



WM Morford
Investment Grade Collectibles at Auction

Investment Grade Collectibles & Maxfield Parrish Items Absentee Auction

Rd #2, Cobb Hill Road, Cazenovia, NY 13035 • 24 Hr. Tel: (315) 662-7625 • 24 Hr. Fax: (315) 662-3570 • morf2bid@aol.com • morfauction.com

Bidding closes Friday, December 6th, 2013. (See page 40 for Terms & Conditions)



1). **Stock Exchange Cigar Can.** 5.25 x 5" (dia.) early paper label (over cardboard, w/ tin top and base) 50 ct. can for "Stock Exchange" brand cigars, w/ nice images of NY Stock Exchange building, floor traders, ticker machine, certificates, etc. Clean, bright and exceptionally nice (a strong C. 8.5+) w/ exception of some overall light wear and stain speckling on top of plain lid (complete series 1901 tax stamp). Min. bid \$50.



2). **Ambulance Thermometer.** 1-3/8 x 9-1/8" (dia.) early dial type thermometer for a Belleville, Ill. ambulance service and mortician w/ great image of early vehicle. Painted metal frame w/ glass covered ad inside. Min. bid \$40.



3). **Lindy Candy Bar Box.** 8.25 x 8.25 x 2.25" unusual, early 2-ps. cardboard candy box (Lion Specialty Co., Chicago) featuring nice image of "Lindy" airplane on lid and four side flaps (dated 1927). Clean and attractive appearance and displays nicely (C. 8+), w/ minor soiling and pencil marks. Note: side apron cover flaps have a couple tears and some non-offensive minor edge wear. Min. bid \$40.



4). **Public Telephone Sign.** 5.5 x 12" early, heavy porcelain directional "Public Telephone" sign. Clean and excellent w/ nice original sheen (basically near mint appearance) w/ a few minor fleabites along bottom edge (mentioned for accuracy- very minor and not at all detracting). Min. bid \$50.



5). **Planters Display Rack.** 4-3/8 x 14 x 7.25" early tin litho Planters Peanut "Z" shaped countertop display rack, promoting various Planters Co. candy bars. Clean, bright and very attractive appearance (displays as a strong C. 8++) w/ only very minor wear. Min. bid \$70.



6). **Western Theme Biscuit Tin.** 3.75 x 7 x 6-5/8" ca. 1895 fancy hinged lid tin litho biscuit tin from Huntley & Palmers Co., featuring beautiful graphic scenes of life in Mexico. Clean and very attractive appearance (C. 8+). Min. bid \$40.



7). **Fleet-Wing Box.** 8-1/8 x 5.75 x 1-5/8" early metal service station literature/envelope box w/ hinged lift-up lid at top, w/ nice advertising for Fleet-Wing Oil Co. products. Clean and excellent (appears never used). Min. bid \$40.



8). **Smith's Ice Cream Tray.** 13-3/8 x 13-3/8" scarce, early tin litho advertising tray w/ very attractive image. Clean, bright and excellent overall (a strong C. 8+) w/ some darkening and wear at outer edges of rim. Min. bid \$50.



9). New York City Plate Topper. 5-5/8 x 11" early cast aluminum automotive license plate topper featuring nice image of Empire State Building. Never used piece is excellent and all original, w/ nice rich surface patina (near mint). Min. bid \$40.



10). Porcelain Auto Emblem. 3.75 x 3.75" unusual, early, small advertising sign from Illinois Agricultural Insurance Co., w/ beautiful high quality detailing (for displaying on car radiator or license plate). Very high quality piece is crisp, bright and like new, w/ exception of tiny fleabite at 5 o'clock outer edge- just below "B". Never used, as found still in its original included mailing envelope. Min. bid \$40.



11). Contraceptive Sponge Tins. Lot of five early tin litho female contraceptive sponge tins (ea. app. 1.75" (dia.) x 1"). They are clean and quite nice overall, w/ only minor wear (avg. C. 8). Min. bid \$40 (the lot).



12). Egg Baking Powder Mirror. 2-1/8" (dia.) scarce, early celluloid advertising pocket mirror for "Egg" brand baking powder. Clean, bright and very attractive (displays as near mint), although examination under magnification will reveal very minor background toning/darkening and a couple tiny pin pricks- mentioned for accuracy, so minor they barely merit mention. Min. bid \$40.



13). Topsy Jar Rings Box. 3-1/8 x 3-1/8 x 1.25" early cardboard product box for "Topsy" brand canning jar rings, featuring nice image of trademark kid in top hat (same image both sides). Full box is clean, bright and excellent overall, w/ minor toning (a strong C. 8++). Min. bid \$30.



14). Jenney Aero Tip Tray. 4-1/8" (dia.) early tin litho advertising tip tray for "Jenney Aero" brand gasoline and Jenney and Valvoline brand motor oils, featuring a great image of Co.'s airplane logo in center (note: tray has dimple on center of backside to use for spinning/betting). Clean and excellent overall, w/ only very minor wear (a strong C. 8++). Min. bid \$40.



15). Cooking Oil Mirror. 2-1/8" (dia.) scarce, early, colorful and highly graphic celluloid advertising pocket mirror for Louisville Cotton Oil Co.'s "Ideal" and "Progress" brands of cooking oil. Excellent. Min. bid \$50.



16). Santa Candy Container. 5-3/8 x 2-1/8" (dia.) early figural glass candy container in likeness of Santa Clause, w/ very nice early paint surface and original closure. Excellent, w/ minor surface wear (paint surface C. 8/+). Min. bid \$40.



17). Ideal Cocoa Pin Tray. 3-7/8 x 2-3/8" fancy, early tin litho pin tray advertising Ideal brand breakfast cocoa, w/ beautifully detailed graphics. Clean and very attractive appearance (a strong C. 8++), w/ wear spots on non-graphic backside. Min. bid \$30.



18). Thomas Bread Door Push. 8 x 4" early porcelain door push for Thomas bread, featuring nice image of early bread loaf. Clean, bright and excellent (near mint) w/ exception of tiny fleabite at bottom edge (so minor barely merits mention). Min. bid \$40.



19). Dr. Pepper Trophy. 8 x 4 x 4" ca. 1950's Dr. Pepper Co. soda sales promotional contest award. Heavy, quality piece w/ figural bronze finished metal Dr. Pepper figure at top, w/ wooden base. Excellent overall, w/ nice surface patina (has a little early, light plating wear in cap area). Min. bid \$40.

JIFFY Toothache DROPS Instant Relief 25¢

20). Jiffy Toothache Drops Sign. 1 x 12" early, porcelain drugstore advertising strip sign for Jiffy brand toothache drops. Clean and like new (near mint). Min. bid \$50.



21). Lard Pails Catalog. 8.5 x 5.25" unusual early 36 pg. catalog for Trethaway Co.'s lithographed lard cans and pails, w/ beautiful color images of Co.'s various offerings. Front side cover has some wear, inside pages excellent. Min. bid \$30.

Change Reciever



22). Dundreary Cigars Change Receiver. 1.5 x 6.75 x 6.75" early, heavy glass countertop change receiver for Dundreary 5¢ cigars (Witter Co., Newmantown, Pa.), w/ beautiful color litho label inside. Excellent overall, w/ some softening to reds on side design lettering area. Min. bid \$50.



23). Hires Tray. 13" (dia.) early tin litho Hires Root Beer tray featuring Co.'s soda Jerk character Josh Slinger (dated 1914). Has strong colors and displays very well (as a strong C. 8+) although close examination will reveal a few faint scattered hazy spots on surface if tipped just right- barely noticeable except on close examination and a little light oxidizing in outer rim area (critical grade C. 8-, although it displays much nicer than this implies) w/ some oxidizing/wear on non-graphic backside. Min. bid \$70.



24). Black Man Inkwell. 5.5" (h) x 5-3/8" (dia. base) unusual, large, very early inkwell in shape of black man. Heavy (weighs in at almost 4 lbs.), very high quality piece, has dark bronze finished metal mounted on black stone base w/ very nice detailing (has lifelike glass eyes, a heavy wiry cloth rug type hair, and earrings dangling from each ear). Excellent and all original, w/ a nice, rich surface patina. Min. bid \$60.



25). Torpedo Pocket Tin. 4.25 x 3 x 1" scarce, early tin litho concave tobacco pocket tin for Torpedo brand (Rock City Tobacco Co., Quebec, Canada) featuring beautiful multi-color lithography (same image both sides). Clean, bright and excellent (a strong C. 8+) w/ very minor wear and a couple trace hints of denting on backside (general wear and typical oxidizing to gold flash finish of lid). Min. bid \$90.



26). Super-Lube Oil Can. 5-5/8 x 4" (dia.) full, unopened, early 1 quart tin litho solder seam picture style motor oil can for "Super-Lube" brand featuring great image of early airplane, speeding automobile and farm tractor. Clean, bright and attractive (displays as a strong C. 8+) w/ light dent in left background area and oxidized pitting and darkening on non-graphic metal lid. Min. bid \$40.



27). Baker's Cocoa Tin. 5-7/8 x 3.25 x 3.25" scarce, very early, 1 lb. small-top tin litho product can for Baker's brand cocoa, w/ nice images of Co.'s trademark girl on front, back and lid. Excellent (C. 8.5). Min. bid \$40.



28). Mother Dawson Spice. 3.75 x 2-3/8 x 1-3/8" early tin litho spice tin (paprika) for Mother Dawson brand (Kennedy Products Co., Gloversville, NY) w/ attractive color graphics (has nice image of vanilla bottle on left side edge). Has strong colors and displays nicely (C. 8+) w/ minor soiling and some oxidizing on non-graphic lid. As found, should improve w/ cleaning. Min. bid \$30.



29). Planters Box. 8.5 x 9.5 x 7" as shown (7 x 9.5 x 2-1/8" box closed) scarce, ca. 1930's 2-ps. waxy cardboard display box for Planters 5¢ Jumbo Peanut candy bars, w/ images of growing peanut plant featured on lid and inside marquis (marquis not attached at back). Has some light fade and scattered wear spots on lid, as well as some edge tattering and separation along the back right edge of side apron area, w/ inside reinforced separation closure on lid, but overall quite attractive and displays nicely (C. a strong 7++). Min. bid \$60.



30). Arm & Hammer Flower Cards Set. The complete set of all 60 Arm & Hammer Soda Co.'s "Beautiful Flowers" product insert cards (each 2-7/8 x 1-7/8") featuring colorful and highly graphic flower images on front, w/ text on backside. Mostly excellent overall (backsides on a few have minor toning/staining, w/ couple small glue spots on one card). Min. bid \$30 (the set).



31). Pippin's Ceiling Sign. 5.5 x 5" early 2-sided die-cut cardboard string hung ceiling sign/tan pull advertising Pippins brand 5¢ Cigars. Clean and attractive appearance, w/ tiny pinhole and a little non-offensive light edge wear from use (C. 7.5+/8-). Min. bid \$30.



32). Moore's Lozenges Tin. 3-1/8 x 2 x 1/2" small, very early tin litho hinged lid pocket tin for Dr. C. C. Moore's Throat & Lung lozenges, featuring beautifully detailed graphics (Somers Brothers Litho). Clean and very attractive appearance, w/ minor scattered wear (C. 8). Min. bid \$40.



33). Butterine Pocket Mirror. 2.75 x 1.75" early celluloid pocket mirror for Ammon & Person Co.'s "Butterine" brand spread featuring beautiful multi-color graphics (scarce deep blue background variation). Excellent. Min. bid \$40.



34). Ashlee Shoes Match Safe. 2.75 x 1.5 x 3/8" early celluloid covered match safe advertising Ashlee & Co. hand-made shoes for Miners and Loggers (W.B. Ashley Co., Wardner, Idaho) w/ nice image of early work boot. Excellent. Min. bid \$40.



35). Triple L Oil Can. 5.5 x 4" (dia.) early tin litho 1 quart solder seam motor oil can for "LLL" brand (Powerene Co., Pennsylvania) w/ nice images of early planes, trucks and cars in background (same images both sides). Clean and attractive appearance (C. 8+) w/ minor scattered wear. Min. bid \$40.



36). Roth Packing Co. Mirror. 4 x 2" important, early celluloid advertising pocket mirror w/ fancy, embossed metal hand mirror styled frame, advertising Roth meat packing Co., Cincinnati, featuring outrageous, colorful and highly graphic image of pig whipping young piglet. Crisp, bright and like new. Min. bid \$50.

Taxi Badges



37). Taxi Badges. Lot of five different ca. 1920's through 1940's small, very high quality metal taxi cab driver badges (sizes range from 1-3/8 x 1-1/8" to 1-7/8 x 1.25"). Cities/States include Pontiac; Minneapolis; Glen Ridge; and Kentucky. Excellent overall, w/ a little minor expected wear from use. Min. bid \$30 (the lot).



38). Coronation Coach Biscuit Tin. 5 x 10 x 3-1/8" fancy, very high quality, early figural tin litho British biscuit tin from Jacob Co., made to commemorate the 1937 coronation of Edward VIII. Clean and very attractive overall, w/ a little typical light darkening/oxidizing to gold flash finish areas (C. 8+/-). Min. bid \$50.



39). Cadette Baby Powder. 7-3/8 x 2.25 x 1.25" early tin litho 3-1/8 oz. grey coat variation figural product can for Cadette brand talcum powder (Cadette Products Co., Rutherford, NJ). Full, never used can is clean, bright and excellent in appearance, w/ some typical very minor storage crazing and small dent on backside of lid (a strong C. 8++). Min. bid \$40.



40). Butcher Shop Calendar. 11-3/8 x 8.25" early, embossed, pressed cardboard advertising calendar for an early butcher (James Hoste, Newark, NY), w/ nicely detailed shiny finished lithography of butcher shop interior. Clean, bright and basically like new, w/ exception of a little very minor edge wear. Complete w/ full 1908 calendar pad. Min. bid \$40.

Planters Peanut Butter



41). Planters Peanut Butter Pail. 4 x 3-5/8" (dia.) early tin litho 1 lb. peanut butter pail from Planters Peanut Co., Suffolk, Va., w/ great images of Mr. Peanut characters all around (lithography by Tindeco Co.). Clean, bright and very attractive appearance (basically an attractive C. 8/+ appearance) w/ only minor wear w/ typical general darkening and wear to gold flash surface finish of lid (lid C. 7+). Min. bid \$60.

Heinz Horseradish Jar



42). Heinz HorseRadish Jar. 4-7/8 x 3" (dia.) early, very high quality, 2-ps. glass advertising jar for Heinz Noble Co.'s horse radish, w/ embossed lettering and finely detailed horse head finial on lid. Excellent. Min. bid \$50.



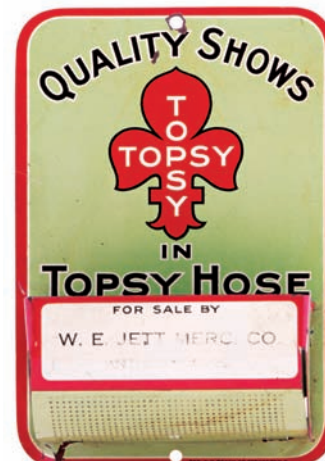
43). Gugler Litho Co. Mirror. 2.75 x 2" scarce, early celluloid advertising pocket mirror for the Gugler Litho Co., Milwaukee, Wis. Clean, bright and excellent. Min. bid \$40.



44). Haleeka Spice Tin. 3.25 x 2-3/8 x 1-3/8" scarce, early tin litho spice tin (turmeric) for Haleeka brand (Bubb & Sons, Williamsport, Pa.) featuring wonderful, multi-color graphic image of Co.'s trademark Indian chief (same image both sides). Clean, bright and excellent, w/ only slight wear (C. 8.5). Min. bid \$40.



45). Pay Toilet Sign. 6 x 3.75" early, heavy porcelain door push from an early 5¢ coin operated bathroom pay toilet stall. Excellent, w/ minor soiling. Min. bid \$40.



46). Topsy Hose Match Holder. 4-7/8 x 3-3/8" early tin litho match holder for Topsy brand hosiery. Clean, bright and attractive appearance (displays as a C. 8+), although close examination will reveal a trace hint of faint creasing (nothing detracting) and some loss to ink stamped letters on front white basket area. Min. bid \$40.



47). Puritan Pocket Tin. 4.5 x 3 x 7/8" early tin litho vertical tobacco pocket tin for Phillip Morris Co.'s "Puritan" brand. Clean, bright and exceptionally nice (near mint). Min. bid \$40.



48). National Queen Sweepers Mirror. 2.75 x 1.75" scarce, early celluloid advertising pocket mirror for National brand floor sweepers, featuring great image of woman using sweeper. Clean bright and excellent. Min. bid \$40.



49). Colonial Coffee Tin. 6-1/8 x 4.25" (dia.) early tin litho 1 lb. coffee can for "Colonial" brand (Thomas Coffee Co., York, Pa.) featuring trademark soldier on both sides. Attractive and displays nicely (basically as a strong C. 8+) w/ a little non-offensive minor background wear on backside and some hazy wear on gold flash finish of lid. Min. bid \$30.

Uncle Sam Oil Company



50). Uncle Sam Oil Co. Match Safe. 2.75 x 1.5 x 3/8" scarce, early celluloid covered match safe advertising Uncle Sam Oil Co. (Kansas City, Kansas). Has some light, even toning and a few faint, slightly darker spots at side edges (pretty minor and not at all offensive), w/ a few light oxidizing specks in metal at top. Overall attractive and displays nicely. Min. bid \$30.



51). Gas Price Sign. 8.5 x 9.25" early, heavy, license plate style embossed metal service station gasoline price sign. Has just the right amount of general wear from use, giving it a rich, attractive, slightly weathered patina and great overall look (C. 7.5++/8-). Min. bid \$40.



52). Hotel Lee Sign. 10 x 8.5" outstanding, early five sided heavy porcelain advertising sign promoting \$1.00 rooms at Hotel Lee (Peoria, Ill.). Never used sign is crisp and like new w/ its original brass hanging chain (near mint w/ exception of a few tiny, very minor fleabites at bottom right edge). Min. bid \$50.



53). Kinney Bros. Tobacco Sign. 8.25 x 7.25" very early, embossed, pressed cardboard sign for Kinney Bros. Tobacco Co. Clean, bright and very nice (C. 8.5+), w/ some dark glue remnants (from scrapbook removal) on plain backside (no longer contains easel back stand-up strip on back). Min. bid \$40.



54). Medicinal Feeding Cup. 4.25 x 3 x 2.75" early, embossed glass "Ideal" brand invalid medicinal feeding cup by Whitall Tatum Co. Cup is excellent and appears never used, as found still in its original cardboard box. Box (3.25 x 5.25 x 3-1/8") is quite nice overall, w/ a small paper loss/wear spot in top right outer border area of label. Min. bid \$40.



55). De Laval Cows. cow 3.75 x 4-7/8"; skim milk baby calf 2 x 2.5". Lot consists of a pair of early tin litho die-cut advertising cows for De Laval cream separators, w/ advertising on both sides of each (back has product info and pictures separator). Clean and excellent (C. 8.5+). Min. bid \$40.



56). Planters Chocolate Peanuts Display Box. 8.25 x 9.5 x 2-1/8" (as shown) extremely rare ca. 1930's 2- ps. cardboard advertising display box for Planter's Chocolate Peanuts, featuring great image of kid holding pack/nuts. Has strong colors and displays nicely (C. 7.5+/8-) w/ some non-offensive minor scattered wear from use. Min. bid \$50.



57). Advertising Skull. 3 x 4 x 3" early, very unusual, heavy figural chalkware skull shaped ashtray advertising Clay-Adams Medical Supplies Co.) w/ incised advertising on backside for Co.'s skeletons, skulls, charts, surgical instruments, etc. Interesting, high quality piece, w/ a nice richly aged surface patina. Excellent. Min. bid \$40.

Advertising Brushes



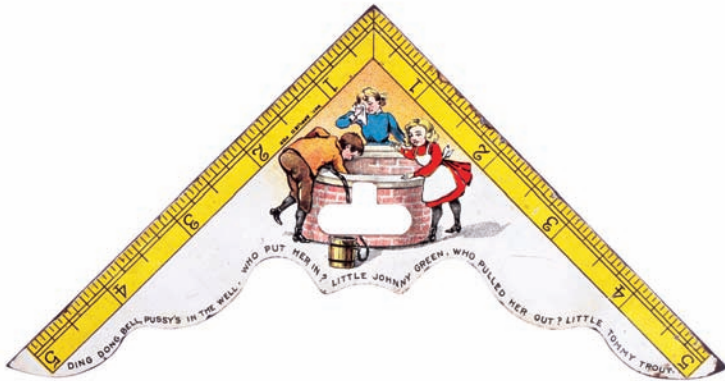
58). Dan Patch Tobacco. 3.25 6 x 3.75" early tin litho tobacco tin for Scotten Dillen Co.'s "Dan Patch" brand, featuring attractive image of famous racehorse on front, back and lid. Clean, bright and excellent overall, w/ trace hint of fade on lid (C. 8/+). Min bid \$40.



59). Advertising Brushes. 7 x 2-1/8 x 1.5" lot of two early, high quality wooden advertising brushes for Triumph brand auto tires and Standard Oil Co. Very high quality pieces are clean and excellent (C. 8++). Min. bid \$30 (the lot).



60). Chef Coffee. 3.5 x 5-1/8" (dia.) early tin litho 1 lb. key wind style coffee can for "Chef" brand (Lee & Cady, Ohio & Michigan) featuring great image of Co.'s trademark chef. Clean, bright and very attractive (basically C. 8.5) w/ exception of scratch mark and minor dent in background area. Min. bid \$40.



61). Tin Litho Ruler. 3.75 x 7.5" unusual, early die-cut tin litho children's ruler, w/ wonderful color graphic image from children's nursery rhyme "Pussy's in the Well". Clean and attractive appearance w/ a little faint waving and non-offensive light wear (C. 8/-). Min. bid \$30.



62). Rothert Co. Tip Tray. 5 x 6-7/8" unusual, early tin litho advertising tip tray for a York, Pa. home furnishings store, featuring beautiful graphic image of lounging women w/ hand mirrors. Very attractive appearance (image area C. 8+/-) w/ a little non-offensive scattered wear in outer edge rim area. As found, should improve w/ cleaning. Min. bid \$40.



63). Patterson Hammock Couches Mirror. 1.75 x 2.75" early celluloid advertising pocket mirror for Patterson Mfg. Co., w/ beautifully detailed graphics. Clean, bright and very attractive appearance (note: a close examination under magnification will show a few very minor tiny foxing specks at outer top right corner edge (mentioned for accuracy, not at all offensive or detracting). Min. bid \$40.



64). Planters Double Jumbo Block Box. 3-3/8 x 5.75 x 7-7/8" scarce variation, ca. 1920's 2-ps. product box for Planters Co.'s 10¢ "Double Jumbo Block" peanut candy bars. Clean, bright and exceptionally nice (C. 8.5+) w/ exception of a little light pencil writing on label (can probably be easily erased off). Min. bid \$40.



65). Berry Bros. Varnish Mirror. 1.75 x 2.75" early celluloid advertising pocket mirror for Berry Bros. Varnishes featuring adorable image of child pulling his dog in a Berry Co. wagon. Clean, bright and excellent. Min. bid \$40.



66). Town Talk Bread Sign. 2.75 x 15" outstanding, early, heavy porcelain strip sign advertising Town Talk brand bread. Crisp, bright and exceptionally nice (near mint). Min. bid \$50.



67). JAP Complexion Powder Die-Cut. 7.5 x 5.25" early cardboard die-cut easel back stand-up on heavy cardstock advertising J.A. Pozzoni's Co.'s JAP brand complexion powder. Clean, bright and excellent (C. 8.5+) w/ signs of removal from scrapbook on backside. Min. bid \$40.



68). Planters Clean Crisp Tin. 9-5/8 x 8-3/8" (dia.) ca. 1918 10 lb. size Planters "Clean Crisp" brand salted peanut can. Has scattered scuffing and light overall age toning and wear, but still decent and presentable overall (C. 7/+) (has substantial wear on lid). Min. bid \$50.



69). Sentenne & Green Ledger Marker. 12 x 3-1/8" outstanding, very early and extremely rare tin litho advertising ledger marker promoting the Sentenne & Green Co.- the premiere 1870's-1890's lithographer of fine early tin, glass and paper signs. Attractive and displays very nicely (as a strong C. 8++) w/ a couple non-offensive faint yellowish spots in bottom background area. Min. bid \$80.



70). Superior Grain Drills Mirror. 2-1/8" (dia.) scarce, early colorful and highly graphic celluloid advertising pocket mirror for Superior Drill Co.'s agricultural seed planting implements. Clean, bright and excellent. Min. bid \$50.



71). Bond Bread Porcelain Sign. 14 x 19" early, thick, very heavy porcelain country store sign for Bond Bread. Clean, bright and very attractive in appearance. Field of sign is exceptionally nice, w/ a little light scattered oxidizing and light chipping wear in outer border area. Min. bid \$40.



72). Limetta Pocket Mirror. 2-1/8" (dia.) scarce, early celluloid pocket mirror for Drewry Co.'s "Limetta" cocktail soda mixer, featuring wonderful image of child riding dog while holding bottle. Clean, bright and excellent overall, w/ non-detracting minor bumps and surface wear. Min. bid \$40.



73). Taxi Co. Paperweight/Mirror. 3.5" (dia.) large, early celluloid palm/paperweight mirror advertising the Muskogee Taxi Co., w/ great hand-tinted photo image of early "Yellow Cab". Excellent. Min. bid \$50.



74). Planters Clean Crisp Wrapper. 7 x 11-5/8" early and extremely rare candy bar wrapper for Planters Co.'s "Clean Crisp" brand "Old Fashioned" large 1 lb. size peanut candy bar. Displays nicely w/ strong colors (front C. 7.5+/-; back C. 7+/-), w/ a fair amount of light wrinkling, a couple light crease marks on front side and some tattering along edges; w/ some faint age tone staining and a 7+ inch tear on backside. Would look great framed. Min. bid \$40.



75). Red Coon Tobacco Box. 6-1/8 x 6.75 x 6.75" unusual early wooden product box for Taylor Bros. "Red Coon" brand tobacco (box originally held 20 triple thick plugs). Attractive dovetailed box has incised red Coon design on two sides and comes complete w/ original lid and partial 1926 tax stamp on side. Excellent appearance (displays as a C. 8+/-). Possibly re-varnished long ago. Min. bid \$40.



76). Flour Thermometer. 21 x 5.25 x 3/4" early country store wooden painted thermometer advertising Fairchild brand flour, w/ beautiful rich patina to its early paint surface. Impressive piece is clean and very nice overall (C. 8+/-) w/ an early enlarged nail hole at top edge for hanging. Min. bid \$40.



77). Medicine Calendars. Lot of two beautiful, early medicine advertising calendars, both clean and like new that are complete w/ full pads and cover sheets. Includes: nicely framed 1891 Scott's Emulsions 12.75 x 11" (8.75 x 6-7/8" actual piece); and 1901 Hood's Sarsaparilla (10-1/8 x 6.75"). Min. bid \$40 (the lot).



78). Etched Grape Juice Glasses. Lot includes nine small, fine, early advertising glasses for various brands of grape juices, each w/ nicely detailed etched lettering and design. Sizes range from 3 (h) x 2" (dia.) to 3-5/8 (h) x 2.25" (dia.). Brands include: DuBelle; Randall's; Welch's; Millen's; Naboth's and Royal. Excellent. Min. bid \$30 (the lot).



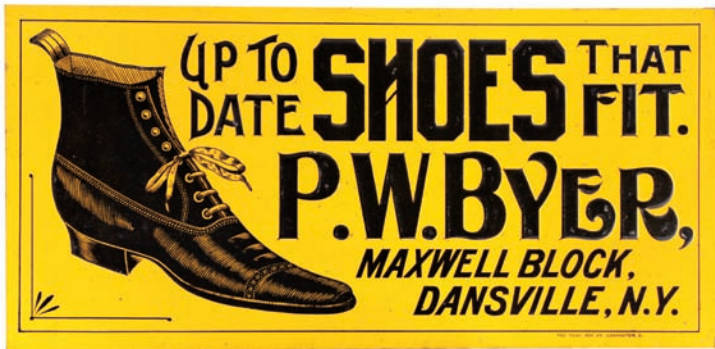
79). Gymnasium Equipment Tip Tray. 4-3/8" (dia.) scarce, early tin litho tip tray of nude male athletic figure, advertising Fred Medart Mfg. Co., St. Louis, makers of gymnasium equipment and steel lockers. Has a little non-offensive minor scattered wear (including tiny ping mark, and a little slight bending and light edge wear- nothing that's serious or detracting). Attractive and displays nicely (C. 7.5+/+/-). Min. bid \$40.



80). Tac-Cut Coffee Can. 4 x 5" (dia.) unusual, early tin litho 1 lb. key wind style coffee can for "Tac-Cut" brand (Toleriton & Warfield Co., Sioux City, Iowa) featuring attractive image of Co.'s trademark chicken. Has strong colors and displays nicely (displays as a C. 8+/-; critical grade C. 7.5+/+/-) w/ a couple background scuffs (note: lid has two pried can opener puncture marks). Min. bid \$40.



81). Moxie Tip Tray. 6-1/8" (dia.) unusual, very early tin litho Moxie tip tray. Has strong colors, nice sheen and displays well, although close examination will show a little non-offensive edge wear (including some light oxidizing at outer edge between 5 and 6 o'clock) and a few tiny scattered scratch marks, w/ some light surface oxidizing and general wear on non-graphic backside (C. 7.5+/+/-). Min. bid \$40.



82). Shoes Sign. 6.75 x 14" very early embossed tin litho sign advertising P.W. Byer Shoe Store, Dansville, NY. Never used sign is clean and excellent overall (a very strong C. 8+/-), w/ minor storage wear. Min. bid \$40.



83). Tire Ashtray in Box. 5.5 dia. x 1-5/8" early advertising ashtray souvenir from Firestone Co. exhibit at 1936 Great Lakes Exposition in Cleveland, Ohio. Rubber tire surrounds embossed amber depression glass advertising ashtray insert. Crisp and like new, as found never used in its original box (box has slight soiling and a little light storage wear). Min. bid \$30.



84). Advertising Clips. Lot includes three metal clipboard style advertising clips (sizes range from 2.25 x 1-7/8" to 2-7/8 x 2"). Includes: Charles Shonk Co.; Dean Rubber Co.'s Peacock brand condoms (tin litho); and Ertel Bros. Boxes Co. (embossed Art Nouveau style brass). All are excellent. Min. bid \$40.



85). Tin Litho Moxie Top. 2.5" (dia.) scarce, early tin litho advertising top (by Shonk Litho) for Moxie (w/ wooden peg insert) that features beautiful multi-color lithography on both sides (top shows Moxiemobile vehicle; bottom Co.'s Frank Archer logo). Clean, bright and exceptionally nice (near mint). Min. bid \$40.



86). Taxi Thermometer. 6" (dia.) unusual, early celluloid (over cardboard) "button" style advertising thermometer for Yellow Cab taxis. Clean and very attractive in appearance (close examination will reveal a little non-offensive, very faint background spotting- mentioned for accuracy, nothing that's at all serious or detracting). Min. bid \$40.



87). Listerine Tooth Brush Holder. 6 x 2-7/8" early tin litho advertising toothbrush holder for Listerine brand tooth brushes, featuring comic character Skeezy. Holder appears never used and is crisp and like new, as found still in its original box (box has some crimping and a tear at upper left narrow edge (box C. 7.5+/+/-). Min. bid \$50.



88). Round Spice Tins. Lot of three different round spice tins (sizes range from 4 x 1.75" (dia.) to 4.5 x 2-1/8" (dia.). Includes tin litho "Greenberg" 2 oz. allspice w/ iceberg image both sides (C. 8.5); Parke's Newport tin litho 2 oz. allspice (C. 8+/-); and Great Eastern cinnamon cardboard side w/ metal top and base (C. 8-). Min. bid \$40 (the lot).



89). Moxie Records. 9-7/8" (dia.) Lot consists of two different large ca. 1921 advertising records issued by Moxie Co. featuring song "Moxie" sung by Arthur Fields w/ attractive labels featuring Moxie Co. spokesman Frank Archer on both sides of each record. Excellent. Min. bid \$30 (the lot).



90). Gloves Sign. 6.5 x 13.25" ca. 1920's early embossed tin litho sign for Hansen's Men's Gloves (Passaic Ware Co. lithographers). Rich, high quality sign is clean and very attractive, w/ minor wear at outer corner edges (a strong C. 8+). Min. bid \$40.



91). Planters Chocolate Bars Display Box. 2-7/8 x 5-7/8 x 9.5" (5-7/8 x 6 x 9.5" as shown) early and extremely rare 2-ps. waxy cardboard store display box for Planters 5¢ "It's the Nuts" chocolate bars. Clean and displays nicely (C. 8/-) w/ minor soiling and a couple tear/puncture marks on top of plain non-graphic section of box lid. Min. bid \$50.



92). Eigenbrot Brewery Sign. 9.25 x 13-3/8" early tin over cardboard sign for Schiller Beer (Eigenbrot Brewing Co., Baltimore, Md.). Clean, bright and attractive appearance (displays as a strong C. 8++) although close examination will reveal a few light rubs, wear marks and minor dents- nothing offensive or detracting (critical grade C. 8/-). String missing on backside. Min. bid \$40.



93). Iron Match Holder. 3.5 x 4 x 4" unusual, early figural cast iron countertop match holder advertising Abendroth Co. (maker of iron stoves, ranges, fountains and vases). Very nice overall. Min. bid \$30.

Dice Holders



94). Dice Games Lot. Lot of three different miniature advertising dice holders. High quality pieces are nickel over brass w/ celluloid advertising bands, and several miniature dice inside each. Includes: Feigenspan's Lager Beer, Lake Fuel Co., and Vote for Milwaukee. All are excellent. Min. bid \$40 (the lot).



95). Heinz Vinegar Sign. 4-1/8 x 11" very early, embossed, pressed cardboard sign for H.J. Heinz Co.'s Keystone brand pickling vinegar. Clean, bright and exceptionally nice (a strong C. 8.5++). Min. bid \$30.



96). Planters Roasted Peanuts Box. 10 x 6.25 x 6.25" early cardboard 3 lb. size box for Planters roasted in the shell peanuts. Clean, bright and excellent (a strong C. 8++) w/ some tearing and edge wear on top inside edge flap (not visible when closed) and non-detracting minor spotting in red background area below peanut. Min. bid \$30.



97). Medicinal Cures Match Scratchers. Lot of two early cardboard advertising match scratchers for quack medicinal cures. Includes: Barker's South American Fever & Ague Cure (4-5/8 x 3-1/8") excellent w/ exception of loss to sandpaper striking surface; and Bruce's Corn Cure 4 x 2-5/8" (like new). Min. bid \$30 (the lot).



98). Mapleline Tip Tray. 4.25" (dia.) scarce, early tin litho advertising tip tray for "Mapleline" brand maple flavored table syrup (Crescent Mfg. Co., Seattle). Clean and very attractive in appearance (displays as a C. 8/+) w/ non-offensive minor hazy spot in bottom background area (as found should improve w/ cleaning). Min. bid \$30.



99). H & K Coffee. 4 x 5-1/8" (dia.) early tin litho 1 lb. key wind style coffee tin from Hanley & Kinsella Co., St. Louis, Mo. Clean, bright and exceptionally nice (C. 8.5/+). Min. bid \$40.



100). General Motors Trucks Emblem. Early (ca. 1920's/30's) very high quality, heavy stamped metal (nickel?) U.S. made manufacturers emblem for General Motors Trucks (Argentina) w/ beautifully detailed ranching scene image showcasing farm truck, w/ cattle, setting sun, etc. in background (stamped: "Hedlaid Co., Columbus, O. (Ohio). Neat piece, (would make incredible Western style belt buckle). Min. bid \$30.



101). Wandersee Buffet Mirror. 1.75 x 2.75" scarce, early celluloid advertising pocket mirror for Wandersee Buffet, Rochester, NY, featuring great image of nude and cherubs. Clean, bright and excellent overall, w/ typical minor bumps on surface (American Art Works). Min. bid \$40.

Salesman's Samples



102). Salesman's Sample Bathroom Fixtures. Lot includes three different, early, high quality, miniature porcelain ceramic salesman's sample bathroom fixtures, ea. w/ stamped advertising in the glaze. Includes: Great Western Pottery Co. pedestal sink (3.25 x 3-7/8 x 2.75"); Trenton Potteries bathtub (1-5/8 x 5 x 2.5") and Camden Pottery Co. toilet bowl (2.5 x 2-3/8 x 3-7/8"). Min. bid \$40 (the lot).



103). Moxie Tip Trays. 6-1/8" (dia. ea.) Lot of two tin litho tip trays for Moxie (different images of same girl). Both are clean, bright and display very nicely (as a strong C. 8++) w/ only minor wear (note: tray showing upper body has fairly heavy wear on non-graphic backside. Min. bid \$50 (the lot).



104). Greyhound Cap and Badge. Early Greyhound bus drivers uniform cap (5-3/8 x 9 x 11"), complete w/ its original, beautifully detailed "Atlantic Greyhound Lines" cap badge featuring great ca. 1930's style bus (badge 2-5/8 x 2-3/8"). Very high quality piece, excellent condition (C. 8.5/+). Min. bid \$40.



105). Planters Jet Racer Toy. 2-1/8 x 5.5 x 2.25" unusual, ca. 1950's/60's plastic toy featuring Mr. Peanut driving racecar. Excellent, as found w/ its original box. Min. bid \$40.



106). Drugstore Pin Tray. 3-1/8" (dia.) early, very high quality advertising pin tray for a Reading, Pa. druggist, featuring nice image of woman in sailors outfit driving boat. Tray is high quality brass, w/ advertising under glass. Min. bid \$20.



107). Friends Oats Pitcher. 2-7/8 x 1.75" (dia.) wonderful, early miniature advertising cream pitcher in fine Austrian porcelain advertising Friends Oats (has text advertising on backside and gold stamped advertising on base). Very high quality piece (like new condition). Min. bid \$40.

Cigar Makers Union



108). Cigar Maker's Union Match Safes. Lot of two different early celluloid covered match safes promoting cigars manufactured by Cigar Makers Union workers, each featuring the Unions official blue cigar box label stamp strips. Both are clean and excellent. Min. bid \$50 (the lot).



109). Parisian Novelty Co. Mirror. 1.75 x 2.75" early celluloid advertising pocket mirror promoting Parisian Novelty Co. (an early maker of celluloid political and novelty items) featuring beautiful multi-color image of Co.'s factory building. Excellent. Min. bid \$40.



110). Pez Mechanical Clicker. 2.5 x 3.5" mechanical tin litho toy clicker advertising Pez brand candy (when clicker is pushed on backside, girl bends over to hand boy candy). Clean, bright and very attractive (a strong C. 8+) w/ a little non-offensive light wear from use (works well). Min. bid \$40.



111). Stock Food Match Safe. 1-3/8 x 2.25 x 3/8" early celluloid covered match safe advertising "Molassine", a veterinary stock food product, w/ advertising all around (side text notes health and restorative properties and worm eradicator benefits). Clean and excellent, w/ trace bit of wear to top lettering of word "Molassine" above the logo (English). Min. bid \$40.



112). Herz Spark Plug Tin. 2.5 x 1-5/8 x 1-1/8" early tin litho product tin for Herz Co. (New York) spark plugs (has 1905 patent pending date), w/ detailed product image on right side edge. Excellent overall (a strong C. 8++) w/ only minor wear. Min. bid \$40.

Sample



113). Johnson's Wax Sample Tin. 1-7/8 x 1.5" (dia.) very early, miniature tin litho sample tin for Johnson Wax Co.'s dancing floor wax, featuring same images of dancing couple on both sides. Full, sealed, unopened tin is clean and excellent (C. 8.5++). Min. bid \$30.



114). Greyhound Cap Badge. 2-3/8 x 2" ca. 1930's bus drivers uniform cap badge from the Pacific Greyhound Lines, featuring very high quality 3 color inlaid porcelain cloisonné enameling. Nickel finish has some slight oxidizing and general surface wear from use, but overall attractive and displays nicely (enameling very nice). As found, should improve w/ cleaning. Min. bid \$30.



115). Rex Brake Wafers Tin. 2-1/8 x 1.25" (dia.) early tin litho product can for Rex brand brake wafers featuring great image of man applying product to early auto wheel. Clean, bright and very attractive (C. 8++) w/ a couple minor wear spots. Min. bid \$40.



116). Reed Mfg. Co. Match Safe. 2.75 x 1.5 x 3/8" early factory scene celluloid covered match safe advertising tin ware maker Reed Manufacturing Co. (has Co.'s logo image on backside). Clean and excellent. Min. bid \$40.



117). Pepsi-Cola Glasses. Lot of seven ca. 1940's Pepsi-Cola soda glasses, ea. w/ enameled advertising and soda fountain syrup lines at bottom. Includes six 10 oz. glasses (5-1/8 x 2-3/8" dia.) and one 6 oz. glass (4.5 x 2.25" dia.). They are all excellent and appear never used. Min. bid \$30 (the lot).

Taxi Ashtrays



118). Taxi Ashtrays. Lot of eight different early advertising ashtrays for various Taxi Cab Co.'s. Seven are glass w/ reverse painted design and one is painted metal. Includes 4 different Yellow Cab variations; Friendly Cab Co.; two different Pine Hill Taxi and Dudley 6 1121 Taxi. All are excellent. Min. bid \$30 (the lot).

Coca-Cola Co.



119). Sun-Rise Soda Sign (Coca-Cola Co.). Unusual ca. 1950's/60's metal advertising sign w/ raised frame area. Has bright, colorful graphics to its thick, heavy enamel type paint surface marked "Bottled by the Coca-Cola Bottling Company" in bottom left corner. Clean, bright and excellent overall (C. 8.5+) w/ some minor storage wear in the raised, bottom outer frame area. Min. bid \$40.

Bidding Ends Friday, December 6th, 2013.



120). **Factory Scene Paperweights.** Lot of two early glass advertising paperweights w/ white milk glass bases, each w/ beautifully detailed New York City factory images (ea. 2-5/8 x 4 x 7/8"). Includes: Fulton & Walker Coach and Wagon Builders and Reinhardt Co. Hay, Straw and Grain dealers. Both are excellent. Min. bid \$40 (the lot).



121). **Moxie Glasses.** 3-7/8 x 2.5" (dia.) lot of five early soda fountain glasses w/ acid etched advertising for Moxie soda, each w/ syrup line at bottom. They are excellent and appear never used. Min. bid \$30 (the lot).



122). **Mayo's Tobacco Canister.** 5.25 x 5" scarce, very early 16 oz. kitchen canister style tobacco container for Mayo's brand (Series 1891 tax stamp) w/ hinged lid and clasp on back side for later use as coffee canister (Hasker & Marcuse Litho). Clean and attractive in appearance, w/ some light wear on backside and gold flash base (C. 8+/-). Min. bid \$40.



123). **RC Cola Sign.** 14.75 x 27-5/8" early embossed tin litho soda sign for RC brand cola (by Donaldson Art Sign Co.). Clean w/ bright, vivid colors and nice original sheen (appears never used and displays on wall as a C. 8.5/+). although closer examination will show a little minor crimping, minor storage wear and a light scratch mark from "A" of "cola" to just above "w" in word "twice" at bottom- which appears to be a mfg. blemish. Min. bid \$40.



124). **Navy Plug Candy Box.** 8-5/8 x 10.75 x 1.5" early, colorful and highly graphic 2-ps. cardboard candy box for National Licorice Co.'s penny candy. Clean, bright and impressive looking (C. 8+/-) w/ a little non-offensive minor staining in upper left background and scuff wear in bottom dark border area. Min. bid \$40.

Dr. Daniels Veterinary Medicines



125). **Dr. Daniels Spinner.** 1.25 x 2.75" scarce, early die-cut tin litho Who Pays spinner, advertising Dr. Daniels Horse and Cattle Medicines, w/ very attractive graphics and design. Front is clean and excellent (near mint), w/ some tarnishing on non-graphic backside. Min. bid \$50.



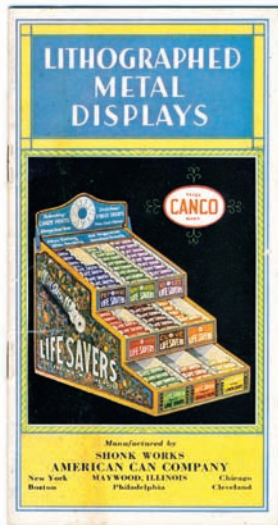
126). **Hy Flash Motor Oil.** 5-5/8 x 4" (dia.) early tin litho solder seam 1 quart motor oil picture can for "Hy Flash" brand (Mouren Lauren Oil Co., Los Angeles, Ca.) w/ nice image of early plane and car. Full, unopened can has bright colors and displays nicely, w/ minor background wear (C. 8+/-). Min. bid \$40.



127). **Oilzum Blotters.** (ea. app. 3.5 x 6.25"), lot of six different early, never used Oilzum motor oil cardboard ink blotters (one features six different 1920's champion racecar drivers that used product). All are clean and excellent in appearance, w/ remnants of scrapbook removal to non-graphic backside on a few. Min. bid \$30.



128). **Perfect Seal Motor Oil.** 5-5/8 x 4" (dia.) early tin litho solder seam 1 quart motor oil picture can for "Perfect Seal" brand (Independent Lubricating Co., Topeka, Kansas) w/ same image on both sides. Display side excellent, back has some non-offensive light scattered wear, w/ a little light background scratching on side edge (front C. 8+/-; back C. 7.5+/-). Min. bid \$40.



129). Canco Litho Brochure. 6.25 x 3.25" early, fully illustrated 16 page promotional brochure for Canco Co. (Shonk Works division of American Can Co.) advertising Co.'s tin lithographed countertop displays (also promotes Co.'s tin signs on back page, showing Hires, Wrigley's Gum, etc.). Excellent overall, w/ a little non-detracting minor staining on front and back covers (C. 8+/-). Min. bid \$30.



130). Mr. Peanut Hand Puppet. 6-3/8 x 6 x 2" scarce, early figural Planters Peanut Co. advertising rubber hand puppet doll, in likeness of Mr. Peanut. Excellent. Min. bid \$60.



131). Patterson Match Safe. 2.75 x 1.5 x 3/8" early celluloid covered match safe advertising Patterson Hydraulic Damper Regulators, featuring attractive image of product, w/ text advertising on back. Clean and attractive, w/ minor toning and wear. Min. bid \$40.



132). Old Judge Coffee. 5 x 4.25" (dia.) early tin litho 1 lb. coffee can for "Old Judge" brand (Evans Coffee Co., St. Louis) featuring beautiful color graphics. Clean, bright and very attractive appearance (C. 8++) w/ only minor wear (note: early lid fits and looks great, but probably not original to piece). Min. bid \$40.



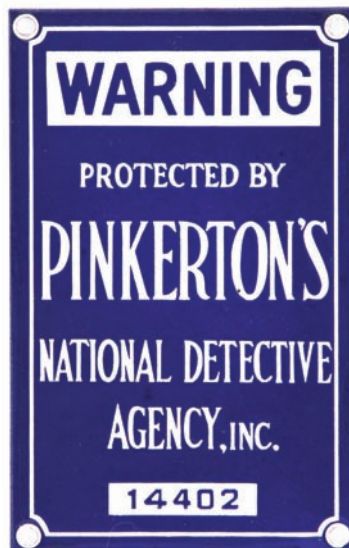
133). Colonial Spice Tin. 4 x 2-3/8 x 1-1/8" early tin litho 2 oz. spice tin for "Colonial" brand ginger (Matthews & Co., Kingston, NY), w/ same nice image on both sides. Clean and very attractive (a strong C. 8++). Min. bid \$30.



134). Keystone Overalls Mirror. 2.75 x 1.75" early celluloid pocket mirror for Keystone brand overalls, featuring great image of semi-nude wearing only an unbuttoned overalls shirt. Excellent. Min. bid \$40.



135). McAvoy's Malt Marrow Mirror. 2.75 x 1.75" early celluloid pocket mirror featuring great image of child holding product bottle. Clean and excellent. Min. bid \$40.



136). Pinkerton Sign. 5.5 x 3.5" early porcelain door push sized sign issued by Pinkerton Detective Agency for jewelry stores, etc. to warn off potential intruders. Excellent. Min. bid \$30.



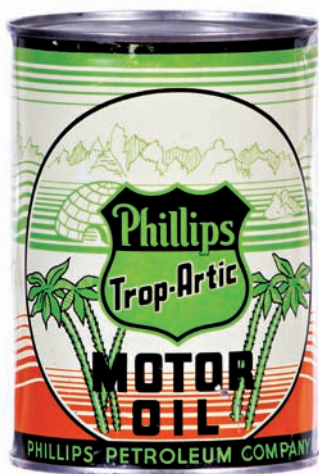
137). Min. Bartholomay's Beer Stein. 3.25 x 1-7/8" (dia.) early, very high quality miniature ceramic stoneware beer stein advertising Bartholomay's Brewing Co. (Rochester, NY), complete w/ hinged pewter lid. Excellent. Min. bid \$40.



138). Very Early Spice Tin. 3-3/8 x 1-7/8" (dia.) very early tin lithographed spice tin ("Fine Ground Pepper") w/ fine, beautifully detailed Ginna style lithography. Has strong color and displays nicely, w/ stable surface (display side C. 8+/-; back side w/ lion image is quite nice overall, w/ exception of early damage area in upper left background area). Min. bid \$30.



139). Animated Displays Catalog. 7.75 x 5.25" scarce, early 32 pg. fully illustrated catalog for Attracto Co.'s mechanical and electrical animated store window and point of purchase displays, including great display figures, trade stimulators, light-ups, etc. Outside cover has some soiling/light staining and inside pages have some non-offensive light water staining, but overall decent and attractive. Min. bid \$40.



140). Phillips Trop-Artic Motor Oil. 5-5/8 x 4" (dia.) early tin litho solder seam 1 quart tin litho motor oil picture can for Phillips Petroleum Co.'s "Trop-Artic" brand. Clean, bright and very attractive appearance (C. 8++) w/ minor denting on backside and a little non-detracting light wear at very top edge. Min. bid \$40.



141). Cut and Slash Tobacco. 4 x 2.5 x 1.25" scarce, full, early cloth tobacco pouch for "Cut and Slash" brand Durham tobacco, featuring image of Union Civil War soldier cutting high prices. Unopened, sealed package is clean and quite nice overall, w/ some light tattering along left side edge of front label and there is a separation tear across the back side tax stamp (Series of 1898). Min. bid \$30.



142). Q-Boid Pocket Tin. 4.5 x 3 x 7/8" early tin litho vertical tobacco pocket tin for Larus Co.'s "Q-Boid" brand. Clean, bright and excellent (C. 8.5+) w/ exception of a couple light scratch marks on front of lid. Min. bid \$40.



143). Zanol Talc Tin. 5-3/8 x 2-5/8 x 1.75" early tin litho talc tin for Zanol Co.'s "Baby Mine" nursery powder (has toy images all around). Clean and very attractive appearance, w/ a little non-detracting wear on right side corner edge (C. 8+/-). Min. bid \$40.



144). Cadette Tooth Powder. 7-3/8 x 2.25 x 1.25" early tin litho 3-1/8 oz. figural product can for Cadette brand children's tooth powder (Cadette Products Co., Rutherford, N.J.). Full, never used can is clean, bright and excellent in appearance, w/ minor storage crazing and small dent on backside of lid (a strong C. 8++). Min. bid \$40.

Edison Mazda Blotters



145). Edison Mazda Blotters. Lot of ten different ca. 1920's cardboard ink blotters, each advertising Edison Mazda brand lamps (light bulbs), including a larger one w/ Maxfield Parrish "Get Together" image. Sizes range from 3.25 x 6" to 4 x 9-1/8" All are in excellent, never used condition. Min. bid \$40 (the lot).



146). Hershey's Lapel Button. 7/8 (dia.) x 2.75" scarce, early celluloid advertising button (w/ wire loop for inserting in lapel) for Hershey's Cocoa, w/ great image of Co.'s trademark kid. Displays great, w/ a clean, very attractive appearance (note: examination under magnification will reveal a very minor background foxing and wear-mentioned for accuracy- not detracting and hardly noticeable). Min. bid \$30.



147). Coca-Cola Sign. 11.75 x 31-5/8" ca. 1960 metal Coca-Cola sign. Clean and bright w/ nice original sheen. Appears never used, w/ only minor traces of storage wear (C. 8.5++). Min. bid \$40.



148). Honor Coffee. 3.5 x 5.5" (dia.) unusual, early paper litho (over tin) 1 lb. coffee can for "Honor" brand (Honor Coffee Mills, Duluth, Minn.) featuring beautiful multi-color graphics. Clean, bright and very attractive (basically a strong C. 8++) w/ minor background rubs and a little non-offensive typical loss and wear along cut line (area separating lid and body of can). Min. bid \$40.



149). Eastman Photo Films Sign. 13.5 x 20.5" early cardboard advertising sign for Eastman brand photographic film, featuring action image of WWI trench fighting soldiers. Colors are strong and piece displays nicely, w/ a little non-offensive minor soiling and wear at outer border area (C. 8/+). Min. bid \$40.



150). Moxie Postcards. Lot of four different early Moxie advertising postcards, ea. w/ attractive graphic advertising images (ea. app. 3.5 x 5.5"). One w/ Frank Archer was mailed, others never used. Min. bid \$50 (the lot).



151). Porcelain Sinclair Sign. 13.5 x 12" ca. 1950's/60's service station porcelain pump plate sign for Sinclair brand gasoline. Clean, bright and like new, w/ exception of small chip spot at bottom left hanging hole. Min. bid \$40.

Iron Toys Catalog



152). Iron Toys Catalog. 6 x 3.25" fully illustrated accordion style fold-out paper brochure/toy catalog for Buffalo brand cast iron toys, featuring detailed images of 23 different toys. Very nice overall condition. Min. bid \$40.



153). Indian Inkwell. 4 x 3.5 x 3.75" unusual, early painted figural white metal inkwell in image of Indian chief. An attractive, quality piece w/ nice detailing and excellent, rich paint surface (headdress lifts up to reveal glass inkwell inside. Min. bid \$40.



154). Ferguson Tractors Sign. 11 x 22" early tin litho agricultural sign promoting Ferguson System Tractors (a brand of tractors made in partnership w/ Ford Motor Co. and Ferguson Co. from 1938-1946). Very nice overall (C. 8+). Min. bid \$40.



155). Uncle Sam Soap Die-Cut. 5.25 x 6" colorful and very attractive early die-cut ad on heavy cardstock advertising Uncle Sam's tar soap product. Clean, bright and exceptionally nice (C. 8.5+), w/ fine detailing. Was probably a stand-up (remnants on backside from what was probably a fold out easel piece). Min. bid \$30.



156). Old Home Spice Tins. Lot of two different tin litho Pitkin Co. "Old Home" brand spice tins (ea. app. 3.75 x 2.25 x 1.25") w/ same images on both sides. Includes: 2 oz. paprika w/ solid yellow background (C. 8+/- w/ minor denting) and 2-1/2 oz. allspice w/ metallic gold background (C. 8+/- w/ minor wear and denting). Min. bid \$40 (the lot).



157). Animal Characters Sand Pail. 4.25 x 3.5 x 3-7/8" early tin litho sand pail toy by J. Chien & Co., w/ nice animal character images all around. Clean and excellent (C. 8.5+). Min. bid \$30.



158). Swell Blend Coffee. 6 x 4.25" (dia.) early tin litho 1 lb. pry lid coffee can for "Chautauqua Swell Blend" brand (Wilcox, Crissey Co., Jamestown, NY). Clean and very attractive appearance, w/ minor trace hint of speckles and staining on backside (front C. 8+; back C. 8/-). Min. bid \$40.



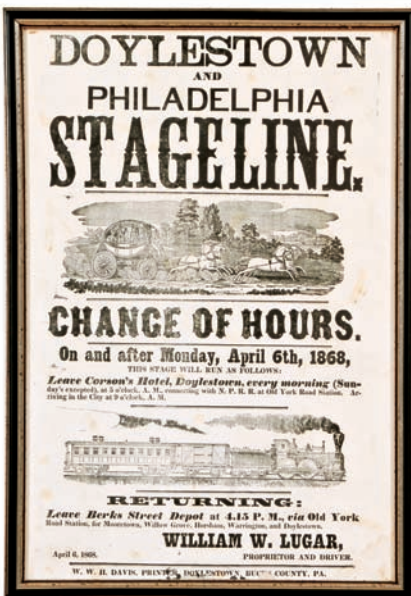
159). Baker's Whiskey Mirror. 2.75 x 1.75" early celluloid pocket mirror for Garrett Co.'s Baker's brand rye whiskey, featuring attractive image of topless nude. Clean and excellent. Min. bid \$40.



160). Gold Medal Grease Can. 4-5/8 x 3-3/8" (dia.) early tin litho pry-lid 1 lb. grease can for "Gold Medal" lubricant (Kunz Oil Co., Minneapolis, Mn.), featuring great image of early car (same image both sides). Clean, bright and excellent overall, w/ some scuffing on backside (front C. 8.5+; back C. 8-). Min. bid \$40.



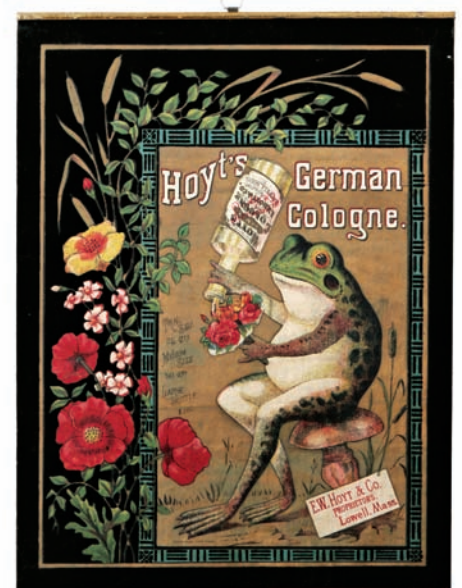
161). Oakville Pins Tip Tray. 6-1/8 x 4-3/8" early tin litho advertising tip tray for Oakville Co.'s (Waterbury, Ct.) safety pins, featuring beautifully detailed graphic images of product packaging, etc. Clean and excellent (a strong C. 8+). Min. bid \$40.



162). Philadelphia StageCoach Broadside. 19.25 x 13-3/8" (18 x 12" visible image) unusual Civil War era transportation sign w/ wonderful woodcut images and 1868 schedule for a Philadelphia, Pa. area stagecoach and railroad transportation service provider. Clean and very attractive appearance (displays as a C. 8+), w/ a little minor expected age toning and light wear. Framed. Min. bid \$40.



163). Blue Ribbon Motor Oil Can. 9-5/8 x 6-5/8" (dia.) large, early 5 qt. size motor oil can for Mid-Continent Blue Ribbon brand (Golden Rule Oil Co., Wichita, Kansas) w/ great images of early touring bus and a Golden Rule service station. Early solder-seam can displays nicely, w/ some general light scattered wear, scuffs and some white hazy spots scattered about. Hard to grade, but a strong C. 7+ seems about right (displays on shelf much better than this implies). Min. bid \$70.



164). Hoyt's Sign. 14 x 10.5" wonderful, early cloth sign (velvet type finish in black border area) w/ metal strips at top and bottom, advertising Hoyt's German Cologne, w/ great image of toad seated on toadstool sprinkling perfume on flowers. Clean, bright and exceptionally nice (displays as near mint) although there is a professionally restored horizontal cut line reinforcement/closure on backside. Min. bid \$60.



165). Altes Beer Tip Tray. 4-1/8" (dia.) early tin litho tip tray for Altes brand beer (Tivoli Brewing Co., Detroit) w/ nice image of early labeled bottle. Clean, bright and attractive appearance (front has minor wear and light denting; non-graphic backside has some general light oxidizing/wear). (C. 8+/-). Min. bid \$30.



166). Garland Broom Holder. 4.5 x 4.25 x 2.25" (dia.) very early tin litho whisk broom holder advertising Garland brand stoves and ranges w/ finely detailed lithography (by Somers Bros.). Clean and excellent overall (C. 8+) w/ minor denting. Min. bid \$40.



167). Junket Tip Tray. 4-3/8" (dia.) early tin litho tip tray advertising Junket brand desserts featuring beautiful multi-color graphics. Clean, bright and exceptionally nice (basically C. 8.5+/-) w/ non-detracting minor mfg. imperfection in upper background (above word "World's"- mentioned for accuracy, not at all serious or offensive). Piece was given as souvenir at 1904 St. Louis World's Fair. Min. bid \$40.



168). Harley Accessories Catalog. 9 x 6" unusual, 24 pg. heavily illustrated 1932 product catalog for Harley-Davidson motorcycle accessories (includes everything from Co.'s official logo clothing, to pennants, badges and motorcycle equipment). Excellent overall w/ faint vertical center fold line and a few minor water stains on back cover (mailing label area). Min. bid \$40.



169). Architect Shaving Mug. 3.75" (h) x 3.75" (dia.) early china occupational shaving mug featuring beautifully detailed image of architects/draftsmen at work. Excellent. Min. bid \$60.



170). Liberty Air-O Oil Can. 10.75 x 7.5 x 3.25" scarce, early tin litho 1 gallon oil can from Mutual Oil Co. (Kansas City, Mo., and various Nebraska, Colorado and Montana cities) featuring great image of Co.'s trademark bi-wing airplane (same image both sides). Has strong colors throughout and displays very nicely, although there is some uneven splotchiness and light staining and scattered wear in the creamy/white colored background section (front C. 8+/-; back C. 7/+). Min. bid \$60.



171). Black Man Clock. 9.5 x 4 x 2.25" early mechanical motion clock featuring great image of black man holding whiskey flask and a stringed instrument, with wonderful large eyes that move back and forth. Scarce clock has wooden body w/ nicely detailed embossed metal front. Excellent overall, w/ great all original paint surface (C. 8.5). Note: clock movement recently has been professionally cleaned and runs great. Min. bid \$60.

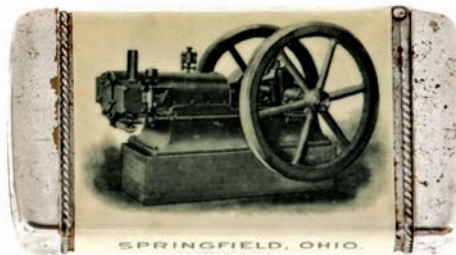


172). Wooden Indian Cigar Sign. 11.75 x 4.75" scarce, very early, easel-back die-cut cardboard stand-up sign advertising Wooden Indian brand cigars. Clean and very attractive in appearance (displays as a strong C. 8+/-), w/ text advertising on backside (back has some lightly scattered stain spots- possibly glue remnants). Min. bid \$50.

Bidding Ends Friday, December 6th, 2013.



173). Front



173). Superior Engines Match Safe. 1.5 x 2.75 x 3/8" early celluloid covered match safe advertising Superior Gas Engine Co., Springfield, Ohio, featuring nice engine image on front, w/ colorful and graphic winged nudes on backside. Clean and attractive. Min. bid \$40.



174).



174). Figural Ink Well. 2-1/4 x 2.75" (dia.) unusual, early metal figural inkwell in shape of a "Vance Steam Trap" industrial device, w/ additional advertising along base for a Phil'a engineering firm (glass ink bottle inside). Very high quality piece, w/ attractive antique bronze looking finish (excellent). Min. bid \$40.



175). Unusual Variation Velvet Tobacco. 4 x 3.5" (dia.) scarce, small variation tin litho knob top tobacco canister for Liggett & Myers Co.'s "Velvet" brand. Has a little minor light scattered wear on body and an area of litho loss/wear on lid (body C. 8/-; lid C. 7). Min. bid \$40.



176). Planters Premium Set. 7 x 9" early Planters Peanut Co. premium display for a Mr. Peanut child's fork, knife and spoon set, w/ actual utensils and ordering form pad attached. Excellent overall, w/ minor soiling and light background stain spot at upper right edge. Min. bid \$30.



177). Buffalo Peanut Butter. 4 x 3.75" (dia.) early tin litho 1 lb. peanut butter pail for "Buffalo" brand (Hoyt & Co., Amesbury, Mass.) featuring attractive image of Co.'s trademark buffalo. Clean, bright and excellent (C. 8.5+). Min. bid \$40.



178). Harley Motorcycles Catalog. 5.5 x 7.5" 12 page heavily illustrated product brochure catalog for 1947 line of Harley Davidson motorcycles and accessories, w/ nice pictures and detailed product info. Excellent. Min. bid \$30.



179). Planters Chocolate Peanuts Tin. 2-3/8 x 4-5/8 x 4-5/8" scarce, ca. 1919 tin litho 10 oz. pry lid product tin for Planters Co.'s milk chocolate peanuts (Planters Nut & Chocolate Co., Wilkes-Barre, Pa.). Clean and attractive, w/ just a trace bit of oxidized toning/light staining on surface- mentioned for accuracy, nothing that's at all detracting or offensive (C. 7.5+/8-). Min. bid \$40.



180). Kow-Kare Sign. 9.5 x 12.5" early, heavy, painted metal flange sign promoting Dairy Association Co.'s cow care products, w/ nice images of product containers. Nice thick enamel type paint surface w/ crisp, bright colors (same image both sides). Appears never used, w/ a little non-offensive light storage wear and minor oxidizing at outer edges. Min. bid \$40.



181). Closed



181). Chase & Sanborn Folding Ad. 5 x 6" unusual, early folding trade card on heavy cardstock. Starts as closed up shutters, which opens up to reveal image of comical black man promoting Chase & Sanborn brand coffee (© 1888 Forbes Litho). Excellent overall, w/ a little light scattered wear to text area on backside. Min. bid \$20.



182). Home Run Cigar Box. 6.75 x 7-3/8 x 4.75" (as pictured lid up) scarce, early wooden cigar box for "Home Run" brand, featuring wonderful early stone litho label on inside, w/ colorful and highly graphic pre-glove era baseball scene on both the inside and outer right label. Inside label is clean, bright and very attractive (a strong C. 8+), w/ scratch marks across tax stamp area (Series of 1883 stamp). Min. bid \$50.



183). Pequot Chief Motor Oil. 6.25 x 8 x 3-1/8" early tin litho 1/2 gallon size motor oil can for "Pequot Chief" brand (Solberg Jobbers, Pequot, Minn.) featuring attractive image of trademark Indian chief (same image both sides). Has strong colors and displays quite nicely on shelf, although there is some light scattered denting, scuffing and wear spots scattered about (C. 7.5). As found, might improve a bit with cleaning. Min. bid \$50.



184). Fire Brigade Cigar Box. 1.75 x 9-3/8 x 1.75" (as shown) unusual, early wooden cigar box featuring great comical image of a stereotypical Currier & Ives "Darktown" style black fire fighting brigade (lithography by Barlow, Rogers & Simpson Co., Buffalo, NY). Clean, bright and excellent overall (a strong C. 8++) w/ Series 1883 tax stamp. Min. bid \$40.



185). Horse Blankets Door Push. 6-3/8 x 3-3/8" early tin litho door push advertising "5A" brand Horse Blankets, w/ attractive, deeply incised logo design. Has strong colors and displays nicely (as a solid C. 8+), w/ a little non-offensive minor expected wear from use. Min. bid \$40.



186). Royal Tooth Powder. 4.25 x 1-5/8" (dia.) early tin litho Royal brand tooth powder tin from Allen Pharmacal Co. Clean, bright and excellent overall (C. 8.5+). Min. bid \$50.



187). Supreme Court Coffee. 6 x 4" (dia.) scarce 1 lb. paper label (over tin) coffee can, featuring attractive image of court building (Dunne Co., Norwich, NY). Clean and attractive appearance, w/ a little minor soiling (front C. 8+/-; back C. 7.5++/8-) w/ a little background fade on backside. Min. bid \$40.



188). Belle of Anderson Match Safe. 2.25 x 1.5 x 3/8" early celluloid covered advertising pocket match safe (w/ built in cigar clipper) for Belle of Anderson brand whiskey, w/ beautiful graphic image of bottle (has text advertising for RI liquor dealer on backside). Clean and very nice appearance w/ some light overall even toning and non-offensive very minor dark spot at bottom left edge. Min. bid \$30.



189). Rainbow Oats Box. 9.75 x 5.5" (dia.) early 2 lb. 10 oz. size cardboard oats box for Ralston Purina Co.'s "Rainbow" brand rolled oats, w/ same beautiful graphic image on both sides. Clean, bright and very attractive (a strong C. 8++), w/ tear mark and pen writing on lid. Min. bid \$40.



190). Yankee Metal Polish Tin. 4-3/8 x 2.5" (dia.) early tin litho product can for Taylor Co.'s "Yankee" brand metal polish, featuring nice image of Uncle Sam. Bright and attractive appearance, w/ some light soiling and toning (as found, will probably improve w/ cleaning). Min. bid \$30 ea. (have 3, winning bidder can take one 2, or all 3).



191). Victor Auto Polish Tin. 7.75 x 3.5" (dia.) early tin litho hand-soldered 1 qt. product can for Victor brand auto body polish (Fiebing Chemical Co., Milwaukee, Wis.) featuring great image of early convertible auto. Attractive and displays nicely, w/ light wear and some typical light oxidizing to metallic silver lettering (C. 7.5++/8-). Min. bid \$40.



192). Fergus Oats Box. 9.75 x 5-3/8" (dia.) early cardboard 2 lb. 10 oz. size oats box from Beall & McGowan Co., Fergus Falls, Minn., featuring beautiful multi-color graphic image of Co.'s trademark waterfalls (same image both sides). Clean, bright and very attractive appearance (a strong C. 8+) w/ minor wrinkling (no paper on lid). Min. bid \$40.



193). Carriage Builder Paperweight. 1-3/8 x 3.5" (dia.) early glass advertising paperweight for D.M. Dorsheimer Carriage Builder (Paradise, Lancaster County, Penn.) w/ image of early, finely detailed carriage. Excellent. Min. bid \$30.



194). Old Time Coffee. 4.25 x 5.25" (dia.) early tin litho 1 lb. pry lid coffee can for "Old Time" brand (John Hoffmann Co., Milwaukee, Wis.) featuring attractive color graphic images of trademark woman (same image both sides). Clean, bright and excellent overall (basically a C. 8.5+) w/ exception of a little light wear to right side white text section. Min. bid \$50.



195). Metzger Roofing Materials Paperweight. 2 x 3.25" (dia.) very early, heavy glass paperweight w/ white milk glass bottom, advertising Metzger Roofing and Roofing Materials Co., Beaver Falls, Pa., w/ nicely detailed image of early roof. Excellent, w/ minor surface wear from use. Min. bid \$30.



196). Maryland Club Pocket Tin. 4.25 x 3-1/8 x 1" early tin litho vertical tobacco pocket tin for Marburg Co.'s Maryland Club brand, w/ nice image of men's club building. Clean, bright and very attractive appearance, w/ minor scattered wear (C. 8+). Min. bid \$40.



197). Cloverine Talc Sign. 6-3/8 x 9.25" early bevel edged tin litho (over cardboard) string hung sign for "Cloverine" brand talcum powder, featuring beautifully detailed multi-color graphics. Clean, bright and very attractive appearance (displays as a strong C. 8++) w/ a few non-detracting background wear spots (Kaufmann & Strauss Litho). Min. bid \$50.



198). Mohican Coffee Tin. 5.75 x 4-3/8" (dia.) early tin litho 1 lb. coffee can for "Mohican" brand coffee (New York), featuring nice graphic image of Co.'s trademark Indian character on both sides. Crisp, bright and attractive appearance (basically a C. 8.5+) w/ exception of a couple tiny, very minor background scratches (lid has some darkening and light oxidizing on its gold flash finish). Min. bid \$40.



199). Old Glory Cigar Ad. 8 x 4.75" early advertising die-cut on heavy cardstock for "Old Glory" brand cheroot cigars, w/ great image of Uncle Sam. Clean, bright and exceptionally nice (displays as a strong C. 8.5+) although close examination under magnification will reveal a minor crease mark at top area and cello tape on plain backside (mentioned for accuracy, not at all detracting and almost impossible to spot w/ naked eye). Min. bid \$40.



200). Nu Icy Soda Sign. 19-5/8 x 9.25" early embossed tin litho sign for Nu Icy brand soda pop, featuring beautiful color graphics. Crisp, bright and like new (C. 8.5+). Appears never used, w/ a couple non-offensive small scratch marks in bottom yellow background area. Min. bid \$50.



201). Sweet Wheat Gum Sign. 12-3/8 x 9" scarce, early cardboard sign advertising "Sweet Wheat" brand chewing gum, w/ attractive color graphics. Clean, bright and attractive (displays as a C. 8.5+), although examination under black light will reveal a little very well-done professional restoration at bottom edge. Min. bid \$40.



202). Talc Samples. Lot of eight different miniature sample sized talcum powder tins (ea. app. 2-1/8 x 1-3/8 x 3/4"). Includes: Colgate; Mirelle; Jap Rose; Massatta; Mulford's; Hinds; and Mennen's San Yang. Very good to excellent overall (light soiling and wear on Jap Rose example and some light scratches on Vantine). Min. bid \$50 (the lot).



203). Chief Paints Sign. 12 x 28" great looking 2-sided tin litho sign for Chief brand paints, w/ same nice image on both sides. Clean, bright and excellent overall (C. 8.5+). Min. bid \$40.

Fishing Lure Tins



204). Fishing Lure Tins. Lot of three different A.L. Foss Co. "Pork Rind Minnow" fishing lure tins, each w/ attractive image on lid. They are clean and attractive in appearance overall, w/ some wear on non-graphic bases (ea. 1.25 x 4 x 1.25"). Min. bid \$40 (the lot).

Gambling Paperweight



205). Dice Paperweight. 1.5 x 3" (dia.) early glass paperweight w/ 5 small dice inside advertising Furst Bros. (a Baltimore, Md. picture, mirrors and moldings Co.). Decent overall, w/ color loss fade to center logo image. Min. bid \$30.



206). Mr. Peanut Vender Bank. (7.5 x 5.5 x 5.5"; box 8 x 5.5 x 5.5") ca. 1950's plastic mechanical battery operated Mr. Peanut vending bank (can of nuts sits in hat and are dispensed through slot in his neck area). Excellent, as found never used, still in its original box (also includes key and original certificate inside). Excellent (some expected light wear to box). Min. bid \$40.



207). Sunshine Finishes Tip Tray. 4-3/8" (dia.) early tin litho advertising tip tray for Heath & Milligan brand paints and varnishes, w/great image of children and dog inside arts & crafts style home. Clean, bright and excellent (a very strong C. 8+). Min. bid \$40.



208). Champion Harvesters Sign. 9.25 x 12" early paper litho sign for Warder, Bushnell & Glessner Co.'s Champion brand harvesting machinery (note: U.S. President Harrison is driving the mower). Clean and very attractive appearance, w/ nicely detailed graphics (Winters Art Litho., Springfield, Oh.). Displays as a nice C. 8+, although there is a 2.5" tear in right grass/hoooves area (barely noticeable, closed w/ archival tape on backside). Min. bid \$60.



Pulver Co. Yellow Kid Vending Machine Ephemera



209). Yellow Kid Vending Ephemera. Lot includes a 7.25 x 8.25" 1905 letter from Pulver Co. trying to collect a 40¢ Wells Fargo Express shipping charge that recipient had refused to pay (note: great coin-op machine pictured on letterhead). Lot also includes a 14 x 11" folding promotional ad for Co.'s chewing gum vendors w/ large colorful images of Co.'s mechanical Yellow Kid gum machines. Both are clean and excellent. Min. bid \$40 (the lot).



210). Adams Gum Litho. 6 x 13" large 2-sided paper litho (over cardboard) box lid for Adams chewing gum, featuring great image of magician, card tricks and magic tricks, etc. (same images both sides). Both sides have strong colors and display nicely (as a C. 8+), w/ exception of some edge loss and light scattered wear (critical grade C. 7.5). Min. bid \$40.



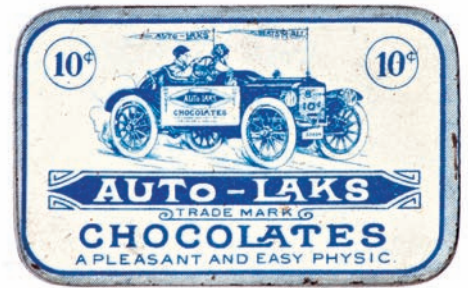
211). Standard Oil Checkers Set. unusual boxed set of wooden checkers (each w/ embossed advertising for various Standard Oil Co. products), complete with folding cardboard checkers board (opens to 14.25 x 14"). Board has Co. advertising on both sides. Excellent (a strong C. 8++). Min. bid \$30.



212). La Fayette Medicines Match Safe. 2-5/8 x 1.5 x 3/8" unusual, early celluloid covered match safe from La Fayette Pharmaceutical Co., Lafayette, Indiana, w/ text advertising on backside for Co.'s "Ointment Universal" product. Excellent overall, w/ a nice rich ivory colored toning (has trace hint of darkening at bottom left narrow side edge). Min. bid \$40.



213). Advertising Turtle. 2.25 x 1.5 x 5/8" early advertising turtle paperweight w/ painted cast iron base and celluloid "shell" from New York publishing Co. Grosset & Dunlop, promoting author Jack London's book "Turtles of Tasman" and 23 of his other titles. Excellent overall. Min. bid \$40.



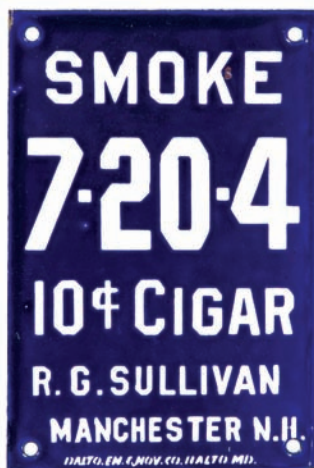
214). Auto-Laks Medicinal Tin. 1-5/8 x 2-5/8 x 1/4" early tin litho product tin for "Auto-Laks" (Crystal Chemical Co., New York, NY). Attractive piece, displays nicely (C. 8+/-) w/ a slight hazy stain spot on bottom side (as found, might improve w/ cleaning). Min. bid \$40.



215). Advertising Turtles. Lot of two early advertising paperweight turtles w/ painted cast iron bases and celluloid "shells" (ea. 2.25 x 1.5 x 5/8"). Includes: Billups Co., Richmond; and Twomey Co., Los Angeles. Excellent overall, w/ a little non-offensive minor surface wear to celluloid on Twomey's example. Min. bid \$40 (the lot).



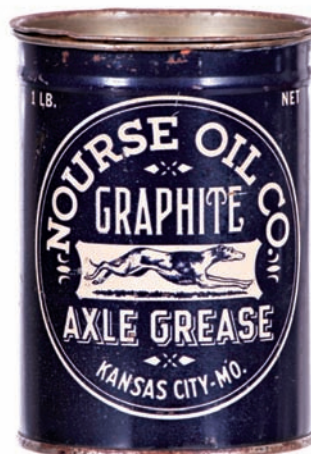
216). Yellow Cab Paperweight. 2-5/8 x 4 x 7/8" early glass advertising paperweight for Yellow Cab taxi Co., w/ nice photo image of early taxicab. Excellent. Min. bid \$30.



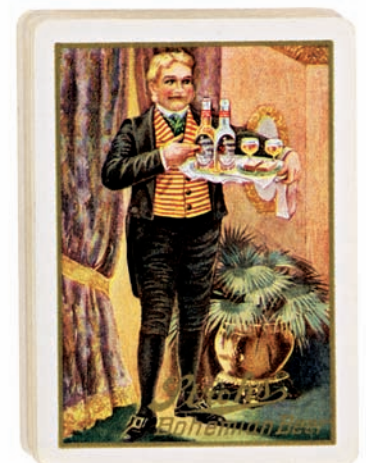
217). Cigar Door Push. 6 x 4" very early, heavy porcelain advertising door push for R.G. Sullivan Co.'s "7-20-4" brand cigars (Baltimore Enamel). Crisp, bright and like new appearance (appears never used) w/ beautiful, rich surface sheen (near mint appearance, w/ only minor traces of wear). Min. bid \$50.



218). Wilbur's Cocoa Tin. 3.25 x 2-3/8" scarce, early paper label (over tin) miniature small top style can for Wilbur's brand cocoa, w/ nice image of Co.'s trademark cherub. Attractive and displays nicely (C. 8/-) w/ minor toning and slight bit of fade to reds (note close examination shows a non-offensive fine vertical separation/split line in paper (in background area just to left of logo). Min. bid \$30.



219). Nourse Axle Grease Can. 4.5 x 3-3/8" (dia.) early 1 lb. tin litho pry lid can for Nourse Oil Co.'s axle grease, featuring nice image of Co.'s trademark dog (Norse Oil Co., Kansas City, Mo.). Clean and attractive (C. 8+/-) w/ some light oxidizing to gold finish of lid. Min. bid \$40.



220). Stroh's Playing Cards. Full deck of 52 playing cards (no jokers) advertising Stroh's Bohemian brand beer, w/ nice image of Co.'s trademark waiter. Cards are excellent (note: box fair to poor, w/ tape repairs and missing flap section at top). Min. bid \$20.



221). Talc Samples. Lot of seven different miniature tin litho talcum powder sample tins (sizes range from 1-7/8 x 7/8 x 5/8" to 2-1/8 x 1-1/8" dia.). Includes Colgate's unscented (in box); Colgate's Monad; Vandice's Kutch; Euthymol; Babcock's; Watkin's; and Samurai (paper label). They are clean and excellent overall, w/ minor wear on a couple. Min. bid \$50 (the lot).



222). Esslinger Brewing Co. Top. 1.5" (dia.) unusual, early celluloid advertising top for Esslinger Brewing Co.'s "Repeal Beer", w/ nice image of Co.'s trademark character carrying tray of beer (wooden spinner insert). Excellent. Min. bid \$30.



223). Western Union Porcelain Sign. 12 x 24" early 2-sided heavy porcelain flange sign for Western Union Telegraph Company. Clean and very attractive appearance, w/ nice surface sheen (note: has a couple non-offensive background chips in field area and some chipping wear inside and at side edge of angled mounting section. Min. bid \$50.



224). Janitor's Bell Sign. 3-1/8 x 2.75" unusual, very early, miniature shield shaped enameled porcelain sign, w/ tiny zinc grommets. Neat little piece is clean and excellent. Min. bid \$30.



225). Roesch Ranges Thermometer. 3/4 x 4 1/2" (dia.) early dial type advertising thermometer for Roesch brand enamel ranges, featuring nice image of Co.'s zeppelin logo. Has metal body, w/ glass covering over paper inside label. Excellent. Min. bid \$40.



226). Huntley & Palmers Biscuit Tin. 5 x 7 x 7" fancy, early embossed decorative peacock theme hinged lid product tin for Huntley & Palmers biscuits, w/ different images all around. Clean, bright and excellent overall (a strong C. 8++) w/ only minor scattered wear. English. Min. bid \$40.



227). Sliptivity Grease Tin. 4.5 x 5.25" (dia.) early tin litho grease tin for "Sliptivity" brand (C.C. Snowdon Co., Calgary, Canada) w/ same beautiful graphics on front, side and lid. Clean and very attractive appearance, w/ a little light scattered edge wear on lid. Min. bid \$40.



228). Malt Nutrine Booklet. 6 x 3-5/8" early promotional booklet (dated 1896) for Anheuser-Busch Co.'s "Malt Nutrine" medicinal malt beverage product, featuring 12 beautiful, highly graphic illustrated pages of promotional advertising on very heavy stock paper. Clean and excellent overall (non-detracting small 1" separation along bottom edge fold of cover). Min. bid \$40.



229). Whale Tobacco. 7.25 x 5 x 2.75" large 16 oz. cloth tobacco bag for "Whale" brand smoking tobacco, w/ colorful and highly graphic paper label. Full, never opened piece is clean and quite nice overall (C. 8+/+) w/ minor wrinkling and a little slight edge wear on label, w/ some light tears on the large, still sealed Series 115 revenue stamp. Min. bid \$40.



230). Plug Crumb Cut Pocket. 4.25 x 3-3/8 x 1" early tin litho vertical pocket tin for David Ehrlich Co.'s "Plug Crumb Cut" tobacco. Clean, bright and attractive appearance, w/ minor wear (front C. 8+/-; back C. 8-/-). Min. bid \$40.



231). Currier & Ives Anti Tobacco Print. 15 x 18.5" (9.5 x 13-3/8" visible image) scarce, ca. 1870's hand-colored small folio sized stone litho print by Currier & Ives featuring an interesting symbolic puzzle message to smokers. Quite nice overall (C. 8+/-), w/ a slight bit of toning and a few minor background stains. Framed. Min. bid \$50.



232). Krueger Brewing Tip Tray. 4-3/8" (dia.) early tin litho advertising tip tray for Gottfried Krueger Brewing Co. (Newark, N.J.). Clean, bright and exceptionally nice (C. 8.5+/-) w/ minor, trace wear at outer edge of rim. Min. bid \$40.



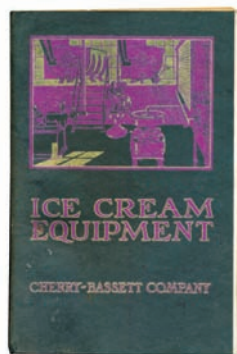
233). Planters Peanut Butter Pail. 4 x 3.75" (dia.) scarce variation, ca. 1910-1918 tin litho 1 lb. peanut butter pail from Planters Nut & Chocolate Co., Wilkes-Barre, Pa. Displays pretty well on shelf, although there is some fairly heavy general scattered wear and light surface oxidizing (C. 7-). Min. bid \$50.



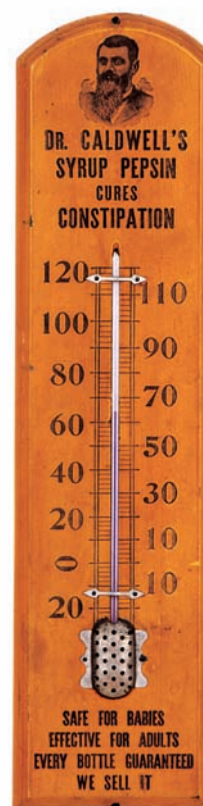
234). Seal of North Carolina Tobacco. 6.25 x 4.75" (dia.) early tin litho small-top style tobacco can from Marburg Co., featuring different, beautiful multi-color graphic images on both sides (Litho. by Tindeco). Crisp, bright and like new (C. 9). Min. bid \$40.



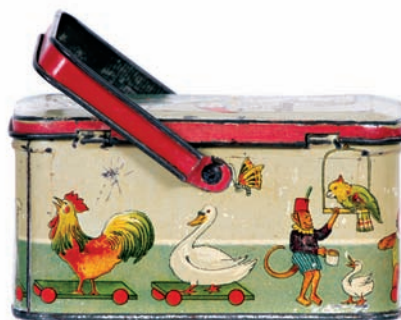
235). Dr. Swett's Bottle & Topper. 5-3/8 x 5.5" early cardboard die-cut bottle topper for Dr. Swett's brand root beer. Excellent overall, w/ minor wear from use (C. 8+/-). Comes w/ an original enamel labeled Dr. Swett's soda bottle (bottle excellent). Min. bid \$30 (the lot).



236). Ice Cream Equipment Catalog. 9.25 x 6 x 7/4" unusual, 1921 Cherry Bassett Co. product catalog featuring 280 illustrated and described pages of ice cream equipment (includes everything needed to manufacture, serve and distribute ice cream, including ice cream parlor serving dishes, scoops, straw holders, tables, chairs, etc.). Nice overall, w/ slight bit of minor color bleed through from cover stain at outer edges of first few pages. Min. bid \$30.



238). Dr. Caldwell's Thermometer. 20.75 x 5.25" scarce, early wooden painted thermometer for Dr. Caldwell's Syrup Pepsin ("Cures") w/ great image of Co.'s trademark doctor. Excellent overall, w/ a nice rich patina to its early paint surface (C. 8+/-). Note: has non-offensive neatly drilled nail hole at tapered upper edge. Min. bid \$50.



237). Iten Animal Cookies Tin. 2-3/8 x 4-5/8 x 2.75" early tin litho animal crackers tin from Iten Biscuit Co., featuring animal and toy images around sides and on lid (Litho by Tindeco). Clean and attractive appearance, w/ minor scattered wear and some light denting on lid. Min. bid \$40.

Bidding Ends Friday, December 6th, 2013.



239). Beer Can Openers. Lot of six metal advertising can openers in shape of early beer cans (each has a heavy metal can puncturer that pops out from inside (2 x 7/8" (dia.) ea.). Includes: Pabst; Miller; Schlitz; Knickerbocker; Budweiser and Blatz. All are excellent. Min. bid \$30 (the lot).



239). Detail



240). Exide Battery Paperweight. 2-7/8 x 4-3/8 x 1" early glass advertising paperweight for Exide brand electric vehicle batteries w/ nice image of batteries on front and a highly detailed enameled factory scene on backside. Excellent. Min. bid \$30.

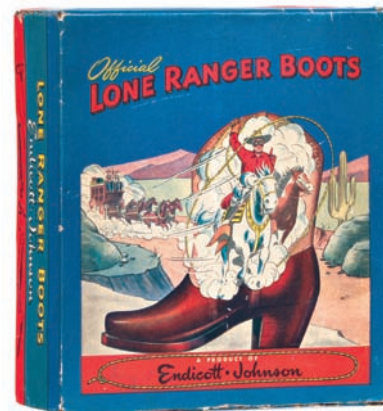
Gold Mining



241). Barringer Mustard Tin. 7.5 x 7.25 x 5" early tin litho mustard tin featuring beautiful color graphic images from Europe, Asia, America, Africa and England, including great gold mining image on front side (w/ 1896 calendar months shown). Has some early scattered scuffing and wear including some stained oxidizing on lid, but overall displays quite nicely (front displays as a (C. 8+/-), other sides range from C. 8/- to 7; lid only fair). Min. bid \$40.



242). Royal Doulton Auto Plate. Scarce, 9-5/8" (dia.) fine, early china dinner plate by Royal Doulton, featuring "Room for One" image from Co.'s highly collectible Motorist series of plates (note: these prized plates were produced in Co.'s Burslem, England factory from 1903-1913). Excellent. Min. bid \$40.



243). Lone Ranger Box. 11.25 x 10 x 3.75" early 2-ps. cardboard product box for Endicott Johnson Co.'s Lone Ranger Boots. Clean and very attractive appearance (C. 8+/-), w/ wear at bottom side apron edge (split seam along bottom right edge and small 1" square area of paper loss). Min. bid \$30.



244). Coca-Cola China Serving Set. Unusual, ca. 1940's, heavy 4-piece commercial diner style china place setting set by Shenango Pottery Co., w/ Coca-Cola circular marking on each of pieces. Includes 9.75" dinner plate, 6-3/8" bread plate, coffee cup and matching saucer. Excellent overall, w/ a little light surface wear from use on bread plate. Min. bid \$50 (the set).



245). Airplane Sand Pail. 4-1/8 x 4-7/8" (dia.) very early tin litho sand pail featuring attractive early bi-wing airplane, w/ Dutch themed images all around. Has strong colors and displays quite nicely, w/ some light scattered wear from use (C. 7.5+/-). Min. bid \$40.



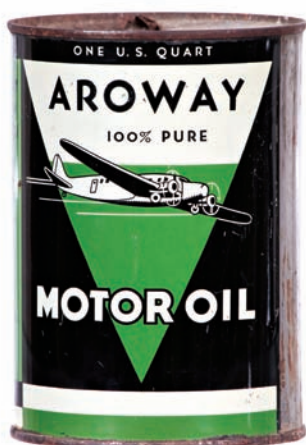
246). Taxi Badges. Lot of five different ca. 1940's - 1950's metal taxi-cab driver badges (sizes range from 1.25 x 1.25" to 2.5 x 1.75"). Cities include Houghton; Gary; Tulsa, Brockton; and Whittenton. Decent overall, w/ some expected general wear from use. Min. bid \$30 (the lot).



247). Ever-Ready Razors Sign. 19.25 x 24.5" (13-5/8 x 18-7/8" visible) early, framed printers proof advertising sign (complete w/ registration marks and printers notes in outside margins) advertising Ever-Ready brand safety razors. Clean, bright and excellent overall (C. 8.5+/-). Note: this proof was used for making two different die-cut countertop standup signs. Min. bid \$40.



248). Hood's Sarsaparilla Calendars. Lot of three early die-cut calendars on heavy cardstock for Hood's Sarsaparilla Medicines, ea. w/ full calendar pads (actual calendars range from 6.25 x 5.25" to 8 x 7.5"). 1895 and 1900 (are both in attractive matching matted frames); 1892 (unframed). First two are vg. to excellent (1895 has minor toning and missing protective cover tear sheet); 1892 has faint, trace staining at top edge (nothing offensive or detracting). Min. bid \$50 (the lot).



249). Aroway Motor Oil. 5-5/8 x 4" (dia.) early solder seam 1 quart tin litho motor oil picture can for "Aroway" brand (Mouren Lauren Oil Co., Los Angeles, Ca.) w/ same image both sides. Display side excellent, back has some non-offensive light scattered wear, including some light scratching on side edge (front C. 8/+; back C. 7.5+/8-). Note: half of lid was cut away long ago (oxidized weathering to remaining section of lid). Min. bid \$40.



250). Sexual Disease Treatments Door Push. 5-7/8 x 3-7/8" unusual, early tin litho door push advertising "Kuragon", treatment for gonorrhea and gleet. Very nice overall (a solid C. 8/+) w/ minor soiling and wear (as found, might improve w/ cleaning). Min. bid \$40.



251). Amocat Spice Tin. 3-3/8 x 2.25 x 1.25" early tin litho 2 oz. spice tin for Amocat brand (West Coast Grocers, Tacoma, Wash.), w/ beautiful multi-color graphics (same scene both sides). Clean, bright and excellent overall (displays as strong C. 8++) w/ non-offensive dent mark on backside and tarnishing/light oxidizing area on non-graphic gold flash lid. Min. bid \$30.



252). Grand Duchess Tobacco. 6-1/8 x 4-1/8 x 2.25" very early (ca. 1870's) 2-ps. cardboard product box for Thomas & Oliver Co.'s "Grand Duchess" brand tobacco (Richmond, Va.). Top label has some light soiling and scattered wear, but overall is attractive and displays nicely (a solid C. 7.5/+). Note: close examination will show some "magic invisible" cello tape reinforcement at outside corner edges of lid Min. bid \$40.



253). Duke's Mixture Door Push. 8-5/8 x 4.25" early, heavy porcelain advertising door push for Liggett Myers Co.'s "Duke's Mixture" tobacco, w/ rich, beautifully detailed image of early tobacco pouch. Clean, bright and very attractive appearance (C. 8.5/+). Min. bid \$50.



254). Kemp's Medicine Sign. 13 x 13" early 2-sided die-cut cardboard sign for Kemp's Balsam Cough Medicine, w/ beautiful color graphics (same image on both sides). Clean, bright and exceptionally nice (C. 8.5++). Min. bid \$40.



255). Winchester Bill Hook. Scarce, early cardboard and metal advertising bill hook from Winchester Repeating Arms Co., New Haven, Ct. Clean and excellent overall (C. 8.5+). Min. bid \$40.

Detail



256). New Empire Catalog. 10 x 6.75" early 32 pg. 1893 illustrated catalog for Seiberlin Co.'s "New Empire" brand harvesting machinery, featuring stunning front and back side cover illustrations on textured paper (front cover shows outrageous image of Indians out harvesting). Crisp and like new (very minor wear at bottom right edge). Min. bid \$40.



257). Motor Cigar Tin. 3.5 x 4-1/8 x 2-7/8" as shown (2-7/8 x 4.25 x 3/4" lid closed) early paper label (over tin) cigar box for "Motor" brand small cigars, featuring same great motoring image on outside and inside lid. Nice overall condition, w/ some light soiling and wear to outside label (inside label C. 8.5/+; outer label C. 7.5+/-). Series 1909 tax stamp. Min. bid \$30.



258). Hires Flange Sign. 12 x 14" early, 2-sided metal flange sign for Hires Root Beer, w/ nice surface sheen. Clean, bright and very attractive appearance (a strong C. 8+/-) w/ a little non-offensive minor scattered wear. Min. bid \$40.



259). Amazon Fire Insurance Paperweight. 1.75 x 3.25" (dia.) very early, heavy blown glass advertising paperweight for the Amazon Fire Insurance Co., Cincinnati, w/ nice logo image of bare breasted woman on horseback. Excellent overall, w/ a little non-detracting typical minor surface wear from use. Min. bid \$40.



260). Planters Change Receiver. 6-5/8 x 6.5" unusual, early rubber counter top change receiver advertising Planters Peanuts. Attractive and displays nicely, w/ some non-offensive light wear from use. Canadian. Min. bid \$40.



261). Defender Tobacco Tin. 4.5 x 5-1/8 x 5-1/8" scarce, early tin litho pry lid tobacco can for Defender brand, featuring attractive image of trademark ship on two sides. Displays pretty well, although there is some general overall oxidized darkening to silver flash trim and lettering areas (C. 7+/-). Min. bid \$40.



262). Mardi Gras Coffee Mirror. 2-5/8 x 1-7/8" (dia.) early celluloid 2-sided advertising pocket mirror w/ movable mirror inside body. Advertises Mardi Gras Coffee on front and Margolla Tea on backside. Excellent. Min. bid \$40.



262).



263). Paul Bunyan Coffee. 3.5 x 5" (dia.) tin litho 1 lb. key wind coffee can for Paul Bunyan brand (Fine Foods Inc., Seattle and Minneapolis) w/ nice image of trademark lumberman. Clean, bright and very attractive appearance (C. 8+/-) w/ a few non-offensive background scratches (nothing serious or detracting). Min. bid \$40.



264). Regal Pocket Tin. 4 x 3-3/8 x 1.25" early Canadian tin litho vertical tobacco pocket tin w/ embossed fold-over lid for Imperial Tobacco Co.'s "Regal" brand tobacco. Clean and attractive in appearance and displays nicely, w/ some minor scattered background wear, including slight fading to reds and light dent mark at left edge of base on backside (C. 8/-). Min. bid \$40.

Bidding Ends Friday, December 6th, 2013.

Sample



265). Sykes Comfort Sample Talc. 1-5/8 x 1.25 x 7/8" scarce, early tin litho miniature "Free Sample" product tin for Sykes Comfort healing powder. w/ nice image of children on front and nurse on backside. Clean and very attractive, w/ only minor wear (C. 8/+). Min. bid \$40.



266). Hercules Blasting Caps Tin. 1.75 x 2.75" (dia.) unusual, early tin litho Hercules brand (Wilmington, Del.) blasting caps tin that originally held 100 No. 6 caps. Excellent (C. 8.5). Min. bid \$20.

Sample



267). White Heather Sample Talc. 2-1/8 x 1-3/8 x 7/8" scarce, miniature tin litho sample sized talc tin for Boots Co.'s "White Heather" brand. Clean, bright and excellent appearance (C. 8/+), w/ only minor wear. English. Min. bid \$30.

John Ehresman Brewing Co.
(Binghamton, NY)



268). Brewery Puzzle/Pocket Mirror. 1-7/8 (dia.) x 3/8" very early handheld dexterity puzzle game w/ mirror on backside promoting John Ehresman Brewing Co.'s (Binghamton, NY) Parlor City Ale. Features wonderful embossed image of black man inside (tiny beads fill slots for his teeth). Excellent. Min. bid \$40.



269). Pioneer Motor Oil. 5-5/8 x 4" (dia.) early solder seam 1 quart tin litho motor oil picture can for "Pioneer" brand (Pioneer Oil & Refining Co., San Antonio, Texas), w/ nice covered wagon image. Full, unopened can has bright colors and displays nicely, w/ minor denting and wear on non-graphic backside (C. 8/+). Min. bid \$40.



270). Old Dutch Grease Can. 4.5 x 3-3/8" (dia.) early tin litho pry lid grease can for "Old Dutch" brand (Autocraft Lubricants Co., Ft. Worth, Tex.). Attractive and displays nicely (same image on both sides), w/ a little non-offensive scattered wear, including a little minor litho loss at top edge (C. 7.5/+). Min. bid \$30.



271). Lax-ets Match Holder. 4-7/8 x 3-3/8" early tin litho advertising match holder for Dr. Shoop Co.'s "Lax-ets", w/ nice image of Co.'s 5¢ product tin. Clean, bright and like new (appears never used). Min. bid \$40.



272). Chocolate Sprinkles Tin. 7-7/8 x 5-1/8 x 5-1/8" early tin litho store size canister for "Just Born" chocolate sprinkles for decorative use on ice cream, baked goods, etc. Clean, attractive and displays nicely (basically a strong C. 8/+ w/ exception of a few light scattered scuff marks. Min. bid \$40.



273). Pickle Jars. Lot of two different Paxton & Gallagher Co. (Omaha, Neb.) Yellowstone brand paper label pickle jars, featuring great image of Co.'s Indian on buffalo logo (sizes 6.25 x 2.75" (dia.) and 4.75 x 2-1/8" (dia.)). Both are clean and very nice (C. 8/+). Lot also includes a taller Gallagher pickle jar for Co.'s Windmill brand w/ attractive windmill image on label (label decent on this although there is a chip at top of jar lip). Min. bid \$30 (the lot).



274). Woodrow Wilson Giant Cigar. 9 x 1-5/8" (dia.) giant promotional cigar w/ fancy embossed graphic Woodrow Wilson band label, in original box. Box is decent w/ some darkening on lid; the beautiful graphic cigar band is excellent (note: some of outer wrapper leaf on cigar is loose at top w/ some general wear). Min. bid \$30.



275). 1918 Coca-Cola Calendar. 8.75 x 5" ca. 1918 Coca-Cola distributors calendar from Allison's News Stand (McAlester, Okla.), featuring silent era film star June Caprice. Very nice overall condition, w/ just a slight trace of minor age toning. Complete w/ full calendar pad (C. 8++). Min. bid \$50.



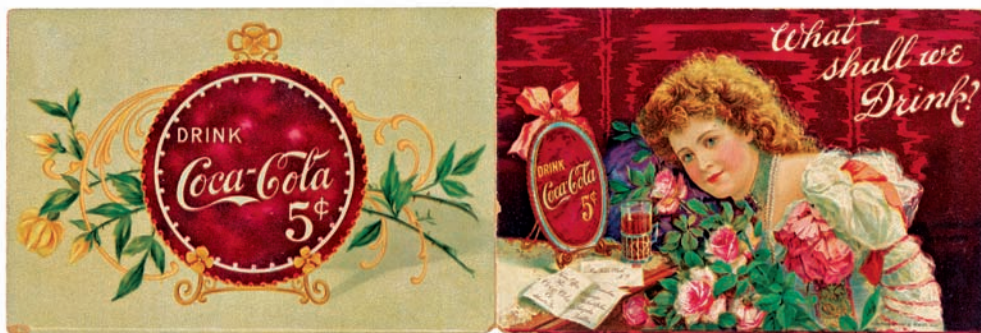
276). Tom Moore Cigar Jar. 5.75 x 5-1/8" (dia.) early, heavy embossed cigar store counter jar for Tom Moore brand cigars, w/ embossed chrome finished lid. Jar is excellent and has interesting early US postage stamps displayed inside jar and comes w/ its original cardboard storage box (box has attractive color labels on both sides). Jar is excellent; box has some pinching, w/ light stain spots on lid. Min. bid \$40.



277). Alka-Seltzer Sign. 9 x 20-7/8" early, fancy, wooden framed glass drugstore sign for Alka-Seltzer, featuring an unusual embossed metallic pattern on the lettering inside. Excellent and all original (some light wear to frame). Min. bid \$40.



278). Princeton vs. Yale Football Tickets. 2-5/8 x 6.75" lot of two complete, never used college football tickets on heavy cardstock for a Nov. 16, 1907 game between Princeton and Yale at Yale Field. Excellent. Min. bid \$30 (the pair).



279). 1901 Coca-Cola Menu. 3-7/8 x 11.75" (as shown) (closes down to 5-7/8" wide) scarce, 1901 Coca-Cola advertising menu on heavy cardstock featuring opera star Hilda Clark (has printed soda menu on inside). Clean, bright and very attractive appearance (a strong C. 8++) w/ a little minor chipping wear at very outer edges. Min. bid \$50.



280). Ohio State Buckeyes Plate Topper. 3 x 10" unusual, early embossed aluminum license plate topper for the Ohio State's Buckeyes, w/ nice images of football and basketball players. Appears never used, w/ a little light scattered storage wear in red background area. Min. bid \$30.



281). Alligator Wind-up Toy. 3.5 x 15.5 x 3.25" early figural tin litho wind-up mechanical alligator toy, w/ native rider on top. Excellent, w/ working mechanism (his mouth opens and closes as he runs along the floor). Min. bid \$40.

Celluloid Items - Salesman's Kit



282). Ocean Blend Coffee. 5 x 4-1/8" (dia.) scarce, early tin litho 1 lb. style coffee can featuring attractive image of Co.'s trademark ocean liner ship, w/ anchor and floral designs on backside (Ocean Blend Tea Co. Toronto and Peterborough, Canada). Clean and very attractive, w/ minor dent mark (C. 8/+). Min. bid \$50.



283). Parisian Novelty Co. Salesman's Kit. Important, early salesman's selling kit from Parisian Novelty Co. (early premier maker of celluloid buttons, pocket mirrors, pin backs, etc.). This traveling salesman's case (16.25 x 11 x 1.25") opens up to reveal two large felt lined display trays inside, that are filled w/ actual salesman's samples of Co.'s various celluloid advertising products (samples include Havoline Motor Oil, Chesterton Beer, Sweet-Orr, etc.). Celluloid sample pieces inside are all crisp and like new (note: one of snaps missing from outside of case). Min. bid \$60.



284). Morris Supreme Pail. 3-7/8 x 3-5/8" (dia.) early tin litho 1 lb. peanut butter pail for Morris Supreme brand, featuring attractive scenes of children at seashore (all around can). Has strong colors and displays nicely, w/ some chipping and small wear spots scattered about (C. 7.5/+). Min. bid \$40.



285). Hood Ornament. 3-7/8 x 6.5 x 3" (dia. base) very high quality, fancy, early automobile hood ornament featuring beautifully detailed image of Mercury. Excellent overall, w/ just the right trace amount of patina and wear. Min. bid \$50.

Advertising Shoe Horns



286). Advertising Shoe Horns. Lot includes a collection of thirteen different advertising shoe horns. Top three are a pressed composition material. Next eight are lithographed metal (Rival has etched design). They display nicely and conditions range from C. 7+ to C. 8.5, w/ soiling, minor denting and backside wear on a couple (sizes range from 3.5 x 1.5" to 4-7/8 x 1.75"). Lot also includes two larger early celluloid examples (hgts. Range from 5.5 to 5.75"). Min. bid \$50 (the lot).



287). Gulf Porcelain Sign. 18 x 18.25" very early, heavy 2-sided porcelain flange service station sign for Gulf Refining Co.'s "No-Nox" brand motor fuel. Clean, bright and very attractive appearance overall (a strong C. 8+), w/ a few non-serious light chips and soiling at outer edges and some typical chipping wear to angled flange mounting bracket section. As found, should improve w/ cleaning. Min. bid \$50.



288). Moxie Tip Tray. 6" (dia.) early tin litho tip tray advertising Moxie w/ an attractive purple floral background design. Clean, bright and excellent (a very strong C. 8++), w/ non-offensive wear spot at outer edge of gold rim (at 3 o'clock). Min. bid \$40.



289). Red Raven Match Holder. 3.5 x 6" (dia.) early, heavy ceramic advertising match holder for Red Raven, featuring great image of Co.'s trademark bird and bottle (same image both sides). Clean and excellent. Min. bid \$40.

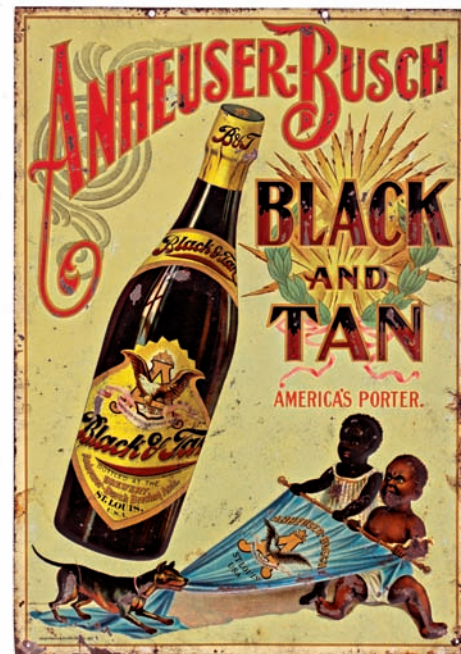


290). Arbuckle's Coffee Sign. 28.75 x 21" early paper roll-down sign w/ metal strips at top and bottom for Arbuckle Co.'s "Ariosa" brand coffee, promoting Co.'s collectors set of 50 product insert cards (the cards featured various food products on front w/ recipes on back). Clean and attractive appearance (C. 8+/-), w/ some non-offensive light tattering/wear along outside edges and some faint, typical expected minor snake line wrinkle marks and horizontal roll marks scattered about (©1889 Knapp & Co. lithographers). Min. bid \$60.

Chewing Gum



291). Adams Gum Tin. 8.5 x 4.75" (dia.) scarce, very early tin litho display can for Adams "Silver Roll" brand chewing gum, w/ beautiful, finely detailed Ginna style lithography (not marked). Clean, bright and excellent overall (C. 8++). Min. bid \$80.



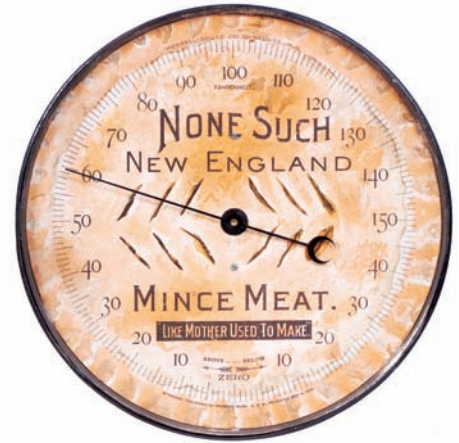
292). Anheuser-Busch Sign. 13.75 x 9-5/8" important and very rare, early embossed tin litho sign for Anheuser-Busch Co.'s "Black and Tan" brand porter, featuring great image of early labeled bottle, w/ a dog and black and mulatto babies displaying Co. banner. Has strong colors and displays quite nicely overall, although there is some general oxidized darkening and wear to outer border edges (would be mostly hidden if framed), some light bends and a few non-offensive scattered litho loss and wear spots scattered about (Kaufmann & Strauss Lithographers). Impressive piece, displays nicely (as a strong C. 7.5), as found, should improve w/ cleaning (note: a little minor restoration could improve to a C. 8.5+ appearance). Min. bid \$250.



293). Soda Water Carrier. 9.5 x 7 x 5" very unusual, early wooden and metal soda water bottles carrier (same lettering design on both sides). Has a nice, rich, all original dry surface patina, w/ a great look. Excellent. Min. bid \$30.



294). Pennsylvania Railroad Calendar. 29.75 x 29" large, early, heavy paper roll-down 1928 calendar for the Pennsylvania Railroad, featuring beautiful color image of painting by artist Grif Teller, complete w/ original strips at top and bottom (has Nov., Dec. and Jan. calendar sheets). Clean, bright and very attractive (a strong C. 8++), w/ minor snake line wrinkles and slight trace of wear along outer right edge (mentioned for accuracy, nothing serious or detracting). Min. bid \$40.



295). None Such Thermometer. 9.5" (dia.) x 1.25" (d) early dial type advertising thermometer for None Such brand mince meat pie filling, in pie plate style metal frame. Clean and excellent (working thermometer). Note: metal pie plate was painted black at some point long ago. Min. bid \$50.

Salesman's Sample



296). Salesman's Sample Coal Grate. 12.5 x 13 x 4.5" very early, heavy figural cast iron salesman's sample for a coal burning fireplace grate unit (no makers name evident). Neat and unusual piece has excellent detailing and a nice rich patina to its early paint surface (note: silver and red's possibly repainted long, long ago). Min. bid \$60.



297). Coca-Cola Art Plate. 14.5 x 14.5" ca. 1905 tin litho Vienna Art plate issued by the Western Coca-Cola Bottling Co., featuring topless model (marked Coca-Cola on backside). Attractive piece (displays as a C. 8/- as shown in frame) w/ some general light wear and some loss/wear spots on outer edges that are hidden by frame (critical grade C. 7++) w/ a couple minor, tiny touch-ups in dark background area. Original frame displays very nicely, although close examination reveals it has been re-glued along a break line). Min. bid \$50.



298). Apothecary Sign. 17-1/8 x 14-1/8 x 1" unusual, primitive wooden 2-sided painted mortar & pestle drugstore trade type sign which appears to have been made to slide into a base. Has some general overall wear and darkening, w/ a repaired break spot on pestle section. Overall still pretty attractive and would display nicely if hung on wall (C. 7/+). Min. bid \$50.



299). Dub-L-Valu Soda Door Push. 8 x 3.5" unusual, early celluloid over tin bevel edged door push advertising "Dub-L-Valu" brand kola and orange sodas. Clean and excellent overall w/ just a faint trace hint of minor staining at bottom grommet hole area (very minor-hardly merits mention). Min. bid \$40.



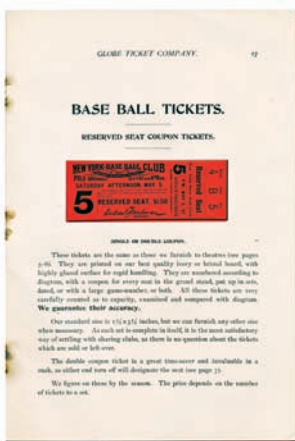
300). Indian Souvenir Spoon. 5.75 x 1.25" fancy, early sterling silver souvenir spoon featuring nicely embossed Indian images on front and back sides of handle, w/ beautifully detailed multi-color cloisonné enameled porcelain Indian chief. Excellent. Min. bid \$30.



301). Polar Milk Bottle. 9.5 x 3-5/8" (dia.) early enamel labeled 1 qt. milk bottle from Garden Farm Dairies, Denver, Col., featuring nice polar bear advertising image for Co.'s "Polar Bear" brand ice cream. Excellent. Min. bid \$20.



302). Dr. Pepper Door Push. 10 x 3 x 1/8" unusual, early mirrored reverse glass advertising door push for Dr. Pepper soda. Piece is crisp and like new, as found never used, still in its original wrapper (note: has a little light silver paint loss to very outer bottom border edges-probably a minor oversight from mfg. process). Min. bid \$40



303). Tickets Catalog. 10.75 x 7-3/8" unusual, ca. 1890's 26 pg. advertising catalog for Globe brand tickets, featuring large, beautifully illustrated color images of early tickets (includes circus, sporting events, theatre, season's passes, etc.) w/ nice section featuring several color illustrated pages of baseball tickets. Cover has some wear spots and has become separated from remainder of booklet w/ some darkening to staple areas (inside pages vg to excellent). Min. bid \$30.



304). Planters Salesman's Case. 9.5 x 17.75 x 7-3/8" early Planters Peanut Co. salesman's presentation selling case, w/ nice early gold advertising on front panel (inside has fold-out staircase style storage/presentation shelves). Decent and displays nicely, w/ general expected ageing and wear from use (C. 7.5). Min. bid \$40.



305). Uncle Wiggily Toy. 7.25 x 6.5 x 3" ca. 1935 Uncle Wiggily tin litho windup Easter car toy by Marx. Clean and attractive appearance (a strong C.8+) w/ some light wear in his hat area. Mechanical operation works great (when wound, car makes a jerky repetitive front and reverse motion). Min. bid \$50.

Motorcycle Cub



306).



306). AMA Motorcycle Bumper Tag. 5 x 4" ca. 1930's/40's early metal AMA (American Motorcycle Association) Mason Dixon chapter motorcycle club members' license plate attachment, w/ an attractive beaded reflective surface finish. Excellent, as found never used, still in its original envelope (envelope has paper loss area). Min. bid \$40.



1901 John Deere Catalog



307). 1901 John Deere Catalog. 3.75 x 6-3/8" early, 1901 Deere & Co. "Pocket Companion", a 64 pg. heavily illustrated and descriptive product catalog w/ heavy stock fold-over covering, featuring illustrations and descriptions of Co.'s many varieties of plows, w/ memorandum pages throughout for note taking. Nice overall condition (C. 8/+). Min. bid \$30.



308). Mechanical Trade Card. 6 x 2.25" (opens to 4.5" wide) very early, folding mechanical trade card advertising Dolly Madison Cigars. When card is opened, woman's leg lifts up to reveal "peekaboo image". Outside has a little scattered soiling and wear, w/ some separation at top of divided centerline. Neat piece! Min. bid \$30.



308). Opened



309). Wunder Brewing Co. Sign. 6-1/8 x 9-1/8" early string hung cardboard sign for Wunder Brewing Co., Oakland, Cal. Clean and attractive, w/ minor toning and just a slight bit of minor edge wear (C. 8/+). Min. bid \$30.



310). 1939 Coke Tray. 13.25 x 10.5" early tin litho serving tray for Coca-Cola, featuring girl on diving board. Clean, bright and very attractive appearance w/ nice surface sheen (a strong C. 8.5/+) w/ exception of a few small chips at outer silver rim area. Min. bid \$40.



311). Mooney's Baking Powder. 5.5 x 3" (dia.) very early paper label (over tin) product can from Mooney & Baker Co., Kingston, Ark., featuring beautiful multi-color lithography. Full, never opened can is clean and very attractive overall (C. 8/+), w/ some light staining spots coming through at top edge of lid. Min. bid \$40.



312). Quick Meal Paperweight Mirror. 4 (dia.) x 3/8" scarce, large, heavy celluloid advertising paperweight mirror for Ringen Stove Co.'s "Quick Meal" ranges, featuring beautiful multi-color graphic image of Co.'s trademark chick chasing bee. Clean, and very attractive appearance w/ a slight touch of even toning across background (a close examination will reveal some non-offensive slightly darker toning/foxing at outside background edges which don't detract from great overall look of piece). Min. bid \$40.

Anheuser-Busch



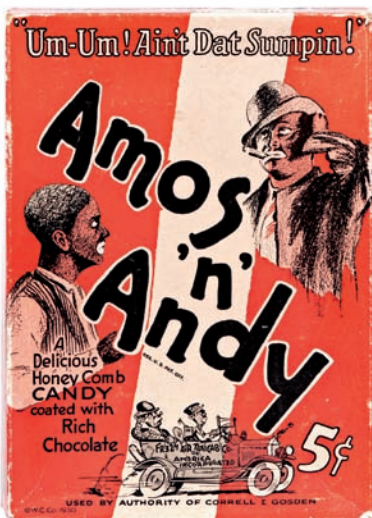
313). Anheuser-Busch Art Plate. 10" (dia.) early tin litho Vienna style art plate w/ eagle logo and advertising on backside for Anheuser-Busch Co.'s Malt Nutrine beverage. Clean and attractive appearance (C. 8+/), w/ a little minor wear (minor pinching and a few tiny chips). Min. bid \$40.



314). Harness Makers Thermometer. 6.25 x 4 x 1.5" early advertising thermometer for Bowman & Sons (maker of harnesses, horse blankets, etc.) w/ a wonderful, very high quality miniature horse collar surrounding the advertising and thermometer (collar is an exact miniature stitched leather version of an actual horse collar, w/ nice early surface patina). Neat and unusual piece! Excellent. Min. bid \$40.



315). Cracker Jack Boxes. Lot of two early cardboard Cracker Jack product boxes, including a 6.75 x 2-7/8 x 1.25" full, never opened box w/ ad on backside for "The Babe Ruth Story" (1948 movie starring Wm Bendix) (C. 8++); and a never used, early unfolded product box (C. 8.5/+) w/ a tiny tear mark at base. Min. bid \$30 (the lot).



316). Amos 'n' Andy Candy Box. 11.75 x 8.5 x 2-7/8" early 2-ps. cardboard product box for Correll & Gosden Co.'s "Amos 'n' Andy" brand 5¢ candy bars. Clean and excellent overall (basically a strong C. 8++), w/ exception of a few cello tape strips at the bottom right apron edges of lid. Min. bid \$40.



317). Double Cola Posters. Lot of two advertising posters on heavy paper stock for "Double Cola" brand, ea. measuring 24 x 18". Both are clean, bright and like new (minor pinching at top left corner on "More to Enjoy" example). Min. bid \$40 (the lot).



318). Sunny Monday Billhook. 6.25 x 3.5" (dia.) large, early celluloid advertising billhook for "Sunny Monday" brand washing machines, w/ great image of woman doing laundry. Near mint. Min. bid \$30.



319). **Badger Grease Tin.** 6.75 x 6.25" very early tin litho pry lid product can for Wadhams Oil Co.'s (Milwaukee, Wisc.) "Badger" brand gear compound (grease) featuring finely detailed lithography by Heekin Litho. Has strong color and displays nicely, w/ light dent on front and a little non-offensive minor wear (C. 8+/-). Lid has general oxidizing and loss to gold flash finish. Min. bid \$40.

Coca-Cola



320). **Coca-Cola Art Plate.** 10-1/8" (dia.) ca. 1905 tin litho Vienna Art plate issued by the Western Coca-Cola Bottling Co., featuring semi-nude model (marked Coca-Cola on backside). Clean, bright and very attractive (a strong C. 8++) w/ non-detracting minor crazing (note: there is plastic tape applied to a hanger on backside). Min. bid \$40.

Coca-Cola



321). **Coca-Cola Art Plate.** 10-1/8" (dia.) ca. 1905 tin litho Vienna Art plate issued by the Western Coca-Cola Bottling Co., featuring female model (marked Coca-Cola on backside). Clean, bright and very attractive (a strong C. 8++) w/ only very minor wear. Min. bid \$40.

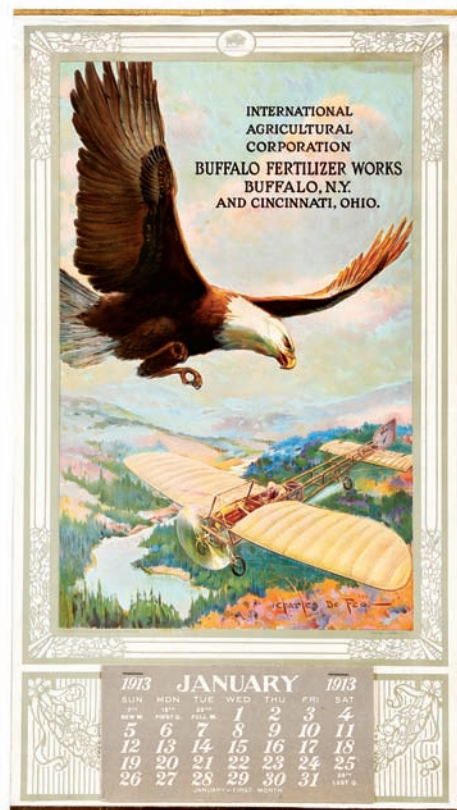


Turtle Spittoon

77). **Turtle Spittoon.** 4 x 15 x 10.75" unusual, early mechanical figural metal spittoon in shape of a turtle, w/ cast iron head and base. Has nice detailing and a great overall look, w/ typical expected wear from age (note: stepping on his head raises his shell up to reveal cuspidor inside). Min. bid \$50.



323). **Indian Bicycle Pin Back.** 1.25" (dia.) early celluloid advertising pin back button for Indian Motorcycle Co.'s "Indian" brand bicycles. Clean and excellent, w/ original paper label on backside. Min. bid \$40.



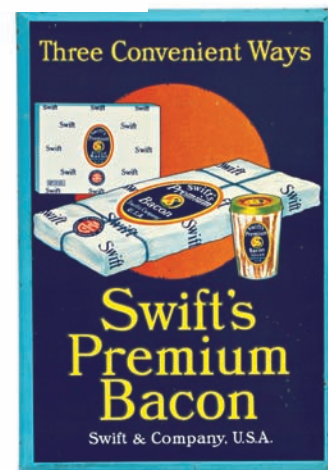
324). **Buffalo Fertilizer Works Calendar.** 20.75 x 11.5" (15 x 9-3/8" image) early paper litho calendar featuring multi-color image of early airplane by illustrator Charles De Feor, complete w/ its full 1913 pad. Excellent appearance (displays as a strong C. 8.5+) although close examination will reveal some professional tear repairs in upper white margin area (below metal strip). Min. bid \$40.



325). **Mac Diarmid's Candy Pail.** 3.75 x 4" (dia.) early tin litho candy pail from Mac Diarmid Candy Co. (Cleveland and Detroit) featuring wonderful animal images all around. Clean, bright and very attractive (a strong C. 8++) w/ some light scattered soiling and wear on gold lid. Min. bid \$40.



326). **Miller Beer Sign.** 13.5 x 10.5 x 1/4" unusual, early, heavily embossed Miller Brewing Co. sign w/ great image of Co.'s girl on moon logo. Sign is made of a heavy, rubbery composition type material and is crisp, bright and like new in condition, w/ very nice detailing (has both string for hanging and metal easel for stand-up use on backside). Min. bid \$40.



327). **Swift's Premium Bacon Sign.** 9.25 x 6-3/8" early tin over cardboard beveled sign for Swift & Co. bacon products, featuring attractive images of Co.'s early bacon packaging. Clean and very attractive appearance (displays as a strong C. 8+) although close examination will show a little non-offensive light background wear (critical grade C. 8/-). Min. bid \$40.



328). Sweney Motor Oil. 6.5 x 8 x 3" unusual, early hand-soldered 1/2 gallon sized motor oil can from Sweney Gasoline & Oil Co. (Peoria, Ill.). Has some light scattered soiling and general wear, but overall attractive and displays quite nicely (C. 7.5/+). Min. bid \$50.



329). Natural Set Up Soda Lot. Unusual, ca. 1930's beveled tin over cardboard sign for "Natural Set Up" brand soda pop, w/ dice counting illusion image shown (8.75 x 6-1/8"). Clean and attractive appearance, w/ a little faint, minor scattered surface wear (C. 8+/-). Lot also includes one of Co.'s green colored enamel labeled soda bottles (excellent). Min. bid \$40 (the lot).



330). Cleo Cola Sign. 5-7/8 x 5.5" early bevel edged tin litho (over cardboard) stand-up sign for Cleo Cola, w/ deeply incised lettering (also has string for hanging). Attractive and displays nicely w/ a little lightly scattered wear from use (C. 8-). Min. bid \$40.



331). Shults Bread Mirror. 2.75 x 1.75" scarce, early celluloid pocket mirror advertising "Shults" brand bread, w/ great color graphic image of Red Riding Hood. Clean, bright and excellent appearance (displays as near mint, although examination under magnification will reveal non-detracting minor wear speck on path behind her hind foot) and minor, shallow surface flake on backside mirror glass. Min. bid \$40.



332). Modox Soda Glass. 5 x 4-3/8 x 3" (dia.) early, heavy, high quality embossed soda fountain glass for Modox medicinal nerve drink (Moxie type beverage) w/ beautifully detailed embossed Indian image. Excellent. Min. bid \$30.



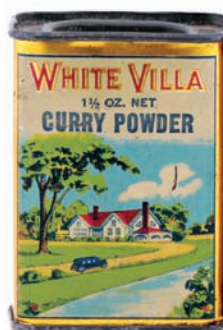
333). Blackstone Coffee Tin. 5-3/4 x 4-1/4" (dia.) early 1 lb. tin litho pry lid coffee can for Blackstone brand (Black Hawk Coffee & Spice Co., Waterloo, Iowa) w/same image both sides. Attractive and displays nicely, w/some non-offensive light general background wear (C. 7.5+/8-). Min. bid \$40.



334). Ceresota Flour Co. Match Safe. 2.25 x 1.5 x 3/8" early celluloid covered advertising pocket match safe from Ceresota Flour Co., featuring nice image of Co.'s wheat food cereal product box, w/ 1901 envelope shown on backside. Excellent. Min. bid \$30.



335). Sci-Fi Horror Movie Poster. 22 x 13-5/8" early promotional cardboard movie lobby sign for double feature 1957 movie thrillers "I was a Teenage Werewolf" (starring Michael Landon) and "Invasion of the Saucer Men". Very nice overall condition (C. 8+), w/ some non-offensive light age toning in outer white border areas. Min. bid \$40.



336). Spice Tin Lot. Lot includes three attractive early tin litho spice tins, (ea. app. 3-1/8 x 2-3/8 x 1-3/8"). Includes S-Bro-Co red pepper (Schneider Bros., Mt. Carmel, Pa.); White Villa Curry powder (Cincinnati and Dayton, Oh.); and Sunshine (Flach Bros., Cincinnati). They are clean and attractive overall, w/ minor scattered wear (C. 8+/-). Min. bid \$40 (the lot).



337). Bally Mule Toy. 4.5 x 8.75 x 3.25" early tin litho mechanical wind-up "Balky Mule" toy by Marx, as found never used in its original box. Toy is crisp and like new and works great, box has some pinching, light tatters and general wear and is missing one of right side end flaps. Min. bid \$40.

Maxfield Parrish Items



338).



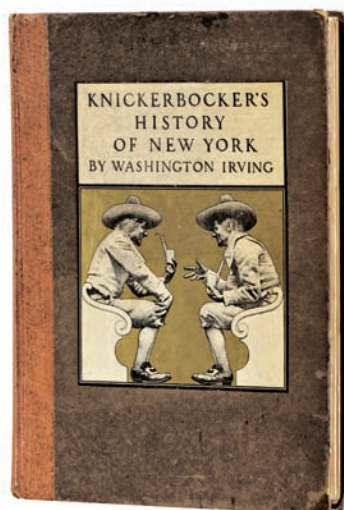
339).



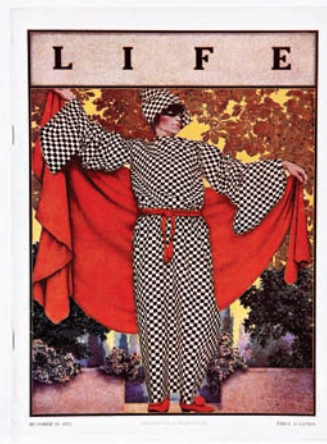
340).



341).



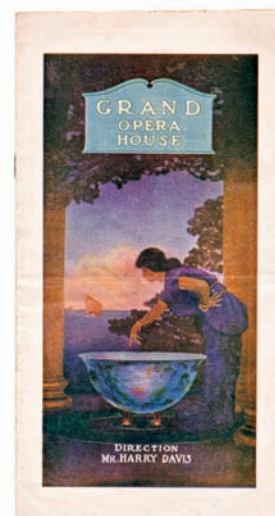
342).



343).



344).



345).

338). "A New Day" Calendar. 14.25 x 16-3/8" (8-3/8 x 10.75" image) beautiful Parrish B & B nighttime Winter landscape image mounted on its original calendar mat board advertising Boyd's Coffee Co., complete w/ full 1950 calendar pad. Excellent, never used condition (minor fold mark on bottom left edge of mat board). Min. bid \$40.

339). "Sing a Song of Sixpence". 11.75 x 23.75" (8.5 x 20.5" visible) Ca. 1910 art print featuring great Parrish illustration of King and Queen, pages and servants looking in amazement at pie filled w/ singing blackbirds. Clean and very attractive, presented in period frame. Min. bid \$100.

340). Boxed Dodge Contentment Calendars. (8 x 6 x 3/4" ea.) lot consists of three different 1920's boxed Contentment calendar sets by Dodge Publishing, as found complete and never used in their original boxes. Includes: 1924 "Three Shepherds"; 1927 "Land of Make Believe"; and 1929 "Jason and the Talking Oak". Calendar sets are excellent overall (two of the box covers have cello tape repairs to side aprons). Min. bid \$40 (the lot).

341). Scribner's Magazine. 9.75 x 7 x 1/2" complete, October 1900 Scribner's magazine, featuring beautiful Parrish cover illustration of woman seated on wall holding fruits, w/ harvest moon in background. Illustration is clean and bright (has typical expected edge wear at outer edges of margins). Min. bid \$30.

342). "Knickerbocker's" Book. 11.25 x 8.25" hard cover book titled "Knickerbocker's History of New York" by Washington Irving; 1915. Has 8 vertical illustrations by M.P. and attractive paste on cover illustration of two men seated on benches facing each other. Very nice overall condition, w/ minor cover wear. Min. bid \$40.

343). "Masquerade". 11-1/8 x 8.25" complete Oct. 19, 1922 Life magazine issue, featuring beautiful Parrish "Masquerade" color cover illustration. Excellent overall. Min. bid \$30.

344). Edison Mazda Ad. 17 x 11" (8.25 x 5" image) ca. 1920's cardboard display sign for Edison Mazda lamps featuring Parrish "Venetian Lamplighters" image. Clean, bright and excellent overall w/ exception of a little minor background wear including small crimp spot at top right corner edge, non-offensive edge wear and a few minor background rubs (C. 8++). Min. bid \$50.

345). Circe's Palace Program. 9.5 x 5" early 12 pg. opera Co. program booklet from the Grand Opera House, featuring Parrish's "Circe's Palace" image of cover page. Bright and attractive w/ non-offensive faint horizontal fold line in center. Min. bid \$40.

Maxfield Parrish Items



346).



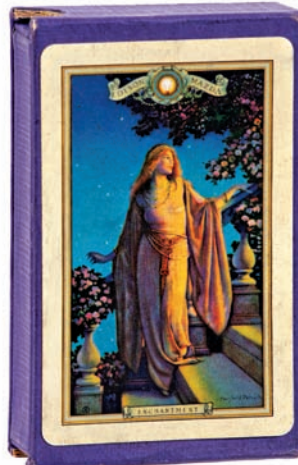
347).



348).



349).



350).



351).



352).



353).



354).



355).

346). **Large "Rubaiyat"**. 10 x 32" (7.5 x 29.5" visible) ca. 1917 art print by Reinthal Newman Co.'s House of Art, featuring attractive outdoor scene used by Crane Chocolate Co. on candy boxes. Exceptionally nice example has rich, vibrant, uncirculated like colors, complete in its beautiful original period frame (original labels on backside). Min. bid \$100.

347). **"Garden of Opportunity" Triptych**. 25.75 x 29" (21 x 25" visible) ca. 1915 art print featuring Parrish's Florentine Fete mural images "Call to Joy", "Garden of Opportunity" and "Love's Pilgrimage". Excellent overall, w/ small, non-offensive minor dark/wear spot in upper right panel sky area. Beautifully presented in original period frame. Min. bid \$100.

348). **Pierrot's Serenade**. 15.75 x 10-5/8" (11.25 x 9-5/8" image) ca. 1908 Colliers art print featuring image of Pierrot playing mandolin by lakeside. Like new condition, w/ full never trimmed margins. Min. bid \$40.

349). **"Waterfall" Playing Cards**. 3-7/8 x 2.5 x 7/8" complete deck of 52 linen finish advertising playing cards in original box (no jokers) for General Electric Co.'s Edison Mazda lamps, featuring great image of Co.'s 1931 Parrish illustrated "Waterfall" calendar girl image of girls on rock ledge overlooking rushing waterfalls. Crisp and like new. Min. bid \$40.

350). **"Enchantment" Playing Cards**. 3-7/8 x 2.5 x 7/8" complete pinochle deck of 48 linen finish advertising playing cards in original box (+1) for General Electric Co.'s Edison Mazda lamps, featuring great image of Co.'s 1926 Parrish illustrated calendar girl image of medieval woman in robe standing on stairs. Deck is crisp and never used (very slight storage wear on box). Min. bid \$40.

351). **Golden Hours Thermometer**. 7 x 5-1/8" impressive, ca. 1929 "Golden Hours" advertising thermometer (from Rock River Oil Co., Galt, Ill.). Great art deco look, sealed in its original glass covered metal frame. Bright and like new (near mint). Min. bid \$40.

352). **"Sunrise"**. 10.5 x 7.75" (9.5 x 6.75" visible) attractive framed image of two women looking out over balcony at sunlit canyon walls, cropped from 1933 Edison Mazda calendar. Clean, bright and excellent, still sealed in its attractive, original period frame. Min. bid \$50.

353). **"Golden Hours"**. 10-1/8 x 7-3/8" (8-7/8 x 6.25" visible) attractive framed image of two women in bateau, surrounded by fiery autumn foliage, cropped from 1929 Edison Mazda calendar. Clean, bright and excellent, still sealed in its attractive, original period frame. Min. bid \$50.

354). **"Evening Shadows"**. 19.75 x 16" (15.5 x 12" image) large 1953 Brown & Bigelow image featuring evening scene of house reflected in pond. Clean, bright and like new, w/ original period matting. Presented in stunning antique frame. Min. bid \$40.

355). **"Land of Make Believe"**. 12-7/8 x 10.75" (11.25 x 9-1/8" visible) attractive, ca. 1912 framed print of a couple between tall pillars in rose garden. Clean and excellent, as found in attractive period frame. Min. bid \$40.

Maxfield Parrish Items

Parrish Blotters



356).

Celluloid Pocket Calendars



357).



358).

Parrish Jigsaw Puzzles



359).



360).



362).

RCA Radiotron Window Display



361).

356). **Parrish Ink Blotters.** Lot includes two different Maxfield Parrish illustrated ink blotters. Includes: "Venetian Lamplighter" (5.75 x 3.25") for Edison Mazda lamps; and a blotter for the Vermont Association for Billboard Restriction promoting billboard restricting law (3.5 x 6"). Both are excellent. Min. bid \$30.

357). **Edison Mazda Pocket Calendars.** (3.75 x 2.25" ea.) lot of two early celluloid advertising pocket calendars for GE's Edison Mazda lamps, each featuring beautiful images of Co.'s Parrish illustrated calendar girls on front and years calendar months on backside. Includes 1920 "Ecstasy" and 1924 "Venetian Lamplighter". Both are clean, bright and excellent. Min. bid \$40 (the lot).

358). **Parrish Ephemera.** Lot includes: "Egypt" cover illustration on 5-7/8 x 3.25" folding price list for General Electric light bulbs; and a 16 pg. Announcement brochure from Century Publishing Co., w/ two separate attractive Parrish Italian Garden illustrations. Both are excellent. Min. bid \$30 (the lot).

359). **Sterling Bicycles Catalog.** 8.75 x 5-5/8 x 1/8" scarce, 30 pg. illustrated 1898 bicycles catalog from the Sterling Cycle Works, Chicago, filled w/ great Art Nouveau layout design and featuring Parrish illustrated cover illustration. Clean and excellent overall (C. 8/+), w/ a little non-offensive faint toning and wear on front cover (mentioned for accuracy, nothing serious or detracting). Min. bid \$40.

360). **Parrish Puzzles.** Lot includes two different 12 x 9.5" cardboard jig saw puzzles featuring Maxfield Parrish images: "The Prince" and "The Princess". Both are complete and excellent and include their original boxes (minor wear and writing on boxes). Min. bid \$40 (the lot).

361). **RCA Window Display.** Unusual, ca. 1920's 4-ps. cardboard window display set advertising RCA Co.'s "Radiotron" brand radio tubes. Each of the easel-back die-cuts pieces feature neat images of the RCA character w/ radio tube head, which are attributed to Parrish (sizes of pieces range from 8 x 11.25" to 15.5 x 10"). Appear never used-display sides are clean and excellent overall, w/ a little non-offensive light scattered toning and soiling from storage (some staining on non-graphic backside). Min. bid \$50 (the set).

362). **"Christmas" Mirror.** 34 x 11-5/8" early hanging antique hall mirror has attractive period mahogany frame and Parrish "Christmas" art print at top (print 10-5/8 x 8.5" visible image). Excellent (mirror glass replaced). Min. bid \$50.



Rd #2, Cobb Hill Road, Cazenovia, NY 13035 • 24 Hr. Tel: (315) 662-7625 • 24 Hr. Fax: (315) 662-3570 • morf2bid@aol.com • morfauction.com

Welcome to our 80th auction of quality antique advertising and fine collectibles. Everything we sell is guaranteed authentic and as described. We attempt to grade condition both fairly and conservatively, using a scale of 1-10 on the advertising items (ten being absolutely mint). We do not list reproductions, re-issues, deceptively restored or pieced together type merchandise. Flaws and blemishes are prominently noted and over emphasized. We encourage you to call for a detailed description on any item you have an interest in, but respectfully must request that you do this before the closing night. Dimensions are listed by height, then width, and are only approximate (+ or - a quarter inch).

Bidding

Bids are accepted only from those parties who have registered with us to bid. (If you were mailed this catalogue by us you are automatically pre-registered.) Your bid is a legal contract to purchase and once entered, cannot be canceled. Placement of a bid indicates acceptance of our terms.

On all "BID" items there is a 15% buyers premium added to each successful bid. You're welcome to bid by mail, email and fax anytime after receiving this catalog. **We will begin accepting phone bids on Wednesday, DECEMBER 4th, 2013. We will be taking calls on Wednesday and Thursday from 10:00 AM until 5:00 PM.** If no one answers when you call, please leave a message on our machine and we will get back to you. **If bidding by mail or fax, please remember to include your telephone number with your bids!** You may call or bid as often as you like. We will tell you the current bid on any item(s) you are interested in. To raise a bid, your advance must be at least \$10 more than the current high bid amount. When an item reaches \$250, bidding increments rise to \$25, at \$1,000, bidding increments advance in \$50 steps, and above \$2,000 in \$100 increments. We suggest not waiting until the last minute to begin your bidding, as its quite possible you won't be able to get through.

Web Page and Bid Updates

We will begin posting current bid prices (not including the buyers premium) on Wednesday, December 4th, 2013 (including an addendum of additional catalogue lot information) on our internet web page. These prices will be updated once each day (each evening sometime after 9:00 PM, EST) and will get updated to include the final hammer prices on Sunday afternoon once the sale is concluded. On the closing night, we will attempt to update current bid prices every hour. Our web page address for this sale is: <http://www.morfauction.com> We suggest that once you get to it, that you bookmark this address for easy re-access. There is also an addendum section on our website where we post additional information and photo's for this sale.

Reserves and Estimates

All items which receive an opening bid in our sale will be sold to the highest bidder regardless of the price realized (we reserve the right to withdraw items in the event of inaccurate catalog descriptions and to reject any bid we feel is not made in good faith). **We run our auctions with a strict policy of no buy-backs, no auctioneer games and no hidden reserves.** Unlike some of our competitors, we do NOT allow consignors to bid up their own items!

Mechanical Operations

Early mechanical and electric motors and mechanisms on machines toys, coin-ops, clocks, etc. are quite often temperamental and very unpredictable in nature. Although these mechanisms may be working fine at the time of sale, we make no guarantees or representations regarding their continued operating status once they have left our premises (including during shipping).

Closing Night

THE LAST DAY FOR BIDDING WILL BE ON FRIDAY, DECEMBER 6TH, 2013. On closing day, we begin taking calls at 5:00 PM. Please mark your calendar now. **On the closing night (ONLY), we will also be taking calls at (315) 662-3318, (315) 662-3429 and (315) 662-3904 after 5:00 PM** (in addition to our regular (315) 662-7625 office number). **Closing Time: This Auction will close at 10:00 PM (EST) on Friday, DECEMBER 6TH, 2013.** At that time, no more incoming calls will be accepted and all lots with a registered bid of less than \$300, as well as all items without call backs registered on them will be officially closed and final. The items at \$300 and over that have call back protection registered on them will be closed out during our call back period the following afternoon ("see important call back rules below"). We reserve the right to change the official closing in the event of unforeseen family type emergencies or technological failures (utility disruptions, etc.). We also reserve the right to either extend the bidding, to postpone or to cancel this auction in the event of a national emergency or if the Internet or the services of the US Post Office were to get seriously disrupted during our catalogue mailing or bidding period.

"Up-To" Bids & Call Backs

CEILING BIDS: We will be happy to enter competitive "up to" ceiling bids for you on any lots you request. Beginning at your minimum amount, we will advance these bid(s) up to your left ceiling amount, if (and only if) it is topped by another bidder. "Up To" bids will be handled discretely and executed in a completely competitive manner for you. Please note that we don't accept open ended "top all others" ceiling type bids.

CALL BACKS: You may request call back protection for any lot(s) that you enter with either a minimum or a protected "up-to" ceiling bid in an amount of at least \$300. This request must be registered with us before the official 10:00 PM closing hour of Friday, December 6th, 2013. All callbacks will be placed by us on Saturday, December 7th, 2013, beginning at 12:00 noon (EST) and will continue that afternoon until each of the individual lots have been closed out (using past experience, I would expect this to be finished by 6:00 PM, if not earlier). If you register for call-backs, it is your responsibility to be available during this call back time period. We make every effort to honor all our call back requests, but this service is done solely as a convenience to our bidders and will be performed on a best efforts basis only. If you will be traveling or if you will not be available during call back times at your primary number, be sure you provide us with proper alternate or back up numbers for reaching you!

Payment Terms

Winning bidders will be invoiced by mail immediately after the sale. Those who desire fast shipment can pay by Money Order or Cashiers Check. Payments are due within 10 days of receipt of invoice. We reserve the right to offer the item out to our back bidders and deny future bidding privileges to those who do not pay in a timely manner. In addition to personal checks, we also accept payment on your American Express, Visa, Master Card, Discover and Optima Credit Cards (with no surcharge added). No COD's or Collect calls are ever accepted. Items shipped to anywhere in New York State must include appropriate sales tax or signed resale certificate.

Shipping

All packing and shipping charges are extra. We do most of our own packing and shipping in house and try to keep these charges as reasonable as possible for you. On especially fragile and larger hard to pack items, we hire the services of professional packers and charge you at our billed cost. We ship mostly through the Post Office and Fedex Ground, (Fedex Overnight available at an extra charge.)

Subscribing, Prices Realized, Consignments & Upcoming Events

Future catalogs can be assured by sending \$20 for a full 12 months subscription. (Prices are published on our website after each sale) An automatic credit card ordering program is available. We currently run between 2-4 auctions a year. In addition to our regular sales, we also occasionally offer sales made up entirely from single owner collections. Please contact us should you have items you would like us to consider for inclusion in our upcoming events. All inquiries are handled in a completely confidential manner. Our services are also available for the private placement marketing of important individual items, marketing plans for large collections as well as for estate planning and settlement purposes. Back copies of many of our previous auction catalogs are still available at \$5 each (w/ prices realized) w/ quantity discounts available if multiple issues are ordered. For further information, check our website.

Photography by Wes Feuz.

© Copyright 2013. All Rights Reserved. No portion of this publication may be copied in any form without the express written permission of Morford's.

Important Closing Night Information

In addition to our regular (315) 662-7625 office number,
on the closing night (only!) you may also call us at:

(315) 662-3318*
(after 5:00 PM)
(315) 662-3904*
(after 5:00 PM)
(315) 662-3429*
(after 5:00 PM)



***These numbers for
Closing night only!
Friday, December 6th, 2013**

Bidding closes at 10:00 PM on Friday closing night. We will be accepting faxes and e-mails on closing night. Our web page will update current high bid prices approximately every hour on closing night and will also list any important addendum information. **All call backs will be made on Saturday, December 7th, 2013, beginning at 12 o'clock Noon!**