



WM Morford
Investment Grade Collectibles at Auction

Investment Grade Collectibles at Auction

Rd #2, Cobb Hill Road, Cazenovia, NY 13035 • 24 Hr. Tel: (315) 662-7625 • 24 Hr. Fax: (315) 662-3570 • morf2bid@aol.com • morfauction.com

Bidding closes Friday, June 5th, 2009. (see pg. 24 for Terms & Conditions)



1).Fragrant Mixture Tobacco Tin. 4 x 6 x 2.75" early hinged lid tobacco tin featuring beautiful, finely detailed art nouveau design. Clean, bright and very attractive appearance, w/ a little minor scattered wear (C. 8+/-). Min. bid \$40.



2).Indian Refining Co. Badge. 1-5/8 x 2' extremely rare, early service station employee name badge from Indian Refining Co., w/ incredible inlaid cloisonné enameled image of Co.'s running Indian logo. Excellent. Min. bid \$100.



3).Akron Tourist Condom Tin. 1-5/8 x 2-1/8 x 1/4" scarce, early tin litho condom tin for Akron Rubber Supply Co.'s "Akron Tourist Tubes" condoms, featuring great image of Co.'s trademark blimp. Clean, attractive and displays well (close examination will reveal some minor wear and faint bump marks on front, base has some scattered light scuffing in outer dark border area (front C. 8+/-; base 7/+). Min. bid \$60.



4).Magnus Root Beer Sign. 8.75 x 19.25" unusual, early, embossed metal sign for Magnus brand Root Beer. Clean, bright and very attractive, w/ nice original surface sheen. A powerful and impressive piece, appears never used (C. 8.5+/-) w/ exception of a little minor storage/handling wear in outer border area. Min. bid \$60.



5).Bug Shaped Boot Jack. 10.25 x 5.25 x 2.5" early, figural cast iron bootjack in shape of a large, fancy bug. Excellent, w/ nice detailing and a great overall look. Min. bid \$70.



6).Edgewater Grocers Tin. 8.25 x 8-1/8 x 2.75" very early,hinged lid product tin for Edgewater brand grocery products (Louis W. Stayart Co., Chicago). Sides of outer box have finely detailed images of boats, streams, lakes etc., while inside lid has colorful and very graphic image of Co.'s trademark sailing ship. Clean, bright and excellent (C. 8.5). Min. bid \$50.



7).Ice Cream Tray. 13.5" (dia.) early tin litho serving tray for Russ Bros. Ice Cream, featuring nice graphic image. Basically excellent (displays as strong C. 8+/-) w/ a little light scattered wear on rim. Note: there is a slight bit of minor haziness on upper surface, visible only if tipped just right (barely noticeable- mentioned for accuracy). Min. bid \$50.



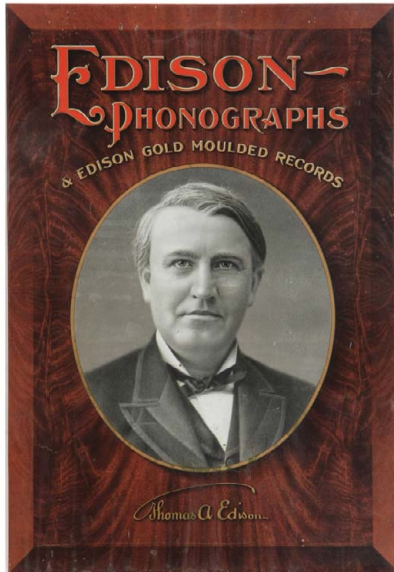
8).Cardinal Cherry Dispenser. 12 x 8" (dia.) scarce, early art pottery style ceramic syrup dispenser, w/ a beautiful, finely detailed embossed colored cherry branch pattern design for Hungerford Smith Co.'s (Rochester, NY) "Cardinal Cherry" brand. Clean, bright and exceptionally nice. Complete w/ a working period pump. Min. bid \$250.



9).Fishing Tackle Sign. 11.75 x 35-5/8" embossed, early tin litho sign for Abbey & Imbrie fishing tackle, featuring great image of Co.'s logo (dated 1912). Sign is clean and attractive and it appears that it was probably never used. Pretty much excellent in condition overall, w/ some minor yellowing and a little light storage handling wear at very outer edges (C. 8), w/ some hazy trace remnants of it's original protective paper remaining. Min. bid \$60.



10).Phillips Oil Co. Badge. 1 x 3-3/8' early, very high quality service station employee badge, w/ beautiful inlaid cloisonné enameling. Excellent. Min. bid \$50.



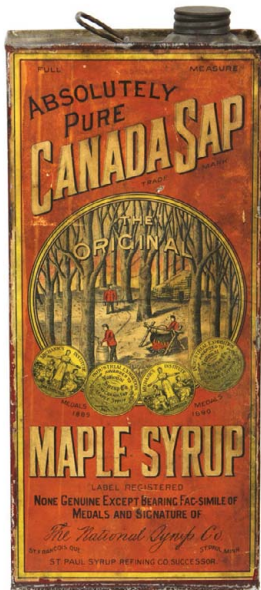
11).Edison Phonographs Sign. 19 x 13" early tin litho sign for Edison brand phonographs, w/ portrait image of Thomas Edison in center. Colors are strong and piece displays quite well (as a C. 8+/-) although there is some non-offensive light scattered scuffing marks and minor dents and a close examination will reveal some faint light hazy water staining remnants in bottom wood grain background area (critical grade C. 7.5+/-). As found, should improve w/ cleaning. Min. bid \$150.



12).Mitchell Cars Sign. 19-7/8 x 13-5/8" very early, embossed tin litho dealership sign for the Mitchell Car Co., featuring detailed image of Racine, Wisc. dealership garage (National Sign Co., Chicago). Clean and excellent overall (a very strong C. 8+/-) w/ exception of a little minor wrinkling and some wear in outer border area. Appears never used, w/ a few faint traces of original protective paper on surface. Impressive piece, displays well. Min. bid \$100.



13).Horse Blankets Window Display. 34 x 24" incredible, large, early paper litho (on a fine cloth netting type material) window display sign for 5A brand horse blankets, featuring stunning multi-color lithography. A powerful and very impressive looking piece that is clean, bright and excellent in appearance (displays as a strong C. 8+/-) w/ exception of some scattered tattering and jagged brittle paper loss along bottom edge. Neat piece! Min. bid \$70.



14).Canada Sap Syrup Tin. 11 x 4.75 x 2.5" primitive, very early, hand soldered product can for National Syrup Co.'s "Canada Sap" brand Maple Syrup (St. Paul, Minn. and Quebec, Canada) featuring incredible, beautifully detailed paper label. Impressive piece, displays nicely (C. 7.5+/-) w/ a great primitive country type look. Min. bid \$40.



15).Jack Sprat Oats Box. 9-5/8 x 5-3/8" early 3 lb. 7 oz. size oats box for Jack Sprat brand (Western Grocer Co., Marshalltown, Iowa) featuring colorful and attractive images all around. Clean, bright and attractive in appearance (C. 8+/-) w/ a little minor soiling and a bit of typical roughness and paper loss around top edge (note: has replacement lid that fits perfect and looks fine- but is not original to piece). Min. bid \$50.



16).Royal Club Oats Box. 7-1/8 x 4-1/8" unusual, early cardboard oats box for Royal Club brand (Harris Grocers, Richmond, Va.) featuring trademark image of king w/ club on front and oats bowl and pitcher on back (20 oz. size). Has a few snake/crease type lines in paper and a little minor soiling and wear, but overall attractive and displays well (C. 8+/-). Min. bid \$40.



17).Port O'Mobile Coffee. 9-7/8 x 5.25" (dia.) scarce, early 3 lb. tin litho pry lid coffee can for "Port O'Mobile" brand (Taylor, Lowenstein Co., Mobile, Ala.) featuring wonderful image of trademark ship (same image both sides). Has strong colors and displays quite well, although there is some scattered scuffing and surface loss on one side w/ oxidized darkening to gold flash finish on lid (front 7.5+/-; back 7). Min. bid \$40.

Small Showcase



18. **Small Display Case.** 7.25 (h) x 16.75 (w) x 11-5/8" (d) outstanding, small, early table top display case for Lundborg Perfume Co. Nickel over brass metal case, w/ etched lettering on curved glass and attractive oak door in back. Impressive piece is exceptionally nice (great size for displaying miniature tins, pocket mirrors, etc.). Min. bid \$100.

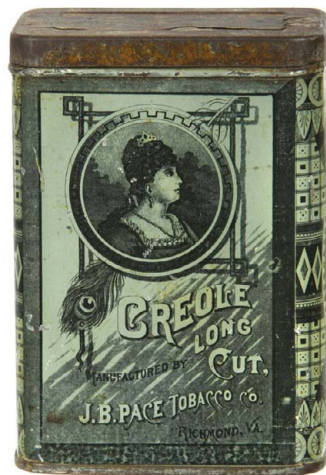
Display Box



19. **Fairy Soap Display Box.** 14.5 x 7-3/8 x 4.25" oversized figural store display box for Fairbank's Co.'s Fairy brand soap, featuring great image of Co.'s trademark girl (same image both sides). Attractive and displays well, w/ some non-offensive age tone soiling and light wear (including non-offensive puncture tear mark on back side). Displays as a (C. 8+/-). Min. bid \$50.



20. **Metropolitan Coconut Tin.** 5.25 x 2.5 x 2.5" scarce, very early tin litho small top product can for Metropolitan brand coconut, featuring beautiful detailed lithography by Ilsley & Co. Clean and very attractive appearance, w/ a little light scattered wear (C. 7.5+/- 8-). Min. bid \$40.



21. **Pace Tobacco Tin.** 4.75 x 3.25 x 2.25" very early tin litho product can for J.B. Pace Tobacco Co.'s "Creole" brand, featuring beautiful, finely detailed Ginna style lithography all around (lithographer not marked). Min. bid \$40.



22. **"Cream of Harvest" Spice Tin.** 3.75 x 2-3/8 x 1-3/8" extremely rare tin litho 3 oz. size spice tin from Auburn Mercantile Co. (Auburn, NY), featuring wonderful color graphic farm scene logo (same image both sides). Colors are strong and piece displays well, w/ some minor discoloration and background loss on back side (front C. 8+/-; back 7.5). Min. bid \$40.



23. **Whip Pocket Tin.** 3-5/8 2-5/8 x 7/8" small (sample size variation) early tin litho vertical tobacco pocket tin for Patterson Bros. "Whip" brand. Bright and very attractive in appearance, w/ a little minor soiling, a little chipping and light wear on back side and some oxidizing on lid from remaining remnants of tax stamp (front C. 8+/-; back 7.5+/- 8-). Displays well (as found, should improve w/ cleaning). Min. bid \$60.



24. **Glass Straw Holder.** 11.5 x 4-1/8" (diam). early, 2-ps. heavy fancy pressed glass soda fountain straw holder. Very impressive looking piece, excellent condition (note: has possibly had a minor base chip professionally polished off). Min. bid \$50.



25. **Royal Talcum Powder.** 5-1/8 x 2.5 x 1-3/8" unusual, early tin litho talc can for Merrill Co.'s "Royal" brand, featuring outstanding detailed color lithography. Clean and very attractive (a strong C. 8+) w/ exception of oxidized tarnishing to center gold coin area. Canadian. Min. bid \$40.



26. **Barber Bottle.** 7 x 2-7/8" scarce, label under glass barber shop hair tonic bottle for "Osage Rub", w/ hand applied neck and lip. Excellent, w/ exception of some faint stains inside bottle from leftover traces of product (as found, should improve w/ cleaning). Label area is bright and attractive, w/ exception of some expected typical color staining along outer oxidized gold border areas. Min. bid \$50.



27. **Rare Planters Wrapper.** 4-7/8 x 2" early, extremely rare Planters Peanut Co. celluloid serving wrapper for Co.'s 5¢ Chocolate covered peanuts product. Excellent, w/ a little expected loss at top from when opened. Min. bid \$30.



28).Surbrug's Tobacco. 5.25 x 6-7/8 x 4.5" early tin litho tobacco can for Surbrug's High Grade tobacco, featuring attractive art nouveau design. Displays well, w/ some light scattered oxidized tarnishing type wear on lid and sides (tin C. 8+/-; lid 7.5). Min. bid \$40.



29).Whites Utica Match Striker/ Holder. 4-5/8 (h) x 6-1/8" (dia.) unusual, early, heavy stoneware pottery table top stick match holder made by the Whites Utica Co. (of Utica, NY). Has a textured striking surface down sides w/ nicely incised blue lettering and a fancy textured design at base. Excellent. Min. bid \$60.



30).Central Brewing Co. Tip Tray. 4.25" (diam.) scarce, early, pre-prohibition tip tray from the Central Brewing Co. (New York City) featuring attractive image of Co.'s trademark horse, surrounded by decorative design of grains and hops. Attractive and displays well (C. 8/-) w/ some minor scattered stain speckles and wear. Min. bid \$40.



31).Miniature Mustard Pail. 3 x 2-3/8" (dia.) very early, miniature 1/4 lb. size mustard pail from Foss & Deering Co. (Portland, Maine) featuring beautiful, finely detailed lithography by Ginna & Co. Excellent (C. 8.5/+). Min. bid \$40.



32).Red Bird Coffee. 5 x 4.25" colorful and very attractive paper label (over tin) 1 lb. coffee can from Red Bird Products Co. (Hamilton, Ontario) featuring beautiful image of trademark cardinal (same image both sides). Clean, bright and attractive, w/ a little non-offensive minor age toning and faint foxing (C. 8+/-). Canadian. Min. bid \$40.

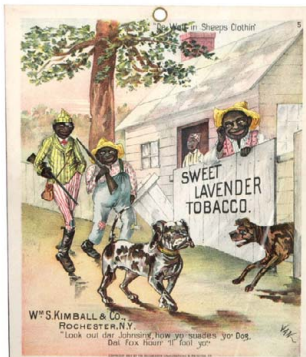


33).Martin's Pocket Tin. 4-1/8 x 2-7/8 x 1" scarce, early tin litho vertical tobacco pocket tin for Martin's Granulated Cut Plug Tobacco (Martin U Co., Louisville, Ky.). Clean, bright and very attractive appearance, w/ a little light scattered wear (C. 8+/-). Min. bid \$100.

Min. Paperweight



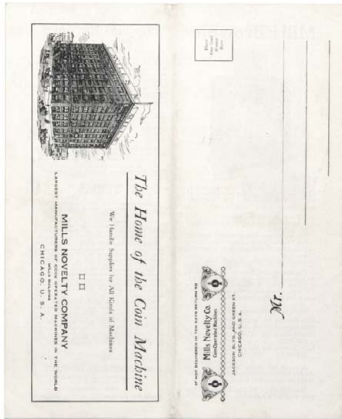
34).Hazard Gunpowder Paperweight. 2.25 x 2" (dia.) wonderful, early tin litho sand filled paperweight is an exact miniature version of one of Co.'s larger tin gunpowder kegs. Clean, bright and exceptionally nice (a very strong C. 8+/-) w/ exception of some (well blended) scratching wear on pouring spout label area on bottom side. Min. bid \$50.



35). Kimball Tobacco Ads. Complete set of six ca. 1890 cardboard litho tobacco signs for Kimball & Co.'s "Sweet Lavender" brand tobacco (each 11 x 9.25"), w/ incredible, finely detailed multi color lithography. Outstanding set shows outrageous comical series of darktown Currier & Ives type cardboard signs featuring stereotypical black men hunting (by the Rochester Litho & Printing Co., Rochester, NY). Clean, bright and excellent, w/ a little minor edge wear (C. 8.5/+). Min. bid \$70 each (times the 6).



36).Skookum Syrup Tin. 11-3/8 x 6 x 3-7/8" early tin litho maple syrup tin for Scully Syrup Co.'s "Skookum" brand, featuring colorful and attractive deep woods syrup making images (same image both sides). Excellent appearance, w/ minor soiling and wear (C. 8+/-) as found, should improve w/ cleaning. Min. bid \$40.



37) Mills Coin-Op Catalog. 9-1/8 x 7-3/8" outstanding 24 pg. product catalog from Mills Novelty Co., filled w/ beautiful detailed illustrations, prices and descriptions for Co.'s various vending machines, skill games, slot machines, etc. This is a self-mailer style paper catalog (never addressed or mailed) and is pretty much excellent in condition (a strong C. 8+/). Min. bid \$50.



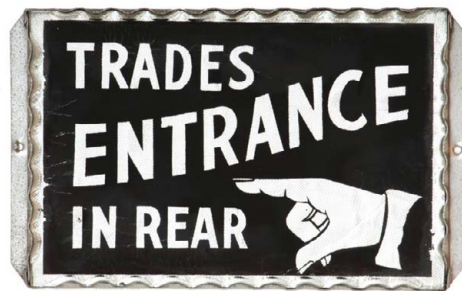
38) Tennyson Cigar Sign. 16 x 32" unusual, large, early heavy porcelain sign for Tennyson 5¢ Cigars. Field area is pretty much excellent and piece is clean and very attractive in appearance (displays as a nice C. 8+/) w/ exception of chip spot at upper left edge hanging hole area, a little faint, non-detracting minor surface wear (mentioned only for accuracy); and some scattered oxidized roughness at very outer edges of white border area. Displays very well! Min. bid \$70.



39) Planters Peanuts Display Rack. 9 x 14 x 2.75" ca. 1920's tin litho Planters Peanut Co. counter top "Z" shaped display rack, featuring great images of early product packages. Clean, bright and exceptionally nice example, w/ only minor wear (a very strong C. 8++). Min. bid \$150.



40) Planters Double Jumbo Block Box. 3.5 x 5-7/8 x 7-7/8" scarce, ca. 1920's 2-ps. cardboard product box for Planters Double Jumbo Block peanut candy bars (unusual 10¢ size variation). Clean, bright and like new (C. 8.5+) w/ exception of a little light pencil writing on label (can probably be erased off). Min. bid \$40.



41) Pointing Finger Sign. 6 x 10" early, thick, heavy reversed glass entrance sign w/ fancy scalloped edges, featuring great folksy image of a pointing finger, w/ attractive textured silver finish underneath. Excellent, as found still on its original metal mounting bracket. Min. bid \$50.



42) Junket Pot Scraper. 2-5/8 x 3-3/8" unusual, early tin litho pot scraper for Junket brand products. One side advertises Co.'s ice cream mix; other side its milk flavoring tablets. Very nice appearance, w/ a little minor scattered soiling and wear (C. 8+/-). As found, should improve w/ cleaning. Min. bid \$50.



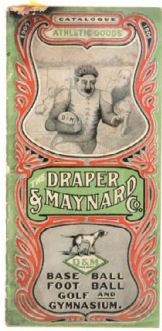
43) Packard Sign. 12 x 15-7/8" unusual, beveled celluloid over tin over cardboard auto dealership showroom sign, featuring great image of classic ca. 1956 Packard Caribbean car. Clean, bright and excellent in appearance (C. 8.5+). Has both a string for wall hanging and an easel on back side (for counter top display). Min. bid \$60.



44) Hohenadel Beer Sign. 17-1/8 x 23.25" outstanding, large, early lithographed tin over cardboard sign for Hohenadel Beer, featuring beautiful color graphic image of legendary race horse "Man of War" (American Art Works). Clean, bright and like new (C. 8.5+). Impressive, high quality piece! Min. bid \$70.



45) Wells Fargo Express Co. Ephemera. Lot consists of two very early signed documents from The Wells Fargo Express Co. Includes: an excellent 1875 signed check issued from Co.'s Carson, Nevada office (2.75 x 7-5/8"); and a paid 1888 consignee's receipt for \$570 from Co.'s San Francisco office (4.25 x 8.25") some edge tattering and wear, otherwise excellent. Min. bid \$30 (the lot).



46).Sporting Goods Catalog, 8-1/8 x 4" terrific 44 pg. illustrated 1905/1906 sporting goods catalog w/ incredible cover illustration from the Draper Mahnard Co., filled w/ page after page of great early sporting equipment (includes baseball, football, boxing, golf, tennis, etc.) Inside pages complete and excellent, w/ some damage and wear on front and back covers. Min. bid \$40.

Hotel Bell



47).Snail Hotel Bell. 2.5 x 4-3/8 x 2.75" very unusual, ca.1880's/ 90's figural cast iron snail shaped counter top clockwork hotel type service call bell. "Piece has some darkening w/ surface weathering and wear on shell area, but overall a neat and unusual piece that works and displays well. Min. bid \$50.



48).Kensington Kernel Pocket Tin. 2.75 x 3.5 x 1.25" early tin litho vertical tobacco pocket tin for J.G. Dill Co.'s Kensington Kernel Cut tobacco. Clean and attractive in appearance, w/ a hint of fade and a little light wear on back side (front 8/+; back 7.5+/8-). Min. bid \$50.



49).“Butting Match” Cap Gun. 3-3/8 x 5 x 7/8" fancy, very early, finely detailed cast iron figural mechanical “Butting Match” toy cap gun (pulling trigger shoots man in back forward to butt heads and shoot off cap). Attractive overall, w/ a little typical non-offensive light gunpowder oxidizing in head butt contact area. Works and displays well. Min. bid \$60.



50).Iron Clad Tacks Display Box. 14 x 19.75 x 13.25" (as pictured) early wooden display box from Norvell Shapleigh Hardware Co., St. Louis w/ a beautiful multi-color paper label inside, featuring attractive American battle ship. Label is bright and very attractive, w/ a little non-offensive paper loss and minor staining (label C. 8/-). Displays very well! Min. bid \$60.



51).Edison Mazda Light Display. 28.5 x 41" outstanding, ca 1920's/30's tri-fold cardboard window display for Edison Mazda light bulbs featuring adorable image of young children reading. Crisp, bright and like new, as found never used still in its original storage box (minor hidden edge wear at one corner). Lot also includes pair of 15 x 10" cardboard stand-ups made to hold actual bulbs (see web site for image). Min bid \$100.

Keywind Hotel Bell



52).Jeweler Sign. 10 x 13.75" very early tin litho sign for Glen's Falls, NY Jeweler, featuring a wonderful folksy image of early pocket watch and glasses. Clean, very nice overall look, w/ a little light wear and slight rusting wear at very outside edges of outer border area (C. 8/-). Min. bid \$50.



53).Elephant Hotel Bell. 6 x 4 x 3" scarce, early figural counter top elephant shaped clock work hotel service type call bell. Finely detailed brass case, w/ glass eyes and ivory tusks (pushing down on tusks makes bell ring steady for as long as it is held down). An interesting and unusual, very high quality piece. Excellent. Min. bid \$70.

Trade Sign



54).Chiropractor Trade Sign. 13.25 x 22" very early, 2-sided hanging wooden trade sign for a Chiropractor's office (similar design both sides). Excellent appearance, displays very well, w/ a nice rich surface patina (dark background areas have black sand paint surface). Min. bid \$100.

Sample



55).Golden Wedding Coffee Sample. 2-1/8 x 3-1/8"(dia.) scarce, early, miniature sample size tin litho pry lid coffee can for Golden Wedding brand (Ennis-Hanly-Blackburn Coffee Co., Kansas City). Clean, bright and very attractive, w/ some light scuffing on back side (front C. 8.5/+; back C. 8-). Min. bid \$40.

Oil Badge



56).Oil Co. Badge. 1-5/8 x 1-5/8" unusual, early service station employee uniform badge from True's Oil Co., w/ advertising for Co.'s Rainbow brand products. Excellent condition. Min. bid \$40.



57).Skin Diseases Tip Tray. 4.25" diam. early tin litho medicine tip tray for Resinol brand skin disease products. Clean, bright and very attractive (C. 8++) w/ a little light wear in outer rim area (at 5 o'clock). Min. bid \$40.



58).Puffit Pocket Tin. 3.5 x 3.25 x 1-1/8" scarce tin litho vertical tobacco pocket tin for Falk Tobacco's "Puffit" brand (slide closure on lid). A respectable example that displays pretty well, w/ a bit of even fade to reds, some general overall surface crazing and a couple small chip spots on back. Tough one to grade, but a strong C. 7.5/+ seems about right. Min. bid \$70.



59).Roundup Spice Tin. 3.25 x 2-3/8 x 1-3/8" unusual, early tin litho 2 oz. mustard tin from Roundup Grocery Co. (Spokane, Wash.) featuring Co.'s great western theme trademark image on both sides. Clean, bright and displays well (front and back display as C. 8/+), w/ wear and some paint loss on non-graphic right side panel. Min. bid \$40.



60).Bottle Shaped Paperweight. 4-1/8 x 2-7/8 x 1.5" early, figural bottle shaped paperweight w/ milk glass bottom, advertising the Owens Bottle Machine Co., of Toledo, Ohio (features photo type detailed image of Co.'s bottle making machinery). Excellent. Min. bid \$40.



61).Bayle Peanut Butter. 3-3/8 x 3.75" (dia.) early tin litho 1 lb. peanut butter pail for Bayle brand, featuring wonderful color graphic boy scout and girl scout camping images all around. Clean, bright and excellent (a strong C. 8++). Min. bid \$70.

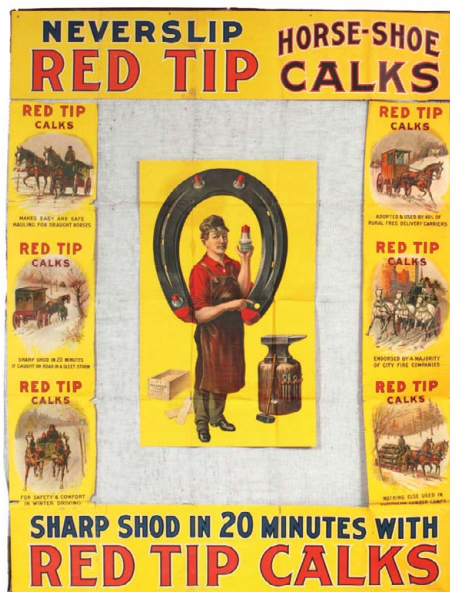


62).Trout Line Pocket Tin. 3-3/8 x 2.5 x 1-3/8" early, oval shaped vertical tobacco pocket tin (has cardboard sides, tin top and bottom w/ slide closure on lid). Clean, bright and attractive in appearance (C. 8) w/ a spot of surface loss on side edge (where tax stamp once sat). Note: label was applied slightly off center when made. Min. bid \$70.

Display Box



63).Electric Bitters Store Display. 20.5 x 7.5 x 4.5" large, early cardboard drugstore display box for "Electric Bitters" patent medicine product "for all diseases of the stomach, liver and kidneys". Impressive piece is clean and displays very well (basically as a C. 8) although there is some minor creasing and tattering, a small piece missing from top side panel (piece is included) and a few brittle tear marks (some tape reinforcement added to inside corner edges for structural integrity). Lot also includes a full, unopened embossed amber product bottle w/ paper label for Electric Bitters. Min. bid \$60 (the lot).



64).Horse Shoe Calks Display. 64 x 49" large, very early store display for Red Tip Horse Shoe Calks. Paper litho, mounted on a fine cloth net backing, made for hanging on large wall or for window display. A powerful and impressive looking piece, w/ beautiful detailed graphics and bright, vibrant colors. Has a little edge tattering on side panels, fold lines (done in mfg.) and a few brittle break marks, but overall clean, bright and amazing in appearance. Displays great as is, or could actually be trimmed apart for making several individual signs and banners. Min. bid \$100.



65).Maxwell House Flange Sign. 26-5/8 x 13-7/8" unusual, large 2 sided metal die-cut flange advertising sign for Maxwell House brand coffee. Crisp, bright and like new, w/ a beautiful rich surface sheen. Powerful and impressive looking piece is crisp and like new (basically near mint), w/ only minor handling/storage wear. Min. bid \$90.



66).Y-B Cigars Pocket Knife. 3-1/8 x 5/8" early advertising pocket knife for Y-B brand cigars, featuring beautiful, finely detailed inlaid cloisonné enameling. Outstanding, very high quality piece (Valley Forge Cutlery Co.). Excellent. Min. bid \$40.



66).Detail



67).Buttermilk Sign. 4-1/8 x 9-1/8" small, early, heavy porcelain "Fresh Buttermilk" sign. Interesting and unusual piece is clean and attractive in appearance, w/ a chip at bottom and a little minor wear in white border area. Min. bid \$40.



68).Dixie Kid Lunchbox. 33.75 x 7.75 x 5.25" early tin litho lunchbox style product can for Nall & Williams Co.'s "Dixie Kid" brand tobacco, featuring great image of Co.'s trademark black baby (same image both sides). Clean, bright and excellent in appearance (C. 8/+), w/ some minor soiling and light wear on lid. Min. bid \$50.



Hotel Bell



69).Turtle Hotel Bell. 6.5 x 3-7/8 x 2.5"(h) scarce, early nickel plated figural cast iron key wind hotel type service bell in shape of turtle (pushing down on head or tail rings bell constantly until released). Impressive, unusual high quality piece, has glass eyes and very nice detailing. All original, displays and works great, w/ nice surface patina (note: has small area of plating wear on side edge of shell). Min. bid \$50.

String Holder



70).Walker's Soap String Holder. 4.5 (h) x 6.5" (dia.) early, heavy figural cast iron counter top country store string holder in shape of beehive, w/ embossed advertising all around for Walker's Soap. Nice overall condition, w/ much of its original paint surface intact. Min. bid \$60.



71).Whip Tobacco Canister. 5.5 x 5.5 x 5.5" early 8-sided tin litho canister for Patterson Tobacco Co.'s "Whip" brand tobacco, featuring wonderful embossed horse theme images all around (including lid). Clean, bright and very attractive in appearance (C. 8+/-) w/ a little fairly minor scattered wear.



72).Medicine Thermometer. 9.25" (diam.) x 1-3/8" unusual, early metal and glass dial type thermometer advertising "Nature's Remedy" medicine. All original, w/ attractive painted finish over its solid brass case. Has a little bit of scattered wear in outer blue border area, otherwise excellent, w/ a nice attractive patina to paint surface. Min. bid \$40.



73).Farmers Bank Football Sign. 19.75 x 15" outstanding, large, early paper sign for Farmers Bank of Concordia, Mo. w/ great image of boy holding football. Printed on a heavy, slightly glossy, linen type textured paper, piece is clean and bright and displays very well (as a strong C. 8/+), although close examination will reveal a little wrinkling, edge tattering and some light touch up restoration in background area. Powerful and impressive looking piece (probably originally had calendar at bottom). Min. bid \$50.

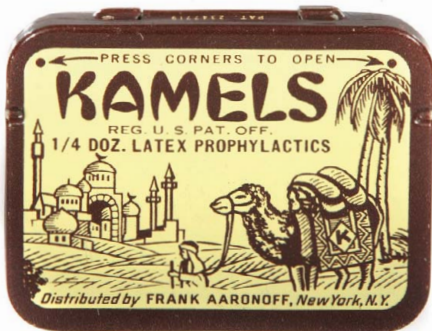


74).West End Brewery Tray. 13" (dia.) early pre-prohibition era tin litho serving tray from West End Brewing Co. (Utica, NY), featuring wonderful, patriotic Miss Liberty image. Clean, bright and excellent in appearance (displays as a strong C. 8++), w/ oxidized dark spot in outer rim area at 4 o'clock (note: close examination will reveal a non-offensive faint 7/8" hazy blemish spot in "hops" area - barely noticeable unless tipped just right). Min. bid \$90.

Cigar Lighter



75).Cigar Lighter. 7" (hgt.) figural, heavy cast white metal counter top cigar lighter and match holder in likeness of a child drummer, w/ nice period gold wash paint finish (drum holds matches or cigars). Excellent detailing, all original, w/ great paint surface. Min. bid \$60.



76).Kamels Condom Tin. 1-5/8 x 2-1/8 x 1/4" early tin litho condom tin for Frank Aaronoff Co.'s Kamels brand, w/ attractive image of trademark camel. Excellent (C. 8.5/+). Min. bid \$40.

Oil Comp. Badge



77).Fletcher Oil Co. Badge. 1-5/8" dia. unusual, early, employee badge for Fletcher Oil Co.'s Veltex brand products. Very high quality, excellent condition. Min. bid \$50.



78).Rothenberg's Pocket Tin. 3-1/8 x 3-3/8 x 1.25" early tin litho vertical tobacco pocket tin from Rothenberg & Schloss Co. Clean, bright and very attractive in appearance (C. 8/+) w/ exception of some typical oxidized tarnishing on lid and wear spot on side edge (where tax stamp once sat). Min. bid \$60.



79).Atlantic Gasoline Sign. 20 x 30" scarce, large, early, heavy porcelain advertising sign for Atlantic Refining Co.'s "Automobile Gasoline". Inside field area is clean and basically excellent, w/ exception of a couple tiny chip specks (very minor); w/ some chipping wear spots and loss in outer border area. Min. bid \$150.



80).Boston Cigars Clock. 11.75 x 16 x 2-5/8" important, very early, heavy figural cast iron advertising clock for Grothe & Co.'s "The Boston" and "Peg Top" brand cigars. All original, w/ a nice rustic, unadorned undisturbed paint surface (which lends itself to enhanced value in folk art circles). A powerful and impressive looking piece that displays well (note: clock is temperamental and only runs 5-10 seconds before stopping). Canadian. Min. bid \$150.

String Holder



81).Old Virginia Cheroots String Holder. 9 x 9 x 9" extremely rare, early 3-sided tin litho chain hung string holder for Old Virginia brand Cheroots cigars. Examination under black light will reveal that piece has had some fairly substantial professional restoration done to it, but it displays extremely well (note: from arms length its hard to tell anything has been done to it). Min. bid \$200.

Salesman's Sample Saddle Blanket



82).Salesman's Saddle Blanket. 10.25 x 16" heavy, high quality, small salesman's sample saddle blanket from Troy Mills Inc. (Troy, NH). Has attractive painted Indian bird motif design (similar to that found on early pennants), complete w/ its original western themed advertising label (note: heavy card stock label was originally stapled onto blanket, but is no longer attached). Very nice overall, w/ minor wear to bird and a little light creasing and soiling wear on label. Min. bid \$50.



83).MLB Sugar Butter Pail. 3.5 x 4-3/8" (dia.) early tin litho pail for ML Sugar Butter, featuring attractive images of little girl and mother baking (same image both sides). Clean and very attractive overall (C. 8+/-) w/ light scratch on back side (no bale). Min. bid \$40.



84).Cameron & Cameron Tobacco Tin. 5-1/8 x 6 x 3.75" unusual, early tin tobacco can w/ paper label for American Tobacco Co.'s Cameron & Cameron brand. Clean, bright and very attractive (C. 8+/-), w/ a little non-offensive minor background staining. Min. bid \$40.



85).Western University Pocket Tin. 3.25 x 3.5 x 1-1/8" scarce, early tin litho vertical tobacco pocket tin for L. Goldsmit Bro.'s Western University Mixture. Clean, bright and excellent overall appearance, w/ vivid colors and nice sheen. Pretty much rates a strong C. 8+/, w/ exception of a few small background wear spots and some oxidized surface wear spots on narrow side edge (has unusual circular dial type closure on lid). Min. bid \$100.



86).Kaier Brewery Match Holder. 4-7/8 x 3-3/8 x 1-3/8" outstanding, early tin litho advertising match holder for Chas. Kaier Brewing Co. (Mahanoy City, Pa.) featuring beautiful, highly detailed color graphics. Clean, bright and very attractive in appearance (C. 8/+). Possibly clear coated long ago, w/ a little minor wear in upper surface background area (not detracting- mentioned for accuracy). Displays very well! Min. bid \$70.



87).Excelsior Motorcycles Mirror. 2.75 x 1.75" outstanding early celluloid advertising pocket mirror for Excelsior motorcycles, featuring great color image of primitive motorized bike ("first motorcycle to attain speed of 100 miles per hour"). Excellent. Min. bid \$60.



88).Euclid Mixture Pocket. 4.5 x 3 x 7/8" scarce tin litho vertical tobacco pocket tin for Weidman Co.'s "Euclid Mixture". Has some scattered small surface scuffs and light wear, but overall an attractive and very respectable example that displays well, w/ bright color and nice sheen (C. 7.5/+). As found, might improve a bit w/ cleaning. Min. bid \$70.



89).Queen Caroline Cigars Match Safe. 2-7/8 x 1.5 x 3/8" early pocket match safe w/ wrap-around celluloid advertising for Queen Caroline 5 - 50¢ Habana Segars'. Unusual and attractive piece, is basically excellent, w/ a slight bit of even age toning. Min. bid \$50.



90).Baking Powder Store Tin. 9.75 x 7.75 x 6" very early, hinged lid counter top country store display tin for Walter Moewan Co.'s National Brand Baking Powder (Albany, NY), w/ a wonderful primitive folk art type stenciled design featuring an early American flag. Has some general, fairly heavy scattered wear from use and some light oxidizing on lid, but a nice primitive country type piece that overall displays pretty well (C. 7+). Min. bid \$50.



91).Heurich Brewing Co. Tray. 13.5 x 16-3/8" outstanding, important early pre-prohibition serving tray from the Heurich Brewing Co. (Washington, D.C.), w/ beautiful, finely detailed color graphics featuring a bustling factory scene. Clean, bright and exceptionally nice in appearance (displays as a strong C. 8+), w/ a faint, trace hint of a minor ring mark (visible when tipped just right- barely noticeable, mentioned for accuracy). Min. bid \$150.



92).Brownie Peanuts Tin. 8.75 x 8.25" (dia.) early tin litho 10 lb. size salted peanuts can, featuring nice image of Co.'s trademark Brownie character (same image both sides). Clean, bright and very attractive in appearance (displays as a strong C. 8+) w/ some non-offensive light scattered surface scuffs and wear (critical grade C. 7.5+/8-). Min. bid \$40.

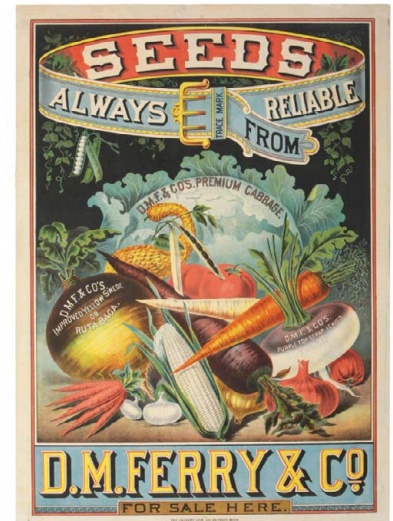
Salesman's Sample Saddle



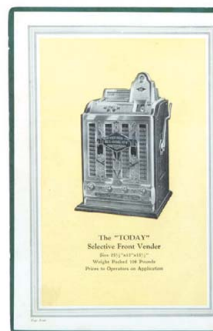
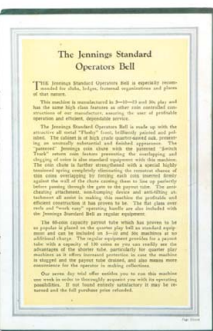
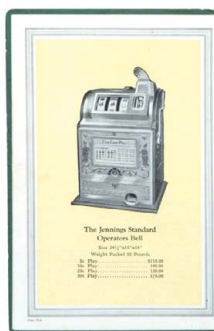
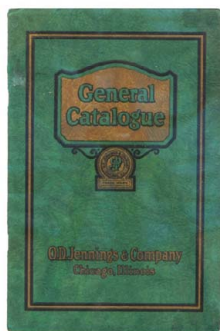
93).Salesmans Sample Saddle. 10 x 9.5 x 10" (as pictured) unusual, high quality small (salesman's sample size) leather saddle, w/ nicely tooled designs into leather. A neat and unusual piece, w/ a great look. Min. bid \$70.



94).Welcome Soap Wooden Sign. 23 x 6.75 x 3/4" (31" long metal bracket) early, primitive, 2-sided wooden country store advertising trade sign for Welcome Soap. All original, in very nice overall condition, w/ nice rich patina to its paint surface. Min. bid \$100.



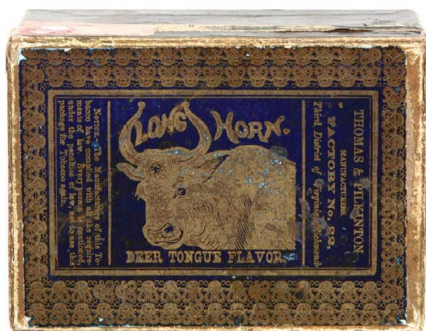
95).Ferry Seed Poster. 33.75 x 24-1/8" incredible, very early paper litho advertising poster for Ferry Seeds, featuring stunning, multi-color detailed lithography. Clean, bright and excellent in appearance (displays as near mint), although close examination will reveal that it has had a little extremely well done professional restoration in bottom right corner area and in outer white margin areas. Linen mounted and ready for framing. Incredible looking piece! Min. bid \$150.



96).Jennings Coin Op Catalog. 9.5 x 6.25" early, 32 pg. illustrated catalog for Jennings coin-op slot machines and vendors, w/ attractive illustrations, pricing info and very detailed descriptions. A nice example and great reference, w/ some staining on front and back cover (not offensive- blends pretty well into textured marbled design). Non-illustrated inside front and back pages have some foxing, other pages pretty much excellent. Min. bid \$50.



97).Lily White Flour Pocket Mirror. 1-5/8 x 2-3/8" scarce, early celluloid pocket mirror for Valley City Milling Co.'s Lily White flour, w/ beautiful multi-color graphics. Clean, bright and excellent in appearance (a little faint barely noticeable foxing and minor bumps under surface). Displays great! Min. bid \$40.



98).Long Horn Tobacco Box. 4 x 5.5 x 2-5/8" unusual, very early 2-ps. cardboard tobacco box for "Long Horn" brand "Deer Tongue" flavor tobacco (Thomas & Pilkinton Co.), w/ attractive image of steer on cover (Act of 1872 tax stamp). Displays well, w/ a little non-offensive light staining and a little light edge wear. Min. bid \$40.



99).C & B Lines Tip Tray. 4.5 x 6.25" early tin litho tip tray for Cleveland & Buffalo Lines passenger ship line, featuring stunning, multi-color graphics. Clean, bright and excellent (displays as a strong C. 8++) w/ exception of non-offensive wear mark at 4 o'clock (at very outer edge where field touches rim). Min. bid \$50.



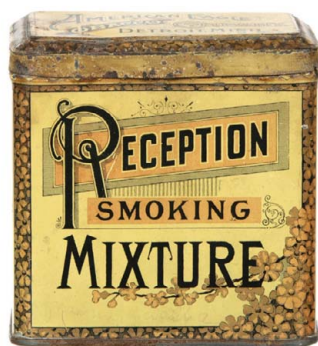
100).Blue Jay Cigar Tin. 5-5/8 x 6-1/8 x 4.25" tin litho 50 ct. cigar can for Orison Cigar Co.'s "Blue Jay" brand. Clean, bright and exceptionally nice example (a very strong C. 8++) w/ some light wear and a couple dents on non-graphic gold lid. Min. bid \$70.



101).Salesman's Sample Perfume Bottles. 5 x 7 x 5" unusual, very early, miniature salesman's sample case for Giroux & Co. Perfume Co., w/ attractive small, labeled perfume sample bottles inside (bottles 3-1/8 x 1-3/8" (dia.)). Eight of bottles match, and have excellent original labels, w/ four additional various miniature bottles that appear to have been added as replacements (staining on one label of replacement bottles). Min. bid \$60 (the set).



Salesman's Sample



102).Reception Tobacco Can. 3-7/8 x 3-7/8 x 2-3/8" early, tin litho hinged lid tobacco can for American Eagle Co.'s "Reception" brand tobacco, featuring fine early detailed lithography (Ilisley & Co. litho). Attractive and displays very well (C. 8+) w/ exception of a little light staining and wear on lid (lid C. 7+). Min. bid \$40.



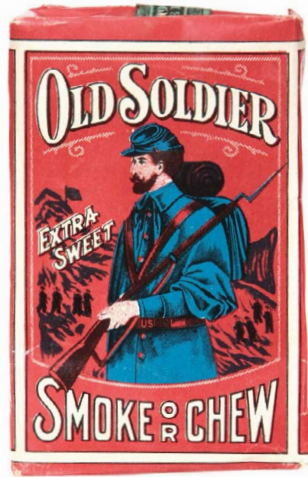
103). Boar Cigar/Match Holder. 4.5 x 8.5 x 3" early, fancy cast white metal figural counter top cigar and match holder in shape of boar, w/ brass inserts. Powerful and very good looking piece, w/ nice detailing and nice surface patina (cigars and matches not included). Excellent. Min. bid \$50.



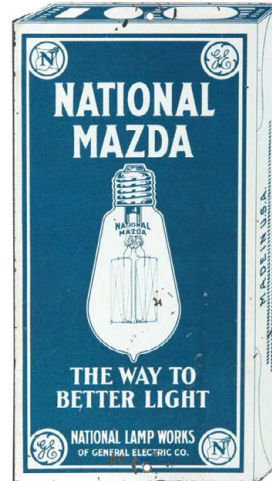
104).Sunshine Animal Crackers Box. 3 x 5 x 1-7/8" unusual, early children's cardboard box for Loose-Wiles Biscuit Co.'s "Sunshine Animal Biscuits", featuring wonderful graphic animal images around four sides. Has some edge tears, minor staining and a little light wear, but overall attractive and displays very well, w/ bright colors(C. 8+/-). Min. bid \$40.



105).Parisian Novelty Co. Billhook. 6.5 (h) x 3.5" (dia.) unusual, early advertising billhook for Parisian Novelty Co. (maker of celluloid pocket mirrors, novelties, etc.) featuring nicely detailed graphic image of Co.'s factory. Clean and excellent. Min. bid \$40.



106).Old Soldier Tobacco Pack. 4-5/8 x 2-7/8 x 1" unusual, full, sealed (never opened) soft pack style tobacco package for Goodrich Co.'s "Old Soldier" brand tobacco, featuring great image of Co.'s trademark Union civil war soldier. Excellent (a strong C. 8+), w/ just a slight bit of crimping and minor wear (series 1926 tax stamp). Min. bid \$40.



107).General Electric Door Push. 6-5/8 x 3-5/8" scarce, early tin litho advertising door push for General Electric Co.'s National Mazda brand light bulbs, featuring great image of early product box picturing an early, pointed top light bulb. Displays well, w/ a little general light scattered wear (C. 8/-). Min. bid \$50.



108).Price's Spice Tin. 3.75 x 2 x 1.25" scarce tin litho 2 oz. spice tin for Price Flavoring Extract Co. (Chicago) nutmeg. Has strong colors and displays well, w/ a little minor wear on back side (C. 8+). Min. bid \$40.



109).American Family Soap Sign. 20 x 26" large, early, heavy porcelain curved corner grocery store sign, advertising American Family Soap. Field of sign is clean, bright and like new, w/ nice original sheen (basically near mint), although there is some scattered chipping along the outside edges. Min. bid \$150.



Salesman's Sample

110).Mascotte Wringers Salesman's Sample. 15.5 x 15 x 7" (15.5 x 5 x 5-5/8" when folded-up) important, very early, museum quality salesman's sample for Mascotte Wringer Co.'s laundry wringer unit. The attached drying racks fold open and closed, and piece has intricate, very high quality working rollers, turning gears, etc. (note: it is missing a small wooden handle on turning crank (could be easily replaced). Excellent and all original, w/ a beautiful deep, rich surface patina. Outstanding piece! Min. bid \$150



113).Folky Trade Sign. 48.5 x 12" impressive, early, primitive folk art style painted metal sign for a Manchester, Vermont real estate office. Appears never used, w/ a blank area at top for painting route miles to office. Clean, bright and excellent in appearance, w/ nice, rich surface patina (a strong C. 8+!) w/ a little expected non-offensive storage darkening and wear (Ithaca Sign Works). Min. bid \$100.



111).Kismet Flour Sign. 14.5 x 14.5" attractive, early tin litho sign (w/ fancy rolled edges) for Noblesville Milling Co.'s "Kismet" brand flour (American Art Works). Clean and very attractive in appearance (basically displays as a C. 8+) w/ exception of a some paint chip loss surrounding top center hanging hole and a little non-offensive wear and minor oxidizing on dark rolled edge (not serious or detracting, mentioned for accuracy). Min. bid \$100.



112). "Spring Step" Die-Cut. 17.75 x 18" unusual, early cardboard die-cut string hung ceiling sign for U.S. Rubber Co.'s "Spring-Step" brand rubber heels, featuring great image of couple in swing. Impressive looking piece has strong colors and displays very well (as a strong C. 8+) although a close examination will reveal some non-offensive edge wear spots and a few scattered crease marks- mostly in wooden swing seat section (critical grade C. 7.5). Min. bid \$50.



114). **Fisk Tires Sign.** 44 x 11.5" scarce, early yard-long style paper litho sign for Fisk Tires, featuring wonderful repeating images of Fisk's trademark candlestick child, w/ early tires, etc.. Clean, and very nice appearance, as found still in original period frame. Min. bid \$90.



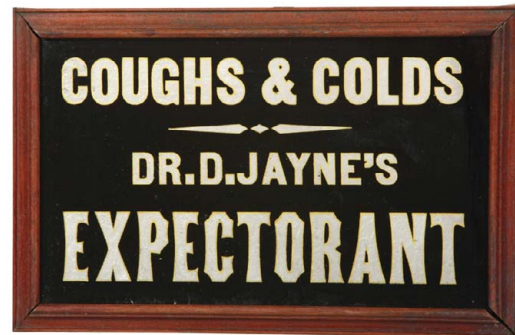
115). **Calycine Soda Pocket Mirror.** 1.75 x 2.75" scarce, early celluloid advertising pocket mirror for Cal-y-cine soda. Excellent appearance, w/ minor surface wear. Min. bid \$40.



116). **Lemon Crush Sign.** 4 x 19-3/8" scarce, ca. 1920's / 30's embossed tin litho sign for Lemon Crush soda (by Stout Sign Co.). Clean, bright and very attractive in appearance, w/ a slight bit of minor background wear (C. 8/-). Min. bid \$50.



117). **Hiawatha Ice Cream Sign.** 14 x 19" unusual, early, 2-sided porcelain flange advertising sign for Hiawatha brand ice cream, w/ attractive silhouette image of Co.'s trademark Indian in upper corners. Clean and very attractive, w/ a little minor edge wear. Min. bid \$70.



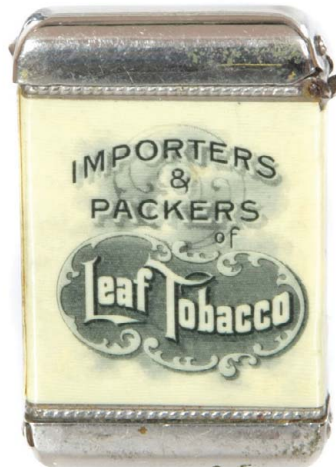
118). **Dr. Jayne's Medicine Sign.** 7 x 11" very early (ca. 1870's / 80's) reverse glass medicine sign for Dr. Jayne's Expectorant. Beautiful and all original, in its gorgeous original fame, (has finely stenciled advertising on wooden back panel). Min. bid \$100.

Match Striker

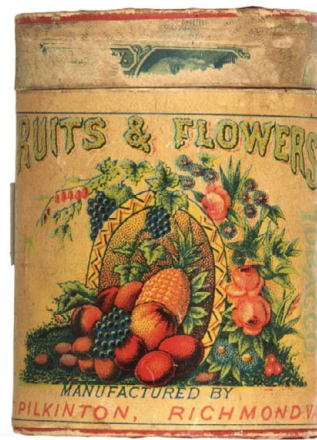


119). **Star Shoes Match Striker.** 5.25 x 3.5" unusual early cardboard match striker (on heavy card stock) advertising Star brand shoes (roof of building has sandpaper type surface for striking). Like new w/ exception of small stain mark on roof. Min. bid \$20.

Match Safe



120). **Tobacco Match Safe.** 2.25 x 1.5 x 3/8" early, high quality, celluloid covered advertising pocket match safe for John Meyer & Son Tobacco Co. Excellent. Min. bid \$40.



121). **Fruits & Flowers Tobacco.** 3.25 x 2.25" very early, small round cardboard tobacco container for Pilkinton's "Fruits & Flowers" brand, featuring beautiful multi-color images of fruits and flowers on both side labels and lid. Side label is clean, bright and displays very well (C. 8/+) w/ some age tone darkening, a little brittle edge chipping to label on lid. Min. bid \$40.



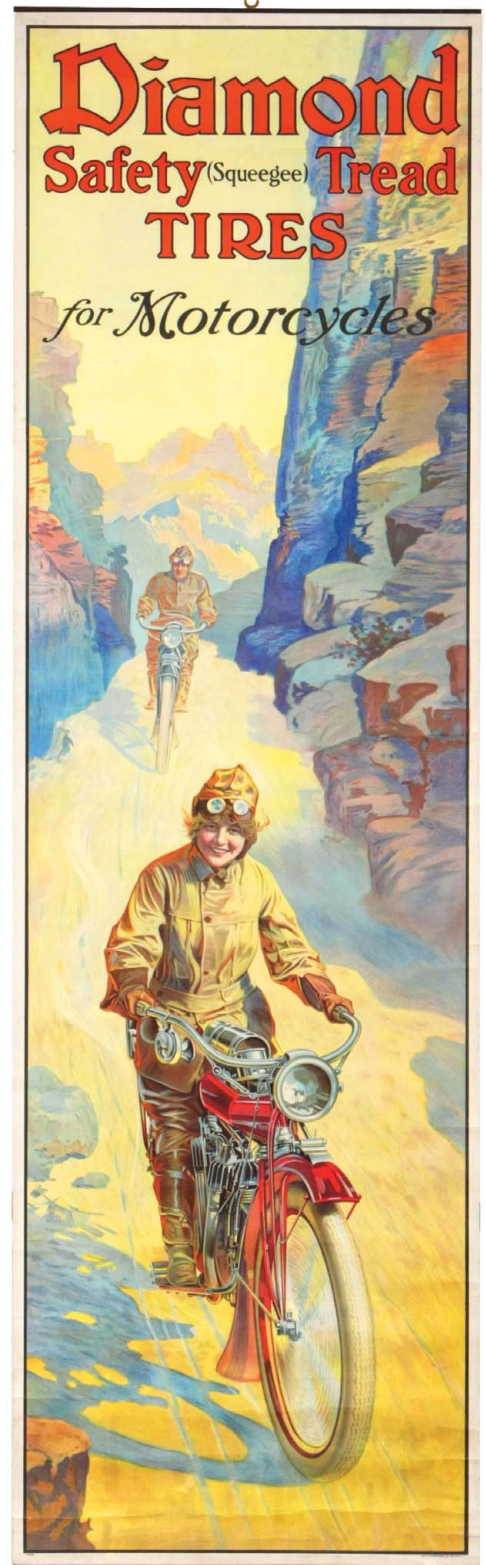
122). **Zipper Cigarettes.** 2.75 x 2 x 7/8" full, sealed (never opened) Ca. 1939 (Series 109 tax stamp) cigarette pack for "Zipper" brand, featuring great image of Co.'s trademark streamlined land speed car. U.S. made, for export market by Williamson Tobacco Co. Like new condition Min. bid \$30.



123).Cabin Cigar Box (Black Americana). 8.75 x 8-5/8 x 4.5" (as shown w/ lid open) wonderful, very early wooden cabin shaped cigar box for "Old Kentucky Home" brand, w/ great inside label featuring well dressed black family waiting for train. Attractive and very nice overall, w/ some light age tone staining on label (label C. 7.5+/8-). Displays well (missing closing clasp on front of box). Min. bid \$50.



Motorcycle Poster



Salesman's Sample Murphy Bed



124).Salesman's Sample Murphy Bed. 24.75 x 13-5/8 x 7.25" early, high quality, miniature salesman's sample mirrored wall case furniture piece. All original, high quality piece has/ attractive surface finish to its nicely detailed wooden (oak) mirrored front. The panel front opens up to reveal a hidden bed and mattress inside. A neat and very unusual piece (no manufacturer markings). Min. bid \$70.



125).Lin-O-White Sign. 27.5 x 13-5/8" (22-3/8 x 9-3/8" actual sign) outstanding, early die-cut embossed pressed cardboard sign for Lin-O-White brand washing tablets, w/ attached cloth advertising dropdown section below. Clean, bright and exceptionally nice appearance (C. 8++) w/ exception of a little very faint water staining (not offensive or detracting- mentioned for accuracy). Nicely matted and beautifully presented in antique frame (some wear to frame). Min. bid \$80.



126).Welcome Soap Sign. 31.75 x 16 x 2" outstanding, very early paper litho country store promotional sign for Welcome Soap. Presented in beautiful shadow box style gold leaf frame, with actual cloth clothing on girls. This was a promotional piece for a plain version of this sign, which was offered in premium exchange for 25 soap wrappers (customer would make clothes and then dress the girls on sign). Basically clean and excellent in appearance, w/ minor age toning and small edge tear (C. 8+/-). Min. bid \$150.

127).Diamond Motorcycle Tires Sign. 50 x 15" important, large, museum quality, early roll-down paper litho sign (metal strips at top and bottom) for Diamond Motorcycle Tires, featuring incredible multi-color graphics. Freshly estate picked, this incredible piece was found still rolled up and is clean and bright, w/ rich vivid colors. Sign is excellent overall and basically displays as a strong C. 8.5/+, w/ exception of a few non-offensive light crease marks at bottom, a couple of which have been backed and reinforced w/ archival tape (see web site addendum). One of the most attractive pieces we have ever had the pleasure of offering. Min. bid \$250.



128).Graniteware Pot Scraper. 3-3/8 x 2-7/8" scarce, early tin litho advertising pot scraper for Royal and Nesco brand's of granite enameled ware. Clean, bright and excellent (C. 8+), w/ only minor wear. Min. bid \$60.



Cigar Holder

129).Brass Car (Cigar Holder). 3-5/8 (h) x 9.5 (l) x 4.75 (w) unusual, early figural brass auto shaped cigar holder in likeness of 1930's streamlined car (hood lifts up to reveal storage compartment inside). Very high quality, w/ stamped hallmark design on back (Betel Co.). Excellent, w/ exception of couple scattered dent marks. Min. bid \$70.



130).Pittston Gazette Sign. 8 x 16" very early, heavy porcelain advertising sign for the Pittston Gazette newspaper, w/ raised volcano style hanging holes. Crispy and like new in condition (unused and basically near mint- w/ exception of small flake spot at left very bottom edge), w/ nice original surface sheen (most of the original Ingram-Richardson Mfg. Co.'s paper label still intact on back side). Min. bid \$60.



129).Detail



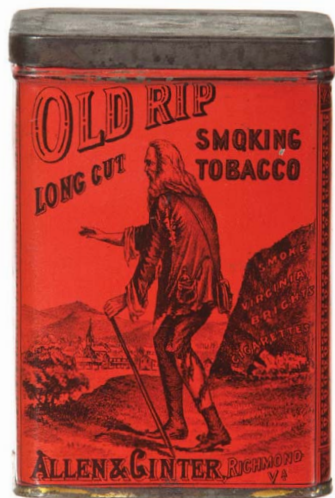
131).Tintex Dyes Display. 19.75 x 16.5 x 7" unusual, early tin litho counter top store display rack for Tintex brand dyes, complete w/ over 80 of its full original product boxes. Clean, attractive and displays very well, w/ a little light wear (C. 8+/-). Min. bid \$60.



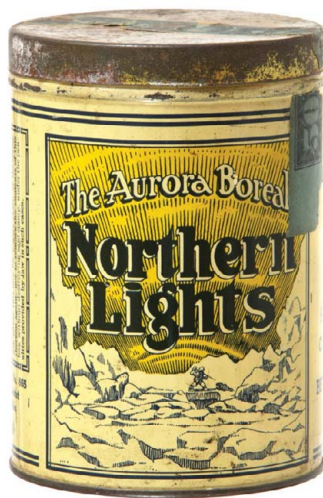
132).Hair Bobbing Globe. 12.25 x 11.5 (diam.) x 5.5" unusual, ca. 1920's heavy 2-sided milk glass trade globe for use as early outdoor trade sign light fixture. Excellent and all original, w/ nice patina to original paint surface (in incised design areas). Min. bid \$50.



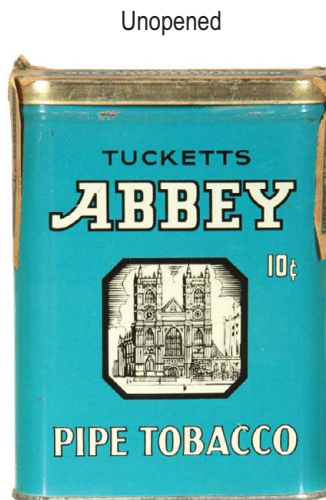
133).“Nigger Hair” Tobacco Pail. 6-5/8 x 5-3/8" unusual caramel/tan color variation tin litho tobacco pail for Leidersdorf Co.'s “Nigger Hair” brand tobacco, featuring great trademark image of African woman (same image both sides). Tin is clean and displays well (as a C. 8+/-) although close-up examination will reveal a little light scattered fine chipping and wear (critical grade C. 7.5+/-). Min. bid \$70.



134).Old Rip Tobacco Tin. 4.75 x 3.25 x 2-1/8" scarce, very early tin litho tobacco tin for Allen & Ginter Co.'s “Old Rip” brand tobacco. A clean, bright and exceptionally nice example, w/ some wear on back side (front and sides C. 8.5; back 7.5+/-). Min. bid \$50.



135).Northern Lights Cigar Tin. 6-1/8 x 4.25" scarce tin litho 50 ct. cigar can for Sterling Cigar Co.'s “Aurora Borealis Northern Lights” brand, featuring same attractive image on both sides. Clean and very nice overall look, w/ a little light soiling and scattered wear (C. 8+/-). Min. bid \$50.



Unopened

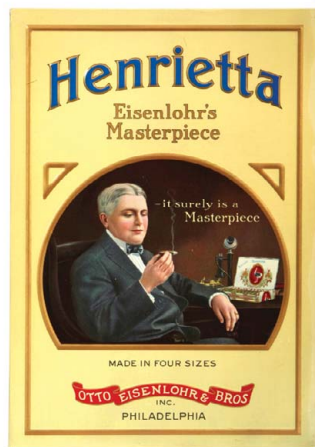
136).Abbey Pocket Tin. 4 x 3x 7/8" tin litho vertical tobacco pocket tin for Tuckett Tobacco Co.'s “Abbey” brand. Full, sealed, never opened can is clean and like new in appearance (a strong C. 8.5++), w/ nice original sheen (a little minor wear at raised top lip area just below lid and some loss to paper on tax stamp (Canadian). Min. bid \$100.



137).Boydell Paints Match Holder. 8 x 5 x 1.25" scarce, large, early tin litho advertising match holder for Boydell Bros. Paints, featuring powerful color graphic image of product can. Bright and attractive in appearance, w/ a little bit of light scattered background wear (C. 8/-). Note: still has complete original 1908 calendar attached to bottom area. Min. bid \$60.



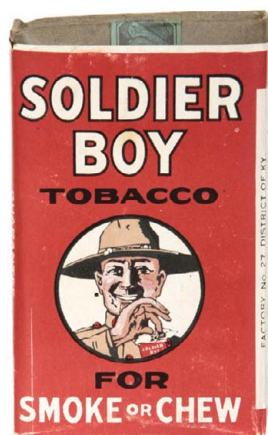
138).Napoleon Cigars Sign. 15-7/8 x 12.75" early, heavy, solid cast bronze advertising sign for Napoleon Cigars, featuring great embossed image. Very high quality piece, (mfg. by Price Bros., Chicago) probably made for Co.'s factory building. Excellent. Min. bid \$70.



139).Henrietta Cigars Sign. 13.25 x 9-1/8" early embossed tin over cardboard hanging sign for Otto Eisenlohr & Co.'s "Henrietta" brand cigars. Impressive sign is basically crisp, bright like new in appearance (appears never used) with only minor storage wear (note: a close examination will reveal a small section along very outer right edge where shiny coating was not applied evenly in mfg. process- not offensive and barely noticeable- mentioned for accuracy). Min. bid \$70.



140).Owl Cigar Sign. 9.5 x 7" outstanding, early 2-sided die-cut cardboard ceiling hanger sign for Owl brand cigars, featuring wonderful image of trademark owl in cage (same image both sides). Clean bright and excellent in appearance (displays as a strong C. 8+) although a very close examination will reveal some barely noticeable minor repair to separation break spots at delicate very upper top rung section of cage. Min. bid \$50.



141).Soldier Boy Tobacco Pack. 4-5/8 x 2-7/8 x 1" full, sealed, never opened tobacco soft pack from American Tobacco Co.'s "Soldier Boy" brand tobacco, featuring attractive image of trademark soldier (same image both sides). Excellent overall, w/ a few minor trace hints of age tone staining (barely noticeable, mentioned for accuracy). Min. bid \$30.



142).La Nora Cigar Tin. 5.25 x 3.5 x 3.5" early tin litho 25 ct. cigar can for La Nora cigars featuring beautiful multi-color graphics. Clean, bright and very attractive (C. 8++) w/ a little minor soiling. Min. bid \$40.



143).Busy Biddy Spice Tin. 3.75 x 2.25 x 1.25" scarce tin litho 2 oz. spice tin for Davies-Strauss-Stauffer Co.'s (various Pa. cities) "Busy Biddy" brand, featuring great graphic image of trademark chicken. Clean, bright and very attractive, w/ a little light wear on non-graphic back edges (front C. 8.5; back 8). Min. bid \$40.



144).Tiolene Oil Match Holder. 5.5 x 3.75" early, extremely rare tin litho advertising match holder for various petroleum products from Tiona Oil Co. Has a little scattered soiling and wear (including a second small tack hole added near top, as well as some minor light oxidizing and minor bends and wear in hanging basket) but overall attractive and displays pretty well (C. 7.5+). As found, should improve w/ cleaning. Min. bid \$40.



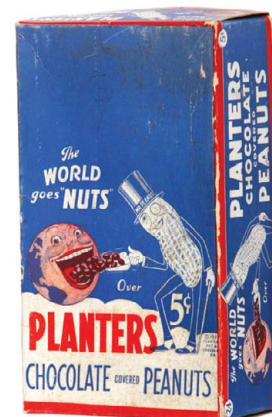
145).Fairway Oats Box. 9-5/8 x 5-3/8"(dia.) scarce, early 3 lb. cardboard box for Twin City Wholesale Grocer's "Fairway" brand, featuring attractive image of Co.'s trademark kids on both sides. Clean, bright and very attractive (C. 8+) w/ a little non-offensive faint background staining on backside. Min. bid \$50.



146).Shaker Bookmark. 7.75 x 3.25" fine, early, silk advertising bookmark for Shaker made cloaks (from Shaker Community, Mount Lebanon, NY). Beautifully detailed, excellent and like new condition. Nicely framed and matted (framed image pictured in website addendum). Min. bid \$50.



147).Blown Fruit Jar. 6.5 x 3" ca. 1860's/70's crude, fine, primitive hand blown clear glass fruit jar w/ attractive, "Fresh Peaches" paper label on front (from John T. Mitchell Co., Baltimore). Jar is excellent; label has some general age toning and some staining and foxing at bottom, but still attractive and displays quite well (especially for its age). Note: an 1864 Baltimore City directory listed Co. as a purveyor of "hermetically sealed fruits, oysters, etc." Neat piece! Min. bid \$50.



148).Planters Chocolate Peanuts Box. 8.75 x 5 x 2.75" scarce variation, early 2-ps. cardboard product box for Planters chocolate covered peanuts, featuring great image of Mr. Peanut feeding hungry globe (image pictured on box top and four side panels of lid and inside bottom section). Colors are strong and piece displays quite well, although there is some non-offensive light scattered age tone staining and light scattered soiling on top of lid (a strong C. 7.5+). Min. bid \$70.



149).10¢ Trade Mirror. 2.25' early celluloid 'Good for 10¢ in Trade' advertising pocket mirror from European Café, Carthage, NY, featuring great hand tinted photographic image of semi-nude. Excellent. Min. bid \$40.



150).Eve Pocket Tin. 3-5/8 x 3.5 x 1.25" early tin litho vertical tobacco pocket tin for Globe Co.'s "Eve" brand, featuring same beautiful image on both sides. Clean, bright and exceptionally nice (C. 8.5/+). Min. bid \$50.



151).Red Robin Peanut Butter. 3.75 x 3-3/8" (dia.) scarce tin litho 1 lb. peanut butter pail for Red Robin brand (Tom Huston Co., Columbus, Ga.) featuring attractive image of Co.'s trademark bird. Colors are strong and piece displays pretty well, although there is a fair amount of scuffing and scattered background wear. Grades a (C. 7/-), although displays a lot better than this would imply. Min. bid \$40.



152).Carmen Condom Tin. 1-5/8" (dia.) x 1/2" attractive, early tin litho condom tin for Carmen brand, featuring great image of a semi-nude pin-up model. Clean, bright and attractive in appearance, w/ minor dents and wear (front C. 8++; base 8-). Min. bid \$40.



153).Ceresota Match Holder. 5-3/8 x 2-3/8" early embossed tin litho die-cut advertising match holder for Ceresota Flour, featuring adorable image of trademark child slicing bread (barrel match holder variation). Crisp, bright and like new (near mint) as found never used still in its original box (box is excellent, although top and inside flaps no longer attached). Min. bid \$70.



154).American Ever Ready Co. Art Plate. 10" (dia.) early tin litho Vienna art plate featuring colorful and highly graphic advertising for the American Ever Ready Co.'s lighters. Clean, bright and attractive in appearance, w/ some darkening and wear in raised border area of rim (critical grade C 7.5/+), although it displays much better than this would imply (center image area excellent). Min. bid \$50.



155).German Figural Tin. 5.75 x 6.75 x 3.25" outstanding, early tin litho hinged lid house shaped biscuit style product tin, featuring fine, detailed embossing. Clean, bright and exceptionally nice appearance (C. 8+/-) w/ a little light scattered wear (has area of litho loss from rub wear on side of building from bell. Min. bid \$60.

John Deere



156).John Deere Calendar. 22 x 11-7/8" early paper litho advertising calendar for John Deere farm implements, featuring attractive image of farm girl by illustrator Haskell Coffin w/ early Deere Co. logo on fence. Clean, bright and very attractive (a strong C. 8++) w/ exception of a couple dark stain specks in sky area, and some non-detracting faint horizontal crease marks in sky area (from being rolled). Complete w/ full 1924 calendar pad. Min. bid \$40.

Coca-Cola Gum



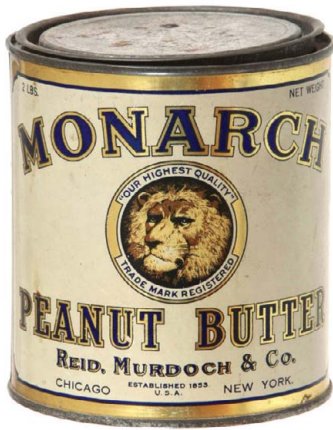
157).Coca-Cola Gum Jar. 11.5 x 4.75 x 4.75" scarce, early, embossed store display jar for Coca-Cola Chewing Gum, w/ ground glass lid. Glass has no chips or cracks, although there is a slight bit of minor haziness on inside area of jar. Lid has a slight smoky purplish tint and sits slightly high on jar. Min. bid \$70.



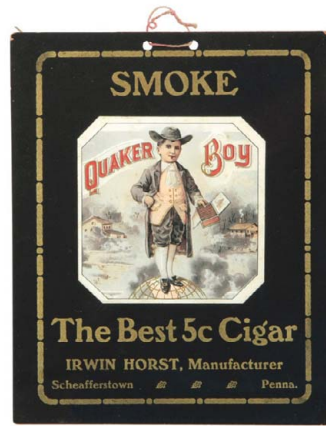
158).Celluloid Starch Die-Cut. 10 x 4-1/8" outstanding, early die-cut cardboard easel back stand-up sign for "Celluloid Starch" laundry product, featuring wonderful lightly embossed graphic image of Victorian era child. Clean, bright and excellent w/ a little minor edge wear (a very strong C. 8++). Min. bid \$50.



159).Folk Thermometer. 21 x 8" wonderful, very early wooden advertising thermometer for a Kansas Steam Laundry Co. featuring a great primitive folk art country type look. Has some early wear at bottom and at right edges, but overall attractive and displays very well, w/ a rich, nicely weathered patina to its paint surface (replacement hanging hook on back). Min. bid \$100.



160).Monarch Peanut Butter. 4.75 x 4.25" (dia.) early tin litho 2 lb. pry lid peanut butter tin for Reid Murdoch Co.'s "Monarch" brand, featuring powerful image of trademark lion logo (same image both sides). Clean and excellent (C. 8+). Min. bid \$40.



161).Quaker Boy Cigar Sign. 9 x 7-3/8" unusual, early cardboard string hung sign for Quaker Boy brand cigars, featuring attractive box label image in center. Excellent overall (a strong C. 8+), w/ minor wear spot at upper right edge. Min. bid \$40.



162).Marksman Cigar Tin. 5-3/8 x 5" (dia.) unusual, early paper litho (over tin) 50 ct. product can for "Marksman" brand cigars, w/ same great image on both sides. Has a little fade, light wear and some age toning, but overall attractive and displays well (C. 7.5+). Min. bid \$40.



163).Kentucky King Cigarette Pack. 2.75 x 2 x 7/8" full, early, sealed never opened cigarette pack for Brown & Williamson Co.'s "Kentucky King" brand. Excellent. Min. bid \$20.



164).Pride of Aden Coffee. 7.25 x 5-1/8" unusual, 2 lb. tin litho small top coffee can for Ginter Grocery Co. (Boston) "Pride of Aden" brand. Has strong colors and displays very well (C. 8+), w/ a little light scattered wear. Min. bid \$40.

Lucky Strike Vendor



165).Lucky Strike Vendor. 11.25 x 6.75 x 7-1/8" outstanding, early coin operated vending machine for Lucky Strike cigarettes (vended individual cigarettes for 1¢ each). Very high quality piece is cast iron, w/ heavy aluminum and glass section at top. Excellent and all original, w/ nice paint surface and very attractive advertising labels and instructional decals (C. 8). Complete and working, as found still in its original carrying case (note: case leads me to believe this was as a salesman's sample machine). No key. Min. bid \$100.

Match Holder



166).Ceilings Co. Match Holder. 9-3/8 x 75 x 1-1/8" large, very early pressed metal advertising match holder from the Friedley & Voshardt Co., Chicago (makers of fancy ornamental steel ceilings) featuring a great, early primitive folk art look (similar to their ceilings). Very attractive piece, w/ a nice rich, early surface patina. Min. bid \$70.



167).Zoo-Zoo Tobacco Sign. 31.5 x 25.5" (27-5/8 x 21.5" visible image) incredible, museum quality large paper litho advertising poster for Wilson & McCallay Co.'s "Zoo-Zoo" brand tobacco. Powerful and very impressive piece is clean, bright and exceptionally nice in appearance w/ incredible multi-color lithography (C. 8.5+). Min. bid \$150.



168).Red Rose Gum Calendar. 11-7/8 x 6-3/8" scarce, early cardboard litho advertising calendar for Adams Co.'s "Red Rose" brand chewing gum. Clean and very attractive (C. 8+), complete w/ its full 1900 calendar pad. Min. bid \$80.



169).Shaw's Pure Malt Sign. 22.25 x 16 x 1" outstanding, early self-framed tin litho sign for Shaw's Pure Malt, featuring beautiful multi-color graphics. Clean, bright and very attractive in appearance (displays on wall as a strong C. 8+), although a very close examination will reveal some non-offensive faint scratches and some barely noticeable light scuff marks (nothing serious or detracting from overall great look of the piece). A powerful and impressive piece, that displays very well! Min. bid \$150.

Giant Display Box



170).Argo Starch Display Box. 17-7/8 x 9 x 4.5" large, figural cardboard country store display box for Argo brand Corn Starch, featuring nice image of Co.'s trademark Indian "Corn Girl". Displays well (a strong C. 8++) w/ a little minor edge wear. Min. bid \$50.



171).Kitchen Toy Set. 11.75 x 11 x 3.5" (box size) unusual, early boxed set of ca. 1920's "Play House" metal kitchen toy furniture pieces in great paint, by Henry Katz Toys, as found in excellent, never used condition, still in their original box. Includes a stove, hoosier cabinet, sink and pantry cabinet. Min. bid \$40.



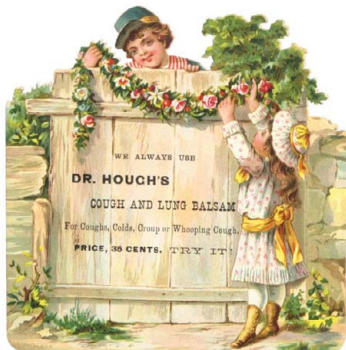
172). Dan Patch Tobacco Tin. 4 x 6 x 3-1/8" early hinged lid tobacco can for Scotten, Dillon Co.'s "Dan Patch" brand tobacco, featuring great images of world famous trotter pictured on front, back and lid. Clean, bright and excellent (a strong C. 8++). Min. bid \$40.



173).Lucky Cup Coffee Can. 4 x 5-1/8" (dia.) unusual, early tin litho key-wind coffee can for Lucky Cup brand. Clean, bright and very attractive (C. 8++) w/ only minor wear. Min. bid \$40.



174).Gem Razor Tins. 2-3/8 x 1-3/8" (diam.) early, unusual variation product tin for Gem Cutlery Co.'s Gem brand safety razor, w/ nice image of man shaving. Displays well, w/ some general scattered wear (C. 7+). Lot also includes a Gem razor blades tin, w/ same image of Co.'s trademark man on base (C. 8+/-). Min. bid \$50 (the lot).



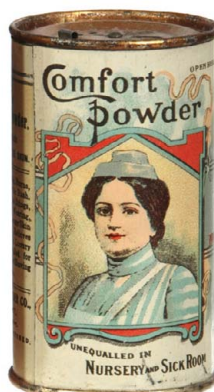
175).Medicine Die-Cuts. Lot consists of two outstanding, very early 2-sided medicine advertising die-cuts for Dr. Hough's Cough and Lung Balm medicine, each apx. 5-7/8 x 5.75". Both are crisp, bright and like new. Min. bid \$40 (the pair).



176).Columbia Veterinary Sign. 6-7/8 x 10" early paper litho advertising sign for Sturtevant Co.'s Columbia brand veterinary medicines, featuring beautiful graphic image of record setting trotter Nancy Hanks. Excellent (C. 8.5+). Min. bid \$50.



177).Hammond Lard Pail. 5 x 5" (dia.) scarce, early tin litho advertising lard pail from G. H. Hammond Co., featuring wonderful image of Co.'s trademark Indian character. Bright, attractive and displays well, w/ some typical general scattered overall darkening and wear to gold flash finish area of back and lid (C. 7.5/+). Min. bid \$50.



178).Comfort Medicinal Powder Tin. 3.5 x 2"(dia.) very early, unusual variation tin litho product can from Comfort Powder Co., featuring beautiful detailed color graphics (shows nurse on front, w/ baby on back). Clean, bright and excellent (a strong C. 8++) as found in original box (box has 1-5/8" tear and is missing cover flap). Min. bid \$50.



179).Columbia Brewing Co. Tray. 9.75" early pre-prohibition tin litho serving tray from Columbia Brewing Co. (Tacoma, Washington), featuring beautiful, early litho image. Clean, bright and very attractive in appearance, w/ satin type finish. Excellent overall appearance, w/ a little non-offensive very faint crazing and a little minor wear (C. 8+). Min. bid \$150.



180). Gum Valentines. Lot consists of two unusual, early black Americana Valentines. 10.25 x 5.5" piece features black man w/ actual Wrigley's Spearmint gum stick pieces for arms; and Adams Black Jack gum legs; 6 x 3.75" piece has black girl holding stick of Adams Black Jack gum. Both are clean and very attractive (C. 8+/) w/ minor soiling and small arm tear spot on Black Jack example. Min. bid \$30 (the pair).



181). Biscuit Tin/Bank. 14-3/8 x 5" (dia.) unusual, early 2-ps. British Fairy Tree biscuit tin (from Crawford & Sons) w/ coin slot at top for later use as bank. Clean and very attractive w/ only minor scattered wear (C. 8+/). Min. bid \$60.



182). Arctic Ice Cream Tray. 13-5/8" (dia.) tin litho advertising tray for Arctic brand ice cream, featuring beautiful color image of Polar bear. Clean, bright and very attractive (basically a strong C. 8+/) w/ exception of a couple scratch marks in jagged iceberg area and a little scattered wear in lower section of rim. Min. bid \$50.

Sample



183). Old Colony Sample. 3 x 2 x 3/4" miniature, sample size tin litho vertical tobacco concave pocket tin for Bagley & Co.'s "Old Colony Mixture". Clean, bright and very attractive (C. 8+/) w/ small background hazy soiling spot (as found, should improve w/ cleaning). Min. bid \$40.



184). Old Rover Tobacco Pack. 4.25 x 2-7/8 x 1" full (sealed, never opened) soft pack tobacco package for R.J. Reynolds Co.'s "Old Rover" brand (series of 1910 tax stamp). Clean and attractive, w/ some faint, minor scattered foxing speckles in background area (not offensive and barely noticeable- mentioned for accuracy) w/ typical flaking to foil at upper top and bottom edges (C. 8+/-). Min. bid \$40.



185). Climax Stoves Match Holder. 4-7/8 x 3-3/8 x 1.25" scarce, early tin litho advertising match holder for Climax brand Stoves (Taplin, Rice-Clerkin Co., Akron, Oh.). Clean, bright and displays well (as a strong C. 8+/) although close examination will reveal a few non-detracting faint hazy spots and a little oxidizing inside hanging match basket area (not visible when displayed). Min. bid \$50.



186). Here's Howe Spice Tin. 3-5/8 x 2-3/8 x 1-3/8" unusual, early tin litho 2 oz. spice tin (ginger) from Geo. Howe Co., Grove City, Pa., featuring castle images (same image on both sides). Clean, bright and excellent, w/ minor scattered wear (C. 8+). Min. bid \$40.

Watch Holder



187). Pocket Watch Holder. 8-3/8 x 5-1/8 x 4" unusual, early, figural cast iron pocket watch stand, w/ nicely detailed leaves, etc. Excellent and all original, w/ attractive, early paint surface. Min. bid \$50.

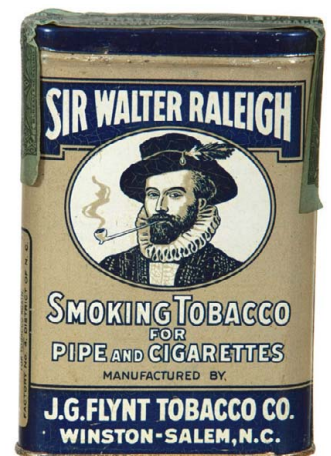


188). Case Tractors Mirrored Sign. 11-1/8 x 6" ca. 1940's mirrored glass advertising sign for Case brand tractors, featuring great images of early farm tractor and Co.'s trademark eagle logo. Excellent. Min. bid \$40.



189). Hazel Coffee Tin. 7.5 x 4.25" unusual, very early tin litho 1 lb. coffee can from Hazel Pure Food Co. (Chicago) featuring colorful and attractive lithography (Fischer Litho., Hamilton, O.). Bright and displays nicely, w/ some general light scattered overall wear (C. 7+). Min. bid \$40.

Unopened



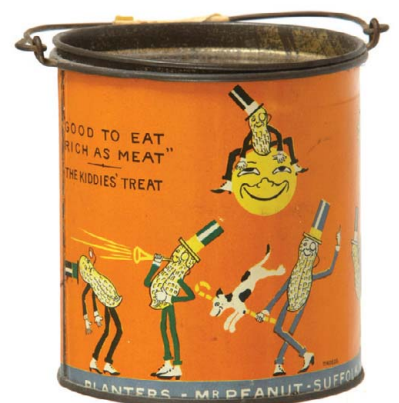
190). Sir Walter Raleigh Pocket. (Unopened) 4-3/8 x 3 x 7/8" scarce variation, early tin litho vertical tobacco pocket tin for Flynt Tobacco Co.'s "Sir Walter Raleigh" brand. Full, sealed, never opened tin is clean, bright and displays well (as a strong C. 8+/) w/ some light surface crazing. Min. bid \$80.



191).Sexton Co. Spice Bin. 9-5/8 x 7-3/8 x 6-1/8" very early, 5 lb. size country store display bin for John Sexton Co. Teas, Coffee's and Spices. Attractive appearance w/ stenciled lettering and a nice primitive country type country look (C. 8+/-) w/ some light scattered wear. Min. bid \$60.



192).Success Spreaders Sign. 19-5/8 x 27.5" outstanding, early tin litho advertising sign for Kemp & Burpee Co.'s Success brand manure spreaders, featuring incredible, finely detailed color graphics (Mayer & Lavenson Litho). Colors are bright and piece displays extremely well on wall (as a strong C. 8+/-), although close examination will reveal a little light wear and a few scattered blemish marks (all are pretty non-offensive, includes a couple small dents, a few light wear spots, etc.) as well as a couple small holes and light denting marks in the outer embossed border/frame area (critical overall grade 8-) A powerful and very impressive looking piece (note: a little minor restoration would improve it to a strong C. 9 appearance). Min. bid \$250.



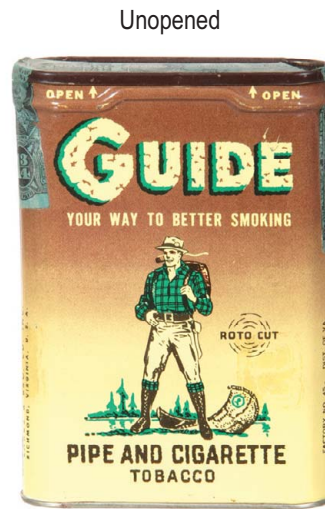
193).Planters Peanut Butter Pail. 4 x 3-5/8"(dia.) early tin litho 1 lb. pail for Planters Peanut brand peanut butter, featuring wonderful, comical Mr. Peanut cartoon type images all around. Clean, bright, excellent appearance, w/ small wear spot on back and a little darkening and light wear on gold flash finish of lid). Min. bid \$50.



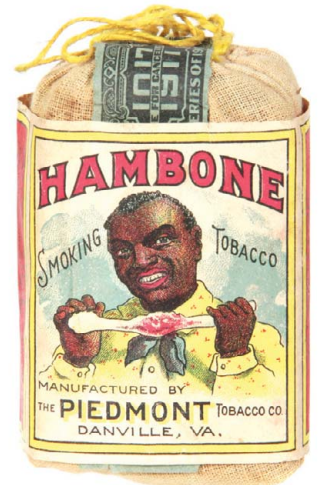
194).King Edward Pocket Tin. 4.5 x 3 x 7/8" early tin litho vertical tobacco pocket tin for Dominion Tobacco Co.'s "King Edward" brand. Clean, bright and very attractive (C. 8+/-) w/ a little light scattered wear. Min. bid \$60.



195).Adriance Platt Match Holder. 4-7/8 x 3-3/8 x 1.25" unusual, early tin litho advertising match holder for Adriance Platt Farm Machinery Co. (Poughkeepsie, NY) featuring beautifully detailed color image of Co.'s Corn Binder machine. Image and advertising area is clean, bright and quite nice, w/ a little light background wear (C. 8+/-); although there is a fair amount of wear in hanging match basket area, including oxidizing to striking surface (basket C. 7-ish). Min. bid \$60.



196).Guide Pocket Tin. 4.25 x 3 x 1" early, full, sealed (never opened) tin litho vertical tobacco pocket tin for Laurus Bros. "Guide" brand. Clean, bright and like new (near mint) w/ exception of minor hazy spot just above canoe. Min. bid \$50.



197).Hambone Tobacco Bag. 3 x 2 x 1" early, full, never opened cloth tobacco pouch for Piedmont Co.'s "Hambone" brand, featuring outrageous color graphic image of trademark black man eating from a ham bone (1917 tax stamp). Excellent (a strong C. 8+). Min. bid \$50.



198).Drug Store Sign. 19.5 x 9-5/8" early, die-cut cardboard easel back stand-up drug store display sign for Ex-Lax laxative product. Clean, bright and excellent (C. 8.5/+), appears never used. Min. bid \$40.



199).Re-Joyce Spice Tin. 5.25 x 2-3/8 x 1-3/8" unusual, early 4 oz. tin litho spice tin for Re-Joyce brand pepper (Chris Hoerr & Son, Peoria, Ill.) featuring same beautiful graphic trademark image on both sides. Clean, bright and exceptionally nice (C. 8.5+). Min. bid \$40.

Tooth Powder



200).Police Pal Tooth Powder. 5-1/8 x 1-5/8 x 7/8" unusual, early product tin for Lordent Co.'s "Police Pal" brand tooth powder in shape of police man, w/ tin litho body and painted wooden cap. Clean and very attractive (C. 8+) w/ only minor wear. Min. bid \$40.



201).Bond Bread Sign. 14-7/8 x 9.25" early die-cut cardboard easel back sign, featuring great image of Santa holding up early Bond bread loaf. Clean, bright and like new. Appears never used w/ exception of a couple faint, non-offensive light crease marks in base area. Min. bid \$40.



202).DeLaval Porcelain Sign. 12 x 16" very early, heavy porcelain advertising sign for DeLaval Cream Separators, w/ early, raised volcano type hanging holes. Excellent (C. 8.5+), w/ nice original surface sheen. Min. bid \$50.



203).DeLaval Match Holder. 6.5 x 3.75 x 1" early embossed tin litho die-cut advertising match holder for DeLaval Cream Separators, in shape of separator machine (1.75 Million in use variation), complete w/ original box. Excellent and appears never used, although there is some typical storage tarnishing and oxidized darkening in silver metallic areas. Box is fair to good, w/ general overall wear (includes some light creases and tattering, a little minor faint staining and separated top end flap). Min. bid \$70.



204).Carolina Trailways Cap. 4.5 x 11.5" early, very high quality bus drivers uniform cap (size 7-3/8) complete w/ unusual, very high quality metal badge from Carolina Trailways Bus Co. Excellent. Min. bid \$40.



205).Three States Tobacco Tin. scarce: 2.75 x 4-5/8 x 3/4", oval variation, hinged lid tobacco tin for Harry Weissinger Co.'s "Three States Mixture". Clean, bright and very attractive in appearance (C. 8/+), w/ only minor wear. Min. bid \$40.



206).Marshmallow Tin. 2-5/8 x 4.5 x 1.75" very early, tin litho Original French brand hinged lid marshmallow tin, featuring beautiful, highly detailed lithography by Somers Bros. Clean, bright and very attractive in appearance (a very strong C. 8/+) w/ a little non-offensive scattered wear. Min. bid \$40.



207).Cigar Boxes. Lot consists of three early wooden cigar boxes. All are attractive and display very well, w/ excellent labels on inside lid of each. Includes: "Racket" 7.25 x 8-3/8 x 5", (1883 tax stamp) crack in base and couple tiny nail holes in top outer margin area; "Gallop" 7.5 x 8.25 x 5.5"; and "Smokers Union" 7.5 x 8-5/8 x 5-3/8" a little minor edge wear at very top edge of label and a just a hint of minor age tone staining in background-barely noticeable (1910 tax stamp). Min. bid \$40 (the lot).



208).Perfection Baking Powder. 10 x 5.5"(dia.) scarce, milk pail style baking powder tin for Meldrum & Co.'s "Perfection" brand, featuring an attractive, very early stencil painted design. Clean and very attractive appearance (C. 8+/-), w/ chipping and paint loss on lid. Nice patina to paint surface, w/ wonderful primitive, country type look. Min. bid \$50.



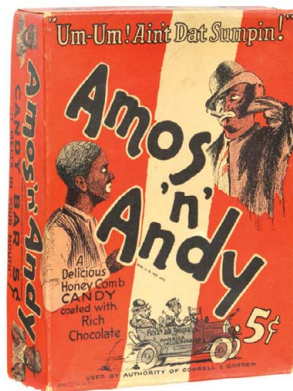
209).Four Roses Tobacco Sign. 22.75 x 17.5" (19.75 x 14.75" visible) beautiful, early paper litho (cardboard?) sign for Four Roses tobacco, featuring stunning, highly detailed color lithography. Clean, bright and exceptionally nice (C. 8.5/+), as found still in its original frame. Min. bid \$90.



210).Towles Log Cabin Syrup Keg. 13.25 x 11" (dia.) early, extremely rare 45 lb. wooden covered metal Towles brand syrup keg from the Log Cabin Products Co., St. Paul Minn. All original, piece is attractive and displays nicely. Label is bright and attractive in appearance w/ vertical split mark (from wood crack underneath) with some paper loss. Min. bid \$70.



211).Patriotic Drum. 6.75 x 9" (dia.) very early, high quality toy drum. Very attractive piece has nice detailed designs on wood bands at top and bottom; w/ wonderful embossed lithographed American flag images in metal all around the sides. Excellent and all original, w/ nice toning and rich surface patina. Min. bid \$50.



212).Amos 'n' Andy Candy Box. 11.75 x 8.5 x 3' early 2-ps. cardboard store display box for Amos 'n' Andy brand 5¢ candy bars. Clean and very attractive in appearance (C. 8+/) w/ clean separation split line along bottom left side apron of lid (could be easily closed w/ archival tape from back side). Min. bid \$40.



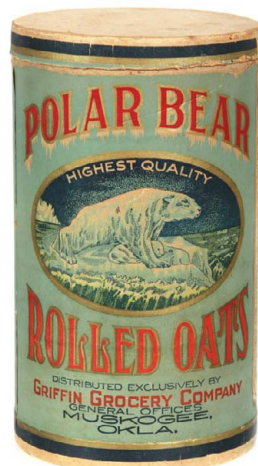
213).Blanke's Coffee. 4.75 x 5-1/8" unusual, early tin litho 1 lb. pry lid coffee can for Blanke's Faust Blend brand coffee, featuring great trademark devil image on both sides. Attractive and displays pretty well, w/ some light denting and a little light scattered wear (C. 7.5+/8-). Min. bid \$40.



214).Forest & Stream Pocket. 4-1/8 x 3 x 7/8" early tin litho vertical tobacco pocket tin featuring great color graphic image of men fishing from canoe (same image both sides). Clean, bright and very attractive (C. 8+/-) w/ minor surface wear. Min. bid \$50.



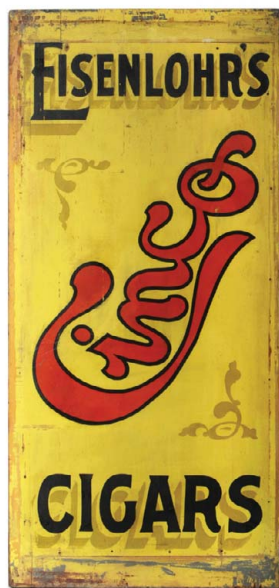
215).Steeple Chase Coffee. 6 x 4.75 x 3.5" early paper over cardboard (w/ tin base and lid) oval 1 lb. coffee can for C. D. Kenney & Co.'s "Steeple Chase" brand coffee featuring wonderful graphic horse racing scene (same image both sides). Has bright colors and displays very well, w/ some non-offensive light scattered staining (C. 7.5+/). Min. bid \$40.



216).Polar Bear Oats Box. 9.5 x 5.5" (dia.) early 3 lb. rolled oats box for Polar Bear brand (Griffin Grocery Co., Muskogee, Ok.) featuring attractive graphic image of trademark bear (both sides). Clean, bright and excellent overall (C. 8+). Min. bid \$50.



217).Sherman Bros. Coffee. 7-3/8 x 5-3/8" (dia.) very early small top 2 lb. coffee can for Sherman Bros. "Orizaba" brand, featuring very attractive stenciled design. Has some scattered wear from use, but overall attractive and displays very well, w/ a nice rich surface patina. Min. bid \$50.



218).Cinco Cigars Sign. 40.75 x 19.25 x 7/8" large, early, primitive wooden country store sign for Cinco brand cigars, featuring a nice rich patina to its all early, all original paint surface. Excellent color and surface finish on important areas, w/ some weathering and general fairly heavy wear along outside areas. Displays well (would look incredible if properly framed). Min. bid \$100.



219).De Laval Separators Sign. 40.5 x 29.5" (30.5 x 19-5/8" visible) large, early tin litho sign for DeLaval Cream Separators, featuring beautiful multi-color graphics. Clean, bright and very attractive in appearance (a nice solid C. 8+/), w/ a couple minor dent marks and some non-offensive minor wear, consisting mostly of some faint scattered oxidized fly type specks. Presented in its original gold leaf frame (frame appears to have been repainted long ago- but still looks and displays great). Min. bid \$250.



220).Babbitt's Soap Sign. 32x 17.25" (28 x 14" actual piece) outstanding, early paper litho roll down sign for Babbitt's Soap, featuring wonderful color graphic image of Victorian children w/ toys, complete w/ original metal strips at top and bottom. Clean and very attractive in appearance (displays as a strong C. 8+)) w/ only minor wear and a couple small edge tears. Beautifully presented in attractive, shadow box style frame (archival materials). Min. bid \$150.



Rd #2, Cobb Hill Road, Cazenovia, NY 13035 • 24 Hr. Tel: (315) 662-7625 • 24 Hr. Fax: (315) 662-3570 • morf2bid@aol.com • morfauction.com

Welcome to our 62nd auction of quality antique advertising and fine collectibles. Everything we sell is guaranteed authentic and as described. We attempt to grade condition both fairly and conservatively, using a scale of 1-10 on the advertising items (ten being absolutely mint). We do not list reproductions, re-issues, deceptively restored or pieced together type merchandise. Flaws and blemishes are prominently noted and over emphasized. We encourage you to call for a detailed description on any item you have an interest in, but respectfully must request that you do this before the closing night. Dimensions are listed by height, then width, and are only approximate (+ or - a quarter inch).

Bidding

Bids are accepted only from those parties who have registered with us to bid. (If you were mailed this catalogue by us you are automatically pre-registered.) Your bid is a legal contract to purchase and once entered, cannot be canceled. Placement of a bid indicates acceptance of our terms.

On all "BID" items there is a 10% buyers premium added to each successful bid. You're welcome to bid by mail and fax anytime after receiving this catalog. **We will begin accepting phone bids on Wednesday, June 3rd, 2009. We will be taking calls on Wednesday and Thursday from 10:00 AM until 5:00 PM.** If no one answers when you call, please leave a message on our machine and we will get back to you. **If bidding by mail or fax, please remember to include your telephone number with your bids!** You may call or bid as often as you like. We will tell you the current bid on any item(s) you are interested in. To raise a bid, your advance must be at least \$10 more than the current high bid amount. When an item reaches \$250, bidding increments rise to \$25, at \$1,000, bidding increments advance in \$50 steps, and above \$2,000 in \$100 increments. We suggest not waiting until the last minute to begin your bidding, as its quite possible you won't be able to get through.

Web Page and Bid Updates

We will begin posting current bid prices (not including the buyers premium) on June 3rd, 2009 (including an addendum of additional catalogue lot information) on our internet web page. These prices will be updated once each day (each evening sometime after 9:00 PM, EST) and will get updated to include the final hammer prices on Sunday afternoon once the sale is concluded. On the closing night, we will attempt to update current bid prices every hour. Our web page address for this sale is: <http://www.morfauction.com> We suggest that once you get to it, that you bookmark this address for easy re-access.

Reserves and Estimates

All items which receive an opening bid in our sale will be sold to the highest bidder regardless of the price realized (we reserve the right to withdraw items in the event of inaccurate catalog descriptions and to reject any bid we feel is not made in good faith). **We run our auctions with a strict policy of no buy-backs, no auctioneer games and no hidden reserves.** Unlike some of our competitors, we do NOT allow consignors to bid up their own items!

Mechanical Operations

Early mechanical and electric motors and mechanisms on machines, coin-ops, clocks, etc. are quite often temperamental and very unpredictable in nature. Although these mechanisms may be working fine at the time of sale, we make no guarantees or representations regarding their continued operating status once they have left our premises (including during shipping).

Closing Night

THE LAST DAY FOR BIDDING WILL BE ON FRIDAY, JUNE 5TH, 2009. On closing day, we begin taking calls at 5:00 PM. Please mark your calendar now. On the closing night (ONLY), we will also be taking calls at (315) 662-3318, (315) 662-3429 and (315) 662-3904 after 5:00 PM (in addition to our regular (315) 662-7625 office number). **Closing Time: This Auction will close at 10:00 PM (EST) on Friday June 5th, 2009.** At that time, no more incoming calls will be accepted and all lots with a registered bid of less than \$300, as well as all items without call backs registered on them will be officially closed and final. The items at \$300 and over that have call back protection registered on them will be closed out during our call back period the following afternoon (**see important call back rules below**). We reserve the right to change the official closing in the event of unforeseen family type emergencies or technological failures (utility disruptions, etc.). We also reserve the right to either extend the bidding, to postpone or to cancel this auction in the event of a national emergency or if the Internet or the services of the US Post Office were to get seriously disrupted during our catalogue mailing or bidding period.

"Up-To" Bids & Call Backs

CEILING BIDS: We will be happy to enter competitive "up to" ceiling bids for you on any lots you request. Beginning at your minimum amount, we will advance these bid(s) up to your left ceiling amount, if (and only if) it is topped by another bidder. "Up To" bids will be handled discretely and executed in a completely competitive manner for you. Please note that we don't accept open ended "top all others" ceiling type bids.

CALL BACKS: You may request call back protection for any lot(s) that you enter with either a minimum or a protected "up-to" ceiling bid in an amount of at least \$300. This request must be registered with us before the official 10:00 PM closing hour of Friday, June 5th, 2009. All callbacks will be placed by us on Saturday, June 6th, 2009, beginning at 12:00 noon (EST) and will continue that afternoon until each of the individual lots have been closed out (using past experience, I would expect this to be finished by 6:00 PM, if not earlier). If you register for call-backs, it is your responsibility to be available during this call back time period. We make every effort to honor all our call back requests, but this service is done solely as a convenience to our bidders and will be performed on a best efforts basis only. If you will be traveling or if you will not be available during call back times at your primary number, be sure you provide us with proper alternate or back up numbers for reaching you!

Payment Terms

Winning bidders will be invoiced immediately after the sale. Those who desire fast shipment can pay by Money Order or Cashiers Check. Payments are due within 10 days of receipt of invoice. We reserve the right to offer the item out to our back bidders and deny future bidding privileges to those who do not pay in a timely manner. In addition to personal checks, we also accept payment on your American Express, Visa, Master Card, Discover and Optima Credit Cards (with no surcharge added). No COD's or Collect calls are ever accepted. Items shipped to anywhere in New York State must include appropriate sales tax or signed resale certificate.

Shipping

All packing and shipping charges are extra. We do most of our own packing and shipping and try to keep these charges as reasonable as possible for you. On especially fragile and larger hard to pack items, we hire the services of professional packers and charge you at our billed cost. We ship mostly through the Post Office and Fedex Ground, (Fedex Overnight available at an extra charge.)

Subscribing, Prices Realized, Consignments & Upcoming Events

Future catalogs can be assured by sending \$20 for a full 12 months subscription, (includes after sale prices realized). An automatic credit card ordering program is available. We currently run between 4-6 auctions a year (versus our previous format of running semi-annual sales). This format allows us to run smaller, more focused sales featuring larger, higher quality catalog images and gives our consignors the opportunity for a quicker turn-around of their items. In addition to our regular sales, we also occasionally offer sales made up entirely from single owner collections. Please contact us should you have items you would like us to consider for inclusion in our upcoming events. All inquiries are handled in a completely confidential manner. Our services are also available for the private placement marketing of important individual items, marketing plans for large collections as well as for estate planning and settlement purposes. Back copies of many of our previous auction catalogs are still available at \$5 each (w/ prices realized) w/ quantity discounts available if multiple issues are ordered. For further information, please call, e-mail or write.

Photography by Wes Feuz. Layout by Sean Maroney.

© Copyright 2008. All Rights Reserved. No portion of this publication may be copied in any form without the express written permission of Morford's.

Important Closing Night Information

In addition to our regular (315) 662-7625 office number, on the closing night (only!) you may also call us at:

(315) 662-3318*
(after 5:00 PM)
(315) 662-3904*
(after 5:00 PM)
(315) 662-3429*
(after 5:00 PM)



***These numbers for
Closing night only!
Friday, June 5th, 2009**

Bidding closes at 10:00 PM on closing night. We will be accepting faxes and e-mails on closing night. Our web page will update current high bid prices approximately every hour on closing night and will also list any important addendum information. **All call backs will be made on Saturday, June 6th, 2009, beginning at 12 o'clock Noon!**