



WM Morford
Investment Grade Collectibles at Auction

Choice Selections from the Challenger Collection

Rd #2, Cobb Hill Road, Cazenovia, NY 13035 • 24 Hr. Tel: (315) 662-7625 • 24 Hr. Fax: (315) 662-3570 • morf2bid@aol.com • morfauction.com

Bidding closes Friday, February 26th, 2010. (See page 24 for Terms & Conditions)



1) **Elephant Java Coffee.** 5-5/8 x 7.75 x 5.5" scarce, 3 lb. size tin litho Steiner Co.'s "Elephant Java" coffee can w/ fine Ilisley & Co. lithography (great RR images on sides). Has darkening and some general scattered wear, but overall attractive and displays nicely (front and sides C. 8/-; back C. 7+). As found, should improve w/ cleaning. Min. bid \$60.



2) **Jefferson Mixture Tobacco.** 5.25 x 6-1/8 x 4-1/8" scarce, tin litho tobacco canister w/ oval small top, for Jefferson Mixture. Clean, bright and attractive, w/ non-offensive light wear (displays as a nice C. 8/+; critical grade C. 8/-; w/ darkening and wear on lid (lid fair to poor)). Min. bid \$80.



3) **Rose of Kansas Coffee.** 3-5/8 x 5.25" scarce 1 lb. tin litho pry lid coffee can for "Rose of Kansas" brand (Ennis-Hanly-Blackburn Co., Kansas City) w/ same attractive image on both sides. Clean, bright and very attractive, w/ some non-offensive background wear on back side (C. 8/+). Min. bid \$60.



4) **Star Shoes Race Car.** 8-5/8 x 3-3/8 x 2-1/8" early die-cut tin litho advertising toy from "Star" brand shoes, featuring great image of early racecar. Clean, bright and excellent in appearance (a strong C. 8++), w/ exception of a little wear on outer edges of tires (including some surface rusting to one of tires on back side). Min. bid \$100.

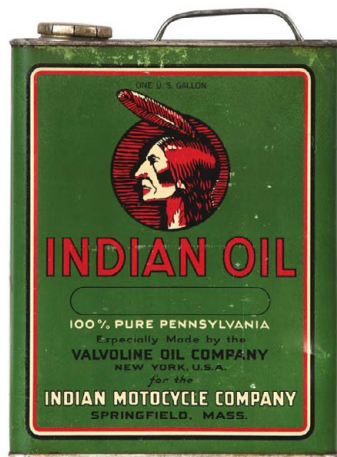


5) **Adams Gum Box.** 6 x 12-5/8 x 1" scarce, early 2-ps. cardboard litho chewing gum display box (originally held 100 pieces) for Adams & Sons "Red Rose" brand, featuring beautiful graphics on lid, w/ text advertising and 1886 Dr. testimonial letter on back. Excellent overall w/ minor toning and edge wear (C. 8+). Min. bid \$60.

Counter Display



6) **Recruit Cigar Display.** 8 x 7.5 x 7.25" (tent shape) wonderful, early, figural cardboard folding display piece for Recruit brand little cigars, featuring beautiful multi-color graphics. Clean, bright and very attractive in appearance (displays as a strong C. 8+) w/ a little minor restoration to neck areas on two of soldiers. Min. bid \$80.



7) **Indian Motorcycle Oil.** 11 x 8 x 3-1/8" important, early tin litho 1 gallon motorcycle oil can made by Valvoline Oil Co. for Indian Motorcycle Co. (Springfield Mass.), featuring super image of Co.'s early logo on both sides. Strong, bright colors, displays nicely (displays as a C. 8+/-) w/ minor scuffing and some non-offensive light scattered wear (critical grade C. 7.5++). Min. bid \$70.



8) **Black Fox Cigar Tin.** 5.25 x 5.25" scarce, early tin litho 50 ct cigar can for Black Fox brand, featuring great image of Co.'s trademark fox on front, back and lid (McLeod, Nolan Co., London, Canada). Clean, bright and very attractive in appearance (C. 8+/-) w/ some denting and non-offensive light general wear to lid (lid C. 7.5+). Min. bid \$70.



9) Winner Safety Razor Tin. 2.25 x 1.5" scarce, early tin litho safety razor tin w/ finely detailed graphics (has fine print directions in English and German on back side). Clean and attractive (C. 8+), w/ some litho loss and wear to edges of lid. We are not able to remove lid, but there is something fairly heavy inside (original razor?). Min. bid \$50.

Unopened Sample



10) Trout Line Sample. 3 x 2" early, extremely rare 3-1/2 oz. size paper label (over tin) sample can for Trout-Line brand tobacco (Series 1928 tax stamp). Full, sealed and never opened can is clean, bright and displays nicely, although there is a paper loss spot at bottom edge of back side and a background staining spot just to left of fisherman (not really offensive, pretty much blends into the scene). Min. bid \$70.

Gold Mining



11) Klondike Tobacco Pouch. 4 x 2.5 x 1" early string pull closure cloth tobacco pouch for Klondike Mixture, featuring nice gold miners scene. Display side is attractive and displays well (C. 7.5+), w/ some stain spots at bottom on back side. Min. bid \$40.



12) Holiday Candy Pail. 3.5 x 3.75" scarce, 1901 Christmas / 1902 New Years tin litho candy pail, w/ unusual graphic angel images on side edges. Excellent, w/ a little minor wear and light scratching (C. 8+/-). Min. bid \$50.

Gunpowder Paperweight



13) Hazard Gunpowder Paperweight. 2.25 x 2.25" wonderful, small sample sized keg shaped sand filled advertising paperweight, w/ embossed advertising for Hazard gunpowder Co.'s Mining Powder. This is an exact miniature version of Co.'s larger powder keg and is in excellent condition (C. 8.5), w/ only minor wear. Min. bid \$50.



14) Capitol Peanut Butter. 30-1/8 x 3-5/8" scarce, early tin litho 14 oz. peanut butter pail for Andrus Scofield Co. (Columbus, Oh.) "Capitol Brand", w/ nice images of playing children all around. Clean and attractive appearance, w/ a little non-offensive light wear (C. 7.5+/-). Min. bid \$60.



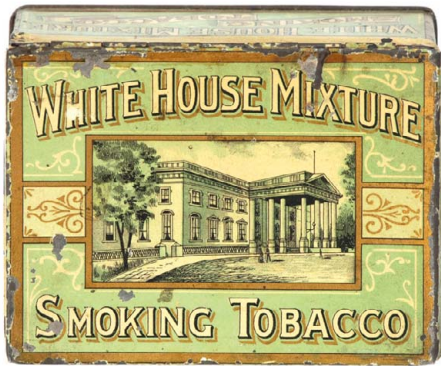
15) Mocha-Java Coffee Tin. 9.5 x 5.5" dia. early tin litho 3 lb. pry lid coffee can from Weidman Co., Cleveland, Oh., featuring great image of Co.'s trademark character (same image both sides). Clean, bright and very attractive, w/ nice original sheen (front C. 8.5; back C. 8/-) w/ a slight bit of non-offensive hazy surface wear on back side. Min. bid \$70.



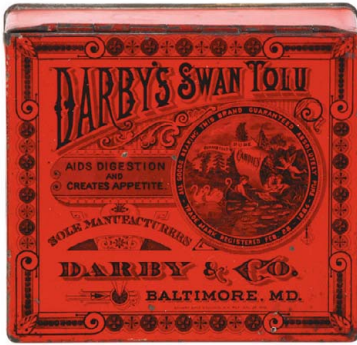
16) Schiedam Gin Sign. 30.25 x 25" (22 x 17" visible) very early paper litho sign for Scheidam's Holland Gin (Udolpho Wolfe Co., New Orleans, La.) featuring stunning, highly detailed multi-color graphics by Shober & Carqueville Litho. Co., Chicago. Clean, bright and like new (near mint), beautifully framed and matted. Min. bid \$250.



17) Runkel's Store Tin. 11 x 7-1/8 x 7-1/8" scarce tin litho 10 lb. store size product tin for Runkel Bros. "Chocolatina" brand cocoa. Clean, bright and exceptionally nice appearance (C. 8.5+/-). Min. bid \$60.



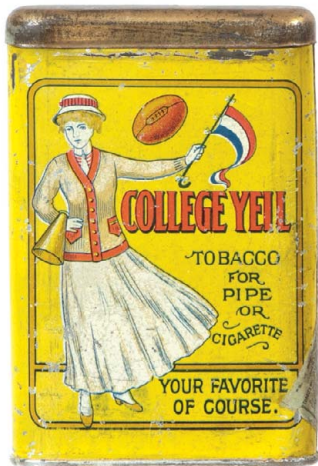
18). White House Mixture. 3-3/8 x 4.5 x 2.25" important, very early tin litho square corner tobacco tin for "White House Mixture" brand, featuring beautiful detailed graphics. Image on lid is very nice, w/ some scattered chipping spots in background areas; sides are very good w/ exception of some early loss in areas where tax stamp once sat. Overall would rate a (C. 7+) due to chipping, although some minor restoration could improve it to a C. 8.5/+ appearance. Min. bid \$100.



19). Darby's Swan Tolu Tin. 3.5 x 3-7/8 x 1.5" very early product tin for "Darby's Swan Tolu" chewing gum product for "creating appetite, aiding digestion and tobacco substitute". Has beautiful Ginn style lithography (not marked), w/ an 1884 dated finely detailed images of children in boat, swans in water, flying cherub, etc. Lid is excellent (a strong C. 8/+ appearance), w/ minor wear, w/ a narrow area of litho loss on non-graphic plain colored front right side edge. Min. bid \$50.



20). Buffalo Oil Tin. 7 x 8 x 3-1/8" very early hand-soldered tin litho motor oil can for Prairie Cities Oil Co.'s "Buffalo" brand, featuring a beautiful, finely detailed image of Co.'s trademark buffalo on front, back and side. Has some scattered early wear, but overall bright, clean and attractive and displays quite well (C.7.5+/8-). Min. bid \$50.



21). College Yell Pocket. 4.5 x 3 x 7/8" important and extremely rare tin litho vertical tobacco pocket tin for "College Yell" brand, featuring great image of Co.'s trademark football cheerleader (same image both sides). Has strong colors and displays nicely (as a C. 8+/-), w/ some non-offensive general light scattered wear (critical grade C. 7.5++). Min. bid \$250.



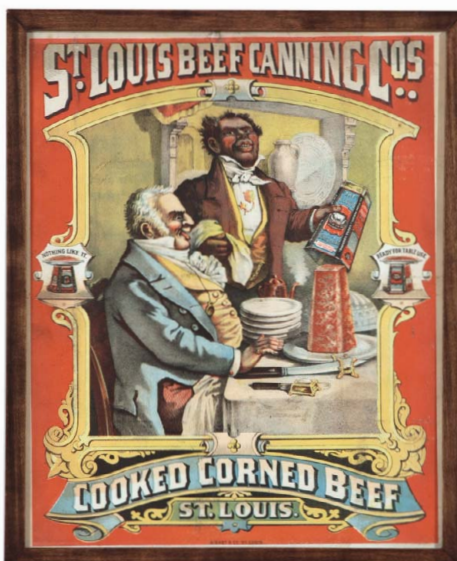
22). Rabbit's Foot Baking Powder. 3-5/8 x 2-3/8" early paper label (over tin) product can for Rabbit's Foot brand baking powder (Paxton & Gallagher Co., Omaha, Neb.) featuring beautiful color graphics. Clean and very attractive in appearance (C. 8+) w/ a little non-offensive minor age toning and background soiling. Min. bid \$50.



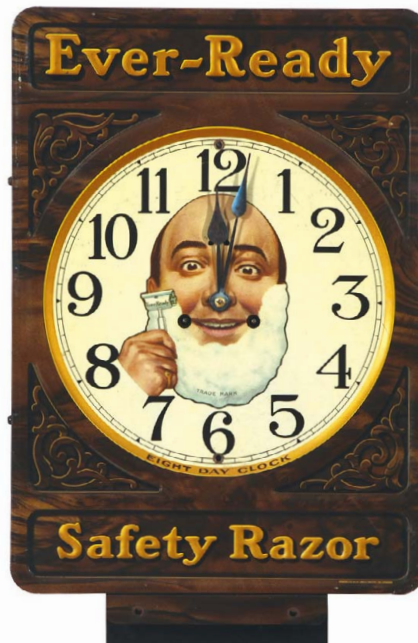
23). Over-Sea Spice Tin. 3-3/8 x 2-3/8 x 1" outstanding, early tin litho spice can for "Over-Sea" brand black pepper (Lewis-Chitty Co., Jacksonville, Fla.) featuring stunning multi-color graphic image of Co.'s trademark train (same image both sides). Full, never used tin is clean, bright and exceptionally nice (C. 8.5+). Min. bid \$60.



24). Pennsylvania Oil Can. 4-7/8 x 2.5" unusual, very early hand soldered tin litho lawn mower oil can from Supple Hardware Co., Phil'a., w/ nice graphic image of early push mower. Attractive and displays nicely, w/ light general overall wear from use (C. 7.5). Min. bid \$40.



25). Corned Beef Sign. 14.75 x 12" (13-5/8 x 11" visible) outstanding, early paper litho sign for St. Louis Canning Co.'s canned corn beef product, featuring beautiful, multi-color graphics (Gast & Co. Litho.). Bright and attractive in appearance (basically a strong C. 8), w/ minor soiling and a minor small repair in upper white margin area. Min. bid \$100.



26). Ever-Ready Clock. 19.5 x 12.5 x 2.25" early embossed tin litho advertising clock for "Ever-Ready" brand safety razors, featuring great image of Co.'s trademark man shaving. Clean, bright and exceptionally nice (C. 8.5/+), w/ attractive original surface sheen (missing 2 screws). Min. bid \$100.



27). Sweet Loma Tobacco Tin. 10.25 x 8.5" scarce, large tin litho store size tobacco bin for Scotten Tobacco Co.'s "Sweet Loma" brand, featuring attractive image of Co.'s trademark girl. Clean, bright and very nice appearance (displays as a strong C. 8+) w/ a little non-offensive light scattered background wear. Min. bid \$100.



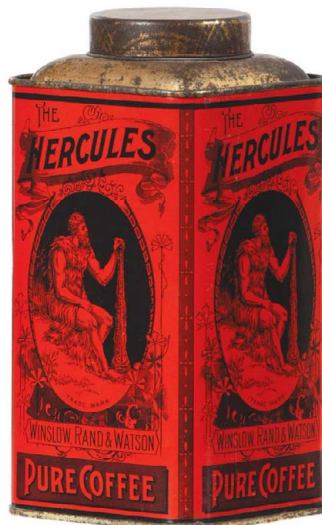
28).Folky Jewelers Sign. 12 x 48" early painted and stenciled tin advertising sign by Ithica Sign Works, featuring attractive looking train cars scene. Sign has some light general scattered wear, but overall has an attractive appearance and patina, w/ a wonderful primitive, folk art country type look (C. 8/-). Min. bid \$80.



29).Central City Coffee. 6.75 x 4.75" very early 1 lb. tin litho coffee can from Central City brand (Ostrander Loomis & Co., Syracuse, NY), w/ different images on both sides. Clean, bright and exceptionally nice in appearance (C. 8.5/+). Min. bid \$50.



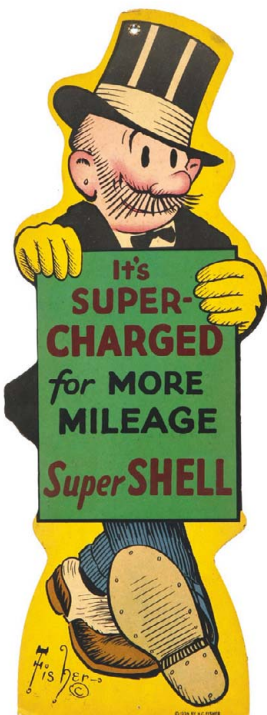
30).Little Singer Talc. 4-5/8 x 2.5 x 1-3/8" unusual, early paper label talc can, featuring wonderful graphic image of large mosquito playing stringed instrument. Clean and bright (C. 8.5/+), w/ a terrific look (has appearance of being tin litho). Min. bid \$40.



31).Hercules Coffee Tin. 7-1/8 x 3-5/8 x 3-5/8" outstanding, very early tin litho 1 lb. small top coffee can w/ Ginna type lithography (not marked) for Winslow, Rand & Watson Co.'s Hercules brand coffee, w/ same great image on all four sides. Clean, bright and exceptionally nice (C. 8++). Min. bid \$70.



32).“Cream of Milk” Talc. 5.25 x 2.5 x 1-3/8" early high quality tin litho talcum powder can for “Cream of Milk” brand (Gustave Spiltair Co., Long Island City, NY) featuring same nice detailed image on both sides. Clean, bright and very nice (C. a strong 8++). Min. bid \$40.



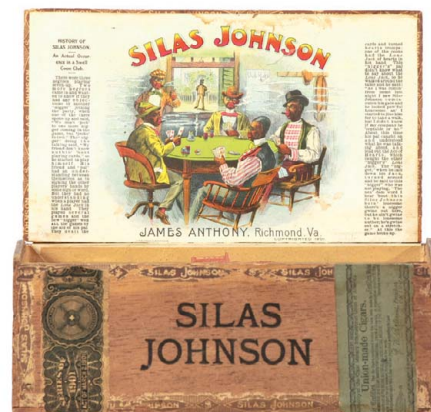
33).Shell Oil Signs. Lot consists of a great set of four different 2-sided cartoon character die-cut signs (each app. 23.25 x 9") promoting Shell Oil Co. products (includes Mutt & Jeff and Toonerville comic characters), ea. © 1934. They are clean, bright and excellent overall (C. 8++), w/ minor pinching wear at bottom edge. Min. bid \$100 (the set).



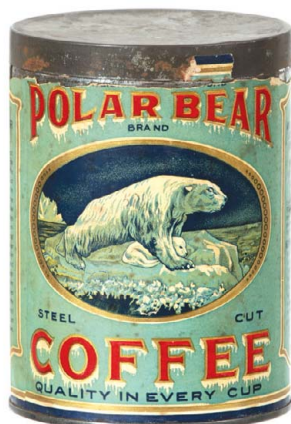
34) "Early Dinner" Coffee Pail. 7-3/8 x 7.5" tin litho 4 lb. coffee pail from Peyton-Palmer Co. (Danville, Ill.), featuring a nice dining table scene (same image both sides). Clean and attractive appearance (displays as a strong C. 8/+), although close-up examination will reveal some non-offensive light scratching and wear (critical grade: front C. 8/-; back C. 7.5/+). Min. bid \$70.



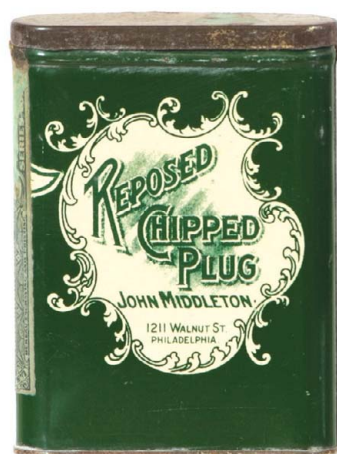
35) Tooth Powder Clock. 4.25 x 4-1/8 x 2-3/8" great early animated advertising clock for Zonweiss brand tooth powder, featuring wonderful detailed color graphic image of girl brushing teeth (animated arm w/ tooth brush moves back and forth). Very high quality piece, w/ nickel over brass case. Clean, bright and excellent (C. 8.5/+), w/ working clock and mechanism. Min. bid \$70.



36) Blacks/Poker Cigar Box. 8.75 x 9.25 x 3.5" (as pictured) early wooden cigar box for Silas Johnson brand, w/ great image of black men at table playing cards w/ highly racist description of history of Silas Johnson from occurrence at a "Swell Coon Club" (series 1901 tax stamp). Clean and excellent (C. 8+), w/ exception of a little non-offensive faint water staining in upper background area (lid no longer attached). Min. bid \$40.



37) Polar Bear Coffee. 5.75 x 4-1/8" dia. scarce, early embossed paper label (over tin) 1 lb. coffee can for Polar Bear brand (Griffin Grocers, Tulsa, Ok.) featuring great image of trademark bear (same image both sides). Clean, bright and very attractive in appearance (C. 8+/-) w/ a little barely noticeable minor background speckling and a little bit of narrow paper loss along right top edge of back. Min. bid \$40.



38) Reposed Pocket. 4 x 3 x 7/8" early tin litho vertical tobacco pocket tin for John Middleton Co.'s "Reposed" brand tobacco. Display side is clean, bright and excellent (front C. 8.5+), back is also nice, w/ exception of small faint oxidized spot in lettering area and area of litho loss at top edge (back C. 7+/-). Min. bid \$50.

Paperweight



39) Cox Fences Paperweight. 4.75 x 2-3/8 x 2-3/8" very early, unusual, heavy figural cast iron paperweight w/ embossed advertising for Cox brand fences. All original, w/ a nicely weathered surface finish, giving it a great primitive folk art look. Min. bid \$50.



40) Maryland Club Pocket. 4.25 x 3-1/8 x 1" early tin litho vertical tobacco pocket tin for A.T. Co.'s Maryland Club, featuring attractive image of trademark building. Clean, bright and exceptionally nice (a strong C. 8.5/+), w/ a couple minor scuffs. Min. bid \$60.



41) Sunset Trail Cigars. 5-5/8 x 3-5/8 x 3-5/8" scarce variation 25 count tin litho cigar can for Sunset Trail brand, featuring nice graphic western image on two sides. Tin is clean, bright and very attractive in appearance (a strong C. 8+/-), although lid has some fairly heavy wear including oxidizing, haziness and some paint loss (lid fair to good). Min. bid \$60.



42) Coconut Tin. 6.25 x 3.25 x 3.25" very early, tin litho small top style coconut tin from Croft & Allen Co., Philadelphia, w/ different monkey images on each side; w/ wonderful early detailed Ginn style graphics (not marked). Has a few scattered wear spots, but overall clean and very attractive in appearance (C. 8+/-). Min. bid \$40.

Unopened



43) Hi-Plane Pocket. 4.5 x 3 x 7/8" tin litho vertical tobacco pocket tin for Larus Co.'s Hi-Plane brand (2 engine variation). Full, sealed, never opened tin is clean, bright and excellent, w/ a little minor wear on back side (front C. 8.5+; back C. 8+/-). Min. bid \$50.



44) Yacht Race Game. 14-5/8 x 8.5 x 1" early cardboard "International Yacht Race" game by McLoughlin Bros., w/ stunning multi color graphics. Lid is clean, bright and excellent in appearance (C. 8+/-) w/ some minor staining at upper left edge. Complete w/ game board, spinner and yacht playing pieces inside (game board has light warping, but otherwise excellent). Min. bid \$50.



45). **Over There Game.** 9 x 15 x 1-3/8" early boxed cardboard "Over There" game by Milton Bradley Co. Attractive graphic images of soldiers on lid; has game board on base piece inside, w/ spinner and playing pieces. Lid is clean, and very nice (C. 8++) w/ tear mark on top, side apron edge (touches into to top section of lid). Min. bid \$40.



46). **Soap Crate.** 9.5 x 15.75 x 23.5" (label 8-5/8 x 14.25") early wooden crate for Fairbank's & Co. soap, w/ wonderful color graphic label featuring Co.'s adorable "Tom, Dick & Harry" black children, w/ same image incised onto long side panels of box (originally held 120 soap bars). Attractive and displays nicely, w/ some non-offensive light staining and wear and some light pencil writing in background (basically displays as a nice C. 8+/; critical grade C. 7.5+/8-). Min. bid \$70.



47). **Brother Jonathan Tobacco Bin.** 11-5/8 x 8.25" scarce, early tin litho large store size tobacco bin for Brother Jonathan brand, featuring beautiful multi-color graphics. Has nice color and displays quite well (as a C. 8+/-), w/ exception of some minor denting and a little light scattered staining and wear (critical grade C. 7.5/+). Min. bid \$250.



48). **Gold Dust Display.** 11.25 x 13.5 x 3" early folding cardboard counter-top die-cut display for Fairbank Co.'s "Gold Dust" brand washing powder, featuring great images of Co.'s adorable trademark kids and product box. Has some general light overall wear, including a few light crease marks, light tattering, etc. as well as some minor restoration w/ reinforcement on back, but overall attractive and displays quite well (C. 7.5/+). Min. bid \$150.



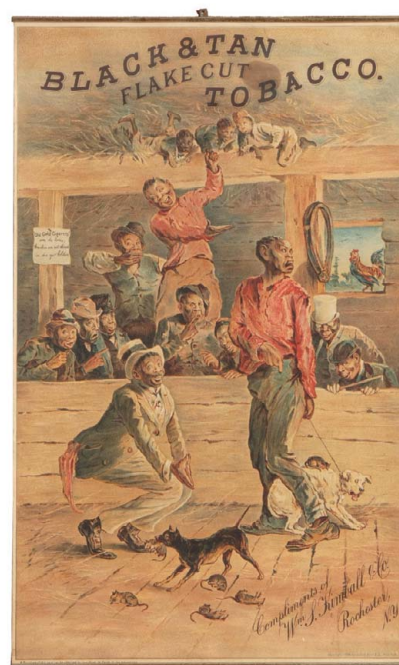
49). **Dairy Coffee Pail.** 11.75 x 7-1/8" dia. early tin litho 5 lb. milk pail style coffee tin for Dairy brand (McCormick, Behnke Co., St. Paul, Minn.) featuring great image of Co.'s trademark cow (same image both sides). Colors are bright and piece displays quite well on shelf (as a C. 8+) although close examination will reveal some scattered oxidized speckling spots and light scattered wear (critical grade C. 7.5/+). Min. bid \$100.



50). **Story & Clark Organs Sign.** 26.5 x 18.5" early paper litho sign featuring great image of Uncle Sam and Miss Liberty at organ. Overall piece is clean, bright and excellent in appearance (C. 8++), w/ original metal strips at top and bottom; w/ a little soiling, tattering and light wear in outer white border area (would be hidden if framed or matted) Min. bid \$150.



51). **Medicine Display.** 20-7/8 x 8" large cardboard die-cut easel-back store display for Minard's Liniment "for man and beast", featuring beautiful multi-color lithography. Clean, bright and excellent (basically a strong C. 8.5/+) w/ exception of a little non-detracting light wear at base. Min. bid \$60.



52). **Kimball Tobacco Sign.** 27-1/8 x 18-5/8" (21.5 x 13" actual) early paper litho roll-down sign w/ metal strips at top and bottom for Wm Kimball Co.'s "Black & Tan" tobacco, featuring comical stereotypical black men w/ dogs, rats, etc. Clean and excellent (basically C. 8++) w/ exception of small stain spot in upper background area. Nicely framed (frame not pictured). Min. bid \$150.



53).Ehlermann & Co. Sign. 10 x 13.75" outstanding, very early (ca. 1870's) tin litho sign for "Charles Ehlermann & Co. Maltsters", dealers in hops, barley and brewer and distillers supplies, featuring wonderful, finely detailed lithography by Tuckfarber & Co. lithographers. Clean and very attractive appearance w/ some light chipping wear around top hanging holes (would be hidden if framed), and a little non-offensive light scattered wear (C. 8/+). Impressive piece! Min. bid \$250.



54).Dog Food Sign. 10.5 x 19.25" wonderful, early tin litho sign for Melox brand dog food, featuring embossed, beautifully detailed color graphics. Clean, bright and exceptionally nice appearance (a very strong C. 8++) w/ a little non-offensive minor background wear (English). Min. bid \$150.



55).Simon Williams Tobacco Tin. 5-1/8 x 4.5" dia. fine, very early tin tobacco container, featuring a very attractive stenciled design. Clean and excellent, w/a nice primitive folk art look (C. 8.5+). Min. bid \$50.



56).Standard Lubricant Can. 3.75 x 3-1/8" unusual, very early tin litho grease tin for New York Refining Co.'s "Standard Carriage & Harness Lubricant" featuring trademark image of Co.'s trademark bird holding bucket of product (lithography by Ilsly & Co.). Clean and very attractive, w/ some non-offensive light scattered wear (C. 8-). Min. bid \$50.



57).Taylor's Foot Powder. 4.25 x 2.5 x 1.5" outstanding, early tin litho foot powder tin for Taylor's brand (Taylor Drug Co., Trenton, NJ) featuring beautiful color graphics. Front is clean, bright and excellent (C. 8.5+); backside has a little minor wear and a scratch mark on edge of lid. Min. bid \$50.



58).Stetson Pocket Tin. 4.5 x 3 x 7/8" important, extremely rare early tin litho vertical tobacco pocket tin for Goodell Co.'s "John B. Stetson" brand, w/ same great image on both sides. Clean and very attractive appearance (displays as a strong C. 8+/) w/ just a trace hint of fade and a little minor wear. Min. bid \$5000.



59).Circus Club Marshmallow Tin. 7 x 4.25" dia. figural 6 oz. size product tin for Circus Club brand mallow puffs (Harry Home Co., Toronto, Canada). Clean, bright and excellent overall (a strong C. 8+/). Min. bid \$50.



60).Circus Club Marshmallow Tin. 7 x 4.25" dia. figural 6 oz. size product tin for Circus Club brand mallow puffs (Harry Home Co., Toronto, Canada). Clean, bright and excellent overall (a strong C. 8+/), w/ exception of some litho loss/wear on top of lid. Min. bid \$50.



61).Circus Club Marshmallow Tin. 7 x 4.25" dia. figural 6 oz. size product tin for Circus Club brand mallow puffs (Harry Home Co., Toronto, Canada). Clean, bright and excellent (a strong C. 8+/). Min. bid \$50.



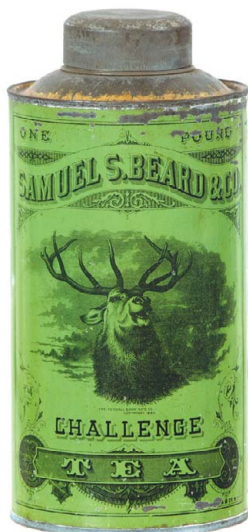
62).Circus Club Marshmallow Tin. 7 x 4.25" dia. figural 6 oz. size product tin for Circus Club brand mallow puffs (Harry Home Co., Toronto, Canada). Clean, bright and excellent overall (a strong C. 8+/) w/ exception of some denting on lid. Min. bid \$50.



63).Epicure Tobacco Tins. Lot consists of seven different variations of Epicure brand tin litho tobacco boxes, each w/ attractive embossed floral designs around all four sides and lid (each app. 3.75 x 3-7/8 x 3-7/8"). They are clean, attractive and display nicely (C. 7.5/+ to 8+) a few have a little light scattered wear. Min. bid \$50 (the lot).



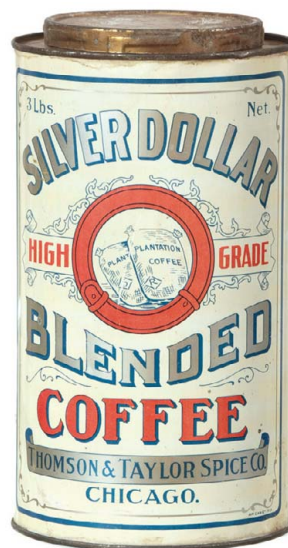
64).Elephant Kind Peanut Tin. 4 x 4 x 2" scarce, small, early tin litho 2-pc. product tin for "Elephant Kind" brand salted peanuts, w/ attractive image of Co.'s trademark elephant (Superior Peanut Co., Cleveland). Clean and excellent, w/ a little minor wear (C. 8+/-). Min. bid \$50.



65).Samuel Beard Tea Tin. 8.75 x 4.25" very early 1 lb. small top tea tin for Samuel Beard Co.'s Challenge brand tea, featuring beautiful finely detailed graphics by Ginna & Co. Has a little early scattered wear, but overall attractive and displays nicely (C. 8/-). Min. bid \$60.



66).Log Cabin Baking Powder. 6.25 x 3" very early paper label (over tin) product can for Log Cabin brand baking powder (Corbett & Sons, Kansas City, Mo.) featuring nice image of a primitive log cabin and black family. Label is attractive and displays quite well (no label on lid), w/ minor age toning and some non-offensive general light background speckling scattered about (C. 7.5/+). Min. bid \$40.

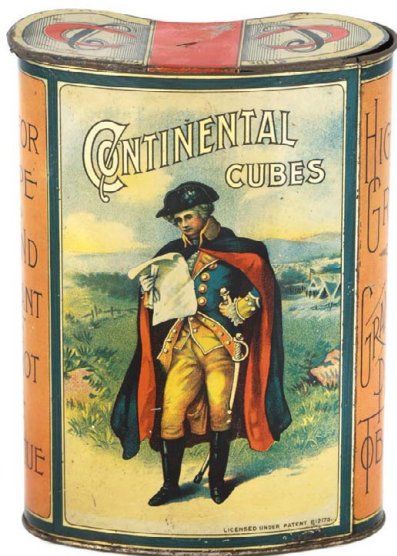


67).Silver Dollar Coffee. 10 x 5.5" scarce, early tin litho 3 lb. coffee can for Silver Dollar brand coffee (Thomson & Taylor Spice Co., Chicago). Clean, bright and very attractive (a strong C. 8++). Min. bid \$50.

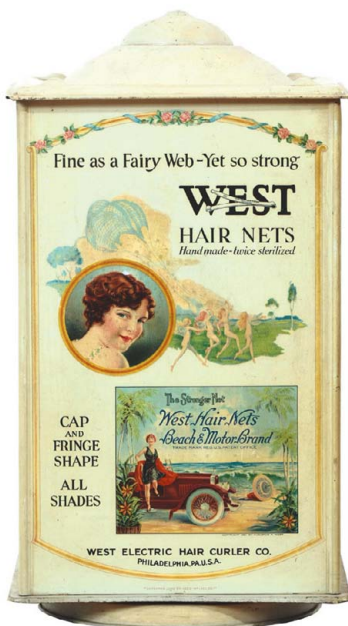


68).Hazard Gunpowder Tin. 6 x 3.5 x 1-5/8" very early tin litho gunpowder can for Hazard smokeless gunpowder, featuring beautifully detailed graphics by Isley & Co. lithographers. Clean, bright and very attractive in appearance, w only minor wear (a very strong C. 8++). Min. bid \$100.

Display Tin



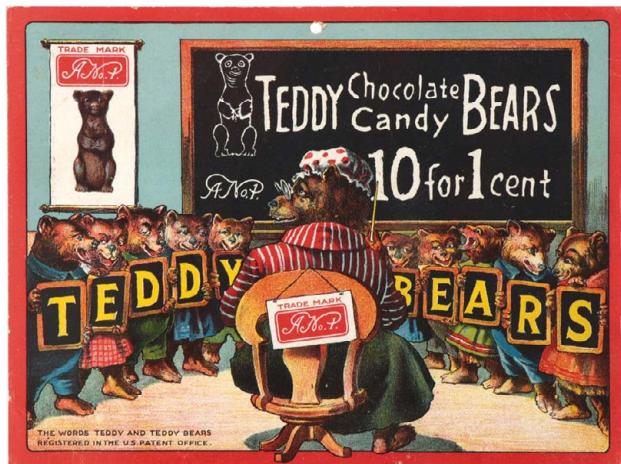
69).Continental Cubes Display Tin. 7.5 x 5.25 x 2" scarce, large size curved display tin (in shape of pocket tin) for Continental Cubes tobacco, featuring beautiful multi-color graphics (same image both sides). Clean, bright and very attractive in appearance, w/ nice surface sheen (display side C. 8.5/+; other side similar w/ exception of horizontal scratch line in sky/lettering area). Complete w/ nice lid (lid bright and excellent w/ exception of wear in red area where tax stamp once sat). Min. bid \$250.



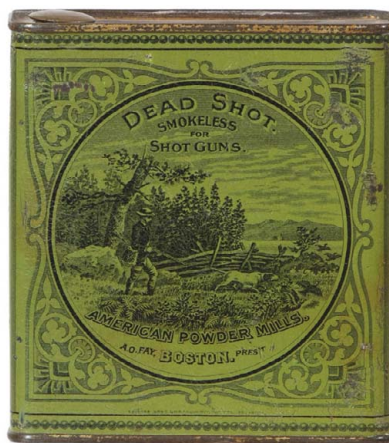
70).West Hair Products Display. 19 x 10.25 x 9" wonderful ca. 1920's tin litho countertop display for West Brand hair products on a revolving pedestal base. Has a different graphic images on three sides; w/ product shelves and drawer in back. Clean, bright and very attractive in appearance (displays as a C. 8+), w a little non-offensive light background soiling and wear. Min. bid \$150.



71).Armour & Co. Sign. 31.5 x 25" (27-3/8 x 21.25" visible image) outstanding, early embossed tin litho sign for Armour & Co.'s meats, featuring beautifully detailed color graphics by Kaufman & Strauss. Clean, bright and exceptionally nice in appearance (displays on wall as a strong C. 8++), although close examination will reveal a little non offensive light scattered oxidizing and wear (nothing serious and although it is there, it pretty much blends in and really does not detract from overall great appearance and look of piece). All original w/ nice period frame (critical grade C. 8/-). Min. bid \$250.



72). **Teddy Bears Candy Sign.** 6 x 8" wonderful, small, early cardboard advertising sign for "A No. 1" Co.'s Teddy Bears brand chocolate candies, featuring beautiful multi-color graphic image of an early schoolhouse classroom (bear teacher and bear cub students). Clean, bright and excellent (near mint). Min. bid \$70.



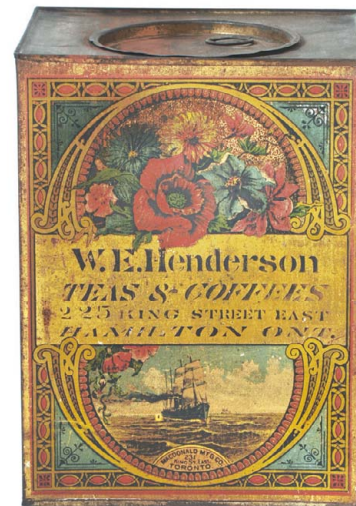
73). **Dead Shot Gunpowder.** 4-5/8 x 4.25 x 1-5/8" outstanding, very early tin litho can for Dead Shot brand gunpowder (American Powder Mills, Boston) featuring beautifully detailed graphics (Somers Bros. Lithographers). Clean and very attractive appearance (a strong C. 8/+), w/ light crazing and a little non-offensive scattered wear. Min. bid \$80.



74). **Monarch Store Bin.** 14-5/8 x 12.5" dia. early tin litho store bin for Monarch Co.'s Teenie Weenie brand toffee candy, covered w/ great graphic images of Palmer Cox type Brownie cartoon characters on back. Clean, bright and very attractive appearance (C. 8+/), w/ minor soiling and a little light scattered wear. Min. bid \$70.



75). **Galaxy Java Coffee Pail.** 8.75 x 5.5" outstanding, very early 2 lb. milk pail style coffee can for Aragon Coffee Co. (Richmond, Va.) "Galaxy Java" brand, featuring fine early stenciled design. Clean, bright and exceptionally nice in condition (C. 8.5+) w/ exception of non-offensive minor dent mark in lettering area of front side and early handle mark wear spot on plain back side (critical grade a strong C. 8/+). Min. bid \$90.



76). **Henderson Coffee/Tea Bin.** 10 x 7-3/8 x 6-1/8" unusual, very early tin litho store bin for W.E. Henderson Co. coffee and tea (Hamilton, Ontario, Canada) featuring beautiful, different high quality graphic images all around. Clean, bright and exceptionally nice (a very strong C. 8++). Min. bid \$80.



77). **Santa Fe Coffee.** 7 x 5-1/8" dia. scarce, early 2 lb. size key wind coffee can for Santa Fe brand, featuring beautiful multi color image of railroad workers (Jones Thierbach Co., San Francisco). Display side is clean, bright and excellent, back side has some fairly heavy scratch marks and slight bit of fade (front C. 8++; back C. 7-). Min. bid \$50.



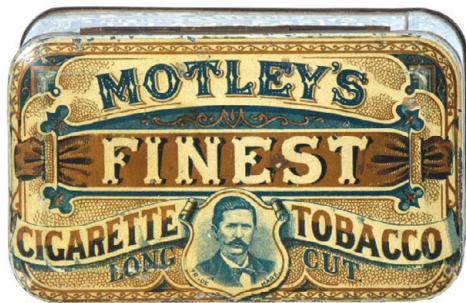
78). **Dental Die-Cut.** 12-7/8 x 5-7/8" ca. 1920's/30's die-cut cardboard litho easel back countertop sign for Kolynos dental cream (woman). Clean, bright and like new in appearance, w/ exception of a little minor storage wear at bottom edge (C. 8.5+). Min. bid \$50.



79). **Dental Die-Cut.** 12-7/8 x 5-7/8" ca. 1920's/30's die-cut cardboard litho easel back countertop sign for Kolynos dental cream (man). Clean, bright and like new in appearance, w/ exception of a little minor storage wear at bottom edge (C. 8.5+). Min. bid \$50.



80). **Elk Oats Box.** 9.5 x 5.5" early 3 lb. 7 oz. size cardboard oats box for Elk brand (Krenning-Schlapp Grocers, St. Louis) w/ same image on both sides. Clean, bright and attractive, w/ a little non-offensive light soiling/staining in bottom background area of back side (C. 8+/). Min. bid \$40.



81). Motley's Finest Tobacco. 2.5 x 5 x 3" scarce, early tin litho hinged lid horizontal tobacco box for "Motley's Finest" brand (A.H. Motley Co., Ridsville, NC) featuring beautifully detailed graphics by Hasker & Marcuse. Clean, bright and very attractive (basically a C. 8/+), w/ exception of a little early chipping on front panel. Min. bid \$80.



82). Sunshine Animals Biscuits Box. 3 x 5 x 1-7/8" unusual, early cardboard animal crackers style box for Loose-Wiles Co.'s Sunshine brand animal crackers, featuring nice colorful image of rabbit on both sides. Excellent (C. 8.5). Min. bid \$40.



83). Watch Spring Tin. 3 x 3.5 x .75" unusual, very early tin litho hinged lid watch springs product tin (W. W. Mansfield Co., Portland, Me.) featuring beautiful lighthouse and harbor scene (Somers Bros. lithography). Clean and very attractive, w/ a little light crazing (C. 8/+). Min. bid \$40.



84). Board of Trade Tobacco Bucket. 10.5 x 12-3/8 x 12.5" unusual, very early 10 lb. store bucket for Stewart Chapin Co.'s "Board of Trade" brand tobacco, has glass viewing window and beautiful, exceptionally nice advertising on front and bale handle at top. Clean, bright and excellent (a strong C. 8++). Min. bid \$100.



85). Wm McKinley Cigar Tray. 12" dia. outstanding, early tin litho advertising tray for Wm McKinley brand Cigars, featuring great image of US president. Crisp, bright and exceptionally nice in appearance (a very strong C. 8++), w/ minor dent mark and small area of litho wear in bottom of white shirt area. Min. bid \$100.



86). Advertising Clock. 11.5 x 12 x 2.75" fine, very early cast iron stand-up advertising clock for Jackson Coon Co., Rockford Mich. w/ nice detailing and an attractive copper finished upper surface. Excellent, w/ nice surface patina (clock not working). Min. bid \$80.

Salesman's Sample



87). Salesman's Sample Sled. 8.75 x 3 x 1.25" very early, miniature salesman's sample advertising sled for Steel Flyer brand. Has nice wooden top w/ stenciled lettering and design, w/ painted steel blades and metal strapping underneath (marked: "Steel Flyer No. 0"). A very high quality piece, that is all original (C. 8/-), w/ nice surface patina (wood has some non-offensive light hazy wear on its upper surface finish). Min. bid \$60.



88). Honest Tobacco Poster. 34 x 26.5" (27.5 x 20" visible) important, early paper poster for Duke & Son's "Honest" brand tobacco, promoting Co.'s 1892 political insert cards. Clean, bright and exceptionally nice in appearance (displays as a strong C. 8.5/+). Note: we have not examined it out of frame, but close examination reveals a couple repaired tears and what appears to be a little well done minor restoration). Beautifully framed and matted. Min. bid \$250.



89). Gold Hopper Coffee Grinder. 15.75 x 4.25 x 4-3/8" unusual, early wall mount style coffee grinder. Wooden back, w/ cast iron grinder and great tin litho insert advertising Gold Hopper brand coffee (Goodridge Barrett Co., Boston) w/ great folksy grasshopper image. Decent and attractive piece that displays well, w/ some light scattered wear (C. 8/). Min. bid \$70.



90) U. S. Marine Lunch Box. 4-5/8 x 7-3/8 x 4-3/8" early tin litho lunch box style tobacco tin, featuring great images of trademark sailor (front and back), w/ beautiful graphic battleship on sides. Has nice color and displays very well (as a C. 8+/-), although there is a little light scattered wear and some non-offensive light scattered oxidizing spots on surface (critical grade C. 7.5+/-). Min. bid \$50.



91) Silver Top Gum Box. 9.25 x 9-3/8 x 3" very early, wooden display box for "Silver Top" brand chewing gum (Sibley & Holmwood Co., Buffalo, NY) w/ nice graphic paper label inside. Box has some typical darkening and wear to outside top label of lid and a stain line at top on inside label, but overall attractive and displays pretty well (C. a strong C. 7+/-). Includes an early metal advertising top (same as pictured on label). Min. bid \$50.



92) American Eagle Tobacco Tin. 5-1/8 x 6 x 4-3/8" unusual, early tin litho hinged lid tobacco container for "American Eagle" brand, w/ nice image of trademark girl riding eagle on lid. Attractive piece is very nice overall (C. 8+/-) w/ exception of a few small spots of litho loss on back side (back C. 8/-). Min. bid \$50.



93) Cameron & Cameron Tobacco. 5.25 x 7 x 4.5" fine, very early tin litho tobacco container from Cameron & Cameron Co., Richmond Va. Clean and very attractive (C. 8+/-) w/ early wear spot on shoulder area. Min. bid \$40.



94) Dan Patch Tobacco Tin. 5.25 x 5.5" early tin litho paper label tobacco tin for Scotten, Dillon Co.'s Dan Patch brand tobacco, featuring great image of world famous racehorse. Clean, bright and very attractive, w/ a little minor speckling and wear on backside (C. 8+/-). Min. bid \$50.

Tin Tradecard

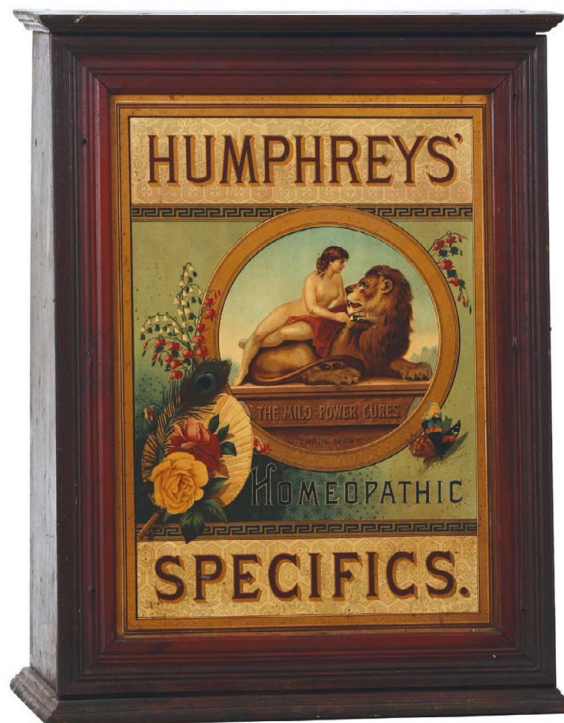


95) Norton Bros. Tradecard. 2.75 x 4" outstanding, very early tin litho advertising trade card for Norton Bros. lithographers, featuring incredible, detailed multi-color lithography. Clean, bright and exceptionally nice (near mint). Museum quality piece. Min. bid \$80.

Display Box



96) Greenback Tobacco Display Box. 14.5 x 9.5 x 5" important, extremely rare large, early 5 lb. oval cardboard display box for Greenback brand tobacco, w/ wonderful label on front featuring Co.'s trademark frog (originally held 40 2 oz. sacks). All original, label is clean, bright and displays extremely well (as a strong C. 8+/-) w/ some general scattered paper loss and wear in non-graphic tan background areas. A powerful and very impressive piece! Min. bid \$250.



97) Humphrey's Cabinet. 27.5 x 21 x 10" important, very high quality display cabinet for Humphrey's Specifics homeopathic medicines, featuring incredible, finely detailed tin litho front panel. The tin is clean, bright and exceptionally nice (basically displays as a strong C. 8.5+/-) w/ some non-offensive light scattered flyspecks in background and very minor wear (as found, looks fabulous as is, might actually even improve a bit w/ cleaning). The wooden cabinet has some typical expected darkening and wear from age, including wood split line at base, but overall displays great (no marquis). Min. bid \$2500.

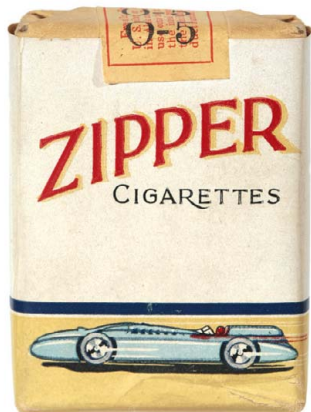


98) Aunt Jemima Die-Cut. 13 x 6" outstanding, early embossed die-cut cardboard litho advertising string climber sign for Aunt Jemima Pancake Flour, w/ nice semi-shiny surface finish. Clean, bright and very attractive in appearance (basically displays as a strong C. 8+/-) although a close examination will reveal a little light wrinkling/creasing in neck area and some in-painting restoration to front tip area of her left boot. Min. bid \$150.

Bidding Ends Friday, February 26th, 2010.



99). Lee Camp Tobacco Box. 3.5 x 3" very early, round 4 oz. size cardboard container for C F Russell Co.'s "Lee Camp" brand smoking tobacco (1883 tax stamp). Full and unopened at top, container is clean, attractive and displays very well, w/ excellent label (C. 8+/-), although there is some dark cello tape remnants and staining residue on underside. Min. bid \$50.



100). Zipper Cigarettes. 2-7/8 x 2-1/8 x 7/8" unopened, full, sealed cigarette pack for Brown & Williamson Co.'s "Zipper" brand cigarettes, featuring great image of land speed car. Clean and excellent, w/ exception of a little minor creasing/wrinkling at bottom edges (has a military service substitute tax stamp at top). Min. bid \$40.

Shoe Polish



101). Black Cat Shoe Polish Tin. 3-1/8 (dia.) x 7/8" unusual, early tin litho product can for Black Cat brand leather preserver product, featuring great image of trademark cat. Nice color and displays well, w/ some general wear along side edge (C. 7.5+/8-). Canadian. Min. bid \$40.



102). Fast Mail Grease Can. 4 x 3.25" dia. early tin litho 1 lb. grease tin for Pure Oil Co. (Minneapolis) "Fast Mail" brand hard oil, featuring attractive image of Co.'s trademark train. Clean, attractive and displays well, w/ some light grease staining on lid and backside (C. 8+/-). Min. bid \$50.

Sentenno & Green



103). Comet Spice Bin. 10-5/8 x 7.5 x 6.25" unusual, early tin litho hinged lid store spice tin for Comet brand cinnamon, w/ attractive stenciled lettering and design for Field & Start Co. (Utica NY) "Comet" brand spices. Clean, bright and attractive appearance (C. 8+/-), w/ a little non-detracting scattered surface wear and a little light staining on lid. Min. bid \$60.



104). Sentenne & Green Sign. 12-3/8 x 18-5/8" important, early embossed tin sign for Sentenne & Green Co., Boston. S & G was one of the premier lithographers of pre 1900 tin signs and product tins and boxes, and sign features stunning embossed detailed lithography, w/ a printed 1897 calendar in the design. Clean, bright and very attractive (basically a strong C. 8+ appearance) w/ exception of a little light oxidizing and fairly minor wear in tan colored outer border area and a slightly yellowed circular spot in upper background surface finish (just to left of nude). Min. bid \$250.



105). Magnet Tobacco Pail. 6.25 x 5.25" scarce, early tin litho tobacco pail for Myers Cox Co.'s "Magnet" brand tobacco (same image both sides). Clean, bright and attractive in appearance, w/ nice sheen (front C. 8.5+; back C. 8+/-), w/ a couple background wear spots on back; lid has some scuffing and neatly punched patterned holes (lid C. 7+/-). Min. bid \$100.



106). Durham Tobacco Die-Cut. 11.25 x 9.25" early cardboard die-cut string hung sign for Blackwell Co.'s Bull Durham tobacco, featuring great image of black kids on swing holding giant pack. Clean, bright and attractive in appearance (displays as a strong C. 8+/-) w/ some minor crazing type wrinkle marks on upper surface and a couple non-offensive light crease marks. Found in scrap book, w/ paper page remnants on non-graphic back side (critical grade C. 8/-). Min. bid \$80.



107). Sunshine Coffee Trade Sign. 26" (h) x 22" (w) large, very early figural trade sign in shape of giant coffee pot, advertising Sunshine brand coffee (Johnson Lewis Co., St. Louis). A powerful and most impressive looking piece, w/ a great primitive and folksy country type look. Has general overall wear to surface finish, w/ substantial darkening and heavy wear on backside (front side C. 7+/-; back fair to poor). Min. bid \$250.



108). Dental Cabinet. 20 x 13.5 x 5.5" important, early tin litho counter top store display cabinet for Peroxigen brand products, featuring wonderful image of young girl in Victorian bathroom brushing her teeth w/ Co.'s tooth powder. Displays pretty well (as a C. 7.5+/-), w/ nice color and a pretty attractive overall look, although there is general light soiling and a fair amount of restoration on front panel, w/ detailed images of product containers on side panels. Min. bid \$250.

Front

Back



109).Log Cabin Maple Butter Tin. 3-3/8 x 4-3/8" unusual, early tin litho 1-1/2 lb. size product tin for Towle's Log Cabin brand maple butter, w/ neat cabin design all around. Has nice color and displays quite well, w/ some minor soiling and a little light litho loss/wear at bottom edge (C. 7.5/+), although it displays better than this would imply. Min. bid \$40.



110).Cigars Display Case. 11.75 x 27.5 x 15.5" early wooden advertising display case for National Cigar Co.'s Black & White brand cigars, has two separate lift-up glass paneled display doors on front w/ an attractive painted finish. Very nice appearance, w/ excellent patina to paint surface (C. 8/+). Great piece for displaying small collectible items. Min. bid \$100.

Sample



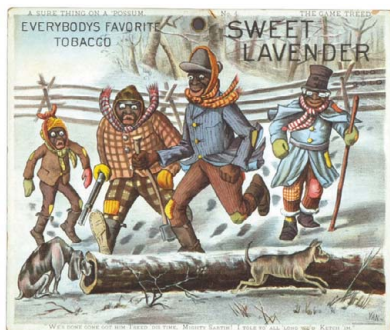
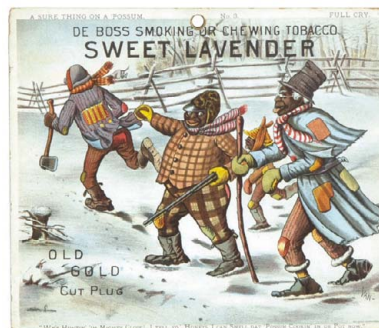
111).Ruby Coffee Sample. 2-7/8 x 2.5" (dia.) very early miniature tin litho sample size coffee pail for Ruby brand (Edward Depew Co., New York) w/ a nice Ginn style type of lithography (not marked). Clean and attractive in appearance (C. 8/+), w/ a little non-offensive minor wear. Min. bid \$50.



112).Western Seeds Box. 19.5 x 28.75 x 14.5" large, early wooden country store display box for Barteldes Co.'s Western brand seeds, w/ a beautiful multi-color graphic fancy western farm scene image on inside label. Label has a few separation tears, minor toning and light edge wear, but overall clean, bright and very attractive (displays as a C. 8/+). Lot also includes 30 full cardboard seed boxes and 25 or so of Co.'s unopened various paper seed packs. Min. bid \$150.



113).Nabob Tea Tin. 5-3/8 x 5 x 3-3/8" scarce, early tin litho 1 lb. hinged lid product tin for Nabob brand tea (Kelly Douglas Co., Vancouver, Canada), w/ same attractive trademark image on both sides. Clean, bright and very nice (C. 8/+), w/ a little minor wear at bottom edge. Min. bid \$40.



114).Sweet Lavender Tobacco Signs. 15.25 x 17" (9.25 x 10-7/8" actual) lot consists of a complete series of six early cardboard litho advertising signs from Sweet Lavender Tobacco Co. (Rochester NY) each featuring comical black family hunting for possums (these are similar to the Currier & Ives's "Darktown" series prints). Clean, bright and very attractive overall, w/ some outer edge wear on a couple of pieces. Nicely framed. Min. bid \$200 the set.



115) Union Brewing Sign. 16.75 x 20-7/8" early self-framed embossed tin litho sign for Cascade Beer (Union Brewing Co., San Francisco) featuring Uncle Sam and world leaders drinking beers. Colors are strong and piece displays quite nicely (as a C. 8+/) although there is some light soiling in table area of image; and green wood grain background area has some crazing and a few scattered small raised bb sized bump marks and a close examination if tipped in light just right will reveal some hazy glue type residue on upper surface surrounding "Cascade Beer" lettering at bottom (critical grade C. 7.5+). Min. bid \$150.



116) Sawing Machines Sign. 18.5 x 25.5" (13 x 20" visible) very early paper litho sign for Monarch Mfg. Co.'s "Lightning" brand sawing machines, w/ stunning multi-color graphics (Shober & Carqueville Lith. Co., Chicago). Clean, bright and excellent in appearance (basically a very strong C. 8+/) w/ exception of a few faint fold lines (not at all offensive and for most part barely noticeable). Nicely framed and matted. Min. bid \$150.



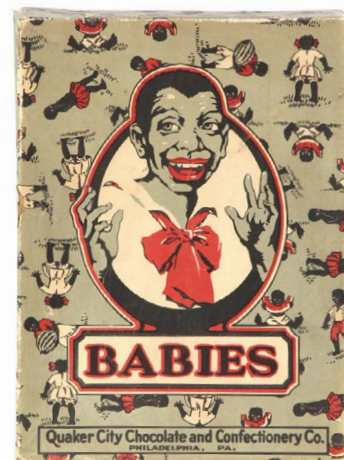
117) Durham Pocket. 4.25 x 2-7/8 x 7/8" extremely rare blue-grey variation tin litho vertical tobacco pocket tin for Blackwell Co.'s "Durham" brand tobacco, featuring great image of trademark bull on front (cigarette rolling scene on back). Front is clean and excellent in appearance (front C. 8+/); back side back has a little light scuffing wear, but still attractive and displays quite well (back C. 7.5+/8-). Min. bid \$2500.



118) Blue Jay Cigar Tin. 5.25 x 3-5/8 x 3-5/8" outstanding, early tin litho 25 ct. cigar can for Orrison Cigar Co.'s "Blue Jay" brand, featuring stunning multi-color graphics. Crisp, bright and excellent (C. 8.5+/ appearance). Min. bid \$60.



119) Durham Spice Tin. 3-7/8 x 2-1/8" outstanding, early tin litho spice tin for "Phoenix Mills Durham" brand mustard (Barton, Thompson & Co., Toronto, Canada) w/ attractive finely detailed graphics all around. Clean, bright and excellent, w/ a little non-offensive minor scattered wear (C. 8+/). Min. bid \$50.



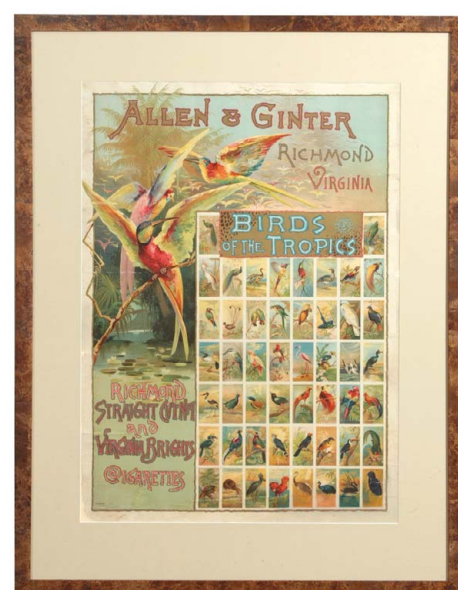
120) Black Babies Candy Box. 10.5 x 7-7/8 x 4" early 2-ps. cardboard candy box for Quaker City Chocolate and Confectionery Co.'s penny candy, w/ a black babies pattern in background. Clean, bright, very nice condition (C. 8+) w/ minor wear at left side edge. Min. bid \$40.



121) Emmy Lou Cigar Sign. 21.75 x 15" great, early paper litho roll-down sign w/ metal strips at top and bottom for Emmy Lou brand cigars, featuring incredible image of woman w/ bat wings flying above city. Clean, bright and attractive in appearance (displays as a strong C. 8+/) w/ a little non-offensive light wrinkling/creasing and some touch up and professionally repaired tears. Neat looking piece, displays great! Min. bid \$100.



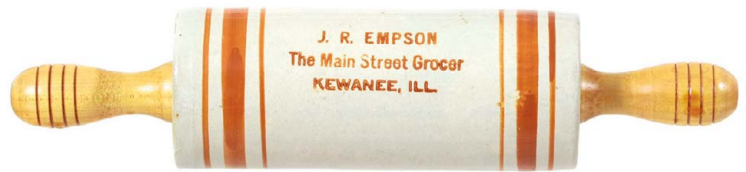
122) Nic Nac Tobacco Bin. 11-5/8 x 8.25" important, early tin litho 5 lb. store size tobacco bin for Leidersdorf Co.'s "Nic Nac" brand tobacco (bin originally held 48 packages). Clean, bright and very nice in appearance (displays as a C. 8+/) although closer examination will reveal some general scattered background wear (critical grade front: 7.5+/; back 7+/). Min. bid \$150.



123) Allen & Ginter Tobacco Sign. 39.25 x 30-3/8" (29.5 x 21.25" visible image) wonderful, early paper litho sign promoting Co.'s "Birds of the Tropics" tobacco insert card series, featuring beautiful multi-color graphics. Clean, bright and very attractive in appearance (basically displays as a strong C. 8+/) w/ exception of some creasing marks in paper from being rolled. Nicely framed and matted (we have not examined out of frame, but mat appears to be hiding some chipping/edge damage in outer white margin area. Min. bid \$200.



124).War Eagle Cigar Box. 5 x 12-5/8 x 1" (5.75" hgt. w/ lid open) unusual, early wooden cigar box for Roth, Bruner & Feist Co. (Cincinnati, Oh.) "War Eagle Cheroots" brand cigars, featuring stunning multi-color graphic image of US Calvary in battle on inside label, w/ attractive war eagle design on outside lid. Excellent (C. 8.5+), w/ some slight warping to lid. Min. bid \$40.



125).Advertising Rolling Pin. 14.5 x 3.5" dia. early fired stoneware pottery rolling pin advertising a Kewanee, Ill. Grocer. Pottery is excellent, w/ no chips or cracks (note: wooden maple handle appears to be a well made replacement copy of an early wooden handle). Min. bid \$70.



126).College Widow Change Receiver. 1.5 x 6.75" early, heavy glass countertop change receiver for College Widow brand cigars, featuring great image of Harvard cheerleader. Unusual and very impressive looking piece, displays great. Min. bid \$70.



127).Motorlube Oil Can. 6-5/8 x 6.5 x 6.5" unusual, very early tin litho product can for Tygert Co.'s "Motorlube" brand motor oil, featuring great image of early touring car on two sides w/ little red devils in background ("Eliminates Trouble Demons"). Attractive and displays well, w/ some soiling and scattered overall scuffing and wear (C. 7+-). Min. bid \$50.



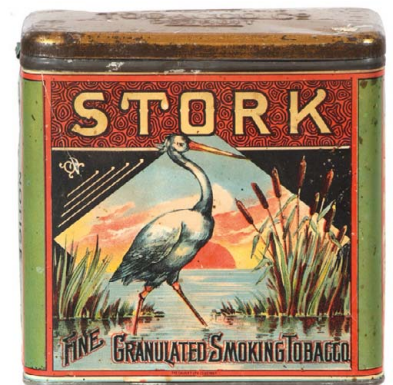
128).Teddy Bear Peanut Butter Pail. 3.5 x 3.5" scarce, early 1 lb. tin litho peanut butter pail for Teddy Bear brand (C & J Jones Co., Winnipeg, Canada) featuring same great image on both sides. Clean and very attractive appearance, w/ a little light scuffing wear on back side (front C. 8++; back 7.5+/8-). Min. bid \$100.



129).Master Guard Cigar Pail. 6-1/8 x 6" scarce, early tin litho 100 ct cigar pail for "Master Guard" brand, featuring great image of Co.'s trademark dog (same image both sides). Displays pretty well (front C.8/-; back C. 7+), although reds on back side have faded out and there are a few very minor in-painting touch-up spots; w/ litho loss and some fairly heavy wear on lid. Min. bid \$80.



130).Nip Cigar Tray. 12" dia. outstanding, early tin litho countertop standup sign/ tray for Jacob Stahl Co.'s Nip brand cigars, featuring beautiful, finely detailed lithography (by Tuscarora Co., Coshocton, Oh.), w/ original wire easel on back. Clean and very attractive appearance (a strong C. 8++) w/ only minor wear and a little fine crazing. Min. bid \$150.



131).Stork Tobacco Tin. 6 x 6-1/8 x 3-7/8" very early paper label tobacco can for Stork brand (American Eagle Tobacco Co., Detroit) featuring stunning multi-color graphics. Clean, bright and attractive in appearance (displays as a C. 8/+), although there are some tear marks, minor speckling and tattering and minor paper loss (critical grade C. 7.5). A powerful and impressive piece that displays great! Min. bid \$50.



132).Walk-Over Shoes Light Up Display. 11.5 x 15-3/8 x 6" unusual, early blinking glass front light-up electric display sign for Walk Over brand shoes, featuring great image of an early car driving down country road (when light blinks on: moon appears in sky, a silhouetted couple appear together in seat and advertising on tire and the red brake light lights up) Excellent (frame and box in back appear repainted). Min. bid \$100.

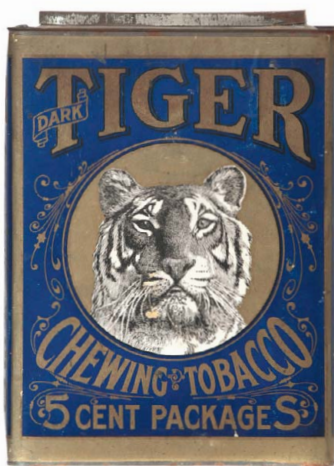
Roosevelt Bears



133).Teddy Sand Pail. 3-5/8 x 4-7/8" unusual, early tin litho sand pail w/ TR in rough rider garb, w/ bear characters in parade all around. Has some tarnishing/soiling and a little light scattered background wear, but overall attractive and displays nicely (C. 7.5+/8-). As found, might improve a bit w/ cleaning. Min. bid \$60.



134).Gail & Ax Tobacco Sign. 12-5/8 x 12-5/8" very early tin litho sign for Gail & Ax Co.'s "Vicar Pear" brand tobacco, featuring stunning, finely detailed color lithography (Wells & Hope Litho.). Colors are strong and piece displays quite nicely, w/ some light scattered wear (C. 8-). Min. bid \$100.



135).Blue Tiger Bin. 11.25 x 8-1/8 x 6.5" early cardboard (tin top and bottom) store size tobacco bin for Lorillard Co.'s 5¢ Chewing Tobacco, in unusual blue color variation, w/ lithographed image of early pack on metal lid. Clean and very attractive in appearance (displays as a strong C. 8+), w/ some light wear including small hole at bottom corner edge of back side and typical expected general wear on lid. Displays very nicely. Min. bid \$50.



136).Green Turtle Ceiling Sign. 10-1/8 x 6-7/8" early 2-sided die-cut cardboard ceiling hanger sign for "Green Turtle" cigars, w/ great image of Co.'s trademark turtle. Clean, bright and excellent (basically C. 8++) w/ exception non-offensive light creasing in bottom leg areas. Min. bid \$40.



137).Bunny Blend Coffee. 6 x 5.75" scarce, early tin litho 4 lb. coffee pail for Bunny brand (Bunn & Co., Springfield, Ill.) featuring great color graphic image of trademark rabbit on front, steaming coffee cup on back. Has strong colors and displays very well, w/ some litho loss at very bottom edge, the typical darkening and speckling in gold areas and some minor haziness and light scattered wear (C.8+/-), w/ heavy wear to lid Min. bid \$70.



138).Just Suits Tobacco Box. 15 x 7 x 6-5/8" outstanding, early 5-sided wooden tobacco shipping box for "Just Suits" brand, w/ wonderful original paper label and nicely stenciled advertising on left side (has remnants of Series 1878 tax stamps along right side panel). Beautiful graphic label is clean and attractive, w/ a little minor toning, slight fade and some non-offensive general light wear (label a strong C. 7.5+). Displays very well! Min. bid \$70.



139).Pabst Tonic Signs. (ea. apx. 43 x 24") lot consists of two large and impressive heavy cardboard die-cut window display signs for Pabst Malt Extract Tonic. Each has some soiling, edge roughness and light general wear, as well as some well done professional touch up restoration, but overall they are attractive and display nicely (C. 8+/- appearance). Min. bid \$150 (the lot).



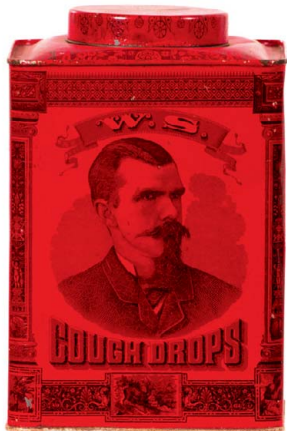
140).Apris Condom Tin. 1-5/8 x 2-1/8 x 1/4" early tin litho condom tin for Killian Mfg. Co.'s Apris brand. Crisp and like new (near mint). Min. bid \$30.



141).Squirrel Candy Box. 5.75 x 10.5 x 3-3/8" early, 2-ps. cardboard candy box for Squirrel brand peanut bar candies, featuring nice graphics. Clean and very attractive appearance (C. 8++) w/ a little minor age tone soiling. Min. bid \$40.



142).Blue Goose Condom Tin. 1-7/8 x 2-1/8 x 1/4" important and extremely rare tin litho condom tin for Blue Goose brand (Schaeffer Products Inc., Cleveland Ohio). Clean and excellent (C. 8.5/+). Min. bid \$100.



143).W. S. Cough Drops Tin. 7.5 x 5-1/8 x 5-1/8" scarce, very early tin litho 5 lb. store size cough drops tin for W.H. Stinard Co.'s "W. S." brand, featuring finely detailed lithography by Somers Bros. Clean, bright and very attractive in appearance (displays as a strong C. 8/+); w/ some surface crazing and a little non-offensive light scattered chipping (critical grade C. 7.5/+). Min. bid \$70.



144).Peter Rabbit Peanut Butter Pail. 4-5/8 x 4.75" scarce, large tin litho peanut butter pail for Peter Rabbit brand (Kelly Confection Co., Vancouver, B.C.) w/ great rabbit images all around. Clean, bright and very attractive, w/ a little non-offensive light scattered wear (C. 8+/-). No lid. Min. bid \$100.



145).Tobacco Barrel. 13.75 x 13.5" dia. very early wooden tobacco barrel for Allen & Ellis Co.'s "Seek No Further" brand, featuring attractive paper label (1873 copyright). Label has a small hole, some wrinkling, light soiling and general wear, but overall still attractive and displays quite nicely (C. 7.5/+). Lid possibly not original to piece. Min. bid \$60.

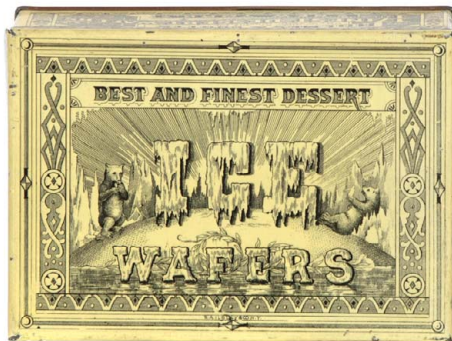


146).Ogden's Tobacco Sign. 32 x 16-7/8" (27.5 x 12.25 " visible) outstanding early paper litho sign for Ogden's Tobacco, featuring stunning multi-color graphic Victorian Christmas image. Clean, bright and excellent w/ minor soiling, and a small abrasion mark at bottom edge (a strong C. 8++). English. Min. bid \$100.

Anheuser-Busch



147).Anheuser-Busch Signs. 14.5" dia. (11.75" visible image) lot consists of an attractive matched set of four early embossed cardboard lithographed advertising signs issued by Anheuser-Busch Brewing Association, featuring beautifully detailed seasonal images (includes Spring, Summer, Winter and Fall), each w/ Anheuser-Busch advertising logs at bottom (each © 1903 and Gray Litho Co., NY). They are near mint in appearance, and each is beautifully presented in an attractive custom hardwood frame. Min. bid \$150 (the set).



148).Ice Wafers Biscuit Tin. 3-5/8 x 5-1/8 x 3-5/8" scarce, early tin litho hinged lid square corner product tin for New York Biscuit Co.'s Holmes & Coutts dessert wafers, w/ beautiful finely detailed image of polar bears, etc. (Hsley & Co. litho). Clean, bright and excellent (C. 8.5/+). Min. bid \$50.



149).Virginity Tobacco Pail. 2-7/8 x4-3/8" small, very early paper label tobacco pail for Gail & Ax Co.'s Virginity brand tobacco. Tin is clean and very nice; early brittle label has some age toning, as well as some chipping loss and tearing in outer right area, but overall still very attractive and displays nicely (label C. 7.5+). Min. bid \$50.



150).Parsons Exterminator Tin. 2" diam x .75" unusual, early tin litho product can for Parson & Co.'s Vermin & Insect Exterminator, featuring wild image of rats, mice crawling insects, etc. Has a little light soiling, but overall attractive w/ very nice appearance (C. 8+/-) as found, should improve w/ cleaning. Min. bid \$40.



151).Invincible Tobacco Barrel. 12-3/8 x 12" dia. unusual, very early small wooden tobacco barrel for Barker & Co.'s "Invincible" brand, w/ beautiful multi-color label. Clean, bright and very attractive appearance (displays as a strong C. 8/+), w/ exception of small hole in leaf area of label. Min. bid \$60.



152).Gobblers Cigar Tin. 4-7/8x 5" early tin litho 50 ct. cigar can for "Gobblers" brand, featuring great image of trademark turkey (both sides). Clean, bright and attractive appearance (displays as C. 8/+), w/ some light scattered wear along side edge of lid w/ denting on non-graphic base of can. As found (critical grade 7.5++), should improve w/ cleaning. Min. bid \$50.



153).Tip Top Tobacco Pail. 6.25 x 5.5" unusual, early paper label variation tobacco pail for Liggett & Myers Co.'s "Tip Top" brand, featuring attractive image of trademark fire fighting equipment (both sides). Clean, bright and excellent (C. 8.5/+). Min. bid \$50.



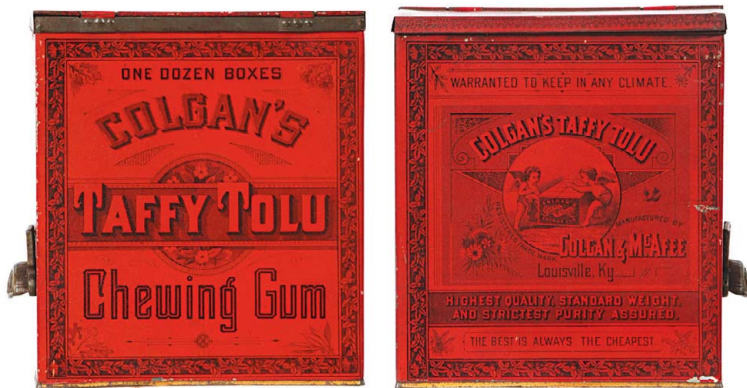
154).The Wonderful Game of Oz. 19-5/8 x 10 x 2" scarce, early game set by Parker Bros. featuring wonderful multi-color graphic Wizard of Oz image on lid. Beautiful box cover is clean, bright and excellent in appearance (a strong C. 8++) w/ some separating and wear to side apron edges. Includes game board (excellent) and five round wooden playing pieces inside. Min. bid \$50.



155).Standard Oil Co. Sign. 27-3/8 x 19.25" important, early, self-framed tin litho (over cardboard) advertising sign for Standard Oil Co.'s Red Crown Gasoline and Polarine motor oil w/ beautiful multi-color graphics. Stunning sign is clean, bright and very attractive (basically displays as a strong C. 8+) w/ exception of some non-offensive light scattered background wear and a little scraping wear along very outer right margin area (critical grade C. 7.5+/8-). Note: a little minor restoration could improve it to a near mint appearance. Min. bid \$2500.



156).Gravely's String Holder. 20.5 x 13.25" important, early tin litho advertising display for Gravely Co.'s Tobacco, featuring wonderful die-cut tin litho hand shaped sign at top and an iron bracket string holder attachment at base. Sign has strong color and displays quite nicely (as a C. 8/+), w/ a couple small nail holes and some light scattered speckling and soiling on upper surface (critical grade C. 7.5+/8-). As found, should improve w/ cleaning. Min. bid \$500.



157).Colgan's Gum Tin. 8.75 x 7.75 x 4-7/8" unusual, very early tin litho hinged lid store tin for "Taffy Tolu" chewing gum (Colgan & McAfee Co., Louisville, Ky) w/ beautifully detailed graphics all around (Bridgeford & Co. Lithographers, Louisville) w/ nice cast iron pull on side. Clean, bright and very attractive in appearance (C. 8+/), w/ light crazing and a little minor scattered wear (probably clear coated at some point- looks natural and is not detracting). Min. bid \$70.



158).Canadian Distillery Sign. 26 x 34 (19.75 x 27.5" (visible) outstanding, very early paper litho sign for Melchers Distillery Co. (Berthierville, Quebec) featuring stunning multi-color litho image of bustling factory (Toronto Litho Co.). Clean, bright and exceptionally nice (C. 8.5+/). Beautifully framed and matted. Min. bid \$150.



159).Whiz Fly Spray. 10 x 6.5 x 4" unusual, early tin litho 1 gallon product tin for Whiz brand fly spray, featuring great image of large flies and fly covered cow. Attractive and displays well, w/ some darkening and light surface oxidizing on left side edge (C. 7.5+/8- overall). Min. bid \$50.



160.Fehr's Talc Tin. 4.25 x 2.5 x 1.5" beautiful, very early tin litho talcum powder can for Fehr's brand (Fehr Talcum Co., Hoboken, NJ) featuring unusual images of nude cuddling children. Clean and very attractive appearance (C. 8+/) w/ a little non-offensive light scattered wear. Min. bid \$70.



161).Old English Pocket. 4.5 x 3.25 x 7/8" scarce variation early tin litho tobacco pocket tin for Old English brand. Clean, bright and exceptionally nice (a strong C. 8.5+) w/ barely noticeable minor bb size indentation on back and some faint very minor speckling. Foreign. Min. bid \$50.



162).Sky Rambler Cigar Tin. 5-3/8 x 4" outstanding, early tin litho 25 ct. cigar can for "Sky Rambler" brand (Kipp Cigar Co., Hastings, Neb.), featuring same great images on both sides (Heekin Litho.). Clean, bright and very nice, w/ a little non-offensive minor wear (a strong C. 8+). Min. bid \$60.



163).Game of Bang. 15-5/8 x 7-7/8 x 1" early 2-ps. "Game of Bang" cardboard boxed game set by McLoughlin Bros. (© 1903), featuring beautifully detailed graphic cover. Has a little non-offensive light background toning and light staining on front label, but overall still very attractive and displays nicely (C. 8/-), w/ a couple tear and separation areas on left side apron edge (includes some of playing pieces inside). Min. bid \$40.



164).Wine Tonic Clock. 9-5/8 x 3.75 1-3/8" early foreign tin litho stand-up advertising clock in shape of graphic early bottle for Serravallo's Tonic. w/ a very fancy clock inside (working). A clean, bright and high quality piece, w/ very attractive appearance (C. 8+/-), w/ some non-offensive light scattered wear (marked "Serravallo's Tonic (Bark and Iron Wine)" in gold lettering on back side". Foreign. Min. bid \$60.



165).Puritan Oats Box. 7.25 x 4.25" early 1 lb. 4 oz. size oats box for Hewett Grocery Co.'s Puritan brand, w/ nice image of Co.'s trademark Pilgrim on both sides. Clean and excellent (C. 8.5+). Min. bid \$40.



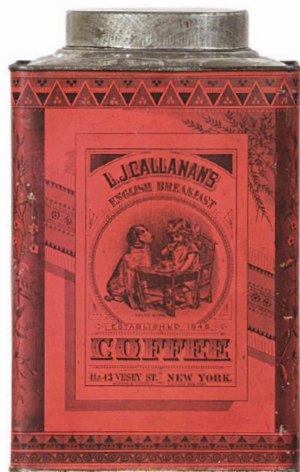
166).Fraser Viger Tin. 7-3/8 x 4.25" unusual, early small top 1 lb. tin litho Canadian coffee (or tea?) tin from Fraser Viger Co. Family Grocers (Montreal), featuring attractive graphic wrap around royal carriage images all around. Clean, bright and attractive (C. 8/-) w/ a little non-offensive light scattered wear. Min. bid \$50.



167). Sweet Mist Tobacco Bin. 11 x 8 x 6" early, hinged lid country store tobacco bin for Scotten Dillon Co.'s "Sweet Mist" brand. Tin top and bottom w/ wonderful color graphics on cardboard sides. Clean, bright and very attractive, w/ some light edge chipping, pinching and non-offensive light wear (C. 8+/-). Min. bid \$70.



168). Hall Luhrs & Co. Hams Sign. 13-7/8 x 19-5/8" important, early museum quality embossed tin litho sign for "Our Taste" brand hams (Hall, Luhrs & Co., Sacramento, Cal.) featuring stunning, highly detailed multi-color graphics by Kaufmann & Strauss lithographers. Clean, bright and exceptionally nice (basically a strong C. 8.5+/-) w/ exception of scrape in upper blue background area under word "Hogs" which could be easily touched up and would give it a near mint overall appearance. Min. bid \$2500.



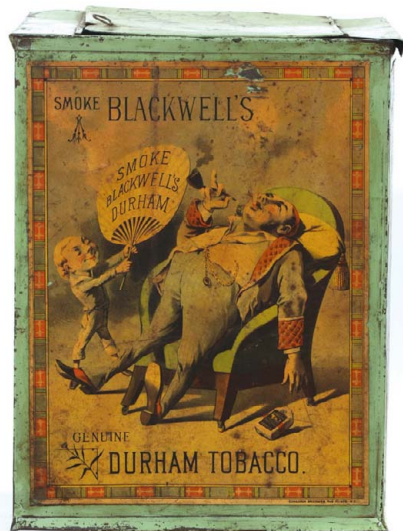
169). Callanan's Coffee Tin. 11-1/8 x 7-1/8 x 7-1/8" outstanding, very early, small top store tin for Callanan's Coffee and Tea Co. (New York) featuring beautiful, finely detailed graphics all around (lithography by Margan & Cornell Tin Cans, NY). Clean and very attractive appearance, w/ a little non-offensive light scattered wear and some minor softening to color. Min. bid \$100.



170). Dining Car Coffee Bin. 25 x 32 x 15.25" important and extremely rare, large tin litho train car shaped figural store bin for Dining Car brand coffee (Johnson Layne Coffee Co., St. Louis, Mo.), in shape of train car w/ beautiful interior and exterior images of fancy RR dining car on all four sides. Has some general scattered overall wear and the typical expected darkening and speckling to gold finish areas, but overall a very powerful and impressive piece that displays nicely (critical grade C. 7+), although it displays much better than this would imply. Min. bid \$250.



170) Side View.



171). Durham Tobacco Bin. 15 x 12 x 11.5" large, very early store size tobacco bin for Blackwell's Durham brand tobacco, w/ different large paper labels on three sides and attractive stenciled lettering on hinged lid. Side pictured is very nice (C. 7.5+/-) w/ some soiling and light wear; other sides are similar w/ exception that they have some fairly substantial paper loss. Min. bid \$100.



172). Wonder Soap Ceiling Sign. 12.75 x 7" unusual, early 2-sided die-cut cardboard ceiling hanger sign/fan pull advertising Grandpa's Wonder Soap, w/ beautiful color graphics (same image in sepia tones on backside). Clean, bright and excellent in appearance (a strong C. 8+/-) w/ a little non-offensive light creasing in boot area. Min. bid \$60.



173). Auto-Bright Tin. 8.5 x 5" very early hand soldered product tin for "Auto-Bright" brand auto polish, featuring great image of early open top touring car. Clean and attractive in appearance (C. 7.5+/-, w/ a little non-offensive light fade to reds Min. bid \$50.



174).Canadian Fire Extinguisher. 23 x 2-3/8 x 1-5/8" unusual, very early tin litho fire extinguisher tin from Electric Fire Extinguisher Co., (Montreal, Canada). Unusual, hand-soldered liquid filled tin is still sealed at top (wax closure). Has some scuffing and scattered wear, but overall clean and attractive (C. 7.5+). Min. bid \$40.



175).1776 Historical Candy Pail. 2-7/8 x 2-7/8" tin litho candy pail from Lovell & Covel Co. featuring beautiful multi-color graphic historical US 1776 landmarks. Clean, bright and excellent (C. 8.5/+), w/ light wear to lid. Min. bid \$50.



176).Peter Cottontail Candy Pail. 2-7/8 x 2-7/8" tin litho candy pail from Lovell & Covel Co. featuring beautiful multi-color rabbit scenes all around. Clean, bright and excellent (C. 8.5/+). Min. bid \$50.



177).Queen of Hearts Candy Pail. 2-7/8 x 2-7/8" tin litho candy pail from Lovell & Covel Co. featuring beautiful multi-color graphics of Queen of Hearts nursery images all around. Clean, bright and excellent (C. 8.5/+). Min. bid \$50.



178).Red Riding Hood Candy Pail. 2-7/8 x 2-7/8" tin litho candy pail from Lovell & Covel Co. featuring beautiful multi-color graphics of Red Riding Hood nursery images all around. Clean, bright and excellent (C. 8.5/+), w/ light spotting on lid. Min. bid \$50.



179).Pigs Candy Pail. 2-7/8 x 2-7/8" tin litho candy pail from Lovell & Covel Co. featuring nursery rhyme pig scenes all around. Clean, bright and very nice (a strong C. 8/+) w/ light edge wear along top. Min. bid \$50.



180).Egret Cigar Tin. 5.5 x 4-7/8 x 4-7/8" early tin litho 50 ct tin for Egret brand cigars (G.A. Strobeck Co., Red Lion, Pa.) featuring beautifully detailed color graphics (litho by Liberty Can Co.). Clean, bright and excellent in appearance (displays as a strong C. 8/+) w/ a little light scattered soiling and wear w/ minor dent mark on side edge (critical grade C. 8/-). Min. bid \$60.



181).Hy-Quality Coffee Sign. 34 x 16.5" 2-pc. die-cut cardboard string hung ceiling sign for Hy-Quality brand coffee, featuring great image of Co.'s trademark girl in swing. Clean and attractive in appearance (basically a C. 8/+), although close examination will reveal a little non detracting faint speckling and minor age tone soiling and edge wear including a couple non-offensive light creases marks (critical grade C. 7.5+/8-). Displays very well! Min. bid \$80.



182).Sharples Sign. 38.75 x 27.5" large, early, self-framed tin litho advertising sign for Sharples brand cream separators, w/ beautifully detailed color graphics (girl in sheer see through top has nipple visible). Has strong, bright colors and displays very nicely on wall (as a C. 8/+) although close examination will reveal some non-offensive light scattered rust speckles scattered about (critical grade C. 7.5/+). Min. bid \$250.



183).Rainier Beer Sign. 15-3/8 x 9.5" outstanding, early die-cut tin litho hanging sign for Seattle Brewing Co.'s Rainier Beer, featuring great multi-color graphic image of girl in swing. Clean, bright and excellent (basically a strong C. 8.5) w/ a couple non-offensive minor wear spots and just a hint of minor creasing (mentioned for accuracy, barely merits mention). Min. bid \$250.



184).MacLaren's Peanut Butter Pail. 3.5 x 3.5" early 13 oz. tin litho peanut butter pail for MacLaren's brand (Toronto and Quebec, Canada) featuring great graphic children's images (different image each side). Clean, bright and very attractive (a strong C. 8++), w/ only minor wear. Min. bid \$60.



185).Christmas Candy Tin. 3-7/8 x 6-1/8 x 2-1/8" outstanding, very early tin litho candy tin from Croff & Allen Co., Phil.'a featuring beautiful, multi-color graphics by Ginna & Co. (has winter sleigh ride image on lid, w/ St. Nick and Christmas images all around the sides). Has a little light scattered wear, but overall attractive and displays nicely (C. 8+/-). Min. bid \$50.



186).Cup Defender Coffee Pail. 10.75 x 7.5" early 5 lb. milk pail style tin litho coffee can for Cup Defender brand (Henry Koenig Co., Cincinnati) featuring image of racing yacht. Has nice color and displays well, w/ some scattered scuffing and light background wear (C. 7.5+/8-). Min. bid \$60.



187).Warner Cough Drops Tin. 6.75 x 6-1/8 x 4" very early tin litho store tin for Wm Warner Co.'s licorice lozenges w/ finely detailed lithography by Somers Bros. Clean and very attractive in appearance, w/ typical crazing and a little light background wear (C. 8+/-) w/ some dark spots and heavier wear on lid). Min. bid \$50.



188).Busy Bee Spice Bin. 11.25 x 9.5 x 9" early tin litho advertising country store bin for John Fitch Co.'s "Busy Bee" brand spices, w/ a nice art nouveau looking decorative design. Clean, attractive and displays well w/ some non-offensive light soiling and wear (C. 8/-). Min. bid \$70.



189).Frazer Axle Grease Sign. 25.5 x 38" large, early tin litho self-framed sign for Frazer Axle Grease, featuring beautifully detailed multi-color graphics. Clean, bright and very attractive in appearance (displays on wall as a strong C. 8+), although there is some non-offensive general light scattered oxidized speckling scattered about (critical grade C. 7.5+/-). Min. bid \$250.



190).Hard A Port Tobacco Sign. 26 x 19.75" (20.5 x 14.5" visible image) wonderful, early paper litho sign for Thompson, Moore & Co.'s "Hard a Port" brand tobacco featuring stunning, highly detailed multi-color graphics. Clean, bright and like new in appearance. Nicely framed and matted (note: we have not examined out of frame). Min. bid \$150.



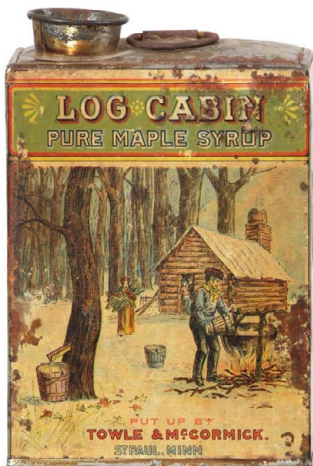
191).Daily Habit Cigar Tin. 5.25 x 5.5" scarce variation larger 50 ct size tin litho cigar can for "Daily Habit" brand cigars, featuring attractive multi-color graphics by Liberty Can Co. (same image both sides). Clean, bright and attractive in appearance (tin C. 8+/-), w/ a little minor denting and light surface skimming wear in plain background area of right side edge w/ some scattered wear on lid (lid C. 7+). Min. bid \$70.



192).Home Comfort Tobacco Box. 4-5/8 x 4-1/8" (dia.) small, ca. 1870's round wooden tobacco container w/ hand soldered metal bands at top and bottom for "Home Comfort" brand (Heartt & Connable's Tobacco Works, Chicago). Clean, attractive and all original w/ beautiful multi color lithographed label (C. 8+/-). Min. bid \$80.



193).Faneuil Hall Cigar Tin. 4.75 x 4-3/8" early tin litho 50 ct cigar can for Faneuil Hall brand, featuring beautifully detailed color graphic image of famous Boston landmark on both sides. Clean, bright and very attractive in appearance (C. 8+) w/ some non-offensive faint age tone background speckling (mentioned for accuracy- not detracting and barely noticeable except on very close examination). Min. bid \$50.



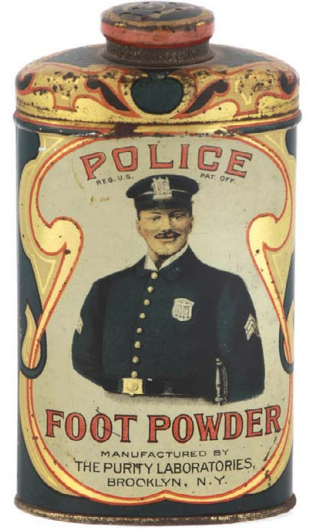
194).Log Cabin Syrup Tin. 6.25 x 4.25 x 2.75" important and extremely rare, very early hand soldered product tin for Towle & McCormick Co.'s maple syrup (St. Paul, Minn.) w/ stunning multi-color paper label. Front displays nicely, w/ some staining at top and along side edges; back side has some paper loss spots and fairly heavy staining spots (front a strong C. 7+; back fair to poor). Min. bid \$50.



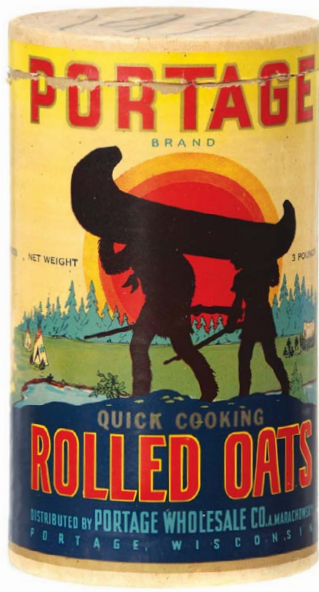
195).Audubon Gun Powder Tin. 5-5/8 x 4-1/8 x 1.5 scarce, very early paper label gunpowder tin for Lafin & Rand Co.'s "Audubon" brand gunpowder. Red painted background area has crazing and some light chipping wear; label is complete and very attractive, w/ some general age toning/darkening (C. 8+/-). Displays nicely! Min. bid \$50.



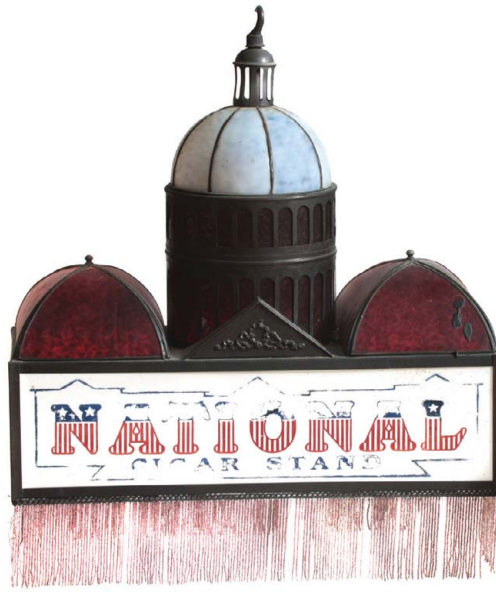
196).Ohio Boys Cigar Tin. 6 x 4.5" scarce, early paper label over tin variation 50 ct cigar can for "Ohio Boys" brand, featuring attractive images of Ohio born presidents. Attractive and displays nicely (C. 7.5+/8-) w/ light fade to reds and some non-offensive light background staining spots (mostly on plain, non-graphic back side). Min. bid \$50.



197).Police Foot Powder. 4-5.8 x 2.5 x 1-3/8" early tin litho 3.5 oz. product tin for Police brand foot powder, featuring great image of early cop. Clean, bright and very attractive (C. 8+/-), w/ non-offensive minor scattered wear. Min. bid \$60.



198).Portage Oats Box. 9-5/8 x 5.5" unusual, early 3 lb. oats box for "Portage" brand oats (Portage Wholesale Co., Portage, Wisc.) featuring colorful Indian image on front, w/ steaming cereal bowl on back. Clean, bright and excellent (C. 8.5). Min. bid \$50.



199).National Cigar Stores Light Fixture. 23 x 23 x 10" wonderful, large, early figural hanging light fixture from early National Cigar Co. tobacco store. All original and displays great. Fixture has a brass/bronze metal frame, w/ leaded stained glass panels at top, lettered advertising around 4 milk glass side panels and a hanging beaded fringe around base. Impressive piece has some general wear to lettering on white panels and a faint early vertical hairline on backside panel, otherwise excellent. Min. bid \$250.



200).Adams Gum Tin. 8.5 x 4.75" very early and extremely rare figural tin litho display tin for Adams "Silver Roll" brand chewing gum, featuring beautiful, finely detailed Ginna & Co. style lithography (not marked). Clean, bright and excellent (a strong C. 8+/-). Min. bid \$80.



Rd #2, Cobb Hill Road, Cazenovia, NY 13035 • 24 Hr. Tel: (315) 662-7625 • 24 Hr. Fax: (315) 662-3570 • morf2bid@aol.com • morfauction.com

Welcome to our 65th auction of quality antique advertising and collectibles. We are honored to announce that we have been chosen by Jim Challenger to direct the sale of his legendary collection of antique advertising and related collectibles and are offering 200 items selected exclusively from this incredible collection for our current Premier auction #65. Everything we sell is guaranteed authentic and as described. We attempt to grade condition both fairly and conservatively, using a scale of 1-10 on the advertising items (ten being absolutely mint). We do not list reproductions, re-issues, deceptively restored or pieced together type merchandise. Flaws and blemishes are prominently noted and over emphasized. We encourage you to call for a detailed description on any item you have an interest in, but respectfully must request that you do this before the closing night. Dimensions are listed by height, then width, and are only approximate (+ or - a quarter inch).

Bidding

Bids are accepted only from those parties who have registered with us to bid. (If you were mailed this catalogue by us you are automatically pre-registered.) Your bid is a legal contract to purchase and once entered, cannot be canceled. Placement of a bid indicates acceptance of our terms.

On all "BID" items there is a 10% buyers premium added to each successful bid. You're welcome to bid by mail and fax anytime after receiving this catalog. **We will begin accepting phone bids on Wednesday, February 24th, 2010. We will be taking calls on Wednesday and Thursday from 10:00 AM until 5:00 PM.** If no one answers when you call, please leave a message on our machine and we will get back to you. **If bidding by mail or fax, please remember to include your telephone number with your bids!** You may call or bid as often as you like. We will tell you the current bid on any item(s) you are interested in. To raise a bid, your advance must be at least \$10 more than the current high bid amount. When an item reaches \$250, bidding increments rise to \$25, at \$1,000, bidding increments advance in \$50 steps, and above \$2,000 in \$100 increments. We suggest not waiting until the last minute to begin your bidding, as its quite possible you won't be able to get through.

Web Page and Bid Updates

We will begin posting current bid prices (not including the buyers premium) on February 24th, 2010 (including an addendum of additional catalogue lot information) on our internet web page. These prices will be updated once each day (each evening sometime after 9:00 PM, EST) and will get updated to include the final hammer prices on Sunday afternoon once the sale is concluded. On the closing night, we will attempt to update current bid prices every hour. Our web page address for this sale is: <http://www.morfauction.com> We suggest that once you get to it, that you bookmark this address for easy re-access.

Reserves and Estimates

All items which receive an opening bid in our sale will be sold to the highest bidder regardless of the price realized (we reserve the right to withdraw items in the event of inaccurate catalog descriptions and to reject any bid we feel is not made in good faith). **We run our auctions with a strict policy of no buy-backs, no auctioneer games and no hidden reserves.** Unlike some of our competitors, we do NOT allow consignors to bid up their own items!

Mechanical Operations

Early mechanical and electric motors and mechanisms on machines, coin-ops, clocks, etc. are quite often temperamental and very unpredictable in nature. Although these mechanisms may be working fine at the time of sale, we make no guarantees or representations regarding their continued operating status once they have left our premises (including during shipping).

Closing Night

THE LAST DAY FOR BIDDING WILL BE ON FRIDAY, FEBRUARY 26TH, 2010. On closing day, we begin taking calls at 5:00 PM. Please mark your calendar now. On the closing night (ONLY), we will also be taking calls at (315) 662-3318, (315) 662-3429 and (315) 662-3904 after 5:00 PM (in addition to our regular (315) 662-7625 office number). **Closing Time: This Auction will close at 10:00 PM (EST) on Friday February 26th, 2010.** At that time, no more incoming calls will be accepted and all lots with a registered bid of less than \$300, as well as all items without call backs registered on them will be officially closed and final. The items at \$300 and over that have call back protection registered on them will be closed out during our call back period the following afternoon (**see important call back rules below**). We reserve the right to change the official closing in the event of unforeseen family type emergencies or technological failures (utility disruptions, etc.). We also reserve the right to either extend the bidding, to postpone or to cancel this auction in the event of a national emergency or if the Internet or the services of the US Post Office were to get seriously disrupted during our catalogue mailing or bidding period.

"Up-To" Bids & Call Backs

CEILING BIDS: We will be happy to enter competitive "up to" ceiling bids for you on any lots you request. Beginning at your minimum amount, we will advance these bid(s) up to your left ceiling amount, if (and only if) it is topped by another bidder. "Up To" bids will be handled discretely and executed in a completely competitive manner for you. Please note that we don't accept open ended "top all others" ceiling type bids.

CALL BACKS: You may request call back protection for any lot(s) that you enter with either a minimum or a protected "up-to" ceiling bid in an amount of at least \$300. This request must be registered with us before the official 10:00 PM closing hour of Friday, February 26th, 2010. All callbacks will be placed by us on Saturday, February 27th, 2010, beginning at 12:00 noon (EST) and will continue that afternoon until each of the individual lots have been closed out (using past experience, I would expect this to be finished by 6:00 PM, if not earlier). If you register for call-backs, it is your responsibility to be available during this call back time period. We make every effort to honor all our call back requests, but this service is done solely as a convenience to our bidders and will be performed on a best efforts basis only. If you will be traveling or if you will not be available during call back times at your primary number, be sure you provide us with proper alternate or back up numbers for reaching you!

Payment Terms

Winning bidders will be invoiced immediately after the sale. Those who desire fast shipment can pay by Money Order or Cashiers Check. Payments are due within 10 days of receipt of invoice. We reserve the right to offer the item out to our back bidders and deny future bidding privileges to those who do not pay in a timely manner. In addition to personal checks, we also accept payment on your American Express, Visa, Master Card, Discover and Optima Credit Cards (with no surcharge added). No COD's or Collect calls are ever accepted. Items shipped to anywhere in New York State must include appropriate sales tax or signed resale certificate.

Shipping

All packing and shipping charges are extra. We do most of our own packing and shipping and try to keep these charges as reasonable as possible for you. On especially fragile and larger hard to pack items, we hire the services of professional packers and charge you at our billed cost. We ship mostly through the Post Office and Fedex Ground, (Fedex Overnight available at an extra charge.)

Subscribing, Prices Realized, Consignments & Upcoming Events

Future catalogs can be assured by sending \$20 for a full 12 months subscription, (includes after sale prices realized). An automatic credit card ordering program is available. We currently run between 4-6 auctions a year (versus our previous format of running semi-annual sales). This format allows us to run smaller, more focused sales featuring larger, higher quality catalog images and gives our consignors the opportunity for a quicker turn-around of their items. In addition to our regular sales, we also occasionally offer sales made up entirely from single owner collections. Please contact us should you have items you would like us to consider for inclusion in our upcoming events. All inquiries are handled in a completely confidential manner. Our services are also available for the private placement marketing of important individual items, marketing plans for large collections as well as for estate planning and settlement purposes. Back copies of many of our previous auction catalogs are still available at \$5 each (w/ prices realized) w/ quantity discounts available if multiple issues are ordered. For further information, please call, e-mail or write.

Photography by Wes Feuz. Layout by Sean Maroney.

© Copyright 2010. All Rights Reserved. No portion of this publication may be copied in any form without the express written permission of Morford's.

Important Closing Night Information

In addition to our regular **(315) 662-7625** office number, on the closing night (only!) you may also call us at:

(315) 662-3318*
(after 5:00 PM)
(315) 662-3904*
(after 5:00 PM)
(315) 662-3429*
(after 5:00 PM)



***These numbers for
Closing night only!
Friday, February 26th, 2010**

Bidding closes at 10:00 PM on closing night. We will be accepting faxes and e-mails on closing night. Our web page will update current high bid prices approximately every hour on closing night and will also list any important addendum information. **All call backs will be made on Saturday, February 27th, 2010, beginning at 12 o'clock Noon!**