

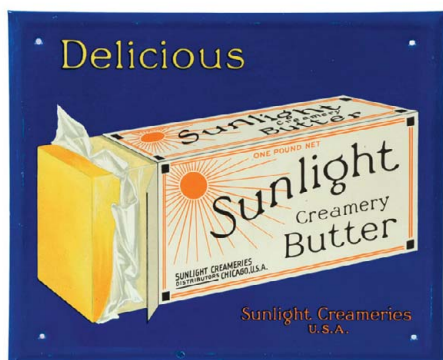


WM Morford
Investment Grade Collectibles at Auction

Investment Grade Collectibles & Maxfield Parrish Items at Auction

Rd #2, Cobb Hill Road, Cazenovia, NY 13035 • 24 Hr. Tel: (315) 662-7625 • 24 Hr. Fax: (315) 662-3570 • morf2bid@aol.com • morfauction.com

Bidding closes Friday, June 11th, 2010. (See page 32 for Terms & Conditions)



1).Sunlight Butter Sign. 8 x 9.75" early tin over cardboard sign from Sunlight Creameries, Chicago w/ beautiful graphics and look. Clean, bright and excellent in appearance w/ a small chip spot and a little minor wear in raised border area (C. 8++). Min. bid \$40.



2).Yellow Cab Badge. 2-3/8 x 3.75" early cap badge for Yellow Cab Co. taxi driver. Great looking, high quality piece, w/ beautiful inlaid cloisonné enameling. Excellent overall, w/ exception of dent mark at top right edge of metal mounting band. Min. bid \$40.



3).Lord Cecil Coffee Can. 3-5/8 x 5-3/8" early paper label (over tin) 1 lb. coffee can for Lord Cecil brand (McCord-Brady Co., Omaha, Neb.) w/ beautiful multi-color graphics (same image both sides). Clean, bright and excellent appearance (C. 8++) w/ minor background staining. Min. bid \$40.



4).Smith Bros. Sign. 9-7/8 x 27-7/8" very early embossed tin litho cough drops sign w/ finely detailed images of trademark brothers and early product box. Clean and very attractive appearance (basically displays as a strong C. 8++), w/ minor edge wear and some non-detracting fairly minor wrinkle marks. Displays great! Min. bid \$80.



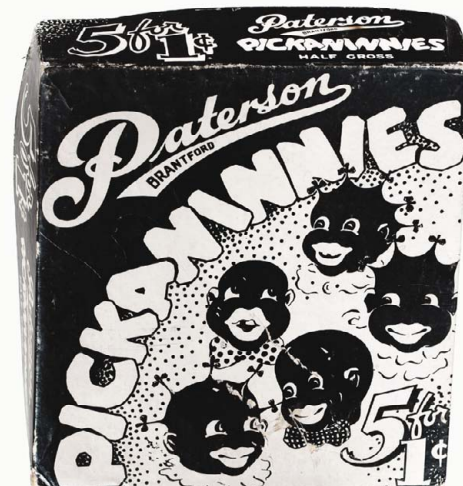
5).Sloan's Liniment Sign. 10-7/8 x 21" early, ca. 1920 trolley car style cardboard sign for Sloan's Liniment. Clean and bright, w/ powerful and impressive look (a strong C. 8++). Min. bid \$60.



6).Peter Schuyler Cigar Cutter. 7.25 x 4.75 x 8" early, heavy cast iron countertop cigar cutter w/ nickel finish, advertising Peter Schuyler Cigars. Has a little non-offensive soiling to advertising and some light wear to plating finish, but overall attractive and displays nicely (C. 8/-). As found, should improve w/ cleaning. Min. bid \$70.



7).Texaco Ethyl Globe. 17.5" (h) early, heavy 1-ps. embossed milk glass gasoline pump globe for Texaco's "Ethyl" brand, w/ copper base. Crisp and like new, as found never used, w/ nice rich surface patina. Near mint. Min. bid \$100.



8).Pickaninnies Candy Box. 8.75 x 7.75 x 2-1/8" unusual, early 2-ps. cardboard candy box for Patterson Co.'s "Pickaninnies" brand penny candies. Attractive and displays well (C. 8/-) w/ a little non-offensive pinching and light scattered wear. Min. bid \$40.



9).Evinrude Sign. 5-1/8 x 13-3/8" early, embossed heavy pressed cardboard easel-back stand-up sign for Evinrude outboard motors, w/ image of early boat motor. Excellent overall (C. 8), w/ small, non-detracting tack hole near top border area. Min. bid \$40.



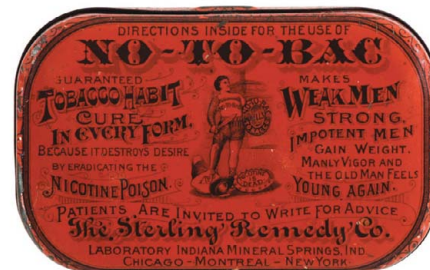
10).Boston Herald Sign. 5.75 x 13.25" early tin over cardboard sign for the Boston Herald Newspaper. Clean bright and attractive in appearance, w/ a little non-offensive minor denting and light edge wear (C. 8). Min. bid \$50.



11).Owls Condom Tin. 1-7/8 x 2-5/8 x .5" unusual, early tin litho condom tin for "Owls" brand. Clean and excellent, w/ minor dent mark on lid (a strong C. 8++). Min. bid \$40.



12).Three States Tobacco Tin. 2.75 x 4-5/8 x 7/8" scarcer, oval variation hinged lid tobacco tin for Harry Weissinger Co.'s "Three States Mixture". Clean, bright and displays nicely (C. 8+/-) w/ minor wear and a little soiling and darkening on side edges. Min. bid \$40.



13). "No-To-Bac" Tin. 2.25 x 3-5/8 x 3/8" very early tin litho flat pocket style product tin for Sterling Remedy Co.'s "No-To-Bac" tobacco cure, w/ nice early graphics by Norton Bros. (bottom side pictured). Has a couple minor bumps, a little minor denting and a little light scattered edge wear, but overall clean, attractive and displays nicely (C. 8+/-). Min. bid \$40.



14).Political Cigar Box. 6.75 x 8-7/8 x 4.75" outstanding, early political campaign cigar box featuring the 1892 Democratic presidential candidates Grover Cleveland and Adlai Stevenson, w/ American flag patterns on outside of box. Inside label is clean, bright and exceptionally nice (a strong C. 8++); outer box has some light age tone staining and minor fade. Min. bid \$60.



15).Majestic Peanut Butter. 3.5 x 3.5" unusual, early 13 oz. tin litho Canadian peanut butter pail for Majestic brand (Imperial Spice Co., Hamilton, Ontario). Bright and attractive in appearance (basically a strong C. 7.5+/8-), w/ a little non-offensive light scattered wear. Min. bid \$40.



16).Success Cigar Cutter. 5.5 x 3.5 x 5" early cast iron glass front mechanical countertop cigar cutter for "Success" brand (Reid & Co., Milton, Pa.) w/ fancy figural design patterns in metal (embossed "Century Cutter Co., Phil'a." on base). Has typical expected light oxidized darkening spots and wear to nickel plating finish of metal, but overall attractive and displays quite well. All original and as found (C. 7.5+/8-), should improve w/ cleaning (advertising area excellent). Min. bid \$50.



17).Fuses Display. 13.5 x 18.25 x 5" attractive, early tin litho counter top store display rack for Buss brand fuses, featuring beautiful color graphics and an area at top that displays actual fuses, w/ storage sections in back for holding product boxes. Clean, bright and exceptionally nice (a very strong C. 8++). Min. bid \$70.

Veterinary Sign



18).Veterinary Sign. 10 x 16" early lithographed die-cut cardboard easel-back sign for Barker's Powder veterinary products, w/ beautiful multi-color graphics. Clean, bright and very attractive (basically displays as a strong C. 8+) although close examination will reveal 4 small tack holes (barely noticeable) and a non-offensive light crease/bend mark in bottom right corner. Min. bid \$100.



19).Gold Dust Sign. 6.5" (dia.) early cardboard string hung ceiling sign for Gold Dust washing powder, featuring great images of Co.'s black twins (different image each side). Piece is attractive and displays nicely (C. 8), w/ just a hint of very minor age toning and a faint snake line type crease mark (not offensive and barely noticeable except on close examination). Min. bid \$40.

Cigar Cutter



20).Figural Cigar Cutter. 3.75 x 7 x 3.5" early embossed cast iron cigar cutter w/ ashtray at base advertising Chatfield's "Paracote" roofing product (tail moves up and down to trim cigars). Dog is finely detailed w/ nice patina and appearance, ashtray base has minor oxidizing to inside bowl and screws on bottom possibly replaced. Min. bid \$50.



21).Sinclair Sign. 12 x 12" early, heavy porcelain sign for Sinclair brand gasoline. Clean and bright appearance, displays well (has a strong C. 8+ appearance), w/ exception of oxidized chipping spots at top hanging holes. Close examination will reveal some barely noticeable light scuffing and fine general wear on surface (mentioned for accuracy, does not detract from appearance of piece when displayed) (critical grade C. 7.5+/8-). Min. bid \$70.

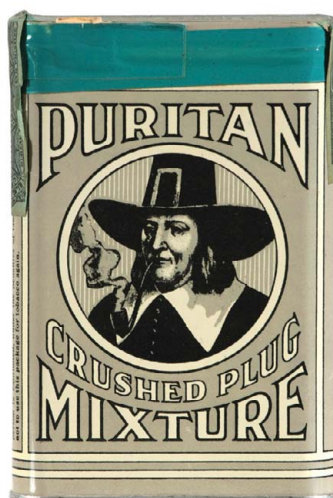


22).Straw Holder. 12.75 x 4.5" (dia.) unusual, early high quality pressed glass soda fountain straw holder, has nickel plated chromed metal base and top piece, w/ a lift up center knob that retrieves individual straws (1918 patent date). Excellent, w/ a couple minor dents on lid. Min. bid \$40.



23).Jane Justice Oats Box. 7.25 x 4.25" early 1 lb. 4 oz. size cardboard oats box for Jane Justice brand (Bauermeister Co., Terre Haute, Ind.), featuring beautiful multi-color graphic image of trademark law school graduate (same image both sides). Clean, bright and excellent (a strong C. 8++) w/ only minor wear. Min. bid \$40.

Unopened



24).Puritan Pocket Tin. 4-3/8 x 3 x 1" early tin litho vertical tobacco pocket tin for Phillip Morris Co.'s "Puritan" brand tobacco. Full, sealed (never opened) can is crisp, bright and like new (near mint). Min. bid \$60.



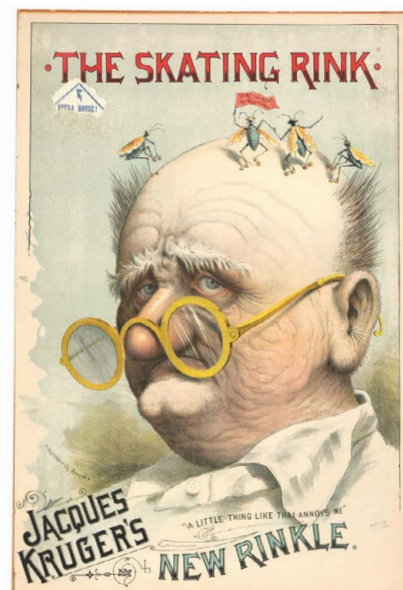
25).BBB Pocket Tin. 4.5 x 3 x 7/8" early tin litho vertical tobacco pocket tin from John Blaul's Sons Co., Burlington, Iowa. Has strong colors and displays quite nicely on shelf (lithography displays as a strong C. 8), although close examination will reveal general overall faint creasing/light denting marks covering the tin and a little light scattered wear (critical grade C. 7++ due to denting). Min. bid \$100.



26).Disney Jewelry Display. 11 x 8-3/8" early cardboard countertop store display piece for Ingersoll's Disney character sterling silver rings, each w/ nicely embossed and painted cartoon character images. Piece is clean and excellent (appears never used) w/ non-offensive minor crease marks in top ring area (C. 8++), complete w/ its 12 original rings. Excellent Min. bid \$50.



27).Musical Strings Display. 26 x 22.5 x 7.5" early store display piece for Black Diamond brand musical instruments strings, w/ compartments in back for holding product packages. Has a black metallic trimmed frame, w/ shiny gold metallic finish to celluloid composition type material on side panels. Attractive and displays quite nicely, w/ some non-offensive light scattered aging and general light wear from use (C. 8-). Min. bid \$60.



28).Play Poster. 42 x 28" outstanding, large, early paper litho play poster for Jacques Kruger's "The Skating Rink". Has stunning, multi-color graphics w/ great image of bugs roller-skating on man's head. Clean, bright and excellent in appearance (C. 8+), professionally mounted on art board and ready for framing (Forbes Litho). Min. bid \$60.



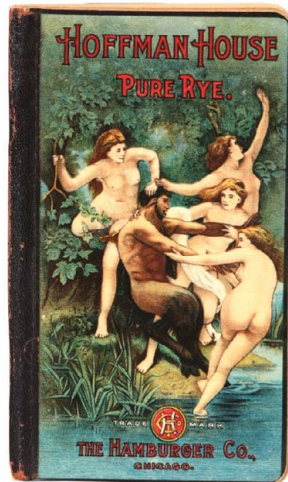
29).East Buffalo Beer Tray. 11-1/8 x 13.75 x .75" outstanding, early heavy porcelain oval serving tray from the East Buffalo Brewing Co., (Buffalo, NY) featuring beautifully detailed graphics. Near mint tray is crisp, bright and like new (appears never used) w/ nice original surface sheen (Baltimore Enamel Co.). Min. bid \$150.



30).Tennis Banner. 45.25 x 33.25" unusual, large, early cloth advertising banner for Ladies Home Journal magazine, featuring beautiful color images of early tennis players (artist William Tefft Schwarz). Powerful and impressive looking piece, that is clean, bright and very attractive in appearance, w/ some light wrinkles and a little non-offensive minor staining (C. 8-ish). Min. bid \$50.

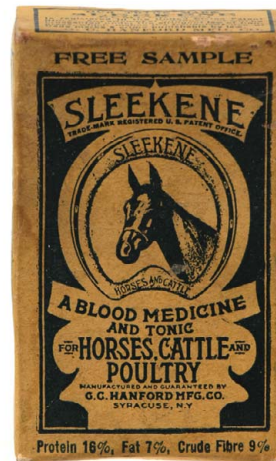


31).Fisk Bumper Tag. 6.75 x 4.75" unusual, early metal bumper tag for Fisk Tires, has reflector at top w/ great image of trademark kid, Very attractive appearance, w/ nice surface patina (basically a C. 8) w/ exception of a little surface wear in plain bottom mounting section. Min. bid \$40.



32).Hoffman House Celluloid. 4.5 x 2.75" very high quality, early leather bound celluloid covered pocket notebook advertising Hoffman House Rye whiskey (Hamburger Co., Chicago), w/ beautiful multi-color images of nudes on cover and 1911 calendar inside. Excellent. Min. bid \$40.

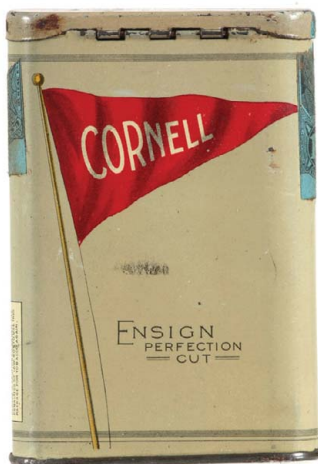
Sample



33).Vet Sample Box. 2.5 x 1-5/8 x 7/8" miniature cardboard product sample box for "Sleekene" brand veterinary blood medicine and tonic product. Full, never opened box is attractive and displays nicely, w/ a little minor soiling and light age toning (C. 7.5+/8-). Min. bid \$20.



34).Cigar Door Push/Match Scratcher. 6 x 4" unusual, early heavy porcelain advertising door push for J.H.P. Cigars, w/ match striking area at bottom. Has some edge chipping and roughness in outer areas, but otherwise quite nice (C. 7.5). Min. bid \$50.



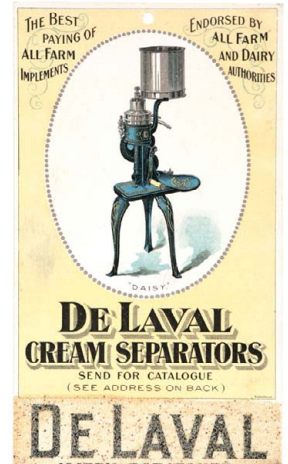
35).Ensign Pocket Tin (Cornell). 4.5 x 3 x 7/8" early tin litho vertical tobacco pocket tin for Ensign brand, w/ Cornell school flag on back. Tin is clean, bright and excellent overall w/ nice surface sheen (basically a strong C. 8++ appearance) w/ minor light oxidizing on back side edge of lid and a little minor denting and light rub marks on backside (critical grade: front 8; back 8/-). Displays very well! Min. bid \$150.



36).Zeno Gum Ad. 6 x 3-3/8" unusual early die-cut mechanical cardboard advertising novelty trademark for Zeno brand pepsin chewing gum, w/ sliding mechanism that makes her mouth chew. Clean, bright and excellent (C. 8.5/+). Min. bid \$50.



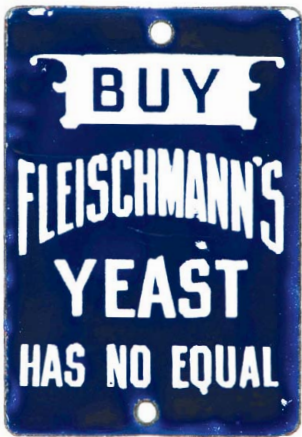
37).Euclid Pocket. 4-5/8 x 3 x 3/4" scarce, early tin litho pocket tin for "Euclid Mixture" tobacco (Weideman Co., Cleveland, Ohio) w/ a metallic green finish. Front has a little bit of even fading and some surface oxidizing along top edge and at bottom, w/ some surface loss on lid (where tax stamp once sat); back side is bright and shiny w/ some general light denting (front C. 7; back C. 7.5/+). Min. bid \$50.



38).DeLaval Match Scratcher. 6.25 x 3.5" unusual early cardboard match scratcher, featuring colorful and attractive image of a primitive looking "Daisy" model cream separator. Trade card type stock, w/ a sandpaper like striking surface at bottom. Clean and excellent (near mint appearance) w/ exception of non-offensive light rubbing mark in left yellow background area. Min. bid \$40.

DRUG STORE

39).Drug Store Sign. 63 x 11 x 3/4" large, early, heavy enameled porcelain Drug Store building sign w/ rounded edges. Excellent w/ early oxidized chipping wear spots at bottom two hanging holes. Min. bid \$50.



40).Yeast Door Push. 4 x 2.75" very early, heavy porcelain advertising door push for Fleischmann's brand yeast, w/ nice raised volcano style grommet holes. Display side is excellent (near mint); plain backside has some weathering and wear. Min. bid \$60.



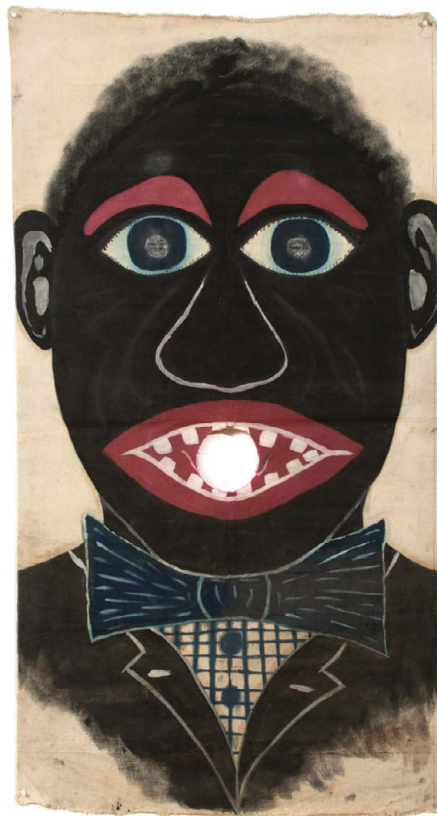
41). Dr. Jayne's Reverse Glass Sign. 11.25 x 13.25" (9.75 x 11.75" visible), scarce, early reverse glass sign for "Dr. Jayne's Alternative" medicine/ w/ rich, deep red background color. Impressive, very high quality piece, as found still in original frame (has partial Jayne's label on back). Excellent overall, w/ a little non-offensive minor haziness in black border area around girl. Min. bid \$100.



42).Disney Candy Container. 4.5 x 1-7/8" (dia.) unusual ca. 1920's/30's candy container by Toypaks Co. Full, never used piece still has original celluloid wrapper and candy inside w/ hand-painted Disney "Ferdinand the Bull" bisque china character at top. Excellent. Min. bid \$40.



43).Cook's Beer Sign. 19.75 x 7" early chain hung embossed die-cut tin litho sign for Cook's Goldblume beer (Cook Co., Evansville, Ind.). Clean, bright and very attractive in appearance w/ a couple small bumps and rubs in bottom section of bottle (displays as a very strong C. 8++). Min. bid \$100.



44).Carnival Folk Art Game. 54 x 29" great, early hand painted hanging folk art wall hanger on heavy cloth banner featuring a wonderfully executed image of a fun, large whimsical black man. Originally made for use as a target for a carnival throw game on a heavy canvas type cloth (has target hole cut in mouth area). All original, this is a powerful and very impressive looking piece, w/ a rich surface patina and just the right amount of wear. Min. bid \$100.



45).Old Gold Cigarettes Rack. 26 x 3.25 x 1.25" unusual, early tin litho hanging vertical store wall rack (by American Art Works) for "Old Gold" brand cigarettes, complete w/ 5 early sealed cigarette packs. Has some minor wavy bends at top and a little light edge wear, but overall attractive and displays nicely (C. 8/-). Min. bid \$40.



46) American Bull Dog Boot Jack. 3-1/8 x 8-1/8 x 7/8" early figural pistol shaped cast iron "American Bull Dog" brand folding bootjack (John Poorman Co., Trimble, Ill.), w/ attractive Japanned copper flash surface finish. Piece is all original, w/ nice surface patina, as found never used still in its original box (box has some non-offensive light staining/foxing). Min. bid \$50.



47) Game Cut Tobacco. x 11.5 x 8" early tin litho store bin for Bagley's Game brand tobacco, featuring beautiful graphic images of game birds on two sides. Attractive tin, displays nicely, w/ minor soiling and a little light scuffing, scratching and wear (C. 7.5+/8-). As found, should improve w/ cleaning. Min. bid \$70.



48) Shadows Condom. 1.75 x 2-1/8 x 1/4" early tin litho product tin for Youngs Rubber Co.'s "Shadows" brand condoms. Clean and excellent (C. 8+). Min. bid \$40.



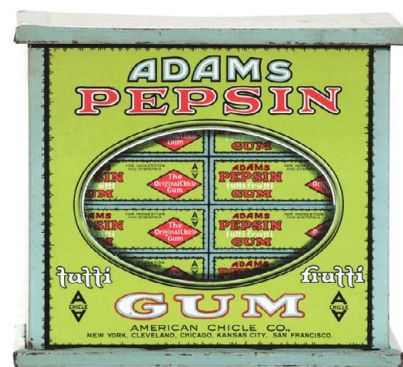
49) Waterman's Pen Sign. 2 x 18.5" very early, heavy porcelain strip sign for Waterman's Fountain Pens. Clean and excellent in appearance, has nice original surface sheen w/ early zinc grommets (basically near mint, w/ exception of a small chip mark at upper left corner edge). Min. bid \$50.



50) TR Cigar Box. 6.5 x 9-3/8 x 5-3/8" (as shown) early wooden cigar box for TR brand (Teddy Roosevelt) w/ other images of him on narrow side label and lid. Inside label is clean, bright and excellent (a strong C. 8++) w/ a typical expected darkening and light general wear to outer box labels. Min. bid \$30.



51) Theatrical Owners Sign. 10 x 12" unusual, early heavy porcelain membership sign from the "TTOA" (an early Theatrical Owners association). Excellent overall (C. 8++), w/ exception of a little wear at left and bottom hanging holes. Min. bid \$40.



52) Adams Gum Tin. 5.75 x 6.75 x 4.75" unusual, early tin litho hinged lid display tin for Adams pepsin chewing gum, featuring nice graphics all around. Clean, bright and exceptionally nice (a very strong C. 8++), w/ minor wear on lid. Min. bid \$60.



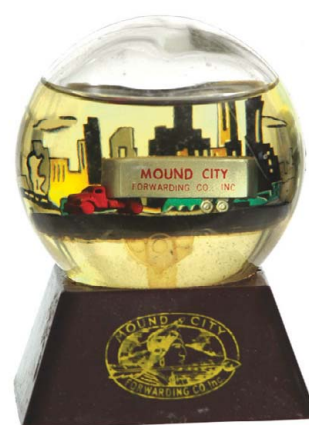
53) Kato Spice. 3-3/8 x 2.25 x 1.5" unusual, early 2 oz. size paper label spice tin for Kato brand (Busch Co., Mankato, Minn.), featuring attractive graphic image of Co.'s trademark Indian. Excellent (a strong C. 8++). Min. bid \$30.



54) Detroit Club Pocket Tin. 3.75 x 3.5 x 1" scarce, early tin litho vertical tobacco pocket tin w/ slide lid closure for "Detroit Club" brand (Charles Holton, Detroit, Mich.) w/ nice image of club building. Front has some non-offensive light scattered wear and minor faint surface oxidizing; top has dent mark and slightly heavier wear w/ light oxidizing at base (front C. 7.5++/8-; back C. 7+). As found, might improve a bit w/ cleaning. Min. bid \$60.



55) Columbia Mixture Tobacco Box. 4.25 x 3.25 x 3" unusual, very early paper label small wooden slide-top box for Marburg Bros. Columbia brand tobacco w/ beautiful color graphics. Box is clean and displays nicely (basically a strong C. 8+) w/ exception of some paper loss on one of side panels (1883 tax stamp). Min. bid \$50.



56) Trucking Co. Paperweight. 3.75 x 2.75 x 2.75" unusual liquid filled glass advertising snow globe style paperweight w/ heavy plastic base for "Mound City Forwarding Co.". Has Co. trailer truck inside w/ colorful city design in background. Excellent. Min. bid \$30.



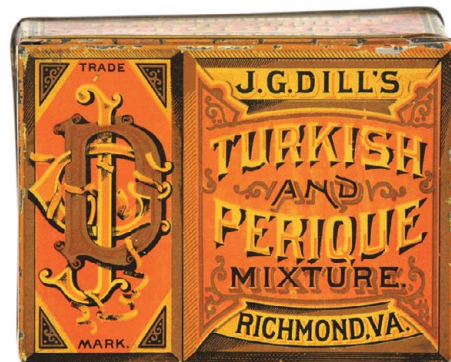
57).Gold Medal Tobacco Tins. Lot consists of four different variations of Gold Medal brand tobacco tins (sizes range from 2-7/8 x 3-7/8 x 1" to 3 x 5.5 x 1-1/8"). Colors are bright and tins are very good to excellent, w/ some general light wear on one of flat pockets (Conditions range from 7+ to C. 8++). Min bid \$50 (the lot).



58).Dill's Havana Mixture. 3.25 x 4-3/8 x 2.25" very early tin litho square corner tobacco tin for J.D. Dill's "Havana Mixture" tobacco, featuring beautiful early color graphics (Hasker & Marcuse lithographers). Clean bright and excellent appearance (displays as a strong C. 8++); w/ exception of early pinching mark and litho loss area at on left side edge. Min. bid \$60.



59).Home Comfort Sign. 4-1/8x 5-7/8" small, very early, heavy porcelain curved advertising sign for "Home Comfort" brand ranges, featuring beautifully detailed graphic image of busy factory (1893 Columbian Fair reference). Basically excellent, w/ exception of non-offensive small chipping and a fine crackling hair line in upper left corner and minor surface wear from use (C. 8+/-). Min. bid \$60.



60).Dill's Turkish Perique Mixture. 3.25 x 4-3/8 x 2.25" very early tin litho square corner tobacco tin for J.D. Dill's "Turkish Perique Mixture" tobacco, featuring beautiful early color graphics by Hasker & Marcuse. Clean bright and exceptionally nice appearance (a strong C. 8+), w/ only minor scattered light wear. Min. bid \$60.

Top View



Side View



61).Pickaninny Peppermints Candy Box. 1-1/8 x 7-3/8 x 1" unusual, small 2-3/8 oz. size 2-ps. cardboard product box for Whitman's brand chocolate covered "Pickaninny Peppermints" candies, featuring wonderful graphic images of black children on three sides. Excellent (C. 8++). Min. bid \$40.

Fishing Line Spool



62).Mermaid Fishing Line. 2-5/8 x 1" nice early wooden spool for Mermaid brand silk fishing line, featuring beautiful multi- color graphic labels (topless mermaid on front and game fish on back). Spool only (no line). Excellent (C. 8.5). Min. bid \$40.

Collar Buttons Case



63).Cottage Biscuit Tin. 7.5 6.75 x 5" unusual, early figural European biscuit type tin, w/ beautifully detailed color graphics all around (marked "Orebro Kexfbrik" on base). Clean and very attractive, w/ a little non-offensive light scattered wear from use (C. 8+/-). Min. bid \$60.

64).Collar Buttons Case. 5.75 x 7-7/8 x 1" small, very early wooden countertop display case for fancy gold plated 5¢ collar buttons. Has divided compartments inside, w/ gold lettering on glass lid. Excellent and all original, complete w/ various old product inside. Min. bid \$40.



65).Old Gold Display. 5-7/8 x 11.5" outstanding ca. 1930's truck shaped cardboard counter-top store display holder for "Old Gold" brand cigarettes, featuring beautiful Deco images of woman, dogs and cigarette pack (same image both sides). High quality piece is clean, bright and excellent, w/ section at top for holding and displaying packs. Near mint. Min. bid \$40.



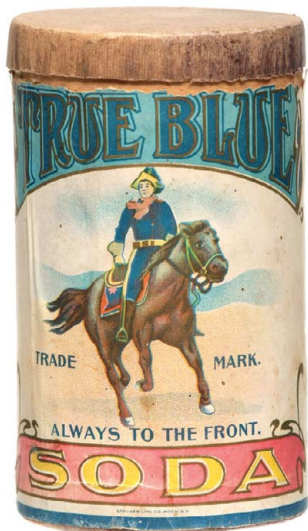
66).Gree-Soff Pail. 5.25 x 6-1/8" (dia.) unusual, early tin litho pail for Thomas Paint Co.'s Gree-Soff brand auto soap, w/ nice image of early limo. Attractive and displays nicely, w/ a little non-offensive light scattered wear (C. 7.5+/+/-). Min. bid \$40.



67).Jell-o Dish. 4 x 4.5 x 1-1/8" early, fine china advertising dish for Jell-o brand dessert, featuring great image of Co.'s trademark girl. Excellent, w/ faint scratch mark in neck area (minor and barely noticeable). Min. bid \$30.



68).3 Pigs Candy Box. 8.75 x 12.5 x 2.5" unusual, early 2-ps. cardboard product box for 3 Pigs brand candy bars (Hollywood Candy Co., Centralia, Ill.) featuring nice image of trademark pigs. Clean and excellent (basically a strong C. 8+/-) w/ some darkening on non-graphic base of box. Min. bid \$40.



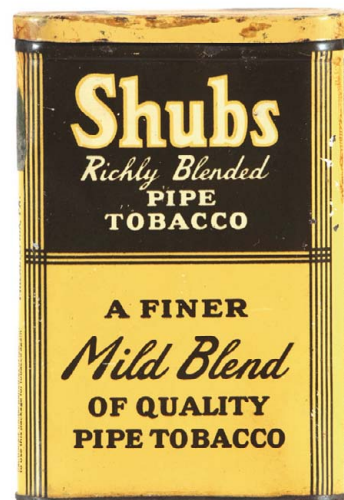
69).True Blue Baking Soda. 5.5 x 3-1/8" unusual, early cardboard product box for True Blue brand baking soda (Economy Tea & Coffee Co., Binghamton, NY), w/ attractive western theme. Displays nicely (as a C. 8/-) w/ a little light fade and some typical paper loss along top edge of backside (critical grade C. 7.5/+). Min. bid \$40.



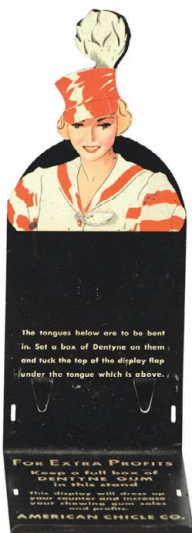
70).Adams Gum Mirror. 2.75 x 1.75" early celluloid advertising pocket mirror for Adams' "Tutti Frutti" gum, w/ graphic image of girl carrying gum tray. Clean, bright and excellent in appearance, w/ a little non-offensive light surface wear (very minor-mentioned for accuracy). Min. bid \$60.



71).Red Man Door Push. 6 x 3" outstanding early, heavy porcelain door push for "Red Man" brand tobacco. Clean, bright and like new w/ exception of a little very minor edge roughness. Min. bid \$60.



72).Shubs Pocket Tin. 4-3/8 x 3 x 1" scarce, early tin litho vertical tobacco pocket tin from Shubs Tobacco Co., Phil'a. Front displays nicely, w/ light edge wear and some glue staining on lid (where tax stamp once sat). Back has some scattered oxidized surface rust spots and some general overall wear (front a nice C. 8+/-; back a weak 7/-). Min. bid \$70.



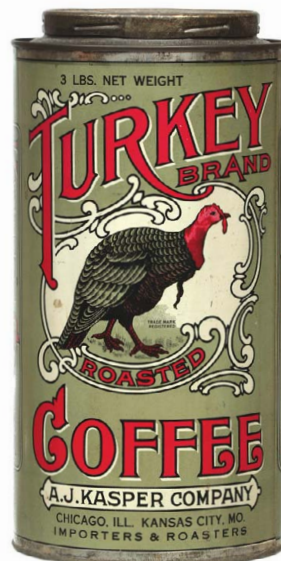
73).Dentyne Gum Display. 7.25 x 3 x 4" early, die-cut tin litho counter top store display for American Chiclé Co.'s Dentyne brand chewing gum (made to hold full box of product). Clean and attractive appearance, w/ a little light scattered wear (C. 8/-). Note: comes with an early, slightly too large cardboard display box which can be placed on stand (see website addendum for image). Min. bid \$50.



74).Baby Bunting Oats Box. 7-3/8 x 4.25" outstanding, early cardboard "Baby Bunting" brand oats box (Rowe-Fawcett Co., New Albany, Ind.) featuring wonderful image of dancing rabbits and cherub playing pipes (same image both sides). A decent and attractive piece, that displays nicely, w/ some general light age toning and the typical tattering along lid closure area (C. 7.5+/+/-). Min. bid \$50.



75).Gum Machine. 15.25 x 8 x 5" unusual, ca. 1920's/30's counter top 5¢ gum and mint packages vending machine. Has silver metallic base (marked Chicago Gum and Candy Co., Chicago, Ill. on name plate), w/ attractive original decal on heavy front glass panel. Excellent overall (C. 8+), no keys. Min. bid \$50.



76).Turkey Coffee. 10.5 x 5.5" large, 3 lb. tin litho small top style coffee can from Kasper Co. (Chicago & Kansas City) featuring great images of trademark turkey on both sides. Clean, bright and exceptionally nice appearance (C. 8.5/+/-) w/ only minor wear. Min. bid \$100.



77). Little Bunny Disney Toys. (sizes range from 2.5 x 3 x 1.75" to 3 x 3.5 x 1.75") Lot consists of a set of three ca. 1930's small Fischer Price type wooden toys, featuring early Disney cartoon character bunnies (each marked Walt Disney Enterprises). Nice overall condition w/ minor soiling and wear (C. 8+/-). Min. bid \$40.



78). Somervilles Gum Tin (Matchsafe). 3-1/8 x 1-1/8 x 1/2" unusual, early tin litho hinged lid product tin for Somerville's pineapple flavor chewing gum (text suggests using tin for holding matches when empty). Has a little light scattered wear, but overall attractive and displays nicely (C. 8-). Canadian. Min. bid \$40.



79). Shoe Leathers Sign. 9-3/8 x 19.5" great looking early embossed tin litho sign for "Kory Krome" brand shoe leathers. Clean, bright and very attractive (C. 8+), w/ a little non-offensive minor scattered wear. Min. bid \$40.

Paperweights



80). Machinery Paperweights. Lot consists of three early figural cast iron paperweights advertising various industrial machinery products. Sizes range from 2 x 1-7/8 x 2.5" to 3 x 1-7/8 x 2.25", and includes Delco Light generators; Electric Motor Shop Motors and Hammond Grinders. Condition ranges from good to very good (avg. 7.5+/-) w/ some general light overall wear from use. Min. bid \$40 (the lot).

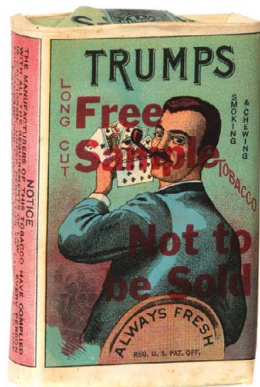


81). Wrigley's Sign. 7 x 11-1/8" early tin over cardboard bevel edged sign, featuring nice images of early packs (has easel back and string for hanging). Clean, bright and excellent (appears never used and basically displays as like new) although close examination will reveal a little minor storage wear including a couple trace bumps and a slight hint of faint creasing (barely noticeable, mentioned for accuracy) and a little non-offensive hardly noticeable oxidizing in upper left corner edge area. Impressive piece, displays great! Min. bid \$60.



82). Hopsburger Beer Sign. 6 x 12" unusual, early die-cut bevel edged sign for Union Brewing Co., San Francisco. Crisp, bright and like new appearance (basically near mint) w/ exception of a little minor handling/storage wear (C. 8.5+/-). Min. bid 70.

Sample



83). Trumps Sample Tobacco Pack. 4.25 x 2-7/8 x 1-1/8" outstanding, early soft pack style tobacco package for Trumps brand, featuring beautiful multi-color graphics (Marked: "Free Sample, Not to be Sold" in large letters on front side). Full, sealed 1-1/4 oz. package is crisp, bright and like new (near mint), w/ series of 1910 tax stamp. Min. bid \$40.



84). Big Ben Pocket Tin. 4-3/8 x 3 x 7/8" early tin litho vertical tobacco pocket tin for Big Ben brand, featuring attractive image of landmark clock tower (same image both sides). Clean, bright and excellent (C. 8.5+/-). Min. bid \$50.

Sample



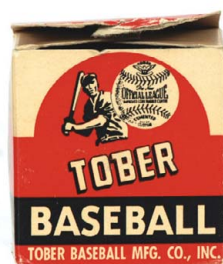
85). Empress Talc Sample. 2.25 x 1.5 x 3/4" scarce, early miniature sample size talc tin for "Empress" brand toilet powder (Empress Powder Co., NY). Has strong colors and displays nicely, w/ minor oxidizing and a little light overall wear (C. 7.5+/-). Min. bid \$40.



86). Sun-Kist Tobacco Tin. 3x 3-3/8 x 3/8" early tin litho tobacco canister for Sears, Roebuck Co.'s "Sun-Kist" brand, featuring attractive graphic image of tobacco plantation. Has a little minor wear, but overall attractive and displays nicely (C. 8+/-). Min. bid \$40.



87). Windshield Cleaner Tin. 3.25 x 4-3/8 x 3/4" unusual, early hinged lid product tin for "Leterrain" brand windshield cleaning pad, featuring great image of couple in a fancy early car. Attractive and displays very well (C. 8+/) w/ some general wear on base. Min. bid \$30.



88). Tober Baseball. 3 x 2.75 x 2.75" early horsehide leather official Little League baseball by Tober Baseball Mfg. Co., as found never used still in its original box. Ball and box are both excellent (box missing tuck in tab at front edge of lid). Min. bid \$20.



89). California Nugget Tobacco Tins. Lot consists of two different sized variations of "California Nugget" tobacco tins. Larger tin measures 4-3/8 x 3-3/8 x 1.25" and has some minor staining and a little light scattered wear (C. 7.5+); smaller tin measures 4-5/8 x 2.75 x 7/8" and is very nice (C. 8). Min. bid \$40 (the lot).



90). Condom Tins. Lot consists of three unusual tin litho condom tins (ea. 1.75 x 2-1/8 x 1/4"). Includes: "Silver Bell" some minor denting and a little light general wear (C. 7+); "Derbies" has wear along outer edges of lid, a non-offensive fine surface scuff mark and a little light soiling w/ some darkening and wear on base (lid C. 7+; base C. 7); and "Silver-Tip" has a little soiling and ageing to surface and some general light scattered wear, but overall decent and displays pretty well (C. 7.5+/). Min. bid \$60 (the lot).



91). Spacecraft Lunchbox. 6.5 x 9 x 4.25" metal lunchbox set by Thermos brand, featuring wonderful images of futuristic space travelers, rockets, spacecraft, planets, etc. Has a couple minor dent marks and light wear from use, but overall clean, bright and very attractive (C. 8+/) and comes complete w/ original thermos bottle. Min. bid \$30.



92). Hamilton Gall Remedy Tin. 2-3/8 x 7/8" unusual, very early 2-ps. tin litho product can for Hamilton's salve and gall remedy, featuring attractive, finely detailed graphics. Clean, bright and like new (near mint). Min. bid \$30.



93). Wrigley's Gum Displays. 5.5 x 17.25 x 4-1/8" and 5.75 x 10.75 x 4-1/8" lot consists of two early tin litho countertop store display racks for Wrigley's chewing gum, both in nice overall condition. Each has a little minor soiling, wear and typical light crazing, but overall they are attractive and display nicely. Both are as found and will should improve a bit w/ cleaning (C. 8-). Min. bid \$60 (the pair).



94). Sea Foam Tobacco Bucket. 11-1/8 x 12.25 x 12-3/8" very early wooden tobacco bucket f/w bale handle and a glass viewing window for Alford's Sea Foam brand tobacco. Excellent (C. 8+/). Min. bid \$50.

State Seal Champagne



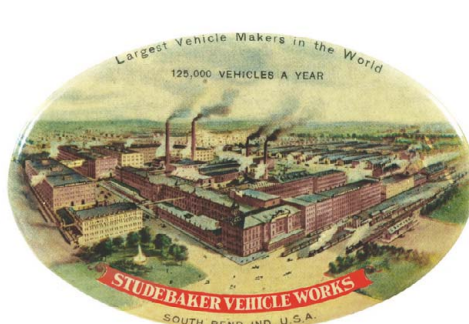
95). Champagne Ashtray/Match Holder. 4-7/8 x 6.75 x 3.75" early, fancy bronze ashtray w/ match box attachment at top advertising Empire State Wine Co.'s "State Seal Champagne" (Penn Yan, NY). Heavy, very high quality piece, features topless girl and bottle on both sides, w/ beautiful detailing and nice surface patina. Excellent. Min. bid \$40.



96). Hiawatha Tobacco Tin. 8.25 (dia.) x 2" early tin litho 16 oz. pie shaped tobacco tin for Spaulding & Merrick Co.'s "Hiawatha" brand, w/ beautiful detailed graphics. Clean, bright and excellent (C. 8.5+). Min. bid \$60.



97).Wagons Tip Tray. 3-3/8 x 4-7/8 x .5" scarce, early tin litho advertising tip tray for Bettendorf Axle Co.'s wagons, featuring beautifully detailed color graphics. Crisp, bright and like new appearance (C. 8.5+) w/ minor crazing. Min. bid \$50.



98).Studebaker Pocket Mirror. 1.75 x 2.75" early celluloid advertising pocket mirror for Studebaker Vehicle Works, South Bend, Ind., featuring birds eye view of factory. Clean and excellent. Min. bid \$40.



99).Cigars Tip Tray. 3.25 x 4.75" very early, embossed tin litho tip tray for Cobb Bates & Yerxa brand cigars, featuring nicely detailed color graphics. Clean, bright and very attractive appearance, w/ non-offensive scratch mark on rim (a strong C. 8/+). Min. bid \$40.



100).Dr. Pepper Tray. 13.25 x 10.5" attractive, early tin litho serving tray for Dr. Pepper brand soda, featuring attractive colorful image. Clean, bright and exceptionally nice (C. 8.5/+). Min. bid \$70.



101).Seal of Minnesota Cigar Cutter. 8-5/8 x 8-3/8 x 5.25" early cast iron countertop advertising cigar cutter for "Seal of Minnesota" brand cigars, featuring attractive embossed image of farms, factories, etc. Has some ageing, darkening and general wear from use (including light oxidized pitting on ashtray base), but overall attractive and displays and works nicely (C. 7++). Min. bid \$70.



102).Yellow Kid Gum Broadside. 11 x 8.5" scarce, early paper litho broadside ad from the Pulver Chewing Gum Co., for a Yellow Kid brand chewing gum promotional offer, w/ great image of YK gum box. Clean, bright and attractive (C. 8/+), w/ exception of a little tattering and light toning along outer edges (back side blank). Min. bid \$50.



103).Comic Book Display. 13.5 x 7-3/8" unusual cardboard die-cut store display sign from Pillsbury Pancake Flour, for a Gene Autry promotional comic book, complete w/ one of the 32 pg. books. Piece is clean and bright and displays quite well, w/ a vertical crease/ bend mark through image area (comic book decent, w/ light vertical fold line through center). Min. bid \$30 (the lot).



104).Seal of NC Tobacco Sign. 20-1/8 x 15.5" (13-7/8 x 9/25" visible) early paper litho sign for Seal of North Carolina, featuring beautifully detailed multi-color graphics (A. Hoen, Balt., lithographers). Clean, bright and excellent, nicely framed and matted ((C. 8.5/+). Min. bid \$60.



105).Windmill Biscuit Tin. 13 x 3-5/8 x 3-5/8"unusual, ca. 1920's tin litho figural Huntley & Palmers biscuit tin, w/ turning blades. Clean and very attractive in appearance, w/ a little minor and non-detracting faint scattered speckling (C. 8/+). Min. bid \$60.



106).Door Push Lot. Lot consists of four original tin litho advertising door push plates for various soda pop products (hgt. app. 11-7/8" on ea.). They are all clean, bright, excellent and appear never used (C. 8.5+), w/ exception of some slight scuffing and fairly minor edge wear on Spur push. Min. bid \$80 (the lot).



107).Cook's Beer Sign. 13 x 21" early, tin over cardboard sign advertising Cook's Beer, featuring nice "Old Days" image (American Art Works, lithographers). Clean, bright and very attractive in appearance, w/ a few non-detracting minor scratch marks (displays as near mint, critical grade C. 8++). Min. bid \$50.



108).Quadroon Tobacco Pouch. 4 x 3 x 1.75" very early cloth tobacco pouch for Quadroon brand (Bolling, Wright & Co., Liberty Va.) featuring wonderful image of Victorian woman w/ fan. Full, sealed, never opened pouch is excellent overall (a strong C. 8++); 1883 tax stamp. Min. bid \$50.



109).Man w/ Tankard Match Holder. 4.75" (h) early figural metal match holder in shape of man holding up beer tankard (note: his head is hinged and body inside holds matches). Excellent, w/ nice detailing and attractive surface patina. Min. bid \$40.



110).San Tox Foot Powder. 4.5 x 2.25 x 1-7/8" scarce, early tin litho foot powder tin for DePree Co.'s "San Tox" brand, featuring great image of Co.'s trademark nurse. Clean, bright and excellent (C. 8.5/+). Min. bid \$40.



111).Checkers Pocket Tin. 4.5 x 3 x 1" early tall variation vertical tobacco [pocket tin for Weisert Bros. "Checkers" brand, w/ attractive checkerboard background pattern. Colors are bright and piece displays quite nicely (basically a C. 8+/), w/ some fairly general scattered wear and some speckling on lid. Min. bid \$50.



112).Tooth Brush Holder. 6 x 2-7/8" early tin litho die-cut toothbrush holder in likeness of Skeeze cartoon character, advertising "Listerine" brand tooth brushes. Clean, bright and attractive appearance, w/ minor wear (C. 8++). Min. bid \$40.



113).Koken's Barber Bottle. 8.5 x 3.25 x 3.25" unusual, early label under glass barbershop hair tonic bottle advertising "Koken's Quinine Tonic for the Hair". Scarce, high quality piece is very nice, w/ excellent label (has minor white hazy remnant traces on inside of bottle). Min. bid \$60.



114).Coca-Cola Door Push. 13-5/8 x 3.5" ca. 1930's early enameled porcelain advertising door push for Coca-Cola. Clean, bright and excellent appearance (a strong C. 8.5/+), w/ faint, very minor surface wear (barely noticeable, mentioned for accuracy). Canadian. Min. bid \$60.

Planters Peanuts Co.



115).Planters Cashews Box. 4.5 x 8-5/8 x 2-3/8" unusual, ca. 1920's 2-ps. product box for Planters Peanut Co.'s 5¢ Salted Cashews. Has a little light edge wear and minor toning, but overall clean and quite nice (C. 8+). Min. bid \$40.

Sample



116).Dot Coffee Sample. 2.5 x 2" dia., early tin litho miniature "five cup sample" coffee can, for Dot brand coffee (Janszen Co., Cincinnati, Oh.). Clean and excellent (C. 8.5/+). Min. bid \$40.

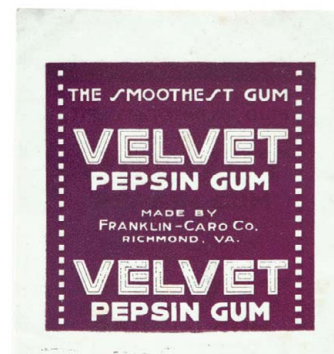


117).Plug Crumb Cut Pocket. 4.25 x 3.5 x 1" early tin litho vertical tobacco pocket tin for "Plug Crumb Cut" (David Ehrlich Co., Boston). Clean, bright and attractive appearance (a strong C. 8++) w/ minor wear. Min. bid \$50.

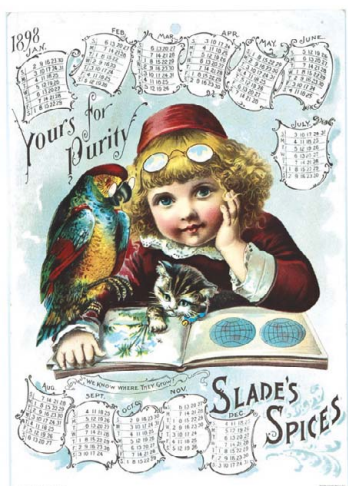


118).Patte Valley Corn Tin. 4.5 x 3-3/8"(dia.) very early hand-soldiered paper label tin for Patte Valley Packing Co.'s sugar corn, w/ image of trademark horse on front and corn cobs on back. Has nice colors and displays well, w/ some light staining on backside (front C. 8+; back C. 7.5). Bottom opened (still attached). Min. bid \$40.

Franklin Caro Co.



119).Velvet Gum Wrapper. 3.5 x 3.25" early paper chewing gum wrapper for Franklin-Caro. Co. "Velvet" brand chewing gum. Near mint, never folded wrapper is crisp and like new (note: this is Co. that also made Coca-Cola chewing gum). Min. bid \$20.



120).Slade's Spices Calendar. 9-3/8 x 6.5" outstanding, early cardboard 1898 advertising calendar for Slade's Spices, featuring stunning multi-color graphics (Donaldson Bros. Litho). Clean, bright and excellent (C. 8.5/+). Min. bid \$60.



121).Hohenadel Beer Sign. 17 x 23.25" large, early tin over cardboard sign for Hohenadel Beer, featuring beautiful multi-color graphic image of legendary race horse "Man of War" (litho by American Art Works). High quality piece is crisp, bright and like new (C. 8.5++). Min. bid \$70.



122).Omar Tobacco Bin. 11.5 x 8.25" scarce, early, round store size tin bin for Omar brand tobacco (C. Shenkberg Co., Sioux City, Iowa) featuring large attractive paper labels (same on both sides). Front label displays well (C. 7.5/+) w/ some non-offensive staining and scattered wear; back label has areas of paper loss under chin and some general wear (back fair to good). Min. bid \$60.

Saloon Sign



123).Saloon Sign. 19.75 x 15" wonderful, early paper litho sign on heavy textured paper advertising Joseph Wysocki Saloon, Niagara Falls, NY ("Choice Wines, Liquors and Cigars") featuring great image of topless saloon girl. Clean, bright and very attractive appearance (displays as a strong C. 8+) w/ metal strips at top and bottom (note: has archival tape on back side of top strip). Min. bid \$100.



124).Mechanic Overalls Original Art. 20 x 13.5" outstanding, early hand-painted original art work illustration painting used for making an advertising sign. A very high quality piece, w/ beautiful detailing, displays as near mint, although a close examination will reveal a little minor, professionally done restoration (repaired tear mark at top) and it appears to have been re-mounted onto a cardboard backing piece. Min. bid \$70.



125).Cigar Cutter & Lit Match Dispenser. 9 x 7 x 8.25" unusual, early mechanical "Perfect Match Lighter" wooden (oak) countertop machine. Pushing down on handle works cigar cutter mechanism and at same time dispenses out a lit match. Excellent and all original, w/ a real nice surface patina (a strong overall C. 8/+), w/ one tack missing from front name plate. Min. bid \$80.



126).Tiger Tobacco Sign. 8-3/8 x 12-7/8" outstanding, very early cardboard litho sign for Lorillard Co.'s "Tiger" brand chewing tobacco, featuring beautiful detailed graphics. Sign is clean and very attractive (a strong C. 8++) w/ minor toning and a slight hint of fade (Hatch Litho, NY). Nicely framed (frame shown on website addendum). Min. bid \$100.



127).Star Sewing Machine Sign. 20 x 27" (24.75" visible) large, 1880's paper litho sign advertising Star Sewing Machines, featuring nicely detailed image of black family in donkey cart (litho by W.J. Morgan, Cleveland, Ohio). Clean and very attractive appearance (C. 8/+), w/ minor wrinkle marks. Framed. Min. bid \$100.



128).Van Dyke Display Mirror. 13.5 x 12-1/8" unusual, fancy, very high quality counter top make-up mirror advertising Van Dyke's face powder. Has a beautifully detailed embossed heavy metal easel back base, w/ painted advertising on mirror glass. Excellent, w/ some non-serious typical dark spots in mirror glass. Probably from early department store make up or jewelry department counter. Min. bid \$60.



129).Manila Girl Cigar Sign. 10-5/8 x 8.5" unusual early cardboard hanging sign for Manila Girl brand cigars. Clean, bright and excellent (C. 8.5/+) w/ a powerful and very impressive look (note: lettering has a metallic glitter type finish). Min. bid \$40.

Animated Store Display



130).Potato Chips Display. 22 x 19 x 6.5" early cardboard battery operated mechanical display piece for Old King Cole brand potato chips, complete w/ section that hold large early can (his hand and face rocks back and forth bringing chips into his mouth). Piece is excellent and comes w/ original partial box; can has a little bit of light wear and fade (display piece C. 8.5; can C. 8-). Min. bid \$50.



131).Humpty-Dumpty Talc. 7-5/8 x 3-1/8 x 2" unusual 12 oz. tin litho can for Humpty-Dumpty brand talcum powder, w/ nice images of nursery rhyme characters on all four sides (Furst-McNess Co., Freeport, Ill.). Clean, bright and excellent (C. 8.5+). Min. bid \$40.



132).Kamo Spice Tin. 4 x 2.25 x 1.5" scarce, early paper label over cardboard 3 oz. spice tin for Kamo brand (Paxton & Gallagher Co., Omaha) w/ same attractive image on both sides. Clean and excellent in appearance, w/ minor age toning and light speckling on backside (front C. 8+; back 8/-). Min. bid \$40.



133).Raven Laxative Tablets. 2.5 x 7/8 x 5/8" scarce small, early tin litho product tin for Raven brand laxative tablets, featuring great image of trademark bird. Full tin is clean, bright and excellent (C. 8.5+). Min. bid \$30.



134).Uncle Sam Game. 15-5/8 x 7-7/8 x 1" outstanding, early "Get There" boxed McLoughlin Bros. game box, featuring wonderful graphic image of Uncle Sam on horseback. Excellent, w/ game board and playing pieces inside. Min. bid \$50.



135).Nehi Soda Sign. 3-3/8 x 19-3/8" early embossed tin litho strip sign for Nehi brand soda. Crisp, bright and like new, w/ great deco era design (near mint). Min. bid \$40.



136).Michelin Cards. 3-5/8 x 2-5/8 x 5/8" complete, early playing card deck in its original box advertising Michelin Tires, featuring great images of Co.'s trademark character Bib. Cards are crisp and like new (near mint) w/ a little light wear to storage box. Min. bid \$40.



137).Pinkerton's Sign. 3-3/8 x 7.25" small, early porcelain store sign from Pinkerton's Detective Agency for members of its Jewelers' Security Alliance burglary protection service, w/ nicely detailed image of Co.'s trademark watch dog. Excellent, w/ only minor wear (C. 8.5/+). Min. bid \$50.



Hotel Bell



138).Cat Hotel Bell. 2.5 x 3-7/8" wonderful, early celluloid and metal clockwork hotel bell w/ glass eyes (pressing on cats tongue rings steady bell). Nice detailing, excellent condition. Min. bid \$60.



139).Ojibwa Tobacco Tin. 6-5/8 (dia.) x 1-5/8" early tin litho 8 oz. size pie shaped tobacco tin for Scotten Dillon Co.'s "Ojibwa" brand. Clean and attractive appearance (C. 8/+) w/ a little light scattered edge wear. Min. bid \$50.



140).Kingsford's Starch Box. 5-3/8 x 6.75 x 4.25" very early (ca. 1880's) cardboard store box w/ a beautiful graphic label on front featuring farmer, ears of corn, bare breasted Indian princess, etc. Clean and very attractive (C. 8+). Min. bid \$40.



141).Oil Co. Clock. 10" (dia.) x 2.75" deep, early Canadian advertising clock for C.C. Snowdon Co.'s Motor Oil. Excellent and all original, clock face is a fine, very high quality early porcelain china, w/ fired on advertising, w/ metal clock case attached to backside (nice working condition). Neat and unusual piece, in excellent condition. Min. bid \$60.



142).Esterbrook Pens Sign. 11-1/8 x 8.5" very early paper litho sign w/ metal strips at top and bottom for Esterbrook's Pens, featuring beautiful multi-color graphics. Clean, bright and like new (near mint). Min. bid \$70.



143).Mineral Water Tray. 13-1/8" dia. outstanding, early tin litho advertising serving tray for Bartlett Spring Mineral Water (Lake County, Calif.) featuring stunning, beautifully detailed multi-color graphics. Clean, bright and very attractive appearance (displays as a strong C. 8+), although close examination will reveal a little non-offensive faint scratching and minor scattered wear (critical grade C. 8-). Min. bid \$100.



144).Honest Scrap Porcelain Sign. 12 x 9" early, heavy porcelain advertising sign for "Honest Scrap" brand tobacco. Has nice color and displays well, w/ chipping wear at upper left edge and some fine, faint spider web type crackling lines evident in letters O N and T and in white trademark area (C. 8-). Min. bid \$50.

Dental Samples



145).Dental Samples. Lot consists of six different early tooth powder sample tins (hgt.'s range from 2-1/8 x 1.75 x 7/8"). Includes: 3 variations of Revelation, Dr. Lyon's, Dr. Martin's and Caroid. Lot also includes a full miniature sample tube of "Ipana" tooth paste, still in its original box. All are excellent (most tins are still full). Min. bid \$40 (the lot).



146).Blimp Cigar Cutter. 4.25 x 8.75 x 4.75" unusual, early figural countertop cigar cutter and match holder in shape of early airship (turning the propeller cuts cigars). Nice high quality piece, nickel over brass w/ painted base. Very good condition, w/ a little light wear from use w/ a couple minor dent marks. Neat piece! Min. bid \$40.



147).DeLaval Cows. Lot consists of two early colorful and highly graphic tin litho promotional stand-up cows for De Laval brand cream separators, w/ advertising on both sides. Cow 3.75 x 4-7/8"; skim milk calf 1-7/8 x 2-7/8". Both are clean, bright and like new (C. 8.5+) as found never used still in their original envelope (brittle partial envelope is well tattered). Min. bid \$40 (the pair).



148).Victor Needles Tin. 1-7/8 x 3 x 1" unusual, early 2-ps. tin litho product tin for Victor brand phonograph needles (originally held 1000 needles) w/ attractive gold embossed trademark image of Nipper and Victrola. Excellent (a strong C. 8+). Min. bid \$30.



149).Tobacco Pouches. Lot consists of two full, sealed, early paper label cloth tobacco bags, ea. w/ 1926 tax stamps. Includes: "Meerschbaum" brand 4.25 x 2.5 x 1.25" (C. 8-) and "Peppers True Smoke" 3.25 x 2-1/8 x 1" (C. 8+). Min. bid \$20 (the pair).

Postcard



150).Giant Salted Peanuts Pail. 3-3/8 x 3-7/8" dia. early tin litho 8 oz. size pail for Superior Peanut Co.'s "Giant" brand, featuring beautiful color graphic circus images all around. Clean, bright and excellent appearance (a strong C. 8++) w/ exception of small litho chip in "i" of "giant". Min. bid \$50.



151).C.H.Y.P. Tobacco Tin. 3-3/8 x 4.5 x 2.25" scarce, very early tin litho square corner tobacco tin for Cameron & Cameron Co.'s CHYP tobacco, featuring beautiful detailed graphic sporting images (by Ilsey & Co.) on lid and sides, w/ Cornell, Harvard, Yale and Princeton school flags. Exceptionally nice example, w/ some non-offensive light chipping on side edges (lid a strong C. 8++; sides C. 8+-). Min. bid \$50.



152).Vin-Fiz Postcard. 3-1/8 x 5.5" scarce, early postcard advertising Vin Fiz brand grape soda, w/ great image of Co.'s trademark girl (dated 1913). Clean, bright and excellent in appearance w/ minor age tone soiling and a trace hint of a faint bend mark in bottom left corner (never mailed). Min. bid \$20.

Sample Packs



153).Tobacco Samples. 3.75 x 2.25 x .25". lot consists of two full, sealed, never opened tobacco samples packages from Christian Peper Tobacco Co.'s "Wellington" and "Fifth Avenue" brands (each has pricing info on back w/ 1926 tax stamps). Excellent. Min. bid \$20 (the pair).



154).Cast Iron Ashtray. 5 x 6-5/8 x 1" unusual, early chrome plated figural cast iron advertising ashtray for Bennett & O'Connell Co., makers of plating and buffing materials and machinery, w/ a nice Art Nouveau type design. Excellent. Min. bid \$40.



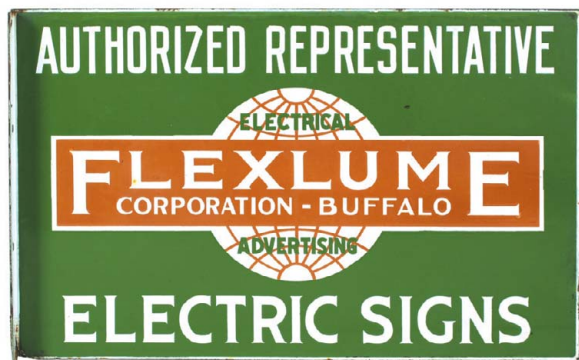
155).Roi-Tan Cigars Advertising Car. 4-5/8 x 4.25 x 1.5" unusual, early metal advertising car for Roi-Tan Cigars, w/ advertising promoting Sophie Tucker CBS Radio show's Chevrolet car give-away. Has some general light scattered wear from use, but overall decent and displays nicely (C. 7.5+/8). Min. bid \$40.



156).Cigarette Lot. Lot consists of five full, sealed, early cigarette packs, each app. 2-7/8 x 2-1/8 x 7/8". Includes: Domino, Omar, Bright Star, "111" and Skis. All are excellent. Min. bid \$60 (the lot).



157).Clean Easy Soap Sign. 3 x 13-5/8" very early, heavy porcelain strip sign for "Clean Easy" brand soap. Crisp, bright and like new. Min. bid \$50.



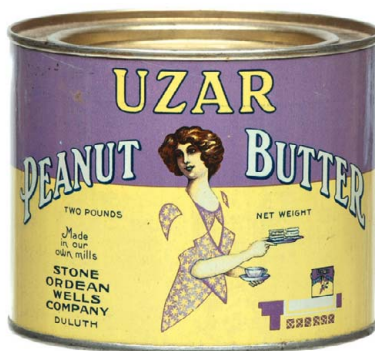
158).Flexlume Sign Co. Sign. 15 x 24" unusual, early, heavy high quality 2-sided porcelain flange sign by Baltimore Enamel for "Flexlume Sign Co. of Buffalo, NY, renowned maker of illuminated electric and neon signs. Sign is clean and very attractive (C. 8+/-), w/ minor haziness on back side and a little light oxidized edge chipping (go to www.flexlume.com/history.htm to see history of Co.). Min. bid \$60.



159).Pocket Knives Display. 12.25 x 12.25 x 1" lot consists of a great ca. 1940's/50's never used cardboard store display for "Super Jack" futuristic rocket shaped pocket knives w/ colorful plastic handles, as found still in its original shipping box, complete w/ all 18 of its original knives. Knives are nice quality (made by Camillus Cutlery Co., NY). Excellent, w/ minor storage wear. Min. bid \$60.



160).Vanity Shoe Polish Tin. 2.75 x 1.25" early tin litho shoe polish tin from Vanity Mfg. Co. (Buffalo, NY) featuring great image of devil holding shoe. Image area is bright and very nice (C. 8-ish), w/ a little darkening and light wear along side edge. (critical grade C. 7.5+/-). Min. bid \$30.



161).Uzar Peanut Butter Tin. 3.75 x 4.75" early 2 lb. size tin litho product can for Uzar brand peanut butter (Stone Ordean Wells Co., Duluth), featuring great image of Co.'s trademark woman. Clean, bright and very attractive (C. 8.5) w/ just a faint hint of minor crazing. Min. bid \$40.



162).Carnation Tip Tray. 4-3/8" dia. early, colorful and highly graphic tin litho advertising tip tray for Dorn Co.'s Carnation brand chewing gum. Tray is clean, bright and excellent in appearance as found never used still in its original protective paper (near mint appearance), w/ only minor storage wear. Min. bid \$50.



163).Chesterfield Cigarettes Tip Tray. 6-1/8 x 4-1/8" early tin litho tip tray for Liggett & Myers Co.'s Chesterfield brand cigarettes, w/ beautifully detailed image of early pack. Clean, bright and excellent appearance (displays as a strong C. 8++) w/ a few non-detracting minor specks in dark background area (mentioned for accuracy only, very minor and barely noticeable). Min. bid \$40.



164).Princeton Mixture Tobacco Tin. 4.5 x 3.5 x 2-1/8" early tin litho hinged lid vertical tobacco box for Marburg Bros. "Princeton Mixture", featuring fine early lithography by Somers Bros. Displays nicely, w/ minor crazing and some non-offensive early edge chipping along side edge. Min. bid \$40.



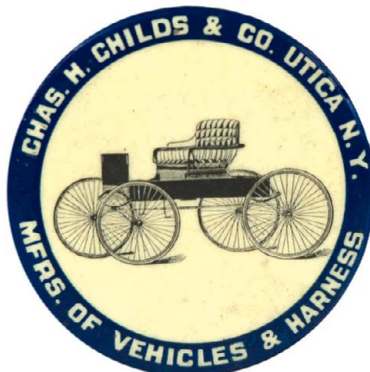
165).Keystone Overalls Mirror. 2.75 x 1.75" early celluloid pocket mirror advertising Keystone brand overalls, featuring beautiful multi-color graphic image of semi-nude girl in overalls shirt. Clean, bright and excellent w/ only very minor wear from use (some dark spots in mirror glass). Min. bid \$50.



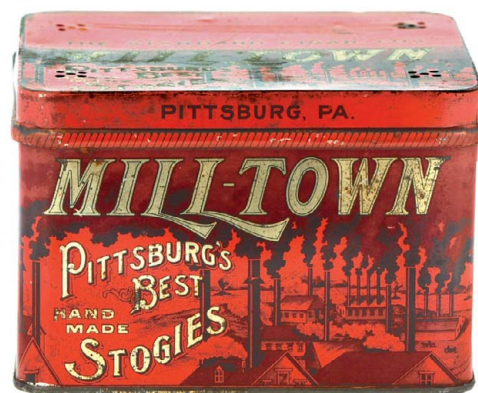
166).Roosevelt Spice Tin. 3.75 X 2.25 X 1.25" scarce, early tin litho spice tin for Karasik Bros. Co. (Chicago) "Roosevelt" brand spices, featuring nice image of Teddy Roosevelt (same image both sides). Clean, bright and very attractive (C. 8+) w/ only minor wear. Min. bid \$50.



167).Cameron Pumps Match Safe. 2.75 x 1.5 x 3/8" early celluloid over metal advertising match safe from Cameron Steam Pump Works Co., New York, w/ images of different pumps on front and back. Clean and excellent (near mint). Min. bid \$40.



168).Buggy Maker Mirror. 1.75" scarce, early celluloid advertising pocket mirror for Chas. Childs Buggy and Harness makers (Utica, NY) w/ nicely detailed image of early carriage. Clean and excellent. Min. bid \$40.



169).Milltown Cigar Tin. 6 x 6 x 4-1/8" tin litho 100 ct. cigar can for Mill Town brand, featuring nice early graphic images of smoke spewing Pittsburgh factories on front, back and lid. Has good color and displays quite nicely w/ some hazy spots and darkening on lid (front & back C. 8/+; lid C. 7.5) w/ exception of some early scratch lines on areas where tax stamps once sat. Min. bid \$40.



170).Black Wedding Textile. 23 x 22" early colorful and highly graphic cloth pillow cover type textile featuring wonderful image of a black family wedding. Clean, bright and very attractive, mounted on art board and ready for framing (can be easily removed from board). Excellent. Min. bid \$40.



171).Hinckel Brewing Die-Cut. 10-7/8 x 14-1/8" outstanding, large, early embossed cardboard advertising die-cut sign for Hinckel Brewing Co. (Albany NY and Manchester, NH). Clean, bright and very attractive (a strong C. 8/+ appearance) w/ a little non-detracting minor background wear including a couple tiny staple holes in bottom right area where small calendar pad probably once sat (note: the letters "Hi" in word "Hinckel" appear to have been redone). Beautifully framed and matted (see website to view w/ frame). Min. bid \$150.



172).Suspenders Display. unusual early chain hung country store ceiling display holder for Common Sense brand suspenders, w/ 8" diam. 2-sided tin litho sign. Sign has some light soiling and general light wear, but overall piece is attractive and displays nicely (C. 7.5/+). Lot also includes several different later era old store stock suspenders that can be used for displaying on piece. Min. bid \$50.



173).Oak Leaf Soap Sign. 33-5/8 x 24" (30.75 x 21-1/8" visible) very early, large paper or cardboard litho sign for Oak Leaf brand soap (Gowans & Stover Co., Buffalo, NY) featuring wonderful graphic image of attractive girl in rain carrying basket of soap bars. A powerful and very impressive looking sign in attractive period frame. Clean, bright and very nice in appearance w/ a little minor age toning (basically displays as a strong C. 8/+). although close examination will reveal a few areas of barely noticeable touch-up and restoration. Min. bid \$100.



174).West End Brewery Calendar. 40.5 x 23" (33 x 16" actual) large 50th anniversary 1938 advertising calendar for Utica Club brand beer (West End Brewing Co., Utica, NY) featuring attractive factory scene and images of the corresponding dates US presidents. Clean, bright and excellent condition (a strong C. 8.5/+). w/ full calendar pad and original metal strips at top and bottom. Nicely framed and matted (note: some scratching to frame). Min. bid \$60.



175).Spice Tins. Lot consists of four early colorful and graphic small size tin litho spice tins (each app. 2 to 2-1/4" hgt). Includes: Lauderdale, Iris, Fiesta and Defiance brands. All are clean, bright and very attractive (C. 8++). Min. bid \$50 (the lot).



176).Veterinary Surgeon Sign. 11 x 31"very early sand painted wooden trade sign for "Dr. Turner Veterinary Surgeon". All original, has a very attractive country folk art type look, w/ some darkening and a nicely alligatored surface finish (C. 8/-). Min. bid \$60.

Baldwin DRY AIR Refrigerators

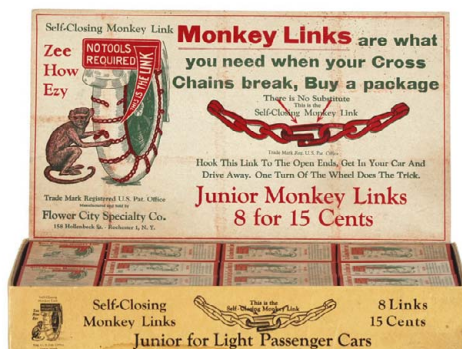
177).Baldwin Refrigerators Strip Sign. 3 x 24" very early, heavy porcelain strip sign for Baldwin Refrigerators, w/ nice raised volcano type grommet holes. Excellent, w/ exception of chip spot under bottom left hanging hole. Min. bid \$40.



178).Advertising Turtles. Lot consists of two early advertising turtles, ea. app. 2.25 x 1.5 x 1/2". They have painted cast iron bases, w/ celluloid "shells" at top. Includes "Mentholatum" medicine and "Century" oak flooring. Both are excellent. Min. bid \$50 (the pair).



179).King Oscar Cigar Cutter. 6.75 x 8.75 x 7.25" Unusual, early, fancy embossed cast iron counter top cigar cutter for John Herman Co.'s "King Oscar" brand. Has a little typical expected surface plating loss and light wear to marquis area as well as some age toned darkening to paper label inside, but overall decent and displays nicely (C. 7.5+/8-). Min. bid \$60.



180).Tire Chain Display Box. 8-7/8 x 12-7/8 x 7.25" full, early store display box for "Monkey Links" brand tire chain links, complete w/ all 22 of its original product boxes. Very nice condition (C. 8+/-) w/ a little typical minor expected age toning and storage wear. Min. bid \$40.



181).Greene Circle Gum Display. 8.75 x 9 x 6.75" early tin litho counter-top display for "Greene Circle" brand chewing gum, w/ nice image on inside display lid and the lift-up cover. Clean and attractive appearance (C. 8+/-) w/ minor soiling and wear. Min. bid \$50.



182).Mammoth Nuts Bowl. 5-5/8" dia. x 2.25" unusual, early tin litho advertising nut bowl for Kelly's "Mammoth" brand salted nuts, featuring great image of Co.'s trademark "Mammoth" elephant. Clean, bright and excellent overall (C. 8+/-) w/ a little light scattered wear. Min. bid \$40.

Cigar Punch



183).Cigar Punch. 2.25 x 1/2" (dia.) unusual, very early, small mechanical pocket sized figural metal cigar punch in shape of early champagne bottle, w/ embossed brass label advertising the Athens Athletic Club of Oakland, California. Very high quality piece, excellent condition (works nicely). Min. bid \$40.



184).Rosemary Oats Box. 7.5 x 4.25" early 1 lb. 4 oz. cardboard oats box for Rosemary brand (Kunn Co., Chicago) w/ same image on both sides. Clean, bright and very attractive appearance (a strong C. 8++) w/ minor toning and small tear on side flap on back side of lid. Min. bid \$40.



185).Bunny Biscuits Tin. 7.75 x 4.25 x 2.75" scarce, early tin litho Jacob Biscuit Co. "Lucky Wheel" British biscuits tin and bank, w/ wonderful images of rabbit characters on front and sides (has coin slot at top and a spinning fortune wheel on front). Clean, bright and excellent in appearance (C. 8+/-) w/ exception of couple wear spots near top of side edges. Min. bid \$60.



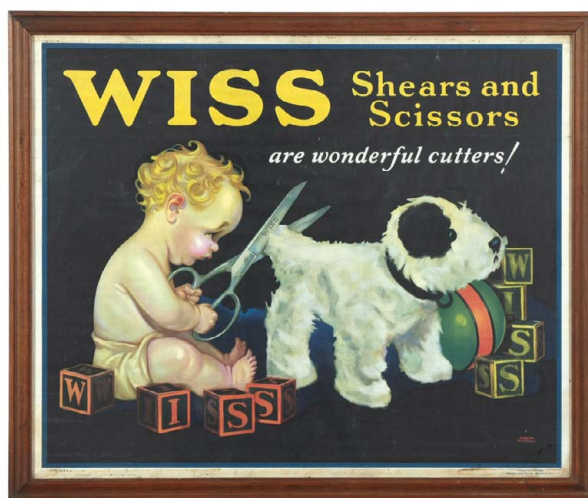
186).Salada Tea Sign. 5.25 x 12-5/8" early porcelain Salada brand tea sign in shape of Co.'s early product box. Exceptionally nice example is clean, bright and excellent (A strong C. 8.5++). Min. bid \$50.



187).Chicklets Gum Toy Glasses. 1-7/8 x 3.75" unusual, early novelty toy glasses advertising Chicklets brand chewing gum. Two sided cardboard, w/ wire attachment at top, w/ tiny holes for seeing through ("you will get cross eyed looking for better chewing gum"). Excellent. Min. bid \$30.



188).Monamobile Oil Funnel. 7.5 (h) x 6.5" (dia.) unusual, early metal advertising funnel w/ lithographed advertising for Monarch Oil Co.'s "Monamobile" brand motor oil, featuring nice image of early touring car. Has general ageing wear and light overall speckling in graphic advertising area, but a neat and scarce piece that displays fairly well (critical grade C. 7-). Min. bid \$40.



189).Wiss Scissors Sign. 26 x 31" (23.5 x 28.5" visible) great early cloth advertising sign for Wiss brand scissors, featuring adorable image by illustrator Joseph Faprelly. Clean, bright and very attractive in appearance, w/ some non-offensive faint staining in outer white margin area (C. 8/+). Nicely framed. Min. bid \$60.



190).Our Hero Coffee Tin. 6.75 x 4.25" very early, six sided tin litho 1 lb. coffee can for "Hero Blend" (Cleveland Coffee Co., Cleveland, Oh.) w/ beautifully detailed graphic images (by Hunt Litho) of US military heroes in uniform (includes: General Shafter, Admiral Sampson, Commodore Schley, General Miles and Admiral Dewey). Clean, bright and exceptionally nice (a very strong C. 8++). Min. bid \$100.



191).Vet Box. 5.5 x 11.5 x 7-5/8" unusual, early wooden 10 lb. size product box for Baum's Horse and Stock Food, featuring colorful, very attractive paper labels all around. Has minor fade and some edge loss to paper, but overall attractive and displays nicely (C. 7.5+/8-). Min. bid \$40.



192).Airplane Drum. 5 x 11" (dia.) early tin litho children's toy drum w/ beautiful color graphic images of great looking early airplanes all around. Clean, bright and excellent (C. 8.5/+). Min. bid \$40.



193).Lucky Strike Tins. Lot consists of three different variations of hinged lid Lucky Strike tobacco tins, each app. 3.75 x 4.5 x 3.25". All three are clean, bright and excellent (C. 8.5/+). Min. bid \$40 (the lot).



194).Moxie Smoke Stand. 32.25 x 8 x 6-5/8" early, wooden painted advertising smoke stand for Moxie, in likeness of Co.'s trademark character "Hitchy". Great folk art type piece, is all original, w/ a beautiful rich patina to it's nicely colored all original paint surface, w/ an original embossed tin insert Moxie ashtray. Excellent (C. 8.5/+). Min. bid \$80.



195).Fisk Tires Sign. 44 x 11.5" scarce, early yard-long style paper litho advertising banner for Fisk Tires, features wonderful repeating images of Fisk's trademark candlestick kids, early tires, etc. Clean bright and attractive in appearance (basically a C. 8+/) w/ a little light edge chipping in outer margins (would be hidden if framed), a 2.5" tear mark at left edge and a couple tiny surface wear spots. Displays very well and is ready for framing. Min. bid \$60.

Biscuit Tin



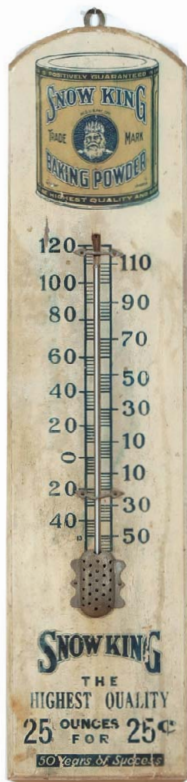
196).Globe Biscuit Tin. 7" dia. early (ca. 1906-07) tin litho globe shaped Huntley & Palmers biscuit tin. Clean, bright and excellent appearance (basically a strong C. 8+/) w/ some wear underneath (on base). Min. bid \$50.



197).Strawberry Preserves Firkin. 6.25 x 6-7/8" small, early wooden product firkin from New Jersey Preserving Co. (Camden, NJ) for Co.'s strawberry preserves, w/ beautiful graphic multi-color label on front. Clean and very attractive (C. 8++). Min. bid \$50.



198).Sand Pail. 3.5 x 4.5" (dia.) very early tin litho sand pail w/ nice images of boats and bathers at sea shore, w/ star patterns on back. Excellent (a strong C. 8+), Min. bid \$40.



199).Snow King Thermometer. 23-7/8 x 5-7/8" unusual, early, wooden advertising thermometer for Snow King brand baking powder, featuring nice image of Co.'s early product can. Displays well, w/ a nice primitive and folksy country type look (C. 7+/), w/ some soiling, crazing, weathering and general overall wear to paint surface. Min. bid \$50.



200).Hoyt's German Cologne Sign. 34.75 x 26-5/8" (29 x 20.75" visible) outstanding, very early paper label sign for Hoyt's German Cologne in attractive period frame, featuring beautiful multi-color lithography (dated 1885). A powerful and very impressive piece that is clean, bright and exceptionally nice (a very strong C. 8++) w/ some non-detracting minor wavy wrinkle marks. Min. bid \$250.



201).Head Play Cigarettes. 11 x 1.75 x 3/8" full, early, sealed cardboard cigarettes pack (w/ 5 extremely long cigarettes inside) for "Head Play" brand (Axton-Fisher Co., Louisville, Ky) featuring 1933 Preakness horserace scene on back w/ horse "Head Play" winning race (series 104 tax stamp). Excellent. Min. bid \$30.

Sample



202).Taylor's Talc Sample. 2.25 x 1.25 x 3/4" scarce, early miniature sample size talcum powder tin for Taylor's brand, featuring attractive image of trademark baby on both sides. Clean and attractive appearance (C. 8), w/ minor wear and a slight bit of fade to reds. Min. bid \$40.



203).Busy Biddy Spice Tin. 3.75 x 2.25 x 1.25" early tin litho 2 oz. spice tin (ginger) for Davies-Strauss-Stauffer Co.'s (various Pa. cities listed) "Busy Biddy" brand featuring attractive image of Co.'s trademark chicken. Clean and attractive (a strong C. 8+) w/ minor wear on non-graphic side edge. Min. bid \$40.



204).Albers Box. 5 x 3-5/8" unusual, early 1 lb. cardboard oats style product box for Albers Bros, Milling Co. tapioca, featuring great color image of Co.'s trademark western pioneer character (same image both sides). Clean, bright and excellent (a strong C. 8++) w/ light tear mark on lid. Min. bid \$50.



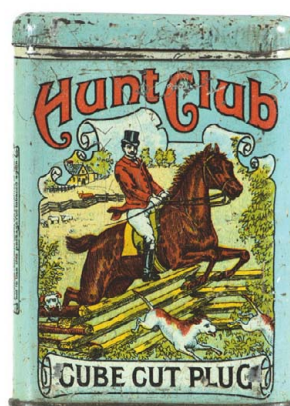
205).Hunting Tobacco Pouch. 4 x 2.25 x 1-1/8" outstanding, early 2 oz. size cloth tobacco pack for Aug Beck & Co.'s (Liggett & Myers Successor) "Hunting Killickinick" brand tobacco, w/ beautiful multi color graphic paper label featuring trademark Indian hunting buffalos. Full, sealed bag is clean, bright and excellent (C. 8.5/+). Min. bid \$60.



206).Punch Match Holder. 5.75 x 3.75 x 2.25" unusual variation, early figural metal match holder in likeness of Punch character. Beautiful detailing w/ a nice rich surface patina (his head is hinged and body holds matches inside). Excellent (C. 8.5). Min. bid \$50.



207).Dwinell, Hayward Co. Spice Tin. 3.5 x 1-7/8" scarce, very early paper label spice tin (cayenne) featuring beautiful multi-color graphics (Dwinell, Hayward & Co., Boston). Excellent (C. 8++). Min. bid \$40.



208).Hunt Club Pocket Tin. 4.25 x 3 x 1" scarce, early tin litho vertical tobacco pocket tin for U.S. Tobacco Co.'s "Hunt Club" brand, w/ very attractive graphics and nice overall appearance. Piece is clean and displays nicely (basically displays as a C. 8/+), although a close examination will reveal a little light general overall wear, w/ some minor faint scattered speckling on back side (critical grade C. 7.5/+). A very respectable example! Min. bid \$150.



209).Cola-Nip Tip Tray. 6.5 x 4-5/8" early tin litho advertising tip tray for "Cola-Nip", an early knock-off of Coca-Cola (note blatant copying of Coke's trademark stylized lettering). Tray is bright, clean and displays quite well (C. 8/-), w/ small dent mark and a little non-offensive light wear. As found, might improve a bit w/ cleaning. Min. bid \$40.

Early Tin Sign

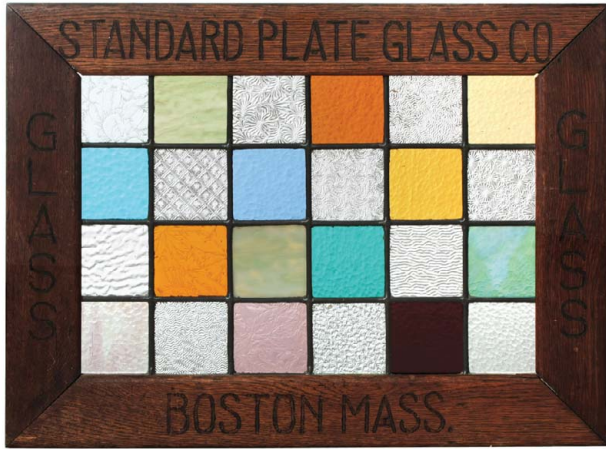


210).Flock's Brewery Sign. 24.25x 32.5" (20 x 28" actual sign) outstanding, very early, museum quality tin litho sign ("Tuchfarber Co., 4-02") for Flock's Brewing Co., Williamsport, Pa., w/ fine, fancy engraving designs in the large gold and silver lettering. This important, very high quality sign is crisp, bright and like new (near mint) and is of such high quality and condition you could easily mistake it for reverse glass. Beautifully framed Min. bid \$500.

Brewery Calendar



211).Clausen Brewery Calendar. 14-5/8 x 11-7/8" very early cardboard litho calendar from H. Clausen & Son Brewing Co., New York, and Phoenix Bottling Co. featuring beautiful multi-color graphics. Piece is clean, bright and exceptionally nice in appearance (a very strong C. 8++), w/ exception of a little edge wear and light litho loss and wear at bottom edge. Min. bid \$150.



212). **Stained Glass Sign.** 17-7/8 x 23-7/8" unusual, early, primitive and folksy handmade advertising sign for the Standard Plate Glass Co., of Boston Mass. Contains 24 different individual leaded paneled stained and patterned glass samples, presented in attractive heavy oak frame (advertising engraved into frame). Has incredible look when hung in front of a window. Min. bid \$70.



213). **Play Sign.** 23 x 30" 21-1/8 x 28" visible) wonderful, very early colorful and highly graphic paper litho sign for a play performance of "Ranch 10" (W.J. Morgan & Co., Cleveland, Oh. lithographers). Clean, bright and very attractive in appearance (basically a C. 8.5) w/ exception of faint vertical crease line and minor very faint stain mark in right side white margin area (both barely noticeable). Min. bid \$70.



214). **Reinken's Cigars Sign.** 13-7/8" dia., wonderful early tin litho sign for Reinken's Havana Plantation 10¢ Cigars, featuring beautiful graphic image of saloon girl "Mildred" (litho by American Art Works). Clean bright and very attractive (basically a strong C. 8++) w/ minor edge wear and a couple light scratch marks in hair area. Min. bid \$100.



215). **Maizena Starch Box.** 13.5 x 11.25 x 10" early wooden store display box for National Starch Co. (New York) "Maizena" brand featuring incredible, early detailed graphics on large inside label. Clean, bright and excellent (C. 8.5/+). Note: label has foreign writing, probably made for sale in immigrant neighborhoods or for export market). Min. bid \$50.



216). **Reinken's Cigars Sign.** 13-7/8" dia., wonderful early tin litho sign for Reinken's Havana Plantation 10¢ Cigars, featuring beautiful graphic image of saloon girl (litho by American Art Works). Clean and attractive (basically a strong C. 8/+) w/ minor edge wear and a little light soiling. Min. bid \$100.



217). **Blue Horse Notebooks Display.** 18 x 9.5 x 10.5" early countertop metal store display rack for Montag Co.'s "Blue Horse" brand notebooks, w/ attractive display sign at top. Excellent and comes w/ two original notebooks (C. 8.5/+). Min. bid \$40.



218). **Vantine's Talc Tin.** 5 x 2.5 x 1-7/8" outstanding, very high quality embossed talcum powder tin for Vantine's Sana-Dermal brand talcum powder, featuring stunning multi-color graphics. Crisp, bright and like new (basically near mint) w/ exception of some wear to shoulder area of lid on back side. Min. bid \$70.



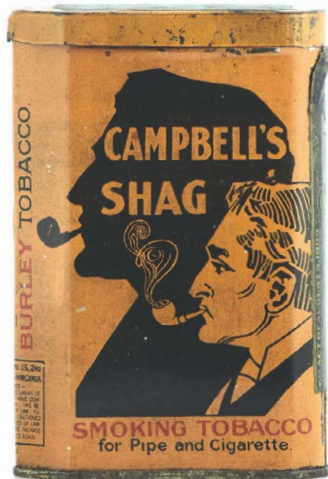
219). **Dentyne Gum Jar.** 9 x 4.5 x 4.5" early glass 2-ps. countertop store jar for Adams Dentyne brand chewing gum, w/ decal type label inside. Jar and label are clean, bright and excellent (near mint). Very nice looking piece! Min. bid \$50.



220). **Die-Cut Calendar.** 17.75 x 14" (9-3/8 x 5.75" actual) wonderful, early fancy embossed die-cut advertising calendar for Triumph Steam Laundry, (Columbia, Pa.) complete w/ full 1914 pad. Very high quality piece that is clean, bright and excellent in appearance (a strong C. 8++) w/ a little non-offensive minor wear in bottom red area. Beautifully framed and matted (see framed on website). Min. bid \$40.



221). Donald Duck Toy. 4 x 3 x 1.75" ca. 1930's small Fischer Price type wooden toy featuring early style long billed Donald Duck (marked Walt Disney Enterprises). Excellent overall, w/ only minor wear (C. 8+). Min. bid \$40.



222). Campbell's Shag Pocket Tin. 4.5 x 3 x 1" scarce, early tin litho vertical tobacco pocket tin for United States Tobacco Co.'s "Campbell's Shag" brand. Clean, bright and very attractive (a strong C. 8++) w/ only minor wear. Min. bid \$100.



223). Disney Candy Container. 4.5 x 1-7/8" unusual, ca. 1920's/30's candy container by Toypaks Co. Full, never opened piece still contains celluloid wrapper and candy inside, w/ 2.5" (h) hand-painted Disney Mickey Mouse bisque at top. Excellent. Min. bid \$40.



224). Disney Toy. 4 x 3-3/8 x 1.75" ca. 1939 small Fischer Price type wooden toy featuring early Disney character "Clara Cluck" (marked Walt Disney Productions). Excellent overall, w/ minor soiling and wear (C. 8+). Min. bid \$40.



225). Atwater Radio Light-Up. 11 x 8-3/8 x 6-3/8" unusual, early light-up display sign for Atwater Kent brand radios. Very high quality piece has cast iron base, w/ metal frame and heavy painted milk glass insert. Excellent and all original, w/ nice rich surface patina and excellent overall look (a strong C. 8++). Min. bid \$60.



226). Coffee Globe. 16.5 x 16 x 5-7/8" early, very high quality gas pump style advertising globe for Lord Calvert brand coffee. Heavy, early milk glass body w/ glass insert lenses on both sides. Crisp and like new (appears never used). Min. bid \$100.



227). Penny Match Vender. 14.75 x 11 x 8-1/8" unusual, early 1¢ matchbox vending machine. Freshly house picked and all original, w/ nice patina to wooden (oak) case. Piece displays nicely (as a C. 8/-) w/ some general light wear to metal, including some surface oxidizing to upper surface of revolving handle on side (critical grade C. 7.5). As found, should improve w/ cleaning. Min. bid \$70.



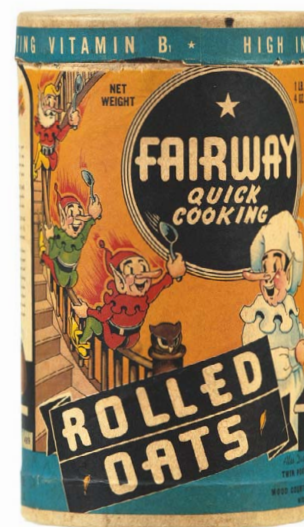
228). Old Time Coffee Can. 9-5/8 x 5.5" (dia.) early pry lid 3 lb. size tin litho coffee can for "Old Time" brand (Hoffmann & Sons, Milwaukee, Wisc.). Crisp, bright and like new appearance, w/ minor denting and a couple minor scratch marks (C. 8.5). Min. bid \$70.



229). Cigar Store Chalkware Figure. 12 x 8 x 5" early, nice smaller size figural chalkware Indian Princess cigar store counter-top bust, w/ embossed "ORIENT" advertising on base. Heavy, high quality piece has nice patina to paint surface, w/ a little light scattered wear from use, including some non-offensive early chipping wear on base. Impressive piece, displays nicely (C. 8/). Min. bid \$50.



230). Katz Coffee Can. 10 x 5.5" (dia.) unusual, early 3 lb. size paper label over tin coffee can for Katz brand coffee (Katz Drug Co., Kansas City, Mo.) w/ two great images of Co.'s trademark cat character. Has a little light soiling and minor wear, but overall attractive and displays nicely (C. 8/-). Min. bid \$50.



231). Fairway Oats Box. 7.25 x 4.25" unusual, early cardboard 1 lb. 4 oz. size oats box for Fairway brand, w/ nice colorful graphic images of Brownie type cartoon characters (same image both sides). Clean, bright and very attractive (C. 8/+). Min. bid \$30.



232).Heinz Ketchup Jug. 9.5 x 7.25" outstanding, early stoneware jug w/ wooden handle at top for Heinz brand tomato ketchup. All original; jar is excellent, w/ a stunning, beautiful multi-color graphic label that is crisp, bright and excellent, w/ a little non-offensive light edge chipping wear in outer border/margins area (label: 8.5/+). Min. bid \$150.



233).Cough Drops Jar. 11.5 x 8" dia. scarce variation, early 2-ps. heavy pressed glass cough drops jar on pedestal base for W & S brand cough drops. A very high quality piece, excellent condition, w/ no cracks or chips. Min. bid \$100.



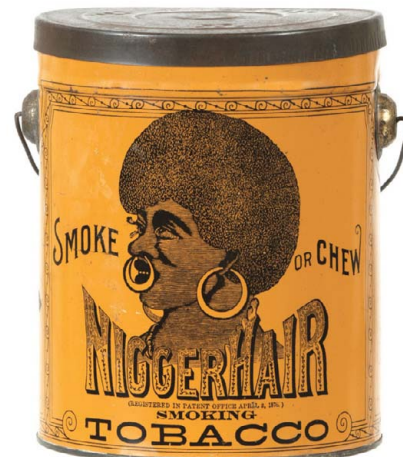
234).Blossom Soda Sign. 10.5 x 7.75" wonderful, early die-cut easel back stand-up sign for Blossoms brand soda. Clean, bright and very attractive, w/ a little wear at bottom edge and small stain spot above "B" of Blossoms (C. 8/+). Min. bid \$60.



235).Armour's Grape Juice Sign. 10.25 x 7.25" early cardboard litho sign for Armour's brand grape juice, featuring wonderful graphic image of child carrying giant bottle. Clean, bright and excellent, w/ just a trace hint of soiling and minor staining in upper white margin area (a strong C. 8++). Min. bid \$40.



236).Carhartt's Overalls Flange Sign. 18.5 x 7.75 x 1.75" important, early die-cut metal litho 2-sided flange sign for Carhartt brand overalls. Powerful and impressive very scarce sign is clean, bright and very attractive in appearance. Display side is basically excellent, w/ only minor wear; back side has a couple scratches and some light general wear (front C. 8/+; back C. 7.5+/-). Min. bid \$250.



237).“Nigger Hair” Tobacco Pail. 6-5/8 x 5.5" scarce variation, caramel colored early tin litho tobacco pail for Leidersdorf Co.'s “Nigger Hair” brand tobacco, featuring great image of trademark African native, w/ huge rings in nose and ear (same image both sides). Clean, bright and excellent in appearance (a very strong C. 8++). w/ a few minor faint scattered speckles. Min. bid \$50.



238).Pepsi Bottle Holder. 10-5/8 x 7.25 x 3.75" outstanding ca. 1930's heavy figural chalkware counter top Pepsi-Cola display piece by Plasto Mfg. Co., Chicago. Clean, bright and exceptionally nice condition, w/ a deep, rich surface patina (basically displays as near mint), w/ expected loss to hard adhesive/glue like material that held bottle in place (note: included bottle is from later period and not original to piece). Min. bid \$70.



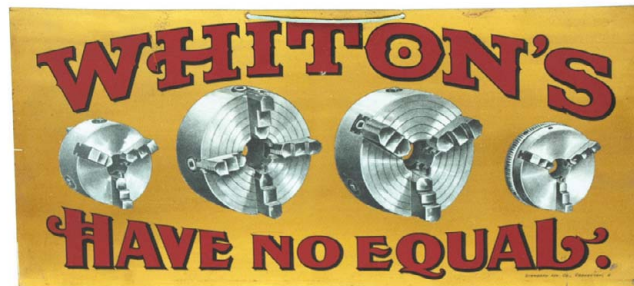
239).Cigarettes Sign. 35.5 x 25.25" (30-5/8 x 20-3/8" visible image) large, early paper litho (cardboard?) sign for Egyptianne Straights Cigarettes, w/ beautiful color graphics. Clean, bright and very attractive appearance, as found still in its original marked frame (C. 8.5+) w/ exception of a couple of small, non-offensive minor stain spots at very upper edge. Min. bid \$100.



240).White House Coffee Flange Die-Cut Sign. 13.5 x 8-1/8 x 1-1/8" wonderful, early 2-sided tin litho die-cut flange sign featuring beautiful multi-color graphics (same image both sides). Crisp, bright and exceptionally nice appearance (appears never used), w/ original surface sheen (basically a strong C. 8.5+ appearance) w/ exception of a little non-offensive edge chipping and light storage wear along outer edges and on mounting flange bracket area (critical grade a strong C. 8/+). Displays very well! Min. bid \$300.



241).Houseboat Biscuit Tin. 4.25 x 10-3/8 x 4" scarce, ca. 1923 embossed figural tin litho Jacob & Co. British biscuit tin in shape of houseboat (piece was made to float in water). Has a little minor denting and light scattered wear from use, but overall attractive and displays nicely (C. 8), w/ some scuffing and heavier wear underneath (on base). Min. bid \$50.



242).Whiton's Sign. 6.5 x 14" unusual, early advertising sign for Whiton's Mfg. Co., w/ nicely detailed images of heavy industrial products on shiny gold background (sign is brass). Crisp and like new, as found never used still in its original protective paper. Min. bid \$40.



243).Gold Star Condom Tin. 1.75 x 2.25 x .25" scarce, early tin litho condom tin for Gold Star brand. Full, early tin is clean, bright and excellent (C. 8.5/+). Min. bid \$40.



244).Piper Cub License Attachment. 4.5 x 10" early metal license plate attachment advertising Piper Cub airplanes, featuring great detailed image of plane. Clean, bright and excellent, w/ nice patina and just the right amount of wear (a very strong C. 8++). In. bid \$40.



245).General Arthur Cigars Tip Tray. 3.25 x 4.75 x .5" very early, embossed tin litho advertising tip tray for King Arthur Cigars, w/ beautifully detailed graphics. Clean, bright and very nice (C. 8/+), w/ small stain spot on bottom rim. Min. bid \$40.



246). "Nigger Hair" Tobacco Pail. 6-5/8 x 5.5" early tin litho tobacco pail for Leidersdorf Co.'s "Nigger Hair" brand tobacco, featuring great image of trademark African native w/ huge nose and ear rings (same image both sides). Exceptionally nice example is clean, bright and excellent in appearance w/ nice original surface sheen (displays as a strong C. 8.5/+), w/ a little non-offensive light surface rust at bottom side seam edge). Min. bid \$50.



247).Heinz Marmalade Sign. 15-7/8 x 19.25" (12-3/8 x 15.75" visible) beautiful, very early cardboard litho printers proof advertising sign for Heinz Grapefruit marmalade, featuring stunning multi-color graphics. Crisp, bright and like new (near mint), nicely framed and matted. Min. bid \$90.



248). "Bigger Hair" Tobacco. 6.5 x 5-1/8" scarce, early cardboard product container for Leidersdorf Co.'s "Bigger Hair" brand tobacco (the successor product to the "Nigger Hair" brand), featuring great image of trademark African native w/ large rings in nose and ear (same image both sides). Clean and very nice (C. 8/+) w/ only minor wear. Min. bid \$50.



249).Atwater Kent Radio Light-Up. 11.75 x 12.75 x 6-3/8" unusual, ca. 1920's/30's light-up display for Atwater Kent brand radios. Has nicely detailed cast iron base, w/ heavy embossed clear glass insert that lights up red when switched on. Excellent overall, w/ some light oxidizing and wear to surface finish on base (was working, but bulb possibly burnt out as it is not currently lighting up). Min. bid \$50.



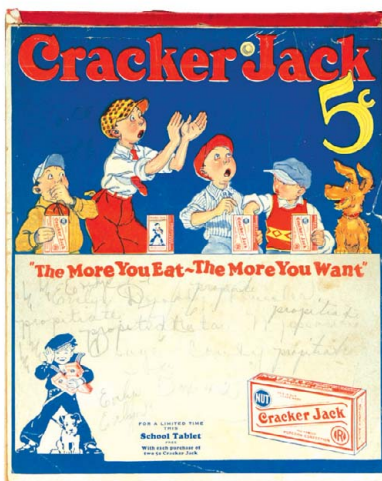
250).Advertising Match Safe. 2.75 x 1.5 x 1/2"unusual, fancy, early metal match safe w/ nicely detailed embossed image of attractive girl on front, w/ celluloid covered advertising on back for leather soles (has mechanical cigar clipper at top end). Excellent. Min. bid \$40.



251).Moxie Tip Tray. 6-1/8" dia. early tin litho tip tray for Moxie, featuring attractive detailed color graphics. Clean, bright and excellent overall (C. 8), w/ a little light chipping in outer edge (at 4 o'clock). Min. bid \$50.



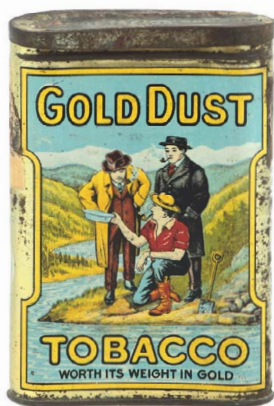
252).Lay-or-Bust Feeds Sign. 19.5" (dia.) embossed painted metal sign for Park & Pollard Co.'s "Lay or Bust" and "Milk Maid" brand animal feeds. Clean, bright and like new (near mint). Min. bid \$50.



253).Cracker Jacks School Tablet. 10 x 8" unusual, ca. 1920's school tablet advertising Cracker Jacks, w/ great color baseball themed image at top. Cover image is bright and attractive in appearance, w/ a little archivally repaired tearing in outer mid right margin area; w/ pencil writing in bottom white section of cover and on first few pages. Appears complete, but the back cardboard piece has separated and is no longer attached at top (C. 8/-). Min. bid \$40.



254).Zipp's Cherri-o Soda Tray. 12-1/8 x 1-3/8" outstanding, early tin litho advertising serving tray for Zipp's "Cherri-o" brand cherry soda, featuring stunning multi-color graphics. Tray is crisp, bright and like new, as found never used (H.D. Beach Co. Litho). Min. bid \$150.



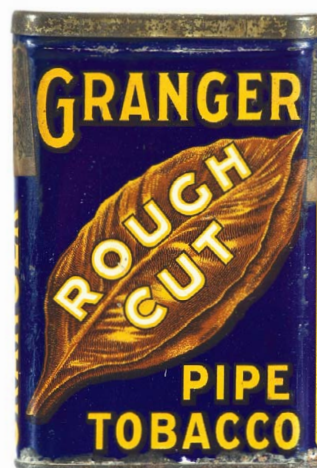
255).Gold Dust Pocket Tin. 4.5 x 3 x 1" scarce, early Canadian tin litho vertical tobacco pocket tin for Gold Dust brand, featuring great graphic images of gold miners (same image both sides) A clean, very attractive example that displays very well (basically a nice solid C. 8/+) w/ exception of some typical dark oxidizing to gold flash finish along right side edge and lid (minor dent and very minor speckling on left side edge). Min. bid \$500.



256).Bus Driver Badge. 2.75 x 2.25" early, very high quality bus drivers cap badge for Eastern Mass. Lines, featuring nicely detailed image of a great looking early bus. Excellent, w/ nice original surface patina. Min. bid \$30.



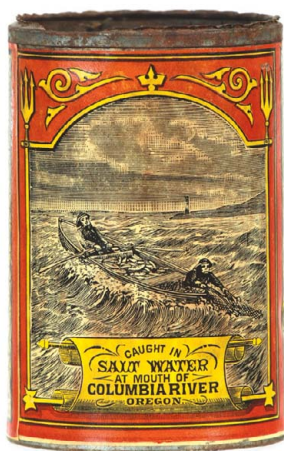
257).Ecco Oats Box. 7.25 x 4.25" early cardboard 1 lb. 4 oz. size oats box for Ecco brand (Economy Grocers, Boston). Clean, bright and very nice (C. 8+). Min. bid \$30.



258).Granger Pocket Tin. 4.5 x 3 x 7/8" early tin litho vertical tobacco tin for Liggett & Myers Co.'s Granger brand, w/ nice image of Co.'s trademark dog on back. Clean, bright and very attractive appearance (displays as a nice C. 8/+) w/ exception of a little light surface oxidizing along very bottom edge. Min. bid \$70.



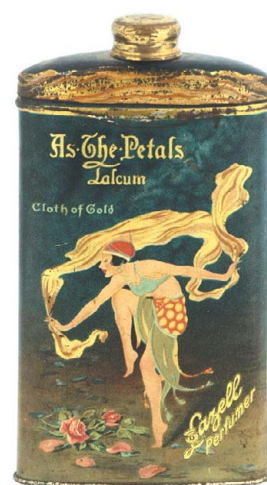
259).Ruppert Beer Display. 6.75 x 4-1/8 x 5.5" early countertop bar display piece for Ruppert beer and ales, made for holding Co.'s foam scrapers. Has attractive cloisonné enameled logo on its rich, nicely crackled and marbled yellow bakelite base, w/ painted lettering on cobalt insert cup. Excellent. Min. bid \$40.



260).Kinney Salmon Tin. 4.5 x 3" (dia.) very early paper label product can for Kinney brand salmon (Astoria, Oregon) featuring nicely detailed image of fishermen in boat on front, w/ large fish on back side. Boat side excellent; w/ couple small areas of upper surface paper loss on back side (front C. 8/+; back 7.5+), no lid. Min. bid \$30.



261).Daddy's Choice Coffee Tin. 6 x 4-1/8" scarce, early 1 lb. coffee can for "Daddy's Choice" brand (Sterling Grocers, Sterling, Ill.) featuring beautiful multi-color graphics. Clean, bright and very attractive appearance (basically displays as a strong C. 8/+) w/ a few light scuff spots (critical grade C. 8/-). Min. bid \$60.



262). "As the Petals" Talc Tin. 5.75 x 3-1/8 x 1" early tin litho Lazell Perfumers talcum powder tin, featuring great image of trademark dancing woman on both sides. Clean and excellent (a strong C. 8++). Min. bid \$40.

Sample



263).Canova Coffee Sample. 2.25 x 2.75" tin litho "Free Sample" miniature coffee can for "Canova" brand (Maury Cole Co., Louisville, Memphis, Dallas). Has strong color and displays nicely, w/ minor scattered wear and some oxidized speckling on top of non-graphic lid (C. 8/-). Min. bid \$40.



264).Chinese Rat Killer Box. 2 x 1-1/8" unusual, very early 2-ps. wooden product container for "Chinese Rat Killer" w/ paper label at top featuring Co.'s outrageous trademark image of Chinaman eating rat. Very nice condition (C. 8/+). Min. bid \$30.



265).Lion Toilet Powder. 3 x 3 x 1-3/8" unusual, early 2-ps. tin litho talcum powder can for Lion brand toilet powder (Georg Dralle Perfumer), featuring beautiful multi-color graphics. German made (for US market?). Clean, bright and excellent (a strong C. 8++). Min. bid \$40.



266).Pinzon Cigars Pin Holder. 1.75" dia. unusual, early celluloid advertising pin holder for Pinzon brand cigars, featuring beautiful color graphics. Clean and excellent. Min. bid \$30.

Planters



267).Kickapoo Salve Tin. 2 x 3/8" very early tin litho product tin for Kickapoo Indian Medicine Co.'s "Kickapoo" salve, featuring beautiful detailed graphics. Full, sealed tin is clean and excellent (C. 8.5++). Min. bid \$30.



268).Planters Fish Bowl Jar. 6 x 5.25 x 3.5" scarce, ca. 1929 small fishbowl shaped 1 lb. size product jar for Planters Salted Peanuts, complete w/ its original lid and paper label. Jar is excellent; label is fair, w/ general overall wear (label C. 7/-). Min. bid \$30.

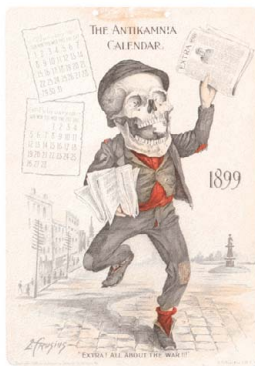


269).Chewing Gum Mirror. 1.25" dia. scarce celluloid pocket mirror for "Sweet Wheat" brand chewing gum, w/ great image of trademark kids holding giant pack. Clean and attractive appearance (close examination will reveal non-offensive light scratching and a couple minor bumps on surface), w/ dark spots in mirror glass. Min. bid \$60.

Sample



270).Mellomints Sample Tin. 2-1/8 x 1-7/8" outstanding, early miniature tin litho sample tin for Mellomints candy, which is an exact tiny likeness of Co.'s much larger full size tin. Clean, bright and excellent. Min. bid \$30.



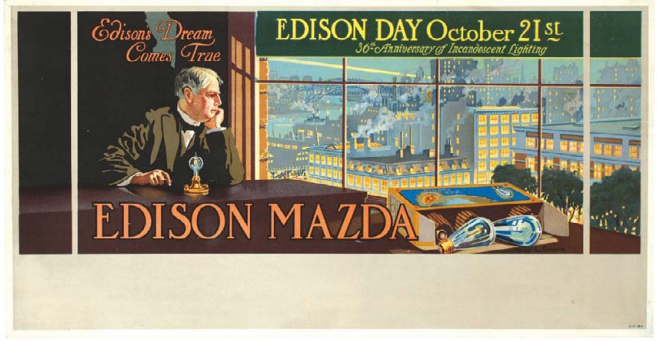
271).Antikamnia Calendar. 10 x 7" early 6-ps. 1899 calendar set on heavy card stock for "Antikamnia" quack medicine product, featuring great images of Co.'s comical skeleton characters. Pages are clean and very attractive overall (C. 8+/-), w/ slight age toning and a little minor chipping wear at outer edges. These are a complete set, each worthy of framing separately, w/ original string tie. Min. bid \$70 (the set).



272).Sharples Sign. 28.5 x 22-3/8" scarce, early self-framed tin litho sign for Sharples brand cream separators. Clean, bright and displays nicely (as a C. 8+/-), although up-close examination will reveal some small, light scattered oxidized speckling, wear spots in white dress and some faint light rusting at top and bottom side edge of frame area, w/ a couple faint drip spot remnants in right background area (barely noticeable). Impressive piece, displays very well! Min. bid \$200.



273).Beauty Shop Sign. 12 x 24" early, heavy porcelain 2-sided flange sign for an early Beauty Shop, featuring powerful image (same on both sides). Clean, bright and very attractive in appearance, w/ nice original surface sheen (a strong C. 8+/) w/ a little light edge chipping. Min. bid \$70.



274).Edison Mazda Sign. 11 x 21" outstanding early cardboard litho sign for Edison Mazda brand light bulbs featuring beautiful graphic image of Thomas Edison at desk looking out at his lit up factories. Clean, bright and excellent (near mint). Min. bid \$50.



275).Rare Socony Mirror. 2-1/8" (dia.) scarce variation celluloid advertising pocket mirror from Standard Oil Co. of NY, featuring great color graphic image of tiger inside Co.'s trademark shield, w/ Chinese caricatures (made by Litchfield Corp., NY). Excellent (some light loss/wear spots in mirror glass). Min. bid \$40.



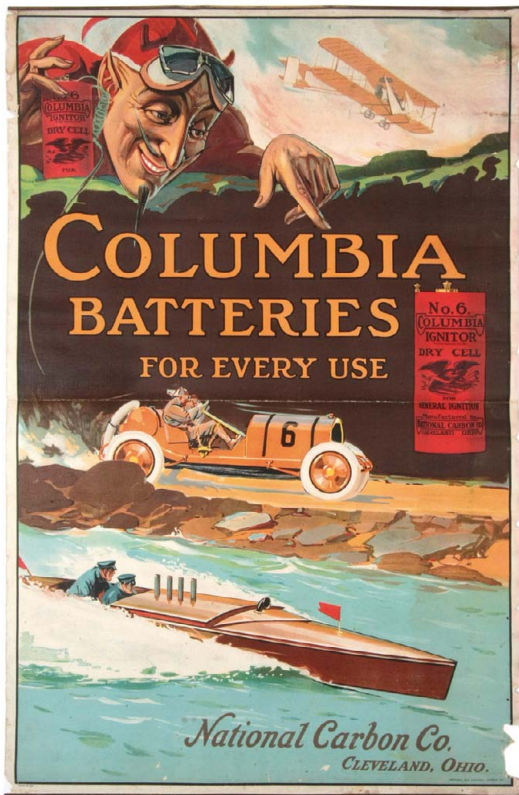
276).Raleigh Cigarettes Change Receiver. 7.5 x 7.5 x 2-3/8" early glass dome covered change receiver on wooden base, advertising Raleigh brand cigarettes w/ early cigarette pack inside. High quality piece is excellent (appears never used), as found still in its original shipping box (box has toning and tape repairs at apron edges). Min. bid \$40.



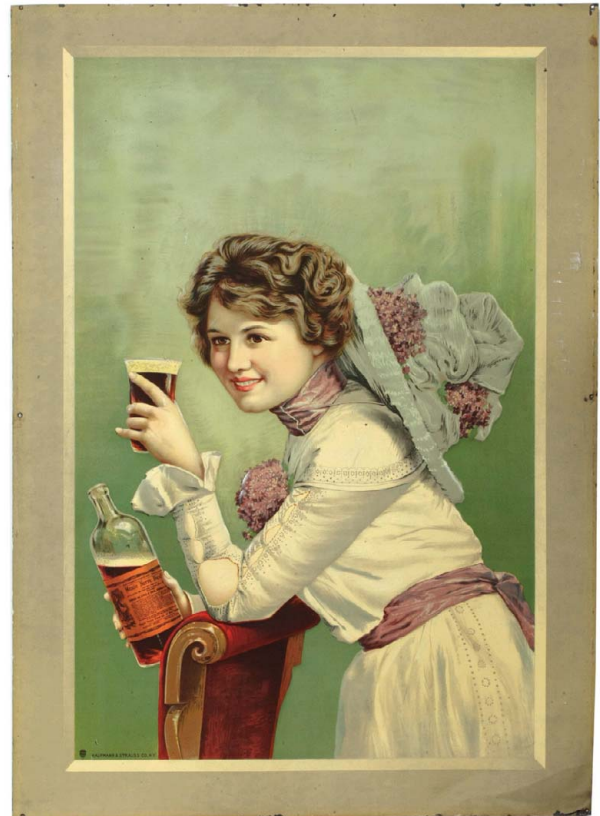
277).Telephone Co. Ash Tray. 5.75 x 5.5" early, heavy enameled porcelain advertising ashtray for Mountain States Telephone & Telegraph Co., w/ trademark Yellow Pages character featured in center. Like new condition (near mint). Min. bid \$40.



278).Radio News Paperweight. 2 x 5.75" (dia.) large, early figural heavy cast iron radio dial shaped paperweight, w/ embossed advertising for "Radio News" magazine. Interesting and unusual piece, w/ nice original paint surface (C. 8-). Min. bid \$40.



279).Columbia Battery Poster. 30.25 x 20" important, early paper litho poster w/ metal strips at top and bottom for Columbia Batteries, featuring incredible multi-color graphic images of devil holding dry cell battery, w/ stunning images of early airplane, race car, speedboat, etc. This stunning piece is clean, bright and very attractive (basically a strong C. 8++) w/ exception of some paper chipping loss in outer edges and a light, fairly minor horizontal fold line in center (a little professional restoration could bring it to a near mint appearance). They don't get much better than this! Min. bid \$500.

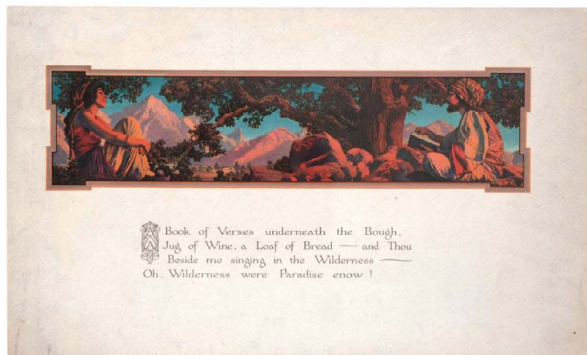


280).Moxie Nerve Food Sign. 27-3/8 x 19-5/8" outstanding, large, very early embossed tin litho sign for Moxie Nerve Food, featuring beautiful multi-color lithography (by Kaufmann & Strauss). Image area of sign is crisp, bright and like new in appearance, w/ nice original sheen (basically a C. 8.5++) w/ only very minor wear; w/ some light wear and minor creasing marks in the very outer plain wide margin areas (which will be mostly covered if framed). Min. bid \$500.

Maxfield Parrish Items



281).



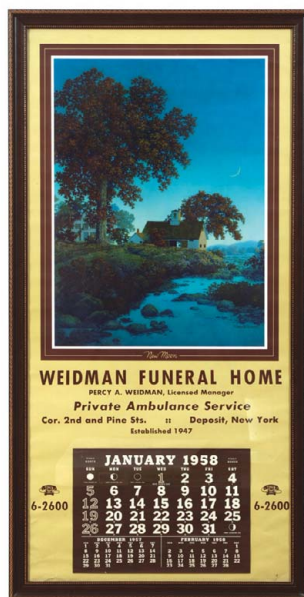
282).



283).



284).



285).



286).



287).



288).



289).



290).

281).Parrish Check. 2-7/8 x 8.25" early, large hand written 1898 check by MP made payable to himself w/ his fancy flourishing signature on front (also signature endorsement by him on back) from account w/ The Land Title and Trust Co., Philadelphia (also has a 2¢ document stamp initial endorsed by him in upper left corner). Excellent. Min. bid \$40.

282). "The Rubaiyat". 10.75 x 17-7/8" (3.5 x 14-3/8" image) unusual variation, ca. 1917 full uncut Rubaiyat image on heavy cardstock, w/ poem underneath. Image has vibrant, fiery bright colors, w/ a little bit of light overall minor soiling in white background area. Min. bid \$60.

283).Large "Enchantment" Calendar. 40 x 22" (35.75 x 16.25" visible) choice, large size, full uncut 1926 Edison Mazda "Enchantment" calendar. Vibrant, bright, un-circulated colors, crispy and like new appearance, beautifully framed and matted w/ full calendar pad (provenance: ex Michael Goldberg collection). Min. bid \$300.

284).Large "Reveries" Calendar. 45 x 26" (35.25 x 16.25" visible) choice, large size, full uncut 1926 Edison Mazda "Reveries" calendar.

Vibrant, bright, un-circulated colors, crispy and like new appearance, beautifully framed and matted w/ full calendar pad (provenance: ex Michael Goldberg collection). Min. bid \$300.

285).Extra Large "New Moon" Calendar. 48.5 x 24-5/8" (45.5 x 21-5/8" visible [23-5/8 x 17-1/8" image]) outstanding, framed B&B extra large size calendar w/ full 1958 pad, featuring attractive "Noon Moon" image. Clean, bright and excellent. Min.. bid \$100.

286).Large Quiet Solitude Calendar. 24.75 x 12.75" (12.25 x 9.5" image) outstanding, framed B&B large size calendar w/ full 1962 pad, featuring beautiful "Quiet Solitude" image. Crisp, bright and like new, beautifully framed. Min. bid \$60.

287). "Egypt" Calendar. 19-1/8 x 8.5" (10.5 x 6-1/8" image) extremely rare, small size 1922 Edison Mazda calendar complete w/ full pad. Crisp, bright and like new (near mint) w/ exception of very minor rub mark in bottom white margin area and minor wear on upper area of calendar pad cover sheet. Min. bid \$500.

288). "Venetian Lamplighter" Calendar. 20.75 x 10.25" (19 x 8.25" visible) beautiful, small size 1924 Edison Mazda calendar, complete w/ full pad. Crisp, bright and like new appearance (displays as near mint), although close examination will reveal minor snake line mark and couple of non-offensive staple transfer marks (from storage) in sky area. Beautifully framed. Min. bid \$100.

289). "Dream Light" Calendar. 19-1/8 x 8.5" (10.25 x 6.5" image) small size 1925 Edison Mazda calendar complete w/ full pad. Crisp, bright and like new (near mint color) w/ exception of minor storage wear and a little typical oxidizing discoloration in staple area of calendar pad cover sheet. Min. bid \$100.

290). "Evening Shadows" Calendar. 25 x 13" (10.5 x 8.25" image) B & B medium size calendar featuring image of large birch tree overlooking river valley and mountains with reflected light on branches, complete w/ full 1953 calendar pad. Excellent condition, framed. Min. bid \$50.

Maxfield Parrish Items



291).



292).



293).



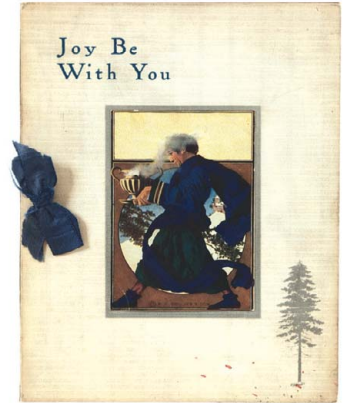
294).



295).



296).



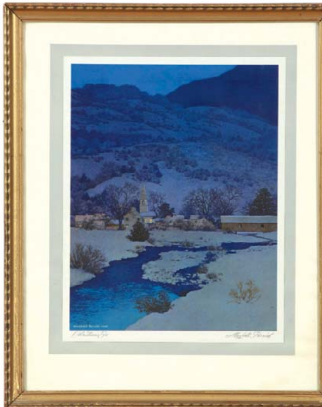
297).



298).



299).



300).



301).

291). "Lights of Welcome". (Night Before Christmas) 14-7/8 x 18.75" (8-1/8 x 10-7/8" image) ca. 1952 B & B executive winter nighttime print of large tree and boulders w/ farmhouse in background. Clean, bright and like new, w/ its original descriptive matting. Framed. Min. bid \$50.

292). "Old King Cole" Cigar Can. 4 x 4" (dia.) scarce, early paper label (over tin) 50 ct. cigar can from B. Wasserman Co., featuring great Parrish illustrated "Old King Cole" images on front, back and lid. Clean, bright and exceptionally nice (C. 8.5+). Min. bid \$60.

293). "A New Day". (8-5/8 x 11" image) 13.75 x 17.75" (8-3/8 x 10.75" image) beautiful 1949 B & B Winter executive art print of a farmhouse and barn against pink and blue shadowed snow. Clean, bright and like new, w/ its original descriptive matting. Framed. Min. bid \$50.

294). "The Page". 13 x 11" (11.75 x 9-5/8" visible) ca. 1928 Reinthal & Newman art print of youth sitting on ledge, w/ castle in background. Exceptionally nice example is clean, bright and excellent, as found still sealed in its attractive original period frame (House of Art label on back). Min. bid \$50.

295). "The Prince". ("The Knave") 13 x 11" (11.75 x 9.5" visible) Ca. 1928 Reinthal & Newman art print of knave laying in field of flowers, arched bridge, waterfalls, etc. in background. Piece is clean and very nice, as found still sealed in its attractive original period frame (House of Art label on back). Min. bid \$50.

296). "Old King Cole" Tobacco Pack. 4.25 x 3 x 1-1/8" full, early (sealed and never opened) soft-pack style tobacco package for B. Wasserman Co.'s "Old King Cole" brand tobacco, featuring nice Parrish illustrated label. Image is clean, bright and very attractive, w/ a little minor soiling and light scattered wear on non-graphic back side. Min. bid \$40.

297). "The Wassail Bowl". 6.25 x 5" unusual, early booklet of friendship poems (by Dodge Publishing ©1911) featuring 3-1/8 x 2-1/8" tipped Parrish illustrated "Wassail Bowl" images on both cover and one of inside pages. Outer cover has a little light soiling and ribbon is loose, otherwise excellent (inside image near mint). Min. bid \$40.

298). "Dinkey Bird". 16.5 x 12.5" (14.5 x 10.5" visible) ca. 1905 classic Scribner's art print image of nude girl swinging in space, w/ castles in the clouds. Clean and very attractive example, as found still in its beautiful

period frame. Excellent w/ exception of non-offensive small white mark in upper left sky area, which could be easily colored in). Min. bid \$50.

299). "Golden Hours" Thermometer. 7-1/8 x 5-1/8" (5.5 x 4" image) scarce, ca. 1929 metal framed advertising thermometer for a DeSoto and Plmouth auto dealer featuring beautiful Parrish "Golden Hours" illustration of two women in bateau, surrounded by Autumn foliage. Impressive piece is all original, crisp and like new (near mint). Min. bid \$40.

300). "Christmas Eve". 16-5/8 x 13-5/8" ((10-7/8 x 8.5" image) ca. 1947 B & B executive winter night scene image of covered bridge over stream, w/ lighted church and houses in background. Clean and excellent, on its original presentation mat board. Min. bid \$50.

301). "The Gardener". 17 x 13" (15.5 x 11.5" visible) CA. 1906 Collier "Artist Proof" image of elderly gentleman gardener holding hoe and watering can. Clean, bright and exceptionally nice example (near mint, w/ exception of minor early glue remnants spot in bottom right white background area). Has original "Artist Proof" card on back. Framed. Min. bid \$50.



Rd #2, Cobb Hill Road, Cazenovia, NY 13035 • 24 Hr. Tel: (315) 662-7625 • 24 Hr. Fax: (315) 662-3570 • morf2bid@aol.com • morfauction.com

Welcome to our 66th auction of quality antique advertising and fine collectibles. Everything we sell is guaranteed authentic and as described. We attempt to grade condition both fairly and conservatively, using a scale of 1-10 on the advertising items (ten being absolutely mint). We do not list reproductions, re-issues, deceptively restored or pieced together type merchandise. Flaws and blemishes are prominently noted and over emphasized. We encourage you to call for a detailed description on any item you have an interest in, but respectfully must request that you do this before the closing night. Dimensions are listed by height, then width, and are only approximate (+ or - a quarter inch).

Bidding

Bids are accepted only from those parties who have registered with us to bid. (If you were mailed this catalogue by us you are automatically pre-registered.) Your bid is a legal contract to purchase and once entered, cannot be canceled. Placement of a bid indicates acceptance of our terms.

On all "BID" items there is a 10% buyers premium added to each successful bid. You're welcome to bid by mail, email and fax anytime after receiving this catalog. **We will begin accepting phone bids on Wednesday June 9th, 2010. We will be taking calls on Wednesday and Thursday from 10:00 AM until 5:00 PM.** If no one answers when you call, please leave a message on our machine and we will get back to you. **If bidding by mail or fax, please remember to include your telephone number with your bids!** You may call or bid as often as you like. We will tell you the current bid on any item(s) you are interested in. To raise a bid, your advance must be at least \$10 more than the current high bid amount. When an item reaches \$250, bidding increments rise to \$25, at \$1,000, bidding increments advance in \$50 steps, and above \$2,000 in \$100 increments. We suggest not waiting until the last minute to begin your bidding, as its quite possible you won't be able to get through.

Web Page and Bid Updates

We will begin posting current bid prices (not including the buyers premium) on Wednesday June 9th, 2010 (including an addendum of additional catalogue lot information) on our internet web page. These prices will be updated once each day (each evening sometime after 9:00 PM, EST) and will get updated to include the final hammer prices on Sunday afternoon once the sale is concluded. On the closing night, we will attempt to update current bid prices every hour. Our web page address for this sale is: <http://www.morfauction.com> We suggest that once you get to it, that you bookmark this address for easy re-access.

Reserves and Estimates

All items which receive an opening bid in our sale will be sold to the highest bidder regardless of the price realized (we reserve the right to withdraw items in the event of inaccurate catalog descriptions and to reject any bid we feel is not made in good faith). **We run our auctions with a strict policy of no buy-backs, no auctioneer games and no hidden reserves.** Unlike some of our competitors, we do NOT allow consignors to bid up their own items!

Mechanical Operations

Early mechanical and electric motors and mechanisms on machines, coin-ops, clocks, etc. are quite often temperamental and very unpredictable in nature. Although these mechanisms may be working fine at the time of sale, we make no guarantees or representations regarding their continued operating status once they have left our premises (including during shipping).

Closing Night

THE LAST DAY FOR BIDDING WILL BE ON FRIDAY, JUNE 11TH, 2010. On closing day, we begin taking calls at 5:00 PM. Please mark your calendar now. **On the closing night (ONLY), we will also be taking calls at (315) 662-3318, (315) 662-3429 and (315) 662-3904 after 5:00 PM** (in addition to our regular (315) 662-7625 office number). **Closing Time: This Auction will close at 10:00 PM (EST) on Friday, June 11th, 2010.** At that time, no more incoming calls will be accepted and all lots with a registered bid of less than \$300, as well as all items without call backs registered on them will be officially closed and final. The items at \$300 and over that have call back protection registered on them will be closed out during our call back period the following afternoon (**see important call back rules below**). We reserve the right to change the official closing in the event of unforeseen family type emergencies or technological failures (utility disruptions, etc.). We also reserve the right to either extend the bidding, to postpone or to cancel this auction in the event of a national emergency or if the Internet or the services of the US Post Office were to get seriously disrupted during our catalogue mailing or bidding period.

"Up-To" Bids & Call Backs

CEILING BIDS: We will be happy to enter competitive "up to" ceiling bids for you on any lots you request. Beginning at your minimum amount, we will advance these bid(s) up to your left ceiling amount, if (and only if) it is topped by another bidder. "Up To" bids will be handled discretely and executed in a completely competitive manner for you. Please note that we don't accept open ended "top all others" ceiling type bids.

CALL BACKS: You may request call back protection for any lot(s) that you enter with either a minimum or a protected "up-to" ceiling bid in an amount of at least \$300. This request must be registered with us before the official 10:00 PM closing hour of Friday, June 11th, 2010. All callbacks will be placed by us on Saturday, June 12th, 2010, beginning at 12:00 noon (EST) and will continue that afternoon until each of the individual lots have been closed out (using past experience, I would expect this to be finished by 6:00 PM, if not earlier). If you register for call-backs, it is your responsibility to be available during this call back time period. We make every effort to honor all our call back requests, but this service is done solely as a convenience to our bidders and will be performed on a best efforts basis only. If you will be traveling or if you will not be available during call back times at your primary number, be sure you provide us with proper alternate or back up numbers for reaching you!

Payment Terms

Winning bidders will be invoiced immediately after the sale. Those who desire fast shipment can pay by Money Order or Cashiers Check. Payments are due within 10 days of receipt of invoice. We reserve the right to offer the item out to our back bidders and deny future bidding privileges to those who do not pay in a timely manner. In addition to personal checks, we also accept payment on your American Express, Visa, Master Card, Discover and Optima Credit Cards (with no surcharge added). No COD's or Collect calls are ever accepted. Items shipped to anywhere in New York State must include appropriate sales tax or signed resale certificate.

Shipping

All packing and shipping charges are extra. We do most of our own packing and shipping and try to keep these charges as reasonable as possible for you. On especially fragile and larger hard to pack items, we hire the services of professional packers and charge you at our billed cost. We ship mostly through the Post Office and Fedex Ground, (Fedex Overnight available at an extra charge.) We will also be happy to deliver your purchases to the AAAA CONVENTION IN READING PA the following week.

Subscribing, Prices Realized, Consignments & Upcoming Events

Future catalogs can be assured by sending \$20 for a full 12 months subscription, (includes after sale prices realized). An automatic credit card ordering program is available. We currently run between 4-6 auctions a year (versus our previous format of running semi-annual sales). This format allows us to run smaller, more focused sales featuring larger, higher quality catalog images and gives our consignors the opportunity for a quicker turn-around of their items. In addition to our regular sales, we also occasionally offer sales made up entirely from single owner collections. Please contact us should you have items you would like us to consider for inclusion in our upcoming events. All inquiries are handled in a completely confidential manner. Our services are also available for the private placement marketing of important individual items, marketing plans for large collections as well as for estate planning and settlement purposes. Back copies of many of our previous auction catalogs are still available at \$5 each (w/ prices realized) w/ quantity discounts available if multiple issues are ordered. For further information, please call, e-mail or write.

Photography by Wes Feuz. Layout by Sean Maroney.

© Copyright 2010. All Rights Reserved. No portion of this publication may be copied in any form without the express written permission of Morford's.

Important Closing Night Information

In addition to our regular **(315) 662-7625** office number,
on the closing night (only!) you may also call us at:

(315) 662-3318*
(after 5:00 PM)
(315) 662-3904*
(after 5:00 PM)
(315) 662-3429*
(after 5:00 PM)



***These numbers for
Closing night only!
Friday, June 11th, 2010**

Bidding closes at 10:00 PM on closing night. We will be accepting faxes and e-mails on closing night. Our web page will update current high bid prices approximately every hour on closing night and will also list any important addendum information. **All call backs will be made on Saturday, June 12th, 2010, beginning at 12 o'clock Noon!**