



WM Morford
Investment Grade Collectibles at Auction

Investment Grade Collectibles & Maxfield Parrish Items at Auction

Rd #2, Cobb Hill Road, Cazenovia, NY 13035 • 24 Hr. Tel: (315) 662-7625 • 24 Hr. Fax: (315) 662-3570 • morf2bid@aol.com • morfauction.com

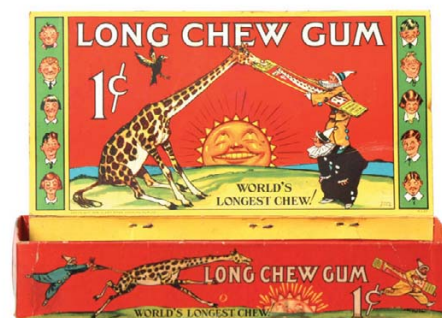
Bidding closes Friday, Sept. 10th, 2010. (See page 32 for Terms & Conditions)



1). **Telephone Mirrors.** Lot consists of two early celluloid telephone Co. advertising pocket mirrors. Includes: AT&T's "Get a Bell" (2.75 x 1.75); and "Missouri & Kansas Tel. Co." (2-1/8 dia.). Both are excellent. Min. bid \$50 (the pair).



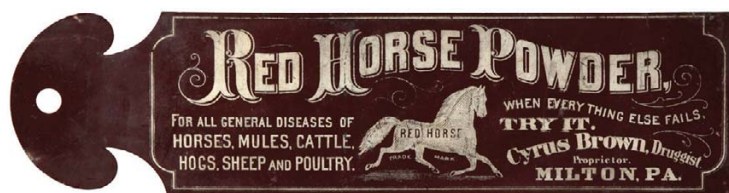
2). **Richmond Belle Tobacco.** 3.25 x 4-3/8 x 2.25" scarce, early tin litho square corner tobacco tin for Cameron & Cameron Co.'s "Richmond Belle" brand. Clean, bright and very attractive appearance (C. 8+) w/ light, fairly minor wear. Min. bid \$70.



3). **Long Chew Gum Box.** 5-7/8 x 8-3/8 x 4.75" (as shown) early cardboard display box for Long Chew brand chewing gum, featuring wonderful color graphic images on front and back of pop-up display, inside base and all around outer base. Also includes box cover and a pack of gum (gum pack has heavy general overall staining). Excellent (a strong C. 8++). Min. bid \$40.



4). **Lion Collars Sign.** 11 x 20.75" early cardboard trolley car sign for "Lion" brand shirt collars, featuring great image of uniformed baseball player. Has some minor tears and edge roughness, but overall clean and very attractive (C. 8+). Min. bid \$40.



5). **Veterinary Ledger Marker.** 3 x 11.5" outstanding, very early tin litho advertising ledger marker for "Red Horse Powder" veterinary cure (Curtis Brown Druggist, Milton, Pa.), featuring a wonderful, very early stenciled folk art style lithography. Clean and excellent (C. 8+). Min. bid \$60.



6). **Dairy Brand Coffee.** 9 x 7.5" (dia.) early 5 lb. tin litho coffee pail for Dairy brand (Foley Bros., St. Paul, Minn.) featuring attractive trademark image of milkmaid and cow (same image both sides). Attractive and displays nicely, w/ minor staining and a little light scattered wear (C. 7.5+/8-). Min. bid \$60.



7). **Kis-Me Gum Die-Cut.** 16 x 15" outstanding, large, early 2-ps. pressed cardboard easel back die-cut display sign for "Kis-Me" brand gum, featuring stunning, very high quality German style lithography. Clean, bright and like new (basically near mint appearance) w/ exception of a faint, non-detracting, minor crease mark at top of instrument. Min. bid \$70.



8). **Dr. Acker's Sign.** 9-3/8 x 9.25" very early, small, embossed tin litho sign for Dr. Acker's "Baby Soother" (teething medicine) w/ great caption that it "Contains no Opium or Morphine". Displays very nicely (C. 8+), w/ only very minor soiling and wear. Min. bid \$50.

Bidding Ends Friday, Sept. 10th, 2010.



9).Big Chief Jar Rings Box. 3.25 x 3.25 x 1.25" scarce, early cardboard product box for Tongue Bros. "Big Chief" brand fruit jar rings, w/ nice image of trademark Indian chief (pictures factory scene on back). Excellent, w/ light pinching on right side edge. Min. bid \$40.



10).Gum Box Lot. Lot consists of a nice group of six early chewing gum boxes. Includes: Lucky Penny; California Fruit; Adam's Yucatan; Adam's Sweet Fern; Lange's; and Bullseye (sizes range from 9 x 4.75 x 9" to 9.5 x 8.5/8 x 8.75" as shown). Conditions range from good to excellent (C. 7+ to 8++) w/ toning and general light wear from use. Min. bid \$50 (the lot).



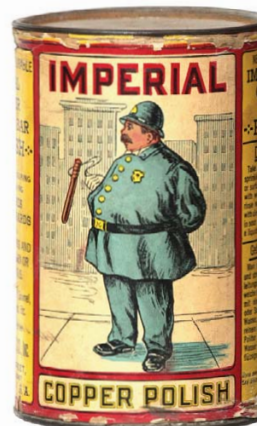
11).Elk Spice Tin. 3.25 x 2-3/8 x 1.5" scarce, early tin litho spice tin for Elk brand spices (same image both sides). Has strong color and displays quite nicely, w/ a little light soiling and wear (C. 8-), as found, might improve a bit w/ cleaning. Min. bid \$30.



12).Williams Talc Tin. 5 x 2-7/8 x 1-3/8" early tin litho talc can for Williams brand, featuring beautiful multicolor graphics (same image both sides). Clean, bright and excellent (C. 8.5+). Min. bid \$40.



13).Autobacco Pocket Tin. 4-3/8 x 3 x 7/8" outstanding, scarce, early tin litho vertical tobacco pocket tin for S.S. Pierce Co.'s "Autobacco" brand. Clean, bright and exceptionally nice example (displays as a very strong C. 8++) w/ only minor wear. Min. bid \$150.



14).Imperial Polish Can. 5 x 3-1/8" full, early, Imperial Products Co.'s (Phil'a., Pa.) Copper Polish can, w/ great image of trademark cop. Cardboard body w/ metal top and bottom. Clean and attractive appearance (displays as a strong C. 8+/), w/ light scattered wear (heavier wear along top and bottom edges), and light oxidizing on metal lid (critical grade C. 7.5). Min. bid \$40.



15).Gem Furnaces Bank. 4-5/8 x 3 x 3.5" early, figural cast iron advertising penny still bank in shape of an early furnace, w/ embossed lettering on both sides ("Abendroth Bros., N.Y." front; "Gem Heaters Save Money" back). Excellent, w/ a rich, nicely aged surface patina. Min. bid \$50.



16).Sauer's Extracts Case. 25-5/8 x 11.75 x 7.25" early, wooden country store display case advertising Sauer's Flavoring Extracts. An all original, exceptionally nice example, that is clean and very attractive, w/ nice surface finish on wood. Complete, w/ shelves inside and beautiful transfer type images on both front glass and left and right side panels (side panels picture factory scene w/ some general light overall wear). Min. bid \$70.



17).Diamond Dyes Sign. 19 x 13-5/8" large, extremely rare, early die-cut cardboard easel-back counter-top stand-up display sign for Diamond Dyes. Impressive piece is clean, bright and like new, w/ only minor storage wear (C. 8.5+). Forbes Litho. Min. bid \$70.

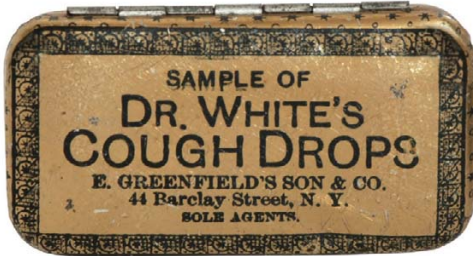


18).Stoneware Sign. 18 x 13" wonderful, early beveled tin litho over cardboard advertising store sign for Stoneware Food Containers, featuring a great multi-color graphic image of child in early kitchen filled w/ stoneware products (American Art Works, lithographers). Image area is clean, bright and very attractive in appearance (basically a very strong C. 8++) w/ some non-offensive light scattered wear in outer green border area. Displays very well! Min. bid \$150.



19). Turtle Spittoon. 4 x 15 x 10.75" unusual, very early figural turtle shaped metal spittoon, w/ nice detailing and a great overall look. A neat, high quality piece, w/ a heavy cast iron base and a rich, nicely aged copper shell on top (note: stepping on his head mechanically lifts the shell to reveal the cuspidor inside). Excellent appearance, w/ some general light expected wear from use (note: hinge mechanism on inside has been re-attached using an epoxy type resin). Min. bid \$60.

Sample



20). Cough Drop Sample. 1.25 x 2.25 x 3/8" early, min. hinged lid sample tin for Dr. White's brand cough drops, featuring finely detailed lithography by Somers Bros. Clean, bright and excellent (a strong C. 8++) w/ exception of small dent mark at bottom edge. Min. bid \$30.



21). Agricultural Pocket Mirror. 1.75 x 2.75" early, celluloid advertising pocket mirror for Silver Mfg. Co.'s "Ohio" brand silage cutters, featuring nicely detailed image of product. Clean and excellent. Min. bid \$30.



22). Taxicab Sign. 6 x 9" unusual, small porcelain sign for a Taxi Co. station. Clean and very nice appearance (basically excellent) w/ exception of small chip at top left edge and very minor non-detracting fleabites at upper right corner edge. Min. bid \$30.



23). Transparent Nutex Condom. 1.75 x 2-5/8 x 3/8" scarce, early tin litho condom tin for Rolled Transparent Nutex brand condoms. Clean, bright and excellent (C. 8.5/+). Min. bid \$40.



24). Spice Tins Lot. Lot consists of three early, colorful and graphic tin litho spice tins, all in excellent condition (heights range from 3.75 to 4.25"). Includes: Stuart's Handy 2 oz. allspice (C. 8++); Hostess 2-1/2 oz. cloves (C. 8.5/+); and Pitkin's Old Home brand 2 oz. paprika (C. 8.5/+). Min. bid \$50 (the lot).



25). Kendall Vet Box. 8.75 x 10.25 x 8.25" unusual, small, early wooden product box for Kendall's Spavin veterinary cure, featuring same attractive image on both sides (originally held twelve bottles). Has some typical expected toning and slight darkening to wood surface patina, but overall attractive and displays nicely (C. 7.5+/8-), w/ a couple narrow replacement strips added along top edges on two sides. Min. bid \$40.



26). Mince Meat Sign. 22-5/8 x 27.5" (19 x 25" image area) large, early paper litho sign titled "The Fairy's Pie" advertising New England brand mincemeat, w/ wonderful color graphic images (note product boxes in picture). Image areas are clean, bright and excellent overall (a strong C. 8++) w/ a little non-offensive faint scattered water staining in white outer margin border areas. Framed in an unusual, attractive period frame. Min. bid \$60.

Miniature Sled



27). Salesman's Sample Sled. 18 x 5.5 x 6" wonderful, very early, salesman's sample size miniature sled. Very high quality piece, has painted steel runners and brackets, w/ beautiful folk art hand-painted wooden top. Untouched and all original paint surfaces have excellent patina and look, w/ a very nice primitive and folksy country look (rounded back edge section of wooden top has some early wear). Min. bid \$100.



28).Silk Skin Condom Tin. 1.75 x 2-5/8 x 3/8" scarce, early tin litho product tin for Silk-Skin brand condoms. Clean, bright and very nice (C. 8++) w/ minor soiling and wear. Min. bid \$50.



29).Cutlery Sign. 6 x 27" unusual, early tin over cardboard "Cutlery" store sign, has bowed center area and embossed lettering. Clean, bright and very attractive appearance, w/ some fairly minor and non-detracting light surface wear (displays as a nice C. 8/+; critical grade 7.5++/8-). Min. bid \$60.



30).Cigar Label Printers Proofing Book. 6.5 x 10-3/8" lot consists of a complete company archival set of 18 paper litho progressive color printers proof cigar box labels (on heavy stock) in booklet form (some have original printers notations in margins) that show each stage of the stone litho color strike progress from 1st strike through to the finished label) on top. Neat and very impressive set. Min. bid \$40.



31). Gum Boxes. Lot consists of two early cardboard chewing gum display boxes, w/ attractive outer and inner labels and glass covered display windows. Includes: Yueta 5 x 8.5 x 4" (as shown) and Adams Tutti Frutti 5 x 10 x 4.25" (as shown). Both are clean and attractive, w/ some light wear on outside labels. Min. bid \$40 (the pair).



32).Planters Box. 7 x 9.5 x 2-1/8" scarce, Ca. 1930's 2-ps. waxy cardboard product box for Planters 5¢ Jumbo peanut candy bars, w/ great image of peanut plant on lid. Has some indents, minor creasing marks and light soiling and fade on lid, as well as some edge tattering and separation along flap edge of side aprons area, but overall attractive and displays quite nicely (C. a strong C. 7++). No pop-up marquis inside. Min. bid \$40.

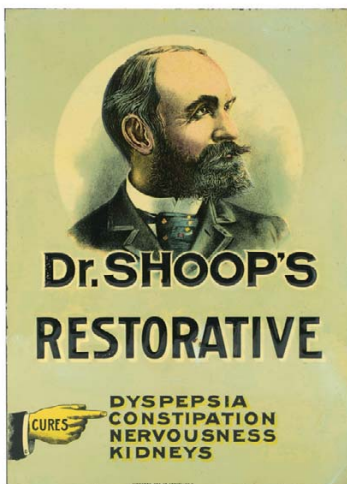
Hotel Bell



33).Hotel Bell. 4-5/8 x 3 x 1-7/8" (hgt) unusual, fancy, high quality metal clockwork hotel bell. Has nicely detailed, highly stylized embossed dragon/turtle likeness in brass/bronze metal base, w/ fancy nickel/brass bell dome. Excellent overall, works great (note: pushing down on tail delivers a long continuous ring). Min. bid \$40.



34).De Laval Calendar. 5.5 x 6-5/8" early tin litho desktop advertising calendar for De Laval brand Cream Separators, featuring beautiful multi-color lithography. Clean, bright and exceptionally nice (C. 8.5), w/ a 110 year perpetual mechanical paper moving calendar inside. Min. bid \$100.



35).Dr. Shoop's Sign. 9-1/8 x 6.5" scarce, small, early embossed tin litho medicine sign w/ beautiful, finely detailed graphics for "Dr. Shoop's Restorative" (cure for dyspepsia, constipation, nervousness and kidneys). Sign is crisp, bright and basically like new (appears never used) w/ exception of a few very minor background blemish marks (C. 8.5+). Min. bid \$150.



36).R B Cigar Cutter. 7.25 x 6 x 8" early, figural cast iron mechanical counter-top advertising cigar cutter for RB brand cigars. Attractive and displays nicely, w/ some crazing and paint chips on advertising marquis area (base section excellent). Min. bid \$50.



37).Chevrolet Sign. 17.5 x 18-5/8" early, two-sided metal flange advertising sign from early Chevy dealership. Clean, bright and very attractive appearance (C. 8/+), w/ just the right amount of wear (as found, should improve w/ cleaning). Min. bid \$70.



38). **Bevera Celluloid Sign.** 8 x 15" early, beveled celluloid (over tin over cardboard) hanging sign for "Bevera" medicinal malt product (Isaac Leisy Brewing Co., Cleveland) featuring great graphic images. Bright, attractive and displays nicely (as a strong C. 8+), w/ some faint edge staining at outer corners, a few tiny speckles and minor scattered wear (critical grade C. 7.5++/8-). Min. bid \$50.



39). **RCA Record Display.** 6 x 14 x 1.5" early, figural cast iron countertop advertising display for RCA records, w/ nicely embossed images of Nipper and early record player. Excellent, w/ a nice rich patina to its early paint surface (possibly a very early re-painted surface). Impressive looking piece, comes w/ a period RCA record for displaying (note: don't confuse this w/ those crudely made poor quality repros). Min. bid \$50.



40). **Bartholdi Mixture Tobacco.** 3.25 x 4-3/8 x 2.25" scarce, very early tin litho square corner tobacco tin for Bartholdi Mixture (Peter Hauptmann C., St. Louis, Mo.), featuring great, early detailed Ginna style lithography (not marked). Clean, very nice example, w/ only minor scattered wear (C. 8/-). Min. bid \$70.



41). **Frontier Coffee.** 4 x 5-1/8" (dia.) scarce, early tin litho 1 lb. pry lid coffee can for "Frontier" brand (Western Grocer Mills, Marshalltown, Iowa) featuring beautiful multi-color graphics. Clean, bright and like new (near mint) w/ same great image on both sides. Min. bid \$70.



42). **Dill's Square Corner.** 3-3/8 x 4.5 x 1-3/8" very early tin litho 4 oz. size square corner tobacco tin for J. D. Dill's "Natural Leaf" tobacco, featuring beautiful early color graphics (by Hasker & Marcuse). Clean, bright and excellent (a strong C. 8+), w/ exception of early chip spot at bottom of left side edge. Min. bid \$60.



43). **Bumper Tag.** 4-5/8 x 5.5" early tin litho bumper tag, featuring great image of cop. Clean, bright and excellent (displays as a strong C. 8+) w/ some small, non-offensive scattered tiny chip spots. Displays well! Min. bid \$40.



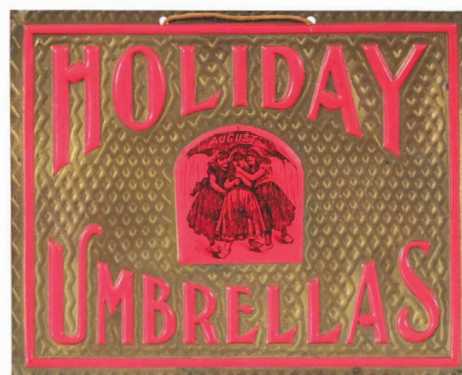
44). **Telephone Pay Station Sign.** 2.25 x 30" early, heavy porcelain Telephone Pay Station strip sign, w/ nice bell logos on either side and original zinc grommets. Attractive w/ a very nice overall appearance (note: a close examination will reveal a few non-offensive slightly lighter colored areas and speckle spots in field area, which appear to have been done during manufacturing process). Min. bid \$50.



45). **Inter-Ocean Telephone Sign.** 2.25 x 30" very early, heavy porcelain Long Distance Telephone strip sign from the Inter-Ocean Telephone and Telegraph Co. Attractive and very nice overall appearance, w/ a little non-offensive light scattered surface wear from use (note: close examination will show a slightly thicker and darker colored bubbly molten area of porcelain running across the top edge, which appears to have been done during manufacturing process). Min. bid \$50.



46). **Teasers Candy Box.** 8 x 9.75 x 4" early 2-ps. cardboard product box for Teasers brand candy (Walter Hall Co., Ottumwa, Iowa), featuring great color images of children on lid. Clean, bright and attractive (C. 8+/) w/ a little light scattered wear. Min. bid \$40.



47). **Holiday Umbrellas Sign.** 6-3/8 x 7-7/8" unusual, early, string hung embossed pressed celluloid advertising sign for Holiday brand umbrellas, w/ attractive image in center. Crisp and like new. Min. bid \$40.



48). **Whistles Candy Box.** 8.75 x 11-3/8 x 2.5" early 2-ps. product box for "Whistles" brand penny candies (National Licorice Co.) w/ nice image of children on lid. Clean and attractive appearance (C. 8+/-), w/ a little paper tattering along bottom right corner edge. Min. bid \$40.



49).Purity Ice Cream Sign. 11.5 x 7.5" adorable, Ca. 1920's cardboard die-cut advertising sign for Purity brand Ice Cream, featuring high quality, shiny embossed finish lithography. Excellent (C. 8.5+). Framed (see addendum to view in frame). Min. bid \$50.



50).Purity Ice Cream Sign. 11.5 x 7.5" adorable, Ca. 1920's cardboard die-cut advertising sign for Purity brand Ice Cream, featuring high quality, shiny embossed finish lithography. Excellent (C. 8.5+). Framed (see addendum to view in frame). Min. bid \$50.



51).Ex-Ray Gum/Slot Machine. 14 x 9.25 x 8.25" ca. 1940 Daval "Ex-Ray" 5¢ metal gum machine w/ trade stimulator slot machine reels that picture beer bottles and mugs. All original, piece is clean and very nice overall, w/ a little non-detracting wear from use (C. 8). Working condition, complete w/ original key. Min. bid \$100.



52).Texaco Globe. 17.5 x 15 (diam.) x 5" early 3-ps. glass Texaco Co. pump globe (both sides the same). Crisp and like new, as found never used in its original shipping crate. Hull body, w/ crimped on copper base (dated 1937 near base). Near mint. Min. bid \$100.



52). Box



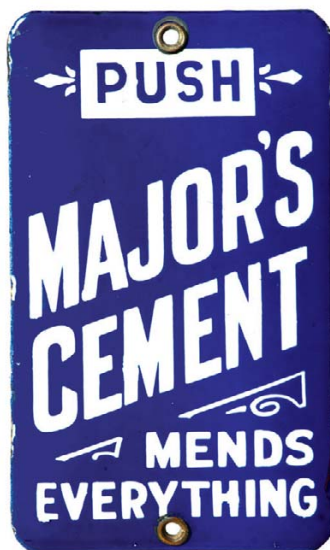
53). Box



53).Texaco Ethyl Globe. 17.5 x 15 (diam.) x 5" early 3-ps. glass Texaco Co. pump globe (both sides the same). Crisp and like new, as found never used in its original shipping box. Hull body, w/ crimped on copper base (dated 1937 near base). Near mint. Min. bid \$100.



54).Tavern Coffee. 6-1/8 x 4.25" (dia.) scarce, early 1 lb. tin litho "Tavern" brand coffee can (Clossert & Devers Co., Portland and Seattle), featuring beautiful graphic images of tavern building on both sides. Clean, bright and very attractive, w/ some non-offensive light denting and a few fairly minor rust spots on backside (front 8/+; back 8/-). Displays very well. Min. bid \$70.



55).Major's Cement Door Push. 6.5 x 3-7/8" early, heavy porcelain advertising door push for Major's brand cement. Clean, bright and attractive, w/ some minor edge roughness and non-detracting minor surface rubs and wear (C. 8+/-). Min. bid \$40.



56).Petroleum Bumper Tag. 5-3/8 x 3" scarce, early embossed tin litho license plate attachment / bumper tag advertising "PDQ" brand motor oil additive (Petrol Corp., Los Angeles). Clean, bright and attractive appearance, w/ a little non-offensive minor surface wear (C. 8+/-). Lot also includes an early matchbook pack of PDQ matches, w/ great color image of trademark bird. Min. bid \$40.



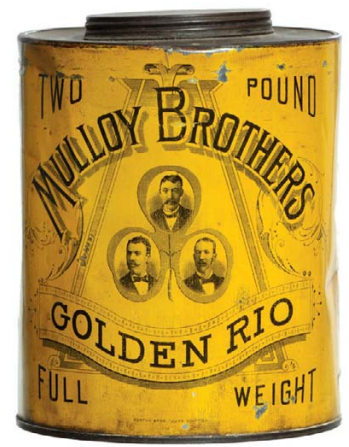
57).Tooth Powder. 3.75 x 1.75" (dia.) very early, tin litho tooth powder tin for Hall & Ruckel Co's "Sozodont" brand tooth powder featuring wonderful, finely detailed early lithography. Clean, bright and excellent (C. 8.5+/-) w/ minor traces of fine speckling on top of lid. Min. bid \$40.



58).Dixie Queen Tobacco. 6.5 x 4-7/8" (dia.) early, tin litho small top style tobacco tin for Dixie Queen brand, featuring beautiful graphics (same image both sides). Clean, exceptionally nice appearance, w/ strong color and bright sheen, w/ only minor background wear (a very strong C. 8++). Min. bid \$50.



59).Hott and Tott Band Toy. 7 x 6.5 x 4.75" ca. 1920's tin litho wind-up mechanical motion toy (by Unique Art Co., Newark, NJ) featuring black musicians (banjo player dances up and down while other one plays the piano), w/ great printed designs of dancing black couples around sides of piano. Clean, bright and excellent (C. 8++), w/ only minor wear. Works great. Min. bid \$150.



60).Golden Rio Coffee. 7 x 5-3/8" very early, 2 lb. tin litho small top coffee can for Mulloy Bros. (Louisville, Ky.) "Golden Rio" brand coffee, w/ nicely detailed lithography by Norton Bros. Attractive and displays nicely, w/ a little light scattered wear and denting (C. 7.5++). Min. bid \$50.



61).Gold Dust Ceiling Sign. 6.5" (dia.) early cardboard string hung ceiling sign for Gold Dust washing powder, featuring great images of the Co.'s trademark black twins (different image each side). Attractive and displays nicely (C. 8+), w/ just a trace hint of very minor age toning. Min. bid \$40.



62).Cigar Display Tin. 5 x 8.5 x 6.75" very early, countertop tin display box for Pittsburgh High Binder brand cigars. Has hinged glass lid at top for displaying contents, w/ attractive primitive folksy lettering on three sides. Displays great (C. 8-/-) w/ minor scattered wear. Min. bid \$50.



63).Veteran Peanut Butter. 3.5 x 3.75" (dia.) early tin litho 1 lb. peanut butter pail from Brewster Gordon Co. (Rochester, NY) featuring nice images of Co.'s trademark Civil War officer (same image both sides). Clean and very attractive (C. 8+), w/ a little light wear along top edge and typical wear and loss to gold flash finish on lid. Min. bid \$40.



64).Golden Days Coffee Can. 12.5 x 6.25 x 4.25" unusual, early tin litho coffee canister for "Golden Days" brand (Schotten Co., St. Louis), w/ hook at top for hanging on wall and a slide closure on narrow base lid for releasing product. Clean, bright and attractive, w/ a little fairly minor scattered wear (C. 8+/-). Min. bid \$60.



65).Nutcracker. 6-5/8 x 3.5 x 2" early figural cast iron mechanical nutcracker (rotating squirrel at top works like a vice to crack open nuts inserted into tree trunk shaped base). Has nice detailing and early original surface patina. Excellent. Min. bid \$40.



66).Delmar Club Spice Can. 4.75 x 2-3/8 x 1-7/8" early pry-lid 2 oz. spice tin for Delmar Club brand (Moll Grocers, St. Louis, Mo.) w/ attractive color graphic images of sailing club (same image both sides). Paper over cardboard sides, w/ tin top and base, excellent overall (C. 8++) w/ store price marked in crayon on back side. Min. bid \$30.



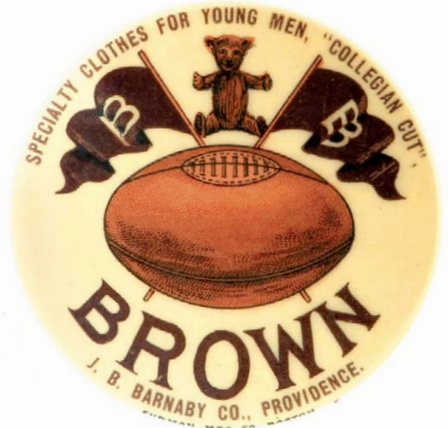
67).Sylvia Cross Talc Tin. 6-7/8 x 2.25" (dia.) unusual, early tin litho talc can for Sylvia Cross brand, featuring an attractive, nicely detailed image of Co.'s trademark nurse. Tin is clean, bright and excellent overall (C. 8++). Min. bid \$40.



68). Wilson's Peanut Butter. 3 x 3.5" (dia.) early tin litho 11 oz. size peanut butter pail from Wilson & Co., Chicago; featuring wonderful nursery color graphic rhyme images all around. Attractive and displays nicely, w/ a little light scattered wear (C. 8-). Min. bid \$40.



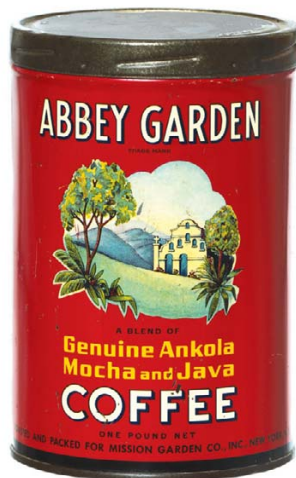
69). Bug Killer Display. 9.75 x 12.75" early die-cut cardboard standup sign for "El Vampiro" brand bug powder, featuring wonderful graphic images of product box and bugs. Excellent, w/ exception of a non-offensive faint crease mark in upper right corner. Min. bid \$50.



70). Brown Football Pocket Mirror. 1.75" (dia.) advertising pocket mirror for a Providence RI clothier, w/ a great Brown collegiate football theme. Excellent. Min. bid \$40.



71). Circus Club Marshmallows Tin. 7 x 4" (dia.) unusual, early 6 oz. size tin litho animal series product can for Circus Club brand marshmallows (Harry Horne Co., Toronto, Canada). Clean, bright and very attractive (C. 8++). Min. bid \$40.



72). Abbey Garden Coffee. 6.25 x 4" dia. scarce, early tin litho 1 lb. coffee can for Abbey Garden brand (Mission Garden Co., New York) featuring nice image of Co.'s trademark mission building. Clean, bright and very attractive appearance (displays as a strong C. 8/+) although close examination will reveal some non-offensive, light scattered wear marks and a few minor dents on backside (critical grade C. 8-). Min. bid \$70.



73). Welch's Pocket Mirror. 2.75 x 1.75" extremely rare, early celluloid advertising pocket mirror for Welch's brand Grape Juice. Clean and excellent appearance (note: examination under magnification will show some barely noticeable faint surface wear-mentioned for accuracy, not at all detracting). Min. bid \$50.

Match Safe



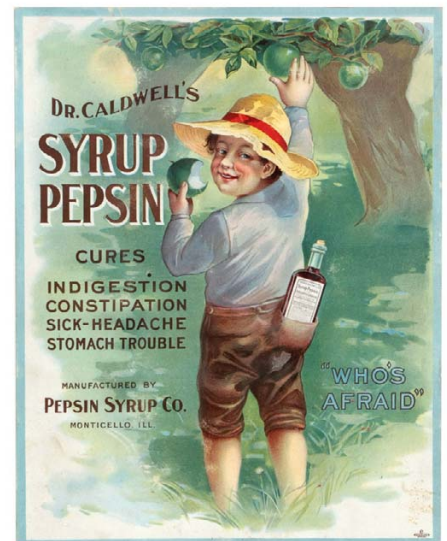
74). Advertising Match Safe. 2-7/8 x 1-3/8 x 3/4" early, figural metal advertising match safe in shape of early work pants, w/ embossed advertising on hinged lid w/ for a Chicago merchant store. A very high quality, nicely detailed piece, w/ nice surface patina. Excellent. Min. bid \$40.



75). Candy Co. Calendar. 19 x 10.5" large, beautiful, early die-cut pressed cardboard advertising calendar for "Fred Burnam, Candy Maker, Saco, Maine", w/ a beautiful, shiny, embossed finish, high quality German style lithography. Crisp, bright and like new (near mint w/ exception of non-offensive tear mark in hat area), complete w/ 1912 calendar pad. Min. bid \$40.



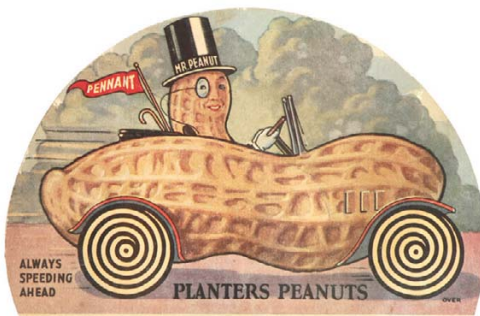
76). Dixie Lard Tin. 8.5 x 8" (dia.) scarce, 10 lb. size, early tin litho product can for Dixie brand lard, featuring wonderful color graphic image of Co.'s trademark black chef (Young Co., Johnstown, Pa.). Color graphic area is clean, bright and very attractive in appearance, w/ some typical darkening and general wear in upper areas of gold flash finish areas. Min. bid \$50.



77). Dr. Caldwell's Sign. 14 x 11" very early cardboard litho medicine sign for Caldwell's Syrup Pepsin Cure (Forbes Litho, Boston), featuring beautifully detailed multi-color graphics. Clean, bright and excellent in appearance (displays as a C. 8.5/+) w/ small tear mark at top edge (archivally closed from back side) and minor, non-offensive faint stain speckling spot in bottom right corner. Min. bid \$70.



78).Cosmos Tobacco. 3.25 x 4.5 x 2.25" early tin litho square corner style tobacco tin for Fauth & Ogden Co.'s "Cosmos Mixture" tobacco. Has strong color and displays nicely, w/ some light wear on side edges (C. 7.5+/-). Min. bid \$40.

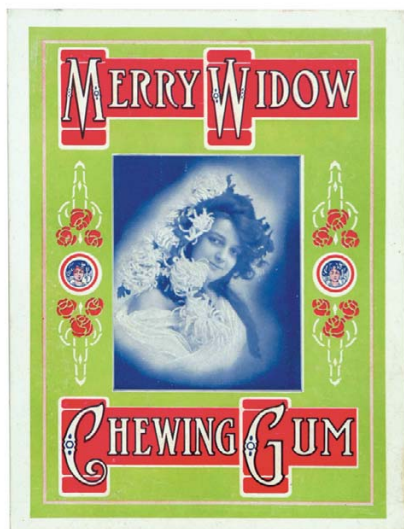


79).Planters Peanuts Fan. 5-3/8 x 8" wonderful ca. 1920's cardboard advertising fan for Planters Peanut Co. (has different advertising on both sides). Excellent (C. 8.5). Min. bid \$40.



80).Gillette Razor Tin. 2-1/8 x 3.5 x 1-3/8"scarce, very early tin litho product tin for Gillette safety razors, complete w/ original razor and 2 blade tins inside. Tin is clean, bright and very nice (C. 8+), (note: small razor tins inside are fair to poor due to color bleed areas from velvet lining). Min. bid \$50.

Chewing Gum



81).Merry Widow Gum Sign. 7.75 x 5-7/8" unusual, small, early cardboard litho advertising sign for "Merry Widow" brand chewing gum. Clean, bright and excellent. Min. bid \$40.



82).Dayton Nuts Tin. 8.25 x 7" (dia.) early tin litho 5 lb. product can for Dayton brand nuts (pecans) featuring a wonderful, highly detailed graphic image of Co.'s trademark bi-plane. Excellent (C. 8++) w/ small dent and minor wear in dark background area. Min. bid \$60.

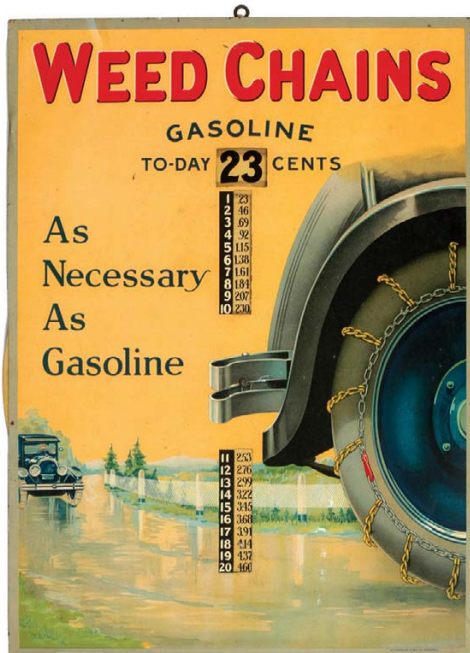
Butcher Supply Co. Ink Well



83).Butcher Supply Co. Inkwell. 6" (hgt.) unusual, early, heavy figural metal advertising inkwell from the Wolf Saver & Heller Co., Chicago w/ nicely detailed figures of steer, pig and sheep on base, w/ deer that lifts off to reveal inkwell underneath. Very high quality piece, excellent, w/ a nice original, rich paint surface (note: Co. made butcher blocks, butcher shop supplies, horn furniture, etc.). Min. bid \$40.



84).Countertop Beer Display. 13.25 x 6-1/8 x 5.5" unusual, early figural countertop advertising display piece for Leinenkugel's Beer, complete w/ an unopened, full beer bottle. Display is made of a heavy, solid rubbery type composition material, w/ nice original paint surface. Excellent, w/ nice surface patina and great overall look. Min. bid \$50.



85).Tire Chains Gas Station Sign. 23.25 x 17.25" wonderful, early tin litho service station display sign (over wood braced backing frame) for "Weed" brand tire chains, with a rotating dial for pricing gasoline. All original, piece is clean, bright and very attractive in appearance, w/ a little minor scattered wear (C. 8+/-). American Art Works. Min. bid \$150.



86).Continental Sign. 18 x 12" early, heavy porcelain advertising sign for Continental Fire Insurance Co., featuring wonderful large detailed multi-color image of Co.'s trademark Continental soldier. Powerful and impressive looking piece that is clean, bright and very attractive in appearance (a strong C. 8++) w/ a little chipping wear at top and two left hanging holes. Provenance: de-acquisitioned from Tee-Too-Tum Museum collection, Wyxox, Pa. Min. bid \$150.



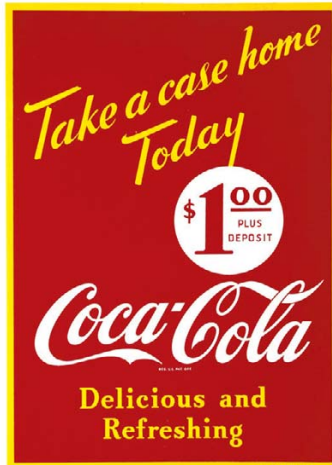
87).Bee Soap Sign. 9-1/8 x 19-3/8" outstanding, early tin litho advertising sign for Bee Brand Soap, featuring beautifully detailed images of early product packages. Crisp, bright and like new (near mint). Min. bid \$60.



88).Coca-Cola Sign. 15.25 x 27.75" (10.25 x 22.75 visible) ca. 1949 paper advertising sign, w/featuring a CBS promotional sponsorship tie-in for the Edgar Bergen/ Charlie McCarthy show. Excellent (C. 8.5/+), nicely framed and matted. Min. bid \$50.



89).Novelty Card Vending Machine. 13 x 7 x 8.25" early, wooden penny picture card vending machine w/ twin coin slots. Freshly picked and all original, w/ nice patina and great look to its early paint surface (no lock on back). Lot also includes two great looking baseball cards that can be used to replace original display cards on machine. Excellent (C. 8/+). Min. bid \$50.



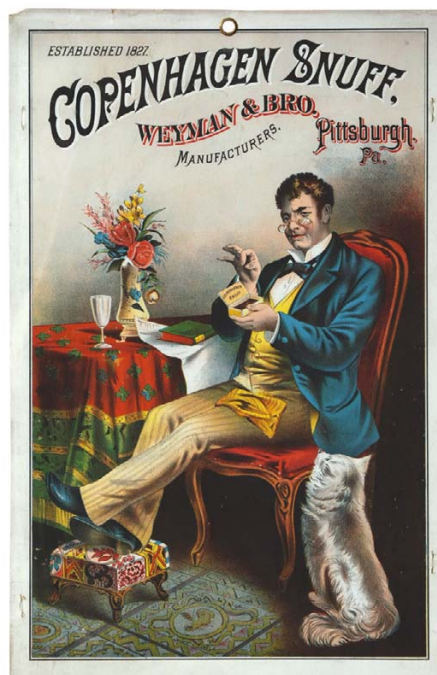
90).Coca-Cola Sign. 27.75 x 19-5/8" early metal Coca-Cola \$1.00 case promotional sign. Crisp, bright and like new, as found never used still w/ its original protective paper covering it. Displays as near mint w/ nice original sheen (a very close examination will reveal a minor, very faint and non-detracting surface scratch mark (hardly noticeable and barely merits mention- stated for accuracy). Min. bid \$50.



91).Jiffy Gum Vendor/Cigarettes Slot Machine. 10.5 x 7.5 x 8.75" great early 1¢ Jiffy brand coin operated gumball machine/trade stimulator. In addition to vending gumballs, it has a working slot machine mechanism w/ branded cigarette packs (Lucky Strike, Camel, Old Gold, etc.) in each of reel windows (per card at top, winning combinations were paid off in cigarette packs). Excellent and all original (a strong C. 8++), w/ only minor wear (complete w/ original keys). Min. bid \$100.



92).Planters Sitting Lady Display. 26 x 10.5 x 5" great ca. 1930's die-cut cardboard counter/table top display piece for Planters Peanuts (box she is holding was filled w/ peanut packs and her feet hung down from counter). Piece is crisp and appears never used, although there is a faint crease line across ankle and neck/chin areas. Min. bid \$70.



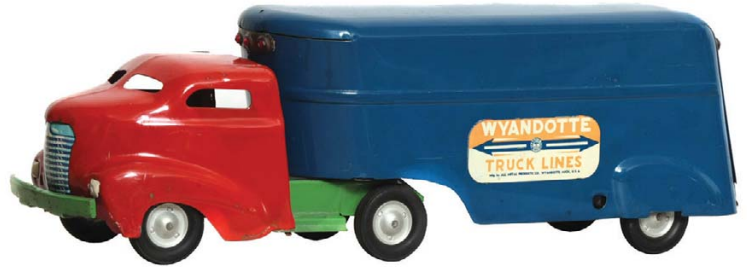
93).Copenhagen Snuff Sign. 17.5 x 11-3/8" outstanding, very early cardboard litho sign for Copenhagen brand snuff (Weyman & Bros., Pittsburgh, Pa.) featuring beautiful multi-color graphics. Image area is clean, bright and exceptionally nice (C. 8.5/+), w/ some scattered wear in the outer white margin area (all of which would be easily matted out if framed). Min. bid \$70.



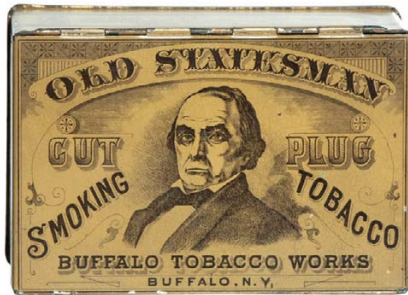
94).Planters Display Stand. 12 x 5 x 4.25" ca. 1920's die-cut tin litho countertop display stand for Planters 5¢ Jumbo Peanut Block candy bars, featuring great early style Mr. Peanut. Clean and very attractive in appearance (basically displays as a strong C. 8/+), w/ exception of typically found small nail hole in top hat area and some light oxidized wear on inside bottom base area of piece. Min. bid \$100.



95).Dr. Pepper Sign. 5 x 23" early, tin litho soda sign for Dr. Pepper brand soda. Appears never used, w/ just a faint trace hint of crazing (not at all detracting- mentioned for accuracy) and minor traces of storage / handling wear. Crisp, bright and like new (C. 8.5++). Min. bid \$50.



96).Wyandotte Toy Truck. 23.25 x 8 x 6" early, high quality pressed steel 2-ps. toy truck w/ advertising insert signs on sides panels of truck for "Wyandotte Truck Lines". Nice overall condition, w/ some light wear from use and a little light fade to insert sign on back side. Min. bid \$50. 2594



97).Old Statesman Tobacco (Buffalo). 3-1/8 x 4-5/8 x 2" very early, extremely rare variation tin litho square corner product tin for "Old Statesman" brand tobacco (from the Buffalo Tobacco Works, Buffalo, NY), featuring beautiful detailed Sommers Bros. lithography. Clean and excellent overall (a strong C. 8+), w/ only minor wear. Min. bid \$70.



98).Black and White Cigar Sign. 11.75 x 36-1/8" early, heavy porcelain advertising sign for Black & White brand cigars. Clean, bright and exceptionally nice condition (C. 8.5/+), w/ a little light chipping at top and bottom center right hanging holes. Min. bid \$70.



99).A & P Sign. 4 x 4" early, small porcelain sign for A & P brand grocers. Unusual piece is clean, bright and exceptionally nice (C. 8.5++), w/ only minor wear. Min. bid \$40.



100).Century Tobacco Sign. 11.75 x 16" (9-3/8 x 13.5" visible) very early (Ca. 1870's/80's) paper litho sign for P & G Lorillard Co.'s "Century" brand chewing tobacco, featuring wonderful early graphics (Major & Knapp lithographers). Clean, bright and exceptionally nice (near mint). Beautifully framed. Min. bid \$70.



101).Faneuil Hall Cigar Tin. 4.75 x 4-3/8" early tin litho 50 ct. cigar can for Faneuil Hall brand, featuring beautifully detailed color graphic images of famous Boston landmark (same on both sides). Clean, bright and very attractive appearance (C. 8+/) w/ only minor wear. Min. bid \$50.



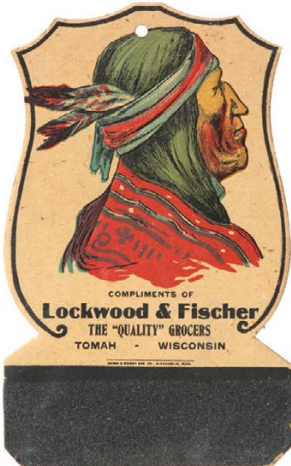
102).Bon Ami Ceiling Sign. 6-7/8" (dia.) early 2-sided die-cut cardboard ceiling sign for Bon Ami cleanser product, featuring beautiful, multi-color graphics. Neat and unusual piece, that is clean and very attractive (C. 8+/) w/ minor age toning. Min. bid \$40.



103).Wrigley's Sign. 7 x 11-1/8" early bevel edge tin over cardboard sign for Wrigley's brand chewing gum, featuring nicely detailed images of various product packs. Clean, bright and excellent (C. 8.5+/) w/ exception of a couple tiny wear spots at lower right corner edge (has both easel and string on back). Min. bid \$70.



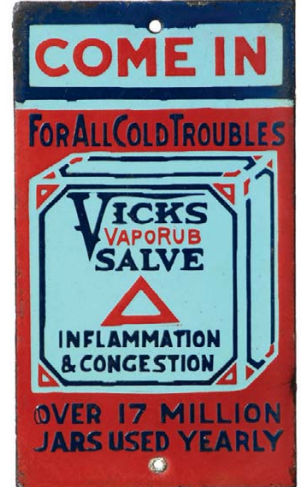
104).Cedar Hill Spice Tin. 3-1/8 x 2.25 x 1.25" early 1-1/2 oz. tin litho spice tin for Cedar Hill brand allspice (Hassendeubel Grocers, St. Louis, Mo.) (same image on both sides). Clean, bright and displays nicely, w/ some minor speckling and light scattered wear (C. 8/-). Min. bid \$30.



105).Indian Match Scratcher. 8 x 5" unusual, large, early die-cut cardboard advertising match scratcher for a Tomah, Wisc. grocer, featuring an attractive Indian image. Clean and excellent (C. 8+), w/ minor wear at bottom right corner edge of scratching area. Min. bid \$40.



106).Winery Sign. 21 x 27" outstanding and very impressive looking early paper sign for M. Hommel Co., featuring stunning multi-color graphic images of Co.'s large, early product bottles and fancy wine making facilities, along w/ 1893 Columbian Expo gold medal award info, etc. Clean, bright and exceptionally nice appearance (basically displays as near mint) although close examination will reveal some faint, non-detracting, minor foxing speckles- mostly confined to outer white margin areas (not offensive, mentioned for accuracy). Min. bid \$70.



107).Vicks Door Push. 6.5 x 3.75" very early, heavy porcelain advertising door push for Vicks medicinal salve. Clean and excellent, w/ minor traces of oxidizing at very outer lower right edge (C. 8.5/+). Min. bid \$50.



108).Allen & Ginter's Tobacco Canister. 5.75 x 4.5" (dia.) early tin litho barrel shaped tobacco canister for Allen & Ginter's "Dixie" brand tobacco, featuring nicely detailed lithography by Ginna & Co. Excellent overall, w/ minor scattered darkening and wear (C. 8/+). Min. bid \$40.



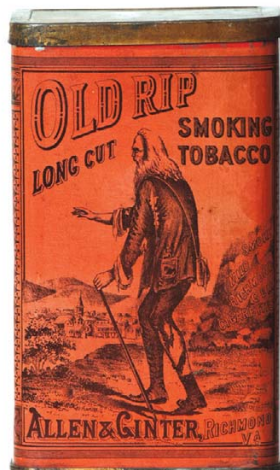
109).Coca-Cola Clock. 15" (dia.) x 3-1/8" Ca. 1950's metal and glass light-up clock advertising Coca-Cola, featuring nice image of early trademark bottle (marked "Pam Clock Co." on bottom inside panel and backside decals). Clean and excellent (C. 8.5++), nice working condition. Min. bid \$100.



110).Buffalo Bill Program. 9.25 x 7.25" early 64 pg. Buffalo Bill's 1898 Wild West show souvenir booklet w/ beautiful color front and back cover illustrations. Heavily illustrated and filled with interesting stories, photos, sketches etc. Clean, bright and excellent (basically a strong C. 8.5/+ appearance) w/ minor professional reinforcement at folded binding edge (extremely well done). Min. bid \$50.



111).Martha Washington Oats Box. 9-5/8 x 5.5" unusual, 3 lb. 7 oz. size cardboard oatmeal box for Martha Washington brand (Joannes Bros., Green Bay, Wisc.), w/ beautiful graphic image of 1st First Lady on front and steaming cereal bowl on back. Clean and attractive appearance, w/ minor scattered wear (C. 8/+). Min. bid \$40.



112).Old Rip Tobacco. 7.25 x 4.5 x 3.25" scarce, large variation tin litho product tin for Allen & Ginter Co.'s "Old Rip" brand tobacco, featuring wonderful, early, finely detailed lithography by Ginna & Co. Has some color softening/fade to front side, a few small scattered dent marks and a few small touch-up spots on narrow left side edge, but overall an attractive piece that displays nicely (C. 7.5/+). Min. bid \$60.

Tooth Powder



113).Odontine Tooth Powder Tin. 4-5/8 x 1-5/8" scarce, early tin litho tooth powder tin for Boerner Fry Co.'s "Odontine" brand tooth powder. Clean, very nice appearance, w/ minor crazing and a little non-detracting light scattered wear (C. 8/+). Min. bid \$40.



114).Chiclets Gum Box. 6-5/8 x 4 x 7" scarce variation, early Canadian countertop display box for Chiclets brand chewing gum (originally held 20 packs). Clean, bright and excellent (C. 8.5++), complete w/ original lid. Min. bid \$40.



115).Life Savers Display. 9 x 12.75 x 9.25" early tin litho store display rack w/ hinged marquis top for Life Savers brand roll candy. Attractive and displays nicely, w/ minor scattered wear from use including some non-offensive and fairly minor scattered oxidized speckles (C. 7.5/+). Min. bid \$40.



116).Magic Poster. 28 x 41" (25.5 x 38.5" image area) outstanding, large, early paper litho promotional poster for master magician "Karmi", featuring stunning multi color lithography (© 1914, National Printing and Engraving Co.). Image area is crisp, bright and like new (near mint), w/ some chipping, light tears and paper loss along top and left edges of the white, outer margin areas (w/ missing piece of margin at bottom left corner) all can be easily hidden if framed and matted. Powerful and impressive piece, displays great! Min. bid \$60.



117).Treasure Line Stoves Novelty. 9.5 x 3-5/8" unusual, early tin litho novelty advertising sign in shape of small shovel/scoop for "Treasure Line" brand stoves and ranges. Attractive and displays nicely (image area C. 8/+), w/ some typical general darkening and wear in gold flash finish surface areas (gold areas C. 7.5). Canadian. Min. bid \$50.



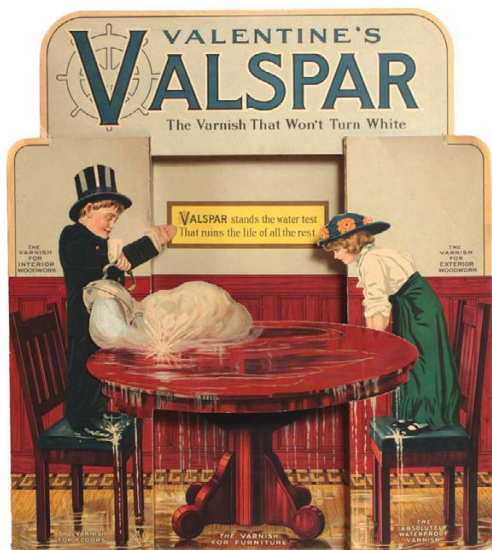
118).Sun Crest Thermometer. 16.5 x 4" early, figural bottle shaped tin litho thermometer for Sun Crest brand soda, w/ embossed patterns in bottle and cap area. Excellent (C. 8.5/+) w/ exception of minor wear from use at hanging holes and bottom edge area. Min. bid \$50.



119).Coca-Cola Gum Jar. 11 x 4.25 x 4.5" unusual, early glass store jar (w/ ground lid) for Coca-Cola brand chewing gum, w/ large embossed "Coca-Cola Pepsin Gum" lettering on front, and "Manufactured by Franklin Mfg. Co., Richmond, Va." on back. Jar is excellent, w/ light wear on base, lid has minor polished chip at top, otherwise excellent. Min. bid \$70.



120).Fergus Oats Box. 9-5/8 x 5-5/8" (dia.) unusual, early 3 lb. 7 oz. size cardboard oats box for Beall McGowan Co.'s Fergus brand (Fergus Falls, Minn.) featuring colorful and attractive image of trademark dam (same image both sides). Clean and attractive appearance, w/ a little non-offensive age toning and some slight fading to reds on backside (C. 8). Min. bid \$40.



121).Valspar Window Display. 34.25 x 30 x 2-1/8" attractive, early fold-out cardboard die-cut window display sign for Valspar brand varnish, featuring great graphic images of well-dressed children, etc. Clean, bright and very attractive appearance (a strong C 8/+), w/ a little minor scattered wear Min. bid \$60.

Salesman's Sample Washing Machine



122).Salesman's Sample Washing Machine. 13.25 x 11.25 x 7.25" outstanding, very early museum quality miniature wooden salesman's sample washing machine for Hanlan brand washers, featuring a wonderful deer image of front ("PATD AUG 16th 1881" on back). Has great early country paint surface and beautifully done folk art type detailing and design; w/ a moving interior (rocks back and forth) w/ an actual working wringer on side. Impressive, very high quality piece, that is excellent overall, w/ just the right amount of wear (C. 8+/-). (Provenance: Joe & Lillian Shapiro Collection. Note: this piece was previously on display at the National Heratige Museum). Min. bid \$150.



123).Dixon's Pencil Display. 15.25 x 37.5" (as shown) early, die-cut cardboard easel back window display sign advertising Ticonderoga brand pencils, w/ nice image of Revolutionary War fort. Clean, bright and very attractive (a strong C. 8++). Min. bid \$40.



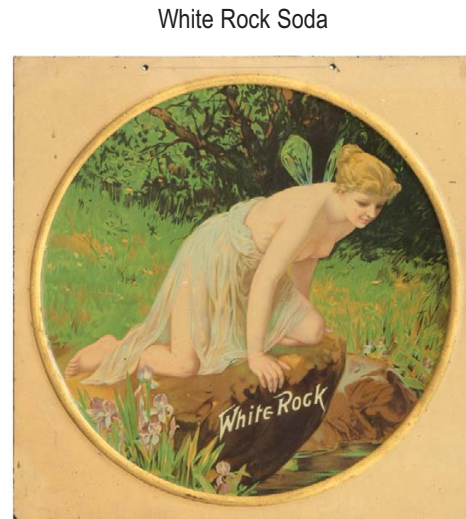
124).Gum Covers. Lot consists of 5 early advertising mailed envelopes (covers) for various chewing gum Co.'s. Includes two different examples from Wrigley's, as well as Franklin, Sense and Adams brands (sizes range from 3.75 x 6.25" to 4 x 8-7/8"). Lot also includes two early typed letters on color graphic letterheads from Wrigley's Co. and Kis-Me brand gum, w/ great images of early gum packs. Min. bid \$40 (the lot).



125).Shell Oil Gas Pump Display. 15.5 x 9.5 x 16" Ca. 1950/60's 2-sided wind driven revolving tin litho figural pump top display sign for Shell brand motor oil. Sign rests on iron brackets and entire piece revolves in wind (also has individual spinning vertical "Buy" signs on each side that rotate quickly alongside the big dimensional oil cans). Great looking piece, excellent condition (appears never used) w/ only minor storage / handling wear (a strong C. 8++). Min. bid \$60.



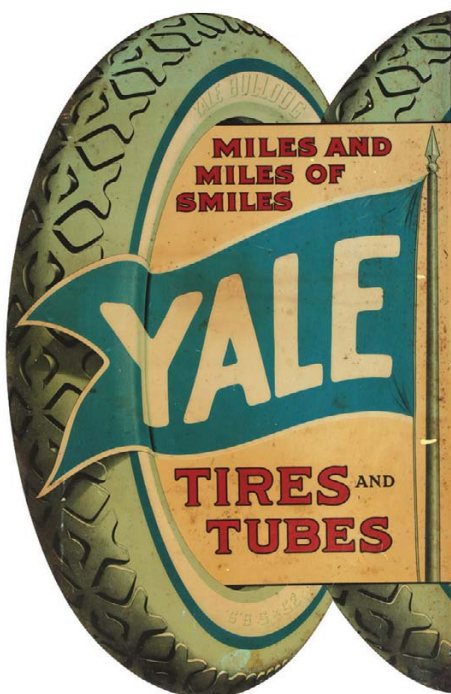
126).Cigars Pocket Notebook. 4.75 x 2.5" early, celluloid covered advertising notebook from Hemmeyer Cigar Co., w/ beautiful multicolor graphic Indian images on front and back covers. Celluloid is clean and very attractive in appearance (excellent), w/ minor wrinkle marks (note: a few of the paper pages inside have light staining and/or tear marks). Min. bid \$30.



127).White Rock Sign. 11.5 x 11.5" impressive, early tin litho sign for White Rock beverages, featuring beautiful multi-color graphic image of Co.'s trademark topless girl on rock (gold circular area surrounding image is raised). Clean, attractive and displays very nicely (C. 8+/-), w/ a little minor scattered soiling and wear (freshly picked and as found, should improve some w/ cleaning). Min. bid \$70.



128).Blue Jacket Tailoring Calendar. 23-3/8 x 13-5/8" scarce, large die-cut tin litho advertising calendar for Blue Jacket Tailoring Co., NY, in likeness of child dressed in a WW I U.S. Navy uniform. A powerful and very impressive piece that displays great (basically as a C. 8+) although close examination will reveal a few non-offensive faint horizontal wavy crease marks in pants area (barely noticeable) as well as some scattered light wear spots and a few small spots of light surface oxidizing (nothing that's serious or offensive- critical grade C. 7.5). Comes with original cardboard calendar insert cards. Min. bid \$100.



129).Yale Tires Sign. 27.25 x 18" large, early 2-sided metal litho flange advertising sign for Yale brand tires. Scarce and impressive sign has some weathering and general scattered wear from use, but overall is a powerful looking piece that displays quite nicely, with strong color (display C. 7.5+/-; back C. 7+/-). As found, should improve w/ cleaning. Min. bid \$150.



130).Allen & Ginter's Baseball Sign. 27.75 x 15-7/8" important, large, early paper litho advertising sign for Allen & Ginter Co.'s "Richmond Straights" brand cigarettes, featuring wonderful image of child holding a large, very early baseball (Lindner, Eddy & Clauss Lithographers, NY). A powerful and impressive piece that is clean and very attractive (a strong C. 8++). Min. bid \$150.



131). **Tiger Biscuits Box.** 10-5/8 x 23 x 14.25" early hinged lid, wooden country store product crate for Tiger brand biscuits, featuring great color litho label on front panel. All original, w/ a clean, very attractive appearance (C. 8/+). Min. bid \$60.



132). **Service Station Toy.** 3 x 11.75 x 6-5/8" tin litho "Blue Bird Garage" service station toy by Marx Co., featuring a wonderful, streamlined deco era service station. Clean, bright and attractive in appearance, w/ some light wear in base area (C. 8+/-). Min. bid \$40.



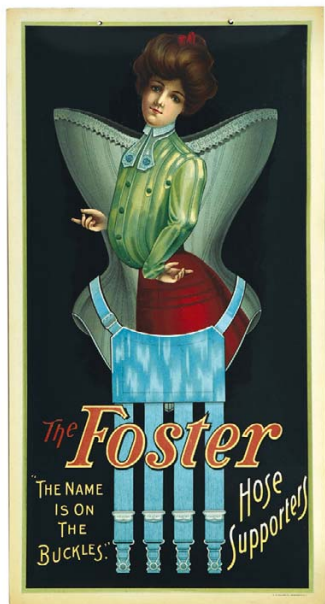
133). **Punch Cigar Lighter.** 7.5" scarce, very high quality heavy figural metal countertop gas fired cigar lighter (gas valve underneath, w/ a hole in his cigar for flame). Has nice detailing and an excellent overall look, w/ a nice rich surface patina. Min. bid \$60.



134). **Duke of York Tobacco Sign.** (20 x 15" actual piece) wonderful, early paper litho sign (w/ metal strips at top and bottom) for "Duke of York" brand tobacco, featuring great image of mischievous eyed glamour girl smoking a cigarette (note the soft-pack dangling from her necklace). A powerful and very impressive looking piece, w/ rich vivid colors and a great look. Basically displays as a strong C. 8.5/+, although close examination will reveal some non-offensive typical minor snake lines and crease marks (from being rolled) and some minor chipping at outer edges (critical grade C. 8/-). Framed. Min. bid \$100.



135). **Gum Blotters.** Lot consists of four early chewing gum company advertising blotters (sizes range from 3.5 x 8.25" to 4 x 9.5"). Brands include: "Sweet Wheat", "Sen-Sen", "Clark" and "Smith Bro.s". Conditions range from very good to excellent (C. 7.5 to 8.5") w/ some light scattered wear from use. Min. bid \$40 (the lot).



136). **Foster Hose Supporters Sign.** 17 x 9" early, celluloid over cardboard advertising sign for Foster brand hose supporters (corsets) featuring beautiful multi-color graphics. Clean, bright and exceptionally nice, w/ a slight bit of minor surface wear (displays as near mint). Min. bid \$40.



137). **Skin Medicine Display Sign.** 13.75 x 12.5" outstanding, ca. 1890's early die-cut cardboard display sign for "Ma-Le-Na" medicinal skin product, featuring incredible and beautifully detailed, embossed multi-color graphics. Clean, bright and like new, (basically near mint, w/ exception of backside tape reinforcement on first girl's neck area). Min. bid \$100.



138). **Mansfield Gum Case.** 11.5 x 5 x 4.75" unusual, small, early countertop display case for Mansfield brand pepsin chewing gum. Has wooden base (oak), glass sides and metal swinging door on backside, w/ very attractive advertising transfer type images on front glass panel. Excellent (C. 8+), w/ some light oxidizing spots on back metal door. Min. bid \$100.



139).Sunbeam Bread Sign. 11.5 x 29.5" Ca. 1950's embossed tin litho sign for Sunbeam bread, w/ unusual red background pattern (dated 1959). Clean, bright and very attractive appearance (basically displays as a strong C. 8++) w/ a little light scattered chipping wear along outer edges and at bottom middle hanging hole. Min. bid \$60.



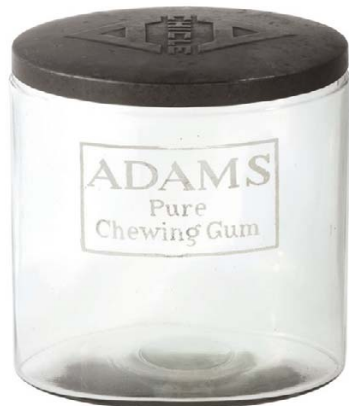
140)."American Doctrine" Printers Proofing Booklet. 6.5 x 10-3/8" lot consists of a complete company archival set of 13 paper litho progressive color printers proof cigar box labels (on heavy stock) in booklet form (some have original printers notations in margins) that show each stage of the stone litho color strike progress from 1st strike through to the finished label) on top. Neat and very impressive set, w/ some general wear from storage and use (C. 8/-). Min. bid \$60.



141).Sullivan's Cigars Strip Sign. 3 x 18" early, heavy porcelain strip sign advertising R.G. Sullivan Co.'s "7-20-4" brand cigars. Clean, bright and excellent, w/ a little, very minor scattered wear along very outer edges. Min. bid \$60.



142).Toilet Paper Rolls. Lot consists of four early toilet paper rolls, each w/ very attractive colorful and graphic outer labels (each app. 4-5/8 x 4.5" dia.). Brands include: Plute; Dr. Warren; Rayosette and Bluebird. All are clean and excellent (C. 8++). Min. bid \$50 (the lot).



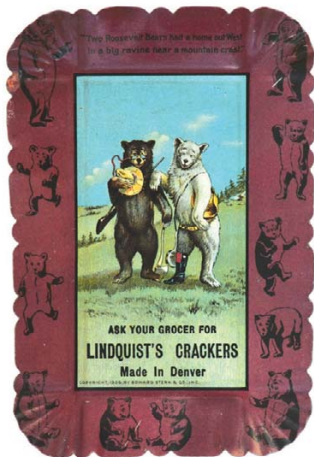
143).Adams Gum Jar. 7 x 7 x 5.25" very early, heavy glass countertop store jar (w/ early style hand ground top) for Adams brand chewing gum, w/ attractive etched lettering on front and embossed advertising design on metal lid. Excellent and all original. Min. bid \$50.



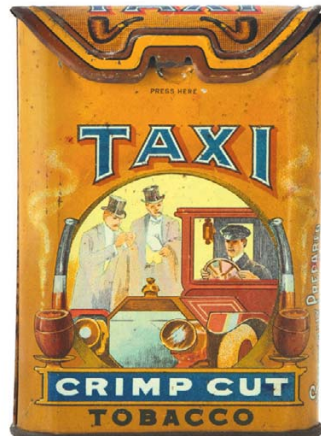
144).Flying Girl Ashtray. Unusual, very high quality ashtray, has nicely detailed fancy Art Nouveau style figural bronze statue of flying semi-nude girl (bronze measures app. 4" hgt.) on an attractive 4.75 x 4.75 x 7/8" heavy stone base. Great looking piece is excellent, w/ a nice rich patina (note: has a few tiny, non-detracting minor edge chips on stone base). Min. bid \$50.



145).Pointers Change Receiver. 6.75" (dia.) early countertop glass change receiver for Townsend Co.'s "Pointers" brand 5¢ cigars, w/ great images of Co.'s trademark bird dogs pictured inside. Excellent overall w/ a couple of small, non-detracting minor mfg. stress/blemish lines inside top coin receiving area of glass. Min. bid \$70.



146).Roosevelt Bears Tip Tray. 5 x 3-3/8" outstanding, early tin litho advertising tip tray from Lindquist's Cracker Co. (Denver, Col.) featuring wonderful multi-color graphic image of the Roosevelt Bears, w/ bear silhouette designs in outer rim area. Excellent (C. 8++). Min. bid \$50.



147).Taxi Pocket Tin. 4.25 x 3 x 7/8" early flip lid vertical tobacco pocket tin for Taxi brand Crimp Cut tobacco, featuring wonderful graphic image of trademark taxi car (same image both sides). A clean, bright and very nice example that displays very well (C. 8+) w/ a little non-offensive light scattered edge wear. Canadian. Min. bid \$200.



148).Victory Tobacco Pouch. 4 x 2.5 x 1-1/8" unusual, early 2-1/4 oz. cloth tobacco pouch w/ wrap around label for American Tobacco Co.'s "Victory" brand, featuring nice image of trademark Indian warrior. Full, sealed, never opened package is clean and very attractive, w/ minor soiling on side edge and some light staining to cloth at bottom edge (C. 8+). Min. bid \$30.



149).Bay Rum Bottle. 4-7/8 x 1-7/8" (dia.) wonderful, early label-under-glass small display bottle for Bay Rum, featuring a beautiful multi-color graphic label inside, w/ gold leaf lettering. Has hand applied lip, w/ embossed lettering on base (reads: "J. Quinlan, New York"). Excellent, w/ some non-detracting, minor faint staining in background areas of label). Min. bid \$50.



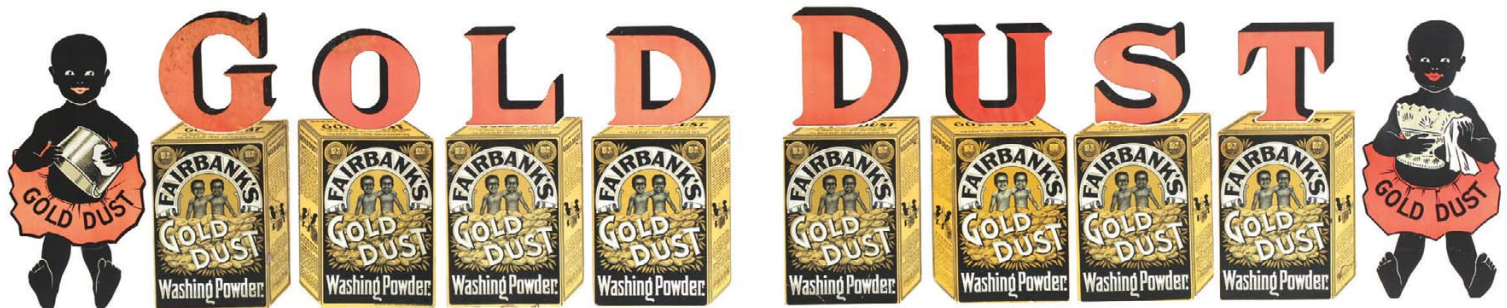
150).Weisert's 54 Tobacco Sign. 9 x 13" wonderful, early die-cut cardboard display sign for John Weisert Co.'s Granulated 54 brand Tobacco, w/ a fine almost invisible white see-through cloth screen center area that holds floating white letters and the smoke above pipe (shot against black background to show detailing). An unusual, very high quality piece (C. 8++). Min. bid \$60.



151).Fehr Brewing Co. Tray. 13-1/8" dia. early pre-prohibition tin litho serving tray from Frenk Fehr Brewing Co., Louisville, Ky., featuring beautifully detailed Kaufmann & Strauss lithography (dated 1910). Interior of tray is clean, bright and exceptionally nice (a strong C. 8++) w/ typical light surface crazing; rim area has a light general wear and some non-detracting light oxidizing chipping spots (mentioned for accuracy, nothing that's really serious or detracting). Min. bid \$60.



152).The Windsor Tobacco. 3-1/8 x 5-5/8 x 1.75" unusual, very early tin litho tobacco box for Windsor brand tobacco, w/ beautifully detailed Ginna style graphics (made by the Pace Tobacco Co. of Richmond, Va. for the M. Michaels Co. of Montreal Canada). Excellent, w/ some wear along outer edges (C. 8+/-). Min. bid \$40.



153).Gold Dust Ceiling Signs. Lot consists of a nice set of ten early 2-sided die-cut cardboard litho Gold Dust brand ceiling signs that spell out the words "Gold Dust" (each letter app. 15.5 x 7.5"). These were made to string together and most of the individual pieces are clean and quite nice, although a couple of pieces have some surface soiling and staining (mostly on one side from storage exposure) and a few have some non-offensive light creasing on them. Overall the pieces average a C. 8+/- (one side on most is very good; on other side, a couple would rate a C. 7+/- due to soiling/staining). Neat set that displays very well. Min. bid \$250 (the set).

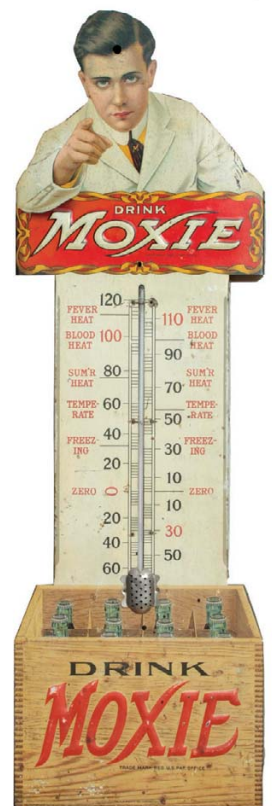


154).High Grade Cigarettes Sign. 30 x 16" (27 x 13" visible) very early paper litho advertising sign for Wm Kimball Co.'s "High Grade" brand cigarettes, promoting Co.'s series of cigarette insert cards w/ costumed women. Clean, bright and attractive in appearance (displays as a C. 8+) although a close examination will reveal a few areas light touch-up repairs and tear restoration. Nicely presented in attractive period frame. Min. bid \$100.

Cigar Label Proofs



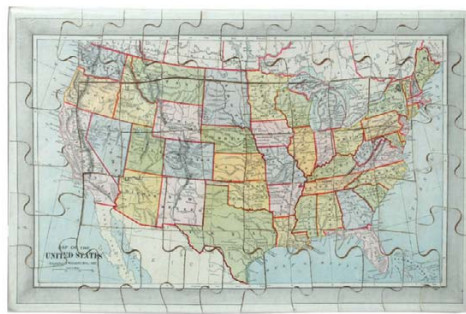
155).Boston Terrier Printers Proofing Booklet. 6 x 6.75" lot includes a a complete printing Co.'s archival set of 15 progressive color printers proof cigar box labels, bound in booklet form (one of each stage of the stone litho color strike progress from 1st strike through to the finished label on top) for Buckley Co.'s "Boston Terrier" cigars. Lot also includes ten loose larger black and white proofing images and the marked original folder they were found in. Neat and very impressive set. Min. bid \$60.



156).Moxie Thermometer. 38.5 x 11-7/8 x 7/8" large, very impressive die-cut tin litho (over wood) embossed advertising thermometer for Moxie. A powerful and impressive looking piece has strong colors and a great overall look, w/ some non-offensive minor scattered speckling, light staining and some light scattered general wear, including a neatly cut 1/2" hanging hole in top hair area (C. 7.5/+). As found, might improve w/ cleaning. Min. bid \$250.



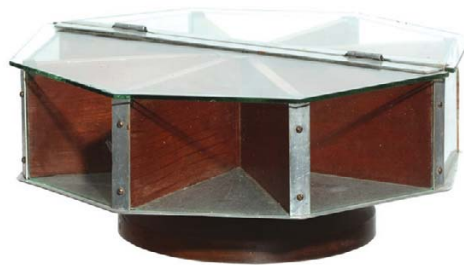
157).Mc Loughlin Map Puzzle. Very early, paper over wood cardboard picture puzzle set, featuring early map of the U.S. (by Mc Loughlin Bros., NY © 1887), complete in its original box (box has beautiful multi-color label on lid). Map measures 12.25 x 18-5/8" (box 8.25 x 12.25 x 1-7/8"). Excellent complete and. Min. bid \$50.



158).University of Chicago Square Corner. 3-3/8 x 4.5 x 2.5" scarce, very early tin litho tobacco tin for Cameron & Cameron Co.'s "University of Chicago" brand. Lid has some light scuffs, scratches and general overall wear, but still displays nicely (as a C. 7.5); w/ heavy wear on sides (sides fair to poor). Min. bid \$50.



159).Maccoboy Snuff Tin. 6.5 x 7.5 x 5" outstanding, very early (1883 tax stamp) 8-sided tin litho hinged lid 5 lb. size snuff tin for Lorillard Co.'s "Maccoboy" brand, featuring beautiful detailed graphics by Ginna & Co. Tin is clean, bright and excellent overall (a strong C. 8++) w/ only minor wear. Min. bid \$70.



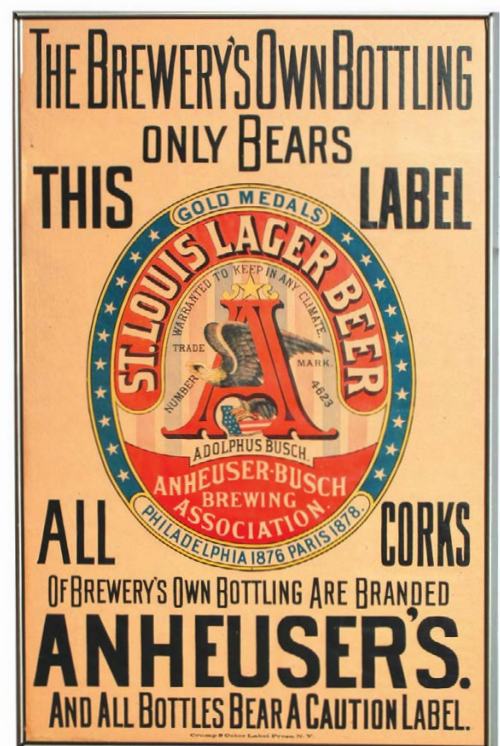
160).National Chewing Gum Display. 5-1/8 (h) x 12" (dia.) unusual, small revolving countertop display case w/ 8 interior compartments for candy and gum. Nice quality piece w/ wood, glass and aluminum construction; w/ center divided lift up lids (National Pepsin Gum Co. stamping on lid). Very nice overall, w/ a little light edge chipping (glass pieces can easily be replaced or edge polished). Min. bid \$50.



161).Indian Cigar/Cigarettes Holder. 6 x 3.5 x 5.75" unusual, early, heavy figural painted metal cigarette/cigars holder w/ smaller baskets on sides for holding matches. High quality piece, w/ nice paint surface and a great look. Excellent. Min. bid \$50.



162).Fountain Tobacco Sign. 26.5 x 34" (18-5/8 x 26.5" visible) incredible, very early museum quality tin litho sign for Fountain Tobacco (Lovell & Buffington Co., Covington, KY) featuring stunning, rich, finely detailed multi-color graphics by Tufchaber Lithographers, Cincinnati, Ohio. This sign was recently discovered hidden beneath a Masonic print inside an old picture frame that was nurturing and protecting it from the elements all these years. The piece is crisp, bright and basically has an almost like new appearance (displays as a strong C. 8.5+), w/ a few small, white wear spots in the bottom section of the fountain. A very close examination will show a little bit of a non-detracting raised molten type faint splotchiness on the surface in the lower fountain area and in a few of the bottom letters of "Tobacco", which are mentioned for accuracy, they are really not detracting to the overall appearance and very possibly occurred during mfg. process (note: the surface of the entire sign is clean, bright and very stable and not showing any hints or signs of flaking, chipping or lifting). Min. bid \$500.



163).Anheuser Busch Sign. 43 x 28" (41.5 x 26-5/8" visible) large, very early paper litho advertising sign for Anheuser Busch Co., featuring a wonderfully detailed image of Co.'s early bottle label. Clean, bright and very attractive appearance (basically a C. 8.5+), w/ exception of a small, very narrow section of paper loss in upper, very outer left margin area (Crump Color Label Press, NY). Framed. Min. bid \$80.

Colt Firearms



164).Motorcycle Picture. 12.5 x 17.5" (9-1/8 x 14.25" visible) wonderful, early hand tinted large photographic image of early motorcycle and rider, as found still in its beautiful period frame. An impressive and unusual high quality piece , w/ a great overall look. Excellent. Min. bid \$50.



165).Colt Firearms Co. Poster. 44 x 18-3/8" ca. 1920's/ 30's large paper sign from the Colt Firearms Co., featuring nicely detailed image of their Hartford, Ct. factory. Display side is clean and very nice in appearance (C. 8.5/+) w/ only minor wear (note: freshly attic picked and was found still rolled up and never used- w/ some soiling and staining wear from storage on its plain non-graphic backside). Min. bid \$50.

Match Holder



166).Tobacco Sample Packs. Lot consists of two never opened, full, sealed small "Free Sample" tobacco soft packs from Scotten, Dillon Co., Detroit (both app. 3.5 x 2.5 x 1"). Includes: Yankee Girl and Union Workman, both w/ Series of 1910 tax stamps. Excellent. Min. bid \$30 (the pair).



167).Iron Match Holder. 2 x 5.75 x 4.5" unusual, early cast iron desktop match holder for Cy Cohen, Reading, Pa. insurance dealer, w/ hinged book shaped lid. Unusual, high quality piece. Excellent. Min. bid \$30.



168).Unity Mixture Pocket Tin. 2.75 x 3.5 x 1" early tin litho "Unity Mixture" vertical tobacco pocket tin. Clean, bright and very attractive in appearance, (C. 8+) w/ a little non-offensive light scattered litho wear/ loss in bottom letters and on right side edge (in tax stamp area). Min. bid \$60.



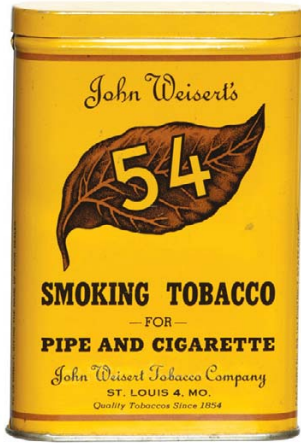
169).Dr. Harter's Bitters Sign. 29.5 x 13-3/8" large, early paper litho roll-down medicine sign (w/ metal strips at top and bottom) for Dr. Harter's Wild Cherry Bitters, featuring stunning multi-color graphics (copyright 1895 Gray Litho Co.). Clean, bright and exceptionally nice appearance (displays as a C. 8.5/+), although close examination will reveal some typical non-detracting and fairly minor horizontal crease/roll marks and minor edge wear- nothing at all serious or offensive (critical grade C. 8/+). Framed. Min. bid \$150.



170).Aero-Bocker Trousers Sign. 54x 21" large ca. 1920's die-cut cardboard stand-up store display sign for Aero-Bocker Co.'s "Dutchess" brand knickers (thick, heavy duty cardboard w/ wooden easel back legs). A powerful and very impressive looking piece, excellent overall (C. 8+). Min. bid \$80.



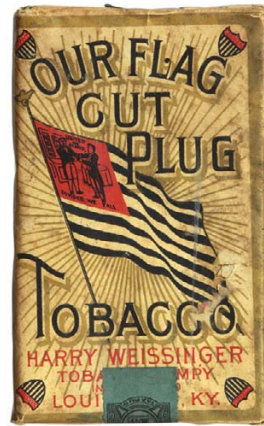
171).Napoleon Flour Sign. 35-3/8 x 18" large, early paper litho sign w/ metal strips at top and bottom. Powerful and impressive piece is crisp, bright and like new, w/ exception of a couple minor, professionally closed tears (barely noticeable even on close examination). Near mint. Min. bid \$70.



172).Weiser's 54 Pocket Tin. 4.5 x 3 x 7/8" full, unused tin litho vertical tobacco pocket tin for John Weiser Co.'s 54 brand smoking tobacco. Clean, bright and like new (near mint), w/ exception of non-offensive light background speck on upper surface (right side below leaf). Min. bid \$40.



173).Brewery Match Safe. 2.75 x 1.5 x 1/2" scarce, very high quality early pocket match safe w/ wrap around celluloid advertising for Neef Bros. Brewing Co., Denver, Co. w/ nicely detailed lettering and hops on front, w/ factory scene on back. Clean, bright and excellent, w/ a minor tiny split mark on side edge. Min. bid \$50.



174).Our Flag Tobacco Pack. 4.25 x 2-5/8 x 1" scarce, full, early sealed (never opened) tobacco soft pack for "Our Flag" brand cut plug tobacco (Harry Weissinger Co., Louisville, Ky), w/ complete Series of 1898 tax stamp. Has some minor, even age tone staining and a couple small holes, but overall is quite nice and displays well (C. 7.5+). Min. bid \$30.



175).Parrot Peanut Butter. 3-7/8 x 3" (dia.) scarce, early tin litho pry lid 13 oz. peanut butter tin for "Parrot" brand (Westport Co., Vancouver, Canada) featuring a great graphic image of Co.'s trademark parrot. Stunning piece is clean, bright and like new (C. 8.5+). Min. bid \$60.



176).Durkee Spice Tin. 3.25 x 2" very early, shiny paper label (over tin) spice can for Durkee & Co. brand cinnamon, featuring beautiful color graphics all around (different images both sides). Bright and attractive in appearance, w/ minor toning and some non-offensive faint speckling (C. 8+). Min. bid \$40.



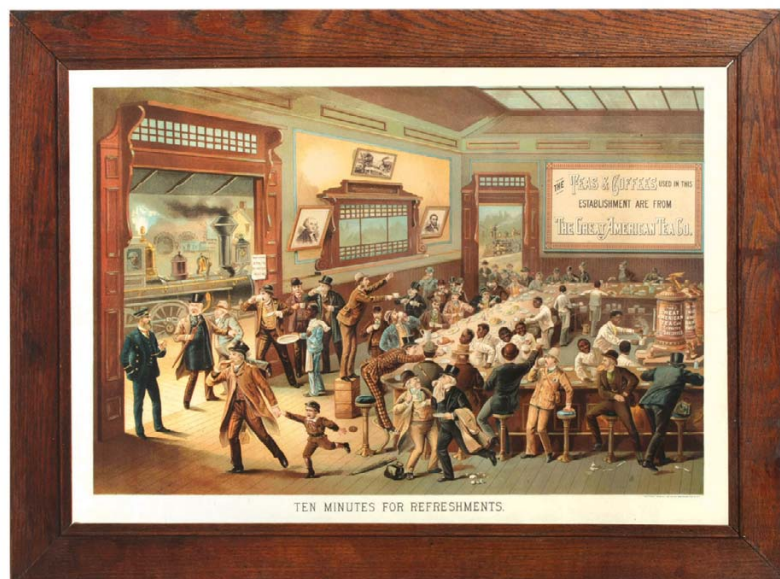
177).Busy Biddy Spice. 3.75 x 2.25 x 1.25" early 2 oz. tin litho spice tin for Davies Strauss Stauffer Co.'s "Busy Biddy" brand, featuring nice image of Co.'s trademark hen. Has strong color and displays nicely (as a C. 8+/-), w/ a little minor soiling and a little non-offensive light wear (as found, might improve w/ cleaning). Min. bid \$30.



178).Washington Tobacco Ceiling Sign. 10 x 8-3/8" early, 2-sided cardboard die-cut ceiling sign for Washington cut plug tobacco, featuring nice image of Co.'s 10¢ soft pack. Excellent overall (C. 8++), w/ a hint of minor age tone soiling. Min. bid \$30.



179).Limit Pocket Tin. 4 x 2.5 x 1-3/8" scarce, very early oval vertical tobacco pocket tin for Niles & Moser's "Limit" brand crushed plug tobacco (Kansas City, Omaha and Denver) w/ a red metallic type background. Has some crazing and wear, but overall still attractive and displays pretty well (C. 7++). Min. bid \$50.



180).Great American Sign. 27.25 x 37" (21.5 x 31.25" visible) outstanding, beautiful early paper litho sign from the Great American Tea and Coffee Co., featuring incredible colorful and highly detailed busy interior scene of passengers at bustling lunch counter of a fancy, early train station, w/ waiting trains outside door. Clean, bright and excellent, still in its original period frame (displays as a strong C. 8.5/+) although a very close examination will reveal a couple very well done professionally repaired tears. Min. bid \$150.



181).Buffalo Soap Sign. 29 x 22.25" (27-3/8 x 20-5/8" visible image) incredible, very early, large paper litho sign for Buffalo Brand Soap (R.W. Bell & Co., Buffalo, NY) featuring a wonderful and outrageous "You Dirty Pig" image of matronly pig scrubbing piglet. Clean and very attractive appearance (displays as a strong C. 8+) w/ exception of some non-offensive scattered tears and some wavy horizontal roll and crease marks from storage. Min. bid \$100.



182).Nine Ninety Nine Tobacco. 4.5 x 3 x 1-1/8" scarce, very early tobacco soft pack for Daniel Scotten Co.'s 999 brand, featuring stunning multi-color graphic images of early trains (different images both sides). Full pack is clean bright and excellent in appearance (displays as a strong C. 8+), although top and bottom flaps have been re-sealed w/ small pieces of cello tape. Min. bid \$40.



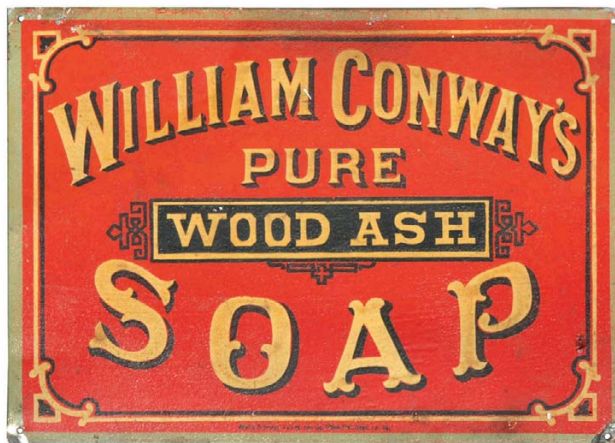
183).Advertising Toy. 2.75" (dia.) x 7/8" fine, early tin litho advertising souvenir toy from Universal Theatres Concession Co. (boy inside balances upright when toy is rolled). Excellent. Min. bid \$40.



184).Sea Side Sand Pail. 6 x 6.25" early tin litho sand pail featuring children playing in sand, w/ great images of early boats, planes, shells, etc. all around. Attractive and displays nicely (as a C. 8+/-) w/ a little minor scattered wear. Min. bid \$40.



185).Oil Co. Tins. Lot consists of three early tin litho oil Co. home product tins. Includes: (A) 6.5" (h) two handy oiler style tins for Socony Co.'s Tavern brand electric motor oil, w/ nicely detailed graphics (both full cans are crisp and like new); and (B) Gulf Refining Co. 7-5/8 x 3-3/8 x 1-5/8" bug killer, w/ great bug images (C. 8++). Min. bid \$40 (the lot).



186).Conway's Soap Sign. 9.75 x 14" very early tin litho sign for William Conway's wood ash soap, w/ a rich, nicely weathered folk art country type look (Wells & Hope lithographers). Clean, bright and very attractive appearance, w/ faint crazing and some chipping wear at outer corner edges (would be hidden if framed). Displays very well (note: surface is very stable and not loose or flaking). Min. bid \$70.



187).Young America Bank. 4.5 x 3-1/8 x 3-1/8" early figural cast iron bank in shape of a fancy safe, w/ beautiful detailing. Has embossed images of children playing on all four panels (includes riding high wheel bicycle, fishing, sledding, etc.), surrounded by fine fancy background patterns. Excellent overall, w/ a nice rich surface patina (has working lock and includes original key). Min. bid \$40.



188).Fly Swatter Display. 17 x 9 x 8.75" early wire fly swatter countertop country store display rack w/ attractive tin litho sign at top (from Gatch Brush and Wire Goods Co., Baltimore, Md.). Neat and unusual piece that displays nicely (C. 8+/-) and includes eight early old store stock wood & wire advertising fly swatters. Min. bid \$60.



188.). Detail



189).Salesman's Sample Lawnmower. 14.5 (h) x 5" (w) early, miniature salesman's sample push lawnmower, is an exact functioning likeness of a full size mower. All original, this very high quality piece has a wooden handle and roller, w/ cast iron wheels and rotating cutting blades. Has some general overall wear to paint and some non-detracting minor surface oxidizing to metal, but overall a wonderful piece w/ a great overall look (C. 7.5++/8-). Min. bid \$100.

Salesman Sample

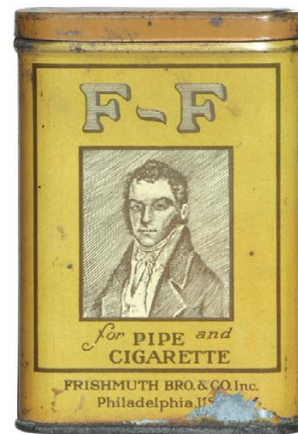




190).Street Sweeper Match Holder. 4.5 x 3.5 x 2-1/8" early figural bronze street sweeper match holder (by Zimmerman) w/ striking surface at front edge of base. Very high quality piece, w/ beautiful detailing and nice surface patina. Excellent. Min. bid \$50.



191).Mickey Mouse Toy. 6-5/8 x 2.75 x 3" great, early "Mickey Mouse Jazz Drummer" tin litho mechanically operated character toy by "Nifty" Toy Co. Has a metal easel stand-up, w/ a push down mechanism on back that makes drum sticks tap against the drum in rapid motion. Excellent (C. 8+). Min. bid \$70.



192).F-F Pocket Tin. 4.5 x 3 x 7/8" scarce, early tin litho vertical tobacco pocket tin for Frishmuth Bros. "F-F" brand. A decent and presentable example that displays quite nicely. Front side has some light even fade and a paint loss flake area at bottom edge (a little minor restoration here could improve it to a nice overall C. 8/+ appearance); back side has some scattered general wear (back C. 7+). Min. bid \$100.



193).Gold Belt Tobacco Pail. 6.25 x 5.25" scarce, very early paper label tobacco pail for Myer Ciox Co.'s Gold Belt brand, featuring beautifully detailed graphics. Clean, bright and exceptionally nice (a strong C. 8.5/+). Min. bid \$40.



194).Maple Leaf Rubbers Sign. 14 x 15-7/8" early Canadian cardboard litho sign for Maple Leaf brand rubber boots, featuring stunning multi-color graphics. Very impressive sign that is clean, bright and like new (near mint). Framed. Min. bid \$50.



195).Man w/ Tankard Match Holder. 5.75" (hgt.) large, early heavy figural metal match holder in shape of man on stool, holding long pipe in one hand and large tankard in other (tankard holds matches). Excellent, w/ nice surface patina. Min. bid \$40.



196).Buffalo Match Holder. 8 x 2.75 x 2.5" early, Black Forest style carved wooden figural hanging match holder of a Buffalo. High quality piece, has nicely detailed carving, sparkling ruby eyes and a beautiful, rich, nicely aged surface patina. Excellent. Min. bid \$40.



197).Red Feather Coffee. 8-1/8 x 4-7/8" (dia.) unusual, very early 2 lb. small top tin litho coffee can for "Red Feather" brand (Saville, Somes Co., Boston) featuring beautiful early Ginna style lithography (not marked). Clean, bright and very attractive appearance (C. 8+) w/ only minor wear and a light denting spot on back side. Min. bid \$50.



198).Marvel Oats Box. 9.5 x 5.25" (dia.) early 3 lb. 7 oz. size cardboard oats box for Webster Grocer's (Danville, Ill.) "Marvel" brand featuring attractive graphic image of mountain waterfalls (same image both sides). Clean and very attractive appearance, w/ some non-offensive light background staining (front C. 8++; back C. 7.5+/8-). Min. bid \$40.



199).Disney Milk Bottle. 7.25 x 2-7/8" (dia.) unusual, glass, pint sized milk bottle from Hilborn Farms dairy (Bridgeport, NY) w/ green painted dairy info on front and great looking Disney cartoon character images on backside. Excellent. Min. bid \$40.



200). **Marine Oils Sign.** 8 x 18" unusual, ca. 1960's metal advertising sign for Wolf's Head Marine Oils, w/ nice deep and rich paint surface. Clean, bright and excellent (appears never used) w/ a little minor soiling and handling wear (C. 8.5/+). Dated 1964. Min. bid \$50.



201). **"Cabinet Council" Printers Proofing Booklet.** 86.5x 10.5" ca. 1890's complete company reference archival set of 31 paper litho progressive color printers proof cigar box labels on heavy stock in booklet form that show each stage of the stone litho color strike progress from 1st strike through to the finished label on top. Neat and very impressive set. Top page has some soiling and fingerprint marks in outer margins from use, other pages mostly excellent. Min. bid \$60.

Tucker Auto Badge



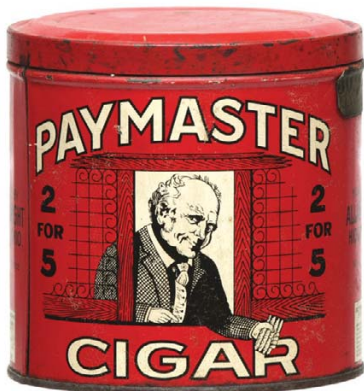
202). **Tucker Badge.** 1.25 x 1.5" early, high quality auto factory workers employee badge from "Tucker Corporation" (legendary car maker of movie fame). Embossed brass, w/ inlaid color and clasp pin on backside (Green Duck, Chicago maker). Excellent, w/ nice patina. Min. bid \$40.



203). **Stafford's Ink Dice Holder.** 1.25 x .75" (dia.) early advertising dice holder for Stafford's brand inks, featuring nice image of master ink bottle. Nickel over brass container, w/ celluloid sides, complete w/ early miniature dice inside. Excellent. Min. bid \$30.



204). **Hercules Condom Tin.** 1.75 x 2-1/8 x 1/4" early tin litho condom tin for Robert Pierce Co.'s "Hercules" brand, w/ great image of trademark character on lid. Clean, bright and very nice appearance, w/ a little light wear in upper right background area (C. 8/-). Min. bid \$40.



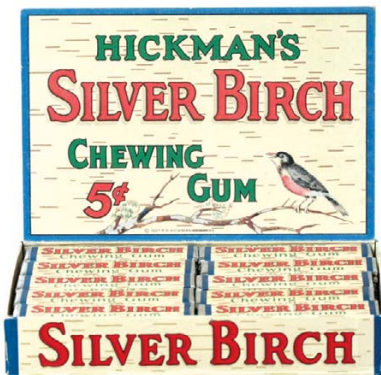
205). **Paymaster Cigars.** 5-1/8 x 5-1/8" (dia.) early tin litho 50 ct. can for Paymaster brand cigars (Allan Wright Co., Hicksville, Oh), featuring great image of trademark paymaster handing over fistful of cigars (same image both sides). Has strong color and displays nicely w/ a little light hazy wear on back side (front C. 8/+; back C. 8/-). Min. bid \$40.



206). **Snowball Pop Corn Sign.** 15.5 x 18.5" (10.5 x 13.5" visible) early paper litho sign for Dickinson Co.'s "Snow Ball" brand popcorn. Unusual piece is clean and displays quite nicely (as a C. 8), although close examination will reveal some well-done professional touch-up restoration. Nicely framed and matted. Min. bid \$50.



207). **Sun Cured Tobacco.** 5.25 x 5" dia. early 1 lb. paper label tobacco can for Bagley Co.'s "Sun Cured" brand, w/ similar labels on both sides (1910 tax stamp across top). Labels are attractive and display nicely, w/ some vertical staining along seam on backside (front C. 8; back C. 7-ish). Min. bid \$30.



208). **Silver Birch Gum Box.** 5.25 x 6.25 x 4-1/8" (as pictured) full, early ca. 1920's cardboard counter top display box for Hickman's "Silver Birch" brand chewing gum, complete with all 20 of its original 5¢ packs inside. Crisp, bright and like new (no lid). Min. bid \$60.



209). **Chimney Sweep Match Holder.** 4.75 x 4 x 2-1/8" early figural bronze chimney sweep match holder (by Zimmerman) w/ striking surface at front edge of base. Very high quality piece, has beautiful detailing and nice surface patina. Excellent. Min. bid \$50.



210). **Little Typewriter Ribbon Tin.** 2-5/8 x 2-5/8 x 3/4" early, tin litho typewriter ribbon tin from A.P. Little Co., featuring great image of Co.'s trademark young black child. Clean, bright and like new. Min. bid \$40.



211).Blue Bird Handkerchiefs Display. 7 x 11.5 7-7/8" early, tin litho countertop display has advertising on front and side panels, w/ glass covered lift top lid that displays product boxes inside. Excellent (C. 8++). Min. bid \$80.



212).Waterman's Pen Sign. 13 x 19" scarce, early tin over cardboard beveled edge sign for Waterman's brand fountain pens, featuring adorable image of young boys writing. Clean, bright and very attractive appearance (C. 8++), w/ a little non-offensive, very minor wear (barely noticeable, mentioned for accuracy). American Art Works. Min. bid \$150.



213).Drum Tobacco Pouch. 4 x 2-5/8 x 1-1/8" unusual, early 2-1/4 oz. cloth tobacco pouch w/ wrap around label for American Tobacco Co.'s "Drum" brand. Full, sealed, never opened package is clean and very nice, w/ minor soiling and a little light wear to label (C. 8+/-). Min. bid \$30.



214).Lane's Medicine Match Holder. 5-1/8 x 3.25 x 1" unusual, very early die-cut cardboard advertising hanging match holder for Lane's Medicines (herbal medicinal product for stomach, liver and kidneys). Clean and like new, w/ exception of minor, very faint wrinkle mark and a couple small brittle break wear spots at tuck-in flap areas on bottom edge (under match basket area). Min. bid \$30.



215).Condom Tins. Lot consists of two early tin litho condom tins. Includes: Napoleons (1.75 x 2-5/8 x 3/8"); and Dean Rubber Co.'s Sekurity brand. Both are clean and excellent (C. 8.5) w/ some speckling wear on base of Sekurity. Min. bid \$40.



216).Stallman Stogies Tin. 6.25 x 5 x 4.5" unusual, oval tin litho 50 ct. cigar can w/ same attractive image on both sides. Clean, very nice appearance, w/ some light scattered denting and wear (C. 8-/-). Min. bid \$40.



217).Welcome Soap Sign. 31-5/8 x 16.25 x 2.25" early, scarce variation, deep shadow box style store display sign for Curtis Davis Co.'s "Welcome" brand soap promoting Welcome Soap wrapper premium (saving 25 wrappers would entitle customer one of these plain posters for them to dress). The picture is very nice (C. 8+), w/ a non-offensive minor tear mark in upper left background area (note: gesso frame is exceptional- by far the nicest I've seen). Min. bid \$100.



218).Cigar Label Printers Proofing Booklet. Lot consists of a complete company archival folder containing a set of beautiful printers proof paper "Alba Flora" cigar box labels (some have original printers notations in margins) as well as a complete 26 page attached reference booklet of progressive color proofs showing each stage of the color strike progress (from 1st strike through the finished label on top). Excellent. Min. bid \$60.



219).Firestone Calendar. 35-5/8 x 17" very large, colorful and highly graphic 1917 advertising calendar for Firestone Tires (given by Oquaga Garage, Deposit, NY), featuring a stunning bathing beauties at beachside motoring image. A powerful and very impressive looking piece that is clean, bright and very attractive (basically displays as a very strong C. 8++) w/ bit of non-detracting minor soiling/speckling and faint horizontal crease mark in upper sky area (not at all offensive- mentioned for accuracy). Min. bid \$100.



221).Theatrical Cold Cream Tin. 4.25 dia. x 1.5" early tin litho product can for Evans's Theatrical Cold Cream, w/ wonderful image of black musical performers. Clean, bright and very attractive (C. 8+/). Min. bid \$30.



222).St Charles Cream Clock. 8.5 x 14 x 1.75" unusual, early cast iron advertising clock for St. Charles brand evaporated cream, w/ a very attractive copper flash surface finish and working clock. Impressive piece (excellent). Min. bid \$100.

Coffee Samples



223).Lipton's Coffee Samples. Lot consists of a pair of two different small paper label (over tin) Lipton's brand sample size coffee cans. Both are clean and nice, w/ light wear to each (C. 7.5+/8-). Min. bid \$30 (the pair).



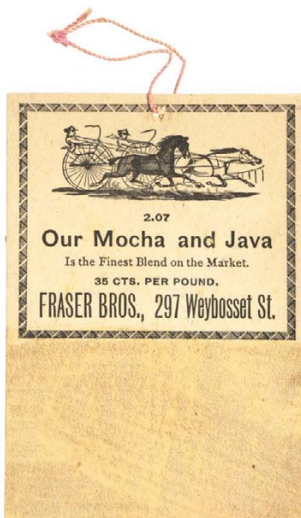
224).Absolute Store Bin. 9-7/8 x 8.5" (dia.) unusual, early tin litho store bin from W.J. Gould & Co., "Coffee Roasters & Spice Grinders, Detroit, Mich. w/ highly detailed graphics by Ilsey on front (back side is plain). A decent example that displays nicely, w/ some general light scattered wear (C. 7.5+/8). Min. bid \$50.



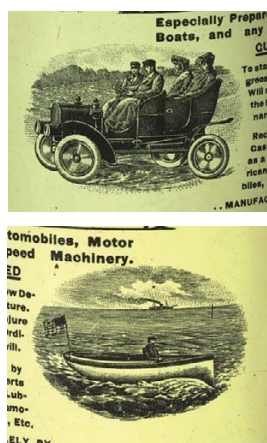
225).Blue Tiger Bin. 11-5/8 x 8-3/8" dia. scarce, blue color variation store size tobacco bin for Lorillard Co.'s Tiger brand tobacco. Clean, bright and attractive w/ minor denting, light scattered scuffing and a little bit of non-offensive typical scattered darkening specks and spots in gold flash areas (front C. 8/-; back C. 7.5+). Min. bid \$60.



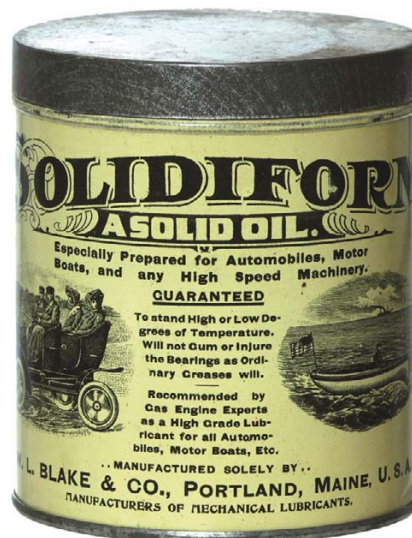
226).McLaughlin Coffee Pail. 12 x 7.25" early tin litho 5 lb. milk pail style coffee can from McLaughlin & Co., Chicago. Clean, bright and attractive in appearance, w/ a little light scattered wear (C. 7.5+/8-). Min. bid \$50.



227).Coffee Match Striker. 4-5/8 x 3.25" unusual, very early cardboard match striker for Fraser Bros. Coffee, featuring a nice early horse racing image. Clean and excellent (C. 8.5+). Min. bid \$40.



228).Blake Grease Can. 5 x 4.25" (dia.) important, very early tin litho grease can from Blake & Co., Portland, Maine featuring stunning, highly detailed graphic images of an early open touring car and man in boat. Crisp and like new (near mint). Min. bid \$60.



229).Pal-O-Mine Coffee Tin. 6.25 x 4-1/8" scarce, early 1 lb. coffee can for Pal-O-Mine brand (McAtee Newell Co., Bloomington, Ill.) featuring great image of children fishing. Clean, bright and very attractive appearance, w/ a little minor scattered wear (C. 8+/). Min. bid \$60.



230). Magic Yeast Cakes Sign. 6-5/8 x 13.75" very early tin litho sign for Magic brand yeast (Chicago Stamping Litho.), featuring nice image of trademark owl. Freshly picked and as found (C. 7.5+/8-), w/ some light soiling and wear, should improve w/ cleaning. Min. bid \$50.



231). Gas Price Sign. early, heavy painted metal gas filling station 2-sided pricing sign, w/ glass viewing windows on both sides, w/ wrought iron mounting bracket (made for attaching to round pole). Complete w/ other side of mounting bracket (not shown) and multiple price cards inside. Excellent. (bracket is app. 33" long; pricing box 7 x 10 x 1"). Min. bid \$40.



232). Transparent Nutex Condom. 1.75 x 2-5/8 x 1/4" early, tin litho Nutex Transparent brand condom tin. Clean, bright and excellent in appearance (C. 8++) w/ a barely noticeable minor tiny chip in yellow background area. Min. bid \$40.



233). Miller Beer Glass Sign. 4 x 8 x 3/8" unusual, early easel back blue mirrored glass stand-up sign for Miller Beer, featuring Co.'s girl on moon logo. Has minor wear to lettering at bottom and a little bit of typical non-detracting dark speckles in mirror glass, but overall excellent. Min. bid \$40.



234). Arco Condoms Tin. 1-5/8 x 2-1/8 x 1/4" scarce, early tin litho condom tin for Arrow Rubber Co.'s "Arco" brand. Lid has strong colors, w/ some minor soiling and a little light scuffing and wear; base has scuffing and slightly heavier wear (front C. 7.5/+; base C. 7). As found, should improve some w/ cleaning. Min. bid \$30.



235). Tire Chain Display. Great, early, tri-fold die-cut cardboard countertop/window display sign for Pyrene Co.'s "Off'N'On" brand tire chains, featuring wonderful color graphic images. Clean, bright and very impressive piece (displays as a C. 8.5/+). Appears never used, w/ a couple small edge chipping spots and very minor storage wear (critical grade C. 8/+). Nicely framed and ready to hang, or can be removed to use as display (actual piece measures 12.5 x 28.75" laid flat as shown, frame measures 14-5/8 x 31"). Min. bid \$80.



236). Pow-Wow Cigar Proofing Book. 10 x 12.75" important, complete printing Co. 36 pg. archival production set of early stone litho progressive color printers proof strikes in book form for "Pow-Wow" brand cigar box labels. These show each stage of the stone litho color strike process, from 1st strike through to the finished label (note: several have interesting original printers notations in margins). Impressive, very high quality set. Excellent interior pages, w/ some general wear on outside protective cover page. Min. bid \$60.



237). Red Raven Tip Tray. 4.25" (dia.) early tin litho advertising tip tray for Red Raven mineral water, featuring beautiful multi-color lithography. Clean, bright and excellent, w/ minor crazing and wear (C. 8.5). Min. bid \$40.

Cigar Punch



238). Mechanical Cigar Punch. 3-1/8 x 6 x 5/8" unusual, early figural pistol shaped cigar punch (pulling trigger forces pointed punch to come out of barrel). Very high quality, nicely detailed brass, w/ remnants of original nickel plating on surface (works great). Min. bid \$40.



239). Rose-O-Cuba Cigar Tin. 5.5 x 5-3/8" (dia.) early, colorful and highly graphic tin litho 50 ct. cigar can, w/ same image on both sides (Liberty Can Co., lithographers). Clean, bright and excellent (a strong C. 8++), w/ minor denting and a little non-offensive light scratching near top (where tax stamp once sat). Min. bid \$40.



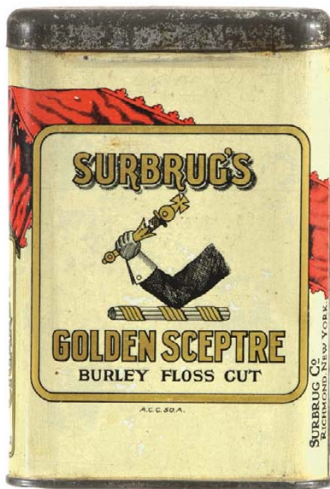
240).Berry's Root Beer Mug. (4-3/8 x 3.5" dia. base) early, blue decorated salt glaze advertising stoneware mug for Berry's brand root beer, w/ an attractive embossed decorative floral and dragon pattern. Excellent, w/ typical crazing inside and a couple flea bites on top rim area. Min. bid \$40.



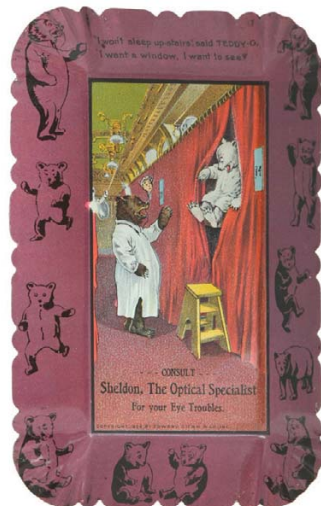
241).Red Jacket Gum Sign. 6.5 x 9-1/8" scarce, early tin litho advertising sign for "Red Jacket" brand chewing gum, w/ attractive graphic images. Unusual sign is hinged at center w/ chain at top. Bright and attractive looking, w/ minor wear (C. 8+/-). Canadian. Min. bid \$50.



242).LLL Tobacco Pail. 6.5 x 5.25" (dia.) very early paper label tobacco pail for Myers Cox Co.'s "Live and Let Live" brand, featuring nice image of man in large hat smoking pipe. Displays well, w/ some general light age tone staining and darkening spots and a few random scattered areas of paper loss (C. 7.5). Min. bid \$40.



243).Golden Sceptre Pocket. 4-3/8 x 3 x 7/8" early tin litho vertical tobacco pocket tin for Surbrug's "Golden Sceptre" brand tobacco (black arm variation). Clean, bright and attractive in appearance (C. 8++), w/ non-offensive light dent mark in background area. Min. bid \$50.



244).Roosevelt Bears Tip Tray. 5 x 3-3/8" outstanding, early tin litho advertising tip tray for an optical specialist, featuring Roosevelt Bears image, w/ bear silhouette design in outer rim area. Excellent (a strong C. 8++), w/ small white mfg. blemish mark in upper left outer corner area of image. Min. bid \$50.



245).Police Foot Powder. 4.5 x 2.5 x 1-3/8" early tin litho foot powder tin for Police brand (Purity Labs., Brooklyn) featuring great image of trademark policeman. Clean, bright and very attractive (C. 8++). Min. bid \$50.



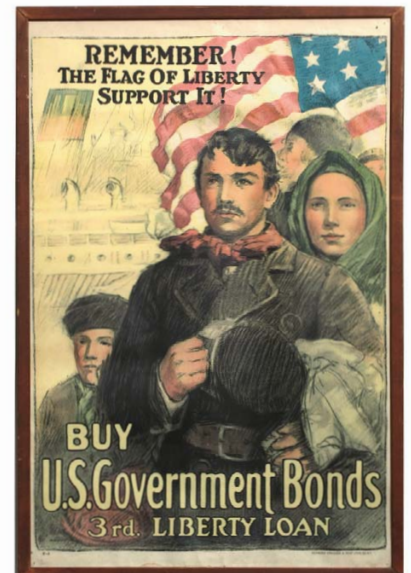
246).Gold Medal Peanut Butter. 3.75 x 3" (dia.) early tin litho 12 oz. peanut butter can from Gold Medal Products Co., Toronto, Canada. Clean, bright and excellent appearance (C. 8.5+/-), w/ oxidized speckling and general wear to gold flash lid. Min. bid \$40.



247).WWII Poster. 30 x 23.75" (27.25 x 20-5/8" visible) 1940's U.S. paper litho war poster, w/ beautiful bright, vivid colors featuring fear mongering racist propaganda images (an interesting look back at a less politically correct era). Excellent condition, framed. Min. bid \$40.



248).1902 Hotel Calendar. 15-3/8 x 9.75" wonderful, fancy 1902 cardboard die-cut advertising calendar for the Hotel St. George, Brooklyn, NY, featuring beautiful image of pretty Victorian era girl playing badminton, w/ embossed highlight detailing. Clean, bright and very impressive looking piece, beautifully framed and matted (near mint). Min. bid \$50.



249).War Bonds Poster. 31 x 21" (29.75 x 19.5" visible) early colorful and graphic WWI paper litho poster for Liberty Loan War Bonds. Clean, bright and excellent (C. 8.5+). Framed. Min. bid \$40.



250).Reconciler Printers Proofing Booklet. 8 x 10.25" lot consists of a complete company archival set of 31 paper litho progressive color printers proof cigar box labels on heavy stock in booklet form (some have original printers notations in margins) that show each stage of the stone litho color strike progress from 1st strike through to the finished label) on top. Neat and very impressive set. Min. bid \$60.



251).Winchester 100 Ct. Box. 8.5 x 8.5 x 3" large, early 100 count size, 2-ps. product box for Winchester Leader brand shotgun shells, w/ a nicely detailed image of 1901 shell on lid. Has some general, even toning, light scattered wear and some scattered staining, but overall a decent and respectable example that displays pretty well (C. 7+). Min. bid \$40.



252).Advertising Penny Mirrors. Lot consists of three early celluloid advertising pocket mirrors, each w/ penny inserts inside. Includes two different 1.75" dia. Hauger's clothing mirrors (from Indianapolis and Flint, Mich.); and 2.25" Holly's Restaurant (Kalamazoo, Mich.). All are excellent. Min. bid \$30 (the lot).



253).Gunpowder Co. Statue. 6.25 x 7 x 4" early, very high quality metal shooting trophy awarded by "Ballistite & Empire" featuring a beautifully detailed heavy metal lion w/ a rich bronzed surface patina, on its original wooden presentation base. Excellent, w/ exception of non-offensive small crack mark on rear leg. Min. bid \$40.



254).DeLaval Match Holder. 6-3/8 x 3-5/8 x 1" early tin litho die-cut advertising match holder for DeLaval Co., in shape of Co.'s cream separator. Clean and attractive appearance w/ small surface oxidizing spot near bottom. As found, still in its original box (box has a cello tape repair at side flap section). Min. bid \$40.



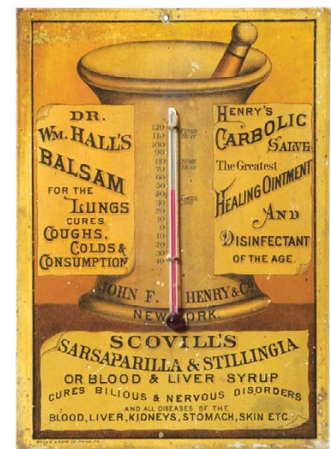
254).DeLaval Match Holder. 6-3/8 x 3-5/8 x 1" early tin litho die-cut advertising match holder for DeLaval Co., in shape of Co.'s cream separator. Clean and attractive appearance w/ small surface oxidizing spot near bottom. As found still in its original box (box has cello tape repair re-attaching left flap section). Min. bid \$40.



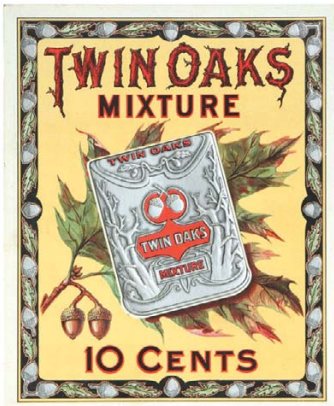
256).Sunny South Peanuts Tin. 9.75 x 8.25" unusual, early tin litho 10 lb. salted peanuts tin, w/ great image of smiling globe trademark (same image both sides). Clean, bright and very attractive in appearance (a strong C. 8+/) w/ dent mark at base of back side. Min. bid \$50.



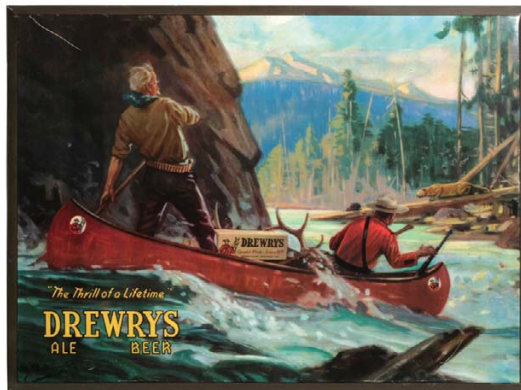
257).Central Union Tobacco. 6.25 x 4-7/8" very early, small top style tobacco canister for United States Tobacco Co.'s "Central Union" brand, featuring great image of Co.'s girl in moon logo (same on both sides). Clean, bright and like new (C. 8.5+/). Min. bid \$50.



258).Drugstore Thermometer. 10 x 7" museum quality, very early, heavy tin litho drugstore thermometer advertising various patent medicines prepared by John F. Henry & Co. (includes Wm Hall's Balsam for Lungs; Henry's Carbolic Salve and Scovill's Sarsaparilla & Stillingia). This wonderful, freshly picked piece features incredible lithography by Wells & Hope, Phil.a, w/ a deep, nicely aged rich surface patina giving it a powerful and most impressive Americana folk art trade sign appearance. Excellent, and all original, w/ just the right amount of wear (C. 8+/). Min. bid \$150.



259).Twin Oaks Tobacco Sign. 11 x 9" early, colorful and highly graphic cardboard sign for Twin Oaks brand tobacco, featuring finely detailed embossed images of pocket tin in center and tiny silver embossed acorns along outer border area. Crisp, bright and like new (C. 8.5++) w/ minor corner wear at outer bottom left edge. Min. bid \$40.



260).Drewry's Beer Sign. 17 x 23" early, tin litho over cardboard beveled edge sign for Drewry's Beer & Ale (South Bend, Indiana) featuring great western sporting image of hunters in canoe, w/ cougar in distance (Hy Hintermeister illustrator/artist). Clean and very attractive appearance (basically displays as a strong C. 8/+), w/ exception of some non-offensive light scattered wear, including a 2.75" fine scratch line in upper left background area. Min. bid \$50.

Fire Fighting



261).Fire Association Ink Well. 3 x 4.25" (dia.) unusual, early, high quality embossed metal (pewter?) 1917 figural desktop inkwell commemorating the 100th anniversary of the "Fire Association of Philadelphia, w/ nicely detailed fire hose that wraps around the base. Excellent. Min. bid \$50.



262).Hand Made Pocket Tin. 4 x 3-3/8 x 1-1/8" early tin litho vertical tobacco pocket tin for Globe Tobacco Co.'s "Hand Made" brand, featuring finely detailed lithography (same image both sides). Clean, bright and very attractive (a strong C. 8++). Min. bid \$50.



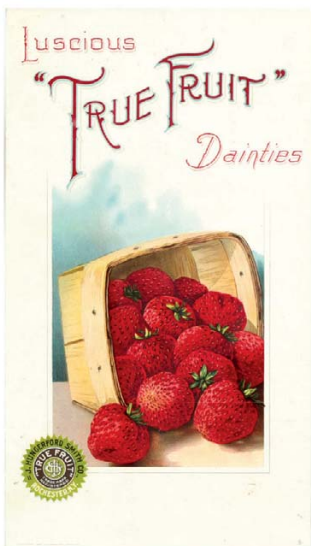
263).Uniform Tobacco. 6.25 x 4-7/8" very early, small top style canister for Larus Co.'s "Uniform" brand tobacco, featuring great image of Co.'s trademark sailor (same on both sides). Clean, bright and exceptionally nice (C. 8.5/+), w/ a couple small, minor background chips. Min. bid \$50.



264).Barq's Soda Sign. 14 x 10-7/8" early, colorful and very attractive beveled edge tin over cardboard advertising sign for Barq's soda pop, w/ both string and easel on backside. Clean, bright and like new, w/ nice original sheen (appears never used), w/ minor soiling wear at bottom edge and a tiny, very faint 3/8" light scratch mark in background area (just to left of bottle neck). Min. bid \$40.



265).Coca-Cola Money Bag. 20 x 11 x 4-5/8" unusual, early Coca-Cola money collection bag from a route salesman. This substantial, heavy duty, high quality piece is made of heavy canvas and stitched leather w/ a thick rubbery vinyl base (by Can Pro Corp.) marked "Williamsport Coca-Cola" on front. Has minor soiling and a little general wear from use, but overall in very good condition (C. 8/-). Min. bid \$40.



266).True Fruit Soda Signs. lot consists of three very early paper litho soda fountain signs (ea. 16 x 9") for Hungerford Smith Co.'s "True Fruit" brand soda syrup, featuring stunning multi-color graphics. Signs are bright and very attractive in appearance (basically display as a C. 8+/-) w/ minor crease marks, light soiling and some non-offensive damage on peaches and grapes examples). Lot also includes two additional variations not shown (cherries and pineapple) that have paper loss and tear damage (see website for images). Min. bid \$50 (the lot).



267).Parrot Sign. 13.5 x 9" great, early 2-ps. double-sided cardboard die-cut string hung ceiling sign for Diamond Dyes, featuring a parrot that balances on metal wire perch. Clean, bright and very attractive appearance, w/ some light flyspecks and a little non-offensive minor scattered wear (C. 8+/-). Min. bid \$70.

Maxfield Parrish Items



268).



269).



270).



271).



272).



273).



274).

Saint-Gaudens Medallion



275).



276).



277).

268). "Path to Home". 13-3/8 x 17-5/8" (8.25 x 10-7/8" image) ca. 1950 B & B winter executive print picturing fresh footprints in deep snow. Still on its original presentation mat board, w/ original descriptive sheet on back. Excellent condition, framed. Min. bid \$40.

269). Edison Mazda Playing Cards. 4 x 2.5 x 1" full deck of 52 (plus 2) linen finish advertising playing cards in original box for Edison Mazda Co., featuring 1930 Parrish illustrated calendar image "Ecstasy". Box has a couple small stain spots, otherwise excellent (cards are crisp and barely used, w/ minor soiling/wear). Min. bid \$30.

270). "A New Day". 13 x 16.5" (8-3/8 x 10-7/8" image) ca. 1949 B & B Winter executive print featuring farm house and barn, against pink and blue shadowed snow, still on its original presentation mat board. Crisp, bright and like new, (near mint). Nicely framed. Min. bid \$40.

271). Small "Stars". 11-1/8 x 7-1/8" (9.75 x 5-5/8" visible) impressive small art print by Reinthal Newman Co.'s House of Art, featuring nighttime image of nude girl sitting on high rock gazing at stars. Excellent condition, in its beautiful period frame (original descriptive label on back). Min. bid \$40.

272). "Land of Make-Believe". 12-5/8 x 10.25" (11 x 8-5/8" visible) attractive, ca. 1912 Scribners image, presented in its original period frame. Clean and attractive, w/ only minor wear. Min. bid \$30.

273). Large "Contentment". 23.75 x 16" (21.5 x 14.25" visible image) ca. 1928 large size Edison Mazda cropped calendar image featuring two women sitting on sunlit rocks, w/ deep purple and bright pink mountains behind them. Very attractive example in attractive period frame, has decent color and very nice overall look, w/ original descriptive sheet on back. Min. bid \$60.

274). "Wynken, Blinken & Nod". 19.25 x 14.25" (15 x 10-1/8" visible) ca. 1905 beautiful Scribner's art print on attractive textured paper featuring great image of 3 young boys in boat, w/ castles and full moon in background. Print is clean, bright and exceptionally nice, (near mint) and is presented in its attractive original period frame (light wear and minor touch-up to finish on frame). Min. bid \$50.

275). Medium "Cleopatra". 16.5 x 18-5/8" (13.25 x 15.25" visible) medium size, ca. 1917 art print (Reinthal Newman Co. "House of Art") featuring beautiful image of the famous Egyptian Queen Cleopatra in

rose filled barge. A clean and exceptionally nice example in its beautiful original period frame (frame is excellent, w/ exception of minor rub wear). Min. bid \$100.

276). Saint-Gaudens Medallion. 3.25 x 1-7/8" important silver medallion designed and created by Augustus Saint-Gaudens (famous sculptor and numismatic designer of the U.S. double eagle \$20 gold coin-considered to this day the most beautiful American coin ever issued) as a gift to Maxfield Parrish. These beautifully detailed medallions were created by Saint-Gaudens and given out on Sept. 17, 1906 as a thank you gift to the participants who had taken part in the 1905 "The Play of Ours" which was given in his honor (Provenance: this piece was gifted to and personally owned by M. P. and was later purchased by Virginia Reed Colby, noted Parrish historian and author who bought it in 1975 from Maxfield Parrish, Jr.). Excellent. Min. bid \$100. (also see #277).

277). Play Cast Photograph. 9 x 11" this photograph shows the characters in costume that took part in the above mentioned play that was given in honor of Augustus Saint-Gaudens. A very interesting historical piece. Min. bid \$40. (also see #276)

Maxfield Parrish Items



278).



279).



280).



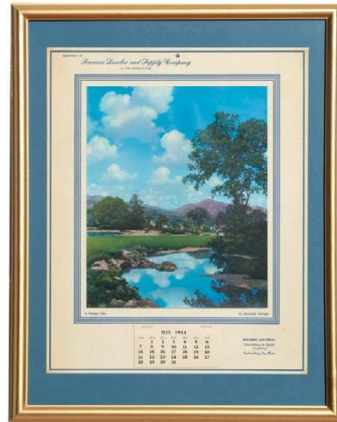
281).



282).



283).



284).



285).



286).

278).Small "Old King Cole". 8.25 x 14.75"(3 x 11-5/8" image) ca. 1906 art print w/ great image of the King and his court. Clean, very nice example, tipped on its original mat board and presented in beautiful original frame. Excellent, w/ minor stain speck spot in lower mat board area. Min. bid \$40.

279)."Romance". 16.5 x 26.25 (13.5 x 23") scarce art print by Reinthal Newman's House of Art, featuring nice image of Knave and Maiden on columned balcony, w/ castles and mountains in background. Nice example in its original frame (some light wear to frame). Min. bid \$50.

280)."Wild Geese". 16 x 13" (14-5/8 x 11-5" visible) Ca. 1924 Reinthal Newman Co. art print of girl on rugged rocks by water, looking up to sky. Beautiful, exceptionally nice example, w/ rich colors and great look (near mint) as found still in its beautiful original period frame. Min. bid \$50.

281).Parrish Window Display. Lot consists of great, early Edison Mazda Co. cardboard window display, w/ attractive Parrish designed "Get Together" logos on each piece.

Includes: (1). a large 26.5 x 15-5/8 x 3" "Light Up" display made to hold lit bulb inside (the bulb and two rectangular framed ads are covered in translucent paper and glow when back lit); (2) Piece picturing boxes (20.5 x 15.5 x 3") has 5 sockets for holding and displaying actual bulbs. Two smaller pieces (5 x 8.5" dia.) are made to hold an individual bulb. Pieces are clean, bright and like new, as found never used still in their original shipping box (note: piece picturing boxes and one of small bulb holders have a rubber band or some kind of remnant removal marks from having been stuck on surface). Min. bid \$70.

282)."Morning". 16.75 x 13-5/8" (14-5/8 x 11-5/8" visible) ca. 1926 Reinthal Newman House of Art print of woman in white robe sitting on top of rock at top of mountain peak, w/ cloudy sky background. A clean, bright and especially nice example, as found still in its beautiful original frame. Min. bid \$50.

283)."Spirit of Transportation". 23.5 x 19.5" (19.75 x 15.5" visible) ca. 1920's art print featuring view of steep

cliffs rising from river at bottom of gorge, with two trucks appearing up on rock cliff road (this image was later used by Clark Eqpt. Co. on one of their calendars). Nice example, presented in its beautiful original frame. Min. bid \$70.

284)."Perfect Day" Calendar (June Skies). 19.5 x 15-3/8" (calendar 15-1/8 x 12") (10.25 x 8.25" image) colorful and very attractive 1944 B&B calendar, featuring nice landscape image of a reflecting pond, trees, mountains and puffy clouded summer sky. Like new, w/ partial calendar pad. Framed. Min. bid \$40.

285)."Canyon". 16.75 x 13.75"(14-5/8 x 11-5/8" image) ca. 1924 art print by House of Art, NY featuring image of girl in robe clinging to a rock cliff ledge. A clean, very nice example, still in its beautiful period frame. Min. bid \$40.

286)."Fountain of Piriene". (7-5/8 x 5.5" visible) unusual art print on textured paper featuring two nude male figures in a forest stream. Excellent example, nicely framed. Min. bid \$40.



Rd #2, Cobb Hill Road, Cazenovia, NY 13035 • 24 Hr. Tel: (315) 662-7625 • 24 Hr. Fax: (315) 662-3570 • morf2bid@aol.com • morfauction.com

Welcome to our 67th auction of quality antique advertising and fine collectibles. Everything we sell is guaranteed authentic and as described. We attempt to grade condition both fairly and conservatively, using a scale of 1-10 on the advertising items (ten being absolutely mint). We do not list reproductions, re-issues, deceptively restored or pieced together type merchandise. Flaws and blemishes are prominently noted and over emphasized. We encourage you to call for a detailed description on any item you have an interest in, but respectfully must request that you do this before the closing night. Dimensions are listed by height, then width, and are only approximate (+ or - a quarter inch).

Bidding

Bids are accepted only from those parties who have registered with us to bid. (If you were mailed this catalogue by us you are automatically pre-registered.) Your bid is a legal contract to purchase and once entered, cannot be canceled. Placement of a bid indicates acceptance of our terms.

On all "BID" items there is a 10% buyers premium added to each successful bid. You're welcome to bid by mail, email and fax anytime after receiving this catalog. **We will begin accepting phone bids on Wednesday Sept 8th, 2010. We will be taking calls on Wednesday and Thursday from 10:00 AM until 5:00 PM.** If no one answers when you call, please leave a message on our machine and we will get back to you. **If bidding by mail or fax, please remember to include your telephone number with your bids!** You may call or bid as often as you like. We will tell you the current bid on any item(s) you are interested in. To raise a bid, your advance must be at least \$10 more than the current high bid amount. When an item reaches \$250, bidding increments rise to \$25, at \$1,000, bidding increments advance in \$50 steps, and above \$2,000 in \$100 increments. We suggest not waiting until the last minute to begin your bidding, as its quite possible you won't be able to get through.

Web Page and Bid Updates

We will begin posting current bid prices (not including the buyers premium) on Wednesday Sept 8th, 2010 (including an addendum of additional catalogue lot information) on our internet web page. These prices will be updated once each day (each evening sometime after 9:00 PM, EST) and will get updated to include the final hammer prices on Sunday afternoon once the sale is concluded. On the closing night, we will attempt to update current bid prices every hour. Our web page address for this sale is: <http://www.morfauction.com> We suggest that once you get to it, that you bookmark this address for easy re-access.

Reserves and Estimates

All items which receive an opening bid in our sale will be sold to the highest bidder regardless of the price realized (we reserve the right to withdraw items in the event of inaccurate catalog descriptions and to reject any bid we feel is not made in good faith). **We run our auctions with a strict policy of no buy-backs, no auctioneer games and no hidden reserves.** Unlike some of our competitors, we do NOT allow consignors to bid up their own items!

Mechanical Operations

Early mechanical and electric motors and mechanisms on machines toys, coin-ops, clocks, etc. are quite often temperamental and very unpredictable in nature. Although these mechanisms may be working fine at the time of sale, we make no guarantees or representations regarding their continued operating status once they have left our premises (including during shipping).

Closing Night

THE LAST DAY FOR BIDDING WILL BE ON FRIDAY, SEPT 10TH, 2010. On closing day, we begin taking calls at 5:00 PM. Please mark your calendar now. **On the closing night (ONLY), we will also be taking calls at (315) 662-3318, (315) 662-3429 and (315) 662-3904 after 5:00 PM** (in addition to our regular (315) 662-7625 office number). **Closing Time: This Auction will close at 10:00 PM (EST) on Friday, Sept 10th, 2010.** At that time, no more incoming calls will be accepted and all lots with a registered bid of less than \$300, as well as all items without call backs registered on them will be officially closed and final. The items at \$300 and over that have call back protection registered on them will be closed out during our call back period the following afternoon (**see important call back rules below**). We reserve the right to change the official closing in the event of unforeseen family type emergencies or technological failures (utility disruptions, etc.). We also reserve the right to either extend the bidding, to postpone or to cancel this auction in the event of a national emergency or if the Internet or the services of the US Post Office were to get seriously disrupted during our catalogue mailing or bidding period.

"Up-To" Bids & Call Backs

CEILING BIDS: We will be happy to enter competitive "up to" ceiling bids for you on any lots you request. Beginning at your minimum amount, we will advance these bid(s) up to your left ceiling amount, if (and only if) it is topped by another bidder. "Up To" bids will be handled discretely and executed in a completely competitive manner for you. Please note that we don't accept open ended "top all others" ceiling type bids.

CALL BACKS: You may request call back protection for any lot(s) that you enter with either a minimum or a protected "up-to" ceiling bid in an amount of at least \$300. This request must be registered with us before the official 10:00 PM closing hour of Friday, Sept 10th, 2010. All callbacks will be placed by us on Saturday, Sept 11th, 2010, beginning at 12:00 noon (EST) and will continue that afternoon until each of the individual lots have been closed out (using past experience, I would expect this to be finished by 6:00 PM, if not earlier). If you register for call-backs, it is your responsibility to be available during this call back time period. We make every effort to honor all our call back requests, but this service is done solely as a convenience to our bidders and will be performed on a best efforts basis only. If you will be traveling or if you will not be available during call back times at your primary number, be sure you provide us with proper alternate or back up numbers for reaching you!

Payment Terms

Winning bidders will be invoiced by mail immediately after the sale. Those who desire fast shipment can pay by Money Order or Cashiers Check. Payments are due within 10 days of receipt of invoice. We reserve the right to offer the item out to our back bidders and deny future bidding privileges to those who do not pay in a timely manner. In addition to personal checks, we also accept payment on your American Express, Visa, Master Card, Discover and Optima Credit Cards (with no surcharge added). No COD's or Collect calls are ever accepted. Items shipped to anywhere in New York State must include appropriate sales tax or signed resale certificate.

Shipping

All packing and shipping charges are extra. We do most of our own packing and shipping and try to keep these charges as reasonable as possible for you. On especially fragile and larger hard to pack items, we hire the services of professional packers and charge you at our billed cost. We ship mostly through the Post Office and Fedex Ground, (Fedex Overnight available at an extra charge.) We will also be happy to deliver your purchases to the INDY Ad Show the last weekend in September.

Subscribing, Prices Realized, Consignments & Upcoming Events

Future catalogs can be assured by sending \$20 for a full 12 months subscription, (includes after sale prices realized). An automatic credit card ordering program is available. We currently run between 4-6 auctions a year (versus our previous format of running semi-annual sales). This format allows us to run smaller, more focused sales featuring larger, higher quality catalog images and gives our consignors the opportunity for a quicker turn-around of their items. In addition to our regular sales, we also occasionally offer sales made up entirely from single owner collections. Please contact us should you have items you would like us to consider for inclusion in our upcoming events. All inquiries are handled in a completely confidential manner. Our services are also available for the private placement marketing of important individual items, marketing plans for large collections as well as for estate planning and settlement purposes. Back copies of many of our previous acution catalogs are still available at \$5 each (w/ prices realized) w/ quantity discounts available if multiple issues are ordered. For further information, please call, e-mail or write.

Photography by Wes Feuz. Layout by Tracy Niemczal.

© Copyright 2010. All Rights Reserved. No portion of this publication may be copied in any form without the express written permission of Morford's.

Important Closing Night Information

In addition to our regular **(315) 662-7625** office number,
on the closing night (only!) you may also call us at:

(315) 662-3318*
(after 5:00 PM)
(315) 662-3904*
(after 5:00 PM)
(315) 662-3429*
(after 5:00 PM)



***These numbers for
Closing night only!
Friday, Sept. 10th, 2010**

Bidding closes at 10:00 PM on closing night. We will be accepting faxes and e-mails on closing night. Our web page will update current high bid prices approximately every hour on closing night and will also list any important addendum information. **All call backs will be made on Saturday, Sept 11th, 2010, beginning at 12 o'clock Noon!**