



WM Morford
Investment Grade Collectibles at Auction

Investment Grade Collectibles at Auction

Rd #2, Cobb Hill Road, Cazenovia, NY 13035 • 24 Hr. Tel: (315) 662-7625 • 24 Hr. Fax: (315) 662-3570 • morf2bid@aol.com • morfauction.com

Bidding closes Friday, Dec. 3rd, 2010. (See page 36 for Terms & Conditions)



1).American Maid Pot Scraper. 1.75 x 3" early tin litho advertising pot scraper for American-Maid brand bread, in shape of Co.'s early bread package. Clean and very attractive appearance w/ just a hint of faint crazing (a strong C. 8++). Min. bid \$50.



2).Berry Bros. Pocket Mirror. 1.75 x 2.75" early celluloid advertising pocket mirror featuring beautiful multi-color graphic image of child pulling his dog in Co.'s varnish crate wagon. Clean, bright and excellent. Min. bid \$50.



3).Billiard Parlor Match Safe. 2-5/8 x 1.5 x 1/4" unusual, early celluloid over metal advertising match safe for the Casino Billiard Parlor, Pittson, Pa., w/ neat image of billiard table on one side and text advertising on back. Has a little non-offensive, slight age toning/staining, but overall attractive and displays very nicely (as found, might improve w/ cleaning). Min. bid \$40.



4).Coca-Cola Sign. 5.5 x 18.5" outstanding, early Ca. 1930's porcelain Coca-Cola script sign. Clean, bright and exceptionally nice (C. 8.5++) w/ very minor wear at hanging holes. Min. bid \$100.



5).Fancy Straight Razor. 6.75 x 1.25 x 1/2" unusual, early, "Delight" brand straight razor, by Smith Bros., Boston, featuring a fancy, beautifully embossed and detailed design on its aluminum handle. Excellent, w/ a nice rich surface patina. Min. bid \$50.



6).Cow Girl Photo Album. 10.5 x 8.5 x 2.25" great early photo album, featuring beautiful multi-color cow girl image on celluloid like finished cover. Clean, bright and very attractive appearance, w/ a little light scattered handling wear from use (C. 8+-). Album filled w/ many pages of early family type photos. Min. bid \$50.



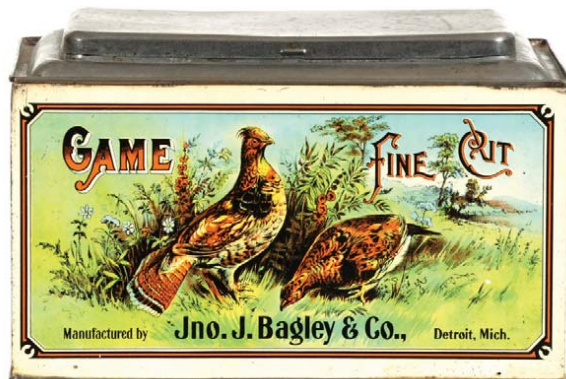
7).Jiffy 1¢ Slot Vendor. 10 x 8 x 8.5" early penny operated Jiffy brand gumball machine/ trade stimulator w/ mechanical slot machine operation (pictures different brands of cigarette packs). Complete, all original and displays quite nicely (C. 7.5++/8-), w/ some light scattered paint wear (some chipping and paint wear on back door panel). Slot mechanism works well, complete w/ key. Min. bid \$70.



8).Santa Claus Puzzle. 12.25 x 8-3/8 x 1" beautiful, early, game box style, boxed puzzle set by Parker Bros., featuring beautiful, early color graphic Santa Claus scene. Box is clean, bright and excellent overall, w/ a little typical light wear from use (C. 8/+). Puzzle is complete and excellent. Min. bid \$50.



9).Cigar Playing Cards. 3-5/8 x 2-5/8 x 5/8" lot consists of a full, boxed deck of pinochle playing cards advertising Chauncey Olcott brand cigars (Unadilla, NY) w/ same nice image on box and each card. Box has small hole in upper corner of one side, deck is complete and in very nice condition (no jokers). Min. bid \$30.



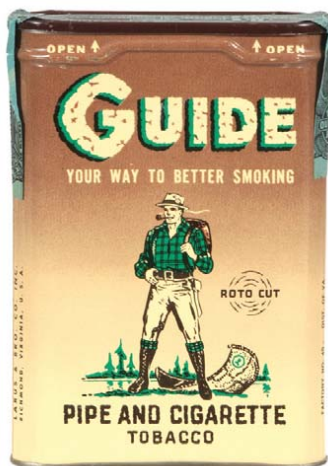
10).Game Tobacco Bin. 7 .25 x 11.5 x 7.75" early, tin litho store bin for Bagley & Co.'s Game Cut tobacco, featuring beautiful, multi-color graphic birds on front and back. Clean, bright and exceptionally nice appearance (displays as a strong 8++) w/ some non-offensive wear on side edges and in front and back outer margin border areas. Shoulder and lids are silver (no longer retaining gold flash finish). Min. bid \$150.



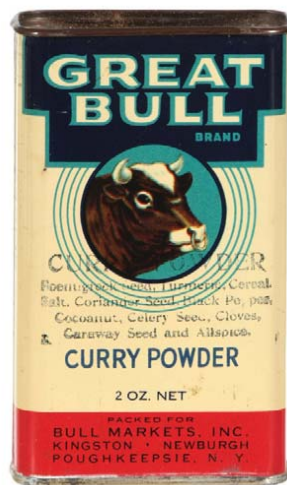
11).Topsy Jar Rings Box. 3.25 x 3.25 x 1-3/8" scarce, early cardboard product box for Simon Bros. "Topsy" brand (same image both sides). Excellent, w/ contents. Min. bid \$40.



12)."Hello Bill" Salesman's Sample Mirror. 2.75 x 1.75" unusual, early salesman's sample "Hello Bill" promotional advertising pocket mirror w/ beautifully detailed color graphics w/ areas for customers to add custom advertising. Celluloid is excellent (some dark areas in mirror glass). Min. bid \$40.



13).Guide Tobacco Tin. 4.25 x 3 x 1" full, sealed (never opened) tin litho vertical tobacco pocket tin for Larus Bros. "Guide" brand. Crisp, bright and like new (near mint). Min. bid \$50.



14).Great Bull Spice Tin. 4 x 2-5/8 x 1-1/8" scarce, early tin litho 2 oz. size product tin for Great Bull brand (Bull Markets, Poughkeepsie, NY) featuring same nice image on both sides. Clean, bright and excellent (a strong C. 8++). Min. bid \$40.



15).Possum Cigar Tin. 5.25 3-7/8" unusual variation, small early 25 ct. cigar can for Lorillard Co.'s "Possum" brand cigars, featuring beautiful multi-color graphics. Clean, bright and very attractive (C. 8/++). Min. bid \$50.



16).Kotex Die-Cut. 13.5 x 8.25" early, die-cut tin litho sign from display rack, featuring nice image of Co.'s trademark nurse holding product box. Attractive piece that displays nicely (displays as a C. 8/-), w/ some non-offensive light background wear and a light surface oxidizing spot at top right corner edge (critical grade C. 7.5/+). Min. bid \$50.



17).Bear Service Station Sign. 39 x 28" unusual, smaller size, early die-cut metal sign for Bear brand wheel balancing service, featuring nice image of Co.'s trademark bear cub. Has some weathering and general scattered wear from use, but displays nicely, w/ an attractive primitive country look to its paint surface (C. 7.5/+), displays much better than this would imply. Min bid \$70.

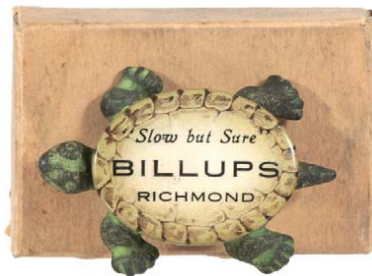


18).Fireman's Fund Sign. 28 x 23.75" (18-7/8 x 14.75" actual) outstanding, very early, paper litho sign for Fireman's Fund Insurance Co., San Francisco featuring beautiful graphic image of firefighter rescuing baby. Clean and excellent overall w/ some faint staining in the very outer white margins of border area (could be easily matted out). Presented in its original marked frame. Min. bid \$100.

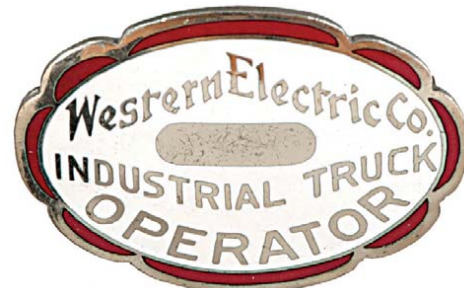
California Perfume



19).California Perfume Co. Pin. .5 x 5/8" unusual, very early, fancy, gold colored employees pin from California Perfume Co., w/ cobalt blue colored "CPC 1886" inlaid cloisonné enameled lettering and hinged pin on back. Excellent. Min. bid \$30.



20).Billups Advertising Turtle. 2.25 x 1-5/8 x .5" small, early celluloid advertising turtle on painted cast iron base for "Billups", as found still in its original box. Excellent overall, w/ no stains or cracks (has minor, barely noticeable indent mark on celluloid- not at all detracting, mentioned for accuracy). Min. bid \$30.



21).Western Electric Badge. 1.25 x 1-5/8" early, very high quality employee uniform badge for a Western Electric Co. Industrial Truck operator, w/ beautiful inlaid cloisonné enameled porcelain (heavy hinged pin on back). Crisp and like new (near mint). Min. bid \$30.



22).Pennsylvania Turnpike Bumper Tag. 4 x 11-3/8" early, heavy aluminum license plate attachment for the Pennsylvania Turnpike, w/ nice detailing and attractive original paint surface. Clean, bright and excellent, w/ nice surface patina. Min. bid \$30.



23).Tin Maker Ledger Marker. 3 x 11.75" scarce, early tin litho advertising ledger marker for lithographed tin can maker Tretheway Bros., Parsons, Pa., w/ nice images of coffee tin and lard pail on front; text advertising on back. Bright, attractive and displays nicely, w/ some light scattered wear (C. 8/-). Min. bid \$50.



24).Public Telephone Signs. Lot consists of two different early, small, hubcap style porcelain telephone phone booth signs (ea. 8" in dia.). Both are clean, bright and like new. Min. bid \$60 (the pair).

Salesman's Sample



25).Salesman's Sample Sled. 22.5 x 11.5 x 3.75" early, very unusual, salesman's sample "Fleetwing Racer" child's sled, is an exact miniature version of a full size sled. Wood and metal, excellent and all original, w/ very nice surface patina (C. 8/+). Very high quality piece! Min. bid \$100.



26).Cedarhurst Whiskey Sign. 11-7/8 x 8" early, self-framed tin litho sign for Thomas Ward Co.'s Cedarhurst brand whiskey featuring great graphic image of ferocious bear. Has bright colors and displays nicely (displays as a strong 8+). Close examination will reveal a few non-offensive faint scattered speckle spots on upper surface (critical grade C. 8/-) w/ some oxidizing on non-graphic back side. Min. bid \$70.

Patent Model

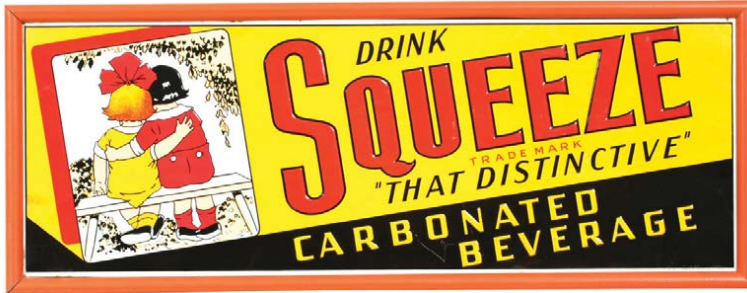


27).Refining Still Patent Model. 11.25 x 7.75 x 7.5" very early painted metal figural patent model for an industrial petroleum refinery still. Unusual, very high quality piece, is an exact miniature scratch built version made for and sent to U.S. patent office in 1880. Wonderful early paint surface w/ a wonderful folk art look, complete w/ it's original patent office issued string tags. Excellent (C. 8). Min. bid \$150.

Salesman's Sample



28).Fishing Line Salesman's Kit. 20 x 23.25 x 1.75" unusual, Ca. 1940 salesman's sample selling kit from the Hall Line Co. featuring various spools and packages of companies high grade fishing lines. Also includes a 1939 12 page, heavily illustrated catalog for same. Excellent overall. Min. bid \$70 the lot.



29).Squeeze Soda Sign. 11.25 x 29" (9.75 x 27.75" visible) early, embossed tin litho sign for Squeeze brand soda. Clean, bright and very attractive appearance (basically displays as a strong 8/+), although close examination will reveal minor oxidizing in outer white border areas, a couple non-detracting small hazy blemish/stain marks in yellow background area and a light scratch mark in bottom black area (critical grade C. 8/-). Framed. Displays very well! Min. bid \$50.



30).Vet Sign. 11 x 29.75" unusual, early cardboard die-cut, folding display sign for Dr. LeGear's veterinary medicines. Bright and attractive overall appearance, w/ exception of some foxing and light staining in middle right panel area. Min. bid \$40.



31).Baseball Score Keeper Fobs. Lot consists of three different early celluloid baseball score keepers/ watch fobs, each measuring 2 x 1.75". Includes: Lamson and Hubbard Hats; 1939 Baseball Centennial; and Boss of the Road Overalls, each w/ a beautiful baseball scene on back side. Excellent overall. Min. bid \$50 (the lot).



32).Public Telephone Sign. 5.5 x 19" heavy, early, 2-sided porcelain telephone directional sign from Southern California Telephone Co. (same on both sides). Clean and attractive appearance, w/ some non-detracting slight edge wear along top edge; and minor chipping wear at top center hanging hole on back side. Min. bid \$50.



33).Sunoco Rest Room Signs. Lot consists of a pair of small restroom signs from early Sunoco service station (each app. 3 x 7"). Both are clean and very nice, w/ only minor wear. Min. bid \$40 (the pair).



34).Watch Fobs. Lot consists of four fancy, early metal advertising watch fobs w/ celluloid inserts for various products. Includes: Poll-Parrot, Every Drop Paint, Glad Hand Soap, Gold Medal Foods. All are clean and excellent (minor soiling and slight curling/lifting to the celluloid on Glad Hand fob). Min. bid \$50 (the lot).



35).Dentyne Display. 7.25 x 3 x 3-7/8" early tin litho counter-top display for American Chicle Co.'s "Dentyne" brand chewing gum (made to hold and display product box on base). Clean, bright and displays nicely (as a C. 8/+), although close examination will reveal a little light wear on bottom base area. Lot also includes an early period cardboard box and gum pack (box slightly larger than display was made for). Min. bid \$60.



36).Spratt's Pet Cleaner. 6.25 x 3-1/8" unusual, early paper label product tin (metal top and bottom) for Spratt's brand powder (Newark, NJ and San Francisco, CA) dog and cat dry cleaning powder. Full sealed, never opened tin is excellent overall (C. 8+). Min. bid \$30.



37).Planters Mask. 15.5 x 7 x 7.5" unusual, early, cardboard Planters Peanuts Co. Mr. Peanut mask. Has a little non-offensive minor crimping and light wear from use, but overall attractive and displays nicely (C. 8). Min. bid \$30.



38).Lawrence Paints Door Push. 8 x 4" scarce, early, heavy porcelain advertising door push for Lawrence & Co. Paints, featuring nice image of Co.'s early paint bucket. Has bright colors and displays nicely, w/ some weathered edge chipping and light background staining. As found, should improve w/ cleaning. Min. bid \$40.



39). Miniature Shuffleboard Table. 2-5/8 x 15.75 x 3-3/8" early, heavy, very high quality miniature (salesman's sample?) metal and wooden bar style shuffleboard table, w/ beautiful detailing. Clean and excellent (C. 8.5), no manufacturers name. Neat and unusual piece! Min. bid \$60.



40). Gensco Condom Tin. 1.75 x 1-7/8 x 3/8" scarce, early, tin litho condom tin for Gensco Supreme brand (Schaeffer Products Co., Cleveland, Ohio). Has some light soiling and minor scattered wear (C. 8+/-), as found, should improve w/ cleaning (slightly heavier wear on non-graphic base). Min. bid \$40.



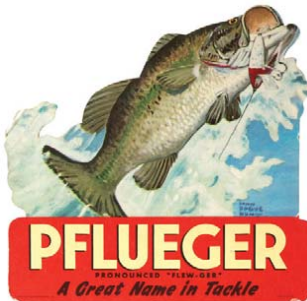
41). Summershine Metal Polish Tin. 1-7/8 (dia.) x 5/8" wonderful, small sample size product tin for "Summershine" brand metal polish (Summers Co., New York) featuring great figural embossed face on lid. Has some wear on raised highlight areas, but still a very neat piece that displays well (C. 7+), minor restoration could easily improve it to a C. 8.5 appearance. Min. bid \$30.



42). Texaco Pins. Lot consists of two different Texaco celluloid advertising pinback buttons (1.75" and 1.25" dia.) each featuring Co.'s trademark Scotties. Both are clean and very nice. Min. bid \$50 (the pair).



43). Flycasters Tobacco Pack. 2-7/8 x 4.5 x 1" full, sealed (never opened) 1.75 oz. size soft pack style tobacco pack for "Flycasters" brand (Sutliff Tobacco Co., San Francisco) featuring attractive image of trademark fisherman (full, sealed pack w/ 1926 tax stamp). Crisp and like new. Min. bid \$50.



44). Pflueger Die-Cut. 8 x 8.25" early, die-cut, easel-back, cardboard counter-top sign for Enterprise Co.'s Pflueger brand fishing tackle. Clean, bright and displays nicely w/ minor edge wear (C. 8). Min. bid \$40.



45). Aviation Insurance Sign. 10-1/8 x 13-5/8" unusual, early, heavy embossed easel back airline countertop sign for Aviation Insurance. High quality piece has a nicely detailed metallic finish over a dense, heavy composition material w/ nice rich surface patina. Excellent, with minor blunting to nose. Min. bid \$50.



46). Cream Separator Soap Holder. Unusual, early advertising soap bar holder for Dairymaid brand cream separators, w/ attractive tin advertisement on back and wire holder at base. Has strong colors and displays pretty well, w/ some light wear from use (C. 7.5/+). Min. bid \$40.

Harely Davidson



47). Royal Stag Whiskey Sign. 14.5 x 14.5" outstanding, early, tin litho rolled-edge sign for Royal Stag brand whiskey (Ahrens Bullwinkel Co., San Francisco) featuring great color graphic image of companies trademark stag. Clean, bright and excellent (C. 8.5/+). Min. bid \$150.



48). Harley Motorcycle Toy. 4-1/8 x 6 x 1.75" early, figural cast iron motorcycle toy embossed "Harley Davidson" on tank. A clean, exceptionally nice example (appears never used) w/ about 95% of its original paint surface (C. 8.5++). Has the typical, expected crazing and crackling to original white rubber tires. Min. bid \$70.



49). Sporting Theme Talc Tins. Lot consists of two different tin litho shaving powder talc tins w/ fishing and hunting scenes (each has same image on both sides and measure 4.75 x 3 x 1"). Includes: Winchester and Reel Man brands. Both are excellent (no cap on Winchester). Min. bid \$40 (the pair).



50).Brink's Express Sign. 7 x 10-5/8" scarce, early, heavy porcelain advertising sign issued by Brinks Express Co. Crisp, bright and like new (near mint, appears never used) w/ trace hint of very minor staining at very outer left edges (barely merits mention, listed for accuracy). Min. bid \$50.



51).Opia Cigar Sign. 5-3/8 x 36" unusual, early tin litho chain hung sign for Opia brand cigars (made of three individual pieces that slide together). Has some scattered scuffing and light wear from use, but overall attractive and displays nicely, w/ a powerful and impressive look (displays as a C. 8; critical grade C. 7.5/+). Min. bid \$60.



52).Popsicle Sign. 2.5 x 18" unusual, early, embossed, tin litho strip sign featuring great art deco look. Clean, bright and very nice, w/ only minor wear (C. 8.5/+). Min. bid \$50.



53).Postal Telegraph Sign. 2.5 x 14"unusual, early, heavy 2-sided porcelain Postal Telegraph Co. sign, made for displaying on messengers bicycle delivery basket. Has some chipping at hanging holes and outer edges, but overall quite nice. Min. bid \$40.



54).Pointer Shotgun Shells Box. 4.25 x 4.25 x 2.5" early 2-ps. cardboard shotgun shells box for Pointer brand (Clinton Cartridge Co., Chicago) featuring attractive color graphic on lid and 2 sides. Clean, bright and very attractive (C. 8+/-) w/ some non-detracting light scattered wear. Min. bid \$40.



55).Gum Display. 9 x 13 x 4.75" unusual, early, figural papier-mâché countertop display for "After Dinner" brand pepsin gum, w/ pullout drawer in back for holding product (National Papier-Mâché Works label inside). Attractive and quite nice overall, w/ some general light overall wear (jewel missing from head area). Min. bid \$60.



56).Providence Car Fender Mirror. 2-1/8" scarce, early, celluloid advertising pocket mirror from Consolidated Car Fender Co. (Providence, RI) featuring beautiful multi-color graphics. Clean, bright and excellent. Min. bid \$60.



57).Brewery Match Holder. 6.75" (dia.) x 5" large, early, heavy stoneware tabletop match holder (by Whites Utica Co.). Has striking surface pattern around sides, w/ incised eagle and advertising on both sides for American Brewing Co., (Rochester, NY). High quality piece, excellent overall (near mint) w/ exception of a couple minor flea bites (mentioned for accuracy, so minor barely merits mention). Min. bid \$50.



58).Clown Cigarettes Thermometer. 9.25 (dia.) x 1.5" early, glass covered dial type thermometer w/ metal frame, advertising Clown brand cigarettes (Axton-Fisher Tobacco Co., Louisville, KY) featuring attractive image of early pack and man smoking. Label inside is clean and excellent (metal frame has some cleaned light oxidized ageing). Displays great. Min. bid \$40.



59).Gobblers Cigar Tin. 5 x 5" early tin litho 50 ct. cigar can for Gobblers brand, featuring great image of trademark turkey (same image both sides). Clean, bright and exceptionally nice (displays as a strong C. 8.5+/-) w/ exception of a couple non-offensive light dent marks in bottom background area of back side. Min. bid \$70.

Chewing Gum



60).Baby Ruth Gum Display. 6.5 x 7.75 x 2.25" scarce, early tin litho counter top gum display w/ attached glass change receiver advertising "Baby Ruth" brand chewing gum. Tin litho gum holder area is bright and displays nicely, although there is oxidizing on inside base and bottom of piece. Glass change receiver is excellent. Min. bid \$50.



61).Trout-Line Pocket Tin. 3.25 x 2.5 x 1.5" early, oval, cardboard vertical tobacco pocket tin, w/ slide top closure for Trout Line brand, w/ same great fly fishing image on both sides. Clean, bright and very attractive (a strong C. 8/+), w/ only minor wear. Min. bid \$70.



62).Cat & Mice Game. 14.5 x 15 x 1" outstanding, large, early boxed game set by Mc Loughlin Bros. featuring incredible color graphic image on lid. Cover illustration is bright and very attractive (C. 8++) w/ minor background soiling and a couple numbers written in pencil in upper background. Inside is crisp and like new (complete w/ playing pieces). Min. bid \$60.



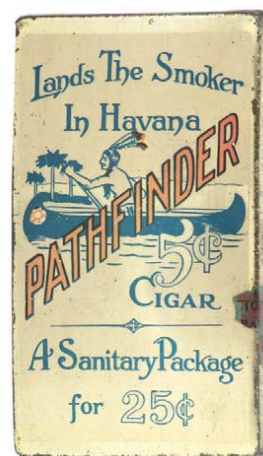
63).Snow Shoe Tobacco Pack. 4-1/8 x 2-7/8 x 1" full, sealed (never opened) 1.25 oz. size soft pack style tobacco pack for "Snow Shoe" brand (Scotten-Dillon Co., Detroit) featuring stunning multi-color graphic image of trademark man on snowshoes (1926 tax stamp). Excellent. Min. bid \$50.



64).Uncle Sam Pin Tray. 3-3/8 x 1-7/8" unusual, early, aluminum advertising pin tray for National Paint and Varnish Co.'s "Graphite Elastic" brand paint w/ neat image of Uncle Sam painting battle ship. Has a little light scattered wear, but overall attractive and displays nicely (C. 8). Min. bid \$30.



65).Iron Paperweight. 3 x 2" (dia.) unusual, early, solid figural cast iron paperweight w/ embossed "Berkshire Life", advertising on base, w/ nicely detailed golf ball at top (marked "Kiwanis Club" on back). Excellent overall, w/ nice patina to paint surface (C. 8/-). Min. bid \$30.



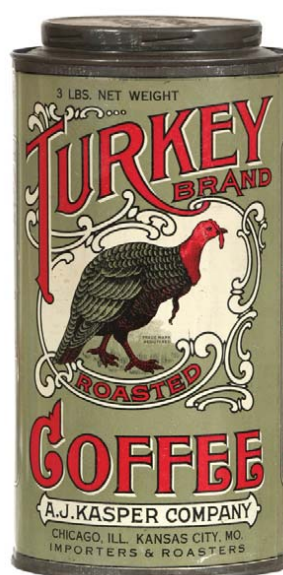
66).Pathfinder Cigar Tin. 5-5/8 x 3.25 x 5/8" unusual, early tin litho wallet style pocket tin for Gresh & Sons "Pathfinder" brand 5¢ cigars, featuring attractive Indian image. Front is clean, bright and excellent, back is nice, w/ some light scattered speckles (front C. 8++; back C. 7.5+/8-). Min. bid \$40.



67).Lion Candy Tin. 10-1/8 x 4-5/8 x 4-5/8" unusual, early 5 lb. small top Lion brand paper label candy tin (Lion Specialty Co., Chicago) featuring same attractive image on all four sides. Clean and attractive appearance w/ a couple scattered paper loss spots on side edges (C. 8/-). Min. bid \$40.



68).Blue Jay Oats. 9-5/8 x 5-3/8" outstanding, early 3 lb. cardboard oats box for Blue Jay brand (featuring beautiful multi-color graphic image of Co.'s trademark bird (same image both sides). Clean, bright and exceptionally nice (C. 8.5+) w/ just a hint of non-detracting age toning (very minor- barely merits mention). Min. bid \$50.



69).Turkey Coffee. 10-5/8 x 5.5" early, tin litho 3 lb. small-top coffee can for Casper Co.'s Turkey brand (same image both sides). Clean, bright and very attractive in appearance (C. 8++) w/ only minor scattered background wear. Min. bid \$70.



70).Dr. Caldwell Stand-Up Sign. 15 x 6.25" early, die-cut, counter-top, easel-back stand-up sign for Dr. Caldwell' Syrup Pepsin. Clean, bright, attractive appearance (displays as an 8.5/+) w/ exception of minor edge wear and a barely noticeable non-detracting, faint crease mark in beard area (barely noticeable). Min. bid \$50.



71).Aunt Minerva Coffee. 7.75 x 6" scarce, early, 3 lb. coffee pail for Aunt Minerva brand (S & D Co., Concord, NC) featuring nice image of trademark black mammy (same image both sides). Tin displays nicely, although there is some non-offensive light scattered wear and a little darkening and light oxidizing along bottom edge. Displays quite well (as a C. 8/-; critical grade C. 7.5). Min. bid \$50.



72).American Express Sign. 16.5 x 18.5" early, heavy porcelain agency sign for American Express Co., w/ a powerful and impressive looking design. Field area is clean, w/ strong colors and displays very nicely, w/ scattered oxidized chipping in outer border area. Min. bid \$60.



73).Sweet Mist Bin. 10-7/8 x 8 x 6.5" early, waxy cardboard store bin for Scotten Dillon Co.'s "Sweet Mist" brand tobacco, w/ same attractive image on both sides. Clean, bright and excellent in appearance (a strong C. 8++) w/ only minor soiling and wear. Min. bid \$50.



74).Dr. Daniels Dice Paperweight. 1.5 x 3" (dia.) unusual, early, glass advertising paperweight for Dr. Daniels veterinary medicines, w/ 5 dice inside. Displays very nicely, (advertising area is clean and basically excellent in appearance, w/ a little bit of wear (from dice) to word "Remedies" in bottom right corner; glass has a 1/4 x 1" crackled stress spot in black band area on base). Min. bid \$40.



75).Butter Color Sign. 11 x 13" small, very early, advertising sign for Ransom Mfg. Co.'s butter color product; printed on a heavy, shiny silk like cloth material, w/ original metal strips at top and bottom. Clean, bright and very impressive looking (basically a C. 8.5/+) w/ exception of a light wrinkle mark and a little non-offensive light background staining in upper border area. Min. bid \$50.

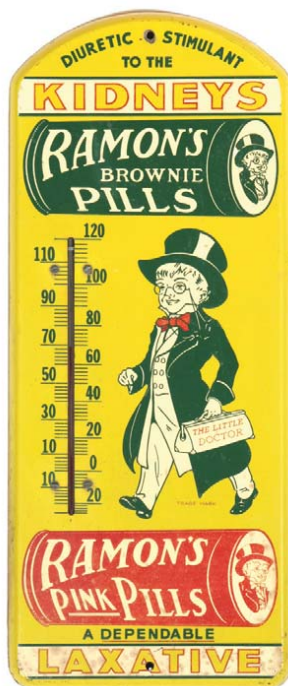


76).Evinrude Tip Tray. 4 x 5/8" early, tin litho advertising tip tray for Evinrude brand outboard motors, featuring beautifully detailed color graphics. Clean, bright and excellent overall, w/ text advertising on back side (C. 8.5/+). Min. bid \$60.

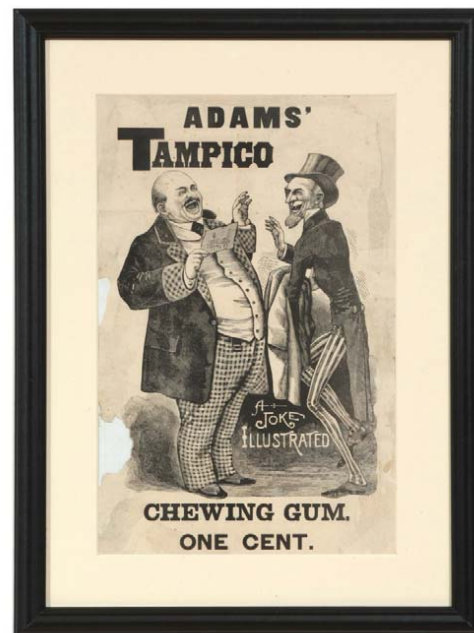
Original Art



77).Planters Original Artwork 16 x 13" (12.5 x 9.5" visible) wonderful, early, original artwork illustration executed in water colors for a Planters Peanuts magazine advertisement. Very high quality piece, artist signed and dated in bottom margin area (can not make out first name, but middle initial B then "Lomborg 1932"). Excellent (C. 8++), w/ a little non-detracting minor background staining. Min. bid \$50.



78).Ramon's Pills Thermometer. 21 x 8.75" early tin litho thermometer for Ramon's brand pills. Clean and attractive in appearance, w/ a little minor wear and a little non-offensive light staining along bottom (edge C. 8/-). Min. bid \$60.



79).Adams' Tampico Gum Sign. 24.25 x 18" (17.75 x 11.25" visible) unusual, very early paper litho sign for Adams' Tampico brand chewing gum w/ great image of Uncle Sam and English counterpart John Bull sharing joke. Piece displays decently, although there is some toning, light staining, as well as some areas of paper loss at left edge background area and a light crease mark in bottom right background area. Nicely framed and matted. Min. bid \$70.



80).Ever-Ready Shaving Brush Display. 13-1/8 x 10-3/8 x 4" unusual, early, glass countertop advertising product showcase for Ever-Ready brand shaving brushes. A very high quality and attractive looking piece that is in excellent condition. Complete w/ several added brushes. Min. bid \$60.



81).Baseball Gum Vendor. 14.25 x 11.25 x 7.35" unusual, Ca. 1940's/50's gum ball vendor w/ baseball theme trade stimulator. Clean and very attractive appearance, excellent overall (C. 8.5+) w/ a little minor scattered wear. Complete w/ key. Min. bid \$100.



82).Milk Maid Coffee Pail. 11.75" x 7-3/8" very early, 5 lb. milk pail style coffee can, featuring wonderful stenciled type image of milkmaid and cow. Has some general light scattered wear and a little light fade to background color, but image and lettering is very good, w/ nice patina and an attractive primitive folk art/country type look (C. 7.5/+). Min. bid \$70.



83).Coca Cola Sign. 19-5/8" (dia.) outstanding, early, embossed tin litho sign for Coca-Cola. Crisp, bright and like new (basically near mint appearance), w/ only minor rubs and slight handling wear at top hanging holes. ("American Artworks 1932"). Min. bid \$150.

Patent Model



84).Patent Model. 6 x 13.25 x 7-3/8" Ca. 1866 painted wood and metal patent model for early oil refining station designed by Charles Adams, Philadelphia. Beautifully detailed, w/ nice early patina to paint surface and original 1865 tag on side. Has some scattered light wear, but overall attractive and displays very nicely (C. 8/-). Min. bid \$100.



85).Pepsi Straws. 10.75 x 3.75 x 3.75" full, Ca. 1930's box of 500 paper straws w/ nice images of early Pepsi bottles on three sides and blue and red Pepsi script advertising on each individual straw. Box has some light wear, including light scuffing and some staining on left side panel of box, otherwise pretty clean and nice (C. 7.5+/8-). Min. bid \$40.



86).Old Thoroughbred Whiskey Flask. 4-3/8 x 2-3/8 x .75" small, early, 2 oz. size pocket whiskey flask w/ hand applied neck for "Old Thoroughbred" brand, w/ attractive original labels on both sides (Williamson Co., Lockport, NY). Excellent w/ minor soiling/wear on backside label. Min. bid \$20.



87).Forest & Stream Pocket Tin. 4.25 x 3 x 1" early tin litho vertical tobacco pocket tin for Imperial Tobacco Co.'s "Forest & Stream" brand (scarce canoe variation) featuring beautiful color graphics (same image both sides). Clean and very attractive appearance (a strong C. 8++) w/ only minor wear. Min. bid \$60.



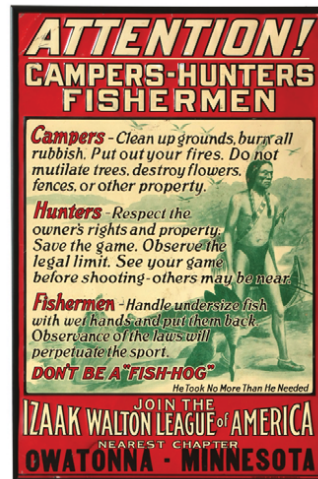
88).Drako Coffee. 6 x 4-1/8" early tin litho 1 lb. coffee can for Drako brand, featuring beautiful color image of trademark duck (same image both sides). Clean, bright and very attractive (a strong C. 8++) w/ a little non-offensive minor background wear. Min. bid \$60.



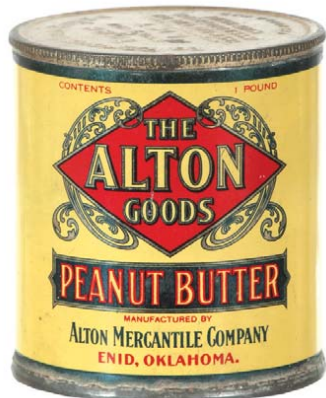
89).Phone Booth Sign. 14 x 12 x 1.5" unusual, early porcelain flange sign, two sided (same image both sides), advertising American Telephone & Telegraph Co. phone booth. Nice early heavy porcelain w/ early style Bell logo. Has some chipping and wear along very outer edge and flange edge of backside, otherwise very nice and displays great. Min. bid \$60.



90).Sparks Trade Stimulator. 12.25 x 10.25 x 9.5" unusual, early 5¢, slot machine style trade stimulator and gumball vendor for Sparks brand (has golfing theme pay-off reels). Clean, bright and excellent appearance w/ nice deco look complete w/ key. Excellent (C. 8.5+). Min. bid \$150.



91).Conservation Sign. 17-7/8 x 11-7/8" (17.25 x 11.25" visible) early, embossed tin litho Camping-Hunting-Fishing conservation sign issued by Izaak Walton League featuring attractive graphic Indian image (American Art Works lithographers). Clean, bright and attractive, w/ a little non-offensive minor scattered wear (C. 8+/-). Framed. Min. bid \$50.



92).Alton Peanut Butter. 3-7/8 x 3-3/8" unusual, 1 lb. tin litho peanut butter can from Alton Mercantile Co., Enid, Oklahoma. Clean, bright and very attractive (C. 8++) w/ minor wear on lid. Min. bid \$40.



93).Burma Cola Sign. 9.5 x 13.5" scarce, small, early, oval embossed tin litho sign for Burma brand soda pop. Crisp, bright and appears never used (near mint). Min. bid \$50.



94).Telephone Tip Tray. 4.25" (dia.) scarce, very early tin litho advertising tip tray for Delaware and Atlantic Telegraph and Telephone Co.'s local and long distance Bell telephone service. Clean and excellent overall, w/ a little faint wear at bottom right edge of rim (C. 8++). Min. bid \$40.

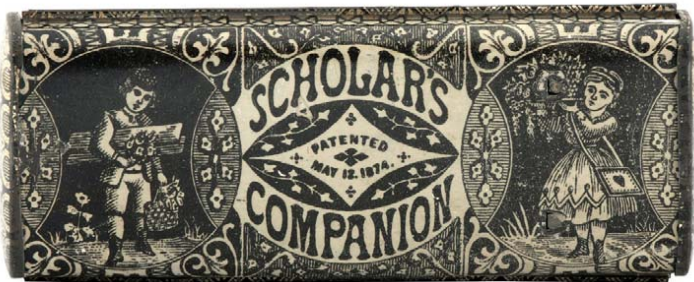
Cigar Lighter



95).Figural Cigar Cutter. 8-3/8 x 3.75 x 3.5" unusual, early, heavy, figural metal cigar cutter, featuring Uncle Sam like character holding purse while seated on treasure chest. Purse has opening in front for inserting cigar into (pushing his head down moves blade down). Nice condition overall, w/ some general light finish wear from use (C. 8/-). Min. bid \$100.



96).American Brewing Co. Sign. 31 x 42.75" (23 x 35.25" visible) outstanding, early, tin litho sign for ABC Bohemian beer, (American Brewing Co., St. Louis) featuring beautiful multi-color graphics. Clean, bright and very attractive in appearance (basically a strong C. 8++), w/ exception of a non-offensive scratch mark in lower rocks area. Complete w/ its original marked gesso frame (frame excellent w/ exception of chip spot in upper left inside border area). Min. bid \$250.



97).Scholar's Companion Tin. 3 x 7-1/8 x 1.25"unusual, very early tin litho children's holder box that appears to be for pencils and/or school supplies. Excellent (like new condition) w/ beautifully detailed graphic images of children (1874 Patent date). Min. bid \$40.



98).Cigarette Packs. Lot consists of 3 full, sealed cigarette packs, each w/ attractive graphic images (each measures 2.75 x 2-1/8 x 3/4"). Includes: Zipper, Skis and Kentucky King brands. All are excellent (no cello wrapper on Ski pack). Min. bid \$40 (the lot).



99).Greyvan Cap Badge. 2-5/8 x 2-7/8" unusual, early uniform cap badge for Greyvan Lines, Chicago, featuring great looking streamlined Deco style truck. Very high quality, w/ finely detailed inlaid cloisonné porcelain enameling. Excellent, w/ light surface wear from use. Min. bid \$40.



100).Chicago Telephone Pinback. 1.25" (dia.) scarce, early celluloid advertising pinback button advertising the Chicago Telephone Co., w/ nice sepia image of girl talking on candlestick phone. Excellent. Min. bid \$40.



101).Postal Telegraph Co. Badge. 2-18 x 2-1/8" early, very high quality employee uniform badge from the Postal Telegraph Co., w/ beautiful inlaid cloisonné enameled porcelain (heavy hinged pin on back). Front is crisp and like new (near mint), pin on back side is missing curved clasp lock closure. Min. bid \$30.



102).Coca-Cola Playing Cards. 3-5/8 x 2-3/8 x 5/8" full Ca. 1941 deck of Coca-Cola advertising playing cards in original box (52 + jokers). Cards are crisp and never used, box is very nice, w/ some minor soiling wear. Min. bid \$40.



103).Cherry Smash Thermometer. 8.75" (dia.) unusual, early, tin over cardboard dial thermometer for Cherry Smash soda. Clean and excellent, w/ minor storage wear (a strong C. 8++). Min. bid \$40.



104).Standard Oil Sign. 9-5/8 x 9.5" early 2-sided cardboard string-hung ceiling sign for Standard Oil Co.'s "Rayolight" brand lamp oil (same image both sides). Clean, bright and excellent (C. 8.5/+) w/ minor trace hint of toning. Min. bid \$50.



105).C&P Telephone Paperweight. 3-1/8 x 3-3/8" (dia.) scarce, early glass advertising paperweight from the Chesapeake & Potomac Telephone Co., w/ lettering on both sides. Excellent, w/ beautiful rich peacock color. Min. bid \$40.



106).Buster Brown Gum Wrappers. Lot consists of two early unused, never folded Buster Brown Shoe Co. paper litho gum wrappers (each 2.25 x 2.75"). I'm told these came from Co.'s archives (both are crisp and like new). Min. bid \$20 (the pair).



107).Switzer's Candy Box. 5.5 x 9.25 x 3.25" early 2-ps. cardboard display box for Switzer's candy cigars (Switzer Licorice Co., St. Louis) featuring great images on lid of kids w/ large cigars in mouth. Has a little light edge wear and some light pencil writing on lid, otherwise excellent (C. 7.5+/8-). Min. bid \$30.



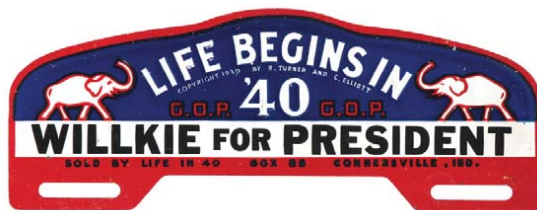
108).Zeno Gum Tin. 7 x 9.5 x 4.5" (as shown) early tin litho product tin for Zeno brand chewing gum, has blue delft Dutch images on outside of box, w/ colorful and highly graphic advertising image on inside lid. Inside image is bright, colorful and like new (near mint); outer box has some light rubs and a little non-offensive soiling and staining (C. 7.5/+ and might improve a bit w/ cleaning). Min. bid \$40.



109).



109).Harley Davidson Lot. (hat 4.25 x 9 x 8.75") lot consists of a great early Harley-Davidson Motorcycle riders leather cap (size 7). Excellent w/ Harley logo inside. Lot also includes an early Harley metal pin w/ nicely detailed logo image (pin .5 x 2"). Min. bid \$40 (the lot).



110).Wilkie License Plate Attachment. 3.75 x 9-7/8" unusual, early, embossed tin litho license plate attachment for 1940 Republican presidential candidate Wendell Wilkie. Crisp and like new (C. 8.5++). Min. bid \$40.



111).Boy Scouts Game. 4 x 6.75 x 1.75" scarce, early boxed game set for Spear Co.'s "Lotto Boy Scouts Edition" featuring beautiful graphic image of Scouts raising flag on lid. Clean, bright and excellent, complete w/ contents inside. Min. bid \$40.



112).Deerwood Coffee Tin. 4 x 5-1/8" early, 1 lb. coffee tin for "Deerwood" brand (Coppes Coffee Co., Stevens Point, Wisc.), featuring nice image of Co.'s trademark deer. Clean and attractive appearance (C. 8/+), w/ only minor soiling and wear. Min. bid \$40.



113).Eclipse Lawn Mower Paperweight. 1.5 x 3.75 x 3.25" unusual, early, cast iron paperweight in shape of early rough riders style hat, w/ embossed advertising for Eclipse Lawn Mowers. Has a nicely aged, well worn rich patina to its early paint surface, w/ a great folk art look. Min. bid \$30.

Savage Arms Fob



114).Dick Tracy Candy Wrapper. 5.5 x 7" early, wax paper candy wrapper for Dick Tracy brand candy bar (Schutter Candy Co., Chicago), w/ premium offer for Dick Tracy ID Bracelet. Has strong color and displays well, w/ minor soiling and light overall wrinkling marks. Min. bid \$20.

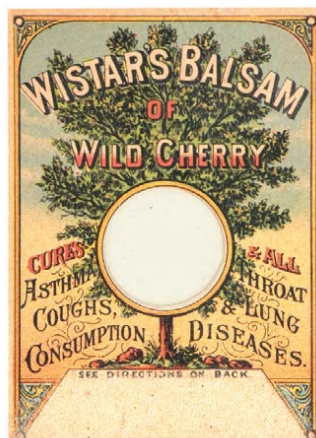
115). Savage Arms Watch Fob. 1.5 x 1" unusual, early, advertising watch fob for Savage Arms Co. featuring finely detailed revolver w/ Indian logo in handle on both sides. Very high quality w/ just the right amount of wear, complete w/ its original leather strap. Min. bid \$40.



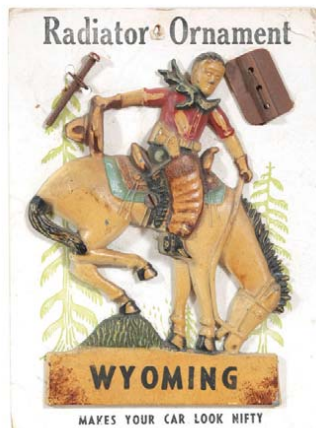
116).Aspirin Display Lot. Lot consists of two St. Joseph brand aspirin display boxes, each filled w/ 12 sealed and unopened product tins (world measures 2-7/8 x 3-7/8 x 1.25") (Snap Open Cover 4.25 x 3.75 x 1"). Both are excellent. Min. bid \$40 (the pair).



117).Colonial Spice Tin. 4 x 2-3/8 x 1-1/8" unusual, early, tin litho 2 oz. spice tin for Colonial brand (Matthews & Co., Kingston, NY). Has a little minor soiling and wear, but overall clean and very attractive (C. 8/-). Min. bid \$30.



118).Medicine Match Scratcher. 4.25 x 3" very early, cardboard advertising match scratcher for Winstars Balsam of Wild Cherry w/ glow in dark material in center and scratching surface at base (has text advertising on back for other patent quack medicine products from Fowle & Sons, Boston). Excellent (C. 8.5/+). Min. bid \$40.



119).Wyoming Radiator Ornament. 8 x 6" unusual, early, heavy cast metal automotive radiator ornament featuring great Western theme image of cowboy on horse w/ great early paint surface. Very impressive piece, w/ great overall look; never used, as found still on its original cardboard backer (C. 8++). Min. bid \$40



120).Dri-Powr Tin. 2-7/8 x 2-1/8" full, sealed, small 4 oz. size soldier seam product can for Dri-Powr Co.'s outboard motor additive product w/ nice color motor boating images all around. Has a little light scattered wear, but overall attractive and displays nicely (C. 8). Min. bid \$20.



121).Leader Gun Sights Tin. 2.25 x 3-5/8 x 5/8" unusual, small, early tin litho flat pocket style product tin for "Leader" brand shot gun sights, w/ beautiful multi-color graphics. Has some non-offensive light scattered wear, but overall attractive and displays nicely (lid C. 8/-; base C. 8+). Min. bid \$40.



122).Dog Soap Box. 3.5 x 7.25 x 3.5" unusual, early 2-ps. product box for Dr. Clayton's Kilflea brand dog soap. Box has some overall light age tone soiling and minor staining, but overall attractive and displays quite well (C. 7.5/+). Min. bid \$30.



123).Post Office Tobacco. 3.25 x 4-3/8 x 2.25" scarce, very early tin litho square corner tobacco tin for Post Office brand (E. Able Co., Denver, Co.) featuring finely detailed graphic image of Post Office building. Clean and attractive in appearance, w/ minor scattered wear and a couple light surface stains on lid (C. 7.5/+). As found, should improve some w/ cleaning. Min. bid \$70.



124).Quack Medicine Pin Holder. 1-7/8 x 1.75 x 3/16" very early, 2-sided tin litho advertising pin holder for "Ely's Cream Balm" Catarrh Cure, w/ claims advertising on both sides (back also lists various postal rates). Has a little light scattered wear from use, but overall attractive and displays nicely (C. 8/-). Min. bid \$30.



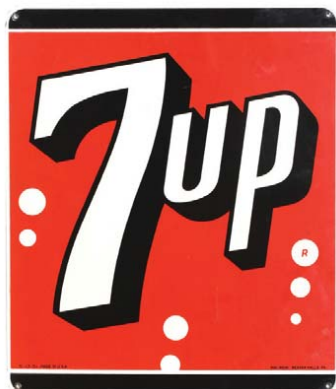
125).Poet Cigars Mirror. 1-7/8" (dia.) early, glass covered metal edged advertising pocket mirror for Boston Cigar & Tobacco Co.'s "Poet" brand cigars, featuring beautiful multi color graphics. Excellent. Min. bid \$30.



126).Hair Grower Tin. 3-1/8 x 3-1/8 x 1.5" unusual, full, early, tin litho product can for Overton Co.'s hair grower product w/ attractive graphic image. Has some minor soiling and hint of fade, but overall attractive and displays nicely (C. 8/+). Min. bid \$30.



127).Safety Razor Mirror. 2.25" (dia.) unusual, early, celluloid advertising pocket mirror for Ward brand safety razors, featuring nice sepia photo image of man shaving. Clean and displays nicely (close examination will reveal some non-detracting minor dings and wear. Mirror on back side has wear and some loss to silver reflective finish. Min. bid \$30.



128).7-Up Sign. 20 x 17" unusual, early, porcelain advertising sign for 7-Up soda. Clean, bright and very attractive appearance (basically a very strong 8++ w/ a little minor scattered wear in outer edges. Dated 1951, ING-RICH, Beaver Falls, PA. Min. bid \$50.



129).Modoc Oil Medicine Box. 6 x 6 x 4-5/8" unusual, very early wooden product box for Modoc Oil, featuring great image of legendary Indian scout Donald McKay on front label. Label has some toning and light wear, but is excellent in appearance overall (C. 8/-). Missing lid and most of small back label (box originally held twelve bottles). Min. bid \$40.



130).Medicine Sign. 9 x 9" very early, embossed tin litho sign for Acker's quack medicine product. Clean and excellent (C. 8++ appears never used) w/ slight handling wear and minor mfg. blemishes in bottom left area. Min. bid \$40.

Front

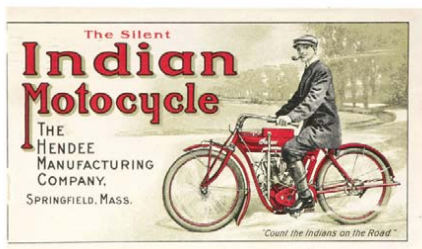
Back



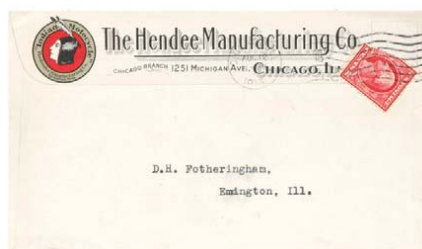
131).Log Cabin Maple Butter Tin. 3-3/8 x 4.25" unusual, early, tin litho 1-1/2 lb. size product tin for Towle's Log Cabin brand, w/ wonderful log cabin image all around. Clean, bright and excellent overall, w/ a little minor scattered wear (C. 8/+ and a little light soiling and wear on lid (lid C. 7.5/+). Min. bid \$60.



132).Yellow Cab Sign. 6.75 x 19-7/8" scarce, early, embossed tin litho sign for Yellow Cab brand cigars, featuring great graphic trademark image of cop and cab. Clean, bright and like new appearance (displays as a very strong C. 8.5+) w/ exception of some non-offensive light scattered wear in outer border area. Min. bid \$150.



133).Indian Motorcycle Envelope. 3-5/8 x 6.25" early paper litho mailed advertising envelope ("cover") w/ 1913 cancellation featuring highly detailed image of man riding Indian bike. Clean, bright and excellent in appearance (displays as a strong C. 8++), although close examination will reveal piece has been slightly trimmed along left outer margin area. (note: we sold this piece a number of years ago and are re-offering it for original purchaser). Min. bid \$40.



134).Toilet Paper Rolls. Lot consists of three different, full, early toilet paper rolls, each w/ colorful and attractive Indian theme wrappers (sizes range from 4.5 x 4" (dia.) to 4 x 4.75" (dia.)). Includes: Mohican, Piute and Pueblo brands. All are excellent. Min. bid \$40 (the lot).



135).Planters Milk Chocolate Peanuts Tin. 4-5/8 x 4-5/8 x 2.25" scarce, early, tin litho 10 oz. product tin for Planters "Milk Chocolate Peanuts". Displays pretty well, although there is some general overall wear and light scuffing and it no longer has lid (C. 7+/-). Min. bid \$30.



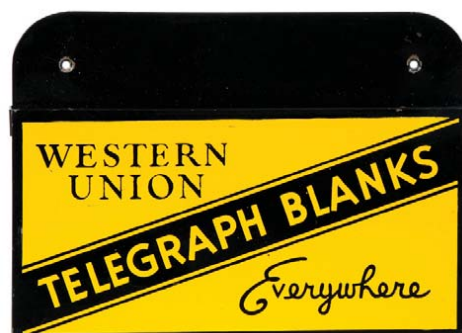
136).Black Cat Cigarettes Match Safe. 1-7/8 x 2-3/8 x .5" unusual, early, very high quality pocket match safe advertising Black Cat brand cigarettes, featuring great image of trademark cats in open touring car. Nickel over brass, w/ celluloid covered advertising area. Has minor plating loss (at top edge) and a slight bit of fade, but overall quite attractive (C. 8/-). Min. bid \$40.



137).Detective Agency Sign. 3.5 x 5.5" unusual, small, early porcelain protection sign from Doolan's Detective Agency, Bristol, Ct. Excellent (near mint). Min. bid \$30.



138).Cafe Martin Tin. 2.75 x 1-1/8" unusual, early, tin litho flip-lid advertising tin for the Café Martin (New York) featuring great art nouveau design (Mucha?) w/ American and French crossed flags on back. Has strong colors and displays nicely, w/ a little light wear on base (C. 8/-; base C. 7.5+). Min. bid \$40.



139).Telegraph Blanks Holder. 6-1/8 x 8.5 x .5" unusual, heavy, high quality, early metal wall box for holding Western Union telegraph blanks. Excellent, w/ minor wear at hanging holes (C. 8.5/+). Min. bid \$40.



140).Carter's Inky Racer Tin. 1-7/8 x 3 x 2" early tin litho product tin for Carter Ink Co.'s "Inky Racer" ink eraser product featuring great image of trademark racing black kid on lid. Has bright colors and displays well, w/ some light soiling and non-detracting light edge chipping on lid (sides C. 8/+; lid C. 8-). Min. bid \$40.



141).Bug Killer Sign. 11.5 x 12" Ca. 1920's cardboard, easel back, stand-up sign for McCormicks Bee brand insect powder w/ attractive graphics. Clean, bright and very attractive w/ exception of litho break/crack in bottom left hand area. Comes complete w/ actual product can 3.5 x 1.75". Min. bid \$40.



142).Fleers Gum Display. 7-1/8 x 7.5 x 6.75 unusual, heavy, figural chalkware countertop change receiver or product display piece for Fleer Co.'s "Double Bubble" brand chewing gum. Excellent. Lot also includes 4 original wrapped gum pieces and a Double Bubble advertising bottle opener. Min. bid \$40.



143).Sparrow's Chocolates Tray. 8-1/8 x 6-3/8 x .5" scarce, early, tin litho advertising tray for Sparrow's brand chocolates, featuring beautiful, highly detailed multi-color graphics. Clean, bright and exceptionally nice appearance (a strong C. 8++), w/ only minor wear and just a trace hint of faint crazing (note Sparrow sign hanging on wall). Min. bid \$80.



144).Christmas Candy Pail. 3.75 x 3.75" extremely rare, multi-color, tin litho candy pail w/ incredible multi-color graphic image of St. Nick. Clean, bright and very attractive appearance (basically a very strong C. 8+) w/ light scratch mark on plain, non-graphic backside. Min. bid \$100.



145).Winchester Flashlight. 7.25 x 1-7/8 x 1-7/8" unusual, early, high quality tubular flashlight by Winchester Arms Co., New Haven, Ct. As found, never used, still in its original box. Crisp, near mint condition. Min. bid \$40.



146).Shaving Mug. 4 x 3.75" outstanding, early, fine china decorative shaving mug featuring beautifully detailed hand-painted image of fishermen in canoe. Large, exceptionally nice image, w/ floral decoration and black wrap (Koken stamp on base). Excellent. Min. bid \$100.



147).Admiral Cigarettes Die-Cut. 11 x 4/78" (cape closed), 11 x 7.25" (cape opened) unusual, early, cardboard die-cut on heavy card stock for Admiral Cigarettes featuring girl in cape (cape opens to reveal different image inside). Clean, bright and excellent in appearance (displays as a strong C. 8/+) w/ a couple faint, very minor crease marks and possible slight loss at bottom left edge. Min. bid \$50.



148).Nudes Pocket Knife. 3.5 x .75" early, very high quality pocket knife (by G.R.C. Co., Chicago), w/ great celluloid handles featuring different topless beauties on both sides. Excellent (C. 8.5+). Min. bid \$40.



151).Sunbeam Bread Sign. 55 X 19" outstanding, large, embossed, tin litho advertising sign for Sunbeam Bread rolls featuring image of Co.'s trademark girl. Clean, bright and exceptionally nice appearance w/ original sheen, appears never used w/ only minor handling and storage wear (C. 8.5++). Min. bid \$150.

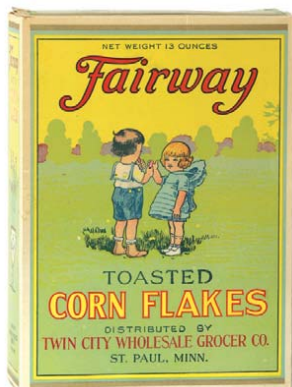
Miniature Wagon



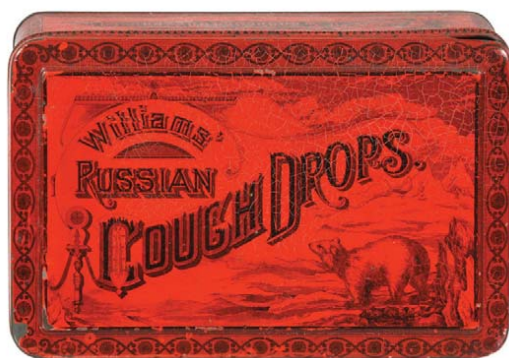
149).Hoosier Express Wagon. Unusual, very early, small advertising wagon, that is probably a miniature salesman's sample for the "Hoosier Express" brand of children's wagons (wagon body 4.75 x 9-1/8 x 5.5"). Very high quality piece, has metal body, a wooden base and cast iron wheels. Very nice paint surface and patina, w/ a little light soiling and general wear giving it a great primitive and folksy country look (C. 7.5+/8-). Wooden oak handle measures app. 12" long and looks great, but is probably a very high quality, well made and nicely aged replacement. Min. bid \$60.



150).Whiz Kleen-Flush Tin. 6-5/8 x 3" (dia.) full, early tin litho product can for Whiz "Kleen-Flush" radiator conditioner product, featuring great image of deep-sea diver. Clean, bright and excellent, (C. 8.5++) w/ a little light wear on pry lid. Min. bid \$40.



152).Fairway Cereal Box. 11 x 8 x 3.25" outstanding, early cardboard cereal box for Fairway brand toasted corn flakes (Twin City Grocers, St. Paul, Minn.) featuring wonderful graphic images of Co.'s trademark kids (same image both sides). Clean, bright and exceptionally nice appearance (basically a strong C. 8/+) w/ exception of some light age toning/staining on top and bottom flaps (flaps possibly re-sealed). Min. bid \$50.



153).Russian Cough Drops Tin. 5.75 x 8.5 x 4.25" scarce, early tin litho store size product tin for "William's Russian Cough Drops, featuring beautifully detailed early graphics (by Somers Bros. lithographers). Has strong colors and displays nicely w/ a little non-offensive light wear and some typical light overall crazing (C. 8/-). Min. bid \$50.



154).Planters Peanuts Lady Box. 9.5 x 9.25 x 3.25" (as shown) unusual, early waxy cardboard store display box for Planters 5¢ peanuts, w/ die-cut lady pop-up on inside base piece. Attractive and displays nicely (C. 8/+) w/ minor soiling (as found, should improve w/ cleaning). Min. bid \$40.



155).Seal of North Carolina Die-Cut. 11.5 x 8.5" scarce, early, cardboard die-cut sign for "Seal of North Carolina" brand tobacco. Clean, bright and displays extremely well (as a strong C. 8++); although a close examination leads me to believe that it may have a couple non-detracting breaks and or minor trimming (at top of umbrella and at bottom edges. Has easel-back remnants on backside (piece appears to have been removed from scrapbook). Min. bid \$60.



156).Veterinary Pail. 12-1/8 x 10.25" large, 25 pound size, product tin for Little Giant brand stock food featuring nice folksy images of pig, sheep, poultry, etc. Has some soiling and general scattered wear and denting on back side, but overall attractive w/ a nice primitive country look (C. 7.5/+/-). Min. bid \$40.



157).Gum Bookmarks. Lot consists of two early, fancy embossed die-cut advertising bookmarks for "Bode's Rarebit Chewing Gum" (J.C. Wheaton & Co.) each app. 5-5/8 x 2". Both are clean, excellent and appear never used (near mint). Min. bid \$40 (the pair).



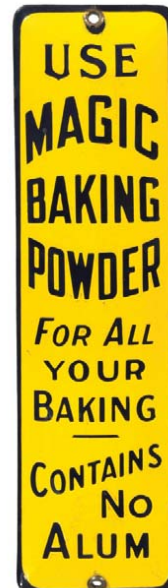
158).Treasure Line Stoves Novelty. 9-3/8 x 4" .95 x 3-5/8" unusual, early, tin litho novelty sign in shape of small shovel scoop for "Treasure Line" brand stoves and ranges. Crisp, bright and exceptionally nice (a strong C. 8.5+). Canadian. Min. bid \$50.



159).Tip Top Door Push. 9.25 x 3.75" extremely rare, early, heavy porcelain advertising door push for Tip-Top brand flour. Crisp and like new in appearance (basically near mint) w/ exception of a little non-offensive light oxidizing staining in outer edges of white border area. Min. bid \$50.



160).United Motors Thermometer. 15 x 4" early, wooden advertising thermometer w/ nice "United Motors Service" car logo at top. Attractive early paint surface and patina, w/ great overall look (displays as a very nice C. 8/+) w/ added hole at top. (Non-offensive early adhesive residue spot in measurement area at 30 degrees). Thermometer tube not working. Min. bid \$40.



161).Magic Baking Powder Door Push. 12 x 3.25" large, early, heavy porcelain convex shaped advertising door push for "Magic Baking Powder". Crisp, clean and like new in appearance (basically near mint), w/ minor trace hints of very faint surface handling-mentioned for accuracy, not at all detracting). Min. bid \$50.



162).O.K. Perfect Gum Boxes. Lot consists of three different early O.K. Perfect brand chewing gum store display boxes. Sizes range from 5.5 x 9.5 x 4.25" to 9.75 x 10 x 8.75" (as shown). Smaller boxes are clean and excellent (C. 8.5+); larger box has some light wear and tear on edge flap and some tape reinforcement at folding flap line inside (C. 8-). Min. bid \$40 (the lot).



163).Fishing Tackle Sign. 8 x 16" early, reverse glass advertising sign for Flatfish brand fishing tackle (Helin Tackle Co., Detroit). Has metal frame and cardboard backing (w/ both easel for stand-up and string for hanging). Excellent (near mint) w/ some non-offensive, faint (very minor) oxidized speckling in frame area. Min. bid \$70.



164).Moses Cough Drops. 2-3/8 x 2-7/8 x 1.75" small, very early, tin litho product tin for Moses brand cough drops, featuring beautiful, finely detailed Ginn type lithography. Has a little non-offensive light scattered wear, but overall attractive and displays very well (C. 8/+). Min. bid \$40.



165).Munging Wear Pocket Mirror. 1.75" (dia.) unusual, early, Munging Wear souvenir pocket mirror from a 1921 company picnic at Antlers Park. Clean and excellent. Min. bid \$40.



166).American Typewriter Ribbon Tin. 2-1/8 x 2-1/8" early, tin litho typewriter ribbon tin for Storms Co. NY, featuring great image of Co.'s trademark Indian. Excellent (C. 8.5). Min. bid \$30.



167).Quack Medical Devices Mirror. 2-1/8" (dia.) scarce, early, celluloid advertising pocket mirror for the Dr. Sanche Co.'s "Oxydonor" quack medical device, featuring nicely detailed image of the contraption. Excellent. Min. bid \$40.



168).Pine Bros. Marshmallow Tin. 3-7/8 x 6 x 2.5" very early, tin litho product can for Pine Bros. Marshmallows, featuring beautiful Gina type graphics. Clean, bright and very attractive appearance (displays as a C. 8/+), w/ a little early, minor scattered background chipping and some faint, fine surface crazing (note surface is very stable). Min. bid \$50.



169).Old Elk Whiskey Match Holder. 2.25 x 4" (dia.) early, heavy, fine china tabletop match holder advertising "Old Elk Whiskey" (Stoll & Co., Lexington, Kentucky) w/ advertising on both sides (and stamped makers name on base). Excellent (near mint). Min. bid \$40.



170).Coke Tray. 10.5 x 13.25" Coca-Cola 1940 serving tray featuring sailor girl on dock fishing. Crisp, bright and like new appearance, w/ nice original surface sheen (a very strong C. 8.5++) w/ a little, very minor edge wear. Min. bid \$50.



171).Bobs Gum Box. 7.75 x 7.75 x 6" (as shown) early, cardboard store display box for Bob's brand chewing gum (Frank Fleer Corp., Phil'a, ©1914) w/ glass lift-up cover inside. Inside is clean, bright and like new; outer box has some toning and light scattered wear, w/ some paper loss spots at bottom corner edges. Min. bid \$40.



172).Niser Ice Cream Tray. 13-5/8" (dia.) early, tin litho advertising tray for Niser brand ice cream featuring beautiful, multi-color graphics. Clean, bright and exceptionally nice (a very strong C. 8++) w/ a little non-offensive, faint, (very minor) crazing. Min. bid \$60.



173).Christmas Mail Game. 13-1/8 x 13-1/8 x 1" very early "Christmas Mail" game set by J. Ottmann Litho. Co., New York featuring wonderful, highly graphic box cover. Clean, bright and very attractive cover illustration (a strong C. 8++) inside is crisp and like new (appears never used), w/ playing pieces. Min. bid \$60.



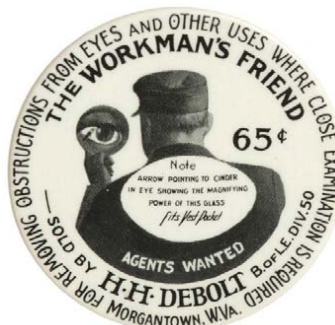
174). **Topps Gum Display.** 4.75 x 5" (as shown) unusual, early store display box for Topps 1¢ chewing gum, as found never used, filled w/ gum pieces still in its original box. Display and gum are excellent (near mint), outer box has some general light overall wear. Min. bid \$50.



175). **Planters Candy Box.** 10.25 x 8.75 x 3-1/8" Ca. 1920's 2-ps. store display box for Planters "Chocolate Twins" 5¢ candy (originally held 24 packages). Box is covered w/ wonderful images of Mr. Peanut performing circus feats on lid and around sides. Excellent (C. 8+) w/ a little minor edge wear. Min. bid \$40.



176). **Honeymoon Spice Tin.** 2.25 x 2/25 x 1.25" early tin litho 1 oz. size spice tin for Honeymoon brand Cream of Tartar (Moore Grocers, Sioux City, IA), featuring great image of Co.'s trademark couple on moon (same image both sides). Crisp and like new (near mint). Min. bid \$30.



177). **Eye Medicine Pocket Mirror.** 2" dia. unusual, early, celluloid advertising pocket mirror for "Workman's Friend" medicinal product for removing obstructions from the eyes. Excellent. Min. bid \$40.



178). **Planters Peanuts Cup.** 2-1/8 x 1-7/8" (dia.) scarce, small, early, waxy cardboard product cup for Planters Pennant brand peanuts. Has some slight darkening/toning along top 1/2" or so around top edge, otherwise excellent. Min. bid \$20.



179). **Remington Ammo Pinback.** 7/8" (dia.) early celluloid advertising pinback button for Remington brand shotgun shells, featuring wonderful image of the Remington bear cubs. Clean, bright and excellent, w/ original paper label on backside. Min. bid \$20.



180). **Ambulance Co. Paperweight Mirror.** 3.5" dia. outstanding, early, celluloid advertising palm style paperweight mirror for Ludlow Ambulance Service, featuring a great hand-tinted photo image of early vehicle. Excellent. Min. bid \$40.



181). **Adams Gum Labels.** Lot consists of four different large, early, Adams Co. paper litho chewing gum product box labels (sizes range from 9.5 x 4" to 7 x 11"). They are clean, bright and excellent overall (basically crisp and like new) w/ small, faint crease mark in bottom left corner of red Tutti-Frutti label. Also includes a small side label (not pictured). Min. bid \$40 (the lot).



182). **Scarce Telephone Paperweight.** 3-1/8 x 3-3/8" (dia.) unusual, early, glass advertising paperweight from the Missouri & Kansas Telephone Co., w/ lettering on both sides. Excellent, w/ a beautiful deep, rich color. Min. bid \$40.



183). **Disney Bread Die-Cuts.** Lot consists of a set of seven different cardboard, die-cut, easel back signs for National Biscuit Co.'s NBC brand white bread, each in shape of one of Disney's Seven Dwarf characters (each app. 12 x 9"). They are clean and attractive in appearance, w/ some non-offensive creasing marks, minor soiling and a little minor wear from use (average C. 7.5+/8-). Note: each has name of character written in pencil. Min. bid \$60 (the lot).



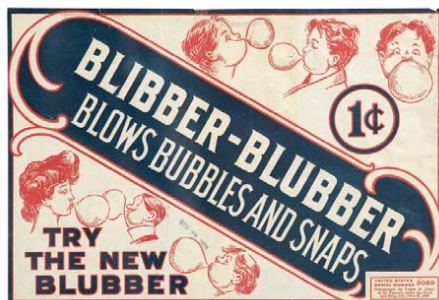
184).Railroad Couplers Patent Model. very early (dated 1884 and 1887) museum quality patent model for "Skinnners" railroad car connecting couplers. Lot consists of two wonderful, early folk art type wooden railroad cars, w/ a wonderful early paint surface (larger car 5.5 x 11.5 x 4.75"; smaller car 3.25 x 11 x 4.75"); each w/ a very high quality machined brass, beautifully detailed working coupler mechanism (see website addendum to view detailed image of couplers). Excellent overall (C. 8+/) w/ a little light soiling and early wear. Neat piece! Min. bid \$150.



185).A No. 1 Candy's Postcard (Yellow Kid). 35 x 5.5" early advertising postcard for Hawley & Hoops Co.'s "A No. 1" brand penny candies, covered w/ great images of figural products (includes Yellow Kid, etc.). Excellent and never used (minor album toning marks on back side). Min. bid \$20.



186).Paul Bunyan Coffee. 3-5/8 x 5-1/8" early tin litho 1 lb. key wind style coffee can for Paul Bunyan brand ((Fine Foods Co., Seattle and Minneapolis). Clean, bright and excellent (a strong C. 8.5+/) w/ minor dent mark. Min. bid \$30.



187).Blibber-Blubber Gum Label. 7.25 x 11" early paper litho gum box label for Fleer Co.'s "Blibber-Blubber" brand bubble gum, w/ neat cartoon type images (dated 1909). Excellent (C. 8+/), w/ a little minor edge wear. Min. bid \$30.



188).American Injector Match Safe. 2.5 x 1.5 x 3/8" unusual, early celluloid and metal advertising match safe from American Injector Co., Detroit, featuring different beautiful color graphic images of fuel injectors on front and back. Clean, bright and excellent. Min. bid \$40.



189).Whiskey Sign. 12" early, self-framed tin litho sign for Deer Run Whiskey, featuring beautiful multi color graphs (by Shonk Litho) Clean, bright and exceptionally nice (C. 8.5+/) w/ faint crazing (very minor) and non-offensive wear spot in outer raised gold border area at 5 o'clock. Min. bid \$100.



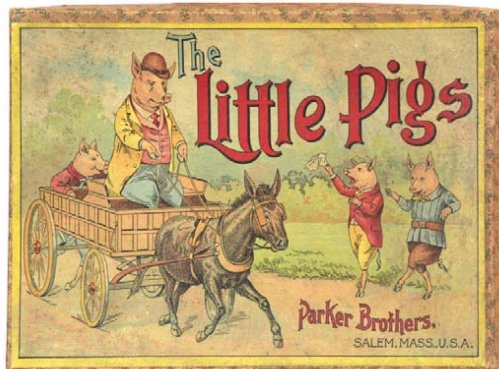
190).Game of Traffic. 9-7/8 x 13.75 x 2" boxed board set by All-Fair Co., featuring nice cover image of traffic cop and early cars, (w/ contents inside). Cover is bright and displays nicely, w/ a little a minor staining and a few light scuffs from use (C. 8-/). Min. bid \$30.



191). Roi-Tan Adv. Car. 4.5 x 4-1/8 x 1.5" early pressed metal advertising car for Roi-Tan brand cigars, promoting a 1939 Sophie Tucker radio show Chevrolet give-away promotion. Toy is clean, bright and like new (near mint). Min. bid \$40.



192).Cigar Co. Tip Tray. 4.25" (dia.) unusual, early tin litho tip tray for Thompson & Co., Tampa, Fla. (cigar dealers), featuring a great Art Deco look. Clean, bright and excellent (C. 8.5), w/ exception of wear spot in outer rim edge (at 1 o'clock). Min bid \$30.



193).Little Pigs Game. 7-1/8 x 10-1/8 x 1-1/8" scarce, early 2-ps. boxed game set by Parker Bros., featuring attractive color graphic lid and playing board on inside box, w/ spinner and wooden playing pieces. Excellent, w/ a little minor soiling on lid. Min. bid \$40.



194).Auto-Laks Tin. 3 x 3-3/8 x 3/8" full, early tin litho product can for Auto-Lax brand, laxitive, featuring great image of Co.'s trademark car (Crystal Chemical Co., New York). Clean, bright and excellent (C. 8.5+/) w/ exception of a little very minor non-detracting wear. Min. bid \$40.



195).Hampden Brewery Sign. 11" dia. Early, tin litho chain hung advertising sign for Hampden Brewing Co. featuring companies goofy looking "handsome waiter" (dated 1934). Clean, bright and very attractive (a strong C. 8++). Min. bid \$50.



196).Barrus Mustard Tin. 11-1/8 x 7 x 7" large, early 10 lb. store size product can for Barrus brand mustard, featuring beautiful finely detailed graphics by Ginna. Clean, attractive and displays very well (as a C. 8+) w/ a little light scattered wear (critical grade C. 7.5++). Min. bid \$60.



197).Sen-Sen Sign. 10 x 6.5" early die-cut cardboard litho easel-back advertising stand-up sign for Sen-Sen brand breath perfume, in shape of an attractive Japanese lantern. Clean, bright and excellent (C. 8.5) w/ cell tape repair on the plain, non-graphic easel. Min. bid \$40.



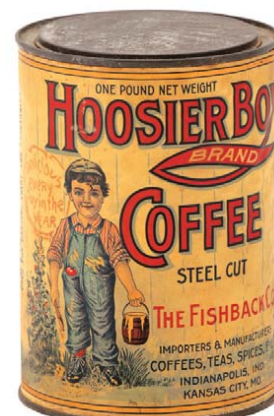
198).Butter Door Push. 6.5 x 3-7/8" outstanding, extremely rare, heavy porcelain advertising door push for "Oak Grove" brand butter. Crisp, bright and like new, w/ just a minor trace hint of minor oxidizing (so minor, barely merits mention). Min. bid \$100.



199).Billiards Mirror. 2-7/8 x 1.75" scarce, early celluloid pocket mirror for a Franklin, Pa. pool hall (has 1909 penny in center). Clean and excellent appearance (note: close examination will reveal a minor, tiny crack mark in background area). Min. bid \$30.



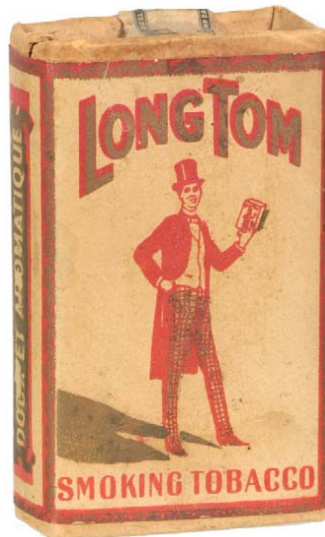
200).Stag Sample. 3.5 x 2.75 x 7/8" unusual, small, early sample size vertical tobacco pocket tin for Lorillard Co.'s "Stag" brand, marked: "Complimentary Trial Package Not To Be Sold" on both sides. Clean, bright and very nice (C. 8+). Min. bid \$40.



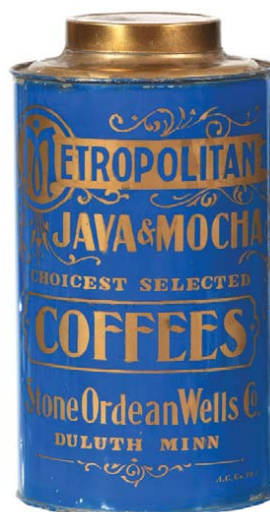
201).Hoosier Boy Coffee. 6 x 4.25" early paper litho (over tin) 1 lb. coffee tin for Hoosier Boy brand (Fishback Co., Indianapolis and Kansas City, Mo.) featuring nice image of trademark child (same image both sides). Clean, bright and very attractive (C. 8+) w/ a little even toning and a non-offensive small paper chip spot in bottom margin area of back side. Min. bid \$40.



202).Hutchinson Co. Display Bottle. 13.25 x 5-5/8" large and impressive looking, early, heavily embossed display bottle from the Hutchinson Bottlers Supplies Co., Chicago w/ nice crude bubbles in glass. Aqua color, glass w/ hand applied top. Excellent, w/. Min. bid \$40.



203).Long Tom Tobacco Pack. 3.5 x 2 x 1-1/8" unusual, early soft pack Canadian tobacco pack for Rock City Tobacco Co.'s "Long Tom" brand. Full, unopened, sealed pack is clean and excellent (C. 8+) w/ minor age toning and some chipping wear to top section of tax stamp (1/14th lb. size). Min. bid \$30.



204).Metropolitan Coffee. 10-1/8 x 5.5" scarce, very early 3 lb. small top style store can for Metropolitan brand coffee (Stone Ordean Wells Co., Duluth, Minn.), w/ nice folksy looking stenciled design. Clean, bright and very attractive appearance (a strong C. 8++), w/ a little light wear and a couple minor dents (has early drugstore paper label added to backside). Min. bid \$50.



205).Hires Pocket Knife. 2-7/8 x .75" unusual, early pocket knife advertising Hires Root Beer (D Peres Solingen, Germany maker), w/ nicely detailed aluminum handles. Excellent (some darkening and general wear from use to blades). Min. bid \$40.

Cola-Cola Cards



206).Coca-Cola Fighter Plane Cards. Lot consists of a complete full set of 20 Ca. 1940's cards issued by the Coca-Cola Co., each picturing different WWII fighting aircraft on fronts, w/ Coke ad on back. All are excellent (note: one has small area of chipping loss in bottom margin section). Complete w/ original Coca-Cola envelope. Min. bid \$40 (the set).



207).Shell Oil Rain Gauge. 5.5 x 5 x 1.75" unusual, early metal advertising rain gauge for Shell Oil dealer (note 5 digit phone number). Clean and excellent appearance (basically C. 8.5++) w/ exception of a couple light surface oxidized spots at outer edges. Min. bid \$30.



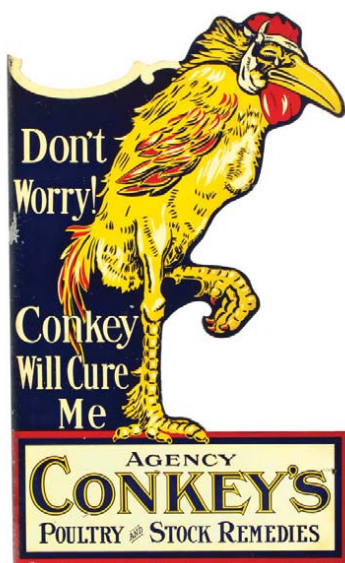
208).Hudson Coal Sign. 10-18 x7.25" unusual, small, early porcelain advertising sign for Hudson Co.'s "D & H" brand coal. Crisp, bright and exceptionally nice in appearance (displays as near mint) w/ excellent surface sheen. Close examination will show a couple tiny, very minor background wear spots – mentioned for accuracy (C. 8.5/+). Min. bid \$50.



209).Sen-Sen Sign. 6.25 x 6-5/8" scarce, early embossed tin litho sign for Sen-Sen brand chewing gum. Piece has had some fairly substantial, but very well-done professional restoration (particularly to the border trim and lettering areas) giving it a strong 8.5/+ appearance. Displays very well! Min. bid \$50.



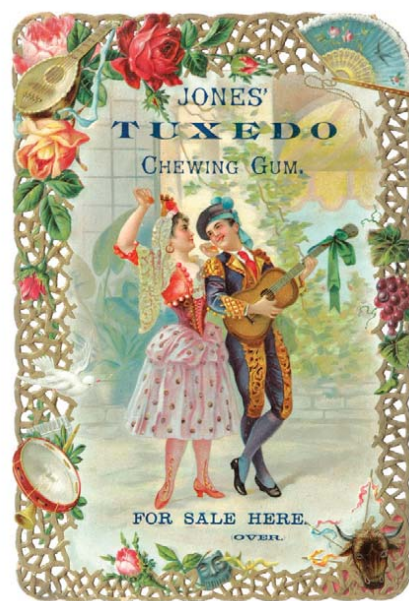
210).Diehl Brewing Co. Tray. 11-7/8" wonderful early tin litho serving tray for Diehl Centennial beer (Christ. Diehl Brewing Co., Defiance, Oh.) featuring beautiful deco era image of topless semi-nude (dated 1933). Clean, bright and very attractive appearance (a very strong C. 8++) w/ a little minor soiling. Min. bid \$50.



211).Veterinary Sign. 19.5 x 11.75 x 1.5" scarce variation, die-cut, tin litho two-sided flange sign for Conkey brand veterinary remedies featuring great image of bandaged crying rooster. Has strong colors and displays nicely (displays as a strong 8/+, critical grade 7.5+/8-) w/ minor scattered wear, including larger wear spot in dark background area at flange edge. Min bid \$100.



212).Camp Fire Coffee. 8 x 5.25" early, tin litho 2.5 pound pry lid coffee can for Blue Ribbon Products "Camp Fire" brand coffee featuring same attractive image on both sides. Clean, bright and excellent appearance (C 8.5/+) w/ only minor background wear. Min. bid \$70.



213).Jone's Tuxedo Gum Die-Cut. 8-5/8 x 5.75" scarce, early cardboard die-cut advertising sign for Jones' Tuxedo brand chewing gum. Clean and excellent (C. 8++), has text advertising on backside (easel back no longer present). Min. bid \$50.



214). Stove Polish Sign. 7-7/8 x 11-7/8" impressive, small, early lithograph sign on light cardboard stock for "Rising Sun" brand stove polish, w/ nice image of Uncle Sam on right side. A clean, bright very attractive high quality piece (C. 8.5/+), w/ 2 original small holes at top (for string). Min. bid \$50.



215). ABC Blocks. 8 x 12-5/8 x 1" great, early boxed set of wooden ABC picture blocks by McLoughlin Bros. (dated 1893). Individual wooden blocks found inside each measure 4 x 2.5 x 7/8" and have great color litho images on front and back (paper over wood) w/ alphabet letters along sides (includes St. Nick, children, animals, etc.) Excellent overall (C. 8/+) with one block missing from set. Min. bid \$50.



216). Thins Condom Tin. 1-5/8 x 2-1/8 x 1/4" scarce, early, tin litho "Service Packet" condom tin for Young's Rubber Co.'s "Thins" brand. Clean, bright and excellent (C. 8.5/+). Min. bid \$40.

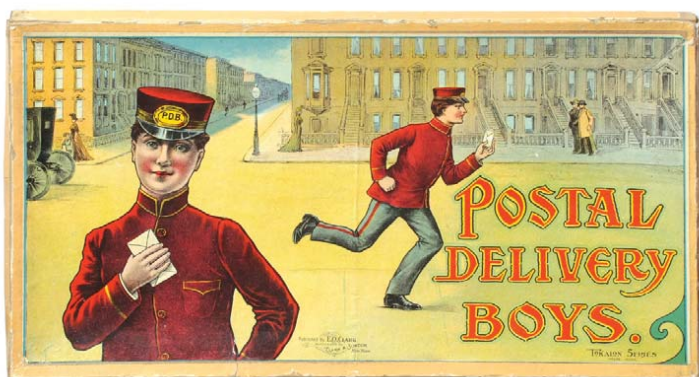


Salesman's Sample

217). Salesmans Sample Decoys. Lot consists of a great group of four, early, miniature wooden hand painted salesman sample advertising duck decoys w/ glass eyes, each measuring apx. 3.5 x 7 x 3-1/8". Each has "Modern Decoy Co. New Haven, CT" stamped in blue on base, w/ model style and pricing info written in faint pencil. Min. bid \$100 the lot.



217). Detail



218). Postal Delivery Boys Game. 10.5 x 19.25 x 1" early, 2-ps. "Postal Delivery Boys" game box (Clark & Sodow Co.'s) featuring beautiful, multi-color graphics on lid. Lid is clean, bright and excellent, w/ some edge wear on aprons. Includes spinner, playing pieces and game board inside (C. 8+/). Min. bid \$40.



219). Wagon Sign. 17 x 22.5" (13-5/8 x 19-3/8" visible) outstanding, very early tin litho advertising sign from Cortland Wagon Co., featuring fine early lithography by Townsend, Hostetter Co., Chicago. Clean and very attractive appearance (C. 8/+), w/ attractive textured gold glitter highlights. Presented in an attractive, old looking contemporary frame. Min. bid \$70.



220). Dr. Daniels' Tip Tray. 4.25" unusual, early, tin litho advertising tip tray for Dr. Daniels' horse and cattle veterinary medicines, featuring beautiful, multi-color graphics. Clean, bright and excellent appearance (a very strong C. 8++), w/ a faint, very minor and barely noticeable bump mark (mentioned for accuracy). Min. bid \$50.



221). Beech-Nut Gum Valentine. 7-7/8 x 5 x .5" early, cardboard die-cut valentine card has early actual Beech-Nut gum sticks for legs, etc. Clean, bright and like new as found still in its original gift box. Min. bid \$40.



222). Peter Rabbit Plate. 7-7/8" early, tin litho children's plate covered w/ adorable Peter Rabbit radio images all around. Clean and very attractive overall w/ some light wear along outer edges (C. 8/-). Min. bid \$40.



223).Budweiser Display. 14.5 x 52 x 2" large, early, die-cut cardboard window display for Anheuser-Busch Co.'s Budweiser beer, featuring wonderful image of early Budweiser wagon being pulled by team of legendary Clydesdale horses. Powerful and impressive display piece, excellent overall (a strong C. 8+) w/ only minor wear. Min. bid \$70.



224).Bottle Toppers. Lot consists of two different baseball theme cardboard die-cut bottle toppers for Altpeter's Beverages, each app. 9-5/8 x 4.25". Both are clean and bright, w/ some non-offensive light background staining (C. 8+). Min. bid \$30 (the pair).



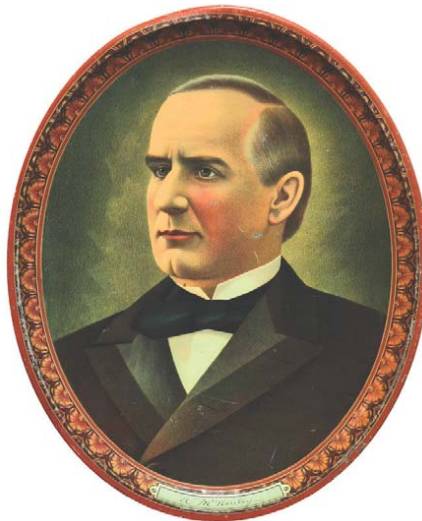
225).Rat Killer Sign. 11 x 9.75" outrageous early cardboard advertising sign for "Ratcorn" brand rat killer, featuring great images of before and after rats and product can. Has decent color and displays pretty well, w/ some staining and minor crease marks. Min. bid \$40.



226).Beeman's Gum Boxes. Lot consists of two early Beeman's chewing gum store display boxes. Taller box (8.5 x 2.75 x 8.5)" has some light soiling and staining (C. 7); other box 5 x 6.25 x 4.25" (as shown) is mostly excellent, w/ non-offensive faint crease marks on display lid (C. 8). Note: gum packs used for display purposes are included, but are not old. Min. bid \$30 (the pair).



227)Visit of Santa Claus Game. 19-5/8 x 10.25 x 1" outstanding, large, very early boxed game set by McLoughlin Bros., featuring beautiful multi-color lithography on both cover and inside playing area inside box. Lid is clean and very attractive in appearance (C. 8+) w/ a non-detracting tear mark in bottom border area and 5" missing section of the side apron at bottom side edge. Inside is crisp and like new (C. 8.5+) w/ some playing pieces. Min. bid \$70.



228).Political Tray. 16.25 x 13.25" Ca. 1896-1900 large, oval, tin litho serving tray featuring U.S. Republican presidential candidate (and later president) William McKinley. Colors are strong and piece displays quite nicely, w/ a little light crazing, a few scratches and some light scattered scuff and wear marks from use (C. 7.5+). Min. bid \$50.



229).Bennett Coffee Tin. 11.25 x 7-1/8 x 7-1/8" large, very early, small-top style tin litho store bin from J.P. Bennett Co., featuring beautifully detailed images of Co.'s famous tea house building on two sides, w/ promotional text on others (Somers Bros. Litho). Bright, attractive and displays nicely, w/ some non-offensive, typical light scattered early wear (C. 7.5+). Min. bid \$60.



230).Michigan Bell Telephone Sign. 11 x 11-3/8" early 2-sided porcelain flange telephone sign from Michigan Bell Telephone Co. (same image both sides). Clean, bright and excellent appearance (a strong C. 8++) w/ a little, very minor edge wear and just a faint trace hint of minor haziness (very minor- mentioned for accuracy; as found, should improve with cleaning). Min. bid \$50.



231).Wisconsin Telephone Co. Sign. 11 x 11-3/8" early, 2-sided porcelain flange telephone sign from Wisconsin Telephone Co. (same image both sides). Clean, bright and quite nice overall (displays a C. 8+/) w/ a little light chipping and wear on one side (has a couple quarter size chips and some paint in flange mounting section (critical grade C. 8/-). As found, should improve w/ cleaning. Min. bid \$50.



232).Illinois Bell Telephone Sign. 11 x 11-3/8" early, 2-sided porcelain flange telephone sign from Illinois Bell Telephone Co. (same image both sides). Clean, bright and excellent overall (a very strong C. 8++) w/ a little, very minor edge wear and some paint on outside flange mounting section (can be easily removed). Min. bid \$50.



233).Baby Ruth Gum Box. 4-3/8 x 6-1/8 x 1-1/8" unusual, early 2-ps. cardboard countertop product display box for Baby Ruth brand chewing gum (© 1928 Curtis Gum Co.). Clean, bright and attractive in appearance, w/ a little faint staining on outer cover, and a non-detracting faint crease on inside flip up display marquis. Min. bid \$30.



234).Ice Box Match Safe. 2.75 x 1-5/8 x 3/8" unusual, early, high quality embossed German silver pocket match safe advertising White Mountain brand refrigerators, in shape of Co.'s early ice box (has embossed image of Co.'s trademark girl on backside). Excellent overall. Min. bid \$40.



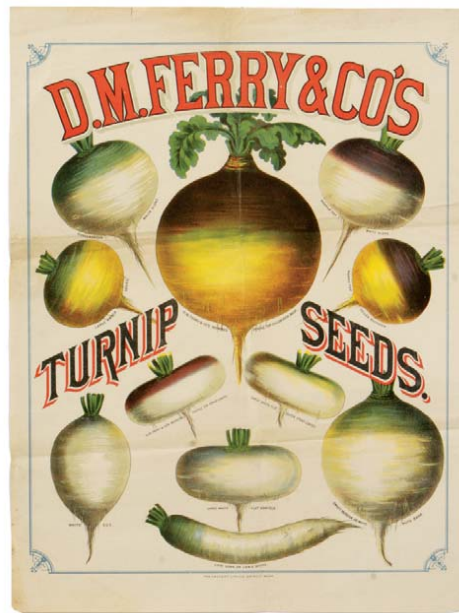
235).Cody Cigars Punchboard. 11-3/8 x 10 x 3/4" outstanding, early, advertising punchboard for (Buffalo Bill) "Cody" brand cigars, featuring great color graphic image of famous Wild West showman. Crisp and like new underneath, as found still w/ its original protective paper covering. Min. bid \$40.



236).Brown's Sarsaparilla Calendar. 24.75 x 18-5/8" (20.25 x 14" visible) beautiful 1891 advertising calendar for Brown's sarsaparilla medicine, featuring beautiful color graphics. Clean and very attractive appearance (basically a strong C. 8+) w/ exception of small stain spot in child's forehead area and a couple light horizontal creasing lines and marks in upper background area (from being rolled). Nicely framed and matted (C. 8++). Min. bid \$60.



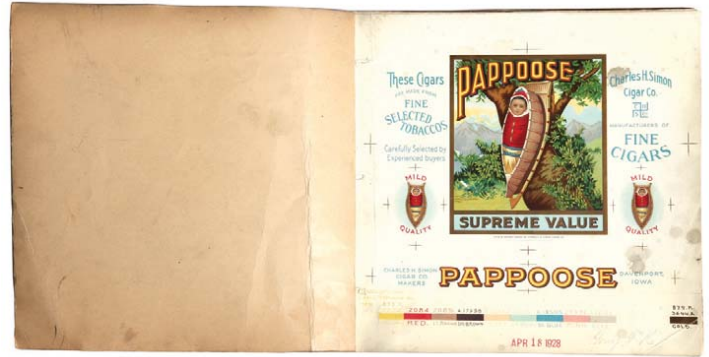
237).Empire Separators Calendar. 26-1/8 x 13-3/8" (24.75 x 11.75 visible) early, framed advertising calendar for Empire brand cream separators. Clean and very attractive in appearance (a strong C. 8+/), complete w/ full 1910 calendar pad. Framed. Min. bid \$50.



238).Ferry Seed Sign. 25 x 19" outstanding, very early advertising poster for D. M. Ferry Co.'s turnip seeds featuring stunning multi-color graphic images of various turnip varieties. Clean, bright and very attractive appearance (has a strong C. 8+/ appearance, critical grade 7.5+/) w/ light crease marks (from being folded) and some minor tattering and soiling in outer edges. (Calvert Litho Co., Detroit). Min. bid \$80.



239).Budweiser Calendar. 19.75 x 29-5/8" large cardboard calendar advertising Anheuser Busch Co.'s Budweiser beer, featuring nice image of Co.'s Clydesdale horses, complete w/ full original 1942 calendar pad. Excellent (a very strong C. 8++), w/ a little non-offensive minor wear in outer margins. Min. bid \$40.



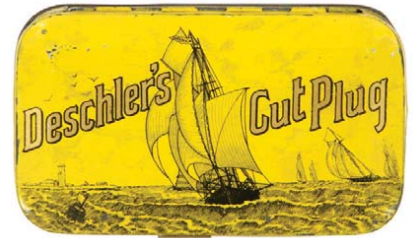
240).Pappoose Cigar Label Proof Book. 9 x 10.25" complete printers archival 23 pg. booklet of paper litho progressive color printers proof cigar box labels on heavy stock (some have original printers notations in pencil in margins) showing each stage of the stone litho color strike process from first strike through to finished label on top. Very impressive (some soiling on top page). Min. bid \$40.



241).Battle Royal Tobacco Tin. 2.75 x 4-5/8 x 1" early tin litho horizontal pocket tin for United States Tobacco Co.'s "Battle Royal" brand, w/ beautiful graphic image on lid. Clean, bright and excellent (C. 8.5). Min. bid \$40.



242).Yum, Yum Gum Box. 1-7/8 x 7.75 x 5.25" very early, hand soldered, hinged lid store display box for "Yum Yum"brand chewing gum, featuring beautiful early gold stenciled lettering. Attractive and displays nicely, w/ some early paint chip spots on lid (C. 7++). Min. bid \$40.



243).Deschler's Tobacco Tin. 2.75 x 4-5/8 x 1" unusual, early tin litho "Deschler's" horizontal pocket tin (Lewis Deschler Co., Indianapolis), featuring beautiful graphic image of sailing ships. Clean, bright and excellent, w/ a little minor wear (C. 8/+). Min. bid \$50.



244).Monkey Match Dispenser. 3 x 5-7/8 x 2.5" unusual early figural metal (brass) tabletop match dispenser (push monkey down and it spears a match), w/ a striking surface along side edges. Excellent, w/ nice surface patina. Min. bid \$40.



245).Dice Paperweight. 1.5 x 3" (dia.) unusual, early domed glass advertising paperweight w/ 5 small dice inside from Wilton Printers, Chicago, Excellent, w/ minor toning. Min. bid \$30.



246).Slade's Christmas Candy Tin. 2-7/8 x 4 x 3" unusual early tin litho hinged lid candy tin for Slade's toffy, featuring great graphic image on lid (holly and snow flake designs around sides). Clean, bright and excellent (C. 8.5/+). English. Min. bid \$40.



247).Old Time Coffee. 4.25 x 5.25" (Dia.) unusual, early tin litho pry-lid one pound coffee can for Old Time brand (Hoffman & Sons, Milwaukee Wisc.) w/ same attractive image on both sides. Clean, bright and exceptionally nice (C. 8.5/+). Min. bid \$50.

Parrot Nut Cracker



248).Parrot Nutcracker. 5.75 x 9.5 x 2-1/8" great early figural cast iron mechanical parrot shaped nutcracker (pulling the tail up and down opens and closes parrots beak which breaks open nut). Nice detailing, w/ a great early paint surface and patina. Excellent (C. 8++). Min. bid \$40.

Min. Phones



249).Miniature Advertising Telephones. Lot consists of two different, early, miniature metal advertising candlestick telephones from phone makers "Stromberg Carlson" and "Garford Mfg. Co." Each measures app. 3.25 x 1.5" (dia.) and are exact, very high quality miniature versions of Co.'s actual candlestick phones. Both are excellent, w/ some light wear to stem on Garford example. Min. bid \$50 (the pair).



250).Plantation Coffee pail. 7.75 x 7.75"(dia.) unusual, early five pound tin litho coffee pail for Plantation Blend (John Blaul's Sons Co., Burlington, IA) w/ same nice image on both sides. Clean and attractive appearance, w/ a little light scattered background wear (front C. 8+; back C. 7.5+/8-). Min. bid \$60.



251).Coke Sign. 15.75" (dia.) x 3/8" early, heavy porcelain round advertising sign for Coca-Cola, picturing beautiful multi-color graphic image of companies trademark hobble skirt bottle. Clean, bright and exceptionally nice overall (C. 8.5/+), w/ minor chipping at top hanging hole and on outer side edges. Min. bid \$60.



252).Sleepy Eye Textile. 22 x 22" scarce, large, early promotional textile advertising pillow cover from "Sleepy Eye" brand flour, covered w/ beautiful multi-color graphic Indian images and scenes. Clean, bright and like new appearance (displays as near mint) w/ a minor, non-detracting stain spot in outer right background margin area. Min. bid \$50.



253).Kadee Pocket Tin. 4-3/8 x 3 x 7/8" early tin litho vertical tobacco pocket tin for Christian Peper Co.'s "Dadee" brand. Clean, bright and very attractive appearance, w/ nice original sheen (basically displays as a strong C. 8.5+), w/ a couple non-detracting minor dents. Min. bid \$70.



255).Firestone Calendar. 35-5/8 x 17" very large, colorful and highly graphic 1917 advertising calendar for Firestone Tires (given by Oquaga Garage, Deposit, NY), featuring a stunning bathing beauties at beachside motoring image. A powerful and very impressive looking piece that is clean, bright and very attractive (basically displays as a very strong C. 8++) w/ a bit of non-detracting, minor soiling/speckling and faint horizontal crease mark in upper sky area (not at all offensive-mentioned for accuracy). Min. bid 100.



256).McEwan Cocoa Nut Tin. 5.75 x 3.25 x 3.25" early tin litho small-top cocoanut tin (Walter McEwan Co., Albany, NY) featuring great images of monkeys in jungle on two sides, w/ Royal Dutch Coffee can pictured on another. Clean, bright and very attractive (a strong C. 8++) w/ only minor wear (Hsley Litho) Min. bid \$40



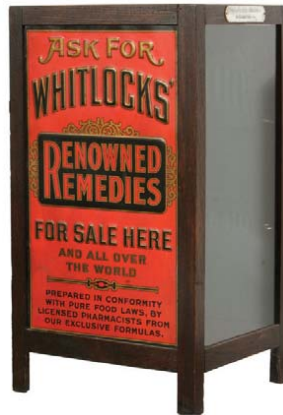
254).Straw Holder. 12 x 3-5/8" (dia.) early and unusual, heavy pressed glass soda fountain straw holder w/ flared base complete w/ attractive metal lid and straw holder inside and lift-up rod in center of lid. Excellent overall (some minor staining inside glass). Min. bid \$40.



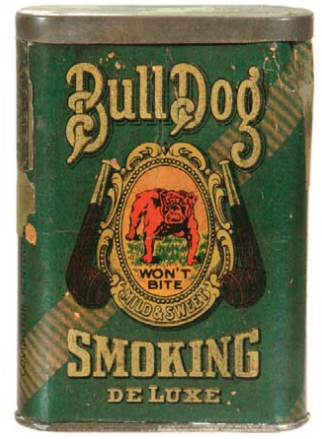
257).Pulver Gum Machine. 20.25 x 8.5 x 4-5/8" early, scarce green color variation porcelain gumball vending machine for Pulver Chewing Gum, w/ composition traffic cop inside. Porcelain is clean, bright and very attractive in appearance w/ exception of a few edge chips (cop crisp and like new). Min. bid \$150.



258).Early 2¢ Card Vendor. 12-1/8 x 9-5/8 x 7-1/8" early metal coin-operated novelty cards vending machine w/ twin coin slots (each takes 2 pennies). Freshly picked, in very nice all original condition (C. 8+). Lot also includes two great looking baseball cards that can be substituted for the pictured display cards (no key).



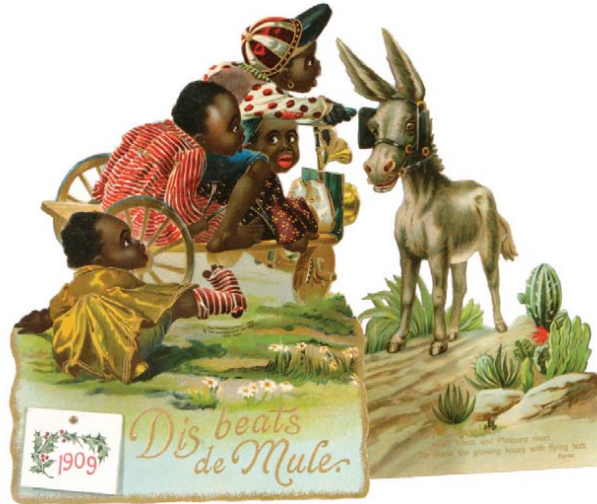
259).Whitlocks' Medicine Cabinet. 25 x 14 x 11-5/8" early wooden counter-top display cabinet for Whitlocks' herbal remedies, featuring beautiful embossed tin signs on two sides. All original, w/ nice surface to both wood and tin, complete w/ original 1914 price sheet on back door (C. a strong 8+). Min. bid \$150.



260).Cardboard Bulldog Pocket. 4-3/8 x 3 x 7/8" scarce, early, cardboard variation vertical tobacco pocket tin for Bull Dog brand. Has strong color and displays quite nicely (C. 8+) w/ a pinching spot at upper right corner edge and a small chip spot on left side edge (where piece of tax stamp once sat). Min. bid \$40.



261).Dining Car Coffee. 7.5 x 6" scarce, large 3 pound tin litho key-wind style coffee can for Dining Car brand (Norwine Coffee Co., St. Louis) featuring great interior scene of fancy dining car w/ black waiter on front, w/ coffee plantation on back. Clean, bright and very attractive in appearance w/ a little minor background scuffing and light scattered wear on backside (front C. 8+; back C. 8-). Replaced lid is not original to piece. Min. bid \$40.

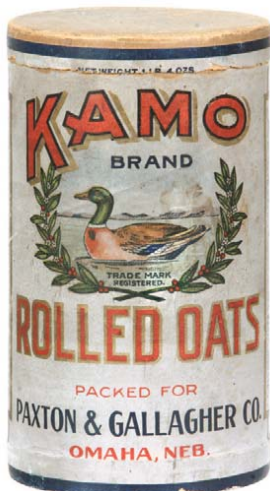


262).Black Kids Die-Cut. 12 x 9.75" outstanding, early embossed cardboard die cut display w/ two attached sections, featuring wonderful images of adorable black kids in donkey cart. Clean, bright and exceptionally nice (a very strong C. 8.5+), complete w/ full 1909 calendar pad. Min bid \$40.

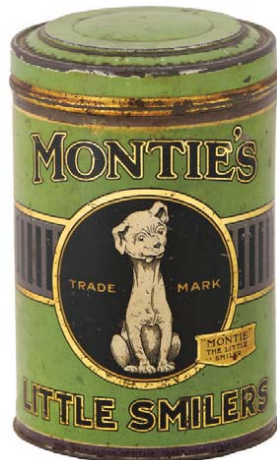
Chewing Gum Stands



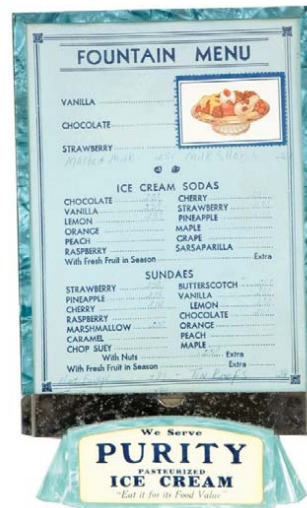
263).Clark's Gum Display Lot. Lot consists of two different early country store countertop glass chewing gum display stands for Clark's Teaberry brand gum, each w/ embossed advertising (vasoline glass stand measures 3.25 x 7 x 4.25"; black glass 8.75 x 6.75 x 2.75"). Both are excellent. Min. bid \$40 (the pair).



264).Kamo Oats Box. 7.5 x 4.25" (dia.) unusual, early 1 lb. 4 oz. cardboard oats box for Kamo brand (Paxon & Gallagher Co., Omaha, Neb.) featuring attractive image of trademark duck (same images both sides). Has even toning, light soiling and some general light scattered wear, but overall piece is attractive and displays nicely (C. 7.5+). Min. bid \$40.



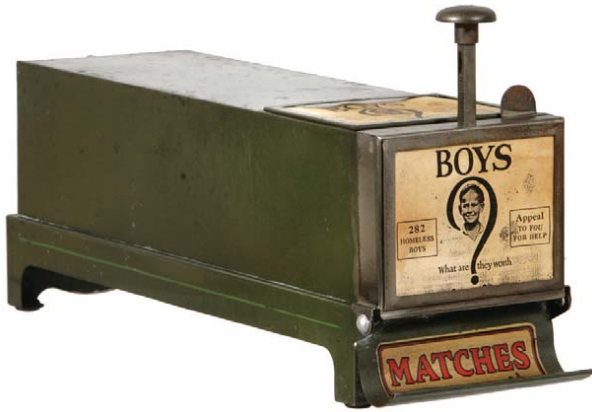
265).Montie's Cigar Can. 6.5 x 4.25" (dia.) unusual, early tin litho cigar can for "Montie's" brand, featuring the trademark dog on front (marked "Sugar" on back for later use as a kitchen canister). Attractive and displays nicely (as a C. 8/-), although close examination will reveal some scattered faint speckling and light general overall wear from use (critical grade C. 7.5). Min. bid \$30.



266).Purity Fountain Menu. 8.25 x 5 x 2-1/8" unusual, colorful and very attractive early celluloid and plastic tabletop menu for early soda fountain, w/ advertising for Purity Ice Cream. Excellent. Min. bid \$30.



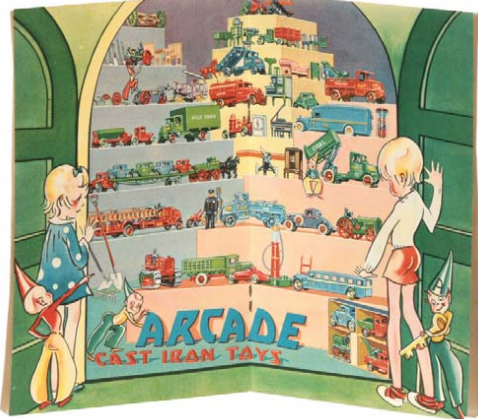
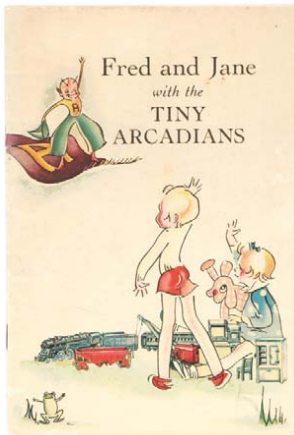
267).Bunny Oats Box. 9-5/8 x 5.5" (dia.) unusual, early 3 lb. 7 oz. cardboard oats box for Bunny brand (Bunn & Humphreys, Bloomington and Springfield, Ill.). Has strong colors and displays quite nicely, although there is some light scattered scuffing, tattering and soiling, as well as a small paper loss spot on side edge (C. 7.5+). Min. bid \$40.



268). Match Vendor. 8.25 x 5 x 16" unusual, early coin operated (2 for 1¢) tabletop metal match book vending machine. Clean and attractive in appearance, w/ a little non-detracting light wear from use (C. 8/-). Min. bid \$70.



269). First American Cigar Label Proof Book. 6.25 x 10-3/8" lot consists of a complete company archival set of 27 paper litho progressive color printers proof cigar box labels (on heavy stock) in booklet form (some have original printers notations in pencil in margins) for each step of the stone litho color strike process from first strike at bottom through to finished label on top (light edge creasing, soiling and tattering on top page). Min. bid \$40.



270). Arcade Toys Booklet. 7.5 x 5" unusual, 24 page illustrated children's book filled w/ color illustrations of various Arcade Co. cast iron toys woven into the stories, including full page centerfold image of a toy store window filled w/ companies toys (© 1931). Excellent overall, w/ minor wear (C. 8+). Min. bid \$30.



271). Standard Oil Co. Banner. 42 x 28" large, early, heavy cloth promotional safety banner issued jointly by Standard Oil Co. of New Jersey Co. and Virginia Division of Motor Vehicles, featuring stunning, highly detailed multi-color graphics. Clean, bright and very attractive in appearance (crisp, never used condition). Min. bid \$50.



272). Dr. Pierce's Sign. 21-5/8 x 10" very early, paper litho roll-down sign (original metal strips at top and bottom) for Dr. Pierce's "Cure for Female Weakness and Kindred Ailments". Has strong colors and displays nicely (as a C. 8+) w/ minor toning, a few faint, non-offensive horizontal crease marks (from being rolled) and a little scattered wear and a couple small tear marks in upper left outer margin area. Displays very well, framed. Min. bid \$100.



273). Gulf Oil Co. Banner. 42 x 28" large, early, heavy, cloth promotional poster style banner, issued by Gulf Oil Co. and the West Va. Roads Commission. Clean, bright and very attractive in appearance, (crisp, never used condition). Min. bid \$50.

Ohio Art Company



274). Toy Tea Set. 5.25 x 8.75 x 2.25" unusual early tin litho children's tea set by Ohio Art Co., as found, never used and still in its original box. Clean, bright and like new, w/ minor wear to lid. Min. bid \$40.



275). Holiday Biscuit Tin. 3 x 4-5/8 x 3-3/8" unusual, very early tin litho biscuit tin from Dunmore and Son Biscuit Co., featuring wonderful Victorian Christmas scenes on lid and all around sides. Clean and very attractive w/ a little light scattered wear (C. 8+/-). English. Min. bid \$40.



276). Smink's Medicine Sign (Boy). 18 x 14.5" (12-7/8 x 11-5/8" visible) very early paper litho sign for Smink's brand patent medicine product, featuring attractive image of young boy (dated 1888). Clean and very attractive appearance (C. 8.5+). Framed. Min. bid \$60.



277). Smink's Medicine Sign (Girl). 18 x 14.5" (12-7/8 x 11-5/8" visible) very early paper litho sign for Smink's brand patent medicine product, featuring attractive image of young girl (dated 1888). Clean and very attractive appearance (C. 8.5+). Framed. Min. bid \$60.



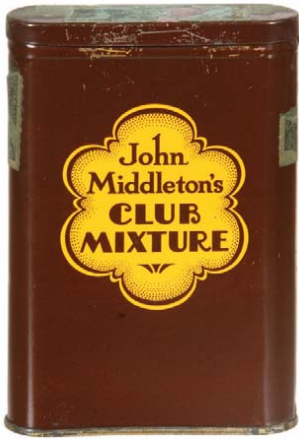
278). Ben Franklin Cigar Label Proofs. 6.25 x 9" lot consists of a complete company archival book of 26 paper litho progressive color printers proof cigar box labels in booklet form (on heavy stock, some have original printers notations in pencil in margins) showing each stage of the stone litho color strike process from first strike through to finished label on top. Lot also includes a separate complete inside label and smaller outside label for side of box. Min. bid \$40.



279). Horseshoe Tobacco Sign. 23.25 x 10.75" (actual) very early paper litho sign for Drummond Tobacco Co. (St. Louis) "Horseshoe" brand tobacco, featuring great comical scene of black horse shoer's (1885 Calvert Litho Co., Detroit). Clean, bright and displays as near mint (linen backed, w/ extremely well done professional restoration- so well done you can't tell w/out use of black light). Min. bid \$100.



280). Folk Art Sign. 36 x 44.75 x 2" important, early, museum quality large wood framed painted metal advertising folk art sign from an early Ambulance and Mortuary Service that features terrific looking antique limo. A powerful and impressive piece that is all original, w/ just the right amount of slight weathering and surface wear to give it a deep, rich patina and a great primitive folk art country type look that will knock your socks off. Min. bid \$500.

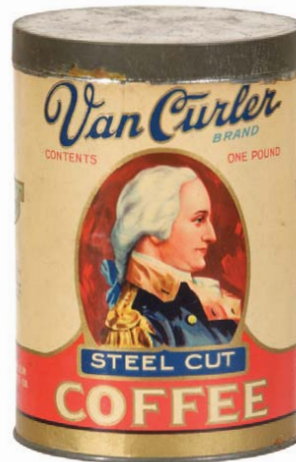


281).Club Mixture Pocket Tin. 4.5 x 3 x 7/8" early tin litho vertical tobacco pocket tin for John Middleton's Co.'s "Club Mixture" brand. Clean, bright and very attractive (basically a C. 8.5/+ appearance), w/ exception of a little light scattered surface wear on top front of lid and in upper background area of backside (critical grade C. 8+/-). Min. bid \$60.

Kis-Me Gum



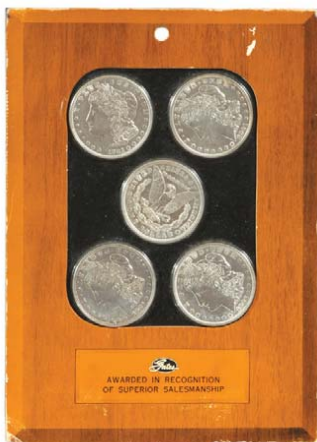
282).Kis-Me Gum Gum Die-Cut. 4 x 2-1/8" small, early advertising die-cut stand-up (on heavy cardstock) for Kis-Me brand chewing gum, featuring adorable young girl in rocker (she bends at waist to reveal ad underneath). Excellent overall, w/ only minor wear (C. 8++). Min. bid \$30.



283).Van Curler Coffee. 6 x 4.25" (dia.) early, paper label (over tin) one pound coffee can for Van Curler brand (Van Curler Food Products, New York, NY). Attractive and displays nicely w/ a little minor scattered wear (C. 8+/-). Min. bid \$30.



284).Security Spice Tin. 3.75 x 2.25 x 1.25" early tin litho spice tin for "Security" brand (Mid-City Wholesale Grocers, Chicago). Clean, bright and excellent (C. 8.5/+). Min. bid \$30.



285).Silver Dollars Award. 7.75 x 5-5/8" unusual salesman's award given by Gates Rubber Co. to an auto repairman for recommending Co.'s automotive belts, w/ five 1921 Morgan Silver Dollar coins inside (coins are crisp and like new). Min. bid \$40.

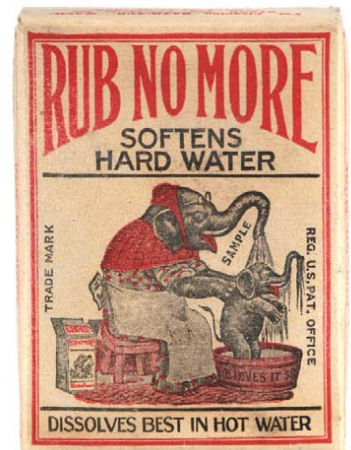


286).Milo Spice Tin. 3.25 x 2-3/8 x 1.25" early tin litho 2 oz. spice tin (cinnamon) from Milo Coffee Co. (San Francisco, Cal.) featuring nice image of famous statue (same image both sides). Clean, bright and excellent (a strong C. 8.5/+) w/ exception of minor dent on side edge. Min. bid \$30.



287).Canoeing Tip Tray. 6-5/8 x 4-5/8" early tin litho advertising tip tray for Schnecksville State Bank, featuring attractive image of girl in canoe by illustrator M.S. Musselmann (Amer. Art Works lithographers). Clean and attractive appearance, w/ a little scattered edge wear (C. 8/-). Min. bid \$40.

Sample



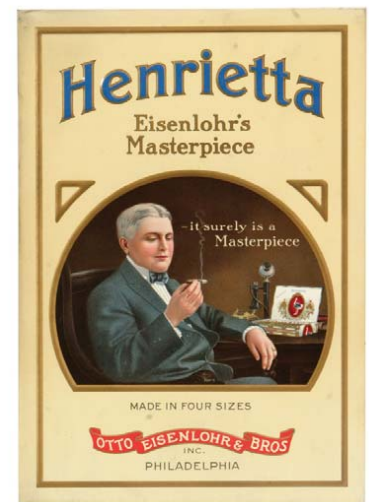
288).Sample Soap Box. 4 x 3 x 1.5" early, full, sealed, small "Sample" size cardboard product box for "Rub No More" brand, featuring great image of Co.'s trademark elephants. Excellent (C. 8.5/+). Min. bid \$30.



289).Typewriter Ribbons Sign. 19.75 x 14-1/8" (15-7/8 x 10.25" visible) beautiful, early, multi-color tin litho sign for Carter's brand typewriter ribbon and carbon papers, featuring attorney w/ various Carter's typing related products. Clean, bright and like new, in its original marked frame (minor wear to frame). Min. bid \$60.



290).O.K. Ice Cream Sign. 15 x 7.75" early embossed die-cut cardboard sign for Binghamton Ice Cream Co.'s O.K. brand, featuring nice image of lgirl carrying school tablet. Attractive and displays very well (as a C. 8/+), although there is some non-offensive light staining and litho loss spot in bottom grass and outer right bonnet sections (critical grade C. 7.5). Min. bid \$40.



291).Henrietta Cigars Sign. 13.25 x 9-1/8" outstanding, early embossed tin (over cardboard) advertising sign fro Henrietta brand cigars, featuring beautiful multi-color lithography (note candlestick phone on table). Crisp, bright and like new, as found never used and still in its original storage box (has minor traces of storage edge wear and soiling). American Art Works. Min. bid \$60.

Gum Trade Cards



292).Chewing Gum Advertising Cards. Lot consists of three early advertising cards for various chewing gum Co.'s. Includes two very early 3 x 4.5" trade cards for "Tuxedo" and "Columbian Fruit" brands (each featuring large pack on back side); and a 1911 mailed advertising postcard from West Gum Co.'s "Cherry Ripe Cream" brand chewing gum. Excellent overall, (C. 8) w/ exception of faint crease mark at upper right corner edge of postcard. Min. bid \$30 (the lot).

Puzzle



293).Baby Ruth Candy Puzzle. 5.75 x 7-3/8" unusual, early cardboard jigsaw puzzle advertising Curtis Candy Co.'s "Baby Ruth" 1¢ and 5¢ candy bars. Excellent. Min. bid \$20.

Match Holder



294).Bug Match Holder. 1-7/7 x 4.25 x 3.25" unusual, early figural brass beetle shaped match holder, w/ advertising lettering in wings area for Jewel Stoves & Ranges Co., Detroit (hinged top of body lifts up to reveal match holder in body area underneath). Excellent, w/ very nice surface patina. Min. bid \$40.



295).Captain Jack Cigar Labels Proof Book. 6.5 x 10.5" lot consists of a complete company archival set of 17 paper litho progressive color printers proof cigar box labels on heavy stock in booklet form (some have original printers notations in pencil in margins) showing each stage of the stone litho color strike process from first strike through to finished label on top. Impressive piece! Min. bid \$40.



296).Planters Peanuts Box. 3 x 3 x 2.5" scarce, early 8 oz. product box for Planters Spanish Peanuts (Planters Nut & Chocolate Co.) featuring nice images of Mr. Peanut on all 4 sides. Clean, bright and excellent (C. 8.5/+). Min. bid \$30.



297).Cadet Cigar Can. 5 x 5.5" (dia.) early, 50 ct. tin litho store display can (w/ glass see-through lid) for Reichard's Cadet brand (Liberty Can Co. Lithographers) featuring same nice graphic image both sides. Clean, bright and attractive appearance w/ a little light scattered wear (C. 8/+). Min. bid \$40.



298).Ford Motor Die-Cut. 5-5/8 x 5" early cardboard promotional die-cut advertisement on heavy card stock for Ford Motor Co., listing locations of factories, service plants and branch houses on back. Neat and unusual piece, excellent overall, w/ minor soiling (C. 8+). Min. bid \$40.



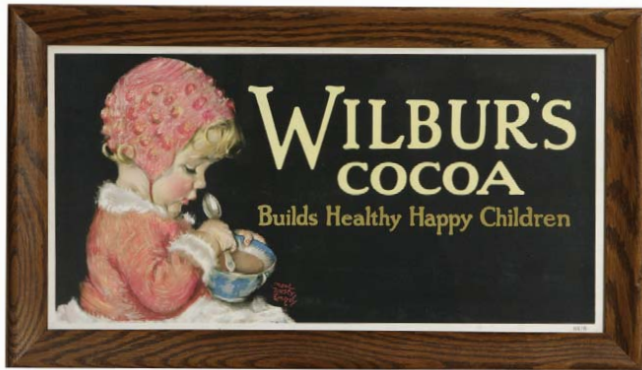
299).Watch Holder. 6.25 x 3.5 x 6" unusual early figural terrier dog watch holder (metal, seated on marble base w/ ruby colored jewel eyes). Nice detailing, excellent overall w/ nice surface patina (watch not included). Min. bid \$40.



300).Ex-Lax Thermometer. 4-5/8 (dia.) x 1" unusual, small, early, glass covered, metal framed dial type thermometer w/ porcelain advertising face inside for Ex-Lax. I believe this was originally an insert to one of the scarce variation large rectangular thermometers. Excellent (C. 8.5/+). Min. bid \$30.



301).Apris Condom Display. 2-3/8 x 3-5/8 x .75" lot consists of two Apris brand tin litho condom tins, as found still in their original storage box. Full tins are crisp and like new (box has some faded purple color on lid). Min. bid \$40.



302). Wilbur's Cocoa Sign. 13.5 x 23.5" outstanding, early trolley car style advertising sign for Wilbur's Cocoa, featuring adorable image of young girl. Clean, bright and like new (near mint). Nicely framed. Min. bid \$50.



303). John Morgan Cigar Label Proof Book. 7 x 9-1/8" lot consists of a complete company archival set of 27 paper litho progressive color printers proof cigar box labels on heavy stock in booklet form (some have original printers notations in margins) showing each stage of the stone litho color strike process from first strike through to finished label on top. Very impressive! Min. bid \$40.



304). Crescent Peanut Tin. 9.75 x 8.25" early tin litho 10 lb. size salted peanuts tin from Crescent Nut and Chocolate Co., Philadelphia featuring attractive trademark image of kids carrying crescent. Clean, bright and attractive appearance (C. 8/+) w/ a little non-offensive light scattered wear. Min. bid \$50.



305). American Oil Co. Sign. 17 x 20" unusual, early 2-sided heavy porcelain advertising sign from Amoco service station (same image both sides). Has strong colors and displays nicely (as a C. 8/+), w/ light edge chipping (note: close examination will reveal some non-offensive fine surface wear on one side and some light soiling on other- critical grade C. 7.5++). As found, should improve w/ cleaning. Min. bid \$60.



306). Art Nouveau Match Box Holder/Ashtray. 4.5 x 5 x 6" unusual, early figural bronze table top match box holder/ashtray, featuring nicely detailed image of topless beauty, w/ flowing dress. Excellent overall. Min. bid \$50.

Gum Case



307). Colgan's Gum Case. 17/5 x 9 x 8" unusual, early counter-top display cabinet for Colgan's brand chewing gum, w/ colored reverse glass lettering on front glass. Excellent overall (C. 8++) w/ minor wear to lettering (hole is expanded where a missing knob or lock originally was on back hinged door), nice original finish on wood. Min. bid \$100.



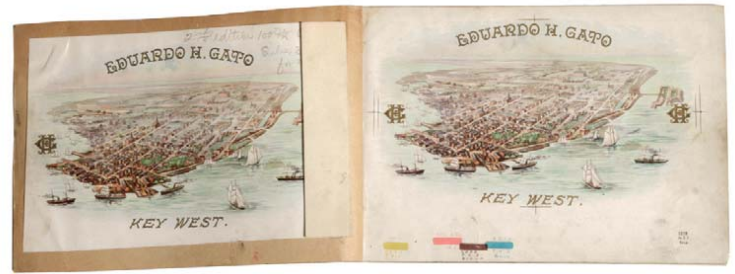
308). Franco-American Soup Sign. 33-5/8 x 23-5/8" (29.75 x 19.75" visible) outstanding early paper litho advertising sign for "Franco-American" brand soups, featuring stunning multi-color graphics. Clean, bright, exceptionally nice appearance (basically a very strong C. 8++) w/ a little non-offensive barely noticeable minor staining in bottom margin area. Complete in its original marked period frame. Min. bid \$150.



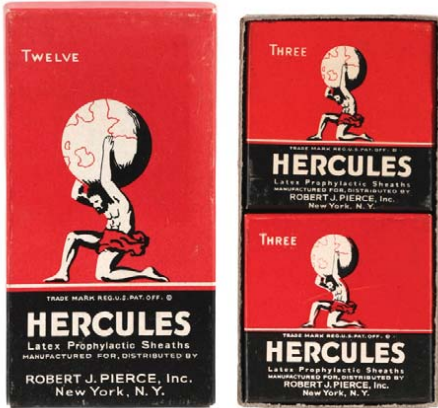
309). Owl Display Jar. 15.5 x 7.5" (dia.) very early, large two-piece heavy figural store display jar in shape of owl, w/ fine embossed detailing all around. I'm told this was made by Owl Chocolate Co. Very high quality piece, w/ ground top and lid. Excellent. Min. bid \$100.



310).Pan American Sign. 2-7/8 x 11.25" unusual early tin litho sign (large bumper tag?) for Pan American Airlines. Clean and excellent (C. 8.5/+). Min. bid \$30.



311).Key West Cigar Label Proof Book. 6 x 8-7-8" lot consists of a complete company archival set of 14 paper litho progressive color printers proof cigar box labels on heavy stock in booklet form (many have original printers notations in pencil in margins) showing each stage of the stone litho color strike process from first strike through to finished label on top. Min. bid \$40.



312).Hercules Condoms. 4-5/8 x 2.5 x 3/4" full, early cardboard product box for Hercules brand condoms, complete w/ four smaller boxes inside (each still w/ contents). Clean and excellent. Min. bid \$30.



313).Bell Telephone Sign (Pennsylvania). 8" (dia.) early, heavy porcelain "hubcap" style telephone sign from Bell Telephone Co. of Pennsylvania, featuring early style bell logo. Clean and excellent w/ only minor soiling and slight traces of over-paint in outer edges of dark border area. Min. bid \$40.



314).Honey Bread Broom Holder. 3.75 x 2-5/8" unusual, early metal advertising broom holder for Honey Bread. Clean, never used condition, as found in its original envelope (minor storage wear on envelope). Min. bid \$30.



315).Tam O'Shanter Proof Book. 6-3/8 x 10.5" complete company archival set of 28 paper litho progressive color printers proof cigar box labels on heavy stock in booklet form (many have original printers notations in pencil in margins) showing each stage of the stone litho color strike process from first strike through to finished label on top. Very impressive! Min. bid \$40.



316).Disney Sand Pail. 3-3/8 x 3-5/8" small, tin litho sand pail by Ohio Art Co. featuring Disney's Duck characters all around (marked Walt Disney Productions). Clean, bright and excellent (basically like new) w/ exception of a small, non-offensive hazy wear spot in bottom dark background area on backside. Min. bid \$40.



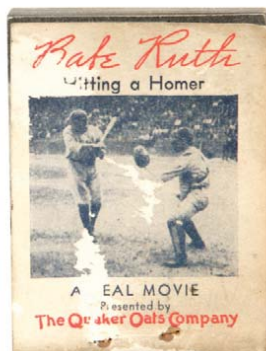
317).Newton's Vet Tins. lot consists of two different size variation product tins for Newton veterinary medicine, each featuring great image of Co.'s trademark skeletal racing horse (large 6-7/8 x 3-5/8" x 3-5/8"; small 4.25 x 3 x 3"). Very attractive appearance (basically displays as a C. 8+/-), w/ minor background wear and some general surface oxidizing on non-graphic gold flash top lid section area (critical grade C. 7.5/+). Min. bid \$40 (the pair).



318).White Owl Cigar Tin. 5.75 x 5.5" scarce blue color variation, early tin litho 50 ct. Canadian cigar can for White Owl brand, featuring beautiful graphic images of trademark owl (same image on front, back and lid). Clean, bright and exceptionally nice (C. 8.5). Min. bid \$60.



319).Dairy Thermometer. 5-7/8 x 2.5" unusual, early metal thermometer in shape of milk bottle, advertising Haines Dairy Farm, Hurfville, NJ, as found never used, still in its original box (note 3 and 4 digit phone numbers). Near mint condition. Min. bid \$30.



320).Babe Ruth Lot. Lot consists of two early Babe Ruth items. Includes: 2 x 1.75" celluloid watch fob w/ scorer on backside and a 3 x 2.25 x .25" movie picture flip book advertising Quaker Oats (flipping pages shows Babe batting & fielding on different sides). Book has some toning, light staining and tattering wear on cover, inside excellent; fob excellent. Min. bid \$40 the pair.



321).Trojan Gold Condom Tin. 1-5/8 x 2 x .5" early tin litho condom tin for Youngs Rubber Co.'s "Gold" brand Trojans. Clean, bright and excellent appearance w/ a little minor wear (C. 8+). Min. bid \$30 each. (Have two, winner can take one or both).



322).Admiration Coffee. 3-5/8 x 5-1/8" scarce, early tin litho 1 lb. key wind coffee can for Admiration brand (Duncan Coffee Co., Houston, Tx.) featuring nice image of black mammy and Southern aristocrats. Excellent overall w/ a little non-offensive light background wear (C. 8+). Min. bid \$40.



323).Texaco Sign. 12 x 33" outstanding, early paper advertising maritime sign for Texaco petroleum products, featuring Gar Wood and his record setting speed boat "Miss America X" (dated 1933). Clean and excellent (has 3 original vertical fold lines (done in mfg. process)). Min. bid \$50.



324).Trout-Line Pocket Tin. 3.75 x 3-3/8 x 1-1/8" early tin litho pocket tin for Trout Line brand, featuring beautiful multi-color graphic fly fisherman images (same image both sides). Clean, bright and exceptionally nice in appearance (displays as a strong C. 8.5+), w/ hint of slight crazing and a little very minor wear (critical grade a strong C. 8++). Min. bid \$100.



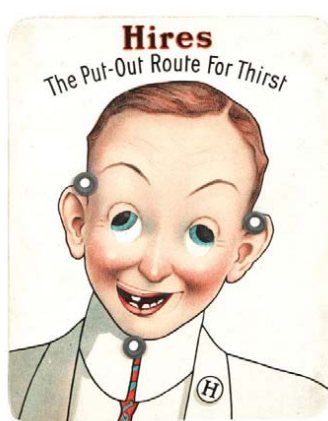
325).Mobil Sign. 8 x 7.75" early Mobil Oil Co. porcelain restroom sign, w/ attractive image of Co.'s Pegasus logo. Clean, bright and excellent (basically near mint w/ exception of a little non-offensive light chipping wear at bottom hanging hole). Min. bid \$50.



326).Duck Hunter Shaving Mug. 3.75 x 3-5/8" fine, early, decorative shaving mug featuring an outstanding, finely detailed hand-painted image of hunter and dog in boat hunting ducks. Beautiful, very high quality image, w/ floral decoration and black wrap (artist signed on base). Excellent, w/ some wear to decorative gold finish. Min. bid \$100.



327).Tyee Bait Tin. 2.5 x 2.25" wonderful, small, early tin litho pry lid product tin for Tyee brand salmon eggs bait (J.E. Hubbard Co., Seattle, Wash., 1910) featuring very nice graphics. Clean, bright and very attractive appearance (C. 8.5+). Min. bid \$50.



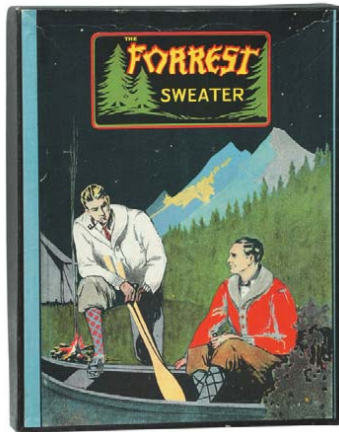
328).Hires Score Card. 3-1/8 x 2.5" early 2-sided celluloid baseball scorekeeper advertising Hires Root Beer, featuring Co.'s soda jerk "Josh Slinger" (turning scores on back changes images in eyes and mouth). Excellent. Min. bid \$40.



329).H-Y Bait Tin. 2.5 x 2.25" wonderful, small, early tin litho pry lid product tin for H-Y Co.'s salmon paste trout bait, featuring beautiful color graphics. Clean, bright and exceptionally nice (displays as a C. 8.5) w/ typical darkening and oxidizing on non-graphic seam area of backside (at soldier seam). Min. bid \$50.



330).Sea Side Sand Pail. 3.25 x 3.5" (dia.) small, very early tin litho "Sea Side" sand pail, w/ eagle and shield on front and smaller eagles on backside. Attractive and displays nicely (C. 8+) w/ only minor wear. Min. bid \$40.



331).Sweater Box. 13-5/8 x 10-5/8 x 2" early 2-ps. cardboard litho product box for Forrest brand sweaters, w/ great ca. 1920's Adirondacks type camping image. Excellent (C. 8++). Min. bid \$30.



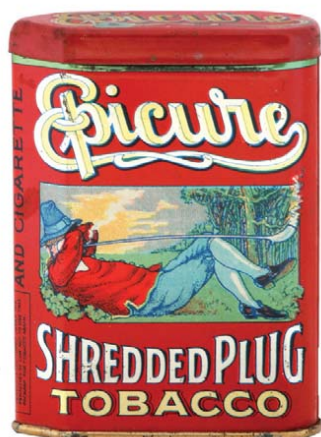
332).Glassport Co. Change Receiver. 5.5 x 4.24 x .5" unusual, early pressed glass change receiver advertising Glassport Co., w/ nicely embossed Indian chief at top and fine detailing all around (dated 1903). Very high quality piece, excellent condition. Min. bid \$40.



333).Life Savers Tag. 5 x 5" early, embossed die-cut tin litho advertisement for Life Savers candy, w/ jewel reflector in center (probably for use as automotive license plate/bumper tag. Excellent. Min. bid \$40.



334).Hires Sign. 8.5 x 6" early, small tin over cardboard beveled edge sign for Hires Root Beer (Donaldson Art Sign Co.). Clean, bright and like new (near mint). Min. bid \$50.



335).Epicure Pocket Tin. 4-1/8 x 3 x 1" early tin litho vertical tobacco tin for United Tobacco Co.'s "Epicure" brand. Clean, bright and exceptionally nice (C. 8.5+). Min. bid \$40.



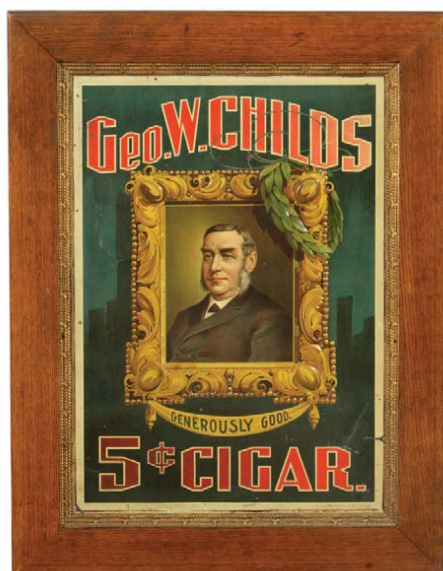
336).Mechanical Cigarette Dispenser. 4-7/8 x 3.25 x 2.75" early figural mechanical desktop metal cigarette dispenser in shape of early radio console (turning bottom dial releases cigarette out of side) w/ mechanical calendar dials at top. Nice overall condition, w/ minor scattered wear from use (C. 8). Min. bid \$30.



337).Quick Oil Additive Tin. 4 x 3-3/8" unusual, early 1 pint size tin litho product can for a Dri-Powr Co. (Azusa, CA) oil additive product, w/ beautiful graphic images all around. Full sealed can is clean, bright and excellent (C. 8.5+). Min. bid \$30 each (have two). Winning bidder can take one or both.



338).DeLaval Calendar. 19.75 x 12.5" scarce, early paper litho advertising calendar for De Laval brand cream separators, featuring attractive illustration art by artist Philip Boileau. Has original metal strips at top and bottom and full 1907 calendar pad. Excellent. Min. bid \$40.



339).Cigar Sign. 35 x 27" (27.5 x 19-1/8" visible) outstanding, large, very early tin litho sign for Geo. W. Child's 5¢ Cigars, featuring fine early lithography by Shonk Litho. Co. Has strong color and displays nicely on wall (C. 8/+ appearance) although close examination will reveal some non-offensive general light crazing, scuffs and non-serious litho loss in outer margins and some light general wear (critical grade C. 7.5++/8-). Framed (beautiful period frame). Min. bid \$150.



340).Coca-Cola Calendar. 24-5/8 x 12" large, early paper litho advertising calendar from Coca-Cola Co., featuring their 1923 calendar girl, complete w/ partial pad at bottom (includes Nov. and Dec. tear sheets). Bright, attractive and displays nicely (displays as a C. 8/+). Although a close examination will reveal some non-offensive fairly light staining in coat and arm area and there are a couple paper loss spots in outer margin areas which could be easily matted out (critical grade C. 7.5++). Min. bid \$70.



Rd #2, Cobb Hill Road, Cazenovia, NY 13035 • 24 Hr. Tel: (315) 662-7625 • 24 Hr. Fax: (315) 662-3570 • morf2bid@aol.com • morfauction.com

Welcome to our 69th auction of quality antique advertising and fine collectibles. Everything we sell is guaranteed authentic and as described. We attempt to grade condition both fairly and conservatively, using a scale of 1-10 on the advertising items (ten being absolutely mint). We do not list reproductions, re-issues, deceptively restored or pieced together type merchandise. Flaws and blemishes are prominently noted and over emphasized. We encourage you to call for a detailed description on any item you have an interest in, but respectfully must request that you do this before the closing night. Dimensions are listed by height, then width, and are only approximate (+ or - a quarter inch).

Bidding

Bids are accepted only from those parties who have registered with us to bid. (If you were mailed this catalogue by us you are automatically pre-registered.) Your bid is a legal contract to purchase and once entered, cannot be canceled. Placement of a bid indicates acceptance of our terms.

On all "BID" items there is a 10% buyers premium added to each successful bid. You're welcome to bid by mail, email and fax anytime after receiving this catalog. **We will begin accepting phone bids on Wednesday Dec. 1st, 2010. We will be taking calls on Wednesday and Thursday from 10:00 AM until 5:00 PM.** If no one answers when you call, please leave a message on our machine and we will get back to you. **If bidding by mail or fax, please remember to include your telephone number with your bids!** You may call or bid as often as you like. We will tell you the current bid on any item(s) you are interested in. To raise a bid, your advance must be at least \$10 more than the current high bid amount. When an item reaches \$250, bidding increments rise to \$25, at \$1,000, bidding increments advance in \$50 steps, and above \$2,000 in \$100 increments. We suggest not waiting until the last minute to begin your bidding, as its quite possible you won't be able to get through.

Web Page and Bid Updates

We will begin posting current bid prices (not including the buyers premium) on Wednesday Dec. 1st, 2010 (including an addendum of additional catalogue lot information) on our internet web page. These prices will be updated once each day (each evening sometime after 9:00 PM, EST) and will get updated to include the final hammer prices on Sunday afternoon once the sale is concluded. On the closing night, we will attempt to update current bid prices every hour. Our web page address for this sale is: <http://www.morfauction.com> We suggest that once you get to it, that you bookmark this address for easy re-access.

Reserves and Estimates

All items which receive an opening bid in our sale will be sold to the highest bidder regardless of the price realized (we reserve the right to withdraw items in the event of inaccurate catalog descriptions and to reject any bid we feel is not made in good faith). **We run our auctions with a strict policy of no buy-backs, no auctioneer games and no hidden reserves.** Unlike some of our competitors, we do NOT allow consignors to bid up their own items!

Mechanical Operations

Early mechanical and electric motors and mechanisms on machines toys, coin-ops, clocks, etc. are quite often temperamental and very unpredictable in nature. Although these mechanisms may be working fine at the time of sale, we make no guarantees or representations regarding their continued operating status once they have left our premises (including during shipping).

Closing Night

THE LAST DAY FOR BIDDING WILL BE ON FRIDAY, DECEMBER 3RD, 2010. On closing day, we begin taking calls at 5:00 PM. Please mark your calendar now. On the closing night (ONLY), we will also be taking calls at (315) 662-3318, (315) 662-3429 and (315) 662-3904 after 5:00 PM (in addition to our regular (315) 662-7625 office number). **Closing Time: This Auction will close at 10:00 PM (EST) on Friday, Dec. 3rd, 2010.** At that time, no more incoming calls will be accepted and all lots with a registered bid of less than \$300, as well as all items without call backs registered on them will be officially closed and final. The items at \$300 and over that have call back protection registered on them will be closed out during our call back period the following afternoon (**see important call back rules below**). We reserve the right to change the official closing in the event of unforeseen family type emergencies or technological failures (utility disruptions, etc.). We also reserve the right to either extend the bidding, to postpone or to cancel this auction in the event of a national emergency or if the Internet or the services of the US Post Office were to get seriously disrupted during our catalogue mailing or bidding period.

"Up-To" Bids & Call Backs

CEILING BIDS: We will be happy to enter competitive "up to" ceiling bids for you on any lots you request. Beginning at your minimum amount, we will advance these bid(s) up to your left ceiling amount, if (and only if) it is topped by another bidder. "Up To" bids will be handled discretely and executed in a completely competitive manner for you. Please note that we don't accept open ended "top all others" ceiling type bids.

CALL BACKS: You may request call back protection for any lot(s) that you enter with either a minimum or a protected "up-to" ceiling bid in an amount of at least \$300. This request must be registered with us before the official 10:00 PM closing hour of Friday, Dec. 3rd, 2010. All callbacks will be placed by us on Saturday, Dec. 4th, 2010, beginning at 12:00 noon (EST) and will continue that afternoon until each of the individual lots have been closed out (using past experience, I would expect this to be finished by 6:00 PM, if not earlier). If you register for call-backs, it is your responsibility to be available during this call back time period. We make every effort to honor all our call back requests, but this service is done solely as a convenience to our bidders and will be performed on a best efforts basis only. If you will be traveling or if you will not be available during call back times at your primary number, be sure you provide us with proper alternate or back up numbers for reaching you!

Payment Terms

Winning bidders will be invoiced by mail immediately after the sale. Those who desire fast shipment can pay by Money Order or Cashiers Check. Payments are due within 10 days of receipt of invoice. We reserve the right to offer the item out to our back bidders and deny future bidding privileges to those who do not pay in a timely manner. In addition to personal checks, we also accept payment on your American Express, Visa, Master Card, Discover and Optima Credit Cards (with no surcharge added). No COD's or Collect calls are ever accepted. Items shipped to anywhere in New York State must include appropriate sales tax or signed resale certificate.

Shipping

All packing and shipping charges are extra. We do most of our own packing and shipping and try to keep these charges as reasonable as possible for you. On especially fragile and larger hard to pack items, we hire the services of professional packers and charge you at our billed cost. We ship mostly through the Post Office and Fedex Ground, (Fedex Overnight available at an extra charge.)

Subscribing, Prices Realized, Consignments & Upcoming Events

Future catalogs can be assured by sending \$20 for a full 12 months subscription, (includes after sale prices realized). An automatic credit card ordering program is available. We currently run between 4-6 auctions a year (versus our previous format of running semi-annual sales). This format allows us to run smaller, more focused sales featuring larger, higher quality catalog images and gives our consignors the opportunity for a quicker turn-around of their items. In addition to our regular sales, we also occasionally offer sales made up entirely from single owner collections. Please contact us should you have items you would like us to consider for inclusion in our upcoming events. All inquiries are handled in a completely confidential manner. Our services are also available for the private placement marketing of important individual items, marketing plans for large collections as well as for estate planning and settlement purposes. Back copies of many of our previous auction catalogs are still available at \$5 each (w/ prices realized) w/ quantity discounts available if multiple issues are ordered. For further information, please call, e-mail or write.

Photography by Wes Feuz. Layout by Tracy Niemczal.

© Copyright 2010. All Rights Reserved. No portion of this publication may be copied in any form without the express written permission of Morford's.

Important Closing Night Information

In addition to our regular (315) 662-7625 office number,
on the closing night (only!) you may also call us at:

(315) 662-3318*
(after 5:00 PM)

(315) 662-3904*
(after 5:00 PM)

(315) 662-3429*
(after 5:00 PM)



***These numbers for
Closing night only!
Friday, Dec. 3rd, 2010**

Bidding closes at 10:00 PM on closing night. We will be accepting faxes and e-mails on closing night. Our web page will update current high bid prices approximately every hour on closing night and will also list any important addendum information. **All call backs will be made on Saturday, December 4th, 2010, beginning at 12 o'clock Noon!**