



WM Morford
Investment Grade Collectibles at Auction

Investment Grade Collectibles at Auction

Rd #2, Cobb Hill Road, Cazenovia, NY 13035 • 24 Hr. Tel: (315) 662-7625 • 24 Hr. Fax: (315) 662-3570 • morf2bid@aol.com • morfauction.com

Bidding closes Friday, March 25th, 2011. (See page 32 for Terms & Conditions)

Cigar Cutter



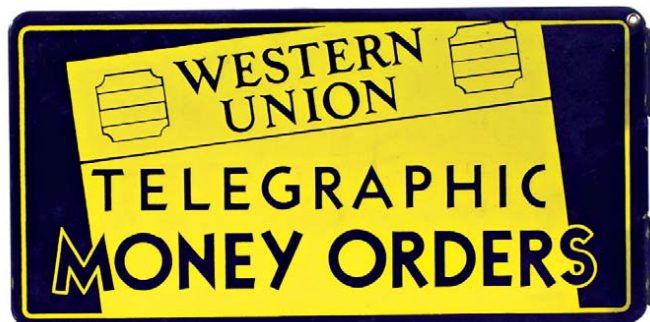
1). **Turtle Cigar Cutter.** 2 (h) x 6 (l) x 3.75" early, heavy figural metal turtle shaped mechanical cigar cutter w/ beautiful detailing (pushing down on head moves cutting blades to trim cigar). Excellent and all original, w/ a nice rich surface patina. Min. bid \$60.



2). **Tooth Powder Samples.** lot consists of three early miniature tin litho tooth powder sample tins. Includes: Calox, Sanitol and Listerine. Hgts. range from 1-5/8" to 2.25". Min. bid \$40 (the lot).



3). **Rose Leaf Flat Pocket.** 2.25 x 3-5/8 x 1/2" scarce, early tin litho flat pocket style tobacco tin for Lorillard Co.'s "Rose Leaf" brand, w/ flowers image on base. Attractive and displays nicely, w/ typical darkening to metallic flash finish areas some general light overall wear from use (C. 7.5). Note: has velvet material glued to inside). Min. bid \$40.



4). **Western Union Sign.** 9 x 18" early, heavy, 2-sided porcelain flange sign from the Western Union Telegraph Co., for Co.'s Telegraphic Money Orders. Crisp, bright and like new, w/ beautiful original surface sheen. Min. bid \$50.



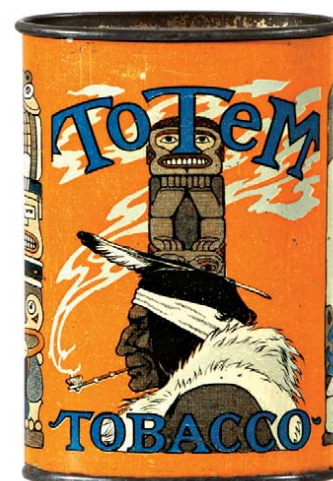
5). **Mobil Lube Sign.** 10.5 x 25-7/8" unusual, early, heavy porcelain Mobil Oil Co. lubster rack sign, featuring Co.'s Pegasus horse logo. Very impressive piece, in crispy, never used condition. Beautiful piece is bright w/ nice original surface sheen (only minor darkening and small storage chip mark near bottom edge keeping it from near mint grade). Min. bid \$70.



6). **Golf Club Spice.** 3-3/8 x 2.25 x 1.25" scarce, early, 1-1/2 oz. paper label (over cardboard) spice can (sage) for Golf Club brand (Green Bros., Kansas City, Mo.) w/ tin top and bottom (same great image on both sides). Clean, bright and excellent (C. 8.5++). Min. bid \$40.



7). **New York Decorative Shaving Mug.** 3-1/8 x 3.25" important, very early, fine china decorative shaving mug featuring a wonderful, primitive folk art painted image of New York waterfront area (outstanding, very high quality image). Mug and painting image are excellent (typical general loss to gold decorative trim areas). Min. bid \$70.



8). **Totem Pocket Tin.** 3-5/8 x 2-5/8 x 1-3/8" early, oval, tin litho vertical tobacco pocket tin w/ slide top closure for "Totem" brand, featuring nice Indian and totem pole images all around. Clean and very attractive appearance, w/ minor soiling/wear on back side (front C. 8+; back C. 8). Min. bid \$100.



9).Cinderella Coffee. 3-7/8 x 5.25" scarce, early, 1 lb. tin litho pry lid coffee can (Kittanning Co., Kittanning, Pa.) featuring same great image on both sides. Clean, bright and very attractive in appearance (a strong C. 8++), although close examination will reveal a little minor wear and some slight darkening at base (critical grade C. 8). Min. bid \$60.



10).Taxi Driver Caps. Lot consists of two different early taxicab drivers uniform caps from Yellow Cab and Star brand taxis (ea. app. 10.5 x 10 x 4.75"). "Star" cap is excellent, "Yellow Cab" quite nice, although there are some light staining areas and a tiny cut mark on top area. Min. bid \$40 (the pair).



11).Sunset Trail Cigars. 5.5 x 6 x 4" (lid closed) early tin litho 50 ct. can for "Sunset Trail" brand cigars, featuring same beautiful color graphic western trademark image on front, back and inside lid. Clean, bright and exceptionally nice (a strong C. 8.5+) w/ a little minor denting on right side edge. Min. bid \$60.



12).Modox Tip Tray. 5 x 4-7/8" unusual, early tin litho die-cut tip tray for Modox (an Indian herb beverage that was made by Moxie Co.). Piece is attractive and displays very nicely (as a strong C. 8/+) although close examination will reveal a little non-offensive light scattered wear from use (mostly at bottom outer edges) (critical grade C. 8/-). Min. bid \$60.



13).Horse & Buggy Shaving Mug. 3-7/8 x 3-7/8" early, fine china occupational shaving mug featuring nice hand painted image of horse drawn buggy. Excellent overall (a close examination will reveal an area of light crack lines on underside of base- not visible from outside). Min. bid \$70.



14).Honey Moon Gum Watch Holder. 11.75 x 8" early and extremely rare, embossed cast iron advertising stand-up display from the Honey Moon Chewing Gum Co., Atlanta w/ hook on back to hang and display a pocket watch. Fine early casting, w/ a great early surface patina giving it a wonderful primitive folk art type appearance. Neat piece, displays great (C. 8/+). Min. bid \$100.



15).Bromo-Seltzer Sign. 16 x 9" early die-cut cardboard countertop sign for Bromo-Seltzer, featuring beautiful multi-color graphic image of nurse holding early product bottle. Clean and very attractive appearance (a strong C. 8++), beautifully framed (frame 21.25 x 14.25"). Min. bid \$50.



16).Hoeffler Ice Cream Tray. 16.25 x 12.5" scarce, early, tin litho advertising serving tray from the Hoeffler Ice Cream Co., featuring wonderful color graphics. Clean, bright and excellent in appearance (displays as a C. 8.5) w/ a couple fairly minor, non-detracting dent marks and a few very minor touch-up spots at outer edges of black rim area (noticeable w/ black light). Min. bid \$80.



17) Sen-Sen Display. 7 x 6 x 3.25" early tin litho product display piece for Sen-Sen brand breath mints (made to either sit on counter or hang on wall). Clean and very attractive appearance (displays as a strong C. 8/+), w/ a hint of fade and minor staining/wear. Min. bid \$70. (also see lot #18).



18) Sen-Sen Display Box. 4-1/8 x 3.5 x 4-1/8" lot consists of a full early display box of ten small Sen-Sen confection product boxes as found never used w/ its original cover. Very nice overall w/ a couple tears at front base area and some age tone staining to box lid (C. 8/+). Min. bid \$30. (also see lot #17).



19) Niagara Falls Brewing Co. Tip Tray. 4-1/8" (dia.) scarce, early tin litho advertising tip tray for Niagara Falls Brewing Co.'s Bock beer, featuring wonderful graphic image. Excellent overall (C. 8++), w/ light surface crazing. Min. bid \$40.



20) Point Loma Spice Tin. 3.25 x 2.25 x 1.25" unusual, early tin litho 2 oz. spice tin (nutmeg) for Point Loma brand (Klauber Wangenheim Co., Calif.) featuring same great image on both sides. Clean, bright and exceptionally nice (C. 8.5+), w/ minor denting on right side edge. Min. bid \$30.



21) Bengal Bluing. 2-3/8 x 1.5" small, very early, paper label (over wood) product container for Bengal brand laundry bluing (G. T. Rogers Co., Binghamton, NY), featuring beautiful multi-color lithography. Full, sealed, never opened container is excellent overall w/ some minor edge chipping along top edge (C. 8/+). Min. bid \$40.

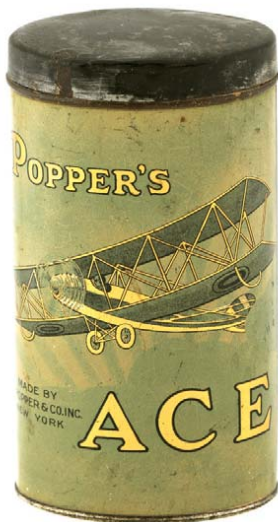
Sample



22) Full Dress Tobacco Sample. 3 x 2.25 x 3/4" scarce, miniature tin litho "free sample" vertical tobacco pocket tin for Sears Roebuck Co.'s "Full Dress" brand. Clean and very attractive appearance, w/ some scattered dark oxidized staining on paper tax stamp areas and some light scattered wear on front edge of lid and on back side (front C. 8+; back C. 8/-). Min. bid \$60.



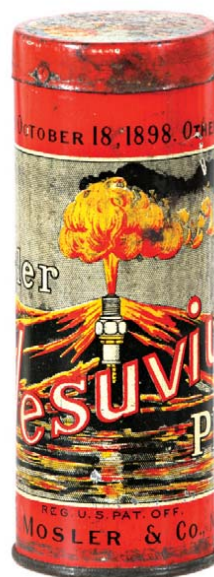
23) Meteor Spice Tin. 3.25 x 2-1/8 x 1.25" scarce, early paper label 1-1/2 oz. spice tin (cinnamon) for Meteor brand, w/ same great image both sides (Lebanon Wholesale Grocers, Lebanon, Mo.). Excellent (C. 8/+). Min. bid \$30.



24) Poppers Ace Cigar Tin. 5.75 x 3 x 2-1/8" scarce, early, tin litho 10 ct. oval cigar tin featuring Co.'s great trademark airplane. Display side is bright, clean and very attractive, w/ a little minor soiling and minor scuffing on non-graphic back side (front C. 8+; back C. 7.5), w/ scattered light oxidizing and some general wear on lid (holes on bottom have melted solder spots covering them). Min. bid \$70.



25) Planters Popcorn Oil. 7 x 2.75 x 2" unusual, ca. 1950's 8 oz. product bottle for Planters brand popcorn seasoning oil, featuring great image of Mr. Peanut in chef's hat. Lid has some minor oxidizing and label has some general light wear, but decent overall and displays nicely (C. 7.5+/8-), w/ partial contents. Min. bid \$20.



26) Spark Plugs Tin. 3-5/8 x 1.5" tin litho product tin for Mosler Co.'s Vesuvius brand spark plugs, featuring same colorful and graphic image on both front and lid. Excellent overall (C. 8+) w/ minor scattered wear. Min. bid \$20.



27) Frisco Line Match Holder. 6.5 x 3.25 x 1-5/8" unusual, early, figural cast iron match holder in shape of early telephone, w/ embossed advertising for the "Frisco Line" railroad. Has a nicely worn rich surface patina and displays nicely, w/ minor traces of paint on surface. Min. bid \$40.



28).Reid's Ice Cream Sign. 6 x 9.25" impressive, small, early tin litho (over cardboard) beveled edge sign for Reid's Ice Cream, w/ beautiful color graphics and nice incised lettering (by illustrator Earl Christy). Clean and very attractive appearance (displays as a strong C. 8+) w/ a couple non-detracting faint dent marks and a little light scraping at very bottom edge (mentioned for accuracy, both barely noticeable). Min. bid \$60.



29).Cascade Beer Tray. 12.25 x 17.25" early, pre-prohibition tin litho serving tray for Cascade brand beer (Union Brewing Co., San Francisco) featuring great image of Uncle Sam and world leaders enjoying a beer. Colors are strong and piece displays very nicely (as a strong C. 8+) although close examination will reveal some non-offensive light scattered background wear and minor dent marks as well as some chipping loss and wear along outer edges of rim (critical grade C. 7.5+). Min. bid \$150.



30).Fosdick's Ice Cream Tray. 13.25 x 10.5" early tin litho service tray from Fosdick's Ice Cream Co., featuring baseball theme kewpie doll (cap reads "Kewpie Base Ball Team"). Clean and very attractive appearance (a strong C. 8+) w/ a little non-offensive light scattered background wear (mostly confined to outer edges of rim). Min. bid \$60.



31).Lemon Crush Dispenser. 13.75 x 10.25 x 6.75" early, figural lemon shaped heavy ceramic pottery syrup dispenser advertising Ward's Lemon Crush brand soda. Excellent, w/ beautiful, original paint surface (near mint). Includes high quality reproduction pump. Min. bid \$150.



32).Buffalo Brewing Co. Tray. 12.25 x 1-3/8" early tin litho Buffalo Brewing Co. tray (Sacramento, California). Clean, bright and beautiful in appearance (near mint image, w/ some light rim chipping and a little non-offensive staining at bottom inside edge of rim at 6 o'clock); and some paint loss wear on non-graphic back side. Min. bid \$60.



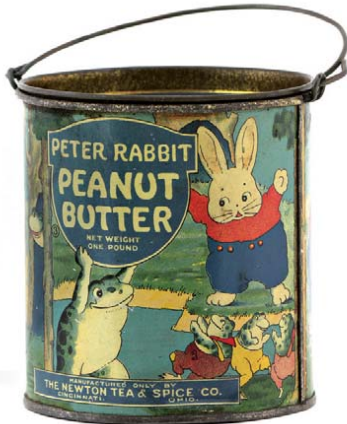
33).Nash's Coffee Pail. 8.75 x 7-3/8" unusual, early 5 lb. tin litho coffee can for Nash's brand (Vancouver, Canada) w/ same image both sides. Has a little soiling and light scattered wear, but overall attractive and displays nicely (C. 7.5+/8-). Lid has heavy soiling and wear. Min. bid \$50.



34).Messer's Gum Case. 10 x 8.25 x 5.5" unusual, early wooden countertop gum case advertising Messer's brand charcoal gum. Has large pack shaped paper advertising label on inside of hinged back door, w/ brass advertising plate on front. Excellent and all original, w/ minor edge chipping on outer edges of paper label. Min. bid \$70.



35).Angelus Die-Cut. 10.75 x 6" early, die-cut cardboard sign advertising Cracker Jack Co.'s "Angelus" brand Marshmallows. Crisp, bright and like new (basically near mint, w/ exception of a light crease mark in hand area). Min. bid \$40.



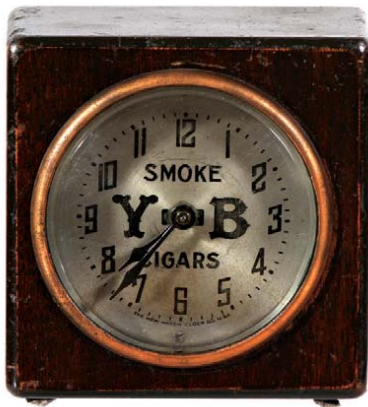
36).Peter Rabbit Peanut Butter. 3-7/8 x 3-5/8" early tin litho 1 lb. peanut butter pail for Peter Rabbit brand (Newton Tea & Spice Co., Cincinnati, Oh) featuring great graphic images of Peter Rabbit and animal fiends all around. Excellent overall (a strong C. 8+) w/ dent mark at base of back side. Min. bid \$50.



37).Wrigley's Gum Box. 8.75 x 13.5 x 6.25" (as pictured) unusual early cardboard store display box w/ glass lift-up lid for Wrigley's (Chicklet style) candy coated chewing gum, w/ colorful and very attractive inside label. Displays nicely (as a C. 8/+), w/ some scattered edge wear to plain outside of box (outer box C. 7.5). Min. bid \$40.



38).Junket Tip Tray. 4-3/8" early, tin litho tip tray for Junket boxed desert mix, featuring beautiful color graphic image of Co.'s trademark girl. Clean, bright and very attractive, w/ slight crazing and non-offensive light blemish mark in her raised arm area. Min. bid \$30.



39).Y-B Cigars Clock. 3.25 x 3.25 x 2.25" unusual, small, early tabletop wooden case wind-up advertising clock for YB brand cigars. Excellent and all original, w/ some minor wear to wood (runs well). Min. bid \$40.



40).Telephone Pocket Mirrors. (each 2.75 x 1.75") lot consists of three different celluloid advertising pocket mirrors for various Bell Telephone Co. providers, each featuring early style Bell logos. Celluloid excellent on all (some dark lines in one of mirrors). Min. bid \$40 (the lot).



41).Fabric Store Shaving Mug. 3-5/8 x 3.75" early, fine china occupational shaving mug for a fabric store owner, featuring beautifully detailed hand painted image of owner waiting on customer. Excellent. Min. bid \$70.



42).C. D. Kenny Co. Sign. 12-3/8 x 8-3/8" early, self-framed tin litho sign from the C.D. Kenny Co., featuring adorable image of young Victorian era children having tea party w/ rabbits. Clean, bright and excellent (C. 8.5). Min. bid \$70.

Tape Dispenser



43).Alka Seltzer Display & Tape Dispenser. 10.75 x 7 x 12.25" unusual early tin litho drug store advertising tape dispenser for Alka-Seltzer, w/ compartment in back for holding and displaying multiple product boxes. Crisp and like new (C. 8.5/+), w/ only minor wear. Min. bid \$40.



44).Wise Potato Chips Clock. 8-5/8 x 5.5 x 2-5/8" early, heavy figural clock w/ nice detailing advertising Wise Potato Chips, in shape of Co.'s trademark owl (made of a heavy, wood like composition material). Excellent, w/ just the right amount of light wear (note: clock is not running and appears to missing part of its cover on backside). Neat piece, displays great! Min. bid \$50.



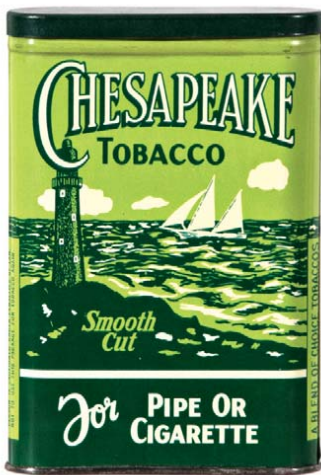
45).Kentucky Cardinal Change Receiver. 1.5" x 6.75" (dia.) unusual, early, heavy glass countertop advertising change receiver for Kentucky Cardinal brand cigars, w/ paper label inside. All original and displays nicely. Glass is excellent, w/ some typical paint loss wear along very outer border area and a little fading and some scattered wear to inside paper label (C. 8). Min. bid \$50.



46).Telegraph Employee Badge. 2.5 x 1.75" very early, finely detailed employee badge from American District Telegraph Co. Excellent, w/ a nice rich surface patina (receptacle clip for hinged pin missing from bottom of back side). Min. bid \$30.



47).Art Nouveau Match Holder. 4.75 x 3-3/8 x 5" early, very high quality heavy figural metal match holder featuring stylish Nouveau model w/ a beautiful rich bronze finished surface patina (signed "L. Allin" on base). Excellent. Min. bid \$40.



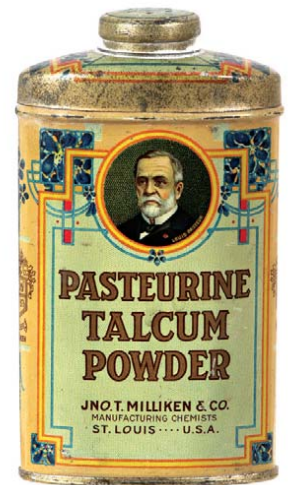
48).Chesapeake Pocket Tin. 4.5 x 3 x 7/8" scarce, early tin litho vertical tobacco pocket tin for "Chesapeake" brand tobacco (same image both sides). Crisp, bright and like new (near mint) w/ beautiful original sheen. Min. bid \$100.



49).Yellowstone Spice. 2.5 x 1.75 x 1.25" scarce, early 2 oz. paper label (over cardboard) spice tin (tin top and bottom) for Yellowstone brand powdered saltpetre (Paxton and Gallagher Co., Omaha), featuring great graphic image (same image both sides). Has strong colors and displays quite nicely, w/ some light staining and minor background wear on back side (front C. 8+/-; back C. 7.5+/8-). Min. bid \$30.



50).Honey Moon Pocket Tin. 4.5 x 3 x 7/8" scarce variation tin litho vertical tobacco pocket tin (couple on moon) for Penn Tobacco Co.'s "Honey Moon" brand. Has strong color and displays nicely (a strong C. 8). Min. bid \$70.



51).Pasteurine Talc Tin. 4.5 x 2.5 x 1-3/8" scarce, early tin litho talcum powder tin for "Pasteurine" brand (Milliken Co., St. Louis) featuring attractive color graphic image of Louis Pasteur. Clean, bright and excellent (a strong C. 8++) w/ only minor wear. Min. bid \$50.



52).Busy Biddy Spice Tin. 3-7/8 x 2" (dia.) unusual, scarce, round variation 1-1/2 oz. tin litho spice tin for Busy Biddy brand cinnamon (Davies Strauss Staufer Co., Pa.) featuring nice image of Co.'s trademark chicken. Clean and very attractive appearance (C. 8+) w/ a little non-offensive background wear on backside (critical grade C. 8/-). Min. bid \$40.



53).Mobil Oil Carrier. 14.5 x 19 x 10" early metal Mobil Oil Co. advertising carrier rack made for holding eight bottles (cans?) of Co.'s "Lubrite" brand motor oil. Very high quality piece as found never used in early station and comes complete w/ all four clip-on tin litho advertising panels for sides. Clean, bright and excellent (note: has a couple non-offensive light scuffs on one of long panels (C. 8.5/+ overall). Min. Bid \$60.

Cigar Lighter



54).Seal Cigar Lighter. 5 x 3 x 2.75" unusual early silver plated figural counter-top cigar lighter in likeness of a perched seal on rock surrounded by waves. Attractive, w/ very nice detailing. Excellent. Min. bid \$40.



55).Railroad Match Holder. 8.5 x 4 x 2" unusual, early figural cast iron alligator shaped match holder w/ embossed advertising for the "Monon Route", w/ embossed names of places traveled to (Florida, Chicago, Indianapolis, Louisville, etc.). Nicely detailed, w/ a rich surface patina. Excellent. Min. bid \$40.



56).Spice Tins. Lot consists of four different colorful and graphic tin litho spice tins. Includes: Iris, Hostess, Stuart's Handy and Juno brands. Heights range from 3.25 to 3.75" and conditions ranges from vg to excellent (they average a strong C. 8+), w/ exception of some darkening soiling and oxidizing on non-graphic lid areas. Min. bid \$50 (the lot).



57).Whitehead & Hoag Co. Box. 3.75 x 10.25 x 7" scarce, small, early wooden shipping box from Whitehead & Hoag Co. (makers of early political items; celluloid pocket mirrors, badges, pinback buttons; and misc. advertising novelties). Has a damage spot on narrow top side edge, otherwise excellent. Min. bid \$30.



58).Whistle Soda Sign. 3 x 12-3/8" small, early embossed tin litho sign for "Whistle" brand soda (dated 1939). Crisp, bright and like new (C. 8.5+) w/ beautiful original sheen and only minor wear. Min. bid \$40.



59).Hubbard Flour Pocket Mirror. 2-1/8" scarce, early celluloid advertising pocket mirror for R.D. Hubbard brand flour, featuring attractive image of early flour sack. Excellent overall, w/ just a trace hint of minor soiling at outer edge. Min. bid \$30.

Devil Card Holder



60).Devil Business Card Holder. 6.25 x 4.5 x 2" unusual, early, finely detailed brass (bronze?) figural devil character business card holder. A heavy, very high quality piece. Excellent. Min. bid \$40.



61).Kansas Telephone Co. Watch Fob. 1-3/8 x 1.25" unusual, ca. 1925 advertising watch fob w/ beautiful inlaid cloisonné porcelain enameling on front and embossed lettering on backside commemorating the 25th anniversary of the Kansas Independent Telephone Association. Excellent. Min. bid \$30.



62).Ship Image Ribbon Tins. Lot consists of four different tin litho typewriter ribbon tins, each featuring attractive ship images (app. 2.5 x 2.5 x 7/8" each). Includes: Battleship, Chesapeake, and two different variations from Eriksen Co.'s Viking Line. Very nice overall, w/ a little minor wear to each (avg. C. 8+/-). Min. bid \$20 (the lot).



63).Disney Tin. 1-7/8 x 6.75" (dia.) early tin litho candy tin featuring great Disney images on lid (w/ various images of running Pluto characters all around sides). Clean, bright and exceptionally nice appearance (C. 8.5), w/ minor wear along edges of lid. Min. bid \$40.



64).Topless Girl on Carpet Ashtray. 3 x 6 x 4.5" early art nouveau style ashtray, featuring nicely detailed cast metal figure of a topless girl seated on oriental rug mounted on red marbled stone base. Excellent, w/ some darkening and minor wear from use. Min. bid \$40.



65).Red Man Tobacco Sign. 3-5/8 x 12" important, small, early, heavy porcelain advertising sign for Red Man chewing tobacco. Crisp, bright and like new (basically near mint) w/ exception of just a faint trace hint of minor flea bite edge wear (so minor, barely merits mention). Min. bid \$60.



66).Talc Samples. Lot consists of a nice group of five miniature tin litho sample size talcum powder tins, each app. 2.25 x 1.25 x 3/4". Includes: Williams, Mirelle, Lilas de France, Hinds, and Gardenia brands, each w/ very attractive graphics. Excellent overall (a strong 8++). Min. bid \$50 (the lot).



67).Taxi Cab Badges. Lot consists of three different early, high quality taxi cab driver uniform/cap badges, (ea. app. 2.5 x 2-3/8"). Includes: Checker, Yellow Cab and Red Cab brands. All are excellent. Min. bid \$40 (the lot).



68).Hopski Tip Tray. 4-5/8 x 6-5/8" early tin litho advertising tip tray from Hopski Distributing Co., San Diego, Calif. featuring great color image of frog pouring drink from bottle. Clean, bright and displays very nicely (as a strong C. 8+) w/ some minor background wear including non-offensive tiny bb size bump to right of glass). Min. bid \$40.



69).Taka-Kola Tip Tray. 4-1/8" (dia.) early tin litho tip tray advertising "Taka-Kola" brand soda, featuring attractive image of Co.'s trademark girl holding bottle. Clean, bright and excellent (a strong C. 8++) w/ only minor wear. Min. bid \$50.



70).Mountain States Telephone Paperweight. 3-1/8 x 3-3/8" scarce, early figural glass advertising paperweight from Mountain States Telephone Co., promoting a security underwriting by brokerage firm Calvin Bullock. Excellent. Min. bid \$40.



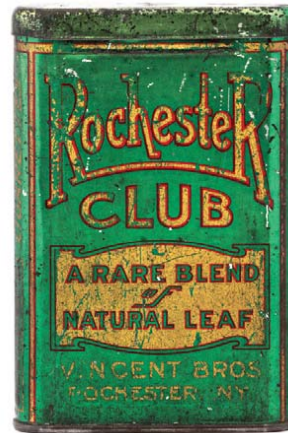
71).Red Raven Tip Tray. 4.25" (dia.) unusual, early tin litho souvenir tip tray from 1904 World's Fair advertising Red Raven medicinal water, featuring great image of Co.'s splits size product bottle w/ the trademark birds. Excellent (a strong C. 8++) w/ minor wear. Min. bid \$40.



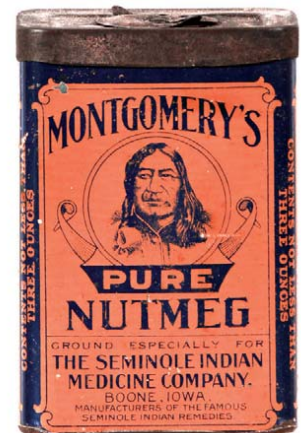
72).Loving Cup Pocket Tin. 4.5 x 3 x 7/8" scarce, tin litho vertical tobacco pocket tin for John More Tobacco Co.'s "Loving Cup" brand. Clean, bright and exceptionally nice (C. 8.5+) w/ only slight wear. Min. bid \$100.



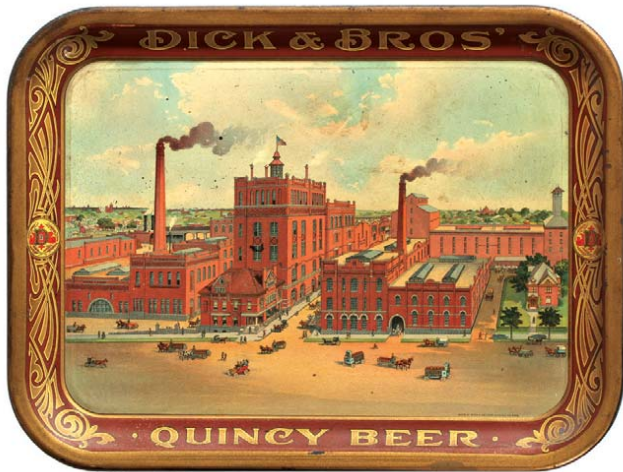
73).Gotzian Shoes Mirror. 2.75 x 1.75" scarce, early celluloid advertising pocket mirror for Gotzian Shoes, featuring Co.'s trademark Indian character. Clean and excellent appearance, w/ some non-detracting minor bump marks on surface. Min. bid \$30.



74).Rochester Club Pocket Tin. 4.5 x 3 x 7/8" scarce, early tin litho vertical tobacco pocket tin for "Rochester Club" brand (Vincent Bros., Rochester, NY). Has a couple tiny pinholes in lid, and some general scattered light scuffing and wear from use, but overall displays quite well (front C. 7+; back C. 7-). Min. bid \$60.



75).Montgomery's Spice Tin. 3.25 x 2.25 x 1.5" scarce, early tin litho spice tin for Montgomery's brand (Seminole Indian Medicine Co., Boone, Iowa) featuring attractive image of Co.'s trademark Indian (same image both sides). Clean, bright and attractive appearance w/ minor wear from use (C. 8+). Min. bid \$40.



76).Beer Tray. 10.5 x 13.75" wonderful, early pre-pro serving tray for Dick & Bros. Quincy Beer (Quincy, Ill.) featuring beautifully detailed factory scene. Image area is clean, bright and very attractive (a strong C. 8/+ appearance) w/ a little non-offensive minor light scattered fly speck type wear (critical grade C. 8/-). Note: the very outer gold border area has a couple fairly minor touch-up spots in upper left corner and in bottom right rim area- just below the "er" in "beer". Min. bid \$100.



77).Acme Beer Sign (Petty Girl). 11.25 x 17-1/8" wonderful beveled tin over cardboard sign from Acme Breweries, San Francisco featuring a great Western theme cheesecake image by famous pinup illustrator George Petty (marked). Excellent overall, w/ only minor wear. Min. bid \$150.



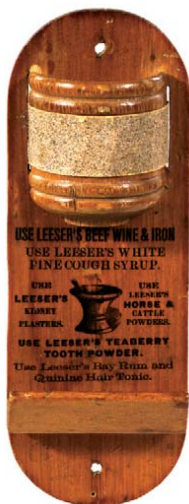
78).Cat's Paw Sign. 3 x 9-3/8" early embossed figural pressed cardboard advertising display sign for "Cat's Paw" brand rubber heels. All original and displays very nicely (as a strong C. 8++) w/ a couple slight bend marks to its hinged pullback rear easel-back type legs. Min. bid \$50.



79).US Tire Die-Cut Girl. 11.5 x 10.5" early, tin litho die-cut advertising sign for US Royal Tires, featuring great image of a diving beauty, w/ tiny holes made for stringing from ceiling. Crisp, bright and like new (near mint). Min. bid \$70.



80).Peppermint Nuggets Gum Box. 5.25 x 6 x 5.5" unusual, early countertop display box for "Peppermint Nuggets" brand chewing gum, complete w/ 5 full sealed gum packs (Common Sense Gum Co., New York). Very nice overall (C. 8+) w/ minor tattering and light wear. Min. bid \$40.



81).Quack Medicines/Veterinary/Dental Match Holder. 7.5 x 2.75 x 1-1/8" early advertising wooden match holder for various Leeson's patent medicine products (includes "White Pine Cough Syrup", "Teaberry Tooth Powder", "Horse & Cattle Powder"; etc.). Excellent and all original (a strong C. 8++). Min. bid \$40.



82).Medicine "Cure" Door Push. 7 x 3.5" very early, porcelain door push advertising Dr. King's "New Discovery" quack medicine product "Cures Consumption, Coughs & Colds". Excellent overall, w/ early chipping wear at top and bottom hanging holes. Min. bid \$40.



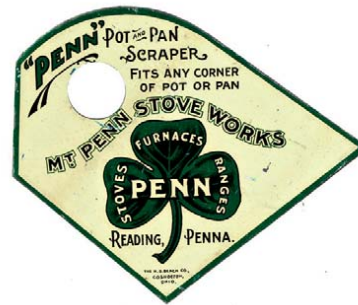
83).Cadette Talc Tin. 7-3/8 x 2.25 x 1.25" early, figural tin litho talcum powder can (Cadette Products Co., Rutherford, NJ) in shape of toy soldier. Full, never used tin is clean, bright and excellent (C. 8.5++). Min. bid \$50.



84).Coke Thermometer. 16-5/8 x 4.5" early embossed tin litho Coca-Cola thermometer in shape of Co.'s famous hobble skirt Christmas bottle (note December 25th, 1923 patent date). Clean, bright and very attractive in appearance (basically a strong C. 8++), w/ only minor wear (has working thermometer). Min. bid \$40.



85).Public Telephone Sign. 5.5 x 19" early, heavy 2-sided porcelain sign from Pacific Telephone & Telegraph Co. (same image both sides). Clean, bright and very nice appearance, w/ nice surface sheen (displays as a strong C. 8+) w/ minor scattered wear (critical grade C. 8/-). Min. bid \$50.



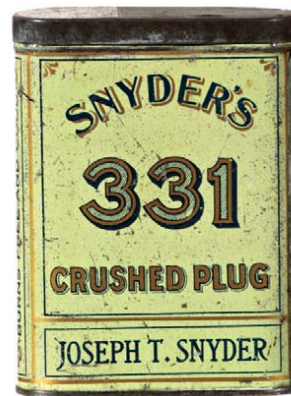
86).Pot Scrapers. Lot consists of two different tin litho advertising pot scrapers, ea. apx. 2.75 x 2-3/8". Includes: Sharples Cream Separators (excellent overall, w/ a few minor scratch marks); and Penn Stoves (appears never used w/ minor storage wear in background area). Min. bid \$40 (the pair).



87).Circus Animals Sand Pail. 5.25 x 5.25" early tin litho children's sand pail (by J. Chein & Co.) featuring attractive colorful images of circus animals all around. Clean, bright and excellent (C. 8.5). Min. bid \$40.



88).Ox-Heart Door Push. 6.5 x 4" early, heavy porcelain advertising door push for Ox Heart brand Cocoa, featuring great looking image of Co.'s logo. Clean, bright and excellent (basically near mint, w/ exception of minor edge roughness). Min. bid \$60.



89).Snyder's 331 Pocket Tin. 4.25 x 3-1/8 x 1" scarce, early tin litho vertical tobacco pocket tin for "Snyder's 331" brand. Front side displays pretty well, although it has some fine scattered speckling and light overall wear, back pretty nice w/ minor wear (front C. 7/+; back C. 8-). Min. bid \$60.



90).Aunt Nellie's Spice Tin. 3.75 x 2.25 x 1.25" unusual, early tin litho 2 oz. spice tin (cinnamon) for Aunt Nellie's brand (Aunt Nellie's Farm Kitchen, Hartford, Wisc.) featuring same graphic image both sides. Clean, bright and excellent (C. 8.5+). Min. bid \$40.



91).Bromo-Seltzer Sign. 37 x 19.5" large, early die-cut cardboard window sign for Bromo-Seltzer. Clean, bright and very impressive looking piece that displays very well (basically as a strong C. 8/+), although a close examination will show a little minor soiling and some non-offensive tattering, light staining and fairly minor wear- mostly in very bottom section (critical grade C. 7.5+/-). Min. bid \$50.



92).Cigar Cutter/Lighter. 17.5 x 8.5 x 5.75" early and extremely rare, large heavy figural metal cigar store cutter and lighter in shape of Indian for Straiton & Storm Co.'s Segars. Excellent w/ very fine detailing and clippings drawer at base. Note: surface finish on piece has been professionally restored w/ a rich Japanese surface finish. An important, very impressive piece! Min. bid \$250.



93).1920 Coke Calendar. 38.25 x 18.5" (31-3/8 x 11-5/8" visible) beautiful ca.1920 Coca-Cola golfing scene advertising calendar (girl w/ bottle variation). Calendar is clean, bright and exceptionally nice (basically near mint appearance), complete w/ a June calendar tear sheet at bottom (minor age toning to bottom calendar tear sheet). Very nicely framed and matted. Min. bid \$250.

Johnston's ICE CREAM

94). Johnston's Ice Cream Sign. 6 x 48" large, early, heavy porcelain strip sign for Johnston's brand ice cream. Clean, bright and like new (near mint). Min. bid \$60.



95). Peacock Condoms Clipboard Clips. Lot consists of two different variations of tin litho clipboard style advertising clips for Dean Rubber Co.'s Peacock brand condoms (each app. 2.25 x 2 x 1"). Both are excellent. Min. bid \$20 (the pair).



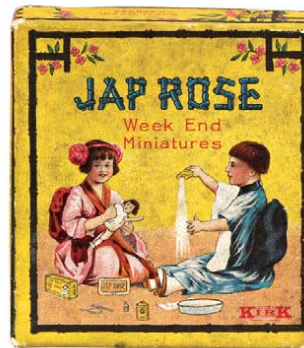
96). Shotgun Shell Boxes. Lot consists of two early cardboard 2-ps. shotgun shell boxes. Includes: Peters, 4.25 x 4.25 x 2.5" (full box, w/ twenty five unused 12 gauge shells), attractive appearance w/ some fading and light general wear (C. 7.5); and Western Cartridge Co. 3.25 x 3.25 x 2.5" attractive appearance w/ minor soiling and some light fade (C. 7.5/+). Min. bid \$30 (the pair).



97). Sun Beam Tobacco Tin. 2.75 x 4-5/8 x 1-5/8" scarce, early tin litho 2 oz. horizontal tin for J. G. Dill Co. "Sun Beam" mixture tobacco, w/ attractive graphics all around (Hasker & Marcuse Litho.). Clean, bright and exceptionally nice (C. 8.5+) Min. bid \$50.

Waterman's Ideal Fountain Pen

98). Waterman's Pen Sign. 6-3/8 x 14" very early porcelain advertising sign for Waterman's Fountain Pens, w/ rich, deep blue lettering. Crisp and like new. Min. bid \$60.



99). Jap Rose Sample Set. 3.75 x 3.5 x 7/8" early Jap Rose brand 2-ps. boxed advertising travel kit. Contains 4 boxed sample products boxes inside (miniature soap bar, cold cream container, toilet water bottle and tin litho miniature talc tin.). Complete and excellent (note: has some general light soiling to outer box lid). Min. bid \$40 (the set).



100). Bear Cigar Lighter. 3-5/8 x 4 x 4" unusual, early figural bear shaped countertop cigar lighter on green marbled stone base. Bear has hollow tube (cigar) in mouth for holding wick (neck hinged w/ hollow body for holding fluid). High quality piece, w/ nice detailing to (bronze?) bear. Excellent. Min. bid \$50.



101). Independent Telephone Sign. 18 x 17.25" unusual, very early, 2-sided heavy porcelain flange telephone sign, w/ great image of trademark shield (same image both sides). Clean, bright and very attractive appearance (displays as a C. 8+/-), w/ some chipping and wear at outer edges. Min. bid \$70.



102). Elk Cigar/Match Holder. 10 x 8.5 x 3" large, early, heavy figural painted metal elk shaped cigar/match holder. A powerful and very impressive looking piece, w/ nice detailing and an excellent, all original paint surface (C. 8.5/+). Min. bid \$50.



103).Chewing Gum Change Receiver. 5.75 x 8 x 1.75" very unusual, early pressed glass countertop advertising change receiver for Beech-Nut brand chewing gum. Excellent, w/ minor crazing to image area. Min. bid \$40.



104).Paper Label Spice Tins. Lot consists of five different early paper label spice tins (each app. 3-3/8 x 2.25 x 1.25" w/ metal top and bottom and cardboard bodies), w/ colorful and nice raphic images. Includes: Buster Brown, Baby Stuart, Jack Sprat, Fairway and Betsy Ross. All are bright, attractive and display nicely, w/ minor toning and wear on a couple (avg. C. 8+/-). Min. bid \$40 (the lot).



105).Granulated 54 Sample. 2 x 2-1/8 x 1" early, miniature tin litho sample size pocket tin for Weisert Co.'s Granulated 54 brand. Clean and attractive in appearance, w/ some light general scattered wear (C. 7.5+). Min. bid \$40.



106).Advertising Trivet. 5-3/8 x 3-7/8 x 1" unusual, early, fancy embossed cast iron advertising trivet w/ chromed finish for Cinderella brand stoves and ranges. Crisp, near mint condition, as found never used still in its original box (some staining and light wear to box lid). Min. bid \$30.



107).Southwestern Bell Phone Co. Paperweight. 3-1/8 x 3-3/8" early, figural glass advertising paperweight from the Southwestern Bell Telephone Co., w/ advertising on both sides. Excellent. Min. bid \$40.



108).Buttermilk Sign. 4 x 9" unusual, small, early,heavy porcelain "Fresh Buttermilk" sign. Clean, bright and excellent, w/ nice original sheen. Min. bid \$40.



109).Typewriter Ribbon Tins. Lot consists of two different variations of typewriter ribbon tins from A. P. Little Co., each w/ attractive image of Co.'s trademark black child (apx. 2.5 x 2.5 x 7/8" ea.). Both are very attractive (red tin excellent (C. 8.5); gray very nice, w/ some light soiling and edge wear (C. 8/-). Min. bid \$30 (the pair).



110).Yellow Cab Lot. Lot consists of nice group of six different early Yellow Cab taxi related items. Lot includes two different high quality metal cap badges 2-5/8 x 2.5" and 2.25 x 4" (larger earlier one has beautiful inlaid cloisonné enameled taxi). Also includes 1" dia. metal uniform button; early book of advertising matches; large 2.25" dia. celluloid uniform or cap badge; and a tin advertising whistle 1 x 2-5/8". Items are excellent overall. Min. bid \$60 (the lot).



111).Korbel Champagne Sign. 13 x 19" early, beveled tin litho (over cardboard) advertising sign for Korbel's brand California Champagne, featuring stunning, beautifully detailed color graphics (1906 Pure Food and Drugs Act notation on bottle label). Image area is crisp, bright and like new (a strong C. 8.5/+), w/ some surface wear/color loss to outer top edge of signs brown border area. Min. bid \$60.



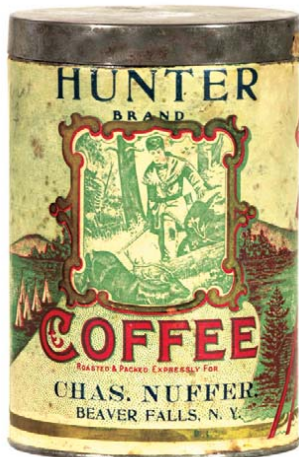
112).Cape Cod Tobacco. 6 x 5" scarce, early tin litho can for Cape Cod brand tobacco (same image both sides). Clean and attractive (a strong C. 8++), w/ a little minor soiling (as found, should improve w/ cleaning). Min. bid \$40.



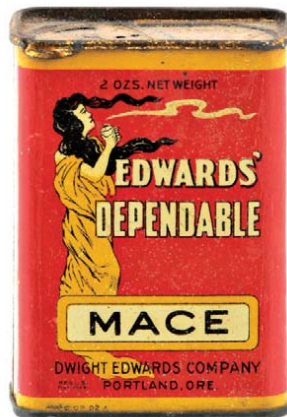
113).Clark's Gum Illustration Art. 17 x 22" early hand-painted original artwork done by illustrator Wm Smith (signed) for Clark's Teaberry brand chewing gum. Clean, bright, very high quality piece, executed on large cardboard art board. Excellent overall (a strong C. 8++), w/ exception of some edge wear at outer corners and a couple light crack marks in plain background areas. Would look great framed. Min. bid \$50.



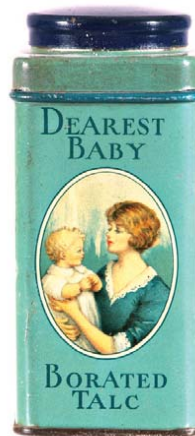
114). "Nigger Hair" Tobacco Pail. 6.75 x 5-3/8" early, scarce caramel color variation, tin litho product pail for Leidersdorf Co.'s "NiggerHair" brand tobacco. Clean, bright and very nice appearance, w/ a couple minor dent and scratch marks (C. 8++). Min. bid \$50.



115).Hunter Coffee. 6 x 4" (dia.) early paper label (over tin) 1 lb. coffee can for Hunter brand (Chas. Nuffer Co., Beaver Falls, NY) featuring nice image of earlier hunter. Clean and very attractive (C. 8+), w/ a little non-offensive minor background speckling and light staining. Displays very well! Min. bid \$30.



116).Edwards Spice Tin. 3.25 x 2-3/8 x 1.25" unusual, early tin litho 2 oz. spice tin (mace) from Dwight Edwards Co. (Portland, Or.) w/ nice image of trademark woman on both sides. Attractive appearance and displays nicely (as a C. 8+) although close examination will reveal some faint scattered fine hazy speckling on surface (critical grade C. 7.5/+). Min. bid \$30. 1333



117).Dearest Baby Talc. 4 x 1.75 x 1.75" unusual, early tin litho talcum powder can for Dearest Baby brand (Bo-Kay Perfume Co., New York, Jacksonville and Toronto, Canada). Clean and very attractive appearance, w/ some non-offensive light denting and a little light wear on non-graphic sides (C. 8-). Min. bid \$30.



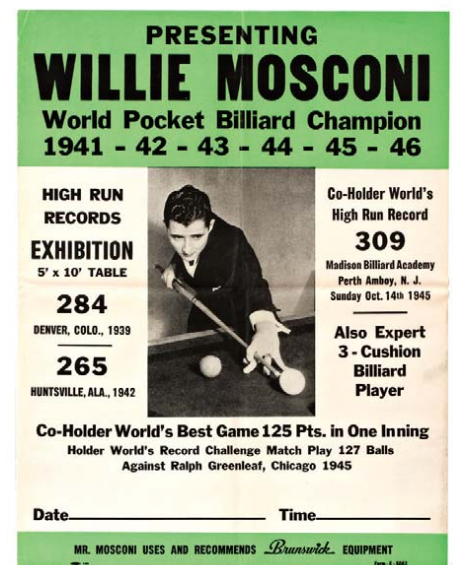
118).Sanico Coffee. 6-3/8 x 4-1/8" scarce, early tin litho 1 lb. coffee can for Sanico brand (Sanitary Grocery and Piggly Wiggly Stores, Washington, D.C.). w/ same image on both sides. Clean, bright and excellent (basically a C. 8.5/+) w/ exception of small bb sized background wear spot on back side. Min. bid \$50.



119).Orange Crush Dispenser. 14.5 x 8" (dia.) early, figural, heavy ceramic orange shaped pottery syrup dispenser advertising Ward's Orange Crush brand. Clean and excellent, w/ beautiful detailing and nice original paint surface (near mint), w/ a high quality reproduction pump added. Min. bid \$150.



120).Foot Rest Hosiery Sign. 29 x 14" early, cardboard die-cut window sign for Foot Rest brand hosiery, featuring great images of young children. Clean, bright and very attractive appearance (basically a strong C. 8+) w/ exception of some non-offensive light scattered staining in the bottom yellow lettered area. Min. bid \$60.



121).Mosconi Billiard Poster. 24 x 18-3/8" Ca. 1940's Brunswick Equip. Co. promotional poster for a Willie Mosconi billiard shooting event. Very impressive looking piece is excellent and all original, (a strong C. 8/+) w/ minor toning at right edge (has light original center fold lines from mfg. process). Min. bid \$40.



122).Lucke's Telescopes Cigar Box. 8.25 x 13.75 x 5-3/8" (as pictured) large wooden store display box for "Lucke's Telescopes" brand cigars, featuring beautiful inside color graphic label (Series 1898 tax stamp). Box is excellent overall, w/ some slight warping to lid (label a strong C. 8++). Min. bid \$40.



123).Red Riding Hood Candy Pail. 2-7/8 x 2-7/8" small, early tin litho candy pail from Lovell & Covell Co., featuring colorful and highly graphic Red Riding Hood nursery rhyme images all around. Clean, bright and excellent (C. 8.5/+). Min. bid \$40.

Yellow Cab Taxi



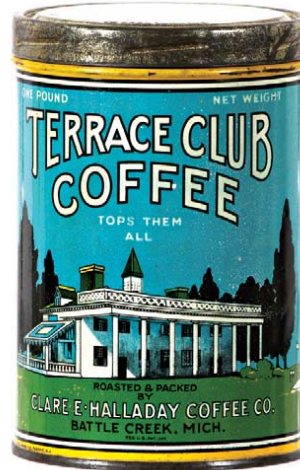
124).Yellow Cab Taxi Cap. 10 x 9.5 x 5.5" unusual, very early uniform cap from Yellow Cab Taxi Co. w/ nicely aged oilcloth material (w/ rich leather looking appearance), complete w/ its original, very high quality beautiful metal badge w/ inlaid cloisonné porcelain enameling. Cap has just the right amount of wear, badge is excellent (near mint). Min. bid \$40.



125).Dog Cigar Lighter. 4.25 x 2-5/8 x 1.75" unusual, small, early figural silver plated countertop cigar lighter in shape of dog wearing nightcap. Nice detailing, excellent overall. Min. bid \$40.



126).Sunbonnet Spice Tin. 3.5 x 2.25 x 1.25" scarce, early tin litho spice tin (Cream Tartar) for Sunbonnet brand (Indianapolis Grocers, Indianapolis, Ind.) w/ bird and flowers on back. Colors are strong and piece displays decently, although there is a fair amount of speckling and darkening in outer margin and shiny gold border areas w/ a couple of fairly minor dent marks (front C. 7.5; back C. 8/+). Min. bid \$30.



127).Terrace Club Coffee. 6 x 4" scarce, early, tin litho 1 lb. coffee can for "Terrace Club" brand coffee (Clare Halladay Co., Battle Creek, Mich.) w/ image on both sides. Clean, bright and excellent (a very strong C. 8++) w/ only minor background wear. Min. bid \$60.



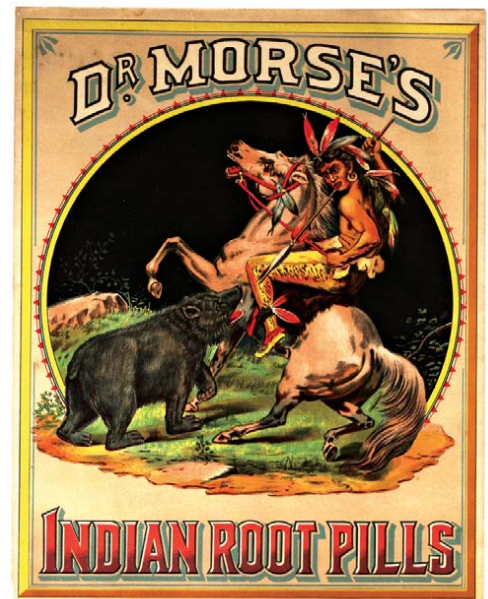
128).Dairy Door Push. 7.75 x 3.25" early, heavy enameled metal (porcelain?) bottle shaped door push advertising Clover brand dairy products. Clean, bright and excellent (a strong C. 8++). Min. bid \$30.



129).Pepsi Sign. 31 x 23-5/8" outstanding, ca. 1930's self-framed cardboard advertising sign featuring great image of Pepsi girl holding bottle. Clean, bright and exceptionally nice (a very strong C. 8.5++), w/ a little minor wear in outer frame area. Min. bid \$70.



130).Mobil Tires Sign. 48 x 24" outstanding, large, early, heavy, self-framed embossed tin litho sign (w/ original wood framed support brackets on back side) for Mobil Tires, featuring great image of Co.'s trademark Pegasus horse. Clean, bright and like new appearance (appears never used and displays as near mint) w/ exception of a few neatly made nail holes near outer border and a few non-offensive light scattered chip spots in outer dark frame area. Min. bid \$100.



131).Dr. Morse's Medicine Sign. 13.75 x 10.75" important, early paper litho quack medicine sign for Dr. Morse's Indian Root Pills, featuring beautiful image of Co.'s trademark Indian. Clean and very attractive in appearance (a very strong C. 8++) w/ just a trace hint of minor soiling and toning, and a little minor edge loss at bottom left corner very outer margin area. Min. bid \$150.



132).Hiawatha Tobacco Tins. 3 x 5 x 2" lot consists of two different 4 oz. hinged lid horizontal boxes for Hiawatha brand tobacco (Daniel Scotten Co., Detroit), each w/ attractive detailed graphics of Co.'s trademark Indian (Ginna & Co. Litho). Both are clean, bright and very nice in appearance, w/ only minor wear (C. 8/+). Min. bid \$40 (the pair).



133).Chesapeake & Potomac Phone Sign. 5.5 x 19" heavy, early porcelain Public Telephone sign from Chesapeake & Potomac Tel. Co. Clean, bright and excellent overall, w/ nice surface sheen. Basically near mint, w/ exception of small edge damage spot at bottom right corner. Min. bid \$50.



134).Barber Shop Sign. 13.75 x 47.5 x 1-3/8" outstanding early wooden 2-sided painted sign from an early barber shop (similar on both sides). All original, w/ a beautiful, rich, nicely aged patina to its paint surface, giving it a nice primitive country folk art look. Sign area is very nice and displays great (C. front 8++; back 8/-), w/ some chipping and wood loss to outer narrow sides of frame area. Min. bid \$100.



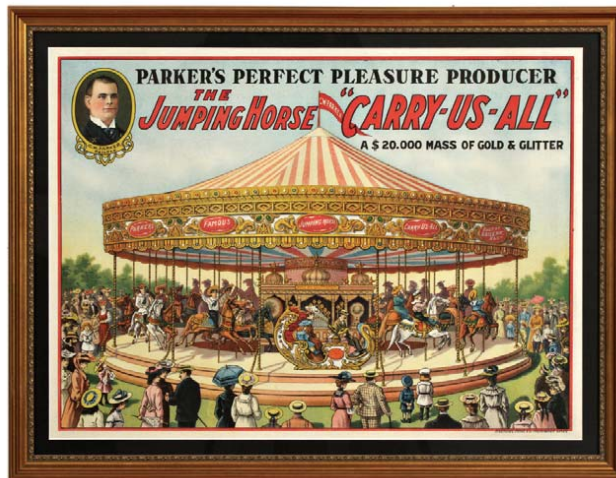
135).Telephone Signs. lot consists of two small, early, round concave "hubcap" style porcelain telephone signs (ea. 8" dia.). Includes New Jersey Bell and New England Telephone & Telegraph Co. Both are clean and very nice, w/ only minor wear to each. Min. bid \$50 (the pair).



136).Art Nouveau Match Holder. 4 x 6 x 6.5" unusual, fancy, early heavy bronze figural match holder featuring attractive and nicely detailed stylish woman holding ribbed glass match holder. Appears to have been painted at one time, w/ some scattered traces of paint in dress and base area. Attractive, quality piece, displays very well. Excellent. Min. bid \$40.



137).Busy Biddy Spice Tin. 3 x 2.5 x 1.25" early, 1-1/2 oz. tin litho spice tin (paprika) for Busy Biddy brand (Davies, Strauss, Stauffer Co., Pa.) featuring Co.'s trademark hen. Clean and attractive appearance, w/ minor scattered wear (C. 8/-). Min. bid \$30.



138).Parker's Carousel Sign. 24-3/8 x 31.25" (20 x 27.25" visible) outstanding, early paper lithographed sign for C. W. Parker Co.'s "Jumping Horse Carry-Us-All" amusement park carousel ride, featuring beautiful rich and vibrant colors and an incredible overall look. Displays as near mint, although a very close examination will reveal a little bit of barely noticeable, well-done restoration. Nicely framed and matted. Min. bid \$150.



139).Macy's Coffee. 6.25 x 4.25" scarce, early 1 lb. tin litho coffee can from R. H. Macy Co., featuring beautifully graphic detailed image of companies New York City flagship store. Clean, bright and very attractive, w/ a little non-offensive scattered background wear (C. 8/+). Min. bid \$50.



140).Coal Sign. 12 x 12" early porcelain advertising sign for "Old Company's Lehigh" brand coal. Clean, bright and excellent (C. 8.5/+). Min. bid \$50.



141).Tobacco Tip Tray. 5-1/8" (dia.) scarce, early tin litho advertising tip tray for "Day & Night" brand tobacco featuring beautiful image of girl holding up tobacco pack. Image area is clean and very nice (basically a strong C. 8/+), although there is some scattered wear in outer areas of rim (critical overall grade C. 7.5+). Min. bid \$50.



142).Southern California Phone Sign. 11 x 11-7/8" early 2-sided heavy porcelain flange telephone booth sign from Southern California Telephone Co. (same image both sides). Clean and very attractive (basically a strong C. 8++) w/ some minor chipping and surface paint on angled flange/mounting section. Min. bid \$50.



143).Grocer Shaving Mug. 3-5/8 x 3-5/8" early, fine china occupational shaving mug featuring beautifully detailed hand painted image of horse drawn grocers delivery wagon. Image side is excellent w/ a tight early crack line on back side. Min. bid \$50.



144).Sand Pail. 3.5 x 3.5" unusual, early, small tin litho children's sand pail (by US Metal Toy Co.) featuring great images of flat-faced band characters playing instruments. Clean, bright and excellent overall (C. 8/+) w/ only minor wear. Min. bid \$30.



145).Pennsy Select Brewery Tip Tray. 4-1/8" (dia.) unusual, early tin litho advertising tip tray for "Pennsy Select Beer" featuring beautiful color graphics. Clean, bright and excellent in appearance (a strong C. 8++). Min. bid \$40.



146).Spices Sign. 32.5x 24.5" (27.5 x 19.5" visible) large, early tin litho advertising sign for Stickney & Poor's brand spices, featuring beautifully detailed lithography. Clean, bright and very attractive (displays as a very strong C. 8++), complete w/ its original wooden frame (note: close examination will reveal a non-offensive touched-up scratch mark in bottom right background area). Min. bid \$100.



147).Welcome Soap Sign. 6-7/8 x 30-7/8" very early 2-sided wooden country store sign for Welcome brand soap (marked: "Teas" on back side). Has very nice patina to its early and all original sand-paint finish. Excellent, w/ a great primitive/country folk art look (a strong C. 8). Complete w/ metal mounting bracket. Min. bid \$70.



148).Fairy Soap Die-Cut. 23 x 18.5" important, large, early die-cut easel-back stand-up cardboard window display sign for Fairy brand soap. Impressive piece is clean and excellent in appearance (a strong C. 8++) w/ some minor edge wear at base. Min. bid \$70.



149).Square Deal Bread Tip Tray. 4-1/8" (dia.) unusual, colorful and highly graphic early tin litho advertising tip tray for "Square Deal" brand bread (Brenneman Baking Co., Columbus, Oh.). Clean, bright and excellent in appearance (C. 8.5/+) w/ only minor wear. Min. bid \$40.



150).New England Telephone Sign. 11 x 11" early porcelain sign from New England Telephone & Telegraph Co. Clean, very nice appearance (displays as a strong C. 8++), although close examination will reveal a little very fine light scattered surface scratching (pretty minor- nothing that's offensive or detracting). Min. bid \$40.



151).National Brewing Tip Tray. 4.5" (dia.) early tin litho advertising tip tray from National Brewing Co., San Francisco, w/ great Western cowboy image. Crisp and bright, w/ nice original sheen (basically a near mint appearance when viewed straight on, although there is some general surface crazing evident when tipped at angle (critical grade a strong C. 8++). Min. bid \$70.

Cigar Lighter



152).Dragon Cigar Lighter. 2-5/8 x 3.5" unusual, fancy figural silver plated cigar cutter, w/ nicely detailed figural dragon shaped handle on side, w/ a fancy floral design on its oil pot base (marked Derby Silver Co.). Excellent. Min. bid \$40.



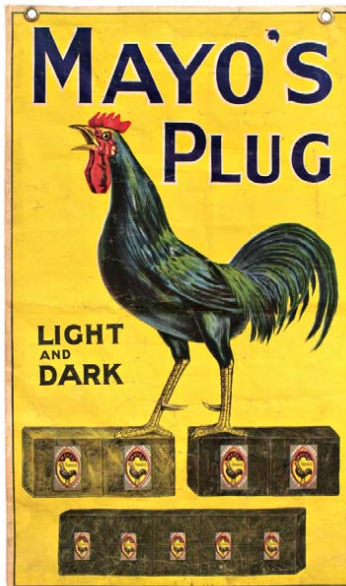
153).Petroleum Pocket Mirror. 2.25" dia. unusual, early celluloid advertising pocket mirror for "White Star Gasolene" and "White Seal Motor Oil" (Cleveland, Oh.). Excellent. Min. bid \$40.



154).De Soto Cigar Can. 5-5/8 x 5.5" early, tin litho, 50 ct cigar can for De Soto brand, featuring attractive color graphic image of Spanish explorer (same image both sides). Clean, bright and very attractive w/ a little scattered background scuffing to back side portrait area (C. 8+/-). Min. bid \$40.



155).Miller Beer Sign. 27.75 x 20.25" (27 x 19.5" visible) scarce, early cardboard (paper?) litho sign from the Fred Miller Brewing Co. Colors are very bright and piece displays quite nicely, although there is some general light staining scattered about (heavier and darker in her bottom blouse area); as well as a 3.25" tear and some scattered light touch-up spots in dark background areas. Dry mounted w/ some trimming at edges (note: some light touch-up restoration could improve it to a strong C. 8.5/+ appearance). Min. bid \$90.



156).Mayo's Tobacco Banner. 29 x 17.5" early cloth advertising banner for Mayo's brand tobacco, featuring nice image of Co.'s trademark Rooster. Attractive and displays nicely, w/ a little non-offensive light wear and minor toning (C. 8+/-). Min. bid \$50.



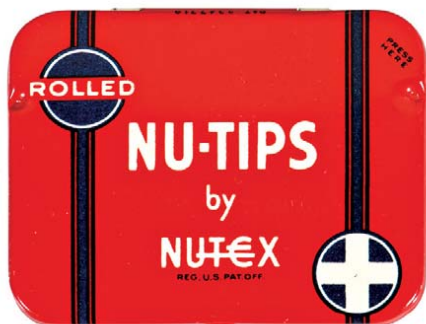
157).Heinz Sign. 22 x 19.5" (16 x 12.5" visible) wonderful, very early paper litho (cardboard?) advertising proof sign w/ stunning multi-color graphics for Heinz brand olive oil and malt vinegar products. Clean, bright and like new (near mint), beautifully framed and matted. Min. bid \$60.



158).Cocoa Sample Lot. Lot consists of three different miniature tin litho sample tins (hgt.'s range from 1.5 to 1-7/8"). Includes: Rawleigh's baking powder, and Cowan's and Rawleigh brands of cocoa. Excellent (C. 8.5+). Min. bid \$40 (the lot).



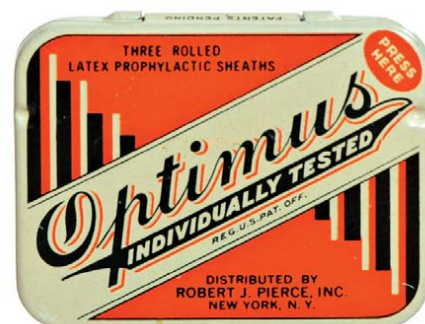
159).Telegrams Sign. 8 x 14" early, heavy porcelain advertising sign from the Postal Telegraph Co. Clean and very attractive appearance (a strong C. 8+/) w/ minor surface wear and a little light edge chipping wear. Min. bid \$50.



160).Nutex Condom Tin. 1.75 x 2-1/8" scarce variation early tin litho condom tin for Nutex Co.'s "Rolled Nu-Tips" brand condoms. Clean, bright and excellent (a strong C. 8.5+/). Min. bid \$40.



161).Nutex Condom Tin. 1.75 x 2-1/8" scarce variation, early tin litho condom tin for Nutex radium brand. Clean, bright and excellent (a strong C. 8+/) w/ minor storage wear. Min. bid \$40.



162).Optimus Condom Tin. 1.75 x 2-1/8 x 1/4" early tin litho condom tin for Robert Pierce Co.'s "Optimus" brand. Clean and excellent (C. 8+/). Min. bid \$40.



163).Hires Sign. 9-1/8 x 17.75" outstanding, early embossed tin litho sign for Hires Rootbeer, featuring great image of Co.'s trademark Soda Jerk "Josh Slinger" and detailed early bottle (dated 1914). Crisp, bright and like new, appears never used (a very strong C. 8.5+) w/ exception of some minor storage highlight wear to large red "Hires" lettering. Min. bid \$80.



164).Bed Springs Sign. 11.75 x 23.75" early, embossed tin litho sign for Hercules brand bedsprings, featuring attractive detailed graphics (American Art Works). Sign is clean, attractive and was probably never used (displays as a strong C. 8+/) w/ a little light scattered storage haziness and wear in non-graphic dark background area (critical grade C. 8/-). Displays very well. Min. bid \$50.



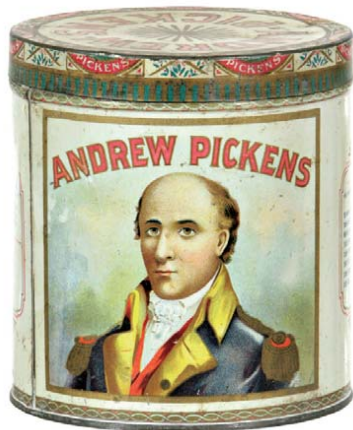
165).Boot Match Holder. 2.75 (h) x 3-1/8 x 1-5/8" early figural metal advertising match holder for Miller's electro metal plating works, w/ striking surface and embossed advertising along base. Has very nice overall appearance, w/ some general light wear from use (C. 8/-). Min. bid \$40.



166).Monroe Beer Tray. 1.25 x 12" (dia.) early tin litho serving tray from Monroe Brewing Co., Rochester, NY, featuring beautiful multi-color graphics. Crisp, bright and exceptionally nice (image area a strong C. 8.5+) w/ a little minor oxidizing and wear at very outer edges of rim. Min. bid \$50.



167).Hires Mug. 5-5/8 x 3.75" (dia.) unusual variation, early, heavy stoneware soda fountain mug advertising Hires brand root beer, w/ attractive early red logo (stamped "Germany" on base). Excellent. Min. bid \$40.



168). Andrew Pickens Cigar Can. 5.5 x 5" (dia.) early tin litho 50 ct. cigar can for Andrew Pickens brand (Liberty Can Co.) w/ same beautiful multi-color graphic images on both sides. Has a little minor soiling and light scattered wear w/ some heavier wear on lid (can C. 8; lid C. 7+). Min. bid \$40.



169). Chums Whiskey Tip Tray. 4-1/8" (dia.) early tin litho advertising tip tray for Chum's Whiskey (Scranton Distributing Co.) featuring stunning multi-color graphics. Clean, bright and exceptionally nice (C. 8.5/+). Min. bid \$40.



170). Clark's Peanut Butter Pail. 3-3/8 x 3.75" early tin litho 1 lb. peanut butter pail for Clarks brand (Montreal, Canada) featuring wonderful Canadian wilderness images all around. Clean, bright and exceptionally nice (a strong C. 8.5/+) w/ a little light wear on lid (lid C. 8). Min. bid \$60.



171). Builders Oats Box. 9-5/8 x 5.5" (dia.) unusual, early 3 lb. size cardboard "Builders" brand oats box (Better Builders Co., Minneapolis) featuring large image of trademark kid and colorful deco buildings; w/ steaming oats bowl on back. Clean, bright and excellent overall, w/ some scattered soiling marks in background on backside (C. 8+/-). Min. bid \$40.



172). High-Grade Pocket Tin. 4 x 3 x 1.25" early tin litho vertical pocket tin for Cameron & Cameron Co.'s "High Grade" tobacco. Clean, bright and very attractive appearance (basically a strong 8+), w/ a little non-offensive light scattered wear (Hsley Litho). Min. bid \$50.



173). Boston Java Coffee. 7.75 x 4-7/8" scarce, early tin litho 2 lb. size small top coffee can from Swain, Earle Co., Boston, Mass) featuring very attractive and highly detailed graphic image of Boston harbor scene. Clean, bright and very attractive (C. 8/+). Min. bid \$60.

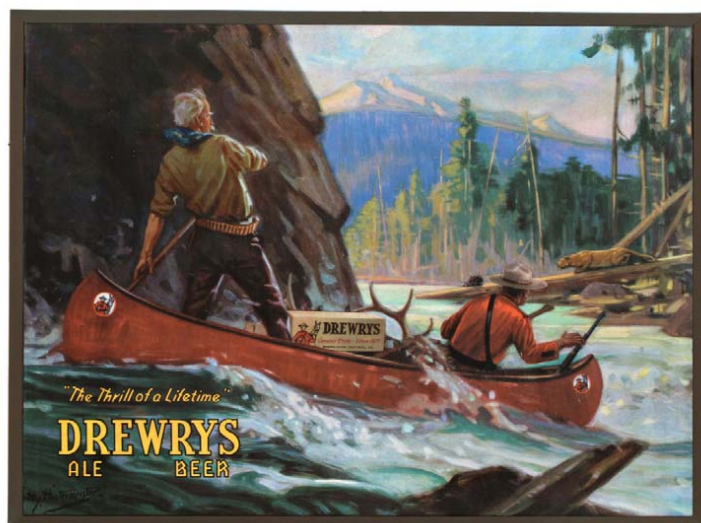


174). Police Talc. 4.75 x 2.5 x 1-3/8" early tin litho product tin for Police brand foot powder (Purity Laboratories, Brooklyn, NY) featuring great image of Co.'s trademark cop. Clean and very attractive appearance w/ only minor background wear (a strong C. 8/+). Min. bid \$60.

Johnson & Johnson Company



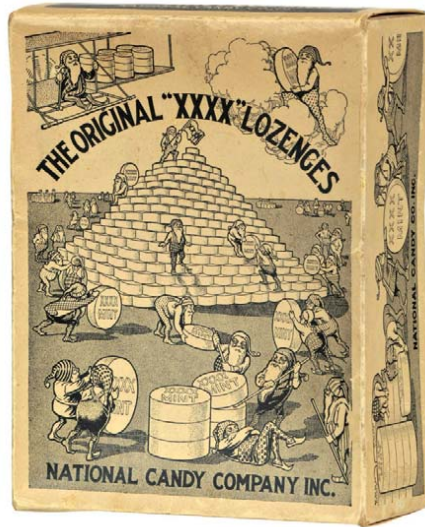
175). Johnson & Johnson Die-Cut. 10 x 14" outstanding early string hung cardboard die-cut sign for J&J Co.'s baby powder, w/ very attractive early graphics. Clean, bright and excellent (near mint, w/ exception of minor bend mark in birds foot area). Min. bid \$60.



176). Beer Sign. 17.25 x 23" early, beveled tin over sign for Drewrys Brewing Co. (South Bend, Indiana) featuring great Western sporting image of hunters in canoe w/ cougar in distance by illustrator/artist Hy Hintermeister. Crisp, bright and like new (near mint) w/ minor wear in bottom frame area. Min. bid \$90.



177).Black Cross Coffee. 5.75 x 4.25" unusual, early 1 lb. coffee can w/ mug type handle on back side for Black Cross brand (Widlar & Co., Cleveland, Oh.). Clean, bright and very attractive (a strong C. 8/+) w/ a few non-offensive minor scattered dark spots in gold flash finish areas. Min. bid \$60.



178).National Candy Co. Box. 9-5/8 x 7.25 x 3-3/8" early 2-ps. cardboard 5 lb. candy box from National Candy Co., featuring great images of elf like characters building w/ lozenges on lid and two side egdes. Clean and very attractive appearance (C. 8/+), w/ small tear/ tattering at upper left side edge of side apron. Min. bid \$40.



179).Sand Pail. 7-7/8 x 8" large, early tin litho sand pail (by J. Chein & Co.) w/ wonderful images of animals at sea shore boardwalk all around. Clean, bright and very attractive (a strong C. 8/+) w/ a little light scattered background scuffing (nothing offensive or detracting). Min. bid \$40.



180).Figural Nut Crackers. Lot consists of two early figural mechanical nutcrackers, both in nice working condition. Includes: 1). Squirrel (3.5 x 3.5 x 1.5") brass and bronze (excellent); and 2).fancy chrome/nickel plated decorative cast iron example (4-1/8 x 3.5 x 2.5") w/ walnuts on handle and ornate floral decorations covering rest of piece (embossed "S. Silverberg Mfg. Co., Wash. D.C." on base). Very nice, w/ some wear to base. Min. bid \$40 (the pair).



181).Orange Crush Sign. 20.5 x 19.25" (12.5 x 11" actual sign) wonderful, early cardboard die-cut sign advertising Orange Crush brand soda. Colors are bright and piece displays very well (as a strong C. 8++), although close examination will reveal a little non-offensive edge wear and a couple non-offensive faint background crease marks. Beautifully framed and matted. Min. bid \$50.



182).Mule-Hide Roofs Sign. 21 x 21.5" early, heavy,2-sided tin litho flange sign advertising Mule-Hide brand roofing products, featuring great image of Co.'s trademark mule (same image both sides). A powerful, very impressive looking piece, that is clean, bright and excellent overall (a very strong C. 8/+) w/ minor soiling on backside (as found should improve w/ cleaning). Min. bid \$80.



183).Dr. Drake's Die-Cut. 17.75 x 16.25" large, early cardboard die-cut easel back sign for Dr. Drake's Cough and Croup medicine, w/ nice early graphics. Sign is clean, bright and very attractive in appearance (displays as a strong C. 8/+, although close examination will reveal some non-offensive light scattered crease marks and a tear mark in man's pants area. Min. bid \$60.



184).Telephone Co. Tape Measure. 1/2 x 1.75 (dia.) unusual early celluloid tape measure from the P & A Telephone Co., w/ early shield logo on front, and girl talking on candlestick phone image on back. Excellent, w/ just a trace hint of minor toning. Min. bid \$30.



185).Coffee Pocket Mirrors. Lot consists of three different early celluloid pocket mirrors advertising various coffee brands. Includes: Bell & Co. 2-1/8" (dia.); Royal Blend 1.75 x 2.75"; and White House (2-1/8" dia.). All are excellent. Min. bid \$40 (the lot).



186).Beverwyck Brewing Tip Tray. 4.5" (dia.) unusual, early tin litho pre-pro advertising tip tray for Beverwyck Brewing Co. (Albany, NY) featuring beautifully detailed graphic image of Co.'s factory. Image area is clean, bright and very attractive, w/ a little light scattered chipping and wear to rim area (C. 8+/-). Min. bid \$40.



187).Sweet Heart Door Push. 5-1/8 x 5" early heart shaped porcelain advertising door push for Sweet Heart brand products. Clean, bright and excellent overall, w/ only minor wear (including non-offensive small chip spot at top edge). Min. bid \$40.



188).Hunting Mug. 3-5/8 x 3.75" early, fine china decorative shaving mug w/ a nicely detailed hand painted image of hunter w/ his bird dogs in woods. Excellent, w/ French marking on base. Min. bid \$60.



189).Indian Cigar Lighter. 17.5 x 8" (dia.) fine, early, heavy figural cast metal gas-lit cigar lighter, w/ fancy cast iron base featuring great image of an Indian w/ leg on stump. An excellent, very high quality piece that displays nicely (note: Indian section has had Japanned surface finish professionally re-done). Min. bid \$150.



190).Pain Killer Sign. 21.5 x 13-7/8" very early paper litho sign (heavy shiny paper w/ a canvas like backing) for Renne's Pain Killing Magic Oil. Has great image of child in pain, looking through drug store window at Co.'s products w/ subtle advertising throughout image. Quite nice overall (basically a strong 8+ appearance) w/ some light wavy lines and light horizontal crease marks from being rolled, as well as some edge tattering and light wear (critical grade 7.5+). Min. bid \$70.



191).1938 Coca-Cola Calendar. 31x 18" (24-3/8 x 11-7/8" actual piece) early paper litho advertising calendar for Coca-Cola, featuring Co.'s 1938 calendar girl. Clean, bright and exceptionally nice appearance (basically a strong C. 8.5+/-) w/ a few tiny edge tears at outer border area and a couple minor and non-detracting faint hints of horizontal wavy lines (from being rolled). Nicely framed and matted, complete w/ full calendar pad. Min. bid \$100.



192).Diamond Taxi Badge. 2 x 3" unusual, very early, taxi cab drivers uniform/cap badge from the Diamond Taxi Co., w/ beautiful, finely detailed cloisonné inlaid enameled porcelain. Very high quality piece, excellent. Min. bid \$40.

Sample



193).Tobacco Sample. 1.25 x 2-1/8 x 1/2" very early, tin litho hinged lid sample tin for Weyman Co.'s Copenhagen brand tobacco snuff, w/ finely detailed lithography by Somers Bros. Attractive and displays nicely, w/ some early scuffing spots on base (top C. 8+; base C. 7.5). Min. bid \$30.



194).Tiger Flat Pocket Tobacco. 2-3/8 x 3.5 x 3/4" early tin litho flat pocket style tobacco tin for Tiger brand (same great image on both sides). Bright, clean and excellent (a strong C. 8+). Min. bid \$40.



195).Sweetheart Peanut Butter. 3.75 x 3" early, 12 oz. tin litho peanut butter pail for "Sweetheart" brand (IXL Co., London, Ontario). Clean, bright and very attractive (C. 8) w/ only minor wear. Min. bid \$40.



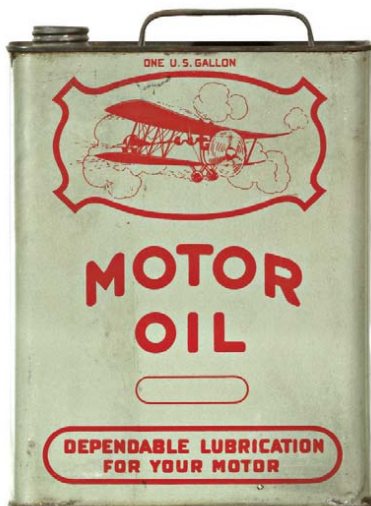
196).MGM Movies Sign. 11-7/8 x 20-7/8" scarce and very unusual, early embossed tin litho promotional sign from Metro-Goldwyn-Mayer Co. movie studio company. Sign is never used, as found w/ its original protective paper cover sheet, along w/ the original marked shipping/box. Excellent overall, w/ light bends at bottom corners and a little light storage wear (C. 8+). Min. bid \$50.



197).Logan Cigars Mirror. 2.25" (dia.) early celluloid pocket mirror for James Logan brand 5¢ Havana cigars, featuring great comical image of a goose attacking a black child while peeing, w/ quote: "early bird catches the worm". Excellent appearance, w/ very minor surface wear from use (mentioned for accuracy, nothing noticeable or detracting). Min. bid \$40.



198).Fish Pond Game. 8-1/8 x 17-5/8 x 1.5" early children's boxed "Fish Pond" game set by McLoughlin Bros. (1890 patent date), featuring stunning multi-color graphic lid (inside has the 4 original fishing poles and 39 of its 45 original fish). Cover and inside board and fish are excellent (right apron area of lid missing). Min. bid \$40.



199).Airplane Motor Oil Tin. 11 x 8 x 3-1/8" early tin litho 1 gallon sized motor oil tin from Nichols Sales & Service Co., Liberty, NY (Essex Hudson dealership) featuring great image of trademark bi-wing plane. Clean, bright and excellent (a strong C. 8+). Min. bid \$60.

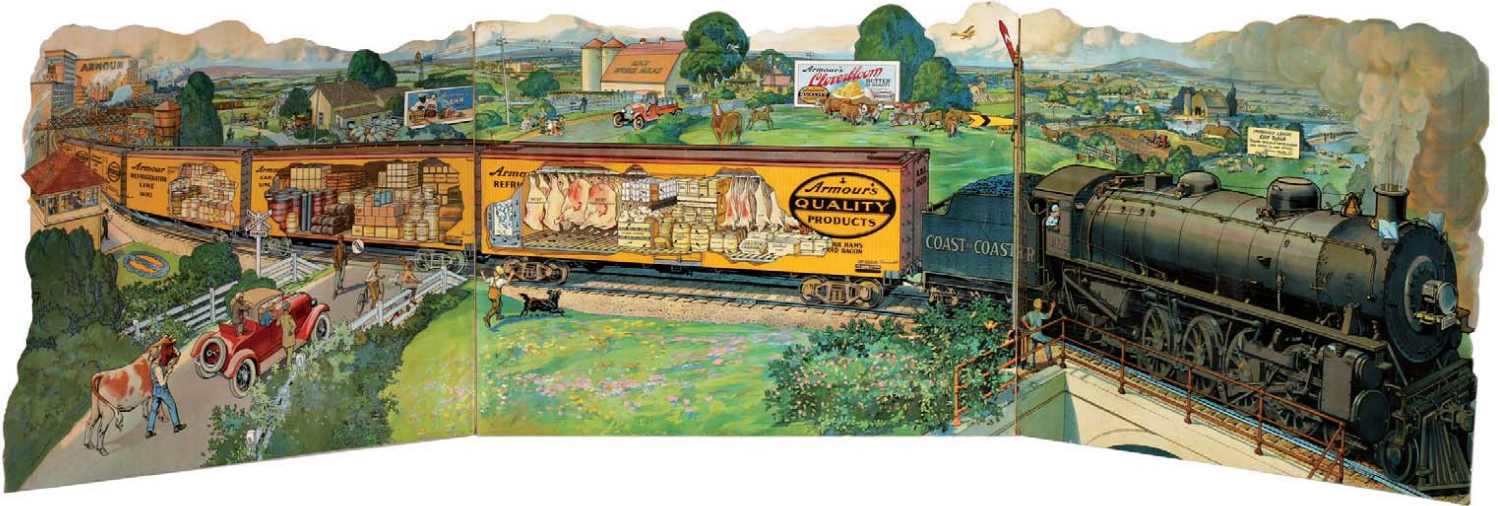


200).N.Y. Tribune Tobacco Jar. 9.75 x 5.5" (dia.) very early, heavy figural 2-ps. china tobacco jar, featuring great image of man in robe reading N.Y. Herald newspaper. Excellent w/ exception of non-detracting chip spot on bottom inside area of lid (not visible from outside). Min. bid \$50.

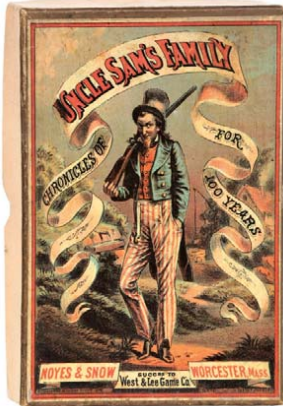
Pencil Boxes



201).Pencil Boxes. Lot consists of four different 1-7/8 x 9.5 x .5" early cardboard litho 2-ps. children's pencil boxes, each w/ beautiful color graphic lids. Includes: Jack and the Beanstalk, Cinderella, Alice In Wonderland, Puss in Boots. Image areas excellent on each (all contain some pencils, etc.). Min. bid \$30 (the lot).



202). **Armour Meats Store Display.** outstanding early cardboard die-cut store window display sign for Armour's brand products, featuring stunning multi-color graphics. Large tri-fold center section w/ train measures 19.5 x 66". Lot also includes two large easel back signs (30 x 19-5/8") showing detailed interior scenes of Co.'s processing facilities (see pg. 31). A powerful and very impressive set that is crisp, bright and beautiful (C. 8.5/+). Also see page 31 to view side pieces for this lot. Min. bid \$90 (The lot).



203). **Uncle Sam Game.** 6 x 4.25 x 7/8" very early "Uncle Sam's Family" boxed game set by Noyes & Snow Co. (Worcester, Mass.) featuring wonderful multi-color graphic image of Uncle Sam on lid. Crisp, bright and like new in appearance (C. 8.5/+), w/ game cards set inside. Min. bid \$40.



204). **St. Nicholas Puzzle.** 8-7/8 x 12.25 x 8.75" early 2-ps boxed wooden jigsaw puzzle set by McLoughlin Bros. (dated 1890) featuring nice St Nick images on both cover and puzzle. Impressive set is complete and very nice; lid area of box displays quite well (C. 7.5+/-) although there is minor soiling and fade, w/ light stress/creasing marks (paper covered wooden side apron areas of lid have some dark scattered staining areas and some minor areas of light paper loss). Min. bid \$40.



205). **Beaver Peanut Butter Pail.** 3.5 x 3.75" early tin litho 1 lb. peanut butter pail from Beaver Maple Products (Whitby, Ontario, Canada) w/ same nice images of trademark beaver on both sides. Attractive and displays nicely (C. 8+/-). Min. bid \$50.



206). **Terre Haute Brewing Co. Sign.** 20.25 x 14.25" (19.25 x 13" visible) early tin litho advertising sign from Terre Haute Brewing Co. (Terre Haute, Indiana) featuring beautiful large graphic images of Co.'s beer bottles. Clean, bright and very attractive appearance (C. 8++), w/ minor background wear. Framed. Min. bid \$70.



207). **Westinghouse Calendar.** 18-5/8 x 11-5/8" (16-3/8 x 9-3/8" actual) scarce, early cardboard advertising calendar for Westinghouse brand lamps (light bulbs), featuring wonderful multi-color art deco calendar girl image by famous girly illustrator Rolf Armstrong, w/ its original 1930 calendar tear sheets (March - December). Excellent. Framed. Min. bid \$40.



208). **Bifocals Display (Uncle Sam).** 9 x 8 x 1.75" early wooden eyeglasses store display, w/ tilting beveled viewing mirror at top and very attractive reverse glass display sign at bottom featuring great image of Uncle Sam. Excellent. Min. bid \$40.



209).Ladies' Favorite Baking Powder. 4-7/8 x 3-3/8" (dia.) unusual, early 1 lb. pry lid paper label baking powder tin for "Ladies' Favorite" brand (J.H. Start Co., Burr Oak, Mich.) featuring attractive graphics. Full, never opened tin is clean and excellent overall (a strong C. 8++), w/ minor toning and non-offensive light staining on non-graphic backside. Min. bid \$40.

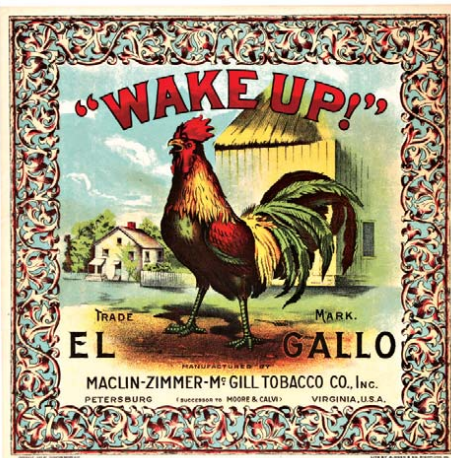


210).Champagne Fan. 10 x 18" wonderful, early, heavy embossed cardboard collapsible fan advertising Moët & Chandon Co.'s White Seal brand champagne, featuring great images of early bathing beauties (1905 calendar months shown on back side). Clean, bright and very attractive (a strong C. 8++). Ribbon attaching sections partially missing (easily replaceable). Min. bid \$40.



211).Barking Dog Pocket Tin. 4.25 x 3-1/8 x 1" scarce, early paper label (over tin) vertical pocket tin for Barkman Co.'s "Barking Dog" brand tobacco. Has light age toning and some non-detracting faint scattered soiling and staining (nothing that's serious or offensive), but overall displays quite nicely (C. 7.5/+). Min. bid \$40.

Gum Trade Cards



212).Wake-Up Tobacco Label. 10.5 x 10.5" very early paper litho advertising crate label for Maclin-Zimmer-McGill Tobacco Co.'s "Wake-Up" brand w/ beautiful, multi-color graphics. Clean, bright and excellent (C. 8.5+). Min. bid \$40.



213).Chewing Gum Ephemera. Lot consists of a nice group of early chewing gum related ephemera items. Includes three different trade cards for Beeman's Pepsin Gum (including one hold to light); two Adam's Chewing Gum cards; an Elders Blood Orange Gum card; and a Kis-Me Fortune Teller kit in original envelope. Items are very good to excellent overall. Min. bid \$40 the lot.



214).Headache Medicine Store Jar. 6-5/8 x 4-1/8" (dia.) scarce, early label under glass store display jar for Shac brand headache medicine, featuring great image of Co.'s trademark globe character on the reverse glass label. Jar appears never used and still has original paper label on neck and is filled w/ original medicine product inside. Excellent overall, w/ slight haziness to dark area of label Min. bid \$90.



215).American Brewing Co. Tray. 16-5/8 x 13.75" outstanding, very early serving tray from American Brewing Co., St. Louis featuring stunning, multi-color lithography. Clean, bright and attractive (displays as a strong C. 8.5/+), although close examination will reveal a little faint crazing, w/ some non-detracting fine scattered oxidizing speckles and a faint background ring mark if tipped just right (mentioned for accuracy, they are actually fairly minor overall and barely noticeable, except upon very close examination). Heavily waxed (or possibly lightly clear coated?). Min. bid \$100.



216).Franklin Cigar Sign. 22-3/8 x 15-1/8" (21-1/8 x 13-7/8" visible) great early paper litho sign for Franklin brand 5c Cigars featuring wonderful graphic image. Piece is clean and displays very well (as a nice C. 8/+), although close examination will reveal some non-offensive faint creasing snake lines (from being rolled) and a slight bit of minor fading (critical grade C. 8-). Framed. Min. bid \$70.



217).National Brewing Co. Tray. 16.25 x 12-5/8" outstanding, large, early tin litho serving tray from National Brewing Co., San Francisco, Calif., featuring great Western image. Clean, bright and very nice appearance (basically displays as a C. 8.5/+), although a close examination if tipped in light just right will show some non-offensive minor surface imperfections from manufacturing process (barely noticeable, mentioned for accuracy- not offensive or detracting). Min. bid \$100.



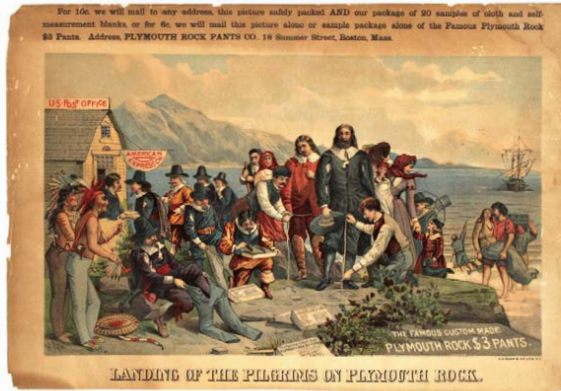
218). Whistle Soda Door Push. 5.25 x 19" (as shown) early tin litho screen door style advertising door push for Whistle brand soda, complete w/ its two adjustable heavy chrome plated mounting brackets, which slide from inside. Push plate advertising area is quite nice, w/ some non-offensive light wear from use (C. 8/-), brackets shiny and excellent (Stout Sign Co.). Min. bid \$40.



219). Plasmon Cocoa Sample. 2-1/8 x 1.75 x 1.25" unusual, early miniature tin litho sample tin for Plasmon brand cocoa. Litho areas are excellent w/ some typical fairly heavy fine oxidized dark speckling spots in gold flash finish areas (C. 7.5+/8-). Min. bid \$30.



220). Christmas Pail. 3.5x 3.5" (dia.) early tin litho Christmas pail featuring nice image of an early St. Nick being pulled in sleigh by a team of pigs. Clean, bright and very attractive, w/ a little light scattered background wear (C. 8/-). Min. bid \$40.



221). Plymouth Rock Pants Sign. 12-3/8 x 18" very early paper litho sign for Plymouth Rock \$3 pants featuring great images of Pilgrims and Indians tailoring clothing (BUEK & Co. Lith. NY). Has age toning and some chipping and paper loss at very outer margins, otherwise quite nice. Min. bid \$60.



222). NRA Paperweight. 3.75 x 3-5/8 x 2" ca. 1930's, figural cast iron paperweight w/ nice detailing and an excellent original paint surface promoting the National Recovery Act ("We Do Our Part"). Excellent. Min. bid \$30.



223). Lipton Cigar Labels Proof Book. 7 x 7" complete archival set of 21 paper litho progressive color printers proof cigar labels on heavy stock paper in booklet form showing each stage of the stone litho color strike process from first strike through to the finished label on top. Top label has a little light staining in outer margins, others quite nice. Labels are excellent overall, w/ toning and wear to protective cover stock. Min. bid \$40.



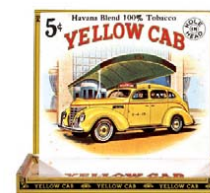
224). Red Bird Labels Proof Book. 6-1/8 x 7.5" complete archival set of 19 paper litho progressive color printers proof cigar labels on heavy shiny stock paper in booklet form showing each stage of the stone litho color strike process from first strike through to the finished label on top. Lot also includes two complete smaller side labels. Very nice overall condition. Min. bid \$40.



225). Hood's Sarsaparilla Sign. 7-1/8 x 6-1/8" very early cardboard die-cut easel back medicine sign featuring Co.'s trademark owls and early product box. Clean, bright and like new (basically near mint, w/ exception of a tiny, barely noticeable tack hole in bottom section of box). Min. bid \$40.



226). Dental Sign. 9-3/8 x 11-1/8" early, light cardboard advertising sign for "Dr. Murlless' Dental Purifico" (artificial teeth cleanser). Excellent, w/ minor toning at very outer edges. Min. bid \$30.



227). Yellow Cab Lot. Lot consists of two early Yellow Cab taxi items. Includes early Yellow Cab brand cigar box (6 x 7-1/8 x 5.5") and an early cardboard Taxi cab rate card (12 x 9"). Both are excellent. Min. bid \$30 (the lot).

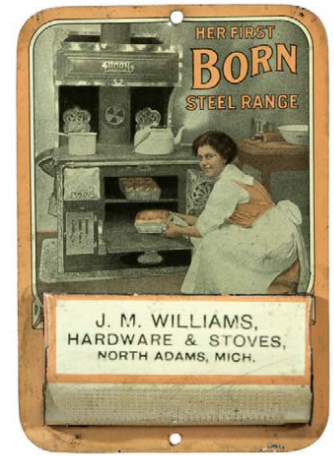




228).Mc Laughlin's Coffee. 5-7/8 x 4-3/8" (dia.) scarce, very early tin litho 1 lb. small top coffee can from McLaughlin Co., Chicago. Clean, bright and very nice in appearance (a strong C. 8++). Min. bid \$50.



229).Cattle Breeders Sign. 9.75 x 14" unusual, early embossed tin litho cattle breeders association sign, made for displaying at early cattle ranch. Has a nice rich green background color and was found never used, still w/ its original protective paper covering it. Excellent. Min. bid \$30.



230).Born Ranges Match Holder. 4-7/8 x 3-3/8" unusual early tin litho match holder advertising Born brand steel ranges, w/ nice image of woman baking bread. Clean and very attractive appearance (C. 8), w/ a couple minor, non-detracting faint crease marks; and minor soiling and wear to basket area. Min. bid \$50.



231).Roundup Spice Tin. 3.25 x 2-3/8 x 1-3/8" scarce, early tin litho 2 oz. spice tin for Roundup brand mustard (Roundup Grocery Co., Spokane, Wash.) featuring Co.'s cowboy logo on both sides. Excellent appearance (displays as a strong C. 8++), w/ a few barely noticeable light scuffs in dark background area. Min. bid \$30.



232).Northland Skis Catalog. 6 x 3.5" ca. 1930's 64 pg. catalog heavily illustrated catalog for Northland brand winter sporting equipment (skis, hockey sticks, snow shoes, etc.), w/ wonderful cover illustration. Excellent. Min. bid \$20.



233).Comfort Powder Tin. 4-3/8 x 2.25 x 1.75" early tin litho talcum/healing powder tin from Comfort Powder Co., Boston, w/ nurse pictured on backside. Clean, bright and very attractive (C. 8++). Min. bid \$40.



234).Royal Foot Powder Tin. 4.5 x 2.5 x 1.5" scarce, early satin finish tin litho foot powder tin for Royal brand (Allen Pharmacal Co., New York and Plainfield, NJ). Clean and very attractive appearance (displays as a strong C. 8+) although tipping in light just right will reveal a little non-detracting minor wear. Min. bid \$40.

Poster Stamps



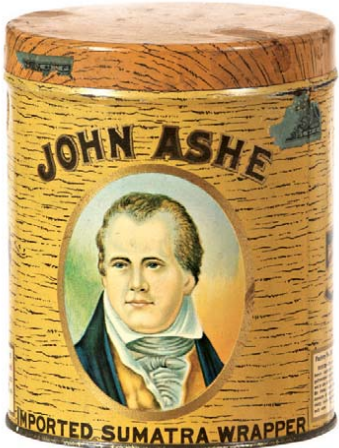
235).Hall Ice Cream Tray. 13.25 x 10.5" early tin litho serving tray for Hall's Ice Cream, Binghamton, NY, featuring beautiful color lithography. Display side is crisp, bright and like new (near mint), w/ some light scuffing wear on backside. Min. bid \$80.



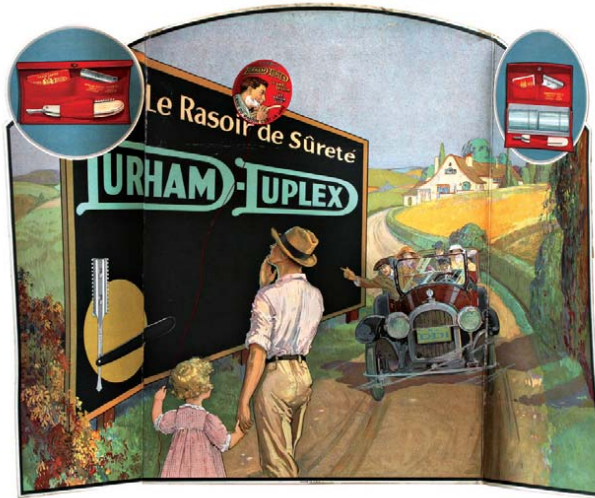
236).Poster Stamp Lot. (heights range from 1.5 to 2-5/8"). Lot consists of an impressive group of 23 different colorful and very attractive paper litho advertising poster stamps for various cigar companies. All are excellent and in like new condition. Min. bid \$30 the lot.



237).Small Heinz Show Jar. 9.75" (h) x 3.75" (dia.) unusual, small, early pressed glass store display/specimen jar w/ ground lid and early paper display label for Heinz's Spiced Pickles (these were used by Co. to exhibit and display various products at fairs and expos). Excellent. Min. bid \$60.



238).John Ashe Cigar Tin. 5.25 x 4-3/8" early tin litho 25 count cigar can for John Ashe brand, featuring attractive color graphics by Liberty Can Co. (same image both sides). Clean, bright and excellent (C. 8.5/+), w/ exception of minor dark spot on lid (remnants of tax stamp). Min. bid \$40.



239).Durham Duplex Razors Sign. 18 x 23" (as shown) impressive, early die-cut cardboard tri-fold advertising display sign for Durham Duplex brand razors, featuring beautiful multi-color graphics. Clean, bright and very attractive (C. 8.5/+), w/ minor wear and a hint of faint creasing (note: sign is U.S. made for Canadian market, w/ some wording in French). Min. bid \$70.



240).Pocket Calendars. Lot consists of four different celluloid pocket calendars for various companies (dates range from 1913 to 1948) each 3.75 x 2.25". Lot also includes a very nice heavy celluloid advertising ruler card for a French taxi company (2-5/8 x 4.25"). All are excellent. Min. \$30 (the lot).



241).Penny Pocket Mirrors. Lot consists of six different 2.25" (dia.) pocket mirrors, each w/ early penny insert in center. All display well, although closer examination will reveal some cracks in celluloid on four of them. Min. bid \$40 the lot.



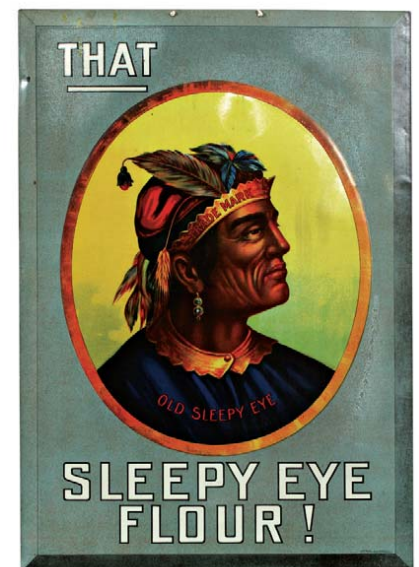
242).Red Wing Ice Cream Tray. 10.5 x 15.25" scarce, early tin litho serving tray advertising "Red Wing" brand ice cream. Decent and attractive appearance (displays as a C. 8/-) w/ some general light wear from use (critical grade C. 7.5/+). Min. bid \$40.



243).Mandeville & King Sign. 28 x 17" early paper litho sign for Mandeville & King brand flower seeds, featuring beautiful color graphics (note the great art pottery vase). Clean, bright and exceptionally nice (near mint), complete w/ original metal strips at top and bottom. Min. bid \$100.



244).Pepsi Calendar. 29.75 x 21-5/8" (22-3/8 x 14.5" visible) early cardboard Pepsi-Cola advertising calendar, featuring great image of Co.'s 1941 calendar girl. Clean, bright and exceptionally nice (displays pretty much as near mint), complete w/ full 1941 calendar pad (note: close examination will reveal a couple faint, very minor crease marks in background area and a few minor flyspecks at bottom). Nicely framed and matted. Min. bid \$50.



245).Sleepy Eye Flour Sign. 19 x 13-3/8" early tin over cardboard beveled edge sign for Sleepy Eye brand flour, featuring beautiful multi-color graphic image of Co.'s trademark Indian. Sign is attractive and displays nicely (image area mostly excellent, w/ bright, vibrant colors) although there is some light scattered background haziness and wear. Tough one to grade, as it displays on wall extremely well (a conservative grade of C. 7.5+/8- seems about right- some minor background restoration could improve it to an 8.5/+ appearance). Min. bid \$150.



246).Champion Spark Plugs Door Push. 3.75 x 5" scarce, early tin litho door push style small advertising sign for Champion brand spark plugs. Unusual piece, has some scattered oxidized speckling and light pitting, and some light fade and wear in bottom right corner, but overall attractive and displays pretty well (C. 7+). Only example I've seen. Min. bid \$30.



247).Sultana Peanut Butter Pail. 4-1/8 x 4" scarce variation 1 lb. peanut butter pail for Sultana brand peanut butter (Quaker Maid Co., Terre Haute, Ind.) w/ unusual silhouetted images of puppy chasing rabbits all around. Excellent (C. 8.5). Min. bid \$40.



248).Political Cigarette Packs. Lot includes two different full, sealed promotional cigarette packs from the 1952 presidential campaign (series 122 tax stamps). Includes packs for candidates Dwight Eisenhower and Adlai Stevenson. Packs measure 2-7/8 x 2-1/8 x 7/8" and both are excellent, w/ some cello loosening and unraveling wear at top of Ike pack. Min. bid \$20 (the lot).



249).Radiana Pocket Tin. 4 x 3.25 x 1-1/8" scarce, early paper label (over tin) vertical tobacco pocket tin for Falk Tobacco Co.'s "Radiana" brand. Clean and excellent (. 8++) w/ minor wear on backside. Min. bid \$50.



250).Ribbon Tins. Lot consists of six ribbon tins (ea. app. 2-5/8" (dia.) x 7/8"). Includes: Gibraltar, Pure Silk, Invincible, Everlasting, Airline, and American brands. All are excellent. Min. bid \$40 (the lot).



251).Country Club Pocket Tin. 3.5 x 3.25 x 1.25" early tin litho vertical tobacco pocket tin w/ slide closure for "Country Club" brand (Jenkinson Co. Pittsburg and Cleveland). Clean, bright and very attractive appearance (front a strong C. 8+) w/ some denting and minor oxidizing speckles on back side (back C. 8+/-). Note: left side edge (where tax stamp once sat) has heavy litho loss (could be easily covered over w/ replacement stamp). Min. bid \$70.



252).Heinz Ketchup Sign. 60.75 x 30" large and very impressive, heavy paper (over canvas) early roll-up sign (w/ original wood at top and bottom) advertising Heinz brand ketchup. Clean, bright and exceptionally nice (a strong 8++) w/ a little minor scattered wear. Min. bid \$100.



253).Cook Brewing Co. Sign. 33x 25" (27 x 19" visible) impressive, early (dated 1907) tin litho sign from F.W. Cook Brewing Co. Evansville, Ind. for Cook's Beer, featuring attractive color graphic images (note: great picture hanging on wall of dog w/ Cook's beer bottle). Sign is clean, bright and excellent in appearance (a strong C. 8+), as found still in its original marked frame (note: embossed lettering at bottom section of frame has some chipping loss; and there is some non-offensive light frame rubbing wear along very outer 1/8" left edge of sign, would be hidden if moved slightly to left). Min. bid \$200.



254).Medo-Land Ice Cream Sign. 40 x 18.5" early and very attractive two sided metal hanging sign for Medo-Land brand ice cream in shape of early cone (same image both sides). Clean and excellent overall (C. 8.5/+) w/ only minor wear. Comes w/ iron bracket for hanging. Min. bid \$70.



255).Cigar Box Lot. Lot consists of three early wooden cigar boxes, each w/ beautiful inside labels. Includes: Select 7 x 8 x 5" (shows colorful playing cards. Excellent label, although lid separated from box); "Yale On The Square" 10.25 x 10-5/8 x 7-5/8" (excellent image w/ some light age toning in background); and Rich and Rare 7 x 8 x 4-7/8" (featuring early trout fisherman. Nice label w/ some age toning/ light soiling). Min. bid \$30 (the lot).



256).Krueger Brewing Tip Tray. 4.25" (dia.) early tin litho advertising tip tray from Gottfried Krueger Brewing Co., Newark, NJ featuring beautifully detailed early lithography. Clean, bright and exceptionally nice appearance, w/ minor crazing (displays as a C. 8.5/+), although close examination when tipped just right will reveal a barely noticeable non-offensive small hazy spot. Min. bid \$40.



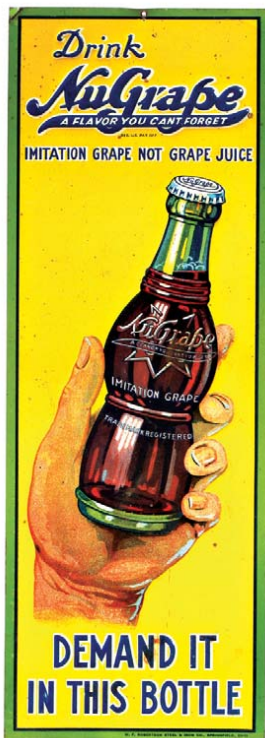
257).Tobacco Fan. 13 x 7.75" very early cardboard die-cut advertising fan on wooden stick for Day & Night brand tobacco, featuring beautiful multi-color graphics (has text advertising on backside). Clean, bright and excellent in appearance (C. 8+), w/ minor age toning on back. Min. bid \$30.



258).Gold Dust Match Safe. 3 x 1-5/8 x 1/4" very early, figural brass advertising match safe for Gold Dust brand cleanser w/ nice incised images of the trademark black twins on front and lion logo on back. Excellent overall, w/ dent mark on backside lid area. Min. bid \$30.



259).Pepsi Bottle Toppers. Lot consists of two different variations of ca. 1930's cardboard bottle topper display pieces, each measuring apx. 13.5 x 6-5/8". Both are crisp and like new (C. 8.5++); note: blue background piece has 1.5" light horizontal crease mark in bottom pull down flap area. Min. bid \$50 (the pair).



260).Nu Grape Sign. 13-7/8 x 4-7/8" impressive, early embossed soda sign is clean, bright and displays great (as a very strong C. 8+), although close examination will reveal a small bend mark in upper left very outer border area, some non-offensive faint tiny scattered speckles and a couple minor hazy spots- nothing that's offensive or detracting (critical grade C. 8). As found, should improve w/ cleaning. Min. bid \$40.



261).Hood Tires License Plate Attachment. 4-5/8 x 1.75" early die-cut tin litho advertising license plate attachment for Hood brand tires, featuring great image of Co.'s trademark officer. Clean, bright and attractive, w/ only minor wear (C. 8+). Min. bid \$40.



262).Comfort Powder Tin. 4.25 x 1.5 x 1" unusual size variation early tin litho talcum/healing powder tin from Comfort Powder Co., Boston, w/ nurse pictured on back. Clean, bright and very attractive (C. 8.5/+). Min. bid \$40.



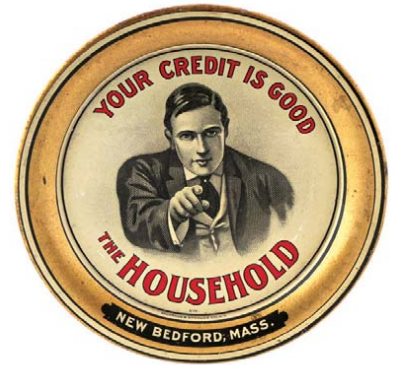
263).Fire Insurance Ledger Marker. 12.5 x 3" very early, tin litho ledger marker advertising the National Fire Insurance Co., Hartford Ct., featuring beautifully detailed lithography by Kellogg & Bulkeley. Clean, bright and excellent overall (basically a strong 8++), w/ a little non-offensive hazy background wear in upper background area (above word National). Min. bid \$60.



264).Telephone Co. Mirror. 2-1/8" (dia.) scarce, early celluloid advertising pocket mirror issued by the Northern Telephone Co. (covered the rural towns of Swanton, Richford and Enosburg Falls, Vermont). Excellent. Min. bid \$40.



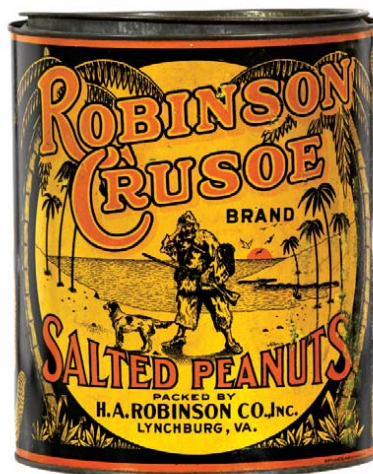
265).Medicine Sign. 6.5 x 9.25" small, early embossed tin litho medicine sign (Kaufmann & Strauss lithographers) for Lavery's Liniment. Clean, bright and excellent (a strong C. 8/+). Appears never used, w/ only minor storage wear. Min. bid \$40.



266).Household Credit Tip Tray. 4.25" (dia.) unusual early tin litho tip tray advertising Household Loan Co., Bedford Mass., featuring great image of Co.'s trademark man. Clean, bright and excellent (C. 8.5/+), w/ exception of minor wear in gold rim area. Min. bid \$40.



267).Chase & Sanborn Coffee Pail. 10.5 x 7.25" (dia.) early tin litho 5 lb. milk pail style coffee can for Chase & Sanborn's brand. Clean and very attractive appearance (C. 8), w/ some light scattered background wear. Min. bid \$60.



268).Robinson Caruso Peanuts Tin. 7.75 x 6.5" (dia.) unusual, smaller 5 lb. size salted peanuts can for Robinson Crusoe brand, featuring nice island image on front side. Clean and very attractive in appearance and displays nicely (as a C. 8/+) w/ some light surface wear, non-offensive light scattered speckling on surface and a slight bit of fade to reds (fairly heavy wear to lid). Min. bid \$40.



269).Cigarette Door Pushes. Lot consists of two tin litho cigarette advertising door pushes each measuring 9 x 4-1/8". Both are excellent and appear never used w/ only light handling wear. Min. bid \$30 (the pair).



270).Studebaker Roadster Banner. 58.5 x 59" outstanding, large, early cloth advertising showroom banner for Studebaker Sedans, w/ a powerful and very impressive look. High quality piece is clean, bright and excellent. Min. bid \$50.



271).Studebaker Sedans Banner. 50 x 51" outstanding, large, early cloth advertising showroom banner for Studebaker Sedans w/ a powerful and very impressive look. High quality piece is clean, bright and excellent. Min. bid \$50.



272).Welsbach Lighting Tip Tray. 4-1/8" (dia.) early tin litho advertising tip tray for Welsbach gas lighting, featuring beautifully detailed color graphics. Clean, bright and exceptionally nice (C. 8.5/+). Min. bid \$40.



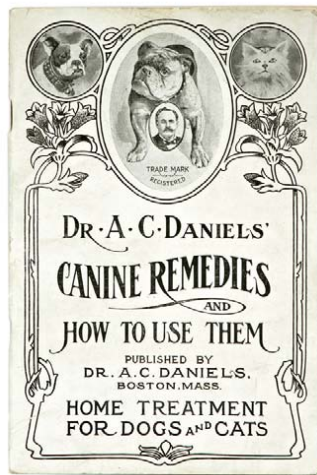
273).Telephone Paperweight. 3.25 x 3-3/8" (dia.) unusual, scarce variation heavy figural glass paperweight from the Ches. & Pot. Tel. Co., w/ advertising on both sides (beautiful peacock blue color). Excellent. Min. bid \$40.



274).Tiz Cigar Can. 5.5 x 5.5" (dia.) early tin litho 15 ct. cigar can featuring beautiful color graphics (same image both sides). Clean, bright and very attractive appearance (C. 8++) w/ some light scuffing on lid (lid C. 7.5/+). Liberty Can Co. Lithographers. Min. bid \$40.



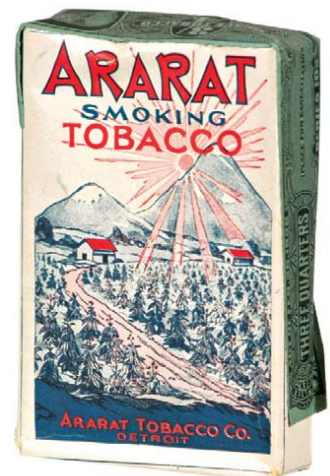
275).Vesta Coffee. 5.75 x 4.25" scarce, early 1 lb. small-top coffee can for Vesta brand coffee (McClintock-Trunkey Co., Spokane, WA). Clean, bright and very attractive appearance (front C. 8.5; back C. 8+/-) w/ a little non-offensive background wear on backside (backside pictures coffee plant). Min. bid \$60.



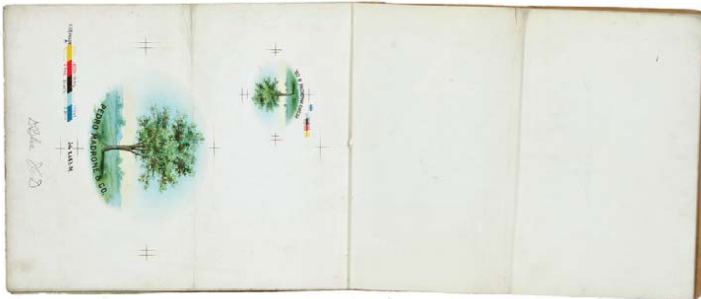
276).Daniel's Canine Remedies Booklet. 7 x 4-5/8" early and unusual 66 pg. advertising booklet for Dr. Daniel's veterinary medicines titled "Canine Remedies". Booklet is excellent, w/ exception of two pages have tear loss in bottom right corner. Min. bid \$20.



277).Honey Moon Spice Tin. 3.25 x 2-3/8 x 1-3/8" early tin litho 1-1/4 oz. spice tin (red pepper) for Honeymoon brand (D.J. Moore Grocers, Sioux City, Ia.) featuring great image of trademark couple on crescent moon on both sides. Clean, bright and exceptionally nice (C. 8.5+, w/ exception of some loss of gold flashing at top border of back side). Min. bid \$40.



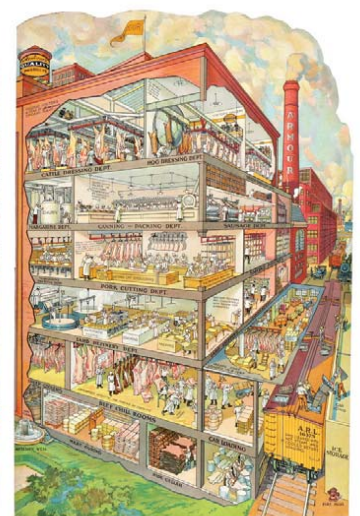
278).Ararat Tobacco Pack. 3-5/8 x 2.5 x 7/8" unusual, full, sealed, early soft pack style tobacco pack for "Ararat" brand tobacco (Ararat Tobacco Co., Detroit). Clean, bright and excellent (1926 tax stamp). Min. bid \$30.



279).Pedro Madrone Labels Proof Book. 9 x 12" lot consists of a complete archival set of 16 paper litho progressive color printers proof cigar labels (for both inside and outer side box labels) on heavy stock paper in booklet form showing each stage of the stone litho color strike process from first strike through to the finished label on top. Lot also includes a separate complete sample label. Very nice overall condition. Min. bid \$40.



280).Crest Condom Tin. 1-7/8 x 2.75 x 3/8" scarce, early tin litho condom tin for Killian Co.'s "Crest" brand. Has a little minor soiling and light surface wear, but overall attractive and displays nicely (C. 7.5+/8-). As found, should improve w/ cleaning. Min. bid \$40.



202.) These are the side pieces for Window Display pictured on page 23. These each measure app. 30 x 19-5/8".



Rd #2, Cobb Hill Road, Cazenovia, NY 13035 • 24 Hr. Tel: (315) 662-7625 • 24 Hr. Fax: (315) 662-3570 • morf2bid@aol.com • morfauction.com

Welcome to our 70th auction of quality antique advertising and fine collectibles. Everything we sell is guaranteed authentic and as described. We attempt to grade condition both fairly and conservatively, using a scale of 1-10 on the advertising items (ten being absolutely mint). We do not list reproductions, re-issues, deceptively restored or pieced together type merchandise. Flaws and blemishes are prominently noted and over emphasized. We encourage you to call for a detailed description on any item you have an interest in, but respectfully must request that you do this before the closing night. Dimensions are listed by height, then width, and are only approximate (+ or - a quarter inch).

Bidding

Bids are accepted only from those parties who have registered with us to bid. (If you were mailed this catalogue by us you are automatically pre-registered.) Your bid is a legal contract to purchase and once entered, cannot be canceled. Placement of a bid indicates acceptance of our terms.

On all "BID" items there is a 10% buyers premium added to each successful bid. You're welcome to bid by mail, email and fax anytime after receiving this catalog. **We will begin accepting phone bids on Wednesday March 23rd, 2011. We will be taking calls on Wednesday and Thursday from 10:00 AM until 5:00 PM.** If no one answers when you call, please leave a message on our machine and we will get back to you. **If bidding by mail or fax, please remember to include your telephone number with your bids!** You may call or bid as often as you like. We will tell you the current bid on any item(s) you are interested in. To raise a bid, your advance must be at least \$10 more than the current high bid amount. When an item reaches \$250, bidding increments rise to \$25, at \$1,000, bidding increments advance in \$50 steps, and above \$2,000 in \$100 increments. We suggest not waiting until the last minute to begin your bidding, as its quite possible you won't be able to get through.

Web Page and Bid Updates

We will begin posting current bid prices (not including the buyers premium) on Wednesday March 23rd, 2011 (including an addendum of additional catalogue lot information) on our internet web page. These prices will be updated once each day (each evening sometime after 9:00 PM, EST) and will get updated to include the final hammer prices on Sunday afternoon once the sale is concluded. On the closing night, we will attempt to update current bid prices every hour. Our web page address for this sale is: <http://www.morfauction.com> We suggest that once you get to it, that you bookmark this address for easy re-access.

Reserves and Estimates

All items which receive an opening bid in our sale will be sold to the highest bidder regardless of the price realized (we reserve the right to withdraw items in the event of inaccurate catalog descriptions and to reject any bid we feel is not made in good faith). **We run our auctions with a strict policy of no buy-backs, no auctioneer games and no hidden reserves.** Unlike some of our competitors, we do NOT allow consignors to bid up their own items!

Mechanical Operations

Early mechanical and electric motors and mechanisms on machines toys, coin-ops, clocks, etc. are quite often temperamental and very unpredictable in nature. Although these mechanisms may be working fine at the time of sale, we make no guarantees or representations regarding their continued operating status once they have left our premises (including during shipping).

Closing Night

THE LAST DAY FOR BIDDING WILL BE ON FRIDAY, MARCH 25TH, 2011. On closing day, we begin taking calls at 5:00 PM. Please mark your calendar now. **On the closing night (ONLY), we will also be taking calls at (315) 662-3318, (315) 662-3429 and (315) 662-3904 after 5:00 PM** (in addition to our regular (315) 662-7625 office number). **Closing Time: This Auction will close at 10:00 PM (EST) on Friday, March 25th, 2011.** At that time, no more incoming calls will be accepted and all lots with a registered bid of less than \$300, as well as all items without call backs registered on them will be officially closed and final. The items at \$300 and over that have call back protection registered on them will be closed out during our call back period the following afternoon (**see important call back rules below**). We reserve the right to change the official closing in the event of unforeseen family type emergencies or technological failures (utility disruptions, etc.). We also reserve the right to either extend the bidding, to postpone or to cancel this auction in the event of a national emergency or if the Internet or the services of the US Post Office were to get seriously disrupted during our catalogue mailing or bidding period.

"Up-To" Bids & Call Backs

CEILING BIDS: We will be happy to enter competitive "up to" ceiling bids for you on any lots you request. Beginning at your minimum amount, we will advance these bid(s) up to your left ceiling amount, if (and only if) it is topped by another bidder. "Up To" bids will be handled discretely and executed in a completely competitive manner for you. Please note that we don't accept open ended "top all others" ceiling type bids.

CALL BACKS: You may request call back protection for any lot(s) that you enter with either a minimum or a protected "up-to" ceiling bid in an amount of at least \$300. This request must be registered with us before the official 10:00 PM closing hour of Friday, March 25th, 2011. All callbacks will be placed by us on Saturday, March 26th, 2011, beginning at 12:00 noon (EST) and will continue that afternoon until each of the individual lots have been closed out (using past experience, I would expect this to be finished by 6:00 PM, if not earlier). If you register for call-backs, it is your responsibility to be available during this call back time period. We make every effort to honor all our call back requests, but this service is done solely as a convenience to our bidders and will be performed on a best efforts basis only. If you will be traveling or if you will not be available during call back times at your primary number, be sure you provide us with proper alternate or back up numbers for reaching you!

Payment Terms

Winning bidders will be invoiced by mail immediately after the sale. Those who desire fast shipment can pay by Money Order or Cashiers Check. Payments are due within 10 days of receipt of invoice. We reserve the right to offer the item out to our back bidders and deny future bidding privileges to those who do not pay in a timely manner. In addition to personal checks, we also accept payment on your American Express, Visa, Master Card, Discover and Optima Credit Cards (with no surcharge added). No COD's or Collect calls are ever accepted. Items shipped to anywhere in New York State must include appropriate sales tax or signed resale certificate.

Shipping

All packing and shipping charges are extra. We do most of our own packing and shipping and try to keep these charges as reasonable as possible for you. On especially fragile and larger hard to pack items, we hire the services of professional packers and charge you at our billed cost. We ship mostly through the Post Office and Fedex Ground, (Fedex Overnight available at an extra charge.)

Subscribing, Prices Realized, Consignments & Upcoming Events

Future catalogs can be assured by sending \$20 for a full 12 months subscription, (includes after sale prices realized). An automatic credit card ordering program is available. We currently run between 3-4 auctions a year (versus our previous format of running semi-annual sales). This format allows us to run smaller, more focused sales featuring larger, higher quality catalog images and gives our consignors the opportunity for a quicker turn-around of their items. In addition to our regular sales, we also occasionally offer sales made up entirely from single owner collections. Please contact us should you have items you would like us to consider for inclusion in our upcoming events. All inquiries are handled in a completely confidential manner. Our services are also available for the private placement marketing of important individual items, marketing plans for large collections as well as for estate planning and settlement purposes. Back copies of many of our previous auction catalogs are still available at \$5 each (w/ prices realized) w/ quantity discounts available if multiple issues are ordered. For further information, please call, e-mail or write.

Photography by Wes Feuz. Layout by Tracy Niemczal.

© Copyright 2011. All Rights Reserved. No portion of this publication may be copied in any form without the express written permission of Morford's.

Important Closing Night Information

In addition to our regular (315) 662-7625 office number,
on the closing night (only!) you may also call us at:

(315) 662-3318*
(after 5:00 PM)
(315) 662-3904*
(after 5:00 PM)
(315) 662-3429*
(after 5:00 PM)



***These numbers for
Closing night only!
Friday, March 25th, 2011**

Bidding closes at 10:00 PM on closing night. We will be accepting faxes and e-mails on closing night. Our web page will update current high bid prices approximately every hour on closing night and will also list any important addendum information. **All call backs will be made on Saturday, March 26th, 2011, beginning at 12 o'clock Noon!**