



WM Morford
Investment Grade Collectibles at Auction

Investment Grade Collectibles & Maxfield Parrish Items at Auction

Rd #2, Cobb Hill Road, Cazenovia, NY 13035 • 24 Hr. Tel: (315) 662-7625 • 24 Hr. Fax: (315) 662-3570 • morf2bid@aol.com • morfauction.com

Bidding closes Friday, June 10th, 2011. (See page 36 for Terms & Conditions)



1). **Success Tip Tray.** 3-3/8 x 4.75" early, tin litho tip tray for "Success" brand manure spreaders, w/ stunning multi-color lithography. Clean, bright and exceptionally nice (displays as near mint) although close examination will reveal a little minor denting (mentioned for accuracy, not offensive or detracting). Critical grade C. 8.5/+. Min. bid \$60.

Match Holder



2). **Advertising Turtle.** 5 x 2-7/8 x 1.25" early, figural brass match holder advertising Grand Rapids Brass Co. (Grand Rapids, Mich.). Hinged at tail, w/ scratcher surface inside "shell" section. Excellent, w/ nice surface patina. Min. bid \$40.



3). **Triangular Dominoes Game.** 2.25 x 3.5 x 1.75" early, tin litho product tin (dated 1886 Somers Bros.) for game of "Triangular Dominoes" (Frank Richards Co., Troy, NY) complete w/ the original triangular cardboard game pieces inside. Excellent, w/ only minor wear (C. 8+). Min. bid \$40.



4). **Race Car Bumper Tag.** 4-7/8 x 10.5" scarce, early painted metal bumper tag / license plate attachment, featuring great looking racer. Powerful and very impressive looking, w/ a great, all original surface patina (C. 8/-). Has a little non-offensive minor soiling and light wear from use. Neat piece! Min. bid \$40.

Cocoa Samples



5). **Cocoa Samples.** Lot consists of five different miniature sample size cocoa tins, ranging in hgt. from 1.5 to 2.5". Includes three tin litho (Ideal, Rawleigh's and McNess); and two w/ paper labels over tin (Bakers and Hooton's). Four are excellent (C. 8+ to near mint), w/ toning and light general wear to Hooton's (C. 7.5). Min. bid \$50 (the lot).



6). **Blue Bird Coffee Pail.** 6 x 7.5" (dia.) scarce, early tin litho 5 lb. coffee pail for Blue Bird brand coffee (Stone Ordean Wells Co., Duluth, Minn.) featuring beautiful image of Co.'s trademark bird (same image both sides). Has strong colors and displays nicely, w/ minor denting and a few light background scuffs (front C. 8/+; back C. 7.5++/8-). Min. bid \$60.



7). **Gargoyle Oil Sign.** 24 x 19.5" outstanding, early heavy porcelain sign advertising Vacuum Oil Co.'s "Gargoyle" brand motor oil. A powerful and impressive piece that is crisp, bright and like new in appearance, w/ excellent original sheen (a very strong C. 8.5++) w/ light chip spot at right middle grommet hole. Min. bid \$70.



8). **Golf Girl Talc.** 5-5/8 x 2.5" (dia.) early, paper label talc container (metal top and base) for Yates Co.'s "Golf Girl" brand, featuring beautiful graphic golfing scene, w/ decorative floral images on sides and back. Displays very nicely (as a C. 8/+), w/ just a trace hint of fade and a little non-offensive light scattered soiling and minor wear (critical grade C. 8/-). Min. bid \$60.



9).Orange Crush Sign. 25 x 36.5 x 1.5" large, Ca. 1940 cardboard folding display sign for Orange Crush brand soda (die-cut at top of hat rises from blue border angled self-frame) area. Sign is crisp, bright and like new (image area displays as near mint) w/ a little non-offensive storage/darkening in outer blue border (frame) area. Non-display plain backside has some darkening and light damage at corner fastening areas. Min. bid \$70.



10).Sunoco Sign. 13.5 x 21.5" (porcelain sign 6.5 x 20-7/8") early 2-sided hanging porcelain Rest Rooms sign from early Sunoco service station (same image both sides) still attached to its original mounting bracket. Sign is clean, bright and displays very nicely (a strong C. 8++) w/ only minor wear. Min. bid \$70.

Advertising Puzzle



11).Pan-Am Gas Station Puzzle. 12.25 x 16-1/8" (9.75 x 13-1/8" visible) wonderful, large, early cardboard jigsaw puzzle featuring great image of busy 1930's Pan-Am service station (© 1933). Complete puzzle is clean, bright and excellent (C. 8.5) w/ exception of a little non-detracting light surface wear in right edge background (pavement area). Framed. Min. bid \$30.

Packard Autos Paper Weight



12).Packard Autos Paperweight. 4 x 3.5 x 1/2" heavy, early, very high quality bronze advertising paperweight from Packard Motor Car Co., Detroit, featuring finely detailed embossed motoring image on front, w/ lettering on base. Excellent, w/ a nice, rich surface patina. Min. bid \$40.



13).Hog Cigar/Match Holder. 4.5 x 7.75 x 3.25" early, figural white metal countertop cigar and matches holder, in shape of hog. Very nicely detailed, w/ a rich surface patina. Excellent. Min. bid \$50.



14).Squeeze Soda Sign. 19-7/8 x 15" early, die-cut, cardboard litho, easel back, stand-up sign for Squeeze brand soda, featuring nice image of kids playing baseball. Sign is excellent and appears never used, w/ minor toning and light edge/storage wear (a strong C. 8++). Min. bid \$60.



15).Elgin Watches Sign. 22 x 15" early, wooden sign for Elgin brand pocket watches, featuring nice graphic image of ragamuffin kid holding his watch (by Meyercord Sign Co.). Clean and attractive appearance (a nice solid C. 8+/+) w/ a little non-offensive light scattered wear and a couple minor crack lines on upper veneer surface. Min. bid \$70.



16).Amalie Motor Oil Sign. 15 x 10.75" (13.75 x 9.5" visible) scarce, early, embossed tin litho sign for Sonneborn Co.'s "Amalie" brand motor oil. Has nice color and displays well, although there is a little light hazy oxidizing and light scattered wear on upper surface. Critical grade C. 7.5 (as found, should improve w/ cleaning). Framed. Min. bid \$50.



17).Consumer's Brewing Tip Tray. 4.25" (dia.) early, tin litho tip tray from Consumer's Brewing Co. of NY featuring beautifully detailed graphics. Clean, bright and exceptionally nice appearance (displays as a strong C. 8.5/+), although a close examination will reveal minor wear and a faint ring mark if tipped in light just right, w/ edge chipping in outer rim area. Min. bid \$40.



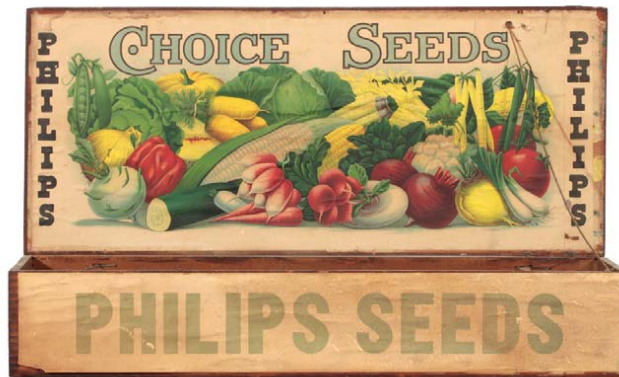
18).Puritan Confection Vender. 10.5 x 10-7/8 x 9" early, embossed aluminum countertop "Puritan Confection Vender" 1¢ coin operated candy vender/ trade stimulator, w/ working slot machine reels (Chicago Mint Co.). Impressive looking, high quality piece is all original, w/ nice patina and beautiful hand-painted highlights to its fancy decorative surface. Excellent overall. Min. bid \$100.



19).Pennsylvania Tires Ash Tray. 1.5 x 4.5" (dia.) early, heavy figural glass advertising ashtray w/matchbox holder for Penn. Vacuum Cup tires, w/ embossed lettering and detailed tread pattern. Excellent overall, w/ some paint loss in center section (non-serious light chipping/flake spots on rectangular block at back for holding match box- barely noticeable). Min. bid \$30.



20).Heinz Advertising Figure. 5.5 x 2.75 x 2.75" early, figural advertising display piece for Heinz 57 products, featuring Co.'s trademark tomato head character. Heavy, rubbery composition type material, w/ nice rich surface patina. Excellent overall (a strong C. 8+) w/ minor soiling and wear. Min. bid \$50.



21).Phillips Seed Box. 15-1/8 x 25.5 x 10-7/8" (as pictured) large, early wooden store display box for Phillips brand vegetable seeds. Inside display label is clean, bright and displays great (C. 8+) w/ typical minor staining and tattering at outer edges; outer front label has the expected usual fade and light wear. Min. bid \$50.



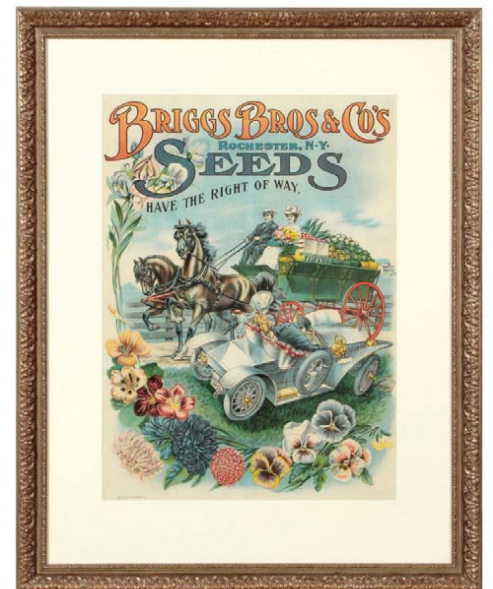
22).Southern Bell Telephone Sign. 11 x 11-7/8" early, 2-sided heavy porcelain flange telephone sign from Southern Bell Telephone Co. (same image both sides). Clean and very attractive (basically a strong C. 8+) w/ exception of chip spot in top angled flange mounting section and small edge chip spot at bottom edge of back side. Min. bid \$50.



23).Borden's Milk Sign. 15 x 10.5" outstanding, early cardboard litho sign for Gail Borden Co.'s Eagle brand condensed milk, featuring adorable image of young girl in witches hat w/ kittens. Clean, bright and exceptionally nice (displays as a strong C. 8.5/+), although close examination will reveal minor scattered soiling/toning and minor, very faint crease mark at bottom section (mentioned for accuracy- barely noticeable and hardly merits mention). Min. bid \$70.



24).Jell-o Stand-up Sign. 24.25 x 15.75" scarce, early die-cut cardboard easel back stand-up sign for Genesee Pure Food Co.'s Jell-o brand desert powder. Impressive piece has strong color and displays quite nicely (as a C. 8+/-), although close examination will reveal a little non-offensive light scattered foxing/staining and minor soiling on girl's dress w/ 1.5" break/puncture spot at bottom of dress area (critical grade as a strong C. 7.5+). Min. bid \$90.



25).Briggs Bros. Seed Sign. 35-3/8 x 28" (24.25 x 17.5" visible) unusual, early paper litho sign for Briggs Bros. Seed Co. (Rochester, NY) featuring wonderful graphic scene of farm wagon and early auto. Sign is clean, attractive and displays very nicely (as a C. 8+) w/ a slight bit of light fade. (Note: close examination will reveal minor professional restoration at fold lines and outer edges). Nicely framed and matted. Min. bid \$100.



26).Café Martin Fan. 9.75 x 17.5" early, very high quality folding advertising fan from the Café Martin in New York, featuring beautiful multi-color graphic image of couple in race car. Clean, bright and excellent (C. 8.5+). Min. bid \$40.



27).Fairy Soap Sign. 14-3/8 x 24.25" (10.25 x 20" visible) early cardboard trolley car style sign for Fairy brand soap, featuring nice image of trademark kid on soap bar. Clean, bright and attractive in appearance (C. 8++), w/ minor background wear. Nicely framed and matted. Min. bid \$50.



28).Overalls Pocket Calendar. 2-3/8 x 3.75" early, celluloid pocket calendar advertising Keystone brand overalls and children's clothing, featuring beautiful multi-color graphic image of children in Co.'s clothing (1908 calendar on backside). Excellent (near mint). Min. bid \$30.

Weathervane Arrow



29).Weathervane Arrow. 26 x 5.5 x 5/8" unusual, early weathervane arrow featuring man driving an early auto. Auto section is a nicely detailed figurial zinc like material on copper rod, arrow is figural cast iron. Very attractive appearance, w/ nice surface patina. Min. bid \$60.



30).Beer Drivers Union Tip Tray. 4.25" (dia.) early, tin litho tip tray from the Beer Drivers Union Local 132 (Philadelphia, Pa. vicinity) featuring beautiful detailed graphics. Clean and excellent (C. 8.5++). Min. bid \$40.



31).Black Kids Candy Box. 6.75 x 10.25 x 3" early, 2-ps. cardboard product box for Henry Heide Co.'s "Black Kids" brand penny candy, featuring great image of black kids dancing to banjo player. Attractive and displays very nicely (as a C. 8/+), w/ some edge tatters and minor staining (critical grade C. 8/-). Min. bid \$40.



32). Tobacco Cure Tin. 2 x 2.5 x 3/4" scarce, early tin litho medicinal product tin for "Electine Tobacco Cure"(Electine Medical Co., Toronto Canada & Westerleigh Park, NY), w/ claims it "Stimulates the Nerves" and "Removes Poisons from the System". Lid is excellent (a strong C. 8/+), w/ general, fairly heavy wear to gold flash finish on base. Min. bid \$40.



33).Buster Brown Apples Sign. 11-3/8 x 12" (10.75 x 11-1/4" visible) unusual, early cardboard string hung sign for Buster Brown brand apples, featuring great image of early Buster and Tigre, w/ large "R.F. Outcault, N.Y." artist mark. Has strong colors and displays very nicely (as a C. 8/+), w/ some non-offensive early background damage and minor staining (critical grade C. 7.5/+). Framed. Min. bid \$40.

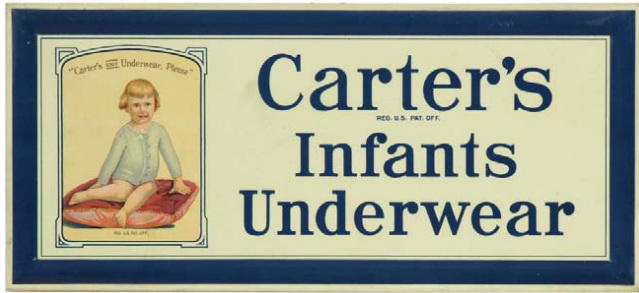


34).Oil Sign. 18" (dia.) early 2-sided porcelain service station sign for "National Benzole Mixture" w/ Mercury logo image on both sides. Sign is clean, bright and very attractive, w/ exception of some early chipping at hanging holes and outer edge of backside (front a strong C. 8++; back C. 8/+). Min. bid \$60.

Cigar Lighter



35).Duck Cigar Lighter. 5 x 5.5 x 3.75" unusual, early, heavy silver plated (over brass) countertop duck shaped lighter (hinged wing lifts up to reveal lighter fluid tank inside, wick comes out mouth). Unusual, high quality piece w/ nice detailing. Excellent (surface appears to have been lightly polished). Min. bid \$40.



36).Carter's Underwear Sign. 6-1/8 x 13.5" early, self-framed tin litho (over cardboard) advertising sign for Carter's brand Infant Underwear, featuring beautifully detailed multi-color graphics (has both easel and a string on back for hanging or stand-up display). Clean, bright and exceptionally nice (basically a C. 8.5/+), w/ exception of a couple small crimps and light rub marks in outer frame area. Min. bid \$80.



37).Union Suits Sign. 6-1/8 x 13.5" early, self-framed tin litho (over cardboard) advertising sign for Carter's brand Union Suits, featuring beautifully detailed multi-color graphics (has both easel and a string on back for hanging or stand-up display). Clean, bright and exceptionally nice (C. 8.5) w/ a minor scattered wear. Min. bid \$80.



38).Checker Taxi's Cap. 10.5 x 10.5 x 4" unusual, early, drivers uniform cap from the Checker Taxi Co. (size 7-3/8), complete w/ its great early Checker Co. metal badge. Very high quality, excellent condition (C. 8.5+). Min. bid \$40



39).Taxi Badges. Lot consists of four different, early, very high quality taxi driver cap badges (sizes range from 2.5 x 2.5" to 2.75 x 2.25". Includes: Red Cab; two variations of Yellow Cab and Kelly's Taxi (Attleboro, Mass.). Excellent. Min. bid \$40 (the lot).



40).Mobil Diesel Sign. 12-1/8 x 12.25" unusual, early porcelain "Mobilfuel Diesel" shield shaped pump plate sign w/ bold Pegasus logo at top. Clean, bright and excellent, w/ exception of a little light chipping at upper left corner and bottom left grommet hole (C. 8.5/+). Min. bid \$40.



41).Mastiff Tobacco. 4 x 5 x 3" scarce, early tin litho hinged lid can for Mastiff brand plug cut tobacco, w/ same image both sides. Has some minor soiling/ darkening and some light scattered wear from use, but overall attractive and displays nicely, w/ some general light overall wear on lid (tin C. 7.5+/-; lid C. 7). As found, should improve w/ cleaning. Min. bid \$100.



42).Esso Thermometer. 17.25 x 17.25 x 3/4" early, dial type service station advertising thermometer for Esso brand products. Has aluminum frame, w/ metal sign inside, protected by glass face cover. Excellent, w/ a little minor weathering to outer frame. Min. bid \$40.

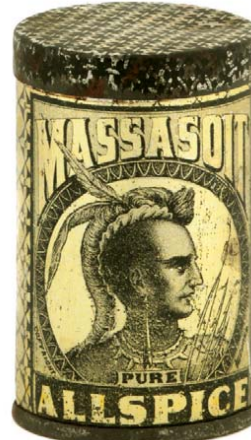
Match Holder



43).Zimmerman Match Holder. 4.25 x 2.5" (dia.) unusual, early figural metal match holder in shape of large headed seated man in fez hat (hat is hinged at back and opens up to reveal match storage area inside). Excellent, w/ nice surface patina. Min. bid \$40.



44).Swansdown Coffee Tin. 6.25 x 4.25" early, 1 lb. tin litho pry-lid coffee can (Swansdown Coffee Co., Pittsburgh, Pa.) featuring beautiful multi-color graphics. Clean, bright and excellent (basically a C. 8.5/+ appearance) w/ exception of a couple non-offensive dents and minor background wear. Min. bid \$40.



45).Massasoit Spice Tin. 3.25 x 2" (dia.) important, very early tin litho spice tin for Massasoit brand allspice (Bonnett, Schenck and Earl Co., New York, NY) featuring great image of trademark Indian warrior. Tin is clean and very attractive (a strong C. 8+), w/ some light oxidizing and darkening to lid (lid C. 7.5/+). Min. bid \$50.



46).Planters Tin. 4 x 3-1/8" (dia.) scarce variation, early tin litho 1 lb. pry-lid product can for Planters High Grade Peanut Butter, featuring nice image of early style Mr. Peanut character (Planters Nut & Chocolate Co., Suffolk, Va.). A clean, very attractive example (C. 8+). Min. bid \$80.



47). Baking Powder Sign. 6.75 x 19-7/8" early, embossed tin litho sign for Pearl brand baking powder (Merchants Mercantile Co., Duluth, Minn.) w/ nice image of product can. Excellent condition (appears never used) w/ only minor storage wear (C. 8.5+). Min. bid \$40.



48). Political Bumper Tags. (4-5/8 x 9.75" ea.) lot consists of a pair of two different metal license plate attachments from the 1940 presidential election campaigns of Democrat FDR (C. 8.5+) and Republican Wendell Wilkie (C. 8). Both are attractive and display nicely, w/ minor wear from use. Min. bid \$40 (the pair).

Sample



49). Miniature Baker's Cocoa Tin. 2.75 x 2-5/8 x 2-5/8" unusual, small 1/4 lb. size (sample?) small top style tin litho product tin for W.H. Baker Co.'s Cocoa, featuring attractive image of trademark woman on front, w/ embossed shield logo on back. Clean and very attractive appearance (C. 8), w/ exception of some non-offensive light litho loss along top and bottom edges (critical grade C. 8-). Min. bid \$40.



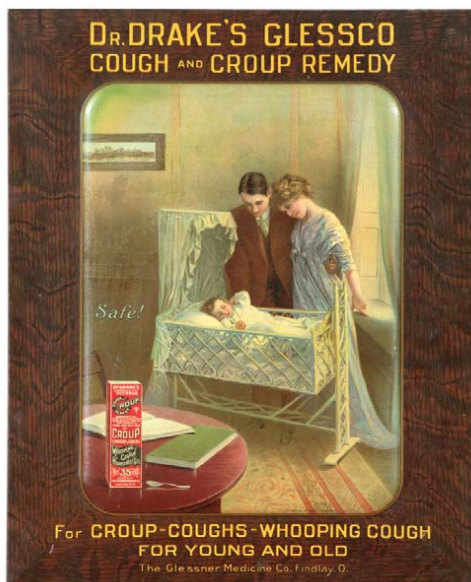
50). Santa Pins. Lot consists of five different, early celluloid pinback buttons, each featuring colorful images of St. Nick (sizes range from 1.25 to 1.5" dia.). Pins are clean, bright and excellent in appearance, w/ exception of small pinprick spot in beard area of bottom right pin. Min. bid \$50 (the lot).



51). Lithographer Sample Cup. 2.5 x 2.25" (dia.) small, early, promotional tin litho advertising nut style cup, from the W.B. Bertels Co., Wilkes Barre, Pa., "manufacturers of plain and lithographed cans and pails". Display side is clean and excellent (a strong C. 8+), w/ some general wear from use on dark, painted backside area (back C. 7+). Min. bid \$40.



52). Ingersoll Watches Sign. 18 x 55.5" outstanding, very early advertising trade sign for Ingersoll brand pocket watches, featuring a great primitive country folk art look. A powerful and impressive piece that is all original, w/ a beautiful rich patina to both its outer wooden frames and sand-painted metal sign. Displays extremely well (a very strong C. 8.5+). Min. bid \$150.



53). Drakes Medicine Sign. 14.25 x 11.5" early, tin litho (over cardboard) patent medicine sign for Dr. Drake's cough and croup remedy, featuring beautifully detailed multi-color lithography (by American Art Works). Clean, bright and exceptionally nice (litho image area is crisp and like new), w/ a little (very minor) wear in outer border area. Min. bid \$100.



54). Promotional Store Tin. 13.25 x 9-3/8 x 4.25" unusual, early figural tin litho promotional store shaped building, covered with beautiful multi-color advertising images on all four sides, as well as front and back of roof area (a few of the many varied products advertised on building include: Hostetter's Bitters, Mail Pouch Tobacco, Bour Coffee, Marathon Tires, etc.). Inside area of fold-down hinged front section is covered with a printed text business directory listing various Cleveland Ohio businesses. Piece is bright and very attractive in appearance, (displays as a nice C. 8+ overall) w/ a few minor wear spots and a little light scattered surface oxidizing- mostly on sides (critical grade C. 7.5+). Powerful and very impressive piece! As found, might improve w/ cleaning. Min. bid \$100.



55).Red Indian Tobacco. 4.5 x 7.75 x 5.25" scarce, early tin litho lunchbox style tobacco can for American Tobacco Co.'s "Red Indian" brand, featuring nice image of Co.'s trademark Indian chief on all four sides. A respectable and decent example that has strong color and displays pretty well, w/ some light scattered wear spots, w/ slightly heavier wear on lid (C. 7.5++/8-). Min. bid \$60.



56).William Penn Tobacco Tin. 3 x 3.25 x 1/4" early, embossed, hinged lid flat pocket style tobacco tin for William Penn brand, made for holding tobacco plug. Clean and attractive appearance, w/ some typical faint tarnishing and speckling to silver metallic finish (C. 7.5+/8-). Min. bid \$20.



57).Acropolis Coffee. 4 x 5" (dia.) scarce, early 1 lb. tin litho vacuum pack coffee can for Acropolis brand, w/ nice multi color image of Parthenon. Colors are strong and it displays quite nicely, although there is some light scattered scuffing and wear and some fairly heavy loss on the raised top section (just below key wind opening band). Min. bid \$30.



58).Jam Boy Coffee. 6.25 x 4-1/8" early, tin litho, 1 lb. coffee can for "Jam Boy" brand (Jameson Boyce Co., Binghamton, NY) featuring attractive color graphic image of trademark kid (same image both sides). Clean, bright and very attractive appearance (displays as a C. 8.5+/) w/ a little very minor denting and background wear (critical grade C. 8+/). Min. bid \$50.



59).Forest & Stream Pocket Tin. 4.25 x 3 x 1" early, tin litho vertical tobacco pocket tin for Imperial Tobacco Co.'s "Forest & Stream" brand featuring beautiful multi-color graphics (same image both sides). Clean, bright and very attractive (a strong C. 8+++) w/ a little minor scattered background wear. Min. bid \$60.



60).Drum Tobacco Pouch. 4 x 2.25 x 1.25" early, sealed (never opened) 2-1/2 oz. soft pack style cloth pouch for American Tobacco Co.'s "Drum" brand (1910 tax stamp). Attractive and displays nicely (as a C. 8+/), although cloth has a little darkening and light staining at bottom base area and there is a little light creasing and soiling on back side of wrap around label (back side of label C. 7.5+/). Min. bid \$40.



61).Kimbo Pocket. 4-3/8 x 2.25 x 1-1/8" full, sealed (never opened) early tobacco pocket tin for Lovell & Buffington Co.'s "Kim-bo" brand. Paper over cardboard, w/ tin top and bottom. Crisp and like new (near mint). Min. bid \$60.



62).Holeproof Hosiery Sign. 12 x 9" scarce, early beveled celluloid (over tin) advertising sign for "Holeproof" brand woman's hosiery, featuring beautiful, seductive graphic image by artist/illustrator Coles Phillips. Impressive sign is clean, bright and excellent overall (a very strong C. 8++ appearance), w/ a little non-offensive minor staining in bottom background area (has both a metal easel and a string on back for hanging or stand-up display). Min. bid \$80.



63).Straw Holder. 12.5 x 4.75 x 4.75" early, heavy 2-ps. fancy pressed glass straw holder. Very high quality piece, like new condition (near mint). Min. bid \$60.



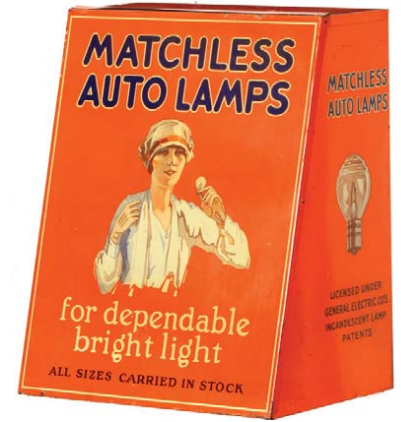
64).Coca-Cola Bookmark. 6.25 x 2-1/8" ca. 1904 Coca-Cola cardboard bookmark w/ beautiful multi color graphics, featuring opera star Lillian Nordica. Crisp, bright and like new (near mint appearance). Framed. Min. bid \$50.



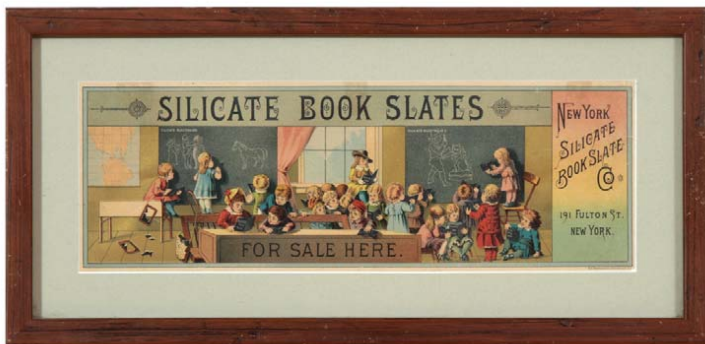
65). Cedar Point Sand Pail. 5.75 x 6.25" (dia.) very early, tin litho sand pail w/ wooden handle, featuring nicely detailed graphic image of "Cedar Point" park (Sandusky, Ohio) "Finest Bathing Beach in the World" (same image both sides). Clean and very attractive overall (C. 8+) w/ only minor wear. Min. bid \$50.



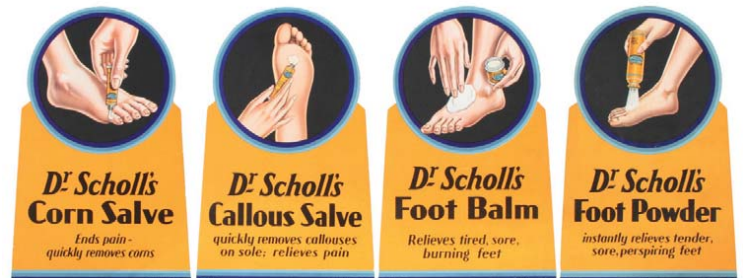
66). Automotive Batteries Clock. 20 x 20 x 3" early, metal and glass service station electric advertising clock for Exide brand automotive batteries. Unusual, high quality piece is excellent overall, w/ attractive, nicely worn surface patina. Min. bid \$70.



67). Auto Lamps Cabinet. 17 x 13.5 x 9.75" ca. 1920's tin litho countertop store display cabinet for Matchless brand automobile headlight bulbs, (has wooden shelves inside w/ bulb tester sockets on side). Clean, bright and very attractive in appearance (a strong C. 8+/overall), w/ a little light scattered edge wear and some darkening/ small staining spots on top panel. Neat piece! Min. bid \$70.



68). Book Slates Sign. 9.25 x 19.25" (5.25 x 15" visible) outstanding, very early paper litho sign (H.E. Rowland Litho Co.) for New York Silicate Book Slate Co., featuring wonderful early schoolhouse scene of students using Co.'s school slates. Clean, bright and very attractive (a strong C. 8++) w/ minor wear in outer margin area. Min. bid \$50.



69). Dr. Scholl's Signs. Lot consists of four different ca. 1930 easel-back, die-cut cardboard stand-up signs for Dr. Scholl's brand foot care products. All are excellent and appear never used (C. 8.5++), each measure app. 12-3/8 x 8". Min. bid \$50 (the lot).



70). McCormick Harvesters Calendar. 29.5 x 15.5" (26-7/8 x 13-1/8" visible) scarce, 1910 paper litho advertising calendar for McCormick Harvesting Machines, w/ beautiful, highly graphic Western themed image. Piece is clean, bright and displays very nicely (as a strong C. 8+/), although close examination will reveal some non-offensive fine, snake line type crease marks, as well as minor background wear along w/ a few professionally repaired tears at top and bottom edges. Nicely framed. Min. bid \$70.



71). Sinclair Sign. 14.25 x 23" original, ca. 1950's 2-sided porcelain credit cards sign from early Sinclair service station. Clean, very nice condition (C. 8.5+) w/ minor wear at top grommet holes on back side. Min. bid \$50.



72). Barbershop Sign. 6 x 12.5" early, chain hung tin sign from early barbershop, w/ a great primitive folk art type look. Excellent appearance w/ a nice, rich surface patina (C. 8+/), w/ faint crazing and light scattered wear (bends at bottom corners). Min. bid \$40.



73). Federal Tires Calendar. 31.5 x 17" (29.5 x 15" visible) large, early paper litho calendar for Federal Tires, featuring great image of couple in early roadster. Clean and attractive appearance, w/ non-offensive, minor scattered wear (C. 8-/) w/ period 1915 calendar tear sheet at bottom. Framed. Min. bid \$50.



74). **Bicycle Lot.** Lot includes three early metal bicycle related pins (hgt. from 1.5" to 2.25"). Includes: 1911 German silver 2-ps. pin National A.L.A.M. race; embossed brass bicycle lamp shaped "Search Light"; and 1894 2-ps. Sterling Silver pin from Century Run (New York to Islip and return" trip. Lot also includes 4-1/8 x 3" tip or pin tray advertising "Columbia" brand bicycles (Pope Mfg. Co., Boston). Unusual, very high quality piece has fancy brass body and beautifully detailed cloisonné styled enameled porcelain insert (made by O'Hara Watch Dial Co.). Excellent. Min. bid \$40 (the lot).



74).



75). **Fancy Nude Pipe.** 4 x 3.75 x 7" outstanding, large, fancy antique smoking pipe featuring beautifully detailed nude in what appears to be carved ivory or possibly meerschaum, w/ porcelain bowl insert at top and bakelite type early composition stem. Very high quality piece, in excellent condition (a little slight yellowish toning on back side) complete in its original leather covered case. Min. bid \$40.

Sample



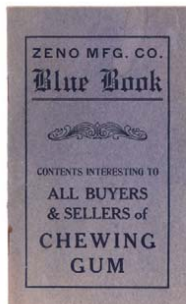
76). Yellow Bonnet Coffee Sample. 2.75 x 3-1/8" (dia.) scarce, early tin litho sample sized 1/4 lb. pry lid coffee can, featuring beautiful multi-color graphic image of Co.'s trademark girl (Springfield Grocer Co., Springfield, Mo.). Clean, bright and excellent (C. 8.5+). Min. bid \$50.



77). **Insect Powder Sign.** 8 x 12.5" early, paper litho sign for Bull Dog brand insect powder, featuring great image of Co.'s trademark dog fuming insects (note driveway covered with various wild looking dead bugs). Clean, bright and excellent appearance (C. 8.5+) w/ 2" separation tear at bottom of a non-detracting and barely noticeable faint vertical crease mark in center area. Min. bid \$40.



78). White Goose Spice. 3-1/8 x 2-3/8 x 1-3/8" early, tin litho 2 oz. spice tin (Turmeric) for White Goose brand (Shuster-Gormly Co., Pa.), featuring nice color graphic images of Co.'s trademark goose (same on both sides). Clean, bright and excellent (C. 8.5/+). Min. bid \$40.



79) Zeno Gum Catalog. 5 x 3" scarce, early 24 pg. heavily illustrated catalog from Zeno Mfg. Co., filled w/ various dealer premium offerings (including Co.'s jars, show cases, etc.). Excellent overall, w/ a non-offensive minor stain spot and a little slight fading to front cover (back cover shows factory). Min. bid \$30.



80).Jell-o Sign. 31.25 x 21" scarce, die-cut cardboard stand-up easel-back sign for Jell-o brand deserts. Clean, bright and attractive in appearance w/ nice surface sheen (displays as like new, w/ exception of small loss spot at bottom right corner edge and non-graphic back side has some darkening and staining). Min. bid \$50.



81). Anna Held Ceiling Sign. 12 x 12" early 2-sided cardboard ceiling hanger sign for Anna Held brand cigars, featuring beautiful multi-color graphics (same image both sides). Clean, bright and very attractive (displays as a strong C. 8.5+), although close examination will reveal a little, very minor wear and slight darkening spots (critical grade C. 8++). Min. bid \$50.



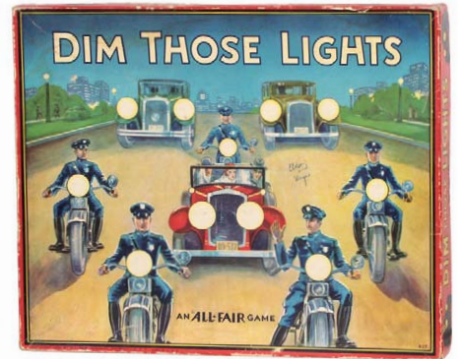
82).Ice Cream Globe. 19.5 x 17.5" (dia.) unusual, early 2-sided gas pump style advertising globe for Easton Sanitary Milk Co.'s Ice Cream. Metal case has glass insert lenses on both sides, with a decorative leaded glass outer border area surrounding each. Glass is excellent; metal has trimming spot at base area and some light rusting speckles coming through white paint (appears repainted at some point). Min. bid \$70.



83).Political Pins. Lot includes three early celluloid political novelty pins. Includes: 1.75 x 1-3/8 x 5/8" figural hat from the 1928 Democratic presidential candidate Al Smith; 2.75 x 7/8" Cigar Makers Union 1907 Labor Day item; and Alton Parker pinback button (1904 Democratic presidential candidate). Toning and light wear to Smith hat, other items like new. Min. bid \$40 (the lot).



84).Coca-Cola Bookmark. 2.25 x 2" ca. 1900 Coca-Cola celluloid advertising bookmark. A clean, very nice example that is excellent in condition. Min. bid \$60.



85).Dim Those Lights Game. 12.75 x 15.75 x 1.5" wonderful, large ca. 1930's boxed game set by All Fair Game Co. featuring same wonderful image on box cover and large inside target toss board. Outer box has a little non-offensive light scattered edge wear and neatly written names in background area (C. 8/+); inside excellent, complete w/ throwing chips (C. 8.5+). Min. bid \$40.



86).Maryland Club Pocket. 4.25 x 3.25 x 1" early, tin litho vertical tobacco pocket tin for Marburg Bros. "Maryland Club" brand, featuring beautiful graphic image of trademark building. Clean, bright and exceptionally nice (front C. 8.5+); back similar condition, w/ exception of small chip spot in bottom background area. Min. bid \$60.



87).Cadillac Spice. 3-5/8 x 2-3/8 x 1-1/8" early, 1-1/2 oz. spice tin (Ginger) for Cadillac brand (Cadillac Foods, Cleveland, Oh.) featuring nice image of Cadillac car logo (same image both sides). Clean, bright and very attractive (basically a strong C. 8++), w/ exception of small dent and a couple small chip spots on left side edge. Min. bid \$30.



88).Bug Killer Tin. 4.25 x 2.5" (dia.) unusual, early tin litho bug killer tin from Salem Chemical and Supply Co. (Salem, Mass.) featuring wonderful image of witch and great looking bugs. Crisp, bright and excellent (C. 8.5+) w/ exception of non-detracting minor dent mark. Min. bid \$30.



89).Brighton Blend Coffee. 5 x 4-3/8" early, tin litho 1 lb. coffee can for Buell's Brighton Blend brand coffee (Buell & Co., Rochester, NY) featuring beautiful graphic image. Clean, bright and exceptionally nice appearance, w/ a light background scuffing spot on back side (front C. 8.5+; back C. 8/+). Min. bid \$40.



90).Elgin Watches Sign. 28.5 x 20.75" (24.5 x 17" visible) wonderful, early paper litho sign for Elgin Watches, featuring stunning multi-color graphic image of Father Time holding Elgin pocket watch. Clean, bright and beautiful appearance, as found still in its original period frame (C. 8.5+), w/ exception of minor, small hazy spot in sky area. Min. bid \$70.



91).Warner's Medicine Sign. 17 x 11" very early, paper litho roll-down sign for Warner's "Safe Cure" medicines featuring beautiful multi-color graphics (Stecher Litho., Rochester, NY). Clean, bright and very attractive appearance (displays a strong C. 8+) although close examination will reveal a few non-detracting faint horizontal creases and small professionally closed tear at middle left edge (all are hardly noticeable when displayed- except on close examination). Min. bid \$80.



92).Weed Tire Chain Sign. 23.5 x 19.5" (19-5/8 x 15.5" visible) outstanding, early paper litho sign (by illustrator S. Werner) for Weed brand tire chains, featuring beautiful color graphic image of young couple in early car off to get married (note: Weed Chain signs in window and on building). Clean, bright and very impressive (C. 8.5+), w/ just a faint trace hint of foxing in sky area. Presented in attractive period frame (probably original to piece). Min. bid \$80.



93).Bell Telephone of Pa. Sign. 5.5 x 19" heavy, early, porcelain Public Telephone pay station sign. Clean, bright and excellent overall, w/ nice surface sheen. Basically like new, w/ exception of non-detracting minor edge wear. Min. bid \$50.



94).Arbuckle Coffee Sign. 5.5 x 19-3/8" early, embossed tin litho sign for Arbuckle's brand coffee. Clean and excellent overall, appears never used w/ only minor storage wear (a very strong C. 8++). Min. bid \$50.

Fancy Snuff Boxes



95).Fancy Snuff Boxes. Lot consists of two different, very early, high quality lacquered composition hinged lid snuff boxes advertising Weyman Co.'s "Copenhagen" brand snuff. Larger box (2.75 x 4.25 x 1.25") has a fancy mother of pearl design around outside border; smaller box 2 x 3.5 x 1". Both are excellent (near mint). Min. bid \$50 (the pair).



96).Auto Pennant. 8.25 x 28.25" very early, felt advertising pennant from the Briggs-Detroit Auto Co., featuring great image of Co.'s ca. 1915 motorcar. Has a very nice overall look, w/ slight toning/darkening and a little expected light wear (C. 8/-). Min. bid \$30.



97).Buffalo Sled Co. Bank. 2.5" (dia.) x 1/2" (w) scarce, early celluloid over metal two-sided advertising bank for Buffalo Sled Co.'s "Auto-Wheel" brand toy wagons (different wagons each side). Clean, bright and very attractive (displays as a near mint) w/ tiny edge cut mark and a trace hint of minor background soiling (mentioned for accuracy- both very minor and barely noticeable). Min. bid \$30.



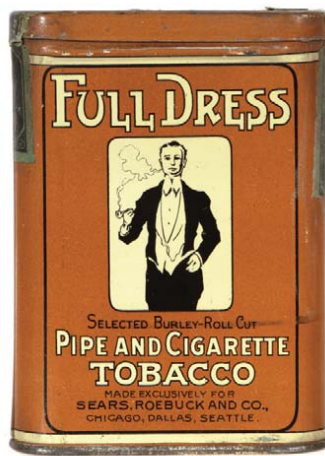
98).Motorcycle Toy. 4 x 6.25 x 1.75" outstanding, early cast iron motorcycle toy of civilian driver on Harley, w/ embossed gold "Harley Davidson" markings on both sides of gas tank. All original, w/ excellent patina and paint surface (C. 8.5/+), w/ the exception of typical chipping/wear on driver hands area and expected crack marks and age wear to rubber tires. Min. bid \$50.



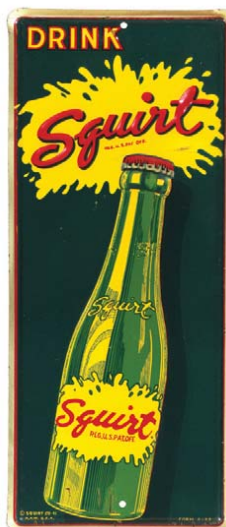
99).Jenney Aero Tip Tray. 4.25" (dia.) unusual, early tin litho advertising tip tray for Jenny Aero brand gasoline, w/ manufactured dimple spot in center for secondary use as spinning game. Excellent (a strong C. 8++). Min. bid \$40.



100).Lake View Spice. 4 x 2" (dia.) early, tin litho 2 oz. spice tin (Cinnamon) for Lake View brand (Mallott-Johnson Co., Chicago) featuring great image of trademark girl in bathing suit (same image both sides). Clean, bright and very attractive (a strong C. 7.5+/8-), w/ darkening and wear on gold flash lid. Min. bid \$40.



101).Full Dress Pocket. 4.25 x 3 x 7/8" early, tin litho vertical tobacco tin for Sears Roebuck Co.'s "Full Dress" brand. Clean and excellent overall (a strong C. 8++). Min. bid \$70.



102).Squirt Door Push. 8.75 x 3.75" unusual, early embossed tin litho door push for Squirt brand soda. Crisp, bright and like new (appears never used). Near mint. Min. bid \$40.

Match Holder



103).Lady w/ Candle Match Holder. 4 x 2" (dia.) unusual, figural metal match holder by Zimmerman in shape of elderly woman carrying candlestick holder, w/ striking surface at base (hat is hinged at back and head opens up to reveal match storage area inside. Excellent. Min. bid \$40.

Original Artwork



104).Campbell's Kids Original Artwork. 11 x 21" important, original hand-painted artwork on cardboard featuring adorable image of trademark Campbell Soup Kid, made for creating a Campbell Soup Co. trolley car sign (note: Campbell kids were created and introduced for use in a series of trolley car ads beginning in 1904 by famous children's illustrator Grace Wierdseim (Drayton), who created the Campbell Kid's advertising for the company until 1924. Wonderful piece displays beautifully, w/ strong colors and a great overall look, w/ minor edge wear and a little light soiling and background toning. Min. bid \$150.

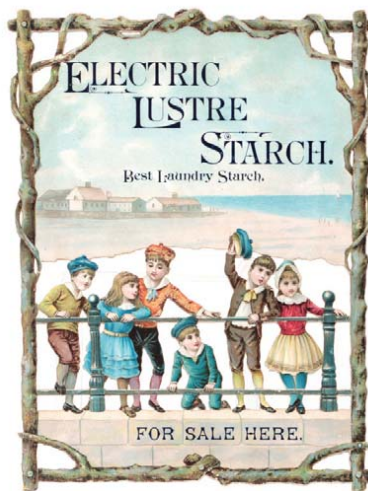
Original Artwork



105).Campbell's Kids Original Artwork. 11 x 21" important, early original hand-painted artwork on cardboard featuring adorable image of trademark Campbell Soup Kid, made for creating a Campbell Soup Co. trolley car sign (note: Campbell kids were created and introduced for use in a series of trolley car ads beginning in 1904 by famous children's illustrator Grace Wierdseim (Drayton), who created the Campbell Kid's advertising for the company until 1924. A wonderful artist signed piece that displays beautifully, w/ strong colors and a great overall look, w/ some light tattering and small tears at outer edges (could be easily framed and matted out) w/ production notations and litho Co. stamping mark on back side- see our web site addendum to view). Min. bid \$150.



106).Cherry Cheer Sign.11 x 8.5" outstanding, early cardboard die-cut sign for Cherry Cheer brand soda, w/ beautiful multi-color graphics. Clean, bright and exceptionally nice appearance (displays as a strong C. 8.5/+) although close examination will reveal a couple faint crease marks (nothing at all serious or detracting) and a light wear mark at top hanging hole (Artcraft Litho Co., Detroit). Min. bid \$50.



107).Electric Lustre Die-Cut. 9-7/8 x 7.25" early, cardboard die-cut sign for Electric Lustre brand starch, featuring very attractive multi-color graphics. Clean, bright and excellent in appearance (C. 8.5/+), probably removed from a scrapbook, w/ some removal remnants and wear on non-graphic backside. Min. bid \$60.



108).Tobacco Playing Cards. complete deck of 52 ca. 1890's tobacco insert playing cards issued by "Hard A Port" brand cigarettes. Individual cards measure 3-7/8 x 2.5" and each has advertising on blue backside (including red distributor's marking at top); playing card side features a different multi-color highly graphic image of a Victorian woman. Note: individual cards were inserted w/ tobacco pack to make or exchange for a complete deck. Cards are clean and excellent overall, w/ only minor wear from use (no jokers). Min. bid \$70 (the set).

TIRE ACCESSORIES

109).Tire Accessories Sign. 3 x 24-1/8" terrific, ca. 1930's/40's small hand-painted service station sign on a masonite like material, w/ great color choice and paint surface. Nice rich patina, w/ some non-offensive scuffs, soiling and light wear from use (C. 7.5+++). Displays great! Min. bid \$40.



110).Coca-Cola Sign. 11-3/8 x 35" outstanding, large 1930's embossed tin litho Coca-Cola sign, featuring beautiful image of Co.'s trademark 1923 Christmas bottle. Crisp, bright and like new (appears never used) w/ beautiful original sheen. Near mint, w/ exception of a little very minor storage wear at very outer edges- mentioned for accuracy, so minor barely merits mention (marked "Robertson, Springfield Ohio 1934 at bottom edge). Min. bid \$70.



111).American Family Soap Sign. 30.5 x 20" outstanding, large, early cardboard sign for American Family Soap, featuring wonderful image of Uncle Sam watching Miss Liberty hanging laundry. A powerful and impressive piece, w/ bright vivid colors and very nice overall look (displays as a strong C. 8/+), w/ non-offensive minor speckling/soiling, minor scattered background wear and a small repaired puncture mark in yellow background area (just to left of word "Soap" at top). Min. bid \$70.



112).Gold Flake Tobacco. 3-3/8 x 4.5 x 2.25" scarce, very early tin litho 4 oz. size square corner tobacco tin for Globe Tobacco Co.'s "Gold Flake" brand, w/ nice image of trademark coin on both lid and front panel (Hasker & Marcuse Litho). Clean and very attractive in appearance, w/ minor crazing and a little non-offensive minor scattered wear on sides (C. 8+/-). Min. bid \$60.



113).Sinclair Oil Can. 6.25 x 8 x 3" unusual, early tin litho 1/2 gallon size motor oil tin for Sinclair's Opaline brand motor oil. Clean, very nice example (C. 8.5). Min. bid \$40.

Sample Tins



114).Peanut Butter Samples. Lot consists of two early, miniature 6 oz. sample sized tin litho peanut butter tins (ea. 2.75 x 2-5/8" dia.). Includes: (1) Derby brand. Clean, bright and like new (a strong C. 8.5+) w/ only minor wear; and (2) Peter Pan "Sample". Clean, bright and excellent (near mint) w/ exception of small dark spot on upper back edge of lid. Min. bid \$40 (the pair).

Sample



115).Mirelle Talc Sample. 2.25 x 1.25 x 3/4"early, miniature tin litho sample size talc tin for Kleinert Co.'s "Mirrelle" brand, featuring a great, early deco era design. Excellent (near mint). Min. bid \$40.



116).Sand Pail. 7.5 x 7.25" (dia.) large, ca. 1940's tin litho sand pail by T. Cohn Co., Brooklyn, featuring great images farm animals blowing bubbles all around. Clean, bright and exceptionally nice (appears never used). Min. bid \$40.

Sample



117).Sozodont Tooth Powder Sample. 2.25 x 1" (dia.) early, miniature tin litho sample tin for Sozodont brand tooth powder, featuring finely detailed lithography. Excellent overall (C. 8+), w/ exception of non-offensive small background scratch mark. Min. bid \$30.

Envelope Holder



118).Advertising Envelope Holder. 3.25 x 2-5/8 x 1.75" early, fancy, embossed cast iron desktop envelope holder advertising Blair's Keystone brand products. Excellent, w/ a nice rich patina to Japanned surface finish. Min. bid \$30.



119).1938 Coke Calendar. 31 x 18.25" (24-3/8 x 11.75" actual calendar) beautiful, 1938 paper litho Coca-Cola advertising calendar. Clean, bright and exceptionally nice (a strong C. 8.5/+ appearance), w/ a little very minor edge wear, including a 1/2" tear in left margin area and a couple non-offensive faint horizontal crease lines from once being rolled (critical grade C. 8+). Complete w/ full calendar pad at bottom. Nicely framed and matted. Min. bid \$150.



120).Cotolene Sign. 36 x 19" (31 x 14" visible) great paper litho sign for Fairbank Co.'s "Cottolene" brand shortening featuring nice, very early graphics. Clean and very attractive in appearance, w/ minor toning and a little non-offensive faint background staining (displays as a nice C. 8+). Attractively framed. Min. bid \$150.



121).1921 Coke Calendar. 38.25 x 18.5" (31-3/8 x 11-5/8" visible) outstanding, 1921 Coca-Cola advertising calendar. Calendar is clean, bright and exceptionally nice (a strong C. 8.5+++ appearance), complete w/ calendar pad at bottom (minor age toning to bottom calendar tear sheet and some darkening/oxidizing to metal strip at top). Nicely framed and matted. Min. bid \$150.



122).Shaving Mug. 4 x 3.75" (dia.) early, decorative occupational shaving mug featuring beautifully detailed hand-painted image of man in horse drawn carriage. Excellent, w/ a little minor wear to decorative gold trim and lettering (marked "D & C" in green on base.) Min. bid \$50.



123).Klaxon Auto Horns Sign. 19 x 25" early, primitive wooden road sign advertising Klaxon brand auto horns. All original, w/ nice surface patina to its paint surface, giving it a great primitive, country folk art type appearance. Excellent overall, displays very well (C. 8+/-) w/ some light scattered wear and edge damage spot at top left corner of frame area. Min. bid \$80.



124).Monarch Popcorn Pail. 3.75 x 3-3/8" (dia.) early, 14 oz. tin litho peanut butter pail for Reid Murdock Co.'s Monarch brand popcorn, featuring beautiful color graphics all around (great comical Brownie like characters on backside). Excellent (C. 8.5+). Min. bid \$40.



125).Oak Hill Spice. 4.5 x 1.5" scarce, cylindrical variation, 2 oz. tin litho spice tin (nutmeg) for Oak Hill brand (Hall Co., Brockton, MA) featuring attractive color graphics (same image both sides). Clean, bright, very attractive (C. 8.5+) w/ exception of faint background scuffing and some oxidizing to gold flash finish on non-graphic lid. Min. bid \$30.



126).Connecticut Creamery Butter Sign. 10-1/8 x 12-1/8" unusual, very high quality early self-framed aluminum sign for E.L.C. brand butter. An outstanding, very high quality piece, that is crisp and like new, w/ terrific look (note the reference to Adams Express Co.). Min. bid \$70.



127).Popper's Ace Display Box. 8 x 8-3/8 x 5.5" (as shown) early, cigar store wooden display box, advertising Popper's Ace brand (marked "Display Boxes" on bottom) w/ a removable faux cigars insert inside (cigar insert is for Tudor Arms brand),. Excellent. Min. bid \$30.



128).Wildroot Sign. 24-3/8 x 18" early, cardboard easel back stand-up sign for Wildroot hair waving product. Clean, bright and very attractive in appearance (display as a strong C. 8+), w/ non-offensive minor wrinkling and a little minor scattered wear. Framed. Min. bid \$60.



129).Wildroot Sign. 24-3/8 x 18" early, cardboard easel back stand-up sign for Wildroot hair tonic product. Clean, bright and very attractive in appearance (display as a strong C. 8+), w/ non-offensive minor wrinkling and a little minor scattered wear. Framed. Min. bid \$60



130).Welcome Nugget Tobacco Label. 19.75 x 12.75" (13 x 6.5" visible) early, paper litho product advertising label for T.C. Williams Co.'s Virginia tobacco, featuring wonderful graphic gold miner image. Clean, bright and like new (near mint). Nicely framed and matted. Min. bid \$40.



131).John Deere Sign. 12 x 23.5" early, embossed tin litho sign for a John Deere Co. farm implements dealer (Helena, Montana). Sign is clean, bright and excellent (C. 8.5+) w/ nice original sheen, w/ exception of small edge wear spot at bottom right corner (American Art Works Co.). Min. bid \$50.



132).Ralph Emerson Proofing Book. 6.75 x 8.5" complete 27 pg. set of early stone litho progressive color printers proof strikes in booklet form for Ralph Emerson brand cigar box labels, featuring beautiful multi-color image of 19th century American poet. This printers reference booklet represents each stage of the stone litho color strike process, from 1st strike through to the finished label. First page (the completed label) has some light creasing. Lot also includes smaller Emerson proofing booklet for side labels as well as original folder containing complete labels (see addendum section of our website). Min. bid \$40.



133).Auto Girl Advertising Calendar. 24.25 x 18.5" (17 x 11.5" actual piece) Large, early embossed die-cut cardboard 1911 advertising calendar for a Boston tailoring establishment, featuring wonderful image of woman driver. Powerful and very impressive looking piece has bright colors and displays very well (as a strong C. 8+) although closer examination will reveal edge chipping in upper left corner and a few scattered tear marks and minor light crimp and crease marks. Framed and matted, displays great! Min. bid \$50.



134).Grumman Canoes Sign. 15-5/8 x 11.5" early, heavy aluminum dealership advertising sign for Grumman Aircraft Engineering Co.'s aluminum canoes, w/ powerful and very impressive look w/ nice rich patina to its beautiful silkscreen style design. Excellent (C. 8.5+). Min. bid \$40.



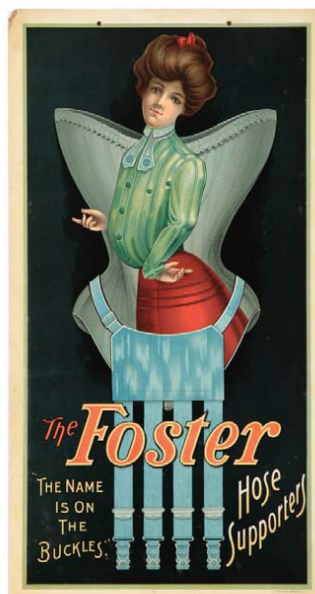
135).Heinz Celery Sauce Jar. 12.5 x 5.25" (dia.) very early display jar for Heinz brand celery sauce, w/ early product labels on front and back. Base of jar is excellent; w/ a few light chips at bottom of ground lid (not visible when displayed); the front side display label is clean and very nice (non-graphic descriptive text label on backside has some light toning and a little light staining). Impressive piece. Min. bid \$60.



136).White Rock Door Pushes. Lot consists of a pair of tin litho advertising door pushes for White Rock brand beverages, each app. 14-5/8 x 4" (includes Ginger Ale and Sparkling Water). These are clean, bright and very attractive (appear never used) w/ exception of some storage wear (mostly confined to raised border area). Min. bid \$40 (the pair).



137).Planters Statue. 7.5 x 2-7/8 x 2-7/8" great, ca. 1930's Planters Peanut Co. heavy metal statue, featuring a wonderful, figural early version Mr. Peanut character, w/ nuts on base. Excellent paint surface w/ some general tarnishing/ wear to top of base area. Min. bid \$60.



138).Foster Sign. 17 x 9" early, celluloid over cardboard sign for Foster brand hose supporters, featuring beautiful multi-color graphics. Sign is clean, bright and exceptionally nice overall (C. 8.5+), w/ exception of some edge chipping and wear at very outer border area (would be easily hidden if framed). Min. bid \$60.



139).Dandruff Cure Bottle. 8-3/8 x 2-5/8" (dia. at base) scarce, early barbershop hair tonic display bottle w/ hand applied top for Rosewood Dandruff Cure, featuring beautiful, high quality enameled label on front w/ original fancy metal top. Excellent. Min. bid \$60.



140). Old Company Coal Sign. 12-1/8 x 12" early, heavy 3 color porcelain sign for Old Co.'s Lehigh brand anthracite coal. Clean, bright and like new (near mint). Min. bid \$50.

Salesman Sample Porthole



141). Salesman's Sample Porthole. 2.5 x 4.75" (dia.) wonderful, early, salesman's sample porthole from the Pittsburgh Lamp Brass & Glass Co. Very unusual and high quality piece, is a working 1/4 scale model porthole, w/ heavy brass case and working hardware, that is covered w/ etched promotional advertising on glass. Complete and excellent, w/ nice surface patina to its original wooden presentation base (base has some scattered upper surface finish wear). Min. bid \$70.



142). Johnston Hot Chocolate Canister. 8.5 x 6" (dia.) unusual, early 2-ps. aluminum soda fountain canister for Co.'s Johnston's Hot Chocolate flavoring, featuring attractive, deeply incised lettering and design. Excellent, w/ only minor wear (C. 8.5). Min. bid \$60.

Rare Pocket



143). Lenox Pocket Tin. 4 x 3-5/8 x 3/4" important, early vertical tobacco pocket tin for Warnick Brown Co.'s "Lenox" brand tobacco, featuring image of trademark auto. A clean, bright, extremely nice example, w/ exceptionally nice color and look (displays as a strong C. 8.5+) although close examination will reveal a few non-detracting minor wear marks (critical grade C. 8++). By far the nicest example of this scarce tin I've ever seen. Min. bid \$150.



144). Disney Glasses. Important, early and extremely rare, ca. 1936 complete boxed set of six early, never used glass tumblers, each featuring a different large color enameled Disney cartoon character (including the scarce Horace Horse Collar glass). Each has early "© W.D." trademark marking and all are like new (4-3/8 x 2-5/8" dia.). These were found still in their original cardboard box, which features the same Disney cartoon characters on lid (box is very nice, w/ a little light pencil marking on lid and just a little minor toning and soiling.) Min. bid \$100 (the set).



145). Match Box Holder. 4.25 x 2.75 x 2.25" unusual, early figural brass tabletop matchbox holder in likeness of a comical man character w/ jeweled sparkling ruby eye. An interesting, high quality piece, w/ nice detailing. Excellent. Min. bid \$40.



146). Grape Smash Syrup Bottle. 11.5 x 3-3/8" (dia.) scarce, early, soda fountain glass syrup display bottle for Grape Smash brand soda, w/ great enameled advertising label. Bottle has a hand-applied lip at top and is excellent overall; enameled label has some light wear from use, w/ heavy loss/ wear to decorative metallic outer border area. Min. bid \$60.



147). Peg Top Door Push. 12.25 x 4" early, raised convex shaped porcelain advertising door push for Peg Top brand 5¢ cigars. Piece is clean and attractive in appearance, w/ nice surface sheen (displays as a strong C. 8+), w/ a little light oxidizing at outer edge and minor background wear spot. Min. bid \$50.



148). Bronson Walton Coffee Grinder. 12.25 x 3.75 x 3.5" unusual, early wall mount coffee grinder. Wooden attachment wall mount, w/ a cast iron mechanism and 1 lb. tin litho canister featuring Dutch scenes on three sides (Bronson-Walton Co., Cleveland). Tin is attractive (C. 7.5), w/ a little light scattered surface staining (as found, should improve w/ cleaning). Min. bid \$50.



149).Cigarettes Box Label. 10-1/8 x 14.5" early, paper litho, printers proof label for El-Myra Cigarettes product shipping box. Outstanding, very impressive label is crisp, bright and like new, w/ exception of a little minor wear along top edge (would look great framed as sign). Min. bid \$40.

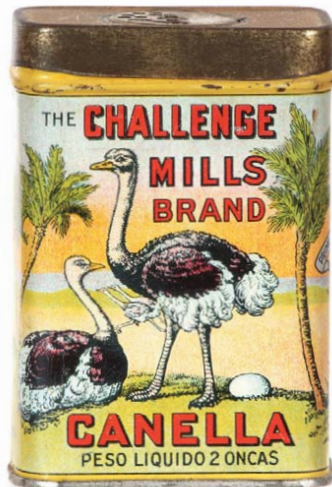


150).Cars Greased Sign. 8.25 x 14.25" Ca. 1920's cardboard service station sign w/ wonderful rich colors and a great overall look. Excellent (C. 8.5/+). Min. bid \$30.

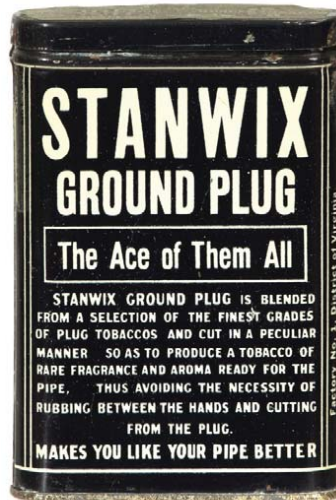
4 Engine



151).Hi-Plane Pocket. 4.25 x 3 x 7/8" early, tin litho, vertical tobacco tin for Larus Co.'s Hi-Plane brand (scarcer 4 engine variation). Clean, bright and very attractive (front C. 8.5; back 8+/-); w/ couple minor dents and a couple pinhead sized oxidizing speckles on upper surface of back side. Min. bid \$60.



152).Challenge Mills Spice. 3-3/8 x 2.25 x 1.25" early, tin litho, spice tin for Durkee Co.'s Challenge Mills brand (Canella spice) featuring beautiful multi-color graphics all around. Clean, bright and like new (near mint). Min. bid \$40.

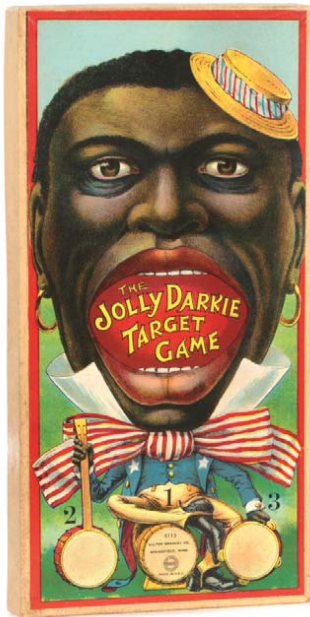


153).Stanwix Tobacco Pocket. 4.5 x 3 x 7/8" elusive, early, tin litho vertical tobacco pocket tin for Falck Co.'s "Stanwix" brand tobacco. Clean and very attractive (C. 8.5/+). Min. bid \$60.

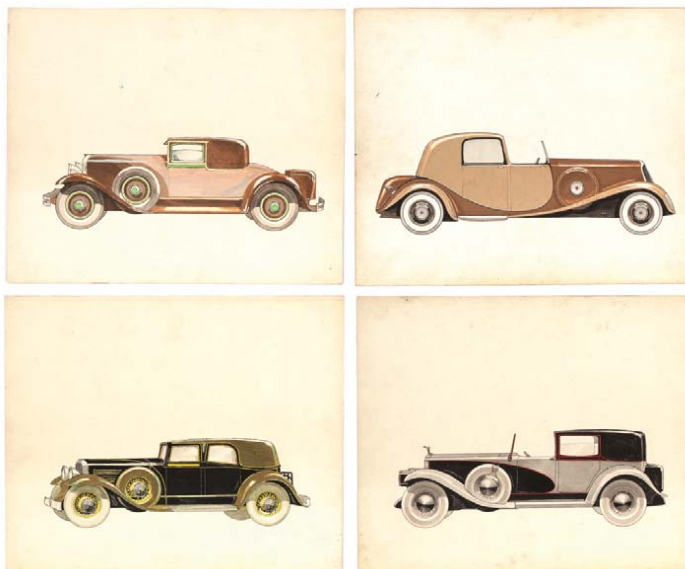


154).Hercules Gunpowder Tin. 5-5/8 x 3" (dia.) scarce, early, paper label over tin gunpowder can for Hercules Rifle Powder (Ringette Sporting Goods, Grants Pass, Oregon). Attractive and displays nicely, w/ non-detracting small dent mark and some non-offensive light general age toning (C. 7.5+). Min. bid \$40.

Original Artwork



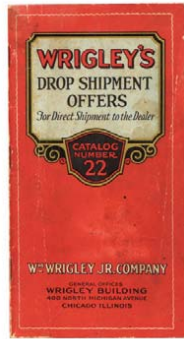
155).Jolly Darkie Game. 15.75 x 8 x 1-5/8" early, 2-ps. "Jolly Darkie" boxed target game set from Milton Bradley Co. Crisp, bright and like new (near mint), w/ same great image on target inside (complete w/ original balls). Min. bid \$70.



156).Original Automobile Artwork. Lot consists of four different, early, very high quality, original professional hand-sketched and painted artist automobile concept illustrations executed on art board by artist/illustrator Ray Ring. They measure app. 9 x 11" (has his fancy signature on back of each). Excellent overall, w/ minor background soiling to each. Min. bid \$50 (the lot).



157).Gulf Oil Thermometer. 26.5 x 7.25" early, painted metal Gulf Oil Co. service station thermometer, advertising Co.'s motor oil, anti freeze and "No-Nox" gasoline. Clean and attractive, w/ minor soiling and light wear (C. 8+/-). As found, should improve w/ cleaning. Min. bid \$50.



158).Wrigley's Gum Catalog. 7.25 x 4" early, ca. 1928, 48 pg. fully illustrated jobber/dealers catalog from Wrigley Gum Co., filled w/ special dealer promotional offers and give-aways for placing orders. Has some wear and light staining on cover, otherwise quite nice. Min. bid \$30.



159).Burns Plows Counter Display. 5-5/8 x 11.75 x 1-3/8" unusual, early cast iron doorstop style countertop advertising display featuring nicely detailed image of man plowing behind horses, w/ incised advertising on base. Excellent, w/ nice surface patina. Min. bid \$40.



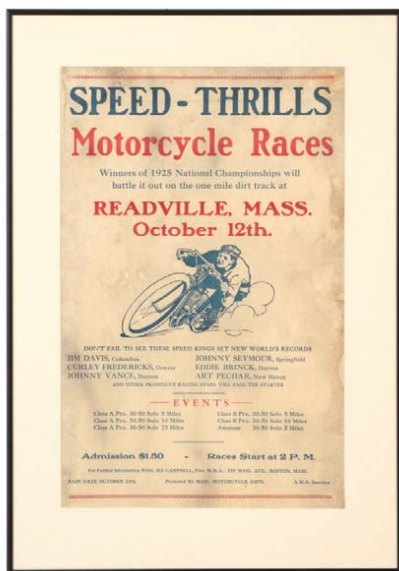
160).American Can Co. Ruler. 3.75 x 9.5" outstanding, early tin litho ruler/letter folder advertising American Can Co., featuring stunning multi-color graphic image from 1904 St. Louis Expo (note: piece also has an advertising ink blotter on base. Clean, bright and exceptionally nice (C. 8.5+). Min. bid \$40.



161).Cassius M. Clay Proofing Book. 6-3/8 x 10.5" complete 23 pg. set of early stone litho progressive color printers proofs strikes in booklet form for Cassius M. Clay brand cigar box labels, featuring beautiful multi-color image of American statesman and abolitionist General Clay. First page (the completed label) has some water staining and soiling/ ink stains from use in outer margins, other pages excellent. Min. bid \$40.



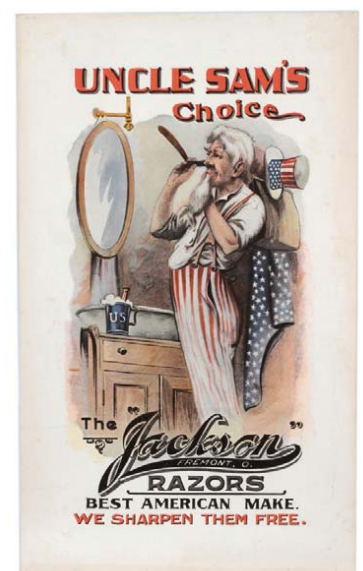
162).General Telephone Co. Sign. 5.5 x 19" early porcelain telephone pay station sign from General Telephone Co., w/ great image of Co.'s telephone pole trademark. Attractive and displays nicely, w/ a little light scattered oxidized staining at outer edges. Min. bid \$40.



163).Motorcycle Racing Poster. 27 x 18.75 (20.75 x 13-3/8" visible) 1925 Motorcycle Races poster, w/ powerful and very impressive look (note: this race had 6 world record holder riders competing). Has age toning, some light staining and a little early professional restoration, but attractive and displays quite nicely (as a 7.5/+). Min. bid \$40.



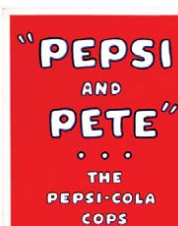
164).Beech-Nut Gum Sign. 38 x 14.5" large, early die-cut cardboard easel-back stand-up display sign for Beech-Nut brand chewing gum. Clean, bright and exceptionally nice (appears never used, w/ only minor storage wear (C. 8.5). Min. bid \$50.



165).Jackson Razors Sign. 12-5/8 x 7-3/8" great, early paper litho sign advertising "Jackson" brand straight razors, featuring wonderful image of Uncle Sam shaving. Clean and excellent overall (a strong C. 8++) w/ minor toning and a trace bit of minor tattering at very bottom edge (nothing serious and would be hidden if framed). Min. bid \$70.



166). Indian Motorcycles Decal. 6.75 x 12-3/8" (4.5 x 11.75" actual decal) unusual, early, never used decal w/ Indian motorcycles logo, featuring great color graphics. Excellent, w/ exception of faint crease mark at bottom right edge. Min. bid \$30.

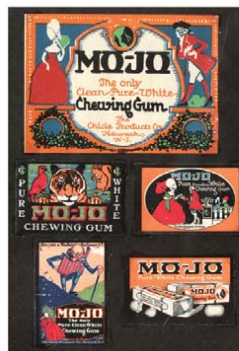


167).Pepsi Pete Blotter. 4 x 8-7/8" early, ca. 1930's cardboard advertising blotter for Pepsi-Cola featuring Co.'s comical "Pepsi and Pete" Cop characters. Clean, bright and like new (near mint), w/ exception of some slight traces of ink blotting on backside. Min. bid \$20.



168).Cigar Box Label. 9-1/8 x 18-1/8" early, paper litho printers proof label for a Rothenberg Cigars product shipping box. Impressive label is crisp, bright and like new, w/ exception of a little minor wear along top edge. Min. bid \$40.

Chewing Gum



169).Mo-Jo Gum Lot. Nice lot of early paper advertising for Mo-Jo brand chewing gum. Includes great near mint multi-color graphic tiger box label (7-1/8 x 7-5/8") and 5 different advertising poster stamps (2.25 x 1.75" to 3.25 x 4.5") excellent. Min. bid \$30 (the lot).

Sample / Bank



170).Donald Duck Coffee Sample/Bank. 2.5 x 3" (dia.) small, early, 3 oz. size tin litho "Free Sample" coffee can for "Donald Duck" brand coffee (Goyer Coffee Co., Greenville, Miss.) w/ coin slot in lid for later use as bank. Excellent overall (a strong C. 8+/) w/ exception of some paint loss and light wear to the non-graphic lid (lid 7.5). Min. bid \$40.



171).Saloon Bottle Stoppers. Lot consists of three unusual, high quality chrome finish whiskey bottle stoppers/pourers, each w/ price of a shot marked on both sides 4.5 (h) x 1.5" (dia.). These were made for displaying inserted at top of branded whiskey back bar bottles. Excellent overall, w/ minor wear from use (C. 8++). Min. bid \$40 (the lot).



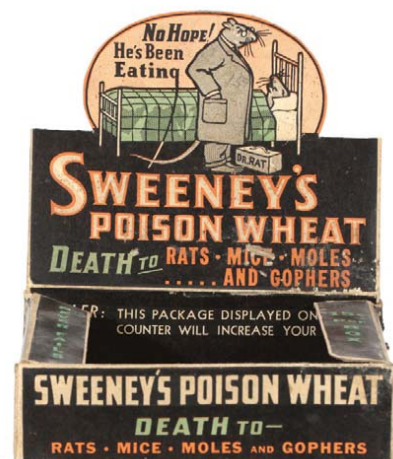
172).Thomas Cigars Tip Tray. 4.25" (dia.) early tin litho tip tray for "Mr. Thomas" 5¢ brand cigars, featuring great image of Co.'s trademark black cat "Tom". Has strong colors and displays nicely (as a strong C. 8+/), w/ a little light wear and a couple minor pings from use (critical grade C. 8-/). Min. bid \$40.



173).Beech Nut Display Stand. 13.5 x 9.75 x 17" early countertop display stand for Beech-Nut Co.'s lifesaver style candy rolls. Clean, bright and displays quite nicely, w/ beautiful multi-color graphic fruits featured on side panels (side panels rate a strong C. 8+/ overall, w/ exception of a small surface oxidizing spot and some gold loss in upper corner border edge section of right side; gold flash finish on bottom inside panel (that holds candy) has some tarnishing and light wear; and top marquis piece has a some bending in right section and few scattered scratch marks on left side. Min. bid \$70.



174).Cherry Cheer Dispenser. 12 x 10" (dia.) outstanding, early countertop soda-fountain syrup dispenser/cooler for "Cherry Cheer" brand soda (similar lettering both sides). Has a beautiful, rich surface patina to its composition body, w/ heavy, high quality 2-ps. white china insert. Excellent overall (C. 8+/), w/ minor aging wear (has 2 metal spots on backside). Min. bid \$70.



175).Rat Killer Display Box. 7 x 6.25 x 6" early, cardboard display box for Sweeney's rat killer, featuring nice die-cut, pop-up at back of Dr. Rat at bedside attending to dying rat. Neat piece, w/ general wear from use (C. 7+). Min. bid \$20.



176).Indian Motorcycles Match Holder. 2.25 x 1.5 x 7/8" early copper advertising matchbox holder for Indian Motorcycles, w/ attractive nicely detailed embossed advertising on both sides (has early Indian logo on front; and "Power Plus" motor on back). Excellent and all original (C. 8.5++). Min. bid \$40.

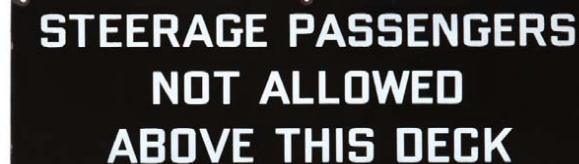
Cocoa Samples



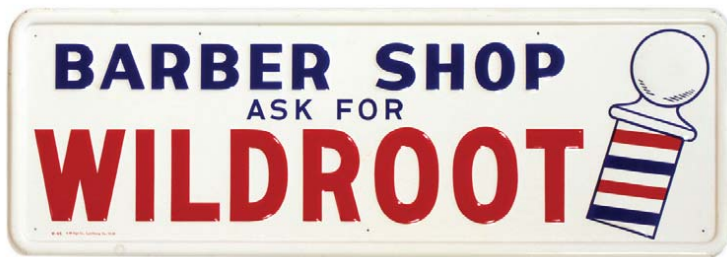
177).Cocoa Samples. Lot consists of 5 different miniature sample size cocoa tins (avg. hgt. 1.75"). Four are tin litho (Droste, Cowan, Rawleigh and Bakers) and Van Houten's has paper label over tin. All are very good to excellent (avg. 8++). Min. bid \$60 (the lot).



178).Lenox Soap Sign. 6 x 10" small, early, heavy porcelain advertising sign for Lenox brand soap. Clean, bright and very attractive appearance, w/ nice surface sheen (a strong C. 8++) w/ a little light chipping and wear at outer left edge. Complete w/ its full, original manufacturers paper label on backside. Min. bid \$40.



179).Ocean Liner Sign. 6 x 18" unusual, early porcelain sign from steerage section of ocean liner ship. Excellent overall, w/ minor oxidizing and wear at bottom edge (below word "above"). Min. bid \$40.



180).Wildroot Sign. 13.5 x 39-5/8" early, embossed self-framed barbershop sign advertising Wild Root hair tonic. Clean, bright and like new (appears never used), w/ exception of a little light chipping and minor stain spot in raised outer self-framed border area. Min. bid \$50.

Indian Motorcycle Pins



181).Indian Motorcycles Pins. high quality, original ca. 1930's Indian Motorcycle advertising pins. Winged Indian (7/8 x 2 x 1/4") is excellent w/ a couple non-offensive minor oxidizing spots in wings area; 1931 30th anniversary (1901-1931) figural brass arrowhead shaped pin (1 x 5/8") is excellent. Min. bid \$40 (the pair).



182).Totem Tobacco Labels. 18 x 4-3/8" early, paper litho printers proofing label sheet for Totem brand tobacco, w/ six full size uncut package labels. Crisp and like new (near mint). Min. bid \$40.

Trade Sign



183).Folk Art Horse Shoeing Sign. 27 x 18 x 1" wonderful, 2-sided folk art trade sign from very early horse shoeing shop. Excellent and all original, w/ thick, old untouched patina to it's early paint surface, w/ metal strapping around outside edge and a heavy wrought iron hoop at top. Has age separation split at top and light scattered wear, but overall a beautiful and very impressive piece. Min. bid \$150.

Cigar Lighter



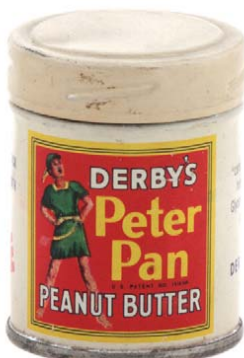
184).Devil Cigar Lighter. 8.75" early, heavy, figural bronze countertop devil cigar lighter w/ claw feet base. Very high quality piece w/ fine detailing. Excellent. Min. bid \$60.

Bidding Ends Friday, June 10th, 2011.



185).Baseball Candy. 2.75 x 3/4"(each) lot consists of two "Strike Three" brand Life Savers type mint candy rolls w/ baseball themed wrappers (these are great for displaying in the roll candy dispensing slot machines). Early wrappers are original and excellent (note: the foil wrapped candy roll inserted into wrappers are not old). Min. bid \$20 (the pair).

Sample



186).Peter Butter Sample. 2.25 x 1.75" (dia.) early, miniature 2 oz. size tin litho "Free Sample" product tin for Peter Pan brand peanut butter. Clean, bright and excellent (near mint) w/ exception of small dark spot on upper back edge of lid. Min. bid \$30.



187). Ice Cream Lot. Lot consists of six different early advertising items from National brand Ice Cream. Includes 3.5 x 2.5" celluloid pin, tin litho whistle, tin clicker; embossed cardboard stand-up figure; wooden ruler; and cardboard fan. Items are excellent (fan has non-offensive small background puncture mark.) Min. bid \$40 (the lot).



187).



188).St. Nicholas Spice Tin. 3-1/8 x 1.75 x 1-3/8" early, tin litho spice tin for St. Nicholas brand (W. H. Harrison Co., Cincinnati) featuring beautiful graphic image of trademark windmill (same image both sides). Clean and very attractive, w/ only minor wear (a strong C. 8++). Min. bid \$30.



189).Back Bay Coffee. 5 x 4.25" (dia.) unusual, early paper label (over tin) 1 lb. coffee can for Champlin Co.'s (Boston) "Back Bay Brand", w/ nice images of Boston landmarks (different scenes both sides). Excellent (C. 8+/-). Min. bid \$30.



190).Dining Car Spice. 3.25 x 2.25 x 1.25" early 1-1/2 oz. spice can (cardboard sides w/ metal top and base) for Dining Car brand (Norwine Coffee Co., St Louis) featuring trademark black waiter in RR dining car (same image both sides). Clean, bright and excellent (C. 8.5+) w/ a few background specks on side edge (very minor). Min. bid \$30.



191).Palma Vanna Proofing Book. 6.5 x 9" complete 18 pg. set of early stone litho progressive color printers proof strikes in booklet form for Palma Vanna brand cigar box labels. This printers reference booklet represents each stage of the stone litho color strike process, from 1st strike through to the finished label. Lot also includes a nice smaller proofing booklet for the side labels w/ original file folder containing completed labels (see addendum section of our website). Min. bid \$40.



192).Yankee Razor Tins. Lot consists of two early tin litho Yankee brand safety razor product tins from Reichard & Scheuber Co., New York. Razor tin (1.75 x 2-3/8 x 1.5") is bright and excellent (a strong C. 8++) w/ exception of a little light chipping wear on right side edge (no razor inside); matching blade tin (1.25 x 2.25 x 1/4") is very nice (C. 8) w/ general wear on back side. Min. bid \$40 (the pair).

**NO BABY CARRIAGES
OR BICYCLES IN THIS
ELEVATOR**

**DELIVER ALL GOODS
AT DUMB WAITER.**

193).Porcelain Salesmen's Signs. Lot consists of two unusual, small, early porcelain signs, (3.5 x 10" each) both in never used condition (I'm told these were from salesmen's kit of gentleman who had sold signs back in the day). Both are excellent, w/ only minor handling wear. Min. bid \$40 (the pair).

NATIONAL ICE & PRODUCTS CO.
ICE COAL, FEED
Both Phones 141
322-330 EAST FIFTEENTH STREET

194).National Ice Co. Sign. 11.5 x 27" unusual, early, heavy porcelain sign w/ fancy incised lettering and logo from the National Ice & Products Co. (New Albany, Indiana). Crisp and like new (basically near mint) w/ exception of minor storage chips at upper right and bottom left corner edges (note 3 digit phone number). Min. bid \$40.



195). Sweet-Orr Overalls Sign. 9.5 x 27" unusual variation, early porcelain sign for Sweet-Orr brand overalls. Field area of sign displays very well (as a strong C. 8+), w/ bright colors and nice sheen; although close examination will reveal some non-detracting fine surface scratches (mentioned for accuracy, barely noticeable and very minor) and white border area has a little fairly minor chipping wear and some light scattered oxidizing at very outer edges (critical grade C. 8/-). As found, should improve w/ cleaning. Min. bid \$40.



196). Castle Gate Coal Sign. 12 x 30" large, early porcelain sign for Castle Gate brand coal, featuring beautiful color image. Has small chip at bottom left corner edge and a few minor bites at middle right outer edge, otherwise crisp, bright and like new in appearance w/ nice original sheen (note: there is a small dime sized paint repaired chip spot in the "a" of "Castle" in top circular area- decently done and hardly noticeable when displayed- except on close examination). Min. bid \$50.



197). Stegmaier Tip Tray. 4.25" (dia.) early tin litho tip tray for Stegmaier Brewing Co. (Wilkes-Barre, Pa.) featuring beautifully detailed multi-color graphic factory scene. Clean, bright and very nice appearance (displays as a strong C. 8.5/+), although a close examination will reveal some non-offensive light scattered wear from use and minor dents and pings (critical grade C. 8). As found, should improve w/ cleaning. Min. bid \$40.



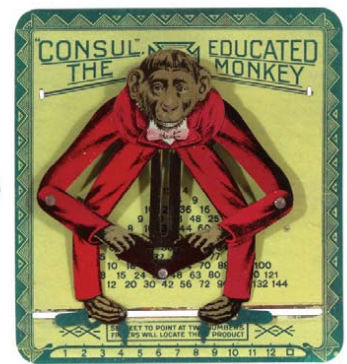
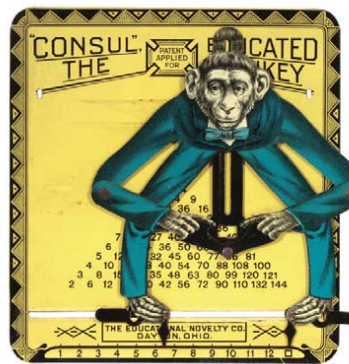
198). Lush's Coffee Tin. 4 x 5" (dia.) earl tin litho 1 lb. key-wind coffee can for "Lush's" brand, Chicago, w/ nice image of trademark chef on front and steaming coffee cup on back. Clean, bright and especially nice (C. 8.5/+). Min. bid \$40.



199). Stock Broker Tip Tray. 4.25" (dia.) early, tin litho, advertising tip tray for a Lancaster, Pa. stock and bond trading brokerage house. Clean and very attractive in appearance (displays as a C. 8.5/+), w/ very minor, non-detracting surface wear. Min. bid \$40.



200). Gum Tradecards. Lot consists of four early tradecards for various chewing gum brands. Includes: 2 variations from West Gum Co., Columbian Fruit, and Jones Tuxedo brands. Excellent overall, w/ minor corner bends of a couple. Min. bid 30 (the lot).



201). Monkey Calculator Toys. Lot consists of two different 6 x 5.5" "Educated Monkey" tin litho mechanical calculator toys (moving monkeys feet to different multiplying numbers reveals answer in square window). Both are clean, bright and excellent (C. 8.5+) and include original direction sheets. Min. bid \$40 (the pair).



202). Independent Telephone Sign. 18 x 17" very early, 2-sided heavy "Independent Local and Long Distance Telephone" porcelain pay station flange sign, featuring nice image of Co.'s early logo. Sign is clean and quite attractive (displays as a strong C. 8/+), w/ some early weathered chipping and light surface wear (critical grade C. 7.5++). Min. bid \$60.

Christmas Tree Stand



203). Christmas Tree Stand. 5 x 11" (dia.) early, heavy cast iron Christmas tree stand w/ embossed Santa Claus images on base section. Excellent, w/ nice original paint surface. Min. bid \$40.



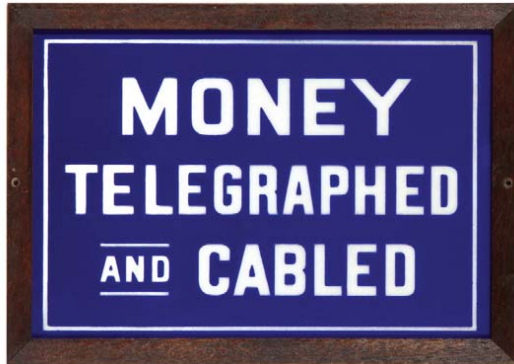
204). Lions Club Sign. 18 x 18 x 3/8" great, early pressed composition advertising sign for Lions Club fraternal organization, has nicely embossed detailing and incredible surface patina, giving it a wonderful folk art trade sign type look. Super looking piece that is excellent overall (a strong C. 8+). Min. bid \$40.



205).Fish Trade Sign. 8.75 x 26.5" unusual, early embossed tin litho fish market trade sign w/ nice lightly embossed fins, tail, eye, gill areas. Has some scattered light general skimming and wear w/ some non-offensive light scratches and scuffs from use, but overall displays nicely, w/ a great folksy look (English). Min. bid \$70.



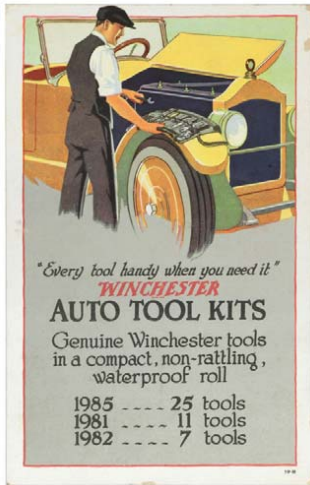
206).Clyde Steamships Paperweight. 2.5 x 4 x 1" early, glass advertising paperweight from the Clyde Steamship Co., featuring beautiful graphic image of Steamship w/ silver metallic highlights on ship and waves. High quality piece, excellent condition. Min. bid \$30.



207).Money Telegraphed Glass Sign. 12.25 x 17-3/8 (10.5 x 15.5" visible) unusual, very early, cobalt blue glass sign featuring thick, deeply incised white lettering and border design (thick layered glass has a blue upper surface and milk glass base. Unusual, high quality piece, presented in attractive period frame. Excellent and displays very nicely. Min. bid \$50.



208).Mine Workers Union Sign. 12 x 16" great, early, hand-painted cardboard United Mine Workers political support sign backing FDR. Very nicely done, w/ a great, primitive folksy look (nice great patina w/ neat glittering red and gold painted lettering). Has a little non-detracting light crackling and minor wear, but overall a great looking piece that displays well (mounted on blue mat board and ready for framing.) Min. bid \$40.



209).WinchesterSign. 11 x 7" outstanding, early ca. 1920's 2-sided cardboard litho store display sign for Winchester brand products, w/ great color graphics. Front automobile Tool Kits side is excellent (a strong C. 8++) w/ a little non-offensive minor paper loss in upper outer border area; back Roller skates side is clean, bright and vibrant (displays as a strong C. 8.5), w/ exception of minor background soiling in sky area and a little upper surface paper loss at top left margin area. Min. bid \$50.



210).Auto Die-Cut Calendar. 12 x 15.5" outstanding, early cardboard die-cut calendar featuring nice image of well-dressed women driving in open car (sliding back wheel cover opens to reveal 1910 calendar pages inside). Very nice appearance (C. 8+/-) w/ a light crease mark at front fender/tire area and a little minor scattered wear. Min. bid \$50.



211).Waverley Navy Cut Tobacco. 3-3/8 x 4-3/8 x 1.75" scarce, early, tin litho square corner tobacco tin for Hodge Tobacco Co.'s "Waverley Navy Cut" tobacco featuring author/poet Sir Walter Scott, w/ nice early graphics by Hasker & Marcuse. Clean and very attractive overall appearance, w/ a little non-offensive light scattered wear (lid C. 8/+; sides C. 7.5+/-8-). Min. bid \$60.

Salesman's Sample



212).Miniature Salesman's Sample Cap. 4 x 7" (dia) early miniature salesman's sample advertising drivers uniform cap from Society brand headwear company. Very high quality piece, in crisp, like new condition. Comes complete w/ early closissonee enameled "City Transit Co. of St. Louis badge. Min. bid \$30.



213).Knapsack Mixture Tobacco. 3-3/8 x 4.5 x 1-3/8" early, tin litho square corner style tobacco tin for Knapsack Mixture brand. Clean, very attractive appearance (C. 8+) w/ only minor wear. Min. bid \$40.



214). White Chief Proofing Book. 6.5 x 10-3/8" complete 21 pg. set of early stone litho progressive color printers proof strikes in booklet form for White Chief brand cigar box labels. This printers reference booklet represents each stage of the stone litho color strike process, from 1st strike through to the finished label. First page (the completed label) has some soiling/ ink stains from use, other pages excellent. (heavy soiling and wear to cover). Min. bid \$40.



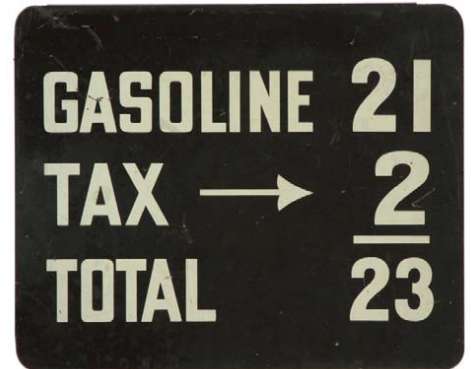
215). Zeno Gum Ruler. 1 x 12" early, wooden Zeno chewing gum ruler, w/ different advertising on both sides. Excellent. Min. bid \$20.



216). De Laval Porcelain Sign. 12 x 15-7/8" very early, heavy porcelain advertising sign for De Laval brand cream separators, w/ raised volcano style mounting holes. Clean, bright and excellent w/ nice surface sheen (C. 8.5++) w/ of a couple fairly minor light edge chips. Min. bid \$40.



217). Gum Tradecards. Lot consists of two early and highly graphic chewing gum advertising trade cards. Includes: Adams 6-5/8 x 4.25" (children nursing dog) made for displaying upright in gum display box; and Fitch's Sweet Violet Gum 5-3/8 x 3.5" embossed die-cut. Both are excellent (Adams has scrap book removal marks on back side). Min. bid \$30 (the pair).



218). Gas Pricing Sign. 9.5 x 11.5" nice, 2-sided metal service station gasoline price sign, w/ looped over section at top of backside for hanging. Attractive appearance, and displays nicely, w/ expected light general wear from use (front C. 8/-; back C. 7.5). Min. bid \$30.



219). Jell-o Dishes. (ea. 4 x 4-5/8") lot consists of four early, fine china advertising dishes for Jell-o brand desert product, each featuring nice images of Co.'s trademark girl. Excellent overall. Min. bid \$50 (the lot).



220). Solidform Grease Can. 5 x 4.25" (dia.) scarce, very early tin litho grease can from Blake & Co. (Portland, Maine) featuring stunning, highly detailed graphic images of early open touring car and early boat (Sexton Can Co., Boston). Crisp and like new, w/ only minor wear and a tiny dent mark (C. 8.5++). Min. bid \$50.

Detail



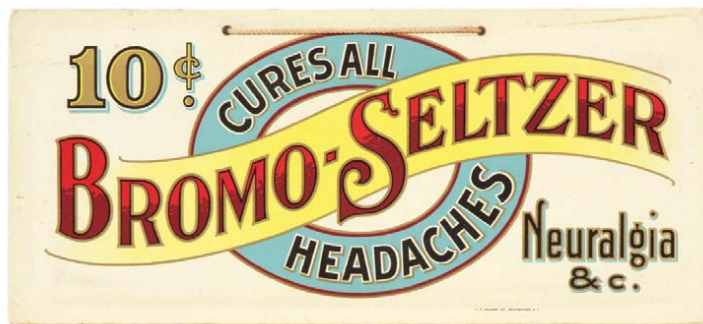
221). Four Roses Pocket. 3-5/8 x 3.25 x 1-1/8" early embossed tin litho vertical tobacco pocket tin for Four Roses brand, w/ bright, vivid colors. Crisp, bright and exceptionally nice (basically like new), w/ just a trace hint of minor darkening to lower silver section on back side. Min. bid \$40.



222). Pearlicross Spice. 3.25 x 2-3/8 x 1-3/8" early tin litho 1-1/4 oz. spice tin (Ginger) for Pearlicross brand (PA & S Small Co., York, Pa., featuring beautiful image of Co.'s trademark girl (same image both sides). Clean, bright and excellent (near mint). Min. bid \$30.



223).Travelers Accident Tickets Sign. 3.5 x 7" unusual, very early, small porcelain Accident Tickets sign, from Travelers Insurance Co., Hartford Conn. Excellent overall appearance, w/ minor scuffing wear (C. 8.5+). Min. bid \$50.



224).Bromo-Seltzer "Cure" Sign. 5 x 11" wonderful, early, pressed celluloid over cardboard string hung sign for Bromo-Seltzer headache and neuralgia cure. Clean, bright and exceptionally nice appearance (displays as a strong C. 8.5+) w/ a little non-detracting light scattered wear at very outer margins. Min. bid \$50.



225).Tobacco Label. 12 x 12" very early, paper litho label for "All The Rage" brand tobacco (Cameron & Co., Richmond, Va.) featuring stunning, highly detailed multi-color graphics by Hatch Litho Co., New York. Image area is crisp, bright and exceptionally nice (C. 8.5++), w/ some lightening and wear in outer margin area (would be easily hidden if framed or matted). Min. bid \$50.



226).Figural Cigar/Match Holder. 7-1/8 x 6.5 x 6.25" early, heavy, figural cast iron cigar and match holder, featuring great figure of western character (note resemblance to Mark Twain). Excellent, w/ nice surface patina (some darkening to paint on base area). Min. bid \$50.



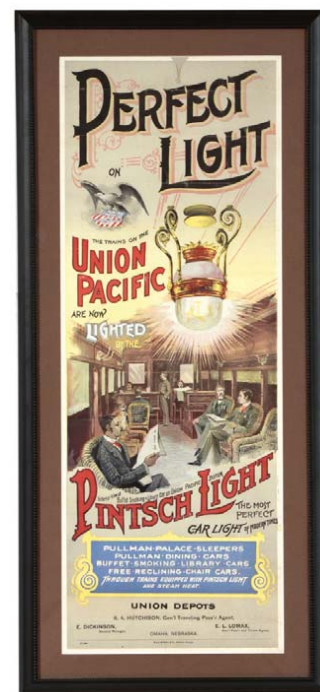
227).Eye Fix Tip Tray. 4.25" (dia.) early, tin litho advertising tip tray for "Eye Fix" brand eye remedy, featuring stunning, highly graphic lithography. Clean, bright and exceptionally nice (C. 8.5++). Min. bid \$40.



228).Advance Agricultural Equipment Calendar. 26.25 x 15.5" (24.25 x 13-5/8" visible) early Advance Thresher Co. (Battle Creek, Mich.) advertising calendar, featuring powerful images of Co.'s early traction engine and harvesting machine. Clean, bright and very attractive in appearance (basically displays as a strong C. 8++) although close examination will show a few light in-painted touch-up spots in background area. Nicely framed. Min. bid \$60.



229). 5¢ Store Signs. Lot consists of an attractive group of six ca. 1910 embossed tin over cardboard Five and Dime store signs, each measuring 6 x 27". Signs have a very nice folksy, country look, w/ strong color and an excellent appearance w/ some darkening, scattered wear and rust spotting on a couple of them (overall condition 7.5). Comes w/ a newly fabricated wooden bracket for displaying on wall. A powerful, very impressive looking grouping. Min. bid \$150.



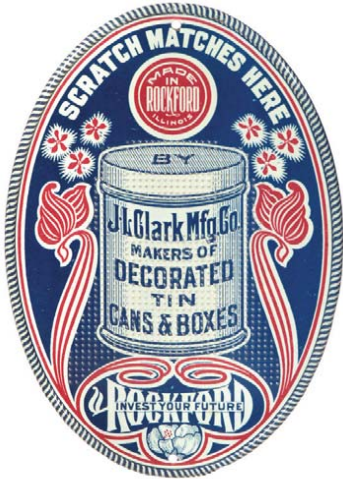
230).Pintsch Lighting/Railroad Sign. 32 x 14.25" (10 x 27.5" visible) ca. 1890's paper litho sign for Union Pacific Railroad and Pintsch Co.'s gas light fixtures. Features great image of interior of Union Pacific Railroad smoking and luxury car lit w/ Pintsch Co.'s "Perfect Light" gas fixture. Clean, bright and displays nicely (as a strong C. 8/+), although there is a small area of paper loss at middle of top edge and several non-offensive faint horizontal crease marks (from being folded at some point). Nicely framed and matted. Min. bid \$50.



231). Civil War Photo Album. 9.5 x 11 x 2.5" scarce, fancy, early photo display album w/ beautiful celluloid cover featuring patriotic Union Army Civil War scenes, w/ a fancy decorative metal trim along outside (17 thick cardboard pages inside containing several period photos). Celluloid is excellent overall, w/ a trace bit of fade to reds (green velvet like material on back side of album has darkening and fairly heavy wear and from use). Comes complete w/ its fancy, original brass stand w/ storage drawer at bottom. Min. bid \$60.



232). Ford Sign. 16.5 x 24" original, heavy, early 2-sided porcelain sign from Ford auto dealership (stamped "Veribrite Signs Co., Chicago" and "Property of Ford Motor Co." in fine black print). This was an indoor hung sign that is crispy and like new and was picked many years ago out of an early New England dealership (display side is near mint; back is excellent w/ only slight wear). Min. bid \$100.



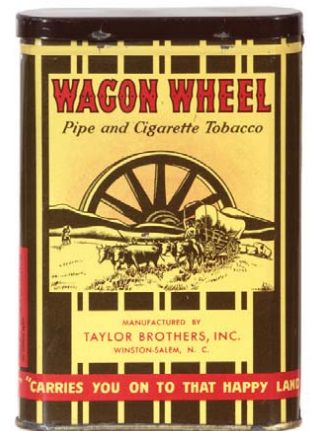
233). Advertising Match Scratcher. 4-7/8 x 3-3/8" early, tin litho advertising match scratcher from Clark Mfg. Co. (early manufacturer of lithographed tins). Crisp and like new (near mint). Min. bid \$40.



234). Cream of Harvest Spice. 4 x 2-3/8 x 1-3/8" early, tin litho 3 oz. spice tin for Cream of the Harvest brand black pepper (Auburn Mercantile Co., Auburn, NY), featuring Co.'s beautifully detailed trademark farming image (same image both sides). Clean, bright and excellent, w/ a couple light stain spots (front C. 8.5+; back C. 8+/-). Min. bid \$30.



235). Snow Ball Baking Powder Tin. 5.5 x 3.25" (dia.) scarce, very early paper label product tin for Snow Ball brand baking powder (New Era Tea Co., Keene, NH), featuring wonderful color graphic image of children pushing on giant snowball. Attractive and displays nicely, w/ a little light chipping wear at outer edges and some non-offensive light scattered foxing speckles (C. 7.5/+). Min. bid \$30.



236). Wagon Wheel Pocket. 4.5 x 3 x 7/8" early, tin litho vertical tobacco pocket tin for Wagon Wheel brand (Taylor Bros., Winston-Salem, NC). Clean, bright and displays very well (front side as a C. 8.5+) although close examination will reveal a couple faint dent spots and minor faint scratches on backside (not at all offensive; backside critical grade C. 8-; although it displays much better than this would imply). Min. bid \$50.



237). Medicine Cure Sign. 15.5 x 11.75" large, early embossed cardboard die-cut easel back sign w/ shiny finish for "Oil of Gadgness... Cure for Coughs, Cold and Croup". Clean, bright and exceptionally nice appearance (basically a strong C. 8.5+/-) w/ exception of some light staining in bottom area (under chair). Min. bid \$50.



238). Armour's Sign. 21-1/8 x 15-1/8" (19-5/8 x 13-7/8") scarce, early cardboard litho sign for Armour's peanut butter, featuring beautiful multi color graphics. Clean, bright and exceptionally nice appearance (displays as a very strong C. 8++) although close examination will reveal a little non-offensive light edge wear and a small touch-up spot in upper dark background area (plain back side has hand drawn chart w/ pen writing). Min. bid \$70.



239). Babbitt's Soap Sign. 35.75 x 21.5" (27.5 x 13.75" visible) early paper litho sign for Babbitt's Soap Co., advertising a promotional soap wrapper poster offer. Clean, bright and attractive appearance (C. 8++), w/ a few faint crease marks and minor foxing specks in background area (mentioned for accuracy, nothing that is at all serious or offensive). Nicely framed and matted. Min. bid \$100.



240).Great Puff Tobacco Pouch. 3.25 x 2-3/8 x 1.25" full, early sealed cloth tobacco pouch for "Great Puff" brand (B. Leidersdorf Co., Milwaukee), w/ beautiful multi-color graphic wrap around paper label (series 1902 tax stamp). Lot also includes a matching pack of "Great Puff" rolling papers. Both are crisp and like new (near mint). Min. bid \$40.



241).Woods Autos Pocket Mirror. 2.5" (dia.) scarce, early advertising pocket mirror for Woods Motor Vehicle Co., promoting Co.'s Electric powered auto. Very high quality piece, has a satiny surface finish, w/ gancy bevel edged mirror on backside (Parisian Novelty Co.). Excellent. Min. bid \$30.



242).Cameron's Light Pressed Tobacco. 3-3/8 x 4.5 x 1.25" scarce, early tin litho square corner tobacco can for "Cameron's Light Pressed" tobacco, w/ nice graphic image of tobacco plug (Hasker & Marccuse litho). Clean and very attractive appearance (displays as a strong C. 8/+), w/ a few non-offensive pings and light wear at outer edges of lid (critical grade C. 8/-). Min. bid \$40.



243).Socony Lubster Sign. 12.5 x 8" early, 2-sided heavy porcelain lubster sign for Socony "990 Motor Oil for Ford Cars". Beautiful, exceptionally nice example is crisp and like new, complete w/ original bracket at bottom (basically near mint, w/ exception of non-offensive tiny edge chip at 2 o'clock on back side). Min. bid \$70.



244).Wildroot Barber Bottles. Lot includes two different scarce, early label under glass barbershop display bottles (hand applied lips on each) for Wildroot brand hair products (ea. app. 8.5 x 2-7/8" dia.), each w/ fancy original metal stoppers. "Dandruff & Eczema" bottle has some very minor staining, and fading to red lettering- otherwise excellent; "Hair Tonic" bottle is excellent w/ some slight cloudiness on inside. Min. bid \$70 (the pair).



245).Derby Coffee Tin. 7 x 5 x 5" unusual, early tin litho small top style coffee can for Derby brand (Myer-Schmid Grocers, St. Louis) featuring nice image of trademark racehorse on two sides. Attractive and displays nicely, w/ some non-offensive light scattered background wear (C. 7.5). Min. bid \$50.

Salesman's Sample



246).Salesman's Sample Hand Truck. (13 x 5 x 4") early, miniature salesman's sample hand cart truck, made by the American Pulley Co., Phil'a. Very high quality piece, fabricated from riveted steel, w/ cast iron wheels and wooden handles at top (w/ advertising decal labels on both sides). Neat and unusual piece is all original, w/ nice patina to paint surface. Has some general light scattered paint wear, but overall impressive and displays nicely (C. 7.5+/-). Neat piece! Min. bid \$60.



247).Dandruff Cure Barber Bottle. 7.75 x 2.5" (dia.) outstanding, early glass barbershop hair tonic product display bottle, w/ beautiful enameled label advertising Klorofil Dandruff Cure. Bottle has hand-applied top and is excellent overall. Min. bid \$50.

Allen & Ginter Co.



248).Allen & Ginter Window Card. 9.5 x 3-7/8" early cardboard litho window card advertising Allen & Ginter Co.'s Pet brand cigarettes, featuring beautiful multi-color images of Co.'s "Birds of Paradise" series of insert cards. Clean, bright and excellent (C. 8.5). Min. bid \$40.



249).Heinz Show Jar. 11 x 4.5 x 5.5" very early display jar for Heinz Pickling Vinegar, w/ original labels on front and around top band. Base has early open pontil mark and jar is excellent; w/ some chipping to bottom section of ground glass lid (not visible when displayed); labels have some light toning and neck label has a little early tattering and small areas of paper loss, but overall piece is very attractive and displays great. Min. bid \$60.



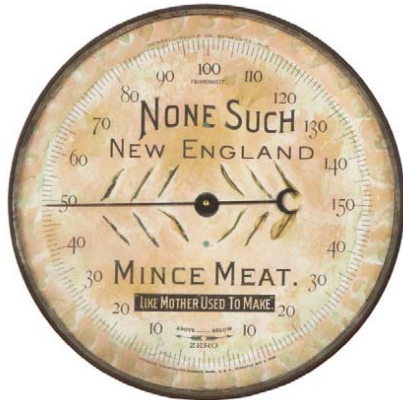
250).Chef Coffee Tin. 3.5 x 5" (dia.) early tin litho 1 lb. key-wind coffee can for Chef brand coffee (Lee & Cady Co., Ohio and Michigan). Clean, bright and attractive tin displays nicely (as a strong C. 8+) w/ minor oxidizing at non-graphic top separation ring and minor background rubs and wear. Min. bid \$40.



251).Telephone Paperweights. 3.25 x 3-3/8" (dia.) lot consists of two heavy, deep blue colored glass bell shaped advertising paperweights. Includes: Western Electric Co. (marked "Telephone and Telegraph apparatus and Supplies" on back); and "Bell Telephone System". Both are excellent (some wear to word "The" on Bell System example. Min. bid \$40. (the pair).



252).Royal Diadem Tobacco. 2-58 x 3-7/8 x 1-5/8" scarce, early tin litho square corner style tobacco tin for Royal Diadem brand (Hess & Co., Rochester, NY). Clean and very attractive (C. 8+), w/ faint crazing and a little minor scattered wear (Hasker & Marcuse litho). Min. bid \$40.



253).None Such Thermometer. 1-3/8 x 9.5" (dia.) early dial type advertising thermometer for None Such brand mince meat, in likeness of a pie. Has pie plate style metal case, w/ glass covering over advertising thermometer inside (1888 patent date). Excellent. Min. bid \$60.



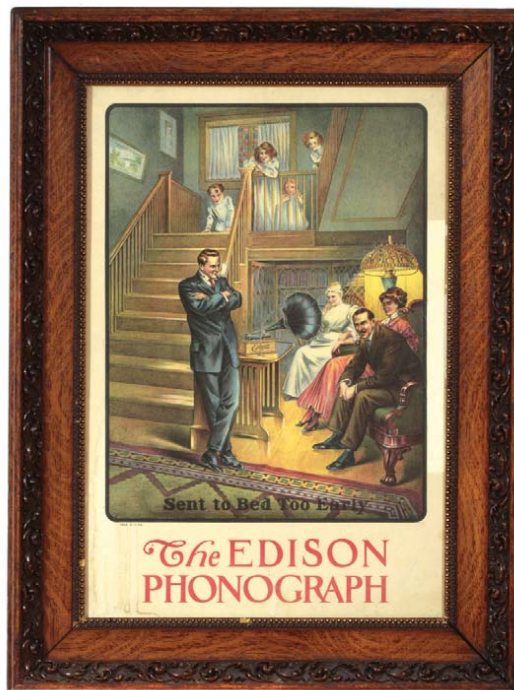
254).Small Porcelain Signs. lot consists of three different small, early porcelain signs, ranging in size from 1.75 x 4" to 2.5 x 6". Excellent overall, w/ minor edge staining on "Agents..." sign. Min. bid \$40 (the lot).



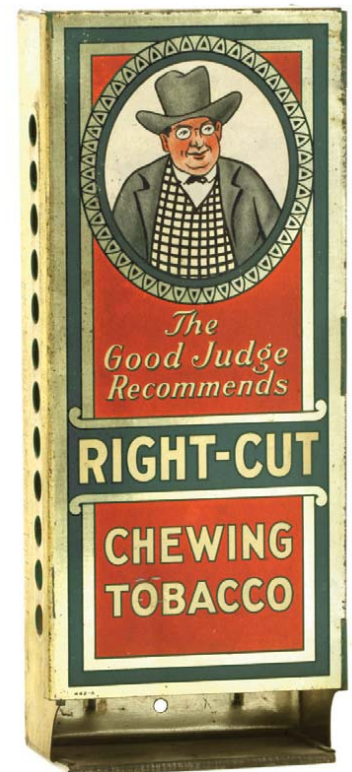
255).American Brewing Tip Tray. 5-1/8" (dia.) early tin litho tip tray from American Brewing Assn., Houston Texas. Attractive, w/ strong colors and nice overall look (displays as a C. 8+), although closer examination will reveal of a couple scratches and a little minor wear from use (including some faint oxidizing and light scattered wear at outer edges of rim-oxidizing is at 3-4 o'clock). Min. bid \$40.



256).Johnston Harvester Calendar. 23.5 x 15-5/8" (21.75 x 13.5" visible) early paper litho calendar w/ 1913 tear sheet advertising Johnston Harvester Co., featuring great image of farmers outside early agricultural implement store (note equipment and Johnston signs on building). Clean, bright and very attractive in appearance (displays as a strong C. 8+) w/ a few non-detracting minor scattered wear marks (nothing offensive or detracting). Framed. Min. bid \$50.



257).Edison Phonograph Sign. 37 x 28" (30 x 20.25" visible) outstanding large, early paper litho advertising poster/sign for Edison Phonographs featuring beautiful multi-color lithography. Image area of sign is clean and excellent in appearance (close examination will reveal a barely noticeable repaired tear damage spot in middle very outer right image area); white background area has some non-offensive light staining at bottom and an overlaid 14" paper tape strip repair in the outer right margin area. Beautifully presented in gorgeous, fancy period frame. (Providence: we sold this piece several years ago in the Robert Russell collection auction to the private museum of legendary collector Charles Rand Penney, and are now selling it for his estate). I'm told sign was dry mounted on mat board (we have not seen piece out of frame). Min. bid \$250.



258).Tobacco Display. 10.75 x 4-3/8 x 2-3/8" early tin litho country store product holder/display dispenser for "Right-Cut" brand chewing tobacco, w/ nice graphic image on front hinged panel (made for both counter use and hanging). Excellent (C. 8+). Min. bid \$40.



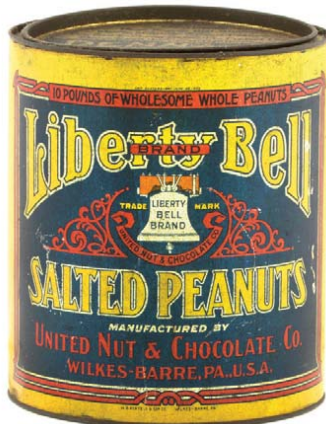
259).Bartholomay Tip Tray. 4.25" (dia.) early tin litho tip tray for Tam O' Shanter Ale (Bartholomay Brewing Co., Rochester, NY) featuring beautiful multi-color graphics. Clean, bright and excellent in appearance (displays as near mint) although close examination will reveal some non-offensive faint crazing. Min. bid \$40.



260).Pinup Girls Punchboards. 8.75 x 3-5/8 lot consists of three great looking, early 1" thick, heavy cardboard gambling punchboards, each featuring attractive cheesecake models (none of holes have been punched). Quite nice overall, w/ a little fade and slight edge wear to one (two include unattached "26 girl" covers). Min. bid \$30 (the lot).



261).Edgewater Brand Tip Tray. 4-1/8" (dia.) early tin litho advertising tip tray for Edgewater brand grocery products (Louis Stayart Co., Chicago) featuring stunning multicolor graphics. Clean, bright and excellent (C. 8.5++). Min. bid \$40.



262).Liberty Bell Peanut Tin. 9.75 x 8.5" early tin litho salted peanuts tin for United Nut & Chocolate Co.'s "Liberty Bell" brand (Wilkes-Barre, Pa.). Attractive and displays nicely (as a C. 8) w/ some non-offensive light scattered wear (critical grade C. 7.5/+). Note: has a replaced Pennant brand lid. Min. bid \$40.



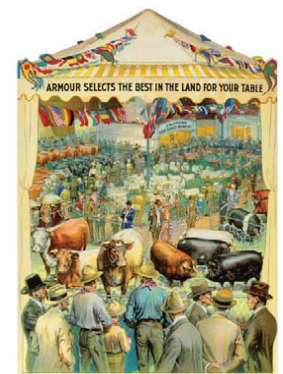
263). Large Sand Pail. 8 x 8" (dia.) large, ca. 1950's tin litho sand pail by Ohio Art Co., featuring great images of children by illustrator Elaine Ends Hileman. Clean, bright and excellent overall (C. 8.5), complete w/ shovel. Excellent. Min. bid \$30.



264).Porcelain Signs. lot consists of five different, small, early porcelain signs, (ea. app. 2-5/8 x 10") all in excellent to like new condition. Min. bid \$40 (the lot).



265).Armour's Products Store Display. outstanding, large early cardboard die-cut store window display set for Armour's brand products, showing state fair type big tent exhibition hall featuring all the Co.'s various products. Large tri-fold display measures 35 (h) x 50" (w), as shown, and is bright and very attractive in appearance (a strong C. 8++), w/ the exception of some light storage soiling at top of center section and small top edge damage spot at tip peak of center tent. Lot also includes two large (28.5 x 20" each) easel back cardboard livestock exhibit displays, both of which are bright and excellent). A powerful and very impressive set that is bright and beautiful. Min. bid \$150 (the lot).





266).Buster Brown Bread Sign. 13.5 x 18" very rare and important 2-sided heavy metal litho die-cut flange sign (same image both sides) featuring wonderful images of the early style Buster and Tigre. Has some rust spotting and light pitting in the non-display angled flange mounting section, a bend and some light scrapes and scuffing in Buster's hat area, as well as a little non-offensive background wear and some light crazing, but overall a clean, bright and a very impressive looking piece (C. 7.5+/8-), that displays extremely well (displays better than this would imply). Killer piece! Min. bid \$500.



267).Stanley Tool Co. Sign. 23.5 x 35.75" (20.5 x 32-5/8" visible) large, ca. 1920's tin litho sign from Stanley Works (tool Co.) advertising Co.'s garage door hardware. Clean, bright and very attractive in appearance, w/ a powerful and very impressive look (displays on wall as a strong C. 8/+) although closer examination will reveal a small nail hole and some non-offensive scattered wear- including light scratch marks and some fairly minor scuffs (nothing that takes away from great overall look of the piece). Framed. Min. bid \$70.



268).Log Cabin Syrup. 6.75 x 5-5/8 x 4.25" early and extremely rare, hand soldered half gallon size paper label Towle's Log Cabin brand maple syrup tin. Colors are strong and piece displays pretty well, although there is some general overall soiling and light staining to paper labels. Tough to grade due to staining, but a 7/+ seems about right (displays better than this would imply). Min. bid \$50.



269).RCA Tubes Sign. 14 x 18" early 2-sided metal sign for RCA radio tubes, as found never used still in its original carton (carton also includes various paper advertising). Clean, bright and excellent, w/ a trace bit of minor storage wear. Min. bid \$40.

Du Pont Award



270).DuPont Shooting Award Spoon. 5-7/8 x 1.25" unusual, early sterling silver advertising spoon featuring attractive embossed image of trap shooter and clay target on handle, w/ DuPont logo on back. Very high quality (made by Tiffany). Excellent. Min. bid \$40.



271).Gold Crumbs Tobacco Sign. 24 x 17.5" scarce, early embossed tin litho sign for "Gold Crumbs" brand tobacco (Penn Tobacco Co., Reidsville, NC). Sign is clean, bright and displays quite nicely (as a nice strong C. 8), although there are some light scattered bends; w/ light wear and scuffing and a couple small nail holes in outer border area; and some scattered oxidizing spotting in bottom quarter area of image (nothing that's really offensive - somewhat blends into dark background area (critical grade C. 7.5) although it displays much nicer than this would imply. Min. bid \$100.



272).Old Reliable Door Push. 9.75 x 4.25" ca. 1920's tin litho advertising door push for Old Reliable brand coffee. Clean, bright and displays like new, although tipping in light just right will reveal some hazy light surface wear- probably residue from protective covering sheet. Displays great! Min. bid \$30.



273).Pulver Yellow Kid Machine. 20.25 x 8.5" great early mechanical porcelain gum machine for Pulver brand, w/ key wind moving figural tin litho Yellow kid character inside. Case is bright and excellent in appearance (about as nice as you find them), w/ a little minor flaking at white chute area and a small 1" paint touch-up chip spot on left side edge, as well as a little early chipping at top back edge (not noticeable when hung). Nice working example, complete w/ keys. Min. bid \$100.

Bidding Ends Friday, June 10th, 2011.



274).Pickaninny Peanut Butter. 3.5 x 3-7/8" early tin litho 1 lb. peanut butter pail for Pickaninny brand (Hoyt Co., Amesbury, Mass.), featuring Co.'s adorable trademark black child holding black rag doll (same image both sides). Clean and excellent, w/ slight bit of softening to reds. Min. bid \$50.



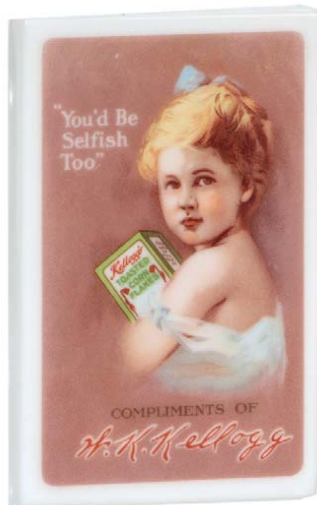
275).Sand Pail Lot. Lot consists of two different size variations of tin litho sand pails by Chain & Co. featuring child cowboy and Indian images all around. Both are crisp and like new, complete w/ original shovels. Large pail 5-3/8 x 5.25" (dia.); small pail 4.25 x 4.25" (dia.). Min. bid \$40 the pair.



276).Yacht Club Coffee. 5.75 x 4-3/8" scarce, early tin litho small-top style 1 lb. coffee can for Yacht Club brand, featuring attractive image of early racing yacht (International Coffee Co., New York and Chicago). Attractive and displays nicely w/ a little non-offensive light scattered oxidizing and wear (C. 8+). Min. bid \$60.



277).Trout Line Pocket Tin. 3.75 x 3-3/8 x 1-1/8" early tin litho vertical tobacco pocket tin for Trout Line brand, featuring beautiful multi-color graphic fly fisherman image (same image both sides). Clean, bright and exceptionally nice example (displays as a strong C. 8.5++), close examination will reveal typical slight crazing and minor wear (Providence: Dr. Ken Seeber estate collection). Min. bid \$70.



278).Kellogg Paperweight. 5 x 3.25 x 3/8" unusual, early advertising paperweight for Kellogg Cornflakes, w/ nice graphic image fired on milk glass. Excellent. Min. bid \$40.



279). Kellogg Paperweight. 5 x 3.25 x 3/8" unusual, early advertising paperweight for Kellogg Cornflakes, w/ nice graphic image fired on milk glass. Excellent. Min. bid \$40.



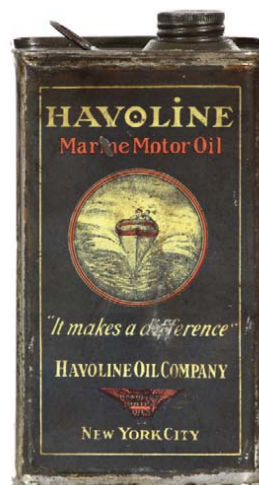
280).McCord Radiator Sample. 3.75 x 2-1/8 x 1.75" early, highly detailed miniature automotive radiator "sample" on stand for use as paperweight advertising McCord brand radiators "Used on Dodge Bros. motor vehicles and Graham Bros. trucks"). Unusual, very high quality piece is very nice overall, w/ minor wear and a small chip spot on back of base area. Min. bid \$40.



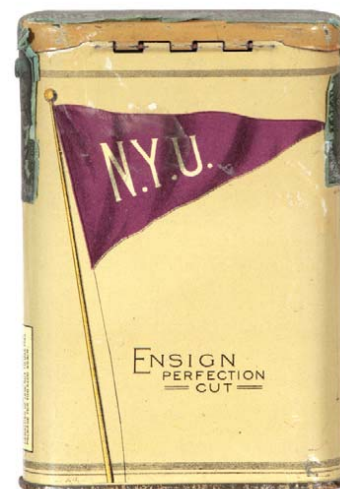
281).Ensign Pocket (N.Y.U.). 4.5 x 3 x 7/8" early tin litho vertical tobacco pocket tin for Ensign brand, w/ NYU school flag on backside. Front is clean, bright and excellent (a very strong C. 8++); back is also quite nice w/ exception of some cloudy white haziness/residue in flag area (from tax stamp glue?; as found, spot might improve w/ cleaning). Min. bid \$70.



282).Perique Mixture Tin. 4-5/8 x 3 x 2" outstanding, very early paper label (over tin) tobacco can for Allen & Ginter Co.'s "Perique Mixture" featuring beautiful, early detailed graphics. Clean and excellent (a strong C. 8++), w/ slight toning and a little very minor paper chipping at top edge (Act of 1883 tax stamp). Min. bid \$40.



283).Havoline Marine Oil Can. 7-1/8 x 4 x 2.5" very early and extremely rare, hand soldered tin litho product can for Havoline brand marine motor oil, featuring neat image of Co.'s trademark boat on both sides. Display side is quite nice, w/ some scattered wear; back side has heavy wear (display side 7+, back 7-). Min. bid \$30.



284).Checkers Pocket. 4.5 x 3 x 7/8" early tin litho vertical tobacco pocket tin for Weisert Bros. "Checkers" brand tobacco. Clean, bright and especially nice (a strong C. 8++), w/ minor wear. Min. bid \$70.

Toothbrush Holder



285). **Toothbrush Holder.** 2.5 x 4.75 x 1-3/8" early, heavy celluloid advertising toothbrush holder for a Harrisburg, PA drugstore. Neat and unusual piece, w/ nice graphic image (C. 8.5/+). Min. bid \$40.



286). **Meerschaum Pipe.** 3 x 1 x 7" outstanding, early fancy meerschaum pipe featuring beautifully carved and detailed image of risqué woman. Very high quality piece, in excellent condition, w/ nice richly toned patina, complete w/ original velvet lined leather case. Min. bid \$40.

Sample



287). **Skippy Peanut Butter Sample.** 2 x 2.25" unusual, 2.75 oz tin litho pry-lid "sample" tin for Skippy brand peanut butter. Attractive and displays quite nicely w/ strong color, w/ some minor soiling and a few light dent marks w/ fairly heavy wear to gold flash finish of lid. (C. 7.5/+). Min. bid \$30.



288). **Hendlers Ice Cream Sign.** 3 x 5-1/8" unusual, early, heavy porcelain, small advertising sign for Hendlers brand ice cream. Crisp and like new overall w/ minor wear spot at very outer right edge (no hanging holes). Min. bid \$50.



289). **Harley 25,000 Mile Pin.** 1-1/8 x 1" unusual, 2-ps. brass advertising award pin for Harley Davidson's "25,000 Mile Club", w/ nice detailing and great overall look. Excellent. Min. bid \$30.



290). **Lumber Co. Paperweight/Mirror.** 4" (dia.) large, early, heavy celluloid covered advertising palm/paperweight mirror for a St. Louis Lumber Co. Beautiful multi-color graphics showing very early lumber delivery truck at lumberyard. Excellent. Min. bid \$40.



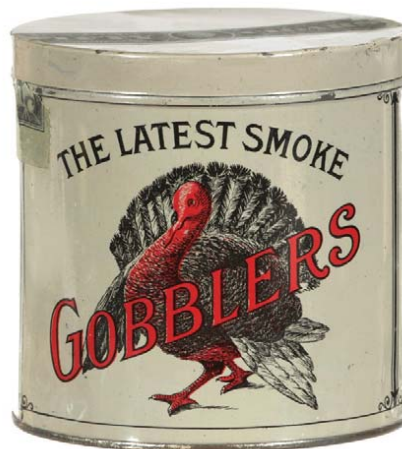
291). **Stove Sign.** 10 x 16" unusual, early celluloid over tin beveled edge advertising sign for Prizer brand stoves and ranges, featuring attractive graphic image of cooking stove (has both string for hanging and metal easel on back for counter-top display). Crisp and like new, as found never used. Near mint. Min. bid \$50.



292). **Lord Kenyon Pocket Tin.** 3 x 3.5 x 1-1/8" scarce, early tin litho vertical tobacco pocket tin for Lord Kenyon brand. Clean and excellent (a strong 8++). Min. bid \$50.



293). **Earl Christy Art Print.** 20 x 16.5" (19-1/8 x 15.5" visible) scarce, early paper litho framed art print by illustrator Earl Christy, titled "Automobile Girl", featuring great image of woman in bright dress driving horseless carriage style early automobile. Clean, bright and exceptionally nice (a strong C. 8++) w/ a little very minor background staining (mentioned for accuracy, barely noticeable and not at all offensive or detracting). Min. bid \$40.



294). **Gobblers Cigar Tin.** 5 x 5" (dia.) early tin litho 50 ct. cigar can for Gobblers brand, featuring great image of trademark turkey (same image both sides). Clean, bright and exceptionally nice appearance (displays as a C. 8.5/+) w/ exception of a little denting at bottom base area. Min. bid \$50. (Seeber Estate)



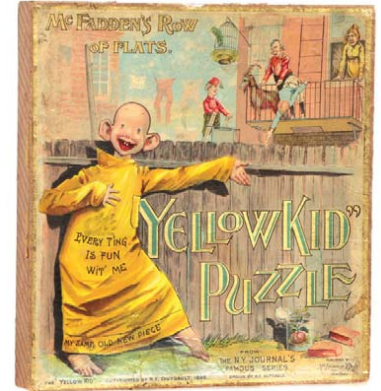
295). **Princeton Cheerleaders Textile.** 24 x 23.25" (22 x 21.75" visible) wonderful, large, early cloth pillow cover by illustrator Early Christy featuring great image of girl cheerleaders in early auto, waving Princeton college pennants (dated 1902). Clean and very attractive in appearance (a strong C. 8+) w/ a couple minor background toning spots. Nicely framed. Min. bid \$70.



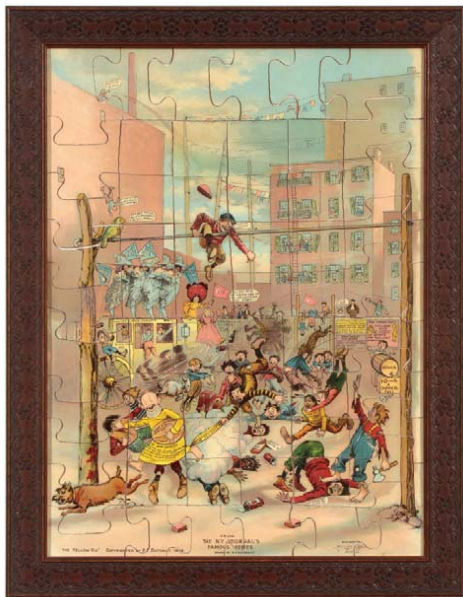
296).Evinrude Decal. 10-3/8 x 8-3/8" large, early advertising decal for Evinrude brand outboard motors, featuring great ca. 1920's boating image. Excellent (Near mint). Min. bid \$30.



297).Campbell's Shag Tobacco Tin. 4-5/8 x 6-1/8 x 4.25" unusual, tin litho canister for "Hugh Campbell's Shag" brand smoking tobacco. Clean and very attractive (C. 8+) w/ just a trace bit of fade to reds and minor scattered wear. Displays nicely. Min. bid \$40.



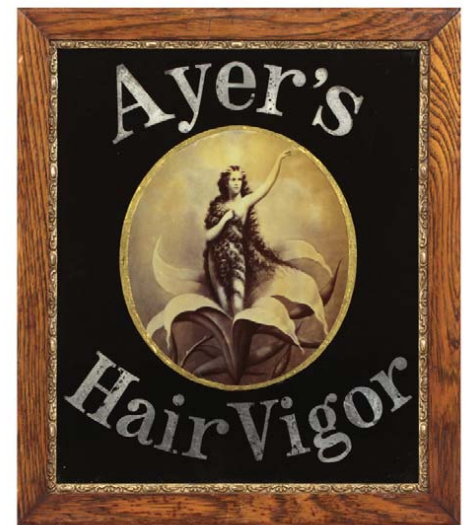
298).Yellow Kid Puzzle. Outstanding, large early boxed Yellow Kid puzzle set, featuring beautiful multi-color lithography. Complete, nicely framed puzzle measures 24.5 x 18-1/8" (visible image) and comes w/ its original box featuring beautiful graphic cover image (box 12.75 x 12-3/8 x 1.5"). Puzzle and box cover illustrations are clean, bright and excellent (box lid displays great but is missing aprons from side edges and has a little minor soiling and wear. Min. bid \$70 (the set).



298).



299).Daisy BB Guns Banner. 40.5 x 27" unusual, early shiny silk like hanging cloth store banner for Daisy BB guns, complete w/ original wooden hanger rod. Excellent. Min. bid \$40.



300).Ayer's Sign. 15 x 13" (12.5 x 10.5" visible) small, very early reverse glass sign advertising Ayer's Hair Vigor, featuring beautiful image of semi-nude in flower. Outstanding piece is clean and excellent, in beautiful period frame. Min. bid \$100.



301).Stork Club Bud Vase. From Prohibition to the dawn of the disco era, the famous Stork Club was New York City's landmark nightclub. It was frequented by celebrities including Joe DiMaggio and Marilyn Monroe, J. Edgar Hoover, Frank Sinatra, JFK and Jackie, etc. Measuring 7.5 x 4", this figural tabletop souvenir is high quality painted wood, w/ glass tube for holding water and stems. Excellent. Min. bid \$20.



302).Indianapolis Gloves Lot. Lot includes two early advertising pieces for Indianapolis Glove Co. Includes a 10.5 x 4 x 1/2" wooden thermometer (C. 8/+) w/ nice patina; and a 9" (dia.) 2-sided tin litho sign (a strong C. 8++) w/ minor staining and slight wear at very outer edges. Lot also includes some of Co.'s old store stock gloves. Min. bid \$40 (the lot).



303).Lambertville Boots Calendar. 18 x 13.5" (11.75 x 7.75" actual) calendar) unusual cardboard litho advertising calendar (complete w/ full 1913 calendar pad), for Lambertville brand rubber footwear, featuring great image of Co.'s trademark Lambertville Girl golfing and surrounded by images of Palmer Cox Brownies characters and boots. Clean and attractive appearance, w/ a little non-detracting light scattered background wear (C. 8/-). Nicely framed and matted. Min. bid \$40.

Maxfield Parrish Items



304). Gibbs Plow Co. Pin Holder. 1-5/8" (dia.) early tin litho advertising pin holder for Gibbs Imperial Plow Co., Canton, Ohio, featuring beautifully detailed graphics (different image both sides). Excellent (C. 8.5/+). Min. bid \$30.



305).



306).

Maxfield Parrish Hand Signed



307).



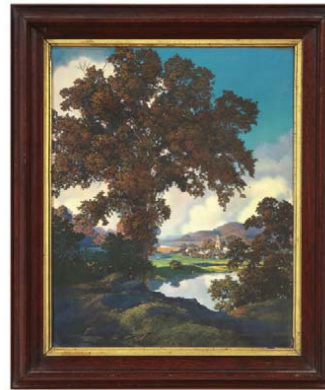
308).



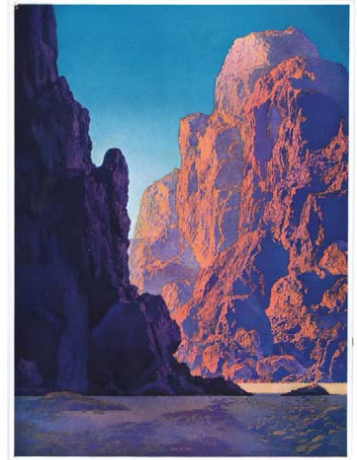
309).



310).



311).



312).

305). "Eventide". (8.25 x 14" image) scarce, ca. 1944 B & B Parrish illustrated nighttime winter scene executive print of house on snowy knoll. Clean and excellent, on its original marked presentation matting, in its attractive original frame. Min. bid \$50.

306). "Jack and the Beanstalk" 21 x 21" (19 x 19" visible) scarce, ca. 1923 Ferry Seeds poster image of "Jack" planting his magic seed. A very attractive example, that displays nicely. Close examination reveals typical very faint production crease lines in center-barely noticeable and not at all detracting. Presented in attractive period frame. Min. bid \$150.

307). Artist Signed "Morning Light". 17 x 14-5/8" (10.25 x 8" visible) outstanding, medium size B&B Parrish image featuring small stone house that was personally hand signed in ink by Maxfield Parrish for Parrish historian and author Virginia Reed Colby. Piece is beautifully framed and matted and comes w/ notarized documentation (see website addendum for additional info). Min. bid \$60.

308). "Quiet Solitude" Calendar. 37.25 x 19-7/8" (17.5 x 13-7/8" image) extra large 1962 Parrish illustrated B&B advertising calendar, featuring beautiful multi-color image of two large trees w/ rushing river in background. Image is clean, bright and excellent in appearance. Has faint horizontal crease line in center, w/ couple cello tape repairs and some light wear in non-image bottom advertising section. Nicely framed. Min. bid \$50.

309). Medium "Daybreak" (Hunt Farm). 13.25 x 10.25" (10.75 x 8" visible) ca. 1951 medium Parrish illustration by Brown & Bigelow, featuring beautiful rosy tinted image of a barn and house w/ brown roof overlooking gully. Clean, bright and like new, presented in beautiful antique frame. Min. bid \$40.

310). "Evening Shadows". 17.25 x 13-7/8" (15-3/8 x 11-5/8" visible) beautiful ca. 1953 Brown & Bigelow Parrish nighttime landscape image featuring house overlooking reflecting pond. Image is clean, bright and excellent. Framed. Min. bid \$40.

311). "Peaceful Valley" (Tranquility). 20 x 17" (15.5 x 12.5" visible) 1936 Parrish illustrated B & B large size cropped calendar, featuring beautiful New England landscape image. Excellent, presented in attractive antique walnut frame. Min. bid \$40.

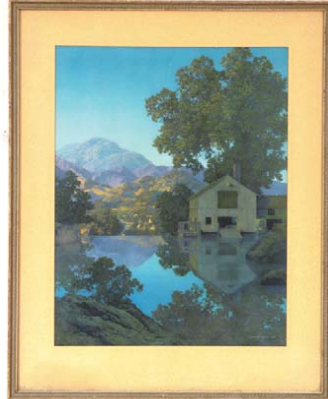
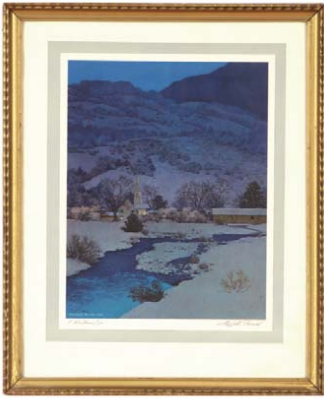
312). "Arizona" (Rock of Ages). 14.25 x 10.5" attractive art print illustration image of beautiful multi-color sunlit canyon. Crisp, bright and like new condition, w/ exception of some minor break marks in upper left outer white margin area (would be easily hidden if framed or matted). Min. bid \$40.

Maxfield Parrish Items



313).

314).

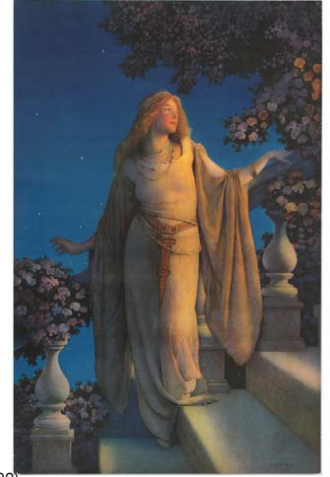
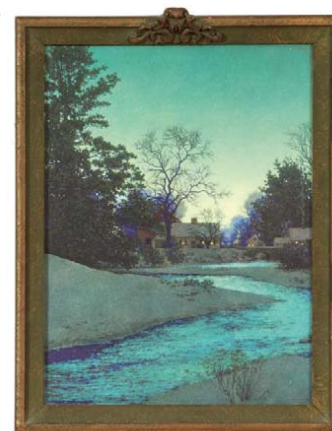
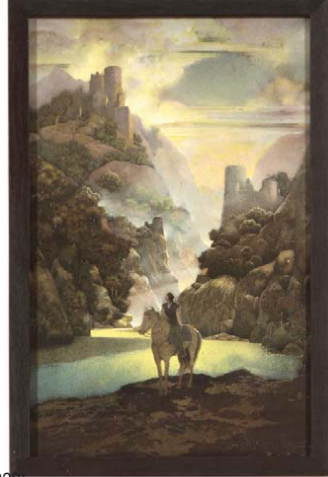


315).

316).

317).

318).



319).

320).

321).

322).

313).Jello-Ads. 8.25 x 10.5" (6.25 x 8.5" visible) Lot consists of two very attractive ca. 1920's Parrish illustrated Jell-o brand desert advertisements. Includes: "King and Queen" and "Polly Put the Kettle On". Both are crisp and like new and are beautifully framed and matted (matching frames). Min. bid \$40 (the pair).

314).Large Garden of Allah. 18.5 x 33.5" (14.5 x 29.5" visible) ca. 1918 oversize House of Art print, featuring nice Parrish illustrated image of three women reclining by reflecting pool. Clean, very impressive example, as found still in its beautiful original frame (print excellent, frame has a bit of light scattered wear along bottom edges). Min. bid \$60.

315)."Christmas Eve". 16-5/8 x 13-5/8" (10-7/8 x 8.5" image) beautiful, ca.1947 Parrish illustrated B & B executive winter nighttime snow scene art print of covered bridge over stream, w/ lighted church and houses in background. Nicely framed image, on its original descriptive matting. Min. bid \$50.

316). Large "Millpond" 20-5/8 x 16.75" (15-3/8 x 12" visible image) large 1948 B&B print featuring barn like mill on water, as found nicely matted and sealed in its original period frame. Clean and excellent appearance (note has a couple non-offensive minor rubs in sky area). Min. bid \$40.

317)."Misty Morn". 19.75 x 15.75" (15.5 x 11.75 image) large cropped 1956 B & B calendar image picturing raging white water stream, rocks and trees, w/ mountains in background. Clean, bright and like new, presented in beautiful antique frame. Min. bid \$40.

318)."Fountain of Pyrene". (7-5/8 x 5.5" visible) unusual, early Parrish illustrated art print on textured paper featuring nice image of nude male figures in forest stream. Excellent and nicely framed. Min. bid \$40.

319)."Sunlit Valley" 18 x 13" (15-5/8 x 10-5/8" visible) 1950 large size, cropped Parrish landscape calendar image by Brown & Bigelow Co. Clean and very attractive example, presented in an attractive antique frame (print excellent, some light scattered wear to frame). Min. bid \$40.

320)."Aucassin Seeks for Nicolette". 18 x 12" (16.5 x 10.5" visible) scarce ca. 1903 fancy Parrish illustrated Scribner's art print on textured paper picturing rider on white horse beside quiet stream w/ castled crags on high cliffs and multi colored clouds in misty background. A clean, bright and very attractive example that displays nicely, although close examination will reveal a couple of non-offensive faint water stains and a minor tear/break mark in right rocks area. Framed. Min. bid \$50.

321)."Peace at Twilight" (Lull Brook). 18.5 x 14" (15.75 x 11-5/8" visible) unusual, large ca. 1946 Parrish illustrated Brown & Bigelow nighttime Winter scene image. Print is excellent and presented in a gorgeous antique frame. Min. bid \$40.

322).Large "Enchantment". 22 x 14-3/8" ca. 1926 Edison Mazda cropped large calendar image of woman in medieval robe, standing on flight of stairs. Crisp, bright and excellent w/ vibrant colors and great overall look. Near mint appearance, w/ exception of a little minor wear at very outer edges- mentioned for accuracy, none will show when framed. Min. bid \$60.



Rd #2, Cobb Hill Road, Cazenovia, NY 13035 • 24 Hr. Tel: (315) 662-7625 • 24 Hr. Fax: (315) 662-3570 • morf2bid@aol.com • morfauction.com

Welcome to our 71st auction of quality antique advertising and fine collectibles. Everything we sell is guaranteed authentic and as described. We attempt to grade condition both fairly and conservatively, using a scale of 1-10 on the advertising items (ten being absolutely mint). We do not list reproductions, re-issues, deceptively restored or pieced together type merchandise. Flaws and blemishes are prominently noted and over emphasized. We encourage you to call for a detailed description on any item you have an interest in, but respectfully must request that you do this before the closing night. Dimensions are listed by height, then width, and are only approximate (+ or - a quarter inch).

Bidding

Bids are accepted only from those parties who have registered with us to bid. (If you were mailed this catalogue by us you are automatically pre-registered.) Your bid is a legal contract to purchase and once entered, cannot be canceled. Placement of a bid indicates acceptance of our terms.

On all "BID" items there is a 10% buyers premium added to each successful bid. You're welcome to bid by mail, email and fax anytime after receiving this catalog. **We will begin accepting phone bids on Wednesday June 8th, 2011. We will be taking calls on Wednesday and Thursday from 10:00 AM until 5:00 PM.** If no one answers when you call, please leave a message on our machine and we will get back to you. **If bidding by mail or fax, please remember to include your telephone number with your bids!** You may call or bid as often as you like. We will tell you the current bid on any item(s) you are interested in. To raise a bid, your advance must be at least \$10 more than the current high bid amount. When an item reaches \$250, bidding increments rise to \$25, at \$1,000, bidding increments advance in \$50 steps, and above \$2,000 in \$100 increments. We suggest not waiting until the last minute to begin your bidding, as its quite possible you won't be able to get through.

Web Page and Bid Updates

We will begin posting current bid prices (not including the buyers premium) on Wednesday June 8th, 2011 (including an addendum of additional catalogue lot information) on our internet web page. These prices will be updated once each day (each evening sometime after 9:00 PM, EST) and will get updated to include the final hammer prices on Sunday afternoon once the sale is concluded. On the closing night, we will attempt to update current bid prices every hour. Our web page address for this sale is: <http://www.morfauction.com> We suggest that once you get to it, that you bookmark this address for easy re-access. There is also an addendum section on our website where we post additional information and photo's for this sale.

Reserves and Estimates

All items which receive an opening bid in our sale will be sold to the highest bidder regardless of the price realized (we reserve the right to withdraw items in the event of inaccurate catalog descriptions and to reject any bid we feel is not made in good faith). **We run our auctions with a strict policy of no buy-backs, no auctioneer games and no hidden reserves.** Unlike some of our competitors, we do NOT allow consignors to bid up their own items!

Mechanical Operations

Early mechanical and electric motors and mechanisms on machines toys, coin-ops, clocks, etc. are quite often temperamental and very unpredictable in nature. Although these mechanisms may be working fine at the time of sale, we make no guarantees or representations regarding their continued operating status once they have left our premises (including during shipping).

Closing Night

THE LAST DAY FOR BIDDING WILL BE ON FRIDAY, JUNE 10TH, 2011. On closing day, we begin taking calls at 5:00 PM. Please mark your calendar now. **On the closing night (ONLY), we will also be taking calls at (315) 662-3318, (315) 662-3429 and (315) 662-3904 after 5:00 PM** (in addition to our regular (315) 662-7625 office number). **Closing Time: This Auction will close at 10:00 PM (EST) on Friday, June 10th, 2011.** At that time, no more incoming calls will be accepted and all lots with a registered bid of less than \$300, as well as all items without call backs registered on them will be officially closed and final. The items at \$300 and over that have call back protection registered on them will be closed out during our call back period the following afternoon (**see important call back rules below**). We reserve the right to change the official closing in the event of unforeseen family type emergencies or technological failures (utility disruptions, etc.). We also reserve the right to either extend the bidding, to postpone or to cancel this auction in the event of a national emergency or if the Internet or the services of the US Post Office were to get seriously disrupted during our catalogue mailing or bidding period.

"Up-To" Bids & Call Backs

CEILING BIDS: We will be happy to enter competitive "up to" ceiling bids for you on any lots you request. Beginning at your minimum amount, we will advance these bid(s) up to your left ceiling amount, if (and only if) it is topped by another bidder. "Up To" bids will be handled discretely and executed in a completely competitive manner for you. Please note that we don't accept open ended "top all others" ceiling type bids.

CALL BACKS: You may request call back protection for any lot(s) that you enter with either a minimum or a protected "up-to" ceiling bid in an amount of at least \$300. This request must be registered with us before the official 10:00 PM closing hour of Friday, June 10th, 2011. All callbacks will be placed by us on Saturday, June 11th, 2011, beginning at 12:00 noon (EST) and will continue that afternoon until each of the individual lots have been closed out (using past experience, I would expect this to be finished by 6:00 PM, if not earlier). If you register for call-backs, it is your responsibility to be available during this call back time period. We make every effort to honor all our call back requests, but this service is done solely as a convenience to our bidders and will be performed on a best efforts basis only. If you will be traveling or if you will not be available during call back times at your primary number, be sure you provide us with proper alternate or back up numbers for reaching you!

Payment Terms

Winning bidders will be invoiced by mail immediately after the sale. Those who desire fast shipment can pay by Money Order or Cashiers Check. Payments are due within 10 days of receipt of invoice. We reserve the right to offer the item out to our back bidders and deny future bidding privileges to those who do not pay in a timely manner. In addition to personal checks, we also accept payment on your American Express, Visa, Master Card, Discover and Optima Credit Cards (with no surcharge added). No COD's or Collect calls are ever accepted. Items shipped to anywhere in New York State must include appropriate sales tax or signed resale certificate.

Shipping

All packing and shipping charges are extra. We do most of our own packing and shipping and try to keep these charges as reasonable as possible for you. On especially fragile and larger hard to pack items, we hire the services of professional packers and charge you at our billed cost. We ship mostly through the Post Office and Fedex Ground, (Fedex Overnight available at an extra charge.)

Subscribing, Prices Realized, Consignments & Upcoming Events

Future catalogs can be assured by sending \$20 for a full 12 months subscription. (Prices are published on our website after each sale) An automatic credit card ordering program is available. We currently run between 3-4 auctions a year (versus our previous format of running semi-annual sales). This format allows us to run smaller, more focused sales featuring larger, higher quality catalog images and gives our consignors the opportunity for a quicker turn-around of their items. In addition to our regular sales, we also occasionally offer sales made up entirely from single owner collections. Please contact us should you have items you would like us to consider for inclusion in our upcoming events. All inquiries are handled in a completely confidential manner. Our services are also available for the private placement marketing of important individual items, marketing plans for large collections as well as for estate planning and settlement purposes. Back copies of many of our previous acution catalogs are still available at \$5 each (w/ prices realized) w/ quantity discounts available if multiple issues are ordered. For further information, please call, e-mail or write.

Photography by Wes Feuz. Layout by Tracy Niemczal.

© Copyright 2011. All Rights Reserved. No portion of this publication may be copied in any form without the express written permission of Morford's.

Important Closing Night Information

In addition to our regular (315) 662-7625 office number,
on the closing night (only!) you may also call us at:

(315) 662-3318*
(after 5:00 PM)

(315) 662-3904*
(after 5:00 PM)

(315) 662-3429*
(after 5:00 PM)



***These numbers for
Closing night only!
Friday, June 10th, 2011**

Bidding closes at 10:00 PM on closing night. We will be accepting faxes and e-mails on closing night. Our web page will update current high bid prices approximately every hour on closing night and will also list any important addendum information. **All call backs will be made on Saturday, June 11th, 2011, beginning at 12 o'clock Noon!**