



WM Morford
Investment Grade Collectibles at Auction

Investment Grade Collectibles at Auction

Rd #2, Cobb Hill Road, Cazenovia, NY 13035 • 24 Hr. Tel: (315) 662-7625 • 24 Hr. Fax: (315) 662-3570 • morf2bid@aol.com • morfauction.com

Bidding closes Friday, October 28, 2011. (See page 28 for Terms & Conditions)



1). **Hotel Lee Sign.** 10 x 8.5" outstanding, early, five sided, heavy porcelain advertising sign promoting \$1.00 rooms at Hotel Lee, Peoria, Illinois. Never used sign is crisp and like new and includes its small original hanging chain (not shown and early postcard picturing hotel). Min. bid \$50.



2). **Moses' Cough Drop Tins.** Lot consists of two different, very early miniature tin litho sample size product tins for "Moses" brand cough drops, featuring finely detailed Ginna type graphics. Both are clean and excellent in appearance, w/ minor scattered wear (a strong C. 8+). Sizes: 2.5 x 2-7/8 x 1.75" and 2.5 x 1.75 x 1.25". Min. bid \$40 (the pair)



3). **Purity Ice Cream Tray.** 10.5 x 13.25" scarce, early, tin litho advertising serving tray for Purity brand ice cream, featuring beautiful multi-color graphics. Clean, bright and exceptionally nice appearance (displays as a strong C. 8.5+), although close examination will reveal a hint of crazing and a few faint hints of minor scratch lines if tipped in light just right (barely noticeable, mentioned for accuracy). Min. bid \$70.



4). **Oilzum Sign.** 10 x 15.5" early, heavy, 2-sided metal sign for Oilzum Motor Oils, featuring great image of Co.'s trademark race driver (same image both sides). Clean, bright and exceptionally nice in appearance (a very strong C. 8++), w/ beautiful original surface sheen. Min. bid \$50.



5). **Dreikorn's Bread Door Push.** 8.75 x 18-3/8 (loaf- w/ mounting bar 26-5/8" long) early, heavy, high quality metal screen door push advertising Dreikorn brand bread. Clean, bright and excellent (C. 8.5+), w/ a nice, deep rich surface. Appears never used, w/ only minor storage wear. Min. bid \$60.



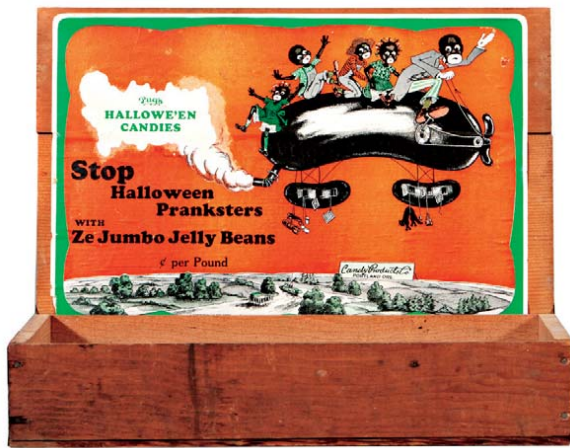
6). **Cat & Mouse Game.** 14.5 x 15 x 1" large, early boxed game set by McLoughlin Bros. featuring incredible color graphic image on lid. Wonderful cover illustration is bright and very attractive (a strong C. 8++) w/ minor soiling and a few light pencil marks in background area. Inside is excellent and comes w/ original playing pieces. Min. bid \$50.



7). **Red Indian Roly Poly.** 7 x 6" (dia.) early, 2-ps. "Singing Waiter" figural tin litho tobacco canister from Red Indian brand tobacco, featuring nice image of Co.'s tobacco package on backside. Tin is attractive and displays quite nicely (as a C. 8) w/ some general light scattered wear and minor denting from use (critical grade C. 7.5+) although it displays better than this would imply. Min. bid \$70.



8). **Planters Clock.** 18.25 x 18.25 x 6.5" scarce, early, 8-sided metal and glass neon light-up advertising clock from an early Planters Peanuts store. Working clock and neon, w/ nice overall appearance. Appears to be all original w/ some general expected wear and ageing from use (C. 7.5+/8-). Provenance: ex Bob Devlon and Charles Penney collection. Min. bid \$200.



9). Halloween Display Box. 16 x 20 x 12.5" (as shown) early, 20 lb. size wooden store display box for Pug's Halloween Candy (Candy Products Co., Portland, Or.) w/ outrageous image on inside display label of comical black family riding on jelly bean shaped airship. Label is clean, bright and excellent overall (C. 8.5) w/ exception of some minor toning, paper loss and small hole in upper right background area. Min. bid \$60.



10). Ice Cream Sign. 13.5 x 19.5" stunning, early tin litho Wagner Co. ice cream advertising sign (Freeport, Ill.) featuring beautiful multi-color graphics. Sign is crisp, bright and like new (appears never used), w/ a little light paint chipping in bottom outer right border area. Min. bid \$50.



11). Planters "Clean Crisp" Can. 9-5/8 x 8-3/8" (dia.) scarce, ca. 1915 ten lb. size tin litho pry-lid product can for Planters Nut & Chocolate Co.'s "Clean Crisp" brand salted peanuts. Colors are bright and piece displays quite nicely (as a C. 8/-), although closer examination will reveal some scuffing and light general overall scattered wear (critical grade C. 7+, although it displays much better than this would imply). Complete w/ excellent original lid. Min. bid \$60.



12). Planters Fishbowl Jar. 12-5/8 x 9.5 x 7" ca. 1929 glass embossed Planters Peanut fishbowl shaped store jar, w/ beautiful multi-color "T" shaped label. Excellent and all original (minor flea bites at bottom edges of lid). Min. bid \$50.



13). West End Beer Tray. 13" (dia.) outstanding, early, pre-prohibition tin litho beer serving tray from West End Brewing Co. (Utica, NY), featuring stunning multi-color graphic trademark image of Miss Liberty and eagle. Crisp, bright and beautiful appearance (basically a strong C. 8.5+) w/ small bb sized chip spot at 5 o'clock area of images border section, and a little non-serious darkening light wear to outer gold rim border. Min. bid \$100.



14). Sunoco Sign. 29 x 20.75" (27.5 x 19.5" visible) early, cardboard litho sign for Sunoco motor oil, featuring great Mickey Mouse Thanksgiving theme. Sign is clean, bright and like new, w/ exception of minor background wear (marked "© 1939 Disney Productions"). Min. bid \$60.



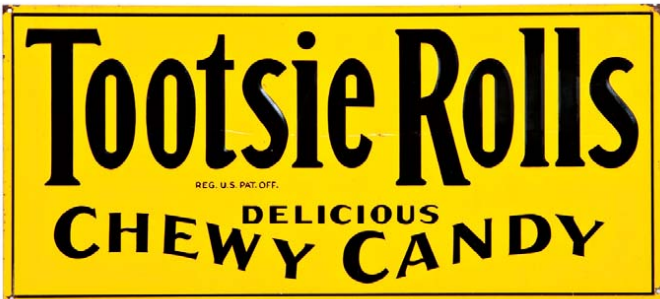
15). Canada Dry Die-Cut. 14 x 8.5" ca. 1920's/30's die-cut cardboard stand-up sign for Canada Dry brand ginger ale. Clean and excellent w/ very nice look (C. 8.5+) w/ minor wear at bottom edge. Min. bid \$40.



16). Salesman's Sample Well. 12 x 6 x 6-1/8" important, very early, museum quality wooden working miniature folk art salesman's sample for an Erickson & Watson Co. well (1862 Patent date). Incredible piece is beautifully detailed, w/ small wooden bucket that lifts up and down using crank handle. Very high quality piece that is all original, w/ incredible early patina to its beautifully detailed paint surface. Min. bid \$300.

Wells Fargo & Co Express

17). Wells Fargo Express Sign. 10-7/8 x 71.75" outstanding, large, sand-painted wooden trade sign from an early Wells Fargo Express Co. building. Impressive sign is excellent and all original, w/ a little minor weathering and some non-offensive light scattered wear from use (C. 8+/-), w/ some light damage at outer edge of outer frame area. Min. bid \$250.



18). Tootsie Rolls Sign. 9-1/8 x 20" early, embossed tin litho sign for Tootsie Rolls brand candy. Clean and bright with nice sheen; displays very well, w/ a couple non-offensive light scratch marks inside "Tootsie Rolls" (between "t" and "s" in Tootsie and "e" and "R" and a few small lightly oxidized paint chip spots in very outer border area). Basically displays as a nice C. 8/+ (critical grade C. 8-). Min. bid \$50.



19). Cocoa Samples Lot. lot consists of three different early tin litho cocoa sample tins (sizes range from 1-5/8 x 1-1/8 x 7/8" to 2.5 x 1.75 x 1-1/8"). Includes: Droste's (near mint); Ideal (C. 8+); and Runkel's (C. 8.5+). Min. bid \$40 (the lot).



20). Whiskey Tip Tray. 4.25" (dia.) early tin litho advertising tip tray for Lakeside Club brand whiskey, featuring beautiful multi-color graphics. Clean, bright and very attractive (displays as a C. 8.5+/-) although close examination will reveal some faint, very minor haziness if tipped in light just right (barely noticeable- mentioned for accuracy). Min. bid \$40.



21). Adams Gum Tin. 6 x 9 x 1-1/8" (as shown) very early tin litho store tin for Adams Honey chewing gum, w/ nice images of colorful birds on outside and Indian princess on inside lid (Ginna Litho). Clean and quite nice overall w/ some light wear from use (outside C. 7.5+/-; inside C. 8.5+). Min. bid \$40



22). School Days Peanut Butter Pail. 3.25 x 3.75" early tin litho 14 oz. peanut butter pail for United Fig & Date Co.'s "School Days" brand, featuring various graphic images of playing school children all around. Clean and attractive appearance, w/ a little minor wear (C. 8+/-). Min. bid \$50.



23). Satis-Factory Coffee Tin. 5.5 x 4.25" unusual, very early tin litho, 1 lb. can for "Satis-Factory" brand coffee, w/ wire loop pull on lid. Clean and very attractive overall (C. 8+/-), w/ minor scattered wear (some chipping loss and wear to backside edges of lid). Min. bid \$40.



24). Moon Shine Pocket Tin. 4.5 x 3 x 1" scarce, early tin litho vertical pocket tin for Bailey Bros. "Moon Shine" brand tobacco. Litho on the tin is bright, attractive and displays nicely (C. 8+/-) w/ a little light crazing and minor scattered wear (note: lid has general oxidized darkening and loss to most of its gold flash surface finish). Min. bid \$70.



25). Brown Paint Co. Mirror. 2.75 x 1.75" early celluloid advertising pocket mirror from Charles Brown Paint Co. (Brooklyn, NY), w/ beautiful multi-color images of nude angels. Clean, bright and excellent. Min. bid \$40.



26). Iris Spice Tin. 3.25 x 2-3/8 x 1.25" early tin litho 2 oz. spice tin for Iris brand (Haas Baruch Co., Los Angeles, Ca.) featuring beautiful color graphics (same image both sides). Clean, bright and excellent (C. 8.5+/-), w/ light oxidizing on non-graphic lid. Min. bid \$40.



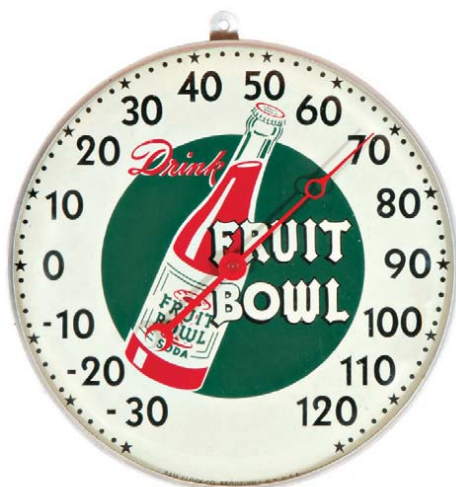
27). Sexual Diseases Sign. 9 x 5.75" early, embossed, tin litho sign for Pabst's Okay Special quack medicine treatment for sexual diseases. Excellent overall, w/ minor wrinkling/wear at very outer edges (C. 8+). Min. bid \$40.



28). Washing Machine Salesman's Sample. 15 x 12.5 x 10.25" unusual, very early "New Becker" brand wooden salesman's sample washing machine, w/ attractive original stenciling on all four sides (including 1885 and 1887 patent dates). This is an exact miniature, working model of Co.'s large machine and is attractive and displays very nicely (note: surface has been heavily waxed or possibly lightly coated in satin varnish, but otherwise excellent and all original). Min. bid \$150.



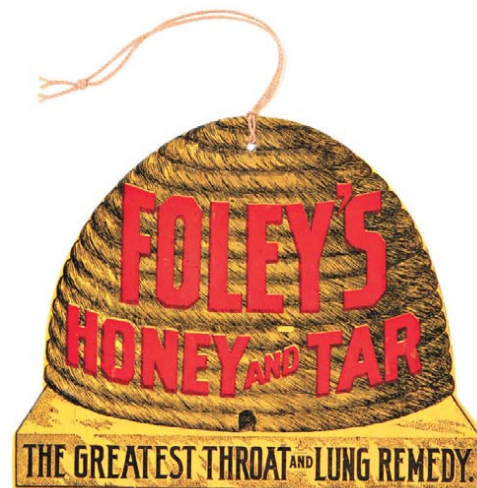
29). Philip Morris Thermometer. 13.5 x 5.75 x 1/4" unusual tin litho thermometer for Philip Morris brand cigarettes, w/ nice image of packs. Thermometer is crisp and like new in appearance (minor storage wear and red liquid has some separation inside glass tube) as found never used still in its original box (box has staining and heavy wear. Min. bid \$40.



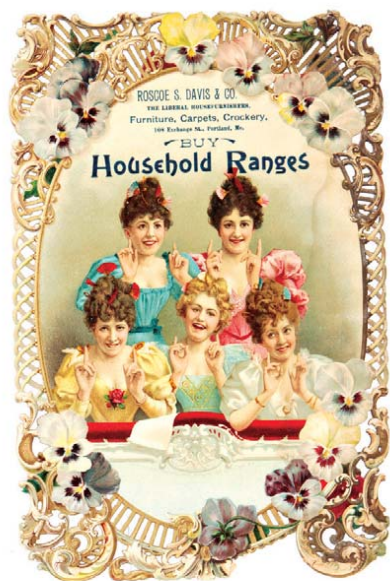
30). Soda Thermometer. 12.25" (dia.) x 1.25" scarce, early dial style thermometer advertising "Fruit Bowl" brand soda pop, featuring nice image of bottle. Aluminum backing w/ domed glass front (by Pam Clock Co., Brooklyn, NY). Clean, bright and excellent (C. 8.5+). Min. bid \$50.



31). Telephone Sign. 7-5/8 x 6.5" unusual, very early, small advertising sign for Bell System local and long distance telephone service, featuring image of early style bell logo. Excellent. Min. bid \$60.



32). Medicine Ceiling Sign. 4.75 x 6" early 2-sided die-cut cardboard string hung fan pull/ceiling sign for Foley's Throat and Lung medicine in shape of beehive (same image both sides). Crisp, bright and like new (near mint). Min. bid \$30.



33). Household Ranges Die-Cut. 11-5/8 x 7.75" fancy, early die-cut cardboard advertising calendar for Household brand ranges. Clean, bright and very attractive appearance (displays as a strong C. 8.5+), although close examination will reveal a little minor background staining and a little non-detracting light edge chipping loss at very outer border edges. Min. bid \$40.



34). Bee Bop Dancer Toy. 9.5 x 4-3/8" (dia.) unusual, early tin litho wind-up toy by Marx, features beautiful, multi-color tin litho base w/ plastic dancing jointed limbs black character at top. Excellent and works great. Min. bid \$40.



35). Dorothy Dodd Shoes Poster. 56 x 42-5/8" early paper litho advertising poster for Dorothy Dodd brand shoes. A large, powerful and very impressive looking piece, w/ bright colors and great overall look. Displays as a strong C. 8.5+, although close examination will reveal some minor scattered background touch-up. Linen backed and ready for framing. Min. bid \$100.



36). Red Man Tobacco Packs. lot consists of ten different variations of full, sealed (never opened) "Red Man" brand soft-pack style tobacco packs (including two different sample packs). Each is apx. 5 x 3.5 x 1.25" (range from 2 to 3 oz. sizes). Excellent overall, w/ typical, expected light staining and wear on a couple. Note: I believe these often contained highly collectible tobacco cards. Min. bid \$50 (the lot).

Change Receiver



37). Raleigh Cigarettes Change Receiver. 7.5 x 7.5 x 2.25" unusual, early country store counter-top change receiver advertising Raleigh cigarettes. Attractive and all original, w/ wood base, marked brass mounting plates and heavy glass see through change dish showing a full, early cigarette pack inside. Excellent overall. (note: lot also includes an additional early Raleigh pack). Min. bid \$50.



38). Orphan Annie Dime Bank. 2.75 x 3 x 5/8" ca. 1930's tin litho registering dime bank featuring syndicated cartoon character Little Orphan Annie. A clean, very nice example (C. 8+) w/ a little light edge wear and a slight bit of fade. Min. bid \$40.



39). Dining Car Coffee. 4 x 5" (dia.) scarce, early 1 lb. key-wind style tin litho coffee can for Dining Car brand, featuring wonderful graphic image of fancy railroad dining car (note black waiter). Clean, bright and excellent (a strong C. 8+) w/ only minor wear and a bit of light speckling on backside of lid. Min. bid \$60.



40). JA Cigars Sign. 3.5 x 21" nice, early, heavy porcelain strip sign for J.A. brand cigars. Has a few minor oxidized flea bites on top edge and a slight, very small surface ding in dark background just above "C" (nothing at all serious or detracting). Excellent. Min. bid \$50.



41). Lorillard's Tobacco Sign. 3.5 x 21" scarce, very early, heavy porcelain strip sign for Lorillard Co.'s "Climax" brand plug tobacco. Very nice sign is excellent and displays great, w/ no chips or cracks (just trace hints of very minor surface soiling and wear (nothing at all serious or detracting, stated for accuracy- barely merits mention). Min. bid \$60.



42). Folky Cough Drops Sign. 35 x 22" great, early painted wooden sidewalk style sign for Luttet's brand Cough Drops, w/ a deep, wonderfully rich, nicely aged patina to its beautiful paint surface. As found, an all original, very impressive piece, in exceptionally nice condition. Min. bid \$100.



43). Sunbeam Bread Sign. 20 x 24" scarce, ca. 1950's heavy metal advertising sign for Sunbeam brand bread, featuring multi-color graphic image of Co.'s trademark girl. Clean, bright and excellent (appears never used w/ exception of a few light scratch marks and minor dent at top outer border area). A-M Sign Co., Lynchburg, VA 11-59. Min. bid \$60.



44). Smith & Wesson Poster. 28.75 x 24.25" (21-5/8 x 17-3/8" visible) outstanding ca. 1920's paper litho advertising poster for Smith & Wesson brand revolvers, featuring wonderful color graphic classic Western image by illustrator Dan Smith. Image area is clean, bright and excellent in appearance (displays as a C. 8.5+) w/ some faint, non-detracting light tears (barely noticeable- visible on close examination). Note: we have not examined piece out of frame, but assume that outer margin area has probably been slightly cropped. Min. bid \$200.



45). Bethlehem Sparkplugs Display. 6.75 x 9.5 x 5" early tin litho counter-top display for Silveco's Bethlehem brand sparkplugs, featuring stunning multi-color graphic nighttime image of Bethlehem, Pa.'s steel mills (has 4 holes at top for inserting and displaying large sparkplugs. Litho area is crisp, bright and like new, w/ some typical wear/loss at top and bottom curved areas. Min. bid \$60.

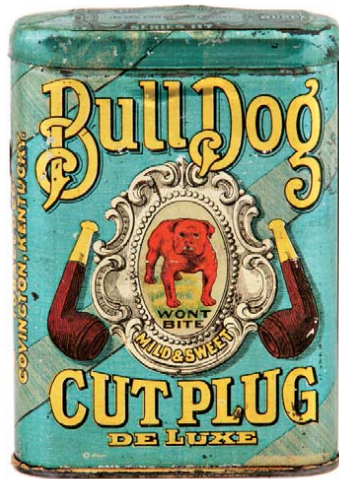


46). Good Humor Sign. 17-7/8 x 26" early, heavy porcelain advertising sign for Good Humor brand ice cream, featuring highly graphic multi-color image of ice cream treat. Clean, bright and very attractive appearance, (basically a strong C. 8+) w/ exception of a couple chip spots and some minor surface soiling and rust staining (as found, should improve w/ good cleaning). Min. bid \$100.

Sample



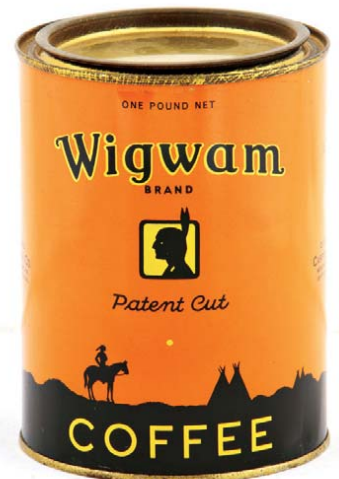
47). Pay Car Sample Pack. 4-7/8 x 3.25 x 1-3/8" scarce 2 oz. size, soft-pack style "Trial Package" paper tobacco pack. Full, sealed, never opened pack is bright and very attractive, w/ a few small scattered stains on one side (1926 Series 109 tax stamp). Min. bid \$30.



48). Bull Dog Pocket Tin. 4.25 x 3 x 7/8" scarce, light blue/turquoise color variation early tin litho vertical tobacco pocket tin for Bull Dog brand (same image both sides). A clean, very nice example that displays nicely (C. 8+), w/ just a slight bit of fade to the red dog (on front side). Min. bid \$70.



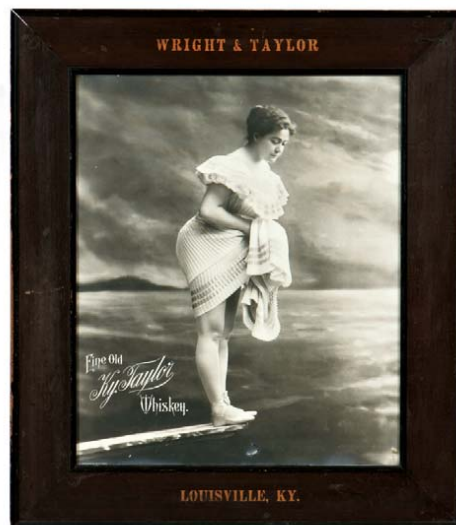
49). Runkel's Cocoa Pocket Mirror. 2.75 x 1.75" scarce, early celluloid advertising pocket mirror for Runkel's brand cocoa, featuring beautiful multi-color graphics. Clean bright and excellent appearance (displays as near mint-although examination under magnification will reveal some non detracting faint scuffs and scratches). Min. bid \$40.



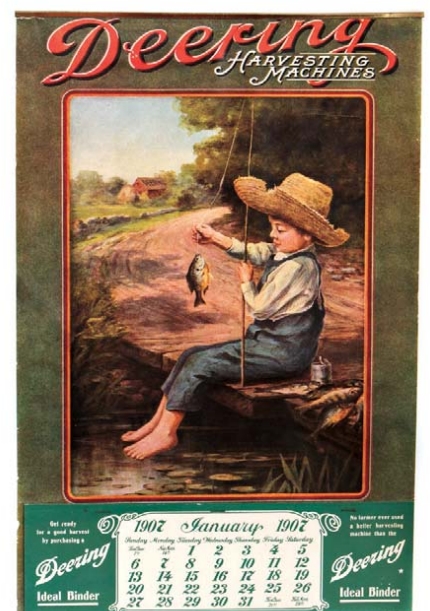
50). Wigwam Coffee Tin. 5-5/8 x 4.25" early tin litho 1 lb. pry-lid coffee can for Wigwam brand (Carpenter Cook Co., Michigan) featuring attractive American Indian theme (same image both sides). Clean, bright and exceptionally nice (C. 8.5+). Min. bid \$40.



51). Carnival Poster. 30-1/8 x 20.25 outstanding, very early paper litho promotional poster featuring stunning multi-color graphics, w/ an area at top for imprinting event details. Clean, bright and exceptionally nice appearance, w/ minor tattering and storage wear at outer edges (C. 8.5+). Min. bid \$50.



52). Taylor Whiskey Sign. 23.25 x 20-3/8" (17-5/8 x 14.5" visible) unusual, framed heavy paper advertising sign for Kentucky Taylor Whiskey (Louisville, Ky.), featuring large photographic image of bathing beauty. Attractive and displays nicely in beautiful marked frame (note: photo image has a couple small, non-offensive blemish spots in bottom background area). Min. bid \$60.



53). Deering Harvesting Co. Calendar. 19.75 x 13" unusual, early paper litho calendar advertising Deering Harvesting Machine Co., featuring adorable image of child in straw hat, fishing. Excellent overall (C. 8+), complete w/ full 1907 calendar pad. Min. bid \$50.



54). A No. 1 Chocolate Pipes Sign. 8.75 x 8.75" early cardboard litho ceiling sign for A No. 1 brand "Chocolate Pipes" penny candy (back side is blank). Outstanding sign is clean, bright and like new (near mint). Min. bid \$50.



55). A No. 1 Chocolate Cigars Sign. 8.75 x 8.75" early cardboard litho ceiling sign for A No. 1 brand "Chocolate Cigars" penny candy (back side is blank). Outstanding sign is clean, bright and like new (near mint). Min. bid \$50.



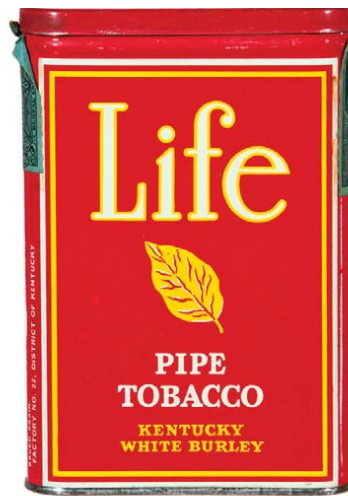
56). Prospect Dairy Sign. 29.75" (dia.) very early, heavy porcelain advertising sign for H.D. Flansbury's Prospect Farm Dairy (probably from early milk delivery wagon). Field of sign is clean, bright and excellent, w/ a little, fairly minor, expected chipping and staining at very outer edges of white border area (nothing serious or offensive). Baltimore Enamel Co. stamping in bottom margin area. Min. bid \$70.



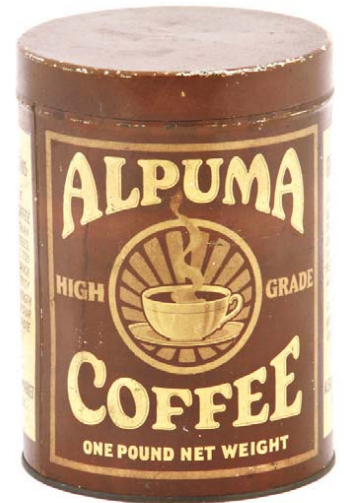
57). Tire Patch Tin. 3.5 x 2.25 x 1-1/8" great early product can for Moe brand tire patches, wonderful image of Co.'s trademark black kid, w/ tin top and bottom and cardboard sides. Neat and unusual piece that displays quite well, although there is some scattered staining and wear (C. 7). Min. bid \$40.



58). Lyon's Tooth Powder Tin. 4 x 1.5" (dia.) early tin litho tooth powder tin for Watkins Co.'s Dr. Lyon's brand. Full, high quality tin is crisp and like new (near mint). Min. bid \$40.



59). Life Pocket Tin. 4.5 x 3 x 7/8" early tin litho vertical tobacco pocket tin for Ryan-Hampton Co.'s "Life" brand. Clean, bright and exceptionally nice (C. 8.5+) w/ only very minor wear and a trace bit of minor oxidizing on top of lid (where tax stamp once sat). Min. bid \$70.



60). Alpuma Coffee. 5-7/8 x 4.25" scarce, early tin litho 1 lb. coffee can for Alpuma brand (Albany Public Market, Albany, NY), w/ same image on both sides. Clean and very attractive overall, w/ a little non-offensive minor scattered wear (C. 8+/-). Min. bid \$40.



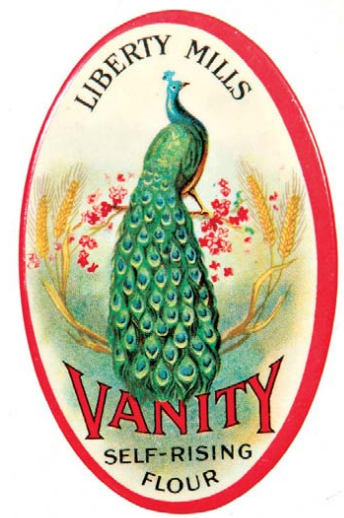
61). Sunset Trail Cigar Tin. 5-5/8 x 3-5/8 x 3-5/8" scarce, early tin litho 25 count can for Sunset Trail brand 5¢ cigars (same image front and back). A decent and pretty respectable piece that is attractive and displays nicely, although close-up examination will reveal some fine horizontal surface scratching on back side and some light scattered oxidizing (C. 7+). Min. bid \$40.



62). Great Puff Tobacco Pouch. 3.25 x 2.25 x 1" full, sealed, never opened 1-2/3 oz., early cloth tobacco pouch for "Great Puff" brand (B. Leidersdorf Co., Milwaukee) featuring beautiful color graphic image of Co.'s trademark cowboy. Clean, bright and excellent appearance (C. 8.5+) w/ a little very minor chipping wear at very bottom edge of label (mentioned for accuracy, barely merits mention). 1902 tax stamp. Min. bid \$40.



63). Ivanhoe Spice Tin. 3.25 x 2.25 x 1.25" scarce variation, early 1-3/4 oz. tin litho spice tin (red pepper) for Ivanhoe brand (Meaker Co., Syracuse, NY). Clean and excellent (C. 8.5). Min. bid \$40.



64). Liberty Mills Mirror. 2.75 x 1.75" scarce, early celluloid pocket mirror for Liberty Mills Co.'s Vanity brand flour, featuring stunning multi-color graphics. Celluloid is clean, bright and like new (near mint), w/ darkening to mirror glass on backside. Min. bid \$40.



65). Hudson & Rambler Neon Clock. 21" (dia.) x 6" large, early electric neon light-up clock for Hudson and Rambler automobile dealership. High quality piece has aluminum body and white neon inside. Very nice and all original, although there is some non-offensive light scattered paper overlay remnants in area of "Hudson" inside- nothing serious or offensive. Both clock and neon work fine. Min. bid \$100.



66). Paris Garters Display. 11 x 12" early die-cut cardboard counter-top stand-up display sign for Paris brand garters, w/ section at top for holding an actual product package (note: also has intact cut out sections under children's hands for displaying boxes). Attractive and displays quite nicely (basically as a C. 8+) w/ exception of small break spot at bottom right edge and a little minor soiling/staining (critical grade C. 7.5+/8-). Min. bid \$50.



67). Rienzi Beer Sign. 17.5" large, tin litho "charger" style sign for Bartholomay Brewing Co.'s (Rochester, NY) "Rienzi" brand beer, featuring attractive multi-color graphics. Has some light general scattered wear, including a few scuffs at 2 o'clock, a very faint hazy water spot area (column through dress area) and some light oxidized speckling at 10 o'clock (nothing that's really offensive or detracting), but overall piece is quite attractive and displays nicely. Tough to grade, but C. 7.5+ seems about right (a little minor restoration could improve it to a strong C 8+ appearance). Min. bid \$80.



68). Bradford Furniture Pocket Mirror. 2.75 x 1.75" scarce, early celluloid advertising pocket mirror for Bradford Co., a Nashville, Tn. furniture manufacturer. Clean, bright and excellent appearance (examination under magnification will reveal minor scratch mark, and typical trace surface scuffs and minor surface bumps (nothing offensive or detracting- barely merits mention). Min. bid \$40.



69). Sweet Violet Pocket Tin. 4.5 x 3 x 7/8" scarce, early tin litho vertical tobacco pocket tin for Globe Tobacco Co.'s "Sweet Violet" brand (backside pictures graphic tobacco pouch). Full, never used tin is clean, bright and exceptionally nice (C. 8.5+). Min. bid \$100.



70). Trout-Line Sample Pouch. 2.75 x 1-7/8 x 1" scarce, early cloth string tie tobacco sample bag, featuring attractive image of Co.'s trademark fly fisherman. Full, sealed (never opened) bag is clean and very attractive overall, w/ a little non-offensive light soiling and wear on backside- including small paper chip spot at side edge (front C. 8+; back C. 7.5+). Min. bid \$40.



71). Roundup Spice Tin. 3-3/8 x 2.5 x 1-3/8" early tin litho 2oz. spice tin (cr. tartar) from Roundup Grocery Co., Spokane, Wa. featuring attractive image of Co.'s trademark western logo. Clean, bright and very attractive, w/ a little non-offensive light wear on backside (front 8.5, back 8+/-). Min. bid \$40.



72). Ever-Well Spice Tin. 3.75 x 2.25 x 1.25" scarce, early, 2 oz., tin litho spice can (mustard) for Ever-Well brand featuring attractive graphic image of trademark well (Everett & Treadwell Co., Kingston, NY). Clean, bright and excellent basically 8.5+ w/ minor oxidizing on right side edge. Min. bid \$40.



73). Fatoco Plug Tobacco Tin. 4 x 2.5 x 1-3/8" early paper label oval tobacco pocket tin for Flak Co.'s "Fatoco" brand, w/ slide mechanism on lid. Nice example has green metallic finish on metal and a little light scattered wear to label (label C. 8). Min. bid \$40.



74). Buster Brown Spice. 5-3/8 x 3-1/8" dia. large, 1/2 pound size paper label spice tin (Cinnamon) for Buster Brown Brand (Forbes Tea & Coffee Co., St. Louis, MO). Tin top and bottom, w/ shiny paper over cardboard body. Full tin is clean, bright and excellent (C. 8.5+). Min. bid \$40.



75). Advertising Ashtray. 6.25 x 3.5 x 1" very early, figural cast iron advertising ashtray for Abendroth Bros. (an early cast iron pipe maker). Neat and very unusual piece, w/ a wonderful primitive folk art type look. Min. bid \$40.



76). Woman Jockey Meerschaum Pipe. fancy, early 5" long smoking pipe featuring beautifully carved meerschaum of figural woman jockey. Very high quality piece, w/ great detailing (note intricate goggles/glasses, whip, etc.). Excellent, w/ a rich, nicely aged patina, complete w/ its original leather covered velvet lined case. Min. bid \$40.



77). Child/Egg Meerschaum Pipe. 6.5" long, fancy, early smoking pipe featuring beautifully carved meerschaum image of figural baby w/ wings emerging from egg. Very high quality piece, w/ incredible detailing. Excellent, w/ rich, nicely aged patina, complete w/ its original leather covered velvet lined case. Min. bid \$40.

Art Nouveau Inkwell



78). Ink Wells Desk Set. 3.25 x 8.25 x 4-3/8" unusual, early, very high quality desk set featuring art nouveau style bronzed finished metal nude on rocks, w/ two metal covered glass inkwells. Attractive, very impressive looking piece. Excellent. Min. bid \$40.

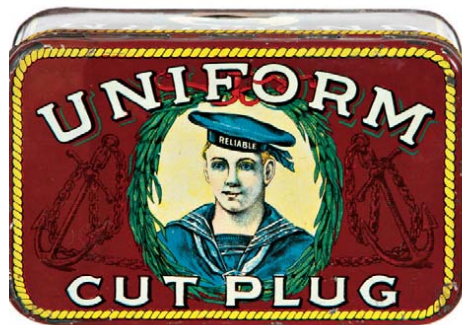
Baseball Tobacco



79). Baseball Theme Tobacco Packs. Lot consists of four different, full, sealed, unopened soft-pack style tobacco packs, each w/ baseball themes. Includes: two variations of 3 oz. size Taykir Bros. "Favorite" brand (one is a "Free Sample" pack), each 5 x 3.5 x 1.25" (Nellie Fox on front and other big league endorsement players pictured on backside). Lot also includes two different variations of Harvey Co., Syracuse "4 Bagger" brand (1-1/4 and 1-3/4 oz. sizes) 5 x 3-3/8 x 1.25 & 1.5". All are excellent (C. 8.5/+). Min. bid \$50 (the lot).



80). Eclipse Bicycle Outfit Tin. 2.75 x 4-5/8 x 3/4" unusual, early tin litho flat pocket style bicycle tire patch tin, featuring great trademark image of Co.'s winged tiger riding early bike (dated 1897). Clean, very attractive appearance, w/ minor scattered wear (C. 8+/-). Min. bid \$40.



81). Uniform Tobacco. 3.75 x 6 x 3.25" early tin litho hinged lid tobacco can featuring beautiful color graphic sailor image on front, back and lid. Clean, bright, very attractive example (a strong C. 8++), w/ only minor background wear. Min. bid \$60.

Salesman's Sample



82). Salesman's Sample Apple Crate. 2-1/8 x 3-1/8 x 1-1/8" early miniature souvenir/salesman's sample wooden advertising crate for Omaha Box Co., East Omaha, Nebraska, promoting Co.'s wooden crates, packing boxes and apple boxes. Neat and unusual piece, w/ nice early surface patina. Min. bid \$30.

Shoe Polish Tins

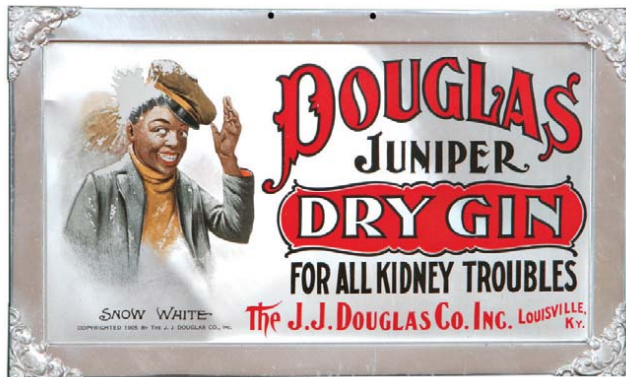


83). Shoe Polish Tins. lot consists of 12 different, early tin litho shoe polish tins, each w/ attractive images. Sizes range from 3-1/8 to 3.5 (dia.) [hgt.s 1-1.25"]. Includes: Neat Slene, Pep, Beau Brummel, Whittmore's, Angelus (red, brown, black, neutral), Paratroop, Chieftain, Bootmaster, Leth-R-Seal. All are very good to excellent. Min. bid \$40.

String Holder



84). Tulip Soap String Holder. 12 (h) x 18" (dia.) scarce, very early country store chain hung advertising string holder for Tulip brand soap (dated 1884). Has fancy, nicely detailed painted cast iron base w/ attractive 3-sided tin litho advertising section at top featuring beautiful, finely detailed, very early lithography by Ginna & Co. Excellent overall (C. 8+/-), w/ a little minor expected light wear from use. Min. bid \$150.



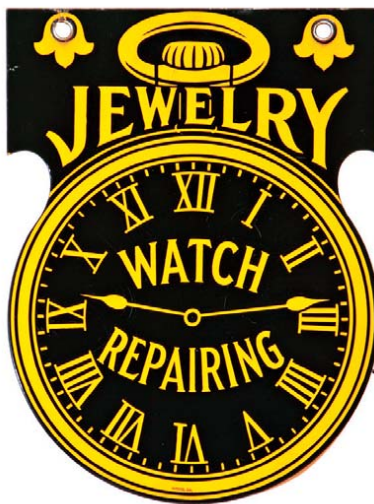
85). Douglas Gin Sign. 7 x 11-7/8" unusual, early, fancy self-framed aluminum advertising sign for Douglas Dry Gin "for all kidney troubles" (titled "Snow White" featuring image of well dressed black boy being hit in head w/ snowball). Clean, bright and excellent (sign rates a strong C. 8.5/+) w/ some non-offensive light oxidizing and minor wear in outer frame area. Min. bid \$70.



86). Dawn Donuts Sign. 6 x 11-1/8" unusual, early celluloid over cardboard sign for Dawn Donuts, featuring beautifully detailed multi-color graphics (by Bastian Bros.). Clean, bright and like new (near mint) w/ exception of a couple very minor blemishes in outer white border area (mentioned for accuracy, so minor barely merits mention). Min. bid \$50.



87). Tobacco Cutter. 14.25 x 7.75 x 8.75" large, early, geared mechanical guillotine style country store countertop plug tobacco cutter. Fancy, heavy cast iron, w/ traces of nickel plating (has large August 1891 patent date at front base area). Excellent overall (works fine). Min. bid \$50.



88). Jewelry Sign. 15 x 11-3/8" small, early, heavy porcelain, 2-sided pocket watch shaped store sign for an early jewelry store. Clean, bright and excellent, w/ nice original sheen (C. 8.5/+) w/ just a little bit of very minor scattered wear ("Brudick, Chi." makers stamp near base). Min. bid \$60.



89). Moxie Sign. 12-7/8 x 8.25" early cardboard die-cut easel-back baseball themed sign for Moxie soda. Sign appears never used and is clean, bright and like new (C. 8.5++). Min. bid \$50.



90). Bromo Seltzer Dispenser. 22-7/8 x 8 x 6" unusual, early countertop dispenser display piece for Bromo-Seltzer headache medicine. Heavy ceramic base, w/ metal hardware and 2-way flasher sign at top. Clean and excellent overall (includes two display cards of metal tube product packages and three early Bromo Seltzer glasses). Excellent. Min. bid \$60.

Salesman's Sample



91). Monument Salesman's Sample. Unusual, very early salesman's sample for a fancy monument, as found still in its original wooden presentation-carrying case. Wooden case has hinged sides that open up to reveal a heavy, very high quality mounted figural metal monument inside. Monument measures 26 x 7-3/8 x 7-3/8" and has excellent detailing and nice surface patina (some wear to outside of wooden case). Min. bid \$150.



92). Cadette Talc Tin. 7-3/8 x 2.25 x 1.25" unusual, early tin litho figural soldier shaped talcum powder tin for Cadette brand, w/ scarce blue color variation coat and hat. Full, never used tin is clean and excellent (C. 8.5/+) w/ exception of non-offensive small bb size white ding near bottom front area and dent line on back. Min. bid \$40.

Boot Jack



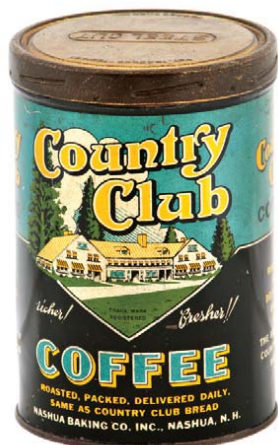
93). Pistol Bootjack. 8.5 x 5 x 3.25" (opened) unusual, early figural cast iron advertising piece for a Phil'a shoe Co., (shaped like pistol when folded and opens up to become a bootjack). Nicely used, attractive piece has embossed detailing and a nice surface patina (C. 8), w/ no breaks or cracks. Min. bid \$40.



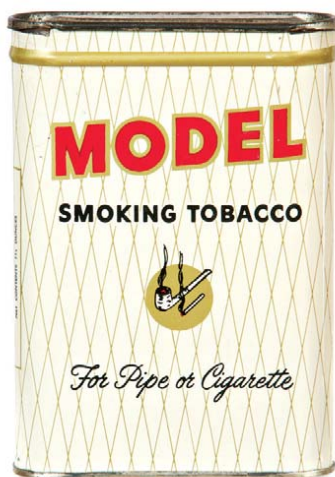
94). Shoe Horns. Lot consists of three early tin litho advertising shoe horns (sizes range from 4 x 1-5/8" to 4-5/8 x 1.75"). Includes: Hurd Shoes (C. 8+); Shinola (black background C. 7.5+/8-); and Shinola (green background C. 8++). Min. bid \$40 (the lot).



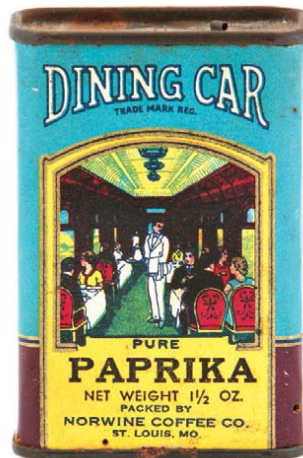
95). TWA Ashtray. 6.75 x 9 x 8" unusual metal ashtray, featuring heavy, solid metal early TWA jet on cast aluminum base. This is a substantial and high quality piece given to Co. executives and important travel agents. Excellent, w/ a little minor scattered wear (C. 8/+). Min. bid \$40.



96). Country Club Coffee. 6 x 4-1/8" early tin litho 1 lb. coffee can for Country Club brand (Nashua Baking Co., Nashua, NH) featuring attractive image of trademark country club building (same image both sides). Tin is clean, bright and displays nicely (as a strong C. 8/+), although close examination will reveal a little non-offensive minor scattered soiling and wear (critical grade C. 8/-). Min. bid \$40.



97). Model Pocket Tin. 4-3/8 x 3 x 7/8" scarce, white background variation early tin litho vertical tobacco pocket tin for US Tobacco Co.'s Model brand. Full, never used tin is crisp, bright and like new (near mint), w/ exception of typical tarnishing and storage wear to gold flash finish of lid. Min. bid \$60.



98). Dining Car Spice Tin. 3.25 x 2.25 x 1.25" scarce, early 1-1/2 oz. spice tin (paprika) for Dining Car brand, featuring attractive image of Co.'s trademark dining car. Metal top and base w/ cardboard body. Clean, bright and very attractive overall, w/ minor soiling & wear (C. 8/+). Min. bid \$40.



99). Pioneer Tobacco Pouch. 3.5 x 2.25 x 3/4" early paper label string-tie cloth tobacco bag for Lorillard Co.'s Pioneer brand, featuring great western image on label. Full, sealed bag comes w/ original pack of rolling papers (same image on papers pack). Label very nice, w/ some light wrinkling; cloth has some tobacco staining at bottom base area. Min. bid \$40.



100). Rock-Co Cocoa Tin. 9 x 4-1/8" unusual, early 2 lb. pry lid cocoa tin for Rock-co brand (Rockwood Co., Brooklyn, NY) w/ attractive image of Co.'s trademark waiter (same image both sides). Tin top and bottom, w/ paper label over cardboard sides. Clean, bright and very attractive. Min. bid \$40.



101). McCormick-Deering Oil Can. 7.75 x 3" unusual, very early advertising oil can from a Port Byron, NY McCormick-Deering Co. Farm Machinery and Implements dealer. Tin was never used and is crisp and like new (near mint). Min. bid \$30 ea. (have two, winning bidder can take one or both).



102). Pepsi Bottle Display. 13-3/8 x 6-5/8" ca. 1930's, cardboard die-cut Pepsi-cola advertising bottle topper display sign. Piece is crispy and like new and appears never used. Min. bid \$40.



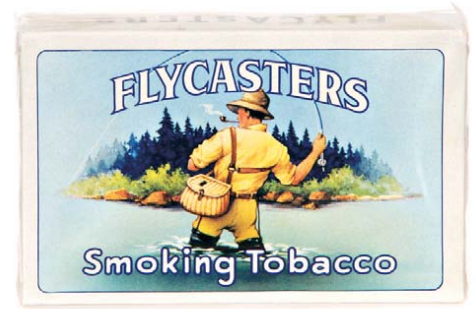
103). Barber Bottle. 8 x 3.5" outstanding, very early, hand-blown barber shop display bottle w/ an open pontil mark on base, featuring a beautifully enameled Mary Gregory decorative design image. Excellent. Min. bid \$60.



104). Farm Machinery Match Safe. 1.5 x 2.75 x 3/8" beautiful, early celluloid and metal advertising match safe for Advance Thresher Co., (Battle Creek, Mich., makers of farm machinery), featuring different, stunning, multi-color graphic images on both sides. Clean, bright and very attractive overall (basically a C. 8.5+) w/ exception of small pinhole and light stain spot in upper area of narrow side edge (right side). Min. bid \$40.



105). Allyn's Mirror. 1.75 x 2.75" scarce, early celluloid pocket mirror advertising Allyn's (dyeing and cleaning Co.), featuring beautiful multi-color graphics. Clean, bright and like new. Min. bid \$40.



106). Flycasters Tobacco Pack. 2-7/8 x 4.5 x 1" full, sealed (never opened) 1-3/4 oz. size, soft pack style tobacco package for Sulliff Co.'s "Flycasters" brand, featuring attractive image of trademark fisherman. Crisp and like new (near mint). Min. bid \$30.



107). Ferry Seeds Poster. 29.5 x 22" (27.25 x 20" visible) outstanding, early paper litho advertising sign/poster for Ferry Seeds, w/ beautiful multi-color lithography featuring nice image of mother and daughter canning. Piece is clean, bright and very attractive in appearance (displays as a strong C. 8+) w/ a small border tear mark and a few non-detracting faint snake line crease marks (note: examination out of frame will reveal some edge cropping). Min. bid \$50.



108). Baseball Fan. 15 x 10.25 scarce, (ca. 1911?) early cardboard fan w/ scorecard on wooden stick, advertising Maine's Bliss School of Business, featuring sixteen named professional ball players. Scorecard is unused and piece displays quite nicely, although there are some light creases and general scattered wear from use, as well as a small tape reinforced break at left corner edge (tough to grade, but 7.5+/- seems about right). Min. bid \$50.



109). Glass Sign. 9.75 x 7.75" unusual, early reverse glass, chain hung sign for a Milwaukee, Wisconsin grocer, featuring attractive image of Indian Princess. Excellent, very high quality piece. Min. bid \$40.



110). International Louse Killer. 7 x 3-1/8" full, sealed, early product can for International Louse Killer, featuring beautiful multi-color graphics. Paper over cardboard body, w/ tin top and bottom. Bright, attractive and displays nicely (as a C. 8+); w/ a little light soiling and non-offensive light scattered wear on backside (back C. 7.5+/-) w/ some light oxidizing on lid. Min. bid \$40.



111). Bunte Candy Tin. 9.75 x 5.25" (dia.) early (5 lb. size?) tin litho pry-lid candy tin from Bunte Bros., Chicago, featuring Co.'s attractive trademark image of girl and dog (same image both sides). Clean, bright and excellent (basically a strong C. 8+) w/ wear spot at bottom. Min. bid \$40.

American Airlines



112). American Airlines Coffee Server. 12.5 x 5.5" (dia.) fancy, silver-plated American Airlines flight service coffee serving pot, featuring attractive inlaid cloisonné enameled Co. logo. This is a substantial, very high quality piece, w/ mercury glass lined thermos type chamber inside. Excellent. Min. bid \$40.



113). Dr. LeGear's Vet Can. 6-3/8 x 3-3/8" outstanding, early product tin for Dr. LeGear's lice killer, featuring wonderful highly graphic barnyard scene. Full, never used product can has tin top and bottom, w/ cardboard sides. Excellent overall, w/ minor wear (C. 8+). Min. bid \$40.



114). Yellow Cab Cigar Sign. 6.75 x 19-7/8" early, embossed tin litho sign w/ powerful and impressive appearance. Clean, bright and very attractive (basically a very strong C. 8++ overall), w/ exception of small scratch mark between "A and B of "Cab" and a little paint chipping/loss at corner edges of outer border area (note: a close examination if tipped slightly will reveal some typical fine, very faint crazing on upper surface that is always found on the originals of this sign- mentioned for accuracy, not at all offensive or detracting). Min. bid \$80.



115). Near's Stock Food Box. 6 x 10.75 x 6.5" unusual, small, early wooden paper labeled product box for Near's brand stock food. Front label is pretty decent (C. 7.5/+) w/ some light toning, staining and wear; back label has some general overall wear (C. 7/-). Min. bid \$40.



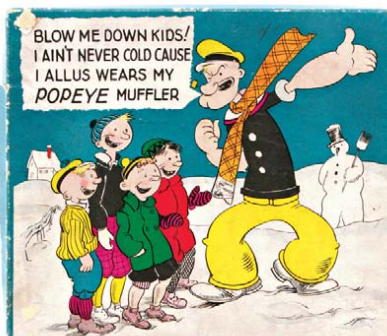
116). "Magi" Cigar Label Book. 7.5 x 10-5/8" 15 pg. set of early stone litho progressive color printers proof strikes in booklet form for Barnes Smith Co.'s "Magi" brand cigar box labels, featuring beautiful graphic image of "Magi" the magician. This printer's reference booklet represents each stage of the stone litho color strike process, from 1st strike through to the finished label. Excellent overall. Min. bid \$40.



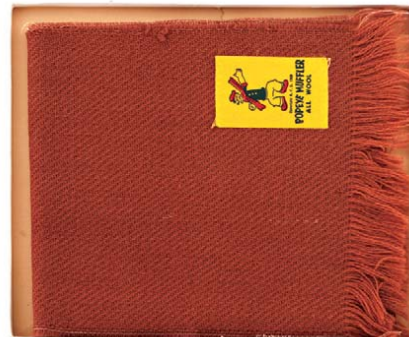
117). Airline Badges. Lot consists of four early, very high quality airline pilot badges, three w/ inlaid doisonné enameling. Includes: TWA, United, North Central and Capital Airlines. Excellent overall (a little light wear to North Central badge). Min. bid \$30 (the lot).



118). White House Coffee. 3-5/8 x 5-1/8" full, sealed (never opened) tin litho, 1 lb., key wind coffee can for "White House" brand (Dwindell Wright Co., New York). Clean, bright and excellent overall (a strong C. 8+) w/ a few typical, scattered dark oxidizing spots to gold flash finish. Min. bid \$30.



119). Popeye Scarf Box. 9-3/8 x 11 x 1/2" extremely rare, ca. 1930's Popeye muffler (scarf) box w/ great multi-color cartoon design on lid, complete w/ its original Popeye scarf inside (has large Popeye label). Box is clean and very nice overall (C. 8+/) w/ exception of a couple small areas of price sticker loss, scarf is like new and appears never used. Min. bid \$50.



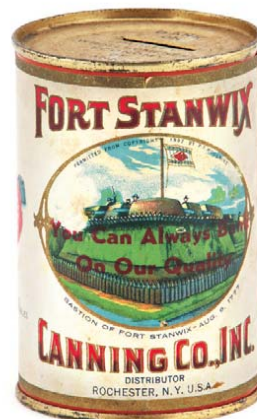
120). Trout Line Pocket. 3-3/8 x 2.5 x 1.5" scarce, early oval pocket tin (cardboard body w/ tin top and base) for Trout-Line brand smoking tobacco, featuring attractive graphic fly-fishing image on both sides. Full, sealed (never opened) tin is clean and excellent overall (C. 8.5+/) w/ exception of typical darkening and light oxidizing to gold flash finish on lid. Min. bid \$70.



121). Supreme Court Spice Tin. 3.25 x 2-3/8 x 1-3/8" scarce, early 1-1/2 oz. tin litho spice tin (red pepper) for Supreme Court brand (Dunne Co., Norwich, NY). Clean, bright and excellent overall, w/ a little light edge chipping and minor wear on backside. Min. bid \$40.



122). Cream Separator Oil Tin. 6-5/8 x 5-1/8 x 3.5" scarce, early hand-soldered tin litho product can for Iowa brand cream separator oil (Associated Mfg. Co., Waterloo, Iowa). Colors are bright and piece displays nicely, w/ some light scattered wear from use (front C. 8+/; back C. 7+). As found, should improve w/ cleaning. Min. bid \$40.



123). Fort Stanwix Bank. Unusual, early paper over tin, advertising bank from Fort Stanwix Canning Co. (Rochester, NY) in likeness of Co.'s vegetable cans. This was a souvenir from a National Cannery convention, and shows colorful and graphic images of Co.'s trademark U.S. Revolutionary War fort on front, w/ graphic image of peas on backside. Excellent. Min. bid \$30.



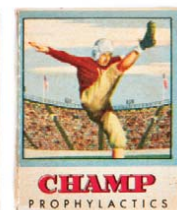
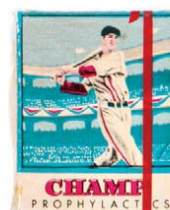
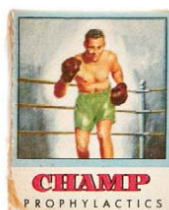
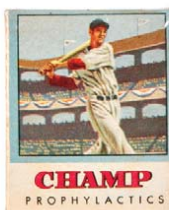
124). American Line Tip Trays. Lot consists of two different variations of tin litho advertising tip trays from "American Line" brand of ocean liners (ea. 4.25" dia.). Both are clean, bright, attractive and display nicely, w/ a little non-offensive light scattered wear on each (C. 8/-). Min. bid \$50 (the lot).



125). Indian Smoking Set. unusual, early figural metal counter-top 3-ps. smoking set. Pieces are nicely detailed, w/ great looking original paint surface. Includes cigar holder (5.5 x 3.75" dia.); ash tray (3-3/8 x 2.75" dia.) and match holder (3-1/8 x 2.25" dia.). Excellent overall, w/ only minor wear from use. Min. bid \$50 (the set).



126). Lucky Strike Sample. 1-5/8 x 3 x 7/8" scarce, miniature cut down style white Lucky Strike sample pocket tin. Clean, bright and very attractive, w/ minor darkening and light scattered wear (C. 8+). Min. bid \$30.



127). Champ Brand Condoms. (2 x 1-5/8 x 1/4" ea.) lot consists of five different full, unopened sporting theme cardboard condom 3-pack packages for "Champ" brand, w/ great sporting images on each (note Ted Williams likeness on the two baseball packs). Excellent overall. Min. bid \$50 (the lot).



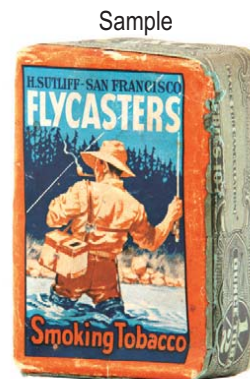
128). Cardinal Sample Pocket Tin. 2.25 x 2-1/8 x 1-1/8" early, miniature "free sample" tobacco pocket tin for Myers Cox Co.'s Cardinal Cut Plug Tobacco, featuring nice image of trademark bird. Colors are decent and piece displays pretty well, w/ typical oxidized darkening in the gold flash areas and some general light scattered wear (C. 7/+). Min. bid \$70.



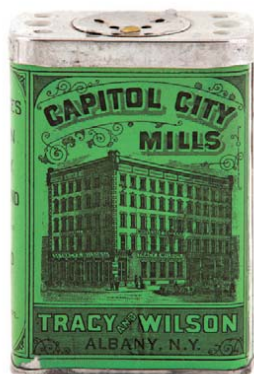
129). Velvet Tobacco Watch Fob. 1.75 x 1-1/8" early, very high quality advertising watch fob for Velvet brand tobacco, in likeness of Co.'s pocket tin, in beautifully detailed inlaid cloisonné enameled porcelain. Crisp and like new in appearance, w/ embossed advertising on backside. Min. bid \$40.



130). Burlesque Show Mirror. 1.75" (dia.) beautiful, multi-color graphic celluloid advertising pocket mirror promoting the scandalous and risqué burlesque show of famous dancer Millie de Leon. Clean, bright and excellent. Min. bid \$40.



131). Flycasters Sample Tobacco. 2.5 x 1.75 x 7/8" early, miniature 1/2 oz. size soft-pack style "Trial Package" for Sutliff Co.'s "Flycasters" brand tobacco, w/ nice trout fishing scene on front (1926 tax stamp). Full, sealed (unopened) pack is very nice overall, w/ a little light scattered wear (C. 8+/-). Min. bid \$40.



132). Capitol City Mills Spice Tin. 3-3/8 x 2-3/8 x 1-3/8" outstanding, early tin litho spice can for Capitol City Mills brand cloves (Tracy & Wilson Co. Albany, NY) featuring beautifully detailed graphics by Ginna & Co. (both sides different images). Clean, bright and exceptionally nice appearance basically an 8.5+ w/ exception of some oxidized wear on narrow right side edge. Min. bid \$40.



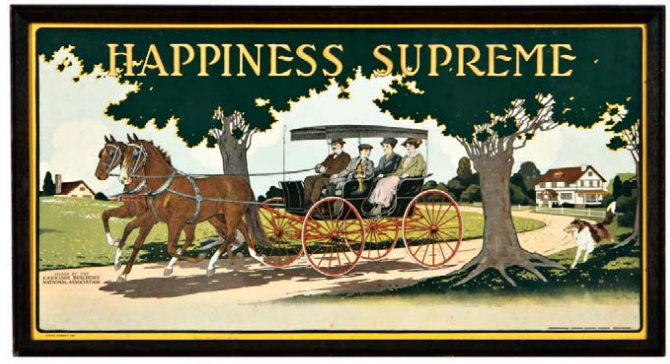
133). Old Colony Tobacco Canister. 6.25 x 5.5" (dia.) scarce, early tin litho canister for Bagley Co.'s "Old Colony" brand tobacco w/ beautiful color graphics all around (has an indented ashtray style lid closure w/ attachment at base for attaching small matchbox). Clean and very attractive appearance (displays as a C. 8/+), w/ minor dents and a little light scattered wear (critical grade C. 8/-). Min. bid \$50.



134). Jumbo Peanut Butter Jar. 3.25 x 3.25 x 1.75" small, early, high quality figural elephant shaped glass jar for Jumbo brand peanut butter (Franks Tea & Spice Co.), w/ attractive graphic tin litho lid. Nicely detailed and embossed heavy glass jar is excellent; lid has some scattered, light general wear along edges (lid C. 7.5/+). Min. bid \$40.



135). Owl Smoking Set. 6.5 x 9.75 x 6.25" early, painted metal counter-top smoking set, featuring detailed figural image of owl and tree trunks (trunks hold cigars, cigarettes and matches). An excellent, very high quality piece, w/ nice detailing and paint surface. Min. bid \$40.



136). Carriage Association Sign. 16.5 x 30.5" (14.75 x 28.75" visible) early, multi-color paper litho promotional sign issued by the Carriage Builders National Association. Clean, bright and exceptionally nice (C. 8.5+) as found in its attractive original period frame. Min. bid \$50.



137). WWII Dime Bank. 2.5 x 2.5 x 3/4" early, "Keep 'Em Sailing" WWII patriotic tin litho dime registering bank, featuring beautiful graphic image of battle ship. Clean, bright and excellent. Min. bid \$40.



138). Log Cabin Display. 15 x 15 x 10" attractive, large, early figural fold-down cardboard store display for Towle's brand Log Cabin syrup, in shape of Co.'s trademark log cabin building (1914 copyright). Has a few non-offensive tear marks, minor creases and light scattered wear, but overall attractive and displays very well (C. 8/+), w/ strong color and great overall look (no chimney). Min. bid \$70.



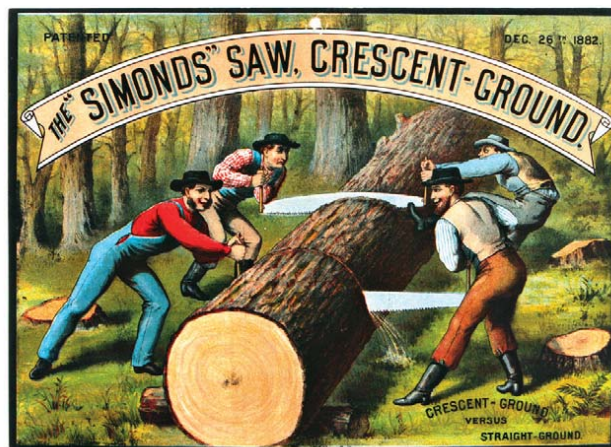
139). Ski Wax Lot. Lot consists of six different, full, early ski wax containers, ranging in size from 2.5 x 1.5" to 2-5/8 x 3-3/8 x 3/4". Includes four round containers and two Northland boxes (Lund, Dry Snow, and Northland brands). All are excellent. Min. bid \$40 (the lot).



140). Chewing Gum Ad. 4.25 x 8" outstanding, very early advertising gum box label (blotter?) on heavy card stock advertising Souder's brand Celery & Pepsin Chewing Gum, featuring beautiful multi-color graphics. Clean, bright and exceptionally nice appearance (C. 8.5+), w/ a little minor bleed to red lettering and some light staining on non-graphic backside (appears to have been removed from scrap book). Min. bid \$40.



141). Forest and Stream Tobacco Tin. 3x3.25" (dia.) early, tin litho tobacco can for "Forest and Stream" brand, featuring attractive color graphic fishing scene on front and back, w/ creel and gun on lid. Clean, attractive and displays nicely, w/ a little non-detracting light scattered wear (C. 8+/-). Min. bid \$40.



142). Simond's Saws Sign. 9.25 x 12.75" outstanding, ca. 1880's cardboard litho sign for Simond's Mfg. Co.'s crosscut lumber saws, featuring stunning and beautiful multi-color graphics. Sign is clean, bright and exceptionally nice in appearance (displays as a strong C. 8.5+) w/ a couple small and non-offensive wear spots (note: non-color backside also covered w/ advertising). Min. bid \$70.



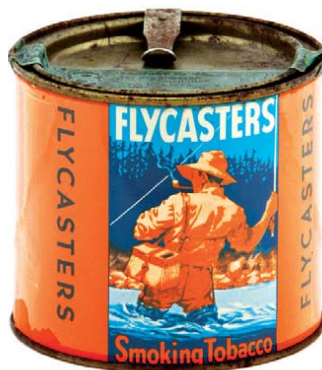
143). Davy Crockett Dime Bank. 2-5/8 x 2-5/8 x 3/4" early, tin litho registering dime bank, featuring nice graphic image of folk hero Davy Crockett on the frontier. Excellent. Min. bid \$40.



144). Tiger Pocket Tin. 2-7/8 x 3 x 7/8" unusual 15¢ variation tin litho vertical tobacco pocket tin for Lorillard Co.'s Tiger brand, featuring different tiger images on each side. Clean, bright and very attractive (a strong C. 8+) w/ minor background wear. Min. bid \$50.



145). Superman Dime Bank. 2.5 x 2.5 x 3/4" scarce, early tin litho "Superman" registering dime bank, featuring great image of cartoon superhero. Clean, bright and excellent appearance (C. 8+) w/ wear along outer edges of top side. Min. bid \$40.



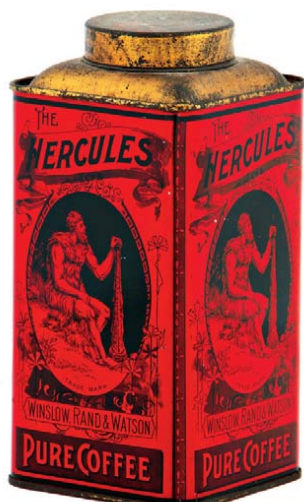
146). Flycasters Tobacco Tin. 3.75 x 4.25" (dia.) full, 8 oz. paper label tobacco tin for "Flycasters" brand (Sutliff Tobacco Co., San Francisco) w/ same image both sides. Full, sealed, unopened tin is excellent overall (C. 8.5+), w/ some oxidized darkening and light spider web type lines to gold flash finish on lid (1926 tax stamp). Min. bid \$40.



147). Addison Typewriter Tin. 2.5 (dia.) x 7/8" tin litho typewriter ribbon tin for "Addison" brand (Drapkin Stationers, Ridgewood, NJ), featuring great NY City art deco skyscrapers image. Near mint. Min. bid \$40.



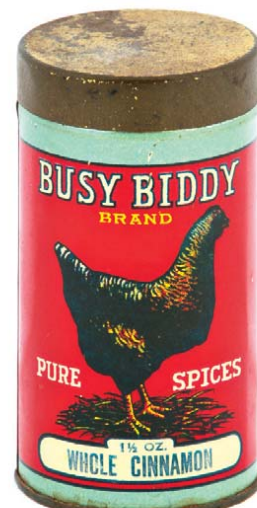
148). Schepp's Cocoanut Tin. 5-7/8 x 3.75 x 3.75" very early small top style tin litho product tin for Schepp's brand cocoanut, featuring great image of monkey juggling cocoanuts (Ilisley Litho). Clean, bright and exceptionally nice condition. Min. bid \$50.



149). Hercules Coffee Tin. 7.25 x 3-5/8 x 3-5/8" scarce, very early small top style 1 lb. coffee can for Winslow Rand & Watson Co.'s "Hercules" brand coffee, featuring attractive, very early Gina type lithography (same image on all four sides). Clean, bright and exceptionally nice (C. 8.5). Min. bid \$50.



150). Squirrel Peanut Butter Tin. 3-7/8 x 3" early tin litho 13 oz. size pry-lid peanut butter can for Squirrel brand (Canada Nut Co., Vancouver), featuring attractive image of Co.'s trademark squirrel. Clean, bright and like new (C. 8.5+). Min. bid \$40.



151). Busy Biddy Spice Tin. 3-7/8 x 2" (dia.) scarce, early tin litho spice tin (1-1/2 oz. cinnamon) for Busy Biddy brand (Davies-Strauss-Stauffer Co., Allentown, Pa.) w/ nice image of Co.'s trademark bird. Clean, bright and excellent (C. 8.5+) w/ exception of non-offensive dent mark. Min. bid \$40.

Gold Mining



152). Colton Fruit Crate Labels. lot consists of a great group of five different, very early fruit crate labels (3 shown) for Colton Packing Co.'s (Colton Cal.) "Miner's Brand," w/ wonderful, early Western graphic images of trademark miner and his equipment (Schmidt Label & Litho Co., S.F.). Pieces are attractive and display nicely (as a C. 8+) although close examination will reveal slight background toning, a little light edge chipping and minor scattered wear (large piece has archival tape repairs at top edge on backside). See website addendum for detailed images and additional info. Min. bid \$50 (the lot).



153). Clock Trade Sign. 21 (h) x 16 (dia) x 2.5 (w)" outstanding, very early 2-sided figural clock shaped wooden folk art trade sign (same image both sides). Great looking piece has a very nice, rich patina to its all original paint surface, w/ heavy original painted cast iron hook at top. Surface is stable and very attractive on both sides, w/ just the right amount of light scattered crazing, slight weathering and light wear from use (about as nice as you find them). Min. bid \$150.



154). Laffin & Rand Gunpowder Calendar. 14 x 8" scarce 1899 cardboard advertising calendar for Laffin & Rand Co. gunpowder, featuring beautiful, multi-color graphics. Clean, bright and like new appearance- basically displays as a very strong C. 8.5+, although close examination will reveal a very well done professionally repaired break mark at very outer right edge (middle outer dark brown area) and small break spot just above top hanging hole. Complete, w/ full calendar pad (some light tattering to top calendar pad cover tear sheet). Min. bid \$70.



155). Oil Can Banks. Lot consists of six different, miniature tin litho oil can shaped advertising banks for various brands (each app. 2-7/8 x 2-1/8" dia.). Includes: White Rose; Cities Service Co.'s 5D and Koolmotor brands; Amoco; Pennzoil; and Thermo brands. All are excellent. Min. bid \$60 (the lot).



156). Pinch Hit Tobacco Packs. Lot consists of two different, sealed, never opened "Pinch Hit" brand baseball themed soft pack style tobacco packs. Larger 3-1/4 oz. 15¢ pack (4-7/8 x 3.5 x 1.25") has some light scattered stain spots and minor paper loss spot at bottom corner edge; 2 oz. size pack (4.75 x 3.25 x 1.5") is excellent (C. 8.5/+). Both have sealed 1910 tax stamps. Min. bid \$40 (the pair).



157). Worlds Fair Kazoo. 4-7/8 x 2 x 1-5/8" scarce, early metal souvenir Kazoo from 1939 NY World's Fair, in shape of fairs landmark Tyrion and Perisphere. Excellent, as found still in its original box (box has some light scattered wear and is missing bottom flap). Min. bid \$40.

Tobacco Silks

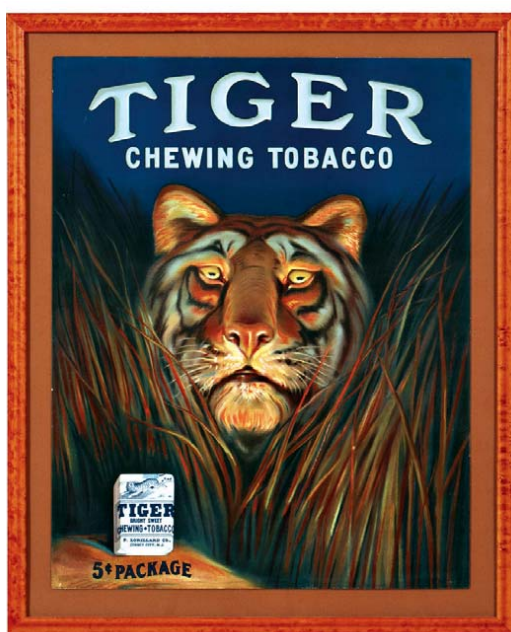


158). Indian Tobacco Silks. Lot consists of 40 different ca. 1910 cloth cigarette insert premium "silks" from Tokyo brand cigarettes, each featuring a colorful and attractive images of American Indians (3-1/8 x 2" ea.). All are clean, bright and excellent. Min. bid \$50 (the lot).



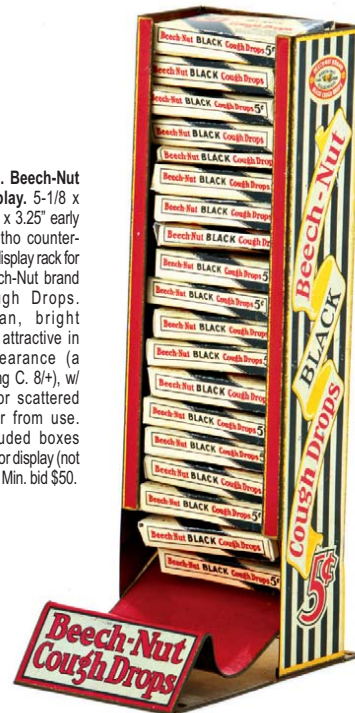
159). High Standard Pistols Banner. 27 x 19.75" early, silky, cloth advertising gun store hanging advertising banner style sign for "High Standard" brand revolvers. Clean, bright and very attractive in appearance (C. 8.5), w/ just the right amount of faint wear. Min. bid \$40. 8909

160). Planters Sitting Lady Display. 20.5 x 10-7/8 x 4-3/8" ca. 1930's die-cut cardboard counter-top display piece for Planters Peanuts (box she holds held cello peanut packs and her feet hung down from countertop). Piece is clean, bright and basically like new in appearance (displays as a strong C. 8.5/+), although one of box flap inserts is missing and the other is reinforced w/ staples (not visible when displayed) and a close examination will reveal some non-offensive light wear in her shoulder area w/ a few very minor faint crease marks (in leg, chin and feet area; mentioned for accuracy-barely noticeable and not at all detracting). Impressive looking piece, displays great! Min. bid \$70.



161). Tiger Tobacco Sign. 32.75 x 26.75" (27.75 x 21.75" actual) important, large, early paper litho advertising sign for Tiger brand chewing tobacco featuring stunning multi-color graphics. Clean, bright and like new (displays as near mint). Note: examination w/ black light will reveal a small, very minor touch-up spot at very outer edge at top left sky area. Nicely framed. Min. bid \$250.

162). Beech-Nut Display. 5-1/8 x 10.5 x 3.25" early tin litho counter-top display rack for Beech-Nut brand Cough Drops. Clean, bright and attractive in appearance (a strong C. 8/+), w/ minor scattered wear from use. Included boxes are for display (not old). Min. bid \$50.





163). Ingersoll Watch Sign. 4.5 x 10" attractive, small, early porcelain sign for Ingersoll brand pocket watches. Attractive and displays nicely (as a C. 8+/-), w/ minor oxidized edge wear and slight traces of non-detracting minor surface scuffing/wear. Min. bid \$40.



164). General Mercer Proofing Book. 6.5 x 10-3/8" 21 pg. set of early stone litho progressive color printers proof strikes in booklet form for "General Mercer" brand cigar box labels, featuring beautiful graphic image of American Revolutionary general and slain war hero. This printer's reference booklet represents each stage of the stone litho color strike process, from 1st strike through to the finished label. Excellent overall. Min. bid \$40.

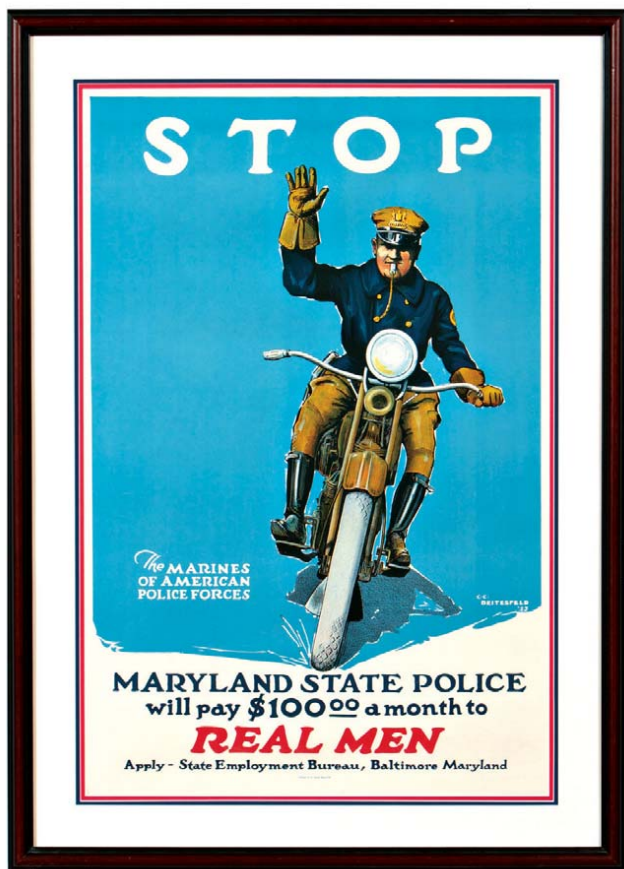
Minature Samples



165). Baking Powder Samples. Lot consists of four early miniature sample size baking powder tins, ranging in size from 1.75 x 2" to 2.5 x 2-1/8". All are clean, bright and excellent. Includes: Davis, Watkins, and Blue Ribbon are tin litho; Staley's is paper label (full, sealed, never opened). Min. bid \$40 (the lot).



166). World's Fair License Plate. 4.5 x 11.5" unusual, early embossed tin litho souvenir automobile license plate from 1939 New York World's Fair. Bright, clean and very attractive appearance (C. 8+/-) w/ minor scattered storage wear. Min. bid \$40.



167). Motorcycle Poster. 46.5 x 33.5" (37.75 x 24.75" visible) outstanding, ca. 1920's large paper litho recruiting poster for the Maryland State Police Department, featuring stunning, multi-color graphic image of motorcycle riding police officer by illustrator C.C. Deitesfeld (1923). Powerful and very impressive poster is clean, bright and like new in appearance, nicely framed and matted and ready to hang (plexy glass used in framing for worry free display and shipping). Min. bid \$250.



168). Wrigley's Vendor. 26 x 3.75 x 5" early, metal wall mount style 5¢ coin operated machine for vending gum packs. Machine is crisp and like new, as found never used and comes complete w/ original key. Min. bid \$60.

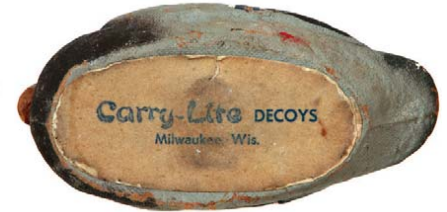


169). Rochester Brewing Co. Sign. 36.75 x 20.75" (28.75 x 11-5/8" visible image) important, large, early, paper litho advertising sign from Rochester Brewing Co. (Rochester, NY) featuring outrageous multi-color graphic image of semi-nude and cherubs, as found still sealed in its original frame. Clean and excellent overall appearance (basically a strong C. 8+/-) w/ a small non-detracting slight board stain spot in dark blue background area (mentioned for accuracy, not offensive and does not detract from great overall look of this wonderful piece). Min. bid \$250.



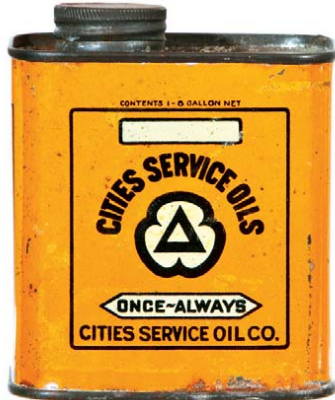
170). **Figural Biscuit Tin.** 3-7/8 x 8.75 x 4" unusual, early figural tin litho biscuit tin, in shape of bookends w/ 7 books. Clean, bright and very attractive, w/ minor scattered wear from use (C. 8+). Min bid \$40.

Miniature Salesman's Sample



171). **Miniature Decoy.** 2.5 x 4.5 x 2-3/8" early miniature advertising salesman's promotional sample decoy for Carry-Lite brand Decoy Co., Milwaukee, Wis. This is an exact miniature version of one of Co.'s painted papier-mâché hunting decoys, w/ large advertising label on base. Excellent. Min. bid \$40.

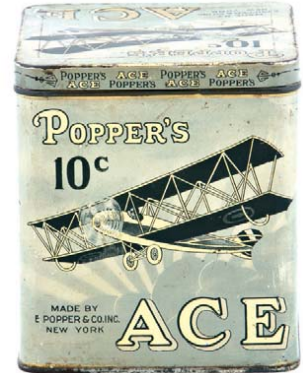
Miniature Samples



172). **Cities Service Oil Tin.** 4.5 x 3.75 x 2-5/8" unusual, small, early 1/8 gallon (pint size) hand-soldered Cities Service Co. oil tin. Clean and very attractive appearance w/ a little minor scattered wear from use (C. 8-). Min. bid \$40.



173). **54 Brand Tobacco Samples.** Lot consists of two different miniature, tin litho sample size pocket tins for John Weisert Co.'s "54" brand tobacco. Both are clean and attractive in appearance and display nicely. Larger 3 x 2.25 x 3/4" (C. 7++); smaller 2 x 2-1/8 x 1" (C. 7.5), w/ some non-offensive scattered wear on each. Min. bid \$50 (the lot).



174). **Popper's Ace Cigars.** 5.75 x 5 x 5" early tin litho, 50 count cigar can for "Popper's Ace" brand, featuring great image of trademark cigar airplane on front, back and lid. Clean, bright and very attractive appearance overall, w/ minor soiling and light scattered wear on lid (body C. 8++; lid C. 8-) note: word "Rice" neatly scratched into white box on left side. Min bid \$50.



175). **Grand Duke Proofing Book.** 6-7/8 x 8.5" complete 27 pg. set of early stone litho progressive color printers proof strikes in booklet form for "Grand Duke" cigar box labels. This printer's reference booklet represents each stage of the stone litho color strike process, from 1st strike through to the finished label. Inside pages of booklet are excellent overall and lot also includes a protective folder containing complete full size and smaller side labels. Min. bid \$40.



176). **McCormick Tape Measure.** 1.75 dia. x 1/2" scarce, early celluloid advertising tape measure for McCormick Harvesting Machine Co., featuring detailed image of factory on front and harvesting machine on back. Excellent. Min. bid \$40.



177). **Chef Smoking Set.** 6 x 5.5" (dia.) early and unusual, figural metal mechanical smoking set on wooden base (pushing down on chef's spoon raises arm- lifting up pot lid "ashtray" underneath), w/ matchbox holder behind. Interesting and unusual piece, in attractive overall condition, w/ just the right amount of surface patina and wear from use. Min. bid \$40.



178). **Red Hawk Clock.** 14.5" (dia.) x 3.5" unusual early electric light-up clock for Red Hawk brand work clothes, w/ cut-out clock #s. that light from behind. Very high quality piece has heavy metal back w/ reverse painted lettering to glass. Clean and excellent. Min. bid \$60.



179). **McKinley Political Items.** Lot consists of three early political campaign items from republican presidential candidate Wm McKinley. Includes: Cloth bookmark (9.25 x 2-1/8") from 1896 campaign (excellent, w/ exception of minor background staining); large (6.5 x 5" dia.) 3-ps. brass "Honest Dollar" badge w/ nicely embossed detailing (excellent, w/ light denting and wear spots to cardboard on backside); and "Union Republican Ticket" (9 x 2.75") cloth badge (w/ celluloid insert) from 1900 campaign, clean and displays nicely w/ partial separation tear on fold line (just above words "Auditor General"). Min. bid \$40 (the lot).



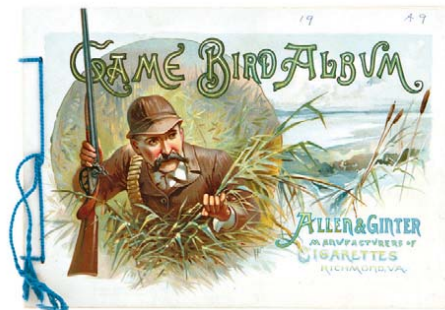
180). Caravan Condom Tins. Lot consists of two different variations of Tiger Skin Rubber Co.'s Caravan brand condom tins (each 1.75 x 2.25 x 1/4"). One is near mint, other C. 8++). Min. bid \$50 (the pair).



181). Pippins Cigars Sign. 3.5 x 21" stunning, early heavy porcelain strip sign for Traisser Co.'s Pippins brand cigars. Outstanding sign is crisp, bright and like new, w/ beautiful original sheen. Basically near mint w/ exception of chip spot at bottom edge. Min. bid \$60.



182). A.P. Little Typewriter Tins. (2.5 x 2.5 x 7/8" ea.) lot consists of three different variations of typewriter ribbon tins from A. P. Little Co., Rochester, NY, each featuring image of Co.'s trademark black child. Clean, bright and excellent. Min. bid \$40 (the lot).



183). Allen & Ginter Album. 6 x 8.5" early cigarette insert card album book from Allen & Ginter Tobacco Co., for collecting "Game Bird" series of cards w/ twelve pgs. inside featuring beautiful color graphic, full size likenesses of the card images found in set. Clean, bright and excellent (basically C. 8.5+), w/ a little wear on cover, non-offensive light edge wear spot, minor crease mark and a couple numbers written in top margin area. Min. bid \$50.



184). Sunset Trail Cigar Tin. 5.5 x 6-1/8 x 4-1/8" unusual, white background variation, tin litho, 50 count cigar can for Sunset Trail brand, featuring attractive color graphic western images on front and inside lid. Litho areas are clean, bright and display nicely, although there is light scattered wear on non-graphic backside and non-graphic outside of lid has some general oxidizing and light weathering (front C. 8+; back C. 7.5; inside lid near mint). Min. bid \$50.



185). Sunbeam Bread Sign. 55 x 18.75" outstanding, large embossed metal advertising sign for Sunbeam Bread, featuring wonderful image of Co.'s adorable trademark girl. Crisp, bright and like new (basically near mint, w/ only very minor wear) w/ beautiful original surface sheen. Min. bid \$100.



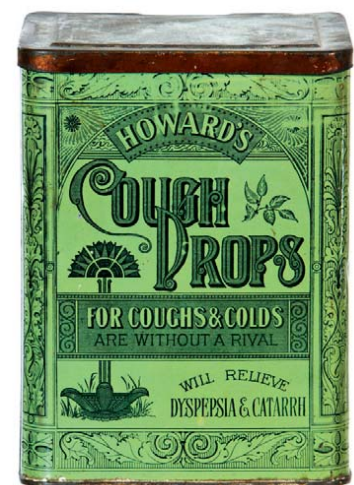
186). Iroquois Brewery Tip Tray. 4.25" (dia.) early tin litho tip tray for Iroquois Brewery (Buffalo, NY) featuring beautiful graphic image of Co.'s trademark Indian princess. Clean, bright and very attractive (displays as a C. 8.5+) w/ couple minor hazy spots evident if tipped in light just right (barely noticeable- mentioned for accuracy). Min. bid \$40.



187). Remington Bears. 9.25 x 6.5" great early glass advertisement of the adorable Remington Co.'s trademark bear cubs. This is a label under glass decal type reverse transfer image, probably cut from a store window. Piece is bright and very attractive in appearance (C. 8+/-) w/ a little non-offensive surface wear at "R" area of word "Headquarters". Displays very well (would look great framed). Min. bid \$40.



188). Bowler Beer Tray. 13" (dia.) scarce, early tin litho pre-prohibition beer tray from Harry Bowler Brewer (Amsterdam, NY). Clean, bright and very attractive appearance w/ beautifully detailed lithography by American Art Works Co. Displays as a very strong C. 8++ (close examination will reveal faint crazing and a few barely noticeable ring and wear marks on surface if tipped in light just right- nothing that detracting or offensive- mentioned for accuracy). Min. bid \$70.



189). Howard's Cough Drops. 6-7/8 x 5-1/8 x 5.25" very early tin litho store size can from H.C. Howard Co., Springfield, Mass. featuring finely detailed lithography by Ginna & Co. Clean and very attractive appearance (C. 8+/-), w/ some non-offensive light wear at top edge (typical tarnishing and light oxidizing to non-graphic lid). Min. bid \$50.



190). Egg Baking Powder Pocket Mirror. 2-1/8" (dia.) early celluloid pocket mirror w/ great graphic image of child holding giant product can. Clean, bright and excellent in appearance (examination under magnification will reveal some minor trace scuffs- barely noticeable, mentioned for accuracy). Min. bid \$50.



191). Black and White Pocket. 3.75 x 3-3/8 x 1.25" scarce, early tin litho "Black and White" brand (National Cigar Stand Co.) vertical tobacco pocket tin. Displays nicely (as a C. 8+), although close examination will reveal a little background soiling and light scuffing/wear (critical grade front C. 7.5+/8-; back C. 7+). As found, might improve w/ cleaning. Min. bid \$60.



192). Gay-Ola Fob/Mirror. 2 x 1.75" (dia.) scarce, early celluloid advertising watch fob for "Gay-Ola" brand soda, w/ mirror on backside. Clean, bright and displays nicely, although close examination under magnification will reveal some fine surface wear and scratches. Min. bid \$40.



193). Tamco Spice Tin. 2.5 x 2 x 1.25" early tin litho 1-1/2 oz. spice tin for Tamco brand (Taylor McLeish Co., Detroit) featuring beautiful multi-color graphics (same image both sides). Clean, bright and exceptionally nice (near mint). Min. bid \$40. 1333



194). Old Sleepy Eye Textile. 25 x 25" (20 x 20.5" visible) scarce, early textile from Old Sleepy Eye Flour Co. w/ stunning multi-color graphics featuring Co.'s trademark character in center and American Indian scenes in background. Clean, bright and excellent in appearance (basically a strong C. 8++), w/ dark spot in background area just above chiefs shoulder. Framed.. Min. bid \$60.

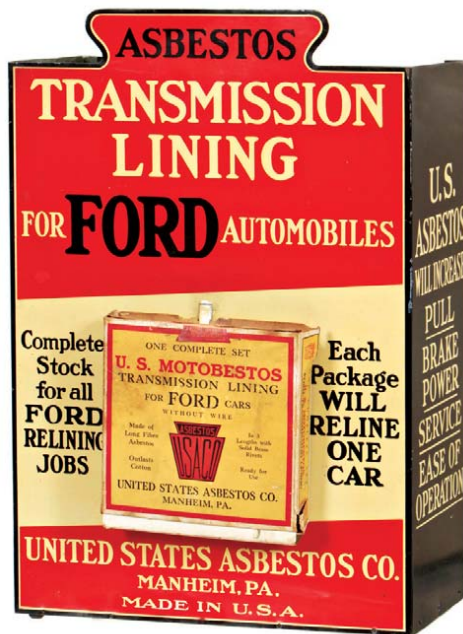


195). Nuts Dispenser. 16.5 x 21 x 9.5" unusual, early country store counter-top nuts dispenser. Has heavy enameled porcelain body and lids on top of the three labeled glass globes, w/ scoop drawers. Very nice overall, w/ chip spot on one of the lids and minor scattered wear on base. Min. bid \$60.



196). Meat Packers Thermometer. 12.5" (dia.) early, glass over aluminum, framed dial style advertising thermometer for Cross Bros. (Phil'a. meat packing Co.), w/ colorful advertising image of Cross Co. logo branded on beef cow. Excellent overall, w/ minor wear from use. Min. bid \$40.

Ford Motor Co.



197). Ford Motor Display. 18-5/8 x 12-5/8 x 6-3/8" early, tin litho counter top store display for Ford Automobile transmission linings. Clean, bright and excellent overall, complete w/ an original empty product display box at front. Crisp, bright and like new w/ a little scattered wear on side edges (C. 8++). Min. bid \$80.



198). Edison Mazda Display. 34-5/8 x 22-5/8 x 3.25" large, ca. 1920's cardboard stand-up window display for Edison Mazda lamps (light bulbs), featuring adorable image of young girl. Has folding shadow box style box in back w/ a translucent paper in lampshade and tablet areas made to glow when bulb is placed inside. Clean, bright and like new, as found never used still in its original shipping carton (has a little non-offensive expected minor creasing marks and light storage wear along top edge). Min. bid \$100.



199). American Seal Paint Calendar. 25 x 18 (20-3/8 x 13-3/8" visible) early paper litho calendar for American Seal Paint Co. (Troy, NY), featuring outstanding multi-color graphic images of Uncle Sam at Pan American Expo. Clean, bright and excellent in appearance (displays as a strong C. 8.5+), w/ small, non-detracting background watermark in sky area. Complete w/ original December 1901 calendar sheet. Framed. Min. bid \$60.



200). **Sunset Trail Cigar Tin.** 5-5/8 x 3-5/8 x 3-5/8" scarce, early tin litho 50 count product can for "Sunset Trail" brand cigars, featuring attractive Western image of couple on horses (same image front, back and on inside lid). Clean, bright, very nice appearance (C. 8+) w/ some hazy light surface oxidizing on narrow left sideedges of lid overlap. Min. bid \$40.



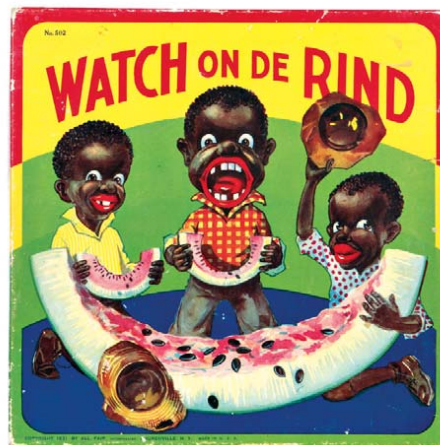
201). **Topless Trade Mirror.** 2.25" (dia.) scarce, early hand-tinted celluloid advertising "Good For 10¢" trade mirror featuring great image of topless girl (issued by Wm Sleeper, New Athens, Ill.). Clean and very nice in appearance (close examination will reveal faint traces of wear and slight hint of minor haziness on surface- nothing offensive or detracting). Displays great! Min. bid \$40.



202). **Orcico Cigar Tin.** 5.5 x 6-1/8 x 4-1/8" beautiful, tin litho, 50 count cigar tin for Orcico brand (Orison Cigar Co., Bethesda, Oh.) featuring stunning, multi-color graphic image (same on both sides). Tin is clean, bright and very attractive in appearance (displays as a strong C. 8+) w/ exception of a little non-detracting light scattered wear at bottom edge and some general darkening and light oxidizing wear spots to gold flash finish of its non-graphic lid. Min. bid \$70.



203). **Dewey Flasks.** Lot consists of two early, heavy label under glass whiskey flasks featuring Admiral Dewey. Canteen shaped flask (5.25 x 4-5/8 x 1.1-3/8") has incised painted "U.S." on backside; larger flask (5 x 4-3/8 x 1-3/8") marked "Remember the Maine". Both are excellent, w/ expected typical light ageing in blue background areas. Min. bid \$60 (the pair).



204). **Watermelon Game.** 11.5 x 11.5 x 1-5/8" early, 2-ps. ball toss "Watch on de Rind" boxed game set by All-Fair Game Co., featuring great images of young black boys and watermelons (© 1931). Clean and bright w/ a great overall look. Outer box cover has minor staining and light scattered edge wear (C. 8-); inside image crisp and like new (near mint). Complete w/ original balls and a catapult type launcher. Min. bid \$60.



205). **Store Gas Lighter.** 16.25 x 5 x 6" early, very high quality, heavy figural metal countertop cigar store lighter on stone base in likeness of warrior. Beautiful detailing and excellent overall, w/ a nice rich surface patina (note: has non-detracting small drilled hole in helmet area- original to piece?). Min. bid \$120.



206). **1899 Coca-Cola Calendar.** 13 x 7-3/8" scarce and important 1899 cardboard advertising calendar for Coca-Cola. Very high quality piece, w/ shiny finish and beautifully detailed graphics. A clean, bright and exceptionally nice example, that is basically almost like new, w/ exception of a little very minor edge wear (stated for accuracy- hardly merits mention) and a few typical non-offensive light scattered flyspecks in background area. Min. bid \$250.



207). **Old Rip Tobacco Sign.** 25-3/8 x 15-1/8" (21-1/8 x 10-7/8" visible) outstanding, very early, paper litho sign for Allen & Ginter Co.'s Old Rip brand tobacco featuring stunning multi-color lithography. Clean, bright and like new in appearance (close examination will reveal a little minor non-offensive wavy wrinkle marks; mentioned for accuracy, barely merits mention). Min. bid \$150.

Cigar Clipper



208). Fancy Cigar Cutter. 3.5 x 4-1/8 x 5/8" fine, early, heavy figural brass (bronze?) cigar clipper/cutter, featuring attractive Art nouveau style nude figure w/ a mechanical cutter/clipper mechanism at side edge. Excellent overall, w/ attractive, richly worn surface patina. Min. bid \$50.



209). Kensington Kernel Cut Pocket. 2.75 x 3.5 x 1.25" scarce, early tin litho vertical tobacco pocket tin for Dill Co.'s "Kensington Kernel Cut" brand. A clean, very nice example w/ a little minor scattered wear (C. 8/+). Min. bid \$60.



210). Enameled Naval Glasses. Lot consists of two early patriotic Spanish American War era glasses, each w/ beautiful high quality enameled label designs (Battleship 4-7/8 x 2.75" dia.; Admiral Dewey 3.75 x 2.75" dia.). Both are excellent, w/ minor wear to enameled on Dewey image. Min. bid \$40 (the pair).

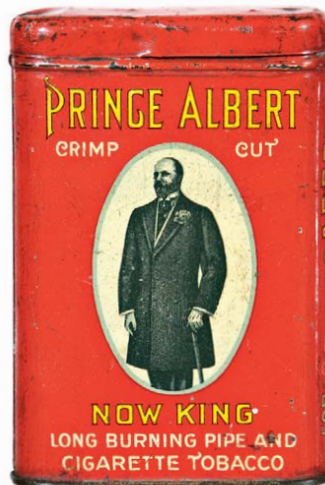


211). Surbrug Tobacco Pocket Mirror. 2.75 x 1.75" scarce, early celluloid advertising pocket mirror from Surbrug tobacco, featuring beautiful multi-color graphic image of topless nude w/ tobacco leaves. Clean, bright and excellent in appearance (examination under magnification will reveal trace scuffs and a few minor surface bumps- mentioned for accuracy, nothing offensive or detracting and barely merits mention). Min. bid \$40.



212). Wedding Ring Coffee. 5.75 x 4.25" unusual, early tin litho 1 lb. coffee can for "Wedding Ring" brand (Humphreys Co., Bloomington, Ill.) shows 18 K wedding band on front and steaming coffee cup on back. Attractive and displays nicely (C. 8+/) w/ some non-detracting typical minor scattered darkening and light wear in gold flash areas (general darkening and heavier wear on lid). Min. bid \$40.

Rare Variation



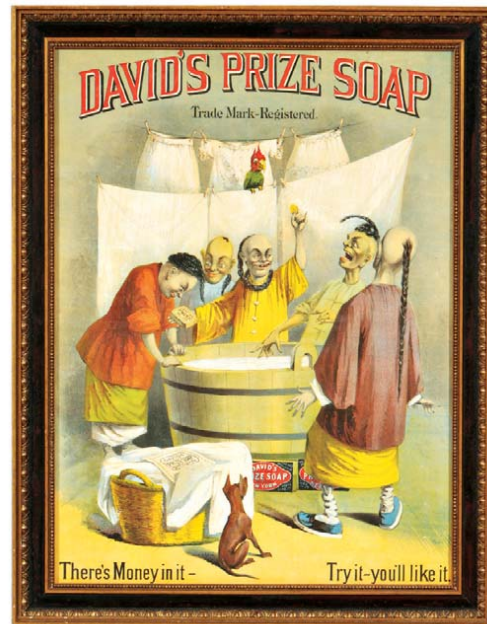
213). Prince Albert "Now King" Pocket. 4.5 x 3 x 1" scarce, tin litho "Now King" variation Prince Albert vertical tobacco pocket tin. Lid has some denting and body has some minor scattered soiling and a little light scattered chipping and wear, but overall is attractive and displays pretty well (C. 7.5). Min. bid \$50.



214). 1922 Coke Mirror. 2.75 x 1.75" extremely rare, 1922 celluloid Coca-Cola pocket mirror. Piece is clean, bright and displays very well, although examination under magnification will reveal some minor surface bumps, a few small celluloid cut marks and slight foxing at 9:00 left edge of sky area- none of which are offensive or detracting to its appearance) and mirror glass has substantial separation and darkening to silver finish. All in all a decent and quite respectable piece that displays very nicely! Min. bid \$150.



215). Baseball/Lard Sign. 21 x 27.25" (15-5/8 x 21.5" actual) wonderful, very early paper litho sign advertising Nelson Morris Co.'s Supreme brand lard, featuring an outrageous image of baseball playing pigs. Piece is clean, attractive and displays very nicely (as a C. 8) although close examination will reveal some non-offensive toning and a little non-offensive light staining, w/ a slight bit of trimming along very outer edges (critical grade 7.5+/+/-). Nicely framed and matted and includes Co.'s matching image advertising trade card. Min. bid \$150.



216). David's Prize Soap Sign. 24 x 19" (21 x 15.5" visible) early paper litho advertising sign for David's Prize brand laundry soap, featuring wonderful image of stereotypical Chinese laundry workers holding up gold coin they found in wash tub. Clean, bright and exceptionally nice (basically displays as a C. 8.5+) although examination out of frame will reveal some very high quality professional restoration. Nicely framed. Min. bid \$150.

HELMAR • TURKISH CIGARETTES • QUALITY SUPERB

217). Helmar Cigarettes Sign. 1.5 x 22" very early, heavy porcelain strip sign for Helmar brand Turkish Cigarettes. Outstanding, very high quality piece is crisp and like new (near mint). Min. bid \$60.



218). DeLaval Separators Match Holder. 6.25 x 3.75" early die-cut, tin litho. advertising match holder in shape of Co.'s cream separator (1.2 million in use variation). As found, never used, still in its original gift box. Both match holder and box are crisp, bright and like new (near mint). Min. bid \$50.



219). Sinclair Sign. 23.75" (dia.) early, heavy 2-sided porcelain advertising sign for Sinclair "H-C" brand gasoline (same image both sides). Clean, bright and excellent overall (a strong 8++), w/ a little minor edge wear. Min. bid \$100.



220). Cigar Holder. 5.25 x 5 x 4" fancy, early art nouveau style metal countertop cigar holder figurine. Very high quality, beautifully detailed piece w/ figural topless woman at side edge. Min. bid \$50.



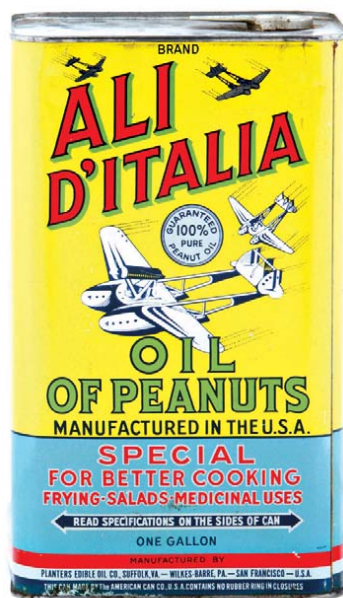
221). Bell Oil Co. Sign. 4 x 26-5/8" early, heavy porcelain sign for Bell Oil Co., St. Louis, Mo. Sign is clean, bright and excellent overall (basically a strong C. 8.5++)/w/ exception of minor chipping at very bottom edge and 1" dia. oxidized chip area at bottom right edge. Min. bid \$50.



222). Pulver Gum Tin. 1 x 3 x .5" unusual, early 2-ps. tin litho product tin for Pulver's Kola flavor pepsin chewing gum, w/ neat images of Co.'s early Yellow Kid gum vending machines on backside. Excellent overall (C. 8+) w/ only minor wear. Min. bid \$40.



223). Kamp Oats Box. 9.75 x 5.25" (dia.) scarce, early 3 lb. cardboard oats box for "Kamp" brand, featuring beautiful and highly graphic camping scene (same image both sides). Clean, bright and exceptionally nice (C. 8.5+). Min. bid \$50.



224). Planters Ali D'Italia Tin. 9.75 x 5.75 x 4-5/8" scarce, ca. 1930's, one gallon size, Planters Peanut Co. "Ali D'Italia" brand peanut oil tin, featuring wild looking airplanes on both sides. Full, sealed, never opened tin is clean, bright and like new, w/ only very minor wear. Min. bid \$60.



225). Dr. King's Medicine Jar. 12.5 x 5 x 5" beautiful glass display jar from early drugstore, w/ ground lid stopper and large label under glass inset advertising for Dr. King's New Life Pills. Excellent. Min. bid \$50.



226). North Maid Oats Box. 9.75 x 5.25" (dia.) scarce, 3 lb. size cardboard oatmeal box for "North-Maid" brand (Northern Oats Co., Minneapolis) w/ nice image of Co.'s trademark girl on both sides. Clean, bright and excellent (C. 8.5+). Min. bid \$40.



227). Honest Scrap Tobacco Sign. 12 x 9" very early, heavy porcelain sign for Honest Scrap brand tobacco, featuring great image of Co. trademark in center. Outstanding sign is excellent (about as nice as you will ever find) w/ a couple miniscule flea bites and trace stains at very outer edge of white border (very minor). Min. bid \$70.



228). Garland Coffee Pail. 11 x 7.25" (dia.) early tin litho 5 lb. coffee can for Sears Roebuck Co.'s "Garland Blend" coffee. Has strong colors and displays quite nicely on shelf (as a C. 8+), although close-up examination will reveal some non-offensive light overall scattered wear (critical grade C. 7.5+). Min. bid \$40.



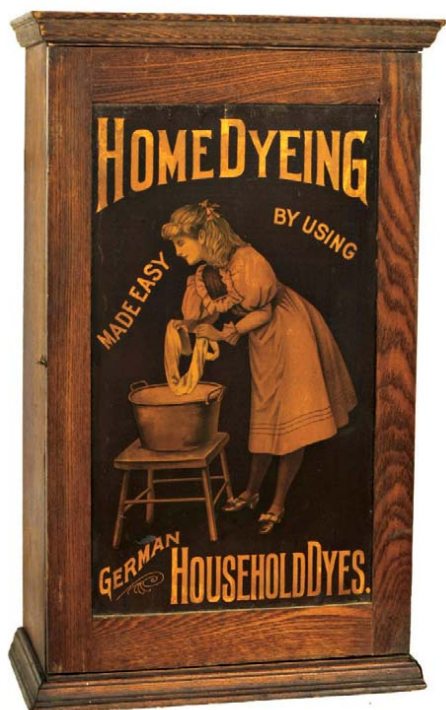
229). Hiawatha Tobacco Bucket. 10.75 x 12.75" dia. outstanding, large, early 10 lb. wooden bucket for Daniel Scotten Co.'s "Hiawatha" brand chewing tobacco, w/ incredible graphic paper label American Indian scene (including topless Indian princess) by Calvert Litho Co. Label is clean, bright and very attractive overall, w/ some typical expected darkening, chipping and wear (C. 7.5+/- although it displays much better than this would imply). Series of 1891 tax stamp. Min. bid \$100.



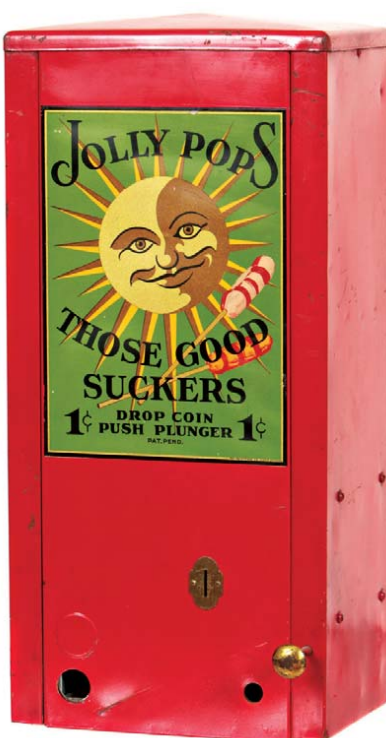
230). Sullivan's Cigars Sign. 3.5 x 21" outstanding, early, heavy porcelain strip sign for R.G. Sullivan Co.'s "7-20-4" brand cigars. Outstanding sign is crisp, bright and like new, (near mint), w/ beautiful original sheen (a couple very minor flea bites at bottom edge- stated for accuracy, so minor barely merits mention). Min. bid \$60.



231). Buster Brown Pocket Mirrors. Lot consists of two different scarce, early celluloid advertising pocket mirrors for Buster Brown Shoes (2-1/8" and 1.75" dia.). Both are clean, bright and exceptionally nice. Min. bid \$100 (the lot).



232). Dye Cabinet. 23.5 x 14.25 x 7-3/8" scarce, early counter-top country store display cabinet for "German Household" brand dyes. Very nice looking piece has original finish on wood surface, w/ very attractive image to paper label on front door panel. Displays very well (as a C. 8+/-) although there is a little age tone darkening, some non-offensive fade and a small area of surface loss in bottom background area of sign (above "MA" of "German"). Very impressive looking piece! Min. bid \$150.



233). Jolly Pops Machine. 20 x 9.5 x 6.5" early 1¢ coin operated "Jolly Pop" brand metal lollipop vending machine, featuring a wonderful and highly graphic advertising image on front. Clean, bright and very attractive in appearance (C. 8++) w/ exception of a little, light, scattered background wear and scratch mark at bottom (advertising image area excellent). Working condition, w/ key. Min. bid \$100.



234). Duke's Cigarettes Chair. 30.5 x 16.5 x 20" very early folding wooden advertising chair for Duke's "Cameo" brand cigarettes. Excellent and all original, complete w/ different attractive color litho images of girls on both sides (a strong 8++). Min. bid \$60.



235). Quick Meal Ranges Flange Sign. 9.25 x 11-5/8" early 2-sided porcelain flange sign for Quick Meal brand ranges. Nice early, heavy porcelain that is excellent overall and displays very great, w/ a little minor scattered wear and some minor bb sized surface pockmarks (from manufacturing process). Min. bid \$80.



236). Gas Irons Mirror. 2" (dia.) scarce, early celluloid pocket mirror for Rose brand gas irons (Rosenbaum Mfg. Co., New York). Clean and excellent overall appearance although examination under magnification will reveal a little faint foxing in red background area (mentioned for accuracy-very minor and barely noticeable). Min. bid \$40.

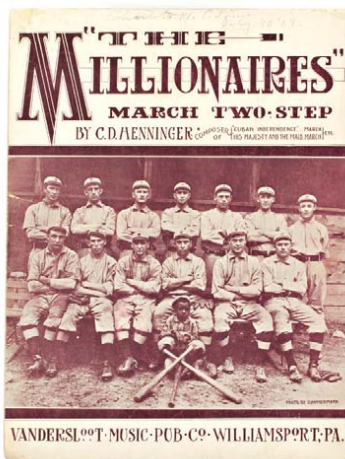
Taxi Badges



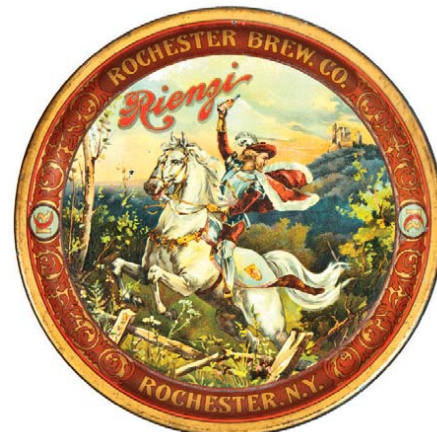
237). Taxi Badges. Lot consists of six early, high quality Taxi cab driver badges (five are metal, Checkers badge is thick celluloid). Sizes range from 2 x 1.75 to 2.75 x 2". All are excellent (brass Broadway Cab badge has most of nickel plating worn away). Min. bid \$30 (the lot).



238). Columbia Beer Tray. 9.75" (dia.) early, tin litho advertising tray for Columbia Brewing Co., Tacoma, Washington, featuring beautiful multi-color graphics. Clean, bright and exceptionally nice appearance (basically displays as a C. 8.5/+), although close examination will reveal a couple non-offensive crease/dent marks at 5 and 9 o'clock. Min. bid \$100.



239). Baseball Sheet Music. 14 x 10.5" scarce, early "The Millionaires" baseball sheet music featuring great cover image of uniformed team and black batboy (©1909). Has a little minor, non-offensive tattering and light wear at left edge, but overall attractive and displays very nicely (C. 8+/-). Min. bid \$50.



240). Reinzi Beer Tray. 12" (dia.) extremely rare, early pre-prohibition tin litho advertising beer serving tray for Rochester Brewing Co.'s Reinzi brand beer. Has decent color and displays quite nicely (basically as a C. 8/+), w/ faint crazing and a few non-offensive light scattered areas of white surface wear- in horses back leg and the upper sky area (critical grade C. 7.5+/-/8-). Min. bid \$100.



241). Advertising Clock. 12.5 x 9.5" nice early figural cast iron counter-top advertising clock for M. J. Bachman (Columbia, Pa. clothier). Has beautiful detailing and a nice rich, all original surface patina. Excellent (working clock). Min. bid \$70.



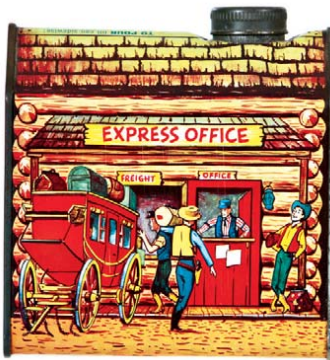
242). Ice Cream Light-Up Display. 17.25 x 8.25" (dia.) outstanding, early heavy figural milk glass light-up cone shaped display, advertising "French Bauer" brand ice cream, w/ nicely embossed detailing and original paint surface, as found complete w/ its original wooden screw-on base. Excellent overall, w/ nice rich surface patina (replaced electrical cord). Min. bid \$150.



243). Cigar Cutter/Match Dispenser. 8.5 x 5-3/8 x 4.75" early, fancy countertop cigar cutter advertising Winecke & Doerr Co.'s "Chancellor" and "La Mira" brand cigars, w/ mechanically operated match dispensing mechanism that spears and lifts up a stick match when pressed to cut cigar. Has nicely detailed and embossed cast iron base, w/ striking surfaces all around. Excellent. Min. bid \$70.



244). Adams Gum Case. 9 x 16 x 10.25" unusual, very early fancy metal framed country store countertop display case for "Adams Pepsin Tutti-Frutti" brand chewing gum, w/ reverse etched gold lettering (on front inside glass). Some wear on backside and back door is missing closure latch and has replaced mirror glass inside; gold lettering has some minor wear from use. Neat and unusual piece, displays nicely. Min. bid \$70.



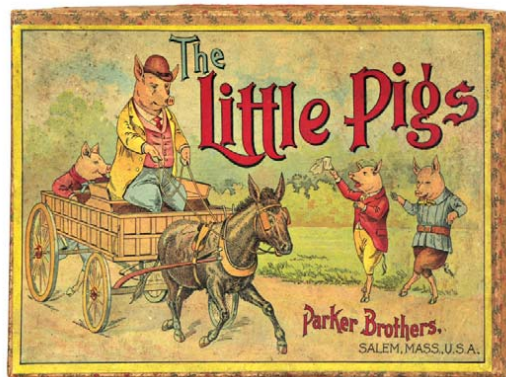
245). Log Cabin Tin. 5 x 4.75 x 3" scarce "Express Office" variation 2 lb. 1 oz. size cabin shaped tin litho maple syrup tin for Towle's "Log Cabin" brand, featuring nice image of frontier express office. Clean, bright and excellent (C. 8.5+) complete w/ original cap. Min. bid \$50.



246). Black Beauty Tobacco Cutter. 7 x 10.75 x 2.75" scarce, early figural counter-top cast iron country store tobacco cutter. Attractive, w/ original paint surface and nice detailing; embossed "Black Beauty" on side. Min. bid \$60.



247). Disney Pull Toy. 14 x 5.75 x 4.25" scarce, ca. 1930's Fischer Price type bell pull toy by N.N. Hill Brass Co. featuring Snow White characters Dopey and Doc. Paper litho on wood, w/ bell between pressed steel wheels ("© 1938 Walt Disney Enterprises"). Clean and excellent overall w/ a little minor wear from careful use (C. 8+/-). Min. bid \$50.



248). Little Pigs Game. 7-1/8 x 10-1/8 x 1-1/8" scarce, early 2-ps. cardboard boxed game w/ attractive graphic cover and inside playing board (includes spinner and playing pieces). Excellent overall, w/ a little non-offensive light toning/soiling on lid (C. 8+/-). Min. bid \$40.

Baseball Bat Display Rack



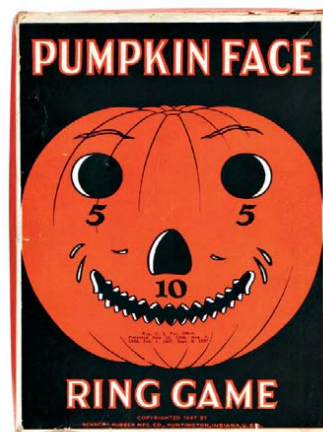
249). Louisville Slugger Bat Rack. 46-7/8 x 17.75 x 22.25" (dia.) outstanding, large ca. 1939 metal advertising store display rack for Hillerich & Bradsby Co.'s "Louisville Slugger" brand of baseball bats. Clean, bright and exceptionally nice appearance (displays as a very strong C. 8++), w/ a few non-offensive faint surface scuffs on backside of 2-sided marquis sign at top (mentioned for accuracy- nothing serious or detracting). Folds flat for shipping. Min. bid \$250.



250). Collar Button Sign. 28-7/8 x 12" very early, Ca. 1880's, paper litho, roll down sign for American Lever brand Cuff & Collar Buttons featuring great image of well-dressed lady standing on giant button (1873 & 1881 patent dates on button). Clean and excellent overall w/ small chip spot at base and non-offensive small, faint water stain in sky area complete w/ metal strips at top and bottom (C. 8+/-). Min. bid \$150.



251). Indian Theme Typewriter Ribbon Tins. Lot consists of four different, early tin litho typewriter ribbon tins, each featuring attractive American Indian images. Includes: Scout; 2 variations of American; and Copy-Right brands (sizes range from 2.25 x 2.25 x 3/4" to 2-5/8 x 2-5/8 x 3/4"). Excellent overall (C. 8+/-), w/ minor wear on square shaped "American" and "Copy Right" tins. Min. bid \$60 (the lot).



252). Pumpkin Face Game. 9.25 x 6-7/8 x 1-1/8" unusual, early, Halloween themed 2-ps. boxed "Pumpkin Face" ring toss game by Schacht Co., featuring great looking jack-o-lantern on lid and inside box (© 1927). Excellent. Min. bid \$40.



Rd #2, Cobb Hill Road, Cazenovia, NY 13035 • 24 Hr. Tel: (315) 662-7625 • 24 Hr. Fax: (315) 662-3570 • morf2bid@aol.com • morfauction.com

Welcome to our 72nd auction of quality antique advertising and fine collectibles. Everything we sell is guaranteed authentic and as described. We attempt to grade condition both fairly and conservatively, using a scale of 1-10 on the advertising items (ten being absolutely mint). We do not list reproductions, re-issues, deceptively restored or pieced together type merchandise. Flaws and blemishes are prominently noted and over emphasized. We encourage you to call for a detailed description on any item you have an interest in, but respectfully must request that you do this before the closing night. Dimensions are listed by height, then width, and are only approximate (+ or - a quarter inch).

Bidding

Bids are accepted only from those parties who have registered with us to bid. (If you were mailed this catalogue by us you are automatically pre-registered.) Your bid is a legal contract to purchase and once entered, cannot be canceled. Placement of a bid indicates acceptance of our terms.

On all "BID" items there is a 10% buyers premium added to each successful bid. You're welcome to bid by mail, email and fax anytime after receiving this catalog. **We will begin accepting phone bids on Wednesday, October 26th, 2011. We will be taking calls on Wednesday and Thursday from 10:00 AM until 5:00 PM.** If no one answers when you call, please leave a message on our machine and we will get back to you. **If bidding by mail or fax, please remember to include your telephone number with your bids!** You may call or bid as often as you like. We will tell you the current bid on any item(s) you are interested in. To raise a bid, your advance must be at least \$10 more than the current high bid amount. When an item reaches \$250, bidding increments rise to \$25, at \$1,000, bidding increments advance in \$50 steps, and above \$2,000 in \$100 increments. We suggest not waiting until the last minute to begin your bidding, as its quite possible you won't be able to get through.

Web Page and Bid Updates

We will begin posting current bid prices (not including the buyers premium) on Wednesday, October 26th, 2011 (including an addendum of additional catalogue lot information) on our internet web page. These prices will be updated once each day (each evening sometime after 9:00 PM, EST) and will get updated to include the final hammer prices on Sunday afternoon once the sale is concluded. On the closing night, we will attempt to update current bid prices every hour. Our web page address for this sale is: <http://www.morfauction.com> We suggest that once you get to it, that you bookmark this address for easy re-access. There is also an addendum section on our website where we post additional information and photo's for this sale.

Reserves and Estimates

All items which receive an opening bid in our sale will be sold to the highest bidder regardless of the price realized (we reserve the right to withdraw items in the event of inaccurate catalog descriptions and to reject any bid we feel is not made in good faith). **We run our auctions with a strict policy of no buy-backs, no auctioneer games and no hidden reserves.** Unlike some of our competitors, we do NOT allow consignors to bid up their own items!

Mechanical Operations

Early mechanical and electric motors and mechanisms on machines toys, coin-ops, clocks, etc. are quite often temperamental and very unpredictable in nature. Although these mechanisms may be working fine at the time of sale, we make no guarantees or representations regarding their continued operating status once they have left our premises (including during shipping).

Closing Night

THE LAST DAY FOR BIDDING WILL BE ON FRIDAY, OCTOBER 28TH, 2011. On closing day, we begin taking calls at 5:00 PM. Please mark your calendar now. **On the closing night (ONLY), we will also be taking calls at (315) 662-3318, (315) 662-3429 and (315) 662-3904 after 5:00 PM** (in addition to our regular (315) 662-7625 office number). **Closing Time: This Auction will close at 10:00 PM (EST) on Friday, October 28th, 2011.** At that time, no more incoming calls will be accepted and all lots with a registered bid of less than \$300, as well as all items without call backs registered on them will be officially closed and final. The items at \$300 and over that have call back protection registered on them will be closed out during our call back period the following afternoon (**see important call back rules below**). We reserve the right to change the official closing in the event of unforeseen family type emergencies or technological failures (utility disruptions, etc.). We also reserve the right to either extend the bidding, to postpone or to cancel this auction in the event of a national emergency or if the Internet or the services of the US Post Office were to get seriously disrupted during our catalogue mailing or bidding period.

"Up-To" Bids & Call Backs

CEILING BIDS: We will be happy to enter competitive "up to" ceiling bids for you on any lots you request. Beginning at your minimum amount, we will advance these bid(s) up to your left ceiling amount, if (and only if) it is topped by another bidder. "Up To" bids will be handled discretely and executed in a completely competitive manner for you. Please note that we don't accept open ended "top all others" ceiling type bids.

CALL BACKS: You may request call back protection for any lot(s) that you enter with either a minimum or a protected "up-to" ceiling bid in an amount of at least \$300. This request must be registered with us before the official 10:00 PM closing hour of Friday, October 28th, 2011. All callbacks will be placed by us on Saturday, October 29th, 2011, beginning at 12:00 noon (EST) and will continue that afternoon until each of the individual lots have been closed out (using past experience, I would expect this to be finished by 6:00 PM, if not earlier). If you register for call-backs, it is your responsibility to be available during this call back time period. We make every effort to honor all our call back requests, but this service is done solely as a convenience to our bidders and will be performed on a best efforts basis only. If you will be traveling or if you will not be available during call back times at your primary number, be sure you provide us with proper alternate or back up numbers for reaching you!

Payment Terms

Winning bidders will be invoiced by mail immediately after the sale. Those who desire fast shipment can pay by Money Order or Cashiers Check. Payments are due within 10 days of receipt of invoice. We reserve the right to offer the item out to our back bidders and deny future bidding privileges to those who do not pay in a timely manner. In addition to personal checks, we also accept payment on your American Express, Visa, Master Card, Discover and Optima Credit Cards (with no surcharge added). No COD's or Collect calls are ever accepted. Items shipped to anywhere in New York State must include appropriate sales tax or signed resale certificate.

Shipping

All packing and shipping charges are extra. We do most of our own packing and shipping and try to keep these charges as reasonable as possible for you. On especially fragile and larger hard to pack items, we hire the services of professional packers and charge you at our billed cost. We ship mostly through the Post Office and Fedex Ground, (Fedex Overnight available at an extra charge.)

Subscribing, Prices Realized, Consignments & Upcoming Events

Future catalogs can be assured by sending \$20 for a full 12 months subscription. (Prices are published on our website after each sale) An automatic credit card ordering program is available. We currently run between 3-4 auctions a year (versus our previous format of running semi-annual sales). This format allows us to run smaller, more focused sales featuring larger, higher quality catalog images and gives our consignors the opportunity for a quicker turn-around of their items. In addition to our regular sales, we also occasionally offer sales made up entirely from single owner collections. Please contact us should you have items you would like us to consider for inclusion in our upcoming events. All inquiries are handled in a completely confidential manner. Our services are also available for the private placement marketing of important individual items, marketing plans for large collections as well as for estate planning and settlement purposes. Back copies of many of our previous auction catalogs are still available at \$5 each (w/ prices realized) w/ quantity discounts available if multiple issues are ordered. For further information, please call, e-mail or write.

Photography by Wes Feuz.

© Copyright 2011. All Rights Reserved. No portion of this publication may be copied in any form without the express written permission of Morford's.

Important Closing Night Information

In addition to our regular (315) 662-7625 office number,
on the closing night (only!) you may also call us at:

(315) 662-3318*
(after 5:00 PM)
(315) 662-3904*
(after 5:00 PM)
(315) 662-3429*
(after 5:00 PM)



***These numbers for
Closing night only!
Friday, October 28th, 2011**

Bidding closes at 10:00 PM on closing night. We will be accepting faxes and e-mails on closing night. Our web page will update current high bid prices approximately every hour on closing night and will also list any important addendum information. **All call backs will be made on Saturday, October 29th, 2011, beginning at 12 o'clock Noon!**