



WM Morford
Investment Grade Collectibles at Auction

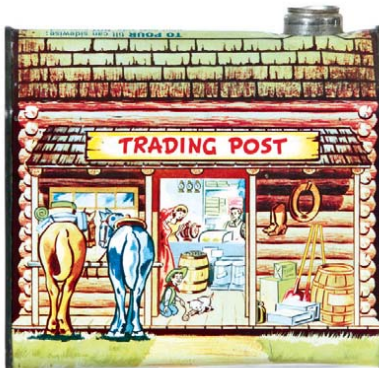
Premier Auction of Quality Smalls

Rd #2, Cobb Hill Road, Cazenovia, NY 13035 • 24 Hr. Tel: (315) 662-7625 • 24 Hr. Fax: (315) 662-3570 • morf2bid@aol.com • morfauction.com

Bidding closes Friday, December 2nd, 2011. (See page 28 for Terms & Conditions)



1). Pilot Coffee Can. 4 x 5" (dia.) scarce, 1 lb. tin litho coffee can for Pilot brand (General Coffee Co., St. Louis) w/ nice image of Co.'s trademark sea pilot. Has strong colors and displays nicely (as a C. 8++) although close examination will reveal a couple of non-offensive, small wear spots in outer right background area of logo and a little light wear on plain backside (critical grade C. 8/-). Min. bid \$40.



2). Log Cabin Syrup. 6.25 x 6.5 x 4" large 5 lb. tin litho Towle's Log Cabin brand figural maple syrup can (scarce "Trading Post" variation). Clean, bright and very attractive appearance (C. 8+), w/ a couple non-offensive light scratch marks on backside (no lid). Min. bid \$50.



3). Borden's Ice Cream Sign. 5 x 7" early, heavy, small porcelain sign for Borden's brand Ice Cream. Clean and like new, w/ exception of a little chipping at top left grommet hole area. Min. bid \$50.



4). Big Chief Cigar Sign. 7 x 11-7/8" early, aluminum self-framed advertising sign for Big Chief brand cigars, featuring great colorful image of Co.'s trademark Indian chief. Sign is clean, bright and excellent in appearance (basically crisp and like new), w/ only very minor wear (a strong C. 8.5/+). Min. bid \$80.



5). Wrigley's Gum Sign. 10.25 x 17" very early, paper litho sign w/ original metal strips at top and bottom for Wrigley's brand chewing gum. Sign is clean, bright and basically like new in appearance (C. 8.5/+). Displays as crispy and like new. (Very close examination will reveal minor toning and a couple very faint small creases; not all detracting- mentioned for accuracy). Min. bid \$50.



6). Dutchman Roly Poly. 6.75 x 6" (dia.) early, 2-ps. figural tin litho Dutchman canister for Mayo's brand tobacco. Has strong colors and displays nicely (C. 8/+), w/ a little bit of non-offensive light scattered wear (critical grade C. 8/-). Min. bid \$100.



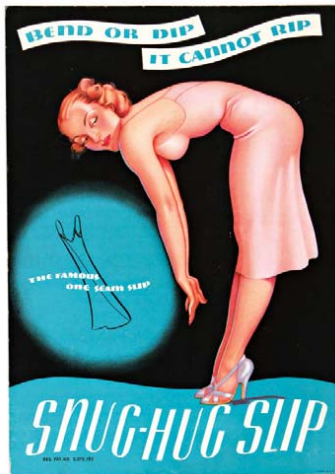
7). Bethlehem Bottling Co. Tray. 13.25 x 13.25" beautiful tin litho advertising tray from Bethlehem Liquor & Bottling Co. (Bethlehem, PA) featuring beautiful graphic image of young children in boat. Clean, bright and very attractive (Basically displays as a 8+) w/ a little non-offensive light scattered edge wear including non-detracting oxidizing wear at upper right corner edge. (critical grade C. 7.5++). Displays much better than this would imply. Min. bid \$60.



8). Dan Patch Coffee Pail. 11-3/8 x 7.25" early and extremely rare, 5 lb. milk pail style coffee pail for Dan Patch brand (Tennessee Coffee Co., Nashville, Tenn.) featuring great images of world famous race horse on both sides. Tin is attractive and displays very nicely w/ some non-offensive light scattered wear, most notably along bottom edge and top rim w/ a neatly cut 3/8" center hole in base (tough to grade, but a C. 8/- seems about right). Min. bid \$250.



9).Laundry Soap Die-Cut. 11.75 x 6.5" very early easel-back die-cut cardboard advertising stand-up sign for Higgin's Co.'s "German Laundry Soap" featuring wonderful multi-color graphics. Clean, bright and excellent (C. 8.5+). Min. bid \$60.



10).Snug Hug Slips Sign. 13 x 9.25" unusual, early, cardboard litho, easel-back, stand-up sign for "Snug-Hug" brand slips, featuring a Vargas style pinup illustration (not marked). Clean, bright and excellent (C. 8.5+). Min. bid \$40.



11).Sun Crest Soda Sign. 12 x 9.25" early cardboard litho advertising sign for Sun Crest soda pop, featuring attractive baseball theme image. Crisp, bright and like new, w/ minor wear at bottom left edge. Min. bid \$40.



12).Calligraphy Shaving Mug. 3.5 x 3.5" early, fine china, occupational shaving mug picturing nicely detailed image of a hand writing w/ quill pen. An excellent, very high quality piece, w/ minor wear to inside decorative gold trim. Min. bid \$70.



13).A No. 1 Chocolate Cigars Signs. Lot consists of two, early cardboard litho ceiling signs for A No. 1 brand penny candies (ea. 8.75 x 8.75"). Chocolate Cigars sign is bright and very attractive in appearance, w/ non-offensive faint crease mark in right corner area and a little very minor scattered surface wear (C. 8). One w/ 2 kids smoking cigars has non-offensive light stain mark and minor blunting wear at bottom edge (C. 8-). Min. bid \$40 (the pair).

Match Scratcher



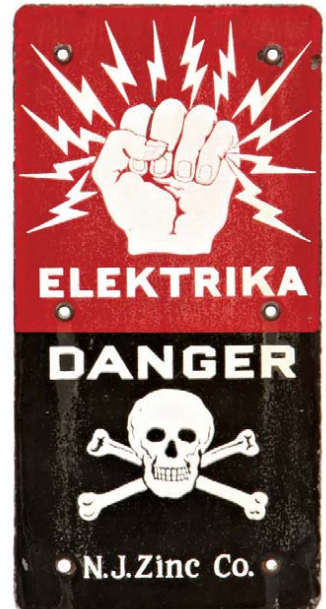
14).Detroit Jewel Match Scratcher. 6 x 3.5" early cardboard advertising match scratcher for "Detroit Jewel" brand gas ranges (white apron area has sandpaper type scratching surface). Bright and very nice appearance, w/ exception of a few dark flyspecks in textured scratching surface area (C. 8+). Min. bid \$30.



15).Peddlers Beware Sign. 10 x 3-5/8" small, thin, early, embossed tin litho door push style peddlers warning sign. Clean and very nice overall appearance w/ only minor wear and slight off centering to punched hanging holes (displays as a C. 8+/-). Min. bid \$30.



16).Erotica Advertising Shoe Horn. 6.5 x 1-7/8" unusual, early, very high quality, heavy ivory like celluloid shoehorn advertising Moe's Shoe Emporium, featuring an unusual scrimshaw like design of a topless nude (copyright 1912). Excellent. Min. bid \$30.



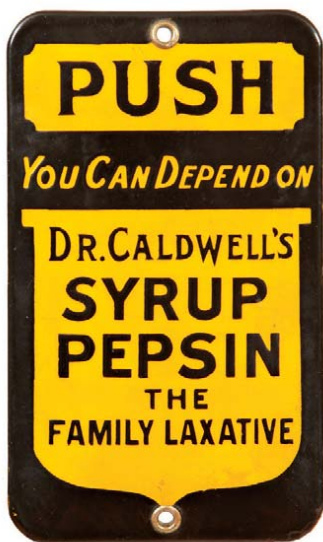
17).Danger Sign. 12 x 6" great early porcelain Danger sign from N.J. Zinc Co., warning of electrical shock danger, w/ a powerful and very impressive look. Has a little bit of non-offensive faint, hazy light weathering on surface, but overall attractive and displays nicely (C. 8-). As found, should improve w/ cleaning. Min. bid \$40.



18). **Motoring Pictures.** 10-1/8 x 14-3/8" (7-3/8 x 11-5/8" visible) lot consists of a nice pair of ca. 1905 hand colored motoring lithos by Ullman Mfg. Co., NY titled "Love is Blind" and "The Only Two on Earth" showing comical before and after scenes of couple making out while driving in early auto. Clean, bright and excellent, w/ exception of small, non-offensive blemish in right background area of "after" scene. Presented in wonderful original oak frames that feature embossed painted driving goggles and car lamps in corners of each. Min. bid \$50 (the pair).



19). **Lithographer Advertising Tray.** 6.25" (dia.) very early, embossed, pressed cardboard 1893 advertising tray for Whiting Co., maker of chromo cards and advertising novelties, featuring beautifully detailed images of early paper currency and coins (made to look like an oversized tip tray w/ money on it). An impressive, very high quality piece, excellent (like new). Min. bid \$40.



20). **Dr. Caldwell's Door Push.** 6.5 x 3-7/8" early, heavy, slightly embossed porcelain door push advertising Dr. Carlwell's Syrup Pepsin medicine. Front is excellent (minor oxidizing on plain back side). Min. bid \$50.



21). **Franco-American Coffee Sample.** 3.5 x 2.5 x 1-7/8" scarce, early, miniature pry-lid, sample coffee can for Franco-American brand (Young & Griffin Co., New York) w/ nice trademark Indian images on both sides (tin top and bottom, w/ cardboard body). Clean and attractive w/ minor background toning (C. 8). Min. bid \$40.



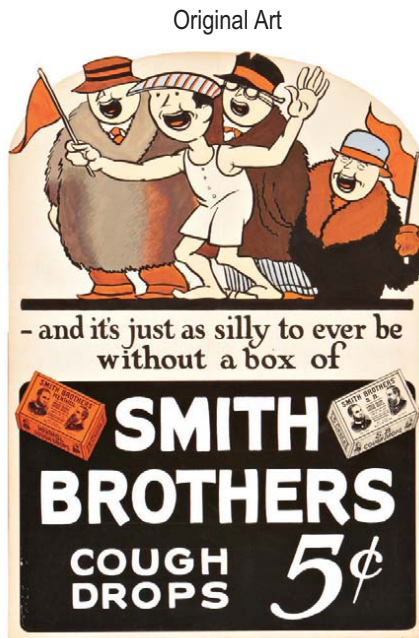
22). **Bond Bread Door Push.** 6 x 3.75" scarce, early metal litho advertising door push for Bond brand bread. Clean, bright and excellent (a strong C. 8++) w/ minor wear from use. Min. bid \$40.



23). **Match Holder.** 4.25 x 2-1/8 x 2-1/8" early, figural metal match holder in shape of man in nightclothes and elf type night cap (cap is hinged and opens to reveal match storage area in body. Excellent. Min. bid \$50.



24). **Sawyer's Bluing Die-Cut.** 11.25 x 6.25" very early die-cut cardboard easel-back advertising stand-up sign for Sawyers laundry bluing product, w/ pop-out dimensional laundry tub. Excellent, w/ very minor wear at bottom edges (C. 8++). Min. bid \$50.



25). **Smith Bros. Cough Drop Sign.** 24 x 17" unusual, ca. 1920's/30's easel back stand-up sign for Smith Bros. Cough Drops. This powerful and impressive piece is actually period hand painted original artwork and is excellent and like new w/ just the right amount of toning and wear w/ advertising agency stamps on back side. Min. bid \$80.



26). **St. Nick Boots Die-Cut.** 11.75 x 5-5/8" early, cardboard litho, die-cut easel back stand-up sign for Unika Co.'s St. Nick brand boots. Clean and excellent (a very strong C. 8++). Min. bid \$60.



27). Cream Separators Sign. 11.5 x 23.25" early, embossed tin litho sign for McCormick - Deering brand cream separators. Sign is all original and displays nicely, w/ a little light speckling and nicely weathered surface patina giving it a primitive country look (C. 7+). Min. bid \$40.



28). Bakelite Bar Piece. 6.25 x 7-5/8 x 3.25" unusual, ca. 1930's heavy bakelite plastic countertop advertising display for Rheingold Lager Beer (made for use in early bar, for holding stir sticks, foam scrapers, etc.). Excellent, w/ nice, richly aged marbled and toned surface patina. Min. bid \$40.



29). Small Porcelain Signs. Lot consists of three different small, early porcelain signs, each crisp and like new. Sizes range from 5 x 7" to 3 x 10" (C. near mint). Min. bid \$40 (the lot).

String Holder



30). Chase & Sanborn String Holder. 10.25 x 13.75" early, two-sided tin litho chain hung advertising string holder for Chase & Sanborn's coffees and teas, compete w/ original wire basket at top for holding string ball (different colors on both sides). Clean, attractive and displays nicely w/ some non-offensive scattered speckling on both sides (green side C. 8+/; red side C. 8-). As found, should improve some w/ cleaning. Min. bid \$120.

Howard Chandler Christy



31). Liberty Bonds Calendar. 8-7/8 x 5.75" scarce, small, early 1919 cardboard litho advertising calendar for Liberty Bonds, featuring beautiful WWI war poster image by illustrator Howard Chandler Christy. Excellent (C. 8.5+/), w/ partial calendar pad. Min. bid \$40.

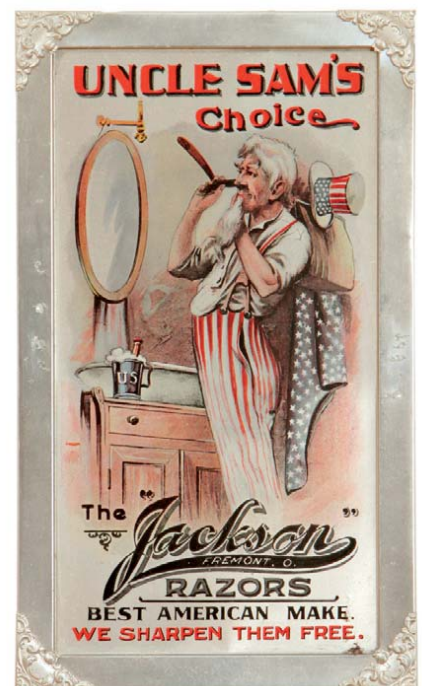
Dan Patch



32). Kellogg's Sign. 20-5/8 x 11-1/8" early, ca. 1920's cardboard litho sign for Kellogg's Corn Flakes. Clean and very attractive appearance (displays as a nice 8+/) although close examination will reveal a little minor soiling and a couple barely noticeable tack holes as well as edge wear, some wear in outer margin areas including break mark at upper right corner and some staining at left edge (could be easily hidden if framed or matted). Displays well. Min. bid \$50.



33). Dan Patch Poster. 39.75 x 29.75" (32-7/8 x 22-5/8" visible) early, large paper litho promotional advertising poster from International Stock Food Co., featuring great image of Co.'s racehorse "Dan Patch". Clean, bright and excellent in appearance (displays as near mint), w/ typical expected original fold lines from mfg. process and minor creasing at very outer edges. Min. bid \$50.



34). Jackson Razors Sign. 12-1/8 x 7-1/8" scarce, early, self-framed aluminum advertising sign for Jackson brand razors, featuring great image of Uncle Sam shaving. Image area is crisp, bright and excellent (near mint) w/ a little non-offensive light oxidizing in outer frame area. Min. bid \$150.



35). Jackie Robinson Dime Bank. 2-5/8 x 2-5/8 x 3/4" early tin litho, Jackie Robinson registering dime bank, featuring nice image of baseball hero. Excellent overall, w/ a little light wear from use (C. 8+/-). Min. bid \$40.

Advertising Clothes Rack



36). Horse Shoe Clothes Rack. 12.25 x 21-5/8 x 2-3/8" unusual, early, primitive wooden, wall-mount style, clothes dryer rack advertising American Wringer Co.'s Horse Shoe brand clothes wringers, w/ a great primitive, folk art type look. (C. 8+/-) Min. bid \$50.

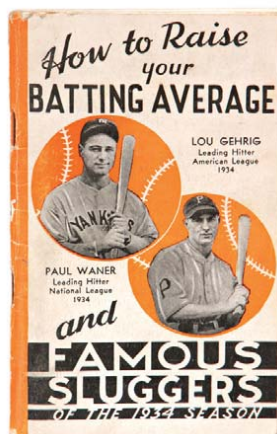
Sample



37). Log Cabin Sample Tin. 2.25 x 2 x 1-3/8" scarce, very early miniature hand-soldiered figural cabin shaped paper labeled sample tin for Towle's Log Cabin brand maple syrup. Has nice color and displays pretty well, although there is some staining and wear scattered about (C. 7+/-). No cap. Min. bid \$40.



38). Maryland Club Tobacco Pouch. 3 x 1.75 x 7/8" small, early, 1 oz. size cloth tobacco pouch for Maryland Club Mixture, featuring nice image of Co.'s trademark building (Series 119 1926 tax stamp). Full sealed piece is crispy and like new (near mint). Min. bid \$30.



39). Louisville Sluggers Bat Catalog. 5.5 x 3.5" early, 72 pg. catalog booklet by Louisville Slugger Co., w/ great cover illustrations showing 1934 batting champions Lou Gehrig and Paul Waner and is filled w/ pages of 1934 stats, neat uniformed photos of stars giving pointers and catalog section at back w/ 9 pages of illustrated and priced bats. Excellent. Min. bid \$20.



40). Hyklas Tip Tray. 6-5/8 x 4-5/8" unusual early tin litho tip tray advertising "Hyklas" (Highclass) brand ginger ale. Piece is clean, bright and excellent in appearance, although close examination will reveal a little non-offensive background wear in outer border and bottom background of image area (critical grade 7.5+/-). Min. bid \$40.



41). Yellow Cab Cigar Tin. 5.75 x 5.5" scarce, early tin litho 50 count cigar can for Yellow Cab brand, featuring great image of trademark taxi on both sides. Exceptionally nice example, tin litho is crisp, bright and like new in appearance w/ nice original sheen (a strong C. 8.5+/-), w/ some tarnishing and wear to gold flash lid (note: lid displays nicely, but is a replacement and not original to the piece). Min. bid \$70.



42). Store Die-Cut. 17 x 10.25" outstanding, early, embossed, cardboard die-cut advertising sign for a Vincennes, Ind. Dry goods store featuring stunning, multi-color graphic image of a couple hunting game birds. Clean, bright and like new (probably had calendar at bottom at one point). Min. bid \$40.



43). Silver Tex Condom Tin. 1.75 x 2.25 x 1/4" early tin litho condom tin for Shunk Latex Product's "Silver Tex" brand. Full tin is crisp and like new (near mint). Min. bid \$40.



44). Gas Price Sign. 5.25 x 9.25" early, small, embossed metal service station pricing sign. Clean and excellent overall (C. 8.5+/-), w/ exception of light wear in outer border area (including crimp spot at bottom left edge). Min. bid \$30.



45). Old Gold Sign. 27.5 x 19" large, early cardboard litho sign for Old Gold brand cigarettes featuring great image of pin-up style glamour girl w/ western cowgirl outfit. Clean, bright and excellent overall (displays as a strong 8+/-), although examination under black light will reveal well-done professional restoration. Min. bid \$60.



46). Foutz's Vet Sign. 7.25 x 22.5" very early, primitive, wooden, folk art style painted veterinary sign for Foutz's horse and cattle powders. All original, w/ a clean and excellent appearance and a wonderful, rich surface patina (C. 8/+). Min. bid \$70.



48). Moxie Sign. 9.5 x 27.5" early tin litho sign advertising Moxie brand soda. Impressive sign is crisp, bright and like new (near mint). Min. bid \$60.



47). Tobacco Sample Pocket Tins. Lot consists of three miniature tin litho vertical tobacco pocket sample tins, each app. 3 x 2.25 x 3/4". All are clean and excellent in appearance. Buckingham (C. 8.5); Twin Oaks (a strong C. 8++); and Velvet (C. 8.5). Min. bid \$70 (the lot).



49). Atlantic Motor Oil Sign. 10 x 7.5" unusual, early, small tin litho flange advertising sign for Atlantic Co.'s "Rayolight" brand oil. Front is attractive and displays nicely w/ a little light soiling and wear; backside has heavier general overall wear (front C. 8/-; back 7+/-). Min. bid \$40.



50). DeLaval Tip Tray. 4-3/8" dia. early tin litho advertising tip tray for DeLaval brand cream separators featuring beautifully detailed multi-color graphics. Displays as near mint although tipping in light just right will reveal a trace hint of non-offensive minor hazy wear. Min. bid \$40.



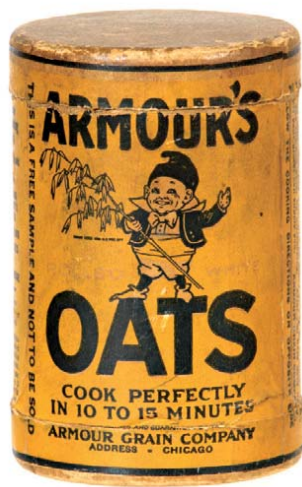
51). Buist's Seeds Sign. 14 x 20 x 1" unusual, early 2-sided metal advertising sign for Buist's brand seeds w/ heavy wrought iron framed border. Sign is bright and very attractive in appearance, w/ some light soiling and minor staining on surface (as found, should improve w/ cleaning). Min. bid \$50.



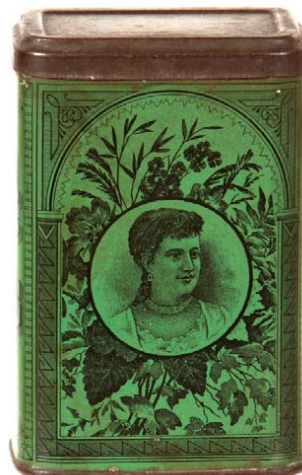
52). Evinrude Tip Tray. 4" (dia.) early tin litho tip tray advertising Evinrude Outboard Motors, featuring great graphic image of woman in boat. Has some light edge wear and a little non-offensive scattered wear from use but overall attractive and displays nicely (critical grade 8/-). Min. bid \$50.



53). Columbia Spice Tin. 3-1/8 x 2.25 x 1.25" scarce variation, early tin litho, 1 1/2 oz. spice tin (cloves) for Columbia brand (Sutherland and McMillan Co. Pittstown, PA). Clean, bright and excellent (C. 8.5). Min. bid \$40.



54). Armour's Oats Sample. 4.25 x 2-7/8" early, miniature "free sample" cardboard oats box from Armour Grain Co., Chicago, w/ trademark kid images on both sides. Has some light overall even toning and minor scattered wear, but overall attractive and displays quite nicely (C. 7.5++/8-). Min. bid \$30.



55). Crouse Spice Tin. 3-7/8 x 2.5 x 1.5" scarce, very early tin litho spice tin (cinnamon) from Crouse Wholesale Grocers (Syracuse, NY), featuring beautifully detailed lithography by Ilsley & Co. Excellent (a strong C. 8++). Min. bid \$40.



56). Drum Tobacco Pouch. 3-1/8 x 2 x 7/8" early 1 oz. cloth pouch for Drum brand tobacco. Full, sealed and never opened piece is clean and very attractive (C. 8+), w/ minor age tone soiling on front (series 1910 tax stamp). Min. bid \$50.

Match Holder



57).Monkey Match Holder. 2.5 x 3.5 x 3.5" heavy, figural painted metal match and cigarette holder featuring monkey w/ baskets. Nice, high quality piece w/ attractive patina to paint surface, w/ some light scattered wear to back of baskets (C. 7.5+/8-). Min. bid \$40.



58).Old Tavern Coffee. 3.5 x 5-1/8" (dia) scarce, early tin litho 1 lb. key wind coffee can for Old Tavern brand (Lee & Cady Co., Detroit) featuring beautiful multi-color lithography. Clean and very attractive, w/ a little minor background wear and some slight oxidizing to non-graphic lid (C. 8+/-). Min. bid \$40.

Executive Paper Weight



59).OPW Paperweight. 2.75 x 4-7/8 x 2-3/8" unusual, very high quality figural advertising brass (bronze?) paperweight advertising OPW brand gas pump nozzles. Excellent, w/ nice surface patina. Min. bid \$40.



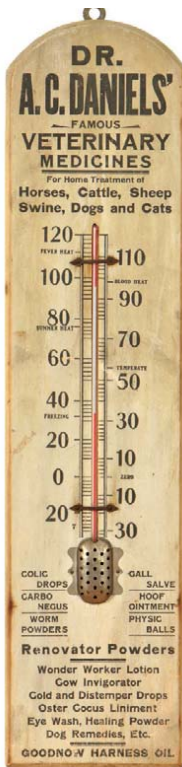
60).Spark Plugs Display. 3.75 x 6.5 x 3-5/8" full, early, cardboard product display box for Universal brand spark plugs complete w/ its original ten boxes of plugs. Excellent w/ minor toning (small separation tear on fold line of lid). Min. bid \$50 the lot.



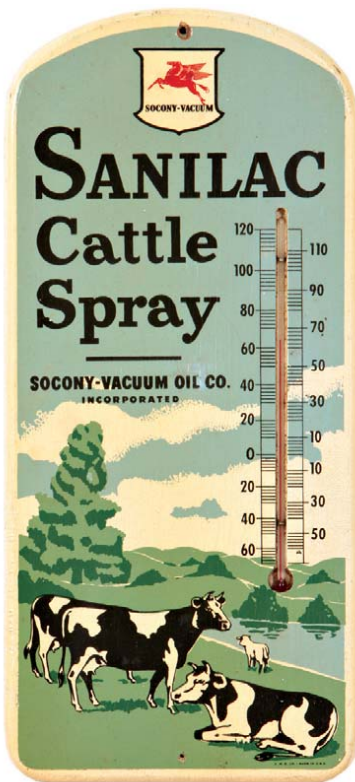
61).Cigar Display Tin. 9 x 8 x 5.5" unusual early tin litho glass front countertop display piece for White Ash brand cigars, complete w/ Co.'s 50 count cigar can. Very nice overall (C. 8+), w/ a little non-offensive oxidizing and wear on display stand area. Min. bid \$40.



62).Buster Brown Sign. 11 x 12" unusual, early, two sided metal advertising sign for Buster Brown shoes featuring the early Buster and Tigre. Display side is clean, bright and excellent overall (a strong C. 8+) w/ some non-offensive light crazing; backside has general scattered wear and some soiling/darkening but still displays quite nicely (C. 7+). Min. bid \$60.



63).Daniels' Vet Thermometer. 24-1/8 x 5-7/8 x 7.5" early wooden advertising thermometer for Dr. Daniel's brand veterinary medicines w/ listing of companies various products at bottom. All original and displays nicely w/ a nice rich, well-worn patina giving it a great country folk art look (C. 7.5+). Note: red liquid in tube has some separation. Min. bid \$50.



64).Socony Thermometer. 18.75 x 8-5/8 x 5.8" unusual, early wooden painted advertising thermometer for Standard Oil Co.'s Sanilac brand cattle spray, w/ nice colorful paint surface. Clean, bright and excellent overall w/ only minor background wear (C. 8+). Min. bid \$70.

Shaker



65).Shaker Pickle Bottle. 7.75 x 2-1/8 x 2-3/8" unusual, ca. 1890's fancy glass pickle bottle w/ hand applied lip, for Shaker brand Pickles (note: Pettengill Co., Portland, Me. had an exclusive arrangement for distributing Shaker Community products in Maine). Glass is excellent; labels have some light toning and minor paper chipping at left edge of oval label (labels C. 8/-). Min. bid \$50.



66).Borax Fan. 14 x 7.25" early, 2-sided cardboard litho advertising fan on wooden stick for Borax soap products (different image both sides). Clean and excellent overall (C. 8+). Min. bid \$40.



67). Red Raven Tray. 13.25 x 13.25" early tin litho serving tray for Red Raven brand water. Field of tray is clean, bright and excellent overall (a strong C. 8+), w/ some general wear along the gold outer border rim area. Min. bid \$50.



68). Political License Attachment. 12.75 x 11.25 (6.25 x 3-1/8" tag) unusual, early tin litho bumper tag / license plate attachment promoting Wendell Willkie (1940 Republican presidential candidate), complete w/ its original mounting bracket and 5 early American flags. Excellent (C. 8.5+) w/ expected ageing and toning to clothflags). Min. bid \$40.



69). Victor Tip Tray. 4.25" dia. x .5" unusual, early tin litho advertising tip tray for Victor and Berliner brand gramophones. Displays pretty well although there is some light soiling, scuffs and light scattered wear (C. 7+). As found, might improve w/ cleaning (Canadian). Min. bid \$40.



70). Shoe Store Match Holder. 5.75 x 3.75" unusual, very early cardboard advertising match holder for a Westfield, Mass. shoe store, w/ figural boot shaped metal match holding section. Excellent (C. 8.5+). Min. bid \$40.



71). Fire Insurance Clock. 6-5/8 x 5 x 2.5" fancy, early, heavy, copper finish metal advertising clock commemorating 100-th anniversary of Pennsylvania Fire Insurance Co. (1825-1925). High quality piece is excellent, w/ nice surface patina (working clock). Min. bid \$40.



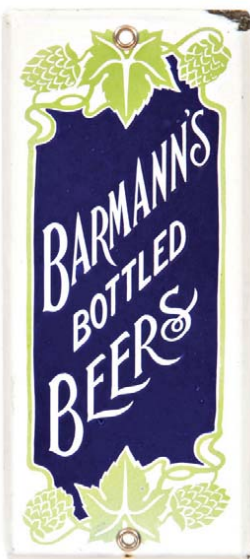
72). Squirrel Peanut Butter. 3.75 x 3" unusual, early pry-lid variation 1 lb. tin litho advertising product can for Squirrel brand peanut butter (Canada Nut Co., Vancouver). Clean, bright and very attractive, w/ a little minor darkening and wear on backside (front C. 8; back 7.5+/8-). Min. bid \$40.



73). Elizabeth Park Spice Tin. 3.25 x 2-3/8 x 1-3/8" scarce, early tin litho 2 oz. spice tin (allspice) for Elizabeth Park brand (Vogel Co., Hartford, CT) featuring beautiful multi-color graphics. Clean, bright, exceptionally nice (C. 8.5+). Min. bid \$40.



74). Boulevard Coffee. 10 x 5-5/8" wonderful early 3 lb. cardboard oats style box for Boulevard brand coffee featuring great image of early automotive street scene. Clean and very attractive in appearance (basically displays as a C. 8+) although there is some light overall background toning, a 1.25" puncture line in background area (above "var") and professionally repaired tear on lid (coffee service set pictured on back side). Neat piece! Min. bid \$50.



75). Brewery Door Push. 8-5/8 x 3-7/8" scarce, very early heavy porcelain door push for Barmann's Bottled Beers (Kingston, NY), w/ attractive decorative hops design in background. Crisp, bright and excellent overall w/ exception of bb size chip at bottom and chip area at upper right beveled edge. Min. bid \$70.



76). Brewery Match Holder. 6-7/8 x 2-1/8 x 7/8" unusual, early tin litho advertising match holder for Robert Portner Brewing Co.'s Hofbrau brand lager beer (Alexandria, VA) in shape of early beer bottle. Piece is clean, bright and quite attractive overall w/ a little non-offensive scattered wear from use. (C. 8+/-). Min. bid \$70.



77). Big Giant Cola Sign. 23.5 x 11.5" unusual, early embossed tin litho sign for Big Giant brand cola, w/ great image. Clean, bright and excellent overall (basically a C. 8.5+) w/ exception of a little light scattered wear in upper white background area. Min. bid \$50.



78). "Nigger Hair" Pail. 6.75 x 5.5" (dia.) early tin litho tobacco pail for Leidersdorf Co.'s "Nigger Hair" brand, featuring image of Co.'s trademark native (same image both sides). Clean, bright and very attractive, w/ a little non-offensive light scattered background wear (front C. 8.5+; back C. 8+/-) and a little light surface oxidizing underneath (base). Min. bid \$60.



79). Oilzum Grease Cans. Lot consists of three full, early, never used 1 lb. grease cans for Oilzum brand pressure gun grease, w/ nice image of Oilzum man logo on side and lid area (ea. apx. 4.5 x 3-3/8" dia.). They are crisp, clean and like new. Min. bid \$50 (the lot).

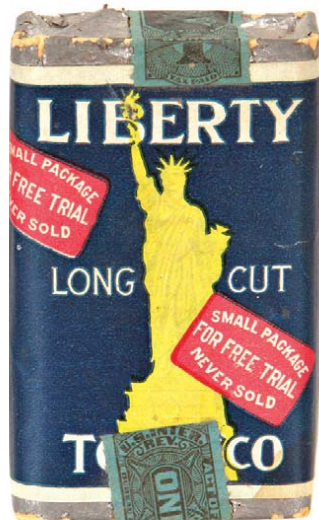


80). Advertising Hotel Bell. 3.5 x 3-1/8" unusual, early, countertop advertising bell for Apollinaris brand mineral waters. High quality piece has embossed bronze base and white porcelain enameled advertisement at top. Excellent, w/ a nice, rich surface patina. Min. bid \$40.

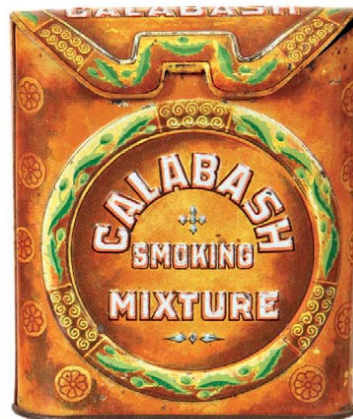
Sample



81). Honeymoon Spice Tin. 3.25 x 2-3/8 x 1-3/8" early tin litho 1-1/2 oz. spice tin (sage) for Honeymoon brand (Moore Grocers, Sioux City, Iowa) w/ same image on both sides. Clean, bright and excellent (a strong C, 8+). Min. bid \$40.



82). Liberty Tobacco Sample. 3.5 x 2.25 x 1" unusual, full, sealed (never opened) 1 oz. size tobacco pack for Liberty brand, w/ 1910 tax stamp. Excellent overall. Min. bid \$30.



83). Calabash Pocket Tin. 4-1/8 x 3.5 x 1.25" early, embossed tin litho vertical tobacco pocket tin for Imperial Tobacco Co.'s "Calabash" brand (fold over lid variation). Tin is clean, bright and very attractive (C. 8+) w/ minor scattered wear. Min. bid \$50.

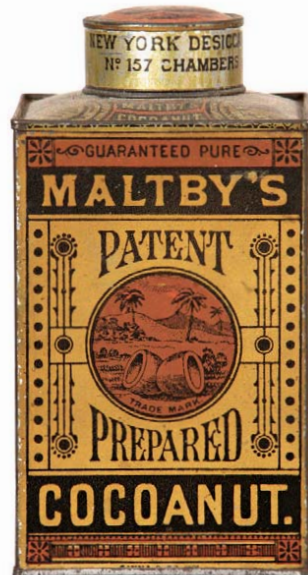


84). Calabash Pocket Tin. 4.25 x 3.25 x 1-1/8" scarce embossed tin litho vertical tobacco pocket tin for Imperial Tobacco Co.'s "Calabash" brand (flat top lid variation). Clean, bright and very attractive in appearance, although close examination will reveal a little non-offensive light scattered wear (C. 7.5+/-/8-). Min. bid \$50.

Rare Moxie Glass



85). Moxie Nerve Food Glass. 3-5/8 x 2-1/8" extremely rare, small, very early etched advertising fountain glass for "Moxie Nerve Food" (earliest era of the Moxie glasses, being from the Nerve Food era- size of glass suggests possibly a large medicinal dosing size vs. beverage use). Excellent. Min. bid \$40.



86). Maltby's Cocoa Nut Tin. 6 x 3.25 x 3.25" unusual, very early tin litho small-top can for Maltby's brand cocoanut, w/ a nice primitive folksy look. Clean and very attractive (C. 8+) w/ only minor wear. Min. bid \$40.

Radiator Cap



87). Fraternal Hood Ornament. 5-5/8 x 2.5" unusual, early automobile radiator cap/hood ornament featuring figural, nicely detailed and decorated nickel over brass Knights of Columbus fraternal emblem. Excellent, with just the right amount of light wear. Min. bid \$40.



88). Rose's Cocoa Tin. 4.5 x 2-5/8 x 2-5/8" very early 1/2 lb. size tin litho small top cocoa tin for "Rose's" brand (Cleveland Chocolate & Cocoa Co., Cleveland, Oh.), w/ attractive graphics by Isley Co. Excellent (C. 8+). Min. bid \$40.



89).Salesman's Sample Car Lighter. 4.5 x 6 x 4" unusual electric automobile showroom working salesman's sample display unit for Wico Co.'s auto cigarette lighters (after a cigarette was inserted into device, it lit and puffed the cigarette). Painted metal, w/ chrome trimmed bakelite handle. Very nice overall, w/ a little wear from use (C. 8-). Min. bid \$40.

Oil Can Banks



90).Oil Can Banks. Lot consists of five different 2-7/8 x 2.25 tin litho miniature oil can shaped banks advertising various motor oil brands. Includes: Cities Service, RMP, Havoline, Marvel and Veedol. Excellent overall w/ minor wear on a couple. Min. bid \$30 the lot.



91).Bartels Match Holder. 3 x 4.75" scarce, early tin litho pre-prohibition countertop advertising match holder for Bartels Beer, w/ nice early lithography by Shonk Litho. Clean, bright and very attractive in appearance, w/ minor soiling and non-detracting minor wear in curved base area (C. 8+/-), w/ heavier wear on non-graphic underside of base. Min. bid \$40.



92).Cigar Counter Felt. 7.75 x 8.75" unusual, early, heavy counter-top advertising felt for Tel and Tel brand cigars, featuring great image of trademark telephone and telegraph operators. Excellent, w/ just the right amount of wear (C. 8++). Min. bid \$40.



93).Soldier Match Holder. 4.5 x 3.5 2.5" early, figural metal match holder featuring French soldier w/ rat on head and candle holder on side (head opens up to reveal match storage area inside). Excellent overall, w/ nice surface patina. Min. bid \$60.



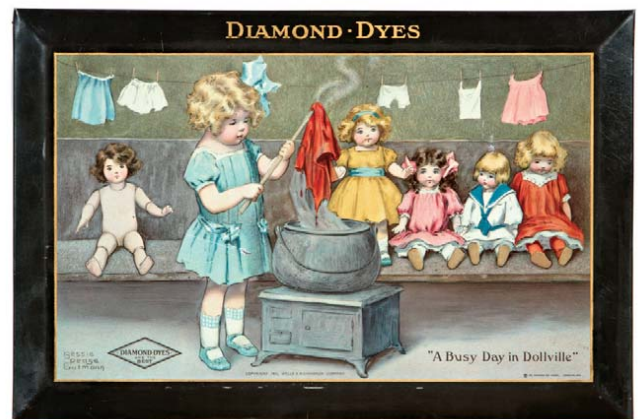
94).Duke Tobacco Insert Cards Book. 6.75 x 10.25" early (dated 1889) complete advertising booklet for Duke Tobacco cigarette insert cards (nine pages feature multiple images of Co.'s "Terrors of America" card series (cards feature kids playing various baseball positions, fishing, playing marbles, etc.), w/ a few pages of pretty girls, and a page featuring Co.'s factories. Inside pages very good to excellent, (missing about 1/4 of back cover page). Min. bid \$40.



95).Log Cabin Tins. 4-1/8 x 3.75 x 2-5/8" Lot consists of a matched pair of figural cabin shaped syrup tins for Towle Co.'s Log Cabin brand syrup (ea. 4 x 3-5/8 x 2.5"). Includes: variations w/ boy and girl in doorway; and family seated on porch. Both are clean, bright and excellent (C. 8.5+/-). Min. bid \$60 the pair.



96).Butchers Union Tray. 13-5/8 x 16-5/8" great early tin litho advertising tray celebrating the 1909 50th anniversary of the Philadelphia Butchers Beneficial Society (w/ German American text along top border). Has strong colors and displays quite nicely (displays as a C. 8+/-) although closer examination will reveal some non-offensive scattered wear from use (critical grade C. 7.5+/-). Neat piece, w/ impressive and powerful image (HD Beach Litho). Min. bid \$80.



97).Diamond Dyes Sign. 11-3/8 x 17" early, beveled tin litho (over cardboard) "Busy Day in Dollville" advertising sign for Diamond Dyes, featuring adorable image of young girl dyeing dolls' clothing (by children's illustrator Bessie Pease Gutman). Sign is clean, bright and exceptionally nice in appearance (displays a strong C. 8++), although close examination will reveal a non-offensive scuff spot in girls blue dress area and a little professional touch-up to outer black border area (barely noticeable except w/ black light). Min. bid \$150.



98).Tooth Soap Tin. 2 x 3.25 x 1/2" scarce, very early tin litho hinged lid product tin for "5 Drops" brand tooth soap (Swanson Rheumatic Cure Co., Chicago). Clean, bright and displays nicely, although close examination will reveal some non-offensive light scattered oxidizing specks and wear (C. 7.5+/-). Min. bid \$40.



99).Santa Candy Tin. 2.5 x 3-7/8 x 1-7/8" early 2-ps. tin litho candy tin for Woolworth Co.'s bon-bon candies, featuring great Christmas image of Santa and airplane on rooftop. Clean and very attractive (C. 8+/+) w/ minor scattered wear. Min. bid \$40.



100).Barber Chair Paperweight. 2-5/8 x 4-1/8 x 7/8" scarce, early advertising paperweight w/ milk glass bottom for Acme brand barber chairs (Archer Mfg. Co., Rochester, NY) featuring beautifully detailed image of early barber chair. Excellent. Min. bid \$40.



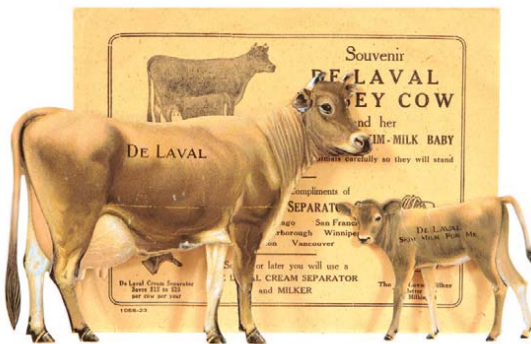
101).7-Up Lot. Lot consists of two early 7-Up soda items. Includes: early 8.5" (dia.) small embossed metal sign (Stout Sign Co.) w/ beautiful interior surface; and an early 5 x 4" license plate topper w/ fine reflective beaded glass surface (found, never used in its original envelope). Min. bid \$40 (the lot).



102).Cigar Labels Proof Book. 6.25 x 9.25" 30 pg. set of early stone litho progressive color printers reference proofs in booklet form for "Hoosier Poet" cigar box labels. This printer's reference booklet represents each stage of the stone litho color strike process, from 1st strike through to the finished label. Inside pages range from good to excellent w/ some light soiling, tattering and printers notations throughout (C. 7.5+/8-). Min. bid \$40.



103).Horse Head Match Holder. 5 x 5-1/8 x 3.75" early, high quality 2-ps. figural cast metal match holder by Zimmerman Co. (top lifts off to reveal match holder base). Base has striking surface on 2-sides w/ horse hoof shaped feet). Excellent, w/ nice detailing and surface patina. Min. bid \$50.



104).DeLaval Cows. lot consists of two tin litho die-cut advertising stand-ups for DeLaval cream separators. Both are clean and bright, as found never used in original envelope. Cow (3.75 x 5") has some scuffs and light wear (C. 8+/+); skim milk calf (2 x 2.75") excellent (C. 8.5). Min. bid \$40 (the lot).



105).Red Raven Tip Tray. 4.25" (dia.) early tin litho advertising tip tray for Red Raven, featuring beautiful multi-color graphics. Clean, bright and excellent in appearance (displays as a 8.5+/+) w/ minor crazing (tipping in light will reveal a couple non-detracting light blemish marks (critical grade 8+/+). Min. bid \$50.



106).Puritan Hams Tip Tray. 4.25" (dia.) early tin litho tip tray for Cudahy Packing Co.'s Puritan hams, featuring Co.'s trademark kid. Clean, bright and very attractive appearance, although there are a few small, non-offensive background chips, light scattered edge wear at very outer edges of rim and light oxidizing on non-graphic backside (C. 7.5+/8-). Min. bid \$40.



107).Summer-Time Tobacco. lot consists of three different variations of full, sealed "Summer-Time" tobacco packs (each app. 4-5/8 x 3 x 1-1/8"). Includes 2, 2-1/4 and a 2-1/2 oz. packs. All are clean and very nice, w/ minor toning on earliest variation. Min. bid \$30 the lot.



108).Electric Meter Paperweight/Thermometer. 4 x 3-3/8 x 3" unusual, early, heavy metal, glass and plastic, salesman's sample style executive advertising paperweight from Sangmo Electric Co. Piece is actually a working thermometer, in likeness of early electric meter. Very high quality, excellent condition. Min. bid \$40.

Oil Can Banks



109).Oil Can Banks. lot consists of seven 2-7/8 x 2" (dia.) tin litho miniature oil can shaped banks, advertising various motor oil brands. Includes: RPM, V.E.P., Farm-Oyl, Atlantic, Allstate, Marathon and Texaco. All are very good to excellent. Min. bid \$50 the lot.



110).Evinrude Sign. 14-5/8 x 25-7/8" early, embossed tin litho sign for Evinrude brand outboard motors. Clean, never used example is excellent overall, w/ exception of a little light background staining/soiling blotches in bottom local dealership text section. Min. bid \$50.



111).Elephant Lot. Lot consists of three unusual, small, early elephants. Includes: early figural bottle in likeness of GOP elephant in suit (5" hgt.) w/ ground lid and original metal cap; Independent Stove Co. metal paperweight w/ nickel finish (2 x 3.5 x 1"); and glass figural "G.O.P." elephant shaped candy container w/ traces of paint and original closure on base (2.75 x 3 x 1"). Excellent overall. Min. bid \$40 (the lot).



112).Smith Bros. Cough Drops. 2-3/8 x 3.75 x 5/8" scarce, very early tin litho flat pocket style cough drops tin for Smith Bros. brand, featuring beautifully detailed lithography by Ginna & Co. A clean, very attractive example that displays nicely (displays as a C. 8/+ overall), w/ a few small chips on lid and some scattered wear along outer edges of both sides (critical grade C. 7.5++ due to edge wear). Min. bid \$40.



113).Lye Banks. Lot consists of two, early paper label (over tin) advertising banks (ea. app. 3 x 2" dia.). Includes: Red Devil and Red Seal brands. Both are excellent. Min. bid \$30 (the lot).

Unopened



114).Cannon's Pocket Tin. 3 x 3-3/8 x 1" early tin litho vertical tobacco pocket tin for Crimmon Coach Co.'s Cannon's Irish Sliced Plug tobacco. Full, sealed, never opened tin is excellent overall (C. 8.5+) w/ minor oxidizing to gold flash finish at front side edge of lid. Min. bid \$40.



115).Monroe Beer Tray. 12" early tin litho advertising beer tray for Monroe Brewing Co., Rochester, NY. Tray is crisp, bright and like new (near mint) although non-graphic backside has some litho loss spots and light oxidizing (in area of removed mounting tape). Min. bid \$60.



116).Seminola Tobacco Jar. 5-3/8 x 4.5 x 4.5" fancy, very early tobacco display jar w/ beautiful color graphic paper labels on all four sides. Excellent and all original (near mint). Min. bid \$40.



117).Baking Powder Art Plate. 10-1/8" (dia.) early tin litho Vienna art plate style advertising tray for Crown Baking Powder, by Shonk Litho Co. Clean and very attractive in appearance (C. 8+/-), w/ background wear spot on plain, non-graphic backside. Min. bid \$70.



118).Advertising Paperweight. 2-5/8 x 4-1/8 x 1-3/8" unusual, early glass advertising paperweight w/ milk glass base, for Griffith & Co., Chicago picturing an outrageous image of man holding blood dripping scissors, w/ cut off tail of unhappy cat on floor. Excellent. Min. bid \$40.

Sample / Bank



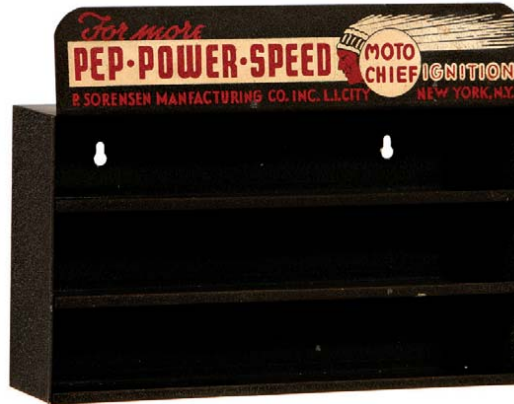
119).Donald Duck Coffee Sample/Bank. 2-3/8 x 3" (dia.) scarce, early tin litho miniature 3 oz. size "Free Sample" coffee can for Goyer Coffee Co.'s Donald Duck brand, has nice cartoon images on sides and coin slot on top of pry lid for use as bank. Clean and attractive appearance (C. 8+/-), w/ some non-detracting light dents on backside and stain/oxidizing area on lid. Min. bid \$50.



120).Oil Co. Lighters. Lot consists of 6 different, early, high quality metal advertising cigarette lighters, for various Oil Co. brands (ea. app. 1.75 x 2-1/8 x 3/8"). Includes: Atlantic, Amoco, Esso, Cities Service, Imperial and Gulf Oil Co.'s. Excellent overall. Min. bid \$40 (the lot).



121).Dr. Bell's "Cure" Sign. 5.25 x 5" small, early 2-sided, die-cut tin litho advertising sign for Dr. Bell's Pine Tar Cough Cure quack medicine product. Clean and very nice (C. 8+/-) w/ a little light scattered wear. Min. bid \$40.



122).Moto Chief Display. 9-3/8 x 12.25 x 3" small, early, wall-mount style metal store display shelf for Moto Chief brand ignition product. Crisp and excellent in condition w/ an attractive textured paint surface (C. 8.5+/-) Min. bid \$60.



123).Royal Tailors Perpetual Calendar. 6-3/8 x 6-3/8" very early cardboard litho calendar advertising Royal Taylor's Co., Chicago, featuring beautifully detailed multi-color graphics (clock face hands move, for keeping track of months and days). Clean, bright and like new (near mint). Min. bid \$40.



124).Degan Typewriter Tin. 2-5/8 x 2-5/8 x 7/8" scarce tin litho typewriter ribbon tin from Degan Publishing Co., Chicago featuring great image of woman typing w/ bag on head. Clean, bright and excellent (near mint). Min. bid \$40.



125).Benjamin Franklin Typewriter Tin. 2.5 (dia.) x 7/8" early tin litho typewriter ribbon tin for "Benjamin Franklin" brand (Franklin Ribbon & Carbon Co., NY) featuring nice image of B.F. Excellent (near mint). Min. bid \$40.



126).Mickey Mouse Dime Bank. 2.5 x 2.5 x .75" ca. 1930's tin litho dime registering bank featuring early Disney Co. Mickey Mouse images. Clean, bright and attractive, w/ a little light scattered wear from use (C. 8/-). Min. bid \$40.



127).Bulldog Advertising Clip. 2.75 x 2.5 x 1"unusual, very early, heavy metal litho clipboard style advertising clip w/ beautiful multi-color graphics from Security Fire Insurance Co., Davenport, Iowa. Clean, bright and very attractive (C. 8+/-), w/ exception of small chip spot in dog's hind leg area. Min. bid \$40.



128).Veterinary Instruments Catalog. 9 x 6-1/8 x 3/4" early 368 pg. heavily illustrated catalog (Catalog G- 11th Edition) for Sharp & Smith Co.'s veterinarian instruments and equipment (w/ page after page of very detailed, high quality images, descriptions and prices). Excellent. Min. bid \$30.



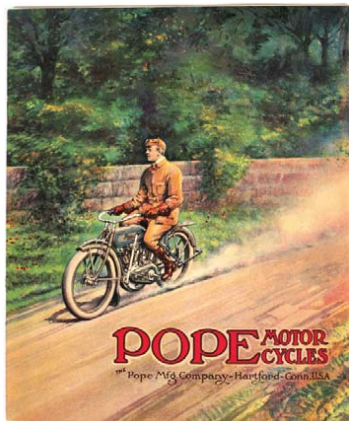
129).Enameled Naval Glasses. Lot consists of three fancy, ca. 1898 glasses, each w/ beautifully detailed heavy enameling (ea. app. 3-7/8 x 2-5/8"). Includes two different versions of Admiral Geo. Dewey, and one featuring U.S. battleship Maine. All are excellent. Min. bid \$40 (the lot).



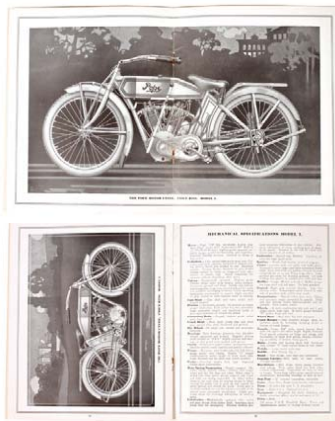
130).Hart Food Sign. 9.25 x 13.25" early tin over cardboard bevel edged advertising sign for Hart brand canned fruits and vegetables, featuring attractive images of Co.'s produce cans. Clean, bright and very attractive (basically a strong 8/+) w/ exception of a little light background wear and minor soiling in outer border area. Min bid \$60.



131).Mullen's Liniment Sign. 14.25 x 20/25" (11-1/8 x 17" visible) very early paper litho sign for Mullen's Hornet's Nest Liniment w/ outstanding detailed lithography featuring companies trademark hornets nest. Clean and excellent, w/ minor toning (C. 8.5/+). Min. bid \$60.



132).Pope Motorcycles Catalog. 8-7/8 x 7-3/8" outstanding, 1913 heavily illustrated 24 pg. advertising catalog for Pope Manufacturing Co.'s motorcycles. Clean, bright and exceptionally nice, as found, never used still in its original mailing envelope. Lot also includes a separate follow-up letter on impressive company stationery. Min. bid \$60.



133).Indian Motorcycles Catalog. 9.75 x 6-7/8" outstanding 1913 fully illustrated 24 pg. product and accessories catalog from Indian Motorcycle Co, w/ beautifully embossed cover. Complete and excellent, as found still in its original mailing envelope. Min. bid \$60.

American Airline Badges



134).American Airline Badges. lot consists of a group of six different, early, very high quality employee uniform badges from American Airlines, each w/ beautiful inlaid cloisonné enameled lettering (ea. app. 1 x 2-7/8"). All are excellent. Min. bid \$40 (the lot).



135).Ramses Condom Tins. 1-7/8 x 2.75 x 1/4" lot consists of three different variations of ca. 1930 Julius Schmidt Co.'s Ramses brand condom tins, each w/ attractive Egyptian themed graphics. All are very nice (C. 8++ to near mint). Min. bid \$60 (the lot).

Quack Weight Loss



136).Quack Weight Loss Tin. 3 x 3 x 3" early product tin for "Louisenbad Reduction Salts" quack medicine product (label claimed soaking in these bath salts twice a week would result in rapid weight loss) w/ nice image of Queen Louise of Prussia. Excellent (C. 8++). Min. bid \$40.



137).Texas Pride Typewriter Tin. 2.5 (dia.) x 7/8" tin litho typewriter ribbon tin for "Texas Pride" brand (Typewriter Supply Co.) featuring great image of bull inside a rope border outlined Texas map. Clean, bright and like new (near mint). Min. bid \$40.

Sample



138).Tide Water Tobacco Sample. 2.5 x 2-1/8 x 2-1/8" small, sample size tobacco tin from Tide Water Oil Co. (marked: "Tide Water Tobacco for your pipe, Tide Water Oil for your Machinery" on backside). Excellent. Min. bid \$30.

Sample



139).Luzianne Coffee Sample. 3 x 2.5" (dia.) miniature tin litho "Free Sample" coffee can for Luzianne brand, featuring attractive image of Co.'s trademark Mammy character. Clean, bright and excellent (C. 8++), w/ non-detracting minor background wear. Min. bid \$30.



140). Good Year Tires Sign. 11-5/8 x 35-3/8" ca. 1920's tin litho sign for Good Year brand tires. Clean, bright and exceptionally nice (appears never used w/ only minor storage wear). Min. bid \$60.



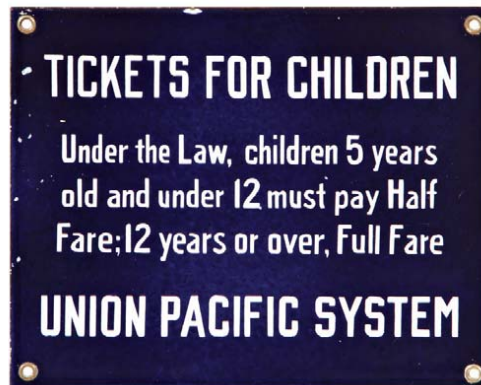
141). Ivy Leaf Tobacco Tin. 3-3/8 x 4.5 x 1-5/8" scarce, very early, paper label over tin square corner tobacco tin for Ivy Leaf brand. Has bright colors and displays nicely w/ some non-offensive toning and background staining along side edges (C. 7.5++/8-). Min. bid \$40.

Pencil Display



142). Pencil Display. 4.75 x 10.75 x 4" unusual, early, wooden advertising counter-top display for Eberhard Faber Co.'s wooden pencils w/ drilled holes for selling/displaying 72 individual pencils. Excellent overall, w/ minor wear from use (C. 8+/-). Includes pencils. Min. bid \$50.

Union Pacific Railroad



143). Railroad Tickets Sign. 8 x 10" unusual, very early, heavy porcelain ticket info sign from Union Pacific Railroad. Clean and excellent overall w/ a couple non-serious light chips along upper edge (note: white background specks along left edge are from manufacturing process - not damage). Min. bid \$50.



144). Municipal Porcelain Sign. 12" (dia.) unusual, porcelain sign from city of Ellensburg, Washington (State), featuring beautifully detailed multi-color enameling. Crisp and like new, w/ exception of slight traces of wear at mounting holes (very minor, mentioned for accuracy). Signs like these were often mounted on sides of city vehicles, etc. Min. bid \$40.



145). Birchola Fan. 15 x 7-5/8 early, cardboard litho advertising fan for Birchola brand soda pop. Clean and attractive in appearance (displays as C. 8+) w/ a little minor edge wear and non-offensive, light crease mark visible on non-graphic backside (critical grade 8-). Min. bid \$30.



146). Dove Undergarments Sign. 13.75 x 5-1/8" unusual, early cardboard easel-back, die-cut sign for Dove brand undergarments. Sign is clean, bright, and excellent and appears never used, w/ only minor trace hints of toning in background (a strong 8++). Min. bid \$40. 6465



147). Seeds Calendar. 22.35 x 10.25 unusual, early paper litho roll-down calendar advertising Rice Seed Co. (Cambridge, NY), featuring beautiful color graphics. Clean and excellent (near mint) complete w/ March - December 1909 calendar pad. Min. bid \$40.

Political Fob



148). Political Watch Fob. 2.1/4 x 1-5/8" early, embossed Billy Possum animal shaped metal watch fob from William Howard Taft's 1908 presidential campaign. Excellent and all original, w/ nice surface patina, complete w/ original leather strap (not shown). Min. bid \$30.



149).Clark's Thread Die-Cut. 9.5 x 7.25" early die-cut advertising sign for Clark's brand thread on heavy card stock, featuring nice image of dog on large spool. Clean, bright and excellent (like new), w/ text advertising on backside (minor toning and wear on back). Min. bid \$40.



150).Taxi Badges. Lot consists of six small, early, high quality metal taxi cab driver numbered uniform badges from various cities. All are excellent (sizes range from 1-1/8 x 1.5" to 1.5 x 1.75"). Min. bid \$30 (the lot).



151).Cherub Watch Holder. 5.5 x 3.25 x 3.25" outstanding, early, fancy, metal pocket watch holder featuring figural nude girl, w/ beautifully detailed inlaid cloisonné enameling (has hooks for holding 6 pocket watches). Very high quality piece, excellent. Min. bid \$40.



152).Hi-Ho Pocket Tin. 4.5 x 3 x 1" scarce, early, tin litho vertical tobacco pocket tin for Wasserman Co.'s Hi-Ho brand. Full tin is clean, bright and very attractive in appearance (basically a strong C. 8.5+) w/ exception of small wear/rub spot in upper right background area (appears never opened, although there is a little bit of loss to tax stamp at top side edges in lid area). Min. bid \$150.

Gas Stove Bank



153).Gas Stoves Bank. 5.5 x 4 x 4" early, fancy, embossed metal coin bank in shape of early gas stove. Excellent and all original, w/ fancy cast iron front, top and base (C. 8+). Min. bid \$50.



154).McCormick & Co. Pocket Mirror. 2.75 x 1.75" early celluloid pocket mirror for McCormick Spice Co., Baltimore.. Clean, bright and excellent appearance (examination under magnification will reveal minor trace scuffs and minor surface bumps- nothing offensive or detracting (mentioned for accuracy- barely merits mention.)). Min. bid \$40.



155).Farmers Pride Oats Box. 7-1/8 x 4.25" early, 1 lb. 4 oz. cardboard oats box for Farmers Pride brand (Hulman Co., Terre Haute, Ind.) featuring Co.'s trademark image of farmer and grandchild. Clean, bright and excellent (C. 8.5++). Min. bid \$40.



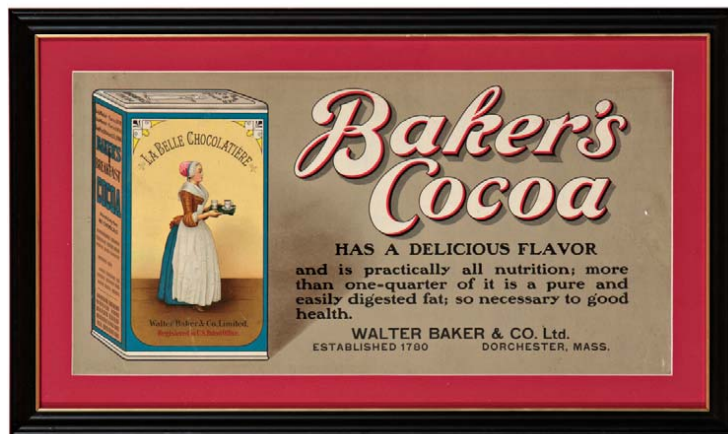
156).Battleship Calendar. 12-5/8 x 8-7/8" early, cardboard litho advertising calendar featuring multi-color graphic image of US battleship. Clean, bright and excellent (C. 8.5+) w/ full 1899 calendar pad (typical light oxidized staple stains at top of pad area). Min. bid \$40.



157).Jewelry Sign. 15-1/8 x 11" early, heavy porcelain 2-sided Jewelry store sign (same image both sides). Crisp, bright and like new, w/ excellent sheen (near mint appearance), w/ minor flea bites at very outer edges and a trace hint of minor staining at top hanging holes (both mentioned for accuracy, so minor barely merits mention). Min. bid \$70.



158).DuPont Sign. 23-5/8 x 19.75" (19.5 x 15.5" visible) unusual, very early paper litho advertising sign from DuPont Company, featuring stunning color graphic image of wild cat. Clean, bright and like new complete w/ its original mat board, as found still sealed in its original frame. (Some chipping and edge wear to frame). Min. bid \$60.



159).Bakers Cocoa Sign. 14.5 x 24.5" (10.25 x 20.25" visible) early cardboard litho trolley car style sign for Baker's Cocoa w/ nice color graphics. Clean, bright and very attractive appearance, w/ minor traces of background wear (basically displays as a strong C. 8/+). Nicely framed and matted (note: we have not seen piece outside of frame). Min. bid \$50.



160).Perfection Oil Sign. 13-1/8 x 19-1/8" early, tin over cardboard self framed sign for Perfection brand oil, featuring beautifully detailed multi-color graphics. Clean, bright and very nice appearance (displays as a strong C. 8++) w/ a little non-offensive light scattered wear (critical grade C. 8/-). As found, should improve w/ cleaning. Min. bid \$150.



161).Velvet Condom Tin. 1.75 x 2-5/8 x 1/4" unusual, early tin litho condom tin for "Improved Velvet" brand. Crisp and like new (near mint). Min. bid \$40.



162).Tiger Stripe Tobacco Packs. lot consists of three different variations of full, never opened Tiger Stripe brand chewing tobacco soft packs (ea. app. 5 x 3 x 1.25"), including "Trial Package". Excellent. Min. bid \$40 (the lot).



163).New Yorker Condom Tin. 1-5/8 x 2-1/8 x 1/4" extremely rare (unlisted?) early, condom tin w/ gold paper label on lid for New Yorker Pharmacy, W. 34th St., New York. Excellent overall (C. 8+), w/ minor wear to label at bottom right corner edge. Min. bid \$30.



164).Typewriter Ribbon Tins. Lot consists of three early, tin litho typewriter ribbon tins, each measuring 2-5/8 dia. x 7/8". Includes: Hi-Hat, The Perfect Matched Line and Queen Silk. All are clean, bright and excellent. Min. bid \$40 the lot.



165).Ribbon Tins. Lot consists of three early typewriter ribbon tins (sizes range from 2-5/8 x 7/8" to 2-5/8 x 2-5/8 x 7/8"). Includes: Penguin, Princess and Golden Poppy. Excellent overall (a little minor scattered wear on Penguin). Min. bid \$40 the lot.



166).Mineral Water Tip Tray. 4.25" (dia.) scarce, early tin litho tip tray for Sheboygan brand mineral water featuring great image of Indian chief and black waiters. Colors are decent and piece displays pretty well (as a 7.5) although there is some general scattered edge wear and litho area appears to have been varnished or clear coated. Min. bid \$40.



167).Gold Dust Soap Boxes. Lot consists of three different, very early, full never opened cardboard soapboxes for Fairbanks Co.'s "Gold Dust" brand washing powder, featuring early variation of trademark black twins (sizes range from 5 x 3.5 x 1.25 to 6.75 x 4 x 1-7/8"). These are attractive and display nicely, w/ minor toning and wear (conditions range from 7++ to C. 8/+). Min. bid \$40 (the set).



168).Western Electric Paperweight. 3.25 x 3-3/8" (dia.) unusual, scarce variation, heavy, figural glass paperweight advertising Western Electric Co. telephone and telegraph apparatus and supplies (deep blue color). Excellent. Min. bid \$40.



169).Buckeye Mirror. 2-1/8" (dia.) early, celluloid advertising pocket mirror for Aultman Miller Co.'s "Buckeye" brand agricultural equipment, featuring nice image of farmer cutting fields. Clean and excellent. Min. bid \$40.



170).Fleischmann's Yeast Pocket Mirror. 2-1/8" (dia.) scarce, early celluloid advertising pocket mirror for Fleischmann's brand yeast. Clean, bright and very attractive. Min. bid \$40.



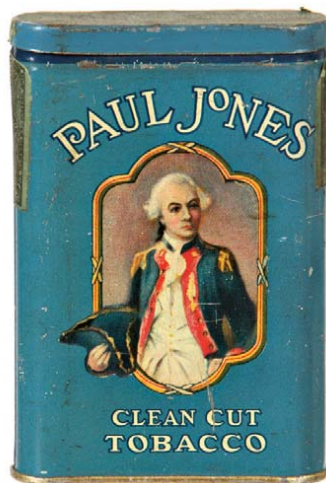
171).Nude Mirror. 2-1/8" (dia.) early celluloid advertising pocket mirror for Frank's Café (Frederick, Md.) promoting Co.'s "Fine Wines, Liquors, Beer and Cigars" w/ beautiful multi-color graphic image of nude in waves. Excellent. Min. bid \$40.



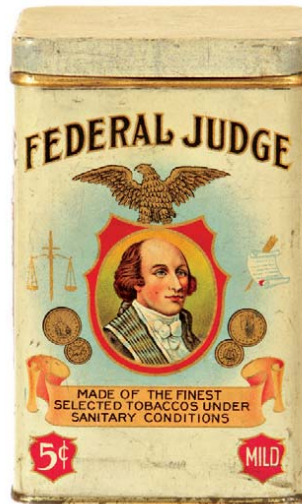
172).Plymouth Gin Tip Tray. 4.25" (dia.) unusual, early glass over tin litho advertising tip tray for Plymouth Dry Gin. Clean, bright and excellent overall w/ minor edge wear (C. 8++). Min. bid \$40.



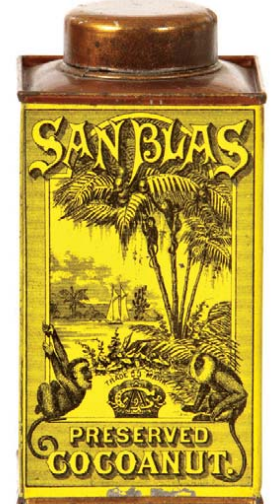
173).Perla-Denta Tooth Powder Tin. 4-1/8 x 1.75" (dia.) unusual, very early tin litho product tin for Penlar Co.'s Perla-Denta tooth powder. Full tin is clean, bright and like new (C. 8.5++) and includes remnants of its original cardboard box (box fair to poor). Min. bid \$40.



174).Paul Jones Pocket Tin. 5 x 3 x 7/8" scarce, early tin litho vertical tobacco pocket tin for Continental Tobacco Co.'s "Paul Jones" brand. Has strong colors and displays quite nicely on shelf (as a C. 8/+), although a close examination will reveal some non-offensive light general overall scattered wear (critical grade: front C. 8/-; back C. 7.5). Min. bid \$100.



175).Federal Judge Cigar Tin. 5-5/8 x 3-5/8 x 3-5/8" early tin litho 25 ct. cigar can for Federal Judge brand, featuring beautiful color lithography by Liberty Can Co. Clean, bright and excellent in appearance, w/ a little minor scattered background soiling and wear (C. 8++). Min. bid \$40.



176).Coconut Tin. 5-1/8 x 2-5/8 x 2-5/8" very early, tin litho small top coconut tin for San Blas brand, featuring stunning, highly detailed litho images of monkeys all around (Ginna Co. Lithographers). Clean and exceptionally nice (C. 8.5/+) w/ typical minor crazing to surface. Min. bid \$40.



177).Nichol Kola Sign. 29.25 x 18" early, die-cut cardboard easel back, stand-up soda pop sign for Nichol Kola, w/ nice image of pin-up girl holding bottle (by illustrator Albert Fisher). Sign appears never used and is clean, bright and like new in appearance (displays as near mint), although close examination will reveal a little minor non-offensive storage edge wear at top and bottom edges and minor staining at top of blue background area (mentioned for accuracy- hardly noticeable). Min. bid \$50.



178).Steam Mills Calendar. 14 x 10" unusual early cardboard calendar advertising Salford Steam Mills, Lederachville, PA, providers of water and steam power. Calendar is clean, bright and excellent, w/ complete 1897 calendar pad. Min. bid \$40.



179).Bank Note Cigars Sign. 21.5 x 13-5/8" early, easel-back cardboard stand-up sign for Bank Note brand cigars, featuring beautiful multi-color graphics, w/ a cut-out cigar box image in center. Clean, bright and like new, w/ exception of a little light edge wear. Min. bid \$40.



180).Choctaw Tobacco Label. 11 x 11" very early, paper litho tobacco crate label for Lorillard Co.'s "Choctaw" brand, featuring beautiful multi-color graphics. Has a little edge chipping, light paper loss at left edge as well as some non-offensive general light toning/soiling, but overall a powerful and impressive looking piece that displays very well (as a C. 8+/-), although close examination under magnification will reveal a couple large, professionally repaired tears (barely noticeable and very well done). Min. bid \$40.



181). Lamp Oil Sign. 9-5/8 x 9.5" early two sided string hung ceiling sign for Standard Oil Co.'s "Rayolight" brand lamp oil (same image both sides). Clean, bright and excellent (C. 8.5/+) w/ trace hint of minor age toning. Min bid \$40.



182).Lay-or-Bust Feeds Sign. 19.5" (dia.) early embossed metal painted sign for Park & Pollard Co.'s "Lay-or-Bust" and "Milk Maid" brand animal feeds. Clean, bright and like new, as found never used. Min. bid \$50.

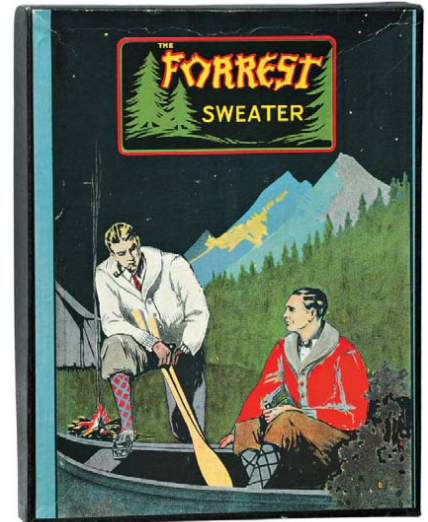
Earl Christy



183).Christy Girl. 20 x 16" early, very attractive cardboard litho, art print featuring beautiful multi-color image of well-dressed woman in horse drawn carriage (by illustrator Earl Christy, dated 1902 in bottom right corner). Piece is clean and bright w/ a very nice overall look (would look great framed). Min. bid \$60.



184).Bell System Sign. 18.25 x 17-3/8 x 3/8" unusual, large, heavy cast aluminum Bell Telephone Co. building marker sign. Neat and unusual piece is excellent overall, w/ slight weathering and wear. Min. bid \$40.



185).Sweater Box. 13-5/8 x 10-5/8 x 2" early 2-ps. cardboard litho product box for Forrest brand sweaters, featuring an Adirondacks camping themed image on cover. Excellent (C. 8++). Min. bid \$30.



186).San-Tox Tooth Powder Tin. 4.25 x 1.75" unusual, scarce, early tin litho tooth powder tin for San-Tox brand (DePree Co., Holland, MI) featuring great image of companies trademark nurse. Full, never used tin is crisp and like new, as found still in its original box (box missing lid and has toning and staining). Min. bid \$40.



187).Finzer Tobacco Box. 13 x 7 x 4" small, early, wooden 5 lb. shipping box for Finzer Bros. Tobacco Co. featuring beautiful, multi-color label w/ busy factory scene and nice stenciling all around box. Label is excellent (a strong C. 8++); box has a nice rich surface patina and great look (no back and a little separation at top right dovetailed joint). Min. bid \$50.



188).Brokerage Firm Watch Fob. 2 x 1.75" (fob) early, embossed metal advertising watch fob featuring images of bull and bear, w/ embossed advertising on backside for "Rumsey & Co., Board of Trade, Chicago". Excellent, complete w/ original strap. Min. bid \$30.



189).Pepsi Straws. 10.75 x 3-7/8 x 3-7/8" full, unopened, ca. 1930's box of Pepsi Cola advertising straws. Box is clean bright and excellent in appearance w/ minor storage wear along edges, (each of straws has fancy Pepsi script in red and blue). Min. bid \$40.

Medicine Tins



190).Medicine Tins. Lot includes five early tin litho medicine tins ranging in size from 2.75 x 3.75 x .75" to 1.75 x 3 x .5". Includes: Garfield Digestive Tablets, Nature's Cure Blood Purifier, Dr. Simmons' Liver Medicine, Dr. Thatcher's Liver Medicine and Smith's Dyspepsia Tablets. All are very good to excellent (couple light chip spots on Garfield tin). Min. bid \$40 (the lot).



191).One-Eleven Brand Cigarettes. Lot consists of two, full, sealed (never opened) early cigarette packs for American Tobacco Co. s "111" brand cigarettes (made for export packs, each apx. 2-7/8 x 2.25 x 7/8"). Both are bright, attractive and display nicely (C. 8+). Min. bid \$30 (the lot).



192).Nutex Condom Tin. 1.75 x 2-1/8 x 1/4" scarce variation, early tin litho condom tin for Nutex Radium brand. Full, never used tin is crisp and like new (near mint appearance) w/ a trace hint of minor hazy storage wear. Min. bid \$40.



193).American Line Tip Tray. 4.25" (dia.) early tin litho advertising tip tray from American Shipping Line. Excellent overall appearance (a strong C. 8+), w/ light crazing and minor scattered wear. Min. bid \$40.



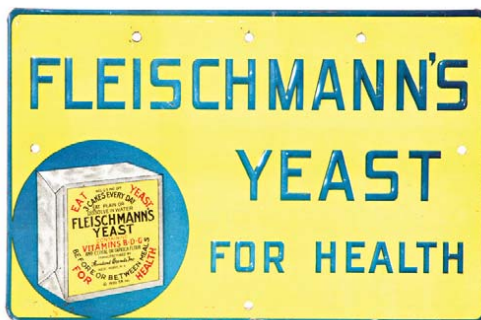
194).Café Savoy Coffee Sample. 2 x 2.25 x 1.5" miniature, sample size tin litho coffee can for "Café Savoy" brand (Charles Biele Co., New York). Clean, bright and very attractive appearance (basically a nice C. 8.5+ appearance) w/ non-offensive, faint stain spot on backside (quite minor- mentioned for accuracy). Min. bid \$40.



195).Nutex Condom Tin. 1.75 x 2-1/8 x 1/4" scarce variation, early tin litho condom tin for Nutex Radium brand. Full, never used tin is crisp and like new (near mint appearance) w/ just a trace hint of minor storage wear. Min. bid \$40.



196).Pickwick Coffee Tin. 4 x 5.25" scarce, early tin litho 1 lb. coffee can for Pickwick brand (Kansas City Grocery Co., Kansas City, Missouri) featuring trademark Pickwick image on front and coffee plantation on back. Clean, bright and excellent (a strong C. 8+). Min bid \$40.



197).Fleischmann's Yeast Sign. 5-5/8 x 8.5" early, embossed tin litho sign featuring nicely detailed image of Co.'s 1930 package (dated). Clean and excellent (a very strong C. 8+), w/ minor background wear. Min. bid \$40.



198).American Eagle Flat Pocket. 2-3/8 x 3.75 x 1/2" very early, tin litho flat pocket style tobacco tin for American Eagle brand featuring great image of woman riding on eagle (Ginna & Co. litho.). Clean, bright and excellent overall (a strong C. 8+) w/ a little minor background wear. Min. bid \$50.



199).Shredded Wheat Ceiling Sign. 6 x 6" early, 2-sided cardboard litho fan pull/ ceiling hanger sign advertising Shredded Wheat biscuits, w/ beautiful detailed lithography (different image both sides). Clean, bright and like new (near mint). Min. bid \$30.



200).Christmas Mail Game. 13-1/8 x 13-1/8 x 1-1/8" very early, "Christmas Mail Game" by J. Ottmann Litho. Co., New York featuring wonderful graphic box cover. Cover illustration is clean, bright and very attractive (a strong 8++), inside like new w/ original playing pieces. Min. bid \$50.



201).Deer Run Whiskey Sign. 12-1/8" (dia.) early, self-framed tin litho sign for Deer Run Whiskey, featuring beautiful multi-color graphics (Shonk Litho.). Sign is clean, bright and displays as like new (a close examination will reveal a trace hint of barely noticeable typical faint crazing and some minor scattered dark spots in outer raised rim area). Min. bid \$60.



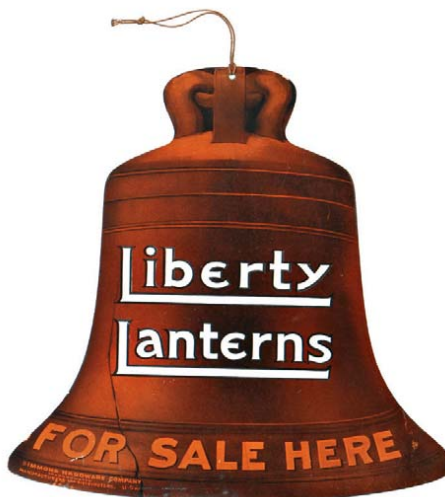
202).Auto-Laks Tin. 3 x 3-3/8 x 3/8" early tin litho medicine tin for "Auto-Laks" brand laxative, featuring great image of Co.'s trademark auto. Clean and excellent appearance, w/ some light wear and slight traces of faint red staining on bottom (lid C. 8.5/+; base 8-). Min. bid \$40.



203).Golden Lion Cigar Lot. Lot consists of a tin over cardboard bevel edged sign (9.5 x 12-7/8") w/ textured, reflective gold lettering (excellent w/ minor surface scuffing); two different cigar boxes (8 x 8.25 x 5.5", and 6 x 7-3/8 x 4.25") both excellent w/ typical toning and soiling to outer lid of smaller box; and some Misc. related Co. advertising ephemera and metal cigar box opener. Min. bid \$50 the lot.



204).Possum Cigar Tin. 5.25 x 5.25" early tin litho 50 count cigar can for Possum brand, featuring beautiful graphic image of trademark critter on both sides. Full, never used tin still contains all 50 cigars and the original pricing display card and lid. Tin is clean, bright and excellent in appearance (C. 8.5/+) w/ exception of light dent mark at top backside edge of lid. Min. bid \$50.



205).Simon Hardward Co. Sign. 13.5 x 13.75" large, early 2-sided die-cut cardboard string hung ceiling sign for Simon Hardware Co.'s "Liberty" brand lanterns. Clean and excellent (a strong C. 8.5/+). Min. bid \$50.



206).Novelty Card Vendor. 13 x 8.25 x 10" unusual, early wooden 1¢ coin operated card vending machine w/ nice original orange and blue-gray carnival paint surface. Attractive (C. 8/+). w/ minor cracking to wood (lock missing on back side). Min. bid \$40 each. (Have two, winning bidder can take one or both). Lot also will include 2 vintage baseball cards for each machines (not shown).



207).Household Ranges Thermometer. 7.5 x 4.5" very early die-cut cardboard thermometer advertising "Household Ranges". Clean and excellent appearance, w/ minor edge wear and a hint of fade; complete w/ working liquid silver filled thermometer (C. 8/+). Min. bid \$40.



208).Puritan Tobacco Packs. Lot consists of three, full, sealed Puritan brand tobacco packs. Includes two similar (4-3/8 x 2-7/8 x 1") 1-3/4 oz. packs (1926 tax stamp); as well as a much earlier (2-5/8 x 2.25 x 1/2") paper over foil sealed pack. Excellent, w/ minor wrinkling on smaller pack. Min. bid \$30 the lot.



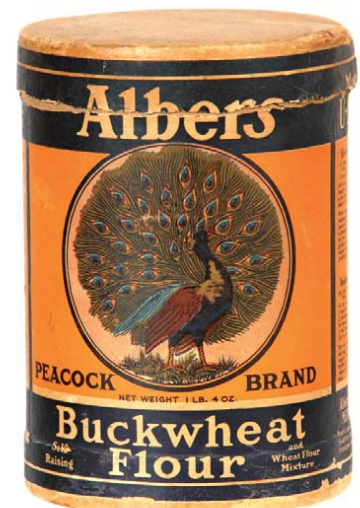
209).Bundy Typewriter Ribbon Tin Lot. Lot consists of three different variations of Bundy brand typewriter ribbon tins ranging in size from 2-5/8 dia. x 7/8" to 2.25 dia. x 3/4". All are clean, bright and excellent. Min. bid \$40 the lot.



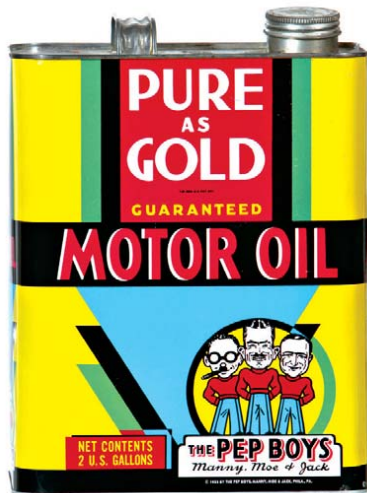
210).Mother's Worm Syrup Match Holder. 6-7/8 x 2-1/8 x 7/8" unusual, early tin litho advertising match holder for Gooch Co.'s quack medicine products featuring attractive multi-color graphics. Clean, bright and attractive overall (a strong 8+++) w/ only minor wear. Min. bid \$70.



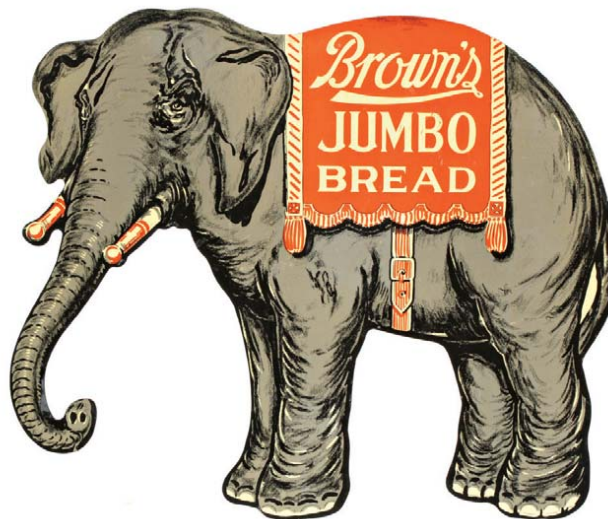
211).Black Hawk Sign. 9-5/8 x 13.5" important and extremely rare, very early embossed tin litho sign for Black Hawk brand corn sheller, featuring beautiful multi-color highly graphic lithography (by Massillon Sign & Poster Co., Massillon, Ohio). Has bright, very rich colors and displays quite nicely (as a C. 8+) although close examination will reveal some light bends (mostly confined to bottom left edge), some non-offensive fine scattered oxidized pitting and some light soiling on surface- nothing that is offensive or takes away from the overall great look of the piece (critical grade C. 7.5++/8-), w/ some oxidized weathering on non-graphic backside. As found, should improve w/ cleaning. Incredible piece! Min. bid \$250.



212).Albers Box. 5-5/8 x 4" (dia.) early, 1 lb. 4 oz. size cardboard oats style product box for Albers's Peacock brand buckwheat flour, featuring attractive graphic image of Co.'s trademark bird (same image both sides). Clean, bright and very attractive appearance, w/ a little typical paper loss at lid separation area and along bottom edge (C. 8+/-). Min. bid \$40.



213).Pep Boys Motor Oil. 11.5 x 8.5 x 5.5" unusual, early, tin litho 2 gallon product tin for Pep Boys Co.'s "Pure as Gold" brand (© 1933) motor oil. Tin is clean, bright and exceptionally nice (a very strong C. 8++), w/ minor background wear. Min. bid \$50.



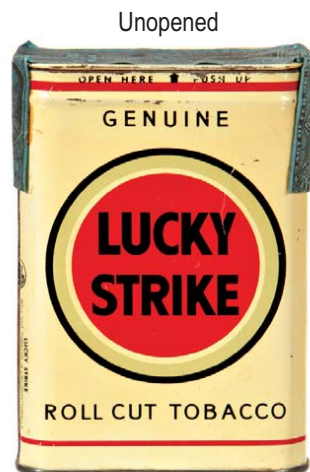
214).Brown's Bread Sign. 12.25 x 15" early tin litho die-cut sign for Brown's "Jumbo" brand bread. Clean, bright and excellent (near mint). Min. bid \$60.



215).Star Oil Can. 11-3/8 x 8.5 x 5.75" unusual, early two gallon size product can for Whiting Oil Co.'s Star brand motor oil, featuring great images of trademark car on four sides. Clean, bright and attractive overall w/ a little scattered scuffing and minor denting (front and back rate a C. 8+/-; sides rate C. 8 & 7+/-). Min. bid \$40.



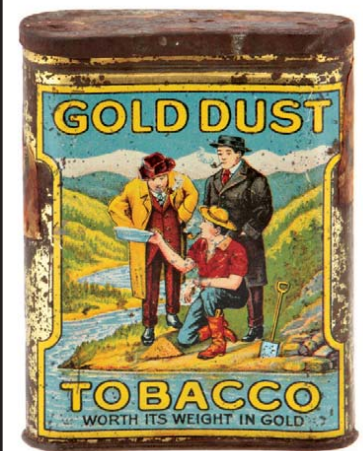
216).Goodhonest Coffee Tin. 5-5/8 x 4-3/8" early tin litho 1 lb. coffee can for Lewis De Groff Co.'s "Goodhonest" brand, w/ image of Abe on front and steaming coffee cup on back. Clean, bright and exceptionally nice (a strong 8++) w/ a little light scattered background wear. Min. bid \$60.



217).Lucky Strike Pocket Tin. 4.25 x 3 x 7/8" unusual white variation tin litho vertical tobacco tin for Lucky Strike brand. Full, sealed (never opened) tin is clean, bright and excellent in appearance (displays as like new), although close examination will reveal a few small, faint scattered scratch marks (mentioned for accuracy, nothing that's offensive or detracting). Min. bid \$50.



218).Gas Station Plate Topper. 4-5/8 x 3.5" scarce, early advertising license plate topper (bumper tag) for Subway brand gas stations. Base is metal, w/ reflective celluloid center. Nice overall condition, w/ light general wear from use (C. 7.5+/8-). Min. bid \$30.



219).Gold Dust Pocket Tin. 4 x 3 x 1" scarce, early tin litho vertical tobacco pocket tin for "Gold Dust" brand (same beautiful multi-color graphic image on both sides). Image areas are clean, bright and very attractive (a strong C. 8+/-), although there is a decent amount of the typical scattered dark oxidizing and darkening in the gold flash background around border areas and on lid. Canadian. Min. bid \$150.



220. Billiard Catalog. 7.75 x 4.25" unusual, ca. 1914 Brunswick-Balke-Collender Co. 156 pg. heavily illustrated pool hall catalog of billiard tables and equipment. Outer cover has a little tattering and water staining, and has a few torn pages at back, otherwise mostly excellent (C. 7.5). Min. bid \$40.



221. Coal Truck Desk Calendar. 3.75 x 6.5 x 1-3/8" unusual, early tin litho die-cut desk top advertising piece in image of delivery truck for early coal company, w/ raised hooks for holding calendar pad. Crisp and like new (note one digit phone number). Min. bid \$30.



222. Ribbon Tins. 2.5 x 7/8" Lot consists of three different, early tin litho typewriter tins. Includes: Red Feather, Dutchess Excellence and Empress Nylon brands. All are clean, bright and like new. Min. bid \$40 the lot.



223. National Cash Register Co. Stapler. 5 x 7 x 1-7/8" unusual, early, high quality, fancy nickel plated embossed cast iron stapler, w/ advertising for National Cash Register Co. on top push plate area ("Hotchkiss No. 1" brand, dated 1896). Excellent overall, w/ exception of some oxidizing and plating loss on the curved insert figural metal band tail section. Min. bid \$30.



224. Clover Club Square Corner. 3-3/8 x 4.5 x 2.25" scarce, very early tin litho square corner style tobacco tin for A.H. Motley Co.'s "Clover Club" brand, featuring beautifully detailed Ginn style lithography. Has strong colors and displays nicely, w/ faint crazing, a little non-offensive light soiling/darkening and a little non-offensive light scattered wear (C. 8+/-). Min. bid \$50.



225. Pipe Pipes Tip Tray. 4.25" (dia.) scarce, early tin litho advertising tip tray from the Standard Vitrified Conduit Co., featuring attractive, nicely detailed graphic images of Co.'s clay conduit pipes. Excellent (near mint). Min. bid \$40.



226. Green Turtle Tobacco Pack. 4.5 x 3 x 1-1/8" unusual, early, soft-pack style tobacco package for Lorillard Co.'s "Green Turtle" brand tobacco, featuring great images on both sides. Full, sealed, never opened package is clean and excellent (a strong C. 8+). Min. bid \$40.



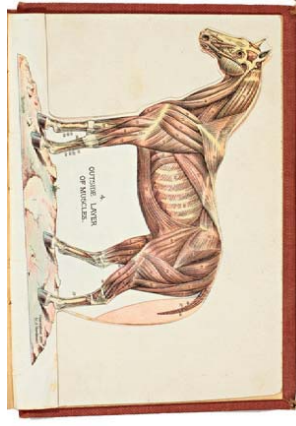
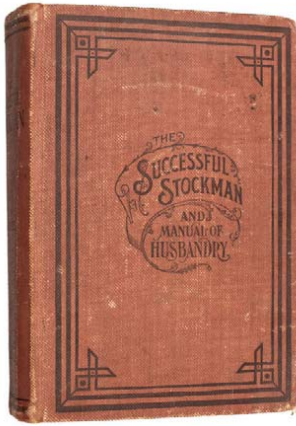
227. Red Turkey Spice Tin. 3.75 x 2.25 x 1.25" early tin litho 2 oz. spice tin (turmeric) for Red Turkey brand (Maltby Co., Corning, NY) w/ nice graphic image of trademark bird. Has strong colors and displays nicely, w/ some non-offensive wear on backside (front C. 8.5+/-; back C. 8-). Min. bid \$30.



228. Buckingham Sample Pack. 3 x 2.25 x 1" unusual, early, small soft-pack style "Sample" tobacco pack for Buckingham brand. Full, sealed, never opened pack (1909 tax stamp) is quite nice overall, w/ a little typical minor lead foil loss at top and bottom edges and a little light scattered paper loss at outer edges of label (C. 8/-). Min. bid \$30.



229. Rex Brake Wafers Tin. 2-1/8 x 1.25" unusual, small tin litho product can for Rex brand auto brakes, w/ great graphic image of man changing brake pads on car. Excellent, w/ a little minor wear (C. 8+/-). Min. bid \$40.



230).Veterinary Book. 9-1/8 x 6.5 x 2.25" large, early 636 pg. hardcover illustrated book (© 1899) titled "The Successful Stockman" filled w/ detailed chapters of info for the management and treatment of diseases of various farm animals. Has several detailed sections inside featuring die-cut animals showing beautiful multi-color cut-away images and sections showing bones, muscles, etc. Excellent overall. Min. bid \$20.



231).Motoring Ad. 11 x 17" (5.5 x 11" image) early paper litho advertisement for a Barton, Vt. service station, featuring ca. 1918 WWI patriotic image of girls in early car awaiting returning soldiers. Image is excellent, w/ some non-offensive light soiling and tattering wear at outer advertising mat board area (note: originally probably had calendar pad at bottom of matting section). Min. bid \$30.



232).Heinz Vinegar Jug. 7.25 x 4.25" (dia.) small, early stoneware jug for Heinz Co. vinegar. Stoneware jug is excellent, labels are attractive and display nicely, w/ some even light toning and small stain area on top round label (labels C. 7.5+/8-). Min. bid \$50.



233).Long Tom Tobacco Pouch. 4.75 x 1.25" (dia.) scarce, early paper label cloth tobacco pouch for Bagley & Co.'s "Long Tom" brand tobacco w/ beautiful multi-color label. Full, sealed, never opened pack is clean, bright and excellent (C. 8.5+/+), w/ exception of small paper loss/chip spot at bottom edge (1926 tax stamp). Min. bid \$40.



234).Guy Fawkes Match Holder. 5 x 3.5 x 2" unusual, early figural metal match holder in likeness of Guy Fawkes seated on gunpowder keg (body is hinged at center to reveal match storage area inside). Nicely detailed, w/ some oxidizing and wear on surface (note: Guy Fawkes was famous hanged English Catholic who plotted the failed gunpowder plot of 1605 to blow up King James I and return England to Catholicism). Min. bid \$40.

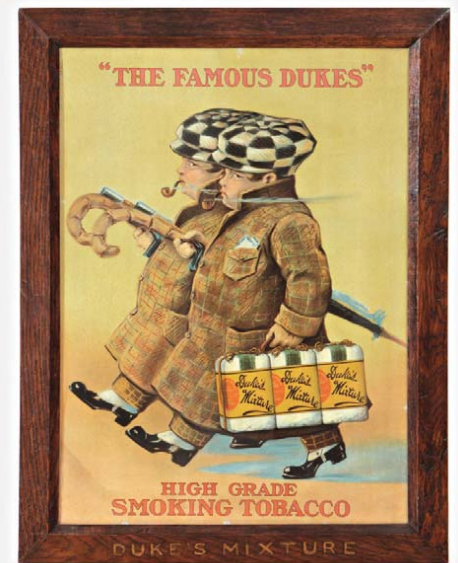


235).Visit of Santa Claus Game. 19-5/8 x 10.5 x 1" large, very early McLoughlin Bros. game featuring beautiful multi-color lithography on lid and inside playing board. Lid is clean and excellent in appearance (a strong 8+/+) w/ section of missing apron at bottom edge. Inside like new and includes some of the playing pieces. Min. bid \$50.



Salesman
Sample
Stove

236).Salesman's Sample Stove. 21.5 x 10.5 x 14" (actual stove itself is 12 x 12 x 8") unusual, large, very early salesman's sample piece for Jemco brand stoves. Powerful and impressive looking piece (steel, cast iron and chrome plated metal) is very high quality, w/ excellent detailing and very attractive surface patina, w/ some scratching on separate metal base piece. Min. bid \$100.



237).Duke's Mixture. 26.75 x 20.5 (22-5/8 x 16-5/8") early paper litho (cardboard?) sign for Duke's Mixture tobacco, featuring great image of Co.'s trademark kids. Sign is clean, bright and quite attractive in appearance (displays a strong C. 8+/+), although close examination will reveal a little very minor background wear and faint water staining area in bottom left background area (nothing offensive or detracting). Complete in original marked frame (note: frame appears re-varnished). Min. bid \$100.



238).Possum Cigar Tin. 5 x 5" scarce, yellow variation, early tin litho 50 count cigar can for Possum brand, featuring beautiful graphic image of trademark critter on both sides. Clean and very attractive appearance, w/ a little light scuffing and wear along bottom edge (C. 8+/-). Min. bid \$50.



239).Landon Bumper Tag. 5 x 5.5" early tin litho license plate attachment for 1936 Republican candidate Alf Landon. Crisp, bright and like new (basically near mint) w/ exception of light wear at top right and bottom left outer edges (not detracting). Min. bid \$30.



240).Quick Oil Additive Tin. 4 x 3-3/8" unusual, early 1 pint size tin litho product can for Dri-Powr Co. (Azusa, Ca.) oil additive product, w/ neat motoring images all around. Full sealed can is clean, bright and excellent (C. 8.5+/-). Min. bid \$30 ea. Have two (winning bidder can take one or both).



241).Dead Shot Gunpowder Tin. 4 x 3.5 x 1.25" very early tin litho gunpowder can from American Powder Mills, Boston, featuring nicely detailed image of hunter and bird dog (same image both sides). Clean and very attractive appearance (a strong C. 8+/-), w/ a little non-offensive crazing and light scattered wear. Min. bid \$50.



242).Forest and Stream Tobacco Tin. 5-3/8 x 4" (dia.) early, tin litho tobacco canister for Forest and Stream brand, featuring wonderful color graphic trout fishing scene (same image both sides). Clean, bright and very attractive (a very strong C. 8+++) w/ exception of the typical non-offensive oxidized darkening to gold flash finish on lid. Min. bid \$50.



243).Hood's Sarsaparilla Calendar. 7 x 4.5" early advertising calendar for Hood's Sarsaparilla quack medicine. Calendar is clean, bright and like new, complete w/ full calendar pad. Min. bid \$40.

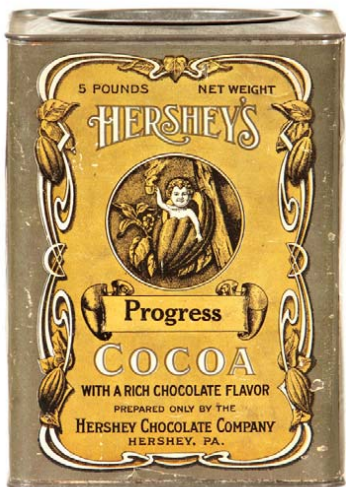


244).Sand Pail Lot. Unusual, early tin litho children's seashore sand pail set. Includes unusual small (2.75" h) pre-war Japanese sand pail by Ichi w/ kewpie like character riding sea turtle images; as well as figural tin fish shaped water sprinkler; a metal sifter and small wooden handled shovel. Crisp and like new, as found never used still in its original string netting. Min. bid \$40 (the set).

Moxie Shaving Mug



245).Moxie Shaving Mug. 3.5 x 3-5/8" unusual, early, heavy, fine china occupational "Moxie" shaving mug, w/ nice decorative design pattern (probably for Moxie employee). Excellent, w/ minor wear to gold trim. Min. bid \$50.



246).Hershey's Cocoa Tin. 8.25 x 6.25 x 6.25" very early, 5 lb. size pry-lid paper label (over tin) product can for Hershey cocoa, featuring wonderful graphic image of companies early logo. Clean and very attractive (a strong 8+/-) w/ minor scattered background wear. Min. bid \$50.

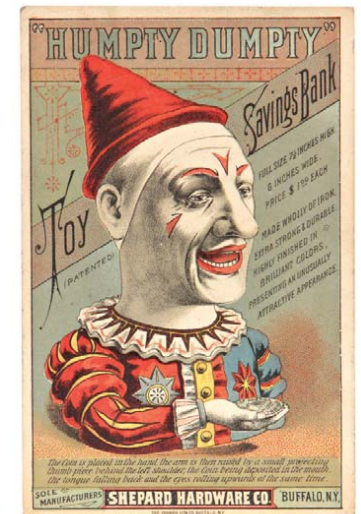


247).Whiz Auto Polish. 10-3/8 x 6.5" very early, 1 gallon size tin litho product can for Whiz brand metal polish, featuring great image of early auto. Hand soldered can has strong colors and displays quite well (C. 7.5+/-) although there are some soiled drip stains, dark spots and soiling scattered about surface (as found, will probably improve w/ cleaning). Min. bid \$40.



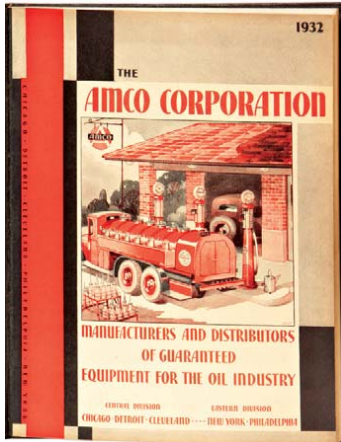
248).Cardinal Pocket Tin. 4.5 x 3 x 7/8" scarce, early, tall variation tin litho tobacco pocket tin for Myers Cox Co.'s "Cardinal" brand w/ beautiful multi-color graphics. Clean, bright and attractive appearance (displays as a strong C. 8+/-), although close examination will reveal a very faint scratch mark and some typical, light scattered darkening/oxidizing speckling and spotting in gold flash background areas (critical grade C. 8/-). Displays very well! Min. bid \$70.

Mechanical Bank Card



249).Mechanical Bank Tradecard. 5.5 x 3.5" scarce, early manufacturers advertising tradecard for Shepard Hardware Co.'s "Humpty Dumpty" mechanical bank. Very nice condition, w/ trace hint of very minor age toning. Min. bid \$50.

1932 AMCO Oil Co. Catalog



250).Amco Gas Station Catalog. 11.25 x 8.75" unusual, early 137 pg. fully illustrated high quality 1932 Amco Co. catalog, featuring everything needed for outfitting an Amco / Cities Service brand service station. Has hard covered textured protective binding (also includes 48 pg. price booklet). Excellent. Min. bid \$40.

251).Medicine Bottle. 8.25 x 3.75" full, sealed, medicine bottle for Magnesia Spumante (bromo seltzer type product). Embossed foil sealed lid w/ beautiful multi-color graphic label on cobalt blue jar. Full and like new (as found still in its original protective wrapper). Min. bid \$40.



252).Welch's Sign. 21 x 13.5" early, cardboard, easel-back stand-up sign for Welch's Grape Juice featuring nice multi-color image by illustrator Cushman Parker. Clean, bright and appears never used (near mint), w/ exception of a little very minor wear at very outer edge. Min. bid \$50.

"Hair" Tobacco Packs

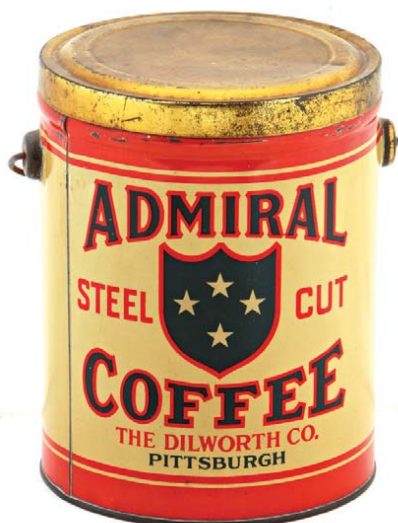


253). "Hair" Tobacco Packs. Lot consists of three full, unopened early Leidersdorf Co. soft pack style tobacco packages. Includes Co.'s "Nigger Hair" brand (near mint); and two different "Bigger Hair" brand packages (successor to Co.'s "Nigger Hair" brand) 1-3/4 and 1-3/8 oz. sizes [both have a little light general soiling, wrinkling and storage wear, but overall are in very nice condition and display well (C. 7.5++/8)] Min. bid \$40 (the lot).

Veterinary



256).Folky Vet Sign. 36.25 x 12-1/8" scarce, very early, primitive painted metal veterinary remedies sign from Carswell Druggist (Gorham, Maine). All original and as found, w/ a nice rich surface patina, although there are some spots of weathering/ surface wear in outer right background areas. Tough to grade but 7+ overall seems about right (displays much better than this would imply and might improve some w/ cleaning- minor background restoration could improve to a strong C. 8++ appearance). Min. bid \$50.



254).Admiral Coffee Pail. 8 x 6.25" scarce, early, tin litho 3 lb. coffee pail for Admiral brand (Dillworth Co., Pittsburgh). Tin is clean, bright and very attractive in appearance, w/ some chipping and background staining on backside (front C. 8.5++; back C. 8-). Min. bid \$40.



255).Blue Jay Oats Box. 9-5/8 x 5-3/8" early 3 lb. sizecardboard oats box for Blue Jay brand, featuring beautiful multi-color graphic images of trademark bird (same image both sides). A clean, bright, very nice example w/ a little non-detracting, very minor toning/staining in background area (front C. 8.5+; back C. 8++). Min. bid \$50.



257).Typewriter Ribbon Tins. Lot consists of three early tin litho typewriter ribbon tins, including Crest, Liberty, and Old Hickory. All are clean and excellent (C. 8.5/+). Min. bid \$50 the lot.

Complete Set Insert Cards



258).Arm & Hammer Insert Cards. Lot consists of a complete set of 60, 2-7/8 x 1-7/8" ca. 1920's Arm & Hammer insert cards from Co.'s "Beautiful Birds J-2 Series". Cards are crisp, bright and like new. Min. bid \$40.

Candy Company Sand Pails



259).Candy Co. Sand Pails. Lot consists of two different, small, early tin litho children's sand pails, both from different candy Co.'s (ea. app. 4.5 x 3-3/8" dia.). Includes "Lifeguard" and "Beach" brand candy lollipops. Both are quite decent and display nicely (C. 8/+), w/ exception of some wear to inside of each (critical grade C. 8-). Min. bid \$40 (the pair).



260).Sinclair Sign. 6" (dia.) small, early porcelain service station sign for Sinclair brand motor oils. Crisp, bright and like new as found never used still in original protective paper. Min. bid \$40 each (have 2, winning bidder can take one or both).

First Year of Issue



261).First Year Duck Stamp. 1-7/16 x 1-7/8" scarce and very desirable, 1934 \$1.00 US duck hunting stamp issued by U.S. Department of Agriculture. Note: this 1934 stamp was the first year that stamps were issued and required for duck hunting. This unused (unsigned, non-cancelled) stamp is excellent overall, as found in a stamp collectors album (unlicked glue on backside still present, w/ collector hinge still attached). Min. bid \$50.



262).Baking Powder Tins. Lot consists of three full, sealed (never opened), early paper label over tin banking powder cans, ranging in size from 4.25 x 2" to 5 x 2.5". Includes: Star, Parrot and Monkey; and Good Luck brands. They are all clean and excellent in appearance, w/ minor background toning/staining on the two shorter tins. Min. bid \$50 (the lot).



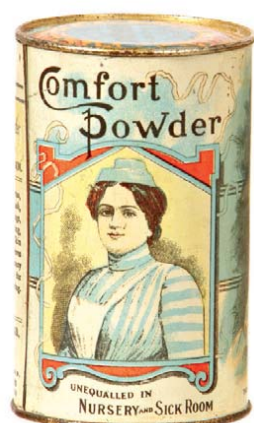
263).Dr. Pepper Sign. 10" (dia.) early, very attractive, aluminum advertising sign for Dr. Pepper soda. Outstanding sign is crisp, bright, like new and appears never used (near mint). Lee-See Art Sign Co. Min. bid \$60.



264).Esterbrook Pens Match Scratchers. (4-3/8 x 2-7/8 and 5-3/8 x 3-7/8") lot consists of two very early advertising cardboard litho match scratchers for Esterbrook brand pens on heavy card stock. Both are clean, bright and excellent (basically like new), w/ minor edge wear on smaller one. Min. bid \$30.



265).Birch-o Soda Sign. 24 x 16" early tin over cardboard beveled edge soda pop sign, w/ blackboard area at bottom for chalk writing. Clean, bright and excellent (appears never used) w/ only minor storage wear. Min. bid \$40.



266).Comfort Talc Tin. 4 x 2.5" (dia.) very early Comfort brand medicated skin powder tin litho product can featuring beautiful multi color lithography. Clean and excellent appearance (a strong C. 8++), w/ minor scattered wear (backside pictures baby). Min. bid \$40.



267).Squirrel Peanut Butter Tin. 4.75 x 5-1/8" early tin litho 48 oz. size pry-lid peanut butter can for Squirrel brand (Canada Nut Co., Vancouver), featuring attractive image of Co.'s trademark squirrel. Clean, bright and excellent (C. 8.5). Min. bid \$40.



268).Toyland Peanut Butter Pail. 3.75 x 3.5" early tin litho 1 lb. pry-lid peanut butter pail for Pond Co.'s "Toyland" brand, featuring highly graphic circus parade images all around. Clean, bright and exceptionally nice (C. 8.5/+), w/ only very minor wear. Min. bid \$50.



Rd #2, Cobb Hill Road, Cazenovia, NY 13035 • 24 Hr. Tel: (315) 662-7625 • 24 Hr. Fax: (315) 662-3570 • morf2bid@aol.com • morfauction.com

Welcome to our 73rd auction of quality antique advertising and fine collectibles. Everything we sell is guaranteed authentic and as described. We attempt to grade condition both fairly and conservatively, using a scale of 1-10 on the advertising items (ten being absolutely mint). We do not list reproductions, re-issues, deceptively restored or pieced together type merchandise. Flaws and blemishes are prominently noted and over emphasized. We encourage you to call for a detailed description on any item you have an interest in, but respectfully must request that you do this before the closing night. Dimensions are listed by height, then width, and are only approximate (+ or - a quarter inch).

Bidding

Bids are accepted only from those parties who have registered with us to bid. (If you were mailed this catalogue by us you are automatically pre-registered.) Your bid is a legal contract to purchase and once entered, cannot be canceled. Placement of a bid indicates acceptance of our terms.

On all "BID" items there is a 10% buyers premium added to each successful bid. You're welcome to bid by mail, email and fax anytime after receiving this catalog. **We will begin accepting phone bids on Wednesday, November 30th, 2011. We will be taking calls on Wednesday and Thursday from 10:00 AM until 5:00 PM.** If no one answers when you call, please leave a message on our machine and we will get back to you. **If bidding by mail or fax, please remember to include your telephone number with your bids!** You may call or bid as often as you like. We will tell you the current bid on any item(s) you are interested in. To raise a bid, your advance must be at least \$10 more than the current high bid amount. When an item reaches \$250, bidding increments rise to \$25, at \$1,000, bidding increments advance in \$50 steps, and above \$2,000 in \$100 increments. We suggest not waiting until the last minute to begin your bidding, as its quite possible you won't be able to get through.

Web Page and Bid Updates

We will begin posting current bid prices (not including the buyers premium) on Wednesday, November 30th, 2011 (including an addendum of additional catalogue lot information) on our internet web page. These prices will be updated once each day (each evening sometime after 9:00 PM, EST) and will get updated to include the final hammer prices on Sunday afternoon once the sale is concluded. On the closing night, we will attempt to update current bid prices every hour. Our web page address for this sale is: <http://www.morfauction.com> We suggest that once you get to it, that you bookmark this address for easy re-access. There is also an addendum section on our website where we post additional information and photo's for this sale.

Reserves and Estimates

All items which receive an opening bid in our sale will be sold to the highest bidder regardless of the price realized (we reserve the right to withdraw items in the event of inaccurate catalog descriptions and to reject any bid we feel is not made in good faith). **We run our auctions with a strict policy of no buy-backs, no auctioneer games and no hidden reserves.** Unlike some of our competitors, we do NOT allow consignors to bid up their own items!

Mechanical Operations

Early mechanical and electric motors and mechanisms on machines toys, coin-ops, clocks, etc. are quite often temperamental and very unpredictable in nature. Although these mechanisms may be working fine at the time of sale, we make no guarantees or representations regarding their continued operating status once they have left our premises (including during shipping).

Closing Night

THE LAST DAY FOR BIDDING WILL BE ON FRIDAY, DECEMBER 2nd, 2011. On closing day, we begin taking calls at 5:00 PM. Please mark your calendar now. On the closing night (ONLY), we will also be taking calls at (315) 662-3318, (315) 662-3429 and (315) 662-3904 after 5:00 PM (in addition to our regular (315) 662-7625 office number). **Closing Time: This Auction will close at 10:00 PM (EST) on Friday, December 2nd, 2011.** At that time, no more incoming calls will be accepted and all lots with a registered bid of less than \$300, as well as all items without call backs registered on them will be officially closed and final. The items at \$300 and over that have call back protection registered on them will be closed out during our call back period the following afternoon (**see important call back rules below**). We reserve the right to change the official closing in the event of unforeseen family type emergencies or technological failures (utility disruptions, etc.). We also reserve the right to either extend the bidding, to postpone or to cancel this auction in the event of a national emergency or if the Internet or the services of the US Post Office were to get seriously disrupted during our catalogue mailing or bidding period.

"Up-To" Bids & Call Backs

CEILING BIDS: We will be happy to enter competitive "up to" ceiling bids for you on any lots you request. Beginning at your minimum amount, we will advance these bid(s) up to your left ceiling amount, if (and only if) it is topped by another bidder. "Up To" bids will be handled discretely and executed in a completely competitive manner for you. Please note that we don't accept open ended "top all others" ceiling type bids.

CALL BACKS: You may request call back protection for any lot(s) that you enter with either a minimum or a protected "up-to" ceiling bid in an amount of at least \$300. This request must be registered with us before the official 10:00 PM closing hour of Friday, December 2nd, 2011. All callbacks will be placed by us on Saturday, December 3rd, 2011, beginning at 12:00 noon (EST) and will continue that afternoon until each of the individual lots have been closed out (using past experience, I would expect this to be finished by 6:00 PM, if not earlier). If you register for call-backs, it is your responsibility to be available during this call back time period. We make every effort to honor all our call back requests, but this service is done solely as a convenience to our bidders and will be performed on a best efforts basis only. If you will be traveling or if you will not be available during call back times at your primary number, be sure you provide us with proper alternate or back up numbers for reaching you!

Payment Terms

Winning bidders will be invoiced by mail immediately after the sale. Those who desire fast shipment can pay by Money Order or Cashiers Check. Payments are due within 10 days of receipt of invoice. We reserve the right to offer the item out to our back bidders and deny future bidding privileges to those who do not pay in a timely manner. In addition to personal checks, we also accept payment on your American Express, Visa, Master Card, Discover and Optima Credit Cards (with no surcharge added). No COD's or Collect calls are ever accepted. Items shipped to anywhere in New York State must include appropriate sales tax or signed resale certificate.

Shipping

All packing and shipping charges are extra. We do most of our own packing and shipping and try to keep these charges as reasonable as possible for you. On especially fragile and larger hard to pack items, we hire the services of professional packers and charge you at our billed cost. We ship mostly through the Post Office and Fedex Ground, (Fedex Overnight available at an extra charge.)

Subscribing, Prices Realized, Consignments & Upcoming Events

Future catalogs can be assured by sending \$20 for a full 12 months subscription. (Prices are published on our website after each sale) An automatic credit card ordering program is available. We currently run between 3-5 auctions a year (versus our previous format of running semi-annual sales). This format allows us to run smaller, more focused sales featuring larger, higher quality catalog images and gives our consignors the opportunity for a quicker turn-around of their items. In addition to our regular sales, we also occasionally offer sales made up entirely from single owner collections. Please contact us should you have items you would like us to consider for inclusion in our upcoming events. All inquiries are handled in a completely confidential manner. Our services are also available for the private placement marketing of important individual items, marketing plans for large collections as well as for estate planning and settlement purposes. Back copies of many of our previous auction catalogs are still available at \$5 each (w/ prices realized) w/ quantity discounts available if multiple issues are ordered. For further information, please call, e-mail or write.

Photography by Wes Feuz.

© Copyright 2011. All Rights Reserved. No portion of this publication may be copied in any form without the express written permission of Morford's.

Important Closing Night Information

In addition to our regular **(315) 662-7625** office number,
on the closing night (only!) you may also call us at:

(315) 662-3318*
(after 5:00 PM)
(315) 662-3904*
(after 5:00 PM)
(315) 662-3429*
(after 5:00 PM)



***These numbers for
Closing night only!
Friday, December 2nd, 2011**

Bidding closes at 10:00 PM on closing night. We will be accepting faxes and e-mails on closing night. Our web page will update current high bid prices approximately every hour on closing night and will also list any important addendum information. **All call backs will be made on Saturday, December 3rd, 2011, beginning at 12 o'clock Noon!**