



**WM Morford**  
Investment Grade Collectibles at Auction

## Choice Selections from the Challenger Collection

Rd #2, Cobb Hill Road, Cazenovia, NY 13035 • 24 Hr. Tel: (315) 662-7625 • 24 Hr. Fax: (315) 662-3570 • morf2bid@aol.com • morfauction.com

**Bidding closes Friday, March 23rd, 2012. (See page 36 for Terms & Conditions)**



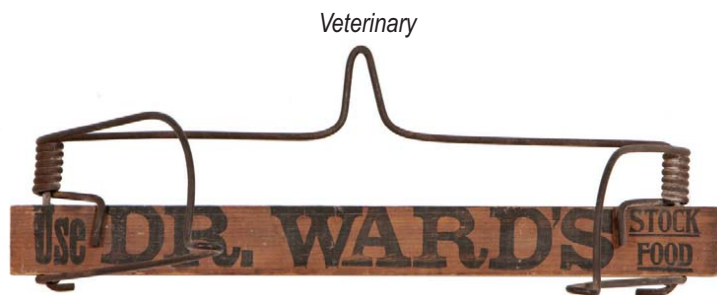
1). **North Dakota Pocket Mirror.** 2.75 x 1.75" unusual, early celluloid agricultural theme pocket mirror, w/ name and address of States agricultural commissioner. Front is excellent, backside has some faint foxing and wear on side edge (very faint and barely visible except under magnification). Min. bid \$40.



2). **Moxie Pins.** Lot consists of two, early die-cut tin litho advertising pins for Moxie, complete w/early Moxie Co. mailing box. Both appear never used and are clean, bright and excellent overall, w/ minor storage wear and slight, typical very minor bends (girl 2 x 1-7/8"; man 1-1/8 x 3/4"). Min. bid \$40 (the pair).



3). **Battle Royal Tobacco Tin.** 2.75 x 4-5/8 x 2.75" early, horizontal tobacco tin for United States Tobacco Co.'s "Battle Royal" brand, featuring beautiful detailed graphics (by Hasker & Marcuse). Clean, bright and exceptionally nice appearance (lid displays as a strong C. 8+), w/a little light scattered chipping wear to rope design on raised lip area and at very outer bottom edge of lid (critical overall grade C. 8/-). Min. bid \$50.



4). **Veterinary Wall Rack.** Great, early, wood and metal wall rack for Dr. Ward's veterinary Stock Food product (made for holding feed sack style product bag). All original, w/ a real nice surface patina, giving it a great primitive, country look (C. 8). Wood section measures 1.5 x 15 x 3/4". Min. bid \$40.



5). **Bee Soap Sign.** 9.25 x 19.5" early, very attractive tin litho sign for Octagon and Bee brand soap products. Clean, bright and appears never used (basically like new, w/ exception of a small crease mark/light litho loss spot in outer left margin area (would be easily hidden if framed). Min. bid \$60.



6). **Sheboygan Tray.** 12" (dia.) x 1.25" early, tin litho serving tray for Sheboygan brand mineral water and ginger ale, featuring great graphic image of American Indian and black waiters. Clean, bright and excellent (a strong C. 8++) w/ exception of non-offensive light indent mark @ 8 o'clock on side rim area. Min. bid \$50.



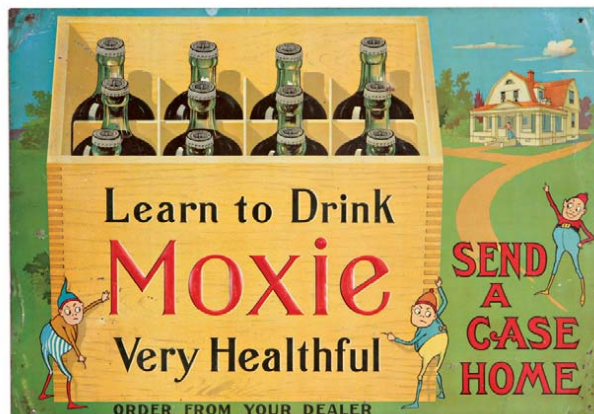
7). **Peter's Candy Jar.** 13.25 x 7" (dia.) early, high quality, heavy glass candy store display jar w/ ground stopper and a thick, enameled label on front advertising Peter's brand chocolates. Excellent overall, w/ only minor wear. Min. bid \$70.



8). **Moxie Die-Cut Display.** 5-7/8 x 6" (dia.) early, tin litho countertop display, features die-cut figure of Frank Archer at back, attached to 6" Moxie change tray at base. Clean, bright and excellent appearance (a very strong C. 8++), w/ only slight wear (trace bit of minor chipping and a few flyspecks at outer edges of tray). Min. bid \$70.



9).Magnus Beck Beer Tray. 12.25 x 17.25" early tin litho advertising tray for Magnus Beck Brewing Co. (Buffalo, NY) featuring beautiful multi-color lithography. Field area of tray is clean, bright and displays extremely well (as a strong C. 8++) w/ a little non detracting faint crazing (has some scattered edge wear and possible slight traces of touch-up at outer black edges of rim). Min. bid \$70.



10).Moxie Sign. 13-7/8 x 19-7/8" scarce, early, very attractive, embossed tin litho sign for Moxie, featuring nice image of product case, Brownie characters, etc. Impressive looking piece is clean, bright and displays very well (basically displays as a nice C. 8+), although there is some light bending and wear- mostly confined to corner edges- nothing really offensive or that takes away from great overall look of piece (critical grade C. 7.5++). Min. bid \$90.



11).Moxie Die-Cut. 6.25 x 5" outstanding, small, early embossed cardboard easel-back die-cut stand-up sign for Moxie, featuring wonderful image of Victorian girl holding fan ("It Feeds the Nerves" notation). Clean, bright and exceptionally nice (displays as near mint) w/ just a trace hint of wear at outer edges of embossed leaves (critical grade C. 8.5++). Min. bid \$50.



12).Basket Ball Gum Machine. 13.5 x 9.25 x 6.75" unusual, early, countertop coin operated (1¢) trade stimulator/gumball machine (gumball gets shot at basketball hoop). Metal body, w/ glass front. Displays nicely, w/ a little light expected wear from use (C. 8-), complete w/ working key (penny stuck in coin slot). Min. bid \$40.



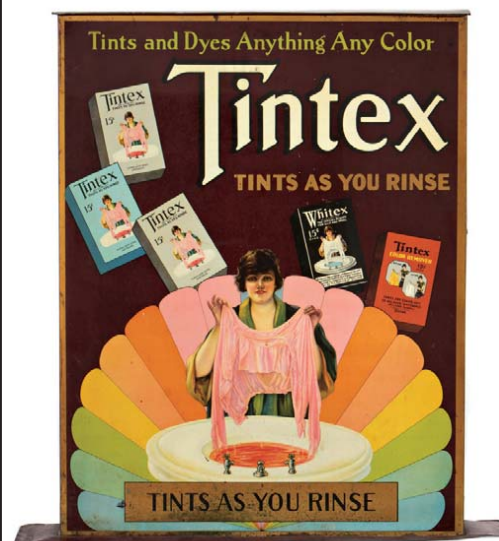
13).Coca-Cola Sign. 24" (dia.) ca. 1950's, unusual white background variation metal "button" style Coke sign w/ a nice, rich, heavy paint surface giving it a porcelain like appearance. Clean, bright and very attractive (displays as a strong C. 8++), w/ some typical light stress lines, light soiling and a little light scattered wear in the outer curved border areas (bottle and field section is crisp, bright and like new). Min. bid \$70.



14).Snider's Catsup Sign. 16.75 x 11-3/8" early, embossed tin litho sign for Snider's brand catsup. Clean, bright and attractive appearance (displays on wall as strong C. 8+) although close examination will show a few light scratches and a little non-offensive light scattered wear (including break mark at left middle hanging hole, a little minor light oxidizing in outer middle left area, and outer grey border area was professionally re-painted long ago). Min. bid \$70.



15).Hires Die-Cut. 13.75 x 8" scarce, early die-cut window sign for Hires Rootbeer, featuring Co.'s trademark kid holding mug. Never used, transfer, decal type translucent sign was made to apply to inside of window. Has strong colors and displays nicely (C. 8+/-), w/ some light scattered storage wear and typical slight haziness on surface (complete w/ original paper backing). Would look great framed (critical grade C. 7.5/+). Min. bid \$50.



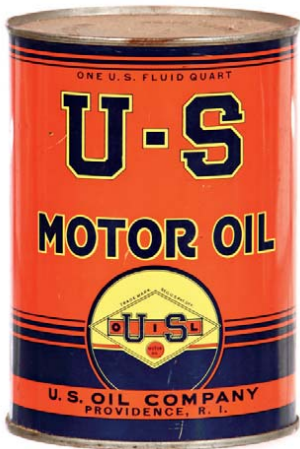
16).Tintex Dyes Cabinet. 23-1/8 x 21.75 x 7-3/8" large, early tin litho store display case for Tintex brand dyes, featuring beautiful, multi-color lithography on front and sides, w/ racks on backside for holding product packages. Clean, bright and very attractive in appearance (basically a strong C. 8++ appearance), w/ a little light scattered soiling and wear (critical grade C. 8+/-). Min. bid \$80.



17) Miller Brewing Tray. 11-7/8" (dia.) early tin litho advertising beer tray for Fred Miller Brewing Co., Milwaukee, Wisc. featuring beautiful multi-color lithography (by Meek & Beach Co.). Clean, bright and very attractive (a strong C. 8++), w/ a little light edge wear. Min. bid \$70.



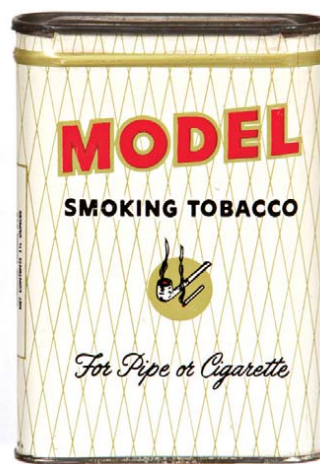
18) Shaving Brush Sign. 9-3/8 x 27-3/8" important, large, early die-cut tin litho chain hung sign for "Rubberset" brand shaving brushes (NY Metal Ceiling Co. lithographers). A powerful and impressive looking piece that is clean, bright and displays very nicely (as a strong C. 8+), although close examination will reveal some faint, minor waving bends and a little light soiling, minor oxidizing and wear- which basically blends in and is nothing at all offensive or that detracts from great overall look of piece (critical grade C. 7.5+/8-). Min. bid \$250.



19) U-S Motor Oil Tin. 5.5 x 4" (dia.) full, unopened, early crimp seam, tin litho 1 quart oil can for U-S brand motor oil (U.S. Oil Co., Providence, RI). Clean, bright and very attractive (basically displays as a strong C. 8), w/ some minor scattered background wear and slight dent mark, w/ a little light soiling on lid (critical grade C. 8/). Min. bid \$20.



20) Woolnough Pocket Mirror. 2.75 x 1.75" unusual, early celluloid advertising pocket mirror from Woolnough Co. (Toronto, Canada women's fashions Co.), featuring beautifully detailed color graphics. Clean, bright and excellent. Min. bid \$40.



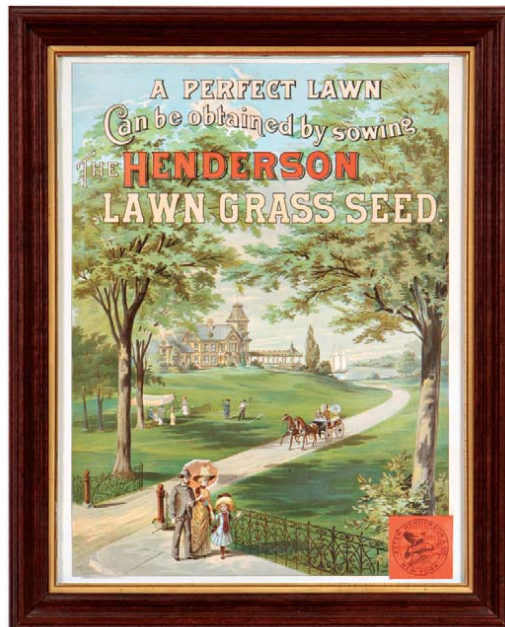
21) White Model Pocket Tin. 4.25 x 3 x 1" elusive, white variation tin litho vertical tobacco pocket tin for United States Tobacco Co.'s "Model" brand tobacco. Clean, bright and excellent (C. 8.5+/), w/ exception of some darkening and general wear to gold flash finish of lid. Min. bid \$40.



22) Velvet Sample Pouch. 2-7/8 x 2 x 1" scarce, early, cloth string tie "Free Sample" Velvet brand tobacco bag. Full, never opened bag is clean and excellent (near mint, w/ exception of minor chipping wear at top edge of backside). Series 1902 tax stamp. Min. bid \$30.



23) 1947 Coke Calendar. 22 x 13" complete and all original, 6 pg. 1947 Coca-Cola calendar featuring different graphic calendar girl illustrations on each of its bi-monthly pages (each worthy of framing individually). Outer cover illustration page has a little non-offensive, faint age toning along the right edge and some faint foxing speckles at bottom edges of outer border area, but overall is clean, bright and displays nicely (C. 8+/); other months pgs. are very good to excellent (C. 8++). Min. bid \$50.



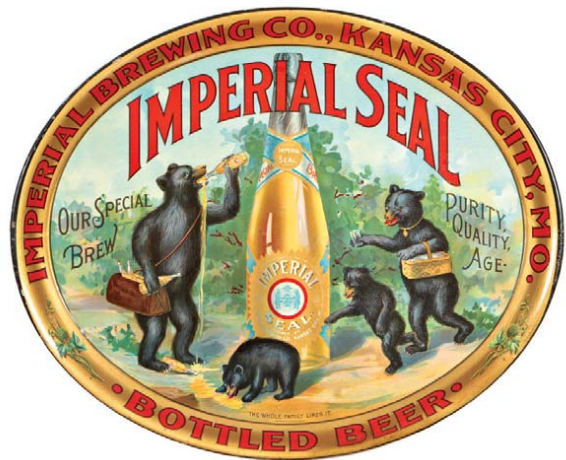
24) Henderson Lawn Seeds Sign. 22.5 x 18.25" (19 x 14.5" visible) outstanding, very early paper litho sign for Henderson Co.'s lawn grass seeds, featuring wonderful detailed color graphics (note details of lawn tennis game, boating scene, etc.). Clean, bright and exceptionally nice (C. 8.5+/). Min. bid \$100.



25) Ice Cream Sign. 24.5 x 16.75" large, early, die-cut cardboard, easel- back stand-up sign for Westerly Ice Cream Co. featuring great image of well-dressed couple in early ice cream parlor. Clean, bright and excellent overall (C. 8++) w/ exception of some soiling and surface wear to edges at bottom corners. Min. bid \$50.



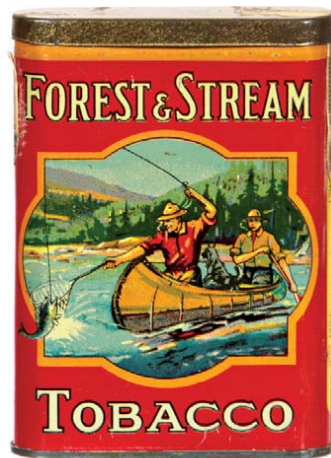
26).Oxydol Sign. 8-78 x 10-1/8" early, 2-sided, die-cut cardboard ceiling hanger sign featuring nice image of Co.'s trademark black Mammy pointing at product box. Clean, bright and excellent overall (C. 8.5/+). Min. bid \$60.



27).Imperial Seal Beer Tray. 13-3/8 x 16.25" scarce, early tin litho beer tray from Imperial Seal Brewing Co. (Kansas City, Mo.), w/ beautiful multi-color lithography featuring outrageous image of bears drinking beer. Clean, bright and displays extremely well (as a C. 8.5/+) although examination under black light will reveal a little, very well-done professional restoration. Min. bid \$100.



28).National Paint Co. Pin Tray. 4.5 x 3-1/8" unusual, fancy aluminum advertising tip or pin tray featuring great image of Uncle Sam painting battle ship "The Paint Uncle Sam Uses". Excellent (C. 8.5/+) Min. bid \$40.



29).Forest & Stream Pocket Tin. 4.25 x 3 x 7/8" early tin litho vertical tobacco pocket tin featuring beautiful multi-color graphics of fishermen in canoe (same image both sides). Clean, bright and very attractive appearance, w/ only very minor wear and a slight dent mark (a very strong C. 8++). Min. bid \$50.



30).Wet or Dry Pocket Mirror. 2.75 x 1.75" unusual, early celluloid pocket mirror w/ beautiful color graphic image of child being pulled by ear and getting beaten for wetting. Clean, bright and like new appearance (examination under magnification will reveal a non-detracting, very minor mfg. blemish mark at very upper corner edge- so minor barely merits mention). Min. bid \$40.



31).Gem Heaters Bank. 4.75 x 3.5 x 3-1/8" early, figural cast iron bank for Gem brand furnaces, in shape of Co.'s heater, has embossed advertising on both sides, w/ a clean, very attractive surface patina (C. 8/+). Min. bid \$40.

#### Toothbrush Holder



32).Toothbrush Holder. 6-1/8 x 2-7/8" early, die-cut tin litho toothbrush holder advertising Listerine brand prophylactic toothbrushes, in likeness of the Skeeze cartoon character. Excellent (C. 8.5+). Min. bid \$50.



33).Soda Fountain Fan. 14.5 x 8-5/8" ca. 1920's/30's, 2-sided cardboard advertising fan from Shady Lawn Creamery Co. (Walla Walla, Wash.) w/ different attractive color images on each side. Clean and very nice (C. 8++). Min. bid \$20.



34).Becker Spice Tin. 5.75 x 3.25" scarce, very early tin litho spice tin (pepper) from J.F. Becker Co., NY, featuring attractive, highly graphic image of headquarters building (Morgan & Cornell Co. lithography). Clean and very attractive (displays as a strong C. 8), although close examination will reveal a little bit of non-offensive light scattered wear (critical grade C. 7.5++/8-). Min. bid \$40.

#### Gum Stand



35).Dentyne Display. 7.25 x 3 x 4" early, die-cut tin litho countertop display for American Chicle Co.'s "Dentyne" brand chewing gum, made for displaying box of gum packs. Clean, bright and attractive, (a strong C. 8+), w/ small spot of original protective paper remaining in top plume area of hat. Min. bid \$40.



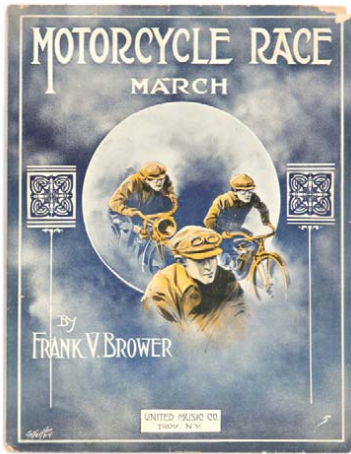
36).Bicycle Race Game. 12.75 x 21-3/8 x 1-1/8" outstanding, large, early 2-ps. boxed "Bicycle Race" game by McLoughlin Bros. (1895 copyright) featuring beautiful multi-color lithography on both cover and inside game board (C. 8.5/+) w/ faint soiling and minor wear on lid. Appears complete, w/original cards, spinners and playing pieces inside. Min. bid \$50.

Burns Plows Display



37).Burns Plows Store Display. 5.75 x 11.5 x 1.25" early cast iron, doorstop style countertop advertising display, featuring nicely detailed image of man plowing behind horses, w/incised advertising on base. Unusual variation, w/ a nicely detailed, hand painted surface (C. 8.5/+) Min. bid \$40.

Motorcycle Sheet Music



38).Motorcycle Race Sheet Music. 13.75 x 10.75" large, early (© 1915) "Motorcycle Race March" sheetmusic booklet (Frank Brower composer, United Music Co., Troy, NY) featuring attractive cover illustration. Clean and displays nicely (as a C. 8+/-), w/ exception of some paper loss and tattering/tears along top outer border edge. Min. bid \$40.



39).None Such Clock. 9.5" (dia) x 1-7/8" unusual, early advertising clock for None Such brand pie fillings, in likeness of early embossed pumpkin. Tin clock case is shaped like a pie pan (pumpkin on front is embossed cardboard). Clean and very attractive appearance w/ a great folksy country look (rates a strong C. 8++), w/ only very minor wear. This is as nice an example of this piece as I have ever seen (clock mechanism still runs). Min. bid \$70.



40).Feen-a-Mint Display. 16-1/8 x 7-5/8 x 5.5" early tin litho countertop advertising display for "Feen-a-Mint" chewing gum laxative product, w/ very attractive color graphics. Has wooden base, w/ compartments on backside for hold product boxes. Clean, bright and very attractive, w/ a little minor scattered wear (C. 8/+). Min. bid \$80.

Airlines Badges

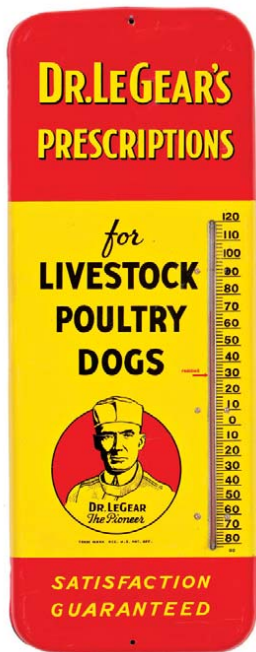


42).Pilot Badges. Lot consists of four different, early, very high quality metal pilots uniform cap badges, each w/ inlaid cloisonné enameling (sizes range from 1-3/8 x 1-1/8 to 1.75 x 2.5"). Airlines include: Eastern; Trans World (TWA); Pan American and Colonial. All are excellent. Min. bid \$20 (the lot).

St. Nick Bank



44).Santa Bank. 7-3/8 x 2 x 2" scarce, early "Save and Smile" hanging figural cast iron St. Nick still bank. Complete and excellent overall, w/ nice patina to its paint surface (C. 8/+). Min. bid \$50.



41).Veterinary Thermometer. 25-5/8 x 9.75" early tin litho advertising thermometer for Dr. LeGear's veterinary medicines. Clean, bright and excellent overall appearance (displays as a strong C. 8++) w/ a little non-detracting light scattered wear. Min. bid \$40.



43).Waterman's Pens Sign. 9-7/8 x 27-5/8" scarce, early embossed tin litho Jewelry store sign advertising Waterman's brand fountain pens. Clean, attractive and displays nicely, w/ minor soiling and wear (C. 8+/-). Min. bid \$50.



45). Noxie Soda Sign. 3-1/8 x 13-7/8" early, embossed tin litho strip sign for "Noxie-Kola" brand soda. Crisp and like new (appears never used). Min. bid \$40.



47). Shoe Polish Tins. Lot consists of eight different, early tin litho shoe polish tins, ranging in size from 2-5/8 x 3.5" dia. Conditions range from good to very good (av. 8+). Min. bid \$30 (the lot).



49). Old Fort Spice Tin. 3-3/8 x 2.25 x 1-3/8" scarce, early tin litho 1-1/2 oz. spice tin (ginger) for Old Fort brand (Ft. Scott Grocers, Ft. Scott, Kansas). Clean, bright and attractive (C. 8+) w/ minor soiling. Min. bid \$40.



50). Gunpowder Tin. 3-1/8 x 2.75 x 1.25" scarce, very early gunpowder can w/ attractive stenciled design on front (reads: "Boston Sporting Powder, F R Knowlton, Agt). Quite nice overall (C. 8-), complete w/ original pewter cap (has minor scattered wear, w/ small dent mark on backside). Min. bid \$40.



46). Porcelain Coin-Op Sign. 5.25 x 24" very early, porcelain marquis sign from a coin-operated weight & fortune telling machine, on its cast iron mounting bracket. All original and as found (heavy, stepped porcelain sign is excellent; iron bracket has nice original period paint, w/ some light paint wear). Min. bid \$40.



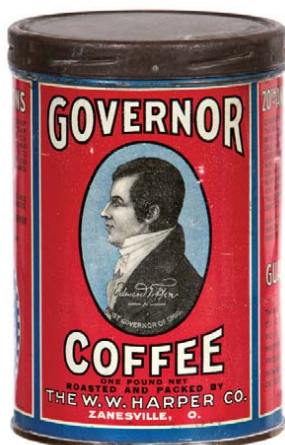
48). Mail Pouch Tobacco Packs. Lot consists of four different, full, never opened soft-pack style tobacco packs for Block Bros. "Mail Pouch" brand tobacco (sizes range from 5 x 3.25 x 3/4" to 4 x 3.75 x 1-1/8"), including a smaller Series 1909 "Free Sample" package. Two are excellent and two have a little staining. Min. bid \$30.



51). Candy Pail. 2-7/8 x 2-7/8" small, early tin litho candy pail for Lovell & Covel Co. hard candies, featuring beautiful graphic images of US Colonial era historical building around the sides. Clean, bright and exceptionally nice (C. 8.5+). Min. bid \$40.



52). Stoves Match Holder. 7-7/8 x 5.75 x 1.25" early, heavy cast iron advertising match holder for Charter Oak Stoves, in shape of oak leaf, w/ embossed advertising and a figural acorn for holding matches. Attractive and displays nicely w/ some minor oxidizing and light surface wear (C. 7.5+). Min. bid \$40.



53). Governor Coffee Can. 6 x 4-1/8" (dia.) early tin litho, 1 lb. coffee can from W.W. Harper Co., Zanesville Ohio, featuring nice images of 1803 Ohio Governor Tiffin (same image both sides). Clean, bright and very nice appearance (displays as a strong C. 8+), w/ minor wear and a little light denting on back side (critical grade C. 7.5+/C. 8-). Min. bid \$40.



54). Trout-Line Sample Pouch. 2-7/8 x 2 x 1" scarce, early cloth string tie tobacco sample bag, featuring attractive image of Co.'s trademark fly fisherman. Full, never opened bag is clean and excellent overall, w/ some chipping wear loss to Series 1902 tax stamp (a strong C. 8++). Min. bid \$50.

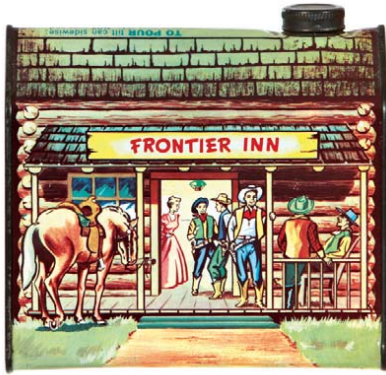


55). Foster's Ice Cream Sign. 11-5/8 x 6" unusual, small, early, heavy porcelain sign for Foster's brand ice cream, in shape of quart ice cream container. Clean and excellent overall (basically like new), w/ exception of the chip spot at bottom right corner edge. Min. bid \$40.



56). Gas Pump Candy Container. 4-3/8 x 2-1/8" (dia.) scarce, early, figural embossed glass candy container in shape of gas pump. All original, w/ nice patina to its great paint surface. Excellent. Min. bid \$50.

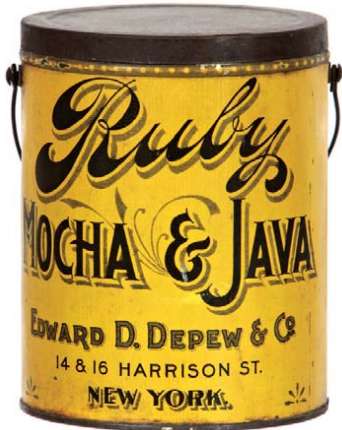
Brewery Fans



57). Log Cabin Syrup Tin. 6.25 x 6.5 x 4" large, 5 lb. cabin shaped tin litho "Frontier Inn" variation maple syrup tin from Towle's Log Cabin brand. Clean, bright and excellent (C. 8.5/+), complete w/ original cap. Min. bid \$50.



58). Brewery Fans. Lot consists of six different cardboard advertising fans from various Breweries (htgs. range from 6-5/8 to 14.5") . Includes: Edelweiss; Schlitz; Fort Pitt; Acme; Poth's; and Herbst Co.'s Lion beer. They are basically very good to excellent overall (light foxing speckles on Schlitz and some light wear on Poth's and Acme). Min. bid \$40 (the lot).



59). Ruby Coffee Tin. 5.5 x 4.25" (dia.) very early tin litho 1 lb. coffee pail (Ginna litho) for Ruby brand (Edward Depew Co., New York). Bright and very attractive in appearance (displays as a strong C. 8/+), w/ a little minor soiling (as found, should improve w/ cleaning). Min. bid \$40.



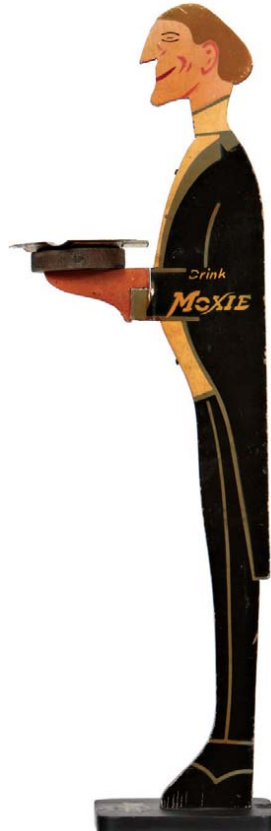
60). Poultry Feed Sign. 9-7/8 x 13-7/8" scarce, early embossed tin litho sign for Park & Pollard Co.'s "Lay or Bust" poultry feeds, featuring beautiful graphic image w/ a farm scene in background. Clean, bright and very attractive appearance (basically displays as a strong C. 8/+), w/ exception of some scattered surface rust spots (H.D. Beach Co. lithographers). Min. bid \$40.



61). Speed King Cigar Box. 8 x 8-3/8 x 5.5" scarce, early wooden cigar box for "Speed King" brand (Eyerly Bros., Canton, Ill.) featuring great color graphic image of Co.'s trademark race car on inside display label. The label is clean and displays quite nicely (as a C. 8/-), w/ exception of some paper chipping/loss areas along outer edges (particularly at outer top and bottom right edges). Note: lid is separated from the box. Min. bid \$40.



62). Life Jackets Window Sign. 40 x 20" large, early, die-cut cardboard, easel-back, stand-up display sign for "Stay-A-Float" brand swim vests, w/ strong color and great image (dated 1937). Clean, bright and very attractive, as found, never used still in its original (included) shipping box (a strong C. 8+ appearance), w/ some non-detracting age toning/staining and minor storage wear. Min. bid \$50.



63). Moxie Smoke Stand. 32.25" (h) early, painted wooden advertising smoke stand for Moxie, in likeness of Co.'s trademark butler. Very high quality piece has a warm, rich patina to its paint surface, giving it a great, high end folk art country look. Excellent overall, w/ some non-offensive scattered minor wear (front a strong C. 8/+; back C. 8-), complete w/ embossed tin Moxie ashtray. Min. bid \$70.



64). Uncle Green Window Sign. 42.25 x 19" large, cardboard die-cut stand-up window display sign for Uncle Green's brand cigars. Powerful and impressive piece is clean, bright and very attractive in appearance (a strong C. 8++), w/ a little non-offensive light scattered wear (light bend/crease in cigar, wear spot in base area at bottom right corner edge). Min. bid \$60.



65).Oil Can Banks Lot. Lot consists of five different, miniature tin litho oil can shaped advertising banks for various motor oil tin brands (sizes range from 2.75 x 2-1/8 to 3.25 x 2-3/8"). Includes: Trop-Artic, Powerlube, Pyroil, Triton and Cities Service. Min. bid \$40 (the lot).



66).Waterman's Pen Sign. 2 x 18.5" early, porcelain strip sign for Waterman's Ideal brand fountain pens. Clean, bright and exceptionally nice condition (basically like new). Min. bid \$60.



67).On Time Gum Tin. 5.25 x 7.75 x 2" scarce, very early hand-soldiered product tin for "On Time" brand chewing gum, featuring a rich, folk art like appearance w/ a rich surface patina to its paint surface, w/ beautifully detailed stenciled design on front and lid. Excellent (a strong C. 8++). Min. bid \$60.



68).Disney Pins. Lot consists of five different ca. 1920's/30's Disney Enterprises Mickey Mouse cartoon character celluloid pinback buttons (sizes range from 7/8 to 1.25" dia.). Excellent, w/ no cracks or stains in celluloid. Min. bid \$50 (the lot).



69).Champion Door Push. 3.75 x 5" scarce, small, early tin litho door push for Champion brand Spark Plugs. Has strong colors and displays nicely, although there are a few scattered areas of some faint surface oxidizing in outer right area and along very bottom edge. Tough to grade, but C. 7+/7.5 seems about right (as found, might improve w/ cleaning). Min. bid \$40.

Mirror



70).Buster Brown Shoes Pocket Mirror. Unusual, early, miniature 1.25" (dia.) celluloid advertising pocket mirror for Buster Brown brand shoes. Celluloid is clean, bright and like new, w/ darkening to mirror glass on backside. Min. bid \$40.

Sample



71).Sample Mustard Tin. 1-7/8 x 1.25" (dia.) scarce, miniature tin litho sample tin for Colburn's brand mustard, w/ fine, early, Ginn type lithography. Clean and excellent (a strong C. 8++), w/ exception of some light oxidized spotting on non-graphic metal lid. Min. bid \$30.



72).Fort Sackville Jar Rings Box. 3.25 x 3.25 x 1.25" early cardboard product box (w/ contents) for Fort Sackville brand canning jar rings (Bierhaus Sons, Vincennes, Ind.), featuring attractive image of Co.'s trademark fort (same image both sides). Clean and attractive overall, w/ some light soiling/darkening on backside (front C. 8++; back C.7.5). Min. bid \$30.

Mirror



73).Candy Co. Mirror. Scarce, early, 1.25" (dia.) miniature celluloid advertising pocket mirror for "Mirror" brand candies. Clean, bright and excellent. Min. bid \$40.



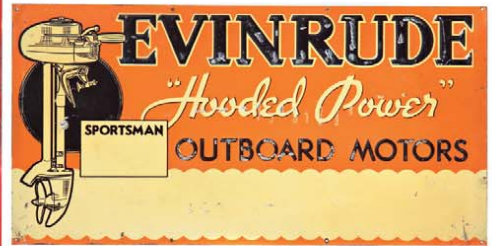
74).Bakers Cocoa Tray. 12.25" (dia.) x 1" scarce, early, tin litho advertising tray for Walter Baker Co.'s breakfast cocoa, featuring nicely detailed color graphic images. Clean and very attractive, w/ minor crazing and wear (C. 8++). Min. bid \$50.



75).Huyler's Candy Tin. 5.25 x 5.75 x 4.25" very early, tin litho product tin for Huyler Co.'s Washington brand taffy, featuring beautifully detailed graphic images of Washington and eagles on lid and around four sides (Acme Metal Works, NY lithographers). Clean, bright and exceptionally nice (C. 8.5+/+), w/ minor edge wear on lid. Min. bid \$40.



76).Red Raven Tray. 12" (dia.) early tin litho advertising tray for Red Raven, featuring great "Papa has a Headache" image. Clean, bright and very attractive appearance (displays as a strong C. 8+), w/ exception of some light scattered wear along outer rim area and some light denting at top of image area (at 12 o'clock), which are not offensive or detracting. Min. bid \$60.



77). **Outboard Motor Signs.** Lot consists of a group of three early embossed tin litho outboard motor signs. Includes: Johnson (13.75 x 19.75") has strong colors and displays nicely, w/ some light scattered wear from use, including dark spot area and light oxidized darkening along bottom and outer right border areas (C. 7.5+); Evinrude (11.75 x 23.5") scattered scuffing marks and some light general scattered wear, but still displays pretty well (C. 7); and Elto (9.25 x 20") strong color and displays pretty well, w/ some light scattered wear from use (C. 7/+). All are as found (might improve a bit w/ cleaning). Min. bid \$80 (the lot).



78). **Rough Riders Baking Powder Tins.** (sizes range from 3-7/8 x 1-7/8" to 5.75 x 2-3/8" dia.). Lot includes three different sized variations of full, sealed, early paper label Rough Rider brand baking powder tins w/ attractive trademark Teddy Roosevelt looking images on each (cardboard sides w/ tin top and base). They are quite nice overall (C. 7.5/+ to 8+), w/ some light traces of protective paper overlay on two and minor edge chipping and faint staining on mid size container. Min. bid \$40 (the lot).



79). **Baseball Player Candy Container.** 3.25 x 4 x 2-1/8" unusual, early, heavy figural glass baseball player candy container. Excellent and all original, w/ much of original paint surface still remaining on player. Min. bid \$50.



80). **Porcelain Auto Emblem.** 3.75 x 3.75" unusual and very early, small advertising sign from Illinois Agricultural Insurance Co., w/ beautiful, high quality detailing (for displaying on car radiator, license plate or attaching to bumper. Very high quality piece is crisp, bright and like new, w/ exception of a couple tiny, very minor flea bites at outside edges. Min. bid \$40.



81). **Castle Tea Tin.** 7 x 6.75 x 6.75" unusual, early, tin litho store sized pry-lid product can for Castle brand tea, featuring beautiful multi-color graphics all around (different image on each side). Clean, bright and very attractive appearance (a strong C. 8+) w/ minor scattered wear (darkening and gold loss to non-graphic lid area). Canadian. Min. bid \$40.

Cigar Cutter



82). **Elephant Cigar Cutter.** 5.25 x 2.75 x 8.5" early, heavy, figural cast iron elephant shaped mechanical cigar cutter (pushing down on trunk mechanically moves cutter blades, while tail lifts up- tobacco scraps come out hole under tail). Neat and unusual piece, w/ some darkening and general light wear to paint surface (C. 7.5+). Min. bid \$50.



83). **Donald Duck Soda.** 8 x 7 x 4.75" early, cardboard bottle carrier for Donald Duck brand Lime Cola, complete w/ six heavy glass 7 oz. enameled label soda bottles (bottles are marked "Copyright Walt Disney Productions") w/ Donald images on 2-sides and come w/ original caps on top of each. Bottles and carrier are excellent, metal caps have general staining and wear. Min. bid \$30.



84). **Gypsy Queen Cigarettes Box.** 10 x 8.25 x 6.5" (as pictured) very early paper litho (over wood and cardboard) advertising display box for Goodwin Co.'s "Gypsy Queen" cigarettes, w/ attractive graphics on inside and outside lid and all around sides. Inside label is clean, bright and beautiful (C. 8.5) w/ general minor soiling along outside margins; outer box is pretty decent and displays nicely, w/ some soiling/toning, light crease marks and paper chipping/loss at bottom edge of left narrow side edge (outer box C. 7.5+/8-). Min. bid \$50.



85). **Ultrax Condoms Lot.** Lot consists of a nearly full, early product box that still contains 47 of its original 48 tin litho Ultrax Platinum brand condom tins (tins are still full). Tins are mostly very good to excellent, w/ scuffs and light storage wear spots on some (storage box measures 6-7/8 x 4.5 x 2-1/8", individual tins 1-5/8 x 2-1/8 x 1/4"). Min. bid \$50 (the lot).

Saleman's Sample



86). **Saleman's Sample.** 4-5/8 x 3.75" outstanding, very early miniature salesman's sample sized kerosene container, fabricated from hand soldered tin and fine, early embossed glass, w/ a tiny painted handle at top. Incredible, very high quality piece is an exact miniature version of the large kerosene containers (no manufacturers markings). Clean and excellent. Min. bid \$70.



87).Bird Products Collection. Lot consists of an interesting group of 11 different early product containers for various Hartz Mountain Co. bird care products (htgs. range from 2.75 to 5"). All display nicely and conditions range from good to very good, w/ a little light staining/soiling on a couple. Min. bid \$30 (the lot).



88).Advertising Skull. 3 x 4 x 3" early and unusual, heavy, figural, skull shaped chalkware advertising ashtray from Clay-Adams Co. (medical supplies Co.), w/ incised advertising on backside for Co.'s skeletons, skulls, charts, surgical instruments, etc. Very high quality piece, w/ a rich, nicely aged surface patina. Excellent. Min. bid \$40.



89).Spice Tin Lot. Lot consists of four different, early, colorful paper label spice tins (ranging from 3.25 to 4-1/8" in ht.). Includes: President, Puck, Linro, and Dolly Varden brands. All are clean and excellent (C. 8+/), w/ a little minor toning/soiling on President. Min. bid \$40 (the lot).



90).Mail Express Game. 14.75 x 22.5 x 1.5" terrific, early, 2-ps. boxed "Mail Express" game by Mc Loughlin Bros., featuring beautiful color graphic snowed in train image on box cover, w/ game board featuring early U.S. map and playing pieces inside. Powerful box cover image is bright and very attractive in appearance, w/ some non-offensive light soiling and light scattered wear and it is missing most of the apron side edges from cover (inside board area excellent). Min. bid \$60.



91).Ox Breeches Sign. 16 x 22.25" (13 x 19.25" visible) important, very early, embossed tin litho sign for Ox Breeches pants, featuring image of black man in cart being pulled by oxen hitched to wagon by Co.'s pants. Sign is clean, bright and very attractive in appearance (displays as a strong C. 8++), although close examination will reveal a little minor oxidizing and slight traces of wear (blends in and barely noticeable—nothing that's offensive or detracting) and examination under blacklight will reveal some extremely well-done professional restoration. Min. bid \$200.

### Saleman's Sample



92).Salesman's Sample Toilets. Lot consists of three unusual, high quality ca. 1920's figural glazed heavy porcelain china salesman's sample advertising toilets, each advertising the maker (includes National Pottery Co., Durock, and Camden Pottery Co.). Sizes range from 2.5 x 2.25 x 4" to 3-7/8 x 2-1/8 x 2.5". All are excellent. Min. bid \$50 (the lot).



93).Horse Theme Tobacco Packs. Lot consists of four early, full, sealed, never opened tobacco packages, each featuring a trademark horse image. Includes three soft-pack style paper packages (Red Horse; Dark Horse and Dan Patch brands) as well as a "Stud" brand cloth pouch (including attached rolling papers pack under label). Sizes range from 3-3/8 x 2-1/8 x 1" to 5 x 3-3/8 x 1.25"; conditions range from very good to excellent. Min. bid \$40 (the lot).



94).Spice Tins. Lot consists of a nice grouping of six early paper over cardboard spice cans (w/ metal tops and bases, heights range from 2-7/8 to 3.5"). Includes: "Jack Sprat" turmeric (C. 8/+); "Early Dinner" turmeric (C. 7.5+/8-) w/ some non-detracting background soiling/darkening; "Minnehaha" cream tartar (a strong C. 8++) w/ minor trace hint of staining spot at bottom edge of backside; "Frontier" pepper (C. 8/+) w/ minor background staining on backside; "Faust" turmeric (C. 8.5/+); and Ecco curry powder (C. 7.5) w/ some non-offensive light background staining. Min. bid \$40.



95).Star Bicycles Match Holder. 1.75 x 3.25 x 4" early, figural, cast iron frog shaped match holder w/ embossed advertising for Star Bicycles and Tricycles (Smith Machine Co., Smithville, NJ). Attractive, w/ nice early paint surface (hinged at back, body opens up to hold matches inside, w/ advertising on top, inside and base areas). Min. bid \$40.

#### Lightning Rods



96).Lightning Rods Sign. 3.75 x 5.25" unusual, small tin litho sign for Shinn Lightning Rods and the Lion Bonding & Surety Co. Sign is clean, bright and attractive in appearance (displays as a C. 8+), although close examination will reveal some faint weathering and possible varnish/clear coating on surface. Min. bid \$30.



97).Advertising Turtle. 1.5 x 2-3/8 x 1/2" unusual, early advertising turtle for San Francisco seafood restaurant "Bernstein's Fish Grotto". Has painted cast iron base w/ a celluloid top. Celluloid is excellent, w/ a couple minor oxidized wear spots on iron base. Min. bid \$30.



98).Cough Drops Sign. 14.25 x 7" outstanding, very early small paper litho roll-down sign (original metal strips at top and bottom) for Luttet's brand cough drops, featuring incredible multi-color graphics (Gies & Co., Buffalo, NY lithographers). Clean, bright and basically like new, w/ exception of very minor mark at top (from hanging hook) and slight crease mark in dark blanket area (mentioned for accuracy- very slight and barely noticeable). Min. bid \$100.



99).Auto Safety Flares Tin. 13-1/8 x 2.25" (dia.) early, 2-ps. tin litho automotive safety flares tin from Hitts Fireworks Co., Seattle, Wa., featuring great early automotive image (dated 1931). Very nice overall appearance (C. 8/-), w/ some minor soiling and wear. Min. bid \$40.



100).Minnesota City Beer Sign. 37 x 26-5/8" (28.75 x 19" visible image) important, large, early paper litho sign for Minnesota City Breweries Bock Beer, featuring stunning multi-color lithography (by Donaldson Litho, Newport, Ky.). Clean, bright and very attractive appearance (displays as a very strong C. 8++) w/ non-offensive faint horizontal crease line near bottom and a little very minor scattered soiling and wear (critical grade C. 8/+). Nicely framed and matted. Min. bid \$250.



101).Standard Oil Co. Sign. 13-7/8 x 18-1/8 x 1.75" unusual, ca. 1920's tin litho 2-sided flange advertising sign from Standard Oil Co. (Indiana) Perfection brand kerosene. Clean, bright and very attractive (C. 8.5/+), w/ exception of a little minor edge wear. Min. bid \$60.



102).Armour's Peanut Butter Sign. 9.25 x 13.25" important, early, beveled, tin litho (over cardboard) sign for Armour Co.'s "Veribest" brand peanut butter, featuring wonderful graphic nursery rhyme images. Clean, bright and displays very well (as a strong 8++) although close examination will reveal some well-done professional restoration in grey background areas and some scattered dents and light creasing (nothing that is offensive or badly detracting). Min. bid \$100.



103).Luzianne Coffee S&P's. 5 x 2-5/8 x 2" scarce and unusual, early figural plastic salt and pepper shakers in shape of Co.'s trademark black mammy character. Impressive looking set is clean and excellent overall. Min. bid \$40 (the pair).

Buddy L Toy



104).Buddy L Toy Car. 6.75 x 10-7/8 x 5.5" early, Buddy "L", pressed steel, flat top coupe toy car. Clean, attractive and appears all original including mostly intact decal on bottom (C. 8+/-) w/ a little minor expected wear from use. Min. bid \$150.



105).Pippins Cigars Tip Tray. 5.5 x 5" early tin litho advertising tip tray for Traiser & Co.'s "Pippins" brand 5¢ cigars. Clean, bright and very attractive appearance (a strong C. 8++) w/ minor wear. Min. bid \$50.



106).WWI Victory Garden Poster. 30 x 19-7/8" early, ca. 1917 paper litho poster promoting wartime food administrator Herbert Hoover's WWI era school children's victory garden program, featuring wonderful color graphics. Poster is clean, bright and very attractive (basically a C. 8.5/+) w/ exception of minor wrinkling in upper right corner edge and small paper loss spot in bottom white margin area. Min. bid \$40.



107).Philadelphia Expo Poster. 32.75 x 23" (26-1/8 x 16.5" visible) early, paper litho promotional poster for the 1926 city of Philadelphia Sesqui-Centennial International Exposition, featuring attractive girl and international flags image by illustrator Dan Smith. Clean, bright and excellent (C. 8.5+). Nicely framed and matted. Min. bid \$50.



108).Philadelphia Expo Poster. 32.75 x 23" (26-1/8 x 16.5" visible) early paper litho promotional poster for the 1926 city of Philadelphia Sesqui-Centennial International Exposition featuring attractive Miss Liberty and Independence Hall image by illustrator Dan Smith. Clean, bright and excellent (C. 8.5+). Nicely framed and matted. Min. bid \$50.



109).Garver Bros. Mirror. 2-1/8" (dia.) early, celluloid advertising pocket mirror for Garver Bros. Co., featuring beautiful multi-color graphics. Clean, bright and like new. Min. bid \$40.



110).Globe Feeds Watch Fob. 1-5/8 x 1.5" unusual, early metal advertising watch fob for Globe Feeds, w/ beautiful graphic celluloid ad in center (has embossed product advertising on backside). Excellent. Min. bid \$30.



111).Columbia Flour Pocket Mirror. 2-1/8" (dia.) celluloid advertising pocket mirror from Columbia Flour Co., featuring colorful and graphic patriotic image of Miss. Liberty, flowers and flour barrel. Clean, bright and excellent. Min. bid \$40.



112).Dental Thermometer. 3-3/8" (dia.) x 7/8" small, early dial type advertising thermometer for Wilson's Corega brand dental adhesive product. Glass covered, w/ metal case (enameled porcelain advertising inside). Excellent overall, w/ a little light wear to paint surface on outer metal frame. Min. bid \$40.

### Bakers Cocoa



113).Baker's Cocoa Tin. 5.25 x 5.5 x 4-7/8" fancy, early, figural tin litho display tin from Bakers Chocolate Co. (Dorchester, Mass.) featuring beautiful sporting images all around (includes tennis, crew rowing, bicycling, skating, etc., (has Bakers lady and Co. text advertising on inside lid). Clean and very attractive appearance, w/ a little light scattered wear on body and some darkening and wear on lid- including loose hinge clasp on left inside edge of lid (body C. 8-; lid C. 7.5+). Displays nicely! Min. bid \$40.



114).Bryant Advertising Dog. 10.75 x 17 x 7" early, figural, papier-mache countertop advertising dog w/ gold embossed "Bryant Pup" lettering on his collar. Attractive piece that displays well, w/ nice patina to its all original paint surface (displays as a 8+/-) w/ some early scattered paint chipping and character wear- nothing that's offensive or that really detracts from its great overall look (critical grade C. 7.5+/-). Min. bid \$40.



115).Large Telephone Sign. 18 x 18.5" extra large, 2-sided enameled porcelain flange sign for American Telephone & Telegraph Co., by Cameo Co., featuring early bell logo. Crisp, bright, and like new (appears never used), w/ very minor storage wear. Min. bid \$60.

### Brewery - Gambling Sign



116).Brewery Gambling Sign. 24-1/8 x 20.25 early, tin litho advertising sign for Ruhstaller Brewing Co. (Sacramento, Cal.), featuring beautiful multi-color graphic image of farmers betting on cockfight. Clean, bright and exceptionally nice (image area displays as near mint), w/ a little non-offensive light scattered wear and non-serious oxidizing in raised, outer border rim area (American Art Works). Min. bid \$250.

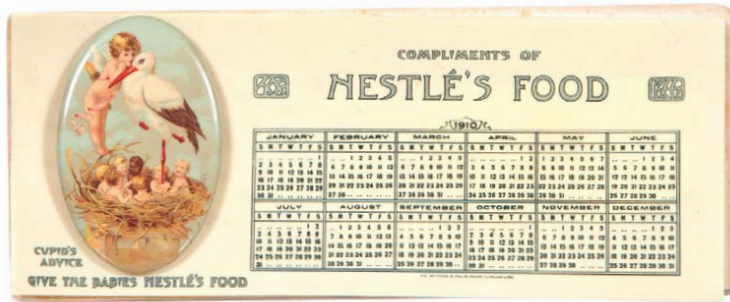


117).Ever-Ready Razors Clock. 22 x 18 x 4.25" (clock only) early, wooden advertising clock for Ever-Ready Safety Razors, featuring great image of Co.'s trademark man shaving. Has very nice overall look (displays as a nice C. 8+/-) although close examination will reveal a little non-offensive, faint haziness on surface and some expected light surface cracks and wear. Also includes its original pendulum 14.5 x 4.5" dia. (tin litho on pendulum has general wear from use including some faint surface oxidizing and light fade C. 7+). Min. bid \$250.

### Nabisco



118).Nabisco Disney Window Sign. 26 x 17.25" outstanding, early die-cut paper litho holiday window display sign featuring great image of Nabisco products in Santa's sack (note: Mickey Mouse cookie box covered w/ Disney cartoon characters) w/ unused envelope type adhesive film spots made for wetting and attaching to store window. Piece is clean, bright and excellent overall (C. 8.5+/-) w/ original factory folds. I'm told this was an unused file copy from Nabisco archives (back has hand written notation: "9/16/40 printed by Edwards & Deutsch, 100,000 at \$26.00 per"). Min. bid \$50.



119).Nestle's Blotter. 3-1/8 x 7.75 x 1/2" (oval button 2.75 x 1.75") unusual, early celluloid blotter advertising Nestle's baby food, w/ 1910 calendar pages and oval celluloid pocket mirror style button featuring beautifully detailed multi-color graphic image of Co.'s trademark cupid, stork and babies in nest. Excellent, complete w/ multiple cardboard blotter pages. Min. bid \$40.



120).Disney Pins. Lot consists of four different, original, ca. 1920's/30's Disney Enterprises cartoon character celluloid pinback buttons (ea 1.25" dia.). Includes Bad Wolf, 2 Pinocchio variations and Snow White club. Excellent overall (some non-offensive light background foxing on colorful Pinocchio pin). Min. bid \$40 (the lot).



121).Coke Pencils. 8-1/8 x 5-7/8 x 1-3/8" complete, full box of 6 dozen early, unused wooden Coca-Cola advertising pencils. Pencils are like new (has some general light wear to box cover). Min. bid \$40.



122).Inky Racer Box. 3.25 x 2.75 x 1-3/8" early, 2-ps. cardboard litho product box for Carter Ink Co.'s "Inky Racer" brand ink eraser, featuring great image of Co.'s trademark black kid (same image both sides). Attractive and displays nicely, w/ a little light toning/soiling on box (C. 8/-), complete w/ original bottles inside. Min. bid \$30.



123).Syke's Comfort Tin. 4 x 2.25 x 1-7/8" early, 3 oz. tin litho product can for Syke's healing powder, featuring attractive image of trademark children on front and early nurse on back. Full, never used tin is clean, bright and excellent (C. 8.5+) as found still in its original product box (box has some staining and flap of box unattached at top). Min. bid \$40.



124).Collins Ice Cream Tray. 10.5 x 13.25" early, tin litho advertising tray for Collins brand ice cream, featuring great image by illustrator C M Burd. Clean and attractive in appearance (basically displays as a strong C. 8+/-) w/ exception of oxidized chip spot in bottom white table area and a little non-offensive light wear in outer rim area (heavier wear on non-graphic backside). Min. bid \$60.

#### Vet Samples



125).Veterinary Samples. 2.75 x 1-5/8" (dia) lot consists of two different, full, sealed (never opened) small sample product cans for De LeGear's brand veterinary lice killer product (metal top and bottoms, w/ cardboard body). Both are clean, bright and very attractive (C. 8.5). Min. bid \$40 (the pair).



126).Climax Stoves Tray. 13.5" (dia.) early, tin litho advertising tray for Climax brand Stoves, Ranges and Furnaces, featuring beautiful, highly detailed color graphics. Clean, bright and very attractive (displays as a strong C. 8+/-), w/ a little very minor wear and light edge chipping. Min. bid \$50.



127).Coca-Cola Ad. 20 x 26" (15.5 x 22" visible), scarce, large, early paper advertisement for Coca-Cola, featuring nice image of glamour girls at fancy soda fountain. Matted and ready for framing, this great illustration represents the front and back cover illustrations from oversize June 1910 "The Housewife" magazine. Clean and attractive appearance (C. 8+/-), w/ some non-offensive light foxing speckles in upper background area and the always present light vertical fold line in center. Min. bid \$40.



128).Baseball ABC Plate. 7.25" (dia.) very early, heavy, Staffordshire ironstone type ceramic children's ABC plate, w/ embossed alphabet letters around outside and a beautifully detailed baseball image in center. Excellent overall, w/ couple small, very, very minor flea bite chips at very outer edge. Min. bid \$50.



129). Yeast Foam Menu Holder. 7 x 5.5" unusual, high quality menu holder from early soda fountain, featuring hinged, metal framed celluloid covered product ads for Co.'s malted milk and misc. products on front, back, and inside covers (w/ hooks inside for holding paper soda fountain menu). Excellent, w/ minor scattered oxidizing to nickel finish frame area. Min. bid \$40.



130). Central Brewing Co. Tray. 13.25 x 16.25" early, tin litho advertising tray from Central Brewing Co., New York City, featuring beautifully detailed image of bustling factory, etc. Clean and very attractive in appearance (displays as a strong C. 8++) w/ a 3" light bend mark in water area and a little creasing/denting at very bottom edge of rim. Min. bid \$100.



131). Buckingham Tobacco Sample. 3 x 1.75 x .75" unusual, miniature, full, sealed, (never opened), 1/2 oz. size, tobacco sample package for Bagley Co.'s Buckingham brand (1909 tax stamp). Excellent overall. Min. bid \$30.



132). Topsy Match Holder. 4-7/8 x 3-3/8 x 1.25" scarce, early tin litho advertising match holder for Topsy brand hosiery, featuring beautiful graphic image of girl at seashore, w/ logo of Co.'s trademark black kid at top. Graphic advertising section is clean, bright and very attractive in appearance (a strong C. 8), some wear at top hanging hole and a spot at left edge of beach area (just top of basket). The attached match basket section has some general scattered speckling and wear to front panel (basket C. 7+/-). Min. bid \$50.



133). Duke's Tobacco Sample. 3.25 x 2 x 1" unusual, full, sealed 1-1/2 oz. cloth tobacco sample pouch for Duke's brand, complete w/ original rolling papers (1910 tax stamp). Crisp, bright and excellent (near mint). Min. bid \$20.



134). Trout-Line Tobacco Tin. 3-3/8 x 2.5 x 1.5" early, oval shaped vertical tobacco pocket tin (cardboard sides, w/ metal top and base) featuring nice image of Co.'s trademark fly fisherman (same image both sides). Attractive and displays very nicely, w/ just a trace hint of minor soiling, slight fade and wear (C. 8+/-). Min. bid \$70.



135). Buffalo Brewing Co. Sign. 28-3/8 x 22-3/8" large, early, self-framed, tin litho sign for Buffalo Brewing Co., Sacramento, Calif., featuring beautifully detailed multi-color graphics (H.D. Beach Co., lithographer). Clean, bright and beautiful overall (basically image area displays as a strong C. 8.5+); w/ stain spot, light scattered wear and dent mark at one of two small nail holes in outer frame area. Min. bid \$200.



136). Perfection Cigarettes Sign. 30.75 x 24" (26.5 x 20" visible) large, colorful, early paper litho sign for Allen & Ginter Co.'s "Perfection" brand cigarettes. Clean, bright and very attractive appearance, w/ beautiful multi-color graphics. Crisp, bright and excellent overall (C. 8.5+); w/ minor wear and a little light water staining at bottom margin and background area (not offensive or detracting). A powerful, very impressive piece, as found still in its original frame. Min. bid \$150.



137). Oyster House Die-Cut. 13 x 9" early, embossed, small cardboard litho die-cut sign for Miller's Oyster House (Herkimer, NY), featuring attractive color graphics. Clean and very nice appearance, w/ minor background wear and a slight bit of non-detracting soiling/toning (C. 8/-). Min. bid \$40.



138).Long Bell Fences Sign. 9 x 19-5/8" early, embossed tin litho sign for Long Bell brand fences featuring nice image of post and fence. Clean and attractive appearance, w/ a little light scattered wear (C. 8+/-). Min. bid \$40.



139).Indian Hood Ornament. 4.25 x 2.75 x 4.75" unusual, ca. 1950's, figural, light-up hood ornament in shape of Indian Chief, as found, never used in its original storage box. Chromed metal and plastic body (headress is translucent), complete w/ wired bulb for illuminating. Like new (some tape repair to box cover flaps). Min. bid \$40.



140).Ace High Spice Tin. 3.25 x 2-3/8 x 1-3/8" scarce, early tin litho, 2 oz. size spice tin (sage) for "Ace High" brand (Simpson, Ashby Co., Los Angeles). Clean, bright and excellent overall (a strong C. 8+/-) w/ light 10¢ price written on backside in black. Min. bid \$50.



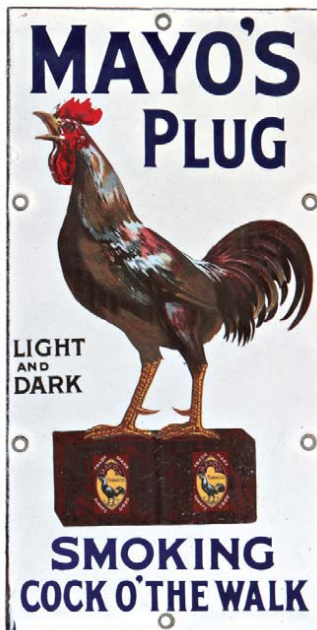
141).King Edward Pocket Tin. 4.5 x 3 x 1" early, tin litho vertical tobacco pocket tin for Dominion Tobacco Co.'s "King Edward" brand. Clean, bright and exceptionally nice appearance (displays as a strong C. 8+/-), w/ exception of some early wear spots on lid (lid C. 7.5). Min. bid \$50.



142).Fairfax Hall Spice. 3-7/8 x 2" (dia.) early, tin litho 2 oz. pickling spice tin for "Fairfax Hall" brand (Wholesale Grocers Exchange, Richmond, Va.) featuring beautiful, multi-color trademark image of southern estate. Clean, bright and excellent, w/ a little non-offensive minor denting and light wear on backside (front C. 8.5+/-; back C. 8-/-). Min. bid \$30.



143).Niagara Coffee Tin. 6 x 4-3/8" scarce, early, 1 lb. tin litho pry-lid coffee can for Niagara brand (Buffalo Coffee Co., Buffalo, NY) w/ same nice image on both sides. Clean, bright and displays very well (as a nice C. 8+/-), w/ some non-offensive light scattered background scuffs and wear spots and minor darkening on backside (critical grade C. 7.5+/-). Min. bid \$40.



144).Mayo's Tobacco Sign. 13 x 6.5" early, heavy enameled porcelain sign for Mayo's brand tobacco, featuring beautifully detailed image of trademark rooster standing on tobacco plug (note tags on plug). Appears never used and is crisp, bright and exceptionally nice (C. 8.5+/-). Min. bid \$100.



145).White Pony Oats Box. 9-5/8 x 5.5" (dia.) scarce, early cardboard oats box for "White Pony" brand (Carroll Brough-Robinson Co., Oklahoma and Kansas) featuring nice image of Co.'s trademark pony (same image both sides). Clean and attractive appearance, w/ minor fade to reds and some light wear on backside and to paper wrap at back of lid (C. 8/-). Min. bid \$40.



146).Superior Coffee Can. 5-7/8 x 4.25" very early, tin litho, small top style, 1 lb. coffee can from Pure Gold Mfg. Co. (Fairport, NY & Toronto, Ont.) featuring beautifully detailed graphics by Ginna & Co. Very nice overall, (basically displays as an C. 8+/-) w/ exception of a few early chip spots and minor scattered wear (critical grade C. 7.5+/-). Min. bid \$50.



147).Red Mill Oats Box. 9-5/8 x 5.5" (dia.) large, 3 lb. cardboard oats box for Red Mill brand (Griesel Bros., Winona, Minn.) featuring colorful graphic image of Co.'s trademark wind mill. Clean, bright and displays nicely, w/ minor paper loss at top and some non-offensive light toning and staining at bottom area of backside (front C. 8+/-; back C. 8/-). Min. bid \$40.



148). Kennel Club Tobacco Box. 6.25 x 6.5 x 4.25" (as pictured) very early, wooden tobacco box for Daniel Scotten Co.'s "Kennel Club" brand tobacco, w/ wonderful paper labels around sides and on inside and outer lid. Attractive and displays nicely, w/ expected edge wear, toning and light staining (note: lid separated from box). Min. bid \$40.



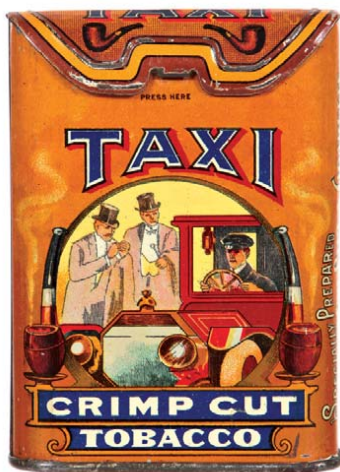
149). American Can Co. Salesman's Sample. 4 x 2.75" (dia.) unusual, early tin litho advertising paperweight in likeness of early product can, featuring attractive graphics all around. Sand filled, w/ early liquid silver thermometer tube on side, given as a salesman's sample souvenir by American Can Co. at 1907 National Canners Association meeting in Buffalo, NY. Has a little light scattered wear and some darkening on lid, but overall attractive and displays very nicely (front C. 8; back C. 7.5+/8-). Min. bid \$40.



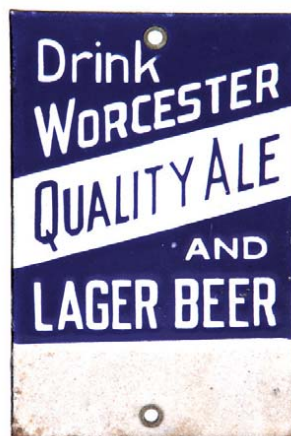
150). California Ice Cream Sign. 10-3/8 x 8.5" unusual, heavy, early multi-color porcelain sign in shape of ice cream treat. Crisp and like new (near mint). Neat piece! Min. bid \$50.



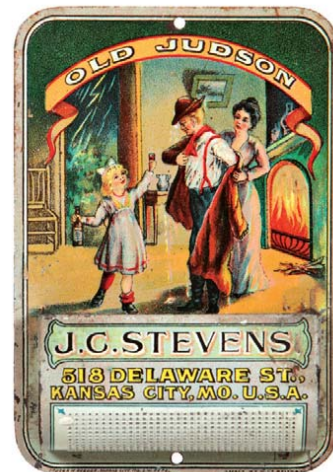
151). Morell Tilson Pocket Mirror. 2.75 x 1.75" celluloid advertising pocket mirror for a Franklin, Indiana seller of Community brand silverware. Clean and excellent in appearance, although examination under magnification will reveal a little minor wear along side edges on backside. Min. bid \$40.



152). Taxi Tobacco Tin. 4.25 x 3 x 1" early tin litho vertical pocket tin for Imperial Tobacco Co.'s "Taxi" brand, featuring same great image of early taxi cab on both sides. Clean, bright and displays extremely well (as a strong C. 8++), w/ some non-offensive slight crazing and minor scattered wear. Min. bid \$100.



153). Brewery Match Scratcher. 6 x 4" scarce, very early, heavy porcelain door push style advertising match scratcher from Worcester Brewing Co. (Mass.), w/ sandy, textured surface at bottom for striking matches across. Clean, bright and exceptionally nice (basically near mint, w/ exception of a little minor darkening/staining in bottom striking surface area). Min. bid \$50.



154). Whiskey Match Holder. 4-7/8 x 3-3/8" early tin litho advertising match holder for J.C. Stevens Co.'s "Old Judson" brand whiskey, featuring beautiful multi-color graphics. Clean, bright and very attractive, w/ a little minor soiling and edge wear (C. 8/+). As found, should improve w/ cleaning. Min. bid \$50.



155). Dill's Tobacco Sign. 14 x 10" early, embossed tin over cardboard sign for Dill's tobacco, featuring nicely detailed images of Co.'s soft pack tobacco pouch and pocket tin. Sign is bright and attractive in appearance and displays nicely (as a C. 8+/), w/ some surface crazing and light scattered wear, including slight soiling and a couple small bends at bottom outer edges (critical grade C. 7.5+). Back has both easel for counter display and string for hanging. As found, should improve w/ cleaning. Min. bid \$50.



156). Clysmic Waters Tray. 16 x 12-5/8" early, tin litho serving tray for Clysmic brand table waters, featuring stunning, multi-color graphic image of large buck and topless girl in forest stream (nice rack). Image area is clean, bright and beautiful (a very strong C. 8++), w/ a little hazy oxidizing and light scattered wear in black rim area (nothing offensive or detracting). Min. bid \$60.

Wall Street Journal



157). Wall Street Journal Apron. 27 x 20" great, early, heavy cloth/ canvas street hawker's newspaper sellers apron, promoting the Wall Street Journal newspaper. Has a wonderful, rich, nicely aged surface patina from many years of use, giving it a great folk art type look, that would display nicely either hung on wall or framed. Would be great for a financial professional's office. Min. bid \$50.



158). C.H.Y.P. Tobacco Tin. 3-3/8 x 4.5 x 2.25" very early, tin litho square corner style tobacco tin for Cameron & Cameron Co.'s Inter-Collegiate Mixture, w/ beautiful graphic sporting scenes around the sides, w/ Harvard, Cornell, Yale and Princeton school flags on lid. Clean and very attractive appearance, w/ minor soiling and a slight bit of scattered wear (C. 8/+). Min. bid \$40.



159). Fire Insurance Paperweight. 2-5/8 x 4 x 1" early, white bottom glass advertising paperweight for Connecticut Fire Insurance Co., featuring nicely detailed image of Co.'s Hartford headquarters building. Excellent. Min. bid \$30.



160). Political License Plate Topper. 7-7/8 x 11.25 x .25" unusual, early figural composition political license plate topper from 1936 FDR presidential campaign, featuring Uncle Sam and FDR. Nicely detailed, w/ a little darkening, light scattered wear and two tiny drilled holes for mounting, but attractive overall and displays nicely, w/ a very nice surface patina (C. 7.5+/8-). Min. bid \$40.

#### Wolverine Toy Co.



161). Wolverine Toy Co. Tray. 4.5 x 6.5" unusual, early tin litho tip tray style advertisement for Wolverine Toy Co., featuring multi-color graphic image of Co.'s factory (Co.'s toys pictured at bottom). Clean, bright and excellent overall (basically a strong C. 8++), w/ exception of a few non-offensive light dent/crease marks. Min. bid \$40.

#### Hotel Bell



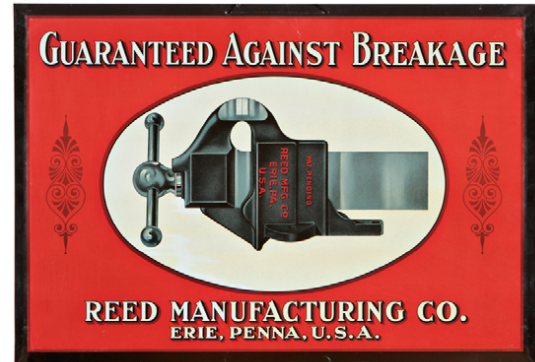
162). Snail Hotel Bell. 2 5/8 x 4-5/8" unusual, early, figural mechanical wind-up hotel bell on wooden base in shape of a snail. Pushing down on white button on snail's metal shell delivers long steady ring. Neat and unusual piece. Excellent, w/ only minor wear from use. Min. bid \$40.



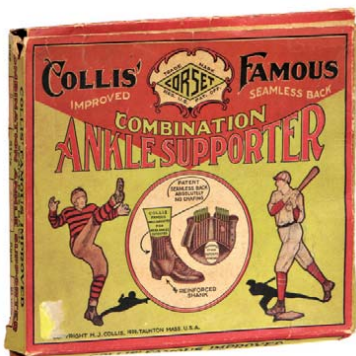
163). Harvest Home Coffee Tin. 4 x 5.25" scarce, early, tin litho 1 lb. pry-lid coffee can for Harvest Home brand (Jett & Wood Merc. Co., Wichita, Kansas) w/ attractive colorful and highly graphic farm scene (same image both sides). Clean, bright and excellent (a strong C. 8++) w/ only minor wear. Min. bid \$40.



164). Merchant Tray. 12.25 x 17.25" unusual, tin litho advertising tray for early general store (seller of farm machinery, buggies, bicycles and hardware). Clean, bright and very attractive in appearance (basically displays as a strong C. 8++) w/ a little minor scattered wear (note: tipping in light just right will reveal a little non-offensive faint hazy type surface crazing- mentioned for accuracy, nothing detracting). Min. bid \$50.



165). Reed Tools Sign. 13.25 x 19.5" early, tin litho (over cardboard) beveled edge advertising sign for Reed Mfg. Co., Erie, Pa. featuring attractive image of Co.'s iron vice. Clean, bright and exceptionally nice appearance (displays as a strong C. 8++), w/ a little non-offensive light background wear. Min. bid \$50.



166). Sporting Ankle Supporter. 6.25 x 7 x 1" unusual, full, early product box for Collis brand ankle supporters, featuring great early sporting images (has ice hockey scene on back). Box is very nice, w/ a little minor wear, complete w/ original supporter inside. Min. bid \$30.



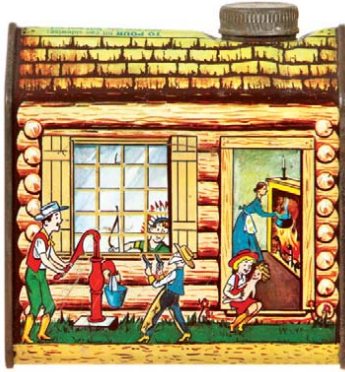
167). Jackie Coogan Peanut Butter. 3.5 x 3.75 (dia.) scarce variation, early tin litho 12 oz. peanut butter pail for Jackie Coogan brand (Kelly Co., Cleveland, Oh.) featuring beautiful multi-color graphic images of silent era child movie star all around (he played the kid in J.C. Field era movies). Clean, bright and exceptionally nice (C. 8.5+). Min. bid \$70.



168). Log Cabin Syrup Tin. 5 x 4.75 x 3.25" early figural cabin shaped tin litho 26 oz. medium size syrup tin for Towle's Log Cabin brand syrup, w/ winter dressed girl in doorway (mother in window flipping hotcakes inside). Clean, bright and attractive appearance w/ minor denting and a little light scattered wear (C. 8+/-). Min. bid \$40.



169). Eve Pocket Tin. 3.75 x 3.5 x 1.25" very early tin litho vertical tobacco pocket tin for Globe Tobacco Co.'s "Eve" brand, w/ nice image of Eve in garden (same image both sides). Clean and displays nicely, w/ a little light scattered wear and some slight even fading (C. 7.5+/8-). Min. bid \$50.



170). Log Cabin Syrup Tin. 5 x 4.75 x 2-7/8" 2 lb. 4 oz. size, figural cabin shaped syrup tin for Towle Co.'s Log Cabin brand syrup w/ nice image of woman cooking at fireplace and children playing cowboys and Indians. Clean, bright and displays nicely (displays as C. 8.5/+) although close examination will reveal a few minor background wear marks (critical grade 8/+). Min. bid \$40.

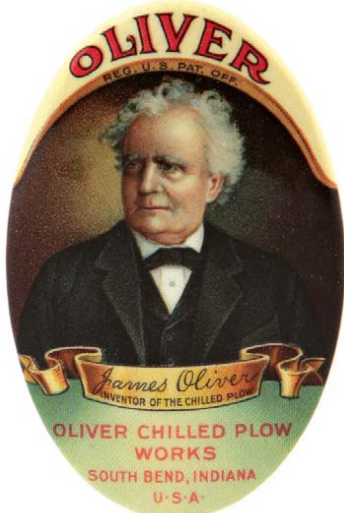


171). Fiona Cigar Tin. 5-1/8 x 5-3/8" early tin litho 50 count cigar can by Liberty Can Co., for "Fiona" brand, featuring stunning multi-color graphic image of Co.'s trademark girl (same image both sides). Crisp, bright and like new (near mint). Min. bid \$60.

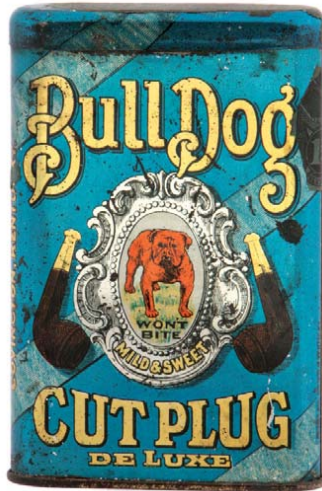
Tobacco Packs



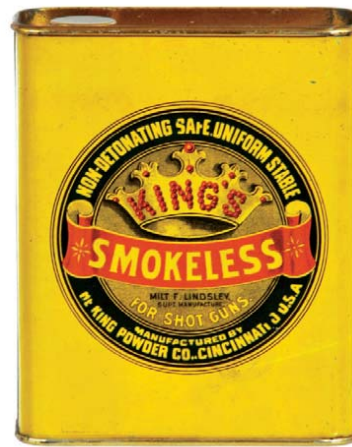
172). Day & Night Tobacco Packs. Lot consists of two different full, sealed, soft pack style packages for Pinkerton Tobacco Co.'s "Day & Night" brand tobacco (5 x 3.75 x 1-3/8" and 5 x 3.25 x 1.25"). Both are excellent (one still sealed in original protective wax paper wrapping). Min. bid \$40 (the lot).



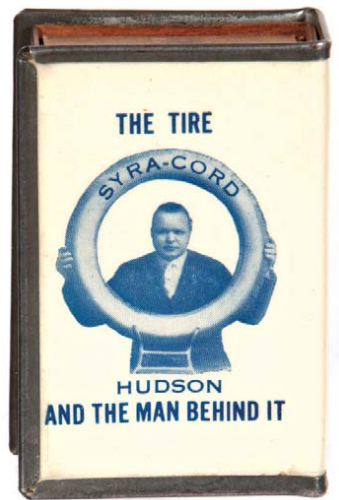
173). Oliver Plows Pocket Mirror. 2.75 x 1.75" colorful and highly graphic advertising pocket mirror for Oliver Chilled Plow Works Co. Clean, bright and exceptionally nice. Min. bid \$40.



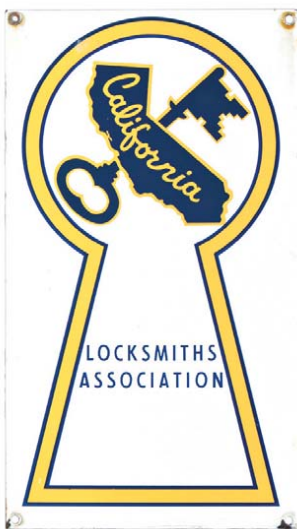
174). Bull Dog Pocket Tin. 4-5/8 x 3 x 7/8" scarce, early tin litho vertical tobacco pocket tin for Lovell & Buffington Co.'s "Bull Dog" brand. A clean, very attractive example that displays nicely, w/ a little light scattered wear and a trace bit of fade to red dog on front side (front C. 7.5+; back C. 8/-). Min. bid \$50.



175). King's Gunpowder Tin. 5 x 4.25 x 1.75" outstanding, very early tin litho gunpowder can for King Powder Co.'s smokeless gunpowder. Very high quality piece that is crisp, bright and like new in appearance (front C. 8.5+; back 8++) w/ minor wear on backside (Vogel Bros. Litho). Min. bid \$50.



176). Tires Matchbox Holder. 2-3/8 x 1-5/8 x 7/8" early, celluloid and metal pocket matchbox holder advertising Hudson Tire Co., distributor of "Syracord" brand tires (text adv. on backside). Clean and excellent. Min. bid \$30.



177). California Locksmith Sign. 16 x 9" unusual, early porcelain locksmith membership store sign from California Locksmith Association, featuring nice image of organizations logo. Field of sign is clean and excellent, w/ light surface oxidizing around hanging holes and a little light chipping below mounting holes at bottom edge. As found, should improve w/ cleaning. Min. bid \$40.



178). Chadwick's Thread Calendar. 10.75 x 6-3/8" early cardboard, die-cut advertising calendar for Chadwick's brand thread, featuring beautiful color graphics. Excellent overall (C. 8.5) although subtle blue stamped merchant info at bottom was smudged a little when made. Complete w/ full 1910 pad. Min. bid \$40.



179). Bunny Oats Box. 9-5/8 x 5.5" (dia.) early 3 lb. 7 oz. size cardboard oats box for "Bunny" brand (Bunn & Humphrey's, Bloomington & Springfield, Ill.) featuring attractive image of Co.'s trademark bunny (same image both sides). Has strong colors and displays nicely (as a C 8/-), w/ some light scattered paper chipping, soiling and non-offensive wear (critical grade C. 7.5/+). Min. bid \$50.



180). Marlin Fire Arms Calendar. 6.25 x 3.5" scarce, ca. 1901, small size advertising calendar for Marlin fire arms, featuring stunning, highly detailed multi-color graphics on heavy card stock (Forbes Litho Co.). Crisp, bright and like new (near mint), w/ text advertising on backside (no pad). Min. bid \$60.



181).Motor Oil Tin Banks. Lot consists of seven 2-7/8 x 2-1/8" early tin litho miniature oil can shaped banks, advertising various motor oil brands Includes: Amoco, 76 Union, Supertest, Veedol, Illini, Structo and Royal Triton. All are very good to excellent. Min. bid \$50 the lot.



182).S-Bro-Co. Spice Tins. Lot consists of three, early tin litho spice tins for Schneider Bros. Co., Mt. Carmel, Pa. (ginger, allspice and red pepper) each featuring Co.'s trademark kids (ea. App. 3.25 x 2-3/8 x 1-3/8"). Tins are clean, bright and excellent overall, w/ a little light soiling and wear on allspice example. Min. bid \$40 (the lot).

# Sample Tins



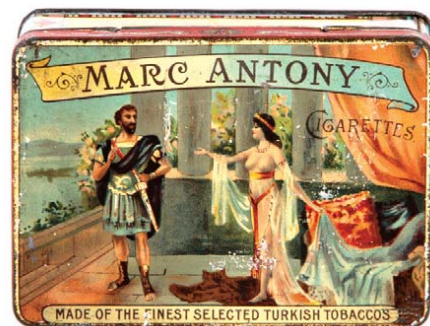
183).Lucky Strike Tobacco Samples. Lot consists of three different variations of small, sample size tobacco pocket tins (heights range from 2.25" to 3.25"). Tins are clean and excellent overall, w/ exception of typical wear and litho loss on top of lids and side areas where tax stamps once sat on the two "Roll Cut" tins. Min. bid \$60 (the lot).



184).Tea Tin. 4.5 x 7 x 3" unusual, very early hinged lid tin litho European product tin for Mazawattee Tea, featuring different beautiful, multi-color graphic images of Victorian era children on lid and around four sides (different images each side). Clean, bright and very attractive (litho areas are a very strong C. 8+) w/ a little typical darkening and speckling to gold flash border areas. Min. bid \$40.



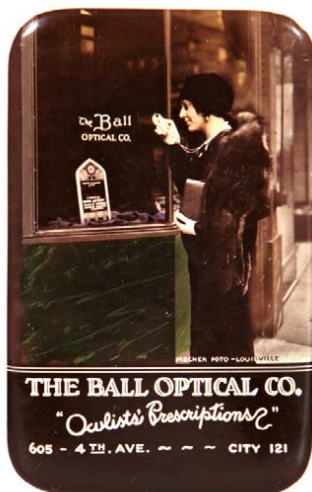
185).Golden West Coffee. 3.5 x 5" early, tin litho 1 lb. key wind coffee can for Golden West brand coffee, featuring attractive images of Co.'s trademark cowgirl. Clean, bright and excellent overall w/ a couple minor rubs on backside (C. 8.5+). Min. bid \$30.



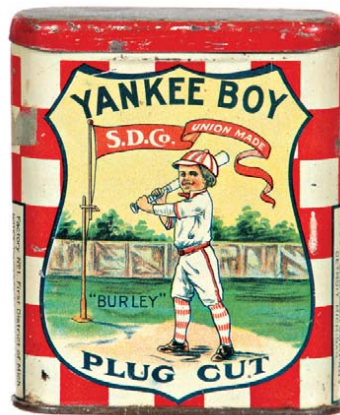
186).Marc Antony Cigarettes Tin. 3 x 4 x 1.25" early, tin litho hinged lid European cigarettes tin, featuring beautifully detailed graphic image of Marc Antony and a topless Cleopatra. Clean, bright and displays nicely, w/ some non-offensive scattered background wear (C. 8/-). Min. bid \$30.



187).Mosemann's Peanut Butter Pail. 4 x 3.5" (dia.) early tin litho 1 lb. pail for Mosemann's brand peanut butter, w/ nice images of various animals on sides. A clean and attractive example that displays nicely (C. 8+) w/ some light wear to gold flash finish on lid. Min. bid \$40.



188).Optician Mirror. 2.75 x 1.75" early, celluloid advertising pocket mirror for Ball Optical Co., w/ hand tinted photo image of a stylish woman outside Co.'s storefront. Excellent. Min. bid \$30.



189).Yankee Boy Pocket Tin. 4-1/8 x 3.5 x 1-1/8" early tin litho vertical tobacco pocket tin for Scotten Dillon Co.'s Yankee Boy brand, featuring nice baseball theme image. Clean, bright and attractive in appearance, w/ a little non-offensive light scattered wear (C. 8+/-). Min. bid \$100.



190).Roundup Spice Tin. 3.25 x 2-3/8 x 1-3/8" scarce variation, early tin litho 2 oz. spice tin (red pepper) from Roundup Grocery Co. (Spokane, Wash.) featuring great image of Co.'s trademark cowboy (same image both sides). Clean, bright and displays very nicely (as a strong C. 8+), although close examination will reveal a 3/8 x 1/4" small touch-up spot in non-graphic dark background area (narrow left side edge). Min. bid \$30.



191).Tobacco Card. 7-5/8 x 12-3/8" very early, oversize cardboard litho advertising display card for Marburg Bros. "Greenback" and "Seal of North Carolina" tobaccos. Clean, bright and very attractive w/ minor scuffing and some scattered edge wear in outer black border areas (C. 8+). Min. bid \$40.

Advertising Boot Jack



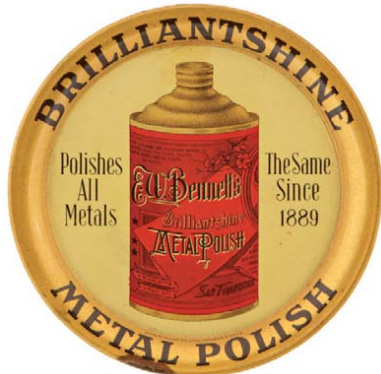
192).Pistol Boot Jack. 8.5 x 5" unusual, early figural cast iron advertising boot jack for "3-S brand shoes, w/ fine detailing and nicely embossed lettering on both sides (hinged at top to open up into bootjack). Excellent condition, w/ a very nice, all original surface patina (note: does not sit up and stay open well for using as bootjack). Min. bid \$40.



193).Handsome Dan Tobacco Tins. Lot consists of three different variations of early paper label (over tin) pry-lid tobacco cans for Phillip Morris Co.'s Handsome Dan brand (sizes range from 3.75 x 4-3/8" dia. to 4.5 x 5-5/8" dia.). They are clean and display nicely, w/ a little minor, non-detracting light scattered wear (C. 8+ to 8.5+). Min. bid \$50 (the lot).



194).Coca-Cola Sign. 3.25 x 6.5" ca. 1920's/30's metal Coca-Cola sign. Very high quality, w/ embossed chrome detailing and a very deep and rich heavy enameled paint (giving appearance of porcelain). Crisp and like new (near mint), w/ just the right amount of surface patina. Min. bid \$40.



195).Metal Polish Tip Tray. 4.25" (dia.) scarce, early tin litho advertising tip tray for W. Bennett's metal polish. Clean, bright and like new, w/ exception of dark spot at 7 o'clock on outer rim area. Min. bid \$30.

Rex Bitters



196).Rex Bitters Sign. 9 x 12.5" early cardboard hanging sign advertising Rex Bitters (quack medicine product), featuring famous Poker playing dogs image by artist CM Coolidge (dated 1906 w/ print offer notation in bottom margin). Front is excellent (C. 8.5) w/ some pencil writing on non-graphic backside). Min. bid \$40.



197).San Felice Tip Tray. 4.25" (dia.) unusual, early tin litho advertising tip tray for San Felice brand cigars. Displays nicely (as a C. 8/-) although closer examination will reveal scattered scrapes and wear in background of image area w/ heavier wear along outer edges of rim (critical grade 7/+). Min. bid \$30.

Advertising Cup



198).Advertising Cup. 1 x 2-1/8" dia. (collapsed) early collapsable aluminum bicycle riders cup, w/ a beautiful, highly graphic pocket mirror style celluloid cover at top advertising Farnsworth, Hoyt & Co., a Boston shoe goods dealer. Clean and excellent. Min. bid \$30.



199).Anheuser-Busch Tray. 13.5 x 16.5" early tin litho advertising tray from Anheuser-Busch Brewing Association, St. Louis, featuring beautifully detailed multi-color graphics. Clean and very attractive appearance (displays as a strong C. 8++), although a close examination will reveal a little non-offensive light scattered background wear (quite minor- nothing that's serious or detracting). Min. bid \$100.

Celluloid Sign



200).Cotton Seeds Sign. 6" (dia.) celluloid over cardboard string hung button style sign advertising Blue Wagon brand cotton seeds. Clean and excellent (Parisian Novelty Co.). Min. bid \$40.



201).Nyal Medicine Display. 11-3/8 x 11.75 x 4-5/8" scarce, early tin litho, counter-top display for Nyal Co.'s medicines, picturing Co.'s medicine and dental products on front (product compartments on back). Attractive and displays nicely, w/ minor soiling and light scattered wear (C. 7.5+). As found, should improve w/ cleaning (note: examination under black light will show a little fairly minor early touch-up at very outer edges of upper border area.) Min. bid \$50.



202).Mid-Channel Pocket Tin. 2.75 x 3.5 x 1-1/8" scarce, tin litho vertical tobacco pocket tin for Mid-Channel brand (Standard Tobacco Co., Fayetteville, NY). Clean, bright and very attractive (displays as a strong C. 8+) although close examination will reveal a little non-offensive light wear and narrow scratch line along seam of right side edge (where tax stamp once sat). Min. bid \$50.



203).U.S. Tires Fan. 9-5/8 x 8-1/8" early die-cut cardboard litho advertising fan for U.S. brand tires, featuring attractive ca. 1920's motoring image (text advertising on back). Very nice appearance, w/ some light background soiling in handle area (C. 8). Min. bid \$30.



204).Coca-Cola Tip Tray. 6-1/8 x 4-3/8" early, ca. 1914 Coca-Cola tip tray, featuring nice image of Co.'s calendar girl "Betty". Clean, bright and excellent (C. 8.5+) w/ trace hint of crazing and tiny background dent mark (extremely minor and barely noticeable- mentioned for accuracy). Min. bid \$50.



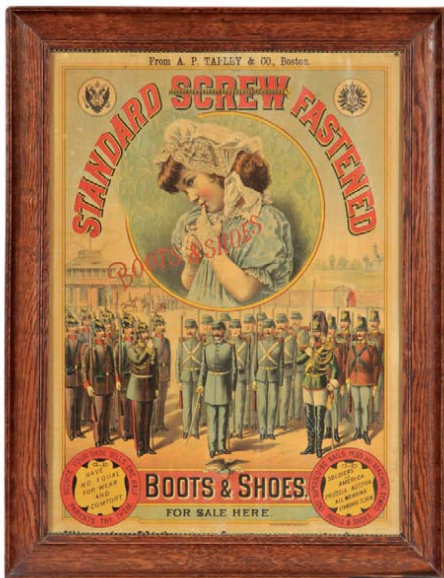
205).Uncle Sam Oats. 7.25 x 4-1/8" (dia.) early, 1 lb. 4 oz. size oats box from Biklen, Winzer Grocers (Burlington, Iowa) w/ same nice image of Uncle Sam on both sides. Clean, bright and attractive appearance, w/ minor soiling/toning on backside (C. 8+/-). Min. bid \$50.



206).Dutch Girl Match Holder. 8-7/8 x 5.25 x 1-7/8" unusual, early, heavy figural brass hanging match holder in image of Dutch girl holding buckets (buckets hold stick matches). Very high quality, w/ a nice rich surface patina. Min. bid \$40.



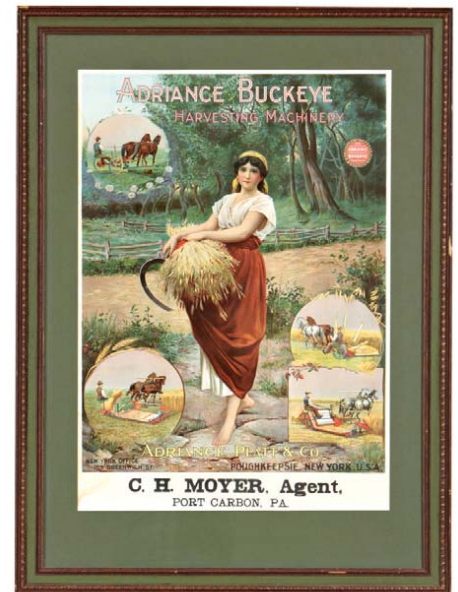
207).Gold Shore Sample. 2-7/8 x 1.75 x 7/8" full, sealed, early 1/2 oz. size soft-pack style tobacco sample for Bagley Co.'s "Gold Shore" brand. Clean and very nice (a strong C. 8+) w/ some light chafing on bottom section of series 1910 tax stamp. Min. bid \$30.



208).Boots & Shoes Sign. 23.5 x 18" (20 x 14.5" visible) very early paper litho sign on coated paper stock (metal strips at top and bottom) for Standard Boots & Shoes (has Civil War era Prussian, U.S. and Austrian uniformed soldiers at bottom wearing Co.'s boots). Attractive and displays quite nicely (C. 8+/-), w/ a slight bit of even toning, and a little minor scattered wear (including small staining spots at bottom edge- just above bottom strip). Presented in attractive antique frame. Min. bid \$100.



209).Diamond Wedding Whiskey Sign. 20 x 14" unusual, early lithographed sign (on brass) for Sloman Co.'s "Diamond Wedding" brand whiskey, featuring colorful and highly graphic images of cherubs, flowers, ribbons, etc. A clean and attractive piece that displays nicely, w/ a little tarnishing to brass surface and a few minor scattered bend marks (C. 8+/-). Min. bid \$70.

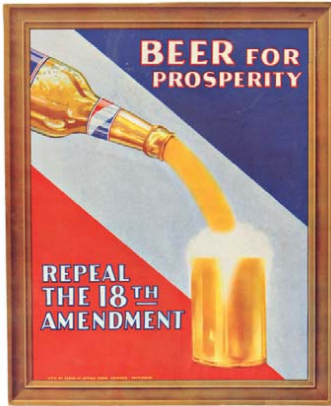


210).Agricultural Sign. 35.75 x 26-3/8" (26.5 x 18.75" visible) large, very early paper litho sign for Adriance Buckeye brand harvesting machinery, featuring beautifully detailed, multi-color lithography. Clean, very bright and displays extremely well (as a strong C. 8.5+/-), w/ exception of a couple very faint water stains in outer border areas (not offensive, but could be easily removed by any good paper conservator). Framed and matted. Min. bid \$100.



211).Murad Cigarettes Porcelain Sign. 3.5 x 22" very early, heavy porcelain strip sign for Murad brand cigarettes, featuring beautifully detailed colorful cigarette pack. Has a couple chip spots at bottom right edge and just a trace bit of fade in cigarette pack area, but overall clean, attractive and displays very nicely (C. 8/+). Min. bid \$70.

Motion Display



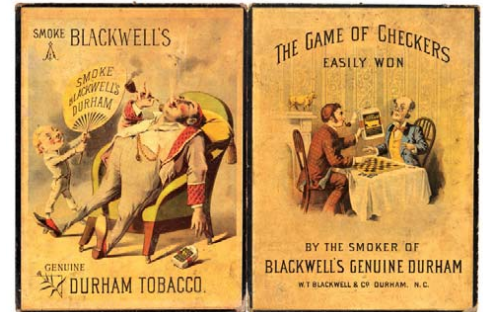
212).Anti-Prohibition Light-Up. 12.25 x 10 x 5" unusual, ca. 1920's/30's cardboard shadow-box style "Repeal 18<sup>th</sup> Amendment" anti-prohibition light-up display sign, w/ revolving electric light mechanism inside (made to show pouring motion from bottle into glass). Neat and unusual piece, excellent overall (a strong C. 8.5/+). Min. bid \$40.

Harvard Brewery



213).Harvard Beer Tray. 12" (dia.) x 1-1/8" early tin litho serving tray for Harvard Export green label beer (Harvard Brewing Co., Lowell, Mass.) featuring attractive graphics (also has Harvard advertising on outer side edges of rim). Clean, bright and very attractive (C. 8+) w/ a little minor scattered wear. Min. bid \$50.

Checker Board



214).Durham Tobacco Checkerboard. 13.5 x 20" (opened) very early, folding cardboard advertising game board for Blackwell Co.'s Durham tobacco, featuring beautifully detailed multi-color shiny finish lithography. Very attractive appearance, w/ scattered wear from use at outer border area (note 2 sides have separated at center fold). Min. bid \$40.



215).Rex Flour Porcelain Sign. 4 x 20" early, heavy porcelain strip sign for Rex Flour. Clean, bright and like new (near mint), w/ exception of a couple minor flea bites on very top edge. Min. bid \$70.



216).Chalmers Autos Paperweight. 2-3/8 x 3.5 x 3/8" very early, heavy bronze advertising paperweight for Chalmers Motor Co., featuring beautiful, finely detailed images of Co.'s factory and early roadsters. Excellent overall, w/ a fairly minor dinging/wear mark at outer middle left border edge. Min. bid \$30.

Sample



217).Tomahawk Tobacco Sample. 4.75 x 2-5/8 x 1.25" full, sealed, early "free sample" 1 oz. soft pack style tobacco package for "Tomahawk" brand (1910 tax stamp). Has a couple minor tears, some light creasing / crimping and a little scattered wear and a white stain spot in bottom right corner, but overall attractive and displays nicely (C. 8/-). Min. bid \$30.



218).Sunset Trail Cigar Tin. 5.5 x 6-1/8 x 4.25" unusual, navy background variation, tin litho, 50 count cigar can for Sunset Trail brand, featuring attractive color graphic western images on front, back and inside lid. Litho areas are clean, bright and display nicely, w/ minor scattered wear on front and back w/ a little light scuffing on inside image (C. 8+/-). Min. bid \$50.



219).Mission Tonic Tip Tray. 6-1/8 x 4-3/8" scarce, early tin litho advertising tip tray from Los Angeles Brewing Co., for Co.'s Mission Malt Tonic medicine featuring great image of nurse holding product bottle on tray (marked "At Druggists" on rim). Clean, bright and excellent (C. 8.5+). Min. bid \$40.



220).Farmer Match Holder. 6.25 x 4.5 x 1.75" unusual, early cast iron hanging match holder. Nicely detailed, w/ wheat, tools and fancy scrolling designs in background, w/ figural Puritan looking farmer head area that holds stick matches. Very nice overall, w/ some light scattered wear. Min. bid \$40.



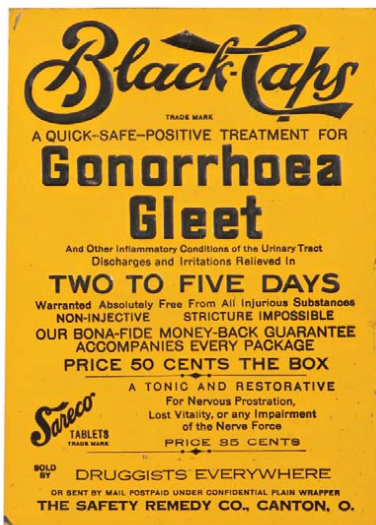
221).Par Excellence Square Corner. 3.25 x 4.5 x 2.25" scarce, very early tin litho square corner tin for "Par Excellence" brand tobacco, featuring nicely detailed lithography by Somers Bros. Tin is clean and very attractive in appearance (C. 7.5+/8-), w/general overall crazing and a couple light scuffs on lid. Min. bid \$50.



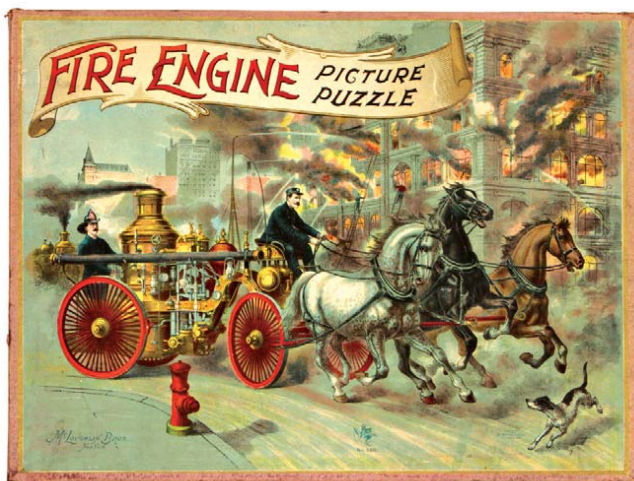
222).Indian Incense Burner. 4 x 3 x 3" early, figural 2-ps. bronze finish pot metal incense burner in shape of Indian chief (smoke comes out of his mouth and pipe). Neat little piece, w/ a rich, nicely worn surface patina. Min. bid \$40.



223).Shakespeare Square Corner. 3.25 x 4.5 x 2.25" scarce, very early tin litho square corner tin for Weisert Bros. "Shakespeare" brand tobacco, featuring beautifully detailed lithography. Tin is clean and very attractive in appearance overall (C. 8/8-), although there is some slightly unstable crazing and flaking on right narrow side edge. Min. bid \$40.



224).Sexual Diseases Sign. 9-5/8 x 7" small, early embossed tin litho sign for "Black Caps" quack medicine treatment for sexual diseases and disorders. Bright, clean and attractive (appears never used), w/ a little light edge wear (C. 8+/-) Min. bid \$40.



225).Fire Engine Picture Puzzle. (13-5/8 x 18-1/8 x 1-1/8" box; 17.75 x 24.75" puzzle) outstanding, very early, large boxed "Fire Engine" picture puzzle set by Mc Loughlin Bros., NY (© 1901) featuring beautifully detailed multi-color color graphics. Both box and wooden puzzle are clean, bright and excellent in appearance (C. 8.5/+), although right side apron on box cover is missing small 2.5" section along narrow outside right edge. Min. bid \$70.



226).Fly Ribbon Tin. 2.5 x 2 x 1/2" unusual, very early tin litho hinged lid tin for Flistikon Fly Catcher ribbon, featuring great image of early fly. Display side is nice (C. 8) w/ trace bit of fade and minor wear to sides and back. Min. bid \$30.



227).Adams Gum Box. 5 x 10 x 4.25" early cardboard store display box for Adams "Tutti Frutti" brand chewing gum (originally held 36 packs- 180 pieces of gum). Outer lid label pictures a child holding rabbit (C. 7.5+/8-); inside has fancy glass lift-up lid w/ stunning multi-color graphics on inside (impressive inside label is like new). Min. bid \$40.



228).Red Raven Shoe Horn. 4-5/8 x 1.75" scarce, early tin litho shoe horn advertising Red Raven waters, featuring great image of bottle and Co.'s trademark bird. (souvenir from 1904 World's Fair). Clean, bright and displays nicely (as a C. 8+/-) w/ some scattered wear and flaking on front and fairly heavy wear on plain, non-graphic backside. Min. bid \$40.



229).King Paints Calendar. 13.5 x 7.75" very early, cardboard die-cut 1883 calendar advertising E.F. King Paint Co. (Boston), featuring beautiful, multi-color graphics. Crisp, bright and like new (near mint appearance) w/ light paper and glue remnants on non-graphic backside (probably removed from scrap book). Min. bid \$40.



230).Kamo Oats Box. 7.5 x 4.25" (dia.) unusual, early 1 lb. 4 oz. cardboard oats box for Kamo brand (Paxon & Gallagher Co., Omaha, Neb.) featuring nice image of Co.'s colorful trademark duck on both sides. Has a little light scattered soiling, toning and some non-offensive minor scattered background staining, but overall attractive and displays nicely (C. 7.5+/-). Min. bid \$40.



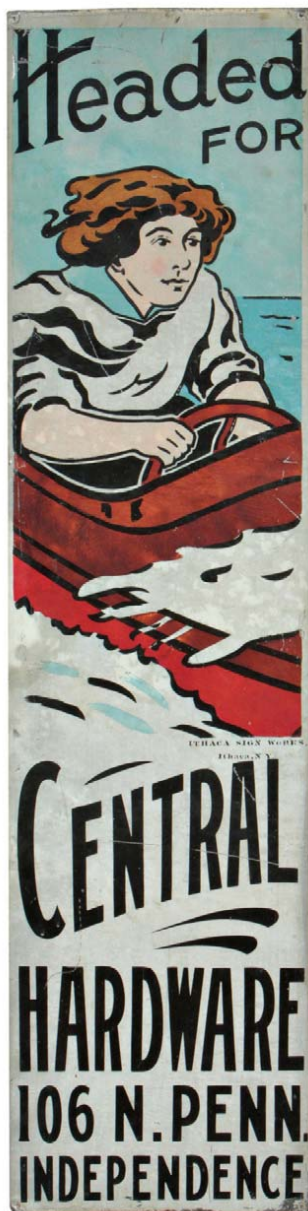
231).Plantation Coffee Pail. 7.75 x 7-5/8" (dia.) scarce, early 5 lb. tin litho coffee pail for Blaul Sons Co.'s Plantation Blend (Burlington, Iowa). Attractive and displays nicely, w/ same image on both sides (front 8+), some litho background wear spots on backside (back 7.5+). Min. bid \$60.



232).Deacon Brown Tip Tray. large 5" (dia.) early tin litho "Drink Deacon Brown, the King of Phosphates" advertising tip tray, featuring beautiful multi-color graphics. Clean, bright and exceptionally nice (C. 8.5+) w/ a couple non-offensive light dents. Min. bid \$50.



233).Buist's Seed Box. 10 x 13.75 x 8" unusual, early wooden store display box for Buist's brand flower seeds, w/ multi-color graphic label inside w/ beautiful images of water lily's. Excellent overall (tiny round brass knob on closure hardware missing). Min. bid \$40.



234).Speedboat Sign. 48.5 x 12.25" wonderful, large, early painted metal sign featuring great image of ca. 1920's girl driving early speedboat. Very impressive looking sign (by Ithica Sign Works, Ithica, NY), has strong colors and displays very well (as a C. 8+/-) w/ an all original, nice folk art type look. Has some general non-offensive scattered wear and scratches from use- but nothing that is offensive or takes away from its great overall appearance (critical grade C. 7.5+). Min. bid \$100.

Large Display Bottle



235).Waterman's Ink Display Bottle. 13.25 x 8" (dia.) large, early, heavy figural glass store display bottle/ trade sign for Waterman's brand ink (hand applied lip), complete w/ fancy original metal cap. Impressive, very high quality piece, is complete and excellent, w/ colorful and attractive original label on front. Glass is excellent (label has a little minor soiling/ wear and there is some denting at top of metal lid). Min. bid \$150.

Large Display Dispenser



236).Chocolate Syrup Dispenser. 7.5 x 11.5" (dia.) outstanding, very early, heavy, high quality 1-ps. blue decorated figural ceramic soda fountain syrup dispenser in shape of giant cup and saucer, advertising Johnston's brand chocolate syrup. Excellent, w/ no cracks or chips (has a trace bit of very minor crazing), complete w/ original metal cover. Min. bid \$100.



237).Coca-Cola Sign. 55 x 16.5" (dia.) ca. 1950's 2-ps. Coca-Cola sign has nice image of 6-pack carrier w/ an attached round button sign at top (dated 1954 near base). Crisp, bright and displays as like new (basically near mint and appears never used), w/ a little light, very minor wear at top outer edge of red button sign (mentioned for accuracy, not visible when displayed). Min. bid \$150.



238). Kentucky Wagons Match Holder. 4-7/8 x 3-3/8" scarce, early tin litho advertising match holder from Kentucky Wagon Mfg. Co, featuring nicely detailed image of early horse drawn wagon. Clean, bright and very attractive (a strong C. 8+/) w/ only minor wear. Min. bid \$50.



239). Dr. Jayne's Medicine Sign. (16 x 18" frame, 9-5/8 x 11.5" visible) important, very early (ca. 1870's) small reverse glass sign for Dr. Jayne's Expectorant. Beautiful, museum quality piece is crisp and like new, as found still sealed in its original frame (wood on back has original product stenciling. Close examination shows minor, extremely well done restoration. Min. bid \$150.



240). Old Hickory Wagons Match Holder. 4-7/8 x 3-3/8" scarce, early tin litho advertising match holder from Kentucky Wagon Mfg. Co, featuring nicely detailed image of early horse drawn wagon. Clean, bright and very attractive appearance (a strong C. 8+/) w/ a little light scattered chipping and minor wear. Min. bid \$50.



241). Seal of NC Tobacco Tin. 6.5 x 4-7/8" (dia.) early tin litho small-top style canister for "Seal of North Carolina" brand tobacco, featuring beautiful multi-color graphics (different images both sides.) Clean, bright, especially nice example (C. 8.5++). Min. bid \$60.



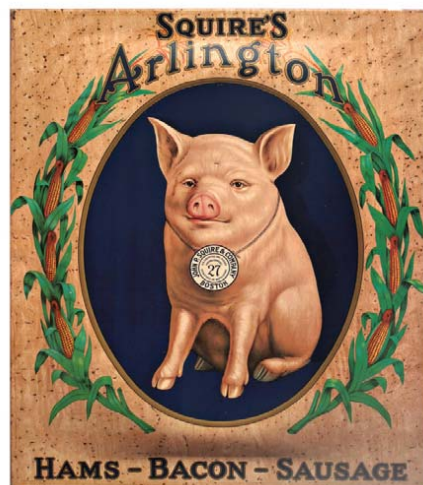
242). Anheuser-Busch Tray. 15.5 x 18-5/8" early tin litho advertising tray from Anheuser-Busch Co. featuring beautifully detailed multi-color factory scene (Standard Adv. Co. lithographers). Clean and very attractive appearance (displays as a strong C. 8++), although close examination will reveal a little non-offensive light scattered speckling and minor background wear (quite minor- nothing serious or detracting) and a little light scattered edge wear (critical grade a nice solid C. 8), w/ some general overall wear on non-graphic backside. Min. bid \$100.



243). Store Tray. 16.25 x 13.25" unusual, early tin litho advertising tray w/ nice color graphics, for Oliver Rothert, an Altoona, Pa. home furnishings merchant. Attractive and displays nicely (as a C. 8+/-), w/ some crazing on surface, and some scattered wear spots on rim. Min. bid \$40.



244). Griffing's Chocolate Box. 13.75 x 10.75 x 9.25" early, wooden store display box for Griffing's breakfast cocoa, featuring attractive display label inside. Outer box has some non-serious wood chipping/loss along bottom edge and expected darkening and wear to front label and wood surface; inside label is attractive and displays very nicely, w/ some non-offensive toning and light background staining and wear (inside label C. 8+/-). Min. bid \$50.



245). Squire's Pig Sign. 24.5 x 20.25" outstanding, early tin litho advertising sign for John Squire Co.'s Hams, Bacon and Sausage products, featuring wonderful image of Co.'s trademark pig (note human features). Clean, bright and very attractive in appearance, w/ nice surface sheen (basically displays as a very strong C. 8.5) although close examination will reveal a few non-offensive light wear marks (picky critical grade C. 8+/-). Min. bid \$250.



246). Orange Crush Sign. 19 x 13.5" nice, early cardboard advertising sign for Orange Crush soda. Clean, bright and appears never used, w/ only minor storage wear (near mint). Min. bid \$40.



247). Grain Brokers Sign. 11.5 x 48.25" wonderful, very early, primitive wooden painted trade sign for Carr & Co., a Chicago Board of Trade grain broker, asking Farmers to ship their grains and seeds to them. A powerful and impressive looking piece, w/ excellent patina to its untouched, all original mustard paint surface w/ black incised lettering and design, giving it a great primitive, country, folk art look (C. 8+). I'm told that this sign was found many years ago inside the walls of early Midwest train station- probably never used, as there are no nail holes present. Min. bid \$150.



248). William Tell Mechanical Bank. 6.75 x 10-5/8 x 3.75" early, figural, cast iron "William Tell" mechanical bank (pushing on boot shoots penny into tower while knocking apple off head). All original, w/ clean, very nice paint surface (w/ only minor wear from use). Min. bid \$150.



249). Just Suits Porcelain Tobacco Sign. 6.5 x 16.25" early, heavy porcelain pipe shaped sign for Just Suits brand tobacco. Clean, bright and displays very well, w/ nice surface sheen (basically displays as a strong C. 8+) w/ exception of some minor wear and early chipping at outer edges . Min. bid \$150.



250). Old Abe Flat Pocket. 2.25 x 3-5/8 x 5/8" scarce, early tin litho flat pocket style tobacco tin for B. Leidersdorf Co.'s "Old Abe" brand, featuring beautifully detailed graphics by Somers Bros. lithographers. Attractive overall and displays nicely (as a nice C. 8/-), w/ some non-offensive light litho loss (mostly confined to outer edges) and a little non-detracting minor denting (critical grade C. 7.5/+). Min. bid \$70.

#### Match Safe



251). Sauer's Match Safe. 2-7/8 x 1.5 x .25" early, very high quality advertising match safe for Sauer's flavoring and extracts w/ beautifully detailed graphic advertising on wrap-around celluloid. Clean, bright and excellent w/ a little minor wear. Min. bid \$40.



252). Anheuser-Busch Pocket Mirror. 2.75 x 1.75" early, colorful and highly graphic advertising pocket mirror from Anheuser-Busch Co., for "Buschtee" a prohibition era carbonated tea beverage. Clean, bright and excellent, w/ very minor traces of surface wear (so minor, barely merits mention). Min. bid \$40.



253). Bailey's Whiskey Tray. 12" (dia.) early, tin litho serving tray for Bailey's Rye Whiskey, featuring beautiful, multi-color lithography. Clean, bright and exceptionally nice appearance (C. 8.5/+), w/ minor crazing and light wear at outer edge of rim. Min. bid \$50.



254). Big Chunk Tobacco Sign. 15.5 x 15.5" (10-5/8 x 10-5/8" visible) very early cardboard litho advertising sign for Drummond Tobacco Co.'s "Big Chunk" brand tobacco, featuring beautifully detailed color graphics. Clean and very attractive appearance (a strong 8++) w/ just a trace hint of fade. Nicely framed and matted in attractive antique frame. Min. bid \$60.



255). Mason's Blacking Box. 11.75 x 12-1/8 x 9.5" (as pictured lid open) very early, wooden advertising store display box for Mason's boot blacking, w/ beautiful multi-color label inside featuring black man shining patron's boot. Min. bid \$40.

**MEN**



**LADIES**

256). Porcelain Rest Room Signs. Lot consists of a pair of early, 2-ps. heavy porcelain 2-sided service station rest room signs, in crisp, like new condition, as found never used, still in their original Texlite Sign Co. shipping boxes (complete w/ mounting hardware- address on box was to D-X Sunray Oil Co.). Signs measure app. 9-1/8 x 16.25". Min. bid \$60 (the pair).



257). Lucky Strike/Tuxedo Tobacco Sign. 9 x 19.25" scarce, early 2-sided tin litho die-cut pipe shaped tobacco sign advertising Lucky Strike on front and Tuxedo Tobacco on back (H.D. Beach Co. Litho). Sign is clean, bright and displays extremely well, w/ a few minor waves in handle area and a little haziness and some light scattered surface wear along bottom edge of back side (front C. 8++; back C. 8+/-). Min. bid \$200.

**Sanitary  
REST ROOMS**

258). Sanitary Rest Rooms Sign. 15 x 30" early, heavy, 2-sided porcelain service station "Sanitary Rest Rooms" sign. Clean, bright and like new appearance (basically near mint), w/ exception of a few tiny, very minor chips at very outer edges. Min. bid \$50.



259). American Airline Badges. Lot consists of four different early, very high quality metal employee uniform badges from American Airlines, each w/ inlaid cloisonné enameling (hinged locking pins on back). Sizes range from 1 x 2-7/8 to 1.25 x 2.75". Excellent. Min. bid \$20 (the lot).

Vaudeville Sign



260). Vaudeville Folky Sign. 20.25 x 16 x 2.5" very early, metal (over wood) painted hanging sign for an early New London, Ct. Vaudeville theatre (w/ heavy iron bracket at top). All original and as found, w/ a rich, nicely weathered primitive country folk art look (C. 7.5/+). Min. bid \$50.



261). Kirk Soap Sign. 13-7/8 x 10.75" very early, cardboard litho advertising sign for Kirk & Co. brand soap. Clean and very attractive appearance (C. 8/+), w/ a little non-detracting minor soiling and light scattered wear (some very minor wrinkle marks that are pretty much confined to outer margin/border area). Min. bid \$60.



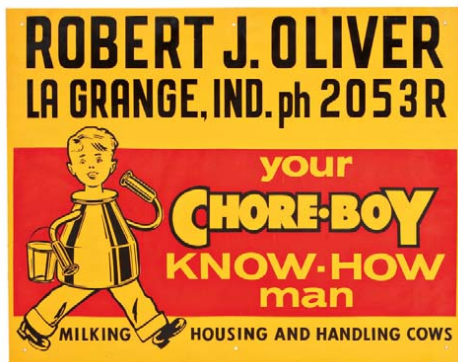
262). Brother Jonathan Tobacco Bin. 11.5 x 8.25" (dia.) scarce, large, early tin litho store tobacco bin for Adams Tobacco Co.'s "Brother Jonathan" brand, featuring attractive early detailed color graphic images all around. Displays nicely, w/ some light soiling, speckling and non-offensive light scattered wear, as well as some light softening to reds (front displays as a strong C. 7.5+; back a respectable C. 7+), w/ some faint staining and minor oxidizing spots on Washington Monument building images on backside. Min. bid \$150.



263).Advertising Turtle. 2-5/8 x 1-5/8 x .5" unusual, early, advertising turtle for a Reading, Pa. lumber dealer. Has painted cast iron base w/ a celluloid top. Celluloid is excellent. Min. bid \$30.



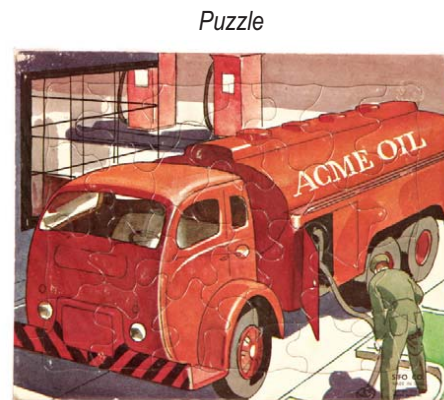
264).Lorillard Tobacco Porcelain Sign. 3-5/8 x 21" very early, heavy porcelain strip sign for Lorillard Co.'s Climax Plug tobacco. Clean, bright and displays extremely well although close examination will reveal a few tiny, very minor chip spots (non-detracting and barely noticeable) and a few minor chips at top and bottom edge (C. 8.5). Min. bid \$70.



265).Chore-Boy Dairy Sign. 22 x 28" unusual, tin litho dealership sign for "Chore Boy" brand milking equipment and dairy farming products, w/ attractive image of Co.'s milking machin kid logo. Clean, bright and like new (appears never used). Min. bid \$40.



266).Car Fender Pocket Mirror. 2-1/8" (dia.) scarce, early celluloid pocket mirror for Providence Car Fender Co. Clean, bright and excellent appearance, w/ minor bumps and very minor surface wear on front (so minor barely merits mention); and trace celluloid pull spot w/ minor foxing at side edge of backside if examined under magnification (also very minor). Min. bid \$40.



267).Acme Oil Puzzle. 8 x 10" unusual ca. 1940's/50's, cardboard advertising jigsaw puzzle for Acme Oil Co., w/ image of gas truck at filling station. Excellent overall, w/ minor edge wear in outer border area. Min. bid \$20.



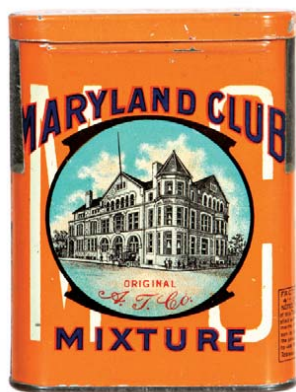
268).Country Club Cigar Tin. 5-5/8 x 4-7/8 x 4-7/8" early tin litho 50 ct. cigar can by Liberty Can Co. featuring beautiful multi-color country club, w/ golfers, boaters and tennis players in foreground (same image on 3 sides). Clean, bright and displays very nicely (basically a strong C. 8++), although there is a little non-detracting light scattered wear, including a couple early litho loss chip spots (critical grade C. 8+-). Min. bid \$50.



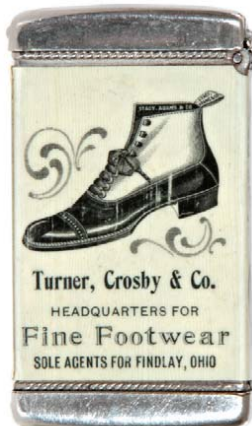
269).Penny Post Tobacco. 4.25 x 7 x 4.5" early, tin litho, lunchbox style tobacco tin for Strater Co.'s "Penny Post" brand. Clean, bright and attractive appearance, w/ a little light scattered wear (C. 8/-). Min. bid \$50.



270).Rugaber Pocket Mirror. 2-1/8" (dia.) scarce, early celluloid pocket mirror for a Westfield, Pa. furniture store. Clean, bright and excellent appearance (examination under magnification will reveal non-offensive minor indent mark in dark section of doghouse entrance and trace hints of scuffing). Min. bid \$40.



271).Maryland Club Tobacco Tin. 4.25 x 3-1/8 x 1" early tin litho vertical tobacco pocket tin for Marburg Bros. "Maryland Club" brand. Clean, bright and very attractive (basically a strong C. 8++) w/ exception of small scratch mark at base area of backside. Min. bid \$50.



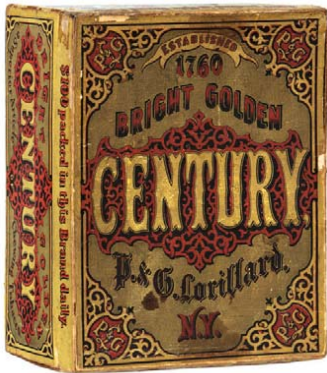
272). Shoe Co. Match Safe. 2-5/8 x 1.5 x .25" early, very high quality advertising match safe from Stacey Adams Co.'s men's shoes. Clean and excellent overall, w/ only minor wear. Min. bid \$40.



273).Whip Tobacco Pack. 3.25 x 2.25 x 1" unusual, full, sealed (never opened) 1 oz. size tobacco package for Whip brand, w/ 1910 tax stamp. Has some light wrinkling, a few tiny pinholes as well as torn wrinkle mark across top of word "ready" near bottom, but overall attractive and displays nicely (C. 7.5+). Min. bid \$30.



274).Anthracite Spice Tin. 3-1/8 x 2-3/8 x 1-3/8" scarce, early tin litho 1-1/2 oz. size spice tin (turmeric) for Goesser & Jacobs Co.'s (Hazleton, Pa.) "Anthracite" brand, featuring great graphic image of Co.'s coal mining logo (same image both sides). Clean, bright and attractive appearance, w/ some non-offensive light soiling and wear on backside (front C. 8++; back C. 7.5++/-). As found, should improve w/ cleaning. Min. bid \$40.

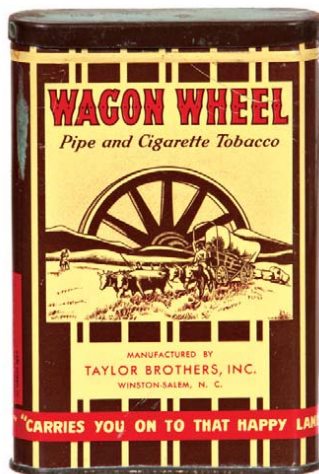


275).Century Tobacco Box. 10 x 8 x 4-7/8" very early, 2-ps. cardboard store box for Lorillard Co.'s "Century" brand tobacco, w/ stunning, beautiful multi-color stone litho label inside (Major & Knap Lithographers, 1867 copyright). Inside label measures 8 x 10" and is clean, bright and excellent overall (C. 8.5+); outer box is decent, w/ some typical, minor light expected wear and some darkening/ light soiling on top of outer lid (base C. 8+; top of lid C. 7+). Note: lid has had a little very well-done professional reinforcement done (by conservator) along outer top and side edges of lid aprons. Min. bid \$50.

276).Pure Stock Cigar Can. 5.5 x 5.5" (dia.) early tin litho 50 ct. cigar can for "Pure Stock" brand, featuring beautiful multi-color lithography by Liberty Can Co. Clean, bright and exceptionally nice (near mint). Min. bid \$40.



277).Overalls Match Safe. 2-7/8 x 1.5 x .25" early, very high quality advertising match safe for Jaynell brand overalls, featuring nice image of overalls. Very attractive overall w/ a little non-offensive, light edge wear to celluloid. Min. bid \$40.

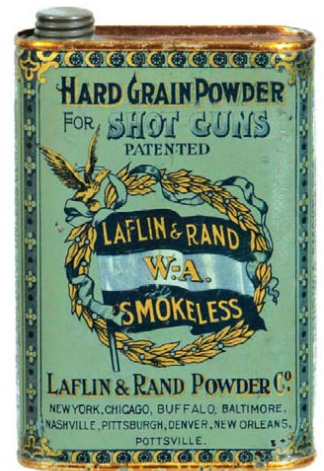


278).Wagon Wheel Pocket Tin. 4.5 x 3 x 7/8" early tin litho vertical tobacco pocket tin for Taylor Bros. Wagon Wheel brand. Clean, bright and very attractive, w/ only minor wear (C. 8+), w/ loss to paper tax stamp across top lid. Min. bid \$60.

#### Taxi Badges



279).Taxi Badges. Lot consists of six different, small, high quality metal taxi cab drivers uniform badges (sizes range from 1-1/8 x 1.5" to 1.5 x 1.75"). All are excellent. Min. bid \$20 (the lot).



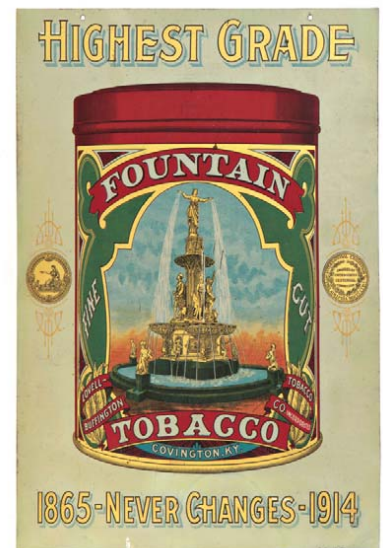
280).Lafin & Rand Gunpowder. 5.25 x 3.5 x 1.25" very early tin litho can for Lafin & Rand Co.'s hard grain shotgun powder. Clean, bright, very nice appearance, w/ just a trace hint of crazing, and some light rubbing and wear on backside (front C. 8.5+; back C. 8-). Min. bid \$50.



281).Hills Medicine Display Sign. 38.5 x 24" large, early die-cut cardboard, drugstore window display sign for Cascara Quinine medicine. Clean bright and displays nicely (basically a strong C. 8+ appearance), although close examination will reveal a little non-offensive edge tattering and some light separation and wear along mid-section fold line. Min. bid \$50.



282).Horse Goods Dealer Sign. 9.5 x 7-5/8" unusual, early, chain hung glass sign for a Waunakee, Wisconsin dealer in harnesses, horse blankets, etc., featuring attractive image (by illustrator Ralph O. Yardley). Clean and excellent. Min. bid \$40.



283).Fountain Tobacco Sign. 12 x 9" scarce, early tin litho sign for Fountain brand tobacco, featuring beautifully detailed lithography by Heekin Can Co. Crisp, bright and like new in appearance (basically displays as near mint), w/ exception of non offensive wrinkle mark at bottom right corner edge (note: an examination under black light will reveal some extremely well done, professional restoration in the outer cream colored background areas- so well done, its almost impossible to tell w/ out aid of black light. Min. bid \$80.



284).Ruhf's Cigars Fan Pull. 2-7/8 x 3-7/8" early cardboard die-cut fan pull advertising "Ruhf's 1145" brand 5 & 10¢ cigars. Clean bright and excellent overall (C. 8.5/+). Min. bid \$40.



285).Collar Tin. 3.25 x 4-7/8" (dia.) early tin litho shirt collars tin from Dixon & Parker Co. (men's outfitters) featuring great graphic image on lid. Clean, bright and very attractive appearance, although there is some scattered scratching on lid. Min. bid \$40.

Oil Badge



286).Stag Motor Oil Cap Badge. 1.5 x 2" scarce, very early service station employee name badge from Stag Motor Oil Co., featuring beautifully detailed embossed image of stag w/ inlaid cloisonné enameling. Min. bid \$50.



287).Fancy Tobacco Cutter. 8.5 x 15 x 4-3/8" unusual, fancy cast iron countertop advertising tobacco cutter w/ embossed chrome plated advertising section at top area (both sides) for Simon & Son Wholesale Cigar and Tobacco dealers, Cedar Rapids, Iowa (brass plated base has 1914 Patent date). Excellent. Min. bid \$40.



288).Aunt Jemima Crate. 11 x 23-5/8 x 13-3/8" very early wooden product crate for Aunt Jemima Pancake Flour, featuring wonderful graphic images of Co.'s early version trademark character (same image both sides). Very attractive appearance and all original, w/ a nice rich surface patina (C. 8+/-) giving it a great primitive country folk art look (side panels would also look great if hung as wooden signs. Min. bid \$60.



289).Royal Die-Cut. 7.75 x 20" early, die-cut cardboard counter-top easel-back stand-up sign from Royal Tailors, featuring stunning, highly detailed color graphics Clean, bright and like new (C. 8.5+/-) w/ light soiling on non-graphic back side. Min. bid \$40.



290).Dutch Boy Paint Sign. 9-7/8 x 27.75" early embossed heavy tin litho sign for Dutch Boy brand paints (Passaic Metal Ware Co.). Attractive and displays nicely when hung (displays on wall as a C. 8), although close-up examination will reveal some very fine surface crazing and oxidized scratching /surface wear- nothing that is offensive or detracts from overall appearance of piece when hung (critical grade C. 7.5/+). As found, should improve w/ cleaning. Min. bid \$40.



291).McCormick Harvesters Sign. 20 x 30" outstanding, large, early paper litho advertising sign for McCormick Harvesting Machinery featuring beautiful color graphics (J. Ottmann Litho Co., New York). Clean and exceptionally nice (basically like new) w/ exception of minor toning and a few faint vertical snake line crease marks at bottom edge (from being rolled). Min. bid \$70.



292).Porcelain Coal Sign. 16 x 22" scarce, early, heavy porcelain coal dealership sign from Colorado Fuel and Iron Co., featuring great image of Co.'s running devils logo. Clean, bright and exceptionally nice, w/ original surface sheen. Basically like new, w/ exception of minor oxidizing at bottom left grommet hole and a few trace hints of very minor background soiling and wear (listed for accuracy, so minor, barely merits mention). Min. bid \$70.

Red Sox Razor



293).Red Sox Razor. 1.25 x 6-5/8 x 1/2" unusual, early cardboard "Red Sox" brand straight razor box from Noonan & Sons, Boston, complete w/ early straight razor inside (razor not marked Red Sox). Interesting piece, w/ some light scattered wear (box C. 7.5+). Min. bid \$30.



294).White Sewing Machines Sign. 5.75 x 19.5" small, very early, primitive wooden advertising sign for a Pa. sewing machines store, w/ a really nice all original surface patina to its mustard paint surface, giving it a great primitive country look (C. 8/-) w/ just the right amount of wear. Min. bid \$40.



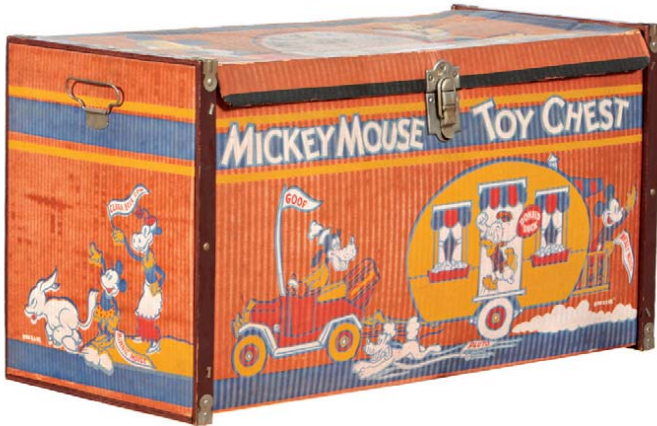
295).Century Tobacco Tin. 3/4 x 3" (dia.) very early, hinged lid, round tobacco pocket sized tin for Lorillard Co.'s "Century" brand tobacco, featuring finely detailed Ginn type graphics. Has a little light scattered denting and minor wear, but overall attractive and displays nicely (C. 8/-). Min. bid \$30.



296).Roofing Sign. 9.75 x 13.75" unusual, early embossed tin litho sign for Carey's rolled roofing product (H.D. Beach Litho.). Field area of sign is clean, bright and displays very well (as a strong C. 8.5/+), w/ general scattered wear and some paint loss in very outer white border area. Min. bid \$50.



297).Bread Tip Tray. 4 1/8" dia. early tin litho advertising tip tray for Square Deal Bread (Brenneman Baking Co., Columbus, OH) featuring beautiful, multi-color graphics. Clean, bright and attractive appearance (a strong 8+++) w/ a little non-offensive weathering and light scattered wear at very outer edge. Min. bid \$40.



298).Mickey Mouse Toy Chest. 14.5 x 26.75 x 12-5/8" ca. 1930's wood framed heavy cardboard children's toy chest, covered w/ different great images of Disney cartoon characters around three sides and lid. Clean, attractive and displays nicely (basically a strong C. 8+); w/ exception of crimping/bend marks and some soiling and light wear to lid (lid C. 7/+). Marked "1938 W.D. Ent". Min. bid \$50.



299).Boy Scout Game. 4 x 6.75 x 1.75" scarce, early boxed game for Spear Co.'s "Boy Scouts Lotto", featuring colorful and graphic scouting image on cover. Clean, bright and very attractive (a strong C. 8+++) w/ contents. Min. bid \$40.



300).Bob's Gum Box. 7.75 x 7.75 x 6" (as pictured lid open) early cardboard store display box for Bob's brand chewing gum (Frank Fleezer Corp., Phil'a. © 1914) w/ glass lift up cover on inside. Inner box is crispy and like new, w/ a little light soiling, toning and expected wear on outer box. Min. bid \$40.



301).Iron Fireman Sign. 11-7/8" (dia.) early porcelain sign for Iron Fireman brand coal furnaces, featuring great image of Co.'s robot like trademark character. Crisp, bright and like new (basically near mint) w/ exception of chip spot in outer edge at 2 o'clock. Min. bid \$40.



302).Chappaqua Shoes Clock. 9.75 x 9.75 x 5" early, heavy figural white metal counter-top advertising clock for Chappaqua Shoe Co., featuring great image of early button-top shoe. Has very nice overall look, w/ some general wear from use (clock not working and possibly incomplete). Min. bid \$50.

Complete Set 86 Pop Pins



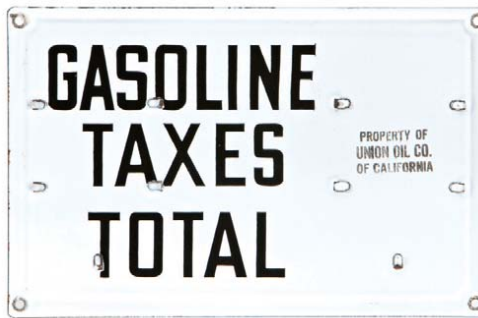
303).Pep Pinbacks. Lot consists of a complete set of 86 ca. 1940's, 3/4" dia. tin litho pinback buttons from Kellogg's "Pep" brand cereal, featuring the popular comic strip characters and adventure heroes of the era (includes Dick Tracey, Orphan Annie, Superman, etc.). Set is in excellent overall condition w/ a little minor wear on a couple of pins. Min. bid \$60 the set.



304).Success Tip Tray. 3-3/8 x 4.75" early tin litho tip tray advertising "Success" brand manure spreader wagons, featuring beautiful multi-color lithography. Clean, bright and excellent (C. 8.5+/). Min. bid \$40.



305).American Girl Flat Pocket. 2.75 x 4.5 x 3/4" scarce, early tin litho flat pocket style hinged lid tobacco tin for Globe Tobacco Co.'s "American Girl" brand. Clean, bright and very attractive appearance, w/ a little minor wear on front, and a few edge chips and light scattered wear on base (front C. 8+; back C. 7.5+/8-). Min. bid \$50.



306).Porcelain Gas Price Sign. 6 x 9.25" unusual, small, early, heavy 2-sided porcelain gas price sign from Union Oil Co. of California, w/ notched hooks for holding price signs on both sides. Crisp and like new (appears never used). Min. bid \$40.



307).Hair and Beard Grower Tin. 1-5/8 x 2-5/8 x 1/2" unusual, very early, small hinged lid product tin for Hirsutine Co.'s Hair and Beard Grower. Attractive and displays nicely, w/ a little light fade and a few light chips on base (C. 7.5+/8-). Min. bid \$40.

Koken Barber Supply Co.



308).Koken Barber Supply Jug. 10.5 x 7" unusual, one gallon size, glazed stoneware jug with printed stamped advertising label for Koken Barbers Supply Co. Clean, very nice appearance, basically excellent overall w/ minor mfg. imperfections and small chip spot on back side. Min. bid \$50.

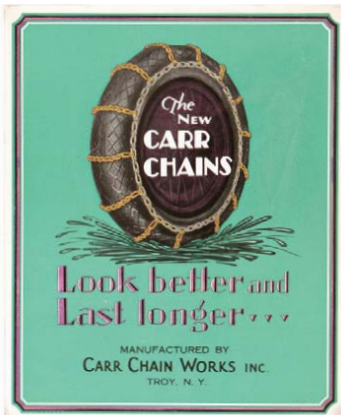


309).Cigar Store Lighter. 9 x 8 x 4.5" early patriotic themed countertop cigar store lighter has figural brass artillery shell shaped fluid reservoir w/ cast iron cannon shaped legs at base, w/ crossed flags and "Remember the Maine" slogan embossed one side, and "Bill Anthony" and soldier and crossed flags on other (embossed advertising from Jacob Stahl Co. on shell base). Excellent w/ nice surface patina, complete w/ milk glass advertising shade at top (shade has a little a little fairly minor jagged roughness along top and bottom ground edges and minor wear to advertising (same image both sides). Min. bid \$150.



310).Ginger Ale Tray. 13.25 x 10.5" early tin litho serving tray advertising Frank's brand ginger ale. Clean, bright and exceptionally nice (C. 8.5+) w/ a couple minor rub marks. Min. bid \$40.

Walter A. Wood Co.



311).Tire Chains Sign. 16-1/8 x 13.25" unusual, early embossed cardboard sign for Carr brand tire chains. Clean, bright and excellent (basically like new) w/ exception of non-offensive pinch mark in bottom left corner edge. Min. bid \$30.



312). Walter Wood Co. Match Safe. 2-5/8 x 1.5 x .25" early, very high quality advertising match safe from the Walter A. Wood Co., maker of agricultural equipment, pictures Walter Wood on backside. Min. bid \$40.



313).Mexican Beer Tray. 12.25" (dia.) unusual, early tin litho factory scene beer tray made by H. D. Beach Co. lithographers (Coshocton, OH). for Cerveceria De Sonora brewery, Hermosillo, Mexico, Unusual lithography on tray is a deep satiny finished lithography that is clean, bright and very attractive in appearance (displays as a strong 8++) although close examination will reveal minor scattered wear and a little bit of non-detracting blemish to finish (from manufacturing process). Min. bid \$40.



314).Milwaukee Mower Match Holder. 4-7/8 x 3.5 x 1.25" early tin litho match holder advertising Milwaukee Harvester Co., Milwaukee, Wis. Clean, bright and very attractive (a strong C. 8++), w/ a couple non-offensive light scuffs to front attached basket section. Min. bid \$40.

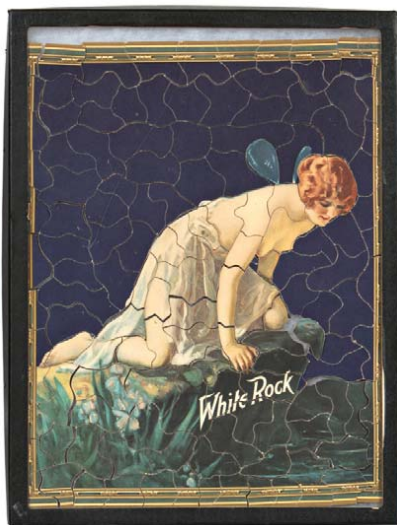
# Yellow Kid Cards



315).Yellow Kid Gum Cards. Lot includes 20 different cardboard advertising insert cards (from the original set of 25), each measuring 4.5 x 2-7/8" from Adams Gum Co.'s Yellow Kid comic insert card series. Cards are clean, bright and very good to excellent overall w/ some expected wear from use (light tears and minor staining on a couple). Min. bid \$100 (the lot).



316). Meyers Hat Store Match Safe. 2-7/8 x 1.5 x .25" unusual, early, very high quality advertising match safe w/ cigar cutter at base for a Buffalo, NY men's furnishings store, w/ nice image of topless girl on backside. Excellent overall. Min. bid \$50.



317).White Rock Puzzle. 14.5 x 11.25" scarce, ca. 1930's cardboard advertising puzzle for White Rock brand sodas, featuring nice image of Co.'s trademark topless winged girl on rock. Very nice overall, w/ only minor wear. Min. bid \$30.

# Sleepy Eye Flour



318).Sleepy Eye Flour Post Cards. 3-3/8 x 5.5" Lot consists of very scarce set of 9 different Sleepy Eye Flour color litho advertising postcards. Unused cards are clean, bright and excellent overall. Min. bid \$100 (the set).



319).Keystone Service Station Sign. 29.5 x 24-3/8" scarce variation, large, early, heavy 2-sided chain hung porcelain service station sign from Keystone Automobile Club. Has strong colors and displays quite nicely when hung, although close examination will reveal some scattered, early weathered chipping and a little non-offensive, faint hazy weathering in a few spots of very upper surface (as found, should improve w/ cleaning). (C. 7.5/-+). Min. bid \$70.



320).Hires Rootbeer Tin. 10.5 x 6-1/8 x 4-1/8" very early, hand soldered tin litho product can for Hires brand root beer syrup. Front and two narrow sides are bright and quite attractive overall, w/ a few wear spots; backside has some scattered surface oxidizing and fairly heavy general wear (front and sides C. 7.5+; back C. 7-). Min. bid \$40.

# Roy Rogers Box



321).Roy Rogers Cookies Box. 7-7/8 x 5.5 x 2-3/4" extremely rare, early cardboard product box for Quaker Oats Co.'s Roy Rogers brand cookies, featuring great image of Western star and his horse Trigger (@1950). Clean and excellent (C. 8.5+), w/ slight hint of toning and minor edge wear at top right corner. Min. bid \$40.



322).Schrafft's Candy Tin. 5-3/8 x 3-1/8" early, ca. 1920's tin litho candy tin for Schrafft Co.'s "Kiddyland" brand, featuring wonderful multi-color graphic animal characters images all around (by children's illustration artist Tom Lamb). Clean, bright and exceptionally nice (C. 8.5++). Min. bid \$50.

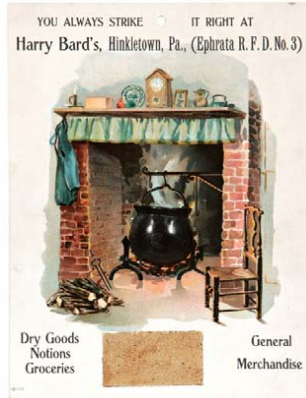
# Paperweight



323).Worcester Corsets Paperweight. 4 x 2.5 x .75" early, heavy, white bottom glass advertising paperweight for Royal Worcester brand corsets, featuring finely detailed image of woman trying on product. Excellent. Min. bid \$40.



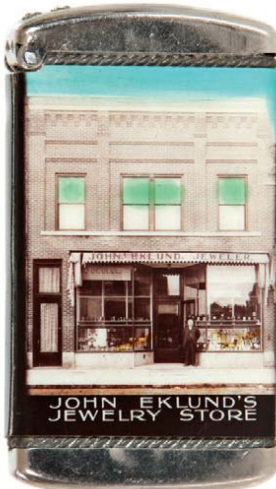
324).Columbian National Pocket Mirror. 2-1/8" (dia.) scarce, early celluloid advertising pocket mirror for Columbian National Insurance Co., featuring a beautiful multi color graphic patriotic image of Miss. Liberty, American shield, eagle, etc. Clean and excellent. Min. bid \$40.



325).Match Holder. 11 x 8.5" early cardboard litho advertising match holder for an Ephrata, Pa. general merchant (figural metal kettle holds stick matches). Crisp, bright and like new (near mint) w/ exception of minor edge wear. Min. bid \$40.



326).Cigar Tip Tray. 4.25" (dia.) very early tin litho tip tray advertising "Andrew White" brand cigars (Harkert Cigar Co., Davenport, Iowa). Clean, bright and exceptionally nice (C. 8.5+/). Min. bid \$40.



327). Michigan Jewelry Store Match Safe. 2-5/8 x 1.5 x .25" unusual, early, very high quality advertising match safe for John Eklund jewelers, featuring attractive hand tinted photo image of Co.'s Norway, Michigan store. Excellent. Min. bid \$40.



328). Café Martin Fan. 9.75 x 17" (as pictured) early, very high quality folding wood and paper advertising fan from the Café Martin, New York, featuring beautiful color graphic motoring scene by illustrator Montaul.. Excellent (C. 8++). Min. bid \$50.



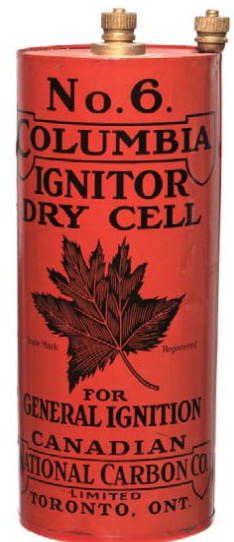
329).Santa Fe Peanut Butter. 3-7/8 x 3.25" (dia.) scarce, early tin litho 1 lb. pry-lid peanut butter tin for Santa Fe brand (Ranney Davis Mercantile Co. (various Kansas and Oklahoma cities) featuring great American Indian and Southwest desert images. Clean, bright and very attractive appearance (basically displays as a strong C. 8+/), w/ some non-offensive faint scattered wear, including some hazy cloud like areas in blue sky section- basically blends in and does not detract (critical grade C. 8/-). Min. bid \$60.



330).Coca-Cola Thermometer. 29-7/8 x 8" ca. 1950's cigar shaped metal advertising thermometer for Coca-Cola. Clean, attractive and displays quite nicely (as a C. 8+/), w/ a little non-offensive light background soiling and wear (critical grade C. 7.5++/8-). Min. bid \$50.



331).Iroquois Brewing Co. Sign. 35 x 28.5 x 4" Important, large, heavy, museum quality fancy embossed self-framed advertising sign for Iroquois Brewing Co. (Buffalo, NY), featuring incredible, multi-color detailed relief. Stunning piece has been presented in and protected by a large glass covered heavy shadow box type frame (see website addendum to view). Note: I'm told this sign was purchased many years ago at the estate sale of former president of this Brewery. Crisp, bright and beautiful (C. 8.5++). Min. bid \$500.



332).Columbia Battery Co. Trade Sign. 25.75 x 9.75" (dia.) early metal trade sign for National Carbon Co.'s "Columbia" brand dry cell car ignition batteries. This is a large, round, figural oversize store display version of Co.'s car ignition battery. Very high quality, complete w/ painted figural wooden terminals at top. A powerful and very impressive looking piece that is clean, bright and excellent in appearance (C. 8++), w/ a little minor scattered wear (Canadian). Min. bid \$100.



**Rd #2, Cobb Hill Road, Cazenovia, NY 13035 • 24 Hr. Tel: (315) 662-7625 • 24 Hr. Fax: (315) 662-3570 • morf2bid@aol.com • morfauction.com**

Welcome to our 74th auction of quality antique advertising and fine collectibles. Everything we sell is guaranteed authentic and as described. We attempt to grade condition both fairly and conservatively, using a scale of 1-10 on the advertising items (ten being absolutely mint). We do not list reproductions, re-issues, deceptively restored or pieced together type merchandise. Flaws and blemishes are prominently noted and over emphasized. We encourage you to call for a detailed description on any item you have an interest in, but respectfully must request that you do this before the closing night. Dimensions are listed by height, then width, and are only approximate (+ or - a quarter inch).

### Bidding

Bids are accepted only from those parties who have registered with us to bid. (If you were mailed this catalogue by us you are automatically pre-registered.) Your bid is a legal contract to purchase and once entered, cannot be canceled. Placement of a bid indicates acceptance of our terms.

On all "BID" items there is a 10% buyers premium added to each successful bid. You're welcome to bid by mail, email and fax anytime after receiving this catalog. We will begin accepting phone bids on Wednesday, March 21, 2012. We will be taking calls on Wednesday and Thursday from 10:00 AM until 5:00 PM. If no one answers when you call, please leave a message on our machine and we will get back to you. If bidding by mail or fax, please remember to include your telephone number with your bids! You may call or bid as often as you like. We will tell you the current bid on any item(s) you are interested in. To raise a bid, your advance must be at least \$10 more than the current high bid amount. When an item reaches \$250, bidding increments rise to \$25, at \$1,000, bidding increments advance in \$50 steps, and above \$2,000 in \$100 increments. We suggest not waiting until the last minute to begin your bidding, as its quite possible you won't be able to get through.

### Web Page and Bid Updates

We will begin posting current bid prices (not including the buyers premium) on Wednesday, March 21, 2012 (including an addendum of additional catalogue lot information) on our internet web page. These prices will be updated once each day (each evening sometime after 9:00 PM, EST) and will get updated to include the final hammer prices on Sunday afternoon once the sale is concluded. On the closing night, we will attempt to update current bid prices every hour. Our web page address for this sale is: <http://www.morfauction.com> We suggest that once you get to it, that you bookmark this address for easy re-access. There is also an addendum section on our website where we post additional information and photo's for this sale.

### Reserves and Estimates

All items which receive an opening bid in our sale will be sold to the highest bidder regardless of the price realized (we reserve the right to withdraw items in the event of inaccurate catalog descriptions and to reject any bid we feel is not made in good faith). We run our auctions with a strict policy of no buy-backs, no auctioneer games and no hidden reserves. Unlike some of our competitors, we do NOT allow consignors to bid up their own items!

### Mechanical Operations

Early mechanical and electric motors and mechanisms on machines toys, coin-ops, clocks, etc. are quite often temperamental and very unpredictable in nature. Although these mechanisms may be working fine at the time of sale, we make no guarantees or representations regarding their continued operating status once they have left our premises (including during shipping).

### Closing Night

**THE LAST DAY FOR BIDDING WILL BE ON FRIDAY, MARCH 23, 2012.** On closing day, we begin taking calls at 5:00 PM. Please mark your calendar now. On the closing night (ONLY), we will also be taking calls at (315) 662-3318, (315) 662-3429 and (315) 662-3904 after 5:00 PM (in addition to our regular (315) 662-7625 office number). **Closing Time: This Auction will close at 10:00 PM (EST) on Friday, MARCH 23, 2012.** At that time, no more incoming calls will be accepted and all lots with a registered bid of less than \$300, as well as all items without call backs registered on them will be officially closed and final. The items at \$300 and over that have call back protection registered on them will be closed out during our call back period the following afternoon (\*\*see important call back rules below\*\*). We reserve the right to change the official closing in the event of unforeseen family type emergencies or technological failures (utility disruptions, etc.). We also reserve the right to either extend the bidding, to postpone or to cancel this auction in the event of a national emergency or if the Internet or the services of the US Post Office were to get seriously disrupted during our catalogue mailing or bidding period.

### "Up-To" Bids & Call Backs

**CEILING BIDS:** We will be happy to enter competitive "up to" ceiling bids for you on any lots you request. Beginning at your minimum amount, we will advance these bid(s) up to your left ceiling amount, if (and only if) it is topped by another bidder. "Up To" bids will be handled discretely and executed in a completely competitive manner for you. Please note that we don't accept open ended "top all others" ceiling type bids.

**CALL BACKS:** You may request call back protection for any lot(s) that you enter with either a minimum or a protected "up-to" ceiling bid in an amount of at least \$300. This request must be registered with us before the official 10:00 PM closing hour of Friday, March 23rd, 2012. All callbacks will be placed by us on Saturday, March 24th, 2012, beginning at 12:00 noon (EST) and will continue that afternoon until each of the individual lots have been closed out (using past experience, I would expect this to be finished by 6:00 PM, if not earlier). If you register for call-backs, it is your responsibility to be available during this call back time period. We make every effort to honor all our call back requests, but this service is done solely as a convenience to our bidders and will be performed on a best efforts basis only. If you will be traveling or if you will not be available during call back times at your primary number, be sure you provide us with proper alternate or back up numbers for reaching you!

### Payment Terms

Winning bidders will be invoiced by mail immediately after the sale. Those who desire fast shipment can pay by Money Order or Cashiers Check. Payments are due within 10 days of receipt of invoice. We reserve the right to offer the item out to our back bidders and deny future bidding privileges to those who do not pay in a timely manner. In addition to personal checks, we also accept payment on your American Express, Visa, Master Card, Discover and Optima Credit Cards (with no surcharge added). No COD's or Collect calls are ever accepted. Items shipped to anywhere in New York State must include appropriate sales tax or signed resale certificate.

### Shipping

All packing and shipping charges are extra. We do most of our own packing and shipping in house and try to keep these charges as reasonable as possible for you. On especially fragile and larger hard to pack items, we hire the services of professional packers and charge you at our billed cost. We ship mostly through the Post Office and Fedex Ground, (Fedex Overnight available at an extra charge.)

### Subscribing, Prices Realized, Consignments & Upcoming Events

Future catalogs can be assured by sending \$20 for a full 12 months subscription. (Prices are published on our website after each sale) An automatic credit card ordering program is available. We currently run between 3-5 auctions a year (versus our previous format of running semi-annual sales). This format allows us to run smaller, more focused sales featuring larger, higher quality catalog images and gives our consignors the opportunity for a quicker turn-around of their items. In addition to our regular sales, we also occasionally offer sales made up entirely from single owner collections. Please contact us should you have items you would like us to consider for inclusion in our upcoming events. All inquiries are handled in a completely confidential manner. Our services are also available for the private placement marketing of important individual items, marketing plans for large collections as well as for estate planning and settlement purposes. Back copies of many of our previous auction catalogs are still available at \$5 each (w/ prices realized) w/ quantity discounts available if multiple issues are ordered. For further information, please call, e-mail or write.

Photography by Wes Feuz.

© Copyright 2012. All Rights Reserved. No portion of this publication may be copied in any form without the express written permission of Morford's.

## Important Closing Night Information

*In addition to our regular (315) 662-7625 office number, on the closing night (only!) you may also call us at:*

**(315) 662-3318\***  
(after 5:00 PM)

**(315) 662-3904\***  
(after 5:00 PM)

**(315) 662-3429\***  
(after 5:00 PM)



**\*These numbers for  
Closing night only!  
Friday, March 23rd, 2012**

**Bidding closes at 10:00 PM on Friday closing night. We will be accepting faxes and e-mails on closing night. Our web page will update current high bid prices approximately every hour on closing night and will also list any important addendum information. All call backs will be made on Saturday, March 24th, 2012, beginning at 12 o'clock Noon!**