



WM Morford
Investment Grade Collectibles at Auction

Investment Grade Collectibles at Auction (our 20th year of auctions)

Rd #2, Cobb Hill Road, Cazenovia, NY 13035 • 24 Hr. Tel: (315) 662-7625 • 24 Hr. Fax: (315) 662-3570 • morf2bid@aol.com • morfauction.com

Bidding closes Friday, June 22nd, 2012. (See page 36 for Terms & Conditions)



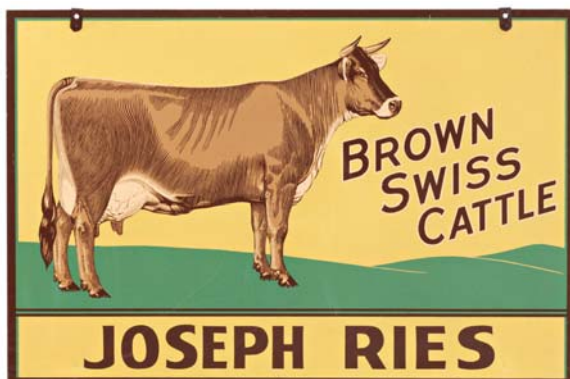
1). Penny Post Tobacco Lunchbox. 4.25 x 7 x 4.5" early, tin litho lunchbox style tobacco tin for Strater Bros. "Penny Post" brand (Louisville, Ky.). Clean, bright and very attractive appearance, w/ a little non-offensive light scattered wear (front and lid C. 8+; backside C. 8/- due a few scratch marks). Min. bid \$40.



2). Auto Fuses Display. 7-3/8 x 8-5/8 x 3.25" early, tin litho counter-top display box for Buss brand auto fuses, w/ great early motoring image (shows various fuses on sides). Front and sides are clean, bright and excellent (a strong C. 8+); back has compartments for holding fuse containers and has some darkening and soiling (includes several full containers). Min. bid \$50.



3). You Pay Spinners. lot consists of a neat group of three early metal litho bar game spinners (sizes range from 1 x 1-5/8" to 3.25 x 1.25") including nice early one for "Day & Night" brand tobacco. They are clean and very nice overall (C. 8+/-). Min. bid \$30 (the lot).



4). Cattle Sign. 23.5 x 35.5" large, heavy, 2-sided metal cattle farmers sign featuring nice image of Brown Swiss cows (same image both sides). Appears never used and is clean, bright and like new (near mint). Min. bid \$70.



5). Game Tobacco Bin. 7.25 x 11-5/8 x 8" large tin litho store bin for Bagley Co.'s "Game" brand tobacco, featuring beautiful multi-color graphic images of game birds. Clean, bright and displays beautifully (basically as a strong C. 8+) w/ a little light background wear. Min. bid \$70.



6). Black Fox Cigar Tin. 5.25 x 5.25" scarce, early tin litho 50 ct. cigar can for Black Fox brand, w/ great image of Co.'s trademark fox on front, back and lid (McLeod, Nolan Co., London, Canada). Clean, bright and exceptionally nice (a strong C. 8++) w/ exception of a small, non-offensive light dent line/mark on lid. Min. bid \$60.



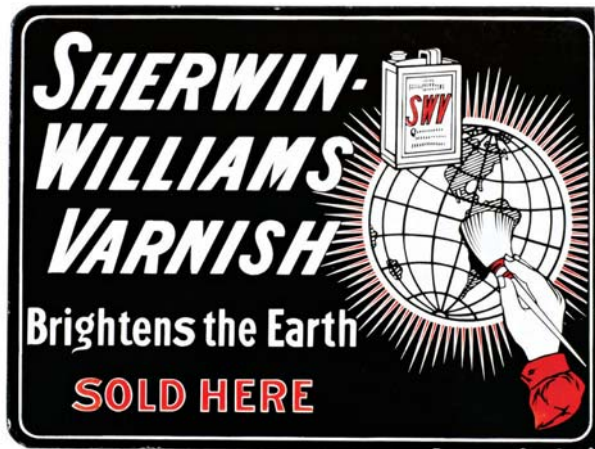
7). Oneida Beer Tray. 12" (dia.) early, heavy enameled porcelain advertising tray for Oneida Brewing Co. (Utica, NY), featuring finely detailed image of Indian Chief. Clean and very attractive appearance (displays as a strong C. 8+) w/ light soiling spot in grass area, and close examination will reveal some very minor rubs and faint traces of wear, as well as some faint spider web lines in outer rim area at 7 o'clock (very minor and barely merit mention). Min. bid \$60.



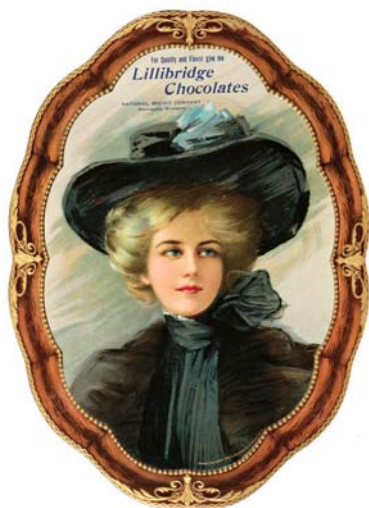
8). Candy Bucket. 12.25 x 13.25 large, early, 30 lb. size pressed cardboard candy bucket, for Underwood Talmage Co.'s chocolate drops, featuring wonderful graphic label of trademark kids on candy cane. All original, impressive piece is clean, bright and very attractive (basically a C. 8+) w/ exception of minor soiling and a little light paper chipping on label. Min. bid \$50.



9).Imperial Service Sign. 24 x 42.25" large, early, two sided heavy porcelain auto dealership sign for Chrysler's Imperial autos. Sign is crisp, bright and like new (never used), w/ exception of a small edge chip spot in upper black border area (hardly noticeable). Min. bid \$60.



10).Sherwin Williams Sign. 14 x 18.75" beautiful, very early, two sided, flange sign advertising Sherwin Williams varnishes featuring different heavy, stepped images on both sides. Clean, bright and excellent w/ nice original sheen, has minor scattered edge wear. Min. Bid \$60.



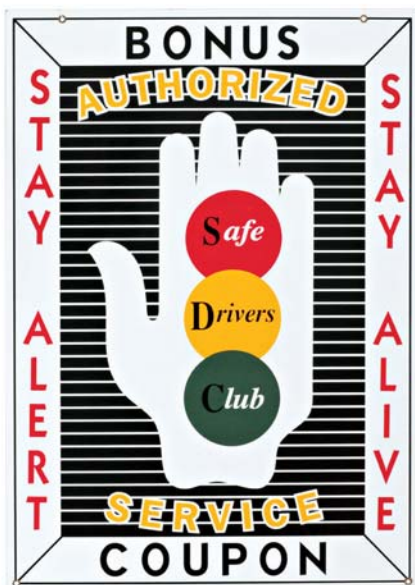
11).Lillibridge Chocolates Die-Cut. 15-5/8 x 11-3/8" fine, early, embossed cardboard die-cut sign for National Biscuit Co.'s "Lillibridge Chocolates" featuring beautiful multi-color graphics w/ shiny surface (© 1906, Kaufmann & Strauss Litho). Crisp and like new appearance (near mint) w/ minor closed tear at base (reinforced w/ cello tape on back side). Min. bid \$40.



12).Silver Top Gum Box. 9.25 x 9-3/8 x 6-5/8" very early wooden store display box for Sibley & Holmwood Co.'s 1¢ "Silver Top" brand chewing gum. Inside label is clean, bright and attractive (C. 8/+); outer box has expected typical soiling and light scattered wear to paper labels (outer labels 7+/-). Min. bid \$40.



13).Rabbit Display. 6.75 x 5-3/8 x 1.5" early, tin litho rabbit display w/ eggs poem at base and slots in hands for holding miniature pails. Tin is clean and attractive in appearance (a strong 8+/-) w/ a little non-detracting minor creasing (copper pails may not be original to piece). Min. bid \$40.



14).Auto Club Sign. 31 x 22" outstanding, large, early, heavy porcelain "Safe Driver's" Auto Club service station membership sign. Crisp, bright and like new appearance (displays as near mint), w/ exception of a little minor edge wear. Min. bid \$60.



15).Policeman Cigar Box. 10.75 x 7.5 x 7.5" (as shown) early, wooden display box for "Pittsburg's Finest" brand cigars, w/ wonderful graphic images of Co.'s trademark policeman. Inside label is clean, bright and displays extremely well, w/ light staining and paper loss at outer edges. Outside front label has typical expected wear w/ some warping to lid (1901 tax stamp). Min. bid \$40.



16).Smitty Talc Tin. 8 x 3 x 1" extremely rare, ca. 1920's/30's tin litho talcum powder tin, featuring great images from Walter Berndt's "Smitty" syndicated cartoon strip (different images both sides). Clean, bright and displays great (as a strong C. 8/+), although close examination will reveal a few faint rubs and wear marks and a barely noticeable, non-offensive oxidizing spot in upper dark blue area at top on backside (critical grade C. 8/-). Min. bid \$50.



17).Folky Store Sign. 5-3/8 x 48" x 1" very early, wooden primitive country store trade sign for Magic brand yeast. Attractive and all original, w/ beveled edges and nice patina to its primitive sand paint surface, w/ some expected general wear spots from use. Min. bid \$80.

Salesman's Sample



18).Salesman's Sample Wringer. 4.5 x 10 x 4" early, miniature salesman's sample size "Anchor" brand clothes wringer (Lovell Mfg. Co., Erie, Pa.), is an exact working miniature version of one of Co.'s full size wash wringers. Attractive and displays nicely, w/ a nice rich surface patina (C. 8+) w/ a little non-offensive minor scattered wear. Min. bid \$40.



19).Derby Rest Room Sign. 6.25 x 12-5/8" early, metal service station flange rest room sign from a Derby gas station. Bright, clean and excellent (a strong C. 8++). Min. bid \$40.



20).Fawn Tea Tin. 3.5 x 5-1/8" scarce, early tin litho key wind can (same size and look as a 1 lb. coffee) for Fawn brand tea (Reliance Food Co., Seattle, Wash.) featuring wonderful image of Co.'s trademark fawn deer. Clean, bright and excellent (a strong C. 8+). Min. bid \$40.



21).Laundry Agency Sign. 8 x 12" unusual, early, heavy porcelain cobalt blue and white sign for an early laundry agency. Nice size, ready for hanging in the laundry room. Clean, bright and excellent in appearance, w/ a little edge chipping at outer bottom corner edges. Min. bid \$40.



22).Dan Patch Tobacco. 3-7/8 x 6-1/8 x 3-1/8" early tin litho horizontal tobacco box for Scotten, Dillon Co.'s "Dan Patch" brand tobacco, featuring nice image of famous race horse on front, back and lid. Clean, bright and exceptionally nice (C. 8.5+). Min. bid \$40.

Radiator Ad



23).Old Mill Tobacco Pail. 6 x 5-3/8" (dia.) scarce, very early (unlisted?) paper label over tin tobacco pail for Spaulding & Merrick Co.'s "Old Mill" brand tobacco w/ attractive color graphics. Label has even overall toning as well as some scattered waterstains and dark marks, but has strong colors and still displays fairly well (front C. 7+/-; back a weak 7- due to heavier staining). Min. bid \$30.



24).Pennzoil Radiator Ad. 5 x 6" small, early, die-cut tin litho sign for Pennzoil brand motor oil in shape of Co.'s trademark bell, made for attaching to early car radiator. Attractive and displays nicely, w/ a little non-offensive light general scattered wear (C. 7.5+/-). Min. bid \$40.



25).Stag Tobacco Canister. 6 x 5-1/8 x 5-1/8" early tin litho canister for Stag brand tobacco, w/ attractive multi-color litho hunting scene images around other sides. Has a little light scratching and some typical wear on top, but overall clean, bright and very attractive (sides C. 8+/-; lid and shoulders C. 7+/-). Min. bid \$40.



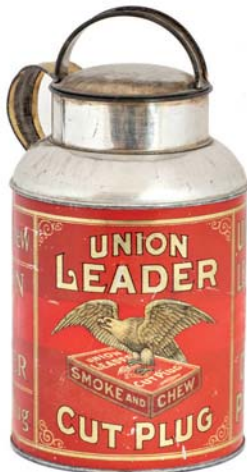
26).Dixie Queen Tobacco. 4.25 x 7.75 x 5-1/8" early tin litho lunchbox style tobacco tin for Dixie Queen brand, featuring same nice image on front and back. Clean, bright and displays nicely (as a strong C. 8+), w/ exception of some light wear areas on lid (lid C. 7.5+/8-). Min. bid \$40.



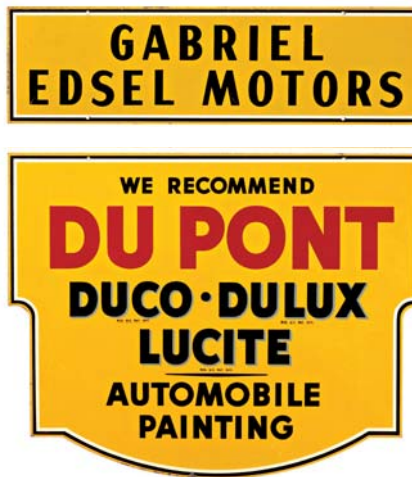
27).Hand Bag Tobacco Pail. 6.25 x 7-1/8 x 4-3/8" early figural tin litho lunchbox style tobacco can for Larus Co.'s "Hand Bag" brand. Attractive and displays nicely (as a C. 8+), w/ a couple non-offensive light background wear spots and some wear and litho loss at bottom seam of base. Min. bid \$50.



28).Bob White Tobacco. 3.25 x 4 x 2.5" scarce, early tin litho product tin for Marburg Bros. "Bob White" brand tobacco, featuring beautiful graphic images all around. Clean, bright and exceptionally nice (a strong 8.5+/). Min. bid \$50.



29).Union Leader Tobacco. 9 x 4.75" (dia.) early tin litho milk pail style tobacco canister for Union Leader brand, featuring same nice images on both sides. Clean and very attractive appearance (basically a strong C. 8+) w/ a non-offensive 1" wide brighter area around mid section (from where tax stamp once sat). Min. bid \$40.



30).Automobile Paints Sign (Edsel Motors). Large, ca. 1950's, 2-ps. hanging auto dealership/body shop hanging sign for Du Pont brand paints, w/ matching Edsel Motors dealership sign for hanging underneath (same on both sides). Signs measure 28.5 x 36" and 10 x 36" and are clean, bright and display nicely, w/ light background wear spots on display sides, and some heavier wear and oxidized pitting on backside (front displays as a strong C. 8+/; back C. 7.5/+ due to mentioned wear). Min. bid \$50.



31).Tea Party Sign. 12-3/8 x 8.5" early, self-framed tin litho sign from C.D. Kenny Co., featuring wonderful multi-color graphic image of well-dressed young girls and rabbit having tea party (note: doll and bunnies in grass). Clean, bright and excellent (C. 8.5+/), w/ exception of small dent/ paint chip spot at 2 o'clock in outside gold raised border/frame area. Min. bid \$50.



32).Western Assurance Ledger Marker. 12.5 x 3-1/8" very early, tin litho advertising ledger marker for Western Assurance Co. (Toronto, Canada) featuring stunning, beautifully detailed color graphics. Clean, bright and very attractive (a strong C. 8+/) w/ only very minor wear (Kellogg & Bulkeley Litho, Hartford, Ct.). Min. bid \$40.



33).Straw Holder. 12.5 x 4-3/8" (dia.) unusual, very early, two-piece, eight sided, heavy clear pressed glass straw holder. Excellent, high quality piece w/ no chips or cracks. Min. bid \$60.



34).Newspaper Door Push. 10-7/8 x 2-7/8" early porcelain door push advertising the Star Weekly newspaper. Clean, bright and excellent overall, w/ exception of some edge chipping at top border area. Min. bid \$40.



35).Gypsy Cough Drops Jar. 11.25 x 5 x 5" extremely rare, early, heavy advertising glass cough drop jar for Birkmeyer's Gypsy brand cough drops w/ etched advertising on front (20¢ per pound). Jar is excellent, lid has a little light chipping on bottom edge. Min. bid \$50.



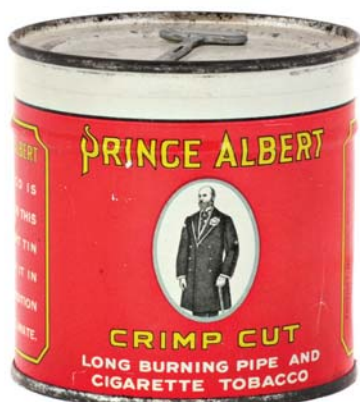
36) **Folky Newspaper Sign.** 5-5/8 x 48" early wooden painted sign for Chicago Evening Journal 3¢ newspaper, w/ a nice, rich patina to its early, untouched and all original paint surface. Has a nice primitive country folk art look, w/ slightly indented lettering (C. 8+/-). Min. bid \$50.



37) **Sunoco Signs.** Lot consists of a pair of small, early, porcelain rest room signs from Sunoco Service Station (each 2-7/8 x 7"). They are clean, bright and very nice, w/ minor soiling and a few tiny flea bites along edges. Min. bid \$50 the pair.



38) **Coal Sign.** 9 x 20" unusual, early, porcelain advertising sign for Colorado Fuel and Iron Co., featuring great image of Co.'s running devils logo. Clean, and quite attractive in appearance (C. 8/-) although there is a little light wear and darkening at outer border edges and some fine scattered surface scratching (mostly but not totally confined to black lettering areas). Min. bid \$70.



39) **Prince Albert Tin.** 3-3/8 x 3.5" (dia.) unusual, small key-wind tin litho tobacco can for Reynold's Co.'s "Prince Albert" brand tobacco. Full, un-opened, sealed can is clean, bright and excellent (C. 8++), w/ key still attached on lid. Min. bid \$30.

Lion Oil Co.



40) **Lion Oil Co. Paperweight.** 2.75 x 3.5 x 1.5" early, figural metal advertising paperweight for Lion Oil Co., El Dorado, Ark. Nice, high quality piece w/ antique bronze finish. Excellent. Min. bid \$40.



41) **Johnston Harvester Mirror.** 2-1/8" (dia.) scarce, early celluloid advertising pocket mirror for Johnston Harvester Co., featuring great colorful graphic images of Co.'s Batavia, NY factory. Clean, bright and excellent, w/ a few very minor surface bumps. Min. bid \$40.



42) **Columbus Match Safe.** 2-5/8 x 1.75 x 7/8" early, figural German silver match safe in likeness of Christopher Columbus bust. Very high quality, w/ beautiful detailing and a nice rich surface patina. Excellent overall, w/ a couple minor pings on backside in cheek area (souvenir of 1893 Columbian Expo Chicago World's Fair). Min. bid \$50.



43) **Utica Trust Pocket Mirror.** 2.75 x 1.75" scarce, early celluloid advertising pocket mirror for Utica Trust and Deposit Co. Clean, bright and displays extremely well (close examination will reveal a little non-offensive minor surface wear). Min. bid \$40.



44) **Snow-Ball Spice Tin.** 3-1/8 x 2-3/8 x 1-3/8" attractive, early tin litho spice tin (thyme) for G.E. Howard Co.'s (Newburgh, NY) "Snow-Ball" brand. Clean, bright and excellent appearance (C. 8++) w/ exception that stamped "thyme" lettering inside the bottom yellow area is faint. Min. bid \$40.

Sample



45) **Twin Oaks Tobacco Sample.** 3 x 2.25 x .75" scarce, miniature embossed tin litho sample pocket tin for Twin Oaks brand tobacco. Clean, bright and very attractive (C. 8++), w/ a little typical minor speckling. Min. bid \$40.



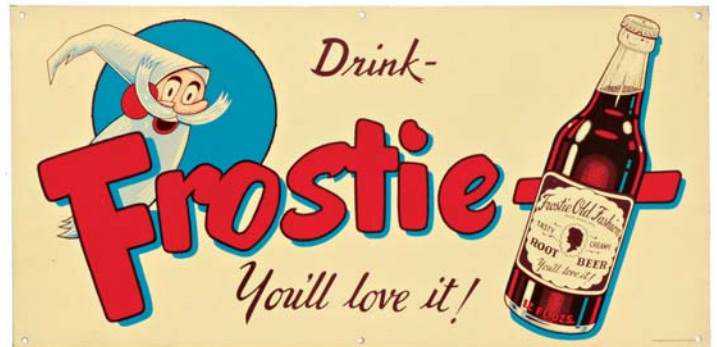
46). Flycasters Tobacco Pack. 2-7/8 x 4.5 x 1" full, sealed (never opened) 1-3/4 oz. soft pack style tobacco pack for "Flycasters" brand (Sutliff Tobacco Co., San Francisco), featuring attractive fly fishing image. Clean, bright and like new, complete w/ original cello wrap (1926 tax stamp). Min. bid \$30.



47). Utica Head-Light Paperweight. 2-5/8 x 4-1/8 x .75" unusual, early white bottom glass advertising paperweight from Utica Head-Light Works, featuring nicely detailed image of Co. made lamp. Excellent. Min. bid \$40.



48). You Pay Spinners. Lot consists of a nice group of five early tin litho bar game spinners, including: White Rock soda, Vimto Fruit tonic and Kuntz's Lime Ricky (sizes range from 2.75 x 1-3/8" to 3.5 x 7/8"). Very good to excellent overall. Min. bid \$40 (the lot).



49). Root Beer Sign. 11.5 x 23-3/8" early tin litho advertising sign for Frostie brand root beer. Clean, bright and like new (appears never used), w/ a little litho loss on edges and minor storage wear (C. 8.5+). Min. bid \$40.



50). Heinz Figure. 5.5 x 3.5 x 3.75" scarce, figural counter-top advertisement for Heinz Co., made of a heavy, solid, rubbery type composition material in shape of Co.'s trademark Mr. Tomato Head character. Has some soiling, darkening, crazing and slight scattered wear, but overall a neat piece that displays nicely, w/ attractive surface patina (C. 7.5+). Min. bid \$40.



51). Surbrug's Tobacco Sample. 1.75 x 1.75 x 1.25" very early, miniature tin litho sample tin for Surbrug Co.'s "Golden Sceptre" brand tobacco. Clean, bright and exceptionally nice (a strong C. 8.5), w/ area of loss to gold flash finish on non-graphic lid. Min. bid \$50.



52). Gold Dust Tobacco. 3.25 x 1-7/8 x 1" scarce, early cloth tobacco pouch for "Gold Dust" brand, w/ nice gold miner image on front label. Full, sealed, never opened pack is attractive and displays nicely, (C. 8/-) w/ some light edge chipping to its 1902 tax stamp. Min bid \$50.



53). Velvet Sample Pocket. 3 x 2.25 x .75" early miniature tin litho "free sample" pocket tin for Velvet brand tobacco. Clean, bright and exceptionally nice (C. 8.5+). Min. bid \$40.



54). Golf Ball Shoe Horn. 4.75 x 1-5/8" early celluloid advertising shoe horn from St. Mungo Mfg. Co., featuring nicely detailed image of an early style golf ball, w/ golfer in background. Clean, bright and like new (near mint). Min. bid \$40.



55). Planters Thermometer. 4.5 x 1.5 x 1.25" early metal advertising fryer thermometer for Planters Peanut Oil, w/ nice image of Mr. Peanut in chef's outfit. Excellent overall, as found still in its original box. Min. bid \$30.



56). Fall-Leaf Coffee Tin. 6.25 x 4-1/8" scarce, early 1 lb. tin litho coffee can for "Fall Leaf" brand (Soodman & Co., Patterson, N.J) featuring beautiful multi-color graphics (same image both sides). Crisp, bright and like new (displays as a C. 8.5+), w/ faint, minor background wear. Min. bid \$40.



57). Cork Town Pocket Tin. 4.5 x 3 x 7/8" early tin litho vertical tobacco pocket tin for Tobin Co.'s "Cork Town" brand. Clean, bright and attractive example (basically a nice strong C. 8/+), w/ exception of fairly minor hazy rub spot in upper green area (just below word "Town") and a small area of light rubbing wear at top front center section of lid. Min. bid \$60.



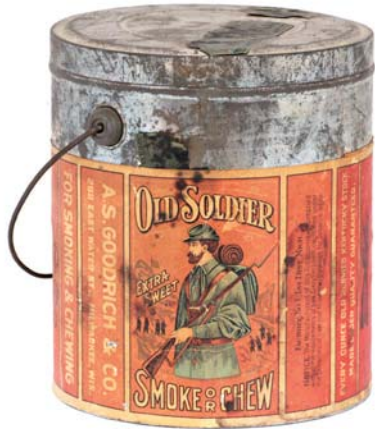
58). **Bull Durham Sign.** 12 x 8.5" scarce, early embossed tin litho sign for Bull Durham Tobacco. Has strong colors and displays pretty well, although there are background wear spots, light scratching and several small nail holes scattered about. Hard one to grade but C. 7++ seems about right (some minor background restoration could improve this to a 8.5/+ appearance). Min. bid \$50.



59). **Socony Aircraft Oil Sign.** 12.25 x 8" early, heavy, 2-sided porcelain lubster sign for Socony No. 2 Aircraft Oil (same image both sides). Field area of sign is clean, bright and quite nice (displays as a strong C. 8/+), although close examination will show some non-offensive oxidized loss and wear at very outer edges of circle area, w/ some rusting and pitting in bottom dark base area. Min. bid \$60.



60). **Whiskey Sign.** 18.5 x 14-3/8" (15.5 x 11-3/8" visible) early tin litho sign for Taylor Co.'s O.F.C. Whiskey w/ nice image of 1892 bottle, cigar, etc. (note: early corkscrew). Clean and attractive appearance (displays as a strong 8/+) although close examination will reveal a little non-offensive light background wear (critical grade 7.5++). Presented in attractive period frame (probably original to piece). Min. bid \$70



61). **Old Soldier Tobacco Pail.** 6-3/8 x 5.5" very early paper label (over tin) tobacco pail for Old Soldier brand (Goodrich & Co., Milwaukee, Wis.) featuring nice image of Union Army Civil War soldier. Label has toning, scattered stains and even, general fading to reds, but overall still attractive and displays pretty well (C. 7). Min. bid \$40.



62). **Moxie Die-Cut Sign.** 6-1/8" (dia.) early tin litho die-cut sign for Moxie, featuring nice cut-away image of girl w/ soda glass. Clean and very attractive in appearance (displays as a strong C. 8/+), w/ a little light, very minor wear. Min. bid \$60.



63). **Buster Brown Cigar Tin.** 5 x 5" scarce, early 50 ct. cigar can for "Buster Brown" brand, featuring attractive color graphic images of Outcault's Buster Brown and Tigre characters. A clean, bright and especially nice example (a strong C. 8++). Min. bid \$90.



64). **Paul Revere Cigar Tin.** 5.25 x 3-1/8 x 3-1/8" scarce, early embossed paper label (over tin) 25 ct. cigar tin featuring colorful graphic image of Paul Revere on famous midnight ride. Clean and very attractive in appearance (C 8/+). w/ a little non-offensive light toning and some scattered wear to lid (1910 tax stamp). Min. bid \$40.



65). **Free Land Overalls.** 10 x 29-7/8" early, heavy porcelain advertising sign for Free Land brand overalls. Crisp, bright and exceptionally nice (basically like new appearance) w/ exception of just a trace bit of minor edge wear. Min. bid \$70.



66). **Airplane Sign.** 10.25 x 20.25" unusual, early tin sign in shape of airplane, advertising Hartman's Store (Athens, Wis.). Bright, attractive and displays quite nicely (as a C. 8/+) w/ exception of minor background wear and a few scratch marks (critical grade C. 7.5 due to scratches). Min. bid \$50.



67). **Rare Straw Holder.** 10.25 x 4.75 x 4.75" early, heavy, very high quality, two-piece pressed glass straw holder w/ unusual patterns. Excellent overall w/ no chips or cracks (has a couple non-detracting minor manufacturing imperfections in base). Min. bid \$60.



68).Nutex Condom Tins. Lot consists of two different color variations of Nutex brand condom tins (ea. 1.75 x 2-1/8 x 1/4"). Both are clean, bright and display like new (blue tin has just a trace hint of hazy storage pattern evident on lid if tipped in light just right). Min. bid \$40 (the pair).



69).Redgate Mineral Water Sign. 11 x 31-5/8" very early, heavy porcelain sign for Redgate brand mineral waters w/ rich surface sheen, featuring nice, deeply stepped image of trademark gate. Crisp, bright and like new appearance, w/ exception of a little chipping wear at hanging holes and minor flea bites on edges. Min. bid \$50.



70).Heinz Sign. 16.25 x 26.25" (13.75 x 23.75" visible) early, high quality pressed cardboard sign for H. J. Heinz Co. Clean, bright and like new in appearance, w/ exception of non-offensive light bend/crease mark at top right. Framed. Min. bid \$50.



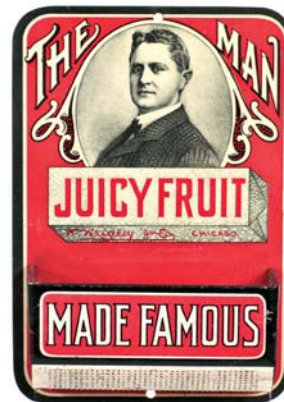
71).Sunoco Desktop Lighter. 3-5/8 x 2 x 1.25" unusual, early, heavy figural metal executives desktop cigarette lighter in shape of a Sunoco gas pump, w/ attractive chrome highlights. A very high quality piece, w/ exceptionally nice detailing. Excellent. Min. bid \$40.



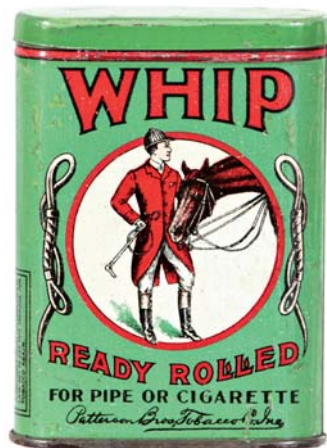
72).Pig Tonic Sign. 9-3/8 x 13.75" early embossed tin litho sign for Moor Man's Minerals (pig feed tonic product). Has a little light oxidizing and wear in outer border area but overall attractive and displays pretty well (C. 7.5). American Art Works Lithographers. Min. bid \$30.



73).Colonial Coal Sign. 12 x 12" high quality, early, heavy porcelain advertising sign for Colonial Anthracite Coal, featuring attractive image of Co.'s trademark Colonial Fife and Drum Corps. Clean, bright and very attractive (basically 8.5/+), w/ fairly minor chip spot in upper right white background area and just a trace hint of faint background soiling (Brilliant Mfg. Co., Philadelphia). Min. bid \$50.



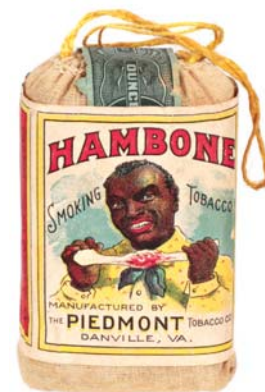
74).Juicy Fruit Match Holder. 4-7/8 x 3-3/8 1-3/8" early tin litho match holder advertising Wrigley Co.'s Juicy Fruitbrand chewing gum. Clean, bright and like new (C. 8.5++). Appears never used. Min. bid \$60.



75).Whip Pocket Tin. 3-5/8 x 2-5/8 x 7/8" early tin litho vertical tobacco pocket tin for Patterson Co.'s "Whip" brand. Clean, bright and very attractive (C. 8.5). Min. bid \$50.



76).76 Service Station Sign. 24 x 36" large, early, two-sided heavy porcelain service station advertising sign featuring 76 logo of Union Oil Co. (later Conoco Oil Co. - predecessor to Conoco Phillips). Crisp, bright and like new (appears never used), w/ a few minor flea bites on side edge. Min. bid \$50.



77).Hambone Tobacco Pouch. 3.25 x 1-7/8 x 1" scarce, full, sealed (never opened) early cloth tobacco pouch for Piedmont Co.'s "Hambone" brand tobacco, w/ wonderful paper wrap-around label featuring Co.'s graphic trademark image of black man chewing on ham bone (1917 tax stamp). Clean and very attractive (C. 8/+). Min. bid \$50.

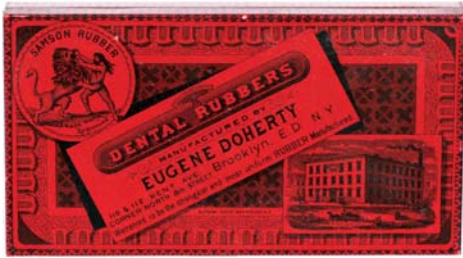


78). **Log Cabin Tins.** 4 x 3.75 x 2.5" Lot consists of two early, 12 oz. size, figural cabin shaped syrup tins for Towle Co.'s Log Cabin brand syrup (ea. 4 x 3-5/8 x 2.5"). Includes: Frontier Jail and mother and daughter playing variations. Both are clean, bright and excellent. Min. bid \$60 the pair.

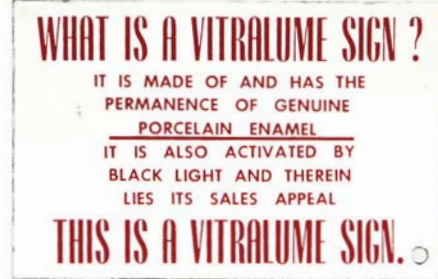


79). **Spice Tins.** Lot consists of three, early tin litho spice tins w/ attractive color graphics. Includes: "Amocat" thyme (C. 8.5+); "Dolly Varden" cloves (C. 8+-) w/ small scuff area on backside; and "Hostess" nutmeg (C. 8+-) w/ some softening/light fade to reds. Min. bid \$40 (the lot).

Dental



80). **Dental Rubber Tin.** 3.25 x 5-7/8 x 7/8" very early 2-ps. product tin for Doherty Co.'s (Brooklyn, NY) Samson brand dental rubber, featuring beautiful, finely detailed graphic images of factory and trademark biblical character Samson fighting lion. Clean, bright and attractive (front displays as a nice C. 8+) w/ some non-offensive light crazing and a little hazy ageing on base (base C. 8-). Min. bid \$40.



81). **Porcelain Sign.** 4 x 6" unusual, small, early porcelain sample sign from the Vitralume Sign Co., promoting Co.'s porcelain enamel signs (these signs had unique property of glowing in the dark in bright green after exposure to a black light). Crisp and like new. Min. bid \$40.



82). **Coffee Samples.** Lot consists of two miniature tin litho sample coffee tins (ea. app. 2.5 x 2" dia.). Includes: Morning Sip (C. 8+) w/ small scratch on side and fairly heavy wear to lid; and Manru brand (C. 8++). Min. bid \$30 (the lot).



83). **King Coin Cigar Tray.** 10.25" (dia.) unusual, early tin litho art style advertising tray w/ concave center image for King Coin brand cigars. Clean, bright and very attractive (a strong 8++), w/ minor background wear. Min. bid \$50.



84). **Goodyear Tires Sign.** 17.75 x 27.72" early, heavy, two sided porcelain dealership sign for Goodyear brand tires (same image both sides). Sign is clean, bright and displays quite nicely, although there is scattered oxidized edge roughness along outer edges and a couple dime size chip spots in field area of back side. Min. bid \$50.



85). **Autobacco Tin.** 4.5 x 4-5/8 x 2-5/8" early, tin litho can for S. S. Pierce Co.'s "Autobacco" brand tobacco, featuring nice image of Co.'s trademark driver. Clean, bright and displays nicely (front a strong C. 8++; back C. 8+), w/ slight darkening and oxidizing near top. Lid has some general scattered wear (lid C. 7.5). Min. bid \$40.



86). **St. Charles Advertising Clock.** 9-1/8 x 14 x 2" early, heavy figural cast iron counter-top advertising display clock for St. Charles Evaporated Cream. Attractive and displays, nicely w/ a little light scattered wear to copper finish. Complete w/ original clock (clock not running). Min. bid \$60.

Trommer's Evergreen Brewery

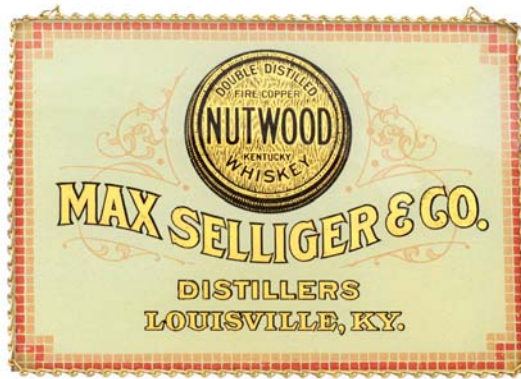


87). **Trommer's Brewery Tray.** 13-5/8 x 16-5/8" early tin litho serving tray advertising Trommer's Evergreen Brewery (Brooklyn, NY), featuring beautifully detailed factory scene (Mayer & Laverson Litho). Image area is clean, bright and especially nice, although there is some general overall scuffing, scratches and wear in dark outer rim areas (minor rim restoration could improve it to a strong C. 8.5+ appearance). Min. bid \$60.

Fisk Tires



88).Fisk Tires Clock. 6.75" (dia.) x 2-3/8" (w) early electric advertising clock for Fisk brand tires, featuring nice image of Co.'s trademark kid logo. Clock case is glass over metal, inside a heavy rubber Fisk tire (has old style cloth cord w/ metal folding stand on backside. Excellent. Min. bid \$40.



89).Whiskey Sign. 7.25 x 10.25" early reverse glass, chain hung sign advertising Max Sellinger Distiller's (Louisville, Ky.) Nutwood brand Kentucky Whiskey. Crisp and like new, w/ fancy brass chain around outer edges. Min. bid \$60.



90).Apollinaris Tip Tray. 4-3/8" (dia.) early tin litho tip tray for Apollinaris brand bottled table waters, featuring nice image by illustrator Phil May. Clean, bright and excellent (C. 8.5+) w/ trace hint of soiling in white background area. Min. bid \$40.

Hood Tire Co.



92).Hood Tires Sign. 11.75 x 23.5" outstanding, early tin litho sign for Hood Tires, featuring great images of trademark man and early tire. Clean, bright and excellent (appears never used), w/ nice original sheen (Shonk Works- American Can Co. Litho). Min. bid \$60.



93).Ford Pointing Finger Sign. 6.5 x 28.25" unusual, early embossed metal sign pointing the way to Ford car dealership. Excellent and appears never used, w/ a heavy, rich patina to its paint surface. Min. bid \$60.

Hayes Gas Pumps



94).Hayes Gas Pump Figure. 6 x 2-7/8" scarce, early, heavy solid figural metal advertising figure in shape of an early visible gas pump, w/ embossed "Hayes" and "Wichita" advertising lettering on base. A neat, very high quality piece, w/ weathering and scattered paint wear to red pump section. Min. bid \$40.

Koken Barber Supply Co.



95).Koken Barber Supply Jug. 10.5 x 7" (dia.) unusual, one gallon size glazed stoneware jug w/ stamped advertising for "Koken Barber Supply Co. barbers furniture. Very nice overall, w/ minor mfg. imperfections and a 1/2" chip spot at top edge of shelved white section. Min. bid \$40.

Porcelain RR Sign



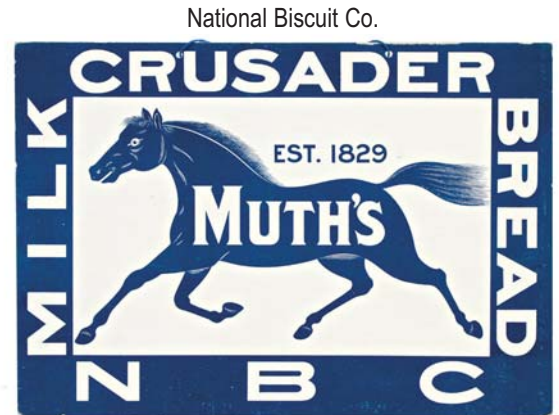
96).Porcelain Railroad Sign. 22-5/8 x 26-1/8" very early, heavy porcelain sign w/ deep stepped textured detailing for California's "Western Pacific Railroad". Outstanding sign is clean, bright and exceptionally nice (a strong C. 8.5+) w/ just the right amount of trace soiling and slight, very minor wear. As found, should improve w/ cleaning. Min. bid \$100.



97).Hard A Port Tobacco Tin. 6 x 4-7/8" (dia.) early tin litho small-top style tobacco tin for Moore & Calvi Co.'s "Hard A Port" brand, featuring very attractive maritime images (different images both sides). Clean, bright and attractive (basically a strong 8++) w/ minor wear and a few faint oxidized speckles scattered about (nothing serious or offensive). Min. \$70.



98). Osh Kosh Overalls Sign. 13-7/8 x 29-7/8" early, heavy, waxy cardboard patriotic sign, w/ original metal framing strips around outer borders for Osh Kosh brand overalls. Powerful and impressive sign is clean, bright and very attractive (a strong C. 8.5+) w/ exception of a few non-offensive, fairly minor background wear spots (1918 Patent date at bottom edge). Min. bid \$70.



National Biscuit Co.

99). Crusader Bread Sign. 7 x 10-1/8" unusual, early, two-sided cardboard sign for National Biscuit Co.'s Crusader brand bread, featuring great image of Co.'s trademark horse (same image both sides). Excellent overall (C. 8.5+). Min. bid \$30.



100). Binder Twine Match Safe. 2-3/8 x 1.5 x 3/8" unusual, early celluloid covered match safe for Viper and Red Star brands of agricultural binder twine. Excellent overall, w/ only minor wear. Min. bid \$40.



101). 1914 Coca-Cola Mirror. 2.75 x 1.75" ca. 1914 oval Coca-Cola celluloid advertising pocket mirror. Clean, bright and excellent. Min. bid \$60.



102). Durham Pocket Tin. 4-3/8 x 3 x 7/8" scarce, tin litho vertical tobacco pocket tin for Blackwell Co.'s "Durham" brand (hands on back variation). Has a couple minor pings and some scattered scuffing and light wear from use, but colors are bright and tin displays quite well on shelf (as a C. 7.5+/8). Critical grade (front 7.5+; back 7+) due to light scuffs, etc. Min. bid \$80.



103). King's Pocket Mirror. 2.75 x 1.75" scarce, early celluloid pocket mirror for King's brand meat products, featuring beautiful multi color graphics. Clean, bright and excellent (displays as like new), w/ minor bumps and wear visible if tipped in light just right (mentioned for accuracy, nothing that's detracting). Min. bid \$60.

Stand-Up Sign



104). Mickey Mouse Display. 20 x 12-1/8" unusual, large, early ca. 1920/1930's easel backed, stand-up cardboard die-cut display sign for Mickey Mouse brand children's slip-overs. Attractive and displays nicely (C. 7.5+/-) although there is minor soiling/staining, a crease/tear spot on bottom ear and fading to reds. Min. bid \$50.

Full Display Box



105). Pay Car Store Display. 14.5 x 12 x 5-1/8" large, early cardboard store display box for "Pay Car" brand tobacco (full box still contains all 36 of its full, sealed 2 oz. 10¢ soft pack style tobacco packages ea. w/1910 tax stamp). Box has strong colors and displays quite nicely (C. 8+/-) w/ exception of some pinching and tattering at top and bottom. Min. bid. \$70 (the lot).



106). Porcelain Soda Sign. 24 x 18" very early, heavy porcelain sign advertising Miller's brand soda fountain syrup flavors. Powerful and impressive looking sign is clean and attractive in appearance (field area a strong C. 8+/-), w/ some oxidized chipping and wear spots mostly confined to outer border areas. Min. bid \$90.



107).Radio Tubes Display Stand. 6-1/8 x 7.5 x 7.5" unusual, early cardboard countertop display stand for "Archatrons" brand radio tubes, featuring different images on all four sides. Very attractive appearance (displays as a C. 8+/-), w/ a little non-offensive light background foxing to panel w/ woman singer. Min. bid \$40.



108).Texaco Cap. 4.25 x 11.5 x 10.75" (dia.) early, size 7-3/8 employee cap from a Texaco gas station attendant's uniform, complete w/ patch and finely detailed, early Texaco star logo metal buttons on sides. Excellent overall (C. 8+/-), w/ minor wear from use. Min. bid \$30.



109).Gopher-Cop Tin. 4 x 3" early, tin litho pry-lid product can for "Gopher Cop" brand gopher poison, featuring great image of cop killing gophers. Has strong colors and displays nicely, w/ a little minor denting and minor scattered wear (C. 8+/-). Min. bid \$40.



110).Brewery Match Safe. 2-7/8 x 1.5 x 3/8" early, celluloid covered match safe for Tadcaster brand ale (Bowler Bros., Worcester, Mass.), featuring beautiful graphic image of labeled product bottles. Excellent overall, w/ only slight wear and minor toning. Min. bid \$40.

Sample



111).Granulated 54 Sample Pocket. 3 x 2.25 x 3/4" miniature, early tin litho "Free Sample" vertical tobacco pocket tin for John Weisert Co.'s "Granulated 54" brand. Tin is a clean, very nice example (a nice solid C. 8+/-), w/ minor dent on back side edge (has darkening and staining to tax stamp). Min. bid \$40.

Dental



112).Peerless Tooth Powder. 3.25 x 1.75" (dia.) early tin litho tooth powder can for Peerless brand, featuring attractive detailed graphics by American Stopper Co., Brooklyn (has unusual turning slide mechanism on lid). Clean, attractive and displays nicely (as a C. 8+/-); close examination will reveal a little non-offensive light scattered wear (critical grade C. 8-). Min. bid \$40.



113).Tripolio Talc Tin. 5-5/8 x 2.5" large, early talc tin for "Toilet Tripolio" brand, featuring very attractive graphic image. Tin has some light scuffing and overall scattered wear, but overall still displays quite nicely (C. 7.5+/-). Min. bid \$40.



114).Little Polly Broom Holder. 6-1/8 x 2.5" (litho area 3.5 x 2.5") early tin litho broom holder advertising "Little Polly" brand brooms. Clean and very attractive appearance (displays as a strong 8+/-) w/ minor wear and a couple non-offensive light creasing marks. Min. bid \$40.



115).Texaco Oil Can. 6.5 x 3.75" early 1 qt. product can for Texaco brand motor oil, w/ unusual screw spout at top and hand-soldered seam along side. Clean, attractive and displays nicely (as a C. 8+/-) w/ exception of a couple small scrapes near bottom on backside. Min. bid \$40.



116).Planters Popcorn Oil Tin. 10 x 5.75 x 4-5/8" scarce, full, sealed, 1 gallon sized can for Planters seasoned popcorn oil, w/ great images of Mr. Peanut in chef's outfit popping corn (same image both sides). Attractive and displays nicely on shelf (as a 8+/-), although there is some light scattered wear, oxidizing on lid and some denting (including a large, heavy crease/dent spot at right base on backside). Min. bid \$40.



117).Texaco Lube Sign. 8.75 x 38.75" scarce, ca. 1930's, heavy porcelain Texaco "Certified Lubrication" service station sign. Clean, bright and displays very nicely (basically as a C. 8.5/+), w/ exception of a few early scattered chip spots (stamped "3-31" at base). Min. bid \$60.



118).American Brewing Match Holder. 3 x 3.75" early, heavy, blue decorated stoneware match holder from White's Utica Pottery Co., featuring beautifully detailed incised advertising design on both sides for American Brewing Co., Rochester, NY. Excellent (near mint). Min. bid \$50.



119).Parrot Peanut Butter Pail. 3.5 x 3-5/8" early tin litho 13 oz. peanut butter pail for Parrot brand (Westport Co., Vancouver, Canada), featuring nice image of trademark bird. Colors are strong and piece displays nicely on shelf (as a C. 8/+), w/ a little light scattered wear and some oxidized speckling on backside (critical grade C. 7.5+/8-). Min. bid \$50.



120).Planters Fish Globe Jar. 6 x 5.25 x 3.5" ca. 1929 jar for Planters brand salted peanuts (1 lb. size), w/ fish shaped paper label and original tin lid. Jar and lid are excellent, label has a couple scuffs and minor toning. Min. bid \$40.



121).Queen Insurance Ledger Marker. 12-5/8 x 3-1/8" very early, tin litho ledger marker advertising Chicago office of Queen Insurance Co., w/ beautiful, early lithography by Kellogg & Bulkeley, Hartford. Clean, bright and excellent overall appearance (a strong C. 8/+ w/ a little non-offensive scattered background wear. Min. bid \$40.



122).Teddy Roosevelt Beer Sign. 13-5/8 x 9.5" important, museum quality early die-cut tin litho sign (Meek & Beach Co. lithographers) for Lemp Co.'s Falstaff brand beer, featuring great image of Teddy Roosevelt in Rough Rider Army uniform. Sign is clean, bright and very impressive looking (displays as a strong 8.5/+) although a close examination, if tipped in light, will reveal a few minor issues including: non-offensive faint waviness, slight surface scuffs and a non-detracting hazy area between upper thigh and lower coat pocket area – hardly noticeable, basically blends in - possibly early restoration. Probably originally had metal easel on back side attached to hole just below belt. Min. bid \$250.

Salesman's Skis



123).Salesman Sample Skis. Lot consists of a pair of small, early wooden Oxford brand skis. (Each app. 24 x 1.5 x 5/8"). Unusual, very high quality set, all original w/ nice detailing (C.8/-) w/ some light scattered wear). Min. bid \$40 the pair.



124).Landon Political Bumper Tag. 5-7/8 x 6.25" early metal litho license plate/ bumper tag attachment for 1936 Republican presidential candidate Alf Landon. Attractive and displays nicely, w/ a little light scuffing and wear in bottom section (C. 8+/-). Min. bid \$20.



125).Squirrel Peanut Butter Tin. 4.75 x 5" early tin litho 48 oz. pry-lid peanut butter can for Canada Nut Co.'s Squirrel brand. Clean, bright and very attractive (basically a strong 8++) w/ exception of minor hazy scuff spot in right side background area. Min. bid \$40.



126).Planters Circus Glasses. 5-1/8 x 2-7/8" (dia.) lot includes two different variations of 1950's Planters Co. drinking glasses, each covered w/ wonderful fired on enameled images of Mr. Peanut performing circus acts all around. Both are like new (appear never used). Min. bid \$50 (the pair).



127).Guide Tobacco Pocket Tin. 4-3/8 x 3 x 1" early tin litho vertical tobacco pocket tin for Larus Co.'s "Guide" brand. Clean, bright and excellent (C. 8.5/+). Min. bid \$40.



128).1909 Coca-Cola Mirror. 2.75 x 1.75" ca. 1909 oval Coca-Cola celluloid advertising pocket mirror, w/ beautifully detailed graphics (pictures nighttime scene from World's Fair). Clean, bright and excellent. Min. bid \$60.



129).Moxie Service Piece. 4.25 x 3" (dia.) scarce, early fine china ware footed desert dish, w/ nice advertising for Moxie. Unusual piece I have not seen before. Excellent. Min. bid \$30.



130).Comfort Powder Tin. 4 x 2.5" (dia.) scarce, very early tin litho Comfort brand powder can featuring beautifully detailed graphics by Ilsley Co. (baby on backside). Clean, attractive and displays nicely (as a C. 8++) w/ a little non-detracting minor darkening and wear). Min. bid \$50.



131).Buss Fuses Display. 9-5/8 x 6 x 3.75" ca. 1950's tin litho counter-top display box for Buss brand auto fuses. Clean, bright and very attractive in appearance (basically a strong C. 8++) w/ a little hazy minor wear on top edge. Has compartments on back side for holding product tins, includes several full tins. Min. bid \$40.



132).Dr. Jayne's Pill Jar. 6-3/8 x 4.5 x 4.5" scarce, early, countertop drugstore display jar for Dr. Jayne's Sanative Pills w/ label under glass advertising label on front, embossed lettering on backside and ground glass stopper lid at top. Glass is excellent, w/ crazing and some light soiling and separation lines to paint under front label. Contains many of the original pills. Min. bid \$50.



133).Mr. Peanut Doll. 8.25 x 4.5 x 2" early wooden jointed figural advertising doll for Planters by Schoenhut Toy Co. in likeness of Mr. Peanut. Very nice overall condition, complete w/ his original wooden stick (C. 8++) w/ minor wear from use. Min. bid \$40.



134).Molasses Tin. 7 x 4.25" unusual, early paper label (over tin) pry-lid product can for Dominion Molasses Co.'s, (Halifax, Nova Scotia) "Sweet Adeline" brand, w/ great image of companies black singers on front, music score sheet on back. Has strong color and displays quite nicely (C. 8/-), w/ a little non-offensive light scattered background wear. Min. bid \$30.



135).Log Cabin Tins. Lot consists of a matched pair (boy and girl in doorway) of 12 oz. table sized tin litho Log Cabin brand syrup tins, both w/ cartoon images all around (ea. 4 x 3-5/8 x 2.5"). Both are clean, bright and excellent (a strong C. 8++), complete w/ original caps. Min. bid \$70 (the pair).



136).Waverly Soda Sign. 11-3/8 x 23-3/8" early, embossed tin litho sign for Waverly brand soda (Superior Beverage Co., Gary, Ind.). Clean, bright and very attractive, w/ a little light storage and edge wear. Min. bid \$40.



137).Moxie Sign. 7 x 6-3/8" beautiful 2-sided die-cut tin litho sign for Moxie (same image both sides). Clean, bright and exceptionally nice appearance (displays as a very strong C. 8++), although tipping in light just right will reveal a couple hints of very faint/minor crease marks and a little very minor scattered wear (mentioned for accuracy, barely noticeable and nothing that is at all offensive or detracting). About as nice as you ever find them. Min. bid \$70.

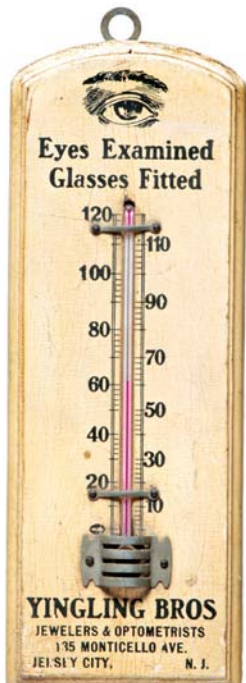
Change Receiver



138).Franklin Change Receiver. 8.25 dia x 1" large, early glass counter-top change receiver for Franklin brand cigars, featuring highly colorful and graphic image of Franklin flying kite. Excellent, w/ minor toning (C. 8+/-). Min. bid \$50.



139).Planters Mothers Brand Tin. 8 x 6-5/8" extremely rare 5 lb. tin litho pry-lid can for Planers Co.'s "Mothers" brand salted peanuts. Tin is clean, bright and exceptionally nice in appearance (displays as an C. 8.5+/-; critical grade 8+) w/ exception of a few very minor rubs and chips and some denting at bottom left edge. Complete w/ original lid. Min. bid \$250.



140).Optician Thermometer. 8 x 3 x 3/8" early wooden advertising trade thermometer for Yingling Bros., a Jersey City, NJ Jewelers and Optometrists, w/ a nice rich primitive paint surface. Clean and very nice appearance (C. 8). Min. bid \$30.

Mechanical Bank



141).Black Man Bank. 7.25 x 2-5/8 x 3.25" early figural tin litho coin bank in image of a well-dressed black man w/ top hat (mechanically operated, he tips cap as coin is deposited). Attractive and displays nicely (displays as a C. 8+) w/ some light scattered paint wear from use. Min. bid \$70.



142).Stahl's Door Push. 8-7/8 x 3-3/8" scarce, early tin litho advertising door push for Otto Stahl's brand meats. High quality piece is clean, bright and very attractive (C. 8+) w/ only very minor wear. Min. bid \$40.

Rare Texaco Oil Bottle



143).Texaco Oil Bottle. 11.75 x 3.75" (dia.) extremely rare variation, pint sized Texaco glass motor oil bottle w/ Co.'s embossed star logo on front and lettering on back. Complete w/ original metal pouring spout at top. Bottle is excellent, spout has a little light oxidizing (Australian). Min. bid \$40.



144).Oil Barrel Match Safe. 2-3/8 x 1.5 x 3/8" early celluloid covered match safe for Swan & Finch Oil Co., New York, featuring nice images of oil barrels (different product barrel shown on each side). Excellent. Min. bid \$40.



145).Baby Ruth Items. Lot consists of two early Curtis Candy Co. Baby Ruth brand advertising items. Includes: early cardboard jigsaw puzzle (5.75 x 7-3/8") for Co.'s 1¢ and 5¢ candy bars (excellent); and 1920's cardboard chewing gum display box (4-3/8 x 6 x 1-1/8") excellent, w/ minor staining and faint crease mark in lift-up lid. Min. bid \$40 (the lot).



146).Bond Bread Santa Sign. 15 x 8.75" attractive, ca. 1920's/30's cardboard easel back die-cut stand-up sign for Bond Bread. Clean, bright and excellent (a strong C. 8++), w/ a just a faint, trace hint of crease mark just below bread loaf (very minor and barely noticeable from front). Min. bid \$40.



147).Tire Chain Display. 24.75 x 18 x 9-1/8" scarce, early 2-ps. tin litho store display stand for Weed brand tire chains, w/ a section at base for holding/displaying chains. A decent and pretty respectable example that displays nicely, w/ light soiling and expected general light wear from use (C. 7.5+/-) w/ some non-serious light oxidizing at a couple edge spots of base. As found, should improve w/ cleaning. Min. bid \$50.



148).Texaco Sign. 15.5 x 10-5/8" wonderful, ca. 1930's heavy porcelain "keyhole" style distributor's sign for Texaco Oil Co. Outstanding sign is crisp, bright and like new, w/ just the right amount of toning and soiling (1938 marking in bottom right). Near mint. Min. bid \$70.

Osh Kosh Trunks



149).Osh Kosh Trunks Statue. 10 x 3.5 x 2.5" early, heavy, high quality figural metal statue advertising Oshkosh brand trunks, featuring nice image of Indian warrior standing on nicely detailed trunk. Excellent and appears all original, w/ nice patina to surface. Min. bid \$60.

Original Oil Painting Illustration Art



150).Illustration Art Advertising Painting. 24 x 31" (19 x 25.75" visible image) important, ca. 1925 golf theme original illustrated artwork oil painting (on canvas) done for Dodge Brothers Motor Car Co. by listed illustration artist William Meade Prince, for a magazine ad promoting Co.'s Type B Sedan (signed and dated by artist). Painting is very well executed and displays nicely in period frame it was found in. Excellent appearance and all original (note: canvas has a few period tack holes-which appear original to the piece and were done in the making). See Website Auction addendum section for additional info. Min. bid \$150.



151). **Movie Star Pencil Boxes.** 7.75 x 2-1/8 x 3/4" lot consists of two early tin litho pencil boxes, featuring silent era film stars Charlie Chaplin and Jackie Coogan (Coogan was child star in Chaplin's film "The Kid" and in later life played "Uncle Fester" in "Adams Family"). Both are clean and excellent (C. 8+). Min. bid \$30 (the pair).



152). **Overalls Mirror.** 2.75 x 1.75" early celluloid pocket mirror for "True Fit" brand overalls, featuring nice image of topless girl fastening strap of bib. Very nice overall w/ a few very minor bumps on surface (mentioned for accuracy, not at all detracting). Min. bid \$40.



153). **Golden Lion Motor Oil.** 5.5 x 4" full, sealed, tin litho 1 qt. picture can for Gilmore Oil Co.'s "Golden Lion" brand motor oil. Clean, bright and excellent, w/ only minor background wear (C. 8++). Min. bid \$40.



154). **Old Woman Sparkler Toy.** 5-3/8 x 2.25 x 1.25" early mechanical tin litho sparkler toy (she opens mouth and shoots out sparks when levers pressed). Clean and excellent overall w/ minor wear from use (C. 8++). Min. bid \$40.



155). **Service Station Badges.** Lot consists of 6 different early celluloid pinback buttons and advertising badges worn by early service station attendants promoting oil, gas, and auto accessories. Sizes range from 1.25 to 4" diam. All are excellent. Min. bid \$40 (the lot).



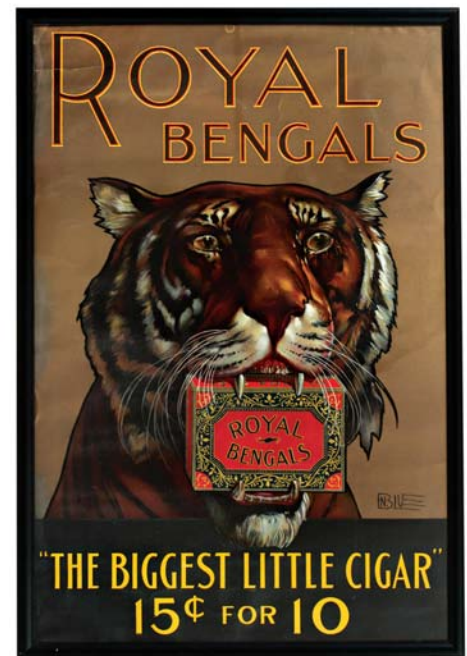
156). **Standard Oil Badges.** Lot includes two different service station employee uniform name badges from Standard Oil Co., each w/ attractive inlaid porcelain cloisonné enameling (1-5/8 x 2-3/8" and 1-3/8 x 2.5"). Both are excellent. Min. bid \$40 (the pair).



157). **Flower Seeds Sign.** 27.5 x 18.5" (25.25 x 16" visible) early paper litho advertising sign for Mandeville & King Co.'s flower seeds, featuring nice colorful image of elderly man tending garden. Attractive and displays nicely (as a C. 8+/-), although close examination will reveal a few light rolling crease marks, minor wrinkles and tear marks as well as a little light toning along top 2.5" or so (mostly blends into background, nothing that's serious or offensive). Sign has original strips at top and bottom and is presented in attractive period frame. Min. bid \$60.



158). **Cow Ease Display.** 34.25 (hgt.) attractive tin litho advertising display stand for "Cow Ease" featuring colorful and very attractive sign at top (w/ curved section below for holding sprayer). Sign is clean and quite attractive, w/ wonderful detailed color graphic image (displays as an C. 8+) although there is some non-offensive light staining and speckling scattered about as well as some scattered wear to base and stand (critical grade C. 8+/-). Neat piece, displays great! Min. bid \$150.



159). **Royal Bengals Cigar Sign.** 31 x 21" (29.25 x 19.5" visible) early paper litho poster for "Royal Bengal" brand little cigars. Sign is clean, bright and very attractive in appearance (basically displays as a strong C. 8+++) w/ exception of a couple non-offensive crease marks and minor scattered wear. Min. bid \$70.

Mandeville & King Co. Seed Boxes



160).Seed Boxes. Lot consists of a nice group of three different early wooden flower seed display boxes from Mandeville & King Co., Rochester, NY, each w/ beautiful multi-color labels inside (each app. 10.5 x 11-7/8 x 8.75" as pictured w/ lids opened). Boxes have original finishes to wood and paper labels on inside are clean, bright and very nice (one box is missing small piece from its metal clip fastener on closure). Min. bid \$40 (the lot).



161).Barber Soap Box. 8.75 x 13 x 5" large, very early 2-ps. store box for Williams Barber Shaving Soap, w/ nice image of early barber shop interior (originally held 100 cakes of shaving soap). Lid image displays quite nicely (C. 7.5++/8-), w/ a little light general toning and minor scattered wear; apron on one of side edges has tear spot/wear and other sides have some white haziness and signs of tape repairs (tape long ago removed) (sides C. 7/+). Min. bid \$40.

Rare Planters Box



162).Planters Peanuts Box. 9.5 x 9.25 x 6.75" (as shown) extremely rare ca. 1940's cardboard display box for Planters Nut & Chocolate Co.'s 5¢ Sugared Peanuts. Box is still folded flat (not assembled and appears possibly never used) and is clean, bright and very attractive (a strong C. 8++), w/ a couple light crease marks on front (there is no top flap/lid on box). Min. bid \$40.



163). Auto Wreckers Sign. 16 x 26" early porcelain tow service sign for "California Auto Wreckers Co." Crisp, bright and basically like new w/ exception of a little edge chipping on bottom right corner. Min. bid \$50.

Full Carton Sample Packs



164).Phillip Morris Sample Packs. 3.5 x 10-5/8 x 1.5" lot consists of a full, never opened carton of Philip Morris brand sample cigarette packs, w/ great image of Co.'s spokesman Johnny on lid (tax stamp on top flap still sealed). Crisp and like new. Min. bid \$40.



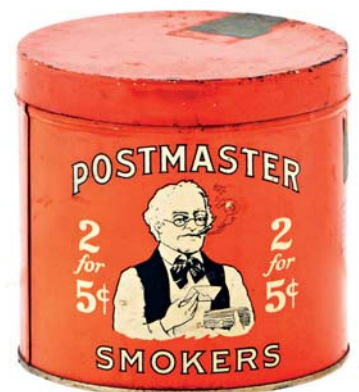
165).Willkie Bumper Tags. Lot consists of three different tin litho bumper tag/license plate attachments for 1940 Republican presidential candidate Wendell Willkie. Sizes range from 5 x 3.25" to 5.5 x 6.25" and are attractive and display nicely (C. 8; C. 8++; and C. 7.5 w/ wear in mounting area). Min. bid \$40 (the lot).



166).Advertising Scoops. lot consists of a nice pair of small, early tin litho advertising scoops for Golden Sun Coffee and Acme brand candies (ea. app. 4 x 1.75"). Both are clean and excellent (a strong C. 8++). Min. bid \$40 (the pair).



167).Bond Bread Sign. 9-3/8 x 13.25" early tin litho (over cardboard) hanging sign for Bond bread, featuring nice image of early packaged loaf. Clean, bright and very attractive (displays as a strong C. 8+) w/ a little non-offensive minor scattered wear from use. Min. bid \$40.



168).Postmaster Cigar Tin. 5-1/8 x 5.25" early tin litho 50 count cigar can for Postmaster brand, w/ nice image of Co.'s trademark Postmaster character (same image both sides). Clean and attractive appearance w/ a little non-offensive minor scattered background soiling/wear (C. 8+/-). Min. bid \$40.



169). Flying A Sign. 13 x 26" outstanding, early porcelain advertising sign for Tidewater Oil Co.'s Ethyl brand gasoline. Crisp, bright and like new, w/ only very minor age soiling and a some tiny flea bites at outer edges. Min. bid \$50.

Advertising Brushes



170). Advertising Brushes. Lot includes two different early brushes, each w/ large colorful celluloid advertising on top (ea. 1-1/8 x 3.5" (dia.). Includes: Parisian Novelty Co. factory scene (a premier maker of early celluloid advertising items); and Hotel Roanoke (Roanoke, Va.) w/ hand tinted image of resort hotel. Both are very nice and display well (minor wear to hotel example). Min. bid \$40 (the pair).

Iron Still Bank



171). Log Cabin Bank. 2-7/8 x 3.5 x 2.75" early, figural cast iron still bank in shape of log cabin building. Very nice overall, w/ light scattered wear to surface. Min. bid \$40.



172). Mariposa Tobacco Tin. 3.5 x 3.5 x 7/8" scarce, early tin litho vertical tobacco pocket tin (concave w/ rounded closures) for Patterson Co.'s "Mariposa" brand. Top and bottom closure sections have darkening and general overall wear, although body section is quite nice w/ a little faint speckling and minor darkening spots (body C. 7.5; top/bottom closures (C. 7-). Min. bid \$40.



173). Old Manse Mirror. 2-1/8" (dia.) scarce, early celluloid advertising pocket mirror for "Old Manse" brand Canadian Maple Syrup, featuring beautiful detailed graphics. Display side is excellent, w/ some faint, light foxing at edges on backside. Min. bid \$40.



174). Pennzoil Lubrication Sign. 8.5 x 30" scarce, early 2-sided heavy porcelain lube sign for Pennzoil motor oil (same image both sides). Sign is crisp, bright and like new, as found never used still in its original shipping carton (box fair w/ some tear loss). Near mint. Min. bid \$90.



175). Conoco Oil Co. License Plate. 6-3/8 x 13-3/8" scarce aluminum Massachusetts automobile front advertising license plate for Conoco brand motor oil. Has a little soiling and some light scattered wear from use, but overall attractive and displays nicely. Min. bid \$30.



176). Century Beer Tip Tray. 4.25" (dia.) early tin litho tip tray for Century brand bottled beer (Schneider Brewing Co., Phil'a), w/ nice colorful image. Clean, bright and excellent (C. 8.5/+) w/ tiny chip spot in gold rim at 10 o'clock. Min. bid \$40.



177). Pabst Extract Display. 8 x 9-5/8" early folding die-cut advertising counter-top display (on heavy cardstock) for Pabst Malt Extract, featuring beautiful, multi-color lithography (by Forbes Co., Boston). Clean, bright and excellent (C. 8.5/+), w/ exception of some minor white spots showing along factory fold lines (note: removed from scrap book- some page remnants on backside). Min. bid \$40.



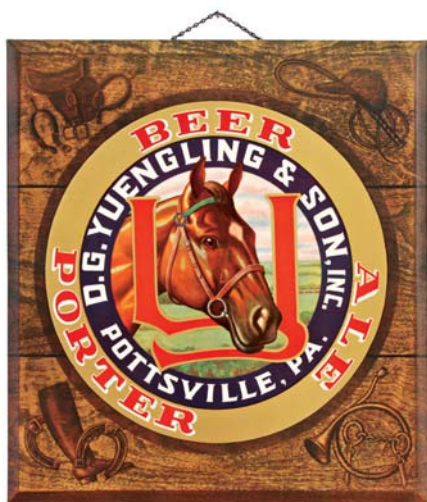
178). Blanke's Tea Tin. 5.75 x 4-7/8 x 3-1/8" unusual, early tin litho tea tin from Blanke's Coffee Co., featuring nice image of Co.'s trademark cabin on front, back and lid. Clean, bright and very attractive appearance (basically a strong C. 8/+) w/ exception of some litho rub/wear spots on lid. Min. bid \$30.



179).Moxie Top. 2-1/2" (dia.) scarce, early tin litho advertising top for Moxie, w/ wooden dowel spinner in center (different images both sides). Clean, bright and excellent (C. 8.5/+). Min. bid \$40.



180).New Yorker Sign. 10.25 x 18.75" Chrysler car dealership sign for ca. 1960? Chrysler New Yorker sedan. Celluloid, over tin, over cardboard (has both string for hanging and easel on backside for counter display). Excellent overall and appears never used, w/ some minor surface rubs at outside edges (mentioned for accuracy, nothing detracting). Min. bid \$40.



181).Yuengling's Pony Beer Sign. 21.5 x 19.5" scarce, large, ca. 1940's, celluloid (over tin, over cardboard) sign for Yuengling & Son Brewery, Pottsville, Pa., featuring nice image of Co.'s trademark pony. Sign is crisp and like new, as found, never used, still in it's original shipping carton. Min. bid \$50.



182).Carnation Malted Milk Canister. 9 x 6.5" (dia.) early, very high quality, heavy enameled, porcelain, counter-top advertising canister from early soda fountain for Carnation brand malted milk. Crisp, bright and like new (near mint- w/ exception of minor expected rubs on underside base). Complete w/ chrome lid. Min. bid \$70.

Hoadley Cough Drops Co.



183).Hoadley Candy Store Scale. 6 x 4-3/8 x 4-3/8" unusual, very early, mechanical counter-top candy scale from E. J. Hoadley Co., Hartford, Ct. (Cough Drops Co.). Neat, very high quality piece is all original and as found, w/ embossed "E. J. Hoadley" and "Hartford, Conn." lettering all around its cast iron base. Has nice rich surface patina and is quite attractive overall (+/-), w/ small flea bite at bottom left corner edge of base. Min. bid \$40.



184).Hilson's Minstrels Poster. 28.5 x 22.25" (24.75 x 18.5" visible) outstanding, early paper litho poster promoting "Hilson's Famous Minstrel" show, featuring beautiful multi-color lithography (Oriz Litho, Erie, Pa.). Powerful and very impressive looking piece, that is clean, bright and excellent (C. 8.5++). Nicely framed. Min. bid \$70.



185).Gail & Ax Store Tin. 8.25 x 7.75 x 2.75" scarce, early tin litho store display tin for Gail & Ax Co.'s "Navy" brand tobacco, w/ nice image of trademark sailor on front and large pack on backside. Clean and attractive appearance (basically displays as a nice C. 8/+) w/ exception of a little light scattered background wear and speckling (critical grade C. 7.5+/C. 8-). Min. bid \$150.



186).Wagon and Carriage Dealers Sign. 20.5 x 15.25" large, early, heavy paper poster for an Elk Heart, Indiana retailer of buggies, wagons, etc. Clean, bright and very nice (C. 8.5/+) w/ exception of a little minor foxing at bottom left edge and minor wear at very outer margins. Min. bid \$50.



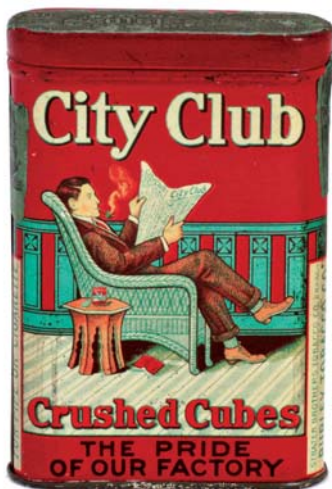
187).Carnation Gum Tip Tray. 4-3/8" (dia.) early tin litho advertising tip tray for Dorne's Carnation brand chewing gum, w/ nicely detailed graphics. Clean, bright and excellent (C. 8.5) w/ minor speckles of wear at top edge of rim. Min. bid \$40.



188).Pep Boys Lighter Fluid Tins. Lot consists of two different variations of Pep Boy brand handy oiler style tin lighter fluid tins (sizes apx. 5.25 x 2-1/8 x 1") one has © 1934, other has a zip code. Both are clean, bright and display nicely. Min. bid \$30 the pair.



189).Olt Brewing Co. Mirror. 2-1/8" (dia.) scarce, early, celluloid pocket mirror for Olt Brewing Co. (Dayton, Ohio), featuring stunning multi-color graphics. Clean and excellent appearance (although examination under magnification will reveal some faint scratching and a couple fine cuts on surface- mentioned for accuracy, very minor and nothing that's offensive or detracting). Min. bid \$50.



190).City Club Pocket Tin. 4.5 x 3 x 1" early tin litho vertical tobacco pocket tin featuring beautifully detailed graphics. Clean, bright, very attractive appearance (basically as a strong C. 8+) w/ slight, non-offensive narrow dark mark in bottom left rug area. Min. bid \$50.



191).Worcester Salt Match Safe. 2-3/8 x 1.5 x 3/8" early celluloid covered match safe advertising Worcester Salt Co. Celluloid is clean and very nice overall, w/ minor denting and very tiny cut mark at right narrow side edge (note: has tiny bb sized plating loss spot at top edge of metal flip lid). Min. bid \$40.



192).Ostrich Farms Mirror. 2.75 x 1.75" early celluloid pocket mirror for Cawston Ostrich Farms, w/ very nice color graphics. Clean, bright and excellent, w/ very minor bumps and wear visible if tipped in light just right (mentioned for accuracy, nothing that's detracting). Min. bid \$60.



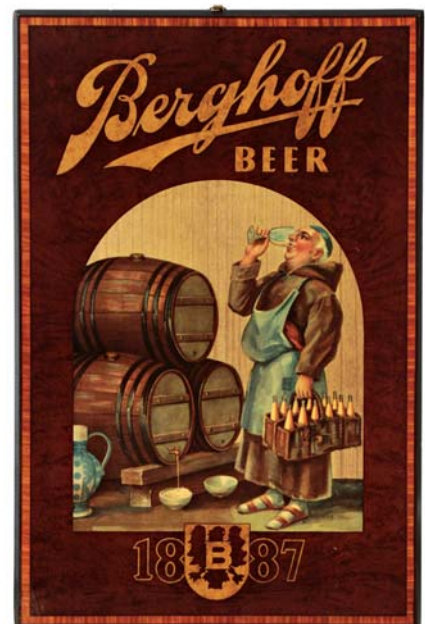
193).By-Lo Talc Tin. 4.5 x 2.25 x 1.75" early tin litho oval talcum powder tin for "By-Lo" brand (Gould Co., NY), w/ nice image of Co.'s trademark girl. Attractive and displays nicely, w/ a little non-offensive minor background wear (C. 8-). Min. bid \$40.



194).Sleepy Eye Fan. 13.25 x 6.25" early cardboard, die-cut advertising fan on original wooden stick for Old Sleepy Eye brand flour, featuring Co.'s trademark Indian Chief. Excellent overall (typical light bend/crease mark at tassel). Min. bid \$30.



195).Soap Die-Cut. 12-3/8 x 6" very early, embossed die-cut easel-back cardboard sign for Warnock & Ralston Co.'s "Anti-Washboard Soap". Clean, bright and excellent in appearance (C. 8.5+) w/ a couple faint, non-detracting crease marks (very minor). Min bid \$50.



196).Berghoff Beer Sign. 17.5 x 11.5" unusual, early wooden sign w/ celluloid protective surface for Berghoff Beer, as found never used, still in original packing box. Excellent overall, w/ a little hazy wear at bottom left corner edge (storage box has tattering and general wear). Min. bid \$50.



197). Orcherade Soda Sign. 17 x 14" (13-3/8 x 10-1/8" visible) early cardboard litho sign for "Orcherade" brand soda, w/ attractive image of Co.'s trademark girl. Displays nicely (as a C. 8) although close examination will show a little light scattered staining and light wear in outer white margins and minor color bleed in red background areas. Nicely framed. Min. bid \$40.



198). Squirrel Peanut Butter Tin. 6.5 x 5-1/8" unusual size (3 lb.?) tin litho peanut butter tin for Squirrel brand, featuring a large, beautiful graphic image of Co.'s trademark squirrel. Clean, bright and very attractive (a strong C. 8++), w/ only minor background wear (Canadian). Min. bid \$40.



199). Planters Ali D'Italia Sign. 14.75 x 9.75" ca. 1930's Planters Peanut Co. cardboard sign for their Ali d'Italia ("Wings of Italy") style peanut oil, w/ nice image of product can. Sign was made for use in Italian immigrant community and promotes a Co. sponsored music program. Excellent, w/ only minor wear. Min. bid \$40.



200). Cinco Cigar Sign. 12-3/8 x 6.75" unusual, early die-cut cardboard sign for Eisenlohr Co.'s "Cinco Londres" brand cigars, featuring beautiful multi-color graphics (has both an easel and string for hanging). (C. 8.5+) Min. bid \$30.



201). Coca-Cola Fountain Service Sign. 25.5 x 22.75" beautiful, early 2-sided heavy porcelain Coca-Cola Fountain Service outdoor hanging sign (Tenn. Enamel Co. stamping at bottom edge). Clean, bright and exceptionally nice (basically crispy and like new in appearance, w/ exception of very minor surface rubs (mentioned for accuracy, not at all detracting and so minor barely merits mention). Critical grade C. 8.5+. Min. bid \$150.

Gambling Spinners



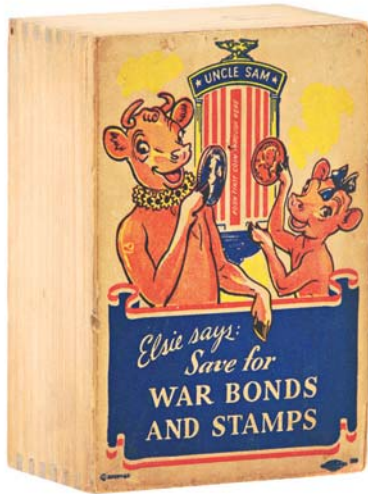
202). You Pay Spinners. Lot consists of a group of three early bar game spinners. Two are heavy stamped metal, and other is die-cut tin litho (sizes range from 7/8 x 2.5" to 1.25 x 3-1/8"). Nice overall (some typical expected light wear from use). Min. bid \$30 (the lot).



203). Aunt Jemima's Patterns. Lot consists of a pair of early Davis Milling Co.'s Aunt Jemima brand cloth advertising rag doll patterns (ea. app. 31" high). Front and back sides on both are very attractive in appearance (C. 8+), w/ minor toning and a few slight hints of background foxing. Min. bid \$40 (the pair).



204). Magee's Emulsion Die-Cuts. Lot consists of a matching set of very early, cardboard die-cut patent medicine advertising signs (ea. app. 13-1/8 x 7.5"), for Magee's Emulsion (A. Magee & Co., Lawrence, Mass.). Both are clean and excellent (C. 8.5+). Min. bid \$40 (the lot).



205).Borden's War Bonds Coin Box. 4.75 x 3.25 x 2" unusual ca. 1940's Borden's Dairy patriotic WW II era dovetailed wooden coin box (made for saving coins for War Bond and Stamps), featuring nice paper label image of Elsie and calf holding coins. Excellent overall (C. 8+) w/ sliding closure on backside. Min. bid \$30.



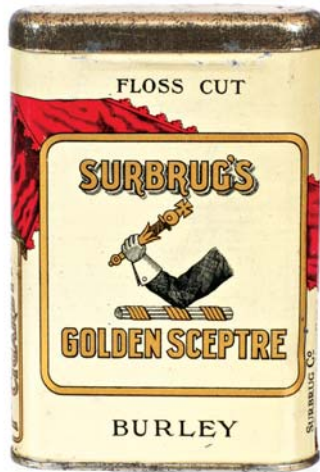
206).Lawrence Paint Sign. 23.25 x 18" early, heavy, two sided porcelain sign in likeness of early paint bucket for Lawrence Co.'s Tiger brand paint (same image both sides). Clean, bright and displays very nicely, w/ chipping loss at top grommet areas and a little minor scattered chipping wear. Min. bid \$50.



207).Pontiac Parts Sign. 13.5 x 10.5" unusual, early embossed pressed cardboard sign from a Pontiac service auto dealership garage. Clean and attractive overall appearance, w/ some non-offensive light rubbing marks in red logo area (C. 8/-). Easel no longer present. Min. bid \$40.



208).Point Loma Spice. 3-7/8 x 2.25 x 1.25" scarce, early tin litho 2 oz. spice tin (nutmeg) for Point Loma brand (Klauber Co., various Calif. cities) featuring beautiful multi-color seascape image (same image both sides). Crisp, bright and like new (C. 8.5++). Min. bid \$40.



209).Surbrug's Pocket Tin. 4.5 x 3 x 7/8" early tin litho vertical tobacco pocket tin for Surbrug Co.'s "Golden Sceptre" brand tobacco. Crisp, bright and exceptionally nice (C. 8.5++). Min. bid \$60.



210).Brotherhood Sample Tobacco. 3.5 x 2.25 x 7/8" unusual, full, sealed (never opened) 1 oz. "free trial" tobacco package for Brotherhood brand (1902 tax stamp). Excellent overall, w/ minor toning and a little typical foil loss at bottom edge. Min. bid \$30.



211).Kellogg's Mirror. 2.75 x 1.75" scarce, early celluloid pocket mirror for Kellogg's brand Corn Flakes cereal, w/ nice image of trademark girl hugging corn stalk (cereal box in pocket). Clean, bright and very attractive, w/ minor bumps visible if tipped in light just right (mentioned for accuracy, nothing that's detracting). Min. bid \$60.



212).Douglas Shoe Horn. 4 x 1-5/8" scarce, early tin litho advertising shoe horn for Douglas brand shoes, w/ nice image of Mr. Douglas (Mayer & Lavenson NY lithographers). Attractive and displays nicely w/ some fine scattered chipping and light scattered wear (C. 7.5/+). Min. bid \$30.

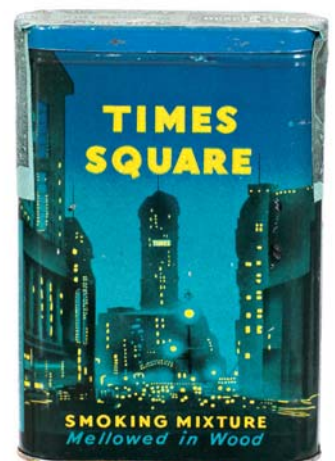


213).Booth's Talc. 4.25 x 2.25 x 1-7/8" early, oval cardboard talc container for "Booth's Compound Derma-Talcum", featuring stunning, highly detailed multi-color lithography. Clean, bright and exceptionally nice (C. 8.5/+). Min. bid \$40.



214).Planters Cocktail Glass. 5-7/8 x 3-1/8" (dia.) ca. 1940's Planters Peanut cocktail glass w/ figural Mr. Peanut stem and scarce variation "V" shape bowl. Very high quality crystal type glass, in like new condition (appears never used). Min. bid \$40.

Unopened



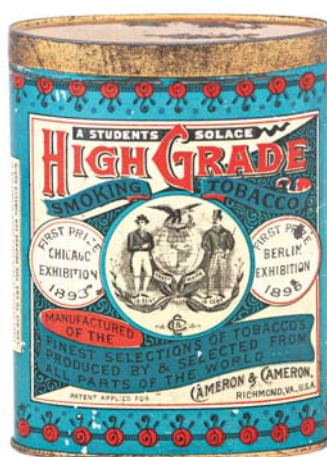
215).Times Square Pocket. 4.5 x 3 x 7/8" early tin litho pocket tin for "Times Square" brand, w/ attractive nighttime NYC Broadway image. Full, sealed, never opened tin is clean, bright and excellent (C. 8.5++). Min. bid \$50.



216).Auto Polish Cloth Tin. 4.75 x 3.25 x 2-1/8" early tin litho product can for Pioneer Mfg. Co.'s "Presto-Shino" brand polishing cloth, w/ great image of chauffeur polishing early limo (woman dusting piano on backside). Attractive and displays nicely, w/ some minor soiling and a little light wear (C. 7.5/+). As found, might improve a bit w/ cleaning. Min. bid \$30.



217).Empire Separators Mirror. 2.75 x 1.75" early celluloid advertising pocket mirror for Sharples brand cream separators. Excellent overall (displays as like new), w/ minor bumps and wear on surface (mentioned for accuracy, very minor and not at all detracting). Min. bid \$60.



218).High Grade Pocket Tin. 4-1/8 x 3 x 1-3/8" early tin litho vertical tobacco pocket tin for Cameron & Cameron Co.'s "High Grade" brand. Exceptionally nice example is clean, bright and like new in appearance, w/ exception of a couple small dark tarnish spots in right expo prize circle area and a little light oxidizing on lid (in area where tax stamp once sat). Min. bid \$60.



219).Busy Biddy Spice. 3.75 x 2.25 x 1.25" early tin litho 2 oz. spice tin for Busy Biddy brand mustard (Davies-Strauss-Stauffer Co. Pa.). Attractive and displays nicely, w/ only minor background wear (a strong C. 8+). Min. bid \$30 ea. (have 2, winning bidder can take one or both).



220).Adams Gum Mirror. 2.75 x 1.75" early celluloid pocket mirror for Adams Pepsin chewing gum, featuring beautiful color graphics. Clean, bright and excellent (displays as near mint), w/ very minor bumps and wear visible if tipped in light just right. Min. bid \$60.



221).Clown Sparkler Toy. 5.25 x 3 dia. x 1.25" early mechanical tin litho clown sparkler toy (shoots sparks from eyes and mouth when levers pressed). Clean and excellent appearance, w/ minor surface wear (C. 8/+). Min. bid \$40.



222).Whitehead & Hoag Match Safe. 2-3/8 x 1.5 x 3/8" early celluloid covered match safe advertising Whitehead & Hoag Co. (premier manufacturer of celluloid advertising novelties). Clean and very attractive, w/ a little light wear along right edge side edge and upper background area. Min. bid \$30.



223).1920 Coca-Cola Mirror. 2.75 x 1.75" ca. 1920 oval Coca-Cola celluloid advertising pocket mirror, w/ beautiful detailed graphics (note golfers in background). Clean, bright and excellent. Min. bid \$60.

Oats Box



224).Oats Box. 8.75 x 5.25" (dia.) scarce 2 lb. size cardboard cereal box for "3 Minute" brand oats, featuring a great car toys premium offer on backside. Has some dark writing along left side edge and on box lid, but otherwise excellent. Min. bid \$40.



225)."Nigger Hair" Tobacco Pail. 6.75 x 5-3/8" early tin litho tobacco pail for Leidersdorf Co.'s "Nigger Hair" brand, w/ same image on both sides. Crisp, bright and like new (near mint). Min. bid \$50.



226).Coca-Cola Tray. 13.25 x 10.25" 1942 tin litho Coca-Cola serving tray w/ nice image of girls and car. Clean, bright and very attractive (displays as a C. 8.5), w/ a couple non-offensive minor rubs on car and a few light scattered wear marks on silver upper edges of rim (critical grade an attractive C. 8+). Min. bid \$40.

Winchester Knives



227).Winchester Knife Case. 15 x 31.5 x 9.25" ca. 1920's/30's countertop wooden store display case for Winchester brand pocket knives, w/ clips for displaying 24 knives in front (shelves behind back doors held product boxes inside). Excellent (C. 8+). Min. bid \$60.



228).Presidential Contest Cigar Box. 10.5 x 19.25 x 9.25" (as pictured) large, early wooden cigar box has beautifully detailed label inside w/ great images of 1880 US Presidential candidates (Garfield/Arthur and Hancock/English). Has some background staining (mostly in outer margin areas), but overall attractive and displays very nicely (strong C. 7.5+). Min. bid \$50.



229).Miller Beer Tray. 12" (dia.) very early tin litho serving tray for Fred Miller Brewing Co., Milwaukee, featuring beautifully detailed graphics by Shonk Litho. Clean, bright and very attractive appearance (a strong C. 8++) w/ very minor wear and expected faint crazing. Min. bid \$70.

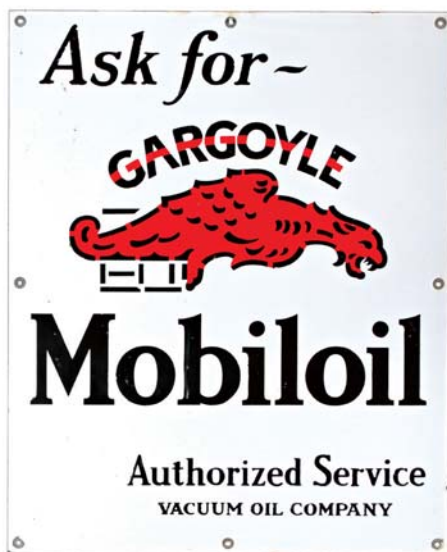
Candy Making Co.



230).Savage Bros. Bronze Plaque. 11 x 8.5" unusual, heavy figural bronze advertising plaque from Savage Bros. (mfg. of copper candy making eqpt. and machinery). Very high quality piece w/ nice detailing and attractive surface patina. Excellent. Min. bid \$50.



231).1901 Coca-Cola Serving Tray. 9.75" (dia.) scarce, ca. 1901 tin litho Coca-Cola serving tray, featuring opera star Hilda Clark. Has some fairly heavy wear at very outer edges of rim and some non-offensive scattered light general wear from use in main area of tray, but overall a nice, respectable example that has decent color and very nice overall appearance. Tough one to grade, but image area would rate a (C. 7.5+/-) appearance overall (non-graphic backside has fairly heavy wear and light oxidizing areas). Min. bid \$250.



232).Gargoyle Porcelain Sign. 24 x 19.5" early, heavy porcelain service station sign for Vacuum Oil Co.'s "Gargoyle" brand motor oil. Has strong colors, original surface sheen and displays very nicely, although close examination will reveal some non-offensive fine oxidized speckled bumps in background area (minor imperfections from mfg. process) and minor rust staining at top edge (critical grade a strong C. 8++) but displays much nicer than this would imply. Min. bid \$80.



233).Chesterfield Banner. 41 x 31" large, ca. 1920's/30's cloth advertising poster/banner for Chesterfield Cigarettes, featuring beautiful graphic image of couple in car. Clean, bright, attractive appearance, w/ minor wear along factory fold lines. Min. bid \$40.

Polar Bear Tobacco



234).Yellow Kid Sign. 18 x 14" (12.5 x 8.5" visible) scarce and important early paper litho sign for Polar Bear brand tobacco, featuring wonderful image of Yellow Kid promoting Co's 5¢ packages. Clean, bright and very attractive appearance, nicely framed and matted (note: we have not examined piece out of frame). Min. bid \$70.



235).Moxie Sugar & Creamer. Large, early, fine china sugar bowl and creamer serving set w/ advertising on each for Moxie. Very high quality, like new condition. Min. bid \$40 (the set).



236).Colgate Display Box. 4-7/8 x 10-5/8 x 3-7/8" early cardboard display box for Colgate dental cream, w/ nice image of early product tube. Clean, bright and excellent appearance (C. 8.5/+) (has some wear on non-graphic bottom base of box). Min. bid \$40.



237).1908 Coca-Cola Mirror. 2.75 x 1.75" scarce, ca. 1908 oval Coca-Cola celluloid advertising pocket mirror, w/ beautiful multi-color image (note fancy soda fountain in background). Clean, bright and excellent. Min. bid \$70.



238).Taylor Match Safe. 2-3/8 x 1.5 x 3/8" early, high quality celluloid covered match safe for Wm S. Lambert, Merchant Tailor, Newark, NJ. Clean and excellent. Min. bid \$40.

Ceiling Sign



239).Dr. Pepper Hanger. 7 x 4.5" unusual, 2-sided die-cut cardboard string hung ceiling sign (fan/light pull) advertising Dr. Pepper soda. Clean and attractive (C. 8/+), w/ a little minor wear on backside. Min. bid \$30.



240).Woonsocket Boots Match Holder. 3-3/8 x 2.75 x 1.75" unusual, small countertop metal advertising match holder for Woonsocket brand rubber boots. Neat, very high quality piece, has embossed advertising on boot and around chrome base. Excellent, w/ only minor wear. Min. bid \$30.

Motor Oil



241).American Packard Oil Can. 12.25 x 8 x 3-1/8" early hand-soldered tin litho oil can for American Packard brand oil (Bernier Co., Quebec, Canada), w/ same image both sides. Colors are strong and piece displays pretty nicely, although there is some scattered staining and light oxidizing scattered about, and there is an original 5 x 4" hydraulic brake fluid blue paper label from Co. pasted over image of back side (critical grade a strong C. 7+), as found, should improve w/ cleaning. Min. bid \$40.

Match Holder



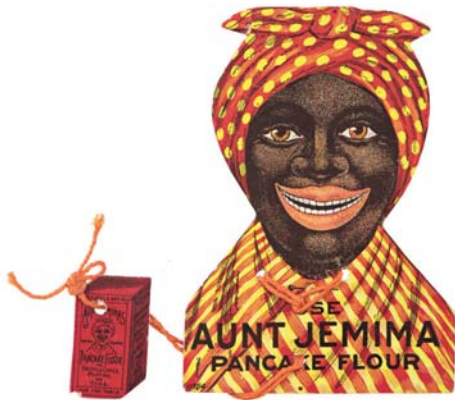
242).Kernerator Match Holder. 5.5 x 3.5 x 3.5" early, figural metal advertising match holder for Kernerator Incinerator Co., Milwaukee. This is heavy, finely detailed, very high quality miniature version of Co.'s incinerator (doors swing down on both sides for disposing hot matches. Excellent. Min. bid \$30.



243).Buffalo Oil Tin. 9.5 x 4.75 x 3-7/8" scarce, very early tin litho oil can for Buffalo brand (Prairie City Oil Co., Winnipeg, Man., Canada) featuring fine early lithography (same image both sides). Not for the perfectionist, as there are scattered scuffs, light dents and soiling/staining and wear spots scattered about, but a decent shelf piece that displays pretty well (display side C. 7; back a weak 7-). As found, might improve some w/ cleaning. Min. bid \$30.



244).Old Time Coffee. 9.75 x 5.5" (dia.) scarce 3 lb. tin litho pry lid coffee can from Hoffmann Co., Milwaukee, Wis. Clean, bright and exceptionally nice appearance (basically displays as a strong C. 8.5/+) w/ exception of non-offensive faint hazy section in white background area (above "ee" in coffee). Min. bid \$40.



245) Aunt Jemima Puzzle Game. 4 x 3" early 2-ps. cardboard die-cut puzzle game advertising Davis Mills Co.'s Aunt Jemima Pancake Flour, (text advertising and pickaninny doll offer on backside). Excellent w/ small edge wear spot at bottom of pancake box. Min. bid \$30.



246) Buster Brown Mirror. 1.75" (dia.) scarce variation, early celluloid pocket mirror for Buster Brown Shoes, featuring beautiful multi-color graphics. Excellent. Min. bid \$50.



247) Porcelain Auto Tag. 4.5 x 3.75" unusual, early advertising bumper tag/licence plate attachment for Illinois Agricultural Mutual Insurance Co., w/ beautifully detailed multi-color enameled porcelain. Crisp and like new (appears never used). Min. bid \$40.



248) Gargoyle Oil Can. 8 x 6.5 x 2.5" scarce, early hand-soldiered tin litho motor oil can for Vacuum Oil Co.'s Gargoyle brand motor oil (foreign writing on sides- German?). Clean, bright and attractive appearance (displays as a strong C. 8+) w/ some non-offensive fine speckling and minor scattered wear on backside (as found, should improve w/ cleaning). Min. bid \$40.



249) Tuxedo Sample Pocket. 2-5/8 x 1-7/8 x 9/16" scarce, miniature, early tin litho sample pocket tin for Patterson Co.'s "Tuxedo" brand. Has a little non-offensive, typical scattered speckling and light wear, but overall clean, bright and attractive (front C. 8; back C. 7.5+). Min. bid \$40.



250) Hard Pan Shoes Mirror. 2.75 x 1.75" scarce, early celluloid pocket mirror for Hard Pan men's shoes, featuring beautiful multi color graphics. Celluloid is crisp, bright and like new (some dark lines in mirror glass). Min. bid \$40.



251) Mogul Spice Tin. 3-3/8 x 2.25 x 1-3/8" scarce, early tin litho spice tin for Mogul brand (Groneweg Schoentgen Co., Council Bluffs, Iowa) w/ same image on both sides. Clean, bright and excellent (C. 8.5), w/ only very minor wear. Min. bid \$30.



252) Steel Foundry Calendar. 19.75 x 8.75" early bevel edged celluloid (over tin) advertising calendar pad holder from Kay-Brunner Co., maker of automotive steel products, w/ great 7 x 7.5" ca. 1920/30's industrial image of laboring foundry workers. Excellent overall, w/ some non-offensive wear in outside gold border area. Min. bid \$40.



253) TR Moxie Sign. 12 x 4" early cardboard die-cut countertop Teddy Roosevelt stand-up sign from Moxie Nerve Food Co., expousing the "strenuous life". A clean and attractive piece that displays very nicely (C. 8.5+) w/ exception of faint crease mark in neck area (easel missing on backside). Min. bid \$40.



254) Ranges Bill Hook. 4-3/8 x 2.25" early tin litho advertising bill hook for Malleable Steel Ranges, featuring nicely detailed graphics. Clean and very attractive (C. 8+), w/ a little non-offensive light scattered background wear. Min. bid \$30.



255) Fan Belts Thermometer. 30.5 x 9.5 x 3/4" large, early tin litho service station thermometer advertising Raybestos brand fan belts, w/ bright colors and a powerful, very impressive look. Clean, bright and excellent (basically like new), w/ exception of a little non-offensive scattered wear along narrow outside edges (C. 8.5+). Min. bid \$80.



256).Gold Dust Die-Cuts. nice group of 4 early cardboard die-cut advertisements (ea. app. 3.5 x 3") on heavy card stock for Gold Dust washing powder, each featuring Co.'s trademark twins (text advertising on backsides). Excellent. Min. bid \$30 (the lot).



257).Varnish Maker Match Safe. 2-3/8 x 1.5 x 3/8" early celluloid covered pocket match safe advertising Flood & Conklin Co. (varnish makers), w/ nice image of Co.'s Oswego, NY factory. Excellent. Min. bid \$30.



258).Moreland's Grease Tin. 2-5/8 x 4.25" (dia.) early tin 's litho Moreland Bro.'s grease can w/ neat image of race car, speed boat, airplane, etc. on lid. Clean and attractive appearance (C. 8) w/ some non-detracting scattered edge wear. Min. bid \$40.



259).Iron Clad Tobacco Litho. 7.75 x 15.5" (6.75 x 14.5" visible) very early paper litho sign (or large box label) for "Iron Clad Tobacco" featuring stunning multi-color lithography (dated 1872, Hatch Lith Co.). Beautiful piece is clean and excellent (C. 8++). Min. bid \$50.



260).Cigar Label Proof Book. 13 pg. set of early stone litho progressive color printers reference proofs in booklet form, for "Flyer" brand cigar box labels (ea. app. 8 x 9.5"), featuring Lindy's "Spirit of St. Louis" airplane, representing each stage of the color strike process. Inside pages are nice, w/ some toning and light wear from use. Min. bid \$30.



261).Spice Tin Lot. Lot consists of four early tin litho spice tins (ea. app. 3-7/8" hgt.). Includes: Stuarts Handy Allspice, BestTaste Cloves, Banner Boy Curry Powder and Sweet Life Cloves. Clean, bright and excellent overall (average C. 8.5++) w/ light scuffing on left side edge of Stuarts. Min. bid \$40 the lot.



262).College Town Spice Tins. lot consists of two early spice tins variations for "College Town" brand. Both are clean, bright and display nicely. Cinnamon (4.75 x 2-5/8 x 1.5") has a few minor, non-detracting hazy surface spots (C. 8+); cloves (2-7/8 x 2-3/8 x 1-1/8") is excellent (a strong C. 8++). Min. bid \$40 (the pair).



263).Coca-Cola Sign. 11.75 x 16.75" (8.25 x 12" actual) ca. 1920's/30's 2-sided cardboard die-cut sign (same both sides). Display side is a nice C. 8/- w/ minor toning and wear at bottom edge; backside (C. 7+/-) has a little fade and some light, general scattered wear from use. Framed (floated inside mat so both sides visible). Min. bid \$40.



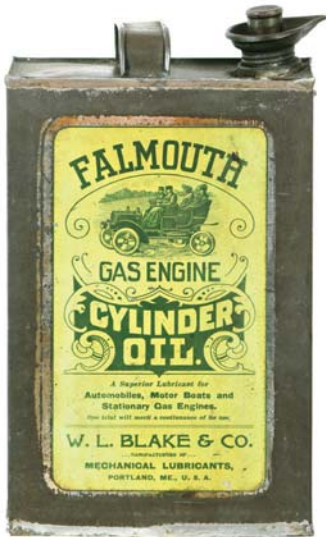
264).Cosmetics Counter Lamp. 6.25 x 8.5" (dia.) ca. 1930's/40's Coty Cosmetics Co. electric counter top advertising lamp made for use in cosmetics area of early upscale department store. Unusual, high quality piece has heavy plastic base and painted pattern design on glass globe that glows when lit). Crisp, like new condition. Min. bid \$40.



265).Spice Tins. lot of four different 2 oz. size spice tins (each app. 3.25 x 2-3/8 x 1.25"). Includes: Defiance Turmeric, New Mark's Cayenne, Folger's Golden Gate Mustard, and Gray's Imperial Mustard. All are clean, bright and excellent (C. 8.5/+). Min. bid \$50 the lot.



266).Queen Elizabeth Proof Book. 5 x 8-1/8" 25 pg. set of early, stone litho progressive color printers proof reference labels in booklet form for "Queen Elizabeth" brand cigar box labels. This printer's reference booklet represents each stage of the stone litho color strike process, from 1st strike through to the finished label. Excellent overall. Min. bid \$40.



267).Falmouth Oil Can. 10.25 x 6.25 x 4.25" very early hand soldered tin litho can for Falmouth brand gas engine cylinder oil (Blake Co., Portland, Me.) w/ wonderful graphic motoring images (same image both sides). Clean and attractive appearance w/ minor soiling and light wear on back side (front C. 8+; back C. 7.5). As found, should improve a bit w/ cleaning. Min. bid \$50.



268).Halloween Witch Candy Container. 5 x 2-1/8" (dia.) wonderful early figural glass candy container in image of pumpkin headed witch. Outstanding piece is excellent and complete w/ original closure and handle, w/ nice detailing and all original paint surface (non-visible minor chip on base-underneath closure). Min. bid \$50.



269).Indian Match Holder. 10 x 4.5" unusual, early metal advertising match holder for Ice Cream & Candy manufacturer. High quality piece has nice detailing w/ figural cast Indian head match basket area, working liquid silver thermometer and 1927 calendar pad at bottom. Very nice. Min. bid \$40.



270).Denby Cigars Die-Cut. 13 x 6.25" ca. 1940's cardboard die-cut counter-top sign for Charles Denby brand cigars, featuring great image of Co.'s comical black bellhop character. Clean, bright and excellent (a strong C. 8++). Min. bid \$30.



271).Beech-Nut Gum Sign. 38 x 14.5" large, cardboard die-cut stand-up window display sign for Beech-Nut brand chewing gum. Powerful and impressive sign is clean, bright and displays extremely well, w/ minor storage wear (C. 8.5). Min. bid \$60.



272).Men u Holders. Lot consists of two early drug store/soda fountain table top menu holders advertising ice cream brands. Includes "Arctic" (4.25 x 3-3/8 x 2.75" dia.) ca. 1920's 2-sided metal and glass; and Borden's 3-3/8" (dia.) celluloid covered base. Both are excellent. Min. bid \$40 (the lot).



273).Miniature Graniteware Pail. 4.25 x 3.5 x 1" unusual, very early, miniature wooden handled bucket shaped graniteware pail, w/ advertising on base for "Royal Granite Steelware" (s a l e s m a n ' s sample?). Neat, very high quality piece, excellent condition, w/ a little light, early chipping wear around bottom edge (pretty minor). Min. bid \$40.



274). AC Spark Plugs Pin. 2-1/4" (dia.) large, early tin litho service station employee badge advertising "AC Method" spark plug cleaning service, w/ great image of Co.'s trademark "Sparkplug" horse in tub. Near mint. Min. bid \$20.



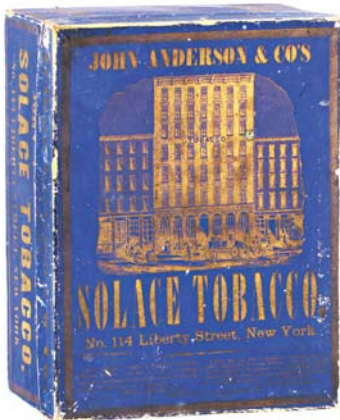
275). Little Imps Container. 1.5" (dia.) x 3/8" early celluloid covered tin container w/ slide closure on base for American Confection's "Little Imps" breath perfume pellets, w/ great devil image. Clean, bright and excellent. Min. bid \$40.



276). Bull Dog Clip. 2.75 x 2-3/8 x 1.25" early, metal clipboard style, hinged advertising clip for American Druggists Fire Insurance Co., Cincinnati, Oh. Clean, bright, very nice appearance, w/ a little non-offensive minor scattered wear (C. 8/+). Min. bid \$40.



277). Fleischmann's Yeast Mirror. 1.75" (dia.) scarce variation, beautiful, early celluloid pocket mirror for Buster Brown Shoes, featuring beautiful graphics. Excellent. Min. bid \$50.

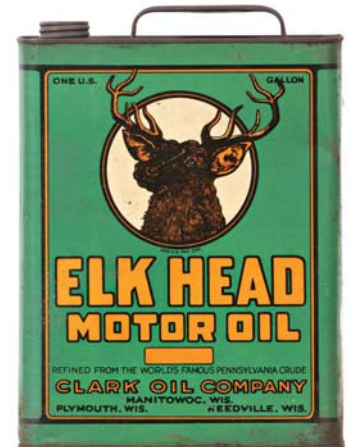


278). Outer Box

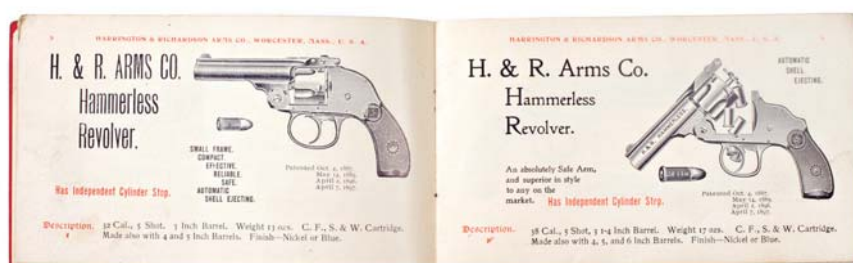
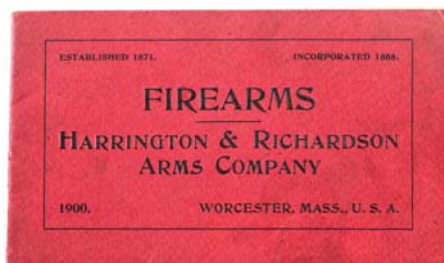


278). Inside Label

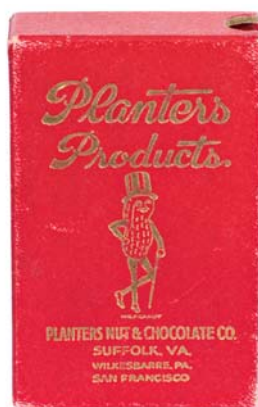
278). Solace Tobacco Box. 10.25 x 7-7/8 x 5" very early 2-ps. cardboard store box for John Anderson Co.'s Solace brand tobacco (originally held 6 dozen packages), w/ stunning multi-color graphic label inside. Inside label excellent (C. 8/+); outer box quite nice, w/ some paper chipping on apron edges and expected normal minor scattered wear on lid (C. 8-). Min. bid \$50.



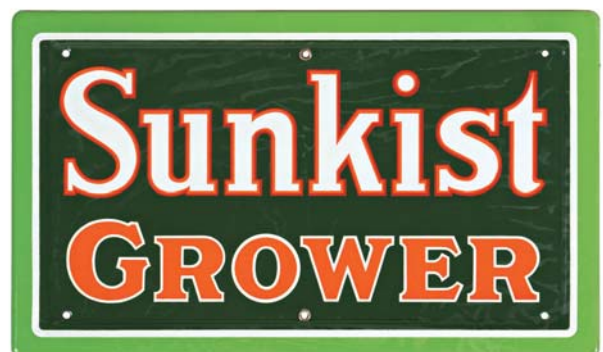
279). Elk Head Motor Oil. 11 x 8 x 3-1/8" scarce, early tin litho 1 gallon motor oil can for Elk Head brand (Clark Oil Co., Manitowoc, Wisc.) w/ great image of trademark buck on both sides. Attractive and displays nicely, w/ some light general wear from use (front C. 8/+; back C. 8/-). Min. bid \$40.



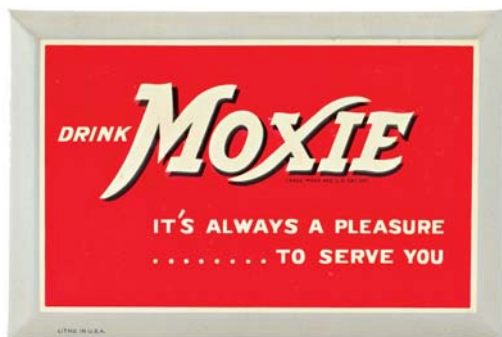
280). Firearms Catalog. 3-3/8 x 5-7/8" small 24 pg. catalog for Harrington & Richardson Arms Co., featuring Co.'s year 1900 revolvers and shotguns, w/ highly detailed illustrations. Excellent overall, w/ a little toning/darkening on cover. Min. bid \$20.



281). Planters Playing Cards. 4 x 2.5 x 7/8" ca. 1932 full deck of 52 linen finish playing cards in original box advertising Planters Peanuts w/ great image of Mr. Peanut in peanut shaped canoe paddling pretty lady on each card (no jokers). Min. bid \$50.



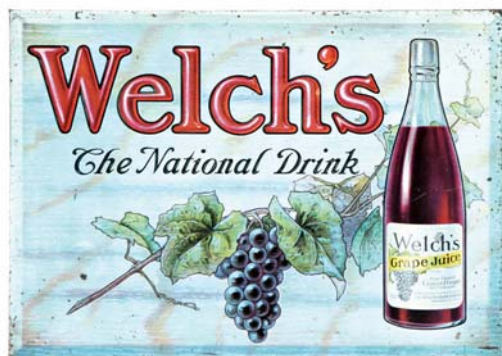
282). Sunkist Porcelain Sign. 11.5 x 19.5" early, heavy porcelain sign for Sunkist citrus growers. Clean, bright and displays as like new, although close examination will reveal a faint, trace hint of barely noticeable, minor hazy pattern on upper surface- probably remnants of protective paper covering (mentioned for accuracy- not at all detracting). Min. bid \$50.



283).Moxie Sign. 6 x 9-1/8" early, embossed, tin over cardboard, beveled sign for Moxie (has both easel and string on back). Clean, bright and exceptionally nice (appears never used), w/ a couple minor dent marks. Min. bid \$50.



284).Tobacco Packs. Lot consists of three, full, sealed tobacco packs for "Giant", "Honest" and "Honest Weight" brands. Hgts. Range from 4.25 to 4.5". All are clean, bright and excellent (C. 8.5/+). Min. bid \$40 the lot.



285).Welch's Sign. 8.5 x 12" early, tin over cardboard sign for Welch's Grape Juice, w/ nice image of Co.'s early style bottle. Has some light, general overall scattered wear and some speckling on upper surface (speckles mostly confined to right side edge) and a slight hint of fade, but overall attractive and displays nicely (C. 7.5/+). As found, might improve a bit w/ cleaning. Min. bid \$50.



286).Cream Separators Sign. 16-7/8 x 22.5" (13-5/8 x 19.5" visible) scarce, large, very early tin litho sign for DeLaval cream separators (lithography by Norton Bros.). Clean, bright and excellent appearance, w/ minor denting (C. a strong 8+). Framed. Min. bid \$60.



287).Cigar Label Proofs. 7.5 x 10.5" (labels measure 7 x 10") 32 pg. set of early, stone litho progressive color printers proof labels in booklet form for "Bud Fisher" brand cigar box labels (note: Bud Fisher was syndicated cartoonist who created the Mutt & Jeff comic strip characters). This printer's reference booklet represents each stage of the stone litho color strike process, from 1st strike through to the finished label. Excellent overall w/ some handling wear from use. Min. bid \$40.



288).Presidential Campaign Cigarette Packs. 2.75 x 2-1/8 x 7/8" lot consists of a pair of full, sealed original cigarette packs from the 1952 Presidential campaigns of Ike and Adli Stevenson (series 1922 tax stamps). Both are excellent. Min. bid \$30 (the pair).



289).McAvoy Tray. 12" (dia.) scarce, early tin litho serving tray from McAvoy Brewing Co., featuring beautiful graphics (dated 1899). Tray is clean, bright and displays very nicely, although there is a little light denting and some minor scattered wear (C. 8+/-); w/ oxidizing and heavy wear on non-graphic back side. Min. bid \$60.



290).Broom Holder Lot. Lot consists of two tin litho advertising broom holders, each apx. 6-3/8 x 2.5" (litho areas 3.5 x 2.5"). Includes: Lee Brooms (C. 8+/- w/ a little non-offensive light creasing) and Campbell's Varnishes (a little light wear from use C. 8+/-). Min. bid \$40 the pair.



291).Bookstand Biscuits Tin. 6.5 x 5 x 5" ca. 1905, figural tin litho bookstand shaped biscuits tin by Huntley & Palmers Co., w/ embossed side panels. Clean, attractive and displays nicely, w/ a little non-offensive light scattered wear (front C. 8+/-; back C. 8/-). British. Min. bid \$40.



292).Keynoil Oil Can. 6.5 x 8 x 3" early, hand-soldered, tin litho 1/2 gallon size oil can for "Keynoil" brand (White Eagle Oil Co.) w/ same image on both sides. Clean and attractive in appearance, w/ some minor soiling and light scattered wear (C. 8; back 7.5+). As found, should improve w/ cleaning. Min. bid \$40.



293).Trout Line Pocket Tin. 3.75 x 3-3/8 x 1-1/8" early tin litho vertical tobacco pocket tin for "Trout Line" brand, featuring great fly fishing scene (same image both sides). Clean, attractive and displays very nicely, w/ a few minor scattered wear marks including light scratch mark in red circular border area (front C. 8; back 8.5). Min. bid \$70.



294).Friends Tobacco Lunchbox. 5 x 7.5 x 4-3/8" scarce, early tin litho lunchbox style tobacco tin for Friends brand, featuring Co.'s trademark donkeys on front and back. Tin is clean, bright and excellent overall (C. 8+) w/ typical expected darkening and wear to flash finish on lid (lid 7++). Min. bid \$40.



295).Slippery Elm Tin. 7-5/8 x 7 x 4.5" very early tin litho 5 lb. store display tin w/ glass display window in front, for Thayer Co.'s "Slippery Elm" brand lozenges, w/ finely detailed Ginn type lithography. Tin is clean, bright and especially nice (basically a strong C. 8+) w/ exception of a little non-offensive, light scattered background wear. Min. bid \$40.

Heinze Horseradish



296).Heinz Radish Jar. 4.75 x 3" (dia.) scarce, early, two-piece glass serving jar for Heinz Nobel Co.'s horse radish, w/ horse shaped finial and large embossed lettering on sides. Very high quality piece, like new condition (predates H.J. Heinz). Min. bid \$40.



297).Needle Tins. Lot consists of four different, early, tin litho phonograph needle tins, each featuring trademark image of Nipper dog and phonograph (larger tin 5 x 1-5/8 x 5/8; smaller tins 1-5/8 x 2-5/8 x 1/2). Lids are clean, bright and excellent in appearance, w/ exception of scuff area on on green example (some light, general expected wear on non-graphic bottoms). Min. bid \$40 the lot.



298).Blanke's Coffee Tin. 10-7/8 x 3.25" scarce, early, tin litho coffee can for Blanke Co.'s "World's Fair" brand coffee featuring image of 1903 St. Louis Fair. Colors are decent and tin displays nicely on shelf, although close examination will reveal scattered dark spots and some general wear (front C. 7+; plain back side 7-). As found, might improve w/ cleaning. Min. bid \$30.

Salesman's Sample



299).Salesman's Sample Swing/Crib. 14 x 12.75 x 9.75" unusual, very early, wooden (oak) and metal mission style salesman's sample porch swing that also folds and converts into baby crib. All original finish and quite nice overall, w/ some light wear from use. Has Thompson Safety Swing, and Huston Mfg. Co., Columbus, GA mfg. decals on front and back sides). Note: display stand is professionally fabricated from early materials and is not original to piece (although it looks incredible and you would never know). Min. bid \$70.

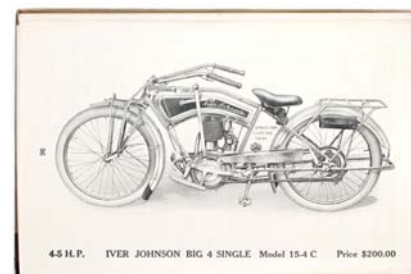
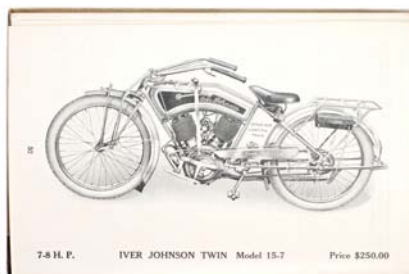
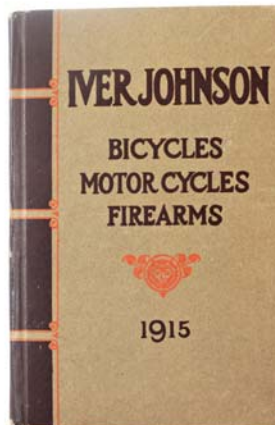
Unused Porcelain Sign



300).Porcelain Paint Sign. 44 x 26" (crate 51.75 x 40.75 x 5") large, early, heavy enameled porcelain 2-sided advertising sig. on its original iron mounting brackets for "DeVoe" brand housepaint. Sign is crisp, bright and like new, as found, never used, still in its original shipping crate. Min. bid \$100.



301).Durkee Spice Tins. 3-3/8 x 2.25 x 1.25" (ea.) lot consists of a nice grouping of seven different Durkee Co. tin litho spice tins, each w/ a related multi-color graphic art image on backside. Tins are clean and excellent overall (avg. 8.5/+), w/ some darkening and wear to gold flash lids on a few. Min. bid \$40 (the lot).



302).Iver Johnson Catalog. 6.75 x 4.5 x 3/8" 85 pg. hardcovered, fully illustrated 1915 product catalog from Iver Johnson Arms & Cycle Works Co., filled w/ wonderful illustrations and product info for Co.'s Motorcycles, bicycles and firearms. Excellent. Min. bid \$40.



303).Switzer's Candy Box. 5.5 x 9.25" early 2-ps. cardboard store display box for Co.'s candy cigars (Switzer Licorice Co., St. Louis) featuring great cover image of kids w/ large cigars in mouth. Basically excellent, w/ exception of a little light edge wear and some pencil writing on lid (C. 7.5+/-8-). Min. bid \$30.



304).Stock Yards Pinback. 1.75" (dia.) large, early, celluloid advertising pin/badge for Sioux City Stock Yards, featuring stunning, beautifully detailed color graphics. Clean, bright and excellent, w/ original label on backside. Min. bid \$30.

Greyhound Bus Candy Container



305).Greyhound Bus Candy Container. 1.75 x 5 x 1-5/8" scarce, early, figural glass candy container w/ embossed trademark Greyhound dog image both sides. Very high quality, excellent (complete w/ original wheels and closure). Min. bid \$40.



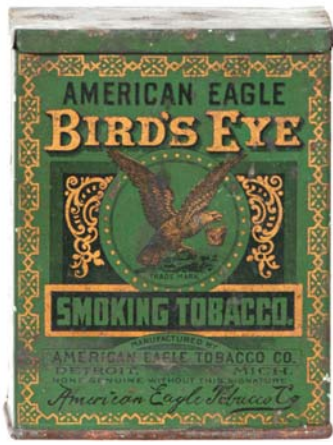
306).Amsdell Beer Tray. 11-7/8" (dia.) scarce, very early, heavy enamel porcelain serving tray from Amsdell Brewing Co. (Albany, NY). Clean, bright and very attractive, w/ a little minor wear from use (a strong C. 8+). Baltimore Enamel Co. Min. bid \$60.



307).Firestone Anti-Freeze Tin. 10.5 x 4 x 3.25" scarce, early tin litho, 1/2 gallon size product can for Firestone brand automotive anti-freeze, w/ nice image of trademark polar bear on front and auto accessories on reverse. Attractive and displays nicely (C. 7.5/+), w/ some light scattered wear (heavier scattered wear on non-graphic side edges). Min. bid \$30.



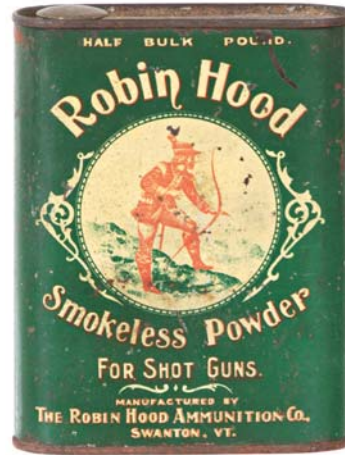
308).Mathie Beer Tray. 13.25" (dia.) scarce, early tin litho advertising beer tray for Mathie Brewing Co. (of Los Angeles, CA) featuring beautifully detailed graphics. Clean, bright and very attractive appearance (displays as a strong C. 8+/-) w/ minor scattered wear including a couple minor pings and a couple faint ring marks evident if tipped in light. Min. bid \$70.



309) Bird's Eye Tobacco Tin. 4.5 x 3.5 x 2-1/8" scarce, very early tin litho tobacco can for American Eagle Co.'s "Bird's Eye" brand, featuring nice image of trademark bird. Body displays pretty decently on shelf (as a C. 8+), although close examination, especially if tipped in light will show some hazy dark spots and light wear (critical grade 7.5); w/ heavy oxidizing and wear on lid. Min. bid \$30.



310) Luden's Cough Drops Tin. 7.5 x 5-1/8 x 5-1/8" scarce variation, small-top style tin litho 5 lb. cough drops tin for Luden's brand menthol cough drops, w/ nice image of early packages all around. Clean, bright and very attractive (C. 8++) w/ exception of a little light scattered litho wear wear spots (T.Bro's Litho). Min. bid \$40.



311) Robin Hood Gun Powder Tin. 4.5 x 3-3/8 x 1-1/8" scarce, early 1/2 lb. size tin litho gun powder can for "Robin Hood" brand. Attractive and displays quite nicely, w/ some light wear on display side, backside has some early chipping scuffs and light oxidizing spots (front C. 7.5+; back C. 7). Min. bid \$40.

Small Spice



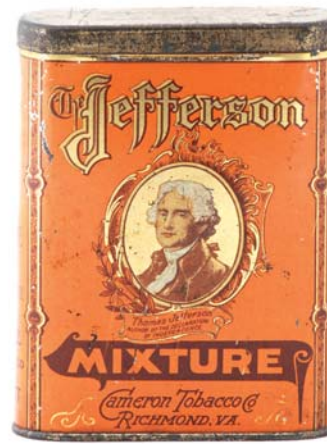
312) Mann's Spice Tin. 3.25 x 2-1/8 x 2-1/8" scarce, very early, small tin litho spice can (Allspice) from John Mann Co. (Syracuse, NY), featuring beautifully detailed graphics by Isley Co. Attractive and displays nicely (C. 8+/-), w/ minor scattered wear. Min. bid \$30.



313) Tulane Oil Can. 5.5 x 4" (dia.) early tin litho 1 qt. crimp seam picture can for Tulane brand (Benz Oil Co., Milwaukee, Wisc.), w/ same nice image on both sides. Full, unopened can is clean, bright and very nice (a strong C. 8+), w/ exception of a few fairly minor background scratch marks and rubs. Min. bid \$40.



314) Sharples Separators Mirror. 2.75 x 1.75" early celluloid pocket mirror for Sharples brand cream separators, featuring beautiful multi-color graphics. Clean, bright and excellent (displays as like new), w/ minor scratching on surface (mentioned for accuracy, very minor and not at all detracting). Min. bid \$60.



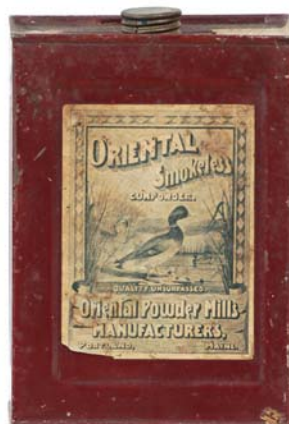
315) Jefferson Pocket Tin. 4.5 x 3.5 x 1" scarce tin litho pocket tin for Cameron Co.'s "Jefferson Mixture". Decent and very respectable example, w/ nice color and bright shiny golds, w/ some early scattered background scuffs and light wear spots scattered about, including small, finely scratched date on backside (nothing that's really offensive or detracting). Displays nicely (critical grade a strong C. 7.5+), although it displays much nicer than this implies. Min. bid \$150.



316) Bear Ring Oil Can. 5.5 x 4" (dia.) early, 1 qt., soldier seam picture can featuring great image of trademark bear (Coleman Co., St. Paul, Minn.). Clean, bright, excellent appearance (a strong C. 8+), w/ minor background rubs and wear, and some oxidizing/staining on top and bottom lids. Min. bid \$40.



317) Sunny Brook Match Holder. 4-7/8 x 3-3/8 x 1.25" early, tin litho advertising match holder for Sunny Brook brand Whiskey, given as souvenir at 1904 St. Louis World's Fair. Very attractive appearance, w/ some general wear along bottom edge of hanging match basket area (C. 8++; basket C. 7+). Min. bid \$50.



318) Oriental Gun Powder Tin. 5.25 x 3-5/8 x 1.75" scarce, very early, paper label gun powder tin for Oriental Powder Mills (Portland, ME) "Oriental" brand smokeless gun powder, featuring great image of duck pond scene. Front side label has some chipping loss at bottom left edge and some light scattered age tone soiling (front C. 7.5); back label is complete w/ general overall age toning and reddened stain spots (has partial label on top shoulder). Min. bid \$50.



319) Our Hero Coffee. 7 x 4.25" (dia.) scarce, early tin litho 6-sided 1 lb. coffee can for "Our Hero" brand (Cleveland Coffee Co., Cleveland, Oh.), featuring nice images of U.S. military heroes. Excellent overall (a strong C. 8+), w/ only minor wear. Min. bid \$50.



320) Golden Pheasant Gun Powder. 6 x 4 x 1-5/8" scarce, very early paper labeled gun powder can for Golden Pheasant brand, w/ great folksy images of game birds. Label has some light overall toning, light staining and some general overall wear, but displays pretty nicely (C. 7+/-). Min. bid \$40.



321). American Can Co. Tin. 3 x 5.5 x 3-1/8" early, tin litho tobacco style (sample?) tin, w/ advertising from American Can Co. w/ promotional advertising for 1904 World's Fair. Clean, bright and exceptionally nice (C. 8.5+). Min. bid \$40.



322). Acropolis Coffee. 4 x 5" (dia.) scarce, early, 1 lb. tin litho vacuum pack coffee can for Acropolis brand, w/ nice multi-color image of Parthenon. Colors are strong and it displays quite nicely, although there is some light scattered scuffing and wear and some fairly heavy loss on the raised top section (just below key wind opening band). Min. bid \$30.

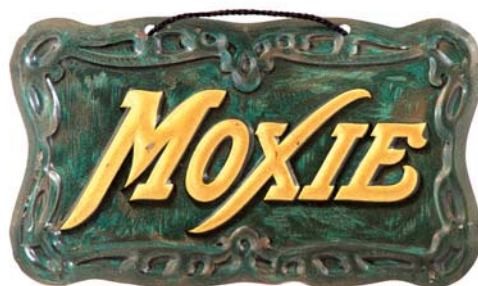
Disney Bread Pins



323). Mickey Mouse Bread Pins. Lot consists of 6 different variations of ca. 1930's Mickey Mouse 1.25" (dia.) celluloid pinback buttons, each for a different bread Co. Includes: Pevely; Peter Pan; Freihofer's; NBC; Hall's and Bell brands. All are clean and excellent. Min. bid \$40 (the lot).



324). Sweet Loma Bin. 10.25 x 8.5" scarce, large, tin litho store size bin for Scotten Tobacco Co.'s "Sweet Loma" brand, featuring attractive image of Co.'s trademark girl. Clean, bright and very nice appearance (displays as a strong C. 8+) w/ exception of a little non-offensive light scattered background wear. Min. bid \$100.



325). Moxie Hanger. 3 x 5-1/8" very early, miniature embossed tin litho string-hung sign for Moxie. Clean and very attractive appearance, w/ only minor wear (C. 8++). Min. bid \$40.



326). Cracker Jack Truck. 9 x 4.25 x 2-1/8" early metal toy truck made for holding early Cracker Jack product box. Truck is clean and very nice and comes complete w/ early vintage product box. Excellent (C. 8++). Min. bid \$50.



327). Sailor's Pride Tobacco Tin. 6 x 4-7/8" scarce, early tin litho, small top style tobacco tin for Bland Tobacco Co.'s "Sailor's Pride" brand. Clean, bright and exceptionally nice, w/ only minor dent and couple faint rub lines keeping it from near mint grade (C. 8.5+). Min. bid \$60.



328). Perfection Whiskey Sign. 20-5/8 x 24.75 x 6" outstanding, large, tin litho advertising sign for Bardenheier's "Perfection" brand whiskey, featuring beautiful, very high quality multi-color lithography. Sign is crisp, bright and like new in appearance (displays as a strong 8.5+) although examination under black light will reveal a little, very minor, light background touch-up. Sign is factory framed using metal strapped wooden antique whiskey barrel. Neat, very unusual piece! Min. bid \$200.



329). Ben Franklin Proof Book. 4-3/8 x 6" 30 pg. set of early, stone litho progressive color printers proof labels in booklet form for "Ben Franklin" brand cigar box side labels. This printer's reference booklet represents each stage of the stone litho color strike process, from 1st strike through to the finished label. Excellent overall. Min. bid \$40.



Rd #2, Cobb Hill Road, Cazenovia, NY 13035 • 24 Hr. Tel: (315) 662-7625 • 24 Hr. Fax: (315) 662-3570 • morf2bid@aol.com • morfauction.com

Welcome to our 75th auction of quality antique advertising and fine collectibles. Everything we sell is guaranteed authentic and as described. We attempt to grade condition both fairly and conservatively, using a scale of 1-10 on the advertising items (ten being absolutely mint). We do not list reproductions, re-issues, deceptively restored or pieced together type merchandise. Flaws and blemishes are prominently noted and over emphasized. We encourage you to call for a detailed description on any item you have an interest in, but respectfully must request that you do this before the closing night. Dimensions are listed by height, then width, and are only approximate (+ or - a quarter inch).

Bidding

Bids are accepted only from those parties who have registered with us to bid. (If you were mailed this catalogue by us you are automatically pre-registered.) Your bid is a legal contract to purchase and once entered, cannot be canceled. Placement of a bid indicates acceptance of our terms.

On all "BID" items there is a 10% buyers premium added to each successful bid. You're welcome to bid by mail, email and fax anytime after receiving this catalog. **We will begin accepting phone bids on Wednesday, June 20th, 2012. We will be taking calls on Wednesday and Thursday from 10:00 AM until 5:00 PM.** If no one answers when you call, please leave a message on our machine and we will get back to you. **If bidding by mail or fax, please remember to include your telephone number with your bids!** You may call or bid as often as you like. We will tell you the current bid on any item(s) you are interested in. To raise a bid, your advance must be at least \$10 more than the current high bid amount. When an item reaches \$250, bidding increments rise to \$25, at \$1,000, bidding increments advance in \$50 steps, and above \$2,000 in \$100 increments. We suggest not waiting until the last minute to begin your bidding, as its quite possible you won't be able to get through.

Web Page and Bid Updates

We will begin posting current bid prices (not including the buyers premium) on Wednesday, June 20th, 2012 (including an addendum of additional catalogue lot information) on our internet web page. These prices will be updated once each day (each evening sometime after 9:00 PM, EST) and will get updated to include the final hammer prices on Sunday afternoon once the sale is concluded. On the closing night, we will attempt to update current bid prices every hour. Our web page address for this sale is: <http://www.morfauction.com> We suggest that once you get to it, that you bookmark this address for easy re-access. There is also an addendum section on our website where we post additional information and photo's for this sale.

Reserves and Estimates

All items which receive an opening bid in our sale will be sold to the highest bidder regardless of the price realized (we reserve the right to withdraw items in the event of inaccurate catalog descriptions and to reject any bid we feel is not made in good faith). **We run our auctions with a strict policy of no buy-backs, no auctioneer games and no hidden reserves.** Unlike some of our competitors, we do NOT allow consignors to bid up their own items!

Mechanical Operations

Early mechanical and electric motors and mechanisms on machines toys, coin-ops, clocks, etc. are quite often temperamental and very unpredictable in nature. Although these mechanisms may be working fine at the time of sale, we make no guarantees or representations regarding their continued operating status once they have left our premises (including during shipping).

Closing Night

THE LAST DAY FOR BIDDING WILL BE ON FRIDAY, JUNE 22ND, 2012. On closing day, we begin taking calls at 5:00 PM. Please mark your calendar now. **On the closing night (ONLY), we will also be taking calls at (315) 662-3318, (315) 662-3429 and (315) 662-3904 after 5:00 PM** (in addition to our regular (315) 662-7625 office number). **Closing Time: This Auction will close at 10:00 PM (EST) on Friday, JUNE 22ND, 2012.** At that time, no more incoming calls will be accepted and all lots with a registered bid of less than \$300, as well as all items without call backs registered on them will be officially closed and final. The items at \$300 and over that have call back protection registered on them will be closed out during our call back period the following afternoon (**see important call back rules below**). We reserve the right to change the official closing in the event of unforeseen family type emergencies or technological failures (utility disruptions, etc.). We also reserve the right to either extend the bidding, to postpone or to cancel this auction in the event of a national emergency or if the Internet or the services of the US Post Office were to get seriously disrupted during our catalogue mailing or bidding period.

"Up-To" Bids & Call Backs

CEILING BIDS: We will be happy to enter competitive "up to" ceiling bids for you on any lots you request. Beginning at your minimum amount, we will advance these bid(s) up to your left ceiling amount, if (and only if) it is topped by another bidder. "Up To" bids will be handled discretely and executed in a completely competitive manner for you. Please note that we don't accept open ended "top all others" ceiling type bids.

CALL BACKS: You may request call back protection for any lot(s) that you enter with either a minimum or a protected "up-to" ceiling bid in an amount of at least \$300. This request must be registered with us before the official 10:00 PM closing hour of Friday, June 22nd, 2012. All callbacks will be placed by us on Saturday, June 23rd, 2012, beginning at 12:00 noon (EST) and will continue that afternoon until each of the individual lots have been closed out (using past experience, I would expect this to be finished by 6:00 PM, if not earlier). If you register for call-backs, it is your responsibility to be available during this call back time period. We make every effort to honor all our call back requests, but this service is done solely as a convenience to our bidders and will be performed on a best efforts basis only. If you will be traveling or if you will not be available during call back times at your primary number, be sure you provide us with proper alternate or back up numbers for reaching you!

Payment Terms

Winning bidders will be invoiced by mail immediately after the sale. Those who desire fast shipment can pay by Money Order or Cashiers Check. Payments are due within 10 days of receipt of invoice. We reserve the right to offer the item out to our back bidders and deny future bidding privileges to those who do not pay in a timely manner. In addition to personal checks, we also accept payment on your American Express, Visa, Master Card, Discover and Optima Credit Cards (with no surcharge added). No COD's or Collect calls are ever accepted. Items shipped to anywhere in New York State must include appropriate sales tax or signed resale certificate.

Shipping

All packing and shipping charges are extra. We do most of our own packing and shipping in house and try to keep these charges as reasonable as possible for you. On especially fragile and larger hard to pack items, we hire the services of professional packers and charge you at our billed cost. We ship mostly through the Post Office and Fedex Ground, (Fedex Overnight available at an extra charge.)

Subscribing, Prices Realized, Consignments & Upcoming Events

Future catalogs can be assured by sending \$20 for a full 12 months subscription. (Prices are published on our website after each sale) An automatic credit card ordering program is available. We currently run between 3-5 auctions a year (versus our previous format of running semi-annual sales). This format allows us to run smaller, more focused sales featuring larger, higher quality catalog images and gives our consignors the opportunity for a quicker turn-around of their items. In addition to our regular sales, we also occasionally offer sales made up entirely from single owner collections. Please contact us should you have items you would like us to consider for inclusion in our upcoming events. All inquiries are handled in a completely confidential manner. Our services are also available for the private placement marketing of important individual items, marketing plans for large collections as well as for estate planning and settlement purposes. Back copies of many of our previous auction catalogs are still available at \$5 each (w/ prices realized) w/ quantity discounts available if multiple issues are ordered. For further information, please call, e-mail or write.

Photography by Wes Feuz.

© Copyright 2012. All Rights Reserved. No portion of this publication may be copied in any form without the express written permission of Morford's.

Important Closing Night Information

In addition to our regular **(315) 662-7625** office number,
on the closing night (only!) you may also call us at:

(315) 662-3318*
(after 5:00 PM)

(315) 662-3904*
(after 5:00 PM)

(315) 662-3429*
(after 5:00 PM)



***These numbers for
Closing night only!
Friday, June 22nd, 2012**

Bidding closes at 10:00 PM on Friday closing night. We will be accepting faxes and e-mails on closing night. Our web page will update current high bid prices approximately every hour on closing night and will also list any important addendum information. All call backs will be made on Saturday, June 23rd, 2012, beginning at 12 o'clock Noon!