



**WM Morford**  
Investment Grade Collectibles at Auction

## Investment Grade Collectibles at Auction

Rd #2, Cobb Hill Road, Cazenovia, NY 13035 • 24 Hr. Tel: (315) 662-7625 • 24 Hr. Fax: (315) 662-3570 • morf2bid@aol.com • morfauction.com

**Bidding closes Friday, October 26th, 2012. (See page 28 for Terms & Conditions)**



1).Aeroplane Cigar Tin. 3.25 x 5.25 x 5/8" scarce, very early tin litho "Aeroplane Sky High" hinged lid cigar tin, w/ great graphic image on lid (National Can Co., Detroit). Attractive and displays nicely, w/ some non-offensive light scattered speckling and edge wear (C. 7.5+/8-). As found, might improve w/ cleaning. Min. bid \$60.



2).Advertising Turtle. 2-3/8 x 1.5 x 1/2" scarce, early advertising turtle has a painted cast iron base and celluloid "shell" advertising the Aetna Indemnity Co. Excellent. Min. bid \$30.



3).Washington Mixture Tobacco. 3 x 4-1/8 x 1-1/8" very early, tin litho hinged lid tobacco tin featuring wonderful graphic image of George Washington on a ca. 1891 44 star flag. Clean, bright and displays nicely (as a strong C. 8/+), although close examination will reveal some non-offensive scratches and light wear (critical grade C. 8/-). Foreign. Min. bid \$40.



4).Brewery Calendar/Fan. 15.75 x 23 x 3.25" (8.5 x 16.5 actual) large, fancy, folding die-cut advertising fan from Independent Brewing Assn., Chicago, promoting companies Prima Tonic. Clean, bright and exceptionally nice appearance w/ beautiful detailed lithography, including 1904 calendar. Excellent overall w/ exception of small area of edge loss at bottom right protective cover edge. Piece is beautifully displayed in large, fancy, shadow box, gold leaf frame (see website addendum to view framed). Min. bid \$70.



5).Railway Express Signs. set of three, early, high quality, heavy porcelain advertising strip signs for Railway Express Co. (sizes range from 4 x 26" to 4 x 30.25"). Signs are clean, bright and excellent overall w/ only minor wear. Min. bid \$70 (the set).



6).Mountain Motor Oil Can. 10.75 x 8 x 3" scarce, early tin litho 1 gallon sized motor oil can from Mountain Tire & Gas Co. (Colorado Springs, Colo.) w/ same image on both sides. Clean, bright and displays nicely, w/ a little minor denting and some non-offensive, light, general scattered wear (C. 7.5+/8-). Min. bid \$50.



7).Wes-Tex Phone Sign. unusual, early, one-sided 12" dia. porcelain pay phone sign from Wes-Tex Telephone Co., Stanton, Tex., w/ nice image of early style dial telephone. Excellent overall, w/ exception of a small chip spot near bottom grommet hole. Min. bid \$50.

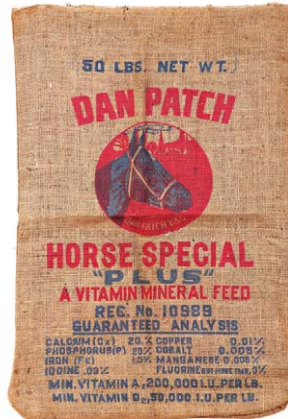


8).Brewery Match Holder/Cigar Trimmer. 3-7/8 x 4 x 5" unusual, very early, heavy ceramic advertising match holder for Louis Bergdoll Brewing Co., Philadelphia, w/ slots for holding early match boxes at sides and cigar rests and mechanical trimmer at base. Excellent overall w/ some light weathering to metal cigar trimmer at base (works fine). Min. bid \$50.





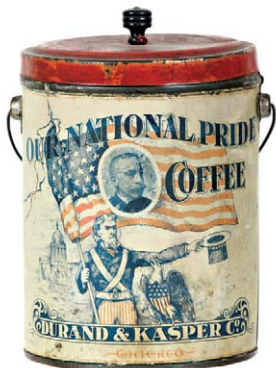
9).Adams Gum Case. 17.75 x 12.25 x 6-3/8" early wooden countertop advertising show case for Admas Co.'s "Tutti Frutti" brand pepsin chewing gum. Outstanding piece is excellent and appears all original (C. 8.5++). Min. bid \$70.



10).Dan Patch Feed Bag. 25 x 16.5" unusual, early 50 lb. size International Stock Food Co. burlap feed bag for "Dan Patch" brand "Horse Special Plus" feed. Clean and like new (near mint, w/ exception of typical storage fold lines). Min. bid \$30.



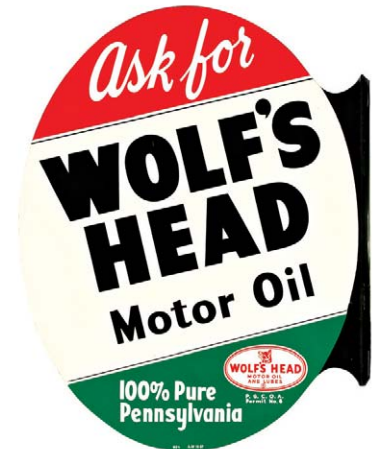
11).World's Fair Mug. 4.75 x 3 x 4.25" early stoneware mug w/ incised blue decorated design from 1893 Chicago World's Fair. Excellent, high quality piece (probably by White's Utica Pottery). Min. bid \$40.



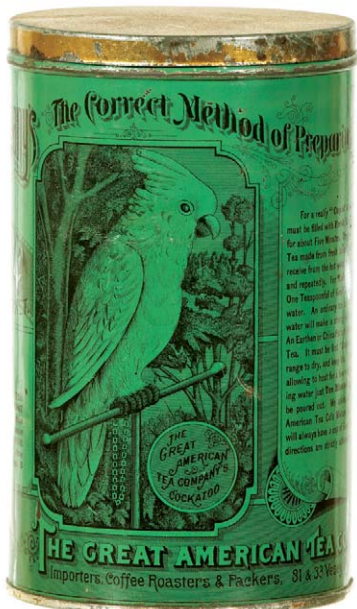
12).National Pride Coffee. 7.25 x 5.5" (dia.) scarce, early 2 lb. tin litho coffee pail for "Our National Pride" brand (Durand & Kasper Co., Chicago) featuring wonderful patriotic themed image, (busy factory scene on backside). Attractive and displays nicely (as a C. 8/-), although close examination will reveal some non-offensive light scattered wear, minor dents and some fade to reds (critical grade a strong C. 7+, although it displays much better than this would imply). Min. bid \$60.



13). Mineral Water Sign. 8.25" (dia.) important, very early glass sign for Sheboygan Mineral Waters, featuring great image of trademark Indian chief in center, w/ wrap around brass chain framing the outer border. Freshly attic picked and all original, this beautiful, very high quality sign (made by Tuchfarber Co., Cincinnati) was found never used still in its original (included) box. Excellent, w/ slight bit of non-offensive darkening in outer gold background area (nothing that's serious or detracting). Min. bid \$100.



14).Wolf's Head Oil Sign. 20 x 17" ca. 1950's, metal, 2-sided flange sign for Wolf's Head motor oil. Crisp, bright and like new (appears never used) w/ exception of a couple non-offensive light wear marks. Min. bid \$40.



15).Great American Tin. 7 x 4.25" very early, tin litho product can for Great American Co.'s "Chop Mixture" tea, featuring wonderful, early detailed lithography by Ginna & Co. Clean, bright and exceptionally nice (displays as a very strong C. 8++), w/ a couple non-detracting, light background dents. Min. bid \$40.



16).Pepsi-Cola Sign. 10 x 30" ca. 1940's embossed tin litho sign for Pepsi-Cola. Clean, bright and displays very nicely (as a very strong C. 8++) w/ nice original surface sheen (close examination will reveal a few slight, very minor bends- mentioned for accuracy, so minor barely merits mention, and a few light scattered scuffs/ wear marks). Min. bid \$50.



17).Planters Jar. 9.5 x 7 x 7" early 6-sided glass Planters Peanuts store jar w/ yellow enameled painted labels and embossed lid w/ a peanut finial. Crisp and like new, as found never used, still in its original box (box has darkening/ soiling on lid). Min. bid \$40.



18).Straw Holder. 12-5/8 x 4.5" (dia.) scarce, early, 2-ps. clear, pressed pattern glass straw holder (American Fostoria pattern). Heavy, very high quality leaded type glass, in excellent, like new condition. Min. bid \$70.





19).Lehigh Coal Sign. 11 x 22" early, heavy, multi-color porcelain sign for Lehigh Coal and Navigation Co. Clean, bright and very attractive appearance, w/ only minor wear. Min. bid \$50.



20).Game Cut Tobacco Bin. 7 x 11.5 x 8" tin litho store display bin for Bagley Co.'s "Game" brand tobacco, featuring beautiful multi-color graphic images of game birds. Clean, bright and displays nicely (C. 8+/-) w/ a little light scattered wear and some typical darkening and wear to shiny metal flash finish on lid. Min. bid \$70.



21).Buffalo Oil Can. 6.75 x 4" early tin litho, solder seamed, 1 qt. (imperial) motor oil picture can from Prairie Cities Oil Co. (Winnipeg, Man. Canada) featuring nice colorful image of trademark buffalo, same image both sides. Clean, bright and very attractive, w/ a couple minor scratch marks on backside (C. 8/+). Min. bid \$40.



22).Pepsi Fountain Pen. 4-7/8" (L) ca. 1930's celluloid advertising fountain pen for Pepsi-Cola, w/ early style metal bottle shaped clip at top. Clean, bright and like new, as found never used in its original storage box (some typical storage wear on clip and box flap has separated at one end). Min. bid \$20.



23).Adam's Gum Box. 9-7/8 x 4.25 x 1.25" early cardboard store display box for Adam's brand "Tutti Frutti" brand chewing gum. Has glass lift-up lid on inside and originally held 36 bars (180 pieces). Clean, bright and excellent appearance (a strong C. 8/+). Min. bid \$40.



24).Yellow Kid Book Mark. 4-7/8 x 2" scarce, early cloth advertising bookmark featuring great Yellow Kid cartoon character image promoting Broadway play "Hogans Alley". Excellent. Min. bid \$50.



25).Coca-Cola Thermometer. 17 x 4-7/8" ca. 1930's, embossed tin litho advertising thermometer for Coca-Cola, featuring beautiful multi-color image of companies trademark hobble skirt bottle. Clean, bright and very attractive appearance (a strong C. 8/+), w/ a few non-offensive minor background rubs. Working thermometer. Min. bid \$60.



26).Shovel and Bucket Match Holder. 9.25 x 3-1/8 x 1" wonderful, very early, figural metal hanging match holder. Very high quality piece is all original, w/ great detailing (brass and nickel silver) and nice surface patina. Excellent. Min. bid \$30.



27).Mr. Peanut Doll. 8.25 x 4.5 x 2" early, wooden, jointed figural advertising doll for Planters Peanut Co. by Schoenhut Toy Co. in likeness of Mr. Peanut. Very nice overall condition (C. 8++), w/ only minor wear. Min. bid \$40.



28).American Beauty Coffee Grinder. 12 x 4.25 x 3.5" scarce, early "American Beauty" brand coffee grinder from Wrightsville Hardware Co., w/ attractive lithographed tin container at top; w/ cast iron mechanism attached to wooden back. All original, clean, bright and very attractive appearance, w/ a little non-offensive background wear (C. 8+/-) as found, might improve w/ cleaning. Min. bid \$50.





29).Planters Jar. 9.5 x 7 x 7" early 4-sided embossed glass Planters Peanuts store jar w/ peanut finial on lid. Crisp and like new, as found never used still in its original box (box has darkening/soiling and tattering on lid). Min. bid \$40.



30).Coca-Cola Sign. 15-5/8" (dia.) x 1/2" wonderful, early porcelain sign featuring multi-color trademark Coke bottle against bright yellow background. Clean, bright and exceptionally nice (basically like new appearance) w/ exception of very minor wear at grommet holes and some light chip spots at bottom side edge. Min. bid \$60.



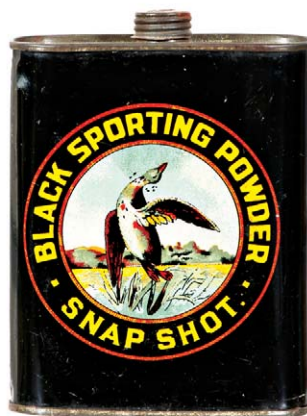
31).Advertising Tag. 5.25 x 2-5/8" early, tin litho American Bicycle Safety Club tag advertising Kansas City Insurance Co. Clean, bright and like new, as found w/ its original envelope (envelope has couple small tear marks). Min. bid \$30.



32).Great Puff Tobacco Pouch. 3.25 x 2 x 1-1/8" full, sealed (never opened) early cloth tobacco pouch for Leidersdorf Co.'s "Great Puff" brand featuring nice image of trademark cowboy. Has a little non-offensive toning/ soiling and minor scattered wear, but overall attractive and displays nicely (C. 8/-). Min. bid \$40.



33).Trout Line Pocket Tin. 3.75 x 3-3/8 x 1-1/8" early tin litho vertical tobacco pocket tin for "Trout Line" brand, featuring great fly fishing scene (same image both sides). Clean, bright and exceptionally nice, w/ only minor wear (C. 8.5/+). Min. bid \$70.



34).Snap Shot Gunpowder. 4-5/8 x 3-3/8 x 1.25" early tin litho gunpowder can for CIL Co.'s Snap Shot brand black sporting powder, w/ beautiful multi-color graphic image of dead gamebird. Clean, bright and excellent overall (a strong C. 8++) w/ only minor wear. Min. bid \$40.



35).Iroquois Watch Fob. 1.5 x 1.25" early, very high quality advertising watch fob from Iroquois Brewing Co. (Buffalo, NY), featuring beautiful trademark image of Indian princess on front, w/ embossed advertising on back. Excellent. Min bid \$40.



36).Cadette Talc. 7-3/8 x 2-1/8 x 1.25" early, figural tin litho talcum powder in shape of toy soldier for Cadette brand baby talc. Full, never used can is clean, bright and like new (C. 8.5++). Min. bid \$40.

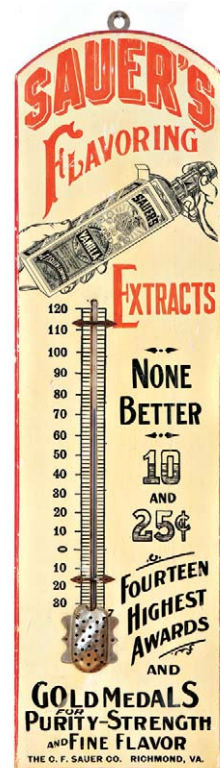
Straw Holder



37).Straw Holder. 12.5 x 4.75" very unusual, fine, early, two-piece hand blown, peacock blue colored glass straw holder w/ fancy figural lid and polished pontil mark on base. Like new and appears never used, w/ exception of a fine, minor chip spot on inside edge of lid. Min. bid \$60.



38).Penn Trooper Can. 4-5/8 x 3-3/8" unusual, early, 1 lb. tin litho grease can for Penn Trooper brand (Grant Petroleum Co., Pittsburgh, PA) featuring great image of trademark motor cycle cop. Image area excellent and piece displays nicely on shelf although can itself has fairly substantial background scuffing and wear (C. 7/-) displays better than this would imply. Min. bid \$40.



39).Sauer's Extracts Thermometer. 24 x 6.75 x 3/4" early wooden thermometer advertising Sauer's brand flavorings and extracts w/ a beautiful, rich surface patina. Outstanding piece is clean, bright and exceptionally nice, w/ great folk art trade sign type look (C. 8.5/+). Working thermometer. Min. bid \$70.





40).Conoco Oil Can. 11.25 x 8 x 3.25" scarce, early 1 gallon tin litho Conoco oil can w/ nice images of trademark soldier character on both sides. Clean, bright and displays quite nicely (as a C. 8/+), although close-up examination will reveal some light scuffs and non-offensive general light scattered wear (critical grade: front C. 7.5+/-; back C. 7/+). Complete w/ original cap. Min. bid \$40.



41).Rainier Beer Tray. 13-3/8" (dia.) early tin litho serving tray for Seattle Brewing & Malting Co.'s "Rainier" brand beer, featuring beautiful multi-color graphic image of Gibson Girl model and silent film actress Evelyn Nesbitt (dated 1903). Clean, bright and exceptionally nice appearance (a strong C. 8++), w/ only minor wear. Min. bid \$70.



42).Whistle Soda Sign. 23 x 15-5/8" ca. 1940's die-cut cardboard sign for Whistle brand soda. Attractive and displays nicely, w/ slight hint of fade and a little non-detracting minor scattered wear from use (C. 8+/-). Min. bid \$50.



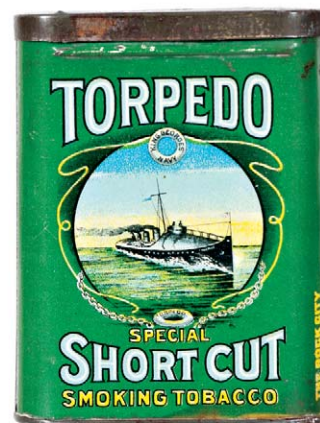
43).Auto Emblem. 4.25 x 3" unusual, early radiator sign advertising State Auto Insurance Co. (Columbus, Ohio) w/ beautifully detailed inlaid cloisonne enameling. Crisp, bright and like new (appears never used). Min. bid \$30.



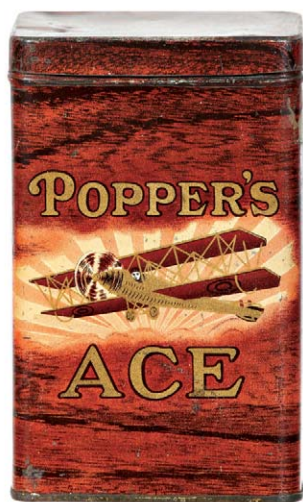
44).Planters Cocktail Glass. 5-1/8 x 2.75" (dia.) ca. 1940's Planters Peanut cocktail glass w/ figural Mr. Peanut on stem. Very high quality crystal type glass, in like new condition (appears never used). Min. bid \$40.



45).1911 Coca-Cola Mirror. 2.75 x 1.75" early celluloid advertising pocket mirror featuring Coca-Cola Co.'s 1911 calendar girl (by illustrator Hamilton King). Clean, bright and excellent. Min. bid \$50.



46).Torpedo Pocket Tin. 4.25 x 3-1/8 x 1" scarce, tin litho vertical tobacco pocket tin for Rock City Tobacco Co.'s Torpedo brand, featuring colorful, highly graphic image of destroyer ship. Clean, bright and displays nicely (as a nice solid C. 8/+), although there is a small area of light orangish/yellowish haziness along top edge of backside (just below lid hinges- mentioned for accuracy, nothing serious or offensive or that takes away from great overall look of piece). Min. bid \$100.



47).Poppers Ace Cigar Tin. 5.75 x 3-5/8 x 3-5/8" unusual, early tin litho 25 count cigar can for Popper's Ace brand (scarce variation w/ woodgrain background pattern). Clean and very attractive (C. 8+) w/ minor scattered wear. Min. bid \$40.



48).Over-Sea Oats Box. 7-3/8 x 4-1/8" (dia.) scarce, 1-1/4 lb. size cardboard oats box for "Over-Sea" brand (Chitty Co., Jacksonville, Fla.) featuring great color image of Co. logo. Clean, bright and exceptionally nice (near mint). Min. bid \$40.

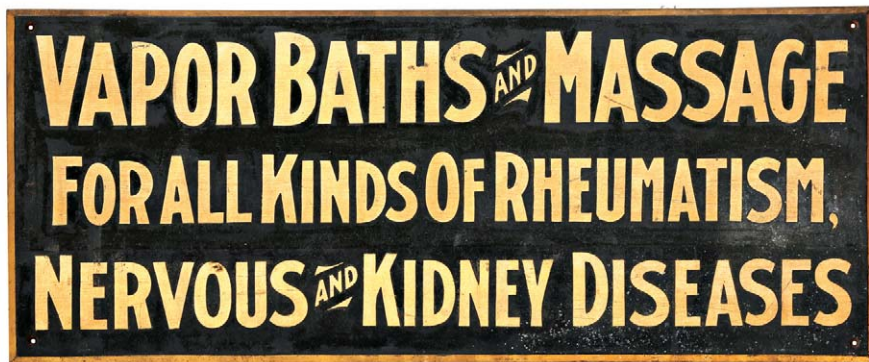


49).Oilzum Oil Can. 5-5/8 x 4" unusual, full, sealed, early solder seam tin litho motor oil can for White and Bagley Co.'s Oilzum brand, featuring great image of companies trademark race driver. Has a little light scattered wear but overall attractive and displays very nicely (C. 8+/-). Min. bid \$40.



50).Hood Tires Tag. 4-5/8 x 1.75" early, tin litho die-cut advertising bumper tag/license plate attachment in image of trademark Hood Tires man. Clean, bright and very attractive (a strong C. 8+) w/ minor scattered wear. Min. bid \$40.





51).Vapor Baths Sign. 15.5 x 37.5 x 1" outstanding, very early, heavy wooden bevel edged trade sign w/ sand paint background finish. Powerful and impressive looking sign is all original, w/ an excellent, rich surface patina and just the right amount of minor surface wear to give it a great country folk art look. Min. bid \$100.



52).Palacine Oil Tin. 5-7/8 x 7.5 x 3-3/8" scarce, early 1/2 gallon size motor oil can from Palacine Oil Co., Ardmore, Ok., featuring attractive graphics (same image both sides). Clean, bright and very attractive (displays as C. 8/+), w/ exception of a little faint surface oxidizing in area below logo. Min. bid \$40.



53).Brewery Clickers. Lot consists of five different, early tin litho advertising clickers for various breweries (sizes range from .75 x 1-7/8" to 2.5 x .75" dia.) Includes: Star Brewing Co., Bull Frog Beer, Gunthers Beer, Fort Pitt, and Penn Special. Excellent overall, w/ exception of a little light wear to Bull Frog. Min. bid \$40 the lot.



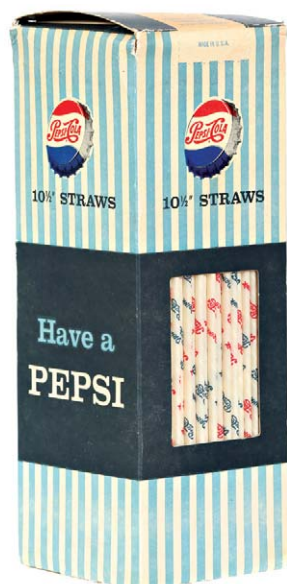
54).Advertising Coat/Hat Rack. 4-7/8 x 21.5" unusual, early primitive wooden wall rack w/ swing out movable cast iron hooks (for holding coats and hats) advertising a Philadelphia clothier. Attractive and displays nicely (note: wood surface appears to have been re-varnished at some time to enhance appearance). Min. bid \$40.



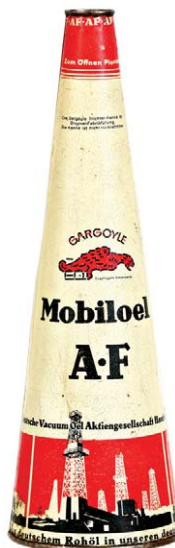
55).Studebaker Wagons Sign. 5.5 x 48 x 3/8" very early, wooden painted strip sign for Studebaker Wagons. All original, w/ light general expected soiling and character wear including minor cracks and knot hole, w/ a nicely weathered, rich paint surface giving it a great primitive folk art look. Min. bid \$60.



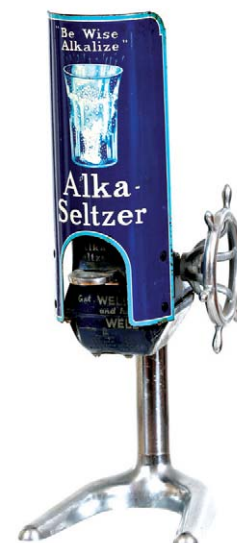
56).Coca-Cola Door Push. 11.75 x 3.5 ca. 1940's enameled porcelain Coca-Cola palm press style country store door push plate. Crisp, bright and like new appearance (very close examination will reveal minor traces of wear from use on upper surface). Min. bid \$60.



57).Pepsi Straws. 10.75 x 3-7/8 x 3-7/8" ca. 1950's full, unused box of 500 Pepsi-Cola 10.5" paper soda straws, each w/ attractive Pepsi logo along sides. Basically excellent, although top has small puncture mark and some non-offensive slight toning. Min. bid \$30.



58).Mobil Oil Tin. 12-1/8 x 4" (dia.) unusual, early tin litho German product can for Mobil Co.'s Gargoyle brand motor oil w/ powerful industrial scene image. Bright, attractive and displays nicely (as a C. 8/-), w/ some non-offensive faint soiling/fine surface oxidizing and some scattered denting (denting a little more pronounced on backside) (critical grade C. 7++). Min. bid \$40.

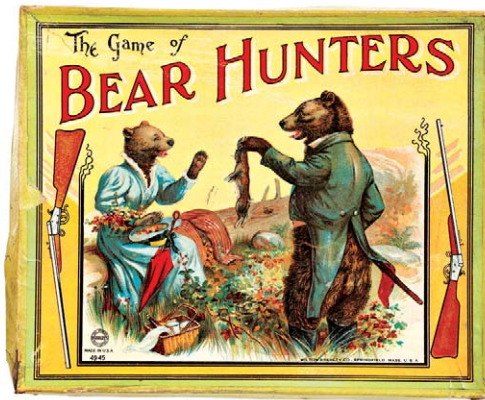


59).Alka Seltzer Dispenser. 14-3/8 x 5 x 6" early drug store/soda fountain counter top dispensing unit for Alka Seltzer, w/ section on back for holding dispensing tablets bottle. Has heavy chrome plated base w/ curved tin litho display sign at top, w/ turning wheel for grinding tablets at side. Attractive and displays nicely, w/ a little light scattered wear from use (C. 8/-). Min. bid \$40.





60).Coal Thermometer. 12.25" (dia.) early glass covered dial type thermometer advertising Hudson Co.'s "Sterling" brand coal featuring "D&H" railroad logo. Clean, bright and exceptionally nice (near mint). Min. bid \$40.



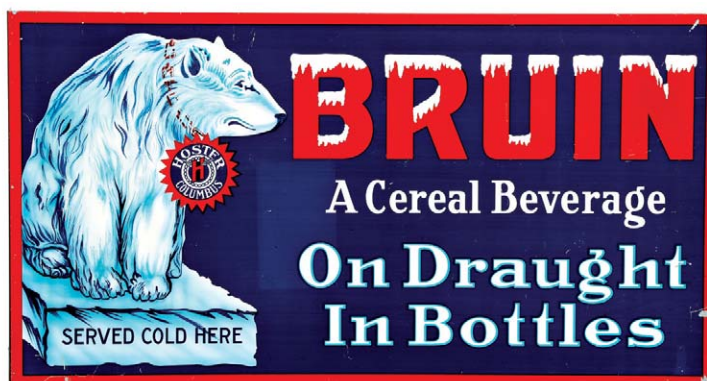
61).Bear Hunters Game. 9 x 11 x 1" great, early cardboard "Bear Hunters" boxed game by Milton Bradley Co., featuring wonderful, color graphic image on boxes cover art and graphic gameboard (has forest bear hunting scene), w/ playing pieces inside. Excellent overall (a strong C. 8/+) w/ some non-serious wear from use (mostly confined to outer margins and side apron areas of lid). Min. bid \$40.



62).Heinz Figure. 5.75 x 3 x 3.25" figural countertop advertisement for Heinz Co., made of a heavy, rubbery type composition material in shape of Co.'s trademark Mr Tomato Head character. Quite nice overall, w/ a little light scattered wear from use (C. 7.5+/8-). Min. bid \$40.



63).Coca-Cola Syrup Bottle. 12.5 x 3.25" (dia.) ca. 1910 Coca-Cola glass syrup bottle, complete w/ its original metal cap. Advertising design pattern on glass has some light general wear from use, but still displays nicely; w/ a couple of chips at top of bottle lip (both should be able to be easily ground and polished away). Min. bid \$40.



64).Bruin Sign. 11-5/8 x 22" early tin litho 2-sided flange sign for "Bruin" (Hoster Co., Columbus) probably a prohibition era grain beverage. Sign is crisp, bright and displays very nicely, although there are some scattered scuffs and scratch marks on surface. Min. bid \$40.



65).Pay Station Sign. 5-5/8 x 18" early, heavy porcelain, two-sided telephone booth directional sign, w/ great image of pointing finger. One side has small chip at top border area and a couple minor manufacturing blemishes, other side excellent. Min. bid \$60.



66).1921 Coca-Cola Calendar. 28.5 x 13.75" (26.5 x 11.75" visible) scarce, early paper rolldown calendar for Coca-Cola featuring Co.'s 1921 calendar girl in baret. Clean, bright and exceptionally nice (C. 8.5+) complete w/ metal band at top (no calendar pad). Framed. Min. bid \$70.



67).Dixie Queen Tobacco. 6.25 x 4-7/8" (dia.) early, tin litho small top style tobacco tin, w/ same image on both sides. Clean, bright and attractive in appearance (displays as a C. 8.5/+) w/ a couple very minor dent marks and a little faint crazing (note: surface appears to have been clear coated long ago- not offensive or detracting). Min. bid \$50.



68).Baker's Chocolate Sign. 5.25 x 11" scarce, early tin over cardboard chain hung sign for Baker's brand chocolates, w/ nice image of Co.'s trademark girl. Clean, bright and displays very nicely (as a solid C. 8/+), although a very close examination will reveal a few minor wear marks in dark background section (mentioned for accuracy- nothing that's serious or detracting). Min. bid \$60.



69). "Nigger Hair" Tobacco Pail. 6.75 x 5-3/8" early, tin litho tobacco pail for Leidersdorf Co.'s "Nigger Hair" brand, featuring same great image on both sides. Clean, bright and like new (C. 8.5+++). Min. bid \$50.





70).Kercher Baths Inkwell. 2.75 x 4 x 2" unusual, early, heavy figural metal inkwell advertising Kercher Baths, Chicago, featuring nicely detailed image of woman in bath tub. Neat, high quality piece, w/ nice patina to copper surface finish. Min. bid \$40.



71).Buffalo Axle Grease Can. 4.25 x 5.25 very early, tin litho axle grease can from Prairie Cities Oil Co. (Winipeg, Man. Canada), featuring nice image of companies trademark Buffalo. Attractive and displays nicely, w/ some scattered wear from use (front C. 8; back 8-, lid 7+). Min. bid \$40.



72).Southwestern States Telephone Sign. 8.5 x 11 x 2" unusual, small, early porcelain two-sided flange pay phone sign from the The Southwestern States Telephone Co. (Texas, Okla., Ark., and La.). Sign is basically excellent, w/ a little minor edge wear (same image both sides). Min. bid \$50.



73).Winner Tobacco Canisters. Lot consists of a nice set of five different early tin litho Wright Co.'s "Winner brand" tobacco tobacco canisters, each w/ a food product name printed on backside for later use as kitchen canisters set (ea. app. 6.5 x 4-3/8 dia.). Clean, bright and attractive overall (avg. C. 8+/-) w/ minor wear from use. Min. bid \$50 (the set).

Backside View



74).Kendall Outboard Oil Sign. 13.5 x 18" early, 2-sided metal flange advertising sign for Kendall brand outboard motor oil (same image both sides). Outstanding, never used sign is crisp, bright and basically like new, w/ nice original surface sheen to its thick, heavy enamel type paint surface (couple very minor background storage wear blemishes). Min. bid \$50.

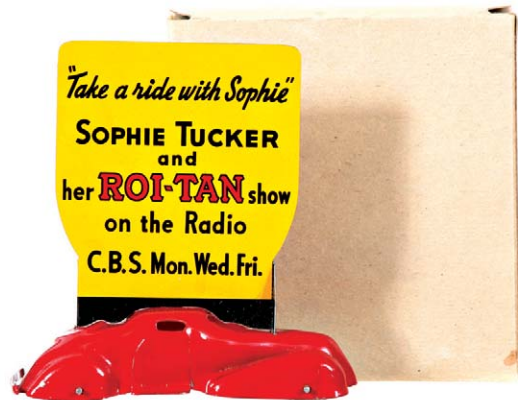


75).Thanksgiving Tip Trays. Lot consists of two early tin litho advertising tip trays w/ Thanksgiving theme images. Includes: Cudahy's Diamond "C" Hams (4.25") attractive and displays nicely (C. 8) w/ a little minor edge wear and light denting; and 1910 C. D. Kenny Co. (4-1/8") has a little minor staining at 2 - 3 o'clock along inside edge (C. 7.5/+). Min. bid \$40 the pair.

Mechanical Hotel Bell



76).Bull Dog Hotel Bell. 3.25 x 4-1/8" early, heavy, figural, brass wind-up hotel bell in image of early dog (pulling dogs ears releases long, steady ringing bell) w/ clockwork wind-up mechanism on back. Excellent overall w/ some wear to paint highlights. Min. bid \$50.



77).ROI-Tan Adv. Car. 4.5 x 4-1/8 x 1.5" early pressed metal advertising car for Roi-Tan brand cigars, promoting Co.'s 1939 Sophie Tucker C.B.S. radio show Chevrolet car give-away promotion. Crisp, bright and like new (near mint) as found never used in its original storage box. Min. bid \$50.





78). Hot Shot Cigar Box. 9.25 x 10-7/8 x 7.5" (as pictured) large, very early wooden cigar box for "Uncle Sam's Hot Shot" brand, featuring stunning color graphic patriotic label inside (series 1883 tax stamp). Powerful and impressive piece is clean, bright and very attractive (a strong C. 8.5/+). Min. bid \$40.

Franklin Auto



79). Franklin Hood Ornament. 4" (h) attractive, very high quality heavy figural metal lion shaped hood ornament from early Franklin automobile. Beautiful detailing and excellent overall condition, marked: "Aura Vincit" at base. Min. bid \$40.



80). Telegraph Messenger Game. 7-3/8 x 7.25 x 1" outstanding, early cardboard boxed game set by J.H. Singer Co., featuring highly graphic lid. Clean, bright and displays nicely (the top label, inside game board piece and instructional spinner are all clean and excellent (C. 8+), although there is pinching and typical tattering and wear to side aprons of box cover. Min. bid \$40.



81). Juliette Shoes Mirror. 2.75 x 1.75" scarce, early celluloid advertising pocket mirror for Juliette brand shoes, w/ beautiful graphic image. Clean, bright and excellent. Min. bid \$40.



82). Groub's Belle Coffee. 6 x 4" (dia.) scarce, early tin litho 1 lb. can for Groub's Belle brand coffee (Groub Co., New York, NY) featuring beautiful color graphic image of Co.'s trademark girl. Clean, bright and attractive appearance (basically a C. 8+/-), w/ exception of a few light rub marks in girl's cheek/chin area. Min. bid \$50.

Advertising Bell



83). Champagne Bottle Bell. 5.25 x 2-1/8" unusual, early figural bell in shape of champagne bottle. Heavy, very high quality brass/bronze metal, w/ beautiful detailing and rich ring tone. Excellent, w/ non-offensive minor dent spot at base. Min. bid \$40.



84). New York Coach Oil. 6-5/8 x 3 x 1-7/8" very early hand soldered can for Marshall Oil Co.'s "New York Coach Oil, featuring nice image of fancy, early carriage. Clean and attractive, w/ a little light wear on backside (front C. 8++; back 7.5). Min. bid \$30.

Franklin Auto  
(Cannon Ball Baker)

Cannon Ball Baker Says:  
"You Can Tell the World"



My 100,000 Miles of Road Tests  
with Franklin cars  
have proved the  
**Power Supremacy**  
of the Air-Cooled Motor

Franklin Automobile Company, Syracuse, N.Y.



85). Hair Net Sign. 19.25 x 17.25" early, die-cut cardboard litho advertising easel back display sign for "Surf Maid" brand hair nets, w/ attached product package. Clean, bright and exceptionally nice appearance (C. 8.5/+). Min. bid \$50.

86). Franklin Automobile Poster. 25-1/8 x 19" scarce, ca. 1930 paper litho promotional advertising poster for Franklin automobiles, featuring great image and product endorsement info from famous cross country race car driver "Cannon Ball Baker" promoting Co.'s air cooled autos. Poster is clean and excellent overall, w/ slight edge wear and a little minor separation at factory fold lines. Min. bid \$50.

Mechanical Cigar Cutter



87). Poet Cigar Cutter. 6.5 x 9.5 x 4-3/8" early, countertop cigar cutter advertising Poet brand. Figural cast iron, on wooden base, w/ 2-sided celluloid advertising logo featuring image of poet Wm Cullen Bryant. Very attractive and displays nicely, w/ some light oxidizing/darkening to surface area of iron base. Min. bid \$50.

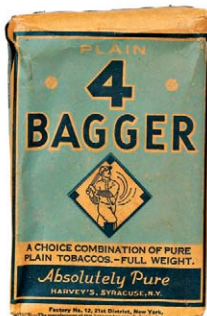




88).Hires Rootbeer Banner. 11.5 x 47.25" extremely rare, large, early cloth store banner advertising Hires Rootbeer, w/ nice image of early product box featured (note: image of trademark kid on top flap of box). Has light fold lines from storage and general overall soiling and wear from use, but still displays pretty well (C. 7/-). Min. bid \$40.



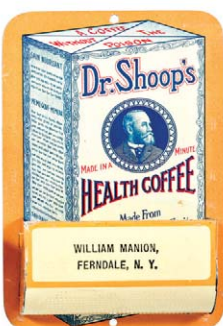
89).West End Brewery Mirror. 2.25" (dia.) scarce, early celluloid pocket mirror for West End Brewing Co., Utica, NY w/ Miss. Liberty logo. Clean, bright and exceptionally nice (near mint). Note: this unusual style mirror by Bell Co., Nashville, Tenn. has small holes in sides of its deep metal collar for holding pins- see web site addendum to view). Min. bid \$40.



90).Baseball Tobacco Packs. Lot consists of three different, full, sealed (never opened) soft pack style tobacco packages, each featuring a baseball image or theme (ea. app. 5.25 x 3.5 x 1.25"). Includes: "Favorite" brand (Nellie Fox on front w/ 8 other players pictured on backside); "4 Bagger"; and "Pinch Hit" brands. All are clean and excellent overall. Min. bid \$40 (the lot).



91).Telephone Sign. 5.5 x 19" early, heavy porcelain, public telephone pay phone strip sign from The Pacific Telephone & Telegraph Co. Excellent w/ very nice surface patina. Min. bid \$50.



92).Dr. Shoop's Match Holders. Lot consists of two different (4-7/8 x 3-3/8 x 1.25" ea.) tin litho Dr. Shoop's brand advertising match holders. Includes Co.'s Health Coffee product and Co.'s "Lax-ets" 5¢ laxative product. Both are crisp, bright and like new, as found never used (near mint). Min. bid \$50 (the lot).



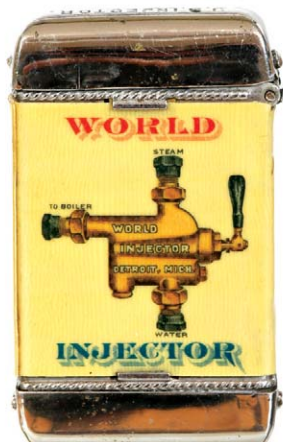
93).Pittsburgh Ice Cream Tray. 10.5 x 13.25" scarce, early, tin litho advertising tray from Pittsburgh Ice Cream Co., featuring wonderful image of kids at party eating ice cream. Image area is clean, bright and has an excellent overall appearance (pretty much displays as a C. 8.5), although close examination will reveal a few non-offensive light background hazy/wear spots and small, faint oxidizing area in kids blue jacket which pretty much blend into the scene; w/ some fairly heavy chipping loss and wear along outer top edges of rim. Min. bid \$50.



94).Table Top Magnifier. 3.5 x 5.75 x 3-7/8" (dia.) great, early, figural metal tabletop magnifier, features nude girl kneeling on rock at edge of reflecting pool (the 3" (dia.) "pool" is a large glass magnifying glass). Heavy, very high quality piece, w/ wonderful look and beautiful bronze finished surface patina. Min. bid \$40.



95).Hy Flash Grease Can. 4.25 x 3-3/8" unusual, early, tin litho, pry-lid 1 pound size grease can for Hy Flash brand (Mourens Laurens Co., Los Angeles) featuring nice trademark image of early car and plane. Attractive and displays nicely w/ some background loss and wear spots on right side edge (display side 8/+). Min. bid \$40.



96).American Injector Co. Match Safe. 2.5 x 1-3/8 x 3/8" early, celluloid covered match safe advertising American Injector Co., Detroit; featuring nicely detailed images of different injectors on each side. Very nice condition, w/ just a trace hint of fade to reds. Min. bid \$40.



97).Candy Sample Tin. 3.25 x 2.5" dia. scarce, early, miniature tin litho, pry-lid sample tin for Blandie Smith Co.'s "Satin Finish" confections (mello mints). Clean, bright and excellent (C. 8.5). Min. bid \$30.



98).Drum Tobacco. 4 x 2.25 x 1-1/8" full, early, sealed (never opened) 2-1/2 oz. cloth tobacco package for American Tobacco Co.'s "Drum" brand. Clean and very attractive (a nice C. 8/+ w/ 1910 tax stamp. Min. bid \$30.



Brewery Inkwell



99). Brewery Ink Well. 2.75 x 4-7/8 x 1.25" unusual, early advertising inkwell from Pilsen Brewing Co., Chicago. Metal base, w/ glass ink reservoirs, w/ sliding celluloid covers featuring companies trademark eagle and Olympia girl. Excellent overall (minor fade to red background). Min. bid \$40.



100). Mail Pouch Tobacco Packs. (sizes range from 4.75 x 3 x 1" to 5.5 x 3.5 x 1"). Lot consists of six different variations of full, sealed (never opened) soft pack style tobacco packages for Block Bros.'s "Mail Pouch" brand tobacco (1-3/4 to 3 oz. size packages). Excellent overall. Min. bid \$40 (the lot).



101). Runkel Cocoa Strip Sign. 2.5 x 18" very early porcelain country store strip sign for Runkel Bros. brand cocoa. Clean, bright and excellent, w/ exception of a couple non-offensive light chip spots at outer left edge. Min. bid \$60.



102). Nutex Radium Condom Tins. Lot consists of two different blue color variations of Nutex "Radium" brand condoms. Scarce tins are clean and excellent (C. 8.5+). Min. bid \$40 (the lot).



103). Inter Mountain Phone Sign. 11 x 11 x 1.5" small, early two sided porcelain flange sign for Inter Mountain Telephone Co. pay phone (same nice image both sides). Clean and excellent overall, w/ a little minor darkening/soiling (as found should improve w/ cleaning). Min. bid \$50.



104). Congress Beer Tray. 8 x 11" unusual, small, early tin litho advertising tray for Congress brand beer (Haberle Brewing Co., Syracuse, NY). Clean, bright and exceptionally nice (C. 8.5+). Min. bid \$50.



105). Pig Cigar Holder. 4.25 x 8.5 x 2.75" early, figural, table top cigar/ match holder. White metal, high quality piece, w/ fine detailing on surface (has brass cups for holding matches and cigars). Excellent w/ nice surface patina. Min. bid \$50.



106). Nutex Condoms Sign. 18-3/8 x 21-3/8" (10-5/8 x 13-5/8" visible) great, early cardboard sign for Nutex Radium brand condoms, featuring powerful and impressive silkscreened baseball themed image. Clean, bright and excellent (C. 8.5+). Nicely framed and matted. Min. bid \$70.



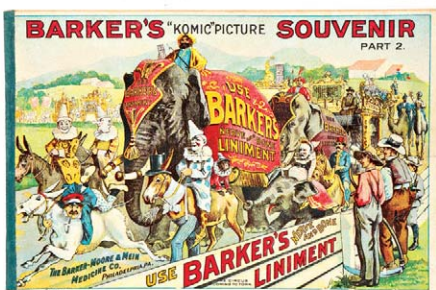
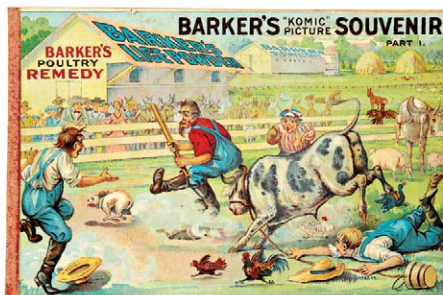
107). White Loaf Sign. 10 x 13-5/8" scarce, early embossed tin litho sign for "White Loaf" brand baking powder. Powerful and impressive looking piece is clean, bright and excellent overall (appears never used and displays as a C. 8.5+) w/ only minor scattered storage wear (tipping in light just right will reveal just a trace hint of barely noticeable hazy pattern from protective storage paper that is usually found on this style of sign- mentioned for accuracy, nothing that is at all offensive or detracting). Min. bid \$60.



Saleman's Sample



108).Salesman's Sample Rocking Chair. 16.5 x 7 x 12" unusual, early wooden salesman's sample spring loaded mechanical rocking chair from Glascock Bros. Mfg. Co., Muncie, Ind. (Co. info and 1898 patent dates stenciled on bottom of seat). Excellent and all original, w/ nice surface patina (has some wear to top of seat). Min. bid \$50.



109).Barker's Veterinary Booklets. complete set of 4 different, very early, comic style advertising booklets (ea. app. 6 x 9.25"), containing page after page of outrageous and often racist cartoon pictures and stories meant to promote Co.'s various veterinary products. Clean and exceptionally nice overall, (w/ exception of minor edge wear), as found still in their original mailing envelope (envelope fair to poor). Min. bid \$50 (the set).



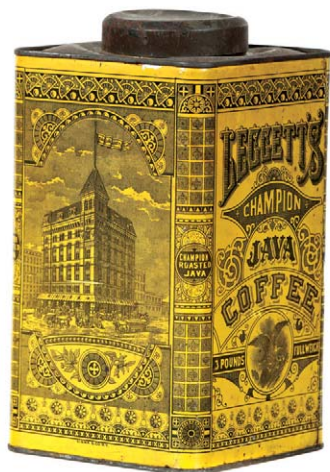
110).Golden Wedding Coffee. 4 x 5.25" (dia.) scarce, early tin litho 1 lb. pry-lid coffee can for "Golden Wedding" brand (Ennis-Hanly-Blackburn Co., Kansas City) w/ same image on both sides. Clean, bright and excellent (C. 8.5/+). Min. bid \$40.



111).Happy Cigar Can. 4-7/8 x 5.5" (dia.) scarce, early 50 ct. cigar can for Admiration Cigar Co.'s "Happy" brand, featuring same great image on both sides. Clean, bright and very attractive appearance (a strong C. 8+) w/ a little non-detracting minor denting and wear. Min. bid \$50.



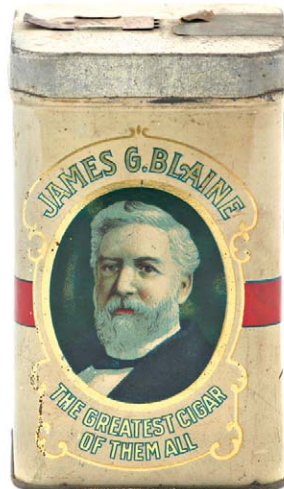
112).Fort Bedford Peanut Butter. 2.75 x 3-7/8" early, 12 oz. size tin litho peanut butter can for Fort Bedford brand (Heckerman Co., Bedford, Pa.). Unusual style can has handle and measuring cup lines on backside for later use as a measuring cup. Very nice overall (C. 8+) w/ minor wear from use. Min. bid \$30.



113).Leggett's Coffee. 9.25 x 5.25 x 5.25" scarce, early tin litho 3 lb. small top style coffee can from Francis Leggett Co., featuring beautifully detailed Ginna Co. lithography all around. Clean, bright and very attractive appearance (a strong C. 8+), w/ only minor background wear (has darkening and minor denting on non-graphic shoulder and lid area). Min. bid \$60.



114).Masters Voice Needle Tins. Lot consists of four different, small tin litho phonograph needle tins, each featuring trademark images of Nipper dog/phone logo. Top three (English) measure 7/8 x 2 x 1/4"; bottom example (Canadian) measure 1-1/8 x 2-1/8 x 3/8". Top ones are good to very good in appearance (avg. C. 8-); bottom one excellent (C. 8.5+). Min. bid \$40 (the lot).



115).James Blaine Cigar Can. 5.25 x 3.25 x 3.25" scarce, early tin litho 25 count cigar can featuring nice images of 1876 Republican presidential candidate James Blaine (same image both sides). Clean, bright and attractive appearance (C. 8+/-) w/ only minor scattered wear (soiling and heavier wear on plain, non graphic lid.) Min. bid \$50.



116).Paragon Grease Tin. 9.5 x 6-1/8 x 6-1/8" scarce, large 10 lb. size automotive (transmission) grease tin for Paragon brand (Paragon Refining Co., Toledo, Oh.) featuring colorful and attractive image of Co.'s trademark mountain peak. Clean, bright and very attractive (C. 8++) w/ non-offensive light surface oxidizing on non-graphic lid. Min. bid \$50.





117).Razor Blade Tins. four different early tin litho safety razor blade tins (app. 1.25 x 2.25 x 1/4") for the heavy, very early wedge shaped blades (3 still have blades inside). Includes two different variations of American Gem; Griffin; and two different variations of Yankee brand. All are clean, bright and excellent. Min. bid \$40 (the lot).



118).Medicine Cup. 4.5 x 3 x 2.75" unusual, early embossed "Ideal" brand invalid's glass drinking cup from Whitall Tatum Co. as found, like new, still in its original box (box 3-1/8 x 5.25 x 3-1/8"). Excellent overall w/ a couple minor flea bites at top of rim. Min bid \$40.



119).Western Theme Pinbacks. early Western themed multi-color celluloid pinback buttons including 2-1/8" (dia.) ca 1902 "South Omaha" w/ buffalo; and a 1.75" (dia.) 1918 "Niagara County" w/ Indian chief. Clean, bright and excellent, w/ original paper on backsides. Min. bid \$40 (the lot).



C.D. Kenney Co.



120).Advertising Ironware. Lot consists of two early cast iron kitchen tools, both advertising C.D. Kenney Co. Includes a small advertising trivet (3 x 5"); and unusual, very early fish scaling tool (7.5" length). Excellent. Min. bid \$40 (the lot).

Unusual Cigar Lighter



121).Ideal Cigar Lighter. 4.75 x 6.5 x 4.25" early "Ideal Electric" countertop cigar lighter from Standard Specialty Co., Waterloo, Ind. w/ cigar hole punch and pull-out torch wand. Paper instructional label underneath tells that this plugged in contraption was to be filled w/ gasoline and the cotton filled torch wand would be lit upon removal. Neat and unusual piece is attractive and displays nicely, w/ all original surfaces to wood and metal pieces (note: electric cord appears to have been repaced at some point). Min. bid \$50.

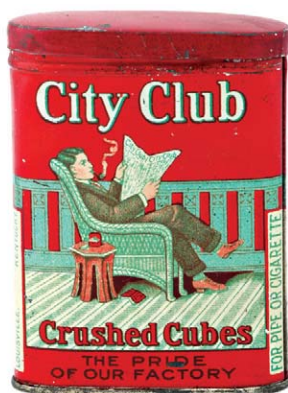


122).Cherry Smash Sign. 11-5/8" (dia.) beautiful, early paper litho die cut sign for Fowler Co.'s "Cherry Smash" brand soda. Clean, bright and like new. Min. bid \$40.

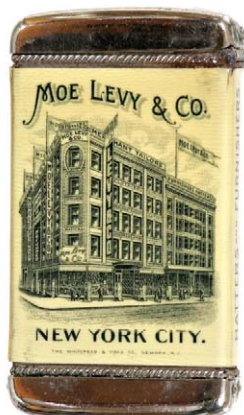
Tobacco Tags



123).Patriotic Tobacco Tags. Lot consists of a nice group of eight different early tin litho tobacco tags, ea. featuring a political/patriotic theme (sizes range from 5/8" to 1.25" (dia.). Attractive and display nicely (avg. C. 7.5/+). Min. bid \$30 (the lot).



124).City Club Pocket Tin. 3-5/8 x 2.75 x 7/8" early tin litho (small variation) oval shaped vertical tobacco pocket tin for "City Club" brand (Burley Tobacco Co., Louisville, Ky.). Clean, bright and very attractive appearance (C. 8+) w/ exception of a few non-offensive light background wear marks. Min. bid \$50.



125).Moe Levy Match Safe. 2.75 x 1.5 x 3/8" early, celluloid covered advertising match safe for NY City men's furnishings store, w/ nice image of flags and eagle logo on front and nicely detailed Walker St. store building on back. Excellent. Min. bid \$40.

Keen Kutter Lock



126).Keen Kutter Lock. 4-1/8 x 2-1/8 x 5/8" early, high quality, heavy embossed brass padlock for E.C. Simmons Co., St. Louis "Keen Kutter" brand (dated 1906). Nice working example, complete w/ original key. Attractive original surface patina, w/ expected paint wear to body from years of use. Min. bid \$30.



127).Du Belle Pocket Mirror. 2.75 x 1.75" scarce, early celluloid advertising pocket mirror for Du Belle brand grape juice, w/ beautiful graphic image. Clean, bright and excellent appearance (displays as like new), although examination under magnification will show minor surface wear (mentioned for accuracy - barely noticeable and very minor). Min. bid \$40.

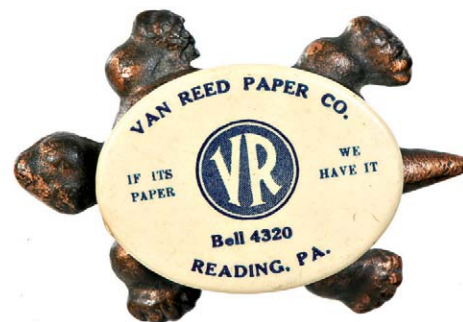




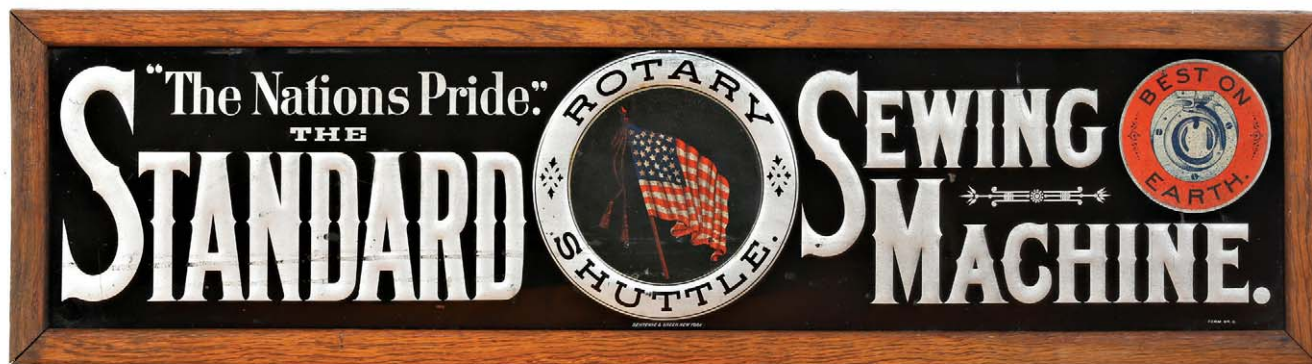
128).Akron Tourist Condom. 1-5/8 x 2-1/8 x 1/4" scarce tin litho condom tin for "Akron Tourist Tubes" brand condoms, featuring neat image of trademark blimp. Attractive and displays quite nicely, although close examination will reveal minor denting and some non-offensive light edge wear in outer border areas (C. 7.5+/8-). Min. bid \$60.



129).Advertising Match Holder. 1.5 x 2.75 x 3/8" early, celluloid covered match safe advertising Luden's brand cough drops. Excellent overall, w/ some minor darkening on backside. Min. bid \$40.



130).VR Advertising Turtle. 1.25 x 2.25 x 1/2" early, turtle paperweight, w/ cast iron base and celluloid "shell", advertising Van Reed Paper Co., Reading, PA. Excellent. Min. bid \$30.

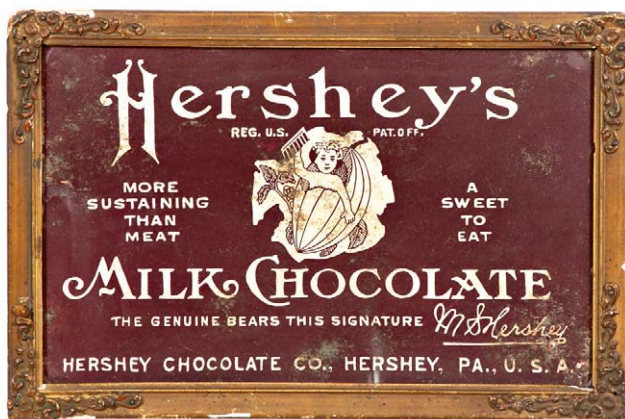


131).Sewing Machine Sign. 9.5 x 35.25" (7.5 x 33-3/8" visible) very early, embossed tin litho advertising sign w/ original wooden frame for Standard brand sewing machines (lithography by Sentenne & Green). Attractive sign displays nicely (as a strong C. 7.5+) w/ a little light soiling, minor weathering and wear. Displays great as found, will probably improve some w/ cleaning. Min. bid \$70.

Porcelain Cap Badge



132).Telegraph Badge. 2-1/8 x 1-7/8" outstanding, very early uniform/cap badge for a Postal Telegraph company employee featuring beautifully detailed inlaid cloisonne enameling. Excellent overall w/ nice surface patina. Min. bid \$40.



133).Hershey's Sign. 7.25 x 11 (6 x 9-5/8" visible) scarce, very early tin litho sign for Hershey's brand chocolate, featuring Co.'s early logo. Attractive and displays decently, although close examination will reveal a little minor scattered darkening and some light oxidizing spots on surface. Presented in small period frame (possibly original to piece). Tough one to grade, but (C. 7+) seems about right (displays better than this would imply). As found, might improve w/ cleaning. Min. bid \$50.



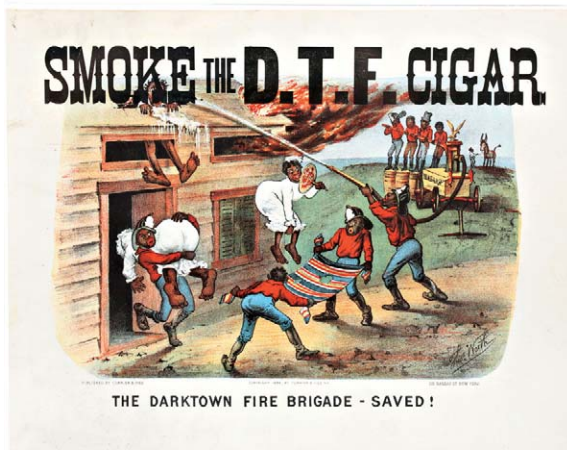
134).Teddy Roosevelt Mirror. 1.75" (dia.) extremely rare, early celluloid advertising pocket mirror from the "Bacon, Chappell & Co.'s" dry goods store (Syracuse, NY), featuring great image of Teddy Roosevelt. Clean and excellent (Whitehead & Hoag). Min. bid \$50.

Cigarette Dispenser



135).Mechanical Cigarette Dispenser. 6.25 x 9 x 3" unusual, early figural cast iron mechanical cigarette dispenser (raising and lowering elephant's tail delivers cigarette under trunk. All original and quite nice overall, w/ a little light scattered oxidizing and wear on surface (C. front C. 8; back 7.5+). As found, should improve w/ cleaning. Min. bid \$50.

Darktown Cigar Sign



136).Darktown Cigar Sign. 13 x 16.5" scarce, early stone lithographed paper advertising sign for D.T.F. brand cigars, w/ beautiful multi-color lithography by Currier & Ives, w/ full, untrimmed margins (1884 copyright). Features "Darktown Fire Brigade", a comical, stereotypical black fire department in action. Clean, bright and exceptionally nice (C. 8.5+) w/ exception a little non-detracting, minor toning/soiling in outer margin area. Min. bid \$50.





137).Fireworks Box. 5.5 x 7.5 x 3" (closed size) early store display box for Victory Fireworks Co.'s Globe brand torpedoes, featuring great image of kids playing w/ fireworks on lid. Full never used box contains ¼ gross of large 1" (dia.) exploding torpedoes packed in sawdust. Excellent. Min. bid \$40.



138).Shoe Polish Tins. group of six high quality small shoe polish tins (sizes range from 1.75 to 2.25" dia.) w/ beautiful, early detailed graphics. Clean, bright and excellent (average C. 8.5+) w/ some wear and darkening to bottom side of red Bixby's. Min. bid \$40 (the lot).



139).President Mixture Tobacco. 3.25 x 4.25 x 7/8" scarce, early tin litho tobacco tin from Smith Stevens Tobacco Co., New York featuring nice image of President Warren Harding (probably made by Co. for export and/or immigrant market). Attractive and displays decently, w/ some light general scuffing and scattered wear on lid. Tough to grade, but C. 7+ seems about right (displays better than this would imply). Min. bid \$40.



140). Navy Motor Oil Can. 6.25 x 8 x 3" early tin litho ½ gallon size motor oil tin (Navy Gas & Supply Co., Denver, Pueblo, and Cheyenne). Has strong colors and displays nicely, w/ a little denting and some non-offensive light scuffs and wear (C. 7.5+). Min. bid \$40.



141).Mohawk Coffee. 3.5 x 5" (dia.) scarce, tin litho 1 lb. key wind coffee can for Mohawk brand (McLaughlin Co., Chicago) featuring attractive image of Co.'s trademark Indian character. Clean, bright and attractive (C. a strong 8+), w/ exception of a little minor background wear on backside. Min. bid \$40.



142).Western Union Sign. 2-7/8 x 13" early, heavy, two-sided Western Union porcelain sign from Telegraph Delivery messenger's bicycle basket. Like new, w/ minor wear inside right hanging hole (mentioned for accuracy, so minor barely merits mention). Min. bid \$50.



143).You Pay Spinners. lot consists of a nice group of four early Foreign die-cut tin litho who pays bar game spinners (sizes range from 2.75 x 1-3/8" to 3.25 x 1.5". Excellent overall (some light edge wear along leg of red/pink example). Min. bid \$30 (the lot).



144).Licorice Lozenges Tin. 7.25 x 4-3/8 x 6" very early tin litho 5 lb. size store tin for Young & Smylie Co.'s Licorice Lozenges. Clean, bright and very attractive (displays as a strong 8+), w/ exception of some light scuffing wear along top edge of back side (Ginna Litho). Min. bid \$40.



145).Albany Grease Pail. 8 x 6" scarce, early tin litho 5 lb. can for Albany Lubricating Compound, featuring great image of Co.'s early logo. Clean and attractive in appearance (C. 8+), w/ minor scattered wear (note: lid does not appear original to piece). Min. bid \$40.



146).Hagerstown Beer Tray. 13.25 x 10.5" early tin litho tray from Hagerstown Brewing Co. (Hagerstown, MD), featuring beautiful multi-color graphics of Co.'s "Chrysanthemum Girl" (American Art Works). Clean, bright and exceptionally nice (displays as a C. 8.5+) w/ exception of small minor raised dent spot in flower area and a little light scattered wear along outer edge of rim. Min. bid \$60.





147). C.A.A. Tobacco Tin. 3-3/8 x 4.5 x 2-1/8" scarce, early tin litho square corner tobacco can for C.A.A. Mixture. Attractive and displays nicely (C. 8), w/ some light crazing on surface (Sommers Bros. Litho.). Min. bid \$40.



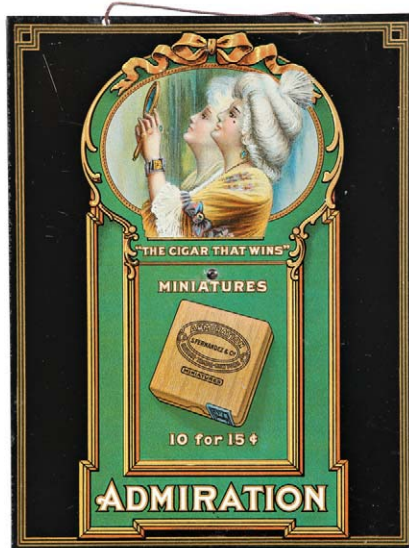
148). Success Tip Tray. 3-3/8 x 4-7/8" early tin litho advertising tip tray for Kent & Burpee Co.'s "Success" brand manure spreaders, featuring beautifully detailed color graphics. Clean, bright and exceptionally nice (C. 8.5+) w/ only minor wear. Min. bid \$40.



149). Candy Match Safe. 1.5 x 2.25 x 3/8" early, very high quality match safe w/ celluloid inserts on both sides advertising Nelson's high grade confections (different images on each). Excellent. Min. bid \$40.



150). Moxie Sign. 10.5 x 4.75" outstanding, scarce, early pressed die-cut cardboard advertising sign for Moxie, w/ a slightly embossed, semi-glossy surface finish. Clean, bright, exceptionally nice appearance (displays as like new), although very close examination will reveal a little non-offensive faint creasing in upper hat area, w/ some scrapbook remnants on non-graphic backside. Min. bid \$50.



151). Admiration Cigars Sign. 7.5 x 5-5/8" early tin litho easel back sign for "Admiration" brand miniature cigars, featuring beautiful multi-color graphics (also has small holes at top for string hanging). Clean, bright and exceptionally nice appearance (basically a C. 8.5+) w/ exception of light 1/2" scratch mark in upper left black background area. Min. bid \$50.



152). Hensler's Sign. 13 x 8-7/8" early, tin over cardboard sign for Joseph Hensler Brewing Co. (Newark, NJ). Clean, bright and like new (appears never used). Has both easel and string for hanging on backside. Min. bid \$40.



153). Mobiloil Tin. 12-1/8 x 4" (dia.) unusual, early tin litho product can for Mobil Co.'s Gargoyle winter motor oil, w/ nice image of polar bear (German). Bright, attractive and displays nicely (as a C. 8/-), w/ some non-offensive faint soiling/fine surface oxidizing and some denting at base area-denting deeper and more pronounced on backside (critical grade C. 7.5+). Min. bid \$40.



154). Brewery Bill Hook. early celluloid advertising bill hook from the Ashland Brewing Co, Ashland, WI. Celluloid 1.75" dia., wire 6" (L). Attractive and displays nicely w/ a little non-offensive staining at top edge (C. 7.5+). Min. bid \$30.



155). Coca-Cola Door Push. 13-5/8 x 3.5" ca. 1930's enameled porcelain Coca-Cola palm press style door push plate. Crisp, bright and like new appearance, w/ some light wear on plain backside. Min. bid \$60.



156). Brewery Match Holder. 5 x 3.5 x 2.75" early, figural cast iron countertop match holder w/ embossed advertising for Feigenspan's Lager. Neat and unusual piece, w/ scattered wear spots to gold paint surface. Min. bid \$40.





157). Eastern Air Lines Sign. 14" (dia.) outstanding, early multi-color nicely stepped porcelain sign for Eastern Air Lines, featuring great image of Co. logo (Veribite Signs stamping on backside). Clean, bright, very attractive appearance, w/ nice surface patina (some non-offensive light scattered chipping wear at outer grommit holes). Min. bid \$50.



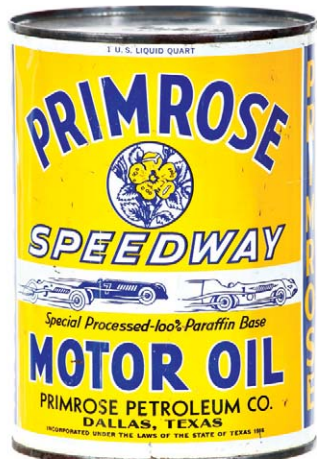
158). Shoe Polish Tins. Lot consists of nine different early tin litho shoe polish tins (ranging from 2-5/8 to 3.5" dia.). Includes: (2) American; Bull Frog; Hy Shine; Bixby; Pep; Angelus; Yankee; and Polyshine brands. All are clean and very attractive (avg. 8+). Min. bid \$40 (the lot).



159). R & H Beer Tray. 12.5" (dia.) early pre pro tin litho beer tray from Rubsam & Horrmann Brewing Co. (New York City and Staten Island, NY) featuring beautiful, multi-color image of a topless semi-nude beauty at seashore rocks. Clean, bright and exceptionally nice (a strong C. 8+/) w/ minor soiling and wear (American Art Sign Co. lithographers). Min. bid \$70.

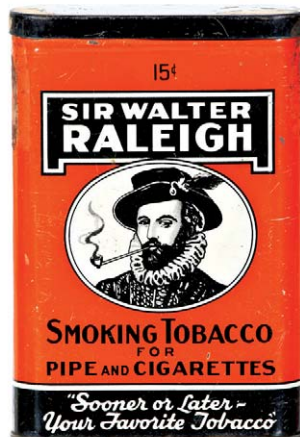


160). Babolene Grease Can. 4-5/8 x 3-3/8" unusual, early tin litho pry-lid 1 lb. size grease can for Babolene brand (Babcock Auto Supply Co.) featuring nice image of early car on both sides. Has soiling and some light general overall wear, but still displays nicely (C. 7+/) as found should improve w/ cleaning. Min. bid \$30.



161). Primrose Oil Can. 5.5 x 4" (dia.) tin litho crimp seam 1 quart motor oil can for Primrose Co.'s (Dallas, Texas) Speedway brand motor oil, featuring nice image of race cars on front, w/ Co. signs and autos, truck and tractor on backside. Excellent overall (C. 8+/), w/ a little non-detracting light scattered background wear. Min. bid \$40.

Rare Variation



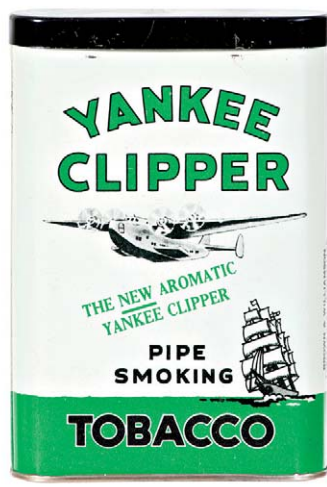
162). Sir Walter Raleigh 15¢ Pocket. 4-3/8 x 3 x 7/8" scarce, early tin litho "15¢" Canadian variation tobacco pocket tin for Brown & Williamson Co.'s Sir Walter Raleigh brand. Attractive and displays nicely, w/ some light wear on back and darkening/wear at upper side edges where tax stamp once sat (front C. 8+/-; back C. 7+). Min. bid \$40.



163). 1907 Coca-Cola Mirror. 2.75 x 1.75" early celluloid Coca-Cola Co. pocket mirror featuring Co.'s 1907 calendar girl. Clean, bright and like new appearance (examination under magnification will show non-detracting minor surface wear - mentioned for accuracy barely noticeable and very minor). Min. bid \$50.



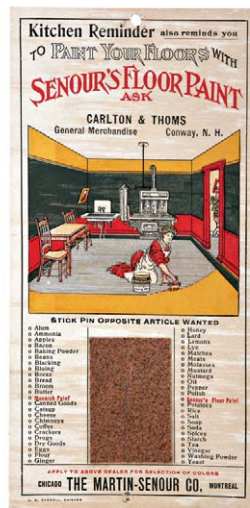
164). Brooklyn Bowling Alley Match Safe. 2.75 x 1.5 x 3/8" early, celluloid covered advertising match safe w/ colorful and graphic nude angels on front, w/ printed text advertising on backside for Herman Ehler's, a Brooklyn, NY bowling alley and café. Excellent. Min. bid \$40.



165). Yankee Clipper Pocket Tin. 4-3/8 x 3 x 7/8" scarce, early tin litho vertical tobacco pocket tin for Brown & Williamson Co.'s "Yankee Clipper" pipe smoking tobacco, featuring great image of flying boat. Clean, bright and exceptionally nice (C. 8.5+). Min. bid \$70.



166). Bird Archer Pocket Mirror. 2.75 x 1.75" scarce, early celluloid pocket mirror advertising Co.'s boiler compounds. Clean, bright and excellent appearance (displays as like new), examination under magnification will show non-detracting minor surface wear and bumps (mentioned for accuracy - barely noticeable and very minor). Min. bid \$40.



167). Floor Paints Match Scratcher. 7.25 x 3.5" early, cardboard advertising match scratcher for Senour Co.'s floor paint, from a Conway, NH paint store (has shopping list surrounding scratching surface). Excellent overall, w/ minor toning. Min. bid \$20.





168).Voss Bros. Paperweight. 2-5/8 x 4-1/8 x 7/8" early glass advertising paperweight for Voss Bros. Ocean Wave washing machines, featuring nice image of washer and ocean surf. Excellent overall. Min. bid \$30.



169).Miniature Wagon. 1.75 x 4.5 x 2" early, miniature (salesman's sample?) advertising children's wagon for "Radio Flyer" brand. Very high quality piece is excellent and all original (a strong C. 8++). Painted metal body, rubber wheels, moving steering column and nice decals on both sides. Min. bid \$30.



170).John Bardenheier Co. Match Safe. 1.5 x 2-7/8 x 3/8" early, celluloid covered match safe advertising John Bardenheier Co., St. Louis, Mo., ("Imported and domestic wines, liquors and cordials" Co.), w/ beautiful image of Co.'s headquarters building on front (Progress Rye and Perfection Bourbon labels shown on backside). Excellent. Min. bid \$40.



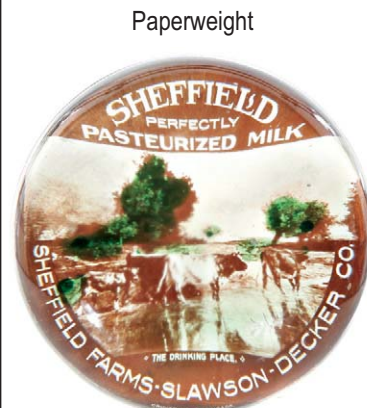
171).Hosmer's Buggy Grease Tin. 3-1/8 x 3-3/8" (dia.) very early tin litho can for Hosmer Co.'s axle grease, featuring beautifully detailed lithography by Sidney Shepard Co., Buffalo, NY. Clean, bright and attractive (C. 8+) w/ minor crazing and light wear. Min. bid \$40.



172).Empire State Tobacco. 3-5/8 x 3.5 x 2.75" unusual, early tin litho tobacco can for Pete Bros. "Empire State" brand tobacco, featuring nice images of landmark skyscraper on both sides. Clean, bright and excellent (basically C. 8.5+), w/ exception of light scuffs on non-graphic lid). Probably US made for export market. Min. bid \$40.



173).Acorn Pocket Tin. 3.25 x 3.25 x 3/4" scarce, early, embossed tin litho flip lid pocket tin for Acorn brand cigarettes. An unusual sized and shaped tin, w/ similar look and design to the Twin Oaks brand tins. Reds are fairly strong and piece displays pretty well, although the silver flash finish is mostly gone, giving it a primitive country type look (C. 7+). Min. bid \$40.



174).Sheffield Milk Paperweight. 1-3/8 x 3" (dia.) early glass advertising paperweight for Sheffield Dairy, featuring nice hand tinted image of dairy cows. Excellent. Min. bid \$30.



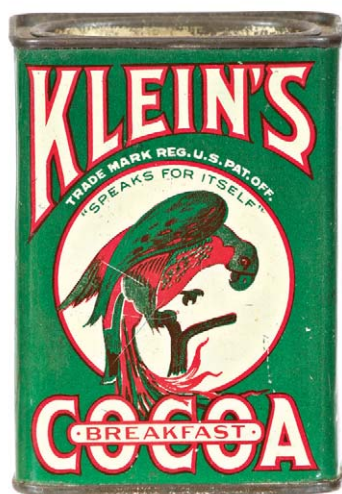
175).Horse Liniment Sign. 5 x 31" very early, wooden painted sign for "Herrick's German Horse Liniment" veterinary medicines. Untrimmed and all original, w/ a nice patina to its untouched surface finish. Has just the right amount of slight weathering and light surface wear, w/ a nice primitive, country look and feel (C. 8-). Min. bid \$50.



176).Telephone Badges. two early, high quality telephone company employee badges, each with beautifully inlaid ciosionee enameling. Includes: New England Tel & Tel Inspector (1.75 x 2.75") and Peninsular Telephone Co. employee badge (1.5" dia.). Both are excellent, w/ only very minor wear from use. Min. bid \$40 the lot.



177).Taft Coffee Tin. 6.75 x 4.25" very early, tin litho 1 lb. size coffee can featuring nice image of President Howard Taft. Clean, very attractive appearance (C. 8+) w/ only minor scattered wear. Min. bid \$50.

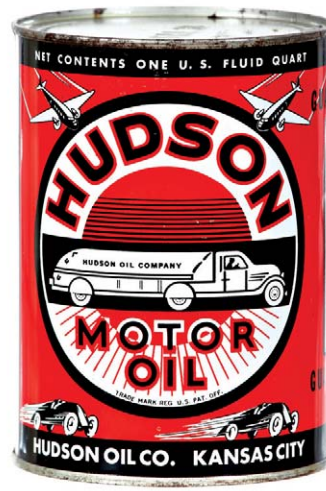


178).Klein's Cocoa Tin. 4.5 x 3.25 x 2.25" scarce, 1/2 lb. tin litho pry-lid cocoa can for Klein's breakfast cocoa, featuring nice images of Co.'s trademark parrot. Clean and attractive appearance, w/ minor denting and wear (C. 8). Min. bid \$40.

#### International Harvester



179).International Harvester Paperweight. 4-3/8 x 2 x 2-3/8" unusual, early, heavy figural cast iron advertising paperweight for International Harvester Co., in image of Co.'s trademark bear (has Co.'s logo on overalls and embossed "Louisville" on base). Excellent, w/ nice surface patina. Min. bid \$40.



180).Hudson Oil Tin. 5.5 x 4" (dia.) scarce, early tin litho crimp seam 1 qt. motor oil picture can, featuring great motoring images (Hudson Oil Co., Kansas City). Full, unopened can is clean, bright and exceptionally nice (near mint) w/ exception of darkening and light oxidizing on non-graphic lid and base. Min. bid \$40.





181). **Cats Paw Sign.** 9-1/8 x 13.25" scarce embossed tin litho sign for "Cat's Paw" heels, w/ neat image of Co.'s trademark cat. Although below the condition we normally run, piece is so scarce and has such a great look, I couldn't resist it. Has oxidizing at outer borders, scuffing and general overall scattered wear (C. 7-), but reds are bright and some light restoration would improve it substantially. Min. bid \$40.



182). **Sports Theme Milk Bottles.** (ea. 9.5 x 3.75" dia.) lot consists of three different color enameled 1 quart glass milk bottles, featuring sporting scene images. Includes golfer (Kates Jr. Dairy, Orlando, Fla.); baseball (Noble Dairy, Seneca Falls, NY); and track runners (City Creamery, Cohos, NY). All are excellent. Min. bid \$40 (the lot).

### You Pay Spinners



183). **You Pay Spinners.** lot consists of three early tin litho 'You Pay' die-cut bar game spinners, including one for Old Frankenthuth Beer (sizes range from 1 x 1.5" to 1 x 1-7/8". Excellent overall. Min. bid \$30 (the lot).



184). **Coca-Cola Sign.** 5.75 x 17-7/8" ca. 1920's embossed tin litho sign for Coca-Cola, as found never used still protected with its original paper wrapper (included). Clean bright and very nice overall (C. 8++) w/ exception of some light oxidizing and speckling wear at left border area (as found, might improve w/ cleaning). Min. bid \$60.



185). **Teddy Spice Tin.** 2 x 2.25 x 1.25" early paper label (over tin) 1 oz. spice tin (Cream Tartar) from Karasik Bros. Co., Chicago w/ nice TR image. Decent and respectable tin which displays nicely, w/ some non-offensive light staining and wear to label (C. 7.5+). Min. bid \$30.

### Sample



186). **Buckingham Tobacco Sample.** 3 x 2.25 x .75" early, miniature tin litho vertical tobacco sample tin for Bagley Co.'s Buckingham brand. Clean, bright and excellent (C. 8.5). Min. bid \$40.



187). **Veterinary Tin.** 3.25 x 2.75 x 1-5/8" early tin litho veterinary tin for Professor Seare's Horse and Cattle Powder, w/ nicely detailed graphic animal images (Somers Bros. Litho). Attractive and displays nicely, w/ some light scattered background wear (C. 7.5++/8-). Min. bid \$40.



188). **World's Fair Match Safe.** 2.25 x 1.5 x 3/8" early celluloid covered match safe from 1904 St. Louis World's Fair, w/ eagle/flag/map image on front and fair building on backside. Clean, bright and excellent. Min. bid \$40.



189). **Vacuum Oil Co. Calendar.** 17 x 9" early 3-ps. cardboard calendar set advertising Vacuum Oil Co. (and Gargoyle brand greases). Each section has different calendar girl featured w/ four 1914 calendar months shown at bottom. Top section has some toning, minor foxing and wear (nothing offensive or detracting) and light break at top of left string hole; other sections very good to excellent. Min. bid \$40.

### Broom Holder



190). **DeLaval Broom Holder.** 3.5" (dia.) early tin litho advertising broom holder for DeLaval brand cream separators. Clean, bright and very nice (appears never used), w/ minor crazing and storage wear (C. 8++). Min. bid \$30.





191).Pepsi Sign. 12-5/8 x 29.25" (10.75 x 27.25" visible) ca. 1940's cardboard sign for Pepsi Cola presented in its original aluminum frame (great double dot die-cut Pepsi cap at top). Frame is excellent, sign quite nice (C. 8/-), w/ minor scuffing and background toning. Min. bid \$40.



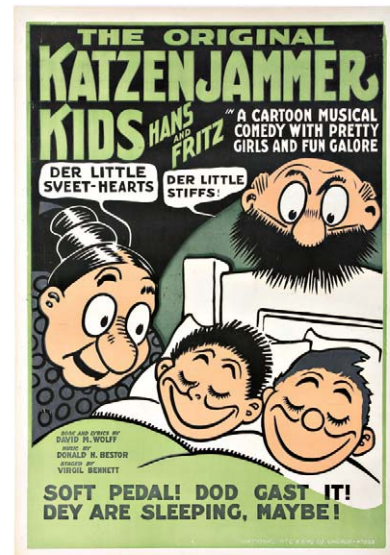
192).Cigar Packs. lot consists of four full, sealed (never opened) cardboard cigar packages, ranging in size from 4-5/8 x 2-7/8 x 1-1/8" to 5-1/8 x 3.5 x 5/8". Includes: Lord Romeo Coronas, Flexo Giants Cigars, The New 400 5¢ cigar, and George Washington Commander. Min. bid \$30 (the lot).



193).Remington Arms Poster. 23.75 x 17" early paper advertising sign/poster for Remington UMC ammo by illustrator Lynn Bogue Hunt (note:12 gauge 500 shells case on shelf). Clean, attractive and displays nicely, complete w/ original metal strips at top and bottom. Basically displays as a (C. 8/+), w/ exception of a few typical non-offensive light crease /wrinkle marks in bottom section and a few light chip spots in very outer white margin area (© 1929 Remington Arms Co.). Min. bid \$60.



194).Ike Political License Plates. lot includes four different metal license plate attachments from 1950's Dwight Eisenhower presidential campaigns. Sizes range from 3.5 x 10.5"to 4-3/8 x 10-7/8". All are excellent and appear never used. Min. bid \$40 (the lot).



195).Katzenjammer Kids Poster. 40.75 x 28.25" ca. 1912 paper litho movie poster featuring Katzenjammer Kids comical cartoon characters (I'm told theaters ran these animated shorts along w/ a live show of musicians, actors and dancers that traveled the theater circuit to various cities). Powerful and impressive piece is clean and excellent, w/ nice color and a great overall look, mounted on linen (note: Katzenjammer Kids are the oldest comic strip still in syndication). Min. bid \$60.

#### Cigar Lighter

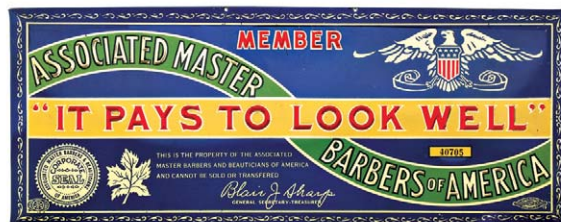


196).Pressed Glass Cigar Lighter. 8.25 x 5 x 5" early, heavy, high quality pressed glass cigar store countertop lighter in beautifully detailed daisy and button pattern. Excellent and all original. Min. bid \$70.

#### Salesman Sample



197).Salesman's Sample Couch. 9.25 x 21.5 x 7.25" great, early salesman's sample couch/sofa. Very high quality piece is a nice sized salesman's sample version of a large, full room sized piece, w/ nicely detailed carved mahogany wooden frame, trim pieces and legs, and a textured upholstered cloth. Excellent and appears all original, w/ just the right amount of wear and minor ageing (C. 8+++). Neat and unusual piece! Min. bid \$60.



198).Barbers Association Sign. 6 x 15" early, tin over cardboard beveled edge barber shop sign issued to members of the Associated Master Barbers of America. Clean, bright and excellent (C. 8.5/+) w/ very minor edge wear. Min. bid \$40.

#### Bug Killer



199).Hooper's Bug Killer Tin. 5 x 2.5 x 1.75 scarce, very early paper label (over tin) product can for "Hooper's Fatal Food" cockroach killer, featuring wonderful graphic image of woman in early kitchen (bugs on floor). Display side is clean and quite nice (C. 8/-), w/ minor toning and wear; backside has some staining at bottom and 3/4" paper loss spot near top (backside fair to good). Min. bid \$30.

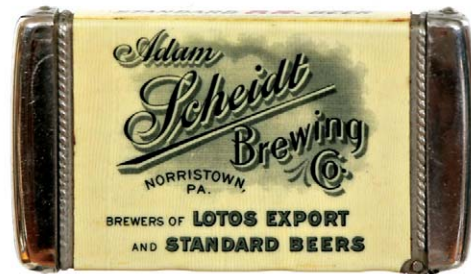




200).De Luxe Condom. 1-5/8 x 2-1/8 x 1/4" scarce, early tin litho condom tin for "De Luxe" brand (Blue Ribbon Rubber Co., Baltimore). Clean, bright and very attractive appearance, w/ some loss and wear to backside (front C. 8++; back C. 7/-). Min. bid \$40.



201).Osborne Paperweight. 2.5 x4 x 1" early, white bottom glass paperweight advertising Osborne Co.'s harvesting machinery, w/ nice detailed image of early plow. Excellent. Min. bid \$30.



202).Brewery Match Safe. 1.5 x 2.75 x 3/8" early, celluloid covered match safe advertising the Scheidt Brewing Co. (Norristown, Pa.), w/ colorful advertising on backside for Co.'s "Lotos Export" beer. Clean and excellent. Min. bid \$40.



203).Tobacco Tags. Lot consists of a group of twelve different, scarce, very early tin litho advertising tobacco tags, (ea. app. 7/8 to 1" dia.) each w/ beautiful graphic images. Includes: Old Honesty; Blue Eye; Patterson's Jersey; Catcher (baseball); Green Turtle; Hoe Maid; Union Navy; Game Cock; Red Rabbit; Ida Motley; Virginia Seal and Lorillard Clown. Clean, bright and exceptionally nice, w/ minor chips and wear on a couple (avg. C. 8/+). Min. bid \$40 (the lot).



204).Pedro Tobacco Lunch Box. 4-3/8 x 7.75 x 5.25" early tin litho lunch box style tobacco can for Kimball Co.'s Pedro brand, w/ nice playing card images on front, back and lid. Clean and very attractive (C. 8/+ w/ a little minor background wear. Min. bid \$40.



205).Hack & Simon Beer Glasses. lot consists of a pair of fine, very early, 3.75 x 2.25" (dia.) advertising beer glasses from the Hack & Simon Brewing Co., Vincinnes, Indiana, w/ attractive eagle on shield logo. Both are excellent. Min. bid \$20 (the pair).



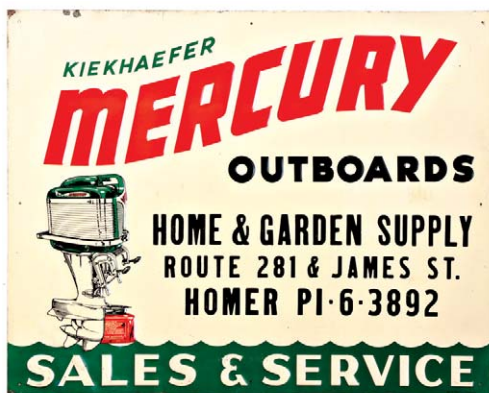
206).Planters Glasses. Lot consists of three ca. 1950's drinking glasses, ea. w/ fired on enameled Mr. Peanut images. Sizes range from 5 x 2.75" to 4.75 x 2-5/8" and all are in excellent, like new condition. Min. bid \$40 (the lot).



207).King's Beer Sign. 11-5/8 x 17-5/8" early, embossed tin litho sign advertising Kings Brewing Co., Brooklyn, NY. Clean, bright and like new (near mint). Min. bid \$40.



208).Landon Bumper Tag. 4.5 x 3.5" (dia.) early metal license plate/ bumper tag attachment for 1936 Republican presidential candidate Alf Landon w/ reflective surface. Crisp and like new, as found still in its original envelope. Min. bid \$20.



209).Mercury Outboard Motors Sign. 23-7/8 x 30" scarce, embossed tin litho sign featuring great image of early outboard motor and marked gas can. Clean, bright and very attractive appearance (basically displays as a nice C. 8+/-) w/ exception of minor soiling and some paint loss spots at outer edges (could be easily hidden if framed). As found, should improve w/ cleaning. Min. bid \$50.



210).US Tires Puzzle. 9.75 x 10.25" unusual, ca. 1920's/30's cardboard jigsaw puzzle, featuring great motoring scene image. Clean and excellent (C. 8.5/+) complete w/ its original envelope. Min. bid \$20.





211).Standard Oil Match Safe. 1-5/8 x 2.75 x 3/8" early celluloid covered advertising pocket match safe for Standard Oil Co., featuring a different engine oil barrel on each side. Excellent. Min. bid \$40.



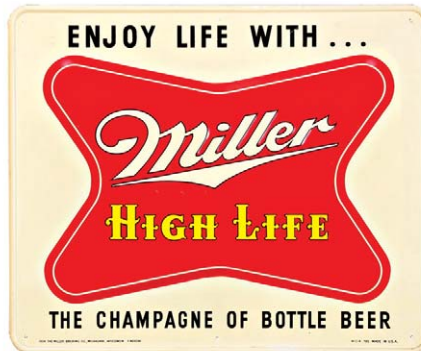
212).Sans Souci Tobacco. 3.25 x 4.5 x 2" scarce, very early tin litho square corner style tobacco tin for W.T. Hancock Co.'s "Sans Souci" brand (lithography by Ginna). Clean, bright and displays nicely (as a strong C. 8+), although close examination will reveal a little fine scratching on lid (not offensive and barely noticeable) and some light wear and oxidizing on right side edge (critical grade C. 8/-). Min. bid \$40.



213).Lord Kenyon Pocket Tin. 3-1/8 x 3-3/8 x 1" early tin litho vertical tobacco pocket tin for Lord Kenyon brand. Clean, bright and attractive appearance, w/ a couple minor dents and a little non-detracting light soiling and wear (C. 8/-). As found, should improve w/ cleaning. Min. bid \$40.



214).Dan Patch Tobacco. 5.25 x 5.5" (dia.) early paper label (over tin) 50 ct. cigar can for Scotten Dillon Co.'s Dan Patch brand tobacco, featuring nice image of the famous world's record setting race horse. Clean, bright and excellent, w/ a few minor wear marks (a strong C. 8++). Min. bid \$40.



215).Miller Beer Sign. 19-5/8 x 23.75" ca. 1954 (dated) embossed tin litho self-framed sign for "Miller High Life Beer". Clean, bright and excellent appearance (basically displays as like new) w/ exception of small scratch line at middle right edge of logo area and very minor wear at raised border edge area. Min. bid \$40.



216).Popper's Ace Cigar Can. 5-5/8 x 5 x 5" early tin litho 50 count cigar can featuring great image of Co.'s trademark cigar body bi-plane on front, back and lid. Clean, attractive and displays nicely, w/ a little non-offensive light scattered wear (C. 8+/-). Min. bid \$50.

# Giant Display Bottle



217).Heinz Ketchup Display Bottle. 26.5 x 6.25" large, early, heavy figural glass countertop display bottle for Heinz brand ketchup. Powerful and very impressive looking piece is complete, excellent and all original, w/ clean and attractive labels and great metal cap (minor wear to label). Min. bid \$80.



218).Paper Label Spice Tins. Lot consists of four early paper label (over tin) spice tins ranging in height from 2.5 to 3-3/8". Includes: King Parrot Nutmeg, La Paluma Mustard, Battleship Red Pepper, and Safe Owl Allspice. All are clean and excellent (C. 8.5+). Min. bid \$40 the lot.



219).Iver Johnson Catalog. 8.25 x 4-7/8" 28 pag. illustrated 1899 bicycle catalog from Iver Johnson Arms & Cycle Works Co., w/ beautiful graphic cover, w/ images and detailed info on Co.'s various bikes inside. Excellent. Min. bid \$40.



220).Calumet Thermometer. 22 x 5.75" great, early wooden advertising thermometer for Calumet brand baking powder. Outstanding, very impressive looking piece, w/ beautiful surface patina, giving it a great folk art country look (rates a very strong C. 8+), w/ original paper label on backside (some slight softening to reds and small, non-offensive chip spot in outer white border area at bottom edge). Min. bid \$60.



Mechanical Hotel Bell



221).Owl Hotel Bell. 4.4 x 4.5 x 3" early cast iron figural countertop hotel bell w/ mechanical key wind clockwork mechanism underneath (pushing down on his beak rings a long steady bell). Has some dark surface staining and light wear from use, but overall a neat and unusual piece w/ nice detailing (works great). Min. bid \$40.



222).El Wadora Cigars Sign. 25.75 x 37.75" early, wooden framed metal sign for El Wadora brand 5¢ cigars. A powerful and impressive looking sign that is clean, bright and excellent overall (appears to have been found stored away and never used w/ just the right amount of age toning and patina). Min. bid \$60.



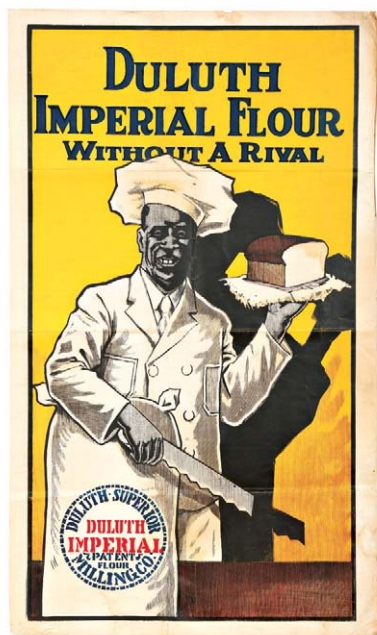
223).Rainier Beer Tray. 13.25" (dia.) scarce, early tin litho Rainier Brewing Co. (Seattle), tray featuring great image of girl and bear (dated 1913). Clean, bright and very attractive (a strong C. 8++) w/ slight bit of faint crazing and a little minor staining and slight wear at left edge elbow area and on rim (rim area C. 8+/-). Min. bid \$50.



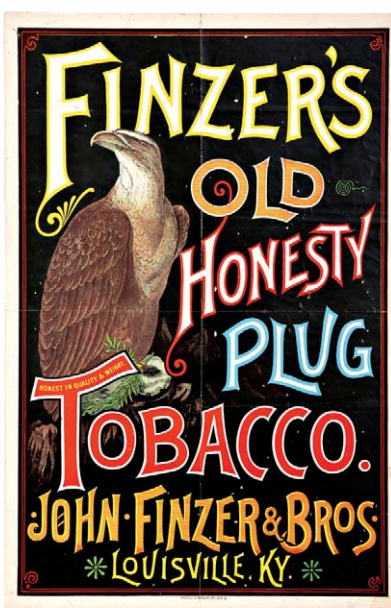
224). Devils Food Cake Flour Tin. 8.5 x 9.25 x 9.25" unusual, early 15 lb. large commercial size product can for Gumpert Co.'s Devils Food Cake mixture, w/ great devil images on front and back (different images both sides). Attractive and displays nicely, w/ minor scattered soiling and light wear from use (C. 8+/-). As found, should improve a bit w/ cleaning. Min. bid \$50.



225).Grand Rapids Beer Tray. 12" (dia.) early tin litho beer tray from Grand Rapids Brewing Co. (Grand Rapids, Mich.) featuring beautiful multi-color graphic factory scene. Tray is clean, bright and has excellent appearance (image area basically a strong C. 8.5/+ w/ exception of a few minor specks and tiny bump in sky area); rim area has some wear (most notable spot at 10 o'clock, others pretty minor). Min. bid \$50.



226).Duluth Flour Sign. 41.25 x 24.5" impressive, large, early cloth poster/banner sign advertising Duluth brand flour, featuring great image of Co.'s trademark baker. Powerful and very impressive looking piece that is clean, bright and excellent (displays as a C. 8.5/+), w/ minor tattering and faint staining in outer white margins and a couple barely noticeable minor holes in background area (nothing offensive or that detracts from great overall look of piece). Min. bid \$50.



227).Finzer's Tobacco Sign. 24 x 15.75" large, very early paper litho sign for John Finzer Co.'s Old Honesty brand tobacco, featuring great image of Co.'s trademark eagle (Russell & Morgan Lithographers). Colors are strong and piece displays nicely, although close examination will show light fold lines as well as some non-offensive minor scattered wear (including a little tattering and light soiling in outer white margin area). Tough to grade but 7.5/8- seems about right (minor conservation/restoration could improve it to a near mint appearance). Min. bid \$70.



228).Bromo-Seltzer Sign. 16-5/8 x 8.75" unusual, early die-cut cardboard litho stand-up sign for Emerson Co.'s Bromo-Seltzer medicine. Clean, bright and excellent (C. 8.5/+), easel missing on back side. Min. bid \$40.





229).Poppy Cigar Can. 5.75 x 5.25" scarce, early tin litho 50 count cigar can for "Poppy" brand, featuring beautiful color graphics. Clean, bright and displays very nicely, although close-up examination will reveal a few minor scattered scuffs and a few faint scratch lines on right side edge (C. 7.5++/8-). Min. bid \$40.



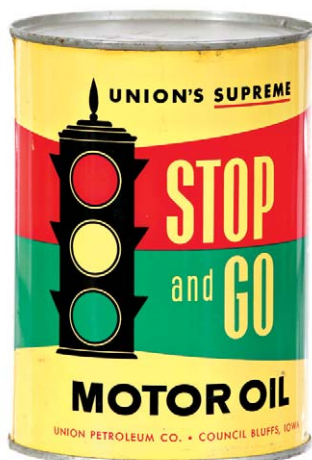
230).Moxie Sign. 4-5/8 x 6.5" early tin litho (over cardboard) string hung sign. Attractive and displays nicely, w/ some spots of light background wear (C. 7.5/+). Min. bid \$30.



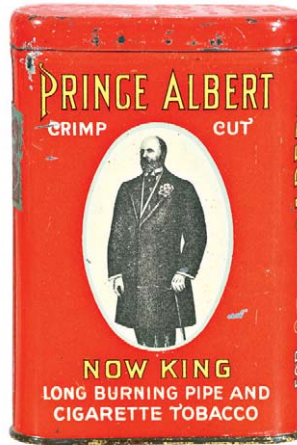
231).Chick Hatcheries Thermometer. 12.5" (dia.) x 1-1/8" unusual, aluminum framed working glass covered dial type w/ tin litho advertising inside for Kimberchick chicken hatcheries thermometer (by Pam Clock Co.). Clean and excellent, w/ great look. Min. bid \$40.



232).Swift's Soap Mirror. 2-5/8 x 1-5/8" scarce, early celluloid pocket mirror for Swift Co.'s "Pride" brand soap. Clean, bright and excellent (displays as like new), although examination under magnification will show non-detracting minor surface indents and faint wear (barely noticeable and very minor- mentioned for accuracy). Min. bid \$40.



233).Stop and Go Oil Tin. 5.5 x 4" (dia.) scarce, early, tin litho, crimp seam 1 qt. motor oil picture can, featuring nice trademark stoplight images (Union Petro. Co., Council Bluffs, Iowa). Full, unopened can is clean, bright and exceptionally nice (C. 8.5/+). w/ only very minor wear. Min. bid \$40.



234).Prince Albert Pocket Tin. 4.5 x 3 x 7/8" scarce tin litho scarce "Now King" variation vertical tobacco pocket tin for Prince Albert brand. Attractive and displays nicely, w/ a little light chipping and wear to front side and slight hazy residue along top of lid where tax stamp once sat (front C. 7.5+/-; back C. 8/+). Min. bid \$60.



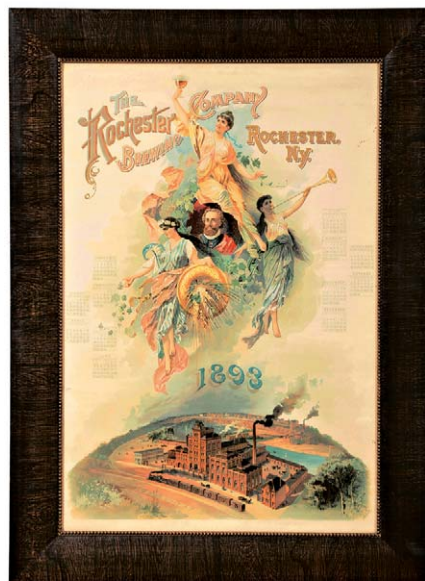
235).Columbia Spice Tin. 3-7/8 x 2.25 x 1.25" scarce, early tin litho 2 oz. spice tin (allspice) for "Columbia" brand (Sutherland & McMillan, Pittston, Pa.) w/ same nice image on both sides. Clean, bright and excellent (C. 8.5+). Min. bid \$40.

Yellow Kid



236).Yellow Kid Paperweight. 7 x 3.25 x 3" scarce, large, early, figural metal paperweight/statue featuring Outcalt's Yellow Kid comic character figure, embossed "Say Ain't I a Heavy Weight" on nightshirt. Has darkening and general wear to its original gold finish but overall attractive and displays nicely (small hole and possible solder spot repair on back side, although it might be original to piece). Min. bid \$60.

Rochester Brewing Co.



237).Rochester Brewing Calendar. 36 x 26" (29-3/8 x 19-5/8") large, 1893 paper litho advertising calendar for Rochester Brewing Co., Rochester, NY w/ nice early lithography showing factory, Christopher Columbus, pretty women, etc. Very impressive piece is clean and excellent overall, complete w/ original metal strips at top and bottom (basically a C. 8.5/+, w/ exception of some non-offensive small stain specks in outer right margin area). Framed. Min. bid \$200.



238).Hershey's Vendor. 17-7/8 x 8.75 x 7.25" outstanding, early, metal, countertop, coin-op machine w/ beautiful deep enameled porcelain front plate advertising Hershey's brand 5¢ chocolate bars. Attractive art deco design machine is crisp, bright and like new in appearance (appears never used w/ minor chipping wear under two knob handles; replaced working lock w/ keys) (Shipman Mfg. Co., Los Angeles, CA). Min. bid \$70.





239).Wells Fargo Label. 3.25 x 4.75" very early paper litho crate label from Wells, Fargo & Co., San Francisco, featuring nice image of early train. Has some toning/soiling in background and light general wear, but overall attractive and displays nicely (C. 7.5). Min. bid \$40.



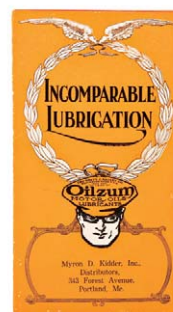
240).Porcelain Cigar Sign. 3.5 x 21" scarce, very early, heavy porcelain strip sign for Boston-Smoker brand 5¢ cigars. Attractive and displays nicely (basically as a C. 8+) although close examination will reveal some non-detracting, minor wear in blue background at right outer edge and some non-offensive fine spider web cracking in a couple white letters of word "Smoker". Min. bid \$60.



241).Fairway Coffee. 4 x 5-1/8" scarce tin litho 1 lb. key-wind style coffee can for Fairway brand, featuring colorful, very attractive graphics (steaming coffee cup pictured on back side). Clean, bright and exceptionally nice (C. 8.5+). Min. bid \$50.



242).Moonstone Tobacco Tin. 3-5/8 x 3-7/8 x 1.25" early tin litho vertical tobacco pocket tin for Frismuth Co.'s "Moonstone Mixture". Clean, bright and displays nicely, w/ a few non-offensive light scattered scratch marks and a little wear along front edge of lid (C. 8+/-). Min. bid \$100.



Oilzum

243).Oilzum Ephemera. lot consists of two ca. 1920's advertisements for Oilzum brand products. Includes: unused blotter (3-3/8 x 6.25"); and pamphlet (6.25 x 3.25" that opens to 13.75 x 6-3/8") featuring early images of Oilzum products. Both are excellent. Min. bid \$30 the lot.



244).Wilbur's Cocoa Mirror. 1.75" (dia.) scarce, early celluloid pocket mirror advertising Wilbur's brand cocoa, w/ nice image of early product can. Clean, bright and excellent, w/ some non-offensive minor bumps on surface (mentioned for accuracy- barely noticeable and very minor). Min. bid \$40.



Sample Packs

245).Sample Tobacco Packs. lot consists of two full, sealed, early soft pack style tobacco sample packages. Includes: Mail Pouch (4.75 x 2.5 x 1.25") w/ 1910 tax stamp (excellent, w/ minor paper loss spot on backside from removed sticker); and Beech-Nut brands (excellent). Min. bid \$30 (the lot).



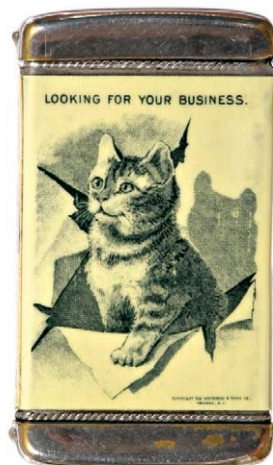
246).Koko Chocolate Mirror. 1.75" (dia.) scarce, early celluloid advertising pocket mirror for Koko brand chocolate, w/ trademark image of Uncle Sam spanking Dutch kid. Displays nicely, although close examination will reveal a little non-offensive light foxing on back/side edge. Min. bid \$40.



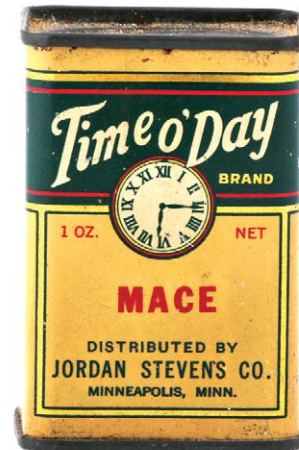
247).Cough Drop Sample Tin. 2.5 x 2.25 x 2.25" small, very early tin litho sample size product can from Kibbe Bros. (Springfield, MA) featuring finely detailed graphics by Sommers Bros. Clean, bright and excellent overall (a strong C. 8+), w/ a little light background wear. Min. bid \$30.



248).Miniature Nut Cup. 2-1/8 x 2.25" (dia.) early, miniature tin litho tapered peanut cup advertising "Cream Dove" brand (Binghamton, NY). Clean, bright and exceptionally nice (C. 8.5+). Min. bid \$40.



249).Elele Shoes Match Safe. 2.75 x 1.5 x 3/8" early, celluloid covered advertising match safe for Elele brand shoes (Hathaway & Son, Boston). Excellent. Min. bid \$40.



250).Time O Day Spice. 2.5 x 1.75 x 1.25" early tin litho 1 oz. spice tin for "Time 'O Day" brand (Jordan Stevens Co., Minneapolis, Minn.) featuring same attractive image on both sides. Clean, bright and excellent (C. 8+). Min. bid \$30.





251).Victor Gum Box. 7 x 6-5/8 x 4-7/8" (as pictured) scarce, very early paper over cardboard countertop display box (w/ glass lift-up cover) for Victor Chewing Gum "Mintlets", w/ nice image of Co.'s trademark chicken. Clean, bright and excellent appearance (displays as a strong C. 8.5+) although close examination will reveal some cello tape reinforcements along top and bottom outside edges of lid (invisible "magic" type tape that is barely noticeable). Min. bid \$40.



252).Quaker Oats Cereal Bowl. 7.5 x 1-5/8" (deep) early fine china cereal bowl, w/ attractive advertising image in center featuring trademark Quaker Oats character holding early cereal box, w/ oats design border design. Excellent (some wear to gold trim around border). Min. bid \$40.

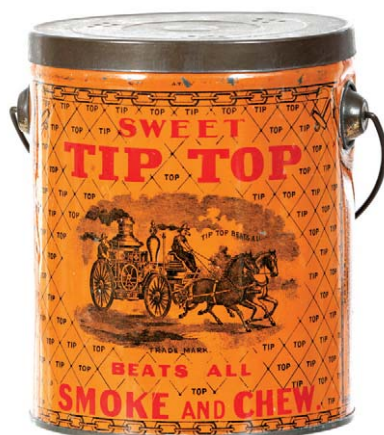
Bank



253).Mermaid Still Bank. 4-5/8 x 4-3/8 x 1.75" unusual, early figural cast iron still bank featuring nice image of child in boat holding fish. Very nice appearance, w/ attractive original gold paint surface (surface C. 8+/-) and just the right amount of wear. Min. bid \$50.



254).Mayo's Small Top Tobacco. 6.5 x 4-7/8" early tin litho small top style 16 oz. tobacco tin for Mayo's brand (marked "Coffee" on backside for later use as kitchen canister). Clean and very attractive (a nice solid C. 8+) w/ minor scattered wear, including oxidized dark spot in background area of backside (1902 tax stamp). Min. bid \$40.



255).Tip-Top Tobacco Pail. 6-1/8 x 5-3/8" (dia.) scarce, early tin litho tobacco pail for Gradle & Strotz Co.'s "Tip-Top" brand featuring nicely detailed graphic firefighting scene (same image both sides). Clean, bright and excellent (a strong 8++). Min. bid \$50.



256).Gillie's Spice Can. 7-1/8 x 3.5" (dia.) impressive, large, early 1 lb. size spice tin (cinnamon) from Gillie Coffee Co., New York. Paper label (over cardboard) w/ metal top and bottom, featuring great image of Co.'s trademark dog. Clean and very nice (C. 8+). Min. bid \$30.



257).Court House Cocoa Tin. 5-1/8 x 3-5/8 x 1-7/8" scarce, pry-lid 1/2 lb. tin litho cocoa can from C. F. Smith Co., Detroit, featuring trademark court building (same image both sides). Attractive and displays nicely w/ minor denting and a little general scattered wear (C. 7.5). Min. bid \$30.

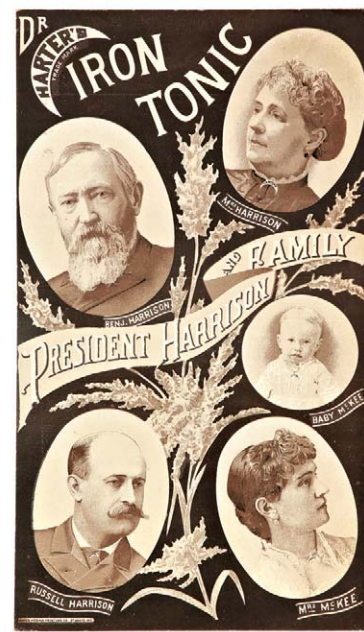
Original Art



258).Pennsylvania Calendar. 21.5 x 12" early paper litho advertising calendar for a Trexertown, Pa. general merchandise store, featuring stunning multi-color graphics. Clean, bright and like new, complete w/ full 1920 calendar pad. Min. bid \$40.



259).Saxon Illustration Art Painting. 32.5 x 24" (24-3/8 x 16-5/8" visible) outstanding, original artwork painting (on artboard) for the Saxon Automobile Co., featuring a beautifully executed, handpainted image created for use on a Saxon Automobile Co. advertising poster (signed "H.H. Lunddig, Poster Designer" in bottom right corner). Excellent overall and displays very nicely (as a strong C. 8+), w/ minor storage/ageing. Framed (original period frame has fairly heavy wear at outside edges). Min. bid \$100.

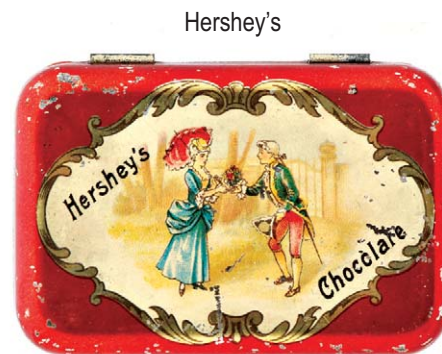


260).Dr. Harter's Sign. 12.25 x 7" unusual, early cardboard advertising sign for Dr. Harter Co.'s Iron Tonic brand patent medicine product, featuring images of president Benjamin Harrison and his family (filled w/ 1880's testimonials and text advertising on backside). Excellent overall. Min. bid \$40.





261).Smith Bros. Sign. 9-7/8 x 28" early, embossed tin litho sign for Smith Brothers cough drops, featuring early style pack. Very high quality piece is crisp, bright and appears never used, w/ beautiful detailing and nice sheen (rates a strong C. 8.5/+) w/ exception of a couple vertical mfg. blemishes in outer white border areas. Min. bid \$50.



262).Hershey's Chocolate Tin. 1-7/8 x 2.75 x 7/8" unusual, early, small hinged lid product tin for Hershey's chocolates, featuring beautiful graphic image on lid. Attractive and displays nicely, w/ a little light scattered wear (C. 8+/-). Min. bid \$40.



263).Whalene Tin. 1-7/8" (dia.) x 1/2" small, very early tin litho 2-ps. product can for "Whalene" brand lubricant, featuring finely detailed Ginna type graphic image of Co.'s trademark whale. Attractive and displays nicely, w/ a little non-offensive minor wear, abd darkening along edges (C. 8/+). Min. bid \$30.



264).Socony Aircraft Oil Sign. 20 x 30" large, early, heavy porcelain sign for Standard Oil Co.'s Aircraft Oils. Field/main area of sign is clean, bright and displays quite nicely (displays on wall as a C. 8+/-); although there are a number of scattered, early, weathered oxidized chips and damage spots around outer areas (critical grade C. 7.5 due to edge issues). Min. bid \$50.



265).Dental Tin. 3-5/8 x 3-5/8 x 1.5" scarce, early tin litho 1/2 lb. dental modeling compound tin from White Dental Mfg. Co., featuring finely detailed lithography by Art Metal Co., New York. Clean, attractive and displays nicely, w/ minor wear (C. 8/+). Min. bid \$40.



266).Gillies Spice Box. 6 x 9.25 x 5" (as pictured) very early cardboard spice box from Edwin Gillies & Co. w/ very attractive color graphic label on inside w/ eight blown cork top spice display bottles inside (some w/ labels and contents). A neat, very unusual piece (possibly a salesman's display case) in very nice overall condition (C. 8/+). Min. bid \$40.



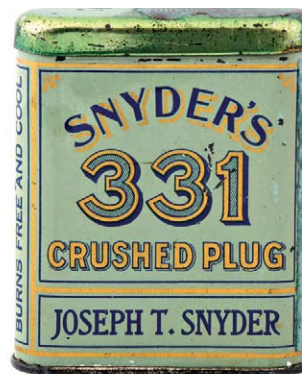
267).Laundry Scrubber. 6.75 x 4.75 x 1.25" scarce, early tin litho laundry scrubber advertising Crystal White brand soap. Neat and unusual piece is clean and very nice (C. 8+) w/ minor wear from use. Min. bid \$40.



268).Haleeka Spice Tin. 3-1/8 x 2-3/8 x 1-3/8" scarce, early tin litho 1-1/2 oz. spice tin (tormeric) for "Haleeka" brand (Bibb & Sons, Williamsport, Pa.) featuring Co.'s trademark Indian chief on both sides. Has strong colors and displays pretty well, w/ some general overall wear (C. 7+). Min. bid \$40.



269).Paint Tin. 3.5 x 2.5" (dia.) scarce, early tin litho 1/2 pint paint tin from Kurfees Paint Co., Louisville, Ky., featuring wonderful image of trademark black man playing banjo. Attractive and displays nicely (C. 7.5/+), w/ some light scattered wear. As found, might improve w/ cleaning. Min. bid \$30.



270).Snyder's 331 Tobacco Pocket Tin. 3.75 x 3 x 1" scarce, early tin litho vertical tobacco pocket tin for Snyder Co.'s "331" brand tobacco. Tin is clean, bright and displays nicely (basically a strong 8+/-), w/ exception of a little wear between the 3 and 1. Min. bid \$50.



271).Yellowstone Spice. 2.75 x 2.25 x 1-3/8" scarce, early paper label (over tin) spice can for "Yellowstone" brand allspice (Paxton, Gallagher Co., Omaha) featuring beautiful graphic image of trademark Indian princess seated on buffalo (same image both sides). Impressive and attractive piece, w/ a little minor, faint toning/soiling in background area (C. 8+/-). Min. bid \$30.





**Rd #2, Cobb Hill Road, Cazenovia, NY 13035 • 24 Hr. Tel: (315) 662-7625 • 24 Hr. Fax: (315) 662-3570 • morf2bid@aol.com • morfauction.com**

Welcome to our 76th auction of quality antique advertising and fine collectibles. Everything we sell is guaranteed authentic and as described. We attempt to grade condition both fairly and conservatively, using a scale of 1-10 on the advertising items (ten being absolutely mint). We do not list reproductions, re-issues, deceptively restored or pieced together type merchandise. Flaws and blemishes are prominently noted and over emphasized. We encourage you to call for a detailed description on any item you have an interest in, but respectfully must request that you do this before the closing night. Dimensions are listed by height, then width, and are only approximate (+ or - a quarter inch).

## Bidding

Bids are accepted only from those parties who have registered with us to bid. (If you were mailed this catalogue by us you are automatically pre-registered.) Your bid is a legal contract to purchase and once entered, cannot be canceled. Placement of a bid indicates acceptance of our terms.

On all "BID" items there is a 10% buyers premium added to each successful bid. You're welcome to bid by mail, email and fax anytime after receiving this catalog. **We will begin accepting phone bids on Wednesday, October 24th, 2012. We will be taking calls on Wednesday and Thursday from 10:00 AM until 5:00 PM.** If no one answers when you call, please leave a message on our machine and we will get back to you. **If bidding by mail or fax, please remember to include your telephone number with your bids!** You may call or bid as often as you like. We will tell you the current bid on any item(s) you are interested in. To raise a bid, your advance must be at least \$10 more than the current high bid amount. When an item reaches \$250, bidding increments rise to \$25, at \$1,000, bidding increments advance in \$50 steps, and above \$2,000 in \$100 increments. We suggest not waiting until the last minute to begin your bidding, as its quite possible you won't be able to get through.

## Web Page and Bid Updates

We will begin posting current bid prices (not including the buyers premium) on Wednesday, October 24th, 2012 (including an addendum of additional catalogue lot information) on our internet web page. These prices will be updated once each day (each evening sometime after 9:00 PM, EST) and will get updated to include the final hammer prices on Sunday afternoon once the sale is concluded. On the closing night, we will attempt to update current bid prices every hour. Our web page address for this sale is: <http://www.morfauction.com> We suggest that once you get to it, that you bookmark this address for easy re-access. There is also an addendum section on our website where we post additional information and photo's for this sale.

## Reserves and Estimates

All items which receive an opening bid in our sale will be sold to the highest bidder regardless of the price realized (we reserve the right to withdraw items in the event of inaccurate catalog descriptions and to reject any bid we feel is not made in good faith). **We run our auctions with a strict policy of no buy-backs, no auctioneer games and no hidden reserves.** Unlike some of our competitors, we do NOT allow consignors to bid up their own items!

## Mechanical Operations

Early mechanical and electric motors and mechanisms on machines toys, coin-ops, clocks, etc. are quite often temperamental and very unpredictable in nature. Although these mechanisms may be working fine at the time of sale, we make no guarantees or representations regarding their continued operating status once they have left our premises (including during shipping).

## Closing Night

**THE LAST DAY FOR BIDDING WILL BE ON FRIDAY, JUNE 22ND, 2012.** On closing day, we begin taking calls at 5:00 PM. Please mark your calendar now. **On the closing night (ONLY), we will also be taking calls at (315) 662-3318, (315) 662-3429 and (315) 662-3904 after 5:00 PM** (in addition to our regular (315) 662-7625 office number). **Closing Time: This Auction will close at 10:00 PM (EST) on Friday, JUNE 22ND, 2012.** At that time, no more incoming calls will be accepted and all lots with a registered bid of less than \$300, as well as all items without call backs registered on them will be officially closed and final. The items at \$300 and over that have call back protection registered on them will be closed out during our call back period the following afternoon (\*\*see important call back rules below\*\*). We reserve the right to change the official closing in the event of unforeseen family type emergencies or technological failures (utility disruptions, etc.). We also reserve the right to either extend the bidding, to postpone or to cancel this auction in the event of a national emergency or if the Internet or the services of the US Post Office were to get seriously disrupted during our catalogue mailing or bidding period.

## "Up-To" Bids & Call Backs

**CEILING BIDS:** We will be happy to enter competitive "up to" ceiling bids for you on any lots you request. Beginning at your minimum amount, we will advance these bid(s) up to your left ceiling amount, if (and only if) it is topped by another bidder. "Up To" bids will be handled discretely and executed in a completely competitive manner for you. Please note that we don't accept open ended "top all others" ceiling type bids.

**CALL BACKS:** You may request call back protection for any lot(s) that you enter with either a minimum or a protected "up-to" ceiling bid in an amount of at least \$300. This request must be registered with us before the official 10:00 PM closing hour of Friday, October 26th, 2012. All callbacks will be placed by us on Saturday, October 27th, 2012, beginning at 12:00 noon (EST) and will continue that afternoon until each of the individual lots have been closed out (using past experience, I would expect this to be finished by 6:00 PM, if not earlier). If you register for call-backs, it is your responsibility to be available during this call back time period. We make every effort to honor all our call back requests, but this service is done solely as a convenience to our bidders and will be performed on a best efforts basis only. If you will be traveling or if you will not be available during call back times at your primary number, be sure you provide us with proper alternate or back up numbers for reaching you!

## Payment Terms

Winning bidders will be invoiced by mail immediately after the sale. Those who desire fast shipment can pay by Money Order or Cashiers Check. Payments are due within 10 days of receipt of invoice. We reserve the right to offer the item out to our back bidders and deny future bidding privileges to those who do not pay in a timely manner. In addition to personal checks, we also accept payment on your American Express, Visa, Master Card, Discover and Optima Credit Cards (with no surcharge added). No COD's or Collect calls are ever accepted. Items shipped to anywhere in New York State must include appropriate sales tax or signed resale certificate.

## Shipping

All packing and shipping charges are extra. We do most of our own packing and shipping in house and try to keep these charges as reasonable as possible for you. On especially fragile and larger hard to pack items, we hire the services of professional packers and charge you at our billed cost. We ship mostly through the Post Office and Fedex Ground, (Fedex Overnight available at an extra charge.)

## Subscribing, Prices Realized, Consignments & Upcoming Events

**Future catalogs can be assured by sending \$20 for a full 12 months subscription.** (Prices are published on our website after each sale) An automatic credit card ordering program is available. We currently run between 3-5 auctions a year (versus our previous format of running semi-annual sales). This format allows us to run smaller, more focused sales featuring larger, higher quality catalog images and gives our consignors the opportunity for a quicker turn-around of their items. In addition to our regular sales, we also occasionally offer sales made up entirely from single owner collections. Please contact us should you have items you would like us to consider for inclusion in our upcoming events. All inquiries are handled in a completely confidential manner. Our services are also available for the private placement marketing of important individual items, marketing plans for large collections as well as for estate planning and settlement purposes. Back copies of many of our previous acution catalogs are still available at \$5 each (w/ prices realized) w/ quantity discounts available if multiple issues are ordered. For further information, please call, e-mail or write.

Photography by Wes Feuz.

© Copyright 2012. All Rights Reserved. No portion of this publication may be copied in any form without the express written permission of Morford's.

## Important Closing Night Information

In addition to our regular (315) 662-7625 office number,  
on the closing night (only!) you may also call us at:

(315) 662-3318\*  
(after 5:00 PM)

(315) 662-3904\*  
(after 5:00 PM)

(315) 662-3429\*  
(after 5:00 PM)

**\*These numbers for  
Closing night only!  
Friday, October 26th, 2012**

**Bidding closes at 10:00 PM on Friday closing night. We will be accepting  
faxes and e-mails on closing night. Our web page will update current  
high bid prices approximately every hour on closing night and will also  
list any important addendum information. All call backs will be made on  
Saturday, October 27th, 2012, beginning at 12 o'clock Noon!**