



**WM Morford**  
Investment Grade Collectibles at Auction

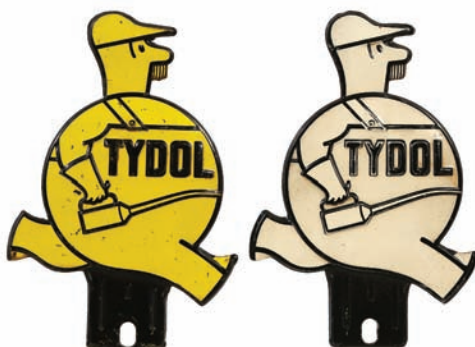
## Investment Grade Collectibles at Auction

Rd #2, Cobb Hill Road, Cazenovia, NY 13035 • 24 Hr. Tel: (315) 662-7625 • 24 Hr. Fax: (315) 662-3570 • morf2bid@aol.com • morfauction.com

**Bidding closes Friday, May 10th, 2013 (See page 40 for Terms & Conditions)**



1).Morning Joy Coffee. 4-3/8 x 5-1/8" (dia.) scarce, early tin litho 1 lb. key wind coffee can for Morning Joy brand (New Orleans Coffee Co., New Orleans). Full, sealed can is clean, bright and excellent (C. 8.5/+) w/ only minor wear. Min. bid \$40.



2).Tydol Bumper Tags. lot includes two different Tydol Oil Co. embossed tin litho advertising bumper tags (ea. 6-7/8 x 4.5"). Both are clean and attractive in appearance, w/ non-offensive light wear on each (C. 8/-). Min. bid \$40 (the pair).



3).Jitney Bus Candy Container. 2-5/8 x 4.25 x 2" early, figural glass candy container in shape of early bus, w/ original metal wheels and tin litho canopy. Excellent overall (some non-offensive minor wear to metal litho top piece). Min. bid \$40.



4).Hershey's Ice Cream Sign. 12 x 20" early, four color, heavy porcelain advertising sign for Hershey's Ice Cream, w/ nice stepped lettering. Clean, bright and exceptionally nice (basically near mint) w/ exception of small chip spot at top edge. Min. bid \$60.



5).Alka-Seltzer Sign. 8-7/8 x 20-7/8" early, fancy glass drug store sign for Alka-Seltzer, featuring unusual embossed metallic lettering. Excellent and all original, sealed in its original frame. Min. bid \$40.



6).Board of Trade Tobacco Bucket. 10.5 x 12-3/8 x 12.5" very early, 10 lb. wooden country store display bucket for Power & Stuart Co.'s "Board of Trade" brand tobacco, has glass viewing window in front, nicely stenciled lid and bale handle. Clean, bright and displays nicely, w/ a little typical light scattered paper loss and expected wear from use (C. 8/-). Min. bid \$60.



7).Bull Dog Jar Rubbers. 12.25 x 10.25 x 7" (as shown) full, early cardboard countertop display box for "Bull Dog" brand canning jar rubbers, featuring great images of Co.'s trademark dog. Powerful and impressive looking display is bright, clean and displays nicely (C. 8+/) w/ only minor edge wear (note: flap piece at top right edge of marquis has archival tape reinforcement spot on backside Complete w/ all 48 full product boxes (boxes excellent). Min. bid \$60 (the set).



8).Mammy Roly Poly. 7 x 6.5" scarce Red Indian brand, figural tin litho tobacco canister in image of black mammy smoking her pipe. Exceptionally nice example is clean, bright and very attractive, w/ only minor wear (a strong C. 8++). Min. bid \$150.





9).Busy Biddy Spice Tins. Lot consists of three different Busy Biddy brand spice tins ranging in size from 3-1/8 x 2.25 x 1.25" to 3.75 x 2" dia. (Davies-Strauss-Stauffer Co., various Pa. cities), each w/ attractive images of Co.'s trademark chicken. Includes 2 oz. ginger; 2 oz. cinnamon and 1-1/2 oz. cream tartar. Clean, bright and excellent overall (avg. C. 8++). Min. bid \$50 (the lot).



10).Pointers Cigars Sign. 13.5 x 18-1/8" early 2-sided tin litho flange sign for Pointers brand 5¢ cigars. Clean and attractive in appearance, w/ some light scuffs and wear on backside (display side C. 8+; back C. 8-). Min. bid \$50.



11).Cherry Sweet Tobacco. 4-7/8 x 3.25 x 2.25" very early, oval cardboard tobacco container for Cherry Sweet brand (F. W. Felgner Co., Baltimore). Attractive and displays quite nicely, w/ a little age toning and some edge chipping/loss at top revenue stamp area (C. 7.5+/8-). Min. bid \$40.



12).Williams' Baby Talc. 5 x 2.75 x 1-3/8" scarce, early tin litho product can for Williams Co.'s talcum powder. Lithography is clean, bright and excellent (C. 8++) w/ minor denting on brass lid. Min. bid \$50.



13).Baker Cocoa Tin. 5.75 x 3.25 x 3.25" scarce, very early, 1 lb. small top tin litho product can for Baker's brand cocoa, w/ beautiful multi-color graphic images of trademark girl on front, back and lid. Clean, bright and excellent overall, w/ only very minor wear (C. 8++). Min. bid \$40.



14).Columbia Spice Tin. 3.75 x 2.25 x 1.25" early tin litho 2 oz. spice tin for Columbia brand allspice (Southernland & McMillan Co., Pittston, Pa.), w/ attractive images of Miss Columbia. Clean, bright and very attractive appearance (C. 8+/), w/ non-offensive minor wear. Min. bid \$30.



15).Reuter's Peanut Tin. 8.75 x 5-7/8" early tin litho 5 lb. pry-lid can for Reuter Co.'s peanuts, featuring great image of elderly Civil War veteran in uniform. Clean and attractive appearance, w/ a little light scattered background wear (C. 8/-). Min. bid \$50.



16).May's Seed Display. 28 x 21.75 x 5-3/8" very early figural painted country store advertising display unit for L. L. May & Co. Seeds (St. Paul, MN) w/ beautiful floral images and gold stenciled lettering. Unit has five doors on each side that pull down to hold and display packs and sits and rotates on wooden base. Has beautiful surface patina and a great primitive country folk art look, w/ a little expected light scattered wear (C. 8+/-). Min. bid \$100.



17).Fur Poster. 21 x 15" very early paper litho advertising poster from the United States Fur Co., St. Louis, featuring "Darktown" style comical image of black hunters having run in with skunks. Clean, bright and excellent (C. 8.5++). Min. bid \$60.





18).Silver Gem Gum Box. 7.5 x 8 x 2.5" (as shown) very early wooden store display box for "Silver Gem" brand chewing gum (Sibley & Holmwood Co., Buffalo, NY) featuring beautifully detailed multi-color litho label. Excellent overall (C. 8+) w/ a little non-offensive light toning and minor wear to label. Min. bid \$40.



19).Truck Builders Paperweight Mirror. 3.5" (dia.) early, heavy celluloid palm style paperweight mirror advertising Johann Mfg. Co., an early truck body builder (note the great Standard Oil Co. advertising on truck). A neat, very unusual piece in very nice condition. Min. bid \$50.



20).Popper's Ace Cigar Tin. 5.75 x 5-1/8 x 5-1/8" early tin litho 50 ct. product can for Poppers Ace brand cigars, featuring nice image of Co.'s trademark plane on front, back and lid. Clean, bright and very attractive appearance (C. 8+/-) w/ a little scattered background scuffing (not offensive, displays better than grade implies). Min. bid \$50.



21).Whiz Tin. 5.25 x 3-7/8 x 1-7/8" scarce, early hand-soldiered product can for Whiz brand auto top enamel (used for re-painting canvas tops) featuring great image of early limo. Attractive and displays nicely (as a C. 8/-) w/ a little non-offensive minor scattered speckling and wear. Min. bid \$40.



22).Ojibwa Magic Lantern Ad. 5 x 4" early, hand-tinted photographic magic lantern glass slide advertising Ojibwa brand tobacco, featuring great image of Co.'s trademark Indian character. Excellent. Min. bid \$30.



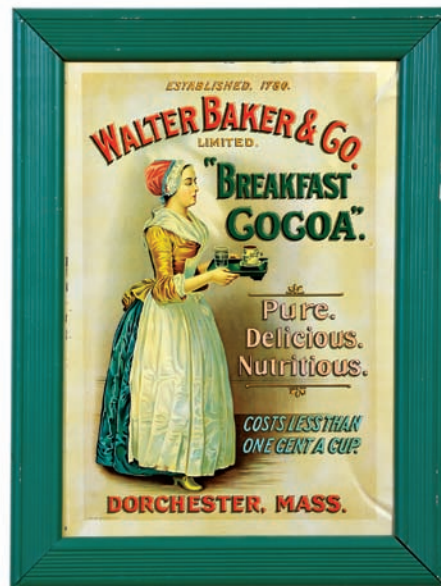
23).Hotel Belvedere Spice Tin. 3.5 x 2-3/8 x 1-3/8" unusual, early tin litho 1-1/4 oz. spice tin (cloves) for Hotel Belvedere brand (Caplin & Co., Baltimore, MD), featuring nice image of Baltimore hotel. Clean, bright and attractive (a strong C. 8+) w/ minor denting and wear. Min. bid \$30.



24).Death Dust Bug Killer Tin. 2-3/8 x 1-7/8 x 1-7/8" unusual, very early tin litho pry-lid can for Meyer Co.'s "Death Dust" brand bug killer, featuring early Ginna type graphics. Clean, bright and excellent (C. 8.5+/-). Min. bid \$40.



25).Grape Juice Dispenser. 12.25 x 6.75" (dia.) scarce, very early, heavy glass advertising dispenser for Naboth Co.'s grape juice, w/ attractive original lettering and its original heavy metal lid (no spigot on backside). Excellent. Min. bid \$70.



26).Bakers Cocoa Sign. 22.75 x 17" (18.5 x 12-7/8" visible) very early tin litho sign for Walter Baker Cocoa, featuring beautiful image of Co.'s trademark girl. Clean and very attractive in appearance (basically displays as a strong C. 8+) although close examination will show fine scratching line in very outer left border area and a couple non-offensive light crimps marks in outer right border section (they don't detract from great overall look of piece). Framed. Min. bid \$100.

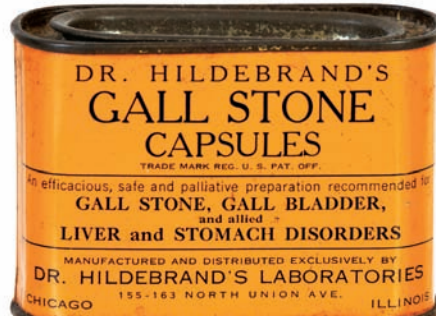


27).Dougherty's Pie Filling Poster. 28 x 21" early paper litho advertising poster for Dougherty Co.'s fruit pie filling product, featuring wonderful, multi-color lithography. Clean, bright and very attractive appearance (basically displays as a strong C. 8/+ in appearance) w/ exception of a little minor chipping/loss at very outer edges and at a couple fine factory fold lines. Min. bid \$40.





28).Atlantic Oil Can. 8.75 x 9.5 x 3.25" early tin litho 1 gallon size oil can for Atlantic Refining Co.'s "Heavy Russian White" motor oil. Clean, bright and very attractive in appearance (basically a strong C. 8/+) w/ exception of wear in the stamped "Heavy Russian White" labeled contents section. As found still in its original marked box. Min. bid \$40.



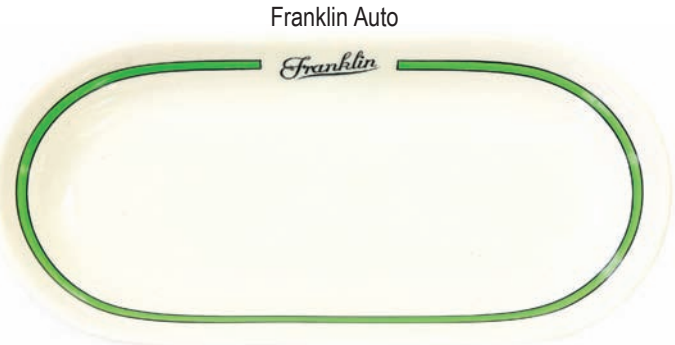
29).Gall Stone Treatment Tin. 2.25 x 3-3/8 x 1-3/8" early tin litho pry-lid quack medicine tin for Dr. Hildebrand's Gall Stone Capsules (treatment for gall stones, gall bladder, liver and stomach disorders). Excellent overall, w/ oxidized darkening to gold flash finish on lid. Min. bid \$20.



30).Derbies Condom Tin. 1.75 x 2-1/8 x 1/4" scarce, early tin litho condom tin for Derbies brand, w/ racing themed logo. Attractive and displays nicely, w/ minor background soiling spot and some light staining and wear on backside (front C. 8+/-; back C. 7.5+/8-). As found, might improve w/ cleaning. Min. bid \$40.



31).Paper Label Spice Tins. Lot consists of four early paper label spice tins (sizes range from 2-7/8 x 2-3/8 x 1.5" to 3.5 x 2-3/8 x 1-3/8"). Includes: Defiance, Wigwam, Elk and Chef brands. All are excellent. Min. bid \$40 (the lot).



Franklin Auto

32).Franklin Autos Dish. 4-5/8 x 9.75 x 1.5" scarce, early, fine china (made by Syracuse China Co.) advertising serving dish from Franklin Automotive Co. Very high quality piece (probably from Co.'s executive dining area). Excellent condition (like new). Min. bid \$40.



33).Heinz Juice Glasses. Lot consists of a full box of twelve ca. 1950's glass Heinz Co. tomato juice glasses (each app. 5-1/8 x 2.5" dia.), w/ enameled advertising on both sides (pictures Co.'s Mr. Tomato Head on front and lists various juice flavors inside Co.'s keystone logo on back). Never used, as found still in their original box. Min. bid \$30 (the lot).



34).Havoline Sign. 11-1/8 x 21.5" ca. 1940's 2-sided tin litho sign for Havoline brand motor oil. Clean and very attractive appearance (a strong C. 8/+) w/ slight soiling and a little very minor wear. Min. bid \$40.



35).Orange Crush Dispenser. 13.25 x 6.5" unusual, early embossed syrup dispenser for Orange Crush brand soda. Has embossed advertising on both the chrome finished metal lid and the heavy patterned amber colored glass dispenser base. Min. bid \$40.



36).Wrigley's Gum Plate. 10" (dia.) scarce, early tin litho hanging art plate style sign, featuring beautiful multi-color lithography advertising Wrigley Co.'s "Juicy Fruit" gum. Clean, bright and displays very nicely (as a C. 8/+) although close-up examination will reveal a little non-offensive light wear and a couple small litho chips at 3 o'clock at outer edge of image area (critical grade C. 7.5+/8-). Min. bid \$60.



37).Moxie Top. 1.5" (dia.) x 1.25" early celluloid toy top advertising Moxie soda, featuring nice image of Co.'s promotional Moxiemobile vehicle. Excellent overall, w/ trace bit of fade. Min. bid \$30.





38).Rosemary Spice Tin. 2.25 x 2.25 x 1.25" unusual, 1 oz. spice tin (Cloves) for Cash Wholesale Grocers, Chicago "Rosemary" brand, w/ attractive image of Co.'s trademark girl on both sides. Clean, bright and displays nicely w/ some light scattered background wear (C. 8-). Min. bid \$30.



39).Packard Hood Ornament. 6.75 x 8.5 x 3-3/8" beautiful, large, figural automotive hood ornament from a luxurious ca. 1925/26 Packard automobile. A powerful and very impressive looking piece that is all original, w/ beautiful detailing and rich, all original surface patina (a strong C. 8++). Min. bid \$50.



40).BDV Pocket Tin. 2-7/8 x 3.5 x 1" unusual, early tin litho vertical pocket tin for BDV brand Virginia cigarettes ("Cork-Tipped" embossed on gold flash finished lid). Clean, bright and excellent (a strong C. 8++), w/ trace hint of minor crimping. Australian. Min. bid \$30.



41).Jackie Coogan Peanut Butter. 3-3/8 x 3.75" (dia.) scarce variation tin litho 12 oz. peanut butter pail for Kelly Co.'s "Jackie Coogan" brand, w/ great movie scene images of silent era child movie star actor all around (note: he played the kid in J.C. Fields movie as well as many other leading roles and in later life became "Uncle Fester" in Adams Family series). Excellent overall (C. 8+). Min. bid \$50.



42).Porcelain Whiskey Sign. 6 x 14" very early, heavy porcelain chain hung sign for McNish & Co.'s "Doctor's Special" brand whisky, featuring incredible, finely detailed image of patient in Dr.'s office, w/ bottle on desk. A powerful and very impressive looking piece! The main interior area is excellent (interior a strong C. 8++), w/ some chipping spots along top edge and some non-offensive light oxidized chipping/wear along other very outside edges, but overall attractive and displays nicely, w/ heavier oxidizing on backside (made by Balt. Enamel & Nov. Co., NY). Min. bid \$60.



43).Winsor Coffee Tin. 5.25 x 4-1/8" (dia.) scarce, very early, tin litho 1 lb. coffee can for "Winsor" brand (McMullen Winsor Coffee Co., Chicago) featuring fine, beautifully detailed litho image of George and Martha Washington. Excellent overall, w/ a clean, very attractive appearance (a strong C. 8++), w/ minor background wear (no lid). Min. bid \$40.



44). Movie Lobby Card. 11 x 14" great, ca. 1952 cardboard movie advertising title card for 20th Century-Fox's movie comedy "Monkey Business" starring Cary Grant, Marilyn Monroe, Ginger Rogers and Charles Coburn (can it get any better?). Attractive and displays nicely (C. 8-) w/ minor toning and a slight bit of non-offensive, minor staining at outer margins. Min. bid \$40.



45).Seal of NC Tobacco Tin. 6.5 x 4-7/8" (dia.) early tin litho small top style canister for Marburg Co.'s "Seal of North Carolina" brand tobacco, featuring beautiful images on both sides. Clean and very attractive appearance (C. 8+). Min. bid \$50.

# TOILET ARTICLES

46).Toilet Articles Sign. 9-5/8 x 47-5/7 x 1-3/8" early, hand-painted wooden interior store sign from Toiletries section of an early drug or department store. Attractive and displays nicely, w/ strong colors and very nice overall look, although piece has had a clear coated / varnished finish applied to upper surface at some point over the past 20 or so years (some scuffing and general overall wear to clear upper surface finish- paint underneath very nice). Min. bid \$50.





47).Ticket Office Sign. 3.5 x 23" very early, heavy enameled porcelain "Ticket Office" sign, probably from early railroad or steamship office. Excellent overall, w/ non-offensive light surface wear spot at outer left edge. Piece is still attached to its original wooden backing board (board 4.5 x 26.5 x 7/8"). Min. bid \$50.



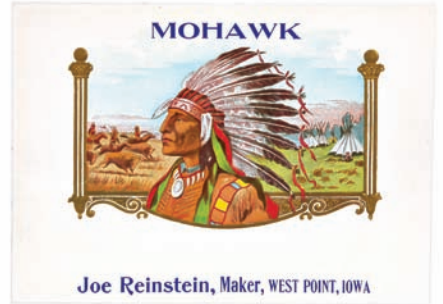
48).Throat and Bronchial Medicine Tin. 1.75 x 2-7/8 x 1/2" scarce, very early 2-ps. tin litho throat and bronchial affections medicine tin from Charles Holzhauser Co. Has fine early Ginna style lithography by American Stopper Co., Brooklyn, NY. Clean and excellent (C. 8.5+). Min. bid \$20.



49).Clicker Lot. Lot consists of nine early tin litho advertising clickers (each app. 2 x 1"). Includes: Smile soda, French Dressing, El Capitan Coffee, Quaker State Motor Oil, Buster Brown Hosiery, Poll Parrot Shoes, Peter Weatherbird Shoes, Sundial Shoes, New and True Coffee. Range from very good to excellent (light wear on a couple). Min. bid \$40 (the lot).



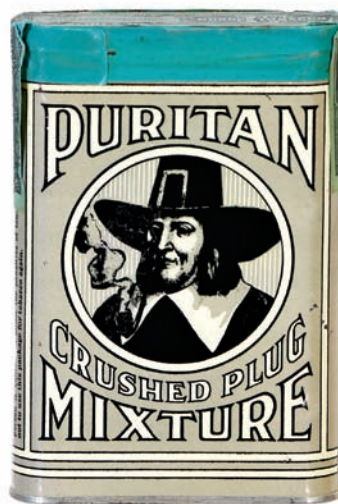
50).Indian Cigar Labels. Lot consists of two early, unused interior cigar box labels, each featuring beautifully embossed, highly detailed multi-color lithography. Includes: "Black Hawk" (7 x 8"); and "Mohawk" (6 x 8.25"). Both are clean and excellent (professionally graded as EX and VF). Min. bid \$50 (the pair).



51).Battleship Toy Blocks. 11-1/8 x 21-1/8 x 2-7/8" full, boxed set of ca. 1890's large paper covered wooden toy puzzle blocks by Mc Loughlin Bros., NY, which piece together to form different beautifully lithographed images of US Naval White Squadron ships. Puzzle pieces are clean, bright and beautiful w/ only minor wear; w/ some soiling, staining and light wear to image on outer box lid. Min. bid \$90.



52).Bright Eye Baking Powder Tin. 5-1/8 x 3" (dia) very early product container for "Bright Eye" brand baking powder (shiny finish paper label on cardboard body, w/ metal base and lid) featuring finely detailed high quality lithography. Clean and attractive appearance and displays nicely (C. 7.5+/8-) w/ minor scattered denting, paper loss and some expected jagged wear along separation edge between lid and can. Min. bid \$40.



53).Puritan Pocket Tin. 4-3/8 x 3 x 7/8" early tin litho vertical tobacco pocket tin for Phillip Morris Co.'s Puritan mixture. Full, sealed, never opened tin is clean, bright and excellent in appearance (a strong C. 8++) w/ a little minor denting and wear. Min. bid \$50.



54).Sure Shot Tobacco Pack. 5 x 3 x 1.75" full, sealed (never opened) 2 oz. size tobacco soft pack for Spaulding & Merrick Co.'s "Sure Shot" brand chewing tobacco, featuring attractive image of Co.'s trademark Indian character. Clean, bright and excellent (series 1910 tax stamp). Min. bid \$30.



55).De Laval Match Holder. 6-3/8 x 4" early, embossed tin litho die-cut advertising match holder in shape of Co.'s cream separator (1 million in use variation). Clean and very nice overall (C. 8++), w/ a little non-offensive surface tarnishing and wear to silver flash finish on figural metal sections that hold matches. Min. bid \$40.





56).Seeds Display Box. 16.5 x 28.75 x 28" (as shown) early tin litho country store counter-top seed display box for Landreth's brand garden seeds. Has a beautiful, high quality tin litho display sign at back (H.D. Beach Co. Litho.) featuring stunning, detailed, multi-color images of various fruits and vegetables, chicken, etc., w/ a lithographed faux wood grain finish to outside box, w/ 40 individual compartments inside for holding and displaying seed packs. Clean, bright and very attractive in appearance (displays as a strong C. 8/+) w/ exception of a little non-offensive wear in dark background area of sign. Min. bid \$60.

Auto Box/Humidor



57).Auto Box/Humidor. 5-5/8 x 9 x 2.75" early, very high quality hinged lid cigar box/humidor, featuring beautifully detailed image of early racing car on lid. Heavy, high quality copper over cedar wood, w/ nice original surface patina. Excellent. Min. bid \$50.



58).Delivery Sign. 6.5 x 27.75 x 1.25" great early commercial building sign w/ heavy metal framing, featuring wonderful gilt lettering and pointing hand image in reverse glass pointing way for deliveries. Excellent and all original, w/ great look and nice surface patina. Min. bid \$50.



59).New Hampshire Plate Topper. 7 x 13-3/8" early, heavy porcelain automotive license plate attachment featuring image of NH's "Old Man of Mountain" landmark. Crisp and like new (appears never used). Min. bid \$30.



60).Contraceptive Sponge Tins. Lot includes five early female contraceptive sponge tins and containers (ea. appx. 1.75" dia. x 1"). Yellow examples are tin litho, blue ones are cardboard. They are clean and very nice overall (avg. C. 8/+), w/ only minor wear. Min. bid \$40 (the lot).



61).Kangaroo Soap Box. 16 x 16.75 x 13" as shown (4 x 16.75 x 13" w/ lid closed) early wooden country store display box for Manhattan Soap Co.'s "Kangaroo" brand soap. Inside display label is attractive and displays nicely (C. 8/-), w/ light chipping loss at outer margin edge and some typical non-offensive faint background staining (from wood knots underneath); outside front label has general wear and paper loss (one on backside is very nice). Min. bid \$50.



62).Moxie Die-Cut. 10-5/8 x 11.5" scarce, early cardboard die-cut advertisement for Moxie, featuring Frank Archer and Moxie girl. "Weather Bureau" building has inset cardboard blotter type material which changes color to forecast weather, w/ an attached thermometer beneath. Piece is attractive and displays quite nicely (as a C. 8/+)- although bottom of thermometer tube is broken off and upper tip of building at top is missing, w/ some edge wear and minor creasing at base (critical grade C. 7.5+/-/8-). Min. bid \$40.



63).Old Dutch Cleanser Doll. 17.5" (hgt.) unusual, early figural stuffed advertising cloth doll in likeness of trademark "Old Dutch Cleanser" woman. Excellent w/ a nice rich surface patina and just the right amount of very slight wear (C. 8/+). Min. bid \$40.



379).Talking Machine Poster. 21 x 14" early advertising poster by Sears Roebuck Co., promoting an exposition for "Graphophone Grand" brand talking machines. Quite nice overall and appears never used, w/ some age toning and a couple repaired tears (closed on backside w/ invisible archival tape). Min. bid \$40.





64).Tiger Tobacco Tin. 3-7/8 x 6-1/8 x 2.25" early tin litho hinged lid 25¢ size can for Tiger brand tobacco in unusual blue color variation. Clean, bright and exceptionally nice appearance (displays a strong C. 8.5/+) w/ exception of non-offensive light scratch mark on narrow front side edge. Min. bid \$40.



65).Coffee Sample. 2.25 x 2.75" (dia.) early tin litho key wind style miniature sample size coffee can for Campbell & Wood Co.'s "Breakfast Cheer" brand, w/ nice images of trademark girl. Clean and attractive, w/ a little light wear and some speckling in gold band around the top lid (C. 7.5+/8-). Min. bid \$30.



66).Tobacco Trade Card. 3-1/8 x 4.5" early advertising trade card for Lorillard Co.'s "49" Cut Plug brand tobacco, featuring great gold mining image. Clean, bright and excellent. Min. bid \$40.



67).Maryland Club Pocket Tin. 4-1/8 x 3-1/8 x 1" early tin litho vertical tobacco pocket tin for Marburg Co.'s Maryland Club brand, featuring nice image of trademark building. Clean, bright and excellent (front 8.5+; back 8/+ ) w/ a couple light rubs on backside. Min. bid \$50.



68).City Mills Spice Box. 12.5 x 19-1/8 x 10-5/8" early wooden store display box for W. G. & B. Co.'s City Mills brand spices (Old Plantation, NY) featuring beautiful multi-color graphics. Label is clean bright and very attractive in appearance, w/ some darkening and staining at outer edges. Min. bid \$40.



69).Comfort Talc Tin. 4 x 2.25 x 1-7/8" oval shaped tin litho product tin for Comfort brand healing powder, w/ attractive early graphics (pictures nice nurse image on backside). Clean and very attractive (C. 8++). Min. bid \$40.



70).Gem Wringers Toy Sign. 24.75 x 16-5/8" (22.75 x 14.75" visible) great early cardboard litho sign advertising "Gem" Co.'s toy clothes wringers, featuring wonderful image of young girl using Co.'s toy wringer to clean her dolls clothes. Has strong colors and displays quite nicely w/ some non-offensive light scattered soiling and wear (C. 8/-). Complete w/ its original period frame. Min. bid \$70.



71).Big Chief Cigar Sign. 13-5/8 x 9.75" important, early, embossed tin litho, easel-back counter-top stand-up display sign for David Spruk Co.'s "Big Chief" brand 5¢ cigars, featuring beautifully detailed image of Fire Chief (lithography by Kaufmann & Strauss). Outstanding sign is clean, bright and exceptionally nice in appearance (a strong C. 8++) w/ a little non-offensive light skimming and wear (critical grade C. 8+/-). Min. bid \$150.

#### A. Hussey Cigar Tobacco



72).Hussey Tobacco Sign. 17 x 13" wonderful, early paper litho (on cardboard) sign advertising "A. Hussey & Co.'s" cigar tobacco, featuring wonderful color graphic image of young, nude "hussy" standing in tobacco plants, smoking a cigar. Attractive and displays nicely, w/ a little non-offensive light staining, toning and minor wear (C. 8/-). Min. bid \$50.



Cigar Cutter



73).Mechanical Cigar Cutter. 1-5/8 x 5 x 3.75" early, figural, cigar box shaped tabletop mechanical cigar cutter, w/ "Habana Flor Fina" incised into lid. Heavy, high quality painted metal, w/ nice surface patina (C. 8/+). Min. bid \$50.



74).Anti Axis Match Box Holder. 2.5 x 1.5 x 1-1/8" unusual, early celluloid (over tin) WWII era anti-axis themed matchbox holder featuring great image of Allies hand strangling Hitler, and filled w/ anti Hitler and Moussolini bashing text on back and along side. Excellent. Min. bid \$30.



75).Fairway Spice Tins. Lot consists of two early Fairway brand spice tins, each w/ beautiful color graphics (metal top and bottom, w/ paper over cardboard body). Includes mustard 3.25 x 2.25 x 1.5"; and cardamon 2.5 x 1-7/8 x 1-3/8". Both are excellent. Min. bid \$40 (the lot).

Bootjack Brand Tobacco



76).Tobacco Advertising Boot-Jack. 9-7/8 x 3.5 x 2-3/8" very early, fancy embossed cast iron advertising boot jack for "Musselman's Boot Jack" brand plug tobacco, w/ attractive patterned design and a nice rich surface patina. Excellent and all original. Min. bid \$50.



77).Borden's Clock. 15.25" (dia.) x 3.25" early metal and glass light-up clock advertising Borden's Ice Cream, w/ nice image of Elsie (Pam Clock Co.). Excellent and all original, in nice working condition (very minor denting on backside). Min. bid \$50.



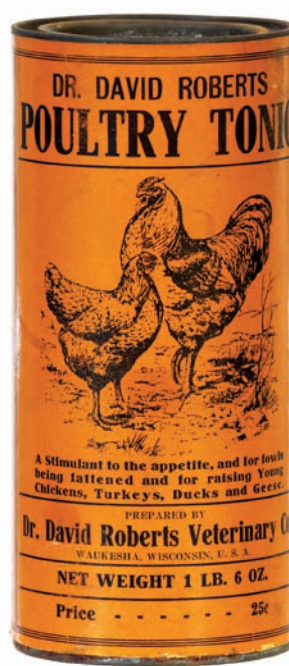
78).Holiday Poppers Box. 8.75 x 7.5 x 2.75" early holiday "toy crackers" (holiday poppers) 2-ps. box, featuring great graphic image of teddy bear, goliath, etc. on cover, complete w/ seven unexploded holiday poppers inside. Excellent (C. 8.5). Min. bid \$40.



79).Adams Gum Box. 9-7/8 x 4.25 x 1.5" early cardboard store display box for Adam's Co.'s Tutti Frutti chewing gum, w/ fancy, lift-up glass cover inside. Inner box is crisp and like new, w/ minor soiling and a slight bit of wear from use to outer lid image (lid C. 8/-). Min. bid \$30.



80).Adams Gum Jar. 11.75 x 4.75 x 4.75" early glass candy store jar advertising Adams brand chewing gum, w/ attractive etched lettering on front and ground lid and stopper at top. Excellent. Min. bid \$40.



81).Veterinary Tin. 7.25 x 3.25" (dia.) unusual, early 1 lb. 6 oz. size pry-lid product can for Dr. David Roberts Veterinary Co.'s Poultry Tonic. Full, never used can has metal top and base, w/ shiny finish paper label. Excellent overall (C. 8+++) w/ minor oxidizing to metal lid. Min. bid \$30.



82).Kerr Walton Gum Box. 9-7/8 x 3-3/8 x 8.75" (as pictured); 8.75 x 3.5 x 1.25 (lid closed). Scarce, early cardboard display box for Kerr Walton Co.'s Sweet Birch chewing gum, featuring beautiful multi-color graphic image on inside label (originally held 100 1¢ pieces). Inside box and inner label are clean, bright and like new (C. 8.5+); outer box pretty nice, w/ some light toning, tatters and wear (C. 7+++). Min. bid \$40.





83).Western Boot Cigar Holder. 6.75 x 6 x 3.5" early, heavy figural cast iron cigar holder in shape of early cowboy boot that is affixed to a horseshoe shaped base. Very high quality piece has excellent detailing and a nice, rich surface patina to its nicked surface finish. Excellent. Min. bid \$40.



84).Socony Aircraft Oil Sign. 12-1/8 x 8" early, heavy, 2-sided porcelain lubster sign for Socony (Standard Oil Co., NY) No. 2 Aircraft Oil. Outstanding sign is crisp, bright and like new (near mint), as found never used. Min. bid \$50.



85).Biltridge Auto Parts Box. 9 x 9" early 2-piece cardboard litho product box for Biltridge brand Ignition Cables, featuring great looking image of race car on lid. Powerful and impressive looking piece is attractive and displays nicely (C. 8-) w/ minor soiling and wear. Min. bid \$40.



86).Flour Match Safe. 2.75 x 1.5 x 3/8" early celluloid covered match safe advertising Spear Head brand flour, w/ nice image of flour sack on backside. Clean and attractive, w/ minor toning and hint of slight wear from use. Min. bid \$40.



87).Baker's Cocoa Butter Tin. 1-7/8 x 2.75 x 3/4" scarce, very early, small 2-ps. product can for Baker's brand cocoa butter. Clean, bright and exceptionally nice (C. 8.5++). Min. bid \$30.



88).Vicks Door Push. 6.5 x 3-7/8" scarce, early porcelain advertising door push for Vicks Va-tro-nol nose and throat medicine. Clean and exceptionally nice overall w/ very minor edge wear. Min. bid \$70.



89).Mountain Rose Box. 5-1/8 x 2-5/8 x 3/4" very early 2-ps. cardboard cosmetics box, featuring wonderful graphic image of cover and make-up kit inside. Excellent (C. 8+), w/ slight background wear. Min. bid \$30.



90).Pipe Major Pocket Tin. 4.5 x 3 x 7/8" early tin litho vertical tobacco pocket tin for Brown & Williamson's Pipe Major brand (same image both sides). Clean, bright and attractive appearance (C. 8+) w/ minor oxidizing/wear at top of lid (where tax stamp once sat). Min. bid \$50.



91).Arrow Coffee Tin. 5.5 x 4.25" scarce, early tin litho 1 lb. coffee can for Arrow brand (Atwood Co., Minneapolis, MN) w/ same great image on both sides. Attractive appearance (displays as a C. 8+), w/ a little non-offensive slight denting, and some light scuff/scratching spots- mostly confined to side background area (critical grade C. 7.5/+). Min. bid \$50.



92).Coffee Match Safe. 2.75 x 1.5 x 3/8" scarce, early celluloid covered match safe advertising "Gilt Edge" brand coffee (Gallup Co., Norwich, Ct.), w/ nice image of product can on front and text advertising on backside. Excellent overall, w/ only minor soiling and wear. Min. bid \$40.



93).Barber Shop Paperweight. 4-1/8 x 2.5 x 3/4" early glass advertising paperweight for a Philadelphia area barber shop, featuring nice hand-tinted image of topless model. Excellent, w/ slight bit of fade to image. Min. bid \$30.





94). Pearl Harbor Plate Topper. 4.5 x 4.5" scarce, early WWII era embossed tin litho patriotic bumper tag / license plate topper. Crisp, bright and like new (appears never used). Min. bid \$40.



95). Fatima Match Holder. 3-1/8 x 5-1/8 x 5-7/8" unusual, early, fine porcelain china match holder advertising Fatima brand cigarettes (same image both sides), w/ ashtray at base. Excellent overall (some non-detracting faint crazing in glaze at base). Lot also includes full, early pack of Fatima cigarettes. Min. bid \$30.



96). Santa Fe Spice Tins. Lot consists of two early Santa Fe brand spice tins, ea. w/ beautiful color graphics (metal top and bottom, w/ paper over cardboard bodies). Includes sage 3.25 x 2.25 x 1.25"; and nutmeg 2.25 x 2.25 x 1.25". Both are excellent, w/ minor soiling on nutmeg (sage C. 8.5/+; nutmeg C. 8/+). Min. bid \$40 (the lot).



97). Moxie Man Sign. 6-7/8 x 4.5" early embossed tin litho sign for Moxie, in likeness of Co.'s soda jerk character. Clean, bright and very attractive appearance (basically displays as a strong C. 8+) w/ exception of some fine scattered speckles and a scratch mark at bottom chin area. Min. bid \$60.



98). 7-Up Clock. 15.75 x 15.75 x 4.5" ca. 1950's electric light-up metal advertising clock for 7-Up brand soda. Metal, glass and plastic, in very nice overall condition (runs). Min. bid \$40.



99). Nigger Hair Tobacco. 6-5/8 x 5.5" (dia.) early tin litho tobacco pail for Leidersdorf Co.'s "Nigger Hair" brand, featuring great image of Co.'s trademark African native (same image both sides). Clean, attractive and displays quite nicely (as a C. 8+) w/ light dent at base and a little non-serious light scattered chipping/wear (critical grade C. 7.5+/-). Min. bid \$50.



100). Cadette Talc Tin. 7-3/8 x 2.25 x 1.25" early tin litho 3 oz. figural product can for Cadette brand baby talc w/ gray coat (Cadette Products Co., Rutherford, NJ). Full, never used tin is clean, bright and like new. Min. bid \$40.



101). Cadette Tooth Powder Tin. 7-3/8 x 2.25 x 1.25" early tin litho 3 oz. figural product can for Cadette brand children's tooth powder w/ red coat (Cadette Products Co., Rutherford, NJ). Full, never used can is attractive and displays nicely, w/ some light general fading to red and minor storage wear (C. 8/-). Min. bid \$40.



102). Cadette Tooth Powder Tin. 7-3/8 x 2.25 x 1.25" early tin litho 3 oz. figural product can for Cadette brand children's tooth powder w/ green coat (Cadette Products Co., Rutherford, NJ). Full, never used can is attractive and displays nicely, w/ minor storage wear and small dent mark on backside (C. 8+/-). Min. bid \$40.

# Sweet Wheat Gum



103). Sweet Wheat Gum Jar. 10.75 x 4.5 x 4.5" extremely rare, early glass countertop country store advertising gum jar for "Sweet Wheat" brand chewing gum. Mold blown w/ hand applied lip and ground lid, w/ nice acid etched advertising on both sides. Excellent. Min. bid \$50.





104).Veterinary Sign. 11-1/8 x 10-1/8" early die-cut cardboard sign for Barker's veterinary medicines. w/ hole at top for string hanging. Never used sign is clean, bright and like new (near mint). Min. bid \$40.



105).Singing Waiter Roly Poly. 7 x 6.5" scarce variation Red Indian brand figural tin litho tobacco can in image of singing waiter. Attractive and displays very nicely (as a C. 8+) w/ exception of a little non-offensive wear and a few dents on base. Min. bid \$60.



106).Bound Books Biscuit Tin. 6-3/8 x 6-3/8 x 4-7/8" ca. 1901 fancy embossed figural tin litho biscuit tin from Huntley & Palmers Co. in shape of bound classics books, w/ embossed design and beautifully marbled pages (Literature). Very attractive (C. 8+), w/ only minor wear. British. Min. bid \$50.



107).Mason's Blacking Box. 11-3/8 x 12.25 x 9-3/8" as shown (2.75 x 12.25 x 9-3/8" w/ lid closed) very early wooden store display box for Mason's brand boot black, featuring beautiful multi-color graphics on inside label. Very nice overall w/ some toning and wear to outside front label (inside label bright and like new). Min. bid \$40.



108).Porcelain Paint Sign. 25.75 x 21.25" early four color porcelain sign in shape of paint bucket, advertising "Dutch" brand paints. Has a non-offensive small 1/2" background chip, a couple tiny background pings and very minor rub marks, but overall is clean, bright and excellent in appearance, w/ nice surface sheen (non-graphic backside has some oxidized weathering). Min. bid \$50.



109).National Brewing Tip Tray. 4.5" (dia.) early, pre-prohibition era, tin litho advertising tip tray for National Beer (National Brewing Co., San Francisco) featuring great image of charging cowboy on horseback holding up bottle of beer. Clean and very attractive appearance (displays as a strong C. 8+) w/ some non-offensive crazing and minor wear. Min. bid \$70.



110).Moxie Die-Cut. 11 x 3.5" extremely rare, early embossed cardboard die-cut sign for Moxie soda (Nerve Food era), featuring beautifully embossed, multi-color lithography. Clean, bright and exceptionally nice (a strong C. 8.5+) w/ minor dark spot at top of front tire. Min. bid \$60.



111).Blue Tiger Tobacco Bin. 11.75 x 8.25 scarce, early blue variation store size tobacco bin for Lorillard Co.'s Tiger brand tobacco (originally held 48 packages). Golds are bright and piece displays very nicely (as a solid C. 8+) although close examination will show some non-offensive light background rubs and denting (critical grade C. 8-). Min. bid \$100.

# Tiger Tobacco Proof



112).Tiger Tobacco Proof Sign. 20 16.25" unusual, early cardboard litho advertising proof sign for Lorillard Co.'s Tiger brand tobacco. Clean, bright and attractive in appearance (C. 8++) w/ exception of some chipping and loss in outer white border area (would be easily hidden if framed or matted). Min. bid \$60.





113).Home Brand Packaging Lot. Lot of six different early Griggs Cooper Co. "Home Brand" spice tins, ranging in hgt. from 2.25" to 6-1/8" (allspice is tin litho, others cardboard w/ metal top and bases). Lot also includes an empty kitchen matches box (2.75 x 5 x 1.5"). Items are attractive and display nicely (avg. C. 8+/-) w/ light expected wear on a couple. Min. bid \$30 (the lot).



114).Hard A Port Tobacco Tin. 2-5/8 x 6-1/8 x 3-7/8" very early hinged lid 4 x 6 style 8 oz. size paper label can for Thompson Moore Co.'s "Hard A Port" brand tobacco, featuring beautiful multi-color graphic wrap-around label (different images both sides) w/ Act of 1890 tax stamp on lid. Clean, bright and excellent overall (displays as a strong C. 8.5/+) w/ exception of small spot of paper loss on front side. Min. bid \$40.



115).Eve Pocket Tin. 3-5/8 x 3.5 x 1-1/8" early tin litho vertical tobacco pocket tin for Globe Co.'s "Eve" brand. Attractive and displays very nicely w/ slight bit of fade and minor scattered wear (C. 7.5+/-). Min. bid \$50.



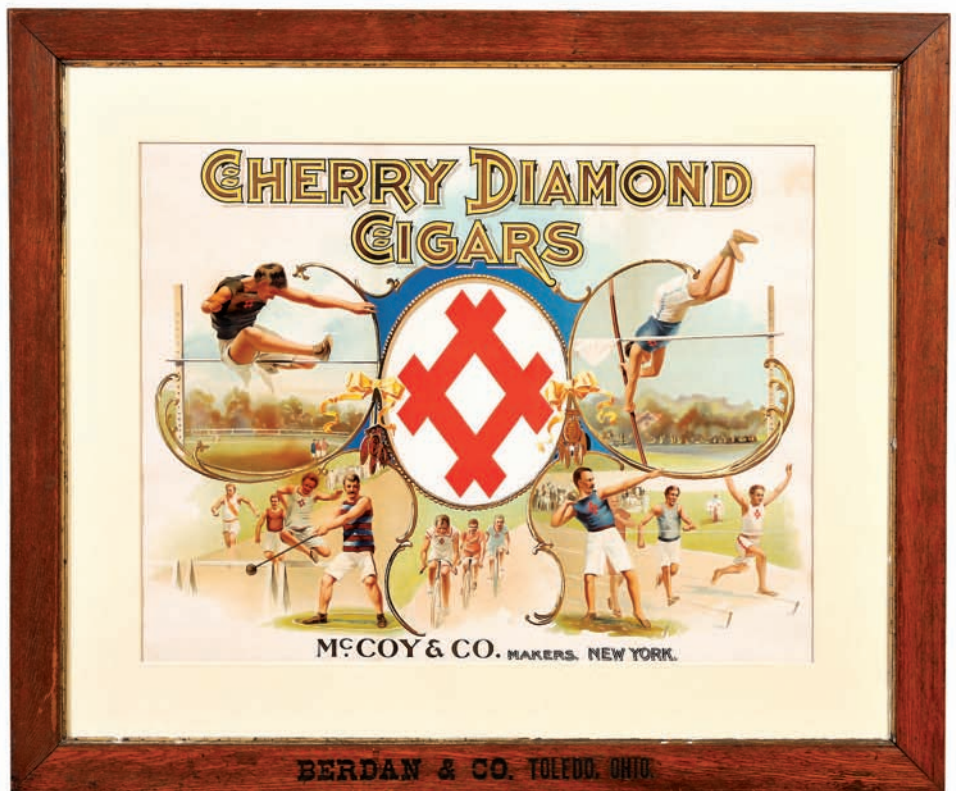
116).Buffalo Turbines Sign. 12 x 18" unusual, early 2-sided metal sign for Buffalo Turbine Co.'s agricultural crop farming equipment. Excellent, never used condition (near mint). Min. bid \$40.



117).Tiger Tobacco Pocket Tin. 3 x 3 x 7/8" early tin litho vertical tobacco pocket tin for Lorillard Co.'s "Tiger" brand. Clean and attractive appearance (basically a strong C. 8+/-) w/ a couple non-offensive wear spots. Min. bid \$40.



118).Inman Flying Circus Poster. 37.75 x 25" outstanding, large, original ca. 1930's paper litho poster for the Inman Bros. barnstorming daredevil flying circus air show w/ a paste-on at bottom announcing a show in Moberly, Missouri. Very impressive, never used poster is clean, bright and excellent (near mint). Min. bid \$500.



119).Cherry Diamond Cigar Sign. 30 x 36" (20 x 26" visible image) important, large, early paper litho sign advertising "Cherry Diamond" brand cigars, featuring powerful and impressive multi-color graphic track and field sporting images. Clean, bright, beautiful appearance, w/ non-offensive minor age tone spot in upper right corner background area (a strong C. 8+/-). Nicely framed and matted in a period antique frame. Min. bid \$150.





**120).Talc Samples.** Lot consists of a nice group of eight different miniature tin litho talcum powder sample tins (each app. 2.25" in hgt.). Includes: Squibb; Massatta; Lilas DeFrance; Corsage Bouquet; Gardenia; Mulford's; Wisteria; and Prichard & Constance Amami brands. Excellent overall. Min. bid \$60 (the lot).

### Collar Boxes



**121).Collar Boxes.** Lot of two very early cardboard collar boxes (ea. app. 4 x 4 x 2-1/8" to 4 x 4 x 2") Including: "Elite" brand; and Phil'a. Collar Co.'s "Crown Prince". Both are very good to excellent overall w/ minor toning and slight hint of foxing to Crown Prince example. Min. bid \$60 (the lot).



**122).Candy Tin.** 7.25 x 8.5" (dia.) unusual, early tin litho store size candy pail from Vaillancourt Confectionery Co. (Montreal, Canada) featuring beautiful farm scene. Clean, bright and very attractive appearance (basically displays as a C. 8/+) although close examination will show a little scattered wear in background including a couple small, non-detracting light rust specks and scratch marks, some non-offensive denting on backside, w/ some darkening and general wear to gold flash finish of lid. Min. bid \$40.



**123).Nutex Condom Tin.** 1-5/8 x 2-1/8 x 1/4" early tin litho condom tin for Nutex Co.'s Radium brand condoms. Clean, bright and excellent (C. 8.5+) w/ only minor wear. Min. bid \$30.



**124).Nutex Condom Tin.** 1-5/8 x 2-1/8 x 1/4" early tin litho condom tin for Nutex Co.'s Nu-Tip brand rolled condoms. Clean, bright and like new (near mint). Min. bid \$30.



**125).Nutex Radium Condom Tin.** 1-5/8 x 2-1/8 x 1/4" early tin litho condom tin for Nutex Co.'s Radium brand condoms. Clean, bright and like new (near mint). Min. bid \$30.



**126).Wonderful Soap Box.** 16.25 x 16 x 9.5" (as pictured), 8 x 16 x 9.5" (lid closed) unusual, early store display box for Shoudy Co.'s "Wonderful" brand laundry soap, featuring beautiful, nicely detailed multi-color inside paper label of women doing laundry. Inside label is clean, bright and exceptionally nice (C. 8.5) w/ a little edge wear in outer margins; outer box labels have typical general darkening, toning and wear (outside labels fair to poor). Min. bid \$50.



**127).Whiskey Art Tray.** 10-1/8" (dia.) scarce, early tin litho Vienna Art Plate advertising Silas Moore brand whiskey. Clean, bright and very attractive appearance (basically displays as a strong C. 8/+) although close examination will reveal light staining at bottom border edge and some non-offensive light scattered wear (critical grade C. 8/-). Min. bid \$40.



**128).Witch Pitcher.** 4-1/8 x 3-1/8 x 3-1/8" unusual, early fine china cream pitcher featuring great image of flying witch w/ cat, marked "Salem 1692" (stamped made in Germany and Willis Whipple & Co., Salem, Mass. on base). Excellent. Min. bid \$40.





129).Polyshine Shoe Polish. 2-3/8 x 8.5 x 5.75" early, cardboard product box for Polyshine brand shoe polish, complete w/ its 12 original, full product tins. Clean, bright and excellent (note: also includes separated, original box lid, which has had some professional reinforcement and repairs on backside). Min. bid \$40.



130).Stock Food Match Safe. 1-3/8 x 2.25 x 3/8" early celluloid covered match safe advertising "Molassine", a veterinary stock food product w/ advertising all around (side text notes health and restorative properties and worm eradicator benefits). Clean and excellent (English). Min. bid \$40.



131).Brownie Peanut Butter Pail. 3-1/8 x 3-5/8" (dia.) scarce, early tin litho 12 oz. peanut butter pail for United Fig & Date Co.'s "Brownie" brand, featuring wonderful images of Palmer Cox Brownie characters all around. Clean and excellent overall (C. 8+/) w/ area of paint loss on inside edge of lid. Min. bid \$50.

#### Spearhead Tobacco



132).Spear-Head Paper Holder. 12 x 16.5 x 5.75" early wood and cast iron country store counter-top paper holder w/ embossed lettering in the iron advertising "Spear Head" brand tobacco. Excellent and all original, w/ nice surface patina. Min. bid \$40.



133).Aunt Jemima Sign. 13-3/8 x 24-7/8" (9.25 x 20.75" visible) early paper litho advertising sign for Aunt Jemima brand pancake flour. Colorful and very attractive piece, w/ nice image of A. Jemima, early style product box and Southern cabin and riverboat scene. Clean, bright and excellent in appearance (basically a strong C. 8+/) w/ minor tear marks and wear at very outer edges. Nicely framed and matted. Min. bid \$60.



134).Slade's Mustard Box. 13.75 x 19.25 x 12.25" early wooden display box for Slade's brand mustard, featuring beautiful multi-color graphic inside label. Inner label is clean, bright and exceptionally nice (C. 8.5+/) w/ typical darkening and wear to outside label. Min. bid \$50.

#### Sample Packs



135).Bound Books Biscuit Tin. 6-3/8 x 6-3/8 x 4-7/8" fancy, ca. 1903 embossed figural tin litho Huntley & Palmers Co. biscuit tin in shape of bound classic books by Sir Walter Scott, w/ embossed design and simulated leather strap (Waverley). Very attractive (C. 8+/), w/ only minor wear. British. Min. bid \$50.



136).White Rock Tip Tray. 4-3/8" (dia.) early tin litho tip tray advertising White Rock brand table waters, featuring beautiful graphic image of Co.'s winged topless trademark girl (nipples showing). Clean, bright and excellent overall w/ trace minor wear at outside edges. Min. bid \$40.



137).Union Workman Sample Packs. 4.25 x 2.5 x 7/8" and 3.25 x 2.5 x 1.25" lot of two different full, sealed (never opened) Scotten, Dillon Co.'s "Union Workman" brand "Free Sample" 1 oz. tobacco soft packs. Both are clean, bright and excellent (taller one still sealed in protective wax paper wrapping). Min. bid \$30 (the lot).





138).Early Candy Box. 9.25 x 11-5/8 x 7.75" very early wooden store display box for American Licorice Co. candy, w/ beautiful, multi-color graphic inside label featuring American sailors. Outer wooden box has expected darkening and wear; inside label is clean, bright and very attractive (C. 8+/-), w/ minor toning and non-offensive light stain spot in upper right border area. Min. bid \$40.



139).Armour's Veribest Peanut Butter. 3-7/8 x 3-5/8" (dia.) early tin litho 1 lb. peanut butter pail, featuring colorful and highly graphic nursery rhyme images all around. Clean, bright and excellent overall (a strong C. 8++), w/ general wear along top edge of lid. Min. bid \$40.



140).Light-up Advertising Clock. 21 x 20.25 x 5.5" unusual ca. 1950's metal and plastic advertising clock for "Uregas" brand bottled fuel gas. Excellent, in nice working condition (basically C. 8.5) w/ exception of a little light edge wear. Min. bid \$50.

#### Drugstore Fire Insurance



141).Drugstore Fire Insurance Letter Holder. 4 x 2-7/8 x 1-5/8" unusual, early, high quality brass desktop letter holder from "United Druggists Mutual Fire Insurance Co." promoting special fire policy for Rexall Drugstores (note: nicely detailed images of early extinguishers). Excellent. Min. bid \$30.



142).Grain Broker Match Safe. 2.5 x 1-3/8 x 3/8" unusual, early high quality celluloid covered match safe advertising Beach Wickham Grain Co., (Chicago Board of Trade grain broker). Excellent. Min. bid \$40.



143).Continental Cubes Mirror. 2.75 x 1.75" early celluloid advertising pocket mirror for Continental Cubes, featuring great image of saloon girl holding hand of cards. Clean, bright and beautiful appearance (displays as near mint) although close examination under magnification will reveal a little typical, faint surface wear (mentioned for accuracy- not detracting). Min. bid \$50.

#### Miniature Sample



144).Cowan's Cocoa Sample. 1.75 x 1-3/8 x 7/8" scarce, early miniature colorful and graphic tin litho sample can for Cowan's Perfection brand cocoa, featuring attractive image of trademark leaf (same image both sides). Excellent (a strong C. 8++). Canadian. Min. bid \$40.



145).Foot Medicine Display. 12-3/8 x 8.25 x 1-3/8" early cardboard drugstore product display for "Resto Foot Cream", complete w/ 10 full boxes of Co.'s foot medicine. Excellent (appears never used) w/ minor toning/wear (C. 8++). Min. bid \$30.



146).American Lady Store Banner. 20 x 28.5" early, heavy, pennant type felt cloth advertising banner for "American Lady" brand teas and coffees, w/ great image of Co.'s trademark woman seated on oversized product package. Powerful and very impressive looking piece is excellent and all original, w/ a rich, warm patina (a strong C. 8++). Min. bid \$40.



147).Buster Brown Spice. 5-3/8 x 3-1/8" early paper label (over cardboard) 1/2 lb. size spice container for Buster Brown brand black pepper (Forbes Co., St. Louis, Mo.) w/ great images of early style Buster Brown and his dog Tigre on both sides. Clean, bright and excellent (C. 8.5+). Min. bid \$40.





148).Charter Oak Stoves Sign. 5.5 x 47-5/8 x 5/16" very early, wooden primitive country store painted sign for "Charter Oak Stoves". Attractive and all original, w/ a nice rich patina to its unusual cobalt blue background colored paint surface and just the right amount of light weathering and wear (C. 7.5+/8-). Min. bid \$60.



149).Wrigley Display Boxes. Lot consists of five large ca. 1930's cardboard window display boxes in shape of early Wrigley gum packs. Juicy Fruit, Doublemint, Licorice and Spearmint are app. 4.75 x 18.25 x 3", P. K. brand box app. 5-3/8 x 15.75 x 2.75". Boxes are clean, attractive and display very nicely (average C. 8+/-), w/ a little minor scattered soiling, tattering and wear, w/ tape reinforcements to inside flaps on a few. Min. bid \$50 the lot.



150).Champion Coffee. 4 x 5-1/8" scarce, early tin litho 1 lb. key wind coffee can for Joannes Bros. "Champion" brand (Greenbay, Wisc.) featuring attractive image of trademark chicken. Clean bright and excellent overall (a strong 8++) w/ small background scratch above "C" in Champion. Min. bid \$30.



151).Dr. Robinson's Condom Tins. 2-3/8 x 3-5/8 x .75" early, slide box complete w/ its four original Wilson Robinson Co.'s "Dr. Robinson's Rx #333" brand condom tins. Clean and excellent. Min. bid \$50 (the lot).



152). Ferry Seed Box. 9.5 x 11-5/8 x 6.75" (as pictured); 3-5/8 x 11.5 x 6-7/8" (w/ lid closed) early wooden (oak) Ferry brand seed box w/ beautifully detailed inside label featuring children tending to flower garden. Clean and exceptionally nice (C. 8.5+/-). Min. bid \$40.



153).Indian Theme Spice Tins. Lot consists of two early paper label (over tin) spice cans w/ attractive American Indian themed images. Includes: Hiawatha 4 oz. (allspice) 4 x 2.5 x 1.75", Stone-Ordean-Wells Co. Duluth, Minn. (C. 8/-) w/ minor soiling and wear; and National Spice Co.'s American brand (poultry seasoning) 3-5/8 x 2.25 x 1.75" (C. 7.5+/8). w/ light scattered soiling and wear Min. bid \$30.



154).Mechanical Bank Trade Card. 5.5 x 3-3/8" scarce, early distributors advertising trade card (Kennedy, Spaulding Co., Syracuse, NY) for Shepard Hardware Co.'s "Humpty Dumpty" mechanical bank. Clean, bright and excellent overall, w/ a very minor mark in left margin border area. Min. bid \$50.



155).Harrisburg Match Safe. 2-7/8 x 1.5 x 3/8" early celluloid covered match safe advertising the 8th Ward House in Harrisburg, Pa. w/ beautiful color graphic image. Clean, bright and very attractive. Min. bid \$40.



156).Scissors Pocket Tin. 4.75 x 3 x 7/8" extremely rare, flat variation (not oval) tin litho vertical tobacco pocket tin for Larus Co.'s "Scissors" brand cut plug tobacco. An attractive example that displays nicely, w/ some even, slight softening to reds, some non-offensive light speckling in tax stamp area and some typical expected darkening/oxidizing spots on silver flash finish in scissors area (C. 7.5+/8-). Min. bid \$100.



157).Kite Snuff Mirror. 2.75 x 1.75" extremely rare, early celluloid advertising pocket mirror for Kite brand tobacco snuff, featuring great images of kids, dog and large kite. Clean and very attractive in appearance (note: a close examination under magnification will reveal some minor scattered nicks and wear-mentioned for accuracy, nothing that's offensive or detracting). Min. bid \$50.





158).Talc Samples. Lot consists of a nice group of nine different miniature tin litho talcum powder sample tins, each apx. 2.25 x 1.25 x 7/8". Includes: Jap Rose, William's Violet, Colgate Dactylis, William's Carnation, Mennens Sen Yang, FHA Ming, Colgates Violet, Wrigley's San Tox, Mennens for Men. Excellent overall. Min. bid \$50 (the lot).



159).Indian Theme Boxes. Lot of two very early colorful and highly graphic cardboard product packages, w/ American Indian images. Includes: Cherokee Tea (3.75 x 2.5 x 1.5") clean, bright and like new (C. 8.5+); and Iroquois Herb Tea medicinal remedy (3.75 x 2-3/8" dia.) clean, bright and very nice (C. 8++) w/ exception of a couple spots of paper loss at top edge on backside. Min. bid \$30 (the lot).

#### Etched Soda Glasses



160). Soda Fountain Glasses. Lot includes four different fine, very early soda fountain serving glasses, ea. w/ nice acid etched advertising. Includes: Orange Crush, Pur-ox, Moxie and Vin Fiz. All are excellent (sizes range from 4.5 x 2.25" to 5 x 3-1/8"). Min. bid \$30 (the lot).



161).Munsing Wear Sign. 12.25 x 42" (11 x 42" actual) unusual early tin litho advertising sign for Munsing Wear brand union suits, has original wood framed bracket on back for mounting w/ patterns of cut out holes in lettering area for light up display. Excellent (a strong C. 8++). Has. Min. bid \$50.



162).Nutex Radium Condom Tin. 1-5/8 x 2-1/8 x 1/4" early tin litho condom tin for Nutex Co.'s Radium brand condoms. Clean, bright and excellent (C. 8+) w/ exception of light scratch. Min. bid \$30.



163).Jack Frost Baking Powder Tin. 5.5 x 3-1/8" (dia.) very early, paper label (over tin) product can for Jack Frost brand baking powder, featuring beautiful multi-color graphics all around. Clean and very attractive (C. 8/+), w/ expected jagged edge wear along separation area between lid and can. Min. bid \$40.



164).Pride of Reidsville Tobacco. 3-1/8 x 2 x 1" early 1 oz. full, sealed (never opened) cloth pouch for Robert Harris Co.'s "Pride of Reidsville" brand tobacco, w/ attractive paper label (full intact series 1910 tax stamp). Very nice overall, w/ minor wear and even toning on label (C. 8/+). Min. bid \$40.



165).Runkel's Cocoa Sample. 2.5 x 1-5/8 x 1-1/8" scarce variation, early tin litho advertising sample tin for Runkel's brand cocoa Clean, bright and excellent (a strong C. 8++) w/ only minor wear from use. Min. bid \$40.



166).Veteran Spice Tin. 2.75 x 1.75 x 1-3/8" scarce, early tin litho 1 oz. spice tin (cloves) for Vereran brand (Brewster Gordon Co., Rochester, NY) featuring beautiful graphic image of Co.'s elderly Civil War veteran (same image both sides). Clean and excellent appearance w/ a minor soiling and wear (front C. 8++; back C. 8/-). Min. bid \$40.





167). Wrigley's Lik-Ris Gum Box. 5 x 8-5/8 x 4-3/8" extremely rare, early cardboard litho store display box for Wrigley's Co.'s "Lik-Ris" licorice flavored chewing gum. Clean, bright and very attractive, (basically a strong 8++) w/ some separation and a little scattered wear to attached flip lid cover. Min. bid \$40.



168). Bunny Peanut Butter Pail. 3-1/8 x 3-5/8" (dia.) scarce, early tin litho 12 oz. size peanut butter pail for "Bunny" brand (Producers Peanut Co., Suffolk, Va.), featuring great cartoon images all around. Impressive piece is clean, bright and very attractive (C. 8+/-) w/ minor scattered wear, a few non-offensive small dried syrup spots in background area. Min. bid \$60.



169). Lily White Flour Mirror. 1-5/8 x 2-3/8" early celluloid pocket mirror advertising Lily White Flour (Valley City, Grand Rapids, MI). Clean, bright and exceptionally nice (displays as near mint) although close examination under magnification will reveal trace hints of minor wear and a couple faint spots of minor foxing on backside rim (not at all serious or detracting). Min. bid \$50.



170). Sears Drivers Cap. 5.5 x 10.5 x 10.25" (dia.) unusual, early cap from Sears Roebuck Co. driver's uniform (size 6-7/8). Excellent overall. Min. bid \$20.



171). Golden Dawn Coffee. 3.5 x 5" scarce, early tin litho 1 lb. key wind coffee can for Golden Dawn Food Co.'s coffee. Clean, bright and excellent appearance (basically a strong C. 8++) w/ exception of a little background wear. Min. bid \$30.



172). Bee Soap Sign. 9.25 x 19.5" very early tin litho sign for Colgate Co. soap products, featuring beautifully detailed multi-color graphic soap packages. Never used sign is crisp and like new, w/ original protective paper still on back side (near mint). Min. bid \$40.



173). Violin Rosin Tin. 1.25 x 1-5/8" early tin litho product can for "Mozart Solo" violin rosin, w/ nice image of woman playing violin on lid and detailed violin image on side. Clean and attractive in appearance (displays as a strong C. 8+) although closer examination will reveal some scattered surface wear spots (critical grade 7.5). Min. bid \$20.



174). Nun's Threads and Yarn Sign. 13 x 9.75 x 3/8" unusual, ca. 1920's celluloid finished wooden "Pyratex Panel" sign advertising Nun's brand threads and yarns for embroidering and crocheting (made by Pyraglass Products, New York). Has nice colors and displays well (backside has chain for hanging and metal easel for countertop display). Clean, bright and very attractive (a strong C. 8+). Min. bid \$40.



175). Insect Powder Advertising Fly. 2 (h) x 4-5/8 (l) x 2-5/8" (w) scarce, figural 2-ps. cast iron bug killer advertising match holder, w/ embossed "Use Insectolene the Blue Powder" lettering on wings. Excellent and all original, w/ a nice, rich surface patina. Min. bid \$50.



176). Windsor Cocoanut Tins. 4-5/8 x 2.5 x 2.5" and 4-5/8 x 2-5/8 x 1-5/8" lot consists of two different variations of very early paper label (over tin) small top cocoanut tins, each featuring beautiful graphic labels (jungle birds on back sides). Excellent overall (C. 8+). Min. bid \$40 (the lot).





177).Chief Joseph Cigar Label. 5-7/8 x 10" unused, early inner cigar box label for Chief Joseph brand cigars, featuring embossed, beautifully detailed multi-color lithography. Clean, bright and excellent (professionally graded as EX). Min. bid \$40.



178).Pennsylvania Beer Glasses. Lot of three different fine, early advertising beer glasses from various Pennsylvania breweries. Includes: Horlacher's w/ fine acid etched design, Bergner & Engel's and Frank's White Label each w/ fine pebble finish embossed lettering. All are excellent (sizes range from 3-5/8 x 2-3/8" to 4-1/8 x 2-3/8"). Min. bid \$30 (the lot).



179).Brunswick Phonographs Sign. 11-5/8 x 35.5" early embossed tin litho sign for Brunswick Phonographs and Records, w/ nice image of upright cabinet (American Art Works). Clean, attractive and displays nicely (appears never used), w/ some light scattered traces of protective paper remaining on surface and a little bend damage and paint loss at outer right corner edges (C. 8+/-). Min. bid \$40.

Cap Gun



180).Frontier Cap Gun. 3 x 5.25" early, nicely detailed "Frontier" cast iron cap gun w/ figural bear head on barrel and 1887 and 1890 embossed patent dates. Nice overall, w/ light general surface finish wear from use. Min. bid \$40.



181).RC Cola Sign. 11 x 28" unusual, ca. 1940's/50's Christmas holiday sign advertising RC Cola featuring nice image of Santa w/ painted bottle. Clean, bright and excellent (C. 8.5+). Min. bid \$30.



182).Bond Bread Sign. 4 x 18" very early, heavy enameled porcelain country store strip sign advertising Bond Bread. Clean, very attractive appearance, w/ minor soiling and a little non-offensive light early chipping in outer border area. Min. bid \$50.

Chicago Football



184).Larkin Soap Calendar. 19 x 15" (15.5 x 11.5" visible) unusual early cardboard lithographed advertising calendar for Larkin Soap Co. featuring great image of University of Chicago cheerleader w/ year 1900 calendar pad underneath rotatable football. Clean and very attractive in appearance (displays as a strong C. 8+/-) w/ a little light scattered background wear. Framed. Min. bid \$50.



183).Coca-Cola Menu Board. 28 x 19.75" ca. 1960 tin litho menu chalk board w/ attractive fish tail logo at top by Robertson. Clean, bright and very attractive (a strong 8+/-) w/ minor scattered wear (including non-offensive crimps and faint, trace remnant hints of writing on top two lines). Min. bid \$40.



185).Celluloid Flour Sign. 12-5/8 x 8.5" impressive, early, celluloid over tin bevel edged chain hung sign advertising American Beauty brand flour (Standard Tilton Milling Co., St. Louis, Mo.) featuring beautiful colors and detailing. Crisp, bright and beautiful (basically like new, w/ near mint appearance) w/ exception of a couple non-detracting faint rubs and a little light discoloration at top left hanging hole. Min. bid \$50.



Currier & Ives



186).Darktown Fire Brigade Trade Card. 3-3/8 x 5.5" early stone litho advertising trade card by Currier & Ives Lithographers for Clarence Brooks Varnish Co. featuring the comical "Darktown" black fire fighters. Excellent. Min. bid \$40.



187).Rat Chips Tin. 3 x 3 x 1.75" early tin litho poison tin for Rat Chip Co.'s exterminator product, featuring great graphic image of trademark rat (lithography by Buckeye Stamping Co., Columbus, OH). Clean, bright and very attractive appearance (C. 8+/) w/ some light wear at edges. Min. bid \$30.



188).Parker Shot Guns Trade Card. 3.5 x 5-5/8" early advertising trade card for Parker Shot Guns, featuring trap shooting on front, w/ printed detailed pricing info on backside. Excellent overall, w/ trace hints of very minor edge wear. Min bid \$30.



189).Skull Match Holder. 3 x 3 x 2.25" unusual, early fine china figural bisque match holder in image of a detailed skull sitting on book, w/ a swinging nodder style moving jaw. Excellent, w/ nice surface patina, w/ paint wear to book and darkening spots in teeth and jaw area. Min. bid \$40.



190).Graniteware Sign. 9.25 x 13.25" scarce, early tin litho (over cardboard) string hung advertising sign for "Titan" brand enameled graniteware, featuring nice image of product pot (note graniteware background pattern). Clean, bright and very attractive appearance (basically displays as a strong C. 8+/) although close examination will reveal a few small scratch marks in bottom right black background image box section and small area of light oxidized wear in upper right background pattern area (Shonk Litho.). Min. bid \$60.



191).Spice Bin. 10-5/8 x 8-7/8" (dia.) very early 15 lb. spice bin from Chas. McLaughlin Co., Portland, Maine. Heavy cardboard body, w/ wooden base, lid and bands, featuring beautiful multi-color image of early train. Very high quality piece is attractive and displays quite nicely (C. 8+/) although close examination will reveal some scattered paper chipping loss on label, and the band along top has slipped down slightly on backside (critical grade C. 7.5+/8-). Min. bid \$40.



192).Furs Calendar. 29-5/8 x 17-3/8" (26 x 13.5" actual) early advertising calendar issued by Maas & Steffen furs buyers w/ nice image of boy, dog and skunks. Clean, attractive and displays nicely (as a strong 8+/) w/ a little non-offensive light scattered wear (critical grade C. 8-). Complete w/ 1940 December tear sheet. Framed. Min. bid \$50.

Palacine Oil Co.



193).Palacine Ashtray. 5.75 x 5 x 4.25" ca. 1920's/30's figural metal ashtray advertising Wirt Franklin Petroleum Co.'s Palacine brand gasoline and motor oils, featuring Co.'s trademark Indian scout. Impressive, heavy, very high quality piece is all original and as found, w/ excellent detailing and a nicely worn, rich, original surface patina to its bronzed finish (ashtray bowl area has general expected darkening and wear from use). Min. bid \$50.



194).Palacine Fan. 11-1/8 x 8-1/8" cardboard advertising fan for Palacine, featuring great image of early Co. service station w/ trademark Indian scout statues. Displays nicely (front displays as a C. 7.5), w/ some crease marks and non-offensive surface skimming wear spot (below chimney); w/ some glue remnants from crease reinforcement repair on backside. Min. bid \$30.





195).Grand Ranges Pot Scraper. 2-8/8 x 3-3/8" early tin litho advertising pot scraper for Cleveland Co-op Stove Co.'s "Grand" brand gas range. A decent and pretty respectable example, w/ some light scattered wear (C. 7.5/+). Min. bid \$40.



196).Samsoun Square Corner Tobacco. 3-3/8 x 4.5 x 2.25" very early, scarce tin litho square corner tobacco tin for "Samsoun" brand (Imperial Turkish Tobacco & Cigarette Co., New York) featuring beautifully detailed graphics (Sommers Bros. Litho.). Attractive and displays nicely (sides are excellent; lid displs as a C. 7++) w/ a little non-offensive light staining and wear in right background area and gold area at left. Min. bid \$50.



197).Norwall Valves Match Safe. 2-7/8 x 1.5 x 3/8" early celluloid covered pocket match safe advertising Norwall automotive valves. Clean and excellent w/ attractive appearance (a little light wear to nickel plating and some non-offensive even toning to celluloid- mentioned for accuracy, not at all detracting). Min. bid \$40.



198).Kid Candy Pail. 3-3/8 x 3.75" early tin litho 7 oz. candy pail featuring silent era child movie star Jackie Coogan, w/ comical silhouette images of him being chased by cop on backside. Clean and attractive (C. 8+) w/ minor denting and wear (light dents on lid). Min. bid \$40.



199).Whistle Soda Sign. 3 x 12.5" small, early (dated 1939) embossed tin litho strip sign for Whistle brand soda. Display side of never used sign is clean, bright and like new (basically near mint), w/ exception of minor storage darkening at very outer edge, w/ minor wear and light oxidizing on non-graphic backside. Min. bid \$40.

#### Moxie Walking Stich



200).Moxie Walking Stich. 35 x 2 x 1" early and extremely rare advertising walking stick featuring great figural image of Moxie's "Hitchy" character at top. Excellent and all original w/ beautiful surface patina (as nice an example as you could hope to find). Min. bid \$50.



201).Recruit Cigars Door Push. 8.5 x 4" scarce, early, heavy porcelain advertising door push for Recruit brand little cigars, featuring beautifully detailed image of cigar pack. Crisp, bright and like new (basically near mint) w/ a little minor chipping and wear on non-graphic backside. Min. bid \$70.



202).Red Raven Shoe Horn. 4-5/8 x 1.75" early tin litho advertising shoe horn for Red Raven splits, featuring great image of Co.'s trademark bird and early product bottle (souvenir from 1904 World's Fair). Clean, bright and attractive, w/ only minor wear (C. 8/+). Shonk Litho. Min. bid \$40.



203).Folger's Coffee. 8 x 5" tall 2-1/2 lb. size tin litho product can for Folger Co.'s "Golden Gate" brand coffee, featuring beautiful graphic image of Co.'s trademark ships. Clean, bright and very attractive appearance (displays as a nice C. 8+) w/ exception of a little non-offensive minor background wear and a dent spot at left side edge. Min. bid \$40.



204).Veterinary Medicine Bottle. 6.25 x 3 x 1-5/8" early embossed aqua colored veterinary medicine bottle w/ hand-applied lip for "Save the Horse" brand veterinary treatment. (Troy Chemical Co., Binghamton, NY). Bottle is excellent, w/ original paper label that covers three sides (paper is nice w/ some toning and minor wear). Note: this product sold for a whopping \$5.50 a bottle, a very substantial sum at that time. Min. bid \$30.





205).Smith Bros. Sign. 9-7/8 x 28" early embossed tin litho sign for Smith Bros. Co. cough drops, featuring great image of trademark bearded brothers and early style package. Very high quality piece is clean, bright and appears never used, w/ beautiful detailing and nice surface sheen (basically a strong C. 8.5) w/ exception of minor crimping and a few non-offensive scattered mfg. blemishes. Min. bid \$50.



206).Ford Oil Can. 8 x 9.75 x 3.75" scarce, very early, hand-soldered tin litho 1/2 gallon size motor oil can from British American Oil Co. (Toronto, Canada) made to fit under car seat (same great image both sides). Displays nicely (C. 7.5+), w/ some non-offensive general wear and a little light fade (missing handle at top). Min. bid \$50.



207).Deering Agricultural Display. 7.5 x 13" (as shown) early colorful and highly graphic fold-out four panel display piece on heavy cardstock advertising Deering & Co. agricultural machinery. Features attached fold-outs w/ children on one side and Co.'s horse drawn harvesting machinery products on other. Clean, bright and exceptionally nice, w/ a few non-offensive small scattered wear spots in background (C. 8.5). Min. bid \$30.



208).Ted Williams Moxie Sign. 11-5/8 x 15-5/8" scarce, original, cardboard die-cut, easel back advertising Moxie soda, featuring baseball legend and Moxie spokesman Ted Williams. Never used piece is crisp, bright and like new (near mint). Min. bid \$100.



209).Sergeant's Veterinary Tin. 1-7/8 (dia.) x 3/4" very early tin litho product tin for Sergeants Condition Pills for Dogs, featuring nicely detailed graphics (Polk Miller Drug Co., Richmond, Va.). Very attractive appearance, w/ a little non-offensive light edge wear (C. 8+/-). Min. bid \$30.



210).Wilkins Toy Sign. 11 x 14" scarce, early paper litho toy store window advertising sign for the Wilkins Toy Co.'s submarine toy. Clean, bright and very attractive appearance, w/ a little minor wear in outer bottom margin area (a strong 8++). Min. bid \$60.



211).Hair Grower Tin. 2.75 x 7/8" (dia.) unusual, early tin litho product tin for S.B. Field Co.'s quack herbal hair growing product, featuring great image of Co.'s trademark woman w/ extremely long hair. Nice overall appearance (displays as a C. 8/-) w/ a few small chips and a little minor wear. Min. bid \$30.



212).Dolly Varden Spice. 2.75 x 2.25 x 1-3/8" scarce, early tin litho spice tin for Fargo Mercantile Co.'s "Dolly Varden" brand. Clean and attractive appearance (C. 8+/-) w/ minor soiling and wear. Min. bid \$30.



213).Wilbur's Cocoa Tin. 3-3/8 x 2.25" scarce, early paper label (over tin) small top style product can for Wilbur's breakfast cocoa, featuring attractive image of Co.'s trademark child. Clean, bright and very attractive appearance (a strong C. 8+/-) w/ non-offensive trace hints of minor soiling and wear. Min. bid \$40.



214).Gold Dust Sample. 2.75 x 2" (dia.) very early, full, sealed (never used) sample can for Fairbanks Co.'s "Gold Dust" brand soap powder, featuring great image of Co.'s early version trademark black twins. Metal top and base, w/ cardboard body; clean and very nice (C. 8.5). Min. bid \$30.



215).Engines Match Safe. 1.5 x 2.75 x 3/8" early celluloid covered match safe advertising Lunt Moss Gasoline Engine Co., Boston. Features nice engine image, w/ text advertising on other sides. Clean and attractive, w/ minor toning and wear. Min. bid \$40.





216).Lawn Mower Match Safe. 1.5 x 2.75 x 3/8" early celluloid covered match safe advertising Thomas Green Co.'s Lawn Mowers, w/ beautiful multi-color image of Co.'s fancy lawn mowing contraption. Attractive and displays nicely, w/ a little non-detracting minor toning and wear (English). Min. bid \$40.



217).Bailey's Rye Mirror. 1.75 x 2.75" scarce, early celluloid advertising pocket mirror for Bailey Co.'s Rye whiskey featuring beautiful color graphic images of various product uses. Clean, bright and exceptionally nice (near mint). Min. bid \$50.



218).America's Best Match Safe. 2-3/8 x 1.5 x 1/2" unusual, early, fancy celluloid and metal pocket match safe advertising Nordyke & Maron Co.'s flour milling machinery. Very high quality piece is clean and excellent overall. Min. bid \$40.



219).Orcico Cigar Tin. 5.5 x 6-1/8 x 4-1/8" early tin litho 50 ct. cigar tin for Orcico brand (Orison Cigar Co. Bethesda, Ohio) featuring beautiful multi-color graphics (same image both sides). Clean, bright and excellent overall (a very strong 8++) w/ a little minor denting. Min. bid \$50.



220).Dale Bros. Coffee. 3.5 x 5-1/8" (dia.) scarce, 1 lb. key-wind style coffee can from Dale Bros. Co., Fresno, CA, w/ same image both sides. Clean, bright and very attractive (basically a strong C. 8+) w/ a little non-offensive light background wear in bottom background area. Min. bid \$30.



221).Cracker Jack Book Marks. Lot consists of four early tin litho insert premium advertising book marks for Cracker Jack popcorn snack ea. with a different dog at top (2.75 x 7/8"). Clean and excellent overall. Min. bid \$30 the lot.

### Political Cigar Box



222).Political Cigar Box. 8-3/8 x 18.5 x 2.25" (as pictured) 8-3/8 x 9 x 2.25" (lids closed) early wooden political campaign cigar box w/ original photo images for 1884 Republican presidential election candidates Blaine and Logan. Excellent (C. 8/+). Min. bid \$50.



223).London Life Cigarettes Sign. 15.25 x 18.25 x 1-5/8" scarce, early, two-sided heavy porcelain flange advertising sign for "London Life" cork tipped cigarettes (same image both sides). Attractive and displays quite nicely (as a C. 8+/-), w/ a little minor scattered weathering and wear from use and some typical wear in flange mounting section. As found should improve w/ cleaning. Min. bid \$100.



224).Baker's Cocoa Tray. early tin litho 6" (dia.) oversized tip tray advertising Baker's Cocoa (Walter Baker Co., Dorchester, MA) featuring beautiful multi-color lithography. Clean, bright and exceptionally nice (C. 8.5++). Min. bid \$40.



225).Political Americana. 10.25 x 12 x 2" (6.5 x 8.25" visible) unusual, early paper broadside promoting 1840 Democratic candidates for Holmes County, w/ wonderful woodcut images of patriotic eagle, stars, banners, etc. Attractive and displays very nicely, w/ some non-offensive expected toning and light staining at top. Presented in beautifully carved antique walnut frame. Min. bid \$40.



226).Silver Top Gum Box. 8-7/8 x 9-3/8 x 6.75" (as shown) scarce, very early wooden display box for Silver Top brand chewing gum (Sibley & Holmwood Co., Buffalo, NY) featuring beautiful graphic inside label. Inner label is clean and very attractive (C. 8+/-) w/ only minor wear, outer label has fairly heavy general scattered scuffing and wear. Min. bid \$40.



# Bidding Ends Friday, May 10th, 2013.

Sample



227).Briggs Sample Pocket. 4-3/8 x 3 x 1" unusual sample variation tin litho vertical tobacco pocket tin for Lorillard Co.'s Briggs Pipe Mixture. Clean, bright and excellent overall (C. 8++) w/ minor denting and wear. Min. bid \$40.



228).Mallard Coffee Can. 6 x 4.25" (dia.) scarce, early paper label 1 lb. coffee can for Mallard brand (Hoyt Co., Chicago) featuring great image of Co.'s trademark duck (same image both sides). Displays on shelf quite nicely, although closer examination will reveal light fade, some age toning and light soiling/staining w/ some general scattered wear (display side C. 7+/7.5; back C. 7-). Min. bid \$40.



229).Ivanhoe Spice. 3.25 x 2.25 x 1.25" scarce, early tin litho 1-3/4 oz. spice tin (allspice) for "Ivanhow" brand (Maker Co., Syracuse, NY). Has strong colors and displays nicely (as a C. 8), w/ minor soiling and wear. As found, should improve w/ cleaning. Min. bid \$30.

Match Holder



230).Water Heater Match Holder. 5 x 3-1/8" dia. early figural metal match holder on stone base in shape of a boiler or water heater. High quality piece w/ fine detailing is hinged lid at top for holding matches in body w/ striker on side edge. Nice overall condition (C. 8/-) w/ a little light scattered scuffing wear from use. Min. bid \$40.



231).Kamargo Coffee Tin. 6 x 4-1/8" early tin litho 1 lb. coffee can for Kamargo brand (Peck, Calen Co., Watertown, NY) featuring great Indian theme images on both sides. Clean, bright and displays nicely (as a strong 8/+) although closer examination will reveal some fine speckling loss in dark blue background areas (critical grade C. 7.5/+). Min. bid \$50.



232).Gillett's Spice Tin. 3.75 x 2.25 x 1.25" scarce red variation, early 2 oz. size Frank Tea & Spice Co. "Gillett's" brand spice tin (turmeric), featuring attractive owl on moon logo. Clean, bright and attractive (C. 8/+) w/ minor soiling on backside. Min. bid \$30.



233).Hires Rootbeer Mirror. 2.75 x 1.75" early celluloid advertising pocket mirror for Hires brand rootbeer featuring attractive image of Co.'s trademark girl holding mug. Clean, bright and very attractive appearance (displays near mint) although close examination under magnification will reveal minor surface wear and bumps, nothing offensive or detracting. Min. bid \$40.



234).Hires Rootbeer Mirror. 2.75 x 1.75" early celluloid advertising pocket mirror for Hires brand rootbeer featuring attractive image of Co.'s trademark girl (non mug variation). Clean, attractive and displays nicely although close examination under magnification will reveal minor surface wear and bumps (nothing offensive or detracting). Min. bid \$40.



235).South Bend Plow Litho. 13.75 x 11.75" (8-7/8 x 6-7/8" visible) early litho advertisement on heavy cardstock advertising South Bend Plow Co., featuring stunning multi-color graphics. Clean, bright and exceptionally nice appearance (basically a near mint appearance) w/ exception of a little light wear at very bottom right margin area (in lithographer lettering in outer white border). Min. bid \$40.



236).Moxie Tray. 9-7/8" (dia.) x 7/8" very early, fancy Moxie serving tray w/ silver metal rim and beautiful reverse glass advertising featuring girl holding Moxie glass. Exceptionally nice example is excellent overall w/ some non-offensive light crazing lines in gold background area. Min. bid \$60.



237).Fleet Wing Thermometer. 6-3/8 x 2" small, early embossed metal advertising thermometer for Fleet-Wing brand gas stations as found never used in its original box (thermometer near mint although red liquid goes to top of tube; box has minor wear). Min. bid \$30.





238).Tobacco Soft Packs. Lot includes four different full, sealed (never opened) soft pack style tobacco packages, each app. 5 x 3.5 x 1.25". Includes: "Dark Horse" 2-1/2 oz. (series 1902 tax stamp); "Bag Pipe" 2-1/4 oz. (series 1910 tax stamp); "Big Mitt" 3-3/4 oz. (Series 1926 tax stamp); and "Day & Night" 2 oz. (series 1910 tax stamp). Excellent overall (minor soiling and wear on Dark Horse). Min. bid \$40 (the lot).



239).Gem Razor Sign. 5-5/8 x 12.75" early cardboard litho string hung sign for Gem brand safety razors. Displays nicely (as a C. 8/-), although close examination will reveal a little faint, minor toning and a some scattered light wear, including a couple non-offensive faint vertical snake line crease marks in green background area and some edge wear/ light damage at bottom left corner edge. Min. bid \$30.



240).Coca-Cola Cigar Band. 1 x 3" ca. 1933, early embossed die-cut Coca-Cola advertising cigar band, featuring nice Coke bottle image. Never used piece is clean and excellent. Min. bid \$20.



241).Winslow's Medicine Sign. 5-7/8 x 36 x 3/8" very early, wooden painted folksy and primitive country store advertising sign for "Mrs. Winslow's Soothing Syrup" patent medicine product. Attractive and all original, w/ a nice, rich paint surface and just the right amount of light weathering and wear (C. 7.5++/-). This cocaine based patent medicine product was said to have addicted many a teething baby in its day. Min. bid \$60.



242).Brotherhood Overalls Mirror. 2-1/8" (dia). scarce, early celluloid advertising pocket mirror for H. S. Peters Co.'s Brotherhood brand overalls featuring great image of topless girl putting on Co.'s coveralls. Clean, bright and very attractive appearance (displays as near mint) although close examination under magnification will reveal a little faint surface wear (mentioned for accuracy nothing offensive or detracting). Min. bid \$50.



243).Sunlight Soap Die-Cuts. 4-1/8 x 7.75 x 7.75" unusual, early cardboard die-cut display piece for Sunlight brand soap, featuring fine, embossed multi-color litho images of Indians. Clean, bright and excellent appearance (displays as a C. 8.5+) although there are a couple archival tape re-inforced repaired breaks on non-graphic backside. Min. bid \$40.



244).Moxie Tip Tray. 6" (dia.) unusual, very early tin litho Moxie tip tray w/ early style script style lettering design. Clean, bright and displays nicely w/ minor wear on rim (displays as a C. 8+/-) w/ exception of light scratch mark in bottom background area at 7 o'clock. Min. bid \$50.



245).Imperial Shaving Stick. 3-3/8 x 1.5" very early tin litho product can for Imperial brand Shaving Stick (Talcum Puff Co., New York) featuring beautifully detailed graphics. Full tin is clean, bright and excellent (C. 8.5/+). Note: never used stick inside is still wrapped in original paper. Min. bid \$40.



246).Texaco Diesel Chief Sign. 18 x 12" ca. 1940's porcelain gas pump sign for Texaco Co. diesel fuel. Clean, bright, very attractive appearance, w/ minor edge wear and typical light chipping at top and bottom mounting holes. Min. bid \$40.

Sample



247).Skookum Syrup Sample. 3 x 1.75 x 1-3/8" early, miniature sample size tin litho can for Skookum brand syrup (Scully Syrup Co., Chicago) featuring nice image of Indian and pioneers making syrup (same image both sides). Excellent overall (C. 8+/-) w/ only minor wear. Min. bid \$40.



248). Texaco Sky Chief Sign. 18 x 12" unusual, ca. 1950's porcelain pump plate sign for Texaco Sky Chief Su-preme hi test gasoline. Bright, attractive and displays nicely, w/ minor scattered wear (C. 8+/-). Min. bid \$40.





249).Sunoco Sign. 18.5 x 31.5" scarce, ca. 1940's advertising sign on Masonite from an early Sunoco service station. Displays nicely, w/ strong colors and a great overall look (basically as a C. 8/+), although there is some non-offensive light soiling and scattered foxing spots on upper surface (critical grade C. 7.5++/8-). As found, might improve a bit w/ cleaning. Min. bid \$40.



250).Harley Window Card. 11 x 21.75" ca. 1920's cardboard Harley Davidson Co.'s dealers window or trolley car sign featuring wonderful image of a couple riding early Harley motorcycle and side car. Clean, bright and exceptionally nice appearance (displays as near mint), although it has had a little very well done minor professional restoration (to a few pinholes and tear spot on engine (extremely well done). Nicely framed and ready to hang. Min. bid \$70.



251).Boraxine Sign. 7.5 x 6.5" early, colorful and highly graphic die-cut advertisement on heavy cardstock for Boraxine brand soap. Clean, bright and excellent appearance (displays as a strong C. 8/+), w/ small, minor tear mark at elbow and some non-offensive light litho loss/wear in bottom red area. Min. bid \$30.

#### Counter Felt



252).Luden's Gum Felt. 11-3/8" (dia.) early advertising counter felt for Luden Co.'s chewing gum, featuring attractive images of early gum packs and flowers. Clean and excellent overall w/ minor expected aging (C. 8). Min. bid \$40.

#### Rare Planters Box



253).Rare Planters Box. 8.25 x 8.25 x 1-1/8" scarce, early 2-ps. cardboard box for Planters High Grade chocolate nut candies w/ wonderful cover image (inside box has 16 compartments for individual candies, w/ original wax paper covering. Clean, bright and exceptionally nice (a strong C. 8++) w/ a little non-detracting minor background toning at outer edges of lid (mentioned for accuracy- not at all offensive or detracting). Min. bid \$50.

#### Tin Litho



254).Fleischmann's Yeast Die-Cut. 12 x 8.25" outstanding, early tin litho die-cut sign advertising Fleischmann's brand yeast, in shape of Co.'s whimsical trademark bread loaves baker character "John Dough". Scarce, very unusual two sided sign (same image both sides) is clean, bright and very attractive, w/ flanged mounting base. Untouched, original surface is clean, bright and excellent (displays as a strong C. 8+), w/ a couple slight waves and minor wear from use (Haeusermann Litho NY, Chicago). Only example I've ever seen. Min. bid \$70.



255).Kodak Sign. (sign 17 x 17"; bracket 14.25 x 19.25 x 1.25") outstanding, early, heavy, 2-sided tin litho hanging sign advertising Kodak, featuring great early style film box (same on both sides) as found still attached to its original iron hanging bracket. Sign is clean, bright and exceptionally nice (a strong C. 8.5++) and appears to have been used indoors. Min. bid \$60.



256).Harley-Davidson Poster. 35-5/8 x 26.5" (26 x 18.75" visible image) great early paper litho showroom advertising poster for the 1925 Harley Davidson "Stream-Line" motorcycle. Clean, bright and very attractive appearance (C. 8+) as found still in its original (included) mailing tube w/ Harley factory label (some light age toning/soiling, minor wrinkling and a little light storage wear (C. 8-), w/ paper loss spot in upper right outer grey margin corner edge. Framed and matted. Min. bid \$50.



# Bidding Ends Friday, May 10th, 2013.

Cracker Jack



257).Cracker Jack Tops. Lot consists of a nice group of six different early tin litho Cracker Jack Co. product toy premium advertising tops (sizes range from 1.5 to 1.75" (dia).). All are clean and excellent. Min. bid \$40 the lot.

Cracker Jack



258).Cracker Jack Trucks. Lot consists of three different small, early tin litho Cracker Jack Co. toy premium trucks (ea. app. 1-5/8" in length). Includes: ambulance, stake delivery truck and Cracker Jack delivery truck. Very good to excellent overall. Min. bid \$30 (the lot).



259).Lime Kiln Club Cigar Box Label. 6 x 7.5" early multi-color stone litho paper cigar box label featuring outrageous image of a meeting of derogatory black fraternal organization. Crisp, bright and like new (professionally graded EX). Min. bid \$40.



260).White Villa Coffee. 3-7/8 x 5.25" early tin litho 1 lb. pry-lid coffee can for White Villa brand (Cincinnati Wholesale Grocers, OH) w/ same image on both sides. Clean bright and attractive appearance (C. 7.5++/8-) w/ some scattered background wear. Min. bid \$30.



261).Porcelain Egg Sign. 10 x 13" early porcelain chicken farm membership sign from Lehigh Valley, PA Egg Producers Association. Clean and excellent overall (field area near mint) w/ a little bit of oxidized staining in outer white border area (as found, border area should improve w/ cleaning). Min. bid \$40.



262).Giant Peanuts Pail. 3-3/8 x 4" early tin litho 10 oz. size "Giant" brand salted peanuts pail featuring graphic circus images all around. Clean, bright and excellent overall (C. 8.5+/+), although lid has a little light wear and some tarnishing on side edges. Min. bid \$50.



263).Moxie Sign. 8.25 x 8.25" early embossed 8-sided tin litho sign for Moxie. Clean, bright and very attractive (a strong C. 8+++) w/ very minor wear in outer border area (mentioned for accuracy, nothing at all offensive or detracting). Min. bid \$50.



264).Christmas Pail. 3-5/8 x 3.75" scarce, early tin litho advertising pail featuring great image of an early St. Nick, w/ stenciled merchants name at bottom. Clean and quite attractive w/ some non-offensive light scattered wear (front C. 8/+; non-graphic backside 7.5+/8-). La Crosse Can Co., LaCrosse, WI). Min. bid \$60.



265).Waverly Mixture Pocket Tin. 4.25 x 3 x 1-3/8" scarce, early, oval tin litho vertical pocket tin for Imperial Tobacco Co.'s "Lambert & Butler's Waverly Mixture" brand tobacco. Clean, bright and very attractive appearance (a strong C. 8+/+) w/ typical minor speckling in gold flash areas (foreign). Min. bid \$60.



266).Mechanical Traffic Cop. 8.25" x 4" outstanding ca. 1920's die-cut tin litho automotive traffic cop, made for displaying in back window of early car (has mechanical mechanism on back that made cop's arms raise up when vehicle slowed down- arms open to 8.75"). A neat, very unusual piece that is excellent overall, w/ a little minor wear from use (C. 8+/+). Min. bid \$50.



267).Baker's Cocoa Plaque. 9-7/8 x 7-7/8" (visible image 6.75 x 4-5/8") unusual, very early, advertisement on fine porcelain china featuring image of Walter Baker Co.'s trademark Bakers Cocoa girl, displayed inside its original heavy velvet frame. Excellent. Min. bid \$60.



Miniature Sample Can



268).Oil Sample Can. 1-5/8 x 2.5 x 1.75" miniature tin litho sample size can is an exact miniature of American Can Co.'s larger oil and grease cans. Sand filled for use as paperweight executives gift (probably a salesmans sample). Attractive and displays nicely, although there is fairly heavy loss and wear to areas of green background color (C. 7+/-). Neat piece! Min. bid \$40.



269).Bubbling Over Coffee. 3-7/8 x 5-1/8" (dia.) scarce 1 lb. key-wind style coffee can for "Bubbling Over" brand (Fletcher Wilson Coffee Co., Nashville, TN) featuring nice image of trademark Jockey on race horse. Clean and very attractive appearance (displays as a strong C. 8+/-), w/ some even softening to reds. Min. bid \$30.



270).White Manor Pocket Tin. 3-1/8 x 3-3/8 x 1" early tin litho vertical tobacco pocket tin for Penn Tobacco Co.'s White Manor brand. Clean, bright and very attractive (a strong C. 8+/-) w/ some non-detracting slight wear on backside. Min. bid \$40.



271).Egyptienne Cigarettes Sign. 11.75 x 9-1/8" early cardboard litho advertising sign for Egyptienne Luxury brand cigarettes featuring beautiful multi-color graphics. Clean bright and exceptionally nice appearance (C. 8.5+/-) w/ exception of a little wear in outer white border area (would be easily hidden if framed or matted). Min. bid \$40.



Bathing Caps Figure

272).Sea Siren Figure. 11.25 x 3-3/8" wonderful early figural composition hard rubber advertising display figure for "Sea Siren" brand bathing caps. Outstanding piece is crisp, bright and like new as found never used still in its original box (included). Stamped King Cole Co. on base. Near mint. Min. bid \$50.



273).Gem Razor Sign. 13-7/8 x 7-7/8" early die-cut cardboard litho sign for Gem brand safety razors. Piece is clean and attractive in appearance (displays as a C. 8/-), although close examination will show crease mark across shaving cream area of mans head (not offensive or badly detracting-kind of blends in). Min. bid \$40.



274).Purity Bread Pennant. 25.25 x 9-7/8" (31.25" length w/ tails) early felt advertising pennant for Purity brand bread, featuring wonderful painted image of Co.'s trademark girl. Clean and excellent overall (C. 8.5+/-) w/ exception of a couple non-offensive small scattered holes. Min. bid \$40.



275).Nehi Soda Sign. 19-5/8 x 5.5" ca. 1930's embossed tin litho sign for Nehi Beverages, featuring beautifully detailed graphic image of early soda bottle. Never used sign is crisp, bright and like new (basically near mint), w/ exception of a couple non-detracting crimp/wear spots at left corner edges (in outer black border area). Min. bid \$40.



276).Razor Blade Display. 11.75 x 6-7/8" unusual, early cardboard store display for "All American" brand razor blades, complete w/ its original 20 full boxes of blades (each featuring attractive football image). Has strong colors and excellent overall appearance, w/ light break mark and minor tattering at top hanging hole, minor crease mark at bottom right edge and a little faint age toning to a few packages (C. 8+/-). Min. bid \$30.



277).Moxie Match Holder. 7-1/8 x 2-5/8 x 7/8" early tin litho advertising match holder for Moxie, featuring nice image of early nerve food bottle w/ likeness of wood soda crate at base for holding matches. Decent and respectable example that displays quite well, although there is some minor crimping and light wear to bottle area w/ staining and heavier wear at basket area (bottle C. 8/-; box C. 7+/-). Min. bid \$50.



## Bidding Ends Friday, May 10th, 2013.



278).Adams' Gum Card. 2.75 x 5 unusual early advertising card for Adam's pepsin gum (back side has 10 playing cards pictured for cutting out and collecting miniature Euchre deck). Excellent, like new condition (near mint). Min. bid \$30.

### Etched Soda Glasses



279).Etched Soda Glasses. Lot of five, fine very early soda fountain serving glasses w/ acid etched design for various soda flavors. Includes: Vernor's ginger ale, Muscadine Punch (image of man holding tray), Pur-ox, Polar Punch and Robin ginger ale (image of bird). All are excellent w/ a couple very minor lip flea bites (mentioned for accuracy, so minor barely merits mention). Sizes range from 3-7/8 x 2-1/8" to 4.75 x 2.5". Min. bid \$30 (the lot).



280).Buckeye Fences Mirror. 2-1/8" (dia.) early celluloid pocket mirror advertising Buckeye brand fences featuring beautiful multi-color graphics. Clean, bright and exceptionally nice appearance (displays as near mint) although close examination under magnification will reveal minor surface wear and tiny nick spot. Min. bid \$40.



281).Harley Davidson Clicker. 2-5/8 x 2" unusual, early aluminum "Snapper Jack" toy clicker advertising an Altoona, PA Harley Davidson motorcycle shop. Excellent overall w/ minor wear from use (C. 8.5). Min. bid \$30.



282).Thompson's Mirror. 2-1/8" (dia.) scarce, early celluloid advertising pocket mirror for Thompson's malted beef peptone (a soda fountain milk additive) featuring attractive color graphics. Clean, bright and excellent. Min. bid \$50.



283).Raleigh Sample Packs. 3 x 6-7/8 x 2" ca. 1940's advertising gift set of six full, sealed (never opened) Raleigh brand cigarette packs (series 112 tax stamp on each). Excellent (minor edge wear and separation at corner edges of box lid). Min. bid \$30.



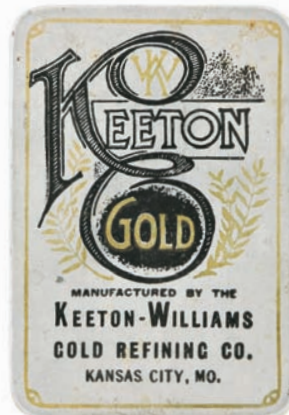
284).Chippewa Wagon Works Sign. 9.5 x 22.25 x 3/8" impressive, large, heavy embossed cast bronze sign w/ nice detailing, advertising the Chippewa Wagon Co. (weighs in at over 20 lbs.) and features Co.'s trademark Indian logo. This substantial, very high quality piece appears to probably be a factory building sign and is very nice overall, w/ original un-cleaned surface (has some green oxidized weathering spots). Min. bid \$50.



285).Ideal Talc Sample. 2 x 1-1/8" scarce miniature sample sized paper label talc can for Erwin Co.'s Ideal brand, featuring beautiful multi-color lithography on nicely textured paper. Clean, bright and excellent (C. 8.5/+) w/ light plating wear spot on metal lid. Min. bid \$30.



286).Faultless Gum Trade Card. 4 x 3" scarce, early cardboard litho advertising trade card for Faultless brand pepsin gum chips featuring attractive embossed graphics. Clean, bright and excellent (C. 8.5/+) Min. bid \$30.



287).Gold Refiners Tin. 3.25 x 2.25 x 1/4" unusual, early hinged lid aluminum lithographed advertising tin from Keeton-Williams Gold Refining Co., Kansas City, MO (has fitted cardboard ad inside instructing holder to fill this tin w/ scrap gold pieces and mail to Co. for refining or a cash offer). Excellent, w/ nice patina. Min. bid \$30.



288).Time O'Day Spice Tin. 3 x 2 3/8 x 1-3/8" early tin litho 1-1/2 oz. spice tin (poultry seasoning) for Jordan Stevens Co., Minneapolis, MN "Time O'Day" brand. Clean, bright and excellent (C. 8.5/+) Min. bid \$30.



Cigar Cutter



289).Steam Pump Cigar Cutter. 5 x 3-3/8 x 3-1/8" very unusual figural mechanical cigar cutter in shape of an early steam pump. Very high quality piece w/ nice detailing (turning fly wheel creates mechanical motion and trims cigar) and has small drawers on either end for holding matches w/ match striker surface on one side. Excellent and all original w/ nice patina (a strong C. 8++) w/ exception of small dent in body, chipping loss at back corner edge of wooden base and is missing tiny screw at base. Min. bid \$40.



290).Fleer's Gum Ceiling Hanger. 4.25" (dia). early cardboard litho fan pull/stringer hanger sign advertising Fleer's Pepsin gum, featuring nice image of early pack w/ text advertising on back. Very nice overall (C. 8+/-) w/ minor age toning/wear. Min. bid \$30.



291).Jo-Beth Peanut Butter. 3-3/8 x 3.5" (dia.) scarce, early 14 oz. size tin litho pail for Jobst. Bethard Co.'s peanut butter, featuring attractive school room images all around. Excellent (C. 8++) w/ minor dents and wear on lid. Min. bid \$50.



292).Butterine Mirror. 2.75 x 1.75" scarce, early celluloid pocket mirror advertising Ammon & Person Co.'s baby brand Butterine spread. Clean, bright and excellent appearance (close examination under magnification will reveal some light surface scuffs and rubs). Min. bid \$40.



293).Comfort Powder Tin. 3-3/8 x 2" (dia.) scarce, very early tin litho product can for Sykes Co.'s medicinal powder, featuring beautiful multi-color graphics by Ilsley Litho, w/ nurse on front and baby on backside. Clean, bright and excellent overall (basically a C. 8.5+/-, w/ exception of a couple non-offensive small chips). Min. bid \$40.



294).White Witch Sample Tin. 2.25 x 1.25 x 3/4" full, never used miniature sample size tin for "White Witch" brand skin cleansing powder. Clean and excellent. Min. bid \$40.



295).Harness and Saddles Match Safe. 2-5/8 x 1.5 x 3/8" early celluloid covered match holder w/ advertising on back for a Harness and Saddle maker (note 3 digit phone number). Excellent overall, w/ some non-detracting toning. Min. bid \$40.



296).Wonder Soap Hanger Sign. 12.75 x 6.5" ca. 1890's 2-sided die-cut cardboard ceiling hanger sign/fan pull advertising Grandpa's Wonder Soap, w/ beautiful color graphics (same image in sepia tones on backside). Clean, bright and displays nicely (a strong C. 8+) w/ a little non-detracting wear and minor creasemark in boot area. Min. bid \$50.

Remington Knives



297).Remington Knives Sign. 13-3/8 x 9.25" unusual, early cardboard easel-back sign advertising Remington Co.'s specialty rancher's pocket knives including knives for "Cattlemen, Sheepmen and Hog Raisers". Quite nice overall (basically displays as a C. 8) w/ exception of light soiling spot in brown background area. Min. bid \$40.



298).Buster Brown Kite. 36.5 x 34.5" (kite only, tail 13") unusual early cloth kite advertising Buster Brown shoes, featuring colorful and very attractive image of Buster and Tigre. Clean and excellent, complete w/ original tail and sticks (C. 8++). Min. bid \$40.





299).Gulf Tire Signs. (man 20-3/8 x 20.25"; girl 20.5 x 18.25") lot consists of a pair of die-cut cardboard service station advertising signs for Gulf brand tires, made for inserting and displaying inside of car tires. Both are clean, bright and excellent (man has non-detracting minor thumb tack mark in outer right section of hat). Min. bid \$40 (the set).



300).Monarch Popcorn Tin. 3.75 x 3-3/8" (dia.) early tin litho popcorn pail for Reid Murdoch Co.'s Monarch brand, featuring great images of Co.'s "Teenie Weenie" Brownie like characters on backside. Clean, bright and attractive appearance, w/ a little non-offensive minor background wear (C. 8+/-). Min. bid \$40.



301).San Blas Cocoanut Tin. 6.25 x 3.25 x 3.25" very early small-top style San Blas brand cocoanut tin, featuring beautifully detailed Ginna graphics all around (great images of monkeys, jungle scenes, etc). Clean, bright and excellent in appearance (C. 8+) w/ small area of litho chipping at bottom edge on back side. Min. bid \$50.



302).Guide Pocket Tin. 4.25 x 3-1/8 x 1" early tin litho vertical tobacco pocket tin for Lauris Co.'s Guide brand. Full, sealed unopened tin is crisp and like new (near mint). Min. bid \$40.



303).Maxwell House Coffee Mirror. 2.75 x 1.75" scarce, early celluloid advertising pocket mirror for Maxwell House brand coffee featuring beautifully detailed graphics (Cheek-Neal Coffee Co., Houston & Nashville). Clean, bright and exceptionally nice (basically near mint) although close examination under magnification will reveal a tiny pinprick in upper background (so minor barely merits mention). Min. bid \$50.



304).Brunswick Cocoanut Tin. 6-3/8 x 3.25 x 3.25" scarce, very early tin litho small top style product can for Brunswick cocoanut (Warner & Merritt Co., Phil'a, PA) featuring beautifully detailed lithography by Ginna. Crisp and beautiful overall (C. 8.5/+), w/ typical darkening and wear on non-graphic gold shoulder area and lid. Min. bid \$40.



305).Football Player Sign. 15.75 x 9" unusual, tin litho die-cut sign featuring player in Vall-Oil jersey carrying American style football. Clean, bright, excellent overall appearance (C. 8.5/+ ) w/ only very minor wear including faint bend mark in shoulder area. Great look, probably ca. 1950's, marked "Undre Germond 54" at bottom edge (foreign). Min. bid \$30.

Cracker Jack Co.



306).Cracker Jack Popcorn. 6-1/8 x 3-1/8 x 1.5" scarce, early 10 oz. size cardboard product box for Cracker Jack Co.'s "Pop-It" brand popcorn. Quite nice overall (basically a C. 8-/-) w/ exception of wear/loss area to top upper flap of box. Min. bid \$30.



307).White Witch Powder Tin. 5.25 x 2.75 x 1.5" tin litho product can for "White Witch" brand skin cleansing powder featuring Co.'s trademark nude w/ streamer. Full, never used tin is clean and excellent. Min. bid \$40.



308).Speckled Trout Tin. 5 x 2-5/8 x 2" unusual early paper label (over tin) 12 count size product can for HAAK's Speckled Trout brand cigars featuring attractive fishing scene image. Displays nicely (as a C.8) w/ some scattered soiling, paper chipping and wear (critical grade (C. 7.5/+)). Min. bid \$40.





309).Philadelphia Beer Glasses. Lot consists of three fine, early acid etched advertising beer glasses. Includes two different variations from Schmidt Brewing Co. (5.5 x 3" and 4.5 x 2.5"); and Louis Bergdoll Brewing Co. w/ nice etched image of L. B. (4.25 x 2.25"). All are excellent. Min bid \$30 (the lot).



Detail



310).Forest & Stream Pocket (Creel Lid). 4-1/8 x 3-1/8 x 1" early tin litho vertical tobacco pocket tin for Forest & Stream brand (same graphic fly fishing image front and back) w/ unusual fishing rods and creels pictured on lid. Has strong colors and displays nicely, w/ a little non-offensive scattered wear (C. 8+/-). Min. bid \$40.



311).Rose Gas Iron Mirror. 2-1/8" dia. scarce, early celluloid pocket mirror for Rosenbaum Co.'s "Rose" brand gas irons. Clean and very attractive in appearance (excellent) although close examination under magnification will reveal a few light scuffs and wear (mentioned for accuracy- not at all detracting). Min. bid \$50.



312).Tums Thermometer Lot. 9-1/8 x 4-1/8 x 1/2" ca. 1950's metal advertising thermometer for Tums brand medicines. Clean, bright and like new (never used) condition. Also includes dealer promotion literature for same. Min. bid \$30.



313).Cream Dove Peanut Butter Mirror. 2-1/8" (dia). scarce, early celluloid pocket mirror for Cream Dove brand peanut butter (Cream Dove Co., Binghamton, NY) featuring beautiful multi-color graphics. Clean, bright and exceptionally nice appearance (displays as near mint) although close examination under magnification will reveal some non-offensive minor surface wear (mentioned for accuracy barely noticeable). Min. bid \$40.



314).Kleenaline Soap Sign. 36 x 16" (35-1/8 x 12.75" visible) large, early paper litho advertising sign for Kleenaline cleansing soap bars featuring great image of music playing monkey. Clean, bright and very attractive appearance (a strong C. 8++) w/ a couple non-detracting minor horizontal roll marks at bottom section (Avil Litho, Philadelphia). Framed. Min. bid \$80.



315).Droste's Cocoa Samples. Lot consists of two different miniature sample sized Droste brand cocoa tins (each app. 1-7/8 x 1-1/8 x 1-1/8"), including scarce variation w/ well dressed Victorian couple inside train car. Both are clean and very nice (C. 8++). Min. bid \$40 (the lot).



316).Coca-Cola Sign. 28.25 x 27.25" outstanding, ca. 1950 2-sided porcelain Coca-Cola sign w/ original chrome framing surround, featuring great image of outboard motor style Coke dispenser. Crisp, bright and like new, w/ nice original surface sheen (near mint appearance), w/ trace hints of slight wear and staining at top grommet holes and barely noticeable 1/4" minor chip at bottom edge of backside. About as nice an example as you can ever find. Min. bid \$150.

Anheuser Busch



317).Anheuser Busch Sign. 39.5 x 24.75" (27.5 x 13-1/8" visible image) important, early paper litho sign for Anheuser Busch Co.'s "White Label Exquisite" brand bottled beer, featuring wonderful color graphic image of girl holding large bottle (1892 copyright by Knapp Litho, NY). Powerful and impressive looking piece is clean, bright and very attractive in appearance (displays as a C. 8+/-) w/ some light scattered toning and faint staining in outer grey background areas (nothing that's offensive or detracting). Presented in gorgeous period frame (note examination out of frame shows some damage and wear in outer margin area under matting (see website addendum for image and additional info.). Min. bid \$150.





318).Frog School Game. 11.25 x 11.25 x 1" unusual, early two-piece Bradley's boxed "Frog School" game featuring wonderful image of singing frogs, w/ game board and playing pieces on inside. Excellent overall w/ only minor wear (C. 8/+). Min. bid \$40.



319).Schwenk-Barth Beer Sign. 12.75 x 10-5/8" early chain hung key shaped pre-pro sign on a heavy pennant type felt cloth advertising Rosebud Beer (Schwenk-Barth Brewing Co., Yankton, S.D.), w/ attractive factory scene. Excellent (a strong C. 8++), w/ nice rich patina. Min. bid \$40.



320).Red Rock Soda Sign. 8.25 x 6.25" unusual, early, paper backed glass sign for Red Rock brand ginger ale, w/ fine brass chain wrap-around framing along outer edges. Features attractive image of girl drinking from marked glass, w/ large labeled bottle on countertop. Excellent overall w/ a slight bit of minor fade. Min. bid \$50.



321).Baker Rye Mirror. 2.75 x 1.75" early celluloid advertising pocket mirror for Garrett's-Williams Co.'s Baker brand Rye whiskey w/ image of lounging nude. Clean, bright and excellent appearance (close examination under magnification will reveal some surface rubs and wear). Min. bid \$50.



322).Forest & Stream Pocket Tin. 4-1/8 x 3 x 7/8" early tin litho vertical tobacco pocket tin for Imperial Co.'s "Forest & Stream" brand (same image both sides). Clean, bright and very attractive appearance, w/ nice sheen (basically a strong C. 8++) w/ exception of minor wear on backside and non-offensive small scratch mark in bottom right background). Min. bid \$50.



323).Wayne Feeds Mirror. 6-1/8 x 3-5/8" early die-cut tin litho thermometer advertising Wayne Feeds Co. Has advertising and temperature instructions for baby chicks on front, w/ chicks feeding schedule on backside. Very nice overall w/ only minor wear (C. 8+/-). Min. bid \$40.



324).Dr. Miles Match Safe. 2.75 x 1.5 x 3/8" scarce, early celluloid covered match safe advertising Dr. Miles Anti-Pain pills, w/ nicely detailed factory image on front and large lettered advertising text on backside. Clean and attractive, w/ only minor wear. Min. bid \$40.



325).Yacht Race Game. 14.25 x 8.25 x 1" early boxed game set for Milton Bradley Co.'s Yacht Race board game, featuring beautiful multi-color graphics. Has playing board on box base, w/ spinner and playing pieces (C. 8+/-). Min. bid \$40.



326).Vantine's Talc. 5 x 2.5 x 1-7/8" early embossed tin litho talc tin for Vantine Co.'s "Sana-Dermal" talcum powder, featuring beautiful multi-color graphic image of mother and baby. Clean, bright and attractive appearance, w/ a little non-offensive light scattered denting and wear (C. 8/+). Min. bid \$40.



327).Advertising Hand Mirror. 9 x 4.75" (dia.) early ladies hand mirror advertising Consolidated Ice Co. Substantial, very high quality piece, has beautiful North Pole scene on fine china bisque on backside, w/ finely detailed floral pattern on its brass handle, w/ beveled mirror on reverse. Neat and unusual piece (near mint). Min. bid \$40.



328).Inman Flying Circus Poster. 20.5 x 12.5" original ca. 1930's paper litho poster for the Inman Bros. barnstorming daredevil flying circus show (this poster for a show in Moberly, Missouri). Unused poster is clean and excellent (near mint) w/ faint, barely noticeable horizontal fold line in center (done in mfg. by printer). Min. bid \$40.



# Bidding Ends Friday, May 10th, 2013.

Stroh's Beer



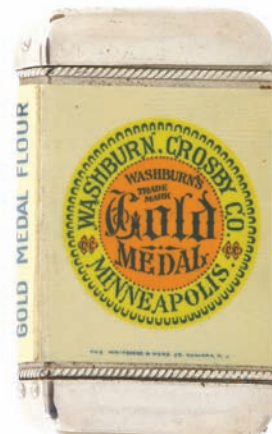
329).Stroh's Tap Knob. 2-3/8 x 2" (dia.) scarce variation, early plastic and celluloid advertising tap knob for Stroh's Bohemian Beer. Excellent. Min. bid \$30.



330).Meteor Spice Tin. 2-7/8 x 2.25 x 1.5" scarce, early spice tin (metal top and base w/ cardboard body) for "Meteor" brand (Lebanon Wholesale Grocers, Lebanon, Mo.), featuring same attractive image on both sides. Bright, attractive and displays nicely, w/ some non-offensive slight toning and faint staining on backside (front C. 8/+; back C. 7.5+/8-). Min. bid \$30.



331).Stay-Ready Petro Additive. 4 x 3-3/8" full, sealed 1 pt. sized "Stay Ready" brand engine additive can (Salyer Refining Co., Oklahoma City) featuring great image of Co.'s trademark girl riding goose. Min. bid \$30.



332).Gold Medal Match Safe. 2-3/8 x 1.5 x 3/8" early, celluloid covered match safe advertising "Gold Medal" brand flour. Clean, bright and excellent. Min. bid \$40.



333).Pratt's Poultry Regulator Tin. 11.5 x 11" (dia.) heavy, high quality 35 lb. metal can for Pratt Co.'s medicinal veterinary poultry product featuring wonderful images of Co.'s trademark rooster pulling cart (same image both sides). Clean, bright and very attractive (displays as a strong C. 8/+) although there is some denting (mostly confined to side edges) and some non-offensive light scattered wear (critical grade C. 8-). Would be great for storing pet food or cat litter. Min. bid \$40.



334).Good Friends Tray. 17.25 x 12.25" unusual, early tin litho serving tray featuring beautiful graphic image of woman and her horse, w/ advertising on rim for Hellman, Waterbury, Ct. Clean, bright and attractive in appearance (displays as a strong C. 8/+) w/ light wear on outer rim and close examination will show trace hint of faint ring marks if tipped in light just right (mentioned for accuracy- very minor and barely noticeable). Min. bid \$40.



335).Cook's Beer Sign. 14.5 x 11.75" early embossed tin litho die-cut sign for Cook's Goldblume beer (F.W. Cook Brewing Co., Evansville, Ind.). Clean, bright and very attractive (displays as like new), although close examination will show a minor background rubs and wear (critical grade C. 8/+) Min. bid \$50.



336).Oneida Tobacco Crate Label. 13.5 x 6.75" early paper tobacco crate label for Oneida brand, featuring stunning multi-color stone litho image of Indian princess (A. Hoen & Co. lithographers). Clean, bright and exceptionally nice appearance, w/ minor wear at very outer bottom edges. Min. bid \$40.



337).Iroquois Brewing Co. Window. 21 x 31.5" (16" dia. round center section) important, museum quality advertising window featuring incredible reverse painted glass center section featuring the Iroquois Brewing Co.'s (Buffalo, NY) trademark Indian character (probably was originally used at the factory). Powerful and very impressive looking piece that is clean bright and excellent in overall appearance, although there is paint loss inside the three blue tail feathers in headdress and there a couple small breaks and loose pieces in narrow outer stained glass round border surround area (all of which could be easily fixed). Note: I'm told this window was purchased many years ago at the estate sale of the former president of this brewery. Min. bid \$250.



Cracker Jacks



338).Cracker Jack Train. 3 ps. ca. 1930's lithographed tin diesel streamliner train set (ea. app. 2-3/8" long). These were originally prizes found inside cracker jack boxes. They are clean, bright and excellent. Min. bid \$30 (the set).



339).Blackstone Cigars Sign. 3 x 24" early, heavy porcelain strip sign for Blackstone brand cigars. Clean, bright and attractive appearance w/ nice surface sheen w/ some fairly minor light scattered wear at very outer edges (C. 8/+). Min. bid \$40.



340).American Can Tip Tray. 4.25" (dia.) tin litho advertising souvenir tip tray given by American Can Co. at their exhibit at the 1904 Louisiana Purchase Exposition. Clean and very attractive (C. 8/+). Min. bid \$40.

Sample Size



341).Sample Oil Dispenser. 4 x 4.5 x 3" (dia.) heavy, early, embossed metal advertising piece that is a miniature version of Brooklin's Co.'s 1 qt. thumb operated service station oil dispenser that was probably an executive gift or salesman's sample give-away. Quite nice overall, w/ just the right amount of wear (C. 8/-). Min. bid \$40.



342).Monadnock Peanut Butter. 3.5 x 3-7/8" (dia.) 1 lb. tin litho peanut butter pail w/ attractive images of Mt. Monadnock, NH (Holbrook Grocery Co., Keene, NH). Clean, bright and excellent (a strong 8++) w/ some light general wear to gold flashed finish on lid. Min. bid \$40.



343).Akerley Hair Brushes Sign. 8.75 x 9" early tin litho (over cardboard) string hung sign for Akerley Co.'s hair brushes. Clean, bright and very attractive appearance (a strong C. 8++) w/ only very slight wear (Shonk Litho). Min. bid \$60.



344).Old Town Canoes Catalog. 6 x 8-1/8" early, 1915 40 pg. fully illustrated catalog for Old Town brand canoes, filled with various canoes, equipment, etc. (same image on front and back cover). Very nice overall w/ minor toning. Min. bid \$40.



345).Zeno Cash Box. 11 x 10.75 x 6.75" as shown (5.25 x 11 x 6.75" closed) early country store cash box w/ large paper label inside advertising Zeno chewing gum (probably shipped full of gum packs as premium offering). Inside label is quite decent w/ minor staining and wear (C. 7.5+/8), outer box has some general light wear from use w/ a few small marker darkened touch-up chip spots on lid (box C. 7/+). Min bid \$40.



346).Smith Bros. Cough Drops Tin. 3 x 4.25" (dia.) scarce, early round variation tin litho 2 ps. product tin for Smith Bros. cough drops, w/ detailed images of Co.'s trademark brothers all around sides and on lid. Clean, bright and attractive appearance (displays as a strong C. 8+) although close examination will show a little light denting, minor scattered wear and a few non-serious dark spots (critical grade (C. 8/-). Min. bid \$40.



347).Political Cigar Box. 7 x 8-3/8 x 4-7/8" as shown (2.5 x 8-3/8 x 4-7/8" w/ lid closed) early wooden cigar box issued during the 1888 presidential campaign promoting losing Democratic running mates Cleveland and Thurman w/ beautiful graphic label inside. Outer box has some staining and typical light warping on lid, but overall is quite nice w/ clean, bright and excellent label inside (label a strong C. 8++). Min. bid \$40.



348).Political Cigar Box. 7 x 8-3/8 x 4-7/8" as shown (2.5 x 8-3/8 x 4-7/8" w/ lid closed) early wooden cigar box issued during the 1888 presidential campaign promoting winning Republican running mates Harrison and Morton w/ beautiful graphic label inside. Box is excellent w/ clean, bright and beautiful label inside (label C. 8.5/+). Min. bid \$40.





349).Coke Fountain Service Sign. 11.75 x 29.5" ca. 1950 porcelain Coca-Cola Fountain Service sign. Clean, bright and very attractive appearance- basically excellent overall w/ exception of minor edge wear and some non-offensive faint scuffs and light scratches (C. 8/+). Min. bid \$50.



350).Bathing Suits Sign. 3 x 10" early tin litho sign for "Swim Easy" brand bathing suits, shows gals in Co.'s bathing suit and forest outing garments. Has slight bit of minor waving and soiling, but overall attractive and displays quite nicely (C. 8/-). Min. bid \$40.



351).Checkers Knife Stone. 2.75 x 1.75 x 1/4" early celluloid covered knife stone advertising Shotwell Co.'s "Checkers" brand popcorn confection (Cracker Jack type product). Excellent overall w/ minor surface wear and some softening to reds. Min. bid \$30.

#### Miniature Skates



352).Miniature Skates. 3.25 x 1 x 1" pair of very high quality miniature metal roller skates from Sherwood Wagon Co., Canastota, NY. They are exact miniatures of Co.'s actual skates (salesman's samples?) w/ incised Co. logo and info, actual turning wheels and spring loaded moving sizing mechanism underneath each. Excellent. Min. bid \$30 (the pair).



353).Matchless Coffee Mirror. 2 x 2.75" unusual, early celluloid advertising pocket mirror for Charles Moody Co.'s "Matchless" brand coffee, featuring attractive image of a blooming coffee tree branch. Excellent (dark spot areas on mirror glass). Min. bid \$30.



354).Moxie Tip Tray. 6" (dia.) unusual early Moxie tip tray w/ colorful, beautifully detailed floral design (Shonk Litho.). Clean, bright and very attractive (a strong C. 8+) w/ minor wear at outer edges of rim. Min. bid \$50.



355).Spice Lot. Lot consists of two early, round cardboard black pepper spice containers. Includes: 8 oz. Puck brand 5-3/8 x 2-7/8" (dia.) (C. 8++); and 4 oz. Petring's Trumpet brand 5.25 x 2" (dia.) (C. 8+/-). Min. bid \$40 (the lot).



356).Walters Pilsners Clock. 15" (dia.) x 5.75" unusual ca. 1950's metal and glass advertising clock by Telechron Co. featuring nice image of Co.'s trademark bear cub. Clean, bright, very attractive appearance w/ non-serious small wear spot at outer inside edge at 1 o'clock (barely noticeable). Working condition. Min. bid \$50.



357).Hensler's Beer Sign. 13 x 8-7/8" early tin over cardboard sign for Joseph Hensler Brewing Co. (Newark, NJ), w/ gold recessed lettering at bottom. Never used sign is crisp, bright and excellent (a strong C. 8.5+) w/ only very minor wear. Has both easel and string on back side. Min. bid \$50 (have 2, winning bidder can take one or both).



358).Colburn's Washing Blue. 9.25 x 6.25 x 2.5" very early 2-ps. store box for Colburn Co.'s laundry bluing product, complete w/ 23 full product tins inside. Has bright, attractive color image on boxtop and displays very nicely (as a C. 8+/-) w/ some non-offensive crimping and broken off area of loss to bottom apron edge of lid, w/ some cello tape repairs along lid's side edge. Min. bid \$40.

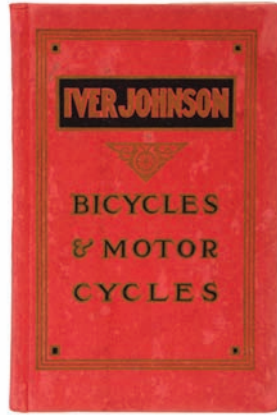


359).Planet Cigar Box. 11 x 7.25 x 5.5" as shown (5-5/8" hgt. w/ lid closed) early wooden cigar box for BL Planet brand cigars, featuring beautiful multi-color graphic labels on both inside and outer right panels. Clean, bright and excellent overall (C. 8+) w/ minor scuffs and wear on inside label (Series 1883 tax stamp). Min. bid \$40.

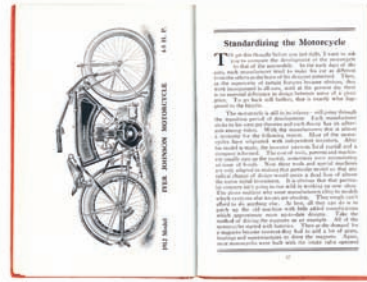




360).Victrola Pocket Mirror. 2.25" (dia.) scarce early celluloid record shaped pocket mirror advertising Victor Talking Machine Co., featuring image of Co.'s recording star Enrico Caruso. Excellent overall. Min. bid \$40.



361).Iver Johnson Catalog. 6-7/8 x 4.5 x 5/16" early (ca. 1912) 48 pg. hardcover catalog for Iver Johnson Co. bicycles and motorcycles, including over 22 highly detailed, heavily illustrated informative pages about their motorcycles. Excellent overall. Min. bid \$40.



362).Sucrene Mirror. 2-1/8" (dia.) scarce, early celluloid advertising pocket mirror for American Milling Co.'s "Sucrene" brand cattle feed/stock product. Clean, bright and excellent w/ beautiful color graphics. Min. bid \$50.



363).Zeno Gum Box. 9 x 6-3/8 x 1-5/8" scarce, very early, 2-ps. cardboard product box for Zeno brand chewing gum, featuring attractive image of young girl and dogs (note the great Zeno gum display in store window). Has some light soiling/toning and expected minor wear, but overall attractive and displays nicely (C. 8-). Min. bid \$40.



364).Napoleon Cigars Sign. 19-7/8" (dia.) scarce, early tin litho sign from Powell & Goldstein Co.'s (Oneida, NY) "Napoleon" brand cigars, featuring wonderfully detailed, beautiful embossed lithography (Standard Advertising Co., Coshocton, Oh.). Crisp, bright and exceptionally nice (a very strong C. 8.5++) w/ exception of small 1/4" indented bb ping spot next to middle right brass button. Interesting side note: consignor discovered this sign in his attic many years ago, never used, still w/ its protective paper. Min. bid \$250.



365).Nabisco Display. 13 x 6" scarce, early, cardboard die-cut stand-up countertop display for National Biscuit Co.'s "Zu Zu" brand ginger snap cookies. Has easel on backside w/ shelf section at top for holding the included original dummy display box. Has nice colors and displays quite well, although top section of cap is missing and there is some light staining and small tear spot area at base. Tough one to grade, but (C. 7.5++) appearance seems about right (box excellent). Min. bid \$70.



366).Canada Dry Door Push. 9 x 3" early embossed tin litho advertising door push plate for Canada Dry brand ginger ale, featuring beautiful color graphics. Clean, bright and excellent appearance (displays as a strong C. 8.5++) w/ some non-offensive crimping at lower outside left edge. Min. bid \$30.



367).Pepsinola Syrup Bottle. 11.5 x 3.25" (dia.) scarce, early, label under glass soda fountain syrup bottle for "Pepsinola" (an early Pepsi-Cola copycat knock-off product). Glass is excellent, although there is some background discoloration/light staining in label area probably caused by the melted beeswax used to attach glass label). Min. bid \$50.



368).White Rock Door Push. 14.75 x 4" scarce, early embossed tin litho advertising door push for White Rock brand sparkling water. Clean, bright and like new, as found never used still w/ its original protective paper covering. Min. bid \$40.



369).Adams Gum Box. 9-7/8 x 4.25 x 1.25" unusual variation, early cardboard display box for Adam's brand "Tutti Frutti" chewing gum w/ glass lift-up lid on inside (originally held 36 bars (180 pieces)). Clean, bright and excellent (a strong C. 8++) w/ light separation wear at bottom right corner edge of lid. Min. bid \$40.



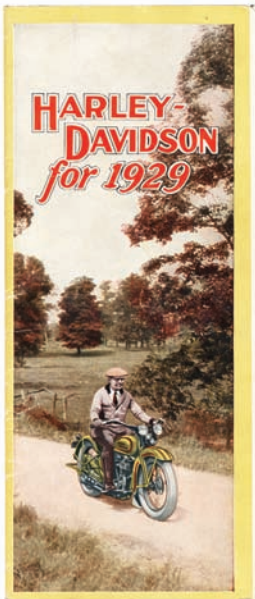


370). Dr. Hollick's Aphrodisiac. 2-3/8 x 3/8" important and extremely rare, (ca. 1870's?) 2-ps. quack medical container for Dr. Hollick's Aphrodisiac Remedy (American). This incredible, very high quality, 2-ps. brass container has beautifully detailed embossing, featuring the nude goddess Aphrodite on front and embossed text in various languages on backside (excellent). Museum quality piece! See website addendum for very interesting additional researched info. Min. bid \$50.



371). Uncle Wiggily Candy Pail. 3.5 x 3.75" (dia.) scarce, early tin litho candy pail featuring colorful and graphic Uncle Wiggily at seashore cartoon images all around (by illustrator Howard Garis). Has strong colors and displays very nicely, w/ some non-offensive light soiling (C. 8/-); w/ some darkening and wear on non-graphic lid. As found, should improve w/ cleaning. Min. bid \$50.

## Harley Catalog



372). 1929 Harley Davidson Catalog. 9.25 x 7.75" (factory folded like map to 9.25 x 3-7/8" size as shown) early 16 pg. catalog for Harley Davidson motorcycles, showcasing 6 different bike models w/ large color illustrations and detailed info. for each, followed by several pages of detailed options and features, Co. info, etc., w/ detailed photos throughout. Very nice overall (C. 8/+), w/ exception of small ink spot at bottom corner edges of back pages. Min. bid \$30.

## Congress Beer



373). Congress Beer Ad. 21.25 x 17.25" (15.25 x 12.75" visible) early ca. 1915 paper litho advertising sign for Haberle Co.'s Congress Beer (Syracuse, NY) featuring attractive sepia tone camp scene image by illustrator Ladendorf. Attractive and displays nicely (basically displays as a C. 8+/-) w/ minor toning and a little non-offensive background staining. Framed and matted (sign is blank on backside). Min. bid \$40.



374). Squires Pig Sign. 24.5 x 20.5" early tin litho sign advertising Squire & Co.'s "Arlington" brand hams, bacon and sausages, featuring wonderful image of Co.'s trademark pig surrounded by corn design border. Clean, bright and exceptionally nice (C. 8.5++). Min. bid \$100.



375). Remington Poster. 35.5 x 27-3/8" (25.75 x 17.5" visible) large early paper litho poster advertising Remington UMC brand firearms and ammo. Clean, bright and excellent appearance (displays as a solid C. 8.5+/-) w/ exception of some typical expected snake line/roll marks. Nicely framed and matted. Min. bid \$80.



376). Gold Cup Door Push. 3 x 32.75" unusual, early screen door type country store advertising door push for Gold Cup Bread, w/ a nice thick, heavy enamel type paint surface (not porcelain). Clean, bright and basically like new (appears never used) w/ minor storage wear. Min. bid \$40.



377). Taxi Thermometer. 16 x 6-3/8" unusual, early, heavy painted metal advertising thermometer for Black & White Taxi Co. (Pendleton, Oregon). Clean and excellent (appears never used) w/ working thermometer. Min. bid \$40.



378). Iroquois Beer Clock. 16" (dia.) early electric light-up "double bubble" style metal and glass advertising clock from Iroquois Brewing Co. (Buffalo, NY). Crisp, bright and like new (lights up fine, clock hands seem to want to, but do not move). Min. bid \$50.





**Rd #2, Cobb Hill Road, Cazenovia, NY 13035 • 24 Hr. Tel: (315) 662-7625 • 24 Hr. Fax: (315) 662-3570 • morf2bid@aol.com • morfauction.com**

Welcome to our 78th auction of quality antique advertising and fine collectibles. Everything we sell is guaranteed authentic and as described. We attempt to grade condition both fairly and conservatively, using a scale of 1-10 on the advertising items (ten being absolutely mint). We do not list reproductions, re-issues, deceptively restored or pieced together type merchandise. Flaws and blemishes are prominently noted and over emphasized. We encourage you to call for a detailed description on any item you have an interest in, but respectfully must request that you do this before the closing night. Dimensions are listed by height, then width, and are only approximate (+ or - a quarter inch).

## Bidding

Bids are accepted only from those parties who have registered with us to bid. (If you were mailed this catalogue by us you are automatically pre-registered.) Your bid is a legal contract to purchase and once entered, cannot be canceled. Placement of a bid indicates acceptance of our terms.

**ON ALL "BID" ITEMS THERE IS A 15% BUYERS PREMIUM ADDED TO EACH SUCCESSFUL BID.** You're welcome to bid by mail, email and fax anytime after receiving this catalog. **We will begin accepting phone bids on Wednesday, May 8th, 2013. We will be taking calls on Wednesday and Thursday from 10:00 AM until 5:00 PM.** If no one answers when you call, please leave a message on our machine and we will get back to you. **If bidding by mail or fax, please remember to include your telephone number with your bids!** You may call or bid as often as you like. We will tell you the current bid on any item(s) you are interested in. To raise a bid, your advance must be at least \$10 more than the current high bid amount. When an item reaches \$250, bidding increments rise to \$25, at \$1,000, bidding increments advance in \$50 steps, and above \$2,000 in \$100 increments. We suggest not waiting until the last minute to begin your bidding, as its quite possible you won't be able to get through.

## Web Page and Bid Updates

We will begin posting current bid prices (not including the buyers premium) on Wednesday, May 8th, 2013 (including an addendum of additional catalogue lot information) on our internet web page. These prices will be updated once each day (each evening sometime after 9:00 PM, EST) and will get updated to include the final hammer prices on Sunday afternoon once the sale is concluded. On the closing night, we will attempt to update current bid prices every hour. Our web page address for this sale is: <http://www.morfauction.com> We suggest that once you get to it, that you bookmark this address for easy re-access. There is also an addendum section on our website where we post additional information and photo's for this sale.

## Reserves and Estimates

All items which receive an opening bid in our sale will be sold to the highest bidder regardless of the price realized (we reserve the right to withdraw items in the event of inaccurate catalog descriptions and to reject any bid we feel is not made in good faith). **We run our auctions with a strict policy of no buy-backs, no auctioneer games and no hidden reserves.** Unlike some of our competitors, we do NOT allow consignors to bid up their own items!

## Mechanical Operations

Early mechanical and electric motors and mechanisms on machines toys, coin-ops, clocks, etc. are quite often temperamental and very unpredictable in nature. Although these mechanisms may be working fine at the time of sale, we make no guarantees or representations regarding their continued operating status once they have left our premises (including during shipping).

## Closing Night

**THE LAST DAY FOR BIDDING WILL BE ON FRIDAY, MAY10TH, 2013.** On closing day, we begin taking calls at 5:00 PM. Please mark your calendar now. **On the closing night (ONLY), we will also be taking calls at (315) 662-3318, (315) 662-3429 and (315) 662-3904 after 5:00 PM** (in addition to our regular (315) 662-7625 office number). **Closing Time: This Auction will close at 10:00 PM (EST) on Friday, MAY10TH, 2013.** At that time, no more incoming calls will be accepted and all lots with a registered bid of less than \$300, as well as all items without call backs registered on them will be officially closed and final. The items at \$300 and over that have call back protection registered on them will be closed out during our call back period the following afternoon (\*\*see important call back rules below\*\*). We reserve the right to change the official closing in the event of unforeseen family type emergencies or technological failures (utility disruptions, etc.). We also reserve the right to either extend the bidding, to postpone or to cancel this auction in the event of a national emergency or if the Internet or the services of the US Post Office were to get seriously disrupted during our catalogue mailing or bidding period.

## "Up-To" Bids & Call Backs

**CEILING BIDS:** We will be happy to enter competitive "up to" ceiling bids for you on any lots you request. Beginning at your minimum amount, we will advance these bid(s) up to your left ceiling amount, if (and only if) it is topped by another bidder. "Up To" bids will be handled discretely and executed in a completely competitive manner for you. Please note that we don't accept open ended "top all others" ceiling type bids.

**CALL BACKS:** You may request call back protection for any lot(s) that you enter with either a minimum or a protected "up-to" ceiling bid in an amount of at least \$300. This request must be registered with us before the official 10:00 PM closing hour of Friday, May 10th, 2013. All callbacks will be placed by us on Saturday, May 11th, 2013, beginning at 12:00 noon (EST) and will continue that afternoon until each of the individual lots have been closed out (using past experience, I would expect this to be finished by 6:00 PM, if not earlier). If you register for call-backs, it is your responsibility to be available during this call back time period. We make every effort to honor all our call back requests, but this service is done solely as a convenience to our bidders and will be performed on a best efforts basis only. If you will be traveling or if you will not be available during call back times at your primary number, be sure you provide us with proper alternate or back up numbers for reaching you!

## Payment Terms

Winning bidders will be invoiced by mail immediately after the sale. Those who desire fast shipment can pay by Money Order or Cashiers Check. Payments are due within 10 days of receipt of invoice. We reserve the right to offer the item out to our back bidders and deny future bidding privileges to those who do not pay in a timely manner. In addition to personal checks, we also accept payment on your American Express, Visa, Master Card, Discover and Optima Credit Cards (with no surcharge added). No COD's or Collect calls are ever accepted. Items shipped to anywhere in New York State must include appropriate sales tax or signed resale certificate.

## Shipping

All packing and shipping charges are extra. We do most of our own packing and shipping in house and try to keep these charges as reasonable as possible for you. On especially fragile and larger hard to pack items, we hire the services of professional packers and charge you at our billed cost. We ship mostly through the Post Office and Fedex Ground, (Fedex Overnight available at an extra charge.)

## Subscribing, Prices Realized, Consignments & Upcoming Events

**Future catalogs can be assured by sending \$20 for a full 12 months subscription.** (Prices are published on our website after each sale) An automatic credit card ordering program is available. We currently run between 2-4 auctions a year. In addition to our regular sales, we also occasionally offer sales made up entirely from single owner collections. Please contact us should you have items you would like us to consider for inclusion in our upcoming events. All inquiries are handled in a completely confidential manner. Our services are also available for the private placement marketing of important individual items, marketing plans for large collections as well as for estate planning and settlement purposes. Back copies of many of our previous auction catalogs are still available at \$5 each (w/ prices realized) w/ quantity discounts available if multiple issues are ordered. For further information, check our website.

Photography by Wes Feuz. Layout by Tracy Niemczal.

© Copyright 2013. All Rights Reserved. No portion of this publication may be copied in any form without the express written permission of Morford's.

## Important Closing Night Information

In addition to our regular (315) 662-7625 office number,  
on the closing night (only!) you may also call us at:

(315) 662-3318\*  
(after 5:00 PM)  
(315) 662-3904\*  
(after 5:00 PM)  
(315) 662-3429\*  
(after 5:00 PM)



**\*These numbers for  
Closing night only!  
Friday, May 10th, 2013**

**Bidding closes at 10:00 PM on Friday closing night. We will be accepting**  
faxes and e-mails on closing night. Our web page will update current  
high bid prices approximately every hour on closing night and will also  
list any important addendum information. **All call backs will be made on**  
**Saturday, May 11th, 2013, beginning at 12 o'clock Noon!**