



WM Morford
Investment Grade Collectibles at Auction

Investment Grade Collectibles at Auction

Rd #2, Cobb Hill Road, Cazenovia, NY 13035 • 24 Hr. Tel: (315) 662-7625 • 24 Hr. Fax: (315) 662-3570 • morf2bid@aol.com • morfauction.com

Bidding closes Friday, October 11th, 2013. (See page 36 for Terms & Conditions)



1). **Planters Clean Crisp Can.** 4-1/8 x 4-1/8 x 2" scarce, early tin litho product can for Planters Co.'s "Clean Crisp" brand salted peanuts. A clean, bright, very attractive example w/ minor wear on lid (a strong C. 8+). Min. bid \$50.



2). **Onion Dealer Paperweight.** 2.5 x 3.25" (dia.) fine, very early, heavy hand blown glass paperweight advertising Ort & Co., a Churubusco, Ind. onions dealer, w/ beautiful detailed color image of large onion inside against milk glass layered background. Excellent. Min. bid \$40.



3). **Home Oil Co. Can.** 6.25 x 8 x 3-1/8" very early hand-soldered tin litho 1/2 gallon size motor oil can from Home Oil Co., Ripley, Tenn. ("Homco"), featuring great image of Co.'s trademark race car (text on backside). Very attractive piece that displays nicely (as a C. 8+), w/ some light scattered wear spots on backside (critical grade front C. 8/-; back C. 7.5). Min. bid \$50.



4). **Wolf's Head Sign.** 10.5 x 18" early 2-sided metal oil rack sign, w/ thick, early enameled paint surface (Wolverine-Empire Refining Co.) featuring nice image of Co.'s early style logo (same image both sides). Has strong colors and displays nicely (as a C. 8+), although close examination will show a little non-detracting light wear, w/ minor bending at bottom mounting holes (critical grade C. 8/-). Min. bid \$50.



5). **Piel's Brewing Co. Sign.** 8-1/8 x 16-1/8" early, heavy enameled porcelain sign for Piel's Brewing Co. lager beer. Crisp, bright and exceptionally nice (basically like new in appearance) w/ exception of hardly noticeable, very minor wear at upper outside border area and a minor white mfg. blemish spot at mid right border (near mint). Min. bid \$50.



6). **Tool Display.** 10.25 x 6.5 x 5.75" unusual, early tin litho die-cut countertop store display for Edelman Co.'s "Sextet" brand wrench tool device, w/ a bracket hook section for holding tool. Displays very nicely (C. 8+/) w/ only minor wear (including a little oxidized wear at top of tool hook spot) and a couple trace, very minor waves to back die-cut figure (mentioned for accuracy, nothing that's at all offensive or detracting). As found, should improve w/ cleaning. Min bid \$60.



7). **Beauty Shop Sign.** 26 x 19" (dia.) x 6.5" (w) unusual, early 2-sided beauty shop sign w/ a great ca. 1920's art deco look. Has black painted metal gas pump style body and glass lens inserts and is attached to metal bracket tube for mounting to building and holding wires inside for lighting. Excellent overall w/ a great look (text on backside). Min. bid \$60.



8). **Dutchman Roly Poly.** 7 x 6.5" (dia.) early figural tin litho Mayo brand tobacco can in likeness of jovial Dutchman. Clean, bright and displays very nicely (basically as a strong C. 8+/) w/ exception of shallow nickel sized indent mark in upper left backside hair area and some general wear on bottom of base (critical grade C. 8/-). Min. bid \$60.



9).John Storm Cigar Tin. 5.5 x 6.25 x 4.25" early tin litho 50 ct. cigar can for John Storm brand. Clean and very attractive appearance w/ a little light wear on non-graphic backside (front C. 8+; back C. 8-) w/ some gold loss on lid and melted solder spot covering up breathing holes on base. Min. bid \$40.



10).Porcelain Shield Sign. 10 x 9-3/8" small, early, heavy enameled porcelain shield shaped sign for Keystone Equipment Co., w/ heavy porcelain mounting hooks on backside. Excellent (near mint). Min. bid \$40.



11).Red Indian Grease Can. 6.25 x 6-3/8" (dia.) unusual 5 lb. size grease can for McColl-Frontenac Oil Co.'s Red Indian brand automotive grease. Attractive piece that displays nicely (as a C. 7.5+/-), w/ a little minor scattered soiling and light wear, including slight hint of fade to reds (as found, might improve a bit w/ cleaning). Canadian. Min. bid \$40.



12).Champ Pomade Tin. 3.5 x 2-3/8 x 1-1/8" unusual, early tin litho hair pomade tin from Dolly Dimple Co., featuring great image of early boxer. Clean and attractive appearance, w/ some non-offensive light scattered wear on lid, w/ heavier wear on backside (lid C. 8/-; base C. 7+/-). Min. bid \$30.



13).White Lilac Coffee Tin. 6 x 4.25 x 2-7/8" early tin litho 1 lb. coffee can for "White Lilac" brand (Consolidated Tea Co., New York), featuring same nice image on both sides. Clean, bright and exceptionally nice, w/ small chip spot in orange circle area on backside (front C. 8.5+; back C. 8+). Min. bid \$30.



14).Advertising Match Holder. 4.5 (h) x 3.5" (dia.) early nickel plated heavy brass countertop match holder (made for holding match box) w/ embossed advertising for Illinois Engineering Co., Chicago (makers of pumps, radiator and vacuum valves, exhaust heads, etc.). Heavy duty, high quality piece is excellent overall, w/ nice surface patina. Min. bid \$30.



15).Ever Well Spice Tin. 3.25 x 2.25 x 1.25" early tin litho 2 oz. spice tin (cinnamon) featuring beautiful graphic image of Co.'s trademark well scene (same image both sides). Clean, bright and exceptionally nice w/ a little typical minor darkening spots in gold flash finish at side edge (C. 8.5). Min. bid \$40.



16).Lucas Carriage Paint Sign. 12 x 8" outstanding, early celluloid over cardboard sign for John Lucas Co.'s carriage gloss paints, featuring beautiful multi-color graphics (backside has ribbon for hanging and easel for counter top display). A clean, bright and exceptionally nice looking piece (basically C. 8.5+) w/ exception of a little non-offensive light foxing and wear at very outer white border area (could be easily hidden w/ narrow frame). Bastian Bros. Litho. Min. bid \$50.



17).Lighter Fluid Vendor. 19.75 x 7-5/8" (dia.) nice mechanical countertop coin-operated (penny) figural aluminum lighter fluid dispenser (by Van Lansing Co., Ellwood City, Pa.), shaped like an early visible style service station gas pump. All original, and as found, this attractive piece displays nicely w/ mostly intact decals on glass globe and metal base areas, complete w/ keys. Quite nice overall, although red paint surface rates a C. 7.5+/-, due to some light scattered scuffing, scratching and expected wear from use. As found, should improve a bit w/ cleaning. Min. bid \$60.



18).Hoeffer Ice Cream Tray. 16.25 x 12-5/8 x 1-1/8" scarce, early tin litho serving tray advertising Hoeffer Ice Cream Co., featuring great image of stylish girl. Clean, bright and very attractive (C. 8+) w/ some non-detracting light scattered wear along outside edge of rim. Min. bid \$70.



19) Shoe Polish Tins. Lot includes five different early tin litho shoe polish tins, ea. w/ interesting images. Top row 3" (dia.) x 1" includes: Slide (C. 8+) and Nonsuch Black Cat brand (C. 8+); bottom row: (2.25" dia.) x 7/8" includes: Columbus (C. 8+); "Half Time" w/ nice Uncle Sam image (8.5+); and Beau Brummel (C. 8.5+). Min. bid \$30 (the lot).



20) Meerschmum Pipe. 3-5/8 x 7 x 2-1/8" unusual, large, fancy hand-carved meerschmum pipe in image of nude woman figure. High quality piece, has nice detailing and an attractive, naturally aged patina. Excellent overall, w/ typical expected minor wear from use. Min. bid \$40.



21) Dark Horse Shoes Ledger Marker. 12-3/8 x 3-1/8" very early tin litho ledger marker (by Somers Bros. Litho.) advertising "Dark Horse" brand men's shoes, w/ great image of Co.'s trademark folkie horse and beautifully detailed image of Co.'s Boston factory building (different advertising on backside). Clean and attractive, w/ minor waving and a slight bit of non-detracting wear on backside (front C. 8.5+; back C. 8+/-). Min. bid \$50.



22) Nashville Plate Topper. 4.5 x 10-1/8" scarce, early cast aluminum license plate topper/ bumper tag from Nashville, Tenn. "Home of Grand Old Opry" w/ musical note and hillbilly carrying jug of moonshine figures at sides. All original, w/ nice surface patina (C. 8+/) w/ exception of a little red background paint wear from use in "Tenn" section). Min. bid \$30.



23) Davis Baking Powder Sign. 5.5 x 13.75" fine, very early embossed tin litho sign for Davis brand baking powder. Very high quality piece is clean, bright and exceptionally nice, w/ just a slight trace crease mark at upper right edge (mentioned for accuracy- quite minor and not at all offensive). American Art Sign Co. (C. 8.5+). Min. bid \$70.



24) Baum's Stock Food Box. 6 x 11.5 x 7.5" full (never opened) early wooden 10 lb. size product box for Baum's veterinary horse and stock food product, featuring wonderful color paper lithography on top lid and around the four side panels. Attractive and displays nicely, w/ minor toning/staining and a little typical expected light paper loss at outer corner edges (C. 7.5+/8-). Min. bid \$40.



25) Anheuser-Busch Tray. 10-5/8 x 12-7/8" very early, pre-pro era oval advertising tray from the Anheuser-Busch Brewing Association, St. Louis, Mo., featuring beautifully detailed multi-color lithography (Copyright 1900, Standard Advertising Co.). Impressive looking piece is clean, attractive and displays quite nicely (basically as a C. 8+/) although close examination will reveal a little slight, non-offensive minor hazy scattered wear, as well as a few chip/scuff marks at top of outer rim area (critical grade C. 7.5+/). As found, might improve w/ cleaning. Min. bid \$70.



26) Hoffman House Display Box. 9.5 x 10.5 x 8.5" early, colorful and highly graphic cardboard display box for Hoffman House brand cigars, probably used for packing and shipping Co.'s wooden cigar boxes. Clean, bright and exceptionally nice appearance (probably never used and displays as a strong C. 8.5+), although there is archival tape reinforcements on underside of boxes top flap, a little non-offensive chipping/edge wear at top corner edges and close examination will reveal a well-done professionally repaired tear line on the right side panel. Min. bid \$50.



27). Quaker State Oil Can. 5.5 x 11 x 3.75" very early hand-soldered gallon sized motor oil can for Phinny Bros. Co.'s Quaker State brand, w/ interesting "Used and recommended by Franklin Auto Co." notation on one side. Has some typical light general expected wear, but overall is attractive and displays well (C. 7.5+/8-). Min. bid \$50.



28). Sharples Cream Separators Pins. Lot of seven different multi-color celluloid advertising pins for Sharples Co.'s Cream Separators. Includes six different 1.25" (diam.) variations and an early celluloid lapel/tie pin (very good to excellent). Min. bid \$40 (the lot).



29). Tahoma Cigars Change Receiver. 1.5 x 6.75 x 6.75" early, heavy glass countertop change receiver advertising Tahoma brand 5¢ cigars, w/ reverse glass advertising lettering all around sides and beautiful color litho scenic Indian and canoe image inside. Excellent overall, w/ some typical expected paint wear at bottom black base area. Min. bid \$50.



30). Ammo Shot Display. ¼ x 8-7/8" (dia.) unusual, very early advertising store display for American Standard Ammo Shot (Colwell Lead Co., New York). All original, very high quality piece, has metal frame surrounding cardboard interior w/ cut-out sections displaying various sizes of actual ammo shot, w/ descriptive advertising and info on backside. Attractive and displays nicely (C. 8+/-) w/ minor soiling and some shot loss (backside has darkening and fairly heavy general overall wear). Min. bid \$60.



31). Planters Box. 9.25 x 9-1/8 x 6-7/8" (as shown); (7 x 9.25 x 3.75 lid closed) unusual, ca. 1940's heavy waxy cardboard 2-ps. counter display box w/ attractive die-cut stand-up marquis in back featuring female aviator. Clean and excellent (C. 8+++) complete w/ original lid (some separating along lid edges). Min. bid \$50.



32). Christmas Bottle. 5.75 x 2.25 x 2.25" unusual, early amber colored figural glass bottle in image of St. Nick, w/ hand-applied blob top lip and nice chimney pattern at base. Excellent. Min. bid \$40.



33). Chocolate Milk Door Push. 11.5 x 3.5" early tin litho door push w/ great looking image of an early chocolate milk filled bottle. Found in crisp, never used condition w/ a beautiful rich patina and only minor storage wear (near mint). Min. bid \$40 ea. (have two, winning bidder can take one or both).



34). Coca-Cola Thermometer. 16 x 4-7/8" early embossed tin litho advertising thermometer in shape of Co.'s 1920's "Christmas" bottle. Clean, bright and displays very nicely (C. 8+/-) w/ a little non-offensive light wear from use. Min. bid \$40.



35). Glass Straw Holder. 11 x 4" (dia.) scarce, very early, fine blue glass straw holder w/ silver plated metal lid and beautifully detailed, fancy hand-painted heavy white enameled "Mary Gregory" decorative image. Excellent overall (tiny flea bite at top edge—nothing serious or offensive and could be easily polished away). Min. bid \$50.



36).Mickey Pencil Box. 8.25 x 5 x 1/2" ca. 1930's Walt Disney Co. Mickey Mouse cardboard pencil holder, w/ pull out drawer at base for holding school supplies (includes original wooden ruler and an unused Mickey Mouse pencil inside). Has a little minor background staining and some non-offensive light wear, but overall decent and very attractive (C. 7.5+/8-). (Note: backside has sepia like colors). Min. bid \$40.



37).Stantons Medicine Clock. 12.25 x 11 x 2.5" early figural cast iron countertop clock w/ antique bronze finish advertising Stantons Pain Killer medicine, w/ nice product bottles featured. Excellent and all original w/ beautiful detailing (note: clock runs slightly, but is pretty temperamental). Min. bid \$90.



38).Store Keeper Roly Poly. 7 x 6.5" (dia.) early Mayo's brand 2-ps. figural tin litho tobacco can in image of a smiling store owner. A clean and attractive example that displays quite nicely (basically as a C. 8+/) w/ a little non-offensive minor scattered wear (critical grade C. 8/-). Min. bid \$60.



39).Granger Pocket Tin. 4.5 x 3 x 7/8" early tin litho vertical tobacco pocket tin for Liggett & Myers Co.'s "Granger Rough Cut" tobacco w/ nice image of Co.'s trademark hunting dog on backside. Tin is clean and bright w/ strong color and very nice overall appearance, w/ some minor scattered wear on backside (front C. 8++; back C. 8+/-). Min. bid \$60.



40).Goal Cigar Can. 5.25 x 2-5/8 x 2" scarce, early tin litho 12 ct. cigar can featuring great image of Co.'s trademark football (same on both sides). Clean, bright and excellent (C. 8.5+/). Min. bid \$40.



45).Indian Head Match Holder. 4-3/8" (h) x 2.5 x 2.25" very early hand carved wooden match holder (dark walnut or mahogany type hardwood) in shape of Indian head. Has nice detailing, and a deep, rich, all original surface patina. Excellent. Min. bid \$40.



42).Continental Cubes Pocket Mirror. 2.75 x 1.75" early celluloid advertising pocket mirror for Continental Cubes brand tobacco, featuring wonderful multi-color graphic image of saloon girl holding poker hand while seated on giant tobacco tin. Excellent. Min. bid \$60.



43).Skyway Oil Can. 5-5/8 x 4" (dia.) full, unopened, early tin litho 1 quart solder seam picture style can for "Skyway" brand motor oil (Airline Oil & Grease Co., Lubbock, Texas) featuring great image of early airplane. Clean, bright and very attractive (a strong C. 8++) w/ nice sheen. Min. bid \$50.



44).De Laval Match Holder. 6-3/8 x 4" early embossed tin litho die-cut advertising match holder in shape of Co.'s cream separator (1.2 million sold variation). Clean, bright and very attractive (a strong C. 8.5+/) w/ a little light surface wear and speckling on silver metallic figural sections that hold matches. Min. bid \$40.



41).Coke Tip Tray. 6.25 x 4.5" ca. 1909 tin litho Coca-Cola tip tray, featuring nighttime fair scene. A decent and pretty respectable example that is clean, bright and quite attractive overall (displays as a pretty solid C. 8). w/ exception of a few tiny background chips-including a small dark spot on cheek and a close examination when tipped in light will reveal a few non-detracting minor surface blemishes (critical grade C. 7.5+/). Min. bid \$40



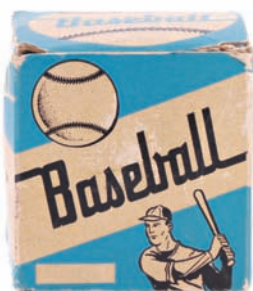
46).Cow Boy Baking Powder Tin. 5 x 3" (dia.) scarce, very early paper label (over tin) display can for "Cow Boy" brand baking powder, featuring great image of child cowboy. Empty still sealed and never opened can appears to have been a dummy display can, w/ 1/2 label on front side only. Has strong color and a great overall look, although there is toning, scattered background staining and some paper loss along base (critical grade C. 7+/-) but displays better than this implies. Min. bid \$40.



47).Bronze Advertising Clock. 5.5 x 7.75 x 2" unusual, heavy, solid bronze early advertising clock for Baer Co. Throwsters, featuring great figural images of standing bears and hay bale, w/ clock in center (made by Keystone Bronze and Pattern Works Co.). Very high quality piece, in excellent condition, w/ beautiful surface patina. Min. bid \$50.



48).Fast Mail Game. 10.25 x 20.25 x 1-1/8" scarce, very early "The Fast Mail" boxed game set by Milton Bradley Co., Springfield, Mass., featuring beautiful multi-color graphics on cover and inside playing board. Clean, bright and excellent overall (a strong C. 8++), complete w/ spinner and wooden playing pieces. Min bid \$50.



Moxie



49).Moxie League Baseball. 2.75 x 2.75 x 2.75" (box) unusual, early, "Moxie League" horsehide leather baseball, w/ attractive images of bottle cap advertising design and Co.'s spokesman Frank Archer. Ball is excellent overall, as found never used w/ its original box (note: box has some toning and light general storage wear). Min. bid \$30.



Good Year Bank

50).Good Year Zeppelin Bank. 2-3/8 x 7-3/8 x 2.75" early, figural cast aluminum Good Year advertising bank in shape of Co.'s zeppelin docking building in Akron, Ohio (made from same duralumin metal used in making the Co.'s zeppelin airship). Excellent and all original, w/ nice surface patina, complete w/ original felt and stopper on base. Min. bid \$50.

Quack Medicine Device



51).Quack Medical Device. 4.75 x 2" (dia.) unusual, early "Ideal" brand (Harris & Berntz Co., Phil'a.) quack medical hair tonic delivery device for applying tonics and restoratives to the scalp (note: the rubber bulb was filled with treatment that was released by squeezing through tiny holes at the end of comb's claws). Device is excellent, w/ some toning and edge wear to label on box lid (label C. 7.5). Min. bid \$30.



52).Planters Canadian Candy Bar Box. 5.25 x 10 x .1/2" scarce, large, early 1/2 lb. size candy bar box w/ attractive wrap around paper label for Planters Peanut Co.'s "10¢ Crunchy P. Nut Candy Bar". Label has strong colors and displays nicely, w/ minor staining and some light tattering at outside edges (C. 7.5+/8-). Min. bid \$50.



53).Planters Summer Jar. 9.5 x 7.4 x 4.75" extremely rare, ca. 1930's embossed glass Planters streamline style store display jar w/ large Jumbo Block "Summer Sun" labels on both sides (I'm told only a couple of these jars are known to exist). Jar is excellent, labels have general light soiling, minor scuffing and light general wear, but overall are attractive and display very nicely (labels C. 7.5+/8-), w/ some light wear on metal lid. Min. bid \$80.



54).Webber Lumber Match Holder. 6.5 x 6.5" very early tin advertising match holder for E.O. Webber Lumber Co., Marysville, Kansas. Clean, bright and exceptionally nice, w/ just a trace hint of barely noticeable minor creasing (C. 8.5/+). Min. bid \$40.



55).First Cabin Tobacco. 5-5/8 x 4.75 x 4.75" unusual, early 1 lb. size cardboard "First Cabin" brand tobacco canister w/ metal base and lid (Weissinger, Co., Louisville, Ky.). Clean, bright and excellent (C. 8++). Min. bid \$40.



56).Phonographs Mirror. 2-1/8" (dia.) scarce, early celluloid advertising pocket mirror w/ pin holder sides for Victor brand phonographs featuring beautiful multi-color graphic image of Co.'s trademark dog and early record player. Excellent. Min. bid \$40.



57).Twistbud Tobacco. 4.5 (h) x 4" (dia.) very early cardboard tobacco container for "Twistbud" brand smoking tobacco w/ beautifully detailed label. Excellent overall (C. 8+). Min. bid \$40.



58).Wrigley's Soap Tip Tray. 3.5" (dia.) early tin litho advertising tip tray for Wrigley's brand soap, featuring great image of Co.'s trademark cat seated on soap bar packages. Clean and very attractive (C. 8++) w/ some wear spots on non-graphic backside. Min. bid \$40.



59).Jackie Coogan Peanut Butter. 3-3/8 x 3.75" (dia.) scarce variation 12 oz. tin litho pail for Kelly Co.'s "Jackie Coogan" brand peanut butter, w/ great movie scene images of silent era movie star all around (he played "The Kid" in J.C. Fields movie as well as many other leading roles and in later life became "Uncle Fester" in Adams Family series). Excellent (C. 8++). Min. bid 50.



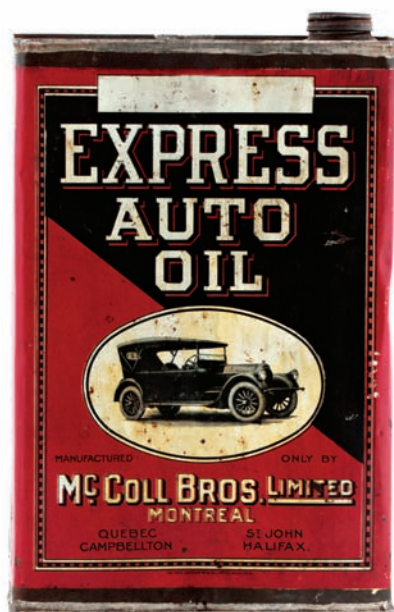
60).Bunny Peanut Butter. 3 x 3-5/8" (dia.) scarce, early tin litho 12 oz. peanut butter pail for Bunny brand (Producers Peanut Co., Suffolk, Va.) featuring great images of adorable animal characters all around. Has nice color and displays quite well, w/ a little minor scattered wear (tin C. 8+/-) w/ some general light wear spots on its non-graphic lid (lid C. 7+). Min. bid \$50.



61).Harley-Davidson Cap. 4 x 9 x 11" ca. 1950's heavy cloth Harley-Davidson motorcycle riders cap, w/ five period AMA and Gypsy Tour enameled badges attached. Cap and badges are excellent, although caps visor has some stress lines and scuff marks evident from many years of use. Min. bid \$40.



62).Spice Tin Lot. Lot of two different tin litho spice tins w/ attractive color graphics. Includes: Hostess brand 2-1/2 oz. allspice 4.25 x 2 x 1.25" (Newton Co., Newark, New York) (C. 8.5/+) and Stuart's Handy 2 oz. cloves 3.75 x 2.25 x 1.25" (Stuart Products, Newark, NY) (C. 8.5). Min. bid \$40 (the lot).



63).Express Auto Oil Can. 12 x 8 x 3-1/8" great, early hand-soldered tin litho 1 gallon size motor oil can for "Express Auto Oil" (McColl Bros., Montreal, Canada) featuring great image of early roadster (same image both sides). Has strong color and displays quite well, although there is some soiling, denting and oxidizing spots and fairly heavy wear on backside (display side C. 7.5+; backside fair to poor). Min. bid \$70.

Salesman Sample



64).Detail



64).Salesman's Sample Wringer. 4.5 x 11.5 x 3.25" early, miniature salesman's sample size "Horse Shoe" brand clothes wringer (American Wringer Co., New York) is an exact working miniature version of Co.'s full size wash wringers. Attractive and excellent overall, w/ nice rich surface patina (C. 8.5/+). Comes w/ miniature wooden wash bucket. Min. bid \$40.



65).Munsing Wear Door Push. 6.5 x 2.5" early embossed brass door push plate advertising Munsing Wear brand underwear. Excellent, w/ nice rich surface patina. Min. bid \$30.



66).Aeroplane Stores Sign. 6-7/8 x 20" unusual, early embossed tin litho sign for the "Aer-o-plane Stores" featuring great image of early bi-wing plane. Has strong colors w/ a neat overall look, although there is some scattered background scuffing and wear, minor bends and four nail holes in white background area (C. 7/+). Min. bid \$40.



67).Limousine Candy Container. 2.5 x 4 x 1-7/8" early figural glass candy container in shape of fancy limo, w/ slide-off metal lid closure. Excellent, w/ very nice original paint surface. Min. bid \$40.



68).Old Dutch Cleanser Sign. 16 x 11" early bevel edged tin over cardboard sign advertising Old Dutch brand cleanser product. Image area is clean, bright and excellent overall (a strong C. 8++) w/ a couple minor chips in sky area and some light scattered chipping in outer white border area. Min. bid \$50.



69).Dunlop Golf Figure. 15.5 x 6 x 7.75" great, ca. 1920's-30's, heavy figural composition stand-up display piece advertising Dunlop brand golf balls. Powerful and impressive piece is clean and very attractive in appearance, w/ a nice rich surface patina (C. 8++). Min. bid \$70.



70).Borden's Sign. 13-5/8 x 10.25" early cardboard litho sign for Borden Co.'s Eagle brand condensed milk, featuring beautifully detailed color lithography. Clean, bright and like new appearance (basically near mint) w/ exception of minor wear mark at very outer right edge. Min. bid \$40.



71).New Currency Cigar Can. 5-3/8 x 2.5 x 2" scarce, very early tin litho 10 count cigar can for U.S.D. Co.'s "New Currency" brand cigars, w/ beautifully detailed graphics (National Can Co., Detroit). Clean, bright and very attractive appearance, w/ some scattered wear in lettering on non-graphic backside (front a strong C. 8++; back C. 7+/-). Min. bid \$40.



72).Golf Theme Tin. 10.75 x 3-1/8" (dia.) ca. 1913 Robinson Bros. embossed, figural golfing theme candy tin with lift-off lid, in shape of early golf bag. Has beautiful detailing and is clean, bright and exceptionally nice in appearance (C. a strong 8++) w/ exception of fairly minor early scuff mark in background of backside. Canadian. Min. bid \$80.



73).Telephone Match Holder. 6.75 x 3.25 x 1-5/8" early, figural cast iron hanging match holder w/ embossed wall phone image at top advertising "Lungstos", a dyeing and cleaning outfit. Nice overall condition, w/ expected typical light paint wear (C. 8). Min. bid \$40.

DR DANIELS' HORSE REMEDIES.

74).Dr. Daniels Veterinary Sign. 2.5 x 20" scarce, early, heavy porcelain advertising strip sign for Dr. Daniels Horse Remedies. Displays quite nicely, although close examination will reveal some overall non-offensive slight hazy dulling to surface finish, as well as some early oxidized chipping at very outer edges (as found, should improve w/ cleaning). Min. bid \$50.



75).North Dakota Pocket Mirror. 1.75 x 2.75" early colorful and highly graphic agricultural themed promotional celluloid pocket mirror w/ name and address of North Dakota's agricultural commissioner. Excellent overall w/ small, very minor foxing spot on rim area of backside. Min. bid \$40.



76).Stellar Aspirin Tin. 1-7/8 x 2-5/8 x 1/4" unusual, early tin litho hinged lid aspirin tablets tin from Steller Drug Co., New York, featuring great image of Co.'s trademark early airplane (larger 24 tablets size tin). Excellent (C. 8.5+). Min. bid \$30.



77).Yellow Cab Taxi Cap. 5 x 11 x 9.5" early, very high quality Yellow Cab taxi cab drivers uniform cap, w/ a nice rich, surface patina from years of use (C. 8). Min. bid \$30.



78).Osborne Harvesters Tip Tray. 5.25" (dia.) scarce, foreign variation (German) advertising tip tray for Osborne Harvesters, featuring beautiful multi-color graphics. Clean, bright and very attractive appearance (a strong C. 8+), w/ a little non-offensive light wear on outer rim. Min. bid \$40.



79).Auto Hood Ornament. 4 x 4 x 2.25" (dia.) unusual, early metal and glass automotive hood ornament featuring Boyce Moto Meter see-through engine thermometer at top beveled glass, w/ unusual decorative wings on sides. Very nice overall appearance (C. 8) w/ expected surface wear and a couple minor, very fine stress line crack marks on upper surface top layer of metal (nothing that's at all serious or detracting). Min. bid \$30.



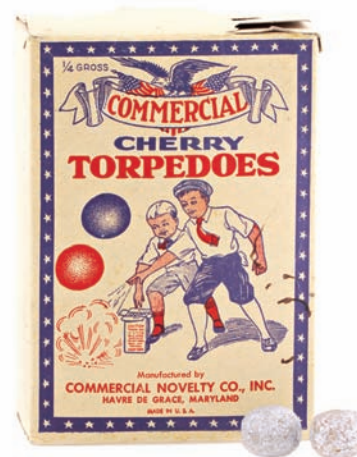
80).Moxie Tip Tray. 6" (dia.) early tin litho advertising tip tray for Moxie w/ nice image of Co.'s Moxie girl. Image area is clean, bright and very attractive (basically interior rates a strong C. 8/+) although there is some scattered wear along gold trim outer edges of rim and a light dent mark in letter "X". Min. bid \$40.



81).Sports Theme Underwear Box. 12 x 9.5 x 2.5" early 2-ps. cardboard underwear box for Scriven Co.'s elastic seam drawers, featuring beautifully detailed multi-color graphic sporting images. Clean and very attractive appearance, w/ minor soiling and wear (C. 8/-). Min. bid \$40.



82).Fidelity Trust Safe. 9.75 x 6-1/8 x 5.75" early, heavy cast iron figural safe w/ nice, all original paint surface (not sure if this was a bank or was made to be used as small safe). Has a turning brass dial and deep, nicely embossed "Fidelity Trust" lettering on its hinged front door, w/ original wooden shelving inside and beautiful color transfer images of children on top and two sides. Nice, all original paint surface, w/ a couple flake spots on upper right raised section and some soiling to images (C. 8+/- overall). Note: lock mechanism appears to be missing from inside casing. Min. bid \$50.



83).Fireworks Box. 7.25 x 5 x 3" full, early store display box from Commercial Novelty Co., Maryland w/ wonderful graphic image on front. Full box w/ cherry torpedoes fireworks packed w/ wood shavings inside. Clean and attractive appearance w/ minor stain spots in background and some light tattering/loss to top flap of box. Min. bid \$40.



84).Frog Match Holder. 2.5 (h) x 5-1/8 x 4-1/8" (base) early, figural metal countertop match holder on embossed cast iron base advertising "Bendroths" (maker of early ironware, fountains, vases, plumbing fixtures, etc.). Attractive and displays nicely, w/ a little typical expected light oxidizing and surface wear. Min. bid \$50.



85).Mr. Peanut Plastic Pieces. Lot of two ca. 1950's Planters Peanut Co. figural Mr. Peanut plastic advertising items in tough to find blue color variation. Includes: bank (8.5 x 4.25"); and drinking cup (4 x 5"). Both are excellent. Min. bid \$30 (the lot).



86).Gold Tip Gum. 4-5/8 x 6 x 4.25" early store display box, including fourteen of its twenty original full, unopened fruit flavored "Gold Tip" brand gum packs. Very nice overall, w/ minor scattered wear to box (including light separation split on back right corner edge of box). Min. bid \$40.

Salesman Sample



87).Salesman's Sample Bathroom Fixtures. Lot of three different, early, high quality miniature porcelain ceramic salesman's sample bathroom fixtures, ea. w/ stamped advertising in the glaze. Includes: Ariston Madera Co. toilet (3.75 x 2 x 2-5/8"); Twyford Co. sink (4.25 x 3.25 x 2-5/8") and Keystone Pottery Co. toilet bowl (2.5 x 2 x 3-3/8"). Min. bid \$40 (the lot).



88).Eagle Chili Sign. 9-7/8 x 17.75" early embossed tin litho Eagle Chili Con Carne sign, featuring beautiful multi-color graphics. Clean, bright and exceptionally nice appearance (basically displays as a strong C. 8.5/+) w/ exception of some weathering/storage wear along outer right side edge (mostly confined to white border area (not offensive and would be mostly hidden if framed). Min. bid \$50.



89).Cadillac Tire Gauge. 3.25 x 2 x 3/4" early, very high quality tire gauge advertising Cadillac and LaSalle automobiles featuring attractive images of Co.'s logos. Crisp and like new, as found still in its original suede leather case. Min. bid \$40.



90).Moxie Tops. Lot of two early Moxie advertising tops featuring Co.'s promotional Moxie-mobile vehicle, w/ wooden peg inserts for spinning on each. Includes: 2" (dia.) early heavy cardboard litho (backside has Frank Archer logo); and 1.5" (dia.) early celluloid over metal. Both are clean and excellent. Min. bid \$40 (the lot).



91).Gaiety Tobacco Tin. 2.75 x 4-5/8 x 2.75" extremely rare tin litho horizontal pocket tin for Bland Tobacco Co.'s "Gaiety" brand cut plug tobacco. Has strong colors and displays quite nicely (basically displays as a C. 8) other than some early circular scratch lines in portrait area, and some minor scuffing. Min. bid \$40.



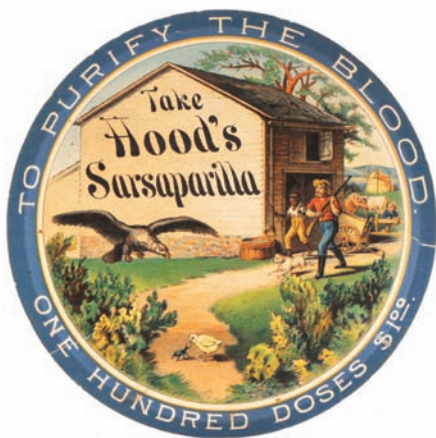
92).Tobacco Soft Packs. Lot of two full, sealed (never opened) soft pack style tobacco packages. Includes: Iron Horse 4.75 x 3.25 x 1.5" (Penn Tobacco Co.) w/ great locomotive image (appears to be near mint underneath the dark original protective wax paper covering); and "The Toiler" 2-1/2 oz. w/ nice image of trademark craftsman (United States Tobacco Co., w/ 1910 series tax stamp). Excellent. Min. bid \$40 (the lot).



93).Miniature Bus Signs. Lot of two miniature, enameled cobalt blue on white porcelain signs. Includes: Bus curb instructional sign (3.25 x 6.75"); and "Please Do Not Smoke" sign (1.25 x 7-5/8"). Both are excellent. Min. bid \$30 (the lot).



94).McCormick Deering Co. Oil Tin. 6.5 x 8-1/8 x 3-1/8" early tin litho 1/2 gallon sized can for International Harvester Co.'s "McCormick-Deering" brand cream separator oil. Has nice color and displays nicely (C. 8+/) w/ some light soiling (as found, should improve w/ cleaning). Min. bid \$40.



95).Hoods Sarsaparilla Sign. 8.75" (dia.) very early, pressed cardboard advertising sign for Hoods Sarsaparilla patent medicine, featuring beautifully detailed lithography (backside covered with product cure info text). Clean, bright and exceptionally nice (C. 8.5++) w/ a couple of non-offensive tear marks in outer blue border area (faint, very minor- probably done in mfg.). Min. bid \$50.



96).Planters Peanut Butter Sandwiches Box. 10.5 x 5.5 x 3.75" extremely rare, ca. 1940's cardboard display box for Planters 5¢ Peanut Butter cracker sandwiches (© 1947 Planters Nut and Chocolate Co.). Box is clean and very nice overall, w/ slight soiling and very minor wear (C. 8/+). Min. bid \$50.



97).National Beer Sign. 9.25" (dia.) early embossed tin litho chain hung sign for National Brewing Co. (Baltimore). Clean, bright and very attractive in appearance, w/ nice surface sheen (basically a strong C. 8+) w/ exception of a couple non-offensive small wear marks in dark blue background section and a couple oxidized wear spots in very outer border area. Min. bid \$50.



98).Betsy Ross Mirror. 2.75 x 1.75" extremely rare, early celluloid pocket mirror advertising "Betsy Ross" brand shoes, featuring beautiful colorful graphic image of famous American seamstress sewing the first flag. Clean and excellent. Min. bid \$50.



99).Endurance Grease Tin. 4.5 x 3-3/8" (dia.) early tin litho 1 lb. grease can for "Endurance" brand wheel bearing grease (Western Tire Auto Stores), featuring nice image of uniformed mechanic servicing early car (same image both sides). Clean, bright and very attractive appearance (basically a C. 8+), w/ exception of a couple non-offensive scuff marks on backside. Min. bid \$40.

Sample Pack



100).North Pole Sample Pack. 2-5/8 x 1.75 x .75" very early, sample size soft pack style miniature tobacco package for United States Tobacco Co.'s "North Pole" brand. Full, sealed never opened pack displays nicely w/ expected toning, minor soiling and light wear (C. 7.5+/+8-). Min. bid \$40.



101).Bisonoil Oil Can. 5.5 x 4" (dia.) full, unopened, early tin litho 1 quart crimp seam motor oil picture can for "Bisonoil" brand (Bison Oil Products Co., Buffalo, NY) featuring great image of Co.'s trademark buffalo (same on both sides). Clean, bright and very attractive (a strong C. 8++) w/ only minor wear. Min. bid \$40.



102).Matoaka Pocket Tin. 4.5 x 3 x 7/8" scarce, early tin litho vertical tobacco pocket tin for Patterson Co.'s "Matoaka" brand. Has strong colors and displays pretty well, although there is some non-offensive light scattered wear, including litho loss spot in right blue ribbon section of front side (C. 7.5). Min. bid \$40.



103).Medicine Paperweight. 4 x 2.5 x 1" early, white milk glass bottom advertising paperweight for the Upjohn Pill & Granule Co., Kalamazoo, Mich., featuring nicely detailed image of hand crushing a pill. Excellent w/ exception of non-serious small chip on raised right edge of underside base section. Min. bid \$30.

Sample



104).Powow Cleanser Sample Can. 3.25 x 2-1/8" (dia.) early, sealed (never opened), miniature "Free Sample" can for Powow brand cleanser (West Coast Soap Co., Oakland, Ca.) featuring nice image of Co.'s trademark Indian scout. Paper over cardboard body w/ metal top and base, piece is bright and quite attractive in appearance (C. 8+) w/ minor toning and wear. Min. bid \$30.



105).Full Dress Spice Tin. 3.5 x 2.25 x 1.5" scarce, early tin litho 2 oz. spice tin for "Full Dress" brand (Gill Co., Norfolk, Va.) featuring great image of Co.'s trademark man in tux (same image both sides). Clean, bright and very attractive, w/ non-offensive slight hazy background spot on backside (display side C. 8.5; back C. 7.5/+). Min. bid \$30.



106).Durand & Kasper Coffee Tin. 7-1/8 x 5.5" (dia.) outstanding, very early small top coffee can featuring beautifully detailed lithography (by Illinois Can Co., Chicago) w/ nice trademark images of Miss Liberty holding American flag on side edges. Clean, bright and exceptionally nice (C. 8.5+). Min. bid \$50.



107).Hanley Ale Sign. 9 x 13" early tin over cardboard sign for Hanley's Peerless Ale, featuring great embossed image of Co.'s trademark bulldog. Has strong colors and displays nicely (as a strong C. 8+) w/ exception of a little minor denting and wear in black bottom background area (critical grade C. 8/-). Backside has string for hanging and easel for countertop standup. Min. bid \$40.



108).Gargoyle Oil Can. 8 x 6.5 x 2.5" unusual, early hand-soldered oil can for Vacuum Oil Co.'s Gargoyle Mobiloil brand motor oil, featuring nice images of Co.'s trademark gargoyle characters on four sides. Has strong colors and displays pretty well, w/ soiling, light general wear and some oily residue evident (C. 7.5). As found, should improve some w/ cleaning. Min. bid \$30.



109).Terrace Club Coffee. 6 x 4-1/8" (dia.) tin litho 1 lb. can for Terrace Club brand coffee (Halladay Coffee Co., Battle Creek, Mich.) featuring attractive image of fancy country club building on both sides. Clean, bright and very attractive (a strong C. 8++), w/ a little typical tarnishing and light wear to gold flash finish on lid. Min. bid \$50.



110).Hi-Plane Pocket Tin. 4.5 x 3 x 1" scarce, early, all cardboard variation vertical tobacco pocket "tin" for Hi-Plane brand tobacco, featuring 1 engine airplane. Clean, bright and excellent overall (a strong C. 8++) w/ exception of light dent/pinch mark at middle right edge. Min. bid \$30.



111).North Star Flat Pocket. 3.75 x 2-3/8 x 5/8" early tin litho flat pocket style tobacco tin for North Star brand tobacco (Cotterill Fenner & Co., Dayton, OH) featuring stunning, finely detailed graphics of topless woman and cherubs (Ginna Litho). Clean, bright and exceptionally nice, w/ minor wear to backside (graphic lid C. 8.5+; base C. 8+). Min. bid \$50.



112).Indian Motorcycle Oil Can. 5-1/8 x 4" (dia.) early 1 qt. oil tin for Indian brand motorcycles, featuring great graphic image of Co.'s early style logo (Indian Motorcycle Co., Springfield, MA). Display side is clean, bright and very attractive w/ minor denting; backside has a few scattered scuffs, small pinhole and a few paint drips at top edge (front C. 8+; back 7.5). No lid. Min. bid \$40.



113).Aircraft Oats Box. 9-5/8 x 5-3/8" (dia.) early cardboard 3 lb. oats box for "Aircraft" brand (Donald Co., Grand Island, Wisc.) w/ attractive image of bi-wing airplanes and bird w/ envelope flying above fruited plains (grain sheaves on backside). Excellent (a strong C. 8++). Min. bid \$40.



114).Senate Beer Door Push. 10-7/8 x 3-3/8" colorful and very attractive early tin litho advertising door push for Heuric Brewing Co. (Washington, DC) for Co.'s "Senate" brand beer. Clean and like new-appears never used (C. 8.5+). Min. bid \$40.



115).Planters Squeeze Toy. 7-7/8 x 2.75 x 2.25" early figural Planters Peanut Co. rubber squeeze toy in shape of early style Mr. Peanut. Has attractive coloration and surface patina (C. 8) and rubber is soft and quite nice overall (no hardening or cracking evident), although there is some typical warping evident resulting in a little front leaning / hunching. Complete w/ original working squeaker in base. Min. bid \$50.



116).Northern Jobbing Co. Oats Box. 9.75 x 5.5" (dia.) early cardboard 3 lb. 7 oz. size cardboard oats box for N. J. C. brand (St. Paul, Minn.), w/ oats harvest scene on front, and oat farm scene on back. Clean, bright and attractive (C. 8+). Min. bid \$40.



117). Gold Shield Coffee. 11 x 10" (dia.) large, early, 15 lb. commercial size tin litho can for "Gold Shield" brand coffee (Schwabacher Bros., Seattle, Wa.) w/ attractive brick pattern background. Clean, bright and very attractive w/ a little non-offensive minor wear to backside and general wear to top of lid. (front C. 8.5/+; back C. 8+/-). Min. bid \$40.



118). Planters Hanging Lamp Shade. 11 x 19" (dia.) scarce, beautiful colored Planters Peanut Co. stained glass (heavy deep plastic and metal) Tiffany style hanging lampshade. Impressive, very high quality piece (I am told these we made by Co. for limited regional use in its NJ sea shore area peanut stores). Excellent. Min. bid \$100.



119). "Nigger Hair" Tobacco. 6-5/8 x 5.5" (dia.) early tin litho tobacco pail for Leidersdorf Co.'s "Nigger Hair" brand, featuring great image of Co.'s trademark African native (on both sides). Clean, attractive and displays nicely (as a C. 8/+ w/ light dent at base and a little non-offensive light scattered chipping/wear (critical grade C. 8-). Min. bid \$50.



120). Barber Bottles. Lot of two different early barber shop advertising hair tonic display bottles, ea. w/ hand applied lips. Includes: Adonis "Hed-Rub" (head rub) dandruff preventative (Sovereign Co., Toronto) 7.5 x 2.75"; and "Bellefontaine's Vigorator Head rub and Hair Tonic" 7 x 3-1/8" (Bellefontaine Co., Montreal). Both are excellent overall (Canadian). Min. bid \$50 (the lot).



121). Hamilton Match Vendor. 14.5 x 13.75 x 8-1/8" early penny operated mechanical matchbox vending machine by Hamilton Mfg. Co. (Hamilton, Oh.). Oak box w/ a wonderful copper finished front plate featuring women holding up light flame, w/ metal matchbox holder/cigar clipper at side. Nice overall, w/ age darkening to wood case. Min. bid \$70.



122). Planters Sal-in-Shell Tin. 12.25 x 10.25" (dia.) large, ca. 1920's 10 lb. size Planters "Sal-in-Shell" (salted in shell) peanuts tin featuring wonderful images of Mr. Peanut scooping nuts w/ net out of ocean waves (same image both sides). Displays nicely on shelf w/ some general light scattered scuffing, small dark spots and wear, w/ some general scattered light denting (critical grade C. 7+, although it displays much nicer than this would imply). Min. bid \$70.



123). White Rock Tip Trays. (6-1/8 x 4-1/8" and 4-3/8" dia.) lot includes two different tin litho advertising tip trays for White Rock brand table waters featuring nice images of Co.'s topless trademark girl. Both are clean and very attractive (a strong C. 8+ w/ only minor wear on each. Min. bid \$50 (the lot).



124). Pinwheels Candy Box. 11 x 6-7/8 x 1-5/8" early 2-ps. cardboard product box for "Pinwheels" brand penny candy (originally held 120 pieces), w/ beautiful multi-color graphics (F.M. Paist Co., Phil.'a). Clean and excellent (C. 8+), w/ minor pencil marks in background. Min. bid \$40.



125). Osato Tonic Bottle. 8 x 3 x 1.75" early 12 oz. size embossed cork top medicine bottle w/ hand applied lip for "Osato Tonic" (Manhattan Medicine Co., Des Moines, Iowa) featuring beautiful multi-color label. Label is clean and excellent and bottle contains over 1/2 of its original medicine. Excellent. Min. bid \$40.



126). District Messenger Boy Game. 17.25 x 9.5 x 1.75" large, very early "District Messenger Boy" boxed game set by McLoughlin Bros., w/ beautifully detailed multi-color graphic image of running telegraph Co. messenger boy (© 1886). Clean and very attractive overall, complete w/ game board, spinner and metal figures inside (C. 8+ w/ some non-serious wear to cardboard slots on inside of box. Min. bid \$50.



127).Paint Co. Match Safes. Lot consists of three different early celluloid covered advertising match holders (sizes range from 2.25 x 1.5 x 3/8" to 2.75 x 1.5 x 3/8") ea. w/ advertising for different paint Co.'s. Includes: Hughes Paint Co. (Kansas City, Mo.); Pierce's (New York) and Van Hoesen Co. (Rochester, NY). Excellent overall. Min. bid \$40 (the lot).



128).Spice Tins Lot. Lot includes four early tin litho spice tins (sizes range from 3.25 x 2-3/8 x 1.25" to 4 x 2-3/8 x 1-1/8"). Includes: Iris sage (near mint); Manor allspice (C. 8+/-); Pitkin's Old Home cloves (C. 8.5+/-) and Scowcroft's Blue Pine cayenne (near mint). Min. bid \$50 (the lot).

Oilzum Tie Tack



129).Oilzum Tie Tack. 1-5/8 x 9/16" unusual advertising tie bar featuring Oilzum Co.'s trademark Oswald. Very high quality gold overlay jewelry, w/ diamond chip eyes (has incised "Krementz" jewelry Co. stamping on backside (note: this Co. made cuff links, collar buttons and quality men's jewelry from the 1880's-1980). Excellent. Min. bid \$30.



130).American Insurance Ledger Marker. 3 x 12" very early tin litho ledger marker from American Fire Insurance Co., Philadelphia, w/ early folky image of eagle and flag. Attractive and displays quite nicely, w/ some light wear from use, including fair amount of chipping on backside (front C. 7.5+/-; back C. 7/-). Note: surface is very stable and not loose or flaking. Min. bid \$40.



131).Bear Milk Co. Bisque. 5 x 5.25 x 3.75" early and unusual high quality, hand-painted china advertising bisque for Bear Brand Swiss Milk, w/ wonderful detailed figure of bear nursing cub from bottle (has bowl at base for holding pins, coins, etc.). Excellent and like new (w/ tiny flea bite on bottom backside of base). Min. bid \$40.



132).Fry Cocoa Tin (Bank) 4.25 x 4 x 3" unusual, early figural lithographed bank from J.S. Fry & Sons Cocoa & Chocolate Manufacturers, (Montreal, Canada) in shape of a bank building, w/ coin slot at top and key hole/lock at front). Very high quality piece is clean, bright and very attractive (displays as a strong C. 8+/-) w/ a little non-offensive minor scattered wear. Min. bid \$50.



133).Disney Tin. 2.25 x 6.25" (dia.) unusual, ca. 1920's/30's tin litho 2-ps. cookies style tin featuring great color images of pie eyed Disney characters on lid, w/ action silhouette character images around sides. Clean and very attractive in appearance (displays as C. 8+/-), w/ exception of a little non-detracting minor denting and wear and some speckle spots on silver flash finish on side images (critical grade C. 8/-). Min. bid \$40.



134).AC Service Station Clock. 21.5 x 19 x 4.75" unusual, ca. 1950's service station light-up clock advertising AC- Spark Plug Co.'s fuel pumps. Metal, glass and plastic, piece is attractive and displays nicely (as a C. 8+/-), w/ a little non-offensive light expected wear from use (running clock). Min. bid \$40.



135).Moxie Signs. Lot consists of two different scarce, early die-cut cardboard 2-sided Moxie signs (16-5/8 x 16.5" and 15-7/8 x 16"). They have strong colors and display quite nicely overall (as a C. 8-) although closer examination will show some edge chips, tear marks, light background staining and a few small nail holes (nothing that's too serious or that detracts much from their attractive overall look; critical grade C. 7+). Min. bid \$50 (the lot). (see website addendum to view backsides).



136).Talc Samples. (ea. app. 2-1/8 x 1.25 x 3/4") lot of eight different miniature tin litho sample sized talcum powder tins. Includes: Williams Karsi; Colgate La France; Sylvan Violet; Larkin Orange Blossom; Sykes Comfort; Larkin's Ideal; Colgate Violet and Regal. Clean and excellent overall. Min. bid \$40.



137).Fishing Tackle Sign. 8.75 x 6.25" unusual, early embossed brass advertising sign/award plaque issued by the Horrocks Ibbotson fishing tackle Co. (Utica, NY) featuring great embossed image of fisherman and game fish, w/ color logo at base. Excellent, w/ nice surface patina. Min. bid \$40.



138).Inspector Roly Poly. 7 x 6.5" (dia.) scarce, early Dixie Queen brand figural tin litho roly poly style tobacco can in image of inspector. Clean and attractive in appearance w/ some light, general scattered wear spots and shallow dent at base (C. 7.5/+). Min. bid \$80.



139).Trop-Artic Oil Can. 10 x 8 x 3" very early tin litho 1 gallon size motor oil can for Manhattan Oil Co.'s "Trop-Artic" brand, featuring same beautiful multi-color graphic image on both sides. Clean, bright and very attractive appearance, w/ minor denting and wear on backside (a strong C. 8/+). Min. bid \$70.



140).Ox-Heart Chocolate Sign. 5 x 25" outstanding, early, slightly embossed heavy porcelain advertising sign for Long's Ox-Heart brand chocolates and cocoa featuring beautiful image of company trademark logo. Clean, bright and exceptionally nice, w/ minor fleabites along top edge and a few faint barely visible surface scratches (C. 8.5/+). Min bid \$90.



141).Hires Sign. 18-5/8 x 36-5/8" extremely rare, large, very early cardboard litho sign for Hires Rootbeer, featuring great images of Co.'s trademark kid (by Swayze Advertising Co., Canton, Pa.). Clean, bright and very attractive in appearance (basically displays as a C. 8.5/+) w/ exception of a little non-detracting minor soiling/toning at outer edges and a couple tear marks at bottom edge (1" and 1.5"). Min. bid \$100.



142).Harvard Roller Skates Sign. 28-3/8 x 16.5" (21 x 10.75" image) outstanding, very early paper litho sign for Harvard brand roller skates, featuring stunning multi-color graphics. Clean, bright and exceptionally nice (a strong C. 8.5++) w/ a little minor wrinkling and a few non-detracting faint crease marks. Framed. Min. bid \$90.



143). **Vermont Schools Sign.** 8 x 20" unusual, early, heavy enameled porcelain sign for a State of Vermont officially approved "Standard School", w/ nice image of Vermont's State Symbol at top. Excellent overall, w/ nice original sheen (basically a C. 8.5+) w/ exception of triangular chip at bottom right corner and tiny chip mark at bottom left outside edge. Min. bid \$40.



144). **Bond Bread Porcelain Sign.** 8 x 22.5" early, heavy enameled porcelain country store sign for Bond Bread. Clean and attractive appearance, w/ nice original sheen (basically a very strong C. 8++) w/ a few light scattered early chips in outer white border area. Min. bid \$40.



145). **Smart Gum Box.** 3-3/8 x 6-1/8 x 4.25" early store display box, w/ sixteen of its twenty original full, unopened peppermint flavored "Smart" brand gum packs. Excellent overall, complete w/ original lid. Min. bid \$40.



146). **Atomic Disintegrator Cap Gun.** 5.25 x 7.25 x 2.25" unusual early toy cap gun by Hubley, w/ futuristic sci-fi space age look. Metal, w/ plastic grips, piece is excellent, complete in its original box (box has minor tears and a little light wear). Min. bid \$40.



Buster Brown Waffle Iron



147). **Buster Brown Waffle Iron.** 14 x 6.5 (dia.) scarce, very early figural cast iron waffle iron w/ nicely embossed character images of Buster and Tigre on front and 1906 patent info and "Buster Waffle" lettering on backside. Excellent, w/ a nice deep, rich, all original surface patina. Note: piece also includes a cast iron stovetop base piece for holding waffle iron which has a repainted flat black paint finish. Min. bid \$60.



148). **Red Top Oil Can.** 6.25 x 8 x 3-1/8" very early hand-soldered tin litho 1/2 gallon sized motor oil can (Top Oil Co., Milwaukee, Wisc.), w/ nice image of spinning top and early car (same image both sides). Attractive piece has strong colors and displays very nicely on shelf (as a C. 8+/-) w/ early scattered chip and wear spots scattered about, especially on backside (critical grade front C. 7.5+/-; back C. 7+/-). Min. bid \$40.



149). **Niser Ice Cream Tray.** 13.5" (dia.) early tin litho advertising tray for Niser brand ice cream, featuring great multi-color graphics. Clean, bright and very attractive appearance (displays as a strong C. 8++), w/ only minor wear and some faint, barely noticeable fine crazing (surface very stable). Min. bid \$60.



150). **Barrel Cigar Cutter.** 9.75 x 5 (dia.) x 6.5" early figural countertop cigar cutter in shape of early barrel. Very high quality piece has a rich, nicely aged surface patina to wood w/ finely machined brass hoops and cutting mechanism at top, w/ a 1914 Bach Beer goat and woman beer themed images on the two bronze medallions on barrel ends. Excellent (German). Min. bid \$60.



151). **Socony Lubster Sign.** 12.25 x 8" early, 2-sided heavy porcelain paddle style lubster sign for Standard Oil Co. motor oil. Clean, bright and very attractive appearance (front a strong C. 8+/-; back C. 8) w/ some dark oxidized chipping in bottom black colored mounting section. Close examination will reveal minor soiling and some non-offensive tiny chips and faint trace spider web crackle marks on backside (critical grade front C. 8+/-; back C. 8/-). Min. bid \$60.



152). **Finck's Overalls Sign.** 11.75 x 23.5" unusual, early embossed tin litho sign for Finck's brand overalls, featuring great images of Co.'s trademark pigs. Has good color and a displays nicely w/ a decent and attractive overall look, although there is some soiling, scattered minor oxidizing and some hazy scattered wear in and surrounding the left pig section. Tough one to grade, but C. 7+/- seems about right (displays better than this implies). As found, might improve a bit w/ cleaning. Min. bid \$50.



153). **Receipt Registering Machine.** 8 x 19 x 11" unusual, ca. 1890's Carter Crune Co. (Niagara Falls, NY) "Invincible" countertop mechanical receipt registering machine. Fancy, heavy, high quality all brass construction, w/ beautiful deep beveled viewing glass window at back. Has open space for writing on paper receipt, clerk would then crank handle and top 1/2 of receipt would come out of slot for customer and store copy would go into lock box while a new receipt automatically was loaded for next order. Excellent (see website addendum for further info). Min. bid \$50.



154). **Enterprise Coffee Grinder.** 9 x 5.25 x 5" early, heavy figural cast iron wall mount style coffee grinder by Enterprise Mfg. Co. w/ patriotic images around top, complete w/ removable cast iron collecting cup at base. Paint surface is decent and all original (C. 8+/-), w/ minor soiling, crazing and a little light wear (as found, should improve w/ cleaning). Works nicely. Min. bid \$50.



155). **Indy 500 Race Car Poster.** 24 x 36.5" (21-5/8 x 33.5" visible) large, ca. 1953 paper poster advertising Monroe shock absorbers, featuring great image of the 1953 and 1954 Indy championship racer Bill Vukovich on front side; w/ images of the four fastest cars and drivers on backside. Front side has a little loss at top edges and a little minor wear at original factory fold lines, w/ a slight bit of non-offensive background toning and light scattered wear, but overall attractive and displays very nicely (as a C. 8+/-). Framed (done to allow viewing of both sides). Note: Bill Vukovich after winning the 1953 and 1954 Indy 500 races was killed during the 1955 Indy 500 race while in the lead in a horrific chain reaction accident). Min. bid \$50.



156). **Cosmetics Display.** 13-1/8 x 10" early cardboard countertop standup display for Princess Pat brand face powder, complete w/ its original 12 metal cosmetic cases. Clean and very attractive appearance (a strong C. 8+/-) w/ trace bit of minor soiling and a little light wear at bottom edge. Min. bid \$40.



157). **Western Union Call Box.** 6-3/8 x 3-3/8 x 2.25" very early Western Union Telegraph and Cable Co. call box, w/ Co.'s early style logo. Heavy enameled porcelain covered piece is attached to white ceramic base w/ electrical mechanism inside and wind-up knob at top for notifying the local telegraph office to send over a messenger to retrieve a written message for sending as telegram. Excellent and all original (near mint), although wind-up mechanism is pretty temperamental. Min. bid \$40.



158). **Detective Agency Door Push.** 6 x 3" unusual, early tin litho advertising sign for Inter-State Detective Agency. Never used piece is clean, bright and like new. Min. bid \$30.



159). **Buster Brown Spice.** 5-3/8 x 3-1/8" early paper label (over cardboard) 1/2 lb. size spice container for Buster Brown brand black pepper (Forbes Co., St. Louis), w/ nice images of early style Buster Brown and Tigre (both sides). Label is clean, bright and exceptionally nice, w/ pinching marks on bottom side cardboard base. Min. bid \$40.



160). **ReJoyce Spice Tin.** 3-7/8 x 2.25 x 1.25" early tin litho 2 oz. spice tin (cloves) for ReJoyce brand (Joyce Laughlin Co., Peoria, Ill.), featuring great image of young children (same image both sides). Clean and very attractive (C. 8+). Min. bid \$40.



161).Buster Brown Mirror. 2.25" (dia.) scarce, early celluloid pocket mirror for Buster Brown Shoes Co.'s Corvallis, Oregon store. Clean, bright and attractive (basically displays as like new) although examination under magnification will reveal a few light bumps and minor scattered surface wear, w/ faint trace hint of very minor foxing (mentioned for accuracy, very minor and barely merits mention). Min. bid \$50.



162).Ever-Ready Watch. 2.5 x 1-7/8 x 1/2" unusual, early pocket watch advertising Ever-Ready brand safety razor blades, featuring great image of Co.'s trademark man shaving. High quality piece is excellent overall, w/ only very minor wear (running condition). Lot also includes a small, early full box of Co.'s blades. Min. bid \$40.



163).Moxie Pin. 2 x 1-7/8" early tin litho die-cut advertising pin for Moxie. Clean, bright and very attractive appearance (a strong C. 8/+) w/ only slight wear and a little non-offensive minor waving. Min. bid \$40.



164).Kolf's Pocket Mirror. 1.75" (dia.) scarce, early celluloid advertising pocket mirror for Kolf's Café Restaurant, St. Louis, featuring great image of black cat. Marked 1904, possibly made as a souvenir or to promote café to World's Fair visitors. Clean and excellent in appearance, although close examination under magnification will reveal a small, faint trace hint of foxing/wear just to right of "O" in word "Kolf's" (so minor barely merits mention). Min. bid \$40.



165).Bottling Co. Tip Tray. 4.25" (dia.) scarce, early tin litho advertising tip tray for the Penna Bottling & Supply Co. (Philadelphia and Camden, NJ) featuring attractive images of early product bottles. Clean, bright and very attractive (a strong C. 8/+) w/ minor wear on rim. Min. bid \$30.



166.) Sterling Oil Can. 9.25 x 9-3/8 x 3.25" extremely rare, early hand soldered motor oil can from Sterling Refining Co. (Emlenton, Pa.) featuring great images of race car, speedboat and airplane (same images both sides). Has strong colors and displays fairly well on shelf, although not for the perfectionist, as there are dark spots of oxidized weathering on front and back sides. Tough to grade, but somewhat below a 7 seems appropriate (some needed restoration in a few areas could improve appearance to a nice solid C. 8/+). Min. bid \$40.



167).McDonald's Match Safes. Lot of two early celluloid covered pocket match safes advertising McDonald Co. work clothes (overalls, shirts, etc.). Taller one (2-7/8 x 1.5 x 3/8") is excellent w/ a cigar clipping mechanism at base; smaller example (2.25 x 1-3/8 x 3/8") is very nice, w/ light, even toning. Min. bid \$40 (the lot).

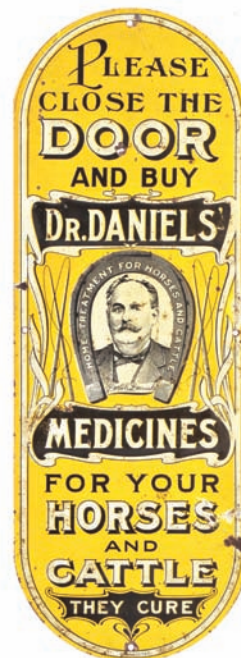
Halloween Signs



168).Matchless Tobacco Box. 16.75 x 7.25 x 7" very early (ca. 1870's) 20 lb. size wooden tobacco shipping box for "Matchless" brand, w/ beautiful original label on its lid. Label is attractive and displays quite nicely, although there is a little of the typical non-offensive light toning, edge chipping and light overall wear one would expect on a piece from this era (C. 7.5/+). Min. bid \$50.



169).Halloween Bread Signs. (34.75 x 11.75" each) lot of two ca. 1940's paper advertising roll down signs for Williams brand bread with original metal strips at top and bottom. Both have strong colors and display nicely (as a strong 8/+) although close examination will reveal some non-offensive age toning and light scattered wear including minor staining and holes. Min. bid \$40 the pair.



170).Dr. Daniels Door Push. 8-7/8" x 3.25" extremely rare, early embossed tin litho advertising door push for Dr. Daniels veterinary medicines for horses and cattle, featuring nice image of trademark Dr. Daniels horseshoe logo. Bright, attractive and displays quite nicely, w/ some light general wear from use (C. 7.5/+). As found, might improve a bit w/ cleaning. Min. bid \$50.



171).Coca-Cola Flange Sign. 22.5 x 18" ca. 1950 2-sided heavy metal flange sign advertising Coca-Cola (same images both sides). Clean, bright and very attractive in appearance (appears to have been used indoors), w/ only minor, non-detracting wear (a very strong C. 8++). Min. bid \$50.



172).Good Luck Store Jar. 12.5 x 5.75 x 5.75" early countertop 2-ps. store display jar w/ground glass lid for J.B. Lytle Co.'s "Good Luck" brand, complete w/ beautiful original multi-color paper label. Excellent. Lot includes two early cardboard peanut boxes from same Co. (boxes measure 3.25 x 7 x 1-5/8"). Min. bid \$40.



173).Card Cheating Devices Display. 11.5 x 10" unusual, early die-cut cardboard store display piece for Wizard brand "cuff holders", which I'm told were used as an early card game cheating device. Attractive piece has decent color and displays quite well, although there are a few crease marks and some scattered staining and light wear (critical grade C. 7+ although it displays much nicer than this implies). Piece includes 7 of the original devices. Min. bid \$50.



174).Liberty Root Beer Dispenser. 14 x 9" (dia.) small, early, very high quality wooden figural countertop syrup dispenser (w/ ceramic reservoir inside) for Liberty brand root beer. Clean and exceptionally nice example (a strong C. 8.5++) w/ beautiful rich surface patina. Includes two heavy, embossed Liberty glass mugs. Min. bid \$150.



175).Banner Flour Sign. 13.5 x 18" early tin litho 2-sided advertising flange sign for B.M.G. brand flour (Banner Milling Co., Buffalo, NY) featuring nice image of large flour barrel (same image both sides). Clean, bright and displays nicely, w/ a little non-offensive light scattered wear (C. 8/-). Min. bid \$60.



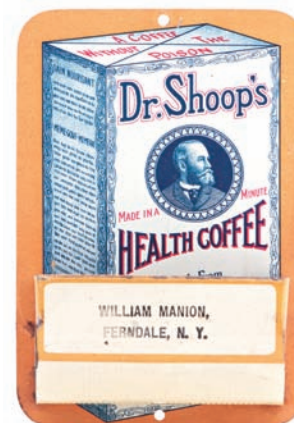
176).Qboid Hanger. 9-1/8 x 6.5" early 2-sided cardboard die-cut ceiling hanger sign advertising Qboid brand tobacco, in shape of Co.'s early pocket tin. Has small background tack hole and a little non-offensive light scattered surface wear, but overall attractive and displays nicely (C. 7.5). Min. bid \$30.



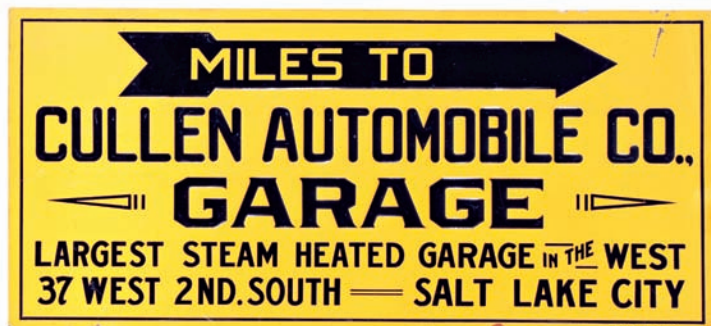
177).None Such Paperweight. 4-1/8 x 2.5 x 1" scarce, early white bottom glass advertising paperweight for None Such brand mince meat, featuring nice image of trademark girl holding pie. Excellent. Min. bid \$30.



178).Winchester Shotguns Sign. 25.25 x 33" (actual size) large, early cardboard litho sign advertising Winchester Co.'s shotguns, featuring great comical scene of two black skunk hunters. Clean, bright and very attractive appearance (basically a C. 8.5/+), w/ exception of some light tattering and wear at very outer edges. Framed (shown unframed). Min. bid \$80.



179).Dr. Shoop's Match Holder. 4-7/8 x 3-3/8" early tin litho match holder advertising Dr. Shoop's brand Health Coffee product, w/ attractive detailed image of product package. Clean and excellent overall, w/ minor denting to front basket area (a strong C. 8++). Min. bid \$40.



180). Salt Lake City Garage Sign. 9 x 20" early, embossed tin litho sign for a Salt Lake City steam heated auto garage (Scioto Sign Co., Kenton, Oh.). Excellent overall, w/ exception of a few non-offensive wear marks in yellow background area. (C. 8+/-). Min. bid \$40.



181). Exit Sign. 10 x 24" large, early, very high quality heavy brass framed leaded stained glass window architectural exit sign, probably from fancy early grand theatre. Excellent (note: top of frame appears to have been hinged at one time, probably to cover an electrical lighted box). Min. bid \$40.



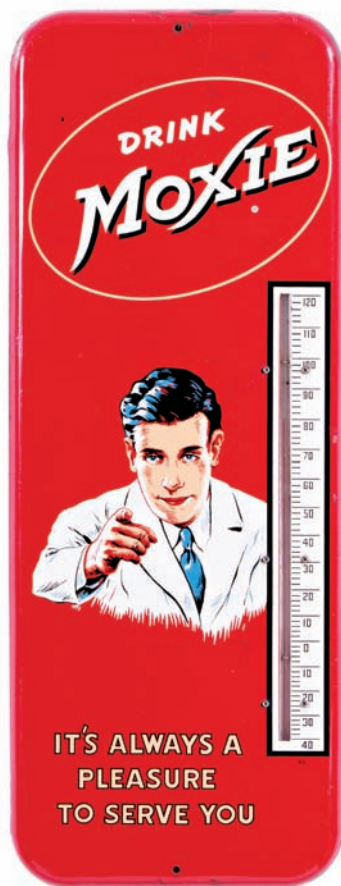
182). New Way Motors Pocket Mirror. 2-1/4" (dia.) early celluloid advertising pocket mirror for "New Way" air-cooled motors, featuring beautifully detailed multi-color graphic image of motor. Excellent. Min. bid \$40.



183). Standard Oil Co. Tag. 5-3/8 x 9-1/8" early, embossed tin litho bumper/license plate tag advertising Standard Oil Co. Attractive and displays nicely (C. 8/-), w/ slight traces of minor soiling/darkening and a little wear from use at bottom mounting holes. As found, might improve w/ cleaning. Min. bid \$40.

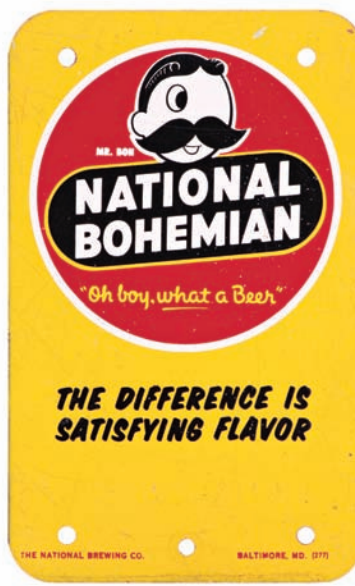


184). Monadnock Peanut Butter. 3.5 x 3.75" (dia.) early tin litho 1 lb. peanut butter pail for Holbrook Grocery Co. (Keene, NH) "Monadnock" brand. Clean, bright and very attractive, w/ a little light wear around top edge and minor dark spot on back side (C. 8+/-). Min. bid \$40.



186). Mason's Paperweight. 4 x 2.5 x 3/4" early white milkglass bottom paperweight advertising Mason's Essence of Beef, featuring beautifully detailed image of product jar for Co.'s concentrated beef based food for invalids. Excellent. Min. bid \$40.

185). Moxie Thermometer. 25.5 x 9.75 x 1/2" early tin litho Moxie thermometer featuring nice image of Co. spokesman Frank Archer. Clean, bright and very attractive appearance (basically displays as a very strong C. 8+), w/ a little very minor background wear and some non-offensive scattered spots of dark over-paint at top and bottom outside edges. Min. bid \$60.



187). National Brewing Door Push. 6 x 3.75" early, heavy, metal advertising door push plate for "National Bohemian" brand beer (National Brewing Co., Baltimore). Clean, bright, attractive appearance (display side a strong C. 8+); although non-graphic backside has some pretty heavy scuffing and paint loss. Min. bid \$40.

188). Bar Display Bottle. 11-5/8 x 3-3/8" (dia.) outstanding, very high quality, early label under glass back-bar display bottle, featuring a stunning image of beautiful saloon girl (hand applied lip at top). Clean, bright and exceptionally nice label. Excellent. Lot includes an unusual, early priced shots pouring spout. Min. bid \$100.





189).Buddy L Advertising Truck. 7 x 14.5 x 6" ca. 1950's pressed steel toy delivery truck by Buddy L Co., w/ nice advertising on both sides for Rival brand dog food. All original, truck is clean w/ very nice appearance (basically displays as a nice C. 8/+), w/ some non-offensive, fairly minor light scattered scuffing and wear from very light use (critical grade C. 8/-). Min. bid \$50.



190).Hires Sign. 9-1/8 x 17.75" early embossed tin litho sign for Hires Root Beer, featuring great image of Co. soda jerk character Josh Slinger (dated 1914). Clean, bright and displays very well (as a strong C. 8+++) w/ only very minor storage wear. Min. bid \$80.



191).First Cabin Tobacco. 4-3/8 x 2-5/8 x 1.25" full, sealed (never opened) soft pack style tobacco package for "First Cabin" brand (Weissinger Tobacco Co., Louisville, Ky.) w/ nice ship image (series 1902 tax stamp backside). Excellent overall. Min. bid \$40.



192).Harrison Bros. Match Safe. 2.75 x 1.5 x 3/8" unusual, early celluloid covered match safe for Harrison Bros., a granite and marble polishing grit and supply company w/ attractive hand-tinted sepia tone photo image. Very nice overall (some typical fade to tinted colors). English. Min. bid \$30.



193).Welcome Guest Coffee. 6 x 4.25" (dia.) early tin litho 1 lb. coffee can (Inter-State Coffee & Spice Co., Joplin, Mo.) featuring same nice black butler image on both sides. Clean, bright and very attractive, w/ minor dents and some scattered light speckles in gold flash trim areas (note: period lid displays nicely on tin, but not original to piece). Min. bid \$40.



194).Telephone Pocket Mirror. 2.75 x 1.75" scarce, early celluloid advertising pocket mirror from Cincinnati & Suburban Bell Telephone Co., featuring great graphic image of well-dressed woman talking on very early style candlestick phone. Excellent overall. Min. bid \$40.



195).Hood's Sarsaparilla Sign. 18.25 x 11-1/8" impressive, very early cardboard die-cut easel-back standup sign for C.I. Hood Co.'s patent medicine products. Piece is clean, bright and displays very nicely (as a strong C. 8+++) w/ exception of non-offensive 1.75" tear mark and a small chip spot at right side edge (text advertising and easel on backside). Min. bid \$70.



196).Firestone Anti-Freeze Sign. 27 x 15" early, heavy embossed tin litho sign for Firestone Co.'s "Super Pyro" brand auto antifreeze (Donaldson Art Sign Co.). Impressive piece has strong colors and displays very nicely (as a strong C. 8/+) although close examination will reveal a little non-offensive minor wear including a few faint scratch marks (critical grade C. 8/-). Min. bid \$50.



197).Empire Soap Sign. 26-5/8 x 19" (22 x 15" image) impressive, early ca. 1880's paper litho advertising sign for Empire Soap Co., featuring beautiful multi-color graphic image of black children returning home from school (note: sign was made to promote a soap wrapper premium offer for getting this image w/ out advertising). Clean, bright and very attractive appearance (basically litho is a strong C. 8+) although there is some softening to the red printed advertising lettering at top and a couple scuff/ scrape spots in very bottom background area (at bottom of path- could be easily colored in). Framed. Min. bid \$80.



198). Louisville Oil Co. Mirror. 1.75 x 2.75" scarce, early celluloid pocket mirror from Louisville Cotton Oil Co. (Louisville, KY) advertising Co.'s cooking oils, w/ beautifully detailed multi-color graphics. Clean, bright and excellent. Min. bid \$40.



199). Golden Pheasant Condom. 1.75 x 2.25 x 1/4" scarce color variation, early tin litho condom tin for Reed Co.'s "Golden Pheasant" brand. Crisp, bright and like new (near mint). Min. bid \$30.



200). Ohio Silo Fillers Mirror. 1.75 x 2.75" early celluloid pocket mirror for Silver Mfg. Co.'s "Ohio" brand of agricultural silo filling machine, w/ nice image of product (note: John Deere Dealers notation). Excellent. Min. bid \$40.



201). Vitamins Sign. 11 x 17" early, fancy reverse glass drug store sign advertising "One a Day" brand vitamins, featuring unusual embossed metallic lettering inside. Nice overall condition, as found in its original frame, w/ some minor expected ageing wear (C. 8/-). Min. bid \$40.



202). Crowley's Needle Case. 5 x 13.25 x 7.75" small, early, wooden 2-drawer country store advertising case for Crowley brand sewing needles. Excellent. Min. bid \$50.



203). Goodrich Tires Porcelain Sign. 19 x 23" early, 2-sided heavy porcelain flange sign advertising Goodrich Co.'s "Siltertown Cords" brand tires. Clean, bright and exceptionally nice appearance, w/ nice sheen (C. 8.5/+). Appears never used, w/ only minor storage wear. Min. bid \$70.



204). Wings Cigarettes Sign. 9 x 13" unusual, early one-sided die-cut cardboard string hung ceiling hanger sign for Wings brand cigarettes (backside blank). Powerful and impressive looking piece is clean and attractive (basically displays as a strong C. 8/+) although close examination will reveal a couple light crease marks (in center wing and back tail sections- neither are offensive or detract from great overall look of piece). Min. bid \$50.



205). "Agriculture" Biscuit Tin. 3.75 x 7-1/8 x 5.5" ca. 1896 fancy, hinged lid scalloped tin litho Huntley & Palmers brand biscuits tin featuring different beautiful color graphic agricultural scenes on lid and around sides. Clean, bright and attractive, w/ minor scattered wear (C. 8/+). Min. bid \$40.



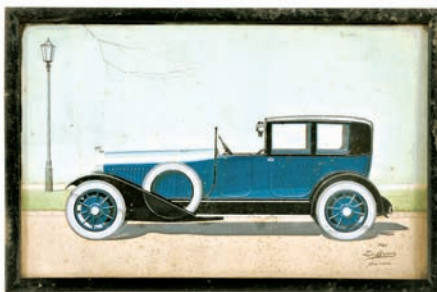
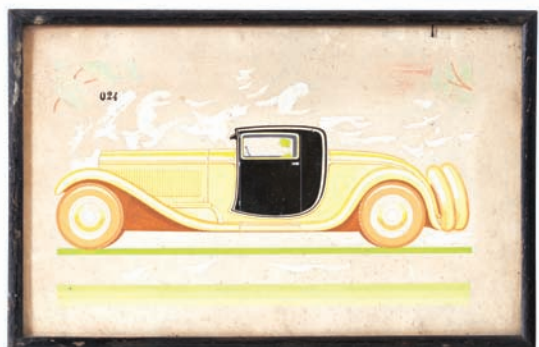
206). Fancy Salesman's Sample Toilet. 4.5 x 5.25 x 3-3/8" fine, early, very high quality, heavy ceramic salesman's sample for an ornate Victorian era blue colored toilet, w/ attractive incised design pattern. Excellent (no name shown). Min. bid \$40.



207). Red Wolf Coffee. 4 x 5-1/8" (dia.) early tin litho 1 lb. coffee can for "Red Wolf" brand (Ridenour Baker Grocers, Kansas City, Mo.) featuring attractive image of Co.'s trademark wolf (same image both sides). Clean, bright and displays nicely (basically as strong C. 8+++) w/ exception of some wear on lid and a few small oxidized dark spots inside circular gold flash background of logo area on backside. Min. bid \$40.

Bidding Ends Friday, October 11th, 2013.

Original Artwork



208).Isotta Fraschini Automobile Artwork. Lot includes two original ca. 1920's hand-painted advertising artwork paintings created for the Isotta Fraschini Co. (note: this Italian brand was known for the production of Rolls Royce class autos that were among the most luxurious and prestigious to ever be built). Both are beautifully executed w/ great detailing and display nicely, w/ minor background speckling, light toning and trace staining- nothing serious or offensive (C. 8-). Framed. Pieces measure 9 x 14" and 7.5 x 11.5" (signed "Le Baron New York"). Min. bid \$50 (the lot).



209).Polarine Ford Oil. 7 x 8 x 3-1/8" very early hand-soldered 1/2 gallon sized motor oil can for Standard Oil Co. (Indiana) Polarine brand for Fords. Attractive and displays nicely, w/ some minor scattered soiling and wear (C. 8/-). As found, might improve w/ cleaning. Min. bid \$50.



210).Fuller's Chocolates Mirror. 2.75 x 2" scarce, early celluloid advertising pocket mirror for Fuller's brand chocolates (Fuller Greene Co., Boston). Attractive and displays very nicely, w/ minor bumps and a little minor, light foxing on backside (at bottom right corner edge). Min. bid \$40.

Chewing Gum Packs



211).Beeman's Gum Packs. 3-1/8 x 4.75 x 2" full, early store display box of 20 full original American Chiclet Co. Beeman's Pepsin gum packs. Base and packs are crisp and like new complete w/ original protective lid (lid has tears and tattering). Min. bid \$40 the lot.



212).Power Lube Oil Can. 5-5/8 x 4" (dia.) outstanding, early tin litho 1 quart solder seam picture can style motor oil can for "Power-Lube" brand (Powerene Co., Pennsylvania) featuring great image of Co.'s trademark tiger. Clean, bright and very attractive appearance, w/ some non-offensive light chipping and wear on backside (front C. 8.5; back C. 8/-). Min. bid \$50.



213).Kitchen Match Holder. 6.75 x 4-7/8 x 2" early figural tin advertising kitchen match holder from Shelby & Weaver (a Foraker, Indiana Grain and Feeds dealer) complete early tin litho (Ginna type) salt and pepper shakers. Clean and like new (appears never used). Min. bid \$40.



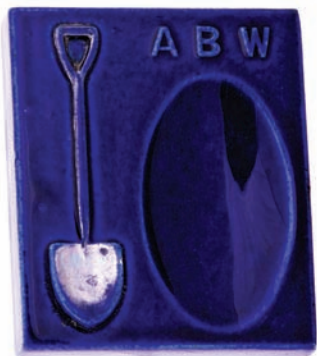
214).Sullivan Cigars Calendar. 18.25 x 10-5/8" (15.25 x 7-7/8" actual piece) early, very high quality, embossed die-cut pressed cardboard calendar for R.G. Sullivan Co.'s 7-20-4 brand cigars (Manchester, NH) featuring beautifully detailed color graphics. Clean, bright and excellent (C. 8.5/+) complete w/ its full 1902 pad. Framed. Min. bid \$50.



215).Armour's Meats Sign. 31.5 x 25" (27-3/8 x 21.25" visible) gorgeous, early embossed tin litho sign for Armour & Co.'s Meats, featuring beautifully detailed color graphics by Meek & Beach Litho. Clean, bright and very attractive in appearance (basically displays as a nice solid C. 8/+) although closer examination will reveal a few lightly oxidized early wear spots in woman's clothing area and some denting and wear at bottom edge (critical grade C. 8). Framed. Min. bid \$250.



216).Die-Cut Calendar. 19.5 x 8.25" outstanding, large, early embossed die-cut cardboard advertising calendar for Wm. Scott Co.'s Teas and Coffees (Biddeford, Me., Boston and Cambridge Mass.), featuring stunning, beautifully detailed glossy finish lithography. Crisp, bright and like new appearance, w/ its original 1912 partial calendar pad. Min. bid \$40.



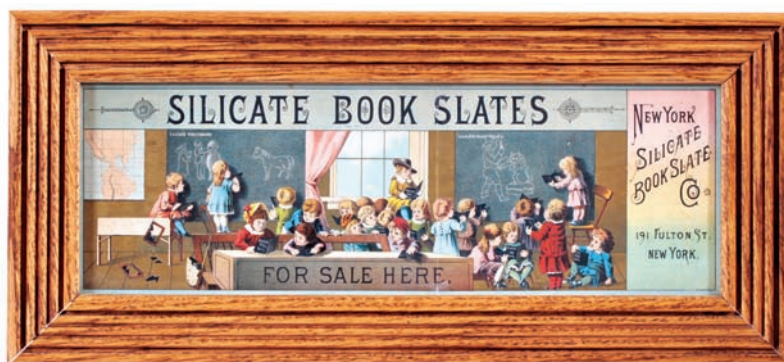
217).Advertising Spoon Rest. 4.25 x 3-5/8 x 3/4" unusual, very high quality glazed ceramic spoon rest advertising the ABW Shovel Co., Parkersburg, WV, w/ embossed lettering and figural shovel on top, and embossed text lettering underneath (similar quality and look to the early collectible kitchen tiles). Excellent. Min. bid \$40.



218).Medicinal Feeding Cup. 4.5 x 3.25 x 2.25" early, embossed glass "Perfection" brand invalid medicinal feeding cup by Meinecke & Co., New York. Cup is excellent (hand-applied ground top) and appears never used, as found still in its original cardboard box. Box (3-3/8 x 4-7/8 x 2-3/8") has only minor storage wear and slight bit of non-detracting toning/soiling on front label (box C. 8). Min. bid \$40.



219).Goebel Match Holder. 3 x 4 x 3-3/8" unusual, early art pottery style ceramic match holder/ashtray from the Goebel Brewing Co. (Detroit, Mich.) featuring Co.'s logo on both sides. Pottery has some overall light surface crazing and soiling in the upper glaze, but otherwise excellent. Min. bid \$40.



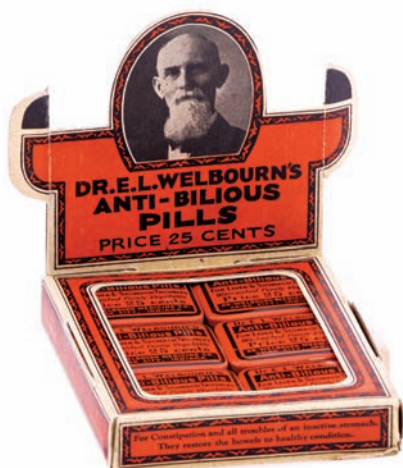
220).Book Slates Sign. 8.25 x 18.25" (5 x 14-7/8" visible) outstanding, very early paper litho sign for New York Silicate Co.'s schoolbook slates, featuring wonderful early schoolhouse scene of students using Co.'s slates in classroom. Has strong colors and displays nicely, w/ minor wrinkling and non-offensive faint vertical fold line. Min. bid \$40.



221).Franklin Cars / Goodrich Tires Sign. 11-5/8 x 35.5" early embossed tin litho sign for Goodrich brand tires, w/ reference at top for a Franklin Auto dealership. Pretty much excellent overall w/ strong colors and nice sheen (C. 8/+), w/ a little non-offensive light wear at outer edges. Min. bid \$60.



222).Brewery Workers Union Match Safe. 1.5 x 2.75 x 3/8" scarce, early celluloid covered match holder from United Brewery Workmen's Union, w/ nice image of beer barrel on front and Union logo on back. Clean, bright and excellent. Min. bid \$40.



223).Welbourn Medicine Display. 4-3/8 x 4.75 x 4-3/8" full, early countertop store display for Dr. Welbourn's Anti-Bilious pills, complete w/ all 12 of its original medicine tins inside. Excellent. Min. bid \$40.



224).Mammy Roly Poly. 7 x 6.5" (dia.) early Mayo's brand figural tin litho roly poly style tobacco can featuring image of black mammy smoking a pipe. Clean and attractive in appearance, w/ some non-offensive, light minor scattered wear (C. 8/-). Min. bid \$60.



225).Singing Waiter Roly Poly. 7 x 6.5" (dia.) scarce variation Dixie Queen brand figural tin litho tobacco can featuring image of a singing waiter. Attractive and displays nicely (basically as a nice solid C. 8/+ w/ exception of a little non-offensive light scattered wear and an oxidized stain area on paper tax stamp (critical grade C. 8-). Min. bid \$60.



226).Chrysler Town and Country Signs. Lot includes 3 separate paper litho framed auto showroom signs for Chrysler Co.'s ca. 1948 Town and Country luxury autos (ea. app. 15 x 24.74"). Includes: Convertible; 4-door sedan; and Club Coup. They are clean and very attractive in appearance (basically a strong C. 8+) w/ minor toning and a little paper loss at very bottom edge of coup sign). Min. bid \$60 (the lot).



227).Home Brand Coffee Pail. 8.75 x 7.5" (dia.) early tin litho 5 lb. coffee pail from Griggs, Cooper Co. (various Minn., S.D. and N.D. cities) featuring attractive image of Co.'s trademark house (same image both sides). Clean, bright and very attractive (basically a strong C. 8+) w/ a few minor background marks. Min. bid \$50.



228).Castles Ice Cream Tray. 13-3/8 x 13-3/8" scarce, early tin litho advertising tray for Castles brand ice cream, featuring wonderful image of Rose O'Neill Kewpies. Clean and very attractive (C. 8+/-), w/ minor wear (mostly confined to rim area). Min. bid \$50.



229).Eagle Water Bags Display. 17.75 x 18.75" ca. 1940's cardboard tri-fold easel-back advertising display for Eagle brand water bags. Interesting and unusual piece that displays nicely (C. 8). Min. bid \$40.



230).Black Kid Pillow Cover. 21 x 20.5" great early heavy textile pillow cover, featuring great image of adorable black kid smoking cigar while holding watermelon (note watermelon patch and elderly man looking on in background). Clean, bright and very attractive in appearance (displays as a C. 8.5+) w/ minor tack holes at outer corners and just to left of elbow. Min. bid \$50.



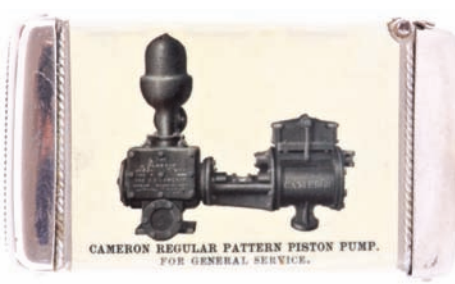
231).Pairpoint Co. Sign. 23.25 x 18.5" (actual piece 14-7/8 x 10-1/8") outstanding, fine, early embossed cardboard die-cut sign, w/ shiny surface finish and wonderful color graphics advertising the Pairpoint Mfg. Co., New Bedford, Mass. (makers of Pairpoint lamps, fine Victorian silver, cut glass, etc.). Clean, bright and exceptionally nice (C. 8.5/+). Beautifully framed and matted. Min. bid \$60.



232).Brunswick Billiards Sign. 29.75 x 40-3/8" (25-5/8 x 36.5" visible image) large, early paper (cardboard?) advertising sign for Brunswick Balke Collender Co.'s billiard tables, featuring great portrait images of the world's leading players of the day. Clean, bright and very attractive appearance (displays on wall as a C. 8.5/+) although close examination will reveal some non-offensive wear at outer edges. Framed (original period frame). Min. bid \$150.



233).Yacht Tobacco Tin. 2-5/8 x 4-5/8 x 1" early tin litho horizontal tobacco tin for United States Tobacco Co.'s "Yacht" brand, featuring beautifully detailed graphics. Clean and very attractive (a strong C. 8++). Min. bid \$40.



234).Cameron Pumps Match Safe. 1.5 x 2.75 x 3/8" early celluloid covered match safe for Cameron Steam Pump Works, featuring different pumps on each side. Excellent. Min. bid \$40.



235).Berry Bros. Pocket Mirror. 1.75 x 2.75" scarce variation early celluloid advertising pocket mirror for Berry Bros. Varnishes, featuring beautiful multi-color graphics. Clean and excellent. Min. bid \$40.



237).Amoco Service Station Manual. 9.25 x 12.25" early, heavily illustrated, high quality spiral bound hard cover 40 pg. merchants manual for American Oil Co. service station owners, filled w/ info for servicing customer needs, promoting business, increasing sales and profits, etc. (© 1939). Excellent. Min. bid \$40.



238).Shoe Inkwell. 2.25 x 4.5 x 1.5" early, hinged lid white metal inkwell in shape of a fancy man's shoe, w/ glass well inside. Very high quality piece, w/ beautiful detailing and a nice, rich surface patina (has a couple small, non-serious plating wear spots on bottom base and on bottom side of lid). Min. bid \$40.

Frank Tea & Spice Co.



239).Dove Spice Tin. 2 x 2.25 x 1.25" early tin litho 1 oz. product tin for Frank Tea & Spice Co.'s pumpkin pie spice, featuring nice pumpkin field image. Clean and attractive overall, w/ small scratch mark on backside (front C. 8+/-). Min. bid \$20.



240).Contraceptive Sponge Tins. Lot includes four early tin litho medicinal contraceptive sponge tins (ea. app. 1.75" (dia.) x 1"). They are clean and quite nice overall w/ only minor wear (avg. C. 8). Min. bid \$40 (the lot).



241).Kayo Soda Sign. 27.5 x 14" early embossed tin litho sign for Kayo brand chocolate beverage, featuring great image of the syndicated comic strip character "Kayo" holding giant bottle of Kayo drink (Donaldson Art Sign Co.). Clean, bright and excellent (C. 8.5+/-) and appears never used, w/ exception of very minor storage wear including light wear mark at very bottom edge. Min. bid \$40.



242).Indian Motorcycle Poster. 34.5 x 27" large, ca. 1940's Indian Motorcycles poster featuring American movie actor and celebrity Alan Ladd riding his Indian Scout motorcycle (note Indian sweater). Very nice overall (C. 8+/-) w/ exception of paper loss spot at outer left top margin (could be easily framed or matted out). Comes complete w/ its original Indian Co. mailing tube. Min. bid \$50.



243).Indian Motorcycle Poster. 34.5 x 27" large, ca. 1940's Indian Motorcycles poster featuring American football great Johnny Lujack in uniform. Has a little minor toning and some light speckling and edge tattering in white margin area (nothing serious or at all offensive), but overall is clean, bright and very attractive (C. 8+/-). Min. bid \$50.



244).Schepp's Cocoanut Jar. 6.5 x 5.75" (dia.) early, heavy, 2-ps. countertop store jar for Schepp's brand cocoanut, w/ attractive embossed lettering and figural cocoanut shaped finial on lid. Min. bid \$40.



245).Edgeworth Pocket Tins. Lot consists of two different scarce variation pocket tins for Larus Co.'s "Edgeworth" brand tobacco (ea. 4.25 x 3 x 7/8"). Vertical stripes tin is clean and excellent w/ only minor wear and a couple tiny dents (a strong C. 8+); fine screen patterned background example is crisp and like new (near mint). Min. bid \$40 (the lot).



246).Buster Brown Cigar Can. 5 x 5" (dia.) scarce variation, early paper label (over tin) 50 count cigar can for Buster Brown brand cigars. Attractive and displays pretty well (graphic front side displays as a C. 7+), although there is some general even overall age toning; and the non-graphic backside has several scattered paper loss spots and some fairly heavy overall darkening and speckled staining spots scattered about (backside fair to poor). Min. bid \$40.



247).Hershey Aero Candy Box. 6.75 x 10 x 2.5" unusual, early-2 ps. cardboard box for "Aero" brand 5¢ chocolate bars (by Hershey Co.) featuring great image of early airplane. Has strong colors and displays nicely (as a C. 8+) w/ exception of some slight background soiling and a little minor tattering on side edges. Min. bid \$40.



248).Coal Wagon Paperweight. 4 x 2-5/8 x 1" early white bottom glass paperweight advertising Trimble & Welcher Co., a Patterson, NJ dealer in coal and kindling wood. Features a beautifully detailed image of early coal wagon. Excellent. Min bid \$40.



249).Cheerio Coffee. 4 x 5-1/8" (dia.) early tin litho 1 lb. key wind style coffee can for "Cheerio" brand (Matthews Co., Kingston, NY) featuring neat image of Co.'s trademark bird. Clean, bright and very attractive appearance (C. 8++), w/ minor soiling. Min. bid \$40.



250).Tire Patch Tins. Lot of four different early tin litho hinged lid tire patch repair kit tins (sizes range from 2 x 3 x 1/2" to 2.75 x 4.5 x 2"). Includes: Kelly-Springfield (C. 8.5); Goodrich (C. 8+); Good Year (C. 7+); and Hartford Rubber Works (C. 8+). Min. bid \$30 (the lot).



251).Planters Jumbo Block Candy Bars. Lot of two full, sealed (never opened) ca. 1920's/30's 2 oz. size Planters Jumbo Block candy bars (ea. 2.25 x 4.5 x 1/2"). Both are clean and like new (these are great for displaying on the early stands and racks). Min. bid \$30 (the lot).



252).Hires Tray. 13" (dia.) early tin litho advertising tray for Hires Root beer, featuring great image of Co.'s Soda Jerk character Josh Slinger at fancy soda fountain (dated 1915). Clean, attractive and displays very nicely (as a strong C. 8+), w/ a little minor scattered wear, slight crimps and a trace hint of fade to reds Min. bid \$90.



253).Nixey Nit Cigar Box. 8.5 x 6.5 x 5-1/8" (as shown) unusual, early wooden dome top cigar box for Nixey Nit brand, featuring beautiful multi-color inside label of girls smoking cigars. Excellent overall (C. 8+). Min. bid \$40.



254).Finley Tobacco Label. 11.5 x 12-5/8" (10.25 x 11.25" visible) outstanding, very early stone lithographed paper tobacco crate label from the Finley, Doll & Co., featuring stunning, finely detailed multi-color graphic image of the Falls of Ohio, w/ trains, boats, etc. Near mint. Min. bid \$50.



255).Pharmacist Shaving Mug. 3.75 x 3-5/8" (dia.) early, fine china occupational shaving mug for a drugstore owner/pharmacist, featuring nicely detailed hand painted mortar and pestle. Excellent (a little minor wear to decorative gold trim at base). Min. bid \$50.



256).Coca-Cola Sign. 9" (dia.) original, ca. 1950's Coca-Cola celluloid (over cardboard) advertising sign featuring nice image of Coke bottle. Crisp and like new, as found never used still in its original envelope (Philadelphia Badge Co. label on backside). Min. bid \$40.



257).Political Cigar Box. 7 x 8-3/8 x 4-7/8" as shown (2.5 x 8-3/8 x 4-7/8" w/ lid closed) early wooden cigar box issued during the 1888 presidential campaign promoting winning Republican running mates Harrison and Morton. Outer box is pretty decent w/ some darkening on narrow front right corner section, inside label is clean, bright and excellent overall (C. 8.5). Min. bid \$40.



258).Wil-Flo Oil Can. 5-5/8 x 4" (dia.) full, unopened, early tin litho 1 quart solder seam picture style motor oil can for "Wil-Flo" brand (Midwest Oil Co., Minneapolis, Fargo and Sioux Falls) featuring great image of early auto driving in deep snow. Clean, bright and exceptionally nice (C. 8.5) w/ some staining and wear on non-graphic top metal lid and a couple light dents on backside. Min. bid \$50.



259).Stock Food Match Safe. 2.75 x 1.5 x 3/8" early celluloid covered match safe advertising "Molassine" veterinary stock food product, featuring great image of nude girl and pig on front, w/ Co.'s animal logo on back. Clean and excellent in appearance, although an examination under magnification will show a few tiny cut marks (English). Min. bid \$40.



260).Read & White Door Push. 6 x 3.5" early, heavy enameled porcelain advertising door push for Read & White Dress Clothing shops (Boston & Providence, RI). Crisp, clean and excellent (near mint) w/ just the right amount of patina. Min. bid \$50.



261).Charlie Chaplin Toy. 4 x 1.75" early, ca. 1915 pressed die-cut mechanical tin litho penny toy by Kellerman Co. (marked CKO) in image of silent era Charlie Chaplin tramp character. Very high quality German made toy has excellent detailing, w/ neat string pull mechanism which moves his arm and top hat up and down. Excellent. Min. bid \$40.



262).Elgin Watches Sign. 22-1/8 x 15 x 3/8" early wooden advertising sign (by Meyercoed Co.) for Elgin brand pocket watches, featuring attractive graphic image of a Tom Sawyer like kid wearing a large Elgin watch. Clean and very attractive in appearance (C. 8+/-) w/ only minor wear. Min. bid \$90.



263).Ambulance Thermometer. 11-5/8 x 3-1/8" unusual, early wooden advertising thermometer for Dailey's Ambulance Service, Cambridge, Mass., w/ great image of early auto. Thermometer is clean and very attractive in appearance (C. 8.5+/-) w/ nice surface patina, as found never used in its original box (note: red liquid inside tube has some separation and box has general overall toning, and scattered tattering and staining). Min. bid \$40.



264).Smith's Confectionery Sign. 22.75 x 16.75" large, early, paper litho sign for Smith & Son Bakers and Confectioners Co. (White River Junction, Vt.) w/ original metal strips at top and bottom. Very attractive in appearance (displays as a nice C. 8+/-) w/ non-offensive minor background staining and a couple of professionally closed edge tears (performed w/ invisible archival tape on backside). Note: sign also mentions Co.'s S&S brand cough drops. Clean, attractive and displays nicely. Min. bid \$50.



265).Talc Samples. Lot of seven different miniature tin litho sample sized talcum powder tins, as found never used, all still in original cardboard boxes. Includes: Violet Dulce; Colgate's Violet; Cashmere Bouquet; Colgate's Monad; Colgate's Violet antiseptic; Eclat; and Hinds Cremis brands. Boxes vg. to excellent overall, w/ minor soiling/wear on a few (box hghts. range from 2 to 2-3/8"). Min. bid \$40 (the lot).



266).Flying Fox Pocket Tin. 3 x 3.25 x 3/4" unusual, early hinged lid vertical pocket tin for "Flying Fox" brand cigarettes, w/ beautiful graphic racing images of world renowned racehorse on both sides (Flying Fox was 1899 winner of British Triple Crown and later sold as highest priced racehorse in history). Clean and very attractive appearance (C. 8+). Marked Dresden (Germany) on side. Min. bid \$40.



267).Historical Series Candy Pail. 3 x 2-7/8" (dia.) small, early tin litho Lovell & Covell Co. candy pail featuring beautiful multi-color graphic images of historical American landmarks around sides. Clean, bright and excellent overall, w/ a few barely noticeable minor background scratch marks (C. 8+). Min. bid \$40.



268).Tiger Pocket Tin. 3 x 3 x 7/8" early tin litho 15¢ variation vertical tobacco pocket tin for Lorillard Co.'s "Tiger" brand. Clean and attractive appearance (C. 8+) w/ some wear at outer edges of lid. Min. bid \$40.



269).Terre Haute Brewery Mirror. 2-1/8" (dia.) scarce, early celluloid advertising pocket mirror for Terre Haute Brewing Co. (Terre Haute, Indiana) featuring beautiful graphic image of large bottle and topless girl. Excellent. Min. bid \$50.



270).Runkel's Cocoa Sign. 6 x 18" early, heavy porcelain advertising sign for Runkel's brand cocoa. Piece is attractive and displays quite nicely, although there is some oxidizing at upper border chip spots and hanging holes (C. 8+/-). As found, might improve slightly w/ cleaning. Min. bid \$40.



271).Coles Liniment Sign. 6.25 x 16-1/8" very early, heavy porcelain quack medicine sign advertising "Coles Penetrating Liniment" ("Cure" for Neuralgia and Pleurisy). Field of sign is clean and basically excellent w/ nice surface sheen, although there is the typical staining and oxidized wear along the outer edges almost always found on this sign (C. 7.5+/C. 8-). Min. bid \$50.



272). "Jubilee" Biscuit Tin. 6-3/8 x 5 x 3.75" early, ca. 1887 hinged lid British biscuit tin from MacFarlane Lang & Co. w/ embossed images of Queen Victoria (on lid) and female figures dressed in native costumes from British Empire countries around sides. Nice detailing and color graphics, and displays beautifully, w/ minor scattered wear and some oxidized darkening spots on lid (body a strong 8+/-; lid fair to good). Min. bid \$40.



273).Eagle Advertising Stove. 11.75 x 12.5 x 5.5" early, figural cast iron advertising stove (salesman's sample?) for Eagle brand ranges. Very high quality piece, has beautifully embossed detailing to it's nickel colored finish, complete w/ side racks, pot, pan, handle w/ 5/6 round and one rectangular inserts for stovetop burner covers. Excellent, w/ very nice surface patina. Min. bid \$60.



274).Tiger Tobacco Bin. 11.25 x 8.25 x 6.5" large, early store size tobacco bin for Lorillard Co.'s Tiger brand, w/ tin top and bottom and cardboard body (originally held 48 5¢ packs). Clean, exceptionally bright and very attractive in appearance (displays as a strong C. 8.5+/-) although there are some light stains on white backside tobacco pack area. Min. bid \$50.



275).Hold Fast Tobacco Box. 11.75 x 11.25 x 7" (as shown); 5-1/8 x 11.25 x 7" (lid closed) very early hinged lid wooden tobacco box for Globe Tobacco Co.'s "Hold Fast" brand, w/ beautiful multi-color paper label on inside lid. Front and outer lid have stencil painted lettering, w/ large 1883 tax stamp and Co. labeling on backside. Very nice overall, w/ a little light wear from use (C. 8+/-). Min. bid \$50.



276).Coca-Cola Clock. 15.5" (dia.) unusual, ca. 1948 button style electric metal Coca-Cola advertising clock. Attractive and displays nicely very nicely w/ just the right amount of minor wear (C. 8/+). Working condition. Min. bid \$50.



277).Planters High Grade Confections Tin. 9-5/8 x 8-3/8" (dia.) scarce 10 lb. tin litho pry lid can for Planters Co.'s "High Grade Confections", complete w/ original lid. Has somewhat of a hazy type oxidizing to its upper surface finish, w/ darkening and general overall wear, but overall still displays fairly nicely on shelf (C. 7/-). Min. bid \$70.



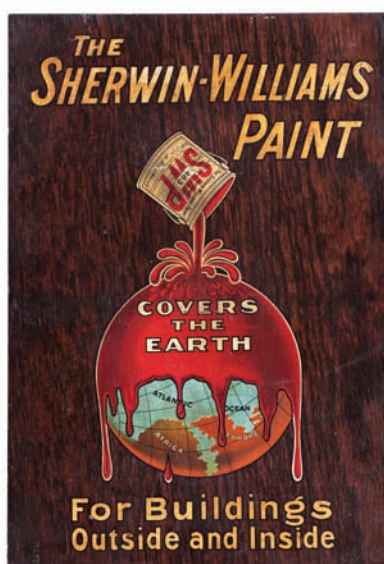
278).Phoenix Insurance Sign. 24 x 29" (20.5 x 25.75" visible) very early paper litho sign for Phoenix Fire Insurance Co., Hartford, Ct., w/ stunning multi-color lithography featuring detailed images of firefighting scene, early downtown Hartford scene, large logo, etc. Has strong colors and displays extremely well (as a C. 8.5) although very close examination will reveal some early, very well done conservation and light restoration (margin area and tear repairs). Framed. Min. bid \$100.



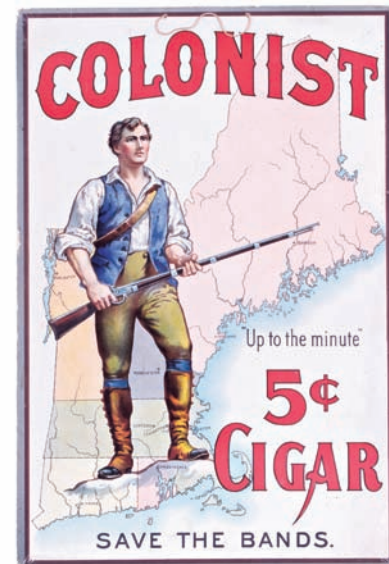
279).Medicinal Gin Sign. 16 x 20" (9.75 x 15" actual piece) unusual, early cardboard die-cut sign for Water Melon Gin, product for kidneys, urinary organs and the bladder. Clean, bright and very attractive appearance, w/ a little non-offensive minor staining on floor area (displays as a strong C. 8/+). Framed. Min. bid \$50.



280).War Stamps Poster. 30 x 20" early paper litho WWI poster promoting US War Saving Stamps, w/ beautiful color graphic image of Uncle Sam and children by illustrator James Montgomery Flagg. Clean, bright and excellent appearance (displays as C. 8.5/+) w/ minor chip at very outside upper left edge and fine, light snake line crease mark in boy's coat area. Min. bid \$40.



281).Sherwin-Williams Paint Sign. 20 x 13.75 x 3/8" early wooden advertising sign for Sherwin Williams Paints, featuring attractive and colorful transfer image of Co.'s "Cover the Earth" logo. Clean, bright and very attractive appearance (a strong C. 8++) w/ a beautiful, rich surface patina. Min. bid \$50.



282).Colonist Cigar Sign. 19.75 x 13.25" early, large cardboard string hung sign advertising Colonist brand 5¢ Cigars, w/ beautiful multi-color graphics. Clean and very attractive appearance (a strong C. 8/+) w/ just a faint, trace hint of non-detracting, very minor soiling and flyspecks, and a wear mark at bottom right corner edge. Min. bid \$50.



283). Cracker Jack Mirrors. Lot of two different early advertising pocket mirrors for Rueckheim & Eckstein Co.'s Cracker Jack snacks. Celluloid mirror (1.75" dia.) excellent overall w/ some chipping loss to upper surface at outer side edge; smaller mirror has puzzle game on top side (1.5" dia.) advertising side excellent overall w/ some fade to reds. Min. bid \$30 the pair.



284). Murine Puzzle Game. 1/4 x 1-7/8" (dia.) very early celluloid and metal hand held dexterity puzzle game advertising Murine eye cure product. Puzzle game side has tiny red and white beads (eyes) that player lands in her eye sockets; other side features beautiful multi-color graphic product advertising. Very nice overall condition w/ some slight yellowing to celluloid cover piece on game side and very minor waving to finish on ad side (mentioned for accuracy- not at all detracting). Min. bid \$30.



285). Gold Seal Boots Sign. 9.25 x 18.25" early 2-sided tin litho sign for Gold Seal brand rubbers and boots, featuring wonderfully detailed graphics (by American Art Works). Clean, bright and very attractive, w/ a little minor scattered wear (C. 8/+). Min. bid \$50.

Salesman Sample



286). Salesman's Sample Sink. 1-7/8 x 3.5 x 4.5 early, very high quality, small cast iron Lenox Standard brand salesman's sample advertising sink w/ heavy enameled porcelain finish and nicely detailed metal faucets. Neat and unusual piece. Excellent. Min. bid \$40.



288). Detail



Express Sign

287). Armstrong Express Sign. 22 x 9" important, early, very high quality heavy porcelain sign from the Armstrong Transfer Co., (a Boston and New England based Express Co.) used on one of Co.'s Baggage and Carriage Office buildings (made for Co. in England by Imperial Sign Co. of New York). Attractive and displays very nicely, although there are a couple chip spots in bottom right area and there is some non-offensive slight pitting and chipping along the very outside edge. Lot also includes early Co. uniform badges and employee rule book. Note: see our website addendum for additional info. Min. bid \$100.



288). Stanley Woods Candy Tin. 9-3/8 x 9.25 x 6" (as shown lid up) important early tin litho candy tin for Stanley Woods brand toffee candy featuring beautifully detailed graphic image of Co. owner Stanley Woods racing his motorcycle on inside lid (note: Stanley Woods, in addition to being a candy maker was also a famous Irish motorcycle racer, who beginning in 1922 went on to win 29 motorcycle Grand Prix races, in addition to many other events- see addendum for further info). Inside image is clean, bright and like new (near mint), although outside edges of tin have soiling, dark marks and general wear (as found, might improve w/ cleaning). Min. bid \$40



289). Laxa-Dean Medicine Jar. 12.25 x 5-1/8 x 5-1/8" extremely rare, early glass advertising display jar label w/ beautiful label under advertising label for Simon Medicine Co.'s "Laxa-Dean Wafers" (hand applied top w/ ground lid). Exceptionally nice condition (like new). Min. bid \$60.



290).Pennzoil Oil Can. 16.5 x 12" (dia.) large, early 5 gallon sized oil can for Pennzoil brand motor oil. A substantial, high quality piece w/ a crisp, bright and like new appearance and beautiful rich surface sheen (near mint) as found still in its original box (tin has light storage wear at raised outer edges; the cardboard storage box is fair to poor w/ heavy damage to backside panel). Min. bid \$40.



291).Kerr's Thread Sign. 19-5/8 x 14-5/8" early paper litho (over cardboard) sign for Kerr brand cotton sewing treads, featuring great image of young girl and her dog (note giant Kerr's thread spools on floor and dogs mouth). Clean, bright and very attractive (basically displays as a nice C. 8/+) w/ exception of a little non-offensive light staining/soiling in outer green border area (critical grade C. 8/-). Min. bid \$60.



292).Amoco Oil Co. Poster. 42.5 x 26.5" large, ca. 1942 paper Amoco Oil Co. advertising poster featuring great driving image by famous Americana illustrator Norman Rockwell. Clean, bright and excellent. Min. bid \$40.



293).Nehi Soda Sign. 13.5 x 21" early cardboard sign for Nehi brand soda, featuring great deco look (John Igelstrom lithographers). Clean and excellent in appearance, w/ a slight hint of minor color softening (C. 8++). Min. bid \$40.




294).Taxi Badges. Lot of five different ca. 1940's through '50's high quality metal taxi cab driver badges (sizes range from 1-3/8 x 1.75 to 2.25 x 1-7/8"). Cities include Brockton; Montreal; Portland; and Davenport, Kansas. Excellent overall, w/ a little light expected wear from use. Min. bid \$30 (the lot).



295).Bakers Chocolate Co. Sign. 23 x 27.5" (19.5 x 23.5" visible) important, very early paper litho advertising sign for the W. Baker & Co., Dorchester, Mass. (makers of "chocolates, prepared cocoa broma and homoeopathic cocoa products") featuring beautiful multi-color lithography. Clean, bright and very attractive (a strong C. 8++) w/ minor background toning and slight, faint trace hints of background staining (nothing that's serious or detracting). Original period frame. Min. bid \$100.

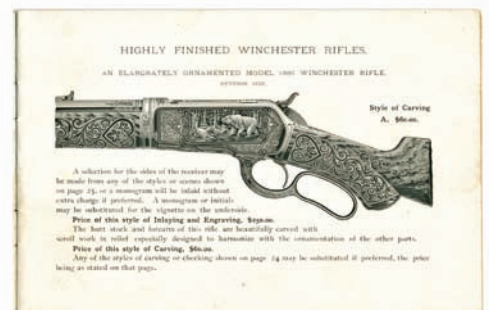


296).Fehr's Brewing Co. Sign. 28.75 x 22-3/8" large, very early, self-framed tin litho sign for Fehr's Malt Tonic, w/ beautifully detailed graphics (by H.D. Beach Co., Coshocton, Oh.). Substantial, very high quality sign features great image of topless girl, product bottles, cherubs, etc. (from the Frank Fehr Brewing Co., Louisville, Ky.). Clean, bright and exceptionally nice example (image area basically a strong C. 8.5/+), w/ a few non-offensive light scattered wear spots in outer raised frame area. Min. bid \$200.



WEBBERS BOOT SHOP
16 Main St.
Belfast, Me.
HIPRESS & STRAIGHT-LINE
GOODRICH RUBBER FOOTWEAR

297). Goodrich Boots Sign. 13-5/8 x 39-5/8" early, embossed tin litho sign for Goodrich Rubber Co. footwear, w/ beautiful graphic footwear images and stamped advertising at top for a Belfast, Maine boot shop. Crisp, bright and like new- appears never used w/ only minor storage wear (C. 8.5+). Min. bid \$50.



298). 1897 Winchester Catalog. 5.75 x 8.75" heavily illustrated 28 pg. 1897 catalog for Winchester Co. fancy, high end rifles, featuring Co.'s finely detailed etched and finely engraved designs. Complete and excellent overall (C. 8+) w/ a little light soiling/staining on backside cover. Min. bid \$40.

Trumps Tobacco Insert Cards Sign



299). Trumps Tobacco Cards Sign. 35 x 20" (29.25 x 14.5" visible) important, early paper litho sign for Thompson Moore Co.'s "Trumps Long Cut" brand tobacco, promoting Co.'s tobacco insert cards. Beautiful sign is crisp, bright and exceptionally nice in appearance, w/ stunning, highly detailed multi-color graphics (close examination will reveal a 2 x 6" professionally repaired section at bottom left corner- very well done). Matted and ready for framing. Min. bid \$250. (see website addendum for additional info)

Armour's Extract of Beef Poster



300). Armour's Poster. 56.5 x 42.25" large, early, heavy paper roll-down poster for Armour's Extract of Beef, w/ original wooden hanging strips. Powerful and impressive looking piece, featuring great image of child cowboy eating from product jar. Clean, bright and very attractive overall appearance (basically displays as a nice C. 8+) w/ exception of some tears at top background area (note: closed on backside w/ invisible archival tape) and the wood strip at bottom edge separated from piece w/ some tear spots, non-offensive edge soiling/staining and some general wear along bottom section. Min. bid \$150.

Bakers Cocoa



Detail



301). Bakers Cocoa Majolica Stand. 5.5 x 10.25" (dia.) fine, very early glazed finish majolica pottery footed stand, has beautifully detailed image featuring Bakers Cocoa Co.'s trademark woman in center, of plate, w/ finely detailed embossed leaf and floral sprig patterns in blue glazed areas. Excellent. Min. bid \$60.



302).Old Town Canoes Catalog. 6 x 7-7/8" unusual, beautifully illustrated 30 pg. 1924 product catalog for Old Town Co.'s canoes (includes several pages of color illustrations w/ tons of detailed product info). Excellent and very attractive, w/ a small missing tear spot at top right corner of cover. Min. bid \$40.



303).Hops Shipping Box. 9 x 17 x 9.5" early heavy cardboard shipping box for Mc Gibbon Bros. choice hops, featuring beautiful multi-color graphic hops harvesting scene on its large side label. Excellent overall (a strong C. 8++). Min. bid \$40.



304).Lookout Die-Cut Sign. 9.5 x 14.5" beautiful, early, colorful and highly graphic countertop die-cut folding sign on heavy cardstock advertising "Lookout" brand biscuits, cookies and crackers. Clean, bright and beautiful appearance (basically displays as a very strong C. 8++), w/ light wear spot in white space just to right of child's lantern. Min. bid \$40.



305).Schoenhut Toy Catalog. 10 x 7-3/8" 48 page heavily illustrated 1918 toy catalog for Schoenhut Toy Co.'s Humpty Dumpty Circus toys, as well as dolls, doll houses, targets, roly poly's, etc. (includes several full pages of color illustrations). Excellent, w/ a little edge wear at bottom edge. Min. bid \$40.

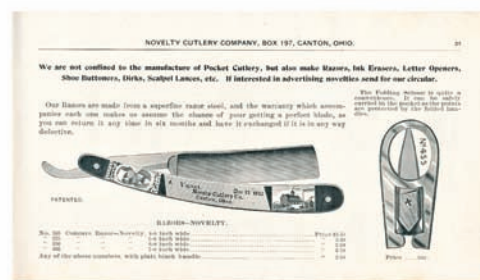
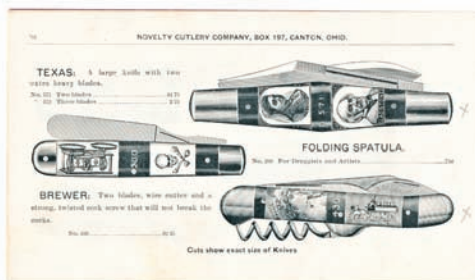


306).Beatrice Cream Separators Mirror. 2-1/8" (dia.) extremely rare, early celluloid advertising pocket mirror for Beatrice brand cream separators (Beatrice Creamery Co., Dubuque, Iowa), w/ beautiful color graphics. Clean, bright and excellent. Min. bid \$50.

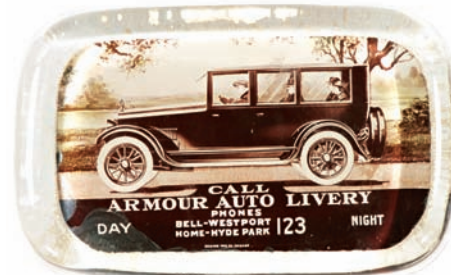
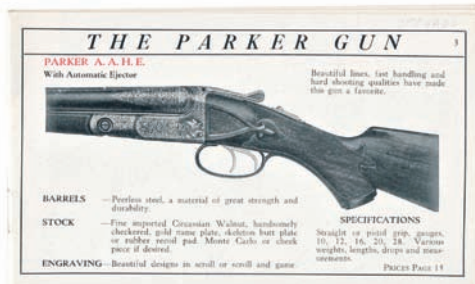


307).Hercules Gun Powder Catalog. 6.25 x 3.5" unusual, ca. 1914, 20 pg. illustrated advertising catalog for Hercules Powder Co.'s sporting powders, w/ nice illustrations of several of Co.'s gunpowder cans. Excellent. Min. bid \$30.





308).Pocket Knives Catalog. 4.25 x 7.5" fully illustrated 30 pg. ca. 1888 product catalog for Novelty Cutlery Co.'s pocket knives, w/ nicely illustrated images of Co.'s various pocket knives. Excellent. Min. bid \$30.



309).Parker Shot Guns Catalog. 3.75 x 6-1/8" ca. 1930 product catalog for Parker brand shot guns, featuring nicely detailed images of Co.'s high-end guns (w/ prices in back). Excellent. Min. bid \$20.

310).Armour Auto Livery Paperweight. 2-5/8 x 4 x 7/8" very early glass advertising paperweight for Armour Auto Livery Co., w/ nice image of early chauffeured limo. Excellent. Min. bid \$30.



311).Planco Cigar Can. 5-1/8 x 5-5/8" (dia.) unusual 50 ct. tin litho cigar can featuring same beautifully detailed graphic image on both sides (Liberty Can Co.). Clean and very attractive (C. 8/+). Min. bid \$40.



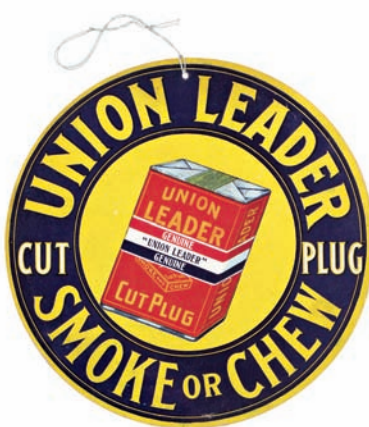
312). "Log Cabin" Biscuit Tin. 4-7/8 x 6.5 x 5" ca. 1911 tin litho Henderson Co. embossed, figural hinged lid British biscuit tin in image of an American frontier log cabin, w/ cowboy, horse, etc. Colorful, attractive and displays very nicely (as a C. 8+/-) w/ a little non-offensive light scattered scratching and wear from use (note: bottom gold flash base area has some fairly heavy scuffing wear). Min. bid \$40.



313).Squirrel Peanut Butter. 4-7/8 x 5-1/8" (dia.) early 3 lb. pry lid peanut butter pail for Squirrel brand, featuring attractive image of Co.'s trademark squirrel eating a peanut (Canada Nut Co., Vancouver B.C., Canada). Clean, bright and excellent overall (C. 8.5/+). Min. bid \$40.



314).Stove Match Holder. 4-3/8 x 2-5/8 x 3.5" unusual, early figural match holder in shape of fancy Victorian stove. Substantial, high quality, heavy brass piece has beautifully detailed embossed design patterns all around and is mounted to black marble base, (has striking surface on inside of its hinged lift up lid). Excellent. Min. bid \$40.



315).Union Leader Ceiling Hanger. 9" (dia.) early 2-sided cardboard ceiling hanger string hung sign for Union Leader brand tobacco, w/ nice image of Co.'s early soft pack style tobacco package (same image both sides). Clean, bright and attractive appearance (a strong C. 8+/-) w/ minor wear on backside. Min. bid \$40.



316).Bryce Bros. Clock. 12.5 x 9.75 x 2.25" early figural cast iron advertising clock in design of a fancy Victorian storefront, w/ embossed advertising for Bryce Brothers & Co., a fancy men's clothier. Has nice detailing w/ attractive copper flash surface (C. 8/+). Clock runs somewhat, but only temperamentally. Min. bid \$60.



Rd #2, Cobb Hill Road, Cazenovia, NY 13035 • 24 Hr. Tel: (315) 662-7625 • 24 Hr. Fax: (315) 662-3570 • morf2bid@aol.com • morfauction.com

Welcome to our 79th auction of quality antique advertising and fine collectibles. Everything we sell is guaranteed authentic and as described. We attempt to grade condition both fairly and conservatively, using a scale of 1-10 on the advertising items (ten being absolutely mint). We do not list reproductions, re-issues, deceptively restored or pieced together type merchandise. Flaws and blemishes are prominently noted and over emphasized. We encourage you to call for a detailed description on any item you have an interest in, but respectfully must request that you do this before the closing night. Dimensions are listed by height, then width, and are only approximate (+ or - a quarter inch).

Bidding

Bids are accepted only from those parties who have registered with us to bid. (If you were mailed this catalogue by us you are automatically pre-registered.) Your bid is a legal contract to purchase and once entered, cannot be canceled. Placement of a bid indicates acceptance of our terms.

On all "BID" items there is a 15% buyers premium added to each successful bid. You're welcome to bid by mail, email and fax anytime after receiving this catalog. **We will begin accepting phone bids on Wednesday, October 9th, 2013. We will be taking calls on Wednesday and Thursday from 10:00 AM until 5:00 PM.** If no one answers when you call, please leave a message on our machine and we will get back to you. **If bidding by mail or fax, please remember to include your telephone number with your bids!** You may call or bid as often as you like. We will tell you the current bid on any item(s) you are interested in. To raise a bid, your advance must be at least \$10 more than the current high bid amount. When an item reaches \$250, bidding increments rise to \$25, at \$1,000, bidding increments advance in \$50 steps, and above \$2,000 in \$100 increments. We suggest not waiting until the last minute to begin your bidding, as its quite possible you won't be able to get through.

Web Page and Bid Updates

We will begin posting current bid prices (not including the buyers premium) on Wednesday, October 9th, 2013 (including an addendum of additional catalogue lot information) on our internet web page. These prices will be updated once each day (each evening sometime after 9:00 PM, EST) and will get updated to include the final hammer prices on Sunday afternoon once the sale is concluded. On the closing night, we will attempt to update current bid prices every hour. Our web page address for this sale is: <http://www.morfauction.com> We suggest that once you get to it, that you bookmark this address for easy re-access. There is also an addendum section on our website where we post additional information and photo's for this sale.

Reserves and Estimates

All items which receive an opening bid in our sale will be sold to the highest bidder regardless of the price realized (we reserve the right to withdraw items in the event of inaccurate catalog descriptions and to reject any bid we feel is not made in good faith). **We run our auctions with a strict policy of no buy-backs, no auctioneer games and no hidden reserves.** Unlike some of our competitors, we do NOT allow consignors to bid up their own items!

Mechanical Operations

Early mechanical and electric motors and mechanisms on machines toys, coin-ops, clocks, etc. are quite often temperamental and very unpredictable in nature. Although these mechanisms may be working fine at the time of sale, we make no guarantees or representations regarding their continued operating status once they have left our premises (including during shipping).

Closing Night

THE LAST DAY FOR BIDDING WILL BE ON FRIDAY, OCTOBER 11TH, 2013. On closing day, we begin taking calls at 5:00 PM. Please mark your calendar now. **On the closing night (ONLY), we will also be taking calls at (315) 662-3318, (315) 662-3429 and (315) 662-3904 after 5:00 PM** (in addition to our regular (315) 662-7625 office number). **Closing Time: This Auction will close at 10:00 PM (EST) on Friday, OCTOBER 11TH, 2013.** At that time, no more incoming calls will be accepted and all lots with a registered bid of less than \$300, as well as all items without call backs registered on them will be officially closed and final. The items at \$300 and over that have call back protection registered on them will be closed out during our call back period the following afternoon ("see important call back rules below"). We reserve the right to change the official closing in the event of unforeseen family type emergencies or technological failures (utility disruptions, etc.). We also reserve the right to either extend the bidding, to postpone or to cancel this auction in the event of a national emergency or if the Internet or the services of the US Post Office were to get seriously disrupted during our catalogue mailing or bidding period.

"Up-To" Bids & Call Backs

CEILING BIDS: We will be happy to enter competitive "up to" ceiling bids for you on any lots you request. Beginning at your minimum amount, we will advance these bid(s) up to your left ceiling amount, if (and only if) it is topped by another bidder. "Up To" bids will be handled discretely and executed in a completely competitive manner for you. Please note that we don't accept open ended "top all others" ceiling type bids.

CALL BACKS: You may request call back protection for any lot(s) that you enter with either a minimum or a protected "up-to" ceiling bid in an amount of at least \$300. This request must be registered with us before the official 10:00 PM closing hour of Friday, October 11th, 2013. All callbacks will be placed by us on Saturday, October 12th, 2013, beginning at 12:00 noon (EST) and will continue that afternoon until each of the individual lots have been closed out (using past experience, I would expect this to be finished by 6:00 PM, if not earlier). If you register for call-backs, it is your responsibility to be available during this call back time period. We make every effort to honor all our call back requests, but this service is done solely as a convenience to our bidders and will be performed on a best efforts basis only. If you will be traveling or if you will not be available during call back times at your primary number, be sure you provide us with proper alternate or back up numbers for reaching you!

Payment Terms

Winning bidders will be invoiced by mail immediately after the sale. Those who desire fast shipment can pay by Money Order or Cashiers Check. Payments are due within 10 days of receipt of invoice. We reserve the right to offer the item out to our back bidders and deny future bidding privileges to those who do not pay in a timely manner. In addition to personal checks, we also accept payment on your American Express, Visa, Master Card, Discover and Optima Credit Cards (with no surcharge added). No COD's or Collect calls are ever accepted. Items shipped to anywhere in New York State must include appropriate sales tax or signed resale certificate.

Shipping

All packing and shipping charges are extra. We do most of our own packing and shipping in house and try to keep these charges as reasonable as possible for you. On especially fragile and larger hard to pack items, we hire the services of professional packers and charge you at our billed cost. We ship mostly through the Post Office and Fedex Ground, (Fedex Overnight available at an extra charge.)

Subscribing, Prices Realized, Consignments & Upcoming Events

Future catalogs can be assured by sending \$20 for a full 12 months subscription. (Prices are published on our website after each sale) An automatic credit card ordering program is available. We currently run between 2-4 auctions a year. In addition to our regular sales, we also occasionally offer sales made up entirely from single owner collections. Please contact us should you have items you would like us to consider for inclusion in our upcoming events. All inquiries are handled in a completely confidential manner. Our services are also available for the private placement marketing of important individual items, marketing plans for large collections as well as for estate planning and settlement purposes. Back copies of many of our previous auction catalogs are still available at \$5 each (w/ prices realized) w/ quantity discounts available if multiple issues are ordered. For further information, check our website.

Photography by Wes Feuz. Layout by Tracy Niemczal.3

© Copyright 2013. All Rights Reserved. No portion of this publication may be copied in any form without the express written permission of Morford's.

Important Closing Night Information

In addition to our regular (315) 662-7625 office number,
on the closing night (only!) you may also call us at:

(315) 662-3318*
(after 5:00 PM)
(315) 662-3904*
(after 5:00 PM)
(315) 662-3429*
(after 5:00 PM)



***These numbers for
Closing night only!
Friday, October 11th, 2013**

Bidding closes at 10:00 PM on Friday closing night. We will be accepting
faxes and e-mails on closing night. Our web page will update current
high bid prices approximately every hour on closing night and will also
list any important addendum information. **All call backs will be made on**
Saturday, October 12th, 2013, beginning at 12 o'clock Noon!