

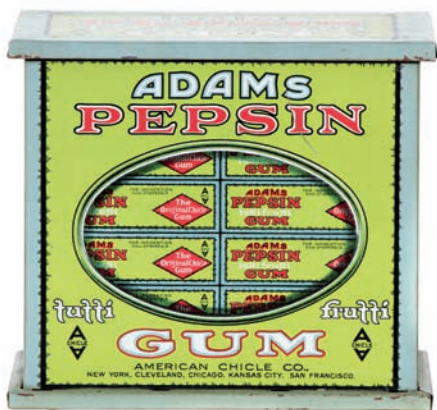


WM Morford
Investment Grade Collectibles at Auction

Investment Grade Collectibles at Auction

Rd #2, Cobb Hill Road, Cazenovia, NY 13035 • 24 Hr. Tel: (315) 662-7625 • 24 Hr. Fax: (315) 662-3570 • morf2bid@aol.com • morfauction.com

Bidding closes Friday, March 28, 2014. (See page 40 for Terms & Conditions)



1). Adams Gum Tin. 6 x 6-5/8 x 4.75" early tin litho hinged lid store display tin for Adams Co.'s Pepsin chewing gum. Clean, bright and very attractive, w/ a little minor oxidizing on narrow backside edge of lid (a strong C. 8++). Min. bid \$50.



2). Orange Kist Sign. 13-7/8" (dia.) ca. 1920's-30's 2-sided tin litho sign for Orange Kist soda pop, w/ wonderful art deco design. Impressive piece has bright colors and a deep, rich, nicely crazed all original surface patina, which enhances its great overall appearance (front C. 8+; back 8/-). Min. bid \$40.



3). Auto Shaving Mug. 3-7/8 x 3.5" (dia.) early fine china occupational shaving mug featuring beautifully detailed hand-colored image of early auto. Excellent (Bavarian markings on base). Min. bid \$60.



4). DuPont Gunpowder Cover. 3.75 x 6.5" colorful and attractive early advertising cover (envelope) for DuPont gunpowder, featuring nice image of cowboy on front and game images on backside (1903 cancellation). Excellent (C. 8++). Min. bid \$40.



5). Lincoln Auto Hood Ornament. 4.75 x 8.75 x 2.75" early figural greyhound hood ornament from a fancy ca. 1920's/30's Lincoln automobile (finely stamped "Lincoln Motor Co." on side). Heavy, very high quality piece is excellent overall (C. 8+), w/ just the right amount of minor wear from use. Min. bid \$40.



6). Planters Jar. 9.5 x 7.5 x 4.75" ca. 1937 Planters Peanuts Co. store display jar w/ painted lettering on outside with its two large original Jumbo block elephant labels on the sides. Complete w/ original colorful and graphic tin litho lid. Clean and exceptionally nice. Min. bid \$70.



7). Newport Gas Station Globe. scarce, early, solid 1-ps. heavy embossed milk glass gas pump style gas station globe (identical to a gas pump globe, except lettering inverted to display upside down for use as a hanging light-up sign). Crisp and like new, as found never used w/ beautiful old paint surface. Min. bid \$80.



8). Opaline Motor Oil Tin. 10.5 x 8.75 x 3" very early, hand-soldered 1 gallon tin litho oil can for Sinclair Refining Co.'s "Opaline", featuring wonderful race car image (same image both sides). Clean and very attractive appearance (front a strong C. 8++) w/ a little non-offensive light background wear on backside (back C. 8+/-). Min. bid \$60.



9).Hudson River Boat Sign. 11 x 21" colorful, early cardboard trolley car style sign advertising "Hendrick Hudson" River Boat Line, (ship ran day service on Hudson River between Albany and New York City). Clean and very attractive (a strong C. 8+/) w/ a little very minor edge wear. Min. bid \$40.



10).Packard Cables Display Rack. 6 x 11.75 x 2.75" unusual, early tin litho service station display rack for Packard brand battery cables w/ long metal hooks along bottom (would be great for hanging or holding belts, ties, keys, etc.). Neat and unusual piece, in excellent condition (C. 8++), Min. bid \$40.



11).Stewart Stoves Sign. 5.75 x 36" early wooden painted country store sign, retaining its attractive, rich, all original paint surface. Very nice appearance, w/ just the right amount of soiling and light overall wear, giving it a nice primitive, country folk art look (C. 7.5), w/ a slight bit of even curl. Min. bid \$60.



12).Northern Pacific Pocket Mirror. 2-1/8" (dia.) scarce, early celluloid advertising pocket mirror for Northern Pacific Co.'s "North Coast Limited" railroad line, featuring nice image of early train and Co. logo. Excellent. Min. bid \$40.



13).Marx Gas Pumps Toy. 6.25 x 9.25 x 2.75" early tin litho service station gas pumps toy by Marx, featuring neat old gas pumps w/ electric gas globe bulbs at top of each (the grease and oil case opens up to hold batteries inside). Clean, bright and basically excellent overall, w/ a little light scratching/wear on base area (C. 8+/). Min. bid \$40.



14).Overalls Mirror. 2-1/8" (dia.) early celluloid pocket mirror advertising Brotherhood brand overalls, featuring great image of topless girl putting on overalls. Clean and excellent. Min. bid \$40.



15).Merit Separators Tip Tray. 5 x 3-3/8" unusual, early tin litho advertising tip tray for Merit Cream Separators, w/ nice image of early separator machine. Clean, bright and attractive appearance, w/ minor background wear (C. 8+/). Min. bid \$40.



16).Bond Bread Door Push. 6 x 3-5/8" unusual, early tin litho door push for "Bond" brand bread. Clean, bright and excellent overall, w/ minor edge marks (a strong C. 8+/). Min. bid \$40.



17).Osborne Harvesting Machine Match Holder. 4-7/8 x 3.5 x 1.25" early tin litho match holder for International Harvester Co.'s "Osborne" line of harvesting machines. Attractive and displays nicely, w/ minor wear from use (C. 8-/). Min. bid \$40.



18).Air Race Motor Oil. 5-5/8 x 4" (dia.) early 1 qt. tin litho solder seam picture can for Deep Rock Oil Co.'s "Air Race" brand motor oil, featuring powerful airplane image. Clean, bright and excellent (C. 8.5). No lid. Min. bid \$40.



19). Monarch Paint Sign. (18.25" (l) x 14.75" (h) x 3/4" (w)) very early, 2-sided wooden painted wall mount sign for Monarch Paints, w/ display pedestal coming from hand area made for holding/displaying gallon sized paint bucket. Excellent and all original, w/ a beautiful, rich patina to its paint surface, giving it a great primitive country folk art look (complete w/ original mounting bracket). Exceptionally nice (a strong C. 8++). Min. bid \$100.



20). Continental Insurance Sign. 12 x 16" outstanding, early, heavy porcelain sign for Continental Fire Insurance Co., featuring beautiful multi-color detailing. Exceptionally nice example is crisp, bright and basically like new, w/ the exception of just a trace bit of very minor edge wear (mentioned for accuracy, barely merits mention). Min. bid \$80.



21). Circus Club Marshmallow Tins. great set of six different tin litho 6 oz. size product tins for Harry Home Co.'s "Circus Club" mallow puffs (Toronto, Canada), ea. featuring a nice circus animal image. They are clean and very nice overall, w/ only minor scattered wear (C. 8/+). Min. bid \$100 (the lot).



22). Superior Motor Oil. 6-5/8 x 4" (dia.) early imperial qt. sized tin litho motor oil can for "Superior" brand (Irving Oil Co.) featuring great image of Co.'s trademark bi-plane (same image both sides). Attractive and displays nicely, w/ some light oxidized gunk at top edge and a little light chipping wear on backside (front C. 8+; back C. 7.5+/8-). As found, might improve w/ cleaning. Canadian. Min. bid \$50.



23). Planters Spanish Peanuts Box. unusual, early cardboard product box for Planters Peanut Co.'s 8 oz. size "Red Skin Spanish Peanuts". This unused 8 x 5.5" never assembled box is crisp and like new (if assembled, would open up to make a 3-1/8 x 3 x 2.5" product box). Crisp and like new. Min. bid \$40.



24). Stollwerck Chocolates Bank. 6.5 x 3 x 2-5/8" early tin litho penny bank from Stollwerck Chocolates Co., has attractive graphics all around w/ glass viewing windows on front and backsides (dispenses small chocolate bars by pulling on drawer loop after penny is inserted). Has bright colors, working mechanism and displays nicely (C. 8+/-), w/ some light wear from use (mostly confined to gold flash finish area of base). Min. bid \$40.



25). D & M Sporting Goods Stick Pin. 2.25 x 3/4" unusual, early metal advertising tie/stick pin promoting Draper & Maynard Sporting Equipment Co. featuring nicely detailed image of Co.'s "Lucky Dog" logo. Excellent. Min. bid \$20.



26).Sinclair Motor Oil. 6 x 8 x 3" early tin litho 1/2 gallon sized motor oil can for Sinclair Co.'s "Opaline" brand motor oil. Clean and attractive overall appearance, w/ a little non-offensive minor soiling and wear (C. 8+/-). Min. bid \$40.



27).White Villa Coffee. 3-7/8 x 5.25" (dia.) early tin litho 1 lb. pry lid coffee can for "White Villa" brand (Cincinnati Wholesale Grocers, Oh.) w/ same attractive image on both sides. Clean, bright and attractive appearance w/ minor denting and background wear (C. 8/-). Min. bid \$30.



28).Tiger Grease Can. 3-3/8 x 4-3/8 x 2.75" very early square corner style tin litho product tin for Tiger brand carriage lubricant (Howard Oil & Grease Co., Cleveland, Oh.) featuring nice image of Co.'s trademark tiger on lid and on four sides (Isley litho). Clean, very attractive appearance (C. 8+/-). w/ minor crazing, some edge chipping and light wear (surface very stable). Min. bid \$40.



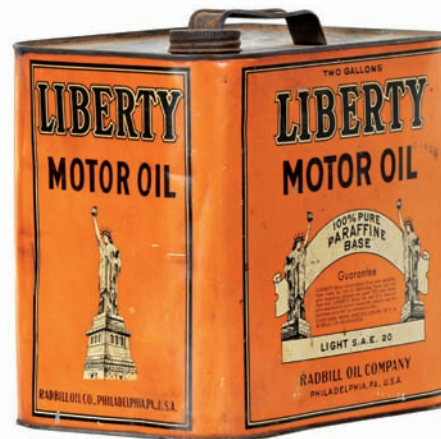
29).Norman Stoves Sign. 5-7/8 x 36" early wooden painted country store sign w/ an attractive, rich, all original paint surface. Excellent, w/ just the right amount of wear, giving it a great primitive, country folk art look (C. 8/+). Min. bid \$60.



30).Davol Nipples Case. 9-3/8 x 10 x 7.75" early slant front display cabinet for Davol brand baby bottle nipples and caps. Has attractive gold textured gesso looking paint finish on its metal body, w/ slanted lift-up glass cover and great embossed advertising marquis featuring great looking images of Co.'s products. Very nice overall appearance, w/ some early scattered wear along outer frame area of lid (marquis near mint). Min. bid \$40.



31).Texaco Sign. 15" (dia.) early, heavy enameled Texaco porcelain advertising sign. Clean, bright and excellent overall, w/ a little non-offensive minor edge wear (C. 8.5/+). Min. bid \$50.



32).Liberty Motor Oil Can. 9 x 9.5 x 6-5/8" unusual, early tin litho 2 gallon motor oil can for "Liberty" brand (Radbill Oil Co., Phil.'a) w/ nice images of Statue of Liberty all around. Attractive and displays nicely on shelf, w/ some scattered denting, scuffing and light general wear (C. 7.5). Min. bid \$40.



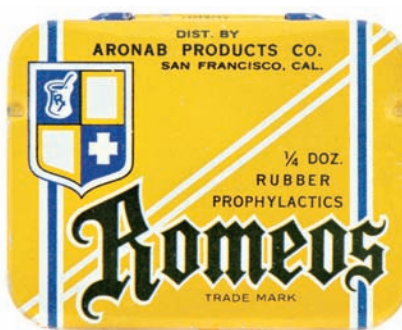
33).Peerless Autos Sign. 17-1/8 x 24-5/8" (13-3/8 x 20.75" visible image) early cardboard advertising sign for "The Peerless Eight" automobile, featuring powerful hand-colored racing image (Walker Litho Co., Boston). Peerless, a Cleveland, Oh. maker was known for building very high-quality precision luxury automobiles and hired racecar driver Barney Oldfield, who went on to set world speed records driving its "Green Dragon" racecar. Piece is attractive and displays very nicely, w/ minor overall toning and light soiling, w/ 1.25" edge tear and some non-offensive light water staining at middle right side edge (C. 7.5/+). Framed. Min. bid \$70.



34).RCA Nipper Bank. 5-7/8 x 2-5/8 x 5.5" early figural metal countertop advertising bank for RCA, featuring great image of Co.'s trademark dog "Nipper". Has glass eyes, a fur type surface finish and original embossed "Radio Corporation of America" metal plug in base. Excellent overall (C. 8+). Min. bid \$40.



35).Rolled Nu-Tips Condom Tin. 1-5/8 x 2.25 x 1/4" early tin litho condom tin for Nutex Co.'s "Rolled Nu-Tips" brand condoms. Near mint. Min. bid \$30.



36).Romeos Condom Tin. 1-5/8 x 2.25 x 1/4" early tin litho condom tin for Aronab Co.'s "Romeos" brand. Full tin is clean and like new. Min. bid \$30.



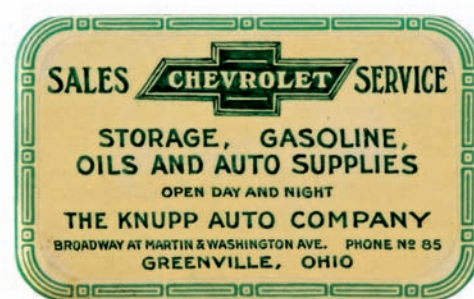
37).Town and Country Condom. 1-5/8 x 2.25 x 1/4" scarce, early tin litho condom tin for Nelson Products Co.'s "Town and Country" brand condoms. Clean and attractive appearance (lid C. 8+), w/ a little wear along side edges of base (base C. 7.5+/8-). Min. bid \$50.



38).Bailey's Rye Mirror. 1.75 x 2.75" early celluloid pocket mirror for Huey & Christ Co.'s (Phil'a) "Bailey's" brand rye whiskey, w/ beautiful, colorful and highly graphic images promoting product's medicinal, longevity and social benefits. Excellent. Min. bid \$40.



39).Michelin Tire Patch Tin. 2-3/8 x 3.5 x 1" unusual, early tin litho tire patch kit featuring great image of Co.'s early Bib character and contents. Clean, bright and very attractive appearance, w/ some typical darkening spots in gold flash areas and a little non-offensive light denting (C. 8+/-). Min. bid \$30.



40).Chevrolet Pocket Mirror. 1.75 x 2.75" unusual, very early celluloid advertising pocket mirror for Knupp Auto Co., a Greenville, Ohio Chevrolet dealership (note 2 digit phone number). Excellent. Min. bid \$40.



41).Auto Tape Measure. 1.75 x 2.5 x 3/4" unusual, very early figural brass tape measure in shape of early automobile (has small handle on back wheel for winding tape into car body). Excellent. Min. bid \$30.



42).US Tires Card Scorer. 2.25 x 3" early celluloid bridge game scorer advertising United States Tires, w/ graphic monkey image on backside (turning counting wheels changes eyes and mouth of monkey on back). Excellent. Min. bid \$20.



43).1905 De Laval Calendar. 15 x 10" (actual) scarce, 1905 paper advertising calendar for De Laval brand cream separators featuring adorable image of young farm girl. Clean, bright and excellent (near mint) complete w/ metal strip at top and its full calendar pad at bottom (includes original cover sheet over pad). Presented in attractive period frame (see web site addendum to view in frame). Min. bid \$40.



44).Marathon Motor Oil. 15.25 x 6.5 x 6.5" scarce and important early hand-soldered figural tin litho 1 gallon can for Marathon brand motor oil (Transcontinental Oil Co., Pittsburgh, Pa.) in shape of early oil well. Has scattered soiling, staining, minor oxidizing and some general hazy wear from use, but overall is a powerful and very impressive looking piece that displays quite nicely (C. 7.5). As found, might improve w/ cleaning. Min. bid \$100.



45).Tire Gauge Display. 14.75 x 6" (dia.) early figural tin litho service station display cabinet for Schrader brand tire gauges, in shape of giant tire gauge (has hinged door that opens up to reveal holding compartments inside). Has strong colors and displays quite nicely (as a C. 8/-), w/ some non-offensive soiling, and some light scattered wear from use (critical grade C. 7.5). As found, should improve w/ cleaning. Min. bid \$60.

Bidding Ends Friday, March 28th, 2014



46) Front



46) Hercules Match Safe. 2.75 x 1-5/8 x 3/8" early celluloid covered match safe advertising Asbestos Mfg. Co.'s (Phila.) Hercules brand steam pipe covering, w/ image of product on backside. Excellent overall, w/ some light wear to nickel finish of flip lid. Min. bid \$40.



47) Polarine Oil Can. 5.75 x 8 x 3.25" early tin litho 1/2 gallon sized motor oil can for Standard Oil of Indiana's "Polarine" brand. Clean, bright and excellent overall appearance (basically a very strong C. 8++) w/ exception of a couple non-offensive slightly soiled drip spots in white background area of front side (as found, might improve w/ cleaning). No cap. Min. bid \$40.



48) RC Cola Sign. 11.75 x 29.75" early embossed tin litho sign for Nehi Co.'s "Royal Crown" brand cola, featuring nice image of early style 1936 dated bottle. Clean, bright and like new appearance (near mint) w/ exception of very minor storage wear. Min. bid \$40.



49) Cigars Match Safe. 2-5/8 x 1.5 x 3/8" early celluloid covered match safe advertising Otto Braeutigam Havana Cigars, w/ nice sepia tone photo image of him on backside. Excellent. Min. bid \$40.

Dr. Daniels Veterinary Medicines



50) Albany Grease Pail. 6.75 x 5.5" (dia.) very early tin litho pail for "Albany" brand grease (Adam Cook's Co., New York) w/ great images of Co.'s trademark image on front and back. Attractive and displays nicely w/ some light pinging/denting marks and light scattered wear on backside (front C. 8+; back C. 8-). Min. bid \$50.



51) Daniels' Veterinary Sign. 14 x 17-7/8" great early cardboard advertisement for Dr. Daniels' veterinary medicines, featuring great image of "Coolidge's famous poker playing dogs. Excellent overall, w/ minor soiling on mat board and a faint, non-detracting background scratch line in top background area of print (C. 8+-). Min. bid \$40.



52) Pickaninny Peanut Butter. 3-3/8 x 3.75" (dia.) early 1 lb. tin litho peanut butter pail for Hoyt Co.'s "Pickaninny" brand peanut butter, featuring same great image of Co.'s trademark young black girl on both sides. Clean, bright and very attractive, w/ only minor wear (C. 8+). Min. bid \$40.

Auto Knives



53) Spice Tins. Lot of two early tin litho spice tins, both w/ attractive color graphic home images (same images on both sides of each). Includes: Oak Hill 4.5 x 1.5" (dia.) 2 oz. nutmeg (Hall Co., Brockton, Mass.) excellent overall (C. 8++) w/ exception of some light scratching marks in left outer background area; and White Villa brand 3.75 x 2.25 x 1.25" 2oz. turmeric (White Villa Grocers, Cincinnati and Dayton, Oh.) clean and attractive w/ slight bit of fade to reds (C. 8+). Min. bid \$40 (the lot).



54) Auto Knives Lot. Lot consists of three different early metal figural auto related pocket knives (each app. 5/8 x 2-3/8"). Very high quality (German made) w/ excellent detailing. Min. bid \$50 (the lot).



55) Trop-Artic Motor Oil. 5.5 x 7.5 x 3-3/8" scarce, very early tin litho 1/2 gallon sized can for Manhattan Oil Co.'s "Trop-Artic" brand motor oil, w/ wonderful multi-color graphics (same image both sides). Impressive looking piece that displays quite nicely overall, although the backside has some general light surface oxidizing and scattered dents-including separation spot at bottom edge (display side C. 8+; backside C. 7+). Min. bid \$60



56).Boardman's Coffee Tin. 4 x 5-1/8" unusual 1 lb. tin litho key wind can for William Boardman & Sons (Hartford, Ct.) "Putnam" brand coffee. Clean and excellent overall (a strong C 8++) w/ only minor background wear. Min. bid \$40.



57).Phillips 66 Plate Topper. 5-3/8 x 6" early embossed tin litho bumper tag/plate topper advertising Phillips 66 service stations, w/ nice logo image at top. Clean and very attractive overall, w/ a few non-offensive light scratch marks around letter "Y" of "Safety". Min. bid \$30.



58).Elephant Kind Peanut Tin. 4 x 4 x 2" unusual, early tin litho product tin for "Elephant Kind" brand salted peanuts (Superior Peanut Co., Cleveland, Oh.) w/ nice image of Co.'s trademark elephant on lid. Attractive and displays nicely, w/ a little non-offensive light scattered wear (C. 8/-). Min. bid \$40.



59).Jaw Teasers Gum Pail. 7-5/8 x 6" (dia.) unusual tin litho pail for "Jaw Teasers" brand 1¢ bubble gum (Gum Products Co., Boston) w/ nice color graphic images of gumballs all around. Has strong colors and displays quite nicely, w/ a little early scattered wear in bottom border area and lid (C. 8+/-). Min. bid \$40.



60).Kings Brewing Co. Sign. 11-5/8 x 17-5/8" early embossed tin litho sign from the Kings Brewing Co., Brooklyn, NY. Clean, bright and very attractive appearance w/ nice original sheen (basically displays as a strong C. 8.5/+) although a very close examination will show a faint, trace hairline scratch line in upper blue background area (barely noticeable-mentioned for accuracy) and a couple non-offensive minor wear spots in outside brown border area. Min. bid \$40.



61).Happy Home Peanut Butter. 3-7/8 x 3.5" (dia.) unusual 1 lb. tin litho peanut butter can for "Happy Home" brand (Schwabacher Co., Seattle, Wash.). Clean, bright and exceptionally nice (C. 8.5/+). Min. bid \$40.



62).Buick Toy Sign. 4.5 x 2" (dia.) unusual, early min. 2-sided toy sized "No Parking" sign promoting Buick cars. Excellent overall (C. 8/+) w/ exception of a little wear on weighted base. Min. bid \$30.



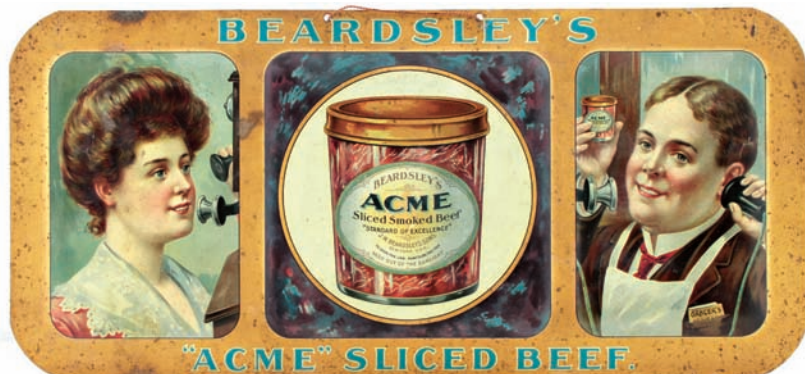
63).Streamline Car Sign. 4.5 x 21-1/8" x 3/8" great looking early pressed steel sign in shape of ca. 1930's/40's car, w/ nicely impressed detailing and original gold paint finish, which I believe was originally part of a Coca-Cola display. Neat and impressive piece w/ a powerful and impressive look (C. 8/+), w/ minor wear from use. Min. bid \$40.



64).Bohemian Mixture Tobacco. 6-1/8 x 5-1/8 x 5-1/8" scarce, early, large variation tin litho tobacco canister for Surbrug Co.'s "Bohemian" plug mixture tobacco. Clean, bright and exceptionally nice appearance (lithography on four side panels rates a very strong C. 8++), w/ exception of litho chip spot on backside edge (lid and top shoulder area has typical general overall surface wear). Min. bid \$60.



65).Chocolate Milk Door Push. 11.5 x 3.5" early tin litho door push featuring great looking image of an early glass chocolate milk bottle. Crisp, never used condition, w/ only minor storage wear. Min. bid \$40.



66) Acme Beef Sign. 8.25 x 16-5/8" early embossed tin litho sign for Beardsley Co.'s "Acme" brand sliced smoked beef, featuring beautiful multi-color graphic images showing an early product jar, and a woman customer and grocer talking on early phones. Graphic sections are clean, bright and very nice overall (a strong C. 8++) w/ some scattered flyspecks and darkened oxidized spots in gold border background area. Min. bid \$60.



67) Shoot The Hat Cap Gun. 4.75 x 4.75 x 5/8" fine, early, fancy figural animated "Shoot the Hat" mechanical cap gun (pulling trigger makes standing man leap forward to place hat on seated man-exploding the cap). Excellent and mechanism works well, w/ nice "Japanned" surface finish (Chinaman still has his original wire beard). Min. bid \$50.



68) Veterinary Signs. (7.25 x 12-3/8" ea.) lot includes two different scarce cardboard veterinary signs from OH Mfg. Co., Lyndon, Vt. Includes: "Standard Worm Balls"; and "Arabian Scratches and Gall Salve" signs. Both are clean, bright and display very nicely, w/ a little faint, very minor background soiling/toning (C. 8+-). Min. bid \$40 (the lot).



69) Squirrel Candy Box. 5.75 x 10.5 x 3-3/8" early 2-ps. cardboard box for Squirrel brand peanut candy bars, w/ great early graphics. Clean and very attractive (C. 8+). Min. bid \$40.



70) Jar Rubbers Boxes. lot of five different cardboard boxes for rubber canning jar rings. Includes: Victor; Tulip; Excelsior; Kamo and Farm & Home brands. Full boxes measure app. 3.25 x 3-1/8 x 1.25" and are quite nice overall, w/ a little faint soiling/ staining on backsides of Kamo and Excelsior. Min. bid \$20 (the lot).



71) Planters Box. 12.5 x 9 x 6.5" (as shown) ca. 1940's 2-ps. countertop display box for Planters Co.'s 5¢ salted peanuts cello packs, featuring attractive die-cut standup image on inside. Clean and very attractive appearance (C. 8++), w/ a little light scattered wear on top of box lid (lid C. 7.5). Min. bid \$40.



72) Poultry Feeds Thermometer. 10" (dia.) x 1-3/8" early dial style thermometer w/ metal frame and curved glass face for TI-o-ga Feed Co.'s "Ni-Carb" poultry feed. Excellent. Min. bid \$40.



73) Folky Shield Sign. 12.25 x 10.5 x 7/8" nice early folk art wooden shield shaped trade sign w/ gilt lettering against black sand painted background. Impressive sign is excellent and all original, w/ just the right amount of minor wear and a rich, nicely aged surface patina. Min. bid \$50.



74). Planters Holiday Gift Pack Display. 3.25 x 8 x 2-7/8" scarce, ca. 1940's/50's holiday gift pack store display set, complete w/ three different empty, sealed "dummy" cans inside. Excellent overall. Min. bid \$40.



75). Veterinarian Sign. 5.25 x 12-5/8 x 1" (4 x 11-1/8" actual sign) very early, heavy porcelain veterinarian sign still attached to its original heavy oak mounting base. Crisp and like new (near mint). Min. bid \$40.



76). Great Puff Tobacco. 3.5 x 2.25 x 1" full, sealed, never opened early "Great Puff" brand cloth 1 oz. tobacco pouch (B. Leidersdorf Co., Milwaukee), featuring beautiful multi-color wrap-around label (Series 1902 tax stamp). Clean, bright and excellent overall, w/ minor wrinkles and light storage wear to label (displays as a strong C. 8.5+/-). Includes package of Co.'s original rolling papers. Min. bid \$40.



77). Mammy Roly Poly. 7 x 6.5" scarce Dixie Queen brand tin litho figural tobacco canister in image of a black mammy smoking a pipe. An attractive example that displays nicely, w/ minor background wear (C. 8+/-). Min. bid \$70.



78). Advertising Animal Figures. Lot consists of two, heavy figural metal advertising animal character figures. Includes: cast iron bear for Parker Vises (3.5 x 2 x 1-1/8") and a heavy painted metal wolf for "Wolf's Abrasive Wheels" (3-5/8 x 1.75 x 1-3/8"). Both are very nice (some light wear on bears back). Min. bid \$40 (the lot).



79). Planters Letter Opener. 9 x 1-3/8" early, metal Planters Peanut Co. advertising letter opener w/ heavy, beautifully detailed inlaid cloisonné enameled images of Mr. Peanut featured on both sides. A substantial, very high quality piece. Excellent. Min. bid \$50.



80). Squirt Soda Sign. 4 x 17.5" unusual, early embossed tin litho sign for Squirt brand soda, featuring great image of early style pop bottle. Never used piece is crisp, bright and like new (1941 copyright in bottom left corner). Min. bid \$40.

Piels Brewing Co.



81). Piels Brewing Sign. 20.5 x 28.5" (17.5 x 25.5" visible image) early framed Oleograph canvas sign (made w/ heavy embossed varnish "brush strokes" on upper surface to give it the appearance of an oil painting). Advertises Piels Bros. Brewing Co., NY w/ a great Western themed image of men in early motoring car getting directions from Indian scouts. Very nice overall appearance, w/ a little light background wear (C. 7.5+/-). Min. bid \$70.

Dr. Daniels Veterinary



82). Dr. Daniels Veterinary Thermometer. 21 x 5 x 1/2" early wooden painted thermometer for a Springfield, Maine dry goods store, filled w/ six lines of advertising in bottom section for Dr. Daniels Veterinary medicines (additional Daniels advertising on backside). Clean and very nice overall condition, w/ a little light wear in top lettering area (C. 8+/-). Min. bid \$40.

Ice Cream Dishes



83).Banana Split Dishes. Lot consists of a set of ten early, pressed pattern glass banana split ice cream dishes. Impressive, heavy, very high quality Heisey type glass (not marked), probably used in a fancy, early, upscale soda fountain (ea. app. 2.5 x 8 x 2.75"). Excellent. Min. bid \$40 (the set).



84).Auto Soap Pail. 5.25 x 6.25" (dia.) early tin litho pail for Thomas Paint Co.'s "Gree-Soft" brand automobile soap, featuring great image of early limo. Clean and displays nicely (as a C. 8/+) w/ some non-offensive light background wear. Min. bid \$40.

Match Holder



85).Billiard Table Match Holder. 2-3/8 x 2-5/8 x 3-7/8" early, very high quality, heavy figural brass match holder on black stone base w/ a felt type material on top (note: has hinged lid that opens to reveal deep compartment inside for storing matches), w/ striking surfaces all around outside of table. Excellent, w/ nice rich surface patina. Min. bid \$40.



86).Oil Gard Can. 5.5 x 4" (dia.) early 1 qt. tin litho crimp seam can for "Oil Gard" brand motor oil ((Sundisco Products Co., Kansas City, Kans.) featuring great image of Co.'s trademark life guard character. Clean, bright and excellent (C. 8.5+) w/ non-offensive light scratch mark on side edge (in green background area). Min. bid \$40.



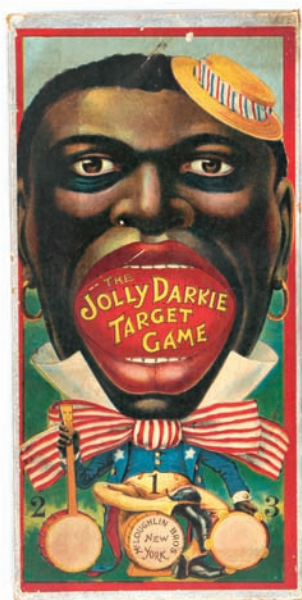
87).Pearlicross Spice Tin. 3.25 x 2-3/8 x 1-3/8" early tin litho spice tin (allspice) for Pearlicross brand (York, Pa.) featuring beautiful multicolor graphic image (same image both sides). Clean, bright and excellent (a strong C. 8++). Min. bid \$40.



88).Fleetwood Motor Oil. 5-5/8 x 4" (dia.) early 1 qt. solder seam motor oil picture can for "Fleetwood" brand motor oil (Traumore Lubricants Co., New York) featuring great image of Co.'s trademark plane. Has strong colors and displays nicely, w/ a little non-offensive hazy speckling and some wear on non-graphic backside (front C. 8++; back C. 7.5+). Min. bid \$40.



89).Cunningham Pianos Mirror. 2.75 x 1.75" early celluloid advertising pocket mirror for Cunningham Pianos, Phil'a, Pa., featuring attractive image of nude in ocean waves. Clean and attractive, w/ very nice overall appearance (has trace, faint hints of very slight foxing along outside border edges-mentioned for accuracy-not offensive or detracting). Min. bid \$40.



90).Jolly Darkie Game. 13 x 6.5 x 1.5" early 2-ps. lithographed cardboard boxed game set for Mc Loughlin Bros. "Jolly Darkie" target game, complete w/ die cut target board inside. Inside target piece is clean, bright and excellent (C. 8.5++); box lid has minor wear and a little non-offensive light toning/darkening (C. 8/-). Min. bid \$50.

Planters Peanut Co.



91).Planters Jar. 14.5 x 9.5" (dia.) scarce, ca. 1918-1922, 2-ps. heavy glass counter top jar made for displaying and selling Planters Pennant brand peanuts. This was the first of many jars issued by Planters over the years and originally came w/ a paper label banner wrapped around the top edge, which is no longer present (note: I'm told there is only one known example that still has the label remaining). Very high quality piece, in excellent condition. Min. bid \$60.

Hood Ornament



92).Cop Hood Ornament. 7-1/8 x 3.75 x 2.25" unusual, early figural metal automotive hood ornament in likeness of overweight policeman, w/ wind driven whirling style rotating arms. Neat and impressive looking piece, w/ a beautiful rich patina to its nice old paint surface giving it a great folk art look. Excellent appearance (displays as a C. 8.5), although examination under black light will show a little bit of light scattered professional restoration (very well done). Min. bid \$50.



93).Imperial Club Cigar Sign. 9-7/8 x 13.75" very early tin litho sign for "Imperial Club" 5¢ cigars featuring nicely detailed embossed image of early open box. Clean, bright and excellent overall (C. 8.5+/+) w/ a little chipping wear from chain at top hanging holes (Sentenne & Green lithographers). Min. bid \$50.



94).Old Hickory Overalls Sign. 9.25 x 12.75" scarce, early beveled tin over cardboard sign featuring a powerful, very impressive industrial image of worker in overalls w/ plane overhead (incised gold lettering). Attractive and displays nicely, w/ some non-offensive light scattered wear (C. 7.5+). Has string for hanging and easel on backside for countertop displaying. Min. bid \$50.



95).Auto Theme Candy Boxes. Lot of two early cardboard candy chocolates boxes, ea. featuring attractive auto themed images on lids. Includes: DeWitt Henry Co.'s 5 lb. box (12.25 x 8 x 2-7/8") (C. 8+/-) w/ a little light wear at corner edges; and Murphy's Auto Chocolates 1 lb. box (6-1/8 x 3-3/8 x 1.75") (C. 8.5). Min. bid \$40 (the lot).



96).Trommer's Beer Tray. 12.25 x 17.25 x 3/4" early tin litho advertising beer tray for Trommer's Evergreen Brewing Co. (Brooklyn, NY), featuring wonderful color graphic tavern motoring scene (Meek Litho). Image area is clean, bright and exceptionally nice (a strong C. 8.5+/-), w/ some general scattered wear marks in the rim area-nothing offensive or that badly detracts from great overall look of piece (rim section rates C. 7.5+/-). Min. bid \$70.



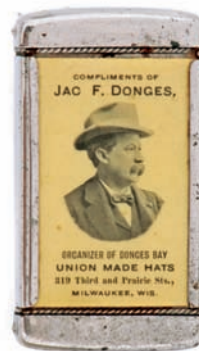
97).Mechanical Gum Ad. 4 x 3-7/8" early cardboard mechanical advertisement for "Listerated" brand antiseptic chewing gum (squeezing card from top and bottom creates an animated up and down chewing motion in child's mouth, while at same time changing her eyes). Excellent overall (C. 8+/-), w/ faint horizontal crease line on backside from light use (not offensive or detracting). Min. bid \$30.



98).Snail Hotel Bell. 2.75 x 4.5" (dia.) unusual, early, metal figural mechanical wind-up hotel service bell on wooden base in shape of snail (pushing down on white button on top of snail's shell delivers a long steady ring). Attractive overall, w/ some oxidizing/ darkening to finish of snail's shell area. Bell works great. Min. bid \$40.



99).Political Plate Topper. 8 x 11 x 1/4" early, ca. 1936 figural embossed political license plate advertisement from Franklin Roosevelt presidential campaign featuring great image of FDR and Uncle Sam. Heavy rubbery composition material, w/ excellent detailing and nice original gold wash finish (C. 8+/-) w/ just the right amount of ageing and light wear from use (dated 1936 on backside). Min. bid \$30.



100).Donges Co.'s Match Safe. 2-7/8 x 1.5 x 3/8" unusual celluloid and metal match safe advertising Donges Co.'s (Milwaukee, Wisc.) "Union Made Hats" on front and "Donges Bay Coffee House" on backside. Clean and nice overall, w/ minor even toning and faint, fairly minor foxing spot at side edge of backside. Min. bid \$40.



101).Baseball Pennant. 10-3/8 x 28.5" (triangle section) large, early felt collegiate baseball pennant for University of North Carolina baseball team. Excellent condition (C. 8.5++) w/ a really great look. Min. bid \$40.



102).Airplane Cigarette Packs. lot of three 2.75 x 2 x 7/8" unopened, full, sealed cigarette packs, ea. w/ attractive airplane images. Includes two different "Southland" packs (Series 121 and 123 tax stamps); and Airline brand (Series 121). Very nice overall condition. Min. bid \$30 (the lot).



103).Brass Auto Clock. 5.25 x 7-1/8 x 2.25" unusual, very high quality figural brass automotive themed clock w/ fine detailing and a rich, attractive all original surface patina. Excellent (clock runs nicely). Min. bid \$50.



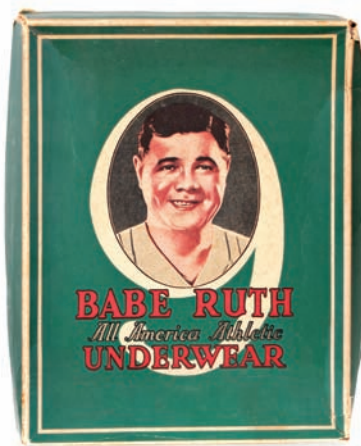
104).Auto Related Tins. Lot consists of three early auto related tins, ea. w/ nice car themed images. Includes: Fiebing's tin litho auto top dressing (3-7/8 x 3.5") (C. 7.5+/8-) w/ a little light wear and some black tar like residue on solder seam edge; Dust-Puff (5.75 x 3.25") tin litho polishing dust product tin (C. 8+); and Martin-Senour paper label auto enamel paint can (3-7/8 x 3-3/8") w/ contents (C. 8/-). Min. bid \$30 (the lot).



105).French Auto Oil Can. 10.75 x 8 x 3" scarce, early hand-soldered 1 gallon sized can for Marshall Oil Co.'s "French Auto Oil" brand motor oil featuring wonderful early auto racing scene. Impressive and attractive piece has a great overall look (display side C. 7.5+/8-); w/ scattered loss/ wear spots on back and sides. Min. bid \$50.



106).Oval Advertising Tray. 16-5/8 x 13-5/8" early tin litho advertising tray for Ike Berney general merchandise store, featuring nice graphic image of men in bar drinking and playing cards. Attractive and displays nicely (C. 8/-), w/ a little scattered chipping and wear in outer rim area. Min. bid \$50.



107).Babe Ruth Underwear Box. 12.75 x 9-7/8 x 2.5" ca. 1920's 2-ps. cardboard product box for "Babe Ruth" brand athletic underwear, featuring great image of famous slugger. Clean and very attractive appearance w/ strong colors (displays as a strong C. 8/+), w/ pinching, creasing and a little light tattering to right side apron edge. Min. bid \$40.

3-way Sign



108).Star Tobacco 3-Way Sign. 4.25 x 18.5" unusual, very early tin litho store sign for Star brand chewing tobacco w/ nice image of early tobacco plug (note: has tin vertical strips on front side which show three different messages when viewed from varying angles; w/ printed text advertising on backside). Excellent overall, w/ minor scattered wear (C. 8+). Min. bid \$70.

Side Views





109).Ford Model A Tire Gauge. 3.25 x 2" (dia.) x 3/4" early, very high quality tire gauge for Ford Model A automobiles w attractive Ford logo. Clean and very attractive appearance, w/ light wear from use on metal case. Lot also includes a BF Goodrich Co. metal tire gauge caliper in its original marked canvas holder. Min. bid \$40 (the lot).



110).Brewery Coaster/Tip Trays. Lot of two early tin litho tip trays w/ raised surface for secondary use as coasters. Includes: Dobler Co.'s 4-3/8" (dia.) "P.O.N." beer (pride of Newark); and A.B. Co. 4.25" (dia.) "Würzburger" beer (Scranton, Pa.). Both are clean and excellent (C. 8.5+/). Min. bid \$40 (the lot).



111).Ronson Motor Oil Can. 5.5 x 4" (dia.) early tin litho 1 qt. crimp seam motor oil picture can for "Ronson" brand (Wynne Oil Co., Phil'a) featuring great image of streamline train, plane and auto. Full, sealed can is clean and attractive in appearance, w/ a little light scattered wear (C. 8+/-). Min. bid \$40.



112).National Highway Sign. 5 x 3" (dia.) early, figural cast iron toy sized sign by Arcade w/ embossed advertising on base for NCR Turf Classic (probably given as a promotional gift or souvenir). Very attractive appearance, w/ nice patina to paint surface (C. 8). Min. bid \$30.



113).Queen Washers Match Holder. 5 x 3.5 x 1.25" scarce, early tin litho match holder advertising Queen Washers (J.H. Knoll Co., Reading, Pa.). Excellent overall, w/ hint of minor waving in upper right corner area. Min. bid \$40.



114).Thorobred Oil Can. 5.5 x 4" (dia.) early 1 qt. solder seam motor oil picture can for "Thorobred" brand (Blue Ribbon Oil Co., Dallas, Texas) w/ same great image on both sides. Clean and very attractive appearance (displays as a strong C. 8++) although close examination will show a little non-detracting very minor hazy soiling and wear. Min. bid \$50.



115).Bee Soap Sign. 9.25 x 19.5" early, very attractive tin litho sign for Bee and Octagon brand soap products featuring nice images of Co.'s early product packages. Never used sign is crisp, bright and like new in appearance, w/ only very minor storage wear (C. 8.5++). Min. bid \$50.



116).Russian Cough Drops Tin. 5.75 x 8-5/8 x 4" very early tin litho product tin for Williams' Co.'s Russian Cough Drops, featuring beautifully detailed art scenes by Somers Bros. lithographers. Clean, bright and very attractive overall appearance (displays as a C. 8+/-), w/ some typical non-offensive light overall surface crazing (note: surface is very stable). Min. bid \$40.



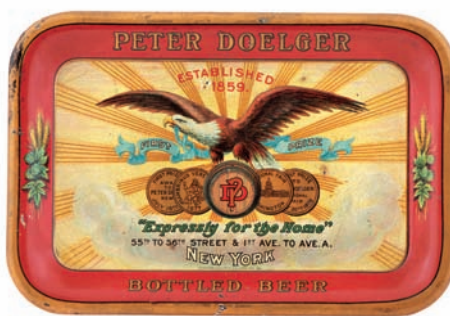
117).Winchester Felt. 11 x 13-1/8" unusual, original, heavy countertop felt from early gun store advertising Winchester Co.'s "New Rival" shotgun shells. Excellent overall, w/ a few typical expected small shallow circular spots scattered about on upper surface (very minor and mentioned for accuracy-nothing at all offensive or detracting). Min. bid \$40.



118).Texaco Pump Plate Signs. lot includes two different ca. 1950's porcelain Texaco pump plate signs for Fire Chief and Sky Chief brand gasoline (ea. app. 18 x 12"). Both are clean, bright and excellent, w/ nice surface sheen. Min. bid \$50 (the lot).



119).The Radium Nutex Condom Tin. 1-5/8 x 2.25 x 1/4" early tin litho condom tin for "The Radium Nutex" brand. Excellent overall, w/ only minor wear (C. 8.5/+). Min. bid \$30.



120).Peter Doelger Tip Tray. 4.25 x 6-1/8" early tin litho advertising tip tray for Peter Doelger Brewing Co. (New York) w/ beautifully detailed lithography. Very attractive overall, w/ minor crazing and a little light scattered darkening/wear at outer edges of rim (C. 8+/-). Min. bid \$40.



121).Pickwick Coffee. 4 x 5-1/8" (dia.) early tin litho 1 lb. coffee can for "Pickwick" brand, featuring colorful, graphic image of Pickwick on front and plantation on backside (Kansas City Wholesale Grocery Co., Kansas City, Missouri). Clean, bright and very attractive (a strong C. 8++). Min. bid \$40.



122).Best Pal Candy Box. 8.5 x 9.5 x 2.5" early, ca. 1930's 2-ps. cardboard candy box for "Best Pal" brand (Euclid Candy Co., Brooklyn) featuring great cover image. Attractive and displays nicely, w/ a little minor soiling and light wear (C. 7.5+/8-). Min. bid \$40.



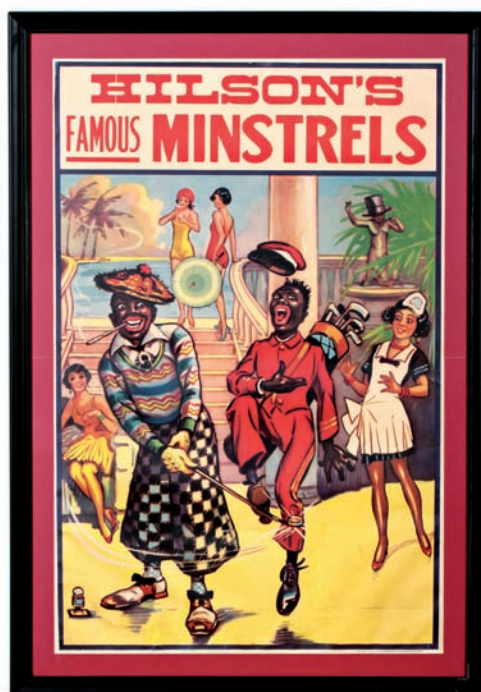
123).Anton Reck Brewing Tip Tray. 4.25" (dia.) early tin litho advertising change tray from Anton Reck Brewing Co. (Alton, Ill.) w/ beautiful lithography. Clean, bright and excellent overall w/ a few minor bumps on outer edge and a couple minor rim chips (a strong C. 8+/-). Min. bid \$40.



124).Driving Rabbit Chocolate Mold. 7.25 x 7.25 x 2" unusual, early, 3-ps. hinged heavy metal chocolate mold featuring wonderful image of rabbit driving early car. Excellent, w/ a nice rich surface patina from many years of tender use (C. 8++). Min. bid \$40.



125).RCA Paperweight. 2.75 x 4.25 x 7/8" scarce, early, heavy glass advertising paperweight for Victor brand phonographs w/ great lithographed image on aluminum of Nipper and Victor brand record player on inside (has mirror on backside). Excellent overall. Min. bid \$40.



127).Minstrel's Poster. 47 x 32.5" (40.25 x 26-3/8" visible) great ca. 1920's paper litho poster for Hilson's Minstrel's Show, featuring outrageous image of black golfer and his caddy, w/ palm trees, beach scene, bathing beauties, etc. in background (Donaldson Litho). Clean, bright and very attractive appearance (displays as a strong C. 8.5/+), although close examination will reveal some very well done light background repairs and restoration. Nicely framed and matted. Min. bid \$70.



128).Nutex Radium Condom Tin. 1-5/8 x 2.25 x 1/4" early tin litho condom tin for Nutex brand. Excellent overall, w/ only minor wear (C. 8.5). Min. bid \$30.



126).Household Nails Box. 11 x 12-5/8 x 9-5/8" early wooden product box for wire nails from HP Nail Co., Cleveland, Oh., featuring beautiful graphic paper label on inside lid (Morgan Litho), w/ compartments inside for separating different size nails and primitive early hammer. Very attractive overall, w/ minor toning and wear to label (label C. 8+/-). Min. bid \$40.



129).Duplex Grease Can. 7.25 x 7 x 7" very early 10 lb. size tin litho small top style can for Duplex brand gear grease for Pierce-Arrow Motor Cars (Enterprise Oil Co., Buffalo, NY), w/ same great motoring image on all four sides. Has some soiling/grease stains, minor dents and light general scattered wear, but overall is still attractive and displays quite nicely (C. 7+). As found, should improve some w/ cleaning. Min. bid \$50.



130). Steamboat Coffee. 3-5/8 x 5" (dia.) early 1 lb. key wind coffee can for Steamboat brand (Hinz & Sons, Cincinnati, Oh.) w/ nice image of Co.'s trademark Mississippi paddleboat on both sides. Clean, bright and attractive appearance (C. 8+). Min. bid \$30.



131). Western Ohio Creamery Mirror. 1.75 x 2.75" scarce, early celluloid advertising pocket mirror for the Western Ohio Creamery Co., Greenville, Ohio, featuring beautiful multi-color graphic image of farm girl feeding cows. Excellent overall, w/ only very minor surface wear (mentioned for accuracy, visible only under magnification—nothing that's at all serious or detracting). Min. bid \$50.



132). Oats Boxes. Lot includes two early cardboard oats boxes, ea. app. 9.5 x 5-3/8" (dia.). Includes: "Bar-B-Q" (Jett & Wood Co., Kansas and Colorado) and "Rose Queen" (Dodd Co., Tyler, Texas) brands. Both are clean and excellent (a strong C. 8++). Min. bid \$50 (the lot).



133). Athlo Medicines Display. 18-7/8 x 28.5" early cardboard tri-fold stand-up display advertising "Ath-lo" brand patent medicine products, featuring beautiful multi-color lithography (American Litho Co., NY). Clean, bright and like new in appearance, w/ exception of a couple round penny sized stain spots at left, bottom edge of background area. Min. bid \$50.



134). Auto Compact. 3" (dia.) x 1/4" impressive, very high quality early metal woman's cosmetic compact case w/ beautiful multi-color motoring scene on outside lid (has mirror on backside). Excellent. Min. bid \$40.



14K Gold Award Fob

135). Gargoyle Award. 1-3/8" (dia.), unusual, early Gargoyle Oil Co. 14K gold fob presented by Vacuum Oil Co.'s Gargoyle Mobiloil division as an award in 1924 contest. Heavy, fancy, high quality jewelry award has beautiful inlaid cloisonné enameled Gargoyle logo in center (substantial piece weighs slightly over .75 oz. of 14K gold). Min. bid \$500 (app. melt/scrap value).



136). Mexican Plumbago Axle Grease. 2.25 x 4.25" (dia.) early tin litho axle grease can from US Graphite Co. (Saginaw, Mich.), featuring nice image of Co.'s Mexican man trademark. Attractive and displays nicely w/ some light edge wear and a few non-offensive small bumps and dents (C. 7.5+/8-). Min. bid \$40.



137). Beck's Beer Tip Tray. 4.25" (dia.) early tin litho advertising change tray from the Magnus Beck Brewing Co. (Buffalo, NY), w/ beautifully detailed multi-color graphics. Clean and excellent (a strong C. 8++). Min. bid \$40.



138). Squirrel Peanut Butter. 3.5 x 3-7/8" (dia.) 1 lb. "Squirrel" brand peanut butter pail w/ nice image of trademark squirrel on both sides. Tin is clean and excellent in appearance w/ minor background wear (C. 8++); w/ some wear/loss areas on gold flash finish of lid. Min. bid \$40.



139). Ryan's Brewing Co. Tip Tray. 4.25" (dia.) early tin litho advertising change tray from Ryan Brewing Co. (Syracuse, NY), featuring beautifully detailed multi-color lithography. Clean and excellent (a strong C. 8++), w/ minor crazing. Min. bid \$40.



140).Fraternal Items Match Safe. 2.75 x 1.5 x 3/8" early celluloid covered match safe for Lynch & Kelly Co. (Utica, NY) makers of "Society Regalia and paraphernalia for all organizations" (lists banners, badges, flags, swords, belts, etc. on narrow side edges). Clean and excellent. Min. bid \$40.



141).Transpolene Grease Can. 4-3/8 x 3.5" (dia.) unusual, early tin litho 1 lb. pry lid grease can for Transpolene brand grease (United Oil Co., Baltimore, Md.) featuring nice image of early airplane. Has a little soiling, darkening and light scattered wear, but overall a decent piece that displays pretty well (C. 7/+). As found, should improve w/ cleaning. Min. bid \$30.



142).Huntley Mfg. Match Safe. 2.75 x 1.5 x 3/8" early celluloid covered match safe for Huntley Mfg. Co.'s "Monitor" brand pea and bean splitting and grader machines. Excellent. Min. bid \$30.



143).Wings Grease Can. 4-5/8 x 3-3/8" (dia.) early 1 lb. size tin litho pry lid grease tin for Security Oil Co.'s (Wichita, Kansas) "Wings" brand automotive grease. Has strong colors and displays nicely, w/ a little light scattered soiling and wear (C. 8/-). Min. bid \$30.



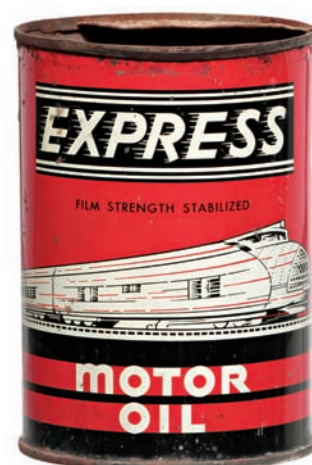
144).Hi-Value Motor Oil. 5-5/8 x 4" (dia.) early 1 qt. tin litho crimp seam picture can for "Hi-Value" brand motor oil w/ attractive design images (same images both sides). Clean and attractive appearance, w/ some non-offensive light background scuffing (C. 8+/-). No lid. Min. bid \$40.



145).Bengal Furnaces Match Holder. 4-7/8 x 3.5 x 1.25" scarce, early tin litho match holder for Bengal brand furnaces. Clean, bright and very attractive (a strong C. 8+/-) w/ a couple light chips in white background area. Min. bid \$40.



146).Baby Rice Pop Corn. 4-5/8 x 3-3/8" (dia.) unusual, early tin litho 1 lb. popcorn tin for Baby Rice brand, featuring beautiful multi-color graphics (different images both sides). Full, sealed can is clean, bright and very attractive (C. 8.5/+/-) w/ exception of a few non-offensive rub/wear spots in white background area. Min. bid \$40.



147).Express Motor Oil. 5.75 x 4" (dia.) early 1 qt. tin litho solder seam picture can for "Express" brand motor oil w/ nice image of speeding streamlined train (early plane in background sky). Has strong color and displays on shelf very nicely (as a strong C. 8+/-) although close-up examination will show some light haziness and oxidized speckling (critical grade C. 7.5/+/-) w/ 3/4 of lid cut off. Min. bid \$40.

Match Holder



148).1942 Coke Tray. 13.25 x 10.5 x 1" original 1942 tin litho serving tray advertising Coca-Cola featuring great automotive image of girls drinking cokes. Clean, bright and exceptionally nice (C. 8.5+/-). Min. bid \$40.



149).Iron Match Holder. 5.5 x 6.75 x 5.5" large, very early, heavy figural cast iron match holder w/ embossed advertising for Detroit Stove Works Co.'s "Crown Jewel" brand stoves. Unusual piece w/ great detailing and a rich, nice, heavily worn surface giving it a great primitive folk art look. Min. bid \$50.



150).White's Gum Box. 8.75 x 7 x 1" (split center lid opens to 14" wide) very early cardboard store display box for White's Yucatan Chewing Gum (originally held twenty 5 ps. bundle packs) w/ attractive images of children on front panels. Has hint of minor fade and a little light scuffing and wear from use, but overall attractive and displays well (C. 7.5). Min. bid \$30.



151).White House Coffee. 3-5/8 x 5-1/8" (dia.) full, sealed (never opened) early tin litho 1 lb. coffee can for Dwinell-Wright Co.'s "White House" brand. Clean, bright and like new. Min. bid \$30.



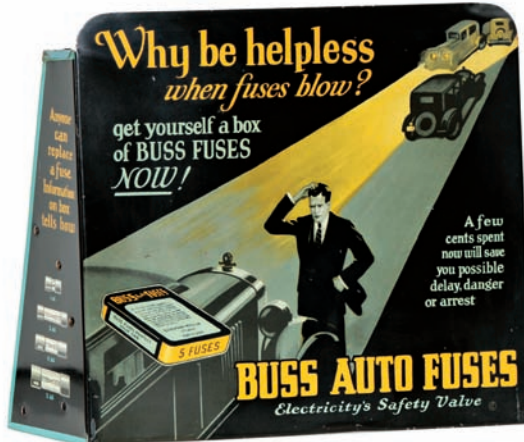
152).Tartan Spice Tin. 2-1/8 x 2-3/8 x 1-3/8" scarce, early tin litho 1 oz. size spice tin for Tartan brand mace (Alfred Lowry Co., Philadelphia), w/ same attractive Scottish themed image on both sides. Clean and excellent overall w/ minor wear on backside (front C. 8.5+; back C. 8/+). Min. bid \$30.



153).Sun Tavern Coffee. 3-5/8 x 5-1/8" early 1 lb. tin litho key wind coffee can for "Sun Tavern" brand (Edmonds Coffee Co., Boston, Ma.) w/ nice image of early tavern. Clean and very attractive appearance, w/ a little non-offensive light wear in left cream colored background area (C. 8+/-). Min. bid \$30.



154).Auto Service Mirror. 2-1/8" (dia.) outstanding, scarce celluloid pocket mirror featuring beautiful multi-color graphic image of nude and cherubs. Clean, bright and excellent appearance, w/ darkening to mirror glass (note: close examination under magnification will reveal minor bumps and faint wear-mentioned for accuracy, nothing that's at all detracting). Min. bid \$40.



155).Auto Fuses Display. 7.25 x 8-5/8 x 3-1/8" early tin litho countertop display for Buss brand auto fuses, w/ great looking graphic motoring scene (has dividers on back for holding fuse boxes). Clean and excellent (C. 8.5+). Min. bid \$50.



156).KC Baking Powder Mirror. 2-1/8" (dia.) scarce, early celluloid advertising pocket mirror for KC brand baking powder featuring beautiful graphic image of product can. Clean, bright and excellent. Min. bid \$40.

Budweiser Beer



157).Budweiser Beer Sign. 39 x 23.25" (28 x 13.25" image) large, early paper litho sign for Anheuser-Busch Co.'s Budweiser Beer featuring attractive image of Co.'s "Budweiser Girl" holding oversized bottle (Copyright 1907, Kaufman & Strauss Litho). Image area is clean, bright and exceptionally nice (a strong C. 8.5+), w/ some non-offensive light water staining in bottom of dark green border area. Complete w/ its original embossed marked frame (note attractive embossed gesso wheat designs on frame). Min. bid \$80.



158).Blackstone Cigar Sign. 12 x 35.75" early, heavy, embossed porcelain sign for Waitt & Bond Co.'s "Blackstone" brand cigars. Impressive piece is clean, bright and displays well w/ nice sheen (displays as a strong C. 8/+), w/ a little very minor edge wear; and just a trace bit of faint, very minor haziness on surface-listed for accuracy (barely merits mention). Min. bid \$40.

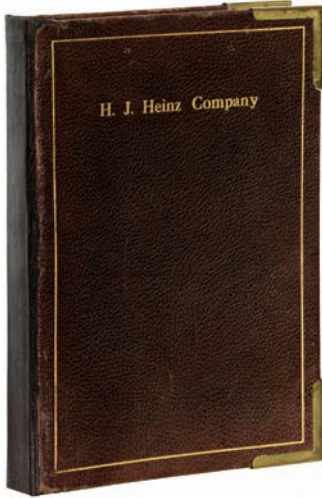


159).Moxie Tip Tray. 6-1/8" (dia.) early tin litho tip tray advertising Moxie w/ pinkish floral background. Attractive example that displays nicely, w/ a faint, very trace hint of fade (C. 8). Min. bid \$40.

Motorcycle Plate Topper



160).Motorcycle License Plate Topper. 4 x 5-7/8" aluminum motorcycle license plate topper from Stone Harbor, NJ featuring nude silhouette. Quite nice overall, w/ a little non-offensive light oxidizing in midsection area (C. 8-). Min. bid \$30.



161).

161).Heinz Catalog. 11.5 x 8.5 x 1.5" important ca. 1910 brass trimmed leather bound salesman's presentation catalog (w/ several fold out sections that open out to feature large, beautiful multi-color graphic images of product jars, crocks, cans, bottles, etc.). Very high quality piece is excellent, w/ only minor wear from use (C. 8/+). Min. bid \$50.



162).Fairbanks Soap Trade Cards. complete set of eight, very early advertising trade cards from the Fairbanks Soap Co.'s series featuring images of young black twins (note: these pre-date and were probably the inspiration for the Co.'s "Gold Dust" twins soap products). Excellent. Min. bid \$30 (the set).



163).Soda Thermometers. Lot includes two early metal soda advertising thermometers for "Double Cola" 17 x 5" excellent (C. 8.5+); and "B1 Lemon Lime" 16-3/8 x 4-5/8" clean and very attractive (C. 8/+) w/ only minor wear. Min. bid \$40 (the lot).

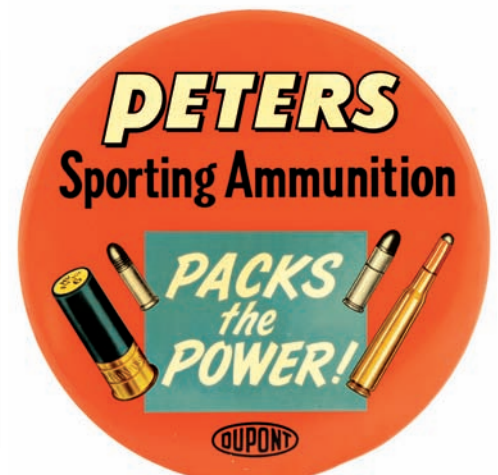


164).Auto Die-Cut. 13-5/8 x 12.75" early cardboard die-cut featuring wonderful image of women in early auto. Clean, bright and very attractive appearance (displays as a strong C. 8++), w/ beautifully detailed fine embossed lithography (note: has minor separation break line at left sign post and small, non-offensive area of wear at bottom right background edge). Includes complete 1912 calendar pad (not attached). Min. bid \$50.

Dice Game Ashtray



165).Black Cat Gambling Ashtray. early 6" (dia.) heavy enameled porcelain over metal advertising ashtray for "Black Cat" brand cigarettes, w/ glass covered metal revolving dice gambling mechanism at top. Excellent (probably Canadian or British). Min. bid \$40.



166).Peters Ammunition Sign. 8.75" (dia.) large, tin over cardboard advertising button style sign for DuPont Co.'s "Peters" brand sporting ammunition. Clean and excellent (C. 8.5+), w/ string on backside for hanging (note: easel on back missing). Min. bid \$40.



167).Golden West Oil Can. 5-5/8 x 4" (dia.) early tin litho 1 qt. crimp seam motor oil picture can from Golden West Oil Co. (San Antonio, Tx.). Clean, bright and very attractive appearance (C. 8.5+). Min. bid \$40.



168).White Rock Soda Display. 9-1/8 x 8.25 x 11-1/8" early tin litho display stand for White Rock brand ginger ale featuring beautiful color lithography (features early labeled soda bottle on each end). Clean, bright and exceptionally nice (C. 8.5+). Min. bid \$60.



169).Sci-Fi Space Theme Sand Pail. (5-5/8 x 5-7/8" (dia.) size measures pail only-not including handle) unusual ca. 1950's/60's tin litho sand pail w/ great images of flying saucers coming down from sky onto busy sea shore beach scene (same image both sides). Clean, bright and very attractive, w/ just the right amount of patina. Min. bid \$30.



170).Life Saver Bumper Tag. 6.5 x 5" early embossed tin litho advertising bumper tag/license plate topper for Life Savers brand candy, w/ faceted reflective "jewel" in center. Excellent overall (C. 8/+). Min. bid \$40.



171).A No.1 Candy Sign. 8-3/8 x 8.5" early cardboard hanger sign on heavy cardstock for A No.1 Co.'s "Chocolate Brownies" penny candies, w/ nice images of Palmer Cox Brownie characters. Clean, bright and excellent overall w/ very minor storage wear (C. 8.5). Min. bid \$40.

Match Dispenser



172).Mechanical Match Dispenser. 5 x 3 x 4" early, heavy figural cast iron match dispenser w/ embossed advertising for "First National Bank, Aberdeen" (note: lever on side delivers match sticks one by one). Attractive and displays nicely, w/ a little non-offensive light oxidizing scattered about (C. 7.5/+). As found, should improve w/ minor cleaning. Min. bid \$40.



173).Kodak Display Case. 14.25 x 8-3/8 x 5" unusual, early glass countertop store display case used for selling and displaying boxes of Kodak's "Verichrome" brand camera film. Excellent overall, w/ a little very minor wear to colored reverse lettering design (note: great for displaying smalls). Min. bid \$50.



174).Oakland Cal. Thermometers, two early wooden advertising thermometers from Oakland, Calif., ea. w/ liquid filled barometers attached. Includes: Carl Dierman, Lumber Trucking Contractor 12.5 x 3.5"; and Union Machine Works Co., makers of gas engines and pumps 8.75 x 3-1/8 x 1-1/8" w/ tin litho back plate. Both are attractive, w/ nice surface patina (C. 8/+). Min. bid \$40 (the lot).



175). Porcelain Coke Thermometer. 18 x 5.5" ca. 1930's/40's early porcelain Coca-Cola advertising thermometer featuring great silhouette image at bottom. Has strong colors, nice surface sheen and displays very nicely overall, although there are several early chips scattered about and early added screw to keep glass tube in place (thermometer tube not working). Min. bid \$40.



176).Paperweights Lot. Lot of three early glass advertising paperweights w/ white milk glass bases. Includes: Groton Bridge Mfg. Co. (2.5 x 4 x 1"); Hendrick Sheet Metal Screens (3" dia. x 3/4"); and Hickman Plumbing & Heating (2.5 x 4 x 1"). Excellent. Min. bid \$40 (the lot).



177).Indian Motorcycle Cigar Clipper. 1 x 2.5" early mechanical pocket cigar clipper w/ advertising on both sides for Indian Motorcycles featuring great embossed image of Co.'s early trademark character. Excellent overall, w/ nice copper flash surface finish (works great). Min. bid \$30.

Automotive Themed Purses



178).Auto Theme Coin Purses. (3 x 2.75"; purses app. 1.25 x 3 x 2.75" dia.). Lot of three unusual, early, high quality leather and metal coin purses (two are shaped like driver caps), each w/ beautifully embossed early motoring scene images on metal closure sections. Very nice overall. Min. bid \$40 (the lot).



179).Golden Girl Soda Sign. 12 x 28" embossed tin litho sign for Sun Drop Co.'s "Golden Girl" brand cola. Clean, bright and excellent overall (appears never used) w/ non-offensive minor storage wear and minor litho loss wear at outer edges of outer raised border. Min. bid \$40.



180).Cherry Blush Soda Sign. 6.25 x 9-1/8" early bevel edged tin over cardboard sign for "Cherry Blush" brand soda (American Art Works). Clean, bright and excellent overall (C. 8++), w/ only minor wear. Min. bid \$50.



181).Mr. Peanut Mask & Top Hat. early Mr. Peanut cardboard mask and top hat costume (mask 7.5 x 8.5"; hat brim 14.5 x 12.75"). Unfolded, never used example is crisp and like new (near mint). Min. bid \$30.



182).Motorcycle Trophy. 11.5 x 6.5 x 4.25" AMA (American Motorcycle Association) 1941 trophy. Impressive, high quality piece by Dodge Trophies Co., Chicago. Plastic and metal composition, w/ nicely detailed figural metal motorcycle and rider at top. Excellent. Min. bid \$40.

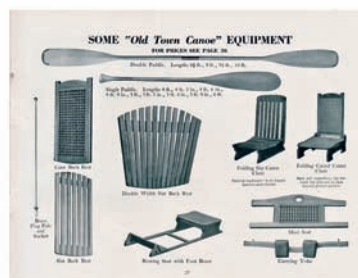


183).Hoffmann's Coffee Grinder. 13.25 x 8.25 x 4.5" early country store coffee grinder from Hoffmann Coffee Co. (Milwaukee, Wis.) advertising Co.'s "Old Time" brand coffee. Nice working example has colorful and attractive tin lithographed advertising on front (tin advertising C. 8+/-) w/ light wear from use (note: wooden case has been refinished at some point, otherwise piece is pretty much excellent and appears complete). Made for wall mounting or countertop use. Min. bid \$70.

Gas Pump Toy



184).Iron Gas Pump Toy. 6 x 2-5/8" (dia.) early figural cast iron gas pump toy by Arcade, w/ working crank dial and original Arcade decal at base. Has nice original paint surface (a strong C. 8+) and braided string "hose" (has fraying at end of string "hose"). Min. bid \$40.



185) Old Town Canoes Catalog. 6 x 7-7/8" beautifully illustrated 28 pg. 1920 product catalog for Old Town Canoes featuring several beautiful color illustrations, detailed product info, etc. Clean and excellent w/ light paper remnants on plain back cover (mentioned for accuracy-nothing serious or offensive). Min. bid \$30.



186) Dryden Hoof Pads Proof Sign. 8-1/8 x 11-1/8" early paper litho printers proof sign for Dryden and Buckeye brand hoof pads (Pulver Litho Co., Rochester, NY). Clean and excellent (C. 8.5/+). Min. bid \$40.

Heinz Labels



187) Heinz Labels. Lot includes three different scarce very early Heinz Co. product packaging labels. Includes a 4-1/8 x 11.25" ca. 1905 can label for Co.'s Mince Meat; and two different ca. 1890's jar labels for Celery Sauce (4.25 x 3-1/8" and 3-1/8 x 2-5/8"). Never used labels are clean and like new. Min. bid \$30 (the lot).



188) Graphic Cigar Boxes. Lot of two early wooden cigar boxes ea. w/ beautiful multi-color graphic labels. Includes: "American Editors" (8.5 x 6-7/8 x 5.25") featuring New York Herald, Tribune and Sun newspapers editor's pictured under respective mastheads; and "Hattie Tom" (7.75 x 8-3/8 x 5-1/8") w/ attractive image of Indian princess. Labels are clean, bright and excellent (typical minor wear to boxes outside). Min. bid \$40 (the lot).



189) Heinz Booklets. Lot of four early catalog booklets, brochures and Co. informational promotional booklets from H.J. Heinz Co. Includes booklet on condiments; a grocers catalog notebook; a "Spice of Life" promotional booklet w/ great color illustrations; and a heavily illustrated book filled w/ Heinz products store window displays, booth and expo exhibits. Excellent overall w/ some paper overlay/wear on two of backside covers. Min. bid \$40 (the lot).



190) Stag Tobacco Canister. 6 x 5-1/8 x 5-1/8" early tin litho small-top style tobacco canister featuring different beautifully detailed images all around. Clean, bright and very attractive (a strong C. 8/+) w/ general wear on lid and shoulder area. Min. bid \$40.



191) Smile Soda Sign. 5-5/8 x 7-1/8" scarce, early tin litho sign for Smile brand soda featuring great images of Co.'s trademark orange characters. Bright, attractive and displays nicely, w/ just a trace hint of very minor denting and a little bit of early litho loss in right background area (C. 8/-). Min. bid \$40.



192) Columbus Brewing Tip Tray. 4.25" (dia.) early tin litho advertising change tray from Columbus Brewing Co. (Columbus, Ohio) featuring beautifully detailed multi-color lithography. Excellent overall, w/ minor edge wear and slight crazing (a strong C. 8++). Min. bid \$40.



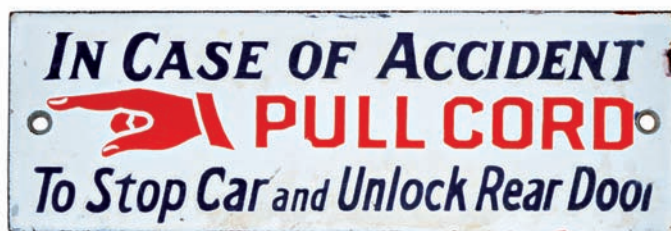
193).Heinz Baked Beans Sign. 6.75 x 16-5/8" very early lithographed cardboard sign for Heinz Co.'s Keystone brand Baked Beans. Clean, bright and excellent overall (a strong C. 8+). Min. bid \$40.



194).Paperweights Lot. Lot includes three early glass advertising paperweights w/ white milk glass bases (ea. app. 4 x 2.5 x 1"). Includes: Rhodes & Sons Co. (maker of papier-mâché shoe buttons); Penn Mutual Insurance Co. (Phil'a, Pa.); and Providence Pump Brake Ratchets. All are excellent. Min. bid \$40 (the lot).



195).Oh Boy Gum Sign. 15.5 x 7-3/8" early tin litho sign for Goudy Gum Co.'s "Oh Boy" brand chewing gum w/ beautiful color graphics (H.D. Beach Co. lithographers). Clean, bright and very attractive overall appearance (basically a C. 8.5+) w/ exception of a few non-offensive light scratch marks at top hanging holes and small indent mark on lower right side edge. Min. bid \$40.



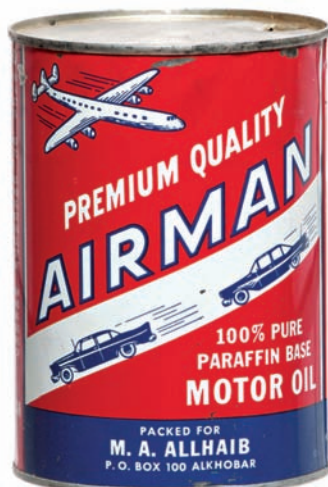
196).Porcelain Accident Sign. 3 x 9" early, small, heavy porcelain sign from railroad or streetcar w/ nicely raised lettering and design. Has a little non-offensive light hazy soiling and light edge wear, but overall attractive and displays nicely. Min. bid \$40.



197).Mail Pouch Tobacco Sign. 2.75 x 12" early, small, heavy porcelain sign for Mail Pouch brand tobacco. Crisp, bright and like new, w/ nice original sheen (pretty much near mint) w/ exception of a couple tiny bb sized pings. Min. bid \$40.



198).Snag Proof Boots Calendar. 12.25 x 8" early cardboard calendar for Lambertville Rubber Co.'s "Snag Proof" rubber boots featuring nice image of Lambertville girl hunting w/ Brownie characters. Clean, bright and very attractive (basically a C. 8.5+) w/ exception of a few staple mark stains (on pad and a couple non-detracting faint wear marks in background area that blend into picture). Complete w/ full 1906 calendar pad. Min. bid \$40.



199).Airman Oil Can. 5-5/8 x 4" (dia.) unusual, early tin litho 1 qt. crimp seam motor oil picture can from M.A. Allhair Co., w/ great images of ca. 1950's cars and planes (same image both sides). Has strong colors and displays nicely, w/ a couple dent spots and a little light chipping wear at top (a strong C. 8+). Min. bid \$40.



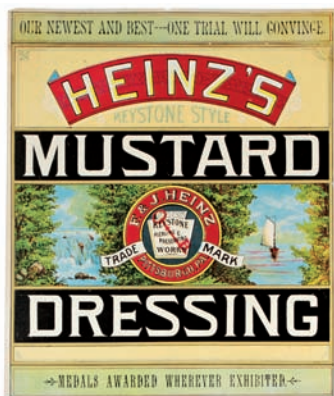
200).Bullock Ward Match Holder. 4-7/8 x 3.5 x 1.25" early tin litho match holder advertising the Bullock Ward Co., Chicago, w/ nice image of Co.'s headquarters building. Clean and excellent overall (C. 8+). Min. bid \$40.



201).Autoplane Motor Oil. 5.5 x 4" (dia.) early 1 qt. tin litho solder seam picture can for "Autoplane" brand motor oil (Penn. Central Oil Co., Kansas City, Kans.) w/ great plane/car logo image on both sides. Full, unopened can is clean and excellent (some oxidizing on non-graphic lid). Min. bid \$40.



202).De Laval Match Holder. 6-3/8 x 4" early embossed tin litho die-cut advertising match holder in shape of Co.'s cream separator (1.2 million in use variation). Clean, bright and very attractive (a strong C. 8.5+) w/ a little light surface wear and speckling on silver metallic figural sections that hold matches. Min. bid \$40.



203).Heinz Mustard Crate Label. 11.5 x 9.5" large, very early paper litho crate label w/ shiny finish for Heinz Co.'s Keystone brand mustard dressing featuring beautiful multi-color graphics. Never used label is clean, bright and excellent overall, w/ a little bit of light wear at outer margin border edges (C. 8++). Min. bid \$40.

Old Sleepy Eye Paperweight



204).Sleepy Eye Paperweight. 3 x 3 x 2" early, heavy bronze finished figural metal paperweight from "Old Sleepy Eye" Milling Co. Very high quality piece w/ nice detailing and beautiful old surface patina. Min. bid \$40.



205).Chippewa's Pride Beer Tray. 13.5 (dia.) x 1.5" early tin litho beer tray for "Chippewa's Pride" brand (Jacob Leinenkugel Brewing Co., Chippewa Falls, Wisc.) featuring great image of Co.'s trademark Indian squaw (American Art Works). Clean, bright and excellent (a strong C. 8++) w/ minor wear on upper rim edge. Min. bid \$40.

Large Porcelain Sign



207).Selz Shoes Sign. 24 x 36" outstanding, large, early, heavy porcelain sign for Selz brand shoes featuring great image of Co.'s feet characters. A powerful and very impressive looking piece that is clean and excellent overall w/ nice original surface sheen (C. 8.5+), w/ a little non-offensive chipping at very outer edges (note: still has original Ingram-Richardson label on backside). Min. bid \$100.



206).Ace-Hy Soda Tray. 13 x 10-3/8" early tin litho serving tray for Faygo Co.'s "Ace-Hy" brand soda pop featuring nice image of early orange soda bottle. Clean, bright and very attractive appearance (a very strong C. 8++), w/ a little chipping to outside edge of rim. Min. bid \$40.



208).Brown Bear Tobacco. 5-1/8 x 4-7/8" (dia.) early, small top style paper label tobacco can for Liggett Drug Stores Brown Bear blend w/ same attractive image both sides. Clean and attractive w/ only minor wear (C. 8+); Series 1926 tax stamp on lid. Min. bid \$30.



209).De Laval Sign. 41 x 29-5/8" (30-5/8 x 19-7/8" visible) large tin litho sign for De Laval brand cream separators featuring nice image of girl hugging cow w/ various cow breeds and separator models around outside, complete in its original marked gold leaf frame. Has decent color and a very nice overall look (displays as a C. 8+/-), although up close examination will show a little non-offensive minor denting in upper left and some light scattered skimming and light scattered wear w/ slight bit of gold frame over-paint at very outer edge (critical grade C. 7.5+/8-). Displays very well (much nicer than you usually find them). Min. bid \$150.

Heinz Bookmarks



210).Heinz Pickle Bookmarks. Lot of ten early cardboard die-cut bookmarks advertising various Heinz Co. products (sizes range from 7/8 x 3-5/8" to 5-1/8 x 1.75"). They are clean, bright and excellent overall (avg. 8.5+). Min. bid \$30 (the lot).



211).Revere Art Pottery Catalog. 9 x 6.25" important, early, nicely illustrated folding brochure style advertising catalog for Paul Revere Pottery Co. (opens up to 9 x 25") featuring both color and black & white illustrations of Co.'s product line (includes pricing info). Excellent overall (C. 8+/-), w/ light wear from use, including 1.25" separation tear at inside bottom center fold line. Min. bid \$30.



212).Hensler's Beer Sign. 13 x 8-7/8" early tin over cardboard sign for Joseph Hensler's Brewing Co. (Newark, NJ), w/ gold recessed lettering at bottom. Never used sign is crisp, bright and excellent (a strong C. 8.5+/-) w/ only the most minor wear. Has both easel and string on back side. Min. bid \$50.



213).Bartels Porcelain Beer Sign. 15" (dia.) scarce, very early curved porcelain sign for Bartel Brewing Co.'s "Crown Beer" (Syracuse, NY). Outstanding early pre-prohibition era sign appears never used and is clean, bright and beautiful in condition (crispy and like new) w/ beautiful, rich, original surface sheen (near mint w/ minor fleabite edge wear at 7 o'clock). Min. bid \$70.



214).Giesecke Boots Match Holder. 5.5 x 3.75 x 1.25" early tin litho match holder for Giesecke Swamp King Boots featuring nice image of Co.'s trademark crane and key. Clean, bright and excellent overall (a strong C. 8+/-), w/ minor crazing. Min. bid \$50.



215).King Cole Coffee. 5-7/8 x 4.25" (dia.) early tin litho 1 lb. coffee can (Barbour Co., Saint John, N.B., Canada) featuring beautiful multi-color lithography (same image both sides). Clean, bright and exceptionally nice (a strong C. 8.5+/-) w/ exception of oxidized darkening on gold flash finish offid. Min. bid \$30.



216).Milwaukee Harvesters Match Holder. 5.5 x 3.75 x 1.25" early tin litho advertising match holder for Milwaukee Harvesting Machines. Clean, bright and very attractive appearance (a strong C. 8+/-) w/ minor crazing and non-offensive early litho wear marks at left corner edge of match basket. Min. bid \$40.

Match Holder



217).Garnet Stoves Match Holder. 5.5 x 4 x 1-5/8" early, fancy, heavy figural cast iron advertising match holder for Garnet Stoves & Ranges (Corning, NY). Excellent. Min. bid \$40.



218).Zerolube Oil Can. 5.5 x 4" (dia.) early 1 qt. solder seam picture can for "Zerolube" brand motor oil (Penn-Glenn Oil Works, Leechburg, Pa. and Cleveland, Oh.) featuring nice polar bear image (same both sides). Attractive and displays nicely (C. 8+/-) w/ a slight hint of non-offensive background yellowing/soiling on surface. Min. bid \$40.



219).Ox-Heart Cocoa Sign. 7 x 20" 7 x 20" early, heavy porcelain sign for "Ox-Heart" brand cocoa, w/ attractive image of colorful logo. Clean, bright and very attractive, w/ nice surface sheen (C. 8.5/+) w/ exception of small chip at bottom right edge and a little light chipping at bottom edge. Min. bid \$60.



220).Royal Crown Cola Napkin Holder. 5.25 x 4.25 x 6.75" scarce, early metal countertop napkin holder advertising Royal Crown Cola. Has strong colors and displays quite nicely, w/ a little light surface oxidizing and minor wear from use (nothing serious or offensive). As found, might improve w/ cleaning (C. 7.5+/8-). Min. bid \$50.

Canvas Driving Gloves



221).Buick Driving Gloves. 24 x 8.25" great pair of large early driving gloves, w/ advertising on each for Buick motor cars. Heavy, canvas type cloth material, in nice overall condition (C. 8). Min. bid \$30.



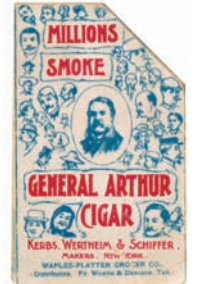
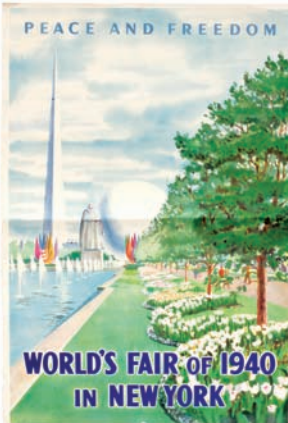
222).Borden's Milk Wagon Toy. 8.5 x 19.5 x 4.75" early tin litho and painted wooden horse drawn milk wagon toy by Rice Toy Co. advertising Borden's Dairy. An attractive piece that displays quite nicely (C. 8/+), w/ only minor wear from use. Min. bid \$50.



223).L.A.W. Syrup Bottle. 11.5 x 3-1/8 x 3-1/8" scarce, early glass soda fountain syrup display bottle w/ wonderful enameled label for L.A.W. brand 5¢ soda (has great League of American Wheelman log featured). Bottle has hand applied lip and original metal cap. Exceptionally nice piece. Min. bid \$60.



224).World's Fair Posters. Lot of four different colorful 20-1/8 x 13-3/8" paper litho advertising travel posters from 1940 (second year of New York World's Fair). All are clean and very nice in appearance (slightly used, w/ original horizontal fold line in centers w/ minor tack holes and non-offensive light tatter/tear marks at bottom edge (C. 8+). Min. bid \$50 (the lot).



225).Mechanical Trade Card. 3-7/8 x 2.25" (opens to 7-5/8 x 4.75") early folding mechanical trade card advertising General Arthur brand cigars. When card is opened, saloon girl's legs open up to reveal peekaboo image. Nice overall, w/ a little minor wear from use. Min. bid \$30.



226).Clark's Gum Change Receiver. 6-5/8 x 9.5 x 2" unusual, heavy, early green depression glass country store countertop change receiver advertising Clark's teaberry chewing gum, w/ separate sections for making change and displaying gum packs. Excellent condition, w/ minor background wear on reversed advertising transfers. Min. bid \$40.



227).Hires Mugs. lot includes two early, heavy ceramic mugs advertising Hires Root Beer, ea. featuring Co.'s trademark kid (stamped Mettlach on bases-makers of high end beer steins). Very high quality pieces (5 x 2.75" dia.; and 4.25 x 3" dia.) are clean and like new. Min. bid \$40 (the lot).



228).Peachy Tobacco Display Box. 11.25 x 7.75 x 9.5" early, colorful, 5 lb. cardboard store display box for Scotten Dillon Co.'s "Peachy" brand tobacco, w/ attractive images of early soft packs on front and back (originally held 48 packages). Has strong colors and displays nicely (C. 8+), w/ expected minor soiling and light wear, w/ typical tattering and cardboard loss at top and bottom edge flaps (C. 8+/-). Min. bid \$40.



229).Oilzum Grease Tin. 4.5 x 3-3/8" (dia.) early 1 lb. tin litho can for Oilzum brand grease, w/ nice image of trademark driver logo on front and lid. Full, unused can is clean and excellent (C. 8.5++) w/ minor dent mark. Min. bid \$40. 3531



230).Delcopenn Oil Can. 16.75 x 14.25 (dia.) x 8.5" early round rocker style 5 gallon motor oil can from Lindsay-McMillan Co., Milwaukee. Has decent color and displays quite nicely, although there is some general scratching, scuffing and wear on backside (front C. 7.5+/8-; back 7+/-). Min. bid \$50.



231).Shirley Braces Sign. 13.5 x 7.25" great early cardboard sign for Edgarton Mfg. Co.'s "Shirley President Braces" featuring wonderful image of well dressed woman in early flying machine (Boston Bank Note Co. lithographers). Clean, bright and very attractive appearance (a strong C. 8.5). Min. bid \$50.



232).Richfield Desk Set. 5 x 9.75 x 4" early figural 2-ps. bronze finished Richfield Oil Co. advertising desk top box featuring beautifully detailed image of early race car. Very high quality piece w/ rich, all original surface patina. Made to resemble a fancy figural bronze statue and was probably created as an upper level executive gift. Excellent. Min. bid \$70.



233).Tire Sign. 5 x 12" early tin litho sign by American Can. Co., for "Carmojon" brand tires, which I believe was an early American brand of pneumatic tires. Clean and bright, w/ only minor wear (C. 8+/-). Min. bid \$40.



234).Kemp's Medicine Thermometer. 15 x 4 x 3/8" early primitive wooden thermometer advertising "Kemp's Balsam" cough medicine. Has a slight bit of overall fade, weathered wear and a little over-paint w/ scattered wear on side edges, but overall attractive and displays pretty well (C. 7.5). Min. bid \$40.

Heinz Ephemera Lot



235).Heinz Ephemera. lot includes a nice grouping of very early Heinz Co. ephemera including early Expo cards, bookmarks, mechanical trade cards, fobs, product labels, etc. Most items are very good to excellent, w/ a little light scattered wear on a few pieces. Min. bid \$40 (the lot).



236).Salesman's Buckles and Badges Kit. 8.25 x 1.75 x 11.5" unusual, ca. 1950's salesman's presentation selling kit from Hook Fast Specialties Co. for their fancy, high quality line of cloisonné enameled metal uniform badges and belt buckles. Includes 8 different salesman's sample uniform badges, 9 belt buckles and a bolo tie. Excellent (like new condition). Min. bid \$50.



237).Yellow Kid Die-Cut. 6-3/8 x 4.75" early, embossed Yellow Kid advertising die-cut trade card on heavy cardstock promoting a Pittsburg, Pa. children's clothing store. Excellent overall, w/ typical wear at brittle umbrella handle area and minor paper remnants on backside (from scrap book removal). Min. bid \$30.



238).Texaco Motor Oil Sign. 30 x 30" impressive, large, early, heavy enameled porcelain sign for Texaco Golden motor oil promoting Co.'s crankcase service. Clean, bright and very attractive appearance, w/ some early weathered chipping in outer red border and small 1/2" dia. chip spot inside gold flowing oil area. Min. bid \$70.



239).Owl Cigar Sign. 11.5 x 7.75" early 2-sided cardboard die-cut sign for Owl brand cigars featuring great images of trademark bird perched on cigar. Display side is clean, bright and excellent; backside has some light fading and spots of a hazy light glue type mounting remnants-probably from album removal (front C. 8.5/+; back C. 7/+). Min. bid \$40.



240).Golden Tonic Medicine Sign. 16 x 11-3/8" very early paper litho sign for "Golden Tonic" medicine featuring beautiful multi-color lithography (Wolf & Co., Phil'a). Clean, bright and attractive (displays as a strong C. 8/+) w/ a little non-detracting minor wear (faint creasing/roll marks; and a few small tear marks in outer margins). Min. bid \$50.



241).Olo Soap String Holder. 15.75 x 14.5 x 6.75" early metal 2-sided country store string holder advertising "Olo" brand soap powder (same images both sides). Decent example that displays quite nicely, w/ fine line of background wear at top backside (front C. 8+; back C. 8/-). Min. bid \$70.



242).Warner's Relish Sign. 14 x 10.25" very early cardboard litho sign for Warner Co.'s Newport brand relish featuring beautiful stone litho image of mother and daughter picnicking (Boston Bank Note & Litho Co.). Crisp, bright and like new (near mint). Min. bid \$40.



243).Goodrich Tire Clock. 6.5 (dia.) x 3" early countertop electric advertising clock by Seth Thomas for Goodrich Co.'s "Silvertown" brand tires, set inside a nicely detailed embossed rubber tire. Excellent. Min. bid \$40.



244).Farmer Allerton's Grease Pail. 5.25 x 5-1/8" (dia.) unusual, very early tin litho pail for "Farmer Allerton's" brand axle grease featuring great graphic image of farmer holding product pail (Allerton Lubricant Co., Chicago). Attractive and displays nicely, w/ non-offensive general light wear (C. 7.5+/8-). Min. bid \$40.



245).Artic Menu Holder. 2.25 x 3.25" (dia.) early celluloid countertop soda fountain menu holder and paperweight mirror advertising Artic brand ice cream, w/ nice image of Co.'s polar bear logo. Excellent. Min. bid \$40.



246).White Rock Tip Tray. 6-5/8 x 4-5/8" early tin litho change tray for White Rock table waters featuring attractive image of Co.'s trademark topless winged girl. Clean, bright and like new (near mint). Min. bid \$40.



247).High Grade Pocket Tin. 4 x 3 x 1-3/8" early tin litho vertical pocket tin for Cameron & Cameron Co.'s "High Grade" brand tobacco. Has strong colors and displays nicely, w/ typical oxidized dulling/darkening in the shiny metallic finish areas (C. 7.5+/8-). As found, might improve w/ cleaning. Min. bid \$40.



248).Temple Garden Spice Tin. 3.25 x 2.25 x 1.5" early tin litho "Temple Garden" brand (Atlanta, Ga.) 1 oz. spice tin (cloves). Bright and attractive appearance, w/ bit of non-offensive minor oxidized hazy wear on surface (C. 8/-). As found, should improve w/ cleaning. Min. bid \$30.



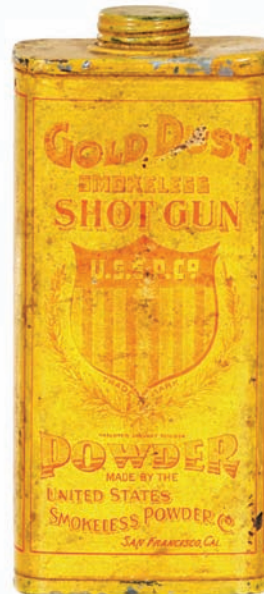
249).Ace High Grease Can. 4 x 3.25" (dia.) early tin litho pry-lid 1 lb. grease can for Avio "Ace High" brand lubricant (Midwest Oil Co., Minneapolis, Mn.), featuring great images of racecar and trademark bi-wing airplane (same image both sides). Attractive and displays nicely, w/ non-offensive background oil stain spot on backside and a little sticker residue on non-graphic side edge (front C. 8+; back C. 8/-). Min. bid \$40.



250).Green Spot Soda Thermometer. 15.75 x 4.5 x 3/8" early embossed metal thermometer advertising "Green Spot" brand soda pop featuring attractive image of early bottle. Clean and very attractive appearance (C. 8/+), w/ a little light edge wear. Min. bid \$40.



251).Dancing Jazz Musician Toy. 6.5 x 2.25 x 1" wonderful, early tin litho dancing mechanical black jazz musician toy (squeezing lever on backside makes his arms, legs, eyes and mouth move, cymbals clash, etc.). Excellent. Min. bid \$40.



252).Gold Dust Gunpowder Tin. 6.75 x 3 x 1-7/8" extremely rare, very early product tin for "Gold Dust" brand shot gun powder (United States Smokeless Powder Co., San Francisco, Ca.), w/ paper wrap-around label over yellow painted tin. Displays pretty well, although there is softening to red lettering and some overall general scattered wear (C. 7+/-). Min. bid \$40.



253).Oilzum Sample Bottle. 6.5 x 1.5" (dia.) unusual, early, sample specimen bottle for Oilzum Co.'s "Special Tractor" gas engine cylinder oil. Full, never opened bottle has attractive paper label on outside, w/ incised stamped wax seal over cork at top. Bottle excellent, w/ some soiling and light wear to label (label C. 7+/-). Min. bid \$20.



254).Telling's Ice Cream Tray. 6-1/8" (dia.) early tin litho advertising tray for Telling's brand ice cream featuring colorful and very attractive image of children reaching into giant ice cream tub. Clean, bright and mostly excellent overall, w/ exception of some light oxidized wear on outside rim area. Min. bid \$40.



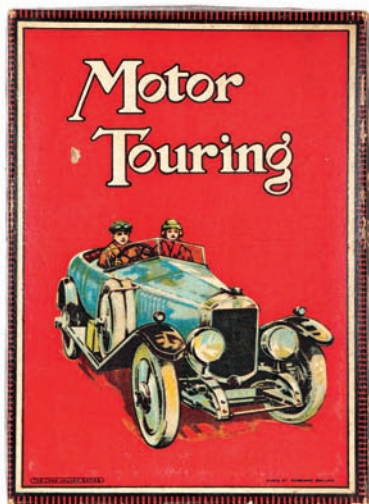
255).Howerton Dairy Tray. 13.25 x 13.25" unusual, early metal advertising tray for Howertown Sanitary Dairy (Northampton, Pa.), w/ nice image of early milk bottle and dairy products. Excellent overall (a strong C. 8++) w/ minor wear on outer edge of rim. Min. bid \$40.



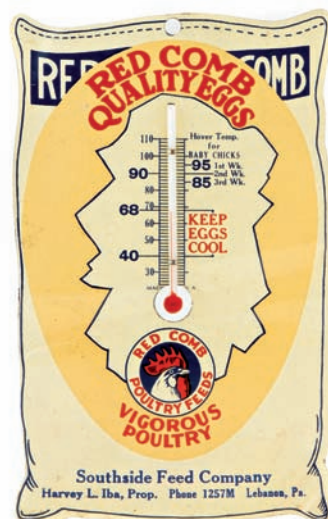
256).Agricultural Thermometer. 9-1/8" (dia.) x 1.25" scarce, early dial type thermometer for Ellis Keystone Agricultural Works (Pottstown, Pa.). Metal framed w/ glass covered ad inside featuring attractive image of Co.'s "Ellis Champion" thresher machine. Excellent (working thermometer). Min. bid \$40.



257).Sand Pail. 5-7/8 x 4.75 x 4-7/8" early tin litho toy sand pail by Chein w/ attractive nursery rhyme images all around. Excellent, never used condition (w/ shovel). Min. bid \$40.



258).Motor Touring Game. 10 x 7.25 x 7/8" early boxed "Motor Touring" boxed game set featuring beautiful color graphic lid and original folding game board and car game pieces inside. Clean and attractive, w/ small background wear mark on lid (C. 8/+). English. Min. bid \$30.



259).Poultry Feeds Thermometer. 6.25 x 3-7/8" early die-cut tin litho thermometer for Red Comb brand poultry feeds in shape of feedbag. Excellent (C. 8.5+) w/ a couple non-detracting slight bends. Min. bid \$40.



260).Pocahontas Coal Co. Sign. 14-3/8 x 11.75" early, embossed tin litho (over cardboard) sign by American Art Works Co. featuring beautiful multi-color graphic image of Indian princess. Clean, bright and very attractive (basically a strong C. 8++), w/ a little non-offensive minor scattered wear in outer background area (note: has two small factory holes at bottom edge which appear original to piece), w/ some fairly heavy wear to cardboard on backside. Min. bid \$60.



261).Buick Presentation Clock. 5.5 x 4 x 2.5" outstanding, very early, brass advertising desk clock made by Whitehead and Hoag Co. for Buick automobiles. Has beautifully detailed heavy inlaid cloisonné enameling, w/ jeweled movement clock by Seth Thomas. A stunning, museum quality piece, in exceptionally nice condition. Min. bid \$80.



262).Spiller's Golden Cure Poster. 16 x 11.5" very early paper sign for "Spiller's Golden Cure" patent medicine (Wolf & Co., Litho). Clean, bright and very attractive appearance (a nice C. 8+/-) w/ a few faint specks in left background section, w/ some light creasing/roll marks and a non-offensive 1.5" tear mark at letter "U" (of word "Rheumatism"). Min. bid \$60.



263).Three Dukes Condom. 1-5/8 x 2-1/8 x 1/4" important and extremely rare (I believe unlisted) early tin litho condom tin for "Three Dukes" brand (Texhide Latex Products Co., NY City) featuring a wonderful enchanted black and white image of castles in the clouds. Impressive looking piece in excellent condition (C. 8++), w/ contents. Min. bid \$50.



264).Yellow Cab Cigar Sign. 6.75 x 20" outstanding, early embossed tin litho sign for "Yellow Cab" brand 5¢ cigars featuring great image of taxicab and traffic cop. Impressive sign is excellent and was probably never used (C. 8.5++) w/ a slight bit of very minor edge wear (note: when tipped in light just right, upper surface has very faint, trace hints of the fine, non-detracting pattern left from its original protective paper that you want to see on this sign). Min. bid \$70.



265).Durham-Duplex Razor Sign. 6-1/8 x 27.25" early tin litho sign (by American Art Works) for Durham Duplex razors and sharpening stropps featuring beautiful multi-color lithography. Clean, bright and attractive looking piece that displays very nicely (basically a strong C. 8++ appearance), w/ exception of minor bends and several small background nail/tack holes scattered about. Min. bid \$50.



266).Union Leader Signs. Lot of two early cardboard Union Leader Tobacco signs. Includes an 11.75 x 8.75" easel back countertop stand-up (C. 8); and a 9" (dia.) 2-sided ceiling hanger sign (C. 8++). Min. bid \$40 (the lot).



267).Civil War Themed Signs. 9-3/8 x 6.25" lot includes two very early, glossy finished patriotic themed cardboard die-cut hanger signs from a Lancaster, PA. grocer featuring stunning multi-color Civil War themed images (one has stamped text promoting the store on backside). Both are clean, bright and excellent (C. 8.5+). Min. bid \$40 (the pair).



268).Western Theme Calendar. 17.5 x 21.5" (15-5/8 x 19.5" visible) early advertising calendar for an Elgin, Nebraska meat market featuring a nice cowboy scene by noted Western illustrator Charles Russell. Attractive piece is on its original cardboard advertising mat board and still includes partial 1914 calendar pad. Clean and attractive appearance, w/ a non-offensive small water stain spot in sky area (C. 7.5+/8-). Min. bid \$40.



269).Moxiemobile Toy. 6.5 x 9 x 2-3/8" early tin litho die-cut advertising toy for Moxie in scarce blue color variation. Clean, bright and very attractive appearance (basically displays a strong C. 8+) w/ a little non-offensive minor scattered wear (including very minor waves and a slight bit of minor oxidizing at very bottom edge-just below word "Moxie"). Min. bid \$70.



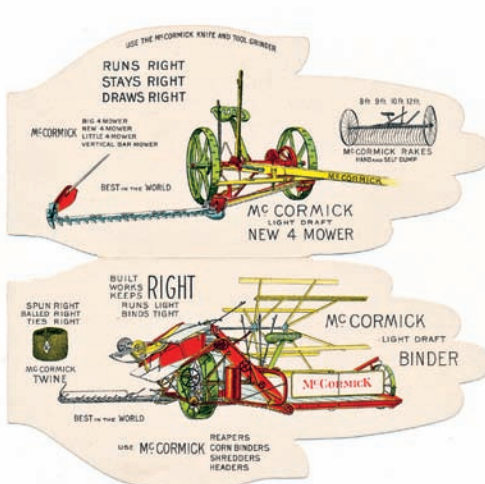
270).Standard Oil Cap Badge. 1-3/8 x 2.5" early metal service station employee uniform name badge for Standard Oil Co. Excellent. Min. bid \$30.



271).Locomotive Puzzle. very early 2-ps. boxed puzzle set by Parker Bros. (1894 copyright), w/ heavy cardboard "Empire State Express" locomotive puzzle (box 7-7/8 x 9-3/8 x 1"; puzzle 7-3/8 x 11.75"). Complete and excellent (C. 8+). Min. bid \$40.



272).McCormick Folding Trade Card. 6 x 3" unusual, early folding die-cut trade card on heavy cardstock for McCormick agricultural equipment (opens to 6 x 5-7/8"), w/ nice images of Co.'s mowers, binders and rakes pictured on inside. Crisp and like new (near mint). Min. bid \$30.



272).Inside Detail



273).Nigger Hair Tobacco Pail. 6-5/8 x 5-3/8" (dia.) early tin litho pail for Leidersdorf Co.'s "Nigger Hair" brand tobacco featuring image of Co.'s trademark African native on both sides. Clean, bright and attractive, w/ nice original sheen (C. 8.5/+). Min. bid \$50.



274).Texas Tailors Paperweight Mirror. 3-3/8" (dia.) early, heavy celluloid paperweight/palm mirror advertising an El Paso, Texas men's clothier, w/ golfing theme image. Excellent. Min. bid \$40.



275).Old Mansion Coffee. 4.25 x 5.25" early tin litho pry lid coffee can for Old Mansion brand (Antrim Co., Richmond, VA) featuring trademark mansion (same image both sides). Clean and attractive appearance (C. 8+/-) w/ minor denting, wear and some fade to reds. Min. bid \$30.



276).Jamestown Vienna Art Plate. 10-1/8" (dia.) early tin litho Vienna Art Plate, w/ beautiful multi-color graphic "Jamestown" American Indian image of Pocahontas and John Smith. Clean, bright and excellent (C. 8.5+/-) w/ non-offensive tiny paint drip spot in upper background area. Min. bid \$40.



277).



277).Pirelli Tires Pocket Knife. 3-1/8 x 1" early, high quality figural metal tire shaped advertising pocket knife for Pirelli's "Superflex" brand tires. Excellent, w/ nice detailing. Min. bid \$30.



278).Jeris Hair Tonic Display. 13.25 x 16-1/8 x 5.75" unusual, ca. 1920's framed electric light-up display for Jeris women's hair tonic, w/ faint ghost like image of woman getting her hair cut. When lit up, image changes to a bright, vibrant dance scene promoting the hair product. Very nice overall. Min. bid \$50.





279).Lake George Plate Topper. 3.5 x 12-5/8" unusual, early aluminum automotive license plate topper from Lake George, NY. Nice overall, w/ some light weathering/wear to highlight paint surfaces. Min. bid \$30.



280).High Point NC Plate Topper. 4.5 x 11-7/8" unusual, early aluminum automotive license plate topper from High Point, North Carolina, w/ nice tobacco plant and leaf designs. Quite nice overall, w/ a little light weathering/wear to highlight paint surfaces. Min. bid \$30.



281).Scouting Footwear Signs. Lot of two matching 13 x 9.5" cardboard easel-back signs for Miner Co.'s footwear products, featuring nice scouting images. Clean, bright and excellent appearance (basically displays as a C. 8.5/+), w/ exception of a little non-offensive light background foxing on boy scouts sign. Min. bid \$40 (the lot).



282).Schultze Gunpowder Sign. 9-7/8 x 13.75" scarce, early embossed tin litho sign for "Schultze" brand gunpowder featuring nicely detailed image of early powder can. Has some light scattered soiling, edge wear, faint hazy oxidizing, minor bends, and some general overall scattered wear, but still quite respectable and displays pretty well (C. 7/+). As found, should improve w/ cleaning. Min. bid \$60.



283).Resinol Tip Tray. 4-1/8" (dia.) early tin litho advertising tip tray for Resinol brand skin disease products. Crisp, bright and like new, as found never used in its original mailer. Min. bid \$40.



284).Sheffield Farms Milk Wagon Toy. 9-1/8 x 21 x 6-1/8" wonderful early wooden horse drawn toy milk wagon advertising Sheffield Farms Dairy. Very high quality piece has a deep, rich paint surface and excellent patina giving it a great folk art look (C. 8-), w/ a little expected light wear from use (note: close examination will show one of front wheels is re-glued along a clean break line). Min. bid \$70.



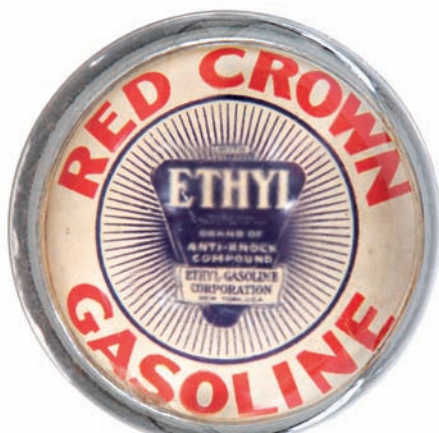
285).Butter Sign. 6-3/8 x 11-3/8" early self-framed embossed metal litho over cardboard sign for American Beauty brand butter. Excellent (C. 8.5) w/ only minor wear. Min. bid \$40.



286).Heinz Pickles Crate Labels. Lot of two ca. 1890's paper litho crate labels w/ glossy finish for Heinz Co.'s Keystone brand "Sweet Mixed Pickles" featuring beautiful multi-color lithography (note 1893 World's Fair gold medal reference). Labels measure app. 8.5 x 13.5" and are excellent overall (C. 8.5/+ appearance) w/ light edge tatters and tears (note: both never used labels are glued back to back at the outside edges onto an early scrap book page). Min. bid \$40 (the lot).



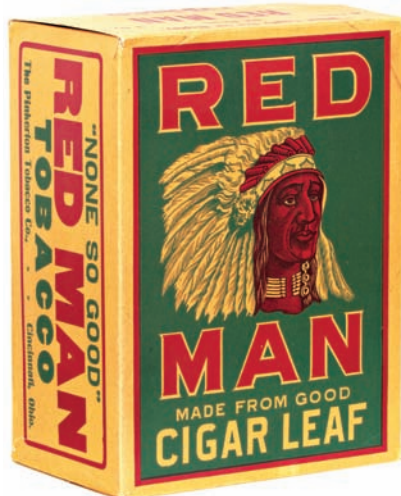
287).Pharmacist Pocket Mirror. 2-1/8" (dia.) unusual, early, colorful and highly graphic celluloid advertising pocket mirror for Thos. S. Nagle, an Allentown, Pa. M.D. and pharmacist. Clean, bright and excellent. Min. bid \$40.



288).Red Crown Paperweight. 1-5/8 x 3" (dia.) early domed glass advertising paperweight for Red Crown brand gasoline. Excellent. Min. bid \$30.



289).Good For Trade Mirror. 2.25" (dia.) early celluloid "Good for 10¢ in Trade" pocket mirror issued by Meaney's, Ithaca, NY featuring a hand tinted photo image of very risqué topless semi-nude. Min. bid \$40.



290).Red Man Display Box. 13.75 x 10.25 x 6.5" early 6 lb. cardboard store display box for Pinkerton Co.'s "Red Man" brand tobacco (originally held 32 three oz. packages). Has strong colors and displays quite nicely, w/ expected minor soiling, toning, light wear and some water staining on bottom edge flaps. Min. bid \$40.



291). "Electric" Razor Tin. 1.25 x 6-5/8 x 7/8" unusual 2-ps. tin litho product tin for Friedman & Lauterjung Co.'s safety razor, w/ attractive, very early finely detailed lithography by Wm. Vogel & Bros., Brooklyn. Nice overall, w/ minor scattered wear (C. 8+/-). Min. bid \$30.



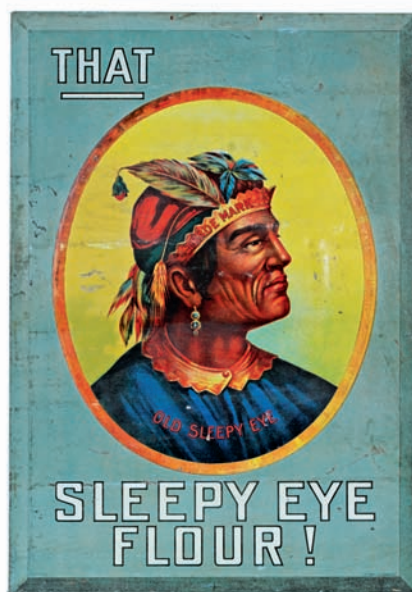
292).Railway Express Signs. (5 x 35-5/8" and 5 x 39.25") two early, heavy porcelain signs for the Railway Express Co. Clean, bright and exceptionally nice appearance (displays as near mint), w/ a little very minor edge wear. Min. bid \$60 (the lot).



293).Matoaka Pocket Tin. 4.5 x 3 x 7/8" early tin litho vertical pocket tin for Patterson Co.'s "Matoaka" tobacco. Attractive example that displays quite nicely, w/ a little minor denting and light wear from use (C. 8/-). Min. bid \$60.



294).The Spirit of America Poster. 30 x 20" ca. 1919 patriotic themed paper litho recruiting poster by illustrator Howard Chandler Christy for the American Red Cross organization (Forbes Litho). Clean, bright and excellent (C. 8.5++). Min. bid \$60.



295).Sleepy Eye Flour Sign. 19-1/8 x 13.5" scarce, early tin litho (over cardboard) sign for Sleepy Eye Flour, featuring great image of Co.'s trademark Indian. Has strong colors and displays pretty well, w/ some non-offensive slight waving, minor bends and some light general scattered background soiling and wear (C. 7.5+/-), w/ fairly heavy wear to cardboard backing on reverse side. As found, might improve a bit w/ cleaning. Min. bid \$70.



296).Century Poster. 25 x 19" (22.5 x 15-1/8" actual) early framed paper litho advertising poster for Century Magazine, featuring nice image of girl at seashore reading the current issue. Clean and very attractive appearance (C. 8.5+) w/ faint center horizontal crease line-probably from mfg. process. Great for a beach house. Min. bid \$50.



297).Heinz Crate Labels. Lot of two very early paper litho crate labels for Heinz Co.'s Keystone brand "Fruit Preserves" and "Prepared Mustard" products, w/ beautiful multi-color lithography (ea. app. 5-1/8 x 12"). Clean, bright and very attractive appearance (display as a strong C. 8++), w/ minor edge chipping (has a couple small professional archival reinforcement spots on backside of mustard label). Min. bid \$40 (the lot).



298).Memphis Turtle. 2.5 x 1-5/8 x 1/4" early figural cast iron turtle shaped paperweight, w/ celluloid "shell" featuring a Memphis, Tenn. office building. Excellent overall (minor scratches on celluloid). Min. bid \$20.

Rare Color Variation



299).Silver-Tex Condom Tin. 1-1/8 x 2.25 x 1/4" unusual, scarce, gold tinted color variation for Killian Co.'s "Silver-Tex" brand condoms. Nice overall, w/ a little non-offensive light background wear (C. 8/-). Min. bid \$40.

Tape Measure



300).Bisque Tape Measure. 1-7/8 x 1.5 x 1-7/8" early, very high quality, small, hand-painted fine bisque china figural head, w/ tape measure that pulls out from her mouth. Excellent. Min. bid \$30.



301).De Laval Tip Tray. 4-3/8" (dia.) early tin litho change tray for De Laval brand cream separators, w/ beautiful image of early separator machine. Clean, bright and excellent w/ minor wear on rim (C. 8++). Min. bid \$40.

Parker Guns



302).Parker Primers Tin. 2 x 2" (dia.) very early primers can from Parker Bros. Gun Co. (West Meriden, Conn.) featuring early paper label on lid. Unusual tin is all original and as found, w/ toning and darkening/soiling on top label. Min. bid \$30.



303).De Laval Tip Tray. 4-3/8" (dia.) early tin litho change tray for De Laval brand cream separators, featuring beautiful multi-color graphics. Clean, bright and excellent (C. 8.5/+). Min. bid \$40.



304).Glendora Coffee Sign. 15.75 x 9.25" early embossed cardboard sign for Glendora Coffee, featuring great image of early can. Clean, bright and excellent w/ exception of a little minor wear at very outer edges (C. 8.5/+). Min. bid \$40.



305).Judge Taft Cigar Sign. 19-1/8 x 13.25" early tin litho (over cardboard) sign for "Judge Taft" brand cigars, w/ nice image of a young Howard Taft. Clean, bright and very attractive in appearance (displays as a nice C. 8/+) w/ a little crimping and wear at corner edges and close-up examination will show a few non-offensive rubs and light wear spots on surface (some damage to plain cardboard on backside and string no longer attached). Min. bid \$60.



306).Lion Candy Tin. 10-1/8 x 4-5/8 x 4-5/8" early 5 lb. Lion brand paper label candy tin from Lion Specialty Co., Chicago w/ same attractive images all around. Clean and very attractive in appearance (displays as a C. 8++) w/ some non-offensive light scattered wear (critical grade C. 8/-). Min. bid \$40.



307).Barber Shop Sign. 7.5 x 11" unusual, early celluloid covered barbershop sign for "Barber Blade" brand razor blades (blades were sold only in barber shops). Clean and excellent w/ only very minor wear (C. 8+). Min. bid \$40.



308).Holiday Poppers Label. 7-7/8 x 10.5" early paper litho crate label for "Chicago Exhibition" brand holiday poppers (a British holiday tradition fireworks novelty toy) w/ beautiful multi-color lithography (features 1893 Chicago World's Fair scene). Crisp and like new (near mint). Min. bid \$40.



309).Advertising Paperweights. Lot of two early glass advertising paperweights w/ white milk glass bases. Includes: Thomas Potter Co. (2.75 x 4-3/8 x 1") industrial materials and Ideal Couch & Casket Co. (2.5 x 4 x 1") funeral supplies Co. Excellent. Min. bid \$30 (the lot).



310).Pepsi Napkin Holder. 5.25 x 4.25 x 6.75" early metal countertop napkin holder advertising Pepsi-Cola, w/ nice images of early double dot logo. Clean and very attractive, w/ strong colors and excellent overall look (C. 8+). Min. bid \$50.



311).Mona Motor Oil Can. 5.5 x 7-5/8 x 3.5" early tin litho 1/2 gallon sized motor oil can for Monarch Motor Oil (Monarch Mfg. Co.) featuring wonderfully detailed rural image of early car, motorcycle, airplane and early farm tractors and equipment. Clean, bright and exceptionally nice (C. 8.5+). Min. bid \$40.



312).Hoosier Corn Crate Label. 11 x 12.25" large, very early paper litho crate label for "Hoosier" brand sugar corn (Bement & Seitz Co., Evansville, Ind.) featuring beautifully detailed early lithography. Clean, bright and very attractive (a strong C. 8+) w/ some non-offensive light wear at outer wide border/margin area. Min. bid \$40.



313).Ramon's Store Jar. 11.5 x 5 x 5" unusual, early drugstore display jar for Ramon's Laxative Cold Tablets w/ ground lid and original label on front side. Excellent overall, w/ a little light background wear on label. Includes several original product tins inside. Min. bid \$40.



314).Kayo Thermometer. 13.5 x 5.75" unusual, early embossed metal sign for Kayo brand chocolate soda w/ nice image of Kayo cartoon character on early bottle. Attractive and displays nicely, w/ a little light scattered wear (C. 7.5+/8-). Min. bid \$40.



315).Fort Western Oats Box. 9.5 x 5.5" (dia.) early cardboard 3 lb. oats box for Fort Western brand (Holmes-Swift Co., Augusta & Waterville, Me.) featuring nice image of Co.'s trademark fort (steaming cereal bowl on backside). Clean, bright and exceptionally nice (C. 8.5+) w/ minor staining and light tear marks on lid. Min. bid \$40.



316).Vin Fiz Syrup Bottle. 11.75 x 3-3/8" (dia.) early glass soda fountain syrup display bottle for "Vin Fiz" brand, w/ nice label under glass trademark logo image. Bottle has hand applied lip and original metal cap. Very nice overall. Min. bid \$50.



317). Socony Lapel Pin. 3/8 x 1/2" fine, early lapel pin w/ beautifully detailed inlaid cloisonné enameling advertising Socony Vacuum Oil Co., in shape of Co's Pegasus horse logo. Excellent. Min. bid \$20.



318). Glover's Dog Pills. Lot includes three different 2 x 3.25 x .5" early tin litho product tins for Glover's Imperial Condition pills for dogs. Clean and very attractive w/ a little minor chipping wear (C. 8+/-). Min. bid \$40 the lot.

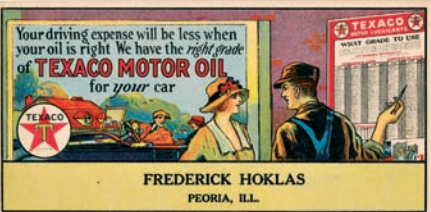
Min. TR Cap



320). Teddy Roosevelt Hat. 1-1/8 x 2.75 x 3.5" unusual, early, heavy felt miniature Teddy Roosevelt Rough Riders hat, complete w/ campaign style button. Neat and unusual piece in very nice overall condition (C. 8+/-). Min. bid \$40.



321). Soda Fountain Syrups Mirror. 1.75 x 2.75" scarce and very attractive early celluloid advertising pocket mirror for Sinalco brand soda fountain syrup flavorings. Excellent. Min. bid \$50.



322). Texaco Blotters. Lot consists of four ca. 1920's colorful and graphic cardboard Texaco advertising ink blotters (ea. app. 3 x 6"). Bright and attractive (C. 8+/-). Min. bid \$30 (the lot).



323). Truck Builders Paperweight. 3.5" (dia.) unusual, early, heavy celluloid paperweight mirror from Johann Mfg. Co., an early truck body maker, w/ neat Standard Oil Co. truck pictured. Excellent. Min. bid \$40.



324). Tongaline Medicine Sign. 10-1/8 x 7.75" early cardboard litho sign for Mellier Drug Co.'s Tongaline medicine featuring attractive image of Apache Medicine Man Go-Shono (has advertising, bottle picture, and 1905 calendar on back side). Clean, bright and exceptionally nice (C. 8.5) w/ minor wear and tiny pin hole in top background area. Min. bid \$40.

Salesman's Sample
Laundry Wringer & Rack



325). Salesman's Sample Laundry Wringer. 15 x 6.75 x 4.5" (opens to 15 x 6.75 x 16.75) great, early miniature wooden laundry wringer and attached drying racks w/ nice old, all original surface patina (8+/-). Excellent, very high quality piece w/ working wringers at top. Lot also includes miniature period laundry pieces that were acquire separately (includes miniature clothes pins, wash board, wash tubs and sample Gold Dust box). Min. bid \$80.



325). Closed



326).Fishing Tackle Sign. 16 x 57" (13-1/8 x 54.25" visible) large paper litho sign for Wright & McGill Co.'s Eagle brand fishing hooks. Clean, bright and excellent (C. 8.5/+). Includes real nice partially filled box of Co.'s fishing hooks. Framed. Min. bid \$40.



327).Dayton Overalls Mirror. 2-1/8" (dia.) outstanding, scarce, early celluloid advertising pocket mirror for Dayton Clothing Co.'s "R.R." brand overalls and jackets, featuring stunning multi-color graphics. Clean, bright and exceptionally nice. Min. bid \$60.



328).Bartholomay Die-Cut. 5 x 6 x 1/4" early 2-ps. dimensional die-cut advertisement on heavy cardstock for Bartholomay Brewing Co. (Rochester, NY). Clean and excellent appearance (professional reinforcement at neck areas on backside). Min. bid \$40.



329).Polarine Paperweight Mirror. 3.5" (dia.) early, heavy celluloid advertising pperweight/palm mirror for Standard Oil Co.'s "Polarine" brand petroleum products. Excellent overall (some darkening and crazing patterns in mirror glass). Min. bid \$40.



330).Marx Service Station Toy. 6 x 9-3/8 x 2.75" unusual, small, early tin litho service station toy by Marx. A neat and unusual piece in excellent condition (C. 8.5/+). Min. bid \$40.



331).Parke-Davis Paperweight. 4.75 x 3.25 x 1-3/8" unusual, very high quality heavy figural pewter paperweight advertising Parke-Davis drug company in likeness of baby in uterus. A substantial, very high quality piece w/ excellent detailing (weighs almost 1-1/2 lbs.). Min. bid \$30.



332).Glass Target Ball. 2.75" (dia.). early blown blue pattern glass target ball, w attractive textured pattern (embossed N.B. Glass Works' w/ backwards "s". These were often stuffed w/ confetti, silk streamers or feathers, then thrown upward and shot at before the advent of sporting clay pigeons. Excellent. Min. bid \$30.



333).Ira Paine Glass Target Ball. 2.75" (dia.). very early embossed blown glass target ball, w/ 3-ps. mold lines and attractive amber color. Note: Ira Paine, inventor of this marked ball, was a champion exposition shooter of this era. Min. bid \$30.



334).Glass Target Ball. 2.75" (dia.). very early blown glass target ball, w/ 3-ps. mold lines and a beautiful deep blue color. Min. bid \$30.



335).Shield Condom Tin. 1-5/8" (dia.) x 3/8" scarce, early tin litho "Shield" brand condom tin. Very nice overall (C. 8/+ w/ only minor wear. Min. bid \$40.



336).Coal Co. Match Holder. 5.25 x 3-7/8 x 1-1/8" early, embossed cast iron match holder for Llyke Martyn Co., an early coal and coke delivery outfit, w/ figural ash bucket section for holding matches. Excellent, w/ nice rich surface patina. Min. bid \$40.



337).Ziegler's Beer Sign. 8.5 x 11.5" early beveled tin over cardboard sign for Louis Ziegler Brewing Co. (Beaver Dam, Wisc.) w/ nice image for early bottle. Clean, bright and excellent overall (basically a C. 8.5+) w/ exception of a little non-offensive faint background scratching at outer edges. Min. bid \$40.



340).Sauer's Extracts Thermometer. 24 x 6-7/8 x 7/8" early wooden country store advertising thermometer for Sauer's brand flavorings and extracts. Nice early paint surface w/ some general ageing and wear (C. 7.5+). Missing tube. Min. bid \$50.



338).Borden's Eagle Milk Sign. 13-5/8 x 10" very early cardboard litho sign for Gail Borden Co.'s "Eagle" brand condensed milk. Clean, bright and exceptionally nice (C. 8.5++). Min. bid \$50.

Ammo Cover



339).Lafin & Rand Cover. 3-5/8 x 6.25" colorful and attractive early advertising cover (envelope) for Lafin & Rand gunpowder, featuring nice image of cowboy w/ text advertising on backside (1907 cancellation). Excellent (C. 8++). Min. bid \$40.

Peters Ammo Folding Postcard



341).Peters Ammo Postcard. 3.75 x 22-1/8" unusual early folding postcard advertising Peters ammunition, featuring train carrying the largest shipment of small arms ever made. Clean and excellent appearance w/ a little non-offensive faint writing in sky area. Min. bid \$40.



342).Catlin's Tobacco Signs. lot of two very attractive, very early cardboard tobacco signs from Catlin Tobacco Co., St. Louis. Includes: 9.5 x 7" embossed die-cut sign for Co.'s "Golden Thread" brand (C. 8/-) w/ light crease mark and minor staining at top left cherub; and 7.5 x 10" "Huntress" brand (C. 8/+) w/ minor wear at upper left margin. Min. bid \$50 (the lot).



343).Nordeck Cigars Die-Cut. 8-3/8 x 6.25" beautiful, embossed cardboard die-cut sign for Nordeck Cigars (Teague Co., Lewis, Me.) featuring stunning, shiny finish multi-color lithography. Clean, bright and exceptionally nice (C. 8.5++) w/ scrapbook removal remnants on backside. Min. bid \$40.



344).Perfect Pipe Pocket Tin. 4.25 x 3-3/8 x 1" early tin litho vertical tobacco pocket tin for S.S. Pierce Co.'s "Perfect Pipe" brand tobacco. Clean, bright and excellent overall (a strong C. 8++) w/ only minor wear. Min. bid \$40.



345).Shamrock Gas Pump Sign. 12.5 x 10.5" early heavy porcelain service station pump plate sign for Shamrock Co.'s Diesel fuel. Clean, bright and excellent. Min. bid \$40.



346).Sunoco Rest Room Signs. pair of small, matching enameled porcelain restroom signs (ea. app. 3 x 7") from early Sunoco service station. Excellent, w/ minor chip at bottom edge of men's sign. Min. bid \$40 (the pair).



347).Headache Cure Mirror. 2.75 x 1.75" scarce, early celluloid advertising picket mirror for "Caf-Fee-No" brand headache "Cure" (Cafee No Drug Co., Baltimore) w/ great image of dog and product package. Excellent. Min. bid \$50.



348).Mohawk Chieftain Motor Oil. 5.5 x 4" (dia.) unusual, full, sealed (never opened) tin litho crimp seam 1 qt. motor oil can from Mohawk Refining Co, Newark, NJ, w/ nice image of trademark Indian scout on both sides. Has strong colors and displays quite nicely, although there are some litho chips in background and light scattered wear (C. 7.5+). Min. bid \$30.



349).William Tell Flour Match Holder. 4-7/8 x 3.5 x 1.25" early tin litho advertising match holder for William Tell Flour Co., featuring beautiful multi-color image of barrel label. Clean, bright and very attractive appearance (basically displays as a strong C. 8+) w/ some light chipping and wear in basket area and non-offensive indent mark on barrel label section. Min. bid \$40.



350).Jell-o Pocket Mirror. 2.75 x 1.75" scarce, early celluloid advertising pocket mirror for Jell-o brand dessert, featuring great image of Co.'s Jell-o girl. Excellent. Min. bid \$50.



351).Araban Coffee. 6.25 x 4.25" (dia.) early 1 lb. tin litho coffee can from Araban Coffee Co., Boston (same image both sides). Crisp, bright and like new (basically near mint) w/ exception of minor mfg. blemish in dark background. Min. bid \$40.



352).Runkel's Cocoa Mirror. 2.75 x 1.75" early celluloid advertising pocket mirror featuring beautiful multi-color graphics. Clean, bright and beautiful appearance. Min. bid \$50.



353). "Ecstasy" Playing Cards. 3-7/8 x 2.5 x 7/8" full deck of 52 linen finish advertising playing cards for General Electric's Edison Mazda brand electric lamp bulbs, featuring famous Maxfield Parrish illustrated 1930 "Ecstasy" image. Complete w/ original box. Excellent. Min. bid \$30.



354).Eagle Motor Oil. 5.5 x 4" (dia.) early 1 qt. tin litho solder seam picture can for "Eagle" brand motor oil (Eagle Oil & Supply Co., Quincy, Mass.) w/ nice image of trademark bird. Full, unopened can is clean, bright and excellent (C. 8.5+) w/ light dent on left side edge. Min. bid \$40.



Rd #2, Cobb Hill Road, Cazenovia, NY 13035 • 24 Hr. Tel: (315) 662-7625 • 24 Hr. Fax: (315) 662-3570 • morf2bid@aol.com • morfauction.com

Welcome to our 81st auction of quality antique advertising and fine collectibles. Everything we sell is guaranteed authentic and as described. We attempt to grade condition both fairly and conservatively, using a scale of 1-10 on the advertising items (ten being absolutely mint). We do not list reproductions, re-issues, deceptively restored or pieced together type merchandise. Flaws and blemishes are prominently noted and over emphasized. We encourage you to call for a detailed description on any item you have an interest in, but respectfully must request that you do this before the closing night. Dimensions are listed by height, then width, and are only approximate (+ or - a quarter inch).

Bidding

Bids are accepted only from those parties who have registered with us to bid. (If you were mailed this catalogue by us you are automatically pre-registered.) Your bid is a legal contract to purchase and once entered, cannot be canceled. Placement of a bid indicates acceptance of our terms.

On all "BID" items there is a 15% buyers premium added to each successful bid. You're welcome to bid by mail, email and fax anytime after receiving this catalog. **We will begin accepting phone bids on Wednesday, MARCH 26, 2014. We will be taking calls on Wednesday and Thursday from 10:00 AM until 5:00 PM.** If no one answers when you call, please leave a message on our machine and we will get back to you. **If bidding by mail or fax, please remember to include your telephone number with your bids!** You may call or bid as often as you like. We will tell you the current bid on any item(s) you are interested in. To raise a bid, your advance must be at least \$10 more than the current high bid amount. When an item reaches \$250, bidding increments rise to \$25, at \$1,000, bidding increments advance in \$50 steps, and above \$2,000 in \$100 increments. We suggest not waiting until the last minute to begin your bidding, as its quite possible you won't be able to get through.

Web Page and Bid Updates

We will begin posting current bid prices (not including the buyers premium) on Wednesday, March 26, 2014 (including an addendum of additional catalogue lot information) on our internet web page. These prices will be updated once each day (each evening sometime after 9:00 PM, EST) and will get updated to include the final hammer prices on Sunday afternoon once the sale is concluded. On the closing night, we will attempt to update current bid prices every hour. Our web page address for this sale is: <http://www.morfauction.com> We suggest that once you get to it, that you bookmark this address for easy re-access. There is also an addendum section on our website where we post additional information and photo's for this sale.

Reserves and Estimates

All items which receive an opening bid in our sale will be sold to the highest bidder regardless of the price realized (we reserve the right to withdraw items in the event of inaccurate catalog descriptions and to reject any bid we feel is not made in good faith). **We run our auctions with a strict policy of no buy-backs, no auctioneer games and no hidden reserves.** Unlike some of our competitors, we do NOT allow consignors to bid up their own items!

Mechanical Operations

Early mechanical and electric motors and mechanisms on machines toys, coin-ops, clocks, etc. are quite often temperamental and very unpredictable in nature. Although these mechanisms may be working fine at the time of sale, we make no guarantees or representations regarding their continued operating status once they have left our premises (including during shipping).

Closing Night

THE LAST DAY FOR BIDDING WILL BE ON FRIDAY, MARCH 28, 2014. On closing day, we begin taking calls at 5:00 PM. Please mark your calendar now. **On the closing night (ONLY), we will also be taking calls at (315) 662-3318, (315) 662-3429 and (315) 662-3904 after 5:00 PM** (in addition to our regular (315) 662-7625 office number). **Closing Time: This Auction will close at 10:00 PM (EST) on Friday, MARCH 28, 2014.** At that time, no more incoming calls will be accepted and all lots with a registered bid of less than \$300, as well as all items without call backs registered on them will be officially closed and final. The items at \$300 and over that have call back protection registered on them will be closed out during our call back period the following afternoon (**see important call back rules below**). We reserve the right to change the official closing in the event of unforeseen family type emergencies or technological failures (utility disruptions, etc.). We also reserve the right to either extend the bidding, to postpone or to cancel this auction in the event of a national emergency or if the Internet or the services of the US Post Office were to get seriously disrupted during our catalogue mailing or bidding period.

"Up-To" Bids & Call Backs

CEILING BIDS: We will be happy to enter competitive "up to" ceiling bids for you on any lots you request. Beginning at your minimum amount, we will advance these bid(s) up to your left ceiling amount, if (and only if) it is topped by another bidder. "Up To" bids will be handled discretely and executed in a completely competitive manner for you. Please note that we don't accept open ended "top all others" ceiling type bids.

CALL BACKS: You may request call back protection for any lot(s) that you enter with either a minimum or a protected "up-to" ceiling bid in an amount of at least \$300. This request must be registered with us before the official 10:00 PM closing hour of Friday, March 28, 2014. All callbacks will be placed by us on Saturday, March 29, 2014, beginning at 12:00 noon (EST) and will continue that afternoon until each of the individual lots have been closed out (using past experience, I would expect this to be finished by 6:00 PM, if not earlier). If you register for call-backs, it is your responsibility to be available during this call back time period. We make every effort to honor all our call back requests, but this service is done solely as a convenience to our bidders and will be performed on a best efforts basis only. If you will be traveling or if you will not be available during call back times at your primary number, be sure you provide us with proper alternate or back up numbers for reaching you!

Payment Terms

Winning bidders will be invoiced by mail immediately after the sale. Those who desire fast shipment can pay by Money Order or Cashiers Check. Payments are due within 10 days of receipt of invoice. We reserve the right to offer the item out to our back bidders and deny future bidding privileges to those who do not pay in a timely manner. In addition to personal checks, we also accept payment on your American Express, Visa, Master Card, Discover and Optima Credit Cards (with no surcharge added). No COD's or Collect calls are ever accepted. Items shipped to anywhere in New York State must include appropriate sales tax or signed resale certificate.

Shipping

All packing and shipping charges are extra. We do most of our own packing and shipping in house and try to keep these charges as reasonable as possible for you. On especially fragile and larger hard to pack items, we hire the services of professional packers and charge you at our billed cost. We ship mostly through the Post Office and Fedex Ground, (Fedex Overnight available at an extra charge.)

Subscribing, Prices Realized, Consignments & Upcoming Events

Future catalogs can be assured by sending \$20 for a full 12 months subscription. (Prices are published on our website after each sale) An automatic credit card ordering program is available. We currently run between 2-4 auctions a year. In addition to our regular sales, we also occasionally offer sales made up entirely from single owner collections. Please contact us should you have items you would like us to consider for inclusion in our upcoming events. All inquiries are handled in a completely confidential manner. Our services are also available for the private placement marketing of important individual items, marketing plans for large collections as well as for estate planning and settlement purposes. Back copies of many of our previous auction catalogs are still available at \$5 each (w/ prices realized) w/ quantity discounts available if multiple issues are ordered. For further information, check our website.

Photography by Wes Feuz.

© Copyright 2014. All Rights Reserved. No portion of this publication may be copied in any form without the express written permission of Morford's.

Important Closing Night Information

In addition to our regular (315) 662-7625 office number,
on the closing night (only!) you may also call us at:

(315) 662-3318*
(after 5:00 PM)

(315) 662-3904*
(after 5:00 PM)

(315) 662-3429*
(after 5:00 PM)

***These numbers for
Closing night only!
Friday, March 28, 2014**

Bidding closes at 10:00 PM on Friday closing night. We will be accepting faxes and e-mails on closing night. Our web page will update current high bid prices approximately every hour on closing night and will also list any important addendum information. All call backs will be made on Saturday, March 29, 2014 beginning at 12 o'clock Noon!