



WM Morford
Investment Grade Collectibles at Auction

Investment Grade Collectibles at Auction

Rd #2, Cobb Hill Road, Cazenovia, NY 13035 • 24 Hr. Tel: (315) 662-7625 • 24 Hr. Fax: (315) 662-3570 • morf2bid@aol.com • morfauction.com

Bidding closes Friday, June 20, 2014. (See page 36 for Terms & Conditions)



1) **Blue Jay Cigar Tin.** 5.5 x 6.25 x 4-1/8" scarce, early tin litho 50 count "Blue Jay" brand cigar can (Orison Cigar Co., Bethesda, OH) w/ beautiful multi-color graphics. Clean, bright and exceptionally nice (C. 8.5/+) w/ exception of minor dent mark on left side edge. Min. bid \$50.



2) **Zingo Candy Tin.** 8.25 x 10" (dia.) large, early 10 lb. store display tin for Zingo Sweets (Euclid Candy Co., Cleveland, OH) w/ great image of speeding race car. Bright, attractive and displays very nicely (front C. 8+; back C. 8/-), w/ minor scattered wear including light scuffs and wear on lid. Min. bid \$50.



3) **"Dog-On Good" Cigar Can.** 5-3/8 x 5" (dia.) early paper label (over tin) 50 ct. cigar can for "A Dog-On Good" brand cigar, featuring wonderful image of Irish Setter standing inside open box. Clean and excellent (a strong C. 8++). Min. bid \$40.



4) **Porcelain Paint Sign.** 11 x 19 x 1.5" early, heavy enameled porcelain flange sign advertising Kyanize brand paints and varnishes. Crisp, bright and like new w/ nice original sheen (has very minor chip at top outside edge of angled flange mounting section). Min. bid \$50.



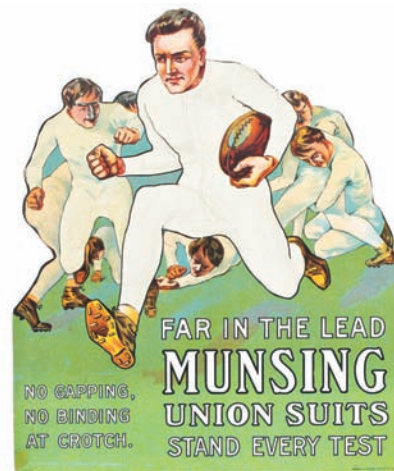
5) **Mechanical Bank Trade Card.** 3-3/8 x 5.25" scarce, early mechanical bank advertising trade card for J. & E. Stevens Co.'s "Dark Town Battery" cast iron mechanical bank (Gast & Co. Lith. NY). Clean, bright and very attractive (a strong C. 8++) w/ full, nicely centered margins (has a slight hint of very minor even toning, w/ a few light stains on backside (not visible on front side). Min. bid \$50.



6) **Mammy Peanut Tin.** 9.75 8-1/8" (dia.) extremely rare, early 10 lb. store tin for "Mammy" brand salted peanuts (Murray-Roll Co., Pittsburgh, PA) featuring great image of Co.'s trademark black mammy. Clean, bright, and displays nicely, w/ very strong colors (front displays as a strong C. 8++), although close-up examination will show some non-offensive faint background denting on front side; w/ some heavier denting and a few scattered wear spots on backside. Min. bid \$70.



7) **Union Leader Display Box.** 11-7/8 x 7-3/8 x 5.5" early cardboard store display box for Union Leader brand tobacco, featuring great image of Uncle Sam on front and early tobacco pack on backside (held 48 5¢ packages). Has strong colors and displays very nicely (as a C. 8+) w/ some non-offensive pencil writing in yellow background area. Min. bid \$50.



8) **Munsingwear Sign.** 12 x 10.25" early easel-back cardboard die-cut countertop sign for Munsingwear brand Union Suits (Edwards & Deutsch Litho., Chicago), w/ great early football image (note early nose guard). Display side is clean, bright and excellent (C. 8.5), w/ some soiling and light wear on non-graphic backside. Min. bid \$40.



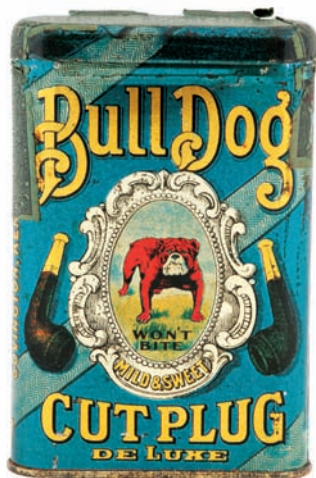
9).Round Oak Match Safe. 2-7/8 x 1.5 x 1/2" unusual celluloid and metal pocket match safe advertising Round Oak brand stoves, featuring nice image of Co.'s trademark Indian character on front and detailed stove on backside. Clean and excellent. Min bid \$40.



10).Champion Spark Plugs Ash Tray. 3.25 x 4.25" (dia.) early ceramic advertising ash tray for Champion brand spark plugs, w/ an actual early plug mounted in center. Excellent. Min bid \$40.



11).Zingo Candy Tin. 10 x 12.25" (dia.) large, early 20 lb. store display tin for Zingo Sweets (Euclid Candy Co., Cleveland, OH) featuring great image of speeding race car. Powerful and impressive looking piece is clean, bright and displays very nicely (as a C. 8+) w/ some scattered scratching and light wear mostly to non-graphic backside (critical grade front C. 8; back 7+). Min. bid \$60.



12).Bull Dog Pocket Tin. 4-5/8 x 3 x 7/8" early tin litho vertical tobacco pocket tin for Lovell-Buffington Co.'s "Bull Dog" brand. Exceptionally nice example is clean, bright and super overall, w/ original sheen (C. 8.5+). Min. bid \$60.



13).Farmers Pride Spice Tin. 3.5 x 2.5 x 1.25" scarce, early tin litho 2 oz. spice tin for Farmers Pride allspice (Hulman & Co., Terre Haute, IN). Clean, bright and excellent, w/ minor wear on backside (front C. 8.5+; back C. 8+). Min. bid \$30.



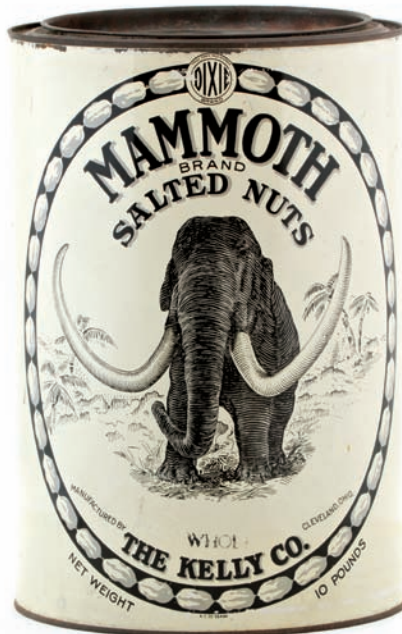
14).Sequoia Oil Can. 5.5 x 4" (dia.) early tin litho crimp seam 1 qt. motor oil can (same image both sides) for "Sequoia" brand (T.C.D.C., Visalia, CA). Attractive and displays quite nicely (as a C. 8), although a closer examination will show some fine scattered surface wear on upper surface of side edge (critical overall grade C. 7.5+). Min. bid \$40.



15).Black Cat Bill Hook. 7.5 x 3.5" (tin advertising section 4.75 x 3.5") scarce, early embossed tin litho advertising bill hook holder for Black Cat brand Shoe Dressing (Nonsuch Mfg. Co., Toronto, Canada), featuring image of Co.'s trademark cat. Has minor bends and a little light wear from use, but overall attractive and displays quite nicely (C. 8/-). Min. bid \$50.



16).Lambertville Boots Calendar. 11-7/8 x 7-7/8" 1917 cardboard calendar advertising Lambertville Co.'s rubber footwear products, featuring great winter scene image of Co.'s Lambertville girl, w/ Brownie characters and footwear at bottom. Clean, bright and very attractive (a strong C. 8.5+) w/ exception of 1/2" tear mark at bottom edge. Min. bid \$40.



17).Mammoth Nuts Tin. 11.25 x 7.5/8" (dia.) early tin litho 10 lb. store tin for "Mammoth" brand salted nuts (Kelly Co., Cleveland, OH) featuring great image of trademark mammoth on both sides. Tin is clean, bright and displays very nicely (a strong C. 8+), w/ a little minor wear on backside. Min. bid \$40.



18).Planters Peanuts Sign. 26.75 x 21.5" (19 x 14" visible) unusual, large, early paper sign for Planters Peanuts, w/ great images of Mr. Peanut promoting Co.'s "Nickel Lunch" campaign. Attractive and displays quite nicely, w/ minor color softening and a little non-offensive light wear (C. 8/-). Framed, matted and ready to hang. Min. bid \$40



19. Ryan's Porcelain Beer Tray. 13.25 x 16" large, early, heavy enameled porcelain advertising beer tray for Thomas Ryan Brewing Co. (Syracuse, NY) featuring great image of Co.'s trademark Indian chief (Baltimore Enamel Co. stamping on backside). Clean and excellent overall (C. 8.5++). Min. bid \$50.

1860's Patent Model



20. Washing Machine Patent Model. 9.5 x 10.75 x 4-7/8" ca. 1860's miniature (salesman's sample sized) wooden patent model for the I.A. Newhall Co.'s washing machine. Wonderful piece is all original, in very nice overall condition, w/ a beautiful, rich surface patina and moving parts inside (has "I.A. Newhall" Co. name on outside front panel and contains partial pieces of original patent office tags assigned to piece in 1869). Min. bid \$60.



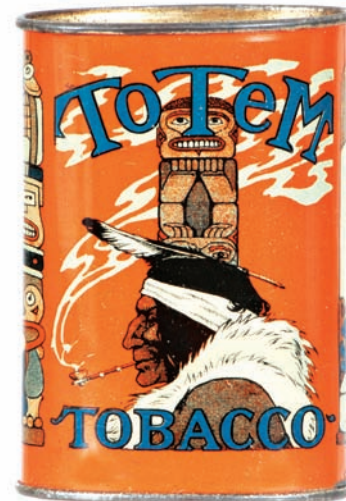
21. Whippet Oil Can. 5.5 x 4" (dia.) scarce, early tin litho solder seam 1 qt. motor oil can for "Whippet" brand (Olympic Refining Co.) w/ great image of racing dog (same image both sides). Full unopened can is clean and very attractive, w/ large dent and a little litho loss (at dent) on backside (front C. 8++; back C. 8-). Min. bid \$40.



22. Pocasset Spice Tin. 4 x 2-3/8 x 1-1/8" scarce, early tin litho 2 oz. spice tin (stick cinnamon) for "Pocasset" brand (Allen, Slade Co., Fall River, MA), featuring great image of Co.'s trademark Indian chief. Clean and very attractive appearance (C. 8+) w/ only minor wear (some typical non-offensive dark spots on gold flash finish of lid). Min. bid \$40.



23. Turkey Coffee. 5.75 x 4.25" (dia.) early tin litho 1 lb. coffee can for "Turkey" brand (A.J. Kasper Co., Chicago and Kansas City, MO) featuring nice images of Co.'s trademark wild turkey (same images both sides). Clean, bright and excellent overall, w/ faint, trace hint of denting and some minor wear on backside (front C. 8.5++; back C. 8+). Min. bid \$50.



24. Totem Pocket Tin. 3.75 x 2-5/8 x 1-3/8" early tin litho slide top oval shaped vertical pocket tin for "Totem" brand tobacco. Clean, bright and excellent appearance (display side C. 8.5+) w/ light scattered wear spots on backside (back C. 7.5+). Min. bid \$60.



25. Kist Soda Sign. 19.5 x 13.5" early embossed tin litho advertising sign for Kist brand soda, w/ black chalkboard section at bottom. Clean, bright and excellent. Min. bid \$40.



26. Mr. Peanut Vendor Bank. 7.75 x 5 x 5.5" ca. 1950's yellow variation plastic mechanical battery operated Mr. Peanut vending bank (a can of Planters nuts sits inside his hat and are dispensed through the slot in neck area). Excellent. Min. bid \$40.



27. Larson's Gum Box. 4.5 x 3-1/8 x 6" (as shown) full early store display box for Larson Co.'s spearmint flavored chewing gum, complete w/ its original 3 rows of gum packs. Gum packs are excellent, counter display box is quite nice overall w/ a slight bit of light age toning in bottom section, (note: has original slip over box cover, which has a fair amount of staining and a some general wear). Min. bid \$50.



28).Haberle Brewing Match Holder. 4-5/8 x 6.5" (dia.) large, early, heavy, blue decorated stoneware countertop match holder by Whites Utica Pottery Co. w/ incised advertising all around for the Haberle Brewing Co., Syracuse, NY. Clean and excellent overall, w/ a little minor wear at bottom edge. Min. bid \$50.

Ford Bank



29).Ford Auto Bank. 2-5/8 x 4.25 x 2-3/8" early, heavy figural white metal advertising bank for an Elizabethtown, PA dealership for Lincoln, Ford and Fordson brand cars, trucks and tractors. Very nice overall condition (C. 8++) w/ lock on base (no key). Min. bid \$40.



30).American Fences Trivet. 3/8 x 6.5" (dia.) unusual, early advertising trivet for American brand fences (American Steel & Wire Co.) w/ attractive tin litho ad in center of fancy wire body. Excellent overall (C. 8++). Min. bid \$30.



31).Plaza Tobacco Canister. 5 x 4-7/8" (dia.) early tin litho small-top style tobacco canister for Plaza brand tobacco w/ attractive image of Co.'s winged trademark logo on both sides. Clean and attractive appearance, w/ minor scattered wear (C. 8+/-). Min. bid \$50.



32).Royal Doulton Auto Plate. 10-1/8" (dia.) early fine china dinner plate by Royal Doulton, featuring hand painted image by designer George Holdcroft, from Co.'s highly collectible motorist series of plates (note: these plates were produced in Co.'s Burslem, England factory from 1903- 1913). Excellent. Min. bid \$40.



33).Beeman's Gum Tin. 4.75 x 5-1/8" (dia.) scarce, early tin litho store display tin for Beeman's brand pepsin chewing gum, featuring photo images of Beeman character on front, back and lid, w/ finely detailed gum stick images all around. A decent and respectable example (C. 7.5) w/ some light scattered wear and a little light fading on lid. Canadian. Min. bid \$50.



34).Motorcycle Tires Calendar. 24.25 x 14.5" large, early paper litho 1917 calendar sign for Firestone motorcycle tires, featuring a powerful and impressive color image of motorcycle and sidecar, w/ riders fishing in stream. Clean, bright and like new in appearance (displays as near mint), although examination under black light will reveal a little very well-done professional restoration. Has been linen backed and is ready for framing. Min. bid \$80.

Miniature Saddle



35).Salesman's Saddle. 13.5 x 6 x 9" early salesman's sample leather saddle is a small version of actual saddle w/ excellent detailing. Very high quality piece, w/ nicely tooled designs and stitching all around and displayed on early wooden counter display rack. Excellent. Min. bid \$60.



36).Wak-Em Up Coffee. 14 x 8-7/8" (dia.) scarce, large store size (10 lb?) tin litho wooden handled coffee can from Andresen-Ryan Coffee Co., w/ same great image on both sides. A powerful and very impressive looking piece that is clean, bright and very attractive (basically displays as a C. 8.5+) w/ exception of a little non-offensive light background wear (critical grade C. 8+/-). Min. bid \$60.



37).Rare Disney Plate. 7.5" (dia.) scarce, early, high quality fine china Bavarian children's plate featuring wonderful Mickey Mouse images on front and early Walter E Disney markings on backside. Excellent. Min. bid \$40.



38).Advertising Fans. Lot includes four attractive early cardboard advertising fans w/ wooden handles (ea. apx. 14.25" tall). Includes: Wehrle Ice Cream; Colonial Restaurant (kid w/ baseball and dogs); White Swan Coffee; and Loy's Service Station (kid w/ boxing gloves). All are excellent. Min. bid \$40 (the lot).



39).Granula Cereal Sign. 12-1/8 x 8.25" very early cardboard litho sign for "Granula" brand wheat cereal, featuring beautiful multi-color lithography. Clean, bright and exceptionally nice (C. 8.5+). Min. bid \$40.



40).Cherry Frap Hanging Sign. 8.75 x 5.5 x 5.5" early figural string top ceiling hanger sign for Cherry Frap brand soda, featuring four early style 2-sided soda bottles. Clean and excellent (C. 8.5+). Min. bid \$40.



41).Sure Shot Display Box. 13 x 17.75 x 5.75" early cardboard store display box for "Sure Shot" brand tobacco, featuring great images of trademark Indian on both sides (originally held 48 5¢ packages). Attractive and displays quite nicely, w/ a little dark toning on backside (nothing serious or offensive) and typical light wear to flaps (display side C. 8+; backside C. 7.5+/8-). Min. bid \$60.



42).Blue Jay Oats Box. 9.5 x 5-3/8" (dia.) early 3 lb. size cardboard oats box for "Blue Jay" brand featuring beautiful multi-color graphics (same image both sides). Clean, bright and very attractive, w/ some wrinkles and light staining at bottom section of backside (front C. 8++; back C. 8-). Min. bid \$40.



43).Smile Soda Hanger Sign. 8-5/8 x 3-5/8" early 2-sided die-cut ceiling hanger sign advertising "Smile" brand soda. Clean and excellent overall w/ original string at top (C. 8.5+). Min. bid \$30.



44).Beardsley Codfish Sign. 12.75 x 4.75" early 2-sided die-cut ceiling hanger sign advertising Beardsley's boxed codfish (Beardsley Co., Newark, NJ, w/ 1896 date on box). Clean and excellent overall, w/ original string at top (C. 8.5+ appearance), w/ trace minor wrinkles in bottom tail area. Min. bid \$40.



45).Adams Gum Box. 5 x 10 x 4.25" early cardboard 2-ps. store display box for Adams Tutti Frutti chewing gum, w/ very attractive color label on outside and a fancy glass lift-up lid on inside for protecting packs (originally held 36 packages). Clean, bright and very attractive (C. 8+). Min. bid \$40.



46). **Motoring Theme Tin.** 4-5/8 x 12.5 x 3-1/8" early purse style "vasculum" lithographed tin container w/ hinged door on front, featuring beautifully embossed image of early auto scene of couple driving through the woods (I'm told these were made for taking on nature hunts for collecting plant specimens). Has decent colors and displays nicely, w/ some light scattered wear from use (C. 7.5+/8-). Min. bid \$40.



47). **Toytown Dairy Wagon Toy.** 4-3/8 x 10.25 x 3" early tin litho wind-up "Toytown Dairy" milk delivery wagon toy by Marx. Clean, bright and excellent overall (C. 8.5/+), w/ only very minor wear (works nicely). Min. bid \$40.



48). **Wrigley's Counter Display.** 6-1/8 x 17.25 x 4" early country store metal countertop stand for displaying packages of Wrigley's chewing gum. Clean, bright and excellent overall (a strong C. 8++) w/ exception of small hole in top area of marquis. Min. bid \$40.

Cracker Jack Prizes



49). **Cracker Jack Prizes.** Lot includes seven different early tin lithographed Cracker Jack toy prizes. All are clean and very nice overall (avg. C. 8++). Min. bid \$40 (the lot).



50). **Goal Needles Case.** 3.5 x 6.5" large, early cardboard case for "Goal Line" brand sewing needles, w/ color graphic image of motorcycle on front and streamlined land speed car on back (printed on heavy, semi-gloss finished cardstock). Very high quality, never used piece is clean, bright and excellent, complete w/ the 35 original needles inside. Min. bid \$30.



51). **Auto Letter Openers.** 9.25 x 1.25" (ea.) two very early advertising letter openers for Buick and Cadillac brand motor cars. Very high quality pieces are crafted in bronze w/ beautifully detailed cloisonné enameled Co. advertising logos on each. Excellent, w/ nice surface patina. Min. bid \$40 (the lot).



52). **Autumn Leaf Spice Tin.** 3.25 x 2.25 x 1-3/8" early tin litho spice tin for Autumn Leaf brand (Burt Zaiser Co., Burlington, IA) w/ attractive oak leaf image. Clean, bright and excellent overall (C. 8.5/+) w/ exception of small dent and minor wear on left side edge. Min. bid \$30.



53). **Jumbo Bread Sign.** 12-7/8 x 15" early tin litho die-cut sign for Brown's Jumbo brand bread. Clean, bright and excellent appearance (displays as a strong C. 8.5/+) w/ only the slightest of minor wear. Min. bid \$50.



54). **Hancock Grease Tin.** 4.25 x 3.25" (dia.) early tin litho 1 lb. grease tin for Hancock Oil Co.'s "Old Black Joe" brand axle grease w/ same great image on both sides. Clean and excellent overall (C. 8+), w/ contents. Min. bid \$40.



55).Schoenhut Toys Catalog. 9-7/8 x 7.25" unusual, heavily illustrated ca. 1928 catalog from Schoenhut Toy Co., featuring 36 heavily illustrated pages of Co.'s circus toys, etc., including several incredible full color pages. Excellent overall, w/ only minor wear. Min. bid \$40.

Salesman's Sample



56).Salesman's Sample Wash Wringer. 8.25 x 13 x 2" unusual, early miniature laundry wringer for Anchor Co.'s "Bicycle" brand. Attractive, very high quality, working piece has nice surface patina and displays and works well, w/ general wear and early surface loss to the blue painted lettered cross bars just above wringers (C. 7.5/+). Min. bid \$40.



57).Miniature Service Station Toy. 1.75 x 2 x 2-7/8" great looking, very early, miniature tin litho service station toy along w/ a nice early toy auto (English). Excellent (C. 8.5). Min. bid \$40.

Match Box Holder



58).Yellow Cab Match Holder. 1-5/8 x 2-3/8 x 7/8" early, celluloid covered (over metal) matchbox holder advertising the Yellow Taxi Co. of Salisbury, MD, w/ great image of early yellow cab brand taxi car. Clean, bright and excellent (C. 8.5++) w/ minor curling at bottom edge. Min. bid \$40.

Sample (Cracker Jack Co.)



59).Angelus Marshmallows Sample Tin. 2.25 x 3-7/8" (dia.) scarce, early tin litho pry lid "Sample" can for Cracker Jack Co.'s "Angelus" brand marshmallows. Clean, bright and excellent (C. 8.5+) w/ paper advertising insert on lid. Min. bid \$40.



60).Junket Pot Scraper. 2-5/8 x 3.25" early 2-sided tin litho advertising pot scraper for "Junket" brand desert products, w/ different images on both sides. Clean, bright and very attractive (basically a C. 8.5+) w/ a little very minor wear at outside edge. Min. bid \$40.



61).War Bonds Window Display. 26.75 x 39" early cardboard tri-fold window display sign by T.F. Moore Co. for Liberty War Bonds, featuring powerful WWI trench war fighting images. Has strong colors and displays quite nicely w/ non-offensive light wear (basically displays as a C. 8+) w/ exception of some wear marks at top edge and some light, fairly minor red color touch-up along the inside vertical red margin lines at inside folding panel edges (critical grade C. 8/-). Min. bid \$40.



62).Coca-Cola Die-Cut Sign. 7.5 x 8.5" early cardboard easel-back countertop sign featuring great layered die-cut bottles pouring into glass image. This scarce and desirable sign was made to cross promote Coca-Cola and Carioca brand Cuban style rum in mid 1930's (just after the repeal of Prohibition), w/ great "United Tastes of America" slogan at base. Sign is crisp and like new (near mint), as found never used, still in its original envelope (envelope has soiling and some general light wear). Min. bid \$50.



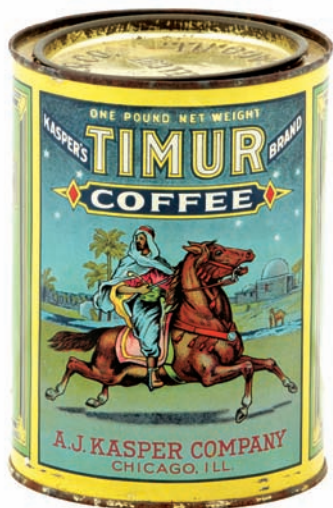
63). Moxie Die-Cut Sign. 22 x 17-3/8" (16.25 x 12" actual piece) scarce, large, very early cardboard die-cut sign for Moxie, w/ unusual slogans. Clean and very attractive in appearance (displays as a C. 8+/+) w/ a little non-offensive light edge wear. Nicely presented in attractive period frame. Min. bid \$50.



64). Columbia Candy Bucket. 12.25 x 13.5" (dia.) early wooden candy bucket for Columbia brand stick candy (Kinney & Co., Hastings, NE) featuring wonderful graphic image of children holding flag and candy sticks. Excellent and all original (a strong C. 8+/+) w/ a little non-offensive minor wear at outer edges of label. Min. bid \$50.



65). Iowa Gas Station Sign. 18.5 x 14.25" unusual ca. 1930's cardboard easel back die-cut sign promoting an independently owned Iowa service station. Great looking piece is very nice overall (C. 8+/+) w/ slight soiling and minor wear in bottom green section. Min. bid \$40.



66). Timur Coffee. 5-7/8 x 4-25" (dia.) scarce, early tin litho 1 lb. coffee can for "Timur" brand (A.J. Kasper Co., Chicago) featuring stunning multi-color lithography (same image both sides). Clean, bright and exceptionally nice, w/ very minor wear on backside (a strong C. 8.5+/+). Min. bid \$50.



67). Elm Park Spice Tin. 4 x 2-3/8 x 1-3/8" early tin litho 3 oz. tin litho spice tin (cinnamon) for Elm Park brand w/ attractive image of Co.'s trademark park scene. Clean and bright and displays pretty nicely, although there is a little light wear on both sides (C. 7.5+/+). Min. bid \$30.



68). Cork Town Pocket Tin. 4.5 x 3 x 7/8" early tin litho vertical tobacco tin for Tobin Tobacco Co.'s "Cork Town" brand. Clean, and excellent (C. 8.5+/+). Min. bid \$60.



69). Sooner Queen Motor Oil Can. 5-5/8 x 4" (dia.) scarce, early tin litho crimp seam 1 qt. motor oil can for "Sooner Queen" brand (Salyer Refining Co., Oklahoma City, OK). Full unopened can is clean and displays quite nicely (as a C. 8), although there is some minor scattered speckles and an area of some faint hazy oxidizing in upper surface at mid right section in background area- at right and above back section of cow (critical grade C. 7.5+/+). Min. bid \$50.

Baseball Mirror



70). Tea Table Spice Tin. 3-1/8 x 2.25 x 1.25" scarce, early tin litho spice tin (cloves) for "Tea Table" brand (Peyton Palmer Co., Danville, IL) featuring beautiful multi-color graphics. Clean, bright and exceptionally nice (C. 8.5+/+). Min. bid \$40.



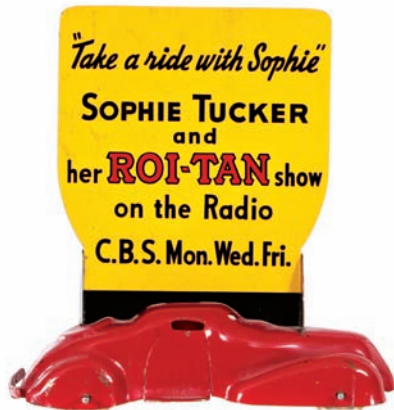
71). Pittsburgh Pirates Mirror. 2-7/8 x 1-75" scarce, early celluloid advertising pocket mirror for Ross Hosack Co. Men's Clothiers (Wilksburg, PA) featuring full 1916 Pittsburgh Pirates home and away game schedule listing. Has a little bit of light, scattered yellowish toning, but otherwise very nice. Min. bid \$40.



72). Manure Spreaders Match Holder. 4-7/8 x 3-3/8" scarce, early tin litho advertising match holder for American Harrow Co. manure spreaders, w/ beautiful graphic image of farmer using product in fields. Has strong colors and displays nicely (displays as a strong C. 8+/+) although close examination will show a couple crease marks (in section just below "Man" in "word "Manure"). Min. bid \$40.



73). Strong-Heart Coffee. 6 x 4.25" (dia.) early tin litho 1 lb. coffee can for "Strong-Heart" brand (Charles Hewitt Co., Des Moines, IA) featuring beautiful graphic image of Co.'s trademark Indian character (same image both sides). Clean, bright and exceptionally nice (display side near mint); back side excellent w/ exception of small, 1/4" scratch mark in left background area. Min. bid \$50.



74) Roi-Tan Advertising Car. 4.5 x 4-1/8 x 1.5" early metal toy advertising car for Roi-Tan brand cigars, promoting Co.'s 1939 Chevrolet car give-away promotion airing on CBS radio network's 1939 Sophie Tucker show. Clean, bright and excellent, w/ only very minor wear (C. 8++). Min. bid \$40.



75) Auto Knives Lot. Lot consists of three different early metal figurative auto related pocket knives (ea. apx. 5/8 x 2-3/8"). Very high quality (German made) w/ nice detailing. Excellent overall (light wear spot to tip of blade on bottom knife). Min. bid \$50 (the lot).



76) Adams Gum Tin. 6 x 6.75 x 4.75" early tin litho hinged lid store display tin for Adams Co.'s Spearmint chewing gum. Clean, bright and displays very nicely (as a C. 8+) although close examination will show a little non-offensive minor scattered wear, including a few light oxidized spots on lid (critical grade C. 7.5+/8-). Min. bid \$40.

Sealed (Unopened)



77) Edgeworth Pocket Tin. 4-3/8 x 3 x 7/8" unusual Canadian striped variation tin litho vertical tobacco pocket tin for Larus Co.'s "Edgeworth" brand. Full, sealed, never opened tin is clean, bright and like new (near mint). Min. bid \$40.



78) Harley-Davidson Oil Can. 5.5 x 4" (dia.) early tin litho solder seam 1 qt. motor oil can for Harley motorcycles. Full, sealed (never opened) can is clean and excellent overall (C. 8.5+) w/ exception of some oxidizing on lid and a little minor denting. Min. bid \$40.



79) Continental Cubes Pocket Mirror. 2.75 x 1.75" early, oval celluloid advertising pocket mirror for Continental Cubes brand tobacco, featuring great image of saloon girl seated on pocket tin holding up a winning poker hand. Clean, bright and excellent. Min. bid \$40.



80) Chef Spices Match Holder. 4-7/8 x 3-3/8" scarce, early tin litho advertising match holder for Chef Brand Spices (Berdan Co., Toledo, OH) featuring great image of Co.'s trademark chef character. Has strong colors and displays quite nicely (as a strong C. 8+), although close examination will show some minor light background wear, w/ some fairly heavy general wear to the hanging match basket section. Min. bid \$40.



81) Iron Gas Pump Toy. 6.25 x 2.75" (dia.) early figural cast iron gas pump toy w/ working crank on side that lowers and raises measuring gauge. Has nice early paint surface, w/ light wear from use (C. 8/-), complete w/ original string hose (missing nozzle at end). Min. bid \$40.



82) Dentyne Gum Stand. 7.25 x 2-7/8 x 3-7/8" early die-cut tin litho countertop store display for American Chickie Co.'s Dentyne brand chewing gum (made for holding a full box of gum packs). Clean and attractive appearance (a strong C. 8++) w/ a couple light scuffs on base. Lot includes three Dentyne gum packs. Min. bid \$50.



83) Purest Talc Tin. 4 x 1.75" (dia.) scarce, early tin litho "Purest Talcum" talc tin, featuring attractive image of Co.'s trademark girl on front and lid (lithography by American Stopper Co., Brooklyn). Note: info on backside states it can also be used as a "face and tooth powder with pleasant results". Full, never used tin is clean and excellent (C. 8.5+) w/ very minor wear on lid. Min. bid \$40.



84) Oilzum Fan. 13.25 x 7-7/8" early cardboard fan on wooden stick handle advertising Oilzum brand motor oils and lubricants, w/ different text images of Co.'s trademark driver character on both sides. Attractive and displays nicely, w/ typical expected minor wrinkles and minor speckled toning and wear (C. 8/-). Min. bid \$40.



85).Baby Ruth Gum Piece. 2-1/8 x 7.75 x 6" unusual, early countertop store display piece for Curtis Co.'s "Baby Ruth" brand chewing gum. Tin litho gum display still has 15 original gum packs and its attached reverse glass change receiver w/ great reverse images promoting Co.'s mint gum. Some fade and wear to the tin gum compartment (the removable glass change receiver is clean and excellent overall (w/ minor darkening in gold background color). Min. bid. \$40.



86).Lehnert Beer Tip Trays. 4.25" (dia.) Lot of two early advertising tip trays for Lehnert Brewing Co. (Catasauqua, PA). Both are clean, bright and excellent overall (C. 8.5+/-), w/ exception of small darkening area over first "e" of "Lehnert's" on example w/ buck. Min. bid \$50 (the lot).



87).Standard Oil Bumper Tag. 5.25 x 9" early embossed tin litho advertising bumper tag/ license plate attachment for Standard Oil Co. Clean and attractive appearance, w/ some minor soiling and light wear from use (C. 8/-). Min. bid \$30.



88).Marathon Oil Can. 6 x 8.5 x 5-5/8" early hand-soldered tin litho 1 gallon sized motor oil can for Marathon brand (Transcontinental Oil Co., various cities). Clean and attractive overall appearance, w/ some light expected wear from use (C. 7.5+/-8-). As found, might improve a bit w/ cleaning. Min. bid \$40.



89).Nash Advertising Car. 2-3/8 x 5-3/8 x 3/4" small, early wooden advertising toy car giveaway promoting John O'Hare, a Long Island City, NY Nash car dealership. Wooden body and moving wheels, w/ paper litho transfer car image on both sides. Excellent overall (C. 8+/-) w/ exception of typical paint loss to wheels. Min. bid \$20.



90).Carborundum Display. 2.75 x 11.25 x 3-5/8" early, very high quality figural brass or bronze countertop store display for Carborundum brand sharpening stones, complete w/ large original sharpening stone at top. Excellent w/ nice, deep, rich, all original surface patina. Min. bid \$40.

Currier & Ives Advertising (Sealy's Veterinary Cures)



91).Seely Veterinary Medicine Signs (Currier & Ives). A matched set of two scarce 13-1/8 x 17.25" (11-1/8 x 15.25" visible) early hand colored Currier & Ives stone lithographed advertising prints w/ product advertising for Seely's Cough, Heave and Distemper Cure veterinary medicine, showing before and after scenes (1880 Copyright). Prints have a little typical toning, light staining, minor fading and some expected light general wear for their age, but overall are attractive and display quite nicely (C. 7.5+/-) as found in attractive period frames. Min. bid \$60 (the set).



92). American-Maid Pot Scraper. 1.75 x 3" early tin litho advertising pot scraper for "American-Maid" brand bread, in shape of Co.'s early bread loaf. Clean, bright and excellent (C. 8.5/+). Min. bid \$40.



93). Advertising Turtles. 2-3/8 x 1-5/8 x 5/8" (ea.) lot of three early figural advertising turtles w/ cast iron bases and celluloid advertising "shells". Includes: Star Line, Harvard, IL; Northwestern Glass Co., Minneapolis; and L. D. Woodington, Phil'a. Excellent. Min. bid \$50 (the lot).



94).



Spark Plug Cigarette Lighter



94). Bosch Spark Plugs Cigarette Lighter. 2.25 x 5/8" (dia.) early, very high quality figural metal and ceramic cigarette lighter advertising "Lavalette-Bosch" brand spark plugs (shaped like a miniature spark plug). Excellent, w/ its original carrying case. Neat piece! Min. bid \$30.



95). Shell Display Boxes. Lot consists of three full, never used product boxes of Shell Oil Co. Stick Lubricant tins (6 tins in each box). Includes one box of Dry Stick lubricants and two boxes of Co.'s "Door-Ease" (tins measure 4-5/8 x 1" (dia.); boxes 6.5 x 4-7/8 x 1-1/8"). Excellent. Min. bid \$40 (the lot).



96). Shell Oil Uniform Badge. 2-1/8 x 2" large, early, high quality Shell Oil Co. service station employees uniform badge w/ beautiful cloisonné enameled porcelain design. Like new condition. Min. bid \$30.



97). White Star Laundry Badge. 1.5" (dia.) unusual, early drivers uniform badge from the White Star Laundry Co. (Brockton, MA) w/ beautifully detailed inlaid cloisonné enameling. Clean and excellent. Min. bid \$20.



98). Fort Bedford Mirror. 1.75" (dia.) early celluloid advertising pocket mirror for Fort Bedford brand peanut butter, w/ nice graphic image of jar. Clean, bright and very attractive (examination under magnification will reveal minor nicks and light wear at outer edge- mentioned for accuracy, barely noticeable and not at all detracting). Min. bid \$40.



99). Dr. Lesure's Vet Tin. 1 x 3" (dia.) early tin litho 3 oz. product tin for Dr. Lesure's Gall Remedy. Full, never used tin is clean and excellent overall (a strong C. 8++) w/ exception of a couple rub/abrasion marks on narrow side edge. Min. bid \$20.



100). Orioles Cigar Can. 5.25 x 5" (dia.) scarce, early tin litho 50 ct. cigar can for "Orioles" brand (C.E. Acton Co., Belmont, OH) featuring stunning, multi-color graphics (Heekin Can Co. lithographers). Tin is clean, bright and exceptionally nice in appearance (displays as a strong C. 8+), w/ some non-offensive light wear (mostly on non-graphic backside) and expected typical darkening/oxidizing to red flash finish of lid. Min. bid \$50.



101). RCA Electric Motion Clock. 12.5 x 12.5 x 4.25" unusual, ca. 1950's electric light up motion clock advertising RCA brand TV and Radio tubes w/ metal case and glass front panel. Clean and excellent, in nice working condition. Min. bid \$40.

Boy Scouts



102). Sand Pail. 4-1/8 x 4-7/8" (dia.) unusual, early tin litho toy sand pail featuring beautiful graphic scouting scene on one side and children at seashore on other (McDonald Mfg. Co., Toronto, Canada). Has strong colors and displays very nicely (C. 8++), w/ light wear on inside. Canadian. Min. bid \$40.

Cracker Jack Prizes



103).Cracker Jack Prizes. Lot includes five different early tin lithographed Cracker Jack toy prizes. All are clean and very nice (avg. 8++). Min. bid \$40 (the lot).

Planters Peanuts



104).Planters Letter Opener. 9" long, early metal advertising letter opener w/ heavy figural peanut handle advertising Planters Peanut Co. (embossed: "Planters Suffolk" in peanut handle). Structurally piece is excellent, although handle has general overall wear to paint surface from years of use. Min. bid \$30.

Rare Gum Doll



105).Double Bubble Ad Doll. 21 x 9.5 x 4" great looking, large, early promotional advertising doll for Fleece Co.'s "Double Bubble" brand chewing gum. Excellent overall (C. 8/+). Note: this scarce piece had been photographed and was slated to be featured on the back cover of Bill Ennis's chewing gum book. Min. bid \$50.



106).Dr. Morse's Fan. 13 x 8-1/8" (dia.) early cardboard fan on wooden stick handle advertising Dr. Morse's Indian Root Pills featuring stunning multi-color graphic Indian image, w/ text advertising on backside. Attractive and displays nicely w/ typical expected minor wrinkles and light edge wear (C. 8+/-). Min. bid \$40.



107).French Opera Coffee. 7-3/8 x 6.25" (dia.) nice early 3 lb. tin litho coffee can for "French Opera" brand (American Coffee Co., New Orleans) w/ attractive images of opera house on both sides. Clean, bright and attractive overall w/ minor scattered wear (C. 8/+). Min. bid \$40.



108).Detective Agency Signs. Lot includes two small, early, porcelain door push sized Detective Agency property protection warning signs issued by Fingerhuth (5.5 x 3.5") and Lewis Systems Co. (5 x 3"). Both are clean and like new (near mint). Min. bid \$40 (the lot).



109).Pioneer Oil Can. 5.75 x 4" (dia.) scarce, early tin litho solder seam 1 qt. motor oil picture can for "Pioneer" brand. Has strong colors and displays quite nicely (as a strong C. 8/+), although close up examination will show some light scattered wear and minor oxidizing spots scattered about, w/ about 70% of lid cut away (critical grade C. 7.5). Min. bid \$40.



110).Duck Hunting Match Holder. 4-7/8 x 3-3/8" scarce, early tin litho advertising match holder for D.W. Herb, General Merchandise store, featuring wonderful duck hunting scene. Clean and very attractive appearance (C. 8/+), w/ a little minor bending (nothing offensive or detracting) and some light wear to front match basket area. Min. bid \$40.



111).Yankee Boy Pocket Tin. 4-1/8 x 3.5 x 1" early tin litho vertical tobacco pocket tin for Scotten Dillon Co.'s "Yankee Boy" brand, featuring great image of kid batter (dark hair version). Clean, bright and excellent overall (displays a strong C. 8/+ w/ litho wear spot in one of checkerboard squares on backside. Min. bid \$60.

Taxi Badge



112).Yellow Cab Badge. 2.25 x 1.5" scarce, early Yellow Cab taxi company uniform badge issued to driver for his safe driving. Neat and unusual high quality piece, w/ beautifully inlaid cloisonné enameled porcelain. Excellent overall. Min. bid \$40.



113).Advertising Skull. 3 x 4 x 3" unusual, early, heavy figural skull shaped chalk-ware advertising ashtray for Clay-Adams Co. (dealers in skeletons, skulls, charts, and surgical and laboratory equipment, etc.). Very high quality piece is clean and excellent, w/ nice surface patina. Min. bid \$40.

Auto Pinholders



114).Auto Pin Cushions. (larger example 2.25 x 5.25 x 2.25"; smaller 1-5/8 x 3 x 1-5/8") two early figural metal automobile shaped pin holders, w/ a cloth section at top for holding pins and needles Attractive overall, w/ some ageing and light general wear to surface finishes (C. 7.5+/8-). Min. bid \$40 (the lot).



115).Lesh's Oil Can. 6 x 8 x 3" early tin litho hand-soldered 1/2 gallon sized motor oil can for "Lesh's" brand (National Oil Co., Arkansas City, KS). Has strong colors and displays nicely (same on both sides), w/ light general expected wear from use (C. 8/-). Min. bid \$40.

Chewing Gum Covers



116).Chewing Gum Covers. Lot of four early mailed advertising covers (envelopes) from various chewing gum Co.'s, each w/ beautifully detailed graphic advertising (cancellations date from 1893 to 1906). Includes: Wm Wrigley Co.; Baltimore Chewing Gum Co. (has interesting promotional literature inside); Primley's; and W.J. White Co. Excellent. Min. bid \$30 (the lot).



117).Early Cigar Boxes. Lot includes two early wooden cigar boxes w/ attractive paper labels. Includes: "State Seal" 7.5 x 8.25 x 5.25" w/ beautiful stone litho featuring early image of Indiana's State Seal; and "Lord Crasby" 7.25 x 8.25 x 5" featuring attractive American Indian images. Both are clean, attractive and display nicely (some paper loss to tax stamp on State Seal box). Min. bid \$40 the lot.

Cracker Jack Prizes



118).Cracker Jack Trains. Lot of five different early miniature tin lithographed Cracker Jack train car toy insert prizes along with a five piece yellow plastic set of train car prizes. Clean and very nice overall (C. 8/+). Min. bid \$40 (the lot).



119).Red Cross Porcelain Sign. 11 x 4 x 1-5/8" early, heavy enameled porcelain 2-sided flange sign for Red Cross Disaster Relief Headquarters. Never used sign is crisp, bright and like new, w/ nice original surface sheen. Min. bid \$40.

Tin Litho Die--Cut Sign

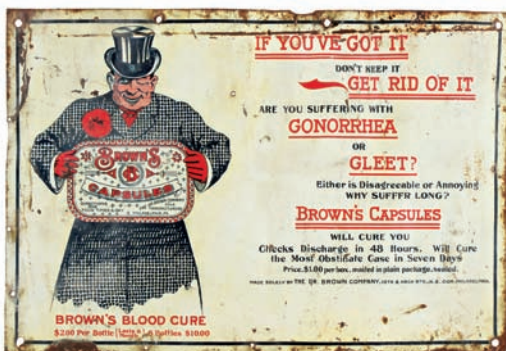


120).Shaving Brush Sign. 9.25 x 27-3/8" scarce, large, early die-cut advertising sign for "Rubberset" brand shaving brushes. Sign has faded to reds and general overall wear, but still displays pretty well (C. 7/-). As found, should improve some w/ cleaning (note: we sold a choice condition example of this sign a couple years back for over \$14,000). Min. bid \$60.



121).Cigar Labels Catalog. 6 x 8.5" early 20 pg. product catalog for F.M. Howell Co.'s (Elmira, NY) cigar box labels, w/ actual full sized embossed labels inside w/ pricing info on many and also includes two pages promoting Co.'s colorful cigar bands. Has soiling and stains on cover, w/ some faint, trace staining at bottom right outer edges on some of pages. Min. bid \$30.

Sexual Diseases
"Cure"
Sign



122).Brown's Medicine Sign. 6.75 x 10" extremely rare, early tin litho sign featuring great image of man holding giant product tin of "Brown's Capsules", a sexual diseases "Cure" for gonorrhea and gleet, w/ additional advertising below man for Co.'s \$2.00 bottles of "Brown's Blood Cure" product. Sign has strong colors and displays pretty well, although there is some fairly heavy wrinkling; as well as some oxidizing, tiny nail holes and some general overall wear (mostly at outer edges).A fine black frame would enhance appearance nicely, as found and might improve a bit w/ cleaning (C. 7-). Min. bid \$40.



123).Folkly Tea Tins. 8 x 6.75" (dia.) a matched pair of very early country store countertop tins for loose leaf tea, featuring wonderful Oriental themed images on each against beautiful gold background. Powerful and impressive country/folk art look, w/ a clean and very attractive appearance (basically displays as a C. 8/+) w/ exception of wear at bottom section of tin w/ man. Min. bid \$50 (the lot).



124).LAW Flat Pocket. 2.75 x 4.5 x 5/8" scarce, early tin litho horizontal pocket tin for L.A.W. (League of American Wheelman) brand sliced plug tobacco, featuring beautifully detailed early bicycle images (same image on both sides). Clean, and very attractive in appearance. (a strong C. 8++), w/ only minor wear (Hasker & Marcuse Litho.). Min. bid \$50.



125).Bunte Marshmallows Tin. 2-3/8 x 4.25" (dia.) early tin litho 4 oz. size marshmallow tin for Bunte brand, featuring nicely detailed color graphics (same great trademark image on lid). Clean, bright and very attractive (C. 8++). Min. bid \$30.



126).Sycamore Wagons Mirror. 2 x 2.75" unusual, early celluloid advertising pocket mirror for Sycamore Wagon Works Co., w/ nicely detailed image of a Clover Leaf Dairy milk wagon. Clean and excellent. Min. bid \$40.



127).Anthracite Spice Tin. 3-1/8 x 2-3/8 x 1-3/8" scarce, early tin litho 1-1/2 oz. spice tin for Anthracite brand red pepper (Goesser & Jacobs Co., Hazleton, PA) featuring attractive coal mining images. Clean and very attractive (a strong C. 8++). Min. bid \$40.



128).Katz Peanut Tin. 4-3/8 x 3-7/8" early tin litho 1 lb. can for Katz brand salted peanuts, w/ images of Co.'s trademark cats on both sides. Tin is attractive and displays nicely (C. 8/-), w/ a few light scratch lines on lid. Min. bid \$30.



129).Twin Oaks Sample. 3 x 2.25 x 5/8" early, miniature embossed tin litho sample tin (marked "Trial Package") for "Twin Oaks" brand tobacco. Has bright color and retains most of its original shiny silver finish (a strong C. 8++) w/ exception some typical expected tarnishing and light wear on curved roll-over style lid. Min. bid \$40.



130).Veteran Spice Tin. 3 x 2-3/8 x 1.25" early tin litho 1-1/2 oz. spice tin (allspice) for "Veteran" brand (Brewster Gordon Co., Rochester, NY) featuring great graphic image of elderly Civil War Union officer. Clean, bright and excellent (C. 8.5/+). Min. bid \$40.



131).Automobile Molds. Lot includes three different early 2-ps. metal chocolate candy molds, each featuring great early automotive design (2.75 x 5 x 5/8"; 2.25 x 5.5 x 1.75"; and 2.75 x 5.5 x 3/4"). Also includes a nice, early, heavy pewter auto themed ice cream mold. All are excellent and all original w/ nice surface patina. Min. bid \$40 (the lot).



132).



132).1958 Chevrolet Showroom Book. 10-1/8 x 13-3/8 x 1-5/8" large, hard-covered Chevrolet dealer showroom salesman's book, filled w/ 100 pages of great illustrations on heavy stock paper of the Co.'s 1958 car models, various options available, etc. (also includes 2 separate attached spiral booklets at back containing actual fabric samples and paint color chip options). Excellent overall, w/ minor wear at outside edges of cover. Min. bid \$50.



133).Teddy Bear Peanut Butter. 3.5 x 3-5/8" (dia.) scarce, early tin litho 1 lb. peanut butter pail for Teddy Bear brand (C & J Jones Co., Winnipeg, Canada) w/ nice images of toy bears on both sides. Clean, bright and excellent in appearance, w/ couple small wear spots in bottom side background area (C. 8+/-). Min. bid \$50.

Candy Box



134).Black Kids Candy Box. 6.75 x 10.25 x 3-1/8" early 2-ps. cardboard candy box for Heide Co.'s "Black Kids" brand penny candy featuring great image of old black man playing banjo and dancing black children (box originally held 1000 pieces). Has strong colors and displays nicely, w/ a little non-offensive faint staining on lid (C. 8/-). Min. bid \$40.



135).Cornhill Whiskey Tip Tray. 4.25" (dia.) scarce, early tin litho change tray for Wolcott Co.'s Cornhill Whiskey (Rochester, NY) featuring very attractive image of Co.'s trademark Indian. Clean and excellent (C. 8.5) w/ exception of some leftover mounting tape residue on non-graphic backside. Min. bid \$40.



136).King Edward Pocket Tin. 4.5 x 3 x 7/8" early tin litho vertical tobacco pocket tin for Dominion Tobacco Co.'s "King Edward" brand. Clean, bright and excellent overall (C. 8+), w/ very minor denting and wear (Canadian). Min. bid \$50.



137).Cream of Harvest Spice Tin. 3-1/8 x 2-3/8 x 1-3/8" scarce, early 2 oz. tin litho spice tin (red pepper) for "Cream of the Harvest" brand (Auburn Mercantile Co., Auburn, NY) featuring beautiful graphic farming images. Clean, bright and excellent overall (C. 8.5+), w/ exception of non-offensive minor dent mark. Min. bid \$40.



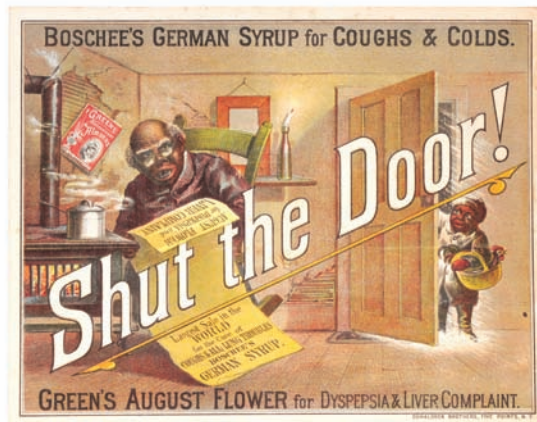
138).Coca-Cola Soda Glass. 3.75 x 2-5/8" (dia.) scarce, ca. 1904 fine, early Coca-Cola soda fountain serving glass w/ syrup line at bottom. Glass is excellent, w/ light wear mark in top area of 2nd "C" in "Coca-Cola". Min. bid \$20.



139).Sana-Dermal Talc. 4-7/8 x 2.5 x 1-7/8" early paper label (over cardboard) oval talcum powder container for Vantine Co.'s "Sana-Dermal" brand talcum powder, featuring beautifully detailed embossed graphics. Clean and excellent overall (a strong C. 8+/-) w/ exception of an abrasion area on top of lid. Min. bid \$40.



140).Canned Vegetables Sign. 10 x 13.5" early cardboard litho sign for Hemingway Preserving Co.'s "Auburn" brand canned vegetables, featuring beautifully detailed color graphics. Clean, bright and very attractive appearance (basically a strong C. 8++) w/ a little minor wear in outer white margin area. Min. bid \$40.



141).Medicine Door Sign. 7-7/8 x 9-7/8" wonderful, very early country store window/door advertising sign on heavy card stock for Boschee's German Syrup and Green's August Flower patent medicine products, w/ great image of old black man and young black child at door. Excellent (C. 8.5/+). Min. bid \$50.



142).Caddy Candy Tin. 4.5 x 3.5" (dia.) unusual, early tin litho 1/2 lb. size candy tin for Whitman Co.'s "Caddy" brand peanut brittle candy, w/ great golfing themed image. Clean and excellent (C. 8.5). Min. bid \$40.



143).Penn-troleum Oil Can. 5-5/8 x 4" (dia.) early tin litho 1 qt.solder seam motor oil can for "Penn-troleum" brand (Cato Oil and Grease Co., Oklahoma City, OK) featuring great speedboat image (same image both sides) w/ nicely detailed images of cars, planes, etc. around top edge. Full, unopened can is clean and excellent overall (C. 8+), w/ minor denting. Min. bid \$40.



144).Merriam Cigars Tip Tray. 6-7/8 x 5" early tin litho advertising tip tray for John Merriam Co.'s "Habana Segars", featuring great image of Co.'s trademark bulldog. Clean, bright and very nice (C. 8++). Min. bid \$40.



145).Swallow Coffee. 5.75 x 4.25" (dia.) early tin litho 1 lb. product can for "Swallow" brand coffee (Swallow Coffee Mills, Chicago) featuring beautiful multi-color graphics (different images both sides). Clean, bright and displays nicely (as a strong C. 8++) w/ a little non-offensive background wear. Min. bid \$50.



146).Crystal Springs Beer Mug. 6-7/8 x 3-3/8" (dia.) early, blue decorated pilsner shaped heavy stoneware beer mug by Whites Utica Pottery Co. advertising the Crystal Spring Brewing Co.'s lager beer (Syracuse, NY). Excellent, w/ attractive detailing. Min. bid \$40.



147).Pluto Water Fan. 14.25 x 6-5/8" early cardboard fan w/ wooden handle for "Pluto" brand medicinal waters, featuring great image of Co.'s devil character on front, w/ text advertising on backside. Has strong colors and displays quite nicely, although there are light rubs and some scattered wear, w/ minor toning and slight staining on backside (C. 7.5/+). Min. bid \$20.

Match Scratcher



148).Queen Washers Match Striker. 9.25 x 5-3/8" large, early cardboard match striker advertising Knoll Co.'s Queen brand washers (tan pathway to house has a sandpaper like surface for scratching). Clean, bright and excellent overall (C. 8.5) w/ some light separation /chafing marks and light wear on backside (from scrapbook removal). Min. bid \$30.



149).Haberle Brewing Co. Mug. 6-7/8 x 3-3/8" (dia.) early, blue decorated pilsner shaped heavy stoneware beer mug by Whites Utica Pottery Co. advertising the Haberle Brewing Co.'s lager beer (Syracuse, NY). Excellent, w/ attractive detailing. Min. bid \$40.



150).Barlow's Soap Display. 4-5/8 x 6.75 x 1" early 2-ps. product box for Barlow's laundry bluing product, complete w/ eight of its full, original product tins. Box lid has some faint scattered speckling/foxing dots, but still attractive and displays nicely (tins are excellent). Min. bid \$40 (the lot).



151).Marx Fire Chief Toy. 3 x 11 x 4.25" early tin litho mechanical friction drive Fire Chief toy car by Marx (works nicely). Clean, bright and excellent overall (C. 8.5/+). Min. bid \$40.



152).Wrigley's Trolley Sign. 15.25 x 25.25" (10 x 20.25" visible) early cardboard trolley car sign for Wrigley's gum. Displays nicely (as a strong C. 8+/) w/ a little wear at bottom right outside corner and a small tear mark and non-detracting trace bit of wear in sky area. Framed. Min. bid \$40.



153).Mechanical Target Toy. 4.75 x 6-7/8 x 3.25" unusual, early tin wind-up mechanical target toy featuring moving gangster target heads at top of get-away car. Excellent overall (C. 8+/) w/ minor wear from use (works nicely). Min. bid \$40.



154).Medicinal Whiskey Tip Tray. 4.25" (dia.) early tin litho tip tray for Clark's Rye whiskey (fine print on bottle refers to its medicinal properties). Clean, bright and excellent (a strong C. 8+/), w/ only very minor wear. Min. bid \$40.



155).Porcelain Phone Sign. 8.5 x 11 x 2" small, early enameled porcelain flange sign from the Southwestern States Telephone Co. w/ same nice image on both sides. Basically crisp, clean and like new w/ exception of a little very minor edge wear (nothing serious or detracting). Min. bid \$50.



156).Lumber Co. Paperweight Mirror. 3.75" (dia.) scarce, early celluloid covered paperweight/palm mirror for Falls City Lumber Co. (Portland, OR), featuring great image of trademark Indian. Has strong colors and displays very nicely, w/ only very minor wear (has trace hints of very slight foxing in outside margins- stated for accuracy, so minor barely merits mention). Min. bid \$40.



157).Political Cigar Box. 7 x 8-3/8 x 4-7/8" (as shown (2.5 x 8-3/8 x 4-7/8" w/ lid closed) early wooden cigar box issued during the 1888 presidential campaign promoting winning Republican candidates Harrison and Morton w/ beautiful multi-color stone litho label on inside. Box is excellent and label inside is bright, clean and like new (C. 8.5+/). Min. bid \$40.



158).Fisk Tires Ashtray. 6.5" (dia.) x 1.25" early figural rubber tire shaped advertising ashtray for Fisk Co.'s "Air-flight" brand tires, w/ attractive reversed advertising image on base of glass insert. Nice overall appearance, w/ a little light wear from use (C. 8/-). Min. bid \$30.



159).US Tires Fan. 9.5 x 8" early cardboard advertising fan for United States Tires, w/ revolving red die-cut car in center. Clean, bright and excellent overall (C. 8+/) w/ a little minor pinching at top edge. Min. bid \$30.



160).Checkers Prizes. Lot of three small, early tin litho insert prizes for "Checkers" brand confections (Cracker Jacks like product) including a whistle, top and small bowl. Nice overall condition, w/ some light soiling on surface of whistle. Min. bid \$20.



161).Angelus Marshmallows Tape Measure. 1-3/8" (dia.) x 3/8" scarce, early celluloid advertising tape measure for Cracker Jack Co.'s Angelus brand marshmallows, w/ different images of Co.'s product packages on each side. Excellent. Min. bid \$20.



162).Air Mail Stamps. Lot includes 3 blocks (each containing ten unused 1949 U.S. Air Mail postage stamps), celebrating 75th anniversary of the Universal Postal Union. Blocks include 25¢, 15¢, and 10¢ denominations. Crisp and like new. Min. bid \$20.



163).Hires Score Card. 3-1/8 x 2-5/8" early celluloid baseball scorekeeper advertising Hires Root Beer, featuring great color image of Josh Slinger (Co.'s soda jerk character). Note: changing the score numbers on back move eye and mouth images when turned. Clean and excellent. Min. bid \$40.



164).Brewing Tip Tray. 4" (dia.) early tin litho tip tray from Adam Scheidt Brewing Co. (Norristown, PA) featuring attractive image of Co.'s Valley Forge brand beer bottle. Excellent. Min. bid \$40.



165).Knox Gelatine Mirror. 2-1/8" (dia.) scarce, early celluloid pocket mirror for Knox brand gelatin, featuring great image of young black child holding giant dessert plate. Attractive and displays nicely, w/ a few minor bumps along outside edge. Min. bid \$50.



166).Shell Badge. 1-7/8" (dia.) early, very high quality employee uniform service award badge w/ beautiful inlaid cloisonné enameled detailing (presented by Shell Oil Co. for 2 Years of Safe Driving). Excellent. Min. bid \$20.



167).Good For Pocket Mirror. 2.25" (dia.) scarce, early "Good for 12-1/2¢ in Trade" celluloid photo image pocket mirror, featuring great image of topless semi-nude (issued by "The Mint, Merced, CA). Excellent overall. Min. bid \$40.



168).Wyandotte Cleanser Tin. 6-1/8 x 3-5/8" (dia.) early paper label 2 lb. size cleanser tin (metal top and bottom w/ semi-glass finish on label) for Wyandotte Co.'s "Steri-Chlor" brand cleanser, featuring great image of Co.'s trademark Indian character. Full, unopened tin is clean, bright and like new (C. 8.5+++). Min. bid \$40.



169).Daisee Spice Tin. 3-1/8 x 2.25 x 1.25" scarce, early tin litho 1-1/2 oz. spice tin (mustard) for "Daisee" brand (Herman Co., Paterson, NJ) w/ attractive image of Co.'s trademark young farm girl. Attractive and displays nicely, w/ only minor wear (C. 8+/-). Min. bid \$30.



170).Oilzum Oil Can. 5-5/8 x 4" (dia.) early 1 qt. crimp seam motor oil picture can for Oilzum brand (White Bagley Co., Worcester, MA) featuring great image of Co.'s trademark driver. Full, sealed can is clean, bright and excellent (C. 8.5++) w/ some oxidizing on lid. Min. bid \$40.



171).Old Colony Sample. 3 x 2 x 5/8" early tin litho concave shaped miniature vertical tobacco sample pocket tin for Bagley Co.'s "Old Colony" brand (marked "Free Sample"). Clean bright and excellent overall (displays as a C. 8++), w/ very minor dents and wear (mentioned for accuracy, not offensive or detracting). Min. bid \$50.



172).Albers Paperweight/Mirror. 3.5" (dia.) scarce, early celluloid covered paperweight/palm mirror advertising Albers Co. cereals and flour, w/ great Western scene image of Co.'s trademark pioneer cowboy character. Clean and excellent overall. Min. bid \$50.



173).Crystal Springs Match Holder. 5.25 x 3-7/8" very early embossed cast iron match holder for Crystal Springs Pure Water, Fuel & Ice Co., w/ embossed coal bucket shaped match holder. Attractive overall, w/ nice primitive country look (note: 2 digit phone number). Min. bid \$40.



174).Stegmaier Brewing Tip Tray. 4.25" (dia.) early tin litho advertising tip tray for Stegmaier Brewing Co., Wilkes-Barre, PA, featuring beautiful graphic images of Co.'s early style beer bottles. Clean, bright and exceptionally nice (basically a strong C. 8.5+) w/ exception of very minor wear at outer edge of rim. Min. bid \$30.



175).Kis-Me Gum Fan. 15 x 10" (dia.) early wooden handled folding paper advertising fan for Kis-Me brand chewing gum (Louisville, KY). Excellent. Min. bid \$20.



176).401).Grand Ranges Ashtray. 5.5 x 8 x 3.5" early, heavy figural chimney shaped cast iron ashtray advertising Grand brand ranges, w/ a heavy, baked-on enameled porcelain finish. Unusual, high quality piece. Min. bid \$40.



177).Crystal Springs Brewing Co. Mug. 4.75 (h) x 3.5" (dia.) early, blue decorated heavy stoneware beer mug by Whites Utica Pottery Co., advertising the Crystal Springs Brewing Co., Syracuse, NY, w/ attractive embossed image of Co.'s trademark girls at spring. Excellent, w/ very nice detailing. Min bid \$40.



178).Soda Fountain Light-Up Display. 15.75 x 10.5 x 4" early figural countertop metal light-up display for Sheffer Co.'s "White Deer" brand Ice Cream. Unusual, very high quality piece, in a great, easy to display size. Black metal case has painted white milk glass inserts and is excellent and all original, w/ a rich, very attractive surface patina, complete w/ original cloth covered cord. Min. bid \$80.



179).Sapon Laundry Soap Sign. 18.75 x 12" (14.75 x 8.25" visible) early cardboard sign for "Sapon" brand laundry soap, featuring attractive image of young girl in mud covered fancy dress, playing w/ puppies. Excellent overall (C. 8+) in its original period oak frame. Min. bid \$50.



180).Jesse Welden Cigar Sign. 20-1/8 x 14 x 3-3/8" early, curved embossed tin litho corner sign on its original wooden mounting bracket advertising W.T. Donovan Co.'s "Jesse Welden" brand cigars. Attractive and displays nicely (basically as a solid C. 8+) although close examination will show a little non-offensive light scattered background wear (critical grade C. 8-). Min. bid \$70.



181).Coca-Cola Sign. 11.25 x 36" early MasoniteCoca-Cola store display sign w/ wood and metal detailing (by Kay Displays Co.) featuring great image of Co.'s ca. 1940 silhouette girl. Powerful and impressive piece is clean, bright and very nice (a strong C. 8.5+) w/ only very minor wear and some crazing on upper surface. Min. bid \$60.

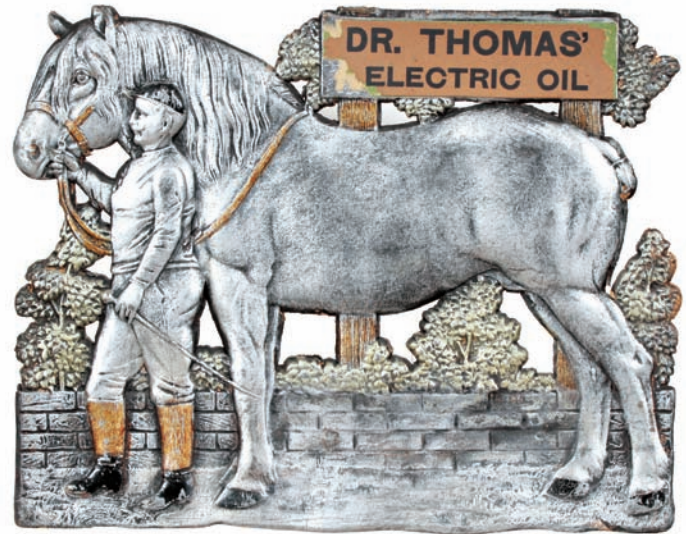
Packard



182).Packard Lapel Pin. 1 x 5/8" unusual, early, high quality embossed brass advertising lapel pin for Packard Motor Cars ("A new Ride ask Packard"). Excellent. Min. bid \$30.



183).Hammocks Sign. 8 x 11" very early, paper litho sign for Rich's Hammock Supporter, featuring beautiful multi-color lithography (Shober & Carvilleville Litho. Co., Chicago). Clean, bright and exceptionally nice (C. 8.5+), w/ exception of a faint vertical white line in left background area. Min. bid \$40.



184).Veterinary Medicine Sign. 15.75 x 19.75" early, heavy pressed cardboard embossed advertising sign for Dr. Thomas's Electric Oil veterinary medicine. Impressive, high quality piece is all original, w/ excellent paint surface and very nice detailing (C. 8+). Min. bid \$50.



185).Shepard's Minstrels Poster. 27 x 38.25" large and important, ca. 1880/90's paper litho advertising sign for Shepard's Minstrels Show, featuring outrageous comical stereotype scene of two early black baseball teams titled "Black Brotherhood vs. The Blackville League" (Strobridge Litho Co.). This powerful and very impressive, large museum quality piece is bright, clean and very attractive in appearance (displays as a strong C. 8++), w/ some non-offensive trimming in the outer border area (note: piece has had professional conservation w/ a little bit of extremely well done minor restoration). Min. bid \$250.



186).Indian Motorcycles Decal. 2.5 x 8-3/8" outstanding, early era Indian Motorcycle Co. unused decal. Excellent, w/ original protective instructional backing paper on backside. Min. bid \$30.



187).Moto Meter Hood Ornament. 4.25 x 10.5 x 2" unusual, early automobile radiator/hood ornament w/ Boyce Moto Meter thermometer gauge and nicely detailed, heavy figural cast aluminum wing design. Has a little expected weathering and general wear to early re-painted surface highlights, but overall a powerful and impressive looking piece that displays great (C. 8). Min. bid \$40.



188).1933 Coke Signs Catalog. 11 x 8-5/8" unusual, early 16 page Coca-Cola promotional supplemental catalog booklet of latest new signs and promotional advertising items available to Co.'s bottlers in 1933. Contains several great color illustrations, as well as pricing info, suggested usage ideas, etc. Neat and unusual piece, in very nice overall condition (inside pages are excellent; w/ fairly minor chafing spot on back cover). Min. bid \$40.



189).WGY Spice Tins. Lot includes two different early tin litho spice tins for WGY brand (Schenectady, NY), w/ same attractive images on both sides. Includes: red pepper (3.75 x 2.25 x 1.25") and cloves (3.25 x 2.25 x 1.25"). Both are clean, bright and excellent (C. 8+) w/ only minor wear. Min. bid \$30 (the lot).



190).California Oil Zippo Lighter. 2.25 x 1.5 x 7/16" original ca. 1950's Zippo brand advertising cigarette lighter (5 barrel outside hinge) has incised advertising for California Oil Co., w/ attractive inlaid cloisonné enameled product logos on front and backside for Calso Gasoline and RPM Motor Oil). Excellent overall. Min. bid \$30.



191).Buick Watch Fob. 1.75 x 1.25" (fob) early, very high quality advertising watch fob for Buick automobiles, featuring Co.'s beautifully detailed inlaid cloisonné enameled logo. Excellent, w/ partial original strap. Min. bid \$30.

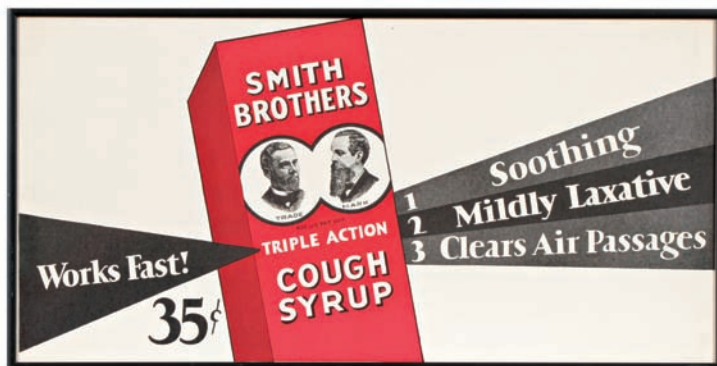
Ice Cream Festoon



192).Hendlers Ice Cream Festoon. Unused, early 2-sided die-cut drugstore/soda fountain string hanging festoon display advertising Hendlers brand ice cream. Includes: large 13 x 20" centerpiece promoting Co.'s chocolate ice cream, w/ four 12.75 x 10.5" die-cuts for soda fountain dish products and treats along w/ four rectangular banner signs (5 x 16.5" for back bar use and 4 x 11" window strips). Pieces are crisp, bright and like new, as found never used still in their original shipping sleeve (protective sleeve has some tattering and storage wear). Min. bid \$50.



193).Richfield Gasoline Sign. 11.75 x 19.5" early cardboard sign for Richfield brand gasoline, featuring great image of early race cars. Clean, bright and very impressive appearance (a strong C. 8++), w/ minor toning and only slight wear (including non-offensive small tear mark at bottom margin area). Min. bid \$40.



194).Smith Bros. Medicine Sign. 10.5 x 20-5/8" early cardboard sign for Smith Brothers cough syrup, w/ great image of early product box featuring the famous bearded brothers. Clean, bright and like new (near mint). Framed. Min. bid \$40.



195).Rookie Cop Motorcycle Toy. 5.75 x 8-3/8 x 2.5" early tin litho wind-up motorcycle toy by Marx. Clean and bright colors, w/ nice surface sheen. Excellent overall, w/ minor wear from use (C. 8++). Min. bid \$40.

Washing Machine Patent Model



196).Morelock Washing Machine Patent Model. 4 x 6.25 x 4-5/8" wonderful ca. 1860's small wooden washing machine patent model. Excellent and all original (C. 8+/-), w/ operational moving parts inside (complete w/ original "J.A. Morelock" labels and tags attached by Patent Office in 1870). Min. bid \$60.



197).War Eagle Cigar Tins. Lot includes two different tin litho 50 count cigar cans (5-3/8 x 5" (dia.) ea.) for War Eagle brand cigars including the red and green variations. Both are clean, bright and very attractive (a strong C. 8++). Min. bid \$50 (the lot).



198).Disney Seashore Sand Pail. 5-3/8 x 5-1/8" (dia.) ca. 1950's tin litho sand pail by J. Chain & Co., featuring great images of Disney characters at seashore park. Clean, bright and excellent overall (appears never used) w/ only minor storage wear (C. 8.5+/-). Min. bid \$30.



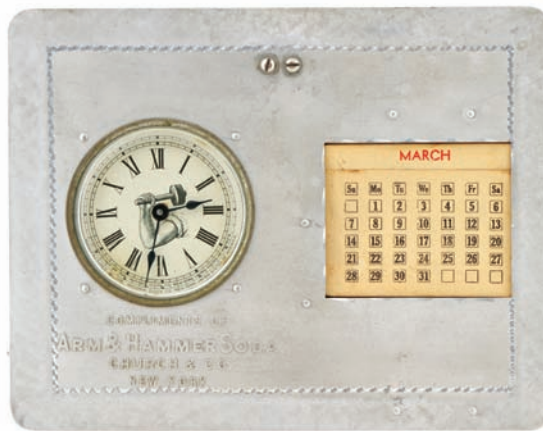
199).Tobacco Decals. Lot includes three stunning, colorful and highly graphic early advertising decals for tobacco store window or showcase use (display like labels and would look great framed like signs). Never used examples, as found still on original backing paper. Includes: Recruit Cigars (11.75 x 8"); Zira Cigarettes (5-1/8 x 6.75"); and Piedmont Cigarettes (6 x 11-5/8"). Excellent overall (some scattered soiling and a tear in outer white backing paper background section of Recruit). Min. bid \$30 (the lot).



200).Pine Bros. Marshmallow Tin. 3-7/8 x 6-1/8 x 2.5" very early tin litho product tin for Pine Bros. brand marshmallows, featuring finely detailed early Ginna type lithography (not marked). Has a little non-offensive early scattered chipping, but overall clean, bright and attractive w/ a stable surface that is not flaking. Min. bid \$40.



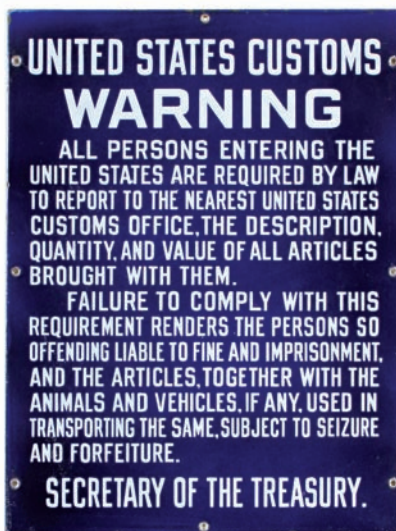
201).Spice Tins. Lot includes three different early tin litho spice tins. Includes: Parke's 2 oz. cloves (4.24 x 2-3/8 x 1-1/8"); Mother Dawson 3 oz. paprika (3.75 x 2-3/8 x 1-3/8") and Big Bear 3 oz. cinnamon (4.75 x 2.25 x 1.25"). All are clean and excellent. Min. bid \$30 (the lot).



202).Arm & Hammer Clock. 5-1/8 x 6-5/8 x 1" early, high quality aluminum executive desk clock from Church & Co.'s "Arm & Hammer" brand soda (very high quality piece, w/ nicely beveled glass front on clock). Excellent. Min. bid \$40.



203).Tobacco Crate Label. 13.75 x 12" very early paper litho advertising crate label from the Maclin-Zimmer Tobacco Co. (Petersburg, VA). Unused label is clean, bright and excellent. Min. bid \$40.



204).Porcelain Customs Sign. 20 x 15" early, heavy enameled porcelain Customs warning sign issued by the U.S. Treasury. Excellent overall, w/ a little minor edge wear. Min. bid \$40.



205).Disney Sand Pail. 7.25 x 6.75" (dia.) large, ca. 1930's tin litho "Mickey Mouse Picnic" sand pail by Ohio Art Co., featuring great images of the early style (Disney Enterprises) characters. Outside lithography has strong colors and displays nicely, w/ a little non-detracting light wear (C. 8+/-); w/ some lightly oxidized scuffing and general wear to the inside bottom of pail. Min. bid \$40.



206).Clover Ice Cream Pennant. 28.25 x 12" large, early felt advertising pennant w/ metal strip at top for Clover brand ice cream. Clean and attractive w/ very impressive look (C. 8+/-). Min. bid \$40.



207).Fly Swatters Display. 16.75 x 9.25 x 8" (display sign 3 x 4-7/8") early heavy wire countertop store display stand for Gatch brand fly swatters, w/ attractive tin litho sign at top. Impressive piece is excellent overall, w/ minor wear on sign (sign C. 8+/-). Lot includes 4 early swatters for displaying on stand and Gatch Co. promotional literature. Folds flat for storing and shipping. Min. bid \$50.

207). Detail



208).Chain Sign. 9.25 x 9.25" unusual, early tin litho advertising display sign for Chain Products Co. (Cleveland, OH), w/ neat cutout finger "hook" for holding and displaying a chain. Has strong colors and displays nicely, w/ minor soiling and some non-offensive minor scattered wear (C. 8+/-). As found, might improve w/ cleaning. Min. bid \$40.



209).Ithaca Guns Catalog. 8.25 x 13-7/8" outstanding, oversized 1922 catalog for Ithaca brand guns, featuring beautifully detailed large color illustrations of various shotguns, etc., w/ great testimonials pages. Clean and excellent overall w/ minor wrinkles and wear on cover (C. 8+). Min. bid \$30.



210).Dr. Pepper Sign. 11-7/8 x 23.75 x 2-1/8" large, early 2-sided heavy tin litho die-cut flange sign for Dr. Pepper soda. Has strong colors and displays nicely (as a strong C. 8+), although close examination will reveal some fine scattered stain speckles on one side (critical grade C. 8- this side). As found, might improve w/ cleaning. Min. bid \$50.



211).Porcelain Bus Sign. 18 x 24" early, 2-sided heavy porcelain sign for "T.N.M.&O." Texas based bus line (same design both sides). Clean, bright and very attractive appearance, w/ nice original surface sheen (C. 8.5/+) w/ exception of a little light chipping at top hanging holes and some light wear at bottom edge. Min. bid \$40.

Hotel Bell



212).Bulldog Hotel Bell. 3-5/8 x 4-3/8 x 2-5/8" unusual, early figural mechanical wind-up hotel bell in image of bulldog head (pressing down on dogs mouth produces long steady ring). Heavy figural celluloid face, w/ glass eyes and metal mechanism underneath. Quite nice overall (w/ C. 8+/) w/ non-serious small crack mark on bottom of neck area). Min. bid \$40.



213).Bunte Marshmallows Store Tin. 6 x 10.5" (dia.) large 5 lb. store size display tin for Bunte Brothers brand marshmallows, featuring great image of Co.'s trademark kid (factory scene on backside). Clean and very attractive (C. 8+) w/ minor soiling and light wear mark in bottom white border area. Min. bid \$40.



214).Porcelain Ice Cream Sign. 18.75" (dia.) x 1/2" unusual, early, heavy porcelain sign for Hender's brand ice cream, w/ game board design for secondary use as a country store checkerboard. Field of sign is clean, bright and excellent (C. 8.5/+) although there is some early chipping on outside edges in raised outside border area. Min. bid \$50.



215).Carnation Milk Sign. 15 x 14-1/8" attractive original porcelain sign for Carnation Co.'s fresh bottled milk, w/ attractive image of milk bottle. Clean, bright and exceptionally nice (C. 8.5+/) w/ exception of some light wear at a couple of the hanging holes. Min. bid \$40.



216).MGM Movie Studios Badge. scarce, large 3.5" (dia.) celluloid badge made for invitees of a 1930 Metro-Goldwyn-Mayer Movie Studio Co. convention. Clean and excellent overall, w/ very minor soiling in outside white margin area. Min. bid \$40.



217).Gulf Oil Bank. 3-7/8 x 4.5 x 1-3/8" early cardboard advertising bank in shape of Gulf service station gas pumps, w/ dealer info on backside from a Northfield, Vt. dealer (note 4 digit phone number). Very nice overall, w/ faint creasing and light soiling at top edge (C. 8+/-). Min. bid \$20.



218).Toy Gas Pumps. 2-5/8 x 6 x 3/4" original boxed set of Dinkey Toy Co. painted metal gas pump toys and service station oil bottles holder (w/ hinged lift-up lid). Toys are excellent, as found never used still in their original packaging (box has minor soiling). Min. bid \$30.



219).International Stock Food Litho. 17 x 20-5/8" (9.25 x 13" visible) early paper litho advertisement for International Stock Food Co., w/ beautiful multi-color graphic image of black jockey, his horse and bucket of Co.'s veterinary stock food. Clean, bright and excellent (C. 8.5). Nicely presented in attractive period frame. Min. bid \$40.



220).Roadside Rest Toy. 5.5 x 10.25 x 13.5" early tin litho "Roadside Rest Service Station" toy by Marx, featuring great lunch roadside restaurant and early service station, including gas pumps, oil rack, moving car lift, etc. Quite nice overall (C. 8+/-), w/ a little light wear from gentle use (note: the added car has heavier wear (C. 7+) and pump lights are not original). Min. bid \$50.



221).Coca-Cola Clock. 15.25 x 15.25 x 3.25" ca. 1960 Coca-Cola electric light-up clock w/ metal case and concave glass front. Clean and excellent, in nice working condition. Min. bid \$50.



222).Sand Pail. 4-1/8 x 4-7/8" (dia.) unusual, early tin litho toy sand pail featuring beautiful graphic images of children at seashore, w/ different images on both sides (McDonald Mfg. Co., Toronto, Canada). Has strong colors and displays very nicely, w/ non-offensive small wear spot on backside boat area (C. 8+/-). Min. bid \$40.



223).Leisy Brewing Tip Tray. 5-1/8" (dia.) early tin litho advertising tip tray for Leisy Brewing Co., Peoria, IL., w/ image of playing cards. Clean, bright and excellent, w/ minor wear at outer edge of rim (C. 8.5+/-). Min. bid \$40.



224).Seed Packs Display. 14 x 14.75 x 11" early wooden store display rack for the Card Seed Co., Fredonia, NY. Very attractive looking piece has nice original display label at base and the back bracket folds over to transform into box cover (C. 8+/-). Lot includes 16 of Co.'s beautiful, colorful and highly graphic early seed packs (packs are unsealed and were never used). Min. bid \$40 (the lot).



225).Auto Race Game. 10.5" (dia.) x 1/2" early tin litho "Brownie Auto Race" marble roll game set by Jeannette Toy & Novelty Co., featuring great early auto racing image, complete w/ original marbles and metal auto playing pieces. Clean and very attractive, w/ a little light wear from use (C. 8). Min. bid \$40.



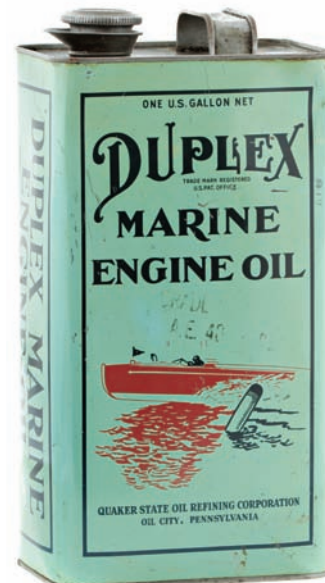
226).Ferry Seed Box. 9.5 x 11.5 x 6.75" (as pictured) early wooden country store display box for Ferry & Co. brand flower seeds, featuring beautiful multi-color graphic label on inside (label dated 1893). Clean and excellent (C. 8.5+/-). Min. bid \$40.



227).Ingersoll Watches Sign. 2.75 x 24" early, heavy porcelain strip sign for Ingersoll watches. Very nice overall (basically a solid C. 8/+) w/ exception of 3/8 x 1.25" chip spot below "ch"; w/ a few small nicks at upper right edge and slight wear to bottom right raised volcano hanging hole- pretty minor). Min. bid \$40.



228).Wooden Gasolene Sign. 9.75 x 30.5 x 3/4" very early wooden painted sign w/ an attractive, nicely weathered dry surface (note unusual early spelling). All original (C. 7.5) w/ just the right amount of soiling and wear to give it a great primitive country look (originally was painted on both sides, backside has lost most of its paint surface). Min. bid \$50.



229).Duplex Marine Oil Can. 11.5 x 6 x 3.75" early tin litho 1 gallon sized can for Quaker State Co.'s "Duplex" brand marine engine oil, featuring great image of speeding early motorboat. Attractive and displays nicely, w/ couple dent lines on back and side edge (C. 8+/). Min. bid \$40.



230).Sterling Motor Oil Can. 11 x 7.5 x 3-3/8" early tin litho 1 gallon sized motor oil can for "Sterling" brand Pennsylvania motor oil. Has very strong colors and displays quite nicely, w/ some light general splotchy wear from use (C. 7.5+). Min. bid \$40.



231).Central Petroleum Oil Samples Kit. 4.25 x 8 x 3/4" early salesman's oil sample bottles kit from the Central Petroleum Co. Lot includes the protective carrying case and all 14 of the original oil filled glass cork sealed sample bottles containing Co.'s various grades oils. Excellent. Min. bid \$40.



232).Letter Scale. 4-1/8 x 3-1/8 x 3" early, mechanical postage scale has copper flash finish to metal w/ paper label on front advertising a Men's clothing store. Neat and unusual piece is quite nice overall (C. 8+/) w/ some non-detracting light age toning and minor wear to paper advertisement). Min. bid \$30.

Match Holder



233).Tea Co. Match Holder. 10-5/8 x 6.75" large, very early die-cut cardboard advertising match holder from the Great American Tea Co. Display side is clean, bright and like new (C. 8.5++) w/ some light soiling and wear on non-graphic backside. Min. bid \$40.

General Motors



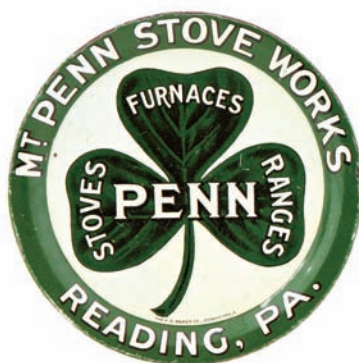
234).General Motors Frigidaire Clock. 6 x 20.5" (dia.) large, early glass front metal cased light-up electric advertising clock for General Motors Co.'s Frigidaire cooling products division. Very nice overall, w/ a rich, nicely worn surface patina to metal case and a powerful, great overall look. Runs and works great (note: missing square back plate panel on backside). Min. bid \$50.



235).Honest Scrap Display Box. 15-3/8 x 11 x 5" early cardboard store display box for "Honest Scrap" brand tobacco, featuring nice images of Co.'s trademark arm & hammer logos all around (originally held 36 5¢ packages). Has strong color and displays pretty well (front C. 8+/); w/ faint staining and some scuffing/chafing on backside (back C. 7). Min. bid \$40.



236). Coupon Cigarette Packs. 3 x 11 x 3" full carton of ten 1930's packs of Liggett & Myers Co.'s "Coupon" brand cigarettes, featuring great Indian chief image (series 102 tax stamps). Packs are excellent, as found still in their original carton (packs C. 8.5/+); (note: brittle cardboard carton has edge tears, and light tatters and lid has separated from box. Min. Bid \$40 (the lot).



237). Tip Trays. lot includes two 4.25" (dia.) early tin litho advertising tip trays for Mt. Penn Stove Works (Reading, PA.); and Zeisler's soda and ginger ale. Both are clean and excellent (C. 8++). Min. bid \$30 (the lot).

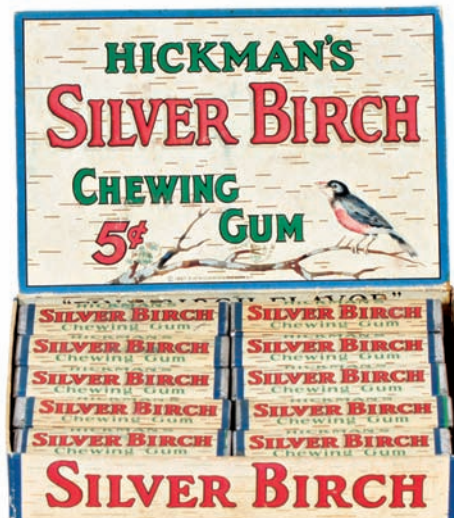
National Biscuit Co.



238). Nabisco Ice Cream Cones. 13 x 11-1/8 x 11-1/8" impressive, full, unopened early store display box containing 100 ca. 1930's National Biscuit Co. "Cremo" brand ice cream cones. Clean and like new (note: box was found still sealed inside its original protective wax paper covering). Like new. Min. bid \$40.



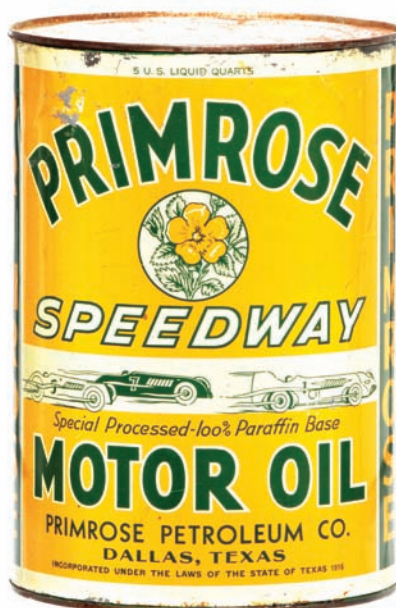
239). Quaker Boy Cigar Sign. 12.75 x 11-1/8" (8-5/8 x 6-7/8" visible image) unusual, early cardboard string hung sign for "Quaker Boy" brand 5c cigars, w/ attractive box label image in center. Clean and excellent (C. 8.5/+), nicely framed and matted. Min. bid \$40.



240). Silver Birch Gum Box. 5.25 x 6-3/8 x 4.25" full, early cardboard display box for Hickman's "Silver Birch" brand chewing gum, complete w/ its original 20 gum packs inside. Packs are excellent, w/ slight bit of minor wear to box. Min. bid \$50.



241). Necco Candies Display. 18 x 6.5 x 6.5" early tin litho revolving countertop store display (on cast iron base) for Necco brand roll candies, w/ a great Art Deco design. Has a very attractive overall appearance, w/ a little light general scattered wear (C. 8-). Min. bid \$40.



242). Primrose Speedway Oil Can. 9.5 x 6-5/8" (dia.) large, early, full, unopened tin litho 5 qt. motor oil can featuring great images of race cars on front (early cars, stake truck and farm tractor on backside). Front display side has great look and displays quite nicely (as a C. 8+/-), although there is some light wear at top and a couple grey paint drool spots in upper background (just above "R" in "Primrose"); backside has heavy wear lines, light soiling and general scattered wear (back C. 7); w/ some speckling and oxidizing on lid. Min. bid \$40.



243). Porcelain Gum Machine. 32 x 9-3/8 x 9.75" large, early enameled porcelain covered coin-operated gum and confections machine by Autosales Co., w/ inset porcelain signs for Adams Chiclets and Dentyne Gum brand chewing gums. Working machine is very clean and attractive (displays a solid C. 8++) w/ just the right amount of minor wear (includes working key). Min. bid \$50.

Chewing Gum Bookmarks



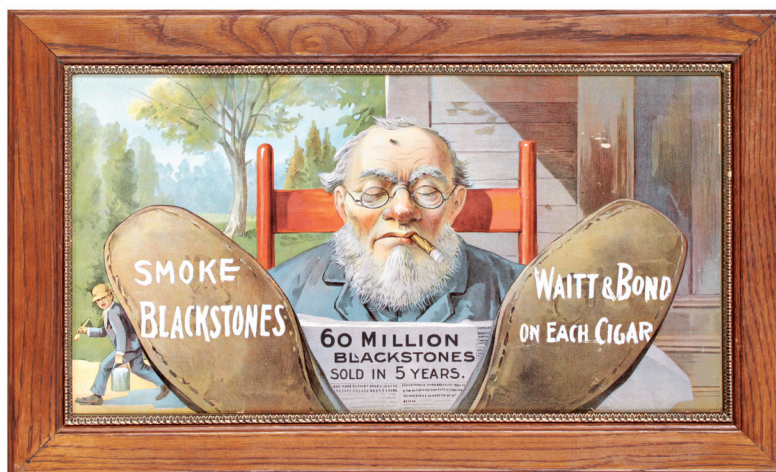
244).Chewing Gum Bookmarks. Lot of six early advertising bookmarks for various chewing gum Co.'s. Cardboard examples include: Zeno; Norris Co.'s Blue Ribbon brand; Bode's Fruit gum; and Newton Gum Co., San Francisco. Lot also includes a die-cut celluloid "Sweet Wheat" brand and a heart shaped pressed aluminum bookmark for Colgan's "Taffy Tolu" gum (see website addendum). Excellent overall (minor wear on the celluloid example). Min. bid \$40 (the lot).



245).Topps Gum Display. 2.5 x 5" (dia.) early round cardboard countertop advertising display box for Topps brand chewing gum, complete w/ it's original 1¢ gum pieces. Excellent overall, as found never used still in its original protective box. Min. bid \$40.



246).5/A Horse Blankets Thermometer. 1.25 x 9.25" (dia.) early advertising dial thermometer for 5/A brand Horse Blankets. Very high quality piece has copper metal case on outside, w/ glass covered thermometer inside. Excellent. Min. bid \$40.



247).Blackstone Cigars Sign. 15 x 25" (11 x 21-1/8" visible) wonderful early cardboard advertising sign for Waitt & Bond Co.'s "Blackstone's" brand cigars, w/ great multi-color graphic image of sleeping man w/ a large fly on his forehead. Clean, bright and very attractive appearance (a strong C. 8+/) w/ a few light background rub/wear marks (nothing serious or offensive). Framed. Min. bid \$60.



248).Disney Christmas Lights Display. 40 x 26" large, early cardboard holiday window display sign for Noma brand Christmas tree lights, promoting Co.'s Disney cartoon characters lights (dated 1936, featuring early Disney Enterprises images of Mickey, Donald, 3-Pigs, etc.). Beautiful piece is crisp, bright and like new, as found never used still in its original box (minor expected storage/edge wear). Min. bid \$60.



248). Detail



249).Sinclair Motor Oil. 8 x 6 x 3" early tin litho 1/2 gallon sized can for Sinclair Refining Co.'s "Opaline" brand motor oil. Clean and attractive overall appearance w/ a little non-offensive minor soiling and wear (C. 8+/-), and still retains remnants of its original red paper labels along bottom edges. Min. bid \$40.



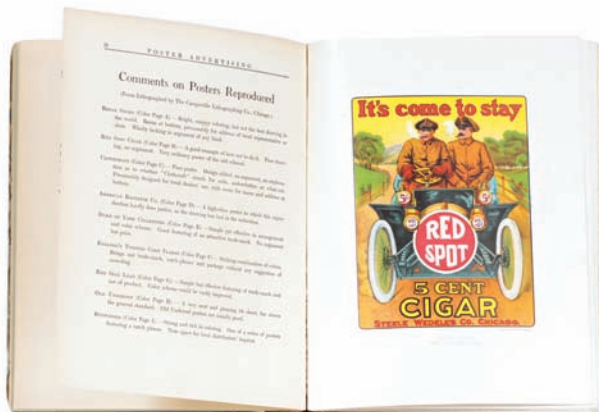
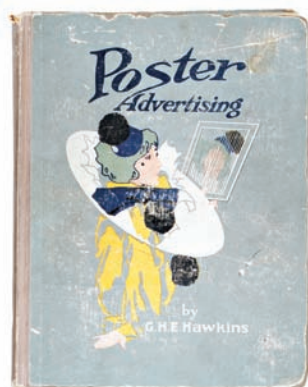
250).Dr. Daniels Veterinary Thermometer. 21 x 5 x 3/4" early wooden painted advertising thermometer for Dr. Daniels Veterinary medicines w/ advertising at top for a Derby, Vermont druggist (he sold a wide variety of goods including guns, ammo, candy, fishing tackle, and did watch repair). All original and as found (C. 7++) w/ just the right amount of soiling and wear to its nicely weathered black on grey paint surface to give it a great primitive country folk art look. Min. bid \$40.



251).Paper Label Spice Tins. lot includes five early colorful and graphic paper label spice tins (w/ cardboard sides and metal tops and bases), ea. app. 3.25" tall. Includes: "Fairway" allspice; "H & K" turmeric; "Elco" poultry seasoning; "Home" brand thyme; and "Arsenal" brand cloves. All are clean and quite attractive (average C. 8+). Min. bid \$40 (the lot).



252).Poker Tobacco Tin. 3-1/8 x 4-3/8 x 1.75" early tin litho hinged lid square corner style tobacco tin for "Poker" brand tobacco (Rock City Tobacco Co.), featuring great image of seated gentlemen playing poker. Clean, bright and excellent overall appearance, w/ minor wear (a strong C. 8++). Canadian. Min. bid \$40.



253).Poster Advertising Book. 11 x 8.5 x 3/4" scarce and important. ©1910 88 pp. hardcover "Poster Advertising" how to marketing book by G.H.E. Hawkins. Book features 32 stunning multi-color poster illustrations inside including the prized, rarely found large fold-out Teddy Roosevelt Gold Dust twins billboard poster). Outer cover has general overall wear, inside color illustrations are beautiful overall, w/ some general wear from use (de-acquisitioned library book). Min. bid \$50.



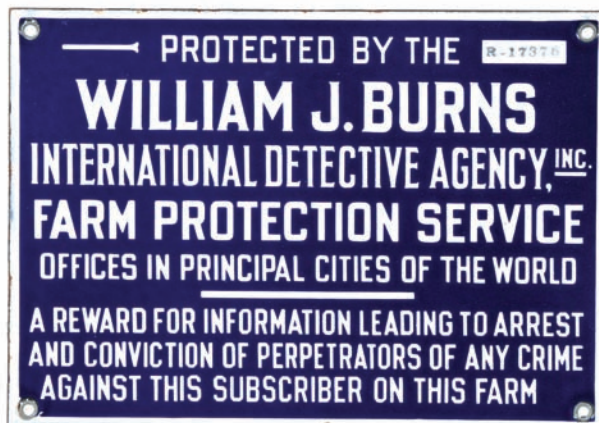
253). Detail (Teddy Roosevelt fold-out poster)



254).Mounds Candy Sign. 6.75 x 19-5/8" scarce, ca. 1930's embossed tin litho sign for Peter Paul Co.'s 5¢ Mounds candy bars. Clean, bright and exceptionally nice overall (appears never used), w/ exception of some light wear litho loss in the outer dark blue border area. Min. bid \$40.



255).Krueger Brewing Tip Tray. 4-3/8" (dia.) early tin litho advertising tip tray for Krueger Brewing Co. Clean and attractive appearance (C. 8+), w/ nice images of hops, etc. in background. Min. bid \$40.



256).Farm Detective Agency Sign. 7-3/8 x 10.5" early, heavy porcelain warning sign from Burns Detective Agency for Co.'s Farm Protection Division members. Field of sign is clean and like new (basically near mint), w/ a little very minor wear at very outer edges. Min. bid \$40.



257).Baker's Cocoa Tip Tray. 6-1/8" (dia.) large, early tin litho tip tray for Bakers Cocoa Co. (Dorchester, Mass.), w/ beautiful multi-color graphics. Clean, bright and exceptionally nice (C. 8.5++). Min. bid \$50.



258).Pepsi Sign. 14 x 31" (11 x 27-7/8" actual sign) original, ca. 1940's cardboard advertising sign for Pepsi-Cola (w/ double dot logo) featuring great fishing theme. Clean, bright and exceptionally nice (appears never used), nicely framed and ready to hang. Min. bid \$40.



259).Pocono Plate Topper. 4-7/8 x 11-1/8" scarce, early, cast aluminum license plate topper for Pocono Wild Animal Farm (Stroudsburg, Pa.). Excellent overall, w/ minor oxidizing on surface (C. 8+). Min. bid \$40.



260).Sunshine Stoves Sign. 5.5 x 36-5/8 x 3/8" early wooden country store strip sign advertising Sunshine brand stoves. Excellent and all original, w/ very attractive surface patina giving it a great country folk art look w/ just the right amount of wear (C. 8/+). Min. bid \$40.



261).AAA Franklin Plate Topper. 2-5/8 x 10-3/8" early, heavy embossed tin litho license plate attachment marked w/ American Auto Club logo and "Franklin". Neat and unusual piece. Min. bid \$20.



262).Oil Co. Playing Cards. lot includes boxed double deck advertising Ohio Oil Co.'s Marathon brand, w/ sign image on each card; and boxed deck of Fleet-Wing Gasoline cards w/ futuristic car on each). Decks are complete and excellent (no jokers). Min. bid \$30 (the lot).



263).Great Bull Spice Tins. 4 x 2-3/8 x 1-1/8" lot includes two different variations of "Great Bull" brand tin litho 2 oz. spice tins from Bull Markets and Craft Co.; Kingston, Newburgh and Poughkeepsie, NY (includes allspice and turmeric). Both are clean, bright and excellent (C. 8.5/+). Min. bid \$40 (the lot).



264).Neushell Strops Sign. 5-5/8 x 19" early heavy tin litho 2-sided die-cut hanging sign for Pike Gibford Co.'s "Neushell" brand razor strops (same on both sides), featuring images of Co.'s great pike fish logo (has S hooks along bottom edge for hanging strops from). Clean and excellent overall (a strong C. 8++). As found, should improve w/ cleaning. Min. bid \$50.



265).Congress Yeast Powder Box. 7-7/8 x 13.5 x 10" very early wooden store box for Slade Co.'s "Congress" brand yeast powder, featuring large, stunning multi-color graphic label. Label is attractive and displays very nicely, w/ minor soiling and light toning (C. 8). Min. bid \$40.



266).Brewery Tip Trays. Lot of two early tin litho tip trays (ea. app. 4-1/8" (dia.). Includes: Tivoli Brewing Co. (Detroit) w/ nice image of early bottle (attractive and displays nicely, w/ some light fading to reds (C. 8/-); and Iron City Beer (clean, bright and excellent overall (a strong C. 8++)) w/ minor wear at outer edges of rim). Min. bid \$40 (the lot).



267).Charter Oak Match Holder. 7-7/8 x 5.75 x 1.25" early, heavy primitive cast iron advertising match holder for Charter Oak Stoves. Oak leaf shaped body, w/ figural acorn match holding section. Neat piece, as found, w/ minor oxidizing and light surface wear. Min. bid \$40.



268).Rex Magnus Tin. 6.75 x 5-1/8 x 5-1/8" very early tin litho 5 lb. product tin for Rex Magnus, a food preservative and medicinal properties product, w/ wonderful graphic images of sea critters, meat cuts, etc. on side and great image of man slaying winded beast on lid. Clean, bright and very attractive in appearance (C. 8+) w/ small loss spot on lid. Min. bid \$40.



269).Star Soap Die-Cut. 9.5 x 5-5/8" early 2-ps. cardboard die-cut string hung ceiling hanger sign advertising Star brand soap (Schultz Co., Zanesville, OH), w/ attractive 2-sided image of young children in swing. Clean, bright and excellent (a strong C. 8++). Min. bid \$40.

Zeolene Motor Oil



270).White Star Pocket Mirror. 2-1/8" (dia.) scarce, early celluloid advertising pocket mirror for White Star gasoline and Co.'s "Lubalene" brand motor oil. Excellent. Min. bid \$30.



271).Standard Oil Co. Fob. 1.75 x 1-5/8" early embossed metal watch fob (nickel finish over brass) w/ embossed advertising on backside for Standard Oil Co.'s "Zeolene" motor oil. Front is excellent, backside has some early wear from use. Min. bid \$30.



272).Mansfield's Gum Label. 2.25" (dia.) scarce, early paper litho advertising label for Mansfield's Pepsin Gum featuring stunning image of Victorian woman (note Mansfield gum machine to her left). Never used label is crisp, bright and like new. I believe this was originally made for use on one of Co.'s glass store display cases. Min. bid \$30.



273).Berry Bros. Mirror. 2-1/8" (dia.) early celluloid pocket mirror for Berry Bros.'s varnish, featuring beautiful multi-color graphics. Clean, bright and excellent (near mint appearance). Examination under magnification will reveal a faint, trace hint of minor darkening in upper left corner edge (mentioned for accuracy, so minor barely merits mention). Min. bid \$40.



274).Fruit Beverages Sign. 4 x 19-7/8" early tin litho strip sign for Bireley's brand fruit beverages, w/ nice colorful embossed images of product bottles and fruits. Clean, bright and very attractive (appears never used) w/ minor soiling / storage wear (a strong C. 8++). Min. bid \$40.



275).Sunset Marshmallows Tin. 2.25 x 4.25" (dia.) scarce, early tin litho marshmallow tin for "Sunset" brand (Rueckheim & Eckstein Co.- maker of Cracker Jacks) featuring attractive daisy images. Clean, bright and excellent (C. 8.5+). Min. bid \$30.



276).Wine Co. Match Holder. 4 x 3-3/8" unusual, early cast iron match holder from the Boehmke Wine Co. (Cleveland, Ohio), w/ unusual horse shoe and wine barrel design. Excellent, w/ nice rich, early surface patina. Min. bid \$40.



277).Cleopatra Movie Poster. large (app. 85 x 40.5"), original 3-sheet size roadshow movie poster from classic 1963 Academy Award winning movie "Cleopatra", starring Elizabeth Taylor and Richard Burton, w/ large 25 x 39.5" color image. Clean, bright and very attractive overall, w/ small paper loss spot in top left corner edge and some light scattered crease marks at fold areas and outer side edge (Note: this limited release, full color roadshow poster from this movie is considered the most attractive and desirable of all the Elizabeth Taylor movie posters that were produced). Min. bid \$40.

Packard Autos



278).Packard Autos Watch. 1.75" (dia.) x 3/8" early 14K gold-filled employees presentation pocket watch issued by the Packard Motor Car Co. in 1939, w/ nice Packard Co. logo featured on dial (high quality Hamilton watch has engraving on backside in appreciation of employees 15 years of loyal service to Co.). Excellent. Min. bid \$60.



279).Cunningham Ice Cream Tray. 10.5 x 13.25" early tin litho serving tray for Cunningham's brand ice cream. Crisp, bright and like new (near mint), w/ a powerful and very impressive design and look. Min. bid \$40.



280).Standard Identification System Mirror. 2-1/8" (dia.) important, early celluloid pocket mirror advertising Standard Identification Co., w/ outrageous, highly graphic image of bloody accident victim (note early horse drawn ambulance, policeman, etc.). I consider this incredible mirror to be among the rarest and most desirable of all the pocket mirrors known. Min. bid \$60.



281).Trout-Line Pocket Tin. 3.75 x 3.25 x 1-1/8" early tin litho vertical tobacco tin featuring beautiful multi-color graphic fly fishing images on both sides. Clean, bright and excellent overall (C. 8.5/+), w/ minor wear. Min. bid \$60.



282).No Spitting Sign. 7 x 10" great small sized, early, heavy porcelain "No Spitting" flange sign. Has strong color, nice sheen and displays nicely (as a strong C. 8++), w/ exception of a little light scattered edge wear/chipping on back side. Min. bid \$40.



283).Bird Theme Spice Tins. lot includes two early paper label spice tins (cardboard bodies w/ tin top and base) featuring beautiful color graphic bird images. Includes: Bell's poultry seasoning (3 x 2-3/8 x 1-7/8") and Polly brand ginger 3 x 1-7/8 x 1-3/8". Both are excellent (C. 8.5/+). Min. bid \$30 (the lot).



284).Orange Crush Door Push. 12-1/8 x 3-1/8" early embossed tin litho door push for Orange Crush soda, featuring attractive image of Co.'s ca. 1920's ribbed bottle. Clean and attractive appearance, w/ slight soiling and minor bend marks at top (C. 8/+). Min. bid \$40.



285).Coca-Cola Bottle Sign. 16.75 x 5.25" beautiful, early 1950's heavy pressed tin bottle shaped sign for Coca-Cola w/ a deep, heavily layered paint surface. Crisp and like new, w/ a beautiful, rich surface patina. Near mint. Min. bid \$40.



286).NuGrape Sign. 13-7/8 x 5" small, early embossed tin litho sign for NuGrape brand soda, featuring beautiful multi color graphics. Crisp, bright and like new (near mint), w/ exception of some scuffing marks on non-graphic backside. Min. bid \$40.

D-X Oil Co.
Salesman's Selling Kit



287).D-X Oil Sample Kit. 4-5/8 x 9.25 x 2-3/8" unusual, early salesman's sample bottles kit from the D-X Oil Co. Lot includes the protective presentation carrying case and 16 of the original glass sample bottles of Co.'s various grades of oils and six jars of Co.'s greases. Excellent. Min. bid \$40.



288).Auto Theme Textile. 24.75 x 24.5" (21.75 x 21.5" visible image) large, early framed cloth pillow cover featuring great color motoring image of girls in early auto. Excellent, very high quality piece (C. 8.5). Min. bid \$40.



Cocaine Cigarettes

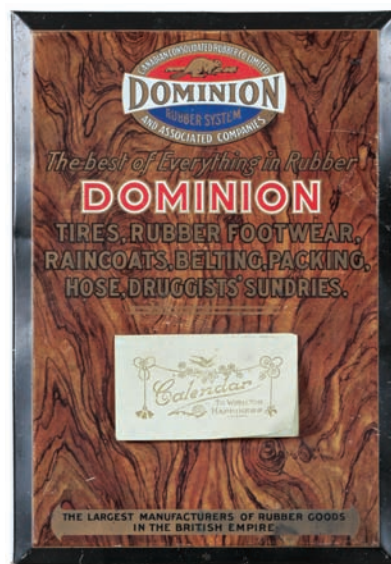
289).Cocarettes Label. 10 x 10" outrageous paper litho box label promoting Cocabacco Co.'s "Cocarettes", cocaine and tobacco blended cigarettes (see website addendum to view early brochure promoting the nerve tonic and stimulant benefits of these cigarettes, which were "made by mixing in proper proportions of Bolivian Coca Leaves and the finest Virginia Tobacco). Label is clean and quite nice (C. 8/-), w/ a little bit of fade Min. bid \$40.



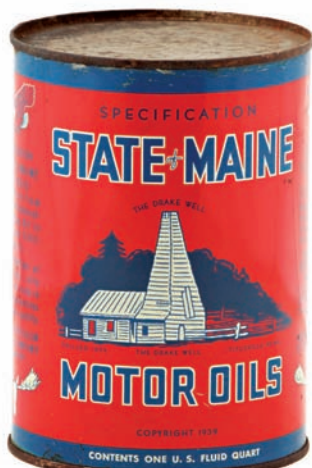
290).Coca-Cola Golfing Ad. 18 x 14" (13 x 9" visible) unusual, early, very attractive advertisement w/ gold border and lettering for Coca-Cola, featuring great image of couple golfing. Clean, bright and excellent (near mint) and nicely framed and matted. Min. bid \$40.



291).Dr. Jayne's Medicine Sign. 22.75 x 19" (13 x 11" image) early paper litho sign for Dr. Jayne's medicines, featuring multi-color litho image of girl in center w/ print advertising for product on her collar, complete w/ beautiful, original fancy advertising mat and its original frame. Clean, bright and exceptionally nice (basically a strong C. 8.5 appearance) although close examination will show a few spots of colored-in touch-ups in her hair section. Min. bid \$70.



292).Dominion Tires Calendar Sign. 13-1/8 x 9-1/8" early beveled tin over cardboard sign for Dominion Tires (and Co.'s various other rubber products), featuring nice image of Co.'s Beaver logo, at top, w/ attached 1935 paper calendar sheet. Has strong colors and displays quite nicely, w/ slight soiling and minor scattered wear (C. 8/-). As found, should improve a bit w/ cleaning. Min. bid \$30.



293).State of Maine Oil Can. 5.75 x 4" (dia.) scarce, early tin litho solder seam 1 qt. motor oil picture can for "State of Maine" brand (pictures state map on backside). Full, unopened can has strong colors and displays quite nicely (as a solid C. 8/+), minor wear, minor speckles on backside and some general oxidizing to top and base and the bare side seam area (critical grade C. 7.5/+). Min. bid \$40.



294).Indian Handy Oil. 5.5 x 2-3/8 x 1-1/8" unusual, early tin litho "Indian" brand handy oiler style can featuring Co.'s great looking trademark Indian character. Excellent overall appearance (displays as a nice C. 8/+) w/ exception of a couple small chips in yellow background area. Min. bid \$30.



295).White Eagle Grease. 4-5/8 x 3-3/8" (dia.) early tin litho 1 lb. grease can for Socony White Eagle brand grease, w/ nice images of Co.'s trademark bird on either side. Has nice color and displays quite well, although close-up examination will show some non-offensive general scattered wear (C. 7/+). Min. bid \$20.



296).Universal Coffee. 6.5 x 4.25" (dia.) very early tin litho 1 lb. coffee can for "Universal Blend" brand coffee (E.B. Millar & Co., Chicago) featuring a stunning, detailed patriotic image of Uncle Sam (lithography by Illinois Can Co., Chicago). Clean, bright and exceptionally nice (C. 8.5+++). Min. bid \$60.

Maxfield Parrish Items



297).Playing Cards. 4 x 5 x 1-1/8" boxed set includes two complete decks of playing cards by Brown & Bigelow Co., featuring Parrish "Sheltering Oaks" and "New Moon" images. Excellent. Min. bid \$20.

298).Parrish Mirror. 14-1/8 x 44-3/8" early wooden framed hall mirror features Parrish "Sea Nymph" and "Aladdin" art print images (each 10-7/8 x 8.75"). Excellent overall. Min. bid \$60.

299). "Jason and the Talking Oak". (7.5 x 5.5" visible) Attractive early art print in gorgeous period frame complete w/ original descriptive mat board featuring Jason in cape standing on boulder beneath mighty oak. Exceptionally nice example is clean and excellent. Min. bid \$40.

300). "Christmas". 13.25 x 11.75" (10-1/8 x 8-5/8" visible) Attractive early art print featuring image of Three Shepherds looking to sky, as found still sealed in its beautiful original frame (period descriptive label on back side). Min. bid \$40.

301). "Evening". 16-1/8 x 13-1/8" (14.5 x 11.5" visible) Reinthal Newman House of Art print of nude young girl in reflecting pool. A clean, very attractive example as found still in its period frame. Min. bid \$40.

302).Large "The Glen". 16-5/8 x 13-7/8" (15-1/8 x 12.25" visible) beautiful cropped 1938 large Brown & Bigelow image featuring deep blue forest scene. Clean, bright and exceptionally nice, presented in beautiful period frame. Min. bid \$50.

303). "Dream Light" Calendar. 19-1/8 x 8.5" (10.25 x 6-3/8" image) attractive, small Edison Mazda 1925 cardboard calendar featuring image of girl swinging in woods. Clean, bright and excellent, complete w/ full pad (image is crisp, bright and like new, w/ some typical staining at staples on calendar pad cover sheet). Min. bid \$60.

304). "Old King Cole" Plaque. 3-7/8 x 12.5 x .5" ca. 1909 wooden hanging plaque w/ laminated celluloid finish featuring Parrish "Old King Cole" image. Original, high quality manufactured piece by Pyraglass Co. (originally made as part of tie rack). Excellent overall, w/ crazing to upper surface finish. Min. bid \$40.

305).Parrish Ephemera Lot. a really nice grouping of early misc. advertising pieces and ephemera, each featuring illustrations by M. P. Includes: "Old King Cole" cigar box label (5-7/8 x 5.75"); 2 unused postcards (Palace Hotel's "Pied Piper" 3 x 7" and Broadmoor Hotel 3.5 x 5.5); Jell-o recipes booklet 4.25 x 6"; Brill Bros. poster stamp (2.5 x 1-5/8"); Broadmoor and St. Regis match books; and Edison Mazda auto lamps box (complete w/ bulb). Pieces are clean and excellent. Min. bid \$40 the lot.

306). "Solitude" Calendar. 19-1/8 x 8.5" (9-1/8 x 6.5" image) attractive, small Edison Mazda 1932 cardboard calendar featuring image of girl on rocks w/ sunlit canyon behind her. Clean, bright and excellent complete w/ full pad (image is crisp, bright and like new, w/ trace hint of very minor soiling in cream colored outer margins). Complete w/ original protective envelope. Min. bid \$60.

Maxfield Parrish Items



307.



308.



309.



310.



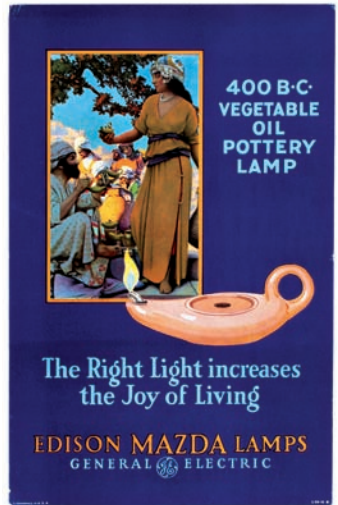
311.



312.



313.



314.

307).Parrish Greeting Cards. Lot of four high quality Brown & Bigelow greeting cards, each featuring attractive tipped on Parrish landscape images (cards range from 7.75 x 6-1/8" to 5.5 x 6.75". Includes: "Eventide"; "The Twilight Hour"; "Peaceful Valley"; and "The Glen". Excellent. Min. bid \$30 (the lot)

308).Large "Sheltering Oaks". 19-3/8 x 16-3/8" (16-3/8 x 13-3/8" visible) large ca. 1960 Brown & Bigelow landscape of lake house surrounded by large oaks w/ water reflections of clouds, etc. Clean, bright and excellent in attractive frame. Min. bid \$40.

309).Ladies' Home Journal. 16.5 x 11-3/8" scarce July 1896 Ladies' Home Journal complete magazine w/ Parrish sepia tone illustrated cover. Clean and excellent example (C. 8.5+). Min. bid \$40.

310). "Circe's Palace" Plaque. 4 x 3.25 x 1/2" small wooden hanging plaque w/ laminated celluloid finish featuring Parrish "Circe's Palace" image. Original, high quality manufactured piece by Pyraglass Co. Clean, bright and exceptionally nice w/ original labels on back side. Min. bid \$30.

311).1896 "Book News". 10/5 x 7-3/8" complete September 1896 "Book News" magazine by John Wanamaker Co., featuring attractive Parrish cover illustration. Excellent overall, w/ a little minor wear on backside cover). Min. bid \$30.

312).Large "Golden Hours". 25 x 17-5/8" (21.25 x 14" visible image) stunning large cropped image from 1929 Edison Mazda calendar featuring two women in boat surrounded by fiery autumn foliage. Exceptionally nice example has crisp, bright colors and displays as like new (although close examination will reveal a little very well-done, minor touch-up in upper background area) and is presented in museum quality frame. Min. bid \$60.

313). "Romance". 16-5/8 x 26-1/8" (13-5/8 x 23-1/8" visible) desirable House of Art large print featuring knave and maiden on columned balcony w/ castles and mountains in background. Decent and respectable example as found still in its original frame. Min. bid \$60.

314).Edison Mazda Sign. 17 x 11" (8.25 x 5" Parrish illustration) ca. 1920's cardboard display sign for Edison Mazda lamps featuring Parrish's "Lamp Seller of Baghdad" image. Clean, bright and excellent overall w/ a little very minor background wear and light edge crimping (C. 8.5+). Min. bid \$50.



Rd #2, Cobb Hill Road, Cazenovia, NY 13035 • 24 Hr. Tel: (315) 662-7625 • 24 Hr. Fax: (315) 662-3570 • morf2bid@aol.com • morfauction.com

Welcome to our 82nd auction of quality antique advertising and fine collectibles. Everything we sell is guaranteed authentic and as described. We attempt to grade condition both fairly and conservatively, using a scale of 1-10 on the advertising items (ten being absolutely mint). We do not list reproductions, re-issues, deceptively restored or pieced together type merchandise. Flaws and blemishes are prominently noted and over emphasized. We encourage you to call for a detailed description on any item you have an interest in, but respectfully must request that you do this before the closing night. Dimensions are listed by height, then width, and are only approximate (+ or - a quarter inch).

Bidding

Bids are accepted only from those parties who have registered with us to bid. (If you were mailed this catalogue by us you are automatically pre-registered.) Your bid is a legal contract to purchase and once entered, cannot be canceled. Placement of a bid indicates acceptance of our terms.

On all "BID" items there is a 15% buyers premium added to each successful bid. You're welcome to bid by mail, email and fax anytime after receiving this catalog. **We will begin accepting phone bids on Wednesday, JUNE 18, 2014. We will be taking calls on Wednesday and Thursday from 10:00 AM until 5:00 PM.** If no one answers when you call, please leave a message on our machine and we will get back to you. **If bidding by mail or fax, please remember to include your telephone number with your bids!** You may call or bid as often as you like. We will tell you the current bid on any item(s) you are interested in. To raise a bid, your advance must be at least \$10 more than the current high bid amount. When an item reaches \$250, bidding increments rise to \$25, at \$1,000, bidding increments advance in \$50 steps, and above \$2,000 in \$100 increments. We suggest not waiting until the last minute to begin your bidding, as its quite possible you won't be able to get through.

Web Page and Bid Updates

We will begin posting current bid prices (not including the buyers premium) on Wednesday, June 18, 2014 (including an addendum of additional catalogue lot information) on our internet web page. These prices will be updated once each day (each evening sometime after 9:00 PM, EST) and will get updated to include the final hammer prices on Sunday afternoon once the sale is concluded. On the closing night, we will attempt to update current bid prices every hour. Our web page address for this sale is: <http://www.morfauction.com> We suggest that once you get to it, that you bookmark this address for easy re-access. There is also an addendum section on our website where we post additional information and photo's for this sale.

Reserves and Estimates

All items which receive an opening bid in our sale will be sold to the highest bidder regardless of the price realized (we reserve the right to withdraw items in the event of inaccurate catalog descriptions and to reject any bid we feel is not made in good faith). **We run our auctions with a strict policy of no buy-backs, no auctioneer games and no hidden reserves.** Unlike some of our competitors, we do NOT allow consignors to bid up their own items!

Mechanical Operations

Early mechanical and electric motors and mechanisms on machines toys, coin-ops, clocks, etc. are quite often temperamental and very unpredictable in nature. Although these mechanisms may be working fine at the time of sale, we make no guarantees or representations regarding their continued operating status once they have left our premises (including during shipping).

Closing Night

THE LAST DAY FOR BIDDING WILL BE ON FRIDAY, JUNE 20, 2014. On closing day, we begin taking calls at 5:00 PM. Please mark your calendar now. **On the closing night (ONLY), we will also be taking calls at (315) 662-3318, (315) 662-3429 and (315) 662-3904 after 5:00 PM** (in addition to our regular (315) 662-7625 office number). **Closing Time: This Auction will close at 10:00 PM (EST) on Friday, JUNE 20, 2014.** At that time, no more incoming calls will be accepted and all lots with a registered bid of less than \$300, as well as all items without call backs registered on them will be officially closed and final. The items at \$300 and over that have call back protection registered on them will be closed out during our call back period the following afternoon (**see important call back rules below**). We reserve the right to change the official closing in the event of unforeseen family type emergencies or technological failures (utility disruptions, etc.). We also reserve the right to either extend the bidding, to postpone or to cancel this auction in the event of a national emergency or if the Internet or the services of the US Post Office were to get seriously disrupted during our catalogue mailing or bidding period.

"Up-To" Bids & Call Backs

CEILING BIDS: We will be happy to enter competitive "up to" ceiling bids for you on any lots you request. Beginning at your minimum amount, we will advance these bid(s) up to your left ceiling amount, if (and only if) it is topped by another bidder. "Up To" bids will be handled discretely and executed in a completely competitive manner for you. Please note that we don't accept open ended "top all others" ceiling type bids.

CALL BACKS: You may request call back protection for any lot(s) that you enter with either a minimum or a protected "up-to" ceiling bid in an amount of at least \$300. This request must be registered with us before the official 10:00 PM closing hour of Friday, June 20, 2014. All callbacks will be placed by us on Saturday, June 21, 2014, beginning at 12:00 noon (EST) and will continue that afternoon until each of the individual lots have been closed out (using past experience, I would expect this to be finished by 6:00 PM, if not earlier). If you register for call-backs, it is your responsibility to be available during this call back time period. We make every effort to honor all our call back requests, but this service is done solely as a convenience to our bidders and will be performed on a best efforts basis only. If you will be traveling or if you will not be available during call back times at your primary number, be sure you provide us with proper alternate or back up numbers for reaching you!

Payment Terms

Winning bidders will be invoiced by mail immediately after the sale. Those who desire fast shipment can pay by Money Order or Cashiers Check. Payments are due within 10 days of receipt of invoice. We reserve the right to offer the item out to our back bidders and deny future bidding privileges to those who do not pay in a timely manner. In addition to personal checks, we also accept payment on your American Express, Visa, Master Card, Discover and Optima Credit Cards (with no surcharge added). No COD's or Collect calls are ever accepted. Items shipped to anywhere in New York State must include appropriate sales tax or signed resale certificate.

Shipping

All packing and shipping charges are extra. We do most of our own packing and shipping in house and try to keep these charges as reasonable as possible for you. On especially fragile and larger hard to pack items, we hire the services of professional packers and charge you at our billed cost. We ship mostly through the Post Office and Fedex Ground, (Fedex Overnight available at an extra charge.)

Subscribing, Prices Realized, Consignments & Upcoming Events

Future catalogs can be assured by sending \$20 for a full 12 months subscription. (Prices are published on our website after each sale) An automatic credit card ordering program is available. We currently run between 2-4 auctions a year. In addition to our regular sales, we also occasionally offer sales made up entirely from single owner collections. Please contact us should you have items you would like us to consider for inclusion in our upcoming events. All inquiries are handled in a completely confidential manner. Our services are also available for the private placement marketing of important individual items, marketing plans for large collections as well as for estate planning and settlement purposes. Back copies of many of our previous auction catalogs are still available at \$5 each (w/ prices realized) w/ quantity discounts available if multiple issues are ordered. For further information, check our website.

Photography by Wes Feuz.

© Copyright 2014. All Rights Reserved. No portion of this publication may be copied in any form without the express written permission of Morford's.

Important Closing Night Information

In addition to our regular (315) 662-7625 office number,
on the closing night (only!) you may also call us at:

(315) 662-3318*
(after 5:00 PM)
(315) 662-3904*
(after 5:00 PM)
(315) 662-3429*
(after 5:00 PM)



***These numbers for
Closing night only!
Friday, June 20, 2014**

Bidding closes at 10:00 PM on Friday closing night. We will be accepting faxes and e-mails on closing night. Our web page will update current high bid prices approximately every hour on closing night and will also list any important addendum information. **All call backs will be made on Saturday, June 21, 2014 beginning at 12 o'clock Noon!**