



**WM Morford**  
Investment Grade Collectibles at Auction

## Investment Grade Collectibles at Auction

Rd #2, Cobb Hill Road, Cazenovia, NY 13035 • 24 Hr. Tel: (315) 662-7625 • 24 Hr. Fax: (315) 662-3570 • morf2bid@aol.com • morfauction.com

**Bidding closes Friday, October 31, 2014. (See page 32 for Terms & Conditions)**



1) **Electric Mixture Tobacco.** 3.25 x 4.5 x 2.25" very early tin litho square corner style tobacco tin for J.B. Pace Co.'s "Electric Mixture" featuring beautifully detailed electrical themed images all around (Somers Bros. Litho). Clean and very attractive (a strong C. 8+). Min. bid \$50.



2) **Carsten's Lard Pail.** 6 x 6" (dia.) unusual, early tin litho product pail for Carsten Co.'s "Washington" brand lard. Clean and impressive high quality piece, in excellent condition (C. 8.5+). Min. bid \$30.



3) **North Pole Tobacco Tin.** 5-1/8 x 6 x 4-1/8" early tin litho oval top tobacco tin for United States Tobacco Co.'s "North Pole" brand. Clean, bright and very attractive example w/a small background wear mark on backside (front C. 8.5+; back C. 8/+). Min. bid \$40.



4) **Wonder Bread Sign.** 8.5 x 20" early, heavy porcelain sign for "Wonder Bread" featuring beautiful, bright, unusual color scheme of orange and red lettering against deep cobalt blue background (original grommets). Clean and excellent overall w/ nice surface sheen (basically displays as a C. 8.5+) w/ a little minor wear at very outer edges. Min. bid \$40.



5) **Buffalo Bill Tobacco Tin.** 4 x 6-1/8 x 2-1/8" early tin litho hinged lid tin for J.B. Pace Co.'s "Buffalo Bill" brand tobacco (Ginna Litho), featuring finely detailed graphic images of Buffalo Bill on lid, front and back side panels (side panels show him shooting at buffalo). Clean and very attractive appearance, w/ a little non-offensive light scattered wear (C. 8+/-). Min. bid \$60.



6) **Kan-O-Tex Gas Globe.** 17 x 14.5" (dia.) outstanding, scarce, early ripple body style gasoline pump globe for "Kan-O-Tex" brand featuring wonderful image of Co.'s sunflower logo (same on both sides). Incredible piece in excellent condition. Note: Co. originally derived its' name from stations located in the states of Kansas, Oklahoma and Texas. Min. bid \$250.



7) **Dr. Swett's Root Beer Sign.** 14.5 x 14.5" early tin litho chain hung sign featuring nice image of woman holding an early mug of Dr. Swett's Root Beer (by Meek Lithography). Clean, bright and very attractive in appearance (displays on wall as a C. 8.5+), although close examination w/ black light will show a little well done light professional restoration to scratch marks and a couple litho chip spots. Min. bid \$60.



8) **Coca-Cola Sign.** 19-5/8" (dia.) outstanding, early, embossed tin litho round Coca-Cola sign w/ green watermelon style border (American Art Works, dated 1932). Crisp, bright and like new (near mint), w/ exception of a couple tiny, very minor background scrapes. Min. bid \$60.

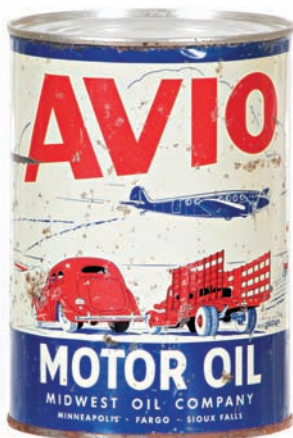




9).Western Ammo Sign. 12.5 x 20.25" early cardboard die-cut easel-back sign for Western brand ammunition featuring nice image of bird dog. Never used sign is clean and excellent (C. 8.5/+). Min. bid \$40.



10).Porcelain Coal Sign. 10 x 17" early, heavy porcelain "Connecticut Coke" brand coal sign. Clean and bright, w/ nice original surface sheen (a strong C. 8.5+++) w/ a couple minor nicks at very outer edge. Min. bid \$40.



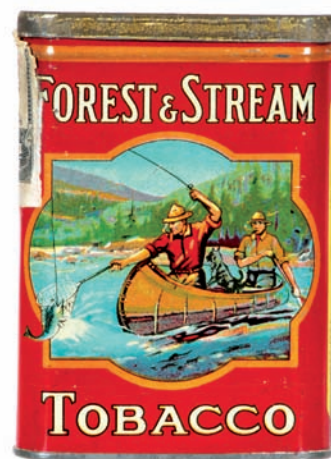
11).Avio Motor Oil Can. 5.5 x 4" (dia.) early tin litho solder seam 1 qt. can for "Avio High" brand motor oil (Midwest Oil Co.; Minneapolis and other Midwest cities) showing great images of early car, airplane and stake truck. Has strong colors and displays nicely, although there is a fair amount of light surface oxidizing and speckling scattered about (base has heavy oxidizing and top lid has been neatly and professionally replaced). Min. bid \$40.



12).Hotel Belvedere Spice Tin. 3.5 x 2-3/8 x 1-3/8" scarce, early tin litho 1-1/2 oz. spice tin (allspice) featuring Co.'s hotel building logo (Caplaw & Co., Baltimore, MD). Clean, bright and displays nicely (basically a strong C. 8/+), w/ exception of minor dent and scratch mark w/ mfg. printing blemish mark in printed "allspice" section on backside. Min. bid \$30.



13).Straight Goods Cigar Tin. 5-3/8 x 3.25 x 3.25" scarce, early 25 count cigar tin from Straight Goods Cigar Co., Chicago, featuring great graphic image of man rolling cigars at desk. Excellent overall (C. 8++), w/ a little oxidizing/darkening on backside edge of lid. Min. bid \$40.



14).Forest & Stream Pocket Tin. 4.25 x 3 x 7/8" early tin litho pocket tin for Imperial Tobacco Co.'s "Forest & Stream" brand, featuring colorful and highly graphic trout fishing scenes (same image both sides). Clean, bright and very attractive appearance w/ a little minor wear to bottom background section of backside (C. 8+). Canadian. Min. bid \$50.



15).C. D. Kenny Sign. 12.25 x 8.5" very attractive, early self-framed tin litho sign from the C.D. Kenny Co. featuring wonderfully detailed color graphic images of children's tea party. Clean, bright and very nice appearance (basically a strong C. 8++) w/ exception of a little light crimping to bottom edge of gold, raised frame area. Min. bid \$50.



16).Polarine Oil Can. 14 x 9-3/8 x 9-3/8" outstanding, large, early tin litho hand-soldered 5 gallon oil can for Standard Oil Co. (of NJ) "Polarine" brand motor oil featuring stunning multi-color graphic motoring scenes on 2 sides. Clean, bright and exceptionally nice appearance (basically a C. 8.5/+), w/ a little minor scattered wear. Min. bid \$70.



17).Red Indian Tobacco Sign. 35 x 28.5" (28 x 22" visible) early paper litho sign for "Red Indian" brand tobacco featuring beautiful multi-color graphics. Clean, bright and like new, complete w/ original metal strips at top and bottom edges (near mint), w/ exception of small, minor mfg. imperfection in background area. Framed. Min. bid \$60





18).Ham and Sam Toy. 7.5 x 6.5 x 5.5" ca. 1920's "Ham and Sam" minstrels windup toy by Strauss Co., NY featuring great figural black musicians moving, shaking, dancing and playing at a piano. Clean and attractive, w/ a little minor scattered wear from use (C. 8+/). Min. bid \$60.



19).Cloverland Dairy Sign. 15 x 19.75" unusual, early metal sign for Cloverland Dairy Co.'s "Golden Guernsey Milk" featuring neat and unusual attached fiberboard cow head image. Sign is clean and attractive (a strong C. 8++), w/ a little light crimping to cow's horns. Min. bid \$40.



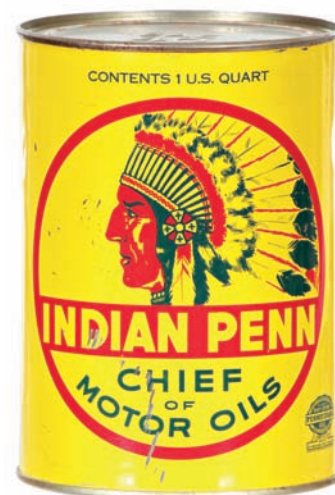
20).Monarch Coffee. 6-1/8 x 4.25" (dia.) unusual, early 1 lb. tin litho coffee can for Reid, Murdoch Co.'s "Monarch" brand coffee featuring nice image of Co.'s trademark lion (same image both sides). Attractive and displays quite nicely (as a C. 8/-) although closer examination will show some non-offensive light scattered wear (critical grade C. 7.5+/8-). Min. bid \$40.



21).Hi-Plane Pocket Tin. 4.25 x 3 x 7/8" early tin litho vertical tobacco pocket tin for Larus Co.'s "Hi-Plane" brand (scarce 4 engine variation). Full, never opened tin is clean, bright and displays quite nicely (basically a strong C. 8+/) w/ some paper loss to tax stamp on top side edges (note: backside has a few fine vertical factory paint/wear lines which appear to have been done in mfg. process). Min. bid \$40.



22).Ideal Spice Tin. 3-1/8 x 2-3/8 x 1-3/8" scarce, early tin litho 1-1/4 oz. spice tin (cloves) for "Ideal" brand (Wilkinson, Gaddis Co., Newark, NJ) featuring beautiful image of Co.'s girl w/ wings logo. Very attractive (C. 8++) w/ minor darkening and wear. Min. bid \$40.



23).Indian Penn Oil Can. 5.5 x 4" (dia.) early tin litho 1 qt. solder seam can for Idaho Refining Co.'s "Indian Penn" brand motor oil. Bottom opened can is clean, bright and displays nicely on shelf (as a C. 8+/), although closer examination will show there is some light scattered scuffing/scratch marks on front side (critical grade C. 7.5). Min. bid \$40.

#### Mechanical Bank Box



24).Mechanical Bank Box. 9.5 x 5.75 x 5-7/8" extremely rare, early wooden mechanical bank box for J & E Stevens Co.'s "Funny Clown" cast iron mechanical bank. Excellent and all original, w/ just the right amount of natural patina and minor wear (no lid). Min. bid \$50.



25).Store Jar. 16 x 8 x 8" scarce, very early, heavy 6-sided pressed glass candy store display jar w/ ground lid. Impressive, very high quality jar is clean and excellent overall, w/ exception of a few very minor fleabites on base and lip areas, which could be easily polished off. Lid has some edge roughness and light chipping, which could also be polished away. Min. bid \$70.



26).Fairy Soap Sign. 18 x 12.75" scarce, early cardboard die-cut easel-back countertop stand-up sign for Fairy brand soap featuring great image of Co.'s trademark girl. Attractive and displays nicely, w/ a little light wear (C. 8+/). Min. bid \$50.





27).Hood's Sign. 19.25 x 21.75" early tin litho 2-sided flange sign for Hood's ice cream, featuring Co.'s colorful and graphic trademark cow (same image both sides). Impressive looking sign has strong colors and displays quite nicely on wall. Multi-color image area is mostly excellent, w/ some general scattered surface wear and oxidizing in outer red background areas (display side rates a nice C. 7.5+/8-, but displays much nicer than this implies; back side C. 7+). Min. bid \$60.



28).Quaker Oats Porcelain Sign. 11.75 x 23.5" early and extremely rare, heavy convex porcelain sign advertising Quaker Oats, featuring a large and powerful looking early style Quaker Oats box. This important, stunning, very high quality sign was made in Germany but pictures a product box w/ a Chicago address. Clean, bright and exceptionally nice (a strong C. 8.5/+) w/ a little non-detracting early scattered edge wear (very minor). Min. bid \$80.



29).Tweddle Chicks Sign. 27.25 x 19.25" early 2-sided tin litho livestock sign for Tweddle Co.'s baby chicks (different images on both sides). Has strong colors and displays nicely (as a C. 8/+), although close examination will show some non-offensive light scratches and some wear at outer areas of both sides (critical grade C. 7.5/+). Backside is lightly embossed and features large image of broken egg and large baby chick. Canadian. Min. bid \$40.



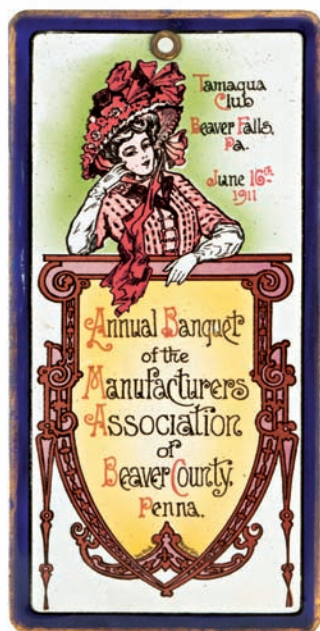
30).Scarce Disney Pail. 8 x 8" (dia.) scarce, large, early tin litho sand pail by Ohio Art featuring great images of Mickey, Minnie, Pluto and Goofy characters all around (© 1938 Walt Disney Enterprises). Clean, bright and very attractive, w/ nice original sheen (basically a very strong C. 8++) w/ exception of a couple light horizontal background scratches in upper background area (on backside). Min. bid \$50.



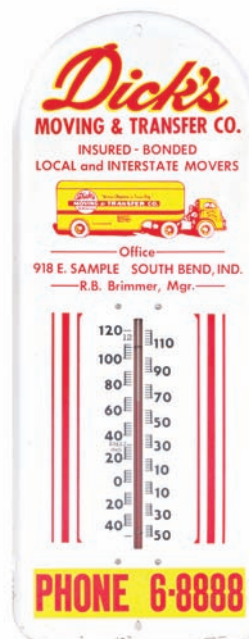
31).Joe Louis Clock. 12.5 x 8.5 x 3.75" early, bronze finished white metal figural novelty clock featuring boxing great Joe Louis. Excellent and all original (C. 8.5/+), w/ nice detailing and excellent surface patina (working clock) Note: Louis was the World Heavyweight champion from 1937 to 1949 and is considered the #1 heavyweight fighter of all time. Min. bid \$40.



32).Turkey Coffee Tin. 10-5/8 x 5.5" (dia.) early tin litho 3 lb. small top coffee tin for Kasper Co.'s "Turkey" brand coffee featuring nice image of Co.'s trademark bird (same image both sides). Clean, bright and excellent overall (a strong C. 8/+), w/ a little non-offensive minor background wear. Min. bid \$50.



33).Beaver Falls Porcelain Sign. 8 x 4" scarce, early, door push sized enameled porcelain sign made by the Ingram-Richardson Co. as a souvenir for a Manufacturers Association banquet held at the Tamaqua Club in Beaver Falls, Pa. in 1911. This stunning and extremely rare multi-color sign is clean bright and like new, w/ beautiful, very high quality detailing (near mint). Min. bid \$60.



34).Moving Co. Thermometer. 16 x 6-3/8" vintage metal advertising thermometer for Dick's Moving & Transfer Co. (South Bend, IN) featuring great image of Co.'s early tractor trailer truck (note 5 digit phone number). Clean, bright and excellent overall appearance, w/ a little light wear to bottom edge (displays as a strong C. 8++). Working thermometer. Min. bid \$40.



35).Sharples Match Holder. 6-7/8 x 2.25 x 7/8" early tin litho match holder for Sharples Co.'s "Tubular" brand cream separators featuring beautiful multi-color graphics. Clean, bright and excellent overall (a strong C. 8++), w/ minor edge wear. Min. bid \$40.



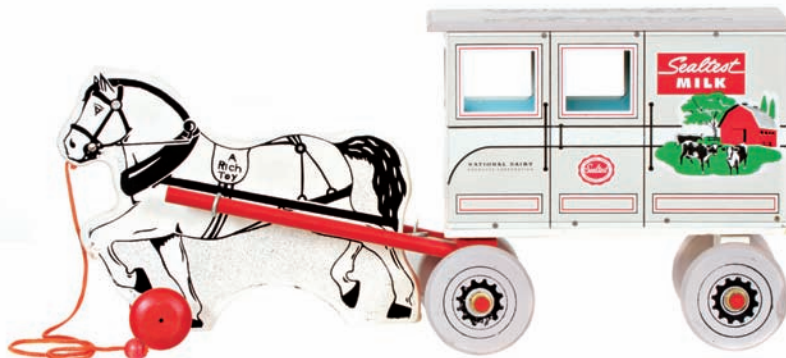


36). Splendid Stoves Sign. 5.75 x 42.25" very early wooden painted country store sign for Fuller & Warren Co.'s "Splendid" brand stoves. Attractive and all original, w/ solid colors and a nice dry paint surface, w/ some typical weathering, minor soiling and light general wear from use giving it a nice primitive country look (C. 7/+). Min. bid \$50.



37). Box

37). Sealtest Milk Wagon Toy. 9.25 x 20.5 x 5.5" unusual, early wooden Sealtest Milk delivery wagon toy w/ lithographed metal sides, by the Rich Toy Co. (Clinton, IA). Toy is crisp and like new, as found never used in its cardboard barn shaped storage box (box has minor toning, a little light storage wear, and a couple small puncture marks, but is still pretty much excellent overall). Min. bid \$60.



38). Egg Brand Pocket Mirror. 2-1/8" (dia.) early celluloid advertising pocket mirror for Egg Baking Powder featuring beautiful color graphics. Clean and excellent. Min. bid \$40.



39). U.M.C. Cartridges Sign. 7 x 10" early 2-sided cardboard die-cut sign for "UMC" brand ammo featuring great image of early bullet (same image both sides). Excellent appearance, w/ a little minor rubbing and wear on backside (front C. 8.5+; back C. 8/+). Min. bid \$40.



40). Universal Motor Co. Mirror. 2.25" (dia.) unusual, early celluloid advertising pocket mirror for the Universal Motor Co., Binghamton, NY. Clean and excellent, w/ great overall look. Min. bid \$40.



41). Silver Arrow Car Polish. 5.5 x 3.25" (dia.) early tin litho can for "Silver Arrow" brand car cleaner/polish product. Clean, bright and very attractive appearance (C. 8+) w/ a little non-offensive light wear on non-graphic backside. Min. bid \$30.



42). Zymole Trokeys Mirror. 2.75 x 1.75" early celluloid advertising pocket mirror for Sterns & Curtis Co.'s "Zymole Trokeys" (chewing gum?) w/ nice image of woman holding product box and putting piece in her mouth. Excellent overall, w/ very minor wear on outside edges. Min. bid \$50.

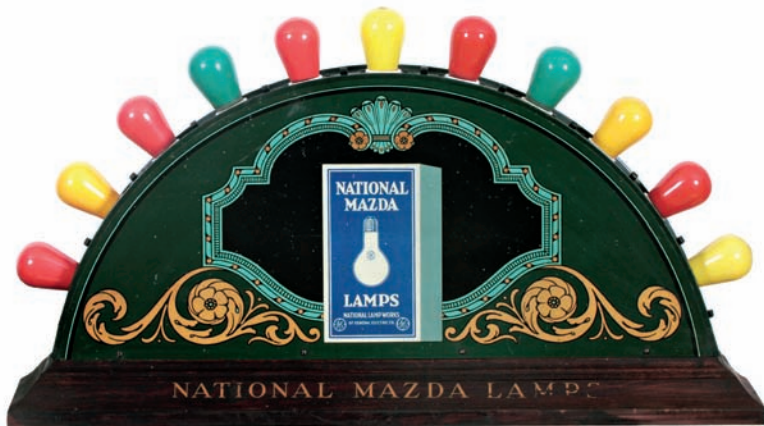


43). Silent Chief Oil Can. 5.5 x 4" (dia.) early tin litho 1 qt. solder seam can for "Silent Chief" brand motor oil (Security Oil Co., Wichita, KS) featuring great image of Co.'s Indian chief logo. Powerful and impressive piece is clean, bright and excellent overall (a strong C. 8++) w/ a small scratch mark in bottom feather area and some wear to cream separator oil paper label section at bottom edge. Min. bid \$40.



44). Wizard Spice Tin. 3.25 x 2.25 x 1-3/8" scarce, early tin litho 1 oz. spice tin (cloves) for "Wizard" brand (Kansas Wholesale Grocers, Coffeyville, KS) featuring nice image of Co.'s trademark wizard (male witch) on both sides. Attractive and displays nicely, w/ a little non-offensive minor soiling/darkening on backside (front C. 8++; back C. 8/-). Min. bid \$30.





45). National Mazda Light Bulb Display. 13.25 x 27.5 x 6-1/8" scarce, ca. 1920's 2-sided electric light bulb display and tester for General Electric Co.'s "National Mazda" brand bulbs. Has wooden base, w/ same tin litho advertising image on both sides and light switches for testing bulbs next to each socket. Attractive and displays very nicely (C. 8+/-), w/ some light wear from use (note: original cloth covered electrical cord is heavily frayed). Min. bid \$60.

Mechanical Cigarette Dispenser



46). Gypsy Cigarette Dispenser. 6.5 x 7.25" (dia.) great ca. 1920's figural mechanical gypsy woman cigarette dispenser (wood, metal and cloth composition). High quality piece is excellent and all original, w/ beautiful surface patina to gypsy woman. Pushing down on front button mechanically delivers cigarettes out of her mouth (mechanism works, but often sticks a little bit). Min. bid \$40.



47). German Carousel Toy. 7.5 x 5.5" (dia.) unusual, early German made tin litho wind-up merry-go-round carousel toy. Clean, bright and very attractive, w/ working wind-up mechanism. Excellent (C. 8.5+/-). Min. bid \$60.



48). Foley Medicine Jar. 10 x 7 x 6" very early, heavy, high quality label under glass drugstore display jar for "Foley's Cathartic Tablets". Jar has hand-applied lip and ground glass stopper, w/ beautiful, very clean label. Excellent. Min. bid \$50.



49). Reddy Syrup Dispenser. 14.25 x 9.25" early, heavy ceramic soda fountain syrup dispenser for Richardson Co.'s (Rochester, NY) "Reddy" brand chocolate syrup. Excellent overall, w/ some staining/wear to three of the large blue letters on backside ("OCO"). Note: includes only the top section of its metal pump (bottom section is cut off). Min. bid \$60.

Adams Gum Tin



50). Popsicle Sign. 25.25 x 17.25" (24 x 16" actual piece) early cardboard display sign for Popsicle brand frozen treats featuring great art deco design by illustrator C. W. French. Has strong colors and displays very nicely (as a strong C. 8+/-), w/ exception of wear spot at top left edge (dated 1932). Framed. Min. bid \$50.



51). Adams Silver Roll Gum Tin. 8.5 x 4.75" (dia.) fine, very early, fancy figural 2-ps. tin litho display tin (w/ lift-off lid) for Adams Co.'s "Silver Roll" brand chewing gum, featuring beautifully detailed Ginn style lithography (w/ fine images of flowers, butterflies, etc.). Clean, bright and very attractive (C. 8.5+/-). Min. bid \$60



52). Telephone Office Sign. 24-5/8 x 19.5" early 2 sided, heavy porcelain sign for a Southern Bell Telephone Co. Office. Clean and excellent overall, w/ nice original sheen (basically a C. 8.5+/-) w/ exception of a little wear at outer edges. Min. bid \$50.





53).Spice Tins Lot. Lot includes four early tin litho spice tins, ea. w/ attractive graphics (hgts. Range from 3-1/8 to 3.75"). Includes Ward 2 oz. allspice (C. 8.5+); Fiesta 2 oz. cloves (C. 8+); Oak Hill 2 oz. turmeric (C. 8+); and Ko-We-Ba 1-1/2 oz. catsup spice (C. 8.5+). Min. bid \$40 (the lot).

Cream Separator Fobs



54).Cream Separator Watch Fobs. Lot includes four different early metal Cream Separator Co. advertising watch fobs, three w/ inlaid cloisonné enameled porcelain. Includes: three different De Laval examples (each app. 1-7/8 x 1.25"); and Primrose brands (1-5/8 x 1.5"). All are excellent. Min. bid \$40 (the lot).



55).Jack Sprat Peanut Butter Tin. 3 x 3-5/8" (dia.) early tin litho 12 oz. "Jack Sprat" peanut butter pail (Western Grocers, Marshalltown, Iowa) w/same great image on both sides. Clean, bright and excellent overall (tin rates a very strong C. 8+); w/ some chipping wear on inside edges of lid. Min. bid \$40.



56).Frost Fences Tip Tray. 4.5" (dia.) early tin litho scallop edged tip tray advertising Frost Fence Co. (notes factories in Cleveland, OH; Hamilton, Ont., and Winnipeg, Man. Canada), featuring beautiful multi-color graphic white horses image. Clean, bright and excellent (C. 8.5+++). Min. bid \$40.



57).Albany Grease Pail. 7 x 7.5" (dia.) unusual, very early 10 lb. grease can for "Albany" brand grease (Adam Cook & Sons, New York), featuring large, detailed image of Co.'s great early logo. Clean, attractive and displays quite nicely, w/ some light denting and minor scattered wear (front C. 8/-; back C. 7.5). Min. bid \$40.



58).Perfume Vendor. 12 x 5 x 2.75" small, early coin operated Perfume vending machine (Perfume Vending Machine Co., Benzonia, MI). Nice quality piece is clean, excellent and all original, w/ oak case, deep scallop edged mirror, original nickel finish mfg. plate and celluloid "Perfume" sign. Excellent (C. 8.5+), w/ a few minor dark spots in mirror glass (complete w/ original key). Min. bid \$50.



59).Miss Minneapolis Flour Sign. 12 x 48" early country store flour sign on Masonite board advertising "Miss Minneapolis" brand. Excellent overall, w/ nice patina to its paint surface and a great overall look (a strong C. 8+). Min. bid \$40.

Porcelain De Laval Sign



60).Porcelain De Laval Sign. 12 x 16" very early, heavy porcelain sign w/ raised volcano grommet holes for De Laval brand cream separators. Sign is crisp and like new, as found never used still w/ its included original protective envelope. Min. bid \$40.





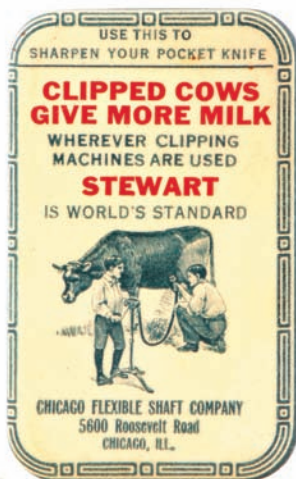
61).Borden's Malted Milk Jar. 9 x 6.5" (dia.) early "Borden's" brand malted milk soda fountain display jar. Very high quality piece has enameled blue on white label on heavy ribbed pressed glass base, complete w/ original marked metal lid. Jar is excellent (has a little non-detracting minor denting to top knob of lid). Min. bid \$50.



62).Cascarets Medicine Signs. Lot includes a matched set of early paper litho drugstore signs (ea. set app. 22.5 x 22.25" as pictured) for "Cascarets" brand medicines featuring stunning multicolor lithography. Pieces are clean, bright, exceptionally nice and appear never used (C. 8.5++) w/ exception of small tack hole in top blue background area of one w/ boy (both have faint original factory fold lines). Min. bid \$50 (the lot).



63).Puritas Spice. 3.25 x 2.25 x 1.25" scarce, early tin litho 2 oz. spice tin (allspice) for "Puritas" brand (Puritas Co., Los Angeles) w/ attractive image of Co.'s trademark woman on both sides. Clean, bright and very attractive appearance (display side a strong C. 8++), w/ a little scuffing on left, narrow side edge and minor dents and a couple small paint drops on backside. Min. bid \$30.



64).Stewart Livestock Clippers Knife Stone. 2.75 x 1.75" scarce, early celluloid covered knife sharpening stone advertising Stewart brand livestock clippers (Chicago Flexible Shaft Co., Chicago) w/ nicely detailed image of farmers clipping cow ("Clipped Cows Give More Milk"). Excellent. Min. bid \$30.



65).Motor Seal Oil Can. 5.5 x 4" (dia.) early tin litho 1 qt. solder seam oil can for "Motor Seal" brand (Bodie Hoover Co., Chicago). Lithography is clean and excellent overall, w/ some light haziness at very bottom edge (bottom side has heavy oxidizing and top lid has been neatly and professionally replaced). Min. bid \$40.



66).Puffenjoy Pocket Tin. 4-3/8 x 3 x 7/8" scarce, early paper label (over tin) vertical pocket tin for "Puffenjoy" brand tobacco (Cin-Tobacco Co., Minneapolis). Attractive and displays pretty well, w/a few stain spots scattered about (C. 7++). Min. bid \$40.



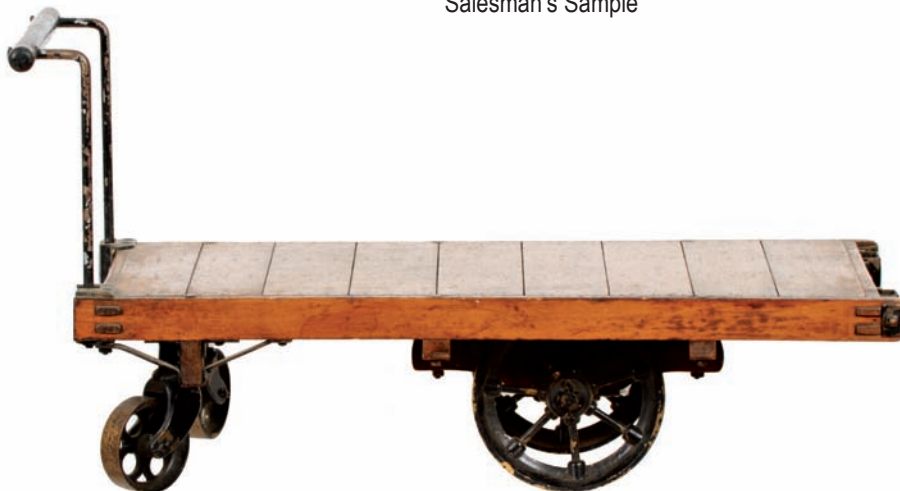
67).Satin Skin Powder Sign. 18.25 x 18.5" early die-cut cardboard easel-back standup sign for Satin brand complexion products (Albert Wood Co., Detroit). Piece is bright and clean and displays pretty well, w/ small break marks and wear at outer bottom right edge corners and a faint vertical abrasion area in cheek/shoulder section (critical grade C. 7.5/+, but displays nicer than this implies). Min. bid \$50.



68).Westchester County Brewery Sign. 24 x 34 x 5/8" early wooden pre-prohibition beer sign mfg. by Meyercord Co., Chicago featuring beautifully detailed multi-color factory scene of Westchester County Brewing Co. factory buildings (this Pelham, NY brewery operated from 1910-1920). Clean, bright and displays quite nicely (basically displays as a C. 8/++), w/ some minor scattered surface wear, including a few small nail holes in outer background and a few upper surface chip spots at outer edges (critical grade C. C. 7.5+/8-). Min. bid \$70.

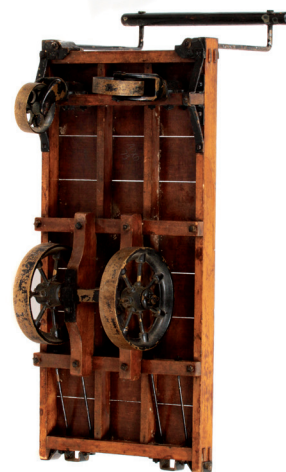


Salesman's Sample



69).Salesman's Sample Factory Dolly. 11-5/8 x 21 x 9" outstanding, very early salesman's sample factory floor freight dolly that is an exact miniature version of one of the large full sized working units. This extremely high quality piece has incredible detailing and is made of cast iron, wood and heavy machined brass. Excellent and all original, w/ a beautiful, deep, rich surface patina and just the right amount of minor wear (C. 8++). Min. bid \$70.

Detail



70).Busy Biddy Spice. 3-1/8 x 2-3/8 x 1-3/8" scarce, early tin litho 1 oz. spice tin (celery seed) for "Busy Biddy" brand (Davis-Strauss-Stauffer Co., various PA cities) featuring beautiful detailed image of Co.'s trademark hen. Clean, bright and like new (near mint), w/ exception of a minor rub mark at bottom of backside. Min. bid \$30.



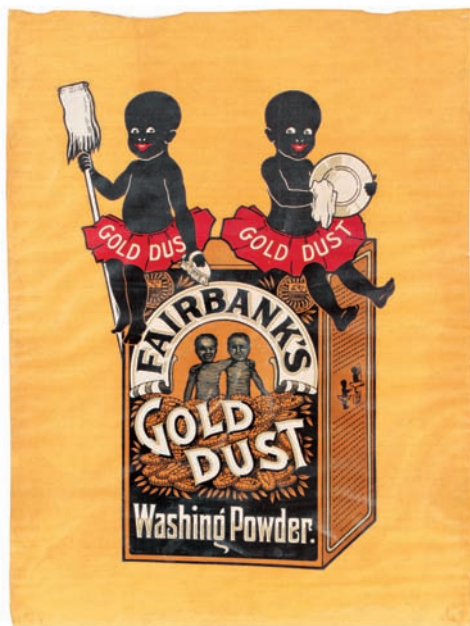
71).Auto Top Dressing. 4 x 3.5" (dia.) early tin litho pry-lid product can for Miller Co.'s auto top dressing (made for detailing early mohair automobile tops), w/ great image of early car. Clean and very attractive appearance (C. 8+). Min. bid \$40.



72).Alumni Pocket Tin. 4-1/8 x 3 x 7/8" scarce, early tin litho vertical tobacco pocket tin from United States Tobacco Co., Richmond, Va. (concave shaped). Has strong colors and displays pretty well, although there are a few light background scuffs and scrapes and an area of darkened wear area on graduates' cheek/jaw area (front C. 7.5; back C. 8+/-). Min. bid \$50.



73).Banner Boy Spice. 3 x 2.25 x 1.25" scarce, early tin litho 1-1/2 oz. spice tin (cloves) for "Banner Boy" brand (Banner Wholesale Grocers, Chicago) w/ attractive image of Co.'s trademark kid on both sides. Clean, bright and very attractive (C. 8.5+/-). Min. bid \$30.



74).Gold Dust Sign. 30.25 x 22.5" large early cloth sign for Fairbank's Co.'s "Gold Dust" brand washing powder featuring powerful and impressive image of Co.'s trademark twins sitting on Co.'s early style box (image area of sign has a high quality semi-gloss oldcloth type finish. Clean, bright and excellent (C. 8.5++) and ready to frame. Min. bid \$60.



75).Coca-Cola Sign. 38.75 x 11-5/8" large, early, nicely detailed and embossed tin litho Coca-Cola bottle shaped sign featuring great image of Co.'s 1923 style bottle. Sign is clean, bright and basically displays as almost like new (a strong C. 8.5++) and comes complete w/ its original marked wooden shipping crate (note: examination under black light will reveal a little minor professional touch up that is mostly confined to outside edges of the piece). Min. bid \$60.



76).Daniels Dog Medicines Sign. 28 x 34.75" scarce, early advertising sign for Dr. Daniels Dog Remedies, featuring four different paper litho images of the famous poker playing dogs by artist Coolidge (ea. 9.5 x 14") which are mounted to a large original Daniels advertising cardboard mat backing board. There is some light general wear to images, some separation to top of center factory fold line on the mounting mat board piece, and a close-up examination will show some overall non-offensive faint general speckling/foxing scattered about. Critical grade (C. 7+/-), although it displays much better than this implies (displays on wall more like a C. 8). Would look great framed. Min. bid \$50.





77). Victoria Grease Can. 3-3/8 x 4.5 x 2.25" very early tin litho square corner style grease can from Canfield Oil Co. (Cleveland, OH), featuring beautifully detailed graphics by Ilsley Lithographers. Clean, bright and excellent (C. 8.5+). Min. bid \$40.



78). Jitney Bus Candy Container. 2.5 x 4.25 x 2" early, nicely detailed figural glass candy container in shape of early bus, complete w/ original metal wheels and tin "Jitney Bus" closure. Excellent. Min. bid \$40.



79). Blue Label Tobacco. 2-5/8 x 4-5/8 x 1" very early tin litho hinged lid tobacco tin for Buchanan & Lyall Co.'s "Blue Label" brand featuring beautiful early lithography by Ilsley & Co. Clean, bright and exceptionally nice (C. 8.5++). Min. bid \$30.



80). Possum Cigar Can. 5-1/8 x 5.25" (dia.) early tin litho 50 ct. cigar can for Lorillard Co.'s "Possum" brand cigars featuring beautiful, colorful and highly graphic possum image on both sides. Clean, bright and excellent overall (tin itself rates a solid C. 8.5+), although lid has some non-serious slightly oxidized darkening and minor pings. Min. bid \$40.



81). Western Union Sign. 21 x 34" early, heavy enameled porcelain 2-sided Western Union Telegraph Co. office building sign. Clean and bright, w/ nice surface sheen. Excellent overall (C. 8.5+) w/ exception of some oxidized wear to top mounting bracket holes and a little minor edge wear. Min. bid \$60.



82). Dietz Bicycle Lamps Mirror. 2" (dia.) important and extremely rare celluloid advertising pocket mirror for Dietz brand bicycle lamps, featuring beautiful multicolor graphics. Outstanding piece is crisp, bright and like new (near mint). This is considered to be among the rarest and most desirable of all the known pocket mirrors. Min. bid \$100.



83). Hupmobile Auto Calendar. 30.5 x 13" large 1924 paper litho advertising calendar for Hupmobile brand automobiles, w/ great color lithography (the Western American Indian illustration at top is by illustrator Philip R. Goodwin). Clean and very nice overall (a strong C. 8++) w/ minor soiling and wear in outer margins. Has original strips at top and bottom and full 1924 calendar pad. Min. bid \$40.



84). Primrose Ice Cream Sign. Large, early 2-ps. die-cut cardboard string hung sign for "Primrose" brand ice cream (pieces measure 7.5 x 16" and 26.5 x 16.25"). Clean, attractive and displays very nicely (as a nice C. 8+) w/ a little minor scattered wear and light faint wrinkle marks (note: close examination will show a couple of light bend marks that have been professionally fixed w/ reinforcement on backside). Min. bid \$50.



85). Hercules Gunpowder Calendar. 29 x 12" large, 1917 paper litho advertising calendar for Hercules brand gunpowder featuring great image of wild turkeys by illustrator Charles Livingston Bull. A clean very good looking piece that is excellent overall (displays as a C. 8.5+), w/ a couple non-detracting minor tears and very minor wear. Has original metal strip at top and the October/November calendar tear sheet at bottom. Min. bid \$50.





86).Lazell's Perfumes Glass Sign. 14.25 x 38.5" outstanding, very high quality frosted acid etched glass window/trade sign for Lazell's Perfumes, w/ incredible deep ruby glass detailing. Beautiful piece is still in its original wooden frame and was probably used in a high end pharmacy or fancy big city department store. Excellent. Min. bid \$50.



87).Dixie Creams Candy Bucket. 11 x 13.5" (dia.) unusual, early wooden candy bucket for H. H. Co.'s "Dixie Creams" brand candies w/ its great original black Americana themed paper label featuring wonderful image of black characters dancing to banjo and accordion music. Label has a fair amount of edge loss and general overall wear, but still displays quite nicely (C. 7/+). Min. bid \$50.



88).Pard Dog Food Clock. 15.5 x 15.5 x 3.5" early heavy wood framed glass animated electric clock advertising "Pard" brand dog food, w/ great tin advertising image of dog in doghouse eating food from "Pard" marked bowl (note: dogs head goes up and down above bowl to mimic eating motion). Excellent overall (a strong C. 8.5/+) and animation runs great, although clock is not running). Note: large hanging hook at top not original to piece. Min. bid \$40.



89).Hires Tray. 13-3/8" (dia.) scarce, early tin litho serving tray for Hires Root Beer featuring great image of Co.'s trademark kid holding stein. Crisp, bright and exceptionally nice overall condition (C. 8.5+) w/ some touchup in the outside gold area of rim. Min. bid \$60.



90).Shinola String Holder. 17 x 8 x 1" scarce, unusual early country store advertising string holder for "Shinola" brand shoe polish. Constructed of wood and metal, w/ nice early stenciled advertising on both sides. All original, w/ a great primitive country look (C. 7.5/+), w/ general expected ageing and wear. Min. bid \$50.



91).Forbes Howard Co. Candy Jar. 11.25 x 4.75 x 4.75" unusual, very early store display jar w/ fancy ground lid for Forbes Howard Co.'s (Boston, MA) "English Fruit Tablets" candy. Jar is excellent, w/ some storage wear marks on the label. Found still in its original box w/ beautiful multi-color label still intact (box label C. 8+/+). No lid on box. Min. bid \$40.



92).Spud Cigarettes Sign. 20.75 x 10.75" ca. 1930's paper litho sign for Spud brand cigarettes (Axton-Fisher Tobacco Co., Louisville, KY) w/ powerful and impressive look. Clean, bright and excellent in appearance (basically displays as a C. 8.5) w/ exception of small damage spot in bottom outer right border area (reinforced on backside w/ invisible archival tape). Min. bid \$40.





93).Majestic Hams Match Holder. 4-7/8 x 3-3/8" scarce, early tin litho advertising match holder for Sulzberger & Sons Co.'s "Majestic" brand hams. Has strong colors and displays on wall pretty well, although there is minor bending and light general wear (critical grade C. 7+, but displays a lot better than this implies). Min. bid \$40.



94).Jackson Square Cigar Sign. 10.5 x 12.75 x 1" scarce, early 2-sided tin litho die-cut flange sign for "Jackson Square" brand cigars. An impressive and powerful looking piece that displays quite nicely, although there is some general wear, including some light scattered blemishes, a small nail hole in top wrist area and some light oxidizing in outer fingers area on backside (front C. 7.5++/8; back C. 7++) displays much nicer than this implies (as found, might improve some w/ cleaning). Min. bid \$80.



95).Hotel Bell. 5-1/8 (h) x 3.25 x 3.25" (base) fancy, early, nickel (over brass) mechanical countertop hotel bell, w/ nicely detailed patterns in metal (has attractive figural acorn shaped ringer that strikes inside bell when knob at top is touched). Excellent, w/ nice sounding ring. Min. bid \$40.



96).Perfect Pipe Pocket Tin. 4.25 x 3-3/8 x 1" early tin litho vertical pocket tin for S.S. Pierce Co.'s "Perfect Pipe" brand tobacco. Clean, bright and very attractive overall (basically a strong C. 8) w/ exception of wear spot at mid section of raised top lip area (just below edge of lid). Min. bid \$40.



97).Black Man Mechanical Bank. 5-3/8 x 2.5" (dia.) early figural tin litho black man mechanical bank (lever on front makes tongue stick out to take coin, which retracts dropping coin into his body). Piece is bright and very attractive (a strong C. 8++) w/ exception of some light surface oxidizing on his tongue). Complete w/ original trap on base. Min. bid \$40.



98).What Cheer Spice. 3 x 2.25 x 1.25" scarce, early tin litho 1-1/2 oz. spice tin (cream tartar) for "What Cheer" brand (Rhode Island Wholesale Grocers, Providence, RI) w/ same image both sides. Clean, bright and very attractive (a strong C. 8++) w/ exception of some darkening in stamped "Cream Tartar" area. Min. bid \$30.



99).Hi-Plane Oil Can. 5.5 x 4" (dia.) early tin litho solder seam 1 qt. can for "Hi-Plane" brand motor oil (Star Oil Co., Tulsa, OK), featuring great image of Co.'s trademark airplane (same image both sides). Clean, bright and excellent (C. 8.5+/), w/ exception of some oxidizing on base. Min. bid \$30.

Texaco Gun Oil



100).Texaco Gun Oil Tin. 5.5 x 3-5/8 x 1-7/8" scarce, early, hand-soldered 1 pint size Texaco brand Gun Oil tin (Texas Co., Port Arthur, TX). Has strong color and displays nicely, w/ some light general wear from use (C. 7.5+/). As found, might improve a bit w/ cleaning. Min. bid \$40.



101).Selz Shoes Sign. 24 x 36" outstanding, large, early, heavy porcelain sign for "Selz" brand shoes featuring great image of Co.'s happy feet logo. A powerful and very impressive looking piece that is crisp, bright and excellent overall, w/ beautiful original surface sheen (C. 8.5+++) w/ a little light wear at very outer edges. Min. bid \$70.



Wrigley's Gum



102). Wrigley's Gum Change Receiver. 7 x 5.75 x 1-3/8" scarce, early, heavy pressed glass country store change receiver w/ embossed "Wrigley's" advertising and four sections at back for selling and displaying gum packs. Glass is excellent w/ minor paint wear and lot includes the four early pictured Wrigley's gum packs (note: gum pack wrappers are original, but gum sticks inside them are not original). Min. bid \$50.



103). Sweet-Orr Overalls Sign. 14 x 20" outstanding, heavy enameled porcelain sign for "Sweet-Orr" brand Union Made Overalls featuring beautifully detailed stamped image of Co.'s great early logo in center. Very early sign has raised volcano holes and is clean, bright and like new in appearance, w/ beautiful original sheen (basically crisp and near mint), w/ exception of a few chip spots at very outer top and bottom edges. Min. bid \$60.



104). Miller Beer Tray. 13" (dia.) outstanding, early tin litho pre-pro beer tray for Miller Beer featuring great image of Co.'s trademark girl on moon. Crisp, bright and exceptionally nice (a strong C. 8.5++) w/ nice original sheen (has a few spots of mounting residue on non-graphic backside). Min. bid \$50.



105). Dixon Pencil Display. 11.25 x 9 x 3.25" unusual, early tin litho countertop stand-up pencil store display rack for Dixon's brand graphite pencils, made to display 72 individual pencils. Features attractive color graphic image of a fort constructed of pencils, w/ pencils fence out front. Clean, bright and very attractive (a strong C. 8+/), w/ very minor wear. Min. bid \$50.



106). Texaco Gas Globe. 16.75 x 16.5 x 4.75" early, 3-ps. milk glass service station pump globe for Texaco brand gasoline. Clean, bright and excellent overall, w/ a little light wear to outside black border section on globe insert lenses and a little weathered staining and minor red over-paint to heavy milk glass globe base. Min. bid \$60.



107). Ayer's Pills Die-Cut. 12.5 x 7-1/8" very early lithographed cardboard die-cut easel back stand-up countertop sign for Ayer's brand cathartic pills featuring nice image of black country doctor and young children. Clean and excellent overall (a strong C. 8++) filled w/ text advertising on backside. Min. bid \$40.



108). Western Shotgun Shells Sign. 12-1/8 x 8" early cardboard die-cut easel-back countertop standup sign for Western Co.'s Field Load Shotgun Shells featuring great color graphic image of flying game birds and early product box. Clean, bright and very attractive appearance, w/ a trace bit of faint, very minor background soiling (C. 8+). Min. bid \$40.



109). Figural Hand Service Bell. 7 x 3.5 x 3-3/8" unusual, early heavy figural white metal hand shaped hotel bell on wooden base. All original, w/ a great look. Impressive piece that works great, w/ some general plating wear to finish. Min. bid \$50.





110) Anti Prohibition License Plate. 4-3/8 x 11.75" ca. 1920's embossed metal automotive license plate calling for the repeal of the 18th Amendment. Never used piece is clean, bright and like new (C. 8.5+), w/ only minor storage wear. Min. bid \$30.



111) License Plate Toppers. Lot of two ca. 1920's / 30's metal license plate toppers w/ great painted images on reflective celluloid centerpieces. Excellent, never used examples (C. 8.5+). Min. bid \$30 (the lot).



112) Marathon Endurance Oil Can. 5.5 x 4" (dia.) early tin litho solder seam 1 qt. can for Ohio Oil Co.'s "Marathon Endurance" brand motor oil. Full, unopened can is clean and very attractive (a strong C. 8+), w/ exception of some oxidized darkening on lid. Min. bid \$40.



113) US Marine Pocket Tin. 4.25 x 3 x 7/8" early tin litho vertical pocket tin for "U.S. Marine Flake Cut" tobacco. Has strong colors and displays nicely (C. 8+/-), w/ minor soiling and wear (note: there is a tiny early rivet hole in top of lid). Min. bid \$30.



114) Lily of the Valley Spice. 3-1/8 x 2.25 x 1.25" scarce, early tin litho 1-1/2 oz. spice tin (red pepper) (Sackville Co., Washington, PA) w/ attractive image of trademark flowers. Clean and very attractive, w/ minor soiling and wear on backside (front C. 8+; back C. 8/-). Min. bid \$30.



115) Ace High Oil Can. 5.5 x 4" (dia.) early tin litho solder seam 1 qt. can for "Ace High" brand motor oil (Midwest Oil Co.; Minneapolis and other Midwest cities) featuring great image of Co.'s racecar and airplane logo. Has strong colors and displays nicely, although there is some light surface oxidizing on left side. Min. bid \$40.



116) 1925 Western Ammo Calendar. 27-5/8 x 13-1/8" large, 1925 paper litho advertising calendar for Western Cartridge Co.'s ammo and guns w/ a nice hunting dogs image by illustrator A. Russell. Clean and excellent (C. 8.5+) w/ original metal strip at top and calendar tear sheets for February through December at bottom. Min. bid \$50.

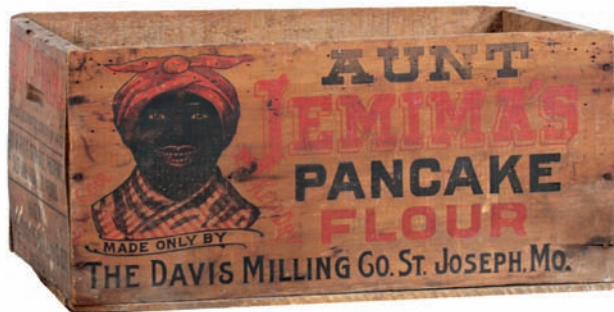


117) Nabisco Standup Sign. 25 x 11-1/8" great, early cardboard easel-back store display sign for Nabisco Co.'s "Uneeda" brand biscuits, in a great, unusual size. A powerful and very impressive looking piece that displays great (as a strong C. 8+), although there are a couple of professionally repaired crease/break lines in upper body area (incredibly well done). Min. bid \$50.



118) 1922 Coca-Cola Calendar. 38.5 x 19.75" (30-3/8 x 11-7/8" actual piece) scarce, early paper litho calendar featuring Coca-Cola Co.'s 1922 calendar girl at ballpark, w/ great baseball scene in background. Impressive piece has strong colors and displays very nicely (as a solid C. 8+), complete w/ metal strip at top and full calendar pad below (note: we have not examined piece out of frame, but an close-up examination will show some minor snake lines, a faint horizontal fold line in center and what appears to be a few professionally repaired tears in sky area, w/ a few fairly minor stain and wear marks and couple small chips in outer white border area). Beautifully framed and matted. Min. bid \$200.





119). Aunt Jemima's Pancake Crate. 10.25 x 23/8 x 13" early wooden crate for Aunt Jemima brand pancake flour featuring wonderful image of the early style Aunt Jemima character (same image on front and back panels). Powerful and impressive piece w/ nice patina and just the right amount of weathering and general scattered wear to give it a great a folksy country look (C. 7.5/+). Front and back panels would make great looking hanging signs. Min. bid \$40.



120). Dagwood the Driver Toy. 6.5 x 8 x 3-5/8" ca. 1935 tin litho crazy car wind-up toy by Marx w/ cartoon character Dagwood driving (from King Features "Blondie" comic strip series) w/ pictures of various strip characters covering car. Clean, bright and excellent overall (C. 8.5) w/ only very minor wear from use. Mechanism works well (his head turns around as car jerks back and forth, goes in circles, etc.). Min. bid \$50.



121). Steffen's Ice Cream Tray. 13.5" (dia.) early tin litho advertising tray for Steffen's brand ice cream, featuring beautiful multi-color graphics. Image area of tray is clean, bright and excellent (image area a strong C. 8++), although there is scattered wear in rim (fairly heavy chipping and wear at 3 o'clock in outer rim). Min. bid \$40.



122). Farmer Occupational Mug. 3.75 x 3-5/8" (dia.) early, fine china occupational shaving mug w/ nicely detailed hand-painted image of farmer and horses plowing field (G.H. Fralick Barbers Supplies stamping on base). Excellent. Min. bid \$50.

Planters Peanuts Jar



123). Planters Fish Globe Jar. 6 x 5.25 x 3.5" scarce, ca. 1929 glass fish globe style 1 lb. Planters brand salted peanuts jar complete w/ its original label on outside of jar. Jar is excellent and outside label is quite nice, w/ some light wear (C. 8+/-). Note: jar lid still has the original instructional label on inside of lid, which is quite unusual to find. Min. bid \$40.



124). R-Pep Soda Sign. 47.5 x 11-5/8" large, early, embossed, heavy bottle shaped metal litho sign for "R-Pep" brand soda fruit flavored pop. Clean, bright and very attractive appearance (displays as a strong C. 8.5), w/ a few non-detracting minor background wear spots. Min. bid \$50.



125). Beacon Oil Co. Display Bottle. 18-7/8 x 4-1/8" (dia.) fancy, very early, heavy, high quality blown glass display jar (polished pontil mark on base) featuring fancy etched advertising for the Beacon Oil Co., Boston. Interesting and very unusual piece probably used to display Co.'s oil at an exposition. Exceptional condition. Min. bid \$50.



126). Ramon's Pills Thermometer. 21 x 8.25 x 7/8" unusual, early wooden variation thermometer advertising Ramon's brand medicines, w/ beautiful rich, early paint surface. Piece is clean and impressive looking, w/ strong colors and displays very nicely (basically a strong C. 8/+ overall appearance), w/ exception of some early paint chip wear at left top and left outside edge section w/ a small narrow stress line in paint just below the thermometer numbers. Min. bid \$40.



127). Gargoyle BB Oil Tin. 12-3/8 x 4" (dia.) early tin litho cone shaped product can for Gargoyle Co.'s "Mobilol BB" brand motor oil, w/ nice gargoyle logo and refinery tower images all around base. Has strong colors and displays pretty well, w/ a little minor denting and some light scattered soiling and wear (C. 8-). German. Min. bid \$40.





128).Cocoa-Crush Sign. 19.5 x 27.25" scarce, early embossed tin litho sign for Orange Crush Co.'s "Cocoa-Crush" chocolate pop drink, featuring Orange Crush Co.'s 1920 ribbed bottle. Sign is bright and displays on wall pretty well (as a C. 8/-), although close-up examination will show faint bends and wrinkles and a little light scattered wear (critical grade C. 7+). Lithography by Robertson Steel & Iron Co., Springfield, OH. Min. bid \$40.



129).Popeye the Pilot Toy. 5.5 x 8.25 x 8.25" scarce, ca. 1920's figural tin litho wind-up comic character toy by Marx Bros., featuring Popeye in early plane. Clean and attractive piece w/only minor wear and just a faint hint of fade (C. 8/+), nice working condition. Min. bid \$60.



130).Nutrine Candy Tin. 14 x 10" (dia.) early tin litho pry lid store can for Nutrine brand candy featuring same nice graphic image on both sides. Clean and attractive in appearance (C. 8/+), w/ a little minor wear and a couple dent marks on backside. Min. bid \$40.



131).Schilling's Spices Corner Sign. 11-7/8 x 9.75" very early, small, curved heavy porcelain country store corner sign for Schilling Co. Spices (has raised volcano style mounting holes w/ original iron mounting bracket on backside). Clean, bright and exceptionally nice. Min. bid \$60.



132).Sunoco 5 Gallon Oil Can. 14 x 9-3/8 x 9-3/8" scarce, early tin litho 5 gallon motor oil can for Sun Oil Co.'s Heavy Duty Motor Oil. Bright and attractive appearance w/ a little non-detracting minor expected wear and some general oxidizing on non-graphic top side (C. 8/-). Min. bid \$40.



133).Davis Laundry Thermometer. 21 x 8 x 3/4" early wooden advertising thermometer for the Davis Steam Laundry Co., Meriden, Ct. in shape of an early shirt. Excellent (C. 8.5), w/ a great overall look (note: thermometer tube broken and surface may possibly have been re-varnished long ago). Min. bid \$50.



Salesman's Sample

134).Salesman's Sample Wash Machine. 18.75 x 10-3/8 x 12.25" very early, figural miniature working salesman's sample wash machine. Outstanding, very high quality piece has beautiful detailing and an incredible overall look, w/ nice rich surface patina. Excellent and all original, w/ exception of a small replaced washer and nut at base. Min. bid \$70.



135).Osh-Kosh Thermometer. 25.5 x 9.75" unusual, early metal advertising thermometer for Osh-Kosh brand overalls and work wear. Has decent color and displays pretty nicely, w/ some light general scattered wear from use (C. 7.5+). As found, might improve w/ cleaning (working thermometer). Min. bid \$40.





136).Invincible Motor Oil Mirror. 1.75 x 2.75" unusual, early celluloid pocket mirror for Miller & Sons Co.'s (Pittsburgh) "Invincible" brand motor oil in likeness of Co.'s oil barrel. Celluloid is excellent overall, w/ minor oxidizing to metal collar on backside. Min. bid \$40.



137).Springfield Thread Sign. 9.5 x 20-7/8" very early paper litho sign for "Springfield Silk" (thread) featuring beautifully detailed lithography by Milton Bradley & Co., Springfield, Mass. (later became famous for their lithographed games). Impressive piece is clean, bright and exceptionally nice (C. 8.5+) in its original frame. Min. bid \$50.



138).De Laval Sign. 14-1/8 x 20-1/8" unusual, larger variation ca. 1890's tin litho sign for De Laval cream separators featuring nice image of Co.'s primitive early separator (Norton Bros. Litho). Quite nice overall, w/ a little light scattered wear in outer border (could be easily framed out) and a slight bit of non-detracting minor bending (C. 8+/-). Min. bid \$40.



139).Pepsi Toy Gun. 4 x 25-3/8 x 1" early toy air gun (by G & G Mfg. Co., Cincinnati), w/ painted advertising on wooden stock for "Double size 5¢ Pepsi-Cola". Has some darkening to metal (especially at end of barrel), otherwise excellent, as found still in its original box (box excellent except loss to right side edge flap). Min. bid \$40.



140).Edgeworth Shelf Sign. 8 x 32 x 7" early tin litho country store advertising shelf for Edgeworth brand tobacco w/ original metal folding rods underneath (used for hanging from ceiling). Has strong colors and displays nicely (advertising panel C. 8+/-) w/ a little light scattered background wear and some wear spots on non-graphic dark top shelf piece. Min. bid \$50.

#### Sample Coffee Tins



141).Sample Coffee Tins. Lot includes two early tin litho miniature 1/4 lb. sample size coffee cans (ea. app. 2-5/8 x 3-1/8"). Includes: "Advo" (McCord Brady Co., Omaha, NE); and "Vienna" (Woolson Spice Co., Toledo, OH). Both are clean, bright and excellent (C. 8.5+). Min. bid \$40.



142).Trinity Mountain Plate Topper. 5-7/8 x 6-7/8" early aluminum automotive license plate attachment for Trinity Mt. (Fernie, British Columbia). Excellent, w/ nice paint surface and a rich all original patina. (Canadian). Min. bid \$40.



143).Orange Crush Sign. 11.5 x 36 x 7/8" scarce, early, 2-sided wooden country store arrow sign for "Orange Crush" Soda, featuring great early paint surface. Has an early break mark at bottom section of triangular pointed arrow, some general overall light weathering and some general surface wear from years of use, but overall the piece is attractive and displays quite nicely, w/a nice primitive, folksy country look (C. 7+). Note: surface is all original and as found, would probably improve some w/ a good cleaning. Min. bid \$80.





144).Morris Express Sign. 13.5 x 30 x 3/4" important, early wooden folk art trade sign for the Morris Express Co., w/ beautiful free hand painted detailing surrounding its gilt decorated lettering. This important, very impressive looking and freshly picked piece has an exceptionally nice patina and look to it, (C. 8+/) and still retains its all original, un-cleaned dry surface. Min. bid \$100.



145).Disney China Set. ca. 1930's very high quality fine china tea set featuring great images of the early long billed style Donald Duck character on each piece (marked "Walt E. Disney" on tea pot base). As found never used still in its original box, set includes teapot, sugar and creamer and six individual cups and saucers. Pieces are excellent (has expected dark toning and some general wear to box and box lid). Min. bid \$50 (the set).



146).Dr. Hess Chick Tablets. Lot of twelve full, never opened ca. 1930's cardboard product boxes for Dr. Hess veterinary medicine Co.'s "Chick Tablets" bowel astringent. Individual boxes are like new and measure 5.5 x 2.5" (dia.); outer shipping box has top half of cover neatly cut off, otherwise it's excellent (measures 6 x 10.75 x 8"). Min. bid \$40.



147).Optician Sign. 6 x 14" very early heavy reverse glass Optician's trade sign featuring fancy scrolled silver mirrored lettering and "chipped" glass scalloped edges. High quality, very impressive looking piece is excellent overall, w/minor expected darkening and light wear at outer edges, complete w/early brass hanging chain. Min. bid \$50.



148).Totem Cigars Display. 14.25 x 6.75 x 8.25" scarce, early tin litho countertop store display for Waitt & Bond Co.'s "Totem" brand cigars (piece is made to hold and display a wooden box full of Co.'s cigars inside - w/ original box included). Has glass covered lift-up front panel, w/ a beautiful multi-color graphic marquis featuring Co.'s trademark Indian Totem logo at top. Piece has strong colors and displays very nicely overall, w/ minor haziness on side panels, and some light scattered background speckles in sky area of marquis (critical grade C. 7.5+/8-), although it displays much nicer than this would imply (as found should improve some w/ cleaning). Min. bid \$50.

Texaco Gasoline Poster



149).Texaco Poster. 35 x 28" (28 x 21-1/8" visible) great early paper advertising poster (made to use as a window mounted sign) for Texaco brand "Winter-Run" gasoline and golden flow motor oil, w/ winter snowstorm image. Clean and very attractive in appearance (a strong C. 8+++) and appears never used (note: still has original window mount stickers), w/ a non-offensive faintly toned area in text section. Matted and ready for framing. Min. bid \$40.



150).Tire Patch Kits. 13.25 x 3.75 x 2.5" early cardboard service station store display box for "Camel" brand tire patch kits, complete w/ 12 of its full, never used patch kits inside. Displays very nicely, w/ some light expected tattering and edge wear to display box (C. 8+/); the colorful and very attractive kits inside are very good to excellent. Min. bid \$40.





151).Osborne Harvesting Machinery Sign. 21.25 x 27.5" (19.5 x 26" visible) very early paper litho sign for D. M. Osborne & Co. Harvesting Machinery (Auburn, NY), w/ beautifully detailed lithography (Forbes Litho., Boston, MA; 1888 copyright). Clean and bright, w/ very strong colors (displays as a nice C. 8++), although close examination will show some non-offensive very faint 4" vertical lines in the top sky area (early roll marks) and several small scattered touched in speckle spots in the bottom grass and plant areas. Framed. Min. bid \$50.



152).United States Express Sign. 14.25 x 20.25" scarce, very early pressed copper sign from the United States Express Co. Has nicely detailed embossed background pattern w/ beautifully raised painted lettering against gilt background finish. As found, all original and untouched, w/ a rich, nicely worn surface giving it a great folk art look (some expected non-offensive darkening and light creasing w/ some edge wear and tack holes at outside border area (note: Co. operated from 1854-1914). Framed (pictured w/ out frame, see website addendum to view in frame). Min. bid \$60.



153).Squirrel Peanuts Die-Cut. 10 x 8-5/8" early tin litho die-cut sign for Squirrel brand peanuts. Clean, bright and very attractive (basically a strong C. 8++) w/ exception of small scratch spot in red background area (just to left of "5¢"). Note: I believe this was originally the top section of a large tin display piece, but it looks and displays great as a sign. Min. bid \$50.



154).Clicquot Club Clock. 15.5" (dia.) x 3.25" early electric light-up clock by Telechron Co., w/ reverse glass advertising for "Clicquot Club" brand soda, featuring Co.'s famous trademark Eskimo kid. Clean and excellent overall (clock runs well). Min. bid \$50.



155).Fire Fighting Textile. 23 x 22.75" outstanding, large, early, heavy textile (pillow cover) featuring beautiful multi-color fire fighting theme (1906 Copyright, by Campbell, Metzger & Jacobson Co.). Stunning piece is clean, bright and exceptionally nice (C. 8.5++) and would look great framed. Min. bid \$40.



156).Stanwix Pocket Tin. 4-3/8 x 3 x 7/8" early tin litho vertical tobacco pocket tin for Falk Co.'s "Stanwix" brand tobacco. Full tin is clean and excellent overall (C. 8.5++) w/ a little minor wear on lid. Min. bid \$40.



157).Hoffman Radiator Cleaner. 5 x 3-3/8" (dia.) early tin litho pry-lid tin for Hoffman Co.'s radiator and motor block cleaner featuring great image of early car radiator. Clean, bright and very attractive in appearance (C. 8+) w/ some light wear and minor denting on backside. Min. bid \$40.



158).Greenberg Spice Tin. 3-1/8 x 2-3/8 x 1-3/8" scarce, early tin litho 1 oz. spice tin (whole cloves) for "Greenberg" brand (Greenberg Co., Pottsville, PA) w/ nice image of Co.'s trademark iceberg on both sides. Clean, bright and excellent (C. 8++). Min. bid \$30.



159).Penguin Oil Can. 5.5 x 4" (dia.) early tin litho solder seam 1 qt. can for Penguin motor oil (Penguin Oil & Grease Co., Milwaukee, WI). Displays quite nicely, although close-up examination will reveal some non-offensive overall light weathering and wear (critical grade C. 7/+), but displays much better than this implies. Min. bid \$40.





160).Waterman's Pen Case. 9.5 x 18 x 16.75" great small sized, early countertop showcase made for displaying and selling fountain pens. Excellent, very high quality piece, w/ original finish to the oak framed case (has hinged locking door on backside w/ great enameled porcelain Waterman's Ideal brand Fountain Pens sign attached to the inside). Excellent (C. 8.5/+ overall, complete w/ original key (porcelain sign is near mint). Min. bid \$50.



161).Orange Crush Sign. 9" (dia.) large and unusual early celluloid over cardboard "button" style sign for Orange Crush Soda, featuring great image of whistling Crushy character. Crisp, bright and like new, as found never used still in its original packaging. Min. bid \$40.



162).Havoline Oil Can. 6-1/8 x 8-5/8 x 5-5/8" early hand-soldered 1 gallon oil can for Indian Refining Co.'s "Havoline" brand motor oil. Has nice color and displays pretty well, w/ toning and light general wear from use (C. 7+). As found, might improve some w/ cleaning. Min. bid \$30.

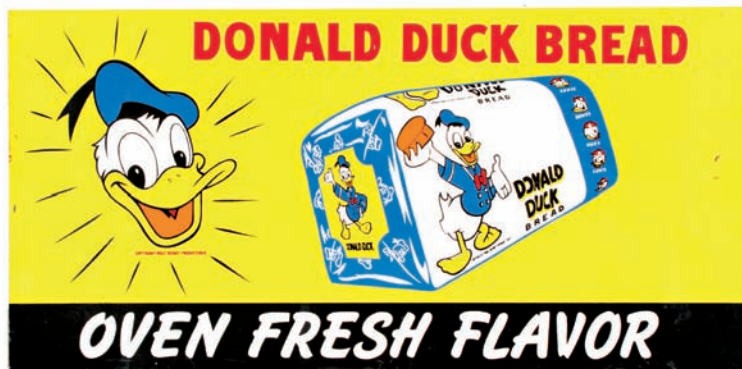
# Du Pont Gunpowder



163).Du Pont Gunpowder Sign. 14.5 x 33.5" early framed advertising sign for Du Pont Co. Gunpowder, w/ nice western buffalo hunt and hunting dog images, complete w/ its original advertising mat board. Images and advertising mat board are very nice and piece displays well (C. 8/+), although there is a damage area at the top corner edge of wooden frame. Min. bid \$50.



164).Iron Fly Match Holder. 2 x 4.75 x 2.5" very early figural cast iron fly shaped advertising match holder for Green Joyce & Co.'s Hosieny, Overalls, etc. (hinged wings lift up to reveal match section inside). Excellent appearance, w/ nice detailing and surface patina (C. 8++). Min. bid \$50.



165).Donald Duck Bread Sign. 19-5/8 x 40" large, ca. 1950's tin litho store sign for Donald Duck brand bread, featuring great image of Co.'s early bread loaf. Clean and bright w/ a nice overall look, w/ some non-offensive light scattered dents and wear (C. 8+/-). Min. bid \$50.



166).Old Mammy Mop. 5.5 x 14 x 4.5" (dia.) early never used "Old Mammy" brand fine cotton mop from the Jafee Cotton Products Co. (Dallas, TX) featuring wonderful image of Co.'s trademark mammy character mopping floor. Unusual, high quality piece w/ a neat look (C. 8+/-). Min. bid \$30.



167).Porcelain Coal Sign. 12 x 24" early heavy porcelain sign for DL & W Co.'s (Delaware, Lackawanna and Western RR Co.) anthracite coal (Scranton, PA). Clean, bright and exceptionally nice (a strong C. 8.5+++) w/ a little very minor edge wear (so minor barely merits mention). Min. bid \$50.





168).Indian Puzzle. (puzzle 6.75 x 12.25"; box 7.25 x 10.25 x 3/4") early boxed "Across the Plains" lithographed cardboard puzzle by Milton Bradley Co. (Springfield, MA) featuring beautifully detailed multi-color graphics of a Wild West shootout. Has minor toning and wear, but overall is clean and excellent (C. 8+). Min. bid \$30.



169).St. Charles Milk Clock. 8.75 x 12.75 x 2" early, figural cow shaped advertising clock for St. Charles brand evaporated milk. Nicely detailed heavy figural cast iron piece has a bronze finish, complete w/ its fancy original clock (clock runs for a few seconds then stops). Excellent (C. 8.5). Min. bid \$50.



170).Hair Net Display Case. 8.25 x 13.5 x 6.75" small, early, metal framed country store display case for "Sister Susie" brand hair nets w/ nice attractive advertising labels on inside of glass. Labels are excellent (there is a little light general scattered wear to white finish of metal case). Min. bid \$40.



171).Cherry Cake Tin. 4 x 8-1/8" (dia.) early tin litho product tin for Breeding Co.'s Cherry Cake (Canada Bread Co.), featuring beautiful graphic image of girl holding cake. Excellent overall, w/ a bright very attractive appearance (displays as a C. 8+), although there are some scuff marks and minor scattered oxidizing on side edge of lid (critical grade C. 8-). Min. bid \$40.



172).Shoe Polish Light-up Display. 12.75 x 11.75 x 5-3/8" early (ca. 1930's) shadowbox style countertop light-up display (light repeatedly flashes on and off) advertising "2-in-1" brand shoe polish, w/ glass covered sign inside gold leaf gesso finished light box. Excellent and all original (C. 8.5+), w/ working flashing light. Min. bid \$40.



173).Motor Brand Container. 8 x 7" (dia.) early hand-soldered metal container (for holding oil or kerosene) featuring great motoring scene image on its still intact front label. Neat and unusual piece has some darkening/weathering on top, and some non-offensive age toning and light general expected wear to label, but overall a neat and unusual piece w/ a great overall look (C. 7.5). No cap. Min. bid \$40.



174).United Airlines Ashtray. 5.75 x 7 x 5.5" early, figural chrome finished heavy metal executive advertising ashtray for United Airlines. Very high quality piece is excellent overall, w/ typical loss to a couple propeller spokes and minor wear to Co.'s logo. Min. bid \$40.



175).Moxie Tip Tray. 6" (dia.) early tin litho advertising tip tray for Moxie featuring nice image of girl holding fountain glass. Field of tray is clean, bright and excellent overall (displays as a C. 8++) w/ exception of a slight dent mark at 9 o'clock and a couple dark marks on outer gold edge of rim. Min. bid \$40.



176).Barber's Shaving Mug. 3-5/8 x 3-5/8" (dia.) early fine china occupational shaving mug w/ beautifully detailed hand-painted image of barbershop interior and barber shaving customer (note mug rack on wall). Image is excellent although there is a chip at left underside base edge (stamped "D & C; France" in green on base). Min. bid \$60.





177).Oat Boxes. Lot consists of five early 3/4 lb. sized cardboard oat boxes ranging in hgt. from 8.5 to 9.5". Brands include: Aunt Sally, Sunnyfield, Our Family, Marvel and Clover Farm. All are clean and present very nicely (avg. C. 8/+) w/ exception of some staining on top of Marvel lid. Min. bid \$50 (the lot).



178).Borden's Ice Cream Sign. 36" dia. x 2.25" large, early embossed tin litho "button" style sign for Borden's brand ice cream featuring nice image of Co.'s trademark character Elsie. Clean, bright and excellent (a strong C. 8++). Min. bid \$50.



179).Tool Co. Tip Tray. 4-1/8" (dia.) scarce, early tin litho advertising tip tray for Wm. McNiece Co. (Phil'a, PA), maker of high grade saws. Clean and attractive overall, w/ minor soiling and wear (C. 8+/). As found, should improve w/ cleaning. Min. bid \$30.



180).Jack Sprat Coffee Can. 4 x 5-1/8" (dia.) unusual, early tin litho 1 lb. key-wind coffee can for "Jack Sprat" brand, w/ same nice image on both sides. Clean and excellent overall (a strong C. 8/+) w/ a little minor wear at top edge. Min. bid \$30.



181).Coffee Tip Tray. 4.25" (dia.) early tin litho tip tray for Old Reliable brand coffee featuring beautiful multi-color graphics. Clean, bright and very attractive (C. 8.5), w/ a few wear spots on non-graphic backside. Min. bid \$30.



182).Porcelain Cigar Sign. 3-1/8 x 21-1/8" early, heavy enameled porcelain strip sign for Feifer's Union Co.'s 5¢ cigars. Impressive sign is clean, bright and excellent overall w/ very minor edge wear and small early chip at bottom middle hanging hold. Min. bid \$50.



183).Political Banner. Large, early political cloth campaign pennant/banner from the successful 1880 Presidential campaign of Republican candidate James Garfield (cloth 10 x 26.5"; stick 24.25" long). All original and very nice overall, w/ just the right amount of minor toning and wear (C. 8+/). Min. bid \$40.

#### Humphrey's Veterinary Medicines

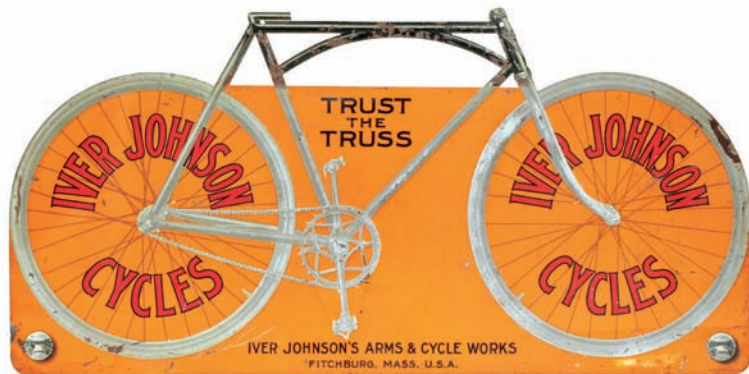


184).Humphrey's Vet Box. 5.25 x 9.5 x 5.75" (as shown lid open) fancy, early wooden case for "Humphrey's Veterinary Specifics" homeopathic veterinary medicines. Very high quality dovetailed hardwood box is excellent overall (a strong C. 8/+) w/ nice clean label inside; all its original hardware (including working key). Min. bid \$40.



185).Cattle Rustling Sign. 12 x 14" early, heavy porcelain cattle ranch warning sign telling would be thieves that the ranches livestock and poultry have been branded and registered w/ states sheriffs association. Has minor oxidizing to hanging holes, otherwise crisp, bright and excellent (near mint). Min. bid \$40.





186).Iver Johnson Cycles Sign. 10.25 x 20-5/8" scarce, early, embossed tin litho die-cut sign from the Iver Johnson Arms & Cycle Works (Fitchburg, MA), promoting ammo Co.'s line of bicycles. Has strong colors and displays quite nicely, although up close examination will show some scattered early wear. Tough one to grade, but a very decent and respectable (C. 7.5/+) seems about right. Min. bid \$100.



187).Perfection Kerosene Sign. 13.75 x 18 x 1-7/8" early heavy metal litho 2-sided flange sign for Standard Oil Co. of Indiana's "Perfection" brand kerosene, w/ same nice image on both sides. Clean, bright and excellent overall appearance, (display side C. 8.5/+); (back basically a strong C. 8+ w/ exception of some light scattered early litho chips). Min. bid \$50.

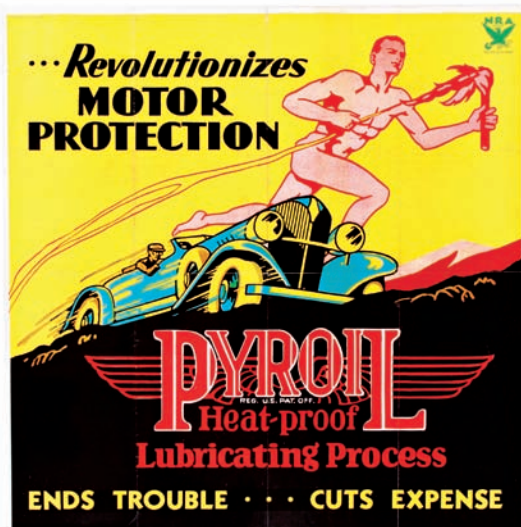
### Dr. Daniels Veterinary



188).Daniels Dog Medicines Sign. 28 x 34.75" scarce, early advertising sign for Dr. Daniels Dog Remedies featuring four paper litho images of the famous poker playing dogs by artist Coolidge (ea. 9.5 x 14") which are mounted to a large, original Daniels advertising cardboard mat board. There is some light general wear to images, some separation to top of center factory fold line on the advertising back board, and a close-up examination will show some overall non-offensive faint general speckling/foxing scattered about. Critical grade (C. 7/+), although it displays much better than this implies (displays on wall more like a C. 8). Would look great framed. Min. bid \$50.



189).Schlitz Beer Calendar. 18-5/8 x 12.25" 1908 embossed cardboard die-cut advertising calendar for Gus Broch & Son, a Bridgeport, CT distributor for Schlitz Milwaukee Beer. Clean and very attractive in appearance (displays as a C. 8/+) although close examination will show a little non-offensive faint staining in hat and a repaired break mark at bottom right corner. Min. bid \$40.



190).Pyroil Sign. 14.5 x 14.25" early, ca. 1930's paper litho advertising poster for Pyroil brand automotive oil, w/ powerful looking art deco image. Clean, bright and impressive looking piece (displays as a strong C. 8++) w/ non-offensive light factory fold lines (for mailing). Min. bid \$40.

### Sen-Sen Chewing Gum



191).Sen-Sen Gum Display. 17 x 19 x 3" (17 x 25.25" when folded flat) beautiful, early cardboard die-cut store display piece for "Sen-Sen" brand chewing gum featuring stunning multi-color graphics. A powerful and impressive looking piece that has bright colors and displays very nicely (as a strong C. 8++), although up-close examination will show a small break mark at top left edge of the center flap (on gum boxes top flap panel) and back-side has a tape reinforced break mark to outer left section of girls fan (dated 1904 American Lithographic Co.). Min. bid \$100.





192).De Laval Separator Oil Sign. 11.25 x 17.25" scarce, early bevel edged tin over cardboard sign for De Laval brand cream separator oil featuring great image of 1 gallon sized product can. Attractive and displays quite nicely (basically as a C. 8+/-), although there are two nail holes at outer edges and some minor staining/weathering in background, w/ some softening to color in raised letters area (critical grade C. 7.5). Note: reds in can are clean, bright and vibrant. Min. bid \$40.



193).College Whoopie Car. 6 x 7.25 x 2.75" early College Whoopie sports themed tin litho wind-up toy car by Louis Marx & Co. Clean and attractive overall (C. 8+/-) w/ only minor wear from use (working mechanism). Min. bid \$50.



194).AA-1 Oil Can. 5.5 x 4" (dia.) early solder seam 1 qt. tin litho can for "AA-1" brand motor oil (Phoenix Oil Co., Augusta, GA) featuring great images of speeding racecar, train, airplane and tractor. Full, unopened can is clean and very attractive (a strong C. 8++), w/ a little very minor denting. Min. bid \$40.



195).Merit Separators Tip Tray. 5 x 3-3/8" unusual, early tin litho tip tray w/ scalloped edges advertising Merit brand Cream Separators, w/ nice image of early separator. A decent and respectable example w/ a little light wear and minor soiling (C. 8+/-). As found, should improve w/ cleaning. Min. bid \$30.



196).National Auto Body Dressing. 5.75 x 3-1/8" (dia.) early paper label (over tin) product tin for National brand auto body dressing, featuring great image of early car (backside pictures neat image of large product can). Clean and very attractive appearance (C. 8++). Min. bid \$30.



197).Snow Shoe Tobacco. 4-1/8 x 2.75 x 1" full, early, 1-1/2 oz. soft-pack for Scotten-Dillon Co.'s "Snow Shoe" brand tobacco, featuring nice image of trademark man snowshoeing. Crisp, bright and like new, still w/ original wax paper protective covering (series 1926 tax stamp). Min. bid \$30.



198).Red Riding Hood Bank. 6-7/8 x 3 x 2.75" very early tin lithographed advertising bank issued by Stollwerk Bros. (German chocolates company) featuring beautiful, finely detailed lithography all around (inserting coin allowed bank to release Co.'s small chocolate bars through pull out drawer). Lithography is excellent (a strong C. 8++) w/ the typical expected dark speckling spots in gold flash base area. Min. bid \$50.



199).Pyroil Oil Can. 7-5/8 x 3.5" (dia.) unusual, early tin litho cone top 1 qt. motor oil can for Pyroil Co.'s aviation oil, w/ nice image of early airplane. Full can is attractive and displays nicely w/ a little light denting and minor scattered wear (C. 8+/-). Min. bid \$40.



200).Oh Boy Gum Sign. 15.5 x 7-3/8" early tin litho sign for Goudey Gum Co.'s "Oh Boy" brand chewing gum featuring nicely detailed images of Co.'s early gum sticks (H.D. Beach Litho). Clean, bright and attractive in appearance (C. 8+) w/ a couple non-offensive light bend marks at top and bottom edges. Min. bid \$40.



201).Mammy's Coffee. 10.75 x 6-1/8" (dia.) early tin litho 4 lb. coffee pail for "Mammy's Favorite" brand (C.D. Kenney Co., Baltimore, MD), w/ same nice image of mammy serving coffee on both sides (cotton plants background design). A decent and very respectable example w/ minor scattered wear (C. 8+/-). Min. bid \$50.





202).Porcelain Prophylactics Sign. 5.25 x 8.5" scarce, ca. 1918 WWI era porcelain Navy washroom sign w/ advertising at bottom for "Sanitubes" brand prophylactics. Quite nice overall, w/ minor edge wear (basically a strong C. 8+) w/ fade to reds. Min. bid \$50.



203).Kotex Sign. 6.25 x 9.25" early beveled tin litho over cardboard sign for Kotex (Cellucotton Products Co., Neenah, WI) featuring nice image of early product box. Field of sign is clean and excellent (C. 8++), w/ a little bit of light general wear in dark outer beveled border area. Min. bid \$40.



204).Western Ammunition Sign. 13.5 x 10.5" early cardboard litho sign advertising Western brand ammo, featuring great image of soldier shooting next to Co.'s early stacked cartridge boxes. Has strong colors and displays very nicely (as a strong C. 8++) although close examination will show a little faint foxing and slight soiling to outer background areas (critical grade C. 8+/-). Min. bid \$50.

Salesman's Sample



205).Salesman's Sample Stool. 10-5/8 x 6.25 x 6.25" early, miniature salesman's sample work stool from the Angle Steel Stool Co. This substantial, very high quality piece is a solid, heavy, exact scaled down miniature version of Co.'s large full size stool, w/ painted steel frame and solid oak top, complete w/ brass mfg. plaque on bottom of wooden seat. Excellent overall, w/ light scattered oxidizing in base area and minor light general wear (C. 8+/-), w/ oxidizing wear to finish on plaque. Min. bid \$50.



206).Kis-Me Gum Sign. 23 x 17-3/8" (17.5 x 11.75" actual piece) early cardboard die-cut sign for "Kis-Me" brand chewing gum (American Chicco Co., Louisville, KY) featuring nicely detailed color graphics. Clean and very attractive appearance (C. 8/+) w/ a little typical expected non-offensive wear to outside edges. Framed. Min. bid \$50.



207).Gargoyle Artic Oil Tin. 12-3/8 x 4" (dia.) early tin litho cone shaped product can for Gargoyle Co.'s "Mobiloil Artic" brand winter motor oil, w/ nice images of polar bear and Co.'s gargoyle logo. Has strong colors and displays pretty well, w/ a little minor denting and some light scattered soiling and wear (C. 7.5++/8-). German. Min. bid \$40.



208). "Alabama Coon" Target Game. 21 x 10.75 x 2.5" outrageous, large, early cardboard litho target game in image of a comical smiling black man. The game figure character is made of an early finely textured die-cut lithographed cardboard (over a shadowbox ball receiving box); and comes complete in its original graphic covered box. Game figure is excellent (C. 8.5+) w/ a couple faint, non-detracting crease marks at top of his hat; box displays very nicely (as a C. 8+), although there is a very well done professionally repaired puncture (in man's face section). Bavarian. Min. bid \$50.



209).Western Field Shells Sign. 14-1/8 x 6" early cardboard die-cut sign for Western brand shotgun shells featuring beautiful multicolor graphics. Clean, bright and exceptionally nice appearance (displays as a C. 8.5+), w/ a couple non-detracting minor blemishes (faint indent mark on top hanging holes section and tape reinforcement spot on backside at bottom left corner edge). Min. bid \$40.





210).Rhineland Butter Sign. 9.25 x 13.25" early tin litho (over cardboard) bevel edged sign advertising Rhineland brand butter, w/ nice images of 1 lb. and 1/2 lb. packages. Never used sign is clean and excellent overall (a strong C. 8.5), w/ very minor storage wear (has both string for hanging and easel on backside for countertop display). Min. bid \$40.



211).Jumbo Flour Pocket Mirror. 1.75" (dia.) scarce early celluloid advertising pocket mirror for Jumbo brand hard wheat flour (Eckhart Co., Chicago) w/ beautiful early color graphics. Clean and excellent overall, w/ minor wear on backside edge (stated for accuracy, so minor barely merits mention). Min. bid \$50.



212).Gulf Oil Porcelain Sign. 6 x 9"very unusual, scarce ca. 1960's "No Smoking" sign. Crisp and like new (near mint), w/ minor staining on backside. Min. bid \$30.



213).De Voë's Pocket Tin. 4.25 x 3 x 7/8" early tin litho concave shaped pocket tin for United States Tobacco Co.'s "De Voë's Sweet Smoke" brand tobacco. Clean, bright and very attractive (a strong C. 8++) w/ only minor wear. Min. bid \$40.



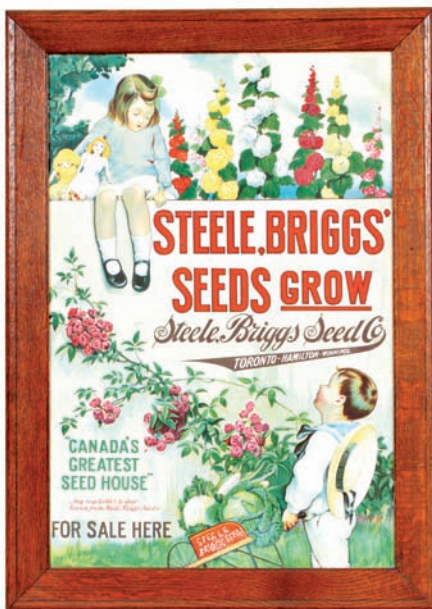
214).Karavan Coffee. 6 x 4.25" (dia.) scarce variation, early 1 lb. tin litho pry lid coffee can for Karavan brand (Karavan Coffee Co., Toledo, OH) featuring Co.'s trademark camel image. Has strong colors and displays nicely w/ some light scattered background wear (C. 8/-). Min. bid \$40.



215).Willson's Spice Tin. 3.75 x 2.25 x 1-3/8" scarce, early tin litho 4 oz. spice tin (black pepper) for "Willson's" brand (Monarch Labs, Edgerton WI) featuring nice image of Co.'s graphic buck logo (same image both sides). Clean, bright and exceptionally nice (near mint). Min. bid \$30.



216).WOW Metal Polish Tin. 4.25 x 2.5" (dia.) early tin litho metal polish tin for Wow brand aluminum polish featuring wonderful image of Co.'s trademark black kid polishing pan (A.P. & F. Co., Chicago, IL). Has a little light general scattered wear and some typical expected dark speckling to silver finish areas (C. 7.5+). As found should improve w/ cleaning. Min. bid \$30.



217).Seeds Poster. 35 x 24.75" (29.75 x 19.75" visible) impressive, large, early paper litho sign for Steele, Briggs Seed Co. (Toronto, Hamilton and Winnipeg, Canada) featuring beautiful multi-color lithography. Clean, bright and excellent (C. 8.5/+) w/ minor hazy spot in wheelbarrow area (mentioned for accuracy, not at all offensive) and two non-detracting faint horizontal fold lines which appear original to piece. Nicely presented in beautiful period oak frame. Min. bid \$70.

#### Oil Sample Kit



218).Archer Oil Samples Kit. 10.5 x 11.5 x 1" unusual, salesman's oil sample bottles kit from the Archer Oil Co. (Omaha, NE). Lot includes protective carrying case w/ 20 cork sealed glass sample bottles inside (17 contain various grades of Co.'s oils inside). Lot also includes 3 empty bottles for holding used oil and 4 aluminum sample containers for Co.'s greases. Excellent. Min. bid \$40.



219).Café Martin Calendar. 21.25 x 13.5" impressive, large, heavy die-cut cardboard 1909 advertising calendar from the landmark Café Martin New York City French restaurant w/ large image of early auto, w/ neat sporting, gambling and high life images all around. Has a little toning and light expected wear from use, but overall very attractive (C. 8/-). Exquisitely framed and matted (frame measures 30.75 x 22.5"-see website addendum to view item in frame). Min. bid \$50.





220).Aeroil Oil Can. 5.5 x 4" (dia.) early tin litho solder seam 1 qt. tin for Universal Oil Co. "Aeroil" brand motor oil (same image both sides). Full, unopened can is clean and very attractive (a strong C. 8++), w/ minor oxidizing along seam, and small dent mark on one side. Min. bid \$40.



221).Borden's Milk Sign. 17 x 21.75 x 2.75" early lithographed cardboard sign for Gail Borden Co.'s "Eagle" brand condensed milk, featuring attractive image of young children holding large, early product can (1892 copyright). Attractive and displays very well, w/ a little non-offensive faint staining at left edge (C. 8/+). Beautifully presented in gorgeous matted shadow box frame. Min. bid \$50.



222).Gold Chord Spice. 3-1/8 x 2.25 x 1.25" scarce, early tin litho 1-1/2 oz. spice tin (black pepper) for "Gold Cord" brand (Guyer & Calkins Co., Freeport IL) featuring beautiful color graphics (has harp logo on front, w/ stunning graphic island/ palm tree image on backside). Clean, bright and like new (near mint). Min. bid \$30.



223).Honest Scrap Porcelain Sign. 12 x 9" very early, thick and heavy porcelain sign, w/ raised volcano style grommet holes for "Honest Scrap" brand tobacco, featuring great image of Co.'s early trademark hand. Exceptionally nice example (field near mint, w/ just a trace bit of minor oxidized staining in very outer white outer border area). Min. bid \$50.



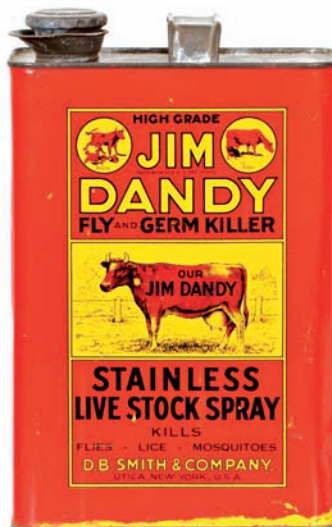
224).Me'lottle Cream Separators Sign. 17.5 x 23.5" early embossed tin litho sign for Me'lottle brand cream separators, featuring nicely detailed image of Co.'s attractive looking separator machine (Shonk Litho.). Impressive piece has strong colors and displays quite nicely (basically as a strong C. 8/+) w/ exception of a little bit of oxidized wear in left background area (critical grade C. 7.5++). Min. bid \$50.



225).Imp Hotel Bell. 4.75 x 3-1/8 x 1.5" unusual, early figural mechanical hotel bell (pressing tail makes long steady ring) w/ fancy bronze finished cast iron base (embossed: "Pat. July 9 '00" on base). Very attractive, w/ nice surface patina (C. 8/+). Min. bid \$40.



226).La Sena Cigar Sign. 13-7/8 x 13-7/8" early self-framed tin litho sign for Henry Conerus Co.'s "La Sena" brand Havana Cigars featuring great image of dogs at table smoking cigars and drinking beers. Has strong colors and displays quite well, although there is some general wear in outer edges of frame area and a few areas of wear in background section of sign (note: a little light professional restoration in these areas would improve it to a strong C. 8.5/+ appearance). Min. bid \$50.



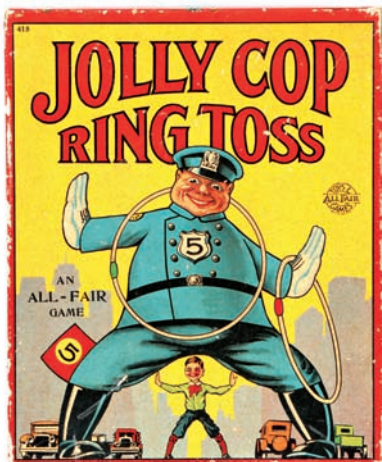
227).Jim Dandy Vet Tin. 10.5 x 6-5/8 x 4.25" unusual, early tin litho 1 gallon sized product tin for Jim Dandy brand live stock spray w/ nice animal images on both sides (horse on front, cow on backside). Attractive piece displays nicely, w/ minor background denting and wear (C. 8+/-). Min. bid \$40.

# Bus Proof Sign



228).Bus Co. Proof Sign. 9.5 x 11" early paper litho printers proof sign for the R.F. & P. Bus Line (this bus line was owned by the Richmond, Fredericksburg and Potomac Railroad and provided express bus service between Fredericksburg and Richmond. Clean, bright and excellent (a strong C. 8++), complete w/ printers reference registration color blocks in bottom margin section (minor paper chip in outer top left border area). Min. bid \$50.





229).Jolly Cop Game. 10.5 x 9.75 x 1.5" ca. 1920's boxed "Jolly Cop" ring toss game by All Fair, complete w/ stand-up cop figure and all four rings inside. Impressive piece is clean and excellent (game piece near mint; box cover C. 8++, w/ a little light edge wear). Min. bid \$40.



230).Truck Desk Calendar. 3 x 6" early tin die-cut stand-up desk calendar in shape of a great ca. 1930's moving truck advertising Eaton Transfer Co., an Indianapolis moving Co. Excellent, complete w/ full 1935 calendar pad (C. 8.5++). Min. bid \$30.



231).West End Brewing Tray. 12-7/8" (dia.) early, very high quality pre-prohibition era brass beer tray from West End Brewing Co. (Utica, NY), w/ beautiful incised and embossed detailing (features Co.'s Miss Liberty image in center). Excellent, w/ a couple minor hazy spots on surface. Min. bid \$50.



232).Citgo Service Station Calendar. 15 x 9-7/8 x 1.25" unusual, heavy metal advertising calendar featuring great image ca. 1960's Citgo service station (complete w/ perpetual rotating and flipping calendar months, dates and days). Clean, bright and excellent overall (C. 8++) w/ a little minor background wear. Min. bid \$30.



233).Dutchman Roly Poly. 6.75 x 6" (dia.) early 2-ps. figural tin litho canister for Mayo's brand tobacco featuring the Dutchman character. Has strong colors and displays nicely w/ a little non-offensive minor scattered wear (C. 8/+). Min. bid \$50.



234).Speedway Ignition Coils Sign. 13.25 x 9" early embossed beveled tin litho sign for Mapco Co.'s (Machined Parts Co., Detroit) "Speedway" ignition coils featuring powerful and impressive image of early racecar and coil. Sign is clean, bright and excellent in appearance w/ nice surface sheen (appears never used), although close examination will reveal a non-offensive very faint 6.75" scratch mark and some minor storage wear (barely noticeable except on very close examination). Min. bid \$40.

## Johnston's Cookies and Crackers

235).Johnston's Cookies Porcelain Sign. 1.75 x 18.5" extremely rare, very early heavy porcelain strip sign for "Johnston's Cookies and Crackers". Excellent overall, w/ nice original surface sheen (basically like new w/ exception of a few minor fleabites on left hanging hole and top edge). Min. bid \$40.



236).Coca-Cola Sign. 11-3/8 x 34-7/8" early, ca. 1930's embossed tin litho sign for Coca-Cola featuring beautiful image of Co.'s Dec. 25, 1923 bottle. Sign is crisp, bright and like new (basically near mint) w/ exception of a little minor edge wear at outside green side edge. Min. bid \$50.





237).Candee Rubbers Sign. 11-5/8 x 27" (sign only, not measuring hanging strings) large, hanging, cardboard die-cut store sign for Candee Rubber Co. footwear (New Haven, CT) featuring neat image of lounging girl in hammock (strings give appearance of hammock ropes when hung). Has a little bit of non-offensive light scattered edge loss, as well as some expected slight soiling, staining and fade, but overall is quite attractive and displays quite nicely (C. 7.5+). Min. bid \$60.



238).Blimp Cigar Cutter. 4.25 x 8.75 x 4.75" unusual, early figural metal countertop cigar cutter and match holder in shape of an early airship (turning propeller moves blade to cut cigars). Attractive overall, w/ minor dents and light wear from use. Min. bid \$40.



239).Teamsters Labor Union Sign. 7 x 11-1/8" nice, early tin litho "Union Service" sign from the International Brotherhood of Teamsters, Chauffeurs, Warehousemen and helpers of America. Clean, bright and excellent, w/ a real nice look (C. 8++). Min. bid \$40.



240).Cafe Pocket Mirror. 2-1/8" (dia.) scarce, early advertising pocket mirror for Morgan's Oasis Café (Detroit, MN) featuring beautiful color graphic image of semi-nude. Excellent. Min. bid \$40.



241).Perfection Oil Sign. 13-1/8 x 19-1/8" early tin over cardboard self-framed sign for "Perfection" brand oil featuring beautifully detailed multi-color graphics. Sign is clean, bright and displays quite nicely (as a C. 8/+), although there is some creasing w/ light bends and wear scattered about (critical grade C. 7.5/+). Min. bid \$60.



242).Sucrene Dairy Feeds Mirror. 2-1/8" (dia.) unusual, early celluloid pocket mirror for American Milling Co.'s "Sucrene" brand dairy feeds, featuring beautiful color graphics. Note: this is the seldom found scarce variation of this Co.'s mirror. Excellent. Min. bid \$50.



243).Basketball Gum Machine. 13.5 x 9.25 x 6.75" early countertop coin operated (1¢) gum machine w/ metal body and glass front (gumballs get shot at basketball hoop). Attractive and displays nicely (C. 8++), complete w/ working key. Min. bid \$50.



244).Kellogg's Corn Flakes Poster. 28 x 23" ca. 1920's paper litho advertising poster for Kellogg Co.'s Corn Flakes cereal, w/ nice Campfire Girls scouting image. Clean, bright and excellent (C. 8.5++). Professionally linen backed and ready to frame. Min. bid \$50.



245).Casey & Kelly Beer Tray. 13-3/8" (dia.) early tin litho tray for Casey & Kelly Brewing Co. (Scranton, PA), featuring beautifully detailed graphics. Clean, bright and very attractive (displays as a very strong C. 8++), w/ a couple faint hazy/dull spots evident if tipped in light just right- mentioned for accuracy (barely noticeable and not at all offensive). Note: piece is as found and might improve a bit w/ a good cleaning). Min. bid \$50.





246).Cigars Pocket Mirror. 1-5/8 x 2-3/8" unusual, early celluloid advertising pocket mirror for Louis Chodat Cigar Co., Decatur, IL. Celluloid is clean and excellent, w/ a few dark lines in the mirror glass. Min. bid \$40.



247).Paper Label Spice Tins. Lot includes five early paper label spice tins w/ cardboard bodies and metal top and bottoms (htgs. range from 2-7/8 to 4"). Includes: Fairfax Hall cloves; Jack Sprat cloves and turmeric; Puck black pepper; and Mission brand cayenne. All are clean and very nice (avg. C. 8++). Min. bid \$30 (the lot).



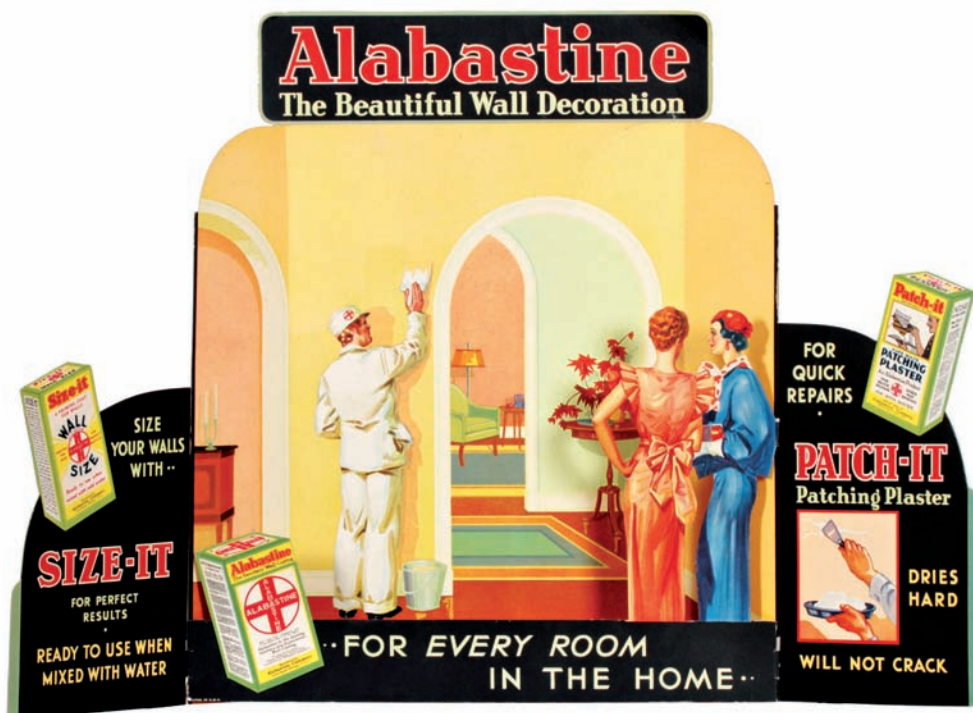
248).Lambertville Boots Calendar. 12 x 8" original 1906 cardboard advertising calendar for Lambertville Rubber Co.'s "Snag Proof" boots, featuring great image of "The Lambertville Girl" hunting w/ Brownie characters. Clean, bright and excellent overall (a strong C. 8++) w/ partial calendar pad (Oct-Dec.). Min bid \$30.



249).Columbian Beer Sign. 13.75 x 9.75" early embossed tin litho chain hung sign for Columbia brand beer (Tennessee Brewing Co., Memphis, TN) featuring beautifully detailed multi-color lithography (H.D. Beach Litho.). Field of sign is crisp, bright and like new (near mint); w/ a little bit of chipping loss and minor bending in the very outer border area. Min. bid \$50.



250).Honey Moon Tobacco Sign. 9-7/8 x 6-7/8" early embossed tin litho sign for Penn. Co.'s "Honey Moon" brand tobacco. Clean, bright and very attractive appearance (basically displays as a C. 8.5+) although close examination will reveal a slight bit of very minor wrinkling, and if tipped in light just right, there is a faint, very trace hint of a very minor hazy pattern on upper surface left from original protective paper (mentioned for accuracy, neither detract or take away from terrific look of piece). Min. bid \$50.



251).Alabastine Painters Display. 25.25 x 34 x 2.5" (as pictured) early tri-fold cardboard standup display for "Alabastine" brand of painters wall prep products w/ a great dimensional shadowbox style look. Beautiful and impressive piece is clean, bright and like new in appearance (displays as a C. 8.5+) w/ some tape reinforcement added to backside of the left side panels fold lines. Min. bid \$50.



252).Kream-ee Ice Cream Sign. 19.25 x 8.5" unusual, early self-framed tin litho sign listing various flavors of Kream-ee brand ice cream being served at ice cream parlor. Clean, bright and excellent overall w/ a little minor wear in outer raised frame area (C. 8++). Min. bid \$50.



Trade Stimulator



253).Trade Stimulator. 6 x 7.5 x 9-5/8" unusual, small wooden glass front countertop trade stimulator game w/ punchboard type insert which dropped small balls into action w/ scoring slots at base. Clean, and very attractive, w/ great patina to its early paint surface. Excellent (C. 8+). Min. bid \$50.



254).Ivory Soap Porcelain Sign. 3-3/8 x 21" early, heavy porcelain country store strip sign for Ivory Soap. Sign is crisp, bright and like new, as found never used. Min. bid \$50.



255).Coca-Cola Sign. 17.5 x 53.5" large ca. 1963 tin sign featuring Co.'s fishtail design. Clean, bright and displays very nicely (basically a strong C. 8++) w/ exception of a couple very minor bends, some crinkling at top outer right raised border edge and a little faint scattered speckling on upper surface. Min. bid \$40.



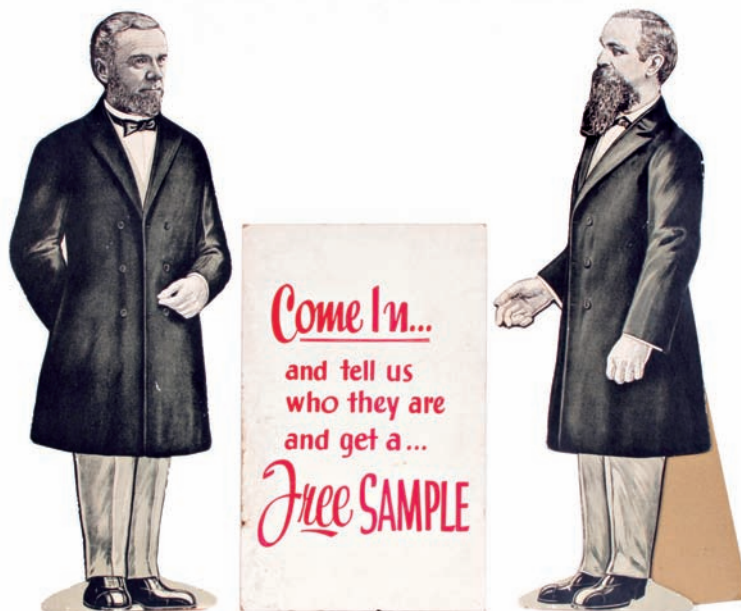
256).Pittsburgh Ice Cream Tray. 10-5/8 x 13.25 x 1.25" scarce, early tin litho advertising tray for "Cream of Pittsburgh" brand ice cream, featuring beautiful multi-color graphic image of children's party. Clean, bright and excellent (C. 8.5+) w/ exception of some scattered wear across the dark outer rim area. Min. bid \$50.



257).Listerine Tooth Brush Holder. 6 x 2-7/8" early tin litho die-cut advertising toothbrush holder advertising Listerine brand prophylactic toothbrushes featuring comic character Skeeze. Piece is crisp and like new, as found never used in its original box (box is clean and attractive w/ light pinching at base and tear mark at top edge). Min. bid \$40.



258).Patriotic Poster. 20-3/8 x 15.25" early, colorful and highly graphic paper litho advertising poster for a Bristol, Rhode Island grocer featuring patriotic WW I scene. Has strong color and displays very nicely (as a strong C. 8++), w/ minor edge wear and a few light horizontal crease marks from being rolled (nothing really serious or offensive). Appears it was originally a large calendar, as there are a couple light staple puncture marks in bottom grass area. Min. bid \$40.



259).Smith Bros. Window Display. Three piece die-cut cardboard window display for Smith Bros. Cough Drops featuring large 34.25 x 12-3/8" easel back stand-ups of the famous brothers. Lot also includes a 22 x 13.75" rectangular sign. The brothers are excellent overall (C. 8+) w/ some minor scattered wear; middle sign has some soiling and wrinkling and minor water damage (C. 7+). Min. bid \$70 the lot.





**Rd #2, Cobb Hill Road, Cazenovia, NY 13035 • 24 Hr. Tel: (315) 662-7625 • 24 Hr. Fax: (315) 662-3570 • morf2bid@aol.com • morfauction.com**

Welcome to our 83rd auction of quality antique advertising and fine collectibles. Everything we sell is guaranteed authentic and as described. We attempt to grade condition both fairly and conservatively, using a scale of 1-10 on the advertising items (ten being absolutely mint). We do not list reproductions, re-issues, deceptively restored or pieced together type merchandise. Flaws and blemishes are prominently noted and over emphasized. We encourage you to call for a detailed description on any item you have an interest in, but respectfully must request that you do this before the closing night. Dimensions are listed by height, then width, and are only approximate (+ or - a quarter inch).

## Bidding

Bids are accepted only from those parties who have registered with us to bid. (If you were mailed this catalogue by us you are automatically pre-registered.) Your bid is a legal contract to purchase and once entered, cannot be canceled. Placement of a bid indicates acceptance of our terms.

On all "BID" items there is a 15% buyers premium added to each successful bid. You're welcome to bid by mail, email and fax anytime after receiving this catalog. **We will begin accepting phone bids on Wednesday, OCTOBER 29, 2014. We will be taking calls on Wednesday and Thursday from 10:00 AM until 5:00 PM.** If no one answers when you call, please leave a message on our machine and we will get back to you. **If bidding by mail or fax, please remember to include your telephone number with your bids!** You may call or bid as often as you like. We will tell you the current bid on any item(s) you are interested in. To raise a bid, your advance must be at least \$10 more than the current high bid amount. When an item reaches \$250, bidding increments rise to \$25, at \$1,000, bidding increments advance in \$50 steps, and above \$2,000 in \$100 increments. We suggest not waiting until the last minute to begin your bidding, as its quite possible you won't be able to get through.

## Web Page and Bid Updates

We will begin posting current bid prices (not including the buyers premium) on Wednesday, October 29, 2014 (including an addendum of additional catalogue lot information) on our internet web page. These prices will be updated once each day (each evening sometime after 9:00 PM, EST) and will get updated to include the final hammer prices on Sunday afternoon once the sale is concluded. On the closing night, we will attempt to update current bid prices every hour. Our web page address for this sale is: <http://www.morfauction.com> We suggest that once you get to it, that you bookmark this address for easy re-access. There is also an addendum section on our website where we post additional information and photo's for this sale.

## Reserves and Estimates

All items which receive an opening bid in our sale will be sold to the highest bidder regardless of the price realized (we reserve the right to withdraw items in the event of inaccurate catalog descriptions and to reject any bid we feel is not made in good faith). **We run our auctions with a strict policy of no buy-backs, no auctioneer games and no hidden reserves.** Unlike some of our competitors, we do NOT allow consignors to bid up their own items!

## Mechanical Operations

Early mechanical and electric motors and mechanisms on machines toys, coin-ops, clocks, etc. are quite often temperamental and very unpredictable in nature. Although these mechanisms may be working fine at the time of sale, we make no guarantees or representations regarding their continued operating status once they have left our premises (including during shipping).

## Closing Night

**THE LAST DAY FOR BIDDING WILL BE ON FRIDAY, OCTOBER 31, 2014.** On closing day, we begin taking calls at 5:00 PM. Please mark your calendar now. **On the closing night (ONLY), we will also be taking calls at (315) 662-3318, (315) 662-3429 and (315) 662-3904 after 5:00 PM** (in addition to our regular (315) 662-7625 office number). **Closing Time: This Auction will close at 10:00 PM (EST) on Friday, OCTOBER 31, 2014.** At that time, no more incoming calls will be accepted and all lots with a registered bid of less than \$300, as well as all items without call backs registered on them will be officially closed and final. The items at \$300 and over that have call back protection registered on them will be closed out during our call back period the following afternoon (\*\*see important call back rules below\*\*). We reserve the right to change the official closing in the event of unforeseen family type emergencies or technological failures (utility disruptions, etc.). We also reserve the right to either extend the bidding, to postpone or to cancel this auction in the event of a national emergency or if the Internet or the services of the US Post Office were to get seriously disrupted during our catalogue mailing or bidding period.

## "Up-To" Bids & Call Backs

**CEILING BIDS:** We will be happy to enter competitive "up to" ceiling bids for you on any lots you request. Beginning at your minimum amount, we will advance these bid(s) up to your left ceiling amount, if (and only if) it is topped by another bidder. "Up To" bids will be handled discretely and executed in a completely competitive manner for you. Please note that we don't accept open ended "top all others" ceiling type bids.

**CALL BACKS:** You may request call back protection for any lot(s) that you enter with either a minimum or a protected "up-to" ceiling bid in an amount of at least \$300. This request must be registered with us before the official 10:00 PM closing hour of Friday, October 31, 2014. All callbacks will be placed by us on Saturday, November 1, 2014, beginning at 12:00 noon (EST) and will continue that afternoon until each of the individual lots have been closed out (using past experience, I would expect this to be finished by 6:00 PM, if not earlier). If you register for call-backs, it is your responsibility to be available during this call back time period. We make every effort to honor all our call back requests, but this service is done solely as a convenience to our bidders and will be performed on a best efforts basis only. If you will be traveling or if you will not be available during call back times at your primary number, be sure you provide us with proper alternate or back up numbers for reaching you!

## Payment Terms

Winning bidders will be invoiced by mail immediately after the sale. Those who desire fast shipment can pay by Money Order or Cashiers Check. Payments are due within 10 days of receipt of invoice. We reserve the right to offer the item out to our back bidders and deny future bidding privileges to those who do not pay in a timely manner. In addition to personal checks, we also accept payment on your American Express, Visa, Master Card, Discover and Optima Credit Cards (with no surcharge added). No COD's or Collect calls are ever accepted. Items shipped to anywhere in New York State must include appropriate sales tax or signed resale certificate.

## Shipping

All packing and shipping charges are extra. We do most of our own packing and shipping in house and try to keep these charges as reasonable as possible for you. On especially fragile and larger hard to pack items, we hire the services of professional packers and charge you at our billed cost. We ship mostly through the Post Office and Fedex Ground, (Fedex Overnight available at an extra charge.)

## Subscribing, Prices Realized, Consignments & Upcoming Events

**Future catalogs can be assured by sending \$20 for a full 12 months subscription.** (Prices are published on our website after each sale) An automatic credit card ordering program is available. We currently run between 2-4 auctions a year. In addition to our regular sales, we also occasionally offer sales made up entirely from single owner collections. Please contact us should you have items you would like us to consider for inclusion in our upcoming events. All inquiries are handled in a completely confidential manner. Our services are also available for the private placement marketing of important individual items, marketing plans for large collections as well as for estate planning and settlement purposes. Back copies of many of our previous auction catalogs are still available at \$5 each (w/ prices realized) w/ quantity discounts available if multiple issues are ordered. For further information, check our website.

Photography by Wes Feuz.

© Copyright 2014. All Rights Reserved. No portion of this publication may be copied in any form without the express written permission of Morford's.

## Important Closing Night Information

In addition to our regular (315) 662-7625 office number,  
on the closing night (only!) you may also call us at:

(315) 662-3318\*  
(after 5:00 PM)

(315) 662-3904\*  
(after 5:00 PM)

(315) 662-3429\*  
(after 5:00 PM)

**\*These numbers for  
Closing night only!  
Friday, October 31, 2014**

**Bidding closes at 10:00 PM on Friday closing night.** We will be accepting faxes and e-mails on closing night. Our web page will update current high bid prices approximately every hour on closing night and will also list any important addendum information. **All call backs will be made on Saturday, November 1, 2014 beginning at 12 o'clock Noon!**