



WM Morford
Investment Grade Collectibles at Auction

Investment Grade Collectibles at Auction

Rd #2, Cobb Hill Road, Cazenovia, NY 13035 • 24 Hr. Tel: (315) 662-7625 • 24 Hr. Fax: (315) 662-3570 • morf2bid@aol.com • morfauction.com

Bidding closes Friday, December 5, 2014. (See page 44 for Terms & Conditions)



1). Yellow Kid Pins. Lot includes 6 different celluloid advertising pins featuring Yellow Kid character. Includes five different pins from cigarette series (1.25" dia.) with #14, 17, 22, 15 and 26 (metal easel back) from the set; and a 7/8" (dia.) Yellow Kid chewing gum pin. All are excellent. Min. bid \$40 (the lot).



2). Buster Brown Camera Box. 4.5 x 6 x 3.75" early cardboard litho product box for Anso Co.'s "Buster Brown" brand camera, featuring different stunning multi-color graphic Buster Brown images all around. Clean, bright and very attractive (displays as a strong C. 8.5+); w/ minor wear spot and tape reinforcement strips on inside narrow left side panel flaps. Lot also includes two instruction books. Min. bid \$40.



3). Champion Spark Plugs Sign. 3.75 x 5" small, early tin litho advertising sign (door push?) for Champion brand spark plugs. Clean, bright and very attractive (basically a C. 8.5+) w/ a couple tiny background chips (stated for accuracy, so minor barely merits mention). Min. bid \$50.



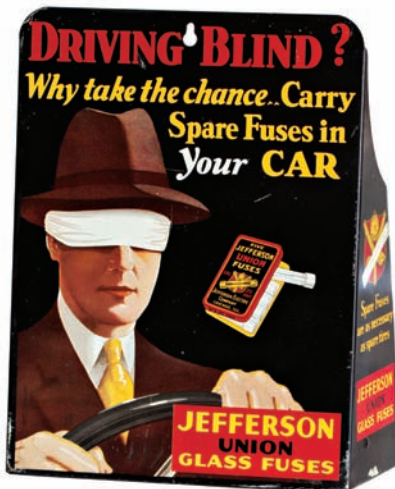
4). Red Raven Match Holder. 3-5/8 x 5" (dia.) scarce, early tin litho countertop advertising matchbox holder for Red Raven brand medicinal waters featuring wonderful die cut images of the trademark bird holding a product bottle on both sides (Shonk Litho). Excellent (C. 8++). Min. bid \$50.



5). Fleischmann's Yeast Sign. 5.25 x 9.25" small, early reverse glass sign w/ brass chain border for Fleischmann's brand yeast. Sign is crisp and like new as found still in its included original protective cardboard wrapper (near mint). Min. bid \$50.



6). Texaco Motor Oil for Fords. 11 x 8 x 3" early tin litho hand-soldered 1-gallon oil can for Texaco brand "Motor Oil for Ford Cars". Clean, bright and very attractive (C. 8/+) w/ only minor wear. Min. bid \$50.



7). Car Fuses Display. 9-7/8 x 7.5 x 3.5" unusual, early tin litho counter top display for Jefferson brand automotive fuses featuring great color graphic image of man driving blindfolded, w/ compartments in back for holding product tins. Clean, bright and excellent overall (basically a strong C. 8++) w/ a couple small, light scratch marks in background area. Min. bid \$40.



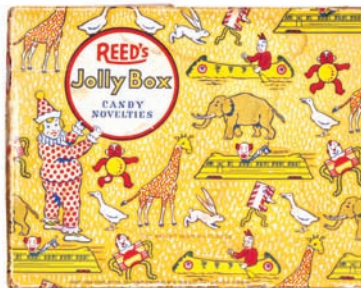
8). Purity Ice Cream Tray. 13.25 x 10.5" early tin litho advertising tray for "Purity" brand ice cream featuring beautiful multi-color graphics. Clean, bright and exceptionally nice (C. 8.5+), w/ only very minor wear. Min. bid \$40.

Cutlery Counter Display



9).Wheeler Cutlery Display. 7.25 x 11.25 x 7/8" unusual, early countertop country store cutlery display box for Wheeler Raisley Co.'s kitchen knives. Unused boxed display is excellent and comes complete w/ its 12 original knives. Min. bid \$40.

Reed Candy Co. "Canoodles" Box



10).Reed's Canoes Candy Box. 6.5 x 8.25 x 3/4" ca. 1930's Reed Candy Co. cardboard 2-ps. candy box, including its 3 early empty cardboard canoe shaped "Canoodles" brand butter scotch candy packages inside. Box is nice overall, w/ some scattered wear on side edges (C. 8/-); canoes are very good to excellent (C. 8++). Min. bid \$40 (the lot).

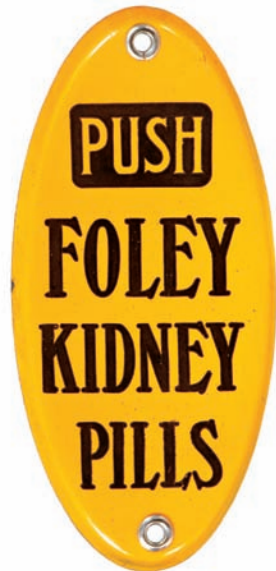
Brewery Mirror



13).Bergdoll Brewing Co. Mirror. 2.75 x 1.75" early celluloid advertising pocket mirror for Louis Bergdoll Brewing Co., Philadelphia, PA, featuring beautiful color graphic image. Clean, bright and excellent. Min. bid \$40.



14).Pep Boys Grease Tin. 5 x 3-1/8" (dia.) scarce, early 1 lb. tin litho grease can for Pep Boys "Pure as Gold" lubricant. Attractive and displays nicely, w/ some light oxidizing and wear (C. 7.5+). Min. bid \$30.



11).Foley Door Push. 6-5/8 x 3-1/8" early pill shaped enameled porcelain advertising door push for "Foley Kidney Pills". Crisp and like new (near mint). Min. bid \$50.



12).Sinclair Oil Can. 5.5 x 4" (dia.) early tin litho solder seam 1 qt. can for Sinclair Refining Co.'s Pennsylvania Motor Oil featuring great image of Co.'s early style dinosaur. Clean, bright and excellent, w/ exception of light dent mark (a strong C. 8++). Min. bid \$30.



15).Franklin Price Foot Powder. 5 x 2 x 2" scarce, early cardboard 3-sided foot powder container from Franklin Price Co., featuring beautiful multi-color label on front side (label C. 8/-). Full, never opened container has a little edge wear, general toning and soiling w/ some light general wear (critical overall grade C. 7+). Min. bid \$30.



16).Cow-Ease Tin. 7 x 3.25 x 3.25" scarce, early hand-soldered tin litho product tin for Cow-Ease brand veterinary bug repellent w/ great graphic image of farmer in suit and tie spraying cows (same image both sides). Full, never opened tin is clean and very nice overall (a strong C. 8++). Min. bid \$30.



17).Topsy Shoe Polish Bottle. 5 x 1-5/8 x 1-5/8" unusual, early paper labeled product bottle for "Topsy" brand shoe polish featuring nice image of Co.'s trademark black girl. Early aqua bottle has hand-applied lip, original marked wooden cap and attached applicator brush. Bottle is excellent, label has minor toning and fade w/ some darkening and light staining on sides. Min. bid \$40.



18).Majors Cement Door Push. 7-5/8 x 3-1/8" unusual, early, heavy porcelain advertising door push for "Majors" brand cement (glue). Never used piece is crisp, bright and like new (near mint). Min. bid \$40.



19).Toyland's Dairy Wagon. 4.5 x 10 x 3.75" early tin litho windup toy by Marx Bros. of horse drawn milk delivery wagon. Clean, bright and basically like new, w/ exception of small scratch mark on roof (C. 8.5/+). Min. bid \$40.



20).Porcelain Texaco Sign. 11-1/8 x 21.5" early 2-sided porcelain sign for Texaco brand motor oil, w/ same image on both sides. Attractive piece is clean and bright w/ nice surface sheen, w/ some chipping spots on outside edges and a little minor wear in field area. Min. bid \$40.



21).Automotive Paperweight Mirror. 3.5" (dia.) x 3/8" large, early celluloid covered heavy paperweight/palm mirror for the Ludlow Ambulance Service featuring wonderful large hand-tinted photo image of Co.'s "Holmes Auto Co." sedan (this Canton, OH Co. produced high quality, expensive air cooled autos from 1918-1923). Excellent. Min. bid \$40.



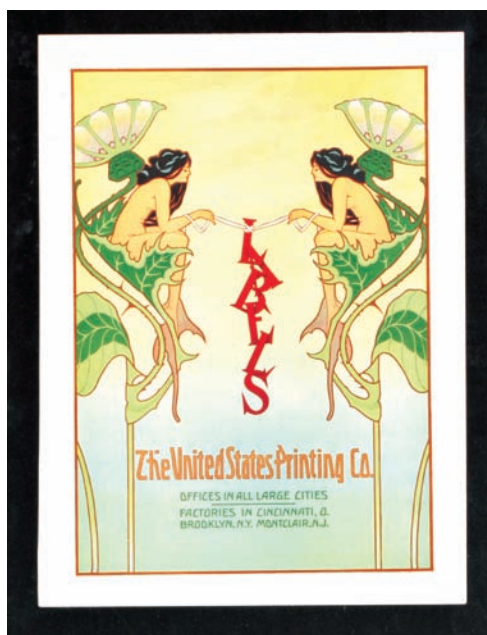
22).Smile Bumper Tag. 6 x 6.25" early painted metal advertising bumper tag for "Smile" brand orange soda featuring wonderful image of Co.'s trademark orange character. Clean and excellent overall, w/ great patina (basically a C. 8.5/+) w/ a slight bit of very minor edge wear. Min. bid \$40.



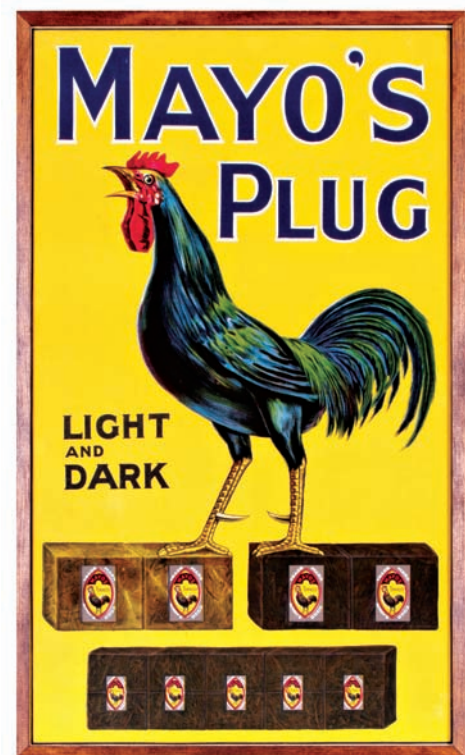
23).Look Out Cigar Box. 7.25 x 8.5 x 5" (as shown lid up) very early wooden cigar box for "Look Out" brand (Payn's Tobacco Co., Albany, NY) featuring wonderful stone litho graphic image of girl walking above falls across a cable while carrying a giant cigar. Inside label is clean, bright and exceptionally nice (near mint) w/ soiling and wear on small outside label. (Series 1883 tax stamp). Min. bid \$30.



24).Olco Whiskey Calendar. 22 x 15" large, early advertising calendar for Cook & Co.'s Olco brand rye whiskey (Detroit, MI), featuring stunning, highly graphic multi-color lithography of women undressing behind tree. Clean, bright and beautiful (displays as a C. 8.5/+) w/ original metal strips at top and bottom. Close examination will show a little non-offensive light staining in bottom margin area w/ minor toning and a few tear marks mostly confined to left outer white margin area (critical grade C. 8+/+). Has 1908 calendar tear sheet at bottom. Min. bid \$50.



25).Printing Co. Broadside Poster. 11 x 8" beautiful, early, small paper litho advertising broadside poster promoting United States Printing Co.'s labels featuring beautiful Art Nouveau image of nudes seated on flowers. Clean, bright and very attractive appearance, w/ faint, very trace hint of minor soiling in outer margin area (mentioned for accuracy, not at all detracting). Framed (see website addendum to view in frame). Min. bid \$40.



26).Mayo's Tobacco Sign. 30.75 x 18.25" (29.25 x 17" visible) early colorful and highly graphic advertising linen sign for Mayo's brand tobacco featuring beautiful image of Co.'s trademark rooster standing on tobacco plugs (note Co.'s Rooster tobacco tags on plugs). Clean, bright and like new (near mint). Framed. Min. bid \$40.



27).MGM Movies Sign. 12 x 21" unusual, early, embossed tin litho promotional sign for MGM (Metro-Goldwyn-Mayer) promoting Co.'s movies. Excellent overall, w/ a couple minor storage rubs (C. 8.5+). Framed. Min. bid \$40.

Disney Pins



28).Disney Character Pins. Lot includes 9 different early pin-back buttons each featuring images of early Disney cartoon characters (sizes range from 7/8 to 1.25" dia.). Three center pins in top row are tin litho, others are celluloid covered. Pins are clean and excellent overall (w/ exception of small loss spot on top edge of Wolf pin). Min. bid \$50 (the lot).

Tin Litho Bank



29).Figural Tin Bank. 3.75 x 2.25" (dia.) early figural tin lithographed character bank (Foxy Grandpa?) featuring beautifully detailed embossed German lithography w/ coin slot on backside. Clean, bright and exceptionally nice (C. 8.5++), w/ minor dent mark on lid. Min. bid \$40.



30).Mail Pouch Fan. 13.75 x 7.5" large, early cardboard fan on wooden stick advertising Mail Pouch brand tobacco featuring great image of Co.'s trademark baby on front w/ tobacco package and product advertising on backside. Excellent overall (C. 8+) w/ exception of a few small, early, light pen marks (child's ear area). Min. bid \$30.



31).Keystone Cigars Door Push. 6 x 4.25" early, small, door push sized porcelain sign for Keystone brand cigars. Clean and excellent, w/ only minor wear from use (note: has a couple very minor wavy mfg. imperfection lines in surface-mentioned for accuracy, adds character and not at all detracting). Min. bid \$40.



32).Breyer's Door Push. 8-5/8 x 3.75" scarce, very early porcelain door push for Breyer's brand ice cream, featuring nice image of Co.'s leaf logo against attractive background pattern. Field area is excellent, w/ some early scattered weathered chipping wear along the outer edges. Min. bid \$40.



33).Ube See Oat Box. 9.5 x 5.5" early 3 lb. cardboard oats box for United Buyers Co.'s "Ube See" brand. Clean, bright and very attractive (a strong C. 8++) w/ exception of a little tattering and wear on backside of lid. Min. bid \$40.



34).Texaco Key Holder. 7 x 3.25" unusual vintage metal bathroom key holder from a Texaco gas station. Clean, bright and excellent overall (C. 8.5). Min. bid \$20.



35).Oilzum Tin. 6.25 x 3 x 2.25" early tin litho product can for Oilzum Co.'s auto tar remover. Decent example, w/ typical oxidized darkening to silver flash areas (C. 7.5), w/ heavier wear on lid. Min. bid \$20.



36). **Bottle Opener Lot.** Lot consists of ten different early metal figural church key style bottle openers (sizes range from 3-1/8 x 1" to 2-5/8 x 3/4"). Includes: Coca-Cola; White Taxicab Service (car shaped); Cascade, White Rock, Lemon Kola and Gay-Ola (boot shaped) sodas; Bishop Sea Food (fish shaped); and S.Q. and Ni Carbazin Poultry feed product (chicken shaped). Very nice overall, w/ a little light wear from use. Min. bid \$40 (the lot).



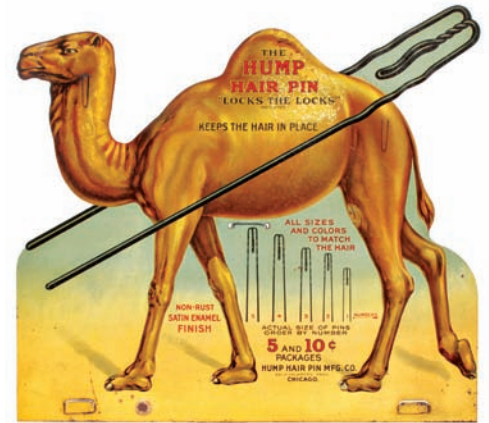
37). **Chevrolet Sign.** 15 x 22.75" vintage celluloid over Masonite advertising sign introducing Chevrolet's 1951 "Styline De Luxe" 4 door sedan, a brand new upper end model for Chevy at the time. Sign is clean, bright and excellent overall (C. 8.5++) w/ exception of small wear spot in upper right red border area (and missing one of small hanging hooks on backside). Min. bid \$40.



38). **Whisky Jug Thermometer.** 12 x 9.25 x 3/4" unusual early wooden advertising thermometer for a Reading, PA Wines and Liquors dealer. Excellent and all original, w/ great primitive country look (C. 8/+). Min. bid \$40.



39). **Bethlehem Bottling Co. Tray.** 13.25 x 13.25" early tin litho advertising tray for the Bethlehem Liquor & Bottling Co. (Bethlehem, PA) featuring beautiful multi-color graphic image of young children and dog in boat. Tray is clean, bright and displays very well (basically displays as a strong C. 8/+), although there is a little bit of light scattered wear in the dark green rim area and a bit of non-offensive light surface oxidizing in the very upper right outside edge of image. Min. bid \$60.



40). **Hump Hair Pins Sign.** 13.5 x 15-7/8" unusual, early tin litho die-cut display sign for "Hump" brand hair pins. Powerful and impressive looking piece has strong colors and displays quite nicely on wall (basically as a C. 8/+), although closer examination will show an area of hazy white speckled litho wear in camels hump section (critical grade C. 7.5 due to speckling). Note: I believe this sign was originally part of a store rack, but displays great when hung as a sign. Min. bid \$50.



41). **Sparrow Chocolates Sign.** 17 x 11.25" scarce, early tin over cardboard sign for Boston Confectionery Co.'s "Sparrow's" brand chocolate candies featuring wonderful image of well dressed child eating from Sparrow candies box (American Art Works). Has strong colors and displays great (displays as a strong C. 8/+), although very close examination will show some non-detracting touch up to some light scattered bb sized indent marks and some minor scattered restoration in the outer black frame area (restoration is extremely well done). Min. bid \$50.



42). **Celluloid Indian Box.** 3.5 x 8.25 x 6" unusual, early highly graphic celluloid covered dresser top box featuring beautiful early American Indian image, w/ embossed pattern design along edges. High quality piece has cloth lining inside and is clean and excellent (note: missing clasp piece on front closure). Min. bid \$40.



43). **Sweet Marie Gum Die-Cut.** 10.5 x 6.75" early, embossed die-cut sign on heavy cardstock for "Sweet Marie" brand chewing gum featuring beautifully detailed shiny finish lithography. Clean, bright and excellent (C. 8.5++), missing easel on backside. Min. bid \$40.



44). **Stewart Stoves Sign.** 5-7/8 x 35-7/8 x 3/8" very early wooden painted country store sign for Fuller & Warren Co.'s "Stewart" brand stoves. Attractive and all original, w/ a nice dry paint surface. Has some typical expected minor weathering, soiling and light general wear from use, w/ a nice primitive country look (C. 7.5). As found, might improve a bit w/ cleaning. Min. bid \$50.



45). **Trop-Artic Motor Oil Cup.** 2.75 x 5 x 3.75" (dia.) early tin litho cup advertising Manhattan Oil Co.'s "Trop-Artic" brand motor oil and gasoline featuring stunning multi-color graphic motoring image. Clean, bright and excellent (C. 8.5+). Min. bid \$40.



46). **Shell Oil Truck.** 2.25 x 6 x 2-1/8" small, early figural tin litho oil delivery tanker truck toy, w/ advertising on both sides for Shell brand. A clean, very attractive piece (C. 8/+). Probably European. Min. bid \$40.



47). **Hood Thread Tin.** 4.25 x 3-7/8" unusual early tin litho product tin for Hood Rubber Co.'s 1 lb. size linen thread featuring great image of Tire Co.'s trademark man. Excellent overall, w/ minor dent mark and a little non-offensive minor scattered wear in background (C. 8/+). Min. bid \$30.



48). **Uncle Remus Cigar Box.** 5-7/8 x 7-1/8 x 5" very early wooden 13 count cigar box for "Uncle Remus" brand featuring beautifully detailed early stone litho black themed images. Clean and excellent (C. 8.5). Min. bid \$30.



49). **Red Raven Tip Tray.** 4.25" (dia.) early tin litho advertising tip tray for Red Raven featuring beautifully detailed color graphics. Clean and excellent (C. 8.5+) w/ tape residue spot on backside. Min. bid \$40.



50). **Bigger Hair Tobacco Pack.** 5 x 3 x 1-1/8" unusual, early paper label soft pack style tobacco package for Leidersdorf Co.'s "Bigger Hair" brand featuring Co.'s trademark African native woman on both sides (this is the successor to Co.'s "N" Hair brand product). Full, still sealed package is quite decent overall, although there is a spot of surface loss in upper background area on one side (probably from removed price sticker) and there is paper loss to outer label underneath (Series 1926 tax stamp). Min. bid \$30.



51). **Pittsburg Water Heaters Mirror.** 2.75 x 1.75" scarce, early celluloid advertising pocket mirror for the Pittsburg Automatic gas water heater, featuring beautiful detailed color graphic image of Co.'s product. Excellent. Min. bid \$40.



52). **Poultry Feed Knife Stone.** 2.75 x 1.75 x 1/4" scarce, early celluloid covered advertising knife sharpening stone for Cudahy Packing Co.'s "Blue Ribbon" brand poultry feed. Clean, bright and very attractive, w/ a great look. Min. bid \$30.



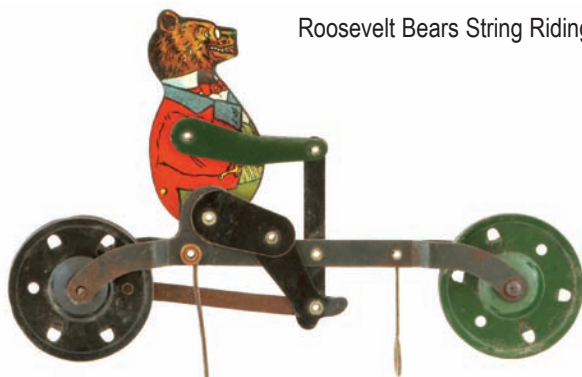
53). **Admiral Polishing Cloth Tin.** 4.75 x 3-1/8" (dia.) early tin litho product tin for Co.'s auto polishing cloth, featuring great image of streamlined futuristic car. Tin is attractive and displays nicely (C. 8+) w/ some soiling and wear on lid (lid as found, might improve w/ cleaning). Min. bid \$30.



54). **Regent Soda Sign.** 9 x 20" early embossed tin litho sign for Regent brand sparkling beverages, w/ nicely detailed image of Co.'s labeled soda bottle (Regent Bottling Co., Pittsburgh, PA). Crisp, bright and basically like new (appears never used) w/ exception of a couple minor storage wear marks. Min. bid \$40.



55). **Pioneers Auto Plate.** 5 x 9.5 x 1/4" vintage ca. 1950's heavy, embossed cast aluminum license plate featuring great image of early street rod, made for members of the "Pioneers" hot rod club in Keene NH. Excellent overall, w/ just the right amount of patina and light surface wear (C. 8/+). Embossed: "Chicago Metal Craft Co., Port Chicago, Calif" on backside. Min. bid \$30.



Roosevelt Bears String Riding Toy

56). **Roosevelt Bear Toy.** 4.25 x 6.75" (not including balancing weight attachment) early tin litho mechanical string/wire riding balancing toy featuring great image of lithographed bear w/ Teddy Roosevelt glasses and his toothy grin (bears legs make a pedaling motion and he moves up and down as he pedals the bike). Neat piece that is excellent overall (a strong C. 8+) w/ minor oxidizing on thigh area of leg. Min. bid \$50.



57). **Disney Birthday Candles.** 3 x 5-7/8 x 1-1/8" ca. 1930's, full, early boxed set of Mickey Mouse birthday cake candle holders from Cypress Novelty Corp., Brooklyn (Disney Enterprises), w/ nice images of early Disney characters holding candles. Never used piece is clean and excellent. Min. bid \$30.



58). **Gum Packs.** Lot includes two scarce, full, early packages of chewing gum. Includes: United Pepsin Co.'s "Chin Chin" synthetic carnation flavor (excellent); and Henry Lin's "Trixie" brand (front excellent, w/ small surface loss spot on backside). Min. bid \$30 (the lot).



59). **May's Lozenges Tin.** 2.5 x 4 x 3/4" early tin litho flat pocket style throat lozenges/cough drops tin from May Drug Co. (Pittsburg, PA.). Clean and attractive appearance, w/ minor soiling and wear (C. 8+/-). As found, might improve a bit w/ cleaning. Min. bid \$30.



60). **Lily White Flour Pocket Mirror.** 2.75 x 1.75" scarce variation, early celluloid advertising pocket mirror for Lily White brand flour (Valley City Milling Co., Grand Rapids, Mich.) featuring beautifully detailed multi-color graphics. Clean, bright and excellent. Min. bid \$40.



61). **Blue Ribbon Car Polish Tin.** 4 x 1.75" (dia.) early, miniature, hand-soldered tin litho 1/4 pt. size product can for Blue Ribbon Metal Polish cream, featuring wonderful image of Co.'s trademark racecar. Clean and very attractive, w/ minor background wear (C. 8/+). Min. bid \$30.



62). **Auto Finish Tin.** 3.25 x 2.75" (dia.) early paper label product can for Allentown brand enamel auto finish, featuring beautiful graphic image of early roadster. Full, never used can is clean and very attractive in appearance, w/ just the right amount of light toning and minor wear (C. 8/-). Min. bid \$30.



63). **Chippewa Milk Can.** 4 x 3" very early solder seal paper label evaporated milk can for "Chippewa" brand (Sault Grocers Marie, MI) featuring stunning, highly detailed color graphics. Clean and excellent (C. 8.5/+). Min. bid \$20.



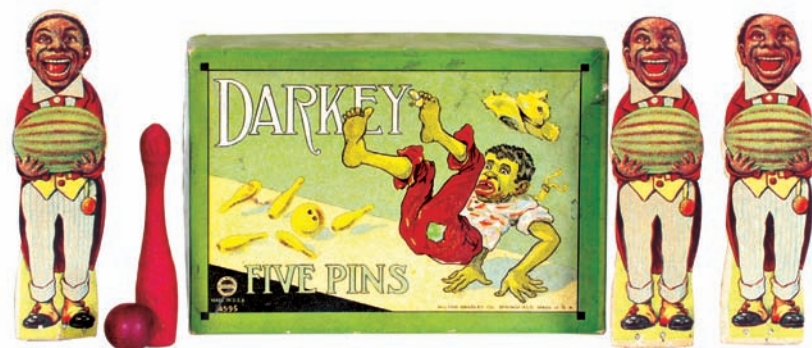
64). **Columbia Spice.** 3 x 2.25 x 1.25" scarce, early tin litho 1-1/2 oz. spice tin (allspice) for "Columbia" brand (Sutherland & McMillan, Pittsburgh PA) featuring great image of Co.'s Miss Liberty trademark (same image both sides). Clean, bright and exceptionally nice (C. 8.5++). Min. bid \$30.



65). **Motorcycle Pins.** Lot of three early motorcycle pins. Includes 1.5 x 1" embossed metal Indian Motorcycles pin (excellent); 7/8" Indian celluloid pin-back button (excellent appearance, w/ a little light foxing in outer edge); and 3/4" (dia.) embossed brass stud back button from the 1913 National M. B. & A. show in Chicago (excellent). Min. bid \$40 (the lot).



66). **Jell-O Dishes.** Lot includes two early fine china advertising dishes for Jell-O brand dessert product, featuring nice color images of Co.'s trademark girl on each (4 x 4.5 x 1-1/8" and 4-1/8 x 4.75 x 1"). Both are excellent. Min. bid \$30 (the lot).



67). **Darkey Five Pins Game.** 5.75 x 8.25 x 1-3/8" early boxed "Darkey Five Pins" game set by Milton Bradley Co., featuring nice graphic image of black child on box lid. Inside box are five die-cut cardboard black men holding watermelon figures (each attached to wooden block), a wooden pin and a small wooden ball. Excellent overall (C. 8++). Min. bid \$30.



68). **Black Jack Candy Box.** 4.25 x 8.25 x 4.25" unusual, early 2-ps. cardboard product box for Clark Co.'s "Black Jack" brand penny candy, featuring neat image of trademark black man playing a banjo. Nice overall condition, w/ a little light wear on corner edges (C. 8+/). Min. bid \$30.



69). **Jackie Robinson Bank.** 2-5/8 x 2-5/8 x 5/8" original tin litho dime register bank featuring Brooklyn Dodgers baseball great Jackie Robinson. Clean, bright and like new. Min. bid \$40.



70). **Horse Importers Pin-back.** Large 1.75" (dia.) colorful and highly graphic advertising pin back button advertising Lafayette Stock Farm (Lafayette, IN) featuring beautiful graphics. Clean, bright and excellent w/ original label on backside (note has a couple tiny foxing dots in outer border-mentioned for accuracy, very minor and not at all offensive or detracting). Min. bid \$30.



71). **Oshkosh Brewing Co. Fob.** 1.75 x 1.5" early advertising watch fob for the Oshkosh Brewing Co. (Oshkosh, WI) featuring nicely detailed cloisonné enameling. Excellent. Min. bid \$30.



72). **Old Manse Pocket Mirror.** 2-1/8" (dia.) early celluloid advertising pocket mirror for "Old Manse" brand imported Canadian maple syrup (William Manierre Co.) featuring beautiful multi-color graphics. Clean, bright and excellent appearance, w/ very minor wear. Min. bid \$40.



73). **Cows in the Corn Game.** 14 x 13.75 x 2" early boxed "Cows in the Corn" game by Parker Bros., featuring great graphic cover image of cow in cornfield, w/ wooden game board and playing pieces inside. Box lid is clean and displays nicely (C. 8+), although it is missing one of side apron flaps and two others are no longer attached (inside board and pieces are excellent). Min. bid \$30.



74). **De Laval Separator Oil Sample.** Unusual 3.5" (h) sample bottle for De Laval brand oil (for cream separator machines). Full, embossed, miniature cork sealed bottle has beautifully detailed paper label and comes in its original 3-sided gift box. Excellent. Min. bid \$20.



75). **Clown Cigarettes Ashtray.** 5-1/8" (dia.) x 3/4" (h) early, very high quality metal advertising ashtray w/ inlaid cloisonné porcelain enameled advertising in center (adv.: 3-1/8" dia.) for Clown brand cigarettes, featuring great image of early cigarette pack (note: this high quality piece was made by the O'Hara Dial Co., of Waltham, MA (the premier maker of high quality enameled dials for pocket watch dials)). Excellent overall, w/ some non-offensive light soiling. Min. bid \$40.

Fisk Tires Desk Set



76. **Fisk Tires Desk Set.** Early, very high quality executives desk set advertising Fisk Tires, featuring nice figural metal image of Co.'s trademark kid, w/ faux marble beveled glass top, large desk fountain pen and mechanical pencil set (child logo 3 x 2.5 x 2-3/8"; base 3.75 x 6.5 x 1"). Excellent. Min. bid \$40.



77. **Wrigley's Gum Stand.** 11 x 8 x 4-5/8" scarce variation, early heavy metal countertop display stand of Co.'s celluloid face character seated in chair, advertising Wrigley's brand chewing gum (made for holding a display box of gum packages). Neat and unusual piece has some general oxidized pitting and light general wear on upper surface, but is still attractive and displays pretty well (C. 7+/-). As found, might improve some w/ cleaning. Min. bid \$50.

Goodyear Tires Clock



78. **Good Year Tires Clock.** 6 x 6.5 x 2-5/8" unusual, early, embossed metal advertising desk clock for Good Year brand Tires, w/ early miniature rubber tire surrounding clock (working clock). A neat, very high quality piece w/ bronze finished deco style base. Excellent, w/ nice surface patina (a strong C. 8++). Min. bid \$40.



79. **Niser Ice Cram Tray.** 13-5/8" (dia.) early tin litho tray advertising Niser brand ice cream featuring great color graphics. Clean, attractive and displays nicely (field of tray displays as a strong C. 8+), w/ some tiny scattered paint speckles (mentioned for accuracy, very minor and non-detracting) and minor dent at 4 o'clock; w/ some light scattered wear in rim area (rim C. 8-). Min. bid \$50.

Spalding Bicycles Match Holder



80. **Spalding Bicycles Match Holder.** 4.5 x 2-5/8 x 1.25" scarce, very early tin match holder advertising "The Spalding Bicycle", w/ nicely stenciled design. Has some light general wear from use, but overall decent and quite respectable (C. 7.5). As found, might improve w/ cleaning. Min. bid \$40.



81. **Brown Shoes Match Holder.** 9 x 4-7/8" large, impressive, rare tin litho match holder for the Brown Shoe Co., featuring wonderful multi-color graphic image of woman holding shoe (by Meek & Beach Litho.). Clean, bright and very attractive overall (basically a very strong C. 8++) w/ exception of some crimping and wear at three of the outside corner edges. Min. bid \$50.



82. **Beacon Oil Sign.** 30" (dia.) early, heavy 2-sided porcelain service station sign for Beacon Oil Co., w/ beautiful color and design. Clean, bright and very attractive, w/ nice surface sheen. Has a little typical weathered wear on one of top hanging holes and a few scattered chips on backside, but overall clean, bright and very attractive (display side a strong C. 8++; backside C. 8/- due to chips). Min. bid \$50.



83. **Moxie Display.** 11.75 x 6" (dia.) unusual, early, tin litho counter display for Moxie, w/ multi-color lithographed die-cut figure at top of Frank Archer sitting on Moxie crate (note: has perforations along the bottom edge for bending up to make him stand vertically above the tray-never folded). Piece is nice overall (basically a C. 8+) w/ a few minor wavy crease marks in die-cut figure and a few faint hazy spots visible in tray if tipped in light just right-nothing that's serious or detracting. Min. bid \$40.



84).Fadaway Gum Box. 7.75 x 7.5 x 4.5" early cardboard store display box w/ original protective glass covering for American Chic Co.'s "Fad-a-Way" brand ball gum featuring a great image of pitcher (accepted in hobby as being Hall of Fame pitching great Christie Mathewson). Outer box has typical expected light general overall wear; inside label is clean, bright and displays great w/ a couple light tears and minor wear (label a strong C. 8/+). Note: baseball gumballs inside not original to piece. Min. bid \$50.



86).Philip Morris Sign. 15.25 x 24.25" early, heavy, embossed metal sign for Philip Morris Cigarettes, featuring great image of Johnny. Clean, bright and powerful looking piece is crisp and excellent overall (appears never used and is basically a C. 8.5+/-) w/ exception of some oxidized storage wear and light paint loss in very outside raised "frame" border section. Min. bid \$50.

Iron "Mascot" Baseball Bank



88).Baseball Bank. 5-7/8 (h) x 2.5" (dia.) scarce, early figural cast iron "Mascot" bank by Hubley, featuring great image of kid ball player standing on baseball (marked "American and National League Ball"). Has nice patina to its early gold paint surface, w/ a little light expected general wear (C. 7.5+/-/8-). Min. bid \$60.



89).Tanglefoot Fly Destroyer Sign. 16 x 9" great early 2-sided cardboard litho sign for Tanglefoot brand fly destroyer strips featuring different images on both sides. Clean and very attractive, w/ non-offensive faint crease mark in upper corner (C. 8+/-). Min. bid \$40.

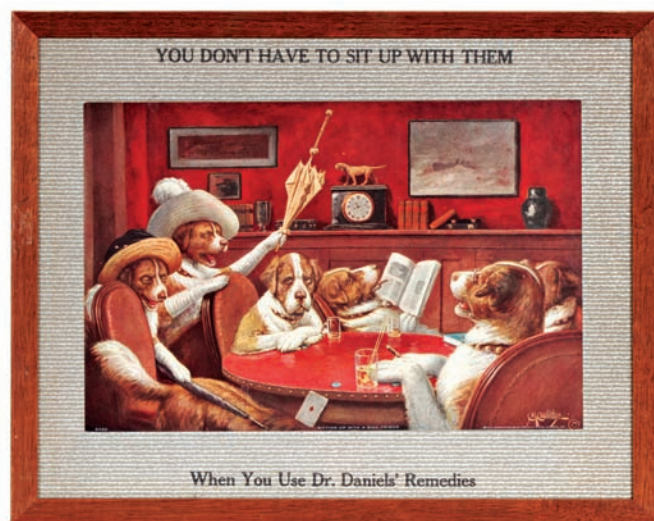


Winchester Sample



90).Winchester Advertising Sample Shell. 6-1/8 x 7/8" (dia.) early Winchester Co. salesman's advertising dummy sample shotgun shell display piece w/ glass viewing window showcasing the various gunpowder's used in Co.'s shotgun shells. Excellent overall, w/ a slight bit of even toning and non-offensive light background staining (C. 8/-). Min. bid \$30.

Dr. Daniels Veterinary Medicines



85).Dr. Daniels Vet Medicines Sign. 14-3/8 x 18" (13 x 16.5" visible) great early paper on cardboard advertising sign for Dr. Daniels' Veterinary Remedies, featuring great image of illustrator Coolidge's comical dogs. Clean, bright and excellent (C. 8.5+/-). Framed. Min. bid \$40.



87).Western Ammo Sign. 6.5 x 12.25" early cardboard easel-back countertop sign for Western brand Ammo. Has strong colors and displays quite nicely (C. 8+/-), w/ a little light soiling and minor wear (critical grade C. 7.5/+). Min. bid \$40.

Sample



91).Tidewater Oil Co. Tobacco Sample. 2-5/8 x 2.25 x 2.25" unusual, early, tin litho tobacco sample tin from the Tide Water Oil Co., New York (has advertising on backside for Co.'s oils). Clean and very nice overall (C. 8/+). Min. bid \$30.



92).Hanfords Ice Cream Tray. 10-5/8 x 13.25 x 1.25" scarce, early tin litho advertising tray featuring beautiful, multi-color graphics. Clean, bright and displays as like new (outstanding near mint appearance), although examination under black light will show some very well done professional restoration (mostly confined to outer rim areas). Min. bid \$40.



93).Early Sand Pail. 5.75 x 6" (dia.) unusual, very early tin litho sand pail featuring wonderful graphic seashore images all around. Has strong colors and displays quite nicely (basically displays as a strong C. 8/+ w/ exception of some scattered oxidizing and light pitting on upper surface in the top inch or so of pail (marked "Made in U.S.A. w/ a L S Co. logo-probably Leo Schlesinger Co., NYC which operated from 1880-1909). Min. bid \$30.

Celluloid Bank



94).Celluloid Advertising Bank. 1/2 x 2.5" (dia.) early, very high quality advertising bank for "The Detroit Savings Bank", featuring metal body, w/ celluloid advertising on both sides. Clean and exceptionally nice (near mint). Min. bid \$30.

1868 Nursing Cup Patent Model



95).1860's Nursing Cup Patent Model. 3 x 5-1/8 x 5.5" great early hand-soldered tin patent model for a Civil War era nursing cup. Cup is excellent and still contains its original 1868 tags issued by the U.S. Patent Office. Min. bid \$40.



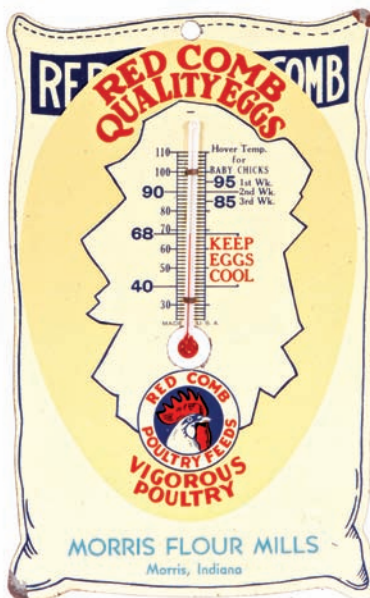
96).Non-Korod Battery Compound Tin. 1.25 x 3" (dia.) early tin litho product tin for "Non-Korod" brand car battery terminal compound, featuring wonderful graphic image on lid. Lid is super overall (C. 8.5+), w/ a little light scattered wear on base. Min. bid \$30.



97).Princeton Tire Patch Tin. 4-7/8 x 1-7/8" (dia.) scarce, early tin litho tire patch tin (Princeton Tire & Rubber Co., Trenton, NJ), featuring large, wonderful graphic image of tiger ("Princeton University mascot"). Clean and excellent (C. 8.5/+). Min. bid \$30.



98).Cadillac Presentation Fob. Outstanding, very high quality 10K gold presentation fob from Cadillac Motor Car Co. featuring beautifully detailed inlaid cloisonné enameling (awarded for 10 years of faithful service to company). Fob measures 1-5/8 x 1.25" and is crisp and like new (near mint) still on its original cloth presentation ribbon (ribbon 6 x 1-3/8"). Min. bid \$50.



99).Poultry Feeds Thermometer. 6.25 x 3-7/8" early die-cut tin litho thermometer advertising "Red Comb" brand poultry feeds (Morris Flour Mills, Morris, IN) in shape of early feedbag. Clean, bright and excellent overall (near mint, w/ exception of a couple small paint loss spots at two corner edges). Min. bid \$40.



100).Hot Ball Tobacco Door Push. 8 x 3" outstanding, very early embossed tin litho advertising door push for "Hot Ball" brand tobacco, featuring great image of devil like figure holding early product package (note great baseball image on tobacco pack). Clean, bright and displays great (as a strong C. 8+) although there is some non-offensive light denting, a little minor wear and small nail hole at top of letter "h" near top edge (Meek & Beach Litho). Min. bid \$50.



101).Kayo Soda Sign. 14 x 27-3/8" early embossed metal sign for "Kayo" brand chocolate drink featuring great images of syndicated cartoon character Kayo and early enamel labeled pop bottle (Donaldson Art Sign Co.). Clean, bright and appears never used (C. 8.5/+) w/ only minor storage wear. Min. bid \$40.



102).Farm Equipment Puzzle. 11 x 20" (7.25 x 16-1/8" visible) early cardboard advertising puzzle for "New Idea Farm Equipment Co.", featuring great early farm scene image w/ early truck and equipment everywhere. Puzzle is excellent, nicely framed and matted. Min. bid \$30.



103).Paper Label Spice Tins. Lot includes three early tin litho paper label spice tins. Includes "Court House" (2-3/8 x 2-3/8 x 1.25") 1-1/2 oz. paprika (C. 8-); "Fairway" (2-5/8 x 1-7/8 x 1-3/8") 1 oz. red pepper (C. 8+); and "Defiance" brand (2-3/8 x 2-3/8 x 1.25") 1-1/2 oz. cinnamon (C. 8.5+). Min. bid \$30 (the lot).

Veterinary Banner



104).Veterinary Cure Banner. 9.5 x 24.5" unusual, very early cloth advertising banner for Gamol Agtogenes Co.'s "Nu-Tri-O-Tone" veterinary cure product. Clean and excellent (appears never used). Min. bid \$30 ea. (have 2, winning bidder can take one or both).



105).National Cigar Stands Tip Tray. 6-1/8" (dia.) large, early, tin litho tip tray for the National Cigar Stands Co. featuring beautiful color graphics promoting Co.'s various brands. Clean, bright and excellent (C. 8.5+) w/ some wear on non-graphic backside. Min. bid \$30.



106).Celluloid Stamp Holders. Lot consists of two early, highly graphic celluloid covered stamp holders w/ advertising on both sides. Includes: Sunshine Paints (3 x 2"); and Mother's Oats (2-3/8 x 1.5") a souvenir from Pan-Am Expo. Both are clean and very attractive. Min. bid \$30 (the lot).



107).Bellmore Whiskey Tray. 12" (dia.) early tin litho tray for Bellmore brand whiskey (Bernard Fischer Co., Phil'a) featuring beautiful multi-color graphics. Image area is clean, bright and excellent overall (a strong C. 8++), w/ some chipping and wear along top edge of outer rim. Min. bid \$40.



108).Seaside Sand Pail. 4.25 x 4" (dia.) early tin litho children's "Seaside" toy sand pail w/ different nice images of children playing on each side. Clean and excellent overall, w/ a couple minor background wear spots (C. 8/+). Min. bid \$40.



109).Old Rip Cigar Box. 6.75 x 7-5/8 x 5.5" (as shown lid open) beautiful, very early wooden cigar box w/ unusual removable tray inside for Hendrick Hudson Co.'s "Old Rip" brand, featuring incredible multi-color stone litho label of Rip Van Winkle (Heppenheimer & Maurer lithographers). Clean and exceptionally nice (C. 8.5/+) w/ Series 1883 tax stamp. Min. bid \$40.



110).Round Oak Match Safe. 2-7/8 x 1.5 x 7-1/16" early celluloid and metal advertising match safe for Round Oak brand stoves featuring highly detailed multi-color graphic images on both sides. Clean and very attractive appearance, w/ a little toning along outside edges of celluloid. Min. bid \$40.



111).TNT Popcorn Sign. 8 x 15-7/8" early, heavy embossed tin litho sign for TNT brand popcorn (similar to an oversized license plate). Clean and excellent (appears never used), w/ minor storage wear (C. 8.5/+). Min. bid \$30.

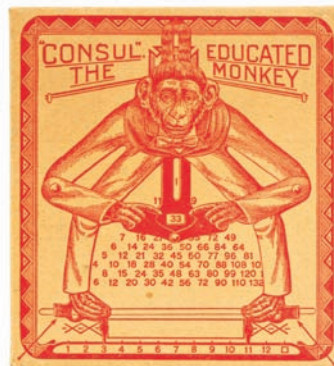
You Pay Spinners



112).Advertising Spinners. Lot consists of three early tin litho die-cut "You Pay" advertising spinners (ea. app. 2.75 x 1.5"). Includes: Davis Hats; Bal Tabarin; and White Rock soda. Decent and attractive in appearance, w/ a little light wear to each (C. 7.5+/8-). Min. bid \$30 (the lot).

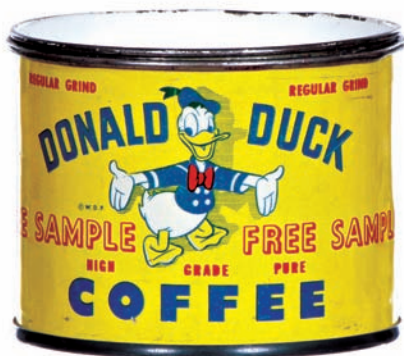


113).Log Cabin Express Toy. 6 x 5.5 x 4" (box 4.5 x 5.75 x 1.75") early tin litho Log Cabin brand syrup promotional express toy, consisting of a near mint tin litho wheeled base unit (complete w/ its original box) and an early 24 oz. log cabin syrup tin. Excellent overall (syrup tin has a little fairly minor light scuffing wear near bottom of one side and box has a couple tiny punctures at top and some minor foxing speckles scattered about). Min. bid \$40 (the lot).



114).Monkey Calculator Toy. 5-7/8 x 5.5" unusual, early, tin litho "Council the Educated Monkey" mechanical calculator toy (moving monkeys feet to different multiplying numbers reveals math answer in square window). Excellent overall (C. 8+/+) w/ a few light scuffs from use. Complete w/ original packaging. Min. bid \$30.

Sample / Bank



115).Donald Duck Coffee Sample Bank. 2-3/8 x 3" (dia.) small, early tin litho 3 oz. size "Free Sample" coffee can for Donald Duck brand coffee (Goyer Coffee Co., Greenville, Miss.), w/ a coin slot in the lid for later use as a bank. Clean and excellent overall (basically a strong C. 8++) w/ exception of very minor denting; w/ some scratches and light scattered wear on non-graphic lid. Min. bid \$40.

Disney Scissors



116).Disney Scissors. 1.75 x 3-3/8" small, early pair of metal toy scissors featuring great 2-sided die-cut image of Mickey. Very high quality, and excellent overall (a strong C. 8++), w/ minor wear on handle (image like new). Marked: "© W.D. ENT.". Min. bid \$30.



117).Coca-Cola Mirrors. 2.75 x 1.75" lot includes two different early celluloid advertising pocket mirrors for Coca-Cola, each featuring nice graphic image of Co.'s 1916 and 1911 calendar girl. Both are clean, bright and display great, although close examination will show some non-detracting light foxing on outer side edges of each (very minor and barely noticeable on 1911 example; basically blends into background on 1916). Min. bid \$40 (the lot).



118).Blumer Beer Sign. Lot includes two early cardboard tri-fold window signs for Blumer's "Golden Glow" beer (Blumer Brewing Co., Monroe, WI) w/ vivid multi-color graphics (ea. app. 25 x 34"). Both are crisp, bright and like new (appear never used), w/ exception of small wear spot at bottom left panel edge fold line on one w/ girl. Min. bid \$50 (the lot).



119).Mobilgas Sign. 12 x 12.25" attractive, ca. 1940's Mobil Co. shield shaped porcelain gas sign. Clean, bright and excellent (near mint) w/ exception of a couple tiny chips at top right corner edge. Min. bid \$40.

Baseball Cigar Label



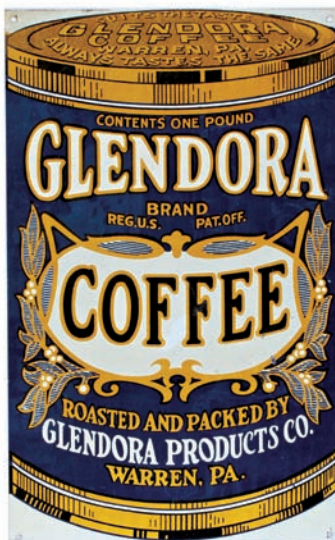
120).Baseball Cigar Label. 9-1/8 x 11-5/8" (4 x 6.5" visible image) very early, colorful and highly graphic paper litho cigar box label for "Our Nine" brand, featuring great, early baseball scene. Clean, bright and excellent in appearance (C. 8.5+). Nicely framed and matted (trimmed). Min. bid \$40.



121).Akron Brewing Co. Sign. 24 x 36 x 1/2" impressive, early, wooden advertising sign (by Meyercord Sign Co., Chicago) for the Akron Brewing Co. (Akron, OH) featuring stunning multi color graphic factory scene (note the early motorcars, horse drawn delivery wagons, etc. in background). Clean, bright and exceptionally nice appearance (C. 8.5+), although examination under black light will reveal some extremely well done professional restoration. Min. bid \$60.



122).Very Early Seed Box. 12-5/8 x 14.25 x 9" (as pictured; 4-5/8 x 14.25 x 9" lid closed) scarce, very early wooden seed box for Chase Bros. & Woodward Co. (Rochester, NY) vegetable seeds featuring wonderful early stone litho label (Clay, Cosack Lithographers, dated 1873). Box and label have some light expected general wear for its age, w/ some toning and scattered staining to label, but colors are decent and overall its attractive and displays pretty well (C. 7+). Min. bid \$40.



123).Glendora Coffee Sign. 13-7/8 x 8-5/8" early tin litho sign for Glendora brand coffee featuring nice image of Co.'s 1 lb. can. Clean and excellent overall (a very strong C. 8++), w/ a little non-detracting minor scattered wear. Min. bid \$30.



124).Disney Amusement Park Sand Pail. 5-3/8 x 5-1/8" (dia.) ca. 1950's tin litho sand pail by J. Chein & Co., featuring great images of Disney characters at amusement park. Clean, bright and excellent overall (appears never used) w/ only minor storage wear (C. 8.5+). Min. bid \$30.



125).Cedar Hill Spice Tin. 3-1/8 x 2.25 x 1.25" scarce, early tin litho 1-1/2 oz. spice tin (ginger) for "Cedar Hill" brand (Hassendeubel Grocers, St. Louis, MO) featuring nice image of Co.'s beautiful graphic logo image on both sides. Clean, bright and very attractive w/ a little faint soiling on backside (C. 8.5+/-). Min. bid \$30.



126).Butterine Pocket Mirror. 2.75 x 1.75" early green background variation celluloid advertising pocket mirror for Ammon & Person Co.'s "Butterine", featuring beautiful color graphic image of child. Clean, bright and excellent. Min. bid \$40.



127).Sooner State Oil Can. 5.5 x 4" (dia.) scarce, early tin litho solder seam 1 qt. can for "Sooner State" brand motor oil (Sooner State Oil Co., Oklahoma City, OK) featuring attractive trademark pioneer wagon images on both sides. Has strong color and displays quite nicely, w/ some non-offensive light scuffs and wear (display side C. 8+/-), w/ heavy loss/wear spots on backside (back fair to poor). Min. bid \$40.



128).Blendwell Pocket Tin. 4.5 x 3 x 7/8" unusual, early, tin litho vertical tobacco pocket tin for "Blendwell" brand (National Cigar Stands Co., Park Ave., New York). Clean, bright and very attractive, w/ a little light scuffing on backside (front C. 8++; back C. 8-). Min. bid \$50.



129).Sullivan's Cigar Sign. 10.5 x 23" early, very heavy enameled porcelain sign for R.G. Sullivan Co.'s "7-20-4" brand cigars (Manchester, NH). Sign is crispy, w/ bright, vibrant colors and nice original surface sheen (a very strong C. 8.5++), w/ a little very minor edge wear. Min. bid \$50.



130).Sinclair Motor Oil Display. Outstanding early Sinclair motor oil display, as found never used still in its original box. Crisp and like new, includes two identical 9.5 x 17.75" tin signs (for making a 2 sided display) complete w/ instructions, mounting brackets and screws. Near mint. Min. bid \$50.



131).Fords Milker Sign. 6-7/8 x 23.75" unusual, early, embossed tin litho dairy farm sign for "Ford" brand milking machines. Lightly used sign is clean and attractive in appearance, w/ just the right amount of minor wear (C. 8+/). Min. bid \$30.



132).De Laval Cows. Lot of two early tin litho die-cut cows advertising De Laval brand cream separators (ea. w/ advertising on backside). Cow 3.5 x 5.5"; skim milk calf 2.25 x 2.5". Both are clean and excellent (C. 8.5+/). Min. bid \$40 (the lot).

Porcelain Sign



133).Quaker State Porcelain Sign. 7.25 x 16.5" early, heavy, 2-sided enameled porcelain service station sign advertising Quaker State products. Field area is excellent, w/ some scattered oxidized light chipping in very outside edges (I'm told it was made to go over an early gas station pump globe). Min. bid \$40.



134).Diehl's Bread Sign. 12 x 24" early, heavy porcelain sign for "Diehl's Bread" featuring a beautiful, bright, unusual color scheme of orange and deep cobalt blue (Baltimore Enamel Co.). Clean and excellent overall w/ exception of some chipping at hanging holes and right corner edges. Min. bid \$40.



135).Pennzoil Motor Oil Salesman's Display. 8.5 x 6.5 x 5" unusual early metal display unit for Pennzoil brand motor oils, w/ brass advertising plates and four glass oil filled tubes that revolve to show motion of auto valves moving through different grades of Co.'s motor oils. Unusual, very high quality piece in excellent overall condition (C. 8+). See our website addendum to view short video clip of piece. Min. bid \$40.



136).Rah Rah Tobacco. 3-5/8 x 2.5 x 1.25" very early tobacco package featuring great football themed wrap-around label. Full, sealed, early paper label cloth string tie pouch is clean and excellent, w/ some chipping loss to tax stamp (C. 8++). Min. bid \$40.



137).Broom Co. Die-Cut. 8 x 6-3/8" wonderful, early, embossed die-cut cardboard sign advertising Southwestern Broom Mfg. Co. (Evansville, IN) w/ wonderful image of well dressed women driving very early car. Clean, bright and very attractive (a strong C. 8++). Note: has tiny staple holes in bottom right background-probably from miniature calendar pad. Min. bid \$40.



138). Fire Escape Sign. 4 x 18" early, heavy porcelain "Fire Escape" strip sign, w/ great pointing finger directional. Clean and excellent overall, w/ light chipping at top edge. Min. bid \$40.



139). Hamburg Plow Works Pen Wipe. 2 x 3-7/8" unusual, early, celluloid 2-sided pen wipe, w/ advertising on backside for Hamburg Plow Works (Hamburg, PA). Opens from bottom, w/ felt inside for wiping gold nib of fountain pen. Crisp and like new (appears never used). Min. bid \$30.



140). Black Kid in the Box. 7.75 x 4.5 x 4" as shown (4 x 3-5/8 x 3.5" lid closed) outstanding, very early wooden Jack-in the Box style toy featuring wonderful figural spring loaded black child pop-up inside. Black figure inside is excellent and all original, w/ a great folk art look (C. 8+); wooden box has general chipping, ageing and general wear (box C. 7+). Very neat piece! Min. bid \$50.



141). Kangaroo Tobacco Label. 10.5 x 10-1/8" early stone lithographed paper tobacco crate label featuring stunning multi-color lithography (Hoen & Co., Richmond, VA). Clean, bright and exceptionally nice (C. 8.5++) w/ trace hint of minor toning. Min. bid \$40.



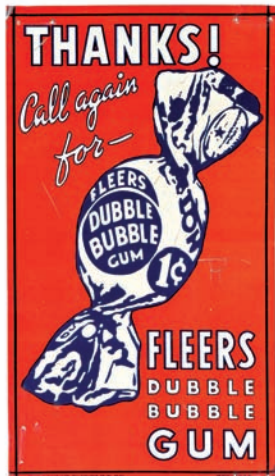
142). Drake's Palmetto Match Holder. 4-7/8 x 3-3/8 x 1.25" scarce, early tin litho advertising match holder for Drake's Palmetto Wine quack medicine product featuring beautiful multi-color graphics. Clean, bright and beautiful in appearance (a very strong C. 8++), w/ minor wear at hanging hole and top left edge and minor pinching at bottom edge (note: black stamped drugstore lettering on match basket area partly worn off). Min. bid \$50.



143). Black Rag Dolls. Lot includes two very early stuffed cloth primitive looking dolls in likeness of young black kids (ea. app. 10.5 x 4.5 x 2") w/ a nicely well worn oilcloth type finish, which give them great character and a fantastic primitive, country folk art look (C. 7+/-). Min. bid \$40 (the lot).



144). Sweet Briar Graham Flour Box. 7.25 x 4-1/8" (dia.) early cardboard oats style box for "Sweet Briar" brand graham flour (Briar Mills, Keokuk, IA), featuring nice image of early mill. Attractive and displays nicely w/ trace bit of slight toning/staining and a little minor scattered wear (C. 7.5) and slight fading to reds. Min. bid \$30.



145). Fleers Gum Sign. 6-5/8 x 3-7/8" colorful and attractive small tin litho sign (door push?) for Fleer Co.'s "Double Bubble" brand chewing gum, featuring great image of 1c gum package. Has good color and displays very nicely (as a C. 8+) although close-up examination will show a few tiny tack holes at outer edges, minor wrinkles and a non-offensive light initial scratch mark in background (critical grade C. 7.5+). Min. bid \$40.



146). Devil Match Holder. 6.5 x 3-5/8 x 2" early figural metal hanging match holder w/ great devil image. Excellent overall, w/ nice paint surface and just the right amount of light wear (C. 8+). Min. bid \$40.



147). Royal Coach Oil. 5.75 x 2.5 x 2.5" very early hand soldered tin litho oil can for Republic Oil Co.'s "Royal" brand coach oil. Clean and attractive appearance (C. 8), w/ minor soiling and wear (as found, should improve w/ cleaning). Min. bid \$30.



148).Restaurant Tip Tray. 3.5 x 5" very unusual, early tin litho advertising tip tray for "Crew's Restaurant", featuring image of collie dog in center, w/ beautifully detailed color graphic images of children playing all around (note kids playing marbles at top). Excellent (C. 8.5), w/ a little minor wear on non-graphic backside). Min. bid \$40.



149).Crow-Elkhart Autos Clip. 2.5 x 2.25 x 7/8" early, embossed brass advertising clipboard style clip advertising a Newark, NJ distributor for Crow-Elkhart autos, featuring nicely detailed image of one of Co.'s early cars (note: Co. made vehicles from 1909-1924). Very nice overall. Min. bid \$20.



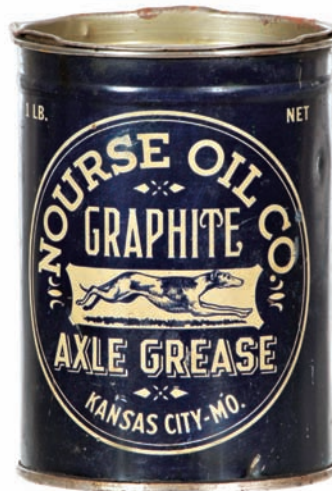
150).Gum Packs. Lot includes three full, early gum packs (ea. app. 3/4 x 2-7/8 x 7/16"). Includes a full, early pack of "My Buddy" and "Old Black Joe" w/ original gum inside; and an advertising pack for "Security Feeds" All are excellent. Min. bid \$30 (the lot).



151).Key-Penn Oil Can. 5-5/8 x 4" (dia.) unusual, early tin litho 1 qt. solder seam can for "Key-Penn" brand motor oil (Keystone Refining Co., Detroit, MI). Clean and excellent (C. 8.5+). Min. bid \$40.



152).Knickerbocker Spice Tin. 3-3/8 x 2-3/8 x 1-3/8" scarce, early tin litho 2 oz. spice tin for "Knickerbocker" brand cloves (Knickerbocker Mills Co., New York). Clean, bright and like new (near mint). Min. bid \$30.



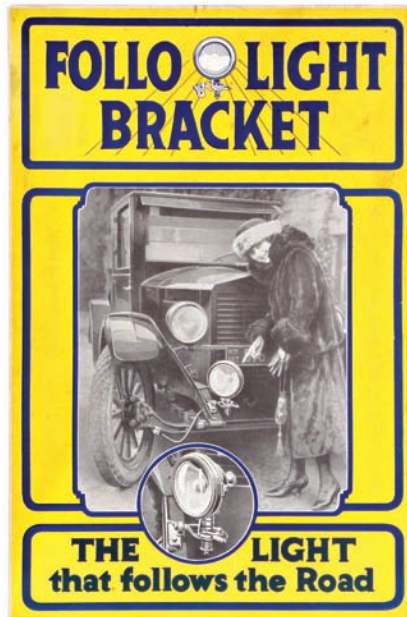
153).Nourse Axle Grease. 4-5/8 x 3.25" (dia.) early tin litho pry lid 1 lb. grease can for Nourse Oil Co.'s graphite axle grease featuring nice image of Co.'s trademark running dog logo. Clean and very attractive appearance, w/ a little light wear on non-graphic backside (front C. 8++; back C. 7.5+). Min. bid \$40.



154).Marvel Spice Tin. 3-1/8 x 2.25 x 1.25" scarce, early tin litho 1-1/2 oz. spice tin (red pepper) for "Marvel" brand (Webster Grocers, Danville, IL) featuring nice image of Co.'s trademark waterfalls logo on both sides. Clean and very attractive (a strong C. 8++), w/ a little minor fading to red lettering on backside. Min. bid \$30.



155).Minstrels Poster. 24 x 16.25" (21-5/8 x 13-5/8" visible) outrageous, smaller sized ca. 1920 paper litho poster for Neil O'Brien's Minstrels show, w/ beautiful multi-color graphics (Strobridge Litho, Cincinnati & New York). Clean, bright and attractive overall, w/minor wear in outer edges of white margins and some non-offensive light background soiling (C. 8-). Framed. Min. bid \$40.



156).Follo Auto Lights Sign. 21 x 14" nice, early cardboard advertising sign for an unusual early car light that was cabled to front wheel and turned to follow direction of the road. Neat piece w/ great overall look. Very attractive overall, w/ a little non-offensive minor toning/soiling (C. 8-+). Min. bid \$40.



157).Patriotic Poster. 30-5/8 x 20.75" (28.5 x 18.75" visible image) vintage paper litho poster featuring Miss Liberty and the founding fathers by illustrator Howard Chandler Christy (poster was created in 1939 for the Constitution Sesquicentennial Commission). Clean, bright and excellent in appearance (a strong C. 8++). Framed. Min. bid \$40.



158).Aetna Ledger Marker. 3-1/8 x 12.25" beautiful, very early tin litho ledger marker advertising Aetna Insurance Co., Hartford, CT, featuring stunning early lithography by Wells & Hope Co. Clean, bright and very attractive, w/ a little non-offensive minor scattered wear (displays as a strong C. 8++). Min. bid \$40.



159).Sample Coffee Tins. Lot includes two early tin litho miniature 1/4 lb. sample size coffee cans (ea. app. 2-5/8 x 3-1/8"). Includes: Forbes "Quality" brand and "Golden Wedding" (Forbes Co., St. Louis). Both are clean, and attractive (C. 8.5+; and C. 8+). Min. bid \$40.



160).Vanderbilt Cup Pin. Large 1.75" (dia.) attractive celluloid pin-back button from the 1936 revival of the classic original Vanderbilt Cup race (the original six races ran on Long Island from 1904-1910 and were the first Int'l road race held in The U.S.). Excellent. Min. bid \$20.



161).Express Truck Desk Calendar. 3 x 5-7/8" early die-cut tin standup desk calendar in shape of a great ca. 1930's delivery truck for "Watertown Dairy & Express Co.". Excellent overall (C. 8.5+) complete w/ full 1938 calendar pad (a little toning and light wear to top couple pages of calendar pad). Min. bid \$30.



162).Keystone Grease Cup. 2-3/8 x 2-3/8" (dia.) early miniature tapered tin litho advertising cup (sample tin?) for Keystone Lubricating Co. (Phil.'a) Keystone brand grease. Clean, bright and very nice (C. 8+). Min. bid \$30.



163).Basketball Shoes Sign. 17.25 x 42.5" (9.5 x 34.75" actual sign) large, early paper sign advertising B.F. Goodrich Co.'s "P.F. Flyers" basketball shoes, featuring nice image of Boston Celtics basketball great Bob Cousy. Sign has a factory vertical fold in center, tack holes, some scattered paper chipping spots and edge roughness (mostly in outer margins), but overall is attractive and displays quite well. Critical grade (C. 7+/), although it displays much better than this implies. Nicely framed and matted. Min. bid \$30.

Savage Arms Co.



164).Savage Arms Bronze Figure. 6.75 x 4-5/8 x 2-1/8" unusual, small, early figural bronze or brass statue featuring nice figure of hunter and his dog w/ advertising for Savage Sporting Arms and Stevens brand guns. Neat and unusual piece, w/ nice surface patina. Min. bid \$40.



165).Thompson's Malt Container. 9.5 x 6" (dia.) early, heavy enameled porcelain soda fountain canister for Thompson's brand malted milk, w/ beautiful colored enameling all around. Clean, bright and exceptionally nice (C. 8.5++), w/ nickel finished lid (some minor expected wear on inside edge of rim). Min. bid \$60.



166).Wieland's Beer Tray. 13-3/8 x 10.5 x 1.25" early tin litho pre-pro advertising tray from John Wieland Brewery, San Francisco, CA, featuring beautiful graphics by American Art Works. Clean, bright and beautiful overall (basically a C. 8.5+) w/ exception of a few scattered chips on outer edge of rim. Min. bid \$40.



167).Mounds Candy Bars Sign. 6.75 x 19-5/8" unusual ca. 1930's embossed tin litho sign for Peter Paul Candy Co.'s "Mounds" 5¢ candy bars. Clean, bright and like new, as found never used w/only very minor wrinkling and storage wear (Donaldson Art Sign Co.). Min. bid \$50.

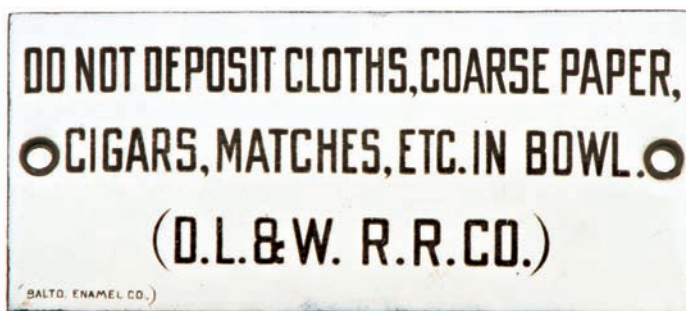
Good Year Aircraft Co.



168).Goodyear Bottle Opener. 1.25 x 3-1/8" early metal airplane shaped advertising bottle opener advertising the Goodyear Aircraft Corporation. Neat and unusual piece in excellent condition. Min. bid \$20.



169).Krueger Beer Sign. 5-7/8 x 12-7/8" early tin over cardboard sign for Krueger Brewing Co., w/ attractive incised gold highlights (has both string and easel on backside). Clean, bright and excellent (displays as a C. 8.5/+) w/ very minor background wear. Min. bid \$40.



170).Railroad Toilet Sign. 2.25 x 5" outstanding, very early, miniature heavy porcelain sign from a D.L. & W. Railroad Co. train car washroom. Slightly convex shaped, complete w/ original grommets (Baltimore Enamel Co.). Near mint. Min. bid \$40.



171).Long & Allstatter Paperweight Mirror. 3.5" (dia.) x 3/8" early celluloid advertising palm/paperweight mirror for the Long & Allstatter Co., (Hamilton, OH) featuring nice image of Co.'s machine engine. Excellent. Min. bid \$40.



172).Sweet Orr Overalls Sign. 7.25 x 10" very early, embossed tin litho sign for Sweet Orr Co.'s Overalls (Excelsior Iron Sign Works, Philadelphia). Appears never used (C. 8/+) w/ minor storage edge staining and wear (still retains some small scattered traces and remnants of its original protective paper (removes w/ dampening and fingernail rubbing)). Min. bid \$40.



173).Cottolene Tip Tray. 4.25" (dia.) outstanding, early tin litho advertising tip tray for Fairbank Co.'s "Cottolene" brand shortening, featuring beautiful graphic image of black woman and child working in cotton field (text advertising on backside). Clean, bright and exceptionally nice (near mint), w/ minor wear on non-graphic backside. Min. bid \$40.



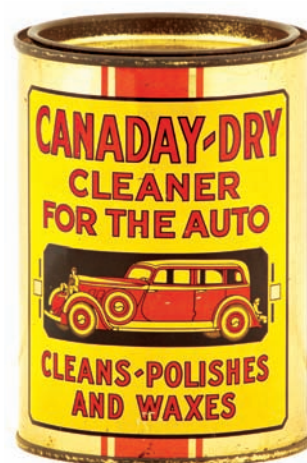
174).Mirrored Glass Door Push. 4-5/8 x 3" very early, heavy metal backed reverse mirrored glass door push w/ scalloped "chip glass" edges. Clean, bright and exceptionally nice (appears never used). Min. bid \$30.



175).Hires Pin Holder. 2-5/8 x 1-5/8 x 1/8" unusual, early lithographed cardboard, can shaped pin holder advertising Hires Condensed Milk w/ different images on each side (has holes along sides for inserting pins). Clean and very nice overall (C. 8/+) Min. bid \$20.



176).Superior Grain Drills Die-Cut. 3-5/8 x 4" small, early advertising string hung die-cut on heavy cardstock for Superior brand agricultural grain drills, w/ text advertising on backside for Co.'s various farm machines. Excellent overall (C. 8.5/+) Min. bid \$30.



177).Canada-Dry Auto Polish Tin. 4-5/8 x 3.25" ca. 1930's early tin litho pry lid can for "Canada-Dry" brand auto polish (Canada Chemical Co. Pomeroy OH), featuring attractive image of early limo. Full, never used can is clean, bright and excellent (C. 8.5++). Min. bid \$30.



178).Postal Telegraph Sign. 2.5 x 14" unusual, early, heavy 2-sided porcelain "Postal Telegraph Co." sign, made for displaying on messengers bicycle delivery basket. Field of sign is clean and excellent, w/ some scattered chipping at outer edges. Min. bid \$40.



179).Popsicle Sign. 2.5 x 18" early, embossed tin litho sign for Popsicle brand frozen treats, w/ great art deco look. Clean, bright and excellent overall (C. 8.5++) w/ minor wear on two nail holes. Min. bid \$40.



180).Raymond Ledger Marker. 12 x 3-1/8" very early 2-sided tin litho ledger marker for Raymond & Co. (a New York City men's clothier), w/ stunning finely detailed multi-color lithography by Senteene & Green lithographers (note: image was taken from painting "Adam & Eve" done by artist Jean Baptiste Santerre in 1700). Outstanding, museum quality piece is clean, bright and exceptionally nice (front a strong C. 8.5++), w/ text advertising on backside (back C. 8++). Min. bid \$60.



181).TWA Sign. 5-1/8 x 8-7/8 x 3/16" small, early easel-back counter sign for Trans World Airlines ticket counter featuring beautifully detailed embossed design (also has string for hanging). Sign is made of a heavy, pressed rubbery composition material, w/ a metallic finish on front side. Clean and excellent w/ nice surface patina (near mint). Min. bid \$40.

Cracker Jack Prizes



182).Cracker Jack Prizes. Lot includes 8 different early tin litho Cracker Jack confection advertising toy prizes. Hts. range from 1.25 to 2.75". Excellent overall (minor wear on whistle toy). Min. bid \$30 (the lot).



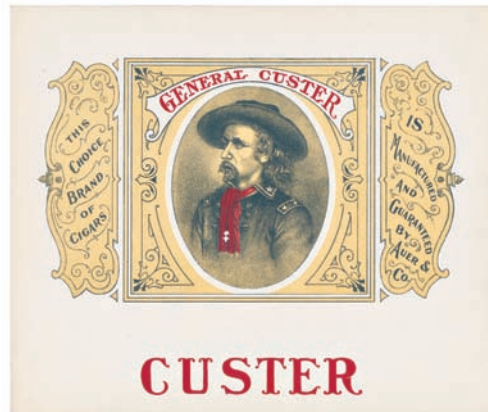
183).



184).Star Cough Drops Sign. 1 x 10.75" small, early tin litho drugstore strip sign for "Red Star" brand cough drops. Bright and attractive, piece appears never used, w/ minor storage darkening/staining to top outer edges (C. 8+). Min. bid \$30.



183).Salesman's Sample Thermometers Kit. Great early salesman's sample demonstration selling kit for advertising thermometers, as found still in its original box. Kit contains a near mint metal promotional sample thermometer advertising Standard Oil Co.'s "Sanilac" brand cattle spray (15 x 7.5"), as well as 5 mock cardboard die-cut advertising fronts showing potential customers different possibilities available. Excellent, w/ some wear to lid of box kit. Min. bid \$40.



185).General Custer Cigar Box Label. 6.5 x 7-5/8" great early paper litho cigar box label for Auer & Co.'s "General Custer" brand cigars, featuring great image of American legend George Custer. Never used label is crisp and like new (sealed and graded). Min. bid \$40.



186).No Spitting Sign. 3.5 x 15" early, heavy porcelain "No Spitting" strip sign. Clean and nice overall, w/ a little minor edge chipping. Min. bid \$30.



187).Babbitt's Soap Sign. 4 x 13.75" small, very early embossed tin sign for B.T. Babbitt Co.'s soaps w/ fine early lithography by Senteene & Green Co. Clean and excellent (C. 8.5++), appears never used. Min. bid \$40.



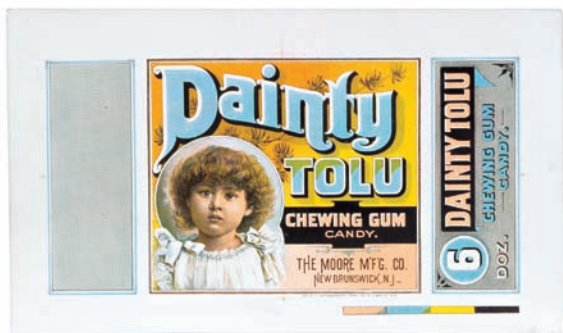
188).Mickey Mouse Advertising Pins. Lot includes 5 different small, early celluloid pin-back advertising buttons each featuring images of the early style Disney Enterprises era Mickey (sizes range from 3/4 to 1" dia.). Includes: Mickey Hose (kids socks); Penney's back to school promo; Mickey Undies; Spingle-Bell, Chicago; and Fox Broadway Theatres advertising pins. Pins are all clean and excellent (3 have original paper on backside). Min. bid \$40 (the lot).



189).Henkel's Flour Advertising. Lot of two early tin litho advertising novelty items from Henkel's Flour Co., including: small scoop (3.75 x 1.75"); and pot scraper (2-7/8 x 3.25"). Both have good color and display nicely, w/ some wear on each from use (C. 7/+). Min. bid \$30 (the lot).



190).American Injector Match Safe. 2-3/8 x 1.5 x 3/8" early celluloid covered (over metal) pocket match safe promoting the American Injector Co., Detroit, featuring beautiful multi-color graphics (different product images on both sides). Clean, bright and exceptionally nice. Min. bid \$40.



191).Chewing Gum Label Proof. 5 x 8-3/8" ca. 1880's paper litho printers proof for Moore Mfg. Co.'s "Dainty Tolu" brand chewing gum. Label was for a store box that held 6 dozen packages and is complete and uncut, w/ printers reference registration color blocks in bottom margin section. Crisp, bright and excellent (C. 8.5+) w/ minor chipping wear at bottom very outer right margin (Heppenheimer Litho.). Min. bid \$40.



192).Pauly Cigars Lot. Lot includes an early Pauly Co. "Long Green" brand wooden cigar box (7.25 x 7-3/8 x 6") as pictured (C. 8.5); and a large, full, early 6 oz. cardboard package of Pauly brand Havana cigar clippings scrap tobacco (7.25 x 4.5 x 2-5/8") which appears never opened, w/ 1926 tax stamp (some crimping wear at bottom of backside and partial loss to top and bottom seals), otherwise clean, bright and excellent (C. 8+/-). Min. bid \$40 the lot.



193).



193).Indian Motorcycles Chrome Frame. (box 6.5 x 4 x 3/4") unusual, early, very high quality Indian Motorcycle Co. chrome finish metal "Initial Frame", made for personalizing custom motorcycle. Crisp and like new, as found never used still in its original box (complete w/ mounting screws and bracket). Frame is crisp and like new; box is excellent overall, w/ a couple small background tape strip stains on side corners/aprons of box lid. Min. bid \$40.



194).Postman Bank. 6.5 x 3 x 2.75" very early tin lithographed English language version advertising bank issued by Stollwerck Bros. (German chocolates company) featuring beautiful finely detailed lithography all around-inserting coin allowed bank to release Co.'s small chocolate bars through pull out drawer. Lithography is excellent (a strong C. 8++) w/ typical expected dark speckling spots in gold flash base area. Min. bid \$50.



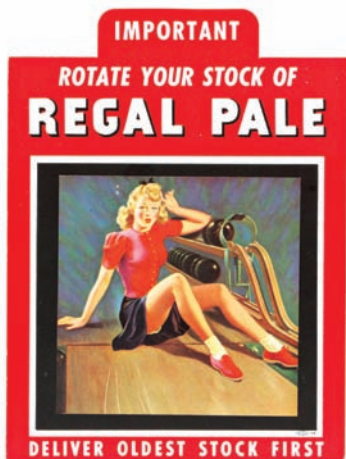
195) Marathon Bumper Tag. 5 x 3.75" scarce, early tin litho advertising bumper tag for Marathon Oil Co., featuring great image of Co.'s trademark runner against embossed textured reflective gold background pattern. Clean and very attractive overall (basically a strong C. 8+ overall), w/ exception of a little fairly minor light oxidizing at very outer edges. Min. bid \$40.



196) Clown Cigarettes Thermometer. 9-1/8" (dia.) x 1.25" unusual, early dial style thermometer w/ glass covered metal frame advertising Clown brand cigarettes, featuring great color image of Clown brand cigarette pack w/ Co.'s trademark girl clown. Clean, bright and exceptionally nice (C. 8.5+). Min. bid \$50.



197) Dr. Swett's Root Beer Mug. 5-7/8 x 3-5/8" (dia.) early, heavy ceramic mug for Dr. Swett's brand root beer, w/ nicely detailed embossed lettering and design. Excellent. Min. bid \$40.



198) Regal Pale Sign. 9.25 x 6-7/8" wonderful ca. 1940's small cardboard distributors sign for "Regal Pale" featuring great pinup bowling scene, w/ reminder at bottom for workers to deliver oldest stock first. Clean, bright and excellent (C. 8.5+). Min. bid \$30.



199) Fountain Pens Sign. 13.25 x 19.25" unusual, early tin litho tin over cardboard sign for American Fountain Pen Co.'s "Moore's Non-Leakable" brand fountain pen featuring beautifully detailed graphics. Clean, bright and very attractive appearance (basically displays as a strong C. 8++), w/ exception of a few minor dent marks and some scattered scuff and scratch marks in outer purple background area. Min. bid \$50.



200) Mammy Roly Poly. 6.75 x 6" (dia.) early 2-ps. figural tin litho canister for Mayo's brand tobacco, featuring the great Mammy character smoking corncob pipe. Has strong colors and displays nicely, w/ a little non-offensive minor wear and a couple light dents on lid (C. 8+). Min. bid \$50.



201) White Eagle Oil Figure. 6 x 2-5/8 x 3.5" scarce, very early small figural chalkware advertising statue for the White Eagle Oil and Refining Co., w/ embossed advertising on front (has incised 1924 date on side and the original makers label on base). Its' all original paint surface is nice, w/ a deep rich patina and attractive detailing. An impressive piece that displays great (note: a close examination will show a small, shallow, very early chip on right side of beak-not offensive and barely noticeable). Min. bid \$40.



202) Rolf Armstrong Calendar. 17-5/8 x 9-1/8" (16 x 7.5" actual) vintage 1937 calendar featuring scarce image of calendar girl w/ terrier by illustrator Rolf Armstrong. Clean, bright and exceptionally nice, complete w/ full pad (near mint). Nicely framed and matted. Min. bid \$40.



203) Palacine Petroleum Statue. 7 x 4" (dia.) early, cast bronze advertising figure for Palacine Co.'s Motor Oils and Gasoline (Wirt Franklin Petroleum Co., of Ardmore, OK) featuring nicely detailed image of Co.'s trademark Indian on rock w/ embossed Co. advertising on rim and backside of rock. Substantial, heavy, high quality piece is excellent w/ nice original surface patina (weighs almost 3 lbs.). Min. bid \$40.



204) Acme Hair Tonic Bottle. 9.25 x 3" (dia.) early label under glass barber shop display bottle for Acme Hair Vigor. Excellent overall. Min. bid \$40.



205).Horse Racing Plate Topper. 4.5 x 11.25" "King of Sports" ca. 1950's cast aluminum automotive license plate attachment featuring harness racing scene. Nice overall, w/ a little scattered paint chipping in solid green and yellow background section. Min. bid \$30.



206).Frontier Peanut Butter Cup. 2.75 x 5.25 x 3.75" unusual, early tin litho peanut butter can for "Frontier" brand (Nave-McCord Co., St. Joseph, MO), w/ tin handle attached to back side for later use as measuring cup. Clean and very attractive overall (C. 8+). Min. bid \$40.



207).Montgomery Spice Tin. 3.25 x 2.25 x 1-3/8" scarce, early tin litho spice tin (pepper) for "Montgomery's" brand (from the Seminole Indian Medicine Co., Boone, IA) w/ great image of Co.'s trademark Indian on both sides. Clean and very attractive, w/ a little non-offensive light scattered wear (C. 8+/-). Min. bid \$30.



208).GEM Oil Can. 5-5/8 x 4" (dia.) early tin litho 1 qt. solder seam can for "Gem" brand motor oil (Gem Petroleum Products, Houston, TX) w/ same attractive image on both sides. Clean and excellent. Min. bid \$40.



209).Ruppert Brewery Mirror. 2.75 x 1.75" unusual, early celluloid advertising pocket mirror for Jacob Ruppert Co.'s Knickerbocker brand beer, featuring beautiful color graphics. Clean, bright and like new. Min. bid \$40.



210).Fairfax Hall Spice. 3.25 x 2-3/8 x 1-3/8" early tin litho 1-1/2 oz. spice tin for Fairfax Hall brand mustard (Wholesale Grocers Exchange, Richmond, VA) w/ Co.'s wheat sheaf logo on back and early coffee can on side. Clean, bright and excellent overall (C. 8+). Min. bid \$30.



211).Kum-Kleen Soap Tin. 2.5 x 4.25" (dia.) scarce, great early tin litho 12 oz. pry lid product can for "Kum-Kleen" brand soap product featuring great images of Co.'s trademark black kid throwing dice (same image both sides). Has good color and displays quite nicely, w/ minor denting and some scuffing wear in background area at upper right side edge (C. 7.5+). Min. bid \$30.



212).Anti-Axis Socks Box. 4 x 14 x 1.5" early 2 ps. product box for Inter Woven Co.'s War-Service socks, featuring great WWII anti-Axis themed image of US soldier chasing down stereotype Jap soldier (note holes in Jap soldiers socks). Excellent overall (C. 8+) w/ a little minor soiling and toning. Min. bid \$20.

Cocaine Cigarettes



213).Cocaine Cigarettes Brochure. 5.75 x 3-1/8" early folding promotional advertising brochure for Cocabacco Co.'s "Cocarettes" brand cocaine and tobacco blended cigarettes (see website to see detailed listings of outrageous testimonials and claims of benefits derived from smoking these cigarettes, which were made by "mixing in proper proportions of cocoa leaves and the finest Virginia tobacco"). Clean, bright and excellent (C. 8.5) w/ minor toning on inside text pages. Min. bid \$30.



214).Wascana Cigar Label. 6.5 x 8.5" early, embossed paper litho cigar box label for "Wascana" brand featuring beautiful multi-color graphics (© 1909 American Colorotype Co.). Clean, bright and like new (near mint), although there are three punched holes in left margin area (probably from sample or proof book). Min. bid \$30.



215). Fly Match Holder. 1-7/8 x 4 x 2-7/8" very early figural cast iron fly shaped match holder w/ advertising on wings for "Richard H. Adams & Co., NY, importers of Tailors Trimmings" (hinged wings lift up to reveal match section inside). Excellent overall, w/ nice detailing and surface patina (C. 8++). Min. bid \$50.

Cracker Jack Prizes



216). Cracker Jack Prizes. Lot includes twelve different early miniature tin Cracker Jack box insert prizes. Conditions range from good to excellent, w/ some light wear on the train cars and dial fortune teller prizes. Min. bid \$40 (the lot).



217). Quentin's Breath Pellets Tin. 1/2 x 2-1/8" (dia.) early tin litho 2-ps. product tin for "Quentin's Breath of Violets" breath pellets (Chapman & Rodgers Co., Phil'a, PA) featuring beautiful multi-color graphics. Clean and excellent (C. 8++) w/ minor speckling in gold flash outer border area. Min. bid \$30.



218). Ammo Counter Felt. 11-1/8 x 17.5" scarce, early advertising counter felt from Harrington & Richardson Arms Co., promoting Co.'s shotguns and revolvers. Attractive and displays quite nicely, w/ a little non-offensive light scattered toning spots, a few light moth bites in upper surface and small 1" cut in bottom left border area (C. 8-). Min. bid \$40.



219). 1929 Motorcycle Fob. 1-5/8 x 1-3/8" early embossed brass AMA (American Motorcycle Association) presentation watch fob given as award for a perfect score in the 1929 National Gypsy Tour. Excellent. Min. bid \$30.

Mechanical Clockwork Hotel Bell



220). Turtle Hotel Bell. 2 x 7 x 3.75" unusual, heavy, early figural turtle shaped cast iron counter top hotel bell w/ windup mechanism underneath (pushing on turtles head or tail makes long, loud, steady ringing noise). High quality piece is very nice overall, w/ some wear to upper gold finish of shell (appears to have nickel plating under gold Japanese finish). Works great. Min. bid \$40.



221). Folky Fishing Theme Sign. 11-3/8 x 44-3/8" early wooden painted folky trade sign for a Greene, NY general store featuring great comical image of black man in boat fishing. Has good color and an excellent all original patina to its paint surface (C. 8++) w/ great overall look, although piece has been trimmed at some point on the right side. Min. bid \$40.



222). 1918 Coke Calendar. 36.5 x 18.25" (30-5/8 x 11-5/8" visible) scarce 1918 large paper litho Coca-Cola calendar featuring great beach scene. Important and impressive piece is attractive and displays nicely (as a C. 8+), although there is non-offensive expected minor wrinkle marks, light general toning, slight fade and some typical expected light wear (nothing serious or offensive). Critical grade (C. 7.5++/ 8-), but much nicer than this implies. Framed. Min. bid \$250.



223).Conoco Badge. 1-5/8 x 2.25" early service station attendants uniform name badge from Conoco, w/ beautifully detailed inlaid cloisonné enameling. Excellent overall, w/ minor wear from use. Min. bid \$30.



224).Hershey's Display Kit. 5 x 8-7/8 x 3.5" unusual, early display kit from Hershey Chocolate Co., featuring seven original display bottles (ea. containing different stage of cocoa production, from cocoa beans to cocoa butter up through cocoa powder) inside its original display box, w/ Co. advertising on inside lid. Excellent overall w/ light storage wear (also includes its original shipping box). Min. bid \$40.



225).Pink Wonders Medicine Tin. 1.25 x 1-7/8 x 3/8" unusual, early tin litho medicine tin for MR Son Pink Wonders Acetphenetidin Tablets featuring nice image of Co.'s trademark Indian chief. Nice overall condition (C. 8+). Min. bid \$20.



226).Chocolate Soldier Sign. 9-5/8 x 27-5/8" original, embossed tin litho soda sign advertising "Chocolate Soldier" brand chocolate drink featuring nice image of Co.'s enamel labeled pop bottle. Clean, bright and appears never used (a strong C. 8++), w/ very minor denting and storage wear. Min. bid \$40.



227).Anti Prohibition License Plate. 4.25 x 10.25" early, ca. 1920's embossed metal license plate attachment promoting the "Repeal of the 18th Amendment". Excellent and all original (near mint), as found never used w/ a nice rich surface patina. Min. bid \$30.



228).Oil Can Banks. 3.5 x 2" (dia.) and 2-7/8 x 2-1/8" (dia.) lot includes two unusual early tin litho service station oil can banks. Includes: Skelly Co.'s "Tagolene" Motor Oil (a strong C. 8++) w/ light wear on lid; and "Imperial Refineries" w/ Indian character smoking pipe on backside (C. 8.5++). Min. bid \$30 (the lot).



229).Baking Powder Tins. Lot includes three full, never used very early paper label baking powder cans, each featuring attractive labels (they have metal top and bottoms w/ cardboard bodies). They range from 5 x 3.25" (dia.) to 7.25 x 3" (dia.) and are clean and excellent overall, w/ only minor wear (avg. C. 8.5+). Min. bid \$40 (the lot).



230).Eve Tobacco Pocket Tin. 3-5/8 x 3.5 x 1.25" early tin litho vertical tobacco pocket tin for "Eve" brand (Globe Tobacco Co., Detroit) featuring nice image of semi-nude Eve and apple tree. Attractive and displays nicely (C. 8+), w/ a hint of minor fade and small wear spot on lid. Min. bid \$40.

Veterinary



231).Veterinary Medicine Tin. 1-7/8 x 2.5" (dia.) small, very early tin litho pry lid veterinary tin for Hill's Humane Salve" (Hills Remedy Co., Des Moines, IA), featuring nice Ginna type early lithographed image of woman tending horses' leg. Full, never used can is clean and quite nice, w/ a little fairly minor scattered wear (C. 8+/-). Min. bid \$30 ea. (have 2, winning bidder can take one or both).



232).Meyer's Ice Cream Tray. 10-5/8 x 13.25 x 1.25" early tin litho advertising serving tray for Meyer's brand ice cream featuring beautifully detailed multi-color lithography. Clean, bright and exceptionally nice appearance (displays as a C. 8.5++), although examination under black light will reveal a little extremely well done professional restoration in the very outer dark edges of the rim area. Min. bid \$50.



233).Goebel Beer Tip Tray. 4.5" (dia.) early tin litho advertising tip tray for Goebel's Blue Label Beer (Goebel Brewing Co., Detroit). Has bright colors, nice sheen and displays nicely (field area displays as C. 8+) w/ minor wear (has general wear along very outside edges of rim (critical grade C. 8-). Min. bid \$40.



234).Indian Hood Ornament. 4.75 x 4 x 3.75" great, early, figural cast aluminum Indian chief auto hood ornament w/ nice rich surface patina and beautiful detailing. Marked "Guy Motors Ltd" at base (Guy Auto Co. was a luxury UK auto maker which I'm told used this mascot from 1919-1925). Excellent w/ just the right amount of slight weathering and minor wear you want to see. Min. bid \$40.



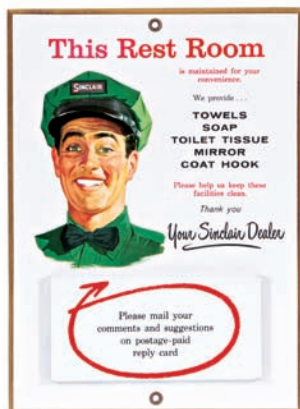
235).Dr. Porter's Medicine Ad. 9.5 x 12.5" (5.5 x 8-3/8" visible image) beautiful, early, colorful and highly graphic Victorian era display card advertising Porter's Bitters and Cough Balsam patent medicine products, w/ attractive tennis theme. Excellent overall (C. 8.5/+). Nicely framed and matted. Min. bid \$40.



237).Jefferson Mixture Pocket Tin. 4.5 x 3-3/8 x 1" scarce, early tin litho vertical pocket tin for Cameron Co.'s "The Jefferson Mixture" brand tobacco. A decent and fairly respectable example of this very scarce tin that displays pretty well, although there are a few minor pings and some early general dark wear spots scattered about (nothing that's really serious or offensive). Tough one to grade, but (C. 7+) seems about right. Min. bid \$100.

YEAST FOAM

236).Yeast Foam Sign. 3-3/8 x 21" early, heavy porcelain advertising strip sign for "Yeast Foam". Clean and excellent overall, w/ a little non-offensive edge chipping at very outer edges (fairly minor). Min. bid \$40.



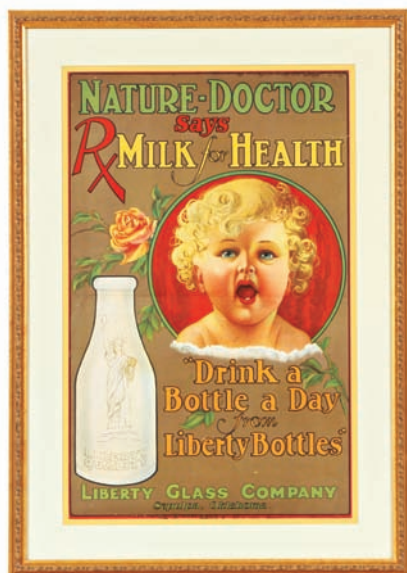
238).Sinclair Service Station Sign. 11 x 8" unusual celluloid over beveled masonite restroom display sign from early Sinclair gas station featuring great image of uniformed attendant, w/ a tin section in bottom for holding postal reply cards. Crisp and like new (appears never used). Min. bid \$40.



239).Match Holders. Lot includes two early tin litho advertising match holders, ea. app. 4-7/8 x 3-3/8 x 1-3/8". Includes "Solarine Metal Polish" (C. 8.5/+) w/ very minor bend marks on backside (not evident when viewed from front); and Ellwood Steel Fences (C. 8/+) w/ minor wear and just a trace hint of staining (so faint, its hardly noticeable). Min. bid \$50 (the lot).



240).Purity Ice Cream Tray. 13.25 x 10.5" unusual, early tin litho advertising tray for Sullivan's Purity Ice Cream (Houston Ice Cream Co.), w/ great baseball themed image of Rose O'Neil Kewpie character wearing "Kewpie Base Ball Team" team cap. Overall has nice color and displays pretty well, although there is some scattered chipping, the surface is slightly dull w/ minor soiling, w/ some fairly heavy wear in outer rim area (C. 7/+). As found, should improve w/ cleaning and polishing. Min. bid \$40.



241).Liberty Milk Bottles Sign. 26 x 18.25" (20.25 x 12.75" visible) unusual, early paper litho sign advertising Liberty Glass Co.'s milk bottles, featuring great image of Liberty marked milk bottle w/ large embossed Statue of Liberty on it. Clean, bright and attractive in appearance (displays as a strong C. 8/+), although close examination will show a few non-detracting light crease marks and tears (light horizontal fold line in center appears original to piece) and a little non-offensive light staining at very top and bottom edges of outer border (critical grade C. 8/-). Framed. Min. bid \$40.



242).Wildroot Sign. 24.25 x 18" early cardboard sign for Wildroot brand hair tonic product, w/ strong colors and a great overall look. Clean and very attractive appearance (a strong C. 8+). Framed. Min. bid \$40.



243).Wildroot Sign. 24.25 x 18" early cardboard sign for Wildroot brand hair tonic product, w/ strong colors and a great overall look. Clean and very attractive appearance (a strong C. 8+). Framed. Min. bid \$40



244).Walker-Gordon Milk Signs Lot includes two early cardboard advertising signs for Walker-Gordon Co.'s Acidophilus Milk. Includes motoring scene (14 x 16.75"); and T.A. sign w/ large bottle (17 x 23"). Image areas of each are clean, bright and excellent overall (basically C. 8.5/+) w/ exception of a little wear in outer border areas of each and some staining on non-graphic backsides. Min. bid \$30 (the lot).



245).McCormick Dairy Equipment Sign. 14.5 x 23" early, heavy, self-framed embossed metal litho sign for International Harvester Co.'s McCormick brand dairy equipment (Stout Sign Co.). Clean, bright and appears never used (a strong C. 8.5/+) w/ only minor storage marks. Min. bid \$40.

Pot Scraper



246).Marathon Motor Oil Pot Scraper. 2.5 x 1-3/8" (dia.) unusual, early miniature figural tin litho oil can shaped pot/pan scraper advertising Marathon Co.'s motor oil, w/ nice image of Co.'s Mercury logo (holds a wad of steel wool inside for scouring pans, w/ metal push down cap). Excellent (a strong C. 8++). Min. bid \$30.



247).Tanvilac Feeds Sign. 10 x 14" early embossed metal sign for Tanvilac brand animal feeds (Des Moines, IA). Never used sign is clean, bright and excellent (near mint), w/ exception of a couple minor scuffs in bottom right outer border area. Min. bid \$30.



248).Ohio Oil Co. Sign. 6 x 9" small, early embossed tin litho service station "No Smoking" sign from Ohio Oil Co. This never used sign is clean, bright and like new (near mint), w/ a couple tiny traces of original protective paper. Min. bid \$40.

Dime Register banks



249).Dime Register Banks. (ea. app. 2-5/8 x 2-5/8 x 5/8") lot includes three early mechanical tin litho dime register banks (banks automatically register amount inside and unlock and open up at \$5.00 amount). Banks are clean and very nice. Min. bid \$40 (the lot).



250).President Taft Pin. 1.5 x 5/8" beautiful, early, colorful and highly graphic celluloid oval pin-back button celebrating the 1909 opening of the landmark 5.8 mile Gunnison Tunnel (Montrose, CO) an engineering marvel which was attended by President Taft. Clean and very attractive overall, w/ exception of 5/32" celluloid split and tiny foxing spot on bottom outer side edge. Min. bid \$30.



251).Daniel Boone Axle Grease Can. 4.25 x 3.25" (dia.) scarce, very early tin litho 1 lb. size product can from Stoll Oil Refining Co. (Louisville, KY) featuring beautifully detailed image of American hero (lithography by Heekin Can Co.). Has some light overall soiling and a little light scattered wear, but overall attractive and displays very nicely (front C. 8/-; back C. 7+). As found, should improve some w/ cleaning. Min. bid \$40.



252).Iron Bed Co. Match Safe. 2.25 x 1.5 x 3/8" early celluloid covered advertising match safe for Heron Iron Bedstead Co. (Chattanooga, TN), maker of iron beds. Clean and very attractive. Min. bid \$40.



253).Sylvia Grease Can. 4 x 3-3/8" (dia.) early tin litho pry lid 1 lb. grease can from Warren Refining Co., featuring nice image of Co.'s trademark chassis. Clean, bright and very attractive (C. 8/+). Min. bid \$40.



254).Manure Spreader Tip Tray. 3-3/8 x 4.75" early tin litho advertising tip tray for Kemp & Burpee Co.'s (Syracuse, NY) "Success" brand manure spreaders. Clean, bright and exceptionally nice (near mint). Min. bid \$40.



255).Louisiana Perique Tobacco. 2-5/8 x 3-7/8 x 1-3/8" small, very early tin litho square corner tin for "Pure Louisiana Perique" Tobacco. Clean and very attractive w/ a little light wear along bottom edge and very minor crazing in upper surface (C. 8/+). Min. bid \$20.



256).Medicinal Inhaler. 1.75 x 1-3/8 x 1/2" unusual, very early embossed figural brass medicinal "electric inhaler" from Abbott's Menthol Plaster Co. (Worcester, MA), w/ a great finely detailed embossed moon face image on front (note: has tiny mechanical tongue mechanism that releases product dose when moved). Excellent. Min. bid \$30.



257).Century Fences Porcelain Sign. 1-3/8 x 15-3/8" unusual, miniature 2-sided porcelain sign for Century Fence Co. (St. Paul, MN), same on both sides. Clean and excellent overall (near mint w/ exception of damage spot at outside edge hanging hole). Cute piece, in a great size. Min. bid \$30.

Side angle View



258). Detail

258).Polar Bear Tobacco 3-Way Sign. 4.25 x 18.5 x 1/4" unusual, early tin litho "3-Way" advertising sign for Polar Bear brand tobacco, w/ vertical slats that give different messages from three different viewing angles. Has some light overall oxidizing and general wear from use giving it a nice primitive country like folksy look (C. 7+/-). Min. bid \$50.



259).Goodlow's Suits Penny Mirror. 1.75 x 2.75" early celluloid advertising pocket mirror for Goodlow's (a Pittsburgh maker of \$9.99 and \$14.99 suits and overcoats) w/ visible actual 1911 uncirculated penny inside. Excellent. Min. bid \$20.



260).Luden's Candy Box. 6-1/8 x 10-1/8 x 6-1/8" early 2-ps. cardboard candy box for Luden Co.'s "Sugar Pairs" lollipop candy w/ same great image on three sides. Very attractive appearance (basically a solid C. 8), w/ a bit of very minor soiling and a little crayon writing on narrow side left edge. Min. bid \$30.



261).1940 Coca-Cola Calendar. 29.75 x 17" (24.25 x 12" actual piece) vintage paper litho Coca-Cola advertising calendar featuring Co.'s 1940 calendar girl. Clean and bright, w/ an attractive overall appearance, w/ some non-offensive toning and faint speckled foxing in upper background area (C. 8+/-). Complete w/ metal strip at top and full calendar pad. Framed. Min. bid \$50.



262).Brookfield Rye Whisky Sign. 33 x 23" beautiful, large tin litho self-framed sign for Brookfield brand rye whisky featuring stunning multi-color graphic image of semi-nude woman holding bottle. Outstanding piece is clean, bright and beautiful overall (image area crisp and like new), w/ a little light scattered wear in outer black border area. Min. bid \$150.



263).Mickey Mouse Pins. Lot includes eight different 1.25" (dia.) early celluloid pin-back Mickey Mouse pins, each featuring images the early style Disney Enterprises era Mickey. Includes: Freihofers, Cote's and N.B.C.'s bread pins; Emerson's Mickey Mouse Radios; and four for Mickey Mouse Club. Pins are clean and excellent. Min. bid \$40 (the lot).



264).Brewers Union Match Safe. 1.5x2.75x3/8" early, very high quality celluloid over metal promotional match safe issued by the United Brewery Workers Union (backside asks for recipient's support against Prohibition). Excellent. Min. bid \$40.

Enameled Pin



265).Edison Lights Pin. 5/8 x 1" early, very high quality advertising pin for "Edison Light" w/ beautifully detailed inlaid porcelain cloisonné enameling featuring early style hand blown light bulb. Excellent. Min. bid \$20.



266).Republic Trucks Lapel Pin. 1/2 x 7/8" early, very high quality brass advertising lapel pin from the Republic Truck Co., featuring beautifully detailed inlaid cloisonné enameling. Excellent. Min. bid \$20.



267).Chevrolet Mechanic Badge. 1-1/8 x 2" early and unusual, very high quality Chevrolet auto mechanics uniform badge, w/ very nice detailing. Excellent overall, w/ minor wear from use (C. 8++). Min. bid \$20.



268).Stephens Furs Knife Stone. 1.75 x 2.75" early celluloid advertising knife sharpening stone for E.A. Stephens Co. (Denver, CO) raw furs, hides and pelt buying outfit. Excellent. Min. bid \$30.



269).Altex Condom Tin. 1.75 x 2.25 x 1/4" scarce variation, early tin litho condom tin for Altex brand (Western Rubber Co. of Canada, Alton, Ontario). Clean and very nice overall (C. 8+). U. S. made. Min. bid \$40.



270).Bastian Bros. Pocket Mirror. 1.75 x 2.75" early celluloid advertising pocket mirror for Bastian Bros. Co. (Rochester, NY) featuring beautiful graphic scene of Co.'s factory (note: Bastian Bros. was a premier maker of graphic celluloid advertising and political badges, pins, mirrors, etc.). Celluloid is excellent (some dark lines in mirror glass). Min. bid \$40

Change Receiver



271).Clown Cigarettes Change Receiver. 6 x 6 x 1.5" scarce, early, heavy countertop glass country store change receiver advertising Clown brand cigarettes (Axton Fisher Tobacco Co., Louisville, KY), w/ nice reverse image of early cigarette pack. Very nice overall, w/ a little minor paint loss at outer painted edges of border area. Min. bid \$40.



272).Hood Dairy Sign. 11-1/8" (dia.) early embossed tin litho advertising sign for H.P. Hood & Sons milk. A very impressive looking piece that is very nice in appearance (a strong C. 8+), w/ just the right amount of minor soiling and wear. Min. bid \$40.



273).Alcazar Cigar Box. 8 x 8.75 x 5.5" full, early 50 count cardboard cigar box for "Alcazar" brand cigars, w/ beautiful embossed multi-color label of record setting race horse inside. Comes complete w/ its original cigars (has horse on bands). Excellent overall w/ light stain at bottom left edge of inside label. Min. bid \$40.



274).Borden's Signs. Lot includes two vintage ca. 1940's paper litho signs for Borden's Co. (8 x 21-7/8" and 11.25 x 24"). Both are clean and excellent (C. 8.5/+) as found, never used w/ a few non-detracting fairly minor background foxing spots. Min. bid \$40 (the lot).



275).Yellow Cab Taxi Drivers Cap. 4 x 9 x 9.75" early, high quality, Yellow Cab Taxi cab drivers uniform cap complete w/ its beautiful original cloisonné enameled brass badge and marked brass buttons on sides. Clean and excellent Min. bid \$40.



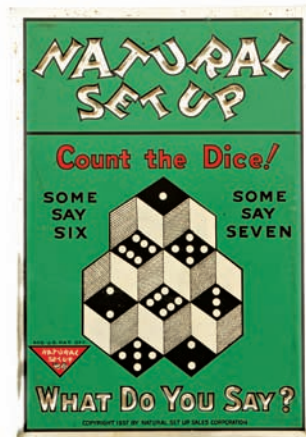
276).Bath House Signs. 3 x 14" (ea.) lot of two early, heavy, 2-sided porcelain bath house signs (same message on both sides of each). They are clean, bright and attractive overall, w/ minor staining/wear to outer yellow border area and some chipping under hanging hole on one side of "Bath" sign. Min. bid \$40 (the lot).



277).Aladdin Coffee. 6.75 x 5" (dia.) large 2 lb. tin litho vacuum pack coffee can for Aladdin brand (M.J.B. Co., San Francisco, CA), w/ same attractive image on both sides. Clean, bright and excellent appearance (displays as a C. 8++), w/ a couple wear spots in upper right background area and a few light oxidizing spots on non-graphic base. Min. bid \$30.



278).NH Auto Dealer Sign. 13-5/8 x 19.75" early, embossed tin litho sign for a Newport, NH Automobiles dealer and Ford Parts seller (lithography by U.S. Calendar Co., Cincinnati, OH). Has strong colors and displays quite nicely, w/ a little non-offensive light staining to yellow background area (around red letters) and some light scattered bends and wear in outer corner areas (some light general oxidizing on non-graphic backside). Tough to grade, but (C. 8-) seems about right (displays better than this implies). Min. bid \$40.



279).Natural Set Up Soda Sign. 9 x 6-1/8" early beveled tin over cardboard sign for "Natural Set Up" brand soda pop (© 1937), featuring Co.'s trademark dice counting illusion puzzler image. Has both string and easel on backside. Excellent (C. a strong C. 8++). Min. bid \$40.

Cream Separator Ephemera



280).Cream Separator Ephemera. Lot includes a nice little grouping of early cream separator company ephemera including trade cards, brochures, postcards, envelopes, etc. (vg. to excellent overall). Min. bid \$30 (the lot).



281).Power-Lube Rocker Can. 17 x 8.5 x 14.25" (dia.) scarce, early tin litho 5 gallon size rocker style motor oil can for "Power-Lube" brand w/ same great image on both sides. Has decent color and displays pretty well, although there is general wear and light oxidizing on surface. Tough to grade, but (C. 7+) seems about right (displays better than this implies, and piece is as found and should improve some w/ cleaning). Min. bid \$50.



282).Mellin's Food Sign. 12 x 10.75" large, early cardboard die-cut standup sign for Mellin's baby food featuring nice image of Co.'s trademark kid in highchair. Clean, bright and excellent (C. 8.5+); nicely framed and matted (frame size 19.5 x 18"). Min. bid \$40.



283).Turtle Spittoon. 6 x 11.75 x 9.75" fancy, heavy figural cast iron spittoon in shape of turtle, w/ unusual bronze finished Art Nouveau like styling (stepping on turtles head raises up the lid). Has a deep, rich, very attractive surface patina and is excellent overall (note: top side of removable cast iron bowl inside was repainted silver long ago). Min. bid \$40.



284).Yellow Kid Cigar Boxes. Lot includes two unusual early wooden "Yellow Kid" brand cigar boxes (9.5 x 9-5/8 x 5.25" and 9 x 4-3/4 x 5.5"). Larger box has great color labels on inside and side edges, w/ nice design on lid (inside label C.8++), w/ some edge stains; outer label has some toning and light wear (C. 7.5+/8-). Smaller box (has great incised design of the Kid on both outside and inside of lid (has chipping loss section at top edge of lid). Min. bid \$40 (the lot).



285).Dinner Pail Coffee Pail. 6.75 x 9-5/8 x 7" scarce, early tin litho large lunchbox style coffee pail for "Dinner Pail" brand (Western Coffee Co., El Paso, TX), w/ same nice image on both sides. Clean and attractive appearance, w/ minor wear (C. 8/+). Min. bid \$50.



286).Dagwood Solo Flight Toy. 5.75 x 8-5/8 x 12" scarce, early tin litho mechanical wind-up "Dagwood Solo Flight" comic character toy by Marx. Clean and excellent overall (C. 8/+), w/ a couple fairly minor wear marks on wing area (mechanism works well). Min. bid \$50.



287).Uncle Wiggly Car Toy. 6.75 x 7.5 x 3" scarce, early tin litho mechanical wind-up Uncle Wiggly character toy by Marx complete w/ its original box. Toy is clean, bright and very nice (a strong C. 8++), w/ working mechanism. Box displays pretty well, but has a few punctures and some tattering, tears and left side panel has separated from rest of box (box C. 7+). Min. bid \$50.



288).Federal Motor Oil Can. 6 x 8 x 3" early tin litho hand-soldered 1/2 gallon sized motor oil can from Federal Oil Co. (Minneapolis/St. Paul, MN) w/ same nice image on both sides. Attractive and displays nicely, w/ some light soiling and wear on backside (C. 7.5+/8-). As found, might improve a bit w/ cleaning. Min. bid \$40.



289).Long Tom Tobacco Tin. 3-5/8 x 5 x 2" early tin litho hinged lid tobacco can for "Long Tom" brand (Rock City Tobacco Co., Toronto, Canada) featuring great images of Co.'s trademark tall black man character. Clean and attractive appearance, w/ a little light scattered wear (C. 8+/+). Min. bid \$30.



290).Clown Cigarettes Pack. Lot includes a full pack of early "Clown" brand cigarettes (Axton-Fisher Tobacco Co., Louisville, KY) and an unused pack of Co.'s advertising matches. Cigarette pack (2.75 x 2.25 x 7/8") is quite nice overall, w/ minor soiling and wear (much of the early metal foil at top has worn away- possibly revealed?); matches (2-1/8 x 1.5 x 3/8") are excellent. Min. bid \$40 (the lot).



291).Edison Mazda Hanger Signs. Lot includes a set of five early cardboard advertising die-cut ceiling hanger signs for Edison Mazda brand light bulbs (sizes range from 3.5 x 1.5" to 9.25 x 4.5"). Clean and excellent overall, complete w/ original hanging threads (minor toning on largest one, minor crease mark on medium one). Min. bid \$30 (the set).



292).Winchester Samples Box. 4.5 x 8.25 x 5.25" (as shown w/ lid open) early Winchester Co. display box featuring eleven dummy samples of Co.'s actual ammo (includes actual bullets, dummy shotgun shells w/ cut-aways to show inside construction, contents, etc. Sample ammo pieces are excellent, although flip-up box lid has some fairly heavy staining and light overall wear (its label is very nice) w/ some reinforcements to cut away box insert that holds shells and bullets in place. Min. bid \$40.



293).RLC Spice. 3.25 x 2-3/8 x 1-3/8" scarce, early tin litho 2 oz. spice tin (allspice) for "RLC" brand (R.L. Craig & Co., Los Angeles) featuring beautiful color graphic landscape image (same on both sides). Clean, bright and excellent, w/ minor wear and tiny dent mark on backside (front C. 8.5; back C. 8++). Min. bid \$30.



294).Checker Motor Oil. 5.5 x 4" (dia.) vintage 1 qt. crimp seam motor oil can w/ great image of men playing checkers, w/ car race scene in upper background (Stewart Checker Oil Co., Wichita, KS 67202). Has strong colors and displays nicely w/ non-offensive light scuff line in white background area (C. 8++). Min. bid \$20.



295).Kansas City Brewery Mirror. 2.75 x 1.75" unusual, early celluloid advertising pocket mirror for the Kansas City Breweries Co. featuring image of man by fireplace holding bottle of Co.'s beer. Clean and displays nicely, w/ a few minor bumps on surface (note: close examination under magnification will reveal a little very minor foxing at outer edges, and there is a small cello chip on backside at upper right side edge-possibly done in mfg.) Min. bid \$30.



296).Dead Shot Gunpowder Fob. 1.5 x 1-3/8" (fob) early brass advertising watch fob for "Dead Shot" brand gunpowder (American Powder Mills, Boston) featuring beautiful celluloid image of Co.'s trademark logo in center, w/ embossed advertising on back (complete w/ original strap). Excellent. Min. bid \$40.



297).Dapper Dan Dancing Toy. 10 x 4.75 x 3.75" early tin litho "Dapper Dan Coon Jigger" wind-up toy by Marx Bros. featuring comical dancing black porter. Has a little minor fading to reds and a slight bit of minor scattered wear from use, but overall quite nice (C. 8+/-), w/ working mechanism (mechanism runs a little slow, but does work). Min. bid \$40.



298).Soda Fountain Shop Signs. Lot includes two great heavy, enamel painted, embossed metal signs from early ice cream parlor/soda fountain in shape of ice cream sundae (24 x 13") and ice cream soda floats glass (24 x 9-1/8"), by C & P - L.A. Impressive, high quality signs are both clean, bright and like new (C. 8.5++). Min. bid \$40 (the lot).



299).Early Velvet Mickey Doll. 6.5 (h) x 3.25 x 3" small, ca. 1930's stuffed figural Steiff style cloth stand-up doll (velvet and felt) featuring wonderful early pie-eyed Mickey. Very high quality piece, w/ great overall look that is all original and in exceptionally nice condition (C. 8.5++), w/ stamped info on base of foot. Min. bid \$40.



300). Monarch Popcorn Pail. 3-7/8 x 3-3/8" 14 oz. size tin litho pail for Monarch "Teenie Weenie" brand popcorn (Reid, Murdoch Co., Chicago) w/ trademark lion on front and comic characters on backside. Clean, bright and very attractive appearance (displays as a strong C. 8++), w/ some non-detracting faint speckles on backside. Min. bid \$30.



301). Toboggans Cigar Tin. 5.25 x 9 x 2" very early 50 ct. tin litho hinged lid tobacco box for Tower & Wells Co.'s (Binghamton, NY) "Toboggans" brand cigars, featuring fine, early winter sledding images on outer and inner lid (early pre 1901 Ginna type lithography by Vogel Bros., Brooklyn). Excellent overall (a strong C. 8+), w/ some minor expected background wear. Min. bid \$30.



302). Mohawk-Penn Motor Oil. 5-5/8 x 4" (dia.) early 1 qt. tin litho solder seam motor oil tin for "Mohawk-Penn" brand (Consumers Petroleum Co., Detroit, MI) featuring nice image of Co.'s trademark Indian. Full, sealed can has strong color and displays nicely (display side as a C. 8+), although there is some light scuffing in outer right side background area and some fairly substantial denting on text filled backside. Min. bid \$30.



303). Schottens Spice Box. 13.5 x 17.75 x 11" very early wooden display box for Wm Schottens Co.'s (St. Louis, MO) spices featuring beautiful, early multi-color paper label inside of Co.'s trademark ship. Clean and excellent overall (inside label a strong C. 8++), w/ a little expected darkening and light wear to outer box. Min. bid \$40.



304). Comfort Talc Tin. 5.25 x 3.75 x 2.25" scarce, large variation tin litho talc tin for Syke Co.'s "Comfort" brand talc featuring beautiful graphic image of young children on front and trademark nurse on backside. Body of tin is excellent (C. 8.5+), although right shoulder area has chipping loss area at side edge. Min. bid \$30.

Min. Sample Size



305). Lily of Valley Oats Box. 7-3/8 x 4.25" (dia.) early cardboard 1 lb. 4 oz. oats box from Lauderbach-Griest Co. (Philpsburg, PA), w/ same nice image on both sides. Clean, bright and excellent overall (C. 8++) w/ minor wear at cut line of lid. Min. bid \$30.



306). Blue Ribbon Auto Dressing. 4 x 3-3/8" (dia.) early tin litho product can for "Blue Ribbon" brand auto top and seat dressing featuring great image of early racecar. Clean, bright and very attractive (C. 8+). Min. bid \$30.



307). Zodenta Tooth Brush Holder. 4 x 1-1/8 x 7/8" early tin litho die-cut advertising toothbrush holder for Ingram Co.'s "Zodenta" tooth paste, in shape of early toothpaste tube. Clean and quite nice overall, w/ minor wear (C. 8+/-). Min. bid \$30.



308). Long Chew Gum Box. 8.5 x 4-7/8 x 1.5" scarce, early 2-ps. cardboard gum box (100 count size) for "Long Chew" brand featuring great giraffe images (© 1928 Clark Bros. Gum Co., Pittsburgh, PA). Attractive and displays nicely w/ minor fade and wear (C. 8-). Min. bid \$40.

Porcelain Rest Room Signs



309). Porcelain Rest Room Signs. Lot includes four early porcelain restroom signs. Includes 5¢ black on grey door push style sign (7 x 3.5"); Wash Hands (2.5 x 10"); Flush Urinals (3.5 x 10-7/8"); and Lock Door (3 x 4"). All are excellent (small edge chip on bottom left edge of wash hands sign, and very minor edge wear spot on bottom right edge of Lock Door sign). Min. bid \$40 (the lot).



310). Airplane Toy. 9.25 x 5" (dia.) early tin litho mechanical "Air-E Go Round" flying airplanes toy by Reeves Mfg., Milford, CT (nice working condition- attached planes circle around the tower). Excellent, as found still w/ its original box (note: box displays pretty well, although it has several large tears, and some general tattering and wear). Min. bid \$50.



311). Welch's Grape Juice Mirror. 2.75 x 1.75" early celluloid advertising pocket mirror for Welch's Grape Juice Co. featuring nice image of early style bottle. Clean and attractive appearance, although very close examination will show a little minor foxing on side edge (very faint and not at all offensive). Min. bid \$30.



312). Husky Motor Oil. 5-5/8 x 4" (dia.) unusual, 1 qt. tin litho crimp seam motor oil can for Husky brand (Husky Oil Co., Cody, WY) featuring different colorful dog images on each side. Clean, bright and displays nicely (as a C. 8+) although close examination will show some non-offensive very fine hazy oxidizing on upper surface. Min. bid \$30.



313). Independent Spice Tin. 3.5 x 2-3/8 x 1-3/8" early tin litho 2 oz. spice tin (ginger) for "Independent" brand (Independent Importing Co., Boston, MA) featuring attractive image of Co.'s trademark American patriot soldier. Clean, bright and excellent appearance (displays as a C. 8.5), w/ a couple very minor scuff marks and some minor oxidizing speckle spots in upper left background area. Min. bid \$30.



314). Fall-Leaf Spice Tin. 3.75 x 2.25 x 1.25" early tin litho 2 oz. spice tin (nutmeg) for "Fall-Leaf" brand (Henry Soodsma Co., Patterson, NJ) featuring attractive image of Co.'s trademark fall colored oak leaves (same on both sides). Clean, bright and excellent (C. 8.5+) w/ non-detracting faint dent line on backside. Min. bid \$30.



315). Clearcut Tools Sign. 19 x 13" early beveled tin over cardboard sign for "Clearcut" brand cutlery and tools (Geo. Worthington Co., Cleveland) featuring beautifully detailed lithography by American Art Works. Clean and very attractive appearance overall (displays as a strong C. 8+); w/ exception of some minor denting and a little touch-up in the outer dark border area. Min. bid \$50.



316). 1966 Coca-Cola Sign. 27 x 16" vintage 2-sided Coca-Cola cardboard sign featuring a different classic 1960's image on each side. Never used sign is clean, bright and basically like new (C. 8.5+), w/ only the slightest, very minor wear. Min. bid \$40.



317). Yara Tobacco Display. 20 x 12-3/8 x 3.5" early cardboard light-up (back lit) stand-up shadow box type store display featuring great image of teacher paddling student. Image is printed on a translucent paper which lights up when a bulb is inserted inside. Impressive piece is clean and excellent overall (a strong C. 8+), w/ a couple non-detracting minor wrinkle lines in outer border area. Min. bid \$40.



318).Borden's Signs. Lot includes six ca. 1940's cardboard litho advertising signs (the milk and cream signs are attached at top; w/ two examples of sign w/ Elsie holding beaters). Sizes range from 10 x 8" to 8.5 x 11". They are clean and like new, as found never used (minor outer edge storage wear on a couple). Min. bid \$30 (the lot).



319).1904 John Deere Catalog. 6.5 x 3.5" (closed) early John Deere Co. folding cardboard covered "Farmers Pocket Companion" brochure containing 27 page nicely illustrated catalog of Co.'s various models of plows, as well as multiple pages in back for taking notes, w/ a full page 1904 calendar on inside back cover. Excellent. Min. bid \$30.



320).Auto Livery Paperweight. 2-5/8 x 4 x 3/4" early glass paperweight advertising a Hudson Valley, NY car limo service w/ great image of early limousine. Excellent overall, w/ exception of minor hazy spot in bottom dark brown outer border area. Min. bid \$30.



321).Jackie Coogan Peanuts Pail. 3-3/8 x 3.75" (dia.) scarce, early tin litho 8 oz. "Jackie Coogan" brand salted peanuts pail featuring great images of famous silent era child actor (note: he starred as "The Kid" in W.C. Fields movie and in later life played Uncle Fester in The Adams Family). Excellent overall (C. 8+), w/ some darkening and wear to gold finish on lid. Min. bid \$40.



322).Borden's Ivy League Football Sign. 11.25 x 14-5/8" early paper litho Borden's Dairy sign featuring Yale vs. Harvard football theme. Never used sign is clean and like new (near mint), w/ exception of minor mfg. blemish in bottom background area. Min. bid \$30.



323).Jackie Coogan Peanut Butter. 3.5 x 3.75" (dia.) scarce, early tin litho 12 oz. peanut butter pail featuring great images of famous silent era child actor all around (note: he played "The Kid" in W.C. Fields movie and in later life played Uncle Fester in The Adams Family). Clean, bright and excellent overall (C. 8++), w/ darkening and wear on embossed lid. Min. bid \$40.



324).Patent Medicine Sign. 14 x 11" early cardboard string hung advertising sign for "Rock, Rye and Honey" coughs, colds, throat and lung troubles "Cure" featuring attractive image of young girl, w/ original advertising covered cardboard matting. Excellent (a strong C. 8++) w/ minor toning to mat area. Min. bid \$40.

Mechanical Hotel Bell



325).Bull Dog Bell. 3-3/8 x 4-5/8" (dia.) early, heavy figural brass wind-up hotel bell in image of early bulldogs head (pushing dogs ears releases a long, steady ringing bell; wind-up mechanism underneath). Excellent overall, w/ minor wear from use. Min. bid \$40.



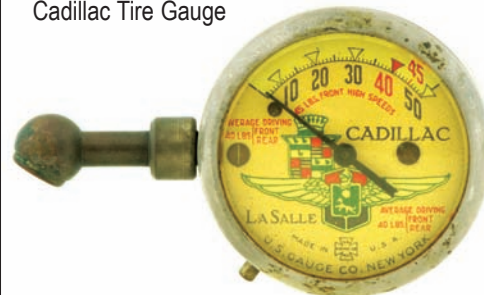
326).Outboard Motors Spark Plug Display. 15.25 x 7.25 x 3.5" early metal countertop display for AC brand spark plugs for outboard motors featuring nice image of man in motor boat. Clean and excellent overall, as found never used still in its original box (box has some black marker writing on top flap, and the plain left side edge panel of top marquee section has a couple crimping lines through it). Min. bid \$40.



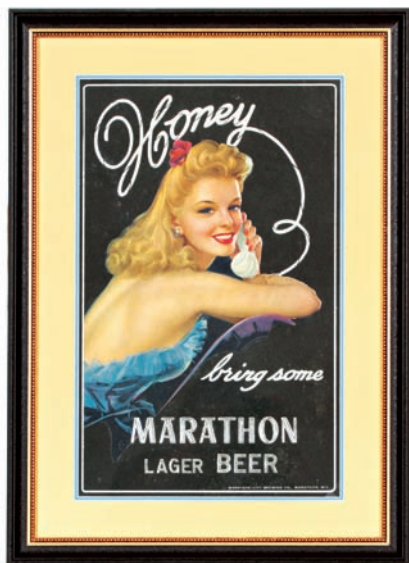
327).Cars, Motorcycles & Airplanes Toy. 4.25 x 8 x 8" early German mechanical key wind toy featuring great early racecars and motorcycles that race around the track, w/ airplanes that rotate from above. Toy works great and is clean, bright and excellent (C. 8.5++) complete w/ its original box (box very nice, w/ a couple small tears and small 1 x 1" section separated from top right edge; separated piece included). Min. bid \$50.



Cadillac Tire Gauge



328).Cadillac Tire Gauge. 2 x 3.25" early tire pressure gauge advertising Cadillac and LaSalle brand automobiles, w/ attractive images of Co.'s logos on inside dial. Very high quality piece is excellent overall, w/ a slight trace of minor soiling on outer metal case (as found, should clean up beautifully). Comes w/ original carrying pouch. Min. bid \$40.



329).Marathon Beer Sign. 28-5/8 x 20.5" (21 x 13" visible image) great, early cardboard or paper litho sign for Marathon City Brewing Co. (Marathon, WI), featuring glamour girl on phone. Clean, bright and beautiful overall (displays as a strong C. 8.5/+), w/ a little non-detracting faint soiling in upper surface of dark background area. Nicely framed and matted. Min. bid \$40.



330).Movie Banner. 49 x 53.5" unusual, large early cloth promotional satin banner for 1940 Universal Pictures musical comedy movie "If I Had My Way" starring Bing Crosby and Gloria Jean. Attractive and displays nicely (C. 8++) w/ minor wrinkles and a trace bit of very minor staining (so minor, barely merits mentioning). Min. bid \$40.



331).Borden's Healthy Eating Posters. 23 x 17" great, early paper litho promotional poster issued by Borden's Farm Products Co. featuring wonderful colorful, highly graphic images of healthy food products. Clean, bright and excellent overall (C. 8.5/+). Poster is attached to heavy brown paper backing, w/ a 12.25 x 11" Borden's breakfast poster on backside (see website addendum to view breakfast poster). Min. bid \$40 (the lot).

Hires Root Beer



332).Hires Fan. 12 x 7.25" (dia.) early die-cut cardboard fan advertising Hires Root Beer picturing nice color graphic children images on front and giant product box on backside. Has minor toning, but overall very good to excellent (C. 8+/-). Min. bid \$20.

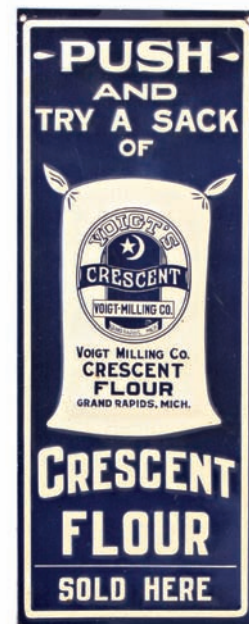
Porcelain Thermometer



333).Crystal Water & Soda Co. Thermometer. 5.75 x 2" (dia. at base) early, very high quality heavy enameled porcelain counter top advertising thermometer for the St. Louis Crystal Water & Soda Co. featuring nice image of Co.'s lilies logo. Beautiful, near mint condition. Min. bid \$40.



334).Stoves Die-Cut. 9-3/8 x 4" unusual, early tin litho figural shovel shaped novelty advertising sign for "Treasure Line" brand stoves and ranges, featuring a beautifully detailed graphic image of Co.'s early stove. Clean and very attractive (C. 8+) w/ a little minor scattered wear. Canadian. Min. bid \$40.



335).Crescent Flour Door Push. 9-5/8 x 3.75" early, embossed tin litho advertising door push for "Crescent" brand flour (Voigt Milling Co., Grand Rapids, MI). Clean and like new, (near mint) w/ exception of two tiny nail holes at top edge. Min. bid \$30.



336).Cadillac Matchbook Holder. 1.75 x 2.25 x 3/8" scarce, early metal advertising pocket matchbook holder w/ celluloid covered advertising in center for Cadillac autos. Very nice overall, w/ light wear from use (C. 8/+). Min. bid \$30.



337).Creamery Pocket Mirror. 2 x 2.75" early celluloid advertising pocket mirror for Farmers Co-Op Creamery. Has nice photo images of the creamery, uniformed workers, etc. Excellent. Min. bid \$30.



338).Teethy Toothpaste Die-Cut. 1.75 x 1" unusual, small, early tin litho advertising die-cut novelty for "Teethy" brand spearmint toothpaste. Clean and excellent (C. 8.5/+). Min. bid \$20.

Yellow Kid Ephemera



339).Yellow Kid Ephemera. Lot includes: a 5 x 3.25" trade card for Manegold Milling Co. (C. 8++); a 6.5 x 4" Wegman Piano Co. die-cut on heavy cardstock (C. 8.5+), w/ exception of reinforcement added to backside wrist area; and a 1911 Marion Hardware Co. advertising postcard (C. 7.5+) w/ light edge wear. Min. bid \$40 (the lot).



340).Nursery Rhyme Peanut Butter Pails. Lot of two early tin litho peanut butter pails each featuring nice nursery rhyme character images all around (ea. app. 3 x 3.5 (dia.)). Includes: 12 oz. Armour Co. "Veribest"; and 10 oz. "Red Seal" brand (Newton Tea & Spice Co., Cincinnati, OH). They are both clean, bright and attractive overall (C. 8/+), w/ darkening to lids on each. Min. bid \$40 (the lot).



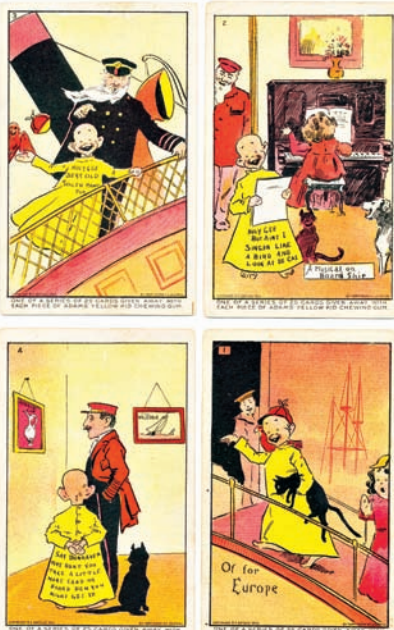
341).Jumbo Chewing Gum. 7/8 x 2-7/8" scarce, early (dated 1905) unopened package of Grove's Jumbo brand pepsin chewing gum (Sen-Sen Chidlet Co.) "Remedy for Indigestion and Dyspepsia". Clean and exceptionally nice (near mint). Min. bid \$30.

Dr. Daniels Vet Cabinet

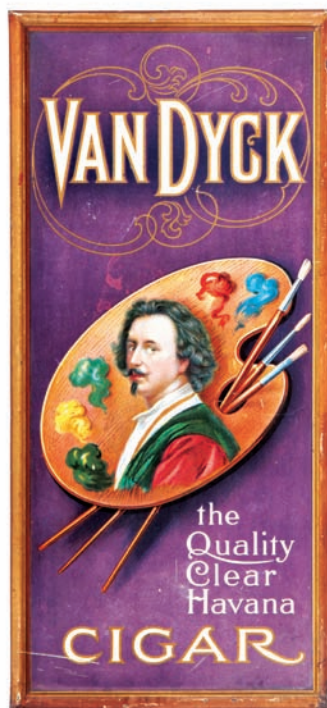


344).Daniels Veterinary Cabinet. 20 x 13-1/8 x 5-3/8" extremely rare, early tin litho advertising cabinet for Dr. Daniels Dog and Cat Remedies featuring beautiful multi-color graphics (by H.D. Beach Co.). Outstanding piece is clean, bright and excellent in appearance all around. Front panel is exceptionally nice (a strong C. 8.5/+ appearance, w/ only the very slightest wear) and remainder of piece displays as a strong (C. 8/+), although examination under black light will reveal some extremely well done restoration to side panels and back side (barely noticeable by naked eye). By far the nicest example of this rare cabinet I've ever seen. Min. bid \$250.

Complete Set of Yellow Kid Gum Cards



342).Yellow Kid Gum Cards. Lot includes a scarce, complete set of all 25 cardboard advertising insert cards from Adams Gum Co.'s Yellow Kid insert card series (ea. 4.5 x 2-7/8"). Cards are clean and very good to excellent overall. Min. bid \$50 (the set).



343).Van Dyck Cigar Sign. 13 x 6" early self-framed, small, tin over cardboard sign for Van Dyck Havana cigars featuring nice graphic image of famous painter. Has strong colors and displays nicely, w/ a few scratch marks and some minor haziness in outer background area. Touch to grade, but (C. 8/-) seems about right. Min. bid \$40.



345. Indian Motorcycle Postcard. 3.5 x 5.5" scarce, early advertising postcard for Hendee Mfg. Co.'s Indian Motorcycles w/ great color image. Very attractive overall appearance (C. 8+), w/ faint, very minor crease mark in upper right corner (mentioned for accuracy-barely noticeable) and a little minor soiling on back message side (never used). Min. bid \$30.



346. Press Club Cigars Match Safe. 2.75 x 1.75 x 3/8" unusual, early figural brass advertising match safe in shape of whiskey flask, w/ incised advertising for "Press Club" brand 5¢ Cigars (Cohen Co., Des Moines, IA); w/ embossed playing cards in hand image on other side. Excellent overall, w/ minor dent mark and general expected tarnishing. Min. bid \$40.



347. Cardboard Cracker Jack Prizes. Lot includes six early cardboard Cracker Jack insert prizes. Most are excellent (soiling and wear on kid and "Blow for More" prize). Min. bid \$20 (the lot).



348. Tydol Zeppelin Oil Sample. 3 x 1-3/8" unusual, early cork stopped miniature glass oil filled advertising sample bottle from the Tydol (Tide Water Oil Co.), as found in its original advertising container (side states that the Co.'s Veedol brand oil inside the sample bottle is the exact oil that was used and drained from the tanks of the Graf Zeppelin airship on October 15, 1928). Excellent overall (minor chafing in top orange background area of container). Min. bid \$30.



349. Planters Jet Racer Toy. 2-1/8 x 5.5 x 2.25" (box 2.25 x 2.25 x 4") ca. 1950's/60's figural plastic toy featuring Mr. Peanut driving racecar. Excellent, as found never used w/ its original box. Min. bid \$40.



350. Tooth Powder Container. 7/8 x 2.25" (dia.) outstanding, very early 2-ps. cardboard tooth powder container (w/ label on side edge from T. Potter Apothecary, Water St., Augusta). Incredible piece is clean and excellent (C. 8.5). Min. bid \$40.



351. Tiger Pocket Tin. 2-7/8 x 3 x 7/8" early tin litho vertical tobacco pocket tin for Lorillard Co.'s "Tiger" brand (unusual 15¢ variation). Clean and excellent overall, w/ minor wear on backside (front C. 8.5+; back C. 8++). Min. bid \$40.



352. Popeye Popcorn Tin. 4.75 x 3.25 x 2-1/8" scarce, early tin litho 12-1/2 oz. popcorn tin for Spice Mills Co.'s "Popeye" brand w/ same nice image on both sides. Clean, bright and excellent overall, w/ minor wear on backside (front C. 8.5+; back C. 8+). Min. bid \$30.



353. Puritan Pocket Tin. 4-3/8 x 3 x 7/8" early tin litho vertical tobacco pocket tin for Continental Co.'s "Puritan" brand tobacco. Full tin is clean and excellent (C. 8.5+). Min. bid \$40.



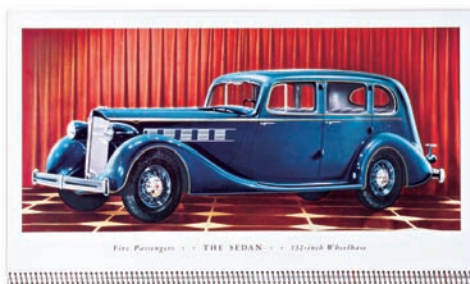
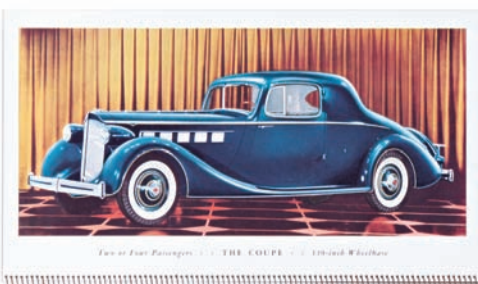
354. Buckingham Pocket Tin. 4.25 x 3 x 7/8" full, sealed (never opened) tin litho vertical tobacco pocket tin has stunning bright colors and is clean, bright and like new (near mint). Min. bid \$30.



355. King Crop Spice Tin. 3.25 x 2.25 x 1.25" scarce, early tin litho 2 oz. spice tin (turmeric) for "King Crop" brand (Lawndale Wholesale Grocers, Chicago) featuring beautiful multi-color graphics (same image both sides). Crisp, bright and like new (near mint). Min. bid \$30.

Bidding Ends Friday, December 5, 2014

1934 Packard Autos Catalog



356).1934 Packard Catalog. 6.5 x 11" beautiful, very high quality early 28 pg. spiral bound catalog for Packard 8 cylinder luxury automobiles featuring pages of beautiful full color illustrations on substantial, heavy paper stock. Crisp and like new, as found never used still in it's original envelope. Min. bid \$40.



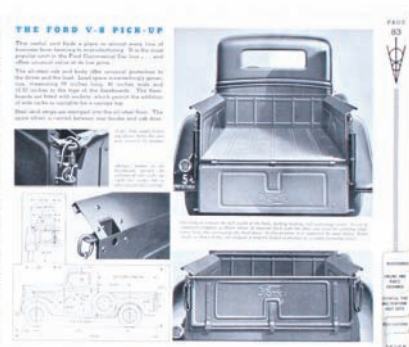
357).Big Sister Peanut Butter. 3.5 x 3-7/8" early tin litho 1 lb. peanut butter pail for "Big Sister" brand (Producers Peanut Co., Suffolk, VA) featuring great images of witch on broom, owl on moon, etc. all around. Clean and very attractive appearance, w/ a little non-offensive minor background wear (C. 8+/-). Min. bid \$40.



358).Cracker Jack Mirrors. Unusual, early celluloid advertising pocket mirror (2.75 x 2") featuring great image of Co.'s trademark kid w/ armful of boxes. Lot also includes very early 1-5/8" (dia.) x 1/4" glass covered metal Cracker Jack puzzle game w/ mirror on backside. Both are excellent. Min. bid \$40.



359).Gas Heater Tip Tray. 4-1/8" (dia.) scarce, early tin litho tip tray for Cleveland Stove Co.'s "Royal King Gas Heater" stoves featuring detailed image of Co.'s early heating unit. Clean, bright and like new. Min. bid \$40.



360).Ford Trucks Showroom Salesman's Book. 9 x 11.75 x 7/16" great early 130 pg. 1936 auto showroom sales book for Ford V-8 Delivery Trucks and Commercial Cars. Impressive, very high quality piece is filled w/ detailed product information, several full-page color truck illustrations, paint color samples, etc. Excellent overall, w/ a little minor wear to cover. Min. bid \$40.



361).Roosevelt Spice Tin. 3 x 2-3/8 x 1.25" great, early 1-1/2 oz. spice container for "Roosevelt" brand (Karasik Bros., Chicago) allspice featuring great image of TR. Tin top and bottom w/ cardboard sides, has some general soiling on non-graphic backside and a little light scattered wear, but overall attractive and displays quite nicely (C. 7.5). Min. bid \$30.



362).Fischer's Pocket Tin. 4-1/8 x 3-3/8 x 1" early paper label (over tin) vertical pocket tin for "Fischer's Private Mixture" Tobacco issued by Fischer's Pipe Shop (Boston). Has a slight bit of background toning and some non-offensive light staining, but overall attractive and displays nicely (C. 7.5++). Min. bid \$30.



363).Three Feathers Pocket Tin. 4-1/8 x 3.25 x 1-1/8" early tin litho vertical tobacco pocket tin for "Three Feathers" brand (convex front). Clean and attractive (a strong C. 8+) w/ just a trace hint of very minor denting (so minor it barely merits mention). Min. bid \$40.



364).Shell Spice Tin. 3-1/8 x 2.5 x 1-3/8" scarce, early tin litho 2 oz. spice tin (allspice) for "Shell" brand (Free & Klinck Co., Brooklyn, NY) w/ same attractive graphics on both sides. Clean and excellent overall (a strong C. 8++), w/ only minor wear. Min. bid \$30.



365).Large Fraternal Pin. 1.75" (dia.) early celluloid pin-back button from the Knights Templar fraternal organization (1906, Pittsburgh, PA) w/ great image of groups comical mascot bird. Clean and excellent overall, w/ only minor wear. Min. bid \$20.



366).Miniature Pail. 2.75 x 2.5" (dia.) early miniature tin litho sample sized pail for Van Marcke Refining Co. (New York City) "Boeufaline", a beef based lard like fine baking/cooking fat. Attractive and displays nicely, w/ minor scattered wear (C. 8/+). Min. bid \$30.



367).Wayne Brewing Co. Mirror. 2-1/8" (dia.) early celluloid advertising pocket mirror for Wayne Brewing Co. (Erie, PA) featuring wonderfully detailed multi-color graphics. Clean and excellent. Min. bid \$40.



368).Bunny Spice Tin. 2.5 x 2-3/8 x 1.5" scarce, early 1-1/2 oz. spice tin (allspice) for Bunny brand (Bunn & Humphrey Co., Bloomington, IL). Metal top and bottom w/ cardboard body (same great image on both sides). Clean and excellent overall (C. 8/+). Min. bid \$30.



369).Kentucky's Best Tobacco Pouch. 3.75 x 2.75 x 1.25" early 2 oz. cloth tobacco pouch w/ beautiful graphic wrap around paper label. Full, sealed (never opened) pouch is clean and excellent (C. 8.5/+). Min. bid \$40.



370).Texaco Die-Cut Bears. (ea. app. 4.25 x 2") lot of two small cardboard die-cut bears advertising Texaco winter motor oils (both have text advertising on backside). They are clean and excellent. Min. bid \$20 (the pair).



371).Buffalo Peanut Butter. 3.75 x 3-3/8" early tin litho 1 lb. peanut butter pail for "Buffalo" brand (Hoyt & Co., Amesbury, MA) featuring attractive image of Co.'s trademark buffalo. Clean, bright and exceptionally nice (C. 8.5++). Min. bid \$40.



372).Western Shotgun Shells Sign. 21.25 x 10-7/8" original easel-back, die-cut cardboard stand-up sign for Western Co.'s "Xpert" brand shot gun shells featuring beautiful multi-color graphics. Never used sign is clean, bright and like new, w/ minor wear mark at bottom left corner edge (C. 8.5+). Min. bid \$40.



373).Scarce Coca-Cola Sign. 19-7/8 x 15-1/8" (11-7/8 x 7-3/8" visible) scarce, very early paper backed sign for Coca-Cola featuring wonderful image of girl drinking from early bottle w/ straw (note: this bottle was used during the years between 1907-1917). Although it is framed and displays great as a paper sign, it appears this intact, never used piece was actually made to be used as a decal type transfer piece for applying image to a window. Clean, bright and beautiful (displays as a C. 8.5/+). Nicely framed and matted. Min. bid \$50.



374).Western Super-X Sign. 21.25 x 10-7/8" original easel-back, die-cut cardboard stand-up sign for Western Co.'s "Super-X" brand shot gun shells featuring beautiful multi-color graphics. Never used sign is clean, bright and like new, w/ minor wear mark at bottom right corner edge (C. 8.5+). Min. bid \$40.

Betty Boop Enameled Jewelry



375).Betty Boop Lot. Lot includes ca. 1930's cardboard die-cut advertising fan (9 x 5.5") for "Rhumprat" a Spanish liquor (C. 8.5+); and three early, very high quality pieces of brass Betty Boop jewelry (1.5" (h)) w/ finely inlaid cloisonné enameling. All are excellent (note: there is some neatly written fountain pen writing on backside of fan). Min. bid \$40 (the lot).

Betty Boop Fan



375).



376).Uncle Wiggily Candy Pail. 3.5 x 3.75" (dia.) scarce, early tin litho candy pail featuring beautiful multi-color graphic images of Uncle Wiggily and cartoon friends all around. Clean, bright and excellent overall (basically a strong C. 8+), w/ exception of a couple wear spots at base of backside (replaced lid has been sprayed gold). Min. bid \$40.



377).Françoise Spice Tin. 4 x 2.5 x 1.75" early tin litho 4 oz. spice tin for Françoise Co. (Cincinnati, OH) white pepper. Impressive piece is clean, bright and like new (C. 8.5++). Min. bid \$30.



378).Universal Match Scratcher. 5 x 3" unusual, early advertising match scratcher on cardstock for Universal brand stoves and ranges w/ sandpaper type striking surface at bottom. Clean, bright and excellent (C. 8.5+). Min. bid \$30.



379).Servoil Oil Can. 5-5/8 x 4" (dia.) early tin litho 1 qt. solder seam oil can for "Servoil" brand (Petroleum Products Corp., Milwaukee, WI). Clean, bright and very attractive w/ a few non-offensive light background scratches and minor dents. Min. bid \$30.



380).Yellow Kid Catalog. 6.75 x 4.75" scarce, early, 56 pg. catalog of Vottlier Co.'s popular vocal and instrumental music, w/ wonderful image of Yellow Kid playing violin on cover. Excellent overall, w/ exception of tiny (1/2 x 3/8" paper chip spot at bottom left edge). Min. bid \$40.



381).Star of the North Tobacco Label. 19.5 x 12-7/8" (12-5/8 x 6.25" visible) very early multi-color stone lithographed paper tobacco crate label featuring a stunning, highly graphic patriotic image (© 1869 Major & Knapp lithographers). Clean and very attractive in appearance (C. 8+-) w/ faint toning and very minor stain mark in background (stated for accuracy, basically blends into background and so minor barely merits mention). Nicely framed and matted (outer margins slightly trimmed). Min. bid \$50.



382).Santa Die-Cut. 16 x 11" (actual piece) outstanding, very early, pressed, embossed cardboard advertising wall hanger w/ fold-out pocket featuring wonderful Christmas themed image. Impressive piece is very nice overall (basically a strong C. 8+-) w/ a little typical chipping wear at brittle edges, some non-offensive light toning and scattered foxing/fly specks on pullout pocket section. Lightly attached to gold mat board and ready for framing. Min. bid \$50.



383).La Belle Tobacco Label. 19.5 x 13-1/8" (13.25 x 6.5" visible) very early (ca. 1870/80's) multi-color stone lithographed paper tobacco crate label from Sullivan Word Co., featuring stunning multi-color graphic image of topless semi-nude girl dropping roses. Clean, bright and very attractive (a strong C. 8+-). Nicely framed and matted (outer margins slightly trimmed). Min. bid \$40.

Original Illustration Art



384).Gulf Oil Original Artwork. 22 x 40" (15.75 x 34" visible inside mat) unusual, early, hand-painted original advertising illustration artwork (oil on cardboard) for Gulf Oil Co., of Pittsburgh, PA. Impressive, high quality piece is very attractive, w/ nice patina and a great overall look (C. 8+) Min. bid \$50.



385).Auto Polishing Cloth Tin. 4.75 x 3.25 x 2-1/8" early tin litho product can for Pioneer Mfg. Co.'s "Presto-Shino" auto polish cloth, featuring attractive image of chauffeur polishing limo on front (woman polishing piano on backside). Attractive piece that displays nicely, w/ some light soiling and a little scattered wear (C. 7.5/+). As found, might improve a bit w/ cleaning. Min. bid \$30.

Trial Box



386).Pratts Veterinary Trial Box. 6.25 x 3-7/8 x 1-1/8" scarce, small, full, sealed (never opened) 3 oz. "Trial Package" for Pratt's Poultry Food product featuring image of Co.'s great logo image. Has some non-offensive light soiling and a little light scattered wear, but overall attractive and displays nicely (C. 8/-). Min. bid \$40.



387).Patterson Match Holder. 4-7/8 x 3-3/8 x 1-3/8" scarce, early tin litho advertising match holder for Fred Patterson, a Harrisburg, PA jeweler. Excellent overall (a strong C. 8++). Min. bid \$40.



388).Zorro Candy Box. 10-7/8 x 7 x 2.75" vintage 2-ps. cardboard candy box for "Zorro" penny candies (Super Novelty Candy Co., Brooklyn, NY), featuring great image of Co.'s © Disney Zorro character logo. Very nice overall, w/ minor wear (C. 8+/-). Min. bid \$30.



389).Car Polish Sign. 12 x 7.75" early tin litho sign for "Mac's" auto polish w/ great image of early car and product can. Clean and very attractive overall (basically a strong C. 8+), w/ exception of some light creasing in the bottom black section (note: it appears that this was originally bent back as its stand-up base for counter display use- now flattened). Min. bid \$40.



390).Smith Bros. Display. 10.75 x 4.25 x 4.25" early tin litho countertop store display for Smith Bros. brand cough drops (made for displaying individual product boxes). Clean, bright and exceptionally nice (C. 8.5++). Min. bid \$50.



391).Mother's Worm Syrup Match Holder. 6-7/8 x 2-1/8 x 7/8" early tin litho advertising match holder for Gooch Co.'s quack medicine products featuring beautifully detailed color graphics. Clean and very attractive (a strong C. 8+) w/ a few minor scattered faint background speckles. Min. bid \$50.



392).Planters Hanging Display. 35 x 17 x 2.5" unusual, ca. 1960's/70's large, figural, heavy vinyl store display in shape of a giant Planters Peanuts cello bag. Interesting, very high quality piece has stuffed satin cloth "peanuts" and Co. advertising on the inside, with hooks at back to hang from ceiling. Excellent. Min. bid \$40.

Sample



393).Blue Car Tobacco Sample. 3-5/8 x 2-1/8 x 7/8" early soft pack style sample tobacco package for "Blue Car" brand (Payn's Tobacco Co., Albany, NY) featuring nice image of Co.'s trademark RR car. Full, sealed (never opened) pack is clean and excellent overall, w/ some typical foil loss to top and bottom edges (Series 1909 tax stamp). Min. bid \$40 each (have two, winning bidder can take one or both).



394).Old Dutch Cleanser Signs. Lot includes two early 2-sided string hung cardboard signs (5.25 x 2-7/8" and 9 x 5") both very nice overall (C. 8++); a 13.5 x 9.5" 2-sided cardboard sign (clean and bright w/ some light tears and wear at outer edges); and an 11 x 6" early can shaped decal (excellent, except 1" tear at top). Min. bid \$30 (the lot).



395).Red Riding Hood Candy Pail. 3 x 2-7/8" (dia.) early tin litho candy pail for Lovell & Covel Co.'s hard candies, featuring colorful and highly graphic nursery rhyme images all around. Clean, bright and excellent (C. 8.5). Min. bid \$40.

Corn Cake Tobacco



396).Corn Cake Tobacco. 6 x 4-1/8" (dia.) early paper label (over tin) tobacco can for Spaulding & Merrick Co.'s "Corn Cake" brand tobacco featuring wonderful color graphic image of farmer w/ harvested crops. Clean and very attractive (C. 8+), w/ only minor scattered wear. Min. bid \$40.



397).Wareco Outboard Motor Oil Can. 5-5/8 x 4" (dia.) vintage 1 qt. crimp seam "Wareco" brand motor oil can (Warelubco, Jacksonville, IL 62650). Full, sealed can is clean and excellent (C. 8.5+). Min. bid \$40.



398).College Town Spice Tin. 3-1/8 x 2.25 x 1.25" early tin litho 1-1/2 oz. spice tin (allspice) for "College Town" brand (Lefkowitz Co., New Brunswick, NJ). Clean, bright and excellent (C. 8.5+). Min. bid \$40.



399).Peruna Catarrh Cure Mirror. 2.75 x 1.75" important and extremely rare celluloid advertising pocket mirror for "Pe-ru-na Catarrh Cure" featuring stunning multi-color graphic image of woman in low cut dress standing next to a giant, full bottle of Co.'s quack medicinal "cure". Outstanding piece is crisp, bright and like new (near mint). Note: this incredible piece is considered to be among the rarest and most desirable of all the known pocket mirrors. Min. bid \$100.



400).Coca-Cola Thermometer. 7-5/8 x 2.25" early embossed tin Coca-Cola gold bottle shaped thermometer as found never used in its original box. Clean and excellent (C. 8.5++) w/ only very minor storage wear. Min. bid \$30.



401).Snow Boy Soap Calendar. 9.75 x 7" early cardboard 1901 advertising calendar for Lautz Co.'s "Snow Boy" and "Marseille's" brand soaps, featuring beautiful multi-color graphics (backside covered w/ text advertising). Clean, bright and like new (near mint). Min. bid \$40.



402).1950's Coke Thermometer. 9.25 x 3" vintage tin litho Coca-Cola thermometer. Piece is crisp and bright, w/ nice original surface sheen (near mint, w/ exception of minor rub mark and light bb sized indent at 12 o'clock). Min. bid \$40.



Rd #2, Cobb Hill Road, Cazenovia, NY 13035 • 24 Hr. Tel: (315) 662-7625 • 24 Hr. Fax: (315) 662-3570 • morf2bid@aol.com • morfauction.com

Welcome to our 84th auction of quality antique advertising and fine collectibles. Everything we sell is guaranteed authentic and as described. We attempt to grade condition both fairly and conservatively, using a scale of 1-10 on the advertising items (ten being absolutely mint). We do not list reproductions, re-issues, deceptively restored or pieced together type merchandise. Flaws and blemishes are prominently noted and over emphasized. We encourage you to call for a detailed description on any item you have an interest in, but respectfully must request that you do this before the closing night. Dimensions are listed by height, then width, and are only approximate (+ or - a quarter inch).

Bidding

Bids are accepted only from those parties who have registered with us to bid. (If you were mailed this catalogue by us you are automatically pre-registered.) Your bid is a legal contract to purchase and once entered, cannot be canceled. Placement of a bid indicates acceptance of our terms.

On all "BID" items there is a 15% buyers premium added to each successful bid. You're welcome to bid by mail, email and fax anytime after receiving this catalog. **We will begin accepting phone bids on Wednesday, DECEMBER 3, 2014. We will be taking calls on Wednesday and Thursday from 10:00 AM until 5:00 PM.** If no one answers when you call, please leave a message on our machine and we will get back to you. **If bidding by mail or fax, please remember to include your telephone number with your bids!** You may call or bid as often as you like. We will tell you the current bid on any item(s) you are interested in. To raise a bid, your advance must be at least \$10 more than the current high bid amount. When an item reaches \$250, bidding increments rise to \$25, at \$1,000, bidding increments advance in \$50 steps, and above \$2,000 in \$100 increments. We suggest not waiting until the last minute to begin your bidding, as its quite possible you won't be able to get through.

Web Page and Bid Updates

We will begin posting current bid prices (not including the buyers premium) on Wednesday, December 3, 2014 (including an addendum of additional catalogue lot information) on our internet web page. These prices will be updated once each day (each evening sometime after 9:00 PM, EST) and will get updated to include the final hammer prices on Sunday afternoon once the sale is concluded. On the closing night, we will attempt to update current bid prices every hour. Our web page address for this sale is: <http://www.morfauction.com> We suggest that once you get to it, that you bookmark this address for easy re-access. There is also an addendum section on our website where we post additional information and photo's for this sale.

Reserves and Estimates

All items which receive an opening bid in our sale will be sold to the highest bidder regardless of the price realized (we reserve the right to withdraw items in the event of inaccurate catalog descriptions and to reject any bid we feel is not made in good faith). **We run our auctions with a strict policy of no buy-backs, no auctioneer games and no hidden reserves.** Unlike some of our competitors, we do NOT allow consignors to bid up their own items!

Mechanical Operations

Early mechanical and electric motors and mechanisms on machines toys, coin-ops, clocks, etc. are quite often temperamental and very unpredictable in nature. Although these mechanisms may be working fine at the time of sale, we make no guarantees or representations regarding their continued operating status once they have left our premises (including during shipping).

Closing Night

THE LAST DAY FOR BIDDING WILL BE ON FRIDAY, DECEMBER 5, 2014. On closing day, we begin taking calls at 5:00 PM. Please mark your calendar now. **On the closing night (ONLY), we will also be taking calls at (315) 662-3318, (315) 662-3429 and (315) 662-3904 after 5:00 PM** (in addition to our regular (315) 662-7625 office number). **Closing Time: This Auction will close at 10:00 PM (EST) on Friday, DECEMBER 5, 2014.** At that time, no more incoming calls will be accepted and all lots with a registered bid of less than \$300, as well as all items without call backs registered on them will be officially closed and final. The items at \$300 and over that have call back protection registered on them will be closed out during our call back period the following afternoon (**see important call back rules below**). We reserve the right to change the official closing in the event of unforeseen family type emergencies or technological failures (utility disruptions, etc.). We also reserve the right to either extend the bidding, to postpone or to cancel this auction in the event of a national emergency or if the Internet or the services of the US Post Office were to get seriously disrupted during our catalogue mailing or bidding period.

"Up-To" Bids & Call Backs

CEILING BIDS: We will be happy to enter competitive "up to" ceiling bids for you on any lots you request. Beginning at your minimum amount, we will advance these bid(s) up to your left ceiling amount, if (and only if) it is topped by another bidder. "Up To" bids will be handled discretely and executed in a completely competitive manner for you. Please note that we don't accept open ended "top all others" ceiling type bids.

CALL BACKS: You may request call back protection for any lot(s) that you enter with either a minimum or a protected "up-to" ceiling bid in an amount of at least \$300. This request must be registered with us before the official 10:00 PM closing hour of Friday, December 5, 2014. All callbacks will be placed by us on Saturday, December 6, 2014, beginning at 12:00 noon (EST) and will continue that afternoon until each of the individual lots have been closed out (using past experience, I would expect this to be finished by 6:00 PM, if not earlier). If you register for call-backs, it is your responsibility to be available during this call back time period. We make every effort to honor all our call back requests, but this service is done solely as a convenience to our bidders and will be performed on a best efforts basis only. If you will be traveling or if you will not be available during call back times at your primary number, be sure you provide us with proper alternate or back up numbers for reaching you!

Payment Terms

Winning bidders will be invoiced by mail immediately after the sale. Those who desire fast shipment can pay by Money Order or Cashiers Check. Payments are due within 10 days of receipt of invoice. We reserve the right to offer the item out to our back bidders and deny future bidding privileges to those who do not pay in a timely manner. In addition to personal checks, we also accept payment on your American Express, Visa, Master Card, Discover and Optima Credit Cards (with no surcharge added). No COD's or Collect calls are ever accepted. Items shipped to anywhere in New York State must include appropriate sales tax or signed resale certificate.

Shipping

All packing and shipping charges are extra. We do most of our own packing and shipping in house and try to keep these charges as reasonable as possible for you. On especially fragile and larger hard to pack items, we hire the services of professional packers and charge you at our billed cost. We ship mostly through the Post Office and Fedex Ground, (Fedex Overnight available at an extra charge.)

Subscribing, Prices Realized, Consignments & Upcoming Events

Future catalogs can be assured by sending \$20 for a full 12 months subscription. (Prices are published on our website after each sale) An automatic credit card ordering program is available. We currently run between 2-4 auctions a year. In addition to our regular sales, we also occasionally offer sales made up entirely from single owner collections. Please contact us should you have items you would like us to consider for inclusion in our upcoming events. All inquiries are handled in a completely confidential manner. Our services are also available for the private placement marketing of important individual items, marketing plans for large collections as well as for estate planning and settlement purposes. Back copies of many of our previous auction catalogs are still available at \$5 each (w/ prices realized) w/ quantity discounts available if multiple issues are ordered. For further information, check our website.

Photography by Wes Feuz.

© Copyright 2014. All Rights Reserved. No portion of this publication may be copied in any form without the express written permission of Morford's.

Important Closing Night Information

In addition to our regular (315) 662-7625 office number,
on the closing night (only!) you may also call us at:

(315) 662-3318*
(after 5:00 PM)
(315) 662-3904*
(after 5:00 PM)
(315) 662-3429*
(after 5:00 PM)



***These numbers for
Closing night only!
Friday, December 5, 2014**

Bidding closes at 10:00 PM on Friday closing night. We will be accepting faxes and e-mails on closing night. Our web page will update current high bid prices approximately every hour on closing night and will also list any important addendum information. **All call backs will be made on Saturday, December 6, 2014 beginning at 12 o'clock Noon!**