

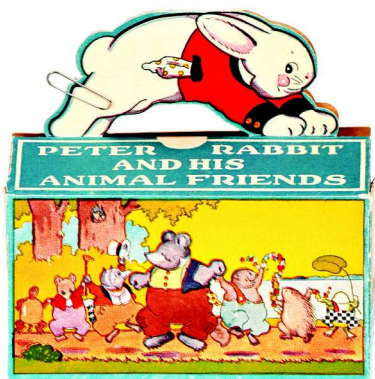


WM Morford
Investment Grade Collectibles at Auction

Investment Grade Collectibles at Auction

Rd #2, Cobb Hill Road, Cazenovia, NY 13035 • 24 Hr. Tel: (315) 662-7625 • 24 Hr. Fax: (315) 662-3570 • morf2bid@aol.com • morfauction.com

Bidding closes Friday, May 15, 2015. (See page 52 for Terms & Conditions)



1). Peter Rabbit Animal Crackers Box. 5.5 x 5-3/8 x 2.75" scarce, early cardboard Albrecht Bakery's (Akron, OH) Peter Rabbit brand animal crackers box, w/ great animal character images all around. Clean and excellent overall (a strong C. 8++), w/ paper clip added to hold it together at top. Min. bid \$40.



2). Cigar Co. Match Holder. 3 x 5" (dia.) early tin litho countertop matchbox holder and ashtray advertising R.G. Sullivan Co.'s (Manchester, NH) "7-20-4" brand cigars. Clean, bright and excellent overall (C. 8.5/+). Min. bid \$40.



3). Cabin Mechanical Bank. 3-5/8 x 2-7/8 x 4-1/8" early figural cast iron mechanical bank by J & E Stevens Co., featuring black man sharecropper at cabin (coin gets placed on roof above his head and when broom (paint brush) gets turned; man flips upside down and kicks coin into slot). Has nice bright, original paint surface, w/ some light wear spots from use (C. 8+/-). Min. bid \$50.



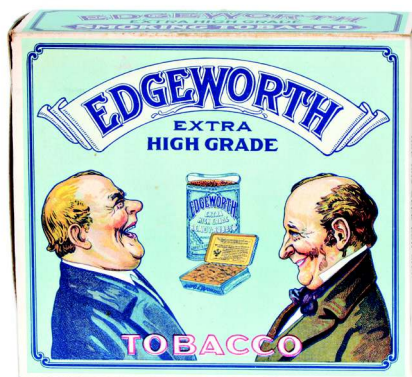
4). Planters Display Rack. 4.75 x 14 x 7.75" early tin litho Planters Peanut Co. "Z" shaped countertop display rack featuring nice images of Co.'s early peanut candy bars. Clean, bright and exceptionally nice (C. 8.5+/-) w/ a few small, very minor faint scratch marks (mentioned for accuracy, not at all serious or detracting). Min. bid \$70.



5). Hanley's Beer Sign. 9 x 13" early embossed tin over cardboard sign for Hanley Brewing Co.'s "Peerless" Ale (Scioto Sign Co., Kenton, OH). Never used sign is crisp, bright and like new in appearance (displays as near mint), w/only very minor storage wear and a slight barely noticeable crimp mark at bottom left side edge. Has both string and easel on backside. Min. bid \$40.



6). Tootsie Rolls Display. 13.5 x 8.5 x 8-5/8" early tin litho countertop store display rack for Tootsie Rolls brand candy. Clean, bright and very attractive appearance, w/ nice original surface sheen (displays as a solid C. 8+), w/ a few non-offensive light crease marks (at top of marquee and side panels- mentioned for accuracy, nothing that's serious or detracting). Min. bid \$50.



7). Edgeworth Tobacco Display Box. (10 x 7-7/8 x 4.5" as shown; folds into a 5-7/8 x 9.75 x 3.5" box) unusual, colorful and highly graphic early cardboard store display box for Edgeworth brand tobacco (same images both sides). Never used box is crisp, bright and basically like new (a strong C. 8.5++). Min. bid \$40 ea. (have 2; winning bidder can take one or both).



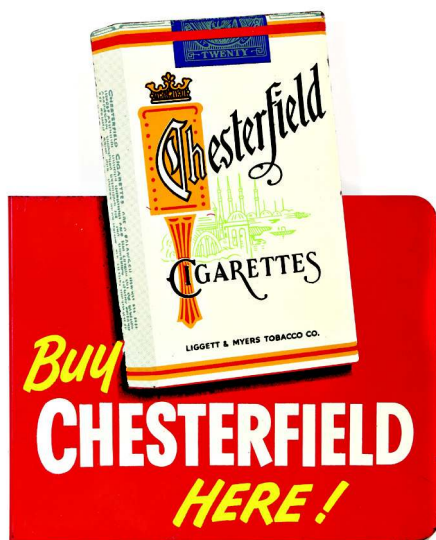
8). Auto Race Game. 11.5 x 11.5 x 2" early boxed "Junior Auto Race" game set by All Fair (Alderman, Fairchild Co., Rochester, NY) featuring wonderful images of early race car scene on cover and inside game board inside. Clean, bright and very attractive appearance, complete w/ original playing pieces inside (a strong C. 8++), w/ minor expected edge wear. Min. bid \$40.



9). Universal Cigar Lighter. 7.5 x 7.5 x 6-1/8" early twin torch countertop cigar lighter by Universal Lighter Co., New York (dated 1895 on brass base piece). Very high quality piece is composed of wood and brass, w/ glass covered nameplate and aluminum ornaments on tips of the pull out torches. Appears to have used some type of an early electric battery operated mechanism for lighting the torches as they are removed from the holders. Excellent overall, w/ exception of a small 3/8" wood chip spot on upper top left edge. Min. bid \$50.



10). Sunoco Rest Room Sign. 13-3/8 x 21.5" (as shown) vintage, 2-sided heavy, early enameled porcelain rest room sign from a Sunoco Service Station, attached to iron mounting bracket. Porcelain sign (6.5 x 21") is clean, displays very nicely and is excellent overall, w/ exception of a few early oxidized chip spots (note: iron hanger bracket appears to have been repainted at some point). Min. bid \$70.



11). Cigarettes Sign. 14-5/8 x 12" early 2-sided tin litho flange sign advertising Chesterfield Cigarettes on front and L & M brand on backside. Clean, bright and excellent overall (a strong C. 8++), w/ a little minor wear. Min. bid \$40.



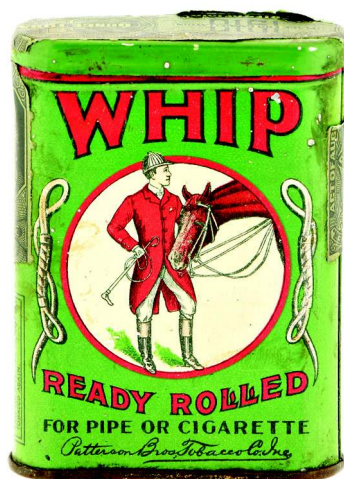
12). Red Horse Tobacco Sign. 11.5" (dia.) early 2-sided die-cut string hung ceiling sign for "Red Horse" brand tobacco (Duwel Bros. Tobacco Co., Cincinnati, OH) featuring beautiful color graphics. Clean, bright and excellent (a strong C. 8.5++). Min. bid \$40.



13). Web-Foot Apricots Tin. 4.75 x 4" (dia.) unusual early paper label advertising tin for "Web-Foot" brand apricots (Donald Co., Grand Island, Nebraska) featuring a great image of Co.'s trademark frog (shows apricots on backside). Has a little non-offensive soiling and light edge loss, but overall attractive and displays very nicely (C. 8+/-). Min. bid \$40.



14). Fall Leaf Spice Tin. 2-5/8 x 1.75 x 1-3/8" unusual, early, miniature tin litho 3/4 oz. sized spice tin (mace) for "Fall-Leaf" brand (Henry Soodsman Co., Patterson, NJ) featuring attractive graphic images of Co.'s trademark Fall colored oak leaves (same image both sides). Clean and very attractive appearance (displays as a C. 8+), w/ a little non-offensive light scattered wear along the outside corner edges (critical grade C. 7.5++). Min. bid \$30.



15). Whip Tobacco Pocket. 3.5 x 2-5/8 x 7/8" early, small variation, tin litho tobacco pocket tin for Patterson Bros. "Whip" brand. Clean, bright and very attractive appearance (a strong C. 8++) w/ minor soiling and trace bit of very minor denting. Min. bid \$50.



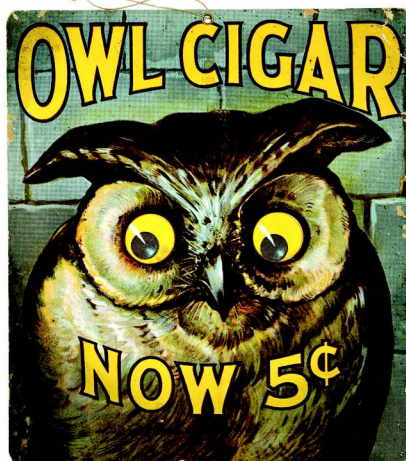
16). Chain Co. Match Safe. 2.75 x 1.5 x 3/8" early celluloid covered advertising pocket match safe for the Standard Chain Co. of Pittsburgh, PA w/ nice image of early chain on front, w/ weight and ratings chart for Co.'s various iron chains on backside. Excellent. Min. bid \$40.



17). Risqué Pocket Mirror. 2.75 x 1.75" early celluloid advertising pocket mirror for Peoples Credit Clothing Co., featuring great image of a risqué saloon girl w/ caption "The Old Reliable". Excellent. Min. bid \$40.

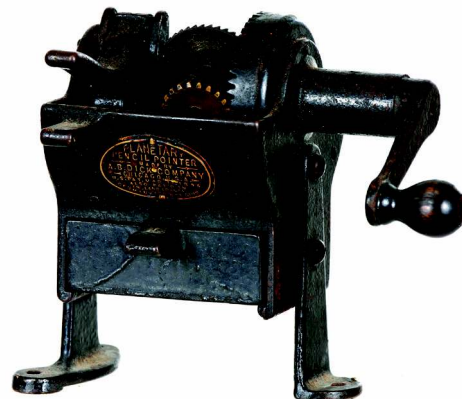


18).Ford Dealership Sign. 13 (dia.) x 1/2" vintage 1947 heavy Ford dealership showroom glass sign w/ reverse gold incised design. An impressive and unusual very high quality piece that is in excellent condition (near mint). Min. bid \$50.



19).Owl Cigars Sign. 11.75 x 10-3/8" early cardboard string hanging sign for "Owl" brand 5¢ cigars featuring back-mounted eyes. Powerful and very impressive looking piece is clean and quite nice overall, w/ a little light soiling and minor edge tattering and wear, including repaired tear to backside on upper right side corner edge (C. 8+/-). Min. bid \$50.

Pencil Sharpener



20).Planetary Pencil Sharpener. 5.25 x 5 x 4.5" early, heavy figural cast iron mechanical pencil sharpener w/ interesting open turning gear mechanism visible from top. Complete w/ original iron drawer, crank handle and brass nameplate (1896 patent date on brass plate). Nice overall condition, w/ some expected light wear from use (works great). Min. bid \$60.

Art Deco
Airplane Lamp



21).Chrome Airplane Lamp. 9 x 7.5 x 3.25" early, very high quality, heavy, art deco style chrome metal electric lamp, w/ ground milk glass tower shade and streamlined sea plane. Excellent and all original. Min. bid \$50.

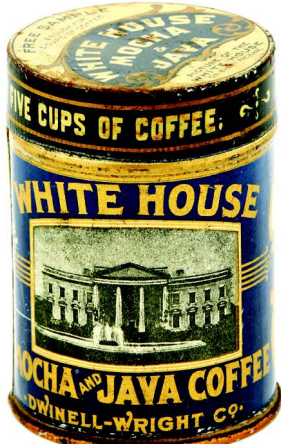


22).Evinrude Sign. 18 x 23-5/8" vintage ca. 1960's embossed heavy tin litho marina sign advertising Evinrude brand outboard motors. Clean, bright and exceptionally nice (like new w/ exception of a little light wear to outer edges). Marked: "Donasco 1-63" in bottom right corner. Min. bid \$40.

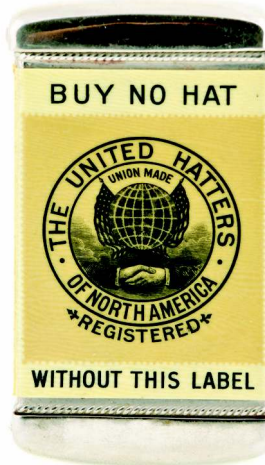


23).Vermont Baking Co. Match Holder. 4-7/8 x 3-3/8 x 1.25" scarce, early tin litho match holder advertising Vermont Baking Co. (White River Junction, VT) "Snow Flake" brand bread, cake and pastries. Quite nice overall, w/ a little minor darkening in gold design area (C. 8+/-). Min. bid \$40.

Min. Sample



24).White House Coffee Sample. 3 x 2-1/8" (dia.) early tin litho miniature "Free Sample" coffee can for Dwinell-Wright Co.'s "White House" brand, w/ nice image of early style White House building. Clean and very attractive (a strong C. 8+/-), w/ a little minor soiling on lid. Min. bid \$40.



25).Hatters Union Match Safe. 2.75 x 1.5 x 3/8" early, very high quality celluloid covered advertising pocket match safe promoting the United Hatters Union (compliments of the Hatters of Danbury District). Clean, bright and excellent (near mint). Min. bid \$40.



26).Honey Moon Pocket Tin. 4.5 x 3 x 7/8" scarce variation, early tin litho vertical tobacco pocket tin for Penn Co.'s "Honey Moon" brand tobacco, featuring trademark image of couple seated on crescent moon. Has strong colors and displays nicely (as a C. 8+/-), although there is a light oxidized dark spot between the O and B (of tobacco on front side) and some fine lines and light general scattered wear on backside (critical grade C. 7.5+/-). Min. bid \$40.

Bidding Ends Friday, May 15, 2015

Miniature Figural Paperweights



27). **Salesman's Paperweights.** Lot includes a nice group of five early, heavy, miniature metal advertising paperweights ranging in size from 3.25 x 2 x 7/8" to 4.5 x 4-3/8 x 4-3/8". Cast iron examples include: shoe (J.R. Palmenberc's Son's, New York); fly wheel (Goldens F & M Co., Columbus, GA); iron pipe (Attalla Pipe & Foundry Co.). Cast brass and bronze examples include: plumbing fitting (Crane Valves & Fittings 1885-1913); and Stockham Valves. All are very good to excellent. Min. bid \$40 (the lot).



28). **Good For Trade Mirror.** 2.25" (dia.) early celluloid "Good for 10¢ in Trade" pocket mirror issued by Backus Club House (a Scranton, PA saloon), w/ nice hand-tinted photo image of semi nude girl w/ pink coral necklace. Clean and excellent in appearance (note: examination under magnification will show a couple non-detracting minor spots and a little faint minor surface wear; mentioned for accuracy, not noticeable by naked eye). Min. bid \$40.

Sample



29). **Peter Pan Sample Tin.** 2.25 x 1-5/8" (dia.) early, miniature 2 oz. "Free Sample" peanut butter tin for Derby Co.'s "Peter Pan" brand peanut butter. Clean, bright and like new (near mint). Min. bid \$30.



30). **Fire Insurance Clip.** 2.75 x 2.25 x 7/8" early tin litho spring loaded clipboard style advertising clip from the Security Fire Insurance Co. (Davenport, IA) featuring attractive color graphics of bulldog. Clean and excellent overall (a strong C. 8+). Min. bid \$40.

Sample



31). **Pixine Veterinary Sample Tin.** 1/2 x 1.5" (dia.) very early tin litho "Free Sample" tin for Pixine brand veterinary remedy, w/ nice image of horse w/ cartoon balloon caption reading: "Saved Me". Very nice overall (C. 8+/-), w/ minor denting and light wear on backside. Min. bid \$30.

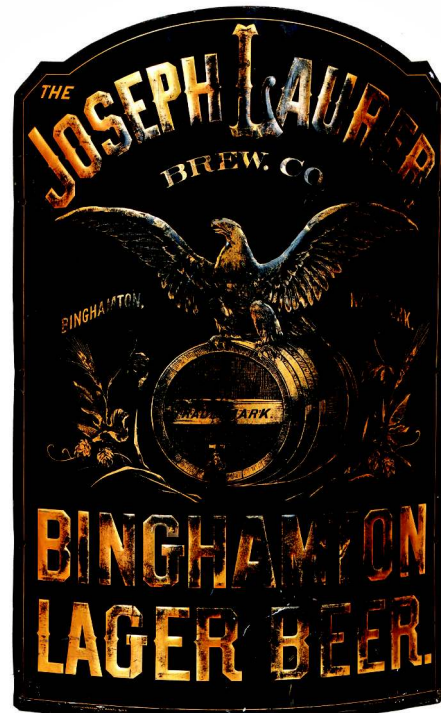


32). **MJB Coffee Grinder.** 11.75 x 4.25" (dia.) unusual, early advertising coffee grinder for M.J.B. brand coffee (M.J. Brandenstein Co., San Francisco) featuring beautifully lithographed advertising container at top, w/ cast iron wall mounted bracket and original collection cup at bottom. Clean, bright and like new (C. 8.5++) appears never used. Min. bid \$50.



33). **Red Goose Die-Cut.** 8.75 x 3.75" (7-3/8 x 3.75" actual sign) great early 2-sided die-cut tin litho sign for Red Goose Shoes, mounted on its original early circular rocking wooden base piece. Neat and unusual piece is clean, bright and exceptionally nice (C. 8.5+) w/a couple very minor wave marks in bottom leg area (mentioned for accuracy, not detracting and hardly merits mention). Min. bid \$60.

Tin Litho



34). **Joseph Laurer Brewing Co. Sign.** 33.75 x 24" (curved dia.) very early, embossed tin litho corner sign (wooden frame on backside) for Joseph Laurer Brewing Co.'s Binghamton Lager Beer (Binghamton, NY). This important and all original piece is freshly attic picked and displays quite nicely, although there are a few light scuffs in bottom background area and a fair amount of scattered wear in the raised gilt lettering areas. Tough one to grade, but a (C. 7+/-) seems about right. Looks and displays nicely as it is (a little professional gold leaf work in gold lettering area would improve its appearance substantially). Min. bid \$1000.



35). Wooden Stoves Sign. 8-3/8 x 46" early, wooden painted sign for "Dockash" brand stoves, w/ a nice, rich, early surface patina. Sign is excellent overall, w/ just the right amount of light wear to give it a great early country folk art look (C. 8+). Framed (simple attractive black frame not original to piece). Min. bid \$50.



36). Flash Gordon Space Gun Toy. 4.5 x 10 x 2.5" ca. 1930's figural tin litho Flash Gordon "Radio Repeater Click Pistol" space gun toy by Louis Marx Co., as found in its original box. Toy is clean and very attractive overall (a strong C. 8+) w/ a little non-offensive minor surface darkening/oxidizing and wear (mentioned for accuracy, nothing that's at all serious or detracting); box is clean and excellent (box C. 8.5++). Min. bid \$40.



37). Primley's Gum Case. 9.5 x 18.5 x 12.25" early wooden curved glass countertop display case for Primley Co.'s chewing gum, w/ original painted reverse lettering on inside of glass. Finish to the advertising lettering on the curved glass is excellent and all original, w/ an area of silver loss on the mirror glass attached to the inside of backside door. There is some wear to wooden frame of case (including a small early repair spot on left side curved frame riser and some light expected light general surface wear on the original surface varnish of the case). Complete w/ metal makers plate (Riswig Co., Chicago). Min. bid \$70.



38). Frog in Throat Display Box. 6 x 10 x 3" nice early cardboard store display box for "Frog in Your Throat" brand lozenges featuring great image of Co.'s trademark frog on front and backside. Nice sized piece is attractive and displays great, w/ a slight bit of non-offensive light toning and some non-offensive light background staining (C. 7.5+/8). Min. bid \$40.



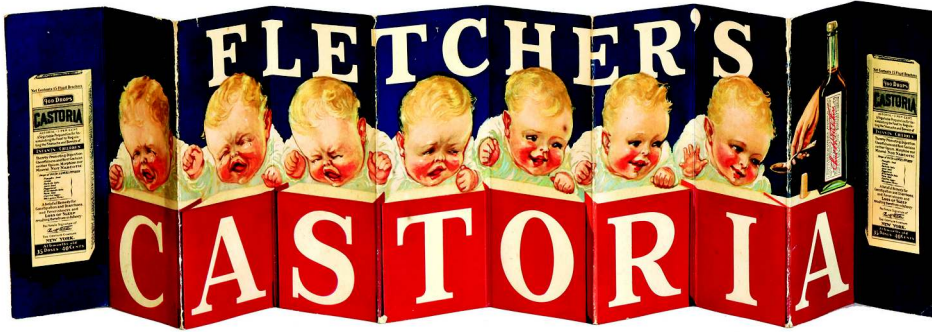
39). Orange Crush Sign. 21.25 x 16-5/8" vintage 1930's paper litho poster for Orange Crush soda featuring nice image of freckle faced kid holding up an early style bottle. Clean, bright and displays very nicely (as a C. 8++), w/ exception of non-detracting minor wrinkles, minor edge wear and a faint horizontal crease mark near the top (between "Hey Kids" and "Orange"). Min. bid \$40.



40). Columbia Brewing Co. Sign. 12.25" (dia.) early glass chain hung sign for Consumers Brewing Co. (New York) featuring beautifully detailed multi-color graphic factory scene (note: sign lights up and sparkles like stained glass when back lit). Clean, bright and exceptionally nice (basically near mint, w/ exception of minor wear at very outer edges of border). Min. bid \$70.



41). Strutting Sam Battery-Op Toy. 11 x 3.75" (dia.) early figural Japanese tin litho battery operated "Strutting Sam" black man dancing toy. Toy is clean and excellent overall (C. 8.5+), as found in its original box (box has minor soiling, toning and a little minor expected wear). Min. bid \$40.



42).Folding Drug Store Sign. 10-3/8 x 31" (As Shown) early cardboard accordion style folding display sign for Centaur Co.'s "Castoria" Children's Medicine. Clean and quite nice overall, w/ a little light wear along fold lines (C. 8+/-). Min. bid \$50.



43).Mack Trucks Paperweight Mirror. 2.5" (dia.) early, heavy celluloid covered paperweight mirror advertising Mack Trucks, featuring great image of early Mack gas powered Pabst Brewing Co. delivery truck. Clean and very nice overall appearance, although there is a little bit of non-offensive faint foxing on outside edge. Min. bid \$40.



44).Light Bulbs Display. 8.5 x 17 x 5.5" (base piece) early 2-sided light bulbs store display for General Electric Co.'s "National Mazda" brand. Lithographed tin on wooden base, w/ switches along top for testing individual bulbs. Very nice overall (a strong C. 8+) w/ a little minor wear from use. Comes complete w/ original cloth cord and early pointed top blown bulbs. Min. bid \$50.



45).Fly Swatters Display. 2-1/8 x 12.25 x 1" early wooden advertising countertop display rack for Jackson brand fly swatters. Has a rich, all original early surface finish, w/ attractive stenciled advertising on both sides and holes along top for displaying swatters (C. 8++). Lot includes six different early wooden advertising swatters for displaying on the piece. Min. bid \$50.



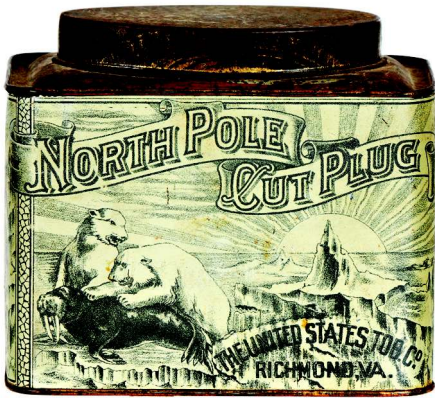
46).White House Coffee Sign. 13.75 x 8-5/8" early 2-sided, die-cut, tin litho flange advertising sign for White House brand coffee. A decent and quite respectable piece that displays nicely and appears to never have been used (it basically is a strong C. 8++ overall), and is clean and excellent overall, although there is some oxidized pitting and surface loss/wear scattered along the outer 1/4" outside edges of can, as well as a little bit of wear on bottom edge of hand and on non-graphic angled flange mount area. Min. bid \$100.



47).Sword Swallowing Act Poster. 43.5 x 29-3/8" great, large, early paper litho poster for "The Great Victorina Troupe"; a circus type act of sword swallowing feats featuring wonderful multi-color graphic images of group performing their outrageous and amazing feats. Clean, bright and very attractive appearance (basically a strong C. 8++), w/ a little minor toning and light repair in upper 4" of top section. Framed. Min. bid \$70.



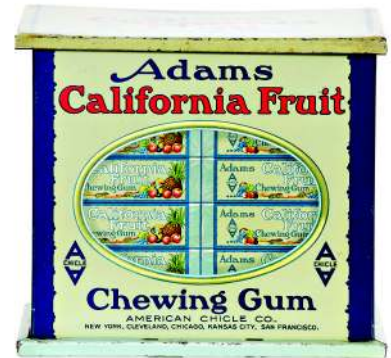
48).Ubero Coffee Grinder. 12.25 x 3.75" (wooden base) early wall mount style advertising coffee grinder. Has cast iron mechanism mounted to wooden base, w/ attractive tin litho "Ubero" brand 1 lb. coffee tin attached at top (tin measures 6.5 x 4.25 x 3.25"). Very nice overall condition, w/ a little minor expected light wear to tin (tin C. 8/-). Min. bid \$60



49).North Pole Tobacco Tin. 5.25 x 6 x 4" early oval top tobacco can for United States Tobacco Co.'s "North Pole" brand, featuring beautifully detailed art and polar bear scenes all around. Clean and very attractive in appearance (displays as a strong C. 8/+) w/ a little non-detracting minor background haziness and staining (critical grade C. 8/-). Min. bid \$50.



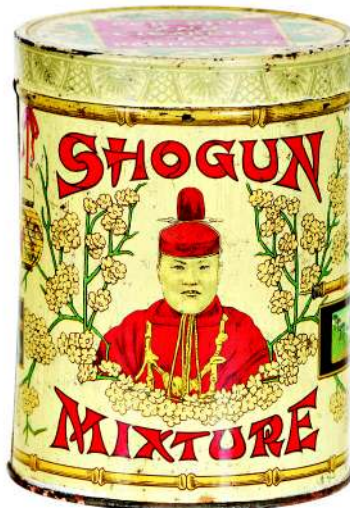
50).Winner Tobacco Box. 4.25 x 7.75 x 5" early tin litho lunch box style can for J. Wright Co.'s (Richmond, VA) "Winner" brand, featuring beautiful multi-color graphic race car scenes on front and back (tobacco packs pictured on sides). Clean, bright and very attractive, w/ a few tiny pings and a little non-offensive minor scattered wear (a nice solid C. 8/+). Min. bid \$50.



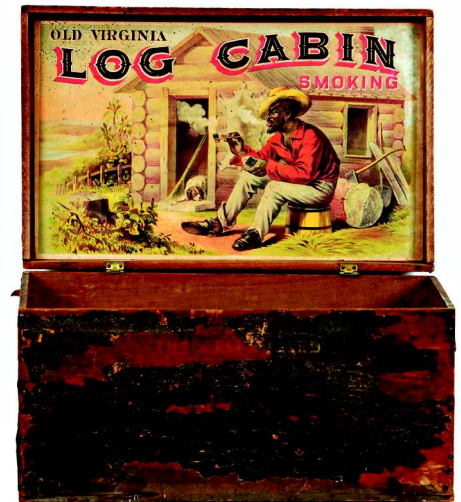
51).Adams Gum Tin. 5-7/8 x 6-5/8 x 4.75" scarce variation, early tin litho hinged lid store display tin for American Chicle Co.'s "Adams California Fruit" brand chewing gum, w/ beautiful multi-color graphic gum packages pictured all around. Clean, bright and exceptionally nice appearance (displays as a C. 8.5/+), w/ a little minor wear at bottom edge and a few minor bumps on lid (note: examination under black light will reveal a little extremely well done professional restoration on top of lid; so well done, not evident when viewed by naked eye). Min. bid \$50.



52).Emerson Bakelite Radio. 10.25 x 7.5 x 5.25" classic, ca. 1930's Emerson AU-190 mini-tombstone style deep butterscotch yellow colored Catalin (bakelite) tube radio. Freshly picked piece is excellent and appears all original (including matching knobs) w/ no cracks, chips or breaks to the case, and a rich, nicely marbled unpolished surface finish (note: original heavily frayed cloth wrapped cord on backside has an early spliced repair). Neat piece, displays great (my research suggests its best not to plug in period radios, so working state remains untested). Neat piece! Min. bid \$70.



53).Shogun Mixture Canister. 5.5 x 4.25" (dia.) extremely rare, early tin litho tobacco canister for Shogun Mixture, featuring great color lithography by Heekan Can Co. Has very strong colors and displays great, w/ a little minor soiling and light scattered wear (mostly confined to edges of lid and along very bottom edge of tin). Overall it rates a strong C. 8/+ (as found, might improve w/ cleaning). Min. bid \$250.



54).Log Cabin Tobacco Box. 16 x 14-5/8 x 9.25" (as shown lid open; 8 x 18-5/8 x 9.25 lid closed) very early wooden 15 lb. sized store display box for Roanoke Tobacco Works "Log Cabin" brand smoking tobacco, featuring beautiful multi-color graphic paper label on its inside lid. Outer box has the typical general to heavy wear to paper wrapping; inside label is clean bright and exceptionally nice (C. 8.5/+), w/ some non-offensive faint scattered flyspecks in upper left corner. Min. bid \$50.

Heinz Sample Pickles



55).Heinz Advertising Pickles. Lot includes five unusual, early and nicely detailed figural metal painted advertising pickles (zinc?) ranging in (sizes range from 2.75 x 1" (dia.) to 4.25 x 1.5" (dia.)). Each one is embossed "Heinz" w/ different hand-painted numerals (numbers range from 1300 to 5000). Neat and unusual pieces have great early painted surfaces, w/ a little early chipping and light paint wear on a three of them. Not sure if these were intended for use as salesman's samples or were possibly used for reference purposes at factory for sorting out different sized pickle varieties. Min. bid \$50.



56).Sweet-Orr Overalls Sign. 8 x 29-7/8" early, heavy enameled porcelain sign featuring great image of Co.'s trademark men pulling on overalls. Field of sign is clean, bright and exceptionally nice (C. 8.5++), and piece is basically excellent overall, w/ exception of a little non-detracting fairly minor oxidized wear in very outside edges. Min. bid \$60.



57).Tooth Paste Die-Cut. 9.75 x 5.5" early, die-cut cardboard, easel back stand-up counter sign for Euthymol brand toothpaste (Parke Davis Co., Detroit). Clean, bright and excellent (C. 8.5++). Min. bid \$40.

Advertising Paperweights



58). **Salesman's Paperweights.** Lot includes a nice group of six early, high quality, heavy miniature figural metal advertising paperweights ranging in height from 1.25" to 2.5". Includes: barrel (Berry Bros. Varnish Co.); compressor machine (Porter Cable Co.); electric meter (Sprague Meter Co.); fasteners (Genuine Crosby Co.); building block ("Stone-Crete" Cement Block Co.); and igloo (Castroville Cold Storage Co.). All are very good to excellent, w/ minor wear from use. Min. bid \$40 (the lot).



59). **Walter Sullivan Co. Match Safe.** 2.75 x 1.5 x 3/8" early, very high quality, celluloid covered pocket match safe advertising Walter A Sullivan Co.'s August & Taylor brand clothing, w/ great image of bulldog and American flag. Clean and excellent. Min. bid \$40.



60). **Amoco Badge.** 1.75 x 2.75" early celluloid service station attendants pin-back badge from an early Amoco gas station (made by Bastian Bros.). Clean, bright and excellent (near mint), w/ exception of very minor crimp mark. Min. bid \$30.



61). **Coal Wagon Paperweight.** 2.5 x 4 x 1" early, white milk glass bottomed glass advertising paperweight for Rimble & Welcher, a Patterson NJ dealer in coal and kindling wood, featuring great image of early coal wagon. Excellent. Min. bid \$40.



62). **Bee Soap Sign.** 9.25 x 19.5" early tin litho advertising sign for Bee brand soap, featuring beautiful multi-color graphic images of Co.'s product packages. Sign appears never used and is clean, bright and beautiful overall, w/ nice original surface sheen (a strong C. 8.5+), w/ a little non-detracting very minor storage wear and a slight hint of minor creasing (stated for accuracy, nothing that's offensive or detracting). Min. bid \$50.



Parker Vices
Iron Paperweights



63). **Parker Vice Co. Paperweights.** Lot includes two early figural cast iron advertising paperweights from the Parker Vice Co. (Meriden, CT). Includes: (1). Adorable figural bear 3.5 x 2 x 1.25" (Co.'s logo character) w/ embossed advertising and vice pictured on his coveralls (exceptionally nice); and (2) miniature figural cast iron vice, w/ embossed advertising 1.5 x 2.75 x 1-3/8" (very attractive) w/ a little light early scattered wear (C. 7.5+/8-). Min. bid \$40 (the lot).



64). **Betsy Ross Change Receiver.** 6.75 x 6.75 x 1.5" early, heavy glass advertising countertop change receiver for Valentine Co.'s "Betsy Ross" brand cigars. Clean, bright and exceptionally nice (near mint), w/ original label on base. Min. bid \$50.

Disney Store Badge



65). **Mickey Store Badge.** Large 3.5" (dia.) celluloid pin-back employees badge made for early department store toy section employees (Disney Enterprises). Bright and very nice overall. Min. bid \$40.



66). **Zingo Candy Tin.** 10 x 12.25" (dia.) impressive, large 20 lb. size store display tin for Euclid Candy Co. (Cleveland, OH) "Zingo" brand sweets, featuring a large and powerful image of Co.'s trademark early race car logo. Colors are bright and piece displays very nicely, w/ a little light scattered soiling, minor denting and wear (front C. 8+/-; back C. 7.5+/-). Min. bid \$50.



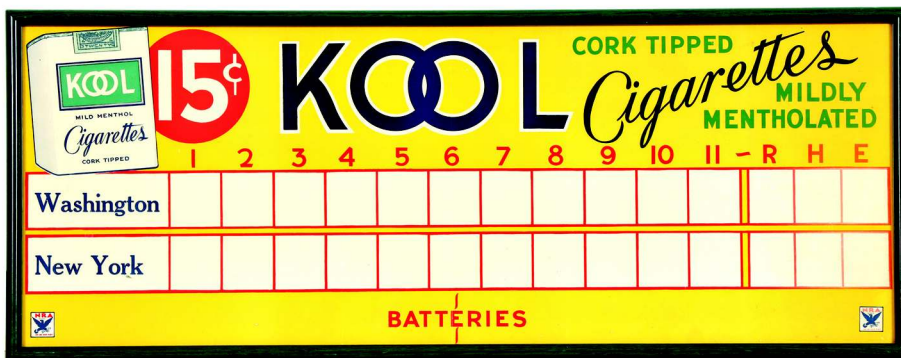
67) Buttermilk Sign. 4-1/8 x 9-1/8" small, early enameled white and deep cobalt blue colored porcelain "Fresh Buttermilk" sign. Very nice overall (a strong C. 8/+), w a little light wear in outer white border area and non-offensive small chip spot at bottom left edge of blue background area. Min. bid \$30.



68) United Lines Toy Truck. 4.5 x 13-7/8 x 3" unusual, early "United Van Lines" steel moving van toy by Marx Bros., as found still in its original box. Toy is clean, bright and excellent, and appears never used w/ nice surface sheen (a strong C. 8.5++). Box has some edge loss and light wear. Min. bid \$40.



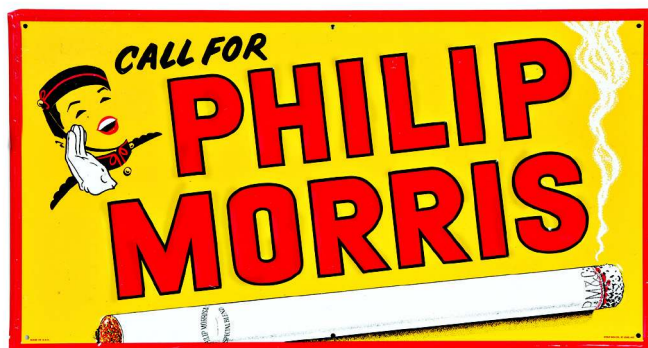
69) Face Creams Pocket Mirror. 1.75 x 2.75" scarce, early celluloid pocket mirror advertising Priscilla brand cosmetic creams, featuring graphic images of two different product jars. Celluloid is clean, bright and excellent (some darkening to mirror glass). Min. bid \$40.



70) Kool Cigarettes Scoreboard Sign. 14.5 x 37.25" large, ca. 1930's Kool Cigarettes advertising baseball scoreboard sign made for scoring game between Washington and New York. Clean and excellent overall (C. 8++). Framed. Min. bid \$40.



71) Coca-Cola Sign. 12.25 x 29.5" unusual, vintage ca. 1960's Canadian variation tin litho Coca-Cola soda w/ embossed self-framed edges. Clean, bright and excellent example (appears never used). Min. bid \$40.



72) Philip Morris Sign. 14.25 x 27" early, embossed, self-framed tin litho cigarettes sign for Philip Morris brand featuring nice image of large cigarette and Johnny. Clean, bright and very attractive, w/ minor skimming wear in outer red border area (C. 8.5/+). Min. bid \$40.

Union Pacific Railroad

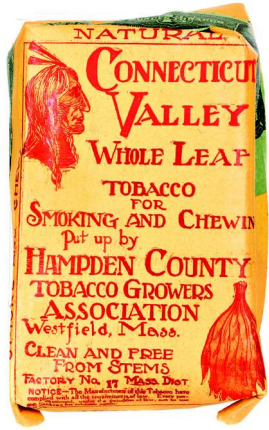


73) Union Pacific Railroad Sign. 20-7/8 x 27" (17 x 23" visible image) outstanding, very early (ca. 1880's) paper litho sign promoting the Union Pacific Railroad, featuring wonderfully detailed fine sepia tone image of an American bison. Clean, bright and exceptionally nice condition (C. 8.5+), beautifully framed. Min. bid \$70.

Harrington & Richardson Revolvers

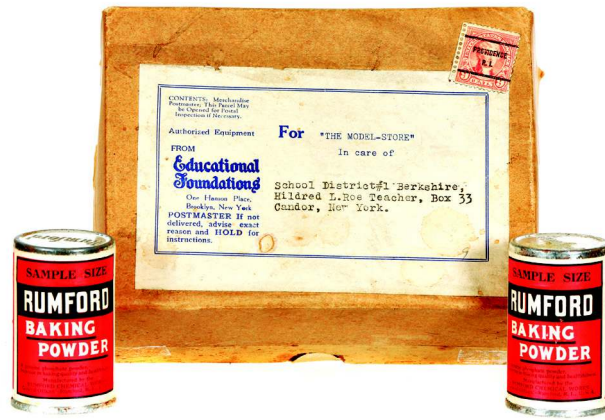


74) H & R Gun Sign. 10 x 13-5/8" early cardboard advertising sign for Harrington & Richardson Co.'s target grip revolvers. Clean and very attractive appearance, w/ very nice detailing (basically displays as a strong C. 8++), w/ exception of very minor edge soiling and a lightly pinched crease mark at upper outside right edge. Min. bid \$50.



75).Connecticut Valley Tobacco Pack. 5 x 3.25 x 2" full, sealed, early 1-3/4 oz. soft-pack style tobacco pack from Hampden County Tobacco Growers Assn. (Westfield, MA) featuring nice image of trademark Indian and bundled tobacco leaves (Series 1910 tax stamp). Clean, bright and excellent (C. 8.5+). Min. bid \$30.

Case Min. Tins



76).Baking Powder Sample Tins. Lot includes a full box of twelve ca. 1930's miniature paper label (over tin) Rumford Baking Powder sample cans w/ embossed tin lids (tins measure 2.5 x 1.5" (dia.)). These sealed, never opened empty dummy "Sample Size" tins are crisp and like new, as found still in their original mailing box (box was mailed to a school for educational use). Lot also includes a can shaped 2-sided cardboard ceiling hanger fan pull sign and misc. related Co. promotional ephemera. Min. bid \$50 (the lot).

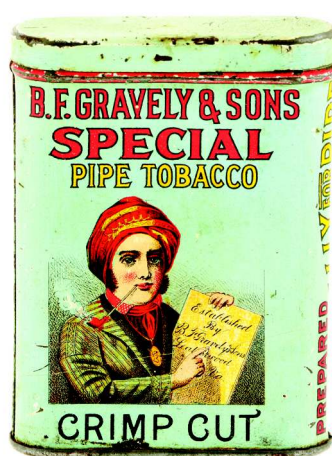
Sample



77).Gold Dust Miniature Sample Tin. 2.75 x 2" (dia.) full, sealed, very early miniature paper label "Free Sample" sample tin for Fairbank Co.'s "Gold Dust" brand scouring powder (tin top and bottom, w/ cardboard sides). Clean, bright and excellent (C. 8.5+). Min. bid \$30.



78).Miniature Vinegar Jug. 3-1/8 x 1-7/8" (dia.) early, miniature stoneware sample jug advertising the O.L. Gregory Vinegar Co., (Paducah, KY). Excellent. Min. bid \$40.

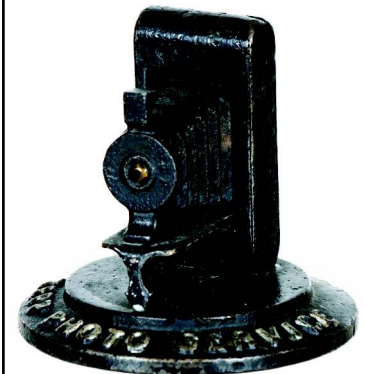


79).Gravely Special Pocket Tin. 4 x 3 x 7/8" early tin litho vertical tobacco pocket tin for B.F. Graveley Co.'s "Special" crimp cut pipe tobacco. Clean, bright and very attractive appearance (C. 8+) w/ some wear to lid. Min. bid \$50.

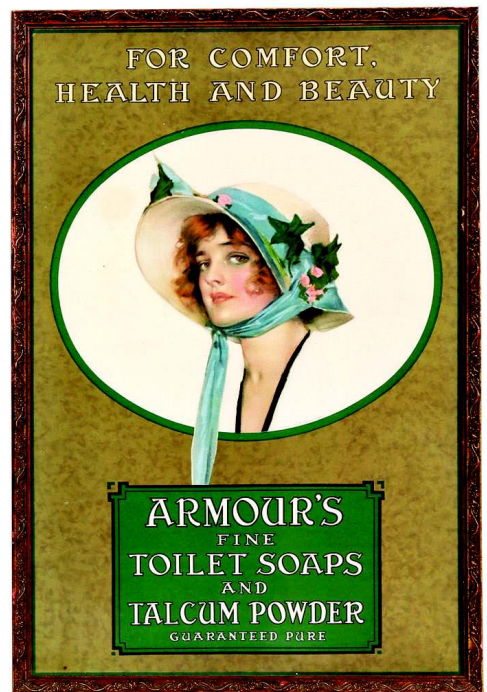
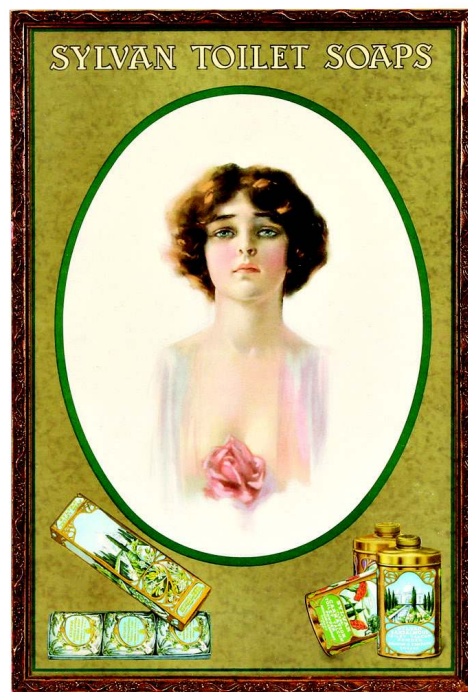


80).Enarco Motor Oil Bank. 4.25 x 3 x 3" outstanding, early tin litho advertising bank for "Enaroo" brand motor oil (Canadian Oil Co., Toronto), in shape of one of Co.'s commercial size motor oil cans. Clean, bright and like new (near mint), complete w/ miniature cap. Min. bid \$40.

Iron Paperweight



81).Camera Paperweight. 2-5/8 x 2.75" (dia.) great, early, figural painted cast iron advertising paperweight for "Zepp Photo Service" in shape of early camera. Excellent overall, w/ nice surface patina. Min. bid \$30.

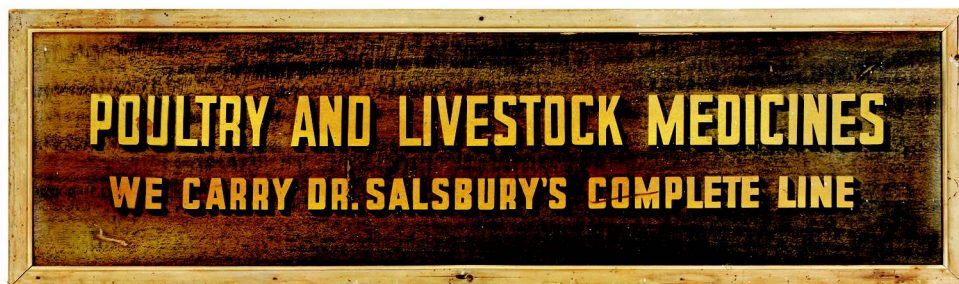


82).Armour's Complexion Signs. Lot includes a set of three early, nicely matched paper litho signs advertising Armour Co.'s "Sylvan" brand complexion soaps and talcs (ea. 18-5/8 x 12-5/8"). Impressive, nicely framed pieces are clean and excellent (C. 8.5+). Min. bid \$70 (the set).



83).Hy-Gee Prophylactic Tin. 1-5/8 x 1-7/8 x 1/4" unusual, early tin litho hinged lid product tin for "Hy-Gee" brand chemical prophylactic, complete w/ three treatment tubes inside. Excellent overall (a strong C. 8++), w/ a little light wear on non-graphic backside. Min. bid \$30.

Veterinary Medicine Sign



84).Dr. Salsbury's Vet Sign. 9 x 31" early cardboard advertising store sign for Dr. Salsbury's brand veterinary medicines, w/ slight convex curved surface. Decent overall w/ some light general wear (C. 8-). Framed. Min. bid \$50.



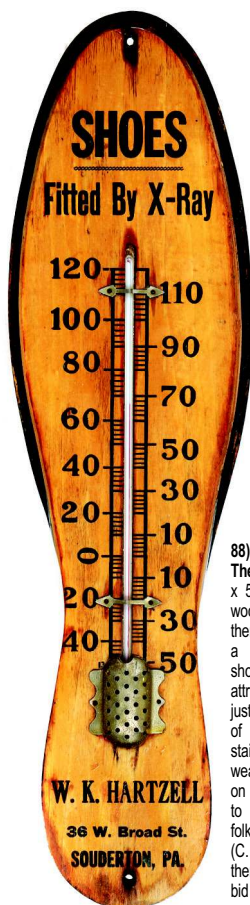
85).Ceresota Flour Match Holder. 5.5 x 2-3/8 x 1" early, embossed, die-cut tin litho advertising match safe for Ceresota brand flour featuring great embossed image Co.'s trademark kid. Clean, bright and exceptionally nice, as found never used still in its original box (box has some tears, tattering and is missing bottom flap section). Min. bid \$50.



86).2-Way Soda Clock. 2.5 x 8" (dia.) unusual, ca. 1960's small electric advertising clock for "2-Way" brand soda pop. Plastic construction, w/original cord. Nice overall, w/slight wear to outer clear protective covering lens. Min. bid \$30.



87).Tire Repair Display. 12.75 x 12.5 x 3-1/8" early tin litho countertop display stand for "Green Top" brand tire repair products. Clean, bright and very attractive overall (a strong C. 8++), w/ small wear spot on top hinged compartment cover. Min. bid \$40.



88).Wooden Shoes Thermometer. 21 x 5.75 x 7/8" early wooden advertising thermometer for a Souderton, PA shoe store. Very attractive piece has just the right amount of original light staining and slightly weathered patina on upper surface to give it a great folk art country look (C. 8+/-). Working thermometer. Min. bid \$50.

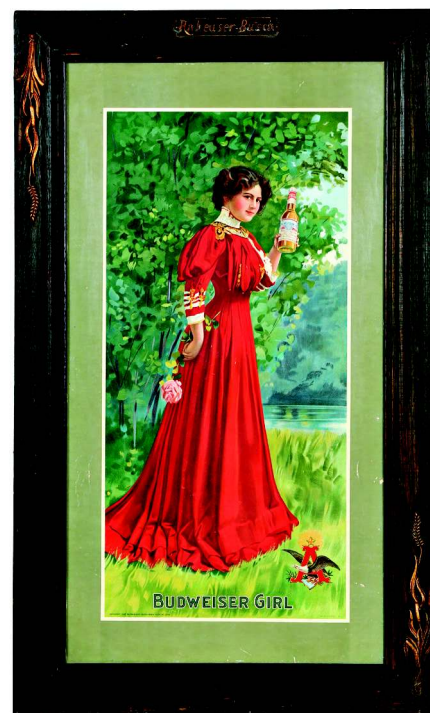


89).Shell Station Sign. 6 x 12" early, deep, heavy porcelain flange rest room sign from a 1920's Shell service station. Impressive piece has an especially nice appearance, w/ strong colors and nice original surface sheen, w/ a little typical expected edge wear (a strong C. 8+). Min. bid \$40.



90).Advertising Turtle. 5.25 x 3 x 1.25" unusual, early figural cast iron advertising turtle w/ a great folkie embossed beehive design on his shell (marked "Bee Hive Clothiers, Opera Block") w/ hinge in tail that lifts up to reveal compartment for holding matches. Excellent and all original, w/a nice rich, untouched surface patina (some light oxidizing on inside). Min. bid \$40.

Anheuser Busch Company
Budweiser Girl



91).Budweiser Sign. 39 x 23.5" (33 x 175" visible) early, very attractive paper litho sign featuring great image of Anheuser Busch Co.'s "Budweiser Girl" (dated 1907). Clean, bright and exceptionally nice (basically a strong C. 8.5+) w/ exception of a few scattered rubs in outer green border area (nothing serious or offensive). Complete in its beautiful original decorative marked frame (frame excellent). Min. bid \$150.



92). Squeeze Soda Ad. 4-7/8 x 17-5/8" unusual, early framed advertisement for Squeeze brand orange soda pop featuring wonderful image of trademark kids. Displays as a sign, but is actually a framed, never used transfer type window decal on original backing. Excellent. Min. bid \$40.

Fairbanks Co. Fairy Soap Box



93). Fairy Soap Box. 3 x 10 x 1.25" unusual, early wooden soap box given as a corporate gift by the N.K. Fairbanks Co. featuring beautifully detailed color graphic labels on top of lid and sides, w/ 6 wrapped bars inside (each features same great graphic Fairy image). High quality piece is very nice overall, w/ a little toning and light staining on top label (C. 8-). Min. bid \$40.

Telephone Co. Paperweight



94). Telephone Receiver Paperweight. 2-1/8 x 3-1/8 x 2-3/8" great early figural brass advertising paperweight for the Stromberg-Carlson Telephone Mfg. Co. featuring beautifully detailed nickel over brass finished figural image of Co.'s early telephone receiver (marked w/ Co. name and 1894 patent date). Excellent overall, w/ nice surface patina (minor pitting and wear to silver finish of receiver piece). Min. bid \$40.



95). Edgeworth Tobacco Tin. 3-1/8 x 4-3/8 x 3.25" small, rare variation Larus Co. Edgeworth brand tobacco can w/ humidor compartment on lid. All original, very nice overall condition (C. 8++), w/ exception of some light soiling and scuffs on the domed humidor lid (lid C. 7++). Min. bid \$40.



96). Miniature Coke Carrier. 2.5 x 2.5 x 1-5/8" early miniature cardboard Coca-Cola 6-pack carrier complete w/ all six original miniature embossed glass bottles (each painted to look full, w/ original metal caps on top). Neat piece, excellent condition. Min. bid \$40.



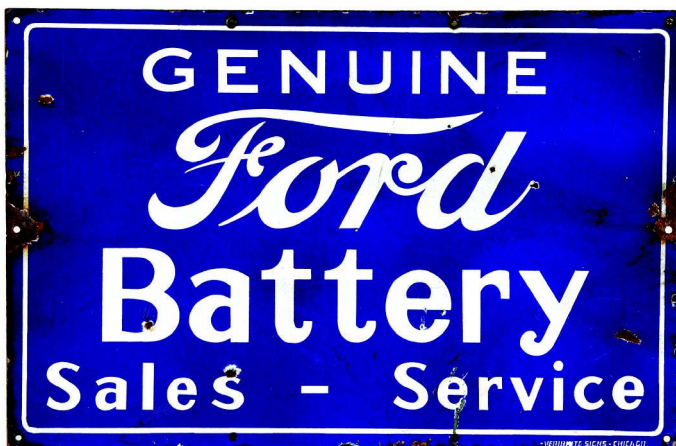
97). Hoody's Peanut Butter Pail. 3-3/8 x 3-7/8" (dia.) early tin litho 1 lb. peanut butter pail from Hoody Peanut Butter Co. (Portland, OR) w/ nursery rhyme images on backside. Clean and excellent overall (a strong C. 8++), w/ some darkening and wear to non-graphic lid. Min. bid \$40.



98). Gallaher's Tobacco Display. 3.75 x 7.5" (dia.) early figural papier-mâché advertising store display piece for "Gallaher's Twist" brand tobacco, featuring nicely detailed figural tobacco display w/ painted advertising lettering on top and around sides (has embossed lettering on side edges). Excellent overall, w/a nice rich patina to its paint surface and just the right amount of light aging and wear (C. 8+). Min. bid \$50.



99). Arch City Hay Co. Match Holder. 4 x 3-3/8 x 1-3/8" scarce, early tin advertising match holder for an obscure, early hay, grain and feeds outfit based in Columbus, OH (note 4 digit phone number on match basket). Attractive overall appearance, w/ a little minor wear (C. 8+-). Min. bid \$40.



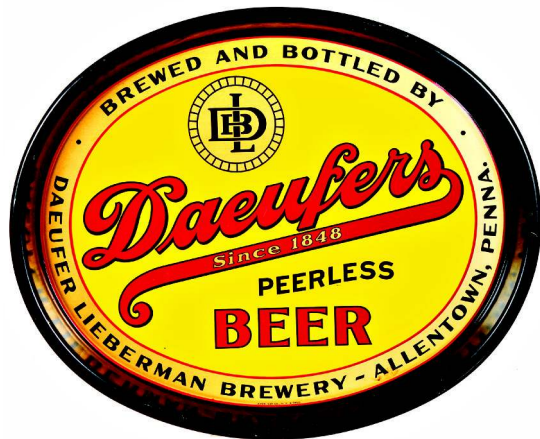
100). Ford Sign. 15 x 23" scarce and very early, heavy enameled porcelain Ford dealership sign (by Veribrite Sign Co., Chicago). Field of sign is pretty respectable, w/ good color and decent overall look, although there is some weathered chipping (especially at middle left and right edge hanging holes, w/ scattered small chip and wear spots w/ a little light bending/waving evident. As found, should improve w/ cleaning. Min. bid \$60.



101). Durham Tobacco Sign. 12.5 x 11" colorful and highly graphic 2-sided die-cut, string hung ceiling sign for Durham brand tobacco, featuring great images of Co.'s trademark bull on both sides. Clean, bright and exceptionally nice overall (C. 8.5/+), w/ only minor edge wear. Min. bid \$60.



102).Trucking Co. Snow Globe. 3.75 x 2.75" (dia.) vintage liquid filled glass snow globe style paperweight on heavy plastic base advertising "Mound City Forwarding Co." featuring Co. delivery truck against colorful city skyline. Excellent. Min. bid \$30.



103).Daeufer Lieberman Beer Tray. 12.5 x 15-1/8" early, oval tin litho beer tray for Daeufer Lieberman Brewing Co. (Allentown, PA). Clean, bright and like new in appearance, w/ exception of minor stain spot at 5 o'clock bottom edge (C. 8.5+). Min. bid \$40.

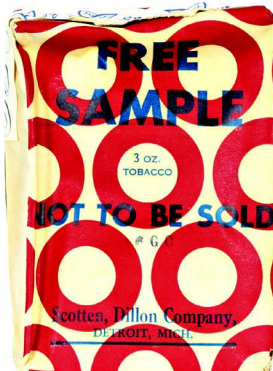


104).Black Crows Candy Tin. 3.25 x 4.25" (dia.) unusual, early tin litho 1 lb. candy tin for Masons "Black Crows" candy drops, w/ great images of crows around sides and on lid. Displays very nicely (a strong C. 8+), w/ only minor wear. Min. bid \$30.

Sample Packs

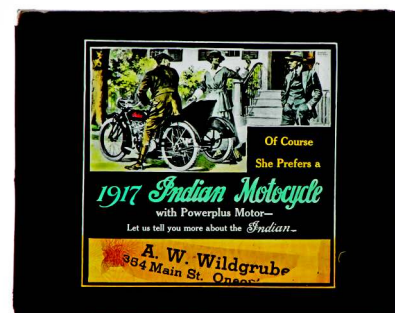


105).Planters Peanut Butter Pail. 4 x 3-5/8" (dia.) ca. 1920's 1 lb. tin litho peanut butter pail for Planters brand, w/ great action images of Mr. Peanut all around. Very attractive appearance (C. 8+) w/ a little minor scattered wear (early lid is not original to piece). Min. bid \$50.

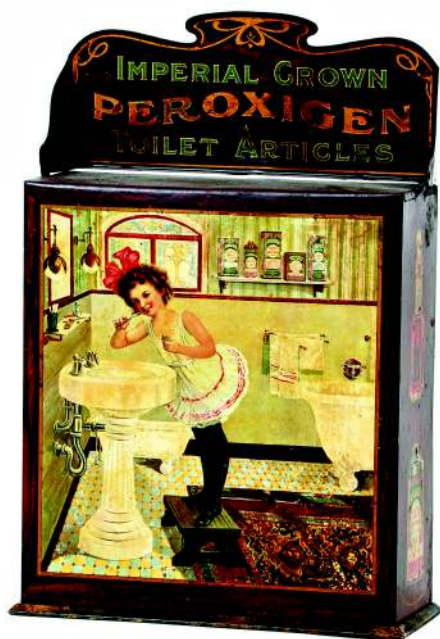


106).Tobacco Sample Packs. Lot includes two full, unopened early soft pack style "Free Sample" tobacco packages. Includes: "Mail Pouch" (very good, w/ a little light edge staining); and "Union Workman" brand (excellent). Min. bid \$30 (the lot).

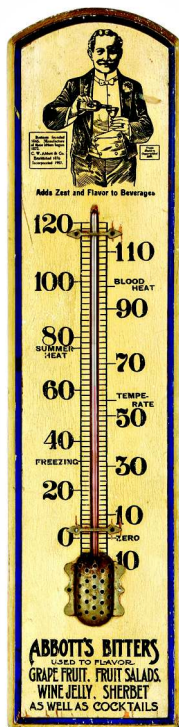
Indian Motorcycles



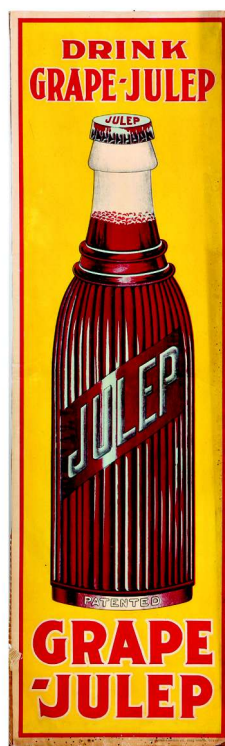
107).Indian Motorcycles Slide. 3.25 x 4" early hand-tinted glass plate photo advertising slide for an Indian Motorcycle dealership, featuring great image of early Indian bike (made for use in early theatres for projecting project ads onto screen). Excellent. Min. bid \$40.



108).Peroxigen Dental Cabinet. 20 x 13.5 x 5.5" scarce and important early tin litho countertop store display cabinet for Peroxigen brand products featuring wonderful image of young girl in Victorian bathroom brushing teeth using Co.'s tooth powder, w/ detailed images of Co. product containers on side panels. Displays pretty well (as a C. 7.5+), w/ nice color and attractive overall look, although there is some general light soiling and a fair amount of restoration on top and front panels of piece. Min. bid \$100.



109).Abbott's Bitters Thermometer. 21 x 5 x 3/4" early wooden advertising thermometer for Abbott's Bitters, w/ nice patina to its early and attractive paint surface. Excellent overall (a strong C. 8+), w/ just the right amount of character wear. Min. bid \$40.



110).Grape-Julep Sign. 39.75 x 12" early, heavy paper advertising sign for Grape-Julep soda featuring great image of company's 1920-30's type soda bottle. Clean, bright and very attractive (C. 8+/-) w/ a little bit of light storage toning along right outside edge. Min. bid \$40.



111).Grapine Syrup Bottle. 11 x 3-3/8" (dia.) scarce, early, label under glass soda fountain syrup display bottle for "California Grapine" brand soda, w/ hand applied lip and beautiful label. Excellent overall, w/ typical, very minor background soiling. Min. bid \$50.



112).Buckingham Tobacco Jar. 6.5 x 4.5" (dia.) early, heavy, 2-ps. glass jar for Bagley Co.'s "Buckingham" brand tobacco, featuring beautiful multi-color label. Clean and excellent (label C. 8.5/+). Min. bid \$40.



113).Wayne Brewing Co. Ashtray. 4.5" (dia.) early tin litho advertising ashtray for the Wayne Brewing Co. (Erie, PA) featuring beautifully detailed multi-color lithography. Clean, bright and exceptionally nice (C. 8.5++). Min. bid \$40.



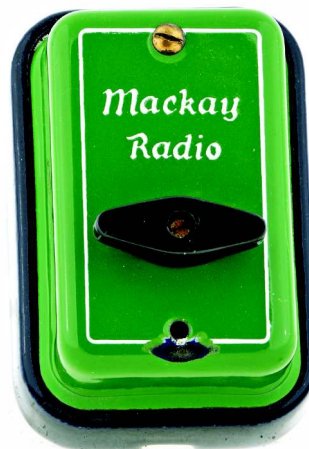
114).Cherokee Brewing Mug. 5.25 (h) x 3-3/8" (dia.) very early, blue decorated stoneware advertising mug from the Cherokee Brewing Co. (St. Louis, MO) featuring great embossed image of Co.'s trademark Indian w/ decorative hops and sprigs in background. Excellent overall, w/ a little minor staining and light wear at very top edge of rim area. Min. bid \$40.



115).Republic Motor Oil Can. 5-5/8 x 4" (dia.) early 1 qt. solder seam picture can for Republic brand motor oil, w/ nice image of Co.'s trademark eagle/shield (© 1936). Strong colors and great overall look, w/ only minor wear (heavy soiling on lid). Min. bid \$40.



116).Hi-Ho Pocket Tin. 4.5 x 3 x 7/8" scarce, early tin litho vertical tobacco pocket tin for Wasserman Co.'s "Hi-Ho" brand. Outstanding example is clean, bright and exceptionally nice, w/ tiny wear mark in upper right background area (C. 8.5+). Min. bid \$100.



117).Telegraph Call Box. 6-5/8 x 3-3/8 x 2-5/8" early heavy enameled Mackay Radio Co. porcelain telegraph call box w/ wind-up knob for notifying local office to send over a messenger to retrieve written message for sending "Radiogram telegraph messages worldwide and to ships using Co.'s private radio stations. Excellent overall, w/ exception of small chip at bottom hole (missing bottom screw). Min. bid \$40.



118).Big Chief Motor Oil. 5.5 x 4" (dia.) early tin litho 1 qt. crimp seam picture can for Mid-West Oil Co.'s (Kansas City, KS) "Big Chief" brand motor oil (same image on both sides). Full, sealed can has strong colors and displays very nicely, w/ a few light background scratches (front C. 8.5/+; back C. 8/+). Min. bid \$40.



119).Snider's Catsup Sign. 3-7/8 x 19-5/8" early, embossed tin litho country store strip sign for Snider's brand catsup. Clean, bright and very attractive, w/ nice surface sheen (basically a C. 8.5/+) w/ exception of minor crimping and small wear spot in upper left corner edge. Min. bid \$40.



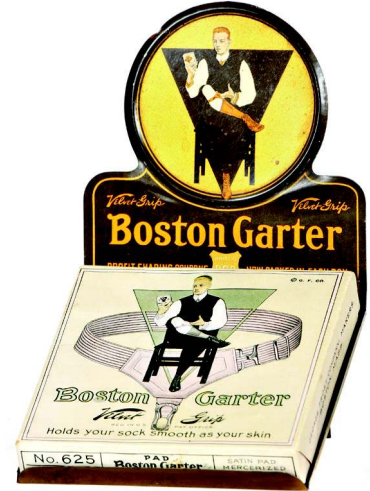
120).Dime Register Banks. (ea. app. 2-5/8 x 2-5/8 x 5/8") lot includes four nice early mechanical tin litho dime register banks (banks automatically register amount inside and unlock and open up at \$.05 amount). Banks are clean and very nice overall, w/ only minor wear from use (avg. 8+; couple minor background scratch marks on backside of elf bank). Min. bid \$40 (the lot).



121).Fixall Varnish Display. 25.5 x 34.25 x 6" great early cardboard window display for Louisville Varnish Co.'s "Fixall" brand finishes, wheat looking layered panels giving a shadow box style depth appearance. A powerful and impressive looking piece that displays very nicely, w/ a little light expected wear (including slight bit of darkening on right half side of piece- nothing that's offensive or detracting and paper tape reinforcement added to backside panel along vertical centerfold line (C. 8+/-). Min. bid \$50.



122).Edgeworth Tobacco Display. 27.25 x 38" (as shown) early tri-fold cardboard store display sign for Edgeworth brand tobacco featuring great color graphics and images of Co.'s various tins and packaging. Has bright colors and displays very nicely (as a strong C. 8+) w/a little light toning to man on rights face, a rub mark in upper dark background and a little light chipping wear in outer edges of red border area (note: folding side panels have been reinforced on backside w/tape). Min. bid \$50.



123).Boston Garter Display. 6.5 x 4.25 x 4-3/8" scarce, early tin litho countertop display rack for Boston Garters, featuring great image of Co.'s trademark man. Clean and very attractive overall (basically a strong C. 8+) w/ exception of a small, pretty minor dent/wear mark at 10 o'clock of top circular outer edge. Comes complete w/ an original product display box. Min. bid \$60.



124).Bohemian Mixture Tobacco Can. 4-5/8 x 4-1/8 x 4-1/8" scarce, early tin litho small top style can for Surdrug Co.'s "Bohemian" brand tobacco. Has a dent mark on one side, as well as a little fade and dulling to finish, but overall attractive and displays pretty well (C. 7+). As found, should improve w/ cleaning and polishing. Min. bid \$50.



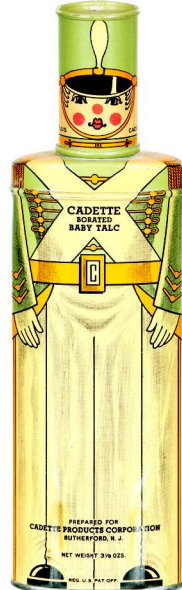
125).Fertilizers Salesman's Sample Kit. 5 x 8.5 x 1.5" Complete, early boxed salesman's sample set of fancy, high quality paper labeled glass sample bottles each containing samples of Crocker Co.'s (Buffalo, NY) various fertilizer products. Excellent. Min. bid \$40.



126).Wrigley Gum Plate. 10" (dia) scarce, early tin litho hanging art plate type advertising sign for Wrigley Co.'s Juicy Fruit gum, featuring beautiful multi-color lithography. Clean, bright and displays nicely w/ a little non-offensive light scattered wear and a couple litho chip/wear spots at outer 3 o'clock area (C. 7.5+/8-). Note: we sold this piece a couple years back-original buyer doing some major downsizing). Min. bid \$50.

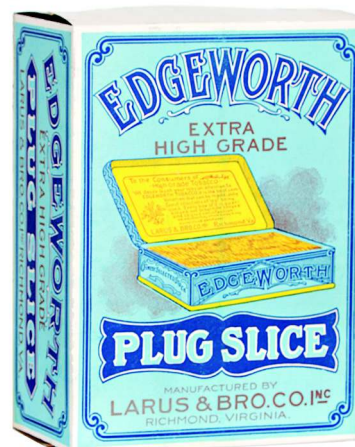


127).Stik-Zit Tire Patch Tin. 5 x 2" (dia.) early, tin litho tire patch tin for Stik-Zit Co.'s White Tube tire patches. Full tin is clean, bright and very attractive (C. 8++), w/some light oxidizing on back side edge of lid. Min bid \$30.

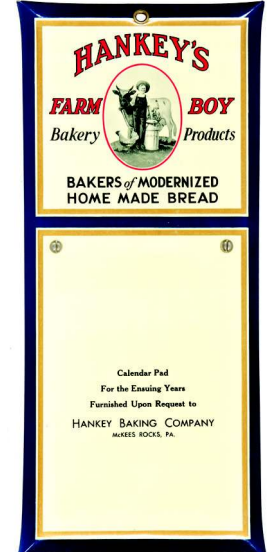


128).Cadette Talc Tin. 7.25 x 2.25 x 1.25" early, tin litho 3-1/8 oz. Cadette brand baby talc can in shape of toy soldier (Cadette Products Co., Rutherford, NJ). Full, never used can is clean, bright and like new (near mint). Min. bid \$40.

Store Display Box



129).Edgeworth Tobacco Display Box. unusual, early cardboard store display box for Larus Co.'s "Edgeworth" brand tobacco (backside shows colorful and attractive square corner tin w/ open lid). Clean, never used box is bright and excellent overall (C. 8.5+), exception of a some minor foxing/toning on narrow inside panel of lid and small pretty minor spot in outer white left side margin area. Min. bid \$40 ea. (have 2, winner can take one or both).



130).Farm Boy Bread Sign. 12-7/8 x 5.5" early, bevel edged celluloid over tin advertising sign for Hankey Baking Co. (McKees Rocks, PA) "Farm Boy" brand bread and bakery products, w/ nice image of Co.'s trademark farm kid. Clean, bright and like new (note: has an area at bottom for holding calendar pages). Min. bid \$40.



131).Clothes Wringer Salesman's Sample. 5 x 10.5 x 2.25" early, very high quality miniature working salesman's sample clothes wringer for American Wringer Co.'s "Horse Shoe" brand "Gem" model, w/ advertising at top for "Good-Will" brand soap. Very high quality working model is an exact miniature version of one of Co.'s full sized wringers and comes in its small, original marked box (box 3.75 x 7-3/8 x 4-3/8"). Wringer is excellent, w/a nice rich surface patina (C. 8.5+); box is fair to good, w/ some overall general darkening to surface and chipping loss along top edges (no lid). Min. bid \$50.



132).Bogey Ginger Ale Sign. 6 x 12" early reverse glass soda sign for "Bogey" brand ginger ale w/original chrome frame. Clean, bright and like new (near mint) w/ exception of a couple minor light oxidized stain spots at top edge of frame (cardboard backed, w/ fold out easel for countertop display). Min. bid \$40.



133).Key Wind Coffees. (ea. app. 4 x 5" dia.) lot of two different tin litho 1 lb. key wind coffee cans, including: "Princess Pat" brand (Jordan Stevens Co., various Midwest cities); and E.B. Millar Co.'s "Nut Brown" brand (Denver, CO). Both are clean, bright and excellent overall, w/ minor wear on each (C. 8++). Min. bid \$40 (the lot).



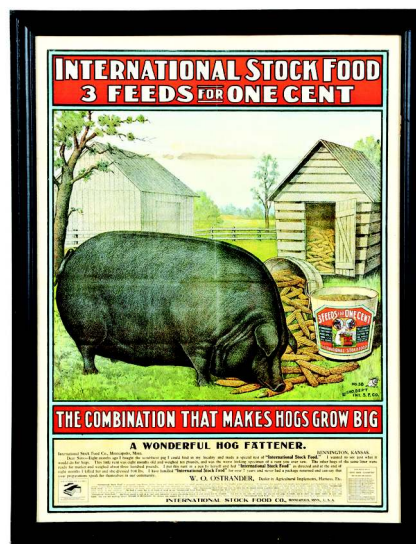
134).Oasis Cigarettes Display Box. 3.5 x 11.5 x 3.75" early metal framed countertop advertising display case for Oasis brand cigarettes, featuring beautiful multi-color graphic paper advertising images across inside of front panel glass. Has glass panels on front and top sides; the side panels, inside and hinged door on back are made of a wood grained finish fiberboard type material. Excellent overall (a strong C. 8++). Min. bid \$40.



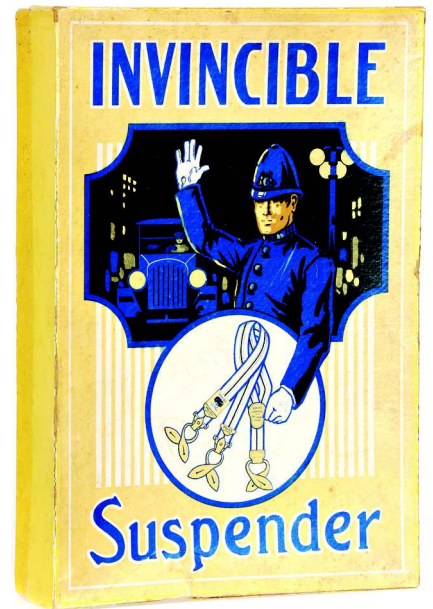
135).Mechanical Bird Match Holder. 3.25 x 4-5/8 x 2-7/8" early, figural cast iron mechanical match holder featuring hinged bird that bends down to spear stick matches w/its beak (and/or tooth picks). Has a great primitive folksy look, w/ just the right amount of rich, slightly oxidized nicely worn surface patina. Min. bid \$40.



136).Jewelry Store Sign. 26 x 14.25" w/ bracket (15 x 11-3/8" sign only) early, 2-sided porcelain jewelry store sign on its original iron bracket featuring nice pocket watch image (same image both sides). Clean and very attractive (C. 8.5++). Min. bid \$50.



137).International Stock Food Poster. 30.25 x 23.25" (27-3/8 x 20.5" visible) impressive, early paper litho poster for International Stock Food Co.'s veterinary stock food tonic, featuring beautiful multi-color lithography. Clean, bright and exceptionally nice appearance (basically a C. 8.5+ overall), w/ exception of faint water staining in upper background sky area (not at all serious or offensive and does not detract from great overall look of piece), w/ typical factory fold lines found on these various posters that Co. created. Framed. Min. bid \$50.



138).Invincible Suspenders Box. 14.75 x 10 x 2-7/8" early, 2-ps. cardboard store box for Invincible brand suspenders, featuring great nighttime image of traffic cop and early auto. Piece is bright, attractive and displays nicely, w/a slight bit of background pinching and a little minor soiling (C. 8+/-). Min. bid \$40.



139).New Home Sewing Machines Sign. 6.25 x 38" very early, cardboard litho strip sign for "New Home" brand sewing machines, featuring nice image of early machine and Co.'s trademark dog. Has a nice overall appearance (C. 8+/-), w/ light even toning and a little chipping wear at bottom left corner edge. Min. bid \$40.

Standard Oil Company



140).Standard Oil Match Safe. 2-7/8 x 1.5 x 3/8" early, celluloid covered pocket match safe advertising Standard Oil Co.'s engine oils, w/ attractive images of different early oil barrels on each side; (note: has unusual cigar clipping mechanism at base). Clean and excellent overall. Min. bid \$40.



141).Pickwick Coffee. 4 x 5-1/8" (dia.) early, tin litho 1 lb. coffee can for Kansas City Wholesale Grocery Co. (Kansas City, MO) "Pickwick" brand (shows colorful and graphic coffee plantation on backside). Clean, bright and excellent overall (C. 8.5), w/ exception of some scattered wear to gold flash finish on lid. Min. bid \$40.



142).United Stores Candy Tin. 3-1/8 x 6 x 3-7/8" scarce, early, tin litho 1 lb. children's candy tin for United Retail Stores "Nursery Candies". Colorful and highly graphic tin is covered w/ great nursery rhyme and animal characters all around (lithography by Tindoco). Clean, bright and excellent overall (C. 8+), w/ small wear spot on lid (under clasp). Min. bid \$40.

Large Spice Tins



143).Jumbo Peanut Butter Jar/Bank. 3.5 x 3.25 x 1-5/8" scarce, early figural green colored, heavy embossed glass store jar for Frank Tea and Spice Co.'s "Jumbo" brand peanut butter w/ lithographed tin lid. Excellent overall, w/ some darkening to lid (note: lid has push in slot on it made for using later as a bank). Min. bid \$40.



144).Large Spice Tins. Lot includes two large sized tin litho mustard spice tins: "Hollywood" (6.5 x 4.25 x 2.25") 1 lb.; and "Max-i-Mum" brand (5 x 3-5/8 x 1-7/8") 8 oz. Both are clean, bright and excellent (C. 8++). Lot also includes a 4 oz. Baltimore Spice Co. "India Girl" paper label poultry seasoning tin (C. 8+). Min. bid \$30 (the lot).



145)."Good For" Saloon Mirror. 2.25" (dia.) scarce, early celluloid "Good for 12-1/2¢ in Trade" advertising pocket mirror from the Bodega Bar & Café (Shelton, WA) featuring attractive, hand-tinted sepia tone photo image of young girl holding flowers. Clean and excellent (made by Globe Adv. Novelty Co., Salt Lake City, UT). Min. bid \$40.

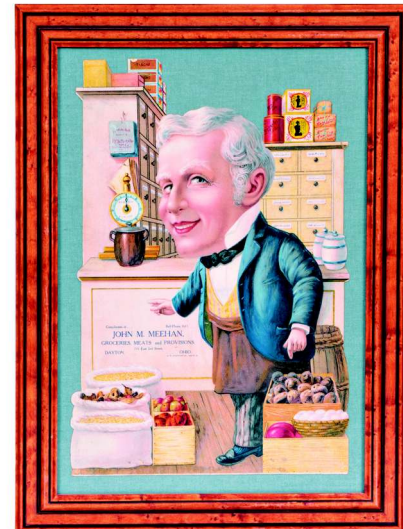
Music Store Die-Cut



146).Music Store Die-Cut. 10-3/8 x 5-1/8" early, embossed cardboard die-cut sign w/ shiny finished lithography, advertising a Pottstown, PA music store. Attractive piece is clean, bright and excellent (C. 8.5+). Min. bid \$40



147).Evans & Watson Safes Co. Sign. 14 x 10" very early tin advertising sign for Evans & Watson's Co.'s safes, featuring a wonderful looking fine gold on black design, w/ nice image of early safe. Clean and excellent overall (basically a strong C. 8.5/+), w/ exception of a small chip spot in bottom middle lettering area. Min. bid \$50.



148).Country Store Die-Cut. 17-7/8 x 13-1/8" (sign 14 x 9.25") outstanding, early embossed advertising die-cut sign on heavy cardstock for John Meehan, a Dayton, OH grocer, featuring a finely detailed, beautiful early shiny finished multi-color lithography). Clean, bright and exceptionally nice (C. 8.5++), presented in an attractive wooden frame. Min. bid \$50.



149). "To Trains" Sign. 3.5 x 18" primitive, very early, heavy porcelain "To Trains" sign. Neat and unusual piece in very nice, all original condition (very minor weathering and slight wear in very outer white border area). Min. bid \$40.

Borden's Cap Badges



150). Borden's Cap Badges. Lot includes two different early high quality brass advertising uniform cap badges for a Borden's Dairy driver (ea. 1-5/8 x 2.75"). Both are clean and exceptionally nice (like new). Min. bid \$30 (the lot).

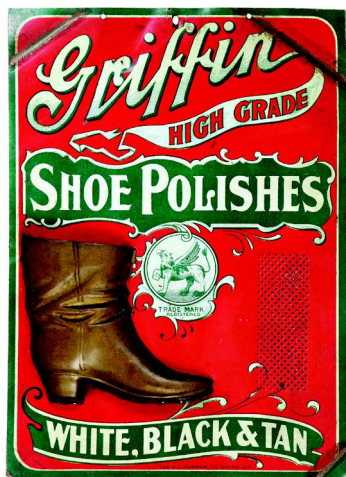
Lion Cap Gun



151). Lion Cap Gun. 3 x 5.25 x 1/2" early, embossed cast iron cap gun for "Lion" brand, w/ figural lion head design at back end of barrel (embossed "Lion" on front w/ 1890 patent dates on backside). Has a little minor light oxidizing on upper surface, but a decent and attractive example overall. Min. bid \$50.



152). Jersey Ice Cream Sign. 5-7/8 x 13-5/8" early, bevel edged tin litho advertising sign for "Jersey" brand ice cream, w/ nice image of Co.'s trademark girl (Leyse Aluminum Co., Kewaunee, WI). Clean and attractive in appearance (basically a C. 8/+), w/ exception of a little light speckling and wear in the outer beveled border area. Min. bid \$50.

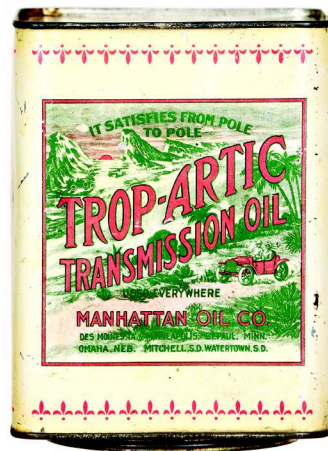


153). Griffin Match Holder. 6.75 x 4-7/8" scarce, early tin litho advertising match holder for "Griffin" shoe polishes, w/ embossed figural brass boot piece for holding match sticks. Has strong colors and displays nicely (as a C. 7.5/+), w/ a little litho loss at three outer edge bend marks. Only example of this rare holder I remember seeing (minor restoration at three bend marks would improve it to a C. 8.5/+ appearance). Min. bid \$50.



154). Lady Legs Corkscrew. 2-5/8 x 1.25 x 3/8" very early, high quality German made figural mechanical corkscrew featuring heavy celluloid stocking legs and nickel finished detailing. Very nice condition, w/ only minor wear from use (C. 8+). Min. bid \$40.

155). Trop-Artic Transmission Oil Can. 6.75 x 5 x 5" great early tin litho small top product can for Manhattan Oil Co.'s "Trop-Artic" brand transmission oil featuring wonderful image of Co.'s North Pole and early car driving in tropics trademark. Clean and very attractive appearance (a strong C. 8/+), w/ a little minor scattered background wear (note: can was manufactured upside down w/ lid on bottom). Min. bid \$50



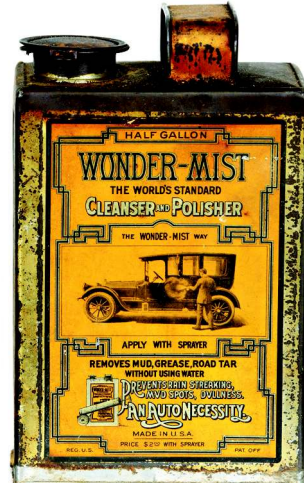
156). Spinner Motor Oil. 5.5 x 4" (dia.) early tin litho 1 qt., crimp seam oil can for Top Oil Co.'s (Lubbock, TX) "Spinner" brand motor oil (same image on both sides). Has strong color and displays very nicely, w/ small chip spot at bottom edge of backside (front C. 8.5/+; back C. 8++). Note: base possibly has been professionally replaced. Min. bid \$40.



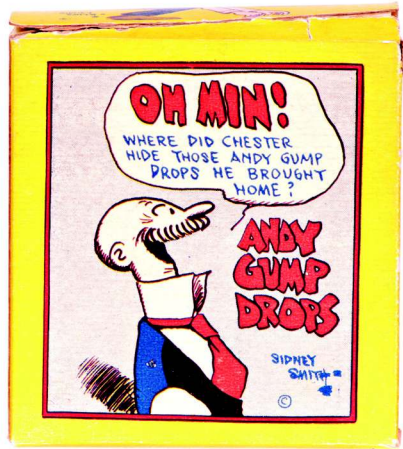
157). Ginger Ale Pocket Mirror. 2.75 x 1.75" scarce, early celluloid advertising pocket mirror for "Red Rock" brand ginger ale, featuring a wonderful color graphic image. Clean, bright and excellent in appearance, although close examination will show a few minor bumps on surface and a tiny, barely noticeable cut mark in dark hair area. Min. bid \$50.



158). Capitol Spice Tin. 3-1/8 x 2-3/8 x 1-3/8" scarce, early tin litho 2 oz. spice tin (mustard) for "Capitol" brand (Andrus-Scofield Co., Columbus, OH) featuring nice image of Co.'s capitol building logo (same image both sides). Clean and very attractive, w/ a little faint soiling and slight wear on backside (front C. 8.5/+; back C. 8/-). Min. bid \$30.

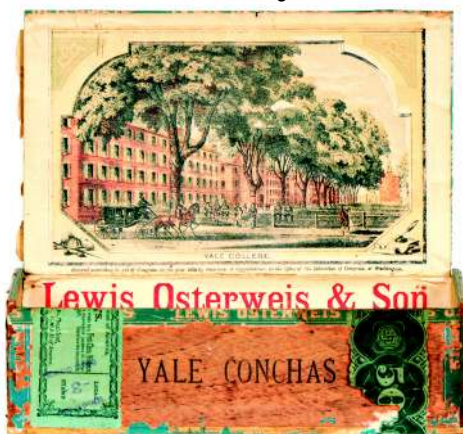


159). Wonder-Mist Car Polish. 8.25 x 5 x 3-3/8" early 1/2 gallon size tin litho product can for Wonder-Mist Co.'s auto cleanser and polish misting spray, w/ nice image of man applying product to early auto. Attractive and displays nicely, (C. 8/-), w/ minor soiling and darkening (as found, should improve w/ cleaning). Min. bid \$40.



160). Andy Gump Candy Box. 3-7/8 x 3-5/8 x 1.75" early cardboard candy box for "Andy Gump Drops" brand gum drops candies (J.N. Collins Co., Minneapolis, MN), w/ great images of the syndicated comic strip character all around. Clean, bright and excellent overall (note: has tape reinforcement on bottom of inside flap of lid-not visible unless opened). Min. bid \$40.

Yale College



161). Yale College Cigar Box. 7 x 8-1/8 x 4.75" very early wooden cigar box w/ outstanding early paper litho label inside of Yale College (New Haven, CT) w/ 1873 copyright (1883 tax stamp). Excellent overall (label C. 8.5+), w/ a little minor expected wear to blue bands on outer box. Min. bid \$30.



162). Cigar Lighter/Holder. 7.55 x 7.25 x 3.75" unusual, early, heavy figural metal countertop cigar holder and lighter on stone base (urn holds cigars and the man's hinged hat tilts back to reveal body cavity inside that holds lighter fluid which wicks through his cigar to offer steady light). Excellent overall, w/ minor wear from use. Min. bid \$40.



163). Red Ball Cigar Box. 6.25 x 4-1/8 x 6-3/8" lid open (5-1/8 x 4-1/8 x 1-3/8" lid closed) small, 12 count size wooden cigar box for "Red Ball" brand cigars featuring beautiful, multi-color graphic image of well dressed couple rolling giant red baseball on inside label (has same image stenciled on outer lid). Excellent overall (a strong C. 8++), w/ Series 1901 tax stamp (inside label near mint). Min. bid \$40.



164). Old Seneca Cigar Can. 5.75 x 4.25" (dia.) early tin litho 25 count cigar can from W.H. Kildow Co. (Tiffin, OH), w/ attractive image of Co.'s trademark Indian character (dark green background variation). Clean, bright and attractive appearance (C. 8/+), w/ a non-offensive slight hazy spot in bottom priced section (probably had factory paper price change label covering over it). Min. bid \$40.



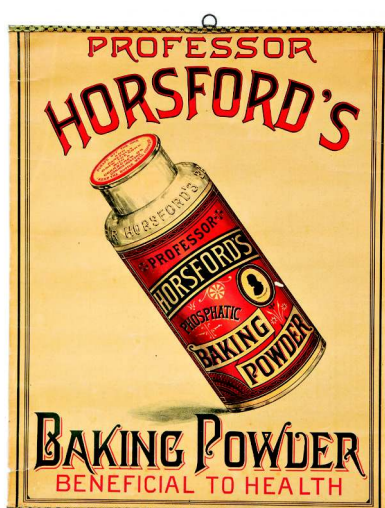
165). Yacht Club Pocket Tin. 4-5/8 x 3 x 7/8" scarce, early tin litho vertical tobacco pocket tin for Lorillard Co.'s "Yacht Club" brand. Full, sealed, never opened tin is clean, bright and very attractive in appearance (basically a strong C. 8+), w/ a little light chipping wear around hinge area on backside of lid and a little expected light scattered rubbing and wear scattered (mentioned for accuracy, fairly minor not at not offensive). Min. bid \$50.



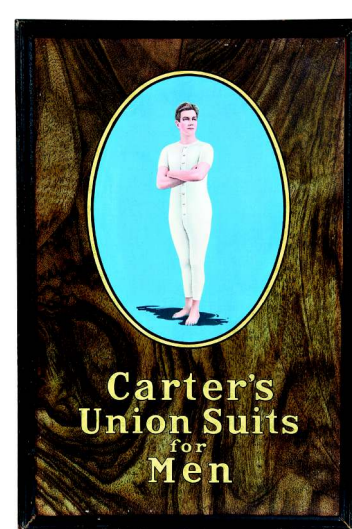
166). Kit Carson Cigar Box. 6.5 x 3-7/8 x 5" lid open (5 x 3-7/8 x 1.5" lid closed) unusual, small, 12 count size wooden cigar box for "Kit Carson" brand cigars, featuring great Western scene images (same image on inner and outer lid labels). Excellent overall (a strong C. 8++), w/ Series 1901 tax stamp. Min. bid \$40.



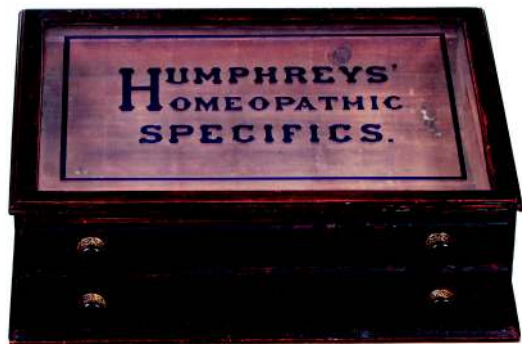
167). Washington's Coffee Sign. 17.5 x 10-3/8" early 2-sided tin litho flange sign for Washington's brand coffee (litho. by American Art Works). Has strong colors and displays quite nicely (basically as a C. 8+-), although close examination will show a little light chipping and some non-offensive light scattered wear (critical grade C. 7.5+). Min. bid \$60.



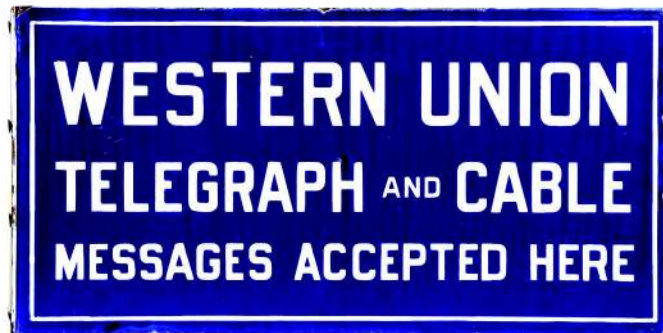
168). Horsford's Baking Powder Sign. 15-1/8 x 11-7/8" very early paper litho sign (w/ original metal strips on top and bottom) for Professor Horsford's Baking Powder, featuring nice image of Co.'s early labeled product bottle. Clean, bright and very attractive appearance (displays as a strong C. 8++), w/ a few barely noticeable small closed tears on edges (reinforced w/ tape on backside). Min. bid \$50.



169). Carter's Union Suits Sign. 11.75 x 7-7/8" (10-7/8 x 7" visible) early tin litho sign featuring great color graphic image of man standing in Co.'s union suit (long underwear). Clean, bright and very attractive (C. 8.5+). Nicely presented in period wood frame. Min. bid \$50.



170).Humphrey's Medicines Cabinet. 7.5 x 22 x 17" early wooden 2-drawer countertop display case for Humphrey's Homeopathic Medicines, featuring beautiful, deep, heavy cobalt blue glass lettering on the display glass at top (allows for viewing of medicines inside the top drawer). All original and very nice overall, w/ a little minor wear from use. Min. bid \$70.



171).Western Union Telegraph Sign. 9 x 18" early, 2-sided heavy porcelain flange sign for a Western Union telegraph station. Clean and excellent overall, w/ nice original sheen (basically a C. 8.5+), w/ exception of a little non-serious edge chipping. Min. bid \$50.



172).Coca-Cola Apron. 21.5 x 14" (not including ties and neckband) early, canvas type cloth ballpark vendors apron advertising Coca-Cola featuring nice image of early style bottle. Has nice patina and great overall look, w/ just the right amount of wear from light use (C. 8+). Makes great wall hanger. Min. bid \$30.



173).Gillette Safety Razors Sign. 13" (dia.) early 2-sided tin litho die-cut sign for Gillette brand safety razors, featuring great image of man shaving (same image on both sides). Clean and very attractive in appearance (basically a strong C. 8+), w/ exception of a little non-offensive light scattered wear in outer black circular background area. Min. bid \$100.



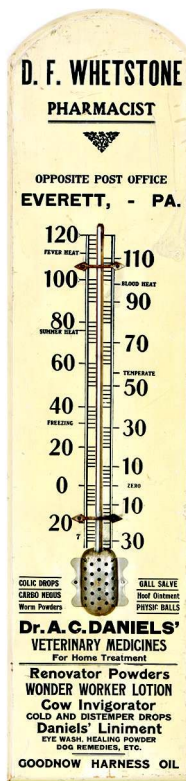
174).Mickey Pencil Holder. 8.5 x 5 x 1" ca. 1920's/30's figural Mickey Mouse pencil holder by Dixon Products Co. featuring nicely detailed embossed image of early pie-eye styled Mickey (composed of a hand-painted heavy composition papier-mâché type material). Very nice overall (C. 8+), w/ a little light scattered edge wear. Min. bid \$40.



175).Skin Medicine Display Box. 8.5 x 5.5 x 7-1/8" full, early store display box for "Tar-Oid" brand skin diseases cure, w/ beautiful multi-color graphic label on inside lid, complete w/ its twelve full product packages inside. Very nice overall (C. 8+), w/ a little bit of slight scattered staining on a few of product packages. Min. bid \$50.

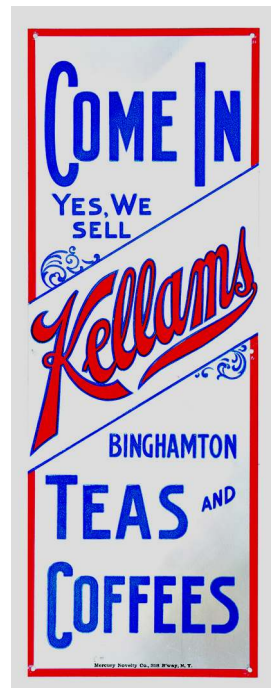


176).Blue Seal Syrup Bottle. 11 x 3-3/8" (dia.) scarce, early label under glass soda fountain syrup display bottle for "Blue Seal" brand Birch Beer Soda (McKey & Co., Boston, MA), w/ hand applied lip and very nice advertising label. Excellent overall, w/ a few faint, barely noticeable freckled speckle spots in background (mentioned for accuracy-so minor barely merits mention). Min. bid \$50.



Dr.
Daniels
Veterinary

177).Dr. Daniels Veterinary Thermometer. 24 x 5-7/8" early wooden thermometer for Dr. Daniels Veterinary Medicines, w/ listing of Co.'s home treatments in bottom section and local advertising for an Everett, PA pharmacist at top (has original Daniels paper label on backside). Attractive and displays very well (C. 8+), w/ a little non-offensive minor soiling and light wear on upper surface (tube not working). Min. bid \$40.



178).Kellam's Door Push. 11 x 4" early country store advertising door push on lithographed aluminum for Kellam's Co.'s (Binghamton, NY) Teas and Coffees. Never used piece is clean, bright and like new. Min. bid \$40.



179).



Cigarette Lighter



179). Spark Plug Lighter. 2 x 5/8" (dia.) small, early, Bosch brand spark plugs advertising cigarette lighter. Very high quality metal and ceramic piece looks just like a real spark plug, but pulls apart in center to reveal lighter wand inside. Excellent. Min. bid \$30.

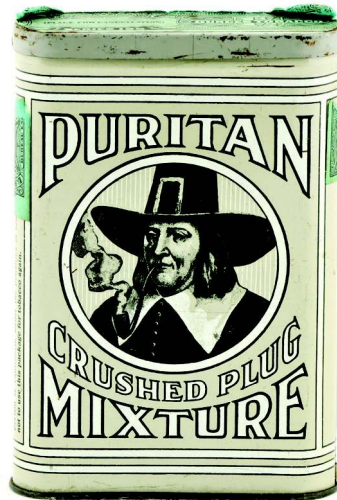
180).



180). Black Man Mechanical Toy. 6.5 x 5" early die-cut tin litho mechanical toy featuring great image of well dressed black man (note: lifting his arms makes his hat rise, his eyes and tongue move and his legs go up and down). Has strong color and displays and works well, although there is some minor scattered wear and some slight waves and slight bends (C. 8/-). Min. bid \$40.



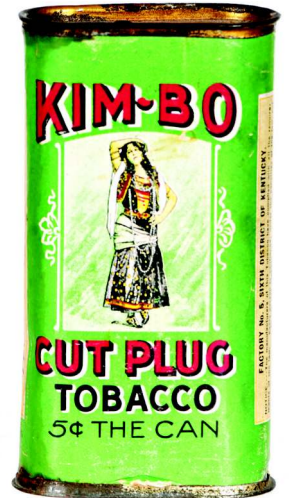
181). Frontier Oil Can. 5.5 x 4" (dia.) scarce, early tin litho 1 qt. solder seam picture can for Frontier Refining Co.'s ultra lube motor oil. Has strong color and displays nicely, w/ some scattered wear/loss spots and some light oxidizing on lid (C. 7.5+). Min. bid \$40.



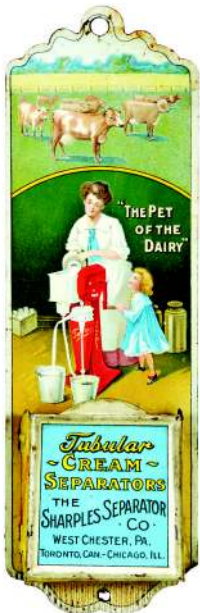
182). Puritan Pocket Tin. 4.5 x 3 x 7/8" early, tin litho vertical tobacco pocket tin for Philip Morris Co.'s "Puritan" brand, w/ nice image of Co.'s trademark Pilgrim character. Clean, bright and excellent (C. 8.5+). Min. bid \$40.



183). Tamco Spice Tin. 3 x 2.25 x 1.25" early tin litho spice tin for Tamco brand ginger (Taylor McLeish Co., Detroit, MI) w/ very attractive color graphics (same image both sides). Clean, bright and exceptionally nice (C. 8.5++). Min. bid \$40.



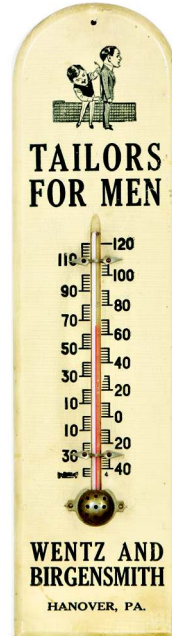
184). Kimbo Tobacco. 4.25 x 2-3/8 x 1-1/8" early vertical pocket tin for Lowell & Buffington Co.'s "Kim-bo" brand tobacco, w/ cardboard body and tin top and bottom. Full tin appears never opened and is clean, bright and excellent overall in appearance (basically a strong C. 8++), w/ a little non-offensive minor darkening/very slight staining at top and bottom left side edges. Min. bid \$40.



185). Sharples Match Holder. 6-7/8 x 2-1/8 x 7/8" early tin litho match holder advertising Sharples brand cream separators, w/ nice image of mother and young girl using Co.'s separator. Clean and very attractive appearance (a strong C 8/+), w/ just a little minor scattered wear. Min. bid \$40.



186). Deer Pencils Thermometer. 11 x 1-7/8 x 3/8" early painted wooden pencil shaped advertising thermometer for "Deer" brand pencils w/working thermometer tube. Clean and excellent overall, w/ nice surface patina (a strong C. 8++). Wire piece on backside for hanging is not original to piece. Min. bid \$40.



187). Tailors Thermometer. 15 x 3-7/8" early wooden painted advertising thermometer for Wentz and Birgensmith Tailors (Hanover, PA), featuring nice image of tailor fitting a customers suit. Excellent overall (C. 8++), w/ nice surface patina. Min. bid \$40.



188). Advertising Doll. 14" (h) figural ca. 1950's/60's vintage advertising doll from the Allied Moving Co., featuring a Buddy Lee type plastic character doll dressed in Co.'s moving van drivers uniform. Excellent (a strong C. 8++) and appears all original (no belt). Min. bid \$40.



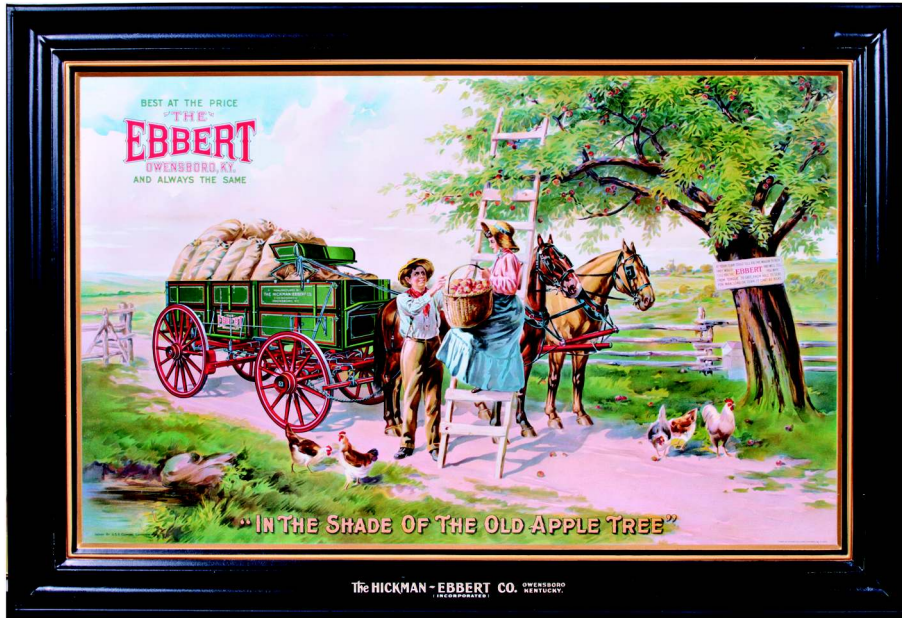
189).Kilmer's Headache Cure Box. 6.75 x 7-7/8 x 5-5/8" (as shown lid open) early cardboard countertop store display box for Dr. Kilmer's headache cure, w/ great image of Co.'s split head logo. Clean and excellent. Min. bid \$40.



190).Green Turtle Cigar Tin. 5.25 x 7.25 x 4.5" early tin litho lunch box style cigar can for Gordon Cigar & Cheroot Co.'s "Green Turtle" brand cigars, featuring great images on front, back and lid of Co.'s trademark turtle on rock smoking a cigar. Tin is pretty much excellent overall (C. 8+); w/ some soiling and light wear to lid (including darkening to tax paper stamp) (lid C. 7.5+/8-). Min. bid \$50.



191).1960 Coca-Cola Playing Cards. 4 x 5 x 1-1/8" double boxed set of 1960 Coca-Cola Co. advertising playing cards by Brown & Bigelow Co., including costume party and beach scene decks. Decks are complete and excellent (ea. w/ Jokers), as found never used inside their original plastic case. Min. bid \$40.



192).Ebbert Wagons Sign. 25.5 x 37.5" outstanding, large, early, heavy, self-framed tin litho sign (by Shonk Litho) advertising Ebbert brand farm wagons. Outstanding sign is crisp, bright and like new, as found never used (this is one of a small group found in the original crate back about 30 years or so ago). Near mint. Min. bid \$500.

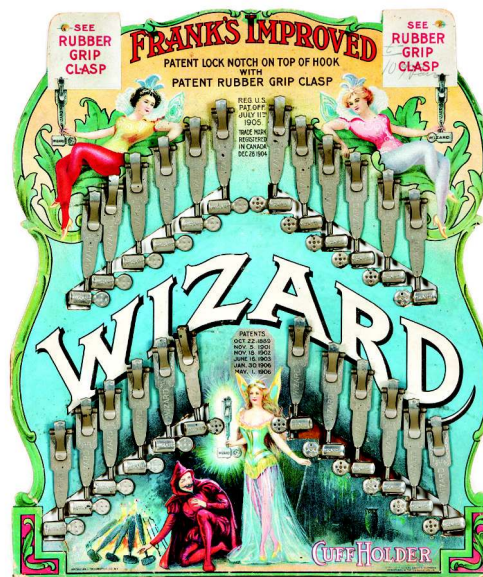


193).Ginseng Liqueur Sign. 11.75 x 8-5/8" beautiful, early embossed, heavy tin litho advertising sign for Ginseng Distilling Co.'s (St. Louis, MO) "Ginseng Amedium" medicinal long life tonic beverage, featuring beautiful multi-color graphics. Clean, bright and very attractive overall (basically displays as a strong C. 8++), although there are several small scattered nail holes along the outer floral border area (Meek & Beach Lithographers). Min. bid \$70.



194).Red Keg Syrup Dispenser. 15 x 7.5" (dia.) early, heavy, glazed ceramic keg shaped stoneware soda fountain advertising syrup dispenser for "Red Keg" brand. Very high quality piece is clean and excellent overall, complete w/ original pump (note: has very minor expected flea bites on bottom edge-mentioned for accuracy, nothing serious or detracting). Min. bid \$100.

Card Cheating Devices



195).Card Cheating Devices Display. 11.5 x 10" great, early die-cut cardboard stand-up countertop display for Wizard brand "cuff holders", which I'm told was an early card gamblers cheating device. Outstanding, very attractive piece is clean, bright and displays great (a strong C. 8++) complete w/all its attached devices. Min. bid \$60.



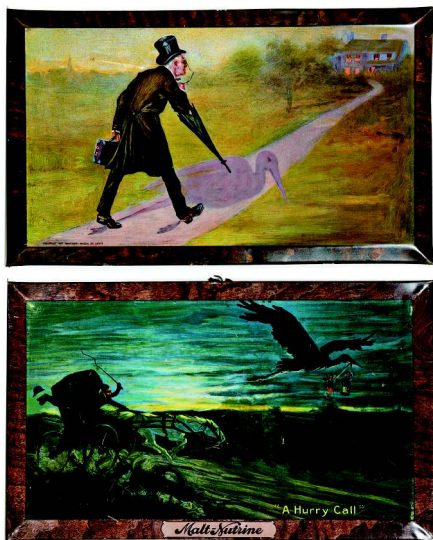
196).1904 Coca-Cola Calendar. 21.25 x 13.5" (15.25 x 7.75" actual piece) important, scarce 1904 cardboard advertising calendar for Coca-Cola, featuring famous opera star Lillian Nordica. Clean, bright and exceptionally nice appearance. Calendar is excellent (basically displays as a C. 8.5+), although close examination will show minor touch-up in the upper right outer white border area. Includes an original period March calendar month tear sheet at bottom, which appears to have been re-attached (no other months underneath). Nicely framed and matted. Min. bid \$2500.



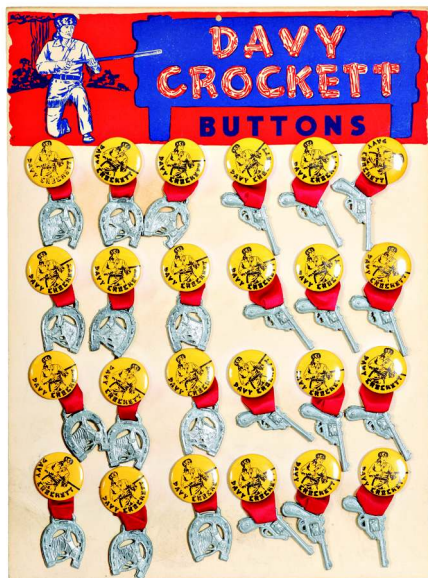
197).Mail Pouch Tobacco Packs. (ea. app. 5" hgt.) lot includes three unopened, full, early soft-pack style tobacco packages for "Mail Pouch" brand chewing tobacco (Block Bros. Tobacco Co.). They are very good to excellent overall (one is still sealed in protective wax paper wrap). Min. bid \$40 (the lot).



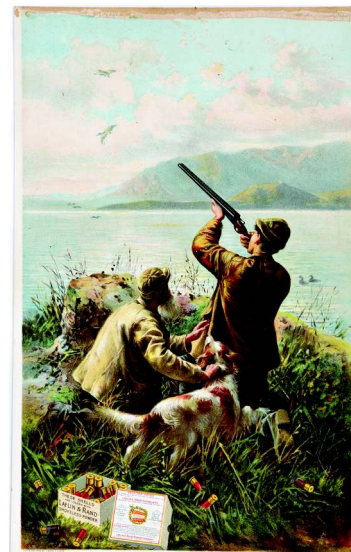
198).Joy Rider Toy Car. 5.5 x 8 x 3" ca. 1928 tin litho mechanical wind-up "Joy Rider" toy car by Louis Marx Co. Clean and excellent overall (a strong C. 8++), w/ only very minor wear (mechanism works nicely). Min. bid \$60.



199).Malt Nutrine Signs. Lot includes two different 7.75 x 12.75" early tin over cardboard bevel edged advertising signs for Anheuser-Busch Co.'s "Malt-Nutrine" (dated 1915), ea. featuring Co.'s stork themed images (product was an alcohol based medicinal health tonic beverage sold through drug stores). Both are clean and quite attractive in appearance (C. 8+/-), w/ a little non-detracting minor scattered wear. Min. bid \$50 (the pair).



200).Davy Crockett Buttons. 15 x 11" ca. 1950's complete, early cardboard store display card for Davy Crockett buttons, complete w/ all 24 of its original buttons (each 1.25" (dia.) pin has a ribbon attached metal pistol at bottom). Excellent (C. 8.5++). Min. bid \$40.

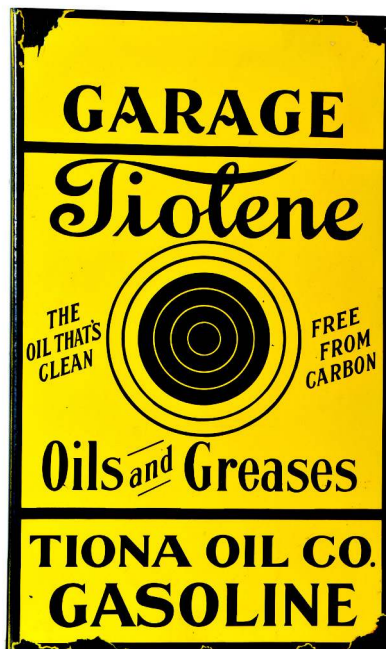


201).Laffin & Rand Ammo Sign. 13.5 x 8.5" early cardboard lithographed sign for Laffin & Rand shotgun shells, featuring nice duck hunting scene (note beautifully detailed box of shells in bottom corner). Clean, bright and excellent overall (C. 8.5+/-) w/ exception of some upper surface paper loss along the top margin edge (© 1898 Knapp Litho). Min. bid \$40.



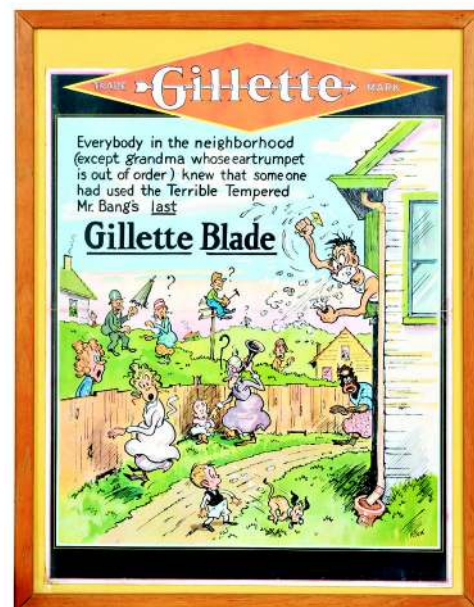
Grand
Union
Coffee Co.

202).Grand Union Coffee Grinder. 12.25 x 3.75" (wooden base) (tin measures 6.5 x 4.25 x 3.25") early wall mount style advertising coffee grinder. Has cast iron mechanism mounted to wooden base, w/ attractive tin litho Grand Union Co. 1 lb. coffee tin attached at top (tin has nicely detailed factory scene, w/ text and logos on side panels). Attractive, highly graphic tin is quite nice overall (C. 8+/-) w/ a little non detracting minor expected wear. Min. bid \$60.



203).Tiolene Sign. 30 x 18.25 large, early, heavy enameled porcelain flange service station sign for Tiona Oil Co.'s gasoline, motor oils and greases. Sign is clean, bright and displays very well, w/ nice original surface sheen, although there is some early weathered chipping in corners and outer border areas. Min. bid \$100.

Toonerville Trolley



204).Gillette Razors Blades Sign. 44.5 x 34" (39.5 x 29.5" actual sign) large, early cardboard sign for Gillette brand razor blades featuring great images of Toonerville Trolley cartoon characters. Very nice overall appearance, w/ minor wear and a little fade to reds (C. 8/-). Min. bid \$60.



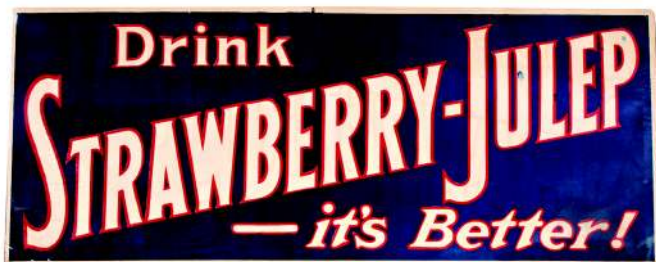
205). Good Luck Jar Rubbers. 12.25 x 10.25 x 7" full, early cardboard store display box for "Good Luck" brand canning jar rubbers, complete w/ all 24 full boxes inside. Clean, bright and excellent overall (a very strong C. 8+), w/ a little minor separation and wear at outside edges of display box. Min. bid \$50.



206). Exquisite Paris Café Coffee Tin. 7 x 3-5/8" early tin litho pry lid coffee can featuring beautifully detailed multi-color graphic images (different woman on each side), w/ following notation in English on sides "This coffee contains a small proportion of Chicory". Clean, bright and excellent overall (C. 8+), w/ minor denting, and some wear to lithography on lid. Min. bid \$40.



207). Bronze Devil Tray. 2-1/8 x 5.75 x 4-1/8" heavy, early figural nicely detailed bronze devil card or change holder, w/ embossed makers marks on base ("Russell & Erwin Mfg. Co., New Britain, CT"). Excellent overall, w/ nice surface patina (makes a great business card holder). Min. bid \$30.



208). Strawberry-Julep Signs. Lot includes two early, heavy paper advertising signs for Strawberry-Julep soda. Vertical sign (39.75 x 12") features great image of company's 1920-30's type soda bottle and is clean, bright and very attractive (a strong C. 8+). Lot also includes 18.75 x 40" horizontal sign (C. 8+). Min. bid \$50 the lot.



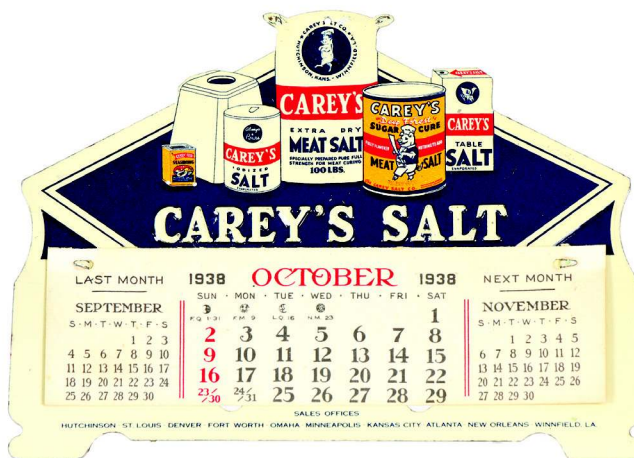
209). Sunny South Tin. 3.25 x 7.75 x 1-7/8" early tin litho 1 lb. sized product tin for Sunny South chocolate peanuts (Blumenthal Bros., Phil.) featuring great image of Co.'s trademark black woman in large hat. Clean and very attractive, w/ strong colors and excellent overall look (C. 8+), w/ a little non-detracting minor wear. Min. bid \$40.



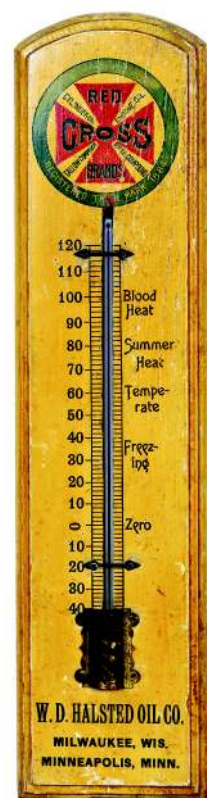
208).



210). Dark Horse Tobacco Packs. Lot consists of two full, unused 2-1/2 oz. size "Dark Horse" brand tobacco soft packs (Gem City Tobacco Co., Dayton, OH), w/ nice images of Co.'s trademark horse (ea. app. 5 x 3.5 x 1.5"). Both are clean and basically excellent (display as a strong C. 8+), although Series 1902 tax stamp seals are broken at top on each. Min. bid \$30 (the lot).

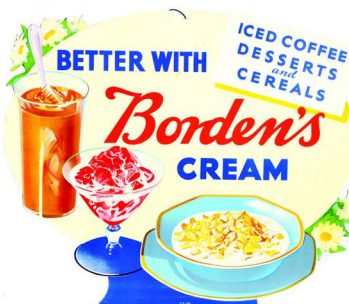


211). Carey's Salt Desk Calendar. 4.25 x 6" early embossed die-cut tin litho desk calendar advertising Carey's brand salt, featuring nice images of Co.'s various retail and commercial product packages. Clean and like new (near mint). Min. bid \$40.



212). Motor Oil Thermometer. 21 x 5.25" early wooden painted advertising thermometer for Halsted Oil Co.'s (Milwaukee and Minneapolis) "Red Cross" brand motor oils. Overall piece is attractive and displays decently (C. 7.5+) w/ a nice primitive country look, w/ some general light wear from use (note: the blue liquid covers entire inside of tube). Min. bid \$40.

Borden's Hanger Signs



213).Borden's Signs. Lot includes three early die-cut cardboard string hung signs for Borden Co. dairy products (ea. app. 12.5 x 16"). They are clean, bright and excellent overall (C. 8.5+), w/ exception of some glue stains on non-graphic backsides. Min. bid \$40 (the lot).



214).Star Soap Ceiling Sign. 9" (dia.) early, 2-sided, two-piece string hung ceiling hanger sign for Schultz Co.'s Star Soap (trademark gold star in center hangs separately by thread from outer circle). Clean and attractive appearance, w/a little bit of minor toning and slight soiling (C. 8+/-). Min. bid \$40.



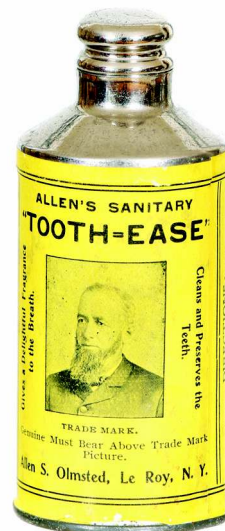
215).Liberty Motor Oil. 5.5 x 4" (dia.) early tin litho 1 qt. solder seam Liberty Petroleum Co. motor oil can (same image on both sides). Has strong color and displays quite nicely, w/ some litho loss along top edge and lid appears to have been professionally replaced (front C. 8+; back C. 8-). Min. bid \$40.



216).Canadian National Telegraph Call Box. 6-5/8 x 3-3/8 x 2-5/8" early telephone call box w/ Canadian National Telegraph and Cable Co.'s logo on its heavy enameled porcelain sign type cover piece, w/ electrical mechanism inside (mounted on ceramic base w/a working wind-up knob at top for notifying the local telegraph office to send over a messenger to retrieve written message for sending as a telegram). Crisp and like new (near mint). Min. bid \$40.



217).Noon Hour Tobacco. 6.5 x 3.75 x 2" large, early 7 oz. tobacco package for Liggett & Myers Co.'s "Noon Hour" tobacco, featuring great graphic image. Bright and attractive appearance, w/ some non-offensive light staining on label (Series 1910 tax stamp). Package is still mostly full, but has been opened at top. Min. bid \$30.



218).Tooth Powder Tin. 4 x 1.75" (dia.) full, never used, early paper label over chrome colored metal product tin for Allen's "Tooth-Ease" dental care product (Allen Olmsted, Le Roy, NY). Very nice overall, w/ a little minor storage toning (C. 8+). Min. bid \$30.



219).Speckled Havana Cigar Sign. 21.25 x 15.5" (13-1/8 x 7.25" actual piece) early die-cut advertising sign on heavy cardstock for "Speckled Havana" brand cigars featuring nice image of girl on swing. Clean and very attractive appearance (a strong C. 8+), beautifully framed and matted. Min. bid \$50.



220).Lawrence Paints Sign. 23.25 x 18-1/8" early, heavy 2-sided porcelain advertising sign for Lawrence Co.'s "Tiger" brand paints and varnishes in shape of paint bucket. Clean, bright and very attractive appearance (basically a strong C. 8+ appearance), w/ nice sheen, although there is a little edge chipping and a nickel sized chip spot in blue background area on backside (nothing that's at all offensive). Min. bid \$60.

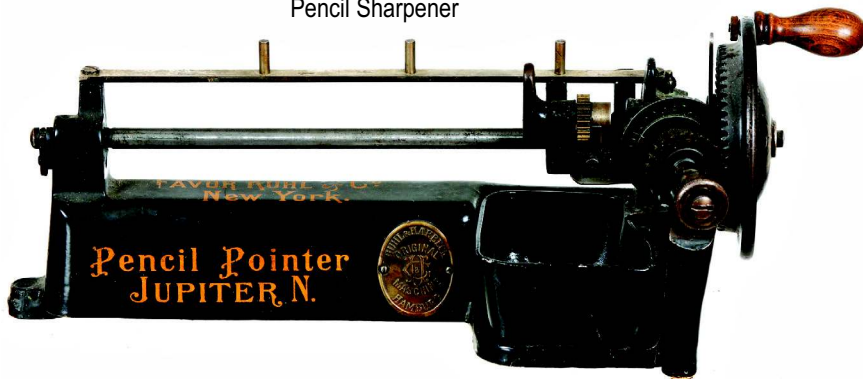


221).Heckert Cigars Die-Cut. 27-3/8 x 21.25" (20 x 14" actual sign) large, early embossed cardboard advertising die-cut sign for J.C. Heckert Co. (Dallastown, PA), Mfg. of fine cigars, featuring nice image of attractive girl in hat, w/ fancy floral designs in background. Has a bright shiny finish and is clean and attractive in appearance (basically a strong C. 8+), w/ minor wear and a slight bit of non-offensive faint background staining. Nicely framed and matted. Min. bid \$40.



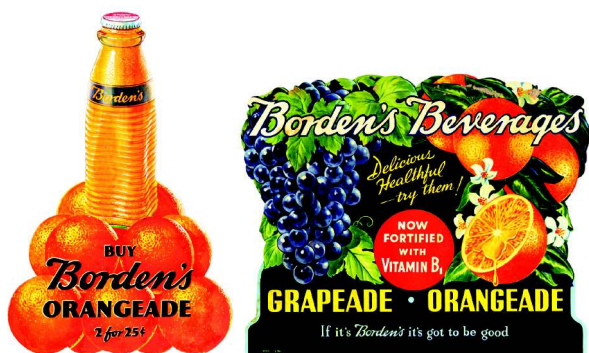
222).No Smoking Sign. 6 x 12" very early, heavy enameled porcelain "No Smoking" sign in a nice small size. Excellent condition. Min. bid \$30.

Pencil Sharpener



223).Guhl & Harbeck Pencil Sharpener. 5 x 11 x 6" large, early, heavy figural cast iron German made mechanical pencil sharpener by Favor Ruhl & Co. (New York). Interesting, very high quality piece still retains its nice gold lettering, embossed brass plate and original container for wood shavings. Gears revolve when handle is turned (C. 8+). Min. bid \$50.

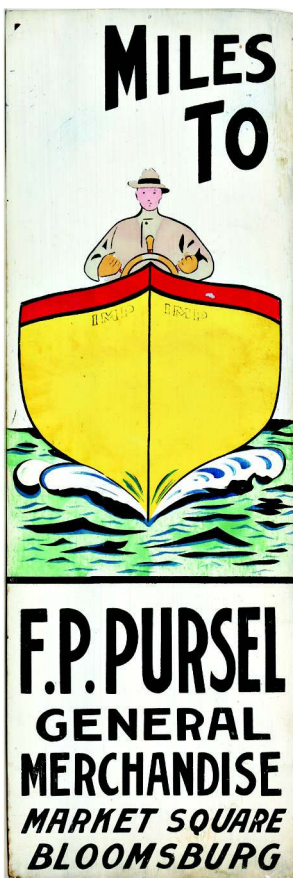
Borden's Signs



224).Borden's Fruit Beverage Signs. Lot includes two early 2-sided die-cut cardboard signs (15 x 10" and 12.5 x 15") for Co.'s fruit juice beverages (same images both sides). Signs are bright and display nicely, w/ minor soiling (C. 8+/-). Min. bid \$40 (the pair).



225).Folky Dry Goods Store Sign. 12-1/8 x 24-1/8" early painted metal sign advertising R.R. Grove's Dry Goods Store (Deer Park, WA), w/ a great rich surface patina to its wonderful, early, all original paint surface. Excellent w/ just the right amount of light wear to give it a great folk art country look (C. 8+). Min. bid \$60.



227). Lids Detail



227).Jumbo Peanut Butter Jars. Sizes range from 3-3/8 x 2.25" (dia.) to 5.25 x 2.75" (dia.). Lot includes four early, heavily embossed glass peanut butter jars for "Jumbo" brand (Frank Tea & Spice Co., Cincinnati, OH). Each shows Co.'s trademark elephant characters in glass design and on the lithographed tin lids. Excellent overall, w/ a little light wear on two of the lids. Lot also includes a scarce "Jumbo" pepper sauce bottle (same embossed design as jars). Bottle is excellent, w/ some denting at top of aluminum cap. Min. bid \$50 (the lot).



226).Folky Store Sign (Boat). 36.5 x 12.25" fantastic early hand-painted folky sign on tin promoting a Bloomsburg, PA general store. These great type of signs were usually made by Ithaca Sign Co. (not marked) and had a space at top for merchant to paint in how many miles it was to store from where sign was nailed up. This outstanding sign was found never used and is in super overall condition, w/ just the right amount of minor soiling and wear to give it a great folk art country look (C. 8.5+). Min. bid \$70.

228).Folky Store Sign (Plane). 36.5 x 12-1/8" fantastic early hand-painted folky sign on tin promoting a Bloomsburg, PA general store. These great type of signs were usually made by Ithaca Sign Co. (not marked) and had a space at top for merchant to paint in how many miles it was to the store from where sign was nailed up. This outstanding sign was found never used and is in super overall condition, w/ just the right amount of minor soiling and wear to give it a great folk art country look (C. 8.5+). Min. bid \$70.

