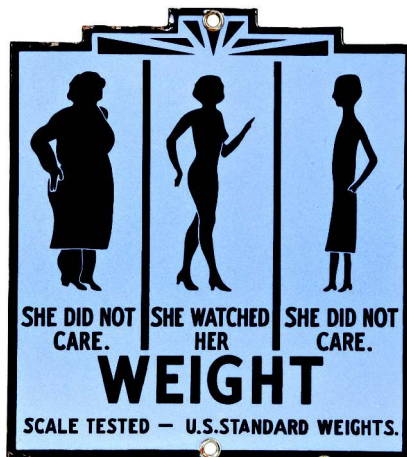




229).Baer Co. Match Holder. 4.25 x 5.5 x 4-1/8" early, very high quality heavy bronze match holder/ashtray advertising the Baer Co. Throwsters. Neat and unusual piece, featuring nice bear character throwing bales of "raw silk". Excellent, w/ nice surface patina. Min. bid \$40.



230).Porcelain Weight Loss Sign. 9.5 x 8.5" nice enameled porcelain sign from early penny scale, featuring great silhouette images of fat, skinny and "just right" woman figures. Field area is crisp and like new, w/ a little staining and light wear in outer black border area. Min. bid \$50.



231).Austin Rifle Powder Keg. 9.5 x 7.75" (dia.) nice early metal Austin Powder Co. (Cleveland, OH) gunpowder keg, w/ attractive original paper label featuring beautifully detailed duck scene. Tin is quite nice overall, w/ original lead closure on backside. Label is attractive and displays nicely, although there is some general overall even toning/darkening evident and light wear (label C. 7.5+). Min. bid \$50.

Salesman's Sample Overalls



232). Miniature Brattleboro Overalls. 12 x 7" (not including cloth straps) scarce, very early miniature pair of railroad workers denim cloth overalls from the Brattleboro Overall Co., Keene, NH (probably salesman's sample), complete w/ original sewn cloth label on front. Neat and very unusual piece w/ great look. Very nice overall (C. 8+/-) w/ a little minor expected toning and light staining (nothing offensive or detracting). Min. bid \$40.

Flypaper Display



233).Flypaper Display Box. 14.5 x 8.5 x 1" full, early store display box for Tanglefoot brand flypapers, featuring great image of a large fly on lid (the fly is part of a die cut that that folds up and displays at back of display when box lid is opened). Excellent. Min. bid \$40.

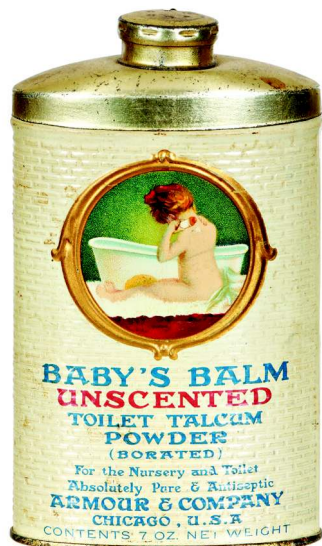
Bifocals Display



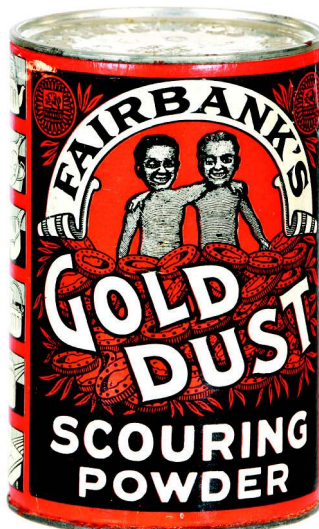
234). Bifocals Glasses Display. 9 x 8 x 1.75" early countertop store display w/ a tilting beveled viewing mirror at top advertising "Steadfast" brand bifocal eyeglasses. Has wooden case, w/ an attractive reverse glass advertising sign at base featuring Uncle Sam. Unusual, high quality piece. Excellent. Min. bid \$50.



235).Penzene Motor Oil. 5.5 x 4" (dia.) early tin litho 1 qt. solder seam oil can for "Penzene" brand motor oil (Independent Lubricating Co., Topeka, KS). Full sealed can has strong color and displays quite nicely (as a C. 8+), w/ some oxidizing on lid. Min. bid \$40.



236).Baby's Balm Talc. 5.25 x 3 x 1.5" early Armour & Co. tin litho "Baby's Balm" talc tin featuring beautiful multi-color litho image against an embossed brick wall style background pattern. Excellent (C. 8.5+). Min. bid \$40.



237).Gold Dust Tin. 4-7/8 x 3-1/8" (dia.) full, sealed, early paper label tin for Fairbank Co.'s "Gold Dust" brand scouring powder (tin top and bottom, w/ cardboard sides). Clean, bright and excellent (C. 8.5+). Min. bid \$30.

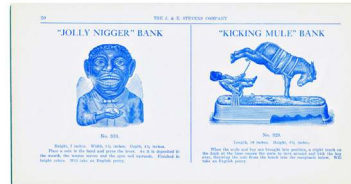
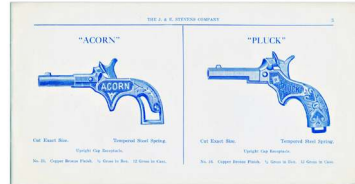
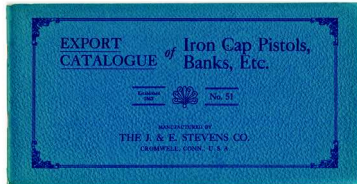
Unopened



238).Hi-Plane Pocket Tin. 4-3/8 x 3 x 7/8" full, sealed (never opened) twin engine variation vertical pocket tin for Larus Bros. "Hi-Plane" brand tobacco. Tin is clean, bright and exceptionally nice (a strong C. 8.5+), w/ a little light wear to paper tax stamp. Min. bid \$40.



239).Lawyer Trade Sign. 18.5 x 60 x 1.25" large, early, framed wooden hand painted trade sign featuring a black sand paint surface in center, w/ silver shadowed gilt lettering against a rich Indian red background color. Impressive, all original sign has great patina to its nice dry paint surface, w/ a great folk art type country look and just the right amount of slight weathering and wear (C. 8+/-). Min. bid \$250.



240).Stevens Iron Banks & Cap Guns Catalog. 5.5 x 10.5" early 28 pg. fully illustrated advertising sales catalog for the J & E Stevens Co. (Cromwell, CT), filled with beautifully detailed illustrations and descriptions of Co.'s mechanical banks, cap guns and still banks. Catalog is clean and excellent (like new), w/ exception of a minor crimp mark at bottom edge of back cover. Min. bid \$50.



241).Gold Medal Tobacco. 2.75 x 4.5 x 5/8" early tin litho horizontal flat pocket tin for Cameron & Cameron Co.'s "Gold Medal" brand tobacco, featuring beautiful multi-color graphic flag and medals images (same images both sides). Crisp, bright and like new, w/ exception of a few small scratch marks. Min. bid \$40.



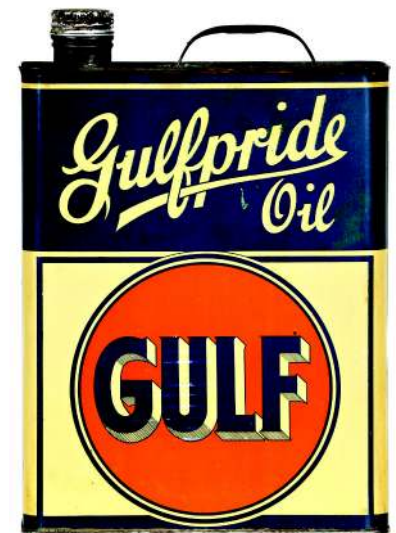
242).Silver Polish Display Box. 1.5 x 6.5 x 3-3/8" very early tin litho display box for "Electro Silicon" brand silver polish, featuring beautifully detailed Ginna type lithography. Clean and very attractive (a strong C. 8.5+/-) w/ exception of some paint wear on non-graphic inside of piece. Min. bid \$40.



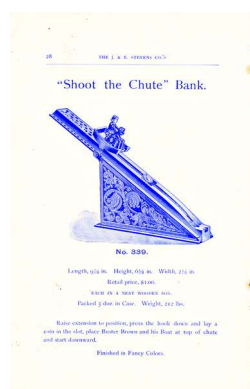
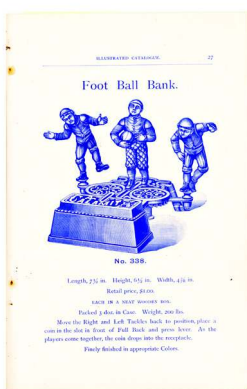
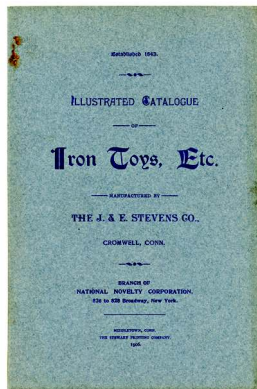
243).Eagle Bell. 7.5" (h) x 6 x 6" early, heavy, very high quality nickel/chrome finished eagle bell, featuring figural cast iron eagle standing on globe, w/ devil head designs in base. Excellent overall. Min. bid \$40.



244).Dairy Queen Clock. 15.5 x 3-5/8" great looking vintage electric metal framed light-up advertising clock for Illinois Baking Co.'s "Dairy Queen" ice cream (Pam Clock Co., Brooklyn). Clean and excellent, in nice working condition. Min. bid \$50.



245).Gulf Oil Tin. 10.5 x 8 x 3-1/8" early tin litho 1 gallon motor oil can for Gulf Refining Co.'s "Gulfpride" brand. Clean and bright, w/ nice sheen and a great overall look. Front displays very well (as a strong C. 8+/-) w/ a little minor wear; backside has some light general skimming marks and some light minor scattered wear (backside C. 7.5). Min. bid \$40.



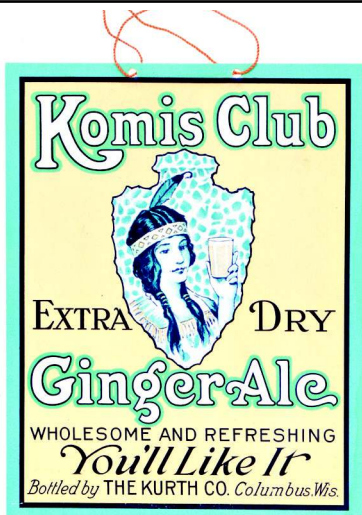
246).Stevens Mechanical Banks Catalog. 9.25 x 6" early, 46 pg. fully illustrated 1906 sales catalog for J & E Stevens Co. (Cromwell, CT), filled with beautifully detailed illustrations and descriptions of Co.'s various cast iron mechanical banks, as well as a few bell toys, still banks, etc. Catalog is clean and excellent (inside pages like new, cover has minor toning and expected light staining at staple spots). Min. bid \$50.



247).Steckley's Seeds Sign. 7.5 x 19.75" unusual, early 2-sided metal flange sign for Steckley Co.'s corn seeds (Stout Sign Co., St Louis, MO). Impressive, never used sign is clean, bright and like new (near mint). Min. bid \$40.



248).Log Cabin Syrup Tins. (ea. 4 x 3-5/8 x 2.5") lot includes two different figural tin litho cabin shaped 12 oz. tins for Towle's Log Cabin brand maple syrup. Includes variations w/ boy in doorway (C. 8.5, no cap); and bear in doorway w/ (C. 8+), w/ a little minor syrup soiling/staining on front roof area. Min. bid \$50 (the lot).



249).Komis Club Soda Sign. 9 x 7" early cardboard litho string hung sign for "Komis Club" brand ginger ale (Kurth Co., Columbus, Wisc.) featuring beautiful graphic image of Indian princess. Clean, bright and exceptionally nice (near mint). Min. bid \$40.

Life Savers Display



250).Life Savers Display. 14.25 x 10 x 15.25" scarce, ca. 1920's/30's tin litho countertop store display for Life Savers brand roll candy, w/ large embossed candy piece on top marquee (Shonk Litho). Impressive piece is clean and excellent in appearance (displays as a strong C. 8+), w/ a little expected minor wear (nothing that's at all offensive or detracting). Min. bid \$70.



251).Large De Laval Calendar. 53 x 22-3/8" (50 x 19.5" visible) large and very impressive oversized dealership paper litho calendar for De Laval brand cream separators, complete w/ original metal strip at top and full 1912 calendar pad. Never used piece is clean and basically like new (C. 8.5++). Nicely framed and ready to hang. Min. bid \$150.

Cigar Lighter



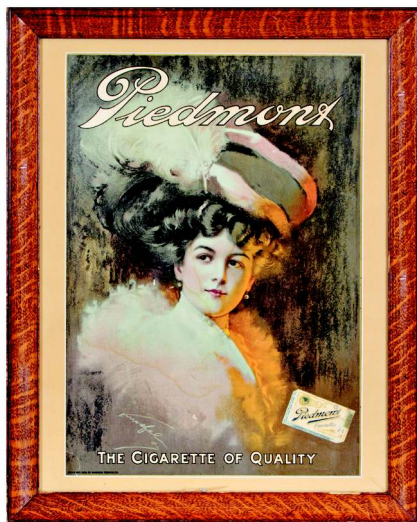
252).Cigar Lighter/Holder. 5 x 5.75 x 3.25" early, heavy figural brass (bronze?) cigar holder and lighter on stone base (the drum holds cigars and the officers head tilts back to reveal body cavity that holds lighter fluid which wicks through his cigar to offer steady light). Very high quality piece. Excellent. Min. bid \$40.



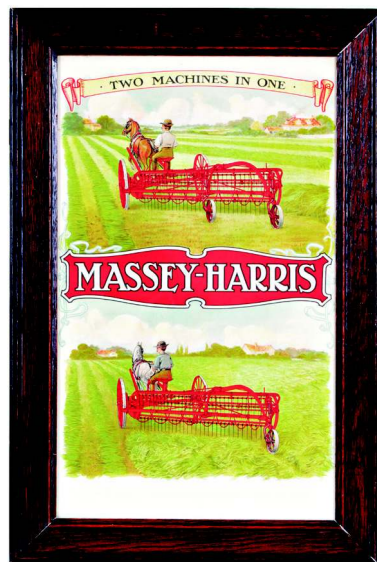
253).Planters Peanuts Jar. 10 x 7.5 x 5.25" ca. 1940 embossed streamline Planters Peanut store display jar, w/ painted lettering, including both original paper labels, w/ lady holding pack on inside. Glass is excellent, litho lid has a little light scattered oxidizing, w/ minor edge wear and a little fading on paper labels. Min. bid \$40.



254).National Recording Dime Register Bank. 6.75 x 7.25 x 2" early ca. 1890's figural cast iron dime registering bank showing early bank building on front and marked "The National Recording Bank, Patented Apr. 7, '91" on backside. Has a little tarnishing and light surface oxidizing on front side, but overall pretty decent (C. 7+). As found, should improve w/ cleaning. Min. bid \$50.



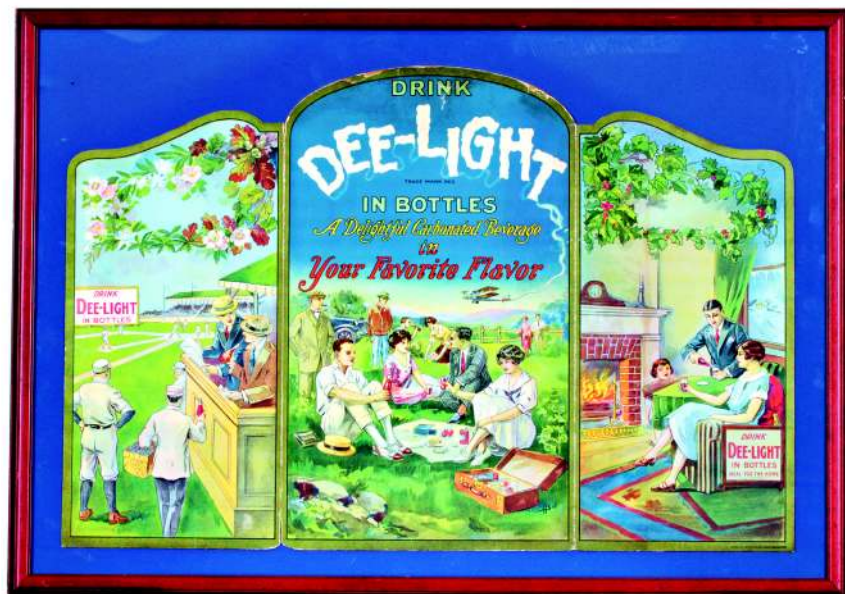
255).Piedmont Cigarettes Sign. 24.75 x 19-5/8" (20 x 14" visible image) early paper litho advertising sign for American Tobacco Co.'s Piedmont brand cigarettes (dated 1908). Attractive piece that displays nicely (as a C. 8+), w/ a little minor wear and a trace bit of barely noticeable very minor staining (nothing at all offensive or detracting). Critical grade C. 7.5+, although it displays much nicer than this implies. Matted and nicely presented in period oak frame. Min. bid \$50.



256).Agricultural Sign. 23.25 x 15.5" (19.25 x 11.5" visible) very early paper litho sign for Massey-Harris Co.'s hay rakes, featuring beautiful multi-color graphics. Clean, bright and exceptionally nice (C. 8.5+), presented in attractive period oak frame. Min. bid \$50.



257).Burger Brewing Co. Sign. 26.5 x 18-3/8" attractive ca. 1930's/40's self-framed heavy tin litho sign for Burger Beer (Cincinnati, OH) featuring attractive image by acclaimed New York illustrator Lawrence Wilbur. Clean, bright and especially nice (C. 8.5+) w/exception of 1/4" scratch mark in raised outer right frame area. Min. bid \$70.



258).Dee-Light Soda Sign. 24.5 x 34.5" early cardboard tri-fold advertising display sign for "Dee-Light" brand soda pop, featuring beautiful multi-color graphics (note great baseball theme on left panel). Piece is clean, bright and displays very well (basically as a strong C. 8.5), although close examination will show a little non-offensive minor toning and a little wear at top edge of center panel. Nicely framed and ready to hang. Min. bid \$100.



259).Leinenkugel Beer Clock. 4.5 x 15.5" (dia.) early electric light-up metal and glass double bubble style advertising clock for Leinenkugel Brewing Co. (Chippewa Falls, WI), featuring nice image of Co.'s Indian princess. Has a clean and like new appearance, w/ some light wear on metal backside. Clock lights up and runs great. Min. bid \$60.



260).Henrietta Cigar Tin. 5.5 x 5-5/8" (dia.) early tin litho 50 ct. cigar can for Otto Eisenlohr Co.'s "Henrietta" brand cigars, featuring beautiful multi-color graphics. Clean, bright and very attractive appearance (basically a strong C. 8+), w/minor soiling on lid and a few light scattered chips on backside. Min. bid \$40.



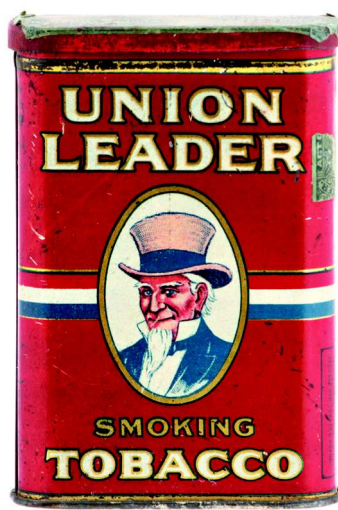
261).Yellow Kid Soap. 4.25 x 2.5 x 1-7/8" early figural soap bar in shape of Yellow Kid cartoon character, as found never used in its original box. Clean and excellent overall (C. 8.5+). Min. bid \$50.



262).Boscul Coffee Pail. 9 x 7.5" (dia.) scarce, early tin litho 5 lb. coffee pail for "Boscul" brand (Wm Scull Co., Camden, NJ) w/ same nice image on both sides. Clean, bright and very attractive appearance, w/nice original sheen (displays as a strong C. 8.5+), w/a little non-detracting minor scuffing and light wear. Min. bid \$50.



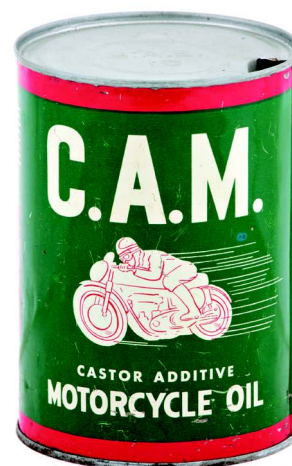
263).Gitum Auto Dust Cloth. 4.75 x 3.25 x 2-1/8" early tin litho product tin for Auto Supply Co.'s "GitUm" brand auto polishing cloth, featuring nice image of Co.'s trademark Indian scout (same image both sides). Clean, bright and excellent (a strong C. 8+). Min. bid \$40.



264).Union Leader Pocket Tin. 4.5 x 3 x 7/8" early tin litho vertical tobacco pocket tin for Union Leader brand (Uncle Sam w/ out pipe variation). Bright and excellent overall, w/ a few minor background scratches (C. 8+). Min. bid \$30.



265).Marine Special Oil Can. 5-5/8 x 4" (dia.) unusual, crimp seam tin litho 1 qt. picture can for "Marine Special" outboard motor oil. Clean, bright and excellent (C. 8.5+). Min. bid \$40.



266).C.A.M. Motorcycle Oil. 5.5 x 4" (dia.) unusual, crimp seam tin litho 1 qt. picture can for C.A.M. brand motorcycle oil (Indian (Motorcycle) Co., Springfield, MA), w/ great image of speeding cycle on both sides. Clean, bright and displays nicely, w/ some non-offensive light scuffing (C. 7.5+/8-). Min. bid \$40.

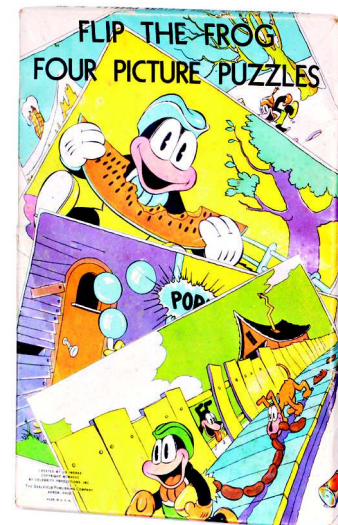


267).Kist Soda Sign. 18.5 x 13" early celluloid over Masonite easel back stand-up sign for "Kist" brand soda, featuring great pin-up image of Kist girl in sailor suit. Clean and very attractive (a strong C. 8+). Min. bid \$40.

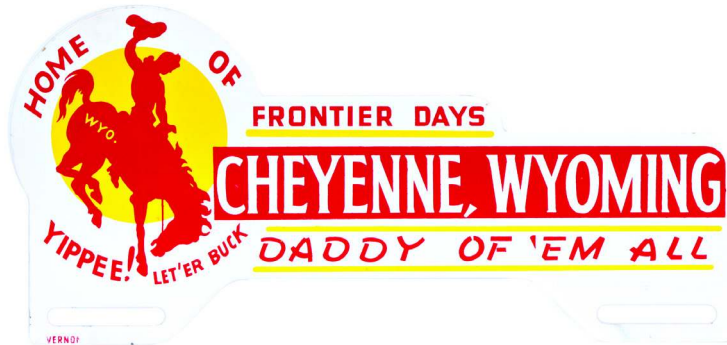


268).Western Ammo Display. 23 x 7 x 7" early figural counter top display for Western brand shot gun shells, in image of early box. Clean, bright and like new (appears never used). Min. bid \$50.

Flip the Frog



269).Flip The Frog Puzzles. 12 x 8-1/8 x 5/8" early jigsaw puzzles set featuring Ub Iwerks "Flip the Frog" cartoon character, in their original graphic box (note: Iwerks was early era film industry pioneer and co-creator of Disney's Mickey Mouse character). Box is clean and very nice, w/just a trace hint of very minor foxing speckles (C. 8+/-); complete w/four different 6 x 8" puzzle sets inside. Min. bid \$50 (the set).



270). Wyoming Plate Topper. 4-5/8 x 9-7/8" nice early metal license plate topper from Cheyenne, Wyoming, w/great Western themed "Frontier Days" rodeo image. Excellent (C. 8.5+). Min. bid \$30.



271). Honey Scotch Candy Sign. 7 x 19.5" early embossed tin litho sign for Collins Co.'s "Honey Scotch" brand 5¢ candy, w/ colorful and very attractive image of candy package. Clean, bright and excellent overall (a strong C. 8++), w/ only minor soiling and wear. Min. bid \$40.

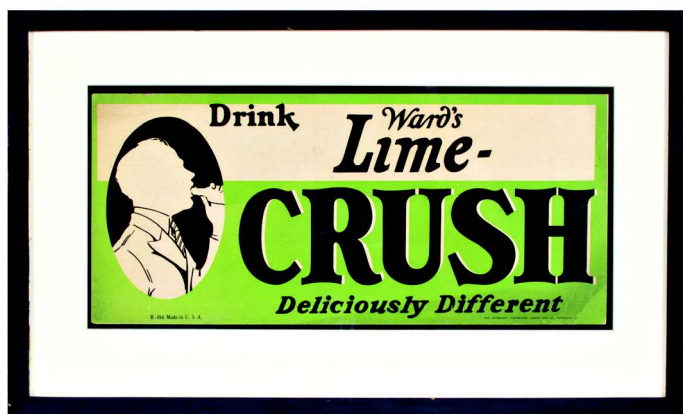


272). Buster Brown Target Game. 10 x 23-3/8" early, colorful and highly graphic Bliss style wooden target game featuring Buster Brown cartoon characters on its beautiful multi-color paper lithography. Clean, bright and excellent overall (a strong C. 8++). Min. bid \$50.

Dr. Daniels Veterinary Medicines



273). Dr. Daniels Vet Medicines. Lot of five early Dr. Daniels veterinary medicines. Includes: Colic Drops box w/ contents (C. 7.5+); two full antiseptic dusting powder tins (C. 8++); Gall Salve tin (C. 7+) w/ some soiling and light wear, and embossed labeled Cough, Cold and Fever Drops bottle w/ partial contents (excellent). Min. bid \$30 (the lot).



274). Lime Crush Sign. 14.25 x 23" (8 x 17.75" actual sign) scarce, early cardboard sign for Ward's Lime Crush brand soda. Attractive and displays very nicely, w/ a little non-offensive light soiling in green bottom edge area (C. 8/-). Framed. Min. bid \$40.



275). Lemon Crush Sign. 14.25 x 23" (8 x 17.75" actual sign) scarce, early cardboard sign for Ward's Lime Crush brand soda. Attractive and displays nicely w/slight hint of non-offensive hazy wear and a little minor soiling in yellow bottom edge area (C. 8/-). Framed. Min. bid \$40.



276). Felix Candy Tin. 6-1/8 x 6-1/8 x 3-7/8" early hinged lid tin litho candy tin for Felix brand cream toffee, w/ great images of Felix cartoon character all around (has cartoon movie promotional images on sides). Clean, bright and very attractive overall (C. 8+) w/ a little non-offensive light background wear. Foreign. Min. bid \$50.



277). Safety Razor Tins. Lot of two early tin litho safety razor tins, each w/ partial contents inside. Includes Gem Cutlery (2.5 x 1-3/8" dia.), (C. 8+/-); and Star brands (2-3/8 x 1.25" dia.) displays nice, w/ some general wear at side edges (C. 7.5). Min. bid \$50 (the lot).



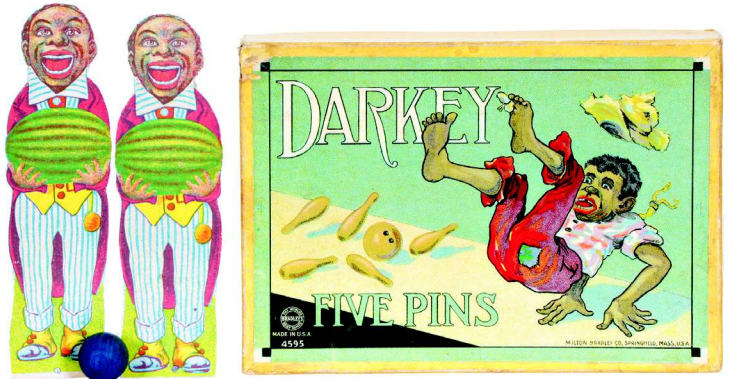
278). 7-Up Sign. 7-7/8 x 10-3/8" early embossed tin litho corner sign for 7-Up brand soda pop. Clean, bright and attractive, w/ minor soiling and some faint scattered speckles (C. 8+/-), w/ oxidizing on non-graphic backside. Min. bid \$30.

BUCKSKIN BREECHES SOLD HERE.

279).Buckskin Breeches Sign. 6 x 48" large, early, heavy enameled porcelain sign from an early trading post store for "Buckskin" britches. Has some scattered chips at hanging holes and outside edges, but overall still pretty decent and displays nicely. Min. bid \$50.



280).Whiz Radiator Cleaner Box. 5-3/8 x 5.75 x 3-1/8" early product box for Whiz brand Radiator Cleaner and Rust Preventive, w/ same great image on both sides (shows overheated steam gushing car on side panels). Very nice overall (C. 8-) w/ minor toning and some fading to reds on backside. Lot also contains full can of Co.'s Rust Preventive treatment. Min. bid \$30.



281).Darkey Five Pins Game. 5.75 x 8.25 x 1-3/8" (box) early Milton Bradley bowling game comes w/ five wood based cardboard black man holding watermelon "pins" (two pictured) and wooden ball, inside its original game box (box has an outrageous, beautiful color graphic lid). Excellent (C. 8.5+). Min. bid \$40.



282).Hand Made Pocket Tin. 4 x 3.5 x 1.25" very early tin litho pocket tin for Globe Tobacco Co.'s "Hand Made" brand, featuring nicely detailed graphics. Has strong color and displays nicely (a strong C. 8) w/ a little light edge wear on lid. Min. bid \$50.

Chewing Gum



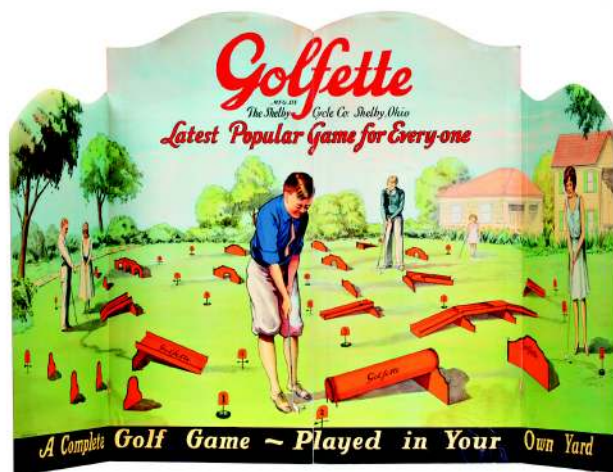
283).Buy-Roz Gum Tin. 5/8 x 1.5" (dia.) scarce, early 2-ps. tin litho red rose flavored chewing gum tin for "Buy-Roz" brand chewing gum (Startup Candy Co., Provo Utah). Clean, bright and like new (near mint). Min. bid \$30.



284).Baking Powder Sample. 2.5 x 1.5" (dia.) early miniature paper label (over tin) sample size baking powder can from Metzner Co., Little Rock, ARK) w/ image of cherubs playing. Very nice overall, w/ a little minor scattered wear (C. 8/-). Min. bid \$40.

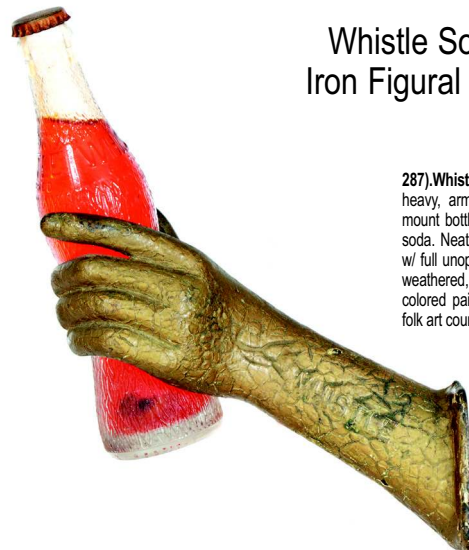


285).Pat Hand Pocket Tin. 2.75 x 2.5 x 1-3/8" early tin litho oval pocket tin for Globe Tobacco Co.'s "Pat Hand" brand. Clean, bright and attractive, w/ a little chipping and light wear on backside (front C. 8++; back C. 7.5+/8-). Min. bid \$50.



286).Golfette Window Sign. 32 x 56" unusual, large early cardboard tri-fold window display sign promoting Shelby Co.'s "Golfette" lawn golfing game. Impressive piece is clean and very attractive in appearance, w/ a little minor toning (note piece was separated along its vertical center fold line (reinforced on non-graphic backside w/ tape). Min. bid \$50.

Whistle Soda Iron Figural Sign



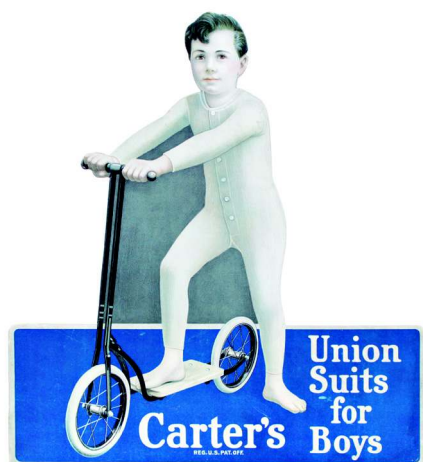
287).Whistle Bottle Holder. 3 x 10 x 2.5" early, heavy, arm/hand shaped figural cast iron wall mount bottle holder trade sign for Whistle brand soda. Neat and unusual piece, comes complete w/ full unopened bottle. Has original patina to its weathered, early alligator cracked heavy gold colored paint surface, giving it a great primitive folk art country type look. Min. bid \$60.



288).Hess Tobacco Box. 13.5 x 14 x 4.5" (as pictured w/ lid open) early wooden 5 lb. store display box for H.F. Hess & Co. Tobacco (Rochester, NY), featuring beautiful, very early multi-color lithography (same nice images on inside, front and two side panels). Clean, bright and very attractive (a strong C. 8++) w/ minor toning and wear. Min. bid \$50.



289).Indian Motorcycle Sweater. 26 x 16" (21.5" sleeve) early motorcycle riders wool sweater, featuring great Indian Motorcycle Co. lettering on front and backside. Piece is clean and displays nicely, w/ strong color to lettering, although there are a few small, early darned holes scattered about. Not marked, but size appears to probably be a small. Min. bid \$40.



290).Carter Union Suits Sign. 15.25 x 14" unusual, early die-cut cardboard easel-back stand-up sign for Carter brand union suits, featuring nice image of kid on scooter. Attractive and displays nicely, w/ minor toning/ soiling at bottom edges (C. 8/+). Min. bid \$50.



291).Buffalo Peanut Butter Bucket. 10.5 x 12" (dia.) unusual, early store sized (25 lb?) handled bucket for Hoyt Co.'s Buffalo brand peanut butter. Heavy papier-mache type composition body, w/ bale handle and original wooden lid, w/ beautiful graphic label. Excellent and all original (C. 8++), w/ minor wear to label. Min. bid \$50.



292).Sergeant's Dog Medicines Cabinet. 14.25 x 12-5/8 x 6.75" nice early tin litho veterinary cabinet for Sergeant's brand dog medicines, featuring wonderful image of young child and his dog. Clean, bright and very attractive (basically a strong C. 8/+), w/ exception of some soiling and wear on non-graphic doors on backside (as found, should improve some w/ cleaning). Min. bid \$70.



293).Royal Standard Cigar Cutter. 6.5 x 5.5 x 9" early wood and metal countertop cigar cutter advertising Abercrombie & Co.'s "Royal Standard" brand Havana Cigars. Clean and excellent overall (a strong C. 8++). Min. bid \$60.



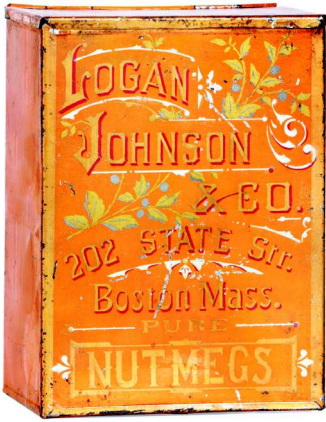
294).Winchester Gun Oil Display. 11.25 x 7 x 2.5" early cardboard countertop store display for Winchester Gun Oil, complete w/all six of its original full tins. Clean and excellent (note: lot also includes an early paper pamphlet for same). Min. bid \$50.



295).Turkish Cigarettes Sign. 16 x 10" early cardboard string hung sign for Lynnhaven Turkish cigarettes (Ware-Kramer Tobacco Co., Norfolk, VA), featuring beautiful color graphics and great look (1908 copyright). Excellent (a strong C. 8++) w/ minor soiling in upper right margin. Min. bid \$70.



296).Whistle Sign. 27 x 14" early die-cut cardboard easel-back standup counter or window sign for Whistle brand soda, w/out out area made for displaying an actual bottle. Excellent overall (a strong C. 8+), w/a little minor toning and slight wear. Min. bid \$50.



297).Early Spice Bin. 7-5/8 x 5.5 x 3.75" very early hand-soldered small store sized spice bin for Logan Johnson & Co.'s (Boston, MA) nutmeg spice, featuring wonderful decorative lettering and paint surface. Attractive overall, w/ minor scattered wear (C. 8+/-). Min. bid \$50.



298).Brandy Wine Sign. 22" (dia.) ca. 1930's paper or cardboard litho soda sign featuring great image of pin-up glamour girl on eagle holding up Co.'s soda bottle (Seminole Flavor Co., Chattanooga, TN). Clean and excellent (C. 8.5+). Framed. Min. bid \$50.

Anheuser Busch



299).Anheuser Busch Pen Holder. 4 x 5 x 1" early executives pen holder from the Anheuser Busch Brewing Co. Very high quality piece, on alabaster stone base featuring large, beautifully detailed image of Co.'s eagle logo in brass or bronze, w/ pen rests at front. Excellent and all original (near mint). Min. bid \$40.



300).Yellow Kid Figure. 3.3 x 3 x 1.5" unusual, early figural Yellow Kid pin holder in cast white metal (I believe the tray section originally held a cloth pin cushion). Nice overall, w/ some general light wear to silver wash finish. Min. bid \$50.



301).Mammoth Cave Back Bar Bottle. 6.5 x 4.25" (dia.) unusual, early glass display back bar bottle for "Mammoth Cave" (scotch whiskey?) w/ hand applied lip. Has embossed white enameled lettering and a beautifully detailed multi-color enameled porcelain display label. Excellent (no stopper). Min. bid \$40.

Gold Dust



302).Gold Dust Figures. Lot of two small, early 2-sided cardboard advertising figures featuring adorable Gold Dust Soap Co.'s black child characters playing instruments, each on original marked wooden bases (ea. app. 2.75" (h)). Clean, bright and excellent (C. 8.5+). Min. bid \$30 (the lot).



303).Coca-Cola Bottle Sign. 16.25 x 4-7/8" early enameled porcelain Coca-Cola sign in shape of early bottle. Clean, bright and exceptionally nice (near mint). Framed (frame not shown). Min. bid \$50.



304).Kant-Rust Oil Tin. 15.25 x 2-7/8" (dia.) unusual, early tin litho lubricating oiler can for "Kant-Rust" brand penetrating lubricating oil, w/ images of early auto, airplane, tractor, etc. Has minor soiling a few light scattered chips, but has very nice overall look (C. 8/-). As found, should improve w/ cleaning. Min. bid \$40.



305).Saint Paul Milk Thermometer. 6.25 x 2-1/8" early celluloid advertising thermometer for St. Paul brand milk, w/ nice graphic image of Pilgrims (note 4 digit phone #). Excellent overall, w/ a little even toning (no hanging hook on backside). Min. bid \$40.

Miniature Jar

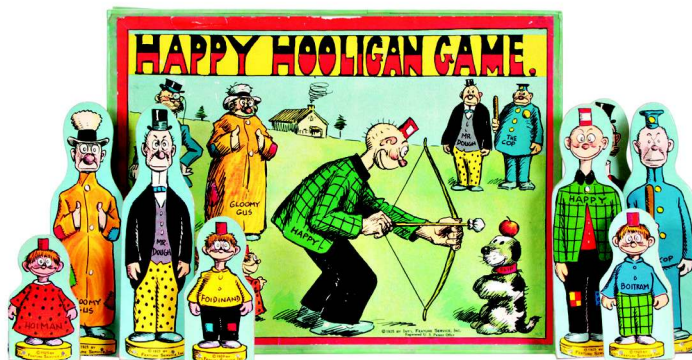


306).Miniature Candy Jar. 6.5 x 1.75" (base) scarce, early "Dakota" style 6.5" (h) glass sample sized cylinder jar (w/ ground glass lid), which is one of the scarcer of the various progressive sized jars. Excellent. Min. bid \$50.

Hoyt's Tooth powder



307).Hoyt's Tooth Powder Fans. Lot of three early, nice 2-sided advertising fans for Hoyt's & Co. (Lowell, MA), each promoting Co.'s "Rubifoam brand" tooth powder and Co.'s "German Cologne" perfume (range from 12-3/8 x 7" to 15-5/8 x 10-1/8"). Very nice overall (C. 8/+). Min. bid \$40 (the lot).



308).Happy Hooligan Game. 11.5 x 15.25 x 1-3/8" (box) ca. 1920's Milton Bradley Co. game featuring nice images of Happy Hooligan cartoon characters. Box is clean, bright and excellent (C. 8.5+), although aprons have had some well done professional restoration. Set includes eight cardboard characters on wooden bases (these are all excellent except Monthmorency character, which has repaired break in ankle area). Min. bid \$50.



309).Polarine Can. 10 x 8 x 3" scarce, early tin litho 1 gallon can for Standard Oil Co.'s "Polarine" featuring colorful and graphic image of Co.'s great trademark touring car scene. Attractive and displays very nicely, w/ some non-offensive general expected soiling and light general wear (C. 7.5+/8-). Min. bid \$50.



310).Red Cross Cough Drops. 3 x 10 x 3.5" full, early store display box for Red Cross brand cough drops, complete w/ 20 original 5¢ boxes. There is some light separation at top of display boxes corner edges and box lid is complete but separated at fold line in middle (sealed cello wrapped boxes inside are crisp and like new). Min. bid \$40.



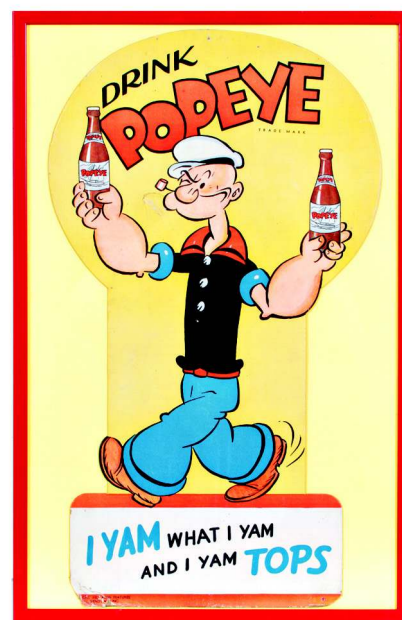
311).Corn Fix Sign. 11 x 8.5" early cardboard easel-back countertop sign for "Corn Fix" brand foot remedy, featuring great images of Co.'s smiling foot characters. Clean and excellent overall (C. 8.5+/+) w/ just slight trace of minor background soiling in bottom right corner. Min. bid \$40.



312).Jumbo Bumbo Figure. 19 x 6 x 7" large early papier-mâché figural cardboard advertising peanut character for "Jumbo Bumbo" brand. A really neat and unusual piece, w/ a powerful and very impressive look and nice early paint surface. Displays as a strong C. 8/+, w/ some non-offensive highlight wear scattered about (critical grade C. 8/-). Min. bid \$70.



313).Richmond Club Tobacco Sign. 14 x 9.25" early, embossed die-cut pressed cardboard sign advertising Cameron & Cameron Co.'s "Richmond Club" brand smoking tobacco. Clean and very attractive (basically displays as a strong C. 8+), w/ minor edge wear and non-offensive slight crease/bend mark in upper right corner. Min. bid \$50.



314).Popeye Soda Sign. 23 x 14-7/8" (21.5 x 12.25" actual sign) ca. 1920's/30's cardboard stand-up sign for Popeye brand soda pop, featuring great image of famous King Features cartoon character. Displays very well (as a C. 8/+), although close examination will show a small puncture mark in yellow background area, little wear at bottom left edge and a hint of fade to reds. Framed. Min. bid \$60.



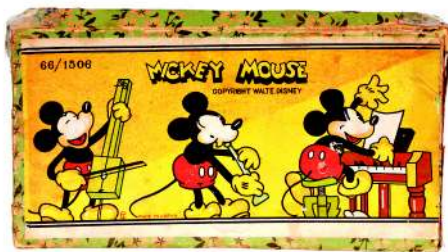
315). Whistle Soda Display. 10.5 x 13.25 vintage ca. 1940's cardboard stand-up display (holds bottle in cart). Clean and very nice overall, (C. 8+) w/ a little non-offensive edge wear. Lot also includes nice 1942 Whistle bottle topper (8.25 x 5-1/8") that is like new. Min. bid \$50 (the lot).



316). Twenty Grand Razor Sign. 15 x 29.75" early tin litho die-cut sign for "Twenty Grand" brand razor blades, in shape of razor blade. Very nice overall (C. 8++) w/ exception of a little light staining and wear in outer border section. Min. bid \$40.



317). Coca-Cola Service Pin. 3/4" (dia.) ca. 1930's employee uniform jewelry service pin, awarded for 10 years of service to Co. Very high quality piece in 10 KT. gold, w/ beautifully detailed cloisonné enameling. Clean, bright and like new. Min. bid \$30.



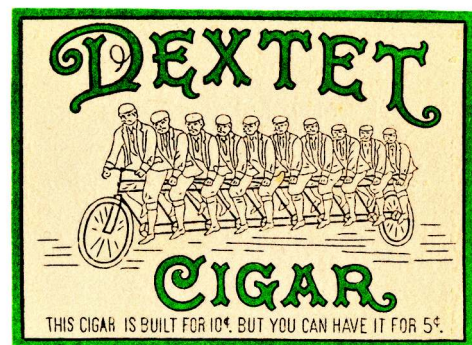
318). Mickey Mouse Bisques. Complete boxed set of four Disney Mickey Mouse hand-painted figural bisques (ea. has Mickey playing a different instrument). Bisques are excellent and appear never used, as found still in their original box (box is very nice, w/ cello tape on right side corner edges of box and lid. Min. bid \$50.



319). Elephant Java Coffee. 5-3/8 x 7.75 x 5.5" very early tin litho 3 lb. hinged lid product can for "Elephant Java" brand coffee (Jos. Stiner Co., New York, NY) featuring fine, beautifully detailed lithography. Very nice example has a few non-offensive light scattered early chips, but overall is very attractive, w/ a nice stable paint surface (C. 8+/-). Min. bid \$50.



320). Milltown Cigar Tin. 4 x 6 x 6" unusual, early tin litho 100 count cigar can for Standard Cigar Co.'s "Milltown" brand (Pittsburgh), featuring great image of smokestack filled Pittsburgh skyline. Has strong colors and a very nice overall appearance, w/ a little non-offensive light scattered scuffing and wear (C. 8+/-). Min. bid \$40.



321). Dextet Cigars Counter Felt. 7.5 x 10" early heavy wool cloth advertising counter felt for Dextel brand cigars, featuring great image of Co.'s bike riders logo. Clean and excellent (C. 8.5++). Min. bid \$40.



322). Gypsy Boy Spice Tin. 3-3/8 x 2.25 x 1-3/8" early tin litho 1-1/2 oz. spice tin (white pepper) for Gypsy Boy brand (Dolan Mercantile Co., Atchison, KS). Clean and attractive appearance, w/ a little non-offensive light background wear (C. 8+/-). Min. bid \$40.



323). Griffon Safety Razor Tin. 2.5 x 1-3/8" (dia.) early tin litho safety razor tin for the "Improved Griffon", w/ partial razor pieces inside (no handle). Quite nice overall (C. 8+) w/ exception of early scratch line on backside. Min. bid \$40.



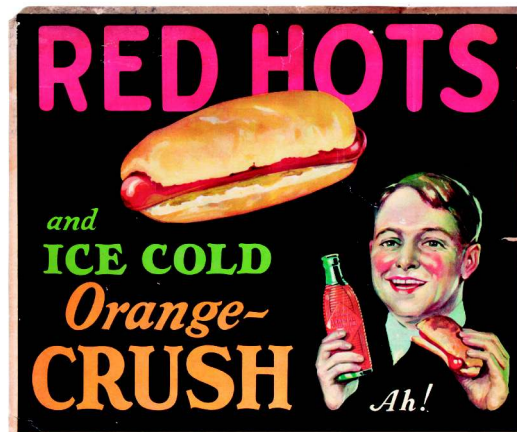
324). Red Seal Overall's Match Safe. 2-7/8 x 1.5 x 3/8" early, celluloid covered pocket match safe advertising McDonald Red Seal brand working clothes, w/ cigar clipping mechanism at base. Clean and very nice overall w/ a little minor denting at bottom edge. Min. bid \$40.



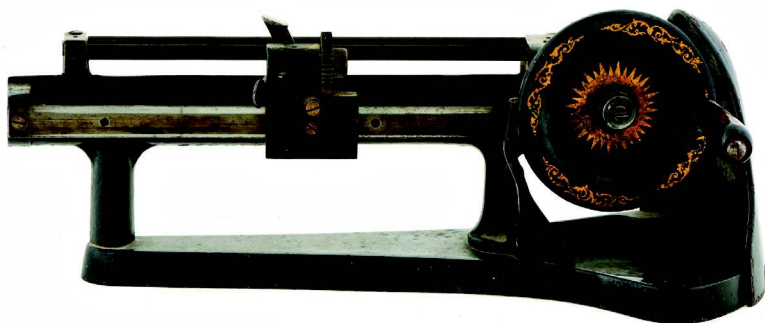
325). Fruits & Flowers Tobacco. 3-1/8 x 2-3/8" (dia.) very early, small paper label (over cardboard) container for "Fruits & Flowers" brand tobacco (Pilkinton Co., Richmond, VA), featuring beautiful color graphic floral and fruit images on front and lid. Very nice overall (C. 8+/-) w/ a little minor even toning and light wear (Series 1883 tax stamp). Min. bid \$40.



326).Schmidt's Bread Sign. 14 x 17" (7 x 10.5" actual piece) beautiful, early embossed pressed cardboard shiny finish sign for Bernard Schmidt Baking Co. (Harrisburg, PA), featuring stunning, multi-color lithography. Clean, bright and exceptionally nice (C. 8.5++), beautifully framed and matted. Min. bid \$50.



327).Orange Crush Sign. 10 x 12" scarce, early cardboard sign for Orange Crush soda. Has some light toning, as well as a fairly large light crease mark at upper right 1/3 of piece and small break spot in bottom left corner (not offensive and don't detract badly from great overall look of piece- reinforced on backside w/archival tape). Displays nicely (as a C. 7.5/+). Min. bid \$40.



Mechanical
Pencil
Sharpener

328).Favor Ruhl Pencil Sharpener. 5 x 13 x 6" early, heavy figural German made cast iron mechanical countertop Pencil Pointer, w/ interesting rotating gear mechanisms and nice early stenciling (dated 1897). Has some wear from use, but overall nice condition (C. 7.5/+), no shavings receptacle. Min. bid \$50.



329).Felix Puzzle Mirrors. Lot of two early glass covered dexterity puzzle games w/ metal collars on sides and mirrors on backsides. Includes 3" and 2.25" (dia.) size variations. Excellent. Min. bid \$40 (the lot).



330).Armour's Peanut Butter. 4 x 3.5" (dia.) early tin litho 1 lb. peanut butter pail for Armour Co.'s "Veribest" brand, featuring nice graphic nursery rhyme character images all around. Clean, bright and excellent (a strong C. 8.5/+), w/ exception of some wear at top edges of lid. Min. bid \$30.



331).Goodrich Footwear Sign. 13-5/8 x 39" early embossed tin litho sign for Goodrich brand rubber boots and footwear, w/ beautifully detailed embossed multi-color lithography. Clean, bright and excellent, as found never used (C. 8.5++) w/ very minor waving, and slight storage wear at outer edges. Min. bid \$50.



332).Beaumont Cigars Tray. 13" (dia.) early tin litho advertising tray for Beaumont brand "Union Made Cigars" (Sentenne & Green Lithographers). Clean, bright and beautiful condition (like new). Min. bid \$40.



333).Sci-Fi Space Toy Set. 7-5/8 x 7-5/8 x 1.25" unused ca. 1951 complete set of "Supersonic Aces" plastic space travelers toys in original box by Premier Products Co., Brooklyn (includes space traveler and 5 colorful futuristic space travel ships). Excellent. Min. bid \$30.



334).Berry Bros. Thermometer. 9-1/8" (dia.) x 1-1/8" very early brass cased dial type advertising thermometer for Berry Bros. Varnishes, whicely detailed factory scene image (dated 1888). Clean, and exceptionally nice. Min. bid \$50.



335). Winchester Cartridges Sign. 13 x 19" (11-5/8 x 17-5/8" visible image) very early paper litho sign for Winchester brand pistol and revolver cartridges. Has strong colors and displays quite nicely (as a C. 8+/-) although there is some non-offensive light background staining and a little bit of early repair in the upper outside right corner area (dark background and yellow border section). Framed. Min. bid \$50.

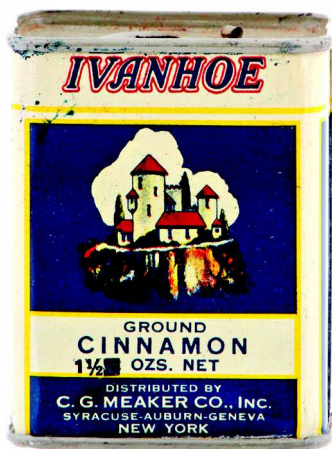
Rare Small Size Globe



336). Coca-Cola Globe. 8 x 10" (dia.) unusual, scarce, smaller size variation, ca. 1930's milk glass Coca-Cola advertising one piece globe. Piece is clean and like new (near mint). Min. bid \$100.



337). Perfect Seal Motor Oil Can. 5-5/8 x 4" (dia.) scarce, early 1 qt. solder seam picture can for "Perfect Seal" brand motor oil (Republic Oil Co., Chicago, IL). Full, sealed can is bright and very attractive (displays as a strong C. 8+/-) w/dent mark on lid and little non-offensive light scuffing and wear. Min. bid \$50.



338). Ivanhoe Spice Tin. 2.75 x 2.25 x 1.25" early tin litho 1-1/2 oz. spice tin (cinnamon) for Ivanhoe brand (Meaker Co., Auburn, NY) w/ nice image of Co.'s trademark castle on both sides. Clean, bright and especially nice (C. 8.5+). Min. bid \$40.

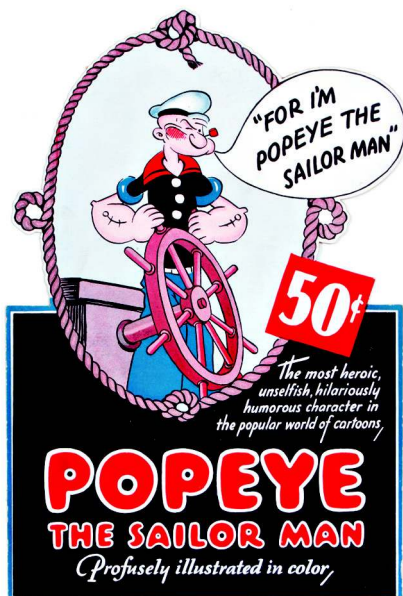


339). Virgin Tobacco. 5 x 3 x 2" scarce, full, early 4 oz. cloth tobacco bag for "Virgin" brand tobacco (Marburg Bros., Baltimore, MD) w/ beautiful early graphic label (1872 tax stamp). Very nice overall (C. 8+/-), w/ minor toning (note: tax stamp has a separation break at top of bag). Min. bid \$40.

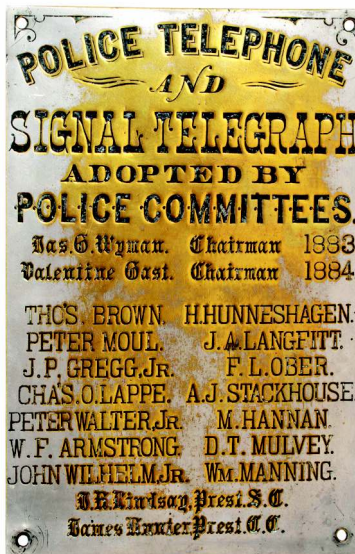
Felix Candy Box



340). Felix Candy Box. 4 x 2.25 x 1.5" scarce, ca. 1930's souvenir Marcelle candy box (heavy cardstock composition) w/ great die-cut Felix image on front side. Very nice overall (a strong C. 8+/-). French. Min. bid \$40.



341). Popeye Sign. 13-5/8 x 9" scarce, early countertop cardboard die-cut easel-back sign promoting a color illustrated "Popeye the Sailor Man" book. Clean, bright and excellent (C. 8.5+/-). Min. bid \$60.

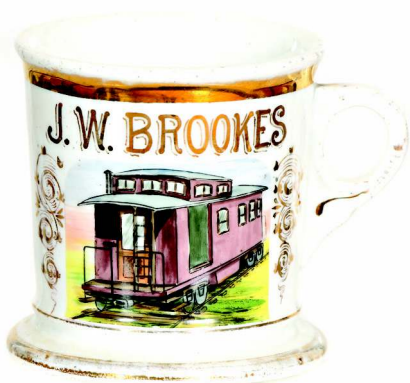


342). Police Telegraph Sign. 12.25 x 8" unusual, 1880's, heavy nickel over brass engraved "Police Telephone and Signal Telegraph" sign. Substantial, very high quality piece that displays great (note: has some early wear to nickel plating, w/ nice rich brass underneath). Min. bid \$50.



343). Orange Crush Sign. 14 x 11" ca. 1920's/30's cardboard sign for Orange Crush soda, featuring nice image of large ribbed bottle and Co.'s trademark Crushy character. Clean, bright and excellent (C. 8.5+/-). Min. bid \$40.

Min. Sample Size



344).Caboose Shaving Mug. 3-7/8 x 3-7/8" (dia.) early, fine china occupational shaving mug for a RR worker, featuring beautifully detailed hand-painted image of early caboose. Excellent, w/wear to decorative gold trim on base and handle areas. Min. bid \$50.



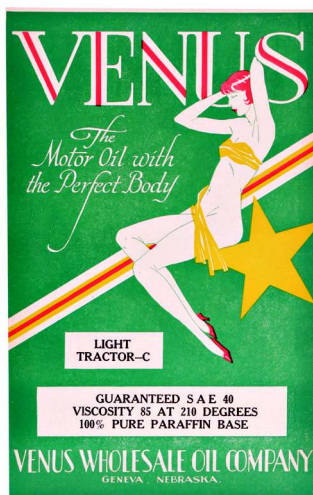
345).Egg Carrier Salesman's Sample. 4.5 x 3.5 x 1.5" early, miniature salesman's wooden advertising sample case for the Star brand commercial egg carrier (Star Egg Carrier & Tray Mfg. Co., Rochester, NY). Has stenciled advertising along four sides, w/ a neat lift off cardboard protective lid which covers small wooden eggs inside. A very high quality, unusual piece in very nice condition (C. 8++). Min. bid \$40.



346).Locomotive Shaving Mug. 3.75 x 3.75" (dia.) early, fine china occupational shaving mug for railroad worker, featuring beautifully detailed hand-painted image of early locomotive. Excellent. Min. bid \$50.



347).Salesman's Sample Western Saddle. 10 x 8 x 8" very high quality miniature leather western saddle (salesman's sample?). Has decent age and a nice patina, w/a fancy tooled decorative floral design, sheep's hide fleece underneath, w/ metal horn and leather stirrups. Interesting and unusual piece (no makers name evident). Includes a nice stand for displaying (see image on website addendum). Min. bid \$50.



348).Venus Motor Oil Label. 10.25 x 6-3/8" great early paper label for a large Venus brand motor oil can (Venus Oil Co., Geneva, Neb.) featuring great image of Co.'s Venus pinup logo. Clean, bright and excellent (C. 8.5+) w/ minor expected toning (would look great framed as sign). Min. bid \$30.

Towle's Log Cabin Syrup



349).Towles Log Cabin Syrup Jug. 8 x 4.5" (dia.) extremely rare, early stoneware pottery maple syrup jug for Towle Maple Syrup Co.'s Log Cabin brand maple syrup (Fairfax VT. and St Paul, MN). Stoneware pottery jug is excellent, labels have some expected toning and general light wear and loss, but overall are attractive and display quite well (heavier wear and some edge loss to label on backside). Min. bid \$50.

Buster Brown Blocks



351).Buster Brown's Blocks. 12-5/8 x 8 x 1" early paper lithographed boxed set of wooden children's toy Buster Brown picture blocks, featuring stunning, multi-color lithography all around each block (individual blocks ea. measure app. 4 x 2.5 x 1"). Blocks are clean, bright and excellent; box cover has some soiling and darkening (as found, should improve w/ cleaning). Min. bid \$70.

350).Uncle Sam Candy Die-Cut. 15 x 7" (9.25 x 4-3/8" actual piece) unusual, colorful and highly graphic die-cut candy advertisement on heavy card stock for "Ambrosia" brand 5¢ chocolate candy. Impressive piece is clean, bright and excellent (a strong C. 8.5+/+). Nicely framed. Min. bid \$40.



352).La Crosse Tractors Calendar. 30 x 18-7/8" scarce, large, 1919 paper litho roll-down calendar advertising "La Crosse" brand farm tractors, w/ nice image of early, primitive style tractor in farmers barn. Image area is clean and quite attractive (displays as a C. 8+/+), although there are some tears and tattering at outer edges and an area of tape damage in outer bottom right corner area (note: these could be easily matted out if framed). Complete w/ metal strips and partial calendar pad. Min. bid \$50.



353). Home Razor Tin. 2.75 x 3.25 x 1.75" scarce, early tin litho product tin from the Home Safety Razor Co. (Boston, MA) w/ nicely detailed image of early razor on lid. Tin has some soiling and light general wear, but overall attractive and displays nicely (C. 7.5+). Complete w/its early razor and wedge blade. Min. bid \$40.



354). Lightning Express Cap Gun. 3 x 5 x 1/2" early figural cast iron "Lightning Express" mechanical cap gun (pulling trigger releases train into cap). Nice overall, w/ some typical light oxidizing in area where caps exploded. Min. bid \$50.



355). Silver Tex Condom. 1.75 x 2-1/8 x 1/4" scarce, early tin litho "Silver Tex" brand condom tin (Akwell Corp., Akron, OH). Crisp, bright and like new (near mint) w/ contents. Min. bid \$40.



356). Negrocuirs Tin. 1-7/8 x 3" (dia.) early tin litho auto leather conditioning tin (saddle soap type product) featuring great image of black woman and early race car. Clean, bright and very nice overall (a strong C. 8++). French. Min. bid \$40.



357). Teddy Cigarettes Tin. 4 x 5.75 x 5/8" unusual, early hinged lid tin litho flat 50's style cigarettes tin w/ nice Teddy Roosevelt image. Clean and very attractive (a strong C. 8++). Min. bid \$40.



358). Gold Shore Tobacco Tin. 4-3/8 x 7 x 4-5/8" early Bagley & Co. "Gold Shore" brand tobacco tin (same image on front, back and lid). Has a little minor denting, a few light scuffs and a slight bit of even fading to reds, but overall is attractive and displays very nicely (C. 8+/). Min. bid \$40.



359). Betty Boop Bisque Set. 3 x 3-7/8 x 1.5" early boxed set of hand-painted figural ceramic comic character bisque figures, featuring "Betty Boop and her Pals". Excellent. Min. bid \$50.



Betty Boop Bisques



360). Colburn's Laundry Bluing Box. 14 x 12 x 12" (as pictured lid open) early wooden store display box for Colburn's laundry bluing product. Has stunning, colorful and graphic label inside showing black woman and child doing laundry. Clean, bright and especially nice (C. 8.5) w/only minor wear. Min. bid \$50.



361). Yellow Kid Textile. 14-3/8 x 16-3/8" (8-5/8 x 11.75" actual piece) scarce, ca. 1890's unused cloth sewing pattern for a "Yellow Kid" stuffed cloth comic character doll. Neat and unusual piece is excellent overall (C. 8++) and nicely framed and matted. Min. bid \$60.



362). Carhart's Coffee Tin. 7 x 6 x 4" early tin litho 2 lb. coffee can by Carhart Co., New York, featuring nice images of Co.'s train car logo on both sides (beautiful early Gina type lithography). Clean and very attractive (a strong C. 8+/) w/ only minor wear. Min. bid \$50.



363).Hanlen Whiskey Tip Tray. 4.25" (dia.) colorful and graphic early tin litho tip tray for W.C. Hanlen Co.'s "98" brand whiskey (Reading, PA). Clean and excellent (a strong C. 8++), w/ minor wear in outer rim area. Min. bid \$30.



364).Wrigley's Sign. 6 x 13" early beveled tin over cardboard sign for Wrigley Co.'s P.K. brand chewing gum. Clean, bright and very nice (displays as a strong C. 8++) although close examination will show a few tiny scratch marks- nothing detracting or that takes away from great overall look of piece (critical grade C. 8+-). Min. bid \$60.



365).Ruhstaller's Tip Tray. 4-3/8" (dia.) early tin litho brewery tip tray for Ruhstaller's Lager (Sacramento, CA) featuring attractive multi-color graphics. Clean, bright and excellent appearance (displays a strong C. 8++), w/tiny pin prick in blue background (at 1 o'clock) and a little slight scattered darkening/ oxidized wear at outer edges of rim. Min. bid \$40.



366).C.D. Kenney Pot Scraper. 1.5 x 3-7/8" scarce, early embossed figural cast iron pot scraper advertising C.D. Kenney Co.'s teas, coffees and sugars. Has a little light oxidizing and wear on upper surface, but overall quite nice. (C. 7.5+/8-). Min. bid \$40.



367).Kis-Me Gum Container. 1.5 x 1.5 x 5/8" early, very high quality, embossed 2-ps. brass chewing gum container for "Kis-Me" orange chewing gum, w/ scattered remnants of early nickel plated finish on surface. Excellent overall. Min. bid \$40.



368).Toonerville Folks Cookies Box. 3 x 5 x 2" early Nabisco Co. "Toonerville Folks" animal crackers style product box w/ great cartoon images from Toonerville Trolley cartoon strip all around. Excellent overall (C. 8.5), (some of string missing at top). Min. bid \$40.

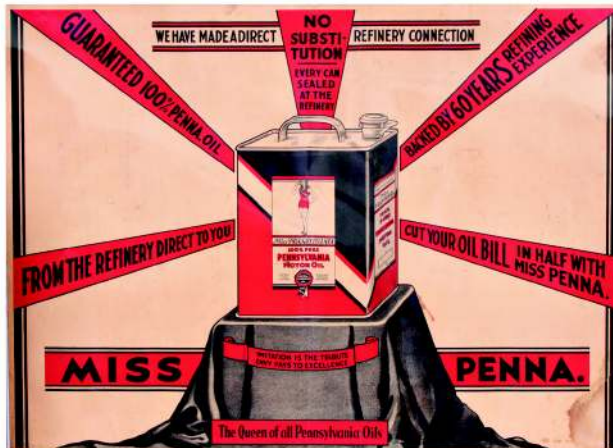


369).Spark Plugs Sign. 37.25 x 14" large, early die-cut cardboard easel-back window sign advertising Hastings spark plugs. Clean, bright and excellent, as found never used still in its original included box (C. 8.5+) w/ very minor trace hint of storage toning/foxing (so minor barely merits mention). Min. bid \$50.

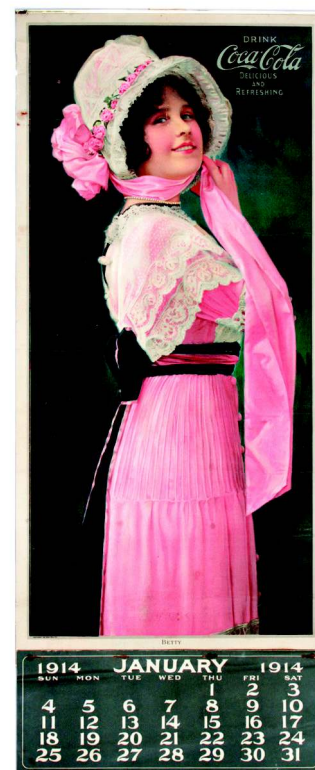
Miniature Samples



370).Cocoa Sample Tins. Outstanding lot includes three early miniature tin litho cocoa sample tins (each app. 1.75" (h)). Klein's (C. 8.5+); Lowney's (C. 8.5+); and Runkel brands (C. 8.5). Lot also includes an early paper over tin sample for Bakers Cocoa (C. 8+). Min. bid \$50 (the lot).



371).Miss Pennsylvania Oil Sign. 29.5 x 39" large and impressive early heavy paper sign for "Miss Pennsylvania" brand motor oil, w/ nice image of Co.'s large 2 Gallon can featuring beauty queen logo. Clean, bright and displays well, w/a stain area in bottom right corner and a large and couple smaller tears (closed on back w/ cello tape). Min. bid \$50.



372).1914 Coca-Cola Calendar. 31.75 x 13" large, complete Coca-Cola calendar featuring Co.'s 1914 calendar girl "Betty". Attractive piece has strong colors and displays nicely, w/ some fairly typical faint horizontal crease lines (from being rolled) and a fairly minor small stain spot and slight tears and wear in very outer white margin area. Complete w/ pad and metal strip. Min. bid \$150.



373).Sandow Cigars Sign. 3 x 4.5" small, early embossed string hung sign for Sandow 5¢ Cigars, featuring great image of Eugen Sandow, the world famous trailblazing strongman and body builder. Clean, bright and excellent (C. 8.5+). Min. bid \$40.



374).Kuhn's Paint Co. Bank. 2 x 1.75" (dia.) miniature, early tin litho advertising bank in shape of an early Kuhn Co.'s paint bucket. Clean and very attractive (C. 8+). Min. bid \$30.

Tooth Powder



375).Sheffield's Dental Powder Box. 2 x 3.25" (dia.) very early 2-ps. paper over cardboard box for Dr. Sheffield's "Crème Dentifrice" tooth cleanser (B.F. Allen Co., New York) w/ attractive color label on top. Quite nice overall, w/ some light soiling and wear on top label (C. 8/-). Min. bid \$40.



376).Trufruit Soda Light. 8 x 11.5 x 2.75" unusual, early electric light-up art deco style wall lamp advertising "Trufruit" brand 5¢ chocolate flavored soda. Has metal decorative trim over wood frame body, w/, a curved celluloid advertising panel across front. Nice overall, w/ minor denting to metal trim and flake spot in red tail area under word "Trufruit". Min. bid \$40.



377).Welsbach Tip Tray. 4.25" (dia.) early tin litho advertising tip tray for Welsbach Co.'s gas lighting products, featuring beautifully detailed multi-color graphics. Crisp, bright and like new (near mint). Min. bid \$40.



378).Hand Bag Tobacco Tin. 7 x 7 x 4.25" early, figural tin litho product can for Larus Co.'s "Hand Bag" brand tobacco, w/ an attractive lithographed faux leather finish. Excellent overall (C. 8+). Min. bid \$40.



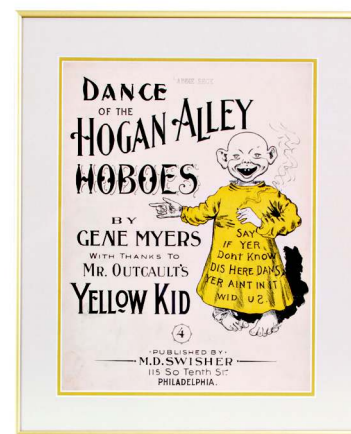
379).Monarch Popcorn Pail. 3.75 x 3-3/8" (dia.) 14 oz. tin litho peanut butter pail for Reid, Murdoch Co.'s Monarch "Teenie Weenie" brand popcorn, featuring Co.'s lion shield logo on front and comic character images across backside. Clean, bright and very attractive (a strong C. 8+). Min. bid \$40.



380).Reliance Safes Sign. 9 x 7-5/8" very early, heavy embossed cast iron sign from the John Tann Safe Co., w/ nicely embossed painted detailing. High quality piece is clean and very attractive, w/ some light wear to its paint surface (C. 7.5+). Note: The Tann family of London was the world's first safe maker and the Co.'s "Reliance" safe lock was patented in 1843 w/ the anchor becoming the Co.'s trademark after that date). Min. bid \$50.



381).Canada Dry Soda Sign. 8" (dia.) impressive, early, heavy glass chain hung advertising sign, w/ reverse painted lettering for Canada Dry soda pop, w/nice deeply incised lettering on front. Impressive, high quality piece is bright, clean and excellent (near mint) w/ exception of a few tiny fleabites on side edge (stated for accuracy, so minor it barely merits mention). Min. bid \$50.



382).Yellow Kid Sheet Music. 17.25 x 14.25" (13.25 x 10" visible) scarce, oversized "Dance of the Hogan Alley Hoboes" sheet music, featuring great color image of Yellow Kid smoking cigarette. Excellent overall appearance (a strong C. 8+) w/ minor toning. Framed. Min. bid \$50.



383). Bottle Toppers and Hangers. Lot of 5 vintage die-cut cardboard advertising soda pop and fruit beverage bottle toppers and string hanger signs (sizes range from 5.75 x 6.25" to 11.5 x 8"). Includes two different 7-up, Rummy, Mission and Mr. Neport brands. All are very good to excellent. Min. bid \$40 (the lot).



384). Security Lightning Rod Items. Lot includes two early celluloid advertising pieces for the Security Lightning Rod Co., ea. w/ great images of Co.'s Uncle Sam logo. Both are clean and very attractive: Match safe 2.75 x 1.5 x 3/8" has minor soiling and tiny cut on bottom edge w/ some general wear on backside; tape measure 1/2 x 1.75" (dia.) excellent (tape re-tied at top). Min. bid \$50 (the lot).



385). Harper Whiskey Mechanical Ad. 5-7/8 x 2-7/8" early mechanical cardboard risqué novelty advertising piece on heavy cardstock for Harper Whiskey ("Pull off My Gown to see whiskey of greatest renown"). Excellent overall. Min. bid \$40.



385).



Yellow Kid Cigarettes Postcard

386). Yellow Kid Cigarettes Postcard. 4 x 6.5" great early die-cut advertising postcard from the National Cigarette and Tobacco Co., promoting Co.'s Yellow Kid brand cigarettes (also Co.'s High Admiral, Admiral and Royal Sweets brands) w/ different images on ea. side (1897 flag cancellation). Clean and very attractive (C. 8++). Min. bid \$50.



387). Town Talk Bread Sign. 14 x 19" early enameled porcelain sign for "Town Talk" brand bread, w/ unusual colors. Clean and very attractive, w/ a few non-detracting minor oxidized chips at bottom edge. Min. bid \$50.



388). Blue Daisy Spice Tin. 3.25 x 2.25 x 1.25" early 1-1/2 oz. tin litho spice tin (red pepper) for Blue Daisy brand (Rasse Wholesale Grocers, Fairbury, NB). Clean and very attractive (C. 8++) w/ minor stain spot near bottom of backside. Min. bid \$30.



389). Litho Co. Tip Tray. 4-5/8 x 3.5" early tin litho tip tray for the New York Metal Ceiling Co. ("Metal Lithographers and Decorators, Artistic Work a Specialty") featuring beautiful multi-color graphics. Clean, bright and very attractive appearance (displays as a C. 8+), w/ a little light wear along outer rim and minor non-detracting faint haze mark in dress area (critical grade C. 8/-). Min. bid \$40.

Iron Bottle Opener



390). Black Man Bottle Opener. 4-3/8 x 3.75 x 1.5" early figural wall mount style smiling black man cast iron bottle opener (bottle inserted into his mouth for prying cap off bottle). Clean and very attractive, w/ nice original paint surface (a strong C. 8+), w/ minor wear from use. Min. bid \$40.



391). Italian Pocket Tin. 4-1/8 x 3 x 7/8" unusual, early tin litho vertical pocket tin for a fine Italian blend of tobacco. Excellent overall w/ slight hint of fade (a strong C. 8/+). Min. bid \$40.



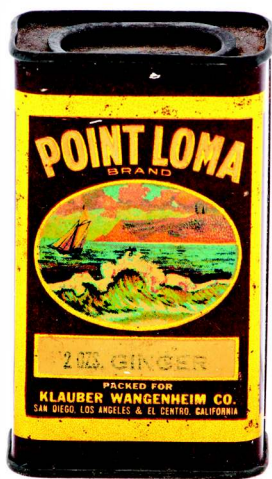
392).Queen of Hearts Candy Pail. 3 x 2-7/8" (dia.) early tin litho candy pail w/ attractive Queen of Hearts nursery rhyme images all around. Clean, bright and excellent (C. 8.5). Min. bid \$40.



393).Thompson Meters Pin Holder. 1.5 x 2" (dia.) early 2-ps. metal advertising pin holder for the Thompson Meter Co. (Indianapolis). w/ stunning, beautifully detailed inlaid cloisonné porcelain enameled advertising on lid. Made by the O'Hara Waltham Dial Co. (maker of early pocket watch dials). Enameling like new, w/ a minor dent and slight wear to nickel over brass finish of container. Min. bid \$40.



394).Three Pigs Candy Pail. 3 x 2-7/8" (dia.) early tin litho candy pail w/ nice Three Little Pigs nursery rhyme images all around. Clean, bright and excellent (C. 8.5), w/ some oxidizing and wear on gold flashed lid. Min. bid \$30.

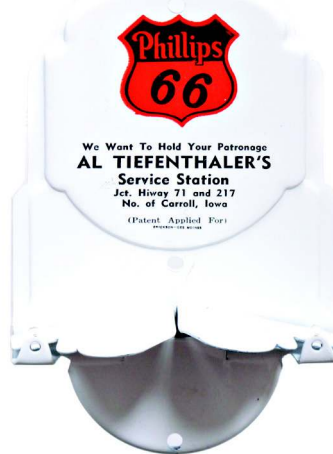


395).Point Loma Spice Tin. 3.75 x 2.25 x 1.25" early tin litho 2 oz. spice tin (ginger) for Point Loma brand (Klauber Wangenheim Co., San Diego and L.A. CA) featuring beautiful multi color graphic trademark image. Clean, bright and excellent (a strong C. 8++). Min. bid \$40.

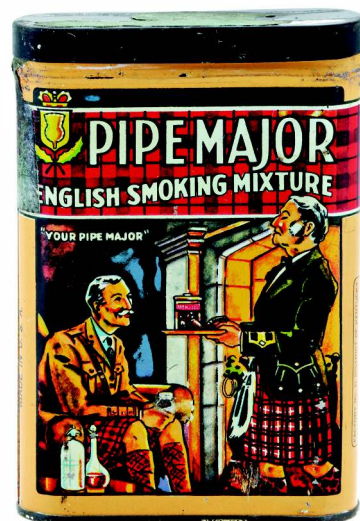


396).Planters Cocktail Glass. 5-1/8" tall, early, very high quality cocktail glass w/ an upright standing Mr. Peanut figural stem and "U" shaped bowl. I'm told these were given by owner of the Co. to friends and employees as gifts on special occasions (wedding presents, etc.). Excellent condition. Min. bid \$40.

Gas Station Towel Holder



397).Service Station Towel Holder. 5.25 x 3.5 x 1-5/8" early metal restroom towel holder advertising Phillips 66 service station. Clean, bright and like new (near mint) as found never used in its original box (minor tattering and wear to box). Min. bid \$40.



398).Pipe Major Pocket Tin. 4-3/8 x 3 x 7/8" early tin litho vertical tobacco pocket tin for Pipe Major brand. Has strong colors and displays nicely, w/ very minor denting and slight wear (C. 8+). Min. bid \$40.



399).Kirby Ford Dealers Calendar. 18 x 10-1/8" early unused cardboard 1920 advertising calendar for a Ford Car, Truck and tractor dealership, w/ beautiful multi-color graphics. Clean, bright and excellent (C. 8.5+), complete w/ full calendar pad. Min. bid \$40.



400).Tiger Pocket Tin. 2-7/8 x 3 x 7/8" early tin litho vertical tobacco pocket tin for Lorillard Co.'s "Tiger" brand, w/ different tiger images on each side. Clean, bright and excellent overall (a strong C. 8++), w/ minor background wear. Min. bid \$40.



401).Two Orphans Cigars. 5 x 5" (dia.) early tin litho 50 count cigar tin for "Two Orphans" brand, featuring nice image of Co.'s trademark sisters (same image both sides). Displays nicely, w/ some light scattered wear (C. 8-). Min. bid \$40.



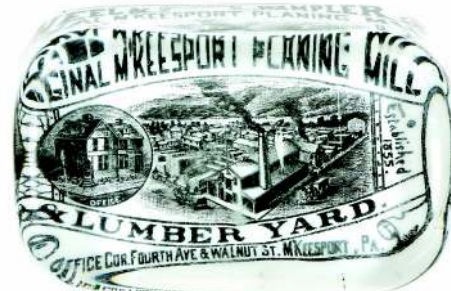
402).Mo-Ko Coffee Thermometer. 12 x 3" early wooden advertising thermometer for "Mo-Ko", an early coffee like beverage made by Bauer Co., Elmira, NY. Never used piece is clean and excellent, and comes w/ original advertising ephemera for product. Min. bid \$40.



403).Billiards Match Holder. 1.5 x 2-3/8 x 7/8" early celluloid covered pocket vespa matchbox holder advertising "The Majestic", a Shenandoah, PA Billiards Parlor, w/ great image of Model 1915 pocket billiard table on front (backside notes parlor had Pool, Billiards, Cigars, Shoe Shining, Hat Cleaning, etc.). Piece has some light general toning, a couple small cuts on backside and a little light staining at outer edges, but overall is attractive and displays great (as found, might improve w/ cleaning). Min. bid \$40.

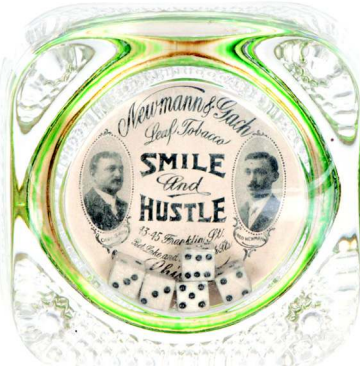


404).Davis Fish Co. Mirror. 1.75 x 2.75" early celluloid pocket mirror advertising the Davis Fish Co. (Gloucester, MA), w/ nice images. Clean and attractive (excellent). Min. bid \$40.



405).Lumber Mill Paperweight. 2.5 x 4 x 1" early, heavy glass advertising paperweight w/ milk glass base advertising the Neel & Wampler Planing Mill and Lumber Yard (M'Keesport, PA), featuring beautiful, finely detailed images of bustling factory and early frame home. Excellent (non-detracting small wear spot on upper surface). Min. bid \$30.

Tobacco Co. Paperweight

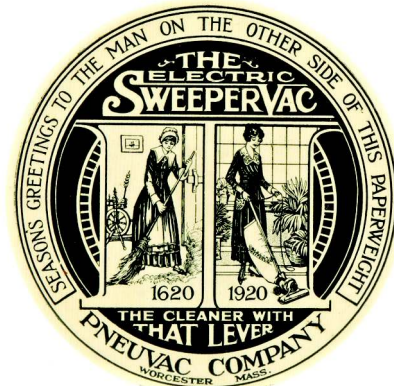


406).Tobacco Co. Paperweight. 3 x 3 x 1-1/8" unusual, very early, heavy glass advertising paperweight for Newmann & Gach Leaf Tobacco Co. (Chicago, IL) w/ five small bone dice inside. Neat and unusual piece. Excellent. Min. bid \$40.

Pencil Sharpener



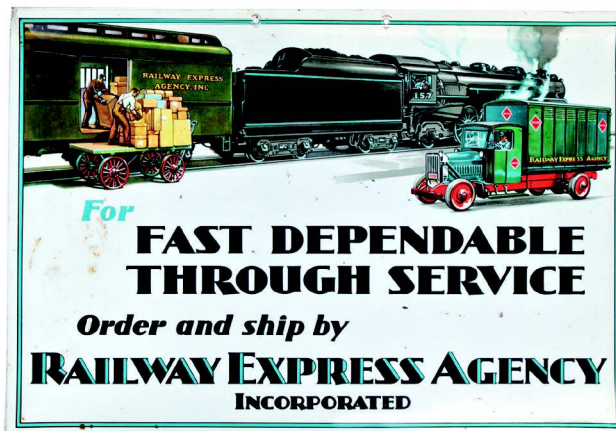
407).Courant Pencil Sharpener. 4.5 x 9 x 3.75" (base 2.75 x 3.75") unusual, steel, and cast metal tabletop "Courant" brand mechanical pencil sharpener. Early, very high quality German made gadget is in very nice overall condition, w/ a rich surface patina and very nice all original paint surface (mechanism works well). Min. bid \$50.



408).Sweepervac Paperweight Mirror. 3" (dia.) scarce, early celluloid paperweight/palm advertising mirror for the Pnevuc Co.'s "Sweepervac". Clean and excellent w/ minor darkening in mirror glass and minor, tiny split mark on backside edge of celluloid (mentioned for accuracy, nothing that is serious or detracting). Min. bid \$30.



409).1917 Coca-Cola Calendar. 32.25 x 13" scarce, large paper litho Coca-Cola calendar featuring 1917 calendar girl Constance (tennis match in background). Outstanding, freshly picked piece is clean and excellent overall (a very strong C. 8++) as found rolled up and never used, complete w/ full pad. Has a little minor wear in outer white margin area and a couple non-offensive barely noticeable trace stains in dress area (from pad staples). Impressive piece. Min. bid \$1500.



410).Railway Express Agency Sign. 13.25 x 18.25" early tin over cardboard sign for Railway Express Agency, featuring wonderful graphic image. Has very strong color and displays quite nicely (basically as a C. 8+), w/ exception of a little light scattered wear including some light oxidized staining in middle left background area and a little minor waving (critical grade C. 7.5+/8-). Min. bid \$70.



411).New State Spice Tin. 3-1/8 x 2.25 x 1.25" scarce, early tin litho 1-1/2 oz. spice tin (allspice) for "New State" brand, w/ map of Oklahoma images (Williamson Marsell Frasier Co., various Oklahoma cities listed). Displays nicely (basically a C. 8+/-) w/ a little minor hazy speckling wear at top edge. Min. bid \$40.



412).Telephone Co. Ashtray. 5-5/8" (dia.) x 1/2" early enameled porcelain ashtray advertising Mountain States Telephone & Telegraph Co., w/ neat image of early Yellow Pages messenger character in center. Crisp and like new (near mint). Min. bid \$40.



413).Railroad Pocket Mirror. 2.25" (dia.) early celluloid pocket mirror for the "Iron Mountain Route" (historic late 19th and early 20th century "St. Louis, Iron Mountain and Southern Railway"- originally established to deliver iron ore from Iron Mt., MO) and later merged into the Missouri Pacific RR. Excellent. Min. bid \$40.

Miniature Sample Size



414).Min. Sample Tea Bin. 4-3/8 x 3.25 x 3.25" scarce, early miniature paper label (over tin) "Liner" brand (John Blau's Co., various Iowa cities) sample tin in shape of one of the large floor model store bins, w/ great images of Co.'s trademark ocean liner on lift up lid and all four sides (oriental tea picking scene inside). Attractive and displays nicely (overall rates a C. 7.5+) although there is some even toning and a little staining on bottom right edge of lid (overall lid C. 7+/-). Neat piece! Min. bid \$50.



415).Austin Ammo Pin-back. 7/8" (dia.) scarce, early celluloid pin-back button advertising Austin Ammunition, w/ nice hunting dogs image. Excellent. Min. bid \$40.



416).Butterine Mirror. 2.75 1.75" early white background variation celluloid advertising pocket mirror for Ammon & Person Co.'s "Butterine" spread, featuring beautiful color graphic image of Co.'s trademark child. Clean, bright and excellent. Min. bid \$40.



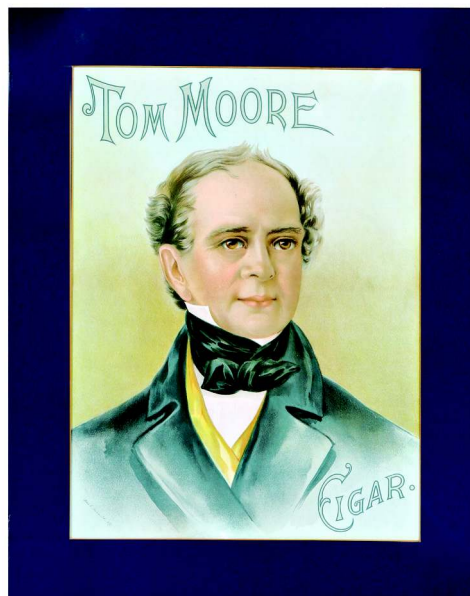
417).Kleckner's Spice Tin. 3.5 x 1-3/8" (dia.) unusual, early tin litho spice tin (ginger) from Kleckner Co. (New York, NY). Excellent (C. 8.5+). Min. bid \$30.



418).Page's Talc. 4.5 x 2.5 x 1-3/8" scarce, early tin litho talc can w/ beautifully detailed color graphics of mother and infant baby (same image both sides). Full, never used tin is clean and like new (near mint). Min. bid \$40.



419).BestTaste Spice Tin. 4 x 2-3/8 x 1.25" early tin litho spice tin (Mustard) from Best Taste Products (Buffalo, NY). Clean, bright and very nice (a strong C. 8+). Min. bid \$30.



420).Tom Moore Cigars Sign. 25 x 20" (19-5/8 x 14-5/8" visible) beautiful, early paper litho sign for "Tom Moore" brand cigars, featuring stunning multi-color lithography (by Louis Neuman Co., NY). Clean, bright and excellent (C. 8.5+), w/ minor staining in outer white margins area. Min. bid \$60.



421).Popeye Fudgicle Sign. 12.5 x 9.25" (8-7/8 x 6" actual sign) great early cardboard countertop die-cut store sign for "Fudgicle" brand popsicles, w/ promotional tie-in for Popeye radio show. Excellent overall (a strong C. 8+) w/ minor toning at top edge (© 1929). Framed. Min. bid \$50.



422).Edison Mazda Bulbs Display. 67.75 x 23-5/8" large ca. 1920's die-cut cardboard stand-up display sign for General Electric Co.'s "Edison Mazda" brand lamps (light bulbs). Powerful and impressive 2-ps. put together display is clean, bright and excellent, as found never uses still in its original shipping carton (a strong C. 8.5+), w/ exception of a little non-detracting storage pinching/wear at outer bottom corner edges. Min. bid \$60.



423).Breinig's Paint Sign. 8.75 x 35.75" large, early beveled celluloid over tin sign for Breinig's Allentown brand oil paints, featuring terrific image of painter dangling from weathervane painting steeple. Clean and attractive appearance (C. 8/+), w/ exception minor waving and a little non-offensive faint foxing surrounding hanging holes along bottom edge (appears these were for holding hanging hooks). Min. bid \$60.



424).Country Club Coffee. 3-5/8 x 5.5" (dia.) early paper over cardboard 1 lb. coffee container from McCord Kistler Co. (Topeka, KS), w/ attractive clubhouse image on both sides. Clean, bright and attractive (C. 8/+) w/ some paper loss spots on lid. Min. bid \$40.



425).Western Shells Box. 4.25 x 4.25 x 2.5" early cardboard 2-ps. shotgun shell box for Western brand 12 gauge shells. Has nice color and displays well, w/ light soiling/scuff mark on lid (C. 8-). Min. bid \$30.



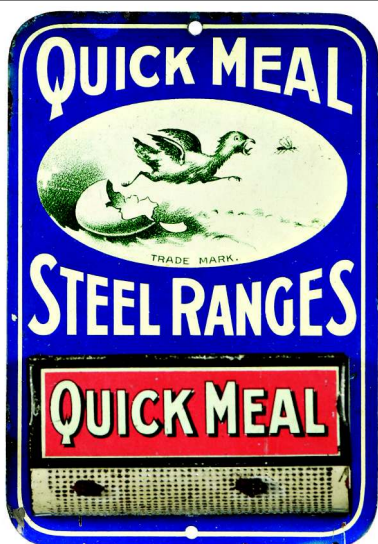
426).Texas Sheet Music Dealers Mirror. 2-1/8" (dia.) early colorful and highly graphic nude in waves celluloid pocket mirror advertising a Houston, Texas sheet music and music books store. Excellent overall. Min. bid \$40.



427).Horse Racing Print. 21.5 x 28" (18-5/8 x 25" visible) early paper sporting lithograph celebrating the 1899 world record setting race won by harness horse Prince Albert in Bethlehem, PA. Attractive and displays nicely, in its nice original frame (C. 8/+), w/ exception of a couple vertical toning lines (from wood backing). Lot also includes the original 11 x 14" mounted photograph that was inspiration for this print (Donaldson Litho, Newport, KY). Min. bid \$50.



428).Dietz Bicycle Lamps Mirror. 2" (dia.) important and extremely rare pocket mirror for Dietz Bicycle Lamps. Clean and attractive piece, w/ very minor pinprick on edge at outer rim and some general light fading. Note: this is considered to be among the rarest and most desirable of all the pocket mirrors (we sold a near mint example a couple sales back for hammer of \$5500- this is possibly the only other known example). Min. bid \$500.



429).Quick Meal Stoves Match Holder. 4-7/8 x 3-3/8 x 1.25" scarce, early tin litho hanging match holder advertising "Quick Meal" brand steel ranges. Clean and very attractive overall (a strong C. 8++), w/ some light general wear on non-graphic backside. Min. bid \$50.



430).Gas Pump Toys. Lot includes two early, large figural cast iron gas pump toys, both w/ real nice, all original paint surface (each has a turning crank on backside). Red 6-7/8 x 2-7/8" (dia.) C. 8/+; Yellow 6.25 x 2" (dia.) a strong C. 8++. Min. bid \$50 (the lot).

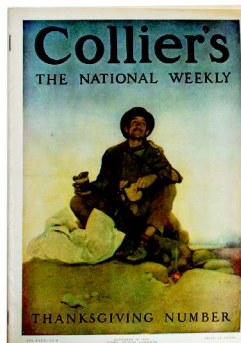


431).Spiffy Soda Sign. 9.5 x 6" unusual, early embossed tin litho sign for "Spiffy" brand cola. Never used sign is clean, bright and like new (near mint appearance) w/ exception of typical slight hints of hazy residue from original protective covering paper (mentioned for accuracy, not detracting and barely visible unless tipped in light just right). Min. bid \$40.

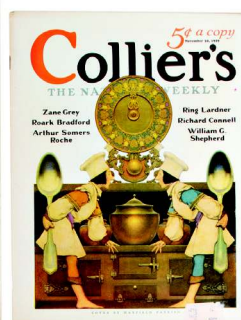
Parrish, Icart, and Other Illustrators



432).



433).

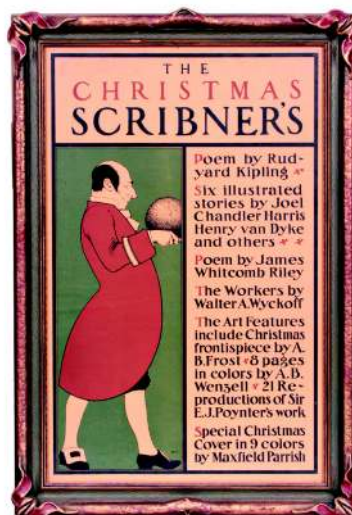


434).

Icart Etching

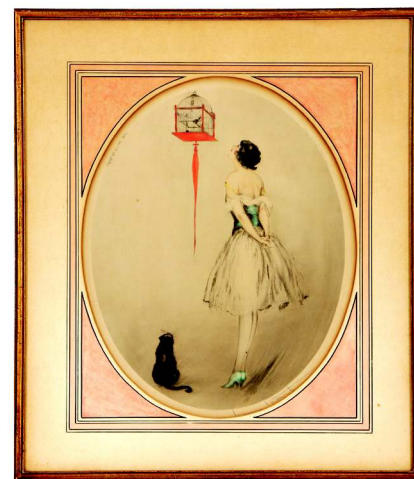


435).



436).

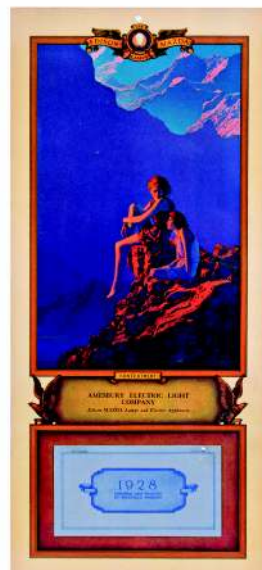
Icart Etching



437).



438).



439).



440).



441).

432).Edison Mazda Waterfall Deck. 3.75 x 2.75 x 7/8" full, boxed deck of General Electric Co.'s "Edison Mazda" advertising playing cards, featuring Co.'s 1931 "Waterfall" calendar image. Excellent (never opened deck still sealed inside its original protective wrapper). Min. bid \$50.

433).Collier's Magazines Lot. Lot of three full, complete Collier's magazines, ea. w/ Parrish cover illustrations. Includes: November 30, 1929 "Two Cooks" (13.75 x 10.5"); November 18, 1905 "Thanksgiving Number" (15 x 10-7/8"); and July 4, 1908 "July 4th" (15 x 10-7/8). Excellent overall (very faint, trace hint of minor vertical fold on July 4th cover). Min. bid \$40 (the lot).

434).Edison Mazda Reveries Deck. 3.75 x 2.75 x 7/8" full, boxed deck of General Electric Co.'s "Edison Mazda" advertising playing cards, featuring Co.'s 1927 "Reveries" calendar image. Excellent (never opened deck still sealed in its original protective wrapper). Min. bid \$50. ##01853

435).Louis Icart Etching. 20.25 x 17" (10.25 x 8-1/8" visible) ca. 1920 "Autumn" (Plums) etching by Louis Icart w/ original hand decorated mat (has "168" and pencil signature in outer bottom margin). Clean, bright and exceptionally nice, in its original frame. Min. bid \$50.

436).Scribner's Christmas Issue Poster. 25.25 x 17" (21.75 x 13.75" visible) 1897 Parrish illustrated advertising poster promoting the Christmas issue of Scribner's magazine, featuring wonderful image of butler carrying Christmas pudding. Clean, bright and exceptionally nice (near mint appearance). Presented in beautiful period frame. Min. bid \$250.

437).Louis Icart Etching. 16-5/8 x 14.25" (12 x 9-5/8" visible image) ca. 1920's "Red Cage" etching by Louis Icart, w/ hand

colored mat (dated 1928, w/ pencil signature in outer margins). Clean and excellent overall, as found still sealed in its original period frame, w/ slight bit of minor even toning. Min. bid \$50.

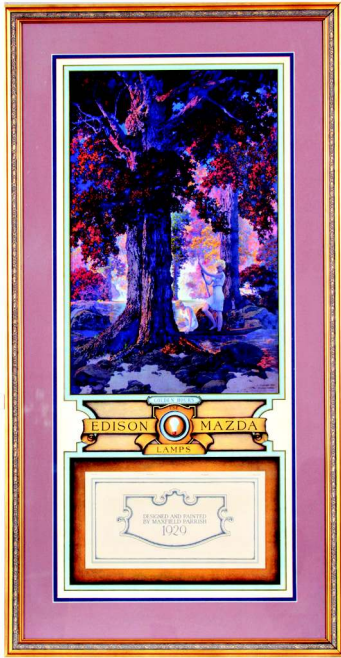
438).Westinghouse Calendar. 16.5 x 9-3/8" outstanding, 1930 art deco cardboard advertising calendar for Westinghouse lamps, featuring stunning multi-color graphic illustration by pinup artist Rolf Armstrong (w/ local advertising for Gardner, MA Electric Light Co.). Excellent overall, complete w/ full calendar pad. There are a couple minor fairly light stain spots in girls nose area (not serious or offensive). Min. bid \$40.

439). "Contentment" Calendar. 19 x 8-3/8" attractive 1928 Edison Mazda cardboard calendar featuring "Contentment" image of girls on rock cliff at sunset. Unused calendar is clean, bright and basically like new in appearance, complete, w/ minor storage wear. Complete w/ full pad. Min. bid \$100.

440).Balloon Co. Calendar. 23-3/8 x 11.75" (22.25 x 10.75" visible) great early cheesecake illustrated pin-up style art calendar advertising Oak Rubber Co.'s "Oak-Hytex" brand toy balloons. Clean, bright and very attractive appearance w/ great art deco look, (C. 8+) w/ exception of some non-offensive light foxing speckles in bottom dark background area. Complete w/ full 1942 calendar pad. Framed. Min. bid \$40.

441).RCA Radiotron Doll. 15 x 7" early wood and composition jointed advertising doll for RCA "Radiotron" brand radio tubes, featuring Co.'s trademark radio tube head character (design is attributed to and accepted by most collectors as being a Maxfield Parrish creation). Has strong color and displays very nicely (as a C. 8+), w/ minor wear on front; backside has area of dark dried goop on tube section and a little light staining on red banner label section (back C. 8-). Min. bid \$50.

Maxfield Parrish Items



442).



443).

Fisk Tires Ads



444).



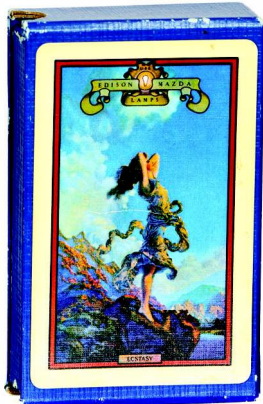
445).



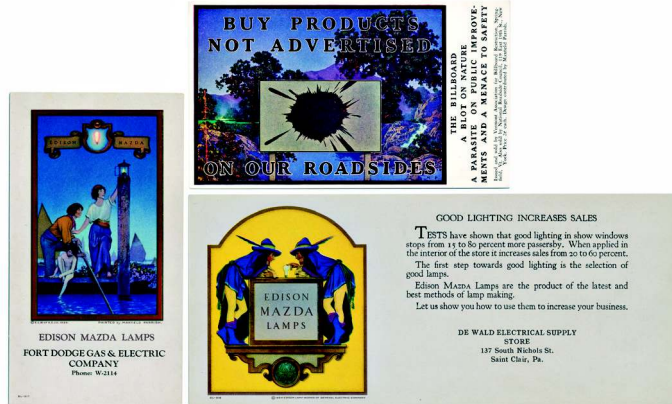
446).



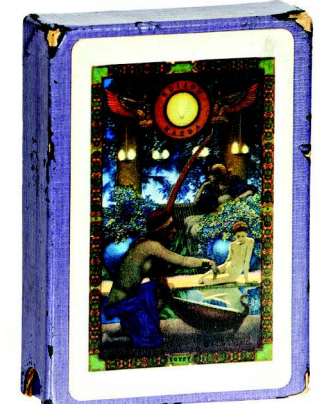
447).



448).



449).



450).

442). Large "Golden Hours" Calendar. 45-5/8 x 23.75" (37.5 x 16.25" visible) scarce, large dealer sized 1929 Edison Mazda calendar featuring Parrish "Golden Hour" image of two women in boat surrounded by fiery Autumn foliage. Stunning piece is crisp, bright and like new (near mint) w/ intense, uncirculated colors and full pad. Beautifully framed and matted. Province: this piece was chosen and featured in the National Parrish museum tour. Min. bid \$500. 560- #02877

443). "Rubiayat" Display. 7.25 x 20 x 3/4" (3.75 x 14.75" image) ca. 1917 (2-1/8 x 8.5" visible) self framed hanging display featuring Crane Chocolate Co.'s commissioned image "The Rubiayat", w/ unusual beautifully embossed and textured gesso display frame. Frame has some light scattered general wear and artwork has some general typical expected soiling and light scattered wear, but overall a most interesting and unusual piece that displays nicely (C. 7.5). Min. bid \$40.

444). Fisk Tire Ads. Lot consists of four different ca. 1917/1918 Parrish illustrated Fisk Tire periodical advertisements. Includes: "Old King Cole" 14 x 10; "Mother Goose" 13.75 x 9.5; "The Modern Magic s" 12.25 x 9; and another variation of "Mother Goose" 12.25 x 9". All are excellent. Min. bid \$30 (the lot).

445). "Solitude" Calendar. 20.75 x 10.75" (17 x 6-7/8" visible) attractive 1932 Edison Mazda calendar featuring "Solitude". Unused calendar is clean, bright and like new, complete w/ full pad. Nicely framed and matted (lot includes original protective envelope). Min. bid \$100.

446). Pocket Calendars. (each 3.75 x 2-3/8") lot consists of three early Parrish illustrated celluloid pocket calendars advertising General Electric Co.'s Edison Mazda lamps, w/ full calendar and dealer advertising on backside of each. Includes: 1933 "Solitude"; 1928 "Contentment"; and 1931 "Waterfall". Clean and attractive, w/ only minor wear. Min. bid \$40 (the lot).

447). Pocket Calendars. (each 3.75 x 2-3/8") lot consists of three early Parrish illustrated celluloid pocket calendars advertising General Electric Co.'s Edison Mazda lamps, w/ years calendar and dealer advertising on backside. Includes: Includes: 1923 "Egypt"; 1924 "Venetian Lamplighter"; and 1925 "Dream Light". Clean and attractive, w/ only minor wear. Min. bid \$40 (the lot).

448). General Electric Ecstasy Deck. 3.75 x 2.75 x 7/8" full, boxed deck of General Electric Co.'s "Edison Mazda" advertising playing cards, featuring Co.'s great 1930 "Ecstasy" calendar image. Excellent (never opened deck still sealed in its original protective wrapper). Min. bid \$50.

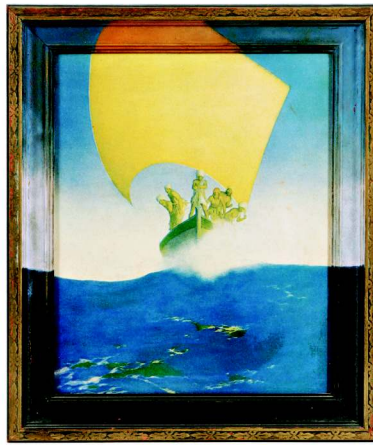
449). Blotter Lot. Lot of three early Maxfield Parrish illustrated cardboard advertising blotters. Includes: "Venetian Lamplighter" (5.75 x 3.25"); Vermont Association for Billboard Restriction (3.5 x 6"); and Edison Mazda Lamps "Get Together" image (4 x 9.25"). They are all unused and excellent (minor wear on Get Together). Min. bid \$40 (the lot).

450). General Electric "Egypt" Deck. 3.75 x 2.75 x 7/8" full 52 card boxed deck of General Electric Co.'s Edison Mazda advertising playing cards, featuring Co.'s 1922 "Egypt" calendar image (no jokers). Cards are decent, w/ signs of some use. Min. bid \$50.

Maxfield Parrish Items



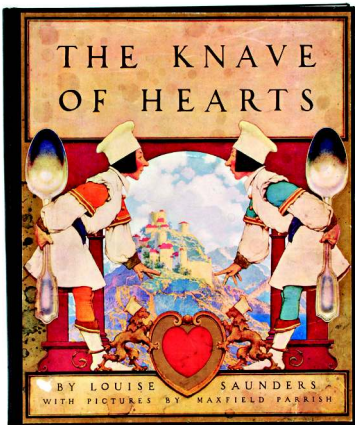
451).



452).



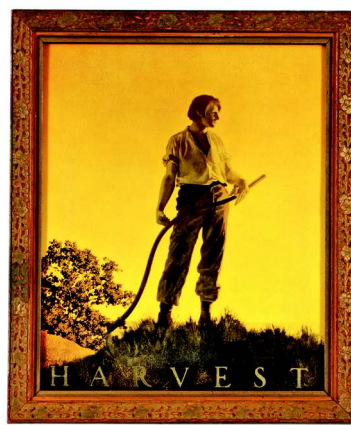
453).



454).



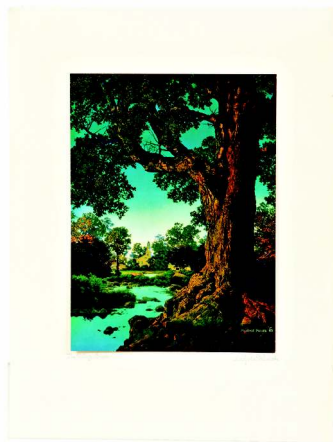
455).



456).



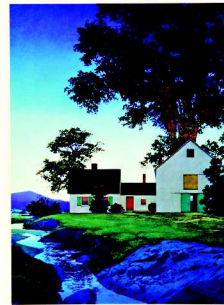
457).



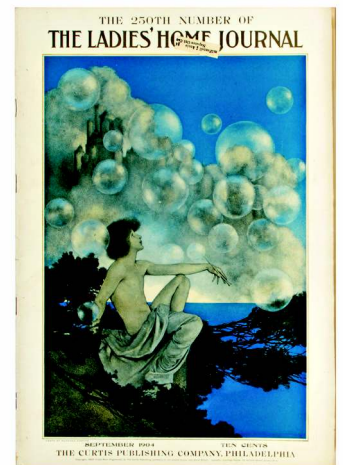
458).



459).



460).



461).

451). "Gulnare of the Sea" Puzzle. Scarce, early wooden jigsaw puzzle featuring M.P. image of queen and large vases. Puzzle is complete and excellent. Min. bid \$30.

452). "Prince Conadad". 13.5 x 11.5" (10-5/8 x 8-5/8" visible) unusual early framed Collier & Sons deluxe edition image from "Arabian Nights" series of art prints, featuring Prince Cocadad and his brothers at sea. Very high quality piece has semi-gloss finish, as found sealed in a very unique painted frame (has original descriptive labels on back side). Min. bid \$40.

453). RCA Radiotrons Display. 12.5 x 13 x 3.5" early countertop advertising display for RCA Co.'s Radiotron brand radio tubes, featuring neat image of Co.'s radio tube character (design attributed to Maxfield Parrish). Bright and very attractive appearance (a strong C. 8++), w/ minor background toning (note: separated factory fold line on tube box area has been reinforced on backside w/ archival tape). Min. bid \$50.

454). Knave of Hearts Book. 14-1/8 x 11.75 x .75" complete original ©1925 hard cover book w/ 23 Parrish illustrations inside (each suitable for individual framing). Inside pages are, crisp, bright and like new (cover illustration has some light foxing and scattered wear). Min. bid \$50.

455). "The Canyon". 16-1/8 x 13-1/8" (14.5 x 11.5" visible) ca. 1924 Reinthal Newman's House of Art print featuring image of blonde girl clinging to rocky cliffs. Decent and attractive example, still sealed in its beautiful original period frame. Min. bid \$40.

456). "Harvest" Print. 12.75 x 10.75" (10.75 x 8.75" visible) ca. 1905 art print by Dodge Publishing featuring attractive silhouette image of farmer holding scythe against orange/yellow sky. Excellent overall, in its beautiful period frame (has original descriptive label on backside). Min. bid \$40.

457). Large "Peaceful Valley" ("Tranquility"). 23 x 19" (16.5 x 13.5" image) ca. 1936 art print of large tree w/ village and purple mountains in background. Clean and excellent as found in its original period frame on its original marked presentation backing. Min. bid \$50.

458). "The Village Brook". 17 x 12.75" (11 x 8" image) 1941 large B&B image of huge old tree, brook, church, etc., w/ greenish blue color sky. Crisp and like new as found tipped on its original marked mat board. Min. bid \$40.

459). "Sugar Plum Tree". 20.5 x 15.25" (15.25 x 9-7/8" visible image) ca. 1905 Scribner's art print on textured paper featuring nice image of children on stairs beneath tall trees, castles and full moon in background. Clean, bright and exceptionally nice appearance (note: an examination under magnification will show two non detracting tiny pin head spots of upper surface loss in outer left edge (mentioned for accuracy, so minor barely merits mention). Nicely framed and matted. Min. bid \$40.

460). "Twilight". 17 x 12.75" (11 x 8" image) large 1937 B&B landscape image featuring evening scene of white house and attached barn. Crisp and like new as found tipped on its original marked mat board. Min. bid \$40.

461). Ladies' Home Journal. 16.25 x 11.25" full, uncut September 1904 Ladies' Home Journal magazine featuring beautiful Maxfield Parrish "Air Castles" cover illustration. Clean and excellent. Min. bid \$40.



Rd #2, Cobb Hill Road, Cazenovia, NY 13035 • 24 Hr. Tel: (315) 662-7625 • 24 Hr. Fax: (315) 662-3570 • morf2bid@aol.com • morfauction.com

Welcome to our 85th auction of quality antique advertising and fine collectibles. Everything we sell is guaranteed authentic and as described. We attempt to grade condition both fairly and conservatively, using a scale of 1-10 on the advertising items (ten being absolutely mint). We do not list reproductions, re-issues, deceptively restored or pieced together type merchandise. Flaws and blemishes are prominently noted and over emphasized. We encourage you to call for a detailed description on any item you have an interest in, but respectfully must request that you do this before the closing night. Dimensions are listed by height, then width, and are only approximate (+ or - a quarter inch).

Bidding

Bids are accepted only from those parties who have registered with us to bid. (If you were mailed this catalogue by us you are automatically pre-registered.) Your bid is a legal contract to purchase and once entered, cannot be canceled. Placement of a bid indicates acceptance of our terms.

On all "BID" items there is a 15% buyers premium added to each successful bid. You're welcome to bid by mail, email and fax anytime after receiving this catalog. **We will begin accepting phone bids on Wednesday, May 13, 2015. We will be taking calls on Wednesday and Thursday from 10:00 AM until 5:00 PM.** If no one answers when you call, please leave a message on our machine and we will get back to you. **If bidding by mail or fax, please remember to include your telephone number with your bids!** You may call or bid as often as you like. We will tell you the current bid on any item(s) you are interested in. To raise a bid, your advance must be at least \$10 more than the current high bid amount. When an item reaches \$250, bidding increments rise to \$25, at \$1,000, bidding increments advance in \$50 steps, and above \$2,000 in \$100 increments. We suggest not waiting until the last minute to begin your bidding, as its quite possible you won't be able to get through.

Web Page and Bid Updates

We will begin posting current bid prices (not including the buyers premium) on Wednesday, May 13, 2015 (including an addendum of additional catalogue lot information) on our internet web page. These prices will be updated once each day (each evening sometime after 9:00 PM, EST) and will get updated to include the final hammer prices on Sunday afternoon once the sale is concluded. On the closing night, we will attempt to update current bid prices every hour. Our web page address for this sale is: <http://www.morfauction.com> We suggest that once you get to it, that you bookmark this address for easy re-access. There is also an addendum section on our website where we post additional information and photo's for this sale.

Reserves and Estimates

All items which receive an opening bid in our sale will be sold to the highest bidder regardless of the price realized (we reserve the right to withdraw items in the event of inaccurate catalog descriptions and to reject any bid we feel is not made in good faith). **We run our auctions with a strict policy of no buy-backs, no auctioneer games and no hidden reserves.** Unlike some of our competitors, we do NOT allow consignors to bid up their own items!

Mechanical Operations

Early mechanical and electric motors and mechanisms on machines toys, coin-ops, clocks, etc. are quite often temperamental and very unpredictable in nature. Although these mechanisms may be working fine at the time of sale, we make no guarantees or representations regarding their continued operating status once they have left our premises (including during shipping).

Closing Night

THE LAST DAY FOR BIDDING WILL BE ON FRIDAY, MAY 15, 2015. On closing day, we begin taking calls at 5:00 PM. Please mark your calendar now. **On the closing night (ONLY), we will also be taking calls at (315) 662-3318, (315) 662-3429 and (315) 662-3904 after 5:00 PM** (in addition to our regular (315) 662-7625 office number). **Closing Time: This Auction will close at 10:00 PM (EST) on Friday, MAY 15, 2015.** At that time, no more incoming calls will be accepted and all lots with a registered bid of less than \$300, as well as all items without call backs registered on them will be officially closed and final. The items at \$300 and over that have call back protection registered on them will be closed out during our call back period the following afternoon (**see important call back rules below**). We reserve the right to change the official closing in the event of unforeseen family type emergencies or technological failures (utility disruptions, etc.). We also reserve the right to either extend the bidding, to postpone or to cancel this auction in the event of a national emergency or if the Internet or the services of the US Post Office were to get seriously disrupted during our catalogue mailing or bidding period.

"Up-To" Bids & Call Backs

CEILING BIDS: We will be happy to enter competitive "up to" ceiling bids for you on any lots you request. Beginning at your minimum amount, we will advance these bid(s) up to your left ceiling amount, if (and only if) it is topped by another bidder. "Up To" bids will be handled discretely and executed in a completely competitive manner for you. Please note that we don't accept open ended "top all others" ceiling type bids.

CALL BACKS: You may request call back protection for any lot(s) that you enter with either a minimum or a protected "up-to" ceiling bid in an amount of at least \$300. This request must be registered with us before the official 10:00 PM closing hour of Friday, May 15, 2015. All callbacks will be placed by us on Saturday, May 16, 2015, beginning at 12:00 noon (EST) and will continue that afternoon until each of the individual lots have been closed out (using past experience, I would expect this to be finished by 6:00 PM, if not earlier). If you register for call-backs, it is your responsibility to be available during this call back time period. We make every effort to honor all our call back requests, but this service is done solely as a convenience to our bidders and will be performed on a best efforts basis only. If you will be traveling or if you will not be available during call back times at your primary number, be sure you provide us with proper alternate or back up numbers for reaching you!

Payment Terms

Winning bidders will be invoiced by mail immediately after the sale. Those who desire fast shipment can pay by Money Order or Cashiers Check. Payments are due within 10 days of receipt of invoice. We reserve the right to offer the item out to our back bidders and deny future bidding privileges to those who do not pay in a timely manner. In addition to personal checks, we also accept payment on your American Express, Visa, Master Card, Discover and Optima Credit Cards (with no surcharge added). No COD's or Collect calls are ever accepted. Items shipped to anywhere in New York State must include appropriate sales tax or signed resale certificate.

Shipping

All packing and shipping charges are extra. We do most of our own packing and shipping in house and try to keep these charges as reasonable as possible for you. On especially fragile and larger hard to pack items, we hire the services of professional packers and charge you at our billed cost. We ship mostly through the Post Office and Fedex Ground, (Fedex Overnight available at an extra charge.)

Subscribing, Prices Realized, Consignments & Upcoming Events

Future catalogs can be assured by sending \$20 for a full 12 months subscription. (Prices are published on our website after each sale) An automatic credit card ordering program is available. We currently run between 2-4 auctions a year. In addition to our regular sales, we also occasionally offer sales made up entirely from single owner collections. Please contact us should you have items you would like us to consider for inclusion in our upcoming events. All inquiries are handled in a completely confidential manner. Our services are also available for the private placement marketing of important individual items, marketing plans for large collections as well as for estate planning and settlement purposes. Back copies of many of our previous auction catalogs are still available at \$5 each (w/ prices realized) w/ quantity discounts available if multiple issues are ordered. For further information, check our website.

Photography by Wes Feuz.

© Copyright 2015. All Rights Reserved. No portion of this publication may be copied in any form without the express written permission of Morford's.

Important Closing Night Information

In addition to our regular (315) 662-7625 office number,
on the closing night (only!) you may also call us at:

(315) 662-3318*
(after 5:00 PM)
(315) 662-3904*
(after 5:00 PM)
(315) 662-3429*
(after 5:00 PM)



***These numbers for
Closing night only!
Friday, May 15, 2015**

Bidding closes at 10:00 PM on Friday closing night. We will be accepting faxes and e-mails on closing night. Our web page will update current high bid prices approximately every hour on closing night and will also list any important addendum information. **All call backs will be made on Saturday, May 16, 2015 beginning at 12 o'clock Noon!**