

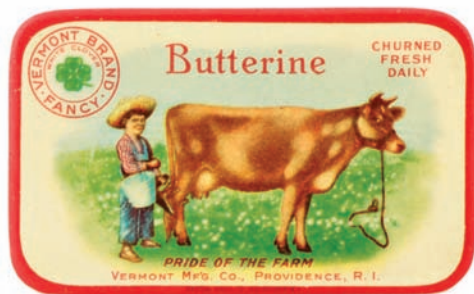


Wm Morford
Investment Grade Collectibles at Auction

Investment Grade Collectibles at Auction

Rd #2, Cobb Hill Road, Cazenovia, NY 13035 • 24 Hr. Tel: (315) 662-7625 • 24 Hr. Fax: (315) 662-3570 • morf2bid@aol.com • morfauction.com

Bidding closes Friday, October 16, 2015. (See page 40 for Terms & Conditions)



1) **Butterine Pocket Mirror.** 1.75 x 2.75" extremely rare, early celluloid advertising pocket mirror for Vermont Mfg. Co.'s "Butterine" brand butter, w/ wonderful image. Clean and excellent. Min. bid \$70.



2) **Advertising Fly.** 1.75 x 4.5 x 2.5" early figural cast iron fly w/ embossed advertising on lift-up wings for Loughton Co., a Philadelphia, PA screens dealer. Nice overall appearance, w/ some light wear to paint surface in wings area (C. 7.5+/8-). Min. bid \$40.



3) **Every Day Tobacco.** 2-5/8 x 4-5/8 x 7/8" early tin litho tobacco tin for "Every Day" brand (Nall & Williams Co., Louisville, KY). Clean, bright and exceptionally nice (C. 8.5+/+). Min. bid \$50.

Baking Powder Samples



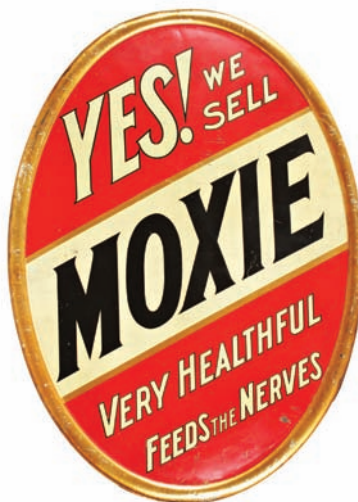
4) **Baking Powder Sample Tins.** Lot includes five early miniature baking powder and baking soda sample tins ranging from 1.75 x 2" (dia.) to 2-7/8 x 1-5/8" (dia.). Royal and Staley are paper label (over tin); Watkins, Davis and Arm & Hammer are tin litho. All are clean, bright and excellent (Staley and Arm & Hammer are full and never opened). Min. bid \$30 (the lot).



5) **Racing Motorcycle Toy.** 4 x 7 x 2.5" vintage German ca. 1960's tin litho wind-up Shooting Star racing motorcycle toy by Technofix. Excellent overall (C. 8.5+/+) w/ working mechanism. Min. bid \$40.



6) **Counsellor Cigar Lighter.** 10 x 7 x 8" early figural cast iron advertising countertop cigar lighter for "Cressman Co.'s Counsellor brand cigars. Has attractive nickel finish and nice original paint surface on base piece, w/ unusual green glass lamp at top. Excellent overall (C. 8+). Min. bid \$70.



7) **Moxie Soda Sign.** 27-3/8 x 19.5" very early self-framed convex tin litho soda sign by Kaufmann & Strauss lithographers for Moxie Soda (nerve food era). Clean, bright and displays quite nicely (displays as a C. 8+/+) although there are some early, light scattered background scuffs and light wear-nothing really serious or offensive (critical grade C. 7.5+++). As found, might improve a bit w/ cleaning. Min. bid \$100.



8) **Xtragood Peanuts Tin.** 9-1/8 x 8-3/8" scarce, early 10 lb. store sized tin for "Xtragood" brand salted peanuts (Naas Sanderson Co., Evansville, IN) w/ unusual cello see-through window in center (for viewing of peanuts inside). Has some fairly minor oxidizing along bottom edge and some light scattered scuffs and wear, but overall attractive and displays quite nicely (C. 8/-). Min. bid \$50.



9).College Baseball Game. 10.25 x 13.5 x 1-3/8" scarce, early 2-ps. "College Baseball" boxed game set by Parker Bros. (Salem, MA) featuring great color graphic collegiate baseball image on lid, w/ playing board on inside base of box (complete w/ dice cup, dice and wooden playing pieces). Very nice overall appearance w/ minor soiling on lid (C. 8/+). Min. bid \$60.



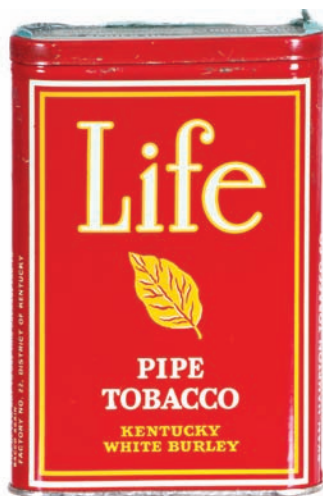
10).Mammy Roly Poly Tobacco. 6.75 x 6" (dia.) early 2-ps. figural tin litho canister for Mayo's brand tobacco featuring black mammy character smoking corn-cob pipe. Attractive piece that displays quite nicely (as a C. 8/-) w/ a few minor oxidizing spots, a little minor soiling and some light scattered wear (critical grade C. 7.5/+). As found, might improve a bit w/ cleaning. Min. bid \$50.



11).Spices Box. 12 x 14.75 x 8.25" as shown (4.25 x 14.75 x 8.25" lid closed) early wooden store display box for Stickney & Poor Co.'s mustard, featuring beautiful multi-color inside label (box originally held 24 cans). Inner label is clean and very nice (C. 8/+) w/ a little minor staining; outer label on front edge has some light wear (C. 7.5+/8-). Min. bid \$40.



12).Saloon Match Safe. 2.75 x 1.5 x 3/8" early celluloid covered advertising match safe for "John Marcus Saloon and Garden" (St. Louis, MO), featuring a great color graphic image of semi-nude. Clean, bright and excellent. Min. bid \$40.



13).Life Pocket Tin. 4-3/8 x 3 x 7/8" early tin litho vertical tobacco pocket tin for "Life" brand (Ryan-Hampton Co., Louisville, KY). Exceptional example is crisp, bright and like new (near mint). Min. bid \$50.



14).Old Seneca Cigar Can. 5.75 x 4.25" (dia.) early tin litho 25 count cigar can from W.H. Kildow Co. (Tiffin, OH) featuring attractive image of Co.'s trademark Indian (lime green variation). Clean and very attractive appearance (a solid C. 8++), w/ a little non-offensive light edge wear on lid. Min. bid \$40.



Moxie
Catarrh Cure

15).Moxie Catarrh Cure Bottle. 3-3/8 x 1-3/8 x 1-3/8" extremely rare, early medicine bottle for "Moxie Catarrh Cure" (W Taylor & Co., Lowell, MA), w/ original paper labels on both sides (label instructs patient to inhale the odor deeply six times a day). Glass is excellent w/ a high quality crystal look to it, w/ ground stopper (labels are complete, but have general darkening). Min. bid \$40.



16).Game of Bounce. 15.75 x 8 x 1" scarce, early 2-ps. "Game of Bounce" by McLaughlin Bros. (New York) featuring wonderful color graphic image of cat playing banjo on lid, w/ playing board on inside box base (w/ 5 wooden playing pieces and spinner). Excellent overall (C. 8.5/+ appearance), w/ minor reinforcement on inside edge of cover. Min. bid \$60.



17).Owl Mechanical Bank. 7.5 x 3.75 x 2-5/8" early, nicely detailed figural cast iron mechanical bank by J & E Stevens Co., w/ attractive original paint surface. Nice overall, w/ a little light expected wear from use (C. 8+/+). Works well. Min. bid \$70.



18).Majors Cement Door Push. 7-5/8 x 3-1/8" early, unusual variation, heavy enameled porcelain advertising door push for Majors brand cement. Crisp, bright and exceptionally nice (basically near mint), w/ exception of a couple very minor fleabites at outer edge (so minor barely merits mention). Min. bid \$50.



19).Turkey Coffee. 10-5/8 x 5.5" (dia.) early 3 lb. tin litho small top coffee tin featuring great images of Co.'s trademark turkey. Clean, bright and exceptionally nice (C. 8.5++). Min. bid \$70.



20).Dr. Pepper Sign. 19x 31.25" large, ca. 1940's vintage cardboard advertising sign for Dr. Pepper soda, featuring nice image of pin-up model Madelon Mason (note: this image was taken by legendary Hollywood glamour photographer George Hurrell). Clean, bright and beautiful condition (C. 8.5++). Min. bid \$50.



21).Wigwam Peanut Butter Pail. 3-7/8 x 3-5/8" (dia.) early tin litho 14 oz. peanut butter pail for "Wigwam" brand (Carpenter Cook Co., Iron Mountain, MI) featuring nice beach scene images all around. Tin is clean and very attractive overall (basically a strong C. 8+) w/ a non-offensive light wear spot at top edge on backside (note: there is general light oxidizing and scattered wear on lid). Min. bid \$50.

Women's Regenerator Tablets



22).Women's Regenerator Tablets. 2 x 2-7/8 x 1/2" scarce, early tin litho quack medicine tin for "Holt's Re-Creation Tablets" made for restoring and regenerating courage, health and stamina in women (also claimed to take care of sick nerves, weak muscles, repaired thin blood, tired brain issues as well as "cured" several diseases). Quite nice overall (C. 8+), w/ a little light wear on backside. Min. bid \$40.



23).Mine Workers Union Mirror. 1.75" (dia.) scarce, early celluloid pocket mirror for Geraghty Co., Chicago, (makers of Union buttons, badges and pennants), given at United Mine Workers Union 1914 Indianapolis convention. Celluloid is clean, bright and excellent in appearance (displays as near mint) although examination under magnification will reveal a few trace hints of faint, very minor foxing specks (mentioned for accuracy, so minor barely merits mention). Min. bid \$40.

Hotel Bell



24).Turtle Hotel Bell. 2.25 x 7 x 3-7/8" early, very high quality figural cast iron turtle shaped hotel service bell w/ clockwork wind-up mechanism inside (pushing down on his tail or head creates a long steady ring). Very nice detailing, w/ nickel plate finish. Excellent overall, w/ nice surface patina (C. 8++) and just the right amount of minor wear from use (bell mechanism works well). Min. bid \$50.

Large Porcelain Sign



25).Fox Head Brewing Sign. 39.5 x 28" large, early, heavy embossed porcelain hanging sign for Fox Head Beer (Waukesha, WI) featuring great image of Co.'s trademark fox. Clean and very attractive appearance (displays as a C. 8.5+) although close examination will show some very well done professional restoration was performed long ago (so well done, barely noticeable even on close examination). Min. bid \$200.

Embossed Tin Display



26).Hoffman Valves Display. 16 x 10-1/8 x 3-5/8" impressive, early, heavy tin litho embossed countertop display advertising Hoffman radiator valves. Neat and unusual piece is clean, bright and excellent overall, complete w/ an actual original valve (basically displays as a strong C. 8++) w/ exception of a little light paint wear at bottom outer left edge. Min. bid \$100.

Salesman's Sample



27).White's Perfection Salesman's Sample Wringer. 13 x 4.5 x 4.25" outstanding, early, wood and metal small working salesman's sample clothes wringer for White's Perfection Model #2 (White Mop Wringer Co., Fultonville, NY), w/ great early stenciled advertising design and 1902 patent date on sides. Very high quality piece, w/ a nice, rich, all original surface patina (C. 8.5+/+). Min. bid \$50

Victor (Nipper)



28).RCA Victrola Sign. 15 x 24.5" ca. 1947 cardboard easel-back sign for RCA Co.'s combination Victrola and radio unit (Model 65U?), w/ great image of Nipper and player. Attractive and displays nicely, w/ minor edge wear and a little non-offensive faint foxing- nothing serious or detracting- basically blends into background (C. 7.5+/8-). Min. bid \$40.



29).Indian Motorcycle Candy Container. 3-3/8 x 5 x 1-7/8" scarce, early figural embossed "Indian" Motorcycle w/ sidecar glass candy container, complete w/ red flash highlights on wheels and original metal closure. Excellent. Min. bid \$50.



30).Arnold's Bread Pot Scraper. 2-7/8 x 3.25" early tin litho advertising pot scraper for "Arnold's Twin Bread" featuring nice image of Co.'s twins logo. Clean, bright and excellent (C. 8.5+). Min. bid \$40.



31).Schaeffer Pianos Mirror. 2-1/4" (dia.) unusual, early celluloid advertising pocket mirror for Schaeffer Pianos, w/ nice detailed image of Co.'s early upright piano, w/ advertising at bottom for Allen-Johnson Co., an Eau Claire, WI dealer. Celluloid is clean and excellent (has several dark lines in mirror glass on backside). Min. bid \$30.



32).Golden West Coffee. 3-5/8 x 5" (dia.) early tin litho key wind 1 lb. coffee can for Ben Hur Co.'s "Golden West" brand (various big West Coast cities) w/ great images of Co.'s trademark Cowgirl on both sides. Clean, bright and excellent overall (C. 8.5+), w/some light speckling on bottom metal base. Min. bid \$40.



33).Pickaninny Peanut Butter Pail. 3.5 x 3.75" (dia.) early 1 lb. tin litho peanut butter pail for F. M. Hoyt Co.'s "Pickaninny" brand, featuring great image of Co.'s trademark black child holding black rag doll (same image both sides). Clean and very attractive (C. 8+). Min. bid \$50.



34).Nut Cracker. 3.5 x 1-5/8 x 1-1/8" early, figural, heavy brass nut cracker (tinely detailed bronze finished base that holds nut is shaped like walnut). Impressive, very high quality piece is clean and like new, as found still in its original box (note: there is some paper loss and wear to top of box). Min. bid \$30.



35).Joe Louis Hair Pomade Tin. 1-1/8 x 3-1/8" (dia.) early tin litho hair pomade tin featuring boxing heavyweight champion Joe Louis. Tin is clean and excellent overall (basically a strong C. 8++) w/ exception of a couple dent marks on backside edge. Min. bid \$30.



36).Rare Planters Box. 8.75 x 9 x 3-1/8" rare, early 2-ps. die-cut waxy cardboard store display box for Planters Peanuts, featuring image of girl holding 5¢ cello pack on top w/ packages below © (1939), complete w/ its vertical slip over box cover. Clean, bright and very nice appearance (C. 8.5+), w/ exception of minor rubs and light pinching spot in middle of horizontal top panel. Min. bid \$60.



37).Taft Candy Tin. 6 x 9 x 4" early tin litho hinged lid European candy tin for "Taftjes" brand bon-bon candies, featuring great images of U.S. president Howard Taft (American flags and farm animal scenes on side edges). Has strong colors and displays quite nicely, w/ some non-offensive light scattered wear on lid (C. 7.5+/8-). Min. bid \$50.



38). C&B Lines Tip Trays. 4.5 x 6.5" and 4.5 x 6.25" two early tin litho advertising tip trays for the Cleveland and Buffalo passenger steamship Line. Both are clean, bright and very attractive (basically display as a C. 8.5), w/ minor wear and a few non-offensive minor speckles on each (critical grade C. 8+/-). Min. bid \$50 (the lot).

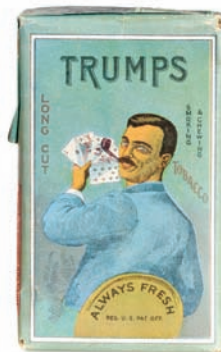


39). United States Tires Ashtray. 1.25 x 5-5/8" early, 2-ps. figural tire shaped ashtray advertising "United States" brand tires. High quality piece has glass base, w/ embossed metal spoke and tire tread insert piece at top. Excellent. Min. bid \$40.



Windshield Wiper Blades

40). Windshield Wipers Display. 5-7/8 x 7.75 x 4-3/8" unusual store display box for "Kleer-Vision Co.'s" (small felt covered metal framed windshield wiper blades). Full, never used box is clean and excellent overall (a strong C. 8++) w/ a little minor soiling (has small edge tear on side apron of box cover). Min. bid \$40.



Tobacco Soft Packs

41). Tobacco Soft Packs. (ea. app. 4.5 x 2-7/8 x 1") lot of three early, full, sealed (never opened) tobacco soft pack style tobacco packages. Includes: Lorillard's "Green Turtle"; "Trumps"; and Liggett & Myers Co.'s "Tip Top" brands. All are clean and excellent (C. 8.5+). Min. bid \$40 (the lot).



42). Kendall Oil Can. 17 x 8.25 x 14-1/8" (dia.) early, heavy tin litho 5 gallon rocker style oil can for Kendall Co.'s "Penzbest" brand motor oil. Has strong colors and displays nicely, w/ a little minor scattered soiling and light wear (C. 8). As found, should improve w/ cleaning. Min. bid \$50.



43). Rush Park Seed Box. 6 x 9.5 x 6.5" as shown (5 x 9.5 x 5" lid closed) scarce, early wooden flower seeds box from Rush Park Seed Co. (Independence, IA) featuring beautiful multi-color graphic label inside. Excellent overall, w/ minor toning and slight hint of background staining on inside label (label C. 8+) missing top metal clasp piece on front of box. Min. bid \$40.



44). California License Plate Topper. 5.5 x 4.75" very early bumper tag/license plate topper from the California State Automobile Association featuring nicely detailed embossed brass bear at top, w/ enameled porcelain advertising in center. Impressive piece is all original, w/ nice surface patina. Excellent appearance, w/ early enamel chip spot at outer left corner edge. Min. bid \$30.



45). Shell Display Boxes. (Boxes: 5.5 x 4 x 1-1/8") lot includes three full, never used Shell service station product display boxes for lubricant products (ea. w/ six tins inside). Includes two boxes of "Door Ease" (tins inside measure 4-5/8 x 1" (dia.) ea.); and "Retinax K" stick lubricant. Excellent. Min. bid \$40 (the lot).

Salesman's Paperweights



46). Salesman's Paperweights. Lot of two beautifully detailed, miniature chrome plated advertising salesman's executive gift paperweights (these are heavy, very high quality, salesman's sample caliber pieces), both are exact miniature versions of the full size products they represent. Includes: "Perry Superstille" turnstile 2.75 x 1.75 x 2" (very neat, w/ revolving metal turnstile arms); and "Exact Weight" Scale Co., Columbus, OH (3 x 2-7/8 x 1-1/8") store scale. Both are excellent. Min. bid \$50 (the lot).



47) Breinig's Paint Sign. 7.25 x 48" large, early, primitive 2-piece folky wooden sign made from four planks (each of pieces is app. 24" wide and were made to nail together side by side). All original, w/ a rich, dry, nicely weathered paint surface giving it a great country look (C. 7.5+/8-). Min. bid \$60.



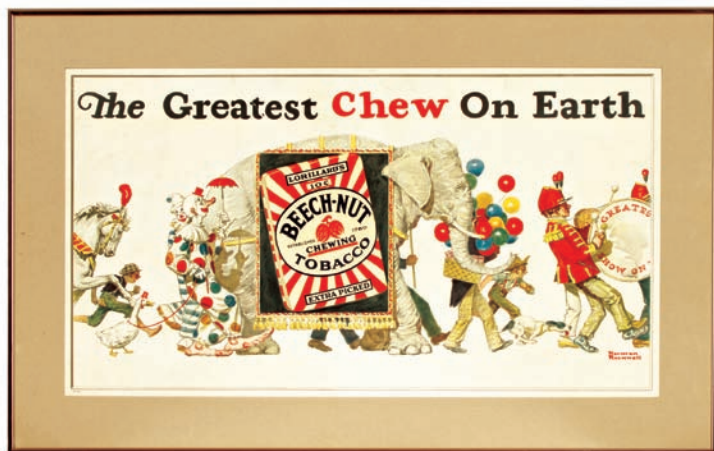
48) Frank Laboratories Aspirin Tin. 1-3/8 x 1.75 x 1/4" scarce, early tin litho 2-ps. aspirin tablets tin from Frank Laboratories (Cincinnati, OH). Has strong colors and displays nicely, w/ some light scattered wear on raised edges (C. 8/-). Min. bid \$30.



49) Advance Threshers Match Safe. 1.5 x 2.75" outstanding, early celluloid (over metal) advertising match safe for Advance Thresher Co. (Battle Creek, MI), featuring beautifully detailed multi-color graphic images of traction engine (tractor) on front and Co. logo on backside. Clean, bright and excellent. Min. bid \$40.



50) Altex Condom Tin. 1-5/8 x 2-1/8 x 1/4" scarce, early tin litho condom tin for Altex brand condoms (Western Rubber Co., Alton, Ontario, Canada). Clean, bright and excellent (near mint). Min. bid \$40.



51) Beech-Nut Tobacco Sign. 19.75 x 31" (14.25 x 25.75" visible) early framed paper litho (cardboard?) advertising sign for Beech-Nut brand chewing tobacco, featuring wonderful circus parade image by American Illustrator Norman Rockwell. Clean, bright and excellent (near mint). Nicely framed and matted (shipped w/ out glass). Min. bid \$50.



Whiz Aviation Tins

52) Whiz Sample Tins. lot includes a complete original set of four different small tin litho Whiz Co. airplane cleaning and polishing sample tins (ea. 3 x 2.25" dia.) as found never used, still in their original marked box. Lot also includes a neat 4.5 x 3-1/8" (dia.) tin litho car wash powder tin, which features great images of wet dripping cars hanging from clothesline. They are all are clean and excellent (C. 8.5/+). Min. bid \$40 (the lot).



53) White Goose Coffee. 6 x 4.25" (dia.) scarce, early 1 lb. tin litho coffee can for "White Goose" brand (Journey Coffee Co., Jeannette, PA) featuring beautiful color graphics. Clean, bright and beautiful appearance w/ nice surface sheen (displays as a C. 8.5+/+) w/ minor denting on back and a few minor scratch marks. Min. bid \$50.



54) Roosevelt Bears Tip Tray. 4-7/8 x 3-3/8" early tin litho tip/pin tray featuring wonderful graphic images of Roosevelt bear characters in center, w/ teddy bear images around rim (© 1906). Clean, bright and excellent. Min. bid \$40.



55) Honey Moon Pocket Tin. 4.75 x 2-7/8 x 7/8" scarce, couple on moon variation tin litho vertical tobacco pocket tin for "Honey Moon" brand (Penn Tobacco Co., Wilkes-Barre, PA). Clean, bright and very attractive (a very strong C. 8++), w/ only minor wear. Min. bid \$50.



56) Gargoyle Aero Oil Can. 5-5/8 x 4" (dia.) early tin litho 1 qt. solder seam can for "Gargoyle" brand Aero oil, w/ nice images of Co.'s gargoyle trademarks and neat airplane propeller image on side (© 1934 Socony-Vacuum Oil Co.). Full can is clean, bright and excellent overall (C. 8.5), w/ a couple small chip marks at bottom edge. Min. bid \$40.



57) Whistle Soda Sign. 13-7/8 x 19.5" early embossed tin litho sign for "Whistle" brand soda, featuring beautiful detailed bottle. Never used sign is clean, bright and very attractive, w/ minor storage wear (a very strong C. 8+). Min. bid \$50.



58) Yara Tobacco Display. 25.5 x 33" (19.75 x 30" actual sign) outstanding, early (dated 1913) 3-panel cardboard tri-fold window display sign for Yara brand tobacco featuring great image of pupil being paddled by his teacher for buying wrong brand. Impressive piece is clean, bright and excellent in appearance (C. 8.5+). Nicely framed and ready to hang. Min. bid \$60.

Mechanical Pencil Sharpener



59) Gould & Cook Pencil Sharpener. 8.25 x 7 x 7.75" unusual, very early cast iron mechanical pencil sharpener (embossed Gould & Cook Co., Leominster, MA, w/ May 25 1886 patent date). Cranking handle moves three gear mechanism which rotates both pencil and the 5.75" (dia.) revolving iron disk holding sandpaper that shapes the pencil point. Excellent (nice working condition). Min. bid \$50.

Yellow Kid



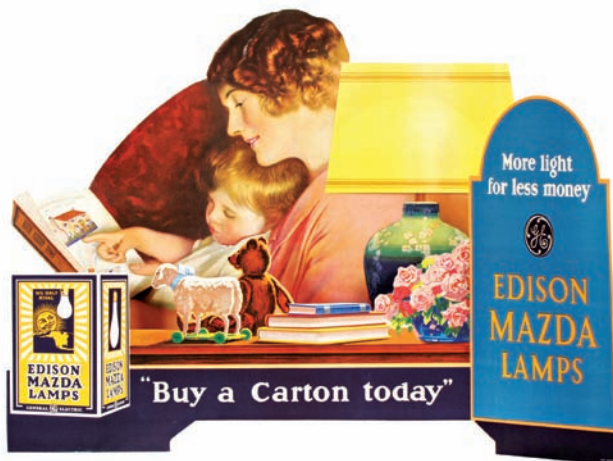
60) Yellow Kid Figure. 6.5 x 3.5 x 3" (dia. base) early, large figural cast metal paperweight featuring wonderful image of Yellow Kid comic character. Has "Say I Aint A Heavyweight" embossed on his nightshirt, w/ nice original goldwash paint surface. Very nice overall (C. 8+) w/ barely noticeable faint hairline in upper wrist area (possibly an early well done repair). Min. bid \$60.

Bitters Medicine Sign



61) Bitters Medicine Sign. 22.5 x 17.75" (19.75 x 14.75" actual sign) large, early, embossed cardboard die-cut sign for Dr. Good's American Stomach Bitters patent medicine product, featuring stunning color graphics. Outstanding piece is clean, bright and very attractive (C. 8.5+ appearance) w/ only minor wear and a few non-detracting tiny scattered flyspecks. Framed. Min. bid \$60.

GE Edison Mazda Window Display



63) GE Edison Mazda Window Display. 34.5 x 22.5 x 2.25" large ca. 1920's cardboard shadow box style window display piece advertising General Electric Co.'s Edison Mazda brand light bulbs w/ adorable image of young girl (note: piece has a translucent paper in lampshade and tablet areas which glows when a bulb is lit inside the display). Never used piece is crisp, bright and like new, as found never used still inside its original shipping carton (has a little non-detracting minor expected storage wear at top edge). Lot also includes a nice pair of cardboard side display pieces. Min. bid \$100.



62) Oil Co. Calendar. 6 x 4.25" wonderful early stand-up aluminum desktop advertising calendar for Crane & Co., a Boston area motor oil company. Very high quality piece, featuring great image of early car. Excellent (C. 8.5+). Min. bid \$40.



64) Coca-Cola Thermometer. 16 x 6.75" outstanding, ca. 1930's embossed tin litho advertising thermometer featuring Co.'s Dec. 25th 1923 gold colored bottle. Never used piece is crisp, clean and exceptionally nice, as found never used still in its original box, w/ a little minor storage wear. Box has some tattering and general wear, w/ separation to red liquid in glass tube. Min. bid \$50.



65). Planters Clipper Jar. 10 x 7.5 x 5.25" ca. 1938 glass Planters Peanut store jar w/ all three original cello labels complete w/ original lithographed tin lid. Jar and labels are excellent, w/ some light oxidized wear around outside edges of lid. Min. bid \$50.



66). Nehi Soda Sign. 21.5 x 42-5/8" (18.5 x 39.5" visible) early, heavy paper advertising sign for Nehi brand soda featuring wonderful deco era look. Clean, bright and powerful appearance (sign rates a strong C. 8++). Framed (frame has some scuffing wear). Min. bid \$50.



67). Johnson Refining Co. Tin. 6 x 2-7/8 x 1.5" scarce, early tin litho product tin for Johnson Oil Refining Co.'s (Chicago, IL) "Handy Spot Cleaner" featuring great images of Co.'s trademark Handy Boys characters and Hour Glass logo. Clean and excellent overall (C. 8.5). Min. bid \$40



Detail



68). Speckled Beauty" Tobacco Cutter. 4.25 x 16.5 x 4.25" important, early, heavy figural cast iron countertop country store advertising tobacco cutter from P.H. Hanes & Co., featuring incredible "Speckled Beauty" folksy advertising fish scene image on base (base embossed Rogers Iron Co., Springfield, OH underneath). Red and gold trimmed paint is very nice (a strong C. 8+), w/ some general overall wear to the decorative folksy fish advertising section, which has a well worn, primitive, folk art country look to it from years of use (fish section C. 7+/-). As found, might improve a bit w/ cleaning. Min. bid \$60.



69). Starling Oats Box. 9.5 x 5-3/8" (dia.) early 3 lb. 7 oz. size cardboard oats box for "Starling" brand (Hannaheer & O'Neil Co., Moorhead, MN) featuring same beautiful graphic image on both sides. Clean, bright and excellent (C. 8.5). Min. bid \$50.



70). Hires Sign. 37.25 x 21.25" (20-3/8 x 14-3/8" visible image) early paper (or cardboard) litho sign for Hires Root Beer featuring beautiful graphic image of girl and early style paper label bottle by illustrator Haskell Coffin. Clean and exceptionally nice appearance (a strong C. 8.5+). Nicely framed and matted. Min. bid \$100.

Battery Operated Gasoline Cigar Lighter



71). Midland Jump Spark Cigar Lighter. 15 (h) x 7 x 7" early Midland brand "Jump Spark" countertop cigar lighter (Davenport Mfg. Co., Davenport, IA). Has wooden mahogany base that hold 4 large dry cell batteries inside w/ original nameplate in front. Pushing down on nickel-plated metal lever creates a steady stream of electrical sparks which lights the wick of lighter providing open flame for cigar. Excellent overall and all original, w/ some light wear from use to metal plating (has original instructions on base). See our website addendum to find additional info and to view video of how piece works. Min. bid \$100.



72). Indianapolis Brewing Co. Sign. 28.5 x 20.25" (22.25 x 15-5/8" visible) early pre-prohibition paper litho sign from Indianapolis Brewing Co., picturing nice image of woman w/ early style bottle of Co.'s "Duesseldorfer" brand beer. Clean, bright and very attractive appearance (basically a strong C. 8++) w/ a few scattered edge tears in outer dark green border section. Presented in beautiful, fancy period gold leaf frame. Min. bid \$100.



73).Jane Justice Oats Box. 7.25 x 4.25" (dia.) early 1 lb. 4 oz. cardboard oats box for Jane Justice brand rolled oats (Bauermeister Co., Terre Haute, IN) featuring beautiful multi-color image of law school graduate on both sides. Clean, bright and excellent (C. 8++) w/ only minor wear. Min. bid \$50.



74).Mortimer Snerd Walker Toy. 8.25 x 2.75 x 2.5" ca. 1939 figural tin litho comic character wind-up walker toy by Marx (black shoes variation). His hat moves up and down and he waddles when walking. Excellent overall, w/ strong mechanism. Min. bid \$40.



75).Turkey Red Spice. 3.75 x 2.25 x 1.25" extremely rare tin litho 2 oz. variation spice tin (ginger) for "Turkey Red" brand (Merchant's Wholesale Grocery Co., Chicago, IL) w/ same graphic image on both sides. Bright and attractive appearance, w/ a little light denting and a bit of non-offensive light scattered soiling and background wear (C. 8/-). As found, should improve a bit w/ cleaning. Min. bid \$40.

Dental Pocket Mirror



76).Dental Products Co. Mirror. 5.25 x 2-1/8" scarce, early fancy brass framed celluloid advertising pocket mirror from the Dental Protective Supply Co. (Chicago and Philadelphia) w/ nice tinted photo image. Excellent overall. Min. bid \$40.



77).Fire Escape Sign. 3-5/8 x 17" very early, heavy enameled porcelain blue on white "Fire Escape" strip sign w/ great pointing finger image. Clean, bright and excellent overall, w/ nice surface sheen. Min bid \$40.

Spina Remedy Co.



80).Devil Sign. 33-5/8 x 19.75" (26 x 8" actual piece) outrageous, large, very early embossed shiny finish jointed devil advertising die-cut cardboard sign from Spina Remedy Co., promoting Co.'s Spina Soap. Clean, bright and beautiful condition (basically crisp and like new, w/ only very minor edge wear). Framed. Min. bid \$500.



78).Red Seal Battery Thermometer. 27-1/8 x 7" early, heavy enameled porcelain advertising thermometer for "Red Seal" batteries w/ great image of early style dry cell battery. Field area is crisp, bright and basically like new, w/ a weathered early chip at top hanging hole and a little minor scattered wear in very outer white border area (working thermometer). Min. bid \$60.



79).Coca-Cola Calendar. 21.25 x 13.5" (15.5 x 7-7/8" visible) scarce, large 1921 Coca-Cola calendar w/ full pad. Piece is clean, and very attractive w/ strong colors and great overall look, complete w/ full calendar pad (note: close examination will reveal a few tiny white splattered paint specks in upper right background area (not offensive and could be easily darkened away)). Nicely framed and matted. Min. bid \$150.



81).Coca-Cola Sign. 4-3/8 x 8-7/8" small, ca. 1920's lithographed tin over cardboard string hung Coca-Cola sign (Passiac Metal Ware Co. Litho, Passiac, NJ). Has strong colors and displays very nicely (as a strong C. 8/+), w/ a couple non-detracting minor dent marks in raised red background area and a little light wear in very bottom left edge of green border area (critical grade C. 8/-). Min. bid \$50.



82).Runkel's Cocoa Sign. 6 x 18" early enameled porcelain country store sign for Runkel's brand cocoa. Clean, bright and excellent w/ just a little very minor oxidizing at very bottom edge (C. 8.5+). Min. bid \$50.



83).American Eagle Tobacco Pail. 5.5 x 7" (dia.) wonderful, small, very early wooden tobacco pail from American Eagle Tobacco Co. (Detroit, MI) w/ its beautifully detailed original paper label on front. Bucket is excellent, w/ a nice rich surface patina; label has strong colors and displays quite nicely, w/ some light scattered chipping and wear including some loss at upper left edge (C. 7.5+/-). Min. bid \$50.



84).Yellow Kid Ginger Wafers Label. 7-3/8" (dia.) wonderful, early paper litho label for New York Biscuit Co.'s "Yellow Kid" brand ginger wafers (© 1896), made for the lid of Co.'s scarce round cookies tin. Never used label is crisp, bright and like new (basically near mint), w/ exception of a trace, fine crease mark (barely noticeable and so faint that it barely merits mention). Min. bid \$50.

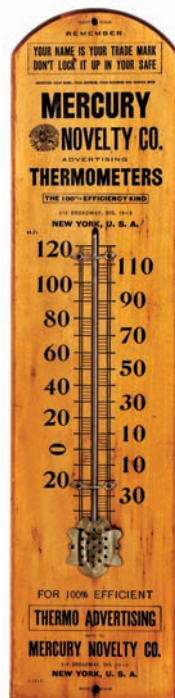


85).Royal Doulton Motorist Pitcher. 6" (h) x 4.75" (dia.) scarce, early hand colored fine china chocolate pitcher by Royal Doulton, featuring "Dead" scene from Co.'s highly collectible Motorist series of art pottery designed by John Holdcroft (note: these prized, high quality pieces were produced in Co.'s Burslem, England factory from 1903 - 1913). Excellent. Min. bid \$50.

Light-up Display



86).Paris Garters Light-Up Display. 17-1/8 x 14 x 5" unusual, early electric light-up display advertising "Paris" brand suspenders (piece displays actual early miniature pair of suspenders). Has wooden base, w/ mirrored reverse glass advertising at top and a bulb inside chrome finished column which highlights the wonderful reverse painted, nicely detailed, deeply etched images of the suspender wearing men in the glass centerpiece. Nice overall condition, w/ a little light wear on top mirrored advertising section. Min. bid \$50.



87).Mercury Advertising Thermometer. 24 x 5-7/8" early wooden advertising thermometer for "Mercury Novelty Co.", a maker of early wooden advertising thermometers. Surface area is clean and very attractive in appearance (a strong C. 8/+). Note: metal protective cover piece at bottom is pushed in and glass tube inside is no longer working. Min. bid \$40.



88).Texaco Fob. 2-1/8 x 1.75" unusual, early celluloid 2-sided advertising watch fob from Texaco promoting Co.'s Golden Motor Oil and High Test Gasoline (complete w/ a nice leather strap). Excellent. Min. bid \$30.



89).Donaldson Art Sign Co. Calendar. 18-1/8 x 8.25" early beveled tin over cardboard sign (made for holding yearly pad of calendar pages) advertising the Donaldson Art Sign Co., Covington, KY (Co. was maker of fine advertising signs and displays). Clean, bright and excellent (a strong C. 8++) w/ a little minor storage wear. Min. bid \$40.



90).Drexel's Aspirin Tin. 1-3/8 x 1-7/8 x 1/4" scarce, early tin litho "Drexel's" brand aspirin tablets tin (Drexel Co., Elgin, IL). Clean and excellent appearance (displays as a C. 8.5+), w/ a little non-detracting minor wear on lid and tiny dent on base. Min. bid \$30.

Studebaker



91).Studebaker Pocket Mirror. 1.75 x 2.75" outstanding early celluloid pocket mirror advertising Studebaker Vehicle Works (wagons), featuring stunning multi-color graphic image of Co.'s South Bend, IN factory. Clean, bright and like new (near mint). Min. bid \$40.

Razor Blade Tin

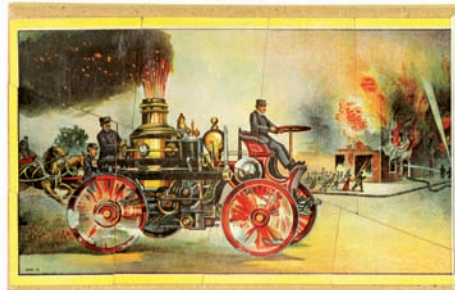


92).Twinplex Razor Stropplers Bank. 2.5 x 2.5 x 1-5/8" unusual, small, early figural tin litho house shaped used razor blades holder (and or bank) advertising "Twinplex" brand razor Strops. Clean and very attractive (C. 8/+). Min. bid \$40.

Fire Fighting Puzzle



93).Fire Fighting Puzzle. early boxed cardboard puzzle set by Milton Bradley Co., featuring nice graphic scene of horse drawn fire fighting equipment (completed puzzle measures 7 x 27"; box: 5.75 x 7.5 x 1"). Puzzle is bright and like new; box is quite nice (C. 8/+), w/ minor toning and a little non-offensive light wear. Min. bid \$40.



Fisher- Price Disney Toys



94).Miniature Fisher-Price Disney Toys. Lot includes two scarce, early wheeled miniature wooden Walt Disney Co. comic character toys by Fisher-Price Co. (ea. app. 4-1/8" (h)). Includes long billed Donald Duck (Disney Enterprises); and "Clara Cluck" (Disney Productions). Both are clean and excellent overall (a strong C. 8+). Min. bid \$40 (the lot).

Yellow Kid



96).Yellow Kid Ice Cream Molds. 4.75 x 3 x 2" lot includes a pair of early 2-ps. figural hinged pewter ice cream molds in the shape of the famous Yellow Kid comic strip characters. Both are excellent, w/ nice, rich, all original surface patina. Min. bid \$50 (the pair).

Southern New England Telephone Co.



97).Telephone Co. Match Holder. 2-1/8 x 2-7/8" (dia.) unusual, early, high quality heavy brass/bronze bell shaped match holder promoting Southern New England Telephone Co. w/ advertising on both sides for Co.'s services in Connecticut. Excellent. Min. bid \$40.



95).Kleber Pianos Mirror. 2-1/8" (dia.) scarce, early celluloid pocket mirror for Kleber pianos, w/ beautiful color graphic image. Clean and very attractive appearance, although very close examination will reveal a non-offensive, very faint, light hazy skim area under surface (barely noticeable) and the mirror on backside has several cracks through it. Min. bid \$30.



98).Typewriter Ribbon Tins. lot includes five different vintage 2-ps. tin litho typewriter ribbon tins, all in excellent condition. Includes two different A.P. Little Co. examples (each featuring Co.'s trademark black kid); Texas Pride; Copper Chief and Old English brands. Min. bid \$40 (the lot).



99).United States Cigar Box. 11.5 x 15.25 x 6.75" as shown (5 x 15 x 6.75" lid closed) outstanding, large, early wooden display box for Hemsheim Bros. "La Belle Creole" brand cigars, New Orleans, LA featuring beautiful multi-color patriotic images (A Hoen & Co., lithographers). Clean, bright and exceptionally nice (inside labels C. 8.5+), w/ a little non-offensive light wear to outer box. Min. bid \$40.

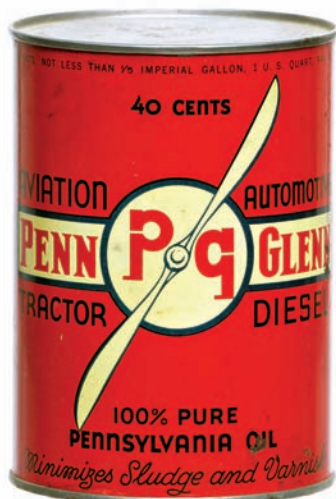


Mechanical Hotel Bell

100).Elephant Hotel Bell. 2.75 x 4 x 6.25" interesting and unusual early, dimensional, figural brass hotel bell in shape of elephants head w/ key wind bell mechanism underneath (pushing down on either of elephants bone tusks creates a long, steady ringing noise). Very nice overall and works well (appears it probably had a nickel plated surface finish at one point). Min. bid \$50.



101).Porcelain Cigar Sign. 10.5 x 23" early, heavy enameled porcelain sign advertising "7-20-4" brand cigars (R.G. Sullivan Co., Manchester, NH). Clean, bright and very attractive appearance (C. 8.5+) w/ exception of a little non-offensive light wear in outer border area. Min. bid \$50.



102).Penn Glenn Aviation Oil Can. 5-5/8 x 4" (dia.) early tin litho 1 qt. solder seam oil can for "Penn Glenn" brand (Penn Glenn Oil Works, Leechburg, PA). Bottom opened can has bright colors and displays nicely, w/ minor soiling and wear (C. 8++). As found, should improve w/ cleaning. Min. bid \$40.

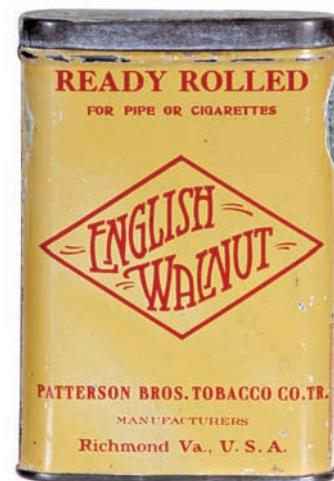


103).Jack Frost Sugar Cubes Dispenser. 8 x 3-3/8" unusual, early, heavy pressed glass countertop sugar cubes dispenser (fine, Heisey type quality glass), w/ nice advertising images on three sides for National Sugar Refining Co.'s "Jack Frost" sugar w/ embossed 1915 Patent date (includes full, unopened early box of Co.'s sugar cubes). Excellent. Min. bid \$40.



104).Dining Car Spice. 3.25 x 2.25 x 1.25" scarce, early 1-1/2 oz. spice tin (chili powder) for Dining Car brand (Norwine Coffee Co., St. Louis, MO) featuring great images of Co.'s trademark fancy railroad dining car images on both sides (tin top and bottom w/ cardboard sides). Clean and excellent overall (C. 8.5+). Min. bid \$30.

English Walnut Tobacco



105).English Walnut Pocket Tin. 4.5 x 3 x 7/8" early tin litho vertical tobacco pocket tin for Patterson Bros. "English Walnut" brand. Clean, bright and attractive, w/ a little light background wear (C. 8+/-). Min. bid \$50.



106).Schoenling Beer Sign. 20-3/8 x 13.5" early pre-prohibition paper litho sign for Schoenling Brewing Co.'s (Cincinnati, OH) Bock Beer. Stunning multi-color lithography is clean, bright and beautiful in appearance (displays as a strong C. 8.5++), although close examination will reveal a couple minor pinholes, minor edge wear and a little very faint horizontal creasing (from being rolled) in upper sky section- just above goat (mentioned for accuracy- nothing that's offensive or that detracts from great overall look of piece). Min. bid \$60.



107).Kodak Sign. (sign 17 x 17"; bracket 14.25 x 19-5/8 x 1.25") early, heavy 2-sided hanging metal sign on its original iron mounting bracket for Kodak featuring Co.'s early style film boxes (same on both sides). Clean, bright and exceptionally nice (C. 8.5++). Min. bid \$60.



108).REO Trucks Calendar. 32.25 x 22" large, 1946 cardboard calendar advertising REO heavy duty trucks w/ powerful and very impressive post Deco era industrial look (U.S. made, w/ advertising imprinted at bottom for Bristol Motors, a Toronto, Canada dealership). Clean and excellent overall (C. 8.5+) and appears never used, complete w/ full pad at bottom (has very minor soiling in outer margins- not offensive or detracting). Min. bid \$50.



109).Tuscarora Cigar Box. 6.5 x 5.25 x 3.75" (as shown lid open); 3 x 5.25 x 3.75" (lid closed) small, early wooden "Tuscarora" cigar box featuring wonderfully detailed American Indian themed labels (box originally held 25 small cigars). Excellent overall (a strong C. 8++), w/ slight warp to lid. Min. bid \$40.



110).Dr. Jayne's Sign. 11-7/8 x 13.75" (9.75 x 11-5/8" visible) beautiful, fine, ca. 1870's/80's small reverse glass medicine sign for Dr. Jayne's "Tonic Vermifuge". Clean, bright and exceptionally nice (near mint), as found still in its original frame. Min. bid \$100.

Match Holder



111).Grinding Wheel Match Holder. 4-3/8 x 3-3/8 x 3-3/8" very high quality, early figural metal match holder on marble base (handle on side actually turns the grinding wheel inside- which has rigid surface for lighting matches while it turns). Excellent, w/ just the right amount of light wear (handle professionally re-attached). Min. bid \$40.



112).Orphan Annie Sandy Toy. 4.25 x 5 x 1.75" early figural mechanical tin litho key-wind toy by Louis Marx & Co. featuring Orphan Annie's dog "Sandy". Clean and attractive piece w/ only minor storage wear (a strong C. 8++), w/ nice working mechanism. Complete w/ its original box (box has minor soiling and wear and is missing side flap on one side). Min. bid \$50.



113).Manhattan Maid Hat Box. 10.75 x 10.25 x 7" great early 2-ps. hat box for "Manhattan Maid" brand hats featuring nice NYC themed image on lid, w/ great auto, boating and swimming images, etc. along sides. Clean, bright and attractive appearance (C. 8++), w/ a little light staining on lid- nothing serious, or that detracts from neat overall look of piece. Min. bid \$40.

Porcelain Corner Sign



114).Professor Morse Cigar Sign. 13.25 x 10.5" outstanding, very early, small, curved, heavy enameled six color porcelain corner sign by Baltimore Enl. & Nov. Co., NY, for "Prof. Morse" brand cigars (Jas. Mc Gahan Co., Troy NY). Important sign is clean, bright and exceptionally nice w/ beautiful original sheen (rates a strong C. 8.5++) w/ small edge chip and some non-offensive faint spider lines in very outer yellow border area. Min. bid \$250.

Medicine Spoon Patent Model



115).Medicine Spoon Patent Model. 6-1/8 x 1.25" very early civil war era patent model for the "P.W. Willard Medicine Spoon". Neat and very unusual piece comes complete w/ its original attached 1867 US Patent Office issued descriptive tags (tags fair to good). Min. bid \$40.



116).Figural Nut Tins. lot of two different small, early figural tin litho, house shaped 2 oz. sized salted peanuts tins from "The Nut House" Co. (Lynn, MA). Both are clean and excellent complete w/ original marked closure caps on side edges. Min. bid \$40 (the lot).



117).Fancy Straw Holder. 11 x 4.25" (dia.) early, heavy, fancy pressed glass soda fountain straw holder, w/ a deep, rich, high quality cut glass appearance. Excellent overall, w/ its original metal lid (has a few very minor nicks and fleabites on bottom of base- nothing at all serious and although not needed, could be easily polished off). Min. bid \$40.



118).Peerless Dyes Wooden Sign. 5.75 x 47-1/8" very early painted wooden sign for Brayton & Co.'s "Peerless Dyes". Never used sign is clean, bright and like new overall, w/ a beautiful, rich patina to its all original paint surface. Min. bid \$70.



119).1935 Lincoln V-12 Catalog. 9 x 12.5" early, high quality 40 pg. catalog filled w/ beautiful full product catalog images including many beautiful full page color images of Lincoln Motor Co.'s 1935 lineup of luxury 12 cylinder automobiles. Clean and excellent overall, as found still in its original envelope (note: has some non-offensive faint haziness on outer front cover). Min. bid \$50.

Yellow Kid



120).Yellow Kid Printing Blocks. great set of four large, heavy, ca. 1910 wood and copper printing plate blocks for making Yellow Kid illustrated newspaper and broadside hardware store ads (ea. app. 4 x 4 x 7/8"). Blocks feature large Yellow Kid cartoon character image, w/ different promotional product tie-in themes on each. Lot also includes four original promotional 11.75 x 8" sample broadside ads (each suitable for framing), as well as their original Outcault Advertising Co. issued 2-ps. storage box. Broadside and blocks are excellent, w/ soiling and some light general soiling and light staining on box lid. Min. bid \$60.

Sample Coffee



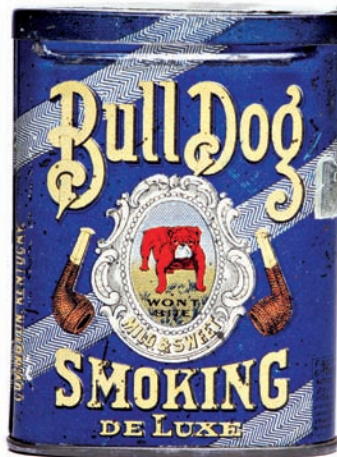
121).Forbes Coffee Sample. 2.25 x 3" (dia.) early, miniature tin litho 3 oz. sample sized "Trial Can" for Forbes Gas Roasted coffee (Forbes Tea & Coffee Co., St. Louis, MO), w/ same nice image on both sides. Clean, bright and attractive (a strong C. 8++) w/ a little minor wear to gold flash finish of embossed lid. Min. bid \$40.



122).Little Rock Railway Mirror. 2.75 x 1.75" important and extremely rare, early celluloid advertising pocket mirror from the Little Rock Railway and Electric Co., featuring stunning multi-color graphic image of woman exiting trolley car. Clean, bright and excellent in appearance (display side near mint (there are a couple large dark spots in mirror glass and a small early celluloid chip spot at bottom left edge of non-graphic backside)). Min. bid \$50.



123).Black Swan Radiator Seal. 4-3/8 x 3 x 1.5" scarce, early automotive radiator sealant tin for "Black Swan" brand, featuring great image of trademark swan. Neat and unusual piece, excellent overall (a strong C. 8+). Min. bid \$40.



124).Bull Dog Pocket. 3.5 x 2.75 x 7/8" early, small, oval variation tin litho pocket tin for Bull Dog brand (Lowell Buffington Co., Covington, KY). Clean, bright and exceptionally nice (C. 8.5+), w/ paper loss to tax stamp on lid. Min. bid \$50.



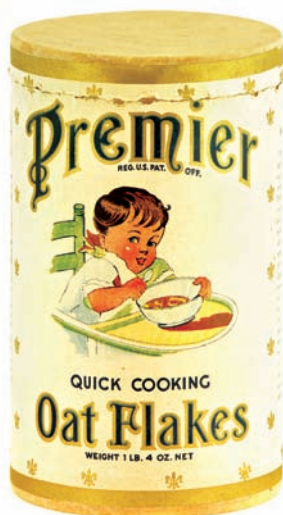
125).Red Dot Spice Tin. 3.25 x 2-3/8 x 1-3/8" scarce, early tin litho 2 oz. spice tin (allspice) for "Red Dot" brand (Marr Grocery Co., Denver, CO). Clean, bright and very attractive (C. 8.5+), w/ only very minor wear. Min. bid \$30.



126).Cycle Bags Porcelain Sign. 6 x 10.5" unusual, early porcelain sign advertising "Midland Cycling Touring Bags". Sign is bright and attractive overall w/ nice original sheen, although there is chipping at bottom hanging holes and along top edge. Min. bid \$40.



127).Kitchen Gadgets Sign. 8 x 11" great early cardboard litho sign for the Ideal Food grinder (Peck, Stow & Wilcox Co.) featuring wonderful graphic image of busy kitchen (© 1898 Donaldson Bros. Litho). Attractive and displays quite nicely (basically as a C. 8+/-), w/ a little non offensive light scattered wear (critical grade C. 7.5+). Min. bid \$50.



128).Premier Oats Box. 7.25 x 4" (dia.) early cardboard oats box for Leggett Co.'s (New York, NY) "Premier" brand oats, featuring colorful and graphic image of Co.'s trademark baby. Clean, bright and excellent overall (C. 8.5+/-) w/ some minor snake line wrinkles on backside. Min. bid \$40.



129).Swell Blend Coffee. 6 x 4.25" (dia.) early 1 lb. tin litho coffee can for "Swell Blend" (Wilcox, Crissey Co., Jamestown, NY) featuring nice image of Co.'s trademark ship. Clean and excellent overall (a strong C. 8+/-) w/ minor wear. Min. bid \$50.



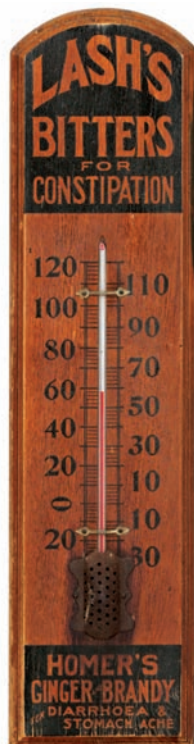
130).Lowney's Chocolates Mirror. 2.75 x 1.75" scarce, early celluloid advertising pocket mirror from the Lowney Chocolate Co., featuring stunning multi-color image of Co.'s trademark girl holding open box of candy (given as a souvenir at 1907 Mansfield, OH Lowney Co. Field Day celebration). Celluloid is crisp, bright and like new (note: has darkening to mirror glass). Min. bid \$50.



131).Liberty Motor Oil Can. 5.5 x 4" (dia.) early solder seam tin litho 1 qt. oil can for "Liberty" brand (Radbill Oil Co., Philadelphia, PA). Full, sealed can is clean and excellent overall (basically a strong C. 8+/-) w/ exception of a few small paint chips in upper left side background area. Min. bid \$40.



132).Large Cylinder Jar. 23" (h) x 5-7/8" (dia.) large, early, heavy glass apothecary and candy store display jar, w/ hand applied lip and ground glass lid. Clean and exceptionally nice piece (near mint). Min. bid \$70.



133). Quack Medicines Thermometer. 21 x 5.25" early wooden thermometer advertising Lash's Bitters and Homer's Ginger Brandy patent medicine products. Piece has a nice deep, richly worn surface patina giving it an attractive primitive country look, w/ minor darkening and a little light wear from use (C. 8+/-). Note: liquid in thermometer tube has a little separation. Min. bid \$40.



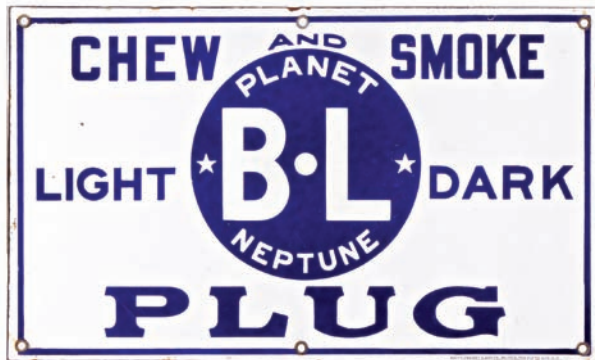
134).Polar Bear Milk Bottle. 9.5 x 3.75" (dia.) early glass 1 qt. enamel labeled milk bottle from Garden Farm Dairy (Denver, CO) w/ image on backside advertising Co.'s Polar Bear ice cream. Excellent. Min. bid \$30.



135).Rajah Coffee Grinder. 12.25 x 3.75" (wooden base) (tin measures 6.5 x 4.25 x 3.25") great, early, wall mount style advertising coffee grinder. Has cast iron mechanism mounted to wooden base, w/ attractive tin litho McKinney, Everts Co. (Binghamton, NY) "Rajah" brand graphic 1 lb. coffee tin at top. Attractive, highly graphic tin (by Shonk Litho) is quite nice overall, w/ a little minor expected wear from use (C. 8+/-). Min. bid \$70.



136).Menekin Railroad Blocks Set. (blocks 2-5/8 x 4.75 x 1-3/8"; depot box 5 x 5.5 x 4.5") unusual, complete set of six early colorful and highly graphic Mennen Co. children's cardboard advertising toy blocks, featuring Co.'s Menekin characters all around, w/ letters spelling out "Mennen" on side edges. Blocks are excellent (C. 8.5) and come w/ their original train depot building shaped storage box (box pretty decent, w/ exception of some tattering and a section that was cut out from one side). Min. bid \$40.



137).Planet Neptune Tobacco Sign. 9 x 15" very early, heavy enameled porcelain advertising sign for B. L. Co.'s "Planet Neptune" brand plug tobacco (Baltimore Enamel & Novelty Co., NY). Clean and impressive looking sign in a nice smaller size. Excellent overall (basically a strong C. 8.5+) w/ exception of minor soiling and small area of wear in very outer border area (as found, should improve w/ cleaning). Min. bid \$60.



138).Welch's Grape Juice Sign. 13-5/8 x 19-5/8" early, embossed tin litho sign for Welch's Grape Juice featuring nice image of Co.'s 1930's paper labeled 10¢ bottle (label has 1929 copyright). Crisp, bright and very nice (C. 8.5+) appearance) w/ minor storage wear in raised outer border area. Min. bid \$50.



139).Red Raven Tip Tray. 4.25" (dia.) early tin litho advertising tip tray for Red Raven brand aperient waters, featuring wonderful image of Co.'s large trademark bird and early labeled bottle. Clean, bright and excellent (C. 8.5+) w/ minor wear spot at very bottom outer edge. Min. bid \$30.

Miniature Samples



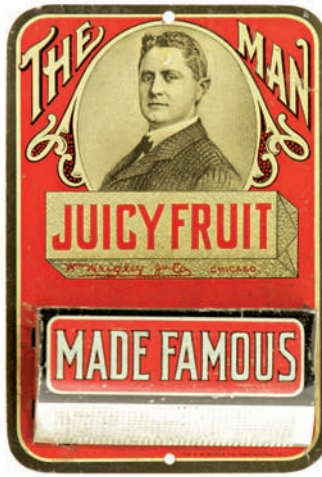
140).Sample Pocket Tins. (ea. app. 2-7/8 x 2.25 x 3/4") lot includes two different miniature tin litho tobacco sample pocket tins, each w/ bright color and great overall look. Includes "Velvet" (C. 8.5); and "Buckingham" brands (basically a strong C. 8++) w/ exception of two non-offensive chips spots at upper right backside edge. Min. bid \$50 (the lot).



141).American Can Co. Tip Tray. 4.25" (dia.) early tin litho American Can Co. advertising tip tray, a souvenir from 1904 St. Louis Worlds Fair (aka Louisiana Purchase Expo), w/ beautiful image of Co.'s fair exhibit building. Clean, bright and excellent (C. 8.5+). Min. bid \$40.



142).Sky Ranger Aviation Oil Can. 5.5 x 4" (dia.) scarce, early tin litho 1 qt. solder seam oil can for Sky Ranger brand (Premier Oil Refg. Co., Longview, Ft. Worth, Baird, TX) made for airplane use. Full, sealed can is clean, bright and excellent, w/ only non-offensive minor wear (a strong C. 8++), although bottom is shiny and possibly replaced. Min. bid \$40.



143).Wrigley's Match Holder. 4-7/8 x 3-3/8" early tin litho match safe advertising Wrigley's Juicy Fruit chewing gum. Clean, bright and very attractive (displays as a strong C. 8.5+) although close examination will show minor manufacturing blemish mark in forehead area (mentioned for accuracy, not offensive and does not detract from great look of piece). Min. bid \$50.



144).Coiner Cigars Tin. 5.5 x 3.25 x 3.25" outstanding, early embossed tin litho 25 count cigar tin for "Coiner" brand hand made cigars, w/ same beautifully detailed embossed graphic images on three sides. Clean, bright and very attractive (a strong C. 8+), w/ a little minor background wear. Min. bid \$40.



145).De Voe's Sweet Smoke Pocket. 4.5 x 3 x 3/4" early, tin litho concave shaped vertical tobacco pocket tin (United States Tobacco Co., Richmond, VA). Clean, bright and very attractive (a strong C. 8++) w/ exception of a little light scuffing along front side edge of lid. Min. bid \$50.

Cocoa Samples



146).Cocoa Samples. Lot includes a nice assortment of four early, miniature tin litho sample cocoa tins ranging from 1-7/8 to 3" (hgt). Includes: two different Rawleigh's; as well as Droste's; and Mc Ness brands. Clean and excellent overall. Min. bid \$40 (the lot).

Harley Davidson



147).Harley Motorcycle Cap. 5 x 9 x 7.5" (dia.) ca. 1950's cloth Harley-Davidson motorcycle riders cap (size 6-5/8) w/ celluloid visor and original Harley cloth patch on front (also has original Harley logo on inside). Hat includes two different nice period enameled AMA pins. Both cap and pins are excellent (C. 8.5/+). Min. bid \$40



148).Nye's Bread Pot Scraper. 2-7/8 x 3-3/8" early metal advertising pot scraper for Nye's brand wholesome bread (5 & 8¢ loaves). Piece is clean and bright w/ like new appearance (C. 8.5+/-) w/ exception of minor storage stain line at bottom edge of background area. Min. bid \$30.

Coffee Sample/Bank



149).Donald Duck Coffee Sample/Bank. 2.25 x 3" (dia.) scarce, early tin litho miniature "Free Sample" coffee tin (Goyer Coffee Co., Greenville, Mississippi), w/ Disney Donald Duck images on front and side. Tin is clean, bright and excellent overall and was made w/ coin slot in top for later use as bank (C. 8.5). Min. bid \$40.

Candy Container



150).Limousine Candy Container. 2-5/8 x 4.25 x 2" early, very high quality glass candy container in shape of fancy early limousine car, complete w/ its original metal wheels and tin closure roof. Excellent. Min. bid \$50.



151). "No Men Visitors" Porcelain Sign. 5 x 16" great, ca. 1915 heavy porcelain sign from hotel or woman's boarding house (by Ingram Richardson Co., Beaver Falls, PA). Clean and excellent overall, w/ nice original surface sheen (has only very minor edge wear). Min. bid \$40.

Anti- Prohibition



152).Brewer's Union Anti-Prohibition Match Safe. 1.5 x 2.75 x 3/8" early, very high quality celluloid covered match safe from the "United Brewery Workmen of America" union, rallying support for Anti Prohibition cause. Clean, bright and like new, as found never used in its original box. Min. bid \$40.



153).Die-Cut Calendar. 13.75 x 10-1/8" beautiful, early multi-color embossed cardboard die-cut 1908 advertising calendar for H.M. Burton, a Romulus, NY insurance and real estate broker (note great early candlestick phone she is talking on). Clean, bright and exceptionally nice appearance w/ silver sparkle highlights (C. 8.5+/- w/ exception of minor edge wear), w/ complete calendar pad at bottom. Min. bid \$50.



154).Buffalo Bill Die-Cuts. Lot includes a set of six different colorful and highly graphic embossed Buffalo Bill Wild West themed die-cuts on heavy card stock (ea. app. 4.5 x 6"). Very high quality pieces are crisp, bright and like new (near mint). Nicely presented on mat board and ready for framing. Min. bid \$50 (the set).

Pennsylvania Tires Poster



155).Pennsylvania Tires Poster. 34.5 x 22.25" large, early paper litho advertising poster for Pennsylvania Vacuum Cup Tires, featuring colorful image by illustrator Everett Johnson. Clean, bright and very attractive in appearance (basically a strong C. 8+/-), w/ a little non-offensive age toning in bottom 4.5" section and a little tear separation at upper right edge of metal strip border. Min. bid \$50.



156).Polishing Paste Tins. lot includes two unusual tin litho foreign polishing paste tins, each w/ American Indian images. Includes "Hurrah" brand 1 x 2.5" (dia.); and "Indian" brand ¾ x 2" (dia.). Both are excellent. Min. bid \$30.



157).Free Land Overalls Sign. 10 x 29-7/8" early, heavy enameled porcelain sign advertising "Free Land" brand Union Made Overalls (Baltimore Enamel). Front of sign is clean, bright and excellent w/ nice sheen and only the most minor of wear (C. 8.5+), w/ some light staining and oxidized speckling on plain white colored backside. Min. bid \$60.

Nabisco



158).Nabisco Cap. 3 x 9 x 8.5" (dia.) very early National Biscuit Co. heavy wool leather lined drivers uniform cap. Unusual, very high quality piece is excellent overall, w/ nicely embossed brass "NBC" buttons on sides. Min. bid \$40.

Lovell Arms Co.



159).Lovell Arms Co. Paperweight. 2.5 x 4-1/8 x 1" scarce, early, white milk glass bottomed heavy glass paperweight advertising Lovell Arms Co. (Boston MA) w/ nicely detailed image of Co.'s "Lovell Diamond" brand bicycle. Excellent. Min. bid \$40.

Miniature Samples



160).Peter Pan Peanut Butter Samples. Lot includes two early, miniature tin litho "free sample" tins for Peter Pan brand peanut butter. Includes: Derby Food Co. 2 oz. (2.25 x 1-5/8" dia.) C. 8.5+; and Pond Co. (1-5/8 x 1.5" dia.) C. 8+. Min. bid \$30 (the lot).



161).Jackie Coogan Peanut Butter. 3.5 x 3.75" (dia.) unusual variation, early tin litho pail for Kelly Co.'s (Cleveland, OH) "Jackie Coogan" brand featuring movie character images of ca. 1919 child star (Coogan played starring roles in Charlie Chaplin silent era movies including "The Kid" and Uncle Fester character in 1960's Adams Family TV series in later life). Clean, bright and excellent overall (C. 8.5/+). Min. bid \$50.



162).Pennant Motor Oil (for Fords) Can. 6.25 x 8-1/8 x 3-1/8" unusual, early tin litho ½ gallon oil can for Pennant brand motor oil for Fords (Pierce Petroleum Co.). Clean, bright and very attractive appearance (basically displays a strong C. 8+) w/ exception of a little background wear (no cap). Min. bid \$40.



163).Nectar Brewing Tip Tray. 4.25" (dia.) early tin litho Nectar Brewing Co. (Elmira, NY) tip tray w/ nice image of Co.'s elf character carrying wooden beer barrel. Clean, bright, never used example, w/ only very minor storage wear (C. 8.5+). Min. bid \$40.



164).Sweet Cuba Store Bin. 12.25 x 18 x 14" large, early tin litho countertop "Sweet Cuba" brand tobacco store bin. Powerful and impressive piece has strong colors and a great overall look (basically displays as a strong C. 8+), w/ a little non-offensive expected light background wear and minor denting (note: has slight lifting to tin on one of five hinge prongs and a tiny pinhole prick on backside). This is the nicest example of this elusive tin that I've seen. Min. bid \$70.



165).White Loaf Baking Powder Sign. 16.5 x 19.75" (10 x 13-5/8" actual sign) early embossed tin litho sign for "White Loaf" brand baking powder. Powerful and impressive never used sign is clean, bright and excellent overall (basically a C. 8.5/+) w/ minor storage wear (note: tipping in light just right will show just a faint, trace hint of barely noticeable hazy pattern left from protective paper that is usually found on this type of sign- mentioned for accuracy, not at all detracting). Presented in an attractive, original heavy period oak frame. Min. bid \$60.



166).Spice Tins Lot. Lot includes a nice group of six interesting, early spice tins (hgt.'s range from 3" to 4-1/8"). Includes "Here's Howe" (C. 8++); "Hillcrest" (C. 8.5+); "Gillett's" mace and paprika (C. 8++) w/ dent on backside of round example; "Time 'O Day" thyme (C. 8++) and "Slade's" nutmeg (C. 8+). Hillcrest is paper label, w/ tin top and base; all others are tin litho. Min. bid \$40 (the lot).

Early Harley Davidson Motorcycles



167).Harley Davidson Pin. 3/8 x 1-5/8" original, ca. 1930's high quality metal pin-back advertising button featuring nice image of Co.'s early winged logo. Excellent (C. 8.5+). Min. bid \$30.

Fishing Line



168).Fishing Line. Lot of two early, unused fly fishing lines still on their colorful and graphic cardboard display cards. Includes: "Huckleberry Finn" brand (Newton Line Co., Homer, NY) 4.5" (dia.) excellent (C. 8++); and "Rainbow" brand (Horrocks-Ibbotson Co., Utica, NY) 4.25 x 3-3/8" quite nice overall, w/ a little light hazy soiling/staining and light wear (C. 7.5). Min. bid \$30 (the lot).



169).Indian Theme Typewriter Ribbon Tins. lot includes a nice grouping of six different tin litho typewriter ribbon tins, each featuring attractive American Indian themed images. Includes: "Copy-Right" (C. 8.5++); "Sioux" (C. 8++); "Black Hawk" (C. 8.5+); "Chieftain" (C. 8.5+) and two different variations of "American" brand (C. 8.5+). Min. bid \$50 (the lot).

Card Counter (Dental Advertising)



170).Advertising Card Counter. 1-5/8" (dia.) x 3/8" unusual, very early tin litho mechanical card game scorer, with different advertising on both sides (front advertises "Zonweiss" brand dental cream; backside "Wood's" penetrating medicinal plasters). Excellent overall (a strong C. 8+). Min. bid \$40.



171).Orange Crush Trolley Sign. 16-3/8 x 25.75" (10.25 x 20-1/8" visible) scarce, early cardboard trolley car style sign for Orange Crush Soda (paper labeled pre ribbed bottle era). Clean, bright and attractive in appearance (basically displays a strong C. 8+) w/ exception of some fine scattered foxing speckles in bottom left blue margin area (nothing serious or that detracts from great overall look of piece). Nicely framed and matted. Min. bid \$40.

Miniature Phone



173).Min. Candlestick Phone. 3.25 x 1.5" (dia.) early, metal and heavy carbon composition material miniature salesman's sample style advertising telephone issued by the Stromberg-Carlson Telephone Co. This very high quality piece that is an exact miniature version of one Co.'s early style candlestick phones. Excellent. Min. bid \$40.

Tooth Powder



174).Noxacid Tooth Powder. 4 x 2.25 x 1.25" scarce, early tin litho tooth powder tin for "Noxacid" brand (Noxacid Laboratories, Newark, NJ) featuring great image of Co.'s trademark nurse. Full tin is clean and excellent (C. 8.5+). Min. bid \$40.

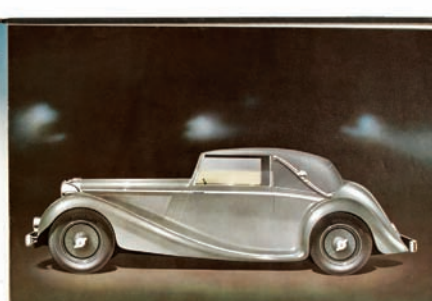
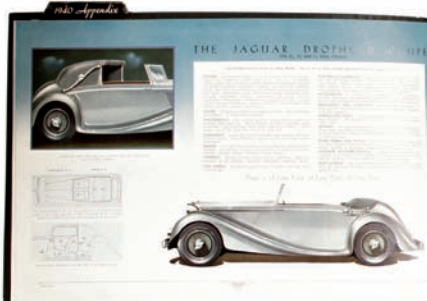


172). Sunset Motor Oil. 5.5 x 4" (dia.) early tin litho solder seam motor oil can from Sunset Oil Co., featuring same attractive image on both sides. Clean, bright and very attractive (C. 8.5+). Min. bid \$40.



175).White Loaf Baking Powder. 4.75 x 2-5/8" (dia.) very early paper label (over cardboard w/ tin top and bottom) product tin for "White Loaf" brand baking powder, featuring beautiful multi-color graphics. Full, never opened tin is clean, bright and very attractive (C. 8.5+). Min. bid \$40.

Jaguar Catalog



176).1940 Jaguar Catalog. 9.75 x 14.5" outstanding, vintage 1940 beautifully illustrated 16 pg. catalog on heavy paper stock promoting the sleek, beautifully styled line of Jaguar luxury automobiles including incredible detailed full page art images of each vehicle. Very high quality catalog is clean and excellent overall (C. 8.5/+), w/ exception of small, fairly minor foxing spot on inside cover page. Min. bid \$50.



177).Royal Doulton Auto Plate. 9.5" (dia.) scarce, fine, early hand colored china plate by Royal Doulton, featuring "A Nerve Tonic" scene from Co.'s highly collectible Motorist series of plates (note: these prized, high quality rack plates were designed by John Holdcroft and produced in Co.'s Burslem, England factory from 1903 - 1913). Excellent. Min. bid \$50.



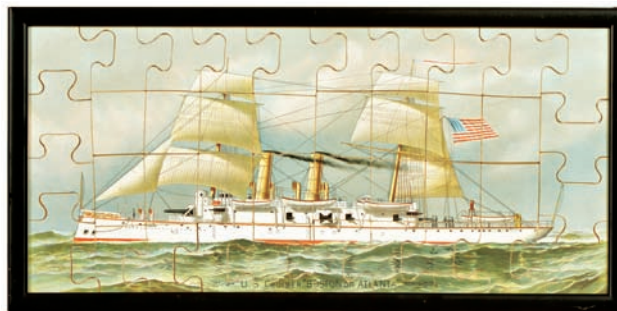
178).Rat Killer Display. 8.25 x 7-3/8 x 4.25" scarce, early tin litho countertop display for "Common Sense" brand rat exterminator w/ wonderful images of Co.'s large trademark rat on front and sides. Has strong color and displays pretty well, although there are some light scattered speckling spots and general wear from use (C. 7.5+). As found, might improve a bit w/ cleaning. Min. bid \$70.



179).Royal Doulton Auto Plate. 9.5" (dia.) scarce, fine, early hand colored china plate by Royal Doulton, featuring "Itch Yer on Guv'nor?" scene from Co.'s highly collectible Motorist series of rack plates (note: these prized, high quality plates were designed by John Holdcroft and produced in Co.'s Burslem, England factory from 1903 - 1913). Excellent. Min. bid \$50.



180).



180).White Squadron Boxed Puzzle. 9.5 x 12-7/8 x 1.75" (box) outstanding early 2-ps. boxed puzzle set by McLaughlin Bros., featuring beautiful multi-color graphic images of U.S. naval cruiser "Boston" on both box lid and puzzle. Complete puzzle is framed (framed puzzle 11.5 x 23.5"). Puzzle and box are both excellent (C. 8.5/+). Min. bid \$50.



181).Lucky Strike Canister. 5-7/8 x 4.25" (dia.) scarce, early tin litho tobacco canister for Patterson Co.'s "Lucky Strike" roll cut tobacco, w/ same classic design on three sides. Clean and attractive appearance, w/ minor background wear (C. 8/+). Min. bid \$50.



182).Boston Garters Display. 13 x 14.5 x 5-1/8" ca. 1911 tin litho countertop store display for Boston Garter Co., featuring powerful image by illustrator J. C. Leyendecker (famous for his fade-away illustrations). Clean and excellent overall (a strong C. 8++) w/ compartments on backside for holding product boxes (lot includes two empty original boxes w/ same image pictured on lids). Note: this company issued what are considered to be the most bizarre and among the rarest and most collectible baseball cards ever issued, depicting famous players in various stages of undress in locker room settings, often wearing just undergarments and Co.'s sock garters. Min. bid \$70.

Tobacco Jar



183).Indian Tobacco Jar. 5.75 x 4.25" (dia.) early, very high quality hand-painted 2-ps. fine china figural Indian chief tobacco jar. Excellent, w/ very nice detailing. Min. bid \$40.

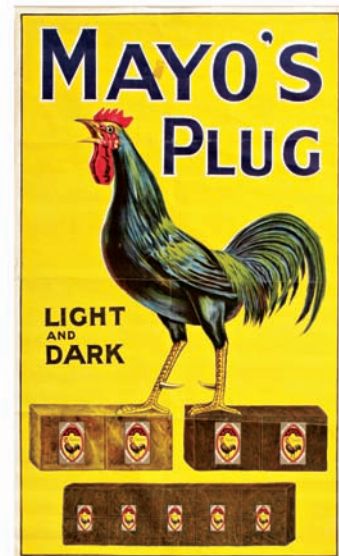


Richfield
Oil
Co.

184).Richfield Aviator Pen Holder. 7 x 4-3/8 x 4-3/8" early, figurative, executives metal desktop pen holder advertising Richfield brand (gasoline) featuring great image of Co.'s trademark aviator character holding early pen. This is a heavy, substantial, very high quality piece, w/ a nice rich patina to its bronze finished surface. Excellent overall, w/ small, early indent mark on base (appears to be minor mfg. imperfection). Min. bid \$50.



185).Porcelain Signs Lot. Lot includes a nice group of five different small, early porcelain signs ranging in size from 1.5 x 6" to 2.5 x 10". All are clean and excellent. Min. bid \$40 (the lot).



186).Mayo's Tobacco Sign. 29-7/8 x 17-7/8" early cloth sign advertising Mayo's Plug cut tobacco, w/ great looking graphic images of Co.'s trademark rooster standing on tobacco plugs (note colorful Mayo's tobacco tags on the tobacco plugs). Clean, bright and quite attractive in appearance (basically a strong C. 8+), w/ a few faint fold lines and small cello tape stain spot in upper background area (between A and Y of "Mayo's"). Min. bid \$50.



187).Long's Aspirin Tin. 1-3/8 x 1-7/8 x 1/4" scarce, early tin litho hinged lid tablets tin for "Long's" brand aspirin (Long Products Co., Memphis, TN). A decent and respectable example that displays pretty well, w/ a little light soiling and minor wear (C. 7.5+/8-). As found, might improve w/ cleaning. Min. bid \$30.



188).1910 Los Angeles Auto Show Badge. 1-7/8 x 2-7/8" scarce, early oval celluloid attendants badge from the 2nd annual Los Angeles Auto Show (held Dec. 24-31st, 1910). Clean and excellent. Min. bid \$30.



189).Fast Mail Flat Pocket. 2.25 x 3-5/8 x 5/8" early Bagley & Co. tin litho flat pocket tobacco tin featuring great image of early train. A clean, very attractive example (C. 8+/). Min. bid \$50.

Dental



190).Dental Thermometer. 15 x 4-1/8" unusual, early wooden advertising thermometer for Masel Dental Laboratory, Philadelphia, w/ nice image of early tooth, candlestick phone and telephone pole (promoting Co.'s Gold Crowns, Cusps, Facings and Bands). Displays nicely, w/ slight darkening to wood finish (tube not working). Min. bid \$40.



191).Mobiloel Arctic Tin. 12-3/8 x 4" (dia.) unusual, early tin litho can for Mobiloel Gargoyle brand Arctic winter motor oil, w/ nice polar bear image. Attractive and displays quite nicely (front displays as a C. 8+); w/ a little non-offensive soiling, faint surface oxidizing and some denting on backside (back C. 7.5+/8-). German. Min. bid \$50.

Trop Arctic Oil



192).Trop Arctic Oil Fob. 5 x 1.75" (1-5/8 x 1-1/8" brass fob portion) early, high quality brass watch fob on its original leather backing advertising "Trop Arctic" brand motor oil. Neat and unusual piece. Excellent. Min. bid \$40.



193).Uncle Sam Oats Box. 9.5 x 5-3/8" (dia.) early 3 lb. 7 oz. cardboard oats box for "Uncle Sam" brand (Biklen, Winzer Grocers, Burlington, IA), w/ same great images on both sides. Clean, bright and excellent (C. 8.5+). Min. bid \$40.



194).Central Oil Co. Match Box Holder. 1-5/8 x 2-3/8 x 7/8" early celluloid over metal advertising pocket matchbox holder from Central Oil Co. (Mendota and Amboy, IL) w/ great images of Co.'s early oil truck featured on both sides. Excellent. Min. bid \$40.



195).Model Tobacco Porcelain Sign. 12 x 36" early enameled porcelain advertising sign for "Model" brand smoking tobacco. Colorful and very attractive sign is clean and excellent overall, w/ nice surface sheen (basically a C. 8.5+) w/ some minor soiling and a little light wear at very outer edges. Min. bid \$60.



196).Vermont General Store Calendar. 9.25 x 6-7/8" early, shiny finish embossed cardboard advertising calendar for Robbins General Store (Northfield Falls, Vermont) featuring beautiful multi-color lithography. Clean, bright and very attractive (basically a C. 8.5+) w/ exception of a little non-offensive very faint staining in upper green background area. Complete w/ full 1915 calendar pad. Min. bid \$40.

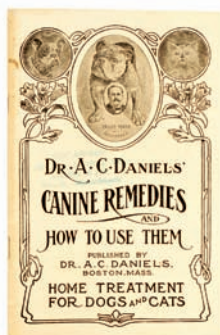


197).County Fair Cigar Box. 8.5 x 10.75 x 5-3/8" (as shown lid up) scarce, very early 100 count wooden cigar display box for "County Fair" brand (Duquesne Cigar Co., Pittsburg, PA) featuring wonderful image of trotters race horse scene on inside label (Simpson & Doeller Litho). Clean, bright and very attractive appearance (displays as a strong C. 8++), w/ some even, faint age toning evident. Min. bid \$30.

Advertising Bank



198).Universal Stoves Bank. 4.25 x 3-3/8 x 2" (dia.) early, colorful and highly graphic figural tin litho advertising desktop bank for Universal Stoves and Ranges (Cribben & Sexton Co., Chicago), w/ figural spinning globe. Clean, bright and excellent (near mint). Min. bid \$40.



199).



199).Daniels Veterinary Lot. Lot includes three early Dr. Daniels veterinary medicines: "Absorbent" tin 1-1/8 x 2" dia. (C. 8++); an unopened full, early labeled cork top bottle for "Oster Cocus" (Bone, Nerve and Muscle Oil) (C. 8.5+); and 3 oz. "Gall Salve" tin, very good, w/ a little non-offensive light scratching wear (C. 8/-). Lot also includes two early Daniels' 7.25 x 5" promotional booklets including a 38 pg. illustrated Daniels veterinary products catalog; and a 62 page advertising booklet promoting Co.'s home treatments for dogs and cats. Booklets are both complete and excellent (C. 8++). Min. bid \$40 (the lot).

Wagon Jack (Salesman's Sample?)



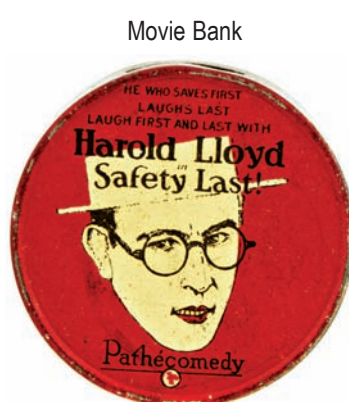
200).Backside



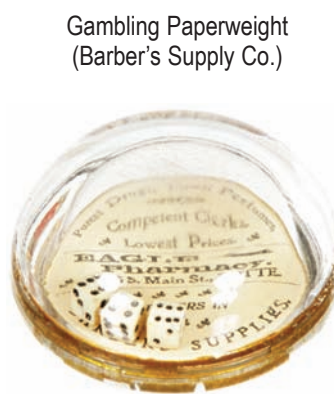
200).Salesman's Sample Wagon Jack. (18 x 5 x 5" wooden jack section- not including 23" long iron handle) important, very early, wood and cast iron working salesman's sample wagon jack from Buck & Co. (Lebanon, NH) w/ beautifully detailed stenciled advertising on backside. This is a substantial, heavy, very high quality piece that weighs almost 9 lbs. and appears to have been made for use as a salesman's sample, w/ a beautiful all original surface patina and a great country folk art look to it (mechanism works well). Excellent (C. 8+). Min. bid \$100.



201).Monarch Peanut Butter. 3.75 x 3.5" (dia.) early 1 lb. tin litho pry lid peanut butter tin for "Monarch" brand (Reid, Murdoch Co.) featuring nice graphic images of Co.'s trademark lion on both sides. Clean, bright and excellent (C. 8.5) w/ minor oxidizing on lid. Min. bid \$40.



202).Movie Star Bank. 3/8 x 2.25" (dia.) early tin promotional bank featuring silent era movie star Harold Lloyd, w/ advertising for his silent era comedy movie "Safety Last" playing at "Miller's Theatre". Excellent. Min. bid \$30.



203).Montana Gaming Paperweight. 1.5 x 3" (dia.) early glass dome shaped paperweight for a Butte, Montana pharmacy and seller of "Barber's Supplies", w/ three small bone dice inside. Excellent. Min. bid \$30



204).Buffalo Pitts Tractors Pin. 1.5" (dia.) early celluloid pin-back button advertising "Buffalo Pitt" brand Traction Engines (early primitive farm tractors) w/ nice image of Co.'s early tractor. Clean and very attractive appearance (field area is clean and bright, w/ some non-offensive light scattered foxing specks on side edge). Min. bid \$30.



205).Niagara Peanut Butter Pail. 3-3/8 x 3-7/8" (dia.) early tin litho 1 lb. peanut butter pail for Jacob Dold Co.'s (Buffalo, NY) "Niagara" brand, featuring nice images of children and pets on backside. Clean and very attractive (a strong C. 8+) w/ only minor wear. Min. bid \$40.



Miniature Salesman's Sample Quack Medical Device



206).Miniature Quack Medical Device Sample. 1-3/8 x 4" (device) early, very high quality, miniature salesman's sample of the "Pulvermacher Electric Belt", a quack electrical medical contraption. Comes complete in its original little dovetailed box, and includes the original papers and attached Sample tag. Excellent. Min. bid \$40.



207).Torrey's Razor Strop. 1.5 x 1 x 13" very early ca. 1870's "Torrey's U.S. Navy" brand razor strop kit. Very high quality, w/ wooden handle, hand-soldered drawer w/ brass pull and beautifully detailed paper label on front. Clean and exceptionally nice (C. 8.5+). Min. bid \$40.



208).Surf Maid Hair Nets Display. 19.25 x 14" large, early, die-cut cardboard countertop display sign for "Surf Maid" brand silk hairnets, featuring wonderful image (note: girl's thumb is raised and holds an actual product package envelope (package features great bathing beauty image). Crisp, bright and like new, as found never used still in its original included packaging. Min. bid \$50.

Bowen Flower Seeds Box



209).Bowen Flower Seeds Box. 10 x 14-5/8 x 8-1/8" as shown w/ lid open (2.5 x 14-5/8 x 8-1/8" box w/ lid closed) early, high quality Bowen Co. wooden flower seeds box, w/ beautiful multi-color graphic label inside. Label is clean, bright and very attractive (C. 8+) w/ some non-offensive minor staining in outer white border area. Box is quite nice overall, although lid closes slightly off-center w/a couple non-detracting small knot hole type pieces missing on back side. Min. bid \$40.

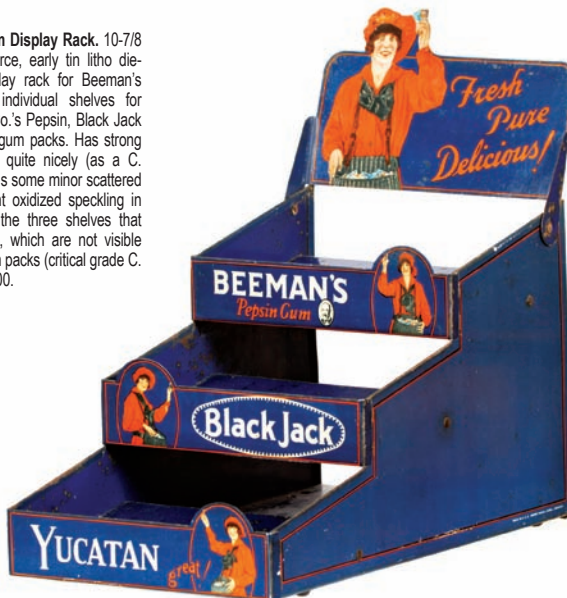


210).Rochester Brewing Co. Sign. 36 x 20" (28-5/8 x 12-7/8" visible) scarce, early pre-prohibition era paper litho sign for Rochester Brewing Co. (Rochester, NY) featuring great image of a topless, drunk semi-nude, w/ cherubs, etc. in background. Sign is bright, attractive and displays very nicely (basically a strong C. 8+) w/ a little faint staining at bottom (not offensive- it pretty much blends in and doesn't take away from great overall look of piece). Complete and still in its beautiful original frame. Min. bid \$150.



211). Arrow Coffee Tin. 5-5/8 x 4.25" (dia.) early tin litho 1 lb. coffee can for "Arrow" brand (Atwood & Co., Minneapolis, MN), featuring nice images of Co.'s trademark Indian warrior (same images on both sides). Clean and very attractive appearance, w/ a slight bit of minor even fading to red lettering and a little light wear to gold flash finish of lid (C. 8+/-). Min. bid \$40.

212). Beeman's Gum Display Rack. 10-7/8 x 6.5 x 11-1/8" scarce, early tin litho die-cut countertop display rack for Beeman's chewing gum, w/ individual shelves for holding sleeves of Co.'s Pepsin, Black Jack and Yucatan brand gum packs. Has strong colors and displays quite nicely (as a C. 8+/-) although there is some minor scattered wear and some light oxidized speckling in bottom sections of the three shelves that hold gum packages, which are not visible when displaying gum packs (critical grade C. 7.5+/-). Min. bid \$100.



213). Wilson's Tonic Pocket Mirror. 2-7/8 x 1-7/8" scarce, early celluloid covered advertising pocket mirror for Wilson's medicinal bracing tonic, w/ a nice hand-tinted image in center. Excellent, w/ exception of faint crack line on upper outer backside edge. Canadian. Min. bid \$40.



214). Maryland Club Pocket Tin. 4-1/8 x 3.5 x 1.25" early tin litho flip lid variation tobacco pocket tin for Marburg Bros. "Maryland Club Mixture" brand. Clean, bright and excellent in appearance (displays as a strong C. 8.5+/-) w/ nice surface sheen (only minor denting and very light wear). Min. bid \$60.



215). 1910 Philadelphia Baseball Posters Ad. 10.5 x 14-3/8" (5.5 x 9-1/8" visible image) vintage paper litho advertisement promoting a 1910 Philadelphia American League Baseball Club team poster that was available for ordering w/ 50¢ postpaid. Very nice overall, w/ minor age toning. Framed and matted. (also see lot #219, matching original poster this piece promoted). Min. bid \$40.



216). Alumni Pocket Tin. 4-1/8 x 3 x 1" scarce, early tin litho concave shaped vertical pocket tin for "Alumni" brand tobacco (United States Tobacco Co., Richmond, VA). Clean, bright and exceptionally nice (tin rates a strong C. 8.5+/-) w/ some non-serious light scattered wear on gold flash finish of lid. Min. bid \$100.



217). Mobiloil Oil Bottles Rack. 22 x 18.75 x 10-3/8" (w/ bottles) incredible, early service station display rack for Mobiloil "A" motor oil, complete w/ its 8 original embossed Gargoyle fillproof oil bottles and its original shipping box. This complete outstanding heavy gauge wire rack has original tin litho panel signs all around and never used bottles still even have their original caps. Crisp, never used set is in near mint condition (possibly the finest example in existence), as found never used still in its original shipping box (box is fair to poor, w/ staining, tattering and loss). Min. bid \$100.



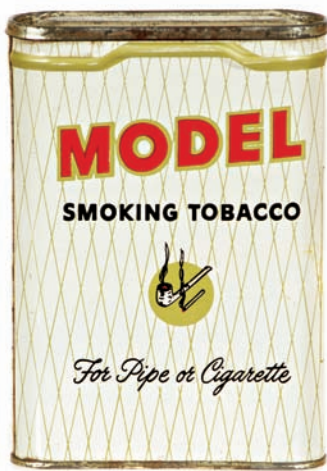
217). Detail



218).1910 Philadelphia Baseball Club Poster. 15.75 x 25-5/8" original 1910 paper poster, w/ full uncut margins featuring manager Connie Mack's 1910 World Champion Philadelphia American League Baseball Club, w/ nice sepia tone images of Mack and team players at stadium. Image area is very nice in appearance, w/ a little light water staining in outer white margin areas and touching into dark bottom brown background (blends in nicely and barely noticeable in brown area). Framed and matted. Note: these posters were originally published by Baseball Magazine Co. and sold for 50¢ each postpaid (also see lot #215, matching promo piece for this poster). Min. bid-\$50.



219).Honest Scrap Store Bin. 12-1/8 x 17-7/8 x 14" large, early tin litho store display tin for "Honest Scrap" brand tobacco. A clean, and exceptionally nice example of this scarce tin, has very strong colors and great overall look (a strong C. 8++), w/ exception of some early chipping on left side panel and some light wear on lid (front display panel a strong C. 8.5+). Provenance: ex. Challenger collection. Min. bid \$150.



220).White Model Pocket Tin. 4.25 x 3 x 1" unusual, white color variation tin litho vertical tobacco pocket tin for Model brand (United States Tobacco Co., Richmond, VA). Full tin is clean, bright and excellent (C. 8.5+) w/ non-detracting minor dent mark on bottom left curved edge. Min. bid \$50.



221).Monkey Face Mechanical Bank. 4-1/8 x 2.75 x 1.5" early tin litho mechanical bank w/ arched top (monkey's tongue sticks out when lever is pressed, then swallows coin when it retracts). Excellent (C. 8.5). English. Min. bid \$40.



222).Federal Club Spice Tin. 3.5 x 2-3/8 x 1-3/8" early tin litho 1 oz. spice tin (nutmeg) for "Federal Club" brand (Euclid Coffee Co., Cleveland, OH) w/ trademark clubhouse on both sides. Clean, bright and excellent (C. 8.5+) w/ a couple tiny, very minor indents. Min. bid \$40.



223).Old Colony Sample Tin. 3 x 2 x 5/8" early, tin litho concave miniature tobacco pocket sample tin for Bagley Co.'s "Old Colony" brand. Clean, bright and excellent overall (displays as a strong C. 8.5+) w/ a couple very minor background wear spots. Min. bid \$50.



224).Kamp Oats Box. 9.5 x 5-3/8" (dia.) scarce, early cardboard 3 lb. oats box (lists different stores from various S. Dakota cities) featuring beautiful multi-color graphic camping scene (same image both sides). Clean, bright and exceptionally nice (C. 8.5+). Min. bid \$50.



225).Chocolate Candy Sign. 17 x 8-3/8" great early cardboard die-cut easel-back sign for Willard's candy bars (Wolf Co. Litho, Philadelphia, PA). Crisp and like new condition, w/ a couple tiny staple holes in candy bar area (probably originally held a sample bar). Min. bid \$40.



226).Car Polish Tin. 5.75 x 3.25" (dia.) early tin litho product tin for "Dust-Puff" car polishing dust, w/ nice image of woman polishing car. Clean and attractive appearance (C. 8+), w/ a little light wear on lid. Min. bid \$40.



227).Portage Oats Box. 9-5/8 x 5.5" (dia.) early 3 lb. oats box for "Portage" brand oats (Portage Wholesale Co., Portage, WI) featuring colorful Indian themed image (steaming cereal bowl on back). Clean, bright and excellent overall (C. 8.5). Min. bid \$50.



228).Mandeville & King Seed Box. 9.25 x 11-3/8 x 8.25 (as shown lid open) 8.25 x 11-3/8 x 1-5/8" (box closed) beautiful, early cardboard countertop display box for Mandeville & King Co.'s flower seeds featuring beautiful multi-color lithographed images of sweet peas and nasturtiums flowers on both inside and boxes inner lid (© 1905). Clean, bright and excellent overall (C. 8.5/+). Lot also includes three of Co.'s early flower seed packs. Min. bid \$50.



229).Rheingold Beer Tray. 12" (dia.) x 1-3/8" vintage Rheingold brand tin litho beer tray w/ great western themed image by illustrator Otto Soglow (creator of syndicated Little King cartoon strip © 1933). Image side is clean, bright and displays quite nicely, w/ a little non-offensive minor wear (C. 8+/-); w/ light scratching and slightly heavier wear on plain backside. Min. bid \$40.



230).Comic Character Bisque. 3 x 3 x 1.25" early hand-painted figural fine German made china bisque featuring Barney Google and horse Spark Plug comic characters, w/ advertising on base for a Plumbing and Heating Co. Basically crisp and like new, w/ exception of mfg. blemish area on smooth underside of base area (mentioned for accuracy- does not detract from piece). Min. bid \$40.



231).Battleship Spice Tin. 3-3/8 x 2.25 x 1-3/8" early tin litho 2 oz. spice tin (allspice) for "Battleship" brand (Canby, Ach & Canby Co., Dayton, OH) featuring nice images of Co.'s trademark battleship on both sides. Clean, bright and attractive appearance, w/ a few non-offensive light rub marks (C. 8+/-). Min. bid \$40.



232).Whip Pocket Tin. 3-5/8 x 2.5 x 7/8" short variation early tin litho vertical pocket tin for Patterson Co.'s "Whip" brand tobacco. Clean, bright and very attractive appearance (C. 8.5/+). Min. bid \$50.



233).Whiz Auto Top Dye Tin. 5.5 x 3-7/8 x 1-7/8" very early hand-soldered tin for Whiz brand auto top dye. Clean, bright and very attractive (a strong C. 8++) w/ minor soiling on backside. Min. bid \$40.



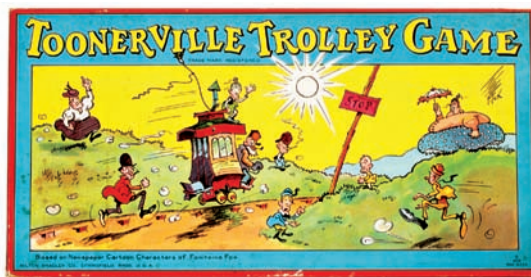
234).Vim Tea Match Holder. 5-5/8 x 3.5 x 1" scarce, early tin litho advertising match holder for Baird & Peters Co.'s "Vim" brand tea. Clean and very attractive appearance (C. 8++), w/ a little light wear on outer left edge of match basket. Canadian. Min. bid \$40.



235).Brown & Bigelow 1930 Art Calendar. 33-3/8 x 16" large, original 1930 dealers calendar promoting the Brown & Bigelow Co.'s advertising art calendars w/ multi-color deco era image by pin-up artist Knowles Hare. Clean, bright and excellent (C. 8.5/+), complete w/ original coversheet and full calendar pad. Min. bid \$40.



237).Salesman's Sample Window Shade Fixture. 2.5 x 14 x 2.5" unusual, very early, small working mechanical salesman's sample for Judd & Co.'s "Empire" brand window shade fixtures (this is a small version of one of Co.'s actual large sized shades). Complete w/ its original wooden mounting bracket, piece has a working pull-down cloth shade that is covered w/ Co. advertising and 1880 patent date and opens by both cord or pulling down on actual shade (shade measures 10.75 x 19.75" when opened). Quite nice overall, w/ some expected toning and non-offensive light staining to cloth shade (shade C. 7.5). Min. bid \$50.



236).Toonerville Trolley Game. 8.75 x 17 x 1-5/8" early 2-ps. boxed game set featuring great images of "Toonerville Trolley" syndicated cartoon strip characters on both the box lid and inside playing board. Clean, bright and very attractive (basically a strong C. 8++) w/ a little non-offensive light foxing on lid. Set also includes dice, wooden dice cups and comic playing pieces inside. Min. bid \$40.

Salesman's Sample



237). Detail

JIFFY Toothache DROPS **Instant Relief** **25¢**

238). Jiffy Toothache Drops Sign. 1 x 12" very early, heavy enameled porcelain strip sign advertising "Jiffy Toothache Drops". Clean and excellent overall (near mint), w/ just a trace hint of slight dulling to surface. Min. bid \$50.



239). 1930's Coke Sign. 13 x 20.75" great, ca. 1935 vintage 2-sided cardboard hanging sign for Coca-Cola featuring beautiful multi-color graphics (same image both sides). Crisp, bright and like new (near mint), w/ exception of minor pinch mark in upper right corner of back side. Min. bid \$50.



240). Wooden Pepsi-Cola Sign. 8.25 x 13-5/8 x 1 1/2" unusual, ca. 1930's early wooden store sign for Pepsi-Cola, w/ a nice, rich all original surface patina. Clean, bright and excellent overall, w/ a few small background wear marks (C. 8/+). Min. bid \$40.



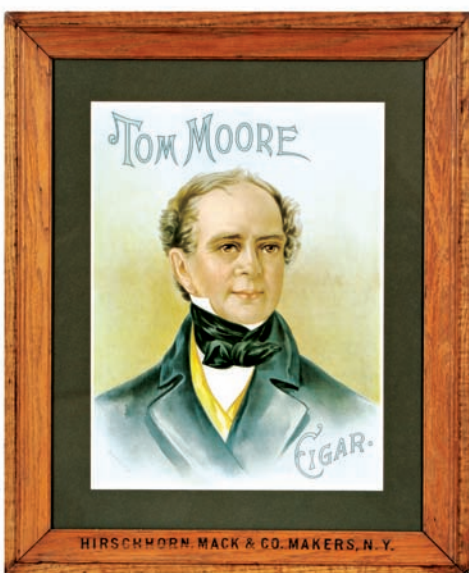
241). Kid Candy Pail. 3-3/8 x 3-7/8" (dia.) early tin litho 7 oz. candy pail for Foss & Co.'s "Kid" brand candy (blue variation), featuring images of silent era movie star Jackie Coogan, w/ comical silhouette images around backside of kid being chased by cop. Clean, very nice example w/ marked embossed lid (C. 8.5). Min. bid \$40.



242). Movie-Land Puzzles. 9 x 7.75 x 1" early 2-ps. boxed "Movie-Land Cut Ups" cardboard puzzle sets featuring great images of Fleischer Studios Betty Boop and Bimbo comic strip characters on lid (© 1932 Wilder Mfg. Co.). Includes two complete 7.25 x 8.5" cardboard puzzles. Clean and excellent overall (note: two pieces on one of puzzle are repaired). See internet addendum to view puzzles. Min. bid \$30.



243). Kid Candy Pail. 3-3/8 x 3-7/8" (dia.) early tin litho 7 oz. candy pail for Foss & Co.'s "Kid" brand candy (lime green variation) featuring images of silent era movie star Jackie Coogan, w/ comical silhouette images around backside of kid being chased by cop. Clean, very nice example w/ marked embossed lid (C. 8.5), w/ a few very minor pings. Min. bid \$40.



244). Tom Moore Cigars Sign. 25 x 20" (19-5/8 x 14-5/8" visible) beautiful, early paper litho sign for "Tom Moore" brand cigars featuring stunning multi-color lithography (by Louis Neuman Co., NY). Clean, bright and excellent (C. 8.5+) complete w/ its beautiful, original marked frame (note: we have examined sign out of frame and it has complete, wide, original uncut margins under the mat board). Min. bid \$60.

MRS. BAIRD'S BREAD

245). Baird's Bread Sign. 1 x 12" small, early, heavy enameled porcelain strip sign for Mrs. Baird's bread. Clean, bright and excellent, w/ nice original surface sheen (has a few trace hints of very minor staining, and tiny fleabite at very outer edge- listed for accuracy, so minor barely merits mention). Min. bid \$40.



246). Brownie Puzzles. 10.75 x 13.25" (puzzles measure 9 x 12") impressive, very early (© 1891) boxed set of two different lithographed cardboard puzzles by McLaughlin Bros., featuring beautiful multi-color graphics of Palmer Cox illustrated Brownie characters on the two separate puzzles and box cover (box is wood framed w/ cardboard lid and base). Puzzles and box are clean, bright and very attractive in appearance (a strong C. 8++), although bottom box is missing small inner edge that secures outer cover. Both of the 24 ps. puzzles are complete, although two of the pieces have lost the bottom layer of cardboard (so slightly thinner than others and two pieces have repaired breaks). Min. bid \$60.





247).Leon's Tablets of Aspirin Tin. 1-3/8 x 1-7/8 x 1/2" scarce, early tin litho hinged lid "Leon's Tablets of Aspirin" tin from the Lax-o-Mint Co. (Joplin, MO). Clean, bright and exceptionally nice (basically a C. 8.5+/-), w/ exception of small wear mark on bottom left edge of lid. Min. bid \$30.

Talc Samples



248).Colgate Talc Samples. Lot includes a nice group of seven different miniature tin litho Colgate Co. talcum powder sample tins, ea. complete w/ their original boxes (tins ea. 2-1/8 x 1.25 x 3/4"). Tins and boxes are all excellent, although "Monad" and "Eclat" are missing top flaps on their boxes. Min. bid \$40 (the lot).



249).Trout Line Pocket Tin. 3-3/8 x 2.5 x 1-3/8" early oval slide closure pocket tin w/ cardboard body and tin top and bottom for "Trout Line" brand tobacco, featuring same great images on both sides. Full, never opened tin is clean, bright and excellent overall (C. 8.5+/-), w/ non-detracting, minor wear marks at bottom edge of backside. Min. bid \$50.



250).Arsenal Spice. 3-1/8 x 2.25 x 1.25" scarce variation, early tin litho spice tin (mustard) for Arsenal brand (Illinois Wholesale Grocery Co., Rock Island, IL) w/ same nice image on both sides. Bright and attractive in appearance, w/ typical scattered speckling in metallic gold flash highlight areas and loss to ink-stamped mustard spice name (C. 8+/-). Min. bid \$40.

Atlantic Refining Co.



251).Atlantic Refining Match Holder. 2-7/8 x 1-5/8 x 1/2" early silver plated metal advertising pocket match holder advertising Atlantic Refining Co.'s Oils, Greases, etc. Display side is excellent, w/ some plating wear on backside. Min. bid \$30.



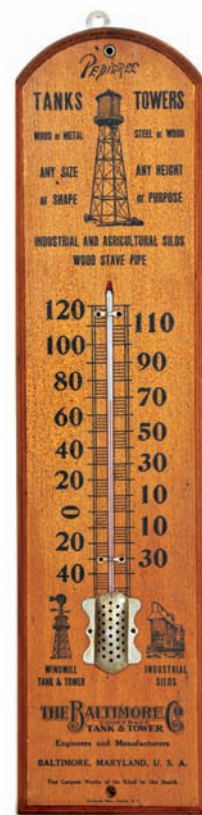
252).Rice's Seed Box. 8 x 5-7/8 x 5" (as shown lid up) 4 x 5-7/8 x 5" (lid closed) small, early wooden seed box from Rice's Seed Co. featuring beautiful color graphic label on inside. Excellent overall (C. 8+/-) w/ minor dark spot on top of lid and missing top hinged clasp piece. Min. bid \$40.



253).Standard Gasoline Ad. 9 x 3-5/8" unusual, cardboard easel-back stand-up advertising novelty piece, promoting Standard Service Stations (© 1931) featuring uniformed attendant next to Standard brand visible pump (note pulling down on the bottom tab creates movement to make attendants hand salute). Excellent overall (C. 8+) w/ trace, minor bend mark in arm area (Canadian). Min. bid \$30.



254).Robert Burns Corner Sign. 22.5 x 16 x 4.25" wonderful, early curved glass corner sign for "Robert Burns" brand cigars on Vitrolite milk glass, surrounded by attractive copper finished protective metal frame, and wooden backing. Outstanding piece is all original (sign is crisp and like new), w/ a little light oxidized surface wear to outer metal frame. Min. bid \$150.



255).Baltimore Tank & Tower Thermometer. 24 x 5-7/8 x 3/4" early wooden advertising thermometer for the Baltimore Tank & Tower Co. (Baltimore, MD) featuring great images of Co.'s various towers. Displays very well (a strong C. 8+) w/ a nicely aged all original rich surface patina (minor expected age speckling on upper surface of varnish). Working thermometer. Min. bid \$40.

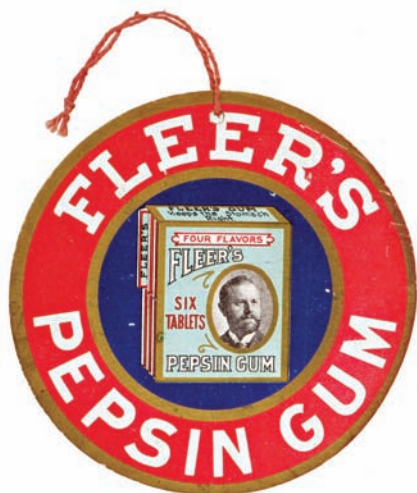
Folding Trade Card



256).Buckeye Harvesters Folding Ad. 4-1/8 x 5.25" unusual, early beautiful multi-color graphic folding die-cut advertisement for Aultman Co.'s Buckeye brand harvesting machines on heavy cardstock (doors open to reveal workers and factory scene). Excellent (C. 8.5+). Min. bid \$30.



257).Perfection Oil Sign. 13-1/8 x 19-1/8" early tin over cardboard self-framed sign for "Perfection" brand oil, featuring beautiful multi-color graphic images. Sign is clean, bright and displays quite nicely (basically as a C. 8+/-) although there is some light creasing and minor bends and wear (critical grade C. 7.5/+). Min. bid \$100.



258).Fleer's Gum Sign. 4-1/8" (dia.) early cardboard string hung fan pull / ceiling sign advertising Fleer's Pepsin Gum, w/ nice image of early gum pack on front, w/ print advertising on backside. Display side is clean and very attractive (C. 8+); w/ minor soiling on back. Min. bid \$40.



259).Harold Lloyd Doll Pattern. 16.75 x 16" ca. 1920's framed cloth doll pattern featuring silent era movie star Harold Lloyd. Nicely framed and matted cut out but never sewn pattern pieces are clean, bright and excellent (near mint). Min. bid \$40.



260).James River Tobacco Tin. 2.75 x 8-1/8" (dia.) extremely rare, early paper label (over tin) pie-shaped 2-ps. tobacco tin for "James River" brand (L. Warnick Brown & Co., Utica, NY) featuring great image of Indian in canoe. Has some dark scattered staining spots, even fading and some general overall wear, but overall is still attractive and displays pretty well (tough to grade, but C. 7+/- seems about right). Min. bid \$50.

Gum Machine Figure



261).OVB Door Push. 8 x 3" very early, heavy enameled porcelain hardware store door push promoting hardware, cutlery, tools and paints. Excellent overall, w/ a little non-offensive light wear in outer border edges. Min. bid \$50.



262).Yellow Kid Figure. 7.25 x 2.75" early, embossed tin litho figural Yellow Kid character made for use inside early enameled Pulver coin operated clockwork gum machines (these often dispensed Co.'s Yellow Kid brand gum). Excellent overall and appears never used (a strong C. 8++), w/ only minor storage wear. Min. bid \$40 ea. (have two, winning bidder can buy one or both).



263).Black Bird Oats Box. 9-5/8 x 5.25" (dia.) early 3 lb. cardboard oats box for "Black Bird" brand (H.P. Lau Co., various Nebraska cities) featuring beautiful multi-color graphic image of Co.'s trademark bird, w/ steaming cereal bowl on backside. Clean, bright and excellent overall (C. 8.5+) w/ a little minor soiling on backside. Min. bid \$40.



264).Fleck's Heave Remedy. 8 x 3" (dia.) early veterinary medicine tin for Fleck's Heave Remedy (horse medicine for heaves, coughs, colds and asthma) w/ impressive early graphics. Has cardboard body, w/ a tin top and base (J.J. Fleck, Tiffin, OH). Quite nice overall, w/ some even toning and a little light fade (C. 7.5++/-). Min. bid \$30.



265).Jar Rubbers Boxes. lot includes six different colorful canning jar rings boxes, complete w/ contents (ea. 3-1/8 x 3-1/8 x 1.25"). Includes: Excelsior, Toppo; Beats All; Hold Fast; Pickwick; and Clover Farm brands. Excellent overall (avg. 8.5/+), w/ minor toning and wear to "Beats All" box. Min. bid \$40 (the lot).



266).Zerbst's Capsules Display. 4.5 x 6.75 x 3-3/8" full, early cardboard countertop display box for Zerbst's Capsules complete w/ all 12 of its unopened original cardboard product boxes. Crisp and like new (near mint). Min. bid \$40.



267).Stutz Autos Catalog. 9.75 x 11-1/8" high quality, vintage ca. 1928 beautifully illustrated 32 pg. catalog on heavy paper stock promoting the beautifully styled line of Stutz automobiles, featuring detailed info and large beautiful color illustrations. Excellent overall (note: a couple of inside pages have become loose and are no longer attached to rest of booklet). Min. bid \$50.



268).Ivory Soap Die-Cut. 10.25 x 7" early, 2-sided, die-cut string hanger cardboard ceiling sign (on heavy cardstock) for Ivory brand soap, featuring dove and early soap bar (bar dated 1879). Sign is clean and very attractive overall (basically a strong C. 8+) w/ exception of small break spot in upper wing area. Min. bid \$40.



269).Celluloid Bakery Sign. 7 x 5" small, early oval celluloid advertising sign for Carver's Bakery (Boyetown, PA) featuring stunning, beautifully detailed color graphics. Clean, bright and like new appearance (near mint). Min. bid \$50.



270).Sears-Roebuck Coffee Bin. 16 x 11-1/8 x 11-1/8" unusual, early tin litho 25 lb. store size hinged lid coffee bin for Sears-Roebuck Co. roasted coffee (neat size!). Clean, bright, and displays quite nicely (displays as a C. 8+), w/ a couple early solder spot repairs on lid and a little non-offensive light scattered wear- nothing that's really serious or detracting (critical grade C. 8/-). Min. bid \$60.



271).Jewel Stoves Bill Hook. 7.25 x 4.25" scarce, early tin litho advertising bill hook for "Jewel" brand stoves and furnaces, w/ nice image of woman cooking at stove. Clean and bright, w/ very nice overall look (basically displays as a strong C. 8+ appearance), although there is some light soiling and background wear in bottom right section (critical grade C. 7.5+). Canadian. Min. bid \$40.



272).Queen Cigars Tin. 5.5 x 3.25 x 3.25" outstanding, early embossed tin litho 25 count cigar tin for Franklin Mac Veagh Co.'s "Queen" brand cigars, w/ same beautifully detailed embossed factory scene images on three sides (Tindeco lithographers). Clean, bright and very attractive (a very strong C. 8+), w/ only very minor wear. Min. bid \$40.



273).Columbia Spice Tin. 3.75 x 2.25 x 1.25" early tin litho 2 oz. spice tin (mustard) for Columbia brand (Sutherland & McMillan Co., Pittston, PA), w/ same great image on both sides. Clean, bright and beautiful appearance (C. 8.5+) w/ minor wear on side edge (red band area). Min. bid \$30.



274).Kellogg's Pocket Mirror. 2.75 x 1.75" scarce, early celluloid pocket mirror for Kellogg Co.'s Corn Flakes cereal, featuring great image of Co.'s trademark girl hugging corn stalk (note early cereal box in her apron pocket). Celluloid is clean, bright and excellent (note: mirror glass on backside is broken w/ several cracks). Min. bid \$50.



275).Marvel Peanut Butter. 4 x 3-5/8" (dia.) scarce, early tin litho 14 oz. peanut butter pail for "Marvel" brand (Webster Grocer Co., Danville, IL) featuring wonderful, multi-color graphic kid and toy images all around. Clean, bright and excellent (tin rates a strong C. 8.5+), although there is fairly heavy wear on its non-graphic blue lid. Min. bid \$50.

2-Sided Porcelain Sign



276).R & G Corsets Sign. 11.75 x 17-7/8" very early 2-sided enameled porcelain sign for "R & G Corsets" (sign made by Baltimore Buckley & Co., New York) surrounded by fancy figural wrought iron border brackets all around. All original, w/ a little light overall weathering and wear, but overall attractive and displays quite nicely, w/ a great primitive folksy look (front C. 8/-; back C. 7.5). As found, might improve a bit w/ cleaning. Min. bid \$60.



277).Smilo Peanut Butter. 5.5 x 6-1/8" (dia.) scarce, early tin litho pry lid product tin for "Smilo" brand peanut butter (Maury-Cole Co., Louisville, KY; Memphis, TN; and Dallas, TX), featuring nice image of Co.'s trademark kid. Clean, attractive and displays nicely (C. 8/-) w/ a little non-offensive minor background wear. Min. bid \$40.



278).Bagley's Tobacco Ceiling Sign. 7.5 x 6.25" early 2-sided, cardboard die cut string hung hanger sign for Bagley Co.'s "Clam Bake" brand chewing tobacco, featuring a Yankee clam digger character holding up giant tobacco pack. Clean and excellent (C. 8.5). Min. bid \$40.



279).Arrow Soap Hanger. 15.75 x 9.75" early 2-sided cardboard die-cut ceiling hanger sign advertising Swift's Arrow brand soap. Clean, bright and very attractive (a strong C. 8/-) w/ non-detracting faint bend mark at bottom of pointed arrow section. Min. bid \$40.

Gum Display Box



280).Tid-Bits Gum Box. 6-7/8 x 7 x 3.25" (as pictured) very early cardboard store display box for Honey Dew Gum Co.'s "Tid-Bits" brand pepsin chewing gum ("The Cyclist's Companion"), w/ advertising around all four sides and on the top and bottom of box cover (has glass covered lift-up inside for showing gum inside). Has a nice overall appearance, w/ minor soiling and a little bit of light expected wear (C. 8/-). Min. bid \$40.



281).Columbia Match Holder. 5.5 x 2.25" early, embossed die-cut tin litho match holder for Columbia Mills Flour Co. (Minneapolis, MN) featuring wonderful patriotic image of Miss Liberty. Clean, bright and very attractive (C. 8.5+) w/ minor wrinkling in basket area (not offensive or detracting). Min. bid \$80.



282).Texaco Gas Globe. 17 x 16" (dia.) x 5" vintage, ca. 1930's 3-ps. glass gas pump globe for Texaco "Ethyl" brand gasoline, w/ crimped metal band at base, as found still in its original box (box marked Advertising Products Inc., Cincinnati, OH). Globe is crisp, bright and like new (box very nice and still has the original protective inserts inside). Min. bid \$100.



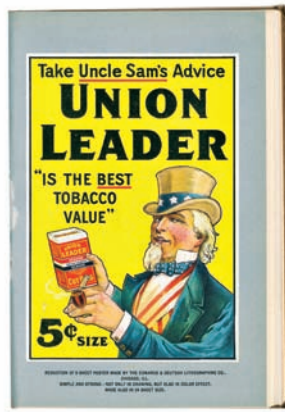
283).Micky Mouse Toy. 6.5 x 6 x 1-1/8" unusual, early wooden jointed Micky Mouse non Disney knock-off toy w/ nice original paint surface and decal on body (dated 1926). Excellent (C. 8++). Min. bid \$40.



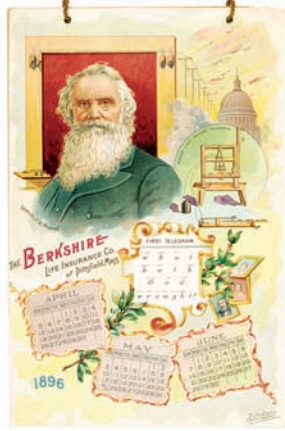
284).Golden Sceptre Pocket Tin. 2.75 x 3-3/8 x 1.25" very early tin litho tobacco pocket tin for Surbrug Co.'s "Golden Sceptre" brand. Full tin is clean and bright w/ an exceptionally nice appearance (a strong C. 8.5+) w/ only a couple minor rub marks. Although the tax stamp on side edge has some chipping loss, it is still sealed and has never been opened. Min. bid \$50.



285).Condom Tins. lot of two attractive tin litho condom. Includes "Ramses" brand 1-7/8 x 2-5/8 x 3/8" (C. 8.5+); and "Three Knights" 1-5/8 x 2-1/8 x 1/4" (C. 8/+). Min. bid \$40 (the lot).



286).Poster Book. 8 x 5.5 x 5/8" scarce 220 pg. © 1912 hardcover "Poster Advertising" "how to" marketing book (by author Herbert Cecil Duce) filled with heavily illustrated, highly detailed chapters covering all aspects of producing and marketing products through the use of advertising posters and contains multiple stunning, full page multi-color poster illustrations inside. Complete and excellent. Min. bid \$30.



287).1896 Berkshire Insurance Calendar. 8.25 x 5.5" outstanding, beautiful, early, string tied historical calendar, w/ four separate multi-color textured calendar pages advertising Berkshire Insurance Co. (Pittsfield, MA), each featuring a famous inventor w/ 3 calendar months at bottom. Includes Robert Fulton (boat, submarine and ship scenes); Samuel Morse (telegraph scenes); John Roebling (Brooklyn bridge); and Thomas Edison (various inventions shown). Clean, bright and exceptionally nice (near mint). Min. bid \$40.



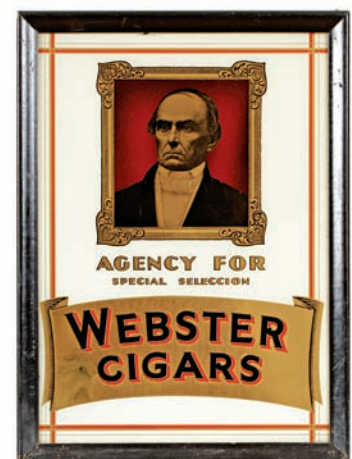
288).Sykes Healing Powder Tin. 4 x 2.25 x 1.75" early tin litho Sykes Comfort medicated healing powder tin w/ beautiful image of trademark kids on front, and Co.'s nurse on back. Full, never used tin is clean and excellent, as found in its original box (tin near mint); box is missing lid and has some tape stain residue in bottom section. Min. bid \$40.



289).Sexual Diseases Medicine Sign. 8.5 x 6" early embossed tin litho sign for Pabst "Okay Special", a medicinal sexual diseases quack medicine. Clean and attractive appearance w/ some light scattered edge wear (C. 8+/-). Min. bid \$40.



290).Ruppert's Beer Tray. 13.25" (dia.) great, ca. 1930's tin litho advertising beer tray for Ruppert's brand beer featuring wonderful color image by German born American art deco era artist and illustrator Hans Flato. Clean, bright and very attractive (displays as a strong C. 8++), w/ a little non-detracting minor scattered wear on inside edge of rim. Min. bid \$40.



291).Webster Cigars Sign. 15.5 x 11.5" (14 x 10" visible) impressive, early reverse glass sign featuring nice portrait image of Daniel Webster, in its original chain hung wooden frame. Sign is clean, bright and beautiful in condition (near mint), w/ a little light wear on frame. Min. bid \$50.



292). Jefferson Park Coffee. 3-5/8 x 5" (dia.) scarce, early tin litho 1 lb. key wind style coffee can for "Jefferson Park" brand (Bickers Coffee Co., Clarksburg, WV) featuring horse racing theme images all around. Clean, bright and excellent overall, w/ minor denting and light oxidized darkening on non-graphic lid and base (C. 8.5). Min. bid \$40.



293). King Midas Pot Scraper. 2-7/8 x 3-3/8" early tin litho advertising pot scraper for "King Midas" brand flour, w/ nice image of Co.'s trademark girl in sunbonnet. Clean and attractive example (C. 8+/) w/ some light wear on non-graphic backside. Min. bid \$40.



294). American Purest Aspirin Tin. 1-3/8 x 1-7/8 x 1/4" scarce, early tin litho hinged lid "American Purest Aspirin" brand aspirin tablets tin from American Remedy Co. (Philadelphia, PA). Clean and excellent (C. 8.5+). Min. bid \$30.



295). Saloon Sign. 4 x 10-1/8" unusual, early beveled celluloid (over tin over cardboard) string hung Saloon sign. Excellent overall. Min. bid \$40.

Gambling



296). Overalls Gaming Tip Tray. 4-1/8" (dia.) unusual, early tin litho advertising tip tray for "Dubbleware" brand overalls and clothing. Has dimple in bottom center for spinning (to use in bar gambling to bet on horses on rim). Near mint. Min. bid \$40.



297). Union Leader Pocket Tins. 4-3/8 x 3 x 7/8" to 4.5 x 3.5 x 1" lot includes three different variations of "Union Leader" brand tin litho vertical tobacco pocket tins. They are clean, bright and quite nice overall (C. 8+/-), w/ slight denting and minor scattered wear. Min. bid \$50 (the lot).

Royal Tailoring Mirror



298). Tiger Pocket Mirror. 2" (dia.) scarce, very early celluloid advertising pocket mirror (pre metal collar era) for Royal Tailoring Co., featuring wonderful multi-color graphics. Clean, bright and excellent, w/ no cracking or stains (some typical dark spots in mirror glass). Min. bid \$50.



299). Three Little Pigs Washer Toy. 9 x 5.25" (dia.) early tin litho washing machine toy by Chain, featuring wonderful laundry themed images of Three Little Pigs cartoon characters all around. Clean, bright and excellent (C. 8.5+). Min. bid \$50.



300). Purol Gas Globe. 19.25 x 17.25 x 6" unusual, ca. 1920's 3-ps. gas pump globe for Pure Oil Co.'s "Purol" brand w/ Ethyl. Has enameled white porcelain covered high profile metal frame w/ glass inserts. Appears never used and is crisp, bright and basically like new, w/ exception of a couple tiny edge nicks to porcelain on backside (so minor, barely merits mention). Min. bid \$100.



301). "Old Witch" Halloween Sparkler. vintage embossed tin litho mechanical sparkler toy by Hale-Mass Co., NY (mechanism makes her eyes and mouth light up from glowing sparks) still on its original display card (toy measures 6 x 3.5" (dia.); card measures 9-3/8 x 5.75"). Toy is excellent w/ some bending and tearing at bottom of cut out section of display card (mechanism works great, but appears to need new flint for creating sparks). Min. bid \$30.



302). Lime Crush Sign. 13-7/8 x 19-3/8" unusual ca. 1930's embossed tin litho sign for "Lime Crush" soda (litho by Robertson Steel & Iron Co., Springfield, OH). Clean, bright and appears never used (a strong C. 8++), w/ only very minor storage wear (Robertson Steel & Iron Co., Springfield, OH lithographers). Min. bid \$50.



303). Success Manure Spreaders Sign. 19-5/8 x 27-5" important and extremely rare, early tin litho sign for Kemp & Burpee Co.'s "Success" brand manure spreaders, featuring incredible, finely detailed color graphics (Mayer & Laverson Litho). Colors are very bright and piece displays pretty well on wall, although there is some waving and a few light bends, and a decent amount of speckled oxidized staining evident in right half of sky, ground and border area of piece. Sign is freshly attic picked and is complete (as found) it should improve w/ cleaning (a little professional restoration in these background areas would improve its appearance to an overall C. 8.5/+). Min. bid \$200.



304). Insect Powders Paperweight Mirror. 2.5" (dia.) x 1/2" early, heavy celluloid covered advertising paperweight mirror for "Creative Chemical Co.", Pittsburgh (maker of insect powders, drain cleaner, etc.) w/ nice image of factory and early car. Excellent. Min. bid \$30.



305). Sucrene Feeds Mirror. 2-1/8" (dia.) early celluloid pocket mirror for American Milling Co.'s "Sucrene" brand dairy feeds (note this is the scarce, rarely seen variation of this Co.'s mirror). Clean, bright and excellent in appearance (note close examination if tipped in light just right will reveal a light scratch in brown shoulder area of cow-mentioned for accuracy- not at all detracting and barely noticeable). Min. bid \$50.



306). Funny Cat Puzzle. 1/2 x 3" (dia.) great early tin litho dexterity puzzle game, featuring "Funny Cat" an unauthorized Felix knock off character. Excellent. Min. bid \$30.



307). Budweiser Sign. 38 x 25.5" outstanding, large, ca. 1905 self-framed "Swiss Girl" tin litho sign for Anheuser Busch Co.'s Budweiser beer, featuring beautiful multi-color lithography. Impressive piece is clean, bright and very attractive in appearance (basically displays as a C. 8.5/+), although close-up examination will reveal a few scattered spots of light scattered touch-up in background and girls arm areas. Min. bid \$250.



308). Akron Tourist Tubes Condom. 1-5/8 x 2-1/8 x 1/4" early tin litho "Akron Tourist Tubes" brand condoms tin, featuring wonderful graphic image of Co.'s trademark blimp. Clean and excellent appearance (C. 8.5/+), w/ only minor wear. Note: a box of these was recently discovered in the wall of an old house during demolition and they are priced for immediate sale at \$645 each (net).

Sample Tins



309). Runkel's Cocoa Sample Tins. (sizes are 1.5 x 1.25 x 3/4" and 2-5/8 x 1.75 x 1.25") lot includes three different early miniature tin litho sample tins for Runkel's brand cocoa All are clean and excellent. Min. bid \$40 (the lot).



310). White House Shoes Calendar. 31.5 x 12" large, early 1912 paper litho roll-down calendar for Brown Shoe Co.'s "White House" brand shoes, featuring beautiful image of Co.'s calendar girl on White House lawn. Clean, bright and very nice appearance (displays as a strong C. 8++), although close examination will show some light scattered edge chipping and wear (critical grade C. 8/-). Min. bid \$40.



311).Dayton Nuts Tin. 8.25 x 7-1/8" (dia.) early tin litho 5 lb. pry lid nut tin for Dayton brand pecans featuring wonderfully detailed image of Co.'s trademark bi-plane. Clean and very attractive appearance (C. 8/+) w/ a little very minor soiling, denting and light wear. As found, should improve w/ cleaning. Min. bid \$50.



312).Back Bar Bottle. 12 x 3.5" (dia.) outstanding, early label under glass back bar display bottle w/ hand applied lip and very fancy gold mirrored label. Excellent. Includes early metal cap. Min. bid \$50.



313).Football Biscuit Tin. 6.25 x 5.25" (dia.) important, scarce, early 16 oz. tin litho biscuit tin from Lakeside Biscuit Co. (Detroit, Toledo and Cleveland) featuring wonderful collegiate football themed images (same great image featured both sides). Clean, bright and very impressive (basically a C. 8.5) w/ exception of a trace bit of minor wear at top "American Cookies" area. Min. bid \$50.



314).True Blue Whisky Bottle. 7 x 2.75 x 5.75" (dia.) early glass display bottle for K & F Co.'s "True Blue" brand rye whisky, w/ patriotic paper label featuring kid in sailor suit and old glory. Bottle has embossed K & F design on backside and ground lip, w/ original metal cap (a couple light chips on top of lip area under cap). Label has some light, general even age toning and a little light wear, but overall is attractive and displays nicely (label C. 7.5/+). Min. bid \$50.



315).Coca-Cola Factory Sign. 23 x 27 x 2.5" large, early, heavy cast aluminum Coca-Cola bottling plant sign, featuring impressive, nicely detailed embossed design. A powerful and impressive looking piece, w/ original paint surface. Decent overall, w/ some general weathered paint loss and wear. Min. bid \$70.



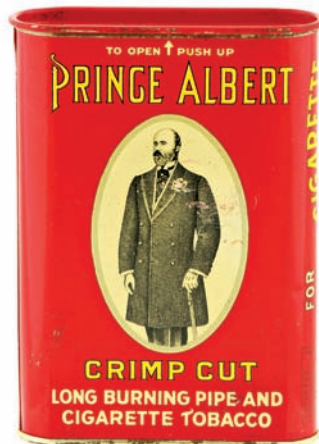
316).Candy Fan Pull. 5.75 x 4-1/8" great, early 2-sided cardboard die-cut fan pull/ ceiling hanger advertising "Chicken Diner" brand 5¢ candy bars. Impressive piece is clean, bright and exceptionally nice (C. 8.5++). Min. bid \$40.



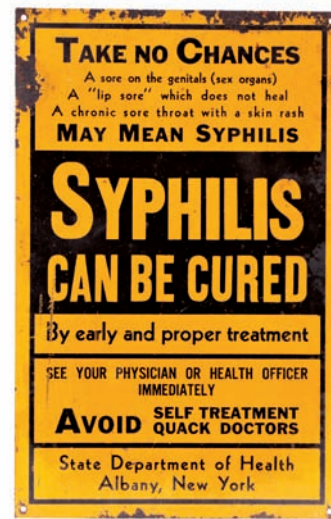
317).Firestone Tires Watch Fob. 6-7/8 x 1.25" (1.5 x 1-3/8" brass fob portion) outstanding, very early, cloisonné enameled porcelain watch fob advertising Firestone red sidewall tires complete w/ its original chain hung cloth hanger. Very high quality piece is crisp and like new (near mint). Min. bid \$40.



318).Tiger Oats Box. 9.75 x 5.25" (dia.) early 3 lb. cardboard oats box for Quaker Oats Co.'s "Tiger" brand, w/ same great image on both sides. Clean, bright and excellent overall, w/ minor chipping and toning at bottom edge (a strong C. 8++). Min. bid \$40.



319).Prince Albert Pocket Tin (Panama Railroad Variation). 4.25 x 3 x 1" unusual variation tin litho vertical tobacco pocket tin for Prince Albert brand, w/ push-up lid, marked "Commissary Division Panama Railroad Company" on base. Excellent overall (a strong C. 8++), w/ minor wear in outer white oval background area. Min. bid \$40.



320).Syphilis Cure Sign. 11 x 7" great early tin litho syphilis treatment sign by New York Department of Health, w/ explicit warning signs of how to tell you might have the disease, w/ warnings to avoid self treatments and quack doctors. Has light overall soiling and some oxidizing in outer border area, but still displays pretty well (C. 7/+). As found, should improve w/ cleaning. Min. bid \$40.



321).Grease Tins. lot includes four different early tin litho 1 lb. size grease cans, ea. app. 4.25 x 3.5" (dia.). Includes: Kendall; Amoco; Keystone and Harrison Co.'s "Super Service" brands. All are clean and excellent overall. Min. bid \$40 (the lot).



322).Philadelphia Eagles Plate Topper. 4.5 x 10-1/8" unusual, early Philadelphia Eagles football team aluminum automotive license plate topper. All original, w/ general, lightly weathered surface finish (as found should improve w/ cleaning). Min. bid \$40.



323).Ukemco Aspirin Tin. 1.25 x 1.75 x 3/8" scarce, early tin litho hinged lid "Ukemco" brand aspirin tablets tin from United Retail Chemists Co. (New York, NY). Clean and excellent overall, w/ minor edge wear on base (C. 8.5). Min. bid \$30.



324).Porcelain Tooth Brush Sign. 2-5/8 x 10-5/8" early, heavy enameled porcelain strip sign for "The Prophylactic" brand tooth brush, featuring beautifully incised design (stamped Baltimore Enamel & Novelty Co. on backside). Never used sign is crisp, bright and like new (near mint). Min. bid \$60.



325). Auto Die-Cut. 9.75 x 7-3/8" early, embossed, pressed shiny finish cardboard advertising die-cut featuring beautifully detailed multi-color lithography of women in early car for E.B. Newton, an Anthol, MA grocer (probably originally had small calendar pad at front of car). Clean and excellent (C. 8.5). Framed. Min. bid \$40.



326).Anheuser-Busch Light-Up. 18" (dia.) X 5" early pre-pro era reverse glass light-up sign for Anheuser-Busch Beer, featuring wonderful reverse mirrored image of eagle logo in center. Powerful and impressive looking piece is clean, bright and excellent in appearance, although there are some small, well done minor touch-up spots in red lettering- not at all offensive and barely noticeable except they show up slightly when piece is lit (note: original metal body has nicely scalloped design on its outer copper frame- working newly replaced electrical socket is not original to piece). Min. bid \$50.



327).Diamond Dyes Marquee Sign. 10-7/8 x 11.75" early metal framed (over glass) 2-sided display sign for Diamond Dyes, featuring wonderful image of Co.'s adorable black children at fence logo on front, w/ actual fabric color wheel pattern on backside, w/ an ornately designed silver colored patterned metal framed border. Clean and very attractive appearance (a strong C. 8++), w/ minor wear and just a trace bit of very minor, faint age tone background staining on both sides (mentioned for accuracy, not at all offensive or detracting). Min. bid \$50.



328).Wilbur Cocoa Sign. 9.25" (dia.) scarce, early embossed tin litho sign for Wilbur & Sons Cocoa, featuring stunning multi-color graphic image of early product can. Clean, bright and shows pretty well (displays on wall as a C. 8-), although there are a couple small nail holes, some small chips and wear spots scattered about (critical grade C. 7.5/+). Min. bid \$50.

Post War Modern Era



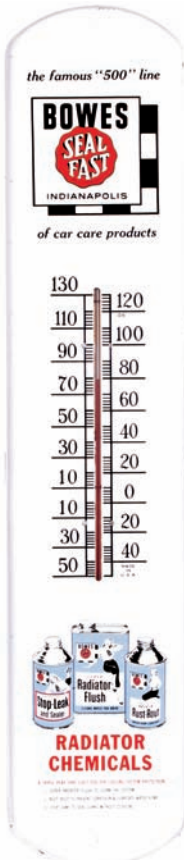
329).



330).



331).



332).



333).



334).



335).



336).



337).

329).Beech-Nut Gum Sign. 23.5 x 22.5" (21-5/8 x 20-3/8" visible) vintage ca. 1940's/50's cardboard advertising sign for Beech-Nut chewing gum, featuring Yankees 6 year all star and Worlds Series champion pitcher Allie Reynolds (he pitched for Yankees from 1947-1954). Clean, bright and excellent overall, although there is a vertical crease line in center. Framed. Min. bid \$40.

330).Coke Spinner Sign. 13-3/8 x 14.25 x 14.25" vintage ca. 1950's tin litho whirligig type sign made for sitting on top of an early Coke machine (signs rotate on axis). Complete piece is crisp, bright and like new (appears never used, w/ a couple minor scattered scuffs and minor storage wear). Min. bid \$50.

331).RCA Radio Tubes Sign. 14 x 18" vintage ca. 1950's 2-sided metal flange sign for RCA radio and television tubes. Never used sign is clean, bright and basically excellent overall, as found never used still in its original shipping box. Sign has some fairly minor storage marks, but overall is crispy and very nice (C. 8.5++), (box has staining, pinching and fairly heavy wear). Lot also includes original envelope found inside containing a nice, large window decal showing tube box and various Co. advertising ephemera for use in newspaper ads, etc. Min. bid \$50.

332).Automotive Thermometer. 38.75 x 8.25" early, heavy metal service station advertising thermometer for Bowes "Seal Fast" brand automotive radiator products. Clean, bright and excellent appearance, w/ a little non-detracting storage edge wear (basically a strong C. 8++). Min. bid \$40.

333).Bugs Bunny Flashlights. 10.75 x 13.25 x 2-7/8" great ca. 1960's vintage cardboard store display for Micro-Lite Co.'s Looney Tunes character flashlights (© Warner Bros. Cartoons Inc.). Full, never used display is clean and like new, as found never used in its original protective storage box w/ all twelve of its flashlights (includes Bugs Bunny, Sylvester and Porky Pig). Excellent. Min. bid \$50 (the set).

334).Dice Key Chains. 8.5 x 10.5" complete set of ca. 1950's dice key chains by Crisloid Co., all still attached to their original cardboard display backing, which features sexy cheesecake style cop. Excellent. Min. bid \$40.

335).Chiein Sergeant Wind-Up Toy. 7.25 x 3.5 x 1" (5.25 x 2-3/8 x 1.25" actual toy) early tin litho "U.S. Army Sergeant" figural mechanical walking wind-up toy on its original store card, by Chein & Co. Excellent. Min. bid \$30.

336).Hires Tin Sign. 24 x 28" early, embossed, heavy painted metal sign for Hires Root Beer. Piece is crisp, bright and basically like new, w/ beautiful sheen as found never used still w/ its original protective wax paper wrapper (minor bending at outer edge). Min. bid \$40.

337).Squirt Soda Thermometer. 13.5 x 5-7/8" original, embossed tin litho vintage advertising thermometer for Squirt soda, featuring nice image of soda bottle and trademark Squirt kid. Clean, bright and excellent overall (C. 8++), w/ very minor soiling and edge wear (as found, should improve a bit w/ cleaning). Working thermometer, © 1961. Min. bid \$30.

Post War Modern Era



338).



339).



340).



341).



342).



343).



344).



345).



346).



347).

338).1950 Coca-Cola Sign. 27 x 16" original, vintage 1950 cardboard "Home Refreshment" Coca-Cola sign. Scarce, never used sign is clean, bright and excellent (C. 8.5++). Min. bid \$60.

339).1961 Plymouth Fury Convertible Sign. 10-3/8 x 18.75" vintage bevel edged celluloid on tin (over cardboard) dealership showroom sign advertising the 1961 Plymouth Fury Convertible (has both easel and string on backside for countertop display and hanging). Clean and excellent overall, w/ only very minor wear (C. 8.5+). Min. bid \$40.

340).Plymouth V-200 2-Door Hardtop Sign. 10-3/8 x 18.75" vintage ca. 1961 bevel edged celluloid on tin (over cardboard) dealership showroom sign promoting Plymouth's V-200 2-door model sedan (has both easel and string on backside for countertop display and hanging). Clean and excellent overall, w/ only very minor wear (C. 8.5+). Min. bid \$40.

341).Plymouth Sport Suburban Wagon Sign. 10-3/8 x 18.75" vintage ca. 1961 bevel edged celluloid on tin (over cardboard) dealership showroom sign promoting Plymouth's Sport 4-door Suburban Station Wagon (has both easel and string on backside for countertop display and hanging). Clean and excellent overall, w/ only very minor wear (C. 8.5+). Min. bid \$40.

342).Plymouth Fury Sedan Sign. 10-3/8 x 18.75" vintage ca. 1961 bevel edged celluloid on tin (over cardboard) dealership showroom sign promoting Plymouth's Fury 4-door sedan (has both easel and string on backside for countertop display and hanging). Clean and excellent overall, w/ only very minor wear (C. 8.5+). Min. bid \$40.

343).Green Spot Chalkboard. 27.5 x 17.25" early, heavy metal country store advertising chalkboard for "Green Spot" brand orange drink, w/ attractive, very colorful image at top. Piece is crisp, clean and bright, as found never used, still w/ the original protective paper covering on it (C. 8.5+) w/ only minor soiling and light storage wear at outer background edges. Min. bid \$40.

344).Plymouth Belvedere 2-Door Hardtop Sign. 10-3/8 x 18.75" vintage ca. 1961 bevel edged celluloid on tin (over cardboard) dealership showroom sign promoting Plymouth's 1961 Belvedere 2-door model hardtop (has both easel and string on backside for countertop display and hanging). Clean and excellent overall, w/ only very minor wear (C. 8.5+). Min. bid \$40.

345).Plymouth V-200 Station Wagon Sign. 10-3/8 x 18.75" vintage ca. 1961 bevel edged celluloid on tin (over cardboard) dealership showroom sign promoting Plymouth's V-200 4-door model Station Wagon (has both easel and string on backside for countertop display and hanging). Clean and excellent overall, w/ only very minor wear (C. 8.5+). Min. bid \$40.

346).Plymouth Belvedere 4-Door Hardtop Sign. 10-3/8 x 18.75" vintage ca. 1961 bevel edged celluloid on tin (over cardboard) dealership showroom sign promoting Plymouth's V-200 4-door model sedan (has both easel and string on backside for countertop display and hanging). Clean and excellent overall, w/ only very minor wear (C. 8.5+). Min. bid \$40.

347).Chevy Sign. 14-3/8 x 22" large, ca. 1950 high quality vintage celluloid (on beveled Masonite) dealership sign for Chevrolet automobiles featuring Co.'s "Styline De Luxe" 4-Door sedan. Impressive sign is crisp, bright and basically like new, w/ minor wear to gold finish at bottom left corner edge (has both a large, heavy easel built onto backside for stand-up use and hooks for hanging). Min. bid \$50.

Post War Modern Era



348).



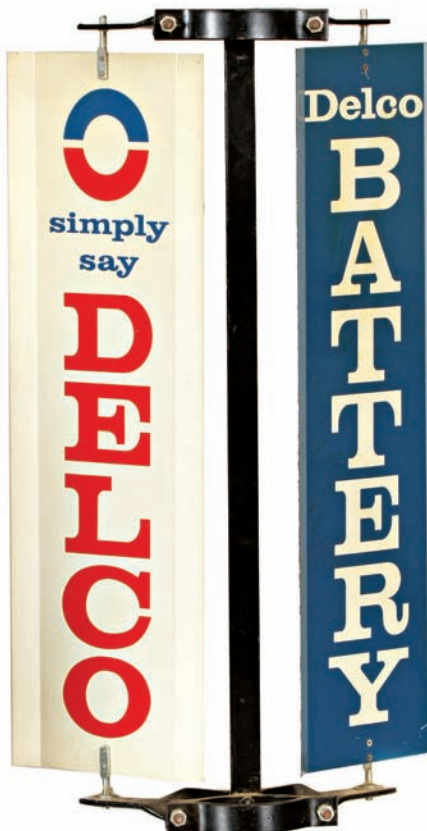
349).



350).



351).



352).



353).



354).



355).



356).



357).

348). 7-Up Sign. 18 x 12" vintage ca. 1940's die-cut cardboard easel-back sign for 7-Up soda, w/ attractive images of kids holding bottles (© 1943). Never used sign is clean bright and like new (basically near mint) w/ exception of minor storage pinching at bottom edge. Min. bid \$50.

349). Dr. Pepper Thermometer. 16.25 x 6.5" early, country store metal advertising thermometer for Dr. Pepper soda. Never used piece is crisp, bright and like new (near mint) w/ working thermometer. Min. bid \$40.

350). 1956 Pin-up Calendar. 21 x 14.25 (18.75 x 12" actual piece) wonderful 1956 pin-up calendar featuring scene of a proper well dressed, wholesome looking glamour girl, who's skirt has blown up in wind. Clean, bright and excellent, w/ a great look (framed). Min. bid \$30.

351). Ace Wil-Flo Oil Can. 5.5 x 4" (dia.) early tin litho crimped seam 1 qt. can for "Ace Wil-Flo" brand motor oil (Midwest Oil Co., Minneapolis and other Midwest cities), featuring beautiful deep color graphics all around. Clean, bright and excellent (C. 8.5/+). Min. bid \$40.

352). Delco Batteries Twirling Signs. 28.5 x 16.5 x 10.5" unusual early metal pole mount unit advertising Delco brand auto batteries, w/ dual wind turned twirling metal signs, mounted on heavy steel bracket. Never used sign is clean, bright and excellent overall (C. 8.5/+), w/ only minor storage wear. Min. bid \$50.

353). Rabbit Cart Toy. 7.75 x 11 x 4.5" unusual, early tin litho rabbit cart toy by Chain & Co. featuring great rabbit images around sides of cart. Clean, bright and very attractive (a strong C. 8++), w/ minor background wear. Min. bid \$40.

354). Yellow Cab Taxi Cap. 4.5 x 11 x 9.75" vintage, early Yellow Cab taxi drivers uniform cap. Heavy canvas/vinyl, leather and wicker composition; very nice overall, w/ minor age toning and minor wear from use (C. 8/+). Min. bid \$30.

355). Green Spot Soda Sign. 36.25 x 14" large, early, heavy painted metal country store sign for "Green Spot" brand orange drink w/ attractive, very colorful embossed bottle image. Piece is crisp, clean and bright, as found never used, still w/ the original protective paper covering on it (C. 8.5++) w/ only minor soiling and light storage wear at outer background edges. Min. bid \$40.

356). Coca-Cola Sign. 27 x 16" vintage 2-sided Coca-Cola cardboard sign featuring classic 1960 image. Never used sign is clean, bright and basically like new, w/ exception of a little pinching in upper left corner outer border area. Min. bid \$40.

357). Sun Crest Soda Sign. 21.75 x 7.75" vintage ca. 1950 self framed aluminum sign for Sun Crest brand orange soda. Crisp, bright and like new (near mint), w/ nice thick, heavy paint surface (1949 Evans Glenn Sign Co.). Min. bid \$50.



Rd #2, Cobb Hill Road, Cazenovia, NY 13035 • 24 Hr. Tel: (315) 662-7625 • 24 Hr. Fax: (315) 662-3570 • morf2bid@aol.com • morfauction.com

Welcome to our 86th auction of quality antique advertising and fine collectibles. Everything we sell is guaranteed authentic and as described. We attempt to grade condition both fairly and conservatively, using a scale of 1-10 on the advertising items (ten being absolutely mint). We do not list reproductions, re-issues, deceptively restored or pieced together type merchandise. Flaws and blemishes are prominently noted and over emphasized. We encourage you to call for a detailed description on any item you have an interest in, but respectfully must request that you do this before the closing night. Dimensions are listed by height, then width, and are only approximate (+ or - a quarter inch).

Bidding

Bids are accepted only from those parties who have registered with us to bid. (If you were mailed this catalogue by us you are automatically pre-registered.) Your bid is a legal contract to purchase and once entered, cannot be canceled. Placement of a bid indicates acceptance of our terms.

On all "BID" items there is a 15% buyers premium added to each successful bid. You're welcome to bid by mail, email and fax anytime after receiving this catalog. **We will begin accepting phone bids on Wednesday, October 14, 2015. We will be taking calls on Wednesday and Thursday from 10:00 AM until 5:00 PM.** If no one answers when you call, please leave a message on our machine and we will get back to you. **If bidding by mail or fax, please remember to include your telephone number with your bids!** You may call or bid as often as you like. We will tell you the current bid on any item(s) you are interested in. To raise a bid, your advance must be at least \$10 more than the current high bid amount. When an item reaches \$250, bidding increments rise to \$25, at \$1,000, bidding increments advance in \$50 steps, and above \$2,000 in \$100 increments. We suggest not waiting until the last minute to begin your bidding, as its quite possible you won't be able to get through.

Web Page and Bid Updates

We will begin posting current bid prices (not including the buyers premium) on Wednesday, October 14, 2015 (including an addendum of additional catalogue lot information) on our internet web page. These prices will be updated once each day (each evening sometime after 9:00 PM, EST) and will get updated to include the final hammer prices on Sunday afternoon once the sale is concluded. On the closing night, we will attempt to update current bid prices every hour. Our web page address for this sale is: <http://www.morfauction.com> We suggest that once you get to it, that you bookmark this address for easy re-access. There is also an addendum section on our website where we post additional information and photo's for this sale.

Reserves and Estimates

All items which receive an opening bid in our sale will be sold to the highest bidder regardless of the price realized (we reserve the right to withdraw items in the event of inaccurate catalog descriptions and to reject any bid we feel is not made in good faith). **We run our auctions with a strict policy of no buy-backs, no auctioneer games and no hidden reserves.** Unlike some of our competitors, we do NOT allow consignors to bid up their own items!

Mechanical Operations

Early mechanical and electric motors and mechanisms on machines toys, coin-ops, clocks, etc. are quite often temperamental and very unpredictable in nature. Although these mechanisms may be working fine at the time of sale, we make no guarantees or representations regarding their continued operating status once they have left our premises (including during shipping).

Closing Night

THE LAST DAY FOR BIDDING WILL BE ON FRIDAY, OCTOBER 16, 2015. On closing day, we begin taking calls at 5:00 PM. Please mark your calendar now. **On the closing night (ONLY), we will also be taking calls at (315) 662-3318, (315) 662-3429 and (315) 662-3904 after 5:00 PM** (in addition to our regular (315) 662-7625 office number). **Closing Time: This Auction will close at 10:00 PM (EST) on Friday, OCTOBER 16, 2015.** At that time, no more incoming calls will be accepted and all lots with a registered bid of less than \$300, as well as all items without call backs registered on them will be officially closed and final. The items at \$300 and over that have call back protection registered on them will be closed out during our call back period the following afternoon (**see important call back rules below**). We reserve the right to change the official closing in the event of unforeseen family type emergencies or technological failures (utility disruptions, etc.). We also reserve the right to either extend the bidding, to postpone or to cancel this auction in the event of a national emergency or if the Internet or the services of the US Post Office were to get seriously disrupted during our catalogue mailing or bidding period.

"Up-To" Bids & Call Backs

CEILING BIDS: We will be happy to enter competitive "up to" ceiling bids for you on any lots you request. Beginning at your minimum amount, we will advance these bid(s) up to your left ceiling amount, if (and only if) it is topped by another bidder. "Up To" bids will be handled discretely and executed in a completely competitive manner for you. Please note that we don't accept open ended "top all others" ceiling type bids.

CALL BACKS: You may request call back protection for any lot(s) that you enter with either a minimum or a protected "up-to" ceiling bid in an amount of at least \$300. This request must be registered with us before the official 10:00 PM closing hour of Friday, October 16, 2015. All callbacks will be placed by us on Saturday, October 17, 2015, beginning at 12:00 noon (EST) and will continue that afternoon until each of the individual lots have been closed out (using past experience, I would expect this to be finished by 6:00 PM, if not earlier). If you register for call-backs, it is your responsibility to be available during this call back time period. We make every effort to honor all our call back requests, but this service is done solely as a convenience to our bidders and will be performed on a best efforts basis only. If you will be traveling or if you will not be available during call back times at your primary number, be sure you provide us with proper alternate or back up numbers for reaching you!

Payment Terms

Winning bidders will be invoiced by mail immediately after the sale. Those who desire fast shipment can pay by Money Order or Cashiers Check. Payments are due within 10 days of receipt of invoice. We reserve the right to offer the item out to our back bidders and deny future bidding privileges to those who do not pay in a timely manner. In addition to personal checks, we also accept payment on your American Express, Visa, Master Card, Discover and Optima Credit Cards (with no surcharge added). No COD's or Collect calls are ever accepted. Items shipped to anywhere in New York State must include appropriate sales tax or signed resale certificate.

Shipping

All packing and shipping charges are extra. We do most of our own packing and shipping in house and try to keep these charges as reasonable as possible for you. On especially fragile and larger hard to pack items, we hire the services of professional packers and charge you at our billed cost. We ship mostly through the Post Office and Fedex Ground, (Fedex Overnight available at an extra charge.)

Subscribing, Prices Realized, Consignments & Upcoming Events

Future catalogs can be assured by sending \$20 for a full 12 months subscription. (Prices are published on our website after each sale) An automatic credit card ordering program is available. We currently run between 2-4 auctions a year. In addition to our regular sales, we also occasionally offer sales made up entirely from single owner collections. Please contact us should you have items you would like us to consider for inclusion in our upcoming events. All inquiries are handled in a completely confidential manner. Our services are also available for the private placement marketing of important individual items, marketing plans for large collections as well as for estate planning and settlement purposes. Back copies of many of our previous auction catalogs are still available at \$5 each (w/ prices realized) w/ quantity discounts available if multiple issues are ordered. For further information, check our website.

Photography by Wes Feuz.

© Copyright 2015. All Rights Reserved. No portion of this publication may be copied in any form without the express written permission of Morford's.

Important Closing Night Information

In addition to our regular **(315) 662-7625** office number,
on the closing night (only!) you may also call us at:

(315) 662-3318*
(after 5:00 PM)
(315) 662-3904*
(after 5:00 PM)
(315) 662-3429*
(after 5:00 PM)



***These numbers for
Closing night only!
Friday, October 16, 2015**

Bidding closes at 10:00 PM on Friday closing night. We will be accepting faxes and e-mails on closing night. Our web page will update current high bid prices approximately every hour on closing night and will also list any important addendum information. **All call backs will be made on Saturday, October 17, 2015 beginning at 12 o'clock Noon!**