



**WM Morford**  
Investment Grade Collectibles at Auction

## Investment Grade Collectibles at Auction

Rd #2, Cobb Hill Road, Cazenovia, NY 13035 • 24 Hr. Tel: (315) 662-7625 • 24 Hr. Fax: (315) 662-3570 • morf2bid@aol.com • morfauction.com

**Bidding closes Friday, December 4, 2015. (See page 24 for Terms & Conditions)**



1) **Sunset Trail Cigar Tin.** 5.5 x 6 x 4-1/8" outstanding, colorful and highly graphic cigar can w/ stunning western scenes of cowboy and cowgirl riding into sunset on front, back and inside lid. Clean, bright and exceptionally nice (a strong C. 8.5++). Min. bid \$50.



2) **Onion Dealers Paperweight.** 2.5 x 3.5" (dia.) impressive, early, heavy glass advertising paperweight for Ort & Co., a Churubusco, IN onion dealer, w/ wonderful detailed color image of large onion in center against white milk glass background. Excellent. Min. bid \$40.



3) **Green Turtle Cigar Tin.** 5.25 x 7.5 x 4-3/8" early tin litho lunchbox style cigar can (Gordon Cigar & Cheroct Co., Richmond, VA) featuring great images of Co.'s trademark cigar smoking turtle on front, back and lid. Clean, bright and very attractive, w/ small dent/chip mark on backside (a strong C. 8++). Min. bid \$40.



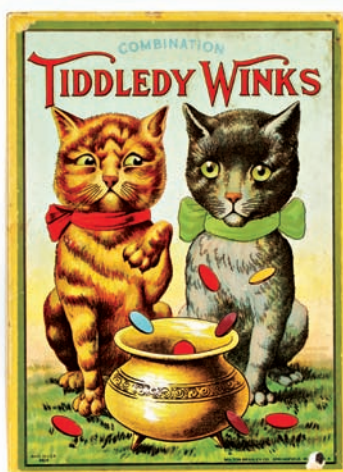
4) **Diamond Matches Tin.** 2.25 x 4-5/8 x 1.5" very early tin litho product tin for Diamond Matches, featuring wonderful detailed graphics of black family (Ginna & Co. Litho). Full, never used tin is clean, bright and like new in appearance (C. 8.5++), w/ only very minor wear. Min. bid \$40.



5) **Fada Radios Neon Sign.** 13 x 22 x 5" scarce, ca. 1920's/30's electric neon light-up metal cased sign advertising "Fada" brand radios, w/ great looking art deco metal case and orange colored neon. Freshly picked, nicely working sign is excellent and all original (C. 8.5+). Min. bid \$100.



6) **Life Savers Display.** 11.5 x 9-5/8 x 11" outstanding, early tin litho countertop display for Life Savers candy featuring attractive embossed marquee at top and beautifully detailed color graphics on side panels. Clean, bright and exceptionally nice (C. 8.5+). Min. bid \$80.



7) **Tiddley Winks Game.** 12.5 x 9-1/8 x 2" early 2-ps. cardboard combination game set by Milton Bradley Co. featuring wonderful graphic cat images on both outer box lid and target game box inside. Lid is clean bright and excellent (basically a C. 8.5, w/ exception of a couple small surface loss spots at outer edges); target game piece is attractive and displays pretty well, w/ a little bit of light scattered foxing (C. 7.5+). Complete w/ contents. Min. bid \$40.



8) **Popsicles Sign.** 14 x 10.75" ca. 1920's/30's cardboard litho sign for Popsicles, featuring wonderful image by illustrator Hazel Brown. Clean, bright and very attractive (C. 8.5+) w/ just a trace hint of very minor toning and slight wear in outer border area. Min. bid \$50.





9) Aunt Jemima Sugar Butter Pail. 3.5 x 4.5" (dia.) scarce, early variation tin litho maple sugar butter pail for Rigney & Co.'s "Aunt Jemima's" brand, w/ same great image on both sides. Clean and very attractive appearance (C. 8+), w/ some wear along bottom edge of lid. Min. bid \$50.



10) Al Simmons Cigar Box. 8 x 9-1/8 x 5.5" as pictured (2.75 x 9 x 5.5" lid closed) early, wooden 50 count cigar box for Al Simmons brand, featuring nice image of ca. 1920/30's Hall of Fame slugger Al Simmons. Inside label is clean, bright and very attractive (C. 8+), w/ a little light staining and some wear on outer top lid and side label. Min. bid \$40.



11) "Cairo" Biscuit Tin. 6.5 x 7.25 x 7.25" unusual, ca. 1902 figural tin litho biscuit tin from Huntley & Palmers Co. in shape of 6-sided table. Clean, bright and very attractive overall, w/ only minor wear and a slight bit of very minor denting on legs area (C. 8+). Min. bid \$40.



12) Small PCW Cough Drops Tin. 3-7/8 x 2.5 x 2.5" very early, scarce, miniature variation small-top style tin for PC.W. brand cough drops (Wiest & Co., York, PA), w/ attractive, finely detailed lithography by Somers Bros. (note: also has lithography on cap). Clean, bright, very nice overall appearance (a strong C. 8++), w/ some early wear on lid. Min. bid \$40.



13) Burley Boy Pocket Tin. 4-1/8 x 3-3/8 x 1" scarce, early tin litho vertical tobacco pocket tin for Bagley Co.'s "Burley Boy" brand, featuring great image of Co.'s kid boxer (both sides). Clean, bright and excellent overall (a very strong C. 8++), w/ a little light wear on side edge of lid. Min. bid \$100.



14) Columbia Spice Tin. 3-1/8 x 2.25 x 1.25" scarce, small 1-1/2 oz. variation tin litho spice tin (cloves) for Columbia brand (Sutherland & McMillan Co., Pittston, PA), w/ same nice image on both sides. Clean, bright and beautiful appearance (C. 8.5+) w/ only very minor wear. Min. bid \$30.



15) Barney Google Candy Container. 3.75 x 2-1/8" early figural embossed glass candy container featuring comic strip character Barney Google. Excellent, w/ original closure, candy inside and still retains most of its original paint surface. Min. bid \$40.



16) Columbia Bicycles Sign. 14.75 x 11" wonderful, very early cardboard litho sign for Pope Mfg. Co.'s "Columbia" brand bicycles, featuring stunning multi-color graphic image on shiny finish cardboard (9.5 x 8-5/8" image area). Outstanding looking sign is clean and bright w/ very attractive appearance (basically displays as a strong C. 8++), although there are a couple tears and a few non-detracting faint snake lines in upper paper surface area, w/ trimming evident along top and bottom edges. Min. bid \$50.



17) Cook's Beer Sign. 17.5 x 13-7/8" early, self-framed tin litho sign for Cook's Beer and Ale (F.W. Cook Co., Evansville, IN), featuring attractive color lithography. Clean, bright and excellent (C. 8.5+). Min. bid \$70.



18) Shell Motor Oil Sign. 46-3/8" x 32.5" large, ca. 1950's service station poster on heavy stock paper advertising "Shell" brand motor oil. Clean, bright and like new, w/ just a trace hint of minor toning. Min. bid \$50.



Large Display Box



19) Washing Powder Display Box. 20.5 x 12 x 6-3/8" large, early cardboard store display box advertising "Rub-No-More" brand washing powder, featuring wonderful elephant images. Powerful and impressive piece is clean, bright and very attractive (displays as a strong C. 8++), although there is a little non-offensive light staining at side edge and a few puncture and tear marks in background area (critical grade C. 8/-). Min. bid \$60.



20) Clothes Washers Sign. 11 x 21" early cardboard trolley car sign for "Easy Vacuum Electric Washer" clothes washing machines (a primitive, early copper tub electric washing machine that used air pressure and suction cups to wash clothes). Clean, bright and like new, w/ beautifully detailed color graphics (near mint). Great piece for laundry room. Min. bid \$50.

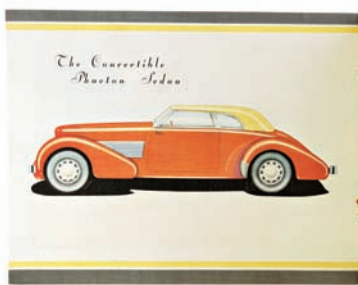
Large Charger



21) Early Times Whiskey Sign. 24" (dia.) large, early, heavy tin litho charger sign for Early Times Distillery Co., Paducah, KY featuring great image of blacks making whiskey in backwoods cabin distillery (note marked whiskey barrels of Co.'s "Jack Beam" and Early Times" brand whiskeys). Impressive sign is clean, bright and very attractive in appearance (displays as a strong C. 8++) w/ some darkening in outer gold border area and a little non-detracting minor scattered wear. Min. bid \$250.



22) Gargoyle Oil Bottles Case. 19.5 x 22 x 13" great early wooden service station oil bottle rack for Mobiloil Co.'s "Gargoyle" brand, w/ great trademark Gargoyle images on all four sides. Has incredible patina to its bright, early, all original paint surface, w/ just the right amount of light wear to give it a great country folk art look (a strong C. 8+). French. Min. bid \$150.



23) 1935 Cord Automobiles Catalog. 8.5 x 11" vintage 1935 12 pg. color illustrated automotive catalog on heavy, textured, high quality paper promoting the sleek, high styled 1935 line of Cord luxury automobiles. Impressive catalog is clean and bright, as found like new still inside its original protective wrapper. Min. bid \$40.



24) Fire Engines Catalog. 11 x 8.5" early twelve page color illustrated advertising catalog for Seagrave Co.'s fire engines, featuring detailed info and nice images of Co.'s various trucks. Excellent overall. Min. bid \$40.





25).ACA Aspirin Tin. 1-3/8 x 1-7/8 x 1/4" scarce, early tin litho "ACA" brand (Aspirin Co. of America) aspirin tablets tin from American Pharmaceutical Co., New York, NY. Clean and excellent (C. 8.5+). Min. bid \$30.



26). "Plee-zing" Aspirin Tin. 1-3/8 x 1-7/8 x 1/4" scarce, early tin litho aspirin tablets tin for "Plee-zing" brand aspirin (Robert C. White Co., Chicago, IL). Has strong colors and displays fairly well, although there is a wear spot in bottom left edge of lid and some light denting and soiling (C. 7+/-). Min. bid \$30.



27).Van-Cliff Aspirin Tin. 1.5 x 1-7/8 x 1/4" scarce, early tin litho aspirin tablets tin for "Van-Cliff" brand (Southern Chemical Co., Fort Smith, Arkansas). A decent example that displays nicely, w/ a little light wear on base (front C. 8/-; base C. 7+). Min. bid \$30.



28).Jack Horner Aspirin Tin. 1-3/8 x 1-7/8 x 1/4" scarce, early tin litho hinged lid tin for "Jack Horner" brand aspirin tablets (Twin City Mfg. Co., Norfolk, VA). Displays fairly well, w/ light, general overall soiling and scattered surface wear (C. 7). As found, might improve w/ cleaning. Min. bid \$30.



29).Chem-Test Aspirin Tin. 1.5 x 1-7/8 x 1/4" scarce, early tin litho hinged lid aspirin tablets tin from Chem-Test Laboratories, Detroit, MI. A decent example that displays pretty well, w/ a little darkening, minor denting and light scattered surface wear (C. 7.5+/-). Min. bid \$30.



30).Guaranteed Aspirin Co. Tin. 1-3/8 x 1-7/8 x 1/4" scarce, early tin litho hinged lid aspirin tablets tin from the "Guaranteed Aspirin Co. of America" New York City, NY. A decent and respectable example that displays pretty well, w/ a few light scattered surface scuffs (C. 7.5). Min. bid \$30.



31).Jackie Coogan Peanut Butter. 3.5 x 3.75" (dia.) unusual variation, early tin litho pail for "Jackie Coogan" brand peanut butter featuring ca. 1919 child movie star (Coogan played starring roles in Charlie Chaplin silent era movies including "The Kid"; and Uncle Fester character in 1960's Adams Family TV series in later life). Clean, bright and attractive overall, w/ some light scattered wear (C. 8/-). Min. bid \$50.



32).Sterling Gasoline Sign. 10-1/8 x 11-5/8" original, vintage 4-color enameled porcelain service station sign for Quaker State Co.'s "Sterling" brand gasoline. Sign is clean, bright and displays pretty well, although there is a weathered chip spot and some faint spider web crackling at 8 o'clock outer area of logo, and some chipping wear at a few of the grommet holes. Min. bid \$40.



33).Silver Gem Pail. 4.5 x 5.25" (dia.) very early hand-soldered pail for "Silver Gem", w/ great early stenciled design, nice surface patina and great overall look. Clean and very attractive appearance (tin displays as a nice C. 8+/-); w/ some scattered early scratch and wear marks on lid. Not sure if this was for tobacco or chewing gum, as both had products with this brand name. Min. bid \$40.



34).Lighthouse Cleanser Sign. 11-5/8 x 17-5/8" (10.5 x 16.5" visible) early cardboard sign for Armour Co.'s Lighthouse brand cleanser, w/ great image of Co.'s trademark lighthouse character. Has minor toning and just a slight hint of fade, but displays nicely, w/ a great overall look (C. 8-). Framed. Min. bid \$40.



35).Superior Drills Sign. 11.75 x 17.75" scarce and important, early, heavy embossed tin litho agricultural equipment sign for "Superior Disc Drills" (Superior Drill Co., Springfield, OH) featuring stunning multi-color litho image of farmer planting field (Kaufmann & Strauss Lithographers). Outstanding sign is clean, bright and very attractive in appearance (basically a C. 8.5+/-), w/ exception of a little non-offensive minor scattered wear in outer border areas. Min. bid \$100.





36). Star Tobacco Sign. 12 x 24" early, heavy enameled 5-color porcelain sign advertising Star brand plug tobacco. Crisp, bright and basically like new appearance, w/ exception of small chip at top middle hanging hole and very minor edge wear. Min. bid \$50.



37). Stock Market Cigar Box. 10 x 15.25 x 5" as shown (5 x 15.25 x 5" lid closed) large, early wooden 250 count display box for "Stock Market" brand cigars (J.F. Cherry & Co., Newark, OH) w/ wonderful Wall Street images on inside label (has early ticker tape machine pictured on lid). Clean and impressive looking (a strong C. 8+/), w/ complete 1901 wrap around tax stamp. Min. bid \$50.



38). Foltz Maid Coffee. 6 x 4-1/8" (dia.) scarce, early tin litho 1 lb. coffee can for "Foltz Maid" brand (Foltz Grocery & Baking Co., Cincinnati, OH) featuring beautiful multicolor graphics (same image both sides). Clean, bright and exceptionally nice (displays as a strong C. 8.5), w/ only minor wear. Min. bid \$40.



39). Pippins Cigar Tin. 5.5 x 3-1/8 x 3-1/8" stunning, early embossed tin litho 25 count cigar tin for "Pippins" brand (H. Traiser & Co., Boston) featuring beautiful multi-color graphics (same image both sides). Clean, bright and exceptionally nice (C. 8.5++) w/ beautiful original surface sheen. Min. bid \$40.



40). Mother Goose Bread Mirror. 2.75 x 1.75" scarce, early celluloid advertising pocket mirror for H. W. Holl Co.'s "Mother Goose" brand wrapped bread. Celluloid is clean, bright and excellent (some darkening and wear in mirror glass). Min. bid \$40.



Unopened

41). Hi-Plane 4 Engine Pocket Tin. 4.25 x 3 x 1" scarce 4-engine variation tin litho vertical tobacco pocket tin (Larus & Bros, Richmond, VA). Full, sealed, never opened tin is clean, bright and excellent (C. 8.5++). Min. bid \$50.



Large 2-Sided Die-Cut Hanger Sign

42). Highland Cream Die-Cut Sign. 13 x 9" (as shown) early, 2-sided die-cut razor shaped advertising sign for Highland brand Evaporated cream featuring stunning, multi-color graphics (same image both sides, w/ hinged blade that moves completely in and out of handle). Clean, bright and exceptionally nice (a strong C. 8.5++), w/ minor edge wear on backside edge of handle. Min. bid \$100.

Firestone Tires Sign



43). Firestone Sign. 25.25 x 17.5" (23.75 x 16.25" visible) early paper litho sign featuring beautiful multi-color graphic image of Co.'s trademark "Firestone Trio" girls (© 1910). Clean, bright and very attractive (a strong C. 8++). Framed. Min. bid \$70.





44). Trout Line Pocket. 3.75 x 3.25 x 1-1/8" early tin litho vertical pocket tin for "Trout Line" brand tobacco, w/ same great fly fishing scene on both sides. Clean and very attractive example, w/ extremely bright colors (C. 8.5/+ appearance), w/ only minor wear and a little light loss to gold flash finish on lid. Min. bid \$70.



45). Ferry Seed Box. 3.75 x 11.5 x 6.75" (9.5 x 6.75 x 11.5" as shown lid open) early wooden display box for Ferry's brand flower seeds. Has clean, nice label inside (C. 8/+ ) and excellent original finish on box. Min. bid \$40.



46). Roller Rink Pocket Mirror. 2-1/8" (dia.) extremely rare, early advertising pocket mirror for the "Excelsior Roller Rink" (Toronto, Canada) featuring wonderful image of well dressed woman roller skating. Clean and excellent. Min. bid \$50.



47). Merit Separators Tip Tray. 5 x 3-3/8" early tin litho advertising tip tray for Merit Separator Co. (Oxford, PA) featuring beautifully detailed image of Co.'s cream separator. Crisp, bright and like new (basically near mint), w/ exception of faint, very minor background stain spot on left edge of rim (not offensive or detracting). Min. bid \$40.



48). Planters Pocket Tin. 3-5/8 x 2.75 x 7/8" scarce, small, early tin litho vertical pocket tin for Planters Peanut Co. salted peanuts. Exceptionally nice example has strong colors and beautiful original sheen (tin is basically near mint), w/ exception of typical expected tarnishing and light wear to gold flash finish on lid. Min. bid \$250.

Glass Label Bottle



49). Murine Glass Label Bottle. 4 x 1.5" (dia.) unusual, small early bottle from Murine Eye Remedy Co., w/ a great curved label under glass advertising on front and large embossed lettering on backside. Excellent, complete w/ original round stopper. Min. bid \$40.

Bank Card



50). Mechanical Bank Card. 5-1/8 x 3.25" early color litho mechanical bank advertising trade card for the "Jolly Nigger" cast iron mechanical bank. Clean, bright and excellent. Min. bid \$50.



51). Swifts Pride String Holder. 15.5 x 29.75" important, large, early 2-sided tin litho advertising string holder for Swift's Pride brand soap products featuring wonderful image of Co.'s trademark. A powerful and very impressive looking piece that is clean and bright, w/ a great overall look (displays as a very strong C. 8++), although there is some light general scattered wear (nothing that is serious or offensive) as well as small 1/2" white paint drool spot in "p" of "soap" on one side and a couple tiny touch ups specks in red background section (barely noticeable and so minor hardly merits mention) (critical grade C. 8/-). Min bid \$500.





52). Betteryet Peanuts Tin. 5-1/8 x 5.25" (dia.) early tin litho 2 lb. salted peanuts pry lid can (Old Dominion Peanut Corp., Norfolk, VA), w/ large images of Co.'s trademark black kids holding giant peanuts (same image both sides). Clean and excellent overall (a strong C. 8++). Min. bid \$40.



53). Van Dyke's Peanut Butter. 4 x 3-5/8" (dia.) early tin litho 1 lb. peanut butter pail featuring nice nursery rhyme illustrations all around. Tin is clean, bright and excellent (C. 8.5+), although there are fairly heavy oxidized speckling spots and wear on lid. Min. bid \$50.



54). Sample Sized Kerosene Container. 4-5/8 x 2-5/8" (dia.) outstanding, very early miniature salesman's sample sized kerosene container. Very high quality piece is an exact miniature version of one of the large, full sized kerosene holders w/ heavy embossed early pattern glass and hand-soldered tin, w/ tiny painted wooden handle and metal cap. Clean and excellent, w/ nice, all original surface patina (no makers markings). Min. bid \$50.



55). Colgate Talc Tins. Lot includes two early tin litho Colgate baby talc tins, each featuring attractive images of Co.'s trademark. Tall example measures 6-1/8 x 2.25 x 1.25" (C. 8++); and 4-5/8 x 2.5 x 1-3/8" (C. 8+) w/ minor background wear. Min. bid \$40 (the lot).



56). Fountain Tobacco Tin. 6-3/8 x 5.25" (dia.) early tin litho tobacco canister for "Fountain" brand (Penn Tobacco Co., Wilkes-Barre, PA) featuring stunning multi-color graphics. Clean, bright and exceptionally nice, w/ a little non-offensive minor background wear on backside and edges of lid (display side C. 8.5+; back a strong C. 8+). Min. bid \$50.



57). Ceresota Match Holder. 5.5 x 2-3/8" early, embossed, die-cut tin litho match holder for Ceresota brand flour in shape of Co.'s trademark kid. Clean, bright and very attractive (C. 8.5++), w/ minor curl mark at bottom edge. Complete w/ its original box (box is quite nice, w/ some light staining on back and side edge). Min. bid \$40.



58). Wigwam Oats Box. 9.5 x 5.5" (dia.) early 3 lb. cardboard oats box for "Wigwam" brand (Carpenter & Cook Co., various Michigan cities) featuring nice color image of Indian village. Clean, bright and very attractive overall (C. 8.5+); lid has minor staining and edge tear on side. Min. bid \$40.



59). Majors Cement Door Push. 7-5/8 x 3-1/8" early, unusual variation heavy enameled porcelain advertising door push for Majors brand cement (glue) w/ rich, deep, cobalt blue background. Clean, bright and exceptionally nice (near mint), w/ original surface sheen. Min. bid \$50.



60). Camera Mirror. 4-1/8 x 2-1/8" unusual, small, fancy advertising mirror for Ebers-White Co., a San Antonio, TX photo outfit, w/ great image of early Kodak camera on celluloid advertising area. Has fancy, early art nouveau styled metal handle w/ beveled mirror on backside. Excellent. Min. bid \$40.

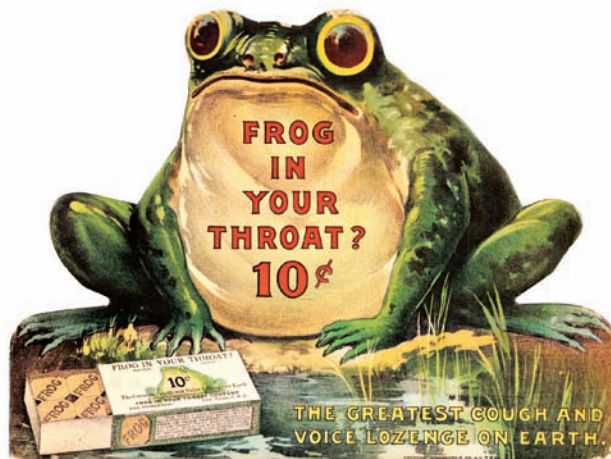


61). Red Indian Motor Oil. 6.75 x 4" (dia.) scarce variation, early tin litho 1 qt. motor oil can for "Red Indian" brand (McColl-Fontenac Oil Co., Canada). Bottom opened tin is clean, bright and very attractive in appearance (basically a strong C. 8+) w/ some non-offensive scattered fine indent marks on bottom backside edge and some hazy, weathered oxidizing on its non-graphic base. Min. bid \$40.





62). Cream Separators Sign. 13.5 x 19.5" early embossed tin litho sign, featuring beautiful detailed image of Sharples brand separator (Shonk Works lithographer). Clean and attractive appearance, w/ bright colors and great overall look (displays as a strong C. 8+), w/ exception of a little non offensive scattered wear in outer border area. Min. bid \$50.



63). Frog in Throat Sign. 13.25 x 17-5/8" great, early, heavy cardboard die-cut sign for "Frog In Your Throat" lozenges, featuring beautifully detailed image of Co.'s trademark bullfrog and early product box. Clean, bright and very attractive appearance (basically displays as a C. 8.5+), w/ exception of a little non-detracting wear at very outer edges. Min. bid \$100.

Indian  
Motorcycles  
Patch



64). Indian Motorcycles Patch. 6.75 x 3.75" great, early, heavy felt motorcycle riders jacket patch featuring the early style Indian Motorcycle Co. logo. Neat and very scarce piece, w/ just the right amount of minor ageing and wear (a strong C. 8+), w/ minor staining and pitting on plain backside (note: this piece was freshly picked out of a great early attic that was filled w/ 1920's and 30's stuff). Min. bid \$40.



65). Roosevelt Bears Tip Tray. 4-7/8 x 3-3/8" early tin litho tip/pin tray featuring wonderful graphic images of Roosevelt bear characters, w/ Teddy bear images along rim (© 1906). Clean, bright and excellent. Min. bid \$40.



66). Twin Ports Coffee. 6 x 4-1/8" (dia.) scarce, early 1 lb. tin litho coffee can for "Twin Ports" brand (Eimon Mercantile Co., Superior, WI) featuring beautiful multi-color graphic ship image. Clean, bright and beautiful appearance w/ nice surface sheen (a strong C. 8+), w/ a little non-offensive light wear in cream background area. Min. bid \$50.



67). Hawthorn Spice Tin. 3.75 x 2.25 x 1.25" scarce, early tin litho 2 oz. spice tin (allspice) for "Hawthorn" brand, featuring nice image of Co.'s trademark rose on both sides. Clean, bright and attractive appearance, w/ minor background wear and loss to ink-stamped allspice spice name (C. 8+/-). Min. bid \$40.



68). Home Plate Oats Box. 7-1/8 x 4-1/8" (dia.) scarce, early 1 lb. size cardboard oats box for "Home Plate" brand, featuring same great color graphic images on both sides (Scott-Mayer-Commission Co., Little Rock and Hot Springs, Arkansas). Clean, bright and exceptionally nice (C. 8.5+). Min. bid \$50.



69). Munsing Wear Door Push. 9.25 x 4.25" early curved edge heavy tin litho door push for Munsing Wear Union Suits, featuring great image of man in Co.'s long underwear playing tennis. A neat and unusual, heavy, high quality piece. Displays nicely (as a C. 8+), w/ a little non-offensive light background wear (critical grade C. 8-). Min. bid \$40.



70). Bull Dog Match Holder. 6.75 x 3 x 3/4" early tin litho die-cut advertising match holder for Bull Dog brand tobacco, w/ bright colors and great overall look. Basically displays as a (C. 8.5+), w/ exception of a little chipping wear at hanging hole, w/ a couple light oxidizing spots on backside. Min. bid \$70.



71). Porcelain Salesman's Sample Sign. 6.75 x 3.75" important, early museum quality door push sized enameled porcelain sample display sign featuring beautiful, multi-colored fine detailing. This German maker of fine enameled porcelain signs displayed their porcelain sign samples at the 1893 Chicago Worlds Fair (this is one of their sample display pieces). Exceptional overall quality and condition, w/ small chip spot at top hanging hole. Min. bid \$100.





72). Turtle Match Holder. 1.25 x 5.25 x 3" early, nicely detailed figural cast iron turtle shaped advertising match holder, w/ embossed advertising on its lift-up shell for Wm A. Webber, a St. Louis, MO wholesale cigar dealer. Very nice overall, w/ an early antique bronze finish. Min. bid \$40.



73). Ford Parts Sign. 9.5 x 26" early, heavy, enameled porcelain Ford dealership auto parts sign (note: has "Burdick" marking on backside). Clean, bright and very attractive w/ nice original surface sheen. Excellent overall (C. 8.5+), w/ exception of a little edge chipping. Min. bid \$100.



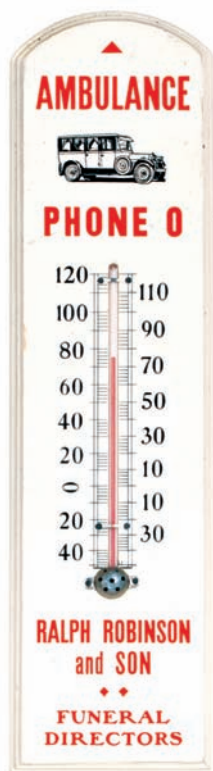
74). Coca-Cola Menu. 6 x 4" scarce, ca. 1903 cardboard Coca-Cola advertising menu featuring opera star Hilda Clark. Clean, bright and very attractive appearance (basically displays as a strong C. 8++) w/ exception of a little expected wear at corner edges (note: ribbons were not included with the piece originally - probably added at the time to dress it up). Min. bid \$40.



75). Pike Razor Hones Display. 8-7/8 x 6.5 x 2-5/8" unusual, early tin litho countertop store display stand for Pike Mfg. Co.'s razor sharpening stones, featuring great image of man honing a straight razor. Clean, bright and very attractive appearance (displays as a strong C. 8+), w/ a little bit of non-detracting light scattered background wear (critical grade C. 8/-). Min. bid \$50.



76). Rocky Ford Cigar Cutter. 8-1/8 x 6.5 x 11" early mechanical cast iron countertop "Rocky Ford" brand advertising cigar cutter that dispenses a wooden match when cigar is clipped. Base has a little bit of typical expected general light wear and minor oxidizing from use; advertising section very nice (C. 8+). Min. bid \$70.



77). Ambulance Thermometer. 15 x 4 x 1/2" early wooden painted advertising thermometer featuring great image of early limo. Excellent, w/ nice surface patina (C. 8++). Min. bid \$40.



78). Marseilles Soap Sign. 49.25 x 36.25" (39.75 x 26.25" visible) outstanding, large, early paper advertising sign for Lutz Bros. (Buffalo, NY) "Marseilles" brand soap featuring stunning multi-color graphics (© 1898 Knapp Litho). Powerful and impressive museum quality piece is clean, bright and exceptionally nice (C. 8.5++). Beautifully framed and matted. Min. bid \$250.



79). Men's Store Thermometer. 21 x 8.75" early wooden thermometer for a Peoria, IL men's furnishings store, featuring nice image of well dressed man. Clean and very nice appearance (a strong C. 8+) w/ slightly enlarged hanging holes at top (working thermometer). Min. bid \$50.





80). Ideal Leather Polish Match Holder. 5.5 x 4.25" scarce, early tin litho match holder for "Ideal" brand leather polish, featuring beautifully detailed color graphics. Clean, bright and excellent (a strong C. 8++). Canadian. Min. bid \$60.



81). Haberle Beer Tray. scarce, large 15" (dia.) variation advertising beer tray for "Congress Beer" (Haberle Brewing Co., Syracuse, NY) featuring beautifully detailed enameled porcelain over steel advertisement in center, w/ fancy decorative brass rim. Clean, bright and exceptionally nice (near mint). Min. bid \$100.



82). Rare Match Holder. 4-7/8 x 3-3/8" extremely rare, early tin litho match holder for Sandmeyer & Co., a Peoria, IL dealer of hard good items (listed items include hardware, carriages, wagons, etc.). Clean, bright and very attractive appearance (displays as a strong C. 8++), w/ a couple trace, barely noticeable waves and a little non-offensive light chipping wear in very bottom area. Min. bid \$70.



83). Red Jacket Coal Match Safe. 2.75 x 1.5 x 7/16" scarce and impressive, early, celluloid covered pocket match safe advertising Red Jacket Coal (Roanoke, VA and Cincinnati, OH), w/ attractive graphic images on both sides. Excellent. Min. bid \$40.



84). Bouquet Spice Tin. 3.25 x 2-3/8 x 1-3/8" scarce, early tin litho 1-1/4 oz. spice tin (red pepper) for "Bouquet" brand (Foerster & Molitor Co., Detroit, MI) w/ nicely detailed graphic banquet scene featured on both sides. Clean, bright and very attractive (C. 8+) w/ minor scattered background wear. Min. bid \$40.



85). Roundup Spice Tin. 3.25 x 2-3/8 x 1-3/8" scarce, early tin litho 2 oz. spice tin (allspice) for "Roundup" brand (Roundup Grocery Co., Spokane, WA) featuring Co.'s great western theme trademark image on both sides. Excellent (a strong C. 8+). Min. bid \$40.



86). Brewery Match Safe. 2.75 x 1.5 x 3/8" early, high quality celluloid over metal pocket match safe advertising Bowler Brothers Brewery (Worcester, MA), featuring beautiful color graphic image of Co.'s "Tadcaster Ale" and "Heidelbrau" early lager style beer bottles. Excellent. Min. bid \$40.



87). International Stock Food Poster. 27-3/8 x 33.25" impressive, large, early paper litho poster for International Stock Food Co., w/ beautiful multi-color image of world champion stallion pacer "Online" (repeating product buckets design in margins). Clean, bright and very attractive appearance (displays as a C. 8.5+) w/ faint factory fold lines and a little light chipping loss at very outer margins. Linen mounted and ready for framing. Min. bid \$100.



88). Buster Brown Doll Set. 20.5 x 25.5" large and impressive, colorful and highly graphic framed Buster Brown & Tige high quality early paper doll set on heavy paper stock (Buster measures 13.25 x 5-3/8"). Crisp, bright and like new in appearance, as found still their original illustrated packaging. Beautifully framed. Min. bid \$50.





89).Auto Service Match Box. 1-5/8 x 2.5 x 1" early celluloid advertising pocket matchbox cover for Van Sant Co., a Minneapolis, MN auto supply and tire repair outfit, featuring wonderful image of Co.'s road service truck. Excellent. Min. bid \$30.



90).Peanut Wagon Sign. 6 x 24.5 x 1.5" great early reverse glass "Peanuts-5¢" sign from early peanut wagon, w/ wonderful scalloped "chipped glass" pattern on edges. Exceptionally nice piece is clean, and excellent, complete w/ its original painted wooden framed backing board w/ great early paint surface. Min. bid \$60.



91).Nature's Remedy "Cure" Calendar. 10-3/8 x 6.75" outstanding, early cardboard advertising calendar for Nature's Remedy patent medicine (A.H. Lewis Medicine Co., St. Louis, MO) "Cures Constipation and Dyspepsia" w/ stunning multi-color lithography. Clean, bright and like new (near mint), complete w/ full 1906 calendar pad. Min. bid \$40.



92).Oneida Brewing Co. Tray. 12" (dia.) early, heavy enameled porcelain advertising beer tray for Oneida Brewing Co. (Utica, NY), featuring nicely detailed image of "Skenandoah" (chief of Oneida Indians). Excellent, w/ only very minor wear (C. 8.5/+). Min. bid \$100.



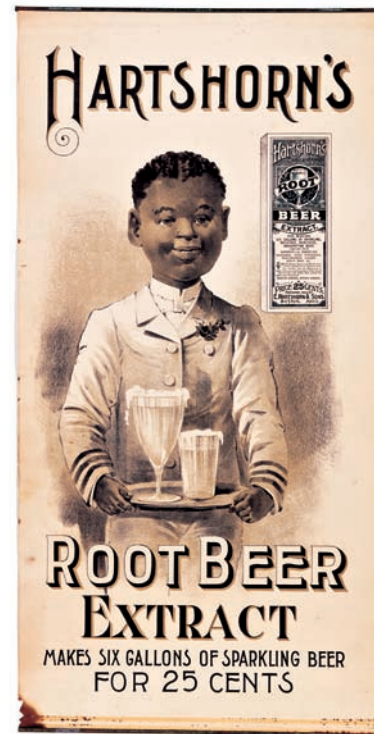
93).Bathroom Fixtures Sign. 9.25 x 7" early 2-sided cardboard sign for Park & McKay Co., (maker of fancy bathroom water closets, toilet bowls, toilet seats, etc.), w/ comical image of man in bathroom w/ no toilet paper left in machine, (black and white illustrated advertising on backside). Attractive and displays nicely, w/ minor toning and slight edge wear (C. 8+/-). Min. bid \$40.



94).Sani-Straw Straw Holder. 11.5 (h) x 4.25" (dia.) early, scarce "no touch" variation 2-ps. "Sani-Straw" brand pressed glass straw holder, w/ wire tool that catches and lifts individual straws up and through narrow opening on lid. Excellent. Min. bid \$60.



95).Sweet-Orr Sign. 40 x 30" scarce, large, early 2-sided heavy enameled porcelain sign for "Sweet-Orr" brand work clothes, featuring 9.5 x 19.5" image of Co.'s logo in center. Powerful and very impressive, freshly picked piece is crisp, bright and basically like new condition (C. 8.5++), as found never used in storage, w/ nice original surface sheen and only minor storage wear (notably a non-serious small border chip on backside edge). Min. bid \$500.

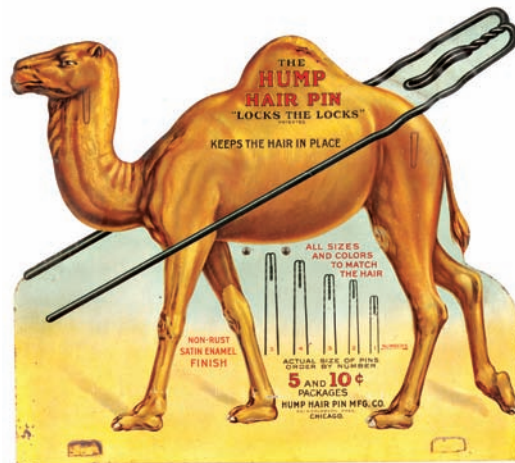


96).Hartshorn's Root Beer Extract Sign. 28 x 14" scarce, very early paper litho sign for Hartshorn's Root Beer Extract, w/ great image of young black waiter. A clean, very attractive example, that displays nicely, w/ a trace bit of non-detracting minor even toning (basically displays as a strong C. 8++) w/ exception of very minor wear background wear and some dark staining and outer left paper chip spot in bottom 1.25" area of piece (this could be easily matted out when framed). Complete w/ original metal strips at top and bottom. Min. bid \$100.





97).Planet Neptune Tobacco Sign. 21-5/8 x 28.25" large, early paper litho sign for Buchanan & Lyall Tobacco Co.'s "Planet Neptune" brand, w/ powerful and impressive nighttime firefighting image. Clean, bright and exceptionally nice appearance (displays as a C. 8.5+), although close examination will show some light scattered professional in-painting restoration in background areas (extremely well done - barely noticeable even on close examination). Linen backed. Min. bid \$150.



98).Hump Hair Pins Display. 14-3/8 x 16-7/8" early die-cut tin litho countertop stand-up display for "Hump" brand hair pins, featuring stunning multi color graphics (by H.D. Beach Lithographers). Clean, bright and very attractive overall appearance (displays as a strong C. 8++) w/ a little light background wear and a couple non-offensive minor bend marks. Min. bid \$100.



99).Frictionless Metal Co. Sign. 22.25 x 16 x 7/8" outstanding, very early self-framed tin litho sign promoting Frictionless Metal Co.'s bearing metal, w/ very high quality graphics by Meek & Beach Lithographers). Clean, bright and exceptionally nice (C. 8.5++) w/ a few non-detracting minor dimples and small dent mark at upper outside left frame section. Min. bid \$250.



100).Crosman Bros. Seeds Sign. 10-3/8 x 6-3/8" great, early 2-sided die-cut ceiling hanger sign for Crosman Bro's. Seeds, featuring great image of man on donkey cart w/ giant cabbage. Clean and attractive overall appearance (basically displays as a C. 8+), although close examination will show some light wear and crease marks in top hat and head area (critical grade C. 7.5+/8-). Min. bid \$40.



101).Kotex Display Stand. 25" (h) x 19.75 x 16.75" (top) early tin litho store display stand for Kotex products, featuring nice images of Co.'s nurse character holding product box (same images on all four sides), complete w/ original tabletop shelf pieces. Clean and very attractive overall, w/ a little non-detracting minor scattered wear (C. 8+). Min. bid \$150.



102).Pony Express Pocket. 4.5 x 3 x 7/8" extremely rare, early tin litho vertical tobacco pocket tin for "Pony Express" brand (John's Pipe Shop, Los Angeles, CA) w/ images of Co.'s great horse drawn promotional advertising wagon on both sides. A clean and attractive example that displays nicely (basically as a C. 8+), w/ small 1/8" dia. pinhole on curved side edge (where tax stamp would have sat). Min. bid \$500.



103).Jolly Darkie Game. 15.75 x 8 x 1-5/8" early 2-ps. "Jolly Darkie" boxed target game set from Milton Bradley Co. featuring outrageous multi-color graphic image of black musician character on both box cover and inside target. Clean, bright and excellent (a strong C. 8.5+) w/ exception of a little non-offensive light edge wear. Min. bid \$50.



104).Shinola String Holder. 17 x 8 x 1" scarce, early hanging country store advertising string holder for "Shinola" brand shoe polish. Wood and metal construction, w/ nicely stenciled advertising on both sides. All original, w/ some general expected ageing and wear, w/ a nice primitive country look (C. 7.5+/8-), and a couple light early paint spots on side edges of top wood piece. Min. bid \$60.





105).



105). Steamer & Hose Fire Puzzle. very early boxed puzzle set (Milton Bradley & Co.), w/ detailed color graphic firefighting images (box 5.75 x 7.5 x 1"). Eighteen cardboard puzzle strips inside make beautiful scene of horse drawn fire fighting equipment racing to a fire. Puzzle is excellent (C. 8.5+); w/ a little light toning, soiling and wear on box (box C. 8/-). Min. bid \$40.



106). Skippy Peanut Butter. 3-1/8 x 3.5" (dia.) unusual, early tin litho 12 oz. pry lid peanut butter tin for "Skippy" brand (Rothfield Packing Co., Alameda, CA) featuring beautiful graphics all around. Crisp, bright and like new (near mint). Min. bid \$50.

### Horseshoe Clothes Dryer Rack



107). Horseshoe Wringers Drying Rack. 12 x 21.5" early wooden advertising clothes drying rack, w/ nice incised advertising on back mounting bracket and folding wooden drying slats for Horseshoe clothes wringers. Very nice, w/ deep, rich surface patina. Min. bid \$40.



108). Andrew White Cigars Tip Tray. 4.25" (dia.) very early tin litho tip tray advertising Andrew D. White Cigars (Harkert Cigar Co., Davenport, IA) w/ stunning, beautifully detailed multi-color lithography. Crisp, bright and like new (near mint). Min. bid \$40.



109). Ice Cream Signs. 14.75 x 9.75" nice set of three colorful and attractive early cardboard die-cut soda fountain signs for "Retzler's" brand ice cream (ea. have both easel and string on backside). Never used pieces are clean and excellent overall, w/ minor toning area from storage on bottom right corner area of one piece. Min. bid \$40 (the set).

### Moxie Smoke Stand



112). Moxie Smoke Stand. 32 (h) x 6.75 x 7.75" (base) early wooden smoking stand advertising Moxie soda, featuring Co.'s trademark butler character "Hitchy". Has a great primitive folk art country type look, w/ a rich surface patina to its all original paint surface. Excellent overall (a strong C. 8+), w/ just the right amount of minor wear. Includes original embossed metal Moxie ashtray. Min. bid \$70.



110). Beacon Oil Sign. 9-7/8 x 9.5" scarce, early, heavy porcelain sign for Beacon Oil Co., w/ deep shelving and great overall look. Has very strong colors and nice surface sheen, although there is a fair amount of scattered chipping, mostly at outer edges and in bottom area. Min. bid \$40.



111). Dutchman Roly Poly. 7 x 6" (dia.) early figural tin litho Dutchman character tin for Mayo's cut plug tobacco. Has strong colors and displays quite nicely (basically as a C. 8), w/ a little non-offensive light scattered soiling, minor dents, and light scratching and wear (critical grade C. 8-). As found, should improve a bit w/ cleaning. Min. bid \$60.



Front



Back



113).Munsing Union Suits Sign. 14-7/8 x 18-7/8" important, early 2-sided die-cut tin litho advertising sign for Munsing Wear Union Suits. Piece has strong colors, original sheen and displays quite nicely, w/ minor soiling, a few non-offensive faint hazy spots and some light scattered oxidizing and wear (front C. 8+/-; back C. 7.5+/-), although piece displays much better than this implies. As found might improve a bit w/ cleaning. Min. bid \$500.



114).Uncle Sam Sand Toy. 18 (h) x 10 x 7.5" (dia.) neat and unusual, early "Yankee Sand Mill" tin litho and painted wood toy w/ funnel like sand receptacle at top that passes sand into his bucket. Wooden Uncle Sam character has nice old paint surface w/ a great country folk art look (he is very nice in appearance overall, w/ minor paint loss and a broken missing section to his left foot w/ two pieces of wire keeping him tied together). Tough one to grade, but (C. 7.5+/8-) seems about right. Min. bid \$50.



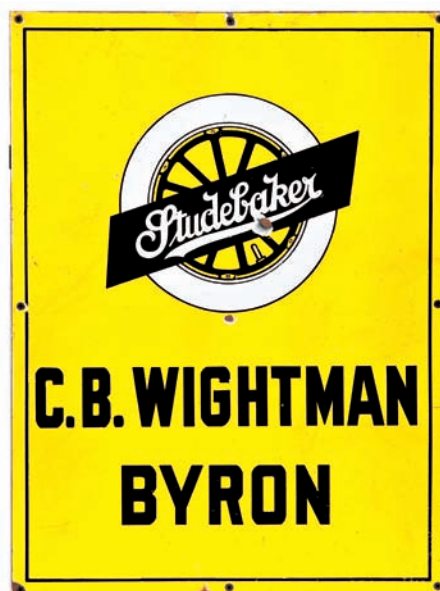
115).Genesee Beer Sign. 12" (dia.) early self-framed tin litho sign for Genesee Brewing Co. (Rochester, NY) by Shonk Litho. Clean, bright and exceptionally nice (basically displays as a C. 8.5+/-), w/ very minor background wear. Min. bid \$150.



116).Nipple Jar. 9 x 5.75" (dia.) early, heavy, 2-ps. glass countertop store jar for Whitall Tatum Co.'s "Tip Top" brand nipples, w/ nice enameled label on front and figural nipple shaped finial on lid. Excellent overall, w/ a few tiny fleabites on inside lip and inside edge of lid (nothing serious- could easily be polished away). Min. bid \$50.



117).Baseball & Checkers Game. 17 x 8.75 x 1-3/8" early 2-ps. game box by Milton Bradley Co. featuring powerful and highly graphic baseball scene on cover. Includes 2-sided playing board, wooden playing pieces and spinner (no checkers). Clean, bright and excellent overall (C. 8.5+/-). Min. bid \$50.



118).Studebaker Sign. 24 x 18" early, heavy porcelain Studebaker sign featuring great image of Co.'s early wheel logo (note: I'm told this sign was removed from a service garage in Byron, California; Wightman name refers to garage owner). Clean, bright and very nice overall appearance, w/ original sheen (basically displays as a C. 8.5+/-), w/ exception of a couple chips in upper center area and a couple early weathered chip spots at bottom edge w/ some non-offensive faint early spider web crackling and light wear at top hanging holes. Note: piece had a slight bit of early bowing and has been secured to a wooden backing brace frame, which keeps it flatter for better displaying. Min. bid \$100.

Early Radios



119).Marconiphone Radios Sign. 35.25 x 22.75" unusual, early paper litho sign for the "Marconiphone Portable" brand of early radios, w/ nice image of girl smoking cigarette next to Co.'s early radio. Clean and very nice overall (C. 8.5+/-), w/ non-detracting faint factory fold lines evident. Framed (will be shipped without glass). Min. bid \$50.





120).De Laval Separators Match Holder. 6.25 x 3.75" early die-cut tin litho match holder advertising De Laval Separator Co., in shape of Co.'s cream separator (1.2 million in use variation). Crisp, bright and like new, as found never used still in its original box (match holder near mint; box has some minor wear). Min. bid \$50.



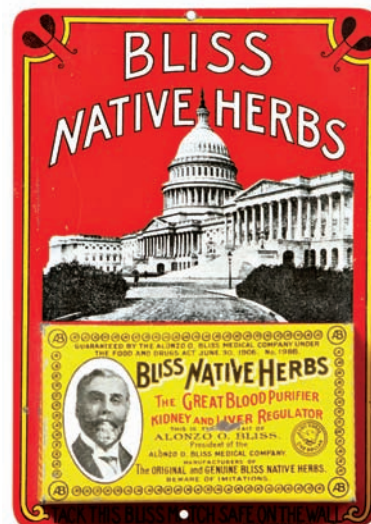
121).Chesterfield Cigarettes Sign. 10 x 20-7/8" early paper litho advertising sign for Liggett & Myers Tobacco Co.'s Chesterfield brand cigarettes, featuring great color graphic hockey scene image by illustrator L. E. Chambers. Clean and excellent overall (C. 8.5/+), linen backed and ready for framing. Min. bid \$40.



122).Beech-Nut Tobacco Die-Cut. 12 x 6.25" early 2-sided cardboard die-cut advertising ceiling hanger (fan pull) sign for Lorillard Co.'s "Beech-Nut" brand chewing tobacco. Clean, bright and very attractive appearance (basically a strong C. 8+), w/ a little non-offensive light soiling at bottom edge and a little minor scattered wear. Min. bid \$40.



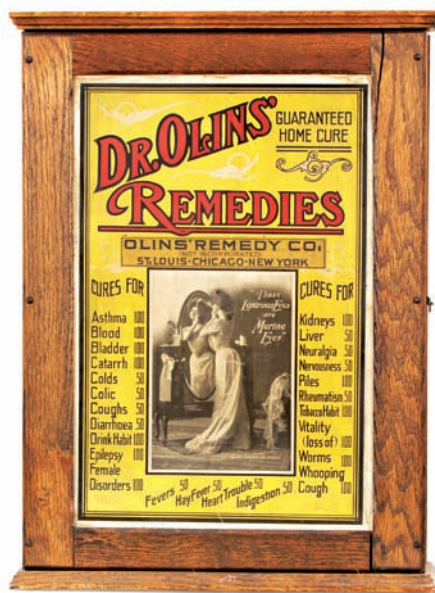
123).Champion Picture Blocks Set. outstanding set of nine very early McLoughlin style nested lithographed paper over wood picture blocks, featuring wonderful animal images around each block (individual blocks range from 6 x 2.5 x 2.5" to 6.75 x 7.25 x 7.25"). They are clean, bright and very attractive overall (basically C. 8+/-) w/ some expected edge wear and light scattered chipping (with heavier wear and some light fade to largest outer block). Min. bid \$100.



124).Bliss Medicines Match Holder. 6-3/8 x 4.5" early tin litho advertising match holder for "Bliss Native Herbs" quack blood purifier and kidney and liver regulator medicine. Clean, bright and excellent overall (basically displays as a C. 8.5+/-) w/ exception of small paint chip spot in match basket area. Min. bid \$60.



125).Post Toasties Sign. 29-3/8 x 19" impressive, large, early die-cut cardboard sign for "Post Toasties" brand cereal (Postum Cereal Co., Battle Creek, MI) featuring nice image of kids in swing. Clean and attractive appearance (basically displays a C. 8+/-) w/ a little minor soiling and wear and there are professionally repaired breaks in boys hand/arm areas (critical grade C. 7.5+/-/-). Min. bid \$150.



126).Dr. Olin's "Cures" Cabinet. 28-3/8 x 19.5 x 6" important and extremely rare, early wooden (oak) patent medicines display cabinet for Dr. Olin's (quack) Remedies, w/ large priced listings of various things their medicines "Cured". Wooden case has excellent original finish and both front and backside feature same nice looking cardboard advertising panels (better displaying back side is pictured in catalog). Backside panel is bright and quite attractive, w/ a little non-offensive light expected soiling (C. 8+/-). Front side panel is double sided, w/ some general overall fading to outside front facing side (its inside panel- which could be reversed, is exceptionally clean and bright); (front outer side C. 7.5; front inside panel C. 8.5+/-). See website addendum for additional images and info. Min. bid \$150.

National Brewing Co. (Syracuse, NY)



127).National Brewing Co. Calendar. 30 x 24" (22.25 x 16.5" visible) outstanding, large, early paper litho 1913 advertising calendar for National Brewing Co. (Syracuse, NY) w/ powerful and impressive image. Crisp, bright and like new appearance (displays as near mint) w/ a couple professionally repaired tears in upper and lower right background areas and trace hint of faint, very minor background staining in bottom left background (barely noticeable). Beautifully framed and matted. Min. bid \$150.





128).



128). Fire Engine Puzzle. 9 x 12 x 2.75" early 2-ps. boxed "Fire Engine" picture puzzle set by McLoughlin Bros., featuring wonderful graphic image of early fire fighting scene (1887 copyright) w/ complete, very large 18 x 24.5" heavy cardboard puzzle set inside (same image on puzzle and box lid). Box is very nice overall w/ slight hint of minor toning on lid (C. 8+); puzzle is complete and excellent (a strong C. 8++). Min. bid \$50.



129). Plexo Suspenders Sign. 12.5 x 22.5" (10-5/8 x 20.75" visible) scarce, early, very high quality cardboard litho sign (w/ shiny surface finish) advertising "Plexo" brand suspenders, featuring wonderfully detailed, early color graphic bowling scene. Clean, bright and exceptionally nice (C. 8.5++). Framed. Min. bid \$50.



130). Wrigley's Gum Sign. 7 x 11-1/8" early beveled tin (over cardboard) sign for Wrigley's brand chewing gums featuring nice graphic images of Co.'s early gum packs. Never used sign is clean, bright and very attractive in appearance, w/ a little non-offensive light storage wear in outer border area (a strong C. 8++). Min. bid \$50.



131).



131). Farm Fences Broom Holder. 4-3/8 x 3.75 x 1.75" scarce, early tin litho whisk broom holder advertising "American Steel" brand farm fences. Clean, bright and very attractive appearance (C. 8.5). Holder only (does not include broom). Canadian. Min. bid \$40.



132). Spark Plug Candy Container. 3 x 4-1/8 x 1.5" early figural glass candy container featuring comic strip "Spark Plug" (Barney Google's horse). Embossed container is excellent w/ original closure and candy inside and retains much of its nice original paint surface. Excellent. Min. bid \$40.



133). Yellow Kid Magazine. 10-3/8 x 7" scarce, June 5th, 1897 (Volume 1, No. 6) edition of the Yellow Kid Magazine featuring wonderful multi-color Yellow Kid illustrations on front and back covers. Complete 48 pg. magazine is filled w/ short stories, sketches, jokes, poems and pictures. Very nice overall, w/ minor toning and some non-offensive slight staining in outer right margins of front and back cover pages. Min. bid \$50.



134). Daddy's Choice Coffee. 6 x 4-1/8" (dia.) scarce, early tin litho coffee can for "Daddy's Choice" brand (Sterling Wholesale Grocery Co., Sterling, IL). Clean, bright and beautiful appearance w/ nice surface sheen (front C. 8.5+) w/ some light scattered surface scuffing on non-graphic backside (back C. 8). Min. bid \$50.



135). Model Sample Tin. 4-3/8 x 3 x 7/8" scarce, early tin litho "Complimentary" sample pocket tin for United States Tobacco Co.'s "Model" brand. Full, never used tin is clean, bright and excellent (C. 8.5+) w/ exception of some light hazy wear on upper surface at top of lid. Min. bid \$30.



Saleman's Sample

136). Salesman's Sample Lantern. 4.75 x 3.5 x 2-1/8" (dia.) base. Outstanding, very early, museum quality nickel over brass miniature salesman's sample barn lantern, w/ "N. C. L. Co. Crank Tubular" embossed on glass globe. This is an exact miniature working model of Co.'s large full sized lantern w/ a lever on side that automatically lifts the globe up for lighting when pushed on. Excellent and all original w/ great early surface patina (C. 8.5++). Min. bid \$70.

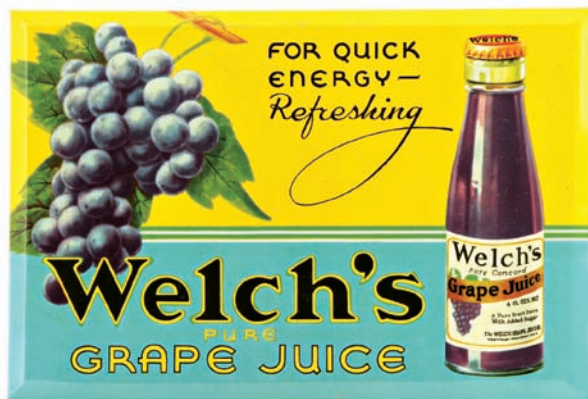




137).Emblem Motorcycles Mirror. 1.75 x 2.75" scarce, early celluloid pocket mirror advertising Emblem brand motorcycles, featuring beautifully detailed image of Co.'s early motorcycle. Clean, bright and exceptionally nice (basically like new appearance), w/ some dark spots in mirror glass and a very minor mfg. blemish on backside corner edge (mentioned for accuracy- so minor barely merits mentioning). Min. bid \$50.



138).Saloon Sign. 6-1/8 x 16-3/8" early embossed tin litho (over cardboard) saloon sign, w/ great image of hand holding State Law book (has both string for hanging and easel on backside). Never used sign is clean, bright and excellent (C. 8.5+/-) w/ only minor storage wear. Min. bid \$50.



139).Welch's Sign. 6-1/8 x 9-1/8" scarce, small, ca. 1920's/30's beveled tin litho over cardboard sign for Welch's grape juice (by American Art Works). Never used sign is crisp, bright and like new in appearance (basically displays as near mint), although there are some faint, trace hints of surface pattern marks and light rubs evident if tipped in light just right (from protective paper covering, they are barely noticeable and mentioned for accuracy- nothing that is at all offensive or detracting). Min. bid \$50.



Inkwell

140).Steer Inkwell. 6 x 8 x 2" unusual, early figural inkwell w/ actual cow horn body and beautifully detailed bronze finished metal legs and head (the hinged head opens up to reveal inkwell inside). Excellent. Min. bid \$40.



141).Rice's Seed Box. 4 x 11 x 6.5" (9.75 x 11 x 6.5" as shown lid open) early wooden display box for Rice's brand flower seeds, w/ beautiful multi-color label inside. Very nice example has clean and bright label inside (C. 8.5+) and excellent original finish on box. Min. bid \$40.



142).Dan Patch Tobacco Tin. 4.5 x 6.75 x 4.5" early tin litho lunchbox style tobacco tin for "Dan Patch" brand tobacco (Scotten, Dillon Co., Detroit). A clean, bright and exceptionally nice example (C. 8.5+/-), w/ only very minor wear. Min. bid \$40.



143).Mecca Cigarettes Sign. 19.75 x 11.25" (18-1/8 x 9-5/8" visible) early paper litho sign for Mecca brand cigarettes, featuring beautiful image by illustrator Earl Christy of Co.'s stylish Mecca girl. Clean, bright and very attractive appearance (basically displays as a strong C. 8++), w/ a little non-offensive faint water staining in bottom background area. Piece is still sealed in its original marked wooden advertising frame (© 1912 American Tobacco Co.). Min. bid \$50.



144).Hartshorn's Medicine Sign. 28 x 21" large, early paper litho sign for Dr. Hartshorn's "Sarsaparilla and Iron" patent medicine product. Impressive piece is clean and very attractive overall (basically a strong C. 8++/-) w/ exception of a trace bit of minor even toning and a little non-offensive minor darkening in upper border area. Complete w/ original metal strips at top and bottom edges. Min. bid \$100.



145).Moxie Nerve Food Sign. 30.25 x 22.5" (27 x 19-1/8" visible) important, very early, large embossed tin litho sign by Kaufman & Strauss Lithographers. Clean, bright and beautiful overall appearance, w/ nice original surface sheen (basically displays a C. 8.5+/-), w/ exception of a little non-offensive light wear (mostly confined to very outer border/margin area). Framed. Min. bid \$500.





146).Hindoo Pocket Tin. 3-5/8 x 3.5 x 1-1/8" scarce, early tin litho vertical pocket tin for "Hindoo" brand (Strater Bros. Louisville, KY) featuring same nice image on both sides. Clean and attractive appearance, w/ nice overall look (C. 8/+), w/ slight softening to reds and scratch mark on side edge (where tax stamp would go). Min. bid \$70.



147).Star Cup Coffee. 4 x 5-1/8" (dia.) scarce, early tin litho 1 lb. key wind coffee can for "Star Cup" brand (Mogar Coffee Co., Brooklyn, NY) featuring great image of Co.'s trademark character. Clean, bright and excellent overall (C. 8.5/+) w/ exception of minor mfg. blemish mark in black bottom area on backside and some non-offensive tiny scattered squiggling marks on base and lid. Min. bid \$40.



148).Old Boone Whiskey Tip Tray. 4-1/8" (dia.) early tin litho tip tray for Thixton Millett Co.'s "Old Boone" brand whiskey, w/ nice graphic image of elderly Daniel Boone outside cabin distillery. Clean and attractive appearance (C. 8/+), w/ a little minor wear (nothing serious or detracting). Min. bid \$40.



149).Walk-Over Shoes Sign. 11-5/8 x 8-5/8" early cardboard sign for "Walk-Over" brand shoes, featuring great 1920's image of woman holding hand mirror. Clean and very attractive (C. 8.5/+), w/ a little light toning in margins. Min. bid \$40.



150).Porcelain No Spitting Sign. 8 x 10" early, heavy enameled porcelain "No Spitting" sign by Baltimore Enamel and Novelty Co., complete w/ its original partial paper label on backside. Excellent overall, w/ nice original surface sheen (has a couple of small chip spots in outer edge area). Min. bid \$50.



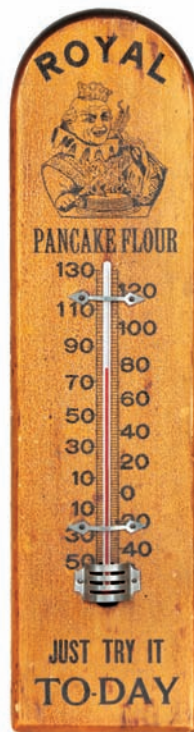
151).Moxie Die-Cut. 6-1/8 x 4.75" extremely rare, early embossed, die cut-easel back sign on heavy cardstock advertising Moxie Nerve Food. Display side is crisp, bright and like new (near mint), w/ some darkening and toning on non-graphic backside. Min. bid \$50.



152).Martha Washington Oats Box. 9-5/8 x 5.5" (dia.) early 3 lb. 7 oz. cardboard oats box for Martha Washington brand (Joannes Bros, Green Bay, WI) featuring beautiful graphic image on front and steaming cereal bowl on back. Clean and very attractive (a strong C. 8/+) w/ minor toning and wear. Min. bid \$40.



153).Wampum Coffee. 9-3/8 x 5.5" (dia.) early tin litho 3 lb. coffee can for "Wampum" brand (Stone-Ordean-Wells Co., Duluth, MN) featuring same great semi-topless American Indian princess images on both sides (has Co.'s trademark tomahawk on lid). Clean, bright and very nice, w/ minor background wear (C. 8/+). Min. bid \$60.



154).Pancake Flour Thermometer. 15 x 4 x 3/8" early wooden advertising thermometer for Royal brand pancake flour, w/ nice image of Co.'s trademark king w/ steaming stack of griddle cakes. Very attractive, w/ excellent, all original surface patina (C. 8+) and working thermometer. Min. bid \$40.



155).Gargoyle Can. 12-3/8 x 4" (dia.) unusual, early tin litho oil can for Mobilol AF motor oil, w/ nice refinery images around base. Clean and attractive appearance, w/ minor denting, soiling and some non-offensive speckling on backside (front C. 8/+; back C. 8/-). As found, might improve w/ cleaning. German. Min. bid \$50.





156). Ferry Seed Box. 4 x 11.75 x 6.75" (9.75 x 6.75 x 11.5" as shown lid open) early wooden display box for Ferry's brand flower seeds, w/ beautiful color label inside. Has clean, bright, very nice label inside (C. 8+); w/ some scattered staining to finish of outer wooden box lid (missing top metal clasp). Min. bid \$40.



157). Red Seal Peanut Butter. 3 x 3.5" (dia.) early tin litho 12 oz. sized peanut butter pail for Newton Tea & Spice Co.'s "Red Seal" brand, w/ colorful and highly graphic nursery rhyme images all around. Clean, bright and very attractive (a very strong C. 8+) w/ a little minor wear on backside. Min. bid \$40.



158). Orange Crush Sign. 14 x 11" ca. 1920's/30's cardboard sign for Orange Crush soda featuring great image of early ribbed bottle inside ice block. Clean and excellent overall (a strong C. 8+), w/ a little minor wear at very outside edges. Min. bid \$40.



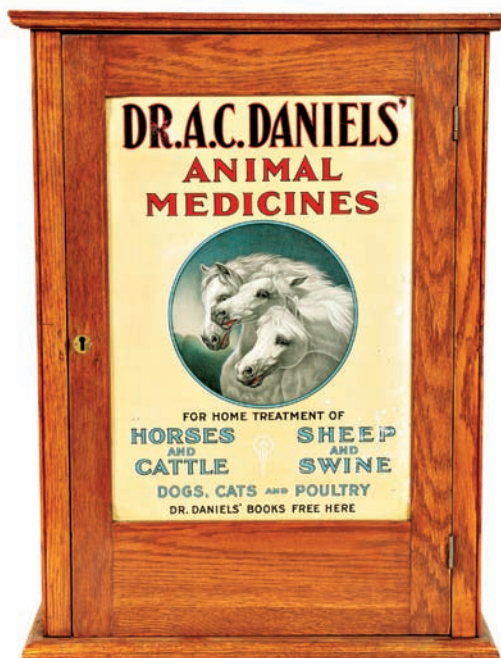
159). Speed King Cigar Box. 8 x 8-3/8 x 5.5" (as shown lid up) impressive, early wooden cigar box for "Speed King" brand (Eyerly Bros., Canton, IL) featuring wonderful graphic image of early race car. Inner display label is clean and attractive (C. 8+), w/ minor soiling and a slight bit of non-offensive light staining in upper left border area. Min. bid \$40.



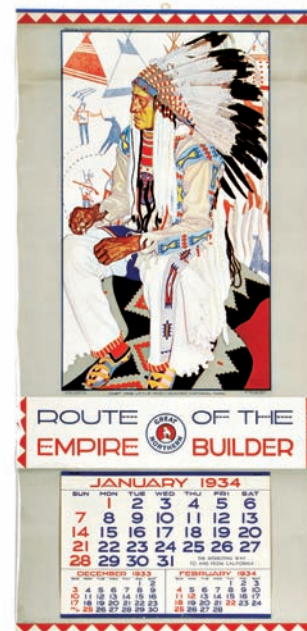
160). Chesterfield Cigarettes Sign. 14.75 x 12 x 1.5" early 2-sided tin litho sign for Liggett & Myers Co.'s Chesterfield brand cigarettes, featuring great image of early pack. Clean and excellent overall (C. 8.5+). Min. bid \$50.



161). Swift's Hams Sign. 33 x 24.25" (29.5 x 21.25" visible) important, large, early paper (cardboard) sign for "Swift's Premium" meat products featuring stunning multi-color graphics. Outstanding, freshly picked sign is clean, bright and exceptionally nice in appearance (basically displays as a strong C. 8.5+) as found still in its original frame (has a few minor wear marks at very top edge- nothing serious or detracting and pretty much hidden by edge of frame). Min. bid \$100.



162). Dr. Daniels Veterinary Cabinet. 28.75 x 21-3/8 x 8" scarce 3 white horses variation, early tin front Dr. Daniels medicine cabinet. Clean and bright w/ nice original sheen (shows very nicely, displays as a strong C. 8+) w/ a little non-offensive light scattered wear and a few light dent marks in background area- nothing really offensive or that detracts from great overall look or the piece (critical grade C. 8/-). The outside of wood cabinet has been beautifully refinished and is clean and excellent in appearance and still retains the original Dr. Daniels painted stenciling on the inside (Note: the original sign and Daniels cabinet were actually found separately and married together). Min. bid \$500.



163). Great Northern Railroad Calendar. 33.5 x 16" large 1934 Great Northern Railway calendar, w/ wonderful Western themed American Indian image by illustrator Winold Reiss. Never used calendar is clean, bright and excellent in appearance (a strong C. 8.5+), complete w/ metal strips at top and bottom and full calendar pad. Has faint, very minor waving from being rolled and a very faint soil spot in upper left margin (mentioned for accuracy, not at all offensive or detracting). Min. bid \$40.





164).Kuco Sample Talc Tin. 2.5 x 1" (dia.) scarce, early tin litho miniature sample sized talc tin featuring nicely detailed images of man shaving, woman tennis player and Co.'s trademark kid image. Excellent (C. 8.5+). Min. bid \$40.



Sample Coffees

165).Sanka Coffee Samples. Lot of miniature sample sized tin litho product cans for Sanka brand coffee. Includes: 2.75 x 3-3/8" (dia.) 4 oz. key wind (C. 8+/-); 5 x 2.5" (dia.) "Trial Size" (C. 8.5+) w/ minor dent at bottom of backside; and 3-5/8 x 2.25 x 1.25" 2 oz. spice sized "Sample" (C. 8.5+). Min. bid \$40 (the lot).



166).Golden Pheasant Condom Tins. 3.5 x 2.25 x 3/4" full 2-ps. cardboard product box for one dozen "Golden Pheasant" brand condoms, complete w/ all four of its "Golden Pheasant" brand tins inside (tins 1.75 x 2-1/8 x 1/4"). Box has a little minor scattered wear; tins inside are crisp, bright and like new. Min. bid \$50 (the lot).



167).Brown's Jumbo Bread Sign. 12.75 x 13.25" early die-cut tin litho country store advertising sign for Brown's Jumbo bread. Clean, bright and like new (near mint). Min. bid \$50.



168).Bakers Cocoa Art Plate. 10-1/8" (dia.) early tin litho art plate style advertising tray promoting Walter Baker Co.'s Cocoa, featuring nice image of Co.'s trademark girl. Has a little bit of even darkening, but overall piece is clean, attractive and displays nicely (C. 8+/-). As found should improve w/ cleaning. Min. bid \$40.

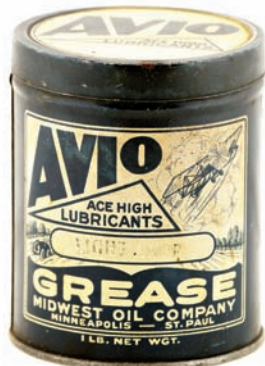


Min. Salesman's Scale

169).Miniature Salesman's Scale. 6 x 6 x 3" outstanding, early miniature candy scale, w/ advertising on both sides for "Exact Weight Scale Co." (Columbus, OH). This substantial, heavy, very high quality piece is an exact working miniature of one of Co.'s full size store scales and has a shiny chrome finish to its non-magnetic metal case- (bronze?) and weighs almost 6 pounds has engraving at bottom and was given as a presentation piece in 1951 to a Murphy Co. candy buyer. Neat piece!! Min. bid \$50.



170).Haberle Beer Tray. 12" (dia.) early pre-pro Haberle Brewing Co. (Syracuse, NY) tin litho beer tray featuring beautiful multi-color graphics (by Shonk Litho.). Clean, bright and excellent appearance (displays as near mint), although examination under black light will reveal a few small, very minor professional touch-ups spots in background and rim area. Min. bid \$60.



171).Avio Grease Tin. 4 x 3.25" (dia.) early tin litho 1 lb. grease can for "Avio" brand (Midwest Oil Co., Minneapolis, MN) featuring great images of bi-wing airplane and racecar (same images on both sides). Clean and very attractive overall appearance (C. 8+), w/minor soiling and wear. As found, might improve a bit w/ cleaning. Min. bid \$30.



172).Shamrock Spice Tin. 3.25 x 2.25 x 1-3/8" scarce variation early tin litho 2 oz. spice tin (turmeric) for "Shamrock" brand (Coffeyville Mercantile Co., Coffeyville, KS) w/ same nice image on both sides. Clean, bright and excellent overall, w/ minor wear on side edge (C. 8+). Min. bid \$40.



173).Black & White Pocket Tin. 3-7/8 x 3-3/8 x 1-1/8" scarce, early tin litho vertical tobacco pocket tin for National Cigar Stand Co.'s "Black and White" brand. Clean, bright and exceptionally nice example (a strong C. 8.5+). Min. bid \$50.



174).Pomeroy's Garage Mirror. 2" (dia.) early celluloid advertising pocket mirror for "Pomeroy's Auto Garage" (Northampton, MA) featuring great image of risqué saloon girls. Clean and excellent. Min. bid \$40.





175).Talc Samples. Lot includes a nice group of eight different early, miniature tin litho sample talc tins (ea. app. 2-1/8 x 1-3/8 x 3/4"). Includes tins from following Co.'s: Sylvan's; Mennen's; Larkin; Palmer; Taylor; Richard Hudnut; and Colgate. Excellent overall. Min. bid \$40 (the lot).



176).Promotional Store Tin. 13.25 x 9-3/8 x 4.25" outstanding, large, early figural tin litho store shaped display tin covered w/ incredible multi-color graphic advertising images around all four sides, as well as on front and backsides of its roof (some of promoted products include Marathon Tires, Hostetter's Bitters, Old Master Coffee, Mail Pouch Tobacco, etc.). This important and extremely rare museum quality tin is clean, bright and exceptionally nice (displays as a C. 8.5+), w/ a little non-detracting minor scattered wear (critical grade C. 8+). It's believed that there are less than five known examples of this super piece (note: we sold one of the other known examples several years back in lesser condition for \$6500 + BP). Min. bid \$2,500.



177).Thomas Ryan Brewery Calendar. 32-1/8 x 26" (22 x 16.5" visible image) scarce, large, early paper litho advertising calendar for Thomas Ryan Brewing Co. (Syracuse, NY). Clean and displays very nicely (basically as a C. 8+), although closer examination will show some horizontal crimp lines and tears from being rolled and damage spot at very bottom right edge (nothing that's offensive or that takes away from great overall look of piece), complete w/ partial 1900 calendar pad. Beautifully framed and matted. Min. bid \$250.



178).Spud Cigarettes Sign. 20.75 x 10.75" vintage, ca. 1920's/30's paper litho sign for Spud brand cigarettes (Axton-Fisher Tobacco Co., Louisville, KY) w/ great color and look. Clean, bright and excellent (C. 8.5+). Min. bid \$50.

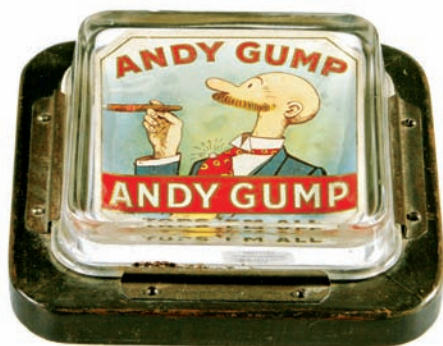


179).Red-Top Flour Sign. 22 x 15.75" outstanding, large, curved, multi-color enameled porcelain country store corner sign for "Red-Top" brand flour featuring incredible detailing (Burdick Sign Co.). A powerful and impressive, very rare piece that is in exceptionally nice condition. Crisp, bright and beautiful overall, w/ nice original surface sheen (C. 8.5+ overall), w/ only very minor wear including a few non-detracting faint, barely noticeable spider web craze lines in white background and border area, and a small, very minor chip at top edge. Min. bid \$1000.



180).Cox's Shoes Thermometer. 21 x 5.75 x 3/4" very early wooden advertising thermometer for Cox's Shoes. Has a little minor color fill-in to added hanging holes and to a few light surface scratches, but overall a super looking piece, w/ a nice, rich patina to its original surface w/ a great primitive folk art country look (C. 8+/- appearance). Min. bid \$40.





181).Andy Gump Change Receiver. 7-3/8 x 7-3/8 x 2.25" early countertop change receiver for Andy Gump brand cigars. Wooden base, w/ glass top showing wonderful Gump label underneath. Excellent w/ a great look (C. 8+). Min. bid \$50.



182).Hodges Peanut Tin. 9.75 x 8.5" (dia.) scarce, early tin litho 10 lb. "Hodges" brand salted peanuts tin (Hodge Candy & Baking Co., Binghamton, NY) w/ wonderful image of Co.'s kid candy maker character. Display side is clean and very nice (C. 8+), w/ some wear and a little light soiling on backside (backside C. 7.5+/8-) including tiny nail hole in top background area (includes original marked lid, which is fair to poor w/ heavy soiling and darkening). Min. bid \$50.



183).Recruit Cigars Display. 8 x 7.5 x 7.25" outstanding, early figural cardboard countertop display piece for "Recruit" brand cigars, featuring beautiful color graphics (folds down flat for shipping). Powerful and impressive looking piece that is clean, bright and very attractive in appearance (displays as a strong C. 8+) w/ minor toning/soiling and professional reinforcement added to backside neck area on two of die-cut soldiers. Min. bid \$60.



184).Bag Co. Thermometer. 1.25 x 9-1/8" (dia.) early dial type advertising thermometer for Philadelphia Bag Co. Has copper finish metal case w/ great looking advertising inside promoting Co.'s burlap and cotton bags and sacks. Excellent overall (working thermometer). Min. bid \$40.



185).1901 Holiday Pail. 3.5 x 3.75" (dia.) outstanding, scarce, early tin candy pail featuring a wonderful, highly graphic 1901 Christmas and New Years themed image w/ stamped merchant advertising at bottom for "Ida Krause". Excellent (C. 8.5+/+). Min. bid \$50.



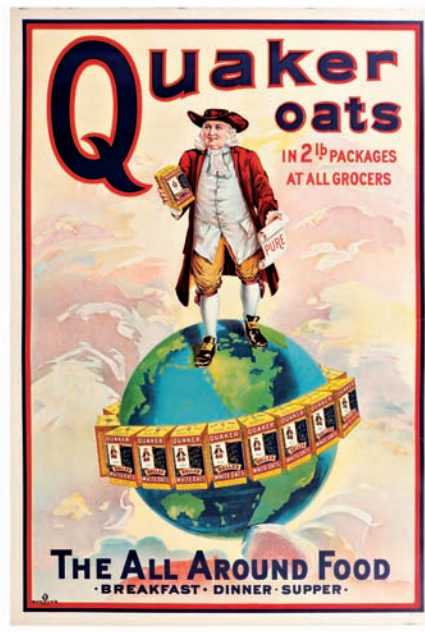
186).Zipp's Cherri-o Tray. 12" (dia.) x 1-3/8" early tin litho serving tray for Zipp's "Cherri-o" brand cherry soda, featuring stunning, beautiful multi-color graphics. Clean, bright and excellent overall (basically a C. 8.5+), w/ exception of small 1/4" scratch in blue background area and a little minor wear on outer rim edge. Min. bid \$50.



187).Flock's Beer Sign. 29-7/8 x 23.75" (22 x 16" visible) large and impressive, early shiny finish cardboard litho sign for Flock's Brewing Co. (Williamsport, PA) w/ pressed embossed design pattern in outer border area. Has nice color and displays very well (as a C. 8+) w/ a little non-offensive toning/slight staining in bottom water and margin area (critical grade C. 8/-). Framed. Min. bid \$300.



188).Mountain Belle Cigars Sign. 19 x 13.25" early tin litho sign for "Mountain Belle" Cigars (Solis Cigar Co., Denver, CO), featuring wonderful color graphics (Meek Co. Litho). A powerful and impressive looking piece that displays very well, w/ strong colors and a great overall look (displays as a C. 8++), w/ some non-offensive minor expected wear and a couple small dents and holes in outer right bottom frame area (missing cardboard on backside). Min. bid \$250.



189).Quaker Oats Poster. 42 x 29.5" large, early paper litho poster for Quaker Oat Co.'s Quaker brand rolled white oats featuring stunning, multi-color graphics (Forbes Litho Co., Boston). Powerful and very impressive looking piece that is clean, bright and exceptionally nice in appearance (displays as a strong C. 8.5++). Note: a close examination will show a little minor, very well done professional restoration. Has been linen backed and is ready for framing. Min. bid \$250.





190).Stove Match Holder. 14 x 3-3/8" (dia.) unusual, figural brass match holder on marble base in shape of early wood stove, w/ very nice detailing. Has hinged lid, w/ a striking surface around base. Excellent. Min. bid \$50.



191).Western Electric Thermometer. 5/8 x 4-5" (dia.) outstanding, small, early glass covered metal dial type thermometer advertising Western Electric Aviation Communication Systems, w/ great image of early pilot using Co.'s communication equipment. Inside label is still clean, bright and exceptionally nice, w/ great overall look (metal case has some scattered oxidized weathering and wear). Min. bid \$40.



192).Rice's Seeds Box. 4-1/8 x 5-7/8 x 4-7/8" closed (8 x 5-7/8 x 4-7/8" as shown lid open) early wooden seed box for Rice's brand flower seeds, featuring attractive color label on inside. Inside label is clean and bright (C. 8.5+/-) w/ exception of typical chipping wear on bottom left inside edge at metal hinge spot; outer wooden box finish is excellent. Min. bid \$40.



193).Borden's Malted Milk Jar. 7 x 4.5 x 4.5" unusual, early, heavy 2-ps. glass soda fountain jar for Borden's malted milk, w/ ground glass lid and thick enameled porcelain label on side. Excellent. Min. bid \$40.



194).Frazer Axle Grease Sign. 13-5/8 x 15-7/8" (10.5 x 12-5/8" visible) great, early cardboard litho sign for Frazer brand axle grease w/ beautiful color graphic image. Clean, bright and very attractive appearance, w/ minor soiling, a few tears and some light staining in bottom border area. Presented in attractive oak frame. Min. bid \$50.



195).Sweet Girl Peanut Butter. 3.75 x 3-3/8" (dia.) scarce, early tin litho 1 lb. peanut butter pail for "Sweet Girl" brand (Geo. Rasmussen Co., various large Midwest cities) featuring wonderful color graphics, w/ children at seashore images around backside. Clean, bright and very attractive (a strong C. 8+/-) w/ only minor wear (has darkening and wear to gold flash finish of lid). Min. bid \$50.



196).Fairway Oats Box. 9.5 x 5-3/8" (dia.) early 3 lb. cardboard oats box for Fairway brand (various Midwest Co.'s and cities) featuring same great image on both sides. Clean, bright and exceptionally nice (C. 8.5+/-). Min. bid \$40.



197).Franklin Coffee. 4 x 5-1/8" extremely rare, early 1 lb. tin litho key wind coffee can for Franklin brand (Franklin Coffee Co., Columbus, OH). Clean, bright and exceptionally nice (C. 8.5+/-). Min. bid \$50.



198).Dad's Root Beer Sign. 12 x 30.75" vintage, heavy embossed tin litho country store sign for Dad's brand root beer. Never used sign is crisp, bright and like new (near mint), w/ exception of tiny scratch mark in upper raised frame area. Min. bid \$50.



199).Squirt Soda Door Push. 8.75 x 3.75" early, heavy embossed tin litho advertising door push for Squirt brand soda pop featuring great image of early bottle. Clean, bright and very attractive, w/ minor dent mark at very bottom silver border edge. Min. bid \$40.





**Rd #2, Cobb Hill Road, Cazenovia, NY 13035 • 24 Hr. Tel: (315) 662-7625 • 24 Hr. Fax: (315) 662-3570 • morf2bid@aol.com • morfauction.com**

Welcome to our 87th auction of quality antique advertising and fine collectibles. Everything we sell is guaranteed authentic and as described. We attempt to grade condition both fairly and conservatively, using a scale of 1-10 on the advertising items (ten being absolutely mint). We do not list reproductions, re-issues, deceptively restored or pieced together type merchandise. Flaws and blemishes are prominently noted and over emphasized. We encourage you to call for a detailed description on any item you have an interest in, but respectfully must request that you do this before the closing night. Dimensions are listed by height, then width, and are only approximate (+ or - a quarter inch).

## Bidding

Bids are accepted only from those parties who have registered with us to bid. (If you were mailed this catalogue by us you are automatically pre-registered.) Your bid is a legal contract to purchase and once entered, cannot be canceled. Placement of a bid indicates acceptance of our terms.

On all "BID" items there is a 15% buyers premium added to each successful bid. You're welcome to bid by mail, email and fax anytime after receiving this catalog. **We will begin accepting phone bids on Wednesday, December 2, 2015. We will be taking calls on Wednesday and Thursday from 10:00 AM until 5:00 PM.** If no one answers when you call, please leave a message on our machine and we will get back to you. **If bidding by mail or fax, please remember to include your telephone number with your bids!** You may call or bid as often as you like. We will tell you the current bid on any item(s) you are interested in. To raise a bid, your advance must be at least \$10 more than the current high bid amount. When an item reaches \$250, bidding increments rise to \$25, at \$1,000, bidding increments advance in \$50 steps, and above \$2,000 in \$100 increments. We suggest not waiting until the last minute to begin your bidding, as its quite possible you won't be able to get through.

## Web Page and Bid Updates

We will begin posting current bid prices (not including the buyers premium) on Wednesday, December 2, 2015 (including an addendum of additional catalogue lot information) on our internet web page. These prices will be updated once each day (each evening sometime after 9:00 PM, EST) and will get updated to include the final hammer prices on Sunday afternoon once the sale is concluded. On the closing night, we will attempt to update current bid prices every hour. Our web page address for this sale is: <http://www.morfauction.com> We suggest that once you get to it, that you bookmark this address for easy re-access. There is also an addendum section on our website where we post additional information and photo's for this sale.

## Reserves and Estimates

All items which receive an opening bid in our sale will be sold to the highest bidder regardless of the price realized (we reserve the right to withdraw items in the event of inaccurate catalog descriptions and to reject any bid we feel is not made in good faith). **We run our auctions with a strict policy of no buy-backs, no auctioneer games and no hidden reserves.** Unlike some of our competitors, we do NOT allow consignors to bid up their own items!

## Mechanical Operations

Early mechanical and electric motors and mechanisms on machines toys, coin-ops, clocks, etc. are quite often temperamental and very unpredictable in nature. Although these mechanisms may be working fine at the time of sale, we make no guarantees or representations regarding their continued operating status once they have left our premises (including during shipping).

## Closing Night

**THE LAST DAY FOR BIDDING WILL BE ON FRIDAY, DECEMBER 4, 2015.** On closing day, we begin taking calls at 5:00 PM. Please mark your calendar now. **On the closing night (ONLY), we will also be taking calls at (315) 662-3318, (315) 662-3429 and (315) 662-3904 after 5:00 PM** (in addition to our regular (315) 662-7625 office number). **Closing Time: This Auction will close at 10:00 PM (EST) on Friday, DECEMBER 4, 2015.** At that time, no more incoming calls will be accepted and all lots with a registered bid of less than \$300, as well as all items without call backs registered on them will be officially closed and final. The items at \$300 and over that have call back protection registered on them will be closed out during our call back period the following afternoon (\*\*see important call back rules below\*\*). We reserve the right to change the official closing in the event of unforeseen family type emergencies or technological failures (utility disruptions, etc.). We also reserve the right to either extend the bidding, to postpone or to cancel this auction in the event of a national emergency or if the Internet or the services of the US Post Office were to get seriously disrupted during our catalogue mailing or bidding period.

## "Up-To" Bids & Call Backs

**CEILING BIDS:** We will be happy to enter competitive "up to" ceiling bids for you on any lots you request. Beginning at your minimum amount, we will advance these bid(s) up to your left ceiling amount, if (and only if) it is topped by another bidder. "Up To" bids will be handled discretely and executed in a completely competitive manner for you. Please note that we don't accept open ended "top all others" ceiling type bids.

**CALL BACKS:** You may request call back protection for any lot(s) that you enter with either a minimum or a protected "up-to" ceiling bid in an amount of at least \$300. This request must be registered with us before the official 10:00 PM closing hour of Friday, December 4, 2015. All callbacks will be placed by us on Saturday, December 5, 2015, beginning at 12:00 noon (EST) and will continue that afternoon until each of the individual lots have been closed out (using past experience, I would expect this to be finished by 6:00 PM, if not earlier). If you register for call-backs, it is your responsibility to be available during this call back time period. We make every effort to honor all our call back requests, but this service is done solely as a convenience to our bidders and will be performed on a best efforts basis only. If you will be traveling or if you will not be available during call back times at your primary number, be sure you provide us with proper alternate or back up numbers for reaching you!

## Payment Terms

Winning bidders will be invoiced by mail immediately after the sale. Those who desire fast shipment can pay by Money Order or Cashiers Check. Payments are due within 10 days of receipt of invoice. We reserve the right to offer the item out to our back bidders and deny future bidding privileges to those who do not pay in a timely manner. In addition to personal checks, we also accept payment on your American Express, Visa, Master Card, Discover and Optima Credit Cards (with no surcharge added). No COD's or Collect calls are ever accepted. Items shipped to anywhere in New York State must include appropriate sales tax or signed resale certificate.

## Shipping

All packing and shipping charges are extra. We do most of our own packing and shipping in house and try to keep these charges as reasonable as possible for you. On especially fragile and larger hard to pack items, we hire the services of professional packers and charge you at our billed cost. We ship mostly through the Post Office and Fedex Ground, (Fedex Overnight available at an extra charge.)

## Subscribing, Prices Realized, Consignments & Upcoming Events

**Future catalogs can be assured by sending \$20 for a full 12 months subscription.** (Prices are published on our website after each sale) An automatic credit card ordering program is available. We currently run between 2-4 auctions a year. In addition to our regular sales, we also occasionally offer sales made up entirely from single owner collections. Please contact us should you have items you would like us to consider for inclusion in our upcoming events. All inquiries are handled in a completely confidential manner. Our services are also available for the private placement marketing of important individual items, marketing plans for large collections as well as for estate planning and settlement purposes. Back copies of many of our previous auction catalogs are still available at \$5 each (w/ prices realized) w/ quantity discounts available if multiple issues are ordered. For further information, check our website.

Photography by Wes Feuz.

© Copyright 2015. All Rights Reserved. No portion of this publication may be copied in any form without the express written permission of Morford's.

## Important Closing Night Information

In addition to our regular **(315) 662-7625** office number,  
on the closing night (only!) you may also call us at:

**(315) 662-3318\***  
(after 5:00 PM)  
**(315) 662-3904\***  
(after 5:00 PM)  
**(315) 662-3429\***  
(after 5:00 PM)



**\*These numbers for  
Closing night only!  
Friday, December 4, 2015**

**Bidding closes at 10:00 PM on Friday closing night.** We will be accepting faxes and e-mails on closing night. Our web page will update current high bid prices approximately every hour on closing night and will also list any important addendum information. **All call backs will be made on Saturday, December 5, 2015 beginning at 12 o'clock Noon!**