



**WM Morford**  
Investment Grade Collectibles at Auction

## Investment Grade Collectibles at Auction

Rd #2, Cobb Hill Road, Cazenovia, NY 13035 • 24 Hr. Tel: (315) 662-7625 • 24 Hr. Fax: (315) 662-3570 • morf2bid@aol.com • morfauction.com

**Bidding closes Friday, June 24, 2016. (See page 32 for Terms & Conditions)**



1). Thomas Ryan's Porcelain Beer Tray. 13 x 16" large, heavy enameled porcelain tray (Baltimore Enamel Co.) advertising Thomas Ryan's Brewing Co. (Syracuse, NY) featuring great folksy image of Co.'s trademark Indian. Clean, bright and exceptionally nice, w/ original surface sheen (C. 8.5+). Min. bid \$100.



2). Gobblers Cigar Tin. 5 x 5" (dia.) early tin litho 50 count cigar can for "Gobblers" brand, featuring great images of Co.'s trademark turkey (both sides). Clean, bright and very attractive (a strong C. 8+), w/ a little light soiling on lid (as found, should improve w/ cleaning). Min. bid \$50.



3). Shaving Soap Box. 3.25 x 12.5 x 8" (closed) early wooden store display box for Woodworth & Son's shaving mug soap, featuring nice images of early shaving mug on top and inside labels. Scarce box is clean and very nice overall. Inside label (7.75 x 12-3/8") is excellent (C. 8.5+); w/ minor light soiling and toning on boxes outside labels. Min. bid \$40.



4). Sweet-Orr Porcelain Sign. 10 x 23.5" early enameled porcelain "Sweet-Orr" overalls sign featuring nice image of Co. logo. Clean bright and attractive (field area is excellent and like new), w/ some scattered chipping at outer edges. Min. bid \$50.



5). Iron Tour Bus Toy. 3-5/8 x 6 x 2" early cast iron bus toy, w/ metal wheels and driver. All original piece has nice paint surface and displays very well, w/ a little non-offensive light scattered wear and some surface oxidizing on wheels (C. 8+/-). Min. bid \$50.



6). Hercules Gunpowder Sign. 13.25 x 9.25" scarce, early tin over cardboard string hung sign for Hercules brand gunpowder. Clean, bright and exceptionally nice (C. 8.5+), w/ very minor rubs in red background area (mentioned for accuracy- barely noticeable and visible only if tipped in light just right). Min. bid \$60.



7). Beck's "Hunting" Tobacco Box. 7 x 5 x 4" very early wooden slide lid 16 oz. tobacco box for "Hunting" brand (Aug. Beck & Co., Chicago) w/ wonderful color graphic labels of Indian hunting buffalos (same image both sides). Display side is clean and very nice (C. 8+), w/ minor toning; backside is pretty decent, w/ a little toning and some paper loss (backside C. 7.5). Min. bid \$50.



8). Whiz Motor Oil Can. 10 x 6-3/8 x 4.25" scarce, very early hand-soldered tin litho 1 gallon motor oil can for "Whizol" brand motor oil featuring powerful image of early car. Display side shows quite nicely (as a C. 8/-) w/ minor soiling and a little light wear; although back and sides have fairly heavy soiling, spotting and general scattered wear (sides and back C. 7-). As found, will probably improve w/ cleaning. Min. bid \$50.



Front



Side



Cast Iron Bank



9).Trop-Artic Oil Co. Cup. 2.75 x 3-7/8" (dia.) scarce, early tin litho, handled cup advertising Manhattan Oil Co.'s "Trop-Artic" brand motor oil. Clean and very attractive piece, w/ a great overall look (C. 8+/) w/ a trace hint of fade to red letters and little non-offensive minor wear. Min. bid \$50.

10).Arcade Model T Car Bank. 3-7/8 x 6.5 x 3" early figural cast iron Model T Ford bank by Arcade, complete w/ driver and original trap on bottom. Very nice overall (C. 8+/) w/ a little typical minor expected wear Min. bid \$60.

Packard Paperweight



11).Packard Autos Paperweight. 3.5 x 3.5 x 1/2" very high quality heavy, early bronze advertising paperweight from Packard Motor Car Co. Detroit, featuring finely detailed embossed motoring image on front, w/ embossed lettering underneath. Excellent, w/ a nice, rich surface patina. Min. bid \$40.

**PETERS**  
Sporting Ammunition



12).Peters Ammo Sign. 8-7/8" (dia.) early tin over cardboard "button" style sign for "Peters" brand sporting ammo, w/ easel and string on backside. Clean and excellent appearance (C. 8.5++) w/ a couple very minor rubs (mentioned for accuracy, not at all detracting and barely noticeable except on very close examination), w/ some wear to cardboard on backside. Min. bid \$50.

Chein Tin Bank



13).Chein Log Cabin Bank. 3 x 3 x 3.25" early figural tin litho cabin shaped bank by J. Chein & Co., featuring great image of black man playing banjo and young black girl dancing in doorway. Clean, bright and excellent (C. 8.5+), complete w/ original key. Min. bid \$50.

Dental Rubber



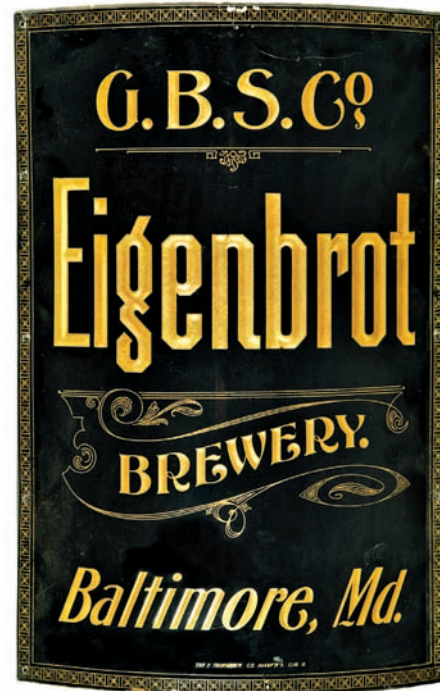
14).Bow Spring Rubber Tin. 3-1/8 x 5-7/8 x 3/4" scarce, very early 2-ps. tin litho product tin for "Bow-Spring" brand dental rubber product (S.S. White Dental Mfg. Co.) w/ outstanding, finely detailed Ginn type graphics (lithographer not marked). Has a nice stable surface and is clean and excellent overall (a strong C. 8+/), w/ only minor wear. Min. bid \$50.

Chewing Gum



15)."On Time" Chewing Gum Tin. 2 x 7.75 x 5.25" scarce, very early (Ca. 1880's?) product tin for "On Time" brand chewing gum, featuring early stenciled and painted clock face designs on top and side. Impressive piece is clean and excellent overall, w/ nice rich surface patina (C. 8+). Min. bid \$40.

Brewery Corner Sign



17).Eigenbrot Brewery Sign. 20-1/8 x 14 x 2-5/8" very early curved tin litho corner sign on its original wood framed mounting bracket for Eigenbrot Brewing Co. (Baltimore, MD). Impressive, very high quality piece by Tuchfarber Litho has deeply incised gold lettering and is clean, bright and exceptionally nice, w/ original surface sheen (a strong C. 8.5+) w/ exception of a few small chips in very outer border area. Min. bid \$50.

Original Artwork



16).Big Chief Ice Cream Signs. 13.5 x 18-7/8" (12 x 17-3/8" visible) lot includes a pair of great looking, early (ca. 1920's/30's?) hand-painted signs on cardboard for "Big Chief" brand ice cream cones. They are clean and bright, w/ a little non-offensive light background wear (example on left C. 8++; piece on right piece has a few light edge tears and wear C. 8/-). Framed. Min. bid \$60 (the pair).





18).Auto Theme Hand Mirror. 9.25 x 5.25" (dia.) early, very high quality hand mirror, w/ great celluloid automotive theme (has beveled glass mirror on reverse), w/ fancy, embossed, decorative Art Nouveau design of mermaids and water lilies featured on both sides of its elaborate brass handle. Excellent. Min. bid \$40.

Bowler Brewing Co. (Amsterdam, NY)



19).Bowler Brewing Co. Tray. 13" (dia.) beautiful, early tin litho pre-pro tray for the Harry F. Bowler Brewing Co. (Amsterdam, NY). Crisp, bright and like new appearance (basically near mint), w/ exception of a few minor wear marks on outer lip of rim and a non-offensive trace dent mark in outer background (these are mentioned for accuracy, not at all serious or detracting). Min. bid \$50.

Porcelan Sign



20).Dragon Cement Sign. 17 x 17" impressive, early, heavy enameled porcelain sign for "Dragon" brand cement (Lawrence Cement Co., Siegfried, PA). Has strong colors, beautiful detailing and nice original sheen. Excellent overall, w/ exception of 1" chip under letter "N" and a little minor scattered edge chipping in outer border area. Min. bid \$50.



21).Jipco Ginger Tin. 3.75 x 2-3/8 x 1.75" extremely rare, early Jipco brand spice tin featuring neat image of Co.'s trademark buffalo. Metal top and base w/ cardboard body. Displays pretty well, w/ age toning, some staining and paper loss on narrow left side edge. Tough to grade, but a (C. 7+) seems about right. Min. bid \$30.



22).Hand Made Pocket Tin. 4 x 3.5 x 1.25" very early tin litho vertical tobacco pocket tin for Globe Tobacco Co.'s (Detroit, MI) "Hand Made" brand. Clean, bright and excellent overall, w/ only very minor wear (C. 8.5/+). Min. bid \$60.



23).Oak Hill Spice. 2.75 x 1.5" (dia.) unusual 1 oz. round variation tin litho spice tin (mace) for "Oak Hill" brand (E.C. Hill Co., Brockton, MA) w/ beautiful graphic images of Co.'s country estate logo (same image both sides). Clean, bright and excellent (C. 8.5/+). Min. bid \$30.

Mini Mug



24).Iroquois Brewing Co. Mini Mug. 2.5 x 1.75" (dia.) early miniature stoneware advertising beer mug from the Iroquois Brewing Co. (Buffalo, NY) featuring nice image of Co.'s Indian logo (handle on back). Clean and exceptionally nice, w/ circular match scratching pattern on base (excellent). Min. bid \$40.



25).Evansville Brewery Sign. 25.5 x 19.5" (22.25 x 16.25" visible) scarce and impressive ca. 1899 paper litho sign from the Evansville Brewing Co. (Evansville, IN) featuring nice image of children holding up beer mugs while bringing in the new century (at top is a listing of cities fire alarm numbers). Has strong colors and displays nicely (basically as a strong C. 8+), although close examination will show a little bit of non-offensive scattered background spotting/staining and a little light wear in outer border area. Nicely framed and matted. Min. bid \$60.



26).Sunday World Witch Theme Sign. 20-3/8 x 14.5" (17-5/8 x 11-5/8" visible) unusual, early paper litho broadside poster advertising Joseph Pulitzer's "New York Sunday World" newspaper, w/ great image of flying witch and black cat on broom (Pulitzer operated this paper from 1883 to 1911). Clean and very attractive (C. 8+), w/ a trace bit of faint, even toning and a few minor light wrinkles (early penciled "Sept 5/95" date notation in upper left margin). Min. bid \$50.



27).Lucas Carriage Paint Sign. 12 x 8" early celluloid over cardboard sign for John Lucas Co.'s carriage paints, featuring beautiful multi-color graphics by Bastian Bros. Clean, bright and very attractive (displays as a C. 8.5+), although there is a crimp spot at bottom right edge (could be easily hidden w/ narrow frame). Min. bid \$50.





28).Countertop Cigar Display Case. 7.75 x 10 x 7" unusual, small countertop display case for "Blewett's \$38.00" brand cigars (Standard Cigar Co., Galena, IL) w/ a cash register like bell that rings when glass lid is lifted. Has wooden base and copper coated trim to its metal body construction and features an impressed brass advertising panel on front. Very nice overall (C. 8). Min. bid \$50.



29).Fire Chief Toy. 5 x 14.5 x 5" high quality, early, heavy pressed steel "Fire Chief" toy car, w/ working wind-up mechanism and battery operated head and tail lights. All original piece is clean, bright and excellent (a strong C. 8++) w/ near mint labels on both sides. Min. bid \$60.



30).Minneopa Peanut Butter. 3-5/8 x 4" (dia.) scarce, early tin litho 1 lb. "Minneopa" brand peanut butter pail. Has nice color and displays pretty well, although there is some non-offensive fine, even background wear (critical grade C. 7.5/+), but displays better than this implies. Min. bid \$40.



31).Life Savers Game. 8.5 x 11-7/8 x 1" early boxed "Life Savers" game by Milton Bradley Co., w/ graphic sinking ship and lifeboat scene on lid and inside playing board. Box lid is very nice overall (C. 8/+), w/ some scattered staining on the side aprons (inside excellent and includes spinner and playing pieces). Min. bid \$40.



32).California Perfume Co. Catalog. 7 x 10-1/8" scarce, early product catalog for California Perfume Co.'s Avon brand products, w/ 76 beautifully illustrated color pages inside featuring Co.'s various jars, bottles, tins and packaged beauty products. Excellent condition. Min. bid \$40.

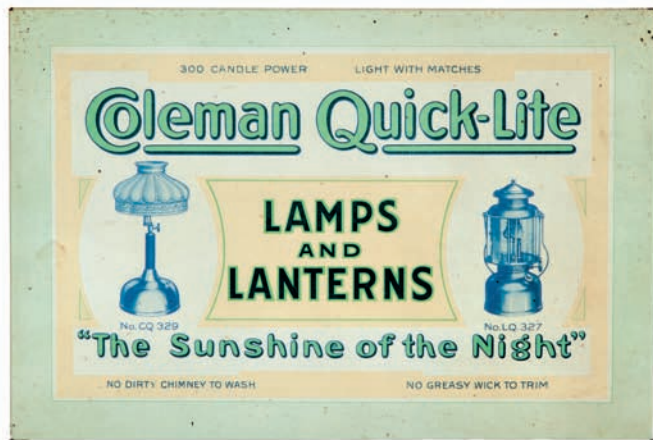


33).Wild West Soap Box. 3-3/8 x 15.75 x 12.5" (lid closed) large, early wooden countertop store display box for Manhattan Soap Co.'s "Wild West" brand soaps, featuring impressive 12 x 15.75" multi-color graphic paper label on inside lid. Label is clean and very impressive in appearance (basically a strong C. 8+) w/ exception of a little non-offensive minor background staining in bottom right grass area (basically blends into the scene) and a little light water staining in outer white border margins and some typical soiling and light wear to front outer label (critical grade C. 8/-). Min. bid \$50.



34).Seal of North Carolina Tobacco Sign. 13-1/8 x 20.75" early paper litho sign for Seal of North Carolina brand tobacco, featuring beautiful multi-color graphic image by illustrator Archie Gunn (© 1894 Knapp Litho). Clean, bright and exceptionally nice (C. 8.5++). Min. bid \$70.





35). Coleman Lamps And Lanterns Sign. 6-3/8 x 9-3/8" scarce, early tin over cardboard Coleman Lantern Co. sign, w/ nice images of Co.'s ca. 1918 lantern and lamp. Clean and quite nice overall (C. 8/+), w/ non-detracting minor soiling spot in outer left background area. Has string hanger and easel on backside. Min. bid \$40.

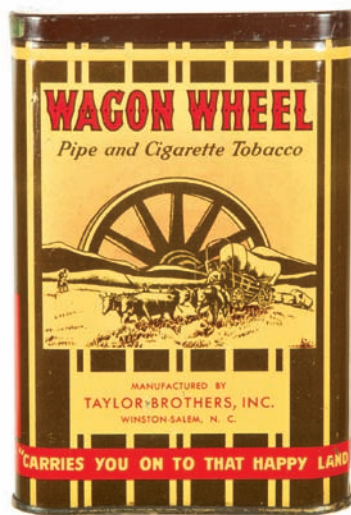
Bull Nose Rings Salesman's Sample Kit



36). Bull Nose Rings Salesman's Samples. 5 x 14.25 x 1" unusual, early salesman's samples selling kit for Seymour Smith Co.'s copper bull nose rings, featuring four different large, high quality copper and brass bull nose rings (sizes range from 2.75 x 3.5" (dia.). These are clean, bright and excellent, as found in their original felt lined canvas carrying case along with two illustrated product info sheets (three have their original tags and keys). Min. bid \$40.



37). Whiting Motor Oil. 5.5 x 4" (dia.) scarce, tin litho crimp seam 1 qt. motor oil can from Whiting Oil Co. Full, vintage can is clean, bright and excellent (C. 8.5+), w/ a dark spot on lid. Min. bid \$40.



38). Wagon Wheel Pocket Tin. 4-3/8 x 3 x 7/8" early tin litho vertical pocket tin for "Wagon Wheel" brand tobacco (Taylor Bros., Winston-Salem, NC). Clean, bright and very attractive appearance (a strong C. 8/+ w/ only minor wear. Min. bid \$50.



39). Penn Convoy Motor Oil. 5.5 x 4" (dia.) tin litho 1 qt. crimp seam motor oil can from Penn Convoy Petroleum Products (Phila, PA) featuring nice battle ship image. Full, sealed can is clean, bright and very attractive (C. 8.5), w/ exception of small dent, a little minor wear on backside and some faint overall oxidizing on lid. Min. bid \$40.



40). Wapello Chief Spice Tin. 4.5 x 2-5/8 x 2-5/8" scarce, larger 8 oz. spice tin (cinnamon) from Hutchison & Co., Iowa featuring beautiful graphic images of Co.'s trademark Indian chief (same image both sides). Clean, bright and excellent overall (front C. 8.5); backside has small 1/4" (dia.) oxidized wear spot in upper gold flash border and minor soiling (back C. 8/+). As found, might improve w/ cleaning. Min. bid \$40.

Walla-Walla Gum Jar



41). Walla-Walla Gum Jar. 12.75 x 4.5 x 4.5" early, high quality clear glass store display jar for Walla-Walla brand chewing gum w/ an attractive, highly detailed embossed image of Co.'s Indian Chief character. Excellent overall (note: a close examination will show there was a professionally polished away small chip removed from top edge of lip and there is a small popped bubble cavity on inside neck area (mentioned for accuracy, neither are serious or detracting). Min. bid \$50.



42). Geo. Zett Brewing Co. Sign. 29 x 28-7/8" (17-5/8 x 18.5" visible) large, early paper litho sign featuring beautiful multi-color factory scenes from the Geo. Zett Brewery (Syracuse, NY). Clean, bright and exceptionally nice appearance (basically displays as a strong C. 8.5+), although close examination will reveal some areas of extremely well done professional restoration. Museum quality framed and matted. Min. bid \$250.



43). Nortex Sanitary Straw Dispenser. 13.75 x 5.75" (dia.) extremely rare, early mechanical sanitary straw dispenser from Nortex Mfg. Co. (Chicago, IL). Has glass cylinder straw holder that sits inside its fancy copper protective body, w/ nice embossed brass nameplate on front (note: lifting nickel plated brass finial lid fans out straws across top when raised). Min. bid \$50.





44).Porcelain No Spitting Flange Sign. 8 x 7" unusual, small, very early enameled porcelain "No Spitting on Sidewalk" 2-sided flange sign. Outstanding sign is excellent (C. 8.5+) w/ exception of small early chip at top edge of angled mounting flange section. Min. bid \$50.

Small Tobacco Pail



45).Small Drummond's Tobacco Bucket. 6.25 x 7" (dia.) outstanding, small, very early wooden tobacco bucket for Drummond's Horseshoe brand tobacco, featuring great image of black jockey. Exceptionally nice, all original piece is clean and excellent (C. 8.5+). Min. bid \$50.



46).Vintage NY Yankees Bobble Head. 6.5 x 3.5 x 2.25" unusual, ca. 1962 white base variation figural heavy composition NY Yankees bobble head doll. All original and excellent overall w/ nice patina to its paint surface w/ a little light paint wear in hair area (still has its original label on bottom base area). Min. bid \$30.



47).Natoma Rose Talc Tin. 5.25 x 3 x 1.5" early tin litho talcum powder can for California Perfume Co.'s "Natoma Rose" brand, w/ nice images of Co.'s trademark Indian princess on both sides (note this Co. was the predecessor to Avon Co.). Clean and very attractive overall (a strong C. 8+), w/ minor wear and a dent mark in bottom area of backside. Min. bid \$40.



48).Dr. Miles Medicine Signs. 15.75 x 7" (each) nice set of early die-cut cardboard advertising easel back stand-up display signs promoting Dr. Miles' Anti Pain Pills and its Laxative Tablets (backside of each covered w/ text advertising). They are clean and excellent overall (C. 8.5+), and come complete w/ their original never used paper dresses and hats (some slight storage staining on backsides). Min. bid \$50 (the pair).



49).Black Gold Motor Oil. 5.5 x 4" (dia.) scarce, early tin litho 1 qt. motor oil can from Native State Oil Co. (Oklahoma City, OK), w/ small airplane and boat images on back. Attractive and displays nicely, w/ a little minor soiling denting and wear on backside (front C. 8+; back C. 8+/-). Min. bid \$40.

Peanut Butter



50).Peter Rabbit Peanut Butter. 3-7/8 x 3" (dia.) scarce variation, early 13 oz. pry-lid peanut butter tin from Kelly Confection Co. (Vancouver, BC, Canada), featuring great graphic images of adorable Peter Rabbit characters all around. Clean, bright and exceptionally nice (C. 8.5+). Min. bid \$70.



51).Heckers Oatmeal Sign. 5-5/8 x 28" early country store wooden painted sign for "Heckers Oatmeal", w/ a nicely worn, all original dry paint surface giving it a nice rich, folksy, primitive country look (C. 8/-). Min. bid \$50.



52).Z-Spar Marine Paint Sign. 15 x 36" ca. 1940's/50's heavy embossed tin litho sign for "Z-Spar" brand marine paints. Appears never used and is clean, bright and very attractive, w/ nice original surface sheen (basically a C. 8.5+) w/ exception of a little non-offensive crimping and wear in raised outer border area and very slight trace bend mark. Min. bid \$40.

Unopened



53).Kim-Bo Cardboard Pocket Tin. 4.25 x 2.25 x 1-1/8" early cardboard litho vertical tobacco pocket tin for Lovell & Buffington Tobacco Co.'s "Kim-Bo" brand, w/ metal top and base. Full can is still sealed w/ intact tax stamp (a strong C. 8.5+). Min. bid \$50.





54). Bixby's Glue Box. 3.5 x 9 x 7" (lid closed) early wooden store display box for Bixby Co.'s "Ready Glue" w/ beautiful multi-color graphic label (6.5 x 8.25") inside. Inner display label is clean, bright and like new (C. 8.5++); w/ typical expected darkening, staining and general wear on boxes front outside label. Min. bid \$40.



55). Haberle's Congress Beer Tray. 12" (dia.) scarce variation early tin litho beer tray advertising Haberle Brewing Co.'s Congress Beer (Syracuse, NY) w/ beautiful multi-color graphics by Shonk Litho. Clean, bright and exceptionally nice (a strong C. 8.5++) w/ very minor background wear. Min. bid \$50.



56). Chase & Sanborn's Coffee Pail. 9.75 x 7.25" (dia.) early tin litho 4 lb. milk pail style coffee can for Chase & Sanborn brand. Clean and very attractive appearance (C. 8+) w/ minor background wear. Min. bid \$50.



57). Mobiloil Oil Bottles Rack. 22 x 18.75 x 10-3/8" (w/ bottles) early, heavy, metal service station display rack for Mobiloil "AF" motor oil, complete w/ its 8 original embossed glass Gargoyle "Filpruf" oil bottles w/ four tin litho panel signs all around. Signs display nicely, but show general weathering and wear from use (critical grade C. 7+); bottles are crisp and like new, complete w/ original caps. Min. bid \$100.



57). Detail



1870s Min. Horse Collar

58). Horse Collar Patent Model. 11.75 x 9.25 x 2" (dia.) original, ca. 1870's figural hand stitched leather patent model for a "J. Meyer" Co. horse collar, w/ original heavy machined brass hardware. Very high quality piece is an exact miniature version of a large actual horse collar, w/ a nice, rich, all original surface patina. Excellent overall, complete w/ its original 1875 U.S. patent office issued tag (has small wear area at outer edge). Min. bid \$70.



59). Tankar Motor Oil Can. 5.5 x 4" (dia.) scarce, early tin litho 1 qt. solder sealed motor oil can from Tankar Gas Co. (Minneapolis, MN) w/ nice railroad tank car logo images on both sides. Has strong color and displays nicely, w/ some light wear (front C. 8+/-; back C. 7.5+/-), w/ some light oxidized wear on lid. Min. bid \$40.



60). Sanford (Ink Co.) Sign. 24 x 32" (17.75 x 25.5" visible) outstanding, very early reverse glass sign for Sanford's Premium "Writing Fluid" featuring stunning, beautifully detailed mother of pearl inlaid lettering. Exceptionally nice and all original, as found still sealed in its original fancy oak frame (has a little non-detracting loss of pearl in foil lettered area). Min. bid \$100.



61). Masga Varnish Tin. 10-3/8 x 6.75 x 4.25" early tin litho 1 gallon tin for Masga brand spar varnish (A.C. Horn Co., Long Island City, NY), featuring powerful and impressive ca. 1920's speedboat and airplanes (same images both sides). Has strong colors and displays nicely, w/ a few varnish drips, and a little light soiling (display side C. 8+); w/ some background scuffing on backside (back C. 7.5). As found, probably will improve w/ cleaning. Min. bid \$40.





62).Taka-Kola Tip Tray. 4.25" (dia.) early tin litho tip tray for "Taka-Kola" brand soda, featuring great image of Co.'s trademark girl and clock face logo. Clean, bright and very attractive (a strong C. 8++), w/ a very impressive look. Min. bid \$40.



63).Bond Bread Porcelain Sign. 14 x 19" very early, thick, heavy porcelain sign for Bond Bread. Has a little minor oxidized edge wear and light chipping at hanging holes, otherwise clean, bright and excellent (C. 8++) w/ nice surface sheen. Min. bid \$40.



64).Ford Pocket Mirror. 2.25" (dia.) scarce, early celluloid advertising pocket mirror from Werner Supply Co. (Mohnton, PA), featuring great image of early Ford auto. Impressive piece is clean and like new (near mint). Min. bid \$40.



65).Gold Medal Grease Can. 9 x 7.25" (dia.) early heavy tin litho 10 lb. axle grease can for "Gold Medal" brand (Kunz Oil Co., Minneapolis, MN) w/ same nice image featured on both sides. Clean, bright and displays nicely (basically a C. 8+/-) w/ some soiling and light wear (note: pry lid has heavy soiling and wear). As found, should improve w/ cleaning. Min. bid \$40.

### Gun Powder Keg



66).Hazard Gunpowder Keg. 13 x 10.25" (dia.) impressive, early wooden gunpowder keg complete w/ original label on bottom side for Hazard Powder Co.'s Sea Shooting Gunpowder. Very attractive overall (C. 8+), w/ a little wood chipping loss at inside bottom edge (note: label is clean and very attractive w/ only minor toning and slight wear). Min. bid \$50.



67).R.O.P. Zip Oil Can. 10.25 x 6 x 6" scarce, early 1 gallon tin litho oil can featuring nice airplane images on three sides w/ an auto and motorcycles listing chart on back. Has nice color and displays pretty well, w/ some light scattered wear and some faint oxidized speckling (C. 7+). English. As found, will probably improve w/ cleaning. Min. bid \$50.



68).President Suspenders Sign. 13-5/8 x 8-5/8" outstanding, early cardboard litho advertising sign for President Suspenders, w/ beautiful color graphic image by illustrator Earl Christy. Clean, bright and excellent overall appearance (displays as a strong C. 8++), although close examination will reveal a little very well done professional restoration (repaired break mark at upper left corner). Min. bid \$50.



69).Hercules Gunpowder Poster. 30-3/8 x 20" large, early advertising poster for Hercules "Infallible" brand smokeless gunpowder, w/ a powerful and impressive look (Bruker & Kessler Co. Litho, Philadelphia, © 1914). Clean, bright and very attractive appearance (displays as a strong C. 8++) complete w/ metal bands at top and bottom (note close examination will show a few non-detracting light scattered snake lines and some tearing at top edge). Min. bid \$100.



70).Curtis-Wright Flying School Sign. 22.5 x 13.25" outstanding, very early cardboard die-cut display sign promoting Curtis-Wright Co.'s flying schools, featuring great color image of early Curtis-Wright Co. bi-wing plane. Powerful and impressive looking piece was found never used and is clean, bright and exceptionally nice (C. 8.5++). Min. bid \$60.





71). Spice Tins Lot. 3.75 x 2.25 x 1.25" (app.) lot includes a nice grouping of three different colorful and highly graphic 2 oz. spice tins, all in excellent condition (avg. C. 8.5+). Includes: Lauderdale (Oppenheim & McEwan Co., Albany, NY) allspice; Banner Boy (Banner Grocers, Chicago, IL) nutmeg; and "Ward" (Weidman Ward Co., Albany, NY) cinnamon. Min. bid \$40 (the lot).



72). Century Of Progress Toy. 2.5 x 6 x 2.25" ca. 1930's early cast iron woody wagon toy delivery car w/ great paint surface and exceptionally nice 1933 Century of Progress Worlds Fair decal on roof. Paint is excellent and all original (a strong C. 8++) w/ a little cracking and wear to its rubber tires. Min. bid \$50.



73). Old Gold Porcelain Sign. 12 x 35.75" early, enameled porcelain sign for Lorillard Co.'s "Old Gold" brand cigarettes. Clean, bright and excellent appearance, w/ nice original sheen (basically a strong C. 8.5++) w/ exception of minor edge wear and chip spot at bottom. Min. bid \$50.



74). Sinalco Pocket Mirror. 1.75 x 2.75" scarce, early celluloid advertising pocket mirror for "Sinalco" brand fruit flavored soda syrups, w/ beautiful color graphics. Clean, bright and excellent (basically near mint in appearance, w/ exception of a minor foxing/wear spot on backside edge-not visible from front side). Min. bid \$30.



75). Polar Tobacco Can. 4 x 4.25" (dia.) scarce, very early tin litho tobacco can for Luhrman & Wilbern Co.'s (Cincinnati, OH) "Polar" brand chewing tobacco (Raible, Smith & Co., Louisville, KY lithographers). Has some darkening and general expected wear, but overall displays pretty well (C. 7.5). As found, might improve some w/ cleaning. Min. bid \$40.



76). Zebra Polishing Paste Box. 3 x 15 x 11.5" (lid closed) early wooden store display box for "Zebra" brand polishing paste, featuring beautiful multi-color graphic label on inside lid. Large inner label (10-5/8 x 14.5") is clean, bright and displays very nicely (as a C. 8+), w/ a little non-offensive light scattered staining; w/ minor scattered paper loss and wear along with typical toning and light wear to boxes outside label. Min. bid \$50.



77). Yankee Boy Pocket Tin. 4-1/8 x 3-3/8 x 1" Scotten, Dillon Co.'s "Yankee Boy" brand vertical tobacco pocket tin w/ excellent detailed image of child baseball slugger (blonde variation). A very clean and nice example w/ strong color and great overall look (a strong C. 8++), w/ only very minor wear. Min. bid \$60.



78). Large 1941 Buick Limited Catalog. 14 x 6-3/8" large, very high quality 20 pg. dealer showroom style catalog for 1941 Buick Limited vehicles, featuring beautifully detailed, full color illustrations of Co.'s various models, interiors, etc. Clean and excellent. Min. bid \$30.





79). Cycle Cigarettes Box. 2-7/8 x 3.25 x 5/8" very early cardboard package for American Tobacco Co.'s "Cycle" brand cigarettes, featuring beautifully detailed color graphics on its slightly shiny finished surface (has original 1883 tax stamp on backside). Clean, bright and very impressive (a strong C. 8+), w/ a little non-offensive faint writing in background area. Min. bid \$30.



80). C.A.A. Square Corner Tobacco. 3-3/8 x 4.5 x 1.75" very early hinged lid tin litho square corner style tobacco can for "C.A.A. Mixture" w/ fine early detailed lithography by Somers Brothers (Pat. 1878). Clean and attractive (C. 7.5+/8-) w/ some wear on outer edges of lid. As found, should improve w/ cleaning. Min. bid \$30.



Cast Iron

81). Greenduck Co. Cast Iron Paperweight. 3 x 3-3/8 x 2.25" neat and unusual, early cast iron advertising paperweight for the Greenduck Co. (Chicago, IL) maker of advertising novelties and fine metal craft items, w/ advertising on both sides. Duck at top has the look of an early primitive shooting gallery target, w/ nice richly worn folk art look. Base on backside has a little light wear, but overall piece is very nice and displays great (front C. 8+/-; back C. 7.5+/-). Min. bid \$40.



82). Hessmobile Touring Car Toy. 3 x 8 x 3" very early tin litho figural JHL Works German Hessmobile open touring car toy. Impressive looking, high quality piece is clean and excellent overall (a strong C. 8+/-), w/ only light wear. All original (its crank mechanism turns but is not catching). Min. bid \$60.



83). Brown Wagons Paperweight. 4-3/8 x 4 x 1-1/8" early, figural cast iron paperweight in shape of large bug, w/ heavy embossed advertising for "Brown Wagons". Has nice detailing and a decent overall look, w/ some weathering and wear to its original mustard paint surface (paint C. 7+). Min. bid \$40.



84). Iron Bus Toy. 2.75 (h) x 9 (l) x 2.25" (w) original, ca. 1930's heavy, figural cast iron Greyhound bus toy w/ rubber wheels. All original, in decent overall condition, w/ some light wear from use to white paint in roof area (C. 8/-). Min. bid \$50.



85). Arctic Ice Cream Mirror. 1.75 x 2.75" scarce, early celluloid advertising pocket mirror for Artic brand ice cream. Clean, bright and excellent. Min. bid \$30.

Scarce Large Size



86). Poker Cut Plug Tobacco. 3-3/4 x 5 x 3-5/8" scarce, tall variation embossed tin litho hinged lid tobacco can for Rock City Tobacco Co.'s "Poker" brand, featuring great image of gentlemen card players. Has a nice appearance and displays very well (lid as a C. 8+), w/ a little non-offensive light general scattered wear (sides C. 8/-). Canadian. Min. bid \$50.

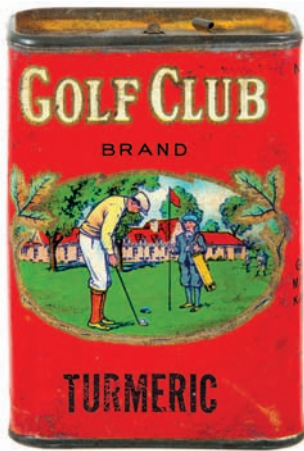


87). Pippins Cigars Tip Tray. 5-3/8 x 5" early tin litho advertising tip tray for Pippins 5¢ Cigars (Traiser Co., Boston), featuring beautiful multi-color graphics. Clean, bright and exceptionally nice (near mint), w/ exception of minor oxidizing spot on non-graphic backside. Min. bid \$40.



88). Ferry Seed Box. 3.75 x 11.5 x 6-7/8" early wooden Ferry Seed Co. store display box w/ beautiful color graphic image on its 6.25 x 11" inside label. Label is clean, bright and excellent overall (C. 8.5+), w/ a little chafing wear to wood at upper right corner edge of box. Min. bid \$40.





89).Golf Club Spice Tin. 3.25 x 2.25 x 1.25" scarce, early 1-1/2 oz. spice can w/ tin top and base and cardboard body for "Golf Club" brand (Green Bros., Kansas City, MO) featuring wonderful golfing scene (same image both sides). Clean, bright and very attractive, w/ only slight soiling and minor wear (C. 8+/-). Min. bid \$40.



90).Imperial Garage Sign. 13.5 x 19.75" early embossed tin litho sign for "Imperial Garage", an auto repair and parts shop in Chilton, WI. Has strong colors and display very nicely (as a strong C. 8+), w/ a little minor wear and a few non-detracting, minor bends in outer corners. Min. bid \$70.



91).Skookum Syrup Tin. 5-7/8 x 4" scarce, tin litho 12 oz. figural maple syrup tin in shape of an Indian teepee, w/ Indian symbols all around (D. B. Scully Syrup Co., Chicago, IL). Clean and very attractive appearance, w/ a couple small break marks to metal "branches" at top of lid; and some light litho loss just to the left of seam line on backside. A neat and impressive piece that displays very nicely (front C. 8+/-; back C. 7.5). Min. bid \$50.



92).Puritan Penn Oil Can. 5-5/8 x 4" (dia.) unusual, tin litho crimp seam 1 qt. motor oil can for Puritan Penn brand (Consumer's Petroleum Co., Detroit, MI). Clean, bright and displays quite nicely (basically as a strong C. 8+/-) w/ exception of a little scuffing in upper left 10 o'clock area (no lid). Min. bid \$40.



93).Gold Chord Spice. 3.5 x 2.25 x 1.25" scarce, early tin litho 1-1/2 oz. spice tin (allspice) for "Gold Chord" brand (Guyer & Calkins Co., Freeport, IL) w/ nice image of harp on front and graphic tropical island scene on back. Clean, bright and excellent (C. 8.5+/-). Min. bid \$30.



94).William Tell Motor Oil Can. 5-5/8 x 4" (dia.) scarce, full, sealed 1 qt. tin litho crimp seam motor oil can for Wm. Tell brand (Canfield Oil Co., Cleveland, OH). Has strong color and displays nicely (basically a C. 8.5+/-) w/ exception of small area of litho loss inside a dent spot at top edge of backside. Min. bid \$40.



95).Full Dress Pocket Tin. 4.25 x 3 x 1" unusual, early vertical tobacco pocket tin for Sears, Roebuck & Co.'s "Full Dress" brand featuring image of man in tuxedo on front, text on back. A clean, very nice example, w/ only minor wear (C. 8+/-). Min. bid \$50.



96).Case Eagle Cast Iron Figure. 7.5 x 3.25 x 1.75" solid cast iron advertising figure for Case agricultural machinery, featuring Co.'s full figured, 2-sided eagle logo. Has a great, rich patina to its terrific all original paint surface, w/ just the right amount of light weathering and wear (primarily on eagles head and beak areas), giving it a great primitive folk art look. Not sure what it is off of (possibly was cut from top of cast iron factory fence post?). A really neat piece that displays great. Nicely presented on quality museum type metal display stand. Min. bid \$50.



97).American Spice Can. 4 x 1.75" (dia.) scarce, early, 2 oz. pry lid spice container (turmeric) for American brand (Steinwender-Stoffregen Coffee Co., St. Louis, MO) featuring wonderful multi-color graphics (cardboard body w/ tin top and base). Clean, bright and exceptionally nice (C. 8.5+/-). Min. bid \$30.



98).Yellow Cab Cigar Tin. 5.5 x 2-5/8" (dia.) scarce, early, small 10 count variation tin litho cigar can for Yellow Cab brand, w/ great image of ca. 1920's taxi cab. Displays nicely (as a strong C. 8+/-), w/ a non-offensive background wear spot in front wheel area and a little staining and darkening on lid (critical grade C. 8+/-). Min. bid \$50.



99).Winchester Flashlights Sign. 10 x 7.5" early, heavy paper litho sign for Winchester brand flashlights and batteries, w/ vivid bright colors and a powerful and impressive overall look. Clean, bright and like new (near mint). Min. bid \$40.



Hood Ornament



100).1927 Buick Radiator Cap. 3-3/8 x 5 x 3" (dia.) impressive, early figural chrome finished heavy white metal radiator cap from a vintage ca. 1927 Buick auto, w/ beautiful detailing and a great stylish art deco look. Finish is excellent and all original, w/ nice rich surface patina (C. 8+). Min. bid \$50.

Currier & Ives Cigar Ads



101).Pall Mall Cigars Darktown Prints. 16 x 18" (11.5 x 15" visible image) lot consists of a matched pair of very early Currier & Ives stone litho small folio sized prints advertising Pall Mall Cigars, featuring comical "Darktown" Yacht Club scenes. They are clean, bright and very attractive (display as a C. 8+) w/ some minor professional conservation and tear repairs. Nicely matted and ready for framing. Min. bid \$60 (the pair).



102).Drako Coffee. 6 x 4" (dia.) early 1 lb. tin litho coffee can for "Drako" brand (Drake & Co. Coffee Roasters, Easton) featuring beautiful color graphic images of Co.'s trademark duck (same image both sides). Clean, bright and excellent (C. 8.5+). Min. bid \$50.



103).Crown Lithia Pocket Mirror. 2.75 x 1.75" outstanding, scarce, early celluloid pocket mirror for Crown Lithia Table Water (North Side Bottling Works, La Crosse, Wisconsin), featuring beautiful graphic image of girl carrying tray. Clean, bright and like new (near mint). Min. bid \$50.



104).A.R.O. (Arrow) Motor Oil. 5-5/8 x 4" (dia.) early tin litho crimp seam 1 qt. motor oil can from American Refiner's Outlet "ARO" brand, featuring nice image of Co.'s trademark arrowhead. Attractive overall appearance, w/ a little minor scattered wear (C. 8). Lid appears replaced. Min. bid \$40.



105).Brown Beauties Cigar Can. 5-3/8 x 3.25 x 3.25" early tin litho 25 count cigar can for "Brown Beauties" brand, featuring beautiful color graphic topless girl images on front and back. Clean, bright and excellent (C. 8.5+). Min. bid \$40.



106).Golden Valley Oats. 9.5 x 5-3/8" (dia.) early cardboard 3 lb. oats box for "Golden Valley" brand, w/ same beautiful, multi-color graphic images on both sides. Clean, bright and exceptionally nice (C. 8.5++) w/ exception of 2" area of paper loss on backside edge of lid. Min. bid \$40.



107).Mazola Oil Door Push. 7 x 3" extremely rare, early tin litho door push for Mazola oil, featuring nice image of Co.'s early gallon sized can. Clean, bright and excellent (a very strong C. 8++), w/ only minor wear. Min. bid \$40.



108).Magic Yeast Door Push. 6 x 3.25" very early, heavy enameled porcelain door push (w/ raised volcano grommet holes) advertising Magic brand yeast, featuring early package. Clean and very attractive (porcelain is near mint, w/ nice sheen) although there is some color softening to reds in package and in bottom yellow border area (mentioned for accuracy, not at all offensive or detracting). Min. bid \$50.



109).Popper's Ace Cigar Tin. 5.75 x 3 x 2-1/8" scarce, early, tin litho 10 count oval cigar can from E. Popper & Co., New York, featuring great image of Co.'s trademark bi-wing airplane. Clean, bright and exceptionally nice (C. 8.5++). Min. bid \$50.





110).1919 Auto Saving Mug. 3-7/8 x 3-7/8" (dia.) early occupational shaving mug featuring wonderful hand-painted image of man driving early auto. Has solid blue wrap on back w/ green stamped K.T. & K makers mark on base. Excellent w/ no chips or cracks (although there is some fine crazing to glaze on inside). Min. bid \$100.



111).Chicago Game. 7.5 x 11 x 1-1/8" early "All Aboard for Chicago" 2-ps. boxed game set by Parker Bros. (Salem, MA) featuring beautifully detailed color graphic glossy finish labels on both lid and inside playing board (game board has railroad tracks connecting various cities to Chicago). Clean, bright and very attractive (C. 8.5++), w/ spinner and wooden playing pieces inside. Min. bid \$50.



112).Invalid Car Paperweight Mirror. 3.5" (dia.) large, early celluloid covered paperweight/palm mirror for C.T. French Co., an Albuquerque, NM invalid motor coach service, w/ great hand-tinted photo image of early auto (note the early 3 digit phone number). Excellent. Min. bid \$40.



113).Julius Bender Reverse Glass Sign. 8 x 16 x 5/16" early, heavy, reverse glass advertising sign for Julius Bender Co., a Chicago maker of store and office fixtures, w/ beautiful fancy "chipped" design gold and silver letters and paper litho bustling factory scene in center. Very nice overall, w/ a little non-detracting minor splotchiness in black background area (piece probably originally was framed). Min. bid \$40.

#### Bakelite Baseball Bats Swizzle Sticks



114).Bakelite Baseball Bat Swizzle Sticks. 6 x 3/8" (dia.) lot includes a great collection of 15 different ca. 1920's/30's figural bakelite baseball bat shaped advertising swizzle sticks from various hotels, restaurants, bars, etc. (includes: Jack Dempsey Lounge, Vanderbilt Hotel; Sagamore Hotel, Lake George; Gramercy Park Hotel; Northwood Inn ("The Gayest Spot"); etc.). All are very good to excellent, w/ nice desirable richly aged patina. Min. bid \$30.



115).Virginians Tobacco Tin. 2.75 x 4-5/8 x 1" scarce, early tin litho horizontal hinged lid tobacco tin for "Virginians" brand sliced plug (Griffith Mayo Co., Richmond, VA). Attractive and displays quite nicely, w/ some light scattered wear (lid rates a strong C. 7.5/+) although displays much better than this implies; w/ some chipping along side edges (sides C. 7/+). As found, should improve w/ cleaning. Min. bid \$50.

#### Winchester Spinner Sign



116).Winchester Sign. 17.25" bracket (14 x 9-7/8" sign) unusual, early 2-sided metal twirling sign for Winchester Co.'s flashlights and batteries w/ original iron mounting bracket (different images on both sides). Clean, bright and excellent overall (C. 8.5/+) w/ exception of a couple small bends in outer angled wind-catching edge area. Min. bid \$60.



117).Gayrock Men's Clothing Sign. 41 x 28.75" (39-3/8 x 27-1/8" visible) outstanding, large and impressive early embossed tin litho sign for Gayrock brand fine men's clothing (from Kohn Bros., Chicago). This stunning, powerful and impressive sign is clean, bright and exceptionally nice (basically a C. 8.5++), w/ exception of a little non-offensive wear in upper blue background area. Framed. Min. bid \$100.



Standard Brewing Co.Original Art



118).Standard Brewing Co. Original Artwork. 22 x 30" large, very high quality, ca. 1950's/60's (Mad Men era) hand-painted illustration artwork on cardboard created for the Standard Brewing Co., of Rochester, NY, featuring a beautifully detailed backyard barbecue scene. Impressive, very well done piece is clean, bright and excellent (C. 8.5/+) w/ minor soiling and original artist markings in outside border area. Min. bid \$40.

Standard Brewing Co.Original Art



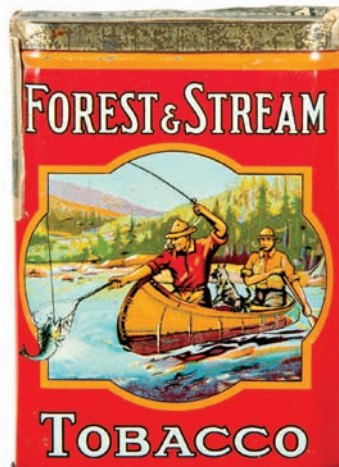
119).Standard Brewing Co. Original Artwork. 23 x 30" large, very high quality original ca. 1950's/60's (Mad Men era) hand-painted illustration artwork on cardboard, created for the Standard Brewing Co., of Rochester, NY, w/ beautifully detailed image of fashionable couple at nightclub, w/ band playing in background. Impressive, very well done piece is clean, bright and excellent (C. 8.5/+) w/ minor soiling in outer margin area. Min. bid \$40.



120).Penn Bee Motor Oil Can. 5.5 x 4" (dia.) scarce, tin litho crimp seam 1 qt. motor oil can from Thermoil Lubricants Corp. (Elk City, OK). Full, vintage can is clean, bright and very attractive (basically a C. 8.5/+) w/ exception of some paint chipping along raised vertical seam on backside. Min. bid \$40.



121).Silvertips Popcorn Tin. 4.5 x 2.5" (dia.) scarce, full, sealed 8 oz. tin litho popcorn tin for "Silvertips" brand (Betty Zane Corn Products, Marion, OH) w/ large Indian chief logo image. Clean, bright and exceptionally nice (C. 8.5++). Min. bid \$40.



122).Forest & Stream Pocket Tin. 4-1/8 x 3 x 7/8" early tin litho "Forest & Stream" brand vertical tobacco pocket tin (scarce variation w/ men fishing from canoe). Clean, bright and excellent (C. 8.5++). Imperial Tobacco Co., Canada. Min. bid \$50.



123).Rex Roofing Match Holder. 5 x 3.5 x 1.25" early tin litho advertising match holder for Rex Flintkote brand roofing product, featuring wonderful multicolor graphic horse/barn image, w/ stamped advertising for a Springfield, VT staples and hardware outfit in basket area. Clean, bright and very attractive appearance (displays as a strong C. 8+) w/ some soiling and light staining in match basket section. As found, should improve w/ cleaning. Min. bid \$40.



124).Totem Cigar Can. 5.5 x 3 x 3" scarce, early tin litho 25 count can for "Totem" brand cigars (Waitt & Bond Co., Boston) featuring beautiful graphic totem pole Indian theme (same images both sides). Clean, bright and very attractive (a strong C. 8++) w/ a few minor background speckles on backside. Min. bid \$40.



125).Greenway's Brewing Co. Sign. 33 x 43" (25.5 x 35.5" visible) large, early paper litho sign for Greenway's Brewing Co. (Syracuse, NY), featuring nice, early factory and malt house scene. A powerful and impressive looking piece that has good color and displays very nicely, w/ some professional restoration in outer border areas. Beautifully framed. Min. bid \$500.



126).Kamargo Coffee. 6 x 4" (dia.) beautiful, colorful and highly graphic tin litho 1 lb. coffee can for Kamargo brand (Peck, Calen & Co., Watertown, NY), w/ same great images on both sides (teepees, trees, etc. in background). Clean, bright and very attractive appearance (displays as a strong C. 8++), w/ a little non-offensive wear at very bottom edge (has some light surface oxidizing to gold flash finish on base. Min. bid \$50.





127).Steamroller Shaving Mug. 3-7/8 x 3.5" (dia.) scarce, early fine china occupational shaving mug featuring an outstanding, beautifully detailed image of an early primitive steamroller machine. Mug and image are excellent, w/ some typical wear on its decorative gold trim. Min. bid \$50.



128).Concord Dairy Sign. 22" (dia.) early, heavy enameled porcelain milk wagon sign from the Concord Dairy (Concord, NH). Clean, bright and excellent, w/ a few minor flea bites on its outer perimeter edge (C. 8.5+). Min. bid \$50.



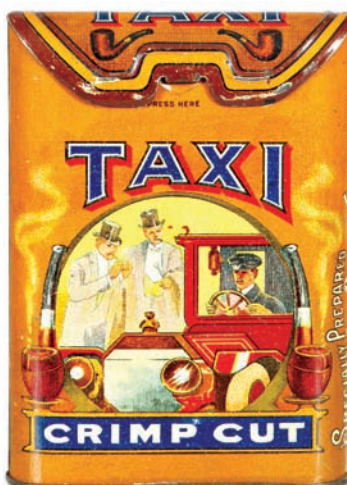
129).Kopper Kettle Klub Cigar Tin. 5.5 x 5.25" (dia.) scarce, early, tin litho 50 count cigar can featuring attractive graphic image of Co.'s trademark kettle on front, back and lid. Clean, bright and exceptionally nice appearance (displays as a strong C. 8.5+) w/ a little minor background wear on lid and backside. Min. bid \$40.



130).Topp's Penguin Motor Oil. 5-5/8 x 4" (dia.) scarce, early tin litho 1 qt. crimp seam motor oil can from Topp Oil & Chemical Co. (Milwaukee, WI). Full, sealed can is clean and excellent (a strong C. 8.5+) w/ minor wear at top edge. Min. bid \$40.



131).Re-Joyce Spice Tin. 3.75 x 2.25 x 1.25" scarce, early tin litho 2 oz. spice tin (ginger) for "Re-Joyce" brand (Joyce-Laughlin Co., Peoria, IL), w/ same great image on both sides. Crisp, bright and like new appearance, w/ a little faint, non-detracting wear on backside (front near mint; back C. 8.5+). Min. bid \$40.



132).Taxi Pocket Tin. 4-1/8 x 3 x 1" scarce, early tin litho vertical tobacco pocket tin for "Taxi" brand, featuring wonderfully detailed color graphic images of Co.'s trademark early taxicab scene (same images on both sides). Clean, bright and exceptionally nice (C. 8.5+), w/ only minor wear. Canadian. Min. bid \$250.



133).Country Club Cigar Tin. 5.75 x 4" (dia.) early tin litho 25 count cigar tin for "Country Club" brand, featuring beautiful Victorian sporting images on grounds of country club. Clean, bright and very attractive (tin rates a strong C. 8+), although there is some fairly heavy wear on lid (lid C. 7-). Min. bid \$40.

Milwaukee Brewing Co.



134).Milwaukee Brewing Co. Sign. 25.5 x 22" (17-5/8 x 14.25" visible) early paper litho sign for the Milwaukee Brewing Co. featuring great image of child holding giant, early style beer bottle. Clean, bright and excellent in appearance (a strong C. 8.5+). Nicely framed and matted (we have examined piece out of frame and it is complete and excellent). Min. bid \$60.

Schoenhofen Brewing Co.



135).Schoenhofen Brewing Co. Sign. 21 x 15.75" (19-1/8 x 13.75" visible) great early paper litho sign for Edelweiss Beer (P. Schoenhofen Brewing Co., Chicago, IL), featuring beautiful multi-color lithography (Copyright 1898 Wolf & Co., Phil'a.). Clean, bright and exceptionally nice (C. 8.5+). Framed. Min. bid \$60.



136).Gray & Stephens Poster. 24 x 19" outstanding, large, very early paper litho poster for Gray & Stephen's play "Roughing It", featuring stunning, multi color graphics and great advertising in center for "Climax Plug" brand tobacco. Clean and very attractive (a strong C. 8+!) w/ minor even toning and a few remnants remaining on upper surface from added info paste on piece for giving local play house location (could be easily removed if desired by paper conservator). Min. bid \$60.





137).Pay Car Tobacco Sign. 17.75 x 13-7/8" early embossed tin litho sign for "Pay Car" brand tobacco, featuring great image of Co.'s early tobacco pack. Powerful and impressive looking sign is clean, bright and very attractive (displays as a strong C. 8+) w/ exception of a few non-detracting minor dents and small background nail hole near top border edge. Min. bid \$40.



138).Hills Bros Coffee Display. 7 x 12.25" unusual, early die-cut cardboard stand-up display piece advertising Hills Bros Coffee, featuring great Western cowboy theme (© 1928). Clean and excellent (C. 8.5) and includes an early 2 lb. can (can C. 7.5+/8-). Min. bid \$50.



139).Air-O-Lite Gas Lamps Sign. 13.75 x 10" early embossed tin litho sign for "Air-O-Lite" brand gas lamps, w/ nicely detailed image of Co.'s early match lit lantern. Attractive and displays decently, w/ some non-offensive denting and general light scattered wear (C. 7.5+/). Min. bid \$40.



140).Modoc Tobacco Round Bin. 15.5 x 14.25" (dia.) large, very early, wood and heavy cardboard round store bin for "Modoc" brand tobacco (D.H. McAlpin & Co., New York) featuring incredible early stone litho label on front side (by Hatch Litho). A powerful and impressive looking piece that displays quite nicely, although there is some expected toning, light staining and little non-offensive light general scattered wear on front label (label C. 7.5+/8- overall), w/ a large currency type 1875 tax stamp on backside. Min. bid \$70.



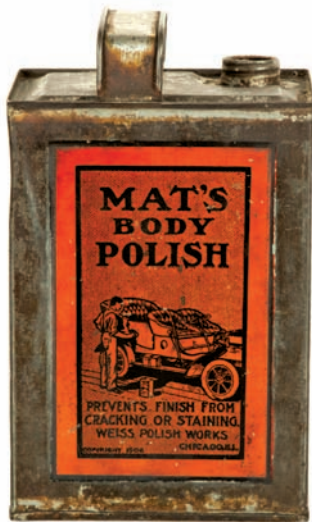
141).Bartel's Porcelain Beer Sign. 13-5/8 x 15" outstanding, early curved porcelain pre-prohibition era sign by Baltimore Co., for Bartel's Brewing Co.'s (Syracuse, NY) "Crown" brand beer. Sign is crisp, bright and beautiful in condition w/ strong color and maintains its rich original surface sheen. Basically near mint and like new, w/ exception of small chip on outside edge at 9 o'clock. Min. bid \$200.



142).Indian Motorcycle Oil Can. 11 x 8 x 3-1/8" scarce, early tin litho 1 gallon motorcycle oil can made by Valvoline Oil Co. for the Indian Motorcycle Co. (Springfield, MA) w/ great images of Co.'s early style logo featured on both sides. Attractive and displays quite nicely, w/ some scattered light rubs and wear and a little bit of even fading to reds on backside (front C. 8-; back C. 7.5+). Min. bid \$70.



143).Froskil Anti-Freeze Can. 6.75 x 4" (dia.) unusual, early tin litho 1 imperial qt. sized solder seam anti-freeze can for "Froskil" brand (Montreal Products Co., Montreal and Toronto, Canada), w/ nice image of service station. Clean, bright and excellent (C. 8.5+/). Min. bid \$30.



144).Auto Polish Tin. 8.25 x 5 x 3.5" very early, hand-soldered tin litho product can for Mat's (automotive) Body Polish (Weiss Polish Works, Chicago, IL), featuring wonderful image of man polishing early car. Clean, bright and very attractive appearance, w/ some non-offensive light wear; backside has some light scuffs and scratches (display side C. 8+/; back C. 7.5). No cap. Min. bid \$30.



145).Honor Brand Oats. 9-5/8 x 5-3/8" (dia.) early 3 lb. 7 oz. cardboard oats box for Honor brand, w/ beautiful multi-color graphic image of George Washington (same images both sides). Clean, bright and exceptionally nice (C. 8.5+/) w/ only very minor wear. Min. bid \$40.

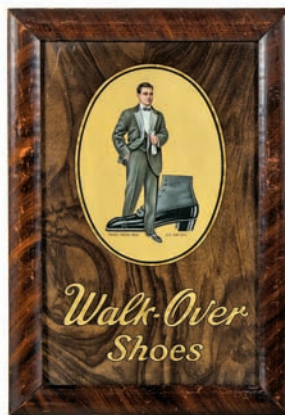


146).Pinocchio Wind-Up Toy. 8-5/8 x 2.75 x 2-3/8" early, figural tin litho wind-up toy by Marx, featuring Disney's Pinocchio character (1939 Walt Disney Enterprises). A super clean bright and very nice example (a strong C. 8+), w/ exception of light rubs in his cheek areas (has strong working mechanism). Min. bid \$50.





147).Evinrude Tip Tray. 4" (dia.) early tin litho tip tray for Evinrude Motor Co., featuring wonderful multi-color graphic image of girl in motor boat, w/ neat text advertising on backside. Clean, bright and exceptionally nice (a strong C. 8.5+) w/ minor wear at top edge of rim. Min. bid \$50.



148).Walk-Over Shoes Signs. 12.75 x 8-5/8" (each) lot includes a nice matched pair of small, early tin litho signs for "Walk-Over" brand shoes, as found still in their original wooden frames. Signs have strong color and display quite nicely, although there are a few light scattered scuffs and wear marks in dark outer background area and on frames (man C. 8/+; woman C. 8/-). Min. bid \$50 (the pair).

Celluloid Bank



149).Buffalo Sled Co. Bank. 1/2 x 2.5" (dia.) scarce, early celluloid over metal two-sided advertising bank for Buffalo Sled Co.'s "Auto-Wheel" brand toy wagons (different wagons each side). Clean and very attractive, w/ typical minor surface bumps and slight wear from use (mentioned for accuracy, so minor it barely merits mention). Min. bid \$40.



150).Fra-Bac Mixture Pocket Tin. 4.25 x 3-3/8 x 1" scarce, early tin litho vertical tobacco pocket tin for "Fra-Bac Mixture" (Perkins Co., Boston). Crisp, bright and exceptionally nice example, w/ beautiful original sheen (C. 8.5++). Min. bid \$70.



151).See-Moon & Co. Spice Tin. 3.25 x 2-3/8 x 1-3/8" early tin litho spice tin (allspice) for See-Moon & Co.'s (Chicago, IL) "Bonded" brand, featuring great image of Co.'s smiling moon logo on front, w/ fancy financial instrument image on backside. Clean, bright and excellent (C. 8.5+). Min. bid \$30.



152).Whiz Rapid Repair Enamel. 4 x 2.75 x 1.75" scarce, very early hand-soldered tin litho product can for Whiz brand Rapid Repair Enamel (auto touch-up paint) featuring a beautiful graphic car image. Full can is clean and very nice (C. 8++). Min. bid \$40.



153).Rose Bud Spice Tin. 3 x 2.25 x 1.25" scarce, early tin litho spice tin for "Rose Bud" brand (Bush Grocery Co., Syracuse & Binghamton, NY) w/ same nice image on both sides. Clean, bright and very attractive, w/ a little minor dark speckling in gold flash background area (a strong C. 8++). Min. bid \$30.



154).Dr. Pepper Sign. 33.5 x 16-5/8 x 3/4" (framed); 25 x 15-1/8" (actual sign) vintage cardboard litho easel-back sign for Dr. Pepper soda, featuring attractive barbecue scene. Clean and excellent, complete in its attractive original marked wooden frame. Min. bid \$40.



155).Dr. Pepper Sign. 33.5 x 16-5/8 x 3/4" (framed); 25 x 15-1/8" (actual sign) vintage cardboard litho easel-back sign for Dr. Pepper soda, featuring attractive sports stadium scene. Clean and excellent, complete in its attractive original marked wooden frame. Min. bid \$40.



156).Red Indian Tobacco Sign. 28 x 22" stunning, early, heavy paper litho sign for Red Indian brand tobacco featuring outstanding, highly graphic image of Co.'s trademark Indian. Clean, bright and like new appearance, w/ exception of minor 1/2" tear at very outer right edge and typically found minor mfg. imperfection in yellow background area (C. 8.5++). Min. bid \$60.





157). Quick Meal Stoves Match Holder. 4-7/8 x 3.25 x 1-3/8" scarce, early tin litho match holder advertising Quick Meal ranges, w/ great image of Co.'s just hatched chick logo on front and on both side edges of basket. Clean, bright and very attractive (C. 8+). Min. bid \$50.



158). De Soto Coffee. 5-5/8 x 4.25" (dia.) scarce, early 1 lb. paper label (over tin) coffee can for "De Soto" brand (AJ Kasper Co., Chicago, IL) w/ nice image of explorer De Soto on front and Indian images on backside. Clean, bright and very nice appearance (basically displays as a strong C. 8+), w/ exception of a little wear in outer side background area and a 3/4 x 1-1/8" area of paper loss at top edge. Min. bid \$40.



159). Quaker Oats Pocket Mirror. 2-1/8" (dia.) scarce, early celluloid advertising pocket mirror for Quaker Oats (by Parisian Novelty Co.) featuring beautiful graphic image of Co.'s early style oats box. Clean, bright and excellent overall appearance (note: close examination shows a few minor bumps on surface and trace amount of minor foxing speckles at 10 o'clock on red very outside edge- very minor and not at all detracting, w/ some darkening spots in mirror glass). Min. bid \$40.



Cast Iron

160). Fire Hydrant Paperweights. appx. 3-3/8 x 2 x 2-1/8" (each) lot includes two neat, small, early figural cast iron fire hydrant advertising paperweights w/ embossed advertising at bottom of each. Includes: "E & F King & Co." and "Prescott". Both have nice, all original paint surfaces, w/ attractive surface patina (C. 8+). Min. bid \$40 (the lot).



161). McLoughlin Picture Blocks. 8-1/8 x 8-1/8 x 2-7/8" early boxed cardboard picture blocks set by McLoughlin Bros., featuring beautiful multi-color graphics all around (blocks each measure app. 2.5" square). Blocks are clean, bright and exceptionally nice (near mint), w/ a little soiling and some expected light wear to storage box. Min. bid \$40.



162). Primrose Ice Cream Sign. early, two piece string hung ceiling hanger sign for "Primrose" brand ice cream. Bottom section w/ girl (26.5 x 16") is clean, bright and beautiful overall, w/ a nice semi-glossy surface finish (basically C. 8.5+, w/ exception of bend mark at bottom heel section of her shoe; top section (8 x 16") is also quite nice, w/ a little minor wear (C. 8). Min. bid \$70.



163). Gundka Racer Toy. 3.5 x 5.5 x 2.75" very early, figural tin litho orange body, spoke wheel German made wind-up race car toy featuring woman driver in racing bonnet. Very nice overall (C. 8+) w/ a couple rubs at back end (has nicely working clockwork mechanism). Min. bid \$70.



164). Pedro Tobacco Box. 4.25 x 7.75 x 5.25" early tin litho lunch box style tobacco can, w/ playing card themed images on front, back and lid. Clean, bright and exceptionally nice appearance (displays a strong C. 8+), w/ a little minor background wear. Min. bid \$40.

Moyo's Tobacco Sign

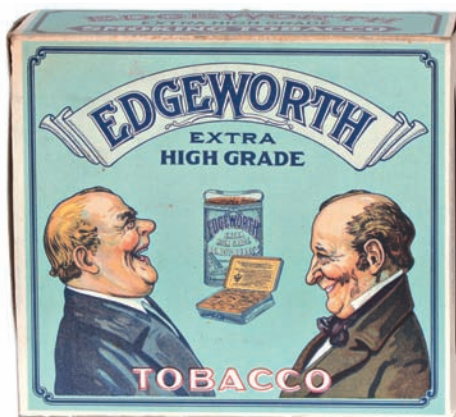


165). Mayo's Tobacco Sign. 22.5 x 13.5" outstanding, very early stone litho paper advertising sign for Mayo's brand tobacco, w/ rich, vibrant colors and a great overall look (displays as a strong C. 8.5+), although close examination will show some very well done professional restoration (linen backed and ready for framing). Min. bid \$50.





166).Whiz Saddle Soap. 1-7/8 x 4.25" (dia.) unusual, early tin litho product tin for Whiz brand (automotive products Co.) saddle soap for car seats. Clean, bright and very attractive (C. 8+) w/ a little minor soiling and wear. As found, should improve w/ cleaning. Min. bid \$40.



167).Edgeworth Tobacco Display Box. (10 x 7-7/8 x 4.5" as shown; folds into a 5-7/8 x 9.75 x 3.5" box) unusual, colorful and highly graphic early cardboard store display box for Edgeworth brand tobacco (same image both sides). Never used box is crisp, bright and basically like new (C. 8.5++) w/ a little minor foxing along edge of lid. Min. bid \$40.



168).Motor List Co. Paperweight Mirror. 4" (dia.) scarce, large, early celluloid paperweight/palm mirror advertising the Motor List Co. of America (Des Moines, IA) featuring great image of early auto wheel. Clean, bright and like new (near mint). Min. bid \$40.



169).Campus Mixture Tobacco Tin. 3.25 x 4.5 x 2-1/8" scarce, very early tin litho square corner tobacco tin for "Campus Mixture" brand (Geo. H. Greenwood, Boston, MA). Piece is clean and displays quite nicely (basically as a C. 8), although there are a few early paint drool drip lines on tins side edges. Min. bid \$50.



170).Miniature Sir Walter Raleigh Tin. 2.25 x 3" (dia.) unusual, small sample sized tin litho tobacco tin for Sir Walter Raleigh brand. Clean, bright and excellent overall (C. 8.5). Min. bid \$30.



171).Bob White Tobacco. 3 x 4 x 2.5" very early hinged lid tin for Marburg Co.'s "Bob White" brand tobacco, w/ beautifully detailed lithography by Ginna. Clean and very attractive example, w/ only minor wear (C. 8++). Min. bid \$40.



172).Keen Kutter Tools Sign. 9.75 x 27.75" early embossed tin litho sign for Keen Kutter brand tools. Never used sign is clean, bright and like new in appearance, w/ slight soiling and very minor storage wear (a strong C. 8.5/+). Min. bid \$50.



173).Circus Game. 9 x 15 x 1" early 2-ps. boxed game set by Parker Bros., featuring wonderful graphic circus themed image on lid, w/ playing board on inside (includes spinner and wooden playing pieces). Clean and excellent overall (a strong C. 8++). Min. bid \$40.



174).Bixby's Shu Wite Die-Cut. 30.25 x 8-5/8" early die-cut cardboard litho sign for Bixby brand "Shu Wite" shoe cleaner, featuring image of well dressed gal w/ an actual cloth dress. Impressive piece is clean, bright and very nice overall (basically a strong C. 8+) w/ the exception of a couple holes in top area of her hat. Min. bid \$50.



Store Bin



175) Store Size Corona Coffee Tin. 11.75 x 10" (dia.) large and impressive, early 15 lb. store size display can for "Corona" brand coffee (Commercial Importing Co., Seattle, WA) featuring attractive graphic image. Clean, bright and excellent overall (a strong C. 8+), w/ a couple non-detracting background wear spots. Min. bid \$30.



176) Dr. Jayne's Glass Medicine Sign. 11.5 x 13-3/8" (9.75 x 11-5/8" visible) outstanding, very early reverse glass sign in its original frame for Dr. Jayne's blood purifier quack medicine (claimed to take care of cancers, epilepsy, dropsy, skin and liver diseases, etc.). Clean, bright and like new (near mint appearance), w/ a little extremely well done professional conservation/touch up restoration in the small, black background area surrounding child. Min. bid \$100.



177) Ocean Liner Calendar. 15 x 12.25" (14-3/8 x 11.5" visible) early paper litho (cardboard?) advertising calendar for the Scandinavian-American luxury cruise ship line, featuring beautiful multi-color graphics. Clean, bright and very attractive appearance w/ full 1908 calendar pad (displays as a strong C. 8.5), although close examination will show a couple non-offensive rub marks and some light touch-ups to the faint, slight crease marks at outer corners. Framed. Min. bid \$40.



178) Drawing Room Tobacco Tin. 2-5/8 x 3 x 2-25" small, very early tin litho hinged lid can for P. Lorillard Co.'s (Jersey City, NJ) "Drawing Room" brand tobacco, w/ fine Ginn type lithography (not marked). Clean, bright and displays nicely (C. 8+/-), w/ a little light general wear (critical grade C. 7.5+). As found, should improve w/ cleaning. Min. bid \$30.



179) Carmel Candies Die-Cut Sign. 5.75 x 10.75" early, embossed, shiny finished cardboard die-cut advertising sign for "Whipped Cream Caramels" candy, featuring beautiful multi-color graphics. Crisp, bright and like new (near mint appearance). Easel on backside is no longer present. Min. bid \$40.



180) White Bear Coffee. 4 x 5-1/8" (dia.) scarce, early tin litho 1 lb. key wind coffee can for "White Bear" brand (Durand-McNeil-Horner Co., Chicago, IL) featuring great image of Co.'s trademark polar bear. Clean, bright and exceptionally nice (C. 8.5+). Min. bid \$40.



181) 1876 Centennial Expo Lithograph. 16 x 11" beautiful paper litho patriotic image celebrating the 1876 American Centennial, w/ stunning multi-color graphics (stone lithography by Donaldson Brothers, Five Points, NY). Clean, bright and exceptionally nice condition (C. 8.5+/-), w/ a trace hint of even toning (note: has a little non-offensive minor staining and a small spot of paper loss in top white margin/ border section). Min. bid \$50.



182) 1905 Deering Harvester Calendar. 20 x 13-3/8" attractive 1905 calendar advertising Deering harvesting machines, w/ December tear sheet and original metal strip at top. Clean, bright and excellent overall (a strong C. 8+), w/ minor snake lines at outer edges (from being rolled). Min. bid \$40.



183) UMC Ammo Poster. 24-3/8 x 17" early paper sign by Illustrator Oliver Kemp advertising U.M.C. brand sporting cartridges for big game shooting, w/ image of guide using moose call in center surrounded by cartridge and bullet images. Clean, bright and very attractive, complete w/ original metal bands (basically a strong C. 8.5+) w/ exception of a little non-detracting minor edge wear. Min. bid \$100.





184). Little Teazer Tobacco. 5-1/8 x 8 x 1-7/8" scarce, early 2-ps. tin litho 1 lb. can for "Little Teazer Twist" brand tobacco (Roth Tobacco Co., Cape Girardeau, MO) w/ great image of woman teasing man w/ tobacco pack (Columbia Can Co., St. Louis, MO). Clean, bright and very attractive in appearance (basically a strong C. 8/+), w/ exception of a little light wear at outer corner edges and some scuffing marks on base. Min. bid \$50.



185). Yellow Cab Mirror. 2 x 2.75" extremely rare, early celluloid advertising pocket mirror for Yellow Cab taxi service of Sioux City, IA, w/ great hand-tinted photo image of early taxicab (note 3 and 4 digit phone numbers). Celluloid is excellent, w/ some darkening to mirror glass. Min. bid \$50.



186). Eye-Gene Door Push. 5 x 4" outstanding, small, early enameled porcelain door push advertising "Eye-Gene" eye medicine. Clean and exceptionally nice (near mint). Min. bid \$50.



187). "My Coca" Coca-Cola Knock-Off Sign. 9 x 9" scarce, early embossed tin litho sign for "My Cola" brand cola, a knock off product which claimed to use the original Coca-Cola recipe. This historical and interesting piece has strong colors and displays pretty well, w/ some general aging and scattered wear (C. 7+). Min. bid \$40.



188). Ojibwa Tobacco Pail. 6.25 x 5.5" (dia.) early tin litho tobacco pail for "Ojibwa" brand (Scotten-Dillon Co., (Detroit, MI)) featuring same nice American Indian image on both sides. Clean, bright and exceptionally nice (C. 8.5++). Min. bid \$50.



189). Rupprecht Brewing Door Push. 10.75 x 3.25" beautiful, early tin litho door push for Jacob Rupprecht Brewing Co., featuring beautifully detailed image of early style beer (ale) can. Crisp, bright and like new (near mint). Nicely presented in shadow box frame. Min. bid \$40.



190). Aqua Crystal Glasses Sign. 5.25 x 15.25" very early, small reverse glass sign advertising Aqua Crystal brand eye glasses, as found in its original oak frame. Impressive piece is clean and like new in appearance, with minor bubble spot in paint at bottom edge. Min. bid \$50.



191). Gun Sights Display. 5.75 x 12-3/8 x 4.5" scarce, early tin litho countertop advertising display on wooden base for "Lyman" brand gun sights, w/ nice big game image on front (inside holds products, w/ a compartment on side edge for holding product brochures). Clean and excellent (C. 8.5++). Min. bid \$100.



192). Allens Syrup Bottle. 11.25 x 3-3/8" (dia.) extremely rare, early label under glass soda fountain syrup bottle for Allens "Red Tame Cherry" soda syrup, w/ great large size glass label. Excellent condition, complete w/ original cap. Min. bid \$100.





193).Dopey Wind-Up Toy. 8 x 3.5 x 2.5" early, figural tin litho wind-up toy by Marx, featuring Disney's Snow White Character "Dopey" (1938 Disney Enterprises). Clean and very nice example (C. 8+), w/ strong working mechanism. Min. bid \$40.

Cracker Jack Co.



194).Angelus Marshmallows Signs. lot includes a pair of early, never used cardboard die-cut signs for Cracker Jack Co.'s "Angelus" brand marshmallows. Boy (11 x 8"); Girl (10.75 x 5.75"). Both are clean, bright and like new, w/ only minor storage wear and tiny pinch mark at bottom right corner base edge of girl example. Min. bid \$50 (the pair).



195).Purity Oil Can. 6-5/8 x 4" (dia.) early tin litho 1 qt. (Imperial) solder seam Canadian oil can for "Purity" brand (Gas & Oil Products Limited, Calgary, Alberta). Full sealed can is clean, bright and excellent (C. 8.5+++) w/ exception of some oxidizing on top lid. Min. bid \$40.



196).Sailor Boy Coconut Store Tin. 8.5 x 8-1/8 x 6-7/8" scarce, large, very early tin litho store sized tin for Perkins Ince Co.'s (Toronto, Canada) "Sailor Boy" coconut, w/ same beautiful graphics on both sides. Has strong colors and displays quite nicely (displays on shelf as a strong C. 8/+), although there is scuffing marks and background wear in background and border areas (critical grade C. 7.5/+). Back side pictured. Min. bid \$50.

Bartels Brewing



197).Bartels Brewing Co. Tray. 1.5 x 12-1/8" (dia.) early tin litho tray for Bartels Brewing Co. (Syracuse, NY) featuring beautiful multicolor graphics by Shonk Litho. Clean, bright and exceptionally nice appearance (displays as a C. 8.5+), w/ some non-detracting faint surface crazing evident on very close examination and a few very well done professionally touched up rim nicks in top black outer border area. Min. bid \$50.

Cigar Cutter



198).Crane Valves Cigar Cutter. 4 (h) x 4.5 x 4.5" early countertop advertising cigar cutter for Crane Valve and Fittings Co. High quality piece has embossed cast iron base and a plumbing pipe design w/ a figural brass advertising valve faucet w/ mechanical cigar cutter mechanism. Excellent and all original, w/ nice surface patina. Min. bid \$50.

Humphreys Veterinary



199).Humphreys Veterinary Medicine Bottle Design Artwork. 14 x 16.75" (8-5/8 x 11-3/8" visible) original 1928 production artwork from Whittall Tatum glass company, featuring a proposed full sized design image for an embossed Humphreys Homeopathic Veterinary Medicines 1-1/2 oz. sized bottle. A neat and historically interesting piece, that is nicely framed and matted (would be a great addition for any Veterinary; Patent Medicine and/ or bottle collection). Min. bid \$40.

Ford Bank



200).Ford Book Shaped Bank And Catalog. 5 x 3-3/8 x 1" unusual, very early book shaped metal bank advertising Ford and Lincoln autos and Fordson brand tractors. Has an embossed pressed leather covering, giving it appearance of small book, w/ paper informational pages encouraging daily savings for buying Ford products in front and nicely illustrated descriptive catalog promotes the various Ford vehicle models in back, w/ nice images and pricing info chart. Very nice overall (C. 8++). Min. bid \$30.

Detail







201. Hires Root Beer Sign. 9.25" (dia.) scarce variation early celluloid (over cardboard) "button" style sign for Hires Root Beer, w/ unfolded easel cut-out on backside. Sign was found never used and is clean, bright and excellent overall (near mint appearance), although there is a non-detracting hint of faint, very minor haziness on surface if tipped in light just right (mentioned for accuracy, barely noticeable and does not detract from great look of piece). Min. bid \$40.



202. Box Of Lady Esther Talc Tins. 6 x 9 x 4" lot includes a full store box of twelve early, full, unused tin litho "Lady Esther" brand talcum powder tins, each w/ great art deco design featuring Lady Esther and her attendants (same images both sides). Box has some tattering and is missing one of top flaps, tins are crispy and like new. Min. bid \$50 (the lot).



203. Golden Eagle Cigars Pocket Mirror. 2-1/8" (dia.) scarce, early celluloid pocket mirror advertising "Golden Eagle" brand cigars, with beautiful graphic image of product box (Whitehead & Hoag). Excellent. Min. bid \$40.



### Wine Cocoa Coupon and Ephemera



204. Pemberton's Wine Coca Co. Coupon and Ephemera. 1.75 x 3.25" important and extremely rare free drink coupon printed on heavy card stock, w/ advertising on both sides for Pemberton's "French Wine Coca". Lot also includes 1896 play booklet w/ product ad on back and an 1885 Atlanta newspaper ad clipping for same. This product, created by druggist John Pemberton (who later went on to create Coca-Cola) was a combination of cocaine, alcohol and French wine and was marketed in the Atlanta area from the 1880's through the 1890's for medicinal purposes as a cure for nerve troubles, mental exhaustion and as an invigorator of sexual organs. Excellent overall (C. 8.5), w/ just the right amount of slight toning and wear. Min. bid \$50.



205. National Brewing Co. Tip Tray. 4.5" (dia.) early pre-prohibition tin lithographed advertising tip tray for National Brewing Co. (San Francisco, CA) featuring great image of cowboy on horse holding up bottle. Clean, bright and excellent overall (C 8.5). Min. bid \$60.



206. Harper Whiskey Sign. 32.75 x 44.25" large, early, framed oleograph advertising "painting" sign on canvas featuring best man handing bottle of Harper Whiskey to the departing honeymooners in a great, early car. Presented in its original marked frame, sign has bright colors and displays beautifully (as a strong C. 8+), although close examination will show some early background touch-up spots, a little scattered paint loss and some slight waving in canvas at upper right edge. Dated 1916, by artist Crompton (taken from his painting "The Parting Gift"). Min. bid \$100.



207. Bartels Beer Sign. 28 x 22.25" outstanding and important, large, early, self-framed tin litho sign for Bartels Brewing Co. (Edwardsville, PA) featuring beautiful multi-color graphics (by Shonk Litho, Chicago). Clean, bright and exceptionally nice appearance (basically displays as a strong C. 8.5+), w/ exception of a narrow line of rub marks in upper background ceiling area (not offensive and could be easily colored in). Min. bid \$150.





208).Topsy Hosiery Match Holder. 4-7/8 x 3.5" scarce, early tin litho advertising match holder for Topsy brand hosiery, w/ great image of woman at beach and Co.'s trademark black kid at top. Has strong colors and displays quite nicely (basically as a C. 8/+), w/ some speckling and light general wear in hanging basket area. Also has a barely noticeable faint, hazy area in top middle section that is evident if tipped in light just right. Min. bid \$70.



209).The Sun Newspaper Sign. 7.25 x 9-5/8" small, very early (ca. 1870's/80's) paper litho advertisement for "The Sun" newspaper (I.W. England Publishers, New York) featuring stunning multi-color lithography (Donaldson Bros. Lithographers, Five Points, NY). Clean, bright and exceptionally nice (near mint). Min. bid \$40.



210).Cafe Extra Coffee. 6 x 4-5/8 x 3.25" early 1 lb. coffee can w/ cardboard body and tin top, base and lid for "Cafe Extra" brand (Tracy, Packard & Hulton Co., New York), featuring great images of Co.'s trademark Indian chief on all four sides. Clean and very attractive appearance (displays as a C. 8/+), w/ a little non-offensive minor background toning/staining (critical grade C. 8/-). Min. bid \$40.



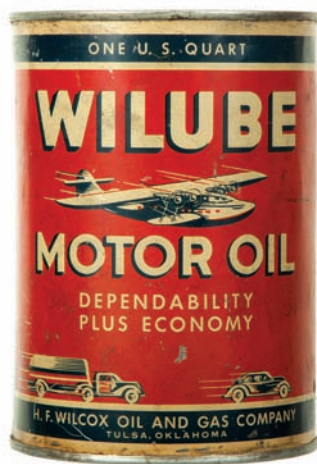
211).Royal Doulton Auto Plate. 10.5" (dia.) scarce, fine, early hand colored china rack plate by Royal Doulton, featuring "Room for One" scene from Co.'s highly collectible Motorist series of plates (note: these prized, high quality plates were designed by John Holdcroft and produced in Co.'s Burslem, England factory from 1903 - 1913). These larger 10.5" plates are extremely hard to find. Excellent. Min. bid \$50.



212).Great Falls Porcelain Gas Sign. 10" (dia.) small, early convex shaped enameled porcelain advertising sign for Great Falls Gas Co. Crisp, bright and like new (near mint) w/ nice original sheen. Min. bid \$40.



213).Royal Doulton Auto Plate. 10.5" (dia.) scarce, fine, early hand colored china rack plate by Royal Doulton, featuring "Deaf" scene from Co.'s highly collectible Motorist series of plates designed by John Holdcroft (note: these prized, high quality plates were produced in Co.'s Burslem, England factory from 1903 - 1913). These larger 10.5" plates are extremely hard to find. Excellent. Min. bid \$50.



214).Wilube Motor Oil Can. 5-5/8 x 4" (dia.) scarce, early tin litho solder seam 1 qt. can for "Wilube" brand motor oil (Wilcox Oil and Gas Co., Tulsa, OK) featuring great image of flying seaplane, w/ early cars and trucks along bottom. Front displays pretty well w/ some haziness and general wear on backside (front C. 7.5+/-; back C. 7-). Lid and base appear replaced. Min. bid \$40.



215).Tippecanoe Vegetable Tin. 4.5 x 3.5" (dia.) scarce, very early paper label vegetable can w/ primitive, hand-soldered tin body for French Bros. (Brookston, IN) "Tippecanoe" brand sugar corn, featuring beautiful color graphic label (shows ear of corn on backside). Outstanding all original piece is clean and excellent in appearance (basically a strong C. 8++), w/ minor toning and a few small, minor background holes in paper. Min. bid \$40.



216).Vulcan Motor Oil. 5.5 x 4" (dia.) scarce, early tin litho 1 qt. motor oil can for "Vulcan" brand. Full sealed can displays nicely (as a C. 8+/-) w/ some fairly minor denting and light wear (heavy darkening and light oxidizing on lid and base). Min. bid \$40.



217).Chef Spice Tin. 4 x 2.25 x 1.75" scarce, early 3 oz. spice tin (cloves) for "Chef" brand (Berdan Co., Toledo, OH) featuring great images of Co.'s trademark chef on both sides. Paper label over cardboard, w/ metal top and bottom. Clean, bright and excellent (C. 8.5+). Min. bid \$30.



Early Tin Sign



218).Merry War Lye Match Holder. 5.5 x 3.75" scarce, early tin litho advertising match holder for "Merry War" brand lye, featuring wonderful image of woman washing clothes. Clean, bright and exceptionally nice (C. 8.5+). Min. bid \$60.



219).White Loaf Baking Powder Sign. 10 x 13-5/8" outstanding, scarce, early embossed tin litho sign for "White Loaf" brand baking powder (Meek Litho). Powerful and impressive sign is clean, bright and very attractive (displays as a strong C. 8.5+), although close examination will reveal a little non-detracting minor background wear (critical grade C. 8/+). Min. bid \$50.

Min. Paperweight



220).Hazard Gunpowder Paperweight. 2.5 x 2" (dia.) outstanding, early tin litho advertising paperweight for Hazard Powder Co.'s smokeless gunpowder, w/ beautiful multi color litho label. This is an exact, sealed miniature sand filled version of Co.'s full sized gunpowder kegs. Attractive and displays great (a strong C. 8+/-), w/ a little non-offensive light wear and "X" mark on bottom side. Min. bid \$40.



221).Chen Wind-Up Santa Toy. 5.5 x 3 x 2.25" early, embossed, figural tin litho wind-up Santa Clause toy by Chen & Co. Clean and excellent overall, in nice working condition (C. 8.5+). Min. bid \$40.



222).Foxy Grandpa Puzzle. 11.25 x 9.25 x 1" (box); 12.5 x 12" (puzzle) early cardboard jigsaw puzzle set featuring Foxy Grandpa cartoon character scene; as found in its original box. Both box and puzzle are very nice overall (C. 8++). Min. bid \$30.



223).Bunny Spice Tin. 2.5 x 1.75 x 1-3/8" scarce, early paper label (over tin) spice tin (paprika) for "Bunny" brand (Bunn & Co., Springfield, IL) w/ great image of Co.'s trademark rabbit image on both sides. Clean, bright and displays nicely (as a C. 8), w/ some non-offensive soiling and light staining (critical grade C. 7.5/+). Min. bid \$30.



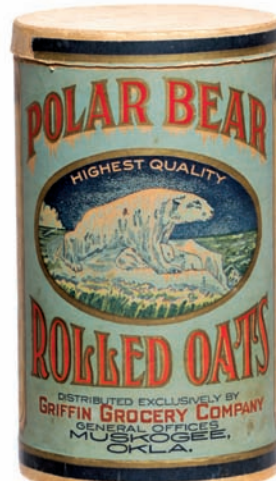
224).Frontier Oats Box. 7.25 x 4.25" (dia.) early 1 lb. 4 oz. cardboard oats box for "Frontier 1846 Brand" brand (Nave-McCord Mercantile Co., St. Joseph, MO) w/ same beautiful hunting scene on both sides. Clean, bright and exceptionally nice (C. 8.5+). Min. bid \$40.



225).Sharple's Match Holder. 6-7/8 x 2-1/8 x 7/8" early tin litho match holder w/ nice image of cows, mother and young daughter using Sharple's Tubular cream separator. Clean and very attractive appearance (C. 8+) w/ a little non-offensive light scattered wear. Min. bid \$40.



226).Pathfinder Oats Box. 9.5 x 5-3/8" (dia.) early 3 lb. 7 oz. cardboard oats box for Pathfinder brand (May Bros. Co., Fremont, NE) w/ nice images of General John C. Fremont on both sides. Clean, bright and attractive appearance, w/ minor soiling and wear on backside (front C. 8.5+; back C. 8/-). Min. bid \$40.



227).Polar Bear Oats Box. 9.5 x 5.5" (dia.) early cardboard 2 lb. 10 oz. sized oats box for "Polar Bear" brand (Griffin Grocery Co., Muskogee, OK) w/ same nice image on both sides. Clean and attractive in appearance (C. 8+) w/ only minor wear and a little paper loss on side edge of lid. Min. bid \$40.





228).Art Nouveau Auto Theme Hat Rack. 4.75 x 7.25" (3-5/8" hooks) early figural cast iron hat rack w/ antique bronze finish featuring great Art Nouveau design, w/ a nice, rich, all original surface patina. Excellent. Min. bid \$50.



229).Sunrise Tobacco Crate Label. 8.75 x 12.75" very early paper litho crate label for "Sunrise" brand chewing tobacco (K.C. Barker & Co., Detroit, MI) featuring beautiful multi-color stone lithography. Clean and very attractive, w/ minor toning and tiny paper loss spot in upper right corner margin (C. 8++). Min. bid \$40.



230).Columbia Records Sign. 16-7/8 x 11.25" beautiful ca. 1920's cardboard die-cut sign promoting Art Hickman's big band Indian Fox Trot recordings for Columbia Records. Clean, bright and very attractive (a strong C. 8++), w/ only minor wear. Min. bid \$40.

Topper Bear Original Art



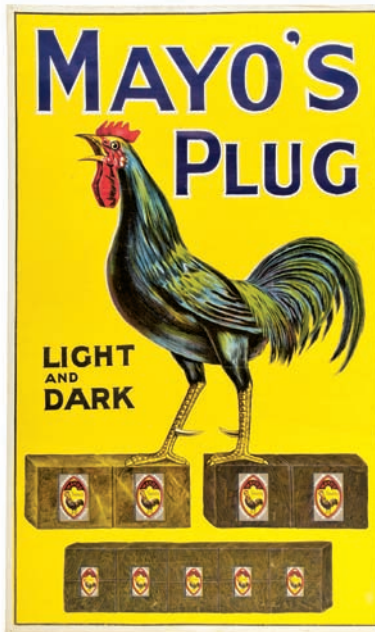
231).Topper Beer Original Artwork. 26.5 x 22" large, very high quality original ca. 1950's/60's (Mad Men era) hand-painted advertising painting (on art board) created for Topper Beer (Standard Brewing Co., of Rochester, NY) featuring beautifully detailed patio garden image. Impressive piece is clean, bright and excellent (C. 8.5/+); although a glued on stacks of flower pots is no longer present. Min. bid \$40.



232).Hussey Tobacco Sign. 17 x 13" great, early paper litho (over cardboard) sign advertising "A. Hussey & Co.'s" leaf tobaccos used in making fine cigars. Features wonderful color graphic image of a young nude "hussey" standing among tobacco plants while smoking a cigar. Displays nicely (as a C. 8/+), although a close examination will show some toning, non-offensive light background stains and some scattered wear (critical grade C. 7.5+/8-). Min. bid \$70.



233).Coca-Cola Menu Board. 29 x 16.5" vintage ca. 1940's die-cut cardboard advertising sign for Coca-Cola (has both string for hanging and easel on backside) w/ unusual triangular 6-pack carrier. Never used sign is clean, bright and like new, w/ only the most minor wear (C.8.5++). Min. bid \$50.



234).Mayo's Tobacco Sign. 29.75 x 17.75" outstanding, early cloth sign for Mayo's brand tobacco, w/ beautifully detailed multi-color graphics. Powerful and impressive, never used sign is clean, bright and exceptionally nice (basically near mint) w/ exception of a couple faint crease/roll marks in background area (mentioned for accuracy, barely noticeable and not at all detracting). Min. bid \$50.



235).Sherwin-William's Paint Sign. 34.5 x 18.25" early, embossed heavy figural convex porcelain sign for Sherwin-William's Paint Co. An outstanding, clean, bright and very impressive looking piece, has nice original sheen (basically displays as near mint), although close examination will show a few non-detracting minor chips in outer edges. Wonderful size, displays great! Min. bid \$80.





236) Logan Havana Cigars Mirror. 2.25" (dia.) early celluloid advertising pocket mirror for James Logan brand 5¢ Havana cigars, featuring great comical image of a goose attacking a black child while peeing, w/ quote: "The early bird catches the worm". Exceptionally clean and nice (near mint). Min. bid \$40.

Very Early Porcelain



237) Grand Union Hotel Porcelain Sign. 4 x 6" very early (ca. 1880's) porcelain sign for the upscale Grand Union Hotel in NY City Grand Central Depot (station). Excellent condition and great overall look (C. 8.5+) w/ exception of a little non-offensive wear to blue outer edges. Min. bid \$50.



238) Austin-Western Road Machinery Pocket Mirror. 2-1/8" (dia.) early celluloid advertising pocket mirror for Austin-Western Co. (St. Paul, MN), featuring nicely detailed image of Co.'s road building machine. Clean and excellent. Min. bid \$40.

Milton Berle Toy



239) Milton Berle Wind-Up Toy. 7 x 5-3/8 x 3-7/8" early tin litho (w/ plastic hat) wind-up mechanical "Milton Berle" toy car by Marx, featuring famous ca. 1950's television comedian. Clean and excellent overall (C. 8++), w/ strong working mechanism. Min. bid \$50.



240) D&H Railroad Coal Sign. 12-1/8" (dia.) early enameled porcelain advertising sign for D&H Railroad's Lackawanna Anthracite Coal. Clean, bright and like new (basically near mint), w/ exception of some very minor fleabites at very outer edge (at 5 o'clock - mentioned for accuracy, so minor barely merits mention). Min. bid \$40.



241) Izaak Walton Cigar Can. 5-5/8 x 5-7/8" (dia.) early tin litho 50 count cigar can for H.E. Snyder Co.'s "Izaak Walton" brand. Has beautiful multi-color graphic images of English writer, w/ sporting theme background scenes (both sides). Clean, bright and excellent overall (C. 8.5/+). Min. bid \$40.



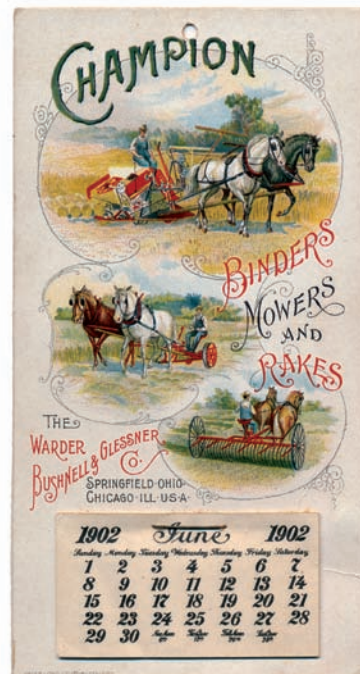
242) OCB Rolling Papers Sign. 5.25 x 10-5/8" ca. 1910 die-cut cardboard countertop display sign for "OCB" brand cigarette rolling papers. Never used sign is crisp, bright and like new (near mint). Min. bid \$30.



243) Cigar Co. Match Holder. 3 x 5" (dia.) early tin litho countertop matchbox holder w/ ashtray base, w/ same nice advertising on both sides for R.G. Sullivan Co.'s "7-20-4" brand cigars. Clean, bright and very attractive (a strong C. 8/+), w/ only minor wear. Min. bid \$40.



244) Kerr's Thread Sign. 19-5/8 x 14-5/8" early paper litho (over cardboard) sign for Kerr brand cotton sewing threads, featuring great image of young girl and her dog (note giant Kerr's thread spools on floor and dogs mouth). Clean, bright and very attractive (basically displays as a nice C. 8/+) w/ exception of a little non-offensive light staining/soiling in outer green border area (critical grade C. 8/-). Min. bid \$50.



245) Champion Implements Calendar. 6.5 x 3-3/8" small, early cardboard advertising hanging wall calendar for "Champion" brand agricultural equipment, featuring beautiful multi-color graphic images of Co.'s various horse drawn agricultural machinery (Warder Bushnell & Glessner Co., Springfield, OH, and Chicago, IL), w/ partial 1902 calendar pad at bottom. Clean, bright and excellent overall (basically a C. 8.5/+) w/ faint bend mark in bottom right margin area (mentioned for accuracy - so minor barely merits mentioning). Min. bid \$40.



# Maxfield Parrish Items



246).



247).



248).

## Christmas Cards



250).

## Postcards



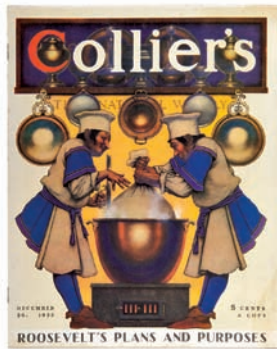
251).



249).



252).



253).



254).



255).

**246). "When Day Is Dawning".** 13 x 15.25" (8.25 x 10.75" image) ca. 1954 Brown & Bigelow "When Day Is Dawning" ("Christmas Morn") executive scene image on its original titled, heavy stock matting board. Clean, bright and exceptionally nice, in very attractive frame. Min. bid \$40.

**247). Prince Codadad Thoughts And Good Wishes Book.** 6.25 x 5" ca. 1912 "Thoughts and Good Wishes" book of poems featuring tipped-in (pasted on) "Prince Codadad"; and "Singing Tree" 1924 calendar booklet w/ color images on cover and inside. Both are excellent, never used examples, complete in original box (1912 box has separated right side apron on lid). Min. bid \$40.

**248). "Evening" Executive Winter Scene.** 13-5/8 x 17.5" (8-3/8 x 10-7/8" image) ca. 1956 Brown & Bigelow executive winter scene image on its original presentation mat board. Crisp and like new, presented in attractive frame. Min. bid \$40.

**249). Maxfield Parrish Dining Room Images.** 11 x 16.25" (each) large, full color image from May 1912 Ladies Home Journal featuring Curtis Publishing Co.'s (publisher of LHJ) dining room, which featured murals by Parrish. Lot also includes large, full color 1920 Ladies Home Journal illustration image featuring Parrish's "A Florentine Fete" mural. Both are clean, bright and like new. Min. bid \$30.

**250). Parish Christmas Cards.** lot includes a nice group of five vintage unused high quality Parrish illustrated greeting cards by Brown & Bigelow Co., complete w/ original envelopes (sizes range from 6 x 7.5" to 8.25 x 6-1/8"). Images include: "A New Day"; "Twilight"; "Lights of Welcome"; and "Sheltering Oaks". Clean, bright and excellent overall. Min. bid \$20 (the lot).

**251). Parrish Postcards.** 3.5 x 5.5" and 3-1/8 x 7" lot of two unused colorful and graphic Parrish illustrated advertising postcards from the Broadmoor Hotel (Colorado Springs, CO); and the Palace Hotel (San Francisco, CA) featuring Parrish's "Pied Piper" painting displayed in hotel. Both are clean, bright and excellent (hotel card has some age toning on non-graphic address side). Min. bid \$30 (the lot).

**252). "Buds Below The Roses".** 16.25 x 11.25" May 1913 Ladies Home Journal magazine featuring Parrish's "Buds Below the Roses" (Florentine Fete Mural) illustration on cover. Full, complete, uncut issue is excellent overall, w/ a little minor edge wear in right very outer margin area. Min. bid \$40.

**253). Two Cooks Parrish Illustration.** 13.5 x 10.5" full, complete December 26, 1936 Collier's magazine w/ Parrish cover illustration featuring 2 cooks making plum pudding in large steaming copper kettle. Clean, bright and excellent overall, w/ a trace hint of non-detracting very minor foxing/toning in outer background area. Min. bid \$30.

**254). Parrish Djer-Kiss Cosmetics Ads.** lot of two different full uncut Parrish illustrated advertisements for Djer-Kiss Cosmetics Co. Includes: 1918 girl in woods w/ elves (16 x 10-5/8"); and 1916 girl swinging in rose garden. Both are clean and excellent (near mint). Min. bid \$40.

**255). Royal Baking Powder Ad.** 13-7/8 x 9-5/8" (12.25 x 9" image) ca. 1904, colorful and very attractive Parrish illustrated full page color ad for Royal Baking Powder featuring nice image of chef walking through floral garden. Clean and excellent. Min. bid \$30.



# Maxfield Parrish Items



256).



257).



258).



259).



260).



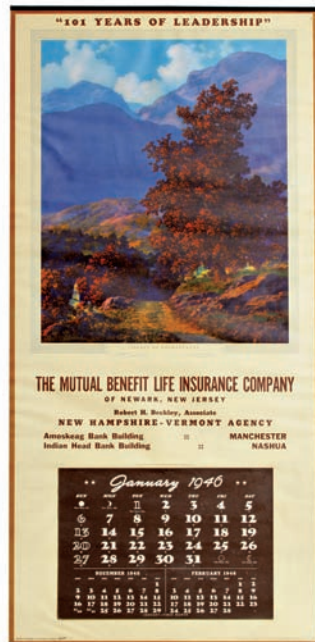
261).



262).



263).



264).



265).



266).

**256).Parrish Playing Cards.** full complete deck of 52 + Joker Parrish illustrated playing cards by Brown & Bigelow Co., featuring "New Moon" image. Excellent, w/ original storage box (originally included a second deck which is missing). Min. bid \$20.

**257).Parrish Novelty Items.** lot includes three small, early, Parrish illustrated novelty items. Unused match packs are both like new and include: Old King Cole Bar (St. Regis Hotel, New York, NY) and Broadmoor Hotel (Colorado Springs, CO). Boxed Edison Mazda brand auto replacement light bulb is in its original package (excellent). Min. bid \$20 (the lot).

**258).Parrish Playing Cards.** 4 x 4-7/8 x 7/8" early, velvet finished gift box containing two never opened, full sealed decks of Parrish "Landscape Masterpieces" illustrated playing cards (deck images include: "Sheltering Oaks" and "New Moon"). Crisp and like new (near mint). Min. bid \$20.

**259).Maxfield Parrish Early Years Book.** 14.75 x 10.5 x 1.5" large, high quality 1973 1st Edition beautifully illustrated hard covered coffee table book by Paul Skeeters covering Parrish's work between 1893-1930. Excellent. Min. bid \$30.

**260).Golden Treasury Of Songs And Lyrics Book.** 9.75 x 7.75 x 1.5" hard cover © 1911 Parrish illustrated book by Francis Palgrave containing eight illustrations inside, a paste on cover and black and white end papers. Book is very nice overall, w/ some faint soiling and light wear on cover illustration. Min. bid \$30.

**261).Italian Villas And Their Gardens Book.** 10.75 x 7.5 x 1.75" hard cover © 1911 "Italian Villas and Their Gardens" book by Edith Wharton featuring 15 color and 11 black & white illustrations by Parrish. Excellent overall, w/ some light wear to gold area on cover illustration. Min. bid \$30.

**262).Edison Mazda Contentment Deck.** 3.75 x 2.75 x 7/8" full 52 card boxed deck (no jokers) of General Electric Co. "Edison Mazda" brand playing cards, featuring Co.'s Parrish illustrated 1928 "Contentment" calendar girl image. Deck shows some light general wear from use and light soiling on box image, but overall pretty decent (C. 8/-). Min. bid \$30.

**263).Edison Mazda Reveries Calendar.** 19-1/8 x 8.5" (10 x 6.5" image) 1927 small Edison Mazda Lamps cardboard advertising calendar featuring Parrish illustrated "Reveries" image of women lounging at garden pool. Never used piece is clean, bright and excellent, complete w/ full calendar pad (C. 8.5+), w/ minor pinching at outer corner edges and minor wear to calendar pad cover sheet. Min. bid \$60.

**264).Large Valley Of Enchantment Calendar.** 33.5 x 16" (15.75 x 12.75" image) large 1946 advertising calendar by Brown & Bigelow for a New Hampshire and Vermont insurance agency, featuring beautiful "Valley of Enchantment" Parrish landscape illustration. Clean, bright and excellent. Min. bid \$40.

**265).Edison Mazda Dream Light Calendar.** 22 x 11.5" (17-5/8 x 7.25" visible) 1925 framed cardboard Edison Mazda calendar featuring Parrish's "Dream Light" image of girl swinging in forest. Clean, bright and very attractive, complete w/ full calendar pad (note: has some non-offensive touched-up light staining in staple areas on calendar tear pad's cover sheet). Beautifully framed and matted. Min. bid \$60.

**266).Large "Perfect Day" Calendar.** 35 X 17.25" (15.5 X 12.25" image) attractive, early B&B Parrish illustrated advertising calendar from Union Machine Works, Oakland, CA, featuring "Perfect Day" (June Skies) landscape image. Clean, bright and exceptionally nice (C. 8.5/+), complete w/ full 1943 calendar pad. Framed. Min. bid \$40.



# Maxfield Parrish Items



267).



268).



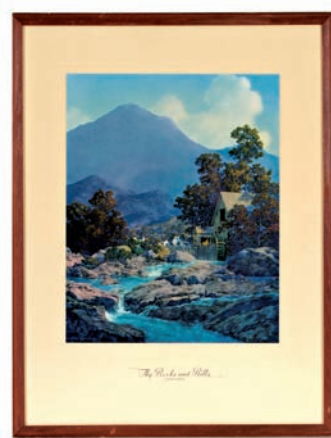
269).



270).



271).



272).



273).



274).



275).



276).



277).



278).

267). Fairbank's Ad. 16 x 11.25" scarce Ca. 1896 Parrish illustrated magazine ad for Fairbank's Co. products (Cocopa Soap, Cottolene Shortening, Gold Dust Washing Powder, Etc.). Taken from March 28th, 1896 Harper's Bizarre Magazine. Excellent overall w/ minor chipping and wear on outer edges and faint horizontal fold line. Min. bid \$30.

268). Jack Sprat Ham Ad. 13.25 x 10.25" (12.25 x 9.25" visible) framed early periodical illustration advertising Swift's Premium Hams, featuring Parrish's "Jack Sprat" image. Excellent. Min. bid \$30.

269). October 1899 Scribner's Cover. 8-3/8 x 5-5/8" scarce, early cropped Parrish illustrated cover image featuring maiden picking grapes w/ medieval village in background. Clean, bright and very attractive, w/ minor professional reinforcement on backside at outer edges. Min. bid \$30.

270). October 1904 Scribner's Illustration. 8.5 x 5-7/8" (visible) scarce, early cropped Parrish cover illustration featuring woman picking grapes. Clean, bright and beautiful appearance, although close examination will reveal a little very well done professional restoration and some reinforcement on backside. Nicely matted and ready to frame. Min. bid \$30.

271). Large Daybreak (Hunt Farm) Calendar. 28 x 21" (14.25 x 11" image) outstanding, early B&B Parrish illustrated executive advertising calendar on its original textured advertising mat board (from Hamachek Pea Hulling Machinery Co., Kewaunee, WI). Crisp, bright and like new (near mint), complete w/ full 1951 calendar pad. Framed. Min. bid \$40.

272). Thy Rocks And Rills Art Print. 16.5 x 12.75" (10.5 x 8-3/8" image) ca. 1944 medium Brown & Bigelow art print of mill and village, w/ lavender mountains in background. Clean, bright and like new on its original marked mat board, in its original period frame. Min. bid \$30.

273). Metropolitan Girl w/ Apple Illustration. 15-5/8 x 12-5/8" (13.5 x 10.5" visible) scarce, large early cover illustration for 1917 periodical "Metropolitan", featuring rarely seen Parrish image of girl in gown holding apple. A decent and attractive piece that has strong colors and displays nicely, w/ a couple scattered tear marks at outer left edge. Presented in attractive period frame (note: frame has scattered gold loss along underside at bottom edge). Min. bid \$30.

274). "A Merry Christmas". 12 x 9-7/8" (10-1/8 x 7-7/8" visible) nice framed color illustration from December 1920 Life Magazine cover, featuring great image of servants marching in lockstep carrying bowls. Excellent, presented in very attractive frame. Min. bid \$30.

275). "Old Glen Mill" B&B Art Calendar. 16-7/8 x 11.5" (9.75 x 7.25" visible image) unused 1954 art calendar by Brown & Bigelow Co., featuring beautiful Parrish Illustrated "Old Glen Mill" image. Clean, bright and like new, w/ full, unused calendar pad. Min. bid \$40.

276). Medium Peaceful Valley Art Print. 17.5 x 13.25" (10-7/8 x 7-7/8" image) ca. 1936 art print of large tree w/ village and purple mountains in background. Clean and excellent on its original marked presentation mat board, as found sealed in its original period frame. Min. bid \$30.

277). "The Poet's Grove" Art Print. 13-7/8 x 10-7/8" ca. 1917 Parrish illustrated "The Poet's Grove" Century art print on its original mat board, complete w/ its original descriptive label. Excellent overall, w/ minor staining on mat board. Min. bid \$30.

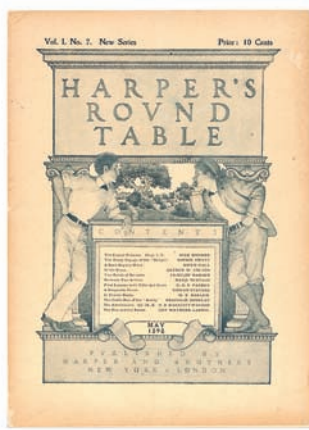
278). At Close Of Day. 11 x 8.5" (6-1/8 x 5" image) large, fancy, very high quality Brown & Bigelow 1957 corporate executive greeting card featuring Parrish "At Close of Day" night time winter scene of house on rocks with one lighted window. Crisp, like new condition, tipped on original pressed backing board, complete w/ its Brown & Bigelow info sheet, as found still in its original envelope (included). Min. bid \$20.



# Maxfield Parrish Items



279).



280).



281).



282).



283).



284).



285).



286).



287).



288).



289).

279). "Sleeping Beauty" Illustration. 9.75 x 6.75" scarce, original cropped Hearst's Magazine November 1912 Parrish illustrated "Sleeping Beauty" cover page. Decent example w/ good color and nice overall look, w/ a little minor typical wear at very outer edges. Min. bid \$30.

280). 1898 Harper's Round Table Magazine. 11-1/8 x 8-1/8" full, complete May 1898 Harper's Round Table Magazine, featuring attractive Parrish illustration on cover. Very nice overall, w/ some non-offensive light age toning. Min. bid \$20.

281). "Frog Prince" Cover. 9-7/8 x 6-7/8" scarce cropped Parrish cover illustration from July 1912 Hearst's Magazine. Decent color and nice overall look, w/ a little typical edge creasing, light tattering and faint fold mark at upper right edge. Min. bid \$30.

282). "Christmas Number Cover". 9.75 x 7" (actual) beautiful, early December 1899 Scribner's cover illustration featuring stunning color graphic shepherd illustration. Clean, bright and excellent appearance, nicely matted and ready for framing (note: has some edge loss in outer margin areas (hidden by mat)). Min. bid \$30.

283). "Thy Templed Hills". 16-7/8 x 12-7/8" (11 x 8" image) ca. 1942 art print by Brown & Bigelow Co. on its original descriptive mat board. Clean and excellent, w/ a trace hint of non-detracting faint staining in outer right area of mat board (so minor, barely merits mention). Min. bid \$30.

284). Large Parrish Ads. Each: 16 x 10-5/8" lot includes two large, full color Parrish illustrated advertisements from early Ladies Home Journal Magazines. Includes: "Spirit of the Night" Edison Mazda General Electric 1919 calendar image ad and 1918 ad from Onedia Community Plate silver service. Both are clean, bright and like new (minor pinch mark at outer bottom right edge on Community Plate ad). Min. bid \$30.

285). "Peaceful Night Winter" Scene. 16-7/8 x 12-5/8" (10-3/8 x 8" image) ca. 1953 Brown & Bigelow Winter scene image of church in moonlight on its original decorated titled mat board. Clean, bright and excellent, in attractive period frame (note has a little faint toning in outer white margin area- stated for accuracy, so minor barely merits mention). Min. bid \$40.

286). Twilight Art Print. 23.25 x 19" (16.25 x 12-7/8" image) large ca. 1937 B&B art print featuring evening scene of white house and attached barn. Crisp and like new, as found still sealed in its beautiful original frame, w/ its original marked mat board and House of Art label (on backside). Min. bid \$40.

287). "The Prince". 16 x 12" ca. 1925 "The Prince" by Maxfield Parrish (House of Art, New York) presented in ornate painted wooden backed gessoed plaster frame, made to display like a fancy oil painting. Image is quite nice (a strong C. 8/+) and piece displays very well, although there is some light chipping and repair in frame area. Min. bid \$40.

288). "The Page". 16 x 12" ca. 1925 "The Page" by Maxfield Parrish (House of Art, New York) presented in ornate painted wooden backed gessoed plaster frame made to look like a fancy oil painting. Image is quite nice (a strong C. 8/+) and piece displays very well, although there is some light chipping and repair in frame area. Min. bid \$40.

289). Prince Codadad (Yellow Sail). 26.5 x 20-3/8" (17-3/8 x 13-7/8" image) scarce, early, large poster sized Parrish image taken from giant full page July 27, 1919 New York Tribune, w/ descriptive text below image. Has horizontal fold line in center (original to piece) and overall is very attractive and displays well w/ nice color. Attractively framed and matted. Min. bid \$30.





**Rd #2, Cobb Hill Road, Cazenovia, NY 13035 • 24 Hr. Tel: (315) 662-7625 • 24 Hr. Fax: (315) 662-3570 • morf2bid@aol.com • morfauction.com**

Welcome to our 88th auction of quality antique advertising and fine collectibles. Everything we sell is guaranteed authentic and as described. We attempt to grade condition both fairly and conservatively, using a scale of 1-10 on the advertising items (ten being absolutely mint). We do not list reproductions, re-issues, deceptively restored or pieced together type merchandise. Flaws and blemishes are prominently noted and over emphasized. We encourage you to call for a detailed description on any item you have an interest in, but respectfully must request that you do this before the closing night. Dimensions are listed by height, then width, and are only approximate (+ or - a quarter inch).

## Bidding

Bids are accepted only from those parties who have registered with us to bid. (If you were mailed this catalogue by us you are automatically pre-registered.) Your bid is a legal contract to purchase and once entered, cannot be canceled. Placement of a bid indicates acceptance of our terms.

On all "BID" items there is a 15% buyers premium added to each successful bid. You're welcome to bid by mail, email and fax anytime after receiving this catalog. **We will begin accepting phone bids on Wednesday, June 22, 2016. We will be taking calls on Wednesday and Thursday from 10:00 AM until 5:00 PM.** If no one answers when you call, please leave a message on our machine and we will get back to you. **If bidding by mail or fax, please remember to include your telephone number with your bids!** You may call or bid as often as you like. We will tell you the current bid on any item(s) you are interested in. To raise a bid, your advance must be at least \$10 more than the current high bid amount. When an item reaches \$250, bidding increments rise to \$25, at \$1,000, bidding increments advance in \$50 steps, and above \$2,000 in \$100 increments. We suggest not waiting until the last minute to begin your bidding, as its quite possible you won't be able to get through.

## Web Page and Bid Updates

We will begin posting current bid prices (not including the buyers premium) on Wednesday, **June 22, 2016** (including an addendum of additional catalogue lot information) on our internet web page. These prices will be updated once each day (each evening sometime after 9:00 PM, EST) and will get updated to include the final hammer prices on Sunday afternoon once the sale is concluded. On the closing night, we will attempt to update current bid prices every hour. Our web page address for this sale is: <http://www.morfauction.com> We suggest that once you get to it, that you bookmark this address for easy re-access. There is also an addendum section on our website where we post additional information and photo's for this sale.

## Reserves and Estimates

All items which receive an opening bid in our sale will be sold to the highest bidder regardless of the price realized (we reserve the right to withdraw items in the event of inaccurate catalog descriptions and to reject any bid we feel is not made in good faith). **We run our auctions with a strict policy of no buy-backs, no auctioneer games and no hidden reserves.** Unlike some of our competitors, we do NOT allow consignors to bid up their own items!

## Mechanical Operations

Early mechanical and electric motors and mechanisms on machines toys, coin-ops, clocks, etc. are quite often temperamental and very unpredictable in nature. Although these mechanisms may be working fine at the time of sale, we make no guarantees or representations regarding their continued operating status once they have left our premises (including during shipping).

## Closing Night

**THE LAST DAY FOR BIDDING WILL BE ON FRIDAY, JUNE 24, 2016.** On closing day, we begin taking calls at 5:00 PM. Please mark your calendar now. **On the closing night (ONLY), we will also be taking calls at (315) 662-3318, (315) 662-3429 and (315) 662-3904 after 5:00 PM** (in addition to our regular (315) 662-7625 office number). **Closing Time: This Auction will close at 10:00 PM (EST) on Friday, JUNE 24, 2016.** At that time, no more incoming calls will be accepted and all lots with a registered bid of less than \$300, as well as all items without call backs registered on them will be officially closed and final. The items at \$300 and over that have call back protection registered on them will be closed out during our call back period the following afternoon (\*\*see important call back rules below\*\*). We reserve the right to change the official closing in the event of unforeseen family type emergencies or technological failures (utility disruptions, etc.). We also reserve the right to either extend the bidding, to postpone or to cancel this auction in the event of a national emergency or if the Internet or the services of the US Post Office were to get seriously disrupted during our catalogue mailing or bidding period.

## "Up-To" Bids & Call Backs

**CEILING BIDS:** We will be happy to enter competitive "up to" ceiling bids for you on any lots you request. Beginning at your minimum amount, we will advance these bid(s) up to your left ceiling amount, if (and only if) it is topped by another bidder. "Up To" bids will be handled discretely and executed in a completely competitive manner for you. Please note that we don't accept open ended "top all others" ceiling type bids.

**CALL BACKS:** You may request call back protection for any lot(s) that you enter with either a minimum or a protected "up-to" ceiling bid in an amount of at least \$300. This request must be registered with us before the official 10:00 PM closing hour of Friday, **June 24, 2016.** All callbacks will be placed by us on Saturday, **June 25, 2016** it is your responsibility to be available during this call back time period. We make every effort to honor all our call back requests, but this service is done solely as a convenience to our bidders and will be performed on a best efforts basis only. If you will be traveling or if you will not be available during call back times at your primary number, be sure you provide us with proper alternate or back up numbers for reaching you!

## Payment Terms

Winning bidders will be invoiced by mail immediately after the sale. Those who desire fast shipment can pay by Money Order or Cashiers Check. Payments are due within 10 days of receipt of invoice. We reserve the right to offer the item out to our back bidders and deny future bidding privileges to those who do not pay in a timely manner. In addition to personal checks, we also accept payment on your American Express, Visa, Master Card, Discover and Optima Credit Cards (with no surcharge added). No COD's or Collect calls are ever accepted. Items shipped to anywhere in New York State must include appropriate sales tax or signed resale certificate.

## Shipping

All packing and shipping charges are extra. We do most of our own packing and shipping in house and try to keep these charges as reasonable as possible for you. On especially fragile and larger hard to pack items, we hire the services of professional packers and charge you at our billed cost. We ship mostly through the Post Office and Fedex Ground, (Fedex Overnight available at an extra charge.)

## Subscribing, Prices Realized, Consignments & Upcoming Events

**Future catalogs can be assured by sending \$20 for a full 12 months subscription.** (Prices are published on our website after each sale) An automatic credit card ordering program is available. We currently run between 2-4 auctions a year. In addition to our regular sales, we also occasionally offer sales made up entirely from single owner collections. Please contact us should you have items you would like us to consider for inclusion in our upcoming events. All inquiries are handled in a completely confidential manner. Our services are also available for the private placement marketing of important individual items, marketing plans for large collections as well as for estate planning and settlement purposes. Back copies of many of our previous auction catalogs are still available at \$5 each (w/ prices realized) w/ quantity discounts available if multiple issues are ordered. For further information, check our website.

© Copyright 2016. All Rights Reserved. No portion of this publication may be copied in any form without the express written permission of Morford's.

## Important Closing Night Information

In addition to our regular **(315) 662-7625** office number,  
on the closing night (only!) you may also call us at:

**(315) 662-3318\***  
(after 5:00 PM)  
**(315) 662-3904\***  
(after 5:00 PM)  
**(315) 662-3429\***  
(after 5:00 PM)



**\*These numbers for  
Closing night only!  
Friday, June 24, 2016**

**Bidding closes at 10:00 PM on Friday closing night.** We will be accepting faxes and e-mails on closing night. Our web page will update current high bid prices approximately every hour on closing night and will also list any important addendum information. **All call backs will be made on Saturday, June 25, 2016 beginning at 12 o'clock Noon!**