



**WM Morford**  
Investment Grade Collectibles at Auction

## Investment Grade Collectibles at Auction

Rd #2, Cobb Hill Road, Cazenovia, NY 13035 • 24 Hr. Tel: (315) 662-7625 • 24 Hr. Fax: (315) 662-3570 • morf2bid@aol.com • morfauction.com

**Bidding closes Friday, December 9, 2016. (See page 32 for Terms & Conditions)**



1).Country Store Post Office Sign. 62 (l) x 13.25 (w) x 1.75" (d) outstanding, very early wooden country store "Post Office" sign, w/ attractive and highly unusual between the words blue and gilt lettering, against textured black sand paint background w/ a great primitive, country, folk art look. A powerful and impressive looking piece that is all original, w/ some darkening to right side and some light general aging and wear (C. 7.5/+). Min. bid \$100.

Porcelain Sign



2).Lay or Bust Porcelain Sign. 7 x 20" scarce, early heavy enameled porcelain sign for Park & Pollard Co.'s "Lay or Bust" brand poultry feeds. Clean, bright and very attractive appearance (a strong C. 8++), w/ minor chips and wear. Min. bid \$50.

Advertising Sign



3).Star Shoes Advertising Car. 2-3/8 x 8.25" outstanding, early die-cut tin litho race car toy advertising "Star" brand shoes (same great images on both sides). Clean and excellent overall (C. 8.5/+), as found never used (note: the wheels haven't even been folded out yet), w/ only minor storage wear and a trace hint of very minor waving (stated for accuracy- so minor barely merits mention). Min. bid \$100.



4).Nichols Oil Can. 11 x 8 x 3-1/8" scarce, 1 gallon tin litho motor oil can from Nichols Sales & Service Co-Op (Liberty, NY) w/ great image of trademark bi-wing plane on front; and promotional text advertising for Essex, Hudson and Nichols vehicles on back. Clean, bright and especially nice appearance (displays a very strong C. 8++), w/ w/ a few minor background rubs and some wear along the narrow right edge. Min. bid \$50.



5).Valvoline Diamond Jubilee Sign. 14.5 x 13-3/8" great, early tin litho display sign for Valvoline "Diamond Jubilee" motor oil, w/ reflective glitter surface to diamond area of can. Never used sign is clean, bright and beautiful overall (displays as a very strong C.8.5/+) w/ original label and brackets on backside. Min. bid \$50.

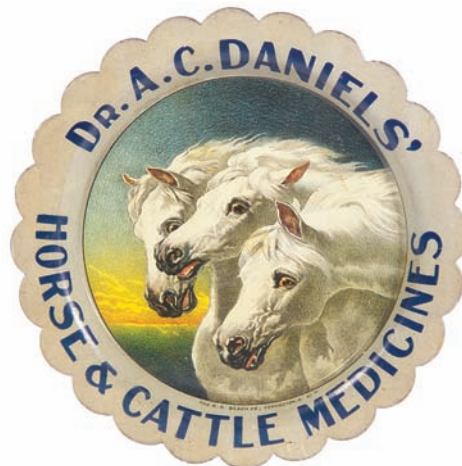


6).Nill & Jess Candy Bucket. 13 x 13" (dia.) great, early, heavy cardboard 30 lb. bucket for Nill & Jess Co.'s chocolate creams candies, w/ beautiful early color graphic label. Excellent overall (a strong C. 8++), w/ a little non-offensive light staining at bottom edge. Min. bid \$50.





7).Yellow Kid Gum Box. 5.25 x 6-7/8 x 1.5" extremely rare, early 2-ps. cardboard box for Pulver Co.'s Kola-Pepsin chewing gum, featuring wonderful, large images of Co.'s Yellow Kid penny gum machine (same images on outside and inside of lid). Lid has bright colors and displays quite nicely (as a C. 8+/-), w/ some minor pinching and non-offensive background toning and light staining (note: non graphic base of box has some general staining). Min. bid \$50.



8).Dr. Daniels Tip Tray. 4.25" (dia.) early tin litho advertising tip tray for Dr. A. C. Daniels' Horse and Cattle veterinary medicines. Clean, bright and very attractive (a strong C. 8++) w/ only very minor wear. Min. bid \$40.



Iron Bank

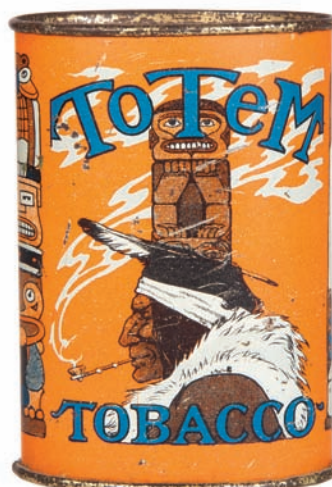
9).Hen On Nest Still Bank. 3.25 x 3-3/8 x 2.5" rare, small, early figural cast iron still bank featuring hen sitting on nest. Bank itself is excellent, w/ nice detailing (old screw possibly replaced) and still retains a fair amount of its well-worn, original paint surface (paint surface C. 7). Min. bid \$50.



10).Whiz Auto Top Dressing Tin. 6-1/8 x 4-5/8 x 2-5/8" scarce, very early tin litho 1 qt. hand-soldered can for Whiz brand auto top dressing, featuring great image of ca. 1910 Packard limo. Impressive piece is clean, bright and exceptionally nice (C. 8.5++). Min. bid \$40.



11).Chieftain Oil Can. 5.5 x 4" (dia.) scarce, early tin litho 1 qt. crimp seam can for "Chieftain" brand motor oil, w/ nice image of Co.'s trademark Indian chief (same images both sides). Full, sealed can has strong colors and displays nicely, although backside has dent mark and some litho loss drip lines running down right edge (front C. 8.5+; back C. 7.5+). Min. bid \$50.



12).Totem Pocket. 3-5/8 x 2-5/8 x 1.25" scarce tin litho vertical tobacco pocket tin featuring great American Indian and totem pole images. Has strong colors and displays nicely (as a strong C. 8+), w/ some non-offensive light wear. Min. bid \$60.



Coca-Cola Tip Tray

13).1910 Coca-Cola Tip Tray. 6-1/8 x 4-3/8" scarce, early tin litho Coca-Cola tip tray featuring wonderful image of Co.'s 1910 calendar girl by illustrator Hamilton King. Clean, bright and very attractive (a strong C. 8++), w/ only very minor wear. Min. bid \$60.



14).Oriole Tobacco Pail. 11-1/8 x 12.5" (dia.) very early wooden 10 lb. tobacco pail for American Tobacco Co.'s "Oriole" brand, w/ beautiful multi-color paper label on front. Label is clean, bright and displays nicely (C. 8/-) although examination under black light will reveal a little bit very well done professional touch up restoration in background and the bottom lettering area (no lid). Min. bid \$50.



15).Root Beer Dispenser. 14 x 6" (dia.) scarce, early, heavy figural milk glass syrup dispenser for Rochester Root Beer, in shape of root beer mug. A powerful and impressive looking, very high quality piece that is excellent and all original, complete w/ its original working pump. Min. bid \$60.



G & J Tires Cardboard Sign

16).G & J Tires Sign. 20 x 18.5" very early cardboard die-cut sign for G & J Tire Co. (Indianapolis, IN) featuring great motoring scene (Ketterlinus Litho., Philadelphia). Displays nicely (C. 7.5), w/ a little non-offensive faint staining, edge tattering and light scattered wear. Min. bid \$50.





17) Veri-Kleen Fabric Cleaner Tin. 9.25 x 9.25 x 3.25" neat and unusual, ca. 1930's tin litho can for "Veri-Kleen", a product for cleaning delicate fine fabrics. Same images on both sides w/ nice early car on side edge). Clean, bright and exceptionally nice (basically a strong C. 8.5+), w/ a couple minor wear spots on backside. Min. bid \$40.



18) None-Such Coffee Grinder. 10 (h) x 5.75 (w) x 6.25" (d) very early tin litho countertop coffee grinder on wooden base for Bronson Walton Co.'s (Cleveland, OH) "None-Such" brand, w/ attractive design and images all around. Outstanding example is clean, bright and excellent (displays as a strong C. 8.5+). Nice working condition. Min. bid \$50.

Watches Display Stand



19) Elgin Watches Store Display. 15.75 x 17 x 9.25" unusual, ca. 1920's/30's high quality wooden store display stand for Elgin brand watches. Has wood base, w/ great looking celluloid image at back featuring glamorous woman wearing watch. Excellent (C. 8.5++). Great piece for displaying jewelry and smalls. Min. bid \$50.



20) Wah Wah Tobacco Bag. 3.25 x 1.75 x 1" scarce, very early 7/8 oz. paper label cloth tobacco bag for "Wah Wah" brand (Hancock Bros., Danville, VA) w/ great American Indian image on front label (1917 tax stamp). Full, sealed bag is attractive and displays nicely, w/ minor toning and some paper loss at bottom left edge of back side (front C. 8+; back C. 7+). Min. bid \$40.



21) Baseball Bank. 5.5 x 3-3/8 x 3-3/8" ca. 1914 figural cast iron bank by Hubley, featuring detailed figural baseball w/ incised lettering and stitching that sits on three attached bats. Has nice paint surface and attractive look (C. 8/-); missing paint on screw w/ some scattered chipping wear to bats and (screw possibly an early replacement). Min. bid \$50.



22) Texaco One Pint Oil Can. 5.5 x 3.5 x 1-7/8" very early hand-soldered tin litho 1 pint sized oil can for Texaco Spica Oil. Crisp, bright and like new (C. 8.5++). Min. bid \$40.



23) Hair Grower Mirror. 2.75 x 1.75" scarce, early celluloid pocket mirror for "Barry's Tricopherous", an early quack medicine hair growing product, w/ stunning multicolor graphics. Clean, bright and exceptionally nice - basically near mint appearance, w/ exception of a couple very minor blemishes on backside edge- visible upon magnification (mentioned for accuracy, quite minor and barely merit mention). Min. bid \$70.



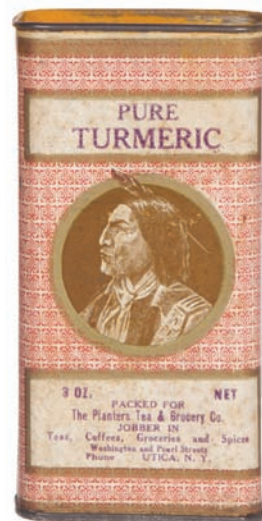
24) La Huronne Motor Oil. 6-5/8 x 4" (dia.) scarce, early tin litho solder seam imperial 1 qt. can for "La Huronne" brand motor oil (Canada Specialties Co., Quebec, Canada), w/ nice image of Huron tribe Indian squaw. Clean and excellent (C. 8.5), w/ minor denting and wear on backside. Min. bid \$40.



25) White Villa Oats. 9.5 x 5-3/8" (dia.) early 3 lb. cardboard oats box for White Villa brand (White Villa Grocers, Cincinnati and Dayton, OH) featuring nice image of country villa, w/ agricultural scene on back. Clean, bright and exceptionally nice (C. 8.5++). Min. bid \$40.



26) Allyn & Blanchard Match Holder. 6-7/8 x 4 x 1" very early tin litho die-cut advertising match holder for Allyn & Blanchard Co.'s Coffees and Spices (Hartford, CT), w/ fine early detailed lithography by Ginn & Co. Surface is very stable and piece is quite nice overall (basically displays as a strong C. 8+) w/ exception of a some early wear at top of match basket section and some slight oxidized darkening in bottom textured striker area. Min. bid \$40.



27) Planters Spice Tin. 4.75 x 2-3/8 x 1-3/8" scarce, early paper label (over cardboard w/ tin top and base) 3 oz. spice tin (turmeric) from Planters Tea & Grocery Co. (Utica, NY) w/ great Indian image on front. Clean and very attractive (C. 8+) w/ faint, very minor background toning in white background boxes. Min. bid \$30.





28). Monamobile Motor Oil Can. 6.25 x 8.5 x 5.5" nice, early tin litho 1 gallon sized hand-soldered tin for Monarch Mfg. Co.'s "Monamobile" brand oil, w/ great image of early touring car and motorcycle (note bi-wing airplanes and early motor boat in background). Bright and attractive appearance w/ a little non-offensive darkening and wear on sides (front C. 8; sides and back C. 7+). As found, should improve some w/ cleaning. Min. bid \$50.

Currier & Ives Darktown Prints



29). Currier & Ives Comical Prints. 13.5 x 17-3/8" lot includes a matched pair of colorful and highly graphic lithographed "Asking a Hand" and "Getting a Foot" prints by Currier & Ives featuring comical before and after scenes of a black man proposing (Copyright 1887). These were found never used w/ complete, extremely wide untrimmed margins, and are clean, bright and exceptionally nice (all original and near mint). Min. bid \$70 (the pair).



30). Pippins Cigar Tin. 5.5 x 3-1/8 x 3-1/8" early embossed tin litho 25 count cigar tin for Pippins brand (H. Traiser & Co., Boston) featuring gorgeous multi-color graphics (same images both sides). Clean, bright and very attractive (a strong C. 8++) w/ narrow strip of litho wear along very bottom area of non-graphic left side. Min. bid \$20.



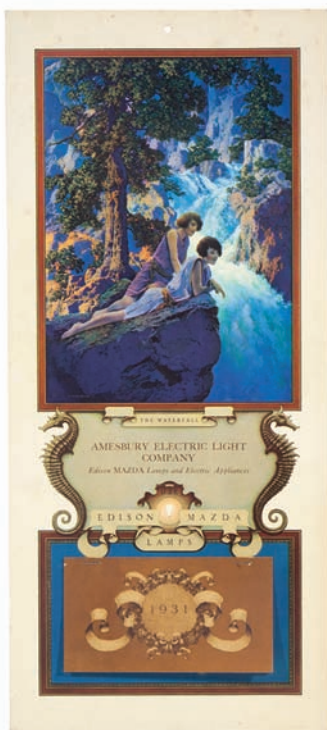
31). Tankar Oil Can. 5-5/8 x 4" (dia.) scarce, early tin litho 1 qt. solder sealed motor oil can for Tankar "Ring Seal" motor oil, featuring Co.'s railroad tank car logo. Has strong color and displays nicely (basically C. 8.5+), w/ heavy weathered oxidizing on lid. Min. bid \$40.



32). Four Roses Pocket. 4.5 x 3 x 7/8" scarce, flat top variation tin litho vertical tobacco pocket tin for Nall & Williams Co.'s "Four Roses" brand tobacco. Clean, bright and very attractive (a strong C. 8++) w/ non-offensive faint dent mark on backside. Min. bid \$50.



33). Mohawk Motor Oil. 5.5 x 4" (dia.) scarce, early tin litho 1 qt. solder seam motor oil can for Mohawk brand (Mohawk Petroleum Co., San Francisco, CA). Has strong colors and displays nicely (C. 7.5+/8-), w/ a few scattered scuffs and some oxidizing at bottom edge, w/ heavy soiling and darkening on lid. Min. bid \$50.



34). 1931 Edison Mazda Waterfalls Calendar. 19 x 8.5" early cardboard advertising calendar for Edison Mazda lamps (light bulbs) featuring illustrator Maxfield Parrish's "Waterfall" image. Never used calendar is clean, bright and excellent, w/ just a trace hint of faint, very minor foxing in outer cream colored border area (complete with full calendar pad). Min. bid \$40.



35). Tire Chains Display Box. 8-7/8 x 12.75 x 7.25" (as pictured); 1.75 x 12.75 x 7.25" (lid closed) full, early store display box for "Monkey Links" brand tire chains, complete w/ all 22 of its original product boxes (Flower City Specialty Co., Rochester, NY). Very nice, never used condition (C. 8+) w/ minor expected toning and storage wear. Min. bid \$50 (the lot).



36). 1929 Edison Mazda Parrish Calendar. 19 x 8.5" early cardboard advertising calendar for Edison Mazda lamps (light bulbs) featuring illustrator Maxfield Parrish's "Golden Hours" image. Never used calendar is clean, bright and excellent, complete with full calendar pad (minor paper loss on pads cover tear sheet). Min. bid \$40.





37).Iron Fireman Porcelain Sign. 11-7/8" (dia.) early enameled porcelain advertising sign for Iron Fireman brand coal furnaces, featuring great image of Co.'s trademark roboman. Sign is crisp, bright and like new, w/ nice original sheen (near mint). Min. bid \$40.



38).Sleepy Eye Stoneware Vase. 8-5/8 (h) x 4" (dia.) early, heavy, blue decorated stoneware pottery vase w/ nicely embossed images of the "Old Sleepy Eye" flour company Indian chief on front, w/ dragonfly and tall grasses on backside. Clean and excellent. Min. bid \$40.



39).Board of Trade Tobacco Bucket. 9.75 x 12.5 x 12.75" very early wooden 10 lb. store bucket w/ bale handle for Power & Stuart Co.'s "Board of Trade" brand tobacco, w/ attractive paper label surrounding a glass viewing window on front side. Has strong color and displays nicely, w/ some early paper loss (C. 7.5+). No lid. Min. bid \$40.



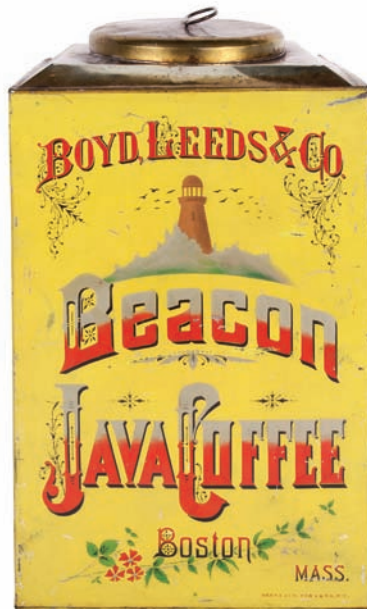
40).Eskay's Window Sign. 20 (h) x 30" (w) unusual, early tri-fold cardboard window display sign, featuring beautiful multi-color graphic image of baby and nursing bottle. Clean, bright and very attractive appearance (basically a strong C. 8+) w/ a little minor soiling and background wear. Min. bid \$40.



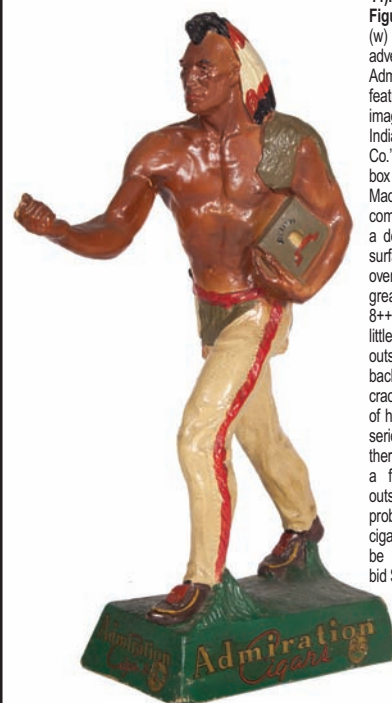
41).Chef Brand Printers Proofs. this historically important lot includes a great group from the original printers archive files from the Wilbert Co. in Philadelphia, PA that were used in the creation of the scarce "Chef" brand tin litho talcum powder tins (from the Berdan & Co. of Toledo, OH). This interesting lot includes the 1913 real size (Chef Label Image: 4.5 x 4.25"; Tin Blank: 3-7/8 x 6.5") original artist creative sketches, the hand-painted colored original label artwork, the back and forth correspondence that was sent between the Co. and the Co.'s creative art department, as well as actual tin lithographed finished talc can sample sheet that would have been used in the making an actual talc tin. Min. bid \$40



42).Beech-Nut Mints Sign. 26 x 17" early cardboard litho easel-back standup sign for Beech-Nut brand rolled mints, featuring stunning multi-color graphics (Ketterunus Litho Co., Phila. & New York). Powerful and impressive piece is clean, bright and exceptionally nice (a strong C. 8.5+) w/ exception of a little non-detracting minor toning and wear in very outer white border area. Min. bid \$50.



43).Coffee Store Bin. 21.5 x 13 x 13" large, early country store coffee bin for Boyd, Leeds & Co.'s "Beacon" brand coffee, w/ wonderful graphic lithography by Ginna & Co. (has slide-down door on back). A powerful and impressive looking piece that is clean, bright and excellent in appearance (displays as a strong C. 8++), w/ some non-detracting scuffs and wear on non-graphic side edges. Min. bid \$100.



44).Admiration Cigars Figure. 18.25 (h) x 4.5 (w) x 8" (d) nice, early advertising figure for Admiration brand cigars, featuring great figural image of American Indian scout carrying Co.'s embossed cigar box under his arm. Made of a dense, heavy composition material w/ a deep, rich, all original surface patina. Excellent overall and displays great (as a strong C. 8++), w/ exception of a little light paint wear in outstretched arm and back area, w/ a faint, tight crack line in outer surface of his upper arm (nothing serious or offensive) and there is what is probably a factory hole in his outstretched hand which probably originally held a cigar (replacement could be easily made). Min. bid \$70.





45). **Beech-Nut Gum Sign.** 11 x 21" scarce, ca. 1920's cardboard trolley car sign for Beech-Nut mint chewing gum, w/ nice image of Co.'s trademark girl. Clean, bright and very attractive appearance (basically a strong C. 8+), w/ a little non-offensive soiling and a 3/4" tear in bottom white border area (Forbes Litho). Min. bid \$40.



46). **City Mills Spice Box.** 2-5/8 x 19.25 x 10.75" (lid closed) early wooden store display box for W. G. & B. Co.'s City Mills brand spices (Old Plantation, New York) featuring beautiful multi-color graphics on its large 10.25 x 18.25" inside label. Label is clean, bright and very attractive (a strong C. 8+) w/ some non-detracting darkening/staining in outer margins. Min. bid \$50.



47). **Occidental Flour Sign.** 9 x 14" early tin litho country store sign for Occidental brand flour, w/ seven glass display domes in center showing various actual wheat samples (bottom row containing Co.'s finished flour products). Sign is crisp, bright and basically like new (slight bit of non-offensive minor bending), as found still in its original shipping carton along w/ original advertising booklet and ephemera (C. 8.5++). Min. bid \$40.

Front

Side



48). **Trop-Artic Oil Cup.** 2.75 (h) x 4" (dia.) beautiful, early tin litho advertising cup for Manhattan Oil Co.'s Trop-Artic brand motor oil and gasoline, w/ outstanding detailed graphic motoring image (has text and logo advertising on sides). Front image area is clean bright and excellent (C. 8.5), w/ a few oxidized wear marks on back left side edge. Min. bid \$40.



49). **Moxie Thermometer.** 25.5 x 9-5/8" early tin litho thermometer, featuring nice image of early style paper label bottle and Co.'s spokesperson Frank Archer. Clean and attractive appearance, w/ a little non-offensive light background wear and a slight bit of even fade to red/orange background color (C. 8). Min. bid \$50.



50). **Hopalong Cassidy Camera.** 5 x 4 x 5.5" scarce, Hopalong Cassidy vintage box camera, as found still in its original box. Camera is like new and appears never used, as found still in its original box, which is covered w/ great images of the cowboy star around four sides and lid. Box is clean and very nice (a strong C. 8+), w/ minor toning and a little light edge wear. Min. bid \$40.



51). **Pontiac Desk Clock.** 5.75 x 7 x 2.5" outstanding, early, executives desk clock given by Pontiac Auto Co. Heavy, very high quality piece, has a fancy, polished alabaster case w/ red Pontiac Indian logo on clock case (clock by Seth Thomas). Excellent and all original, w/ working clock. Min. bid \$40.



52). **Raybestos Thermometer.** 30.75 x 9.5 x 3/4" early, heavy metal service station advertising thermometer for Raybestos brand auto fan belts. Clean, bright and attractive appearance, w/ strong colors and great overall look (basically displays a strong C. 8++) w/ light scattered edge wear and some non-offensive, very faint white speckling on surface (not at all detracting and barely noticeable except on very close examination). Min. bid \$50.





53). **Frog in Your Throat Window Display.** 13.25 x 17-5/8" (sign); 10 x 17.5 x 5.25" (box) outstanding, large, early, heavy cardboard die-cut easel-back window display sign for "Frog In Your Throat" brand lozenges, featuring stunning, beautifully detailed multi color graphics of frog playing a banjo (dated 1897). Has a little extremely well done minor professional restoration, but overall is crisp, bright and like new in appearance (displays as a strong C. 8.5+++). Lot also includes a large, original cardboard display box (box is clean and displays quite nicely, although there is some cardboard loss and wear at top edge). Min. bid \$250 (the lot).



54). **Sunflower Oats Box.** 9.5 x 5.5" (dia.) early 3 lb. 7 oz. cardboard oats box for "Sunflower" brand (Dolan Mercantile Co., Atchison, KS) w/ same colorful flower images on both sides. Clean and attractive appearance, w/ minor toning and light scattered wear (C. 8/-). Min. bid \$40.

55). **Tire Gauge Display.** 14.75 x 6" (dia.) early, figural tin litho countertop display case for Schrader brand tire gauges, shaped like tire pressure gauge. Has nicely detailed graphic images of early style valves, valve caps and tire gauges around outside, w/ hinged door that opens up to reveal selling compartments inside (still contains original products and literature). Clean, bright and very attractive appearance (a strong C. 8+/), w/ a little non-offensive minor scattered wear. Min. bid \$50.

56). **Jack Sprat Oats Box.** 9-5/8 x 5-3/8" (dia.) early 3 lb. 7 oz. cardboard oats box for Jack Sprat brand (Western Grocer Co., Marshalltown, IA) w/ same nice image on both sides. Clean, bright and very attractive (C. 8.5+/). Min. bid \$50.



57). **Curved Porcelain Texaco Sign.** 18 (h) x 10" (w) vintage, ca. 1940 curved porcelain sign for Texaco "Fire Chief" brand gasoline. Crisp, bright and like new (near mint). Min. bid \$40.



58). **Wieland's Beer Sign.** 17.25" (dia.) beautiful, early, self-frame tin litho sign for Wieland's Extra Pale Lager, featuring wonderful image of American Indian girl (Kaufmann & Strauss Litho). Image area is clean and excellent (her image rates a C. 8.5+/); although there is some scattered light general wear around the blue lettering in top cream colored background section and in dark area off raised frame section (Note: a little minor background touch-up could improve it to a strong C. 8.5/+ appearance). Min. bid \$150.



59). **Porcelain Flange Paint Sign.** 20-3/8 x 12.75" very early, 2-sided heavy enameled porcelain sign for Sherwin-Williams paints featuring same nice image of Co.'s early style logo. Impressive sign has strong colors, nice sheen and a great overall look, w/ some non-detracting light wear and some chipping on mounting flange section (displays as a strong C. 8+). Min. bid \$60.





60).Wak-em Up Coffee Pail. 5 x 4-5/8" (dia.) scarce, early 1 lb. pail for "Wak-em Up brand (Andersen-Ryan Coffee Co., Duluth, MN) featuring beautiful graphic image of Co.'s trademark Indian chief. Clean, bright and excellent (C. 8.5+). No lid. Min. bid \$50.



61).Boyce "Radio" Moto Meter. 5.75 x 6.5 x 3" (dia.) elaborate, Art-Deco style ornamental automotive hood ornament temperature gauge by Boyce Moto Meter Co. Stunning, very high quality piece w/ beautiful detailing. Clean and exceptionally nice (C. 8.5+), w/ exception of small, fairly minor edge chip at very outer beveled edge on backside. Min. bid \$40.



62).Gargoyle Lubester Sign. 10-7/8 x 8.75" (dia.) early, enameled porcelain 2-sided paddle style lubester sign for Vacuum Oil Co.'s Gargoyle brand motor oil. Has strong colors and displays nicely, w/ a little faint staining at 1 o'clock area on backside (front C. 8.5+; back C. 7.5+/- due to staining). As found, might improve a bit w/ cleaning. Min. bid \$40.



63).Black Cat Match Holder. 4-7/8 x 3-3/8 x 1.25" outstanding and extremely rare, early tin litho advertising match holder for "The Outlet" (an early Providence, RI store), featuring incredible image of a black cat on fence, w/ large smiling full moon in background. A powerful and very impressive looking piece that has strong colors and displays nicely (C. 8/-) w/ some light scattered soiling and wear. As found, might improve a bit w/ cleaning. Min. bid \$50.

#### Porcelain Ocean Lines Sign



64).Ocean Liner Agency Sign. 15 x 17" very early, heavy enameled porcelain sign (w/ raised volcano grommet holes) for ocean liner passenger booking agency, featuring nicely detailed colored logo flag images for the major lines (including the Titanic's White Star Line). Crisp, bright and like new, w/ beautiful, deep original sheen (near mint). Min. bid \$70.

#### Cowgirl Photo Album



65).Cowgirl Photo Album. 10.5 x 8.5 x 2" unusual early photo album featuring beautiful multi-color cowgirl image w/ nicely embossed decorative border. Front is clean and attractive w/ non-detracting minor wear (C. 8/+); the dark backside cover has darkening and staining. Min. bid \$50.



66).Senate Tobacco Bucket. 12.25 x 12" (dia.) early, wooden 10 lb. size tobacco crate for Barber & Stout Co.'s "Senate" brand, w/ beautiful early stone litho paper label featuring Henry Clay and Senators debating. Label is clean and displays quite nicely, although there are areas of wear and paper loss (C. 7+). No lid. Min. bid \$50.



67).Enterprise Coffee Grinder. 12.5 x 7.25 x 9" (dia. wheels) early figural cast iron coffee grinder on wooden base (by Enterprise Mfg. Co.). Very nice and all original, w/ attractive decals and just the right amount of slight darkening and minor wear (C. 8/+) w/ slight darkening/staining on cover. Works nicely. Min. bid \$70.

#### Original Artwork



68).Gulf Oil Original Artwork. 15 x 12" (9-3/8 x 7-3/8" visible) original ca. 1949 oil painting by illustrator Ellwood Flaherty, featuring great image of Co. service station attendant (was made for use as cover illustration for a Gulf Oil Co. road map). Very high quality piece that is nicely framed and matted. Excellent (C. 8.5+). Min. bid \$40.





69). Bee Soap Sign. 9.25 x 19.5" very early tin litho sign for Colgate Co. soap products, featuring beautifully detailed multi-color graphic soap packages. Never used sign is crisp and like new (near mint), w/ a couple very minor hazy spots in lettering of word "Premiums" (mentioned for accuracy, so minor barely merits noting). Min. bid \$60.



70). Red Indian Tobacco. 4.25 x 7-7/8 x 5-3/8" scarce variation, early tin litho lunch box style tin for Red Indian brand tobacco, w/ same nice trademark Indian images on all four sides. Colors are very bright and piece displays extremely well (as a strong C. 8++) w/ exception of some litho loss on narrow left side edge (in area under and surrounding a large horizontal paper tax stamp). Min. bid \$40.

### 2-Sided Motor Oil Sign

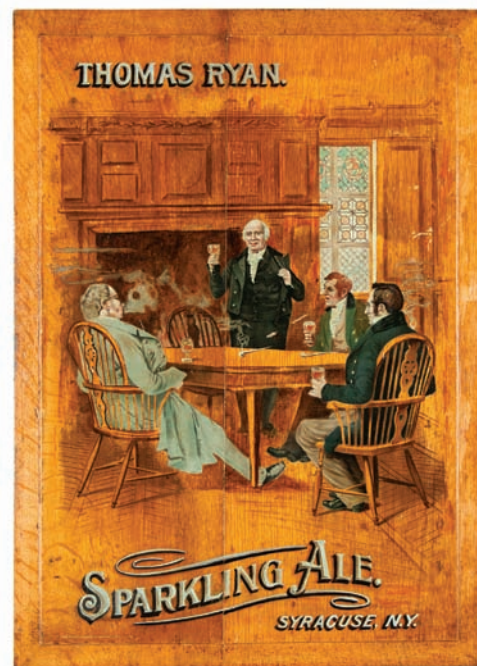


71). Quaker State Racing Oil Sign. 5 x 26" nice, ca. 1960's 2-sided heavy metal sign for Quaker State brand motor oil (same on both sides). Clean and very attractive overall (a strong C. 8++), w/ a little non-offensive minor background staining on backside. Min. bid \$20.

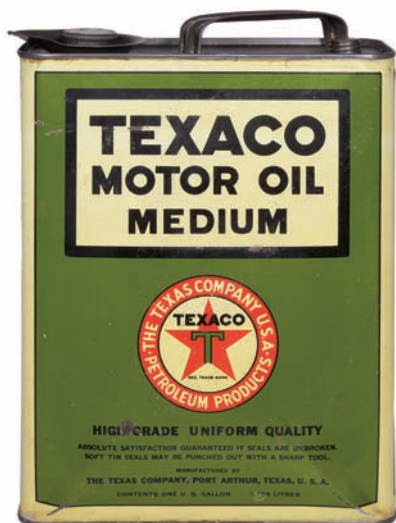


72). Large Welch's Sign. 18 x 40.25" scarce, large, early self-framed tin litho sign for Welch's brand grape juice (shows early style bottle w/ 1929 date on label). Clean, bright and exceptionally nice, as found never used still w/ protective paper on it (basically near mint), w/ slight discoloration spot in black background and a few trace remnants of protective paper in outside framed area. Min. bid \$60.

### Thomas Ryan Brewery Sign



73). Thomas Ryan Beer Sign. 28 x 19.75 x 1/4" large and extremely rare, early wooden advertising sign for Thomas Ryan Co.'s Sparkling Ale (Syracuse, NY) w/ lithography by Tuchfarber Co. Clean, very nice appearance, (C. 8+), w/ a little non-offensive light scattered background wear. Min. bid \$70.



74). Texaco Motor Oil. 11 x 8 x 3-1/8" very early, hand-soldered tin litho 1 gallon can for Texaco motor oil. Has strong colors and displays very nicely (as a strong C. 8+), w/ small dent at bottom edge and a little non-offensive light scattered background wear (critical grade C. 8/-). Min. bid \$40.



75). Sweet Cuba Tobacco Pail. 11-3/8 x 12.5" (dia.) early wooden 10 lb. tobacco pail for Spaulding & Merrick Co.'s "Sweet Cuba" brand, w/ large attractive stone litho label on front. Label has strong colors and displays nicely (basically as a C. 8/-), although there is some paper loss at bottom and a little expected toning and light scattered wear (critical grade C. 7.5+). Min. bid \$50.



76). Samoset Chocolates Sign. 13.5 x 11" (from dowel down) unusual, early heavy felt sign on wooden hanger for Samoset Chocolates. Displays very nicely (as a strong C. 8+) w/ nice patina and great overall look (close examination will show a few non-detracting tiny holes). Min. bid \$40.





77).Beech-Nut Gum Will Rogers Sign. 11-1/8 x 21" scarce, ca. 1929 Beech-Nut Co. cardboard trolley car sign w/ nice image of famous American commentator Will Rogers endorsing Co.'s peppermint chewing gum. This never used Co. archieve sign is clean, bright and displays very nicely (as a very strong C. 8++), w/ a little minor crimping and slight wear in the very outer white border area. Min. bid \$40.



78).Beech-Nut Cough Drops Sign. 11 x 21" scarce, early cardboard trolley car sign for Beech-Nut brand rolled black cough drops, featuring great image of Co. tin litho display rack. Clean, bright and exceptionally nice trolley car sign has stunning multi-color graphics and features great image of Co.'s extremely rare tin litho countertop display rack (C. 8.5++). Min. bid \$40.

#### Drugstore Display Case



79).Drugstore Display Case. 6.5 (h) x 7.75 (w) x 7.25" (d) small, early glass covered tin countertop medicine display case for "Boal's Rolls" laxative product, w/ beautiful inside label and a few original product packages inside. Clean, bright and exceptionally nice (C. 8.5++). Min. bid \$40.



80).Web-Foot Cigar Can. 5.75 x 6.25 x 4.25" early paper label (over tin) 50 ct. cigar can for "Web-Foot" brand, w/ nice American Indian themed image. Clean and attractive overall (basically a C. 8+), w/ exception of faint scratch line on girl. Min. bid \$40.

#### Iron Bank



81).Boy w/ Football Bank. 5.25 x 3.5 x 3.5" scarce, early figural cast iron bank by Hubley, featuring boy in uniform holding large football. Bank has some fairly heavy general overall surface wear, but still retains a fair amount of its original paint surface. Min. bid \$50.



82).Porcelain Pennzoil Sign. 7.25 x 27" early enameled porcelain service station sign for Pennzoil Lubrication products. Clean and quite nice overall, w/ minor staining and a little chipping and light wear at bottom edge. Min. bid \$50.



83).Colburn's Laundry Bluing Box. 2 x 15.5 x 10" (lid closed) very early wooden stenciled store display box for Colburn's laundry bluing, w/ outstanding, large 10 x 10-7/8" colorful and highly graphic shiny finish label on inside lid. Label is clean, bright and exceptionally nice (a strong C. 8++), w/ a little light wear at bottom edge (note: one of wire pieces attaching box lid at back is no longer there). Min. bid \$50.



84).Giles Boot Protectors Box. 3 x 13 x 12.75" early wooden (oak) countertop store display box for Giles brand boot protectors, with beautiful multi-color graphic paper display label inside Label (10 x 12") is clean, bright and very attractive (a strong C. 8++) w/ a little non-offensive minor background wear. Min. bid \$40.





85).Yankee Cigarettes Tin. 3-1/8 x 4 x 3/8" outstanding, scarce, early, flat vest pocket style hinged lid tin for "Yankee Brand" cigarettes, featuring great patriotic image of Uncle Sam seated on Statue of Liberty, w/ American flag in background. Clean and very attractive appearance (displays as a strong C. 8+), w/ minor crazing and faint scratch mark in background area (critical grade C. 8/-). Foreign. Min. bid \$40.



86).Unity Mixture Pocket Tin. 2.75 x 3.5 x 1" early tin litho vertical tobacco pocket tin for "Unity Mixture" brand. Clean, bright and attractive, w/ a little light scattered wear (front C. 8/+; back C. 7.5+/-). Min. bid \$20.



87).Kochenderfer Oil Can. 6.5 x 8 x 3" impressive, early 1/2 gallon sized motor oil can from Kochenderfer Oil Co. (Cochrane, Wisconsin) w/ powerful race car image on front (Co. info on back). Clean and very attractive (a strong C. 8++), w/ some minor aging on non-graphic top. Min. bid \$40.



88).Golden Penn Motor Oil. 5-5/8 x 4" (dia.) scarce, early tin litho 1 qt. solder seam oil can for "Golden Penn" brand (Golden State Oil Co. of California). Front is clean, bright and excellent w/ minor denting; backside has a fairly deep dent at bottom and some light soiling on surface (front C. 8.5; back C. 8/-). Min. bid \$40.



89).Texaco Motor Oil Can. 6.5 x 3.75" (dia.) scarce, early hand-soldered tin litho can for Texaco's "574" motor oil. Clean, bright and exceptionally nice (C. 8.5+). Min. bid \$40.

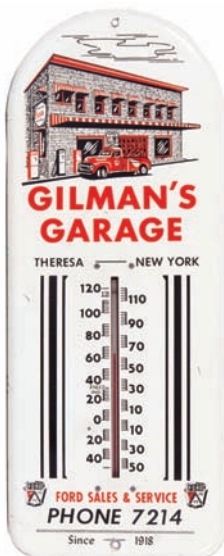


90).Jayhawk Oil Can. 5-5/8 x 4" (dia.) scarce, early tin litho solder seam 1 qt. motor oil can for Kent Oil Co.'s (Salina, KS) "Jayhawk" brand, w/ great image of Co.'s colorful trademark bird. Clean, bright and excellent appearance (displays as a C. 8.5+), although lid and base appear to have been professionally replaced. Min. bid \$60.



91).Dunnsboro Pocket Tin. 4-3/8 x 3 x 7/8" early tin litho vertical tobacco pocket tin for Chas. Auld Co.'s "Dunnsboro" brand, w/ attractive fox hunt image. A clean and very attractive example, w/ a little non-offensive faint rubbing wear and a slight trace of even faded to reds (front displays as a C. 8/+; back C. 8/-) w/ a some light chipping at bottom right edge on backside. Min. bid \$50.

Anheuser-Busch



92).Gilman's Garage Thermometer. 16 x 6-3/8" great early metal advertising thermometer for Gilman's Garage (Theresa, NY- a small town up near Canadian border), featuring neat image of early tow truck, Esso station sign and gas pumps out front of Co.'s Ford dealership and garage. Clean, bright and very attractive (a strong C. 8++), w/ a bit of very minor background wear and some light soiling along outer side edges (working thermometer). Min. bid \$40.



93).Set of Anheuser-Busch Signs. each 11-5/8" (dia.) lot consists of an attractive matched set of four early embossed die-cut cardboard lithographed signs issued by Anheuser-Busch Brewing Association, w/ beautifully detailed four seasons images of Spring, Summer, Winter and Fall, w/ Co. advertising logos at bottom of ea. (1903, Gray Litho Co., New York). They are all clean and image areas on all of them are excellent, although there is some chipping loss and edge damage in the outer dark border areas of each. Min. bid \$60 (the set).

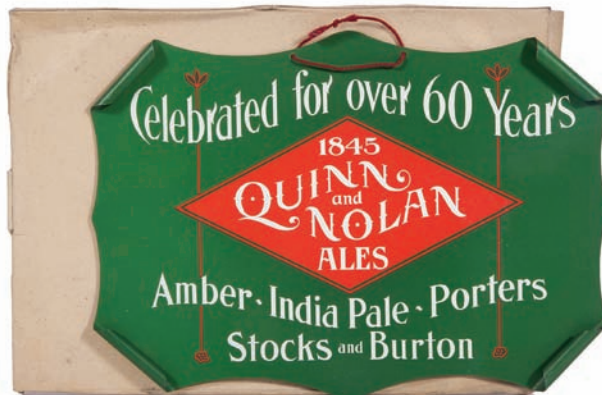


94).Lift Soda Sign. 24 x 12" vintage tin sign for "Lift" brand soda (Three Star Bottling Works, Verona, PA), w/ nice image of WWII era B-24 Liberator airplane on bottle label. Never used sign is clean, bright and excellent, w/ only very minor storage wear (C. 8.5++). Min. bid \$40.





95) Gulf Oil Can. 6-1/8 x 8.5 x 5-5/8" scarce, early hand-soldered tin litho one gallon can for Gulf Refining Co.'s "Supreme" brand motor oil. Clean and very attractive (a strong C. 8++). Min. bid \$40.



96) Quinn & Nolan Brewery Sign. 9 x 13.25" early tin litho pre-pro beer sign for Quinn & Nolan Ale Brewing Co. (Albany, NY), w/ fancy rolled edges design. Clean, bright and like new, as found never used still in its original box (display side is near mint; back has a few minor scuffs). Min. bid \$40.

Front

Back



97) Large Monarch Candy Store Tin. 15 x 12.5" (dia.) large, store sized display tin for Monarch Co.'s "Teenie Weenie" brand toffee candies (originally held 150 packages) w/ great images of Co.'s Brownie like Teenie Weenie characters on back side fighting off bees while stealing honey candy. A Powerful and impressive looking piece that is clean, bright and exceptionally nice (C. 8+) w/ a little non-detracting light background wear. Min. bid \$50.



98) Whiz Tins Lot. It includes a nice grouping of four scarce, early tin litho Whiz brand automotive product tins. Includes: Co.'s Anti Slip brake wafers tin (2.25 x 1.25" (dia.)) w/ neat image of Co.'s elf changing tire on lid (C. 7.5+/8-); Tire Patch Outfit (3-1/8 x 2.25" (dia.)) w/ nice image of Co.'s elf characters dancing on lid (C. 8+/+); Valve Grinding Compound (1.5 x 2-5/8" dia.) (C. 7+); and full, tiny Rain Spot Remover tin (3/8 x 1-3/8" dia.) (C. 8++). Min. bid \$40.



99) Bond Bread Porcelain Sign. 4 x 18" early, heavy enameled porcelain strip sign for Bond Bread. Clean, bright and exceptionally nice (a strong C. 8.5++), w/ minor chipping at middle and top right hanging holes. Min. bid \$40.

Crimps Cigarettes Sign



100) Crimps Tobacco Sign. 25-1/8 x 20" (21.25 x 15-5/8" visible) great looking, very early paper litho sign for Liggett & Myers Tobacco Co.'s "Crimps" brand cigarettes. Clean, bright and attractive appearance (basically displays as a strong C. 8+/+), although close examination will show a few professionally repaired tears and small holes in background area and there is about a 3/4" wide area of some wrinkling and light creasing lines along very outer left border area. Nicely framed and matted. Min. bid \$60.



101) Columbia Veterinary Sign. 19-7/8 x 13.75" scarce, early embossed tin litho sign for Columbia Veterinary Remedies (F. C. Sturtevant Co., Hartford, CT). This early cabinet insert sign is clean and quite attractive overall (displays as a C. 8+/+), although there is some non-offensive light background chipping and wear (critical grade C. 7.5++/8-). Note: wear at outer edges would be hidden if framed or inserted into a cabinet. Min. bid \$70.

Car Batteries Die-Cut Sign



102) Eveready Batteries Sign. 25 x 19" frame (20 x 13.5" sign) early cardboard die-cut countertop sign for Eveready Co.'s Columbia brand dry cell automotive batteries, w/ nice raised cut-out section of hands and batteries. Clean, bright and excellent overall, w/ minor wear spot at bottom edge (C. 8.5). Framed. Min. bid \$50.



Country Store Screen Door Push



103).Sunbeam Door Push. 8.5 x 26" early, heavy tin litho country store screen door push plate in shape of loaf of Sunbeam bread, w/ nice images of Co.'s trademark girl. Clean, bright and exceptionally nice overall, w/ a couple light background scuffs (a strong C. 8++). Min. bid \$50.



104).Porcelain Paint Sign. 10.75 x 24" impressive, small, early, heavy 2-sided enameled porcelain sign for Sherwin-Williams paints (same image both sides). Crisp, bright and exceptionally nice, w/ a little minor wear at top grommet holes (C. 8.5++). Min. bid \$50.



105).Sheffield Farms Toy Truck. 6.75 x 22.5 x 5-5/8" early, very high quality, heavy painted pressed steel toy farm truck w/ nice advertising on both sides for Sheffield Farms and Co.'s "Sealock Milk". All original, in very nice overall condition (C. 8+). Min. bid \$50.



106).Star Soap Sign. 18 x 3" very early, heavy enameled porcelain strip sign for Star brand soap. Clean, bright and very attractive, w/ bright colors and excellent overall look, w/ a small chip in "S" of soap and a little early scattered edge wear (note: piece is still attached to trimmed off board from stores siding). Min. bid \$50.



107).Poultry Feeds Sign. 19.5 x 27.75" scarce, early embossed tin litho sign for "Lakko" brand poultry feeds (Lake of the Woods Milling Co., Canada) w/ powerful and impressive look. Clean, bright, very nice looking piece (basically a strong C. 8+) w/ minor scattered background speckles and wear. Min. bid \$40.



108).American Club Beer Sign. 14.5 x 18-3/8" (11.5 x 15-3/8" visible) early paper litho sign for Lembeck & Betz Brewing Co.'s (Jersey City, NJ) "American Club" beer. Clean, bright and exceptionally nice (a strong C. 8.5++), as found still sealed in its original frame. Min. bid \$50.



109).Maryland Club Pocket Tin. 4 x 3-3/8 x 1.25" early flip lid variation tin litho vertical tobacco pocket tin from Marburg Bros. Clean, bright and excellent overall (a strong C. 8++), w/ only very minor wear. Min. bid \$50.



110).Korbel Champagne Sign. 13 x 19" beautiful, ca. 1915 tin litho over cardboard sign for Korbel California Champagne. Clean and excellent overall, w/ bright, vibrant colors (displays as near mint), w/ exception of a couple very minor specks in label area of bottle (critical grade C. 8.5++). Min. bid \$50.

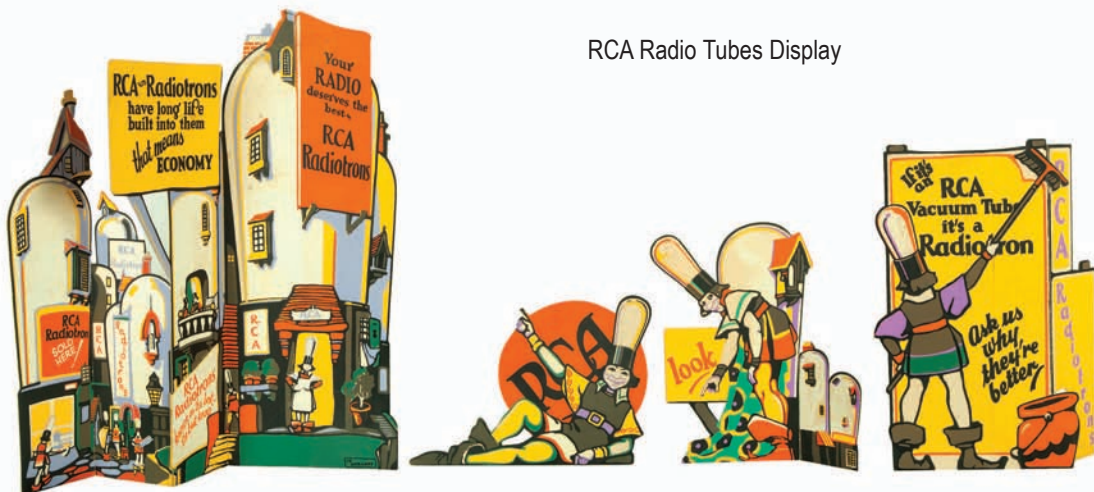
Clark's Peanut Butter



111).Clark's Peanut Butter Pail. 3.5 x 3.75" (dia.) scarce, early 1 lb. tin litho peanut butter pail featuring wonderful sporting scenes (moose hunting, dog sledding, canoeing, etc.). Clean, bright and exceptionally nice (a strong C. 8.5++) w/ minor soiling on lid. Min. bid \$50.



RCA Radio Tubes Display



112).RCA Radio Tubes Display. unusual, ca. 1920's 4 piece cardboard window display set advertising RCA Co.'s "Radiotron" brand radio tubes, featuring Co.'s radio head characters (attributed to illustrator Maxfield Parrish). Pieces range in size from 8 x 11" to 22.25 x 21" and are bright and display nicely, w/ some non-offensive light toning and faint storage stains (C. 8+/-). Min. bid \$50 (the set).



113).Palomino Motor Oil Can. 5-5/8 x 4" (dia.) scarce, tin litho 1 qt. solder seam can for "Palomino" brand (Palomino Oil Co., Oil City, PA) w/ same nice image on both sides. Has strong color and sheen and displays very nicely (display side C. 8+/-; back C. 7.5+/-), although there is some scattered oxidized background speckling wear and a 3/8 x 2.75" line of litho loss along very upper edge in left background area. Min. bid \$40.



114).Yacht Club Pocket Tin. 4-5/8 x 3 x 7/8" scarce, early tin litho vertical tobacco pocket tin for Lorillard Co.'s Yacht Club tobacco. Attractive, very respectable example that displays very well w/ bright color and nice shiny gold's. Basically rates a strong (C. 8+/-), w/ exception of minor soiling, faint scuff above "YA" in "yacht" and a little darkening on lid. Min. bid \$50.



115).Polly Prem Motor Oil. 5.5 x 4" (dia.) scarce, early tin litho 1 qt. solder seam can for "Polly Prem" brand (Wilshire Oil Co., Los Angeles, CA). Clean, bright and like new appearance (displays as near mint) although examination under black light will show a few small, very well done professional touch up spots in black background area. Min. bid \$50.



116).Gold Dust Pocket Tin. 4.5 x 3 x 1" scarce, early concave variation vertical tobacco pocket tin for "Gold Dust" brand, featuring great gold mining images on both sides. Crisp, bright and exceptionally nice example has vibrant colors and bright shiny gold's (near mint, w/ exception of a couple very faint scratches- mentioned for accuracy, so minor barely merits mention). This is the finest example I've ever seen. Min. bid \$250.



117).Statue of Liberty Bank. 9.75 x 3.5 x 3.5" scarce, large size figural cast iron still bank by Kenton, featuring nicely detailed image of Statue of Liberty. Bank is excellent, w/ very nice paint surface, w/ a little light expected highlight wear. Min. bid \$50.



118).Mother Goose Talc. 6-3/8 x 2.5 x 1.75" early, colorful and highly graphic talcum powder tin for "Mother Goose" brand, covered with terrific Nursery Rhyme images all around. Full tin is clean, bright and very attractive (basically a strong C. 8.5+/-) w/ exception of scuff spot on top right edge in non-graphic top shoulder area. Min. bid \$60.



119).Caswell's Coffee. 8.75 x 5.5" (dia.) early tin litho 3 lb.can for Caswell's brand coffee (Geo. Caswell Co., San Francisco, CA) w/ nice graphic image of Co.'s trademark girl. Clean, bright and excellent appearance, w/ a little non-offensive light wear in stripe pattern on backside (front C. 8.5+/- back C. 8). Dated 1924. Min. bid \$40.



120).Porcelain Air Sign. 17.75" (h) w/ bracket scarce, early 3-sided enameled porcelain triangular shaped service station "Air" sign, nicely displayed on iron mounting bracket (porcelain sign measures 15.5 (h) x 3.5 x 3.5. Displays nicely, w/ a little minor weathering and a few scattered edge chips (C. 8-). Min. bid \$40.





121). Porcelain Mack Trucks Sign. 3-5/8 x 13.25" scarce, early, heavy enameled porcelain embossed sign advertising Mack trucks. Never used sign is crisp and like new, w/ a nice deep, rich original patina (still has original Baltimore Enamel Co. label on backside). Near mint. Min. bid \$40.



122). Paper Mache Noddies. (ea.) app. 5.75" (h) Lot includes a nice group of three different early figural hand-painted nodder figures resembling WC Fields, Mark Twain and a Brownie Character. They are clean and excellent overall (avg. C. 8+) w/ exception of a little paint wear on shoes of Brownie. Min. bid \$40.



123). Chevrolet Sign. 18-1/8 x 20" early, 2-sided tin litho "Genuine Chevrolet Parts" flange dealer sign (same image both sides). Clean, bright and displays very nicely (a strong C. 8+), w/ a little minor background wear and a couple sections of metal loss on the side angled mounting section. Min. bid \$50.



124). Salesman's Badges Kit. 8.25 x 1.75 x 11.5" unusual, ca. 1950's salesman's presentation selling kit from Hook Fast Specialties Co. for their fancy, high quality line of cloisonné enameled metal uniform badges. Lot includes 8 different salesman's sample uniform badges, in its original faux leather covered presentation box. Like new. Min. bid \$40.



125). Old Possum Hollow Sign. 10" (dia.) outstanding, early lithographed tin sign w/ concave image area, featuring nude beauty in the woods drinking whiskey. Image area is clean, bright and excellent (a strong C. 8.5+ appearance), w/ small area of well done restoration in outer right border area (Non-graphic backside has some light scattered surface speckling). Min. bid \$60.



126). Chicago & Alton Railway Sign. 29.25 x 11.75" (27.5 x 10-1/8" visible) early paper litho sign from the Chicago & Alton Railway (ran between Chicago and St. Louis) promoting Co.'s fancy Pullman Sleeping Cars and Ladies Palace cars w/ reclining chairs (lithography by Rand McNally & Co. Engravers). Piece is clean, bright and displays nicely (displays as a C. 8+), w/ 1.25 x 1/2" section of paper loss in top edge background area w/ light factory fold lines. Framed. Min. bid \$40.



127). Greenway Brewing Co. Calendar. 32.25 x 27.5" (19-5/8 x 14.75" actual piece) outstanding, early paper litho advertising calendar for Greenway Brewing Co. (Syracuse, NY) featuring wonderful image of children dancing around man w/ organ grinder. Clean, bright and exceptionally nice (C. 8.5+), complete w/ 1900 partial calendar pad. Beautifully framed and matted (museum quality job). Min. bid \$500.



128). Avery Medicine Sign. 29.25 x 13" very early paper litho sign on original cloth backing for Avery Lactate Co.'s "Lactart Acid of Milk" patent medicine product "Cure for Dyspepsia, Etc." (Lithography by Donaldson Brothers, Five Points, NY, Copyright 1884). Displays quite nicely (image area displays as an attractive C. 8+), w/ a slight bit of non-offensive, even toning and minor scattered wear; w/ some tattering and light scattered paper loss areas in the outer border (these could be easily matted out if framed). Original strips at top and bottom. Min. bid \$50.





129).Sunoco Restroom Sign. 14 x 22" w/ bracket (6.5 x 21" sign only) nice, early, 2-sided heavy enameled porcelain restroom sign from early Sunoco service station, as found still on its original iron bracket. Porcelain is clean, bright and very nice overall (a strong C. 8++), w/ minor edge wear; and small 3/8" weathered chip mark in dark background area. Note: Iron mounting bracket has been repainted w/ a flat black finish paint. Min. bid \$50.



130).Early Car Polish Tins. Range from 5-7/8 x 2-7/8" (dia.) to 6-3/8 x 3-1/8 x 2-1/8" lot includes four early pint sized auto polishing product cans. Tin litho cans include: Navon (C. 8+); Victor (C. 7+); Navon (C. 8+); Chi-Namel Lacquer Polish (C. 8+). Also includes nice early paper label Ideal Polish can (C. 8.5+) w/ light dent. Min. bid \$20.



131).Beech-Nut Gum Sign. 16 x 44" large, early cardboard sign for Beech-Nut brand peppermint chewing gum. Crisp, bright, never used piece basically displays as like new, as found never used, w/ just a trace hint of soiling in outer background area, and some very minor storage wear at the very outer edges-mentioned for accuracy, nothing serious or at all detracting and would be easily hidden if framed (C. 8.5++). Min. bid \$40.

#### Polarine Motor Oil for Fords



132).Polarine For Fords Oil Can. 7 x 8 x 3-1/8" early tin litho 1/2 gallon sized can for Standard Oil Co. of Indiana's Polarine brand motor oil for Ford cars. Clean, bright and very nice (C. 8+), w/ only minor wear. Min. bid \$30.

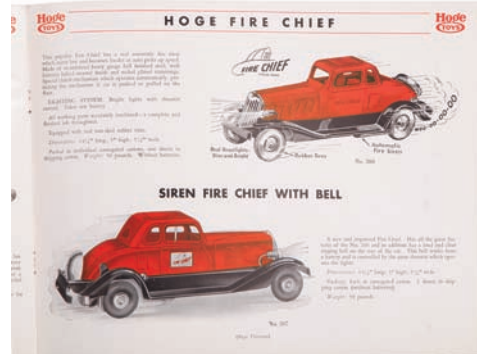


133).Early Wooden Store Sign. 11.5 x 46.75" very early, wooden painted country sign for Larrabee's Store in Wilton, Maine. All original, w/ a nice, just slightly weathered surface, giving it a great primitive, country folk art type look (C. 8+). Min. bid \$50.



134).All Nations Tobacco. 2.75 x 4-5/8 x 1.75" early, hinged lid tin for J. Wright Co.'s "All Nations" brand tobacco, featuring beautifully detailed color graphics. Colors are bright and tin displays quite nicely (as a C. 8+), although close examination will show a few non-offensive light scattered chip marks and minor wear. Min. bid \$40.

#### 1930's Hoge Toys Catalog



135).Hoge Toys Catalog. 8.5 x 11" scarce, ca. 1930's 20 pg. fully illustrated catalog for Hoge Mfg. Co.'s toys and trains w/ several wonderful color illustrations. Excellent overall, w/ small wear mark on cover. Min. bid \$40.

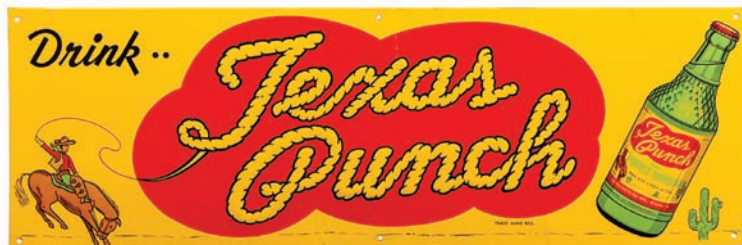




136).McCormick Farm Machine Sign. 15.5 x 21.75" (11-7/8 x 19" image) vintage 1891 paper litho sign for McCormick brand horse drawn agricultural machinery (Winters Print & Litho Co., Springfield, OH). Clean and excellent overall (C. 8++). Min. bid \$50.



137).Gulf Oil Display (w/ Box). 12 x 10 x 4.5" scarce, early tin litho countertop display piece for Gulf oil, w/ slots on top shelf for securing and displaying two handy oiler style household oil tins, (has open storage compartment in back for holding multiple tins inside). Sign at top is crisp and like new, as found, never used still in its original protective paper; base piece displays nicely, w/ faint scratch mark and some light general wear from use (sign near mint; base piece C. 8+/-). Piece includes its original storage box. Min. bid \$50.



138).Texas Punch Soda Sign. 9 x 27" vintage, embossed tin litho sign for "Texas Punch" citrus soda product (Reading Bottling Works, Reading, PA) w/ neat Western theme. Sign is clean, bright and appears never used (displays as near mint), w/ exception of a couple tiny bends and a little minor storage wear in background (critical grade a very strong C. 8++). Min. bid \$40.



139).Gas Truck Toy. 3 x 14-5/8 x 2.75" early pressed steel toy gasoline truck by Louis Marx & Co. Toy is clean, bright, excellent and appears to have been hardly ever been used (C. 8.5+). Includes its original box (box has tattering and wear and is missing edge flaps). Min. bid \$40.



140).Dixie Kid Tobacco Tin. 4.25 x 7-7/8 x 5.25" early tin litho lunchbox style tobacco tin for "Dixie Kid" brand cut plug (Nall & Williams Tobacco Co., Louisville, KY) w/ great images of Co.'s trademark black baby (same on both sides). Clean, bright and very attractive appearance (a strong C. 8+/) w/ some dark spots and light wear on lid. Min. bid \$50.



141).Indian Maidens Fan. 9-5/8 x 16.75" (opened) outstanding, early die-cut folding cardboard advertising fan from the Syracuse Herald newspaper (Syracuse, NY), w/ beautiful multicolor graphic images of American Indian maidens on each panel (has 1903 calendar pages at bottom of panels). Clean and excellent (C. 8.5+/-). Min. bid \$40.



142).Pepsi Double-Bubble Clock. 5 x 15.5" (dia.) vintage, very high quality, early electric light-up "double-bubble" style advertising clock for "Pepsi-Cola" soda. Clean and exceptionally nice (like new) in working condition. Min. bid \$70.



143).Esso Thermometer. 17.25 x 17.25 x 7/8" early dial type service station advertising thermometer for Esso Co.'s Atlas brand anti-freeze and tires. Has aluminum frame covering tin litho advertising inside, w/ convex glass covering. Clean, bright and like new (appears never used), w/ working thermometer. Min. bid \$40.



144).Poth Brewing Light-Up Sign. 17.25" (dia.) impressive, early convex glass covered light-up sign (metal frame and back) from F.A. Poth Brewing Co. (Philadelphia, PA), w/ chain for hanging and metal stand on back for countertop use. Working piece is excellent overall, w/ some light oxidized speckling to finish of silver decorative trim (note glass inserted upside down). Min. bid \$50.



PA RR Baseball Team



145). Pennsylvania Railroad Baseball Team Photo. 18.25 x 22.75" (10-1/8 x 13-5/8" visible) large, early framed cardboard team photograph featuring the Pennsylvania Railroad baseball team in uniform, w/ their manager and early game equipment, as found still in its original oak frame and matting. Photo is sharp and in very good to excellent overall condition (C. 8/+); and frame is very nice, w/ a little light staining along narrow left edge of the mat board. Min. bid \$50.



146). "Alabama Coon" Target Game. 14 x 8 x 1.75" early 2-ps. boxed "Alabama Coon" game, complete w/ its outrageous shiny finish cardboard figure inside. Target piece featuring comical black man appears never used and is clean and excellent (C. 8.5++); outer 2-ps. box is bright and attractive, w/ a little general expected soiling, minor staining and light wear (outer box C. 8/). Min. bid \$40.



147). Good Year Tires Porcelain Sign. 26.5 x 48.5" nice, early, heavy 2-sided porcelain sign for Good Year brand tires, w/ great image of Co.'s logo and racing flag (same on both sides). Clean, bright and exceptionally nice appearance, w/ beautiful original surface sheen (basically a strong C. 8.5++), w/ a trace bit of very minor expected soiling and wear in very outer white border area (including a couple early white touch-up spots on one side at top hanging holes- note: these appear to be white porcelain and appear to possibly have been done at factory during mfg. process). Min. bid \$100.



148). Camel Cigarettes Sign. 10 x 21" ca. 1930's paper litho sign for R.J. Reynold Co.'s Camel brand cigarettes, featuring beautiful graphic circus themed image of Capt. Terrell Jacobs (famous lion trainer). Clean, bright and like new (near mint). Min. bid \$40.

Large Bathing Suits Poster



149). Wil Wite Swimwear Poster. 41-7/8 x 27-5/8" large, early paper litho poster from Olympia Knitting Mills, advertising Co.'s "Wil Wite" brand ladies swim wear w/ great fade-away image of girl skiing on wake board. Powerful and impressive piece is clean, bright and like new in appearance, w/ non-offensive small, minor background tear mark (Erie Litho Co., Erie, PA). Min. bid \$60.

Iroquois Brewing Co.



150). Iroquois Brewing Co. Sign. 33-7/8 x 41-5/8" (25.75 x 33.5" visible) large and impressive paper litho sign for Iroquois Brewing Co. (Buffalo, NY), featuring beautiful color graphic image of Co.'s early factory building. Clean and excellent overall (basically displays as a C. 8.5) although professional conservator has added back missing paper at upper left corner background area). In beautiful period frame. Min. bid \$250.





Miniature  
Store  
Jars



151).Miniature Candy Store Jars. lot includes two nice, early miniature 2-ps. glass display jars, complete w/ their original ground lid stoppers. Cylinder shaped jar is 6.5 x 1.5" (dia.); squat jar is 4 x 2-3/8" (dia.). Both are excellent. Min. bid \$40 (the lot).



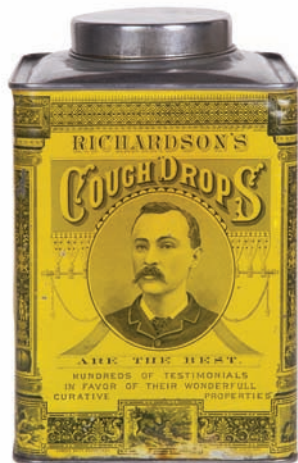
152).Enterprise Mfg. Co. Sign. 14.75 x 16-7/8" early paper litho sign for Co.'s meat choppers, featuring stunning multi-color lithography (© 1891 Donaldson Bros., NY). Clean, bright and exceptionally nice appearance (displays as a C. 8.5+), although there is some slight trimming and a little very well done professional restoration at outer left and right side edges. Min. bid \$80.



153).Squirt Soda Display. 12.25 7.5 x 4.5" ca. 1950's/60's figural plaster display featuring the Squirt soda kid, w/ section for holding soda bottle. Excellent and all original (C. 8.5+), w/ nice patina. Min. bid \$40.



154).Bay State Paints Sign. 34 x 34.5" large, early 2-sided heavy enameled porcelain sign for Bay State Paints, featuring great images of Co.'s Pilgrim logo (same on both sides). Sign is clean, bright and displays beautifully, w/ nice original sheen (displays as a strong C. 8++) w/ a little non-offensive chipping and wear in outer yellow border area (front side has small 1/2" and backside has 1/2 dollar sized chip in green background area). Min. bid \$80.



155).Richardson's Cough Drops Tin. 7.75 x 5-1/8 x 5-1/8" very early, small top style store tin for Richardson's cough drops (C. H. Richardson, Newburyport, Ma), featuring beautifully detailed lithography by Somers Bros. Clean, bright and displays exceptionally well (as a strong C. 8++) w/ minor background wear and a small area of early chipping in upper background area at top side edge (shoulder and lid buff polished). Min. bid \$50.



156).Haberles Brass Tray. 12" (dia.) early pre-pro advertising beer tray for "Congress Beer" (Haberle Brewing Co., Syracuse, NY) featuring beautifully detailed enameled porcelain advertisement in center, w/ fancy decorative brass rim. Clean, bright and exceptionally nice (near mint), w/ minor traces of wear in very outer border area (mentioned for accuracy, so minor barely merits mentioning). Min. bid \$100.



157).Wagon Wheel Pocket Tin. 4-3/8 x 3 x 7/8" early tin litho vertical pocket tin for Taylor bros. "Wagon Wheel" brand tobacco. Clean, bright and very attractive (a very strong C. 8++), w/ just a trace hint of very minor denting (mentioned for accuracy, so minor barely merits mention). Min. bid \$50.



158).Franklin Duroil Motor Oil. 5-5/8 x 4" (dia.) scarce, tin litho solder seam 1 qt. can for Franklin Duroil brand motor oil (Franklin Oil Co., Bedford, OH). An attractive can that displays well, w/ slight fade and a little light upper surface wear (critical grade C. 7.5+), but displays better than this implies. Min. bid \$40.



159).US Marine Pocket Tin. 4.25 x 3 x 7/8" early tin litho vertical tobacco pocket tin for American Tobacco's "U.S. Marine" brand. Clean, bright and exceptionally nice (C. 8.5+) w/ only very slight wear. Min. bid \$50.



160).Paw-Nee Oats Box. 7-1/8 x 4.25" (dia.) scarce, early 1 lb. 4 oz. cardboard oats box for "Paw-Nee" brand (Corno Mills, St. Louis, MO) w/ same great Indian images on both sides. Has bright colors and displays nicely (as a C. 8+/-), although there is a line of paper wear in background on backside, w/ a little faint scattered background staining and minor toning- nothing offensive or detracting (critical grade C. 7.5+). Min. bid \$40.



2-Sided Porcelain Flange Sign



161).Hair Bobbing Sign. 12 x 24" vintage, ca. 1920's/30's heavy enameled porcelain flange sign for Ladies & Children's Hair Bobbing (same on both sides). Clean, bright and excellent (C. 8.5/+). Min. bid \$40.

Mayo's Tobacco Cloth Advertising Banner



162).Mayo's Tobacco Sign. 23.5 x 59.75" large, early cloth tobacco sign for Mayo's brand tobacco w/ beautiful multi color graphics. Powerful and impressive sign is clean, bright and excellent (basically a strong C. 8.5+ appearance) w/ a little non-offensive wear and faint storage toning/staining in outer border area. Min. bid \$50.



163).Large Monarch Store Tin. 14.75 x 12-5/8" (dia.) outstanding, large, 55 lb. store sized display tin for Monarch Co.'s "Teenie Weenie" brand peanut butter w/ great image of Co.'s Brownie like Teenie Weenie characters on backside making sandwiches. A Powerful and impressive looking piece that is crisp, bright and exceptionally nice, (a strong C. 8.5/+). Min. bid \$50.



164).Porcelain Sinclair Sign. 18-1/8 x 22" very early, heavy enameled porcelain sign from an early Sinclair service station (note interesting notation regarding headlight lamp flames burning). Colors are strong and piece displays pretty well, w/ some edge chips and light soiling and wear (C. 7.5++). Min. bid \$50.

Two-Sided Tin Sign



166).Huyler's Candy Sign. 13.75 x 19.75" early tin litho 2-sided die-cut sign for Huyler's Candy Co., in shape of Co.'s fancy gift box (same image both sides). Clean, bright and very attractive appearance (displays as a strong C. 8/+ w/ exception of a few light scratch marks on backside. Min. bid \$50.

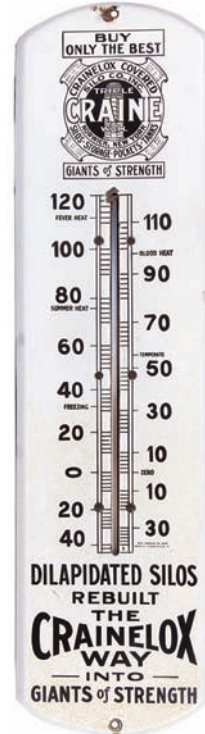


165).R-Pep Soda Sign. 47.75 x 11.5" large, early embossed tin litho sign for "R-Pep" brand soda, in shape of giant soda bottle. Clean, bright and very attractive appearance (displays as a very strong C. 8++) w/ a little non-offensive light scattered edge wear. Min. bid \$40.

1930's Coca-Cola Sign



167).Coca-Cola Sign. 10.5 x 32 x 1/2" vintage ca. 1930's self framed tin litho store sign for Coca-Cola. Displays nicely, w/ strong colors and great overall look (C. 8/+ w/ a little light wear in outer frame area. Min. bid \$40.



168).Craine Silos Thermometer. 27 x 7 x 3/4" early, heavy enameled porcelain thermometer advertising Craine Co. (Norwich, NY) maker of silos and storage tanks. Quite nice overall (basically displays as a strong C. 8/+ w/ a little chipping at hanging holes and top of measuring window, and some non-offensive faint speckled yellowing in background. Min. bid \$40.





169).Drum Mixture Tobacco. 2.25 x 3" (dia.) Neat and unusual, scarce, very early 2-ps. figural patriotic military drum shaped tobacco tin for "Drum Mixture" tobacco (Brown Bros. Co., Winston, NC). Exceptionally nice, w/ strong colors and great overall look (a strong C. 8.5/+), w/ only very minor wear and very minor faint crazing. Min. bid \$40.



170).Dr. Scholl's Porcelain Sign. 7.5 x 23-7/8" early, heavy enameled porcelain sign for Dr. Scholl's brand foot care products. Clean, bright and very attractive, w/ nice sheen (displays as a strong C. 8+) w/ a little chipping at two hanging holes and some non-detracting very minor surface wear. Min. bid \$70.



171).Trout Line Pocket. 3.75 x 3.5 x 1.25" early tin litho vertical tobacco pocket tin featuring beautiful graphic fly fishing scene (same image both sides). Clean, bright and very attractive w/ a little non-offensive minor wear and some light denting on backside (front C. 8.5; back C. 8/+). Min. bid \$50.

#### Hood Ornament



172).Football Player Hood Ornament. 6.5 x 6 x 1.5" (dia.) wonderful, early, figural hood ornament featuring beautifully detailed chrome finished metal figure of early football player (marked Lincoln Art Metal Co. Newark, NJ on base). Impressive, heavy, very high quality piece, w/ beautiful detailing and a nice, rich surface patina. Excellent, w/ just the right amount of aging and slight wear (C. 8.5/+). Min. bid \$40.



173).Consumer's Best Peanut Butter. 3-3/8 x 3-5/8" (dia.) scarce, early tin litho 14 oz. peanut butter pail for "Consumers Best" brand (Consumers Wholesale Grocers, Chicago Hgts, IL) w/ wonderful graphic images of dancing fairies all around. Clean, bright and exceptionally nice (a strong C. 8.5++) w/ typical expected oxidizing and wear to gold flash finish on lid. Min. bid \$50.



#### Flange Sign

174).Purolator Oil Filters Sign. 11 x 13.25" early 2-sided tin litho die-cut flange sign for Purolator brand auto oil filters (same on both sides). Clean, bright and exceptionally nice appearance (displays as a C. 8.5/+), w/ a little non-offensive minor background wear (critical grade C. 8+/-). Min. bid \$50.



175).Western Union Telegraph Sign. 22 x 31.25" early, heavy enameled 2-sided porcelain telegraph office sign w/ original brackets at top (same image both sides). Displays side shows well, w/ nice sheen (some non-offensive light chipping along outer edges and some scattered chips and light staining here and there). Backside has four or five dime to quarter sized chips and one that's a little larger between R and N at top (a few of these on back have some white paint on them). Tough to grade, but a strong C. 7+ seems about right (displays better than this implies). Min. bid \$60.



176).Fisk Tires Wooden Trade Sign. 47 x 30.5 x 1-5/8" important, large, early wooden 2-sided service station trade sign for Fisk Tires, w/ same great image on both sides. A powerful and impressive looking piece, w/ a rich, nicely weathered, dry, untouched, all original paint surface, giving it a great primitive, early country folk art look (the dark painted areas were done w/ using a slightly reflective sand-paint). A powerful and very impressive looking piece, in very nice overall condition (C. 8+) w/ some early rubbing wear on dark outer frame area (at bottom left edge). Backside has some light general weathering and wear (back C. 7.5) Min. bid \$250.





177).Home Comfort Porcelain Sign. 4-3/8 x 5-7/8" early (ca. 1890's) heavy, curved porcelain sign for Home Comfort Ranges & Furnaces (St. Louis, MO & Toronto, Canada), w/ finely detailed bustling factory scene image (note 1893 Columbian World's Fair award notation). Clean and excellent overall (a strong C. 8++), w/ exception of chip at bottom outer left edge. Min. bid \$50.



178).Studebaker Hood Ornament. 5.5 (h) x 8.25 (w) x 3.5" (dia.) ca. 1920's, fancy, very high quality Studebaker Motometer radiator hood ornament, on its fancy figural period metal winged base. Has some light generalized oxidizing and weathering to its metal casing, but overall attractive and displays nicely (as found, will probably improve w/ cleaning). Min. bid \$40.



Match Holder

179).Billiards Table Match Holder. 2-3/8 x 3-5/8 x 1.75" (h) early, very high quality, heavy figural brass match holder w/ a felt type material and ivory like balls on top (note: has hinged lid that opens to reveal deep compartment inside for storing matches), w/ striking surfaces all around outside of table. Excellent. Min. bid \$40.



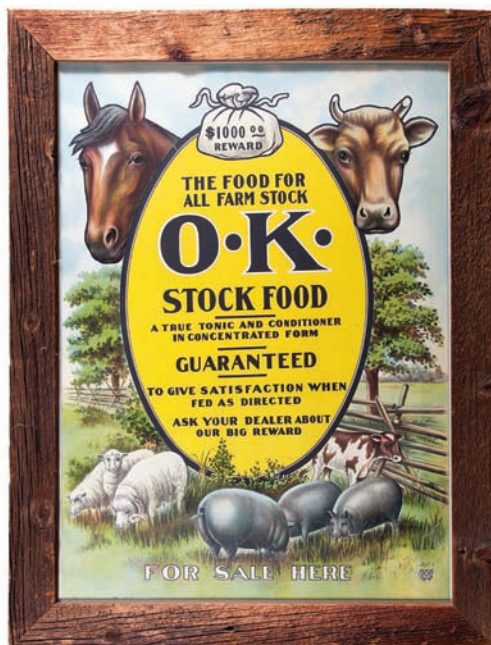
180).Pickwick Mixture Tobacco Tin. 2-5/8 x 3-7/8 x 1.75" scarce, very early tin litho hinged lid square corner tobacco can for "Pickwick Club Mixture" (Griffith, Mayo Co., Richmond, VA) w/ beautifully detailed graphics (Hasker & Marcus lithographers). Clean, bright and very attractive in appearance (basically displays as a strong C. 8++), although close examination will show a couple non-offensive scratches, minor crazing and light wear on lid (critical grade C. 8/-). Min. bid \$50.



181).Bowser Gasoline Sign. 11.5 x 35.5" early, embossed tin litho Bowser service station sign by American Art Works, w/ local reference for "Jones & Gurley, Utica, NY" (note the unusual Gasol'e'ne spelling). Sign was found never used and is clean, bright and excellent overall (a strong C. 8++) w/ a little wear at very outer corner edges. Min. bid \$60.



182).American Radiator Co. Sign. 29.75 x 19.5" outstanding, large, ca. 1920's paper litho sign / poster from American Radiator Co., featuring adorable image of young children by illustrator Jessie Wilcox Smith (dated 1927). Found never used, piece is clean, bright, like new, and ready for framing (would be great for a child's or grandchildren's room). Min. bid \$40.



183).Veterinary Sign. 32.25 x 25.25" (27.25 x 20-3/8" visible) outstanding, very early paper litho sign for O.K. brand veterinary stock food product, featuring beautiful multi-color graphics of of barnyard animals. Powerful and impressive piece is clean, bright and like new (near mint). Framed. Min. bid \$50.



184).Mountain Belle Cigars Sign. 19 x 13.25" early tin litho sign for Mountain Belle Cigars (Solis Cigar Co., Denver, CO), w/ beautiful color graphics (Meek Co. Litho). A Powerful and impressive looking piece that displays nicely, w/ strong colors and a great overall look (basically displays as a C. 8/+), although close examination will show a little non-serious minor scattered wear including a few minor chips, a tiny bit of minor denting (critical grade C. 8-). Plain backside has fair amount of oxidizing. Min. bid \$100.





185).Fram Filters Service Station Clock. 5 x 15.5" (dia.) vintage, very high quality light-up "double-bubble" style advertising clock for Fram automotive oil filters. Clean, excellent and all original, in nice working condition. Min. bid \$60.



186).Satin Skin Die-Cut Display. 16-1/8 x 18" scarce, very early cardboard die-cut cardboard easel-back sign for Satin Rose cosmetic powder. Attractive and displays very nicely (as a C. 8+), w/ minor soiling and wear (close examination will show a couple barely noticeable early touchups in girls hair area). Min. bid \$50.



187).Porcelain Weight Loss Sign. 9.5 x 8.5" unusual, art deco style enameled porcelain sign from early penny pay scale, featuring great silhouette images of fat, skinny and just right woman figures. Field area is clean and excellent, w/ tiny chip in upper left corner and a little non-offensive minor oxidizing in black border area at bottom edge. Min. bid \$50.



188).Orange Julep Tray. 13.25 x 10.25" early tin litho serving tray for "Orange Julep" brand soda, featuring 1920's bathing beauty at shore. Clean, bright and very attractive (C. 8.5+) w/ a few non-detracting, very minor background speckles (mentioned for accuracy, so minor barely merits mention). Min. bid \$40.



189).Star Windmills Sign. 13.5 x 16.5" (11 x 14" image) outstanding, early paper litho sign for Star Wind Mills (Flint & Walling Co., Kendallville, IN) w/ beautiful multi-color graphics. Clean, bright and exceptionally nice (C. 8.5+). Lithography by Giles & Co., Buffalo, NY. Min. bid \$70.



190).Tempeletone Radio Bank. 4.5 x 3.25 x 2-3/8" early figural cast iron bank by Kenton, in shape of early floor radio (embossed "Tempeletone Radio Bank" on top). All original, w/ nice surface patina, complete w/ original trap on base (basically a strong C. 8+, w/ exception of some light oxidizing and wear on top panel). Min. bid \$40.



191).Silver Blend Coffee Tin. 11.75 x 5.25" (dia.) scarce, early tin litho 2 lb. pry lid coffee can for "Silver Blend" brand (Davidson Grocers, Butte, Montana). Clean, bright and excellent overall, w/ a little minor wear on backside (front C. 8.5+; back C. 8+/-). Min. bid \$40.



192).Haberle Beer Sign. 33 x 38.25" (20.75 x 25.5" visible) large, very early paper litho sign for B. Haberle & Son Brewing Co. (Syracuse, NY) featuring beautifully detailed color graphics (© 1881; Wittemann Bros. Litho, New York). Clean, bright and beautiful overall appearance (displays as a C. 8.5+), w/ exception of non-offensive faint horizontal crease line in center (could be easily blended away). Museum quality framing and matting. Min. bid \$250.



193).Bunny Oats Box. 7-3/8 x 4.25" (dia.) early 1 lb. 4 oz. cardboard oats box for "Bunny" brand (Bunn Capitol Grocery Co., Bloomington and Springfield, IL) w/ same great image on both sides. Clean, bright and very nice, (front C. 8.5; back C. 8+) w/ exception of chipping/paper loss along top edge and to lid on backside. Min. bid \$40.





194). Large Hood Tires Porcelain Sign. 20 x 62" w/ frame (18 x 60" sign only) large and important, museum quality, heavy enameled porcelain sign for Hood Tires, as found still in its original wooden frame. This stunning porcelain sign is crisp, bright and like new (as close to mint as you could hope to find) still w/ its beautiful original sheen (wooden frame has a little expected darkening and wear and a few neatly drilled mounting holes). Min. bid \$250.



195). Arrow Coffee Can. 5.5 x 4.25" (dia.) scarce, early tin litho 1 lb. coffee can for Atwood & Co. (Minneapolis, MN) "Arrow" brand, w/ same nice image on both sides. Clean, attractive and displays nicely (as a C. 8+) w/ a little non-detracting light background wear. Min. bid \$40.



196). Blue Jay Cigar Tin. 5.25 x 3.5 x 3.5" scarce, early tin litho 25 count cigar can for "Blue Jay" brand (Orrison Cigar Cop., Bethesda, OH) featuring stunning multi-color graphics (same image on 3 sides). Clean, bright and displays beautifully (as a strong C. 8++) w/ a little non-offensive minor wear. Min. bid \$40.



197). Torpedo Pocket Tin. 4.25 x 3-1/8 x 1" scarce, early tin litho vertical pocket tin for Torpedo brand (Rock City Tobacco Co. Quebec, Canada), featuring nice image of early destroyer ship (same image both sides). Clean, bright and very attractive appearance w/ only minor wear (a strong C. 8++). Min. bid \$100.



198). Pennfield Motor Oil Can. 5.5 x 4" (dia.) scarce, early tin litho 1 qt. can for Pennfield brand motor oil, w/ same images on both sides. Full, sealed crimp seal can is clean, bright and like new (C. 8.5++). Min. bid \$40.



199). Diamond Dyes Sign. 26 x 19.75" (24 x 17.75" visible) very early tin litho country store die cabinet sign for Diamond Dyes, featuring stunning multi-color graphics by Wells & Hope lithographers. Sign is clean, bright and very attractive in appearance (basically a strong C. 8.5+), w/ exception of a few wear spots near bottom. Framed. Min. bid \$80.



200). Squire's Meat Sign. 24-3/8 x 20" neat, early tin litho sign advertising John Squire Co.'s Hams, Bacon and Sausage products, featuring wonderful image of Co.'s trademark pig (note human features). Clean, bright and very attractive in appearance, w/ strong color and nice surface sheen (basically displays as a very strong C. 8++) although close examination will reveal a little light oxidizing and wear in outer edges and a little fairly minor scattered wear including hazy slight wear spot in upper right background- nothing serious or offensive (critical grade C. 8/-). Min. bid \$100.



201). Randolph Macon Cigars Sign. 24.25 x 20.25" impressive, early self framed tin litho sign for Randolph Macon's Cigars, w/ beautifully detailed color lithography. Exceptionally clean and nice, w/ intense bright colors and excellent sheen (basically a strong C. 8.5+); w/ very faint 1" scratch mark in suit jacket and a couple very minor wear marks in outer dark background area (barely noticeable). Min. bid \$80.





202).Jewelry Store Sign. 20 x 13.5" early embossed tin litho sign w/ strong colors and great overall look. Appears never used (a strong C. 8+), w/ a little minor background wear and a few trace wrinkles. Min. bid \$40.



203).True Fruit Soda Signs. each 14 x 9" lot includes two outstanding, very early cardboard signs for Hungerford Smith Co. (Rochester, NY) "True Fruit" brand soda fountain syrups, w/ stunning multicolor graphics. Both are clean, bright and beautiful (C. 8.5+) w/ very slight, minor bend at bottom right corner of pineapple sign. Min. bid \$40 (the lot).

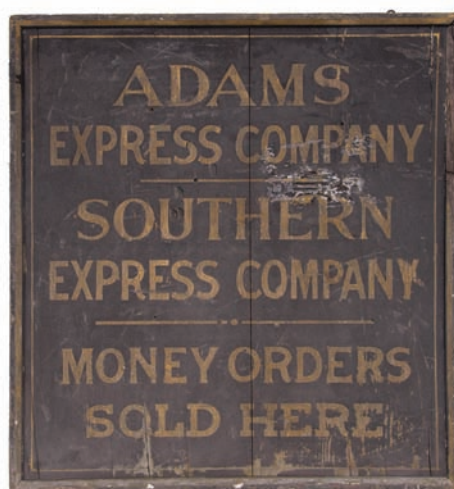


204).David Mayer Beer Sign. 20 x 13" very early, heavy brass advertising sign w/ incised lettering for David Mayer Brewing Co.'s "Palest Lager Beer". All original and quite nice overall, although most of the black paint inside the incised lettering area has worn away over the years and there is a small bended curl spot at bottom right edge (this early pre-prohibition era brewery operated in New York City from 1892 until 1920). Min. bid \$50.

### Iron Bank



205).Crosley Radio Bank. 4.5 x 4 x 2-1/8" early figural cast iron bank by Kenton, in shape of cathedral radio (embossed "Crosley" above dials). All original, w/ nice surface patina, complete w/ original trap on backside (C. 7.5+/8-), w/ a little light scattered surface wear. Min. bid \$40.



206).Express Co. Trade Sign. 36.5 x 4 x 2.5" very early, large, heavy, wooden painted trade sign for Adams and Southern Express Co., w/ gilt lettering on sand paint background. All original and displays pretty well, w/ early break spot to upper right corner section of frame; and a well worn, weathered primitive dry surface finish that includes some expected age cracks and areas of fairly heavy wear from years of use, giving it a weathered primitive country look (C. 7+/-). Min. bid \$100.

### Mechanical Bank



207).Santa at Chimney Mechanical Bank. 6 x 3 x 4.5" early, figural cast iron Santa Clause mechanical bank (coin is placed in hand and pushing lever at base moves hand and drops it into chimney). All original and displays nicely, w/ (C. 8-) w/ some early scattered wear (heaviest on chimney). As found, should improve w/ cleaning. Min. bid \$100.



208).Baker's Cocoa Sign. 25.5 (h) x 20.75" (w) (21.5 x 16-7/8" visible) beautiful, early tin litho sign for Baker's Cocoa, featuring wonderful image of Co.'s trademark girl. Clean, bright and very attractive (displays as a C. 8.5+), although close examination will show a couple non-offensive minor small stains and light wear marks in outer background area (one spot might have had some very well done professional touch-up long ago). Framed. Min. bid \$60.



209).Bull Durham Hanger Sign. 9-7/8 x 7" outstanding, early 2-sided die-cut cardboard ceiling hanger sign for Bull Durham brand tobacco featuring wonderful image of black couple on fence snuggling under umbrella. Clean, bright and very attractive appearance (a strong C. 8++). Min. bid \$50.



210).MKT Railroad Poster. 26-5/8 x 20.5" (23.5 x 17.5" visible image) beautiful, vintage ca. 1950's railroad poster by illustrator Bern Hill, featuring the MKT (Missouri-Kansas-Texas) train station in San Antonio, TX. Hill was a trailblazing artist who is best known for the railroad theme illustrations he did for various railroad travel posters and for the General Motors Co.'s locomotive division. This poster is clean, bright and excellent. Framed. Min. bid \$50.





211).Cultivator Paperweight. 2.5 x 4 x 1" very early, figural cast iron paperweight in shape of a large bug, w/ heavy embossed advertising for "Brown Cultivators". Has nice detailing and a decent overall look, w/ slight weathering and a little light general wear to its attractive, original mustard paint surface (paint C. 7.5). As found, might improve w/ cleaning. Min. bid \$40.



212).Cabin Mechanical Bank. 3-5/8 x 2-7/8 x 4-1/8" early, figural cast iron mechanical bank by J & E Stevens Co., featuring black man sharecropper at cabin (coin gets placed on roof above his head and when broom gets turned; man flips upside down and kicks coin into slot). Has nice original paint surface, w/ some dark spots and light general wear from use (C. 8/-). Min. bid \$50.



213).Canadian Fire Insurance Sign. 18-1/8 x 12-1/8" very early, heavy enameled porcelain sign from the Insurance Co. of Montreal, Canada, featuring beautifully detailed image of Co.'s trademark beaver (made by Acton Burrows Co., Toronto). Clean, bright and exceptionally nice (C. 8.5++), w/ just a trace amount of very minor edge wear. Min. bid \$50.



214).Wright & Taylor Whiskey Tray. 12" (dia.) stunning, early tin litho tray for Wright & Taylor Co.'s "Kentucky Taylor" brand whiskey, featuring stunning multi-color graphics. Clean, bright and exceptionally nice overall appearance (displays as a C. 8.5+) w/ only very minor crazing and wear. Very high quality piece! Min. bid \$1,000.



215).Kipawa Cigar Tin. 6-3/8 x 4-3/8 x 4-3/8" impressive, large, early tin litho 50 ct. cigar can for "Kipawa" brand, featuring same stunning graphic images of Indian chief on front and back. Clean, bright and exceptionally good looking piece (C. 8.5+) w/ a little minor wear on side edges (and some wear to tax stamp on lid). Min. bid \$50.

Saleman's Sample



216).Welcome Soap Sign. 32 x 16.75" (26-5/8 x 11-5/8" visible) very early paper lithographed sign for Welcome brand soap, w/ actual cloth dresses on women, sealed in its fancy, original advertising gold leaf frame. Very nice overall, w/ some even age toning and a little non-offensive darkening and light staining in background (C. 8/-). Frame excellent. Min. bid \$70.



217).Salesman's Sample Icebox. 11-5/8 x 8.75 x 5" outstanding, early, very high quality salesman's sample from Karder Refrigerator Corp. (Cobleskill, NY) for its "Kleenkold" brand wooden ice box. This miniature version of Co.'s full sized unit has finely detailed nickel plated working metal hinges and latches on it's doors w/ a beautiful, rich surface patina to its nicely grained wooden oak case, w/ nice label at top. Excellent and all original (C. 8.5++). Min. bid \$100.



218).Cottolene Sign. 29 x 14-5/8" large, very early paper litho sign for Fairbank Co.'s "Cottolene" brand shortening. Clean, bright and very attractive appearance (displays as a C. 8.5++) w/ a little minor, very well done professional restoration in outer edges. Min. bid \$80.





219). Dodge and Plymouth Cars Pinup Girl Mirror. 18 x 16" early, very high quality large, reverse glass advertising mirror from De Sena Motors, a Cooperstown, NY Dodge and Plymouth dealership (note 3 digit phone #). Crisp, bright and like new, as found never used still in its original box. Min. bid \$40.



220). Consumers Brewing Co. Sign. 14 x 17-3/8" scarce, early, self-framed tin litho factory scene sign from the Consumers Brewing Co. (New Orleans, LA) featuring beautifully detailed multi-color graphics. Image area is clean and very attractive (a strong C. 8++); w/ a little minor soiling and some non-offensive light scattered wear in raised outer border area. Min. bid \$100.



221). Dutch Standard Paints Clock. 5 x 15.5" (dia.) very high quality, early electric light-up "double-bubble" style advertising clock for "Dutch Standard" brand paints. Clean, excellent and all original, in nice working condition. Min. bid \$70.



222). Whip Pocket Tin. 4.5 x 3 x 7/8" tall variation, early tin litho vertical tobacco pocket tin for Patterson Co.'s "Whip" brand. Clean, bright and excellent (C. 8.5/+). Min. bid \$50.



223). Haleeka Spice Tin. 3-1/8 x 2-3/8 x 1-3/8" scarce, early tin litho 2 oz. spice can (Geo. Bubb & Sons, Williamsport, PA), w/ beautiful multi-color graphics (same image on both sides). Clean, bright and very attractive (basically a strong C. 8/+); w/ exception of some early rubbing wear in bottom lettering area. Min. bid \$40.



224). Whiz Auto Cushion Dressing Tin. 5.5 x 3.75 x 1-7/8" very early hand-soldered tin litho pint sized product can for Whiz brand automobile leather cushion dressing. Clean, bright and very attractive appearance (displays as a strong C. 8/+); w/ a little light wear on side edges. Min. bid \$40.



225). Roundup Spice Tin. 3.25 x 2-3/8 x 1-3/8" scarce, tin litho 2 oz. spice tin (nutmeg) from Roundup Grocery Co. (Spokane, WA). Crisp, bright and like new (C. 8.5++). Min. bid \$40.

Front

Back

"48" Porcelain Sinclair Sign



226). Sinclair Aircraft Porcelain Sign. 48" (dia.) great looking, large, early 2-sided heavy porcelain service station sign for Sinclair Aircraft gasoline (same image both sides). A powerful and very impressive looking piece that has decent color and displays quite nicely. Display side has a little minor edge wear and just a slight bit of weathering and light general wear (C. 8/-); back has a few scattered chips and some surface scratches (C. 7.5/+). Min. bid \$250 (freight item).



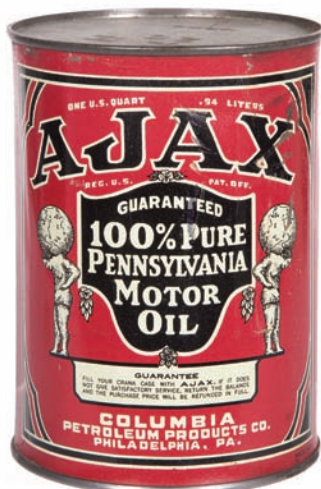


227). Kelly's Gold Cigar Sign. 30 x 23" (actual sign) large and important, very early, museum quality paper litho sign for Wm Kelly & Sons Cigar Co. (London, Canada), featuring incredible gold miners image (dated 1883, Toronto Litho Co.). A powerful and most impressive looking piece w/ very strong colors and an incredible overall look (displays as a C. 8.5+). Professionally conserved, w/ a little bit of minor, extremely well done restoration. Beautifully framed and matted. Note: this is among the finest antique advertising signs I have ever had the privilege to offer at auction. Opening bid \$5,000 (\*Reserve Item).



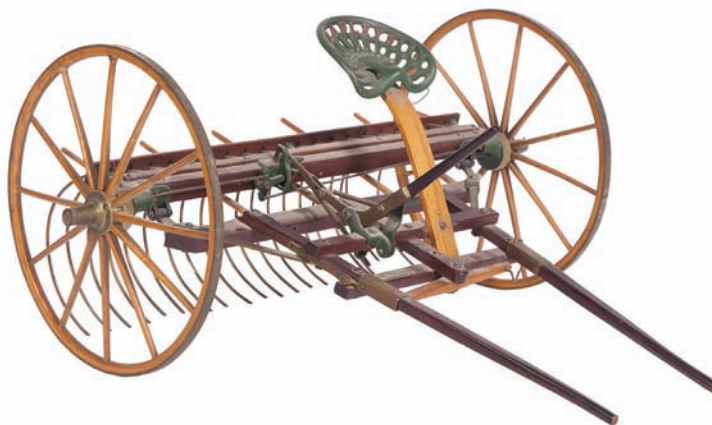


228). Porcelain Mail Pouch Sign. 3.25 x 17-7/8" very early, small, heavy enameled porcelain strip sign, w/ raised volcano grommet holes for Mail Pouch brand tobacco. Clean, bright and very attractive, w/ a little minor wear at outer edges (a strong C. 8+). Min. bid \$40.



229). Ajax Motor Oil. 5.5 x 4" (dia.) scarce, early tin litho 1 qt. solder seam can for Ajax brand motor oil (Columbia Petroleum Products, Phil'a, PA) w/ same image on both sides. Front has a slight bit of minor fade and wear; back has strong color w/ minor dents and a few light scattered scuffs (C. 8-). Min. bid \$50.

Saleman's Sample



230). Salesman's Sample Agricultural Implement. 6.75 (h) x 13.5 (w) x 13" important, very early (ca. 1880's/90's), museum quality salesman's sample for a horse drawn Bradley Co. agricultural implement. Very high quality piece is constructed from fine hardwoods, w/ a deep, rich surface patina. Has fancy brass axles and trim pieces, working levers and a great painted, miniature cast iron seat that is marked "Bradleys, Syracuse, NY". Excellent and all original (a strong C. 8.5+), w/ miniature metal makers plaque showing that it was made by "C M Clinton Model Maker, Ithaca, NY". Min. bid \$150.



231). Tankar Oil Can. 5-5/8 x 4" (dia.) scarce, early tin litho 1 qt. crimp seam can for Tankar brand motor oil (same image on both sides) w/ nice repeating railroad tank car pattern all around. Clean, bright and excellent (C. 8+). Min. bid \$40.



Blue Ribbon Car Polish Tins

232). Blue Ribbon Metal Polish Tins. lot includes a nice group of four different tin litho car polish tins in graduated sizes (from 2.75 x 2.25" (dia.) to 7 x 3.5" (dia.)) for Blue Ribbon brand polish, each featuring nice image of Co.'s trademark race car. They are clean, bright and display very nicely (avg. C. 8+). Lot also includes a very early hand-soldered miniature paper label sample tin for same (1-7/8 x 1-1/8" (dia.)) (C. 8+). Min. bid \$40.



233). Monarch Teenie Weenie Popcorn Pail. 3.75 x 3-3/8" (dia.) early 14 oz. tin litho popcorn pail for Reid Murdoch Co.'s Monarch "Teenie Weenie" brand popcorn, featuring Co.'s lion logo on front and Co.'s "Teenie Weenie" cartoon characters on backside. Clean, bright and very attractive, w/ a little non-offensive minor scattered background wear and minor denting on lid (C. 8+/-). Min. bid \$40. wear and lid dents. Min. bid \$40.

Sweet Clover Tobacco Bucket



234). Sweet Clover Tobacco Pail. 12 x 13" (dia.) very early 10 lb. size wooden tobacco pail for Buffington Tobacco Co.'s "Sweet Clover" brand, w/ nice image of black plantation workers tending tobacco fields. Label is attractive and displays quite nicely, w/ some toning and light general expected light overall wear (C. 7.5+). Min. bid \$50.

Horse Shoe Tobacco Sign



235). Drummond's Tobacco Sign. 15.5 x 15.5" early cardboard litho sign (on heavy card stock) for Drummond's Horse Shoe brand tobacco, featuring beautiful multicolor graphics. Clean, bright and excellent (C. 8.5+). Min. bid \$40.



236). Crown Dandruff Cure Calendar. 19-5/8 x 15.5" large and impressive, early embossed, pressed cardboard die-cut calendar w/ semi-glossy finish, advertising Crown Dandruff Cure, featuring beautiful multi color lithography. Clean, bright and very attractive (a strong C. 8+), w/ a little non-detracting, very minor wear in outer border area (complete w/ full 1910 calendar pad). Min. bid \$40.



Battleship Maine



237). "Remember the Maine" Tray. 12-1/8" (dia.) beautiful, early tin litho patriotic serving tray by Charles Shonk Co., featuring the battleship USS Maine, whose sinking in 1898 led to the Spanish American War. Clean, bright and excellent (a strong C. 8+). Min. bid \$40.

Match Holder



238). De Laval Match Holder. 6.25 x 4" early tin litho die-cut match holder in shape of Co.'s cream separator. MH is clean, bright and like new, as found never used in its original included box (box is nice, but missing top edge flap). Min. bid \$40.

Pan American Expo



239). Pan American Expo Tray. 12" (dia.) early tin litho souvenir serving tray from the 1901 Pan American Expo world's fair, featuring beautiful multi color graphics (Charles Shonk Co. Litho.). Clean, bright and excellent overall (C. 8.5/+), w/ exception of a little wear in outer rim area. Min. bid \$40.



240). Quebec Central Railway Calendar. 21-3/8 x 17" (15 x 11" visible) outstanding, early advertising calendar from the Quebec Central Railway, featuring beautiful color litho image of Quebec City, passenger train, etc. Clean, bright and exceptionally nice (near mint), complete w/ its full 1898 calendar pad. Nicely framed and matted. Min. bid \$40.

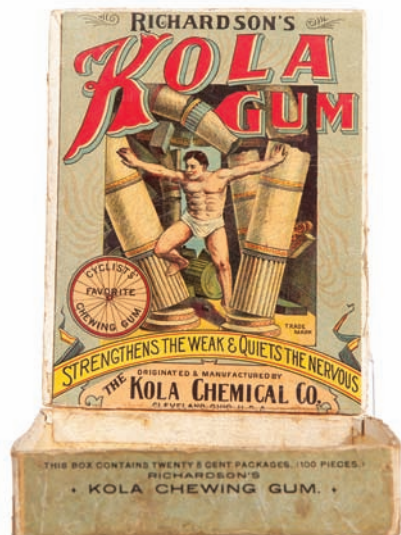


241). Miller Blacking Box. 9 x 11.75 x 3-1/8" (closed) very early wooden store display box for Frank Miller Co.'s blacking, w/ wonderful 8.5 x 11" color graphic label on inside featuring Uncle Sam Shaving in bright reflection of his boot (Neuman & Co. Litho). Inside label is clean and very attractive, w/ some minor toning and non-offensive light staining in the outer margin area (C. 8+/-); outer box label has typical expected darkening and wear. Min. bid \$40.

Match Holder



242). Deering Harvesters Match Holder 8-5/8 x 5-7/8" scarce, very early cardboard litho advertising match holder for Wm Deering Co.'s harvesting machinery and binding twine. Clean, attractive and displays nicely, w/ a little light edge and background wear and minor staining (C. 8/-). Min. bid \$40.



243). Kola Gum Box. 6 x 4.75 x 1-1/8" (closed) scarce, very early cardboard display box for Richardson's "Kola Gum" w/ outstanding graphics featuring Co.'s trademark Sampson images on both inside and outer attached flip-up lid. Clean, bright and very attractive w/ minor toning and a little expected non-offensive light wear on outer box (inside label C. 8.5+/-; outer box C. 8+/-). Min. bid \$50.



244). Unika Boots Sign. 11.75 x 5.5" early die-cut cardboard sign for Unika Co.'s "St. Nick" brand boots. Clean, bright and excellent (C. 8.5/+). Note: he holds an actual miniature figural 3" rubber boot w/ embossed advertising on it. Min. bid \$40.



245). Early Medicine Sign. 14.25 (h) x 9.5" (w) early (dated 1892), heavy paper litho sign for National Remedy Co., w/ nice image of child and medicine crate advertising Co.'s various quack medicine products. Clean, bright and very attractive appearance (a strong C. 8+/-), w/ only minor wear. Min. bid \$40.





246).Early Glass Store Jar. 14 x 7" (dia.) early, heavy pressed glass 6-sided store display jar w/ ground lid. Impressive, high quality piece that is clean and excellent overall w/ exception of a little minor roughness along side edge of lid (not at all serious or detracting and could be easily polished away). Min. bid \$40.



247).Beauty Shop Globe. 19 (h) x 18 (dia.) x 6" (w) early 2-sided globe beauty shop, w/ great stylish art deco design. Painted metal body, w/ glass lenses on both sides. Excellent and all original w/ just the right amount of light wear to paint on metal body (lenses like new). Min. bid \$60.



248).Early Medicine Sign. 14.25 (h) x 9.5" (w) early (dated 1892), heavy paper litho sign for National Remedy Co.'s "Japanese Oil" w/ nice image of child holding doll and medicine spoon. Clean, bright and very attractive appearance (a strong C. 8++). Min. bid \$40.



249).Milwaukee Harvesters Calendar. 19.75 (h) x 13.25" (w) early paper advertising calendar for Milwaukee harvesting machines, w/ adorable image (complete w/ Feb.- Dec. 1909 calendar pages). Clean, bright and very attractive appearance (displays as a C. 8.5+) w/ exception of faint, minor horizontal crease mark and a couple tears at top edges (closed w/ archival tape on back). Min. bid \$40.



250).Curved Socony Porcelain Sign. 15 x 13.25" very early, heavy curved porcelain sign for Standard Oil Co.'s Socony brand motor oil. Clean, bright and very attractive, w/ nice original sheen (basically a strong C. 8++ appearance) w/ some minor edge wear and chipping at top two mounting holes. Min. bid \$20.



251).Chicago & Alton Railway Calendar. 15 x 10" scarce, 1905 cardboard calendar from Chicago & Alton Railway, w/ beautiful color graphics of Gypsy Girl. Clean, bright and very attractive appearance (displays as a strong C. 8++), w/ a faint hint of non-offensive faint staining/toning at upper left and bottom right corners (mentioned for accuracy, barely noticeable and not at all detracting). Framed. Min. bid \$40.



252).Hoosier Poet Oats Box. 7.25 x 4.25" (dia.) early 1 lb. 4 oz. cardboard oats box for "Hoosier Poet" brand (M.O' Connor Co., Indianapolis, IN) featuring beautiful graphic image of poet James Whitcomb Riley on both sides. Clean, bright and exceptionally nice (C. 8.5+). Min. bid \$40.



253).Edison Mazda Car Lamps Cabinet. 16 (h) x 7 (w) x 7.5" (d) early, ca. 1930's heavy enameled porcelain advertising parts cabinet for General Electric Co.'s Edison Mazda brand auto lamps. Clean, bright and exceptionally nice (a very strong C. 8++) w/ just a little minor edge wear. Min. bid \$50.



254).AC Service Station Sign. 21 x 10.5" vintage ca. 1940's tin litho service station sign for AC brand spark plugs and auto products. Top piece is a 2-sided flange sign, w/ chain hung smaller signs beneath. Clean, bright and very nice overall (C. 8+) w/ a little minor expected edge wear. Min. bid \$40.



255).High Line Oats Box. 9.5 x 5-3/8" (dia.) early 3 lb. cardboard oats box for High Line brand (various Co.'s and Midwest cities) featuring beautiful graphic images of train crossing the High Line Bridge in Valley City, ND on both sides. Clean, bright and displays nicely (basically as a strong C. 8+), w/ a little non-offensive minor background soiling and wear; and some paper loss and tear spot at side edge of lid. Min. bid \$20.





**Rd #2, Cobb Hill Road, Cazenovia, NY 13035 • 24 Hr. Tel: (315) 662-7625 • 24 Hr. Fax: (315) 662-3570 • morf2bid@aol.com • morfauction.com**

Welcome to our 89th auction of quality antique advertising and fine collectibles. This is the 25th year of our absentee catalogued auctions. Everything we sell is guaranteed authentic and as described. We attempt to grade condition both fairly and conservatively, using a scale of 1-10 on the advertising items (ten being absolutely mint). We do not list reproductions, re-issues, deceptively restored or pieced together type merchandise. Flaws and blemishes are prominently noted and over emphasized. We encourage you to call for a detailed description on any item you have an interest in, but respectfully must request that you do this before the closing night. Close-ups and additional images are available on our auction website [www.morfauction.com](http://www.morfauction.com). Dimensions are listed by height, then width, and are only approximate (+ or - a quarter inch).

## Bidding

Bids are accepted only from those parties who have registered with us to bid. (If you were mailed this catalogue by us you are automatically pre-registered.) If you are new to our auctions, you must call us so we can get you registered for bidding (it is a quick and easy process). Your bid is a legal contract to purchase and once entered, cannot be canceled. Placement of a bid indicates acceptance of our terms.

**On all "BID" items there is a 15% buyers premium added to each successful bid.** You're welcome to bid by mail, email and fax anytime after receiving this catalog. **We will begin accepting phone bids on Wednesday, December 7, 2016. We will be taking calls on Wednesday and Thursday the 7th and 8th from 10:00 AM until 5:00 PM.** If no one answers when you call, please leave a message on our machine and we will get back to you. **If bidding by mail or fax, please remember to include your telephone number with your bids!** You may call or bid as often as you like. We will tell you the current bid on any item(s) you are interested in. To raise a bid, your advance must be at least \$10 more than the current high bid amount. When an item reaches \$250, bidding increments rise to \$25, at \$1,000, bidding increments advance in \$50 steps, and above \$2,000 in \$100 increments. We suggest not waiting until the last minute to begin your bidding, as its quite possible you won't be able to get through.

## Web Page and Bid Updates

We will begin posting current bid prices (not including the buyers premium) on Wednesday, **December 7, 2016** (including an addendum of additional catalogue lot information) on our internet web page. These prices will be updated once each day (each evening sometime after 9:00 PM, EST) and will get updated to include the final hammer prices on Sunday afternoon once the sale is concluded. On the closing night, we will attempt to update current bid prices every hour. Our web page address for this sale is: <http://www.morfauction.com> We suggest that once you get to it, that you bookmark this address for easy re-access. There is also an addendum section on our website where we post additional information and photo's for this sale.

## Reserves and Estimates

All items (with the exception of lot #227 which is a reserved item) which receive an opening bid in our sale will be sold to the highest bidder regardless of the price realized (we retain the right to withdraw items in the event of inaccurate catalog descriptions and to reject any bid we feel is not made in good faith). Unlike some of our competitors, we do NOT allow consignors to bid up their own items!

## Mechanical Operations

Early mechanical and electric motors and mechanisms on machines toys, coin-ops, clocks, etc. are quite often temperamental and very unpredictable in nature. Although these mechanisms may be working fine at the time of sale, we make no guarantees or representations regarding their continued operating status once they have left our premises (including during shipping).

## Closing Night

**THE LAST DAY FOR BIDDING WILL BE ON FRIDAY, DECEMBER 9, 2016.** On closing day, we begin taking calls at 5:00 PM. Please mark your calendar now. On the closing night (ONLY), we will also be taking calls at (315) 662-3318, (315) 662-3429 and (315) 662-3904 after 5:00 PM (in addition to our regular (315) 662-7625 office number). **Closing Time: This Auction will close at 10:00 PM (EST) on Friday, DECEMBER 9, 2016.** At that time, no more incoming calls will be accepted and all lots with a registered bid of less than \$300, as well as all items without call backs registered on them will be officially closed and final. The items at \$300 and over that have call back protection registered on them will be closed out during our call back period the following afternoon (\*\*see important call back rules below\*\*). We reserve the right to change the official closing in the event of unforeseen family type emergencies or technological failures (utility disruptions, etc.). We also reserve the right to either extend the bidding, to postpone or to cancel this auction in the event of a national emergency or if the Internet or the services of the US Post Office were to get seriously disrupted during our catalogue mailing or bidding period.

## "Up-To" Bids & Call Backs

**CEILING BIDS:** We will be happy to enter competitive "up to" ceiling bids for you on any lots you request. Beginning at your minimum amount, we will advance these bid(s) up to your left ceiling amount, if (and only if) it is topped by another bidder. "Up To" bids will be handled discretely and executed in a completely competitive manner for you. Please note that we don't accept open ended "top all others" ceiling type bids.

**CALL BACKS:** You may request call back protection for any lot(s) that you enter with either a minimum or a protected "up-to" ceiling bid in an amount of at least \$300. This request must be registered with us before the official 10:00 PM closing hour of Friday, **December 9, 2016**. All callbacks will be placed by us on Saturday, **December 10, 2016** it is your responsibility to be available during this call back time period. We make every effort to honor all our call back requests, but this service is done solely as a convenience to our bidders and will be performed on a best efforts basis only. If you will be traveling or if you will not be available during call back times at your primary number, be sure you provide us with proper alternate or back up numbers for reaching you!

## Payment Terms

Winning bidders will be invoiced by mail immediately after the sale. Those who desire fast shipment can pay by Money Order or Cashiers Check. Payments are due within 10 days of receipt of invoice. We reserve the right to offer the item out to our back bidders and deny future bidding privileges to those who do not pay in a timely manner. In addition to personal checks, we also accept payment on your American Express, Visa, Master Card, Discover and Optima Credit Cards (with no surcharge added). No COD's or Collect calls are ever accepted. Items shipped to anywhere in New York State must include appropriate sales tax or signed resale certificate.

## Shipping

All packing and shipping charges are extra. We do most of our own packing and shipping in house and try to keep these charges as reasonable as possible for you. On especially fragile and larger hard to pack items, we hire the services of professional packers and charge you at our billed cost. We ship mostly through the Post Office and Fedex Ground, (Fedex Overnight available at an extra charge.)

## Subscribing, Prices Realized, Consignments & Upcoming Events

**Future catalogs can be assured by sending \$20 for a full 12 months subscription.** (Prices are published on our website after each sale) An automatic credit card ordering program is available. We currently run between 2-4 auctions a year. In addition to our regular sales, we also occasionally offer sales made up entirely from single owner collections. Please contact us should you have items you would like us to consider for inclusion in our upcoming events. All inquiries are handled in a completely confidential manner. Our services are also available for the private placement marketing of important individual items, marketing plans for large collections as well as for estate planning and settlement purposes. Back copies of many of our previous auction catalogs are still available at \$5 each (w/ prices realized) w/ quantity discounts available if multiple issues are ordered. For further information, check our website.

© Copyright 2016. All Rights Reserved. No portion of this publication may be copied in any form without the express written permission of Morford's.  
Photography by Tracy Morford

## Important Closing Night Information

In addition to our regular **(315) 662-7625** office number,  
on the closing night (only!) you may also call us at:

**(315) 662-3318\***  
(after 5:00 PM)  
**(315) 662-3904\***  
(after 5:00 PM)  
**(315) 662-3429\***  
(after 5:00 PM)



**\*These numbers for  
Closing night only!  
Friday, December 9, 2016**

**Bidding closes at 10:00 PM on Friday closing night.** We will be accepting faxes and e-mails on closing night. Our web page will update current high bid prices approximately every hour on closing night and will also list any important addendum information. **All call backs will be made on Saturday, December 10, 2016 beginning at 12 o'clock Noon!**