



# WM Morford

Investment Grade Collectibles at Auction

## Premier Auction #94

Our 28th Year of Absentee Auctions

Tel: 315.662.7625

Fax: 315.662.3570

P.O. Box 247

Cazenovia, NY 13035

Email: morf2bid@aol.com

Auction Website: morfauction.com



### 1. Schemm Brewing Co. Tray.

13 x 10-5/8" Small early tin litho serving tray w/ beautiful art nouveau styling. Clean, bright and excellent appearance (displays as a strong C. 8++) w/ some non-offensive faint scratch lines and a little scattered wear along outer edges of rim (critical grade C. 8/-)

Min. bid \$150.



### 2. Raybestos Brake Service Sign.

14 x 18.5" Early, heavy tin litho 2-sided service station flange sign for Raybestos Co.'s auto brakes. Clean and bright w/ a great overall look (display side a strong C. 8+ appearance); w/ some non-offensive scattered wear spots and minor oxidizing on backside (back displays as a C. 7.5+/8-).

Min bid \$150.



### 3. Wrigley Junior Candy Store Scale.

7.25 x 9.5 x 2-5/8" (w/ out basket) ; 8.25 x 12 x 9-7/8" (w/ basket) Scarce, early cast iron dial scale, w/ nice, rich, all original paint and stenciling. Very attractive overall (a strong C. 8/+) w/ a little light wear from use (original nickel plated brass basket has some plating wear on inside).

Min. bid \$100.



### 4. Stegmaier Brewing Co. Sign.

28.5 x 22.25" Large, early self-framed tin litho sign for Stegmaier Brewing Co. (Wilkes-Barre, PA). Clean, bright and very attractive (basically a strong C. 8.5/+), w/ exception of some non-detracting tiny scattered paint speckles in back-ground.

Min. bid \$150.





#### 5. Tomahawk Tobacco Sign

25 x 16-7/8" Very early cardboard sign w/ beautifully detailed lithography. Clean, bright and very attractive (basically displays as a strong C. 8/+), w/ a little scattered restoration in outer "wood grain" border area and along a professionally repaired crack line in bottom section.

Min. bid \$100.



#### 6. Gulf Marine White Sign.

8.5 x 10.5" Vintage, enameled porcelain marina gas pump sign for Gulf brand marine fuel. Clean, bright and like new (near mint).

Min. bid \$100.



#### 7. Bakelite Radio.

8.25 x 12.75 x 8" Vintage 1940's Catalin Bakelite plastic "Model A-600 Duchess" radio by Air King Co. w/ a rich, deep, nicely aged brownish maroon body color and knobs, w/ an orangish-yellow colored front panel. Excellent and all original, w/ a nice, rich, deep, all original surface patina.

Min. bid \$100.



#### 8. Green River Whiskey Sign.

24" (dia.) Large, early tin litho concave shaped charger sign. Clean, bright and very attractive (a strong C. 8/+) w/ minor background wear and some non-detracting light varnish spots on surface.

Min. bid \$100.



#### 9. Diamond Dyes Maypole Cabinet.

29.75 x 10 x 23" Beautiful, early wooden country store advertising cabinet, w/ beautifully detailed embossed multicolor sign on front, complete w/ sliding doors on backside and slotted compartments inside. Tin sign is clean, bright and exceptionally nice (a very strong C. 8.5++); wooden cabinet was refinished many years ago.

Min. bid \$100.



#### 10. Salesman's Sample Adjustable Crutch.

11 x 2.25 x 3/8" Very early, figural metal and rubber salesman's sample mechanical adjustable crutch in its original wooden box. Very high quality piece is a working exact miniature version of Co.'s large full sized crutch. Excellent and all original, w/ a nice rich surface patina (C. 8.5+).

Min. bid \$100.





**11. Leather Goods Reverse Glass Store Sign.**

7.5 x 41.75 x 1.5" Outstanding, very early, heavy reverse glass sign w/ fancy deep "chipped glass" design to its gold lettering and background areas. Very high quality piece is excellent and all original, w/ a little minor expected wear to its brass over wood backed frame. Freshly picked from early store attic.

Min. bid \$100.



**12. 1893 Bartholomay Brewing Co. Calendar.**

38 x 27.5" (33 x 23" actual piece) Large, vintage paper litho w/ original strips. Clean and very nice appearance (displays as a C. 8/+), w/ exception of a couple horizontal snake/crease lines (from being rolled) and a couple professionally repaired tears. Framed.

Min. bid \$100.



**13. Wonder Washer Salesman Sample.**

9-5/8 x 11.25 x 10.25" Nice, early, salesman's sample for Victor Mfg. Co.'s (Leavenworth, KS) "Wonder Washer" brand clothes washing machine. Very nice overall w/ nice rich surface patina (a nice C. 8/+). Has bright and attractive lightly worn advertising on both sides of its galvanized steel tub, w/ wooden top that opens to reveal working crank driven agitator inside (lettered advertising C. 7.5/+).

Min. bid \$100.



**14. Hires Punchbowl Dispenser.**

12 x 17.25" (dia.) Outstanding, large, very high quality heavy glazed stoneware w/ repeating Hires kid images all around (made by Mettlach- the famous German stein maker). Clean and excellent overall (basically a C. 8.5/+) w/ exception of a couple faint, barely noticeable minor tight hairlines at top edge.

Min. bid \$150.



**15. Buffalo Gum Case.**

15.5 x 6 x 6.5" Outstanding, early, metal countertop advertising display case w/ beveled glass viewing windows on three sides & figural metal buffalo at top (door at front rings a bell inside when opened). Clean and very attractive (displays as a strong C. 8++ overall) w/ a little non-offensive paint wear in bottom base section (note: missing middle closure piece on backside).

Min. bid \$150.





**16. Blue Boar Tobacco Sign.**

14.25 x 9" Impressive, early tin litho easel-back countertop sign in shape of Co.'s small top style tobacco tin. Clean, bright and very attractive (displays as a strong C. 8/+), w/ minor background wear.

Min. bid \$100.



**17. Planters Display Rack.**

8.5 x 14 x 2.5" (depth) Early tin litho Planters Peanut Co. "Z" shaped counter top display rack. Clean, bright and very attractive (a strong C. 8++) w/ only minor wear.

Min. bid \$150.



**18. Evinrude Outboard Motors Sign.**

14-5/8 x 25-7/8" Scarce, early, heavy embossed tin litho. Clean, bright and very attractive (displays as a strong C. 8.5/+), w/ a little fairly minor storage/edge wear and some non-offensive light soiling in bottom yellow background area (critical grade C. 8/+).

Min. bid \$100.



**19. Good Gulf Gas Globe.**

18.5 x 16 (dia.) x 7" Scarce, early Gulf service station gasoline pump globe. Heavy, 1-ps. solid cast milk glass, w/ deep embossed detailing on both sides w/ a beautiful, rich patina to its all original paint surface. Exceptionally nice condition (near mint).

Min. bid \$150.



**20. Bartel's Brewing Co. Sign.**

28.5 x 22-3/8" Early self-framed tin litho sign featuring beautifully detailed Shonk Co. lithography. Image area is clean, bright and exceptionally nice (a strong C. 8.5+) w/ a little non-offensive darkening / oxidized light wear at bottom edge of frame area.

Min. bid \$150.



**21. Sidney Dillon Cigar Sign.**

16.25 x 20" Beautiful, early self-framed multicolor tin litho sign. Clean, bright and very attractive (displays as a strong C. 8++). Appears clear coated long ago (not at all detracting).

Min. bid \$100.





## 22. A No. 1 Candy Signs.

8-5/8 x 8-5/8" each Lot includes three different, early, cardboard litho signs for A No. 1 brand penny chocolate candies (back sides are blank). They are clean, bright and excellent (C. 8.5+).

Min. bid \$100.



## 23. American Brewing Co. 1899 Calendar.

33.25 x 23.25" (frame); 29-3/8 x 19.75" (actual piece) Important, large, early paper litho roll-down calendar from American Brewing Co. (Rochester, NY). Has strong colors and a powerful and very impressive look (basically displays as a strong C. 8+) w/ small repaired hole in upper back-ground and some non-offensive scattered back-ground and edge wear (see web site for particulars). Framed.

Min. bid \$150.



## 24. Warner Bros. Pictures Clock.

7.75 x 8-3/8 x 2.75" Unusual, early, heavy figural cast iron ark shaped advertising clock promoting Warner Bros. Vitaphone movie "Noah's Ark", starring actors Dolores Costello (pictured on clock face) & George O'Brien. Very high quality piece has nice detailing and an excellent, rich, all original surface patina (a strong C. 8.5/+), Note: clock runs briefly when rocked.

Min. bid \$100.



## 25. Small Cigar Store Lighter.

6 x 4.5 x 4-3/8" Outstanding, small, early figural metal countertop cigar store lighter, w/ beautiful rich surface patina to its bronze finish, complete w/ deep cobalt blue glass globe (globe has ground lip and base, w/ attractive gold lettering). Excellent and all original, w/ a little minor wear to lettering on globe.

Min. bid \$100.



## 26. Osh-Kosh Overalls Porcelain Sign.

10 x 30" Outstanding, early, high quality heavy enameled porcelain sign for Osh-Kosh brand overalls. Crisp, bright and like new w/ original sheen (near mint) w/ exception of a little minor chipping at top middle hanging hole.

Min. bid \$150.





**27. Drugstore & Soda Fountain Neon Sign**

7.75 x 27 x 5.75" Ca. 1920's/30's stylish art deco metal cased light-up store sign w/ deep etched glass lettering. Excellent and all original (working blue tinted neon).

Min. bid \$100.



**28. Kellogg's Corn Flakes Pocket Mirror.**

2.75 x 1.75" Scarce, early celluloid. Clean, bright and excellent w/ just a trace hint of minor foxing on back-side edge (stated for accuracy, so faint and minor it barely merits mentioning)

Min. bid \$100.



**29. 1907 Coke Serving Tray.**

13.25 x 11" Medium size variation. Displays nicely (basically a strong C. 8++ viewed straight on), w/ minor background dent, slight crazing and a few small, barely noticeable hazy spots evident if tipped just right (not at all offensive or detracting from great look of piece).

Min. bid \$250.



**30. Munyon's Headache Cure 3-Way Sign.**

4.25 x 18.25" Early tin litho chain hung patent medicine "Cure" sign w/ angled tin slats on front giving three different messages when viewed at different angles. Front is clean and very nice overall, w/ light wear spot at bottom left corner edge; backside has a little light scuffing and light general wear from use (front a strong C. 8/+; back C. 7/+).

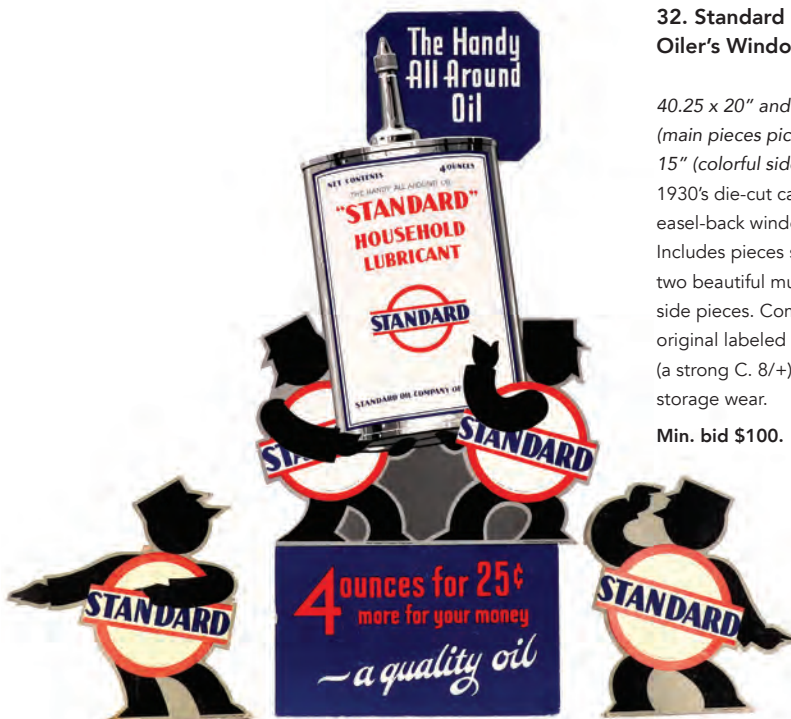
Min. bid \$150.



**31. Pan American Airways Porcelain Sign.**

18" (dia.) x 2" (deep) Vintage ca. 1960's convex shaped medium sized enameled porcelain sign (Dutch makers marks on backside). Crisp and like new w/ exception of a few minor flea bites at outer edge.

Min. bid \$100.



**32. Standard Co.'s Handy Oiler's Window Display.**

40.25 x 20" and 13.5 x 11.75" (main pieces pictured); 40-3/8 x 15" (colorful side pieces) Nice 1930's die-cut cardboard 5-ps. easel-back window display. Includes pieces shown and two beautiful multicolor large side pieces. Complete, w/ their original labeled shipping box (a strong C. 8/+), w/ only minor storage wear.

Min. bid \$100.





**33. Edison Phonographs Stained Glass Store Sign.**

12 x 58" Important high quality early stained glass metal framed store window/sign promoting (Thomas) Edison Co. phonographs. An impressive, great looking piece that is all original and as found, in extremely nice condition, w/ only very minor wear. Also see lot # 34, which came from same store.

Min. bid \$200.



**34. Cigar & Candy Store Stained Glass Sign.**

12 x 58" Important, large high quality, early stained glass, metal framed sign. An impressive, great looking piece that is all original and as found, in extremely nice condition (near mint w/ exception of a few faint hairlines in one of narrow orange panels). (Note: also see lot # 33, which came from same store).

Min. bid \$200.



**35. Set of Circus Club Marshmallow Tins.**

7 x 4-1/8" (dia. each) Set of six 6 oz. novelty circus animal tins from Harry Home Co. (Toronto, Canada). Clean and attractive overall (avg. C. 8/+), w/ a coin slot cut into top of red cap.

Min. bid \$150.



**36. Packard Gold Presentation Ring w/ Diamond Chip.**

1-1/8 x 3/4 x 1" Very high quality, large 10 K gold presentation ring given to executives by Packard motor cars company, w/ finely detailed design of Packard Co.'s name and logos on both sides. This is a rare variation made by Balfour Co., w/ a diamond chip under the large center bloodstone.

Min. bid \$100.



**37. Coca-Cola 1908 Topless Serving Tray.**

12.25" (dia.) Outstanding, scarce, ca. 1908 serving tray from Western Coca-Cola Bottling Co. (Chicago, IL) featuring topless model holding early style paper label bottle. Crisp, bright and exceptionally nice (displays as a strong C. 8.5++) w/ only very minor wear (wax polished or possibly clear coated long ago).

Min. bid \$150.





**38. Dr. Scholl's Sign.**

7.5 x 24" Early, heavy enameled porcelain sign for Dr. Scholl's foot products. Clean, bright and basically like new, w/ exception of a little light chipping at left hanging holes (note: still has its original paper label on backside).

Min. bid \$100.



**39. Betsy Ross Pocket Mirror.**

2.75 x 1.75" Extremely rare, beautiful early celluloid pocket mirror that is clean and excellent in appearance, w/ just a trace hint of minor foxing on back-side edge (so faint and minor, barely merits mentioning).

Min. bid \$100.



**40. Moxie Die-Cut Counter Display.**

5-7/8 x 6" (dia.) base Early tin litho countertop display, w/ Frank Archer attached to 6" Moxie change tray at base. Unused, never folded piece is crisp, bright and like new (near mint), w/ exception of very minor edge wear at outer edge of rim.

Min. bid \$100.



**41. Paul Jones Whiskey Sign.**

13-5/8 x 19.5" Early tin litho curled edge sign (Meek Litho). Litho area has strong colors and very nice overall look (C. 8+/) w/ a little minor background speckling and some non-offensive wear in outer dark background and at rolled edges.

Min. bid \$100.



**42. Leisy Brewing Co. Beer Pitcher & Mugs.**

Pitcher: 13.25 x 6-3/8" (dia.); Mugs: 5-1/8 x 3.75" (dia.) Large, early, heavy ceramic art pottery advertising beer pitcher and five matching mugs (made by Haynes Pottery, Baltimore). Very nice condition (near mint), w/ minor soiling and light crazing on two of the mugs.

Min. bid \$100.



**43. Dr. Lesure's Thermometer.**

24-1/8 x 5-7/8 x 3/4" Scarce, early wooden thermometer for Co.'s veterinary medicines. Attractive and all original, w/ just the right amount of minor soiling and light wear to give it a great folk art look (C. 8+/-). Working thermometer (hanging holes added after mfg.).

Min. bid \$100.





**44. Dr. Pepper Thermometer.**

17.25 x 5-3/8"  
Vintage ca. 1930's embossed metal advertising thermometer featuring nice image of early style bottle. Clean, bright and very attractive (basically a strong C. 8/+), w/ a little minor wear.

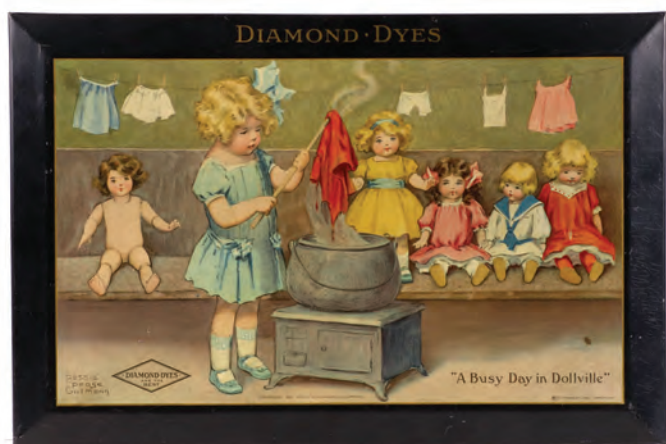
Min. bid \$100.



**45. Perkins Express Sign.**

15 x 47 x 1.75" Large, very early, heavy wooden painted sign for Perkins & Co.'s Express. Has a nicely crazed and weathered surface to its all original dry paint surface, giving it an attractive, primitive country folk art look (C. 7.5++).

Min. bid \$150.



**46. Diamond Dyes Dollville Sign.**

12 x 17" Early tin litho sign w/ image by illustrator Bessie Pease Gutman. Clean, bright and excellent (basically a strong C. 8.5/+) w/ minor dents at bottom edge, a non-offensive small stain spot in bottom background area and a little typical, faint minor crazing.

Min. bid \$150.



**47. 1910 Deering Harvester Calendar.**

20-1/8 x 13-3/8" Scarce, early paper litho w/ beautiful multicolor graphics. Clean, bright and displays as like new, complete w/ full 1910 calendar pad, w/ some very well done professional conservation (tear repairs).

Min. bid \$150.



**48. Franklin Cigars Sign.**

22.25 x 15" Outstanding early paper litho sign. Clean, bright and excellent appearance (displays as a strong C. 8.5/+), w/ light stain speckles in lower hand area, has professional conservation and minor restoration.

Min. bid \$100.



**49. Salesman's Sample Ice Box.**

14.75 x 10-1/8 x 7.5" Outstanding, early, heavy museum quality oak salesman's sample ice box. Excellent and all original (C. 8.5++), w/ beautiful detailing and a deep, rich surface patina (inside is metal lined, w/ original wire racks, hardware, etc.). No makers name evident.

Min. bid \$150.





50. Lee Overalls Porcelain Sign.

11 x 30" Early, heavy enameled porcelain, w/ impressive, colorful and highly graphic images. Clean and very attractive w/ bright colors and nice original sheen (basically a strong C. 8++) w/ a few chips in outer border and inside letter "O" of word "Union")

Min. bid \$100.



51. Taxi Tobacco Pocket Tin.

4.25 x 3 x 1" Scarce, early tin litho flip lid pocket tin w/ beautifully detailed graphics. Clean, bright and exceptionally nice in appearance (C. 8.5/+). Canadian.

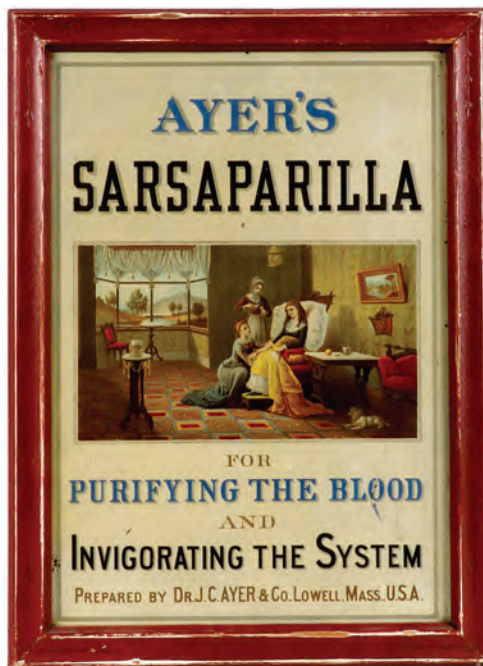
Min. bid \$150.



52. Bull Durham Tobacco Sign.

30 x 21-25" (24.75 x 17-1/8" visible) Nice, early paper litho sign for Bull Durham brand tobacco, w/ beautiful multicolor graphics. Clean, bright and very attractive (displays as a strong C. 8++), w/ a little non-offensive light background wear. Framed and matted.

Min. bid \$150.



53. Ayer's Sarsaparilla Sign.

22.5 x 16.5" (19.5 13-5/8" visible) Very early tin litho sign for Ayer & Co.'s quack medicine treatment, w/ fine, beautifully detailed lithography by Wells & Hope. Clean and quite nice overall, w/ a couple non-offensive light background scuffs and some crazing in image area (C. 8+/-), complete w/ original frame.

Min. bid \$150.



54. Countertop Coffee Grinder.

13 x 9 x 9" (dia. wheels) Scarce, early figural cast iron tabletop coffee grinder from Chas. Parker Co. (Meriden, CT). Has a beautiful, untouched patina to its all original decals and paint surface, w/ nicely embossed detailed lettering on wheels and drawer front. Excellent and all original, w/ a great overall look (a strong C. 8/+).

Min. bid \$100.



55. Nehi Soda Calendar.

24 x 11.5" Vintage 1935 calendar featuring wonderful art deco glamour girl image by illustrator Rolf Armstrong. Clean, bright and like new, complete w/ full 1935 calendar pad and original metal strip (near mint).

Min. bid \$100.

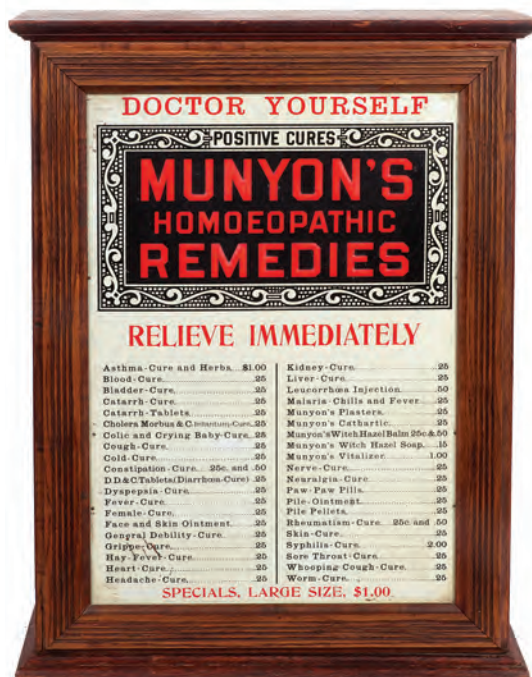




56. Moxie Fancy Serving Tray.

9-7/8" (dia.) x 3/4" (rim) Fine, early Moxie serving tray featuring beautifully detailed reverse glass base w/ fancy metal border and handles. Clean, bright and exceptionally nice appearance (C. 8.5++).

Min. bid \$100.



57. Munyon's Quack Medicines Cabinet.

24 x 18-1/8 x 7"  
Very early country store advertising cabinet for Co.'s various remedies and "cures", w/ products listed and priced on its embossed tin front panel, w/ all 41 individual drawers on backside. All original and as found, w/ strong color and very nice overall look (C. 8+/-).

Min. bid \$100.



58. General Custer Cigar Tin.

5.75 x 2-7/8 x 1.75"  
Outstanding, 2-ps. product tin for General Custer brand cigars, w/ stunning multicolor wrap around paper label featuring Battle of Little Bighorn scene (George Schlegel lithographers, NY). Clean, bright and exceptionally nice (C. 8.5++), w/ Series 1910 tax stamp.

Min. bid \$100.



59. Large Porcelain Carnation Milk Sign.

23 x 22" Large, early enameled porcelain sign for Carnation fresh milk. Clean, bright and exceptionally nice, w/ very impressive look (near mint).

Min. bid \$100.



60. 1930's Coca-Cola Sign.

22-5/8 x 22-5/8"  
Early, 2-sided heavy tin litho die-cut sign. Clean, bright and very attractive appearance (displays as a strong C. 8/+), complete w/ its original hanging hooks.

Min. bid \$150.



61. Munsing Wear Union Suits Sign.

27 x 19.25" Early tin litho die-cut sign. Clean and bright w/ a very impressive look (displays as a strong C. 8/+), w/ a little non-offensive minor scattered background wear (critical grade C. 8/-).

Min. bid \$150.



# BEWARE OF PICKPOCKETS

## 62. Beware Pickpockets Porcelain Sign.

10 x 16" Great, early warning sign to be aware of pickpockets in the area, w/ cobalt blue lettering on white background. Very nice overall, with light edge chipping at two of hanging holes.

Min. bid \$100.



## 63. Salesman's Sample Laundry Stand & Wringer.

16 x 8.5 x 16" (open); 16 x 8.5 x 5.5" (folded down)  
Very early, wooden working salesman's sample for Lovell Mfg. Co.'s (Erie, PA) clothes wringer and washing stand. Very high quality piece is excellent and all original, w/ nice rich surface patina (a strong C. 8++).

Min. bid \$150.



## 64. Diamond Tires Flange Sign.

27-3/8 x 17.25" Early 2-sided tin litho flange sign (unusual variation w/ man on tire logo). Displays very nicely (as a strong C. 8+), w/ bright colors and original sheen, w/ light bend mark at bottom center tip and some scattered soiling and light storage wear (as found, should improve w/ cleaning).

Min. bid \$150.



## 65. Rice's Seeds Sign.

31.25 x 23.25" (27-5/8 x 19-5/8" visible)  
Large, early paper litho sign for Rice's Seeds (Cambridge, NY) w/ stunning, multicolor stone lithography by Cosack & Co. (Buffalo, NY). Clean, bright and exceptionally nice (a strong C. 8.5/+), in beautiful period frame.

Min. bid \$150.



## 66. Lucky Strike Porcelain Thermometer.

19 x 6-1/8 x 3/4" Early, enameled porcelain thermometer. Front is clean, bright and very attractive (basically a very strong C. 8++), w/ some faint, fine spider web stress lines just below bottom hanging hole, and some chipping loss in outer side edge area.

Min. bid \$150.



## 67. Squibb Dental Cream Sign.

19.5 x 6-7/8" Outstanding, ca. 1920's/30's die-cut cardboard easel-back standup sign featuring great golfing image. Impressive piece is clean and excellent (a strong C. 8+), w/ minor edge wear.

Min. bid \$100.



## 68. Lighter Fluid Dispenser

17.5 x 6" (dia.) Early, high quality, heavy figural metal and glass "Serv-a-Liter" brand coin operated countertop lighter fluid dispenser in shape of early visible globe style gas pump. All original piece is clean and quite nice overall, w/ a little light wear from use (C. 8+/-).

Min. bid \$100.





**69. Clockwork Elephant Hotel Bell.**

6 x 4 x 3" Unusual, early, high quality windup clockwork hotel service bell w/ finely detailed brass case, glass eyes and bone tusks (pushing down on tusks creates steady ringing bell sound). A high quality piece in nice working condition. Excellent.

Min. bid \$100.



**70. Club Room Mixture Tin.**

4-5/8 x 3.5 x 2-1/8" Very early tin litho tobacco can from J.B. Pace Co., w/ beautifully detailed Somers Bros. lithography. Clean and very attractive appearance (a strong C. 8/+ overall) w/ a little minor edge chipping and wear on front and a few chip spots on backside.

Min. bid \$150.



**71. Wampum Coffee.**

9-3/8 x 5.5" (dia.) Scarce, early tin litho 3 lb. can from Stone-Ordean-Wells Co. (Duluth, MN) w/ same semi-top-less squaw images on both sides w/ trademark tomahawk image on lid and sides. Clean, bright and very nice overall (a strong C. 8/+) w/ minor background wear and a few scratches on lid.

Min. bid \$100.



**72. Set of Lovell & Covel Candy Pails.**

3 x 3" (dia.) each Complete set of all five small tin litho candy pails from Lovell & Covel Candy Co. featuring beautifully detailed graphics. They are clean, bright and excellent (avg. 8.5/+).

Min. bid \$100.



**73. Runkel's Cocoa Self Framed Tin Sign**

28.5 x 22.25" Large, early self-framed tin litho sign featuring stunning multicolor image "Drinking Cocoa at the Court of Louis XI" (Shonk Litho, 1904). Image area is clean, bright and especially nice (displays as a C. 8.5/+) w/ some non-detracting wear in outer frame area.

Min. bid \$150.



**74. 1937 Coca-Cola Calendar (Canadian).**

24.75 x 12" Scarce Canadian variation 1937 Coca-Cola calendar featuring Huckleberry Finn image by noted illustrator N.C. Wyeth. Clean, bright and excellent (C. 8.5/+), w/ only very minor wear. Complete w/ its full calendar pad and cover sheet (cover sheet has a little minor toning and soiling).

Min. bid \$100.





**75. Torpedo Pocket Tin. (Submarine) Variation**

4.25 x 3 x 7/8" Scarce, early tin litho concave shaped tobacco pocket tin (same image both sides). A clean and attractive example that displays nicely, w/ a little light denting and some light scattered background wear (C. 8/-).

Min. bid \$150.



**76. Torpedo Pocket Tin (Destroyer).**

4.25 x 3-1/8 x 1" Scarce, early tin litho pocket tin from Rock City Tobacco Co. (Quebec, Canada). Displays nicely (as a C. 8+/-), w/ minor denting and some light scattered background wear (including a couple white wear spots on left side edge).

Min. bid \$150.



**77. Sleepy Eye Flour Sign.**

24.5 x 20.25" (19 x 15.25" center image) Large, important self-framed tin litho. Clean, bright and very attractive (basically a strong C. 8++ appearance), w/ a little non-offensive light scattered background wear (critical grade C. 8+/-).

Min. bid \$200.



**78. Hardware Store Door Push.**

8 x 3" Very early, heavy enameled porcelain advertising door push for OVB brand hardware store products. Excellent overall, w/ a little light chipping at very outer edges.

Min. bid \$100.



**79. Buster Brown Cigar Can.**

5 x 5" (dia.) Early tin litho cigar can w/ same great image on both sides. Tin is clean, bright and very attractive (a strong C. 8+++) w/ minor dent at bottom edge (lid has small repaired puncture hole and a name slightly scratched onto it).

Min. bid \$100.



**80. No Spitting Porcelain Flange Sign.**

7 x 10-1/8" Nice, early, 2-sided heavy enameled porcelain flange no spitting sign (same on both sides). Clean and excellent overall w/ nice sheen (C. 8.5/+), w/ exception of a little minor scattered edge wear.

Min. bid \$100.





**81. Mobilgas Marina Sign.**

13-1/8 x 12.5" Vintage enameled porcelain marina gas pump sign for Mobil Co.'s boat fuel. Clean, bright and exceptionally nice (field area near mint), w/ just a trace bit of very minor edge wear (a strong C. 8.5++).

Min. bid \$100.



**82. Little Joker Tobacco Sign.**

20.5 x 18.25" (18 x 16" actual sign) Scarce, very early Wells & Hope tin lithography. Decent color and attractive overall look, w/ a couple non-offensive faint stain spots and some light background wear in bottom right background area (C. 8-).

Min. bid \$150.



**83. Falstaff Beer Charger Sign.**

24" (dia.) Early tin litho concave sign from Lemp Co. (St. Louis, MO). Strong colors and displays nicely (basically a C. 8+), w/ scratch line in fireplace area and a little non-offensive oxidizing and background wear (critical grade C. 8/-, displays better than this implies).

Min. bid \$100.



**84. Gold Dust Pocket Tin.**

4.5 x 3 x 7/8" Scarce, early tin litho vertical tobacco pocket tin. Clean, bright and very attractive, w/ a couple small tar spots at bottom area on backside (front C. 8.5/+; back C. 8+).

Min. bid \$150.



**85. Pilot Gambling Cigar Cutter.**

6.75 x 6.25 x 3.5" Early, embossed figural "Odd or Even" countertop cast iron cigar cutter (spinning the pilot's ship steering wheel rotates gaming dial between odd & even numbers while trimming s cigar). Unusual, high quality piece, w/ nice patina to its all original paint surface (C. 8+/-).

Min. bid \$100.



**86. Home Run Cigar Can.**

5.75 x 4.25" (dia.) Scarce, early tin litho "Home Run Stogie" brand 50 count cigar can (same great image on both sides). Clean, bright and very attractive (a strong C. 8+), w/ a little scattered staining and light wear on edges of lid.

Min. bid \$150.





**87. Porcelain Pointing Finger Toilet Sign.**

4 x 24" Very early, heavy enameled porcelain. Clean, bright and excellent overall (C. 8.5+), w/ exception of chipping at bottom left corner and minor edge wear.

Min. bid \$100.



**88. Large Monarch Store Bin.**

14.75 x 12-5/8" (dia.) Large, early tin litho 55 lb. store tin w/ great images of Co.'s Brownie like Teenie Weenie characters on backside. A powerful, impressive piece that is clean, bright and beautiful (a strong C. 8++) w/ small dent at bottom edge and minor background wear.

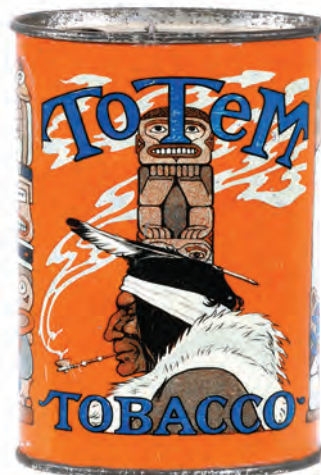
Min. bid \$100.



**89. Ante-Bellum Pocket Tin.**

4.5 x 3 x 7/8" Scarce, early tin litho. Has strong colors and displays nicely (basically as a strong C. 8/+), w/ exception of some minor denting and litho wear on narrow side edges; w/ some tar or black touchup along raised top edge of front side.

Min. bid \$150.



**90. Totem Pocket Tin.**

3-5/8 x 2-5/8 x 1" Early, tin litho tobacco pocket tin featuring nice Indian and totem pole images all around. Clean, bright and very attractive (a strong C. 8++) w/ minor background wear.

Min. bid \$100.



**91. Life Savers Sign.**

20.5 x 18.5" frame; (11.75 x 9-7/8" sign) Vintage ca. 1920's cardboard die-cut sign. Clean, bright and very attractive (displays as a strong C. 8/+) w/ small break mark at top hanging hole, some non-offensive faint toning and a few tiny scattered tack holes. Beautifully framed and matted.

Min. bid \$100.



**92. Miniature Austin's Patent Anvil (Salesman's Sample?).**

8.75 x 7-7/8 x 4.5" Very early, salesman's sample sized anvil, mounted to its nicely painted wooden display box (box has "Austin's Patent" lettering and detailing). Excellent and all original, w/ just the right amount of aging and light wear to give it a great country folk art look.

Min. bid \$100.





**93. Grape-Nuts Sign.**

30-1/8 x 20.25"  
Outstanding, early self-framed tin litho sign. Clean, bright and exceptionally nice (a strong C. 8.5/+). About as nice an example as you can find.

Min. bid \$250.



**94. Welcome Soap Primitive Country Store Sign.**

23-5/8 x 6-5/8 x 7/8"  
(31" long metal bracket)  
Early, wooden 2-sided country store advertising sign for Welcome Soap (marked "Coffees" on backside), w/ nice sand paint finish Excellent overall, w/ a nice rich patina to its all original paint surface, w/ a great primitive country look (C. 8+).

Min. bid \$150.



**95. Golden Shell Motor Oil Can.**

14 x 9-3/8 x 9-3/8"  
Scarce, large, early embossed 5 gallon can w/ same great image all around. Clean, bright and very attractive (a strong C. 8+/-) w/ minor denting and a little scattered soiling and wear (as found, might improve w/ cleaning). Complete w/ original cap

Min. bid \$100.



**96. Wooden Ware Co. Sample Bucket.**

5.75 x 7" (dia.) Small, very early wooden sample bucket. Excellent & all original, w/ nice, rich patina to its beautiful, all original paint surface (a strong C. 8+/-), w/ a little scattered wear at top edge.

Min. bid \$100.



**97. Sleepy Eye Flour Sign.**

13-5/8 x 9.75" Scarce, very early tin litho die-cut standup sign. Has strong colors and displays pretty well (basically a C. 8+/- overall appearance); w/ exception of some light scattered wear including some fine speckled chipping in neck area and some oxidized darkening/ light storage staining at bottom edges and scratch mark in top cap area (critical grade C. 7.5/+).

Min. bid \$150.

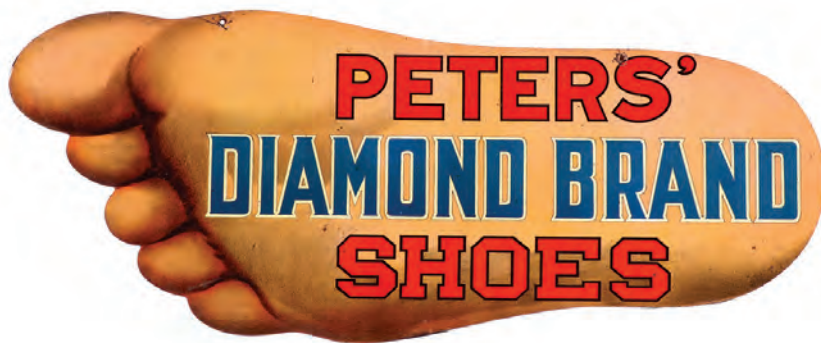


**98. Sleepy Eye Flour Sign.**

13-5/8 x 9.75" Scarce, very early tin litho die-cut standup sign. Has strong colors and displays pretty well (basically a C. 8+/- overall appearance); w/ exception of some light scattered wear including some fine speckled chipping in neck area and some oxidized darkening/ light storage staining at bottom edges (critical grade C. 7.5/+).

Min. bid \$150.





99. Peters' Diamond Shoes Sign.

9.75 x 24.5" Outstanding, early 2-sided heavy tin litho die-cut sign w/ same great image on both sides. Powerful and impressive looking piece is clean and bright, w/ just the right amount of minor wear (front a strong C. 8++); w/ a little non-offensive light speckling and wear on backside (back C. 8+/-).

Min. bid \$150.



100. Polar Bear Tobacco Door Push.

7.25 x 3.5" Scarce, early, heavy enameled porcelain. Clean, bright and excellent overall (basically a C. 8.5/++), w/ exception of chip at top edge, w/ a few very minor scattered flea bites along outer edge.

Min. bid \$100.



101. National Brewing Co. Large Tray.

16-5/8 x 13-5/8" Large, early tin litho tray for National Brewing Co. (Syracuse, NY). Clean, bright and exceptional, w/ nice appearance and original sheen (basically displays as a strong C 8.5+), w/ just a little non-detracting minor wear (critical grade C. 8/+).

Min. bid \$100.



102. Keeling Oysters Tin.

10.75 x 7.5" (dia.) Early and extremely rare large 2 gallon sized tin litho can for S. S. Keeling & Co.'s Oysters. Attractive and displays quite nicely, w/ some non-offensive light, general scattered wear (C. 7.5/+). Complete w/ original lid.

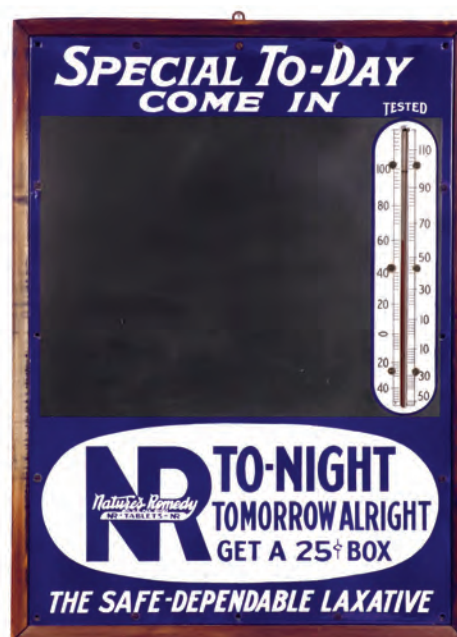
Min. bid \$100.



103. Murphy Paints Sign.

27 x 19" Beautiful multicolor tin litho, w/ wooden color sample blocks at bottom. Clean, bright and very attractive (C. 8.5/+).

Min. bid \$100.



104. Drugstore Porcelain Sign & Thermometer.

29-5/8 x 21-3/8" Very early enameled porcelain sign w/ satin black chalkboard like finish for writing on. Excellent, w/ nice original sheen (a strong C. 8.5+), w/ original, nicely weathered wooden frame and working thermometer.

Min. bid \$150.





**105. Kipawa Cigar Can.**

6-3/8 x 4-3/8 x 4-3/8"  
Scarce, early tin litho  
50 ct. cigar can for  
"Kipawa" brand,  
featuring same great  
image on front and  
back. A clean, bright  
and exceptionally  
good looking piece  
(basically displays a C.  
8.5/+) w/ exception of  
a couple non-offensive  
minor hazy spots on  
side edges.

Min. bid \$150.



**106. Hires Root Beer Tray.**

13" (dia.) Early tin  
litho serving tray for  
Hires Root beer, fea-  
turing great image  
of Co.'s Soda Jerk  
character Josh Slinger  
servicing a fancy soda  
fountain (dated  
1915). Clean, bright  
and displays very  
nicely (as a strong C.  
8++), w/ a little light  
wear along outer  
edges of rim.

Min. bid \$100.



**107. Baer Bros. Paints Sign.**

19-3/8 x 12.5"  
Extremely rare,  
2-sided tin litho  
flange sign (same  
great image both  
sides). Display side  
has some scattered  
chipping, but still  
displays quite nicely,  
w/ strong colors and  
impressive overall  
look; backside has  
darkening along  
outer side edge and  
some areas of fairly  
heavy fine chipping  
and hazy wear  
(display side C. 8/-;  
backside 7+/-).

Min. bid \$150.



**108. Stoneware Food Containers Sign.**

18 x 13" Early,  
beveled tin over  
cardboard. Image  
area is clean, bright  
and very attractive  
(a strong C. 8/+),  
w/ minor pings and  
wear in background,  
and some fine  
oxidized speckling  
at outer right border  
edge.

Min. bid \$150.



**109. Mastiff Tobacco Sign.**

16 x 11.75" Scarce, early,  
heavy pressed cardboard  
sign for J.B. Race Co.'s  
Mastiff brand tobacco. Has  
strong colors and displays  
quite nicely (as a strong C.  
8/+), w/ a little light wear at  
bottom corner edges.

Min. bid \$100.



**110. Kamargo Coffee Can.**

6-1/8 x 4-1/8" (dia.) Beautiful,  
early tin litho 1 lb. can from  
Peck, Calen & Co. (Watertown,  
NY) w/ same great image  
on both sides. Clean, bright  
and very attractive appear-  
ance (a strong C. 8++), w/ a  
little minor background wear,  
including a little very fine  
non-offensive faint speckling  
wear on backside.

Min. bid \$100.





**WM Morford**  
Investment Grade Collectibles at Auction

## Terms & Conditions of Sale

PO Box 247, Cazenovia, NY 13035 . 24 Hr. Tel: 315.662.7625 . 24 Hr. Fax: 315.662.3570 . Morf2bid@aol.com . Morfauction.com

Welcome to our 94th Premier auction of quality antique advertising and fine collectibles. Everything we sell is guaranteed authentic and as described. We attempt to grade condition both fairly and conservatively, using a scale of 1-10 (ten being absolutely mint). We do not list reproductions, re-issues, deceptively restored or pieced together type merchandise. Flaws and blemishes are prominently noted and over emphasized. We encourage you to call or visit our auctions website for a more detailed description on any item you have an interest in, but respectfully must request that you do this before the closing night. Dimensions are listed by height, then width, and are only approximate (+ or - a quarter inch).

### Bidding

Bids are accepted only from those parties who have registered with us to bid. (If you were mailed this catalogue by us or have registered for bidding in any of our AntiqueAdvertising.com auctions, you are automatically pre-registered. Your bids are a legal contract to purchase and once entered, cannot be canceled. Placement of a bid indicates acceptance of our terms.

On all "BID" items there is an 18% buyers premium added to each successful bid. You're welcome to bid by phone, mail, email and fax anytime after receiving this catalog. We will begin accepting phone bids on Wednesday, June 19, 2019. We will be taking calls on Wednesday and Thursday from 10:00 AM until 5:00 PM. If no one answers when you call, please leave a message on our machine and we will get back to you. If bidding by mail or fax, please remember to include your telephone number with your bids! You may call or bid as often as you like. We will tell you the current bid on any item(s) you are interested in. To raise a bid, your advance must be at least \$10 more than the current high bid amount. When an item reaches \$250, bidding increments rise to \$25, at \$1,000, bidding increments advance in \$50 steps, and above \$2,000 in \$100 increments. We suggest not waiting until the last minute to begin your bidding, as its quite possible you won't be able to get through.

### Web Page & Bid Updates

We will begin posting current bid prices (not including the buyers premium) on Wednesday, June 19, 2019 (including updated lot information and additional photos) on our internet web page. These prices will be updated once each day (each evening sometime after 8:00 PM, EST) and will get updated to include the final hammer prices on Sunday afternoon once the sale is concluded. On the closing night, we will attempt to update current bid prices every hour. Our web page address for this sale is: <http://www.morfauction.com> We suggest that once you get to it, that you bookmark this address for easy re-access. There is also a current auction section on our website for this auction with more detailed descriptions and additional photos.

### Reserves & Estimates

All items which receive an opening bid in our sale will be sold to the highest bidder regardless of the price realized (we reserve the right to withdraw items in the event of inaccurate catalog descriptions (and to reject any bid we feel is not made in good faith). We run our auctions with a strict policy of no buy-backs, no auctioneer games and no hidden reserves. Unlike some of our competitors, we do NOT allow consignors to bid on their own items!

### Mechanical Operations

Early mechanical and electric motors and mechanisms on machines toys, coin-ops, clocks, etc. are quite often temperamental and very unpredictable in nature. Although these mechanisms may be working fine at the time of sale, we make no guarantees or representations regarding their continued operating status once they have left our premises (including during shipping).

### Closing Night

THE LAST DAY FOR BIDDING WILL BE ON FRIDAY, June 21st, 2019. On closing day, we begin taking calls at 5:00 PM. Please mark your calendar now. On the closing night (ONLY), we will also be taking calls at (315) 662-3318, (315) 662-3429 and (315) 662-3904 after 5:00 PM (in addition to our regular (315) 662-7625 office number). Closing Time: This Auction will close at 10:00 PM (EST) on Friday, June 21st, 2019. At that time, no more incoming calls will be accepted and all lots with a registered bid of less than \$500, as well as all items without call backs registered on them will be officially closed and final. The items at \$500 and over that have call back protection registered on them will be closed out during our call back period the following afternoon (\*\*see important call back rules below\*\*). We reserve the right to change the official closing in the event of unforeseen family type emergencies or technological failures (utility disruptions, etc.). We also reserve the right to either extend the bidding, to postpone or to cancel this auction in the event of a national emergency or if the Internet or the services of the US Post Office were to get seriously disrupted during our catalogue mailing or bidding period.

### "Up-To" Bids & Call Backs

**CEILING BIDS:** We will be happy to enter competitive "up to" ceiling bids for you on any lots you request. Beginning at your minimum amount, we will advance these bid(s) up to your left ceiling amount, if (and only if) it is topped by another bidder. "Up To" bids will be handled discretely and executed in a completely competitive manner for you. Please note that we don't accept open ended "top all others" ceiling type bids.

**CALL BACKS:** You may request call back protection for any lot(s) that you enter with either a minimum or a protected "up-to" ceiling bid in an amount of at least \$500. This request must be registered with us before the official 10:00 PM closing hour of Friday, June 21, 2019. All callbacks will be placed by us on Saturday, June 22, 2019 it is your responsibility to be available during this call back time period. We make every effort to honor all our call back requests, but this service is done solely as a convenience to our bidders and will be performed on a best efforts basis only. If you will be traveling or if you will not be available during call back times at your primary number, be sure you provide us with proper alternate or back up numbers for reaching you!

### Payment Terms

Winning bidders will be invoiced by mail or email immediately after the sale. Those who desire fast shipment can pay by Money Order, Credit Card or Cashiers Check. Payments are due within 10 days of receipt of invoice. We reserve the right to offer the item out to our back bidders and deny future bidding privileges to those who do not pay in a timely manner. In addition to personal checks, we also accept payment on your American Express, Visa, Master Card, Discover and Optima Credit Cards (with no surcharge added). No COD's or Collect calls are ever accepted. Items shipped to anywhere in New York State must include appropriate sales tax or signed resale certificate.

### Shipping

All packing and shipping charges are extra. We do our own packing and shipping in house and try to keep these charges as reasonable as possible for you. On especially fragile and larger hard to pack items, we hire the services of professional packers and charge you at our billed cost. We ship mostly through the Post Office and Fedex Ground, (Fedex Overnight available at an extra charge.). Foreign bidders will be charged separately based on our actual shipping costs (Supplies/Packing provided at no cost).

### Subscribing, Prices Realized, Consignments & Upcoming Events

Future catalogs can be assured by sending \$20 for a full 12 months subscription. (Prices are published on our website after each sale) An automatic credit card ordering program is available. We generally run between 3-5 auctions a year, including our AntiqueAdvertising.com online sales. In addition to our regular sales, we occasionally offer sales made up entirely from single owner collections. Please contact us should you have items you would like us to consider for inclusion in our upcoming events. All inquiries are handled in a completely confidential manner. Our services are also available for the private placement marketing of important individual items, marketing plans for large collections as well as for estate planning and settlement purposes. Back copies of many of our previous auction catalogs are still available at \$5 each (w/ prices realized) w/ quantity discounts available if multiple issues are ordered. For further information, check our website.

© Copyright 2019. All Rights Reserved. No portion of this publication or our websites may be copied in any form without the express written permission of Morford's.

Photography & Layout by Tracy Morford Photography

### Important Closing Night Information

In addition to our regular 315.662.7625 office number, on the closing night (only!) you may also call us at:

**315.662.3318\***

(after 5:00 PM)

**315.662.3904\***

(after 5:00 PM)

**315.662.3429\***

(after 5:00 PM)

**\*These numbers for  
Closing night only!  
Friday, June 21, 2019**

Bidding closes at 10:00 PM EST on Friday closing night. We will be accepting faxes and e-mails on closing night. Our web page will update current high bid prices approximately every hour on closing night and will also list any important addendum information. All call backs will be made on Saturday, June 22, 2018, beginning at 12 o'clock noon EST!